

INTERIOR TRIM DETAILS:
 1. SEE ARCHITECTURAL DETAIL SHEET "AC" FOR HOUSE
 SPECIFIC INTERIOR TRIM OPTION TABLE.
 2. ALL WINDOWS HAVE T-0 1/2" HEADER HEIGHT UNLESS
 OTHERWISE NOTED.

GYPSONUM NOTES

AT GARAGE:

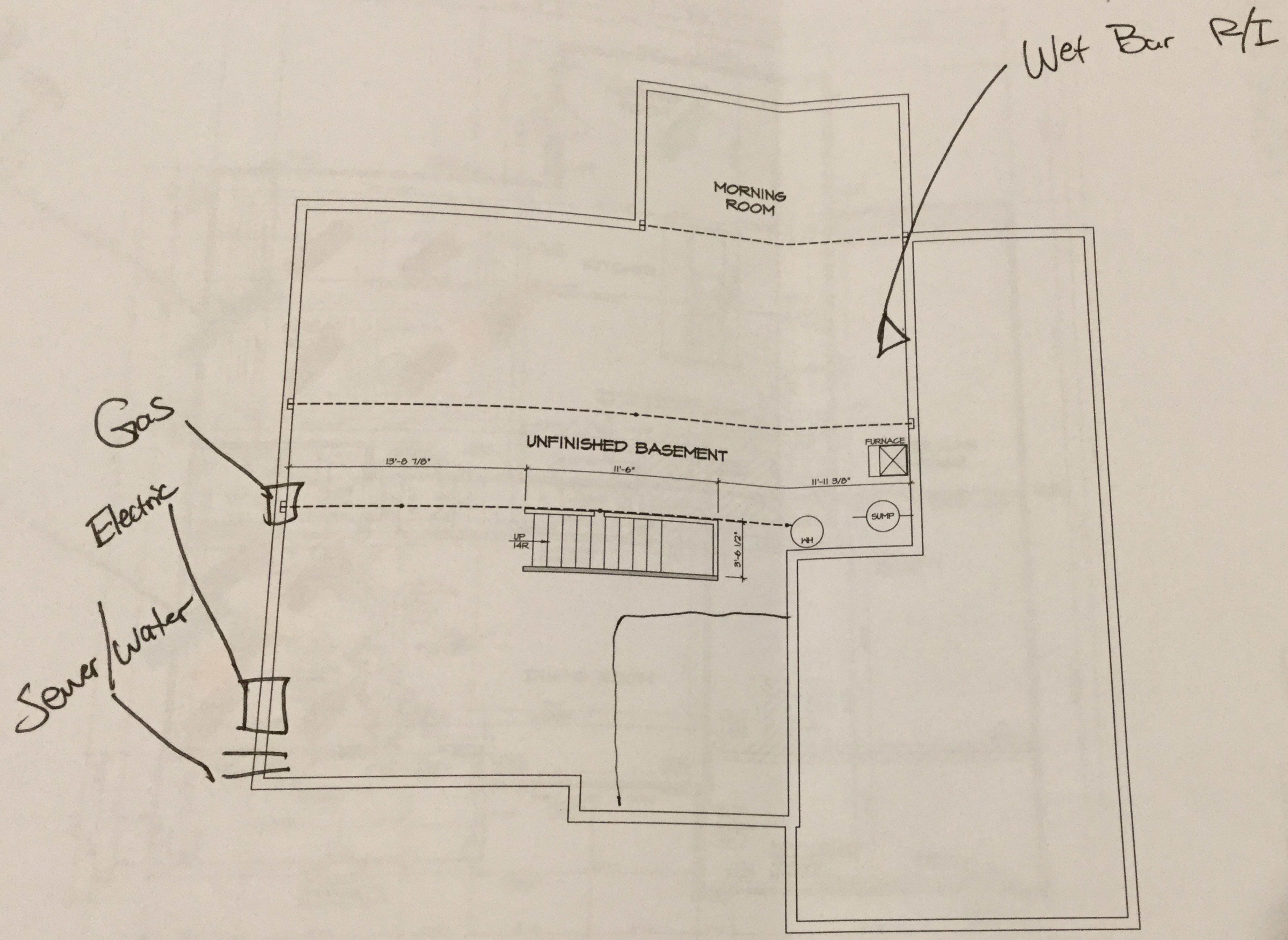
GYPSONUM BOARD AT COMMON WALLS, CEILINGS, BEAM
 WRAPS AND SUPPORTS PER STANDARD DETAIL FA-100
 FIRE ASSEMBLIES OR AS REQUIRED BY LOCAL CODE.

AT STAIRS:

1/2" GYPSONUM BOARD AT UNDERSIDE OF STAIRS AND WALLS
 IN CLOSET

LEGEND

- BEARING WALL
 - - - NON BEARING WALL
 - ⊗ INDICATES BEARING POINT-LOAD ABOVE
 - ⊥ JACKS
 - ⊙ BEAM/HEADER
 - ⊞ PAD FOOTING
 - ◇ STEEL COLUMN
 - ⊗ PORTAL FRAME
 - ⊗ JOIST/TRUSS
 - LVL
 - ⊗ ENGINEERING PA
- SEE FC DETAILS FOR FRAMING CONNECTORS

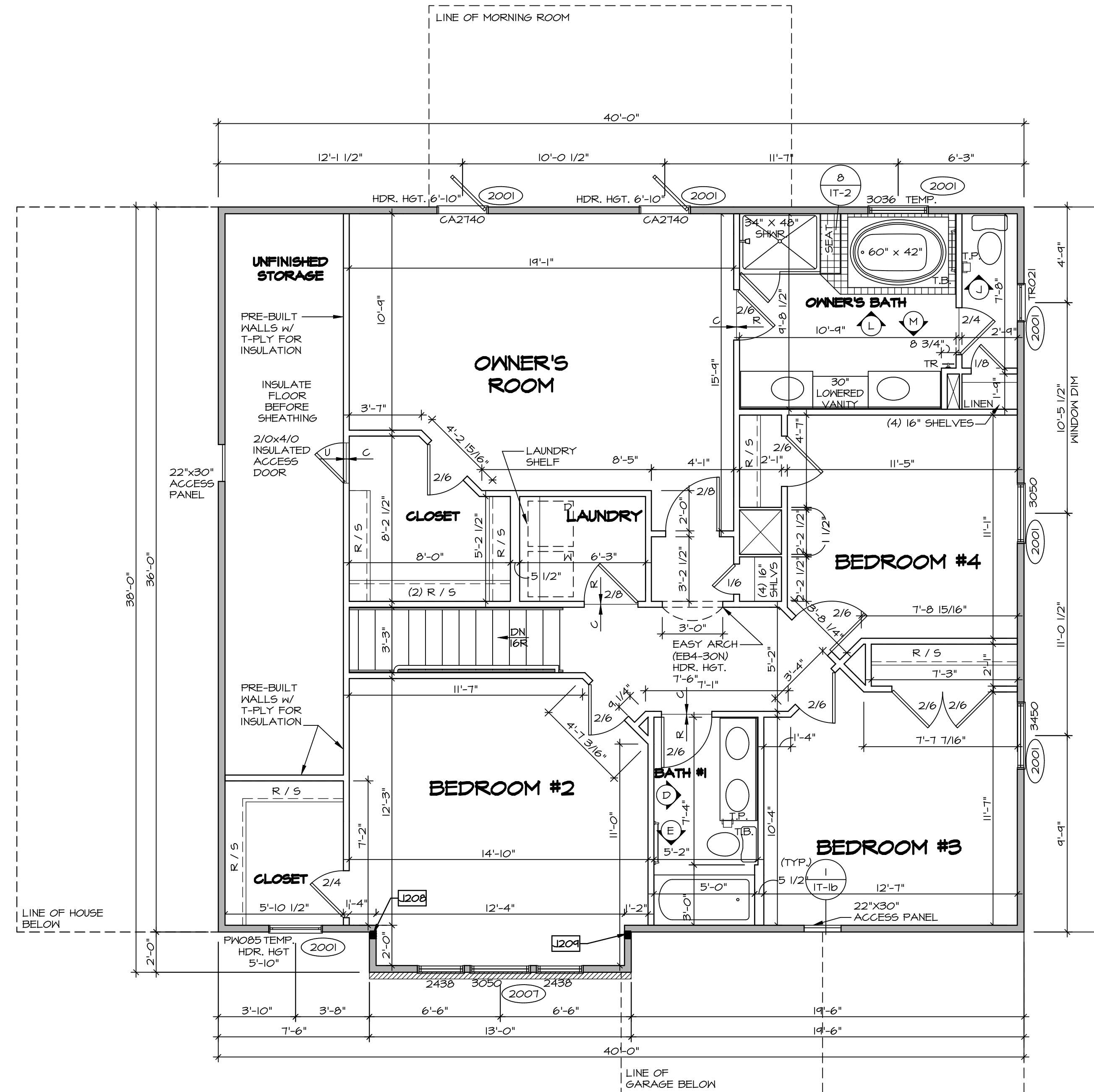


BASEMENT FLOOR PLAN
 SCALE: 1/4" = 1'-0"

SECOND FLOOR JACK SCHEDULE			
IDENTIFIER	DESCRIPTION	OPTIONS	ENG. NUM.
J208	JACK - (3) 2x4 SPM	ELK	2000
J209	JACK - (3) 2x4 SPM	ELK	2000

FLOOR PLAN NOTES

- ALL HEADERS ARE (2) 2x6 w/ 2x4 WALLS OR (3) 2x6 w/ 2x6 WALLS, UNLESS OTHERWISE NOTED.
- ALL HEADERS TO HAVE (1) 2x4 OR 2x6 JACK EACH END, UNLESS OTHERWISE NOTED.
- ALL EXTERIOR WALLS TO BE 4" AND ALL INTERIOR WALLS TO BE 3 1/2", UNLESS OTHERWISE NOTED.
- HATCHED AREAS INDICATE DROPPED CEILINGS. ALL DROPPED CEILINGS ARE 12" UNLESS OTHERWISE NOTED.
- SEE "BRACED WALL PANEL DETAIL SHEET" FOR SPECIAL WALL FRAMING LOCATIONS AND HEADER SIZES, IF APPLICABLE.
- SEE STANDARD DETAIL CATEGORY "1T" SHEET(S) FOR INTERIOR TRIM DETAILS.
- SEE ARCHITECTURAL DETAIL SHEET "AD" FOR HOUSE SPECIFIC INTERIOR TRIM OPTION TABLE.
- ALL WINDOWS HAVE 7'-0 1/2" HEADER HEIGHT UNLESS OTHERWISE NOTED.



LEGEND

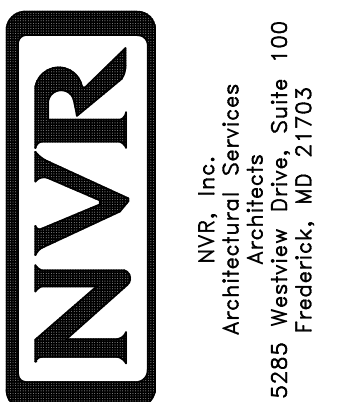
- BEARING WALL
 - NON BEARING WALL
 - INDICATES BEARING FROM POINT-LOAD ABOVE
 - JACKS
 - BEAM/HEADER
 - PAD FOOTING
 - STEEL COLUMN
 - PORTAL FRAME
 - JOIST/TRUSS
 - LVL
 - ENGINEERING PAGE NUMBER
- SEE FC DETAILS FOR FRAMING CONNECTORS

SECOND FLOOR PLAN
SCALE: 1/4" = 1'-0"

REMARKS

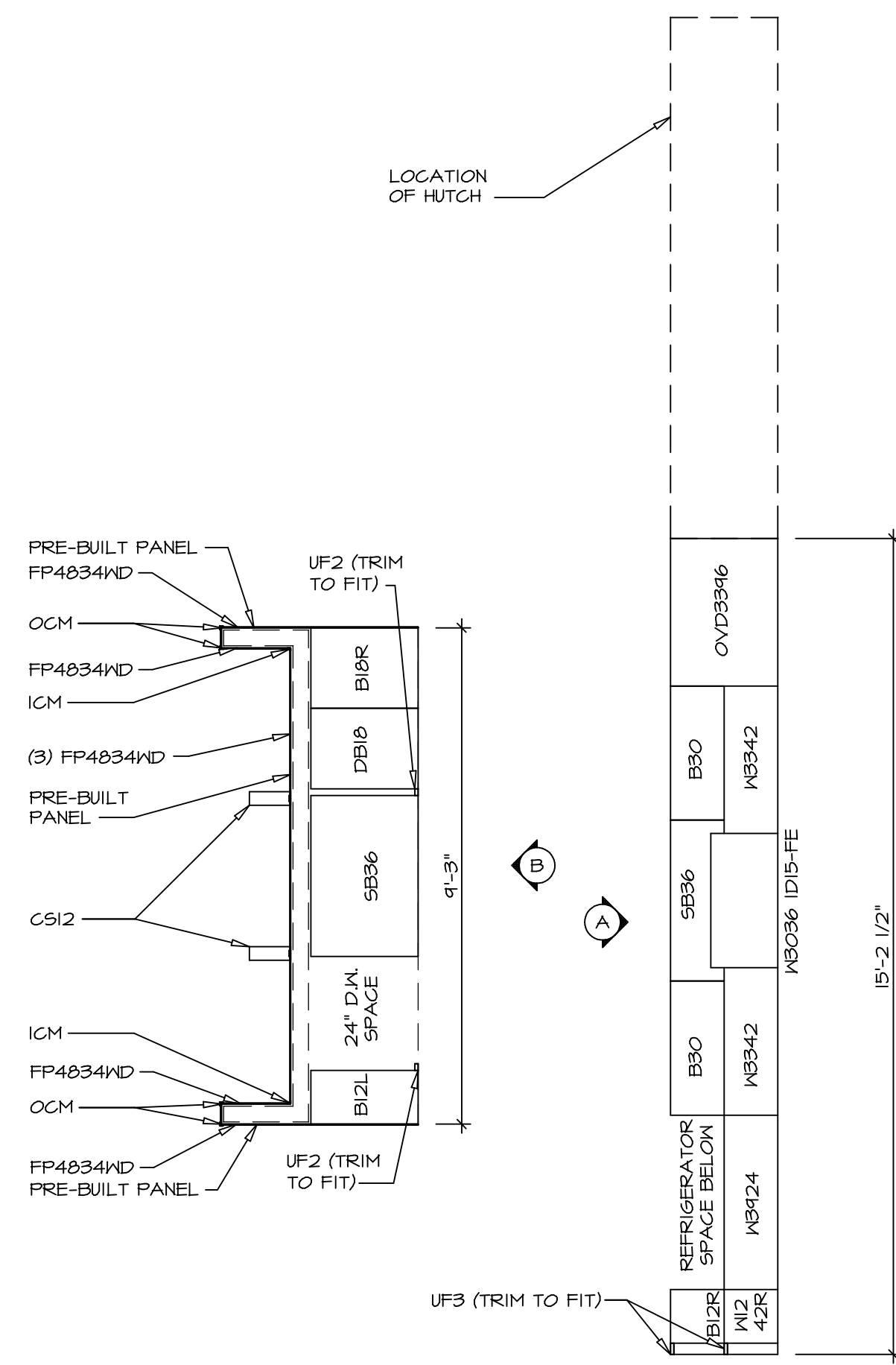
REV. NO. DATE

NVR, Inc., owner, expressly reserves its copyright in these plans. These plans are not to be reproduced, changed, copied, or otherwise used in any way without the written consent of NVR, Inc.



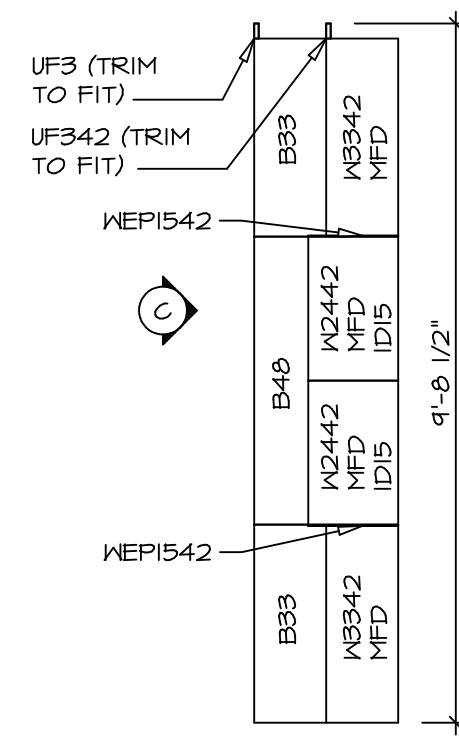
MODEL: BATEMAN
DRAWING TITLE: SECOND FLOOR PLAN
OPTION DESCRIPTION

SHEET NO. A-8
54



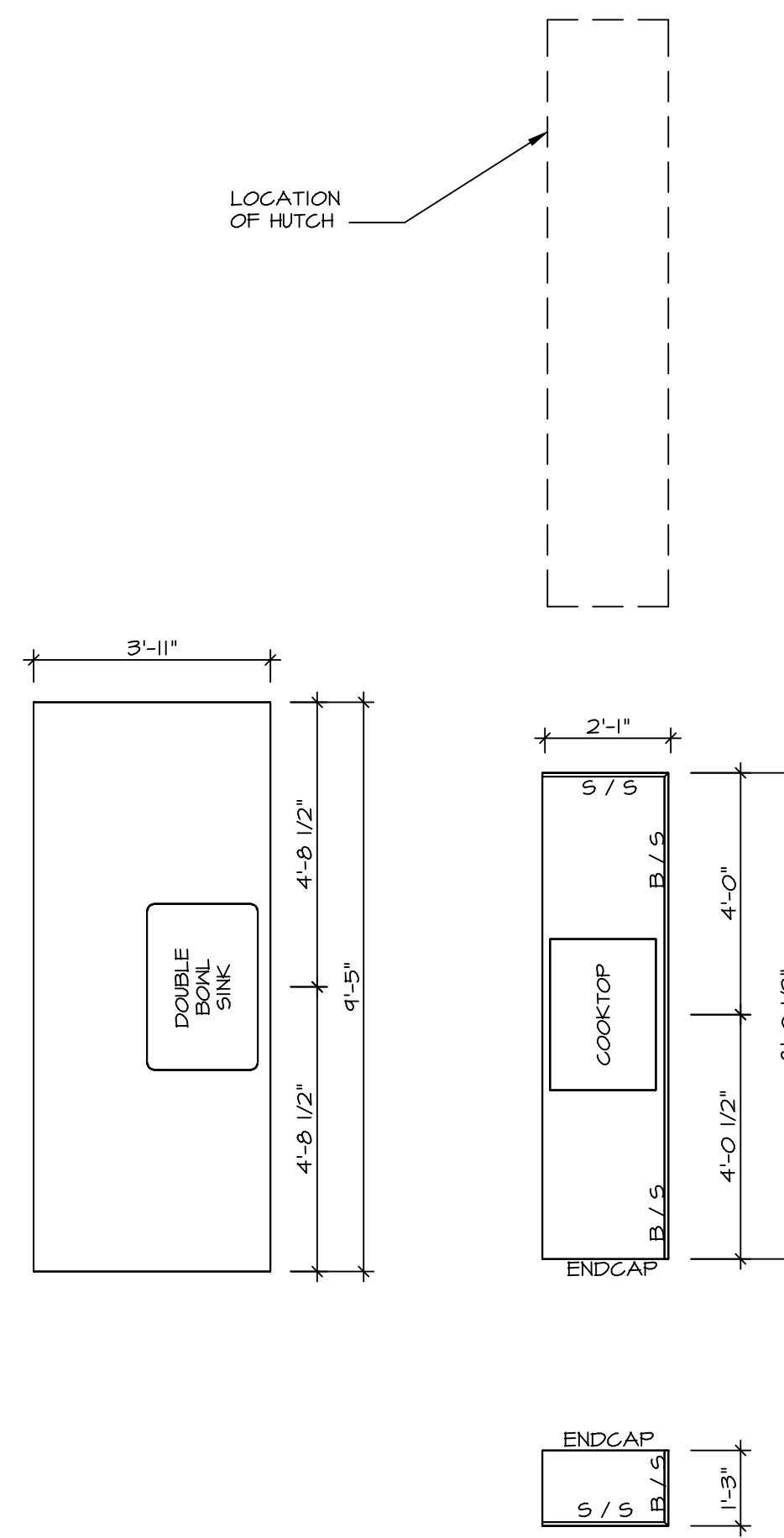
KITCHEN CABINET PLAN - KC-3148

1
A-13
SCALE: 3/8" = 1'-0"



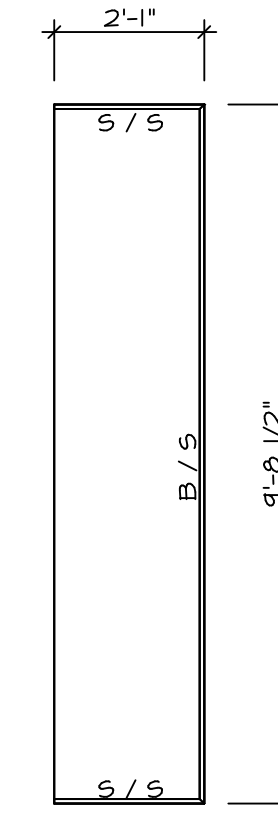
KITCHEN CABINET PLAN - KC-4217

3
A-13
SCALE: 3/8" = 1'-0"



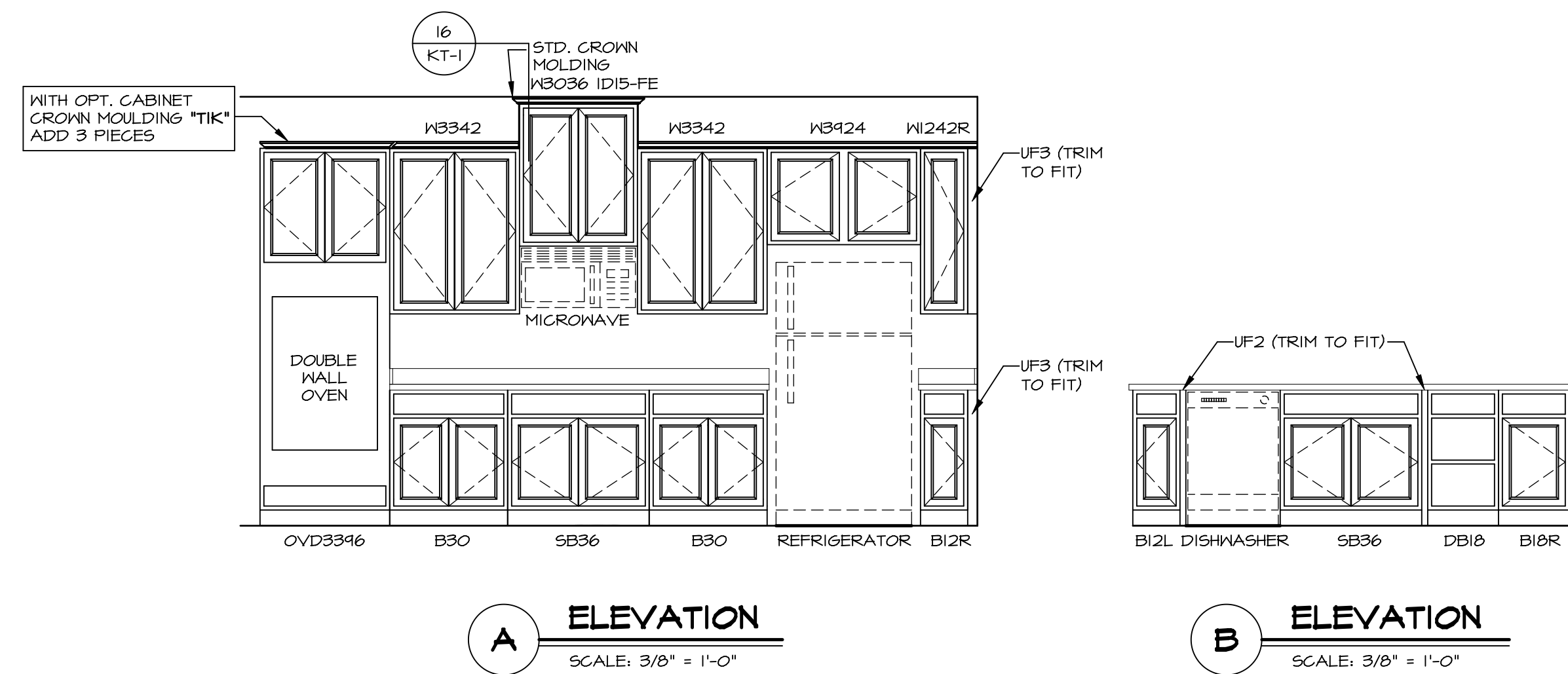
KITCHEN COUNTERTOP PLAN - KC-3148

2
A-13
SCALE: 3/8" = 1'-0"



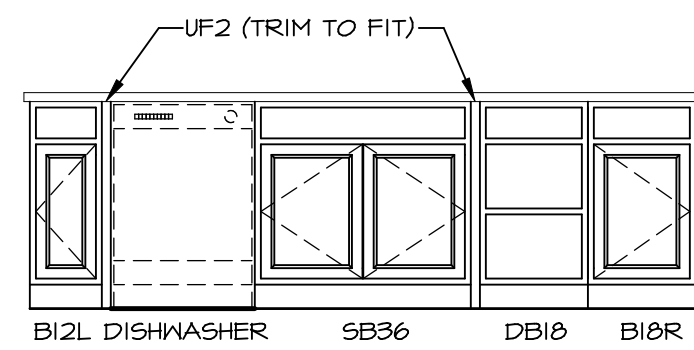
KITCHEN COUNTERTOP PLAN - KC-4217

4
A-13
SCALE: 3/8" = 1'-0"



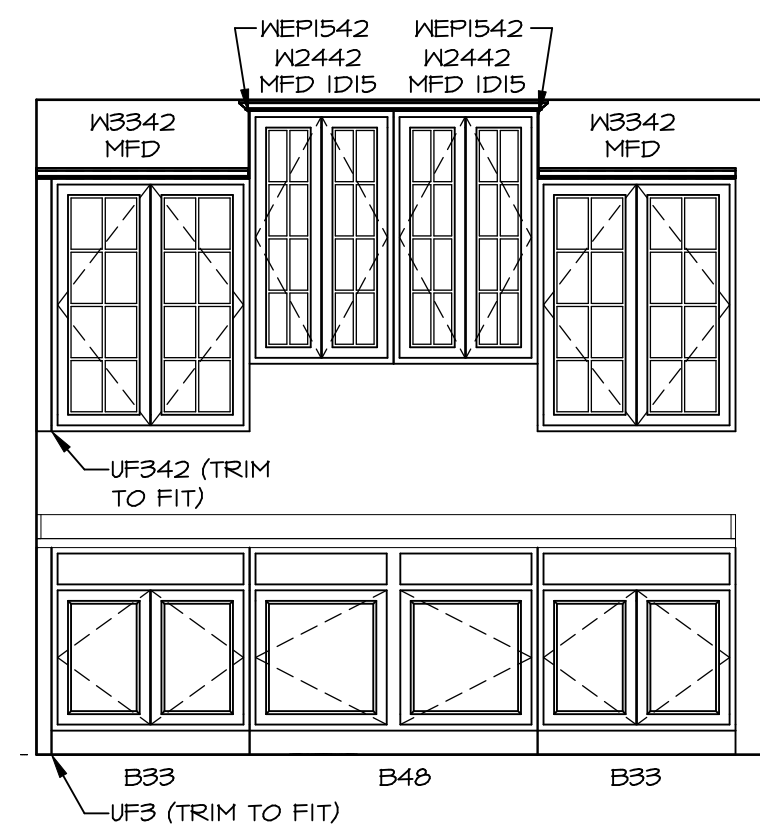
ELEVATION A

SCALE: 3/8" = 1'-0"



ELEVATION B

SCALE: 3/8" = 1'-0"

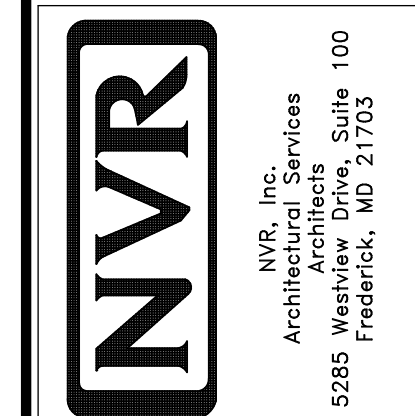


ELEVATION C

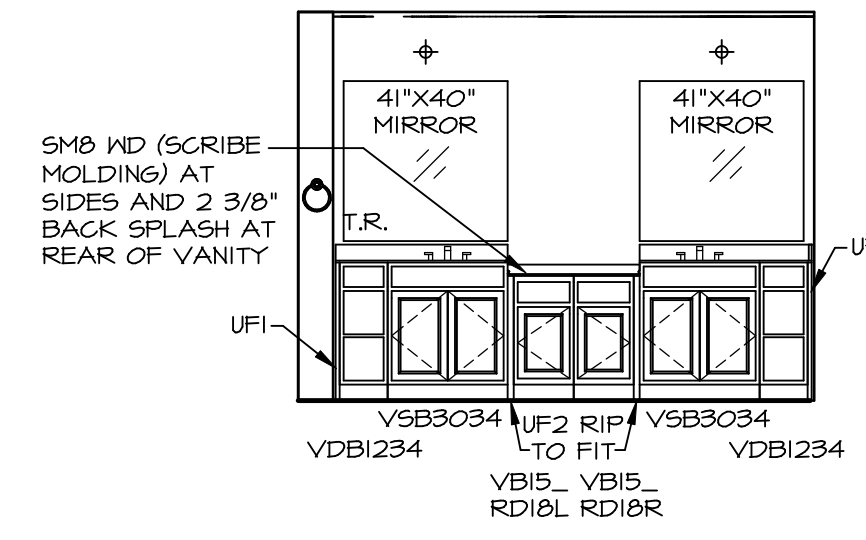
SCALE: 3/8" = 1'-0"

SHEET NO.	MODEL	SET NO.	BATOC	VERSION	DATE	OPTION	REMARKS
A-13	BATEMAN	03	03	03			
65							

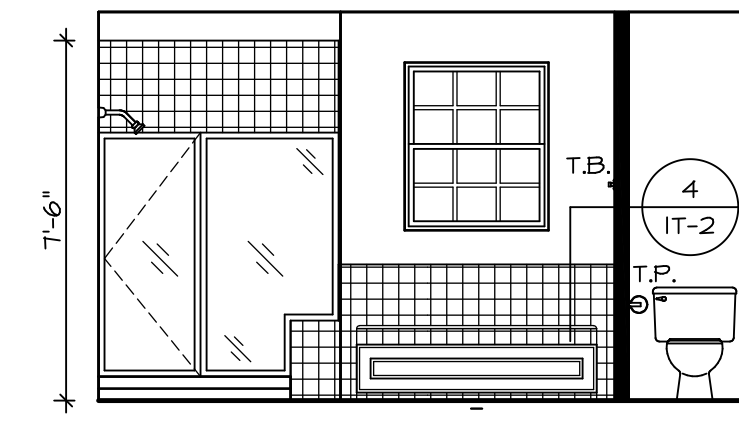
NVR, Inc., owner, expressly reserves its copyright in these plans. These plans are not to be reproduced, changed, copied, or otherwise used without the written consent of NVR, Inc.



C:\NVR\Solves\BATEMAN_BAT00_03\DCI-YG-K458\893446\Sheets\1.dwg A-13_KIT_LS.dwg 08/08/18 - 2:24 am



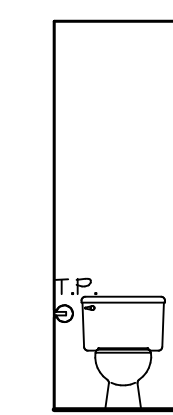
M OWNER'S BATH
SCALE: 1/4" = 1'-0"



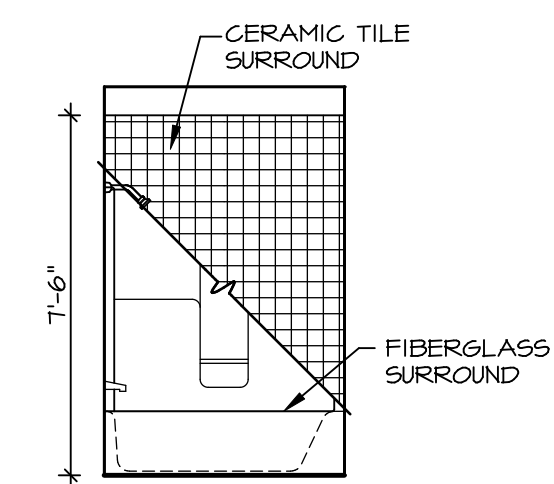
L OWNER'S BATH
SCALE: 1/4" = 1'-0"

NOTES:

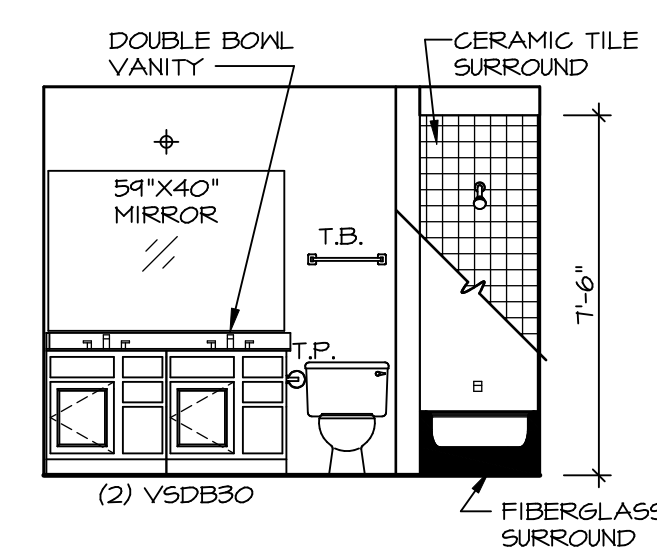
1. TEMPERED GLASS SHOWER ENCLOSURE WITH SWING DOOR OR OPTIONAL SLIDING DOOR BY DIVISION
2. TUB ACCESS PANELS PROVIDED AS NEEDED, ALL MATERIALS BY DIVISION
3. REFER TO SHEET IT-2 FOR TUB AND SHOWER DETAILS.
4. ALL V5DB24-42 DRAWERS TO BE SET ON RIGHT HAND.
5. BATH ELEVATIONS ARE SHOWN PER PLAN.



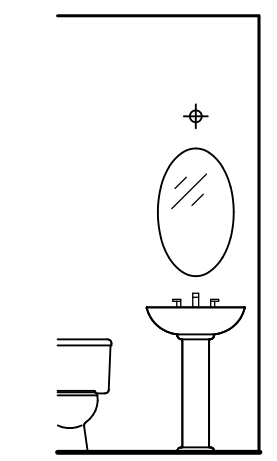
J OWNER'S BATH
SCALE: 1/4" = 1'-0"



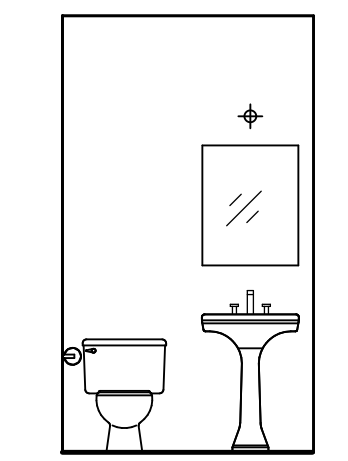
E BATH #1
SCALE: 1/4" = 1'-0"



D BATH #1
SCALE: 1/4" = 1'-0"



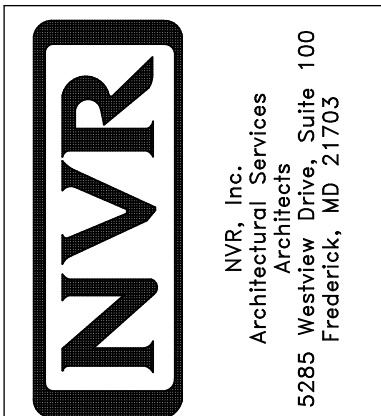
A OWNER ROOM
SCALE: 1/4" = 1'-0"

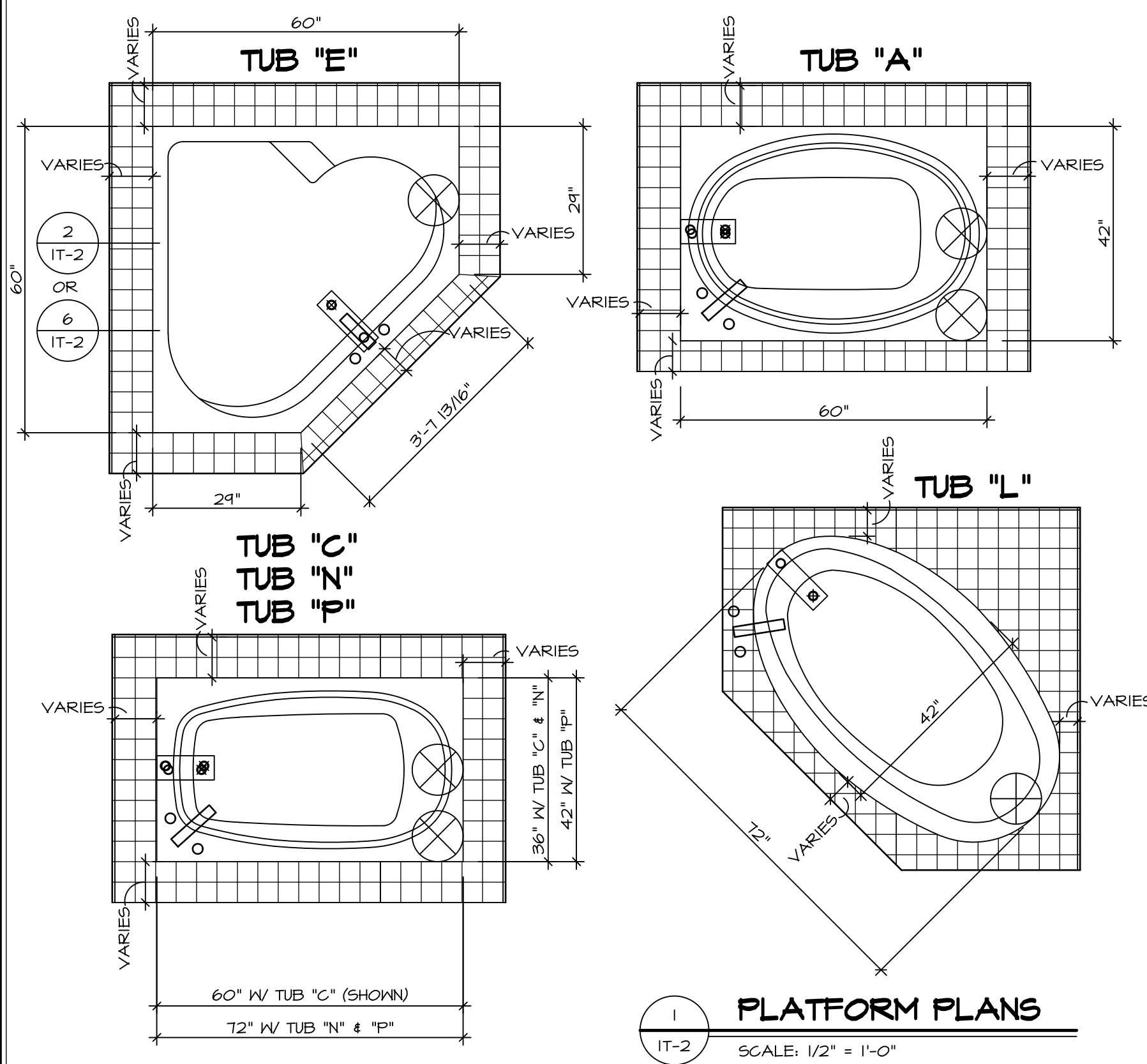


C POWDER ROOM
SCALE: 1/4" = 1'-0"

SHEET NO.	MODEL	SET NO.	VERSION	DRAWN BY	DATE	OPTION	REMARKS
A-14	BATEMAN	BAT00_03	03				
10							

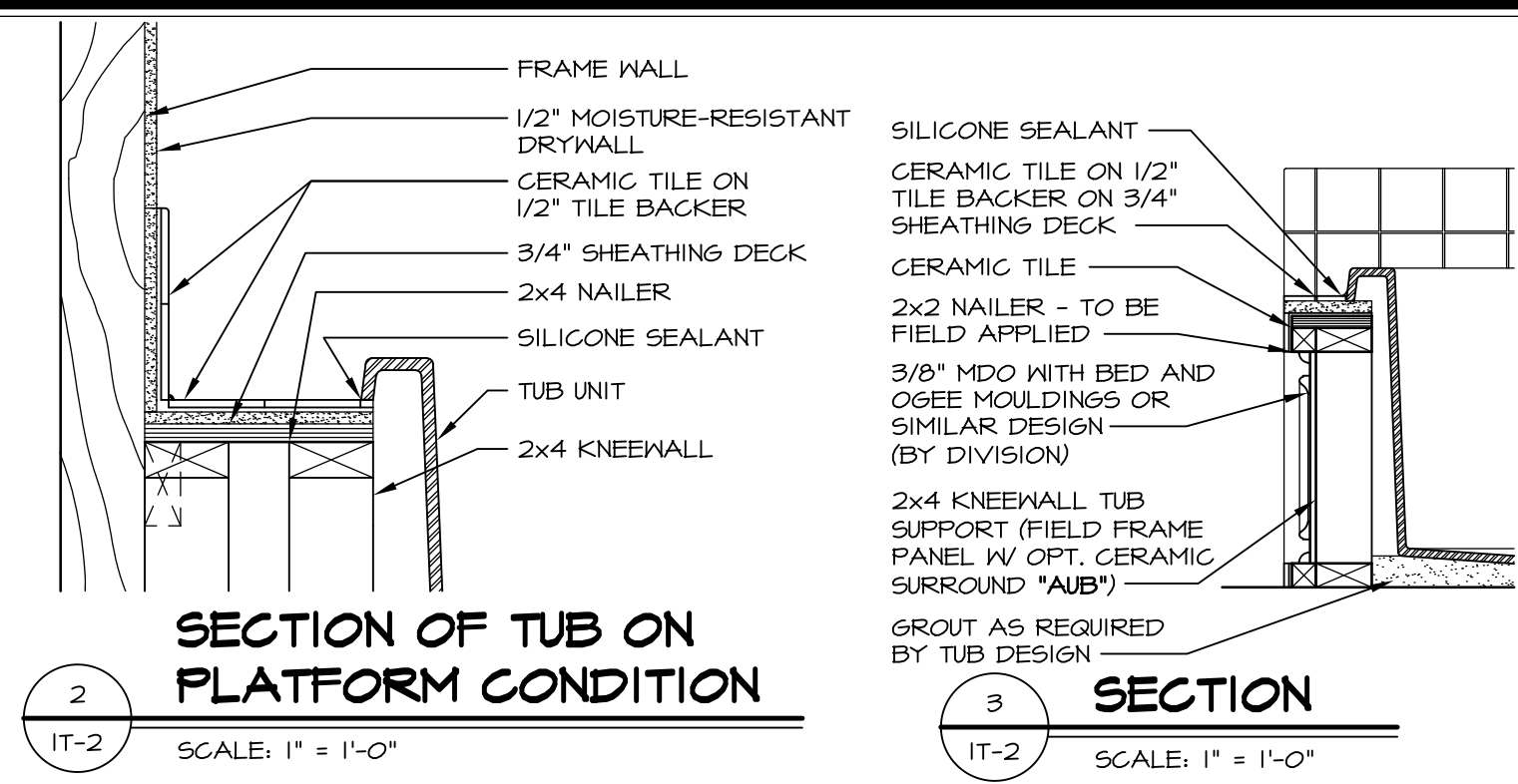
NVR, Inc., owner, expressly reserves its copyright in these plans. These plans are not to be reproduced, changed, copied in any way, or used for any purpose not intended by NVR, Inc. without the written consent of NVR, Inc.



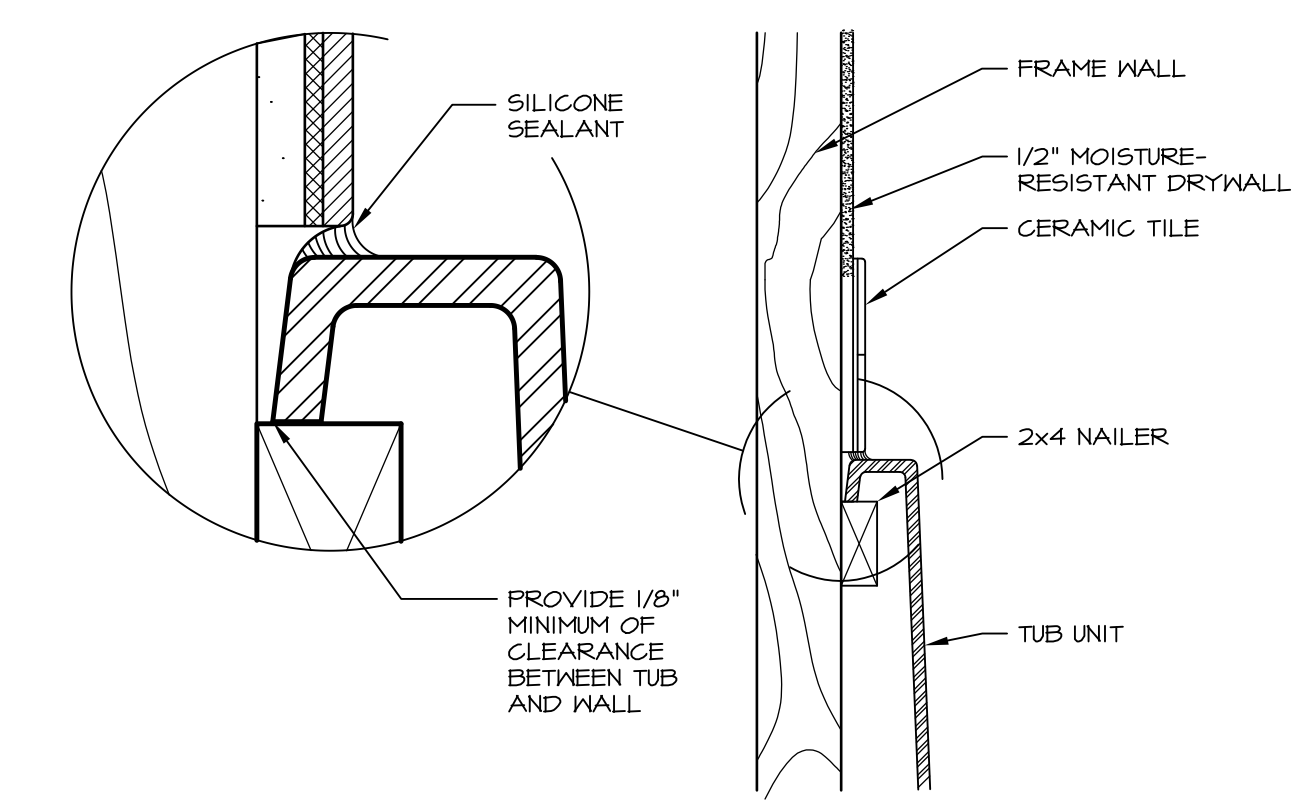


1 PLATFORM PLANS
SCALE: 1/2" = 1'-0"

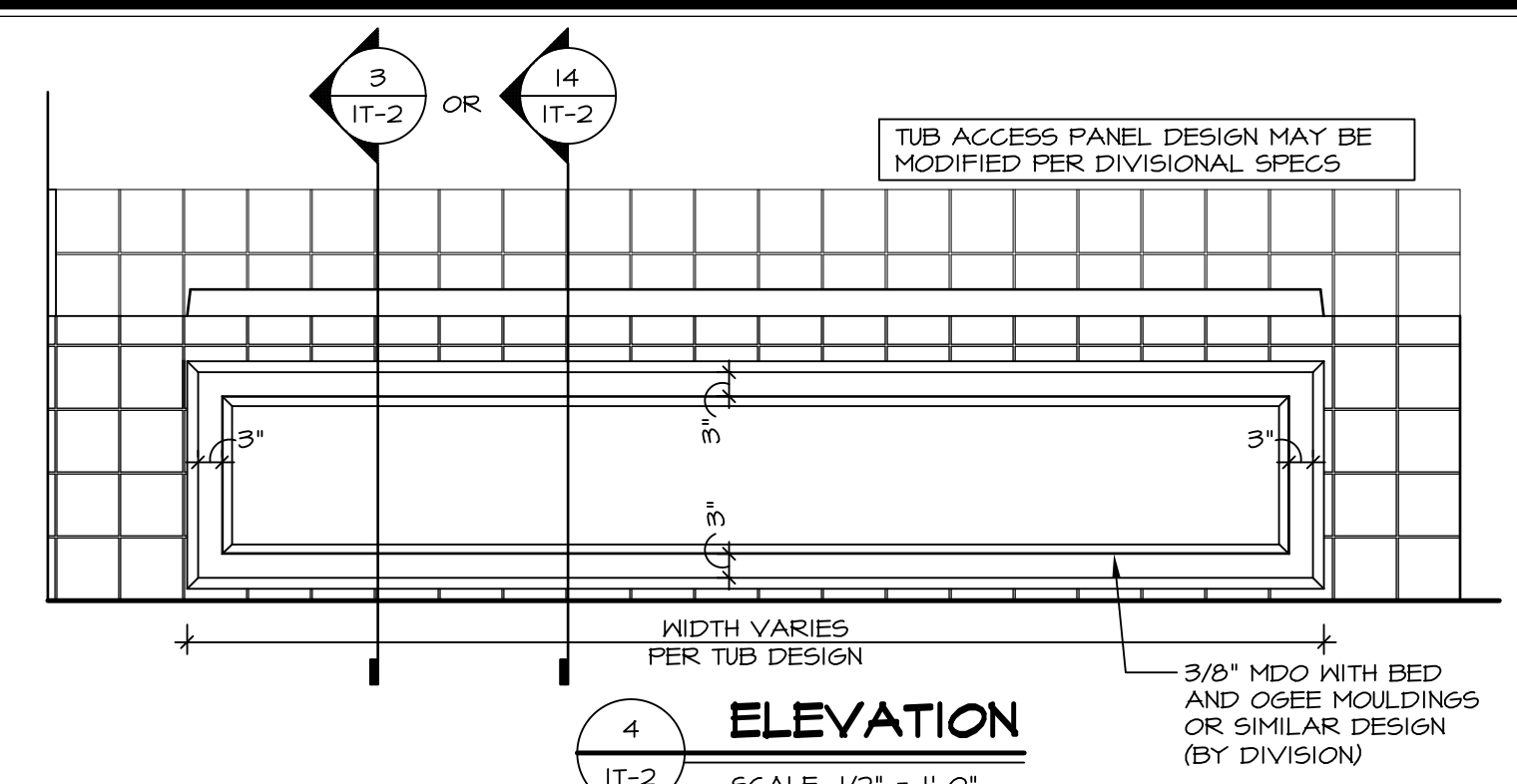
TUB	MANUF.	HEIGHT	WIDTH	LENGTH	TUB DECK PANEL HEIGHT
"A"	KOHLER/ STERLING	18 3/4"	42"	60"	17 1/8"
"C"	KOHLER/ STERLING	18 3/4"	36"	60"	17 1/8"
"E"	KOHLER/ STERLING	19 1/2"	60"	60"	17 7/8"
"L"	KOHLER/ STERLING	18 1/2"	42"	72"	16 7/8"
"N"	KOHLER/ STERLING	18 3/4"	36"	72"	17 1/8"
"P"	KOHLER/ STERLING	18 3/4"	42"	72"	17 1/8"



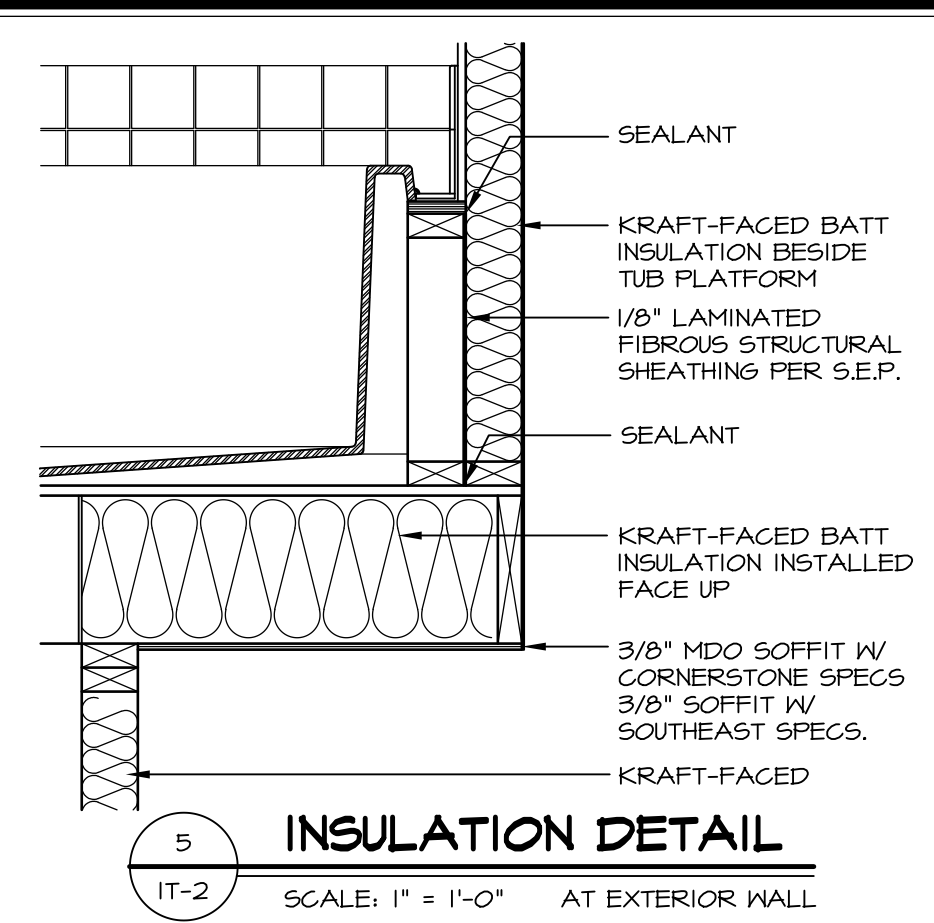
2 SECTION OF TUB ON PLATFORM CONDITION
SCALE: 1" = 1'-0"



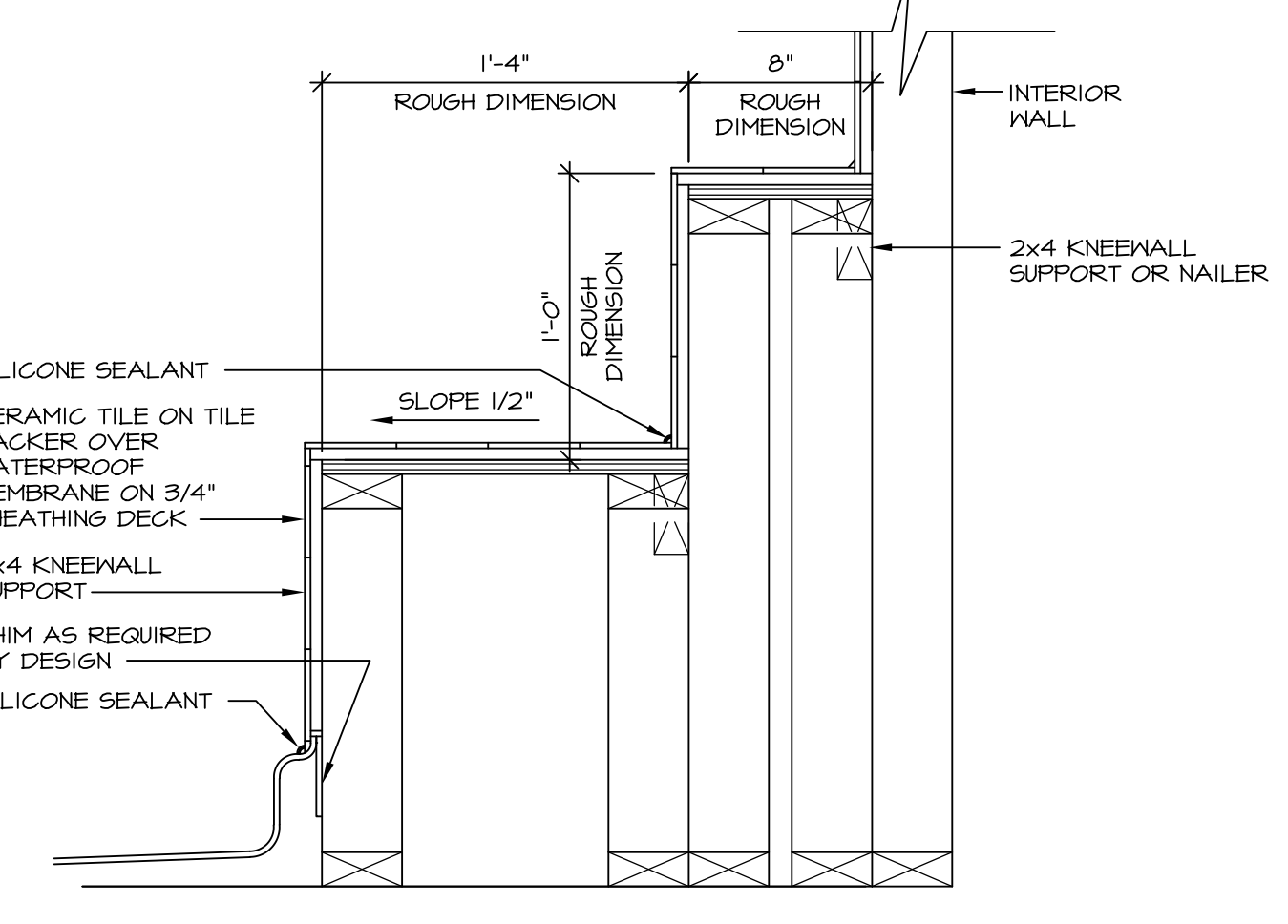
3 SECTION OF TUB TO WALL CONDITION
SCALE: 1" = 1'-0"



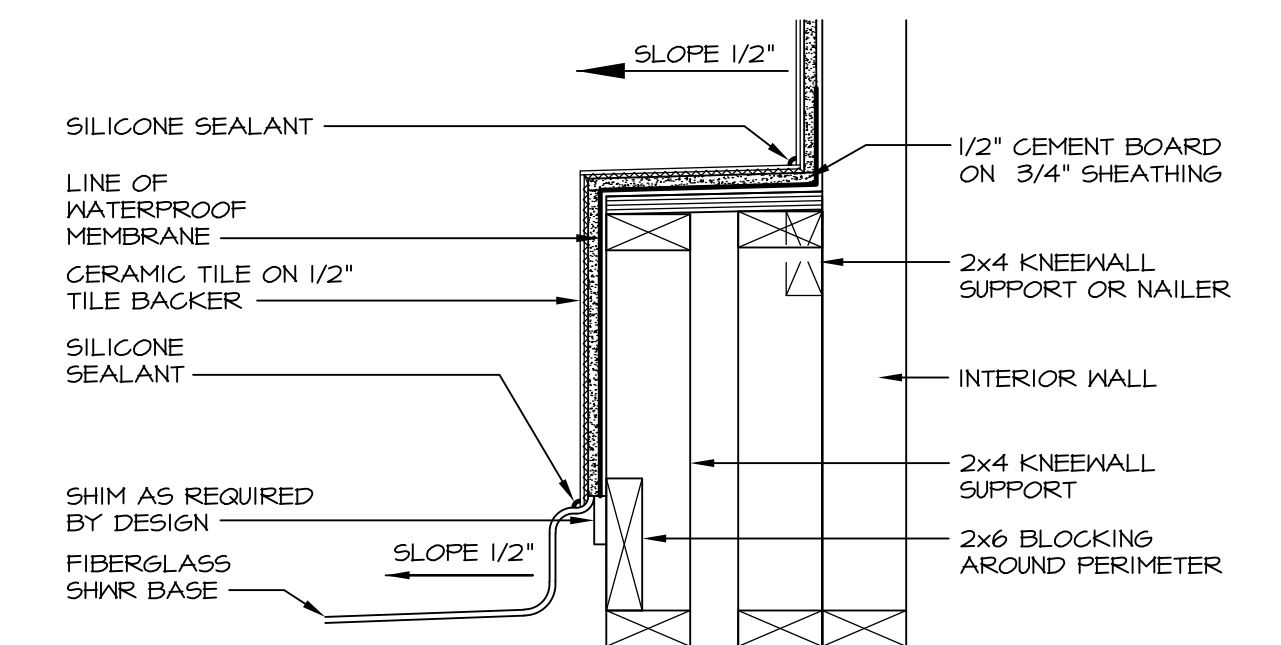
4 ELEVATION
SCALE: 1/2" = 1'-0"



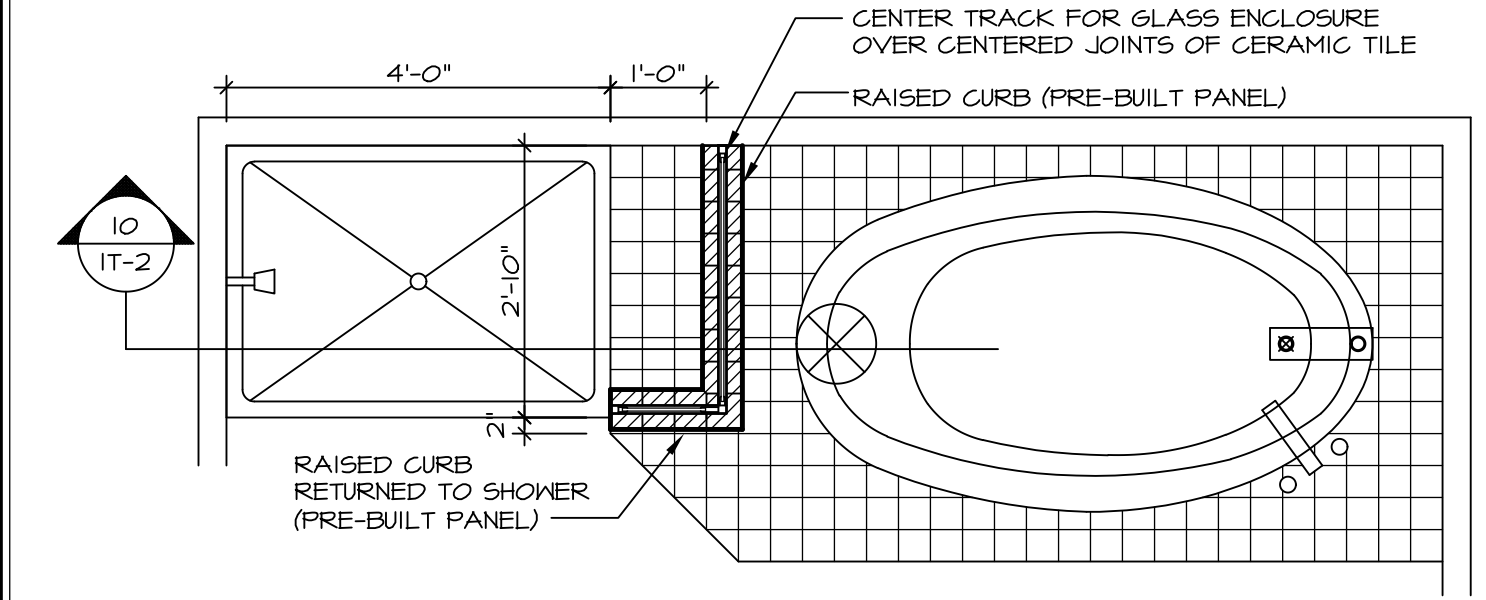
5 INSULATION DETAIL
SCALE: 1" = 1'-0" AT EXTERIOR WALL



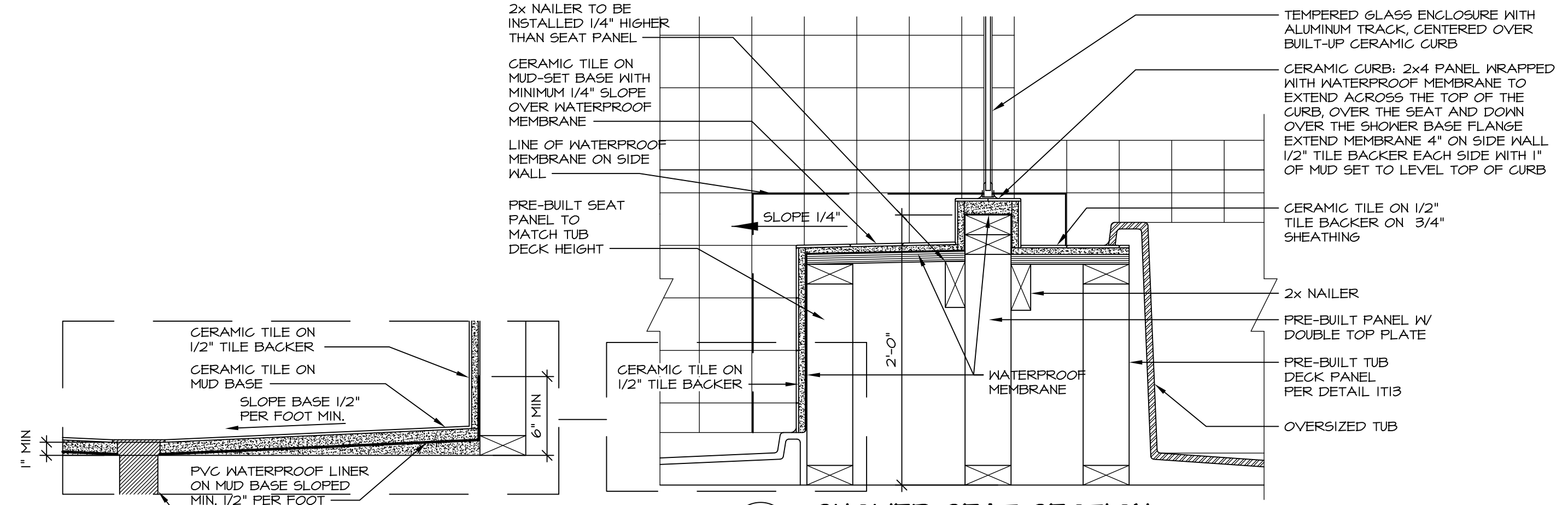
6 SECTION OF SHOWER SEAT AND SHELF
SCALE: 1/2" = 1'-0"



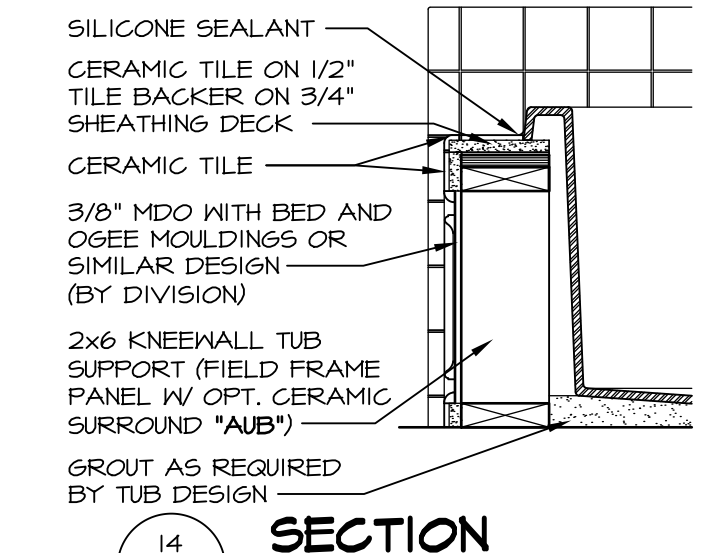
7 SECTION OF SHOWER SEAT
SCALE: 1/2" = 1'-0" FIBERGLASS SHOWER BASE



9 SHOWER SEAT PLAN / DETAIL
SCALE: 1/2" = 1'-0"



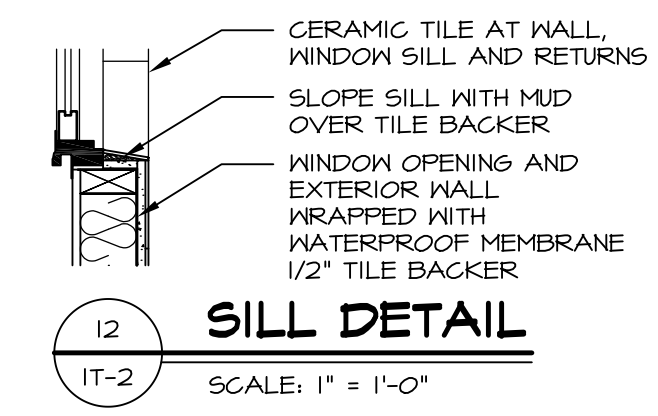
10 SHOWER SEAT SECTION
SCALE: 1/2" = 1'-0"



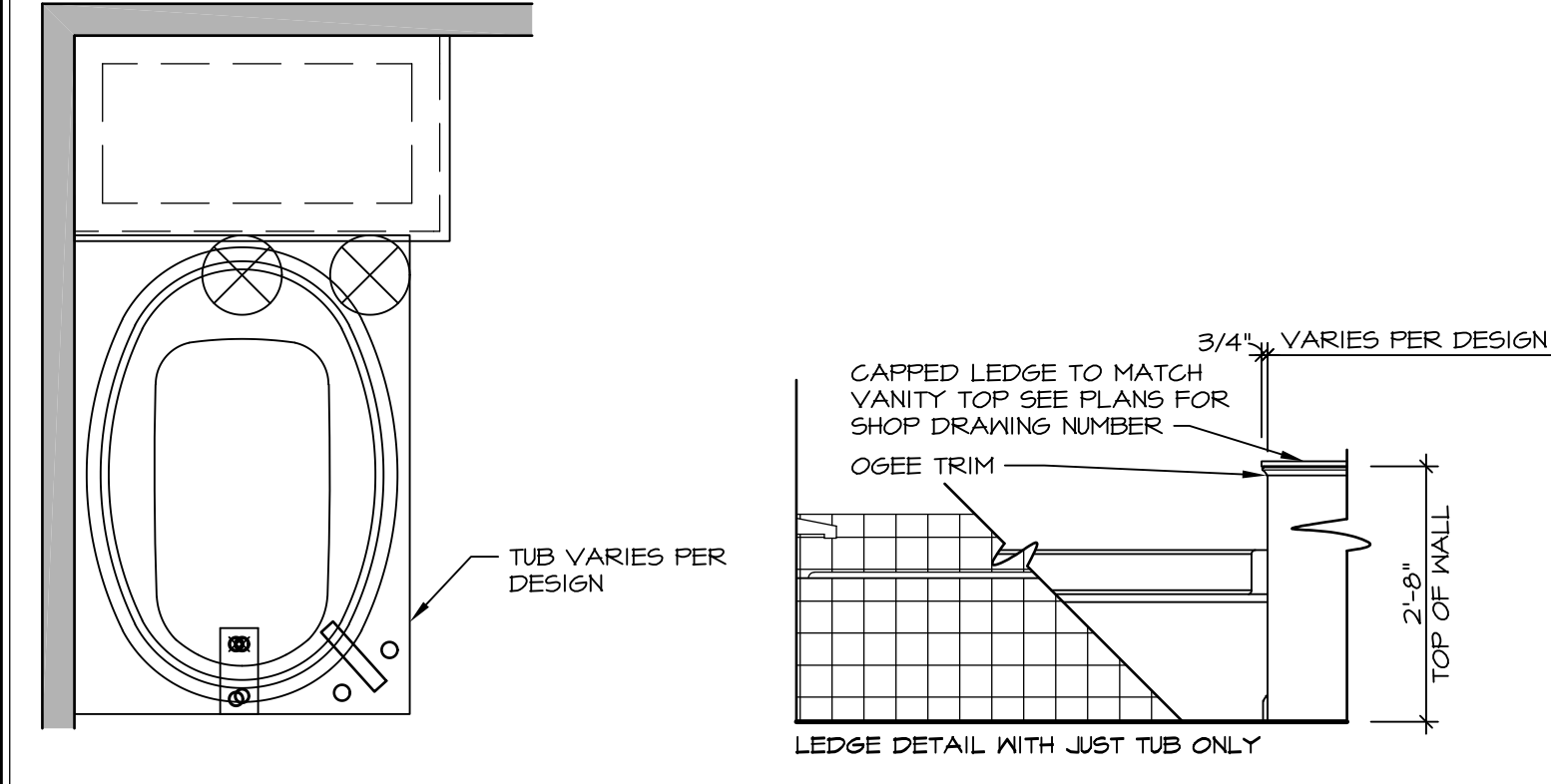
11 SECTION
SCALE: 1" = 1'-0"



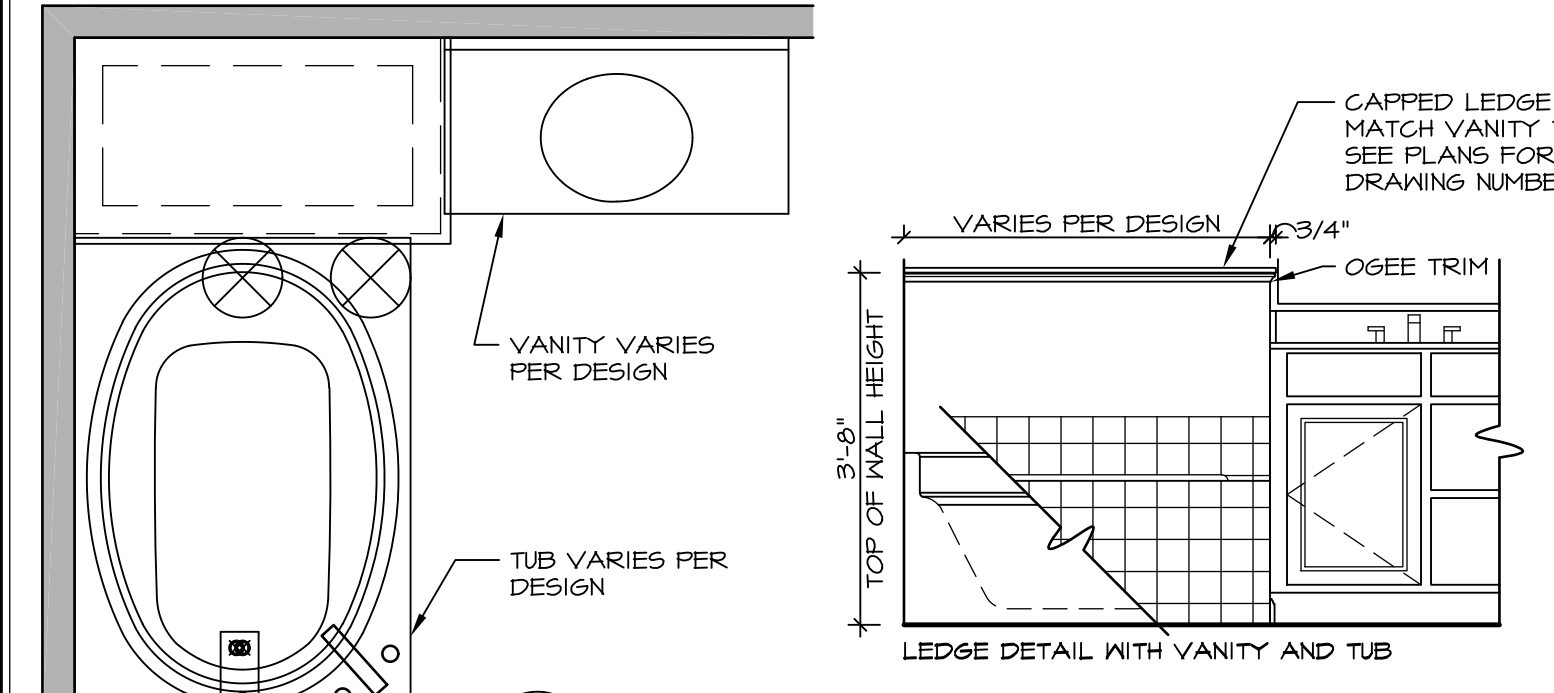
12 ALTERNATE SHOWER PAN DETAIL



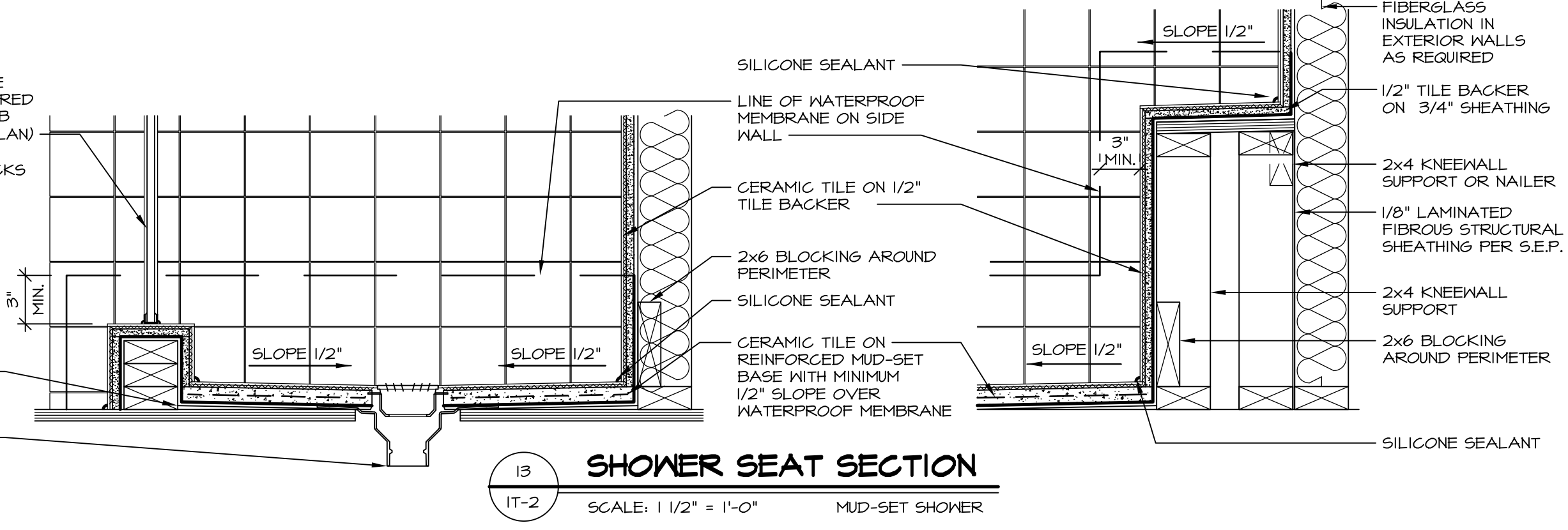
13 SILL DETAIL
SCALE: 1" = 1'-0"



14 BATHROOM LEDGE DETAIL
SCALE: 1/2" = 1'-0"



15 BATHROOM LEDGE DETAIL
SCALE: 1/2" = 1'-0"



16 SHOWER SEAT SECTION
SCALE: 1/2" = 1'-0" MUD-SET SHOWER

REVISIONS

REV. NO.	DATE	DESCRIPTION
1	5/1/17	EBP - REVISED DETAIL 1 AND 11 TO REMOVE TUB ACCESS PANEL REF. (DSS #15 5414)
2	9/2/17	EBP - REVISED T-FLY NOTE TO CALL OUT LFS
3	9/2/17	EBP - REVISED NOTE ON DETAIL #1 - REVISED ORDER OF MATERIAL PARA#6934

NVR, Inc., owner, expressly reserves its common law copyright and other property rights in these plans. These plans are not to be reproduced, stored in a retrieval system, or transmitted in any form or by any means, electronic, mechanical, photocopying, recording, or by any information storage and retrieval system, without the prior written consent of NVR, Inc.

NVR
NVR, Inc.
Architectural Services
5285 Westpark Drive
Frederick, MD 21703

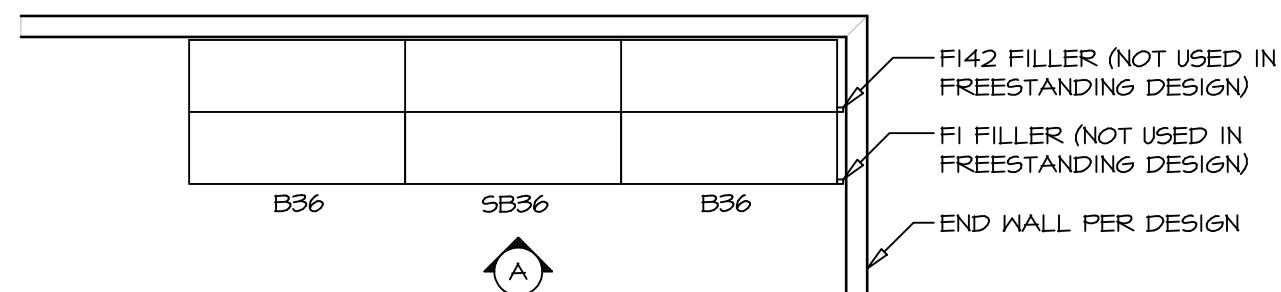
SET NO. NVR
VERSION
DRAWN BY
DATE:
OPTION

MODEL
STANDARD DETAILS
DRAWING TITLE
INTERIOR TRIM DETAILS
BATH DETAILS
OPTION DESCRIPTION

SHEET NO.
IT-2

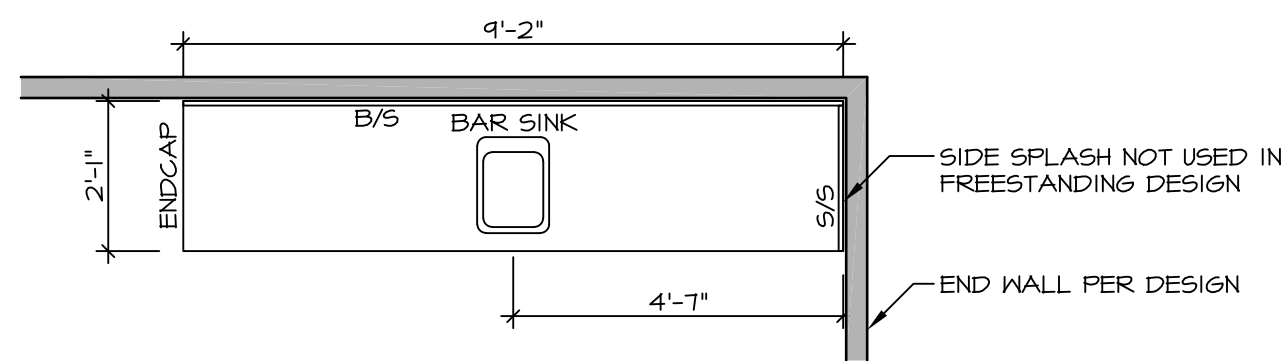
J:\Dwg\NVR\Interior Trim\IT2.dwg 09/27/17 - 9:20 am

NOTE:
REVIEW HOUSE SPECIFIC
PLANS FOR LOCATION
AND HANDING



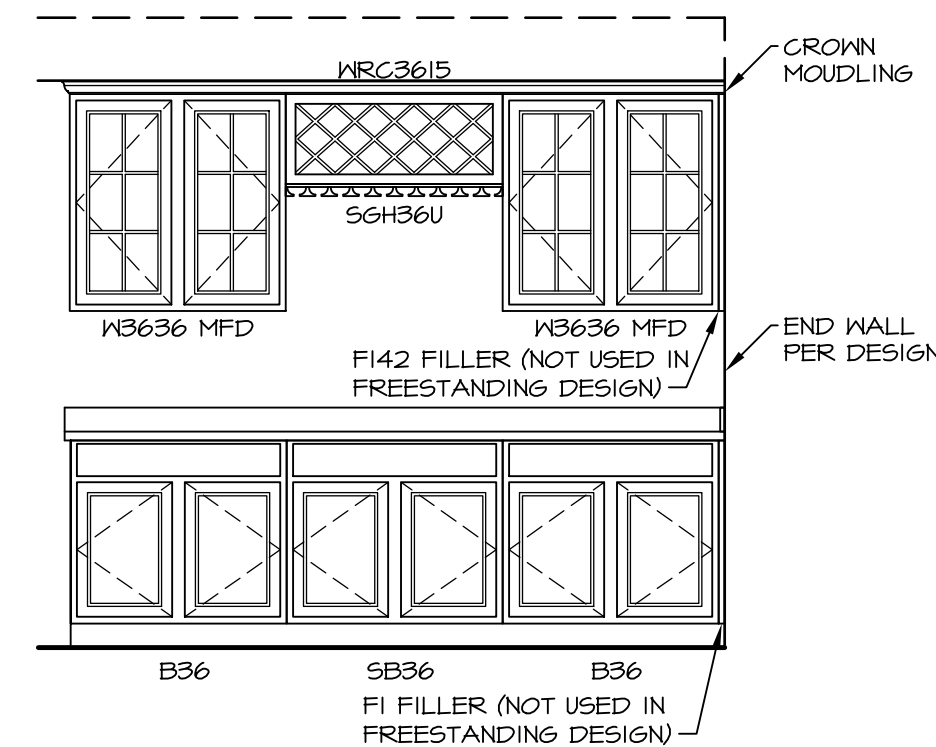
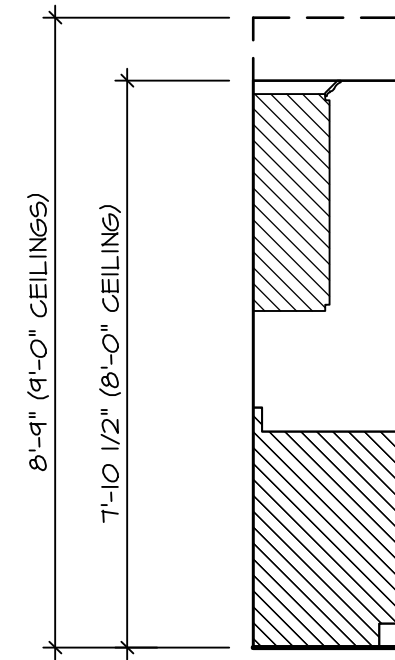
**KITCHEN CABINET
PLAN KC - 1900**

2
IT-3b SCALE: 3/8" = 1'-0"

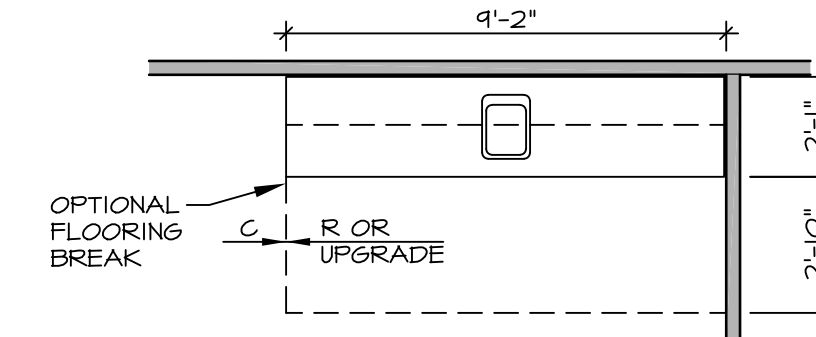


**KITCHEN COUNTERTOP
PLAN KT - 1900**

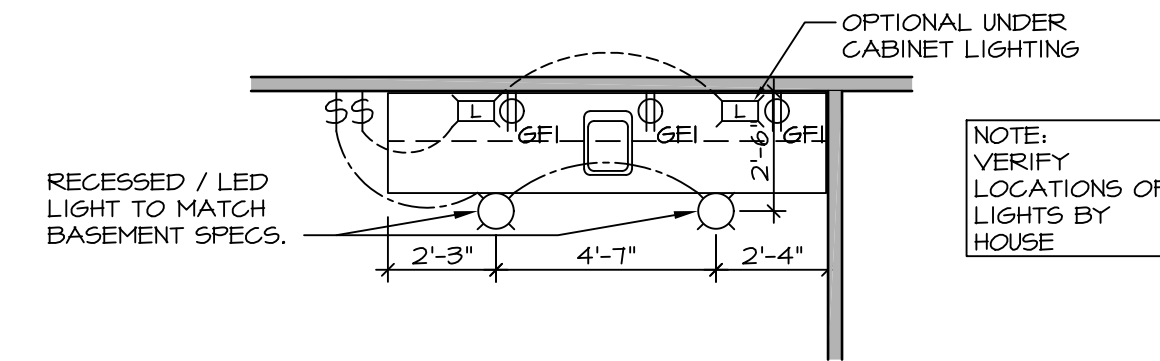
6
IT-3b SCALE: 3/8" = 1'-0"



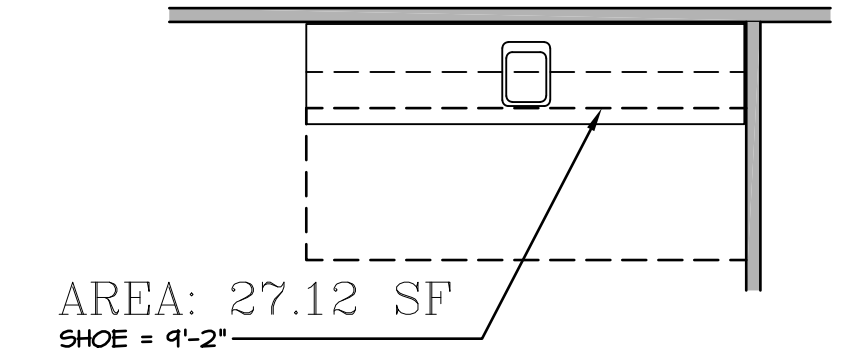
3
IT-3b **ELEVATION "A"**
SCALE: 3/8" = 1'-0"



4
IT-3b **FLOOR PLAN**
SCALE: 1/4" = 1'-0"



7
IT-3b **FLOOR PLAN ELECTRICAL LAYOUT**
SCALE: 1/4" = 1'-0"



5
IT-3b **FLOORING PLAN**
SCALE: 1/4" = 1'-0"
AREA: 27.12 SF
SHOE = 4'-2"

1
IT-3b **WET BAR DETAILS**
SCALE: VARIES * SHOWN AS END WALL DESIGN

SHEET NO.	MODEL	SET NO.	DATE	REV. NO.	DATE	REMARKS
IT-3b	STANDARD DETAILS	NVR	5/17/17	1	5/17/17	56A - REVISED FLOOR PLAN DIMENSIONS TO MATCH COUNTERTOP DIMENSIONS
	INTERIOR TRIM DETAILS		5/23/17	2	5/23/17	56A - REMOVED COUNTERTOP INFORMATION FROM 2/IT-3b
	WET BAR DETAILS - BACK BAR (RYAN ONLY)		6/5/17	3	6/5/17	56A - REMOVED U.C. REF. AND TURNED OFF FLOORING SPACES
	OPTION DESCRIPTION		9/14/17	4	9/14/17	EBP - ADDED NOTE TO RECESSED LIGHT / LED LIGHT IN NET BAR

NVR
NVR, Inc.
Architectural Services
Architects
5285 West Annapolis
Frederick, MD 21703

SET NO. NVR	DATE
VERSION	REV. NO.
DRAWN BY	DATE
DATE	OPTION