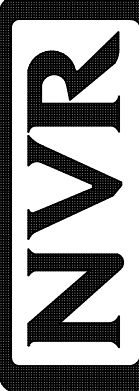
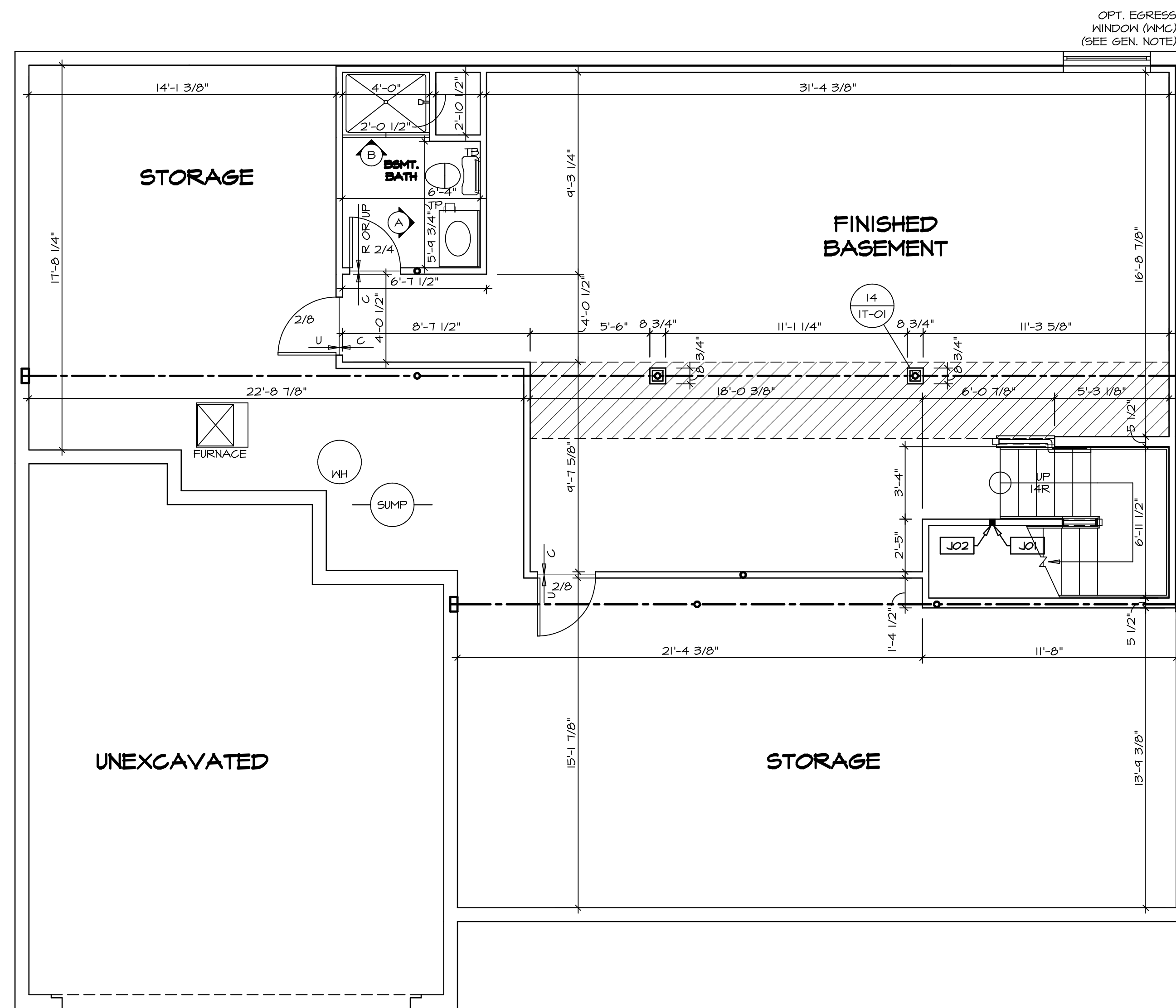


**PLUMBING PLAN**  
SCALE: 1/4" = 1'-0"

SHEET NO. <b>A-5</b>	MODEL <b>NORMANDY</b>	SET NO. NRM00	REV. NO. DATE	REMARKS
	DRAWING TITLE <b>PLUMBING PLAN</b>	VERSION 01 DRAWN BY RJC		
OPTION DESCRIPTION <b>31</b>		DATE: 5/14/15 OPTION		
 NVR, Inc. Architectural Services 5285 Westpark Drive, Suite 100 Frederick, MD 21703		<small>NVR, Inc., owner, expressly reserves its copyright in these plans. These plans are not to be reproduced, changed, copied, or otherwise used in any way without the written consent of NVR, Inc.</small>		
<small>C:\NVA\Solves\NORMANDY_NRM00_01\DCY-VG-K460\223715\Sheets\Lot_Specific\31_A-5_PLUMB_L5.dwg 09/05/18 - 2:16 pm</small>				



**LEGEND**

- BEARING WALL
- NON BEARING WALL
- INDICATES BEARING FROM POINT-LOAD ABOVE
- JACKS
- BEAM/HEADER
- PAD FOOTING
- STEEL COLUMN
- PORTAL FRAME
- JOIST/TRUSS
- LVL
- ENGINEERING PAGE NUMBER

SEE FC DETAILS FOR FRAMING CONNECTORS

- FLOOR PLAN NOTES**
1. ALL HEADERS ARE (2) 2x6 w/ 2x4 WALLS OR (3) 2x6 w/ 2x6 WALLS, UNLESS OTHERWISE NOTED.
  2. ALL HEADERS TO HAVE (1) 2x4 OR 2x6 JACK EACH END, UNLESS OTHERWISE NOTED.
  3. ALL EXTERIOR WALLS TO BE 4" AND ALL INTERIOR WALLS TO BE 3 1/2", UNLESS OTHERWISE NOTED.
  4. HATCHED AREAS INDICATE DROPPED CEILINGS. ALL DROPPED CEILINGS ARE 12" UNLESS OTHERWISE NOTED.
  5. SEE "BRACED WALL PANEL DETAIL SHEET" FOR SPECIAL WALL FRAMING LOCATIONS AND HEADER SIZES, IF APPLICABLE.
  6. SEE STANDARD DETAIL CATEGORY "IT" SHEET(S) FOR INTERIOR TRIM DETAILS.
  7. SEE ARCHITECTURAL DETAIL SHEET "AD" FOR HOUSE SPECIFIC INTERIOR TRIM OPTION TABLE.
  8. ALL WINDOWS HAVE 7'-0 1/2" HEADER HEIGHT UNLESS OTHERWISE NOTED.

- GYPSUM NOTES**
- AT GARAGE:  
GYPSUM BOARD AT COMMON WALLS, CEILINGS, BEAM WRAPS AND SUPPORTS PER STANDARD DETAIL FA-1(b) FIRE ASSEMBLIES OR AS REQUIRED BY LOCAL CODE.
- AT STAIRS:  
1/2" GYPSUM BOARD AT UNDERSIDE OF STAIRS AND WALLS IN CLOSET

**BASEMENT JACK SCHEDULE**

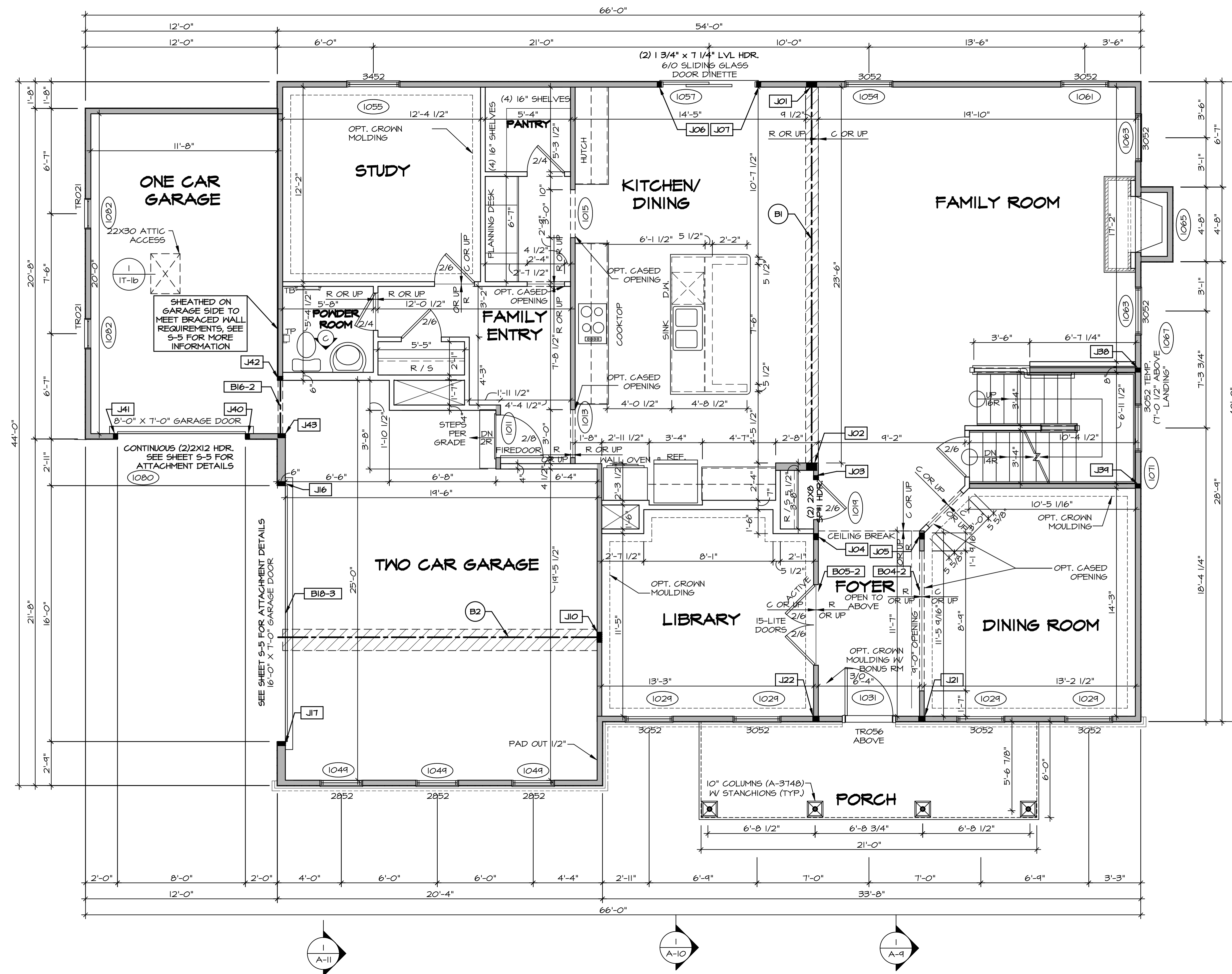
IDENTIFIER	DESCRIPTION	OPTIONS	ENG. NUM.	REMARKS
J01	JACK - 2x4 SPF STUD GRADE		B10	
J02	JACK - 2x4 SPF STUD GRADE		B22	



**BASEMENT FLOOR PLAN**  
SCALE: 1/4" = 1'-0"

<b>SHEET NO.</b> A-6	<b>MODEL</b> NORMANDY	<b>SET NO.</b> NRM00	<b>VERSION</b> O1	<b>DATE</b> 6/29/15	<b>REVISIONS</b>
<b>DRAWING TITLE</b> BASEMENT FLOOR PLAN	<b>DRAWN BY</b> SGA	<b>OPTION</b>	<b>ARCHITECT</b> NVR, Inc. Architectural Services 5285 Washburn Ave Frederick, MD 21703	<b>DATE</b> 6/29/15	<b>REMARKS</b>
<b>OPTION DESCRIPTION</b>					
34					

C:\NVR\Solves\NORMANDY\_NRM00\_01\DCI-VG-K46A\22715\Sheets\Lot\_Spec\134\_A-6\_BSMF\_L3.dwg 09/05/18 - 2:16 am



**FIRST FLOOR PLAN**  
SCALE: 1/4" = 1'-0"

**LVL PLY TO PLY FASTENING SCHEDULE: (WHERE APPLICABLE BASED ON LVL USAGE)**

- 1A - (2) PLY UP TO AND INCLUDING 11 7/8" TALL; FASTEN PLYS W/ (2) ROWS 16D NAILS AT 12" O.C.
- 2A - (2) PLY 14" TO AND 18" TALL (INCLUSIVE); FASTEN PLYS W/ (3) ROWS 16D NAILS AT 12" O.C.
- 3A - (2) PLY 20" TALL AND OVER; FASTEN PLYS W/ (4) ROWS 16D NAILS AT 12" O.C.
- 4A - (3) PLY UP TO AND INCLUDING 11 7/8" TALL; FASTEN PLYS W/ (2) ROWS 16D NAILS AT 12" O.C. FROM EACH SIDE
- 5A - (3) PLY 14" TO AND 18" TALL (INCLUSIVE); FASTEN PLYS W/ (3) ROWS 16D NAILS AT 12" O.C. FROM EACH SIDE
- 6A - (3) PLY 20" TALL AND OVER; FASTEN PLYS W/ (4) ROWS 16D NAILS AT 12" O.C. FROM EACH SIDE
- 7A - (4) PLY (ALL SIZES); FASTEN PLYS W/ (2) ROWS 1/2" DIAMETER A307 BOLTS AT 24" O.C. SEE SHOP DRAWING FOR ADDITIONAL INFORMATION.

**FIELD INSTALLED FIRST FLOOR BEAM/HEADER SCHEDULE**

IDENTIFIER	DESCRIPTION	LENGTH	OPTIONS	ENG. NUM.	REMARKS
B04-2	LVL - 11-14	11'-4 1/16"	SRM, SGK, SGL, ELA, ELK	1017	1A
B05-2	LVL - 11-14	11'-8 1/2"	SRM, SGK, SGL, ELA, ELK	1017	1A
B1	BEAM STEEL - W12X35	24'-2"		1021	
B16-2	LVL - 11-14	3'-10"	MAS, GAA, FBA	1071	1A
B18-3	LVL - 16	16'-6"	GCC, GAA	1051	5A
B2	BEAM STEEL - W12X26	20'-2 1/2"		1023	

**FIRST FLOOR JACK SCHEDULE**

IDENTIFIER	DESCRIPTION	OPTIONS	ENG. NUM.	REMARKS
J01	JACK - (5) 2X4 SPF#1		1021	
J02	JACK - (5) 2X6 SPF#1		1021	
J03	JACK - (2) 2X4 SPF STUD GRADE		1019	
J04	JACK - (3) 2X4 SPF STUD GRADE		1017	
J05	JACK - (3) 2X4 SPF STUD GRADE		1017	
J06	JACK - (2) 2X4 SPF STUD GRADE		1051	
J07	JACK - (2) 2X4 SPF STUD GRADE		1051	
J10	JACK - (5) 2X4 SPF#1		1023	
J16	JACK - (2) 2X6 SPF STUD GRADE	GCC, GAA	1051	
J17	JACK - (2) 2X6 SPF STUD GRADE	GCC, GAA	1051	
J21	JACK - (3) 2X4 SPF STUD GRADE	SRM, SGK, SGL, ELA, ELB, ELK	1017	
J22	JACK - (3) 2X4 SPF STUD GRADE	SRM, SGK, SGL, ELA, ELB, ELK	1017	
J30	JACK - (2) 2X4 SPF STUD GRADE		1007	
J34	JACK - (2) 2X4 SPF STUD GRADE		1007	
J40	JACK - (2) 2X4 SPF STUD GRADE	GCC, GAA	1019	
J41	JACK - (2) 2X4 SPF STUD GRADE	GCC, GAA	1019	
J42	JACK - (2) 2X4 SPF STUD GRADE	MAS, GAA, FBA	1071	
J43	JACK - (2) 2X6 SPF STUD GRADE	MAS, GAA, FBA	1071	

**LEGEND**

- BEARING WALL
- NON BEARING WALL
- INDICATES BEARING FROM POINT-LOAD ABOVE
- JACKS
- BEAM/HEADER
- PAD FOOTING
- STEEL COLUMN
- PORTAL FRAME
- JOIST/TRUSS
- LVL
- ENGINEERING PAGE NUMBER

SEE FC DETAILS FOR FRAMING CONNECTORS

- FLOOR PLAN NOTES** RYAN
- ALL HEADERS ARE (2) 2x6 w/ 2x4 WALLS OR (3) 2x6 w/ 2x6 WALLS, UNLESS OTHERWISE NOTED.
  - ALL HEADERS TO HAVE (1) 2x4 OR 2x6 JACK AND KING STUD EACH END, UNLESS OTHERWISE NOTED.
  - ALL EXTERIOR WALLS TO BE 4" w/ OSB OR 3 1/2" w/ T-PLY. ALL INTERIOR WALLS TO BE 3 1/2", UNLESS OTHERWISE NOTED.
  - HATCHED AREAS INDICATE DROPPED CEILING. ALL DROPPED CEILING ARE 12' UNLESS OTHERWISE NOTED.
  - SEE "BRACED WALL PANEL DETAIL SHEET" FOR SPECIAL WALL FRAMING LOCATIONS AND HEADER SIZES, IF APPLICABLE.
  - SEE STANDARD DETAIL CATEGORY "IT" SHEET(S) FOR INTERIOR TRIM DETAILS.
  - SEE ARCHITECTURAL DETAIL SHEET "AD" FOR HOUSE SPECIFIC INTERIOR TRIM OPTION TABLE.
  - ALL WINDOWS HAVE 7'-0 1/2" HEADER HEIGHT UNLESS OTHERWISE NOTED.
  - ALL HEADERS IN NON-BEARING WALLS SHALL BE A SINGLE FLAT 2X4 OR 2X6 ATTACHED TO CRIPPLES ABOVE, UNLESS OTHERWISE NOTED.

- GYPSUM NOTES** RYAN
- AT GARAGE:**  
GYPSUM BOARD AT COMMON WALLS, CEILING, BEAM WRAPS AND SUPPORTS PER STANDARD DETAIL FA-10b FIRE ASSEMBLIES OR AS REQUIRED BY LOCAL CODE.
- AT STAIRS:**  
1/2" GYPSUM BOARD AT UNDERSIDE OF STAIRS AND WALLS IN CLOSET

**REMARKS**

REV. NO.	DATE	DESCRIPTION
1	08/07/16	NL - DRAWING ALIGNMENT
2	10/05/16	TM - STANDARD DETAILS 3.0
3	07/17/17	SL5 - T-PLY CONVERSION PROJECT

REV. NO. DATE DESCRIPTION

SET NO. NRM00  
VERSION 01  
DRAWN BY SGA  
DATE: 6/29/15  
OPTION

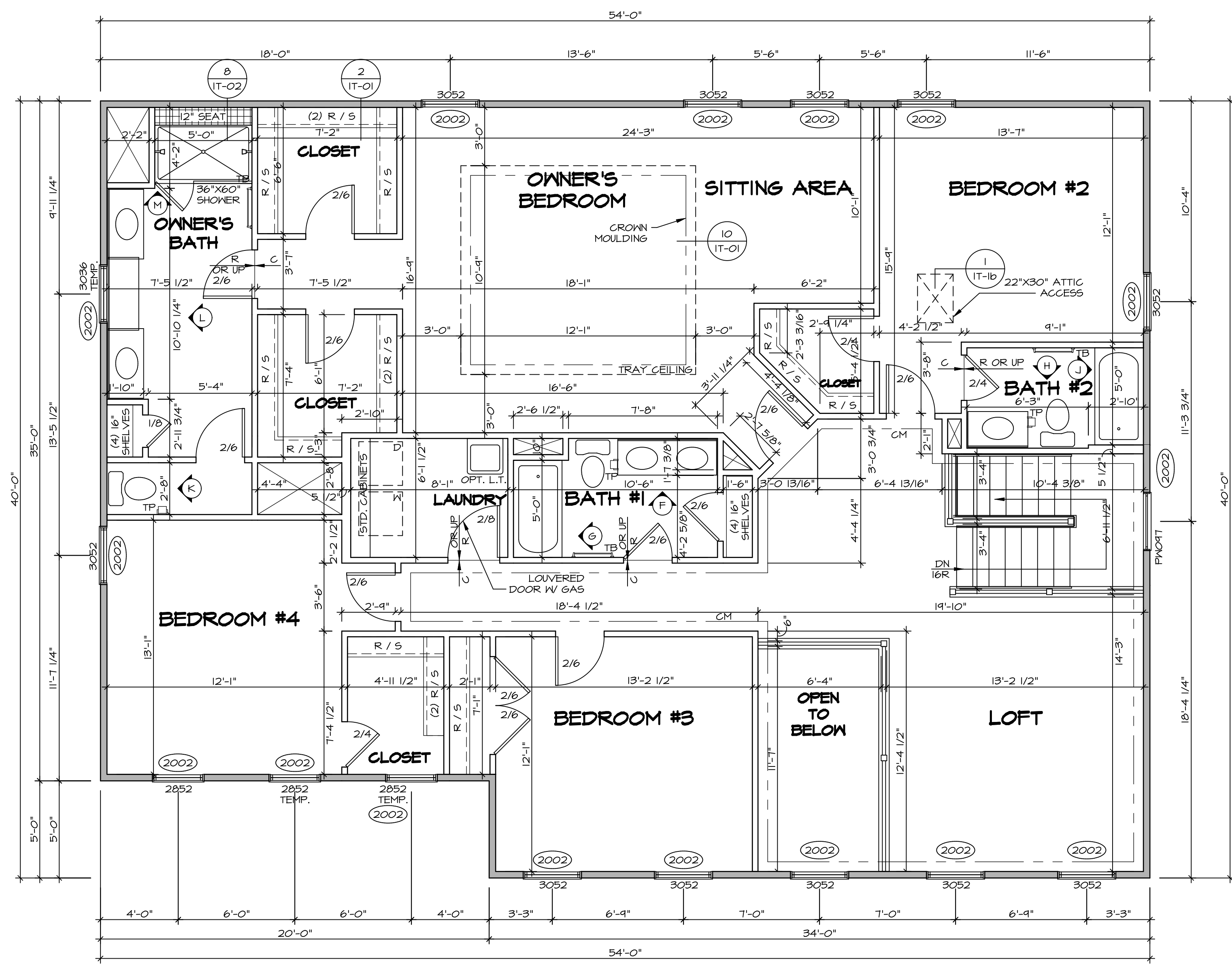
**NORMANDY**  
DRAWING TITLE  
FIRST FLOOR PLAN

OPTION DESCRIPTION

**NVR**  
NVR, Inc.  
Architectural Services  
5285 Washington Blvd  
Frederick, MD 21703

09/05/18 - 2:15 am

35



**LEGEND**

- ▬ BEARING WALL
- ▬ NON BEARING WALL
- ⊗ INDICATES BEARING FROM POINT-LOAD ABOVE
- ⊥ JACKS
- ⊙ BEAM/HEADER
- ⊞ PAD FOOTING
- ◇ STEEL COLUMN
- ⊞ PORTAL FRAME
- ⊞ JOIST/TRUSS
- ▬ LVL
- ⊞ ENGINEERING PAGE NUMBER

SEE FC DETAILS FOR FRAMING CONNECTORS

- FLOOR PLAN NOTES** RYAN
- ALL HEADERS ARE (2) 2x6 w/ 2x4 WALLS OR (3) 2x6 w/ 2x6 WALLS, UNLESS OTHERWISE NOTED.
  - ALL HEADERS TO HAVE (1) 2x4 OR 2x6 JACK AND KING STUD EACH END, UNLESS OTHERWISE NOTED.
  - ALL EXTERIOR WALLS TO BE 4" w/ OSB OR 3 1/2" w/ T-PLY, ALL INTERIOR WALLS TO BE 3 1/2", UNLESS OTHERWISE NOTED.
  - HATCHED AREAS INDICATE DROPPED CEILINGS. ALL DROPPED CEILINGS ARE 12" UNLESS OTHERWISE NOTED.
  - SEE "BRACED WALL PANEL DETAIL SHEET" FOR SPECIAL WALL BRACING LOCATIONS AND HEADER SIZES, IF APPLICABLE.
  - SEE STANDARD DETAIL CATEGORY "IT" SHEET(S) FOR INTERIOR TRIM DETAILS.
  - SEE ARCHITECTURAL DETAIL SHEET "AD" FOR HOUSE SPECIFIC INTERIOR TRIM OPTION TABLE.
  - ALL WINDOWS HAVE 7'-0 1/2" HEADER HEIGHT UNLESS OTHERWISE NOTED.
  - ALL HEADERS IN NON-BEARING WALLS SHALL BE A SINGLE FLAT 2x4 OR 2x6 ATTACHED TO GRIPPLES ABOVE, UNLESS OTHERWISE NOTED.

**SECOND FLOOR JACK SCHEDULE**

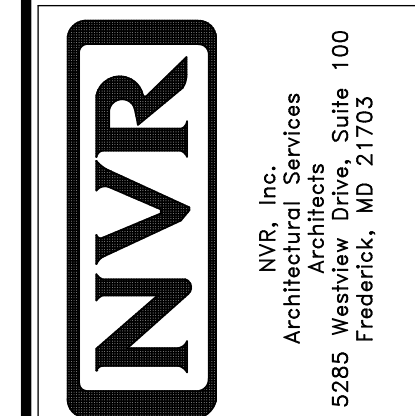
IDENTIFIER	DESCRIPTION	OPTIONS	ENG. NUM.	REMARKS

**SECOND FLOOR PLAN**  
SCALE: 1/4" = 1'-0"

REMARKS

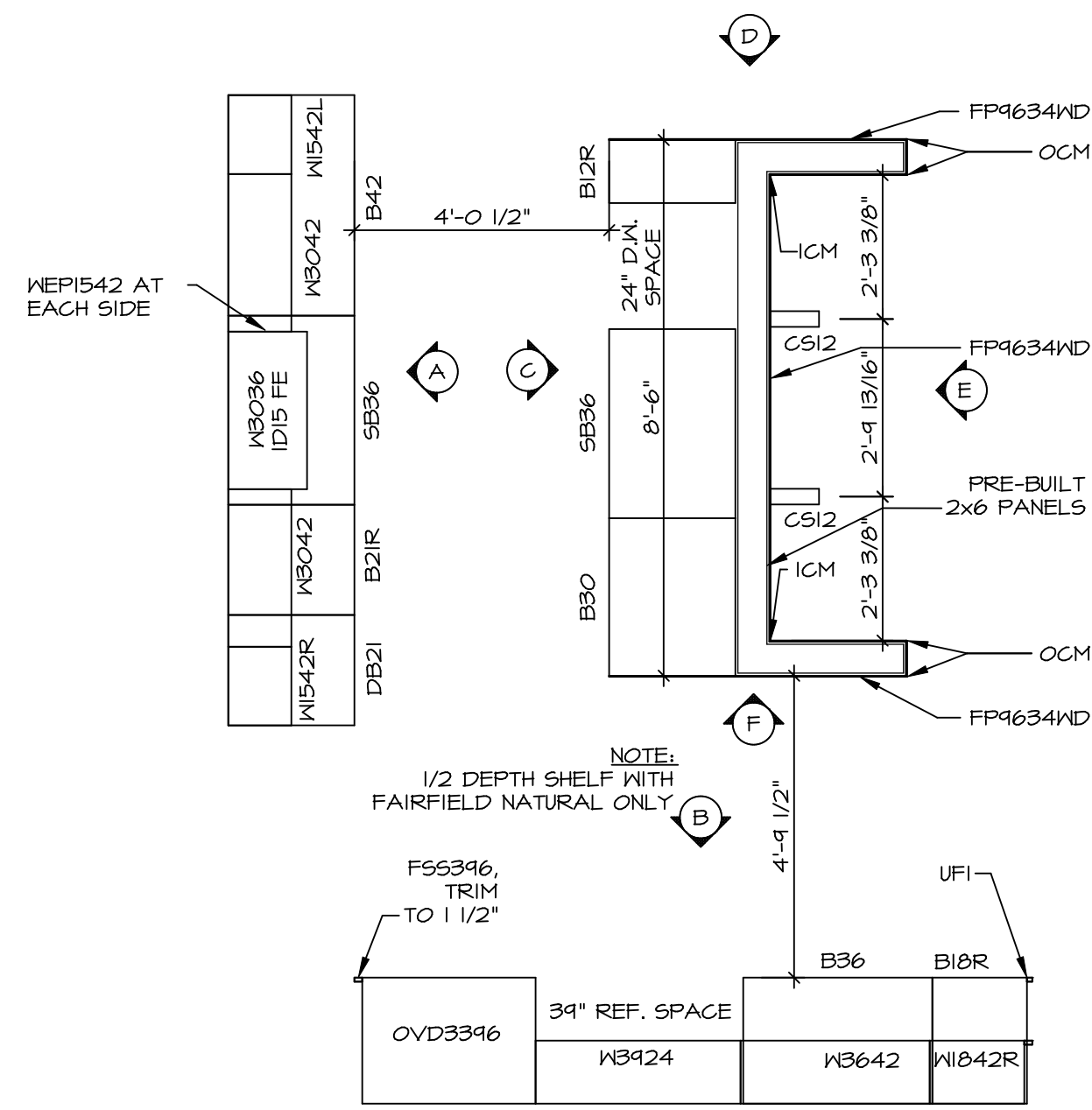
REV. NO.	DATE	DESCRIPTION
1	08/07/16	NL - DRAWING ALIGNMENT
2	11/05/16	TH - STANDARD DETAILS 3.0
3	07/17/17	SLS - T-PLY CONVERSION PROJECT

NVR, Inc., owner, expressly reserves its copyright in these plans. These plans are not to be reproduced, changed, copied, or otherwise used in any way without the written consent of NVR, Inc.

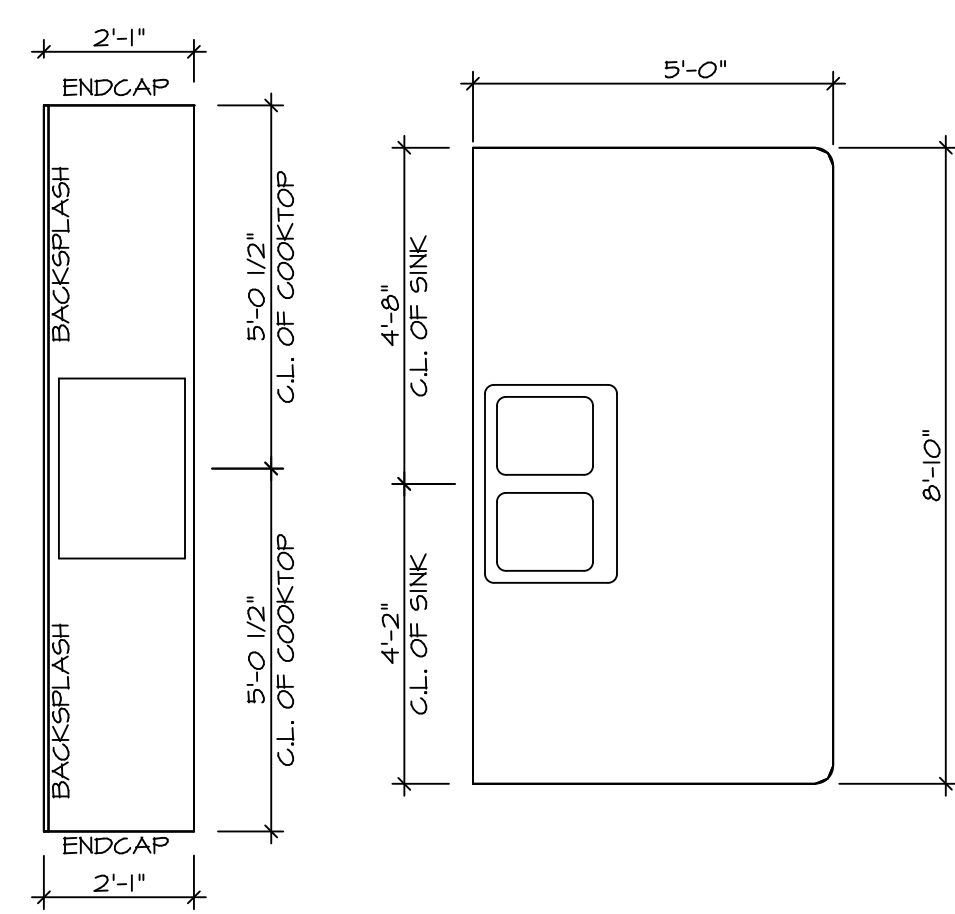


MODEL	SET NO. NRM00
DRAWING TITLE	VERSION 01
OPTION DESCRIPTION	DRAWN BY SGA
	DATE: 6/29/15
	OPTION

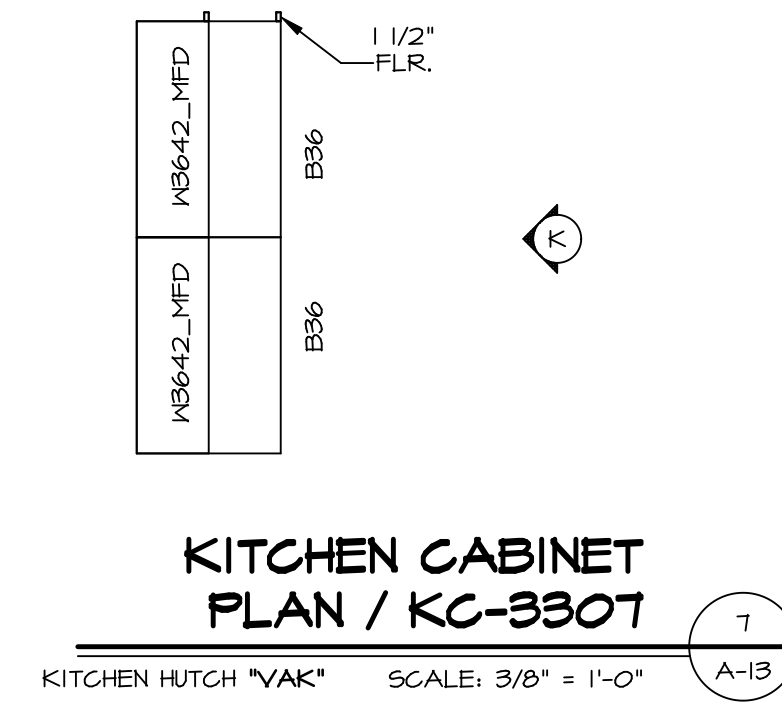
SHEET NO.	A-8
	38



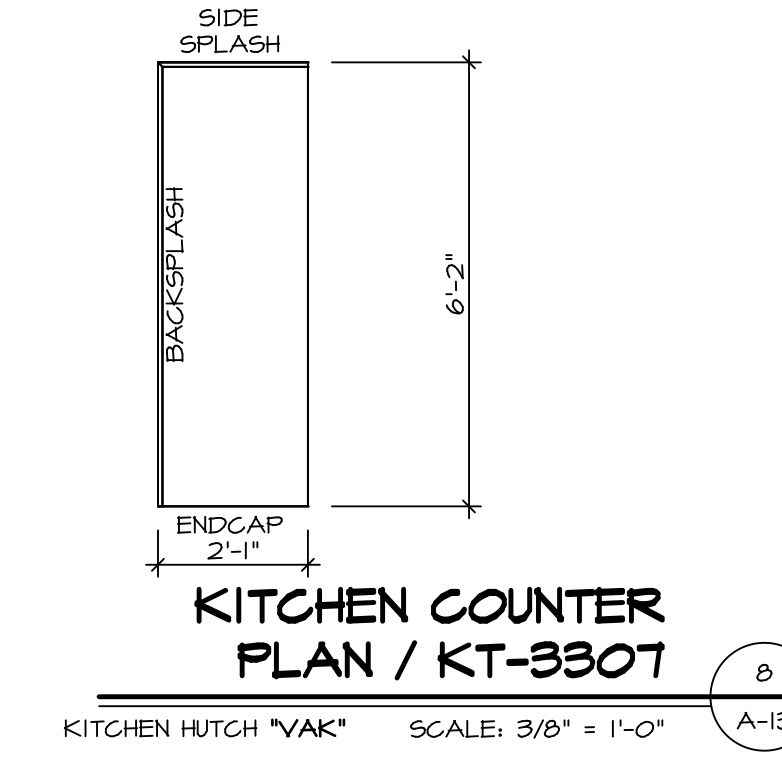
**KITCHEN CABINET PLAN / KC-3231**  
SCALE: 3/8" = 1'-0" A-13



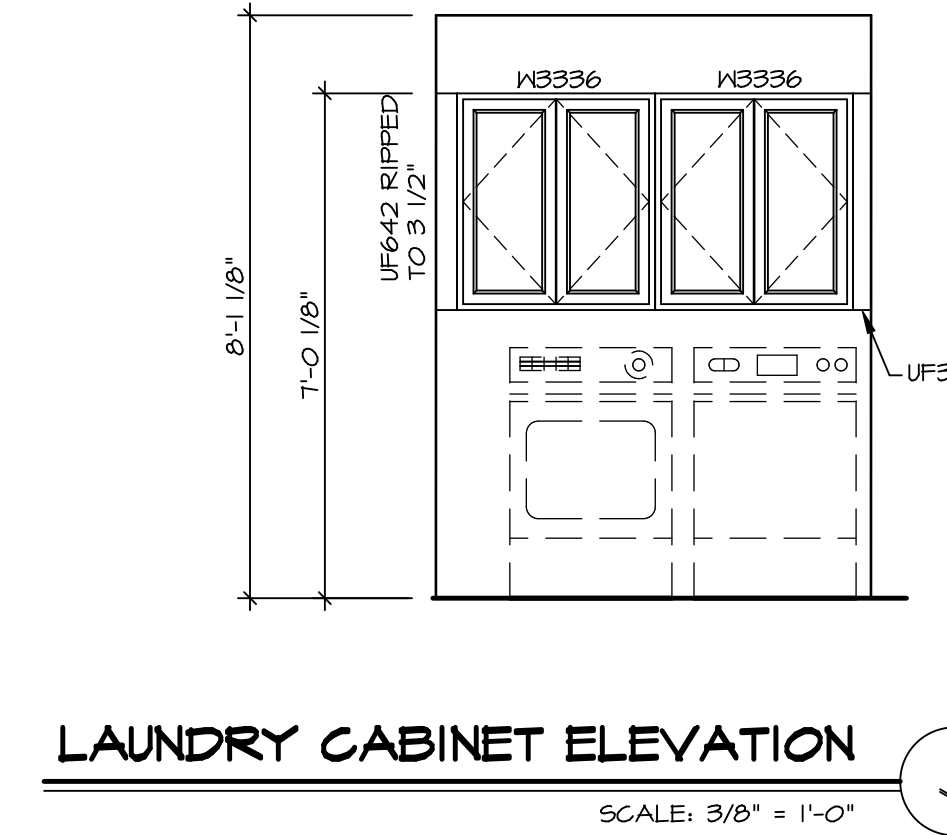
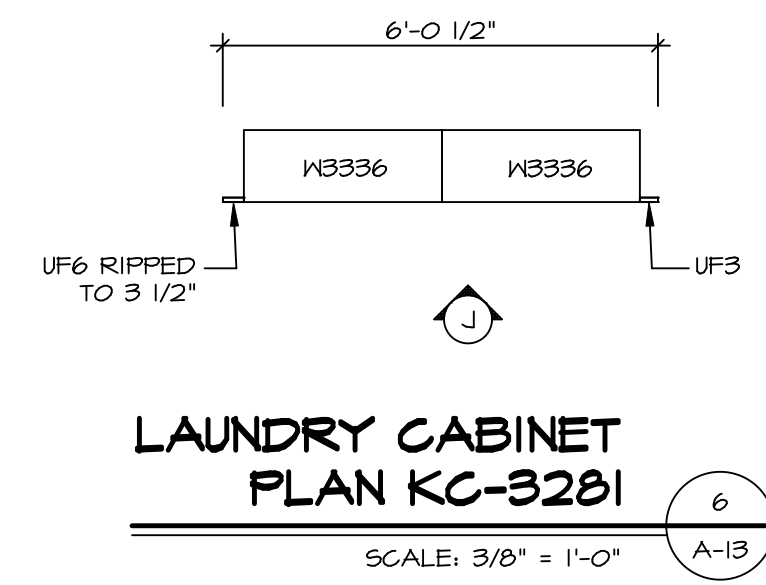
**KITCHEN COUNTERTOP PLAN / KT-3231**  
SCALE: 3/8" = 1'-0" A-13



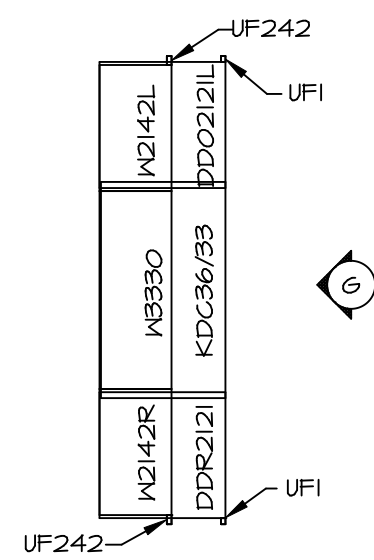
**KITCHEN CABINET PLAN / KC-3307**  
KITCHEN HUTCH "VAK" SCALE: 3/8" = 1'-0" A-13



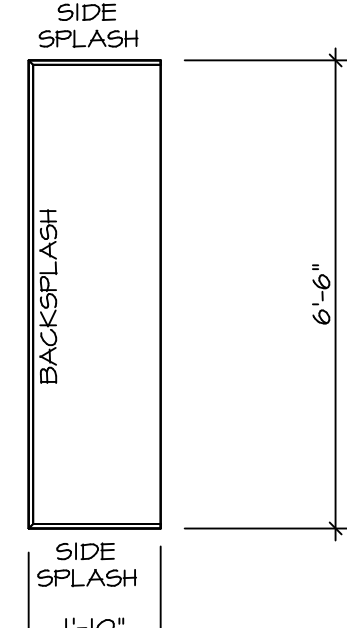
**KITCHEN COUNTER PLAN / KT-3307**  
KITCHEN HUTCH "VAK" SCALE: 3/8" = 1'-0" A-13



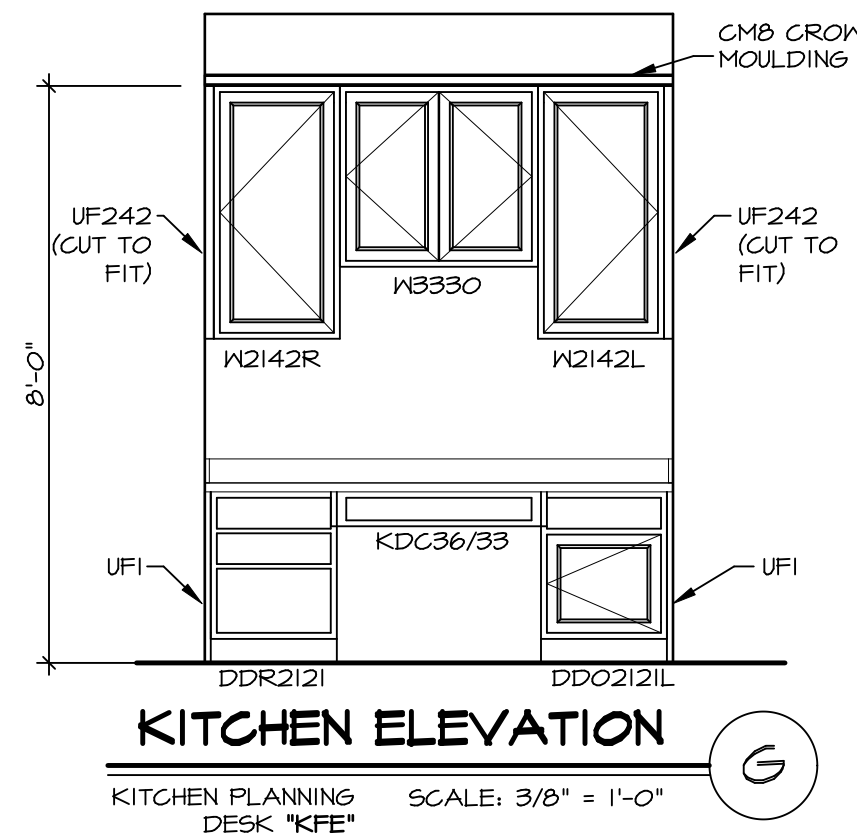
**LAUNDRY CABINET ELEVATION**  
SCALE: 3/8" = 1'-0" A-13



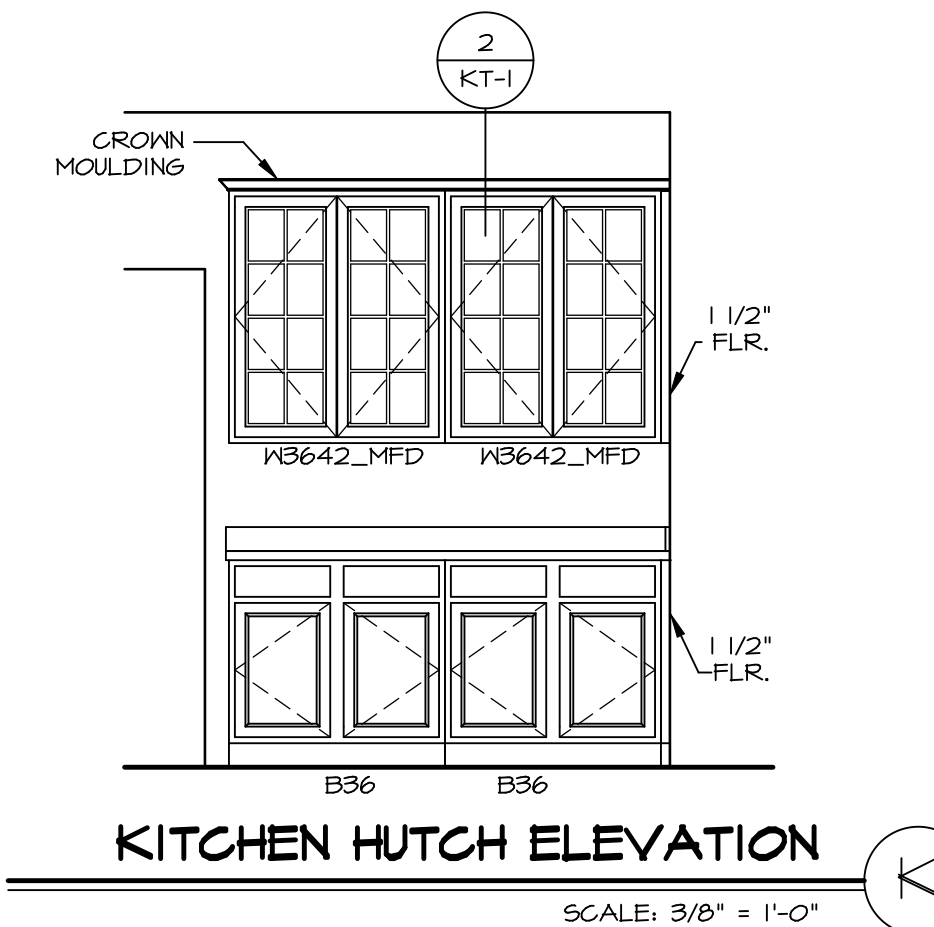
**KITCHEN CABINET PLAN / KC-3232**  
KITCHEN PLANNING DESK "KFE" SCALE: 3/8" = 1'-0" A-13



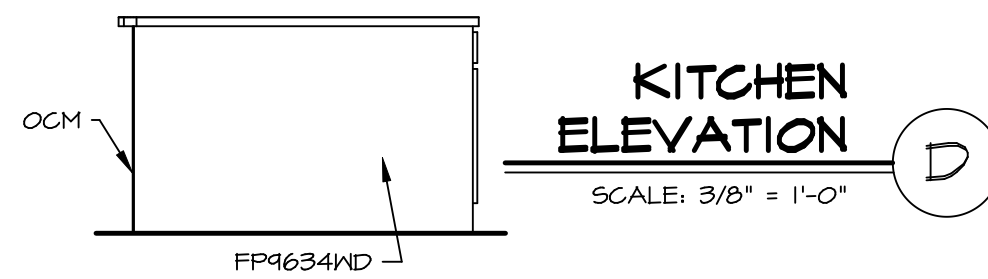
**KITCHEN COUNTER PLAN / KT-3232**  
KITCHEN PLANNING DESK "KFE" SCALE: 3/8" = 1'-0" A-13



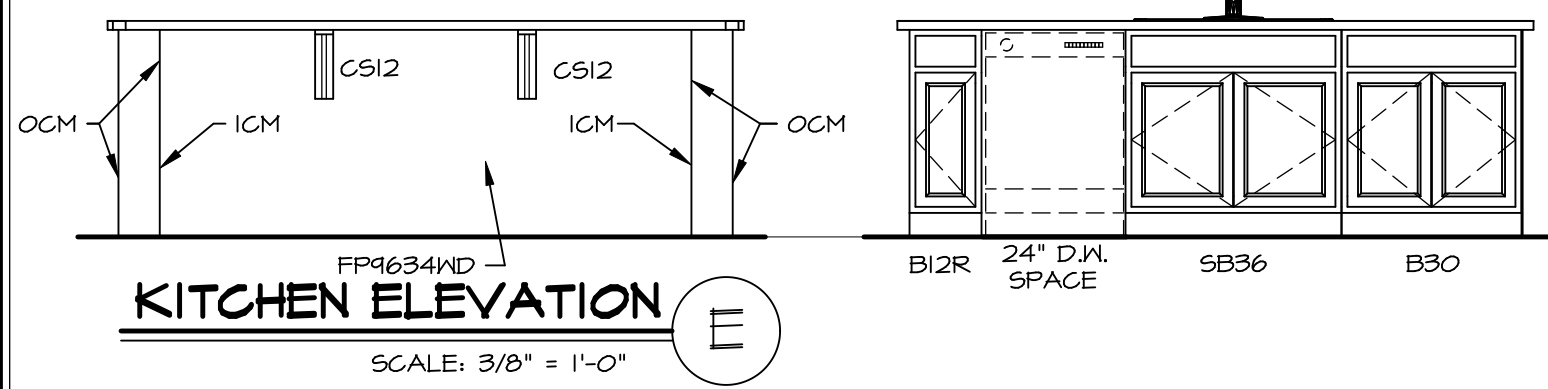
**KITCHEN ELEVATION**  
KITCHEN PLANNING DESK "KFE" SCALE: 3/8" = 1'-0" A-13



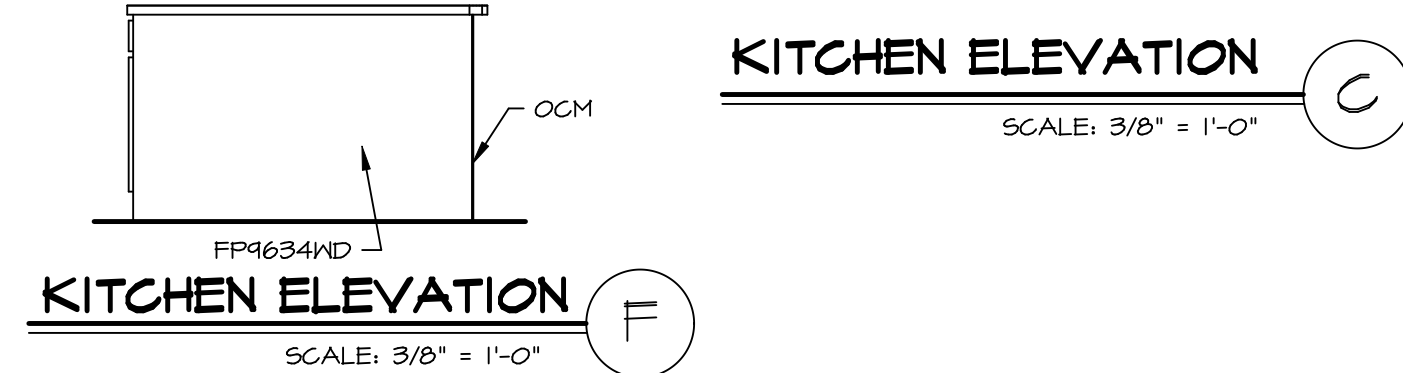
**KITCHEN HUTCH ELEVATION**  
SCALE: 3/8" = 1'-0" A-13



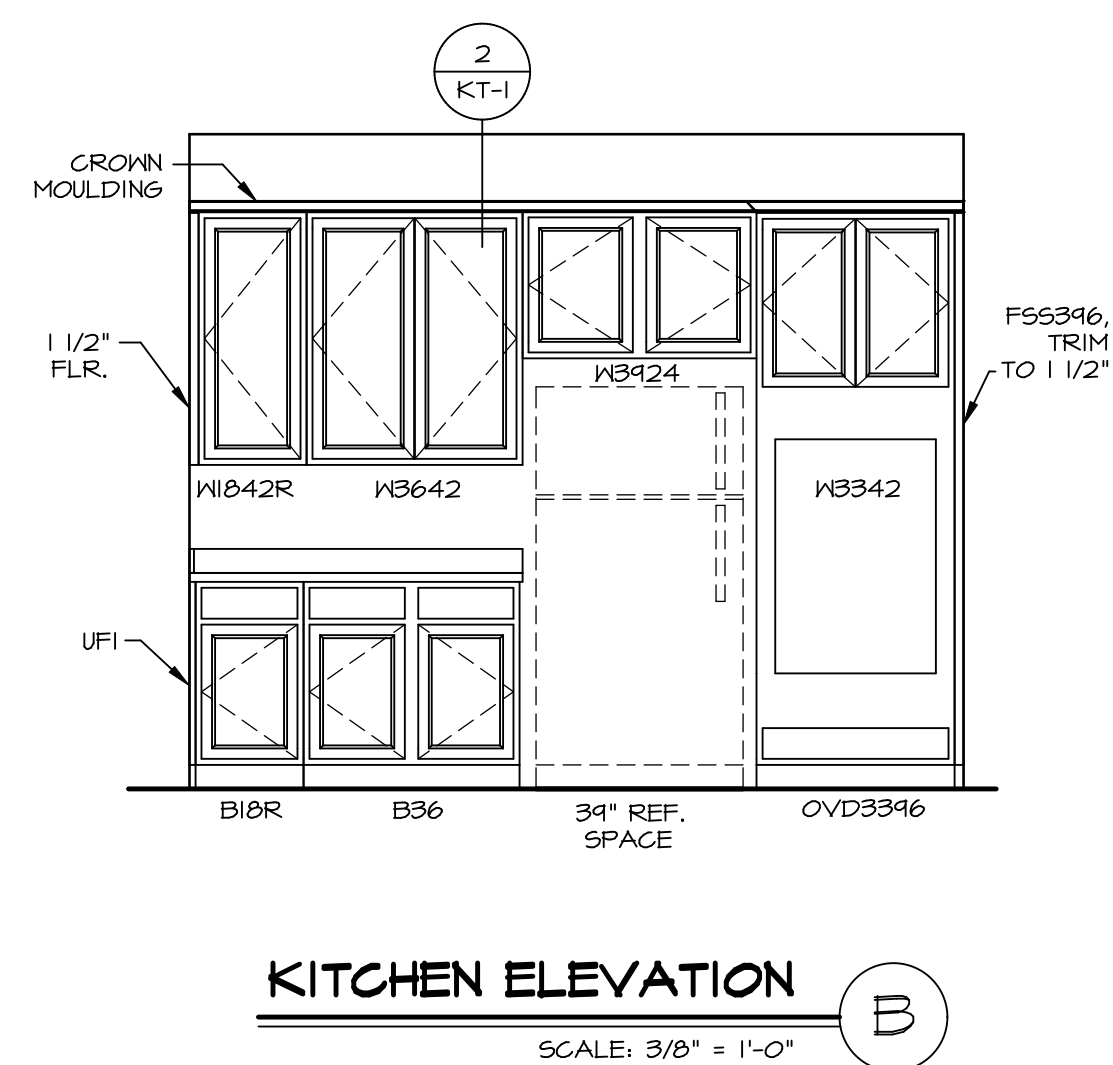
**KITCHEN ELEVATION**  
SCALE: 3/8" = 1'-0" A-13



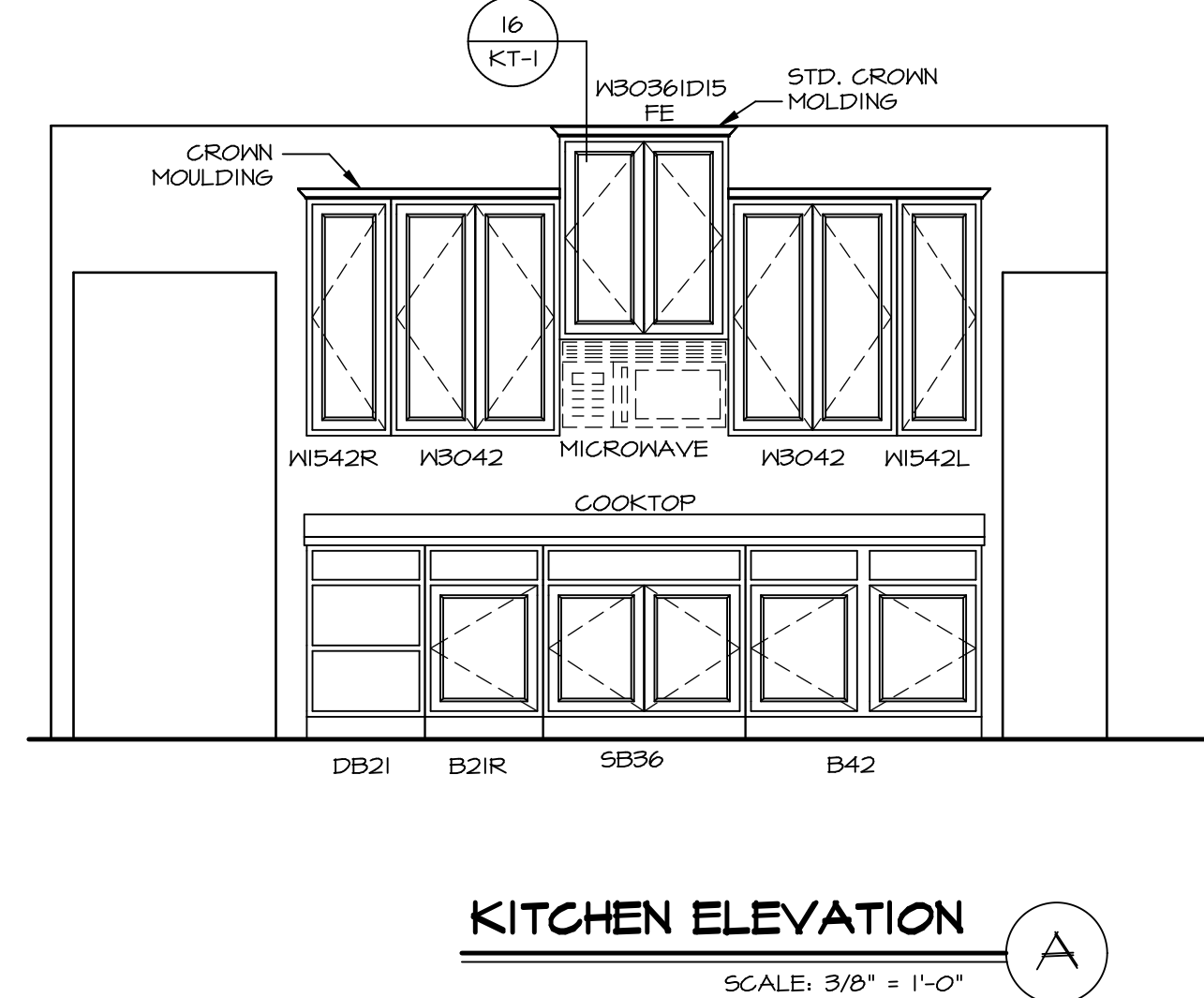
**KITCHEN ELEVATION**  
SCALE: 3/8" = 1'-0" A-13



**KITCHEN ELEVATION**  
SCALE: 3/8" = 1'-0" A-13



**KITCHEN ELEVATION**  
SCALE: 3/8" = 1'-0" A-13



**KITCHEN ELEVATION**  
SCALE: 3/8" = 1'-0" A-13

REV. NO.	DATE	REMARKS
1	10/15/16	TRV - STANDARD DETAILS 5.0

SET NO. NRM00	VERSION 01
DRAWN BY RJC	DATE: 6/29/15
OPTION	

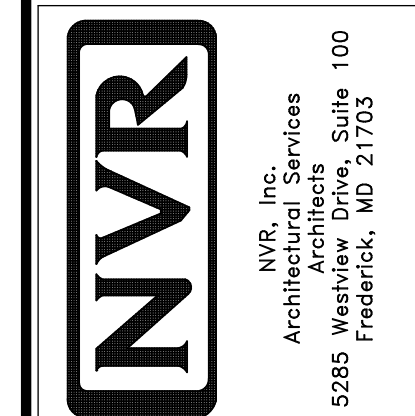
  

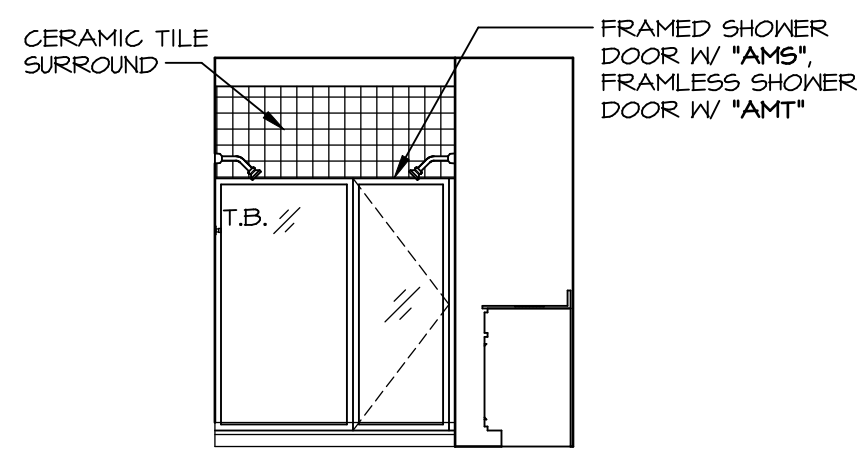
MODEL	NORMANDY
DRAWING TITLE	KITCHEN LAYOUT
OPTION DESCRIPTION	

SHEET NO.	A-13	46
-----------	------	----

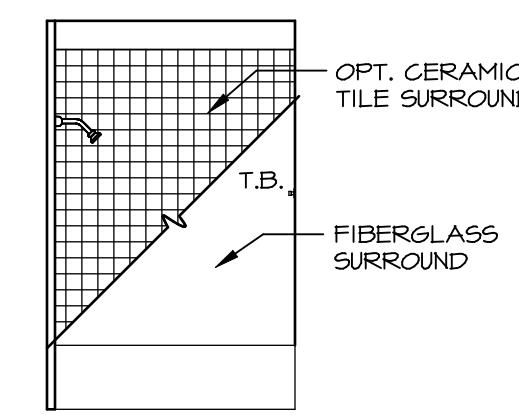
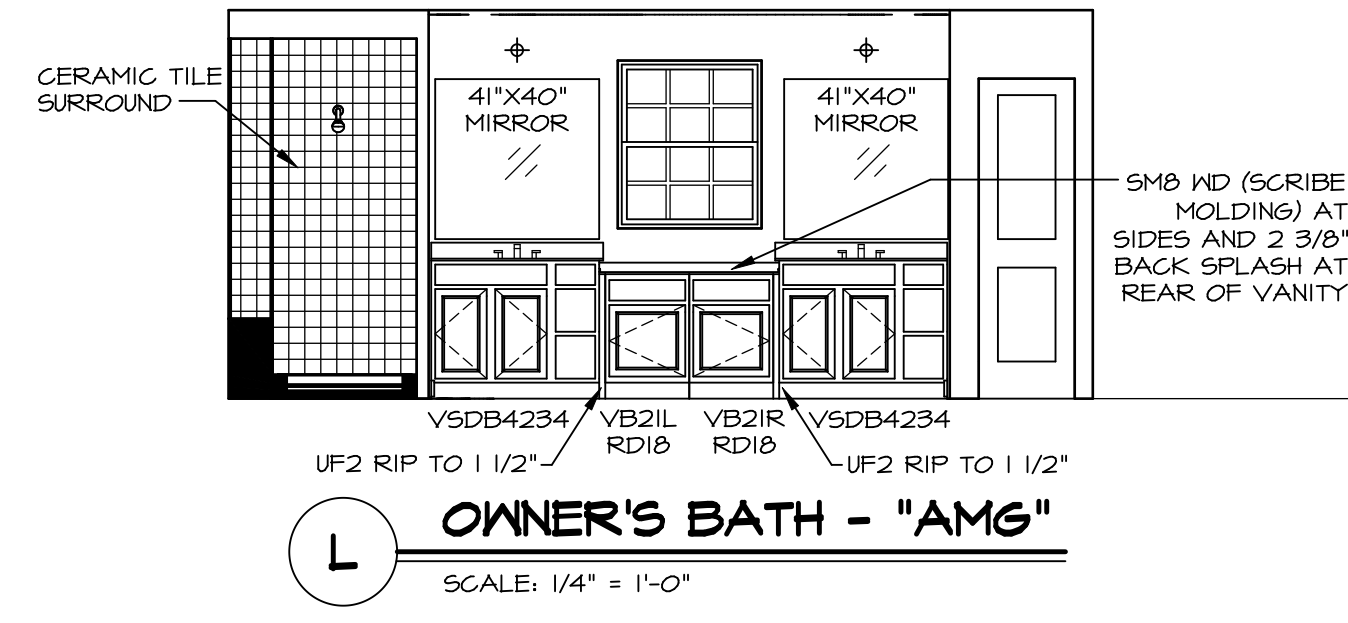
NVR, Inc., owner, expressly reserves the copyright in these plans. These plans are not to be reproduced, changed, copied in any way, or used for any purpose not assigned to them without the written consent of NVR, Inc.



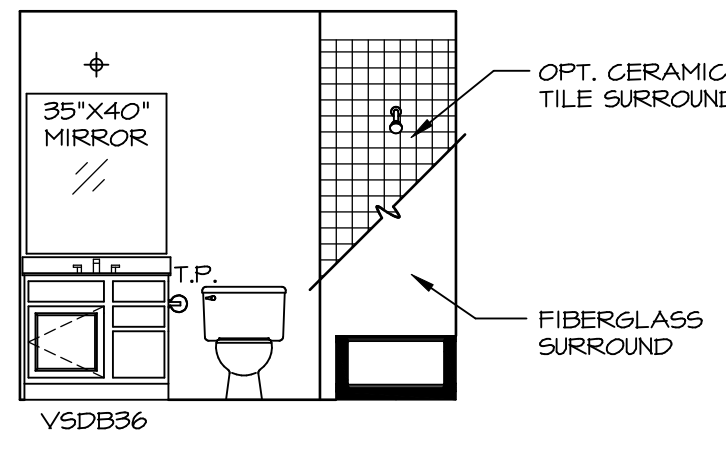


**M** OWNER'S BATH - "AMG"  
SCALE: 1/4" = 1'-0"

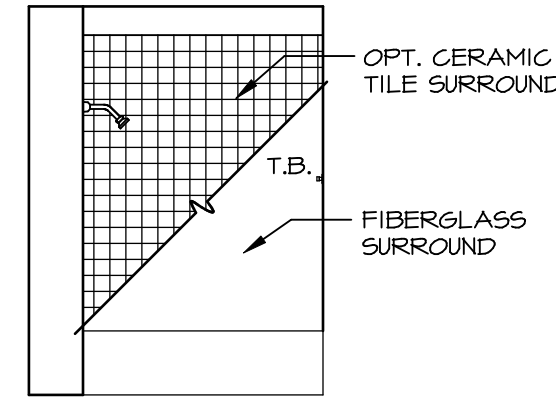
- NOTES:**
1. TEMPERED GLASS SHOWER ENCLOSURE WITH SWING DOOR OR OPTIONAL SLIDING DOOR BY DIVISION
  2. TUB ACCESS PANELS PROVIDED AS NEEDED, ALL MATERIALS BY DIVISION
  3. REFER TO SHEET (11-2) FOR TUB AND SHOWER DETAILS.
  4. ALL VSDB24-42 DRAWERS TO BE SET ON RIGHT HAND.
  5. BATH ELEVATIONS ARE SHOWN PER PLAN.



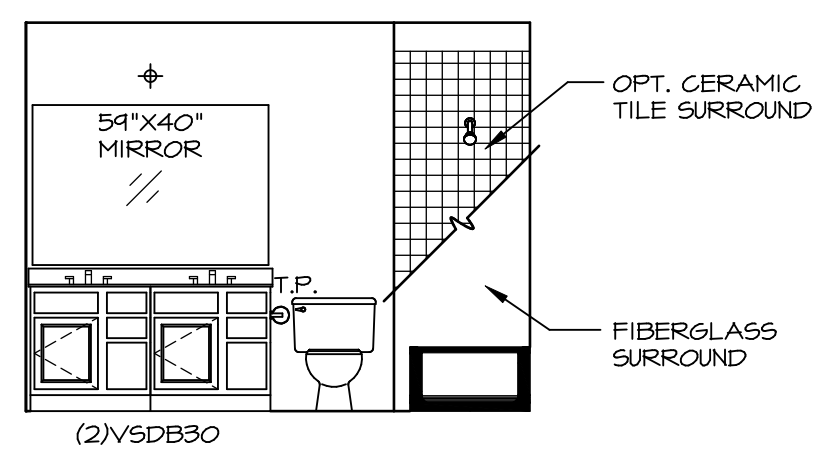
**J** BATH #2  
SCALE: 1/4" = 1'-0"



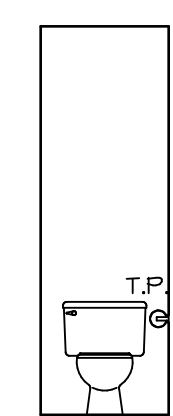
**H** BATH #2  
SCALE: 1/4" = 1'-0"



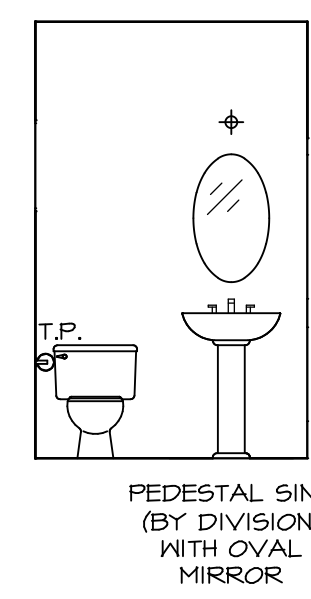
**G** BATH #1  
SCALE: 1/4" = 1'-0"



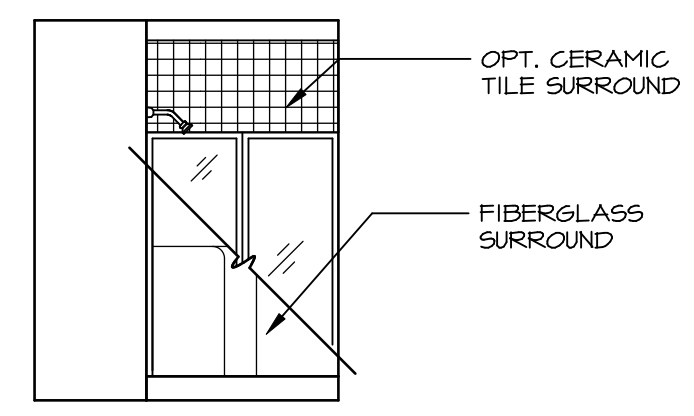
**F** BATH #1  
SCALE: 1/4" = 1'-0"



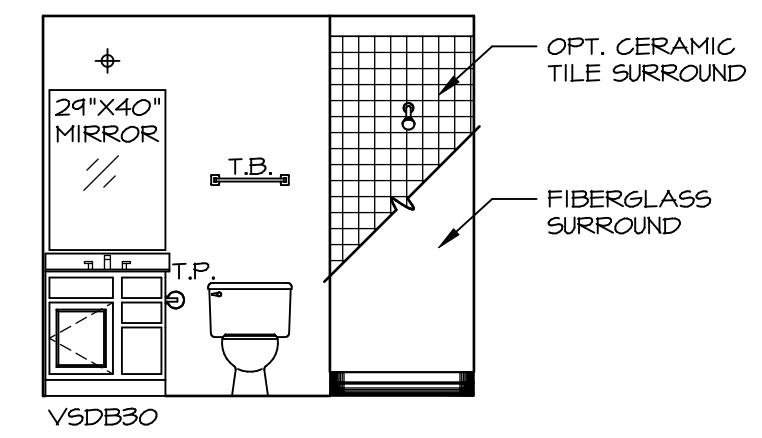
**K** OWNER'S BATH - "AMA" OR "AMG"  
SCALE: 1/4" = 1'-0"



**C** POWDER ROOM - "MAS"  
SCALE: 1/4" = 1'-0"



**B** BASEMENT BATH - "AEB"  
SCALE: 1/4" = 1'-0"



**A** BASEMENT BATH - "AEB"  
SCALE: 1/4" = 1'-0"

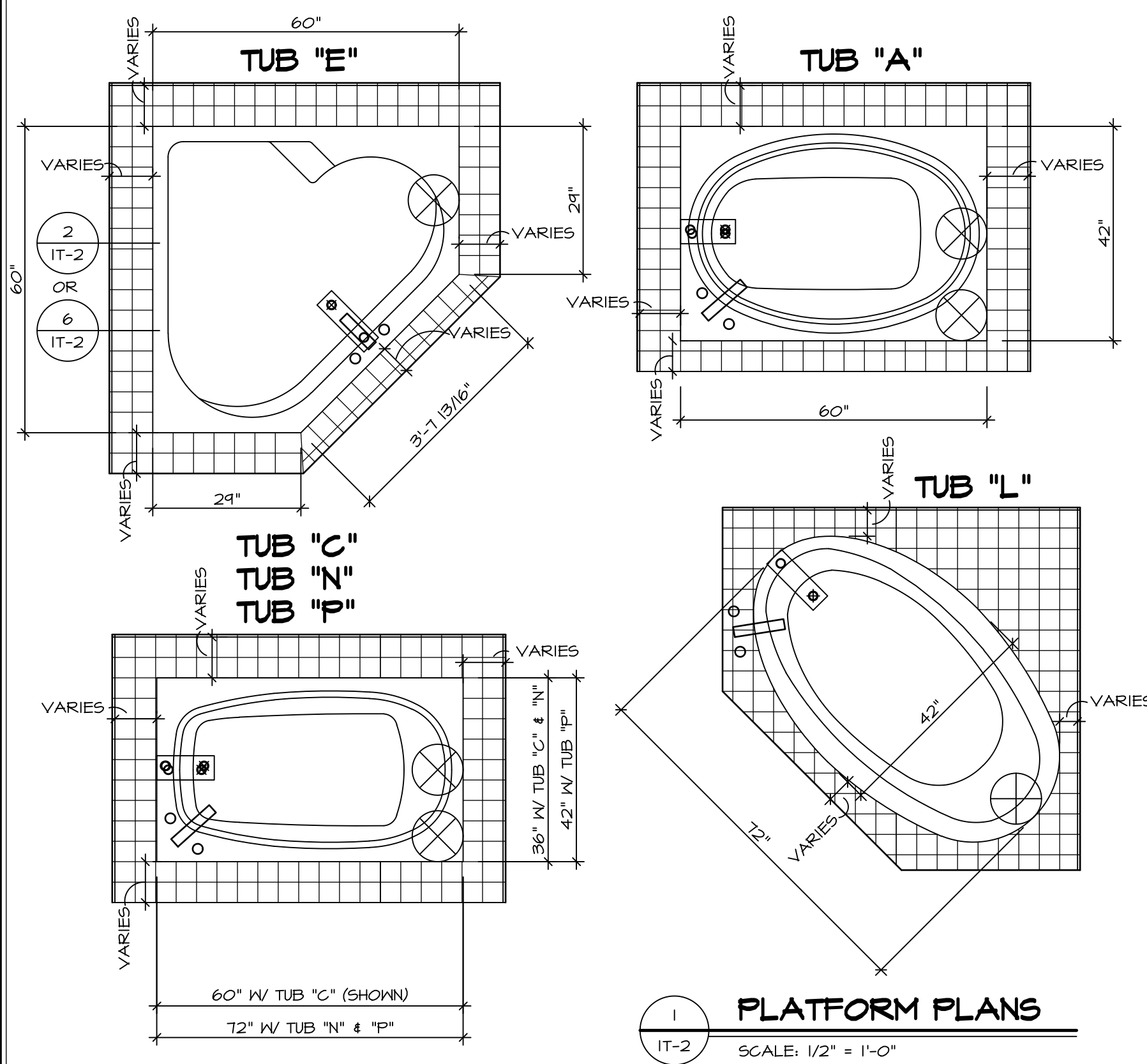
REV. NO.	DATE	REMARKS
1	08/07/16	N.L. - DRAWING ALIGNMENT
2	11/15/16	TRV. - STANDARD DETAILS 5.0

NVR, Inc., owner, expressly reserves its copyright in these plans. These plans are not to be reproduced, changed, copied, or otherwise used in any way without the written consent of NVR, Inc.

**NVR**  
NVR, Inc.  
Architectural Services  
100  
5285 Westchester Avenue, Suite 100  
Frederick, MD 21703

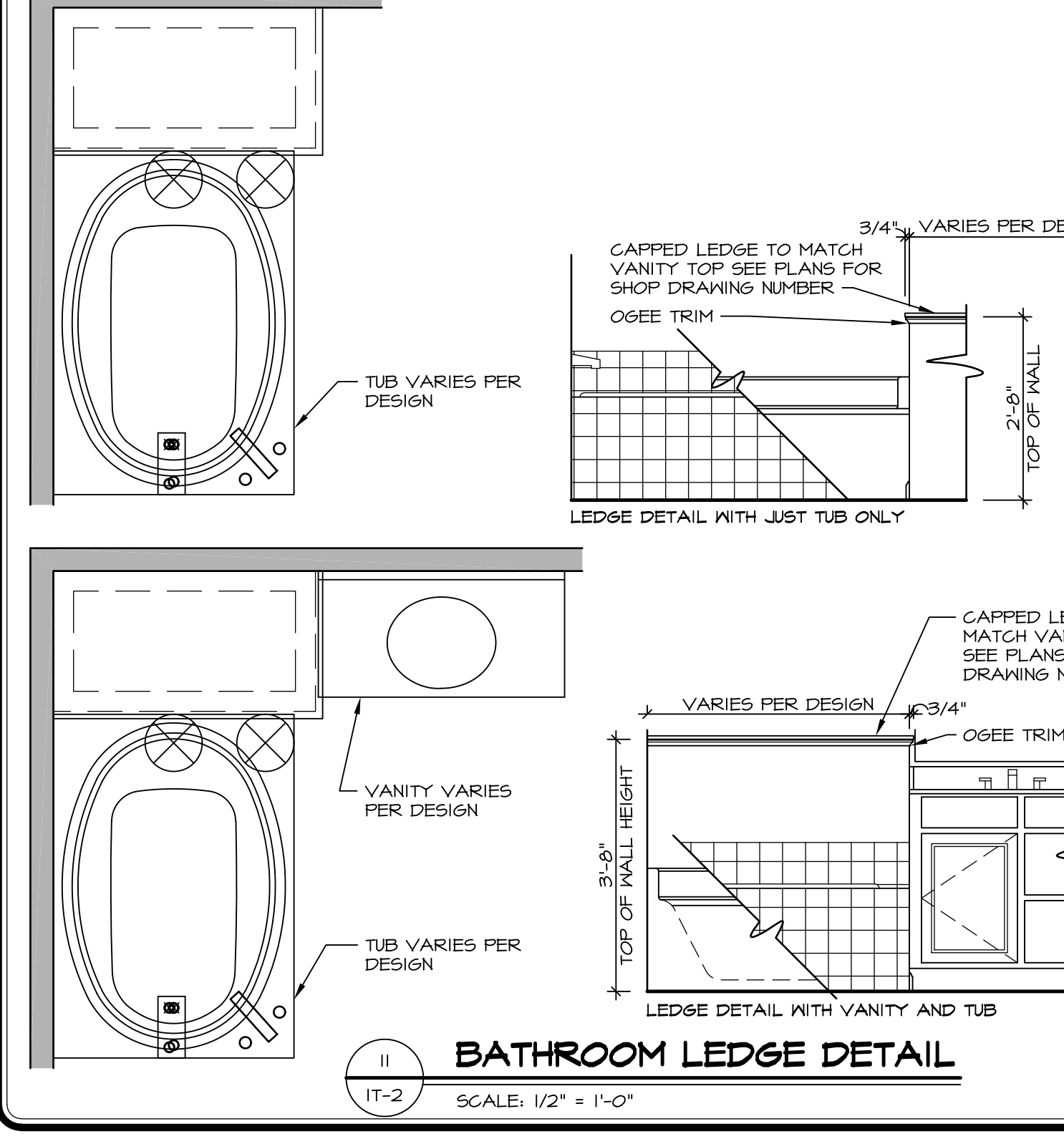
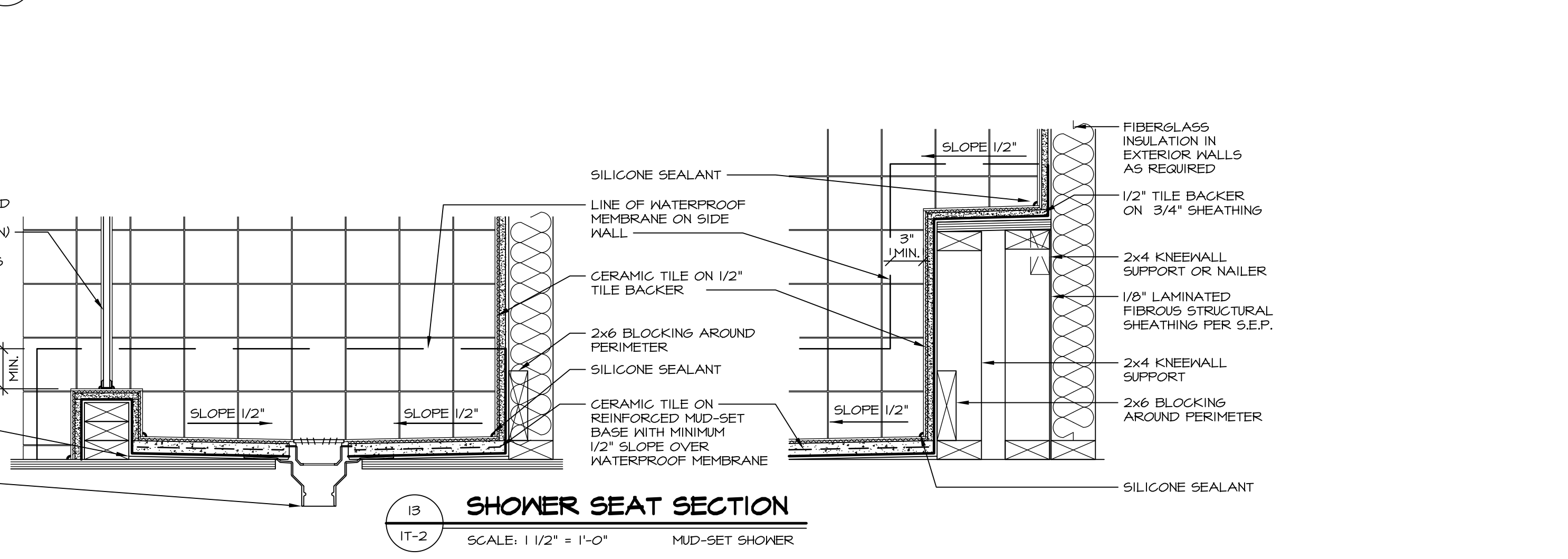
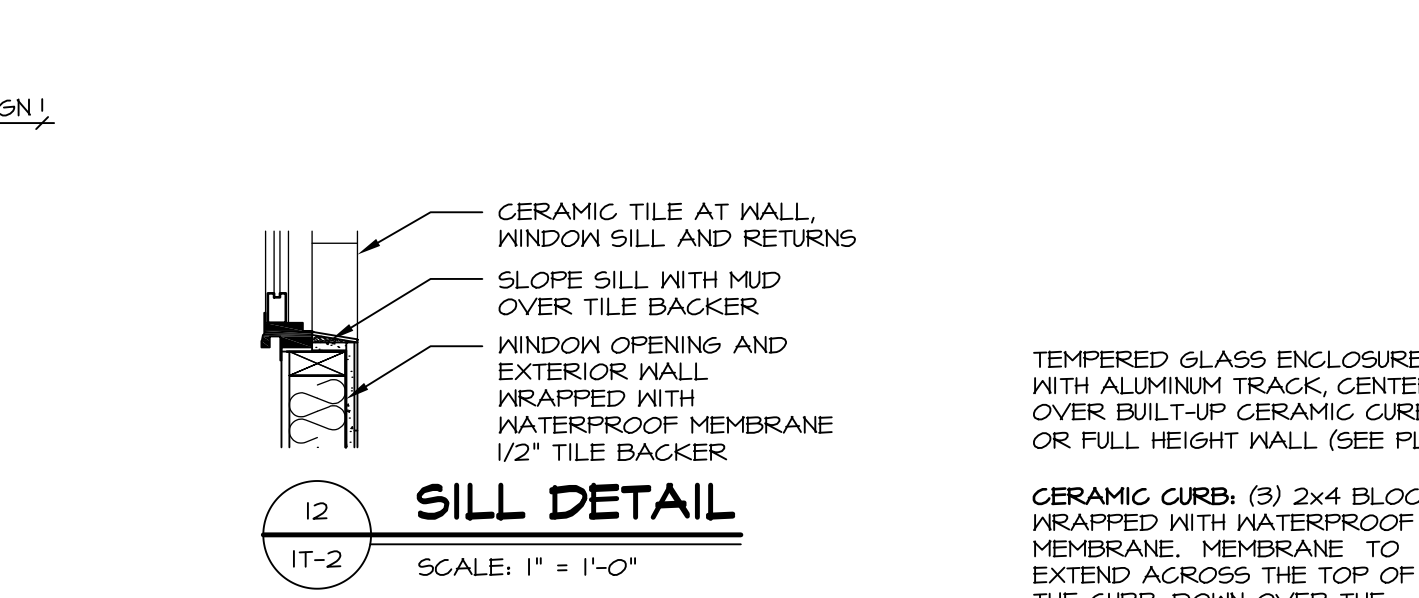
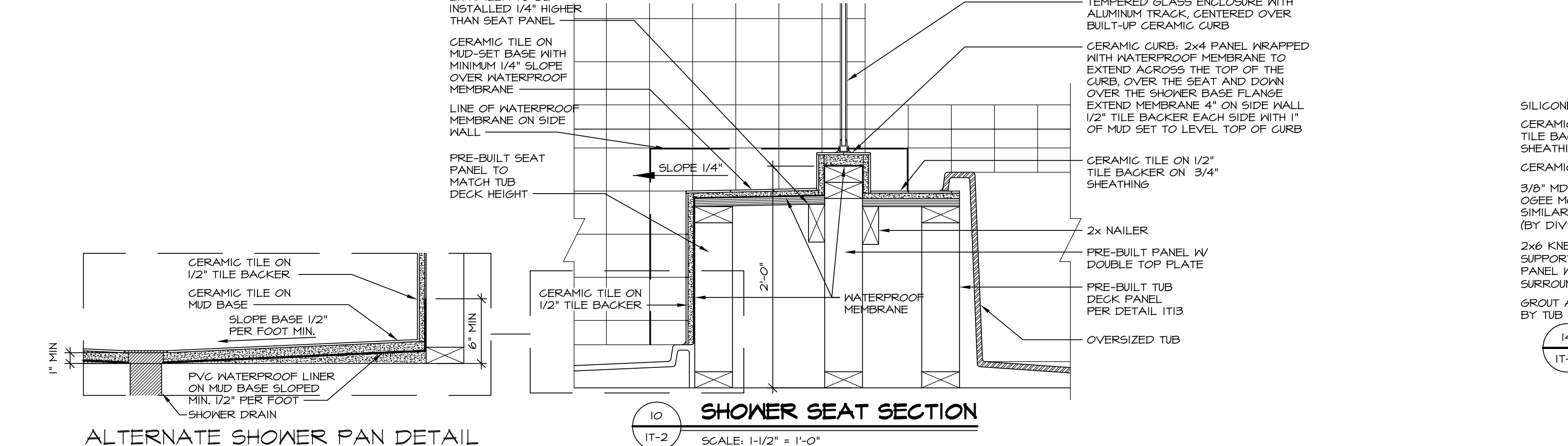
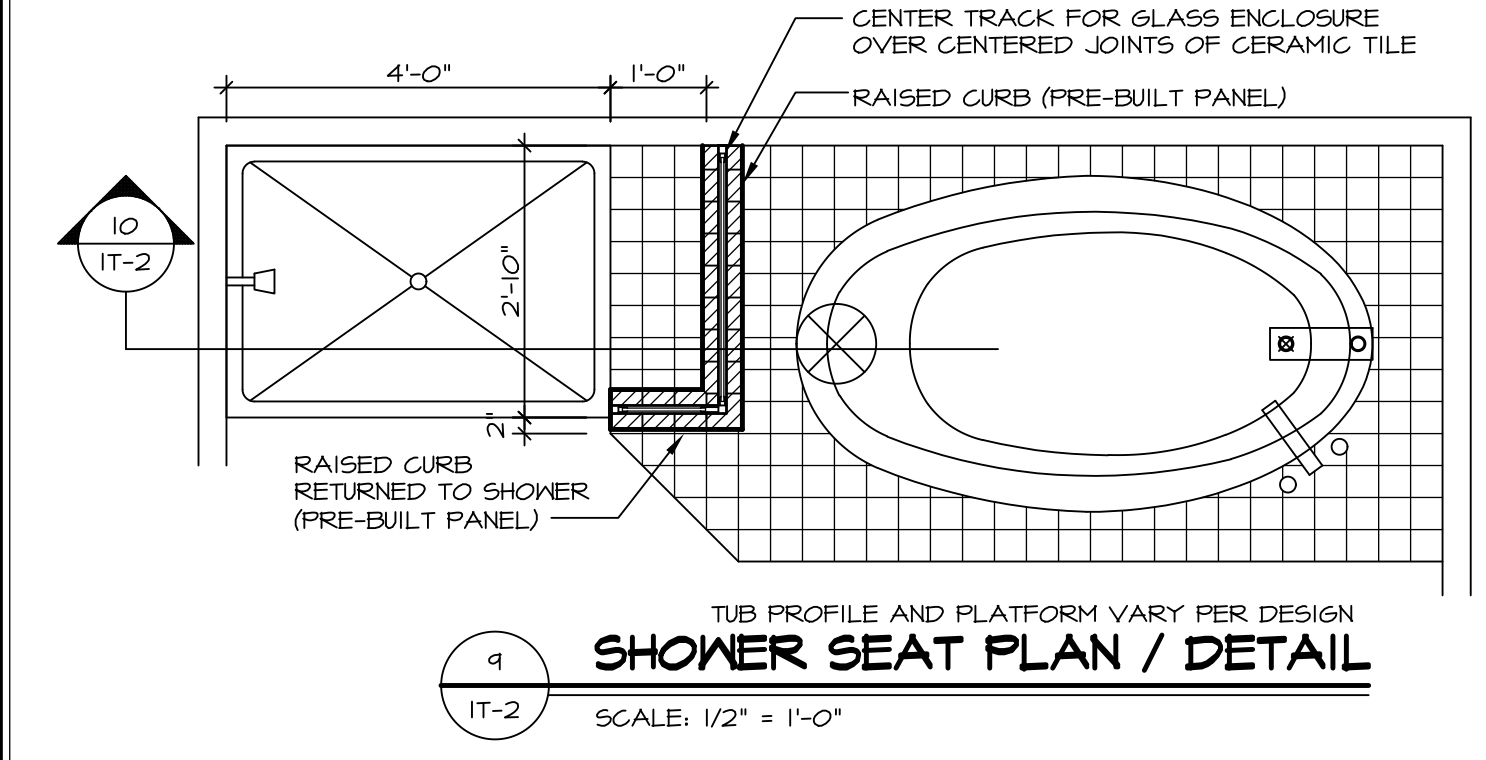
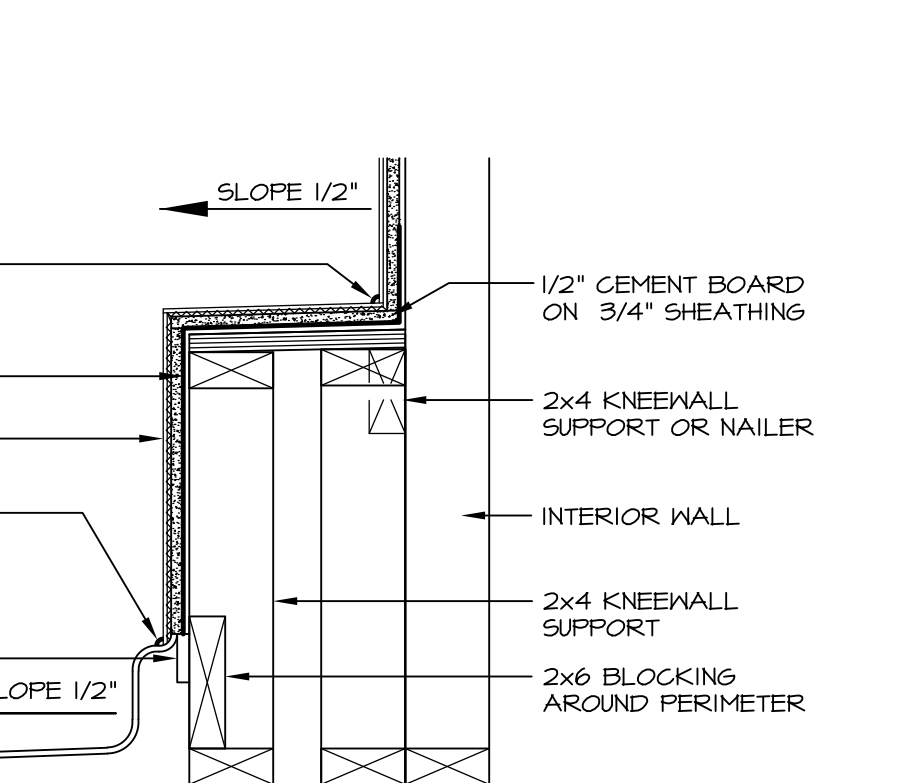
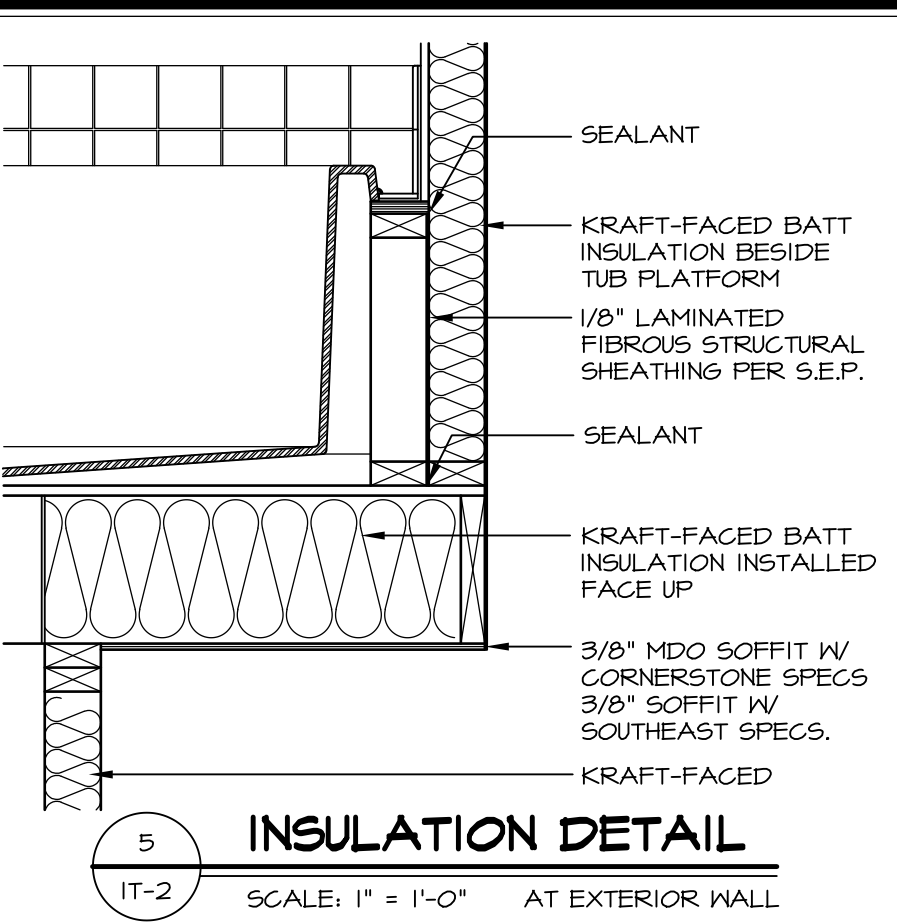
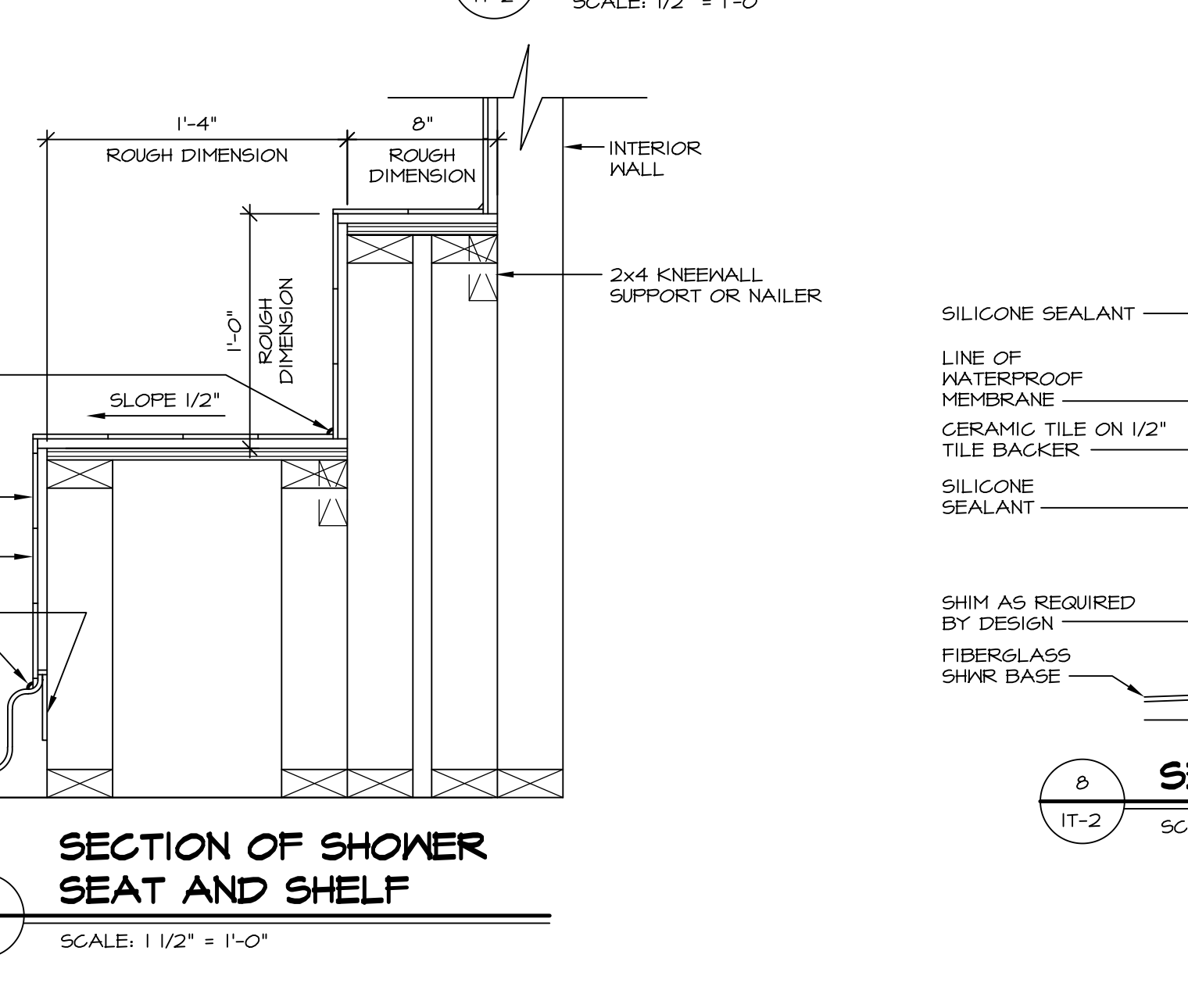
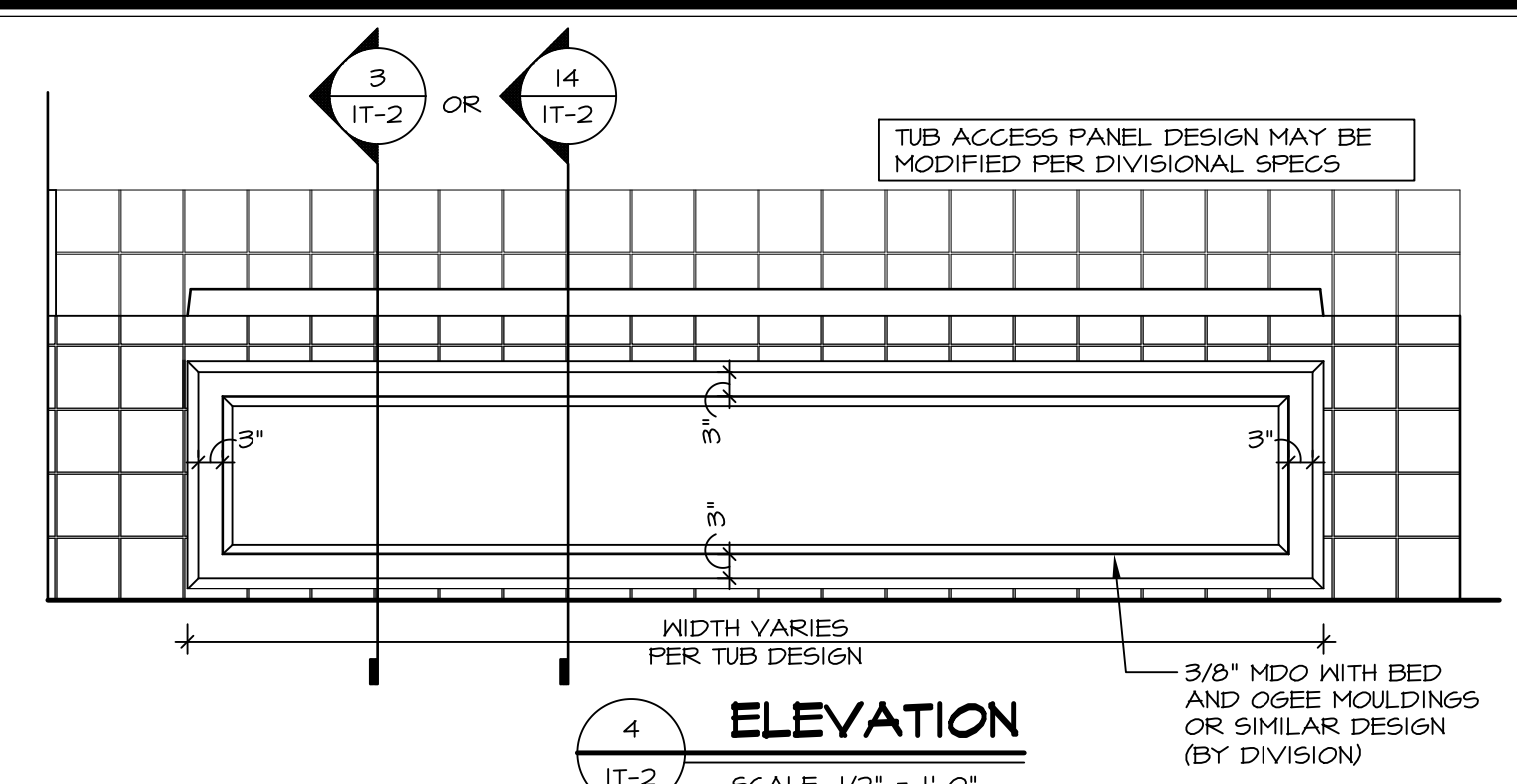
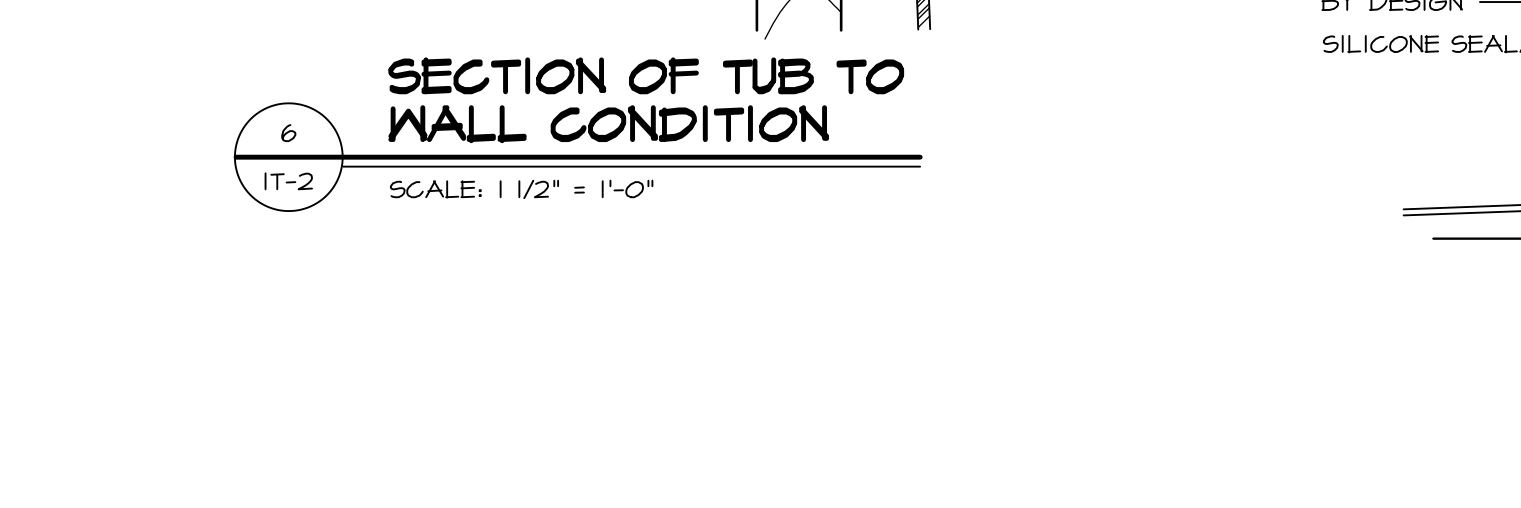
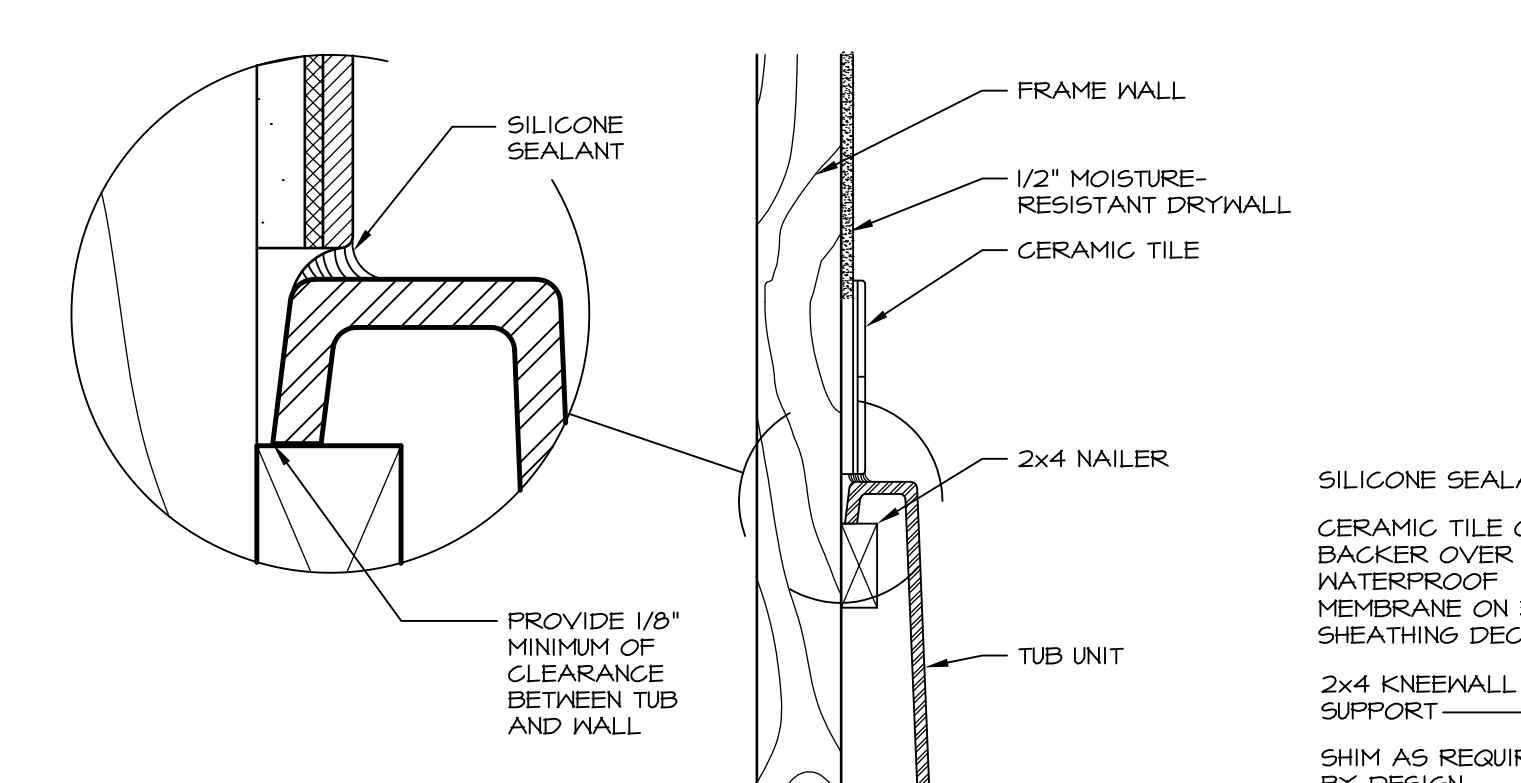
MODEL	NORMANDY
DRAWING TITLE	BATH ELEVATIONS
OPTION DESCRIPTION	
SET NO. NRM00	VERSION 01
DRAWN BY	SGA
DATE:	5/24/15
OPTION	
SHEET NO.	A-14
	48





**1 PLATFORM PLANS**  
SCALE: 1/2" = 1'-0"

TUB	MANUF.	HEIGHT	WIDTH	LENGTH	TUB DECK PANEL HEIGHT
"A"	KOHLER/STERLING	18 3/4"	42"	60"	17 1/8"
"C"	KOHLER/STERLING	18 3/4"	36"	60"	17 1/8"
"E"	KOHLER/STERLING	19 1/2"	60"	60"	17 7/8"
"L"	KOHLER/STERLING	18 1/2"	42"	72"	16 7/8"
"N"	KOHLER/STERLING	18 3/4"	36"	72"	17 1/8"
"P"	KOHLER/STERLING	18 3/4"	42"	72"	17 1/8"



REVISIONS

REV. NO.	DATE	DESCRIPTION
1	5/11/17	EBP - REVISED DETAIL 1 AND 11 TO REMOVE TUB ACCESS PANEL REF. (095 #15 541/4)
2	9/21/17	EBP - REVISED T-FLY NOTE TO CALL OUT LFS
3	9/21/17	EBP - REVISED NOTE ON DETAIL #1 - REVISED ORDER OF MATERIAL PARA#493/4

REMARKS

NVR, Inc., owner, expressly reserves its common law copyright and other property rights in these plans. These plans are not to be reproduced, stored in a retrieval system, or transmitted in any form or by any means, electronic, mechanical, photocopying, recording, or by any information storage and retrieval system, without first obtaining the expressed written consent of NVR, Inc.

**NVR**  
NVR, Inc.  
Architectural Services  
5285 West Lakeshore Drive  
Frederick, MD 21703

SET NO. NVR  
VERSION  
DRAWN BY  
DATE:  
OPTION

MODEL  
**STANDARD DETAILS**  
DRAWING TITLE  
INTERIOR TRIM DETAILS  
BATH DETAILS  
OPTION DESCRIPTION

SHEET NO.  
**IT-2**

J:\Dwg\NVR\Interior Trim\IT2.dwg 09/27/17 - 9:20 am