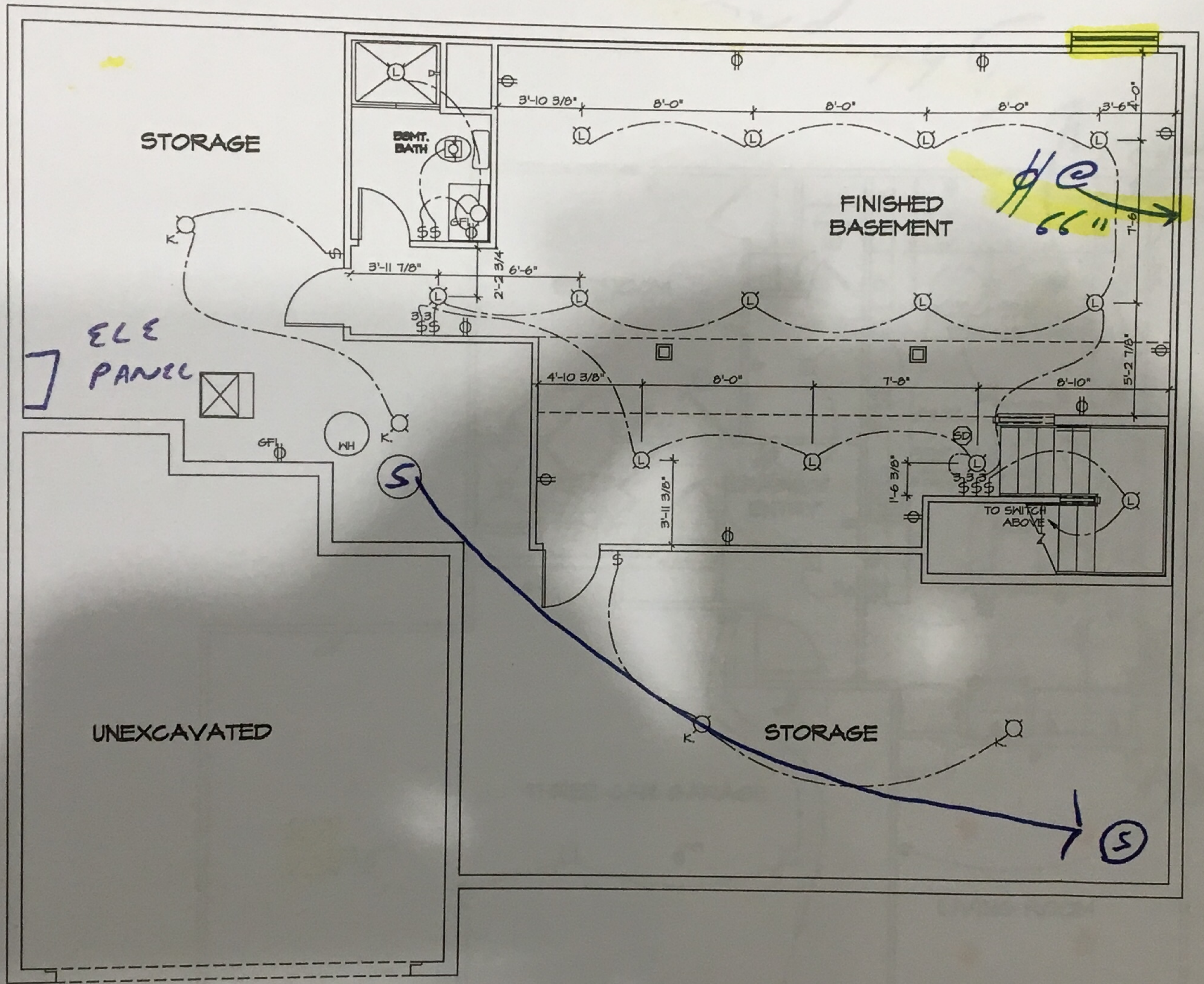


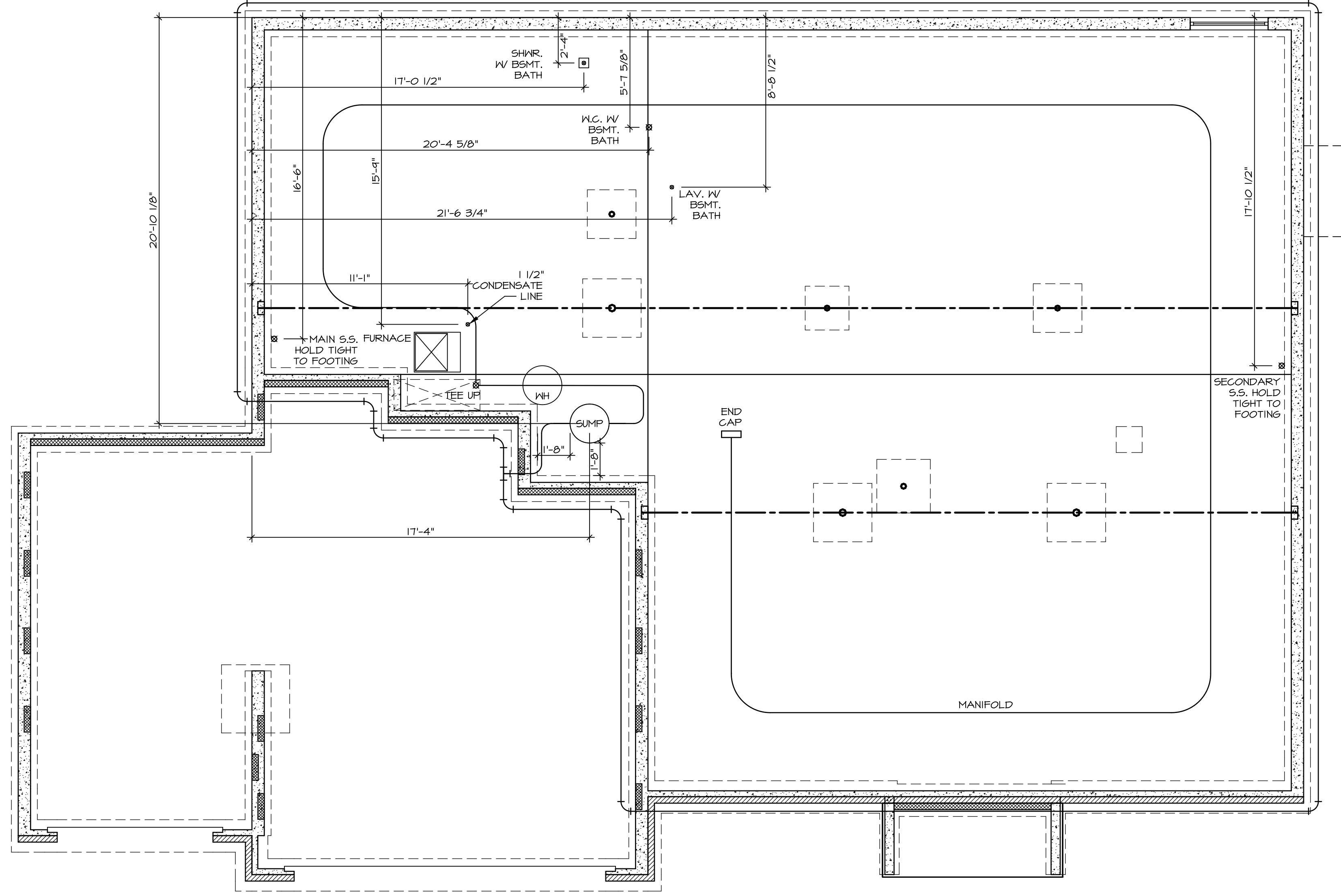
A/C
ELE
METER



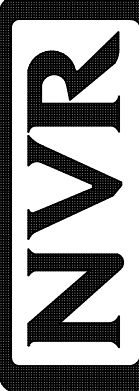
GAS METER

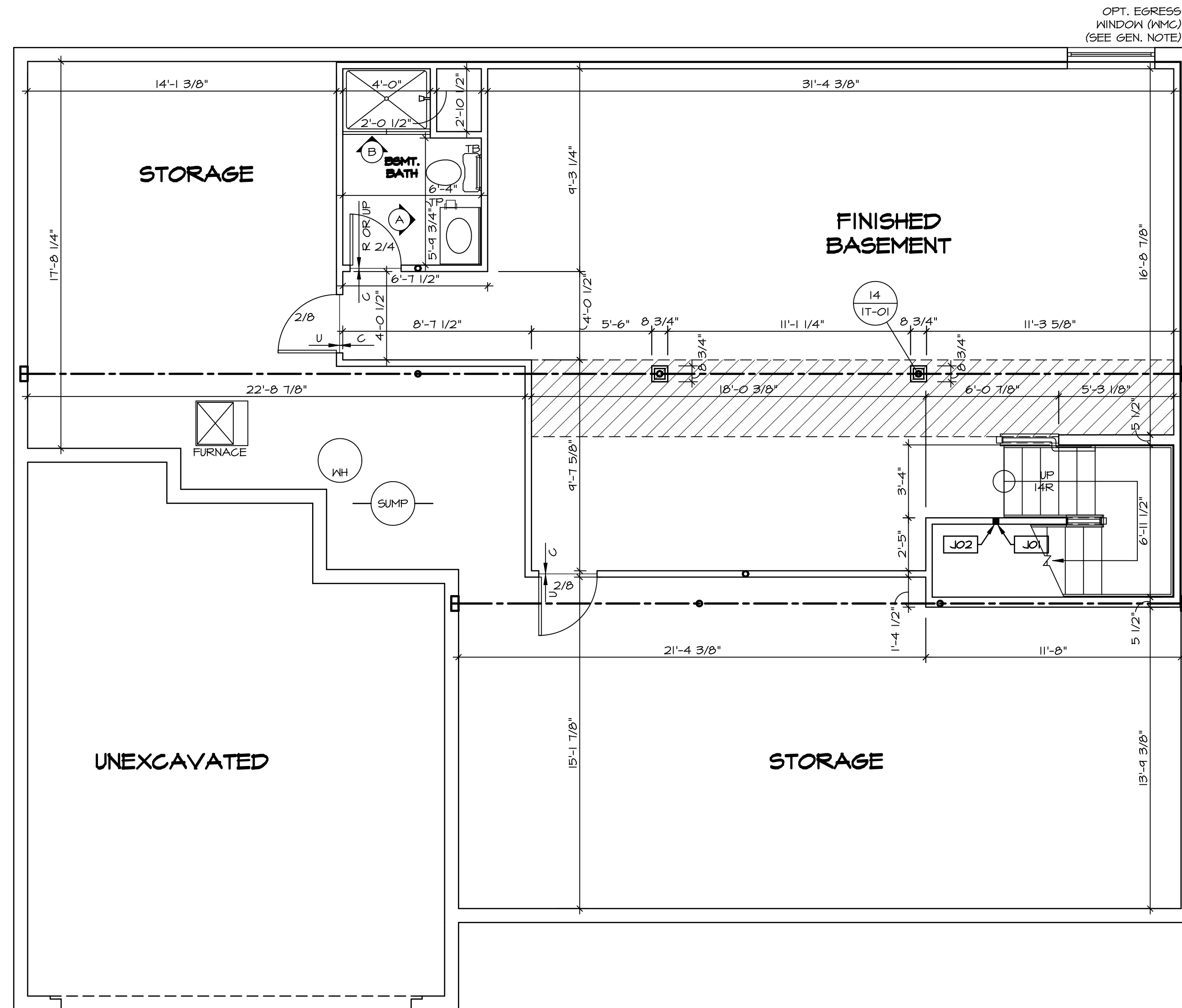
VS DR

1
E-1
BASEMENT ELECTRICAL PLAN
SCALE: 1/4" = 1'-0"



1
 A-5
PLUMBING PLAN
 SCALE: 1/4" = 1'-0"

SHEET NO. A-5 31	MODEL NORMANDY DRAWING TITLE PLUMBING PLAN OPTION DESCRIPTION	SET NO. NRM00 VERSION 01 DRAWN BY RJC DATE: 5/14/15 OPTION	 NVR, Inc. Architectural Services Architects 5285 Westheimer, Suite 100 Frederick, MD 21703	<p> NVR, Inc., owner, expressly reserves its copyright interest in the drawings, plans, specifications, and all other documents prepared or furnished by NVR, Inc. or its agents, consultants, subcontractors, or licensors. These drawings, plans, specifications, and other documents are to be used only for the project and site identified herein. No part of these drawings, plans, specifications, or other documents may be reproduced, stored in a retrieval system, or transmitted, in any form or by any means, without the prior written consent of NVR, Inc. </p>	REV. NO. DATE REMARKS
-------------------------------	---	--	---	---	--------------------------



LEGEND

- ▬ BEARING WALL
- ▬ NON BEARING WALL
- ⊗ INDICATES BEARING FROM POINT-LOAD ABOVE
- ⊥ JACKS
- ⊙ BEAM/HEADER
- ⊞ PAD FOOTING
- ◇ STEEL COLUMN
- ⊠ PORTAL FRAME
- ⊞ JOIST/TRUSS
- ▬ LVL
- ⊙ ENGINEERING PAGE NUMBER

SEE FC DETAILS FOR FRAMING CONNECTORS

- FLOOR PLAN NOTES**
- ALL HEADERS ARE (2) 2x6 w/ 2x4 WALLS OR (3) 2x6 w/ 2x6 WALLS, UNLESS OTHERWISE NOTED.
 - ALL EXTERIOR WALLS TO BE 4" AND ALL INTERIOR WALLS TO BE 3 1/2", UNLESS OTHERWISE NOTED.
 - HATCHED AREAS INDICATE DROPPED CEILINGS. ALL DROPPED CEILINGS ARE 12" UNLESS OTHERWISE NOTED.
 - SEE "BRACED WALL PANEL DETAIL SHEET" FOR SPECIAL WALL FRAMING LOCATIONS AND HEADER SIZES, IF APPLICABLE.
 - SEE STANDARD DETAIL CATEGORY "IT" SHEET(S) FOR INTERIOR TRIM DETAILS.
 - SEE ARCHITECTURAL DETAIL SHEET "AD" FOR HOUSE SPECIFIC INTERIOR TRIM OPTION TABLE.
 - ALL WINDOWS HAVE 7'-0 1/2" HEADER HEIGHT UNLESS OTHERWISE NOTED.

- GYPSUM NOTES**
- AT GARAGE:
GYPSUM BOARD AT COMMON WALLS, CEILINGS, BEAM WRAPS AND SUPPORTS PER STANDARD DETAIL FA-1(b) FIRE ASSEMBLIES OR AS REQUIRED BY LOCAL CODE.
- AT STAIRS:
1/2" GYPSUM BOARD AT UNDERSIDE OF STAIRS AND WALLS IN CLOSET

BASEMENT JACK SCHEDULE

IDENTIFIER	DESCRIPTION	OPTIONS	ENG. NUM.	REMARKS
J01	JACK - 2x4 SPF STUD GRADE		B10	
J02	JACK - 2x4 SPF STUD GRADE		B22	



BASEMENT FLOOR PLAN
SCALE: 1/4" = 1'-0"

MODEL
NORMANDY

DRAWING TITLE
BASEMENT FLOOR PLAN

OPTION DESCRIPTION

SHEET NO.
A-6

34

SET NO. NRM00
VERSION 01
DRAWN BY SGA
DATE: 6/29/15
OPTION

NVR
NVR, Inc.
Architectural Services
Architects
5285 West... Suite 100
Frederick, MD 21703

17/05/18 - 4:55 am

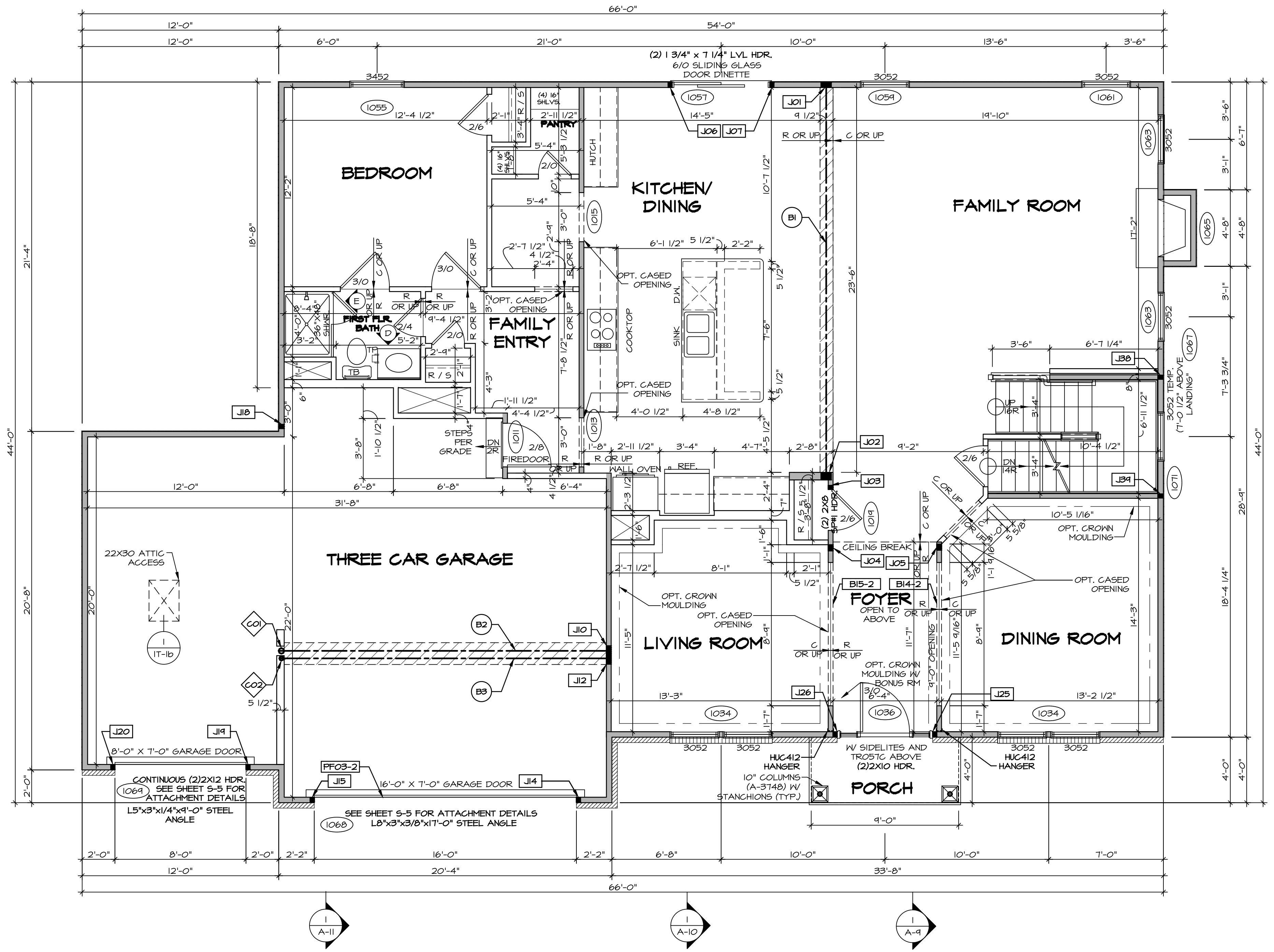
C:\NVR\Solves\NORMANDY_NRM00_01\DCY-VG-K46\10-6020\Sheets\Lot-Specific\34-A-6-BSM_LS.dwg

REVISIONS

REV. NO.	DATE	DESCRIPTION
1	08/07/16	NL - DRAWING ALIGNMENT
2	11/05/16	TH - STANDARD DETAILS 3.0
3	4/20/17	SFK - ADDED BASEMENT FLOOR PLAN JACK SCHEDULE

REMARKS

NVR, Inc., owner, expressly reserves its copyright in these plans. These plans are not to be reproduced, changed, copied in any way, or used for any other purpose without the written consent of NVR, Inc.



FIRST FLOOR PLAN
SCALE: 1/4" = 1'-0"

LVL PLY TO PLY FASTENING SCHEDULE: (WHERE APPLICABLE BASED ON LVL USAGE)

- 1.A - (2) PLY UP TO AND INCLUDING 11 7/8" TALL; FASTEN PLYS W/ (2) ROWS 16D NAILS AT 12" O.C.
- 2.A - (2) PLY 14" TO AND 18" TALL (INCLUSIVE); FASTEN PLYS W/ (3) ROWS 16D NAILS AT 12" O.C.
- 3.A - (2) PLY 20" TALL AND OVER; FASTEN PLYS W/ (4) ROWS 16D NAILS AT 12" O.C.
- 4.A - (3) PLY UP TO AND INCLUDING 11 7/8" TALL; FASTEN PLYS W/ (2) ROWS 16D NAILS AT 12" O.C. FROM EACH SIDE
- 5.A - (3) PLY 14" TO AND 18" TALL (INCLUSIVE); FASTEN PLYS W/ (3) ROWS 16D NAILS AT 12" O.C. FROM EACH SIDE
- 6.A - (3) PLY 20" TALL AND OVER; FASTEN PLYS W/ (4) ROWS 16D NAILS AT 12" O.C. FROM EACH SIDE
- 7.A - (4) PLY (ALL SIZES); FASTEN PLYS W/ (2) ROWS 1/2" DIAMETER A307 BOLTS AT 24" O.C. SEE SHOP DRAWING FOR ADDITIONAL INFORMATION.

FIELD INSTALLED FIRST FLOOR BEAM/HEADER SCHEDULE

IDENTIFIER	DESCRIPTION	LENGTH	OPTIONS	ENG. NUM.	REMARKS
B1	BEAM STEEL - W12X95	24'-2"		1021	
B4-2	LVL - 11-14	11'-5 9/16"	ELB	1011	1A
B5-2	LVL - 11-14	11'-5"	ELB	1011	1A
B2	BEAM STEEL - W12X36	20'-2 1/2"		1023	
B3	BEAM STEEL - W12X22	20'-2 1/2"	EVA	1025	
PF03-2	LVL - 11-04	20'-0"	GCF	1043	PORTAL FRAME, 1A

STEEL COLUMN SCHEDULE

IDENTIFIER	STYLE	HEIGHT	OPTIONS	ENG. NUM.	REMARKS
CO1	STANCHION - 4 IN DIA 11GA ADJ	9'-0 1/8"	GCF, FBA	1023	
CO2	STANCHION - 3 IN DIA 11GA ADJ	9'-0 1/8"	GCF, FBA, EVA	1025	

FIRST FLOOR JACK SCHEDULE

IDENTIFIER	DESCRIPTION	OPTIONS	ENG. NUM.	REMARKS
J01	JACK - (5) 2X4 SPF#11		1021	
J02	JACK - (5) 2X6 SPF#11		1021	
J03	JACK - (2) 2X4 SPF STUD GRADE		1014	
J04	JACK - (3) 2X4 SPF STUD GRADE		1017	
J05	JACK - (3) 2X4 SPF STUD GRADE		1017	
J06	JACK - (2) 2X4 SPF STUD GRADE		1057	
J07	JACK - (2) 2X4 SPF STUD GRADE		1057	
J10	JACK - (5) 2X4 SPF#11		1023	
J12	JACK - (4) 2X4 SPF STUD GRADE	EVA	1025	
J14	JACK - (2) 2X4 SPF STUD GRADE	GCB, GCF	1043	
J15	JACK - (2) 2X4 SPF STUD GRADE	GCB, GCF	1043	
J18	JACK - (2) 2X4 SPF STUD GRADE	GCF	1043	
J19	JACK - (2) 2X4 SPF STUD GRADE	GCF	1043	
J20	JACK - (2) 2X4 SPF STUD GRADE	GCF	1043	
J25	JACK - (2) 2X4 SPF STUD GRADE	EVA	1036	
J26	JACK - (2) 2X4 SPF STUD GRADE	EVA	1036	
J38	JACK - (2) 2X4 SPF STUD GRADE		1007	
J34	JACK - (2) 2X4 SPF STUD GRADE		1007	

LEGEND

- BEARING WALL
- NON BEARING WALL
- INDICATES BEARING FROM POINT-LOAD ABOVE
- JACKS
- BEAM/HEADER
- PAD FOOTING
- STEEL COLUMN
- PORTAL FRAME
- JOIST/TRUSS
- LVL
- ENGINEERING PAGE NUMBER

SEE FC DETAILS FOR FRAMING CONNECTORS

FLOOR PLAN NOTES RYAN

- ALL HEADERS ARE (2) 2x6 W/ 2x4 WALLS OR (3) 2x6 W/ 2x6 WALLS, UNLESS OTHERWISE NOTED.
- ALL HEADERS TO HAVE (1) 2x4 OR 2x6 JACK AND KING STUD EACH END, UNLESS OTHERWISE NOTED.
- ALL EXTERIOR WALLS TO BE 4" W/ OSB OR 3 1/2" W/ T-PLY; ALL INTERIOR WALLS TO BE 3 1/2", UNLESS OTHERWISE NOTED.
- HATCHED AREAS INDICATE DROPPED CEILING. ALL DROPPED CEILING ARE 12" UNLESS OTHERWISE NOTED.
- SEE "BRACED WALL PANEL DETAIL SHEET" FOR SPECIAL WALL FRAMING LOCATIONS AND HEADER SIZES, IF APPLICABLE.
- SEE STANDARD DETAIL CATEGORY "IT" SHEET(S) FOR INTERIOR TRIM DETAILS.
- SEE ARCHITECTURAL DETAIL SHEET "AD" FOR HOUSE SPECIFIC INTERIOR TRIM OPTION TABLE.
- ALL WINDOWS HAVE 7'-0 1/2" HEADER HEIGHT UNLESS OTHERWISE NOTED.
- ALL HEADERS IN NON-BEARING WALLS SHALL BE A SINGLE FLAT 2X4 OR 2X6 ATTACHED TO CRIPPLES ABOVE, UNLESS OTHERWISE NOTED.

GYPSUM NOTES RYAN

AT GARAGE:
GYPSUM BOARD AT COMMON WALLS, CEILING, BEAM WRAPS AND SUPPORTS PER STANDARD DETAIL FA-10b FIRE ASSEMBLIES OR AS REQUIRED BY LOCAL CODE.

AT STAIRS:
1/2" GYPSUM BOARD AT UNDERSIDE OF STAIRS AND WALLS IN CLOSET

REMARKS

REV. NO.	DATE	DESCRIPTION
1	08/07/16	N.L. - DRAWING ALIGNMENT
2	11/05/16	TM - STANDARD DETAILS 3.0
3	07/17/17	SL5 - T-PLY CONVERSION PROJECT

REV. NO. DATE DESCRIPTION

1 08/07/16 N.L. - DRAWING ALIGNMENT

2 11/05/16 TM - STANDARD DETAILS 3.0

3 07/17/17 SL5 - T-PLY CONVERSION PROJECT

MODEL
NORMANDY

DRAWING TITLE
FIRST FLOOR PLAN

OPTION DESCRIPTION

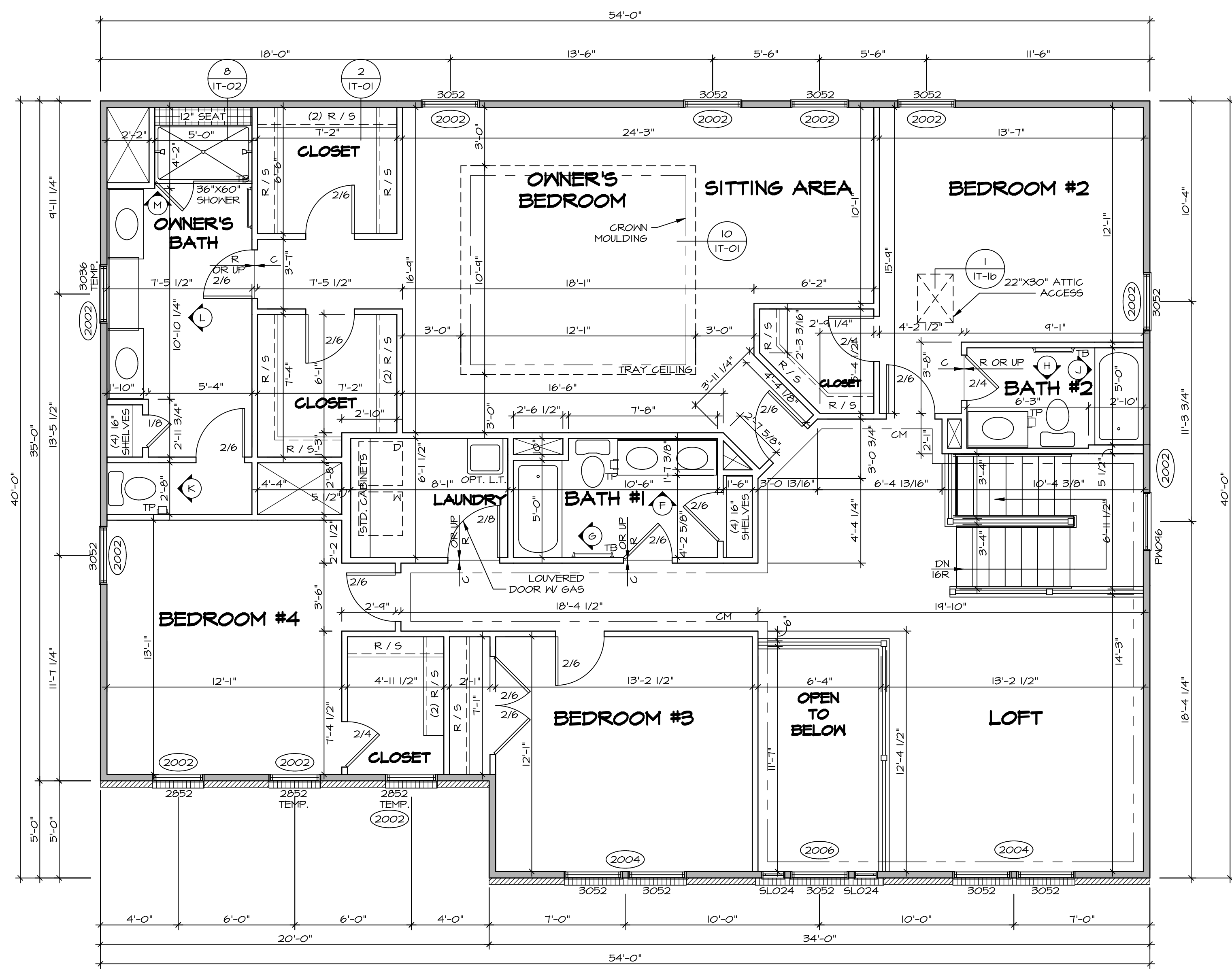
SHEET NO.
A-7

35

NVR, Inc., owner, expressly reserves its copyright in the common plans. These plans are not to be reproduced, changed, photocopied, or otherwise used without the written consent of NVR, Inc.

NVR
Architectural Services
5285 Westgate Drive
Frederick, MD 21703

17/05/18 - 4:55 am



LEGEND

- BEARING WALL
- NON BEARING WALL
- INDICATES BEARING FROM POINT-LOAD ABOVE
- JACKS
- BEAM/HEADER
- PAD FOOTING
- STEEL COLUMN
- PORTAL FRAME
- JOIST/TRUSS
- LVL
- ENGINEERING PAGE NUMBER

SEE FC DETAILS FOR FRAMING CONNECTORS

- FLOOR PLAN NOTES** RYAN
1. ALL HEADERS ARE (2) 2x6 w/ 2x4 WALLS OR (3) 2x6 w/ 2x6 WALLS, UNLESS OTHERWISE NOTED.
 2. ALL HEADERS TO HAVE (1) 2x4 OR 2x6 JACK AND KING STUD EACH END, UNLESS OTHERWISE NOTED.
 3. ALL EXTERIOR WALLS TO BE 4" w/ OSB OR 3 1/2" w/ T-PLY, ALL INTERIOR WALLS TO BE 3 1/2", UNLESS OTHERWISE NOTED.
 4. HATCHED AREAS INDICATE DROPPED CEILINGS. ALL DROPPED CEILINGS ARE 12" UNLESS OTHERWISE NOTED.
 5. SEE "BRACED WALL PANEL DETAIL SHEET" FOR SPECIAL WALL FRAMING LOCATIONS AND HEADER SIZES, IF APPLICABLE.
 6. SEE STANDARD DETAIL CATEGORY "IT" SHEET(S) FOR INTERIOR TRIM DETAILS.
 7. SEE ARCHITECTURAL DETAIL SHEET "AD" FOR HOUSE SPECIFIC INTERIOR TRIM OPTION TABLE.
 8. ALL WINDOWS HAVE 7'-0" 1/2" HEADER HEIGHT UNLESS OTHERWISE NOTED.
 9. ALL HEADERS IN NON-BEARING WALLS SHALL BE A SINGLE FLAT 2x4 OR 2x6 ATTACHED TO GRIPPLES ABOVE, UNLESS OTHERWISE NOTED.

SECOND FLOOR JACK SCHEDULE

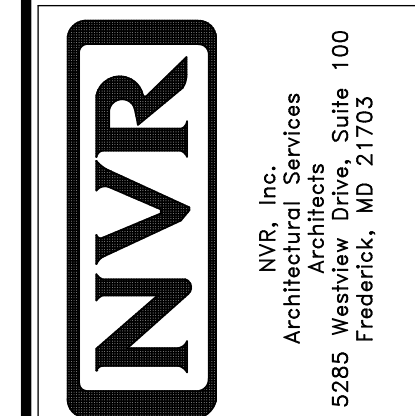
IDENTIFIER	DESCRIPTION	OPTIONS	ENG. NUM.	REMARKS

SECOND FLOOR PLAN
SCALE: 1/4" = 1'-0"

REMARKS

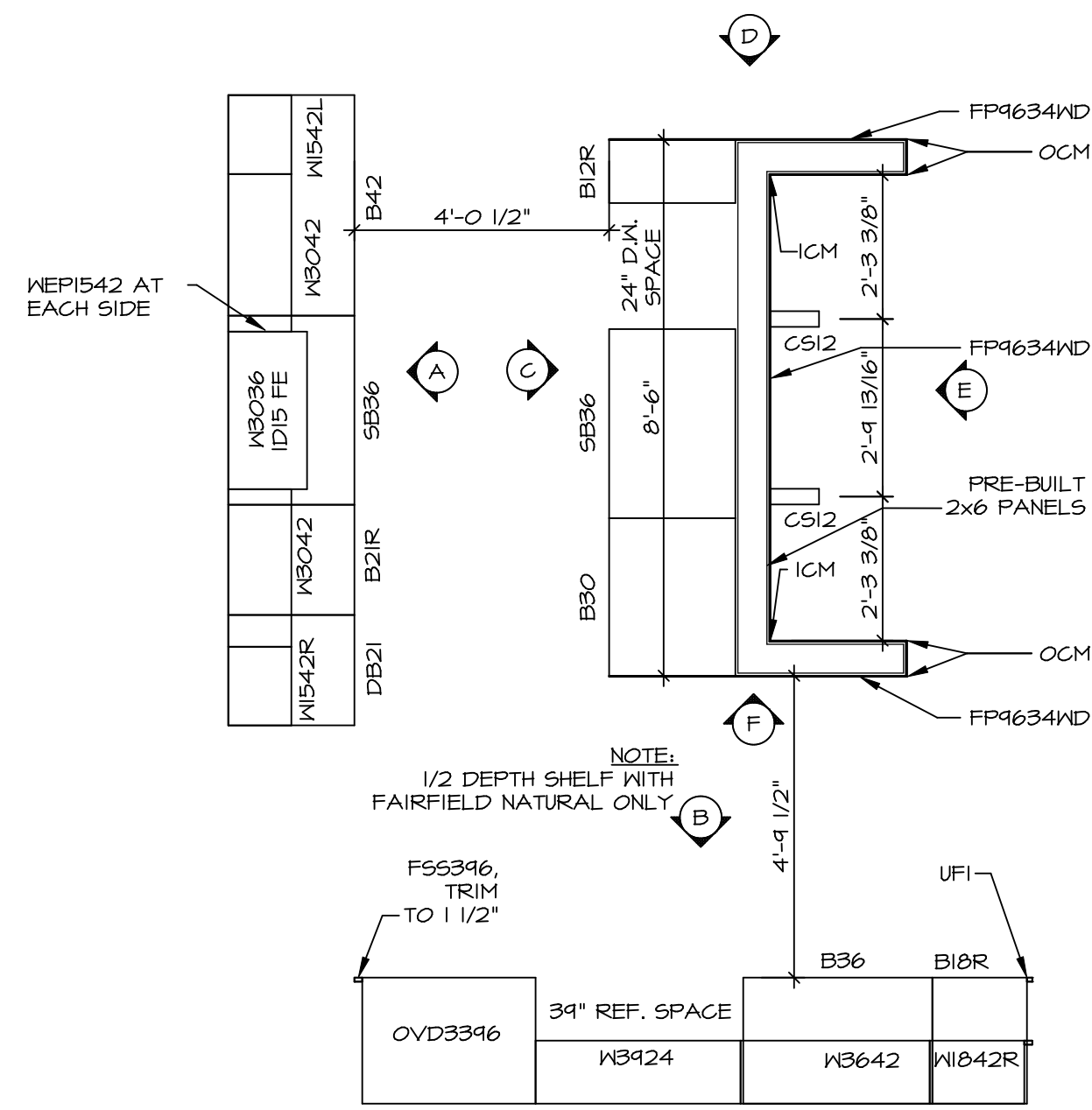
REV. NO.	DATE	DESCRIPTION
1	08/07/16	NL - DRAWING ALIGNMENT
2	10/05/16	TH - STANDARD DETAILS 3.0
3	07/17/17	SLS - T-PLY CONVERSION PROJECT

NVR, Inc., owner, expressly reserves its copyright in these plans. These plans are not to be reproduced, changed, copied, or otherwise used in any way without the written consent of NVR, Inc.

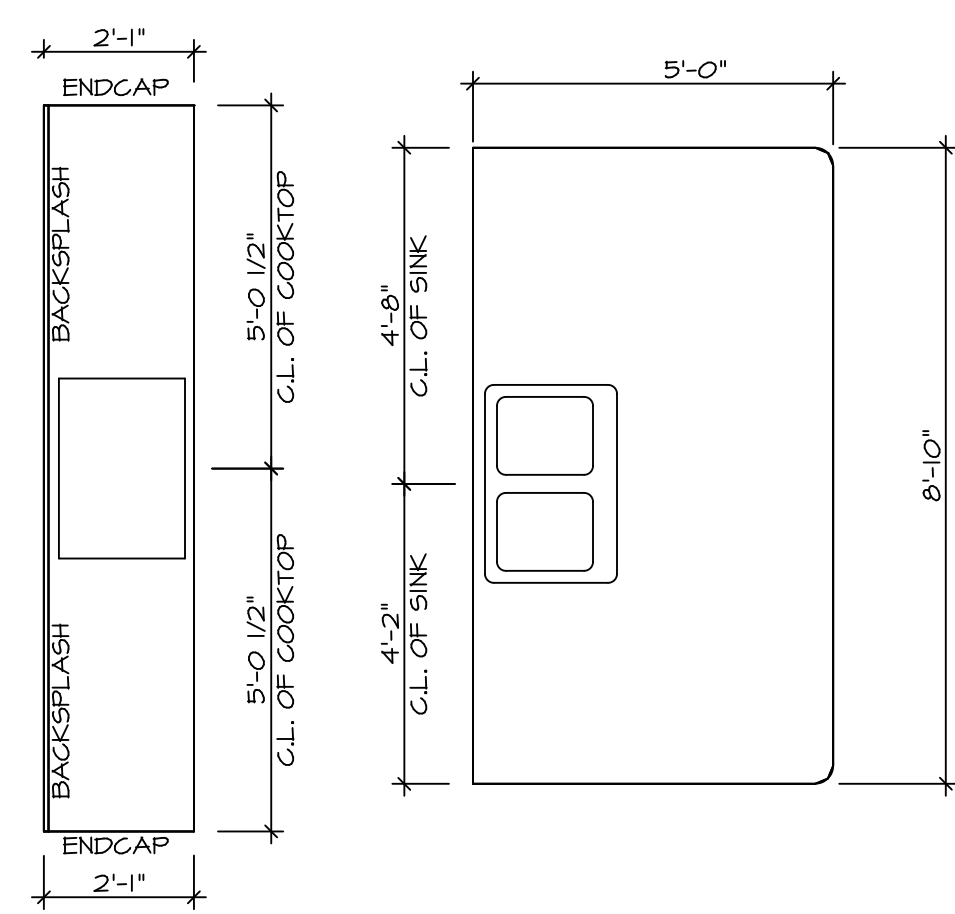


SET NO. NRM00	VERSION 01
DRAWN BY SGA	DATE: 6/29/15
OPTION	

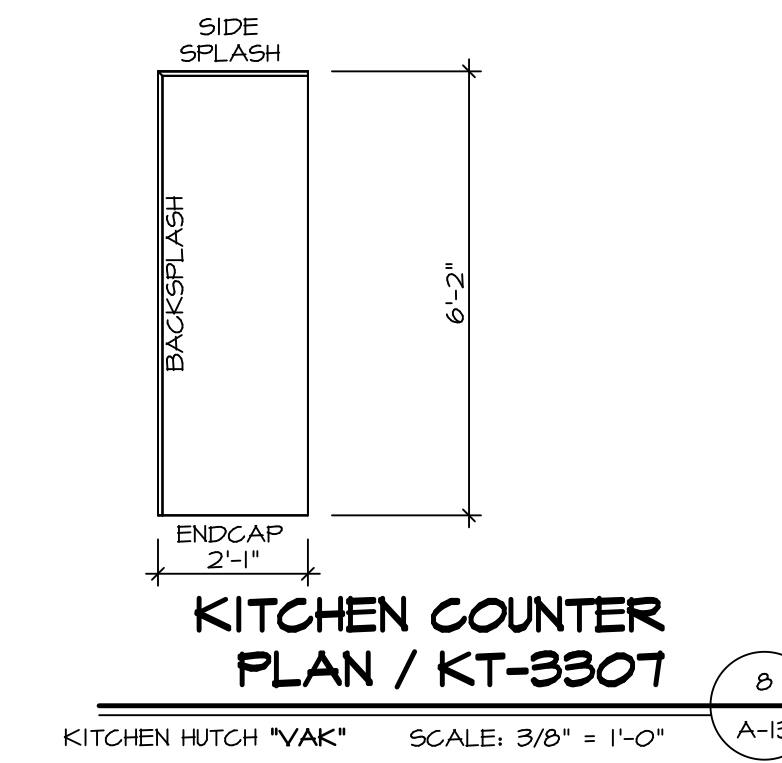
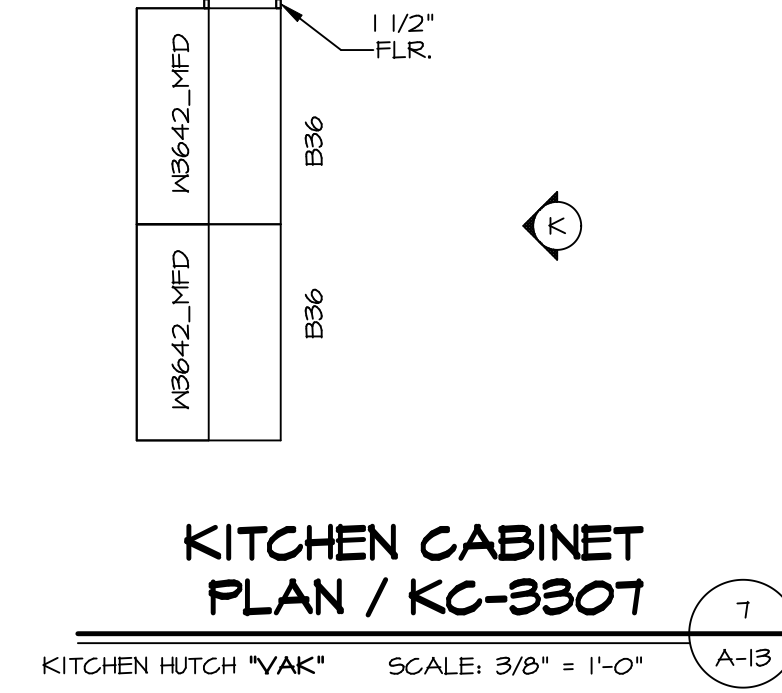
MODEL	NORMANDY
DRAWING TITLE	SECOND FLOOR PLAN
OPTION DESCRIPTION	



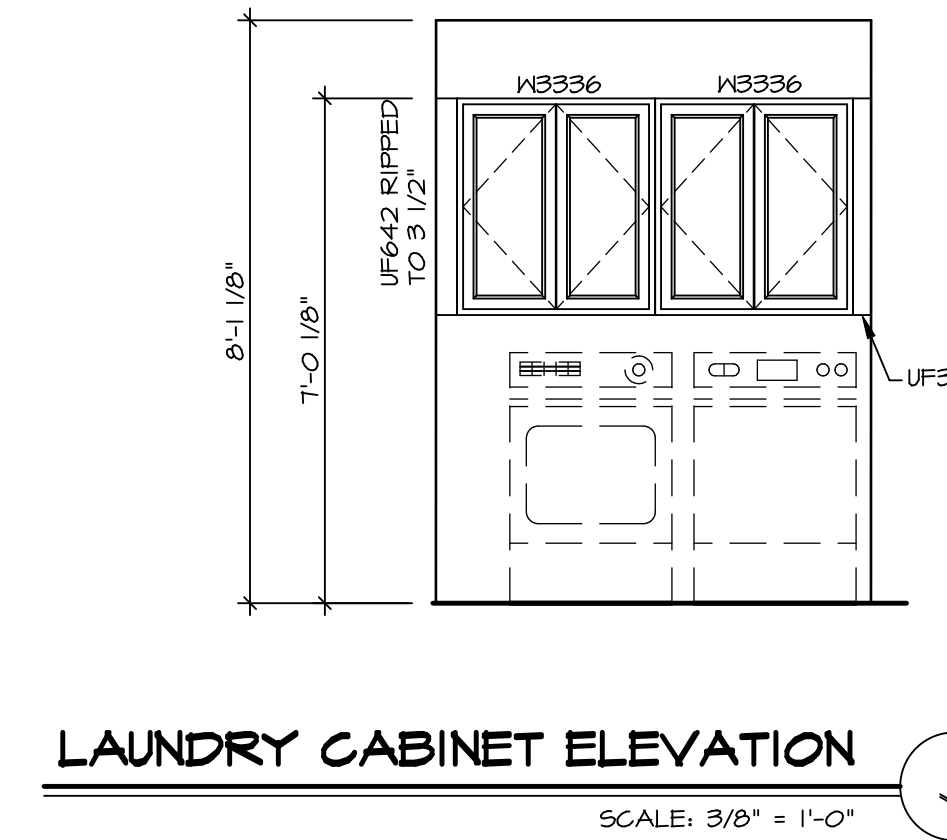
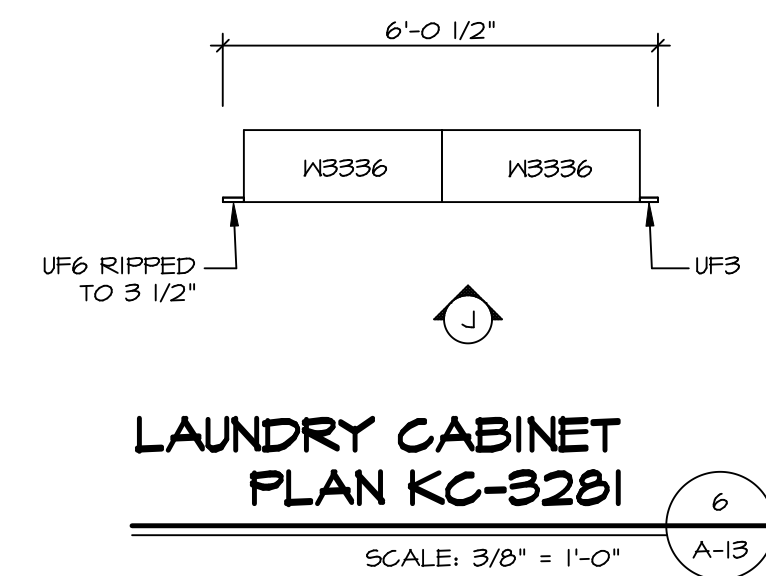
KITCHEN CABINET PLAN / KC-3231
SCALE: 3/8" = 1'-0" A-13



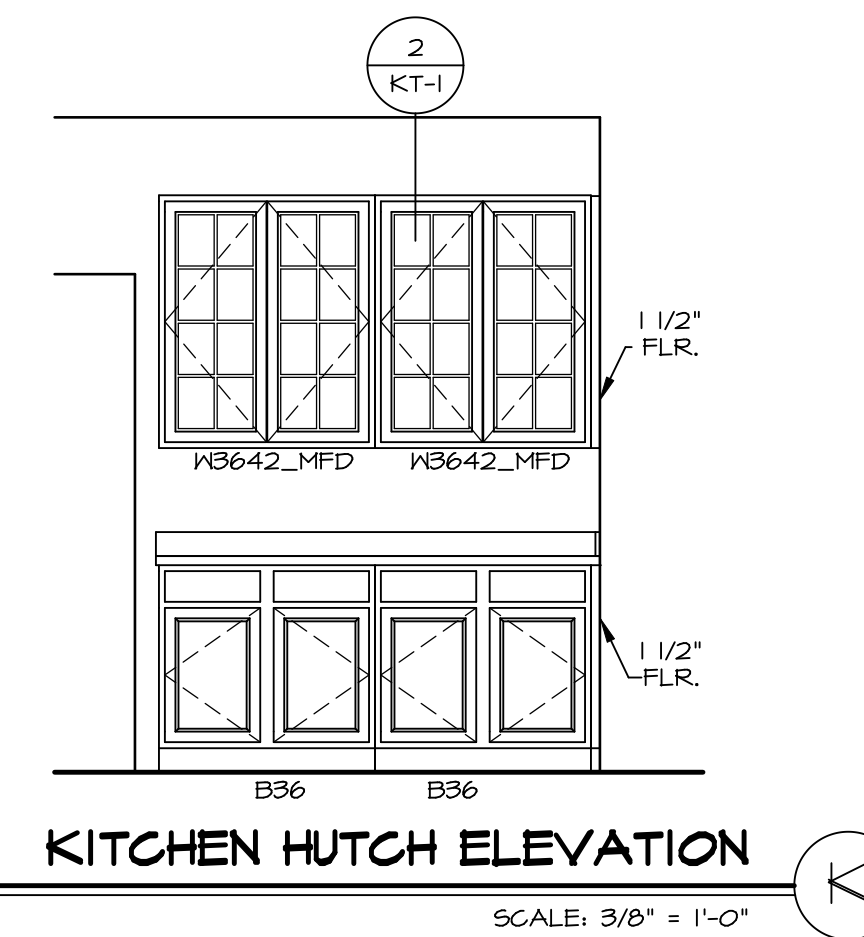
KITCHEN COUNTERTOP PLAN / KT-3231
SCALE: 3/8" = 1'-0" A-13



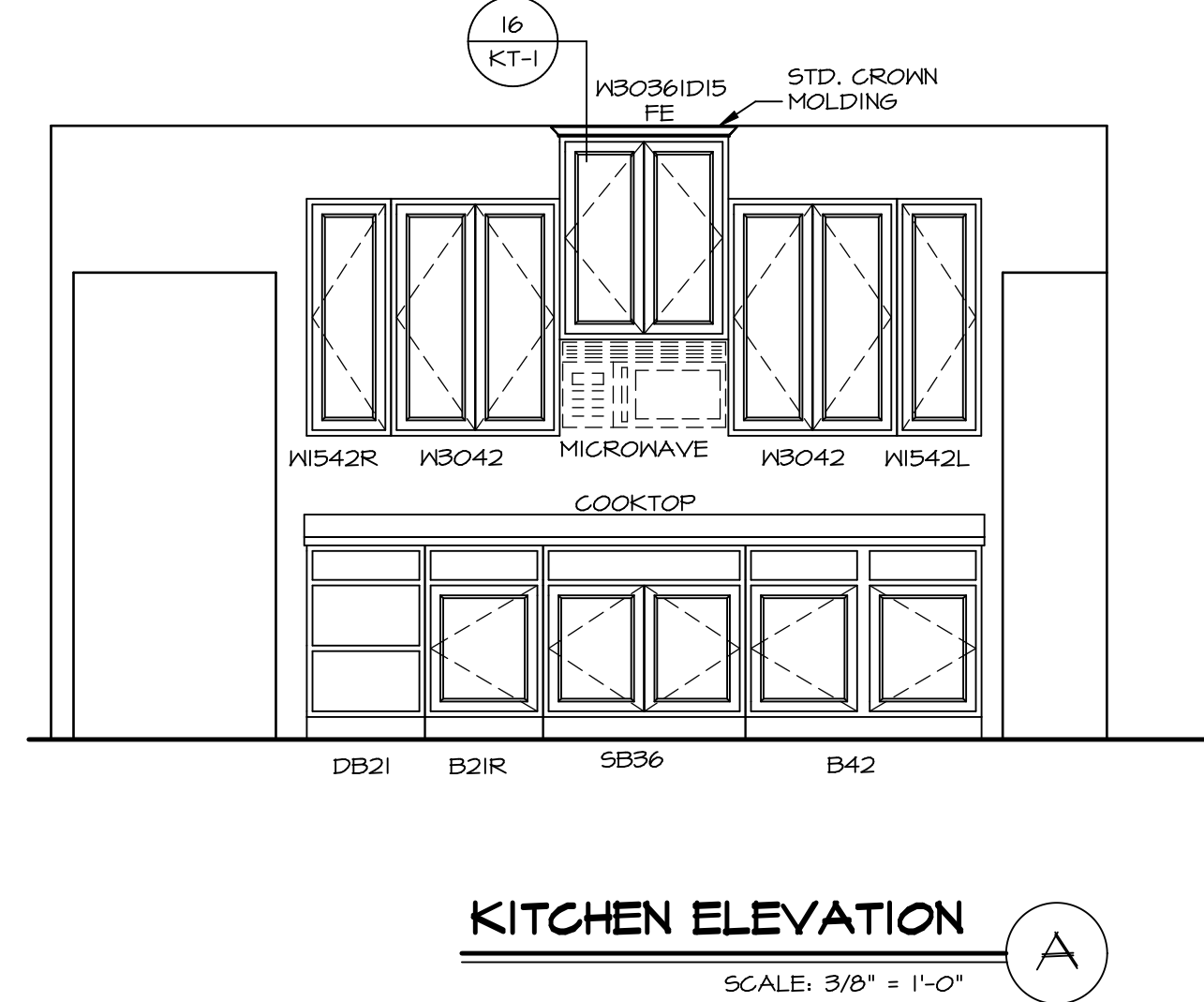
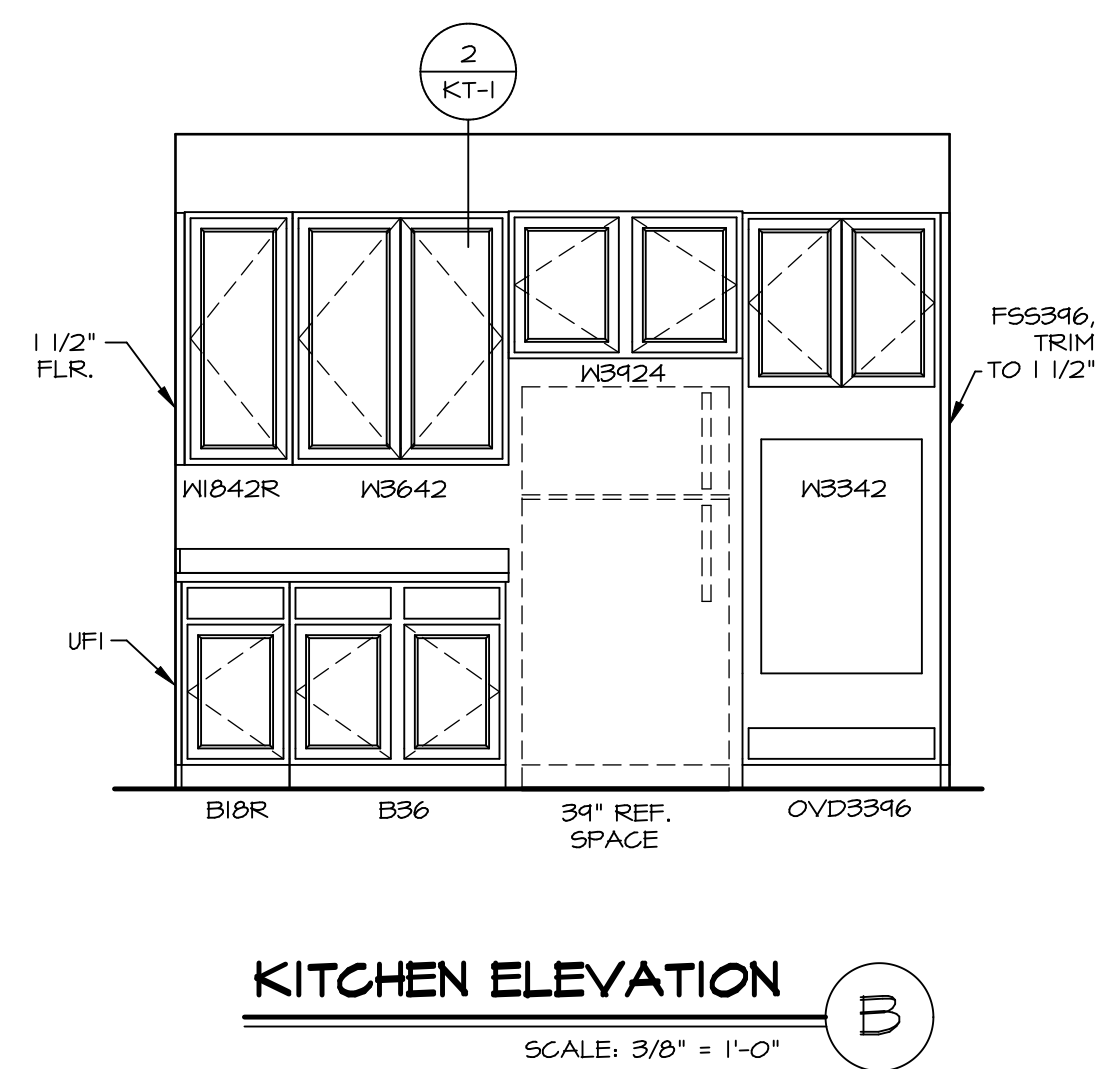
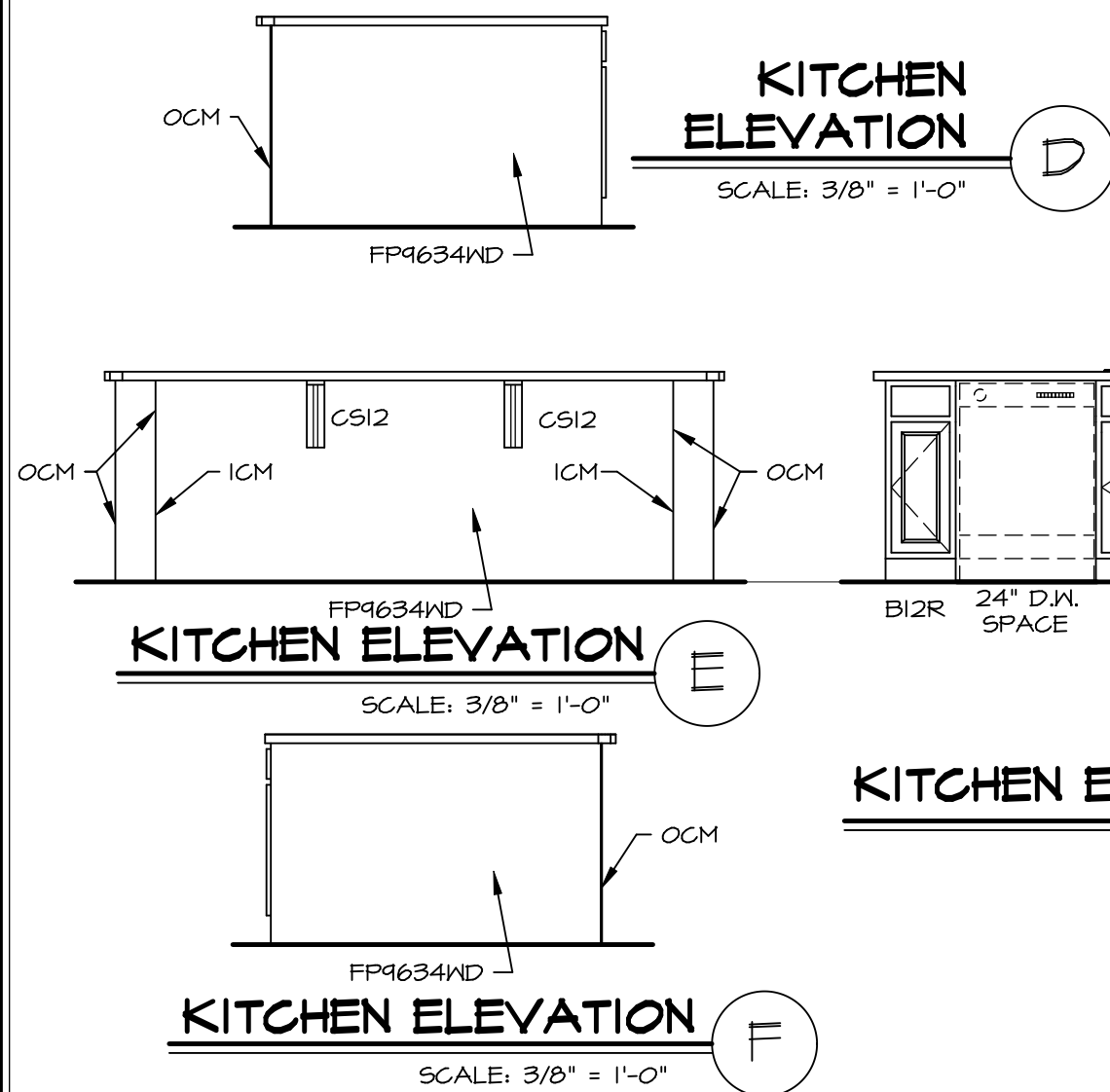
KITCHEN COUNTER PLAN / KT-3307
SCALE: 3/8" = 1'-0" A-13



LAUNDRY CABINET ELEVATION
SCALE: 3/8" = 1'-0" A-13



KITCHEN HUTCH ELEVATION
SCALE: 3/8" = 1'-0" A-13



REV. NO.	DATE	REMARKS
1	11/05/16	TRV - STANDARD DETAILS 5.0

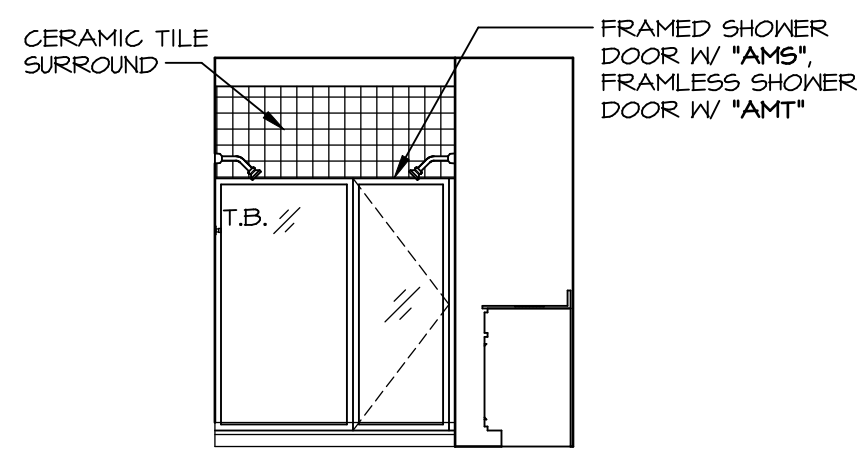
SET NO. NRM00
 VERSION 01
 DRAWN BY RJC
 DATE: 6/29/15
 OPTION

NORMANDY
 DRAWING TITLE
 KITCHEN LAYOUT
 OPTION DESCRIPTION

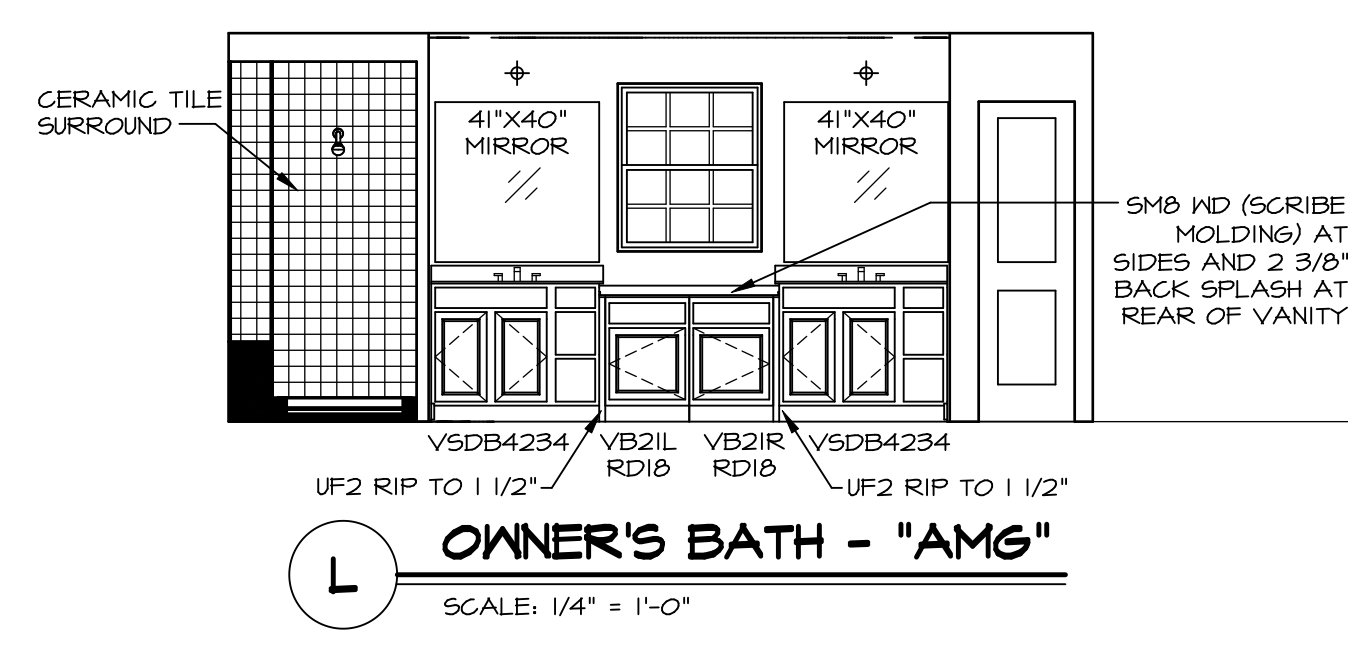
SHEET NO. **A-13**
 46

NVR, Inc., owner, expressly reserves its copyright in these plans. These plans are not to be reproduced, changed, copied in any way, or used for any other purpose without the written consent of NVR, Inc.
 NVR, Inc.
 Architectural Services
 Architects
 5285 Westchase, Suite 100
 Frederick, MD 21703

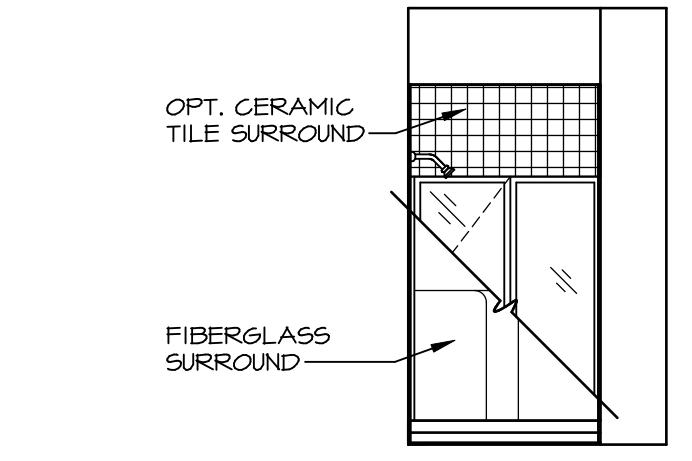
C:\NVR\Solves\NORMANDY_NRM00_01\DCI-VG-K46\04-0920\Sheets\Lot_Specific\46_A-14_KIT_LS.dwg 12/05/18 - 4:56 am



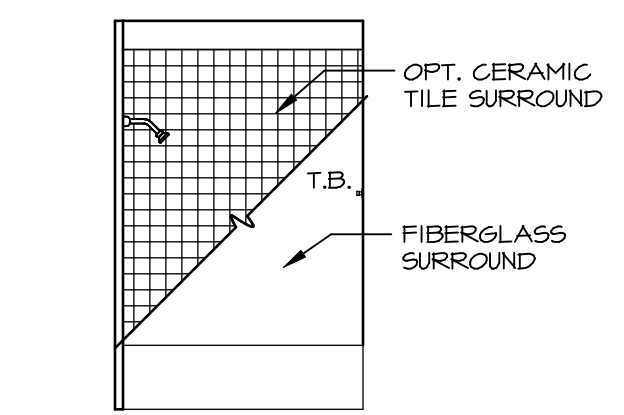
M OWNER'S BATH - "AMG"
SCALE: 1/4" = 1'-0"



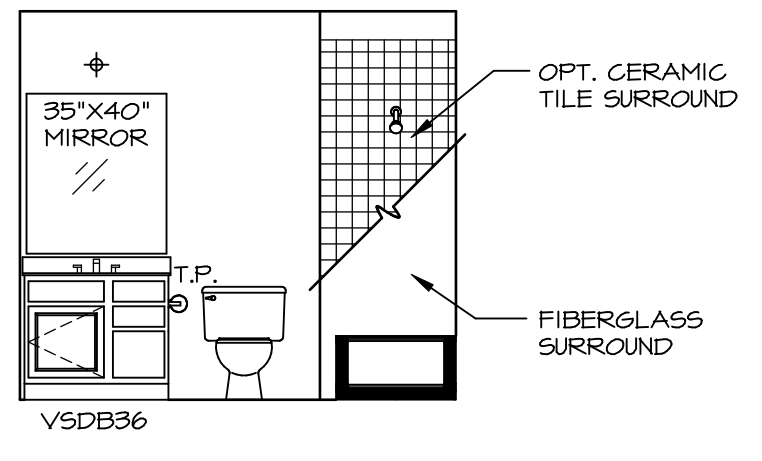
L OWNER'S BATH - "AMG"
SCALE: 1/4" = 1'-0"



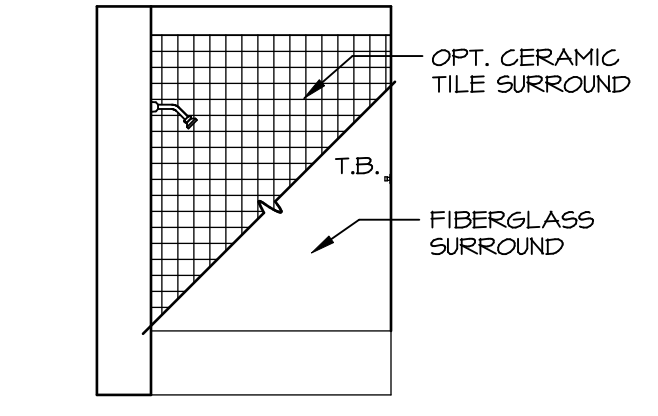
E FIRST FLOOR BATH - "BAR"
SCALE: 1/4" = 1'-0"



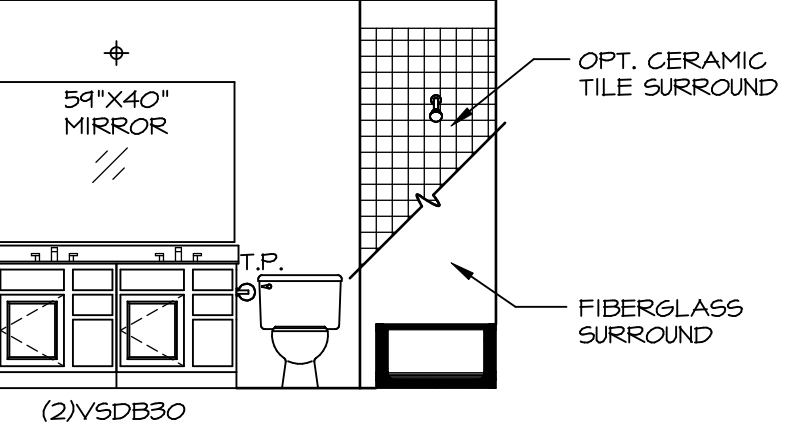
J BATH #2
SCALE: 1/4" = 1'-0"



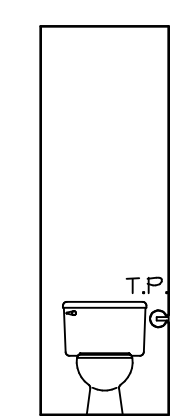
H BATH #2
SCALE: 1/4" = 1'-0"



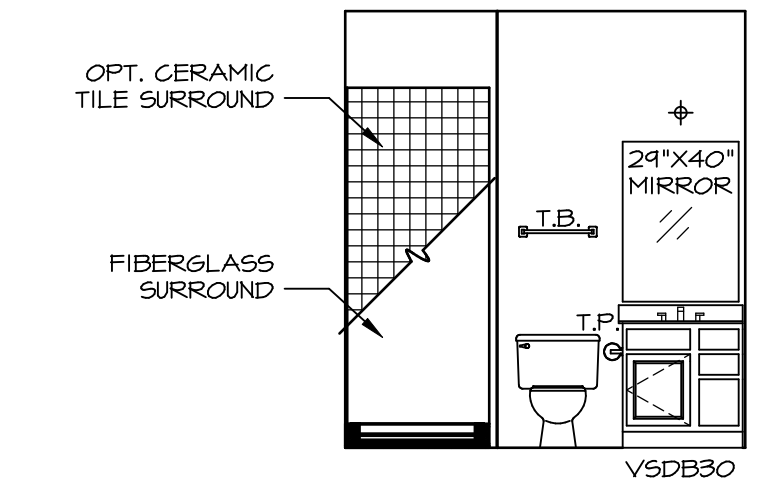
G BATH #1
SCALE: 1/4" = 1'-0"



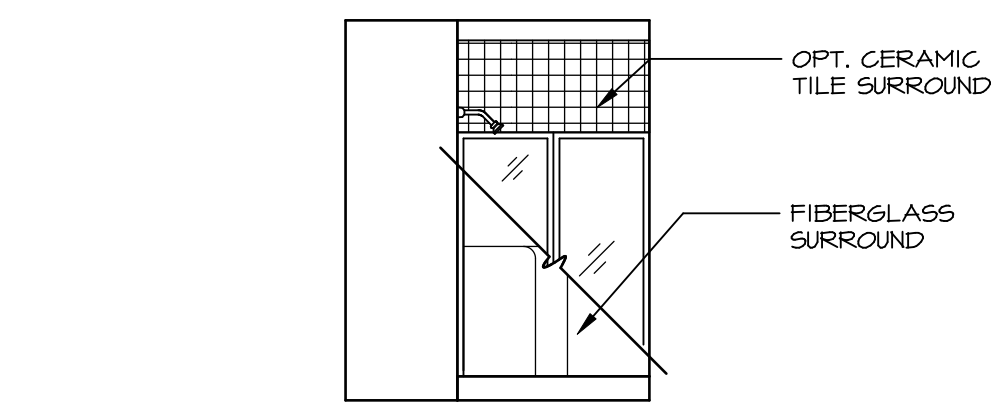
F BATH #1
SCALE: 1/4" = 1'-0"



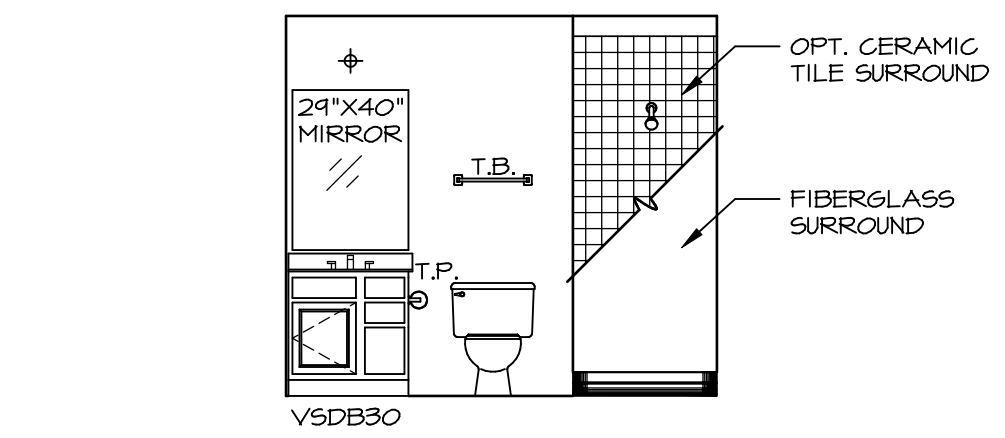
K OWNER'S BATH - "AMA" OR "AMG"
SCALE: 1/4" = 1'-0"



D FIRST FLOOR BATH - "BAR"
SCALE: 1/4" = 1'-0"



B BASEMENT BATH - "AEB"
SCALE: 1/4" = 1'-0"



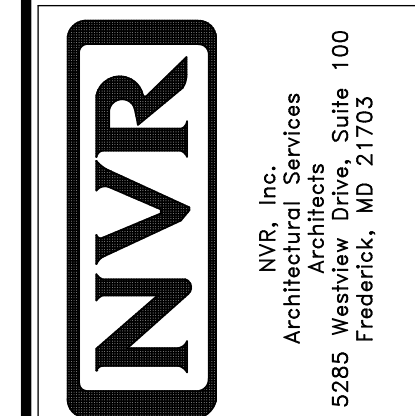
A BASEMENT BATH - "AEB"
SCALE: 1/4" = 1'-0"

NOTES:

1. TEMPERED GLASS SHOWER ENCLOSURE WITH SWING DOOR OR OPTIONAL SLIDING DOOR BY DIVISION
2. TUB ACCESS PANELS PROVIDED AS NEEDED, ALL MATERIALS BY DIVISION
3. REFER TO SHEET (IT-2) FOR TUB AND SHOWER DETAILS.
4. ALL VSDB24-42 DRAWERS TO BE SET ON RIGHT HAND.
5. BATH ELEVATIONS ARE SHOWN PER PLAN.

REV. NO.	DATE	REMARKS
1	08/07/16	N.L. - DRAWING ALIGNMENT
2	11/15/16	TRV. - STANDARD DETAILS 5.0

NVR, Inc., owner, expressly reserves its copyright in these plans. These plans are not to be reproduced, changed, copied, or otherwise used in any way without the prior written consent of NVR, Inc.



SET NO. NRM00	VERSION 01
DRAWN BY SGA	DATE: 5/24/15
OPTION	

MODEL NORMANDY	DRAWING TITLE BATH ELEVATIONS
SHEET NO. A-14	OPTION DESCRIPTION