

BASEMENT FLOOR PLAN
SCALE: 1/4" = 1'-0"

FLOOR PLAN NOTES

1. ALL HEADERS ARE (2) 2x6 w/ 2x4 WALLS OR (3) 2x6 w/ 2x6 WALLS, UNLESS OTHERWISE NOTED.
2. ALL HEADERS TO HAVE (1) 2x4 OR 2x6 JACK EACH END, UNLESS OTHERWISE NOTED.
3. ALL EXTERIOR WALLS TO BE 4" AND ALL INTERIOR WALLS TO BE 3 1/2", UNLESS OTHERWISE NOTED.
4. HATCHED AREAS INDICATE DROPPED CEILINGS. ALL DROPPED CEILINGS ARE 12" UNLESS OTHERWISE NOTED.
5. SEE "BRACED WALL PANEL DETAIL SHEET" FOR SPECIAL WALL FRAMING LOCATIONS AND HEADER SIZES, IF APPLICABLE.
6. SEE STANDARD DETAIL CATEGORY "IT" SHEET(S) FOR INTERIOR TRIM DETAILS.
7. SEE ARCHITECTURAL DETAIL SHEET "AD" FOR HOUSE SPECIFIC INTERIOR TRIM OPTION TABLE.
8. ALL WINDOWS HAVE T-O 1/2" HEADER HEIGHT UNLESS OTHERWISE NOTED.

GYPSON NOTES

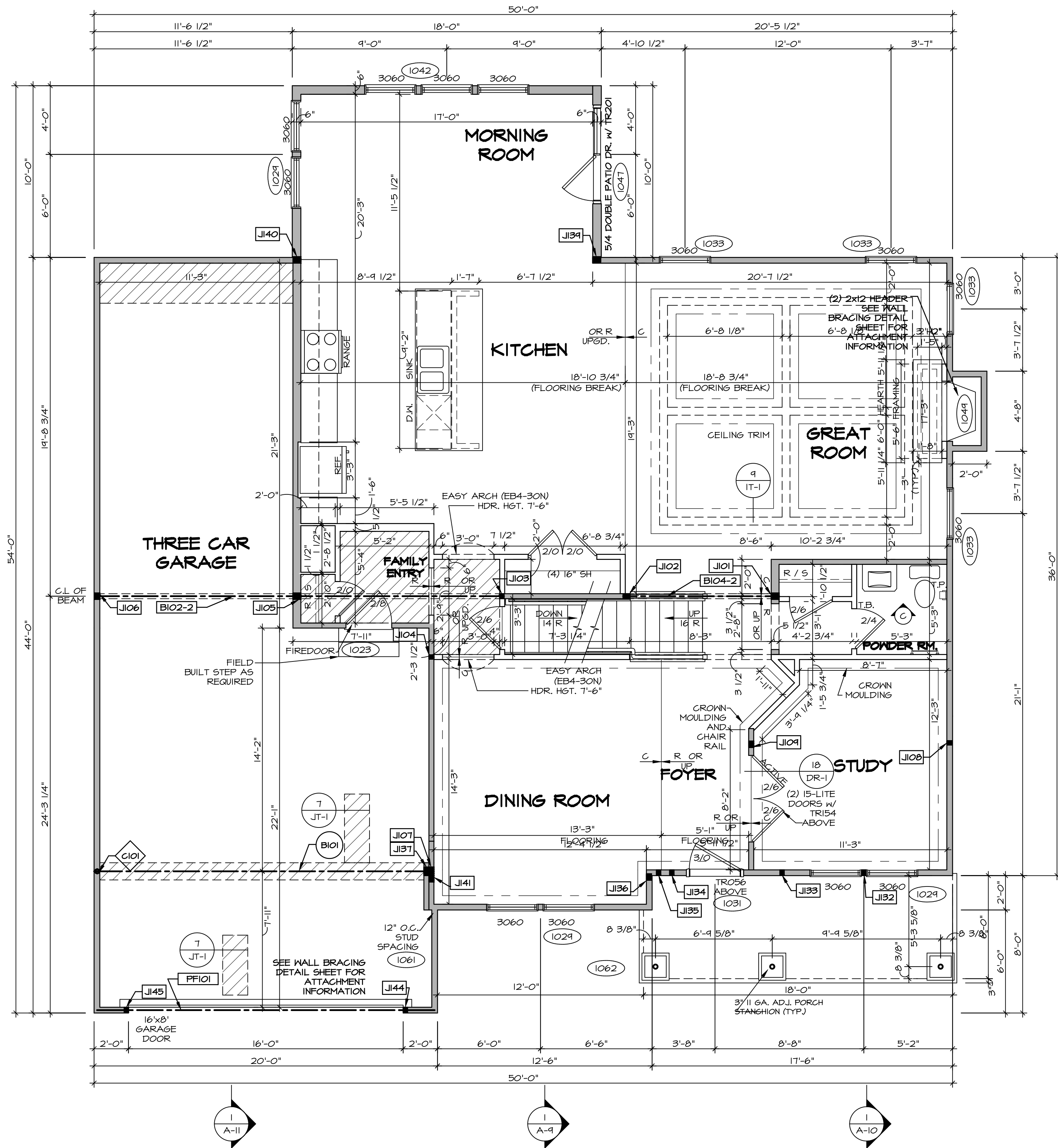
AT GARAGE:
GYPSUM BOARD AT COMMON WALLS, CEILING, BEAM WRAPS AND SUPPORTS PER STANDARD DETAIL FA-1(b) FIRE ASSEMBLIES OR AS REQUIRED BY LOCAL CODE.

AT STAIRS:
1/2" GYPSUM BOARD AT UNDERSIDE OF STAIRS AND WALLS IN CLOSET

LEGEND

- BEARING WALL
 - - - NON BEARING WALL
 - ⊗ INDICATES BEARING FROM POINT-LOAD ABOVE JACKS
 - ⊥ JACKS
 - ⊖ BEAM/HEADER
 - ⊔ PAD FOOTING
 - ⊕ STEEL COLUMN
 - ⊗ PORTAL FRAME
 - ⊗ JOIST/TRUSS
 - ⊔ LVL
 - ⊗ ENGINEERING PAGE NUMBER
- SEE FC DETAILS FOR FRAMING CONNECTORS

<p>SHEET NO. A-6</p>	<p>MODEL BATEMAN</p>	<p>SET NO. BAT00 VERSION 03 DRAWN BY DATE: OPTION</p>	<p>DRAWING TITLE BASEMENT FLOOR PLAN</p>	<p>OPTION DESCRIPTION</p>	<p>SHEET NO. 46</p>
<p>NVR NVR, Inc. Architectural Services 5285 Westwood Drive, Suite 100 Frederick, MD 21703</p>					
<p>NVR, Inc., owner, expressly reserves its copyright in these plans. These plans are not to be reproduced, changed, copied, or otherwise used in any way without the written consent of NVR, Inc.</p>					
<p>C:\NVR\Solves\BATEMAN_BAT00_03\DCY-YG-K46A-B53370\Sheets\1.dwg 07/06/19 - 2:36 am</p>					



FIRST FLOOR PLAN
SCALE: 1/4" = 1'-0"

LEGEND

- BEARING WALL
- NON BEARING WALL
- INDICATES BEARING FROM POINT-LOAD ABOVE
- JOIST
- BEAM/HEADER
- PAD FOOTING
- STEEL COLUMN
- PORTAL FRAME
- JOIST/TRUSS
- LVL
- ENGINEERING PAGE NUMBER

SEE FC DETAILS FOR FRAMING CONNECTORS

FLOOR PLAN NOTES

1. ALL HEADERS ARE (2) 2x6 W/ 2x4 WALLS OR (3) 2x6 W/ 2x6 WALLS, UNLESS OTHERWISE NOTED.
2. ALL HEADERS TO HAVE (1) 2x4 OR 2x6 JACK EACH END, UNLESS OTHERWISE NOTED.
3. ALL EXTERIOR WALLS TO BE 4" AND ALL INTERIOR WALLS TO BE 3 1/2", UNLESS OTHERWISE NOTED.
4. HATCHED AREAS INDICATE DROPPED CEILINGS. ALL DROPPED CEILINGS ARE 12' UNLESS OTHERWISE NOTED.
5. SEE "BRACED WALL PANEL DETAIL SHEET" FOR SPECIAL WALL FRAMING LOCATIONS AND HEADER SIZES, IF APPLICABLE.
6. SEE STANDARD DETAIL CATEGORY "11" SHEET(S) FOR INTERIOR TRIM DETAILS.
7. SEE ARCHITECTURAL DETAIL SHEET "AD" FOR HOUSE SPECIFIC INTERIOR TRIM OPTION TABLE.
8. ALL WINDOWS HAVE 7'-0 1/2" HEADER HEIGHT UNLESS OTHERWISE NOTED.

GYPHUM NOTES

AT GARAGE:
GYPSUM BOARD AT COMMON WALLS, CEILING, BEAM WRAPS AND SUPPORTS PER STANDARD DETAIL FA-1(b) FIRE ASSEMBLY OR AS REQUIRED BY LOCAL CODE.

AT STAIRS:
1/2" GYPSUM BOARD AT UNDERSIDE OF STAIRS AND WALLS IN CLOSET

LVL PLY TO PLY FASTENING SCHEDULE: (WHERE APPLICABLE BASED ON LVL USAGE)

- 1.A - (2) FLY UP TO AND INCLUDING 11 7/8" TALL; FASTEN PLYS W/ (2) ROWS 16D NAILS AT 12" O.C.
- 2.A - (2) FLY 14" TO AND INCLUDING 18" TALL (INCLUSIVE); FASTEN PLYS W/ (3) ROWS 16D NAILS AT 12" O.C.
- 3.A - (2) FLY 20" TALL AND OVER; FASTEN PLYS W/ (4) ROWS 16D NAILS AT 12" O.C.
- 4.A - (3) FLY UP TO AND INCLUDING 11 7/8" TALL; FASTEN PLYS W/ (2) ROWS 16D NAILS AT 12" O.C. FROM EACH SIDE
- 5.A - (3) FLY 14" TO AND INCLUDING 18" TALL (INCLUSIVE); FASTEN PLYS W/ (3) ROWS 16D NAILS AT 12" O.C. FROM EACH SIDE
- 6.A - (3) FLY 20" TALL AND OVER; FASTEN PLYS W/ (4) ROWS 16D NAILS AT 12" O.C. FROM EACH SIDE
- 7.A - (4) FLY (ALL SIZES); FASTEN PLYS W/ (2) ROWS 1/2" DIAMETER A307 BOLTS AT 24" O.C. SEE SHOP DRAWING FOR ADDITIONAL INFORMATION.

FIRST FLOOR JACK SCHEDULE

IDENTIFIER	DESCRIPTION	OPTIONS	ENG. NUM.
J101	JACK - (3) 2X6 SFF STUD GRADE		1012
J102	JACK - (3) 2X4 SFF STUD GRADE		1012
J103	JACK - (2) 2X4 SFF STUD GRADE		1020
J104	JACK - (2) 2X4 SFF STUD GRADE		1008
J105	JACK - (3) 2X6 SFF STUD GRADE		1020
J106	JACK - (3) 2X4 SFF STUD GRADE		1020
J107	JACK - (4) 2X4 SFF		1025
J108	JACK - (2) 2X4 SFF	ZGM, MAV	1014
J109	JACK - (3) 2X4 SFF STUD GRADE	MAV	1014
J132	JACK - (2) 2X4 SFF	ELL	1029
J133	JACK - (2) 2X4 SFF STUD GRADE	ELL	
J134	JACK - (2) 2X4 SFF STUD GRADE	ELL	
J135	JACK - (2) 2X4 SFF STUD GRADE	ELL	
J136	JACK - (3) 2X4 SFF	ELL	2000
J137	JACK - (4) 2X4 SFF		1025
J139	JACK - (3) 2X6 SFF STUD GRADE	MAA	1027
J140	JACK - (3) 2X6 SFF STUD GRADE	MAA	1027
J141	JACK - (3) 2X4 SFF	ELL	2000
J144	JACK - (2) 2X4 SFF STUD GRADE	GCH	1051
J145	JACK - (2) 2X4 SFF STUD GRADE	GCH	1051

STEEL COLUMN SCHEDULE

IDENTIFIER	STYLE	HEIGHT	OPTIONS	ENG. NUM.	REMARKS
C101	STANCHION - 3 IN SCHED 40	9'-2 1/8"	GCH, FBA	1025	

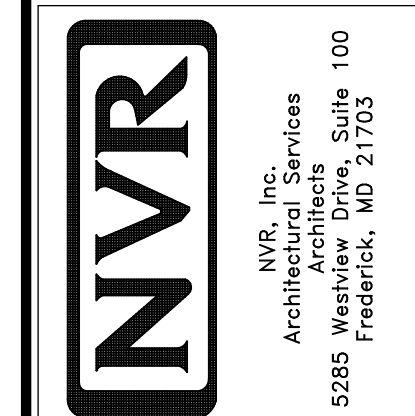
FIELD INSTALLED FIRST FLOOR BEAM/HEADER SCHEDULE

IDENTIFIER	DESCRIPTION	LENGTH	OPTIONS	ENG. NUM.	REMARKS
B101	BEAM STEEL - M10X30	19'-4"		1025	
B102-2	LVL - 11-14	23'-10"		1020	1.A, 2-PLY, FIELD INSTALLED
B104-2	LVL - 11-04	9'-1"		1012	
FF101	EXT HEADER - 2X12 - 2 PLY	19'-8"	GCH	1051	2-PLY, PORTAL FRAME

REMARKS

REV. NO.	DATE	DESCRIPTION

NVR, Inc., owner, expressly reserves its copyright in these plans. These plans are not to be reproduced, changed, copied, or otherwise used in any way without the written consent of NVR, Inc.



MODEL: BATEMAN
DRAWING TITLE: FIRST FLOOR PLAN
OPTION DESCRIPTION:

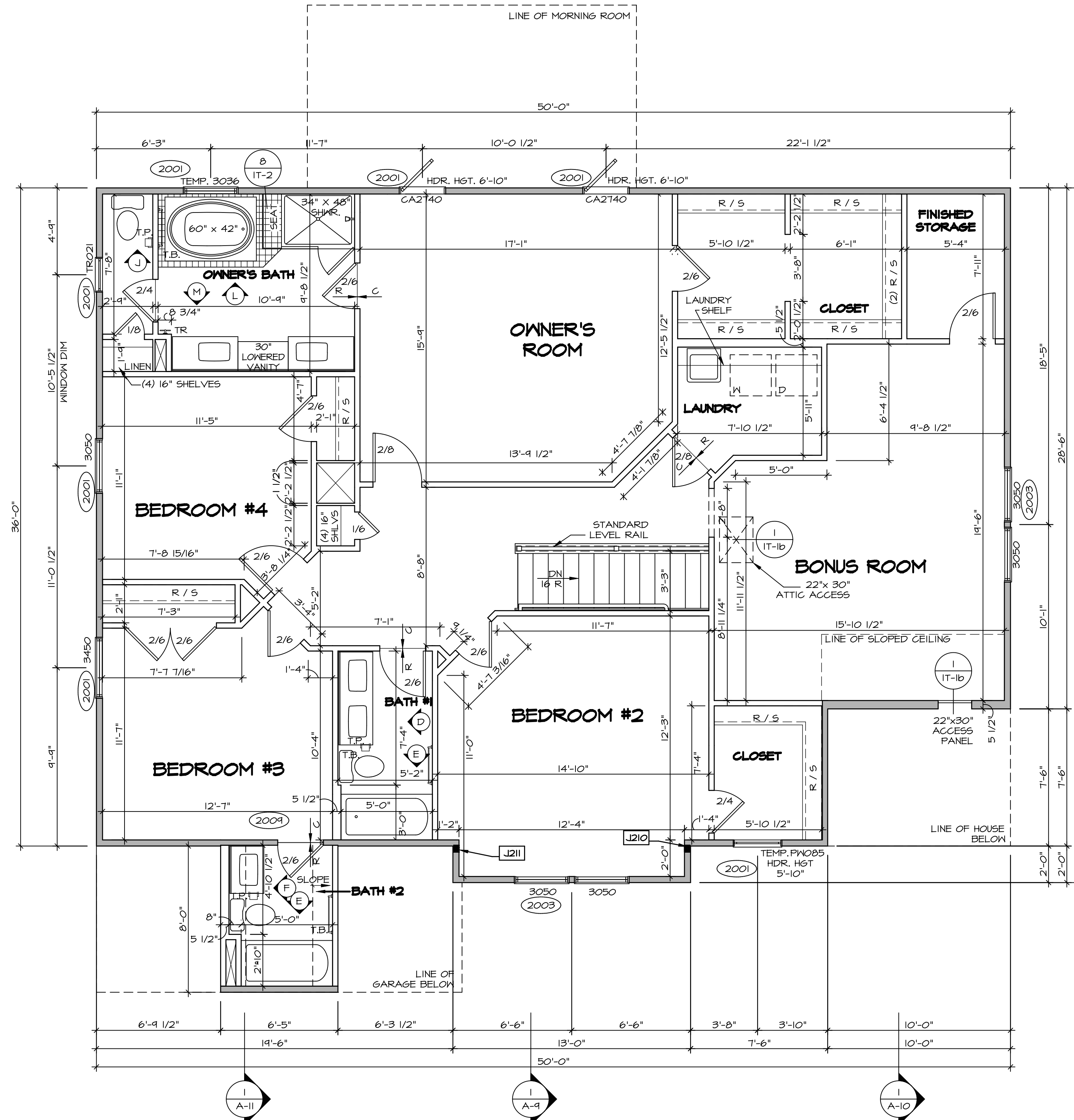
SET NO. BATOOC
VERSION 03
DRAWN BY:
DATE:
OPTION:

SHEET NO. A-7
49

SECOND FLOOR JACK SCHEDULE			
IDENTIFIER	DESCRIPTION	OPTIONS	ENG. N.M.
J210	JACK - (3) 2x4 SPM	ELL	2000
J211	JACK - (3) 2x4 SPM	ELL	2000

FLOOR PLAN NOTES

- ALL HEADERS ARE (2) 2x6 w/ 2x4 WALLS OR (3) 2x6 w/ 2x6 WALLS, UNLESS OTHERWISE NOTED.
- ALL HEADERS TO HAVE (1) 2x4 OR 2x6 JACK EACH END, UNLESS OTHERWISE NOTED.
- ALL EXTERIOR WALLS TO BE 4" AND ALL INTERIOR WALLS TO BE 3 1/2", UNLESS OTHERWISE NOTED.
- HATCHED AREAS INDICATE DROPPED CEILINGS. ALL DROPPED CEILINGS ARE 12" UNLESS OTHERWISE NOTED.
- SEE "BRACED WALL PANEL DETAIL SHEET" FOR SPECIAL WALL FRAMING LOCATIONS AND HEADER SIZES, IF APPLICABLE.
- SEE STANDARD DETAIL CATEGORY "1T" SHEET(S) FOR INTERIOR TRIM DETAILS.
- SEE ARCHITECTURAL DETAIL SHEET "AD" FOR HOUSE SPECIFIC INTERIOR TRIM OPTION TABLE.
- ALL WINDOWS HAVE 7'-0 1/2" HEADER HEIGHT UNLESS OTHERWISE NOTED.



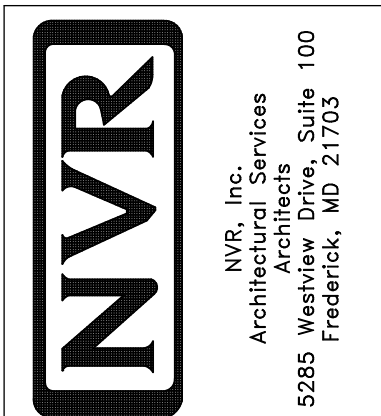
LEGEND

- BEARING WALL
 - NON BEARING WALL
 - INDICATES BEARING FROM POINT-LOAD ABOVE
 - JACKS
 - BEAM/HEADER
 - PAD FOOTING
 - STEEL COLUMN
 - PORTAL FRAME
 - JOIST/TRUSS
 - LVL
 - ENGINEERING PAGE NUMBER
- SEE FC DETAILS FOR FRAMING CONNECTORS

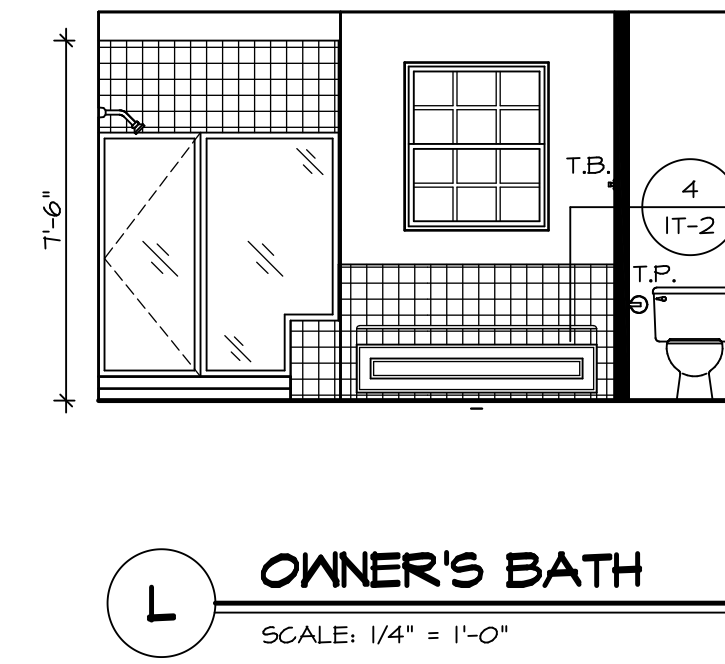
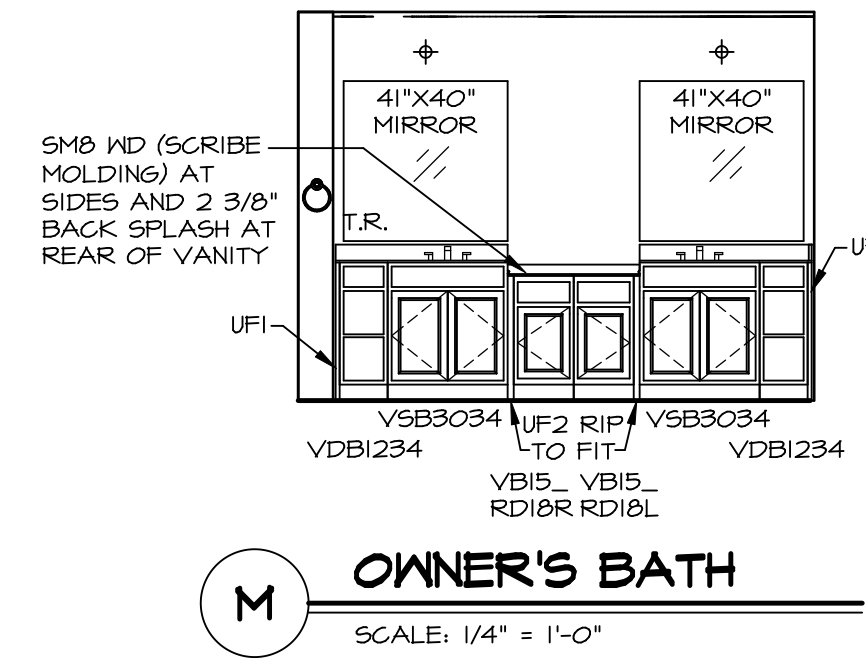
SECOND FLOOR PLAN
SCALE: 1/4" = 1'-0"

REV. NO.	DATE	REMARKS
1	7/6/17	TH - REVISED ROOF ACCESS PANELS

NVR, Inc., owner, expressly reserves its copyright in these plans. These plans are not to be reproduced, changed, copied, or otherwise used in any way without the written consent of NVR, Inc.

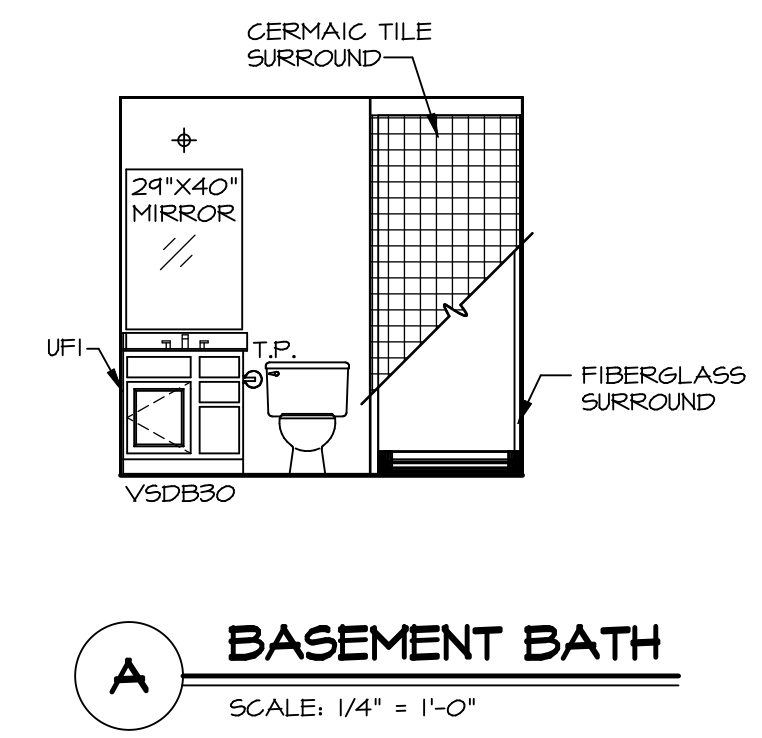
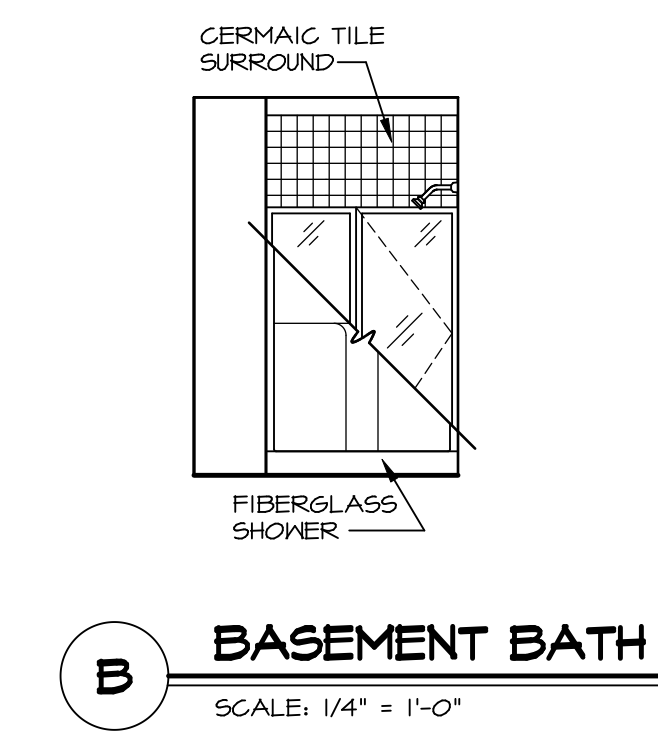
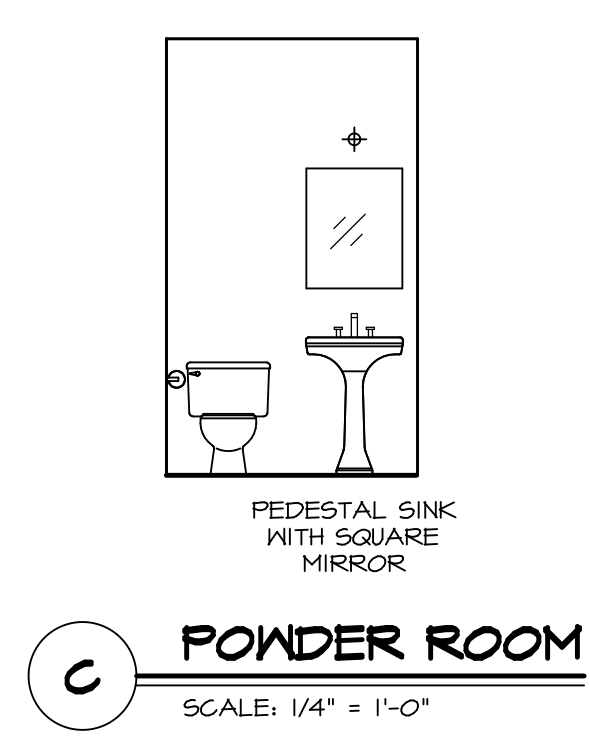
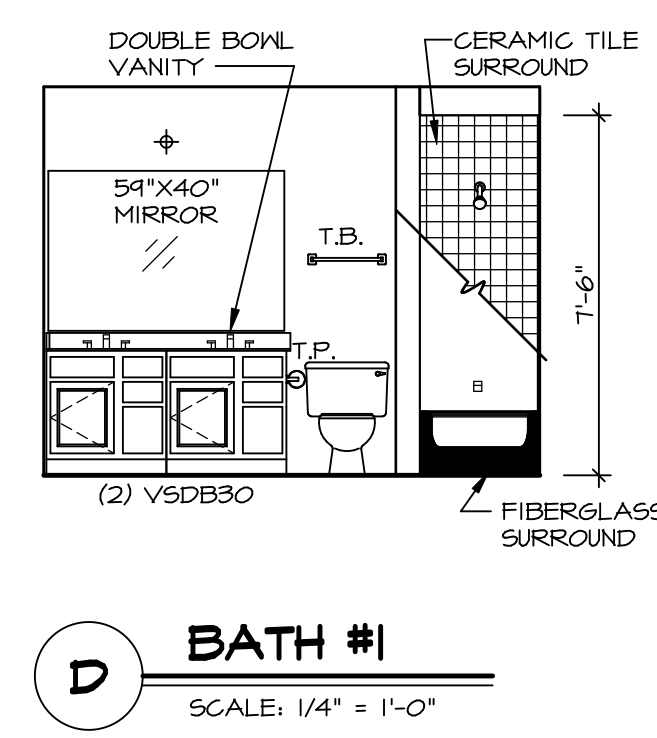
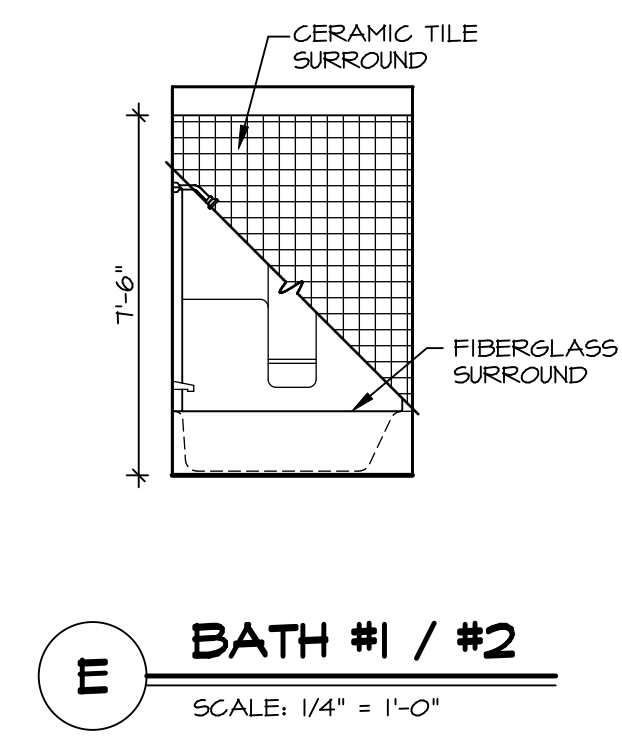
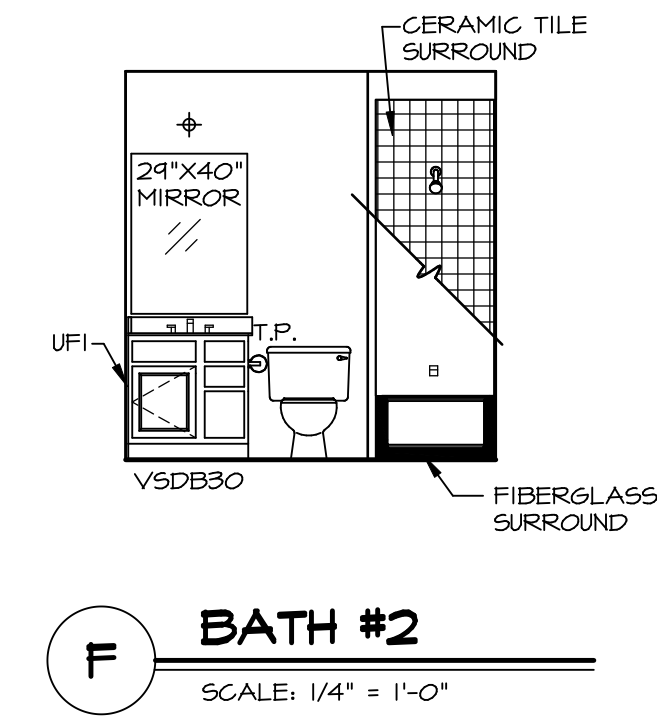
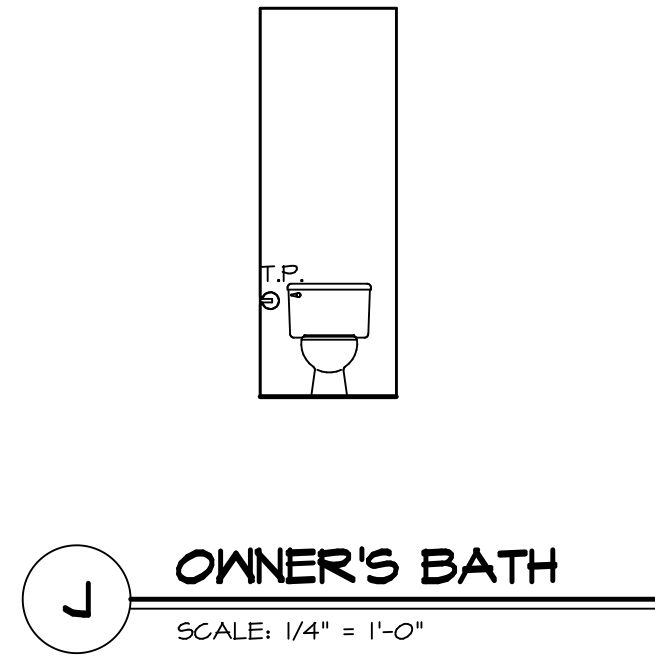


MODEL	BATEMAN
SET NO.	BAT00
VERSION	03
DRAWN BY	
DATE:	
OPTION	



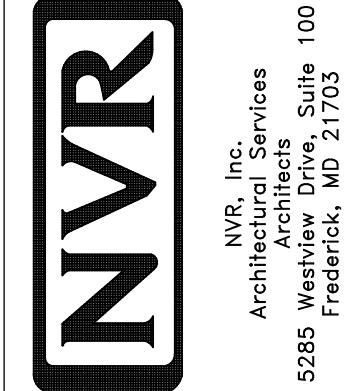
NOTES:

1. TEMPERED GLASS SHOWER ENCLOSURE WITH SWING DOOR OR OPTIONAL SLIDING DOOR BY DIVISION
2. TUB ACCESS PANELS PROVIDED AS NEEDED, ALL MATERIALS BY DIVISION
3. REFER TO SHEET IT-2 FOR TUB AND SHOWER DETAILS.
4. ALL VSD24-42 DRAWERS TO BE SET ON RIGHT HAND.
5. BATH ELEVATIONS ARE SHOWN PER PLAN.



SHEET NO.	MODEL	SET NO.	DATE	REV. NO.	DATE	REMARKS
A-14	BATEMAN	BAT00	03			
10	BATH ELEVATIONS					

NVR, Inc., owner, expressly reserves its copyright in these plans. These plans are not to be reproduced, changed, copied, or otherwise used without the written consent of NVR, Inc.



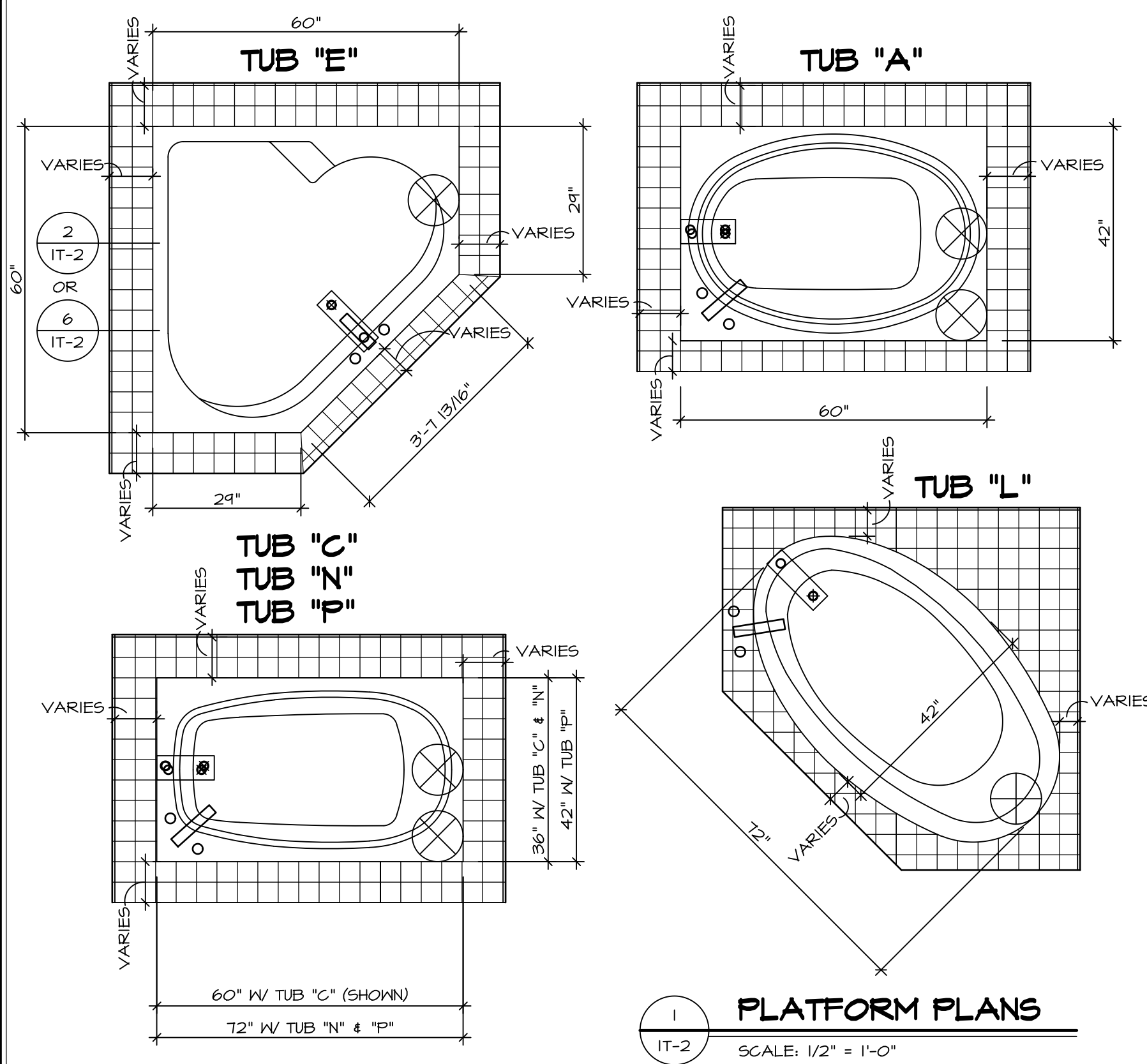
OPTION DESCRIPTION

DATE: OPTION

DRAWN BY: DATE: OPTION

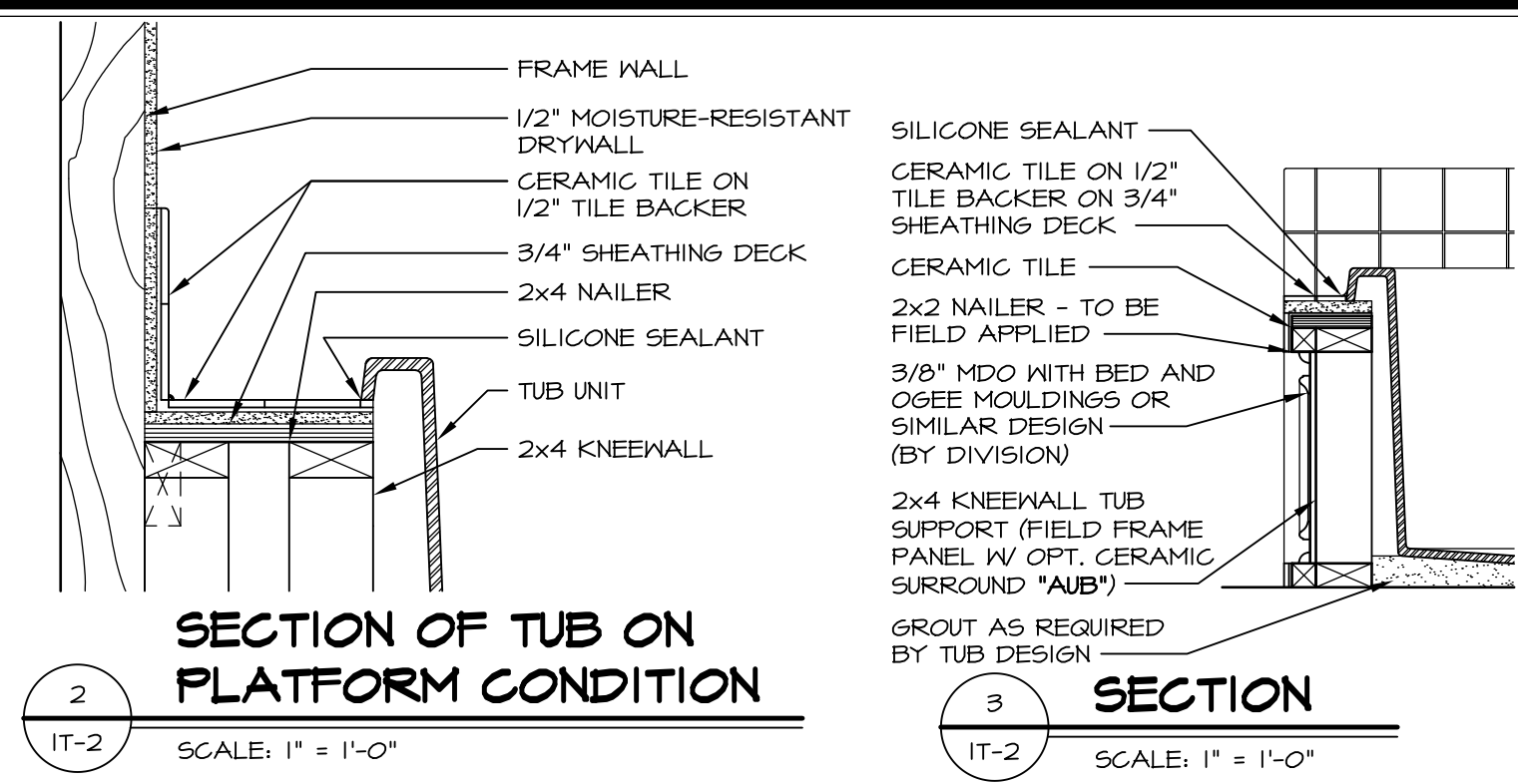
VERSION 03

SET NO. BAT00

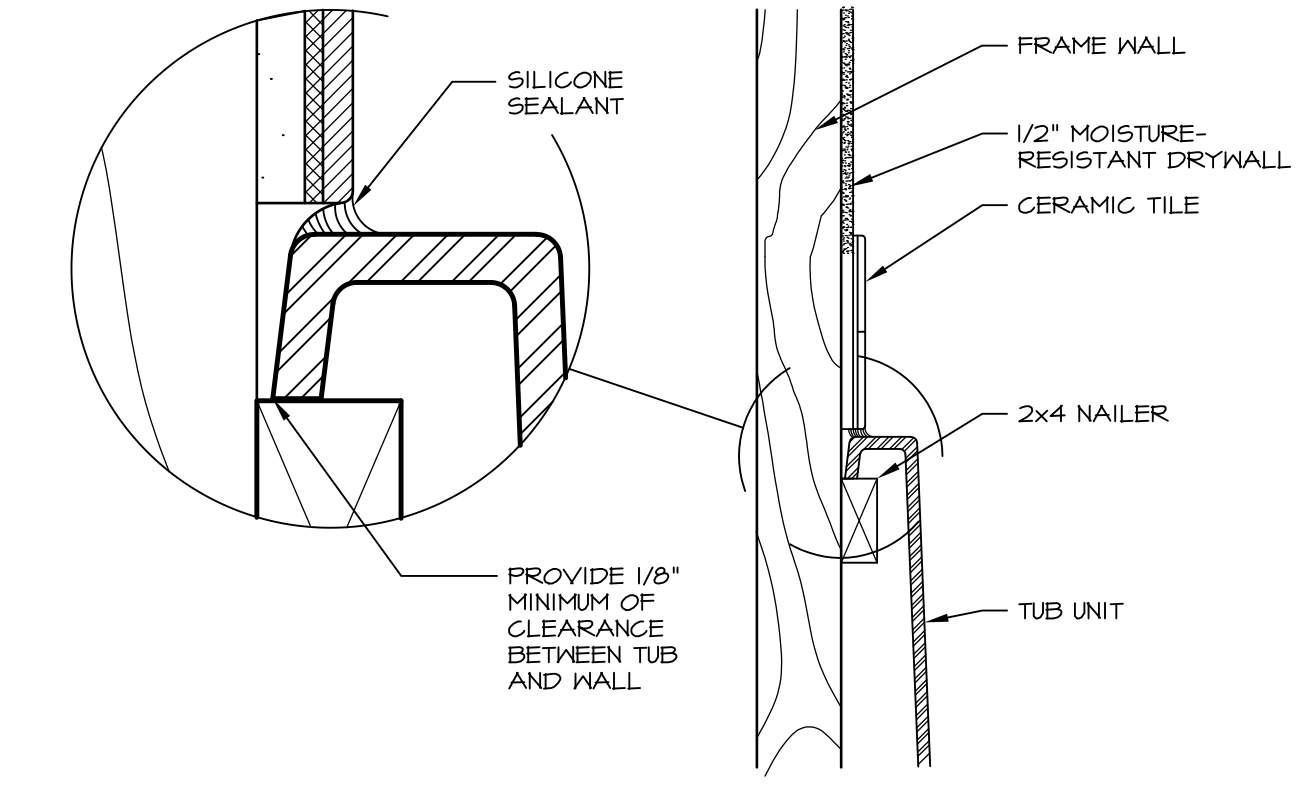


1 PLATFORM PLANS
SCALE: 1/2" = 1'-0"

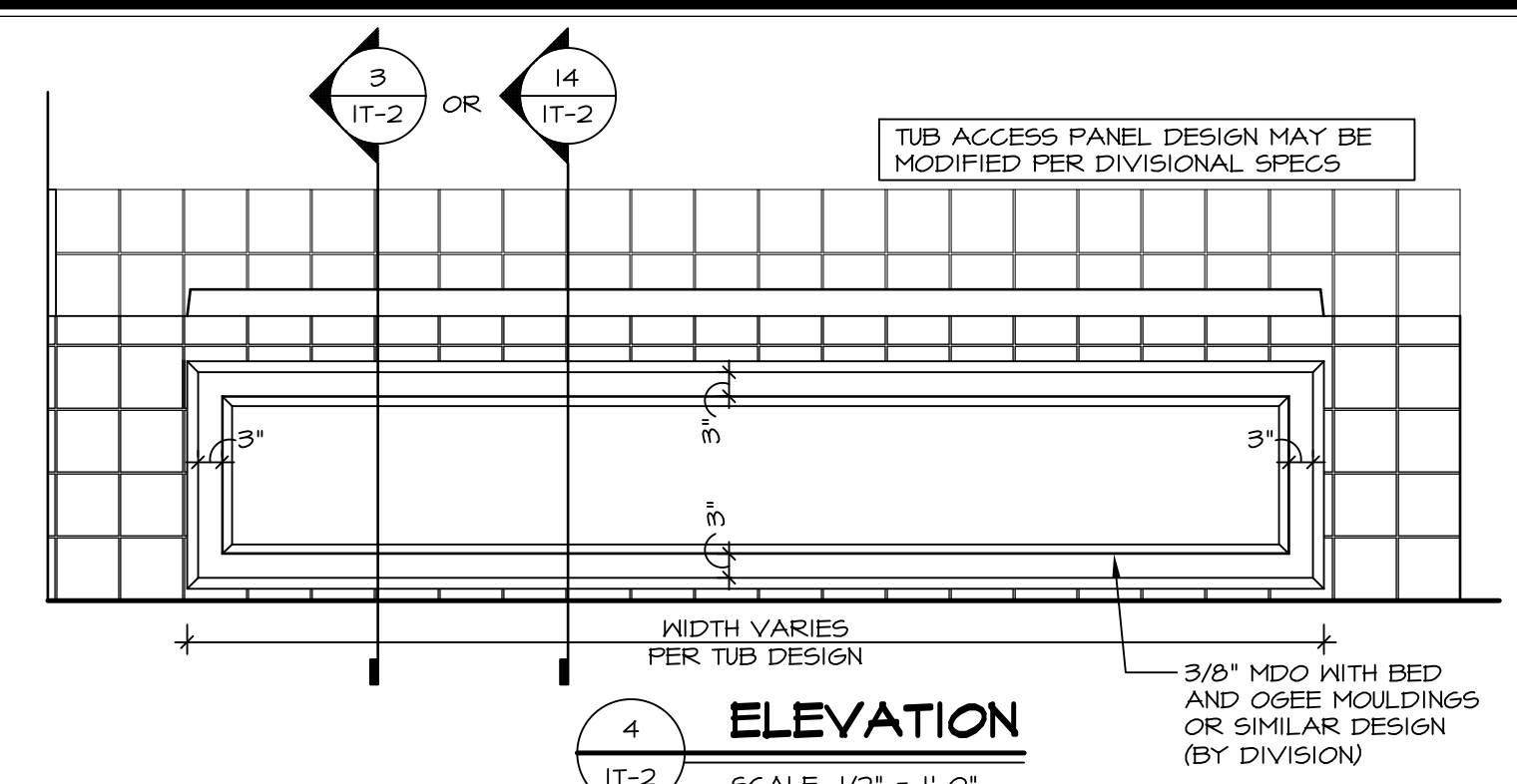
TUB	MANUF.	HEIGHT	WIDTH	LENGTH	TUB DECK PANEL HEIGHT
"A"	KOHLER/STERLING	18 3/4"	42"	60"	17 1/8"
"C"	KOHLER/STERLING	18 3/4"	36"	60"	17 1/8"
"E"	KOHLER/STERLING	19 1/2"	60"	60"	17 7/8"
"L"	KOHLER/STERLING	18 1/2"	42"	72"	16 7/8"
"N"	KOHLER/STERLING	18 3/4"	36"	72"	17 1/8"
"P"	KOHLER/STERLING	18 3/4"	42"	72"	17 1/8"



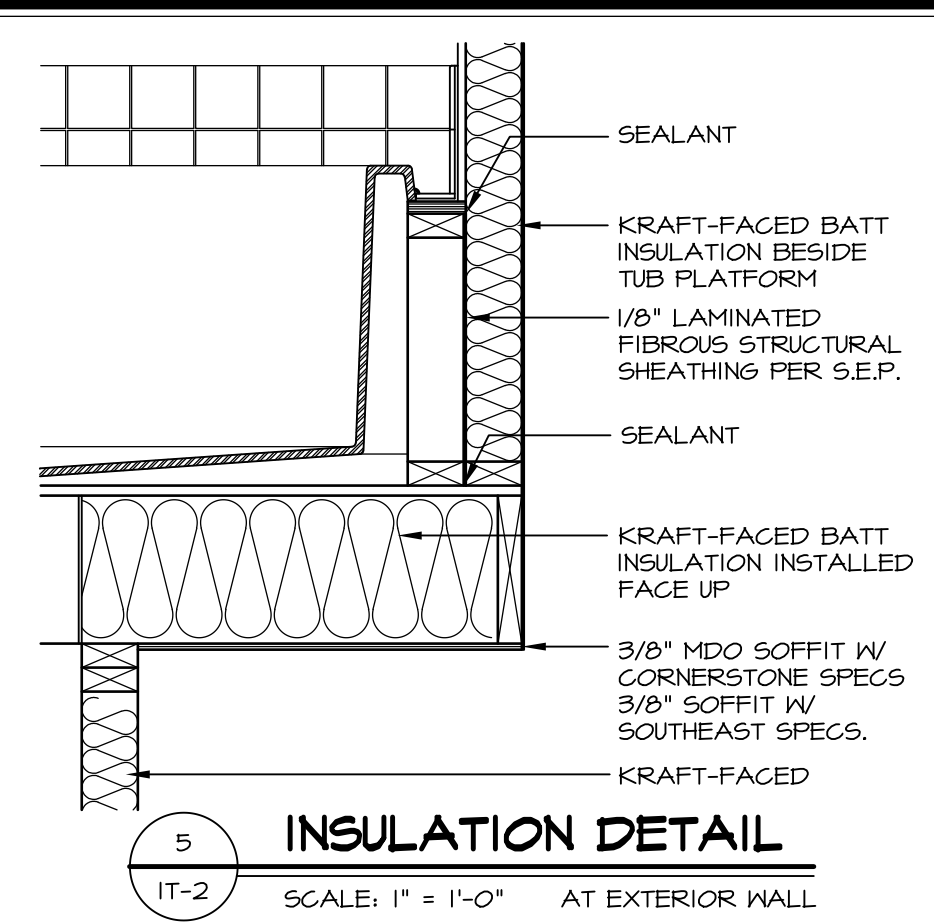
2 SECTION OF TUB ON PLATFORM CONDITION
SCALE: 1" = 1'-0"



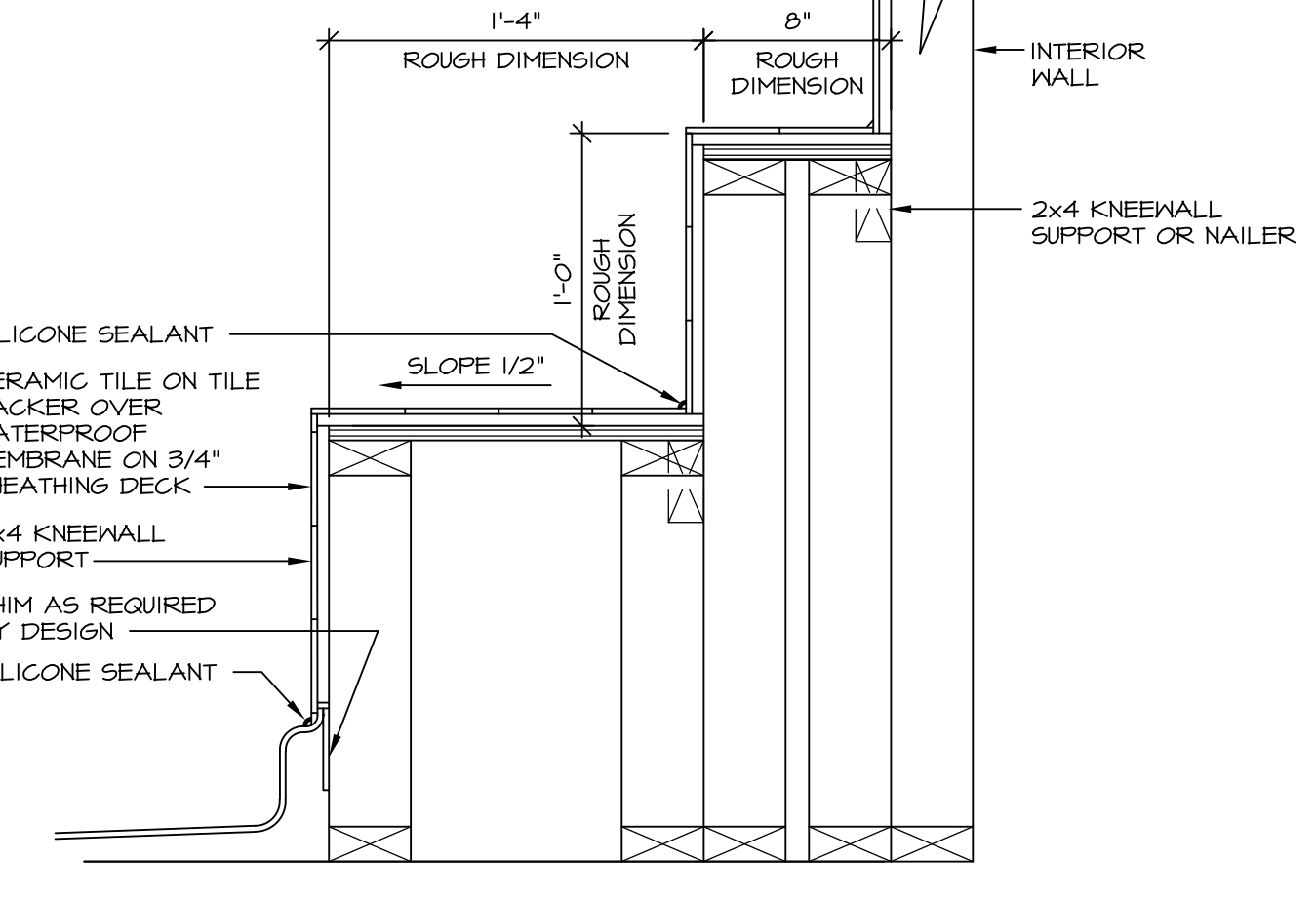
3 SECTION OF TUB TO WALL CONDITION
SCALE: 1 1/2" = 1'-0"



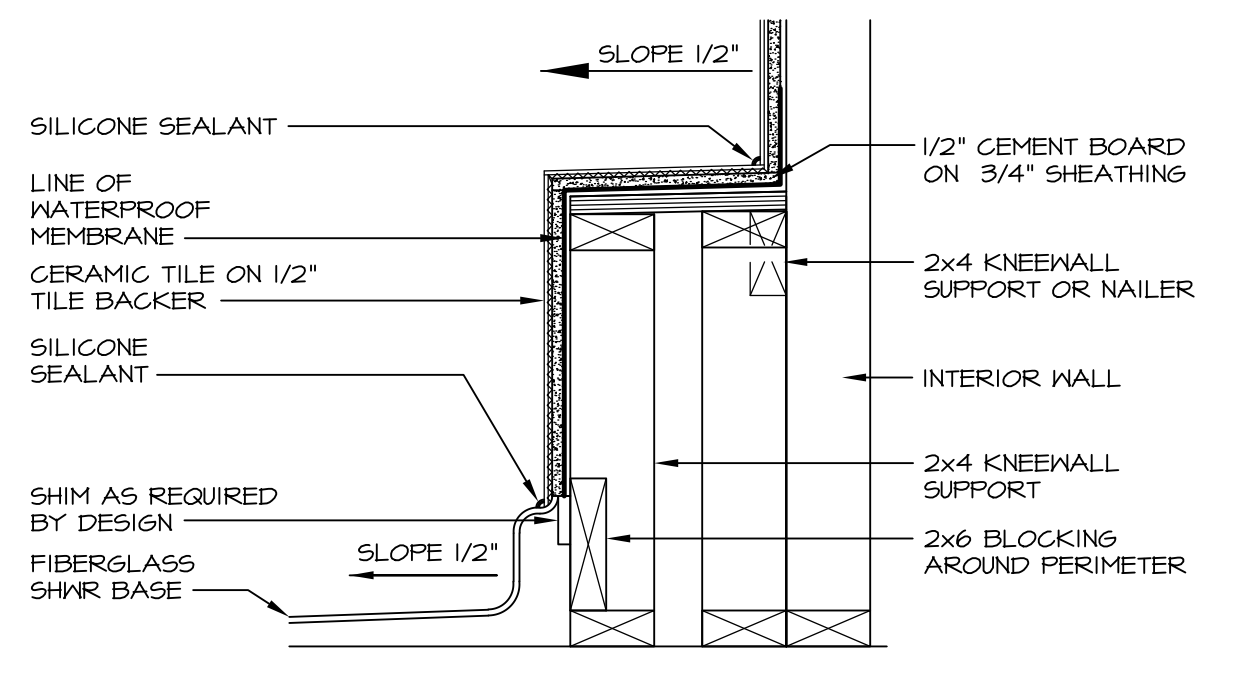
4 ELEVATION
SCALE: 1/2" = 1'-0"



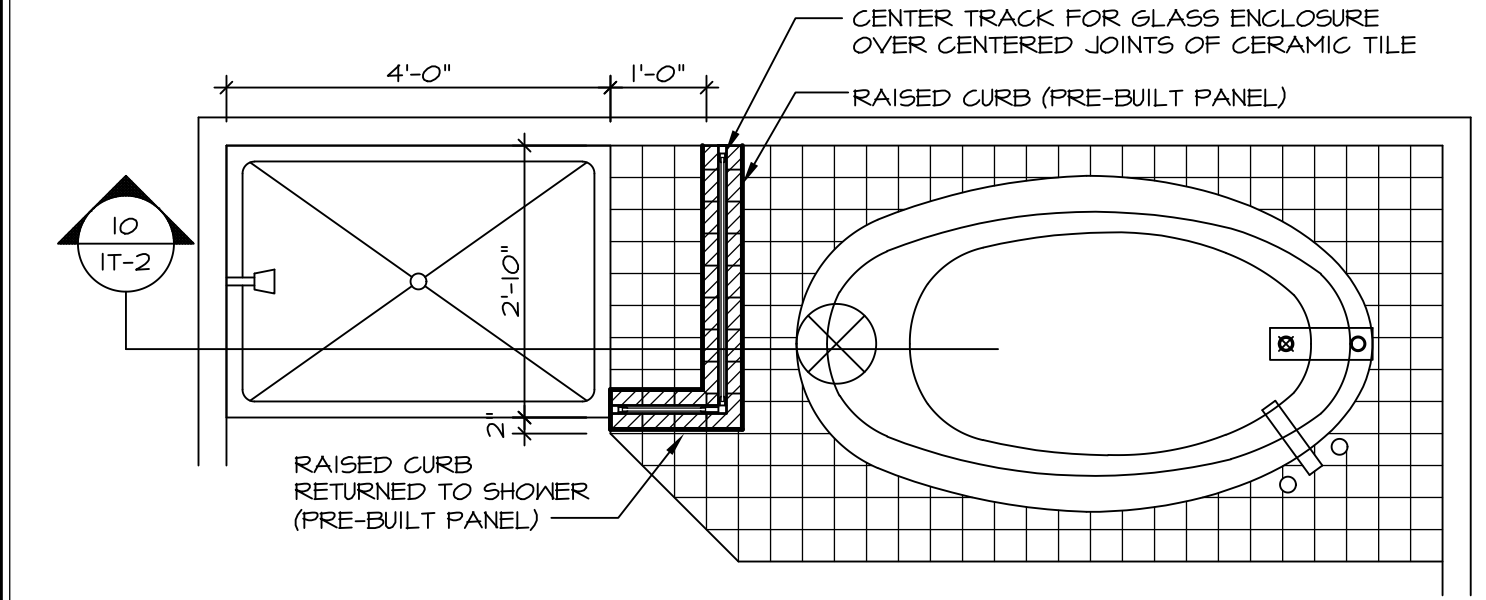
5 INSULATION DETAIL
SCALE: 1" = 1'-0" AT EXTERIOR WALL



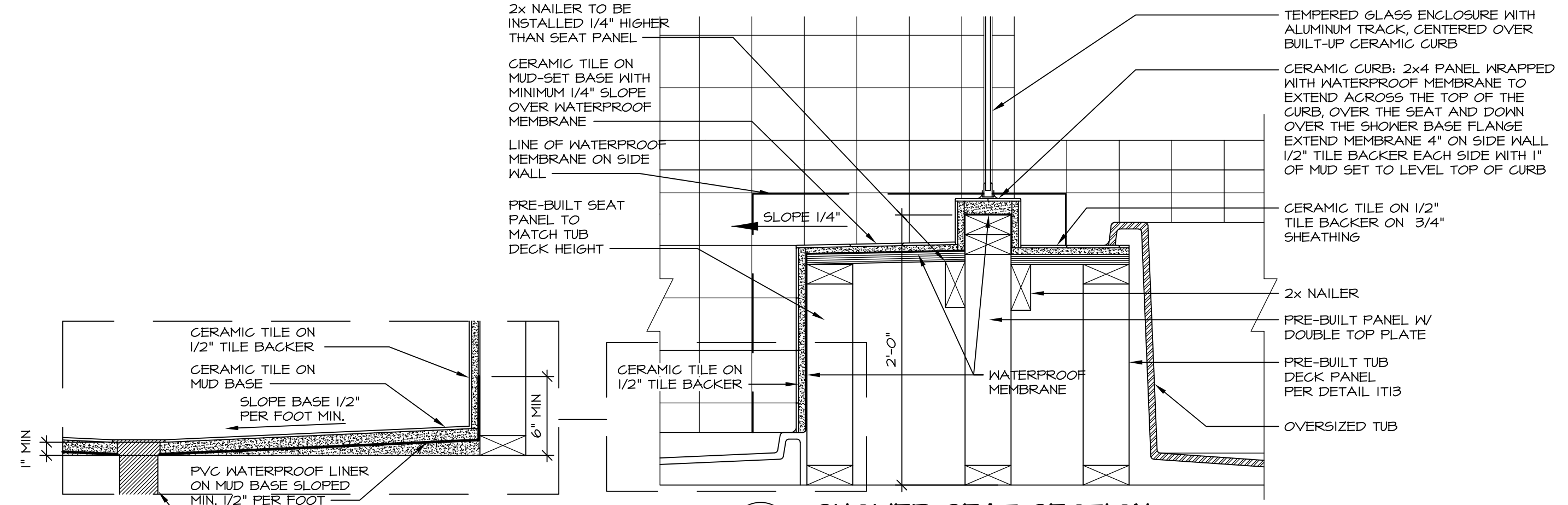
6 SECTION OF SHOWER SEAT AND SHELF
SCALE: 1 1/2" = 1'-0"



7 SECTION OF SHOWER SEAT
SCALE: 1-1/2" = 1'-0" FIBERGLASS SHOWER BASE



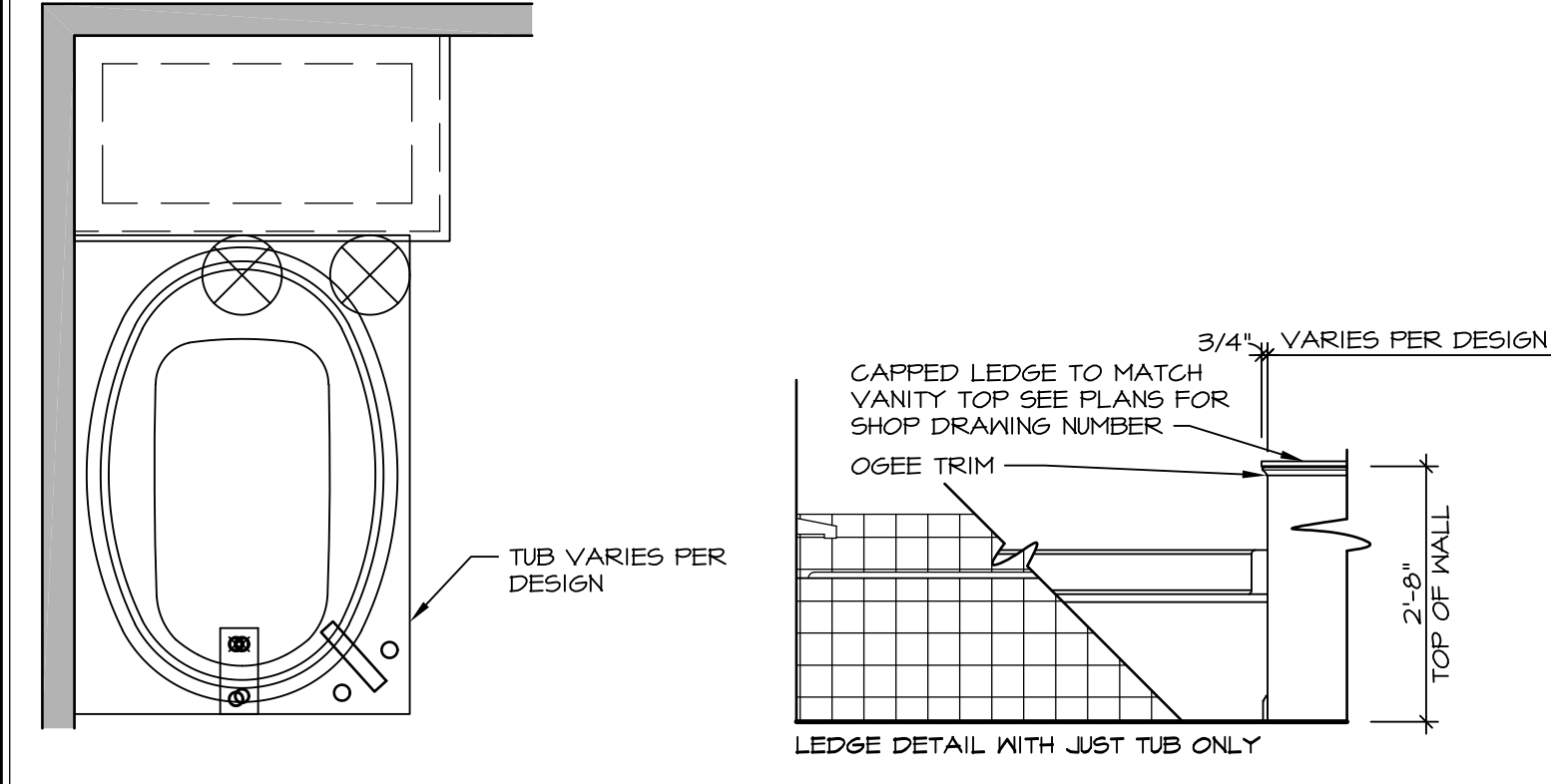
9 SHOWER SEAT PLAN / DETAIL
SCALE: 1/2" = 1'-0"



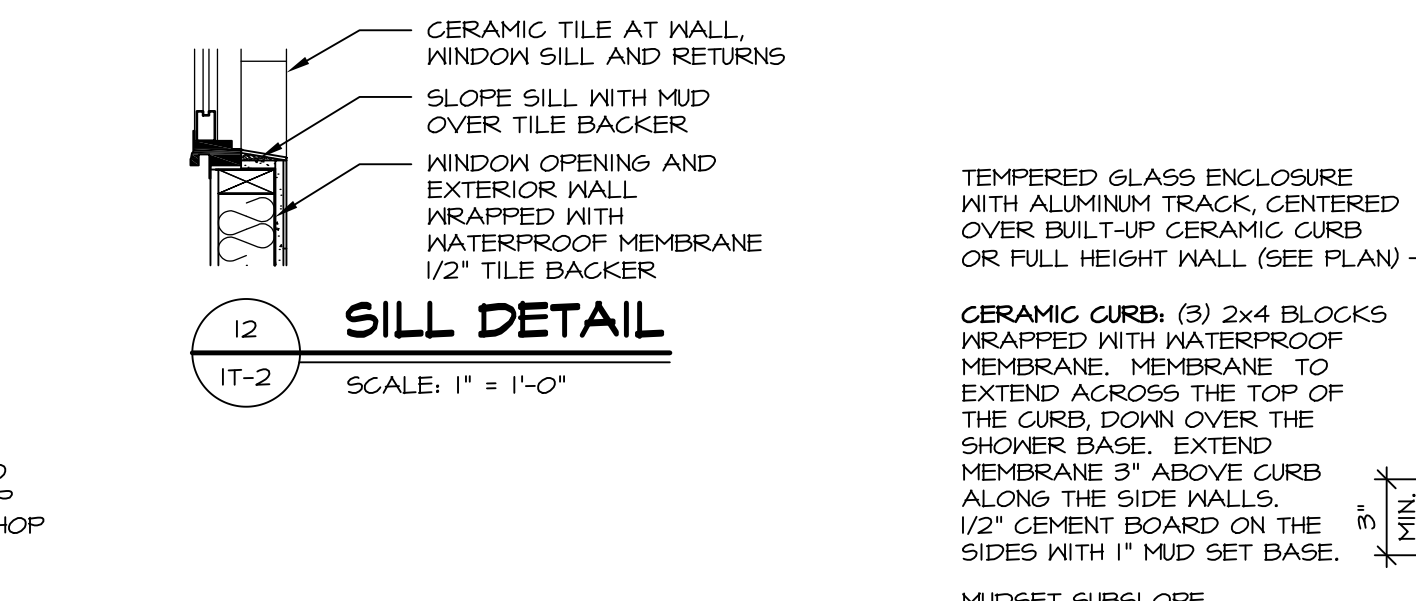
10 SHOWER SEAT SECTION
SCALE: 1-1/2" = 1'-0"



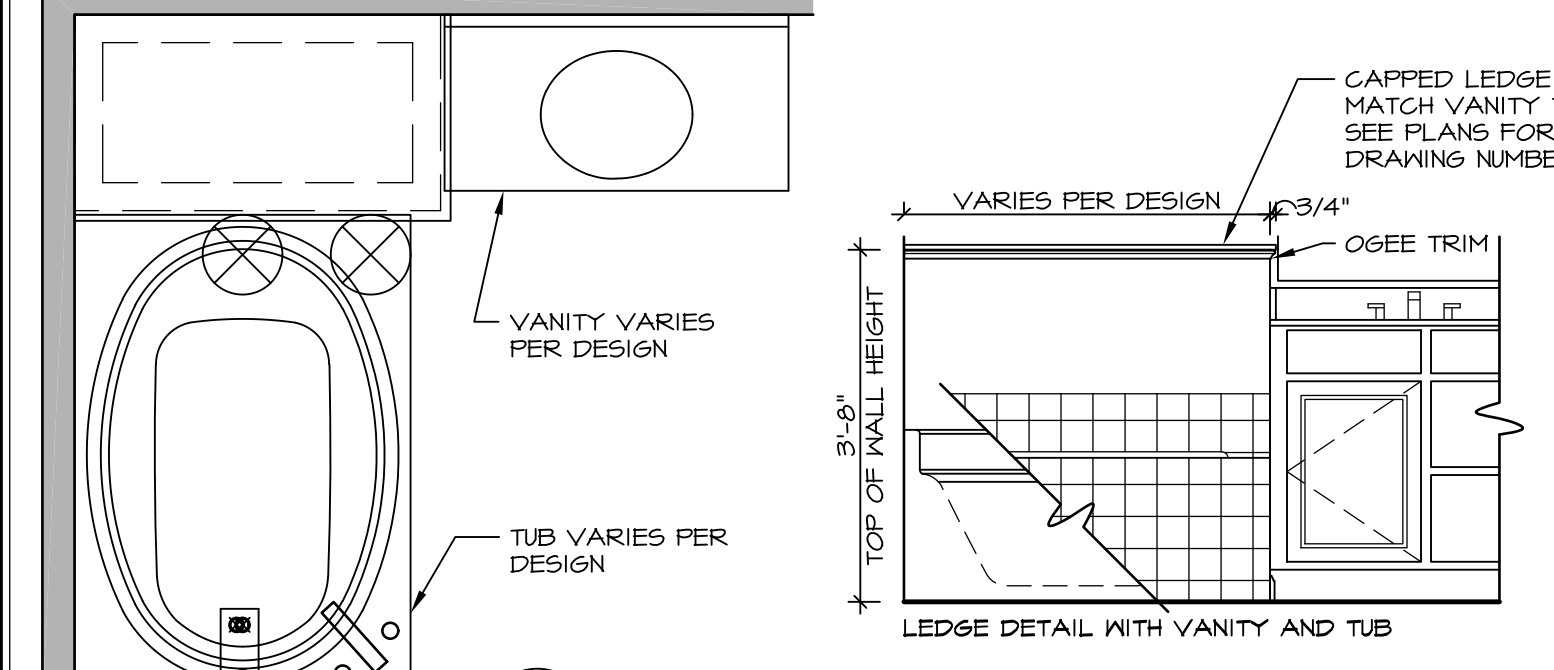
11 ALTERNATE SHOWER PAN DETAIL



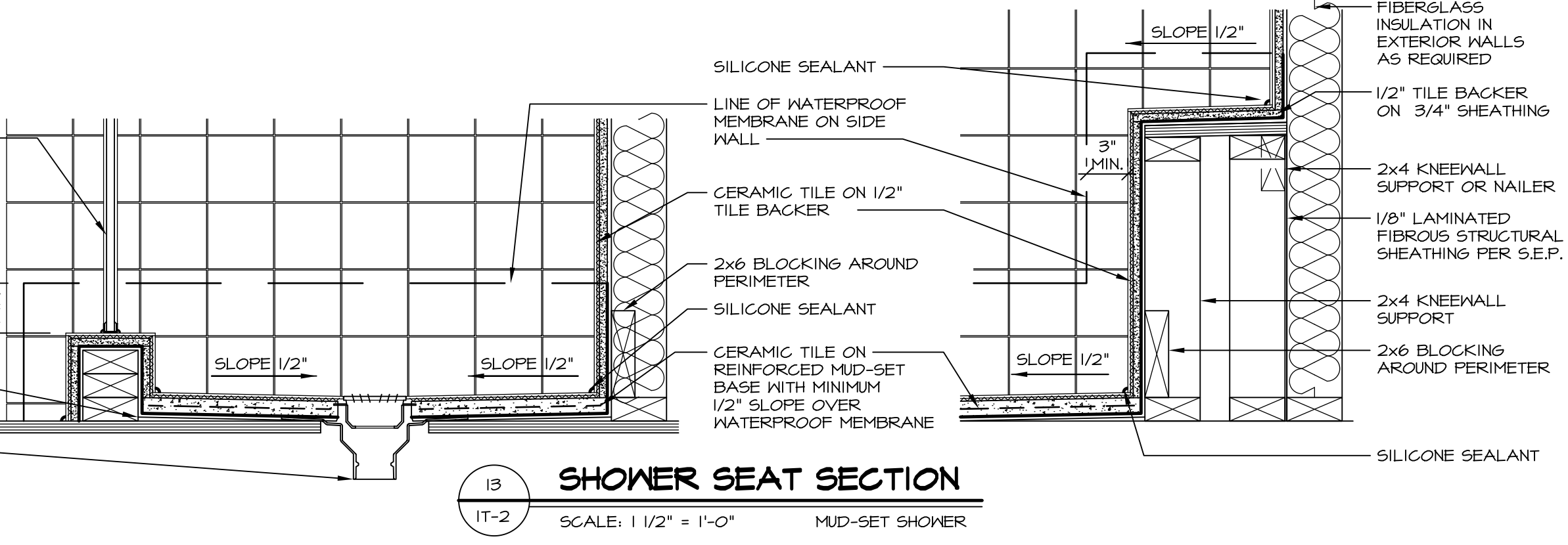
12 BATHROOM LEDGE DETAIL
SCALE: 1/2" = 1'-0"



13 SILL DETAIL
SCALE: 1" = 1'-0"



14 BATHROOM LEDGE DETAIL
SCALE: 1/2" = 1'-0"



15 SHOWER SEAT SECTION
SCALE: 1 1/2" = 1'-0" MUD-SET SHOWER

REV. NO.	DATE	REMARKS
1	5/1/17	EBP - REVISED DETAIL 1 AND 11 TO REMOVE TUB ACCESS PANEL REF. (095 #15 5414)
2	9/2/17	EBP - REVISED T-FLY NOTE TO CALL OUT LFS
3	9/2/17	EBP - REVISED NOTE ON DETAIL #1 - REVISED ORDER OF MATERIAL PARA#6934

NVR, Inc., owner, expressly reserves its common law copyright and other property rights in these plans. These plans are not to be reproduced, stored in a retrieval system, or transmitted in any form or by any means, electronic, mechanical, photocopying, recording, or by any information storage and retrieval system, without first obtaining the expressed written consent of NVR, Inc.

NVR
NVR, Inc.
Architectural Services
5285 Westchester Drive, Suite 100
Frederick, MD 21703

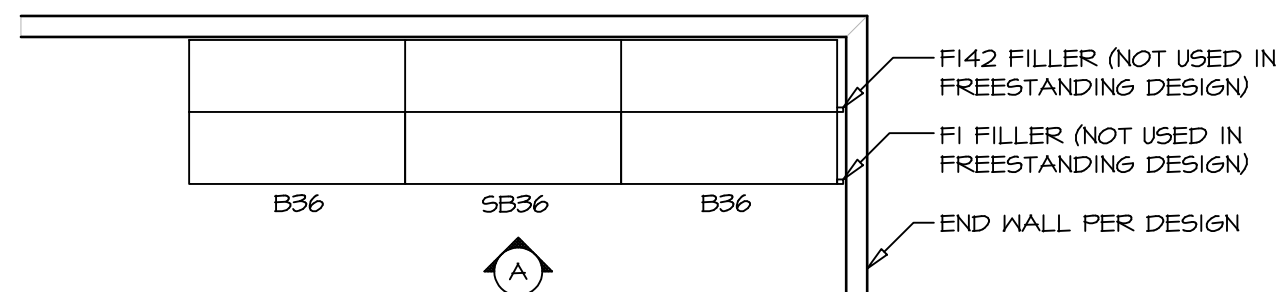
SET NO.	VERSION	DATE	OPTION
1	1		

MODEL: STANDARD DETAILS
DRAWING TITLE: INTERIOR TRIM DETAILS
BATH DETAILS
OPTION DESCRIPTION

SHEET NO. **IT-2**

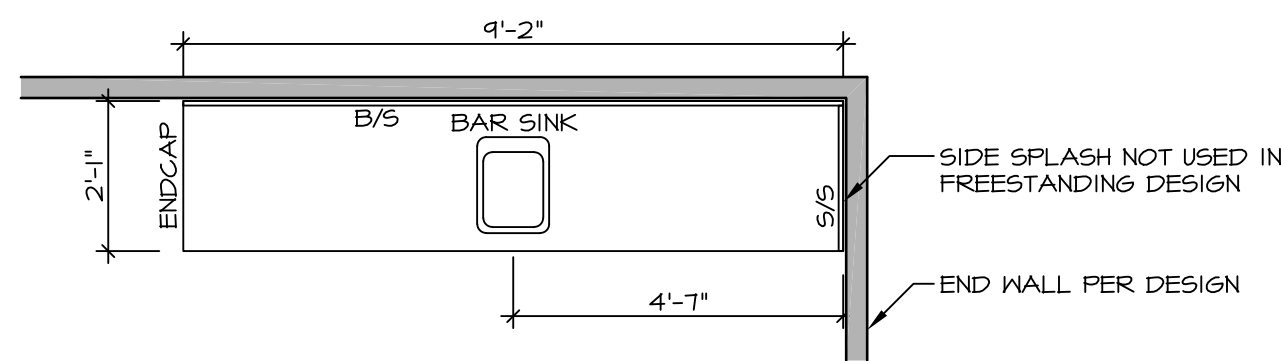
J:\Dwg\NVR\Interior Trim\IT2.dwg 09/27/17 - 9:20 am

NOTE:
REVIEW HOUSE SPECIFIC
PLANS FOR LOCATION
AND HANDING



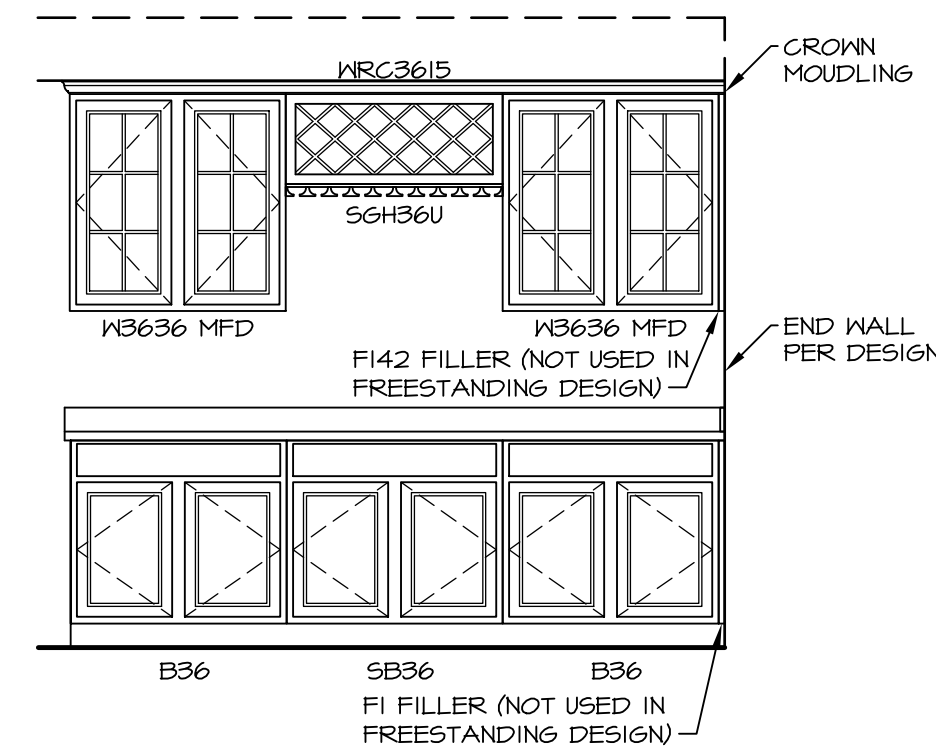
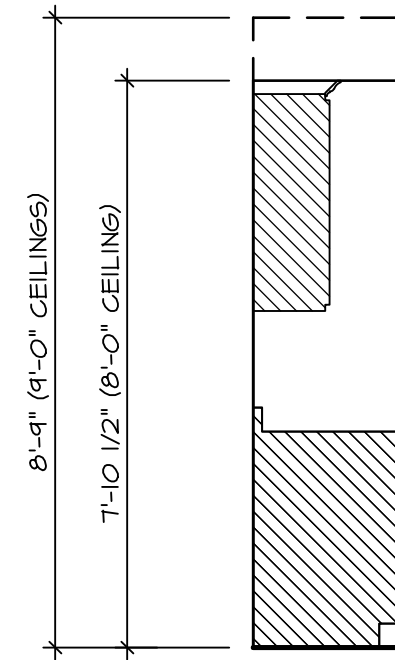
**KITCHEN CABINET
PLAN KC - 1900**

2
IT-3b SCALE: 3/8" = 1'-0"



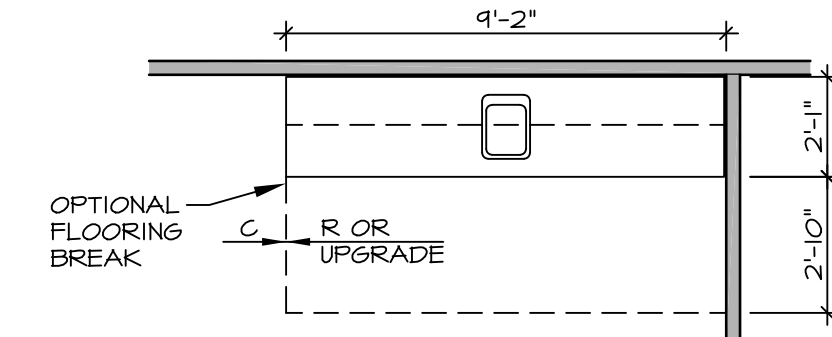
**KITCHEN COUNTERTOP
PLAN KT - 1900**

6
IT-3b SCALE: 3/8" = 1'-0"



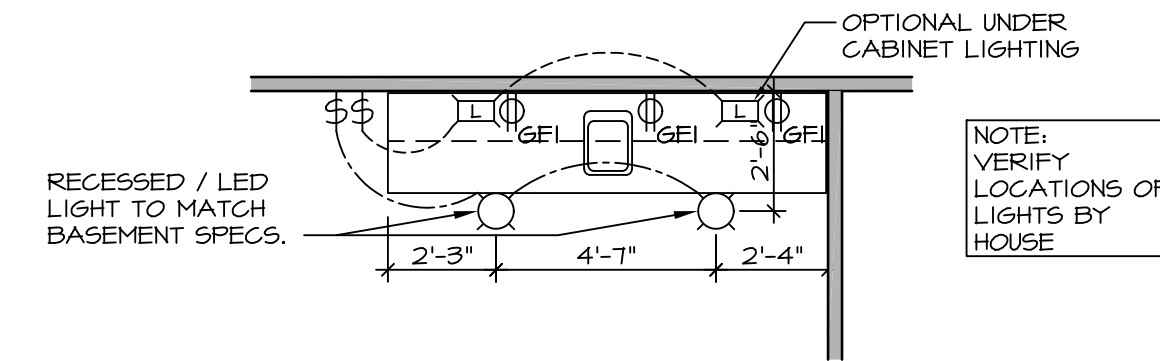
3 ELEVATION "A"

IT-3b SCALE: 3/8" = 1'-0"



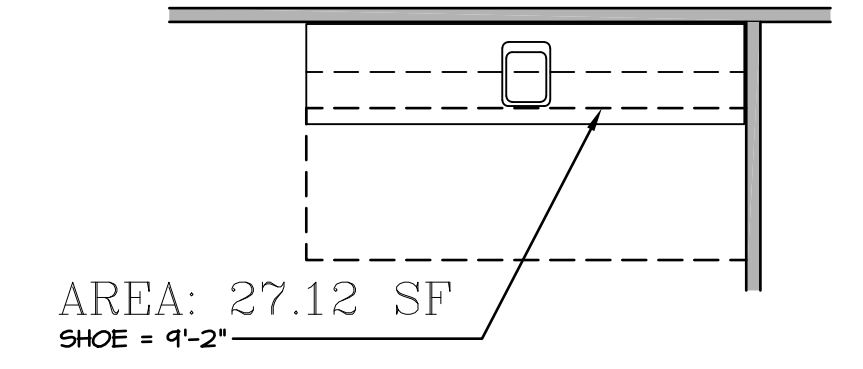
4 FLOOR PLAN

IT-3b SCALE: 1/4" = 1'-0"



7 FLOOR PLAN ELECTRICAL LAYOUT

IT-3b SCALE: 1/4" = 1'-0"



AREA: 27.12 SF
SHOE = 4'-2"

5 FLOORING PLAN

IT-3b SCALE: 1/4" = 1'-0"

1 WET BAR DETAILS

IT-3b SCALE: VARIES * SHOWN AS END WALL DESIGN

SHEET NO.	MODEL	STANDARD DETAILS	SET NO. NVR	REVISIONS	DATE	REMARKS
IT-3b	INTERIOR TRIM DETAILS	WET BAR DETAILS - BACK BAR (RYAN ONLY)	1	5/17/17	5/17/17	56A - REVISED FLOOR PLAN DIMENSIONS TO MATCH COUNTERTOP DIMENSIONS
			2	5/23/17	5/23/17	56A - REMOVED COUNTERTOP INFORMATION FROM 2/IT-3b
			3	6/5/17	6/5/17	56A - REMOVED U.C. REF. AND TURNED OFF FLOORING SPACES
			4	9/14/17	9/14/17	EBP - ADDED NOTE TO RECESSED LIGHT / LED LIGHT IN NET BAR

NVR
NVR, Inc.
Architectural Services
5285 West Annapolis Avenue, Suite 100
Frederick, MD 21703

SET NO. NVR	VERSION	DATE	OPTION
	DRAWN BY		
	DATE:		
	OPTION		