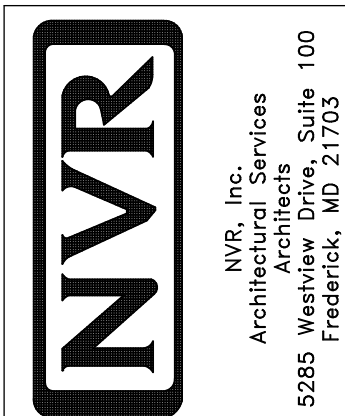
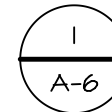
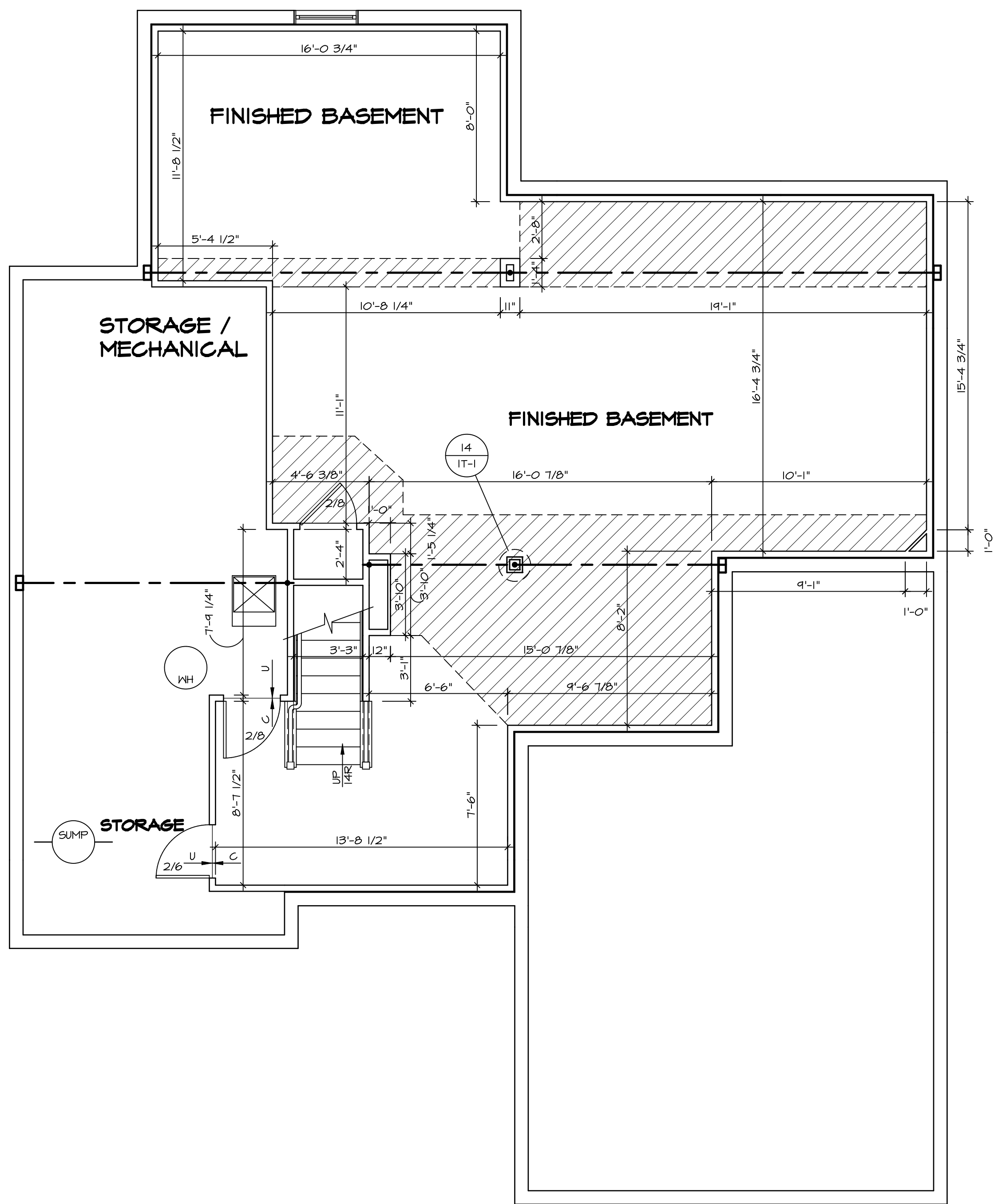


1
A-5 **PLUMBING PLAN**
SCALE: 1/4" = 1'-0"

SHEET NO. A-5	MODEL DUNKIRK	SET NO. DUN00	REMARKS
	DRAWING TITLE PLUMBING PLAN	VERSION 01	
26	OPTION DESCRIPTION	DATE:	<p>NVR, Inc., owner, expressly reserves its copyright in these plans. These plans are not to be reproduced, changed, copied, or otherwise used in any way without the written consent of NVR, Inc.</p>
		OPTION	





BASEMENT FLOOR PLAN

SCALE: 1/4" = 1'-0"

FLOOR PLAN NOTES

- ALL HEADERS ARE (2) 2x6 w/ 2x4 WALLS OR (3) 2x6 w/ 2x6 WALLS, UNLESS OTHERWISE NOTED.
- ALL HEADERS TO HAVE (1) 2x4 OR 2x6 JACK EACH END, UNLESS OTHERWISE NOTED.
- ALL EXTERIOR WALLS TO BE 4" AND ALL INTERIOR WALLS TO BE 3 1/2", UNLESS OTHERWISE NOTED.
- HATCHED AREAS INDICATE DROPPED CEILING. ALL DROPPED CEILING ARE 12" UNLESS OTHERWISE NOTED.
- SEE "BRACED WALL PANEL DETAIL SHEET" FOR SPECIAL WALL FRAMING LOCATIONS AND HEADER SIZES, IF APPLICABLE.
- SEE STANDARD DETAIL CATEGORY "IT" SHEET(S) FOR INTERIOR TRIM DETAILS.
- SEE ARCHITECTURAL DETAIL SHEET "AD" FOR HOUSE SPECIFIC INTERIOR TRIM OPTION TABLE.
- ALL WINDOWS HAVE 7'-0 1/2" HEADER HEIGHT UNLESS OTHERWISE NOTED.

GYPSUM NOTES

AT GARAGE:
GYPSUM BOARD AT COMMON WALLS, CEILING, BEAM WRAPS AND SUPPORTS PER STANDARD DETAIL FA-1(b) FIRE ASSEMBLIES OR AS REQUIRED BY LOCAL CODE.

AT STAIRS:
1/2" GYPSUM BOARD AT UNDERSIDE OF STAIRS AND WALLS IN CLOSET

LEGEND

	BEARING WALL
	NON BEARING WALL
	INDICATES BEARING FROM POINT-LOAD ABOVE
	JACKS
	BEAM/HEADER
	PAD FOOTING
	STEEL COLUMN
	PORTAL FRAME
	JOIST/TRUSS
	LVL
	ENGINEERING PAGE NUMBER
SEE FC DETAILS FOR FRAMING CONNECTORS	

REV. NO.	DATE	REMARKS

SET NO. DUNCO	VERSION 04
DRAWN BY	
DATE:	
OPTION	

NVR, Inc., owner, expressly reserves its copyright in these architectural plans. These plans are not to be reproduced, changed, copied, or otherwise used without the written consent of NVR, Inc.

NVR, Inc.
Architectural Services
Architects
5285 Westpark Drive, Suite 100
Frederick, MD 21703

MODEL	DUNKIRK
DRAWING TITLE	BASEMENT FLOOR PLAN
OPTION DESCRIPTION	

SHEET NO.	A-6
OPTION DESCRIPTION	27

FIRST FLOOR JACK SCHEDULE				
IDENTIFIER	DESCRIPTION	OPTIONS	ENG. NUM.	REMARKS
J101	JACK - (5) 2X4 SPM	EVF, EVN, EVV, ELK, ELL	1048	
J107	JACK - (3) 2X4 SFF STUD GRADE	ELL	2004	
J108	JACK - (2) 2X6 SFF STUD GRADE	ELL	2004	
J109	JACK - (2) 2X4 SFF STUD GRADE	GCB	1127	
J110	JACK - (2) 2X4 SFF STUD GRADE	GCB	1127	
J123	JACK - (2) 2X4 SFF STUD GRADE	M60	1034, 1036, 1042	
J133	JACK - (4) 2X6 SFF STUD GRADE	MAA	1062	
J134	JACK - (2) 2X4 SFF STUD GRADE	MAA, EDQ	1076	
J136	JACK - (3) 2X6 SFF STUD GRADE	MAA	1060	
J137	JACK - (2) 2X4 SFF STUD GRADE		1062	
J138	JACK - (2) 2X4 SFF STUD GRADE		1072	
J139	JACK - (2) 2X4 SFF STUD GRADE		1072	
J140	JACK - (2) 2X4 SFF STUD GRADE		1056	
J141	JACK - (2) 2X4 SFF STUD GRADE		1056	
J142	JACK - (3) 2X4 SFF STUD GRADE		1034, 1034	

STEEL COLUMN SCHEDULE					
IDENTIFIER	STYLE	HEIGHT	OPTIONS	ENG. NUM.	REMARKS
C101	STANCHION - 3 IN SCHED 40	4'-0" 3/8"	GCB, EVF, EVN, EVV, ELK, ELL	1048	

LVL PLY TO PLY FASTENING SCHEDULE: (WHERE APPLICABLE BASED ON LVL USAGE)

- 1.A - (2) FLY UP TO AND INCLUDING 11 7/8" TALL; FASTEN FLIES W/ (2) ROWS 16D NAILS AT 12" O.C.
- 2.A - (2) FLY 14" TO AND 18" TALL (INCLUSIVE); FASTEN FLIES W/ (3) ROWS 16D NAILS AT 12" O.C.
- 3.A - (2) FLY 20" TALL AND OVER; FASTEN FLIES W/ (4) ROWS 16D NAILS AT 12" O.C.
- 4.A - (3) FLY UP TO AND INCLUDING 11 7/8" TALL; FASTEN FLIES W/ (2) ROWS 16D NAILS AT 12" O.C. FROM EACH SIDE
- 5.A - (3) FLY 14" TO AND 18" TALL (INCLUSIVE); FASTEN FLIES W/ (3) ROWS 16D NAILS AT 12" O.C. FROM EACH SIDE
- 6.A - (3) FLY 20" TALL AND OVER; FASTEN FLIES W/ (4) ROWS 16D NAILS AT 12" O.C. FROM EACH SIDE
- 7.A - (4) FLY (ALL SIZES); FASTEN FLIES W/ (2) ROWS 1/2" DIAMETER A307 BOLTS AT 24" O.C. SEE SHOP DRAWING FOR ADDITIONAL INFORMATION.

FIRST FLOOR BEAM/HEADER SCHEDULE					
IDENTIFIER	DESCRIPTION	LENGTH	OPTIONS	ENG. NUM.	REMARKS
B101	BEAM STEEL - W12X26	20'-3"	EVF, EVN, EVV, ELK, ELL	1048	
PF101-2	LVL - 14	20'-0"	GCB	1127	2.A, PORTAL FRAME

FLOOR PLAN NOTES







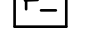
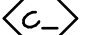
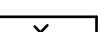

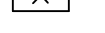
1. ALL HEADERS ARE (2) 2x6 W/ 2x4 WALLS OR (3) 2x6 W/ 2x6 WALLS, UNLESS OTHERWISE NOTED.
2. ALL HEADERS TO HAVE (1) 2x4 OR 2x6 JACK EACH END, UNLESS OTHERWISE NOTED.
3. ALL EXTERIOR WALLS TO BE 4" AND ALL INTERIOR WALLS TO BE 3 1/2", UNLESS OTHERWISE NOTED.
4. HATCHED AREAS INDICATE DROPPED CEILINGS. ALL DROPPED CEILINGS ARE 12" UNLESS OTHERWISE NOTED.
5. SEE BRACED WALL PANEL DETAIL SHEET FOR SPECIAL WALL FRAMING LOCATIONS AND HEADER SIZES, IF APPLICABLE.
6. SEE STANDARD DETAIL CATEGORY "IT" SHEET(S) FOR INTERIOR TRIM DETAILS.
7. SEE ARCHITECTURAL DETAIL SHEET "AD" FOR HOUSE SPECIFIC INTERIOR TRIM OPTION TABLE.
8. ALL WINDOWS HAVE 8'-0" 1/2" HEADER HEIGHT UNLESS OTHERWISE NOTED.

GYPSON NOTES

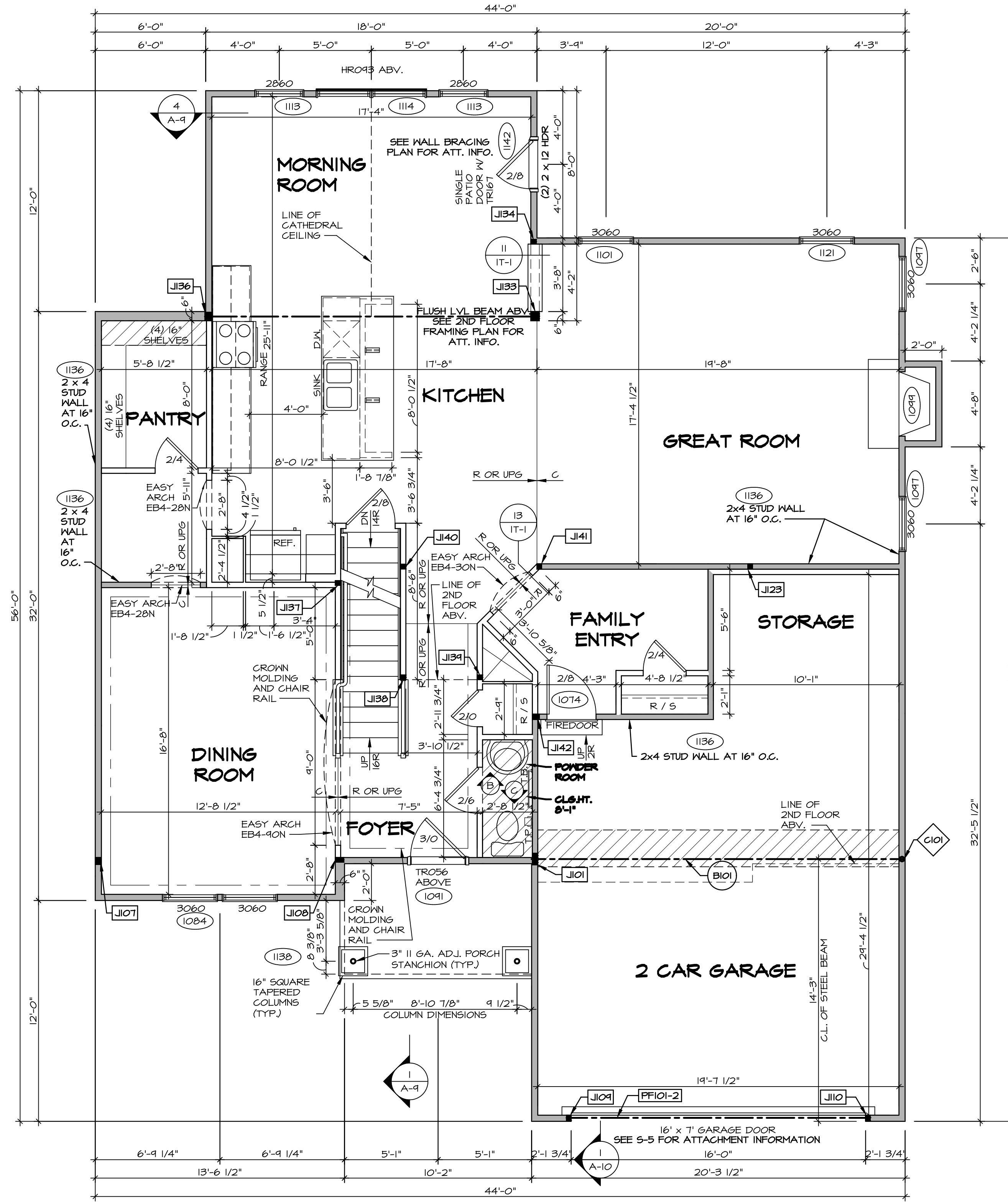
AT GARAGE:
GYPSUM BOARD AT COMMON WALLS, CEILINGS, BEAM WRAPS AND SUPPORTS PER STANDARD DETAIL FA-1(b) FIRE ASSEMBLIES OR AS REQUIRED BY LOCAL CODE.

AT STAIRS:
1/2" GYPSON BOARD AT UNDERSIDE OF STAIRS AND WALLS IN CLOSET

LEGEND

	BEARING WALL
	NON BEARING WALL
	INDICATES BEARING FROM POINT-LOAD ABOVE
	JACKS
	BEAM/HEADER
	PAD FOOTING
	STEEL COLUMN
	PORTAL FRAME
	JOIST/TRUSS
	LVL
	ENGINEERING PAGE NUMBER

SEE FC DETAILS FOR FRAMING CONNECTORS

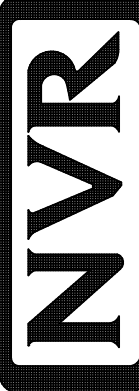


1
A-1
FIRST FLOOR PLAN
SCALE: 1/4" = 1'-0"

REMARKS

REV. NO. DATE

NVR, Inc., owner, expressly disclaims all copyright in these plans. These plans are not to be reproduced, changed, or used in any way without the written consent of NVR, Inc.

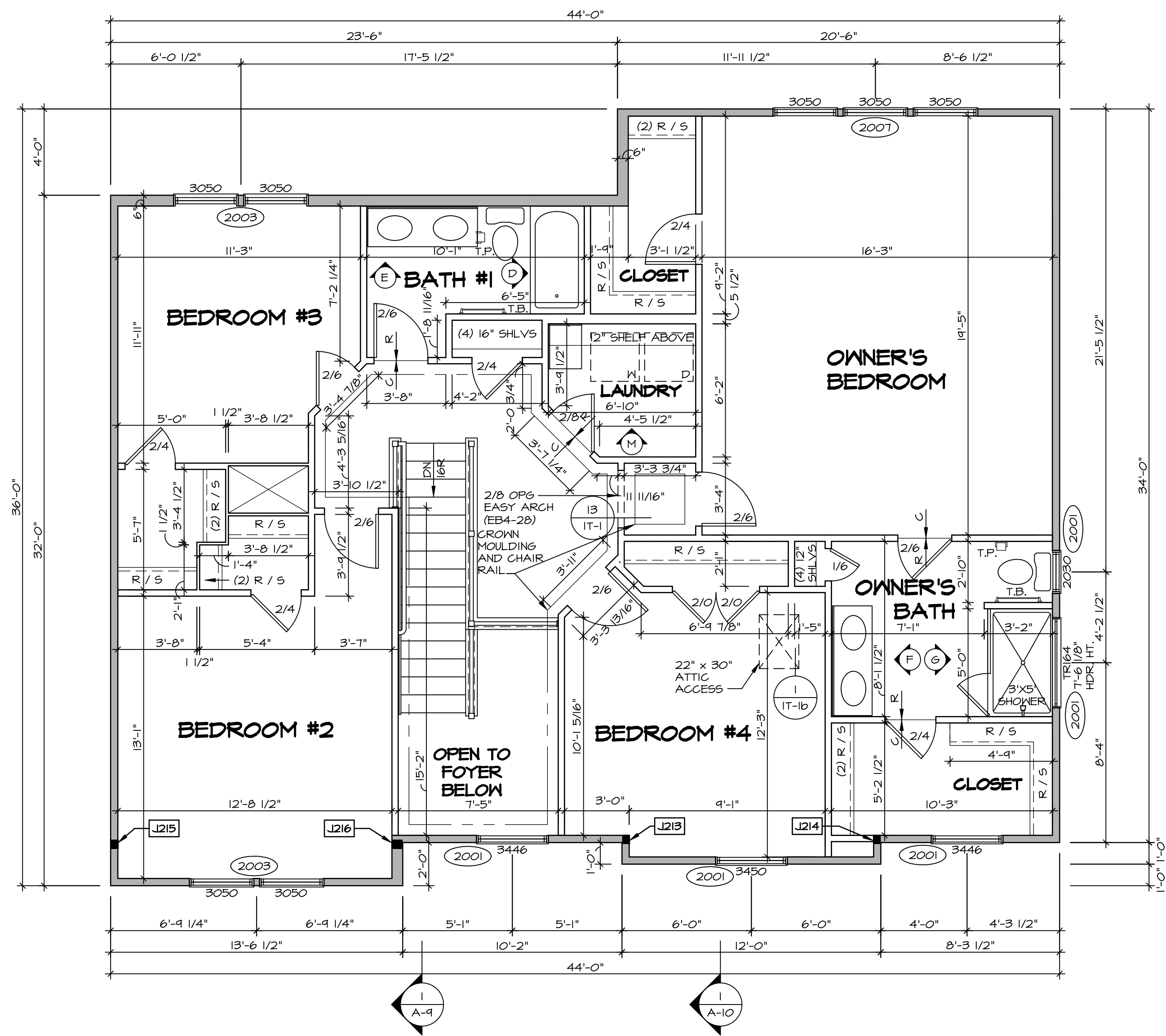


NVR, Inc.
Architectural Services
Suite 100
5285 Westgate Drive
Frederick, MD 21703

SET NO. DUNCO
VERSION 04
DRAWN BY
DATE:
OPTION

MODEL: DUNKIRK
DRAWING TITLE: FIRST FLOOR PLAN
OPTION DESCRIPTION:
A-7
29

SECOND FLOOR JACK SCHEDULE				
IDENTIFIER	DESCRIPTION	OPTIONS	ENG. NUM.	REMARKS
J213	JACK - (3) 2x4 SPF STUD GRADE	ELL	2008	
J214	JACK - (3) 2x4 SPF STUD GRADE	ELL	2008	
J215	JACK - (3) 2x4 SPF STUD GRADE	ELL	2004	EXTEND THROUGH TOP PLATE
J216	JACK - (3) 2x6 SPF STUD GRADE	ELL	2004	



SECOND FLOOR PLAN
SCALE: 1/4" = 1'-0"

LEGEND	
	BEARING WALL
	NON BEARING WALL
	INDICATES BEARING FROM POINT-LOAD ABOVE JACKS
	BEAM/HEADER
	PAD FOOTING
	STEEL COLUMN
	PORTAL FRAME
	JOIST/TRUSS
	LVL
	ENGINEERING PAGE NUMBER

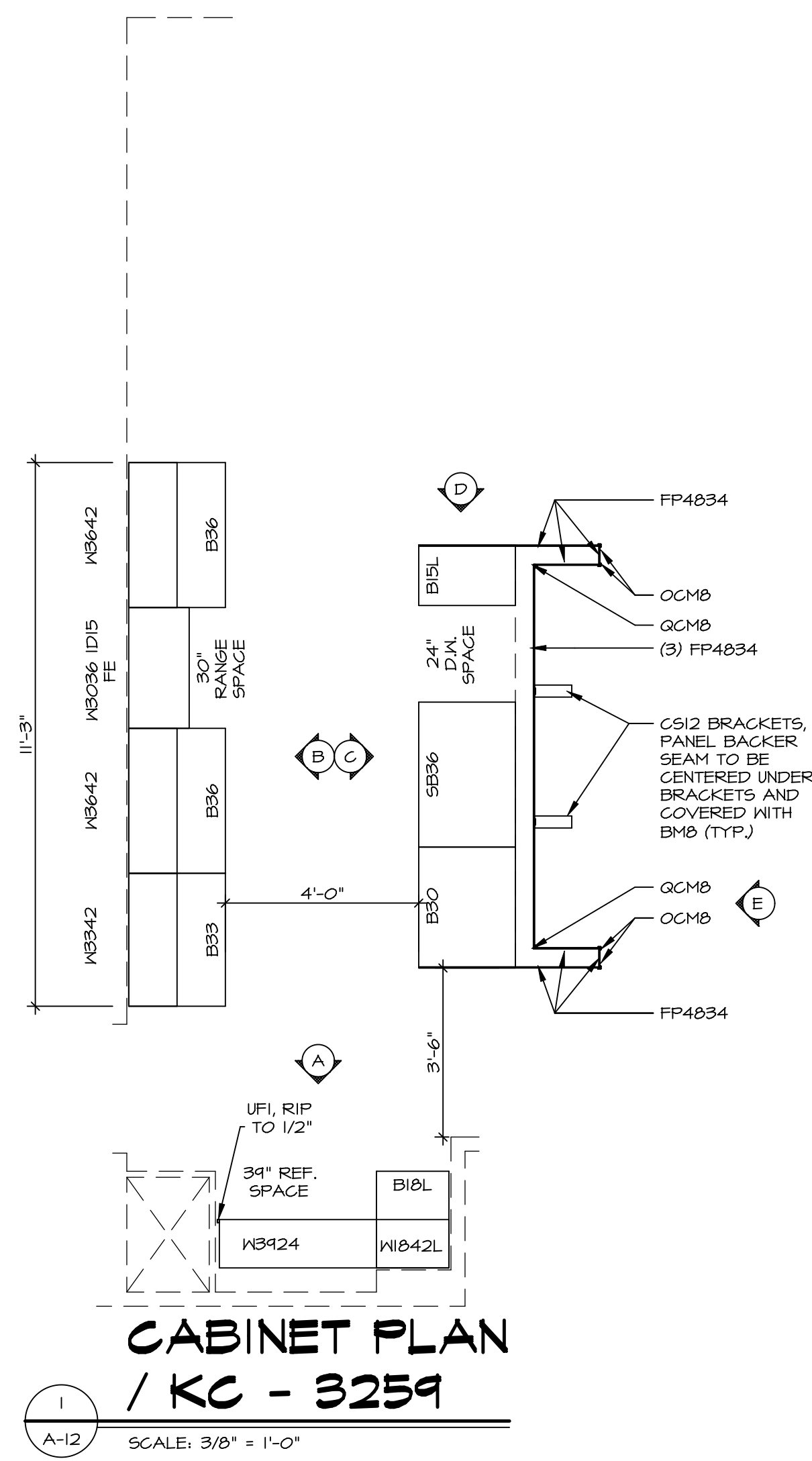
SEE FC DETAILS FOR FRAMING CONNECTORS

- FLOOR PLAN NOTES**
- ALL HEADERS ARE (2) 2x6 w/ 2x4 WALLS OR (3) 2x6 w/ 2x6 WALLS, UNLESS OTHERWISE NOTED.
 - ALL HEADERS TO HAVE (1) 2x4 OR 2x6 JACK EACH END, UNLESS OTHERWISE NOTED.
 - ALL EXTERIOR WALLS TO BE 4" AND ALL INTERIOR WALLS TO BE 3 1/2", UNLESS OTHERWISE NOTED.
 - HATCHED AREAS INDICATE DROPPED CEILINGS. ALL DROPPED CEILINGS ARE 12" UNLESS OTHERWISE NOTED.
 - SEE "BRACED WALL PANEL DETAIL SHEET" FOR SPECIAL WALL FRAMING LOCATIONS AND HEADER SIZES, IF APPLICABLE.
 - SEE STANDARD DETAIL CATEGORY "11" SHEET(S) FOR INTERIOR TRIM DETAILS.
 - SEE ARCHITECTURAL DETAIL SHEET "AD" FOR HOUSE SPECIFIC INTERIOR TRIM OPTION TABLE.
 - ALL WINDOWS HAVE 7'-0 1/2" HEADER HEIGHT UNLESS OTHERWISE NOTED.

SHEET NO. A-8	MODEL DUNKIRK	SET NO. DUNCO VERSION 04 DRAWN BY DATE: OPTION	DRAWING TITLE SECOND FLOOR PLAN	OPTION DESCRIPTION 34	REMARKS
-------------------------	-------------------------	--	---	---------------------------------	---------

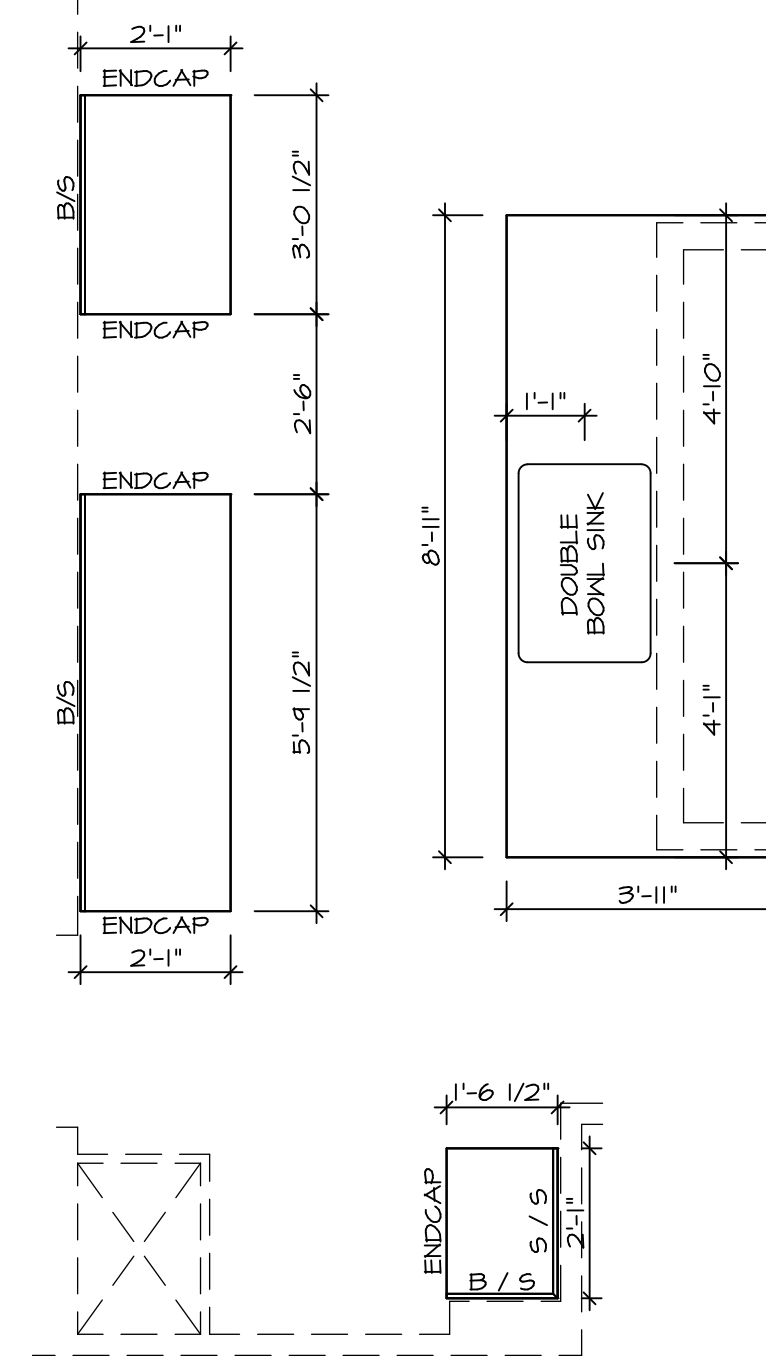
NVR Inc.
Architectural Services
Architects
5285 Westport Road, Suite 100
Frederick, MD 21703

NVR, Inc., owner, expressly reserves its copyright in these plans. These plans are not to be reproduced, changed, copied, or otherwise used in any way without the written consent of NVR, Inc.



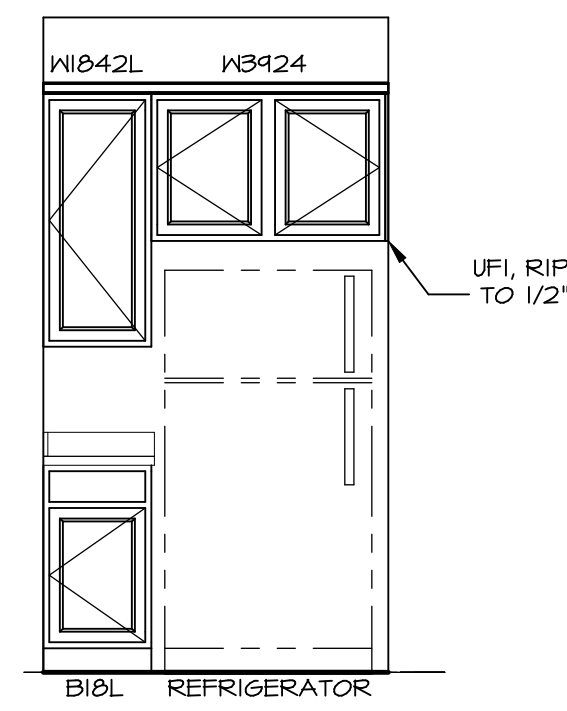
CABINET PLAN
/ KC - 3259

1
A-12 SCALE: 3/8" = 1'-0"



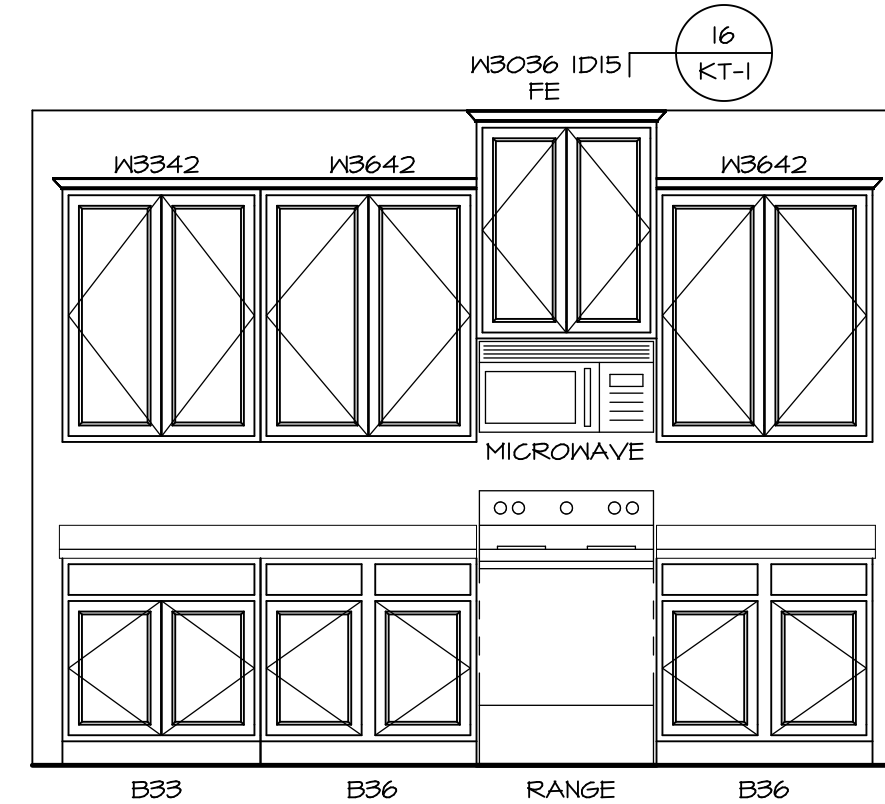
COUNTERTOP PLAN
/ KC - 3259

2
A-12 SCALE: 3/8" = 1'-0"



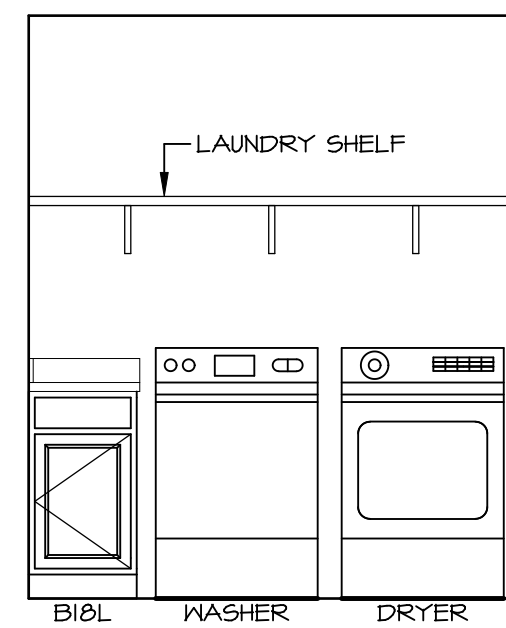
A ELEVATION "A"

SCALE: 3/8" = 1'-0"



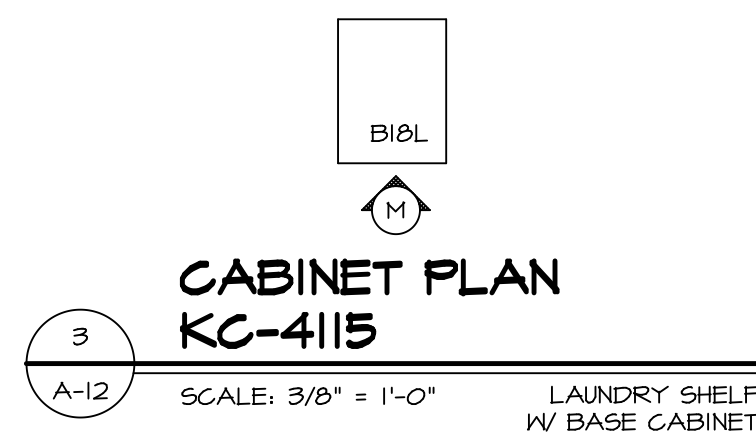
B ELEVATION "B"

SCALE: 3/8" = 1'-0"



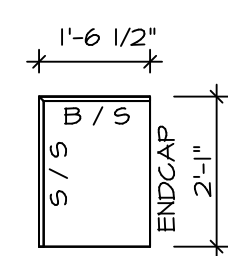
M LAUNDRY ELEVATION

SCALE: 3/8" = 1'-0"



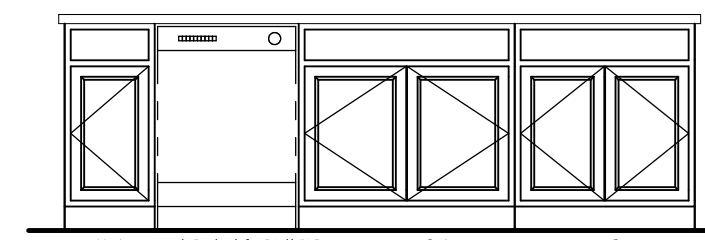
CABINET PLAN
KC-4115

3
A-12 SCALE: 3/8" = 1'-0"



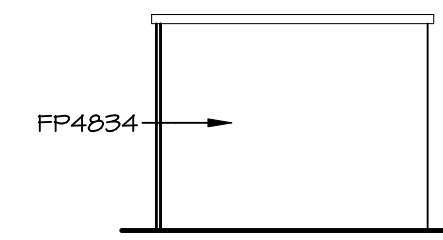
COUNTERTOP PLAN
KC-4115

4
A-12 SCALE: 3/8" = 1'-0"



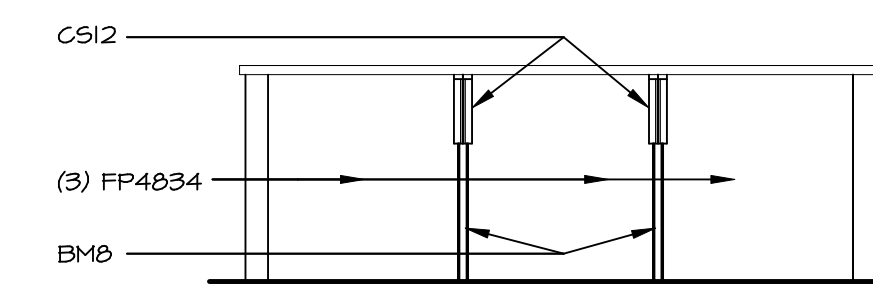
C ELEVATION "C"

SCALE: 3/8" = 1'-0"



D ELEVATION "D"

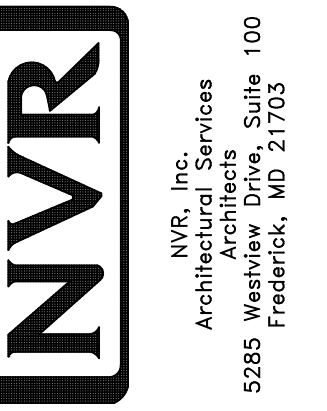
SCALE: 3/8" = 1'-0"



E ELEVATION "E"

SCALE: 3/8" = 1'-0"

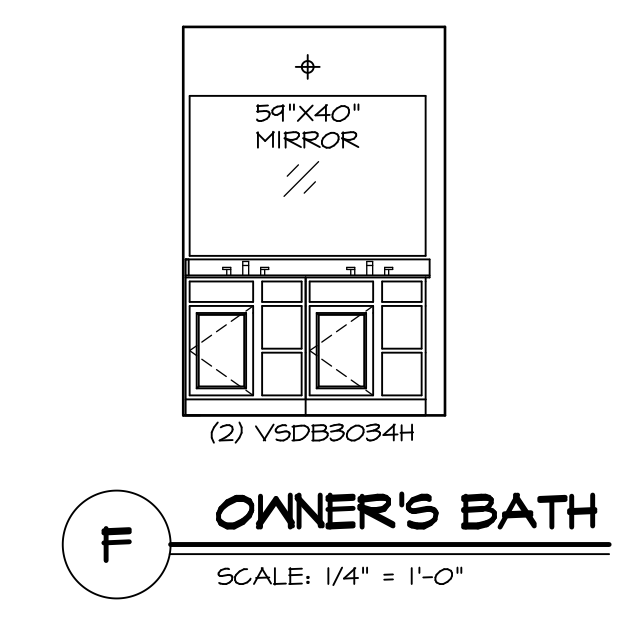
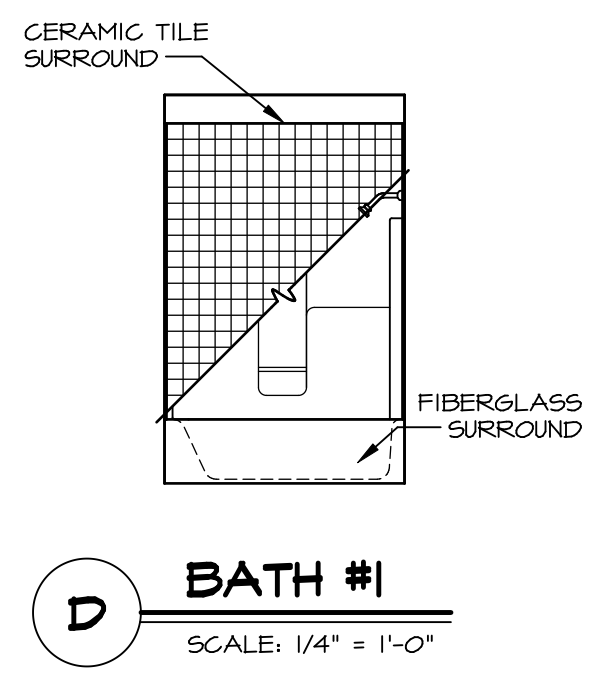
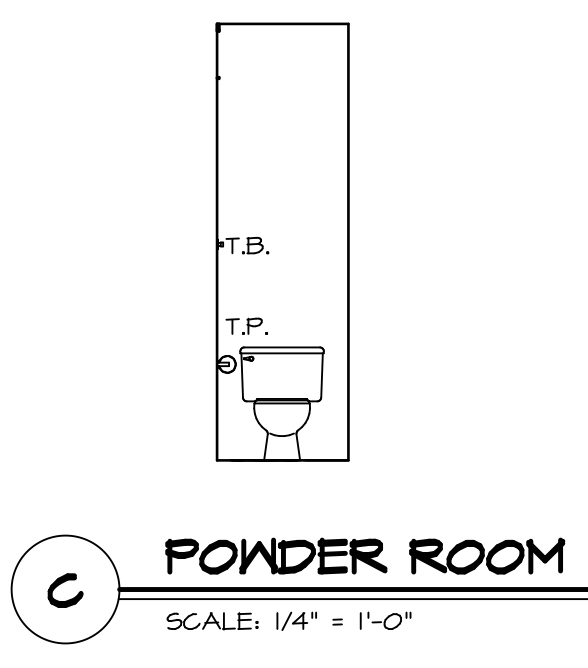
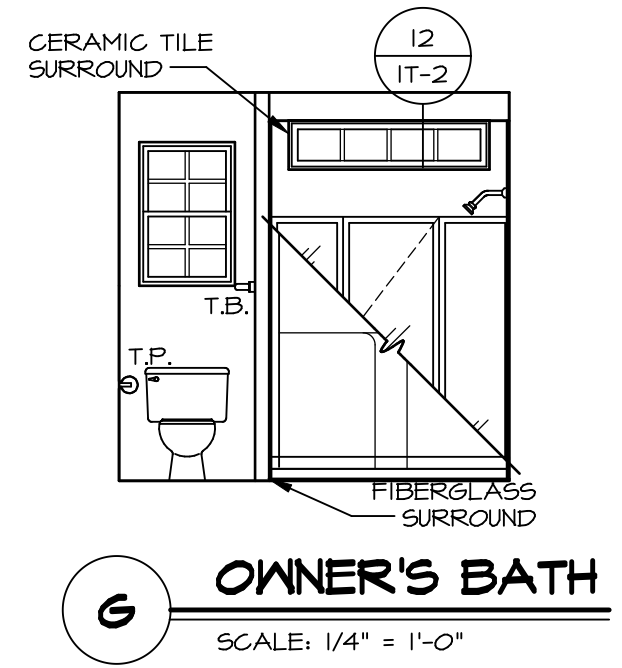
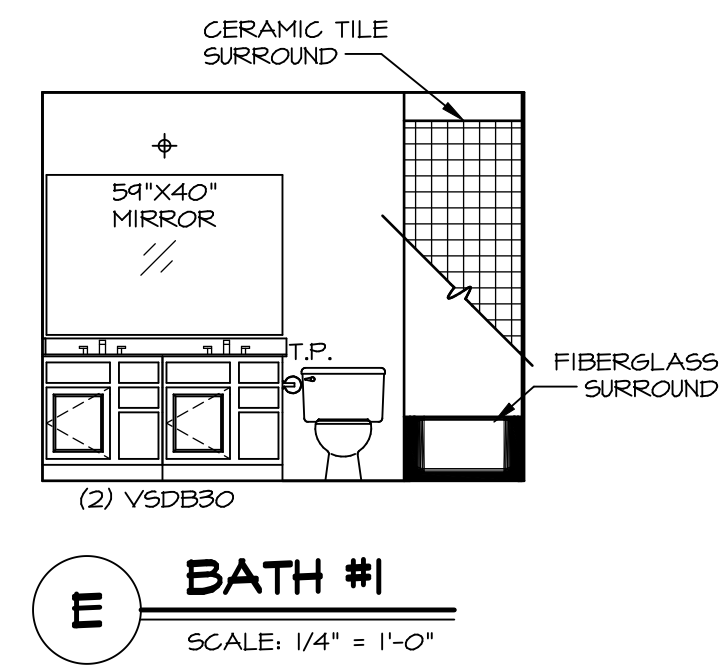
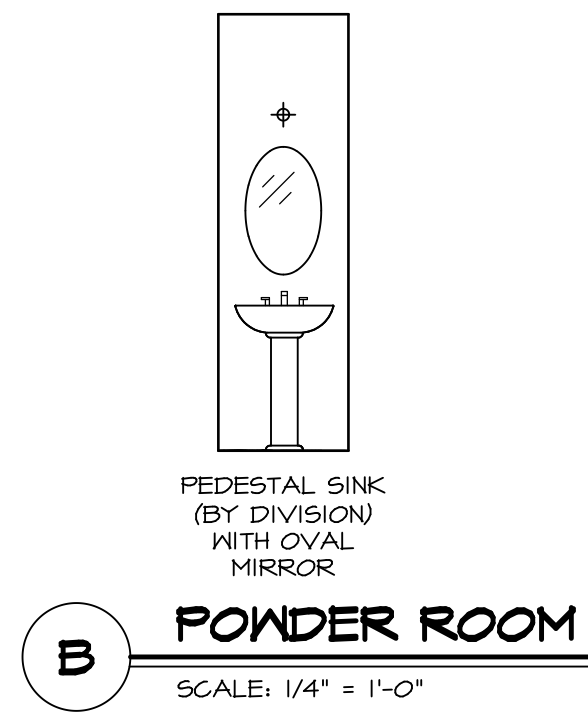
NVR, Inc., owner, expressly reserves its copyright in these plans. These plans are not to be reproduced, changed, copied in any way, or used for any other purpose without the written consent of NVR, Inc.



MODEL	DUNKIRK
DRAWING TITLE	A-12
OPTION DESCRIPTION	40
SET NO.	DUNCO 09
VERSION	01
DRAWN BY	
DATE:	
OPTION	

REMARKS

REV. NO. DATE

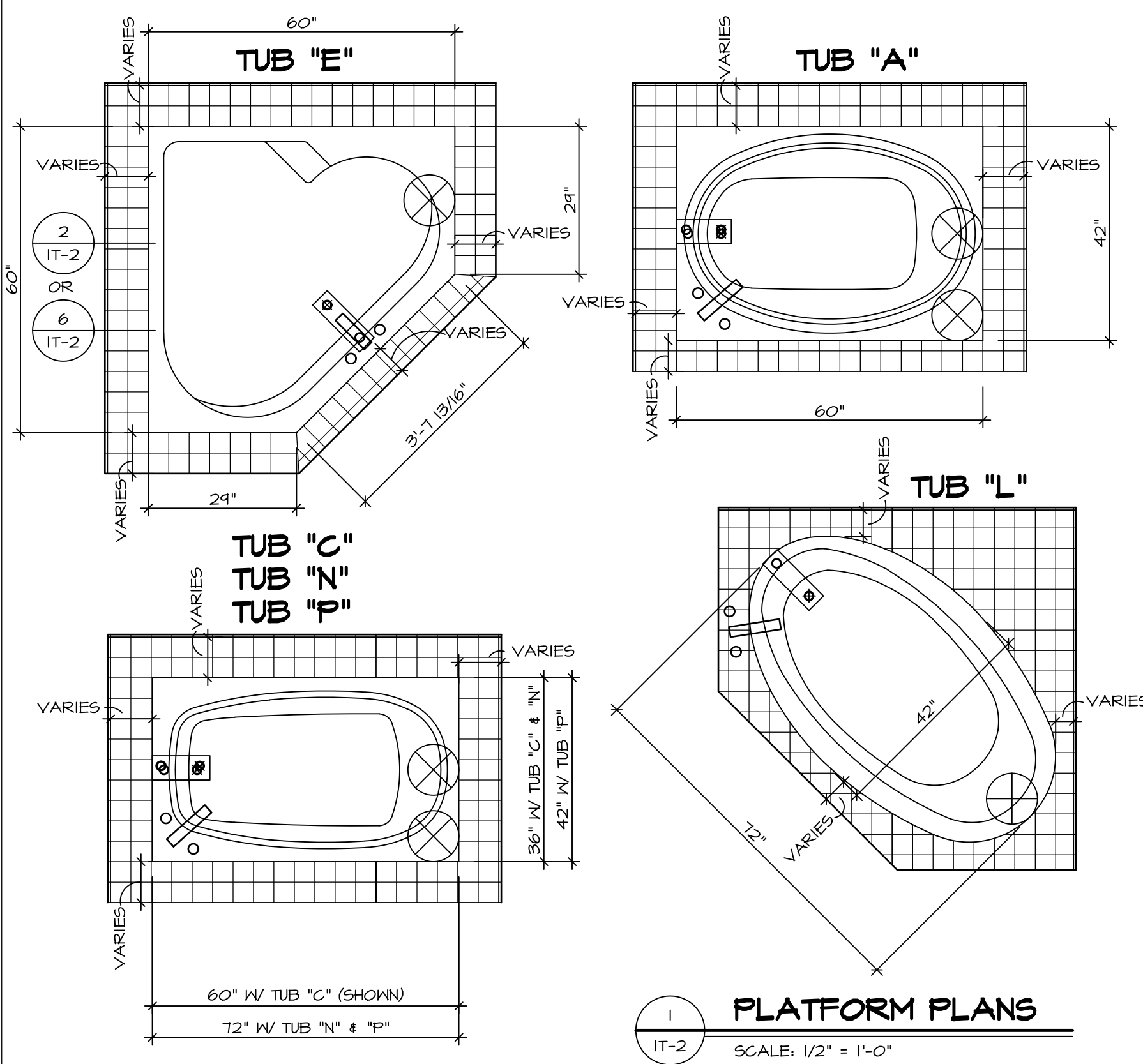


- NOTES:**
- TEMPERED GLASS SHOWER ENCLOSURE WITH SWING DOOR OR OPTIONAL SLIDING DOOR BY DIVISION
 - TUB ACCESS PANELS PROVIDED AS NEEDED, ALL MATERIALS BY DIVISION
 - REFER TO SHEET (1T-2) FOR TUB AND SHOWER DETAILS.
 - ALL V5DB24-42 DRAWERS TO BE SET ON RIGHT HAND.
 - BATH ELEVATIONS ARE SHOWN PER PLAN.

SHEET NO. A-13	MODEL DUNKIRK	DRAWING TITLE BATH ELEVATIONS	SET NO. DUN00	REV. NO. 1	DATE	REMARKS
			VERSION 01	DRAWN BY		
		OPTION DESCRIPTION	DATE:			
			OPTION			

NVR
NVR, Inc.
Architectural Services
Architects
5285 Westview, Suite 100
Frederick, MD 21703

NVR, Inc., owner, expressly reserves its copyright in these plans. These plans are not to be reproduced, changed, copied, or otherwise used in any way without the prior written consent of NVR, Inc.

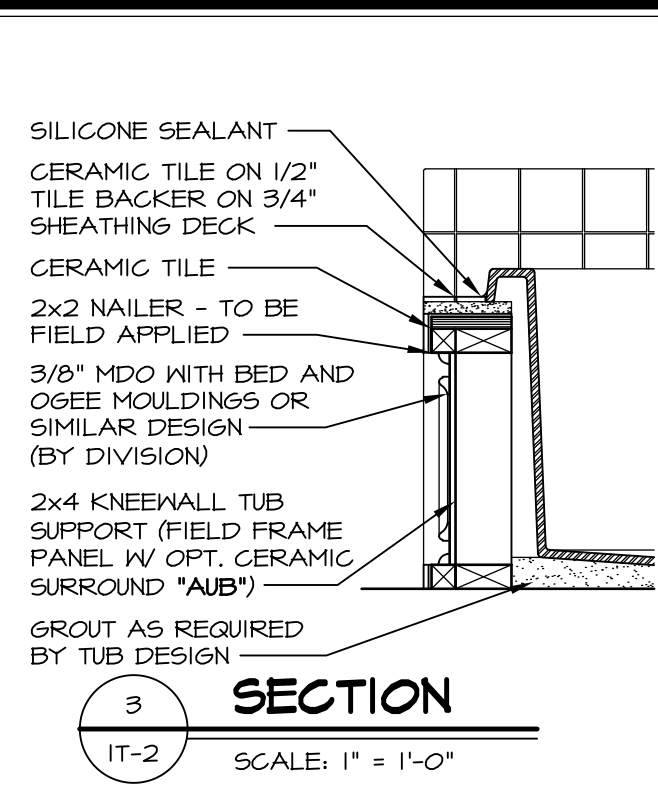


1 PLATFORM PLANS
SCALE: 1/2" = 1'-0"

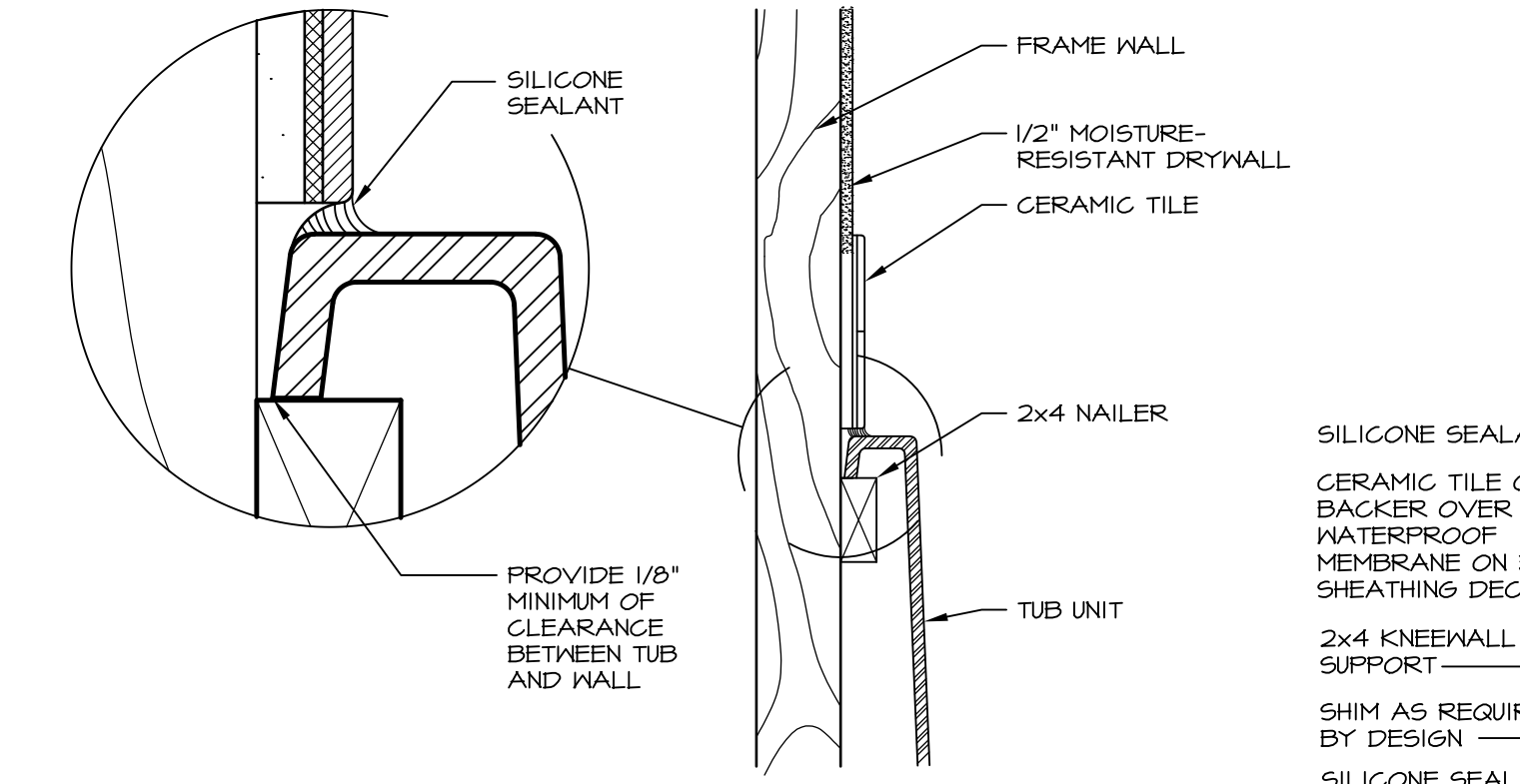
TUB	MANUF.	HEIGHT	WIDTH	LENGTH	TUB DECK PANEL HEIGHT
"A"	KOHLER/ STERLING	18 3/4"	42"	60"	17 1/8"
"C"	KOHLER/ STERLING	18 3/4"	36"	60"	17 1/8"
"E"	KOHLER/ STERLING	19 1/2"	60"	60"	17 7/8"
"L"	KOHLER/ STERLING	18 1/2"	42"	72"	16 7/8"
"N"	KOHLER/ STERLING	18 3/4"	36"	72"	17 1/8"
"P"	KOHLER/ STERLING	18 3/4"	42"	72"	17 1/8"



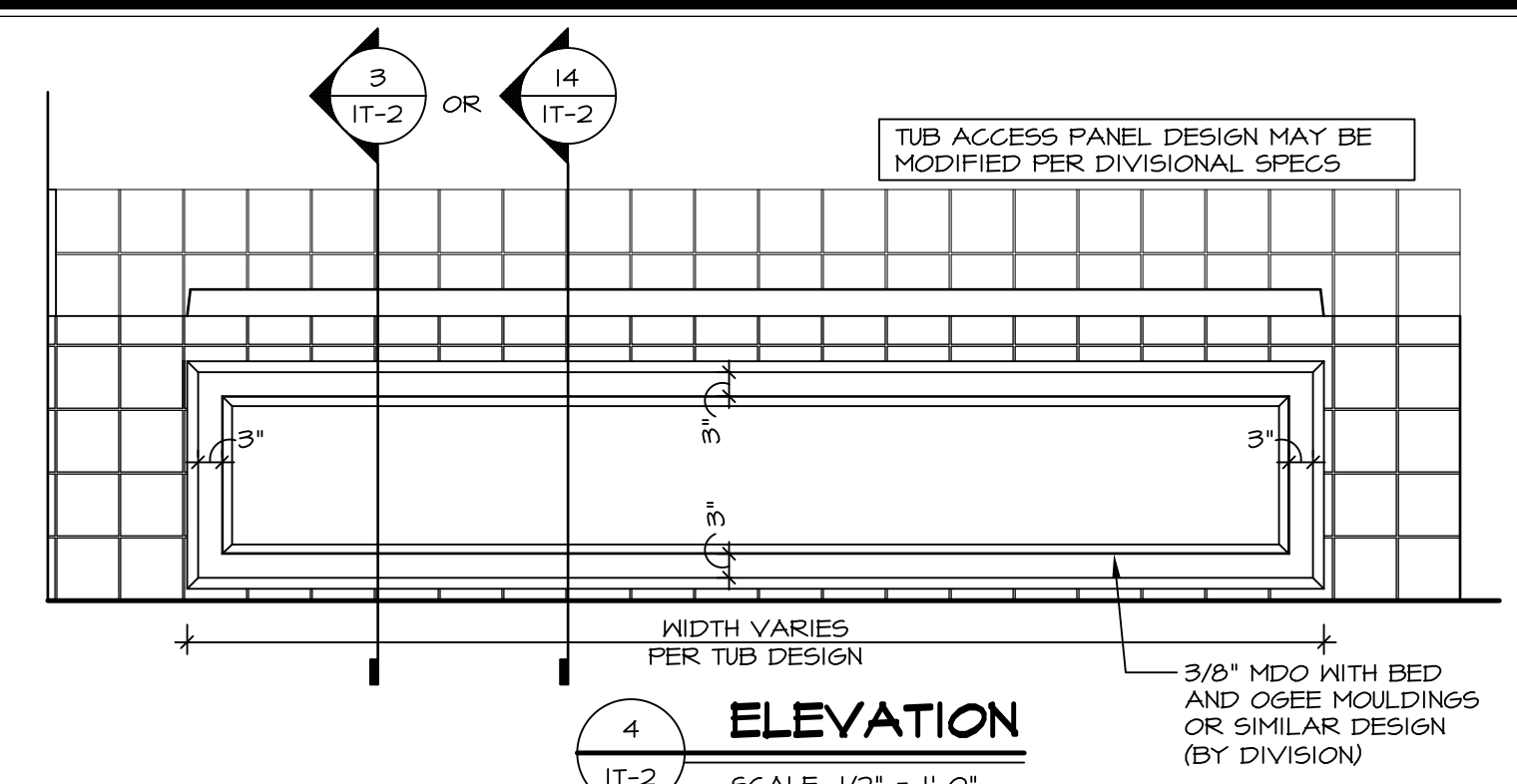
2 SECTION OF TUB ON PLATFORM CONDITION
SCALE: 1" = 1'-0"



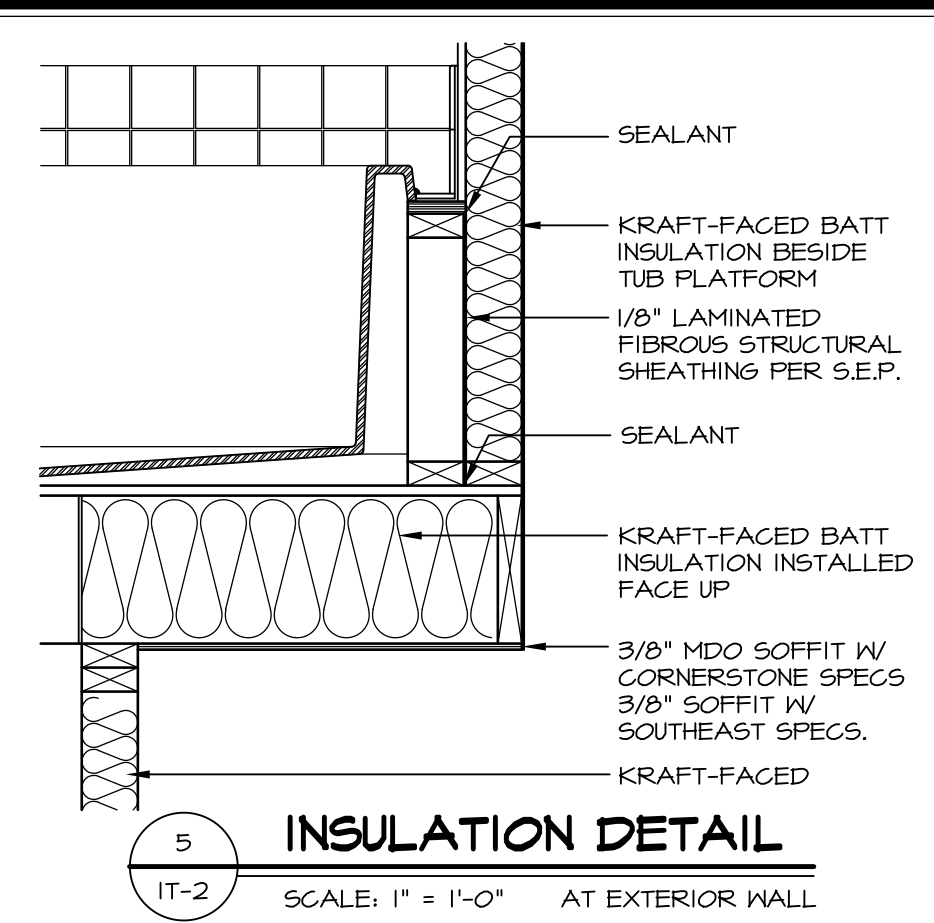
3 SECTION
SCALE: 1" = 1'-0"



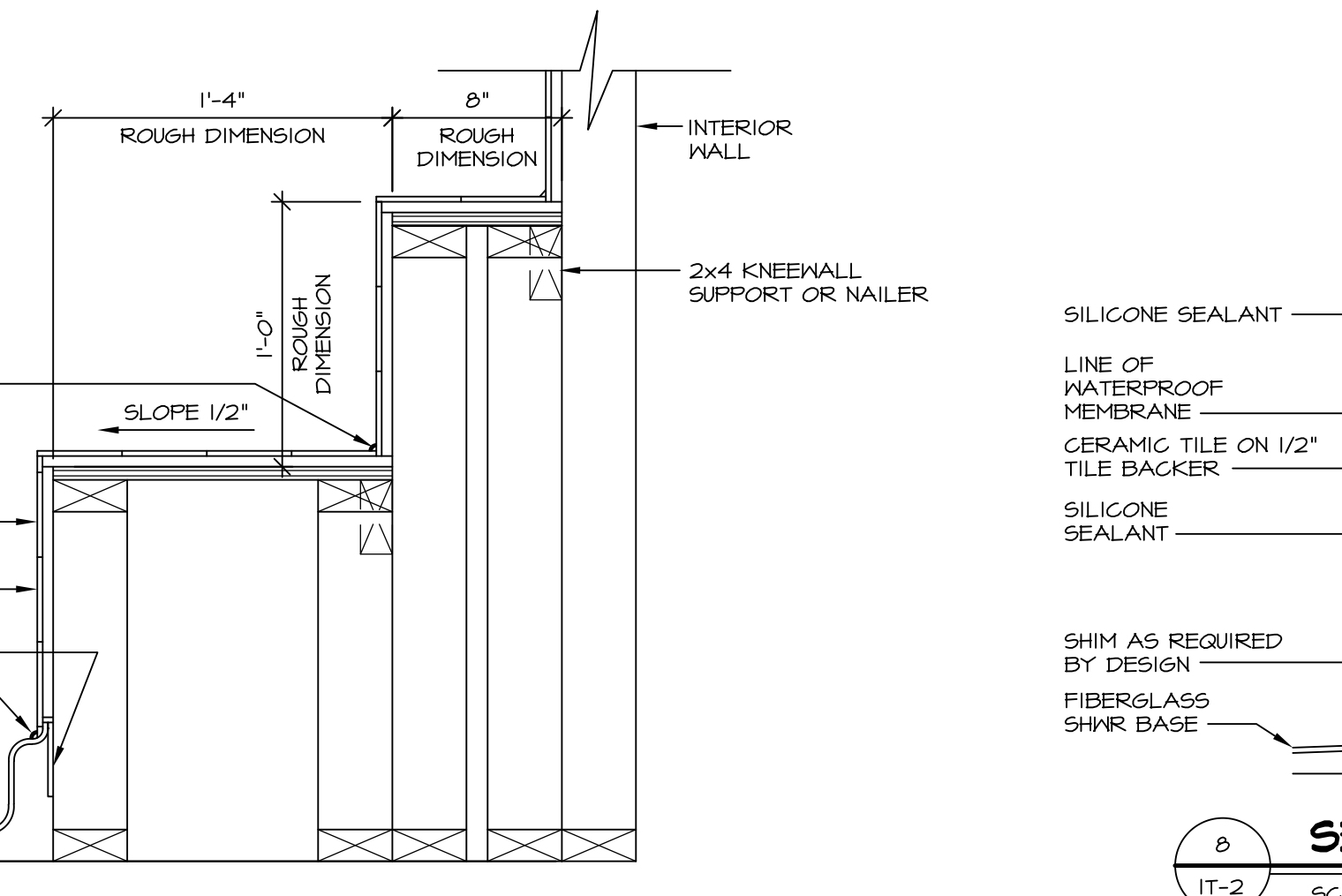
6 SECTION OF TUB TO WALL CONDITION
SCALE: 1 1/2" = 1'-0"



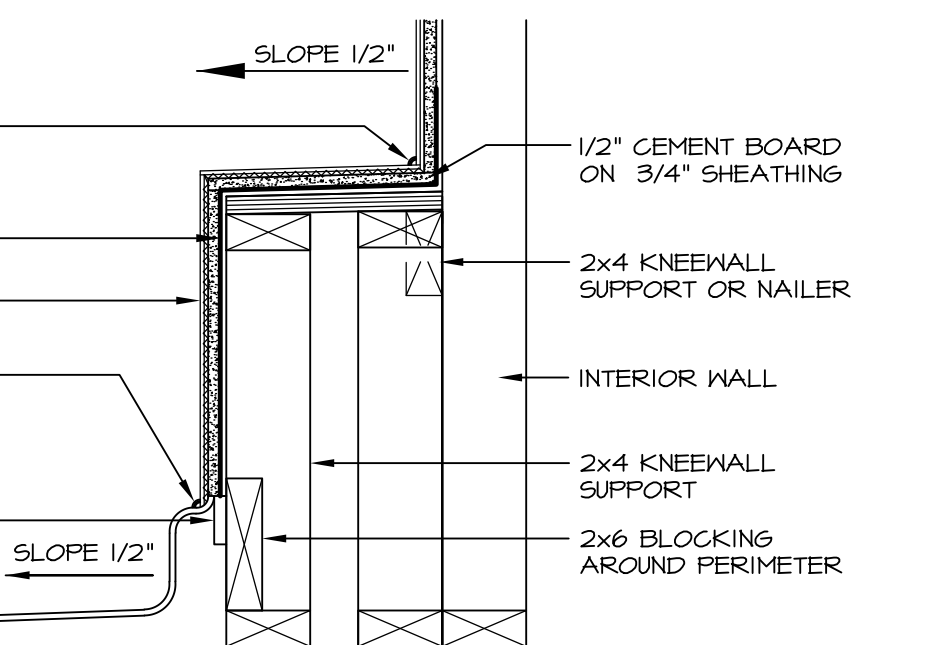
4 ELEVATION
SCALE: 1/2" = 1'-0"



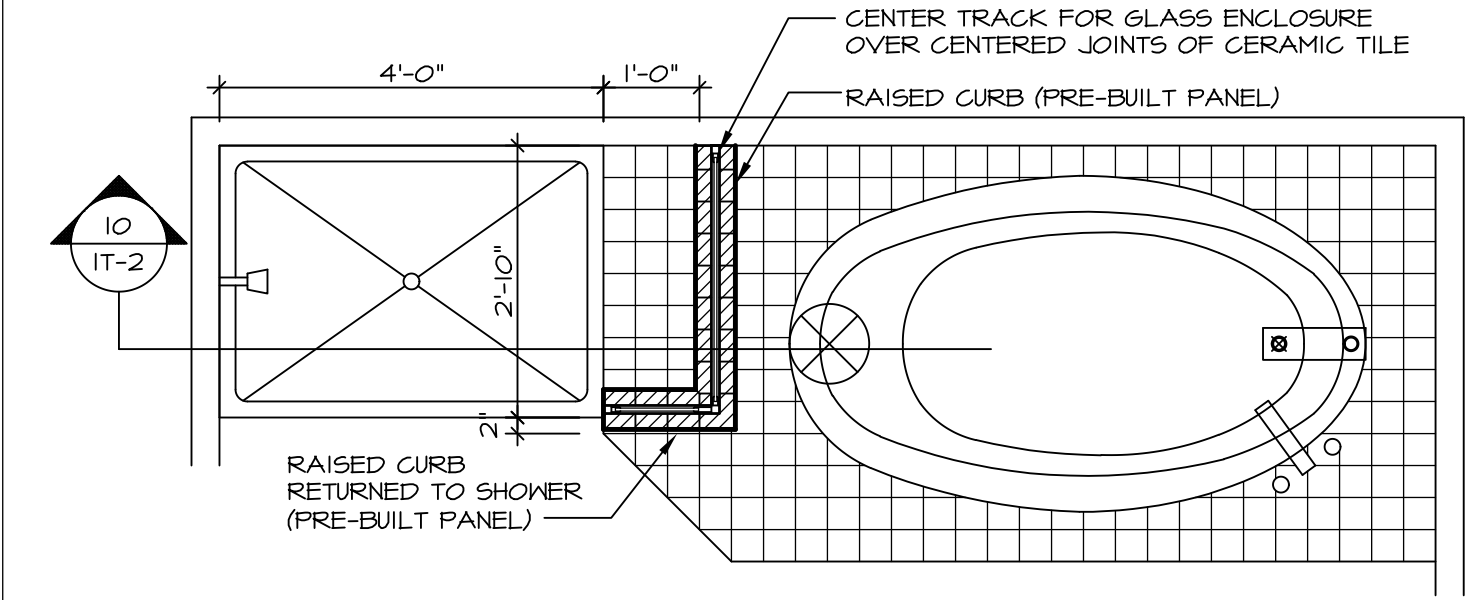
5 INSULATION DETAIL
SCALE: 1" = 1'-0" AT EXTERIOR WALL



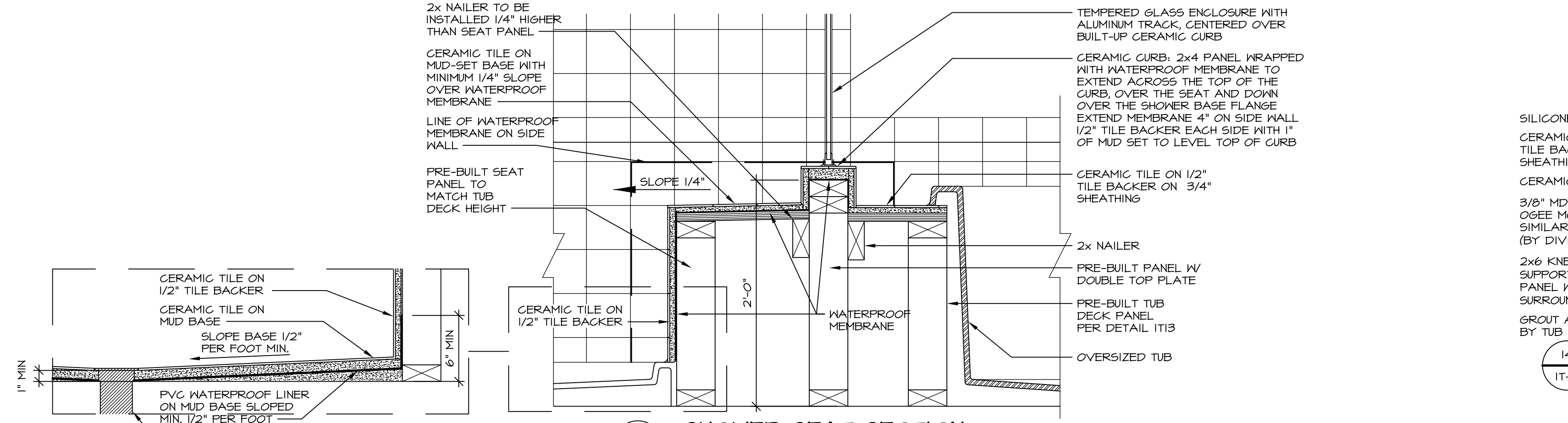
7 SECTION OF SHOWER SEAT AND SHELF
SCALE: 1 1/2" = 1'-0"



8 SECTION OF SHOWER SEAT
SCALE: 1-1/2" = 1'-0" FIBERGLASS SHOWER BASE



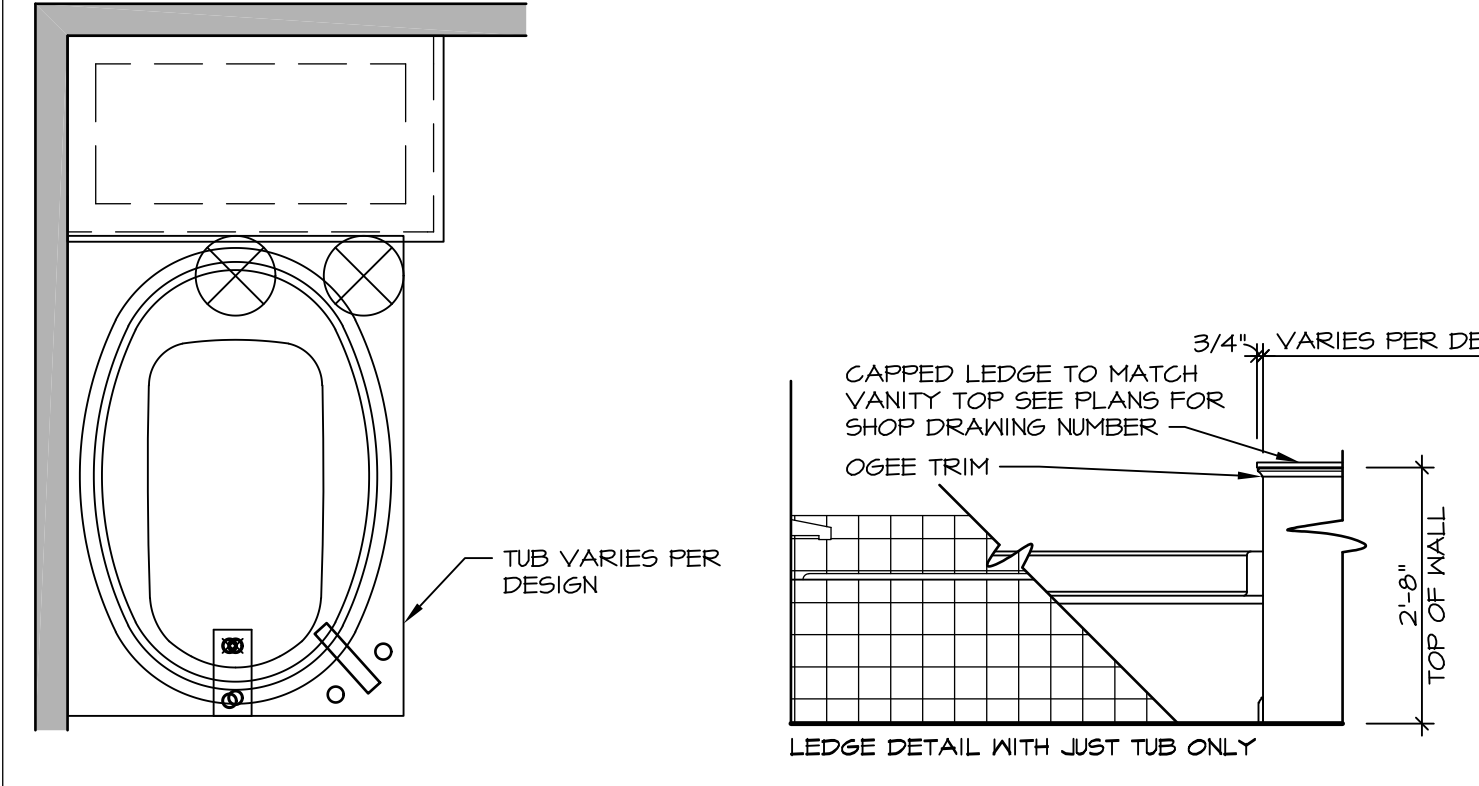
9 SHOWER SEAT PLAN / DETAIL
SCALE: 1/2" = 1'-0"



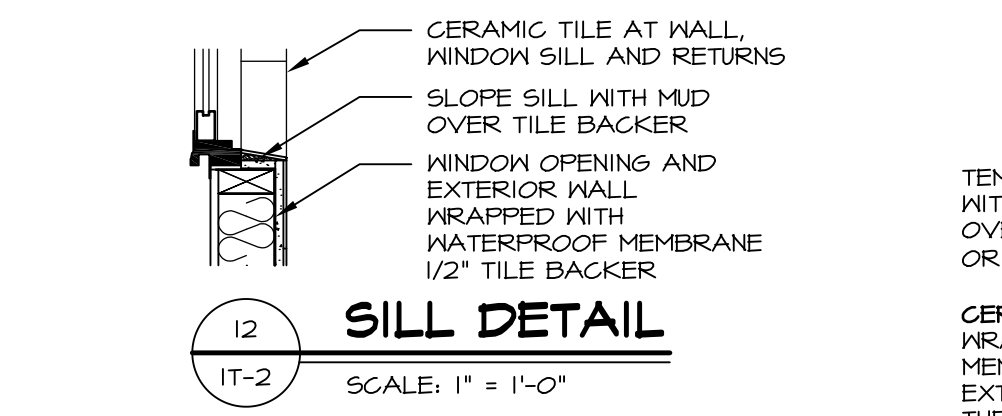
10 SHOWER SEAT SECTION
SCALE: 1-1/2" = 1'-0"



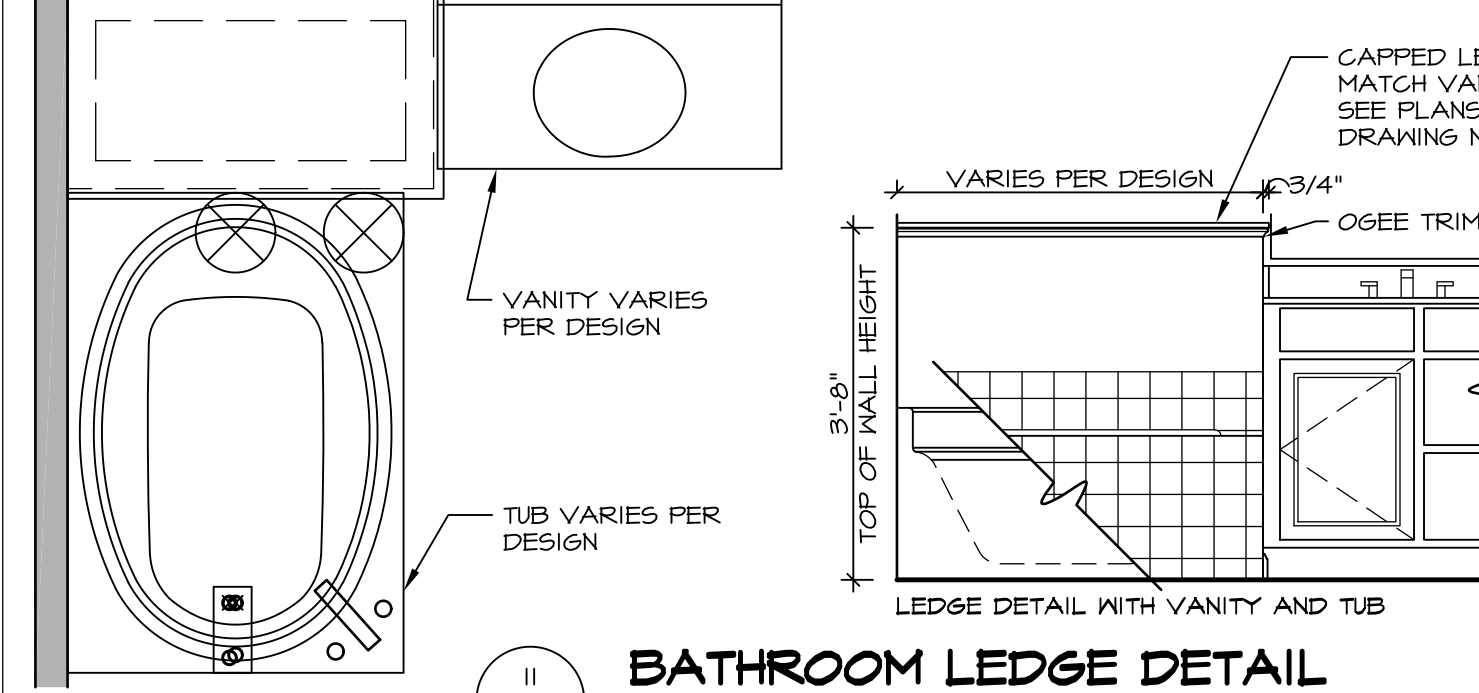
11 ALTERNATE SHOWER PAN DETAIL



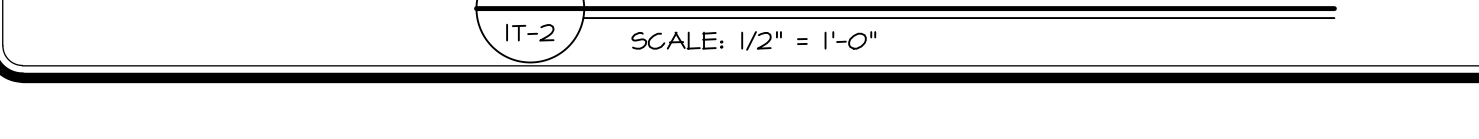
12 BATHROOM LEDGE DETAIL
SCALE: 1/2" = 1'-0"



13 SILL DETAIL
SCALE: 1" = 1'-0"



14 BATHROOM LEDGE DETAIL
SCALE: 1/2" = 1'-0"

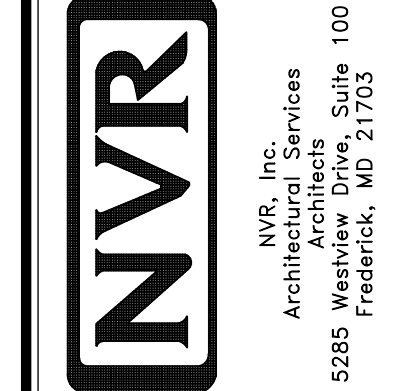


15 SHOWER SEAT SECTION
SCALE: 1 1/2" = 1'-0" MUD-SET SHOWER

REVISIONS

REV. NO.	DATE	DESCRIPTION
1	5/1/17	EBP - REVISED DETAIL 1 AND 11 TO REMOVE TUB ACCESS PANEL REF. (095 #15 541/4)
2	9/2/17	EBP - REVISED T-FLY NOTE TO CALL OUT LFS
3	9/2/17	EBP - REVISED NOTE ON DETAIL #1 - REVISED ORDER OF MATERIAL PARA#493/4

NVR, Inc., owner, expressly reserves its common law copyright and other property rights in these plans. These plans are not to be reproduced, stored in a retrieval system, or transmitted in any form or by any means, electronic, mechanical, photocopying, recording, or by any information storage and retrieval system, without the prior written consent of NVR, Inc.



SET NO. NVR

MODEL STANDARD DETAILS

DRAWING TITLE INTERIOR TRIM DETAILS

BATH DETAILS

OPTION DESCRIPTION

SHEET NO. IT-2

DATE: _____

OPTION: _____

SCALE: 1/2" = 1'-0"