

SHEET NO. A-1	MODEL BATEMAN	SET NO. BAT00	VERSION 03	DATE:	OPTION FBA
		DRAWING TITLE ELEVATIONS	DRAWN BY:	DATE:	OPTION FBA
5	FULL BASEMENT FOUNDATION	OPTION DESCRIPTION			
		FULL BASEMENT FOUNDATION			
REMARKS					
REV. NO. DATE					
<p>NVR, Inc., owner, expressly reserves its common law copyright in these architectural plans. These plans are not to be reproduced, copied, or otherwise used in any form without the written consent of NVR, Inc.</p>					
<p>NVR NVR, Inc. Architectural Services 5285 West Lakeshore Drive Frederick, MD 21703</p>					
<p>C:\NVR\Solves\BATEMAN_BAT00_03\03-16-16-K468\91344\Sheets\1-1 ELEV.LS (FBA).dwg 05/13/18 - 4:37 pm</p>					

FLOOR PLAN NOTES

1. ALL HEADERS ARE (2) 2x6 W/ 2x4 WALLS OR (3) 2x6 W/ 2x6 WALLS, UNLESS OTHERWISE NOTED.
2. ALL HEADERS TO HAVE (1) 2x4 OR 2x6 JACK EACH END, UNLESS OTHERWISE NOTED.
3. ALL EXTERIOR WALLS TO BE 4" AND ALL INTERIOR WALLS TO BE 3 1/2", UNLESS OTHERWISE NOTED.
4. HATCHED AREAS INDICATE DROPPED CEILINGS. ALL DROPPED CEILINGS ARE 12" UNLESS OTHERWISE NOTED.
5. SEE "BRACED WALL PANEL DETAIL SHEET" FOR SPECIAL WALL FRAMING LOCATIONS AND HEADER SIZES, IF APPLICABLE.
6. SEE STANDARD DETAIL CATEGORY "IT" SHEET(S) FOR INTERIOR TRIM DETAILS.
7. SEE ARCHITECTURAL DETAIL SHEET "AD" FOR HOUSE SPECIFIC INTERIOR TRIM OPTION TABLE.
8. ALL WINDOWS HAVE T-O 1/2" HEADER HEIGHT UNLESS OTHERWISE NOTED.

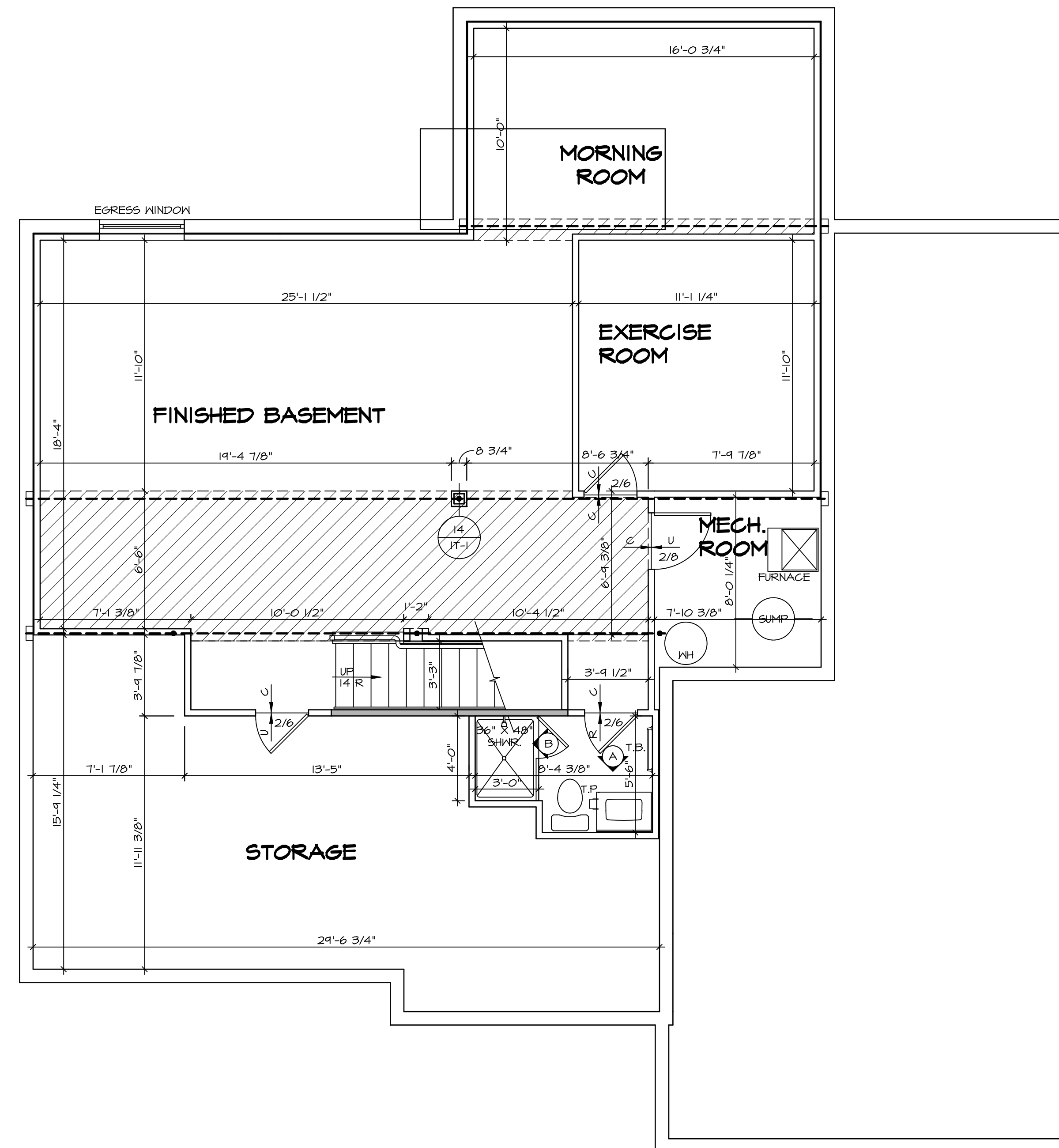
GYPSUM NOTES

AT GARAGE:
 GYPSUM BOARD AT COMMON WALLS, CEILINGS, BEAM WRAPS AND SUPPORTS PER STANDARD DETAIL FA-1(b) FIRE ASSEMBLIES OR AS REQUIRED BY LOCAL CODE.

AT STAIRS:
 1/2" GYPSUM BOARD AT UNDERSIDE OF STAIRS AND WALLS IN CLOSET

LEGEND

- BEARING WALL
 - NON BEARING WALL
 - INDICATES BEARING FROM POINT-LOAD ABOVE
 - JACKS
 - BEAM/HEADER
 - PAD FOOTING
 - STEEL COLUMN
 - PORTAL FRAME
 - JOIST/TRUSS
 - LVL
 - ENGINEERING PAGE NUMBER
- SEE FC DETAILS FOR FRAMING CONNECTORS

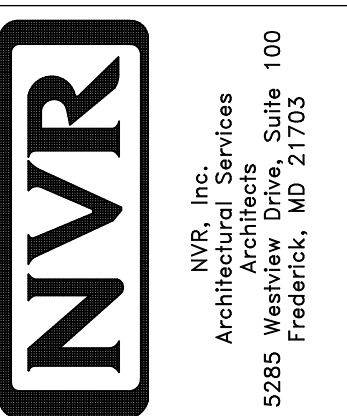


BASEMENT FLOOR PLAN
 SCALE: 1/4" = 1'-0"

REMARKS

REV. NO. DATE

NVR, Inc., owner, expressly reserves its copyright in these plans. These plans are not to be reproduced, changed, copied, or otherwise used in any way without the written consent of NVR, Inc.

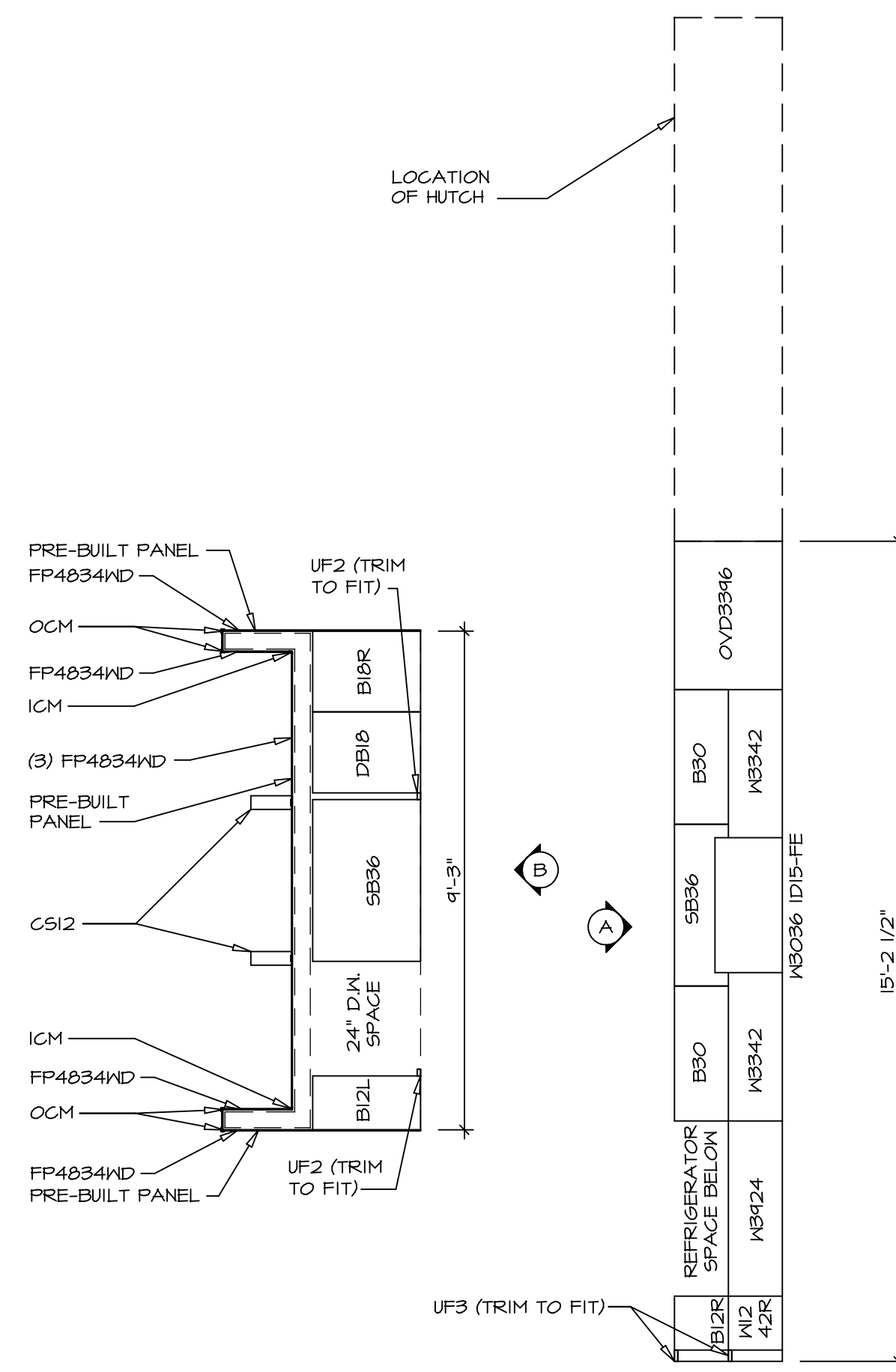


SET NO. BATOOC
 VERSION 03
 DRAWN BY
 DATE:
 OPTION

MODEL
BATEMAN
 DRAWING TITLE
BASEMENT FLOOR PLAN

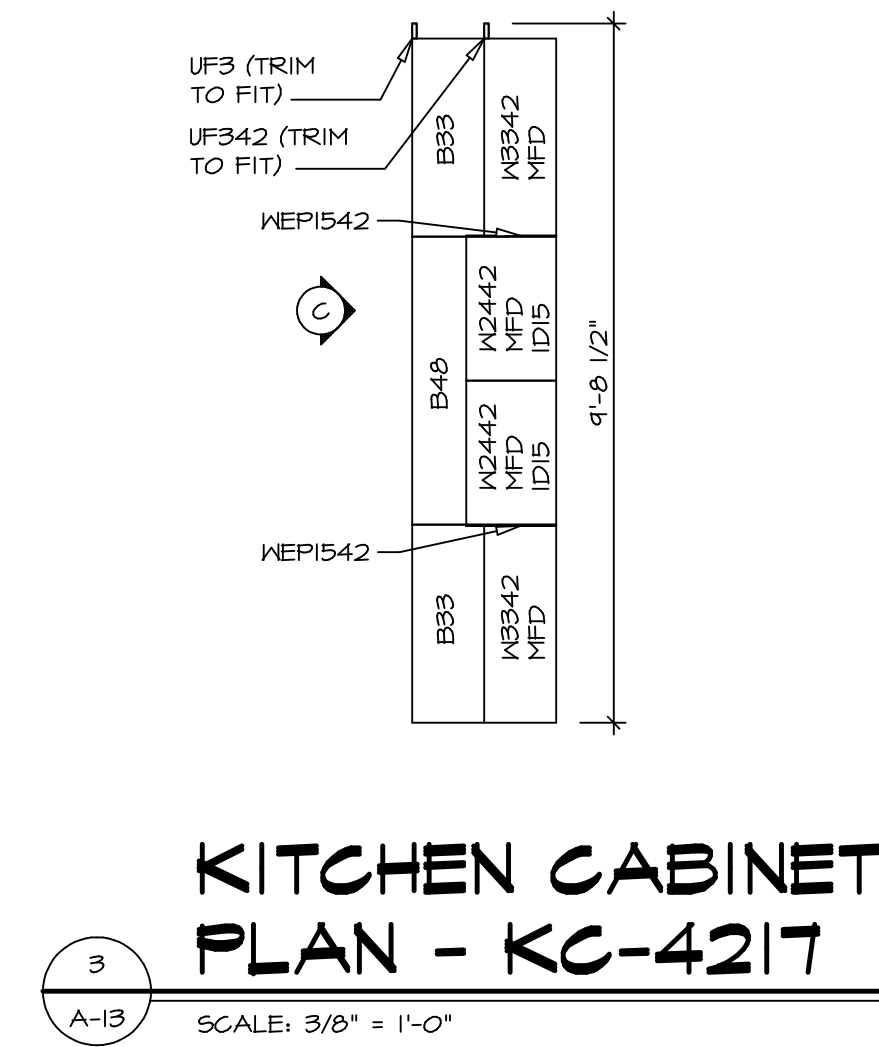
OPTION DESCRIPTION
A-6

SHEET NO.
A-6
 46



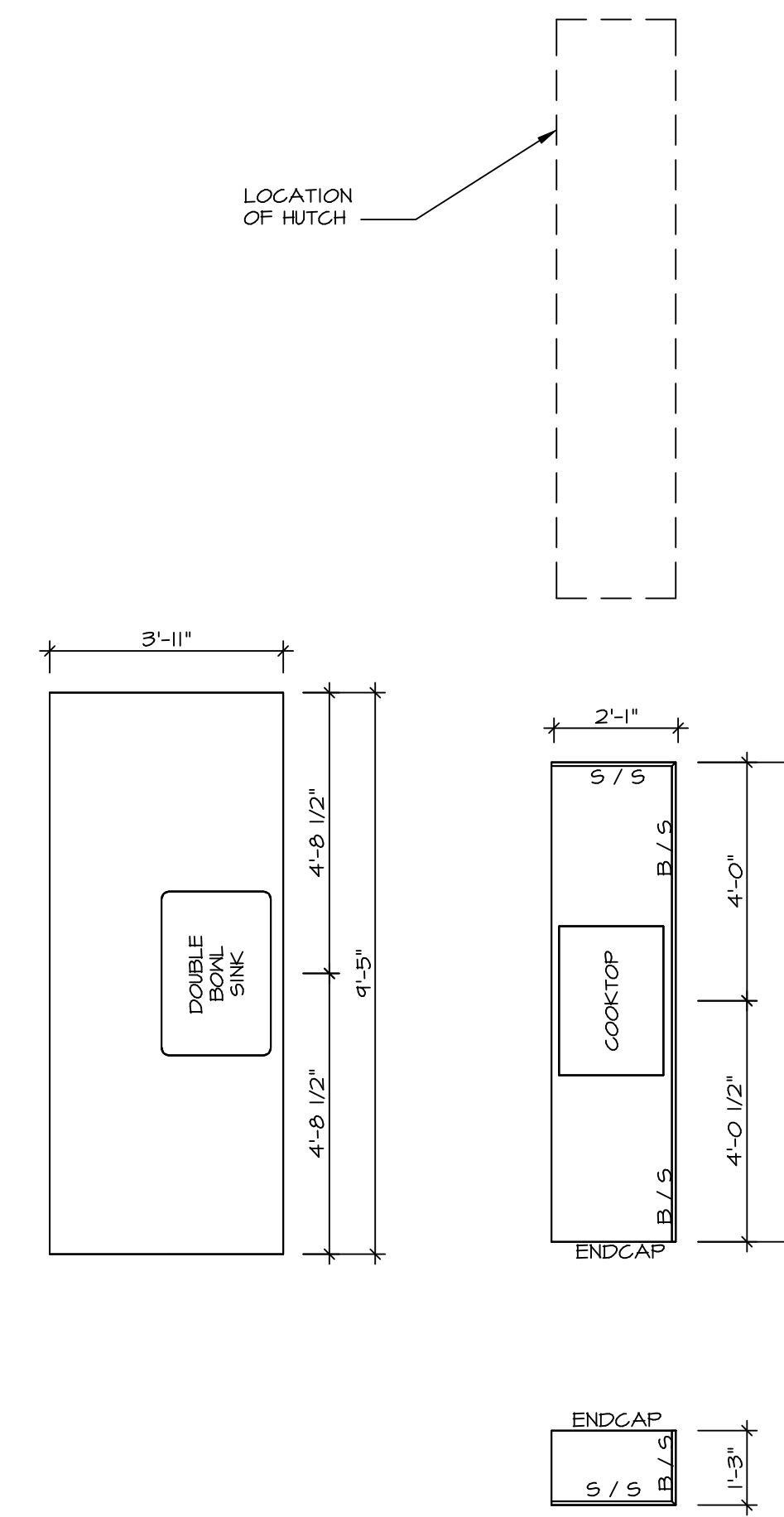
1
A-13
SCALE: 3/8" = 1'-0"

KITCHEN CABINET PLAN - KC-3148



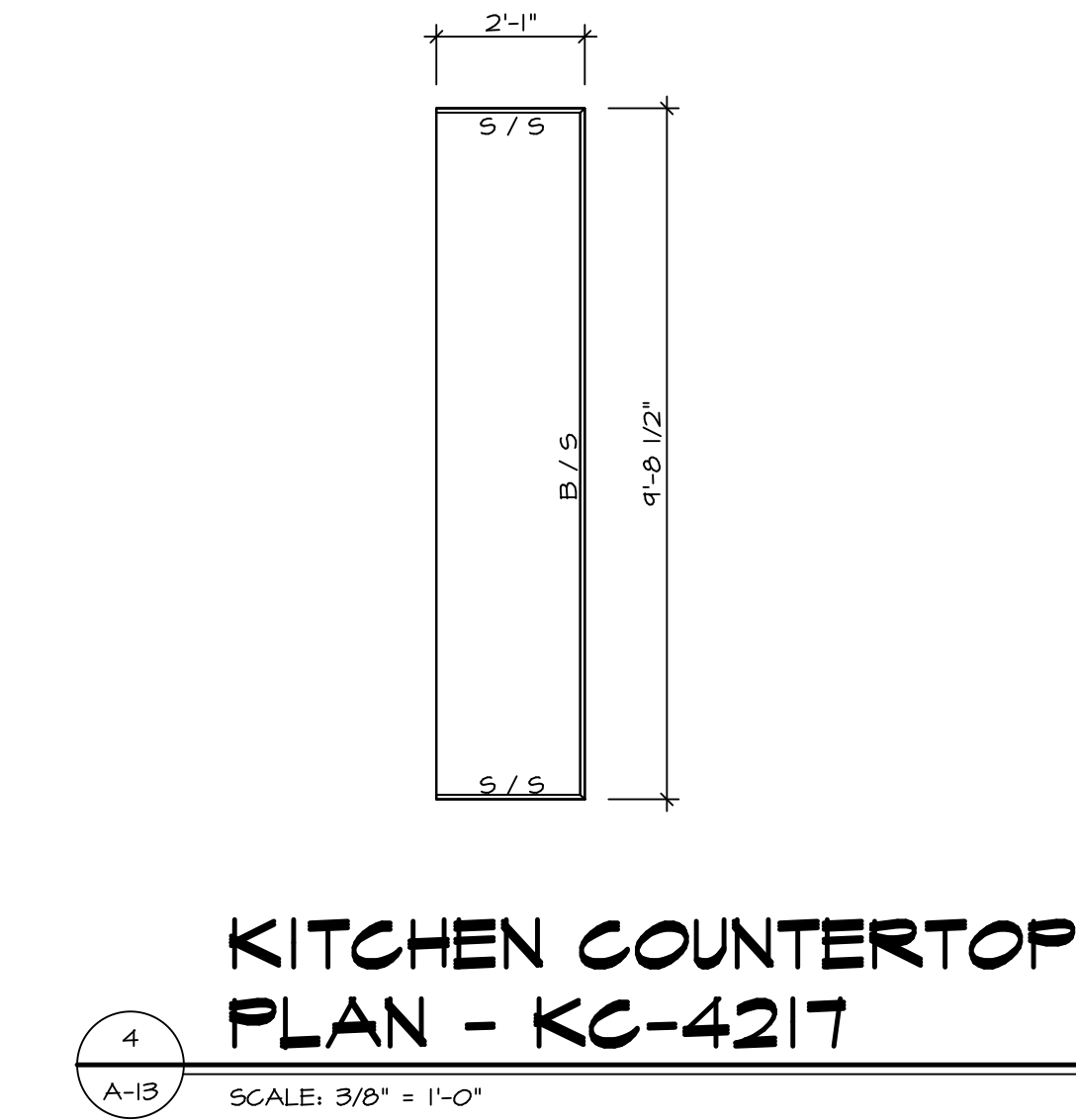
3
A-13
SCALE: 3/8" = 1'-0"

KITCHEN CABINET PLAN - KC-4217



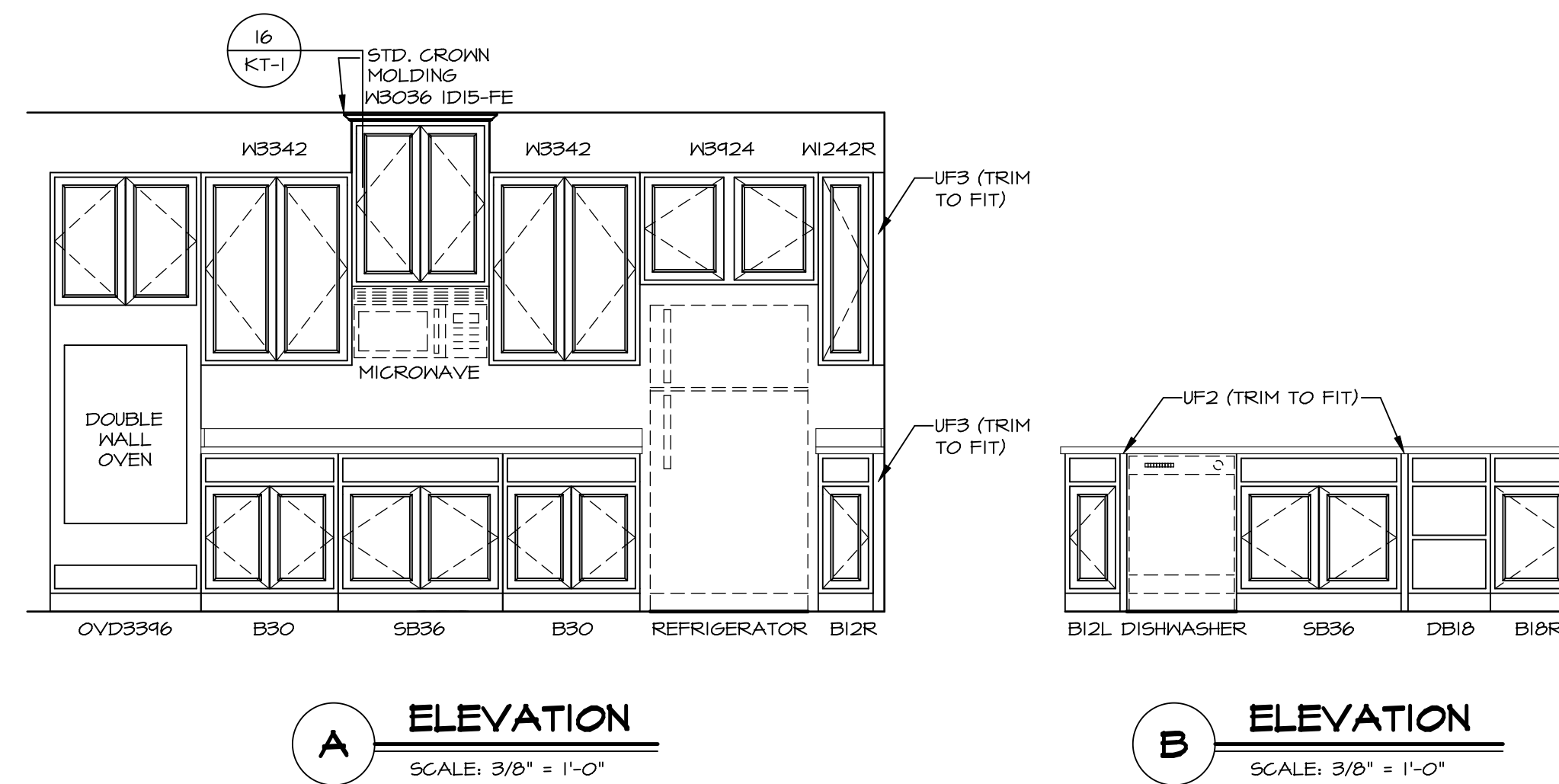
2
A-13
SCALE: 3/8" = 1'-0"

KITCHEN COUNTERTOP PLAN - KC-3148

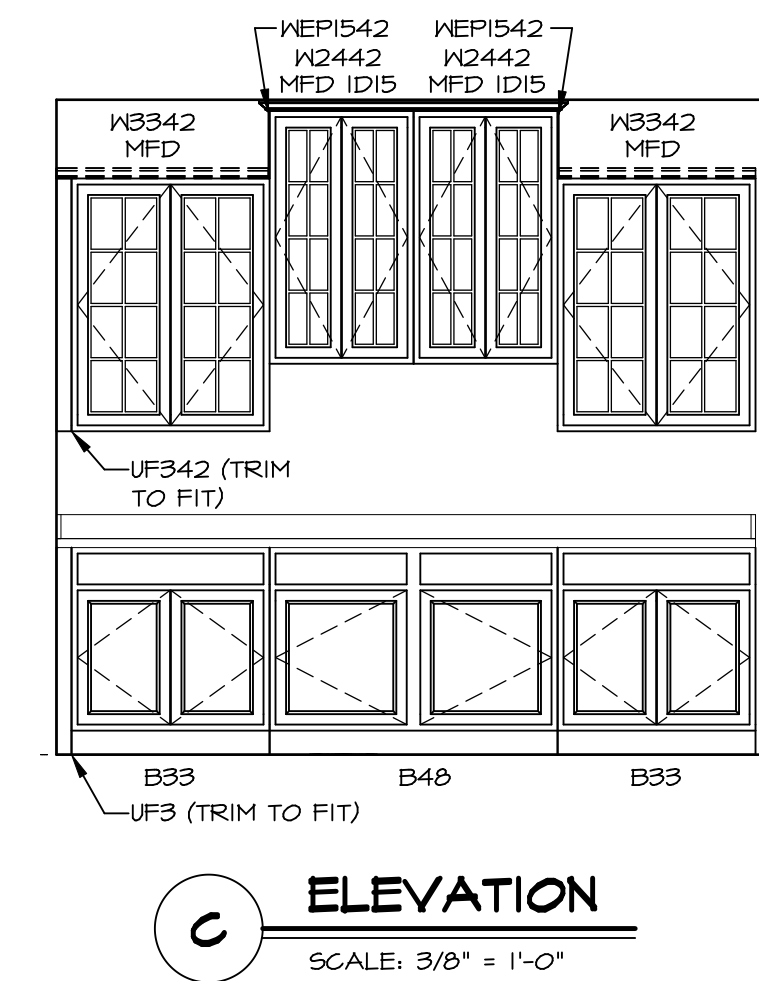


4
A-13
SCALE: 3/8" = 1'-0"

KITCHEN COUNTERTOP PLAN - KC-4217



B
ELEVATION
SCALE: 3/8" = 1'-0"



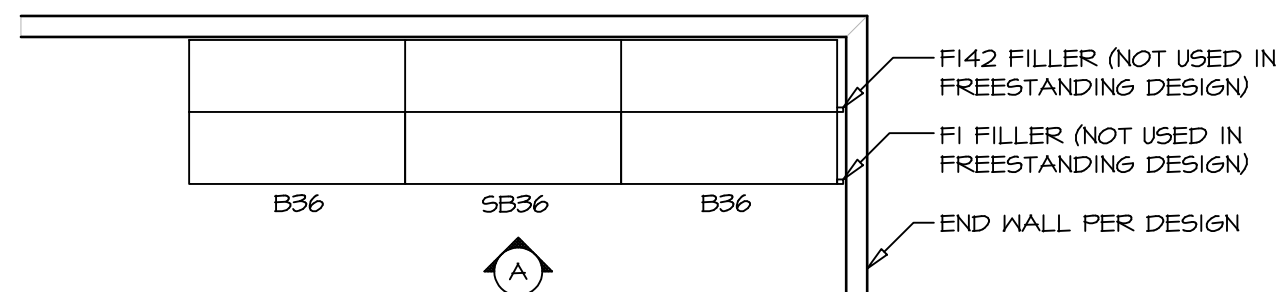
C
ELEVATION
SCALE: 3/8" = 1'-0"

SHEET NO. A-13	MODEL BATEMAN	SET NO. BAT00	REVISIONS	REMARKS
	DRAWING TITLE KITCHEN PLANS	VERSION 03	DATE:	
OPTION DESCRIPTION	OPTION	DATE:		
65				

NVR
NVR, Inc.
Architectural Services
Architects
5285 Westover Lane, Suite 100
Frederick, MD 21703

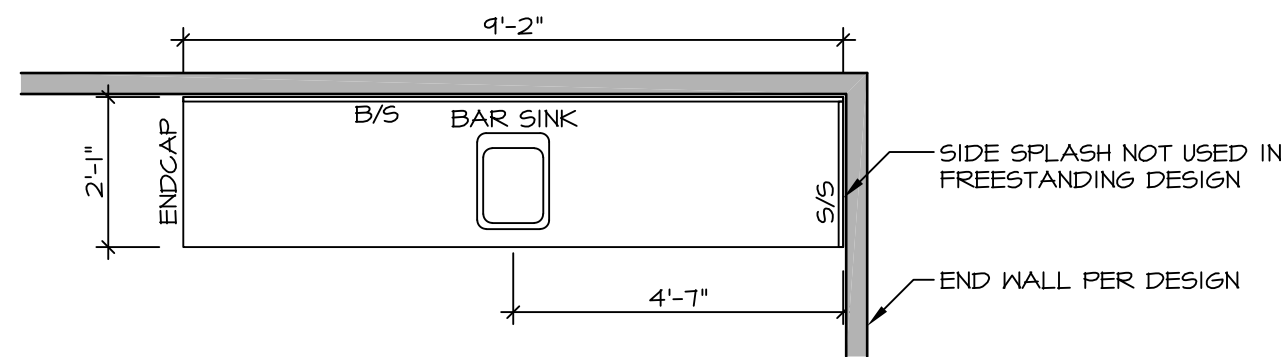
NVR, Inc., owner, expressly reserves its copyright in these plans. These plans are not to be reproduced, changed, copied, or otherwise used without the written consent of NVR, Inc.

NOTE:
REVIEW HOUSE SPECIFIC
PLANS FOR LOCATION
AND HANDING



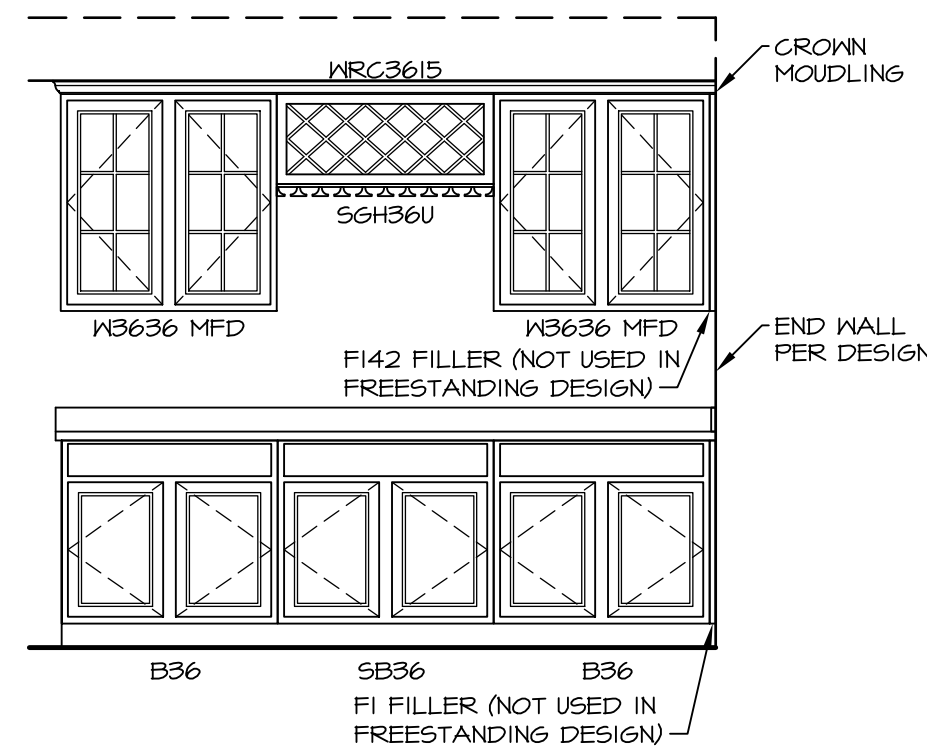
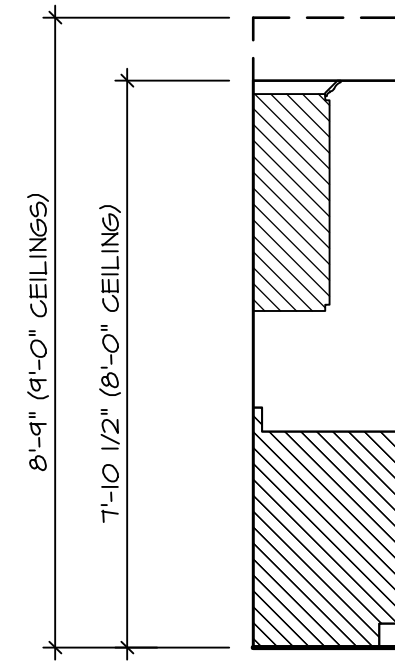
**KITCHEN CABINET
PLAN KC - 1900**

2
IT-3b SCALE: 3/8" = 1'-0"



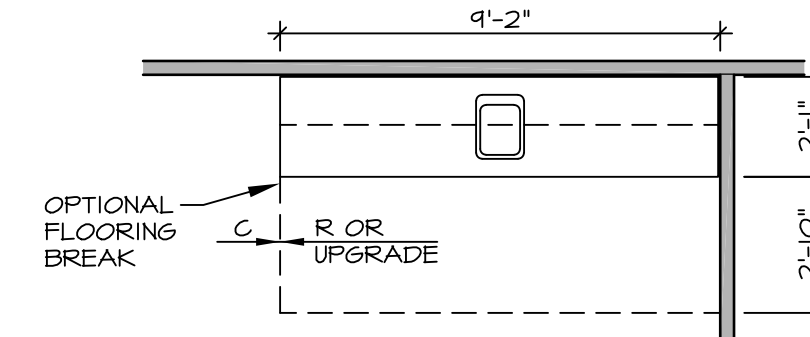
**KITCHEN COUNTERTOP
PLAN KT - 1900**

6
IT-3b SCALE: 3/8" = 1'-0"



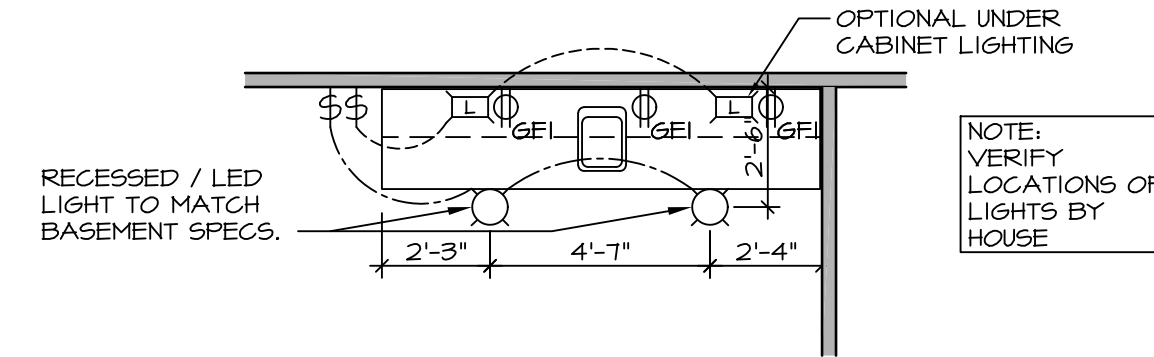
3 ELEVATION "A"

IT-3b SCALE: 3/8" = 1'-0"



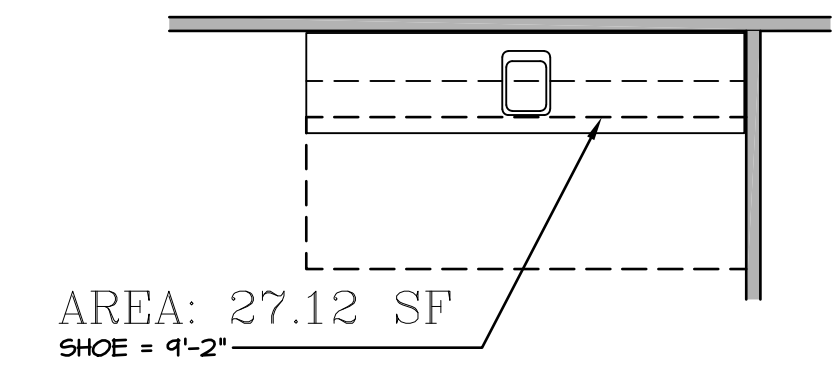
4 FLOOR PLAN

IT-3b SCALE: 1/4" = 1'-0"



7 FLOOR PLAN ELECTRICAL LAYOUT

IT-3b SCALE: 1/4" = 1'-0"



AREA: 27.12 SF
SHOE = 4'-2"

5 FLOORING PLAN

IT-3b SCALE: 1/4" = 1'-0"

1 WET BAR DETAILS

IT-3b SCALE: VARIES * SHOWN AS END WALL DESIGN

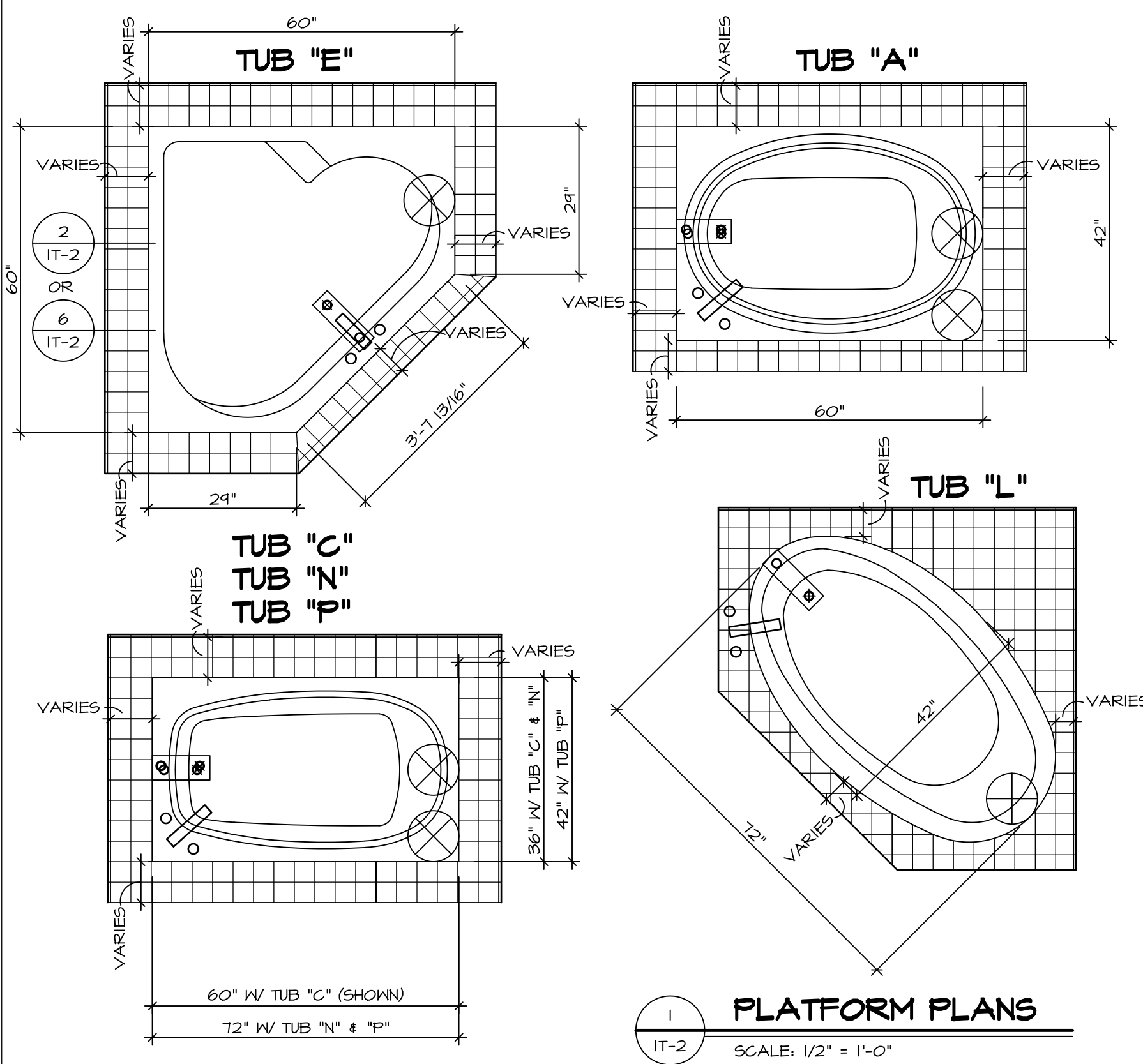
REV. NO.	DATE	REMARKS
1	5/17/17	56A - REVISED FLOOR PLAN DIMENSIONS TO MATCH COUNTERTOP DIMENSIONS
2	5/23/17	56A - REMOVED COUNTERTOP INFORMATION FROM 2/IT-3b
3	6/5/17	56A - REMOVED U.C. REF. AND TURNED OFF FLOORING SPACES
4	9/14/17	EBP - ADDED NOTE TO RECESSED LIGHT / LED LIGHT IN NET BAR

SET NO.	VERSION	DATE	OPTION
1	1		

NVR
Architectural Services
5285 West Annapolis Avenue, Suite 100
Frederick, MD 21703

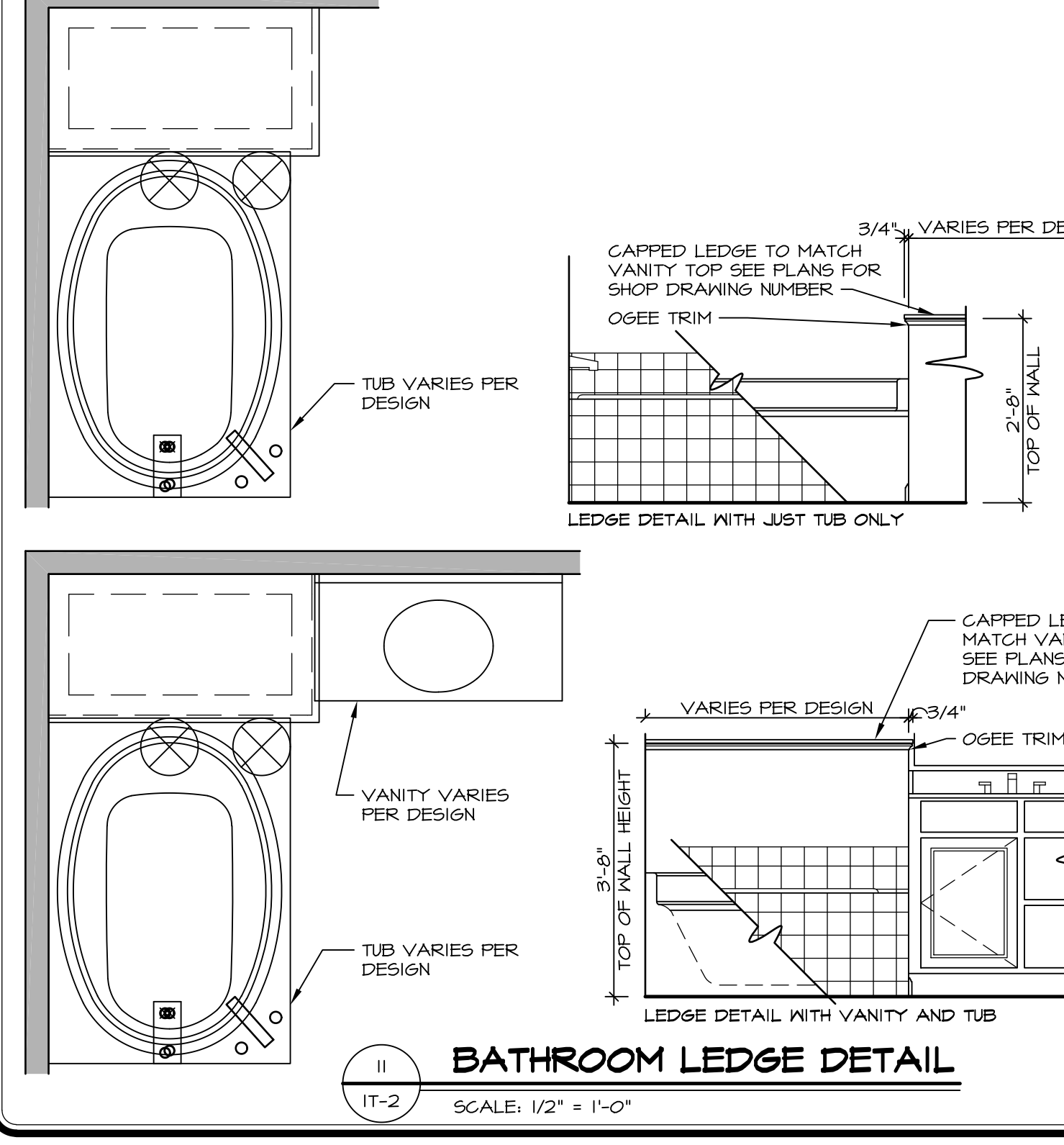
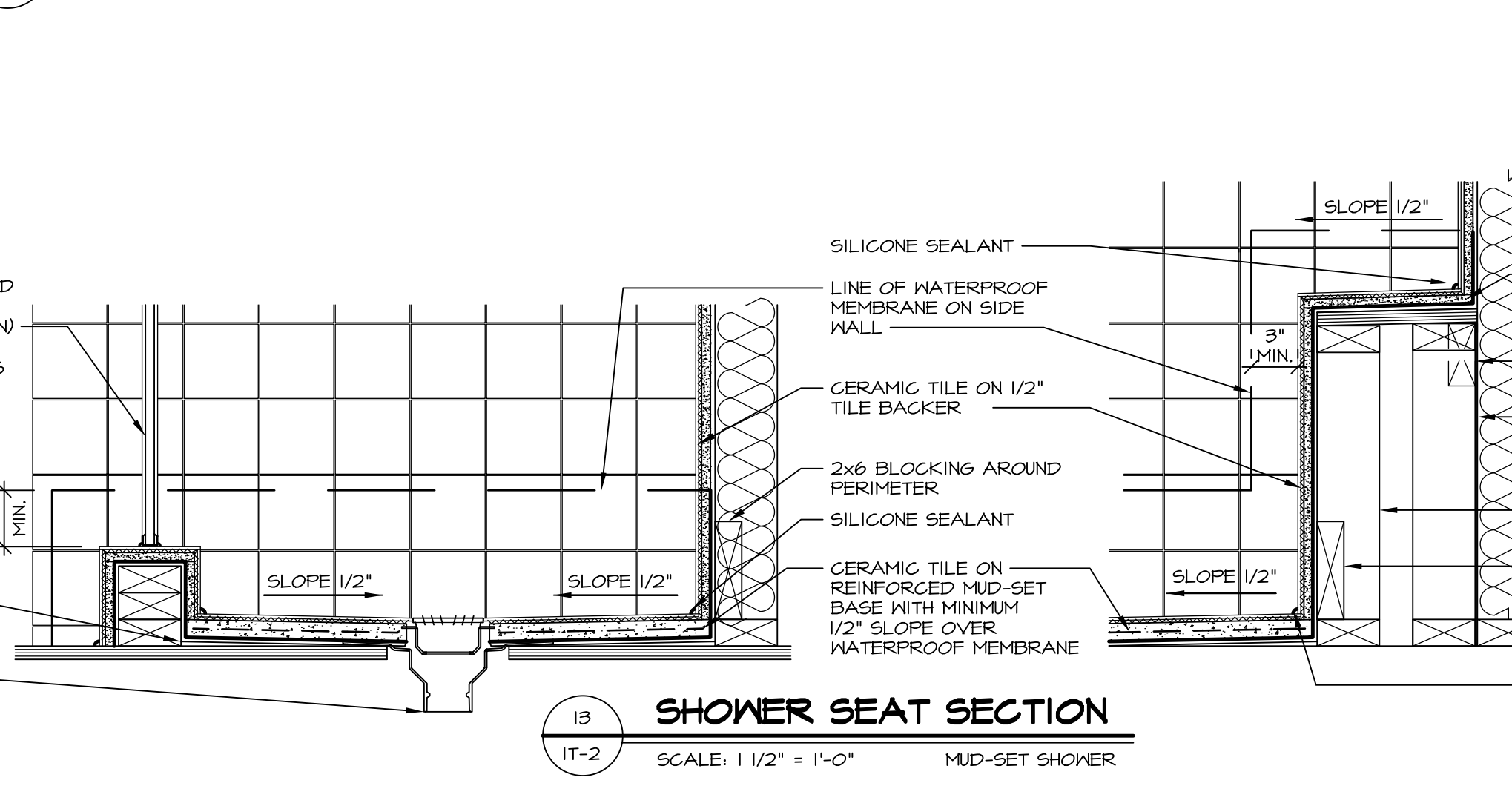
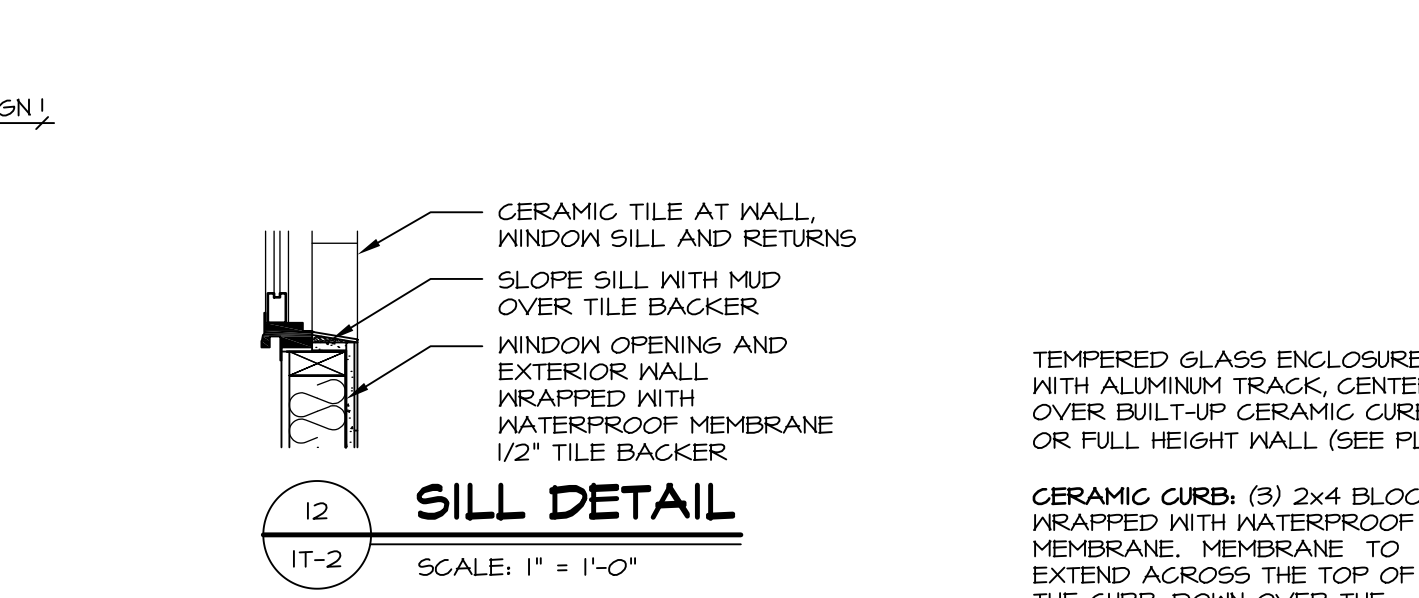
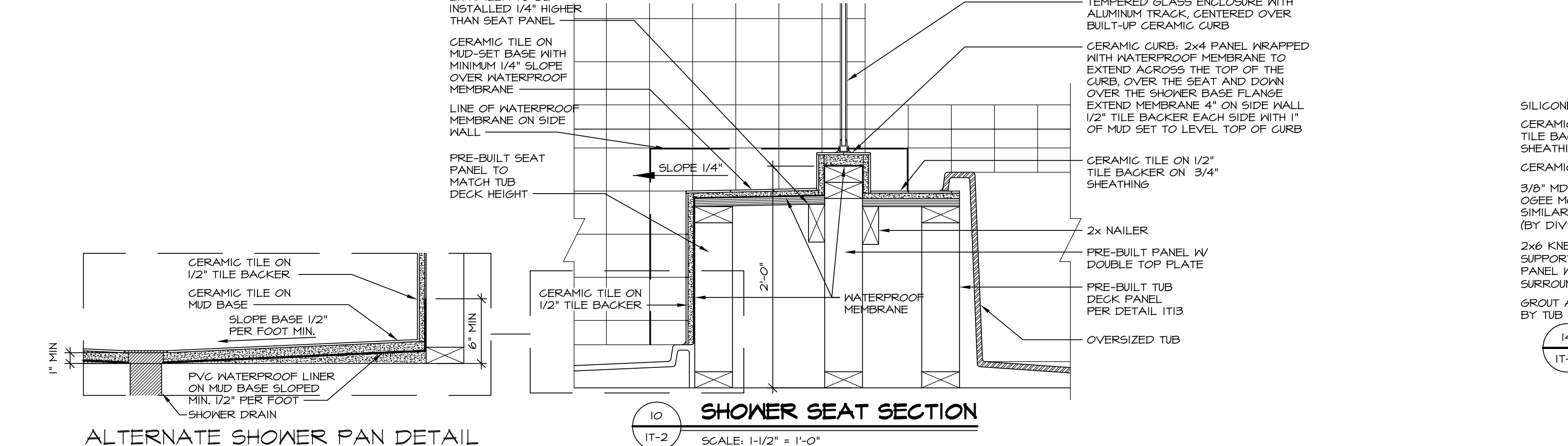
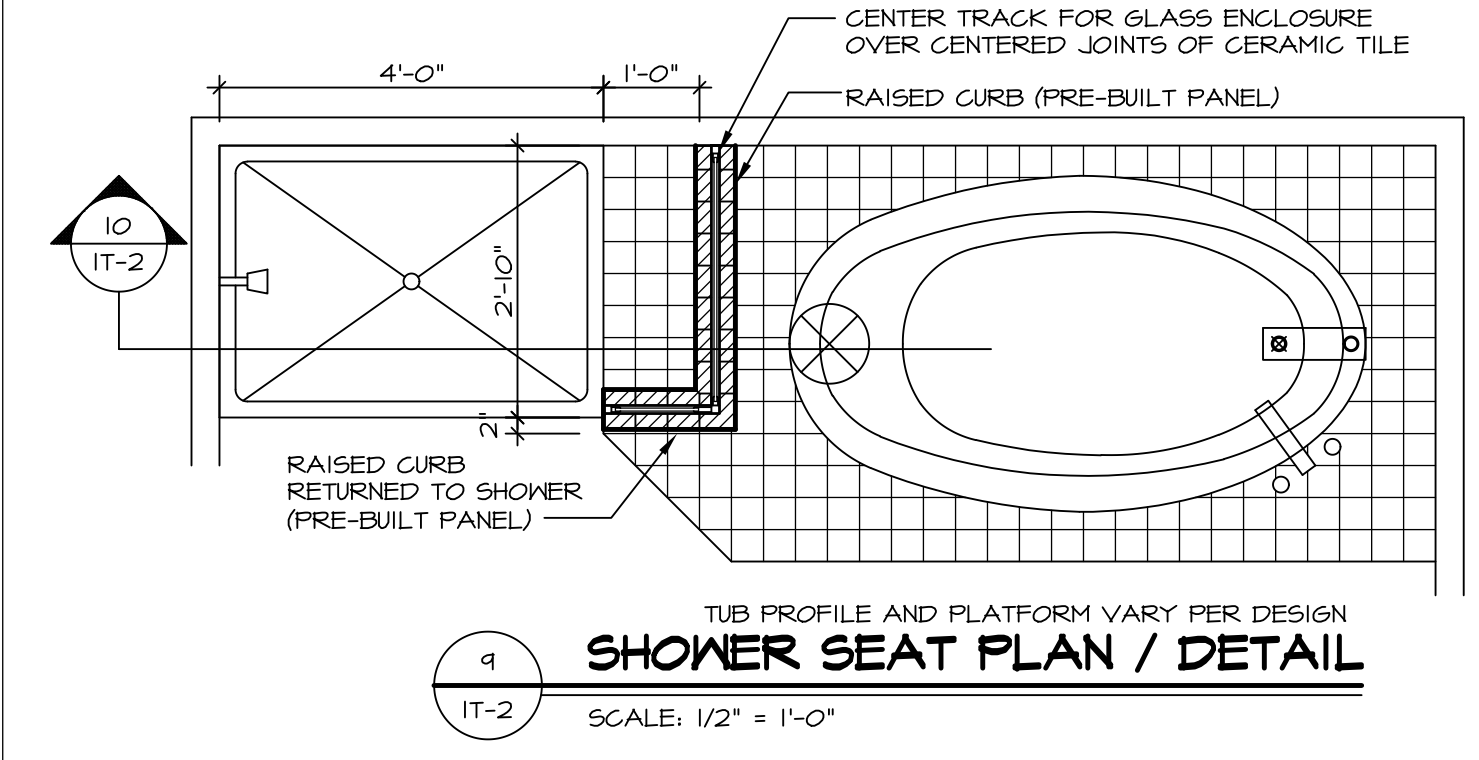
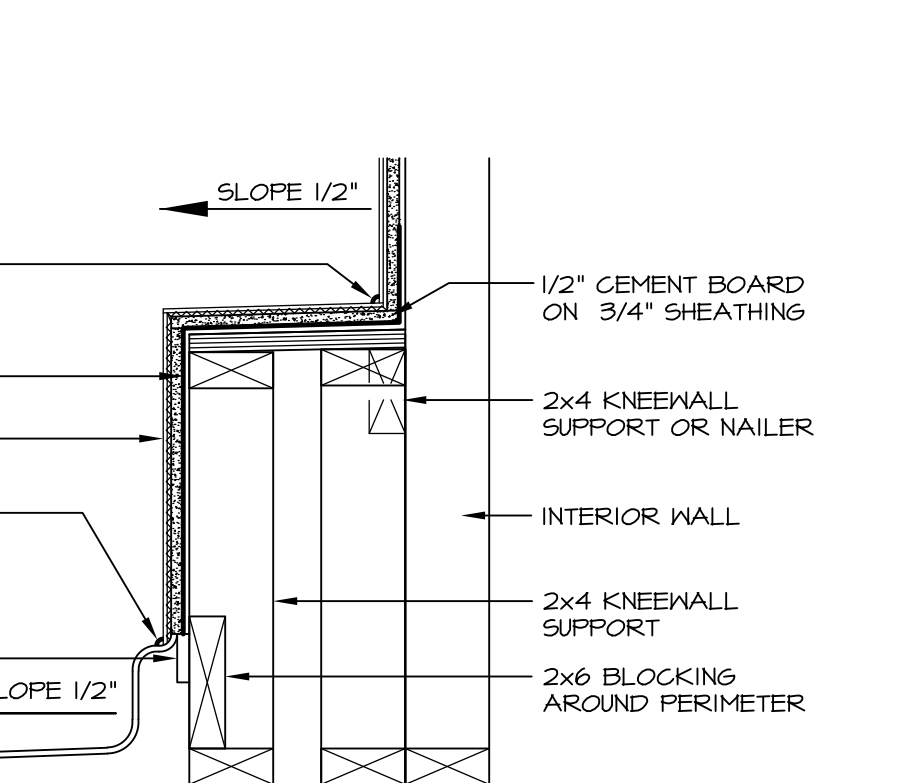
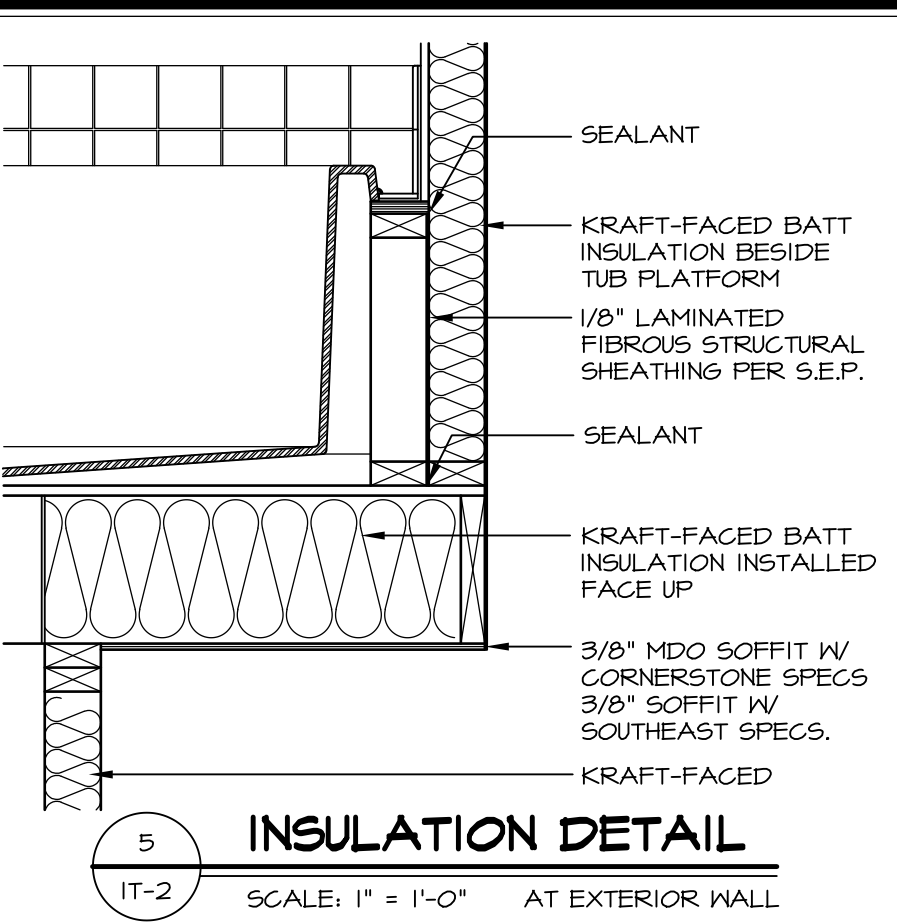
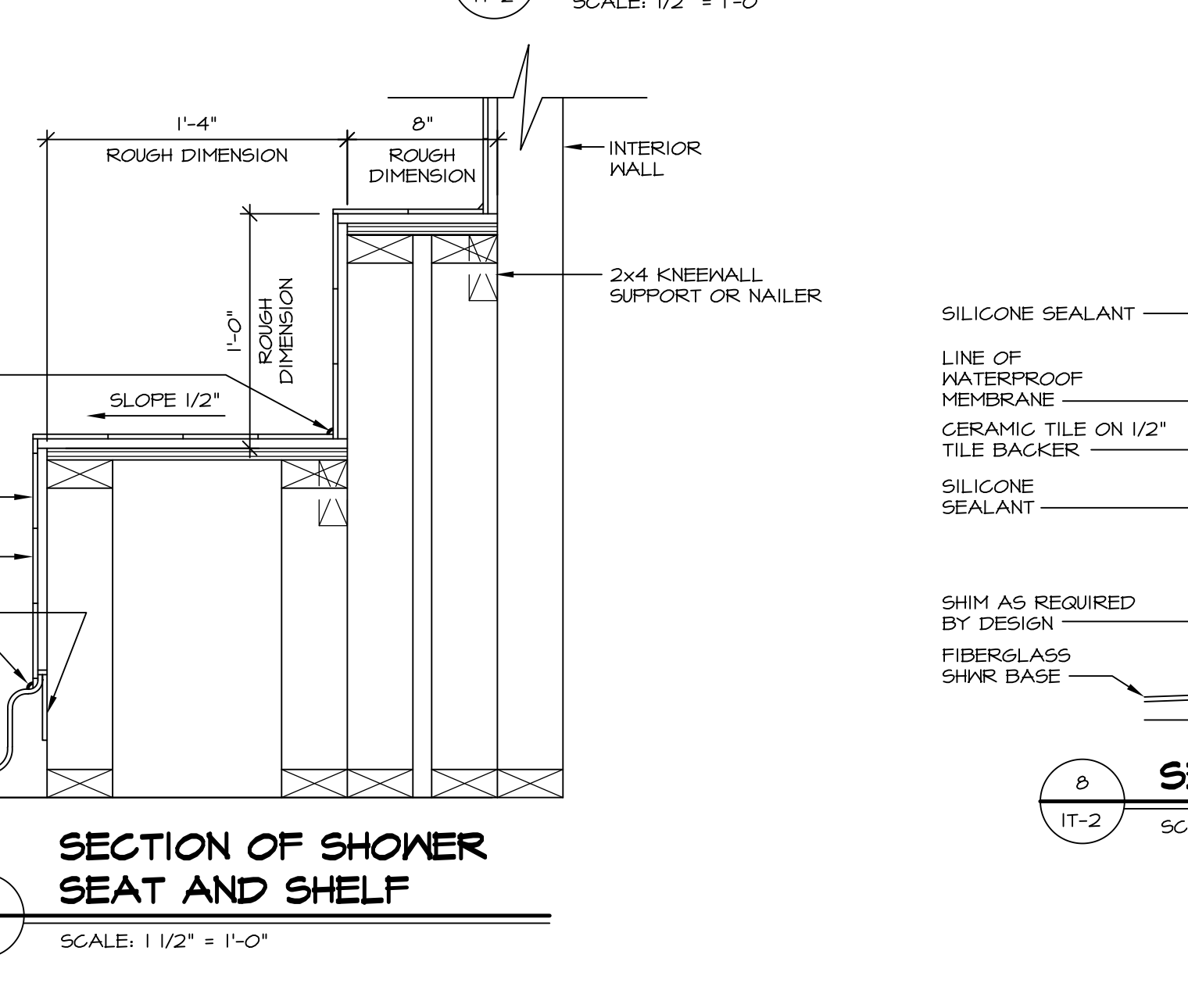
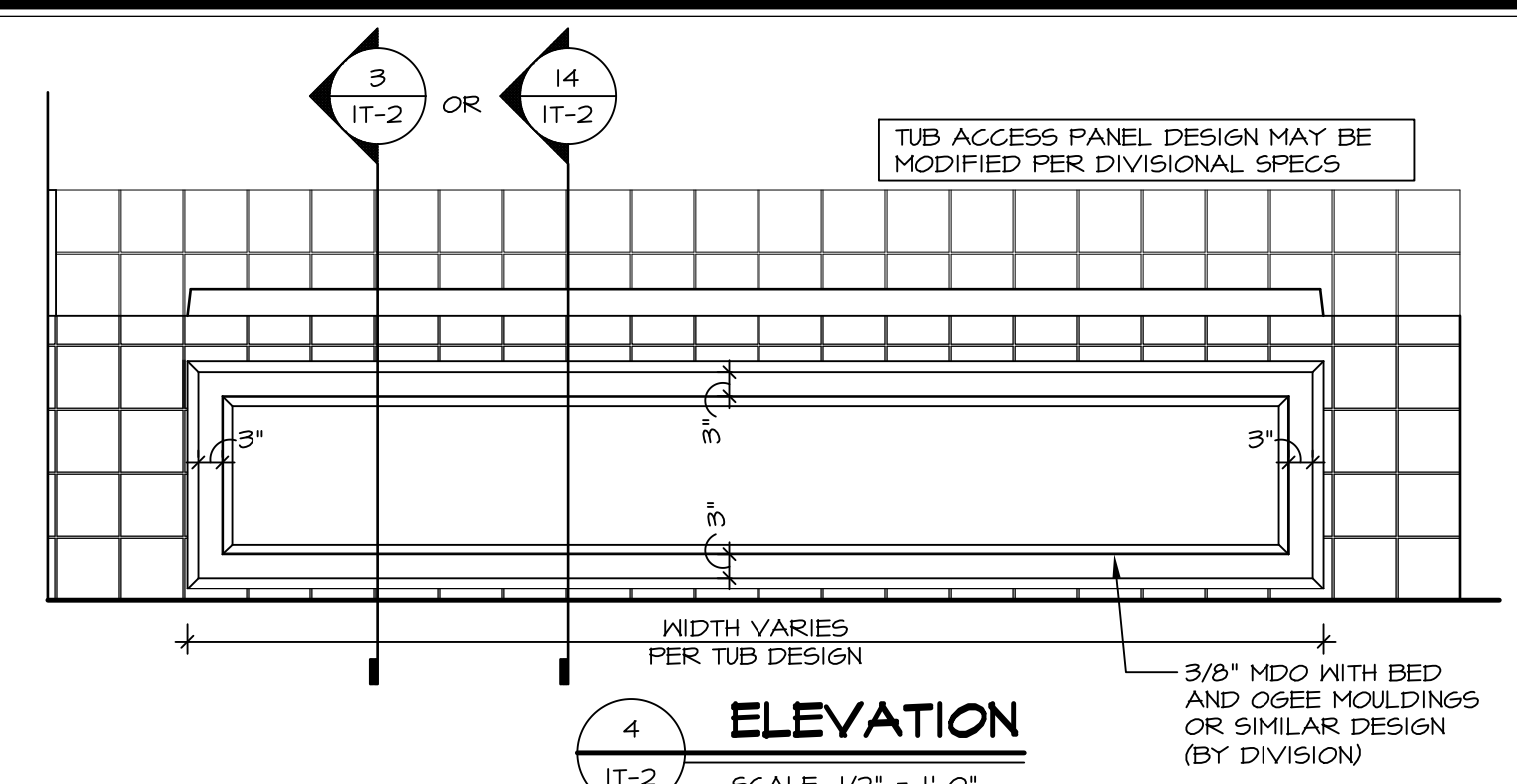
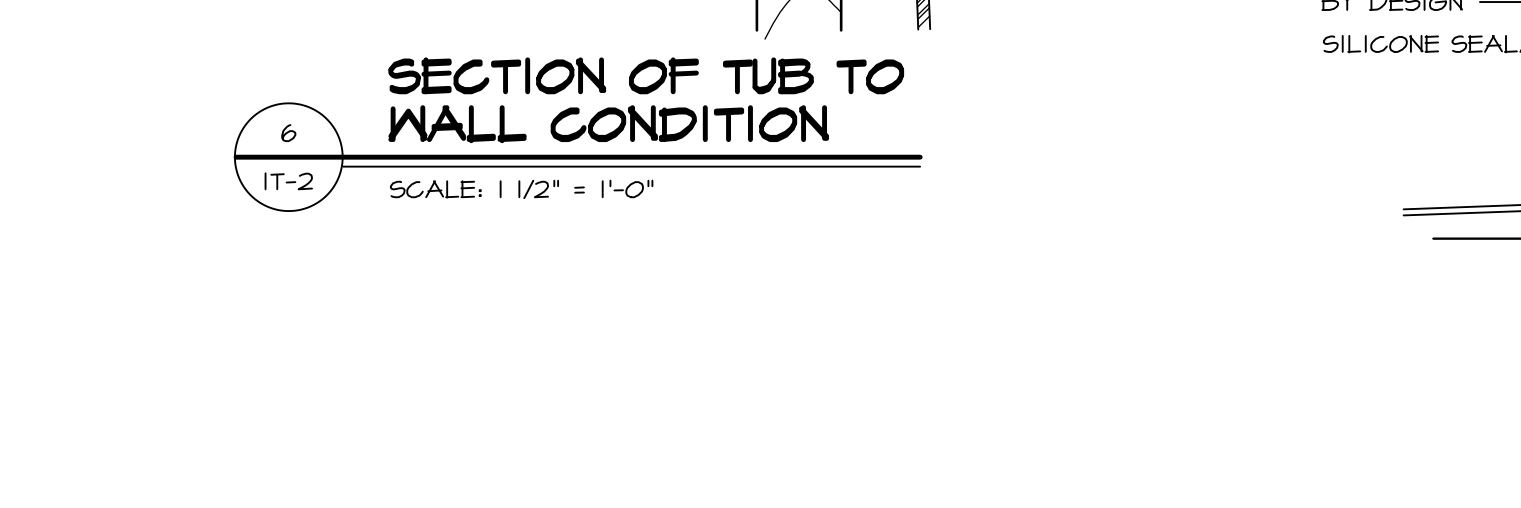
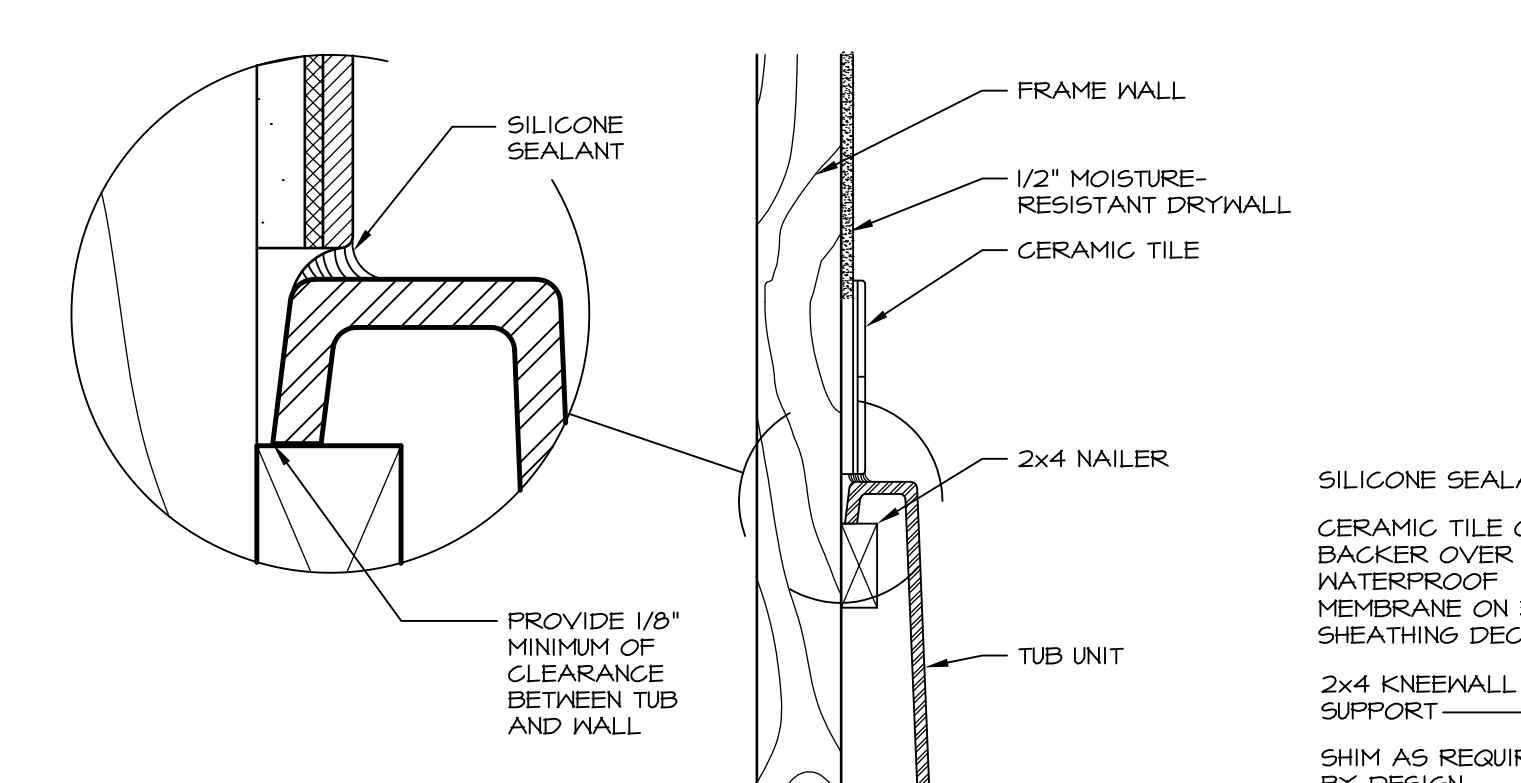
MODEL STANDARD DETAILS	SET NO. NVR
DRAWING TITLE INTERIOR TRIM DETAILS	VERSION
WET BAR DETAILS - BACK BAR (RYAN ONLY)	DRAWN BY
OPTION DESCRIPTION	DATE:
	OPTION

SHEET NO.
IT-3b



1 PLATFORM PLANS
SCALE: 1/2" = 1'-0"

TUB	MANUF.	HEIGHT	WIDTH	LENGTH	TUB DECK PANEL HEIGHT
"A"	KOHLER/ STERLING	18 3/4"	42"	60"	17 1/8"
"C"	KOHLER/ STERLING	18 3/4"	36"	60"	17 1/8"
"E"	KOHLER/ STERLING	19 1/2"	60"	60"	17 7/8"
"L"	KOHLER/ STERLING	18 1/2"	42"	72"	16 7/8"
"N"	KOHLER/ STERLING	18 3/4"	36"	72"	17 1/8"
"P"	KOHLER/ STERLING	18 3/4"	42"	72"	17 1/8"



REVISIONS

REV. NO.	DATE	DESCRIPTION
1	5/11/17	EBP - REVISED DETAIL 1 AND 11 TO REMOVE TUB ACCESS PANEL REF. (095 #15 5414)
2	9/21/17	EBP - REVISED T-FLY NOTE TO CALL OUT LFS
3	9/21/17	EBP - REVISED NOTE ON DETAIL #1 - REVISED ORDER OF MATERIAL PARA#4934

REMARKS

NVR, Inc., owner, expressly reserves its common law copyright and other property rights in these plans. These plans are not to be reproduced, stored in a retrieval system, or transmitted in any form or by any means, electronic, mechanical, photocopying, recording, or by any information storage and retrieval system, without first obtaining the expressed written consent of NVR, Inc.

NVR
NVR, Inc.
Architectural Services
5285 Westpark Drive
Frederick, MD 21703

SET NO. NVR
VERSION
DRAWN BY
DATE:
OPTION

MODEL
STANDARD DETAILS
DRAWING TITLE
INTERIOR TRIM DETAILS
BATH DETAILS
OPTION DESCRIPTION

SHEET NO.
IT-2

J:\Dwg\NVR\Interior Trim\IT2.dwg 09/27/17 - 9:20 am