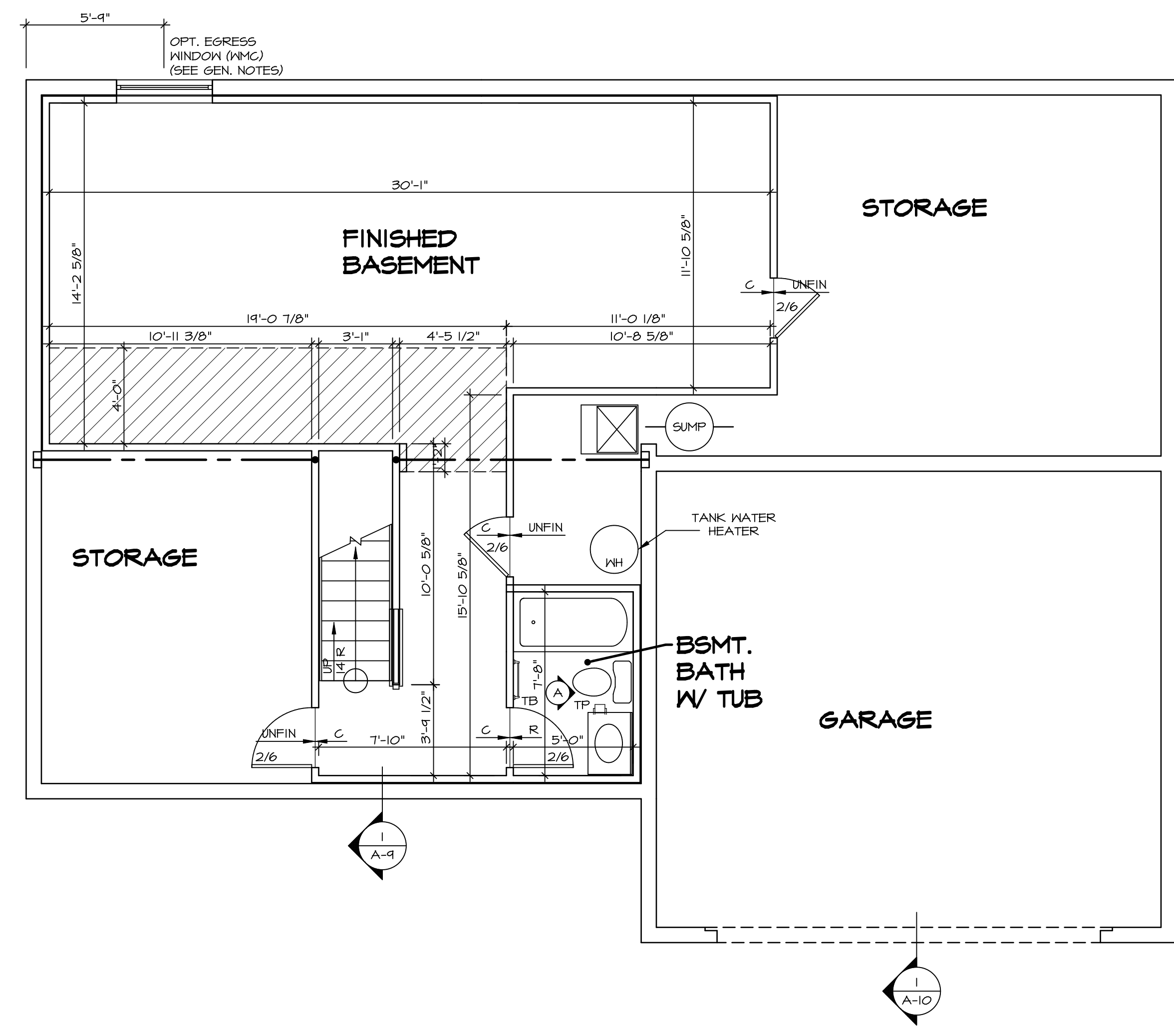


LEGEND	
	BEARING WALL
	NON BEARING WALL
	INDICATES BEARING FROM POINT-LOAD ABOVE
	JACKS
	BEAM/HEADER
	PAD FOOTING
	STEEL COLUMN
	PORTAL FRAME
	JOIST/TRUSS
	LVL
	ENGINEERING PAGE NUMBER

SEE FC DETAILS FOR FRAMING CONNECTORS

- FLOOR PLAN NOTES**
- ALL HEADERS ARE (2) 2x6 w/ 2x4 WALLS OR (3) 2x6 w/ 2x6 WALLS, UNLESS OTHERWISE NOTED.
 - ALL HEADERS TO HAVE (1) 2x4 OR 2x6 JACK EACH END, UNLESS OTHERWISE NOTED.
 - ALL EXTERIOR WALLS TO BE 4" AND ALL INTERIOR WALLS TO BE 3 1/2", UNLESS OTHERWISE NOTED.
 - HATCHED AREAS INDICATE DROPPED CEILINGS. ALL DROPPED CEILINGS ARE 12" UNLESS OTHERWISE NOTED.
 - SEE "BRACED WALL PANEL DETAIL SHEET" FOR SPECIAL WALL FRAMING LOCATIONS AND HEADER SIZES, IF APPLICABLE.
 - SEE STANDARD DETAIL CATEGORY "IT" SHEET(S) FOR INTERIOR TRIM DETAILS.
 - SEE ARCHITECTURAL DETAIL SHEET "AD" FOR HOUSE SPECIFIC INTERIOR TRIM OPTION TABLE.
 - ALL WINDOWS HAVE 7'-0" 1/2" HEADER HEIGHT UNLESS OTHERWISE NOTED.
 - ALL CASED OPENINGS AT 7'-11", UNLESS OTHERWISE NOTED.

- GYPSUM NOTES**
- AT GARAGE:
GYPSUM BOARD AT COMMON WALLS, CEILING, BEAM WRAPS AND SUPPORTS PER STANDARD DETAIL FA-1(b) FIRE ASSEMBLIES OR AS REQUIRED BY LOCAL CODE.
- AT STAIRS:
1/2" GYPSUM BOARD AT UNDERSIDE OF STAIRS AND WALLS IN CLOSET



BASEMENT FLOOR PLAN
SCALE: 1/4" = 1'-0"

SHEET NO.	MODEL	SET NO.	DATE	REV. NO.	DATE	REMARKS
A-6	PALERMO	03	08/05/16	1		
51						

DRAWING TITLE: BASEMENT FLOOR PLAN
 OPTION DESCRIPTION:

NVR, Inc. Architectural Services
 5285 Westchase Lane, Suite 100
 Frederick, MD 21703

NVR, Inc. owner, expressly reserves its copyright in these plans. These plans are not to be reproduced, changed, copied, or otherwise used in any way without the prior written consent of NVR, Inc.

C:\NVR\Solves\PALERMO_PAL00_03\DCY-YG-K47\1015190\Sheet\1 - Specific\51 - A-6 BSMT_LS.dwg 11/11/18 - 3:40 pm

FIRST FLOOR JACK SCHEDULE				
IDENTIFIER	DESCRIPTION	OPTIONS	ENG. NUM.	REMARKS
J101	JACK - (2) 2x4 SPF STUD GRADE		1072	
J102	JACK - (2) 2x4 SPF STUD GRADE		1072	
J103	JACK - (2) 2x4 SPF STUD GRADE	DGT	1084	
J104	JACK - (2) 2x4 SPF STUD GRADE	DGT	1084	
J105	JACK - (2) 2x4 SPF STUD GRADE		1086	
J106	JACK - (2) 2x4 SPF STUD GRADE		1012	
J107	JACK - (2) 2x4 SPF STUD GRADE		1012	
J108	JACK - (2) 2x4 SPF STUD GRADE		1012	
J124	JACK - (3) 2x4 SPF STUD GRADE	ELC	1021	
J125	JACK - (2) 2x4 SPF STUD GRADE	ELC	1004	
J126	JACK - (2) 2x4 SPF STUD GRADE	ELC	1004	
J127	JACK - (2) 2x4 SPF STUD GRADE	ELC	1030	
J128	JACK - (2) 2x4 SPF STUD GRADE	ELC	1030	
J136	JACK - (3) 2x4 SPF STUD GRADE	EVA, MAV		
J138	JACK - (2) 2x4 SPF STUD GRADE	ELC	1021	
J150	JACK - (3) 2x4 SPF STUD GRADE	GCF	1044	
J151	JACK - (3) 2x4 SPF STUD GRADE	GCF	1044	
J152	JACK - (2) 2x4 SPF STUD GRADE	GCF, MAV	1044, 1131	GRIPPLES
J153	JACK - (2) 2x4 SPF STUD GRADE	GCF, MAV	1044, 1131	GRIPPLES
J154	JACK - (2) 2x4 SPF STUD GRADE	GCF	1122	
J155	JACK - (2) 2x4 SPF STUD GRADE	GCF	1122	
J156	JACK - (2) 2x4 SPF STUD GRADE	GCF	1105	
J159	JACK - (3) 2x4 SPF STUD GRADE	EVA, MAV		
J171	JACK - (2) 2x4 SPF STUD GRADE	ELC, EVA		

LVL PLY TO PLY FASTENING SCHEDULE:

1.A - (2) FLY UP TO AND INCLUDING 11 7/8" TALL; FASTEN FLIES W/ (2) ROWS 16D NAILS AT 12" O.C.
 2.A - (2) FLY 14" TO AND INCLUDING 18" TALL (INCLUSIVE); FASTEN FLIES W/ (3) ROWS 16D NAILS AT 12" O.C.
 3.A - (2) FLY 20" TALL AND OVER; FASTEN FLIES W/ (4) ROWS 16D NAILS AT 12" O.C.
 4.A - (3) FLY UP TO AND INCLUDING 11 7/8" TALL; FASTEN FLIES W/ (2) ROWS 16D NAILS AT 12" O.C. FROM EACH SIDE
 5.A - (3) FLY 14" TO AND INCLUDING 18" TALL (INCLUSIVE); FASTEN FLIES W/ (3) ROWS 16D NAILS AT 12" O.C. FROM EACH SIDE
 6.A - (3) FLY 20" TALL AND OVER; FASTEN FLIES W/ (4) ROWS 16D NAILS AT 12" O.C. FROM EACH SIDE

FIRST FLOOR BEAM/HEADER SCHEDULE					
IDENTIFIER	DESCRIPTION	LENGTH	OPTIONS	ENG. NUM.	REMARKS
B102	BEAM STEEL - W12X40	22'-3 1/2"	ELA, ELC, ELL, MAV	1057, 1133	
B107-2	LVL - 14	17'-4"	MAV	1050, 1051	2.A, FIELD INSTALL
PF104-2	EXT HEADER - 2X12 - 2 PLY	11'-4"	GCF	1054, 1148	2-PLY, FIELD INSTALL

LEGEND	
	BEARING WALL
	NON BEARING WALL
	INDICATES BEARING FROM POINT-LOAD ABOVE
	JACKS
	BEAM/HEADER
	PAD FOOTING
	STEEL COLUMN
	PORTAL FRAME
	JOIST/TRUSS
	LVL
	ENGINEERING PAGE NUMBER
	SEE FC DETAILS FOR FRAMING CONNECTORS

STEEL COLUMN SCHEDULE					
IDENTIFIER	STYLE	HEIGHT	OPTIONS	ENG. NUM.	REMARKS
C101	STANCHION - 3 IN SCHED 40	9'-0 11/16"	FBA	1057, 1133, 1128	
C103	STANCHION - 3 IN SCHED 40	9'-0 11/16"	FBA	1057, 1133, 1128	

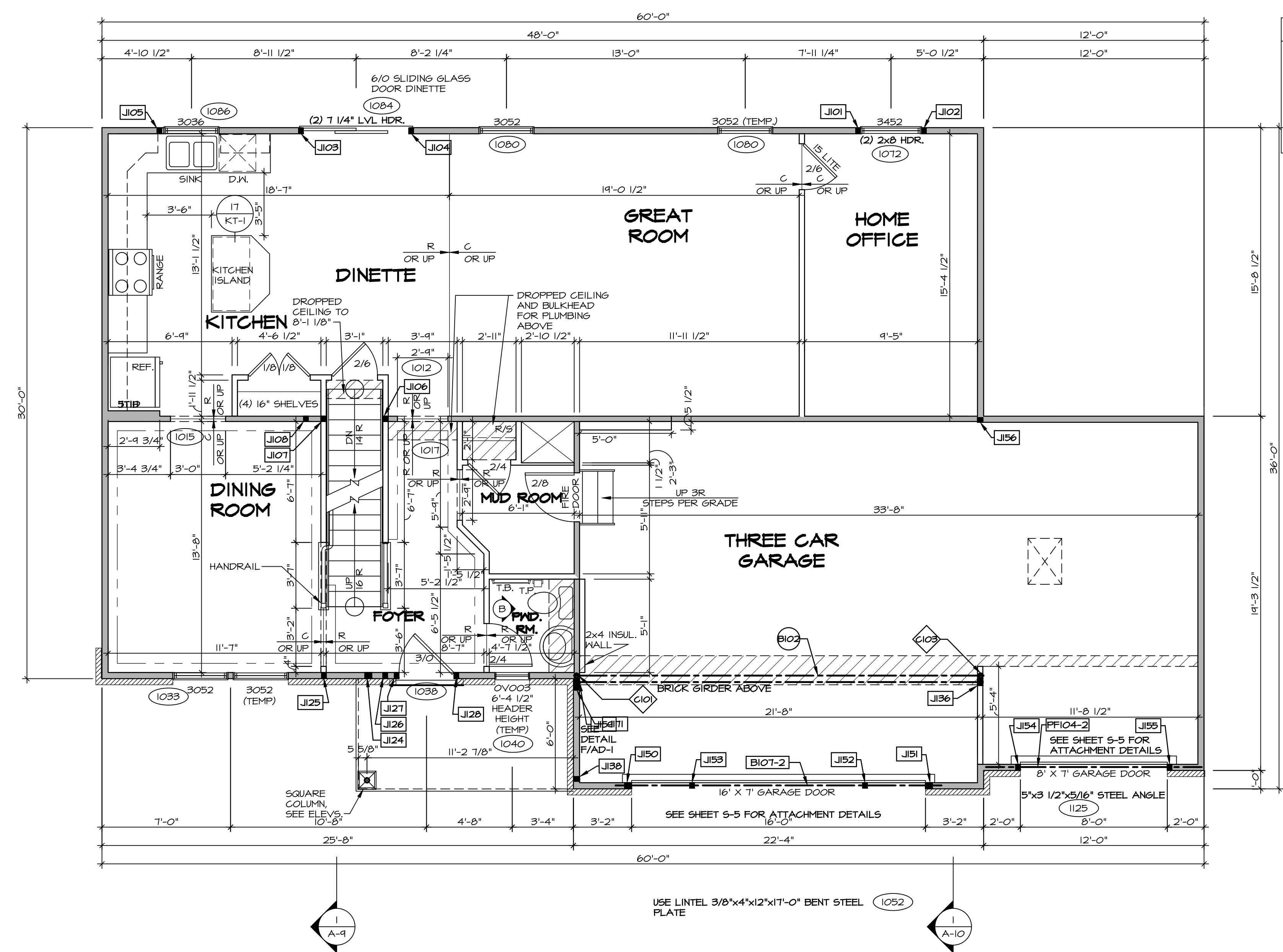
FLOOR PLAN NOTES

- ALL HEADERS ARE (2) 2x6 W/ 2x4 WALLS OR (3) 2x6 W/ 2x6 WALLS, UNLESS OTHERWISE NOTED.
- ALL HEADERS TO HAVE (1) 2x4 OR 2x6 JACK AND KING STUD EACH END, UNLESS OTHERWISE NOTED.
- ALL EXTERIOR WALLS TO BE 4" W/ OSB OR 3 1/2" W/ T-PLY, ALL INTERIOR WALLS TO BE 3 1/2", UNLESS OTHERWISE NOTED.
- HATCHED AREAS INDICATE DROPPED CEILINGS. ALL DROPPED CEILINGS ARE 12" UNLESS OTHERWISE NOTED.
- SEE "BRACED WALL PANEL DETAIL SHEET" FOR SPECIAL WALL FRAMING LOCATIONS AND HEADER SIZES, IF APPLICABLE.
- SEE STANDARD DETAIL CATEGORY "11" SHEET(S) FOR INTERIOR TRIM DETAILS.
- SEE ARCHITECTURAL DETAIL SHEET "AD" FOR HOUSE SPECIFIC INTERIOR TRIM OPTION TABLE.
- ALL WINDOWS HAVE 7'-0 1/2" HEADER HEIGHT UNLESS OTHERWISE NOTED.
- ALL HEADERS IN NON-BEARING WALLS SHALL BE A SINGLE FLAT 2x4 OR 2x6 ATTACHED TO GRIPPLES ABOVE, UNLESS OTHERWISE NOTED.

GYPSUM NOTES

AT GARAGE:
 GYPSUM BOARD AT COMMON WALLS, CEILING, BEAM WRAPS AND SUPPORTS PER STANDARD DETAIL FA-1(b) FIRE ASSEMBLIES OR AS REQUIRED BY LOCAL CODE.

AT STAIRS:
 1/2" GYPSUM BOARD AT UNDERSIDE OF STAIRS AND WALLS IN CLOSET



FIRST FLOOR PLAN
 SCALE: 1/4" = 1'-0"

REV. NO.	DATE	DESCRIPTION
1	08/04/16	TH - DRAWING ALIGNMENT
2	07/12/17	SLS - T-PLY CONVERSION PROJECT

NVR, Inc., owner, expressly reserves its copyright in these plans. These plans are not to be reproduced, changed, copied, or otherwise used in any way without the written consent of NVR, Inc.

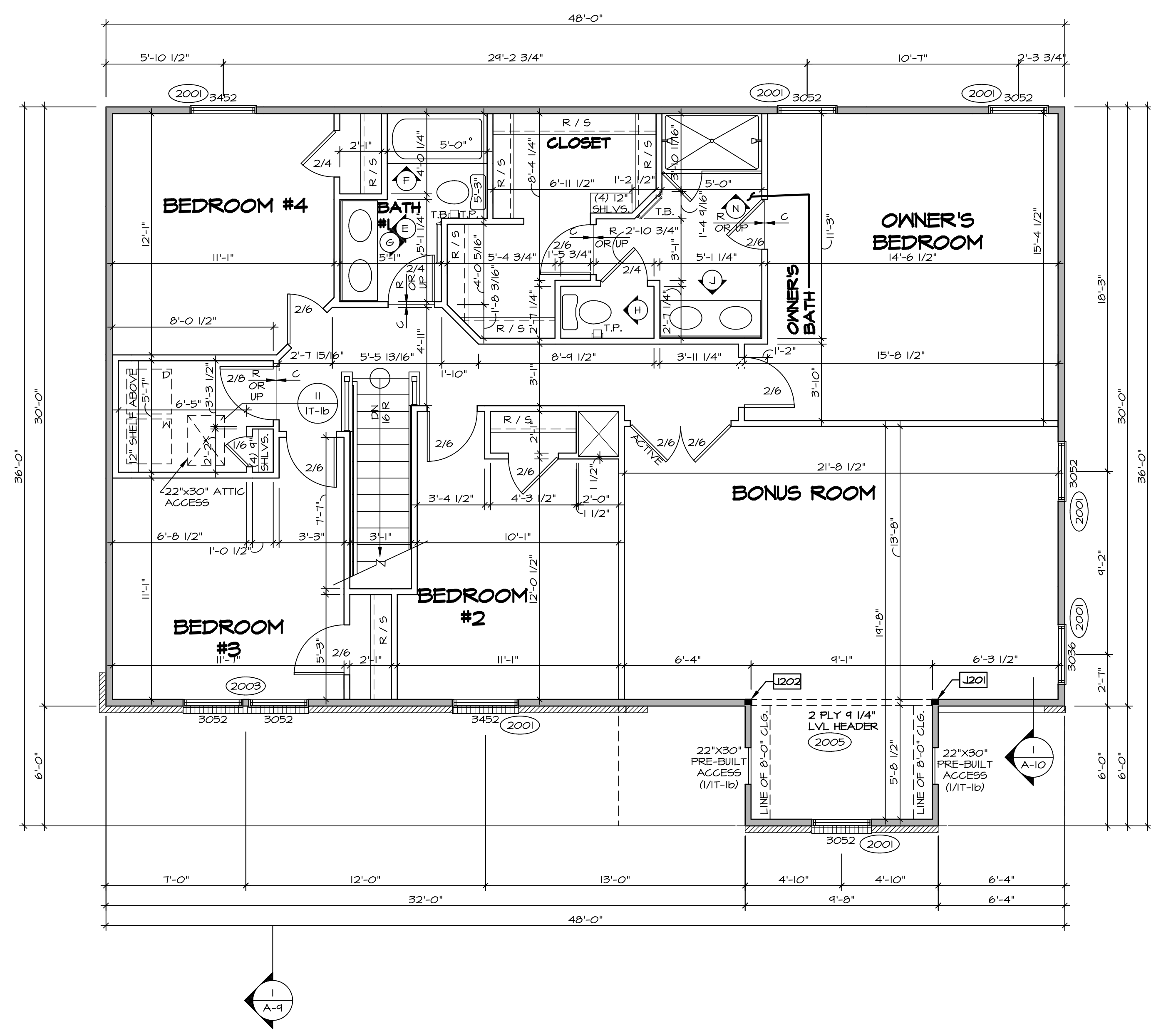
NVR
 NVR, Inc.
 Architectural Services
 Architects
 Suite 100
 5285 West
 Frederick, MD 21703

SET NO. PALOO	VERSION 03
DRAWN BY	DATE:
OPTION	OPTION
SHEET NO. A-7	
DRAWING TITLE FIRST FLOOR PLAN	
OPTION DESCRIPTION	
53	

SECOND FLOOR JACK SCHEDULE				
IDENTIFIER	DESCRIPTION	OPTIONS	ENG. NUM.	REMARKS
J201	JACK - (2) 2X4 SFF STUD GRADE	MAV	2005	
J202	JACK - (2) 2X4 SFF STUD GRADE	MAV	2005	

LEGEND	
	BEARING WALL
	NON BEARING WALL
	INDICATES BEARING FROM POINT-LOAD ABOVE
	JACKS
	BEAM/HEADER
	PAD FOOTING
	STEEL COLUMN
	PORTAL FRAME
	JOIST/TRUSS
	LVL
	ENGINEERING PAGE NUMBER

- FLOOR PLAN NOTES**
- ALL HEADERS ARE (2) 2x6 w/ 2x4 WALLS OR (3) 2x6 w/ 2x6 WALLS, UNLESS OTHERWISE NOTED.
 - ALL HEADERS TO HAVE (1) 2x4 OR 2x6 JACK AND KING STUD EACH END, UNLESS OTHERWISE NOTED.
 - ALL EXTERIOR WALLS TO BE 4" w/ OSB OR 3 1/2" w/ T-PLY, ALL INTERIOR WALLS TO BE 3 1/2", UNLESS OTHERWISE NOTED.
 - HATCHED AREAS INDICATE DROPPED CEILINGS. ALL DROPPED CEILINGS ARE 12" UNLESS OTHERWISE NOTED.
 - SEE "BRACED WALL PANEL DETAIL SHEET" FOR SPECIAL WALL FRAMING LOCATIONS AND HEADER SIZES, IF APPLICABLE.
 - SEE STANDARD DETAIL CATEGORY "1T" SHEET(S) FOR INTERIOR TRIM DETAILS.
 - SEE ARCHITECTURAL DETAIL SHEET "AD" FOR HOUSE SPECIFIC INTERIOR TRIM OPTION TABLE.
 - ALL WINDOWS HAVE 7'-0 1/2" HEADER HEIGHT UNLESS OTHERWISE NOTED.
 - ALL HEADERS IN NON-BEARING WALLS SHALL BE A SINGLE FLAT 2x4 OR 2x6 ATTACHED TO CRIPPLES ABOVE, UNLESS OTHERWISE NOTED.

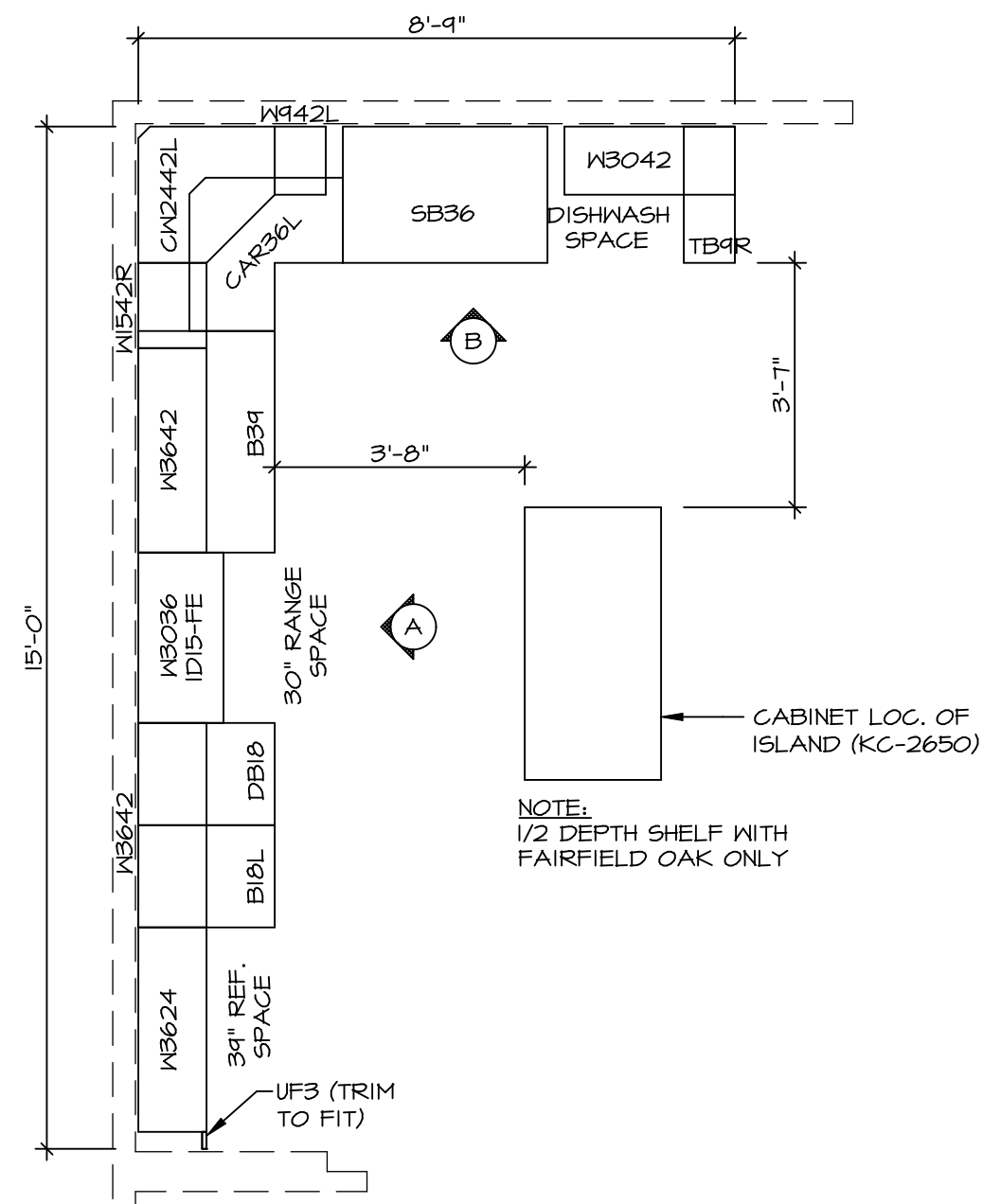


SECOND FLOOR PLAN
SCALE: 1/4" = 1'-0"

SHEET NO.	MODEL	SET NO.	VERSION	DRAWN BY	DATE:	OPTION	REMARKS
A-8	PALERMO	03	03				
60							

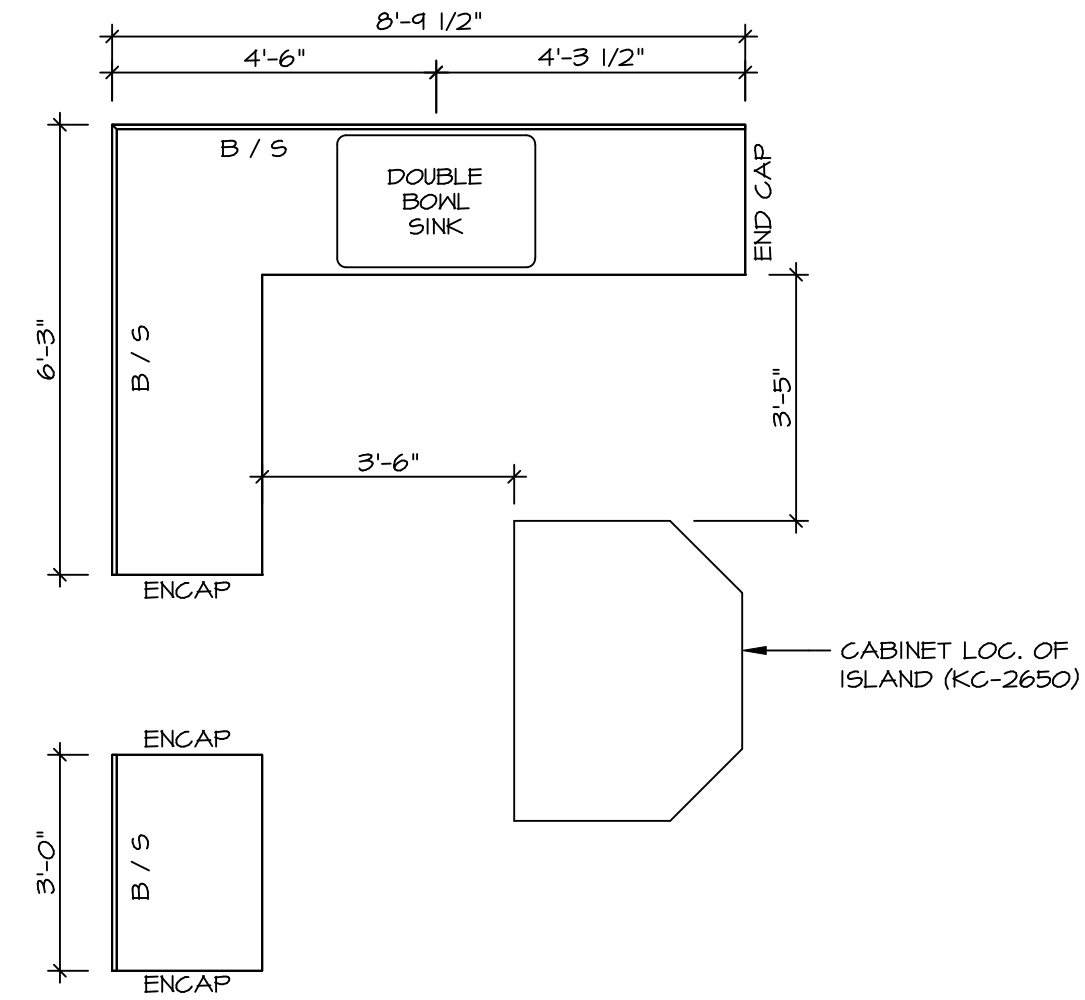
NVR
NVR, Inc.
Architectural Services
5285 West... Suite 100
Frederick, MD 21703

C:\NVR\Solves\PALERMO_PAL00_03\DCY-YG-K47\1015190\Streets\Lot_Specific\60_A-8_PLN2_LS.dwg 11/11/18 - 3:40 pm



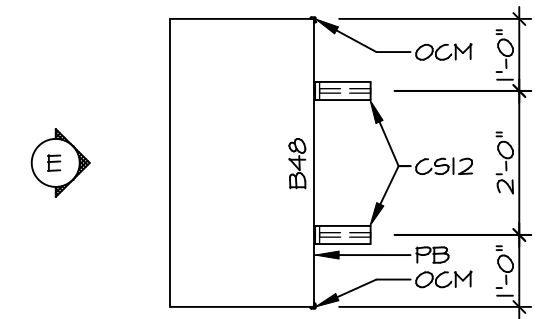
**KITCHEN CABINET
PLAN-KC-2858**

SCALE: 3/8" = 1'-0" STANDARD KITCHEN



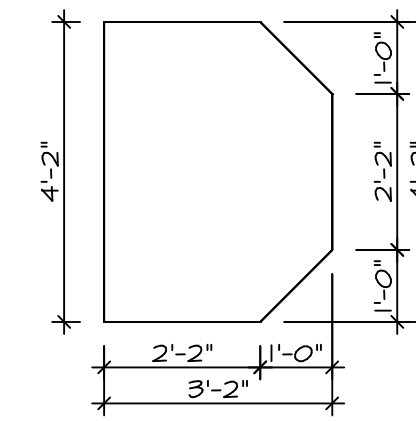
**KITCHEN COUNTERTOP
PLAN-KT-2858**

SCALE: 3/8" = 1'-0" STANDARD KITCHEN



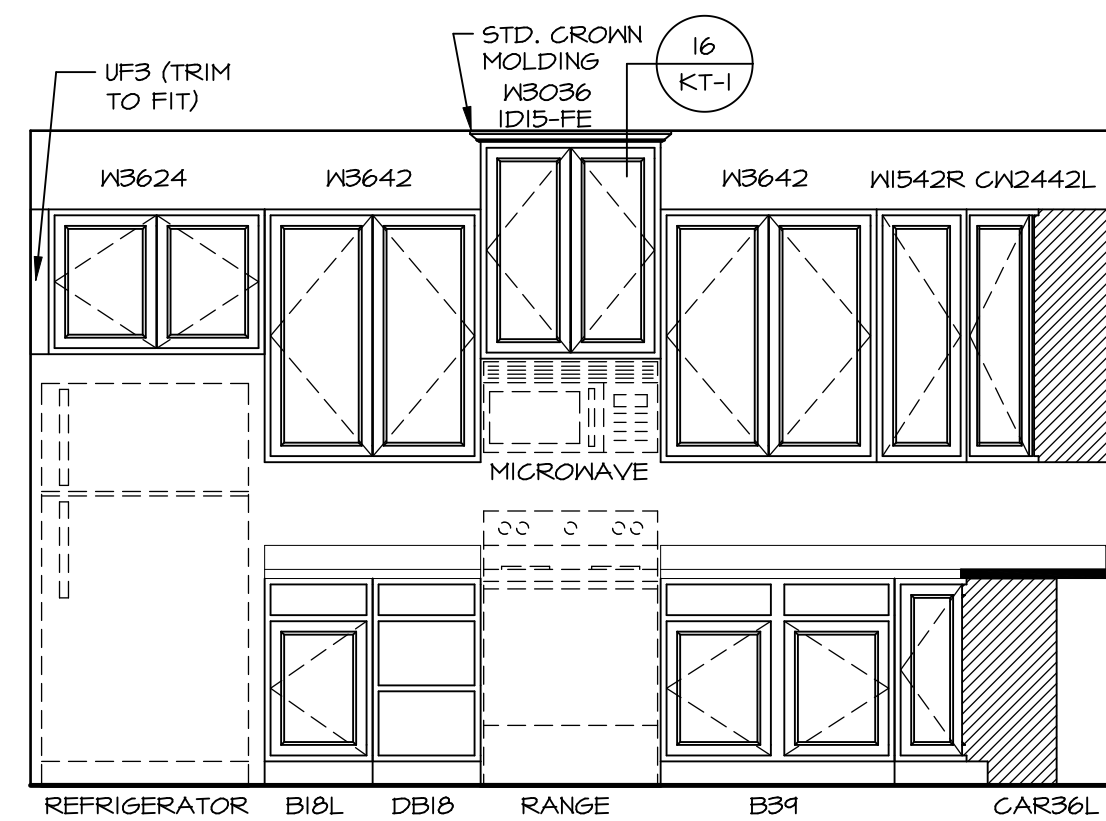
**KITCHEN CABINET
PLAN-KC-2650**

SCALE: 3/8" = 1'-0" KITCHEN ISLAND



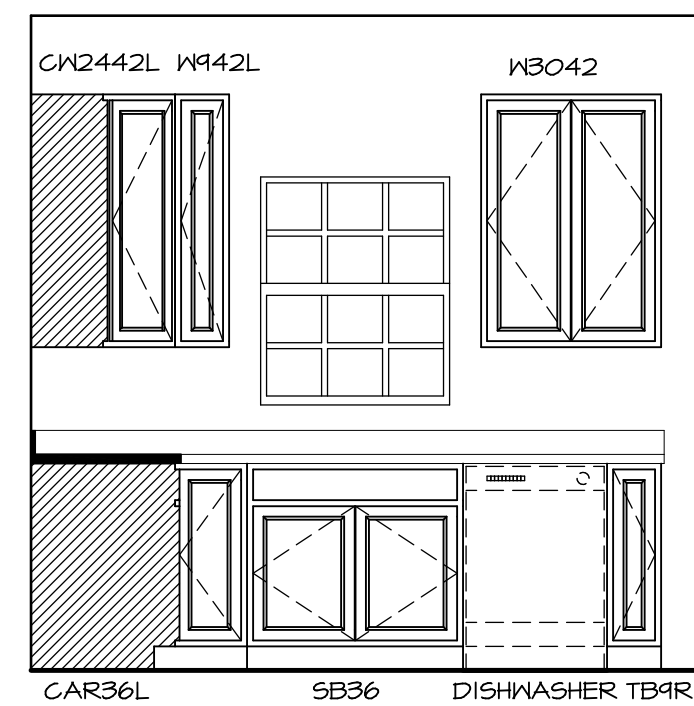
**KITCHEN COUNTERTOP
PLAN-KT-2650**

SCALE: 3/8" = 1'-0" KITCHEN ISLAND



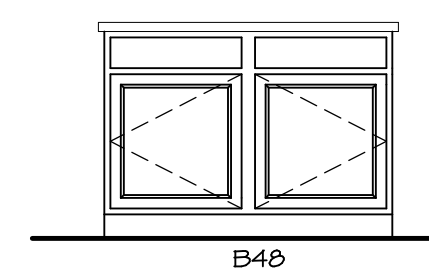
A KITCHEN ELEVATION

SCALE: 3/8" = 1'-0"



B KITCHEN ELEVATION

SCALE: 3/8" = 1'-0"



E KITCHEN ELEVATION

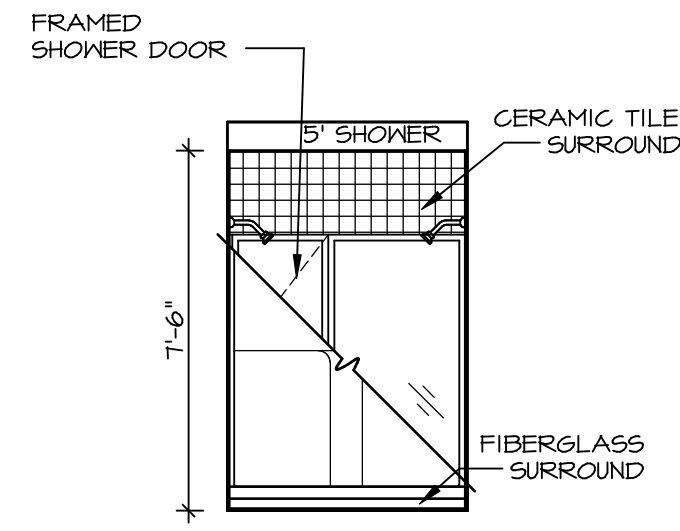
SCALE: 3/8" = 1'-0"

SHEET NO. A-12	MODEL PALERMO	SET NO. PALOO	VERSION 03
	DRAWING TITLE	DRAWN BY	DATE:
	OPTION DESCRIPTION	OPTION	
70			

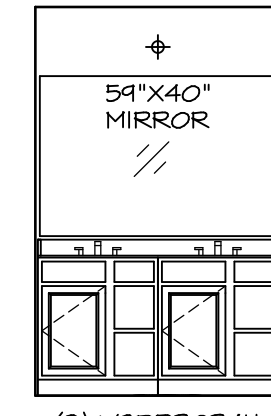
NVR
NVR, Inc.
Architectural Services
5285 Westover Hills
Frederick, MD 21703

NVR, Inc., owner, expressly reserves its copyright in these plans. These plans are not to be reproduced, changed, copied in any way, or otherwise used, without the prior written consent of NVR, Inc.

REV. NO.	DATE	REMARKS

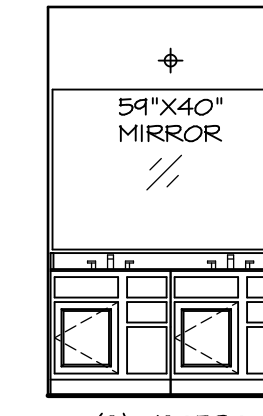


N OWNER'S BATH
SCALE: 1/4" = 1'-0"



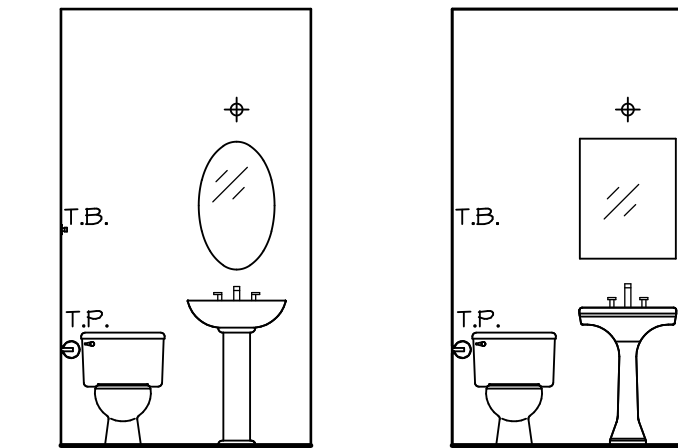
(2) V5DB3034H

J OWNER'S BATH
SCALE: 1/4" = 1'-0"



(2) V5DB30

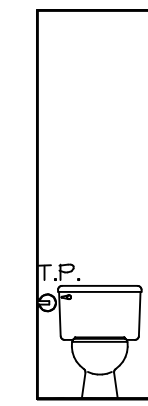
E BATH #1
SCALE: 1/4" = 1'-0"



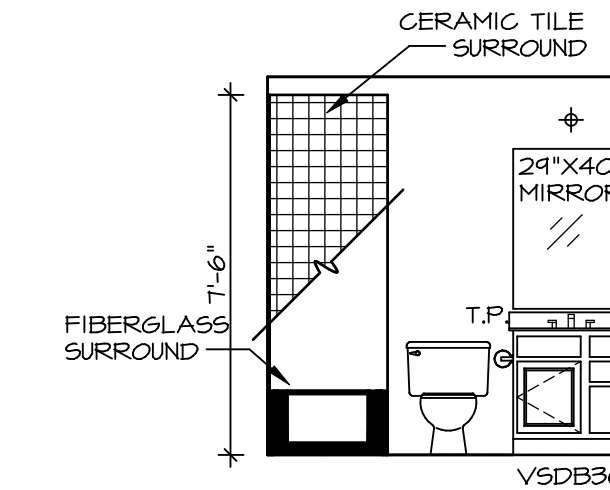
PEDESTAL SINK WITH OVAL MIRROR "5ZB"

PEDESTAL SINK WITH SQUARE MIRROR "5ZC"

B POWDER ROOM
SCALE: 1/4" = 1'-0"



H OWNER'S BATH
SCALE: 1/4" = 1'-0"



29"X40" MIRROR

V5DB30

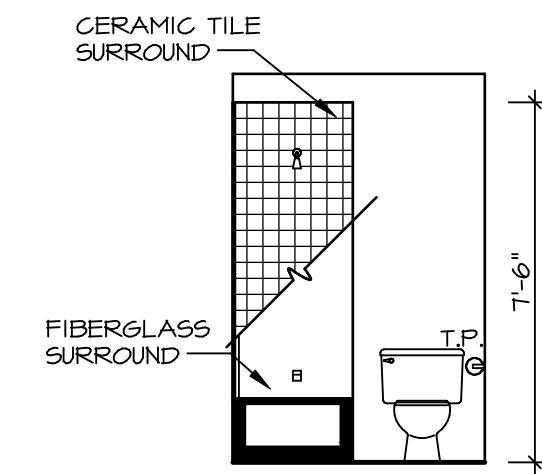
T.P.

FIBERGLASS SURROUND

CERAMIC TILE SURROUND

7'-6"

A BASEMENT BATH
SCALE: 1/4" = 1'-0"

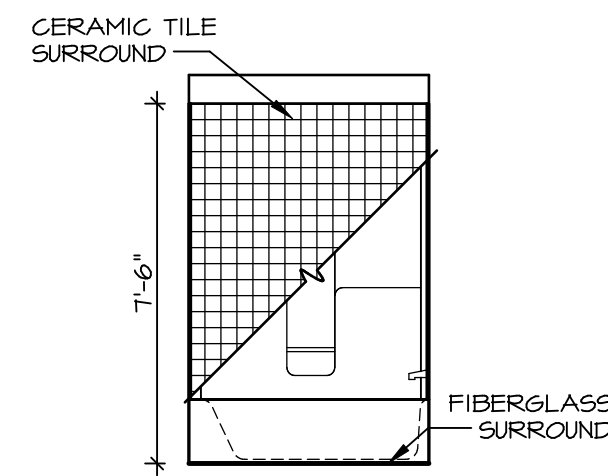


7'-6"

FIBERGLASS SURROUND

CERAMIC TILE SURROUND

G BATH #1
SCALE: 1/4" = 1'-0"



7'-6"

FIBERGLASS SURROUND

CERAMIC TILE SURROUND

F BATH #1
SCALE: 1/4" = 1'-0"

NOTES:

1. TEMPERED GLASS SHOWER ENCLOSURE WITH SWING DOOR OR OPTIONAL SLIDING DOOR BY DIVISION
2. TUB ACCESS PANELS PROVIDED AS NEEDED, ALL MATERIALS BY DIVISION
3. REFER TO SHEET IT-2 FOR TUB AND SHOWER DETAILS.
4. ALL V5DB24-42 DRAWERS TO BE SET ON RIGHT HAND.
5. BATH ELEVATIONS ARE SHOWN PER PLAN.

REV. NO.	DATE	REMARKS
1	08/04/16	TM - DRAINING ALIGNMENT

NVR, Inc., owner, expressly reserves its copyright in these plans. These plans are not to be reproduced, changed, copied in any way, or used for any purpose not assigned to them without the written consent of NVR, Inc.

NVR
Architectural Services
Architects
5285 Westpark Drive, Suite 100
Frederick, MD 21703

SET NO. PALOO	VERSION 03
DRAWN BY	DATE:
OPTION	OPTION

SHEET NO. A-13	MODEL PALERMO	DRAWING TITLE BATH ELEVATIONS
72	OPTION DESCRIPTION	