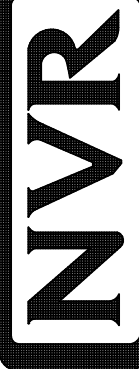
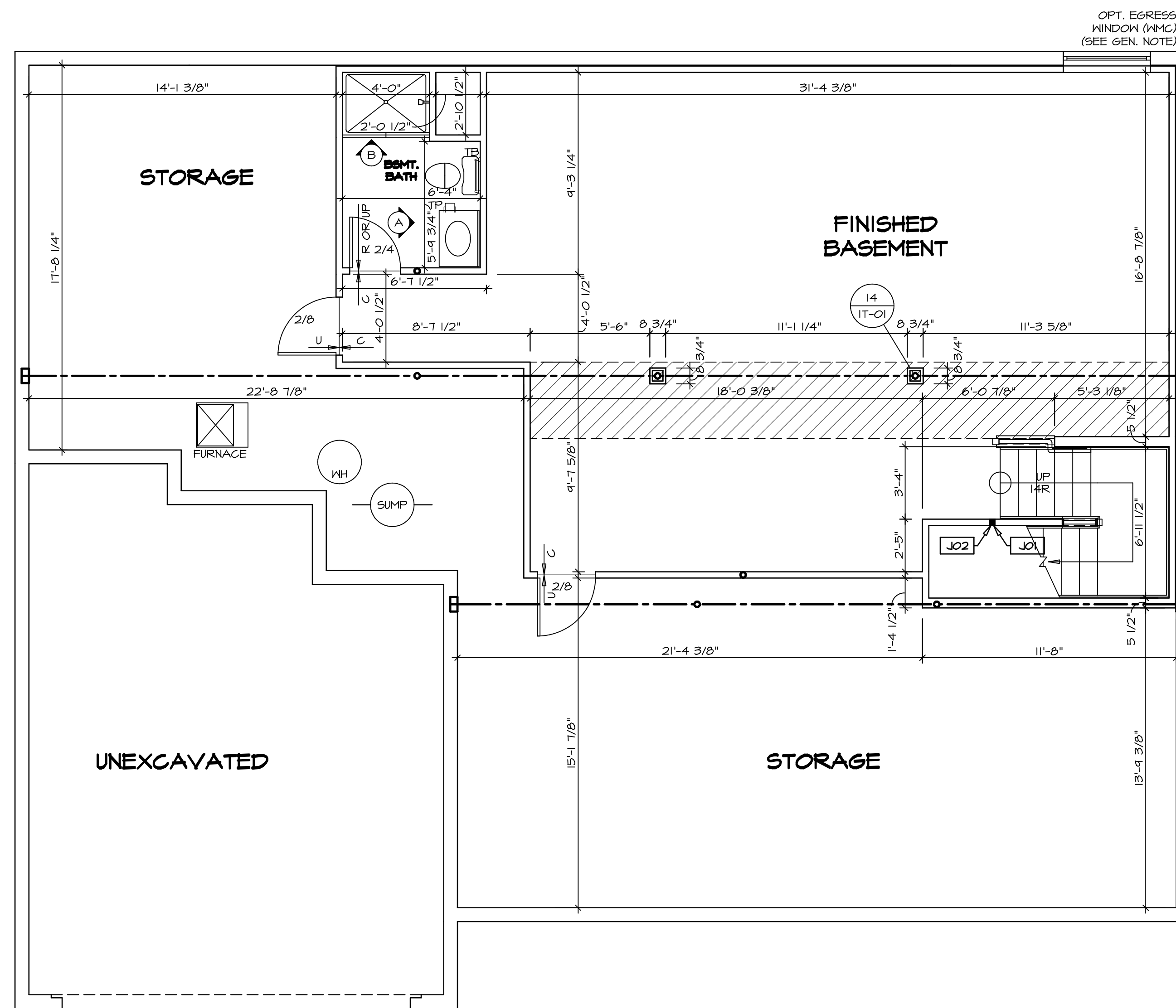


PLUMBING PLAN
SCALE: 1/4" = 1'-0"

SHEET NO. A-5	MODEL NORMANDY	SET NO. NRM00	REV. NO. DATE	REMARKS
	DRAWING TITLE PLUMBING PLAN	VERSION 01 DRAWN BY RJC		
OPTION DESCRIPTION 31	DATE: 5/14/15	OPTION		
 NVR, Inc. Architectural Services Architects 21 Bay View, Suite A Frederick, MD 21702		NVR, Inc., owner, expressly reserves its copyright in these plans. These plans are not to be reproduced, changed, copied, or otherwise used in any way without the written consent of NVR, Inc.		
C:\NVA\Solves\NORMANDY_NRM00_01\DCY-VG-K32A-000007\Sheets\Lot_Specific\31_A-5_PLUMB_L3.dwg 05/30/15 - 3:28 am				



LEGEND

- BEARING WALL
- NON BEARING WALL
- INDICATES BEARING FROM POINT-LOAD ABOVE
- JACKS
- BEAM/HEADER
- PAD FOOTING
- STEEL COLUMN
- PORTAL FRAME
- JOIST/TRUSS
- LVL
- ENGINEERING PAGE NUMBER

SEE FC DETAILS FOR FRAMING CONNECTORS

- FLOOR PLAN NOTES**
- ALL HEADERS ARE (2) 2x6 w/ 2x4 WALLS OR (3) 2x6 w/ 2x6 WALLS, UNLESS OTHERWISE NOTED.
 - ALL HEADERS TO HAVE (1) 2x4 OR 2x6 JACK EACH END, UNLESS OTHERWISE NOTED.
 - ALL EXTERIOR WALLS TO BE 4" AND ALL INTERIOR WALLS TO BE 3 1/2", UNLESS OTHERWISE NOTED.
 - HATCHED AREAS INDICATE DROPPED CEILINGS. ALL DROPPED CEILINGS ARE 12" UNLESS OTHERWISE NOTED.
 - SEE "BRACED WALL PANEL DETAIL SHEET" FOR SPECIAL WALL FRAMING LOCATIONS AND HEADER SIZES, IF APPLICABLE.
 - SEE STANDARD DETAIL CATEGORY "IT" SHEET(S) FOR INTERIOR TRIM DETAILS.
 - SEE ARCHITECTURAL DETAIL SHEET "AD" FOR HOUSE SPECIFIC INTERIOR TRIM OPTION TABLE.
 - ALL WINDOWS HAVE 7'-0 1/2" HEADER HEIGHT UNLESS OTHERWISE NOTED.

- GYPSUM NOTES**
- AT GARAGE:
GYPSUM BOARD AT COMMON WALLS, CEILINGS, BEAM WRAPS AND SUPPORTS PER STANDARD DETAIL FA-1(b) FIRE ASSEMBLIES OR AS REQUIRED BY LOCAL CODE.
- AT STAIRS:
1/2" GYPSUM BOARD AT UNDERSIDE OF STAIRS AND WALLS IN CLOSET

BASEMENT JACK SCHEDULE

IDENTIFIER	DESCRIPTION	OPTIONS	ENG. NUM.	REMARKS
J01	JACK - 2x4 SPF STUD GRADE		B10	
J02	JACK - 2x4 SPF STUD GRADE		B22	



BASEMENT FLOOR PLAN
SCALE: 1/4" = 1'-0"

REMARKS

REV. NO.	DATE	DESCRIPTION
1	08/07/16	NL - DRAWING ALIGNMENT
2	11/05/16	TH - STANDARD DETAILS 3.0
3	4/20/17	SFK - ADDED BASEMENT FLOOR PLAN JACK SCHEDULE

SET NO. NRM00
VERSION 01
DRAWN BY SGA
DATE: 6/29/15
OPTION

MODEL
NORMANDY
DRAWING TITLE
BASEMENT FLOOR PLAN
OPTION DESCRIPTION

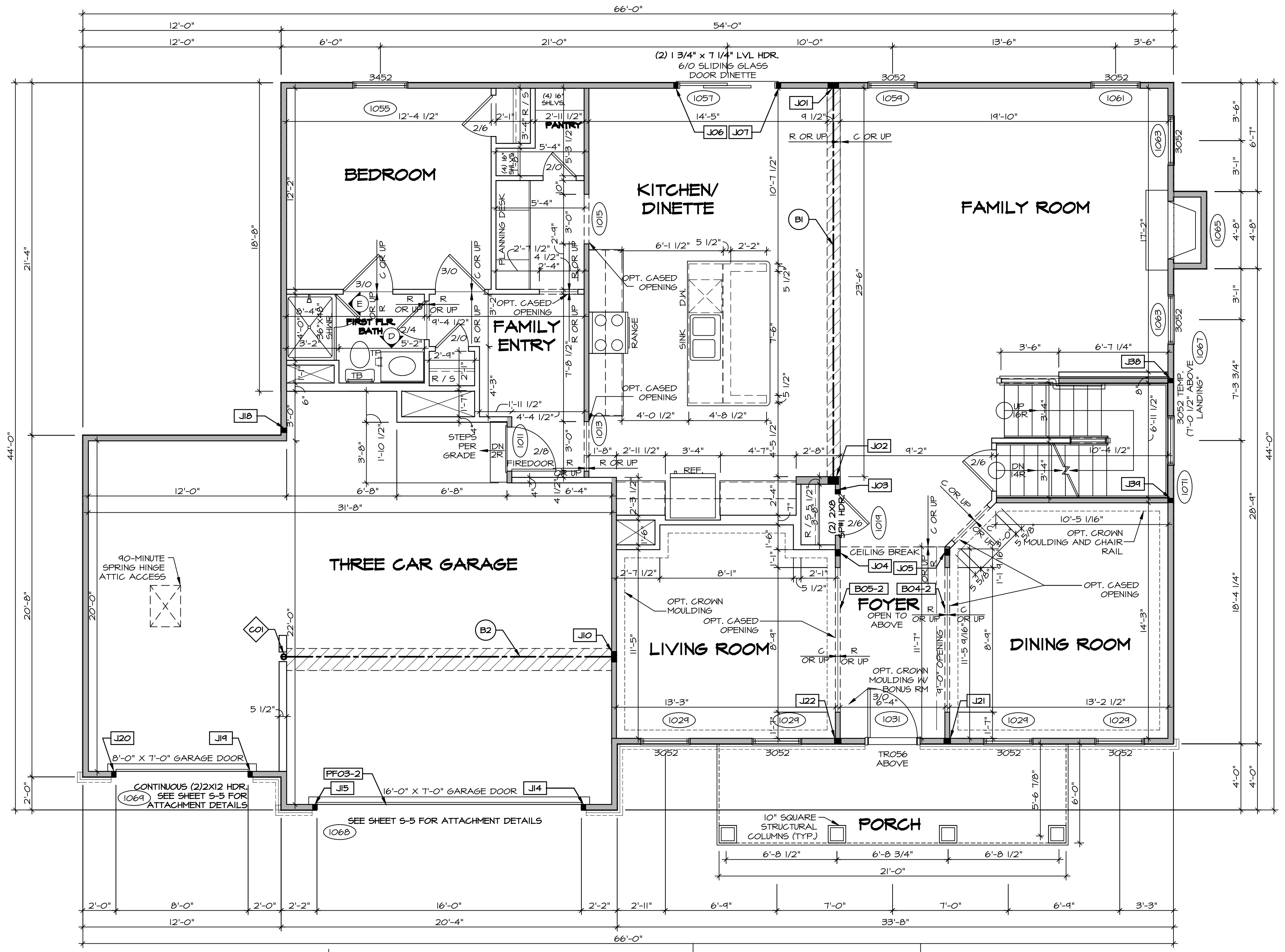
SHEET NO. A-6

34

NVR
NVR, Inc.
Architectural Services
21 Bay Ct., Ste. A
Frederick, MD 21702

NVR, Inc., owner, expressly reserves its copyright in these plans. These plans are not to be reproduced, changed, copied, or otherwise used in any way without the written consent of NVR, Inc.

C:\NVR\Solves\NORMANDY_NRM00_01\DCI-VG-K32A\00007\Sheets\Lot_Spec\134_A-6_BSMF_L3.dwg 05/30/18 - 3:28 am



FIRST FLOOR PLAN
SCALE: 1/4" = 1'-0"

LVL PLY TO PLY FASTENING SCHEDULE: (WHERE APPLICABLE BASED ON LVL USAGE)

1A - (2) PLY UP TO AND INCLUDING 11 7/8" TALL; FASTEN PLYS W/ (2) ROWS 16D NAILS AT 12" O.C.
 2A - (2) PLY 14" TO AND 18" TALL (INCLUSIVE); FASTEN PLYS W/ (3) ROWS 16D NAILS AT 12" O.C.
 3A - (2) PLY 20" TALL AND OVER; FASTEN PLYS W/ (4) ROWS 16D NAILS AT 12" O.C.
 4A - (3) PLY UP TO AND INCLUDING 11 7/8" TALL; FASTEN PLYS W/ (2) ROWS 16D NAILS AT 12" O.C. FROM EACH SIDE
 5A - (3) PLY 14" TO AND 18" TALL (INCLUSIVE); FASTEN PLYS W/ (3) ROWS 16D NAILS AT 12" O.C. FROM EACH SIDE
 6A - (3) PLY 20" TALL AND OVER; FASTEN PLYS W/ (4) ROWS 16D NAILS AT 12" O.C. FROM EACH SIDE
 7A - (4) PLY (ALL SIZES); FASTEN PLYS W/ (2) ROWS 1/2" DIAMETER A307 BOLTS AT 24" O.C. SEE SHOP DRAWING FOR ADDITIONAL INFORMATION.

FIELD INSTALLED FIRST FLOOR BEAM/HEADER SCHEDULE

IDENTIFIER	DESCRIPTION	LENGTH	OPTIONS	ENG. NUM.	REMARKS
B04-2	LVL - 11-14	11'-4 1/16"	SRM, SQK, SQL, ELA, ELK	1017	1A
B05-2	LVL - 11-14	11'-8 1/2"	SRM, SQK, SQL, ELA, ELK	1017	1A
BI	BEAM STEEL - W12X35	24'-2"		1021	
B2	BEAM STEEL - W12X26	20'-2 1/2"		1023	
PF03-2	LVL - 11-04	20'-0"	GCF	1043	PORTAL FRAME, 1A

STEEL COLUMN SCHEDULE

IDENTIFIER	STYLE	HEIGHT	OPTIONS	ENG. NUM.	REMARKS
CO1	STANCHION - 4 IN DIA 116A ADJ	9'-0 1/8"	GCF, FBA	1023	

FIRST FLOOR JACK SCHEDULE

IDENTIFIER	DESCRIPTION	OPTIONS	ENG. NUM.	REMARKS
J01	JACK - (5) 2X4 SPF#1		1021	
J02	JACK - (5) 2X6 SPF#1		1021	
J03	JACK - (2) 2X4 SPF STUD GRADE		1019	
J04	JACK - (3) 2X4 SPF STUD GRADE		1017	
J05	JACK - (3) 2X4 SPF STUD GRADE		1017	
J06	JACK - (2) 2X4 SPF STUD GRADE		1057	
J07	JACK - (2) 2X4 SPF STUD GRADE		1057	
J10	JACK - (5) 2X4 SPF#1		1023	
J14	JACK - (2) 2X4 SPF STUD GRADE	GCB, GCF	1043	
J15	JACK - (2) 2X4 SPF STUD GRADE	GCB, GCF	1043	
J18	JACK - (2) 2X4 SPF STUD GRADE	GCF	1029	
J19	JACK - (2) 2X4 SPF STUD GRADE	GCF	1043	
J20	JACK - (2) 2X4 SPF STUD GRADE	GCF	1043	
J21	JACK - (3) 2X4 SPF STUD GRADE	SRM, SQK, SQL, ELA, ELB, ELK	1017	
J22	JACK - (3) 2X4 SPF STUD GRADE	SRM, SQK, SQL, ELA, ELB, ELK	1017	
J38	JACK - (2) 2X4 SPF STUD GRADE		1007	
J39	JACK - (2) 2X4 SPF STUD GRADE		1007	

LEGEND

- BEARING WALL
- NON BEARING WALL
- INDICATES BEARING FROM POINT-LOAD ABOVE
- JACKS
- BEAM/HEADER
- PAD FOOTING
- STEEL COLUMN
- PORTAL FRAME
- JOIST/TRUSS
- LVL
- ENGINEERING PAGE NUMBER
- SEE FC DETAILS FOR FRAMING CONNECTORS

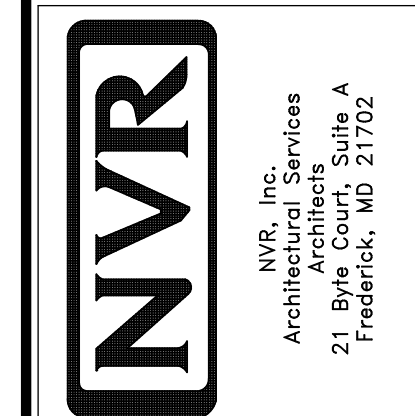
- FLOOR PLAN NOTES** RYAN
- ALL HEADERS ARE (2) 2x6 w/ 2x4 WALLS OR (3) 2x6 w/ 2x6 WALLS, UNLESS OTHERWISE NOTED.
 - ALL HEADERS TO HAVE (1) 2x4 OR 2x6 JACK AND KING STUD EACH END, UNLESS OTHERWISE NOTED.
 - ALL EXTERIOR WALLS TO BE 4" w/ OSB OR 3 1/2" w/ T-PLY; ALL INTERIOR WALLS TO BE 3 1/2", UNLESS OTHERWISE NOTED.
 - HATCHED AREAS INDICATE DROPPED CEILING. ALL DROPPED CEILING ARE 12' UNLESS OTHERWISE NOTED.
 - SEE "BRACED WALL PANEL DETAIL SHEET" FOR SPECIAL WALL FRAMING LOCATIONS AND HEADER SIZES, IF APPLICABLE.
 - SEE STANDARD DETAIL CATEGORY "IT" SHEET(S) FOR INTERIOR TRIM DETAILS.
 - SEE ARCHITECTURAL DETAIL SHEET "AD" FOR HOUSE SPECIFIC INTERIOR TRIM OPTION TABLE.
 - ALL WINDOWS HAVE 7'-0 1/2" HEADER HEIGHT UNLESS OTHERWISE NOTED.
 - ALL HEADERS IN NON-BEARING WALLS SHALL BE A SINGLE FLAT 2X4 OR 2X6 ATTACHED TO CRIPPLES ABOVE, UNLESS OTHERWISE NOTED.

- GYPSUM NOTES** RYAN
- AT GARAGE:**
 GYPSUM BOARD AT COMMON WALLS, CEILING, BEAM WRAPS AND SUPPORTS PER STANDARD DETAIL FA-10b FIRE ASSEMBLIES OR AS REQUIRED BY LOCAL CODE.
- AT STAIRS:**
 1/2" GYPSUM BOARD AT UNDERSIDE OF STAIRS AND WALLS IN CLOSET

REVISIONS

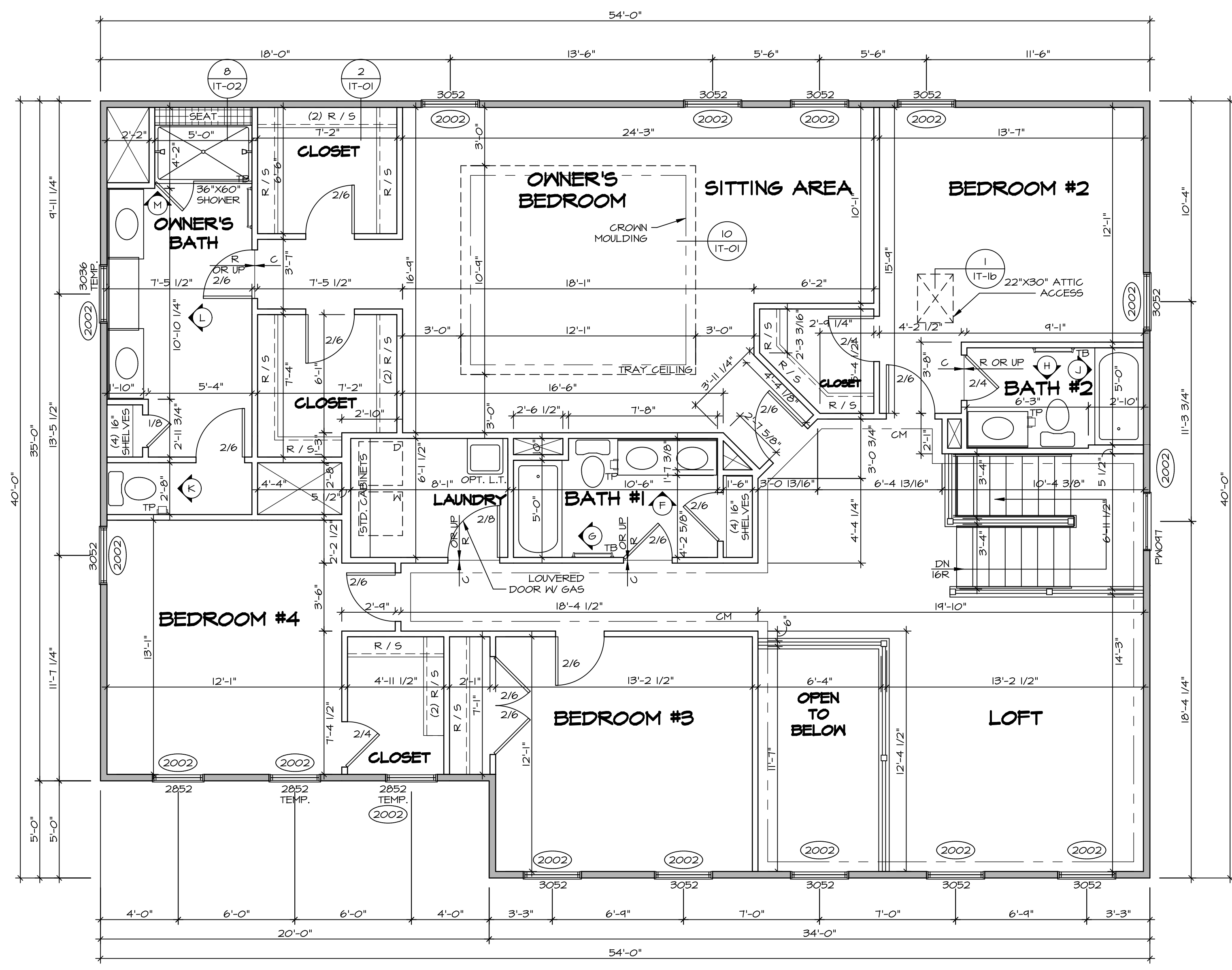
REV. NO.	DATE	DESCRIPTION
1	08/07/16	NL - DRAWING ALIGNMENT
2	10/05/16	TM - STANDARD DETAILS 3.0
3	07/17/17	SL5 - T-PLY CONVERSION PROJECT

NVR, Inc., owner, expressly reserves its copyright in this drawing. No part of this drawing may be reproduced, stored in a retrieval system, or transmitted in any form or by any means, electronic, mechanical, photocopying, recording, or by any information storage and retrieval system, without the prior written consent of NVR, Inc.



SET NO. NRM00
 VERSION 01
 DRAWN BY SGA
 DATE: 6/29/15
 OPTION

MODEL: NORMANDY
 DRAWING TITLE: FIRST FLOOR PLAN
 SHEET NO. A-7
 OPTION DESCRIPTION



LEGEND

- BEARING WALL
- NON BEARING WALL
- INDICATES BEARING FROM POINT-LOAD ABOVE
- JACKS
- BEAM/HEADER
- PAD FOOTING
- STEEL COLUMN
- PORTAL FRAME
- JOIST/TRUSS
- LVL
- ENGINEERING PAGE NUMBER

SEE FC DETAILS FOR FRAMING CONNECTORS

- FLOOR PLAN NOTES** RYAN
1. ALL HEADERS ARE (2) 2x6 w/ 2x4 WALLS OR (3) 2x6 w/ 2x6 WALLS, UNLESS OTHERWISE NOTED.
 2. ALL HEADERS TO HAVE (1) 2x4 OR 2x6 JACK AND KING STUD EACH END, UNLESS OTHERWISE NOTED.
 3. ALL EXTERIOR WALLS TO BE 4" w/ OSB OR 3 1/2" w/ T-PLY, ALL INTERIOR WALLS TO BE 3 1/2", UNLESS OTHERWISE NOTED.
 4. HATCHED AREAS INDICATE DROPPED CEILINGS. ALL DROPPED CEILINGS ARE 12" UNLESS OTHERWISE NOTED.
 5. SEE "BRACED WALL PANEL DETAIL SHEET" FOR SPECIAL WALL FRAMING LOCATIONS AND HEADER SIZES, IF APPLICABLE.
 6. SEE STANDARD DETAIL CATEGORY "IT" SHEET(S) FOR INTERIOR TRIM DETAILS.
 7. SEE ARCHITECTURAL DETAIL SHEET "AD" FOR HOUSE SPECIFIC INTERIOR TRIM OPTION TABLE.
 8. ALL WINDOWS HAVE 7'-0 1/2" HEADER HEIGHT UNLESS OTHERWISE NOTED.
 9. ALL HEADERS IN NON-BEARING WALLS SHALL BE A SINGLE FLAT 2x4 OR 2x6 ATTACHED TO GRIPPLES ABOVE, UNLESS OTHERWISE NOTED.

SECOND FLOOR JACK SCHEDULE

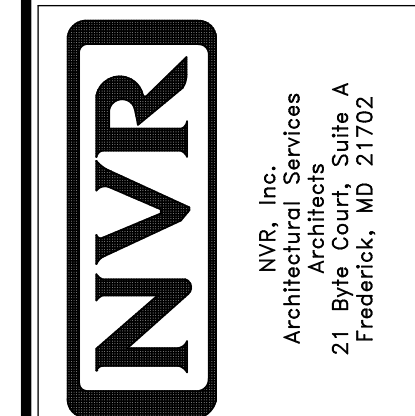
IDENTIFIER	DESCRIPTION	OPTIONS	ENG. NUM.	REMARKS

SECOND FLOOR PLAN
SCALE: 1/4" = 1'-0"

REMARKS

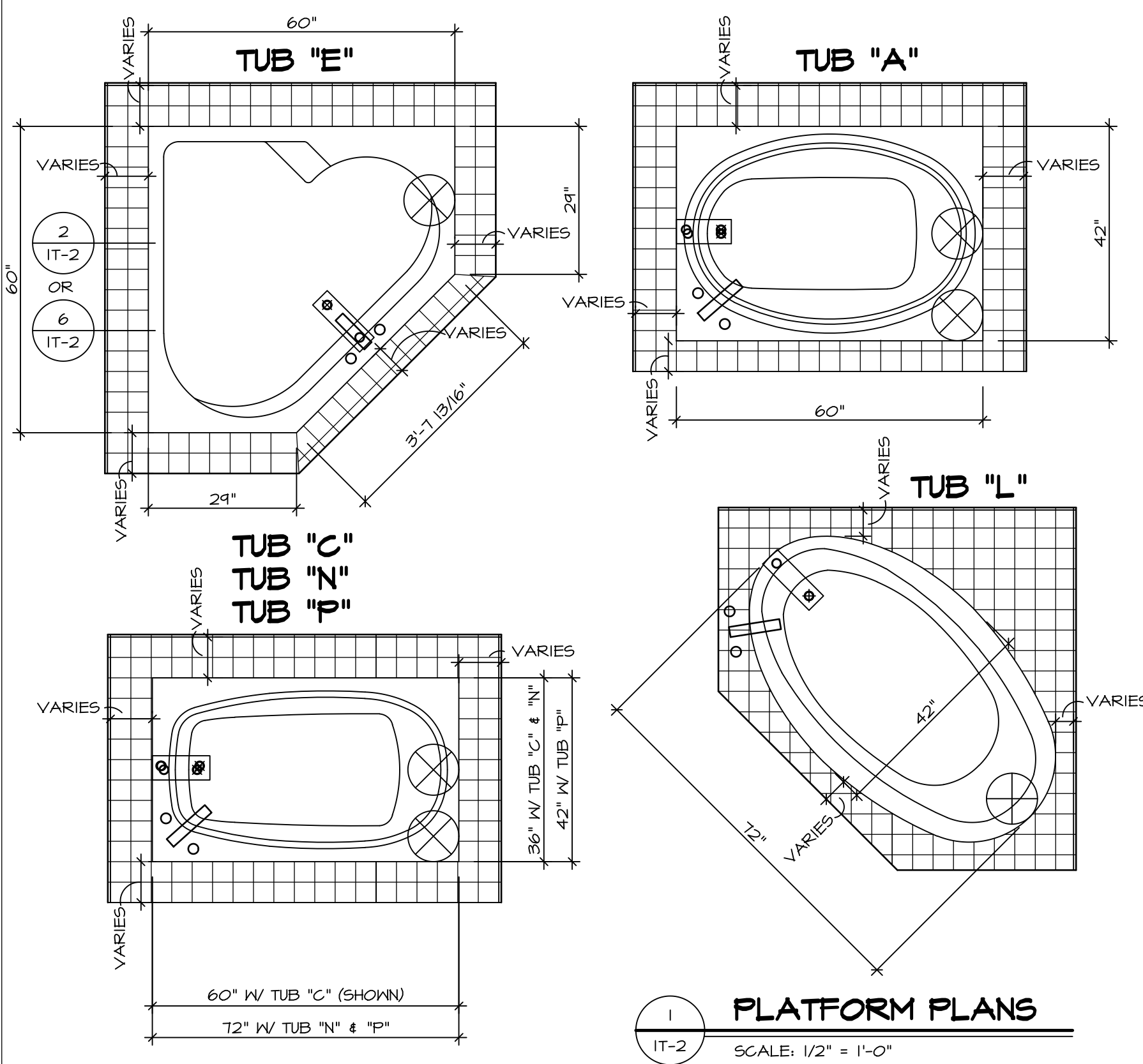
REV. NO.	DATE	DESCRIPTION
1	08/07/16	NL - DRAWING ALIGNMENT
2	11/05/16	TH - STANDARD DETAILS 3.0
3	07/17/17	SLS - T-PLY CONVERSION PROJECT

NVR, Inc., owner, expressly reserves its copyright in these plans. These plans are not to be reproduced, changed, copied, or otherwise used without the written consent of NVR, Inc.



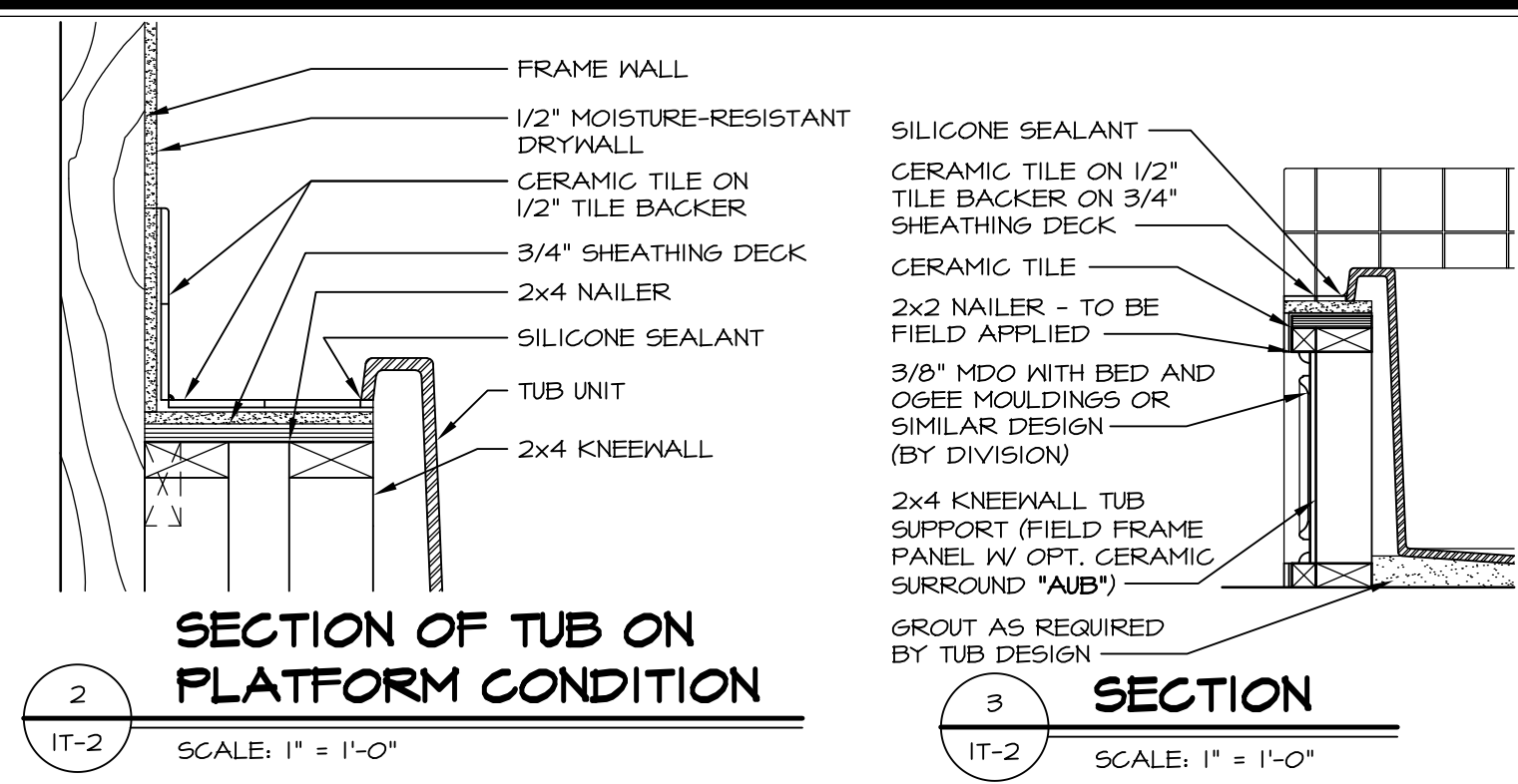
SET NO.	NRM00
VERSION	01
DRAWN BY	SGA
DATE	6/29/15
OPTION	

MODEL	NORMANDY
DRAWING TITLE	SECOND FLOOR PLAN
OPTION DESCRIPTION	

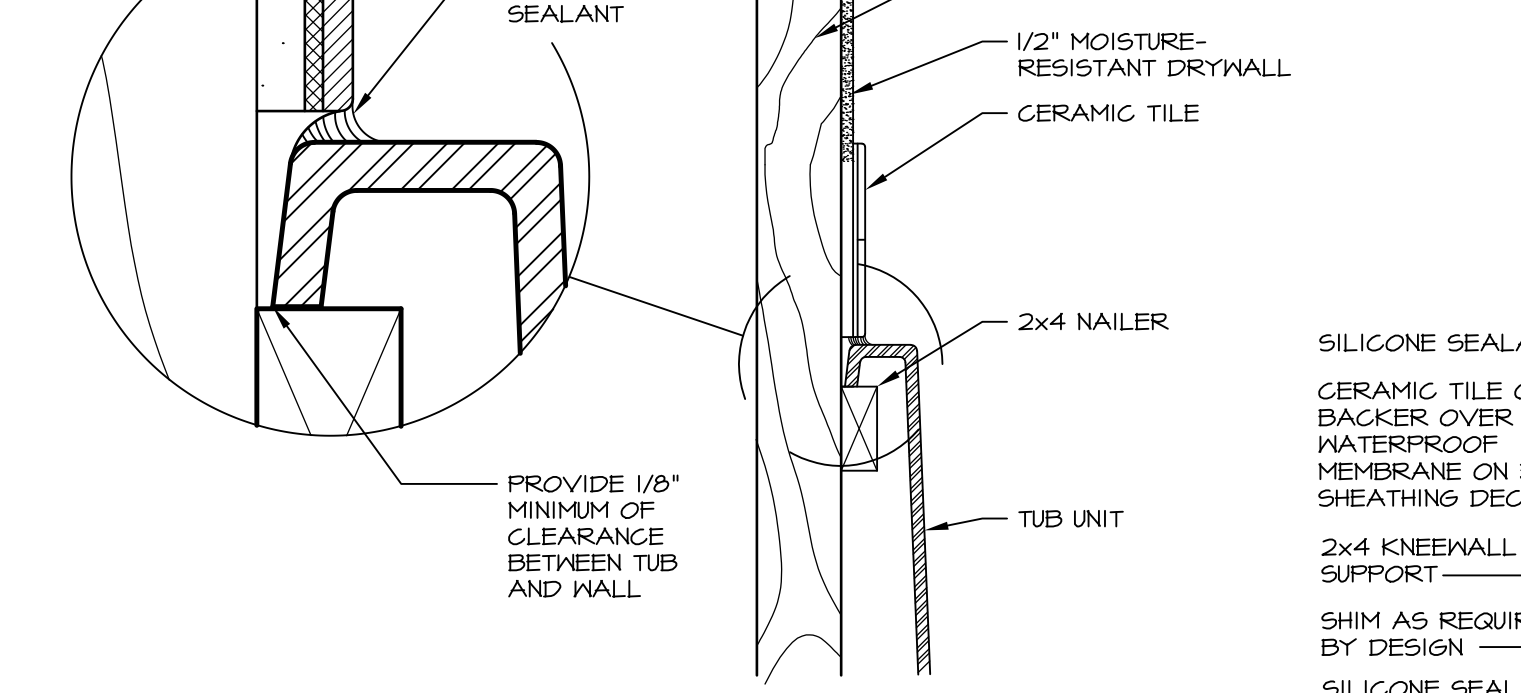


1 PLATFORM PLANS
SCALE: 1/2" = 1'-0"

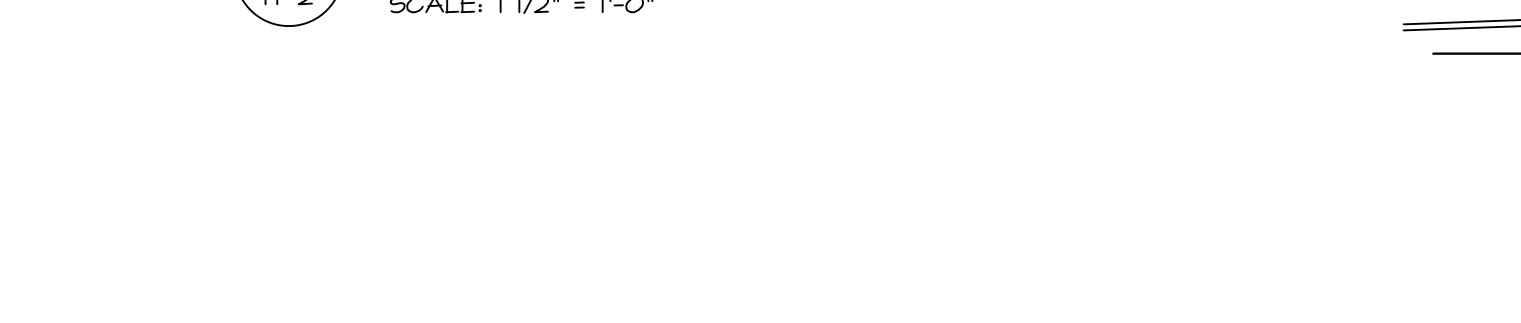
TUB	MANUF.	HEIGHT	WIDTH	LENGTH	TUB DECK PANEL HEIGHT
"A"	KOHLER/STERLING	18 3/4"	42"	60"	17 1/8"
"C"	KOHLER/STERLING	18 3/4"	36"	60"	17 1/8"
"E"	KOHLER/STERLING	19 1/2"	60"	60"	17 7/8"
"L"	KOHLER/STERLING	18 1/2"	42"	72"	16 7/8"
"N"	KOHLER/STERLING	18 3/4"	36"	72"	17 1/8"
"P"	KOHLER/STERLING	18 3/4"	42"	72"	17 1/8"



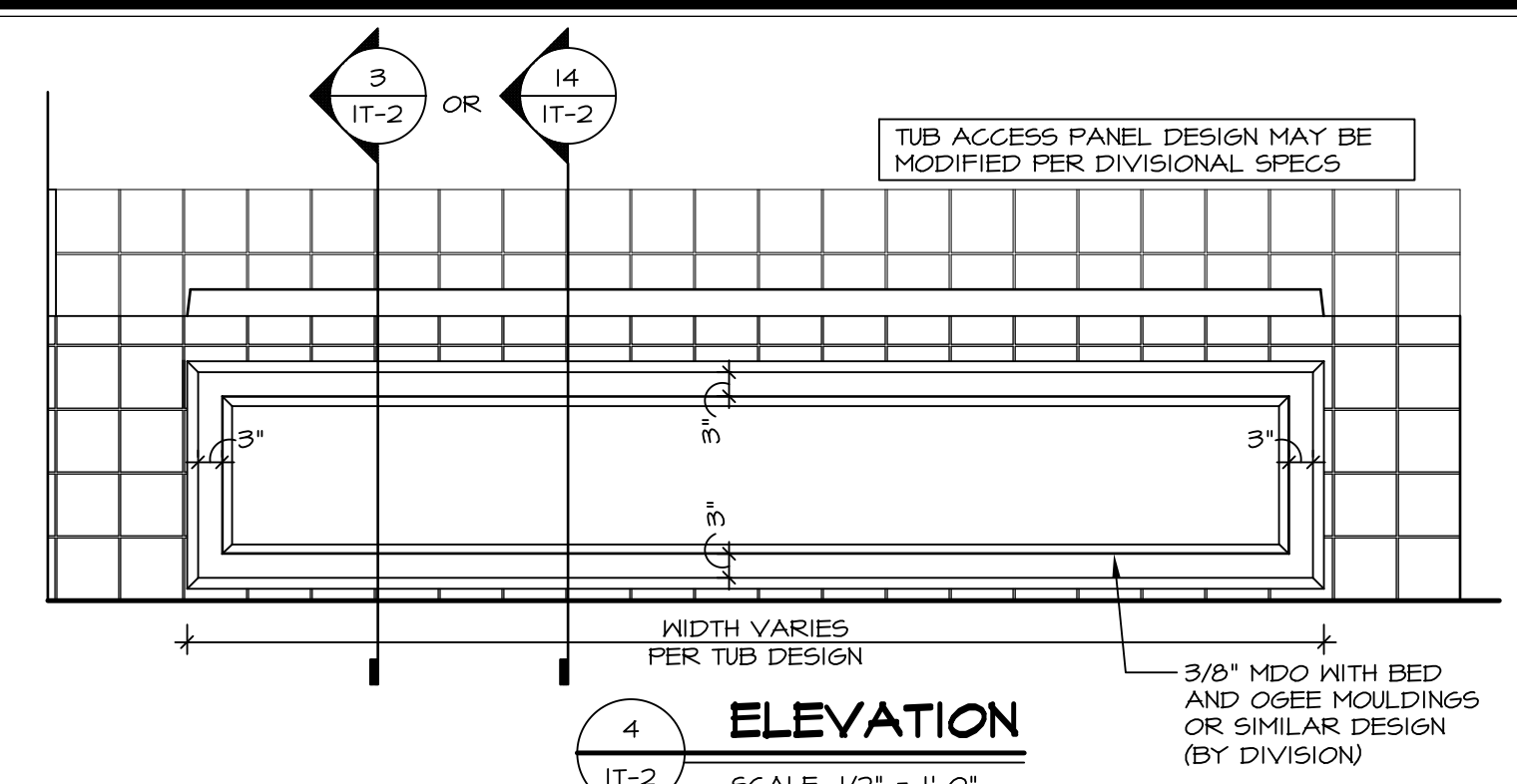
2 SECTION OF TUB ON PLATFORM CONDITION
SCALE: 1" = 1'-0"



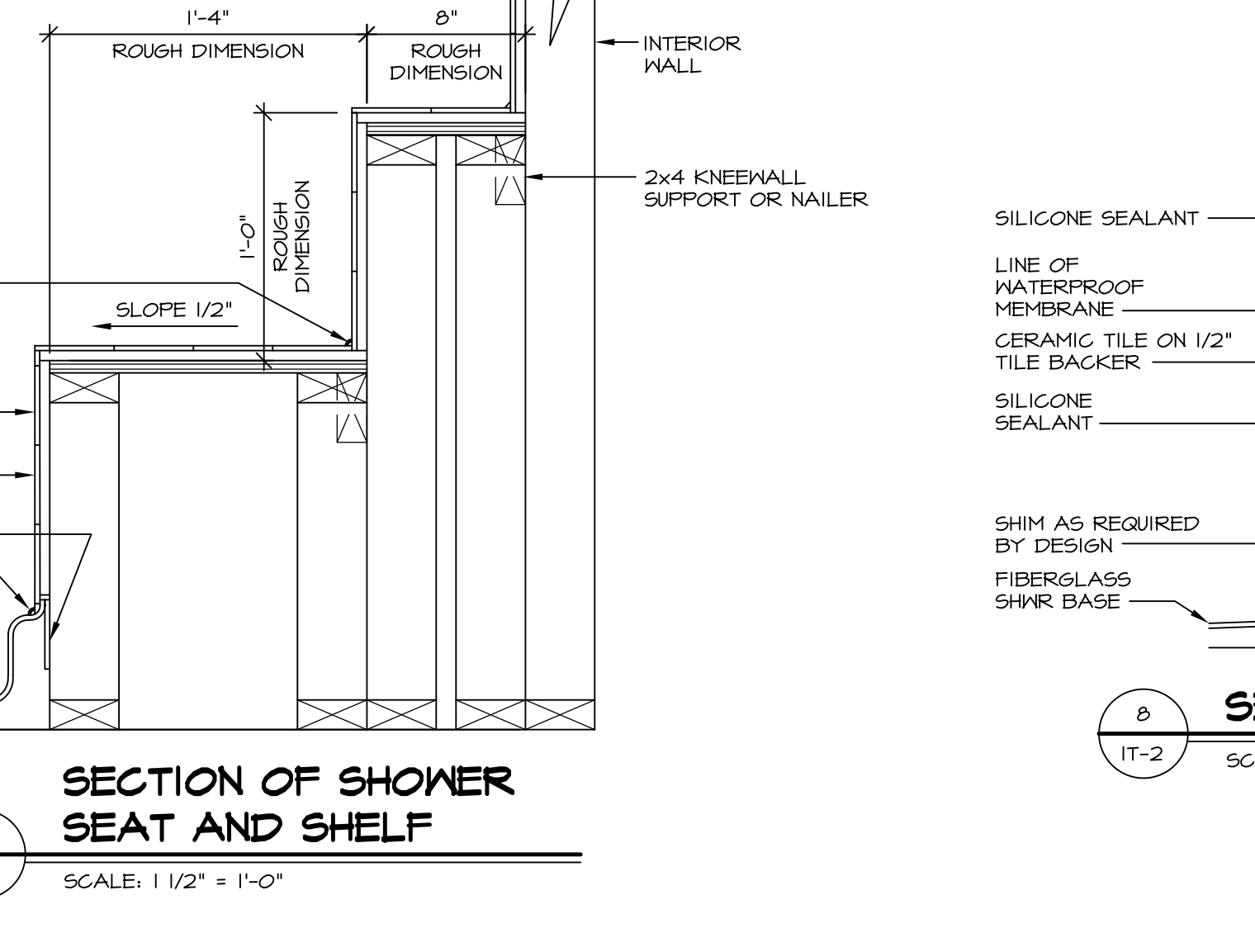
3 SECTION
SCALE: 1" = 1'-0"



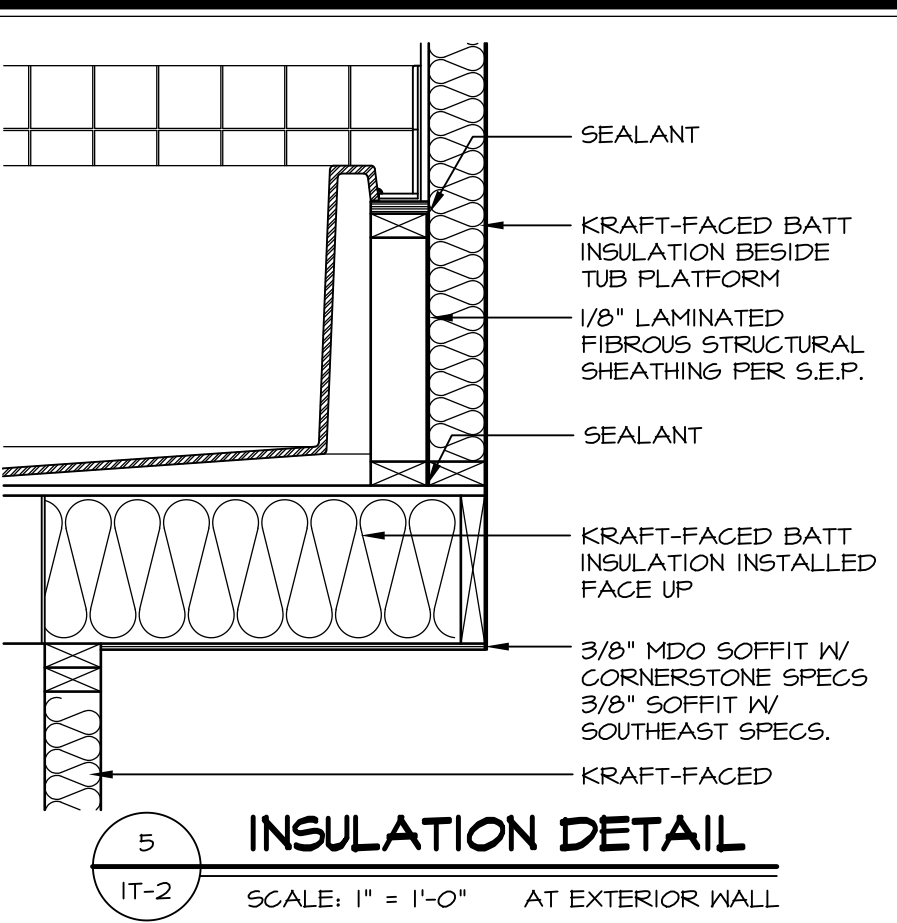
6 SECTION OF TUB TO WALL CONDITION
SCALE: 1 1/2" = 1'-0"



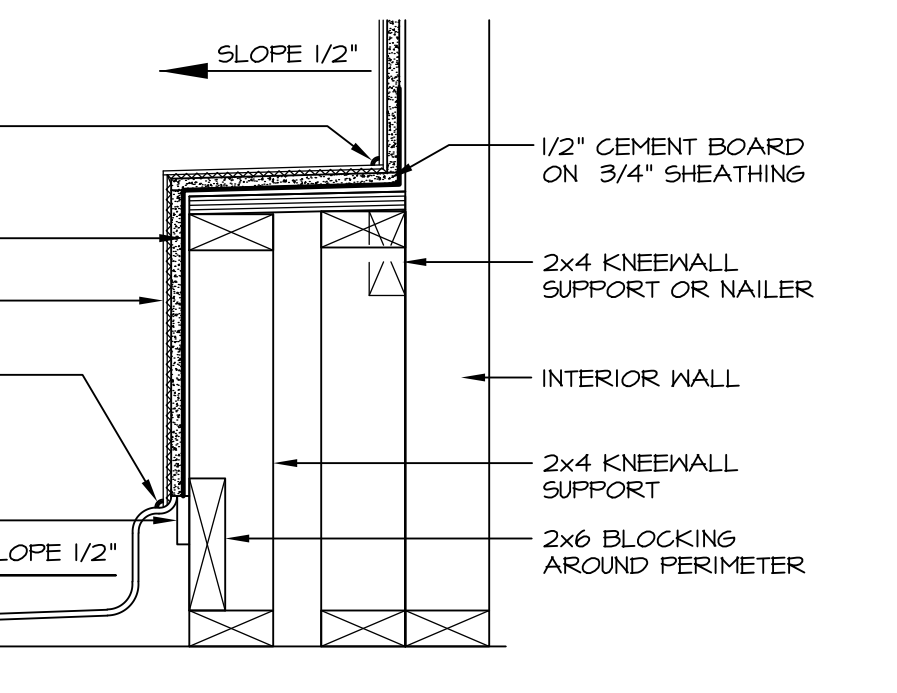
4 ELEVATION
SCALE: 1/2" = 1'-0"



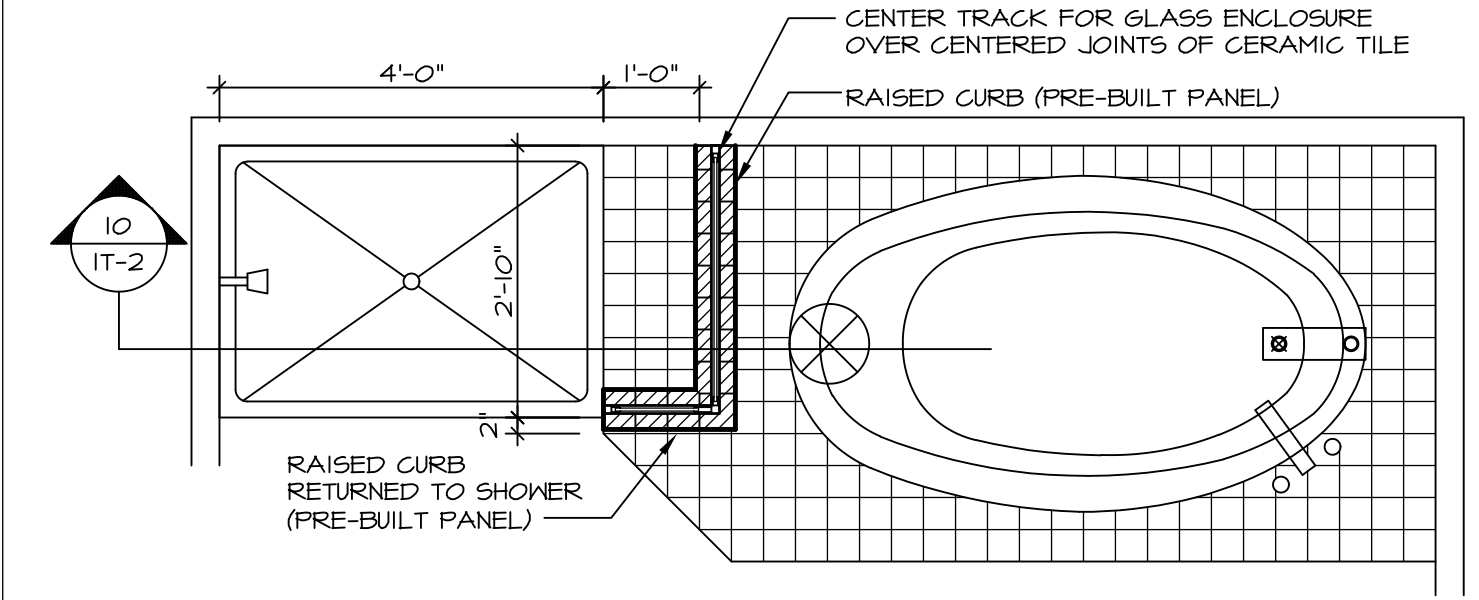
7 SECTION OF SHOWER SEAT AND SHELF
SCALE: 1 1/2" = 1'-0"



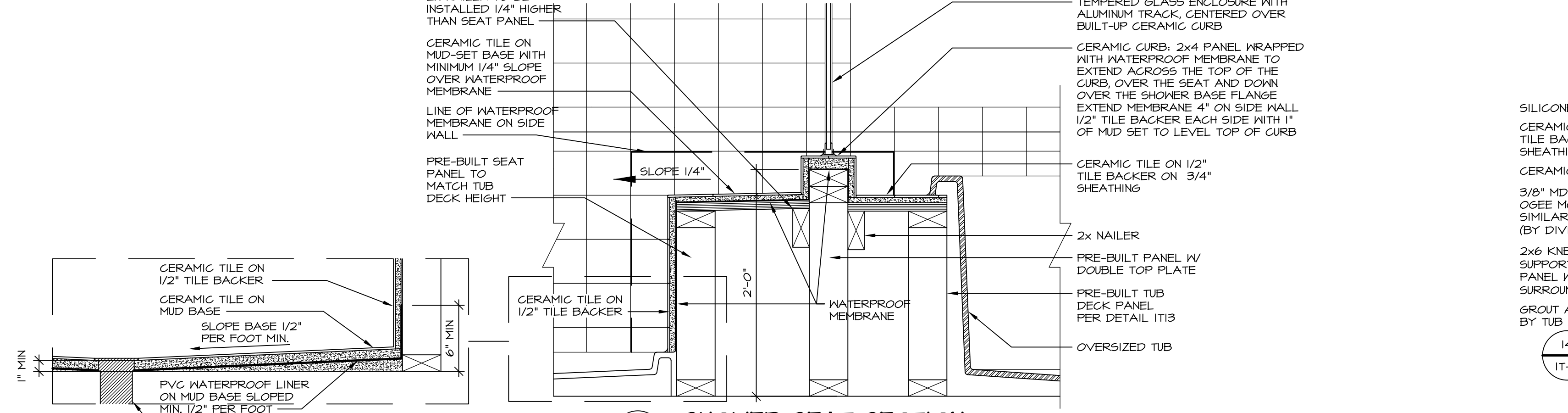
5 INSULATION DETAIL
SCALE: 1" = 1'-0" AT EXTERIOR WALL



8 SECTION OF SHOWER SEAT
SCALE: 1-1/2" = 1'-0" FIBERGLASS SHOWER BASE



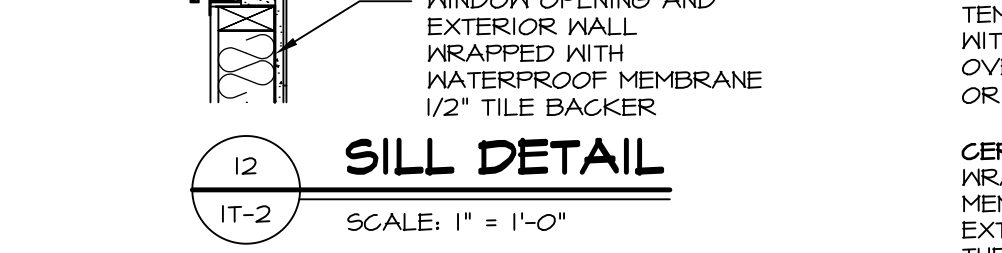
9 SHOWER SEAT PLAN / DETAIL
SCALE: 1/2" = 1'-0"



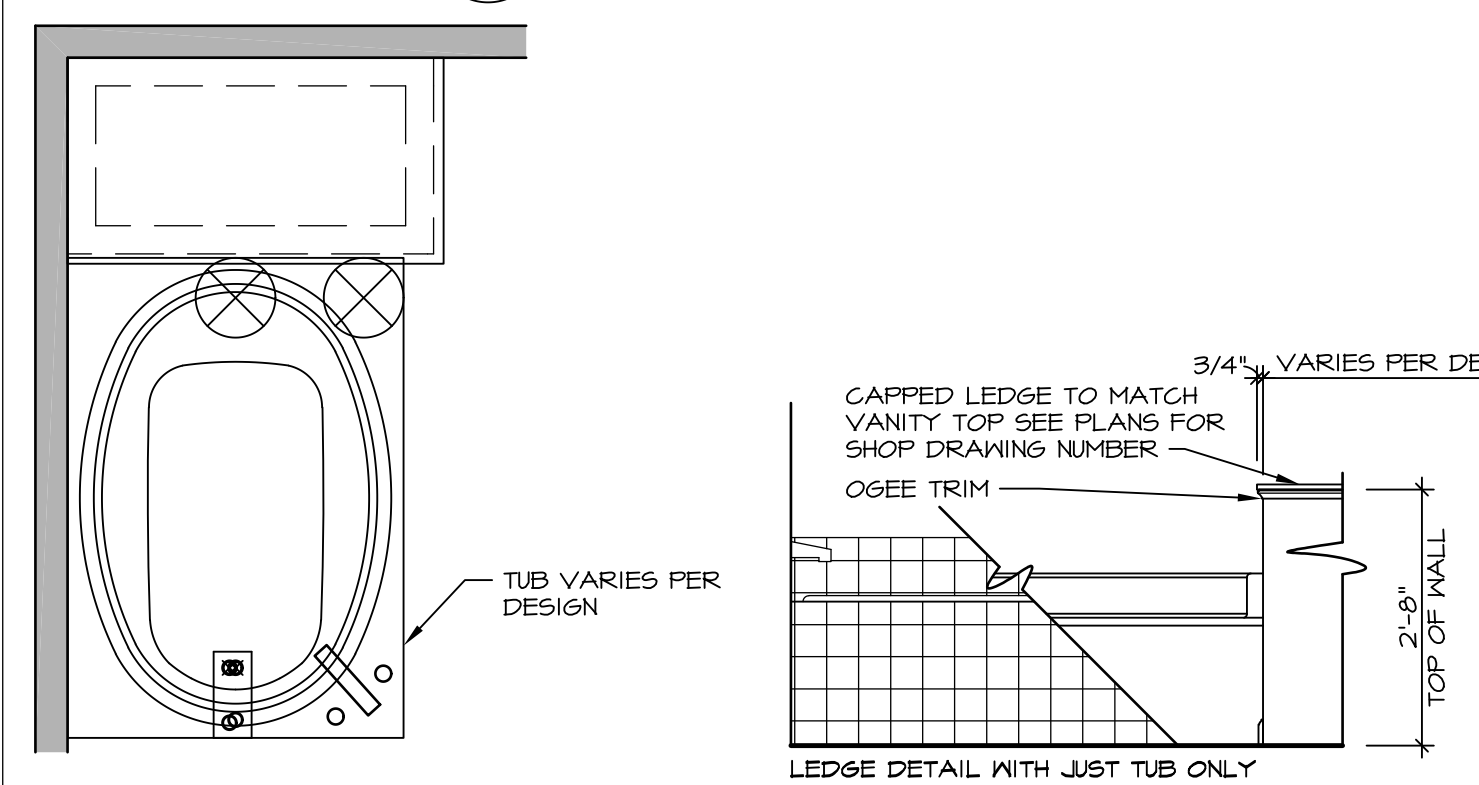
10 SHOWER SEAT SECTION
SCALE: 1-1/2" = 1'-0"



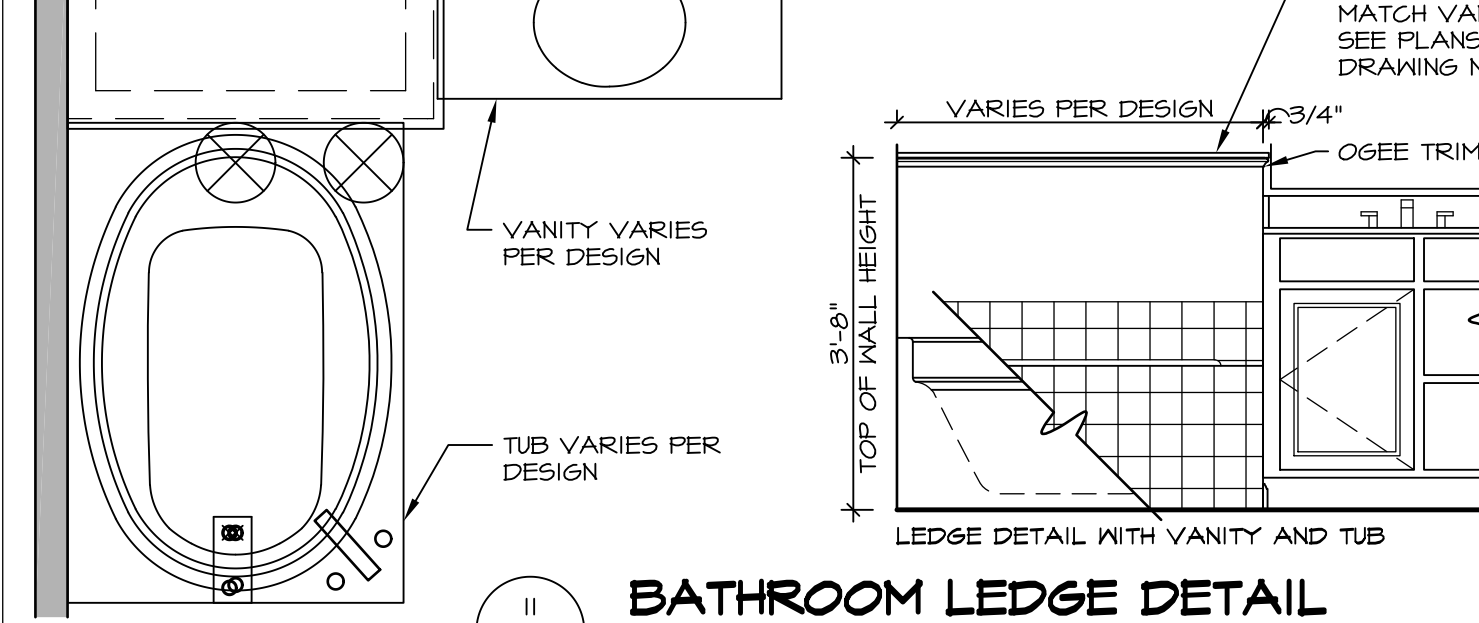
11 ALTERNATE SHOWER PAN DETAIL



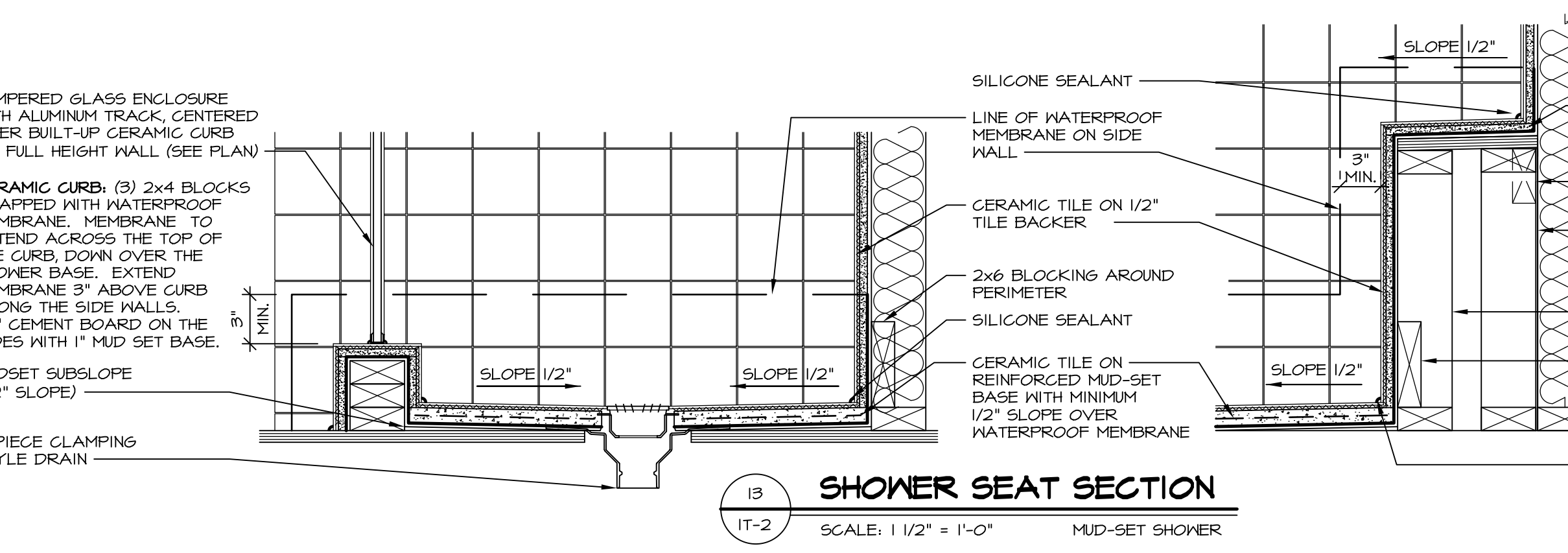
12 SILL DETAIL
SCALE: 1" = 1'-0"



10 BATHROOM LEDGE DETAIL



11 BATHROOM LEDGE DETAIL
SCALE: 1/2" = 1'-0"

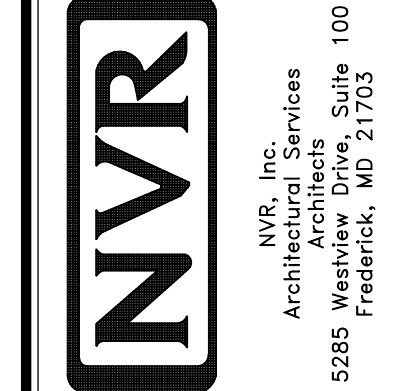


13 SHOWER SEAT SECTION
SCALE: 1 1/2" = 1'-0" MUD-SET SHOWER

REVISIONS

REV. NO.	DATE	DESCRIPTION
1	5/1/17	EBP - REVISED DETAIL 1 AND 11 TO REMOVE TUB ACCESS PANEL REF. (DSS #15 5414)
2	9/2/17	EBP - REVISED T-FLY NOTE TO CALL OUT LFS
3	9/2/17	EBP - REVISED NOTE ON DETAIL #1 - REVISED ORDER OF MATERIAL PARA#4934

NVR, Inc., owner, expressly reserves its common law copyright and other property rights in these plans. These plans are not to be reproduced, stored in a retrieval system, or transmitted in any form or by any means, electronic, mechanical, photocopying, recording, or by any information storage and retrieval system, without first obtaining the expressed written consent of NVR, Inc.



SET NO. NVR

VERSION

DRAWN BY

DATE:

OPTION

MODEL

STANDARD DETAILS

DRAWING TITLE

INTERIOR TRIM DETAILS

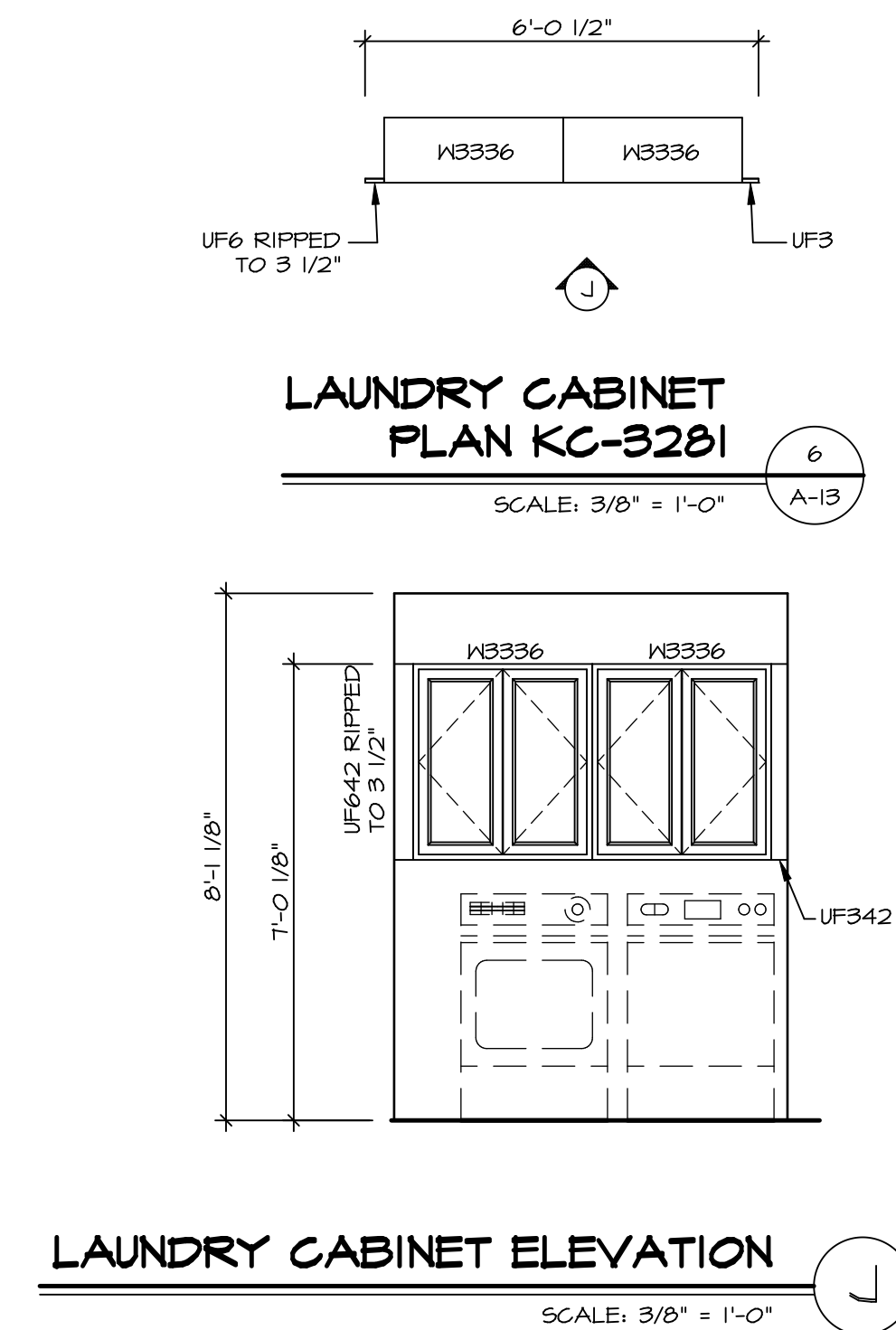
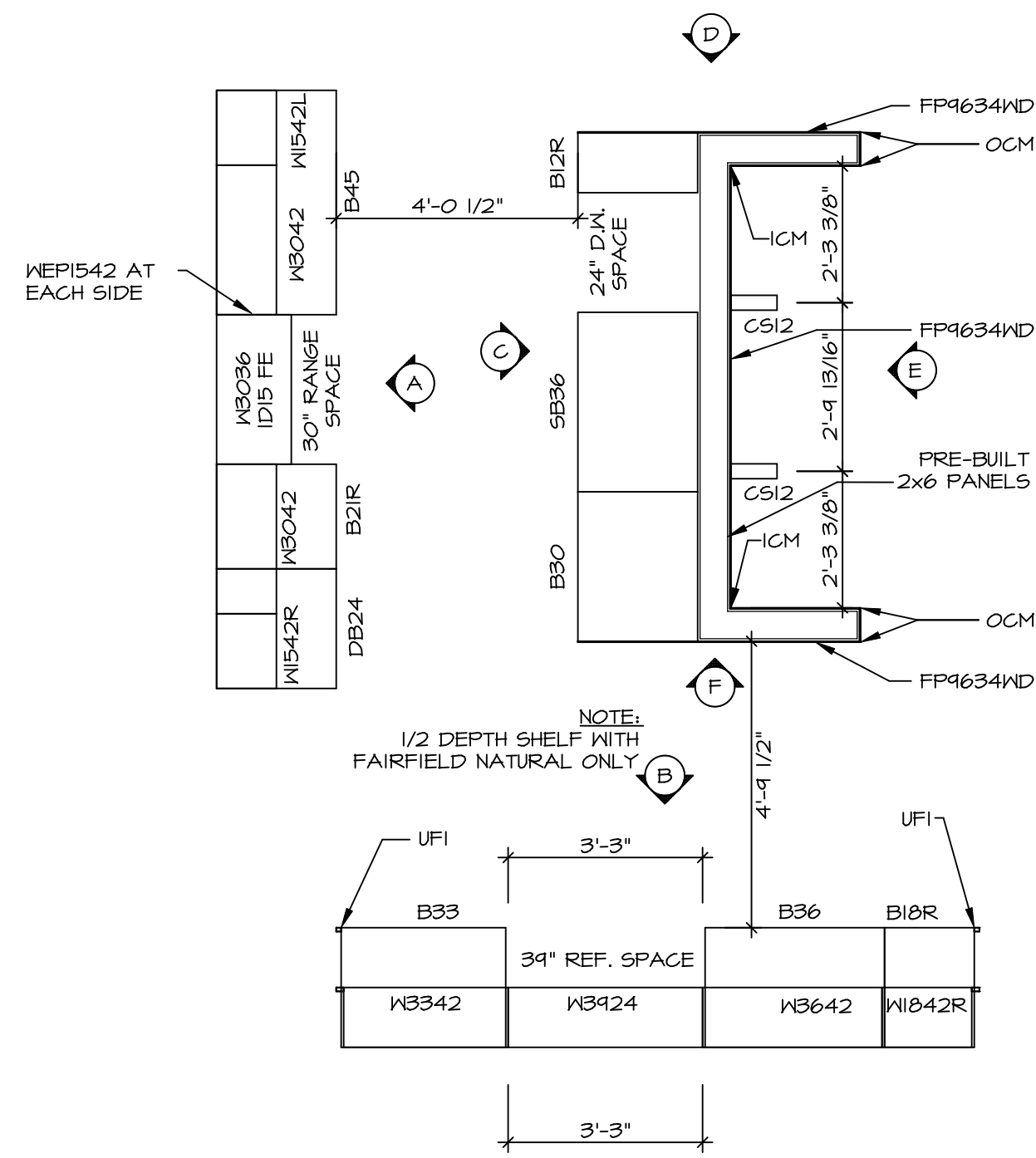
BATH DETAILS

OPTION DESCRIPTION

SHEET NO.

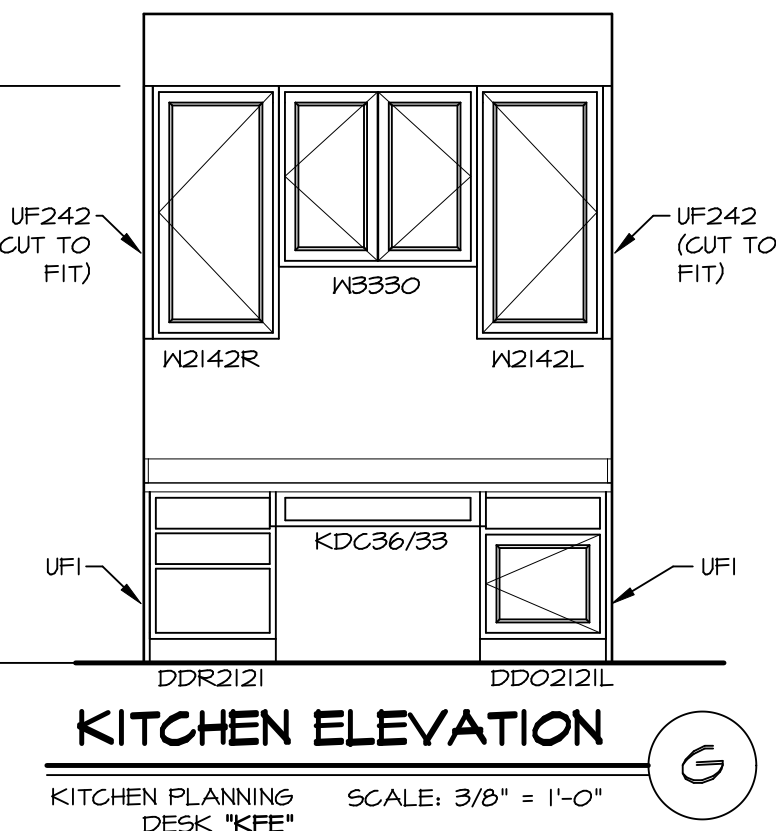
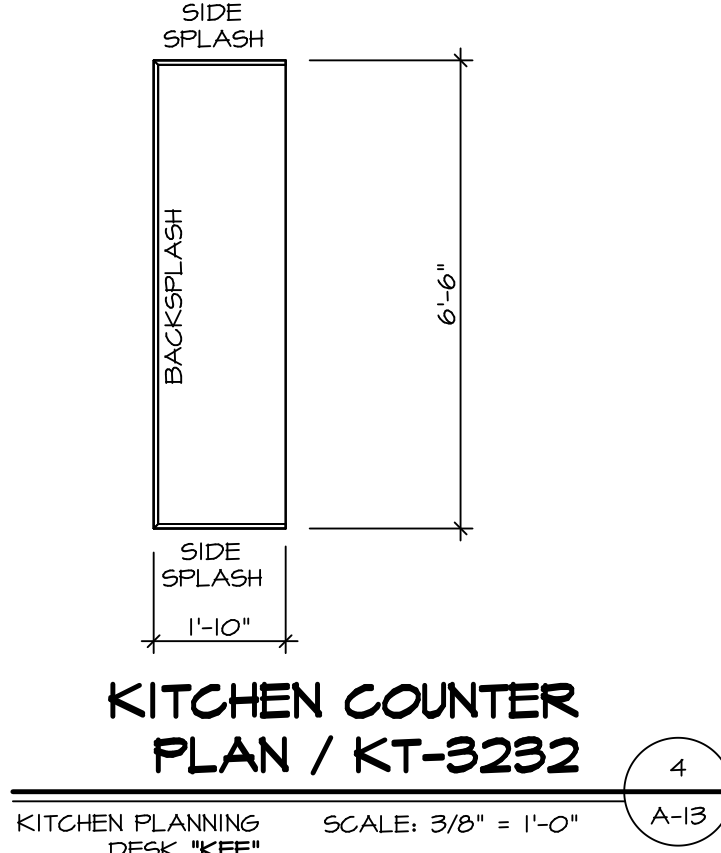
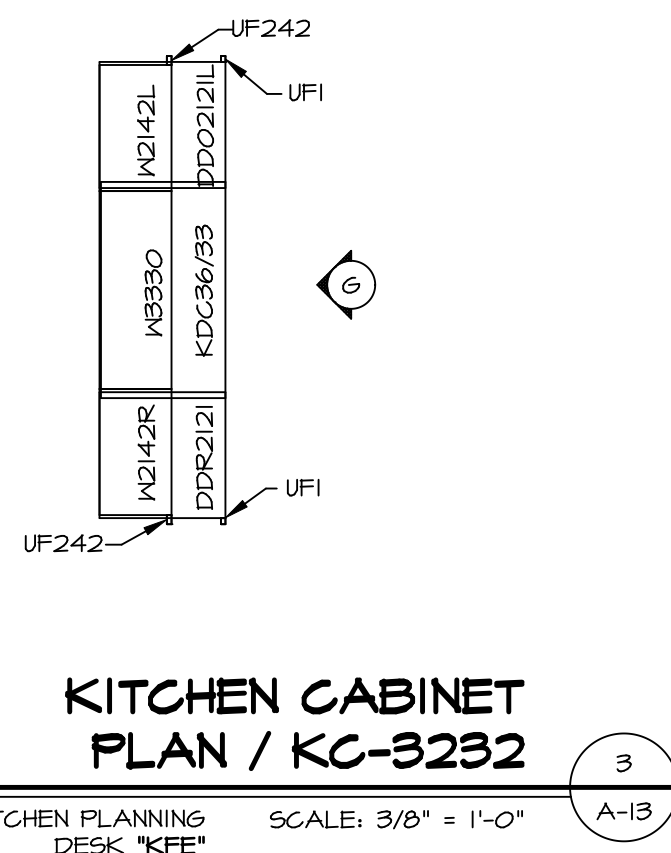
IT-2

J:\Dwg\NVR\Interior Trim\IT2.dwg 09/27/17 - 9:20 am



KITCHEN CABINET PLAN / KC-3230
SCALE: 3/8" = 1'-0"
A-13

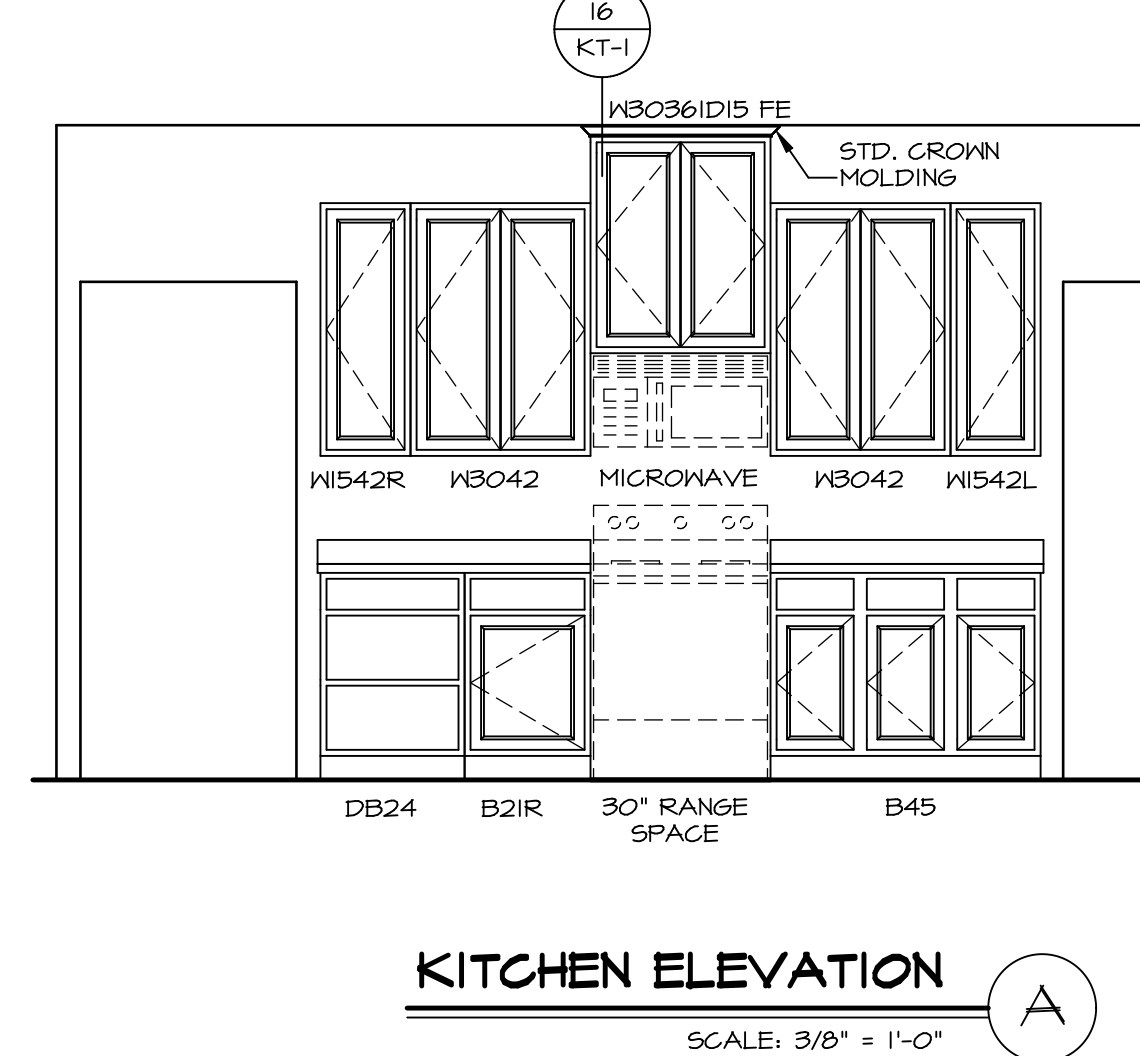
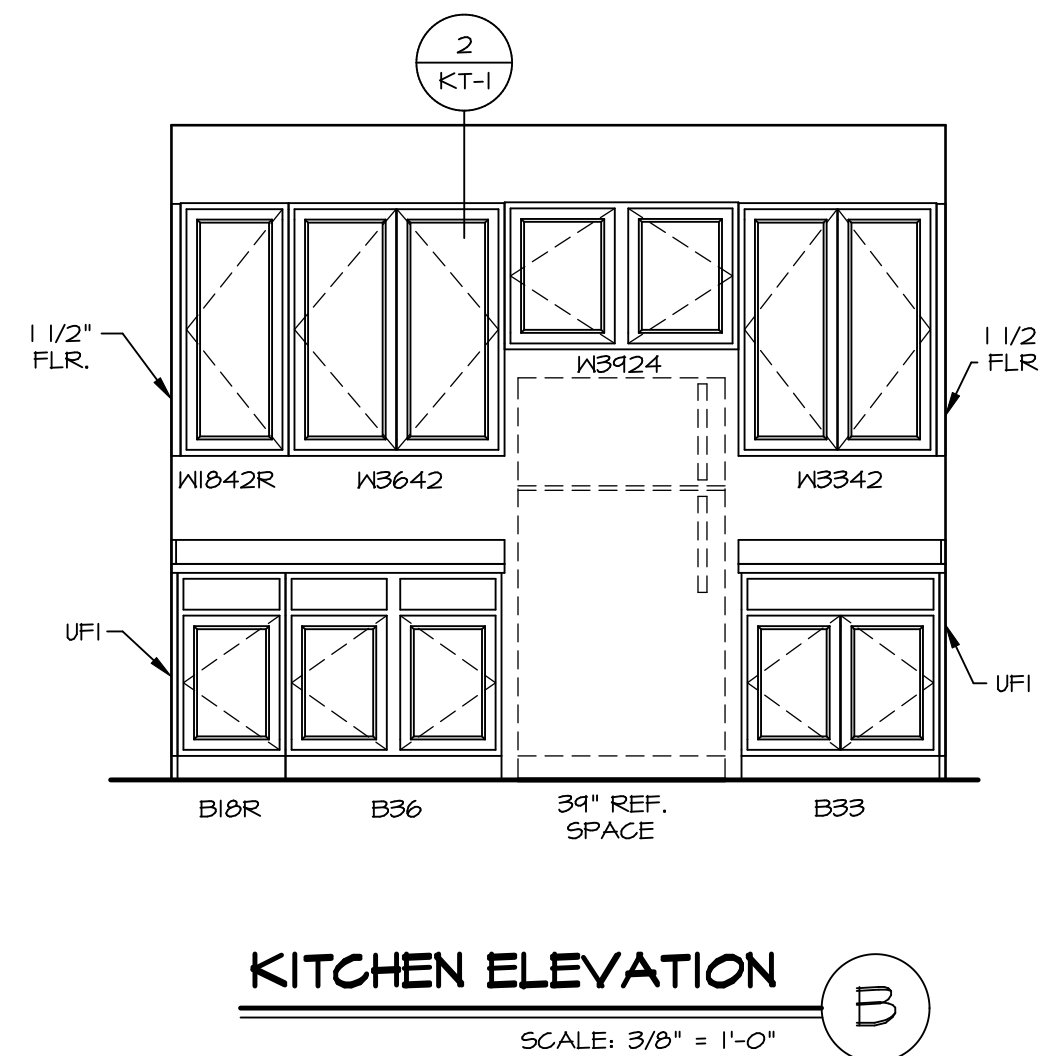
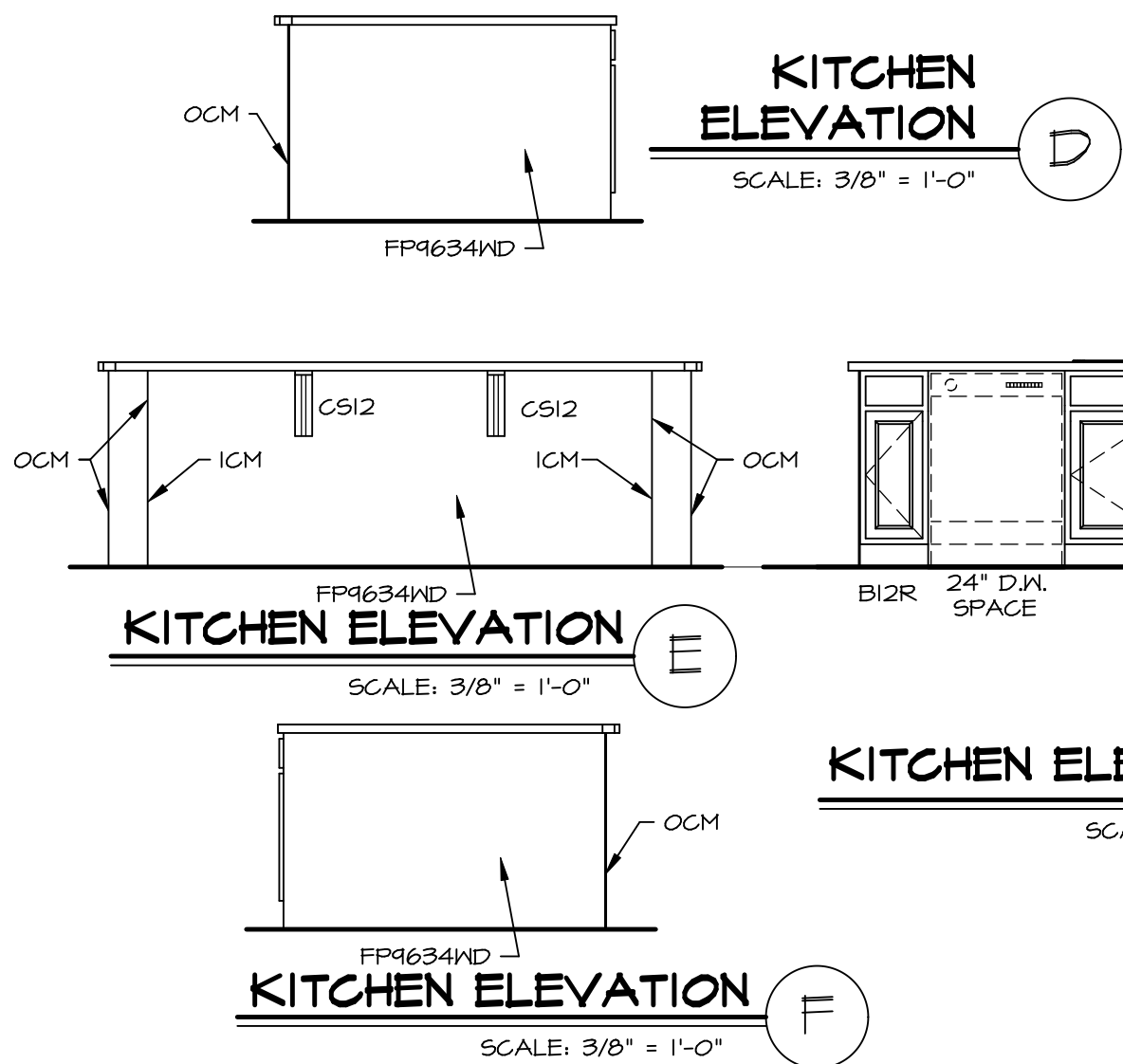
KITCHEN COUNTERTOP PLAN / KT-3230
SCALE: 3/8" = 1'-0"
A-13



KITCHEN CABINET PLAN / KC-3232
SCALE: 3/8" = 1'-0"
A-13

KITCHEN COUNTER PLAN / KT-3232
SCALE: 3/8" = 1'-0"
A-13

KITCHEN ELEVATION
SCALE: 3/8" = 1'-0"
G

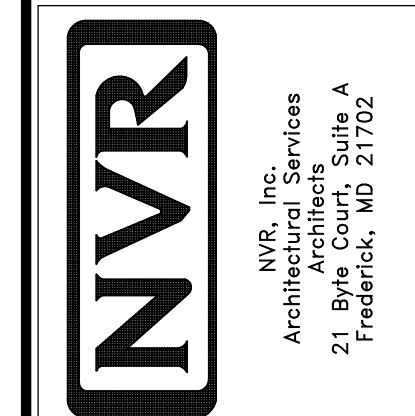


KITCHEN ELEVATION B
SCALE: 3/8" = 1'-0"

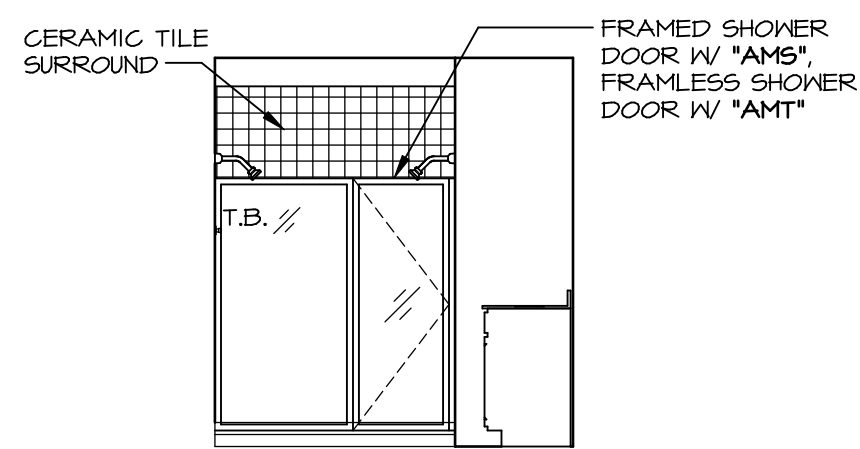
KITCHEN ELEVATION A
SCALE: 3/8" = 1'-0"

REV. NO.	DATE	REMARKS
1	11/05/16	TRV - STANDARD DETAILS 5.0

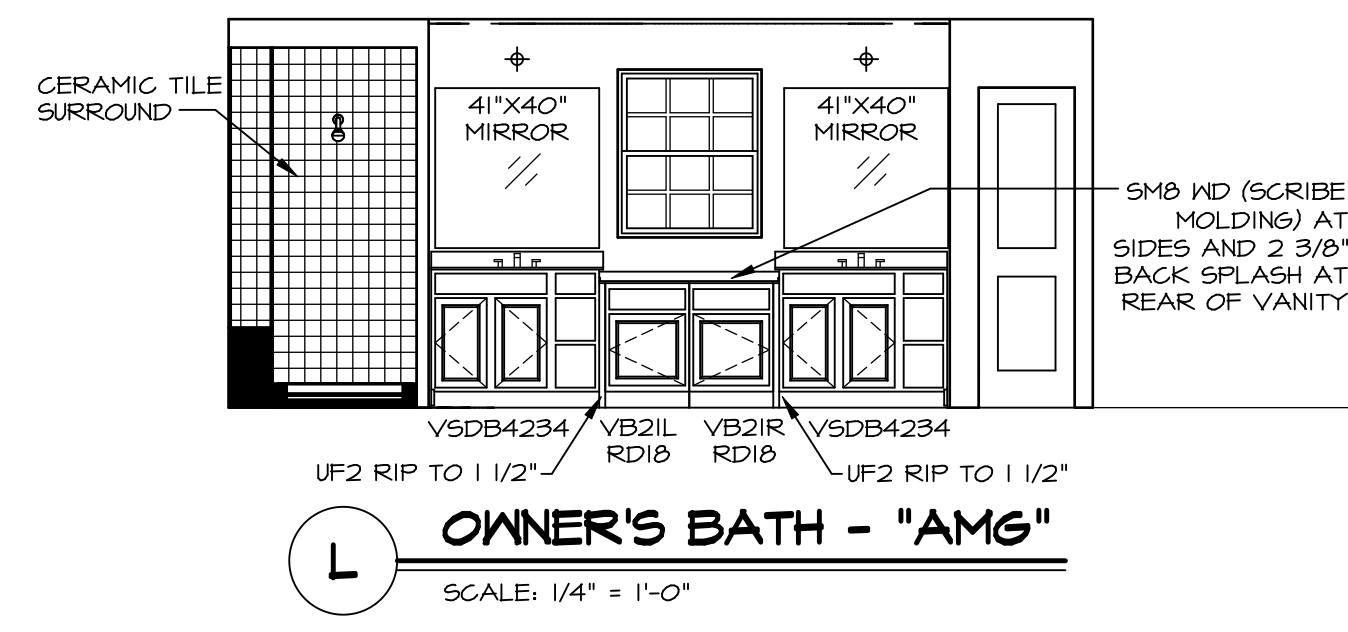
NVR, Inc., owner, expressly reserves the copyright in these plans. These plans are not to be reproduced, changed, copied in any way, or used for any other purpose without the written consent of NVR, Inc.



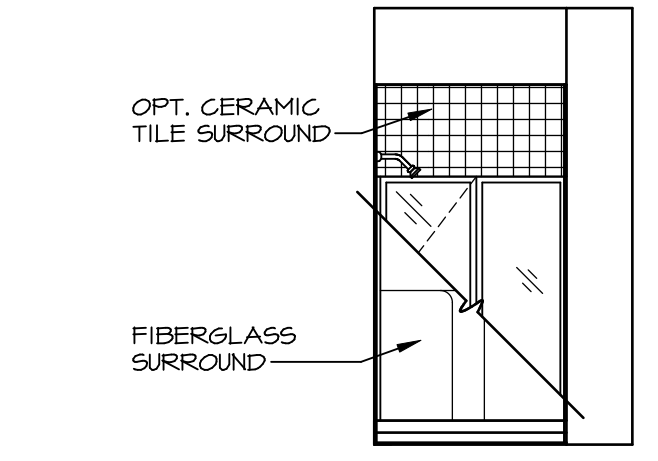
SHEET NO.	MODEL	SET NO.	VERSION	DRAWN BY	DATE	OPTION
A-13	NORMANDY	01	01	RJC	6/29/15	
	DRAWING TITLE					
	KITCHEN LAYOUT					
	OPTION DESCRIPTION					



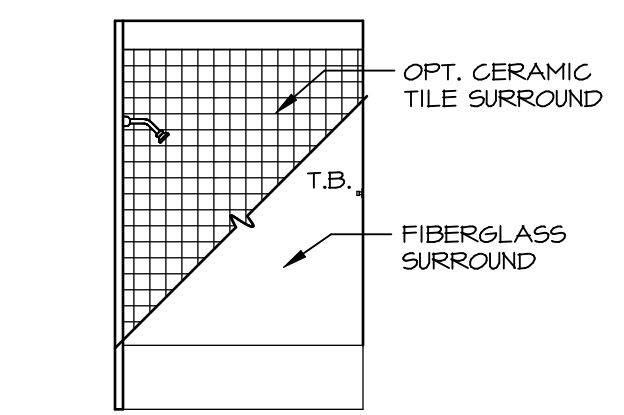
M OWNER'S BATH - "AMG"
SCALE: 1/4" = 1'-0"



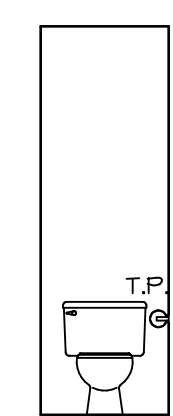
L OWNER'S BATH - "AMG"
SCALE: 1/4" = 1'-0"



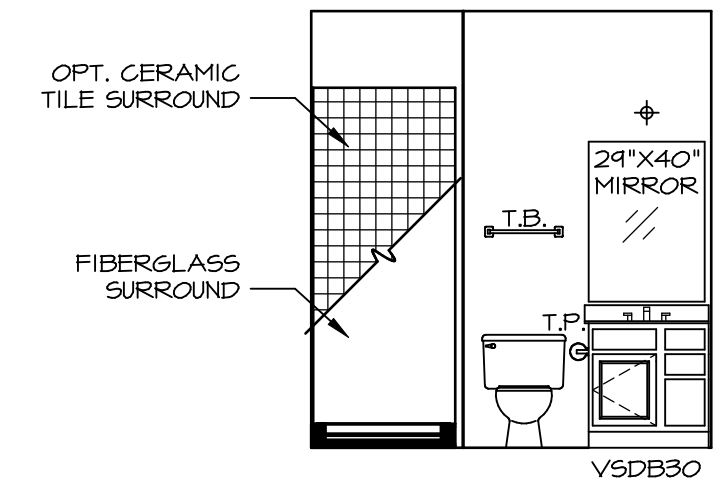
E FIRST FLOOR BATH - "BAR"
SCALE: 1/4" = 1'-0"



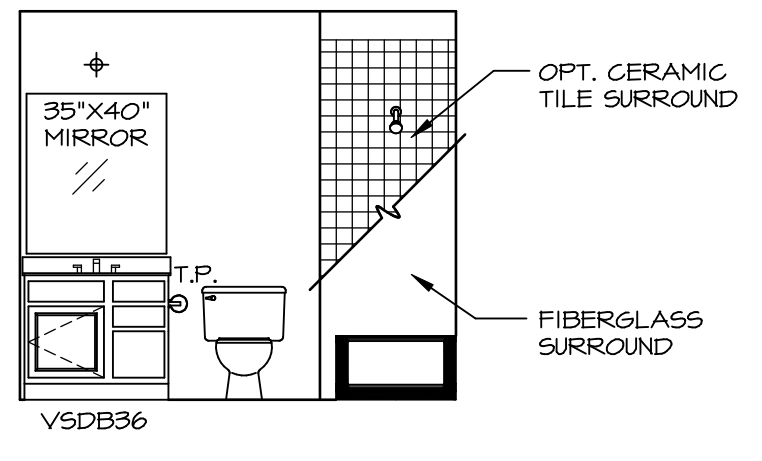
J BATH #2
SCALE: 1/4" = 1'-0"



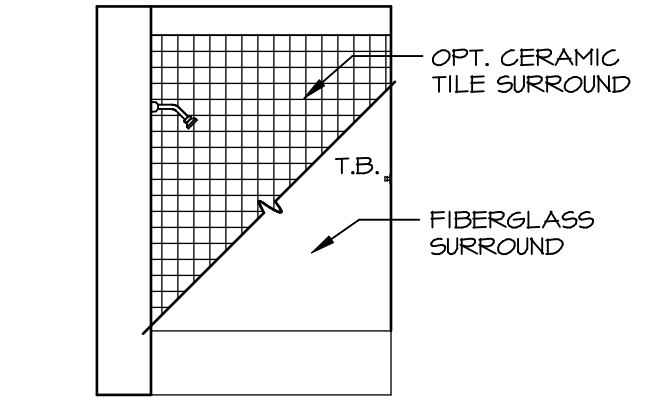
K OWNER'S BATH - "AMA" OR "AMG"
SCALE: 1/4" = 1'-0"



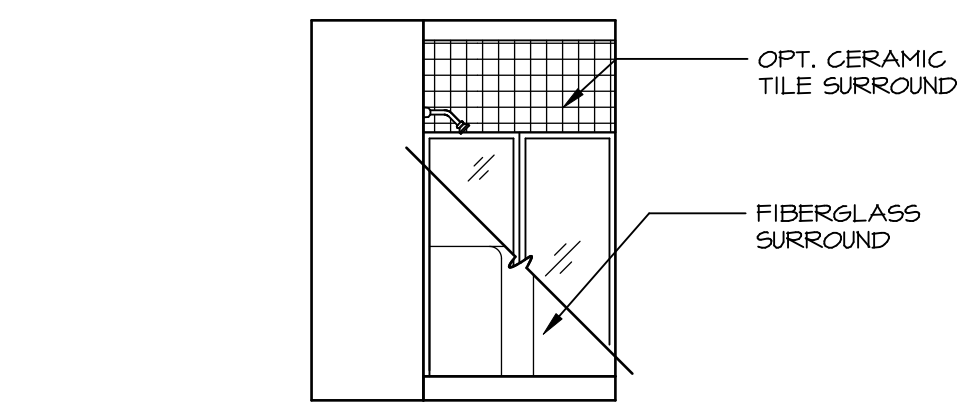
D FIRST FLOOR BATH - "BAR"
SCALE: 1/4" = 1'-0"



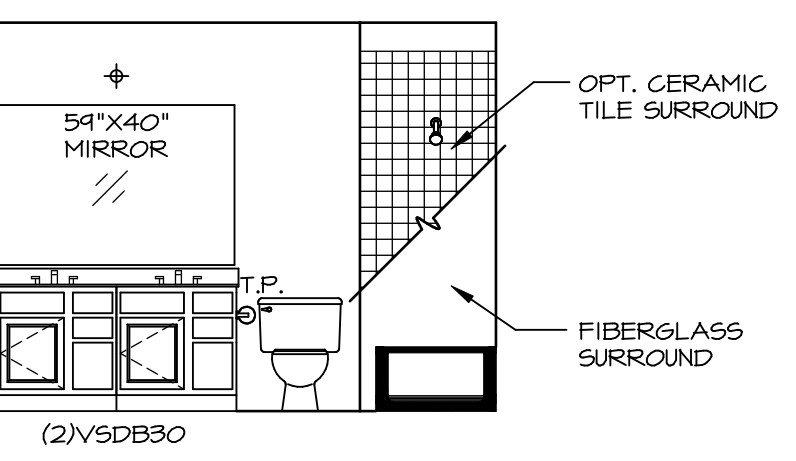
H BATH #2
SCALE: 1/4" = 1'-0"



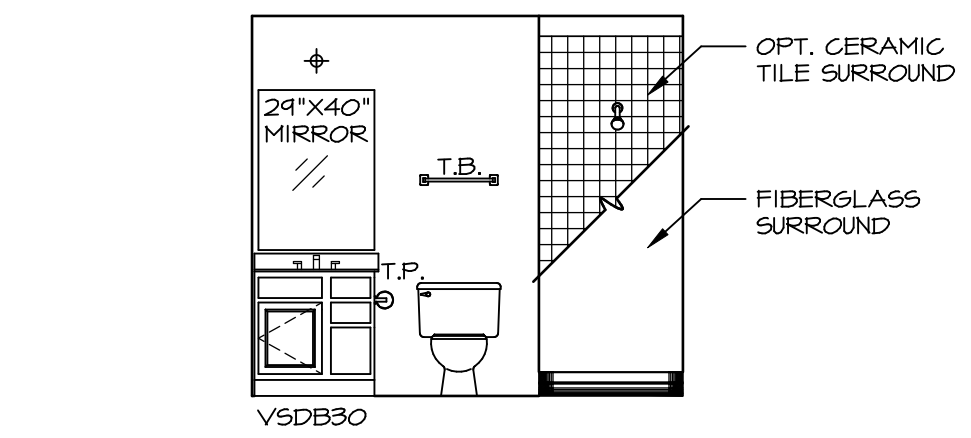
G BATH #1
SCALE: 1/4" = 1'-0"



B BASEMENT BATH - "AEB"
SCALE: 1/4" = 1'-0"



F BATH #1
SCALE: 1/4" = 1'-0"

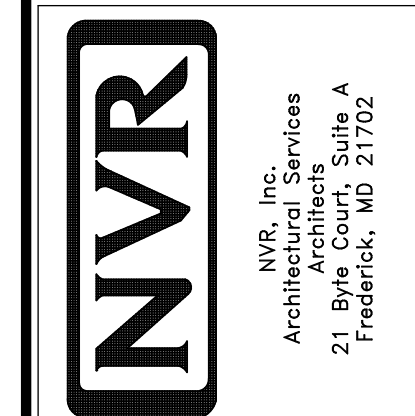


A BASEMENT BATH - "AEB"
SCALE: 1/4" = 1'-0"

- NOTES:**
1. TEMPERED GLASS SHOWER ENCLOSURE WITH SWING DOOR OR OPTIONAL SLIDING DOOR BY DIVISION
 2. TUB ACCESS PANELS PROVIDED AS NEEDED, ALL MATERIALS BY DIVISION
 3. REFER TO SHEET (IT-2) FOR TUB AND SHOWER DETAILS.
 4. ALL VSDB24-42 DRAWERS TO BE SET ON RIGHT HAND.
 5. BATH ELEVATIONS ARE SHOWN PER PLAN.

REV. NO.	DATE	REMARKS
1	08/07/16	N.L. - DRAWING ALIGNMENT
2	11/15/16	TRV. - STANDARD DETAILS 5.0

NVR, Inc., owner, expressly reserves its copyright in these plans. These plans are not to be reproduced, changed, copied, or otherwise used in any way without the written consent of NVR, Inc.



SET NO. NRM00	VERSION 01
DRAWN BY SGA	DATE: 5/29/15
OPTION	

MODEL NORMANDY	DRAWING TITLE BATH ELEVATIONS
SHEET NO. A-14	OPTION DESCRIPTION