

BASEMENT JACK SCHEDULE				
IDENTIFIER	DESCRIPTION	OPTIONS	ENG. NUM.	FIELD INSTALLED

STEEL COLUMN SCHEDULE					
IDENTIFIER	STYLE	HEIGHT	OPTIONS	ENG. NUM.	REMARKS
CO1	STANCHION - 3 IN DIA IIGA ADJ	7'-5 3/8"		004	
CO2	STANCHION - 3 IN DIA IIGA ADJ	7'-5 3/8"		007	

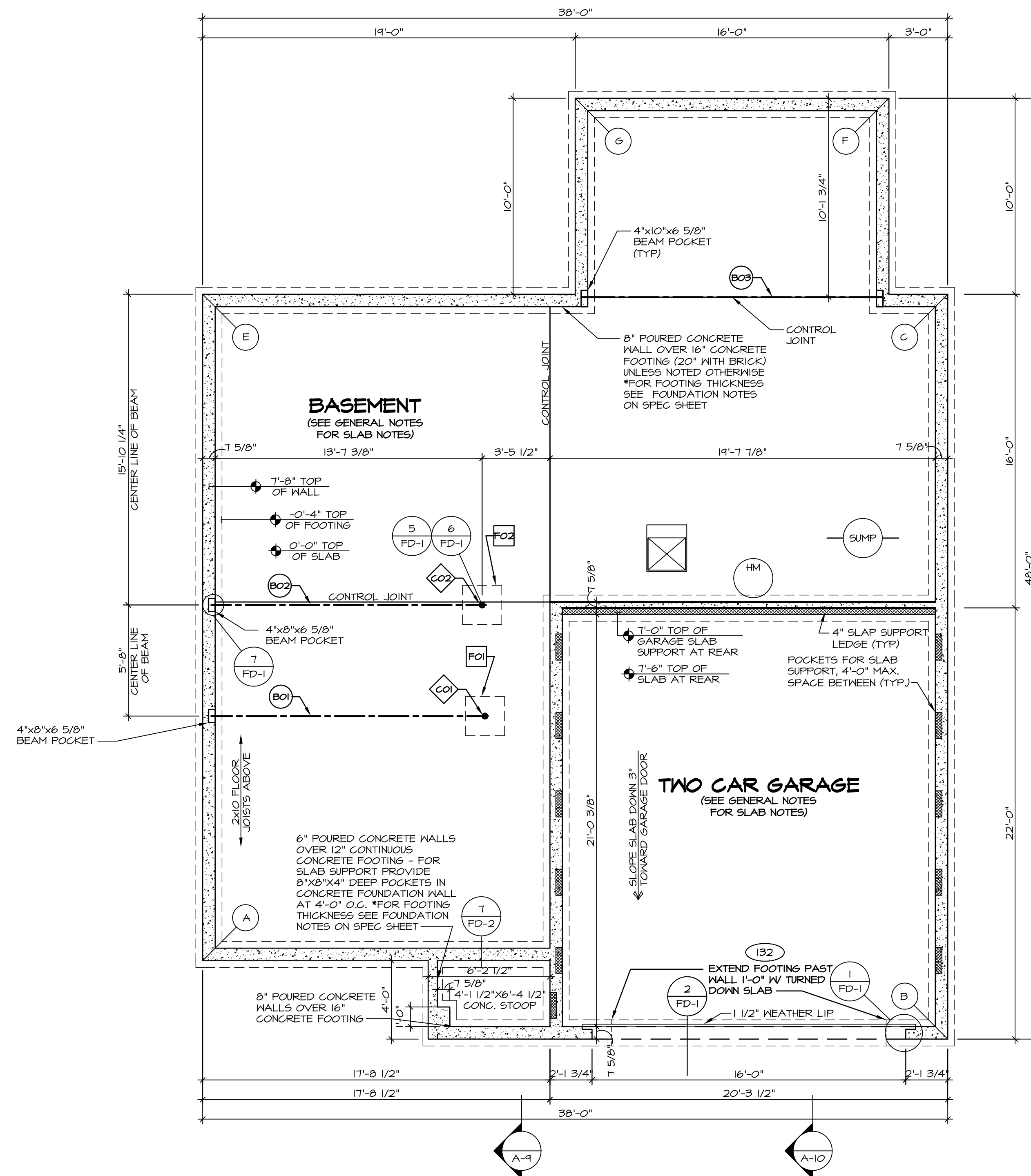
PAD FOOTING SCHEDULE					
IDENTIFIER	LENGTH	WIDTH	HEIGHT	OPTIONS	ENG. NUM.
FO1	2'-0"	2'-0"	1'-0"		004
FO2	2'-0"	2'-0"	1'-0"		007

FOUNDATION BEAM/HEADER SCHEDULE					
IDENTIFIER	DESCRIPTION	LENGTH	OPTIONS	ENG. NUM.	REMARKS
BO1	BEAM STEEL - 10x15	14'-1 1/4"		004	
BO2	BEAM STEEL - 10x10	14'-0"		005	
BO3	BEAM STEEL - 10x10	15'-4"	MAA	024	

LEGEND	
	BEARING WALL
	NON BEARING WALL
	INDICATES BEARING FROM POINT-LOAD ABOVE
	JACKS
	BEAM/HEADER
	PAD FOOTING
	STEEL COLUMN
	PORTAL FRAME
	JOIST/TRUSS
	LVL
	ENGINEERING PAGE NUMBER

FOUNDATION NOTES - BASEMENT	
1.	FOUNDATION UNDER HABITABLE SPACE: 1.1. CONCRETE SLAB ON 6 MIL VAPOR BARRIER OVER SUB-BASE (SEE SPEC SHEET FOR SLAB NOTES)
2.	SLAB UNDER GARAGE: 2.1. UNEXCAVATED WITH CONCRETE SLAB ON VAPOR BARRIER OVER SUB-BASE (SEE SPEC SHEET FOR SLAB NOTES)
3.	SEE SHEET (A-4) FOR FOUNDATION CONNECTION INFORMATION.
4.	OPTIONAL EGRESS WINDOW - LOCATION MAY VARY DUE TO GRADE OR OPTIONS ABOVE WINDOW WELL REQUIRED W/ CERTAIN GRADE CONDITIONS (SEE SPEC SHEET FOR ADDITIONAL INFO.)
5.	SLAB LEDGE LOCATIONS VARY W/ GRADE BEAM(S) ORIENTATION. SEE GB-1 FOR DETAILS.

FOUNDATION DIAGONALS					
A		B			
A	0"	A	30'-2 17/32"		
B	30'-2 17/32"	B	0"		
C	50'-11 7/8"	C	30'-0"		
E	34'-0"	E	53'-8 7/8"		
F	56'-2 11/16"	F	40'-1 1/8"		
G	47'-11 1/8"	G	51'-7 15/32"		



**FOUNDATION PLAN**  
SCALE: 1/4" = 1'-0"

SHEET NO.	MODEL	SET NO.	VERSION	DRAWN BY	DATE:	OPTION	REMARKS
A-3	FLORENCE	06	06				
17	FLORENCE	06	06				

NVR, Inc. is the owner, expressly reserves its copyright in these plans. These plans are not to be reproduced, changed, copied, or otherwise used in any way without the written consent of NVR, Inc.

**NVR**  
 NVR, Inc.  
 Architectural Services  
 Architects  
 21 Park Plaza, Suite A  
 Frederick, MD 21702

SET NO. FLOOR 06  
 VERSION 06  
 DRAWN BY  
 DATE:  
 OPTION

C:\NVR\Solves\FLORENCE\_FL000\_06\DCY-10-L328-415866\Sheets\17\_A-3\_FDN\_L3 (RBA).dwg 04/30/17 - 3:45 pm



**FLOOR PLAN NOTES**



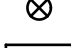
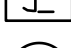

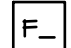
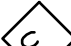

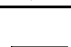
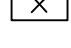
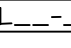
1. ALL HEADERS ARE (2) 2x6 W/ 2x4 WALLS OR (3) 2x6 W/ 2x6 WALLS, UNLESS OTHERWISE NOTED.
2. ALL HEADERS TO HAVE (1) 2x4 OR 2x6 JACK, EACH END, UNLESS OTHERWISE NOTED.
3. ALL EXTERIOR WALLS TO BE 4" AND ALL INTERIOR WALLS TO BE 3 1/2", UNLESS OTHERWISE NOTED.
4. HATCHED AREAS INDICATE DROPPED CEILINGS. ALL DROPPED CEILINGS ARE 12" UNLESS OTHERWISE NOTED.
5. SEE "BRACED WALL PANEL DETAIL SHEET" FOR SPECIAL WALL FRAMING LOCATIONS AND HEADER SIZES, IF APPLICABLE.
6. SEE STANDARD DETAIL CATEGORY "IT" SHEET(S) FOR INTERIOR TRIM DETAILS.
7. SEE ARCHITECTURAL DETAIL SHEET "AD" FOR HOUSE SPECIFIC INTERIOR TRIM OPTION TABLE.
8. ALL WINDOWS HAVE 7'-0 1/2" HEADER HEIGHT UNLESS OTHERWISE NOTED.

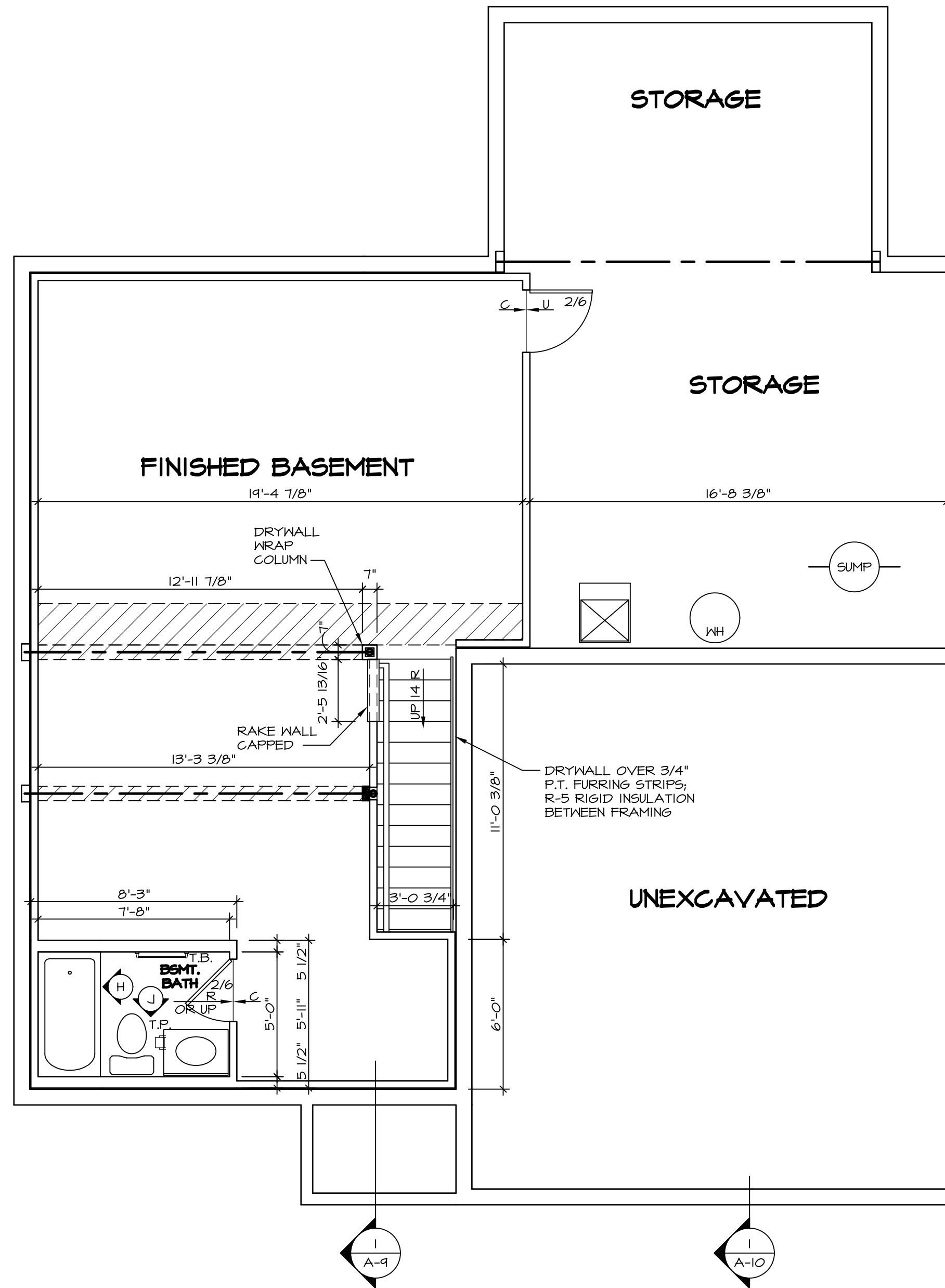
**GYPSUM NOTES**

AT GARAGE:  
 GYPSUM BOARD AT COMMON WALLS, CEILINGS, BEAM WRAPS AND SUPPORTS PER STANDARD DETAIL FA-1(b) FIRE ASSEMBLIES OR AS REQUIRED BY LOCAL CODE.

AT STAIRS:  
 1/2" GYPSUM BOARD AT UNDERSIDE OF STAIRS AND WALLS IN CLOSET

**LEGEND**

-  BEARING WALL
  -  NON BEARING WALL
  -  INDICATES BEARING FROM POINT-LOAD ABOVE
  -  JACKS
  -  BEAM/HEADER
  -  PAD FOOTING
  -  STEEL COLUMN
  -  PORTAL FRAME
  -  JOIST/TRUSS
  -  LVL
  -  ENGINEERING PAGE NUMBER
- SEE FC DETAILS FOR FRAMING CONNECTORS



**BASEMENT FLOOR PLAN**  
 SCALE: 1/4" = 1'-0"

REV. NO.	DATE	REMARKS
1	07/26/16	TM - DRAWING ALIGNMENT

NVR, Inc., owner, expressly reserves its copyright in these plans. These plans are not to be reproduced, changed, copied, or otherwise used in any way without the written consent of NVR, Inc.



SHEET NO.	MODEL	SET NO.	VERSION	DRAWN BY	DATE:	OPTION
A-6	FLORENCE	FLR00_06	06			
32	DRAWING TITLE	BASEMENT FLOOR PLAN				
	OPTION DESCRIPTION					



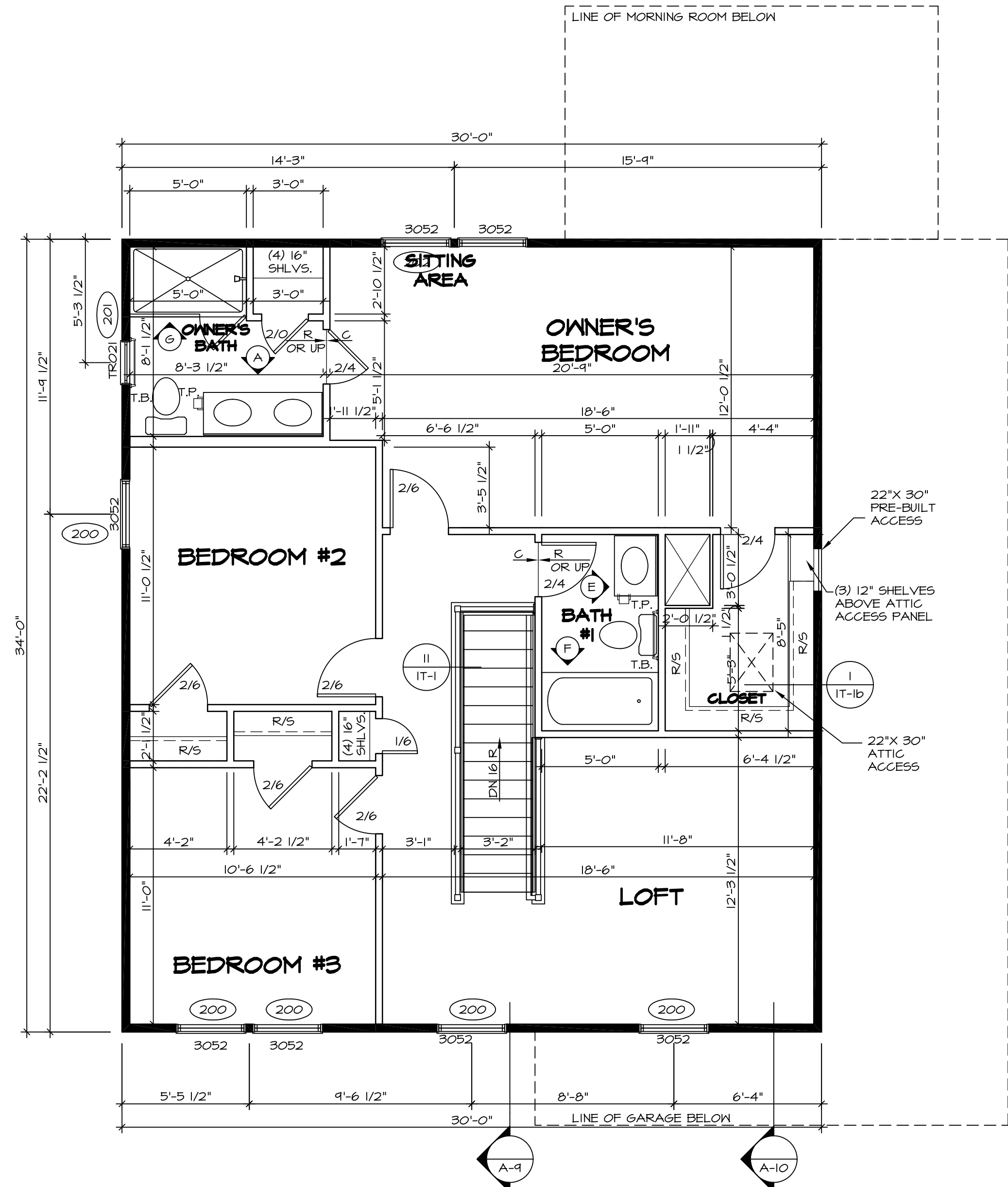
SECOND FLOOR JACK SCHEDULE				
IDENTIFIER	DESCRIPTION	OPTIONS	ENG. NUM.	FIELD INSTALLED

- FLOOR PLAN NOTES**
- ALL HEADERS ARE (2) 2x6 w/ 2x4 WALLS OR (3) 2x6 w/ 2x6 WALLS, UNLESS OTHERWISE NOTED.
  - ALL HEADERS TO HAVE (1) 2x4 OR 2x6 JACK EACH END, UNLESS OTHERWISE NOTED.
  - ALL EXTERIOR WALLS TO BE 4" AND ALL INTERIOR WALLS TO BE 3 1/2", UNLESS OTHERWISE NOTED.
  - HATCHED AREAS INDICATE DROPPED CEILING. ALL DROPPED CEILING ARE 12" UNLESS OTHERWISE NOTED.
  - SEE "BRACED WALL PANEL DETAIL SHEET" FOR SPECIAL WALL FRAMING LOCATIONS AND HEADER SIZES, IF APPLICABLE.
  - SEE STANDARD DETAIL CATEGORY "IT" SHEET(S) FOR INTERIOR TRIM DETAILS.
  - SEE ARCHITECTURAL DETAIL SHEET "AD" FOR HOUSE SPECIFIC INTERIOR TRIM OPTION TABLE.
  - ALL WINDOWS HAVE 7'-0 1/2" HEADER HEIGHT UNLESS OTHERWISE NOTED.

**LEGEND**

	BEARING WALL
	NON BEARING WALL
	INDICATES BEARING FROM POINT-LOAD ABOVE
	JACKS
	BEAM/HEADER
	PAD FOOTING
	STEEL COLUMN
	PORTAL FRAME
	JOIST/TRUSS
	LVL
	ENGINEERING PAGE NUMBER

SEE FC DETAILS FOR FRAMING CONNECTORS



**SECOND FLOOR PLAN**  
SCALE: 1/4" = 1'-0"

SHEET NO.	MODEL	SET NO.	VERSION	DRAWN BY	DATE	OPTION	REMARKS
A-8	FLORENCE	FLR00_06	06				
B7							

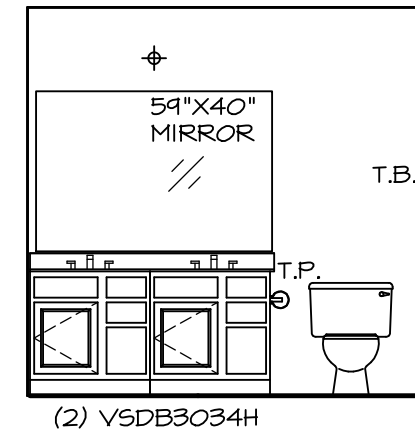
SHEET NO. A-8  
 MODEL FLORENCE  
 DRAWING TITLE SECOND FLOOR PLAN  
 OPTION DESCRIPTION  
 SET NO. FLR00\_06  
 VERSION 06  
 DRAWN BY  
 DATE  
 OPTION

NVR, Inc., owner, expressly reserves its copyright in these plans. These plans are not to be reproduced, changed, copied in any way, or used for any other purpose without the written consent of NVR, Inc.

**NVR**  
 NVR, Inc.  
 Architectural Services  
 Architects  
 21 Park Plaza, Suite A  
 Frederick, MD 21702

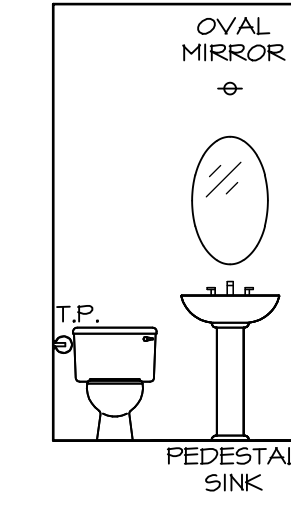
REV. NO. DATE  
 1 07/26/16 TH - DRAWING ALIGNMENT

C:\NVR\Solves\FLORENCE\_FLR00\_06\DCY-16-L328-415866\Sheets\Lot\_Specific\37 A-8 FLR2\_LS.dwg 04/30/17 = 3:46 pm

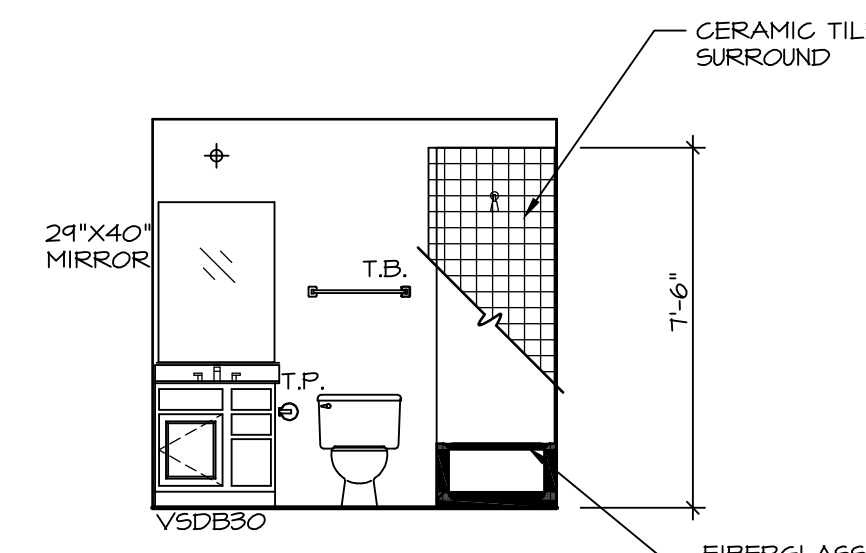


(2) V5DB3034H

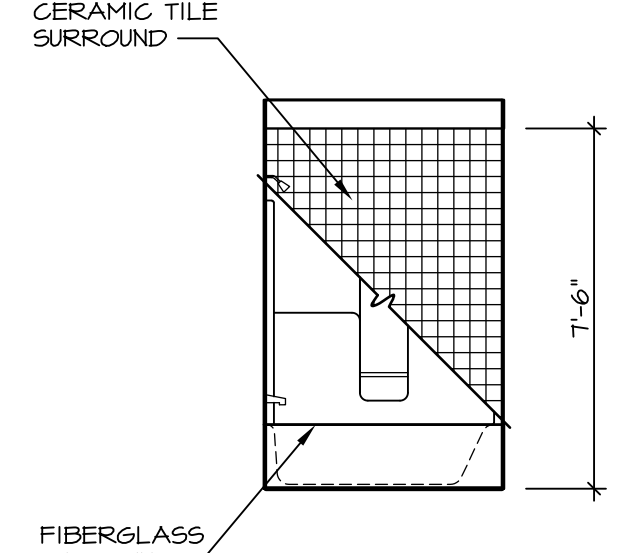
**A OWNER'S BATH**  
SCALE: 1/4" = 1'-0"



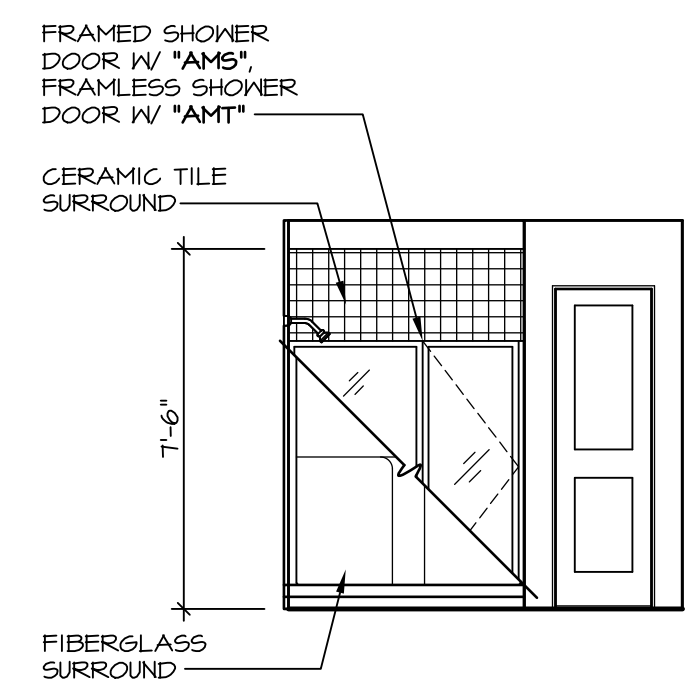
**C POWDER ROOM**  
SCALE: 1/4" = 1'-0"



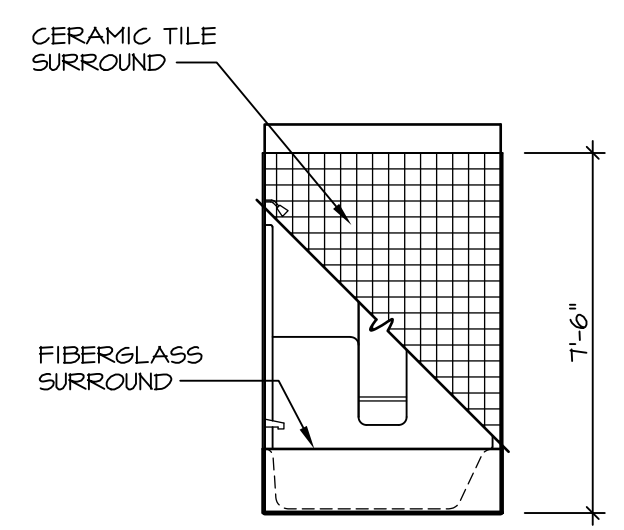
**E BATH #1**  
SCALE: 1/4" = 1'-0"



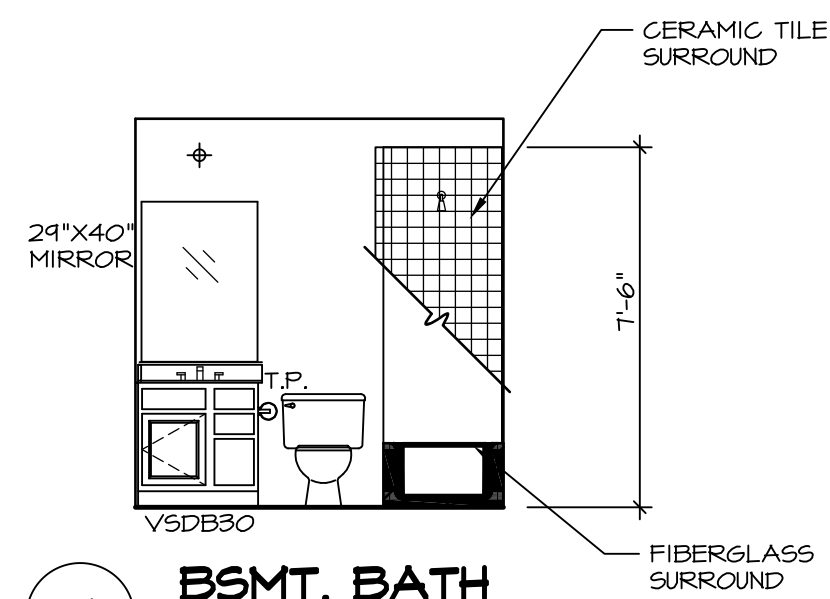
**F BATH #1**  
SCALE: 1/4" = 1'-0"



**G OWNER'S BATH**  
SCALE: 1/4" = 1'-0" UPGRADE OWNER'S BATH \*AMA\*



**H BSMT. BATH**  
SCALE: 1/4" = 1'-0"



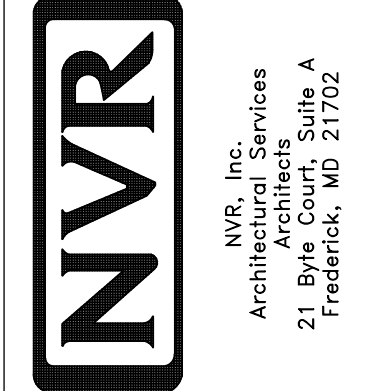
**J BSMT. BATH**  
SCALE: 1/4" = 1'-0"

**NOTES:**

- TEMPERED GLASS SHOWER ENCLOSURE WITH SWING DOOR OR OPTIONAL SLIDING DOOR BY DIVISION
- TUB ACCESS PANELS PROVIDED AS NEEDED, ALL MATERIALS BY DIVISION
- REFER TO SHEET (IT-2) FOR TUB AND SHOWER DETAILS.
- ALL V5DB24-42 DRAWERS TO BE SET ON RIGHT HAND.
- BATH ELEVATIONS ARE SHOWN PER PLAN.

REV. NO.	DATE	REMARKS
1	07/26/16	TM - DRAINING ALIGNMENT

NVR, Inc., owner, expressly reserves its common law copyright in these plans. These plans are not to be reproduced, changed, copied in any way, or otherwise used without the written consent of NVR, Inc.



SHEET NO.	MODEL	SET NO.	VERSION	DRAWN BY	DATE:	OPTION
A-13	FLORENCE DRAWING TITLE BATH ELEVATIONS	06	06			
46						