

FIRST FLOOR JACK SCHEDULE				
IDENTIFIER	DESCRIPTION	OPTIONS	ENG. NUM.	REMARKS
J01	JACK - (2) 2X4 SPF STUD GRADE		1051 / 1050	
J02	JACK - (2) 2X4 SPF STUD GRADE		1051 / 1050	
J03	JACK - (5) 2X4 SPH	SXC	1051	STEEL PLATE
J04	JACK - (5) 2X4 SPH	SXC	1051	STEEL PLATE
J07	JACK - (3) 2X4 SPF STUD GRADE	BTU / SXC	1004	
J08	JACK - (3) 2X4 SPF STUD GRADE	BTU / SXC	1004	
J09	JACK - (2) 2X4 SPF STUD GRADE	L6G / BTU / SXC	1035	
J10	JACK - (2) 2X4 SPF STUD GRADE	L6G / BTU / SXC	1031	
J11	JACK - (2) 2X4 SPF STUD GRADE	L6G / BTU / SXC	1031	
J12	JACK - (2) 2X4 SPF STUD GRADE	L6G / BTU / SXC	1029 / 1050	
J50	JACK - (5) 2X4 SPH	MAA / SXC	1051	STEEL PLATE
J51	JACK - (5) 2X4 SPH	MAA / SXC	1051	STEEL PLATE
J54	JACK - (3) 2X6 SPF STUD GRADE	EES / SXC	1050	STEEL PLATE
J55	JACK - (5) 2X4 SPH	EES / SXC	1050	STEEL PLATE
J62	JACK - (3) 2X4 SPF STUD GRADE	BTU	1050	
J64	JACK - (4) 2X6 SPF STUD GRADE	GCB / BTU / SXC	1000	
J70	JACK - (2) 2X6 SPF STUD GRADE	GCB / BTU / SXC	1050	
J71	JACK - (2) 2X6 SPF STUD GRADE	GCB / BTU / SXC	1050	
J72	JACK - (4) 2X6 SPF STUD GRADE	GCB / BTU / SXC	1000	

LEGEND	
	BEARING WALL
	NON BEARING WALL
	INDICATES BEARING FROM POINT-LOAD ABOVE
	JACKS
	BEAM/HEADER
	PAD FOOTING
	STEEL COLUMN
	PORTAL FRAME
	JOIST/TRUSS
	LVL
	ENGINEERING PAGE NUMBER

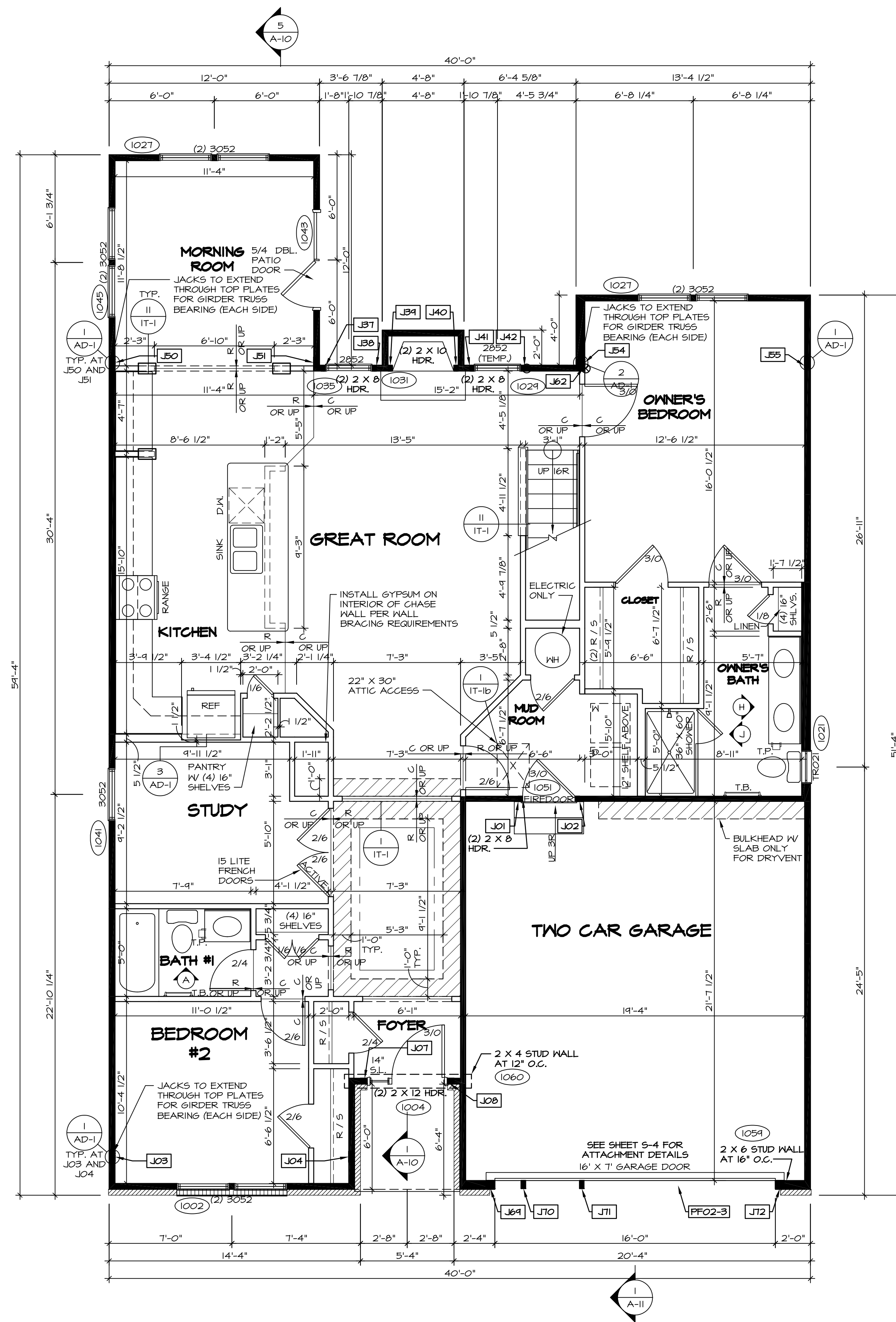
SEE FC DETAILS FOR FRAMING CONNECTORS

LVL PLY TO PLY FASTENING SCHEDULE:				
1A	(2) FLY UP TO AND INCLUDING 11 7/8" TALL; FASTEN PLYS W/ (2) ROWS 16D NAILS AT 12" O.C.			
2A	(2) FLY 14" TO AND 18" TALL (INCLUSIVE); FASTEN PLYS W/ (3) ROWS 16D NAILS AT 12" O.C.			
3A	(2) FLY 20" TALL AND OVER; FASTEN PLYS W/ (4) ROWS 16D NAILS AT 12" O.C.			
4A	(3) FLY UP TO AND INCLUDING 11 7/8" TALL; FASTEN PLYS W/ (2) ROWS 16D NAILS AT 12" O.C. FROM EACH SIDE			
5A	(3) FLY 14" TO AND 18" TALL (INCLUSIVE); FASTEN PLYS W/ (3) ROWS 16D NAILS AT 12" O.C. FROM EACH SIDE			
6A	(3) FLY 20" TALL AND OVER; FASTEN PLYS W/ (4) ROWS 16D NAILS AT 12" O.C. FROM EACH SIDE			

FIELD INSTALLED FIRST FLOOR BEAM/HEADER SCHEDULE					
IDENTIFIER	DESCRIPTION	LENGTH	OPTIONS	ENG. NUM.	REMARKS
PFO2-3	LVL - 1B	19'-4"	GCB / BTU / SXC	1000	3 PLY, 5A

- FLOOR PLAN NOTES**
- ALL HEADERS ARE (2) 2x6 w/ 2x4 WALLS OR (3) 2x6 w/ 2x6 WALLS, UNLESS OTHERWISE NOTED.
 - ALL HEADERS TO HAVE (1) 2x4 OR 2x6 JACK EACH END, UNLESS OTHERWISE NOTED.
 - ALL EXTERIOR WALLS TO BE 4" AND ALL INTERIOR WALLS TO BE 3 1/2", UNLESS OTHERWISE NOTED.
 - HATCHED AREAS INDICATE DROPPED CEILINGS. ALL DROPPED CEILINGS ARE 12' UNLESS OTHERWISE NOTED.
 - SEE "BRACED WALL PANEL DETAIL SHEET" FOR SPECIAL WALL FRAMING LOCATIONS AND HEADER SIZES, IF APPLICABLE.
 - SEE STANDARD DETAIL CATEGORY "IT" SHEET(S) FOR INTERIOR TRIM DETAILS.
 - SEE ARCHITECTURAL DETAIL SHEET "AD" FOR HOUSE SPECIFIC INTERIOR TRIM OPTION TABLE.
 - ALL WINDOWS HAVE T-0 1/2" HEADER HEIGHT UNLESS OTHERWISE NOTED.

- GYPSUM NOTES**
- AT GARAGE:**
GYPSUM BOARD AT COMMON WALLS, CEILINGS, BEAM WRAPS AND SUPPORTS PER STANDARD DETAIL FA-10(b) FIRE ASSEMBLIES OR AS REQUIRED BY LOCAL CODE.
- AT STAIRS:**
1/2" GYPSUM BOARD AT UNDERSIDE OF STAIRS AND WALLS IN CLOSET
- BASEMENT WITH I-JOIST FLOOR SYSTEM ABOVE:**
WITH OPTION "SG1" - DRYWALL UNFINISHED BASEMENT CEILING AREA
- NOTES:**
- 1/2" GYPSUM WALL BOARD REQUIRED ON CEILING IN UNFINISHED AREAS WHEN NO SPRINKLER SYSTEM IS INSTALLED
 - A MAXIMUM AREA OF 80 SQ FT MAY BE OMITTED AS NEEDED FOR INSTALLATION OF PLUMBING, ELECTRICAL, AND/OR HVAC (TYPICALLY AN 8'-0"x8'-0" CEILING SPACE ABOVE MECHANICAL AREA).
 - PROVIDE FIRE BLOCKING AS REQUIRED AT PERIMETER OF ANY AREAS WHERE DRYWALL HAS BEEN OMITTED.

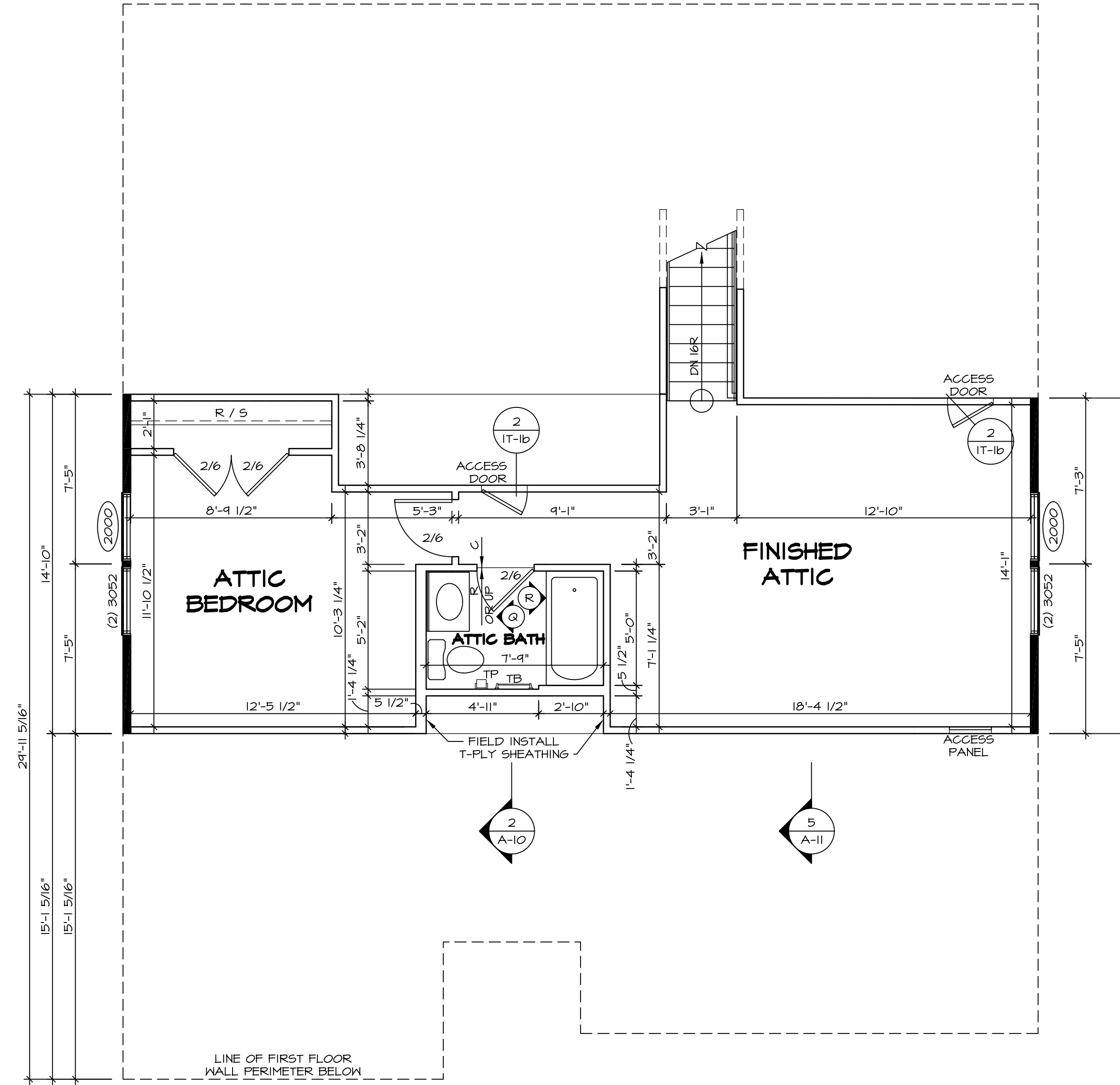


FIRST FLOOR PLAN
SCALE: 1/4" = 1'-0"

MODEL	PISA TORRE	SET NO.	PS100
DRAWING TITLE	FIRST FLOOR PLAN	VERSION	02
OPTION DESCRIPTION	CORNERSTONE SPECIFICATIONS	DRAWN BY	
		DATE:	
		OPTION	
SHEET NO.	A-7	 NVR, Inc. Architectural Services 21 Bay Ct., Ste. A Frederick, MD 21702	
REV. NO.	DATE	DESCRIPTION	REMARKS
1	08/01/16	TH - DRAWING ALIGNMENT	

Small text at bottom right: NVR, Inc., owner, expressly reserves its copyright in these plans. These plans are not to be reproduced, changed, or copied in any way without the written consent of NVR, Inc.

Small text at bottom right: C:\NVR\Solves\PISA_TORRE_PS100_02\CT-16-L561\382643\Sheets\1.ctb Specifics_36 A-7 PLAN_SXC_L5.dwg 03/28/17 - 408 sm



1 SECOND FLOOR PLAN
 SCALE: 1/4" = 1'-0"

LEGEND

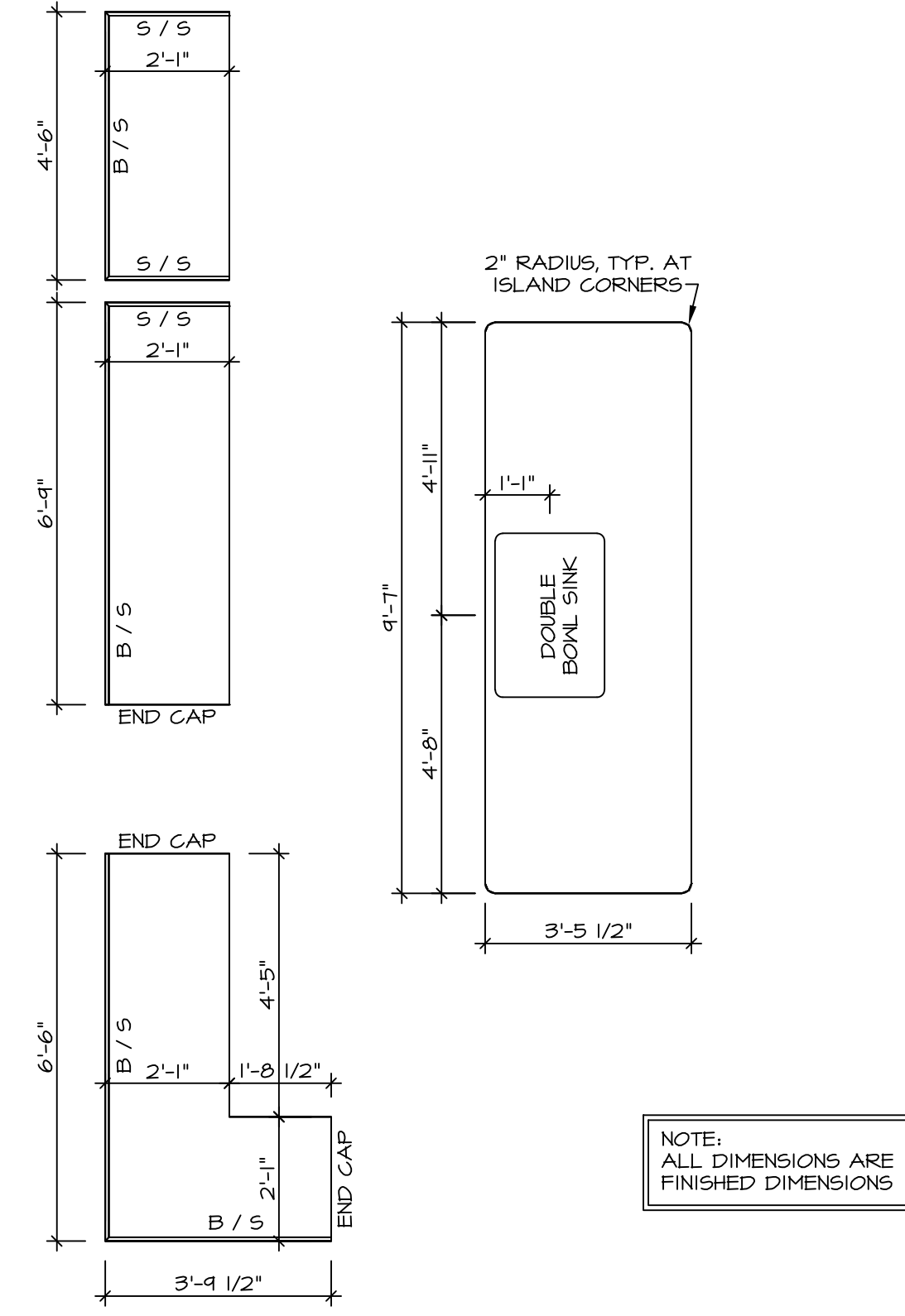
	BEARING WALL
	NON BEARING WALL
	INDICATES BEARING FROM POINT-LOAD ABOVE
	JACKS
	BEAM/HEADER
	PAD FOOTING
	STEEL COLUMN
	PORTAL FRAME
	JOIST/TRUSS
	LVL
	ENGINEERING PAGE NUMBER

SEE FC DETAILS FOR FRAMING CONNECTORS

- FLOOR PLAN NOTES**
1. ALL HEADERS ARE (2) 2x6 w/ 2x4 WALLS OR (3) 2x6 w/ 2x6 WALLS, UNLESS OTHERWISE NOTED.
 2. ALL HEADERS TO HAVE (1) 2x4 OR 2x6 JACK EACH END, UNLESS OTHERWISE NOTED.
 3. ALL EXTERIOR WALLS TO BE 4" AND ALL INTERIOR WALLS TO BE 3 1/2" UNLESS OTHERWISE NOTED.
 4. HATCHED AREAS INDICATE DROPPED CEILINGS. ALL DROPPED CEILINGS ARE 12" UNLESS OTHERWISE NOTED.
 5. SEE BRACED WALL PANEL DETAIL SHEET FOR SPECIAL WALL FRAMING LOCATIONS AND HEADER SIZES, IF APPLICABLE.
 6. SEE STANDARD DETAIL CATEGORY "IT" SHEET(S) FOR INTERIOR TRIM DETAILS.
 7. SEE ARCHITECTURAL DETAIL SHEET "AD" FOR HOUSE SPECIFIC INTERIOR TRIM OPTION TABLE.
 8. ALL WINDOWS HAVE 7'-0 1/2" HEADER HEIGHT UNLESS OTHERWISE NOTED.

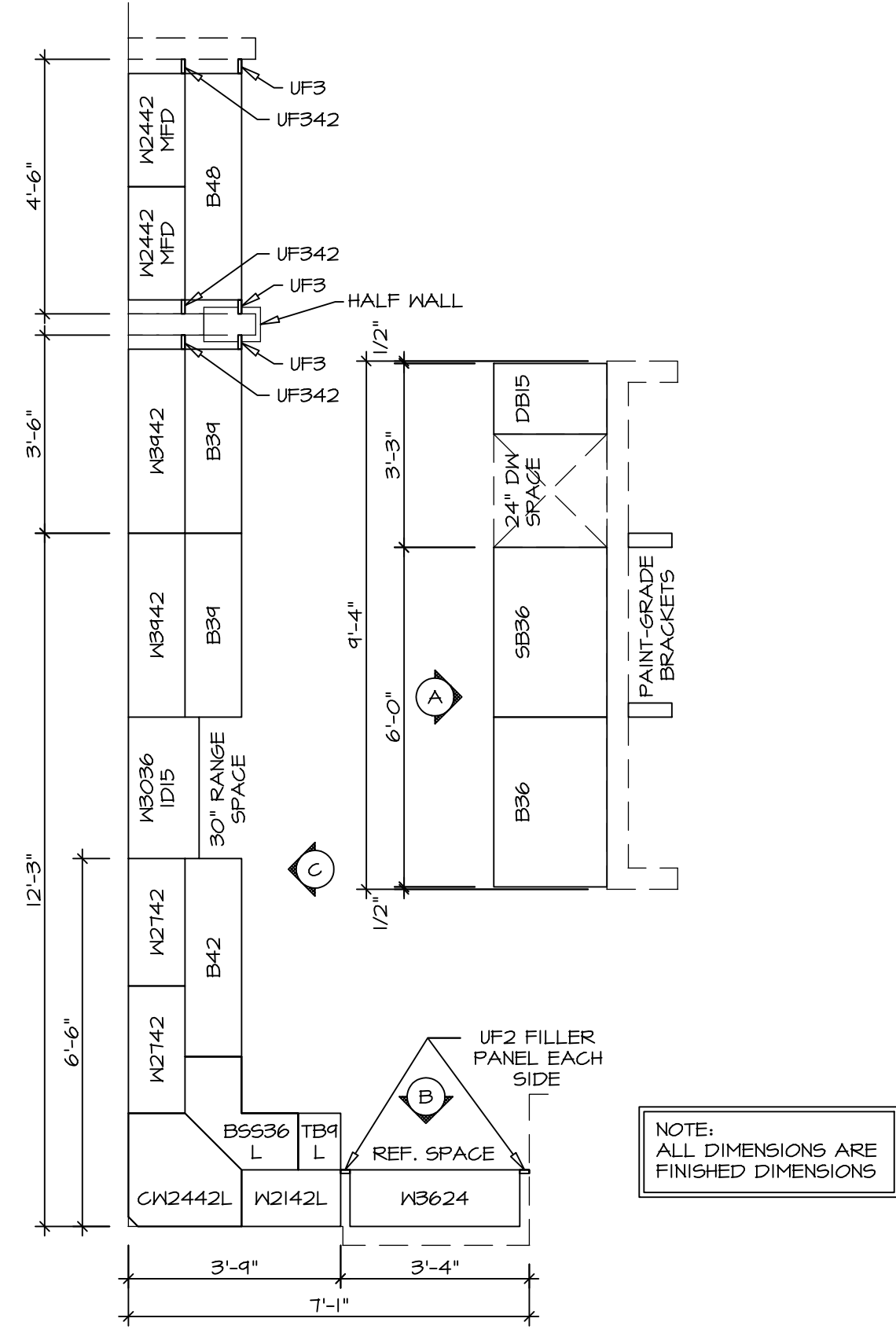
SHEET NO. A-9	MODEL PISA TORRE	SET NO. P5TCO	REV. NO. 1	DATE 08/07/16	REMARKS
		VERSION 02			
DRAWING TITLE SECOND FLOOR PLAN	OPTION DESCRIPTION	DRAWN BY	<p>NVR, Inc., owner, expressly reserves its copyright in these plans. These plans are not to be reproduced, changed, copied in any way, or otherwise used without the written consent of NVR, Inc.</p>		
		DATE:			
44		OPTION			

C:\NVR\Solves\PISA_TORRE_P5TCO_02\DCY-16-L36\382643\Sheets\1.dwg 03/28/17 - 408 gm



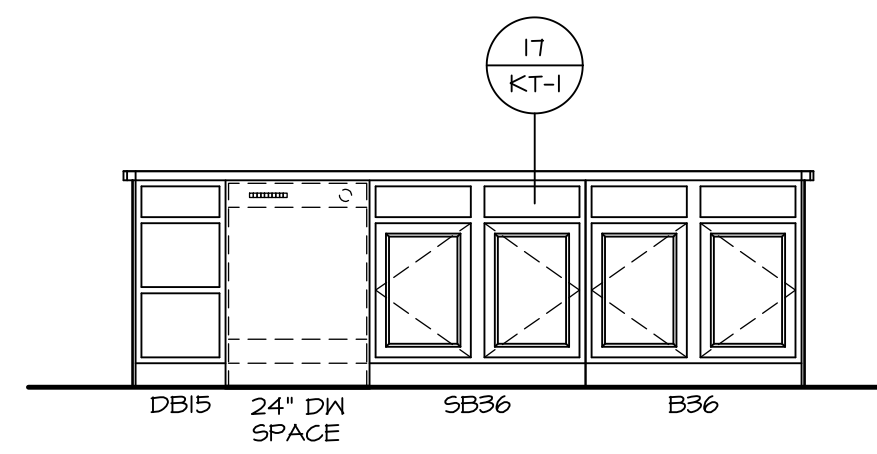
(KT-3212)
COUNTERTOP LAYOUT

2
A-B SCALE: 3/8" = 1'-0"

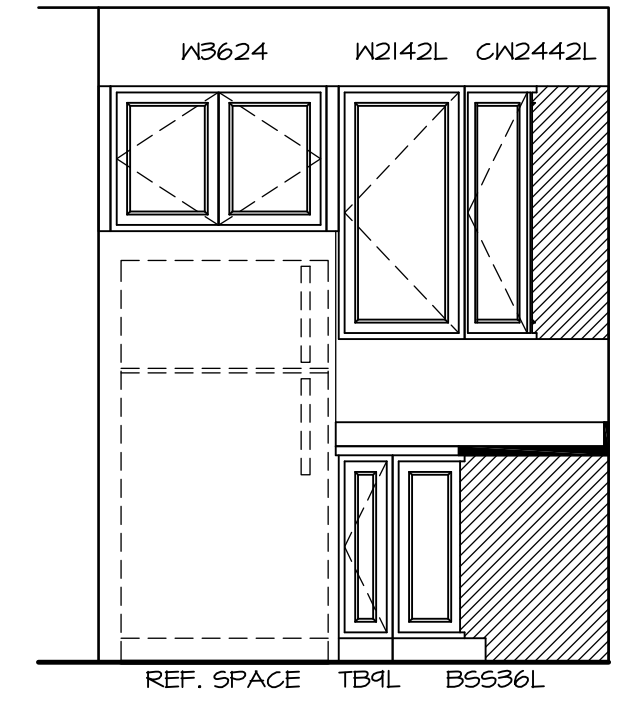


(KC-3212)
CABINET LAYOUT

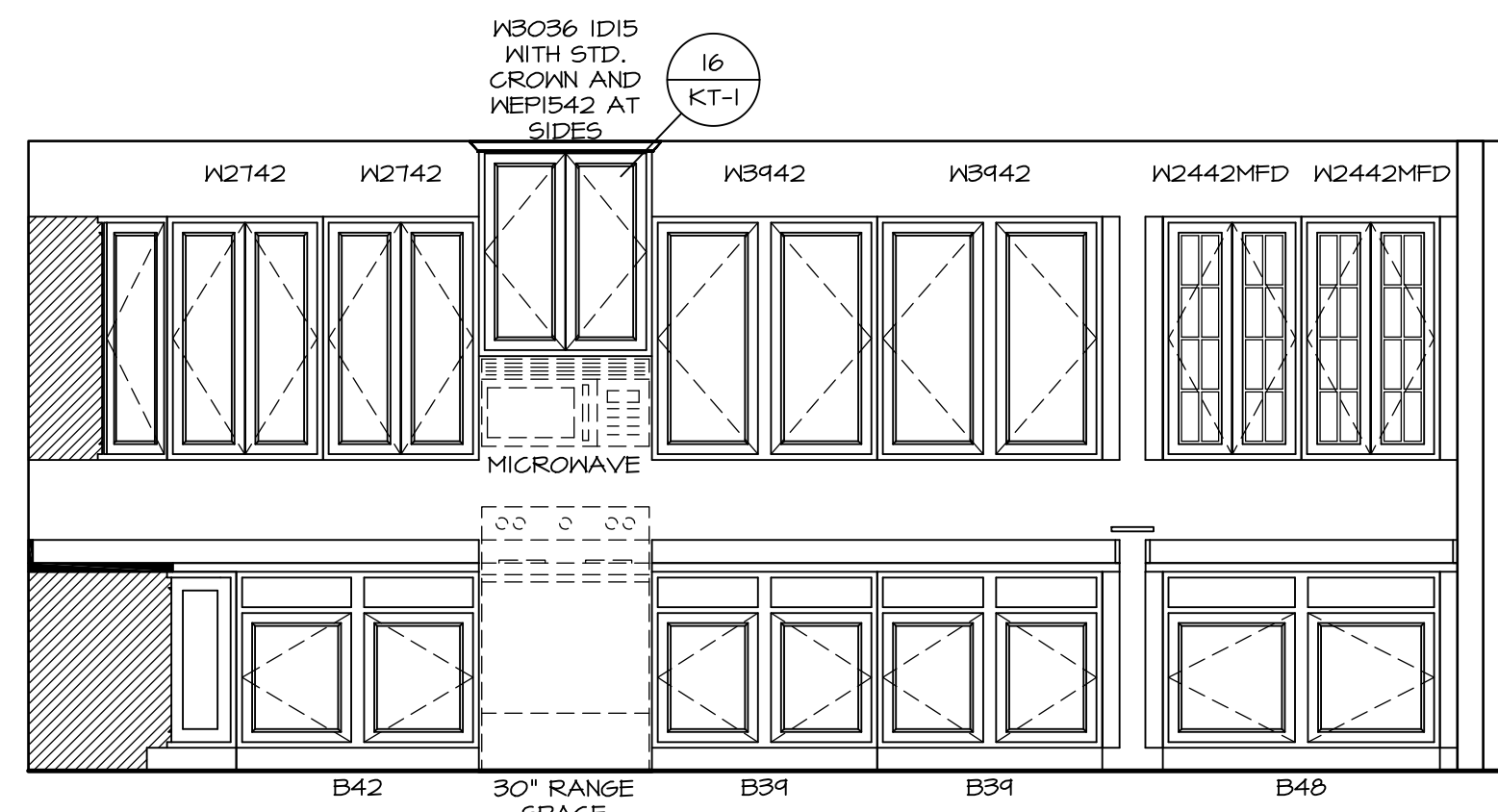
1
A-B SCALE: 3/8" = 1'-0"



A CABINET ELEVATION
SCALE: 3/8" = 1'-0"



B CABINET ELEVATION
SCALE: 3/8" = 1'-0"

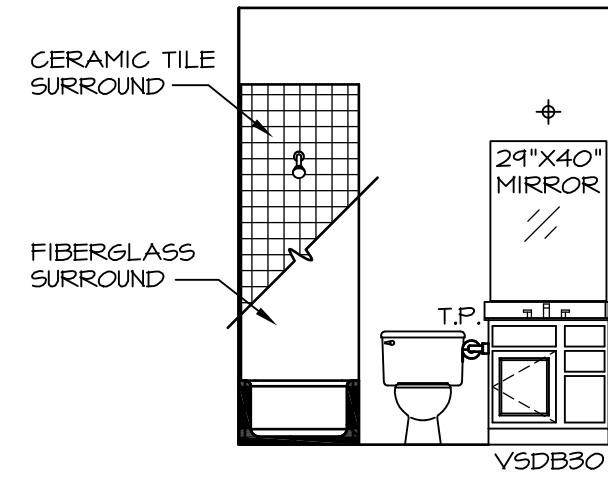


C CABINET ELEVATION
SCALE: 3/8" = 1'-0"

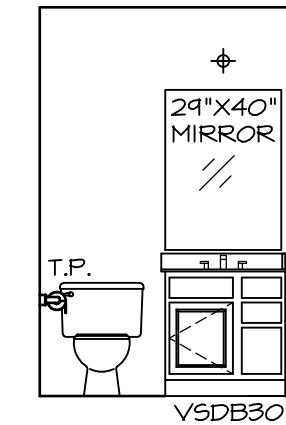
SHEET NO. A-13	MODEL PISA TORRE	DRAWING TITLE KITCHENS	OPTION DESCRIPTION	SET NO. P5700	VERSION 02	DRAWN BY BDH	DATE: 3/24/15	OPTION	REMARKS
				48					

NVR
NVR, Inc.
Architectural Services
Architects
21 Parkside Ave.
Frederick, MD 21702

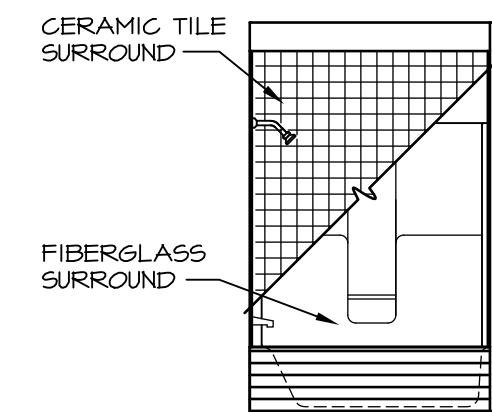
NVR, Inc., owner, expressly reserves its copyright in these plans. These plans are not to be reproduced, changed, copied, or otherwise used in any way without the written consent of NVR, Inc.



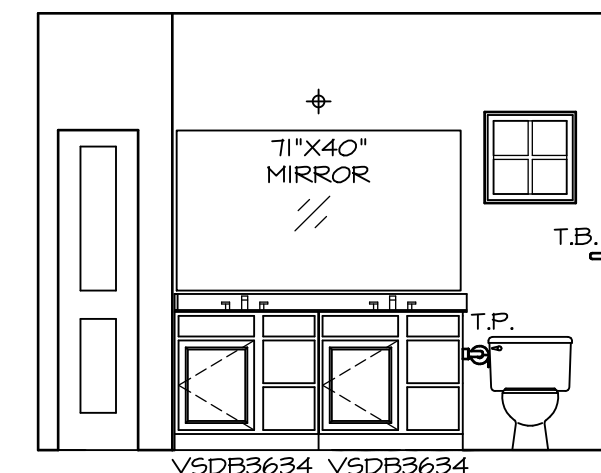
A BATH #1
SCALE: 1/4" = 1'-0"



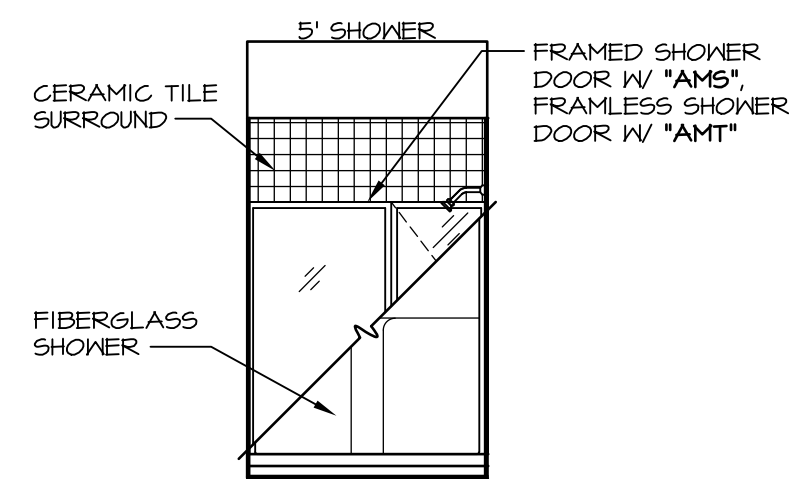
Q ATTIC BATH
SCALE: 1/4" = 1'-0"



R ATTIC BATH
SCALE: 1/4" = 1'-0"



H OWNER'S BATH
SCALE: 1/4" = 1'-0"



J OWNER'S BATH
SCALE: 1/4" = 1'-0"

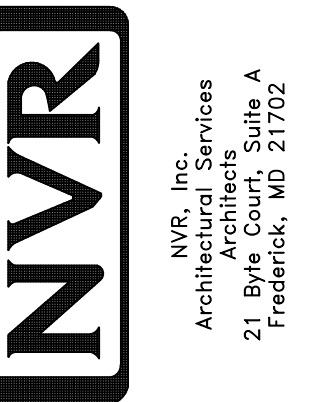
NOTES:

1. TEMPERED GLASS SHOWER ENCLOSURE WITH SWING DOOR OR OPTIONAL SLIDING DOOR BY DIVISION
2. TUB ACCESS PANELS PROVIDED AS NEEDED, ALL MATERIALS BY DIVISION
3. REFER TO SHEET IT-2 FOR TUB AND SHOWER DETAILS.
4. ALL VSDB24-42 DRAWERS TO BE SET ON RIGHT HAND.
5. BATH ELEVATIONS ARE SHOWN PER PLAN.

NOTES
• WINDOWS VARY PER OPTION.

REV. NO.	DATE	DESCRIPTION
1	08/07/16	TM - DRAWING ALIGNMENT

NVR, Inc., owner, expressly reserves its copyright in these plans. These plans are not to be reproduced, changed, copied, or otherwise used in any way without the written consent of NVR, Inc.



MODEL	PISA TORRE
DRAWING TITLE	BATH ELEVATIONS
SHEET NO.	A-14
OPTION DESCRIPTION	53
SET NO.	PSTCO
VERSION	O2
DRAWN BY	
DATE:	OPTION