

LEGEND

- BEARING WALL
- - - NON BEARING WALL
- ⊗ INDICATES BEARING FROM POINT-LOAD ABOVE
- J JACKS
- B BEAM/HEADER
- F PAD FOOTING
- ◇ STEEL COLUMN
- X PORTAL FRAME
- X JOIST/TRUSS
- L LVL
- ⊙ ENGINEERING PAGE NUMBER

SEE FC DETAILS FOR FRAMING CONNECTORS

FOUNDATION NOTES - BASEMENT

1. FOUNDATION UNDER HABITABLE SPACE:
 - 1.1. CONCRETE SLAB ON 6 MIL VAPOR BARRIER OVER SUB-BASE (SEE SPEC SHEET FOR SLAB NOTES)
2. SLAB UNDER GARAGE:
 - 2.1. UNEXCAVATED WITH CONCRETE SLAB ON VAPOR BARRIER OVER SUB-BASE (SEE SPEC SHEET FOR SLAB NOTES)
3. SEE SHEET (A-4) FOR FOUNDATION CONNECTION INFORMATION.
4. OPTIONAL EGRESS WINDOW - LOCATION MAY VARY DUE TO GRADE OR OPTIONS ABOVE WINDOW WELL REQUIRED IN CERTAIN GRADE CONDITIONS (SEE SPEC SHEET FOR ADDITIONAL INFO)
5. SLAB LEDGE LOCATIONS VARY W/ GRADE BEAM(S) ORIENTATION, SEE GB-1 FOR DETAILS.

PAD FOOTING SCHEDULE

IDENTIFIER	LENGTH	WIDTH	HEIGHT	OPTIONS	ENG. NUM.	IDENTIFIER
FO1	2'-4"	2'-4"	1'-3"	ZCC	003	1
FO2	2'-6"	2'-6"	1'-0"	ZCC	002	1
FO3	3'-3"	3'-3"	1'-3"	6CB, ZCC	126/134/160	1

FOUNDATION BEAM/HEADER SCHEDULE

IDENTIFIER	DESCRIPTION	LENGTH	OPTIONS	ENG. NUM.	REMARKS
B01	BEAM STEEL - W8X50	20'-0"	ZCC	002	
B02	BEAM STEEL - W8X20	15'-4"	MAA	001,023	
B04	BEAM STEEL - W8X18	15'-4 3/4"	MAA	020,031	

STEEL COLUMN SCHEDULE

IDENTIFIER	STYLE	HEIGHT	OPTIONS	ENG. NUM.	REMARKS
CO1	STANCHION - 4 IN DIA I16A ADJ	7'-4 3/4"	ZCC	003	
CO2	STANCHION - 3 IN DIA I16A ADJ	7'-5 1/2"	ZCC	002	

FOUNDATION DIAGONALS

A		B	
A	0"	A	40'-0 13/32"
B	40'-0 13/32"	B	0"
D	42'-0"	D	56'-4 21/32"
E	52'-1 1/32"	E	62'-5 5/8"
F	55'-4 11/32"	F	54'-6 15/32"

FOUNDATION PLAN
SCALE: 1/4" = 1'-0"

REVISIONS

REV. NO.	DATE	DESCRIPTION
1	08/07/16	N - DRAWING ALIGNMENT

REMARKS

SET NO. NAPOO
VERSION 06
DRAWN BY KAB
DATE: 07/18/16
OPTION

MODEL
NAPLES
DRAWING TITLE
FOUNDATION PLAN
OPTION DESCRIPTION

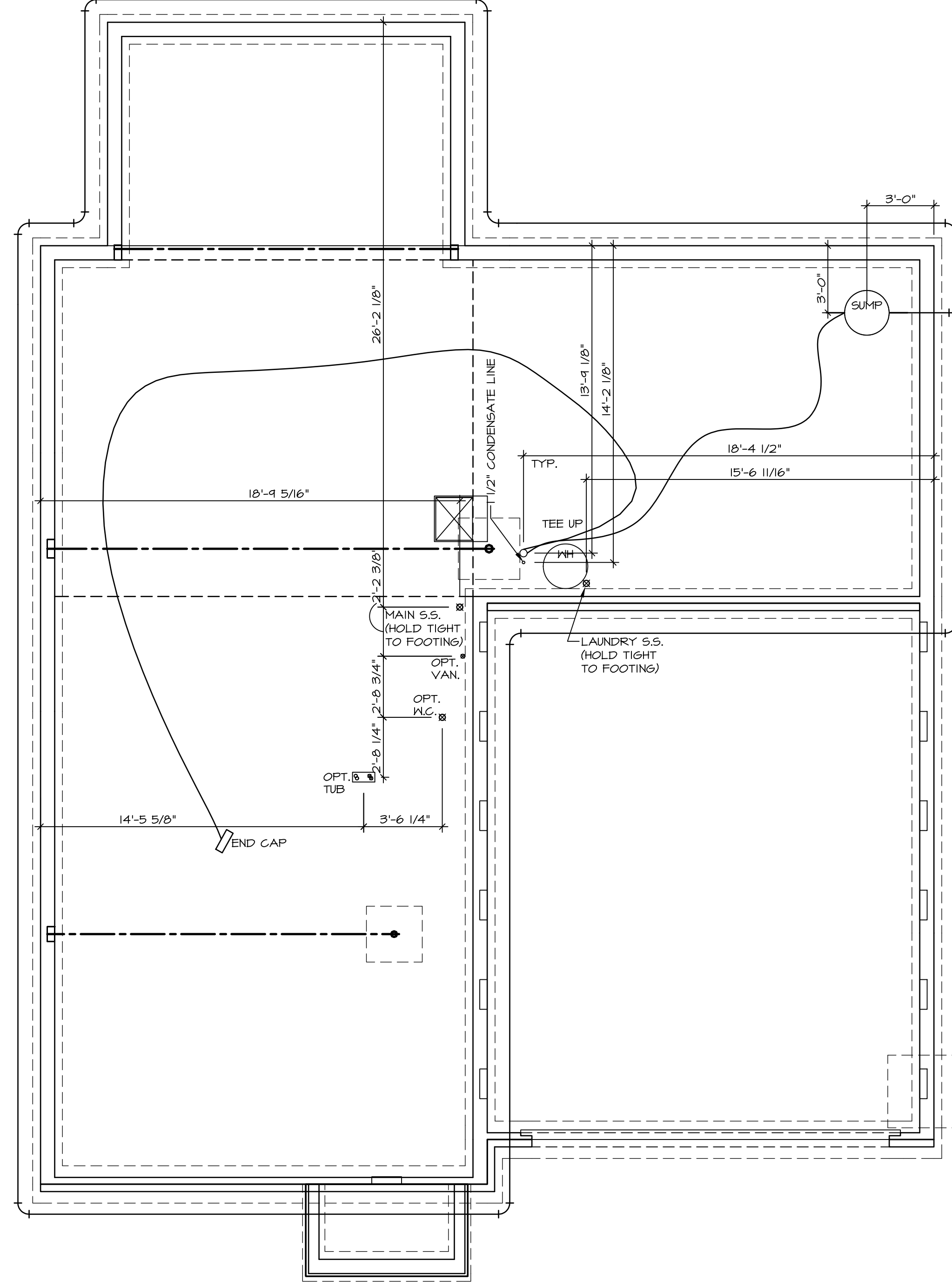
SHEET NO. **A-3**

19

NVR, Inc., owner, expressly reserves its common law copyright and other property rights in these plans. These plans are not to be copied, reproduced, or otherwise used in any way without the express written consent of NVR, Inc.

NVR
NVR, Inc.
Architectural Services
Architects
5285 Washington Blvd, Suite 100
Frederick, MD 21703

C:\NVR\Solves\NAPLES_NAPOO_06\DCY-16-1362\435898\Sheet\19_A-3_FDN_LS_(FPA).dwg_05/19/17 - 4:22 am



1
A-5 PLUMBING PLAN
SCALE: 1/4" = 1'-0"

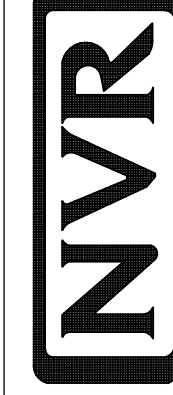
SHEET NO.
A-5

MODEL
NAPLES
DRAWING TITLE
PLUMBING PLAN

OPTION DESCRIPTION

28

SET NO. NAPOO
VERSION 06
DRAWN BY TN
DATE: 05/22/15
OPTION



NVR, Inc.
Architectural Services
5285 Westheimer Blvd, Suite 100
Frederick, MD 21703

NVR, Inc., owner, expressly reserves its common law copyright in these plans. These plans are not to be reproduced, changed, copied in any way, or otherwise transmitted, without the prior written consent of NVR, Inc.

REV. NO. DATE

REMARKS

LEGEND

	BEARING WALL
	NON BEARING WALL
	INDICATES BEARING FROM POINT-LOAD ABOVE
	JACKS
	BEAM/HEADER
	PAD FOOTING
	STEEL COLUMN
	PORTAL FRAME
	JOIST/TRUSS
	LVL
	ENGINEERING PAGE NUMBER

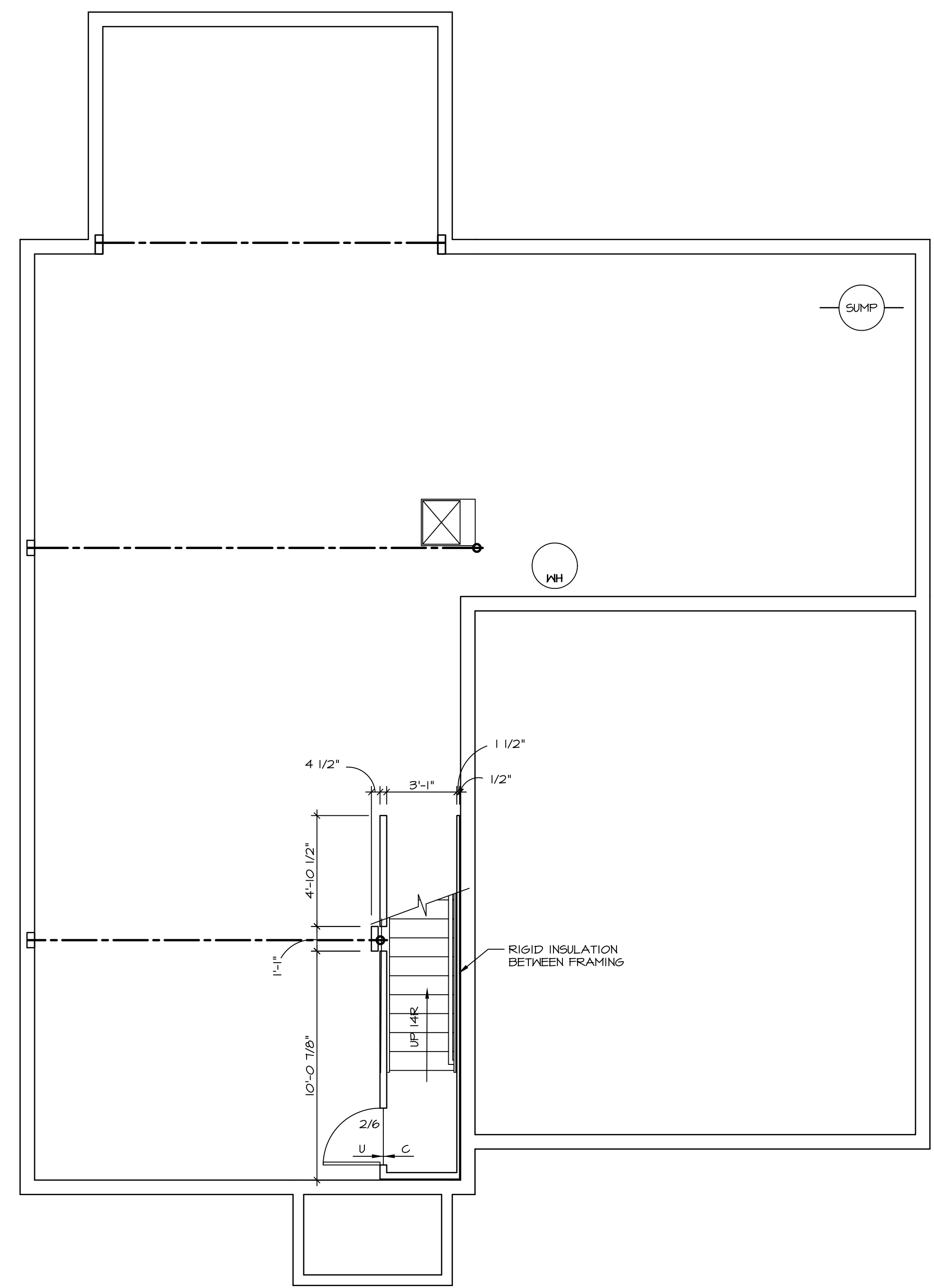
SEE FC DETAILS FOR FRAMING CONNECTORS

- FLOOR PLAN NOTES**
- ALL HEADERS ARE (2) 2x6 w/ 2x4 WALLS OR (3) 2x6 w/ 2x6 WALLS, UNLESS OTHERWISE NOTED.
 - ALL HEADERS TO HAVE (1) 2x4 OR 2x6 JACK EACH END, UNLESS OTHERWISE NOTED.
 - ALL EXTERIOR WALLS TO BE 4" AND ALL INTERIOR WALLS TO BE 3 1/2", UNLESS OTHERWISE NOTED.
 - HATCHED AREAS INDICATE DROPPED CEILING. ALL DROPPED CEILINGS ARE 12" UNLESS OTHERWISE NOTED.
 - SEE "BRACED WALL PANEL DETAIL SHEET" FOR SPECIAL WALL FRAMING LOCATIONS AND HEADER SIZES, IF APPLICABLE.
 - SEE STANDARD DETAIL CATEGORY "IT" SHEET(S) FOR INTERIOR TRIM DETAILS.
 - SEE ARCHITECTURAL DETAIL SHEET "AD" FOR HOUSE SPECIFIC INTERIOR TRIM OPTION TABLE.
 - ALL WINDOWS HAVE T-O 1/2" HEADER HEIGHT UNLESS OTHERWISE NOTED.

GYPSUM NOTES

AT GARAGE:
GYPSUM BOARD AT COMMON WALLS, CEILING, BEAM WRAPS AND SUPPORTS PER STANDARD DETAIL FA-1(b) FIRE ASSEMBLIES OR AS REQUIRED BY LOCAL CODE.

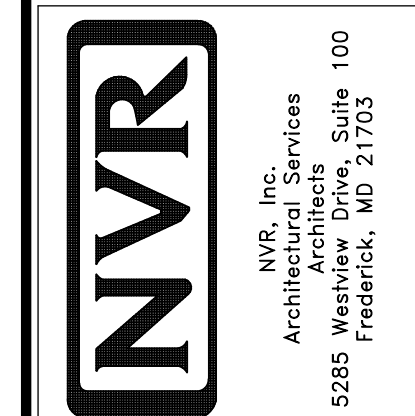
AT STAIRS:
1/2" GYPSUM BOARD AT UNDERSIDE OF STAIRS AND WALLS IN CLOSET



BASEMENT FLOOR PLAN
SCALE: 1/4" = 1'-0"

SHEET NO. A-6	MODEL NAPLES	DRAWING TITLE BASEMENT FLOOR PLAN	SET NO. NAPOO	REV. NO. DATE	REMARKS
			VERSION 06	1 08/07/16 N.E. - DRAWING ALIGNMENT	
OPTION DESCRIPTION					
OPTION					
31					

NVR, Inc., owner, expressly reserves its copyright in these plans. These plans are not to be reproduced, changed, copied in any way, or otherwise used without the written consent of NVR, Inc.



LEGEND

- BEARING WALL
- - - NON BEARING WALL
- ⊗ INDICATES BEARING FROM POINT-LOAD ABOVE
- J JACKS
- B- BEAM/HEADER
- F- PAD FOOTING
- ◇ STEEL COLUMN
- X PORTAL FRAME
- X JOIST/TRUSS
- L LVL
- (X) ENGINEERING PAGE NUMBER

SEE FC DETAILS FOR FRAMING CONNECTORS

LVL PLY TO PLY FASTENING SCHEDULE:

1A - (2) PLY UP TO AND INCLUDING 11 7/8" TALL; FASTEN PLYS W/ (2) ROWS 16D NAILS AT 12" O.C.
 2A - (2) PLY 14" TO AND 18" TALL (INCLUSIVE); FASTEN PLYS W/ (3) ROWS 16D NAILS AT 12" O.C.
 3A - (2) PLY 20" TALL AND OVER; FASTEN PLYS W/ (4) ROWS 16D NAILS AT 12" O.C.
 4A - (3) PLY UP TO AND INCLUDING 11 7/8" TALL; FASTEN PLYS W/ (2) ROWS 16D NAILS AT 12" O.C. FROM EACH SIDE
 5A - (3) PLY 14" TO AND 18" TALL (INCLUSIVE); FASTEN PLYS W/ (3) ROWS 16D NAILS AT 12" O.C. FROM EACH SIDE
 6A - (3) PLY 20" TALL AND OVER; FASTEN PLYS W/ (4) ROWS 16D NAILS AT 12" O.C. FROM EACH SIDE

FIRST FLOOR BEAM/HEADER SCHEDULE

IDENTIFIER	DESCRIPTION	LENGTH	OPTIONS	ENS. N.M.	REMARKS
B01	BEAM STEEL - W12X30	20'-3"	ZCC, ZSX, ELB, ELG, ELL, ELN, GCB	143	
B02	BEAM STEEL - W12X22	20'-3"	ELB, EVA, ELG, EVM, GCB	130	
B07	BEAM STEEL - W12X14	20'-3"	GCB	103	
B10	INT HEADER - 2X8 - 2 PLY	4'-7 1/2"		100	FIELD INSTALLED
B20-3	LVL - 16	14'-11"	MAA, ZCC	124	5A
PF04	EXT HEADER - 2X12 - 2 PLY	19'-4"	GCB, ELB, ELG, ELL, ELN	120	PORTAL FRAME

FIRST FLOOR JACK SCHEDULE

IDENTIFIER	DESCRIPTION	OPTIONS	ENS. N.M.	REMARKS
J01	JACK - (3) 2X4 SPF STUD GRADE	SRM, SQK	112	FULL HEIGHT STUDS
J07	JACK - (3) 2X4 SPF STUD GRADE	SRM, SQK, MAA	112	FULL HEIGHT STUDS
J107	JACK - (2) 2X4 SPF STUD GRADE	ZCC	167	
J108	JACK - 2X4 SPF STUD GRADE		150, 167	
J109	JACK - 2X4 SPF STUD GRADE		150, 167	
J117	JACK - (3) 2X4 SPF STUD GRADE	GCB	120	
J13	JACK - (4) 2X6 SPF STUD GRADE	ZCC, MAA	124	
J14	JACK - (3) 2X6 SPF STUD GRADE	ZCC, MAA	124	
J17	JACK - (3) 2X4 SPF STUD GRADE	ZCC, FBA		
J59	JACK - (2) 2X4 SPF STUD GRADE	ELB	105	
J94	JACK - (2) 2X4 SPF STUD GRADE	ELB	105	
J47	JACK - (4) 2X4 SPF STUD GRADE	GCB		
J48	JACK - (4) 2X4 SPF STUD GRADE	GCB		
J51	JACK - (3) 2X4 SPF STUD GRADE	GCB	120	
J52	JACK - (6) 2X4 SP#I	GCB, ELB, ELG, ELL, ELN	119	
J53	JACK - (6) 2X4 SP#I	SRM, SQK, SRI, 5XS, GCB	142, 143	
J54	JACK - (4) 2X4 SPF STUD GRADE	GCB, ELB, EVA, ELG, EVM	130	
J55	JACK - (4) 2X4 SPF STUD GRADE	GCB, ELB, EVA, ELG, EVM	130	

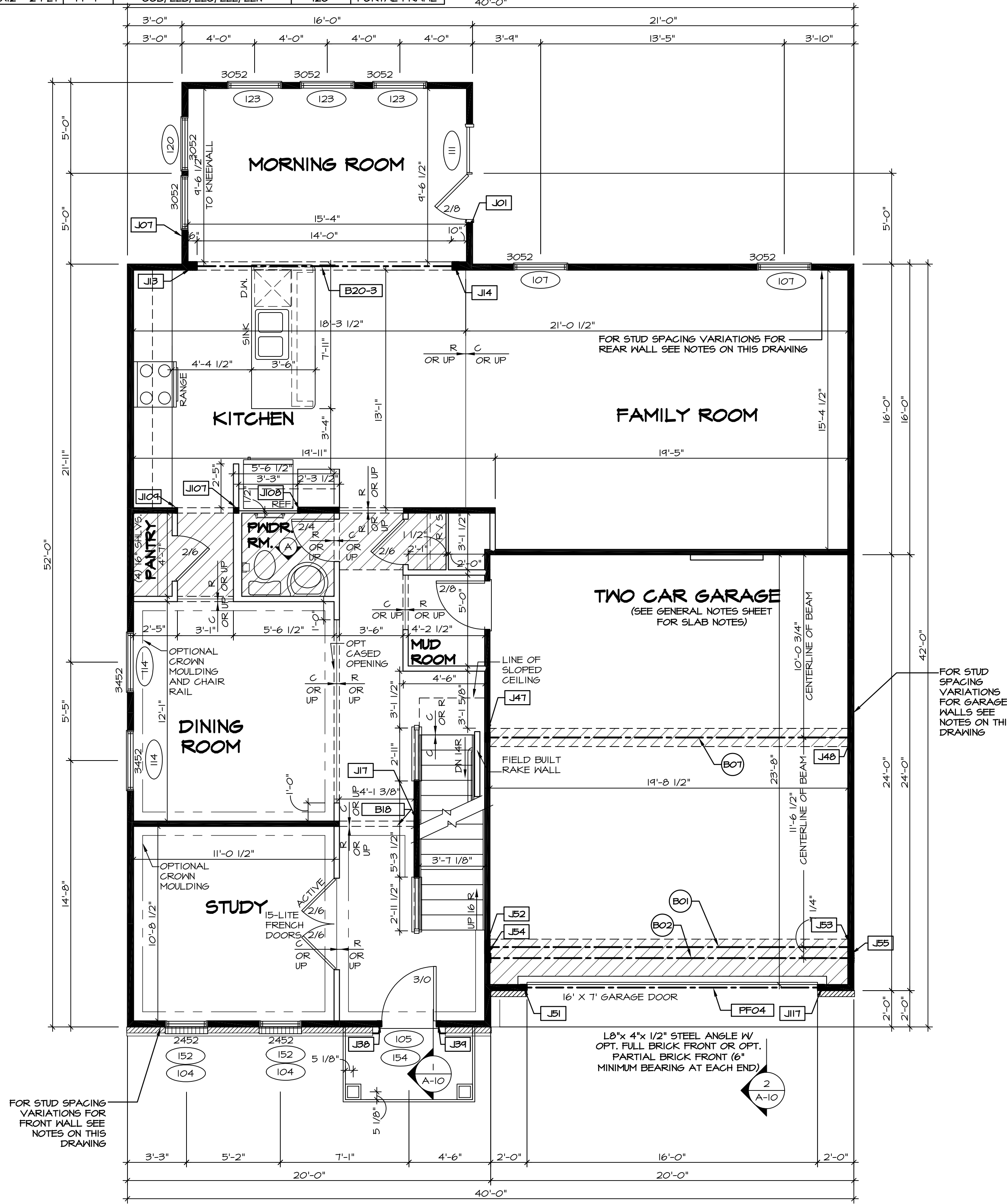
FLOOR PLAN NOTES

- ALL HEADERS ARE (2) 2x6 W/ 2x4 WALLS OR (3) 2x6 W/ 2x6 WALLS, UNLESS OTHERWISE NOTED.
- ALL HEADERS TO HAVE (1) 2x4 OR 2x6 JACK EACH END, UNLESS OTHERWISE NOTED.
- ALL EXTERIOR WALLS TO BE 4" AND ALL INTERIOR WALLS TO BE 3 1/2", UNLESS OTHERWISE NOTED.
- HATCHED AREAS INDICATE DROPPED CEILINGS. ALL DROPPED CEILINGS ARE 12" UNLESS OTHERWISE NOTED. SEE "BRACED WALL PANEL DETAIL SHEET" FOR SPECIAL WALL FRAMING LOCATIONS AND HEADER SIZES, IF APPLICABLE.
- SEE STANDARD DETAIL CATEGORY "IT" SHEET(S) FOR INTERIOR TRIM DETAILS.
- SEE ARCHITECTURAL DETAIL SHEET "AD" FOR HOUSE SPECIFIC INTERIOR TRIM OPTION TABLE.
- ALL WINDOWS HAVE 7'-0 1/2" HEADER HEIGHT UNLESS OTHERWISE NOTED.

GYPSUM NOTES

AT GARAGE:
 GYPSUM BOARD AT COMMON WALLS, CEILINGS, BEAM WRAPS AND SUPPORTS PER STANDARD DETAIL FA-1(b) FIRE ASSEMBLIES OR AS REQUIRED BY LOCAL CODE.

AT STAIRS:
 1/2" GYPSUM BOARD AT UNDERSIDE OF STAIRS AND WALLS IN CLOSET



STUD SPACING FOR FRONT WALLS AT LIVING ROOM:
 W/O ATTIC "BTU"/MAU": 2x4 STUD WALLS AT 16" O.C. (115)
 OR
 W/ ATTIC "BTU"/MAU": 2x4 STUD WALLS AT 12" O.C. (157)

STUD SPACING FOR FRONT WALLS AT FOYER:
 2x4 STUD WALLS AT 12" O.C. (116)
 (157)

STUD SPACING FOR FRONT / SIDE WALLS AT GARAGE:
 W/ 40 MPH "SRM" OR 100 MPH "SQK": 2X4 STUD WALLS AT 16" O.C. (125)
 OR
 W/ 110 MPH "SQL" OR 120 MPH "SRX": 2X4 STUD WALLS AT 12" O.C. (125)

STUD SPACING FOR REAR WALLS AT DINETTE/ KITCHEN:
 W/ CORPORATE TRUSS SPECS. "SRI" OR SOUTHEAST SPECS. "5XS" WITHOUT ATTIC: 2X4 STUD WALLS AT 16" O.C. (117)
 OR
 W/ NORTHEAST TRUSS SPECS. "SRJ" WITHOUT ATTIC: 2X4 STUD WALLS AT 12" O.C. (117)
 OR
 W/ ATTIC "BTU"/MAU": 2X4 STUD WALLS AT 12" O.C. (156)

STUD SPACING FOR REAR WALLS AT FAMILY ROOM:
 W/O ATTIC "BTU"/MAU": 2X4 STUD WALLS AT 16" O.C. (117)
 OR
 W/ ATTIC "BTU"/MAU": 2X4 STUD WALLS AT 12" O.C. (156)

STEEL COLUMN SCHEDULE

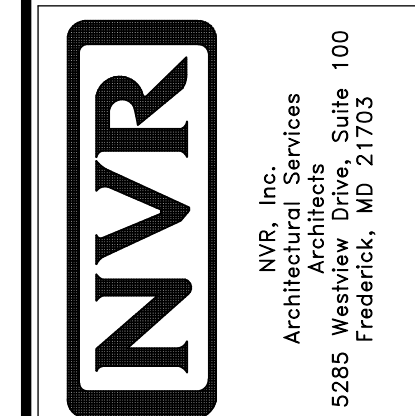
IDENTIFIER	STYLE	HEIGHT	OPTIONS	ENS. N.M.	REMARKS
C104					

FIRST FLOOR PLAN
 SCALE: 1/4" = 1'-0"

REVISIONS

REV. NO.	DATE	DESCRIPTION
08/07/16	N	DRAWING ALIGNMENT

NVR, Inc., owner, expressly reserves its copyright in these plans. These plans are not to be reproduced, changed, copied, or otherwise used in any way without the written consent of NVR, Inc.



MODEL: NAPLES

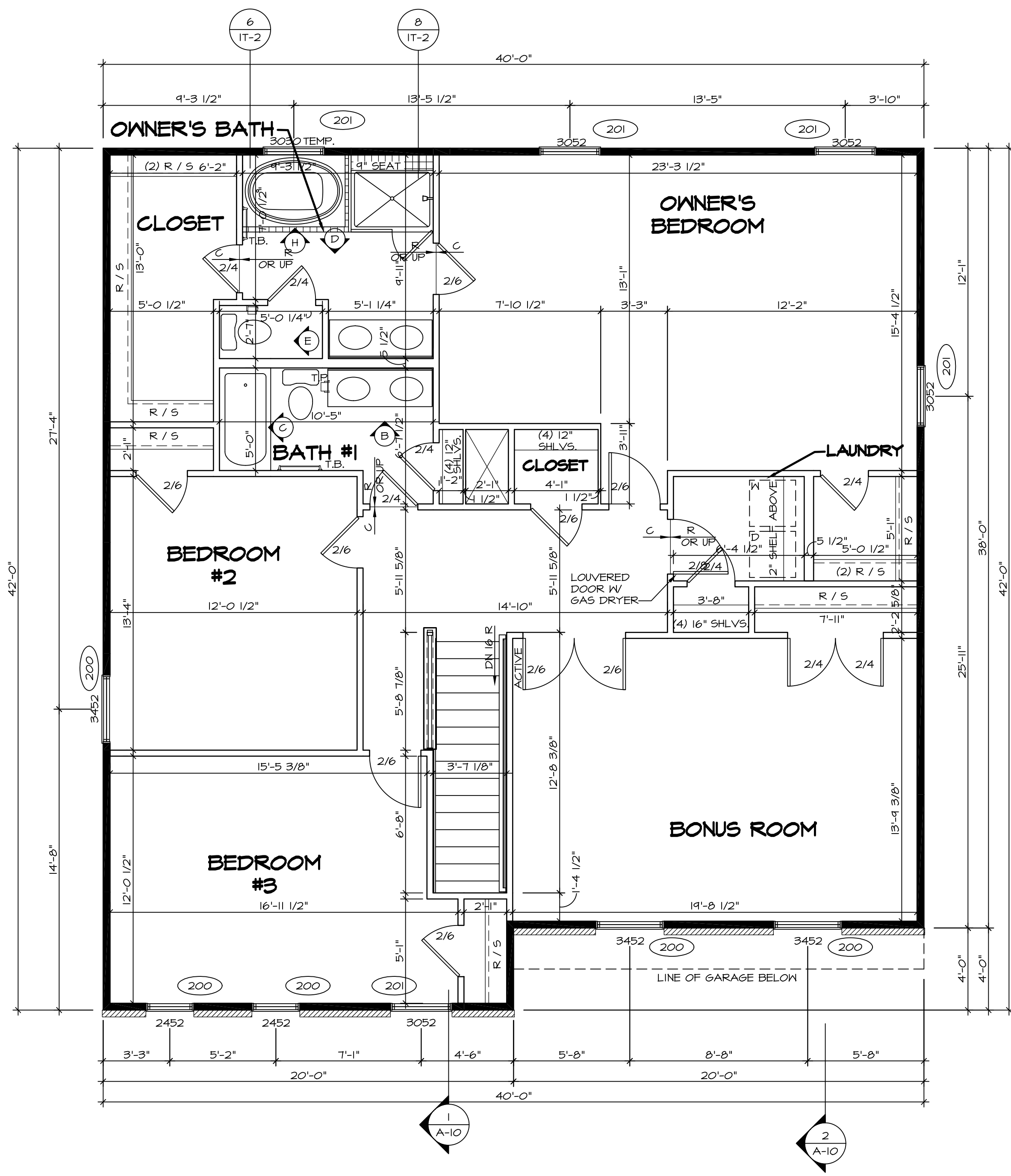
DRAWING TITLE: FIRST FLOOR PLAN

OPTION DESCRIPTION: A-7

SHEET NO.: 32

SET NO.: NAPOO
 VERSION: 06
 DRAWN BY: TN
 DATE: 05/22/15
 OPTION

SCALE: 1/4" = 1'-0"



SECOND FLOOR PLAN
SCALE: 1/4" = 1'-0"

LEGEND

- BEARING WALL
- NON BEARING WALL
- ⊗ INDICATES BEARINGS FROM POINT-LOAD ABOVE
- J JACKS
- B BEAM/HEADER
- F PAD FOOTING
- C STEEL COLUMN
- X PORTAL FRAME
- X JOIST/TRUSS
- L LVL
- X ENGINEERING PAGE NUMBER

SEE FC DETAILS FOR FRAMING CONNECTORS

- FLOOR PLAN NOTES**
- ALL HEADERS ARE (2) 2x6 w/ 2x4 WALLS OR (3) 2x6 w/ 2x6 WALLS, UNLESS OTHERWISE NOTED.
 - ALL HEADERS TO HAVE (1) 2x4 OR 2x6 JACK EACH END, UNLESS OTHERWISE NOTED.
 - ALL EXTERIOR WALLS TO BE 4" AND ALL INTERIOR WALLS TO BE 3 1/2", UNLESS OTHERWISE NOTED.
 - HATCHED AREAS INDICATE DROPPED CEILINGS. ALL DROPPED CEILINGS ARE 12" UNLESS OTHERWISE NOTED.
 - SEE "BRACED WALL PANEL DETAIL SHEET" FOR SPECIAL WALL FRAMING LOCATIONS AND HEADER SIZES, IF APPLICABLE.
 - SEE STANDARD DETAIL CATEGORY "IT" SHEET(S) FOR INTERIOR TRIM DETAILS.
 - SEE ARCHITECTURAL DETAIL SHEET "AD" FOR HOUSE SPECIFIC INTERIOR TRIM OPTION TABLE.
 - ALL WINDOWS HAVE 7'-0 1/2" HEADER HEIGHT UNLESS OTHERWISE NOTED.

SECOND FLOOR JACK SCHEDULE

IDENTIFIER	DESCRIPTION	OPTIONS	ENG. NUM.	REMARKS

- LVL PLY TO PLY FASTENING SCHEDULE:**
- 1A - (2) PLY UP TO AND INCLUDING 11 7/8" TALL; FASTEN PLYS w/ (2) ROWS 16D NAILS AT 12" O.C.
 - 2A - (2) PLY 14" TO AND INCLUDING 18" TALL (INCLUSIVE); FASTEN PLYS w/ (3) ROWS 16D NAILS AT 12" O.C.
 - 3A - (2) PLY 20" TALL AND OVER; FASTEN PLYS w/ (4) ROWS 16D NAILS AT 12" O.C.
 - 4A - (3) PLY UP TO AND INCLUDING 11 7/8" TALL; FASTEN PLYS w/ (2) ROWS 16D NAILS AT 12" O.C. FROM EACH SIDE.
 - 5A - (3) PLY 14" TO AND INCLUDING 18" TALL (INCLUSIVE); FASTEN PLYS w/ (3) ROWS 16D NAILS AT 12" O.C. FROM EACH SIDE.
 - 6A - (3) PLY 20" TALL AND OVER; FASTEN PLYS w/ (4) ROWS 16D NAILS AT 12" O.C. FROM EACH SIDE.

SECOND FLOOR BEAM/HEADER SCHEDULE

IDENTIFIER	DESCRIPTION	LENGTH	OPTIONS	ENG. NUM.	REMARKS

REMARKS

REV. NO.	DATE	DESCRIPTION
1	08/07/16	N.E. - DRAWING ALIGNMENT

MODEL
NAPLES
DRAWING TITLE
SECOND FLOOR PLAN
OPTION DESCRIPTION

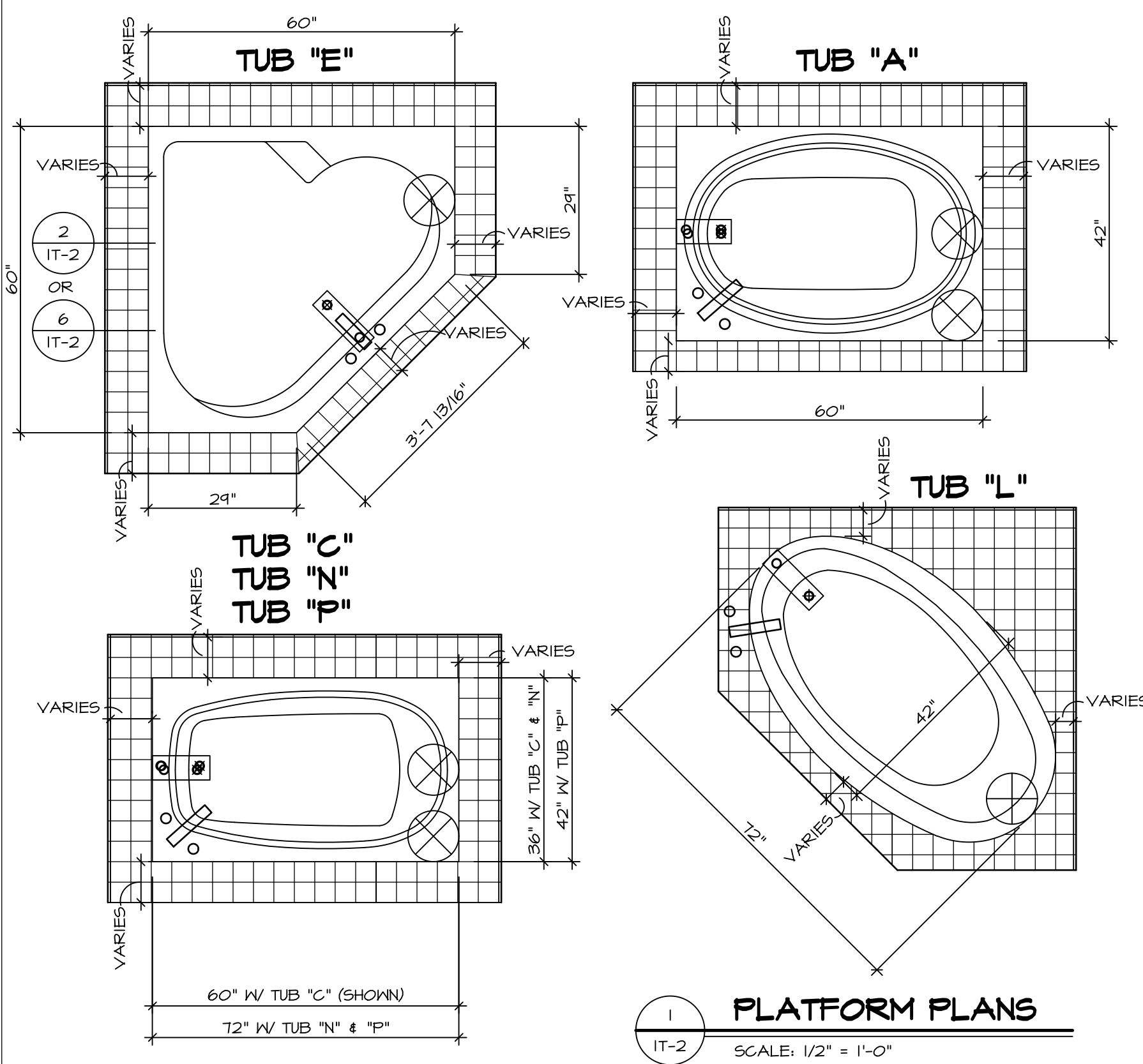
SHEET NO.
A-8
36

SET NO. NAPOO
VERSION 06
DRAWN BY TN
DATE: 05/22/15
OPTION

NVR
NVR, Inc.
Architectural Services
5285 Westchase Circle
Frederick, MD 21703

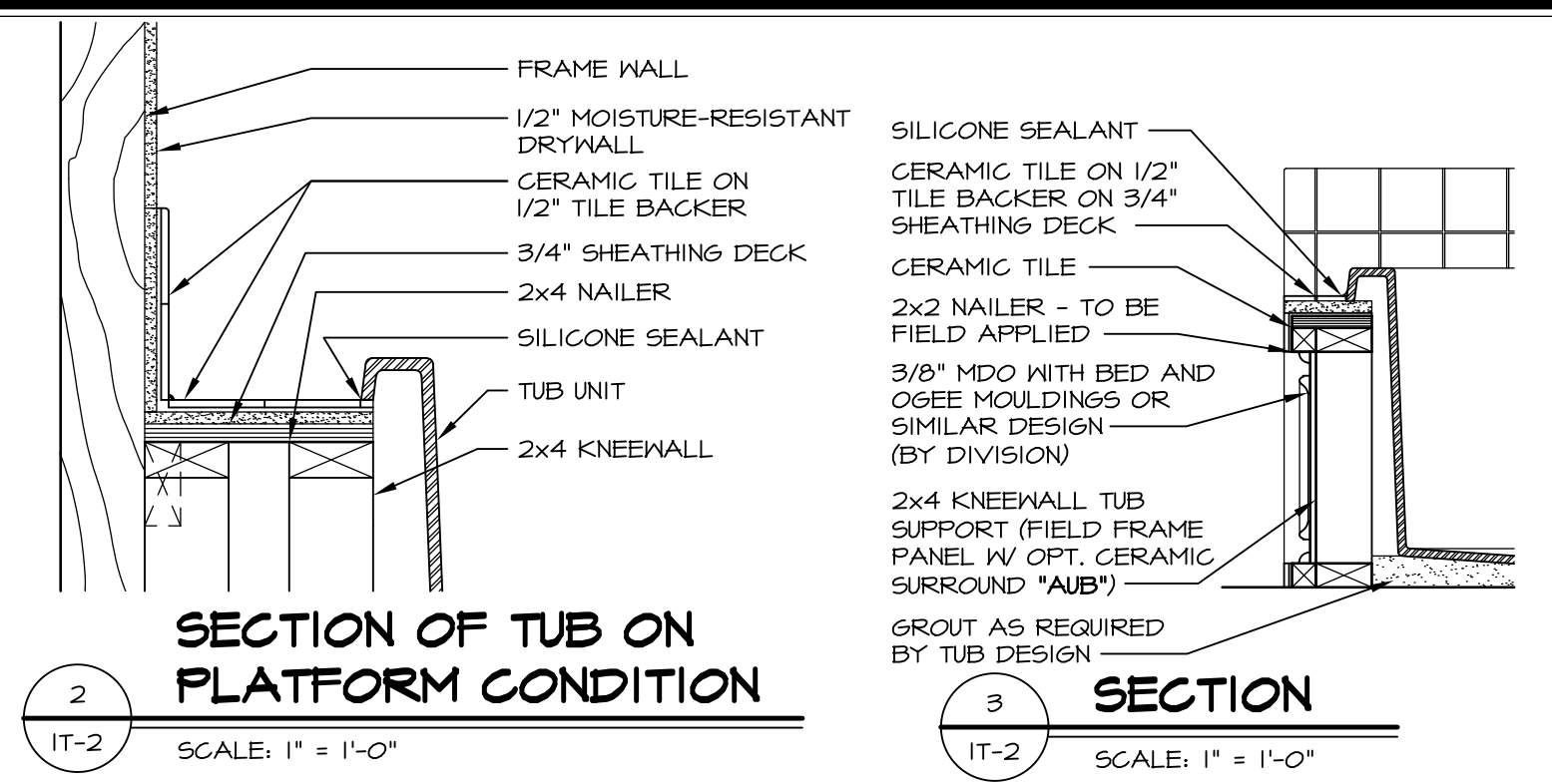
NVR, Inc., owner, expressly reserves its copyright in these plans. These plans are not to be reproduced, changed, copied, or otherwise used in any way without the prior written consent of NVR, Inc.

C:\NVR\Solves\NAPLES_NAPOO_06\DCY-16-L362\43589A\Sheet\1 - Specific\36 A-8_PLY2_LS.dwg 05/19/17 - 4:22 am

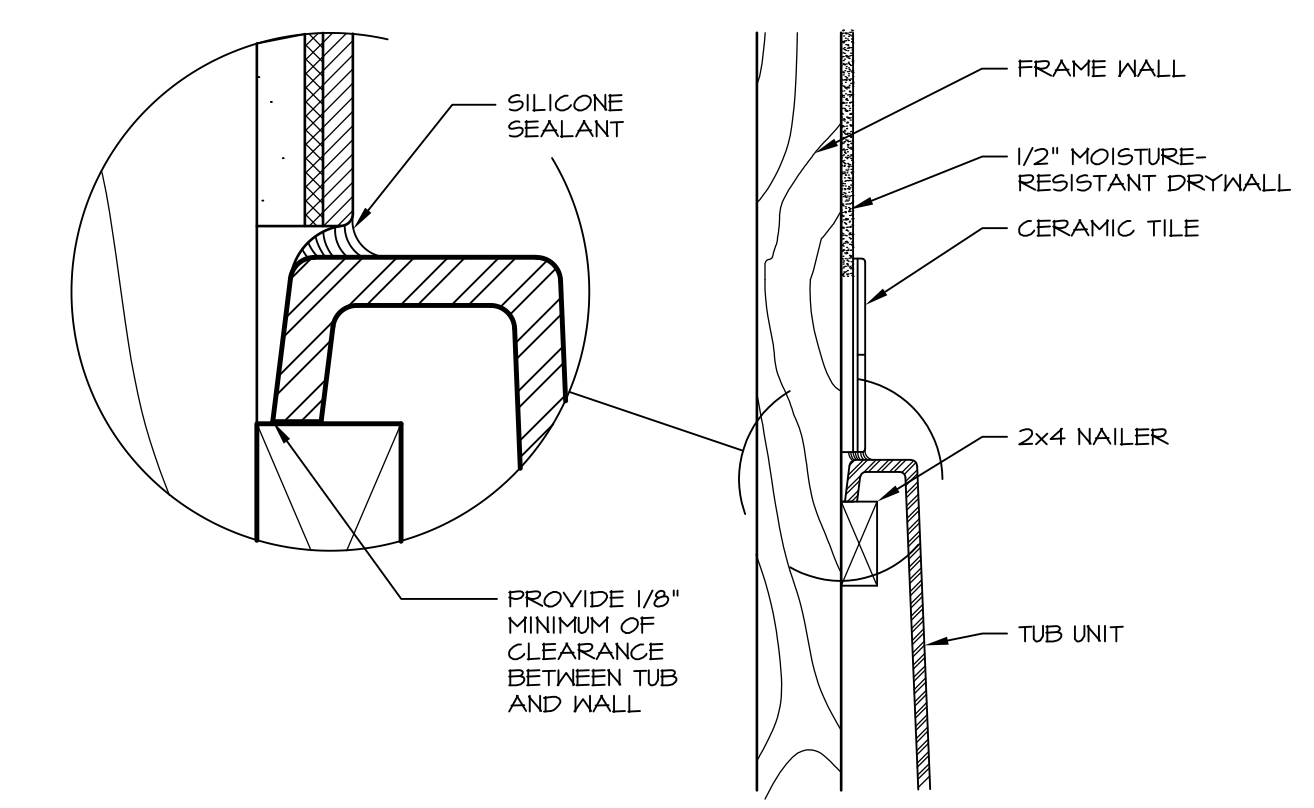


1 PLATFORM PLANS
SCALE: 1/2" = 1'-0"

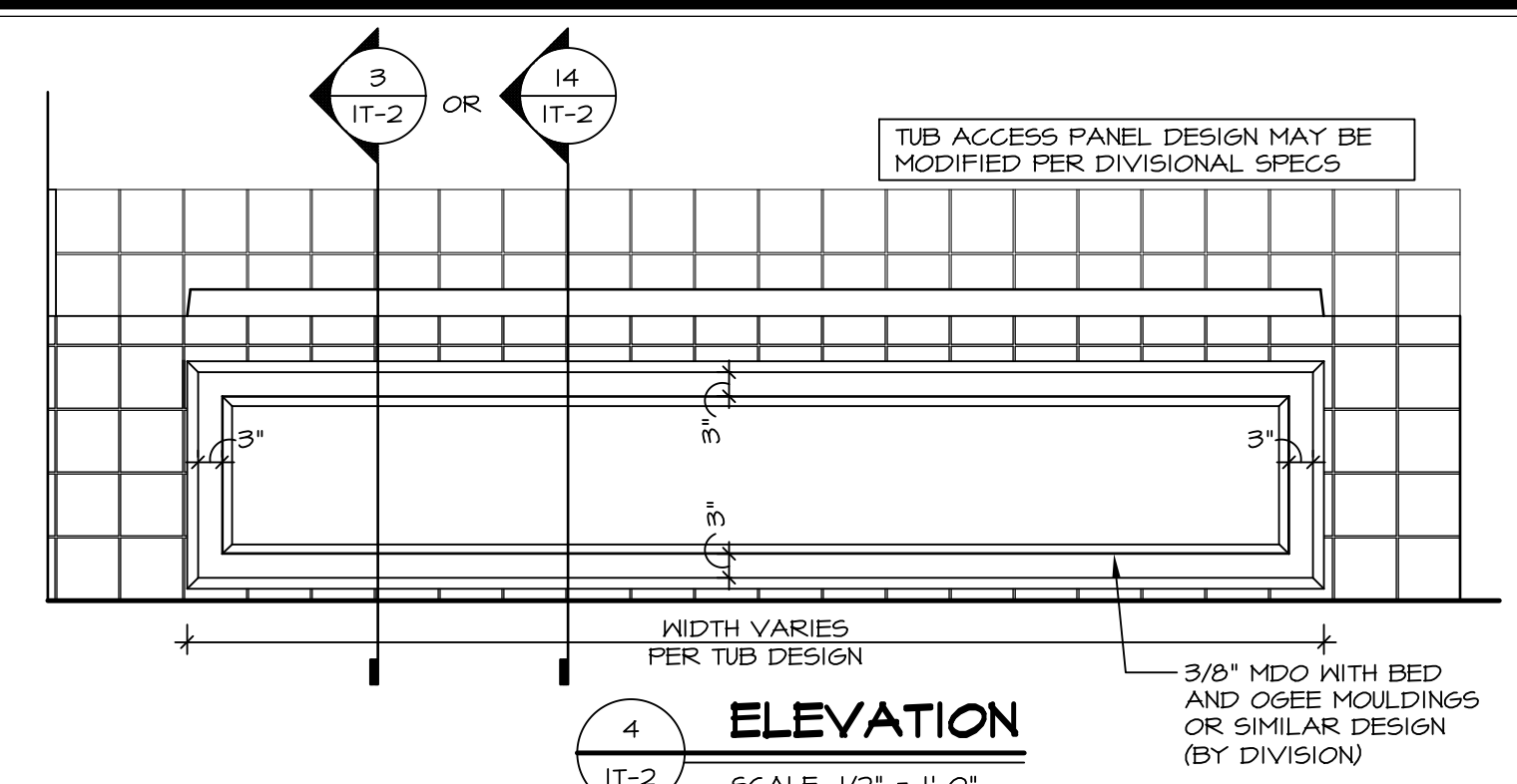
TUB	MANUF.	HEIGHT	WIDTH	LENGTH	TUB DECK PANEL HEIGHT
"A"	KOHLER/ STERLING	18 3/4"	42"	60"	17 1/8"
"C"	KOHLER/ STERLING	18 3/4"	36"	60"	17 1/8"
"E"	KOHLER/ STERLING	19 1/2"	60"	60"	17 7/8"
"L"	KOHLER/ STERLING	18 1/2"	42"	72"	16 7/8"
"N"	KOHLER/ STERLING	18 3/4"	36"	72"	17 1/8"
"P"	KOHLER/ STERLING	18 3/4"	42"	72"	17 1/8"



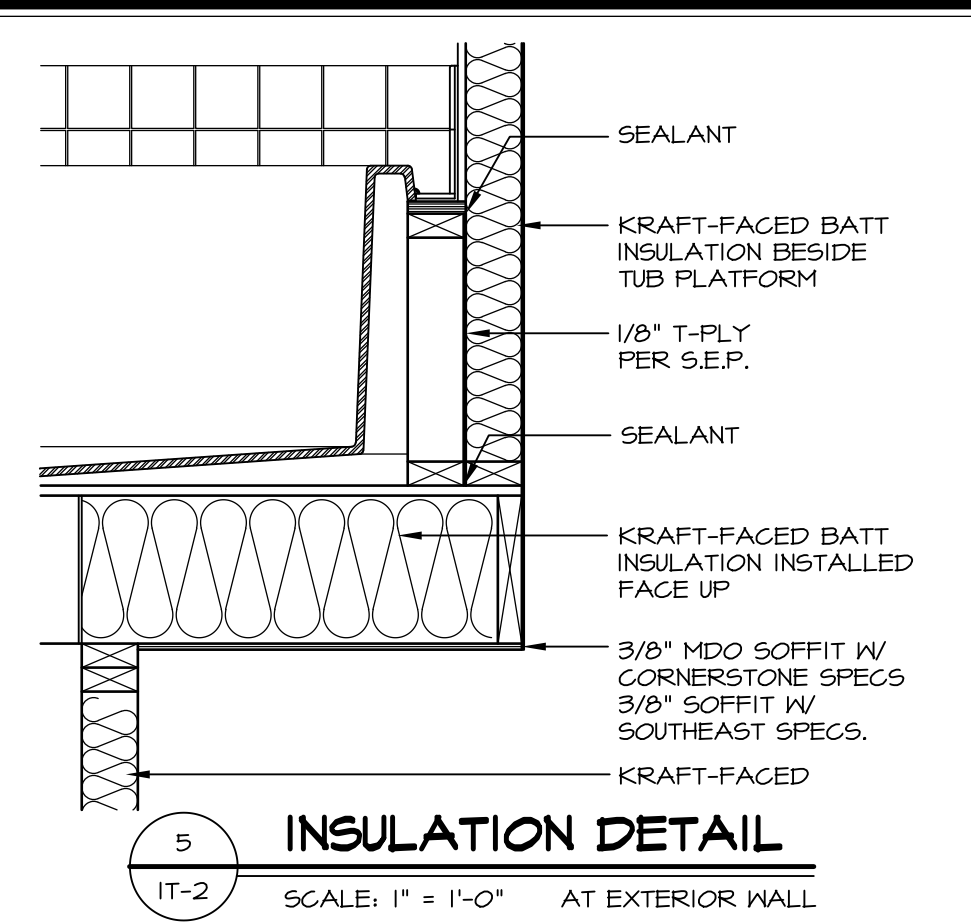
2 SECTION OF TUB ON PLATFORM CONDITION
SCALE: 1" = 1'-0"



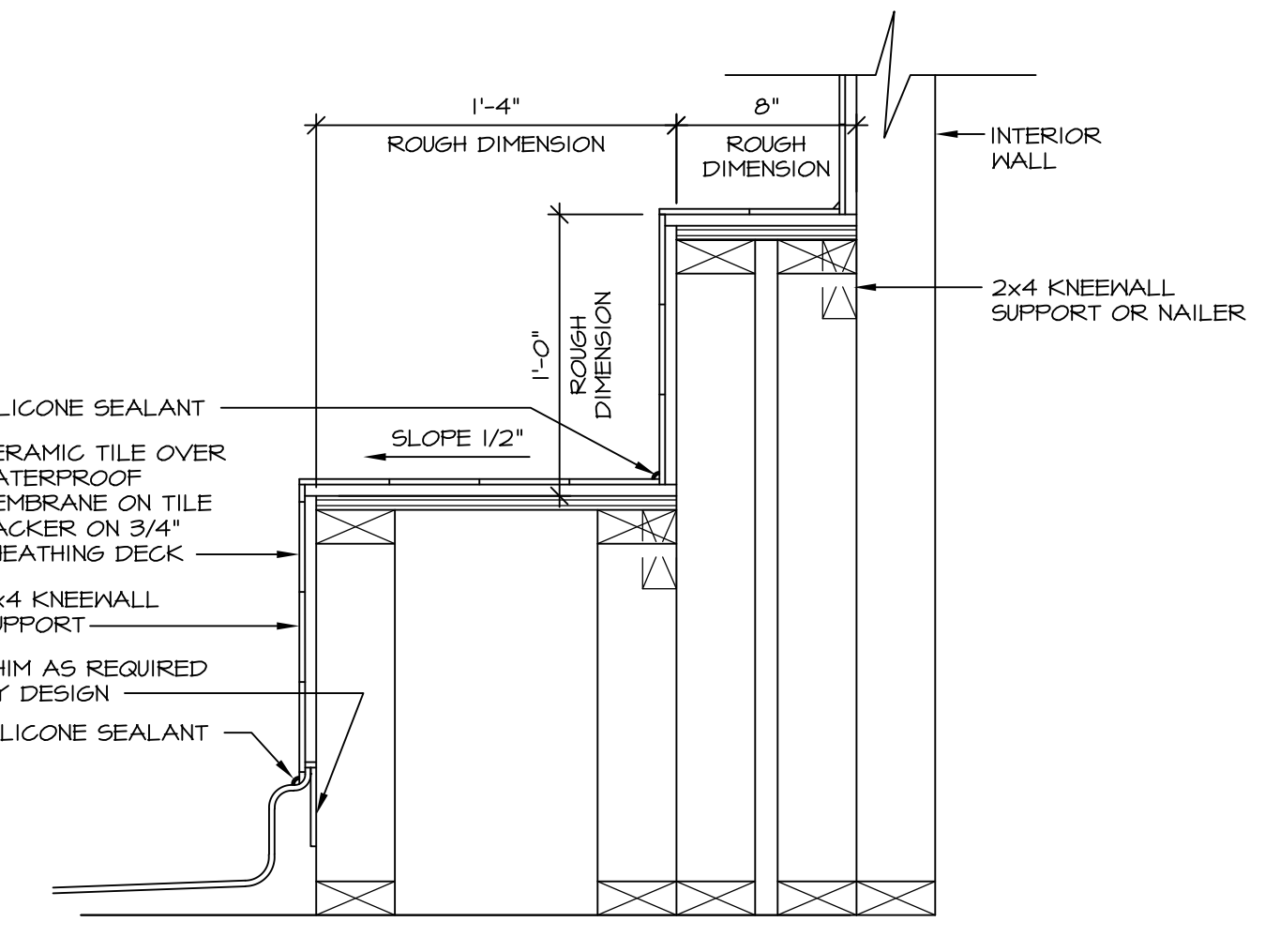
3 SECTION OF TUB TO WALL CONDITION
SCALE: 1 1/2" = 1'-0"



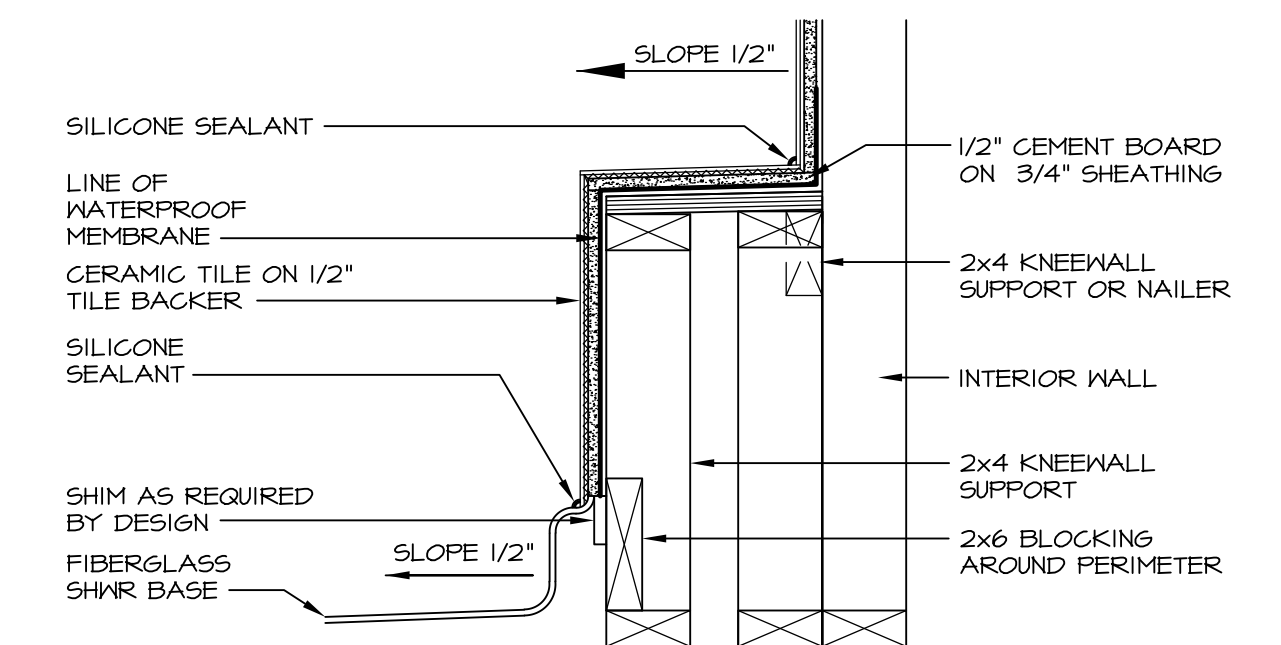
4 ELEVATION
SCALE: 1/2" = 1'-0"



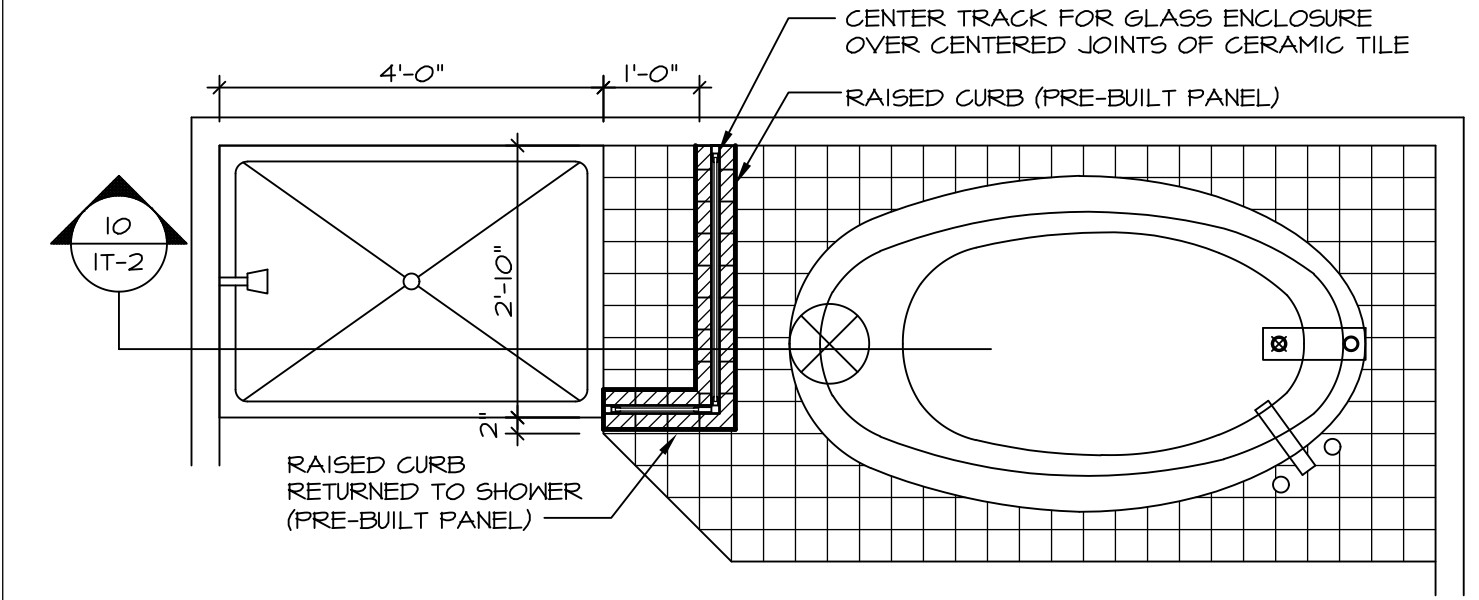
5 INSULATION DETAIL
SCALE: 1" = 1'-0" AT EXTERIOR WALL



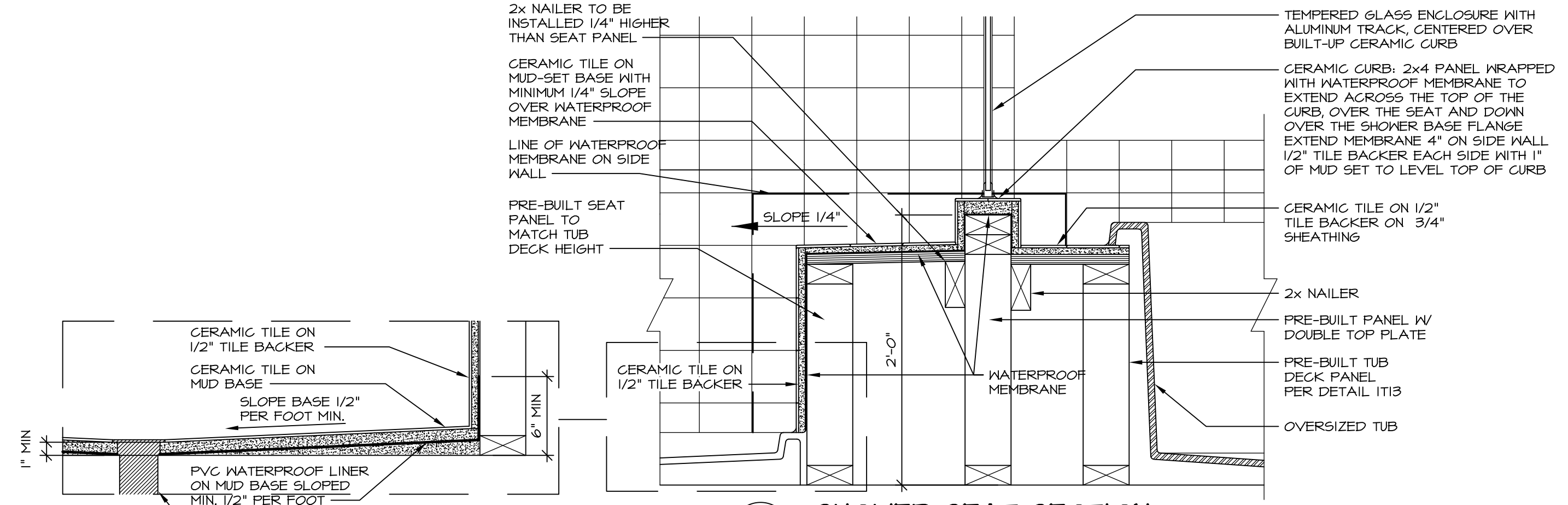
6 SECTION OF SHOWER SEAT AND SHELF
SCALE: 1 1/2" = 1'-0"



7 SECTION OF SHOWER SEAT
SCALE: 1-1/2" = 1'-0" FIBERGLASS SHOWER BASE



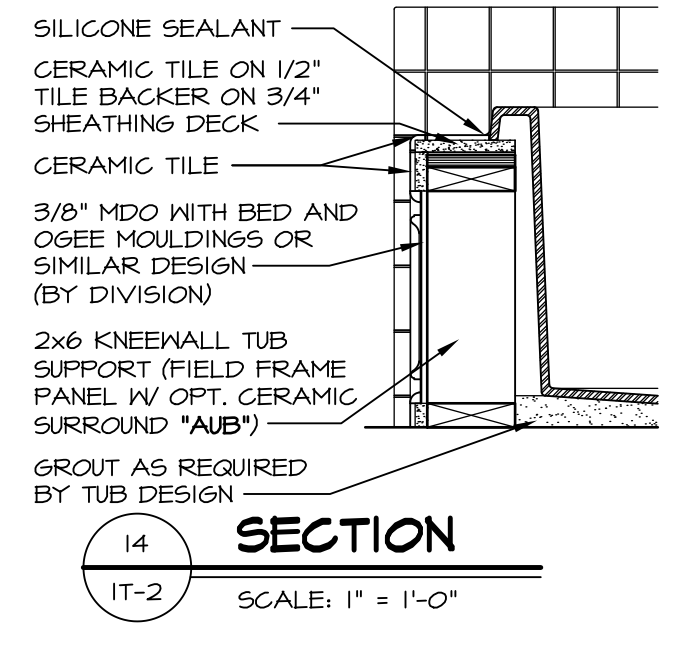
9 SHOWER SEAT PLAN / DETAIL
SCALE: 1/2" = 1'-0"



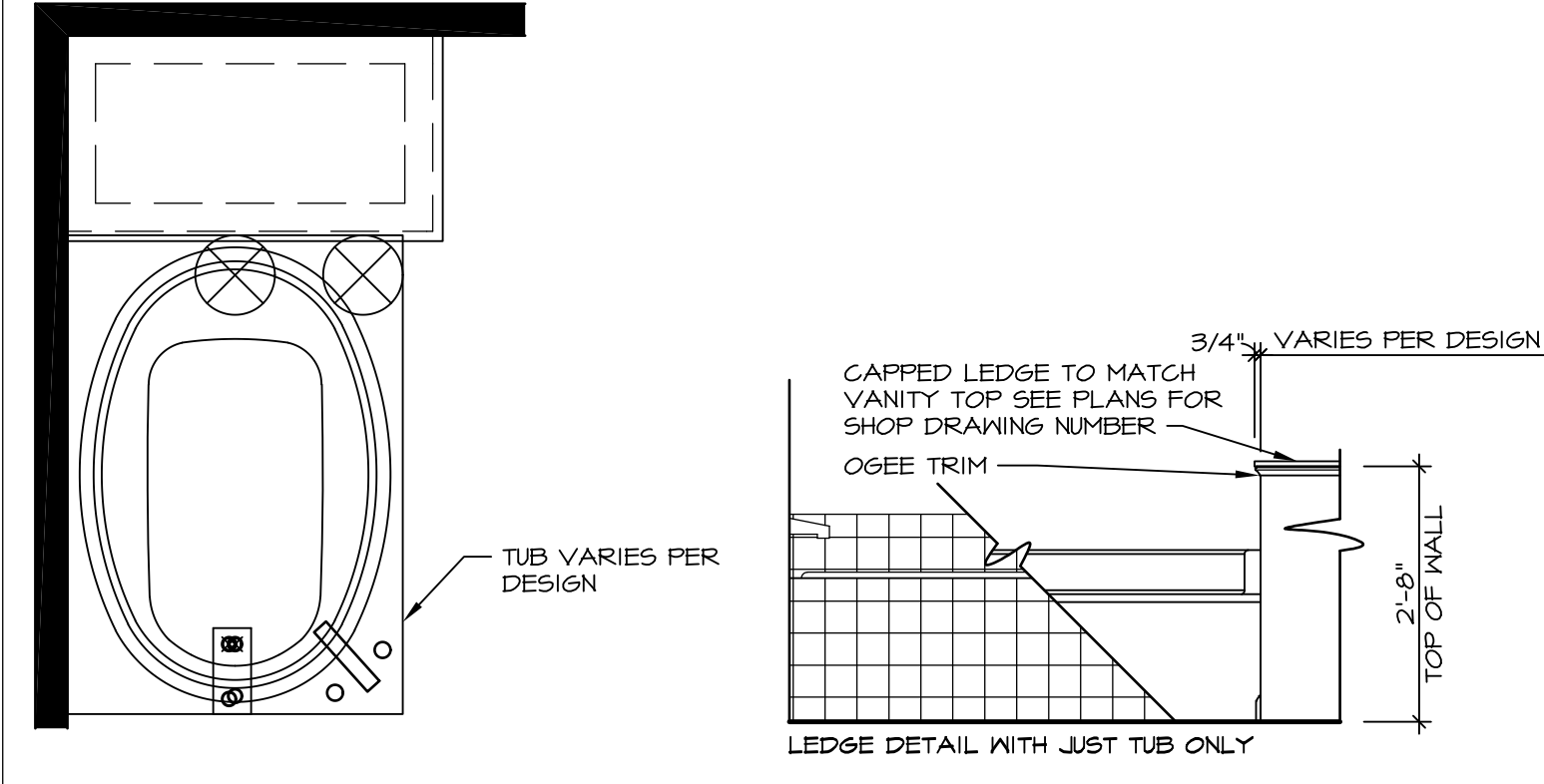
10 SHOWER SEAT SECTION
SCALE: 1-1/2" = 1'-0"



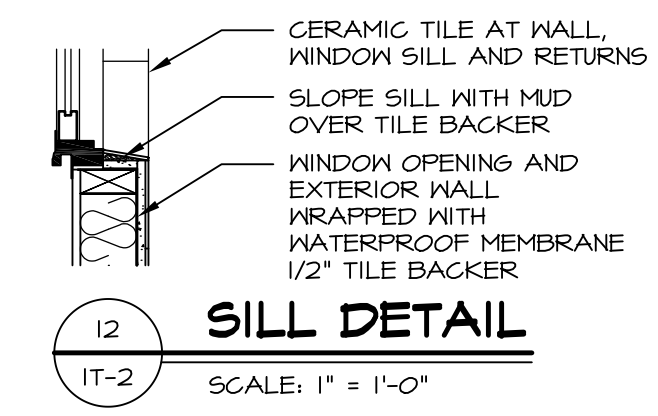
11 ALTERNATE SHOWER PAN DETAIL



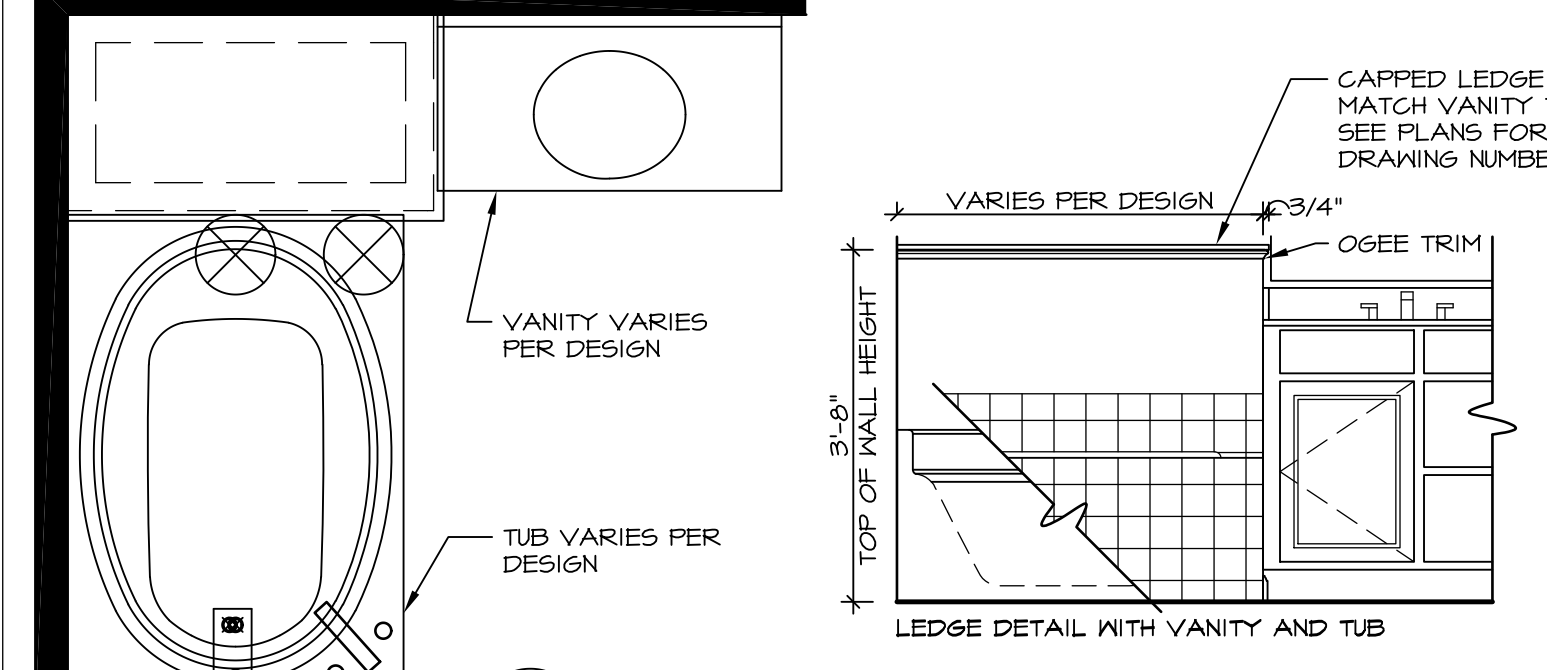
12 SECTION
SCALE: 1" = 1'-0"



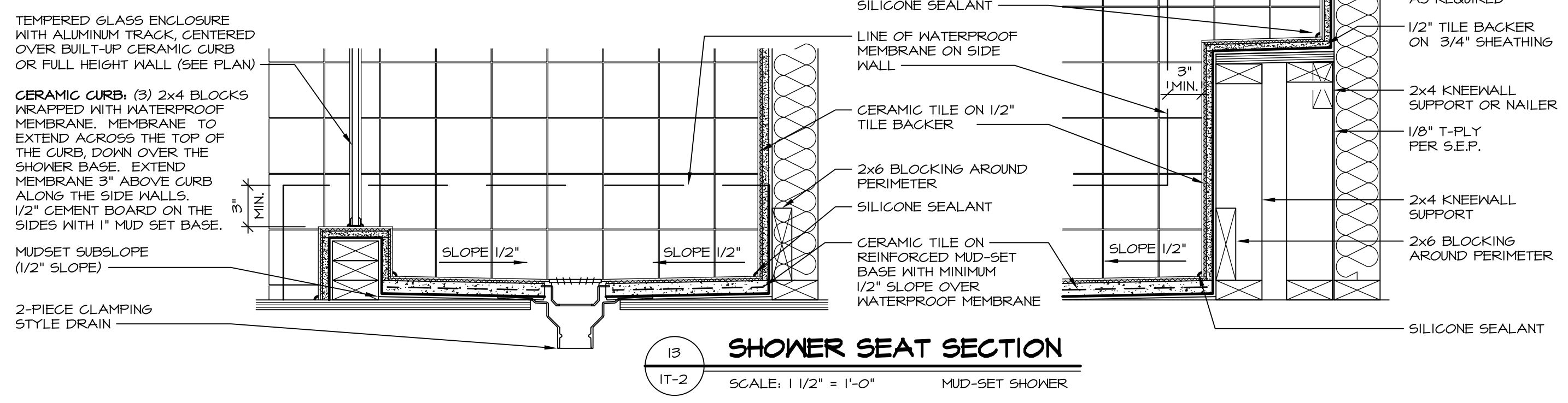
13 BATHROOM LEDGE DETAIL
SCALE: 1/2" = 1'-0"



14 SILL DETAIL
SCALE: 1" = 1'-0"



15 BATHROOM LEDGE DETAIL
SCALE: 1/2" = 1'-0"



16 SHOWER SEAT SECTION
SCALE: 1 1/2" = 1'-0" MUD-SET SHOWER

REVISIONS

REV. NO.	DATE	DESCRIPTION
5/11/17	5/11/17	EEP - REVISED DETAIL 1 AND 11 TO REMOVE TUB ACCESS PANEL REF. (CBS #5 5414)

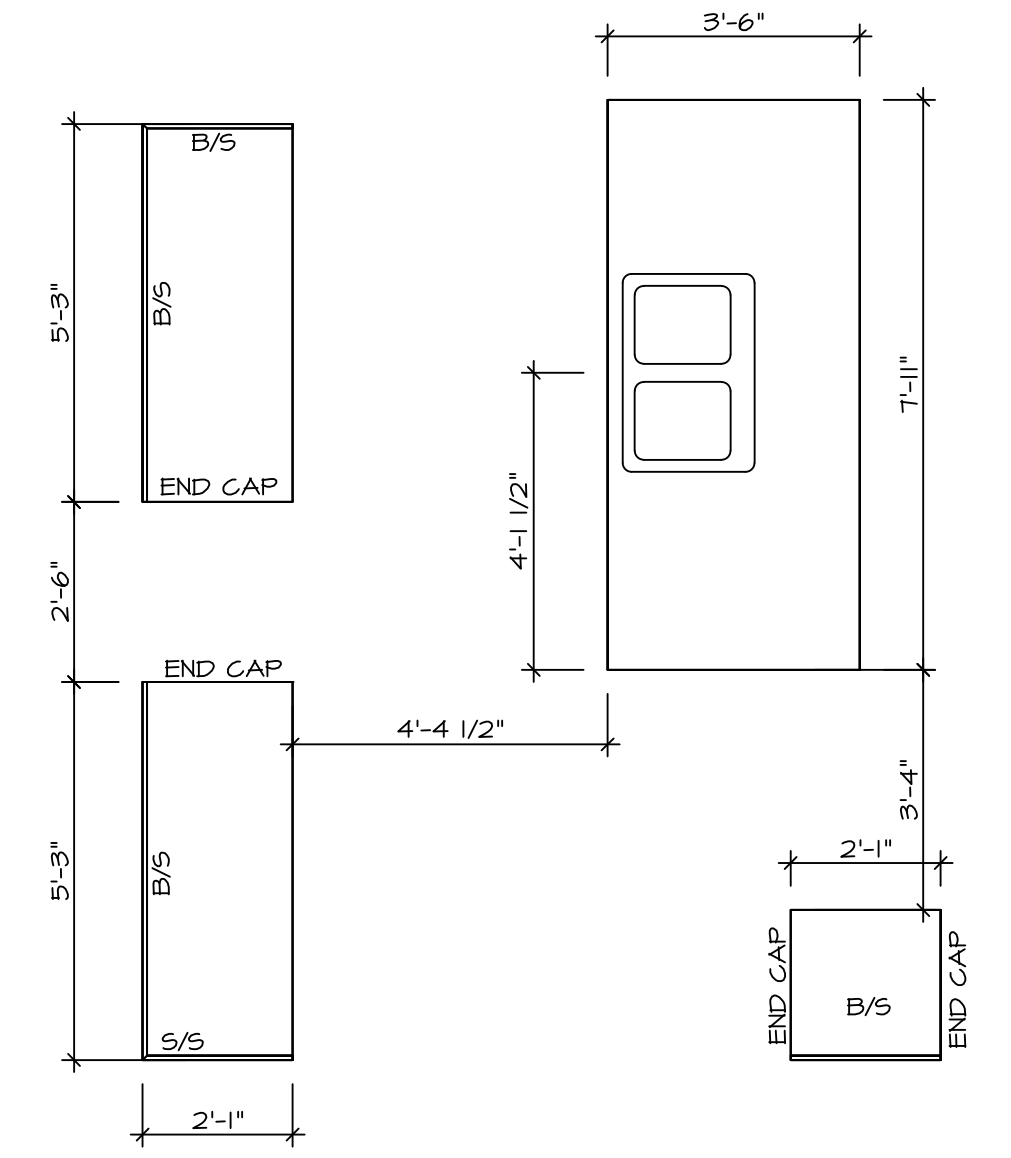
NVR, Inc., owner, expressly reserves its common law copyright and other property rights in these plans. These plans are not to be reproduced, copied, or otherwise used in any way without the prior written consent of NVR, Inc.

NVR
NVR, Inc.
Architectural Services
5285 Westpark Drive, Suite 100
Frederick, MD 21703

SET NO. NVR
VERSION
DRAWN BY
DATE
OPTION

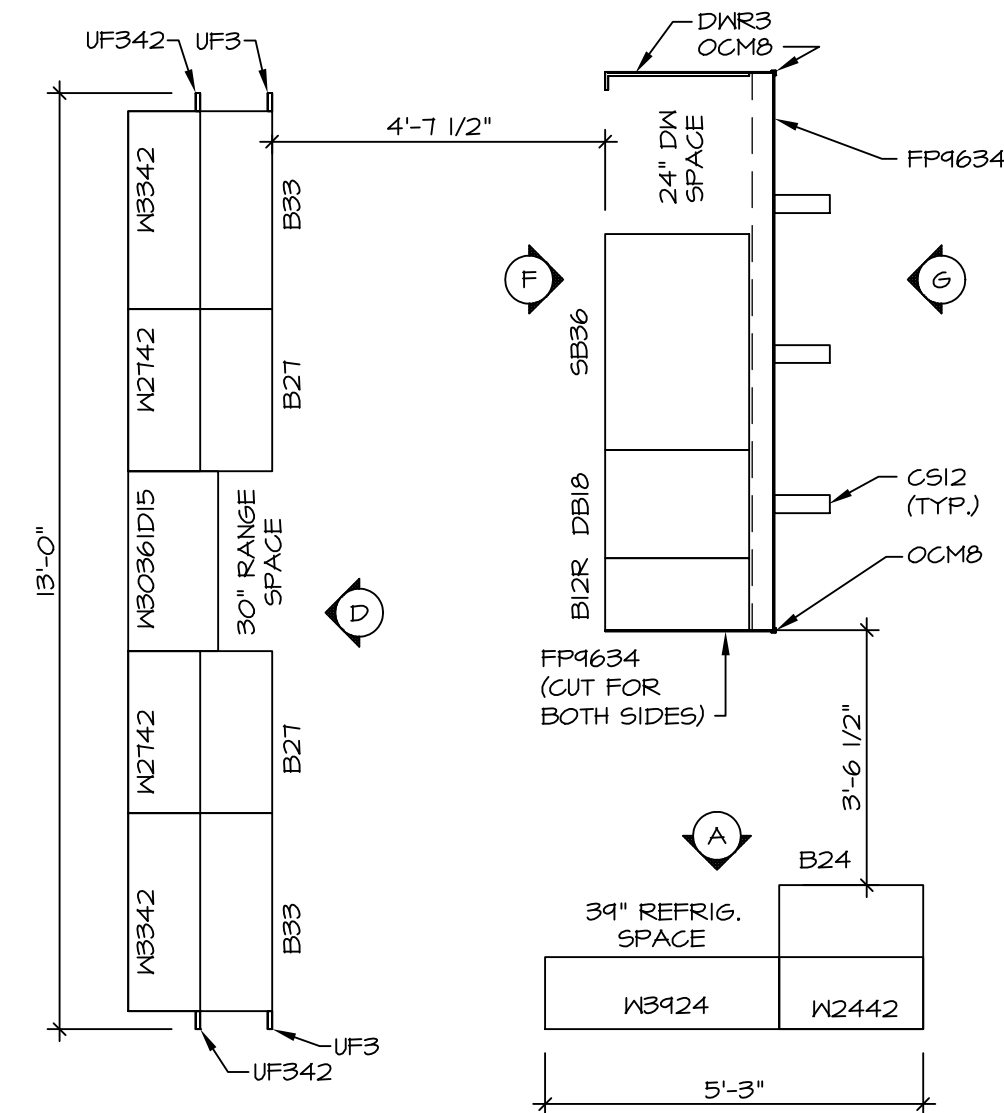
STANDARD DETAILS
DRAWING TITLE
INTERIOR TRIM DETAILS
BATH DETAILS
OPTION DESCRIPTION

SHEET NO. **IT-2**



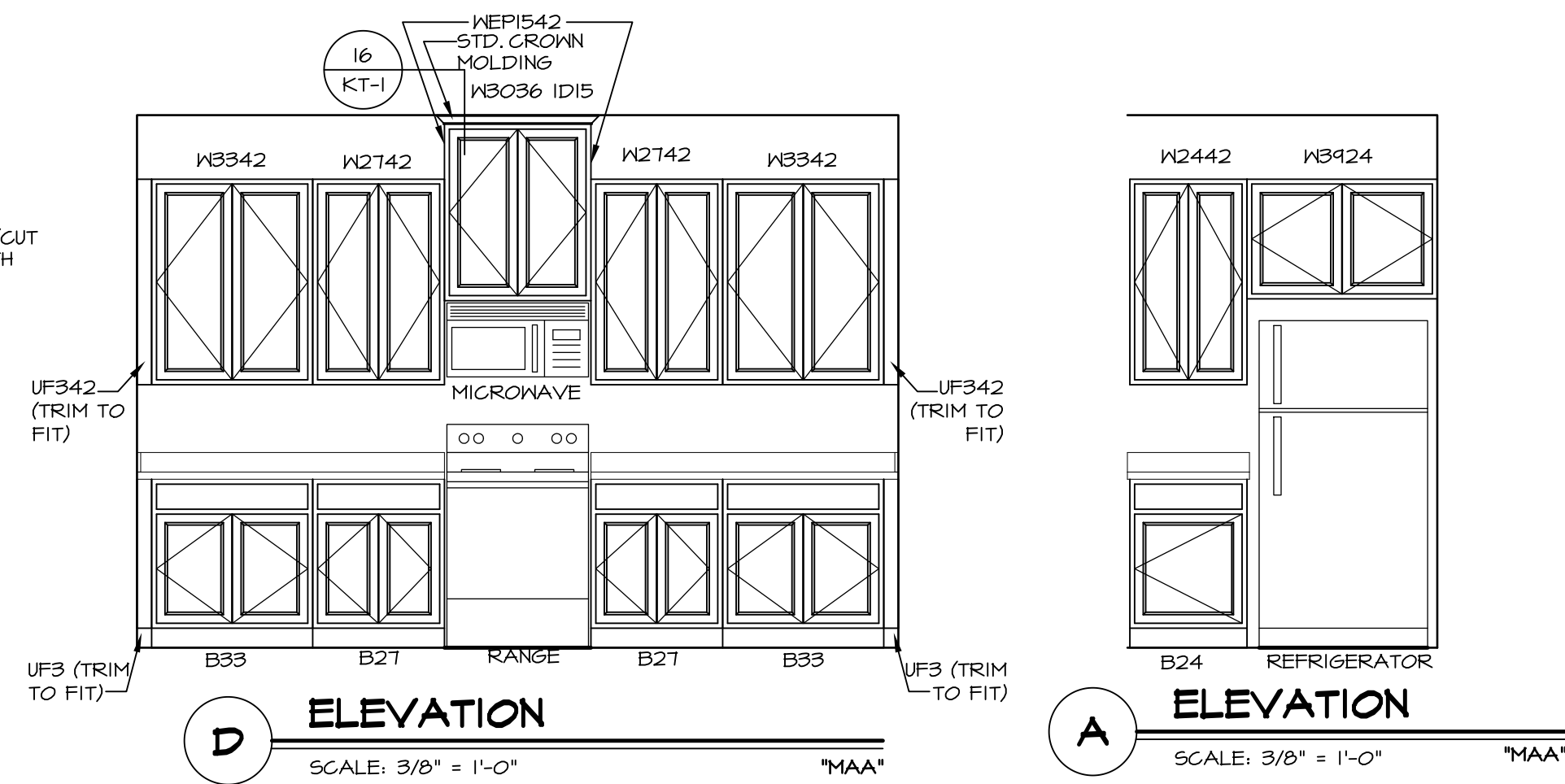
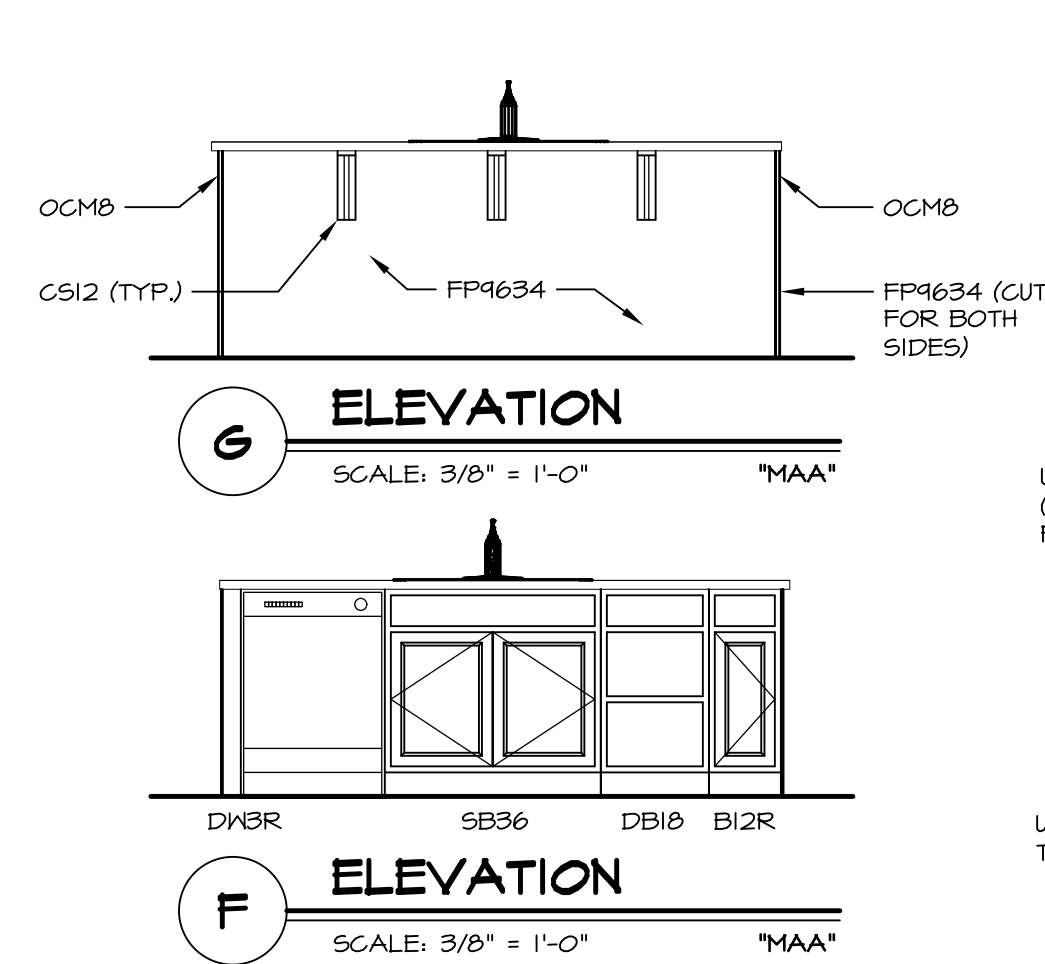
**KITCHEN COUNTERTOP
PLAN - KT-3293**

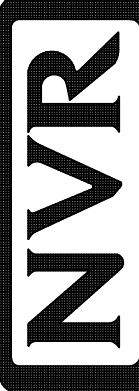
2
A-12 SCALE: 3/8" = 1'-0"

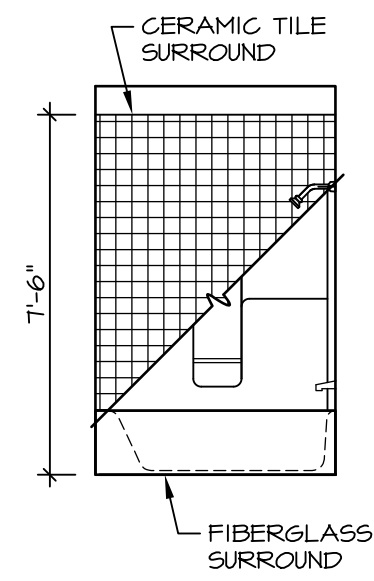


**KITCHEN CABINET
PLAN - KC-3293**

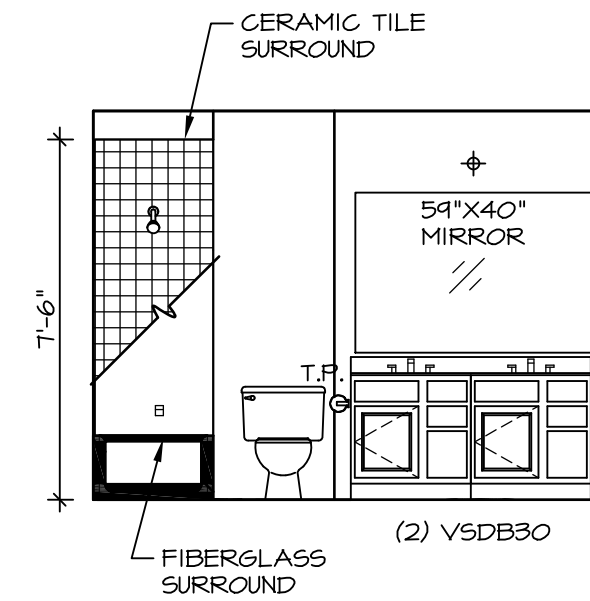
4
A-12 SCALE: 3/8" = 1'-0"



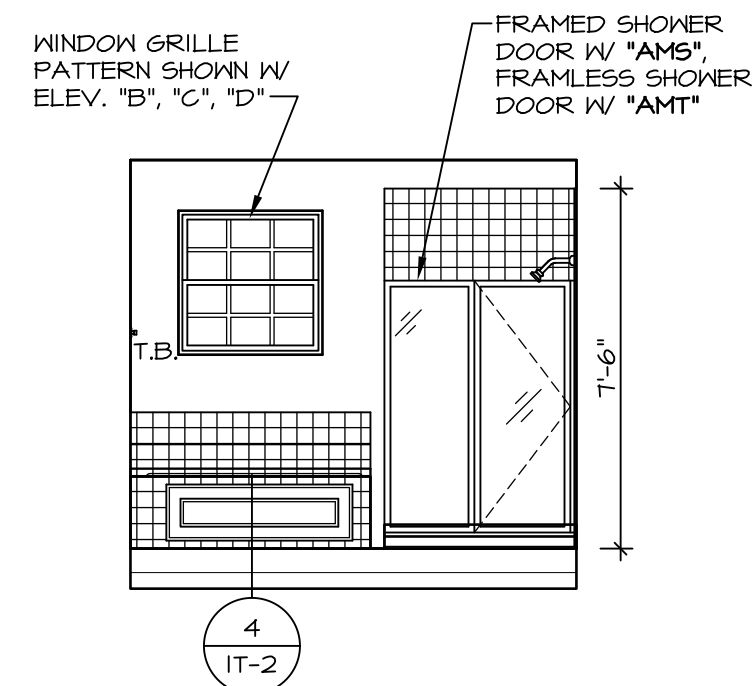
SHEET NO. A-12	MODEL NAPLES	DRAWING TITLE KITCHEN SECTION	SET NO. NAPOO	REV. NO.	DATE	REMARKS
			VERSION 06			
OPTION DESCRIPTION	DRAWN BY TN	DATE: 05/22/15	NVR, Inc., owner, expressly reserves its copyright in these plans. These plans are not to be reproduced, changed, copied, or used in any way without the written consent of NVR, Inc.			
			 NVR, Inc. Architectural Services Architects 5285 Westheimer Blvd, Suite 100 Frederick, MD 21703			
49			C:\NVR\Solves\NAPLES_NAPOO_06\DCY-V6-L382\43589A\Sheet\49_A-12_KIT_LS.dwg 05/19/17 - 4:23 am			



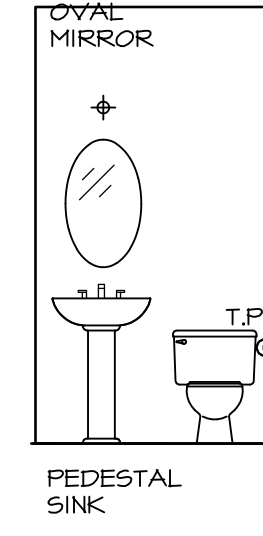
C BATH #1
SCALE: 1/4" = 1'-0"



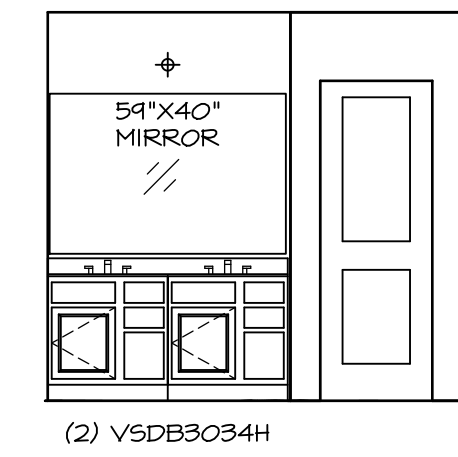
B BATH #1
SCALE: 1/4" = 1'-0"



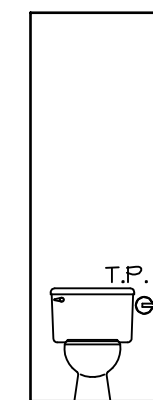
H OWNER'S BATH
SCALE: 1/4" = 1'-0"



A POWDER ROOM
SCALE: 1/4" = 1'-0"



D OWNER'S BATH
SCALE: 1/4" = 1'-0"



E OWNER'S BATH
SCALE: 1/4" = 1'-0"

NOTES:

1. TEMPERED GLASS SHOWER ENCLOSURE WITH SWING DOOR OR OPTIONAL SLIDING DOOR. BY DIVISION
2. TUB ACCESS PANELS PROVIDED AS NEEDED. ALL MATERIALS BY DIVISION
3. REFER TO SHEET ET-2 FOR TUB AND SHOWER DETAILS.
4. ALL VSDB24-42 DRAWERS TO BE SET ON RIGHT HAND.
5. BATH ELEVATIONS ARE SHOWN PER PLAN.

SHEET NO. A-13	MODEL NAPLES	DRAWING TITLE BATH ELEVATIONS	SET NO. NAPOO	REVISIONS	DATE	BY	DATE	BY	DATE	BY	REMARKS
			VERSION 06	06	05/22/15	TN	05/22/15	TN	05/22/15	TN	05/22/15
OPTION DESCRIPTION											
51											

NVR, Inc., owner, expressly reserves its copyright in these plans. These plans are not to be reproduced, changed, adapted in any way, or otherwise used, without the prior written consent of NVR, Inc.

