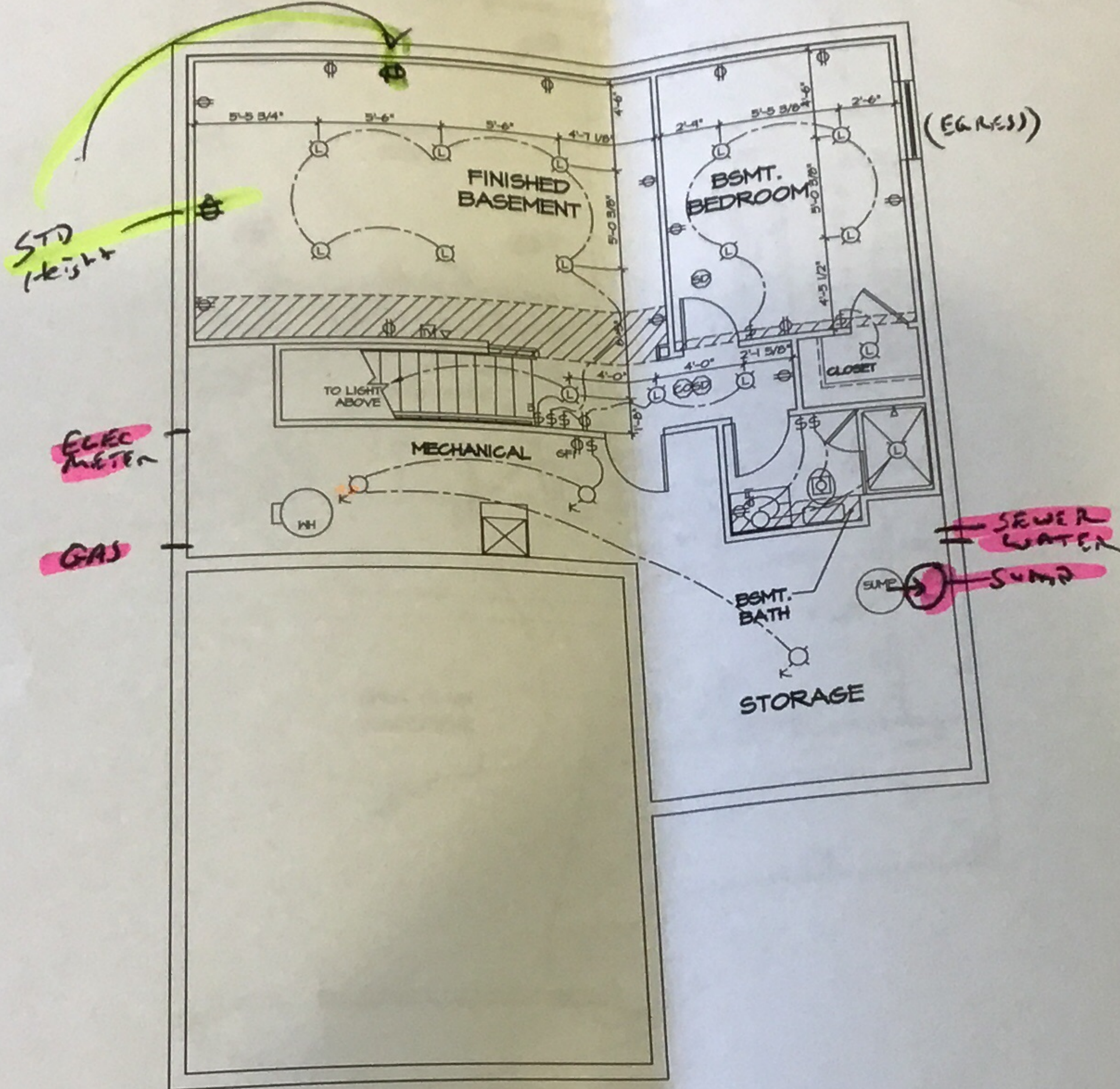


Additional RECEPTACLE (only if layout needs) for CABLE



- NOTES:
1. ALL ELECTRICAL PLANS ARE SCHEMATIC ONLY AND NOT INTERFERED AS ENGINEERED DRAWINGS. THESE PLANS REPRESENT THE DESIGN INTENT FOR SWITCH AND RECEPTACLE LOCATIONS. ADDITIONAL INFORMATION, IF REQUIRED, SHALL BE PROVIDED BY A LICENSED ELECTRICAL SUBCONTRACTOR OR ENGINEER.
 2. ALL KITCHEN, GARAGES, UNFINISHED BASEMENT, MECHANS, AND ALL OUTDOOR RECEPTACLES ARE TO BE GFI PROTECTED.
 3. PROVIDE SWITCH W/ KEYLESS LIGHT IN ATTIC SPACE.
 4. PROVIDE SWITCH W/ KEYLESS LIGHT AND GFI RECEPTACLE WHEN HVAC EQUIPMENT IS IN ATTIC SPACE.
 5. PROVIDE ARC-FULT CIRCUIT INTERRUPTERS TO ALL BEDROOM RECEPTACLES.
 6. WASHER ON LEFT, DRYER ON RIGHT (SEE PLAN OR REVERSE).
 7. DRYER RECEPTACLE 110 VV 60AS OR 220 VV ELECTRIC.

ELECTRICAL LEGEND

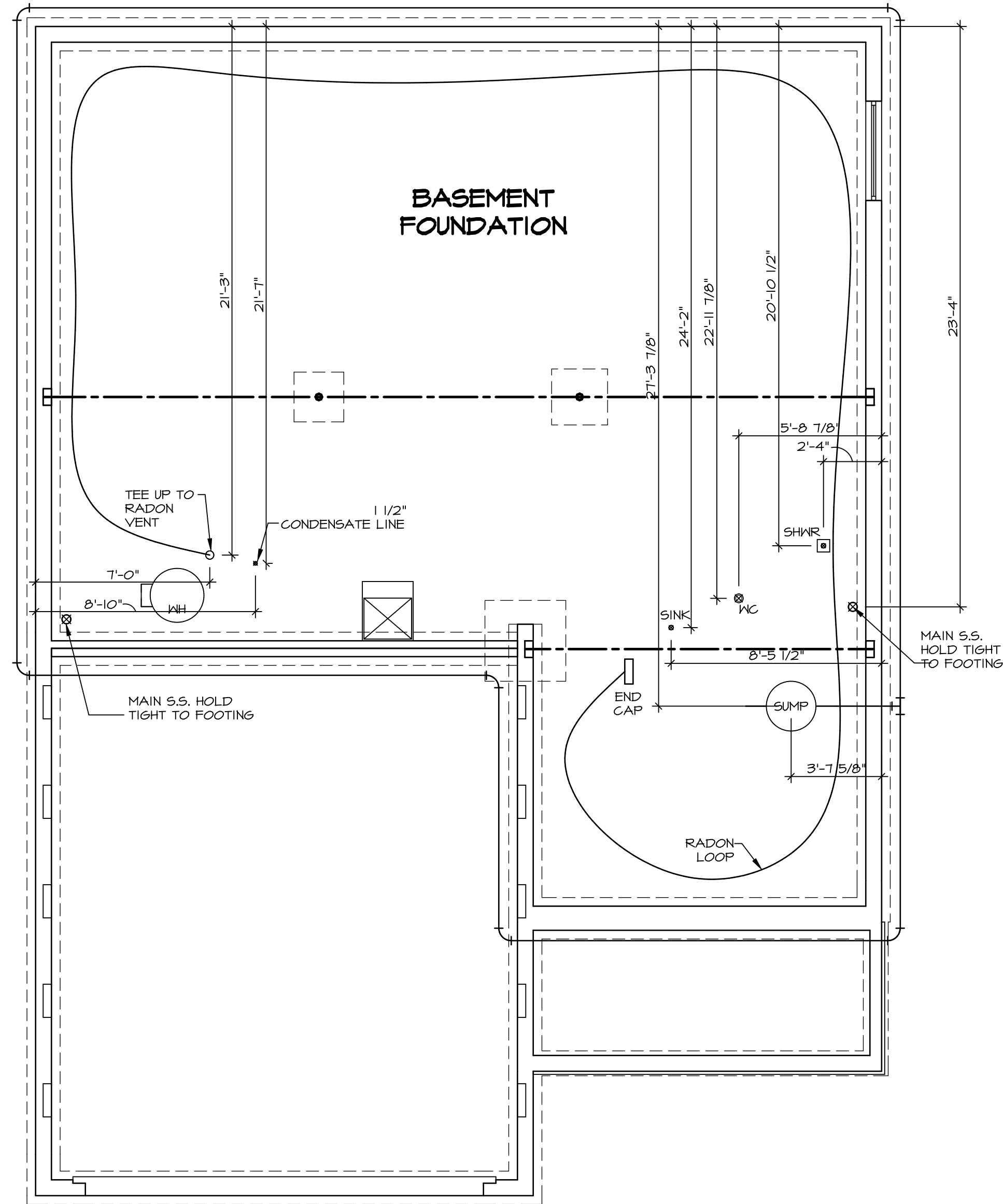
⊕	SINGLE POLE SWITCH
⊕⊕	THREE WAY SWITCH
⊕⊕⊕	FOUR WAY SWITCH
⊕⊕	DUPLEX RECEPTACLE
⊕⊕	DUPLEX RECEPTACLE - BOTTOM HALF SWITCHED
⊕⊕	DUPLEX RECEPTACLE - FLOOR MOUNTED
⊕⊕	RECEPTACLE - 220V
⊕⊕	DUPLEX RECEPTACLE - USB
⊕⊕	DUPLEX RECEPTACLE - GROUND FAULT INTERRUPT
⊕⊕	DUPLEX RECEPTACLE - HEATHER PROOF AND GROUND FAULT INTERRUPT
⊕⊕	SMOKE DETECTOR - WIRED IN SERIES
⊕⊕	CARBON MONOXIDE DETECTOR
⊕⊕	EXHAUST FAN MOTOR
⊕⊕	EXHAUST FAN MOTOR WITH LIGHT
⊕⊕	TELEVISION RECEPTACLE
⊕⊕	DOOR CHIME
⊕⊕	LIGHT FIXTURE - WALL MOUNTED
⊕⊕	LIGHT FIXTURE - CEILING MOUNTED
⊕⊕	LIGHT FIXTURE - RECESSED
⊕⊕	LIGHT FIXTURE - RECESSED WEATHER PROOF
⊕⊕	LIGHT FIXTURE - CEILING MOUNTED LED
⊕⊕	LIGHT FIXTURE - HANGING
⊕⊕	LIGHT FIXTURE - PENDANT
⊕⊕	LIGHT FIXTURE - FLUORESCENT
⊕⊕	LIGHT FIXTURE - UNDER CABINET LIGHT
⊕⊕	5" = SMALL 7" = MEDIUM 9" = LARGE
⊕⊕	FULLCHAIN LAMPHOLDER
⊕⊕	KEYLESS LAMPHOLDER

VGL500
 x Jim Sande
 1-31-19

1
 E-1
 BASEMENT FLOOR ELECTRICAL PLAN
 SCALE: 1/4" = 1'-0"

NOTE
 RADON REMEDIATION
 RADON LOOP

- MUST BE PLACED IN STONE BED SLIGHTLY HIGHER THAN ANY INTERIOR DRAINTILE
- (4") PERFORATED HDPE LOOP
- LOOP TO BE SEPARATE FROM ANY DRAINTILE ELEMENTS
- TO BE CORRUGATED HDPE PIPE
- SCREWS TO BE INSTALLED THROUGH LOOP AT TEE UP INTO STACK
- 3" PVC STACK (4" IF BASEMENT IS GREATER THAN 2200 SQFT)
- NO PART OF STACK IS TO BE HORIZONTAL
- PIPE TO BE PHYSICALLY LABELED IN THE FIELD AS "RADON VENT" OR OTHER JURISDICTIONALLY REQUIRED LANGUAGE (ON EVERY LEVEL OF HOUSE)
- ROOF TERMINATION TO BE IN TOP 1/3 OF ROOF
- SCREEN INSTALLED TO KEEP PESTS OUT OF RADON VENT AT ROOF TERMINATION



PLUMBING PLAN
 SCALE: 1/4" = 1'-0"

SHEET NO. A-5	MODEL BALLENGER	SET NO. BL600	REV. NO.	DATE	REMARKS
	DRAWING TITLE PLUMBING PLAN	VERSION 01			
OPTION DESCRIPTION					
23					

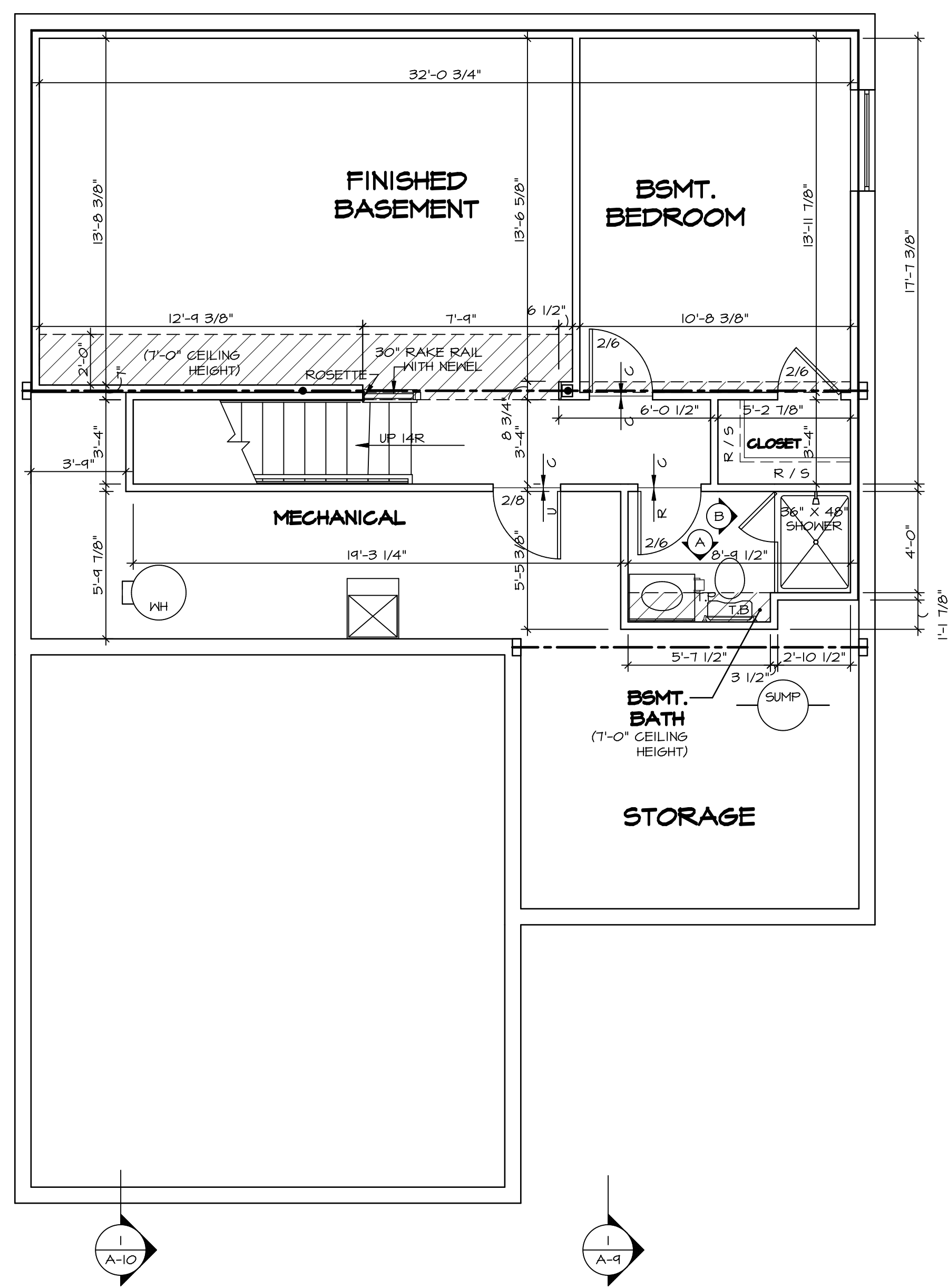
NVR
 NVR, Inc.
 Architectural Services
 Architects
 5285 Westpark Drive, Suite 100
 Frederick, MD 21703

NVR, Inc., owner, expressly reserves its copyright in these plans. These plans are not to be reproduced, changed, copied, or otherwise used in any way without the prior written consent of NVR, Inc.

LEGEND	
	BEARING WALL
	NON BEARING WALL
	INDICATES BEARING FROM POINT-LOAD ABOVE
	JACKS
	BEAM/HEADER
	PAD FOOTING
	STEEL COLUMN
	PORTAL FRAME
	JOIST/TRUSS
	LVL
	ENGINEERING PAGE NUMBER
SEE FC DETAILS FOR FRAMING CONNECTORS	

- FLOOR PLAN NOTES**
- ALL HEADERS ARE (2) 2x6 w/ 2x4 WALLS OR (3) 2x6 w/ 2x6 WALLS, UNLESS OTHERWISE NOTED.
 - ALL HEADERS TO HAVE (1) 2x4 OR 2x6 JACK AND KING STUD EACH END, UNLESS OTHERWISE NOTED.
 - ALL EXTERIOR WALLS TO BE 4" w/ OSB OR 3 1/2" w/ T-PLY, ALL INTERIOR WALLS TO BE 3 1/2", UNLESS OTHERWISE NOTED.
 - HATCHED AREAS INDICATE DROPPED CEILINGS. ALL DROPPED CEILINGS ARE 12" UNLESS OTHERWISE NOTED.
 - SEE "BRACED WALL PANEL DETAIL SHEET" FOR SPECIAL WALL FRAMING LOCATIONS AND HEADER SIZES, IF APPLICABLE.
 - SEE STANDARD DETAIL CATEGORY "IT" SHEET(S) FOR INTERIOR TRIM DETAILS.
 - SEE ARCHITECTURAL DETAIL SHEET "AD" FOR HOUSE SPECIFIC INTERIOR TRIM OPTION TABLE.
 - ALL WINDOWS HAVE 1"-0 1/2" HEADER HEIGHT UNLESS OTHERWISE NOTED.
 - ALL HEADERS IN NON-BEARING WALLS SHALL BE A SINGLE FLAT 2x4 OR 2x6 ATTACHED TO CRIPPLES ABOVE, UNLESS OTHERWISE NOTED.
 - TANKED WATER HEATER SHOWN AS BASE CONDITION, OPTIONAL TANKLESS WATER HEATER IS AVAILABLE IN LIEU OF TANKED WATER HEATER.

- GYPSUM NOTES**
- AT GARAGE:
GYPSUM BOARD AT COMMON WALLS, CEILINGS, BEAM WRAPS AND SUPPORTS PER STANDARD DETAIL FA-1(b) FIRE ASSEMBLIES OR AS REQUIRED BY LOCAL CODE.
- AT STAIRS:
1/2" GYPSUM BOARD AT UNDERSIDE OF STAIRS AND WALLS IN CLOSET



BASEMENT FLOOR PLAN
SCALE: 1/4" = 1'-0"

SHEET NO.	MODEL	SET NO.	VERSION	DRAWN BY	DATE	OPTION	REMARKS
A-6	BALLENGER	BLG00_01	01				
27							

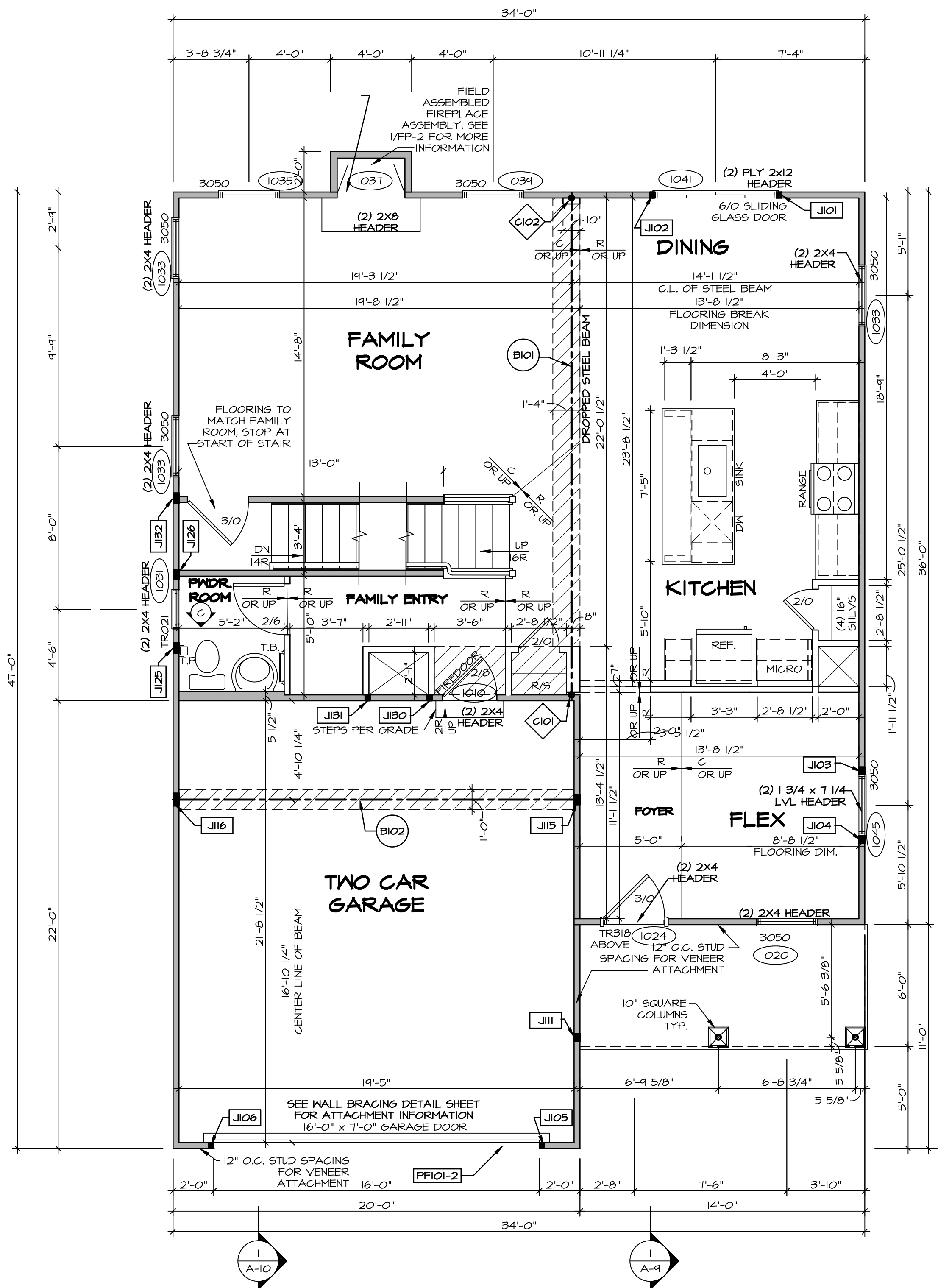
NVR
NVR, Inc.
Architectural Services
Architects
5285 West Annapolis
Frederick, MD 21703

C:\NVR\Solves\BALLENGER-BLG00_01\DCY-VG-L500\122396\Sheets\07_20_19 - 4:10 am

IDENTIFIER	DESCRIPTION	OPTIONS	ENG. NUM.	REMARKS
J101	JACK - (2) 2X4 SFF STUD GRADE		1041	
J102	JACK - (2) 2X4 SFF STUD GRADE		1041	
J103	JACK - (3) 2X4 SFF STUD GRADE		1045	
J104	JACK - (3) 2X4 SFF STUD GRADE		1045	
J105	JACK - (2) 2X4 SFF STUD GRADE		1028	
J106	JACK - (2) 2X4 SFF STUD GRADE		1028	
J111	JACK - (3) 2X4 SFF STUD GRADE		1028	
J115	JACK - (4) 2X4 SFF STUD GRADE	ELK	1012	
J116	JACK - (5) 2X4 SFF STUD GRADE	ELA, ELK, GCB	1012	
J125	JACK - (4) 2X4 SFF STUD GRADE		1006	
J126	JACK - (4) 2X4 SFF STUD GRADE		1006	
J130	JACK - (2) 2X4 SFF STUD GRADE			
J131	JACK - (2) 2X4 SFF STUD GRADE			
J132	JACK - (4) 2X4 SFF STUD GRADE		1006	

IDENTIFIER	STYLE	HEIGHT	OPTIONS	ENG. NUM.	REMARKS
C101	STANCHION - 3 IN SCHED 40	7'-11 1/8"		1008	
C102	STANCHION - 3 IN SCHED 40	7'-11 1/8"		1008	

IDENTIFIER	DESCRIPTION	LENGTH	OPTIONS	ENG. NUM.	REMARKS
B101	BEAM STEEL - W12X35	24'-11"		1008	
B102	BEAM STEEL - W10X26	20'-0"	ELA, ELK, SXC	1012	
PF101-2	EXT HEADER - 2X12 - 2 PLY	19'-4"	GCB	1028	2-PLY, PORTAL FRAME



—	BEARING WALL
- - -	NON BEARING WALL
⊗	INDICATES BEARING FROM POINT-LOAD ABOVE
J	JACKS
B	BEAM/HEADER
F	PAD FOOTING
C	STEEL COLUMN
X	PORTAL FRAME
X	JOIST/TRUSS
L	LVL
(X)	ENGINEERING PAGE NUMBER

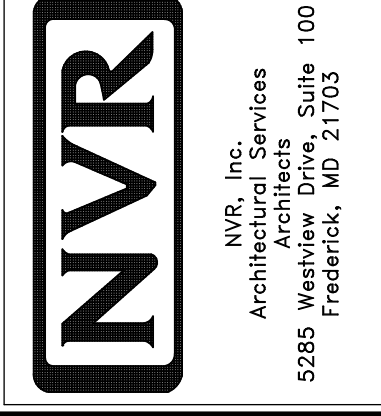
SEE FC DETAILS FOR FRAMING CONNECTORS

- FLOOR PLAN NOTES**
- ALL HEADERS ARE (2) 2x6 w/ 2x4 WALLS OR (3) 2x6 w/ 2x6 WALLS, UNLESS OTHERWISE NOTED.
 - ALL HEADERS TO HAVE (1) 2x4 OR 2x6 JACK AND KING STUD EACH END, UNLESS OTHERWISE NOTED.
 - ALL EXTERIOR WALLS TO BE 4" w/ OSB OR 3 1/2" w/ T-PLY. ALL INTERIOR WALLS TO BE 3 1/2", UNLESS OTHERWISE NOTED.
 - HATCHED AREAS INDICATE DROPPED CEILINGS. ALL DROPPED CEILINGS ARE 12" UNLESS OTHERWISE NOTED.
 - SEE "BRACED WALL PANEL DETAIL SHEET" FOR SPECIAL WALL FRAMING LOCATIONS AND SIZES, IF APPLICABLE.
 - SEE STANDARD DETAIL CATEGORY "11" SHEET(S) FOR INTERIOR TRIM DETAILS.
 - SEE ARCHITECTURAL DETAIL SHEET "AD" FOR HOUSE SPECIFIC INTERIOR TRIM OPTION TABLE.
 - ALL WINDOWS HAVE 7'-0 1/2" HEADER HEIGHT UNLESS OTHERWISE NOTED.
 - ALL HEADERS IN NON-BEARING WALLS SHALL BE A SINGLE FLAT 2X4 OR 2X6 ATTACHED TO CRIPPLES ABOVE, UNLESS OTHERWISE NOTED.
 - TANKED WATER HEATER SHOWN AS BASE CONDITION. OPTIONAL TANKLESS WATER HEATER IS AVAILABLE IN LIEU OF TANKED WATER HEATER.

- GYPSON NOTES**
- AT GARAGE:
GYPSUM BOARD AT COMMON WALLS, CEILINGS, BEAM WRAPS AND SUPPORTS PER STANDARD DETAIL FA-1(b) FIRE ASSEMBLIES OR AS REQUIRED BY LOCAL CODE.
- AT STAIRS:
1/2" GYPSUM BOARD AT UNDERSIDE OF STAIRS AND WALLS IN CLOSET

FIRST FLOOR PLAN
SCALE: 1/4" = 1'-0"

NVR, Inc., owner, expressly reserves the copyright in these plans. These plans are not to be reproduced, changed, copied, altered, or otherwise used in any way without the written consent of NVR, Inc.



MODEL	BALLENGER
DRAWING TITLE	FIRST FLOOR PLAN
OPTION DESCRIPTION	
SHEET NO.	A-7
SET NO.	BLG00
VERSION	01
DRAWN BY	
DATE	
OPTION	

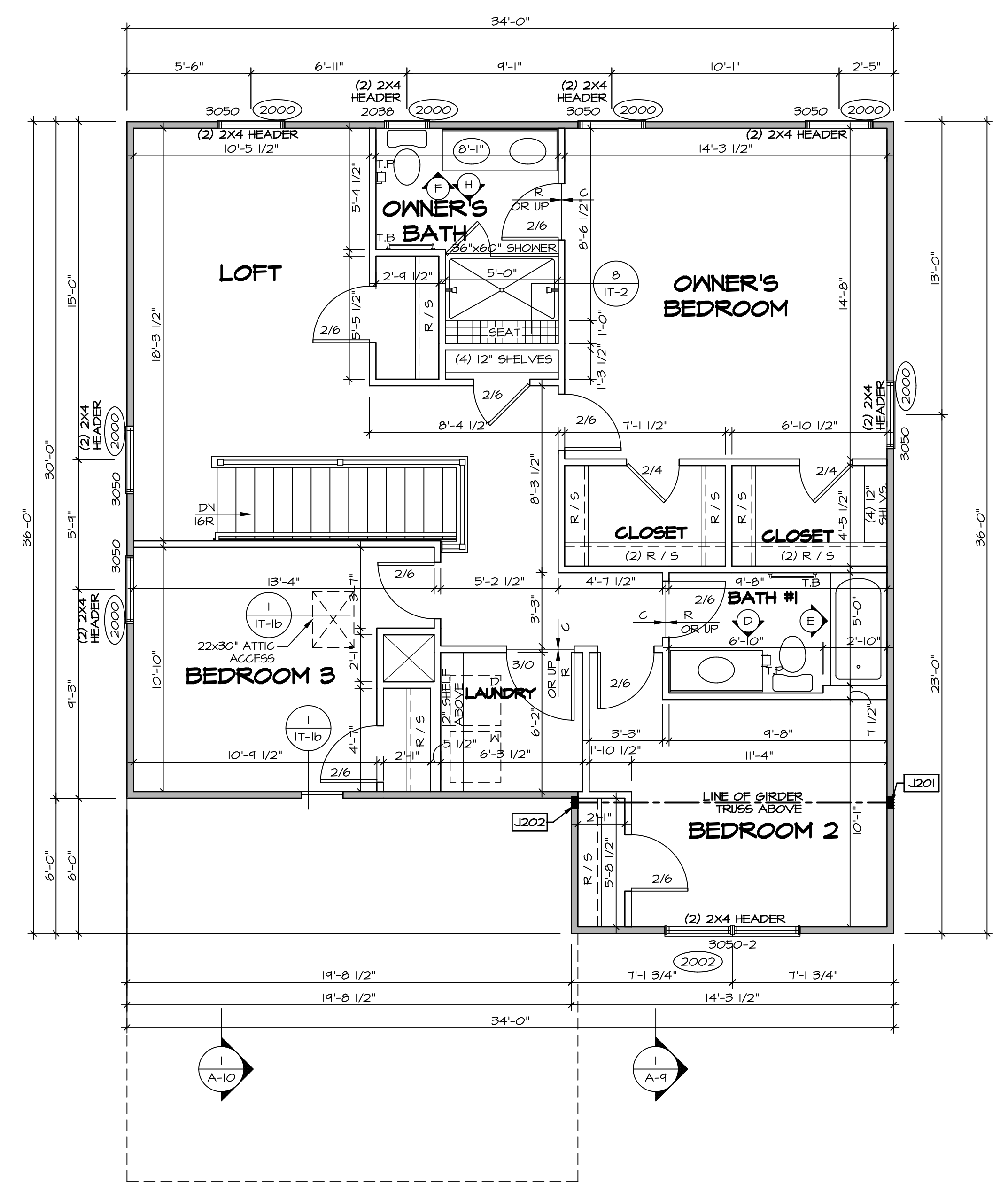
SECOND FLOOR JACK SCHEDULE				
IDENTIFIER	DESCRIPTION	OPTIONS	ENG. NUM.	REMARKS
J201	JACK - (4) 2X4 SPF STUD GRADE	ELA, ELK	2004	
J202	JACK - (4) 2X4 SPF STUD GRADE	ELA, ELK	2004	

LEGEND	
	BEARING WALL
	NON BEARING WALL
	INDICATES BEARING FROM POINT-LOAD ABOVE
	JACKS
	BEAM/HEADER
	PAD FOOTING
	STEEL COLUMN
	PORTAL FRAME
	JOIST/TRUSS
	LVL
	ENGINEERING PAGE NUMBER

SEE FC DETAILS FOR FRAMING CONNECTORS

- FLOOR PLAN NOTES**
- ALL HEADERS ARE (2) 2x6 w/ 2x4 WALLS OR (3) 2x6 w/ 2x6 WALLS, UNLESS OTHERWISE NOTED.
 - ALL HEADERS TO HAVE (1) 2x4 OR 2x6 JACK AND KING STUD EACH END, UNLESS OTHERWISE NOTED.
 - ALL EXTERIOR WALLS TO BE 4" w/ OSB OR 3 1/2" w/ T-PLY. ALL INTERIOR WALLS TO BE 3 1/2", UNLESS OTHERWISE NOTED.
 - HATCHED AREAS INDICATE DROPPED CEILINGS. ALL DROPPED CEILINGS ARE 12" UNLESS OTHERWISE NOTED.
 - SEE "BRACED WALL PANEL DETAIL SHEET" FOR SPECIAL WALL FRAMING LOCATIONS AND HEADER SIZES, IF APPLICABLE.
 - SEE STANDARD DETAIL CATEGORY "IT" SHEET(S) FOR INTERIOR TRIM DETAILS.
 - SEE ARCHITECTURAL DETAIL SHEET "AD" FOR HOUSE SPECIFIC INTERIOR TRIM OPTION TABLE.
 - ALL WINDOWS HAVE 7'-0 1/2" HEADER HEIGHT UNLESS OTHERWISE NOTED.
 - ALL HEADERS IN NON-BEARING WALLS SHALL BE A SINGLE FLAT 2X4 OR 2X6 ATTACHED TO CRIPPLES ABOVE, UNLESS OTHERWISE NOTED.
 - TANKED WATER HEATER SHOWN AS BASE CONDITION. OPTIONAL TANKLESS WATER HEATER IS AVAILABLE IN LIEU OF TANKED WATER HEATER.

- GYPSUM NOTES**
- AT GARAGE:
GYPSUM BOARD AT COMMON WALLS, CEILINGS, BEAM WRAPS AND SUPPORTS PER STANDARD DETAIL FA-1(b) FIRE ASSEMBLIES OR AS REQUIRED BY LOCAL CODE.
- AT STAIRS:
1/2" GYPSUM BOARD AT UNDERSIDE OF STAIRS AND WALLS IN CLOSET



SECOND FLOOR PLAN
SCALE: 1/4" = 1'-0"

SHEET NO.	MODEL	SET NO.	BLG00	VERSION	DATE	OPTION
A-8	BALLENGER	01	01			
32	DRAWING TITLE	SECOND FLOOR PLAN				
	OPTION DESCRIPTION					

REVISIONS:

REV. NO.	DATE	REMARKS

NVR, Inc.

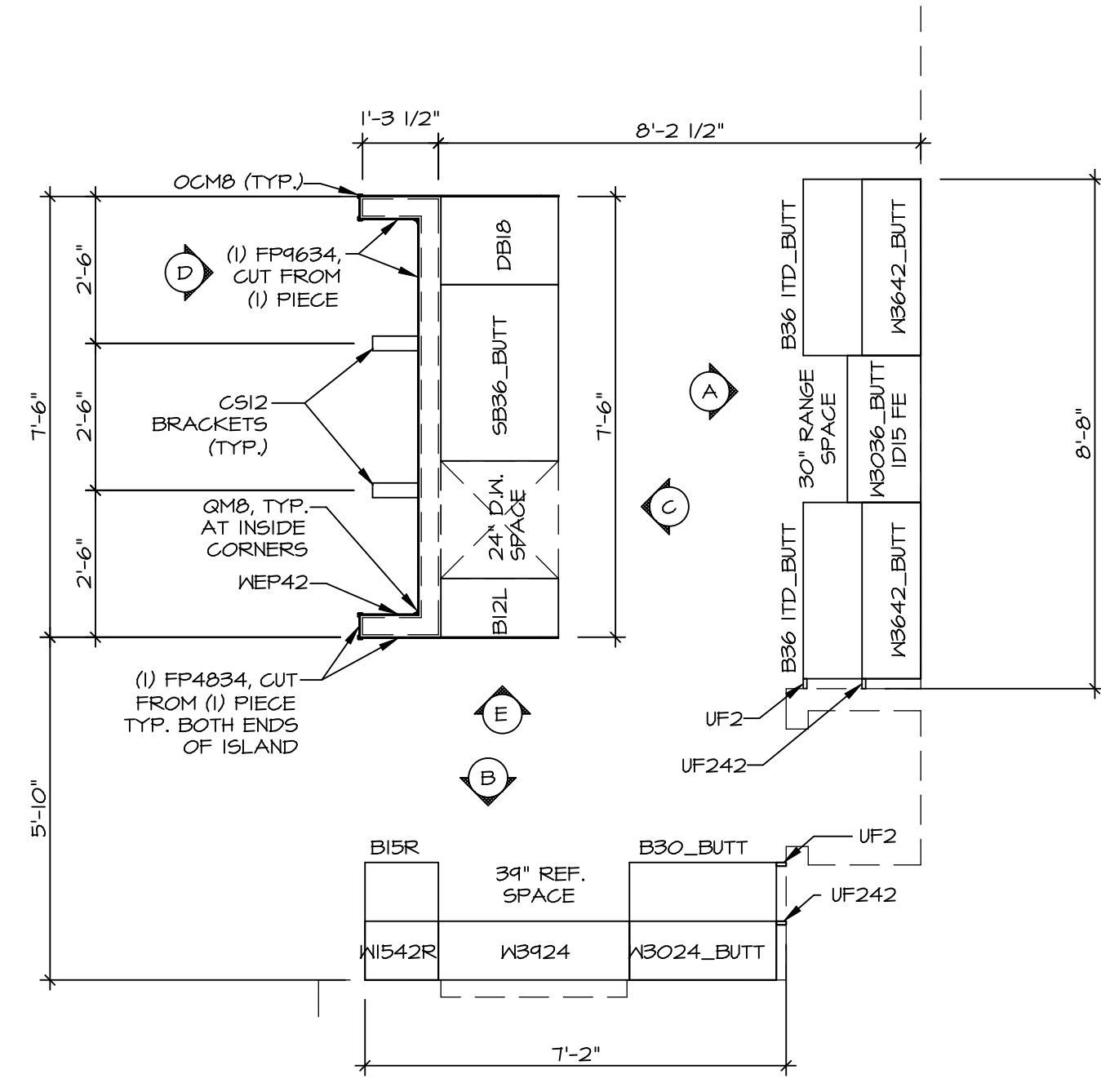
 Architectural Services

 5285 West... Suite 100

 Frederick, MD 21703

NVR, Inc., owner, expressly reserves its copyright in these plans. These plans are not to be reproduced, changed, copied, or otherwise used in any way without the prior written consent of NVR, Inc.

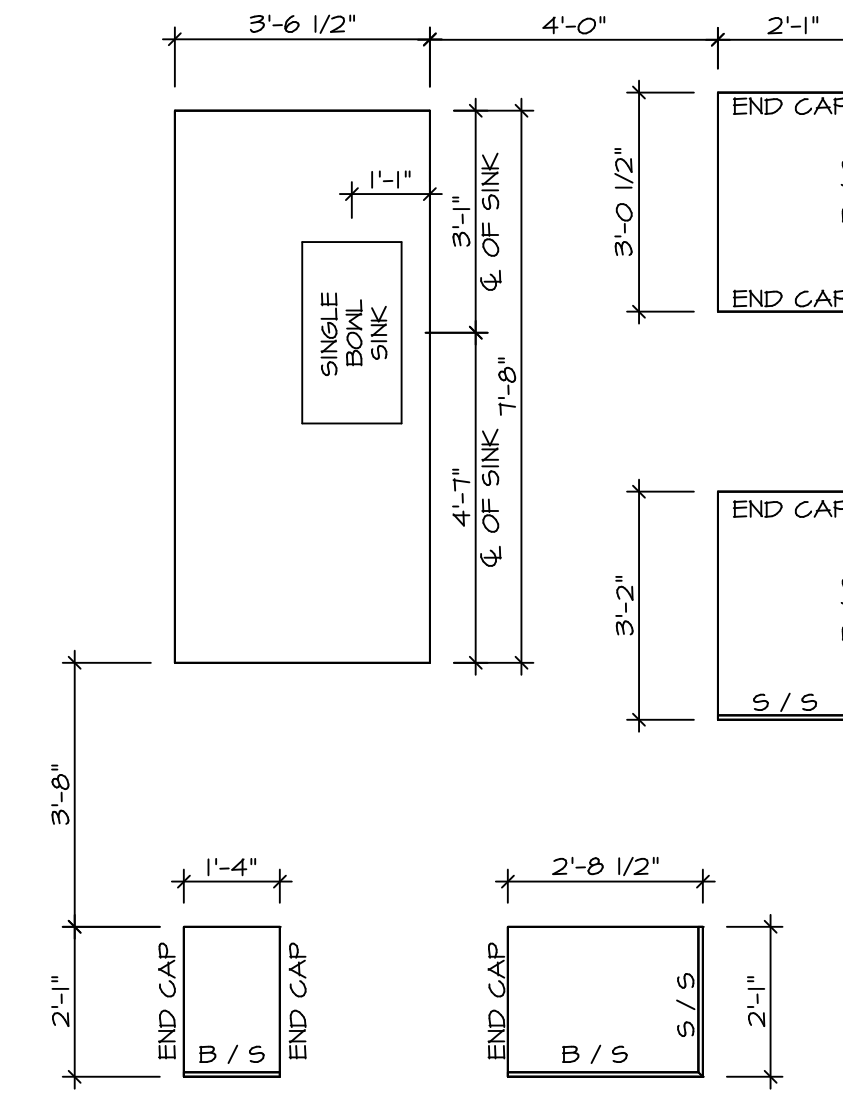
C:\NVR\Solves\BALLENGER-BLG00_01\DCI-VG-L500\1123296\Sheets\02_A-8_PLN2_LS.dwg 02/20/19 - 4:10 am



**KITCHEN CABINET
PLAN (KC - 3491)**

SCALE: 3/8" = 1'-0"

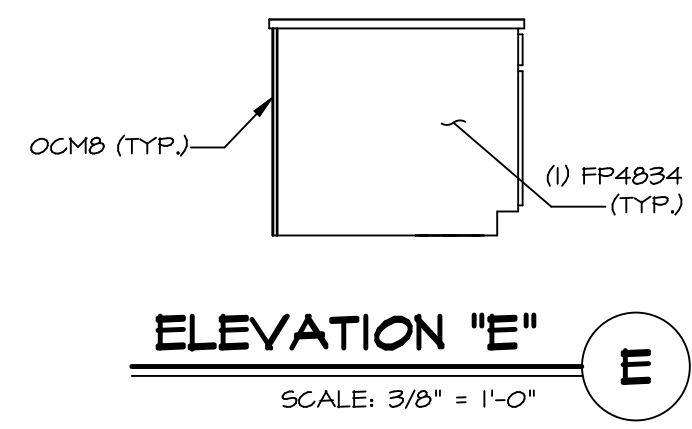
1
A-12



**KITCHEN COUNTERTOP
PLAN (KC - 3491)**

SCALE: 3/8" = 1'-0"

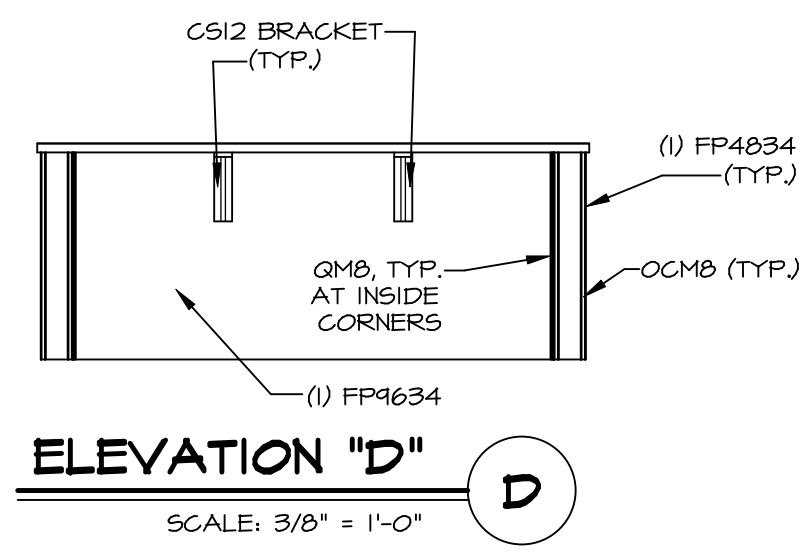
2
A-12



ELEVATION "E"

SCALE: 3/8" = 1'-0"

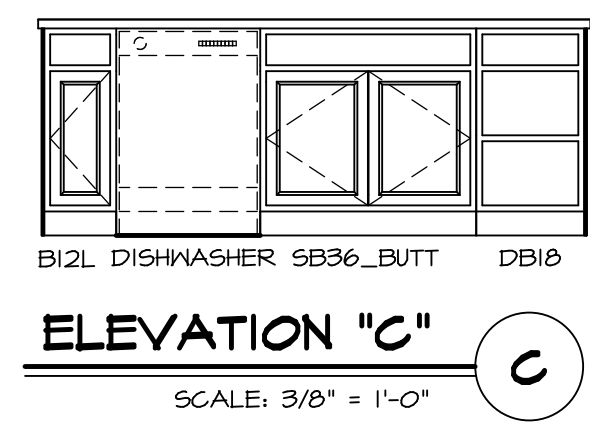
E



ELEVATION "D"

SCALE: 3/8" = 1'-0"

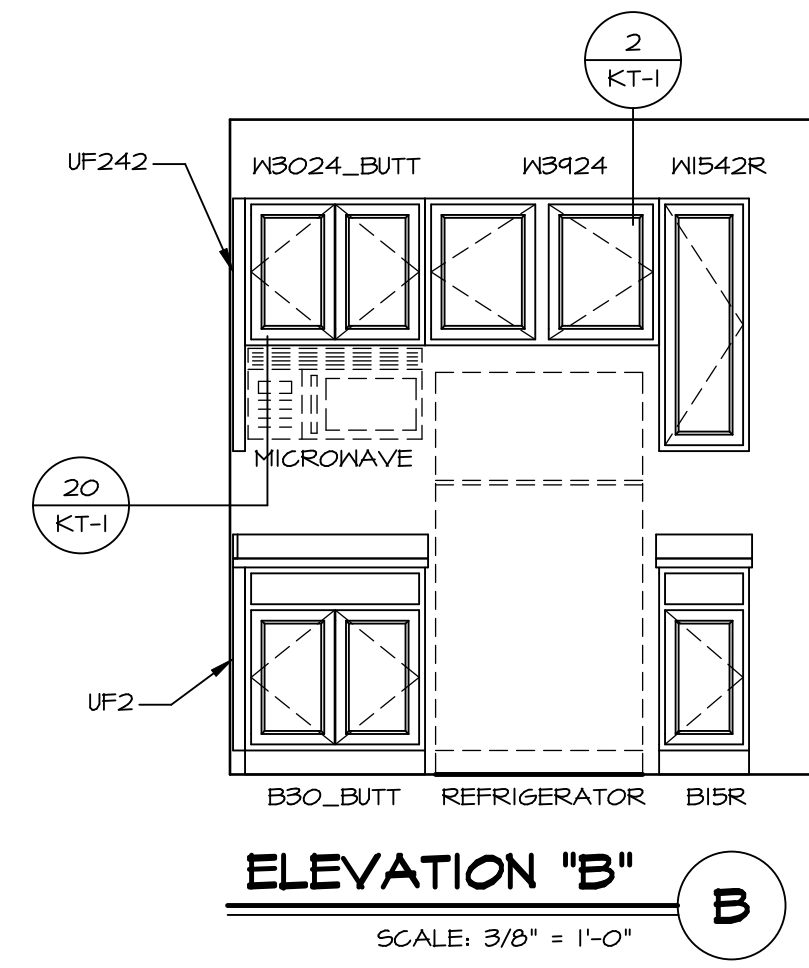
D



ELEVATION "C"

SCALE: 3/8" = 1'-0"

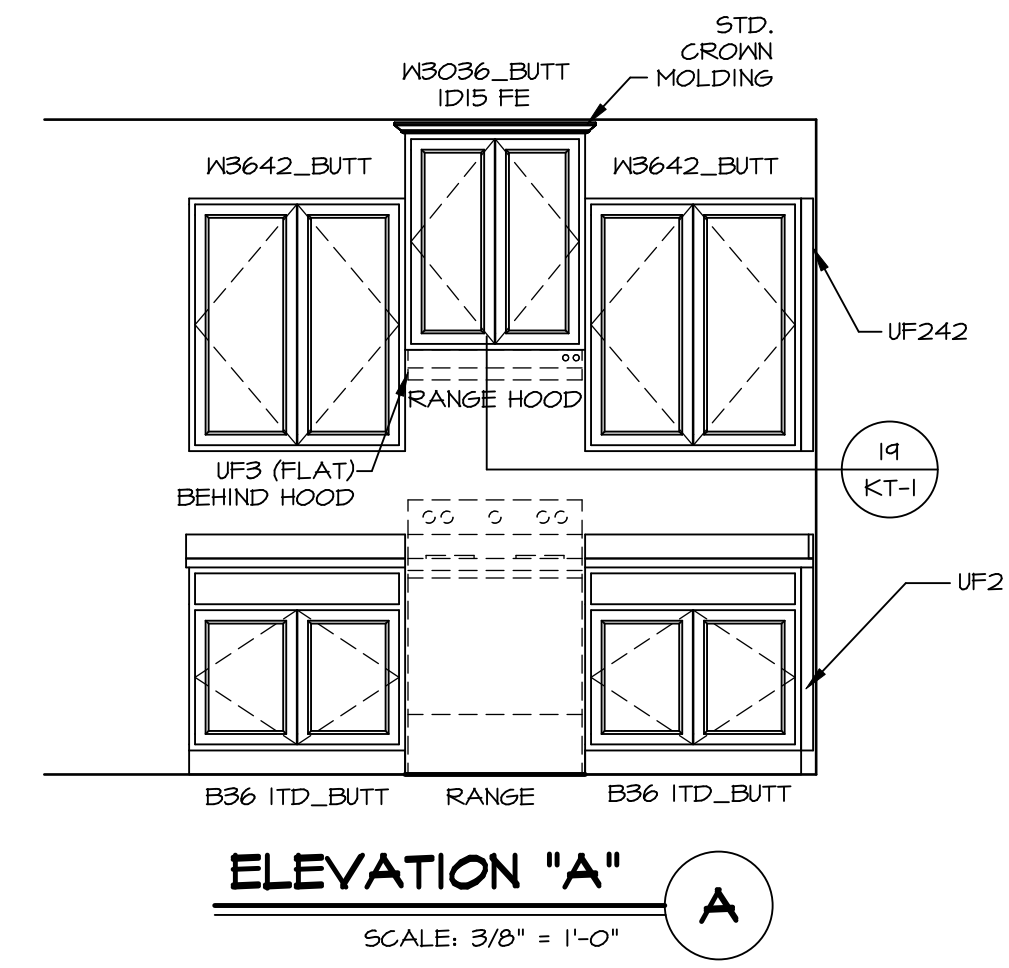
C



ELEVATION "B"

SCALE: 3/8" = 1'-0"

B



ELEVATION "A"

SCALE: 3/8" = 1'-0"

A

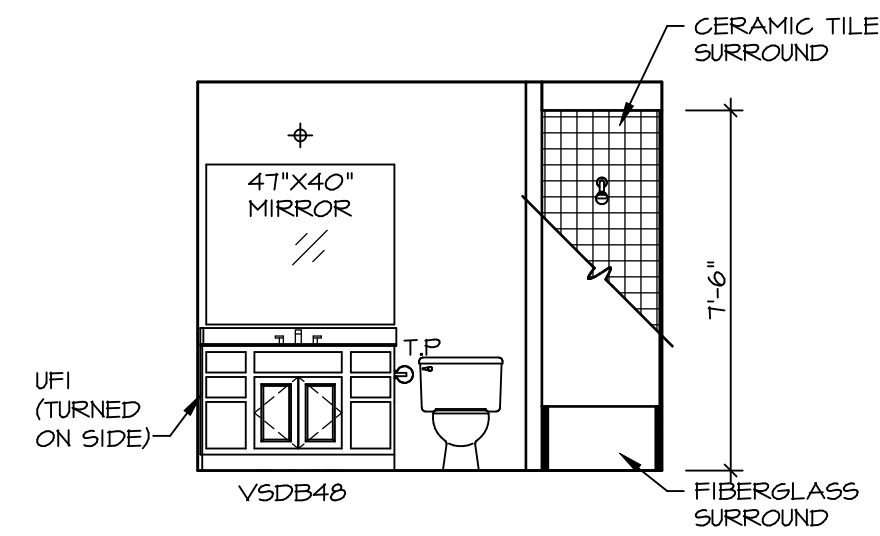
NOTE:
KITCHEN ELEVATIONS/PLANS CALL
OUT STANDARD MOLDING. REFER TO
DETAIL 11/KT-1 FOR REPLACEMENT
BASED ON CABINET STYLE.

NOTE:
CABINET LAYOUT(S) ARE
BASED ON FINISHED
DIMENSION TO DRYWALL.

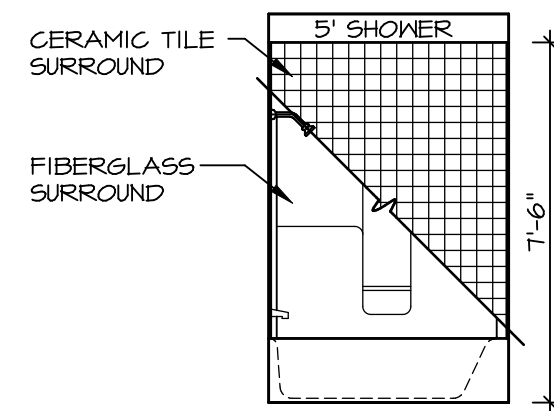
SHEET NO. A-12	MODEL BALLENGER	SET NO. BLG00	OPTION DESCRIPTION	REMARKS
	DRAWING TITLE KITCHEN PLANS	VERSION 01		
47				

NVR
Architectural Services
5285 Westover Lane, Suite 100
Frederick, MD 21703

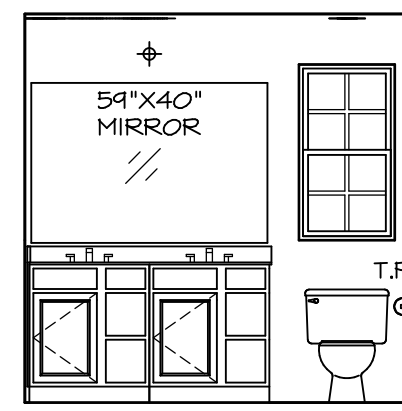
SCALE: 3/8" = 1'-0"



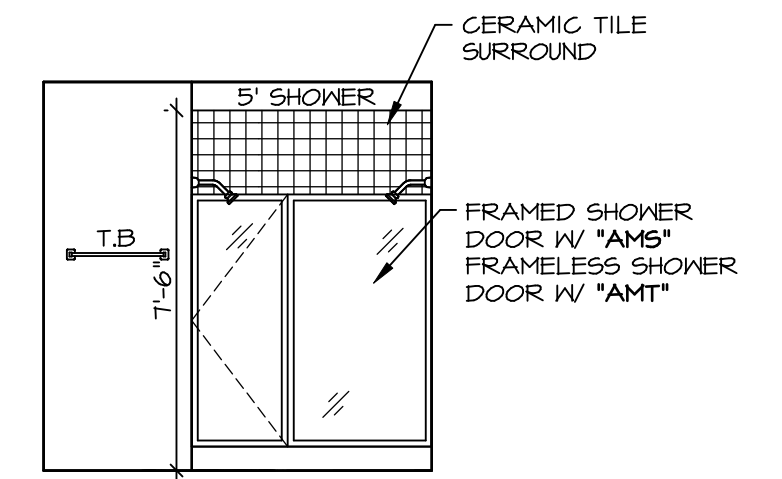
D BATH #1
SCALE: 1/4" = 1'-0"



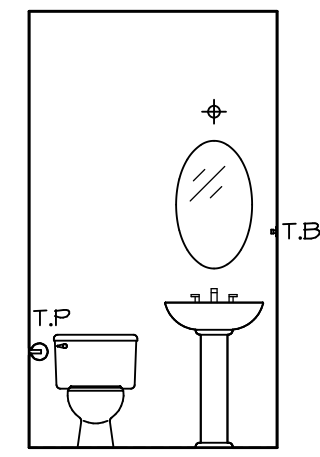
E BATH #1
SCALE: 1/4" = 1'-0"



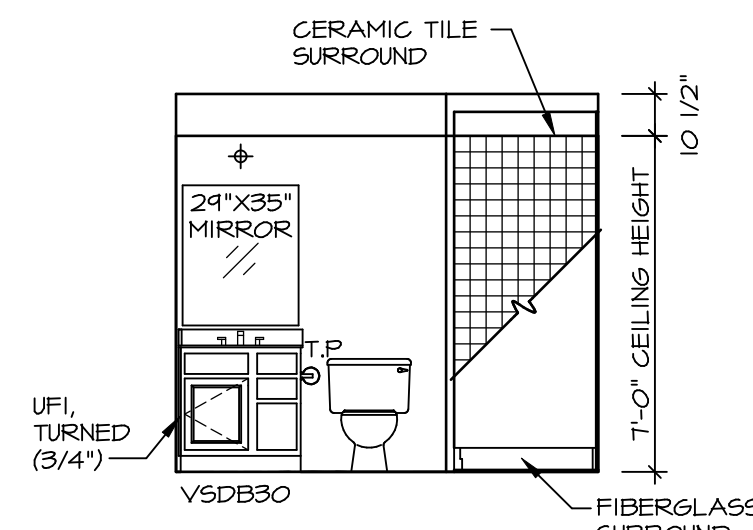
F OWNER'S BATH
SCALE: 1/4" = 1'-0"



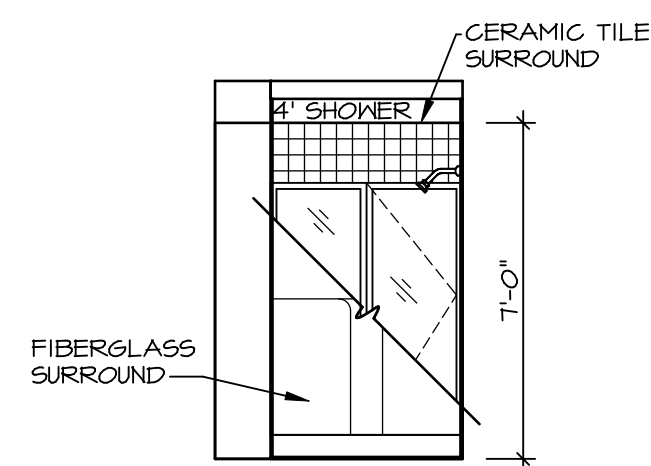
H OWNER'S BATH
SCALE: 1/4" = 1'-0"



C POWDER ROOM
SCALE: 1/4" = 1'-0"



A BASEMENT BATH
SCALE: 1/4" = 1'-0"



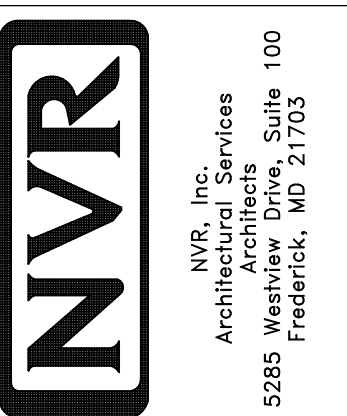
B BASEMENT BATH
SCALE: 1/4" = 1'-0"

NOTES:

1. TEMPERED GLASS SHOWER ENCLOSURE WITH SWING DOOR OR OPTIONAL SLIDING DOOR BY DIVISION
2. TUB ACCESS PANELS PROVIDED AS NEEDED. ALL MATERIALS BY DIVISION
3. REFER TO SHEET IT-2 FOR TUB AND SHOWER DETAILS.
4. ALL V5DB24-42 DRAWERS TO BE SET ON RIGHT HAND.
5. ALL BATH ELEVATIONS ARE SHOWN PER PLAN.

REV. NO.	DATE	REMARKS

NVR, Inc., owner, expressly reserves its copyright in these plans. These plans are not to be reproduced, changed, copied, or otherwise used without the written consent of NVR, Inc.



MODEL	BALLENGER	SET NO.	BLG00
DRAWING TITLE	BATH ELEVATIONS	VERSION	01
DRAWN BY		DRAWN BY	
DATE		DATE	
OPTION		OPTION	
SHEET NO.	A-13	SHEET NO.	49