

- NOTES:
1. ALL ELECTRICAL PLANS ARE SCHEMATIC ONLY AND NOT INTENDED AS ENGINEERED DRAWINGS. THESE PLANS REPRESENT THE DESIGN INTENT FOR SWITCH AND RECEPTACLE LOCATIONS. ADDITIONAL INFORMATION, IF REQUIRED, SHALL BE PROVIDED BY A LICENSED ELECTRICAL SUBCONTRACTOR OR ENGINEER.
 2. ALL KITCHEN, GARAGES, UNFINISHED BASEMENT, PATIOS AND ALL OUTDOOR RECEPTACLES ARE TO BE GFI PROTECTED.
 3. PROVIDE SWITCH W/ KEYLESS LIGHT IN ATTIC SPACE.
 4. PROVIDE SWITCH W/ KEYLESS LIGHT AND GFI RECEPTACLE WHEN HVAC EQUIPMENT IS IN ATTIC SPACE.
 5. PROVIDE ARC-FAULT CIRCUIT INTERRUPTERS TO ALL BEDROOM RECEPTACLES.
 6. WASHER ON LEFT, DRYER ON RIGHT (PER PLAN OR REVERSED).
 7. DRYER RECEPTACLE TO W/ GAS OR 220 V/ ELECTRIC.

ELECTRICAL LEGEND

⊕	SINGLE POLE SWITCH
⊕	THREE WAY SWITCH
⊕	FOUR WAY SWITCH
⊕	DUPLEX RECEPTACLE
⊕	DUPLEX RECEPTACLE - BOTTOM HALF SWITCHED
⊕	DUPLEX RECEPTACLE - FLOOR MOUNTED
⊕	RECEPTACLE - 220V
⊕	DUPLEX RECEPTACLE - USB
⊕	DUPLEX RECEPTACLE - GROUND FAULT INTERRUPT
⊕	DUPLEX RECEPTACLE - HEATHER PROOF AND GROUND FAULT INTERRUPT
⊕	SMOKE DETECTOR - W/RED IN SERIES
⊕	CARBON MONOXIDE DETECTOR
⊕	EXHAUST FAN MOTOR
⊕	EXHAUST FAN MOTOR WITH LIGHT
⊕	TELEVISION RECEPTACLE
⊕	TELEPHONE RECEPTACLE
⊕	DOOR CHIME
⊕	LIGHT FIXTURE - WALL MOUNTED
⊕	LIGHT FIXTURE - CEILING MOUNTED
⊕	LIGHT FIXTURE - RECESSED
⊕	LIGHT FIXTURE - RECESSED HEATHER PROOF
⊕	LIGHT FIXTURE - CEILING MOUNTED LED
⊕	LIGHT FIXTURE - HANGING
⊕	LIGHT FIXTURE - PENDANT
⊕	LIGHT FIXTURE - FLUORESCENT
⊕	LIGHT FIXTURE - UNDER CABINET LIGHT
⊕	5" = SMALL "M" = MEDIUM "L" = LARGE
⊕	FULLCHAIN LAMPHOLDER
⊕	KEYLESS LAMPHOLDER

1
E-1
SCALE 1/4" = 1'-0"

BASEMENT FLOOR ELECTRICAL PLAN

1-30
HK

REVISIONS	
REV. NO.	DATE
<p>NVR, Inc. hereby certifies that the undersigned is duly qualified to practice in this state. These plans are not to be construed as a contract or agreement of any kind, and shall be subject to the terms and conditions set forth in the contract documents, including the contract documents, and any amendments thereto, and shall be void if not executed in accordance with the contract documents.</p>	
<p>NVR NVR, Inc. Architectural Services 5385 Westview Drive, Suite 100 Frederick, MD 21703</p>	
SET NO. 06000	VERSION 01
DRAWN BY	DATE
OPTION	OPTION
MODEL BALLENGER	PROJECT TITLE BASEMENT ELECTRICAL PLAN
SHEET NO. E-1	OPTION DESCRIPTION
50	

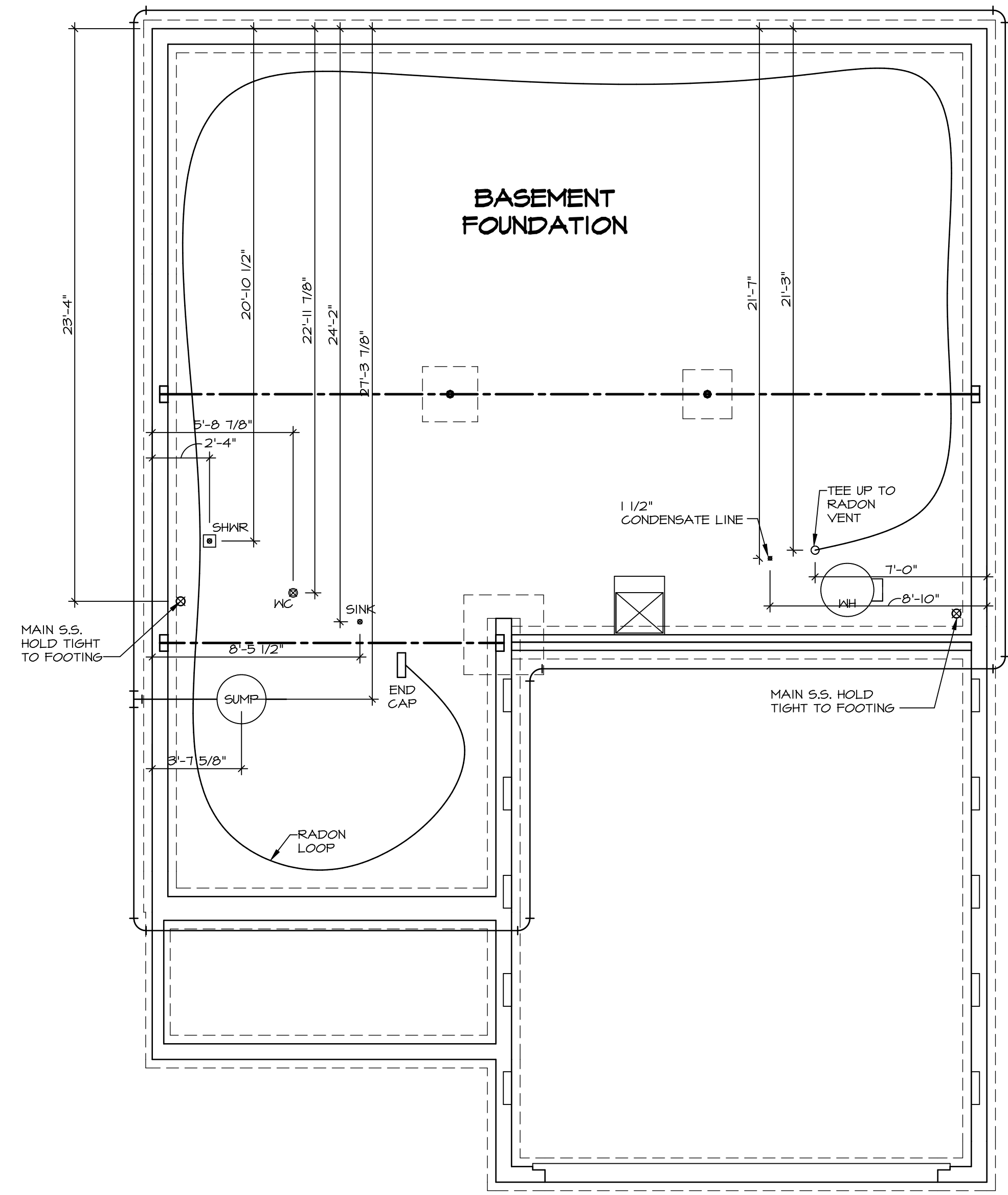
C:\NVR\SW\BALLENGER_0600_01\NVR\200-L59X105680A\BALLENGER_01_SHEET_E-1_BSMT_ELEC_LS.DWG 12/17/18 - 8:30 AM

NOTE
 RADON REMEDIATION
 RADON LOOP:

- (4") PERFORATED HDPE "LOOP"
- MUST BE PLACED IN STONE BED SLIGHTLY HIGHER THAN ANY INTERIOR DRAINTILE
- LOOP TO BE SEPARATE FROM ANY DRAINTILE ELEMENTS
- TO BE CORRUGATED HDPE PIPE
- SCREENS TO BE INSTALLED THROUGH LOOP AT TEE UP INTO STACK

STACK REQUIREMENTS:

- 3" PVC STACK (4" IF BASEMENT IS GREATER THAN 2200 SQFT.)
- NO PART OF STACK IS TO BE HORIZONTAL
- PIPE TO BE PHYSICALLY LABELED IN THE FIELD AS "RADON VENT" OR OTHER
- JURISDICTIONALLY REQUIRED LANGUAGE (ON EVERY LEVEL OF HOUSE)
- ROOF TERMINATION TO BE IN TOP 1/3 OF ROOF
- SCREEN INSTALLED TO KEEP PESTS OUT OF RADON VENT AT ROOF TERMINATION



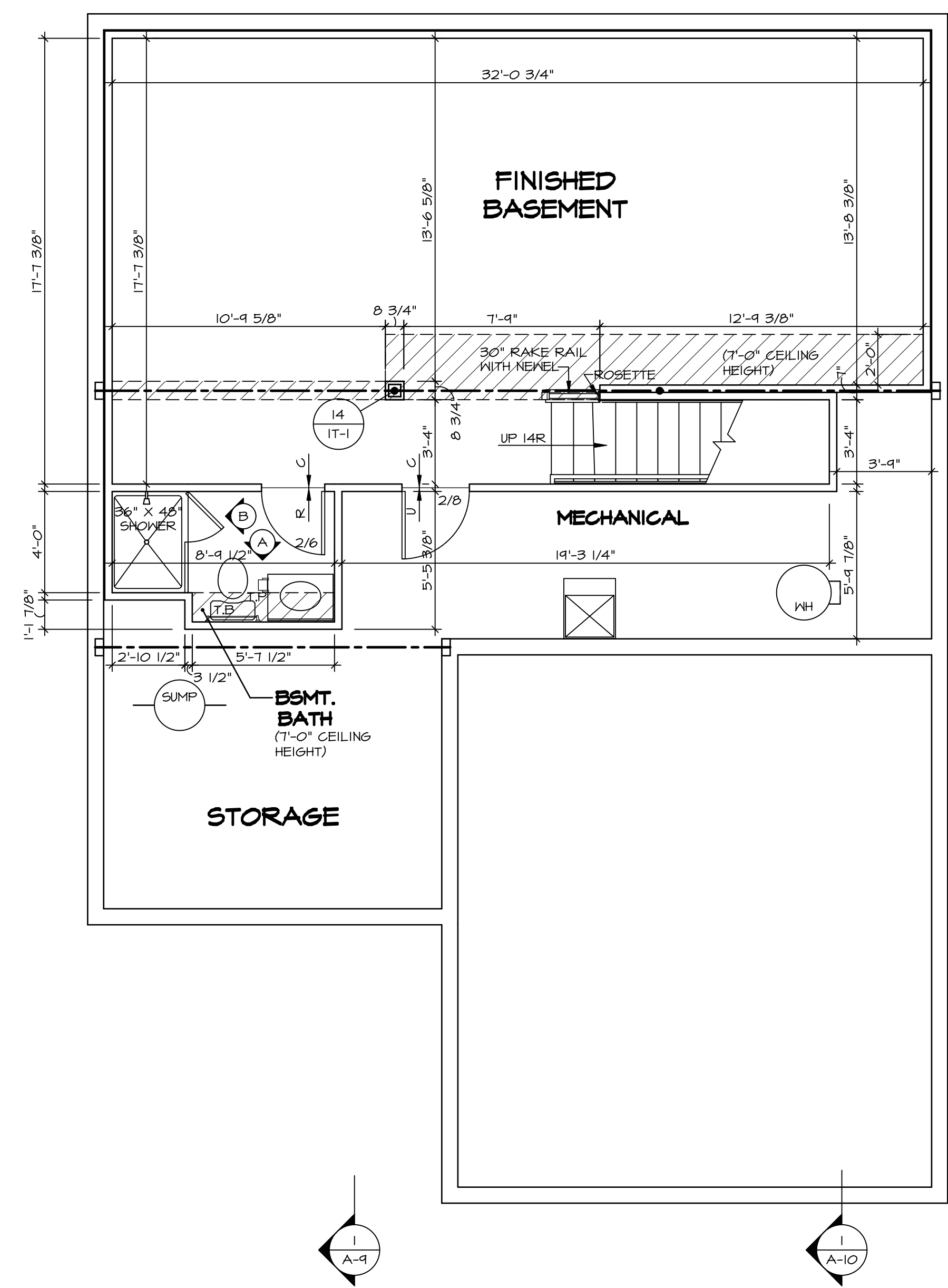
PLUMBING PLAN
 SCALE: 1/4" = 1'-0"

SHEET NO. A-5	MODEL BALLENGER	SET NO. BL600	REMARKS
	DRAWING TITLE PLUMBING PLAN	VERSION 01	
OPTION DESCRIPTION 23	DATE:	DATE:	REV. NO. DATE
	OPTION	OPTION	

NVR, Inc., owner, expressly reserves its copyright in these plans. These plans are not to be reproduced, changed, copied in any way, or used for any other purpose without the written consent of NVR, Inc.

NVR
 NVR, Inc.
 Architectural Services
 Architects
 5285 Westheimer Blvd, Suite 100
 Fredericks, MD 21703

C:\NVR\Solves\BALLENGER-BL600-01\DCY-VG-1509\072490\Sheets\01_Specifs\23_A-5_PLUMB_LS.dwg 01/08/19 - 3:50 am



BASEMENT FLOOR PLAN
 SCALE: 1/4" = 1'-0"

LEGEND

	BEARING WALL
	NON BEARING WALL
	INDICATES BEARING FROM POINT-LOAD ABOVE
	JACKS
	BEAM/HEADER
	PAD FOOTING
	STEEL COLUMN
	PORTAL FRAME
	JOIST/TRUSS
	LVL
	ENGINEERING PAGE NUMBER

SEE FC DETAILS FOR FRAMING CONNECTORS

- FLOOR PLAN NOTES**
- ALL HEADERS ARE (2) 2x6 w/ 2x4 WALLS OR (3) 2x6 w/ 2x6 WALLS, UNLESS OTHERWISE NOTED.
 - ALL HEADERS TO HAVE (1) 2x4 OR 2x6 JACK AND KING STUD EACH END, UNLESS OTHERWISE NOTED.
 - ALL EXTERIOR WALLS TO BE 4" w/ OSB OR 3 1/2" w/ T-PLY, ALL INTERIOR WALLS TO BE 3 1/2", UNLESS OTHERWISE NOTED.
 - HATCHED AREAS INDICATE DROPPED CEILINGS. ALL DROPPED CEILINGS ARE 12" UNLESS OTHERWISE NOTED.
 - SEE "BRACED WALL PANEL DETAIL SHEET" FOR SPECIAL WALL FRAMING LOCATIONS AND HEADER SIZES, IF APPLICABLE.
 - SEE STANDARD DETAIL CATEGORY "IT" SHEET(S) FOR INTERIOR TRIM DETAILS.
 - SEE ARCHITECTURAL DETAIL SHEET "AD" FOR HOUSE SPECIFIC INTERIOR TRIM OPTION TABLE.
 - ALL WINDOWS HAVE 7'-0 1/2" HEADER HEIGHT UNLESS OTHERWISE NOTED.
 - ALL HEADERS IN NON-BEARING WALLS SHALL BE A SINGLE FLAT 2x4 OR 2x6 ATTACHED TO CRIPPLES ABOVE, UNLESS OTHERWISE NOTED.
 - TANKED WATER HEATER SHOWN AS BASE CONDITION, OPTIONAL TANKLESS WATER HEATER IS AVAILABLE IN LIEU OF TANKED WATER HEATER.

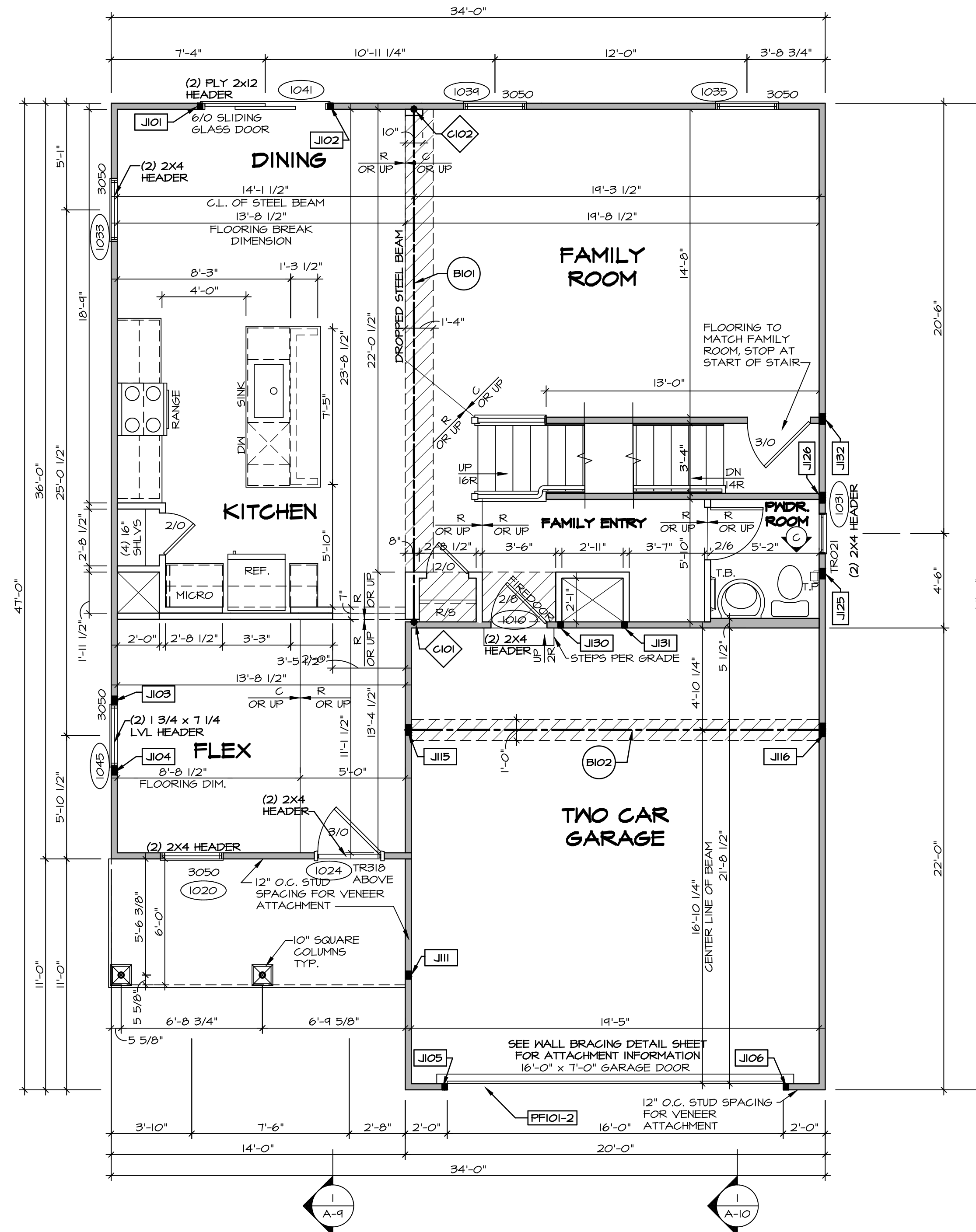
- GYPSUM NOTES**
- AT GARAGE:
 GYPSUM BOARD AT COMMON WALLS, CEILINGS, BEAM WRAPS AND SUPPORTS PER STANDARD DETAIL FA-1(b) FIRE ASSEMBLIES OR AS REQUIRED BY LOCAL CODE.
- AT STAIRS:
 1/2" GYPSUM BOARD AT UNDERSIDE OF STAIRS AND WALLS IN CLOSET

SHEET NO. A-6	MODEL BALLENGER	SET NO. BL600	VERSION 01	DATE:	OPTION
		DRAWING TITLE BASEMENT FLOOR PLAN		DRAWN BY	
OPTION DESCRIPTION		<p>NVR, Inc. owner, expressly reserves its copyright in these plans. These plans are not to be reproduced, changed, copied, or otherwise used in any way without the written consent of NVR, Inc.</p> <p>NVR NVR, Inc. Architectural Services Architects 5285 West Ashburn Avenue, Suite 100 Frederick, MD 21703</p>			
REMARKS		<p>REV. NO. DATE</p>			

FIRST FLOOR JACK SCHEDULE					
IDENTIFIER	DESCRIPTION	OPTIONS	ENG. NUM.	REMARKS	
J101	JACK - (2) 2X4 SFF STUD GRADE		1041		
J102	JACK - (2) 2X4 SFF STUD GRADE		1041		
J103	JACK - (3) 2X4 SFF STUD GRADE		1045		
J104	JACK - (3) 2X4 SFF STUD GRADE		1045		
J105	JACK - (2) 2X4 SFF STUD GRADE		1028		
J106	JACK - (2) 2X4 SFF STUD GRADE		1028		
J111	JACK - (3) 2X4 SFF STUD GRADE		1028		
J115	JACK - (4) 2X4 SFF STUD GRADE	ELK	1012		
J116	JACK - (5) 2X4 SFF STUD GRADE	ELA, ELK, GCB	1012		
J125	JACK - (4) 2X4 SFF STUD GRADE		1006		
J126	JACK - (4) 2X4 SFF STUD GRADE		1006		
J130	JACK - (2) 2X4 SFF STUD GRADE				
J131	JACK - (2) 2X4 SFF STUD GRADE				
J132	JACK - (4) 2X4 SFF STUD GRADE		1006		

STEEL COLUMN SCHEDULE					
IDENTIFIER	STYLE	HEIGHT	OPTIONS	ENG. NUM.	REMARKS
C101	STANCHION - 3 IN SCHED 40	7'-11 1/8"		1008	
C102	STANCHION - 3 IN SCHED 40	7'-11 1/8"		1008	

FIELD INSTALLED FIRST FLOOR BEAM/HEADER SCHEDULE					
IDENTIFIER	DESCRIPTION	LENGTH	OPTIONS	ENG. NUM.	REMARKS
B101	BEAM STEEL - W12X35	24'-8 1/2"		1008	
B102	BEAM STEEL - W10X26	20'-0"	ELA, ELK, SXC	1012	
PF101-2	EXT HEADER - 2X12 - 2 PLY	14'-4"		1028	2-PLY, PORTAL FRAME



FIRST FLOOR PLAN
SCALE: 1/4" = 1'-0"

LEGEND

- BEARING WALL
- NON BEARING WALL
- INDICATES BEARING FROM POINT-LOAD ABOVE
- JACKS
- BEAM/HEADER
- PAD FOOTING
- STEEL COLUMN
- PORTAL FRAME
- JOIST/TRUSS
- LVL
- ENGINEERING PAGE NUMBER

SEE FC DETAILS FOR FRAMING CONNECTORS

- FLOOR PLAN NOTES**
- ALL HEADERS ARE (2) 2x6 w/ 2x4 WALLS OR (3) 2x6 w/ 2x6 WALLS, UNLESS OTHERWISE NOTED.
 - ALL HEADERS TO HAVE (1) 2x4 OR 2x6 JACK AND KING STUD EACH END, UNLESS OTHERWISE NOTED.
 - ALL EXTERIOR WALLS TO BE 4" w/ OSB OR 3 1/2" w/ T-PLY. ALL INTERIOR WALLS TO BE 3 1/2", UNLESS OTHERWISE NOTED.
 - HATCHED AREAS INDICATE DROPPED CEILINGS. ALL DROPPED CEILINGS ARE 12" UNLESS OTHERWISE NOTED.
 - SEE "BRACED WALL PANEL DETAIL SHEET" FOR SPECIAL WALL FRAMING LOCATIONS AND HEADER SIZES, IF APPLICABLE.
 - SEE STANDARD DETAIL CATEGORY "IT" SHEET(S) FOR INTERIOR TRIM DETAILS.
 - SEE ARCHITECTURAL DETAIL SHEET "AD" FOR HOUSE SPECIFIC INTERIOR TRIM OPTION TABLE.
 - ALL WINDOWS HAVE 7'-0 1/2" HEADER HEIGHT UNLESS OTHERWISE NOTED.
 - ALL HEADERS IN NON-BEARING WALLS SHALL BE A SINGLE FLAT 2X4 OR 2X6 ATTACHED TO CRIPPLES ABOVE, UNLESS OTHERWISE NOTED.
 - TANKED WATER HEATER SHOWN AS BASE CONDITION. OPTIONAL TANKLESS WATER HEATER IS AVAILABLE IN LIEU OF TANKED WATER HEATER.

- GYPSUM NOTES**
- AT GARAGE:**
GYPSUM BOARD AT COMMON WALLS, CEILINGS, BEAM WRAPS AND SUPPORTS PER STANDARD DETAIL FA-1(b) FIRE ASSEMBLIES OR AS REQUIRED BY LOCAL CODE.
- AT STAIRS:**
1/2" GYPSUM BOARD AT UNDERSIDE OF STAIRS AND WALLS IN CLOSET

SHEET NO. A-7	MODEL BALLENGER	SET NO. BLG00 VERSION 01 DRAWN BY DATE: OPTION	DRAWING TITLE FIRST FLOOR PLAN OPTION DESCRIPTION	NVR, Inc. Architectural Services 5285 West... Suite 100 Frederick, MD 21703	NVR, Inc., owner, expressly reserves its copyright in these plans. These plans are not to be reproduced, changed, copied, or otherwise used in any way without the written consent of NVR, Inc.	REV. NO. DATE REMARKS
-------------------------	---------------------------	--	--	--	---	--------------------------

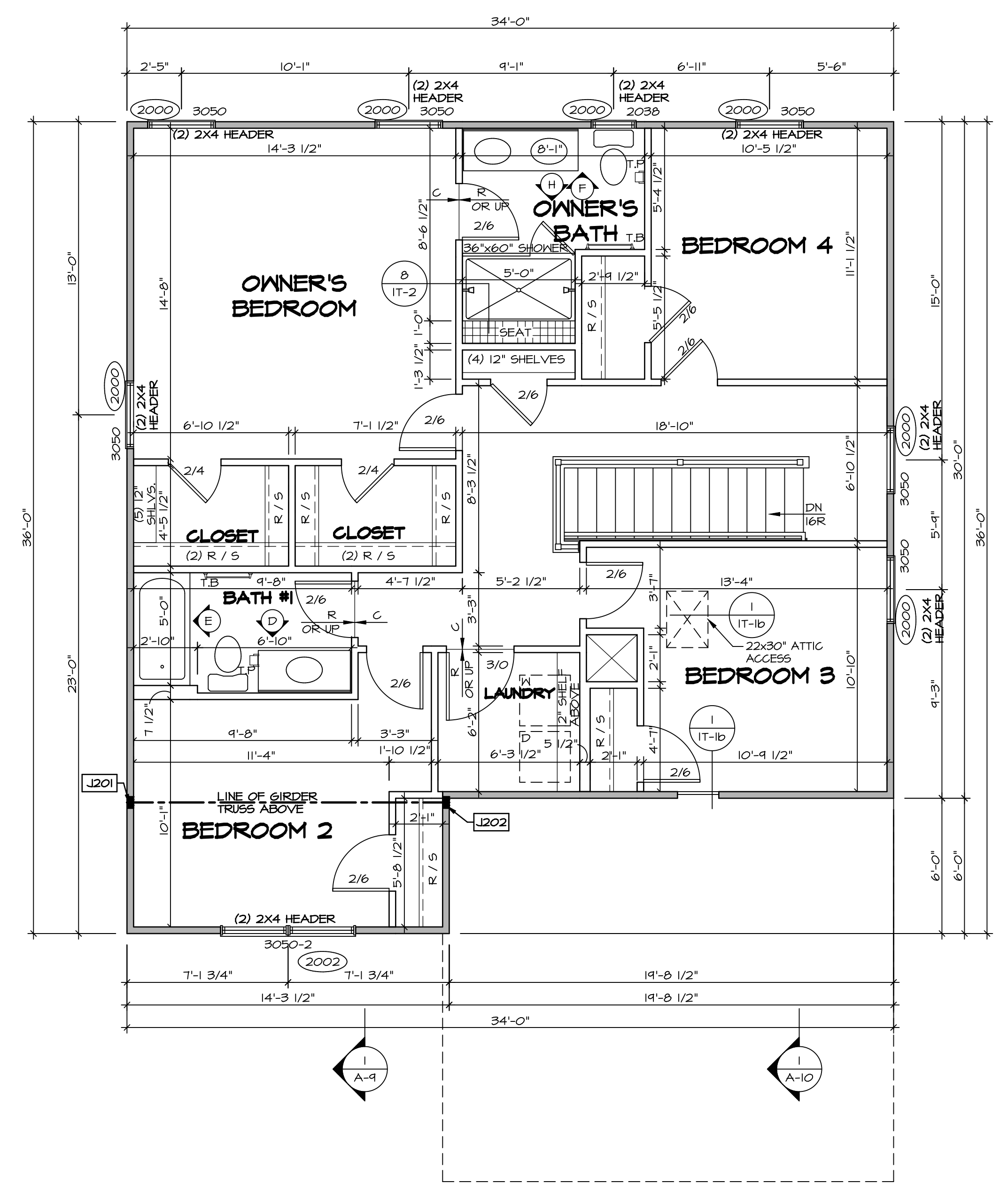
C:\NVR\Solves\BALLENGER-BLG00_01\DCI-VG-L509\072490\Sheets\A-7 PLN1-LS.dwg 01/08/19 = 3.50 gm

SECOND FLOOR JACK SCHEDULE				
IDENTIFIER	DESCRIPTION	OPTIONS	ENG. NUM.	REMARKS
J201	JACK - (4) 2X4 SPF STUD GRADE	ELA, ELK	2004	
J202	JACK - (4) 2X4 SPF STUD GRADE	ELA, ELK	2004	

LEGEND	
	BEARING WALL
	NON BEARING WALL
	INDICATES BEARING FROM POINT-LOAD ABOVE
	JACKS
	BEAM/HEADER
	PAD FOOTING
	STEEL COLUMN
	PORTAL FRAME
	JOIST/TRUSS
	LVL
	ENGINEERING PAGE NUMBER
SEE FG DETAILS FOR FRAMING CONNECTORS	

- FLOOR PLAN NOTES**
- ALL HEADERS ARE (2) 2x6 w/ 2x4 WALLS OR (3) 2x6 w/ 2x6 WALLS, UNLESS OTHERWISE NOTED.
 - ALL HEADERS TO HAVE (1) 2x4 OR 2x6 JACK AND KING STUD EACH END, UNLESS OTHERWISE NOTED.
 - ALL EXTERIOR WALLS TO BE 4" w/ OSB OR 3 1/2" w/ T-PLY. ALL INTERIOR WALLS TO BE 3 1/2", UNLESS OTHERWISE NOTED.
 - HATCHED AREAS INDICATE DROPPED CEILINGS. ALL DROPPED CEILINGS ARE 12" UNLESS OTHERWISE NOTED.
 - SEE "BRACED WALL PANEL DETAIL SHEET" FOR SPECIAL WALL FRAMING LOCATIONS AND HEADER SIZES, IF APPLICABLE.
 - SEE STANDARD DETAIL CATEGORY "IT" SHEET(S) FOR INTERIOR TRIM DETAILS.
 - SEE ARCHITECTURAL DETAIL SHEET "AD" FOR HOUSE SPECIFIC INTERIOR TRIM OPTION TABLE.
 - ALL WINDOWS HAVE 7'-0 1/2" HEADER HEIGHT UNLESS OTHERWISE NOTED.
 - ALL HEADERS IN NON-BEARING WALLS SHALL BE A SINGLE FLAT 2X4 OR 2X6 ATTACHED TO CRIPPLES ABOVE, UNLESS OTHERWISE NOTED.
 - TANKED WATER HEATER SHOWN AS BASE CONDITION. OPTIONAL TANKLESS WATER HEATER IS AVAILABLE IN LIEU OF TANKED WATER HEATER.

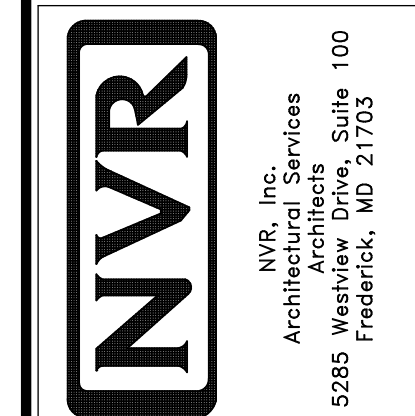
- GYPSUM NOTES**
- AT GARAGE:
GYPSUM BOARD AT COMMON WALLS, CEILINGS, BEAM WRAPS AND SUPPORTS PER STANDARD DETAIL FA-1(b) FIRE ASSEMBLIES OR AS REQUIRED BY LOCAL CODE.
- AT STAIRS:
1/2" GYPSUM BOARD AT UNDERSIDE OF STAIRS AND WALLS IN CLOSET



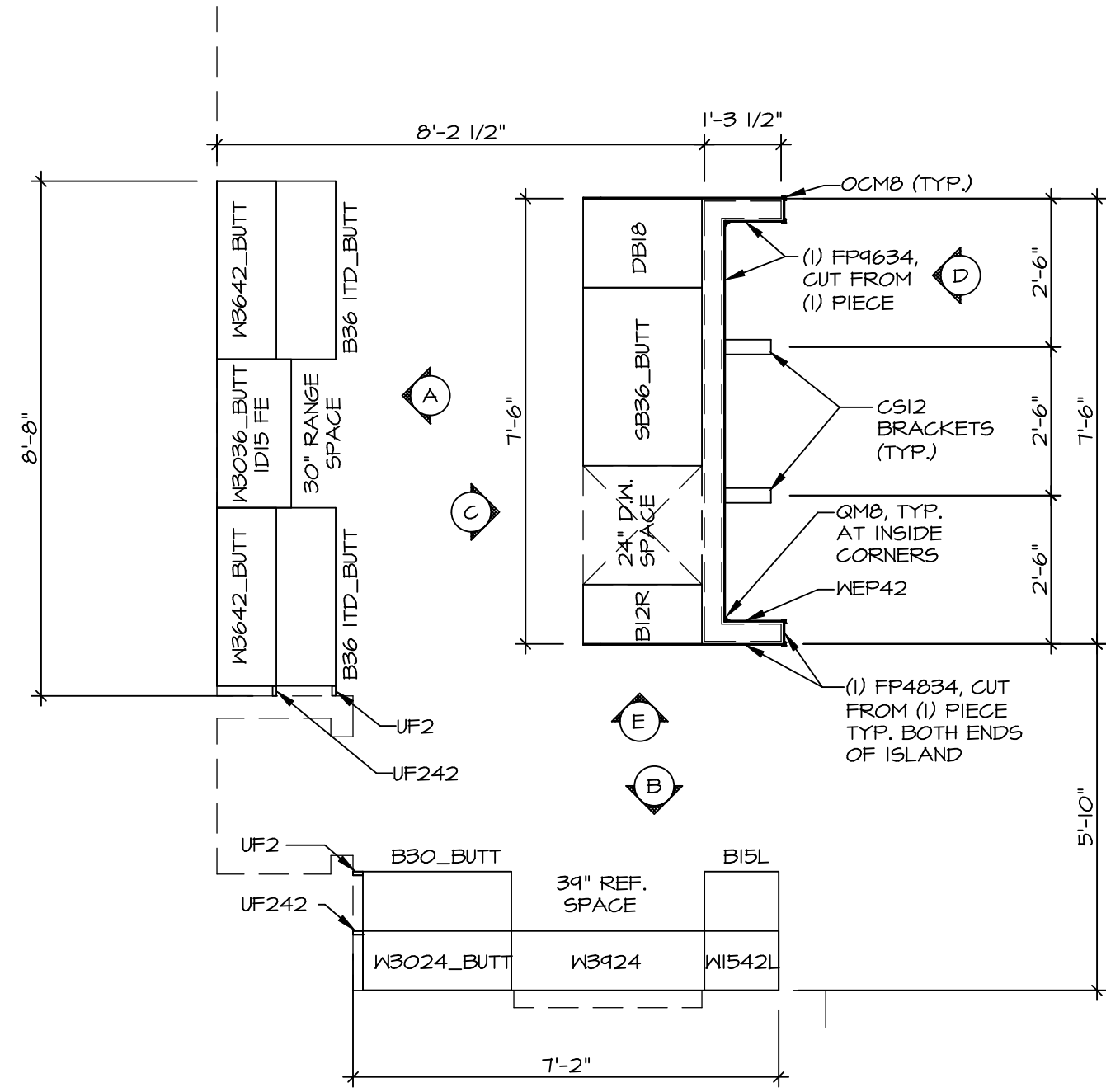
SECOND FLOOR PLAN
SCALE: 1/4" = 1'-0"

REV. NO.	DATE	REMARKS

NVR, Inc., owner, expressly reserves its copyright in these plans. These plans are not to be reproduced, changed, copied, or otherwise used in any way without the written consent of NVR, Inc.

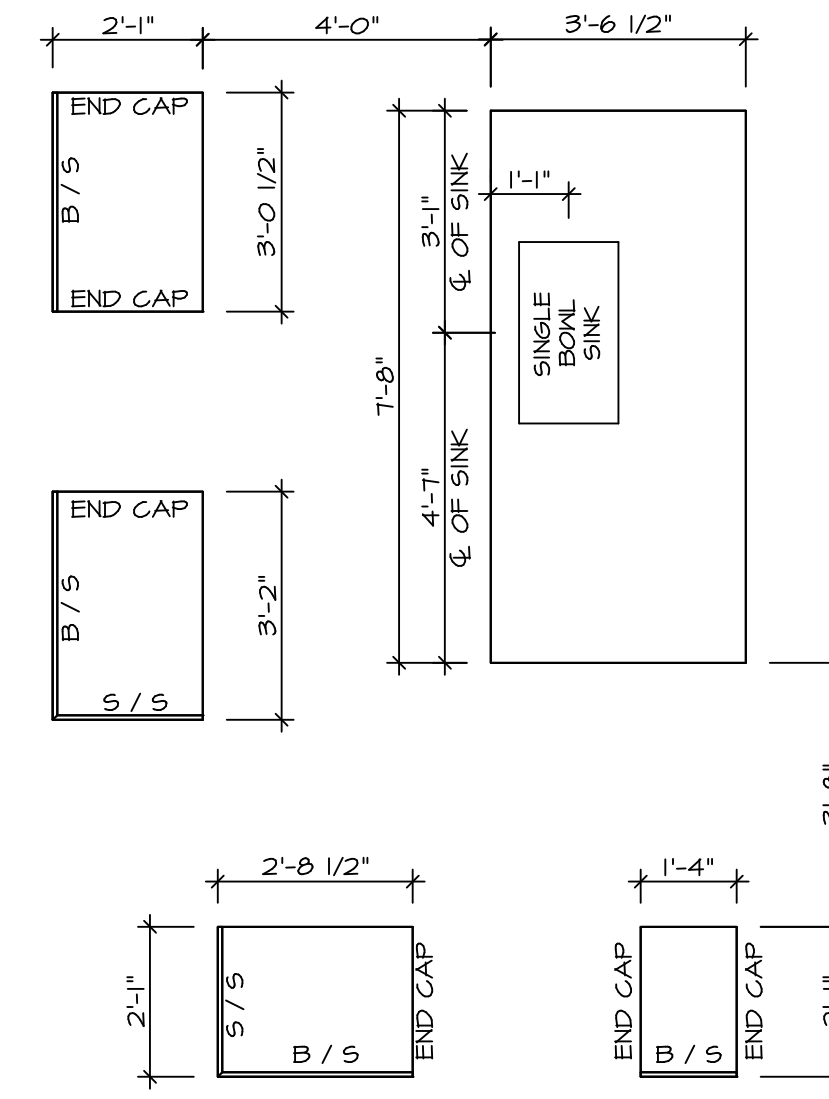


SHEET NO.	MODEL	SET NO.	BLG00
A-8	BALLENGER	VERSION	01
32	DRAWING TITLE	DRAWN BY	
	SECOND FLOOR PLAN	DATE:	
	OPTION DESCRIPTION	OPTION	



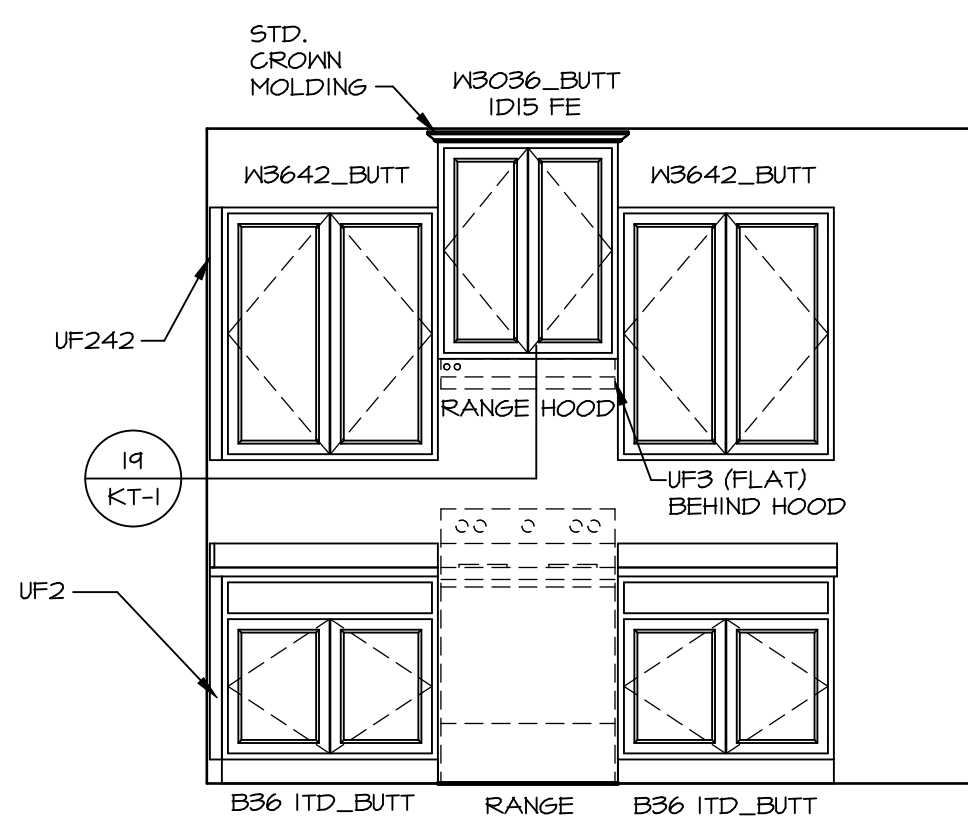
**KITCHEN CABINET
PLAN (KC - 3491)**

SCALE: 3/8" = 1'-0"



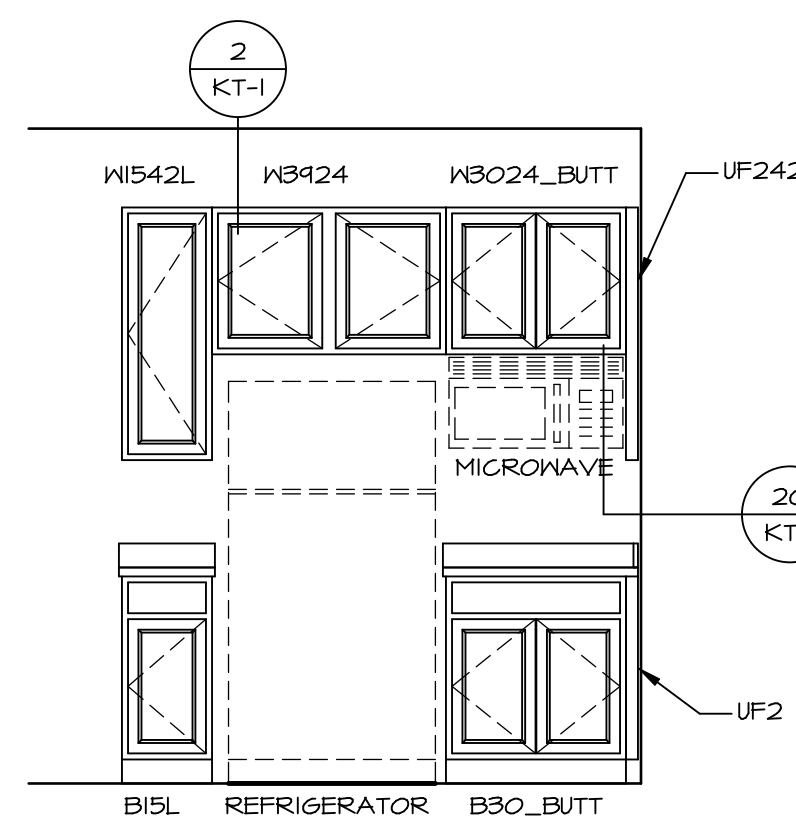
**KITCHEN COUNTERTOP
PLAN (KC - 3491)**

SCALE: 3/8" = 1'-0"



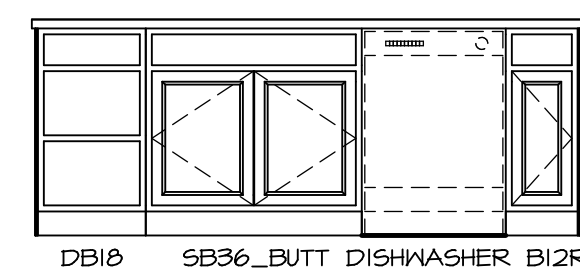
ELEVATION "A"

SCALE: 3/8" = 1'-0"



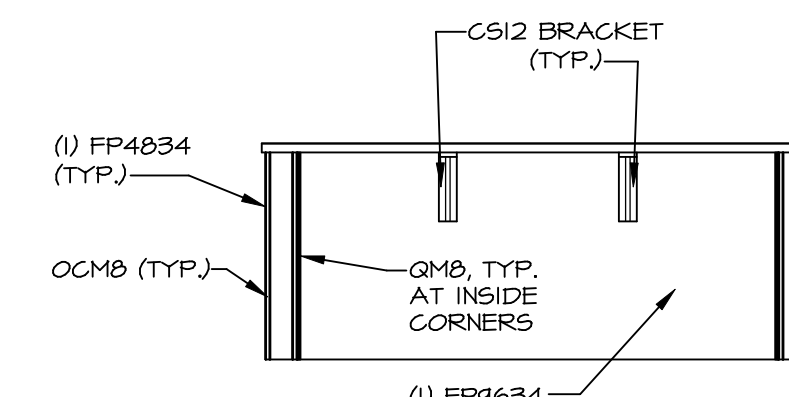
ELEVATION "B"

SCALE: 3/8" = 1'-0"



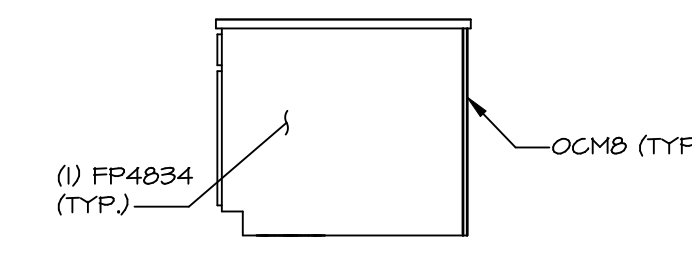
ELEVATION "C"

SCALE: 3/8" = 1'-0"



ELEVATION "D"

SCALE: 3/8" = 1'-0"



ELEVATION "E"

SCALE: 3/8" = 1'-0"

NOTE:
KITCHEN ELEVATIONS/PLANS CALL
OUT STANDARD MOLDING. REFER TO
DETAIL 11/KT-1 FOR REPLACEMENT
BASED ON CABINET STYLE.

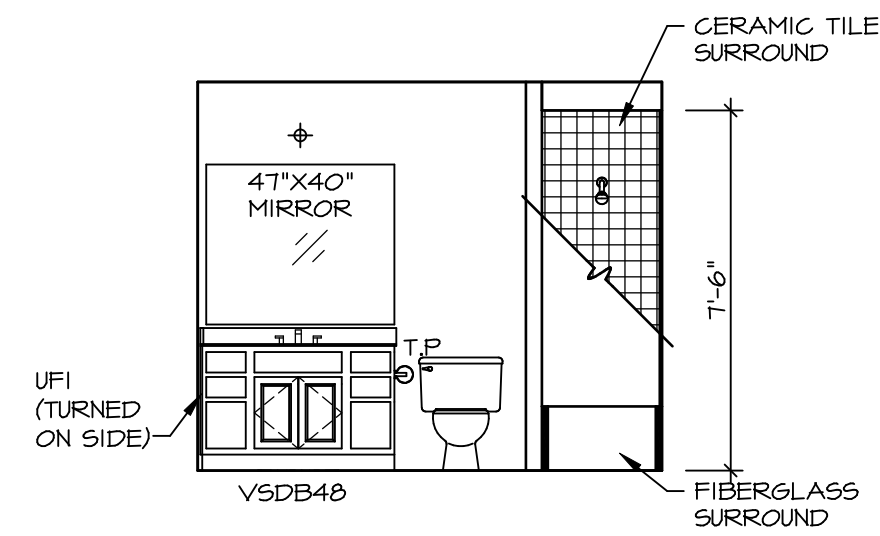
NOTE:
CABINET LAYOUT(S) ARE
BASED ON FINISHED
DIMENSION TO DRYWALL.

SHEET NO. A-12	MODEL BALLENGER	SET NO. BLG00
	DRAWING TITLE KITCHEN PLANS	VERSION 01
	OPTION DESCRIPTION	DRAWN BY
		DATE:
		OPTION

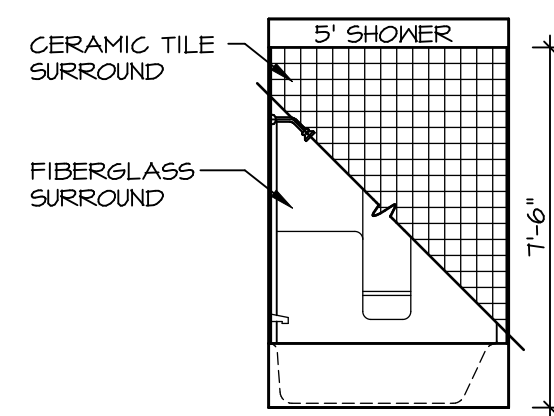
NVR
NVR, Inc.
Architectural Services
Architects
5285 Westover Lane, Suite 100
Frederick, MD 21703

NVR, Inc., owner, expressly
reserves its copyright in all
plans. These plans are not to be
reproduced, changed, copied, or
distributed in any form without
the prior written consent of
NVR, Inc.

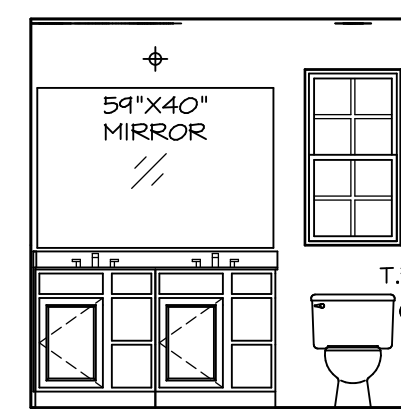
REV. NO.	DATE	REMARKS



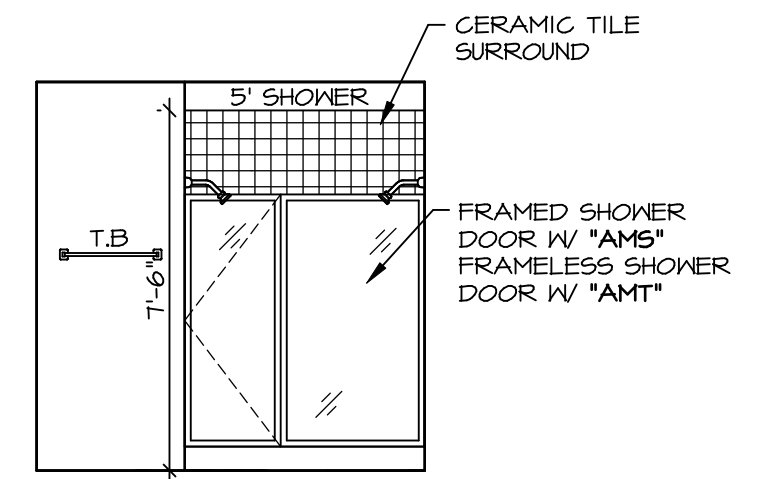
D BATH #1
SCALE: 1/4" = 1'-0"



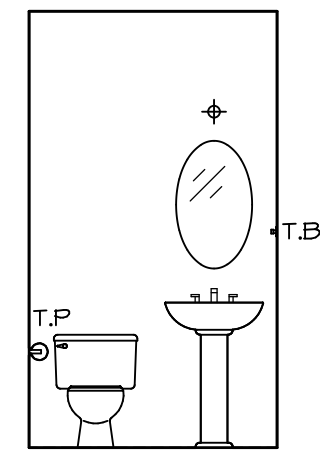
E BATH #1
SCALE: 1/4" = 1'-0"



F OWNER'S BATH
SCALE: 1/4" = 1'-0"

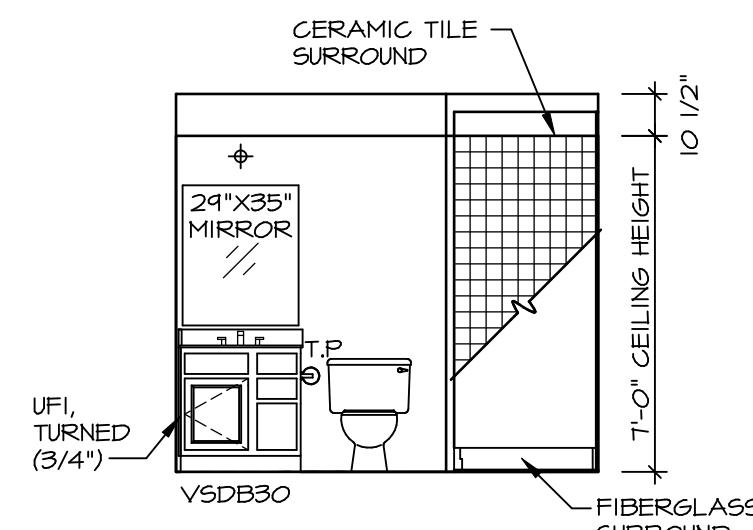


H OWNER'S BATH
SCALE: 1/4" = 1'-0"

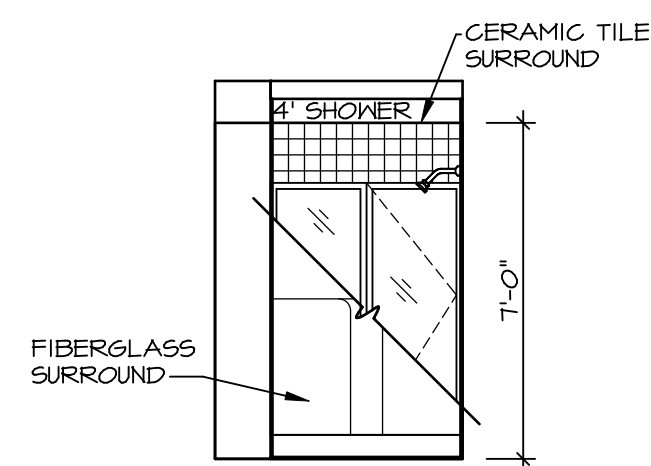


PEDESTAL SINK WITH OVAL MIRROR

C POWDER ROOM
SCALE: 1/4" = 1'-0"



A BASEMENT BATH
SCALE: 1/4" = 1'-0"



B BASEMENT BATH
SCALE: 1/4" = 1'-0"

NOTES:

1. TEMPERED GLASS SHOWER ENCLOSURE WITH SWING DOOR OR OPTIONAL SLIDING DOOR BY DIVISION
2. TUB ACCESS PANELS PROVIDED AS NEEDED. ALL MATERIALS BY DIVISION
3. REFER TO SHEET IT-2 FOR TUB AND SHOWER DETAILS.
4. ALL V5DB24-42 DRAWERS TO BE SET ON RIGHT HAND.
5. ALL BATH ELEVATIONS ARE SHOWN PER PLAN.

SHEET NO. A-13	MODEL BALLENGER	DRAWING TITLE BATH ELEVATIONS	SET NO. BLG00	VERSION 01	DRAWN BY	DATE:	OPTION
			OPTION DESCRIPTION				
49							
REMARKS							
REV. NO. DATE							
<p>NVR, Inc., owner, expressly reserves its copyright in these plans. These plans are not to be reproduced, changed, copied, or otherwise used in any way without the written consent of NVR, Inc.</p>							
<p>NVR NVR, Inc. Architectural Services Architects 5285 Westpark Drive, Suite 100 Frederick, MD 21703</p>							
<p>C:\NVR\Solves\BALLENGER-BLG00_01\DCI-VG-1509\072490\Sheets\01_Specifications\A-13_BATH_LS.dwg - 01/08/19 - 3:51 pm</p>							