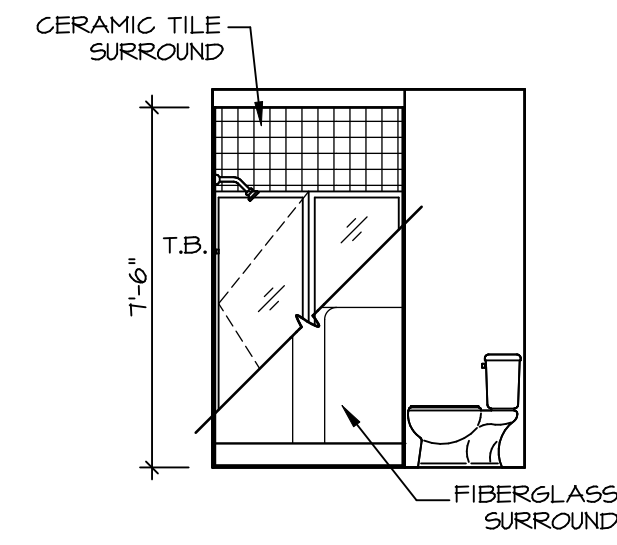
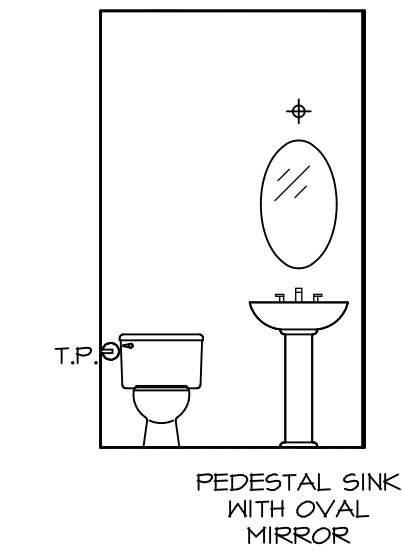


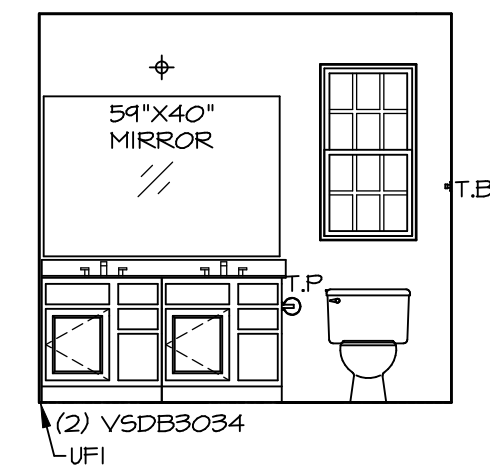
A **BASEMENT BATH**
SCALE: 1/4" = 1'-0"



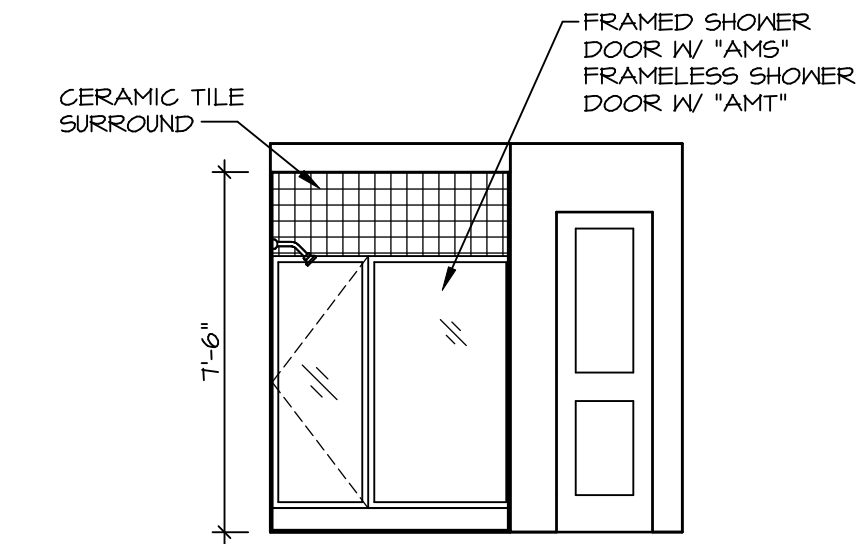
B **BASEMENT BATH**
SCALE: 1/4" = 1'-0"



C **POWDER ROOM**
SCALE: 1/4" = 1'-0"



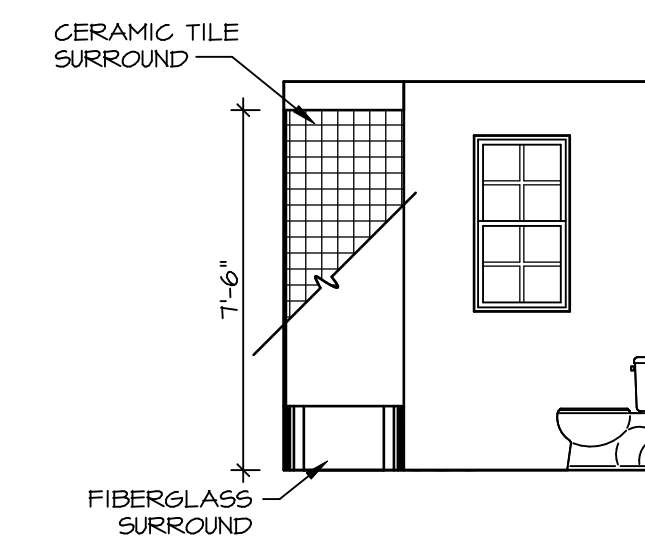
D **OWNER'S BATH**
SCALE: 1/4" = 1'-0"



E **OWNER'S BATH**
SCALE: 1/4" = 1'-0"



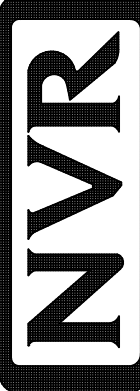
G **BATH #1**
SCALE: 1/4" = 1'-0"



H **BATH #1**
SCALE: 1/4" = 1'-0"

NOTES:

1. TEMPERED GLASS SHOWER ENCLOSURE WITH SWING DOOR OR OPTIONAL SLIDING DOOR BY DIVISION
2. TUB ACCESS PANELS PROVIDED AS NEEDED, ALL MATERIALS BY DIVISION
3. REFER TO SHEET IT-2 FOR TUB AND SHOWER DETAILS.
4. ALL VSD B24-42 DRAWERS TO BE SET ON RIGHT HAND.
5. ALL BATH ELEVATIONS ARE SHOWN PER PLAN.

SHEET NO. A-13	MODEL ALLEGHENY	SET NO. ALGOO	REVISIONS
	DRAWING TITLE BATH ELEVATIONS	VERSION 01	
44	OPTION DESCRIPTION	DATE 4/8/17	REV. NO. DATE
		OPTION	
<p style="text-align: center;">  NVR, Inc. Architectural Services Architects & Interiors 5285 Westover Lane, Suite 100 Frederick, MD 21703 </p>			
<p style="text-align: right;"> C:\NVR\Stores\ALLEGHENY_ALGOO_01\DCY-VG-1512\11316A\Sheets\44_A-13_BATH_LS.dwg 02/28/19 - 8:55 am </p>			

NVR, Inc., owner, expressly reserves its copyright in these plans. These plans are not to be reproduced, changed, copied, or otherwise used in any way without the written consent of NVR, Inc.