

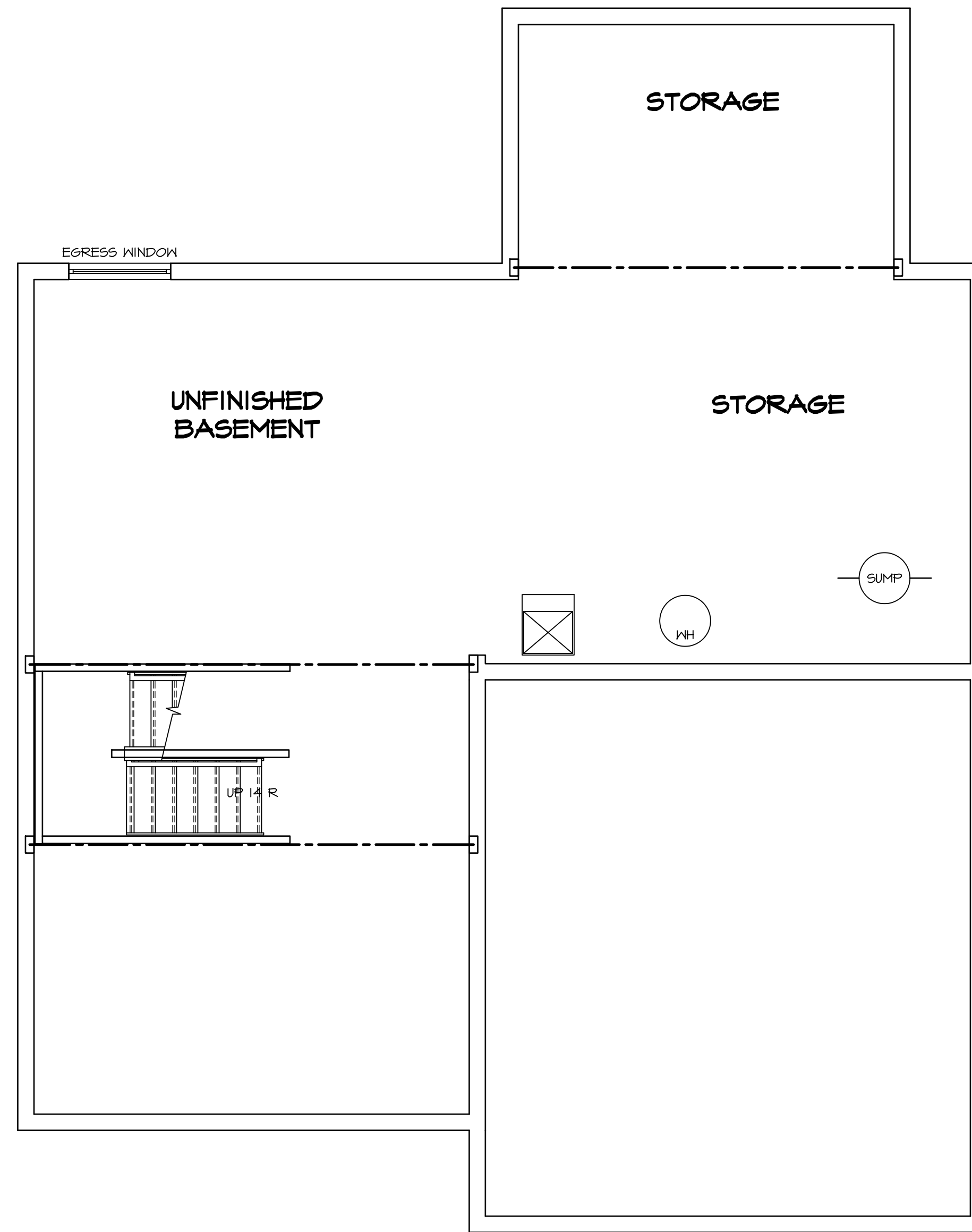
1 PLUMBING PLAN
 A-5 SCALE: 1/4" = 1'-0"

SHEET NO. A-5	MODEL VENICE	SET NO. VNC00 VERSION 06	DATE: 3/18/2015
	DRAWING TITLE PLUMBING PLAN	DRAWN BY	OPTION
	OPTION DESCRIPTION 36		

NVR
 NVR, Inc.
 Architectural Services
 Architects
 21 Sparks Alley, A
 Frederick, MD 21702

NVR, Inc., owner, expressly reserves its copyright in the drawings and plans. These plans are not to be reproduced, changed, copied, or otherwise used without the written consent of NVR, Inc.

REV. NO.	DATE	REMARKS



LEGEND

- BEARING WALL
- NON BEARING WALL
- ⊗ INDICATES BEARING FROM POINT-LOAD ABOVE
- J JACKS
- B BEAM/HEADER
- F PAD FOOTING
- C STEEL COLUMN
- X PORTAL FRAME
- X JOIST/TRUSS
- LVL LVL
- X ENGINEERING PAGE NUMBER

SEE FC DETAILS FOR FRAMING CONNECTORS

- FLOOR PLAN NOTES**
1. ALL HEADERS ARE (2) 2x6 w/ 2x4 WALLS OR (3) 2x6 w/ 2x6 WALLS, UNLESS OTHERWISE NOTED.
 2. ALL HEADERS TO HAVE (1) 2x4 OR 2x6 JACK EACH END, UNLESS OTHERWISE NOTED.
 3. ALL EXTERIOR WALLS TO BE 4" AND ALL INTERIOR WALLS TO BE 3 1/2", UNLESS OTHERWISE NOTED.
 4. HATCHED AREAS INDICATE DROPPED CEILING. ALL DROPPED CEILING ARE 12" UNLESS OTHERWISE NOTED.
 5. SEE "BRACED WALL PANEL DETAIL SHEET" FOR SPECIAL WALL FRAMING LOCATIONS AND HEADER SIZES, IF APPLICABLE.
 6. SEE STANDARD DETAIL CATEGORY "IT" SHEET(S) FOR INTERIOR TRIM DETAILS.
 7. SEE ARCHITECTURAL DETAIL SHEET "AD" FOR HOUSE SPECIFIC INTERIOR TRIM OPTION TABLE.
 8. ALL WINDOWS HAVE 1'-0" 1/2" HEADER HEIGHT UNLESS OTHERWISE NOTED.

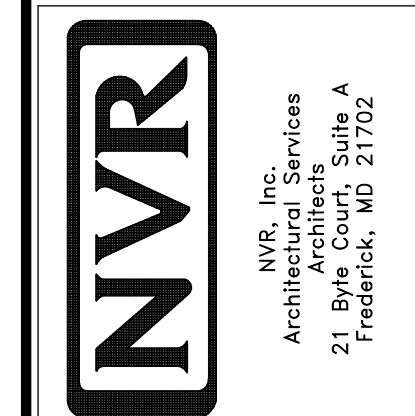
GYPSUM NOTES

AT GARAGE:
GYPSUM BOARD AT COMMON WALLS, CEILING, BEAM WRAPS AND SUPPORTS PER STANDARD DETAIL FA-1(b) FIRE ASSEMBLIES OR AS REQUIRED BY LOCAL CODE.

AT STAIRS:
1/2" GYPSUM BOARD AT UNDERSIDE OF STAIRS AND WALLS IN CLOSET

REV. NO.	DATE	REMARKS
1	08/05/16	TH - DRAWING ALIGNMENT
2	01/24/17	TH - STANDARD DETAILS 3.0

NVR, Inc., owner, expressly reserves its copyright in these plans. These plans are not to be reproduced, changed, copied in any way, or otherwise used without the prior written consent of NVR, Inc.



SET NO. VNC00	VERSION 06
DRAWN BY	DATE: 3/18/2015
OPTION	OPTION

SHEET NO. A-6	MODEL VENICE	DRAWING TITLE BASEMENT FLOOR PLAN
37	OPTION DESCRIPTION	

BASEMENT FLOOR PLAN
SCALE: 1/4" = 1'-0"

LVL PLY TO PLY FASTENING SCHEDULE: (WHERE APPLICABLE BASED ON LVL USAGE)

- 1A - (2) PLY UP TO AND INCLUDING 11 7/8" TALL; FASTEN PLYS W/ (2) ROWS 16D NAILS AT 12" O.C.
- 2A - (2) PLY 14" TO AND INCLUDING 18" TALL (INCLUSIVE); FASTEN PLYS W/ (3) ROWS 16D NAILS AT 12" O.C.
- 3A - (2) PLY 20" TALL AND OVER; FASTEN PLYS W/ (4) ROWS 16D NAILS AT 12" O.C.
- 4A - (3) PLY UP TO AND INCLUDING 11 7/8" TALL; FASTEN PLYS W/ (2) ROWS 16D NAILS AT 12" O.C. FROM EACH SIDE
- 5A - (3) PLY 14" TO AND INCLUDING 18" TALL (INCLUSIVE); FASTEN PLYS W/ (3) ROWS 16D NAILS AT 12" O.C. FROM EACH SIDE
- 6A - (3) PLY 20" TALL AND OVER; FASTEN PLYS W/ (4) ROWS 16D NAILS AT 12" O.C. FROM EACH SIDE
- 7A - (4) PLY (ALL SIZES); FASTEN PLYS W/ (2) ROWS 1/2" DIAMETER A307 BOLTS AT 24" O.C. SEE SHOP DRAWING FOR ADDITIONAL INFORMATION.

FIRST FLOOR BEAM/HEADER SCHEDULE

IDENTIFIER	DESCRIPTION	LENGTH	OPTIONS	ENG. NUM.	REMARKS
BO1	BEAM STEEL - W12X30	20'-2"	ELB, ELC, ELK, GCB, SRI, SXS, ZCN, ZCC	110	
BO3-2	LVL - 04-04	11'-6 1/2"	MAA	106 / 174	1A, FIELD INSTALLED
BO8-2	LVL - 18	15'-7"	MAA	123, 175	2A, FIELD INSTALLED
FFO1-2	LVL - 11-04	19'-8"	GCB, ZCN	102	1A, FIELD INSTALLED

FIRST FLOOR JACK SCHEDULE

IDENTIFIER	DESCRIPTION	OPTIONS	ENG. NUM.	FIELD INSTALLED
JO1	JACK - (2) 2X4 SPF STUD GRADE			
JO2	JACK - (2) 2X4 SPF STUD GRADE			
JO3	JACK - (2) 2X4 SPF STUD GRADE		114	
JO4	JACK - (2) 2X4 SPF STUD GRADE		114	
JO5	JACK - 2X4 SPF STUD GRADE	KAA		
JO6	JACK - 2X4 SPF STUD GRADE	KAA		
J22	JACK - (2) 2X4 SPF STUD GRADE	GCB, ZCN	102	
J50	JACK - (3) 2X4 SP#1	MAA	123, 175	YES
J51	JACK - (3) 2X4 SP#1	MAA	123, 175	YES
J52	JACK - (3) 2X4 SPF STUD GRADE	MAA, SRN, SQK	117	
J54	JACK - (3) 2X4 SPF STUD GRADE	MAA, SRN, SQK, NSA	117	
J66	JACK - (6) 2X4 SP#1	ELB, ELC, ELK, GCB, SRI, SXS, ZCN, ZCC	110	

STEEL COLUMN SCHEDULE

IDENTIFIER	STYLE	HEIGHT	OPTIONS	ENG. NUM.	REMARKS
CO6	STANCHION - 3 IN SCHED 40	4'-0" 5/16"	ELB, ELC, ELK, FBA, GCB, SRI, SXS, ZCN, ZCC	110	

GYPSUM NOTES

RYAN

AT GARAGE:

GYPSUM BOARD AT COMMON WALLS, CEILING, BEAM WRAPS AND SUPPORTS PER STANDARD DETAIL FA-(b) FIRE ASSEMBLIES OR AS REQUIRED BY LOCAL CODE.

AT STAIRS:

1/2" GYPSUM BOARD AT UNDERSIDE OF STAIRS AND WALLS IN CLOSET

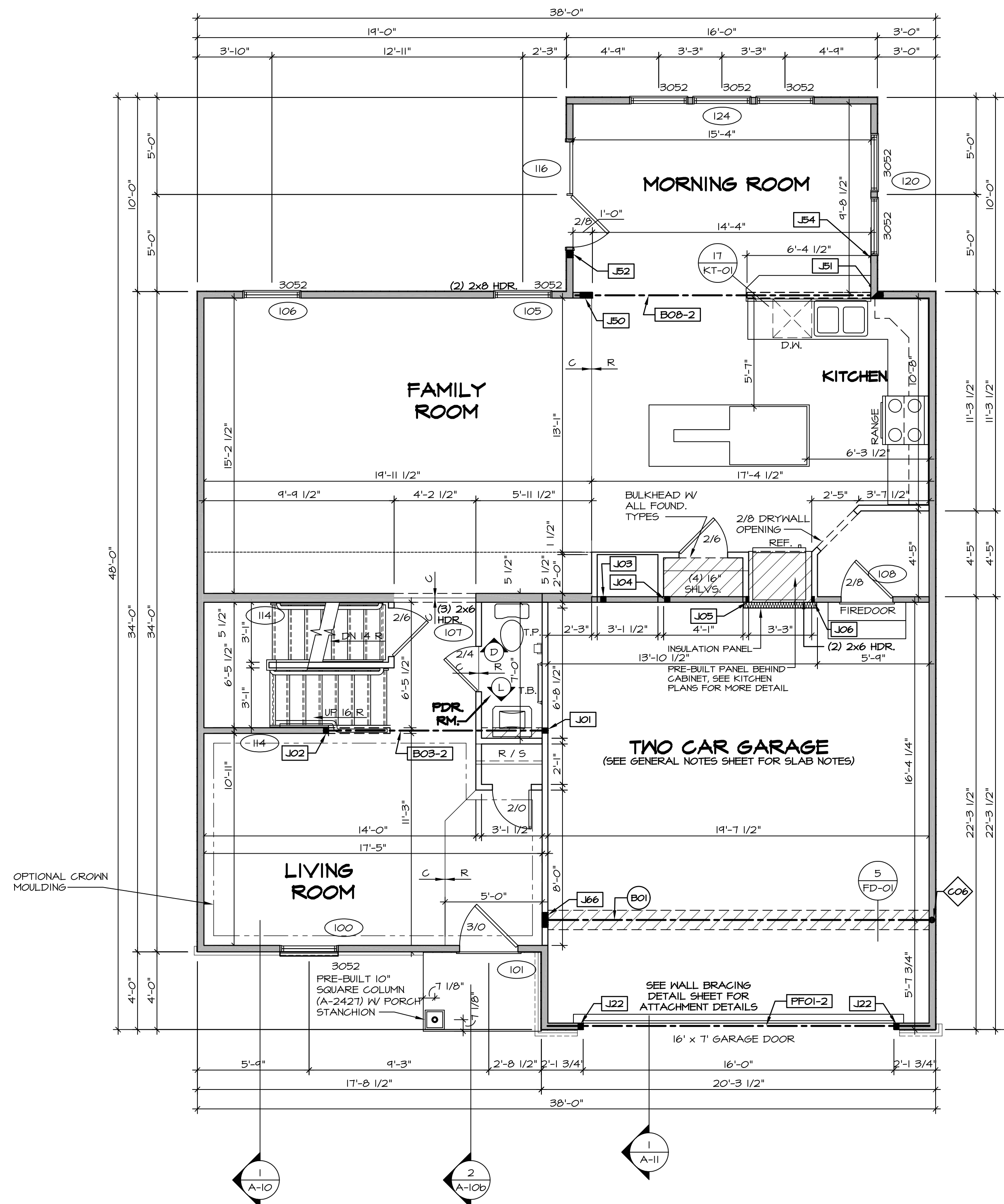
FLOOR PLAN NOTES

RYAN

- ALL HEADERS ARE (2) 2x6 W/ 2x4 WALLS OR (3) 2x6 W/ 2x6 WALLS, UNLESS OTHERWISE NOTED.
- ALL HEADERS TO HAVE (1) 2x4 OR 2x6 JACK AND KING STUD EACH END, UNLESS OTHERWISE NOTED.
- ALL EXTERIOR WALLS TO BE 4" W/ OSB OR 3 1/2" W/ T-FLY, ALL INTERIOR WALLS TO BE 3 1/2", UNLESS OTHERWISE NOTED.
- HATCHED AREAS INDICATE DROPPED CEILING. ALL DROPPED CEILING ARE 12" UNLESS OTHERWISE NOTED.
- SEE "BRACED WALL PANEL DETAIL SHEET" FOR SPECIAL WALL FRAMING LOCATIONS AND HEADER SIZES, IF APPLICABLE.
- SEE STANDARD DETAIL CATEGORY "IT" SHEET(S) FOR INTERIOR TRIM DETAILS.
- SEE ARCHITECTURAL DETAIL SHEET "AD" FOR HOUSE SPECIFIC INTERIOR TRIM OPTION TABLE.
- ALL WINDOWS HAVE T-O 1/2" HEADER HEIGHT UNLESS OTHERWISE NOTED.
- ALL HEADERS IN NON-BEARING WALLS SHALL BE A SINGLE FLAT 2X4 OR 2X6 ATTACHED TO CRIPPLES ABOVE, UNLESS OTHERWISE NOTED.

LEGEND

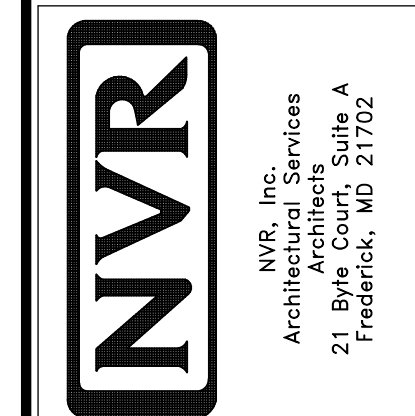
- BEARING WALL
 - NON BEARING WALL
 - INDICATES BEARING FROM POINT-LOAD ABOVE
 - JACKS
 - BEAM/HEADER
 - PAD FOOTING
 - STEEL COLUMN
 - PORTAL FRAME
 - JOIST/TRUSS
 - LVL
 - ENGINEERING PAGE NUMBER
- SEE FC DETAILS FOR FRAMING CONNECTORS



FIRST FLOOR PLAN
SCALE: 1/4" = 1'-0"

REV. NO.	DATE	REMARKS
1	08/05/16	TH - DRAINING ALIGNMENT
2	01/24/17	TH - STANDARD DETAILS 3.0
3	6/28/17	SD - REMOVED GARAGE SERVICE DOOR
4	07/12/17	SLS - T-PLY CONVERSION PROJECT

NVR, Inc., owner, expressly reserves its copyright in these plans. These plans are not to be reproduced, changed, copied, or otherwise used in any way without the written consent of NVR, Inc.



SET NO. VNC00	VERSION 06
DRAWN BY	DATE: 3/18/2015
OPTION	

MODEL VENICE	DRAWING TITLE FIRST FLOOR PLAN
SHEET NO. A-7	OPTION DESCRIPTION

SECOND FLOOR JACK SCHEDULE				
IDENTIFIER	DESCRIPTION	OPTIONS	ENG. NUM.	REMARKS

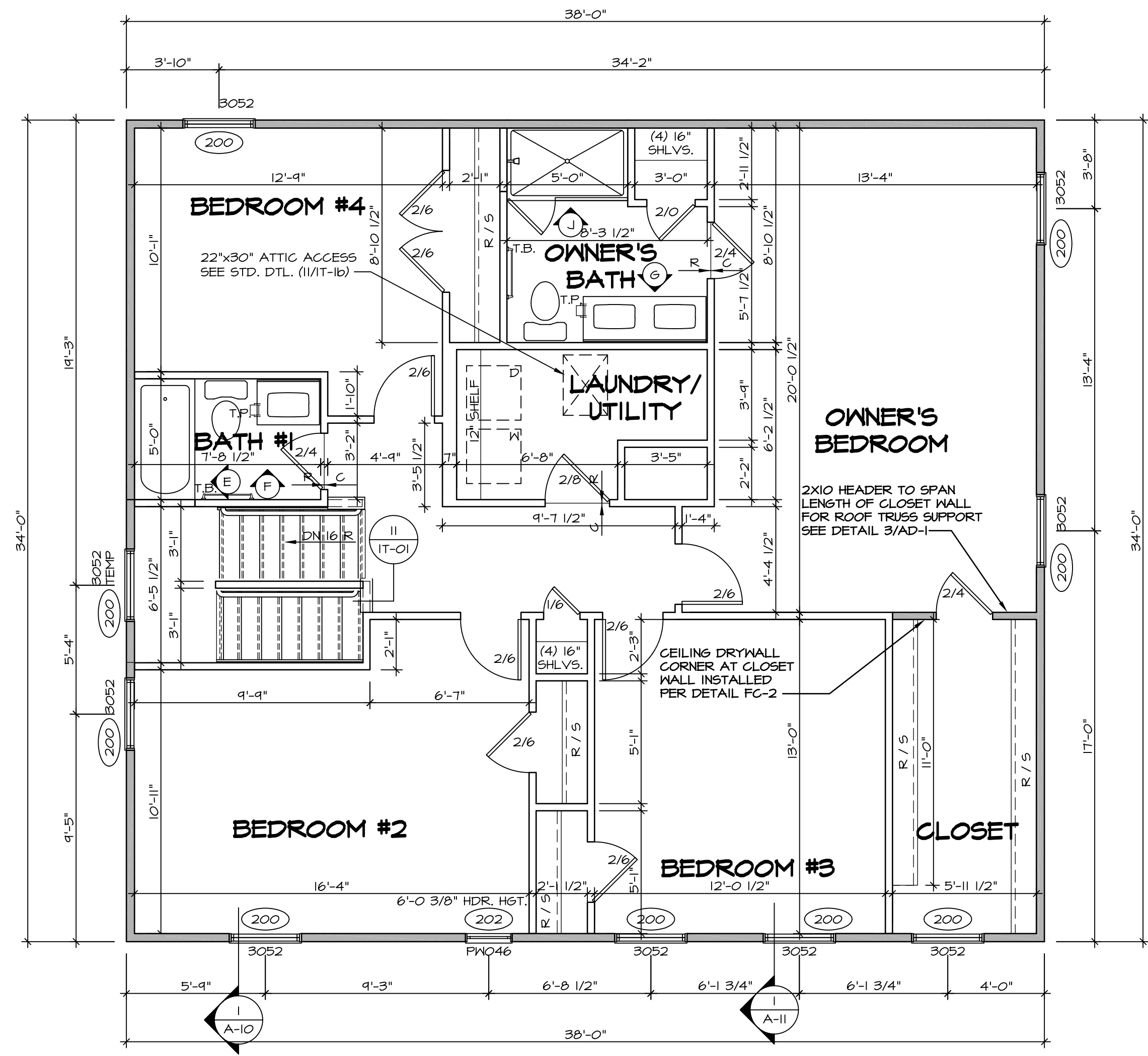
FLOOR PLAN NOTES RYAN

- ALL HEADERS ARE (2) 2x6 w/ 2x4 WALLS OR (3) 2x6 w/ 2x6 WALLS, UNLESS OTHERWISE NOTED.
- ALL HEADERS TO HAVE (1) 2x4 OR 2x6 JACK AND KING STUD EACH END, UNLESS OTHERWISE NOTED.
- ALL EXTERIOR WALLS TO BE 4" w/ OSB OR 3 1/2" w/ T-PLY. ALL INTERIOR WALLS TO BE 3 1/2", UNLESS OTHERWISE NOTED.
- HATCHED AREAS INDICATE DROPPED CEILING. ALL DROPPED CEILING ARE 12" UNLESS OTHERWISE NOTED.
- SEE BRACED WALL PANEL DETAIL SHEET FOR SPECIAL WALL FRAMING LOCATIONS AND HEADER SIZES, IF APPLICABLE.
- SEE STANDARD DETAIL CATEGORY "IT" SHEET(S) FOR INTERIOR TRIM DETAILS.
- SEE ARCHITECTURAL DETAIL SHEET "AD" FOR HOUSE SPECIFIC INTERIOR TRIM OPTION TABLE.
- ALL WINDOWS HAVE T-O 1/2" HEADER HEIGHT UNLESS OTHERWISE NOTED.
- ALL HEADERS IN NON-BEARING WALLS SHALL BE A SINGLE FLAT 2x4 OR 2x6 ATTACHED TO CRIPPLES ABOVE, UNLESS OTHERWISE NOTED.

LEGEND

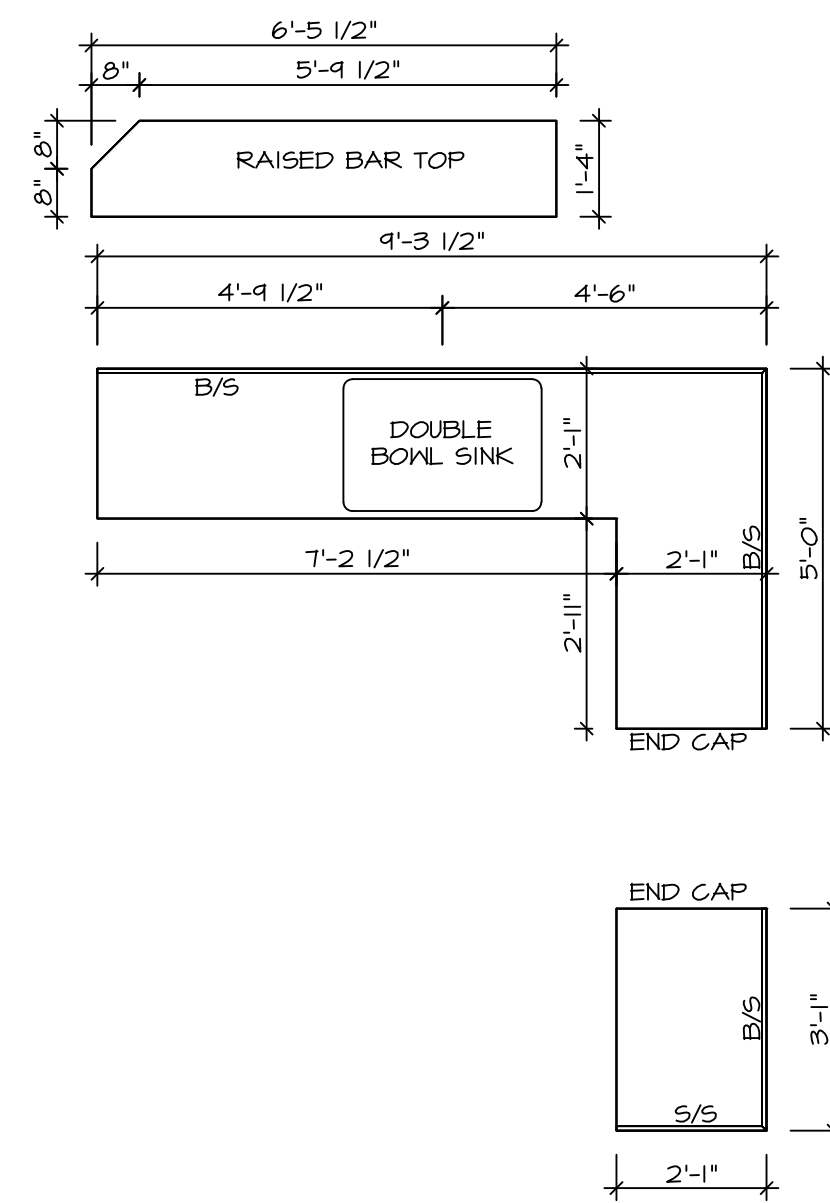
	BEARING WALL
	NON BEARING WALL
	INDICATES BEARING FROM POINT-LOAD ABOVE
	JACKS
	BEAM/HEADER
	PAD FOOTING
	STEEL COLUMN
	PORTAL FRAME
	JOIST/TRUSS
	LVL
	ENGINEERING PAGE NUMBER

SEE FC DETAILS FOR FRAMING CONNECTORS

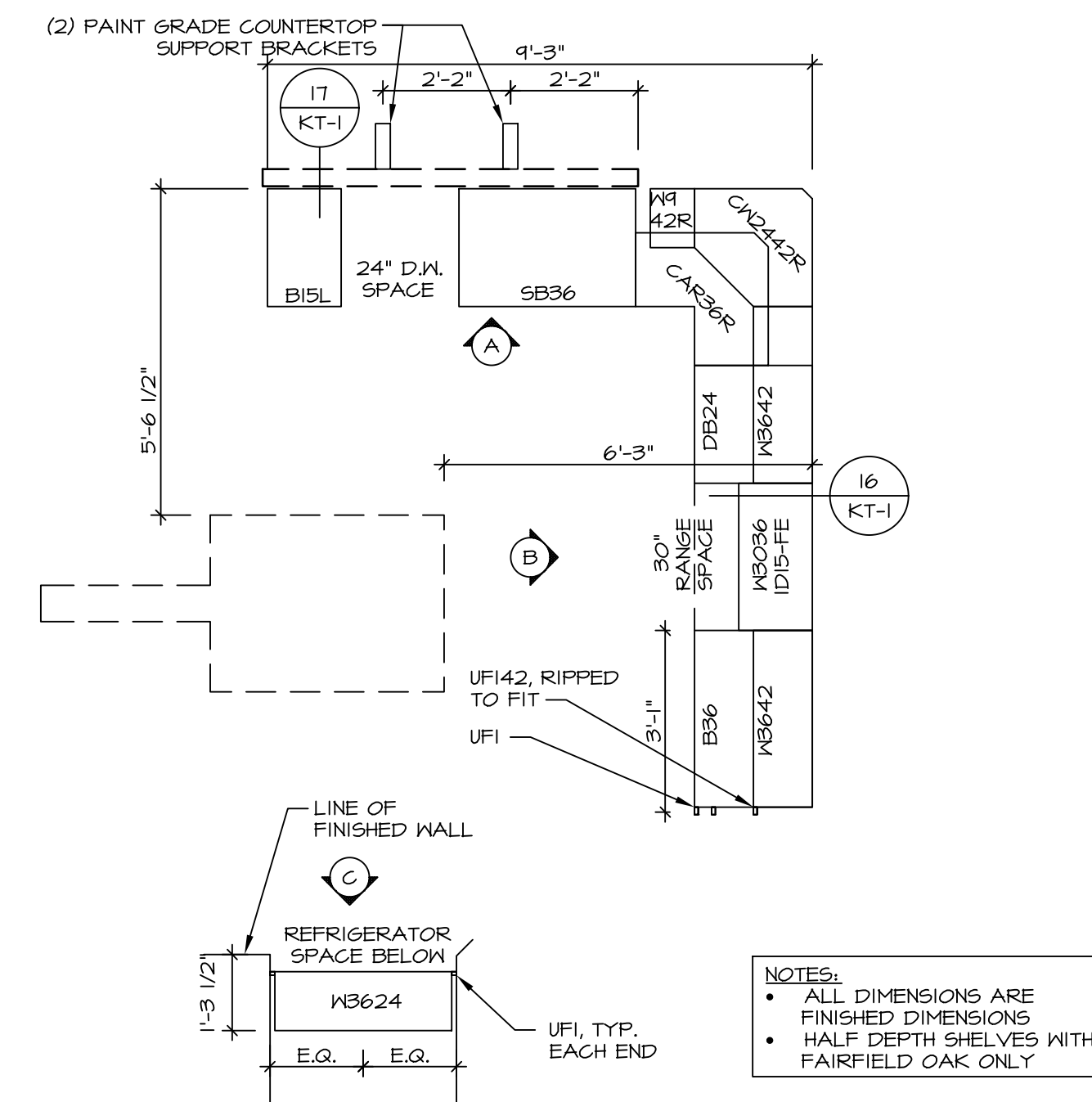


SECOND FLOOR PLAN
SCALE: 1/4" = 1'-0"

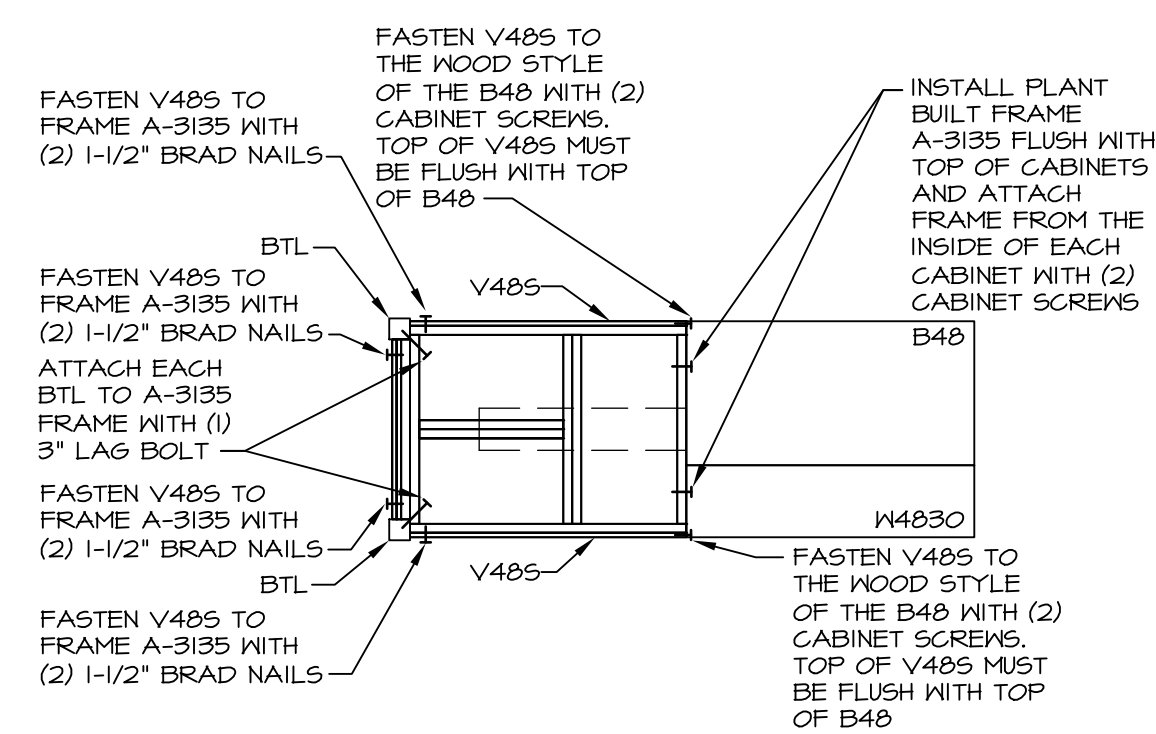
MODEL VENICE DRAWING TITLE SECOND FLOOR PLAN OPTION DESCRIPTION A-8	SET NO. VNC00 VERSION 06 DRAWN BY DATE: 3/18/2015 OPTION	SHEET NO. A-8 44	
	NVR, Inc. Architectural Services 21 Park Plaza, Suite A Frederick, MD 21702	NVR, Inc. owner, expressly reserves its common law copyright in these plans. These plans are not to be reproduced, changed, adapted in any way, or otherwise used, without the prior written consent of NVR, Inc.	REV. NO. DATE 1 08/05/16 TH - DRAWING ALIGNMENT 2 01/24/17 TH - STANDARD DETAILS 3.0 3 07/12/17 SLS - T-PLY CONVERSION PROJECT
	C:\NVR\Solves\VENICE_VNC00_06\DCY-VG-1513\750937A\Sheets\44 A-8 PLAN_LS.dwg 04/11/18 - 6:14 am	REMARKS	REMARKS



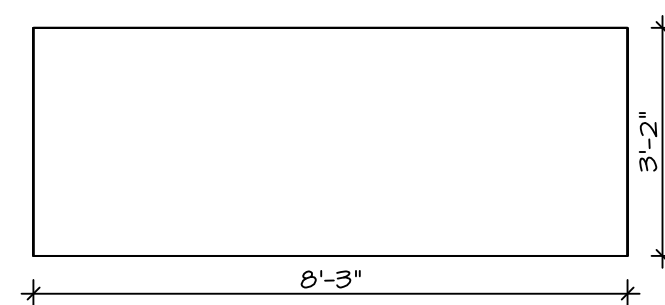
4 COUNTERTOP PLAN - (KT-2920)
 SCALE: 3/8" = 1'-0" STANDARD KITCHEN w/ 42" WALL CABINETS



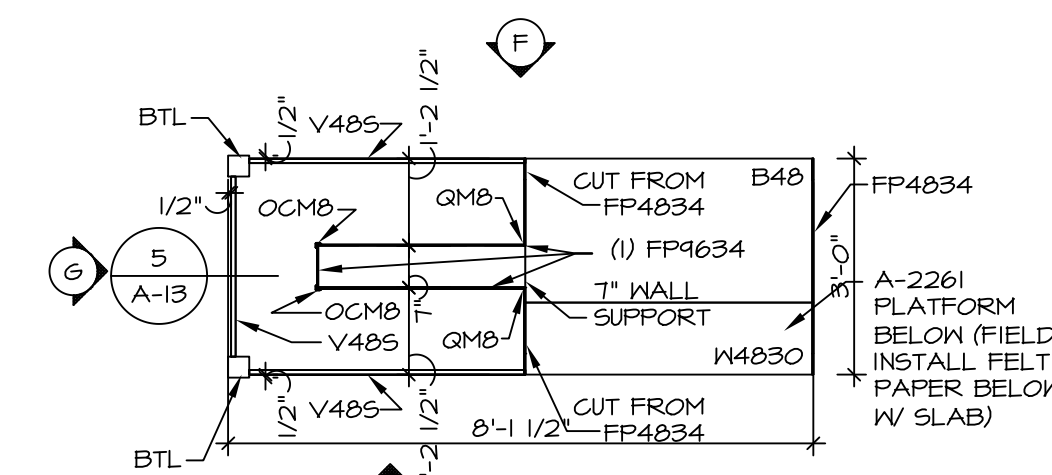
1 CABINET PLAN - (KC-2920)
 SCALE: 3/8" = 1'-0" STANDARD KITCHEN w/ 42" WALL CABINETS



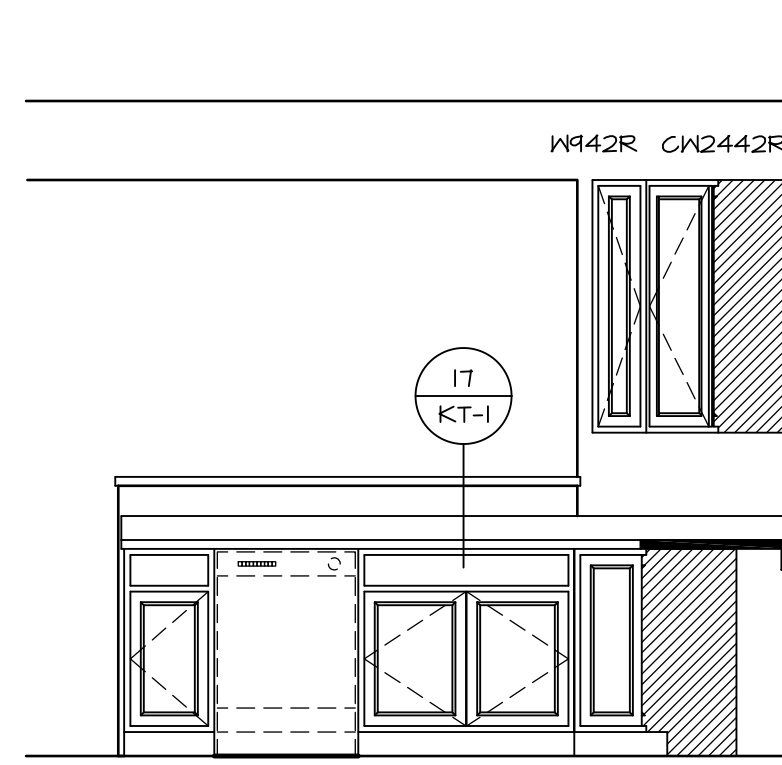
5 COUNTERTOP SUPPORT FRAME
 SCALE: 3/8" = 1'-0"



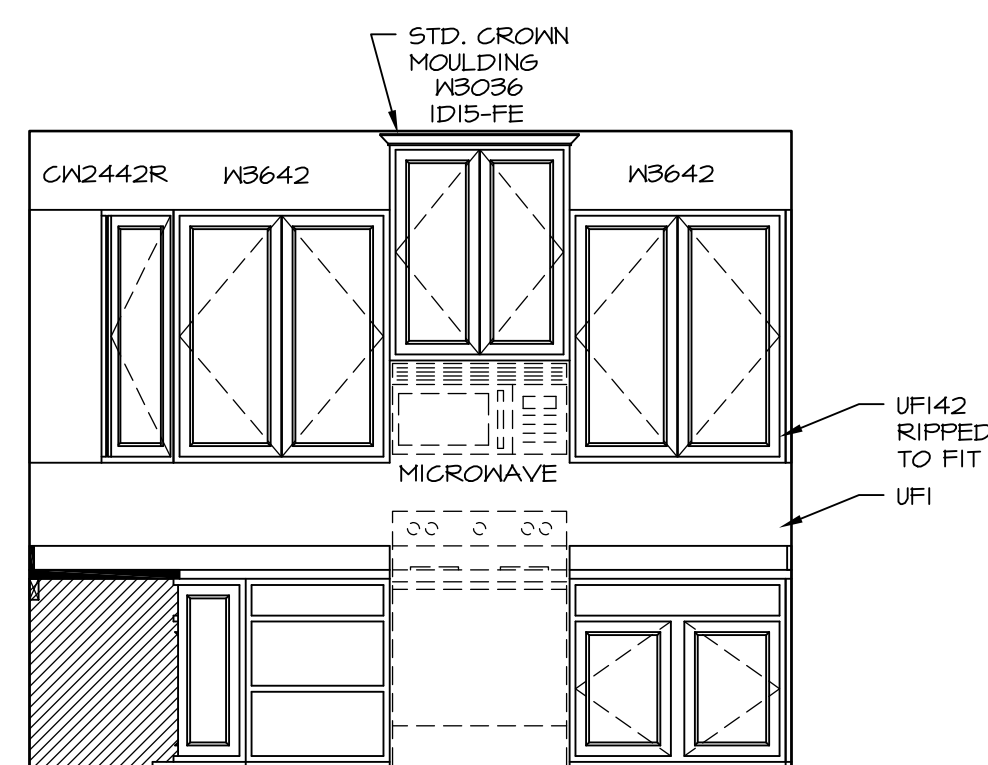
6 COUNTERTOP PLAN - KT-3215
 SCALE: 3/8" = 1'-0" GOURMET KITCHEN ISLAND "KFF"



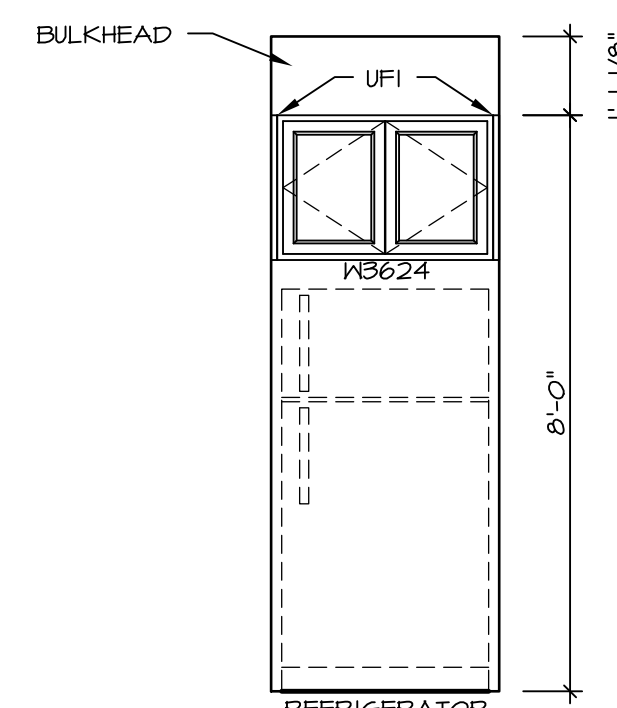
3 KITCHEN CABINET PLAN - KC-3215
 SCALE: 3/8" = 1'-0" GOURMET KITCHEN ISLAND "KFF"



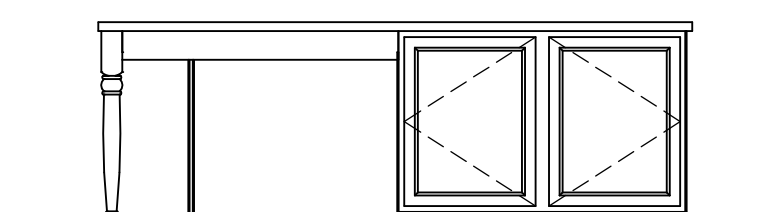
A KITCHEN ELEVATION
 SCALE: 3/8" = 1'-0"



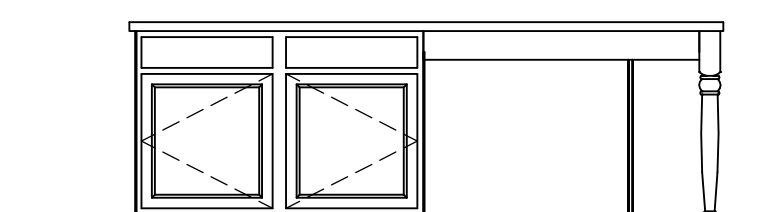
B KITCHEN ELEVATION
 SCALE: 3/8" = 1'-0"



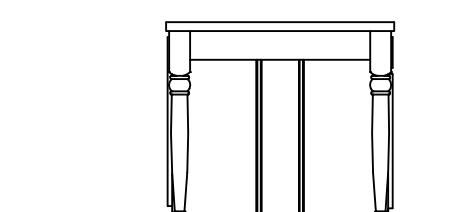
C KITCHEN ELEVATION
 SCALE: 3/8" = 1'-0"



E KITCHEN ELEVATION
 SCALE: 3/8" = 1'-0"



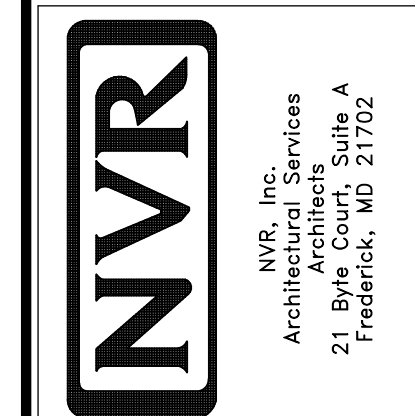
F KITCHEN ELEVATION
 SCALE: 3/8" = 1'-0"



G KITCHEN ELEVATION
 SCALE: 3/8" = 1'-0"

REV. NO.	DATE	REMARKS
1	01/24/17	TNY - STANDARD DETAILS 3.0

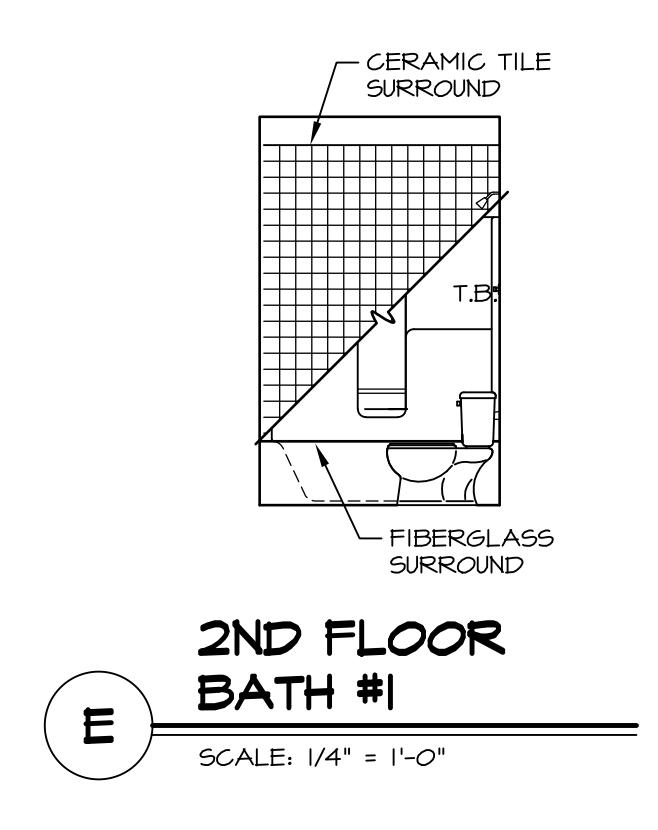
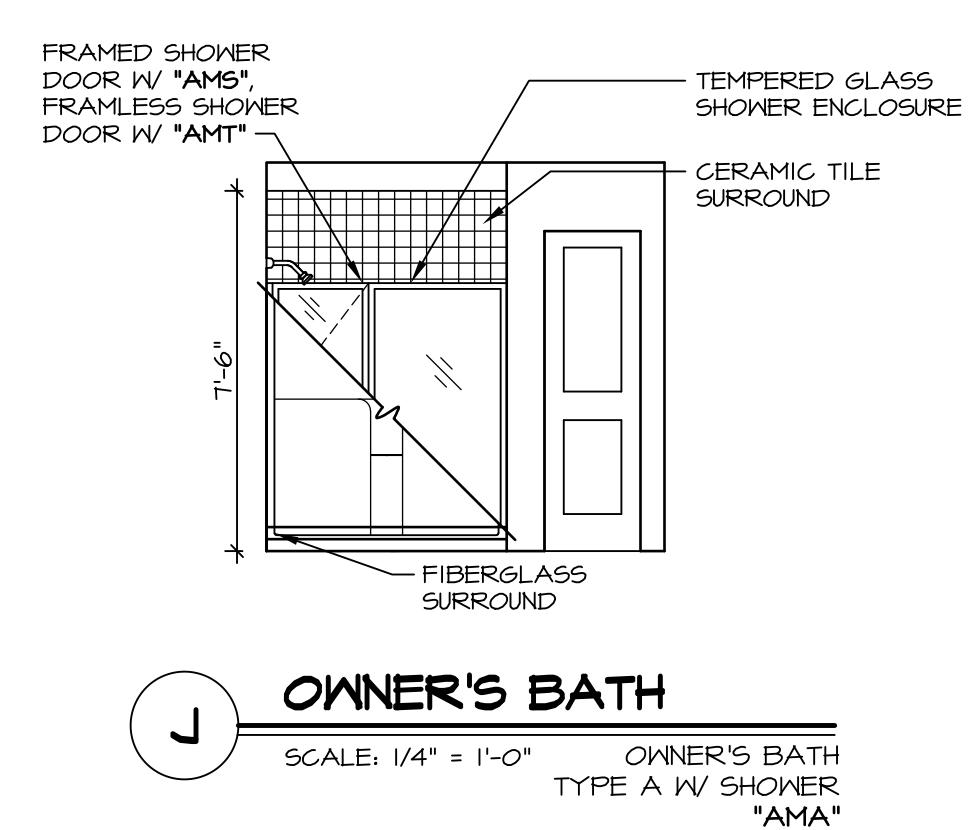
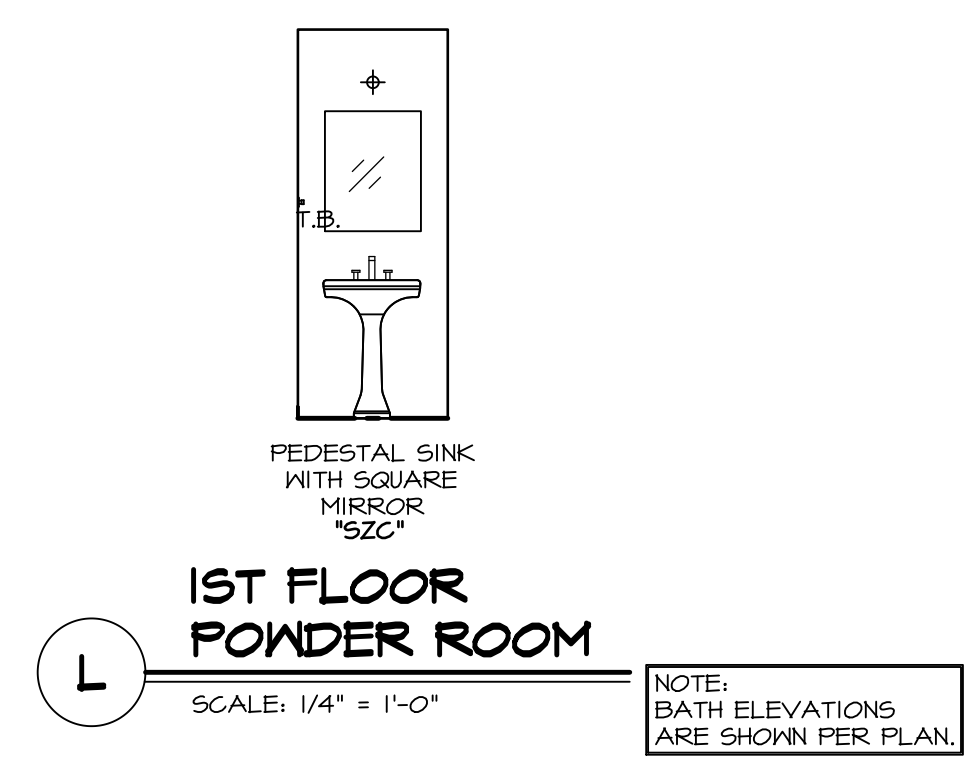
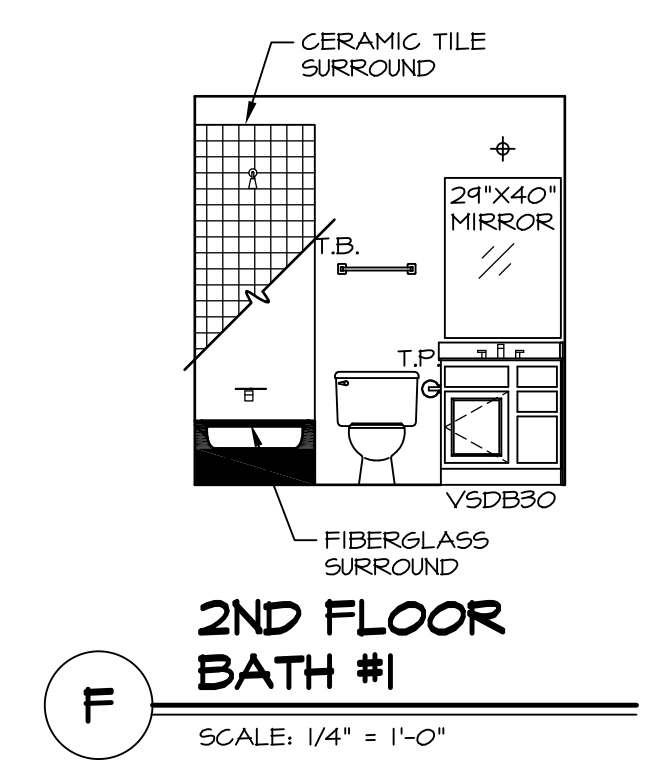
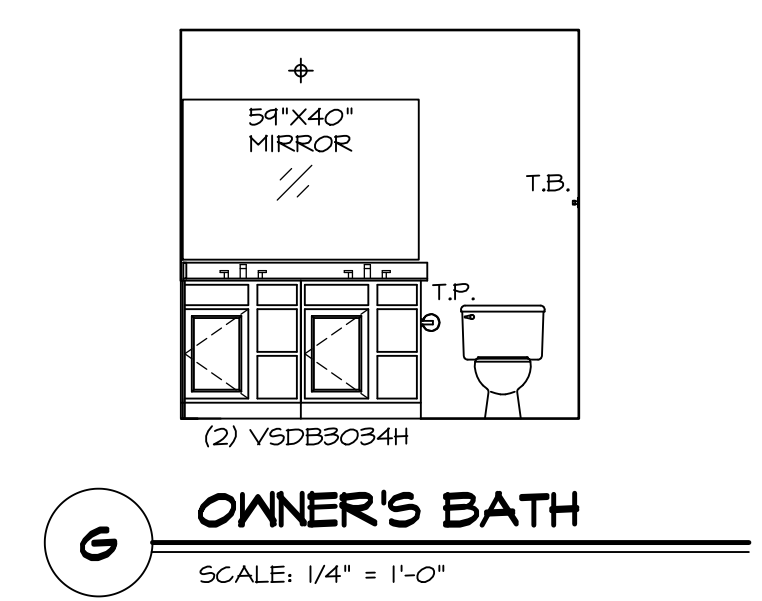
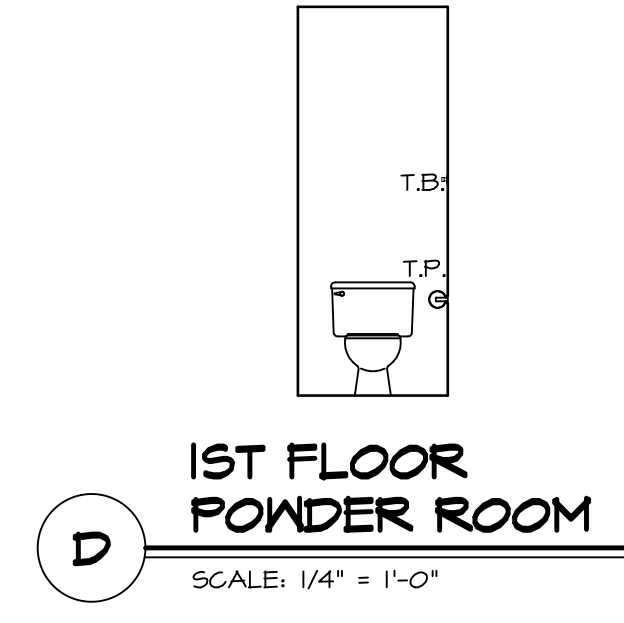
NVR, Inc., owner, expressly reserves its copyright in these plans. These plans are not to be reproduced, changed, copied in any way, or used for any purpose not assigned to them without the written consent of NVR, Inc.



SHEET NO.	MODEL	SET NO.	VERSION	DRAWN BY	DATE	OPTION
A-13	VENICE	06	06		3/18/2015	
	DRAWING TITLE					
	KITCHENS					
	OPTION DESCRIPTION					

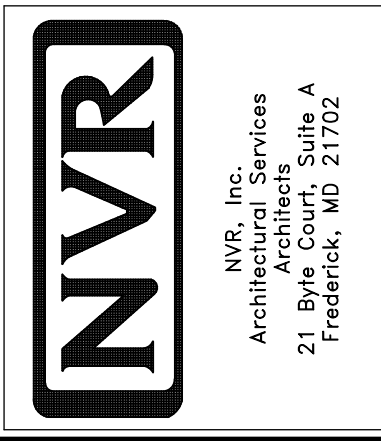
NOTES:

1. TEMPERED GLASS SHOWER ENCLOSURE WITH SWING DOOR OR OPTIONAL SLIDING DOOR BY DIVISION
2. TUB ACCESS PANELS PROVIDED AS NEEDED, ALL MATERIALS BY DIVISION
3. REFER TO SHEET IT-02 FOR TUB AND SHOWER DETAILS.
4. ALL VSDB24-42 DRAWERS TO BE SET ON RIGHT HAND.
5. BATH ELEVATIONS ARE SHOWN PER PLAN.

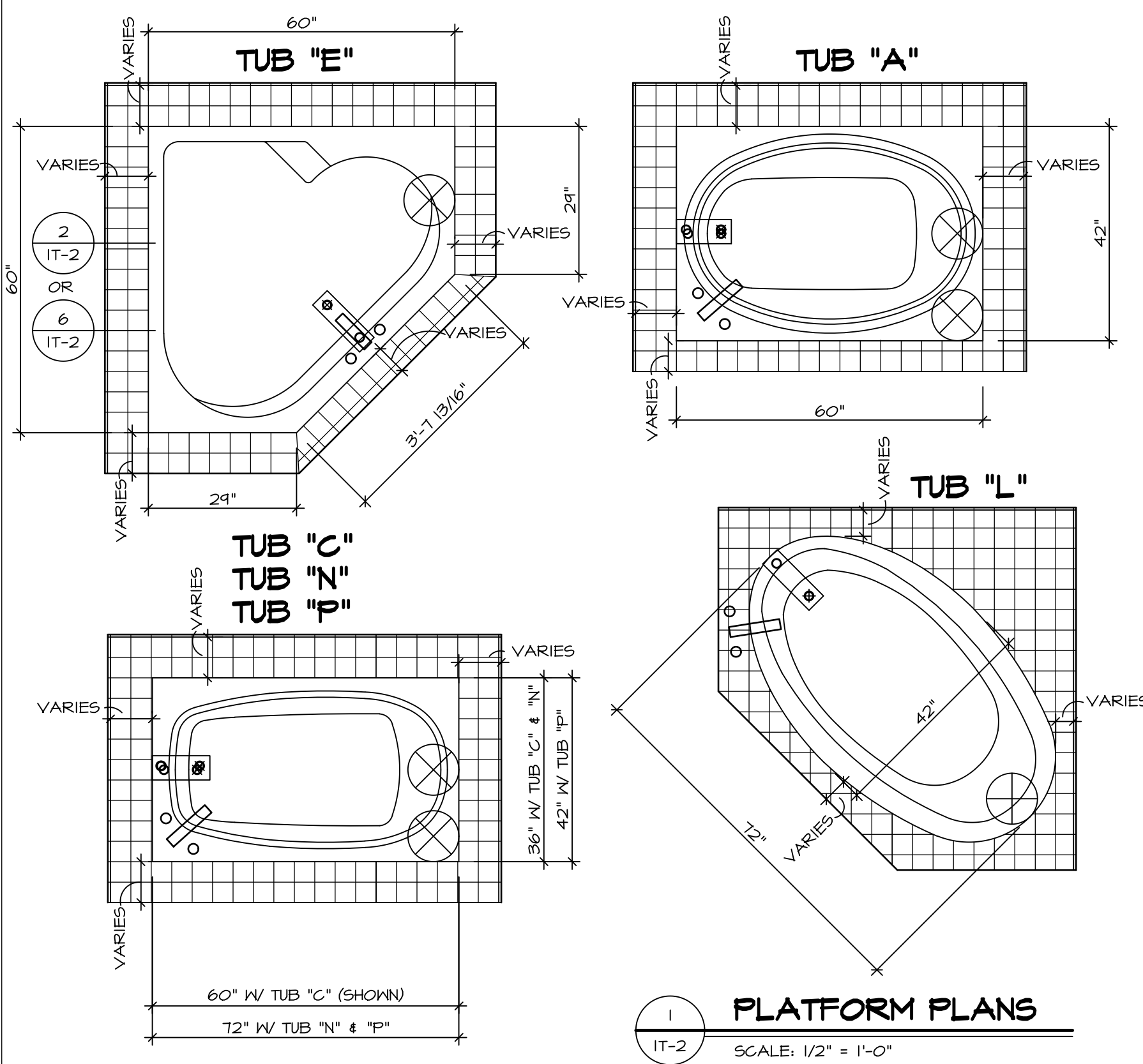


REV. NO.	DATE	REMARKS
1	08/05/16	TM - DRAWING ALIGNMENT
2	01/24/17	TRV - STANDARD DETAILS 5.0

NVR, Inc., owner, expressly reserves its common law copyright in these architectural plans. These plans are not to be reproduced, changed, adapted, or otherwise used in any way without the prior written consent of NVR, Inc.

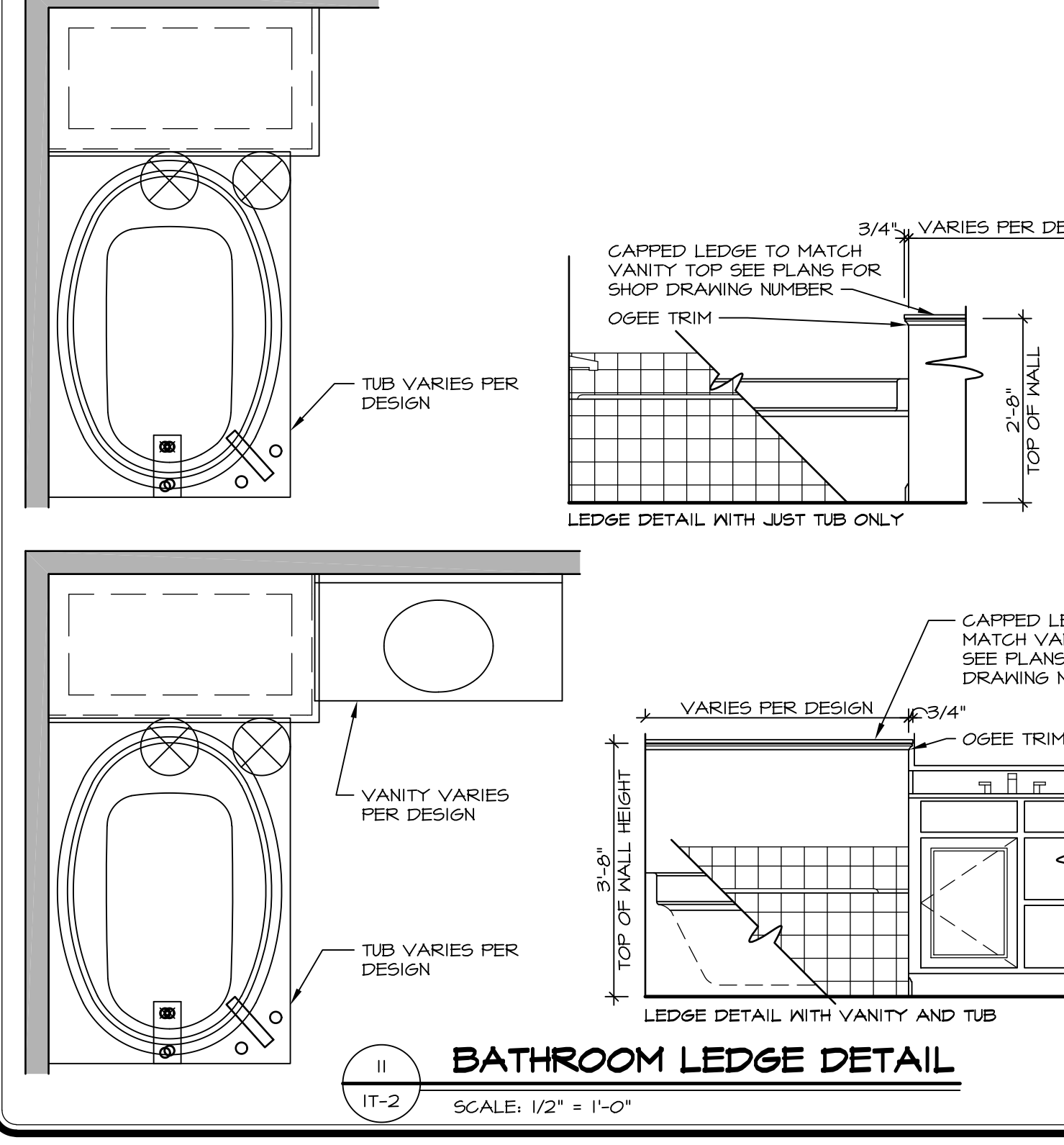
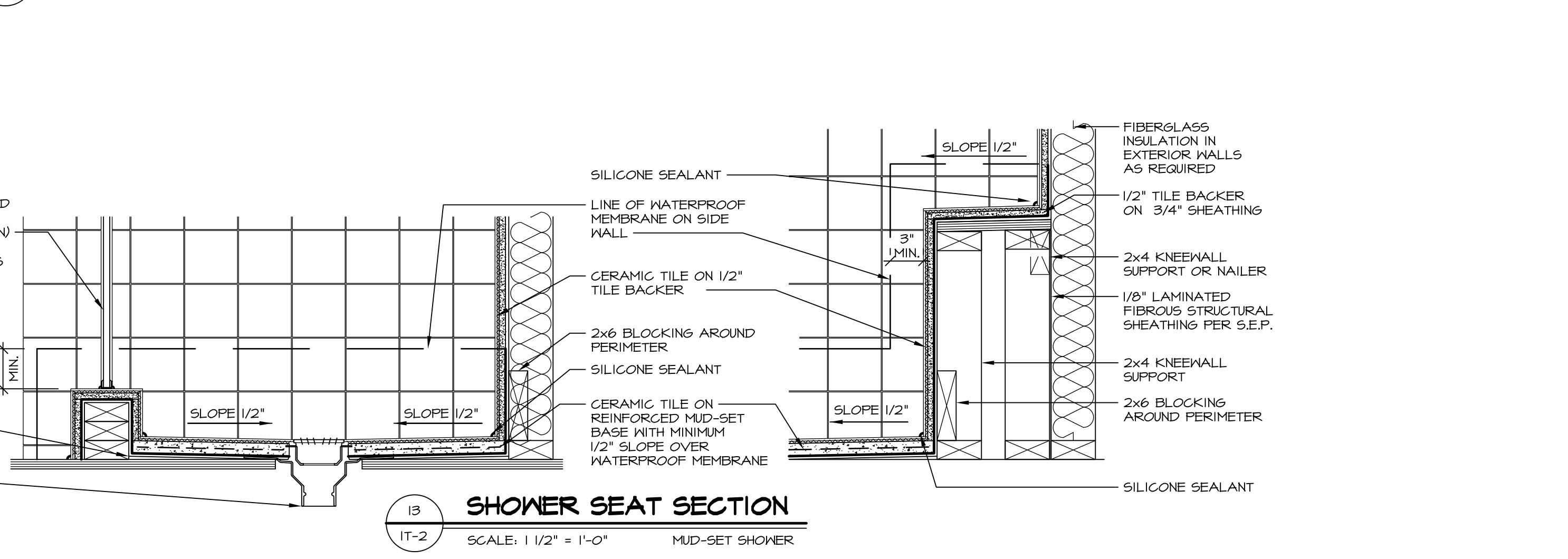
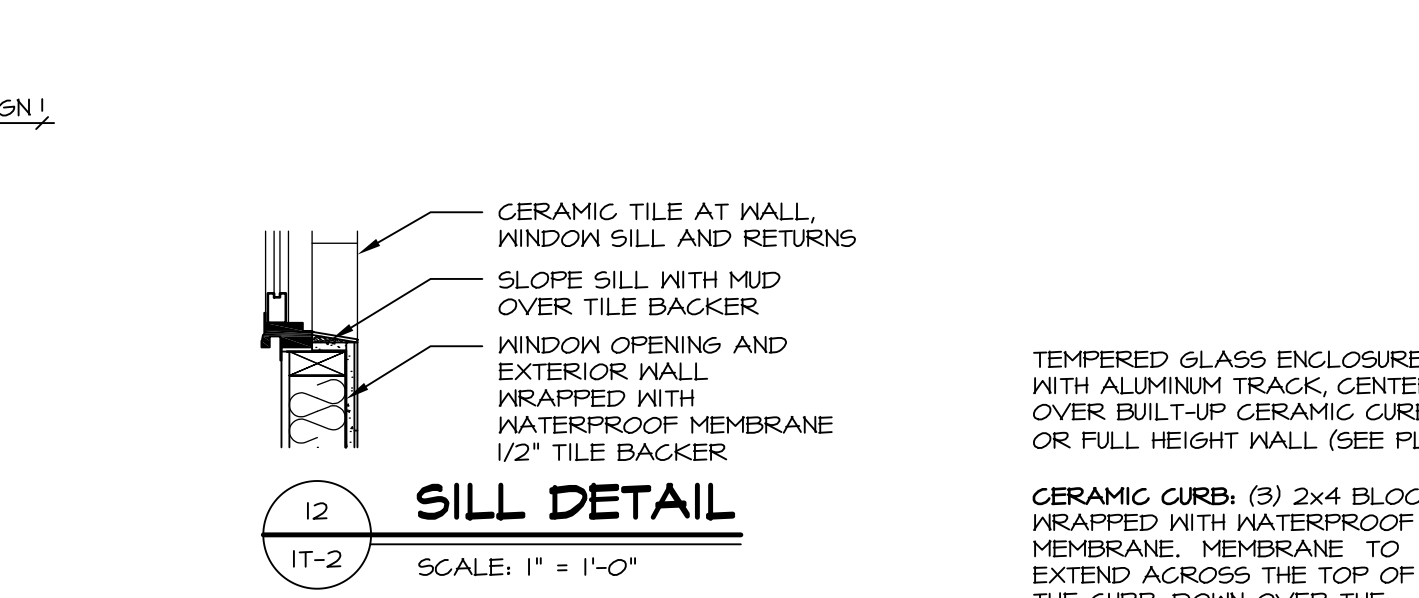
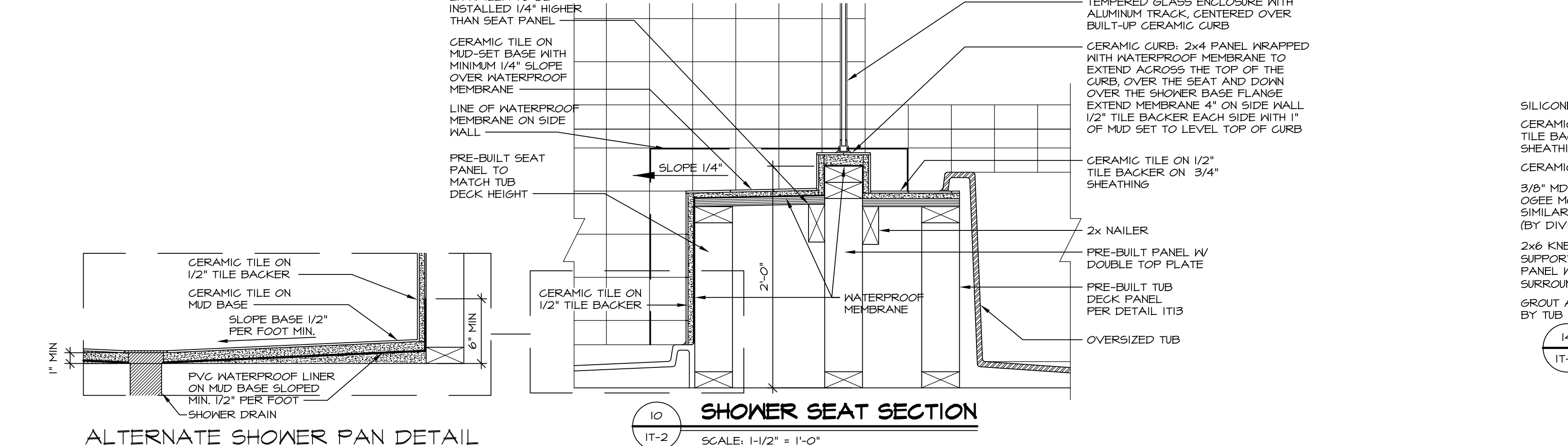
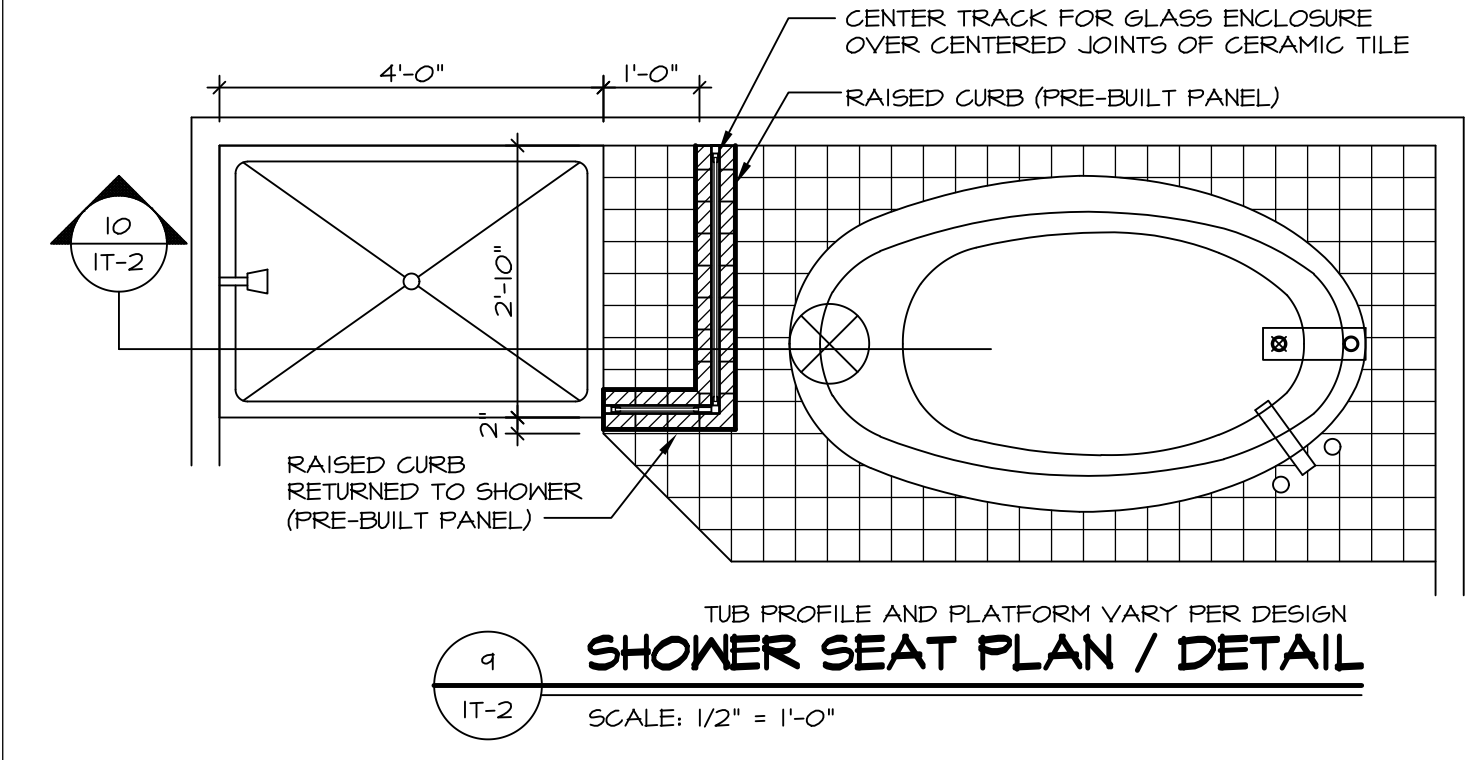
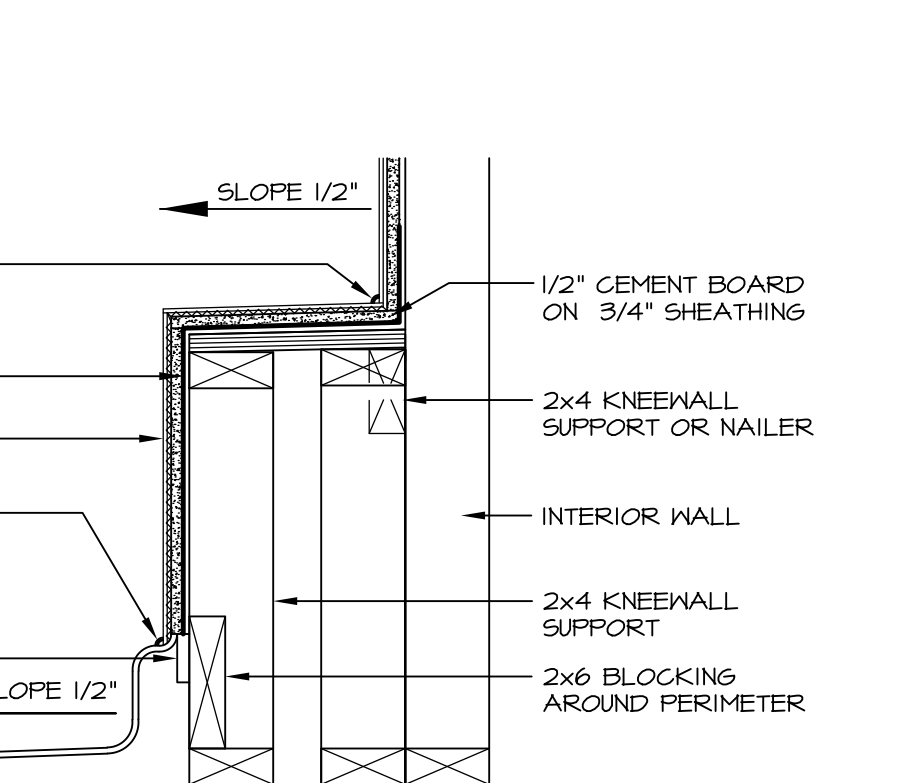
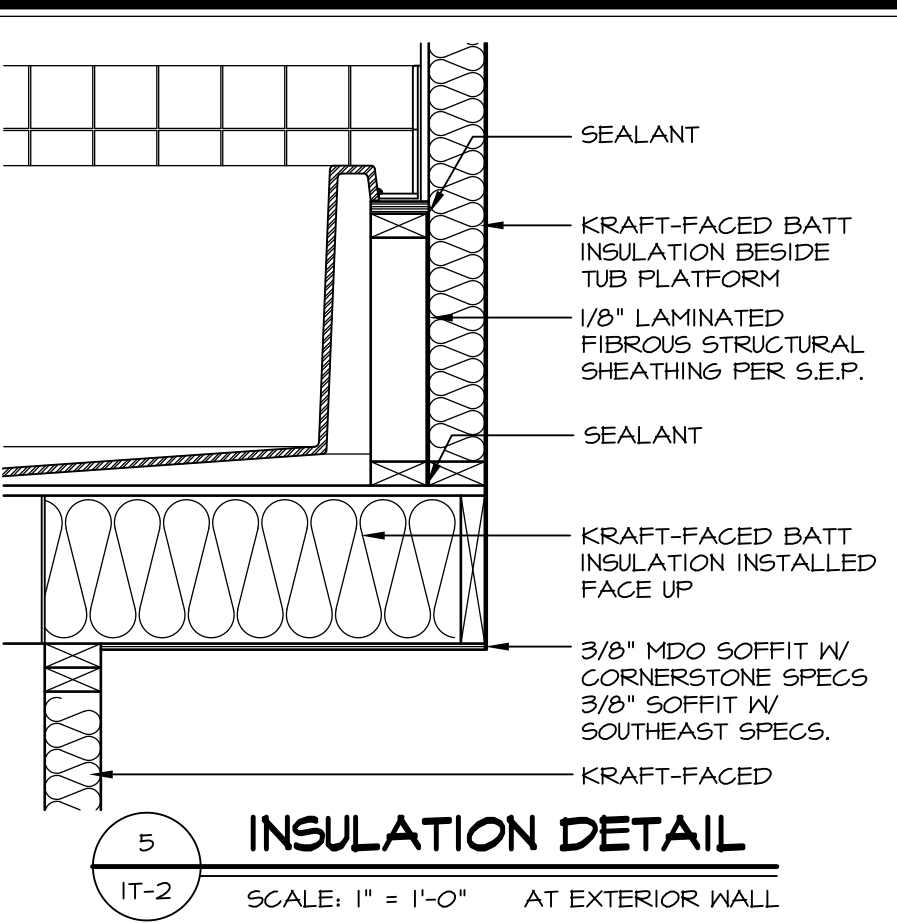
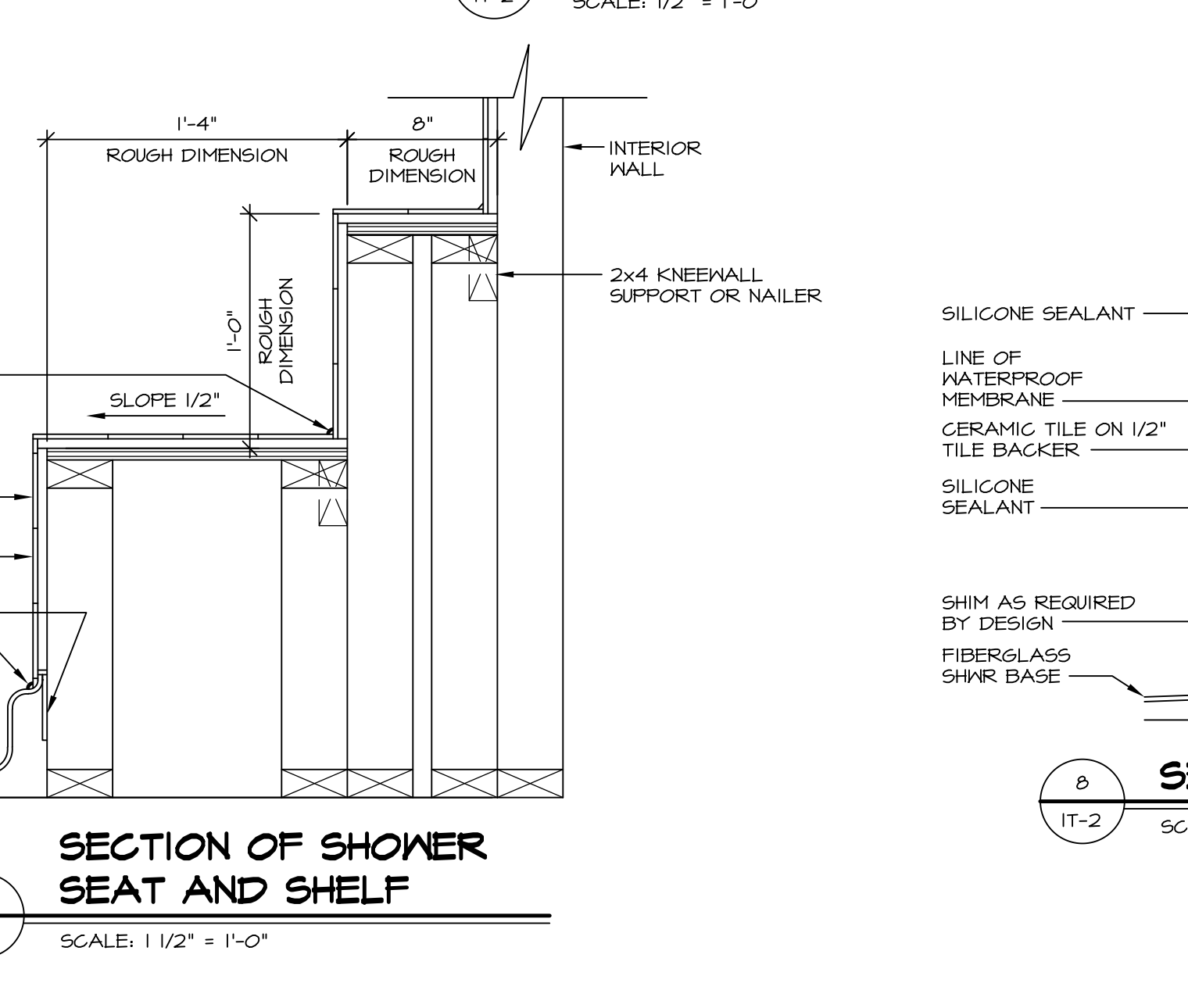
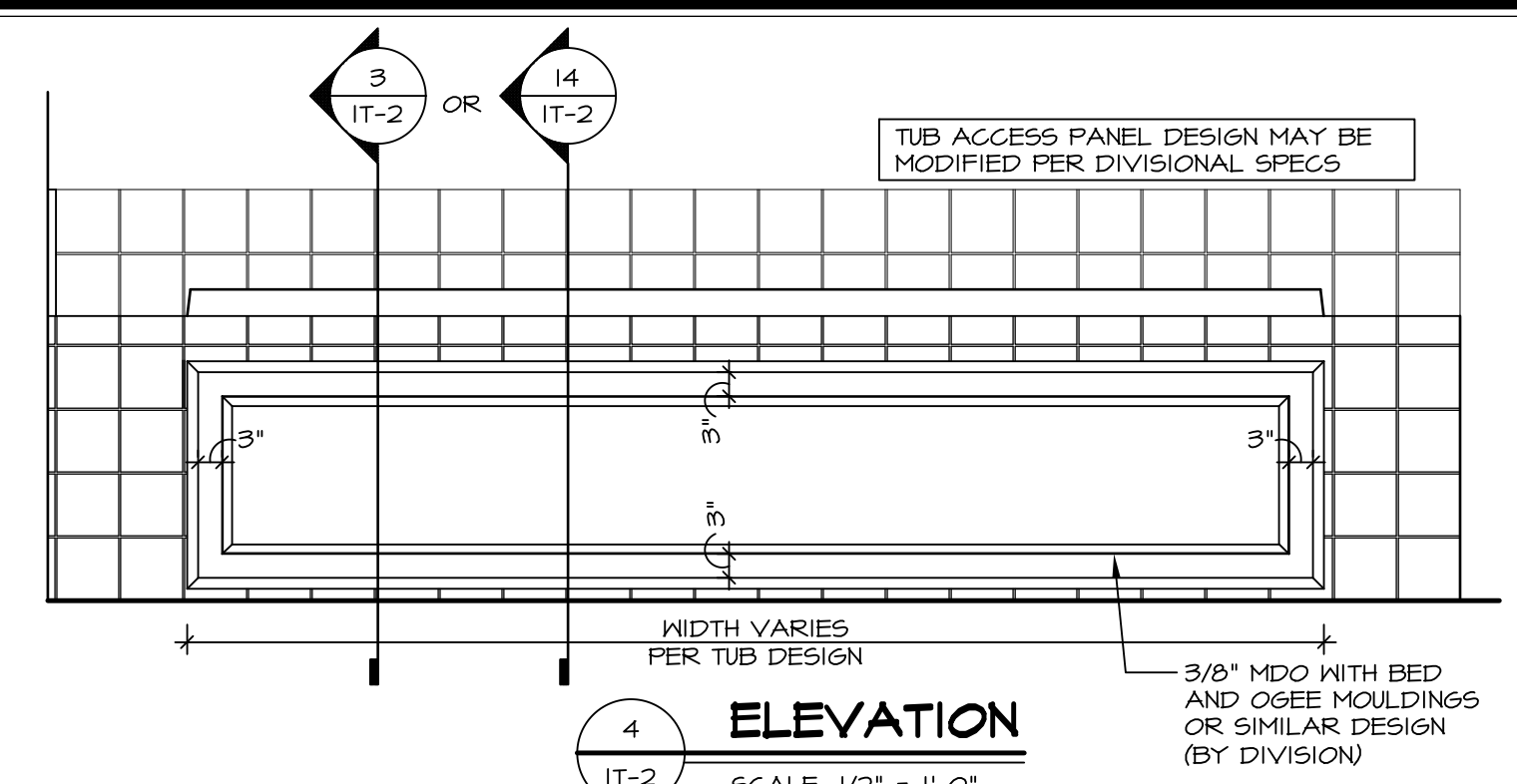
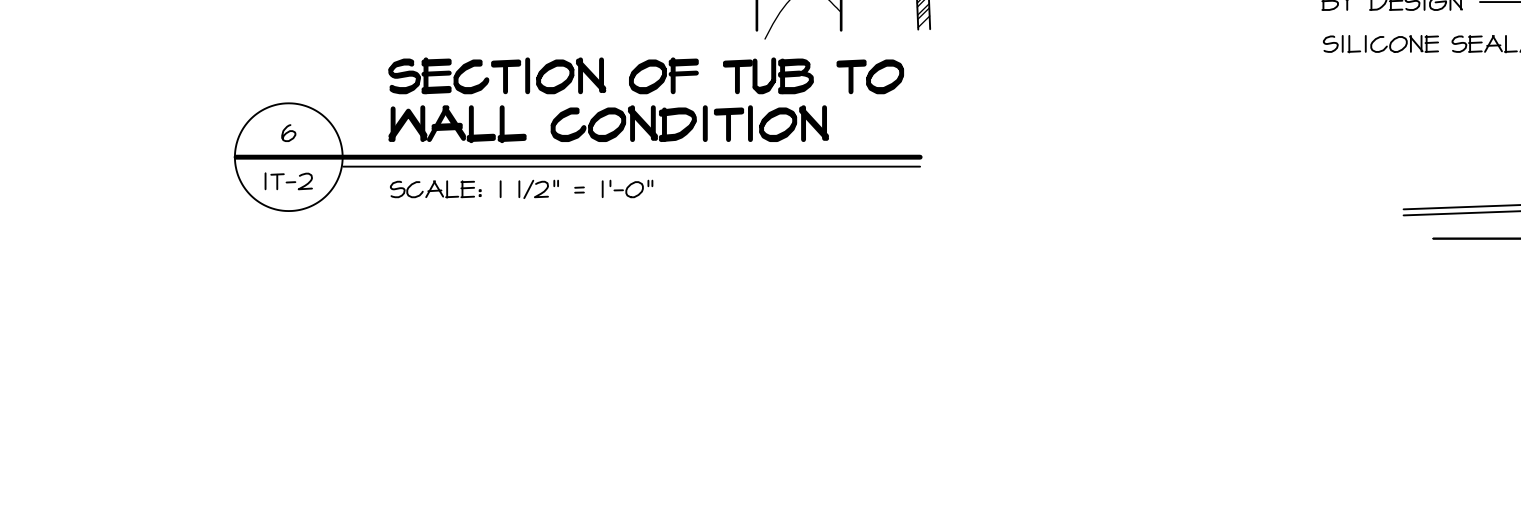
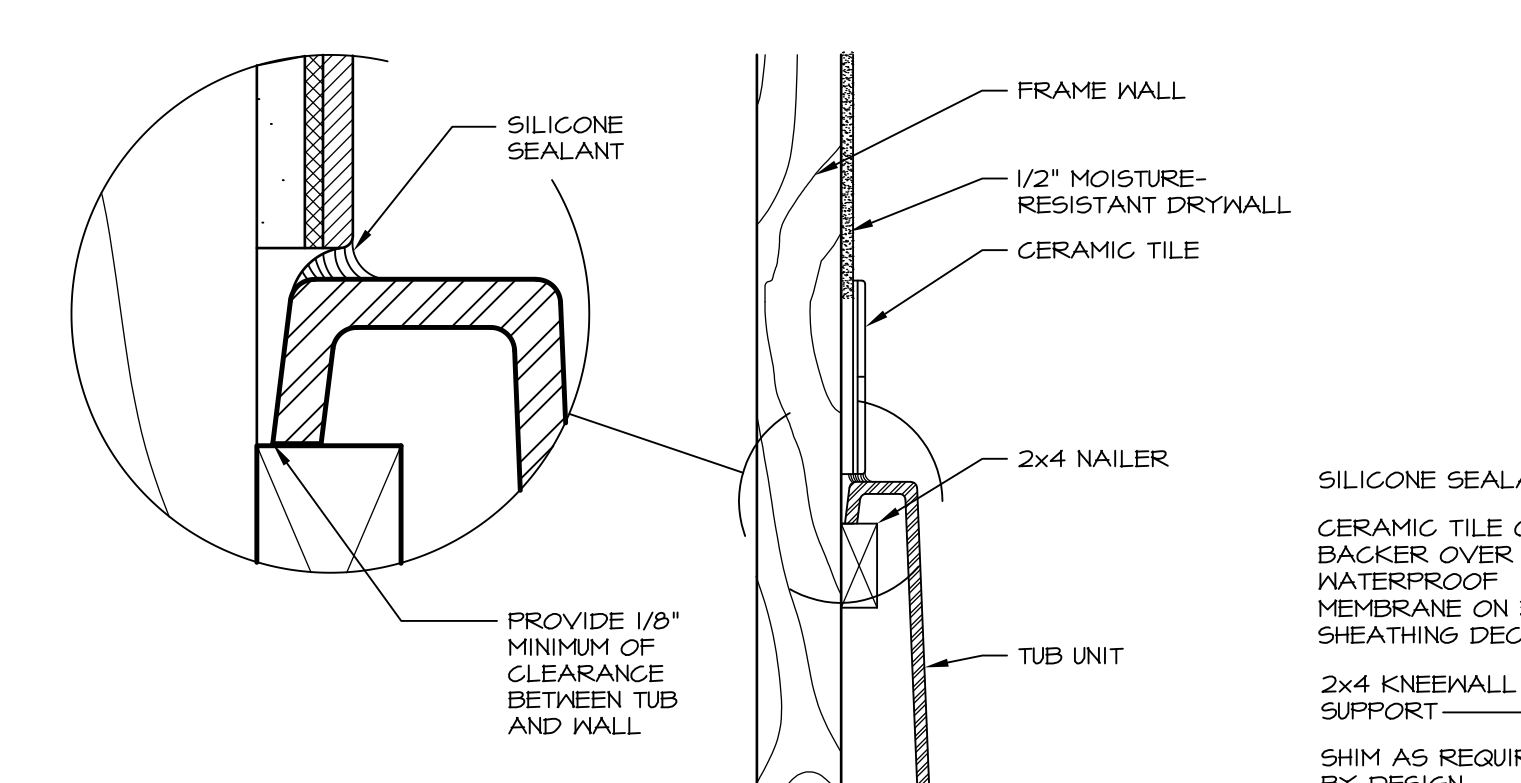
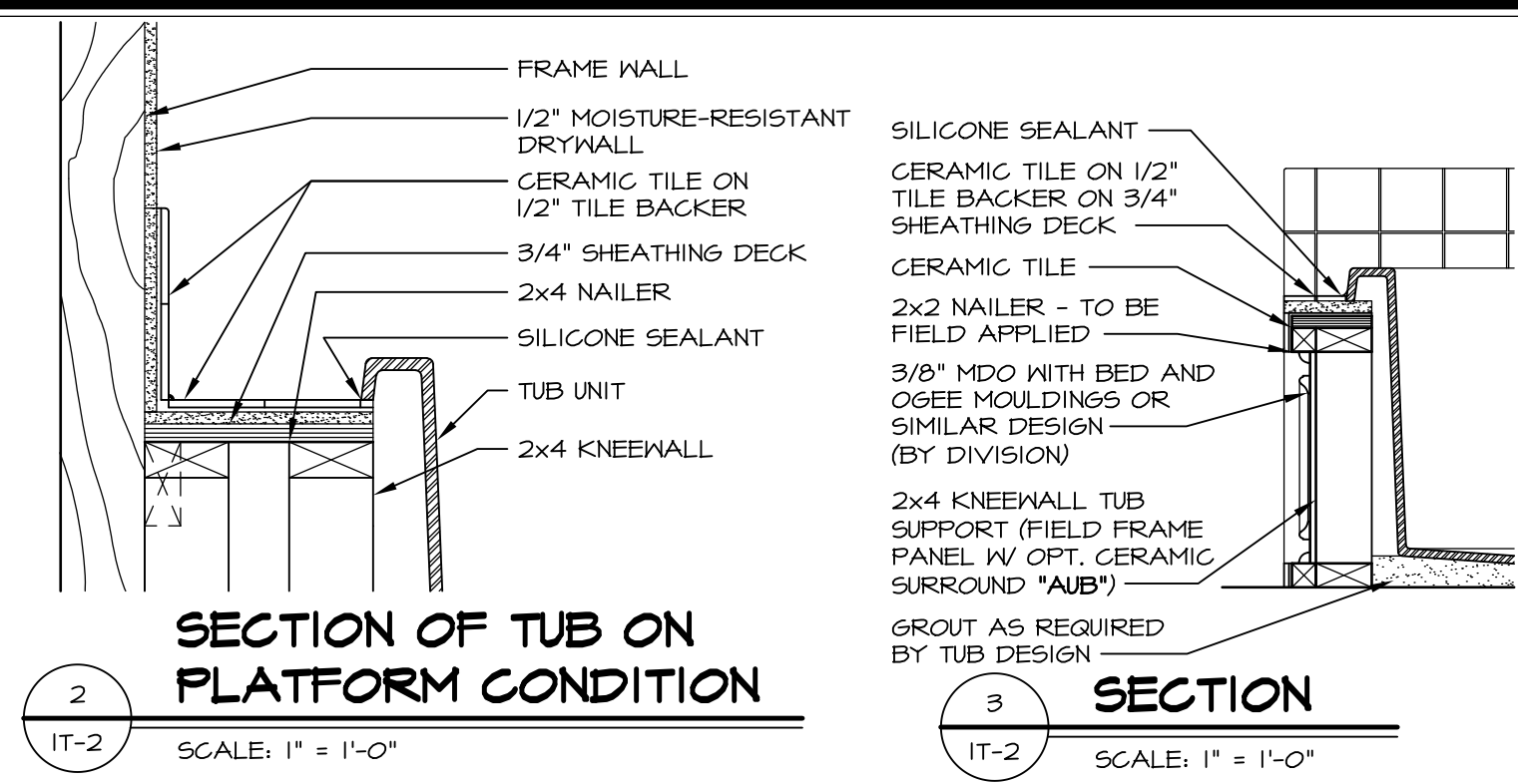


MODEL	VENICE
DRAWING TITLE	BATH ELEVATIONS
OPTION DESCRIPTION	
SHEET NO.	A-14
OPTION	62



1 PLATFORM PLANS
SCALE: 1/2" = 1'-0"

TUB	MANUF.	HEIGHT	WIDTH	LENGTH	TUB DECK PANEL HEIGHT
"A"	KOHLER/ STERLING	18 3/4"	42"	60"	17 1/8"
"C"	KOHLER/ STERLING	18 3/4"	36"	60"	17 1/8"
"E"	KOHLER/ STERLING	19 1/2"	60"	60"	17 7/8"
"L"	KOHLER/ STERLING	18 1/2"	42"	72"	16 7/8"
"N"	KOHLER/ STERLING	18 3/4"	36"	72"	17 1/8"
"P"	KOHLER/ STERLING	18 3/4"	42"	72"	17 1/8"



REVISIONS

REV. NO.	DATE	DESCRIPTION
1	5/11/17	EBP - REVISED DETAIL 1 AND 11 TO REMOVE TUB ACCESS PANEL REF. (095 #15 541/4)
2	9/21/17	EBP - REVISED T-FLY NOTE TO CALL OUT LFS
3	9/21/17	EBP - REVISED NOTE ON DETAIL #1 - REVISED ORDER OF MATERIAL PARA#493/4

SET NO. NVR
VERSION
DRAWN BY
DATE:
OPTION

MODEL
STANDARD DETAILS
DRAWING TITLE
INTERIOR TRIM DETAILS
BATH DETAILS
OPTION DESCRIPTION

SHEET NO.
IT-2

NVR, Inc., owner, expressly reserves its common law copyright and other property rights in these plans. These plans are not to be reproduced, stored in a retrieval system, or transmitted in any form or by any means, electronic, mechanical, photocopying, recording, or by any information storage and retrieval system, without the prior written consent of NVR, Inc.

NVR
NVR, Inc.
Architectural Services
5285 Westpark Drive
Frederick, MD 21703

J:\Dwg\NVR\Interior Trim\IT2.dwg 09/27/17 - 9:20 am