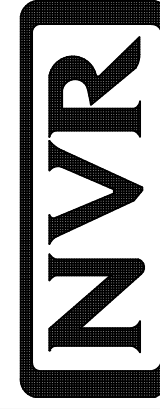


PLUMBING PLAN
SCALE: 1/4" = 1'-0"

SHEET NO. **A-5**
OPTION DESCRIPTION
31

MODEL **PISA TORRE**
DRAWING TITLE **PLUMBING PLAN**
OPTION DESCRIPTION

SET NO. **PSTCO**
VERSION **02**
DRAWN BY
DATE:
OPTION

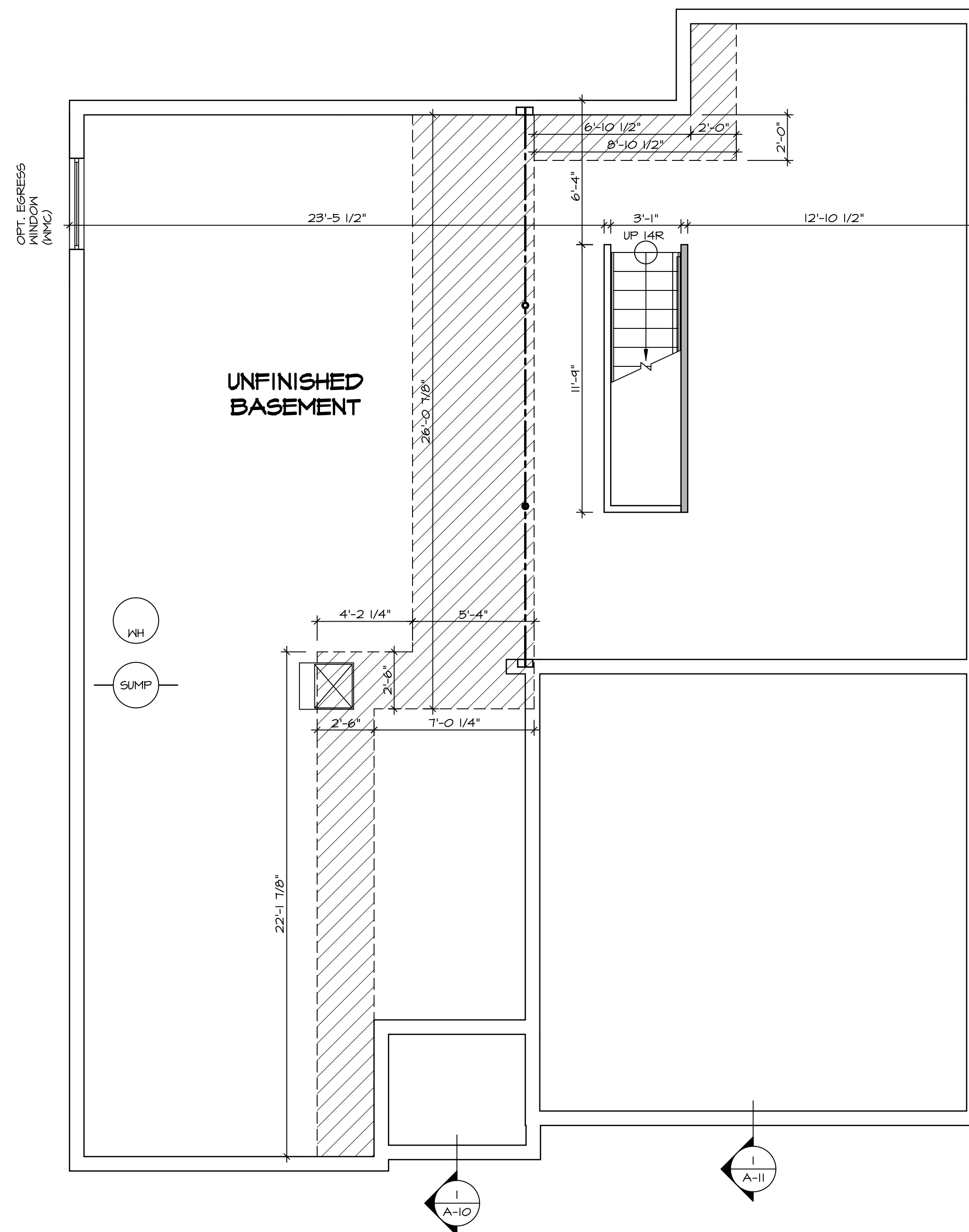


NVR, Inc.
Architectural Services
5285 West Lakeshore, Suite 100
Frederick, MD 21703

NVR, Inc., owner, expressly reserves its copyright in these plans. These plans are not to be reproduced, changed, copied, or otherwise used without the prior written consent of NVR, Inc.

REV. NO. DATE

REMARKS



LEGEND

	BEARING WALL
	NON BEARING WALL
	INDICATES BEARING FROM POINT-LOAD ABOVE
	JACKS
	BEAM/HEADER
	PAD FOOTING
	STEEL COLUMN
	PORTAL FRAME
	JOIST/TRUSS
	LVL
	ENGINEERING PAGE NUMBER

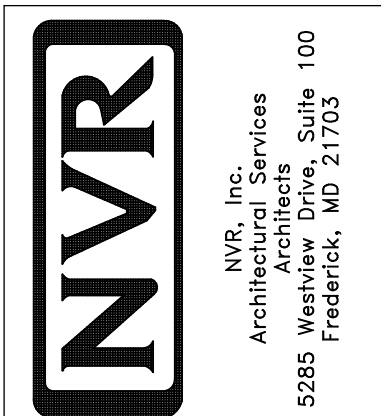
SEE FC DETAILS FOR FRAMING CONNECTORS

- FLOOR PLAN NOTES**
- ALL HEADERS ARE (2) 2x6 w/ 2x4 WALLS OR (3) 2x6 w/ 2x6 WALLS, UNLESS OTHERWISE NOTED.
 - ALL HEADERS TO HAVE (1) 2x4 OR 2x6 JACK EACH END, UNLESS OTHERWISE NOTED.
 - ALL EXTERIOR WALLS TO BE 4" AND ALL INTERIOR WALLS TO BE 3 1/2", UNLESS OTHERWISE NOTED.
 - HATCHED AREAS INDICATE DROPPED CEILINGS. ALL DROPPED CEILINGS ARE 12" UNLESS OTHERWISE NOTED.
 - SEE "BRACED WALL PANEL DETAIL SHEET" FOR SPECIAL WALL FRAMING LOCATIONS AND HEADER SIZES, IF APPLICABLE.
 - SEE STANDARD DETAIL CATEGORY "11" SHEET(S) FOR INTERIOR TRIM DETAILS.
 - SEE ARCHITECTURAL DETAIL SHEET "AD" FOR HOUSE SPECIFIC INTERIOR TRIM OPTION TABLE.
 - ALL WINDOWS HAVE 7'-0" 1/2" HEADER HEIGHT UNLESS OTHERWISE NOTED.

- GYPSUM NOTES**
- AT GARAGE:
GYPSUM BOARD AT COMMON WALLS, CEILING, BEAM WRAPS AND SUPPORTS PER STANDARD DETAIL FA-1(b) FIRE ASSEMBLIES OR AS REQUIRED BY LOCAL CODE.
- AT STAIRS:
1/2" GYPSUM BOARD AT UNDERSIDE OF STAIRS AND WALLS IN CLOSET
- BASEMENT WITH I-JOIST FLOOR SYSTEM ABOVE:
WITH OPTION "SC1" - DRYWALL UNFINISHED BASEMENT CEILING AREA

- NOTES:**
- 1/2" GYPSUM WALL BOARD REQUIRED ON CEILING IN UNFINISHED AREAS WHEN NO SPRINKLER SYSTEM IS INSTALLED.
 - A MAXIMUM AREA OF 80 SQ FT MAY BE OMITTED AS NEEDED FOR INSTALLATION OF PLUMBING, ELECTRICAL, AND/OR HVAC (TYPICALLY AN 8'-0"x8'-0" CEILING SPACE ABOVE MECHANICAL AREA).
 - PROVIDE FIRE BLOCKING AS REQUIRED AT PERIMETER OF ANY AREAS WHERE DRYWALL HAS BEEN OMITTED.

SHEET NO. A-6	MODEL PISA TORRE	SET NO. PS100	REVISIONS	REMARKS
		VERSION 02	08/07/16 TH - DRAWING ALIGNMENT	
DRAWING TITLE BASEMENT FLOOR PLAN	OPTION DESCRIPTION	DRAWN BY		
		DATE:		
		OPTION		



BASEMENT FLOOR PLAN
SCALE: 1/4" = 1'-0"

FIRST FLOOR JACK SCHEDULE				
IDENTIFIER	DESCRIPTION	OPTIONS	ENG. NUM.	REMARKS
J01	JACK - (2) 2X4 SPF STUD GRADE		1051 / 1050	
J02	JACK - (2) 2X4 SPF STUD GRADE		1051 / 1050	
J03	JACK - (5) 2X4 SP#1	SXC	1051	STEEL PLATE
J04	JACK - (5) 2X4 SP#1	SXC	1051	STEEL PLATE
J05	JACK - (2) 2X4 SPF STUD GRADE	ZCC / SXC	1062	
J06	JACK - (2) 2X4 SPF STUD GRADE	ZCC / SXC	1062	
J14	JACK - (2) 2X4 SPF STUD GRADE	ELM	1053 / 1056	
J15	JACK - (2) 2X4 SPF STUD GRADE	D6T / ZCC / SXC	1034	
J16	JACK - (2) 2X4 SPF STUD GRADE	D6T / ZCC / SXC	1034	
J54	JACK - (3) 2X6 SPF STUD GRADE	EES / SXC	1050	STEEL PLATE
J55	JACK - (5) 2X4 SP#1	EES / SXC	1050	STEEL PLATE
J67	JACK - (3) 2X4 SPF STUD GRADE	GCB / ZCC	1006	
J68	JACK - (3) 2X4 SPF STUD GRADE	GCB / ZCC	1006	

LEGEND	
	BEARING WALL
	NON BEARING WALL
	INDICATES BEARING FROM POINT-LOAD ABOVE
	JACKS
	BEAM/HEADER
	PAD FOOTING
	STEEL COLUMN
	PORTAL FRAME
	JOIST/TRUSS
	LVL
	ENGINEERING PAGE NUMBER

SEE FC DETAILS FOR FRAMING CONNECTORS

LVL PLY TO PLY FASTENING SCHEDULE:

- 1.A - (2) PLY UP TO AND INCLUDING 11 7/8" TALL; FASTEN PLYS W/ (2) ROWS 16D NAILS AT 12" O.C.
- 2.A - (2) PLY 14" TO AND 18" TALL (INCLUSIVE); FASTEN PLYS W/ (3) ROWS 16D NAILS AT 12" O.C.
- 3.A - (2) PLY 20" TALL AND OVER; FASTEN PLYS W/ (4) ROWS 16D NAILS AT 12" O.C.
- 4.A - (3) PLY UP TO AND INCLUDING 11 7/8" TALL; FASTEN PLYS W/ (2) ROWS 16D NAILS AT 12" O.C. FROM EACH SIDE
- 5.A - (3) PLY 14" TO AND 18" TALL (INCLUSIVE); FASTEN PLYS W/ (3) ROWS 16D NAILS AT 12" O.C. FROM EACH SIDE
- 6.A - (3) PLY 20" TALL AND OVER; FASTEN PLYS W/ (4) ROWS 16D NAILS AT 12" O.C. FROM EACH SIDE

FIELD INSTALLED FIRST FLOOR BEAM/HEADER SCHEDULE

IDENTIFIER	DESCRIPTION	LENGTH	OPTIONS	ENG. NUM.	REMARKS
PFOI-2	LVL - I4	14'-4"	GCB / ZCC	1006	2 PLY, 2A

FLOOR PLAN NOTES

1. ALL HEADERS ARE (2) 2x6 W/ 2x4 WALLS OR (3) 2x6 W/ 2x6 WALLS, UNLESS OTHERWISE NOTED.
2. ALL HEADERS TO HAVE (1) 2x4 OR 2x6 JACK EACH END, UNLESS OTHERWISE NOTED.
3. ALL EXTERIOR WALLS TO BE 4" AND ALL INTERIOR WALLS TO BE 3 1/2", UNLESS OTHERWISE NOTED.
4. HATCHED AREAS INDICATE DROPPED CEILING. ALL DROPPED CEILING ARE 12" UNLESS OTHERWISE NOTED.
5. SEE "BRACED WALL PANEL DETAIL SHEET" FOR SPECIAL WALL FRAMING LOCATIONS AND HEADER SIZES, IF APPLICABLE.
6. SEE STANDARD DETAIL CATEGORY "IT" SHEET(S) FOR INTERIOR TRIM DETAILS.
7. SEE ARCHITECTURAL DETAIL SHEET "AD" FOR HOUSE SPECIFIC INTERIOR TRIM OPTION TABLE.
8. ALL WINDOWS HAVE T-O 1/2" HEADER HEIGHT UNLESS OTHERWISE NOTED.

GYPSUM NOTES

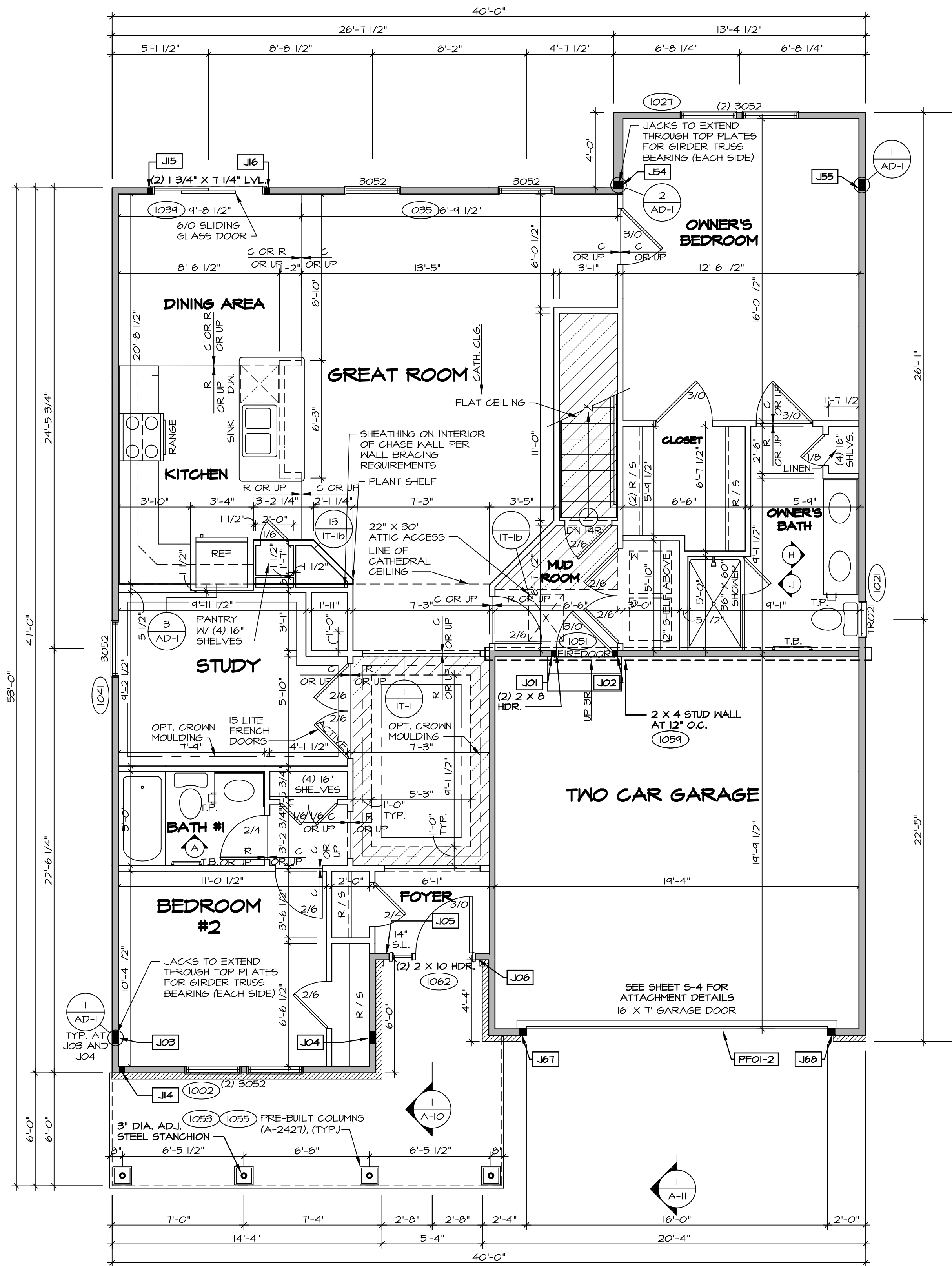
AT GARAGE:
GYPSUM BOARD AT COMMON WALLS, CEILING, BEAM WRAPS AND SUPPORTS PER STANDARD DETAIL FA-10(b) FIRE ASSEMBLIES OR AS REQUIRED BY LOCAL CODE.

AT STAIRS:
1/2" GYPSUM BOARD AT UNDERSIDE OF STAIRS AND WALLS IN CLOSET

BASEMENT WITH I-JOIST FLOOR SYSTEM ABOVE:

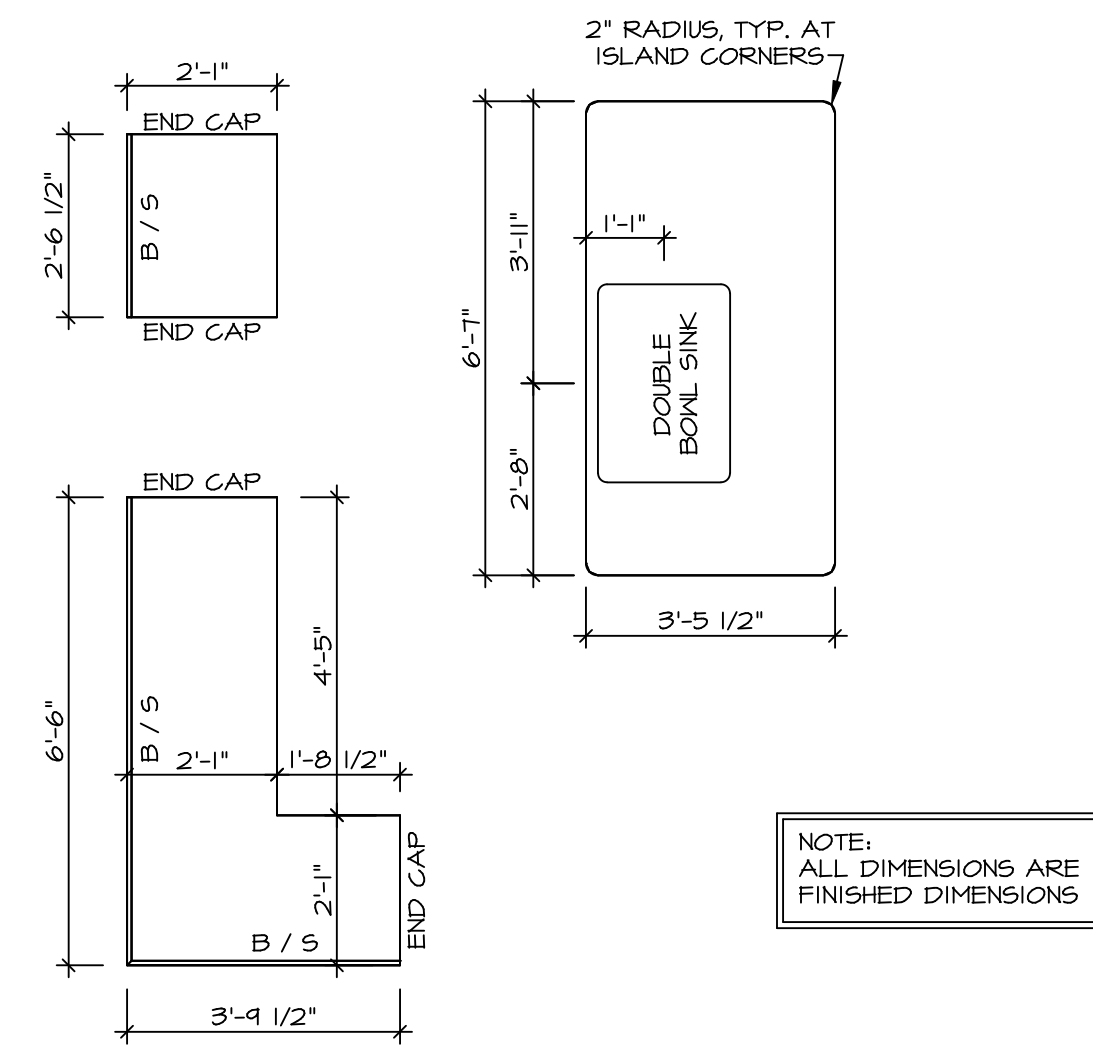
WITH OPTION "SCI" - DRYWALL UNFINISHED BASEMENT CEILING AREA

- NOTES:
- 1/2" GYPSUM WALL BOARD REQUIRED ON CEILING IN UNFINISHED AREAS WHEN NO SPRINKLER SYSTEM IS INSTALLED
 - A MAXIMUM AREA OF 80 SQ FT MAY BE OMITTED AS NEEDED FOR INSTALLATION OF PLUMBING, ELECTRICAL, AND/OR HVAC (TYPICALLY AN 8'-0"X8'-0" CEILING SPACE ABOVE MECHANICAL AREA).
 - PROVIDE FIRE BLOCKING AS REQUIRED AT PERIMETER OF ANY AREAS WHERE DRYWALL HAS BEEN OMITTED.



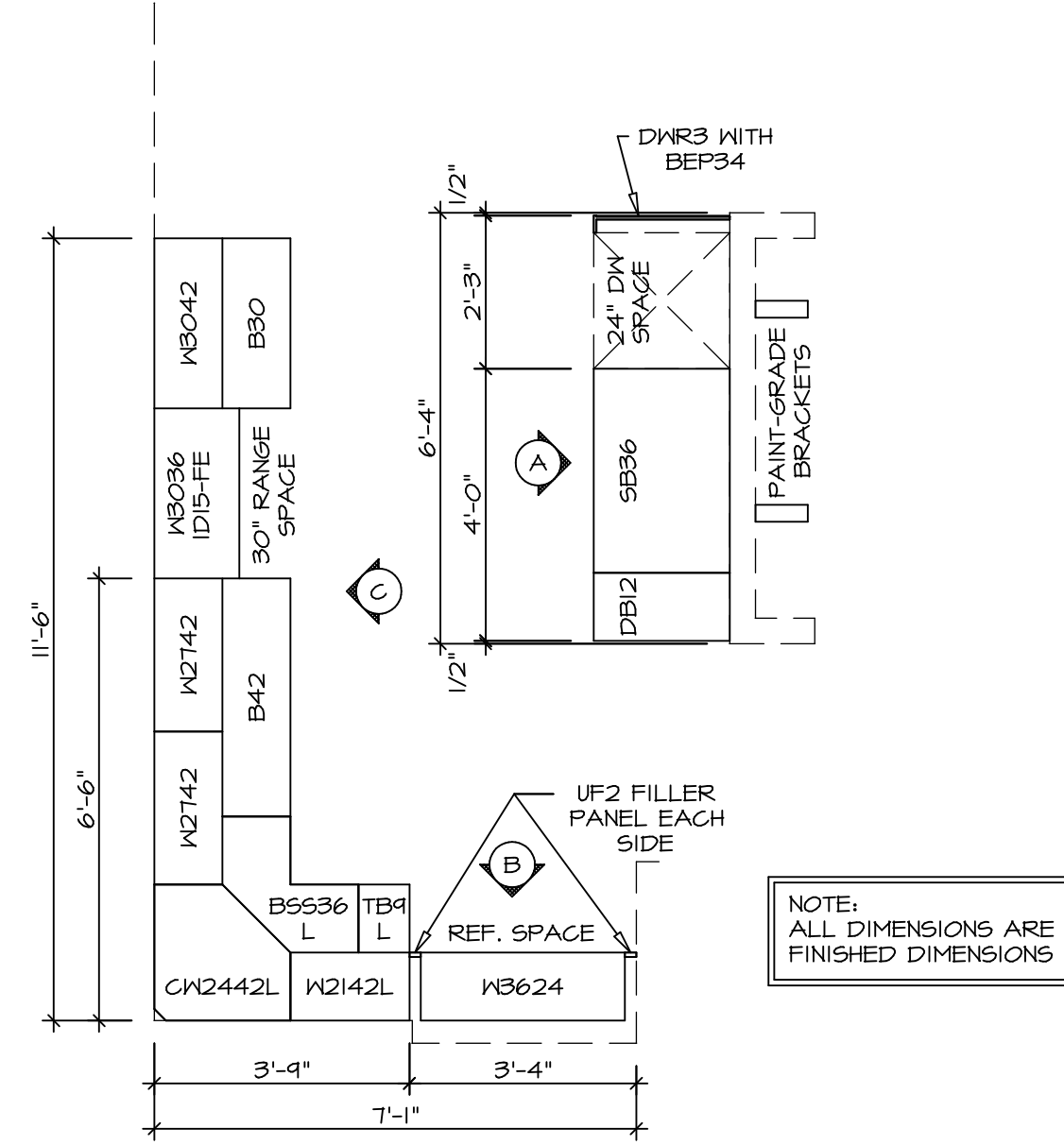
FIRST FLOOR PLAN
SCALE: 1/4" = 1'-0"

MODEL	PISA TORRE								
DRAWING TITLE	FIRST FLOOR PLAN								
OPTION DESCRIPTION	CORNERSTONE SPECIFICATIONS								
SHEET NO.	A-7	DATE:	08/07/16						
VERSION	02	DRAWN BY:							
SET NO.	PSTCO	DATE:							
OPTION		DATE:							
REVISIONS	<table border="1" style="width: 100%; border-collapse: collapse;"> <thead> <tr> <th>REV. NO.</th> <th>DATE</th> <th>DESCRIPTION</th> </tr> </thead> <tbody> <tr> <td>1</td> <td>08/07/16</td> <td>TH - DRAWING ALIGNMENT</td> </tr> </tbody> </table>			REV. NO.	DATE	DESCRIPTION	1	08/07/16	TH - DRAWING ALIGNMENT
REV. NO.	DATE	DESCRIPTION							
1	08/07/16	TH - DRAWING ALIGNMENT							
REMARKS	<p>NVR, Inc., owner, expressly reserves its copyright in these drawings. These drawings are not to be reproduced, changed, or altered in any way without the written consent of NVR, Inc.</p>								
<p>NVR, Inc. Architectural Services 5285 Westchase Circle Frederick, MD 21703</p>									



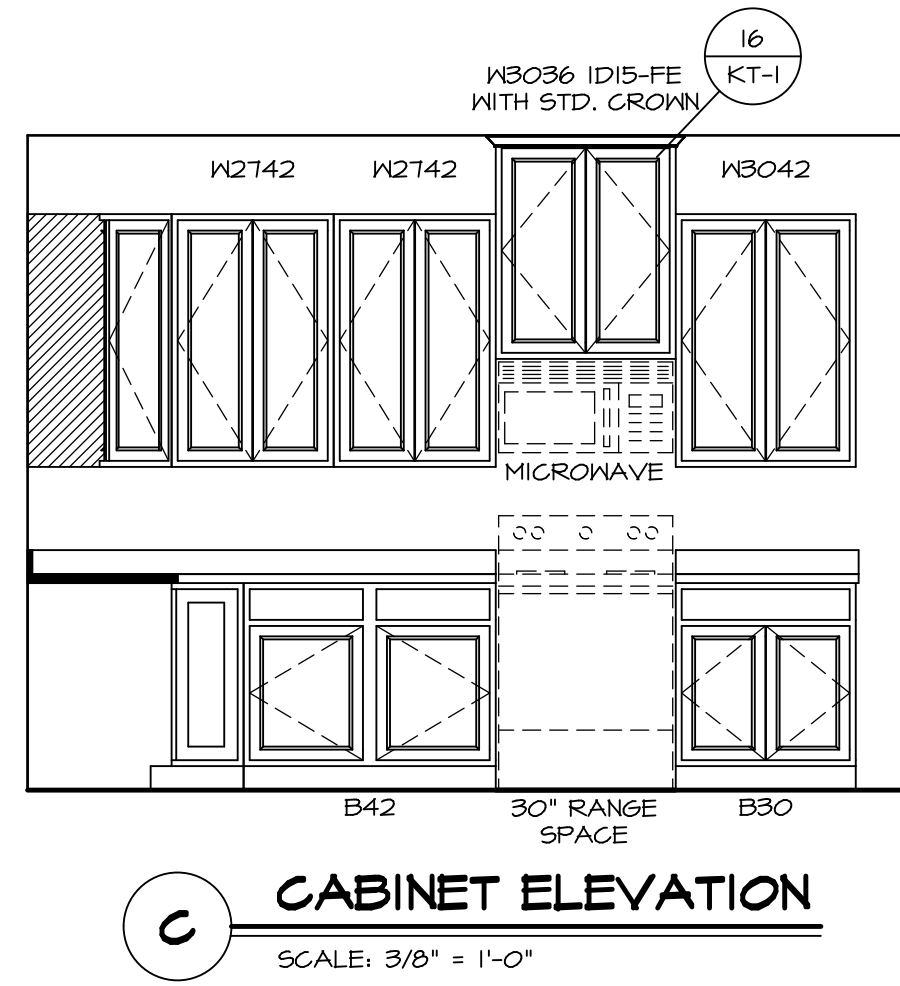
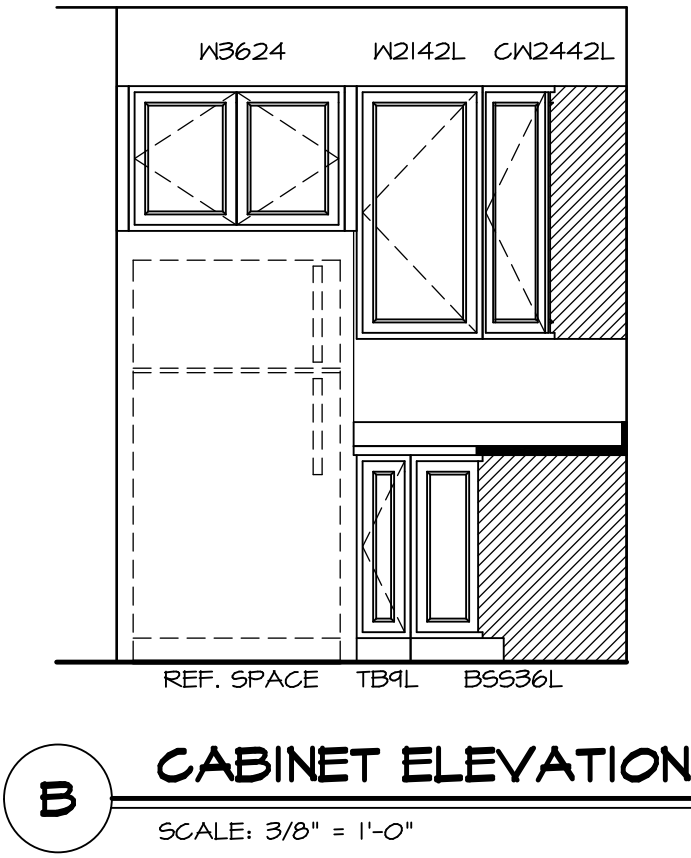
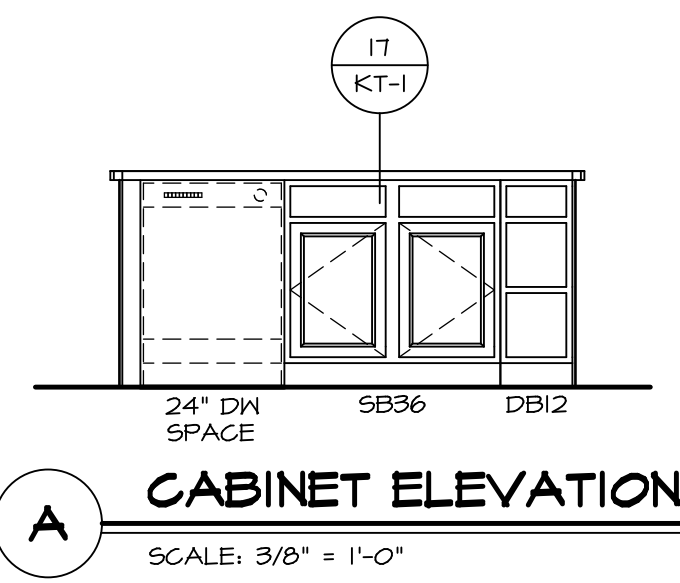
(KT-3209)
COUNTERTOP LAYOUT

2
A-13 SCALE: 3/8" = 1'-0"



(KC-3209)
CABINET LAYOUT

1
A-13 SCALE: 3/8" = 1'-0"

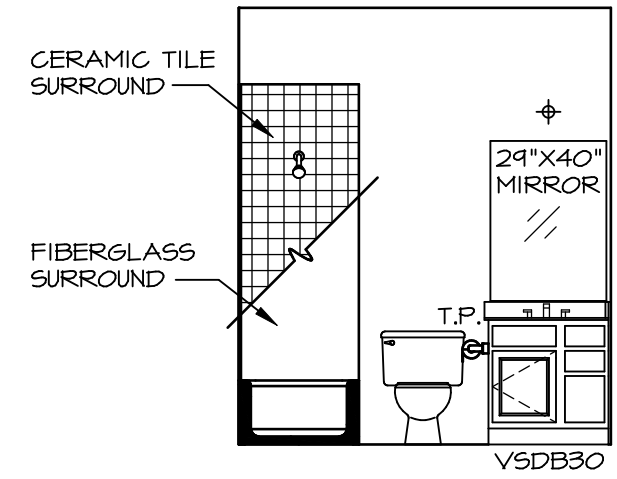


SHEET NO.	MODEL	SET NO.	VERSION	DRAWN BY	DATE	OPTION
A-13	PISA TORRE DRAWING TITLE KITCHENS	PSTCO 02	02	BDH	3/24/15	
48	OPTION DESCRIPTION					

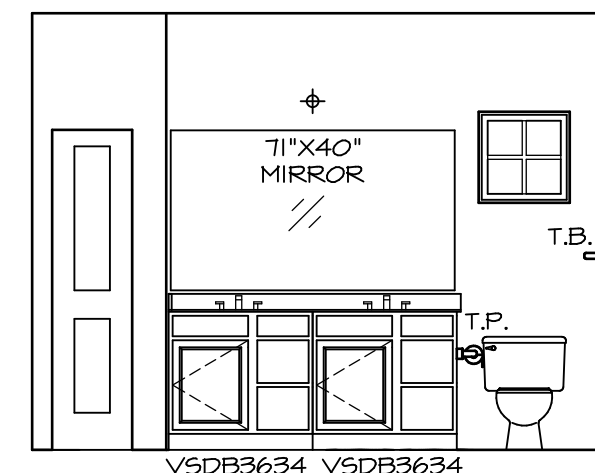
NVR
NVR, Inc.
Architectural Services
Architects
5285 Westover Hills, Suite 100
Frederick, MD 21703

NVR, Inc., owner, expressly reserves its copyright in these plans. These plans are not to be reproduced, changed, copied in any way, or used for any other purpose without the prior written consent of NVR, Inc.

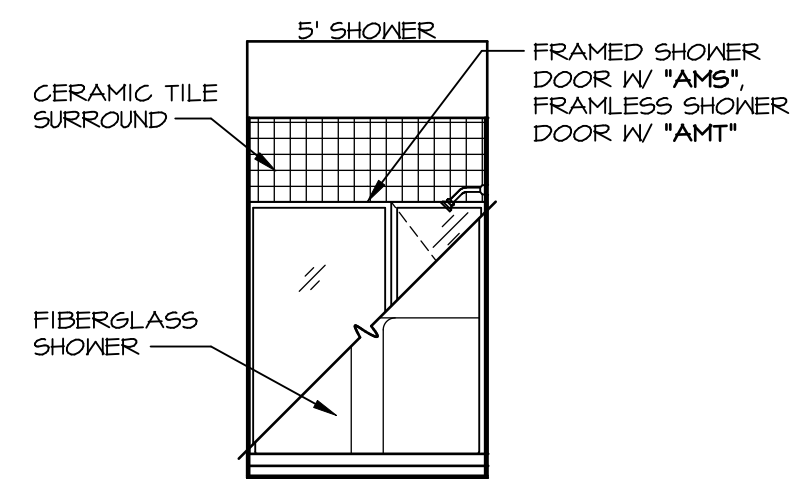
REV. NO.	DATE	REMARKS



A BATH #1
SCALE: 1/4" = 1'-0"



H OWNER'S BATH
SCALE: 1/4" = 1'-0"



J OWNER'S BATH
SCALE: 1/4" = 1'-0"

NOTES:

1. TEMPERED GLASS SHOWER ENCLOSURE WITH SWING DOOR OR OPTIONAL SLIDING DOOR BY DIVISION
2. TUB ACCESS PANELS PROVIDED AS NEEDED, ALL MATERIALS BY DIVISION
3. REFER TO SHEET IT-2 FOR TUB AND SHOWER DETAILS.
4. ALL VSD24-42 DRAWERS TO BE SET ON RIGHT HAND.
5. BATH ELEVATIONS ARE SHOWN PER PLAN.

NOTES
• WINDOWS VARY PER OPTION.

SHEET NO. A-14	MODEL PISA TORRE DRAWING TITLE BATH ELEVATIONS OPTION DESCRIPTION	SET NO. PSTCO VERSION 02 DRAWN BY DATE: OPTION	REV. NO. DATE 1 08/07/16 TM - DRAWING ALIGNMENT	REMARKS
<p style="font-size: small; margin: 0;"> NVR, Inc. Architectural Services Architects & Interiors 5285 Westpark Drive, Suite 100 Frederick, MD 21703 </p>				
NVR, Inc., owner, expressly reserves its copyright in these architectural plans. These plans are not to be reproduced, changed, copied, or otherwise used in any way without the prior written consent of NVR, Inc.				