

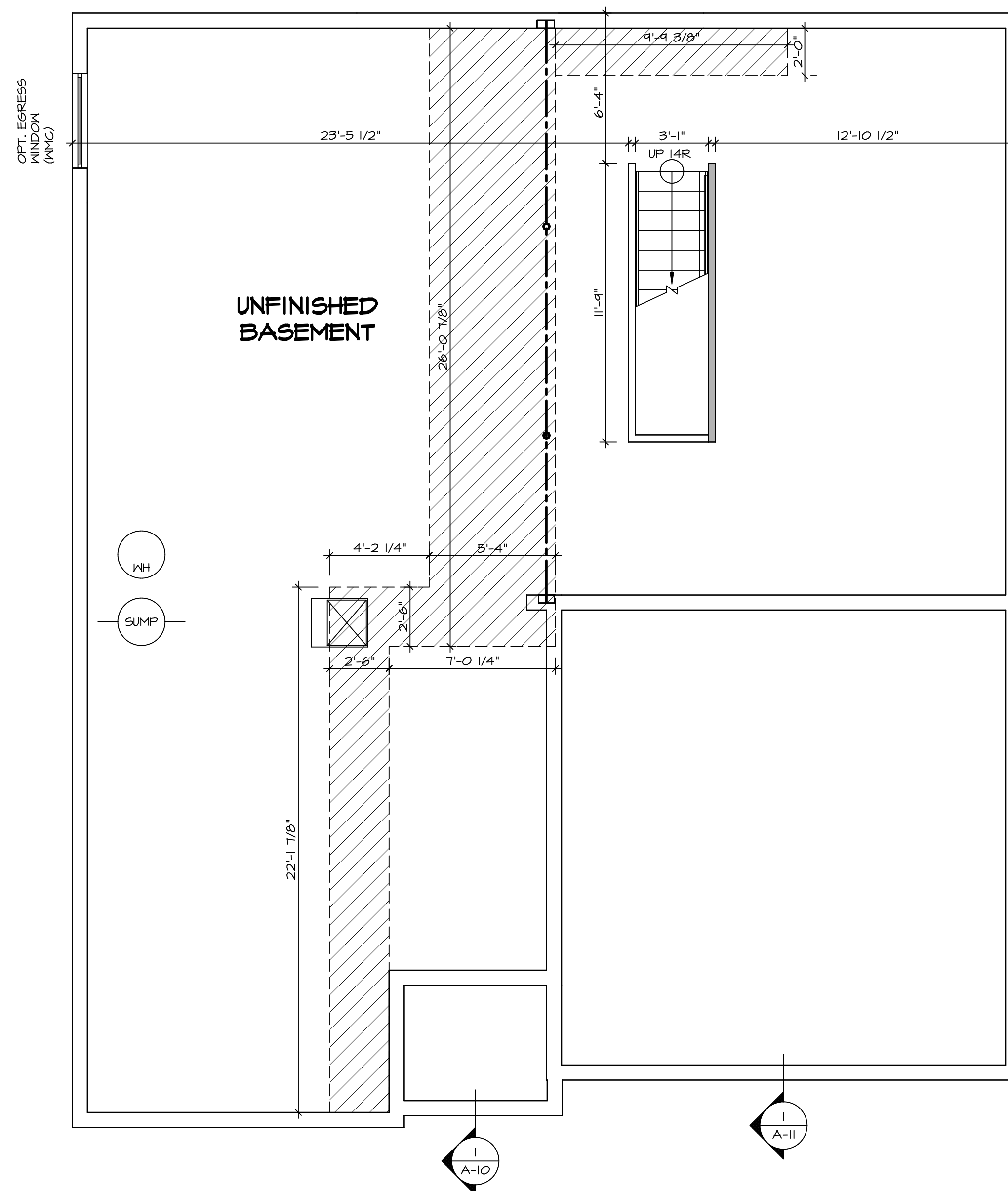
1  
A-5 PLUMBING PLAN  
SCALE: 1/4" = 1'-0"

SHEET NO. <b>A-5</b>	MODEL <b>PISA TORRE</b>	SET NO. <b>PSTCO</b> VERSION <b>02</b>	OPTION DESCRIPTION <b>PLUMBING PLAN</b>
	DRAWING TITLE <b>PLUMBING PLAN</b>	DRAWN BY <b></b>	DATE: <b></b>
	OPTION DESCRIPTION <b>31</b>	DATE: <b></b>	OPTION <b></b>

**NVR**  
NVR, Inc.  
Architectural Services  
5285 West Lakeshore, Suite 100  
Frederick, MD 21703

NVR, Inc., owner, expressly reserves its copyright in these plans. These plans are not to be reproduced, changed, copied, or otherwise used in any way without the written consent of NVR, Inc.

REV. NO.	DATE	REMARKS



**BASEMENT FLOOR PLAN**  
SCALE: 1/4" = 1'-0"

**LEGEND**

	BEARING WALL
	NON BEARING WALL
	INDICATES BEARING FROM POINT-LOAD ABOVE JACKS
	JACKS
	BEAM/HEADER
	PAD FOOTING
	STEEL COLUMN
	PORTAL FRAME
	JOIST/TRUSS
	LVL
	ENGINEERING PAGE NUMBER

SEE FC DETAILS FOR FRAMING CONNECTORS

- FLOOR PLAN NOTES**
- ALL HEADERS ARE (2) 2x6 w/ 2x4 WALLS OR (3) 2x6 w/ 2x6 WALLS, UNLESS OTHERWISE NOTED.
  - ALL HEADERS TO HAVE (1) 2x4 OR 2x6 JACK EACH END, UNLESS OTHERWISE NOTED.
  - ALL EXTERIOR WALLS TO BE 4" AND ALL INTERIOR WALLS TO BE 3 1/2", UNLESS OTHERWISE NOTED.
  - HATCHED AREAS INDICATE DROPPED CEILING. ALL DROPPED CEILING ARE 12" UNLESS OTHERWISE NOTED.
  - SEE 'BRACED WALL PANEL DETAIL SHEET' FOR SPECIAL WALL FRAMING LOCATIONS AND HEADER SIZES, IF APPLICABLE.
  - SEE STANDARD DETAIL CATEGORY '11" SHEET(S) FOR INTERIOR TRIM DETAILS.
  - SEE ARCHITECTURAL DETAIL SHEET "AD" FOR HOUSE SPECIFIC INTERIOR TRIM OPTION TABLE.
  - ALL WINDOWS HAVE 1'-0 1/2" HEADER HEIGHT UNLESS OTHERWISE NOTED.

- GYPSUM NOTES**
- AT GARAGE:**  
GYPSUM BOARD AT COMMON WALLS, CEILING, BEAM WRAPS AND SUPPORTS PER STANDARD DETAIL FA-1(b) FIRE ASSEMBLIES OR AS REQUIRED BY LOCAL CODE.
- AT STAIRS:**  
1/2" GYPSUM BOARD AT UNDERSIDE OF STAIRS AND WALLS IN CLOSET
- BASEMENT WITH I-JOIST FLOOR SYSTEM ABOVE:**  
WITH OPTION "SC1" - DRYWALL UNFINISHED BASEMENT CEILING AREA
- NOTES:**
- 1/2" GYPSUM WALL BOARD REQUIRED ON CEILING IN UNFINISHED AREAS WHEN NO SPRINKLER SYSTEM IS INSTALLED.
  - A MAXIMUM AREA OF 80 SQ FT MAY BE OMITTED AS NEEDED FOR INSTALLATION OF PLUMBING, ELECTRICAL, AND/OR HVAC (TYPICALLY AN 8'-0"x8'-0" CEILING SPACE ABOVE MECHANICAL AREA).
  - PROVIDE FIRE BLOCKING AS REQUIRED AT PERIMETER OF ANY AREAS WHERE DRYWALL HAS BEEN OMITTED.

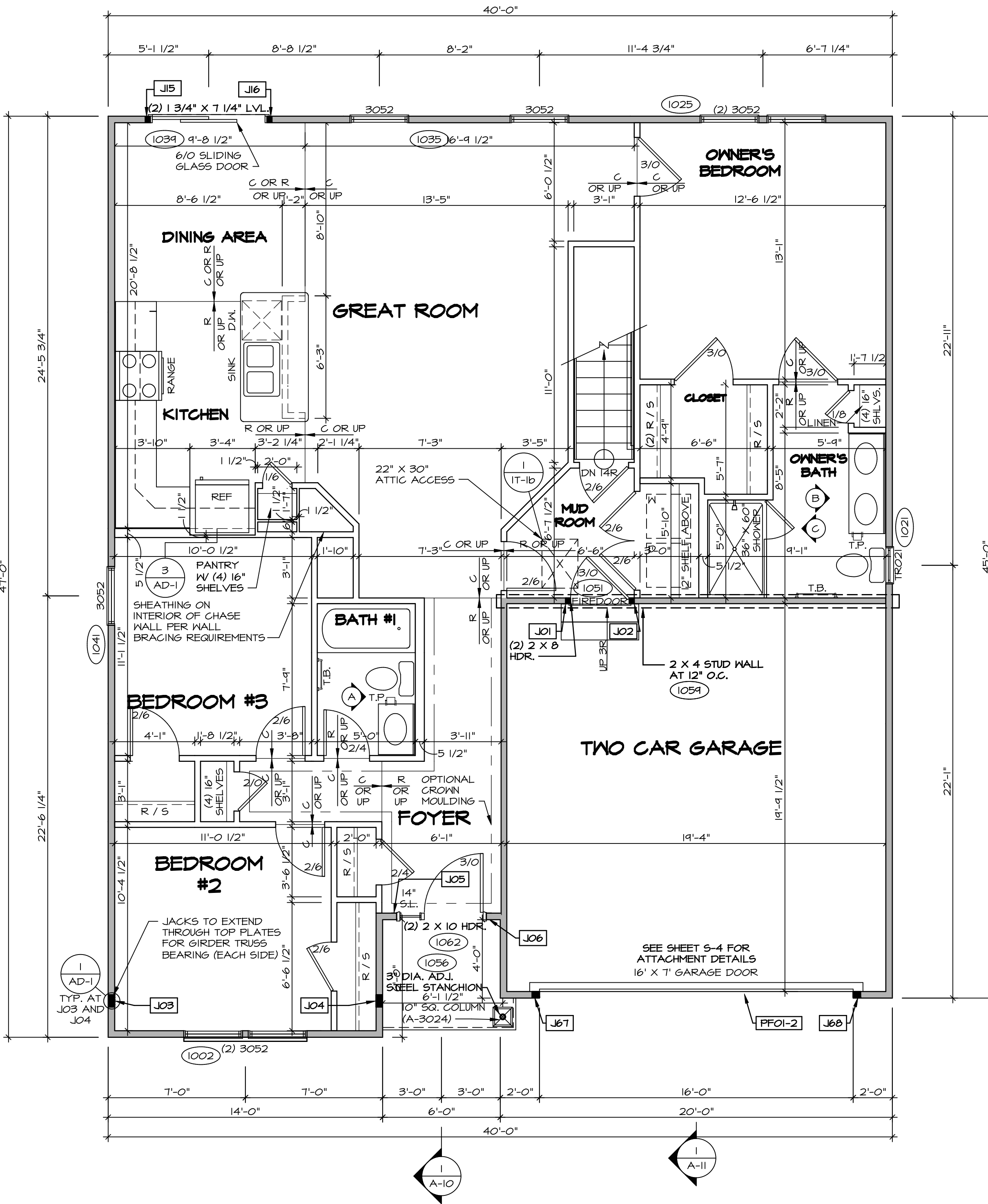
SHEET NO. <b>A-6</b>	MODEL <b>PISA TORRE</b>	SET NO. <b>PS100</b>	REVISIONS	REMARKS
		VERSION <b>02</b>	08/07/16 TH - DRAWING ALIGNMENT	
DRAWING TITLE <b>BASEMENT FLOOR PLAN</b>	OPTION DESCRIPTION	DRAWN BY	REV. NO.	DATE
		DATE:	1	08/07/16
OPTION		<p>NVR, Inc., owner, expressly reserves its copyright in these plans. These plans are not to be reproduced, changed, copied, or otherwise used without the written consent of NVR, Inc.</p> <p><b>NVR</b> Architectural Services Architects 5285 West Lakeshore Drive Frederick, MD 21703</p>		
OPTION		<p>SET NO. <b>PS100</b> VERSION <b>02</b> DRAWN BY DATE: OPTION</p>		
OPTION		<p>C:\NVR\Solves\PISA_TORRE_PS100_02\DC1-YG-L600\1170950\Sheet\Lot_Specific\A-A-6_BSM1_LS.dwg 03/28/19 - 12:03 PM</p>		

FIRST FLOOR JACK SCHEDULE				
IDENTIFIER	DESCRIPTION	OPTIONS	ENG. NUM.	REMARKS
J01	JACK - (2) 2X4 SPF STUD GRADE		1051 / 1050	
J02	JACK - (2) 2X4 SPF STUD GRADE		1051 / 1050	
J03	JACK - (5) 2X4 SP#1	SXC	1051	STEEL PLATE
J04	JACK - (5) 2X4 SP#1	SXC	1051	STEEL PLATE
J05	JACK - (2) 2X4 SPF STUD GRADE	ZCC / SXC	1062	
J06	JACK - (2) 2X4 SPF STUD GRADE	ZCC / SXC	1062	
J15	JACK - (2) 2X4 SPF STUD GRADE	D6T / ZCC / SXC	1034	
J16	JACK - (2) 2X4 SPF STUD GRADE	D6T / ZCC / SXC	1034	
J67	JACK - (3) 2X4 SPF STUD GRADE	GCB / ZCC	1006	
J68	JACK - (3) 2X4 SPF STUD GRADE	GCB / ZCC	1006	

LEGEND	
	BEARING WALL
	NON BEARING WALL
	INDICATES BEARING FROM POINT-LOAD ABOVE
	JACKS
	BEAM/HEADER
	PAD FOOTING
	STEEL COLUMN
	PORTAL FRAME
	JOIST/TRUSS
	LVL
	ENGINEERING PAGE NUMBER

SEE FC DETAILS FOR FRAMING CONNECTORS

FIELD INSTALLED FIRST FLOOR BEAM/HEADER SCHEDULE					
IDENTIFIER	DESCRIPTION	LENGTH	OPTIONS	ENG. NUM.	REMARKS
PFOI-2	LVL - I4	14'-4"	GCB / ZCC	1006	2 PLY, 2A



**FIRST FLOOR PLAN**  
SCALE: 1/4" = 1'-0"

**FLOOR PLAN NOTES**

- ALL HEADERS ARE (2) 2x6 w/ 2x4 WALLS OR (3) 2x6 w/ 2x6 WALLS, UNLESS OTHERWISE NOTED.
- ALL HEADERS TO HAVE (1) 2x4 OR 2x6 JACK EACH END, UNLESS OTHERWISE NOTED.
- ALL EXTERIOR WALLS TO BE 4" AND ALL INTERIOR WALLS TO BE 3 1/2", UNLESS OTHERWISE NOTED.
- HATCHED AREAS INDICATE DROPPED CEILINGS. ALL DROPPED CEILINGS ARE 12" UNLESS OTHERWISE NOTED.
- SEE "BRACED WALL PANEL DETAIL SHEET" FOR SPECIAL WALL FRAMING LOCATIONS AND HEADER SIZES, IF APPLICABLE.
- SEE STANDARD DETAIL CATEGORY "IT" SHEET(S) FOR INTERIOR TRIM DETAILS.
- SEE ARCHITECTURAL DETAIL SHEET "AD" FOR HOUSE SPECIFIC INTERIOR TRIM OPTION TABLE.
- ALL WINDOWS HAVE T-0 1/2" HEADER HEIGHT UNLESS OTHERWISE NOTED.

**GYPSUM NOTES**

AT GARAGE:  
GYPSUM BOARD AT COMMON WALLS, CEILING, BEAM WRAPS AND SUPPORTS PER STANDARD DETAIL FA-10(b) FIRE ASSEMBLIES OR AS REQUIRED BY LOCAL CODE.

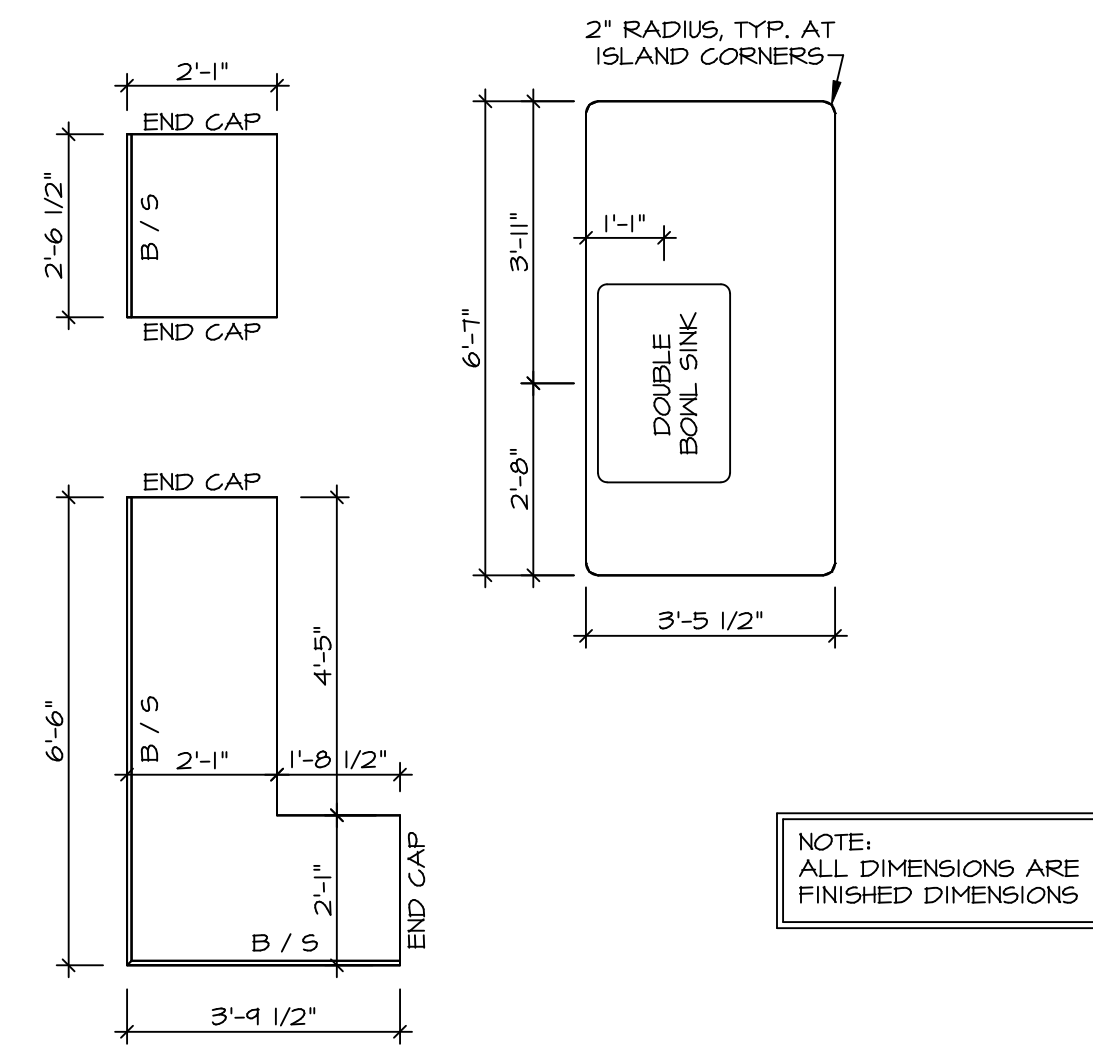
AT STAIRS:  
1/2" GYPSUM BOARD AT UNDERSIDE OF STAIRS AND WALLS IN CLOSET

BASEMENT WITH 1-JOIST FLOOR SYSTEM ABOVE:  
WITH OPTION "SG1" - DRYWALL UNFINISHED BASEMENT CEILING AREA

**NOTES:**

- 1/2" GYPSUM WALL BOARD REQUIRED ON CEILING IN UNFINISHED AREAS WHEN NO SPRINKLER SYSTEM IS INSTALLED
- A MAXIMUM AREA OF 80 SQ FT MAY BE OMITTED AS NEEDED FOR INSTALLATION OF PLUMBING, ELECTRICAL, AND/OR HVAC (TYPICALLY AN 8'-0"x8'-0" CEILING SPACE ABOVE MECHANICAL AREA).
- PROVIDE FIRE BLOCKING AS REQUIRED AT PERIMETER OF ANY AREAS WHERE DRYWALL HAS BEEN OMITTED.

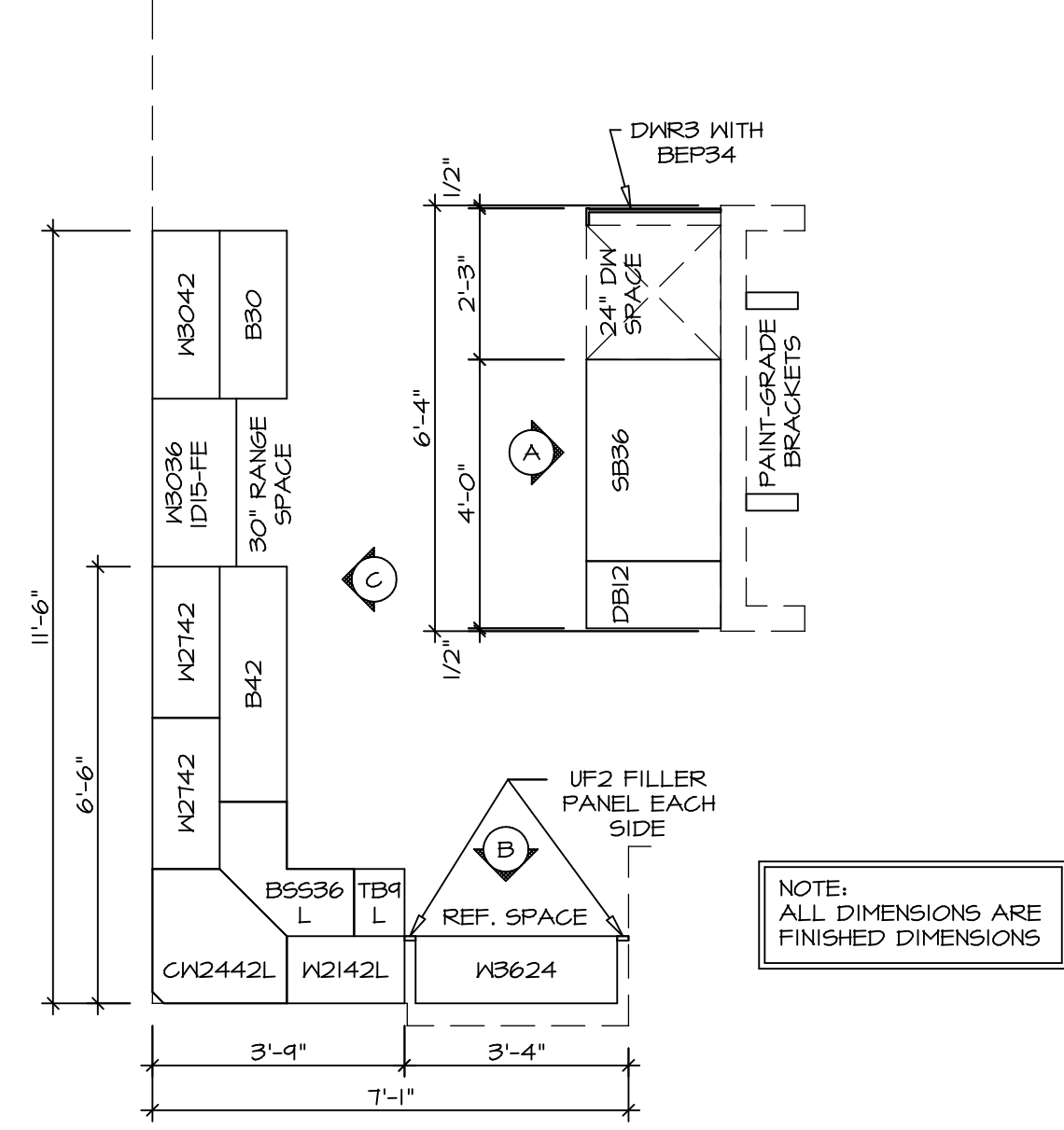
MODEL	PISA TORRE	SET NO.	PS100
DRAWING TITLE	FIRST FLOOR PLAN	VERSION	02
OPTION DESCRIPTION	CORNERSTONE SPECIFICATIONS	DRAWN BY	
		DATE:	
		OPTION	
SHEET NO.	A-7	 NVR, Inc. Architectural Services 5285 West... Suite 100 Frederick, MD 21703	
REV. NO.	1	DATE	08/01/16
REV. NO.	2	DATE	
REV. NO.	3	DATE	
REV. NO.	4	DATE	
REV. NO.	5	DATE	
REV. NO.	6	DATE	
REV. NO.	7	DATE	
REV. NO.	8	DATE	
REV. NO.	9	DATE	
REV. NO.	10	DATE	
REV. NO.	11	DATE	
REV. NO.	12	DATE	
REV. NO.	13	DATE	
REV. NO.	14	DATE	
REV. NO.	15	DATE	
REV. NO.	16	DATE	
REV. NO.	17	DATE	
REV. NO.	18	DATE	
REV. NO.	19	DATE	
REV. NO.	20	DATE	
REV. NO.	21	DATE	
REV. NO.	22	DATE	
REV. NO.	23	DATE	
REV. NO.	24	DATE	
REV. NO.	25	DATE	
REV. NO.	26	DATE	
REV. NO.	27	DATE	
REV. NO.	28	DATE	
REV. NO.	29	DATE	
REV. NO.	30	DATE	
REV. NO.	31	DATE	
REV. NO.	32	DATE	
REV. NO.	33	DATE	
REV. NO.	34	DATE	
REV. NO.	35	DATE	
REV. NO.	36	DATE	
REV. NO.	37	DATE	
REV. NO.	38	DATE	
REV. NO.	39	DATE	
REV. NO.	40	DATE	



NOTE: ALL DIMENSIONS ARE FINISHED DIMENSIONS

**(KT-3209)**  
**COUNTERTOP LAYOUT**

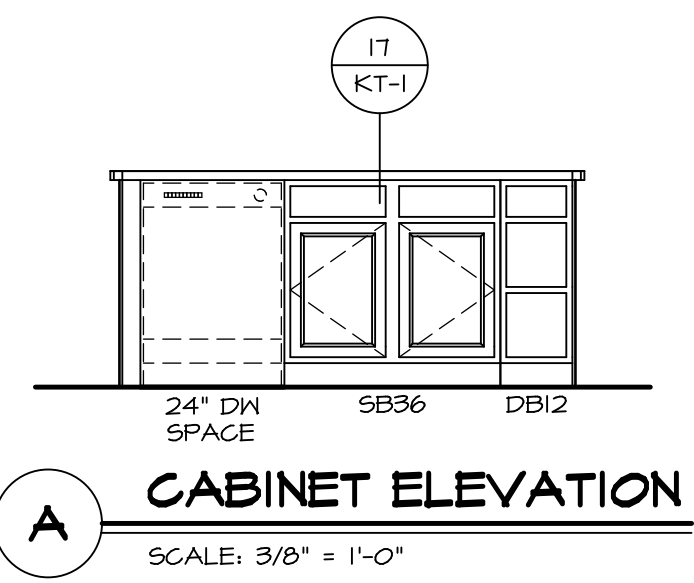
2  
A-13 SCALE: 3/8" = 1'-0"



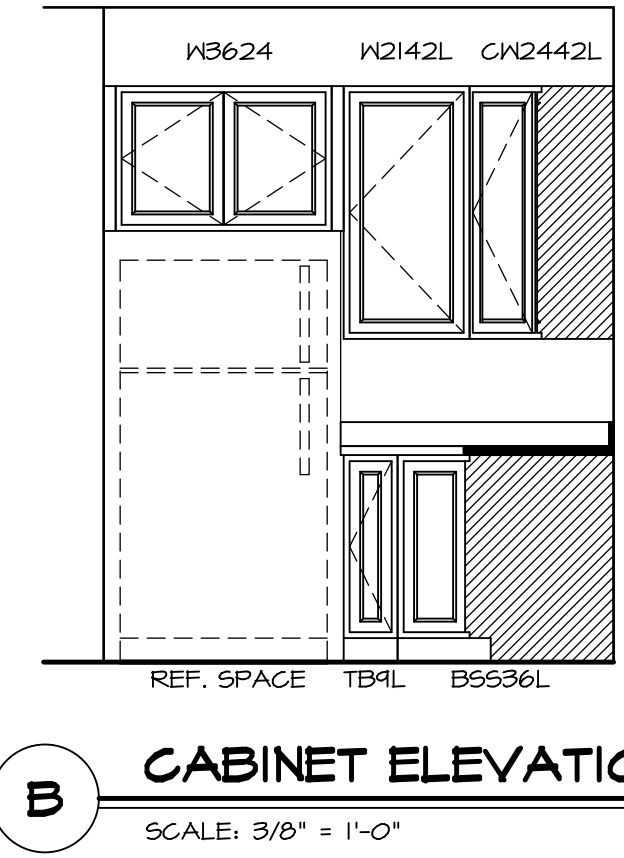
NOTE: ALL DIMENSIONS ARE FINISHED DIMENSIONS

**(KC-3209)**  
**CABINET LAYOUT**

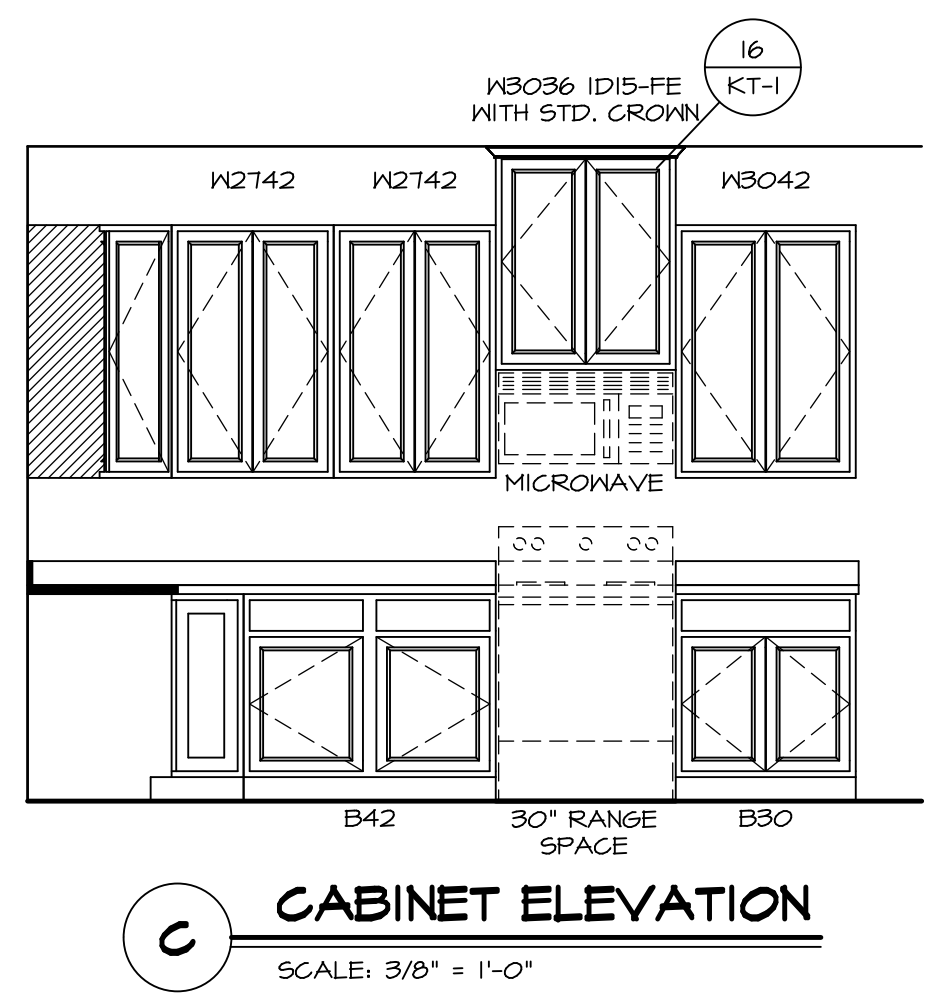
1  
A-13 SCALE: 3/8" = 1'-0"



**A CABINET ELEVATION**  
SCALE: 3/8" = 1'-0"



**B CABINET ELEVATION**  
SCALE: 3/8" = 1'-0"



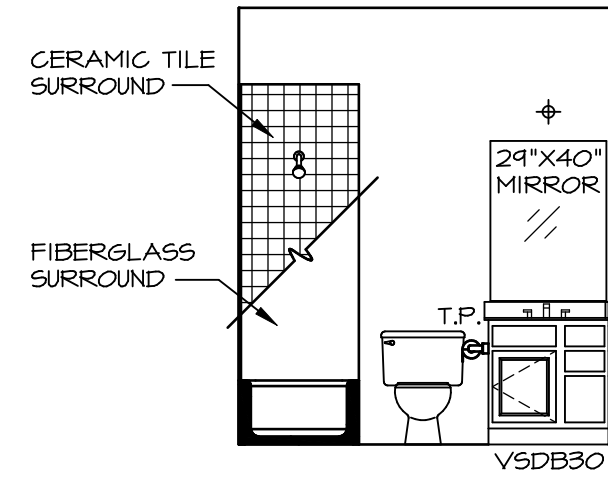
**C CABINET ELEVATION**  
SCALE: 3/8" = 1'-0"

SHEET NO.	MODEL	SET NO.	VERSION	DRAWN BY	DATE	OPTION
A-13	PISA TORRE DRAWING TITLE KITCHENS	PS100	02	BDH	3/24/15	
48						

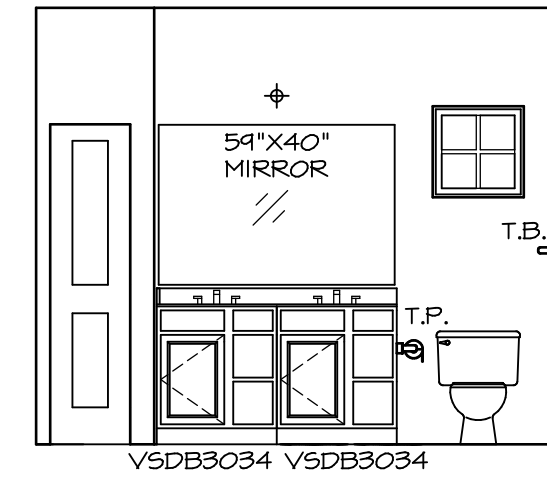
**NVR**  
Architectural Services  
5285 Westover Hills, Suite 100  
Frederick, MD 21703

NVR, Inc., owner, expressly reserves its copyright in these plans. These plans are not to be reproduced, changed, copied in any way, or used for any other purpose without the written consent of NVR, Inc.

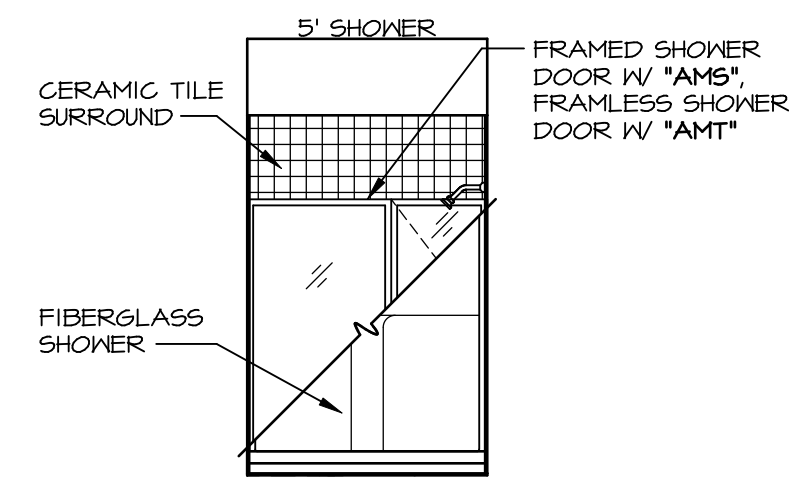
REV. NO.	DATE	REMARKS



**A BATH #1**  
SCALE: 1/4" = 1'-0"



**B OWNER'S BATH**  
SCALE: 1/4" = 1'-0"



**C OWNER'S BATH**  
SCALE: 1/4" = 1'-0"

**NOTES:**

1. TEMPERED GLASS SHOWER ENCLOSURE WITH SWING DOOR OR OPTIONAL SLIDING DOOR BY DIVISION
2. TUB ACCESS PANELS PROVIDED AS NEEDED, ALL MATERIALS BY DIVISION
3. REFER TO SHEET IT-2 FOR TUB AND SHOWER DETAILS.
4. ALL V5DB24-42 DRAWERS TO BE SET ON RIGHT HAND.
5. BATH ELEVATIONS ARE SHOWN PER PLAN.

NOTES  
• WINDOWS VARY PER OPTION.

SHEET NO.	MODEL	SET NO.	VERSION
A-14	PISA TORRE	PSTCO	02
	DRAWING TITLE	DRAWN BY	
	BATH ELEVATIONS	DATE:	
	OPTION DESCRIPTION	OPTION	

**NVR**  
NVR, Inc.  
Architectural Services  
5285 Westpark Drive, Suite 100  
Frederick, MD 21703

NVR, Inc., owner, expressly reserves its copyright in these plans. These plans are not to be reproduced, changed, copied in any way, or otherwise used without the written consent of NVR, Inc.

REV. NO.	DATE	REMARKS
1	08/07/16	TM - DRAINING ALIGNMENT