

FIRST FLOOR PLAN
SCALE: 1/4" = 1'-0"

LEGEND

- BEARING WALL
- NON BEARING WALL
- INDICATES BEARING FROM POINT-LOAD ABOVE
- JACKS
- BEAM/HEADER
- PAD FOOTING
- STEEL COLUMN
- PORTAL FRAME
- JOIST/TRUSS
- LVL
- ENGINEERING PAGE NUMBER

SEE FC DETAILS FOR FRAMING CONNECTORS

- FLOOR PLAN NOTES**
- ALL HEADERS ARE (2) 2x6 w/ 2x4 WALLS OR (3) 2x6 w/ 2x6 WALLS, UNLESS OTHERWISE NOTED.
 - ALL HEADERS TO HAVE (1) 2x4 OR 2x6 JACK EACH END, UNLESS OTHERWISE NOTED.
 - ALL EXTERIOR WALLS TO BE 4" AND ALL INTERIOR WALLS TO BE 3 1/2", UNLESS OTHERWISE NOTED.
 - HATCHED AREAS INDICATE DROPPED CEILINGS. ALL DROPPED CEILINGS ARE 12" UNLESS OTHERWISE NOTED.
 - SEE "BRACED WALL PANEL DETAIL SHEET" FOR SPECIAL WALL FRAMING LOCATIONS AND HEADER SIZES, IF APPLICABLE.
 - SEE STANDARD DETAIL CATEGORY "IT" SHEET(S) FOR INTERIOR TRIM DETAILS.
 - SEE ARCHITECTURAL DETAIL SHEET "AD" FOR HOUSE SPECIFIC INTERIOR TRIM OPTION TABLE.
 - ALL WINDOWS HAVE 7'-0 1/2" HEADER HEIGHT UNLESS OTHERWISE NOTED.

- GYPSUM NOTES**
- AT GARAGE:
GYPSUM BOARD AT COMMON WALLS, CEILING, BEAM WRAPS AND SUPPORTS PER STANDARD DETAIL FA-1(b) FIRE ASSEMBLIES OR AS REQUIRED BY LOCAL CODE.
- AT STAIRS:
1/2" GYPSUM BOARD AT UNDERSIDE OF STAIRS AND WALLS IN CLOSET

LVL PLY TO PLY FASTENING SCHEDULE:

- 1.A - (2) PLY UP TO AND INCLUDING 11 7/8" TALL; FASTEN PLYS w/ (2) ROWS 16D NAILS AT 12" O.C.
- 2.A - (2) PLY 14" TO AND 18" TALL (INCLUSIVE); FASTEN PLYS w/ (3) ROWS 16D NAILS AT 12" O.C.
- 3.A - (2) PLY 20" TALL AND OVER; FASTEN PLYS w/ (4) ROWS 16D NAILS AT 12" O.C.
- 4.A - (3) PLY UP TO AND INCLUDING 11 7/8" TALL; FASTEN PLYS w/ (2) ROWS 16D NAILS AT 12" O.C. FROM EACH SIDE
- 5.A - (3) PLY 14" TO AND 18" TALL (INCLUSIVE); FASTEN PLYS w/ (3) ROWS 16D NAILS AT 12" O.C. FROM EACH SIDE
- 6.A - (3) PLY 20" TALL AND OVER; FASTEN PLYS w/ (4) ROWS 16D NAILS AT 12" O.C. FROM EACH SIDE

FIELD INSTALLED FIRST FLOOR BEAM/HEADER SCHEDULE

IDENTIFIER	DESCRIPTION	LENGTH	OPTIONS	ENG. NUM.	REMARKS
PFOI-2	EXT HEADER - 2X12 - 2 PLY	20'-4"	GCB	1017	

FIRST FLOOR JACK SCHEDULE

IDENTIFIER	DESCRIPTION	OPTIONS	ENG. NUM.	REMARKS
J01	JACK - (2) 2X4 SFF STUD GRADE	GCB	1017	
J08	JACK - (2) 2X4 SFF STUD GRADE	GCB	1017	
J11	JACK - (2) 2X4 SFF STUD GRADE		1021	
J12	JACK - (2) 2X4 SFF STUD GRADE		1021	
J20	JACK - (2) 2X4 SFF STUD GRADE	ELK	1033	
J24	JACK - (3) 2X4 SFF STUD GRADE		1036	
J25	JACK - (3) 2X4 SFF STUD GRADE		1036	

REMARKS

REV. NO.	DATE	DESCRIPTION

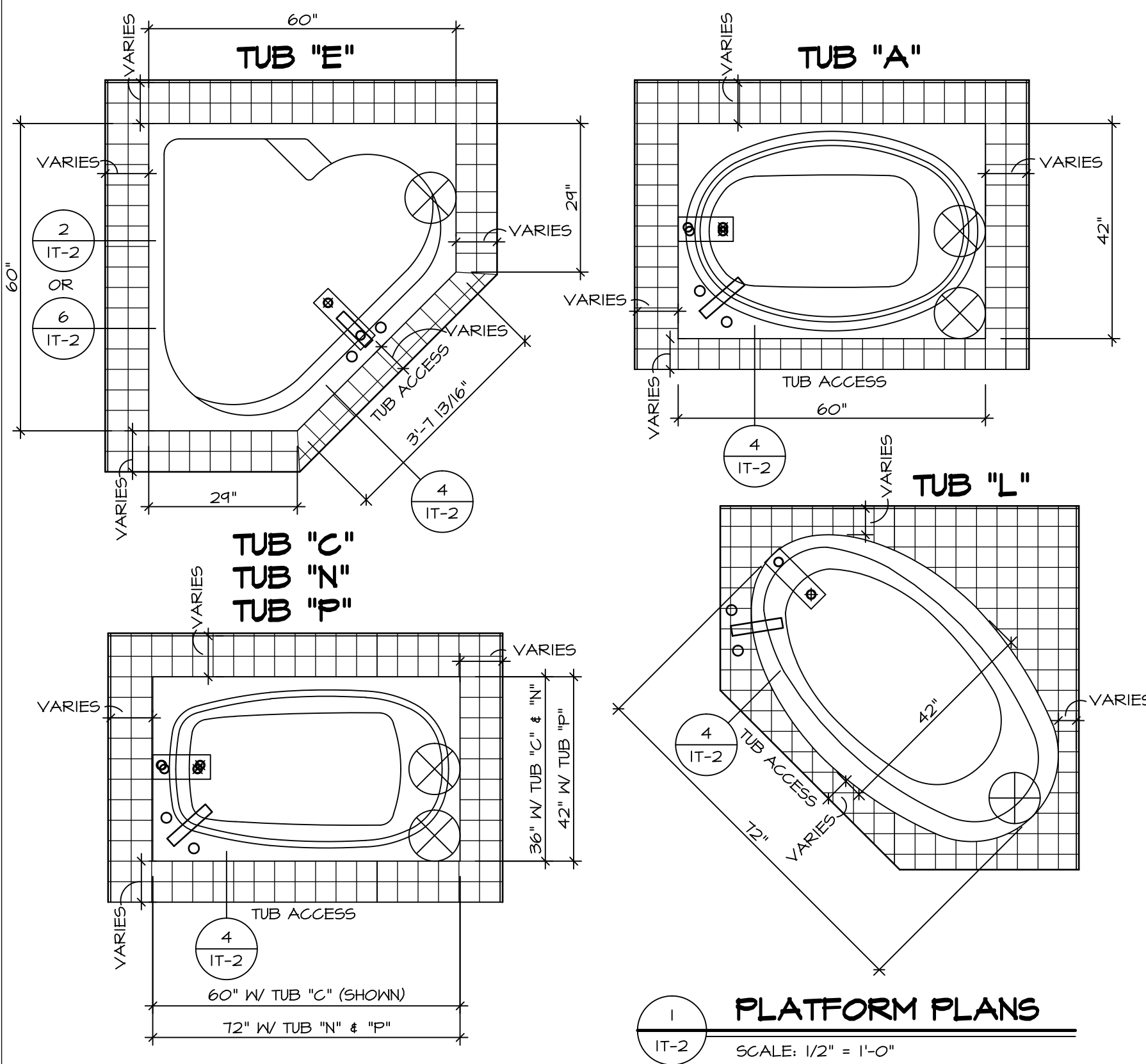
SET NO. A1A00
VERSION 01
DRAWN BY SGA
DATE: 9/17/15
OPTION

AVIANO
DRAWING TITLE
FIRST FLOOR PLAN
OPTION DESCRIPTION

NVR
NVR, Inc.
Architectural Services
100
5285
Washington
Frederick, MD 21703

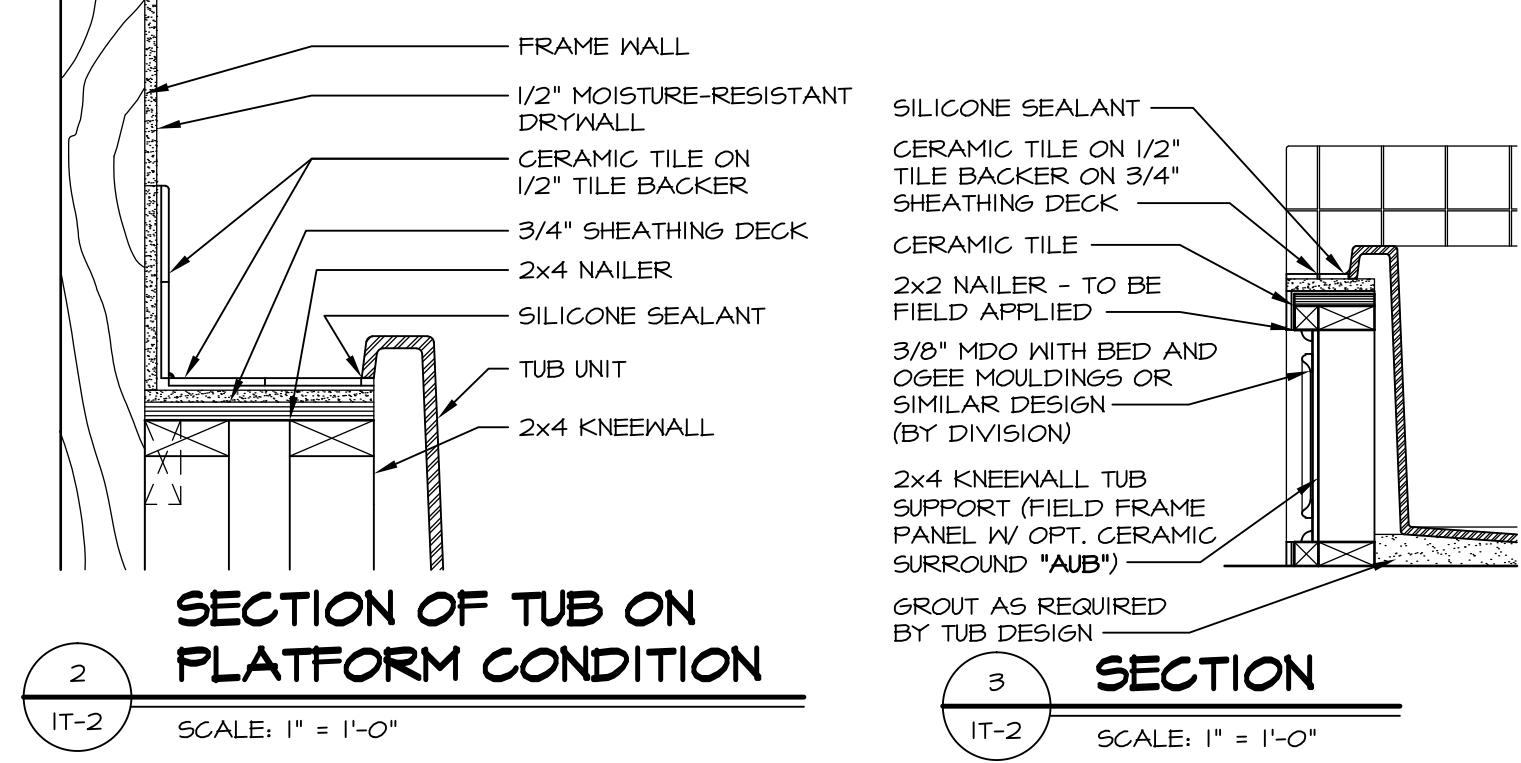
SHEET NO. A-7 31

C:\NVR\Solves\AVIANO_A1A00_01\01-16-1400\401071\Sheets\01_Specific\31_A-7_Plan_L5.dwg 04/14/17 - 5:31 pm

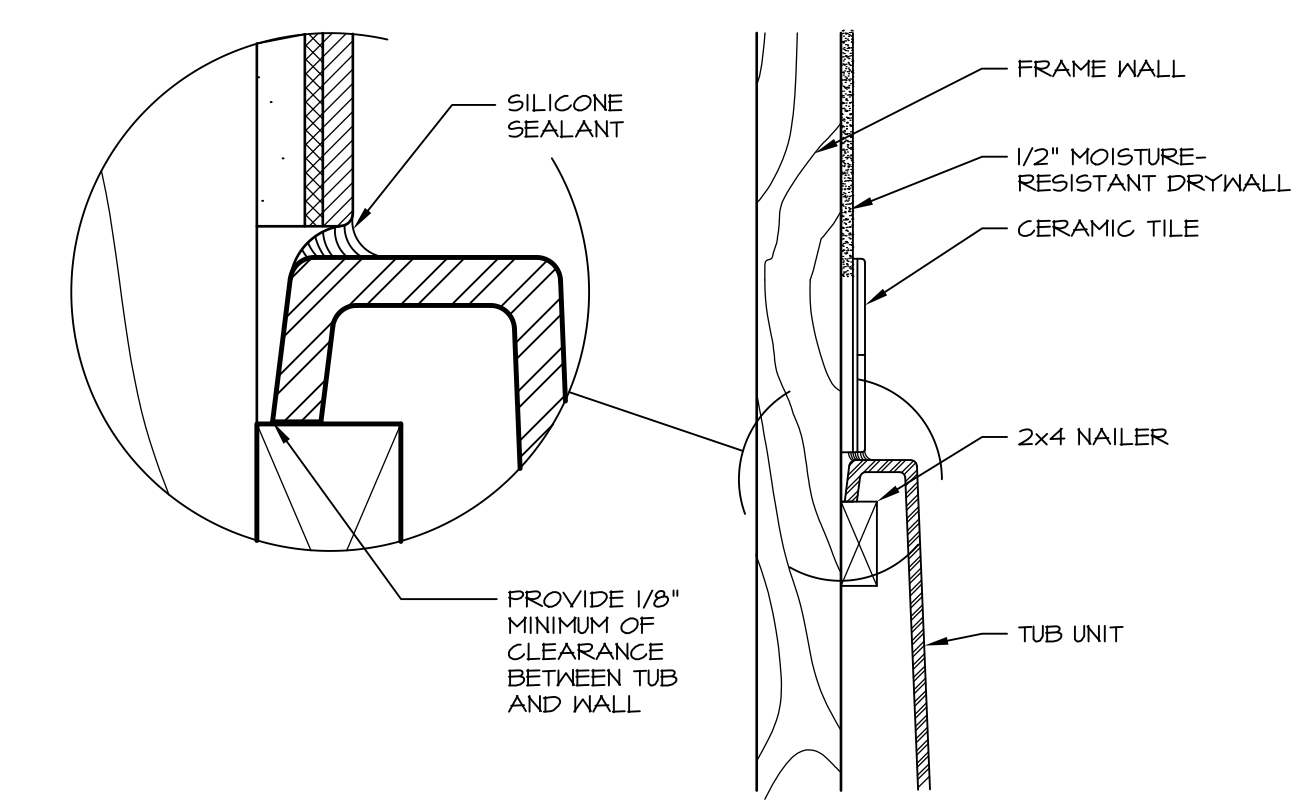


1 PLATFORM PLANS
SCALE: 1/2" = 1'-0"

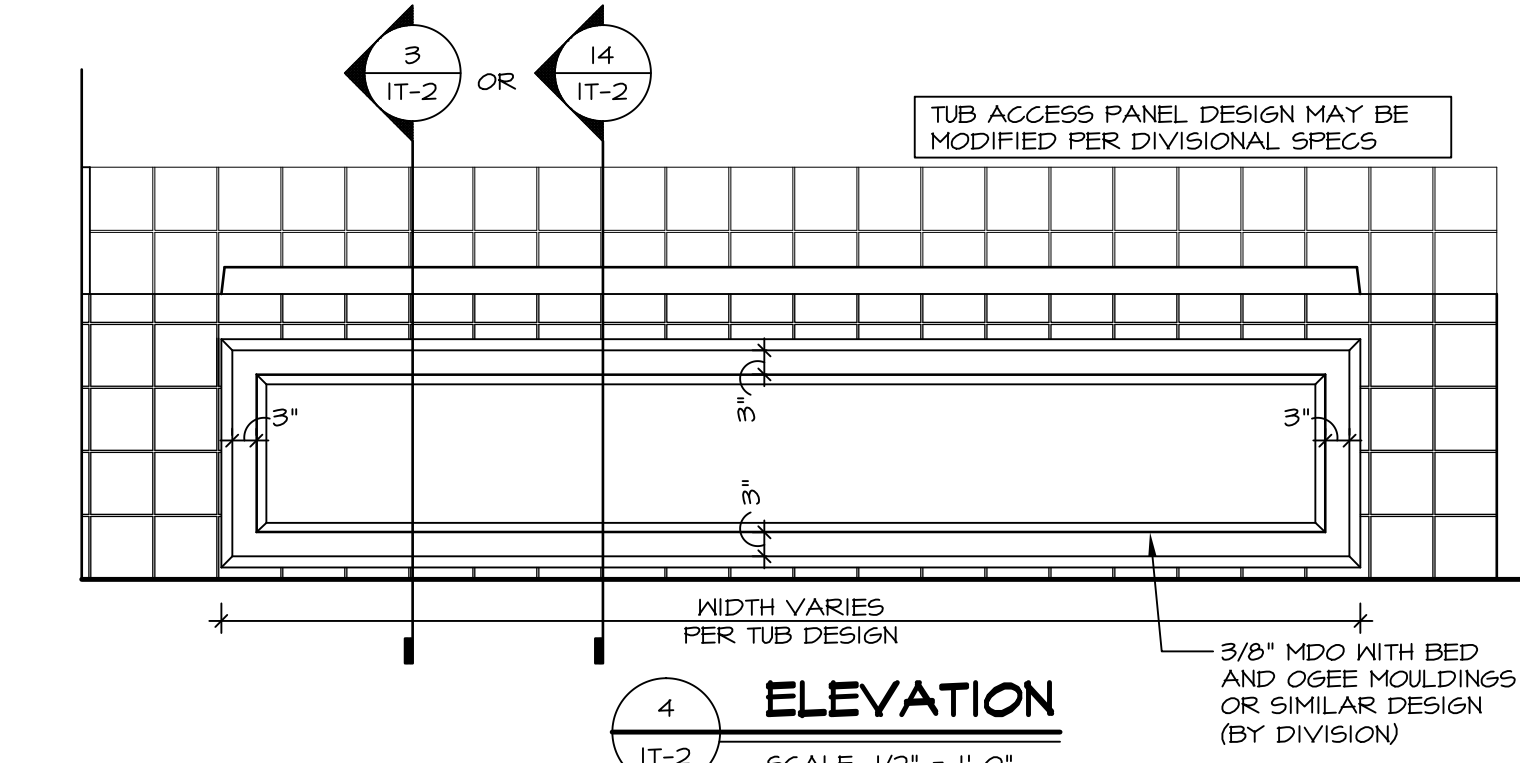
TUB	MANUF.	HEIGHT	WIDTH	LENGTH	TUB DECK PANEL HEIGHT
"A"	KOHLER/ STERLING	18 3/4"	42"	60"	17 1/8"
"C"	KOHLER/ STERLING	18 3/4"	36"	60"	17 1/8"
"E"	KOHLER/ STERLING	19 1/2"	60"	60"	17 7/8"
"L"	KOHLER/ STERLING	18 1/2"	42"	72"	16 7/8"
"N"	KOHLER/ STERLING	18 3/4"	36"	72"	17 1/8"
"P"	KOHLER/ STERLING	18 3/4"	42"	72"	17 1/8"



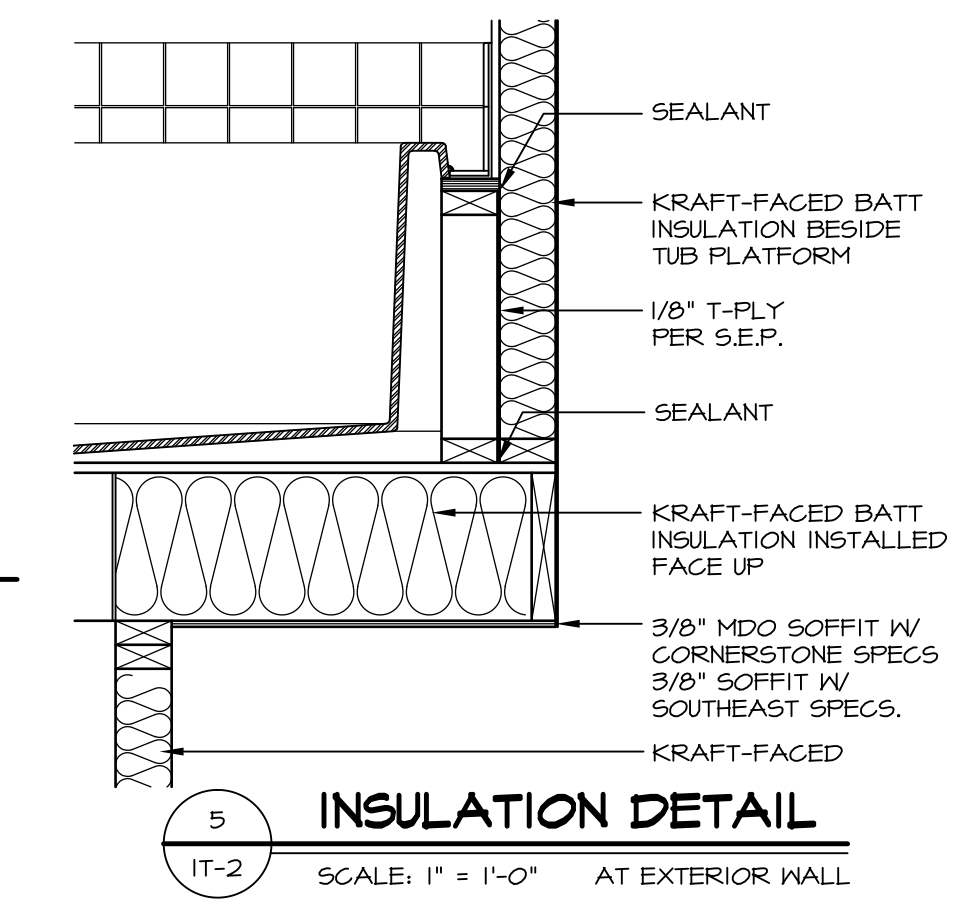
2 SECTION OF TUB ON PLATFORM CONDITION
SCALE: 1" = 1'-0"



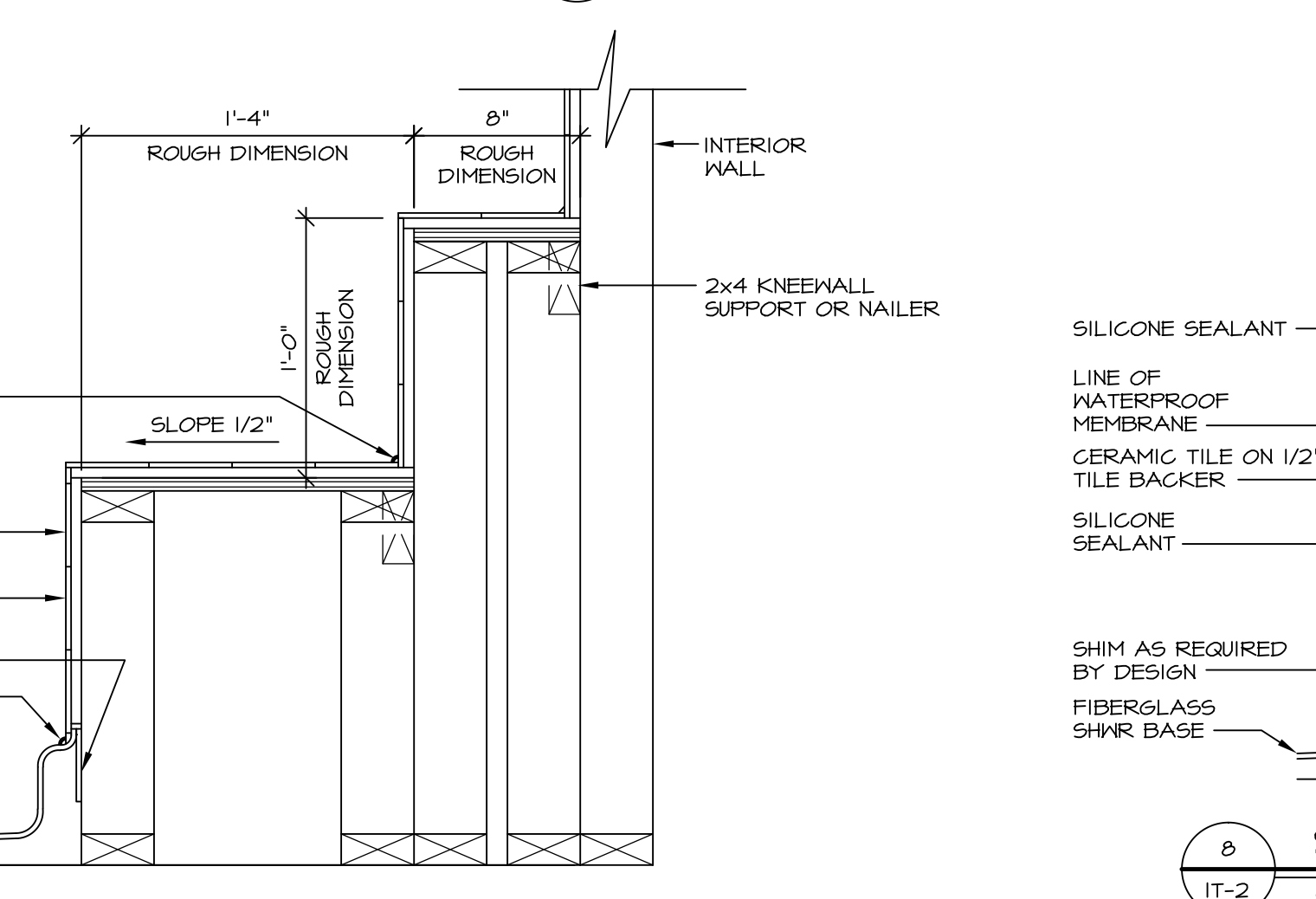
3 SECTION OF TUB TO WALL CONDITION
SCALE: 1 1/2" = 1'-0"



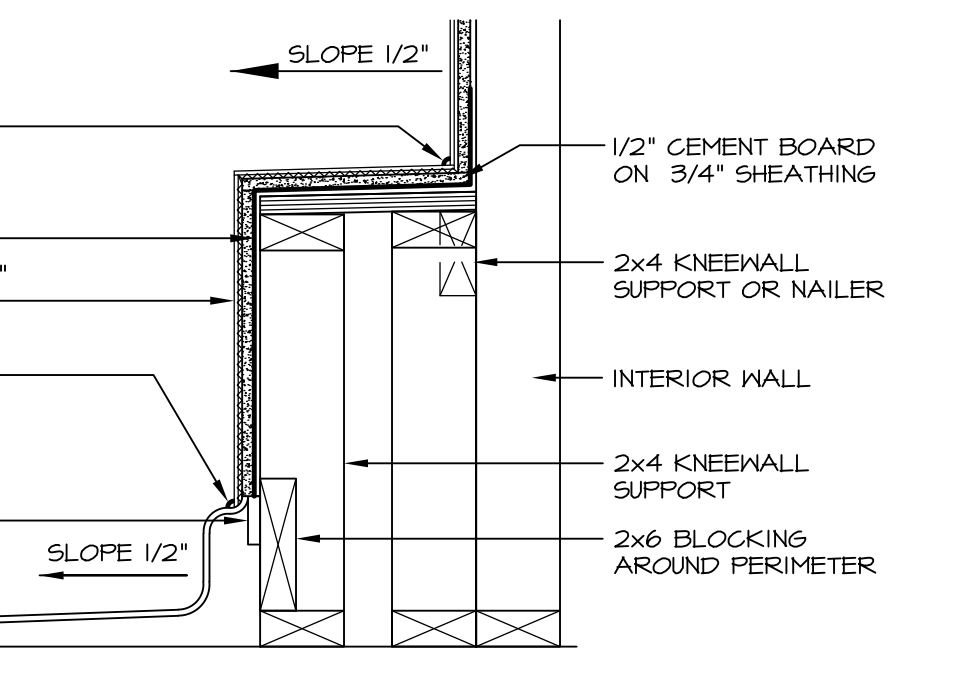
4 ELEVATION
SCALE: 1/2" = 1'-0"



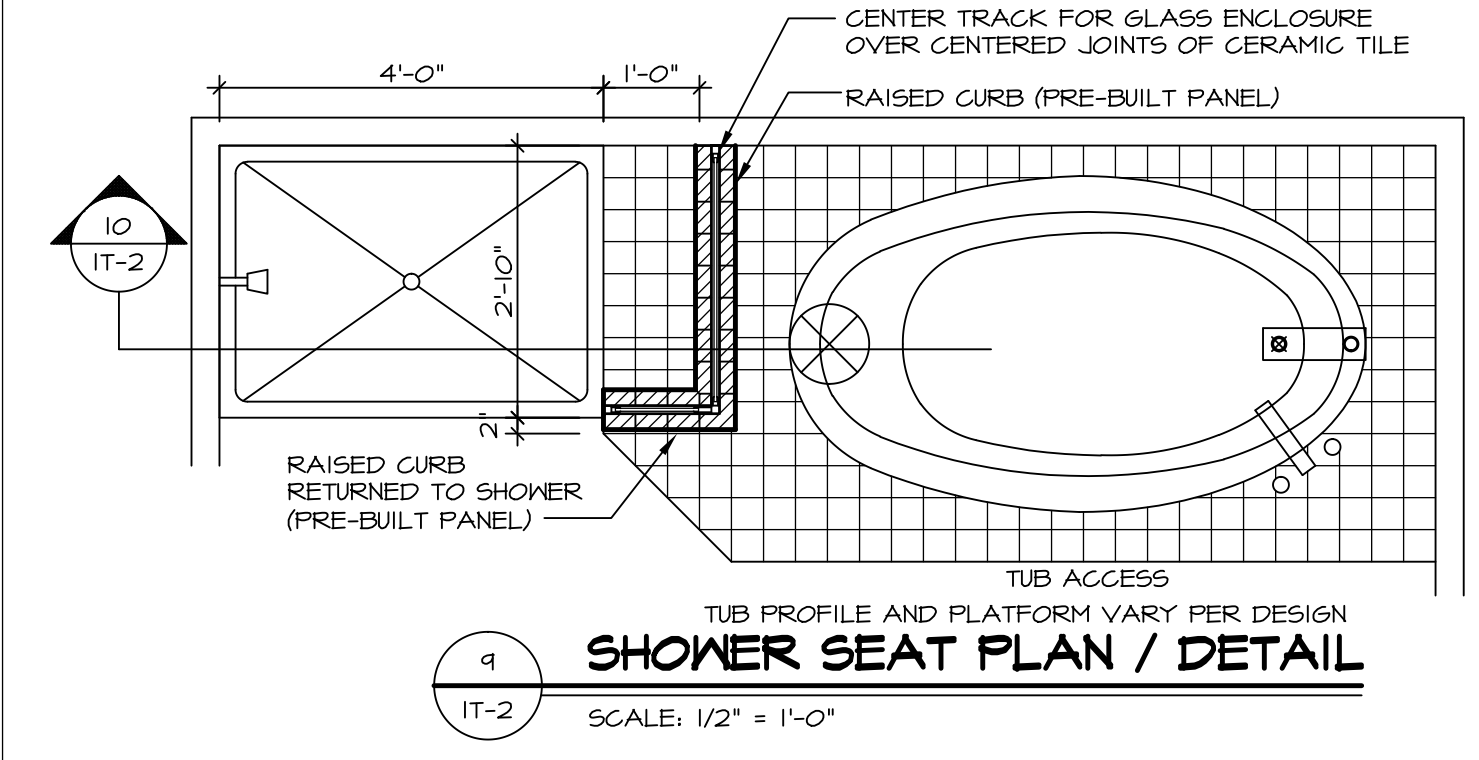
5 INSULATION DETAIL
SCALE: 1" = 1'-0" AT EXTERIOR WALL



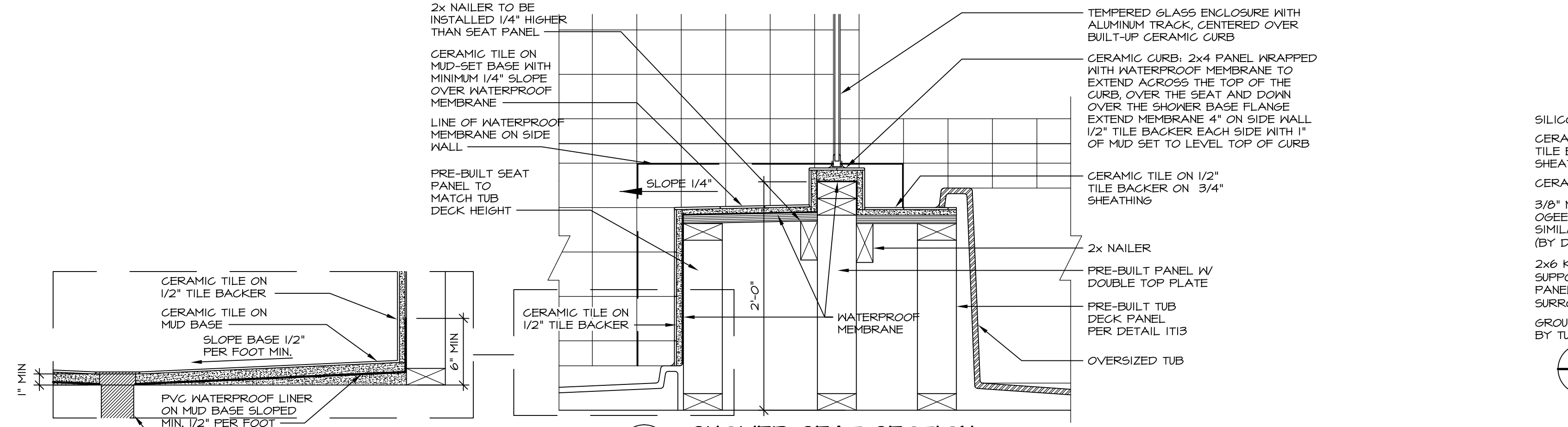
7 SECTION OF SHOWER SEAT AND SHELF
SCALE: 1 1/2" = 1'-0"



8 SECTION OF SHOWER SEAT
SCALE: 1-1/2" = 1'-0" FIBERGLASS SHOWER BASE



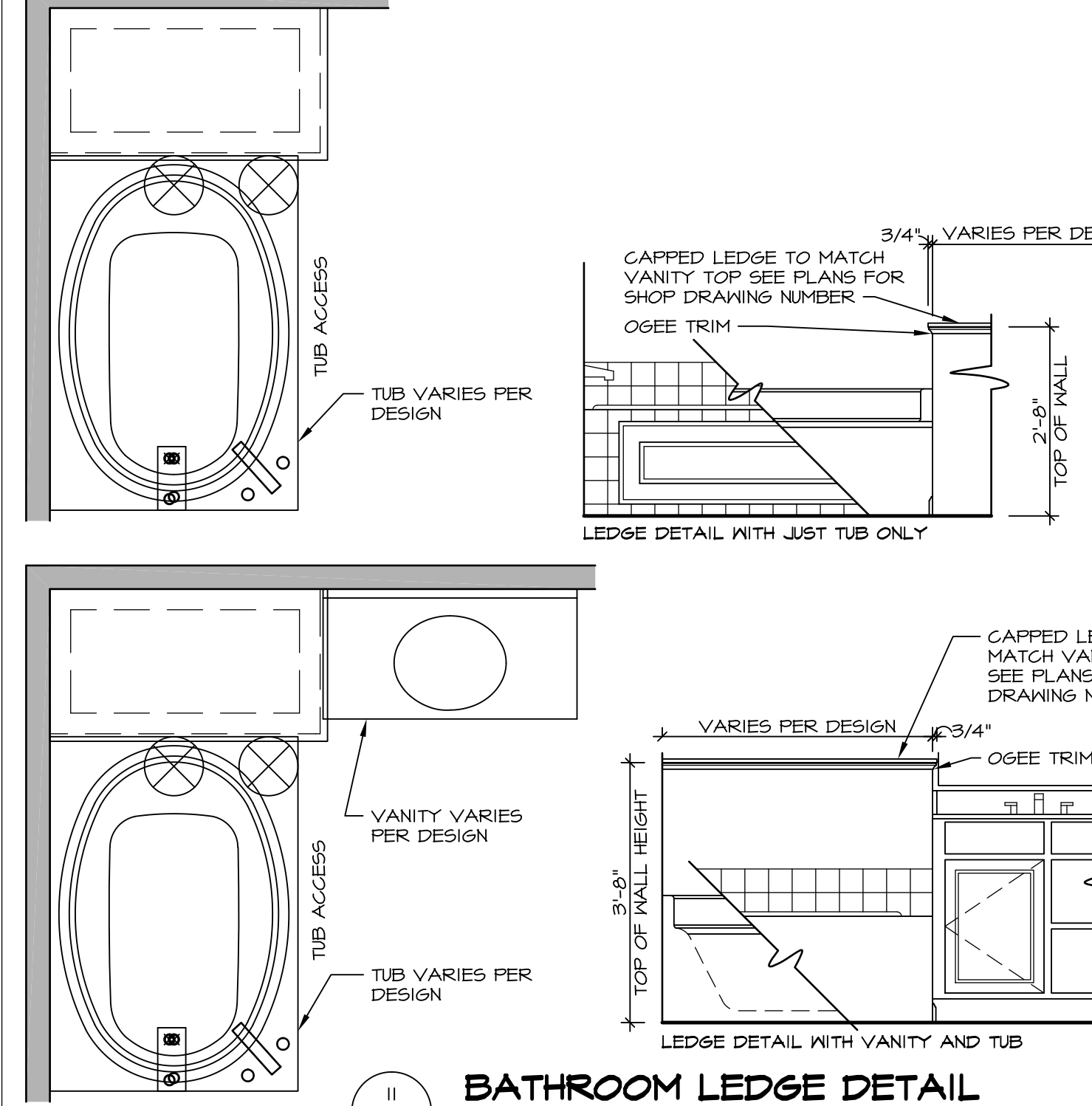
9 SHOWER SEAT PLAN / DETAIL
SCALE: 1/2" = 1'-0"



10 SHOWER SEAT SECTION
SCALE: 1-1/2" = 1'-0"



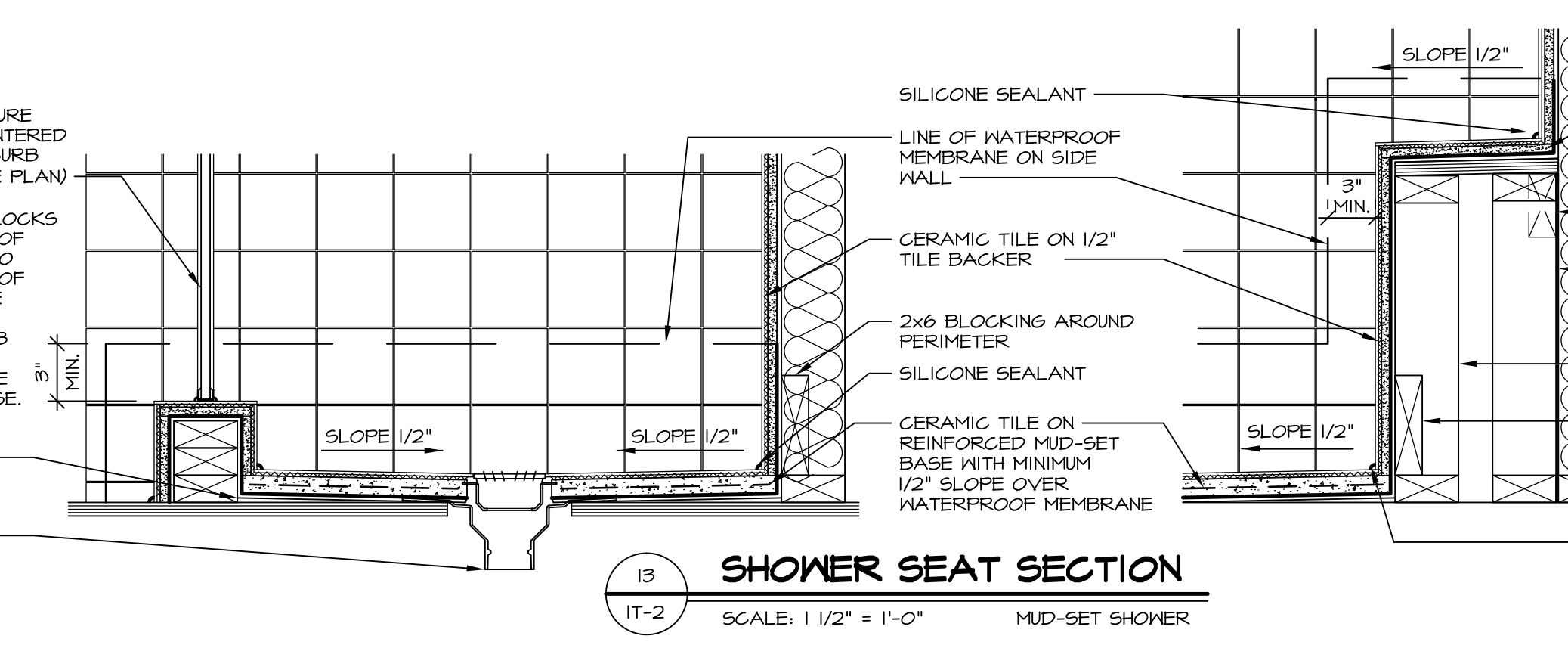
ALTERNATE SHOWER PAN DETAIL



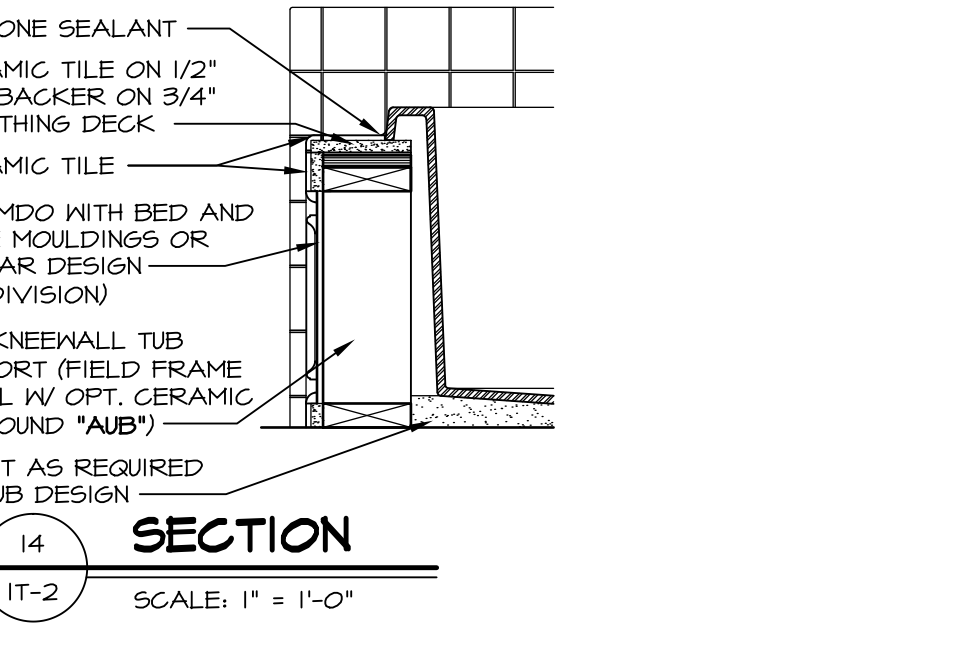
11 BATHROOM LEDGE DETAIL
SCALE: 1/2" = 1'-0"



12 SILL DETAIL
SCALE: 1" = 1'-0"



13 SHOWER SEAT SECTION
SCALE: 1 1/2" = 1'-0" MUD-SET SHOWER



14 SECTION
SCALE: 1" = 1'-0"

REVISIONS:

REV. NO.	DATE	DESCRIPTION

REMARKS:

REV. NO. DATE

REVISIONS

SET NO. NVR

VERSION

DRAWN BY

DATE:

OPTION

MODEL

STANDARD DETAILS

DRAWING TITLE

INTERIOR TRIM DETAILS

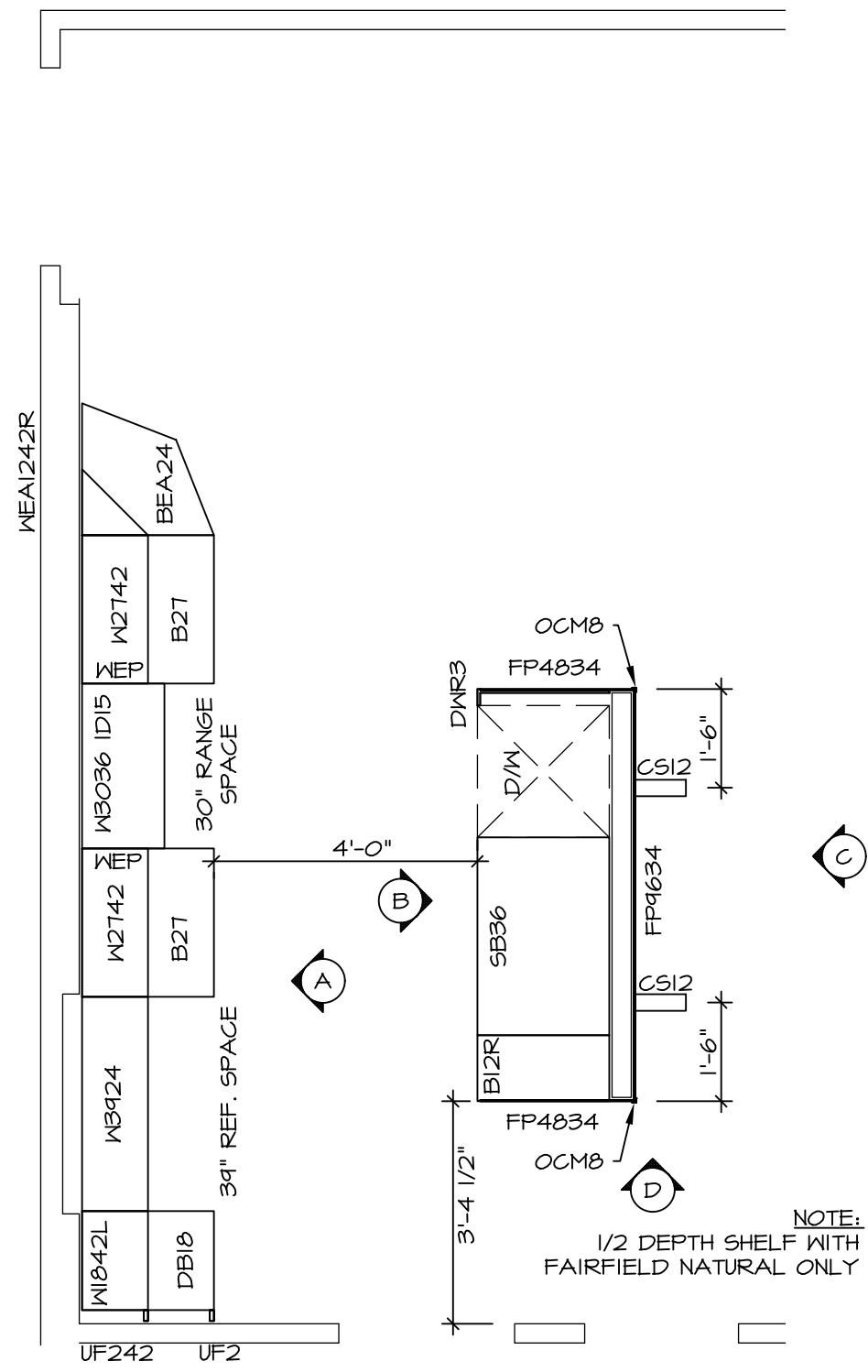
BATH DETAILS

OPTION DESCRIPTION

IT-2

J:\Dwg\NVR\Interior Trim\IT2.dwg 12/13/16 - 7:52 am

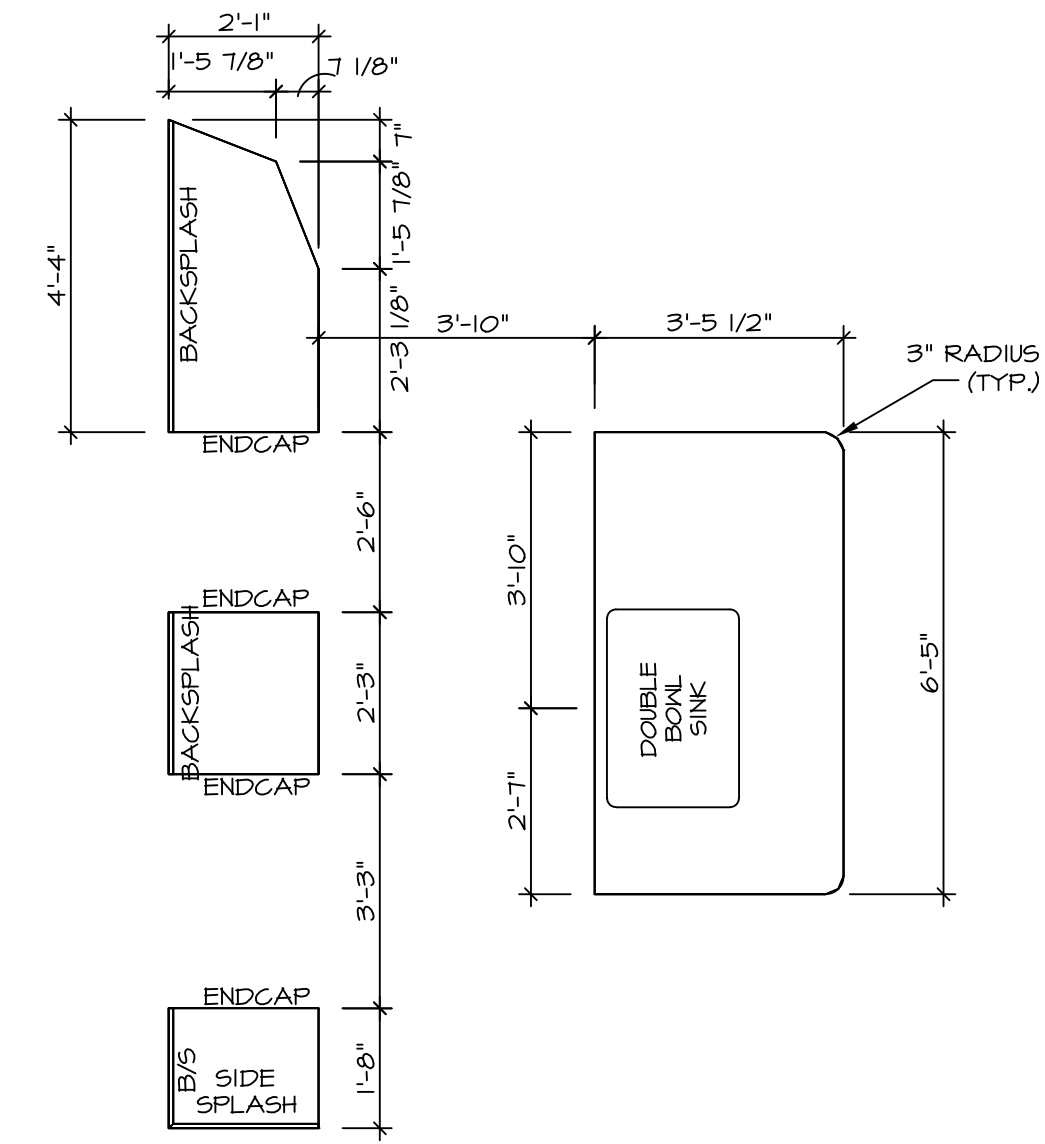
NVR, Inc. Architectural Services
21 Baychester Ave. A
Brooklyn, NY 11214



**KITCHEN CABINET
PLAN / KC-3301**

SCALE: 3/8" = 1'-0"

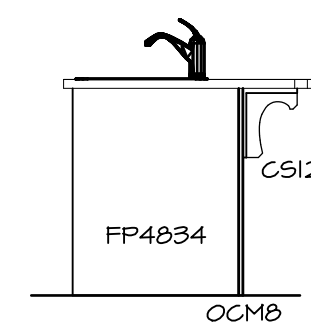
1
A-11



**KITCHEN COUNTERTOP
PLAN / KC-3301**

SCALE: 3/8" = 1'-0"

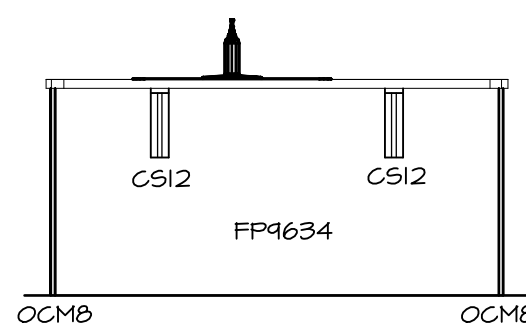
2
A-11



KITCHEN ELEVATION

SCALE: 3/8" = 1'-0"

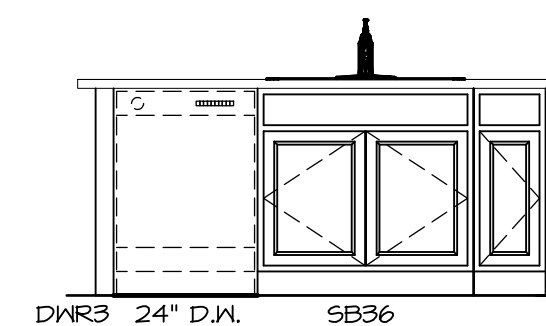
D



KITCHEN ELEVATION

SCALE: 3/8" = 1'-0"

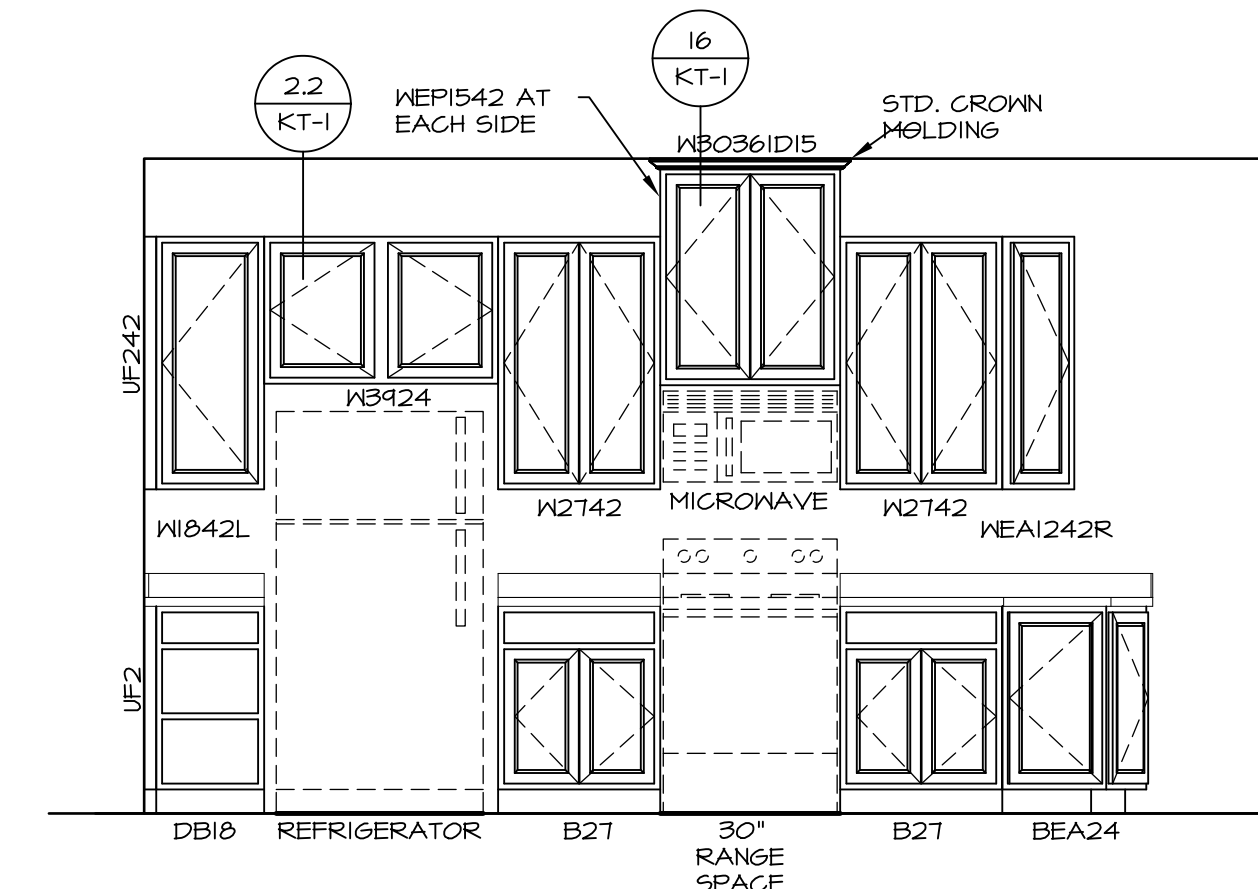
C



KITCHEN ELEVATION

SCALE: 3/8" = 1'-0"

B



KITCHEN ELEVATION

SCALE: 3/8" = 1'-0"

A

3
A-11

KITCHEN ELEVATIONS

SCALE: 1/4" = 1'-0"

SHEET NO. A-11	MODEL AVIANO	DRAWING TITLE KITCHEN LAYOUT	OPTION DESCRIPTION OPTION	SET NO. A/A00	VERSION 01	DRAWN BY RJC	DATE: 4/11/15	OPTION
				<p>REMARKS</p>				
<p>NVR, Inc., owner, expressly reserves its copyright in these plans. These plans are not to be reproduced, changed, copied in any way, or are they to be assigned to anyone without the written consent of NVR, Inc.</p>								
<p>NVR Architectural Services 5285 Westover Hills Frederick, MD 21703</p>								
<p>C:\NVR\Solves\AVIANO_AIA00_01\DCY-Y6-1400\401071\Sheets\Lot_Specific\38_A-11_LS_KIT.dwg 04/14/17 - 5:31 am</p>								

