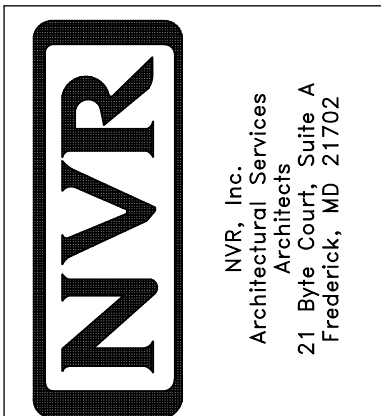


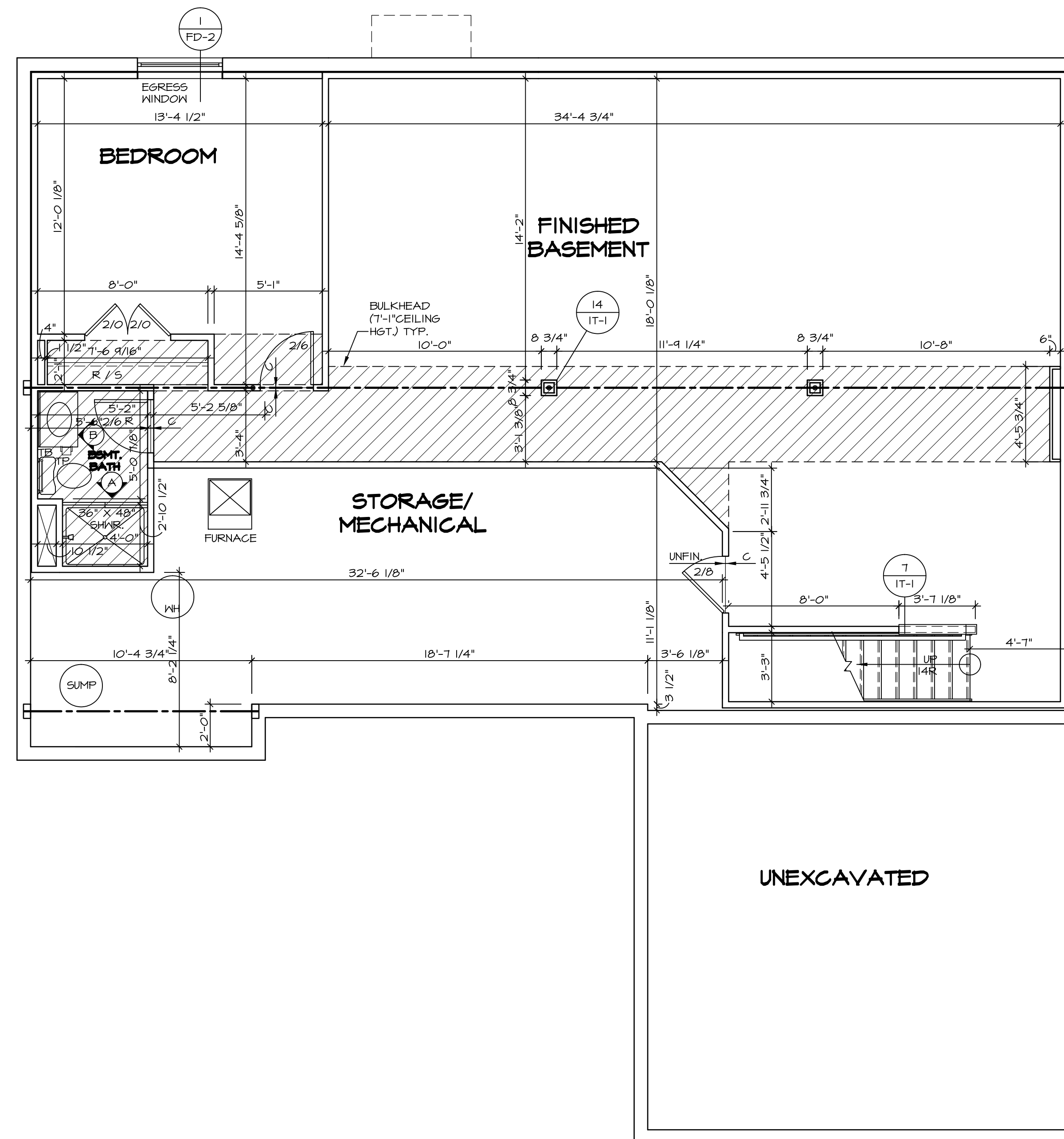
**PLUMBING PLAN**  
SCALE: 1/4" = 1'-0"

SHEET NO. <b>A-5</b>	MODEL <b>AVIANO</b>	SET NO. A/A00 VERSION 01
OPTION DESCRIPTION <b>26</b>	DRAWING TITLE <b>PLUMBING PLAN</b>	DRAWN BY <b>OPTION</b>
	DATE:	DATE:



NVR, Inc., owner, expressly reserves its copyright in these plans. These plans are not to be reproduced, changed, copied in any way, or otherwise disseminated, without the prior written consent of NVR, Inc.

REV. NO.	DATE	REMARKS



LEGEND	
	BEARING WALL
	NON BEARING WALL
	INDICATES BEARING FROM POINT-LOAD ABOVE
	JACKS
	BEAM/HEADER
	PAD FOOTING
	STEEL COLUMN
	PORTAL FRAME
	JOIST/TRUSS
	LVL
	ENGINEERING PAGE NUMBER

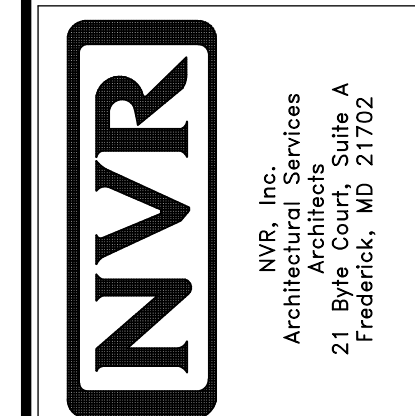
SEE FC DETAILS FOR FRAMING CONNECTORS

- FLOOR PLAN NOTES**
- ALL HEADERS ARE (2) 2x6 w/ 2x4 WALLS OR (3) 2x6 w/ 2x6 WALLS, UNLESS OTHERWISE NOTED.
  - ALL HEADERS TO HAVE (1) 2x4 OR 2x6 JACK EACH END, UNLESS OTHERWISE NOTED.
  - ALL EXTERIOR WALLS TO BE 4" AND ALL INTERIOR WALLS TO BE 3 1/2", UNLESS OTHERWISE NOTED.
  - HATCHED AREAS INDICATE DROPPED CEILINGS. ALL DROPPED CEILINGS ARE 12" UNLESS OTHERWISE NOTED.
  - SEE "BRACED WALL PANEL DETAIL SHEET" FOR SPECIAL WALL FRAMING LOCATIONS AND HEADER SIZES, IF APPLICABLE.
  - SEE STANDARD DETAIL CATEGORY "IT" SHEET(S) FOR INTERIOR TRIM DETAILS.
  - SEE ARCHITECTURAL DETAIL SHEET "AD" FOR HOUSE SPECIFIC INTERIOR TRIM OPTION TABLE.
  - ALL WINDOWS HAVE 7'-0 1/2" HEADER HEIGHT UNLESS OTHERWISE NOTED.

- GYPSUM NOTES**
- AT GARAGE:**  
 GYPSUM BOARD AT COMMON WALLS, CEILING, BEAM WRAPS AND SUPPORTS PER STANDARD DETAIL FA-1(b) FIRE ASSEMBLIES OR AS REQUIRED BY LOCAL CODE.
- AT STAIRS:**  
 1/2" GYPSUM BOARD AT UNDERSIDE OF STAIRS AND WALLS IN CLOSET

REV. NO.	DATE	REMARKS

NVR, Inc., owner, expressly reserves its copyright in these plans. These plans are not to be reproduced, changed, copied, or otherwise used in any way without the written consent of NVR, Inc.

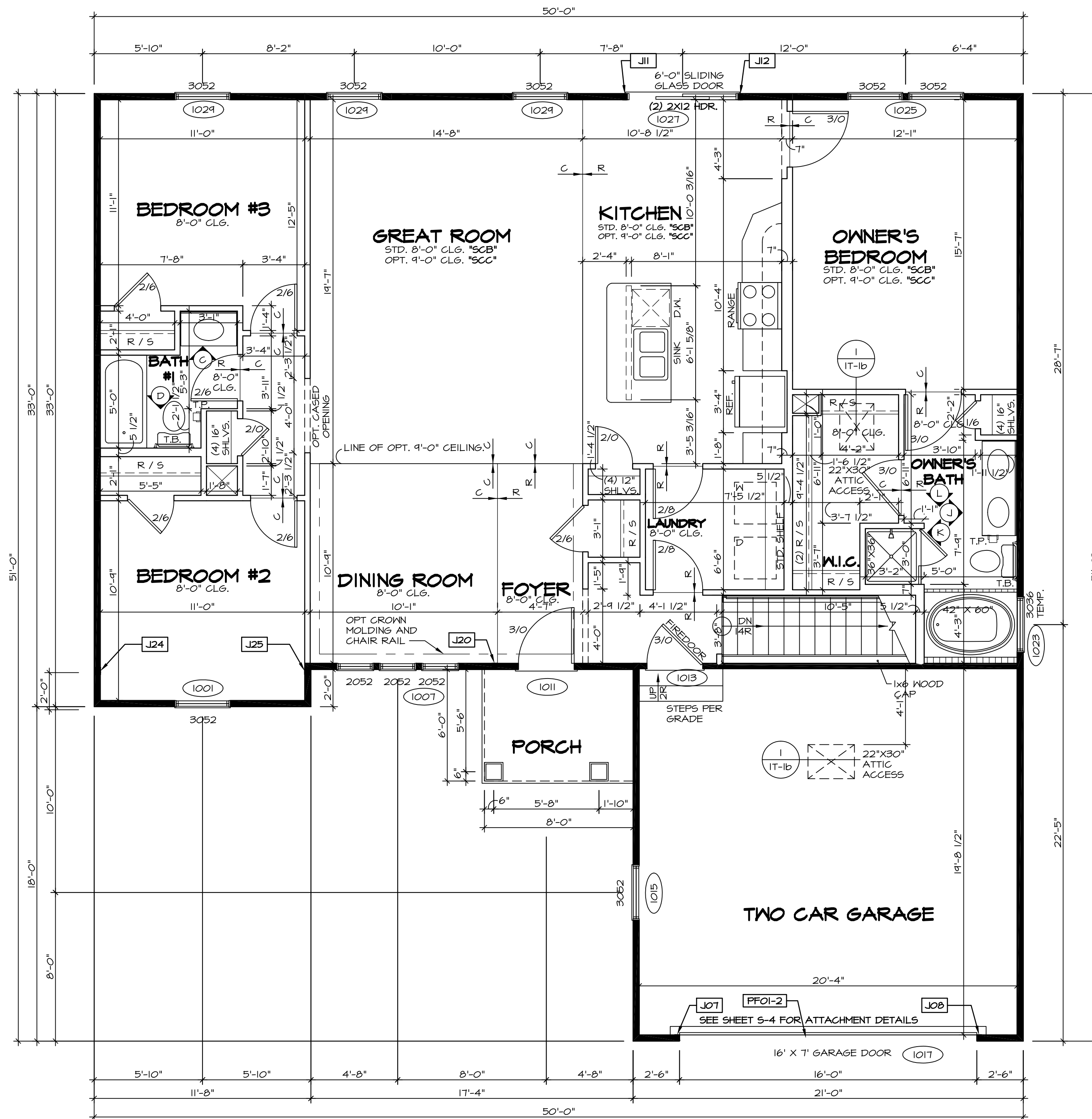


SET NO. A1A00	VERSION 01
DRAWN BY SGA	DATE: 9/1/15
OPTION	

MODEL	AVIANO
DRAWING TITLE	BASEMENT FLOOR PLAN
OPTION DESCRIPTION	

SHEET NO.	A-6	29
-----------	-----	----

**BASEMENT FLOOR PLAN**  
 SCALE: 1/4" = 1'-0"



**FIRST FLOOR PLAN**  
SCALE: 1/4" = 1'-0"

**LEGEND**

- BEARING WALL
- NON BEARING WALL
- INDICATES BEARING FROM POINT-LOAD ABOVE JACKS
- JACKS
- BEAM/HEADER
- PAD FOOTING
- STEEL COLUMN
- PORTAL FRAME
- JOIST/TRUSS
- LVL
- ENGINEERING PAGE NUMBER

SEE FC DETAILS FOR FRAMING CONNECTORS

- FLOOR PLAN NOTES**
- ALL HEADERS ARE (2) 2x6 W/ 2x4 WALLS OR (3) 2x6 W/ 2x6 WALLS, UNLESS OTHERWISE NOTED.
  - ALL HEADERS TO HAVE (1) 2x4 OR 2x6 JACK EACH END, UNLESS OTHERWISE NOTED.
  - ALL EXTERIOR WALLS TO BE 4" AND ALL INTERIOR WALLS TO BE 3 1/2", UNLESS OTHERWISE NOTED.
  - HATCHED AREAS INDICATE DROPPED CEILINGS. ALL DROPPED CEILINGS ARE 12" UNLESS OTHERWISE NOTED.
  - SEE "BRACED WALL PANEL DETAIL SHEET" FOR SPECIAL WALL FRAMING LOCATIONS AND HEADER SIZES, IF APPLICABLE.
  - SEE STANDARD DETAIL CATEGORY "IT" SHEET(S) FOR INTERIOR TRIM DETAILS.
  - SEE ARCHITECTURAL DETAIL SHEET "AD" FOR HOUSE SPECIFIC INTERIOR TRIM OPTION TABLE.
  - ALL WINDOWS HAVE 7'-0 1/2" HEADER HEIGHT UNLESS OTHERWISE NOTED.

- GYPSUM NOTES**
- AT GARAGE:  
GYPSUM BOARD AT COMMON WALLS, CEILING, BEAM WRAPS AND SUPPORTS PER STANDARD DETAIL FA-1(b) FIRE ASSEMBLIES OR AS REQUIRED BY LOCAL CODE.
- AT STAIRS:  
1/2" GYPSUM BOARD AT UNDERSIDE OF STAIRS AND WALLS IN CLOSET

**LVL PLY TO PLY FASTENING SCHEDULE:**

- 1A - (2) PLY UP TO AND INCLUDING 11 7/8" TALL; FASTEN PLYS W/ (2) ROWS 16D NAILS AT 12" O.C.
- 2A - (2) PLY 14" TO AND 18" TALL (INCLUSIVE); FASTEN PLYS W/ (3) ROWS 16D NAILS AT 12" O.C.
- 3A - (2) PLY 20" TALL AND OVER; FASTEN PLYS W/ (4) ROWS 16D NAILS AT 12" O.C.
- 4A - (3) PLY UP TO AND INCLUDING 11 7/8" TALL; FASTEN PLYS W/ (2) ROWS 16D NAILS AT 12" O.C. FROM EACH SIDE
- 5A - (3) PLY 14" TO AND 18" TALL (INCLUSIVE); FASTEN PLYS W/ (3) ROWS 16D NAILS AT 12" O.C. FROM EACH SIDE
- 6A - (3) PLY 20" TALL AND OVER; FASTEN PLYS W/ (4) ROWS 16D NAILS AT 12" O.C. FROM EACH SIDE

**FIELD INSTALLED FIRST FLOOR BEAM/HEADER SCHEDULE**

IDENTIFIER	DESCRIPTION	LENGTH	OPTIONS	ENG. NUM.	REMARKS
PF01-2	EXT HEADER - 2X12 - 2 PLY	20'-4"	GCB	1017	

**FIRST FLOOR JACK SCHEDULE**

IDENTIFIER	DESCRIPTION	OPTIONS	ENG. NUM.	REMARKS
J01	JACK - (2) 2X4 SFF STUD GRADE	GCB	1017	
J02	JACK - (2) 2X4 SFF STUD GRADE	GCB	1017	
J11	JACK - (2) 2X4 SFF STUD GRADE		1027	
J12	JACK - (2) 2X4 SFF STUD GRADE		1027	
J20	JACK - (2) 2X4 SFF STUD GRADE	ELK	1033	
J24	JACK - (3) 2X4 SFF STUD GRADE		1036	
J25	JACK - (3) 2X4 SFF STUD GRADE		1036	

REMARKS

REV. NO. DATE

NVR, Inc., owner, expressly reserves its common law copyright in these plans. These plans are not to be reproduced, changed, adapted, or otherwise used in any way without the written consent of NVR, Inc.

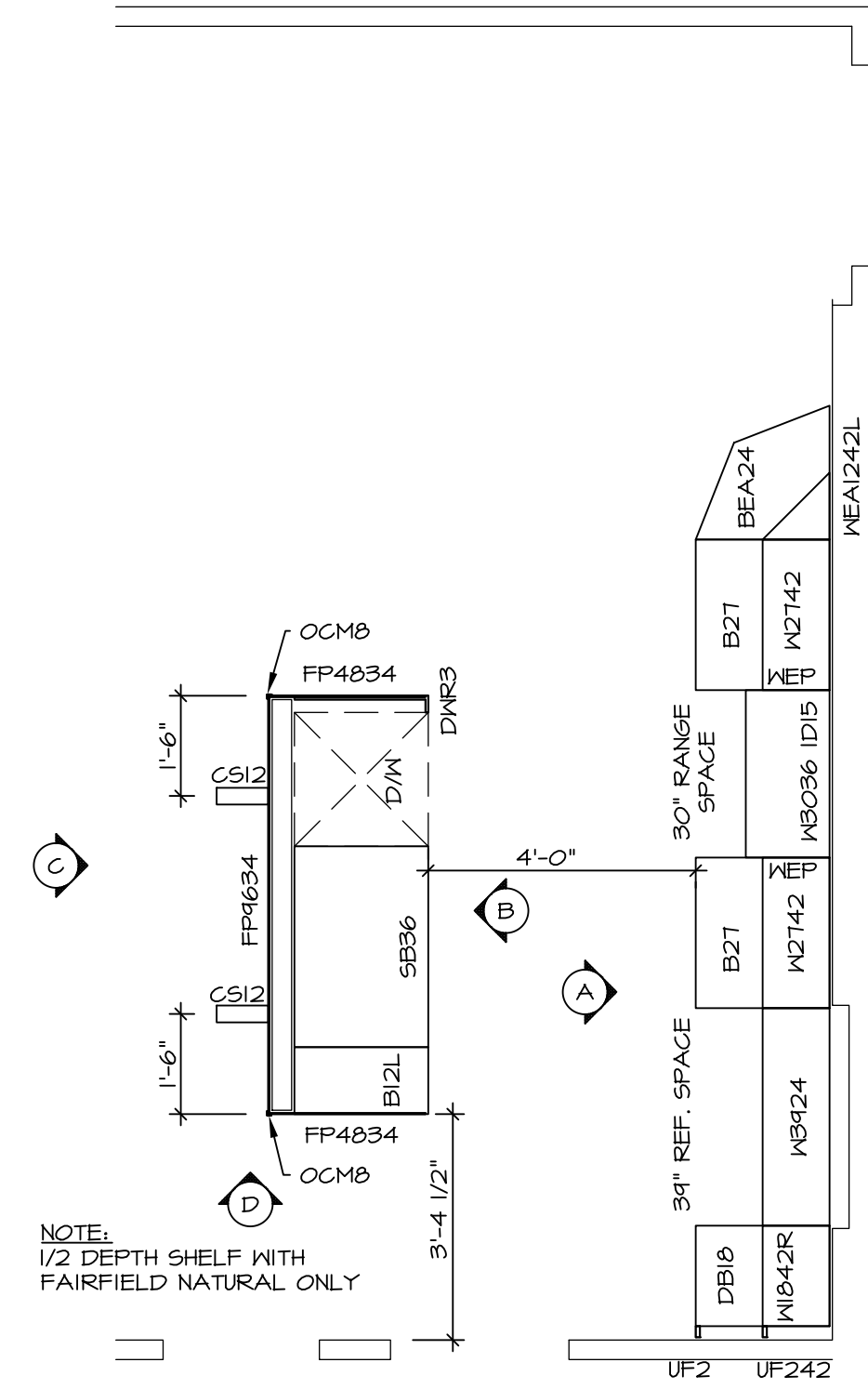
**NVR**  
Architectural Services  
21 B...  
Frederick, MD 21702

SET NO. A1A00  
VERSION 01  
DRAWN BY SGA  
DATE: 9/17/15  
OPTION

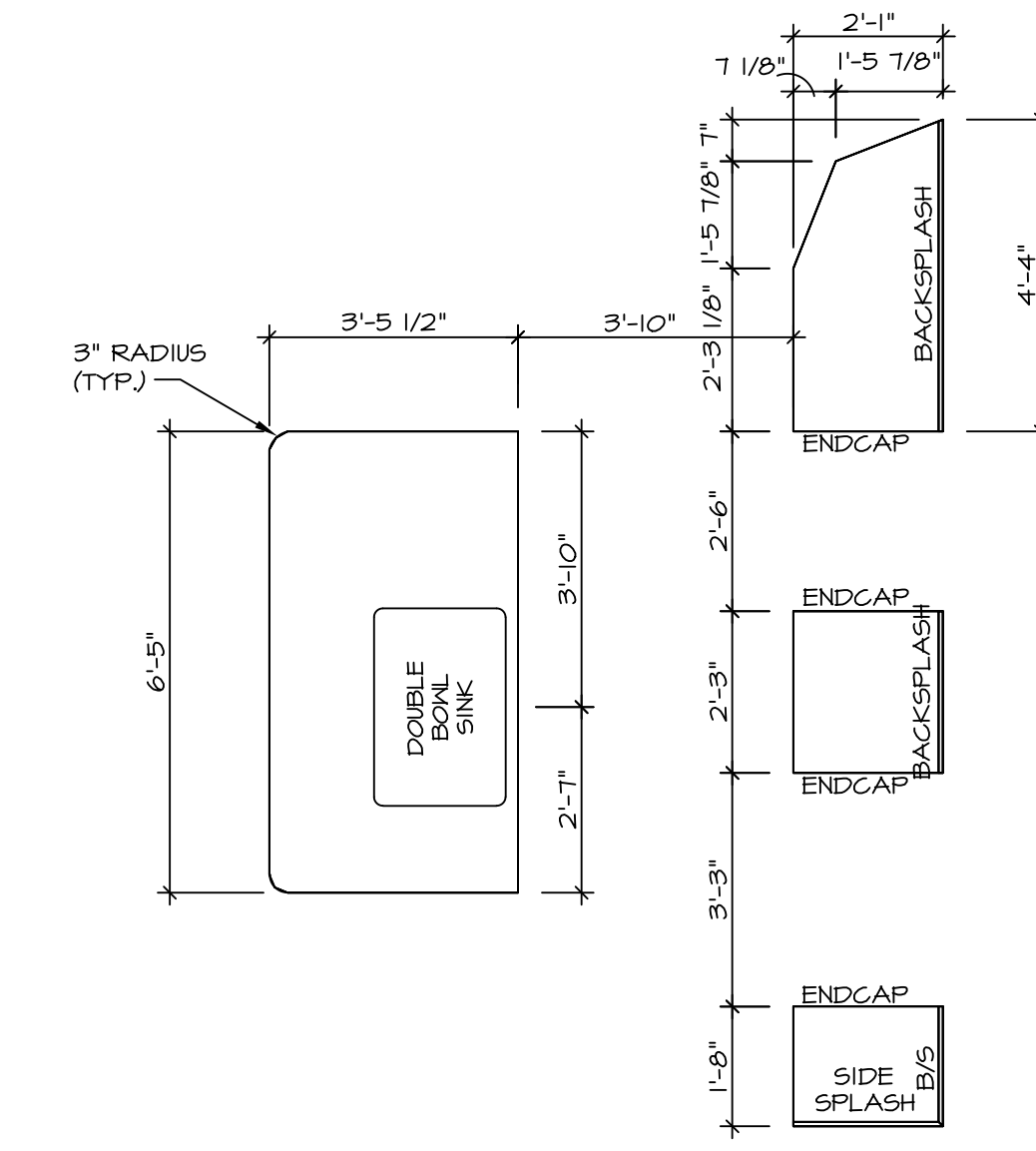
SHEET NO. **A-7**  
DRAWING TITLE **FIRST FLOOR PLAN**  
OPTION DESCRIPTION

31

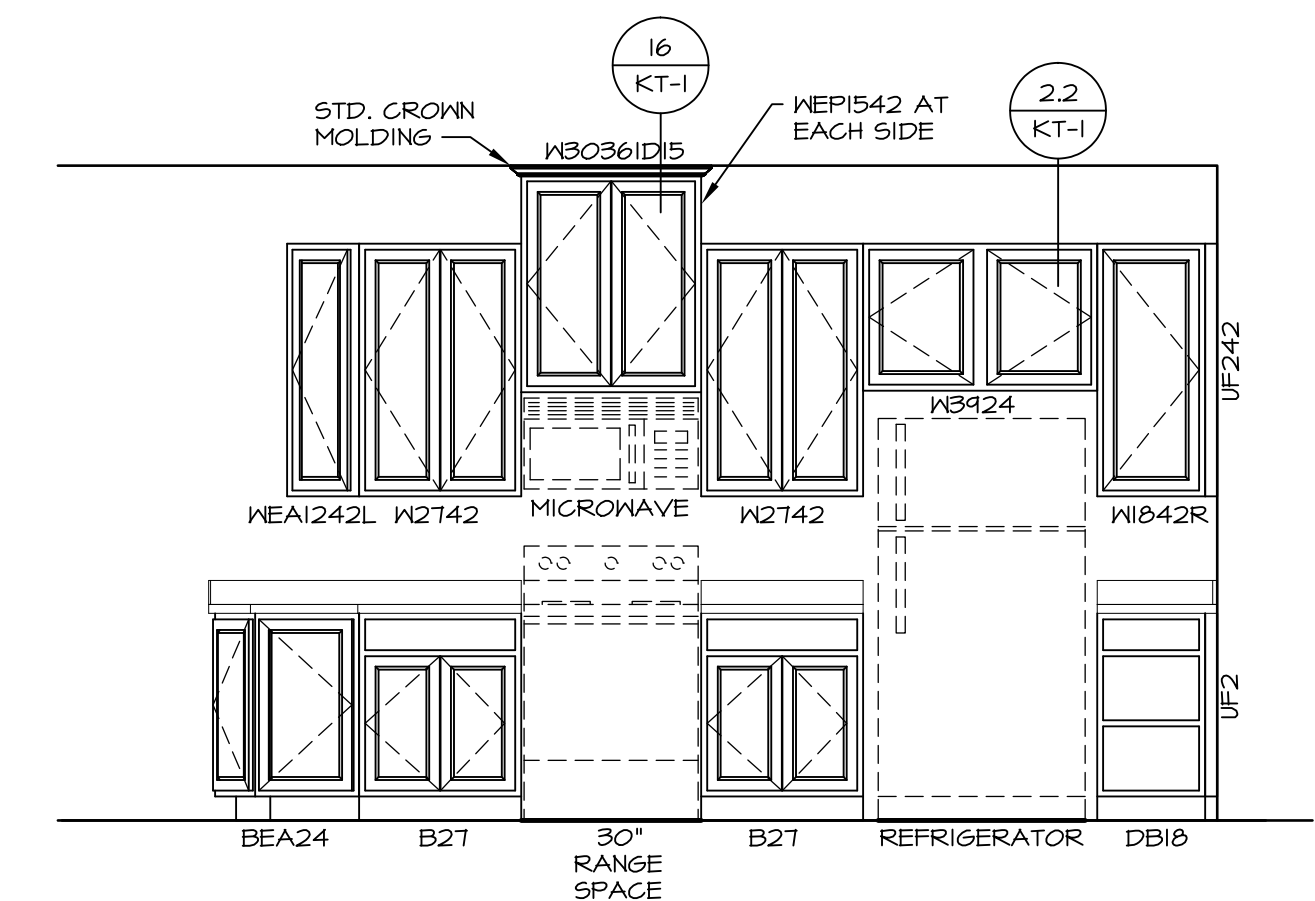
C:\NVR\Solves\AVIANO\_R1800\_01\0CT-16-1409\314914\Sheets\01\_Specific\31\_A-7\_Plan\_L5.dwg 12/16/16 - 7:18 PM



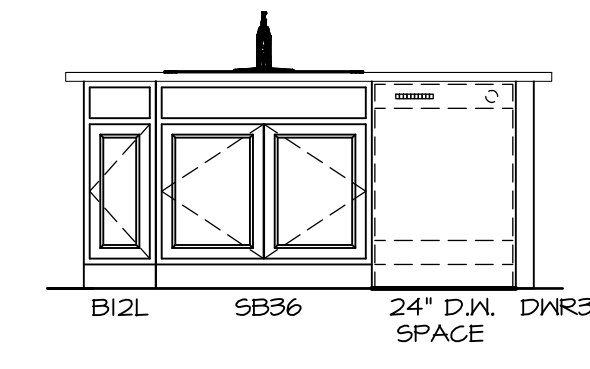
**1**  
A-II  
**KITCHEN CABINET PLAN / KC-3301**  
SCALE: 3/8" = 1'-0"



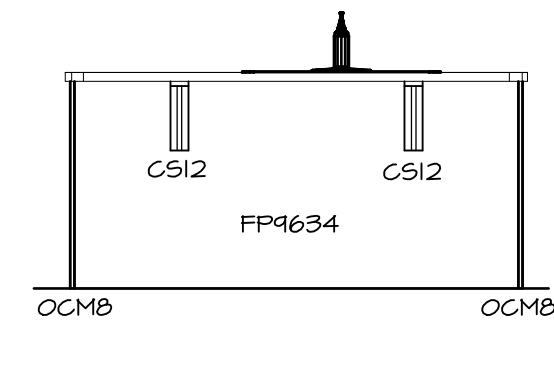
**2**  
A-II  
**KITCHEN COUNTERTOP PLAN / KC-3301**  
SCALE: 3/8" = 1'-0"



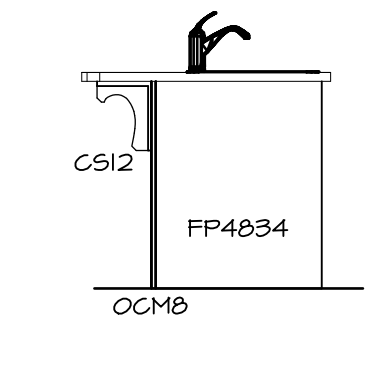
**A**  
**KITCHEN ELEVATION**  
SCALE: 3/8" = 1'-0"



**B**  
**KITCHEN ELEVATION**  
SCALE: 3/8" = 1'-0"



**C**  
**KITCHEN ELEVATION**  
SCALE: 3/8" = 1'-0"



**D**  
**KITCHEN ELEVATION**  
SCALE: 3/8" = 1'-0"

**3**  
A-II  
**KITCHEN ELEVATIONS**  
SCALE: 1/4" = 1'-0"

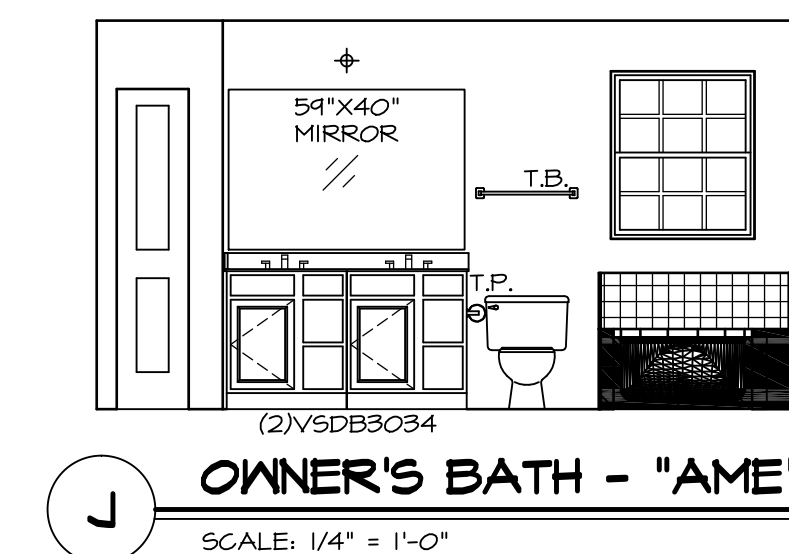
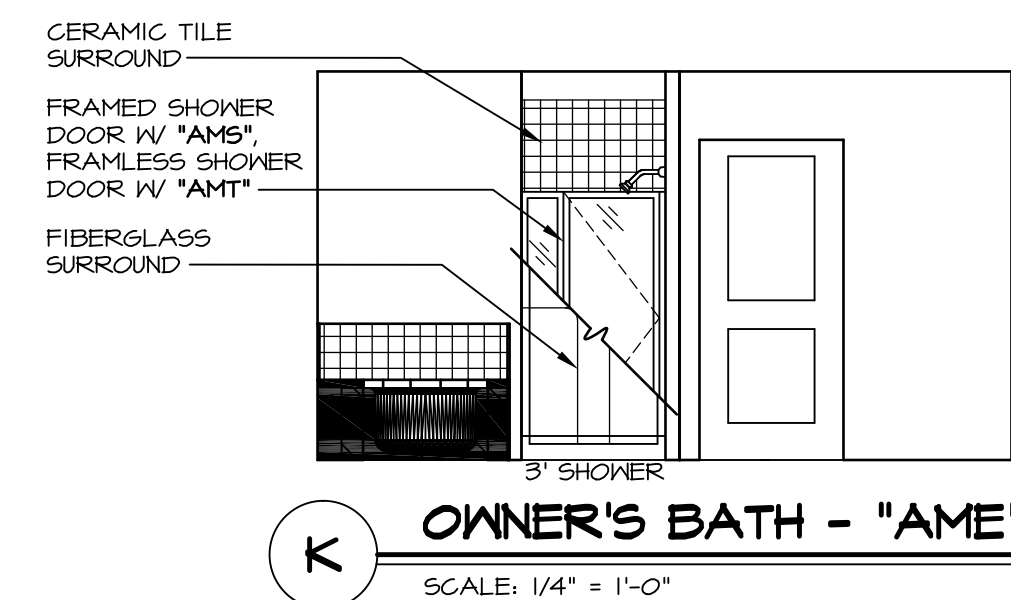
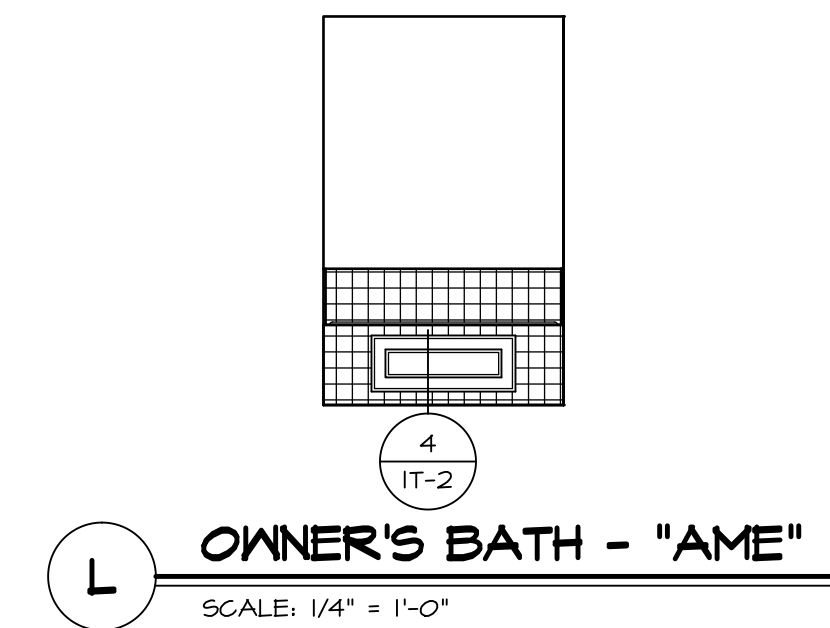
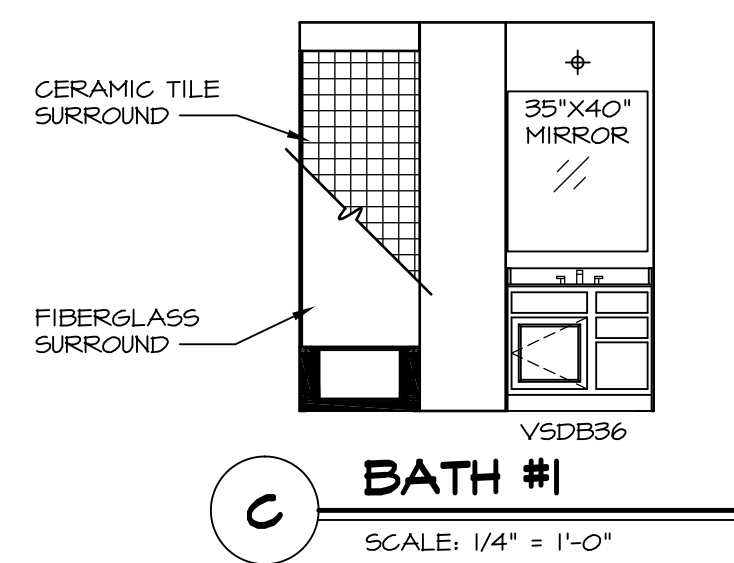
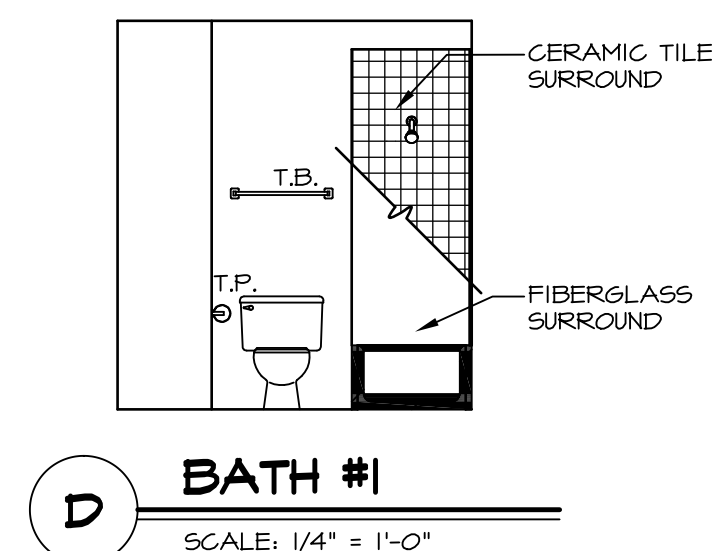
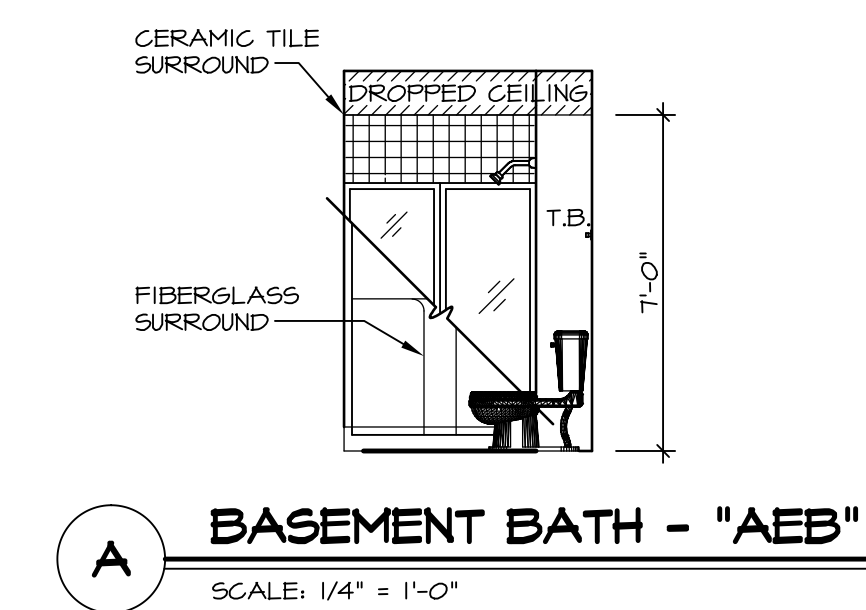
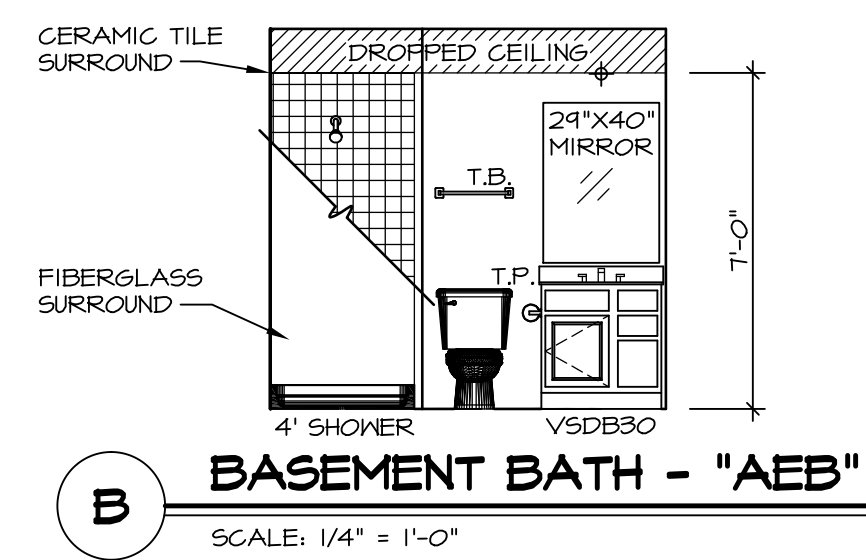
SHEET NO.	MODEL	SET NO.	VERSION	DRAWN BY	DATE	OPTION	REMARKS
A-11	AVIANO KITCHEN LAYOUT	01	01	RJC	4/11/15	OPTION	
38							

NVR, Inc., owner, expressly reserves its copyright in these plans. These plans are not to be reproduced, changed, copied, or otherwise used in any way without the written consent of NVR, Inc.

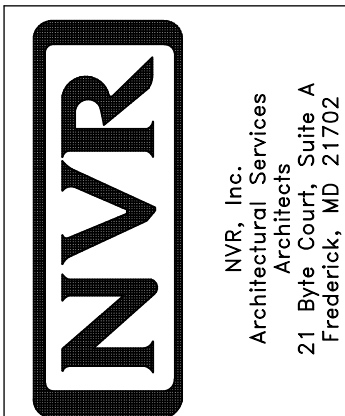


**NOTES:**

1. TEMPERED GLASS SHOWER ENCLOSURE WITH SWING DOOR OR OPTIONAL SLIDING DOOR BY DIVISION
2. TUB ACCESS PANELS PROVIDED AS NEEDED. ALL MATERIALS BY DIVISION
3. REFER TO SHEET IT-2 FOR TUB AND SHOWER DETAILS.
4. ALL V5DB24-42 DRAWERS TO BE SET ON RIGHT HAND.
5. BATH ELEVATIONS ARE SHOWN PER PLAN.

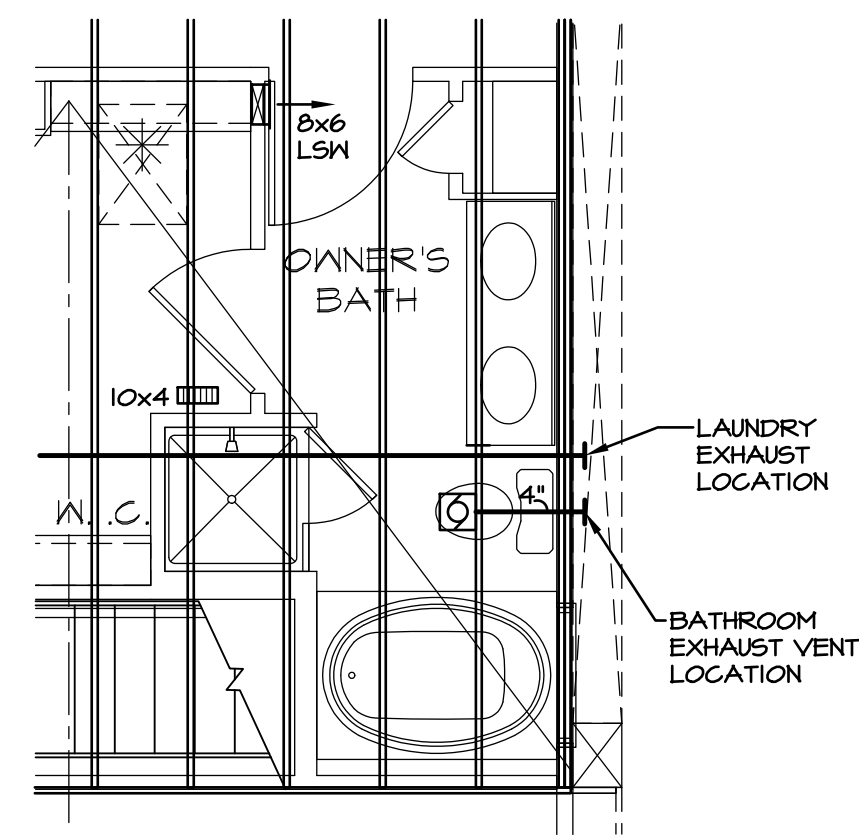


NVR, Inc., owner, expressly reserves its copyright in these plans. These plans are not to be reproduced, changed, adapted, or otherwise used in any way without the prior written consent of NVR, Inc.



MODEL	AVIANO
DRAWING TITLE	BATH ELEVATIONS
OPTION DESCRIPTION	
SHEET NO.	A-12
SET NO.	A/ACO
VERSION	01
DRAWN BY	SGA
DATE	4/11/15
OPTION	
SHEET NO.	42

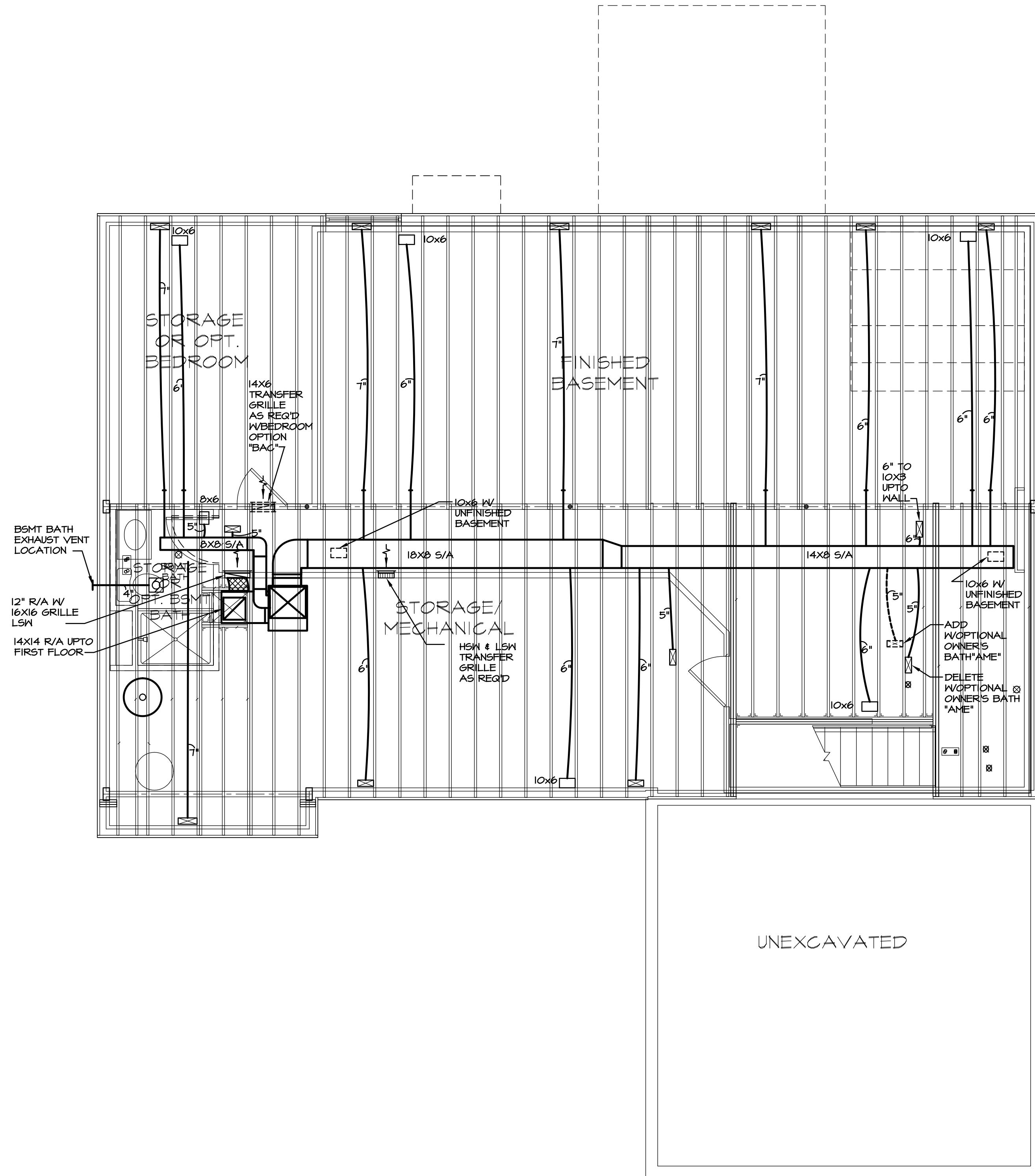
MECHANICAL LEGEND	
	THERMOSTAT
	EXHAUST FAN
	LIGHT / EXHAUST FAN
	S/A REGISTER UP OR OVAL RIGID WALL STACK
	FLOOR REGISTER
	CEILING REGISTER
	OPTIONAL S/A REGISTER UP
	OPTIONAL FLOOR REGISTER
	OPTIONAL CEILING REGISTER
	TRANSFER (COMBUSTION) AIR GRILLE
	LOW SIDE WALL (LSW) OR HIGH SIDE WALL (HSW) REGISTER
	LSW OR HSW R/A GRILLE
	TWO WAY HSW REGISTER OR LSW REGISTER
	BACK FLOW DAMPER
	VOLUME DAMPER
	BAROMETRIC OR BYPASS DAMPER
	MOTOR OPERATED ZONE DAMPER
	ELECTRIC BASEBOARD
	RETURN DUCT SECTIONS
	SUPPLY DUCT SECTIONS
	DISTRIBUTION BOX
	RECTANGULAR METAL DUCTWORK
	INSULATED RECTANGULAR DUCTWORK
	ROUND METAL DUCTWORK
	FLEX DUCTWORK
	INSULATED R/A FLEX DUCTWORK
	RIGID & FLEX SUPPLY DUCT



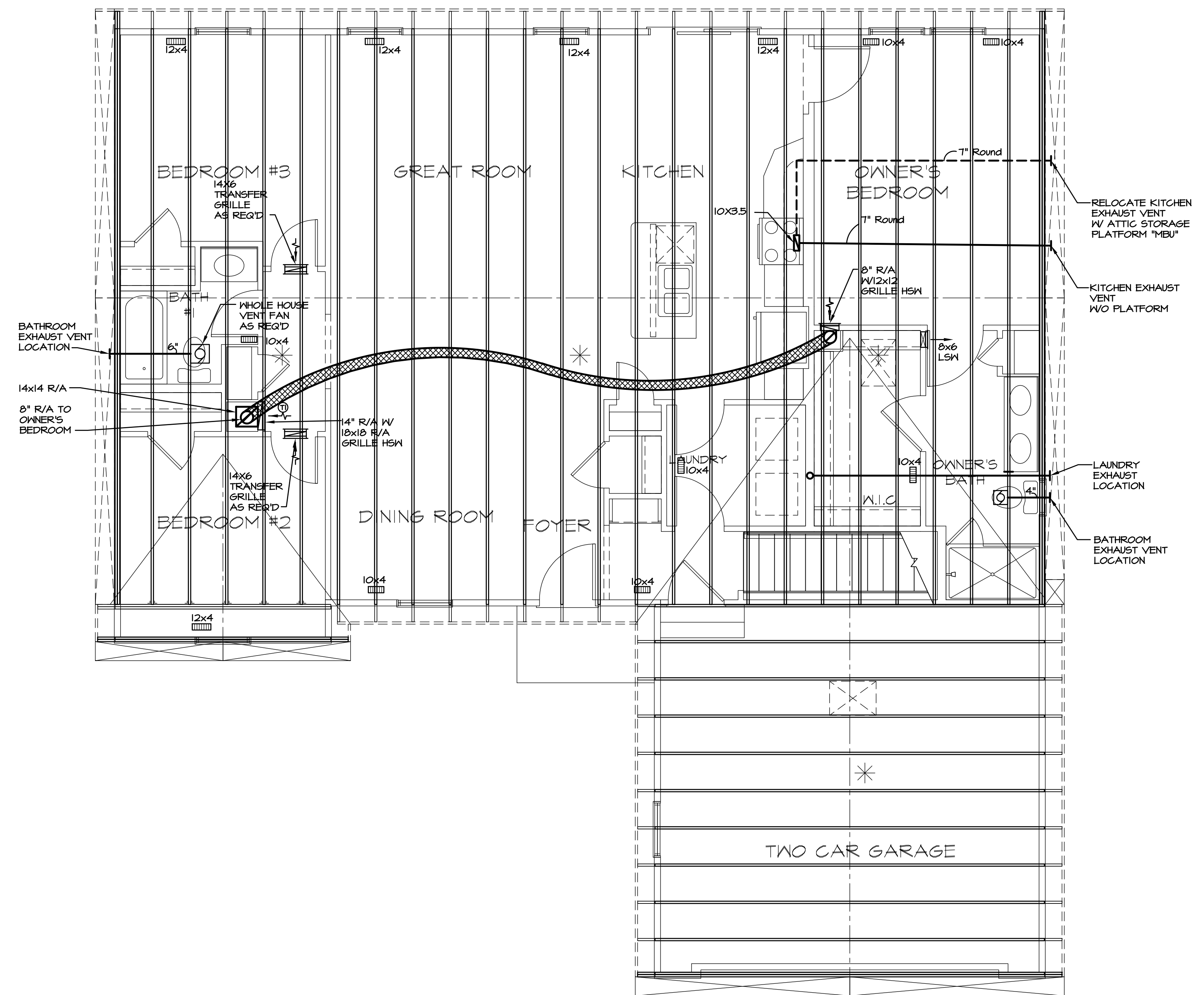
3 PARTIAL FIRST FLOOR HVAC LAYOUT  
SCALE: 1/4" = 1'-0" OPTIONAL OWNER'S BATH "AME"

- NOTES:**
1. PROVIDE ADJUSTABLE DAMPERS IN EACH FLENUM TAKE-OFF FOR BASEMENT SYSTEM.
  2. PROVIDE ADJUSTABLE DAMPERS IN EACH FLENUM TAKE-OFF FOR ATTIC SYSTEM.
  3. PROVIDE RETURN AIR FILTER GRILLES FOR ATTIC SYSTEM.
  4. EXTEND SUPPLY LINES WITH OPTIONAL ELEVATIONS AS NEEDED.
  5. ROOF PENETRATIONS SHALL NOT OCCUR WITHIN 4'-0" OF FIRE SEPARATION WALLS.
  6. INSULATE ALL DUCTS IN UNCONDITIONED SPACES.
  7. TRANSFER GRILLES ARE SHOWN AS A MINIMUM REQUIREMENT FOR COMBUSTION AIR. ADDITIONAL DUCTWORK AND/OR OUTSIDE AIR GRILLES MAY BE NEEDED BASED ON EQUIPMENT SELECTED AND LOCAL CODES. MECHANICAL CONTRACTOR SHALL BE RESPONSIBLE FOR PROVIDING THE REQUIRED COMBUSTION AIR BASED ON LOCAL CODES.

- DRAWING NOTES:**
1. 6" FLEX DUCT ACCEPTABLE IF 5" NOT AVAILABLE.
  2. 4" FLEX DUCT ACCEPTABLE IF 5" NOT AVAILABLE.



1 BASEMENT HVAC LAYOUT  
SCALE: 1/4" = 1'-0"

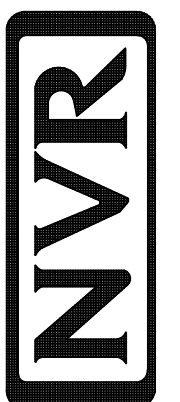


2 FIRST FLOOR HVAC LAYOUT  
SCALE: 1/4" = 1'-0"

REMARKS

REV. NO. DATE

NVR, Inc., owner, expressly reserves its common law copyright and other property rights in these plans. These plans are not to be altered, modified, or otherwise used in any way without the written consent of NVR, Inc.

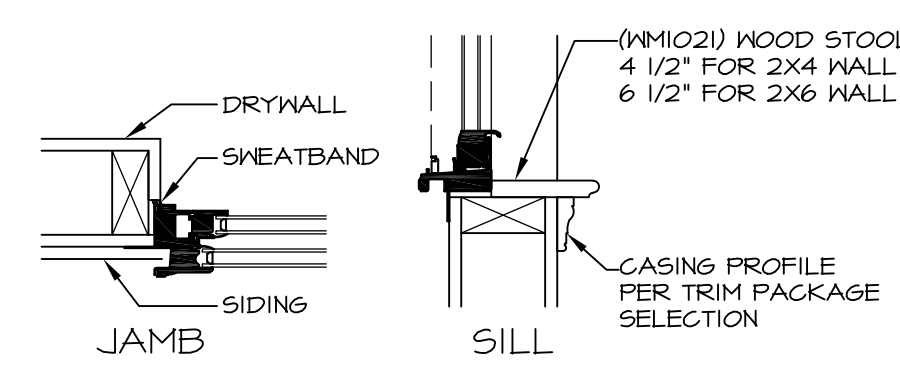
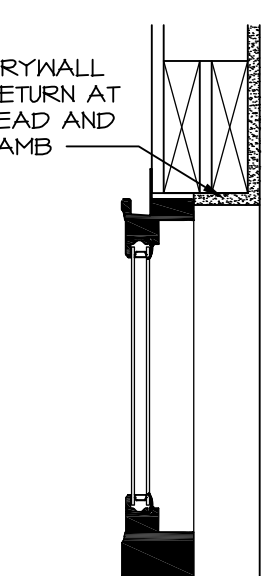
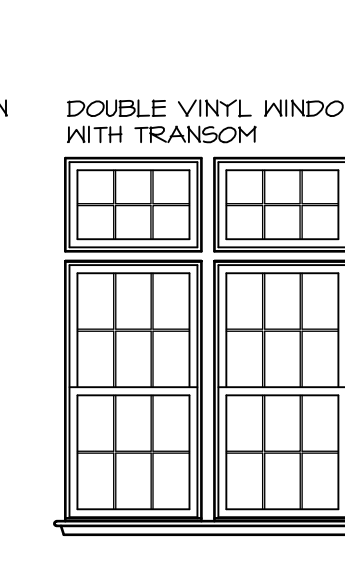
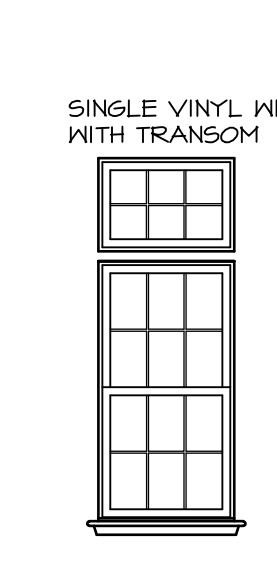
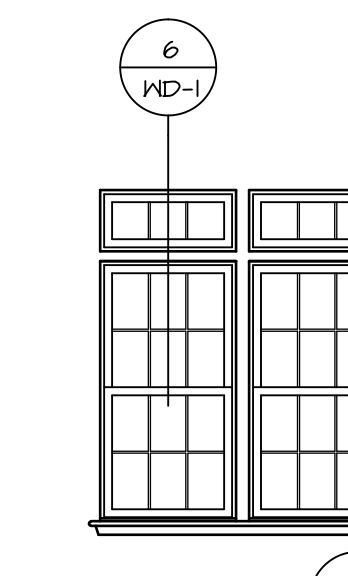
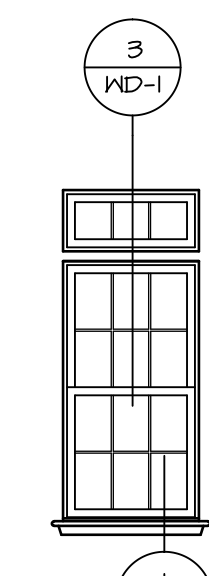
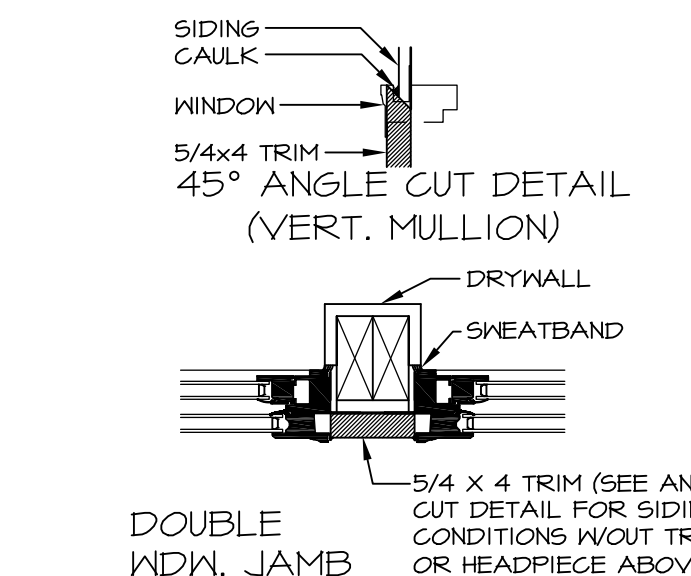


NVR, Inc.  
Architectural Services  
21 B...  
Frederick, MD 21702

SET NO. A/A00  
VERSION 01  
DRAWN BY EJM  
DATE: 10/7/15  
OPTION  
FBA  
SXC  
ØZE

MODEL  
AVIANO  
DRAWING TITLE  
BASEMENT/FIRST FLOOR HVAC LAYOUT  
OPTION DESCRIPTION  
BASEMENT FOUNDATION  
CORNERSTONE SPEC.  
CLIMATE ZONE 5

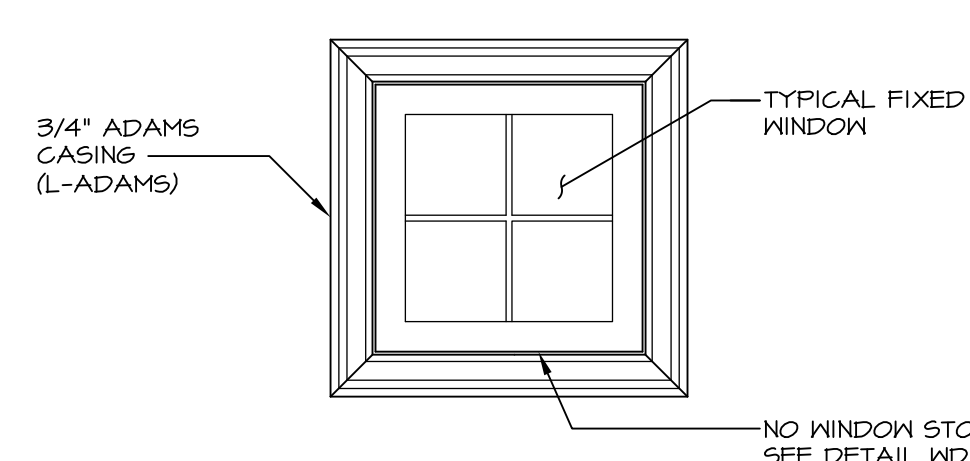
SHEET NO.  
M-1  
121



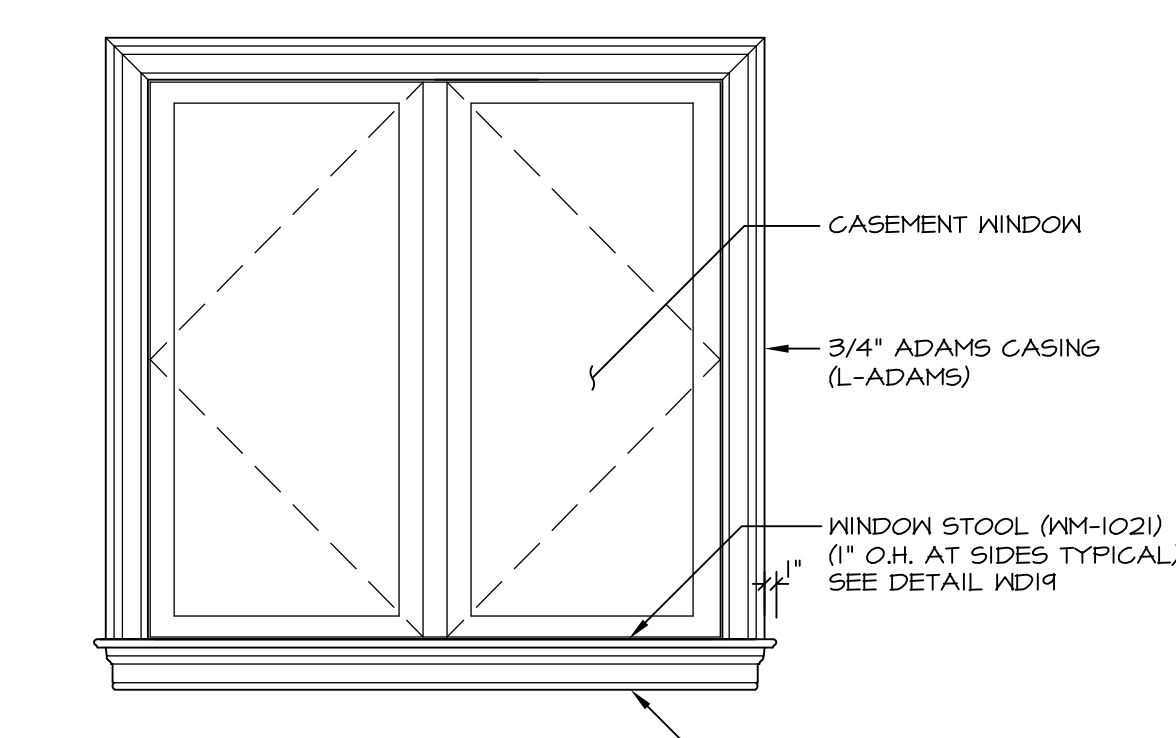
1 VINYL WINDOW WITH TRANSOM  
SCALE: 1/2" = 1'-0"

3 WDW W/ TRANSOM  
SCALE: 1/2" = 1'-0" VINYL

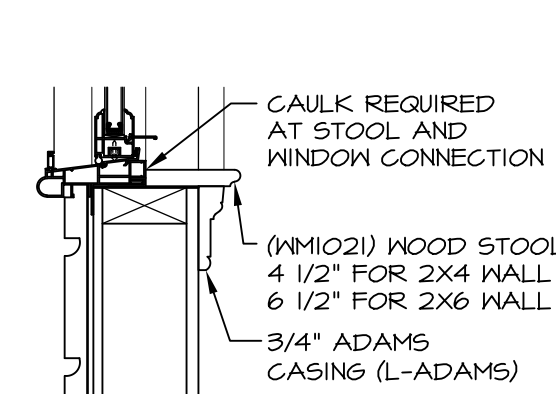
6 VINYL SINGLE HUNG WINDOW JAMB W/ WOOD STOOL SILL  
SCALE: 1/2" = 1'-0"



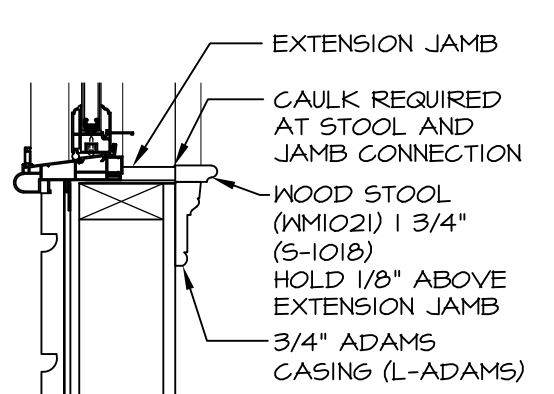
7 TYPICAL FIXED WINDOW  
SCALE: 3/4" = 1'-0"



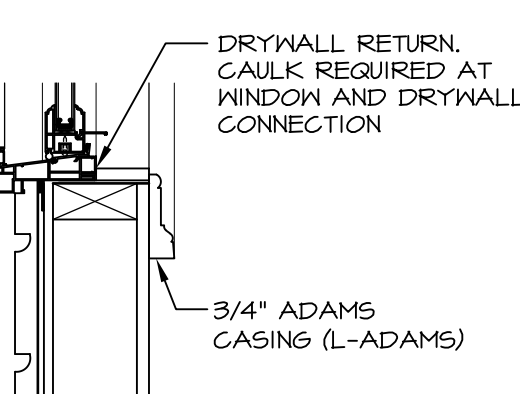
8 TYP. CASEMENT WINDOW TRIM  
SCALE: 3/4" = 1'-0"



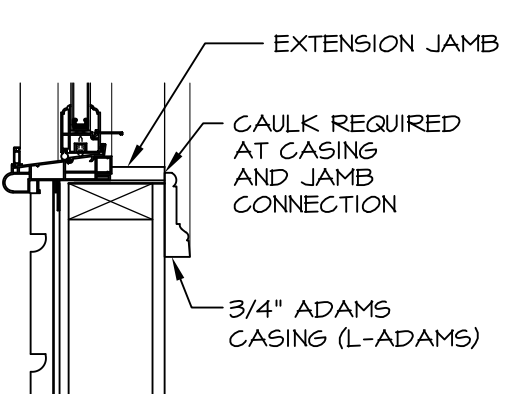
9 SILL WITH STOOL (NO EXTENSION JAMB)



10 SILL WITH STOOL (WITH EXTENSION JAMB)



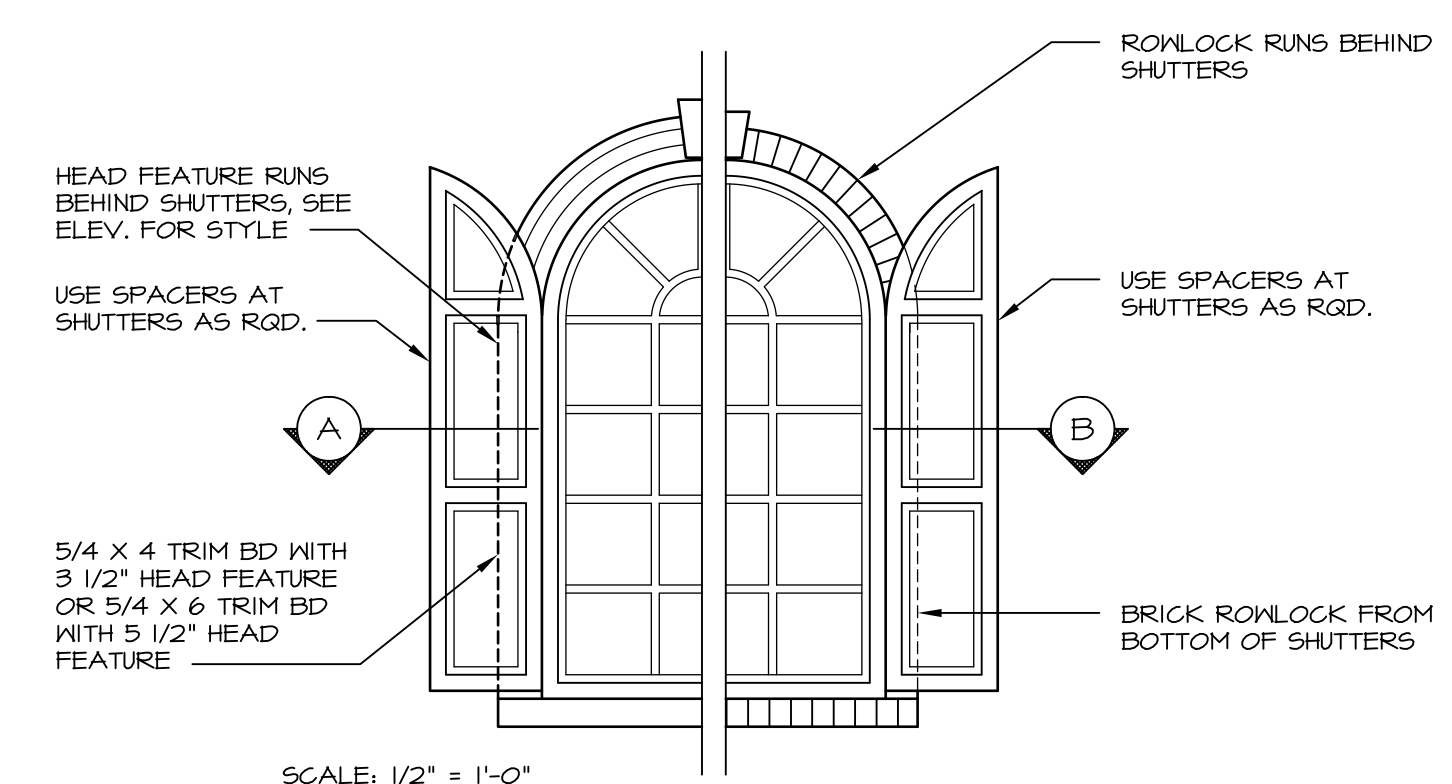
11 PICTURE FRAMED (NO EXTENSION JAMB)



12 PICTURE FRAMED (WITH EXTENSION JAMB)

- GENERAL NOTES:**
1. ALL WINDOWS LOCATED IN ENTRANCE FOYER TO RECEIVE WINDOW STOOL AND CASING PER DETAILS A, B, C, AND E UNLESS OTHERWISE NOTED IN THE HOUSE PLANS.
  2. SINGLE FAMILY ATTACHED PRODUCTS WITH BASEMENT LEVEL ENTRY SHALL HAVE WM-163E BASE MOULDING ON THE BASEMENT LEVEL AS WELL AS THE FIRST FLOOR LEVEL. LEVEL AND MID-LEVEL CONDITIONS SHALL HAVE WM-163E BASE MOULDING ON THE FIRST FLOOR ONLY.

7 WINDOW SECTIONS  
SCALE: 3/4" = 1'-0"

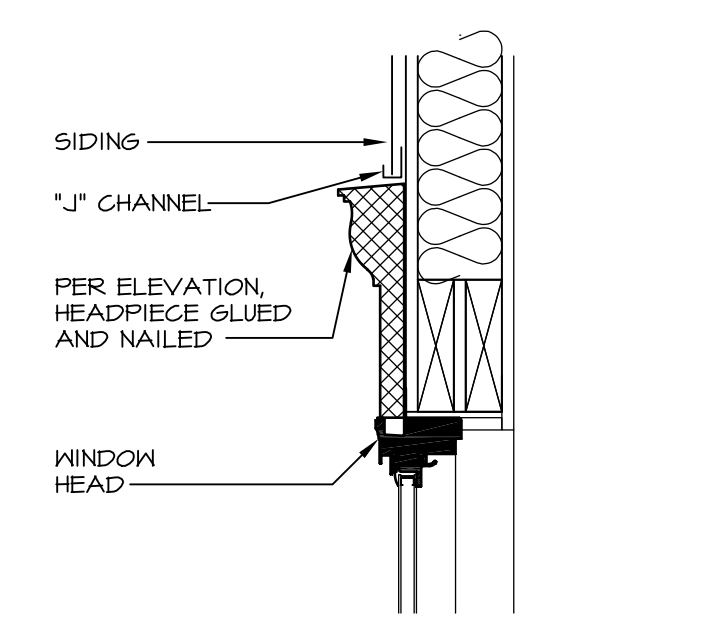


13 WITH SIDING SECTION "A"  
SCALE: 1" = 1'-0"

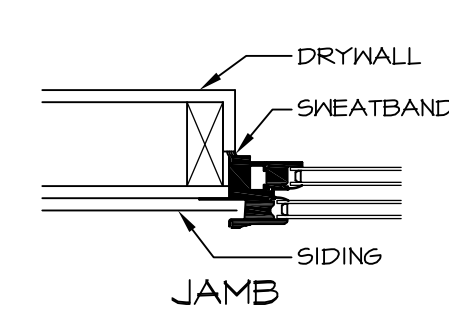
13 WITH BRICK SECTION "B"  
SCALE: 1" = 1'-0"

11 QUARTER ROUND SHUTTER DETAIL  
SCALE: VARIES

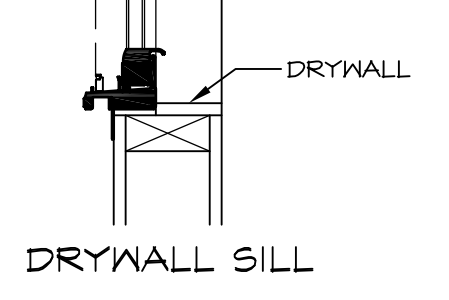
9 WINDOW TRIM DETAIL  
SCALE: 3/4" = 1'-0"



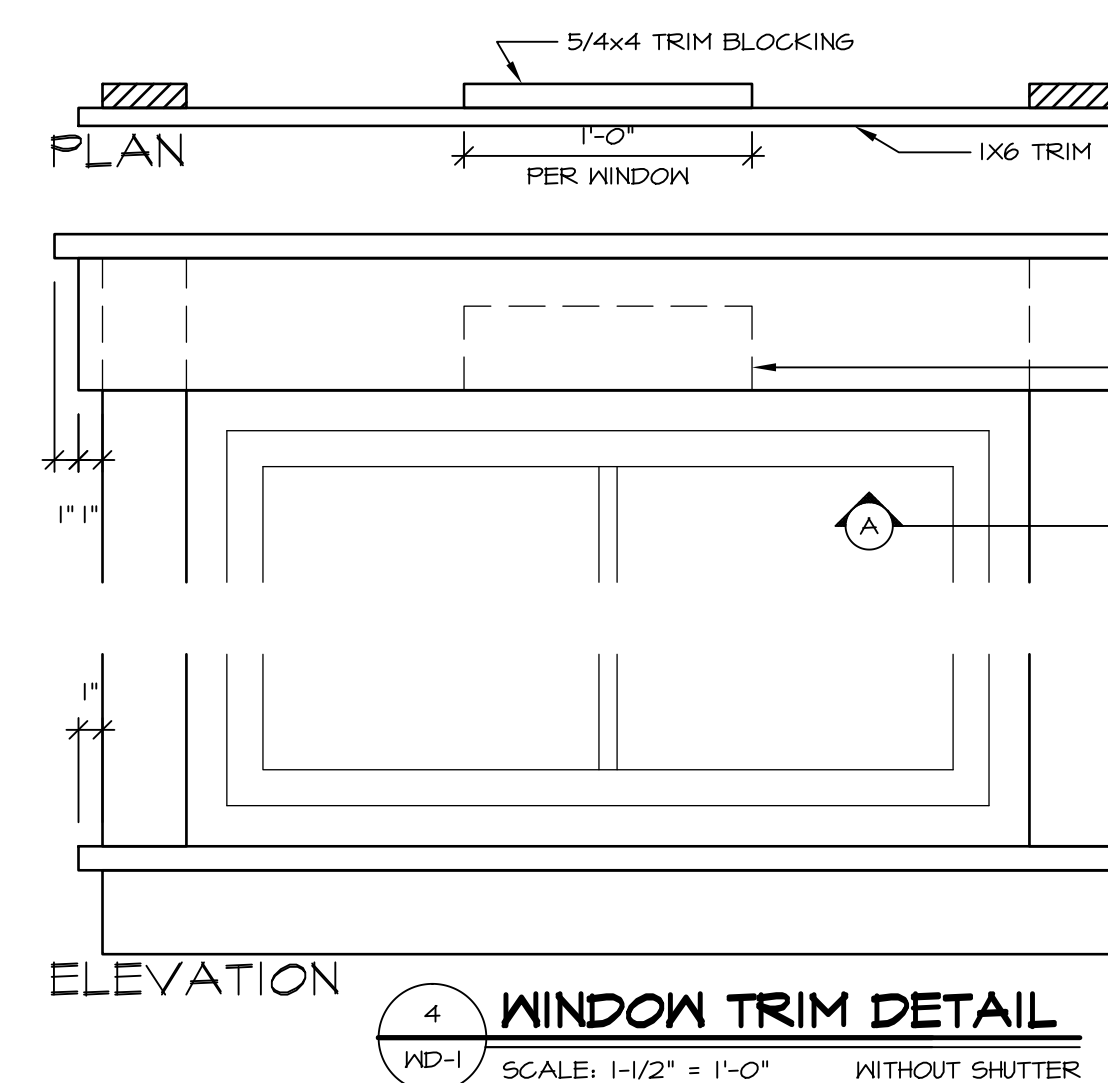
14 WINDOW HEAD WITH SIDING  
SCALE: 1/2" = 1'-0"



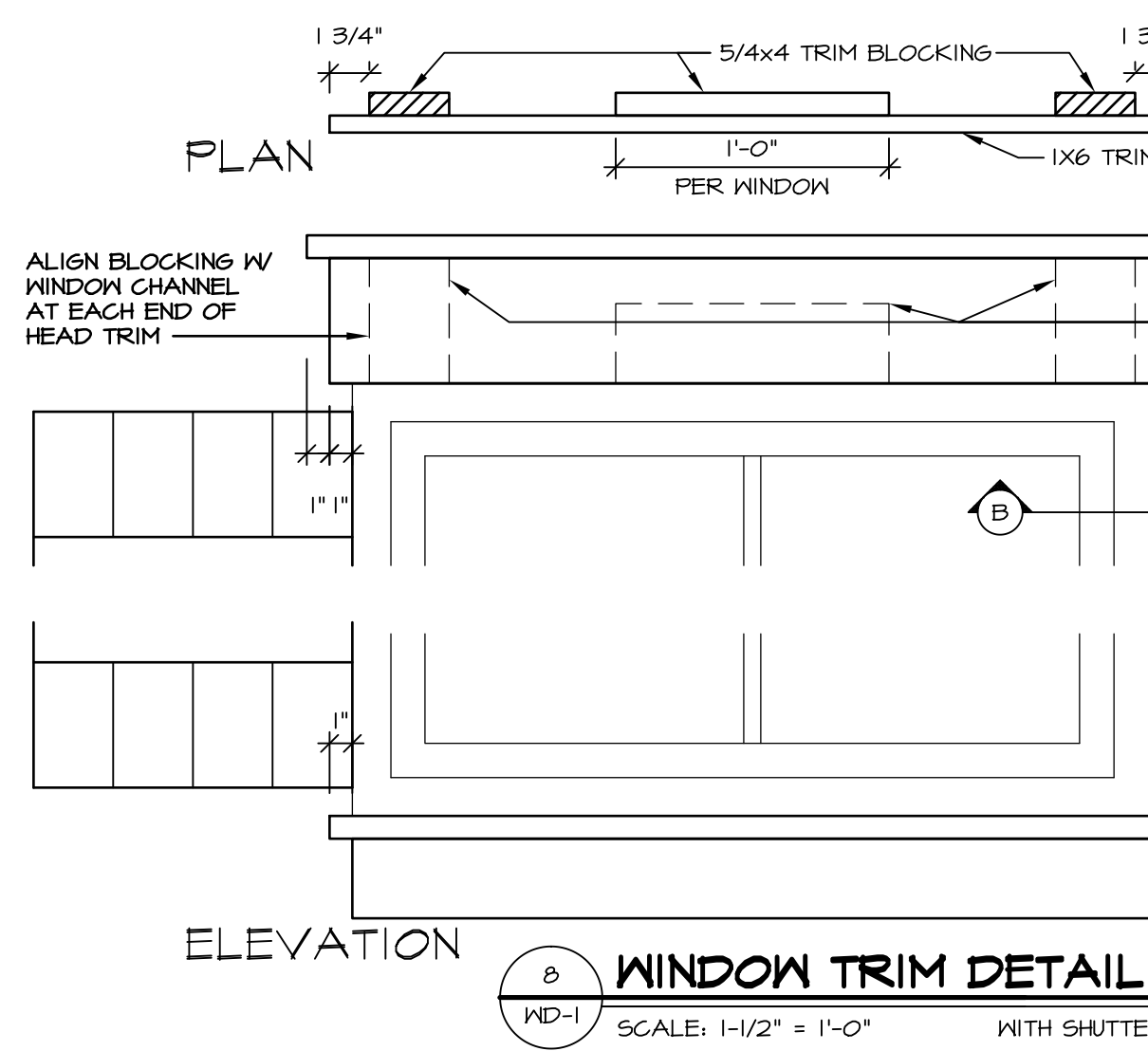
15 VINYL SINGLE HUNG WINDOW JAMB AND DRYWALL SILL  
SCALE: 1/2" = 1'-0"



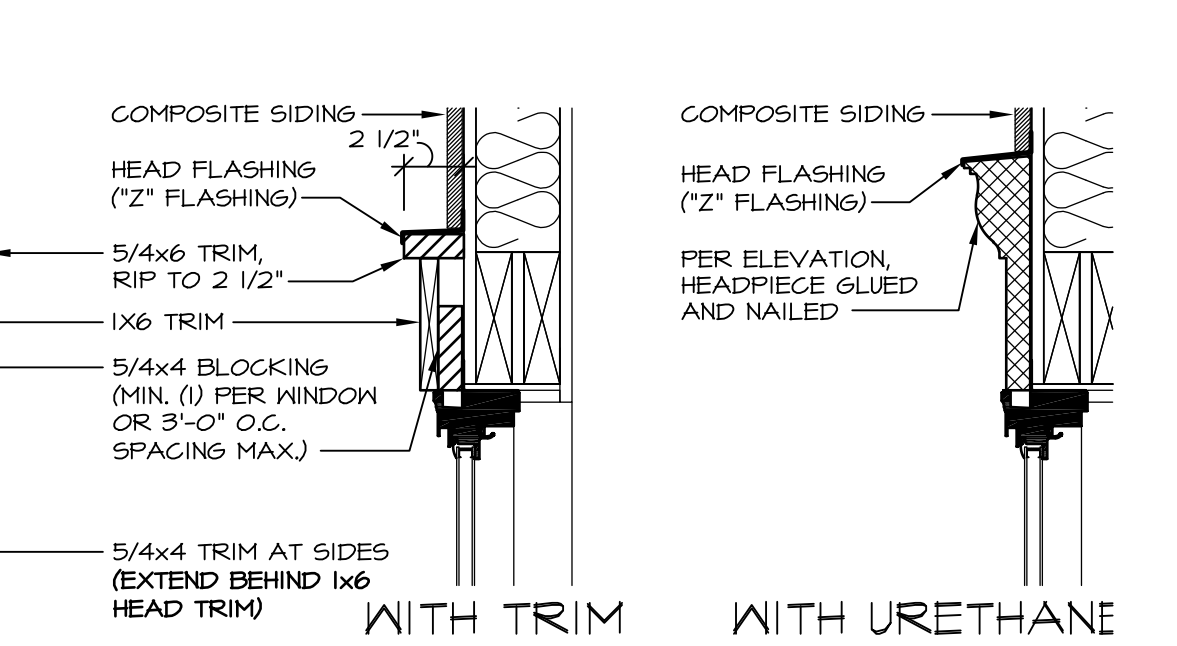
16 DRYWALL SILL WOOD SILL  
SCALE: 1/2" = 1'-0"



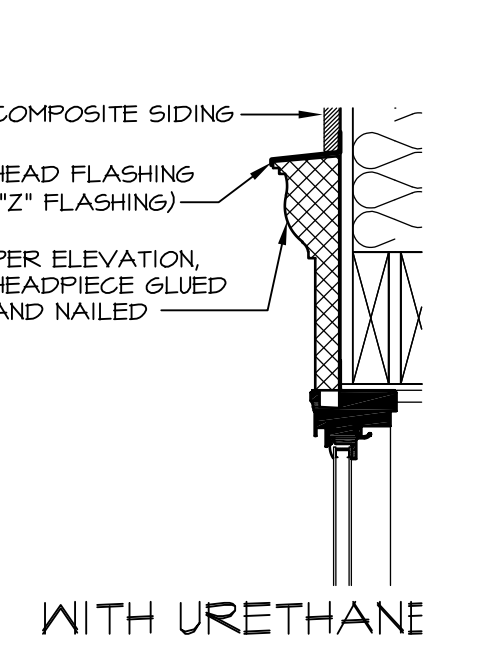
4 WINDOW TRIM DETAIL  
SCALE: 1/2" = 1'-0" WITHOUT SHUTTER



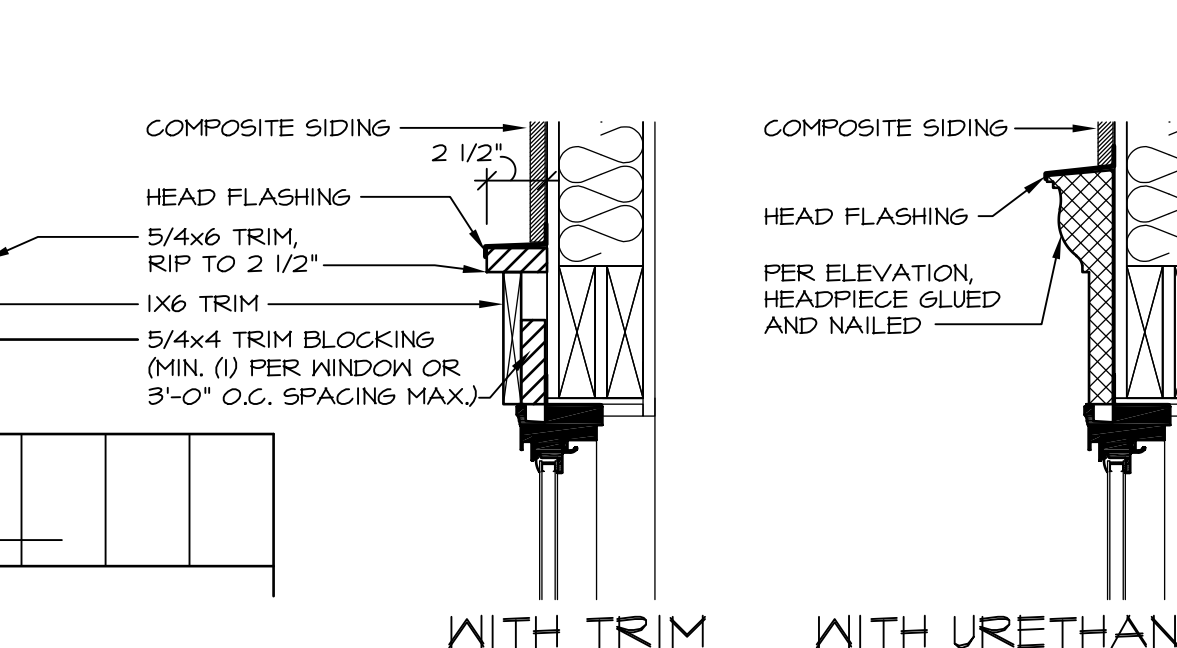
8 WINDOW TRIM DETAIL  
SCALE: 1/2" = 1'-0" WITH SHUTTER



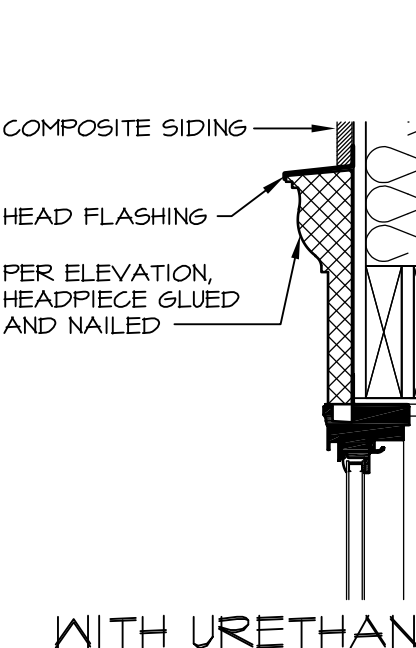
WITH TRIM



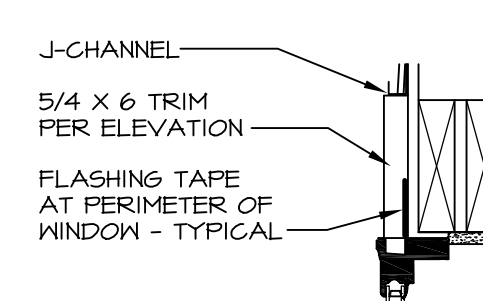
WITH URETHANE



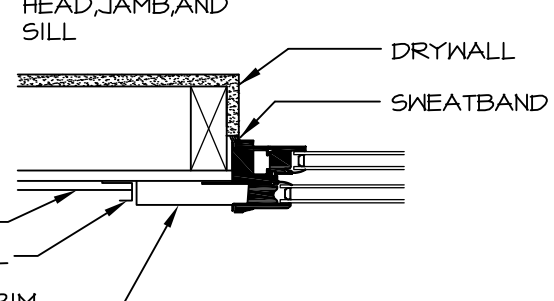
WITH TRIM



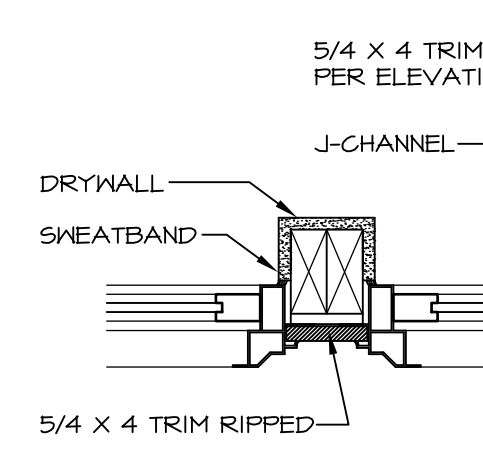
WITH URETHANE



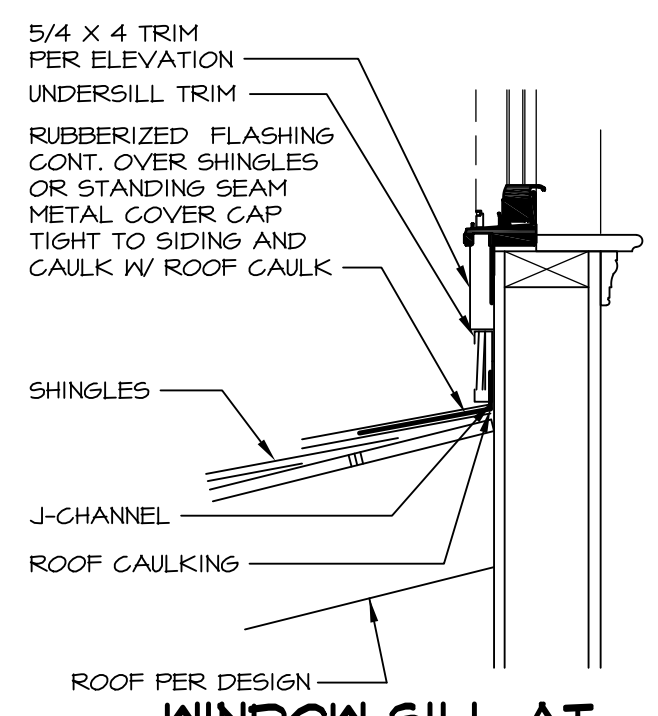
HEAD



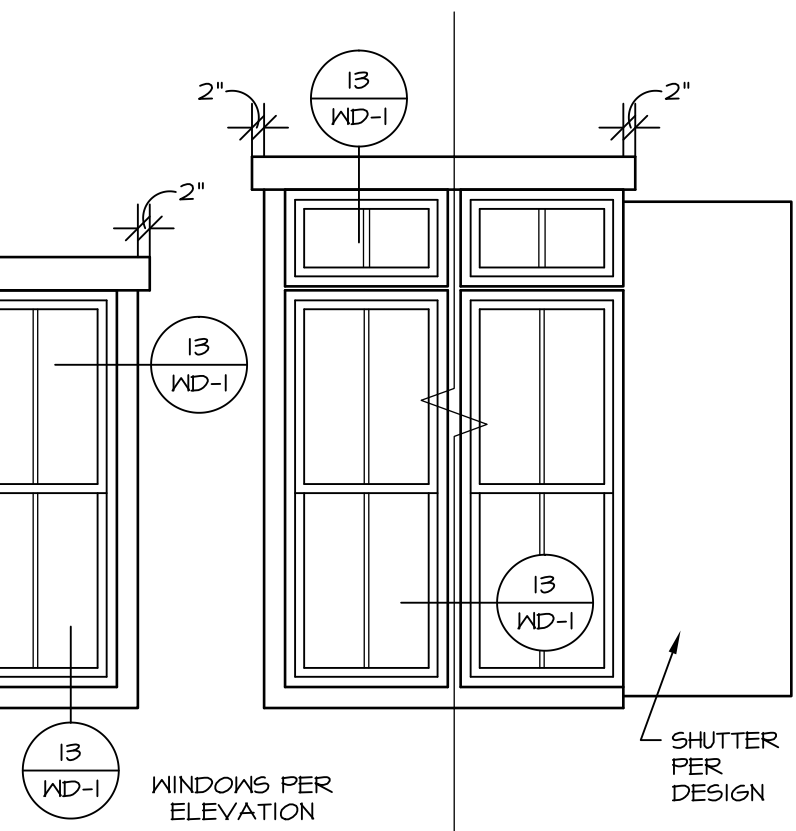
SILL



13 WINDOW TRIM  
SCALE: 1/2" = 1'-0"



14 WINDOW SILL AT PORCH W/ SIDING  
SCALE: 1/2" = 1'-0"



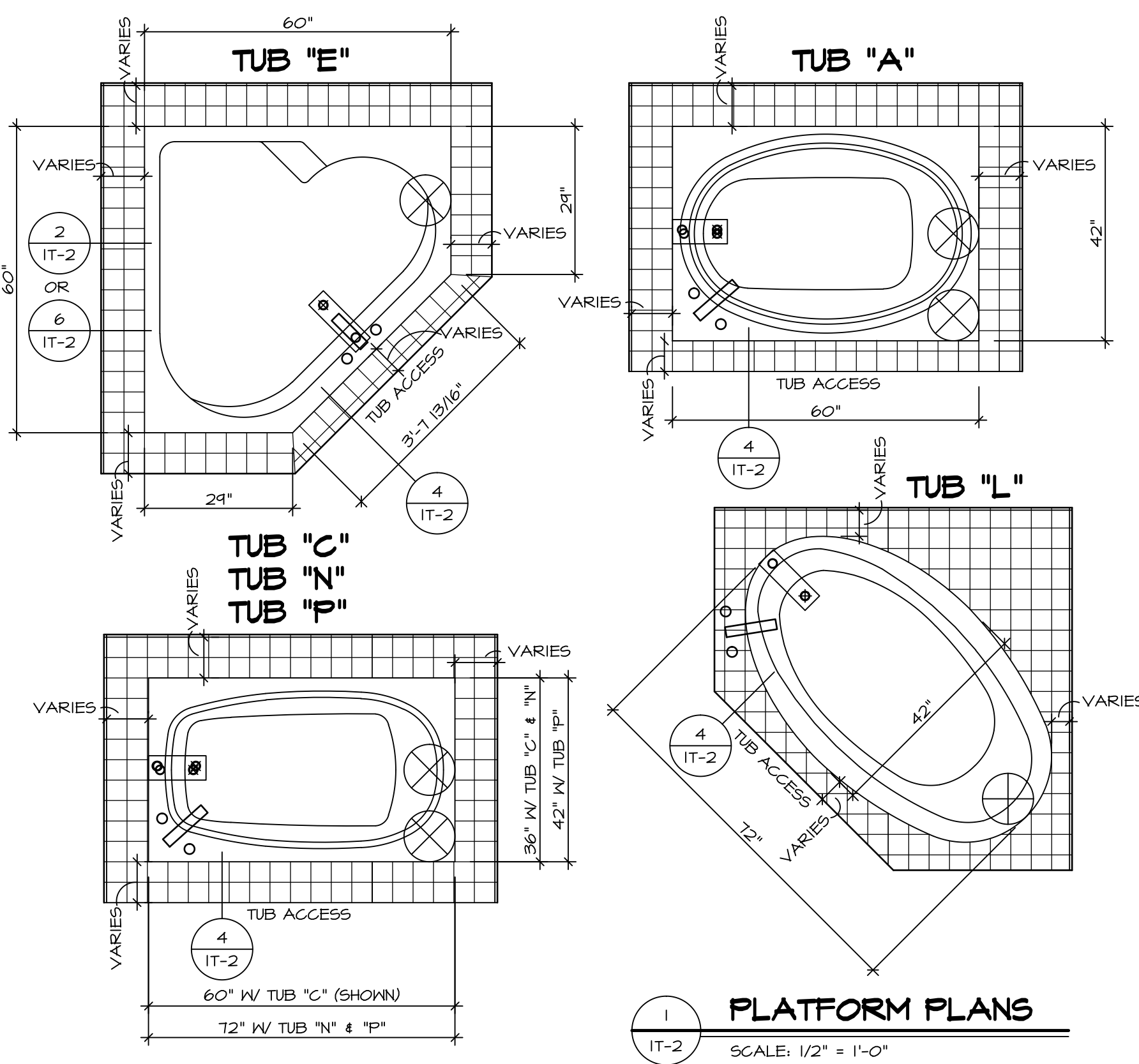
12 WINDOW DETAIL  
SCALE: 1 1/2" = 1'-0"

SHEET NO.	MODEL	DRAWING TITLE	GENERAL DESCRIPTION	OPTION	DATE	REV. NO.	DATE	REMARKS
WD-1	NVR	STANDARD DETAILS WINDOW DETAILS						

NVR, Inc., owner, expressly reserves its common law copyright and other proprietary rights in these plans. These plans are not to be copied, reproduced, or otherwise used in any way without the written consent of NVR, Inc. If you are not the intended recipient of these plans, you are notified that disclosing, copying, distributing, or taking any action in reliance on the contents of these plans is strictly prohibited.

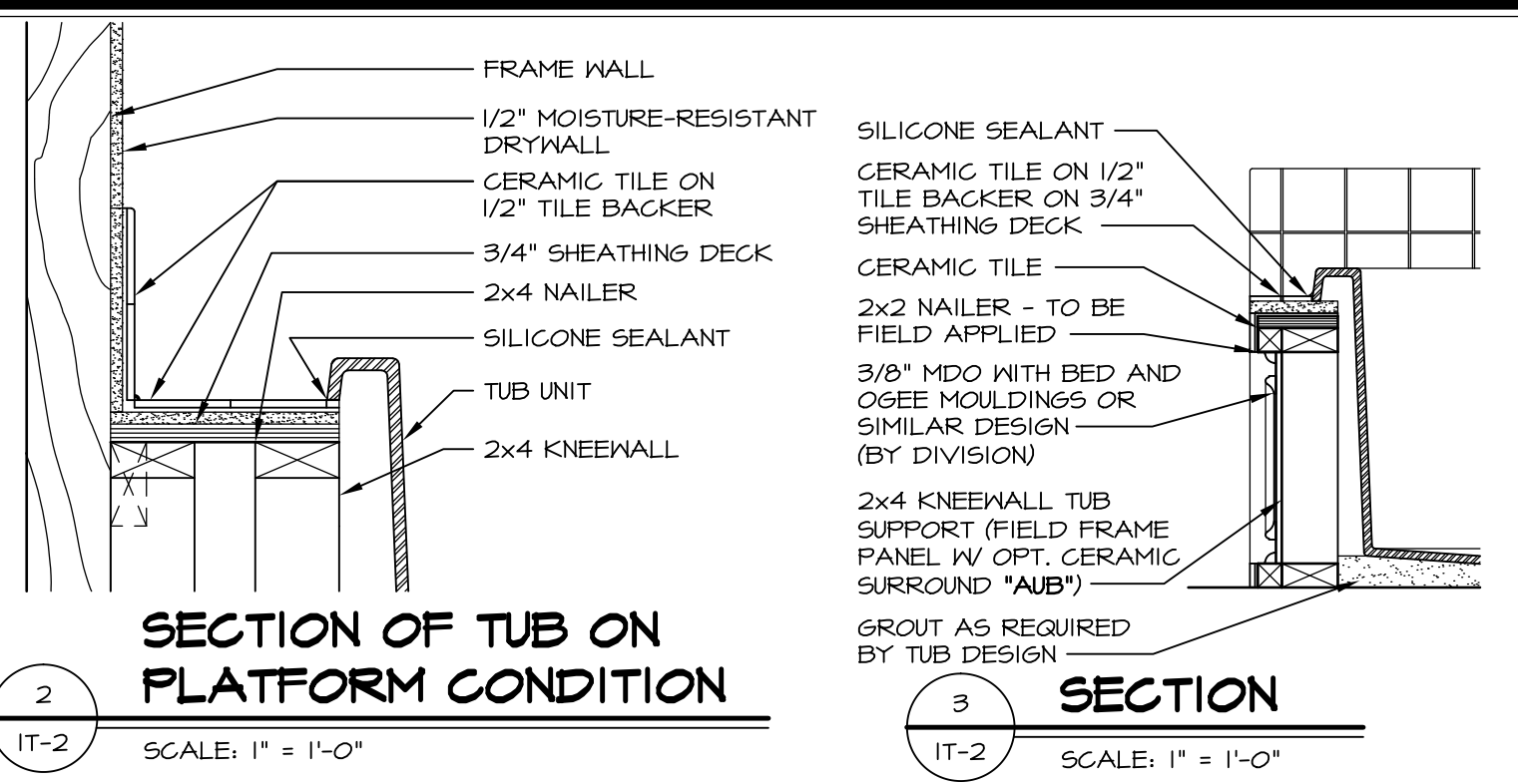
**NVR**  
NVR, Inc.  
Architectural Services  
21 Bay Street, Suite A  
Frederick, MD 21702

SET NO. NVR  
VERSION  
DRAWN BY  
DATE:  
OPTION

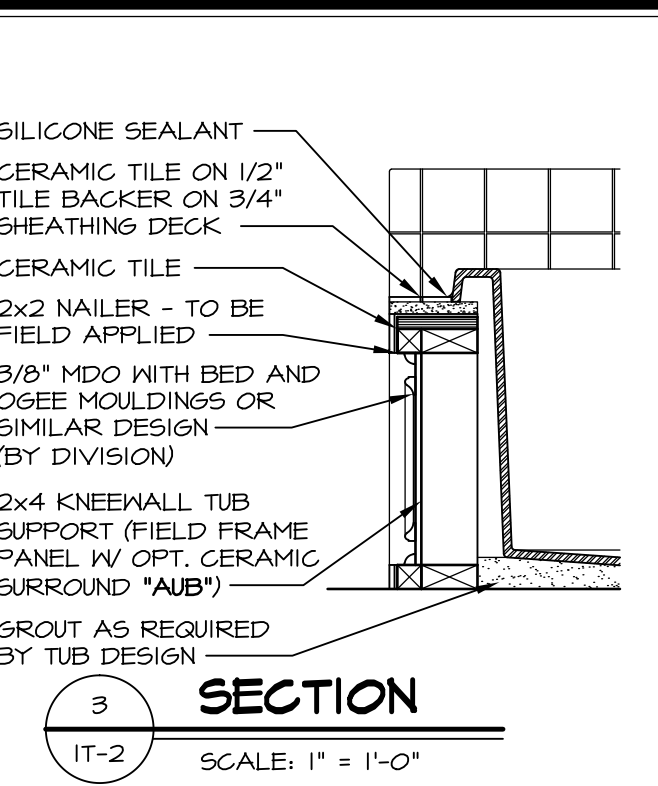


**1 PLATFORM PLANS**  
SCALE: 1/2" = 1'-0"

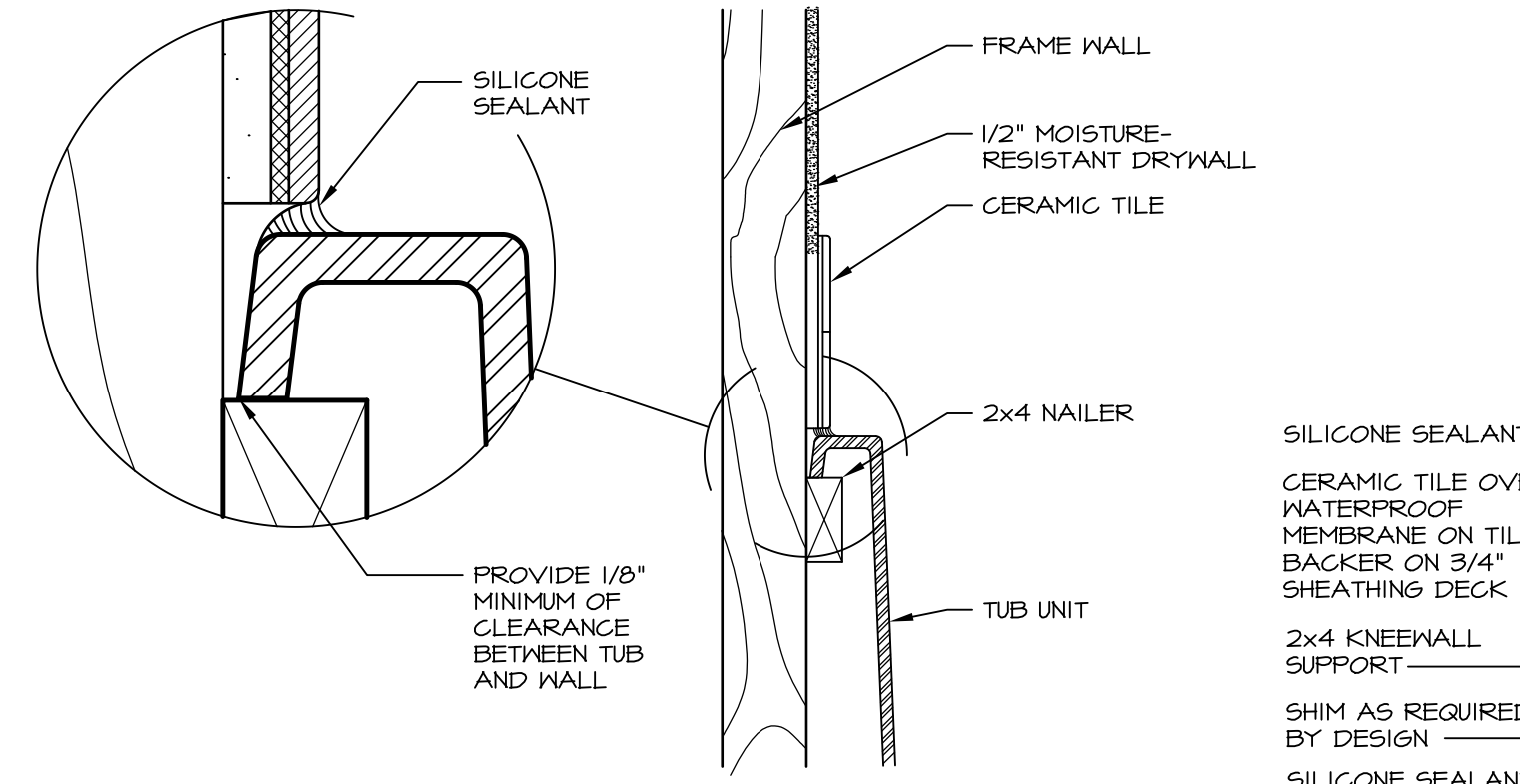
TUB	MANUF.	HEIGHT	WIDTH	LENGTH	TUB DECK PANEL HEIGHT
"A"	KOHLER/ STERLING	18 3/4"	42"	60"	17 1/8"
"C"	KOHLER/ STERLING	18 3/4"	36"	60"	17 1/8"
"E"	KOHLER/ STERLING	19 1/2"	60"	60"	17 7/8"
"L"	KOHLER/ STERLING	18 1/2"	42"	72"	16 7/8"
"N"	KOHLER/ STERLING	18 3/4"	36"	72"	17 1/8"
"P"	KOHLER/ STERLING	18 3/4"	42"	72"	17 1/8"



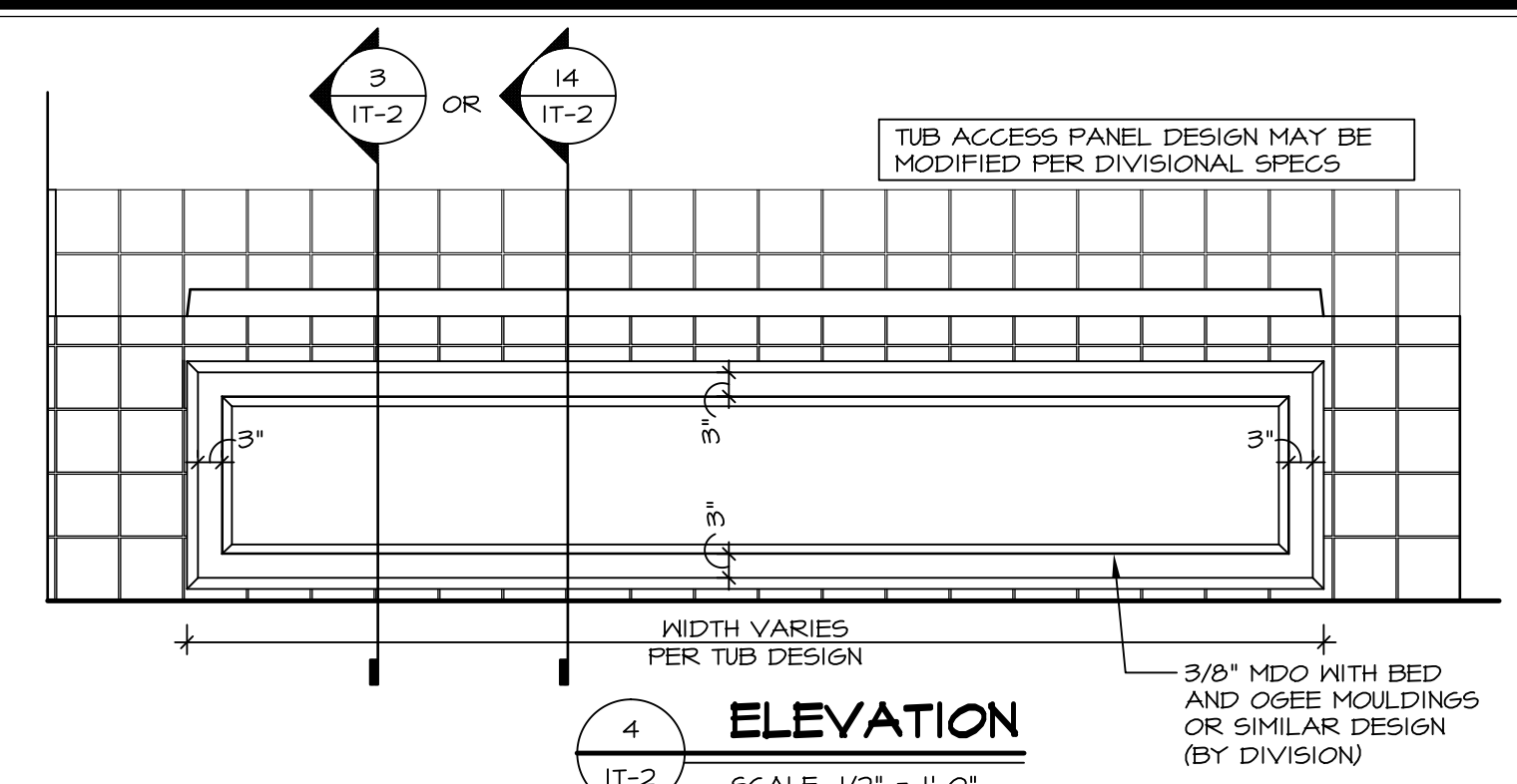
**2 SECTION OF TUB ON PLATFORM CONDITION**  
SCALE: 1" = 1'-0"



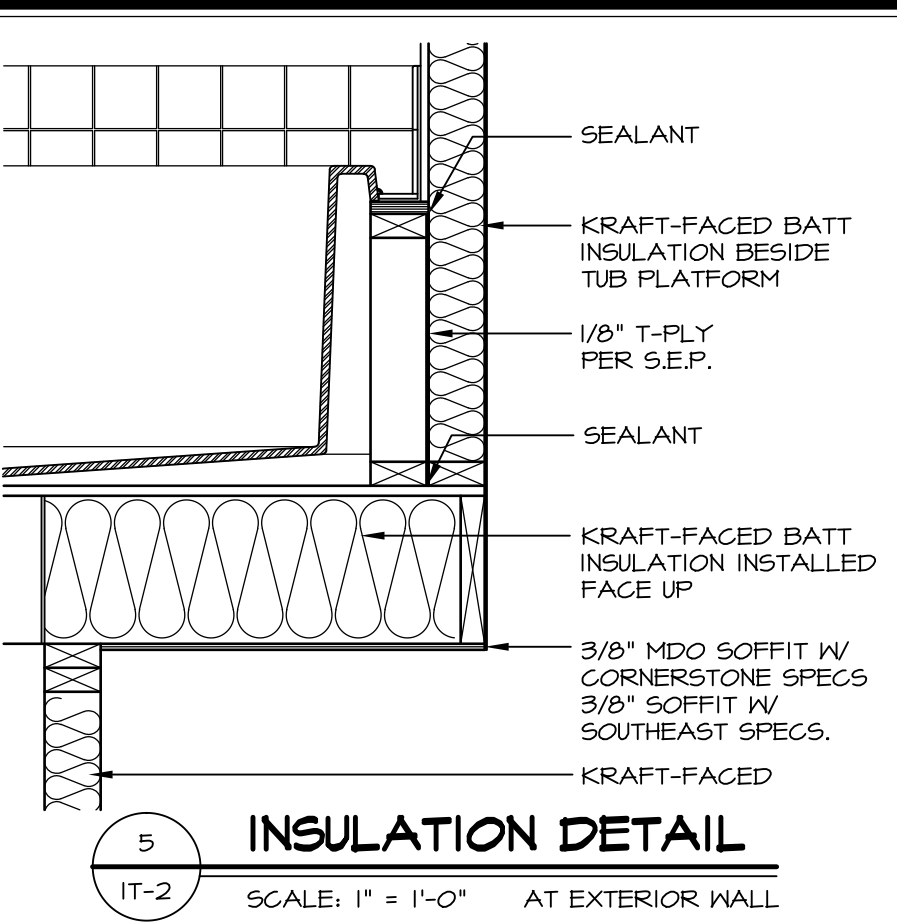
**3 SECTION OF TUB TO WALL CONDITION**  
SCALE: 1" = 1'-0"



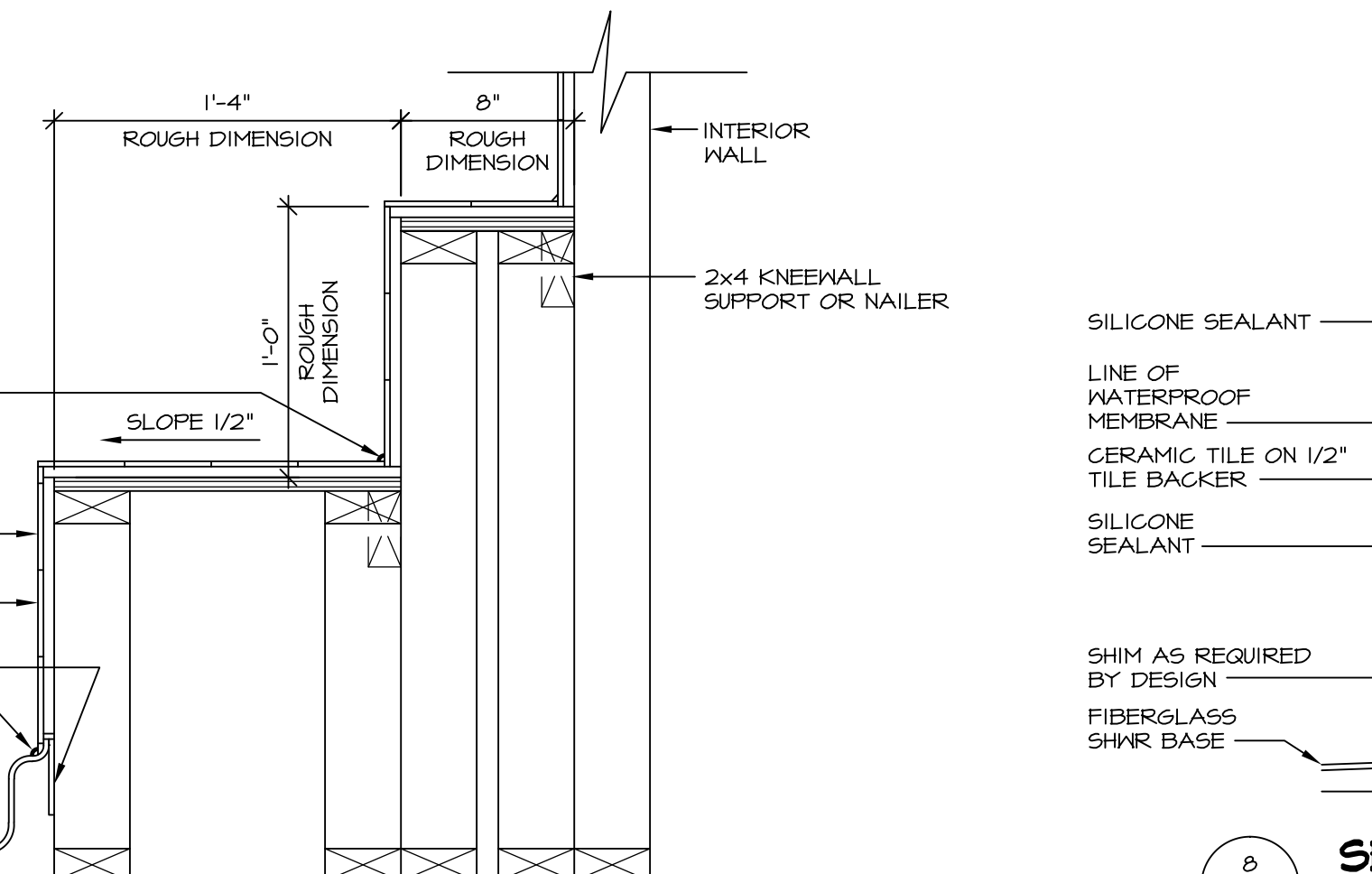
**6 SECTION OF TUB TO WALL CONDITION**  
SCALE: 1 1/2" = 1'-0"



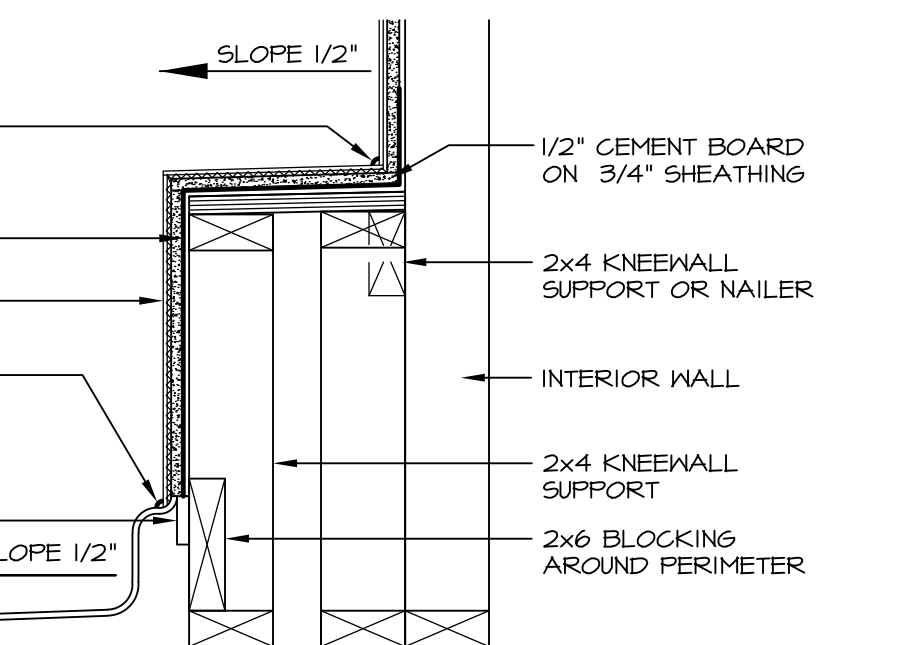
**4 ELEVATION**  
SCALE: 1/2" = 1'-0"



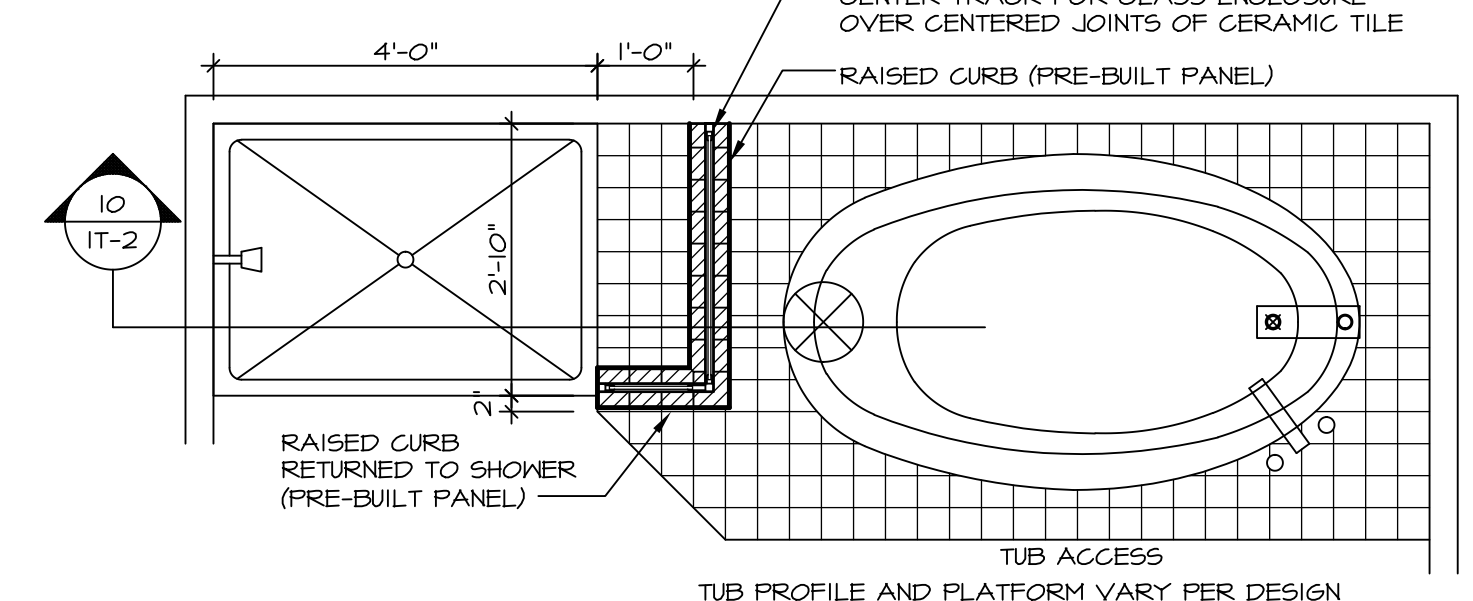
**5 INSULATION DETAIL**  
SCALE: 1" = 1'-0" AT EXTERIOR WALL



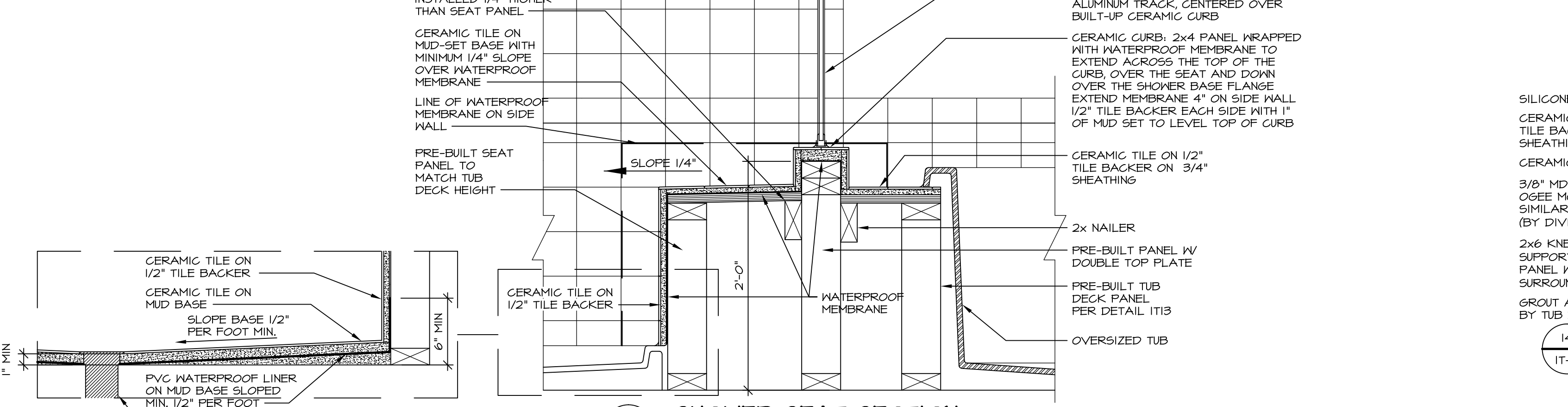
**7 SECTION OF SHOWER SEAT AND SHELF**  
SCALE: 1 1/2" = 1'-0"



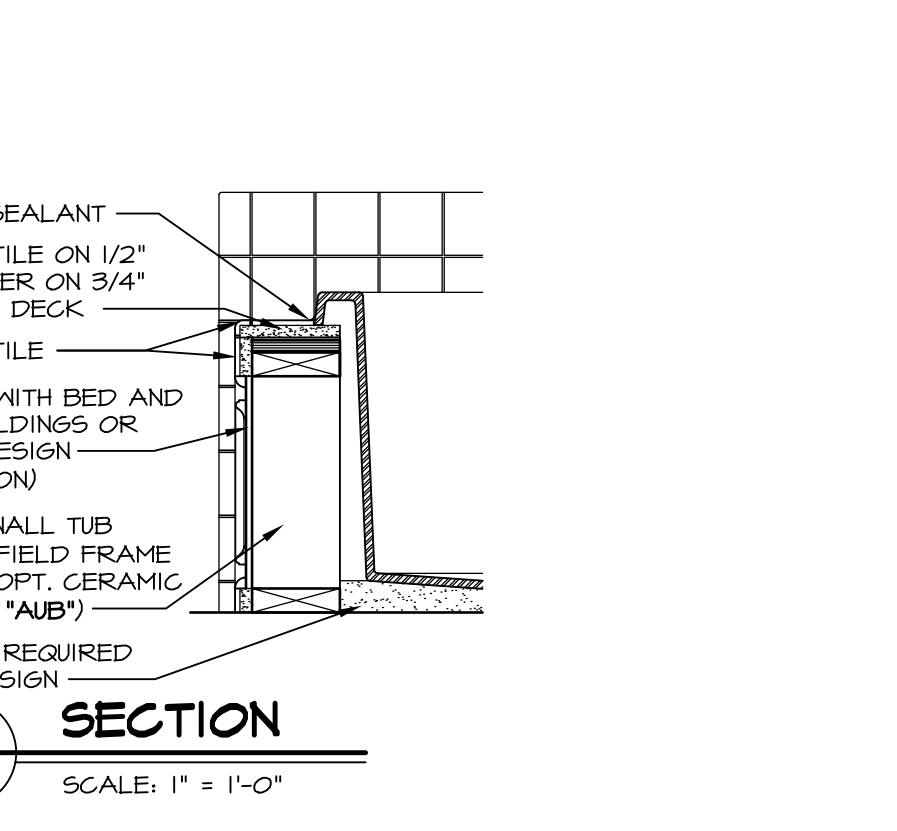
**8 SECTION OF SHOWER SEAT**  
SCALE: 1-1/2" = 1'-0" FIBERGLASS SHOWER BASE



**9 SHOWER SEAT PLAN / DETAIL**  
SCALE: 1/2" = 1'-0"



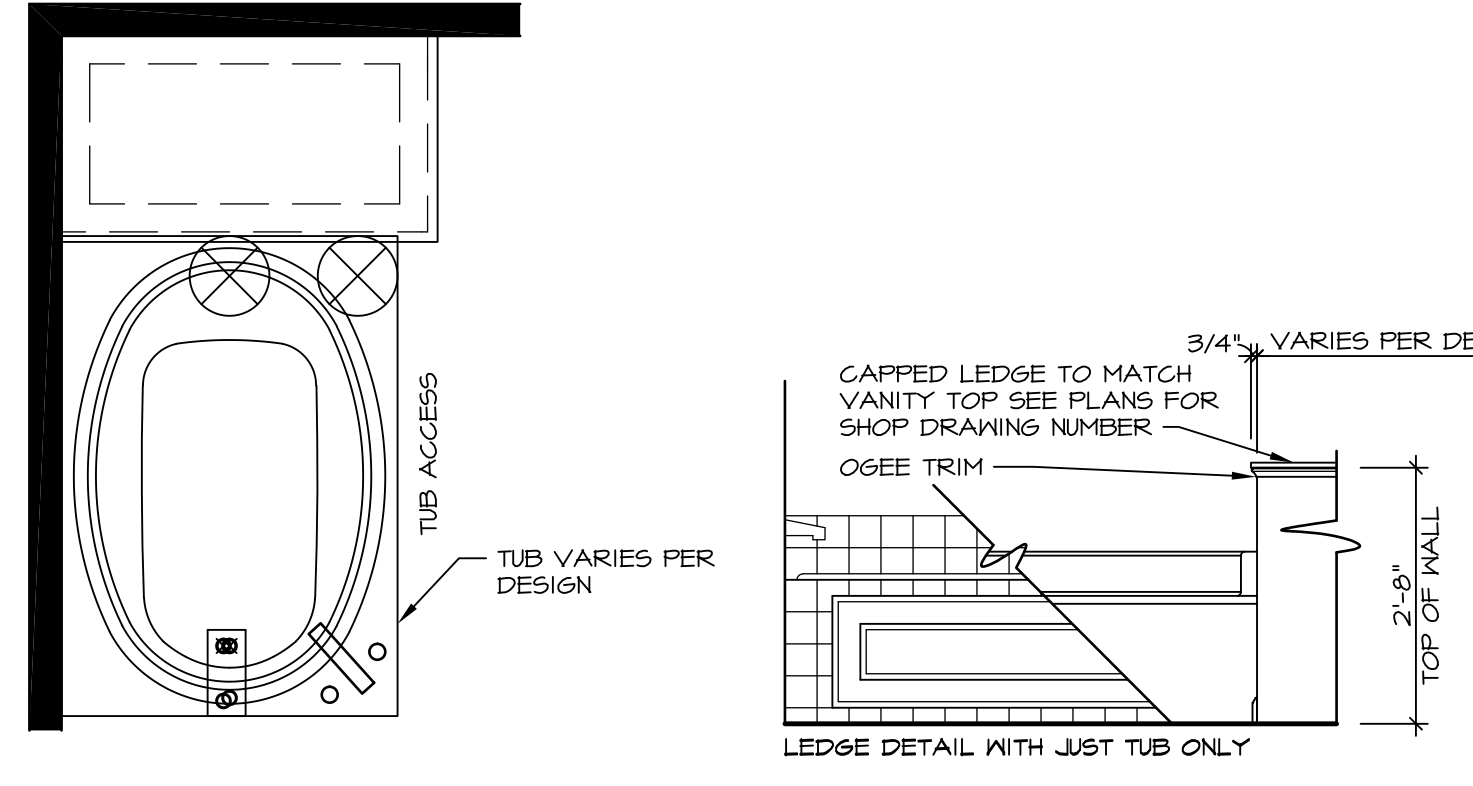
**10 SHOWER SEAT SECTION**  
SCALE: 1-1/2" = 1'-0"



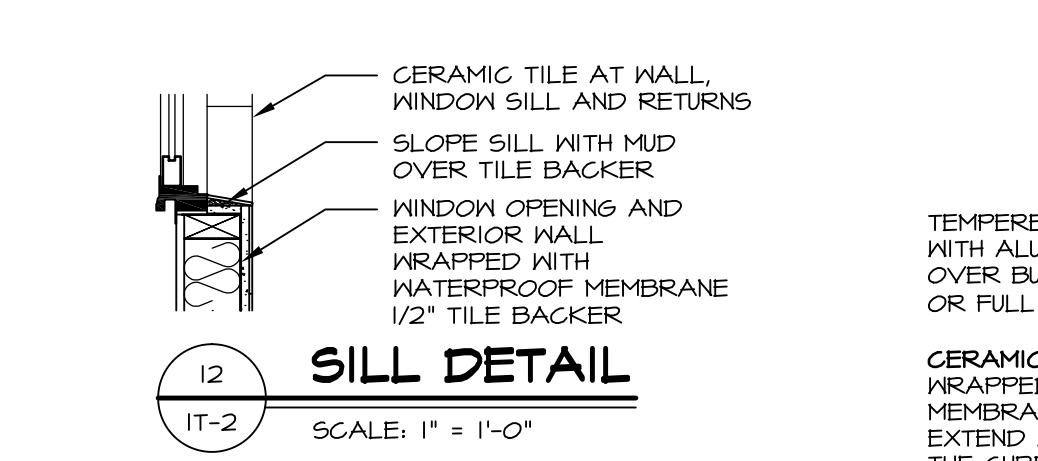
**14 SECTION**  
SCALE: 1" = 1'-0"



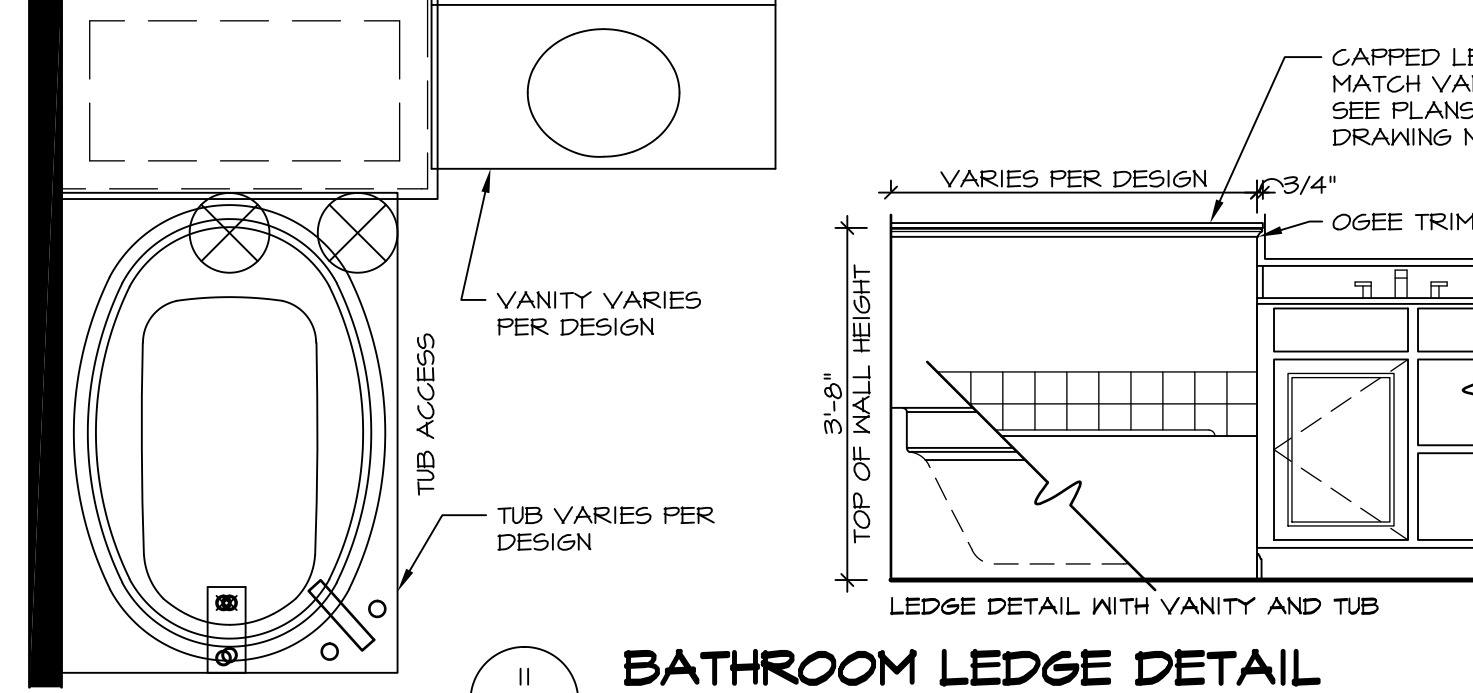
**11 ALTERNATE SHOWER PAN DETAIL**  
SCALE: 1 1/2" = 1'-0"



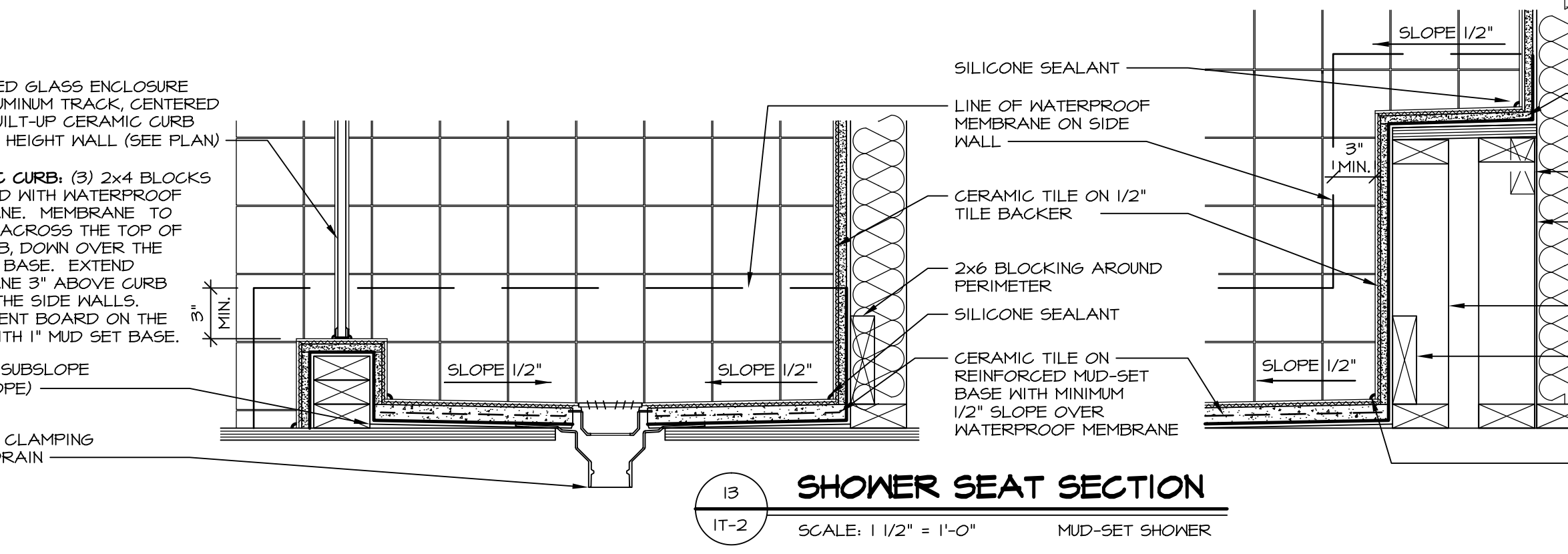
**12 BATHROOM LEDGE DETAIL**  
SCALE: 1" = 1'-0"



**13 SILL DETAIL**  
SCALE: 1" = 1'-0"



**11 BATHROOM LEDGE DETAIL**  
SCALE: 1/2" = 1'-0"



**13 SHOWER SEAT SECTION**  
SCALE: 1 1/2" = 1'-0" MUD-SET SHOWER

REMARKS

REV. NO. DATE

1  
2  
3  
4  
5  
6  
7  
8  
9  
10  
11  
12  
13  
14

SET NO. NVR  
VERSION  
DRAWN BY  
DATE  
OPTION

MODEL  
**STANDARD DETAILS**  
DRAWING TITLE  
INTERIOR TRIM DETAILS  
BATH DETAILS  
OPTION DESCRIPTION

**IT-2**

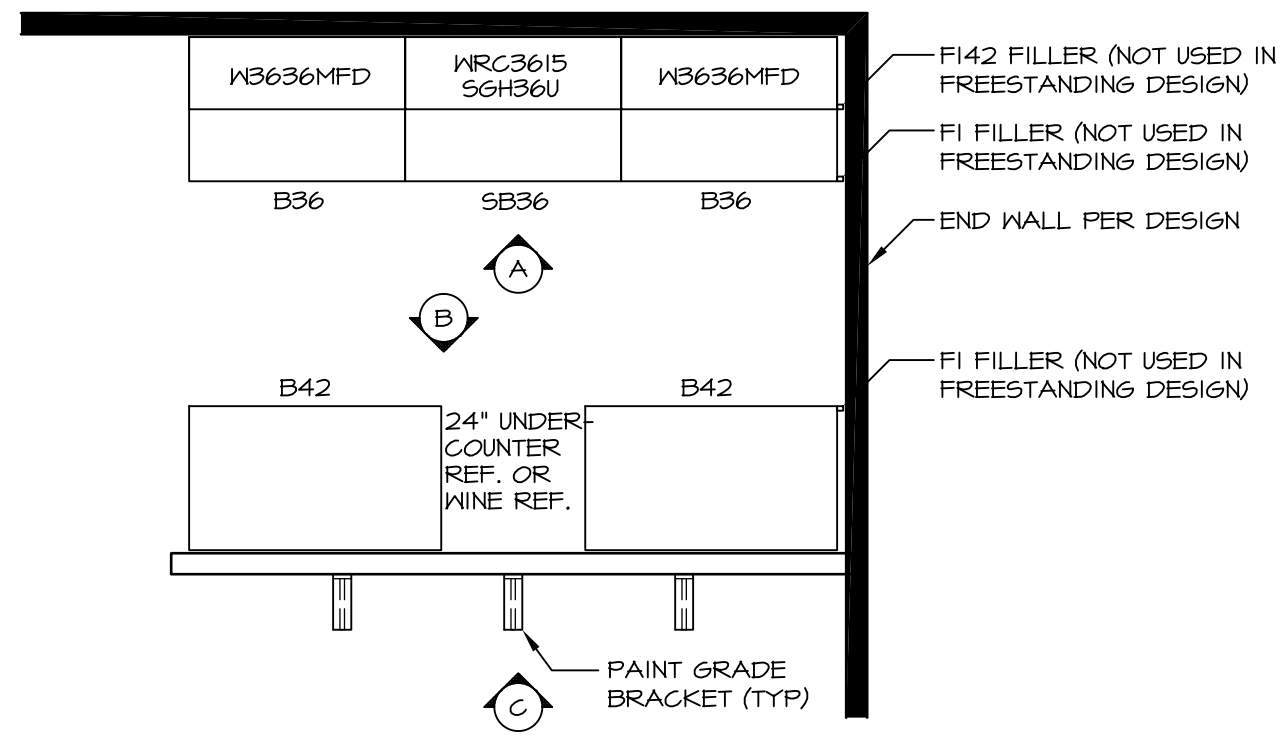
J:\Dwg\NVR\Interior Trim\IT2.dwg 12/13/16 - 7:52 am

NVR, Inc., owner, expressly reserves its common law copyright and other property rights in these plans. These plans are not to be copied, reproduced, or otherwise used in any way without the prior written consent of NVR, Inc.

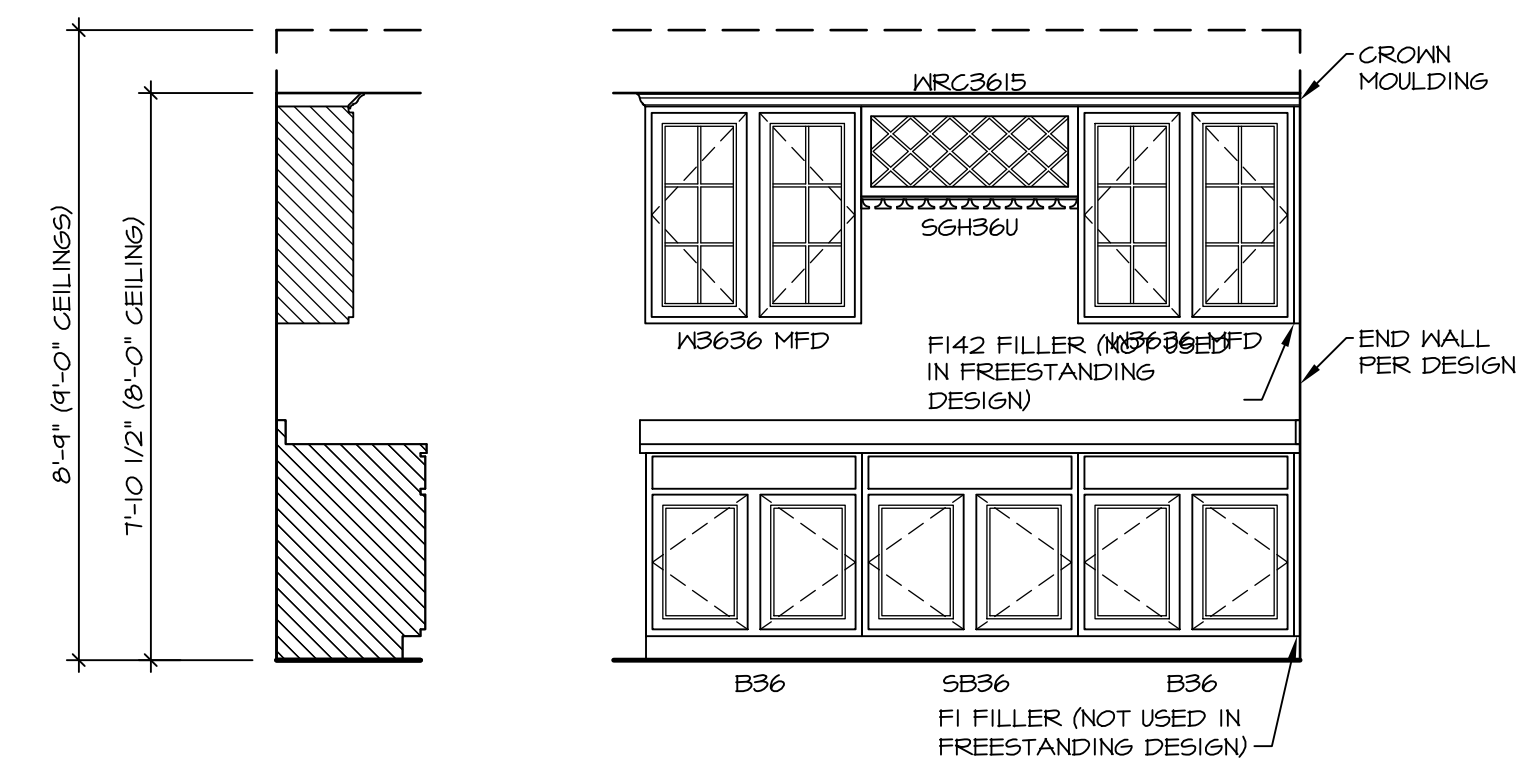
**NVR**  
NVR, Inc.  
Architectural Services  
21 Bay Avenue, Suite A  
Frederick, MD 21702



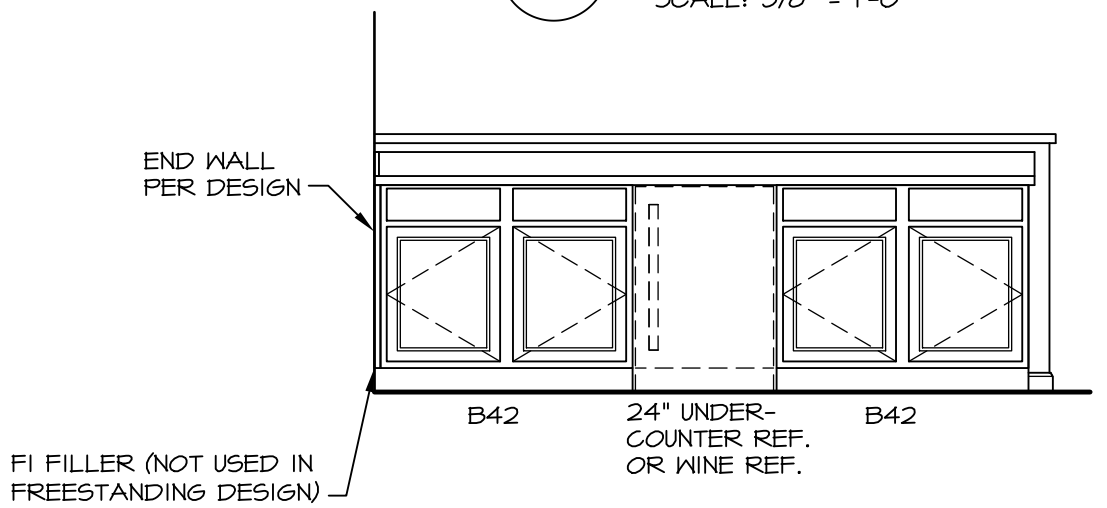
NOTE:  
REVIEW HOUSE SPECIFIC  
PLANS FOR LOCATION  
AND HANDING



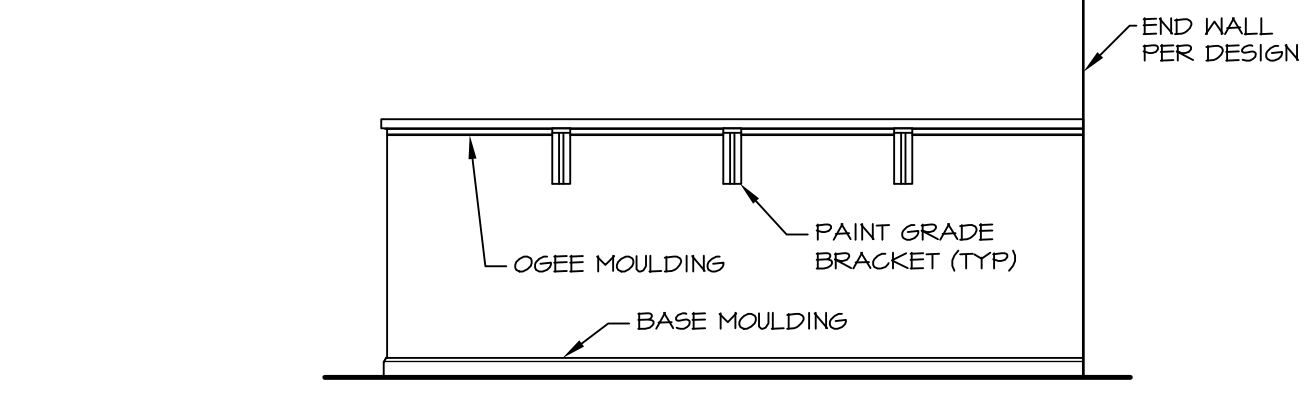
**2 KITCHEN CABINET PLAN KC - 1901**  
SCALE: 3/8" = 1'-0"



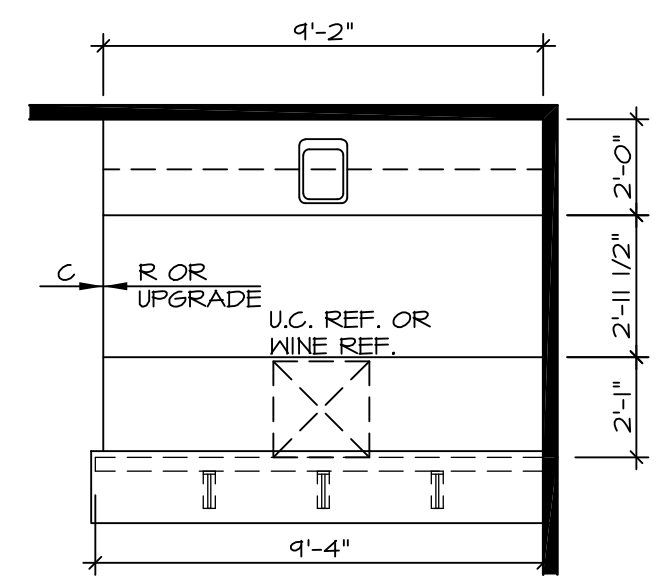
**3 ELEVATION "A"**  
SCALE: 3/8" = 1'-0"



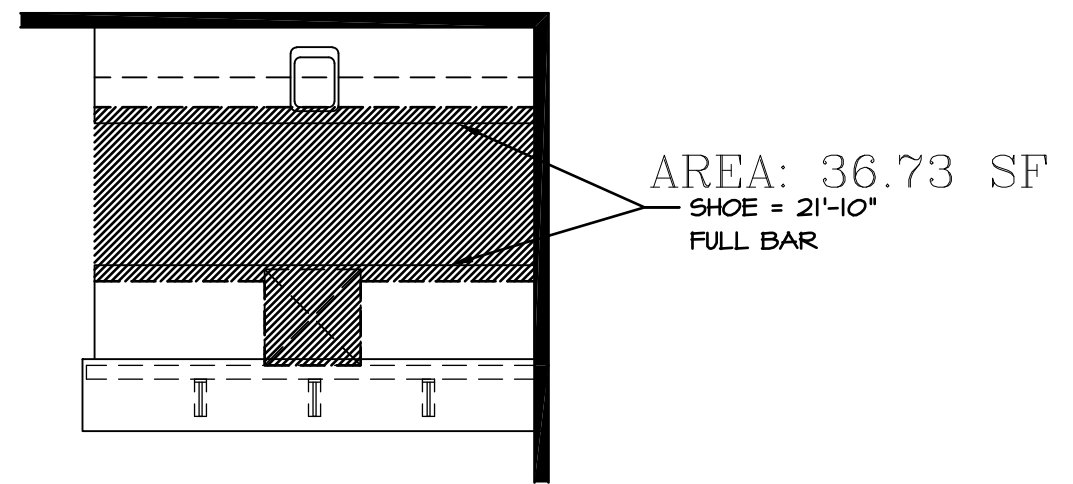
**4 ELEVATION "B"**  
SCALE: 3/8" = 1'-0"



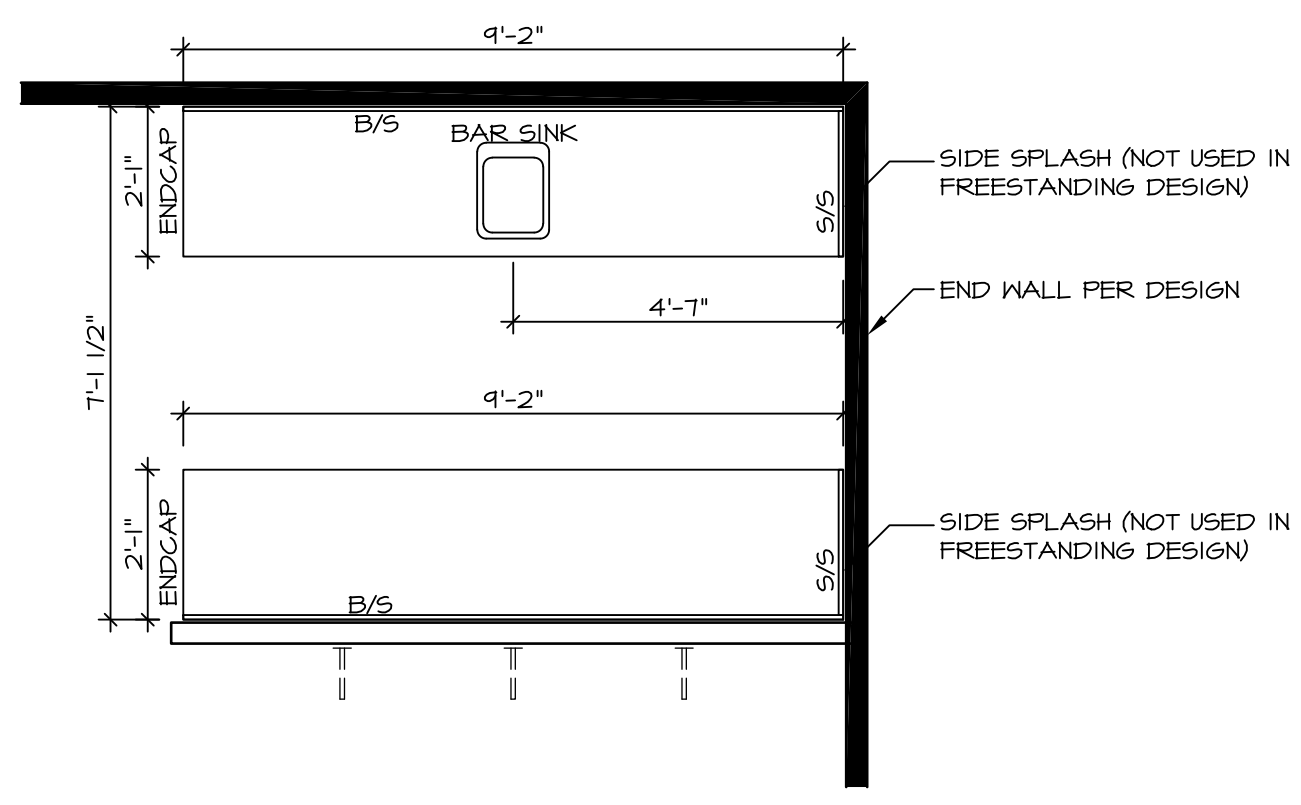
**5 ELEVATION "C"**  
SCALE: 3/8" = 1'-0"



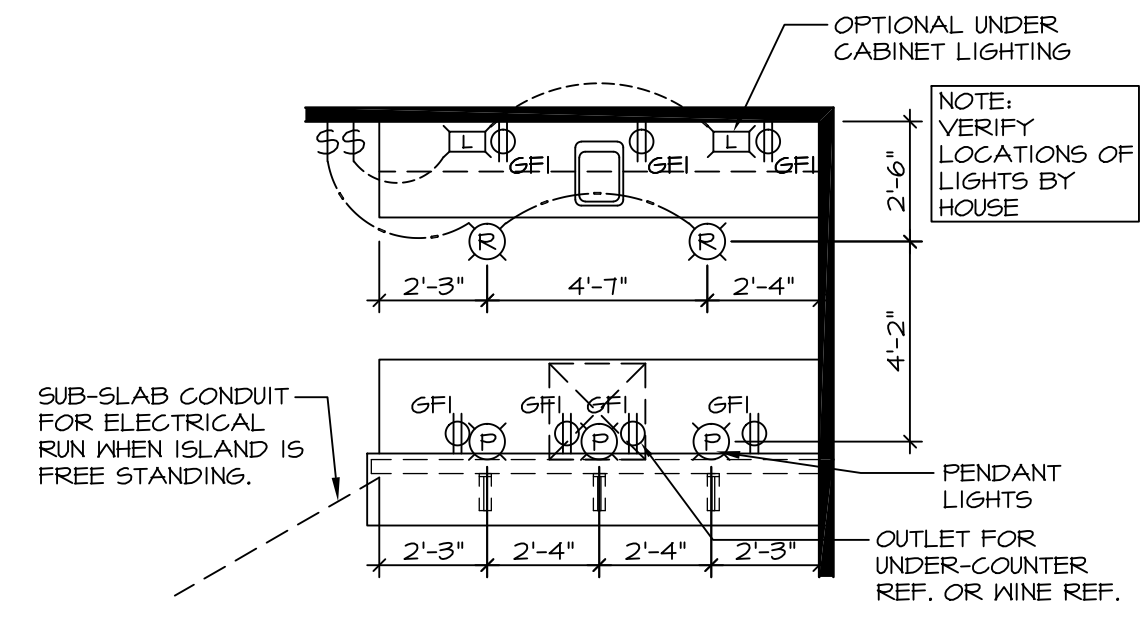
**6 FLOOR PLAN**  
SCALE: 1/4" = 1'-0"



**7 FLOORING PLAN**  
SCALE: 1/4" = 1'-0"



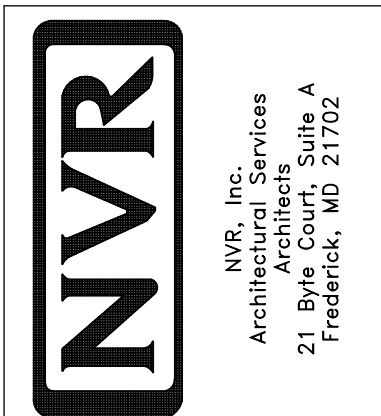
**8 KITCHEN COUNTERTOP PLAN KT - 1901**  
SCALE: 3/8" = 1'-0"



**9 FLOOR PLAN ELECTRICAL LAYOUT**  
SCALE: 1/4" = 1'-0"

**1 WET BAR DETAILS**  
SCALE: VARIES

SHEET NO.	MODEL	SET NO.	VERSION	DATE	OPTION	REVISIONS	REMARKS
IT-3	STANDARD DETAILS	1	1				
	INTERIOR TRIM DETAILS						
	WET BAR DETAILS - FULL BAR (RYAN ONLY)						
	OPTION DESCRIPTION						



NVR, Inc., owner, expressly reserves its common law copyright and other property rights in these plans. These plans are not to be copied, reproduced, or otherwise used in any way without the express written consent of NVR, Inc.