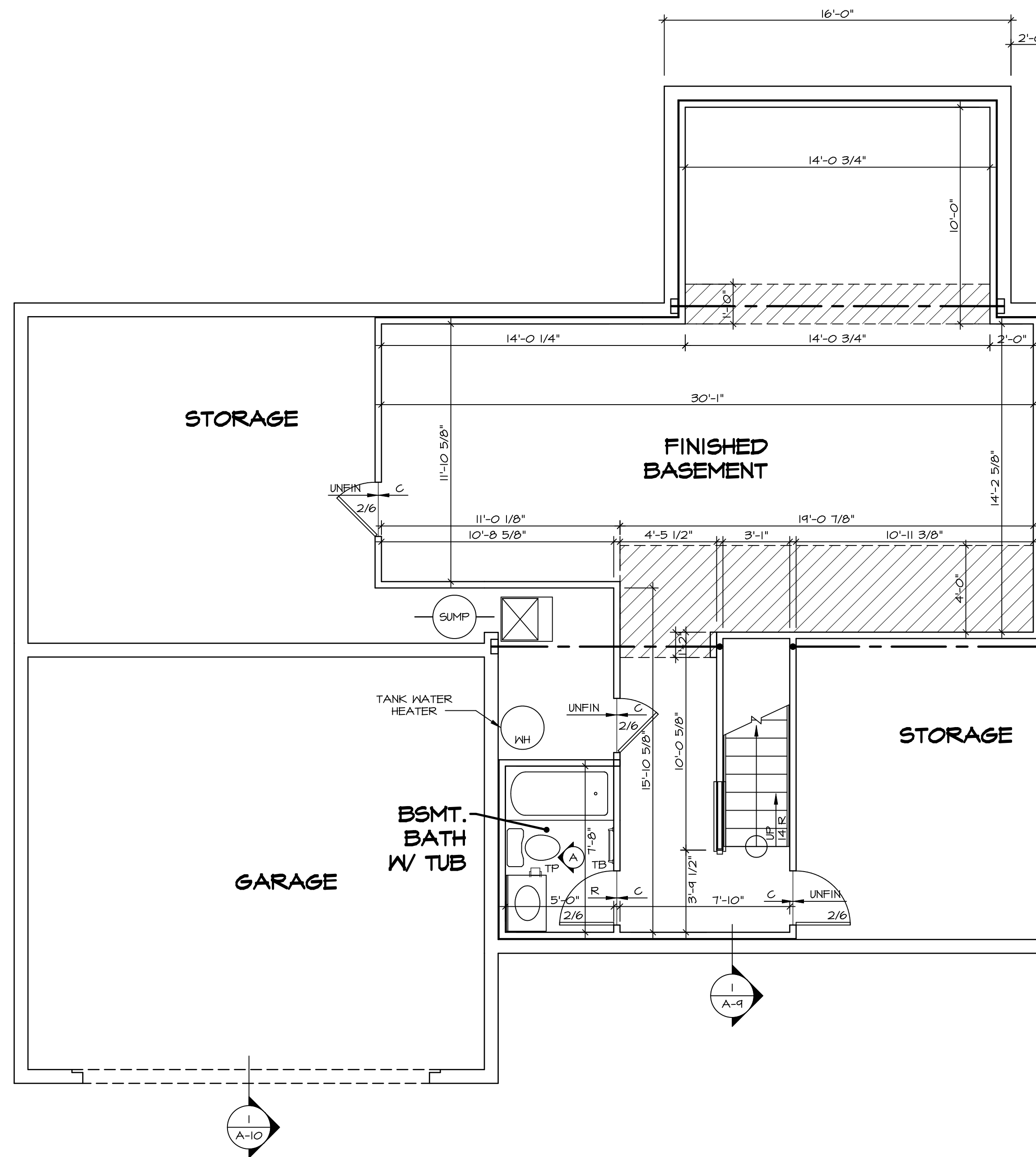


1 PLUMBING PLAN  
A-5 SCALE: 1/4" = 1'-0"

|                         |                                |                  |  |
|-------------------------|--------------------------------|------------------|--|
| SHEET NO.<br><b>A-5</b> | MODEL<br><b>PALERMO</b>        | SET NO.<br>PALOO | REMARKS  |
|                         | DRAWING TITLE<br>PLUMBING PLAN | VERSION<br>03    |  |
| 48                      | OPTION DESCRIPTION             | DATE:            | <small>NVR, Inc., owner, expressly reserves its copyright in these drawings. These drawings are not to be reproduced, changed, copied, or used in any way without the written consent of NVR, Inc.</small> |
|                         | OPTION                         | OPTION           |  |



NVR, Inc.  
Architectural Services  
5285 Westpark Drive, Suite 100  
Frederick, MD 21703



**LEGEND**

|  |   |
|--|---|
|  | BEARING WALL                            |
|  | NON BEARING WALL                        |
|  | INDICATES BEARING FROM POINT-LOAD ABOVE |
|  | JACKS                                   |
|  | BEAM/HEADER                             |
|  | PAD FOOTING                             |
|  | STEEL COLUMN                            |
|  | PORTAL FRAME                            |
|  | JOIST/TRUSS                             |
|  | LVL                                     |
|  | ENGINEERING PAGE NUMBER                 |

SEE FC DETAILS FOR FRAMING CONNECTORS

- FLOOR PLAN NOTES**
1. ALL HEADERS ARE (2) 2x6 w/ 2x4 WALLS OR (3) 2x6 w/ 2x6 WALLS, UNLESS OTHERWISE NOTED.
  2. ALL HEADERS TO HAVE (1) 2x4 OR 2x6 JACK EACH END, UNLESS OTHERWISE NOTED.
  3. ALL EXTERIOR WALLS TO BE 4" AND ALL INTERIOR WALLS TO BE 3 1/2", UNLESS OTHERWISE NOTED.
  4. HATCHED AREAS INDICATE DROPPED CEILINGS. ALL DROPPED CEILINGS ARE 12" UNLESS OTHERWISE NOTED.
  5. SEE "BRACED WALL PANEL DETAIL SHEET" FOR SPECIAL WALL FRAMING LOCATIONS AND HEADER SIZES, IF APPLICABLE.
  6. SEE STANDARD DETAIL CATEGORY "IT" SHEET(S) FOR INTERIOR TRIM DETAILS.
  7. SEE ARCHITECTURAL DETAIL SHEET "AD" FOR HOUSE SPECIFIC INTERIOR TRIM OPTION TABLE.
  8. ALL WINDOWS HAVE 7'-0" 1/2" HEADER HEIGHT UNLESS OTHERWISE NOTED.
  9. ALL CASED OPENINGS AT T-11, UNLESS OTHERWISE NOTED.

- GYPSUM NOTES**
- AT GARAGE:  
GYPSUM BOARD AT COMMON WALLS, CEILING, BEAM WRAPS AND SUPPORTS PER STANDARD DETAIL FA-1(b) FIRE ASSEMBLIES OR AS REQUIRED BY LOCAL CODE.
- AT STAIRS:  
1/2" GYPSUM BOARD AT UNDERSIDE OF STAIRS AND WALLS IN CLOSET

**BASEMENT FLOOR PLAN**  
SCALE: 1/4" = 1'-0"

|                         |   |                      |           |         |
|-------------------------|---|----------------------|-----------|---------|
| SHEET NO.<br><b>A-6</b> | MODEL<br><b>PALERMO</b>                     | SET NO. <b>PALOO</b> | REVISIONS | REMARKS |
|                         | DRAWING TITLE<br><b>BASEMENT FLOOR PLAN</b> | VERSION <b>03</b>    | DATE      |         |
| OPTION DESCRIPTION      | DRAWN BY                                    | DATE                 |           |         |
| <b>51</b>               | OPTION                                      |                      |           |         |

NVR, Inc. Architectural Services  
 5285 Westpark Drive  
 Frederick, MD 21703

NVR, Inc. expressly reserves its copyright in these plans. These plans are not to be reproduced, changed, copied, or otherwise used without the written consent of NVR, Inc.

C:\NVR\Solves\PALERMO\_PALOO\_03\DCY-YG-173\111256\Sheet\1 - Specific\51 - A-6 - BSMT\_LS.dwg 07/11/19 - 10:02 am

| FIRST FLOOR JACK SCHEDULE |                               |          |            |                 |
|---------------------------|-------------------------------|----------|------------|-----------------|
| IDENTIFIER                | DESCRIPTION                   | OPTIONS  | ENG. NUM.  | REMARKS         |
| J101                      | JACK - (2) 2x4 SPF STUD GRADE |          | 1072       |                 |
| J102                      | JACK - (2) 2x4 SPF STUD GRADE |          | 1072       |                 |
| J106                      | JACK - (2) 2x4 SPF STUD GRADE |          | 1012       |                 |
| J107                      | JACK - (2) 2x4 SPF STUD GRADE |          | 1012       |                 |
| J108                      | JACK - (2) 2x4 SPF STUD GRADE |          | 1012       |                 |
| J120                      | JACK - (4) 2x6 SPF STUD GRADE | MAA      | 1014       |                 |
| J121                      | JACK - (3) 2x6 SPF STUD GRADE | MAA      | 1014       | FIELD INSTALLED |
| J122                      | JACK - (3) 2x4 SPF STUD GRADE | SRH      | 1040       |                 |
| J130                      | JACK - (2) 2x4 SPF STUD GRADE | ELL      | 1024       |                 |
| J131                      | JACK - (2) 2x4 SPF STUD GRADE | ELL      | 1004       |                 |
| J132                      | JACK - (2) 2x4 SPF STUD GRADE | ELL      | 1024       |                 |
| J134                      | JACK - (2) 2x4 SPF STUD GRADE | MAY      | 1044, 1131 | CRIPPLES        |
| J140                      | JACK - (2) 2x4 SPF STUD GRADE | MAY      | 1044, 1131 | CRIPPLES        |
| J141                      | JACK - (3) 2x4 SPF STUD GRADE | GCC      | 1046       |                 |
| J142                      | JACK - (3) 2x4 SPF STUD GRADE | GCC      | 1046       |                 |
| J145                      | JACK - (3) 2x6 SPF STUD GRADE | GCC, MAY | 1155       |                 |
| J146                      | JACK - (2) 2x6 SPF STUD GRADE | GCC, MAY | 1155       |                 |
| J147                      | JACK - (6) 2x6 SPF STUD GRADE | GCC, MAY | 1057, 1133 |                 |

**LVL PLY TO PLY FASTENING SCHEDULE:**

1A - (2) FLY UP TO AND INCLUDING 11 7/8" TALL; FASTEN FLIES W/ (2) ROWS 16D NAILS AT 12" O.C.  
 2A - (2) FLY 14" TO AND INCLUDING 18" TALL (INCLUSIVE); FASTEN FLIES W/ (3) ROWS 16D NAILS AT 12" O.C.  
 3A - (2) FLY 20" TALL AND OVER; FASTEN FLIES W/ (4) ROWS 16D NAILS AT 12" O.C.  
 4A - (3) FLY UP TO AND INCLUDING 11 7/8" TALL; FASTEN FLIES W/ (2) ROWS 16D NAILS AT 12" O.C. FROM EACH SIDE  
 5A - (3) FLY 14" TO AND INCLUDING 18" TALL (INCLUSIVE); FASTEN FLIES W/ (3) ROWS 16D NAILS AT 12" O.C. FROM EACH SIDE  
 6A - (3) FLY 20" TALL AND OVER; FASTEN FLIES W/ (4) ROWS 16D NAILS AT 12" O.C. FROM EACH SIDE

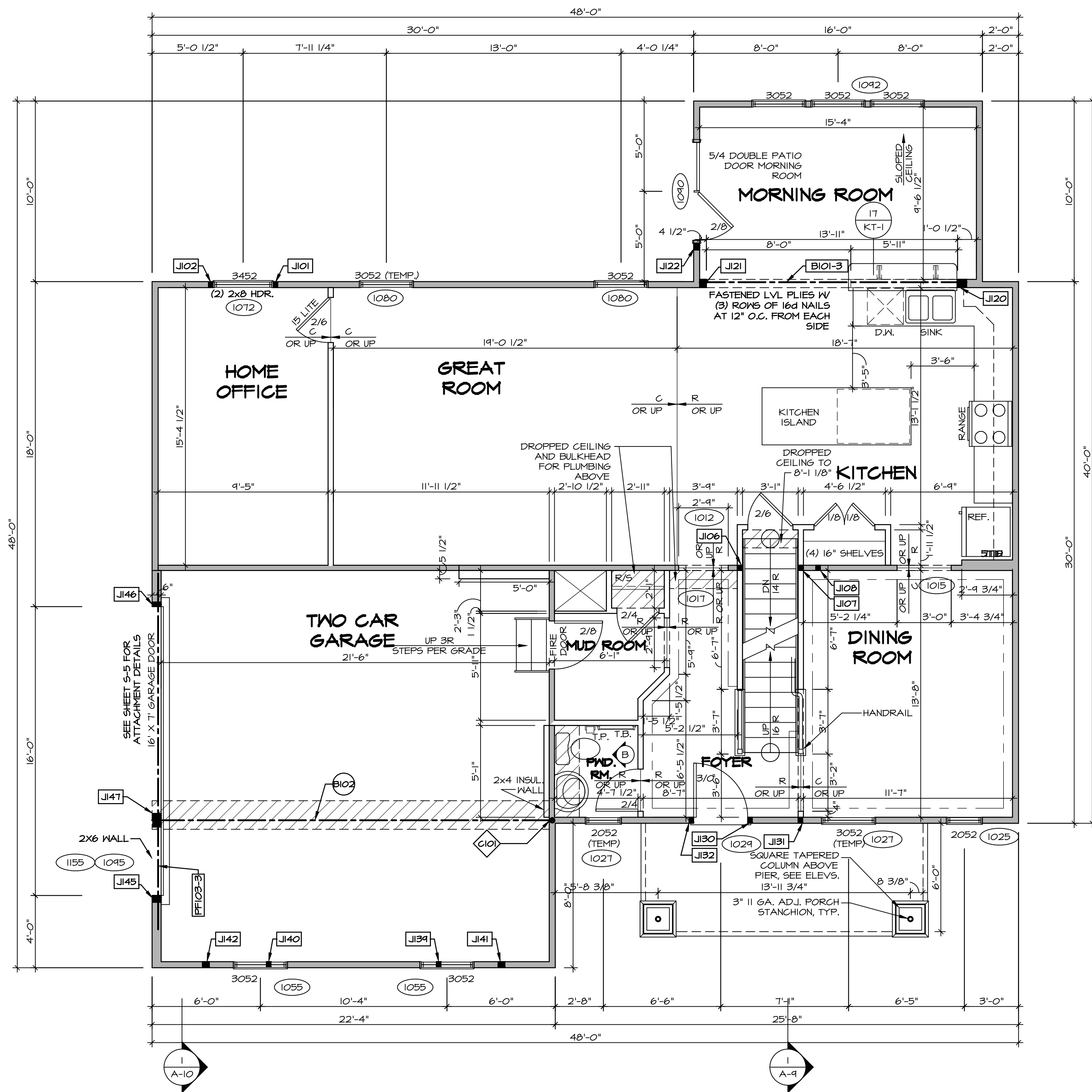
| FIRST FLOOR BEAM/HEADER SCHEDULE |                     |            |                    |            |                   |
|----------------------------------|---------------------|------------|--------------------|------------|-------------------|
| IDENTIFIER                       | DESCRIPTION         | LENGTH     | OPTIONS            | ENG. NUM.  | REMARKS           |
| B101-3                           | LVL - 16            | 14'-4 1/2" | MAA                | 1014       | 5A, FIELD INSTALL |
| B102                             | BEAM STEEL - W12X40 | 22'-3 1/2" | ELA, ELC, ELL, MAV | 1057, 1133 |                   |
| PF103-3                          | LVL - 20            | 14'-8 1/2" | GCC                | 1061, 1146 | 6A, FIELD INSTALL |

| LEGEND |   |
|--------|---|
|        | BEARING WALL                            |
|        | NON BEARING WALL                        |
|        | INDICATES BEARING FROM POINT-LOAD ABOVE |
|        | JACKS                                   |
|        | BEAM/HEADER                             |
|        | PAD FOOTING                             |
|        | STEEL COLUMN                            |
|        | PORTAL FRAME                            |
|        | JOIST/TRUSS                             |
|        | LVL                                     |
|        | ENGINEERING PAGE NUMBER                 |

- FLOOR PLAN NOTES**
- ALL HEADERS ARE (2) 2x6 W/ 2x4 WALLS OR (3) 2x6 W/ 2x6 WALLS, UNLESS OTHERWISE NOTED.
  - ALL HEADERS TO HAVE (1) 2x4 OR 2x6 JACK AND KING STUD EACH END, UNLESS OTHERWISE NOTED.
  - ALL EXTERIOR WALLS TO BE 4" W/ OSB OR 3 1/2" W/ T-PLY, ALL INTERIOR WALLS TO BE 3 1/2", UNLESS OTHERWISE NOTED.
  - HATCHED AREAS INDICATE DROPPED CEILINGS. ALL DROPPED AREAS ARE 12" UNLESS OTHERWISE NOTED.
  - SEE "BRACED WALL PANEL DETAIL SHEET" FOR SPECIAL WALL FRAMING LOCATIONS AND HEADER SIZES, IF APPLICABLE.
  - SEE STANDARD DETAIL CATEGORY "IT" SHEET(S) FOR INTERIOR TRIM DETAILS.
  - SEE ARCHITECTURAL DETAIL SHEET "AD" FOR HOUSE SPECIFIC INTERIOR TRIM OPTION TABLE.
  - ALL WINDOWS HAVE 7'-0 1/2" HEADER HEIGHT UNLESS OTHERWISE NOTED.
  - ALL HEADERS IN NON-BEARING WALLS SHALL BE A SINGLE FLAT 2X4 OR 2X6 ATTACHED TO CRIPPLES ABOVE, UNLESS OTHERWISE NOTED.

- GYPSUM NOTES**
- AT GARAGE:**  
 GYPSUM BOARD AT COMMON WALLS, CEILINGS, BEAM WRAPS AND SUPPORTS PER STANDARD DETAIL FA-1(b) FIRE ASSEMBLIES OR AS REQUIRED BY LOCAL CODE.
- AT STAIRS:**  
 1/2" GYPSUM BOARD AT UNDERSIDE OF STAIRS AND WALLS IN CLOSET

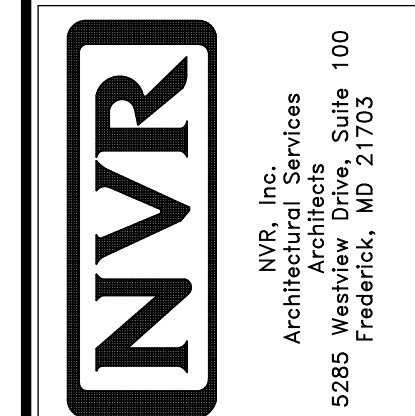
| STEEL COLUMN SCHEDULE |                           |             |         |                  |         |
|-----------------------|---------------------------|-------------|---------|------------------|---------|
| IDENTIFIER            | STYLE                     | HEIGHT      | OPTIONS | ENG. NUM.        | REMARKS |
| C101                  | STANCHION - 3 IN SCHED 40 | 9'-0 11/16" | FBA     | 1057, 1133, 1128 |         |



**FIRST FLOOR PLAN**  
 SCALE: 1/4" = 1'-0"

| REV. NO. | DATE     | REMARKS                        |
|----------|----------|--------------------------------|
| 1        | 08/04/16 | TM - DRAWING ALIGNMENT         |
| 2        | 07/27/17 | SL5 - T-PLY CONVERSION PROJECT |

NVR, Inc., owner, expressly reserves its copyright in these plans. These plans are not to be reproduced, changed, copied, or otherwise used in any way without the written consent of NVR, Inc.

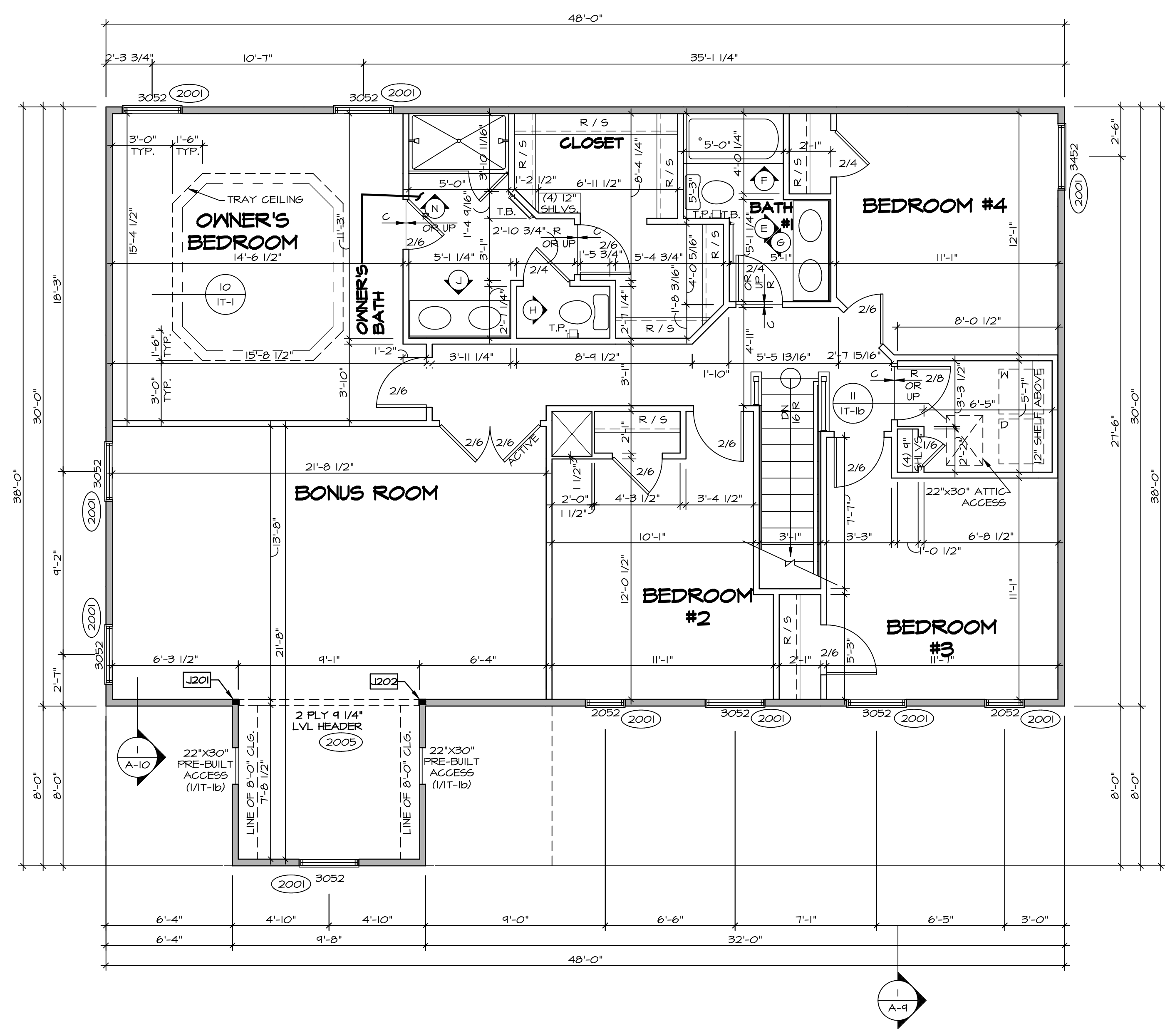


| SHEET NO. | MODEL   | SET NO. | VERSION | DRAWN BY         | DATE: | OPTION |
|-----------|---------|---------|---------|------------------|-------|--------|
| A-7       | PALERMO | 03      | 03      | FIRST FLOOR PLAN |       |        |

| SECOND FLOOR JACK SCHEDULE |                               |         |           |         |
|----------------------------|-------------------------------|---------|-----------|---------|
| IDENTIFIER                 | DESCRIPTION                   | OPTIONS | ENG. NUM. | REMARKS |
| J201                       | JACK - (2) 2X4 SFF STUD GRADE | MAY     | 2005      |         |
| J202                       | JACK - (2) 2X4 SFF STUD GRADE | MAY     | 2005      |         |

| LEGEND |   |
|--------|---|
|        | BEARING WALL                            |
|        | NON BEARING WALL                        |
|        | INDICATES BEARING FROM POINT-LOAD ABOVE |
|        | JACKS                                   |
|        | BEAM/HEADER                             |
|        | PAD FOOTING                             |
|        | STEEL COLUMN                            |
|        | PORTAL FRAME                            |
|        | JOIST/TRUSS                             |
|        | LVL                                     |
|        | ENGINEERING PAGE NUMBER                 |

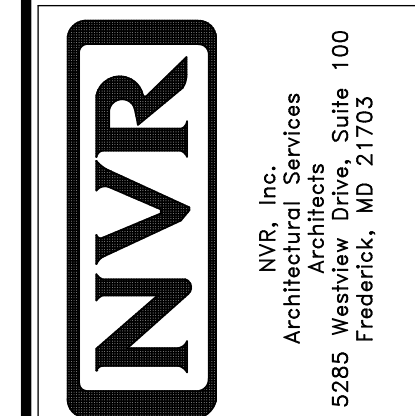
- FLOOR PLAN NOTES**
- ALL HEADERS ARE (2) 2x6 w/ 2x4 WALLS OR (3) 2x6 w/ 2x6 WALLS, UNLESS OTHERWISE NOTED.
  - ALL HEADERS TO HAVE (1) 2x4 OR 2x6 JACK AND KING STUD EACH END, UNLESS OTHERWISE NOTED.
  - ALL EXTERIOR WALLS TO BE 4" w/ OSB OR 3 1/2" w/ T-PLY, ALL INTERIOR WALLS TO BE 3 1/2", UNLESS OTHERWISE NOTED.
  - HATCHED AREAS INDICATE DROPPED CEILINGS. ALL DROPPED CEILINGS ARE 12" UNLESS OTHERWISE NOTED.
  - SEE "BRACED WALL PANEL DETAIL SHEET" FOR SPECIAL WALL FRAMING LOCATIONS AND HEADER SIZES, IF APPLICABLE.
  - SEE STANDARD DETAIL CATEGORY "IT" SHEET(S) FOR INTERIOR TRIM DETAILS.
  - SEE ARCHITECTURAL DETAIL SHEET "AD" FOR HOUSE SPECIFIC INTERIOR TRIM OPTION TABLE.
  - ALL WINDOWS HAVE 7'-0 1/2" HEADER HEIGHT UNLESS OTHERWISE NOTED.
  - ALL HEADERS IN NON-BEARING WALLS SHALL BE A SINGLE FLAT 2x4 OR 2x6 ATTACHED TO CRIPPLES ABOVE, UNLESS OTHERWISE NOTED.



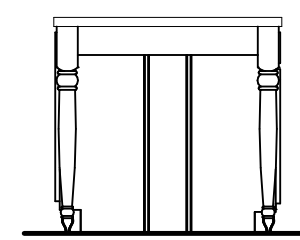
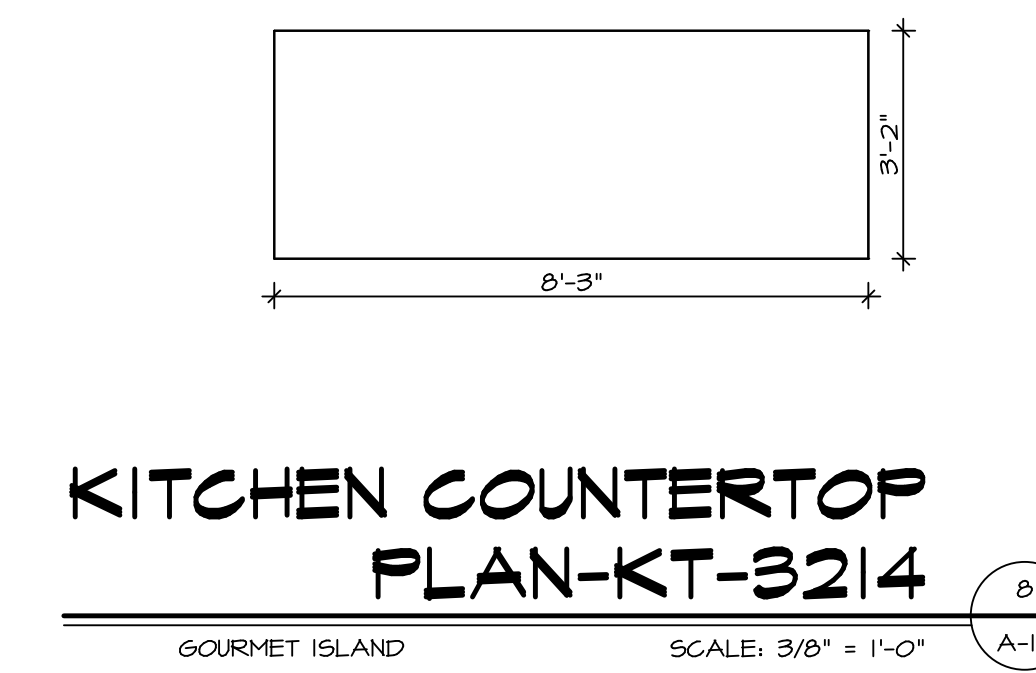
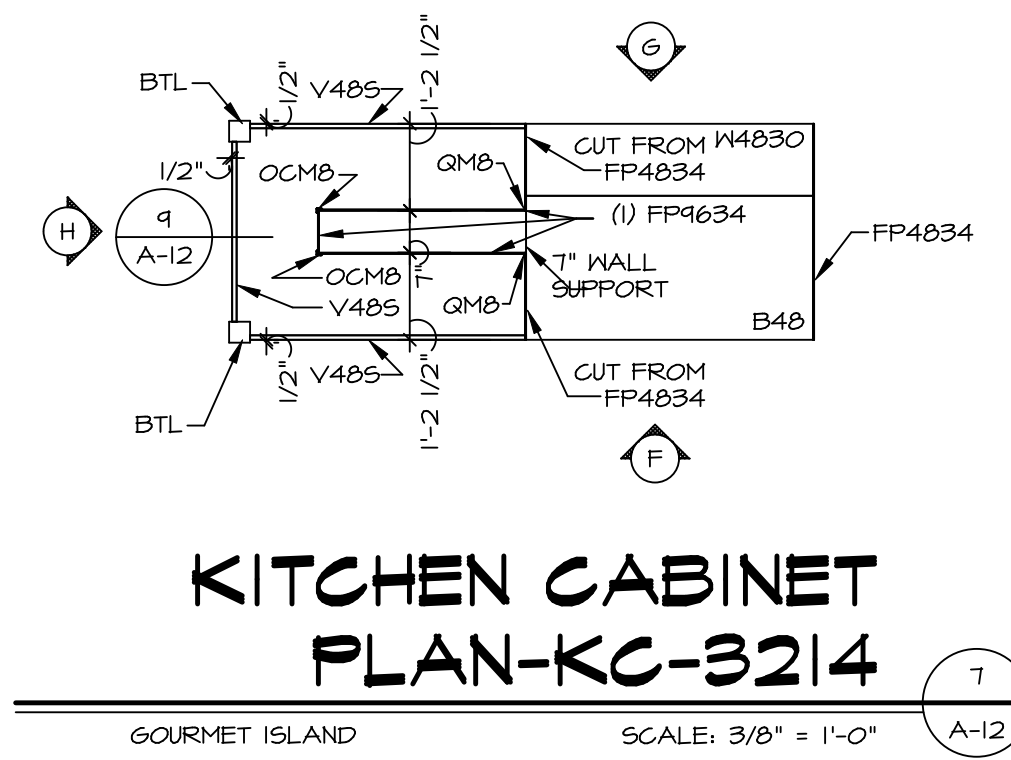
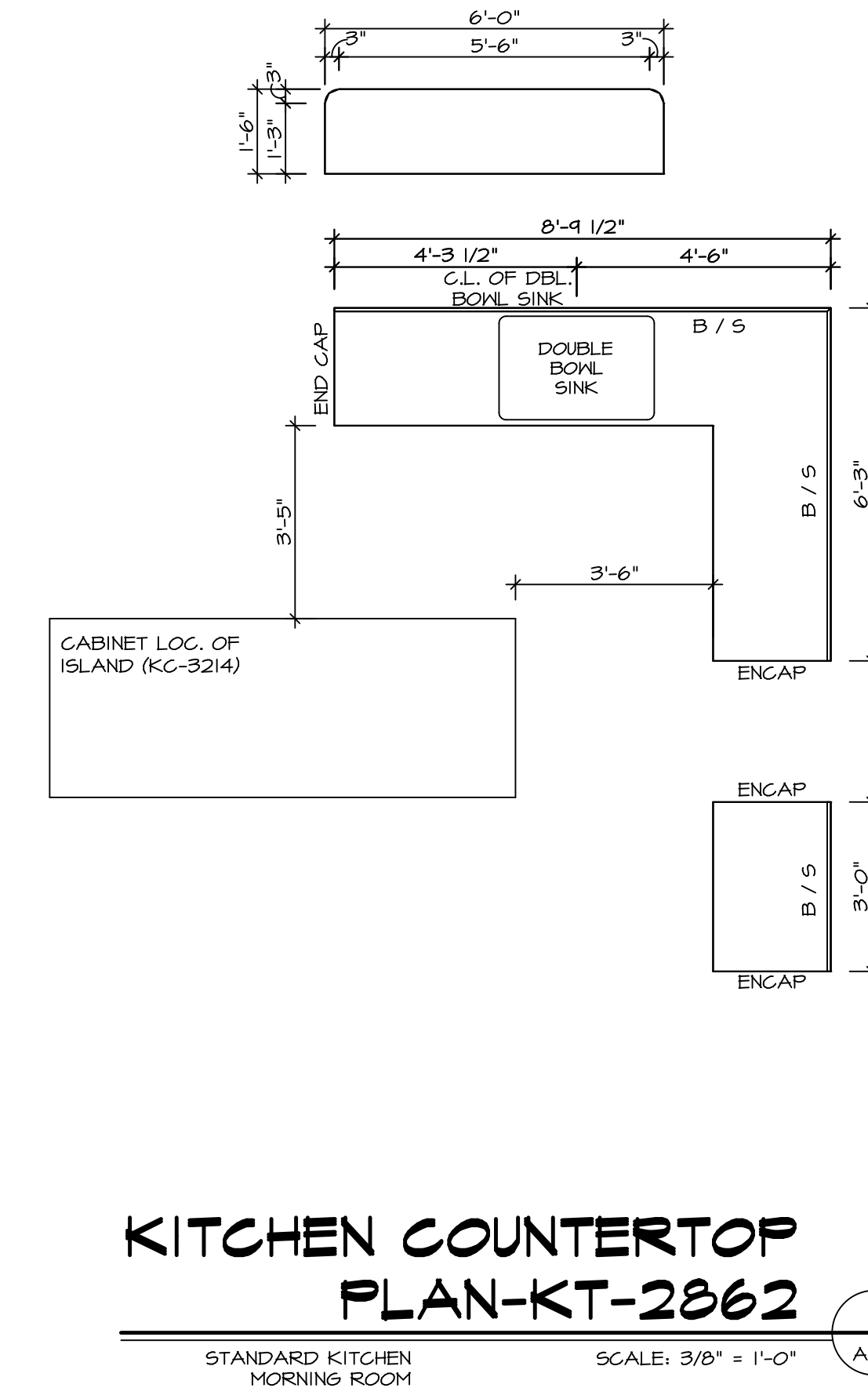
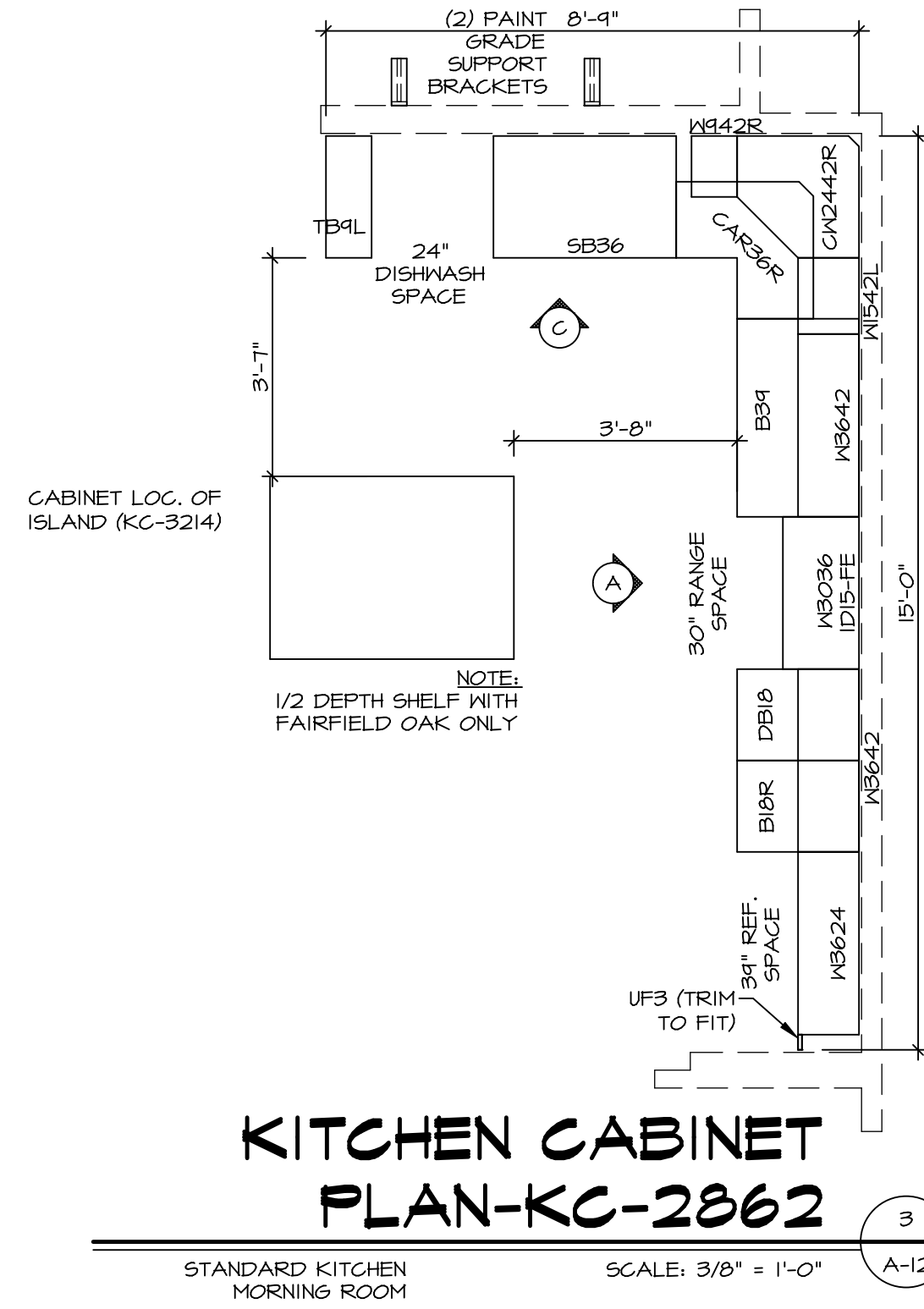
**SECOND FLOOR PLAN**  
SCALE: 1/4" = 1'-0"

| REV. NO. | DATE     | REMARKS                        |
|----------|----------|--------------------------------|
| 1        | 08/04/16 | TH - DRAWING ALIGNMENT         |
| 2        | 07/12/17 | SLS - T-PLY CONVERSION PROJECT |

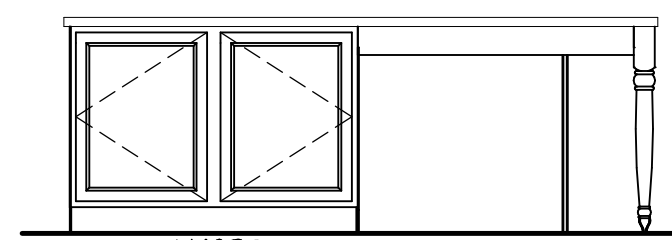
NVR, Inc., owner, expressly reserves its copyright in these plans. These plans are not to be reproduced, changed, copied, or otherwise used in any way without the written consent of NVR, Inc.



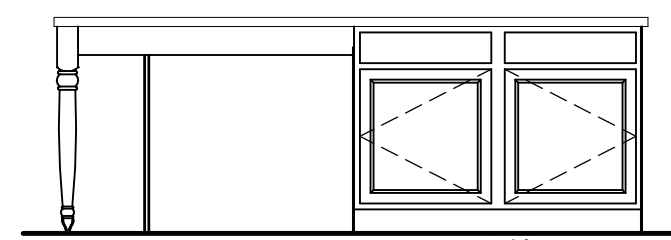
|                    |         |                   |         |          |       |        |
|--------------------|---------|-------------------|---------|----------|-------|--------|
| SHEET NO.          | MODEL   | SET NO.           | VERSION | DRAWN BY | DATE: | OPTION |
| A-8                | PALERMO | 03                | 03      |          |       |        |
| 60                 |         |                   |         |          |       |        |
| DRAWING TITLE      |         | SECOND FLOOR PLAN |         |          |       |        |
| OPTION DESCRIPTION |         |                   |         |          |       |        |



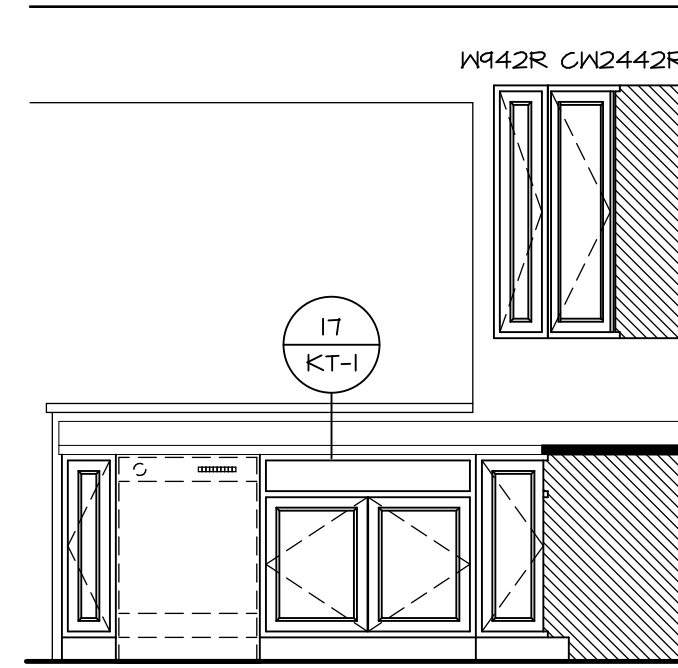
**KITCHEN ELEVATION H**  
SCALE: 3/8" = 1'-0"



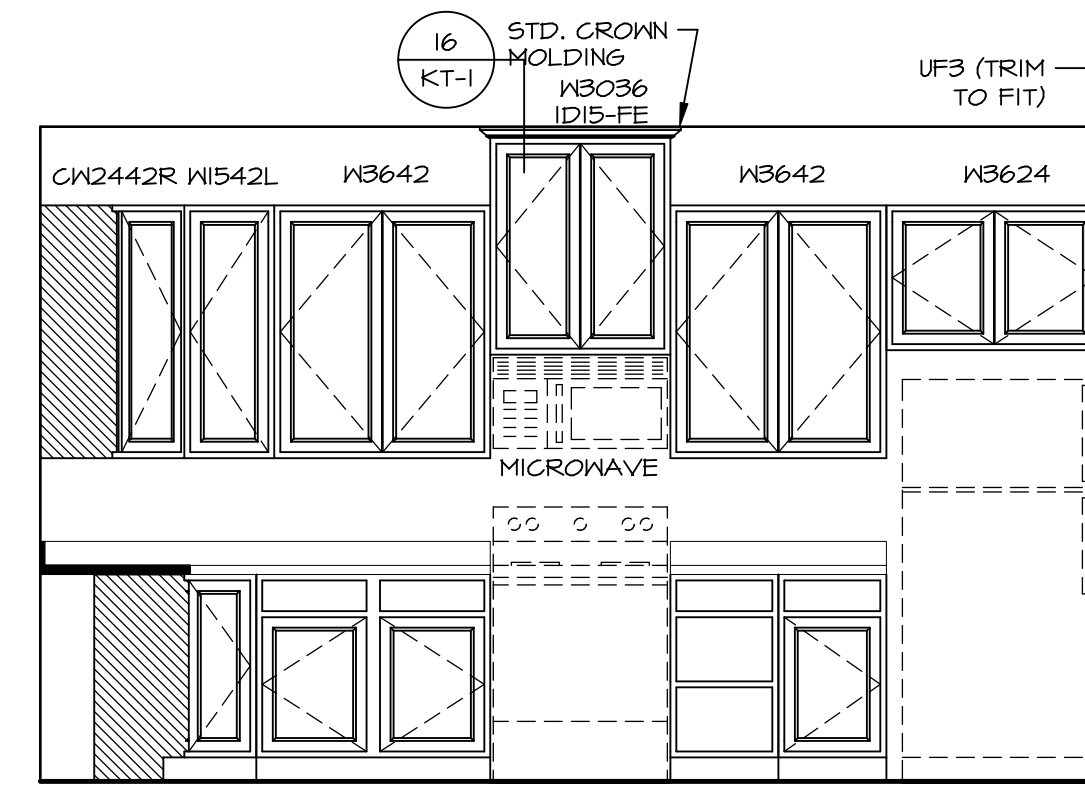
**KITCHEN ELEVATION G**  
SCALE: 3/8" = 1'-0"



**KITCHEN ELEVATION F**  
SCALE: 3/8" = 1'-0"



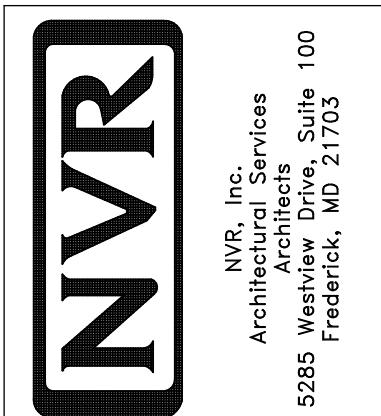
**KITCHEN ELEVATION C**  
SCALE: 3/8" = 1'-0"

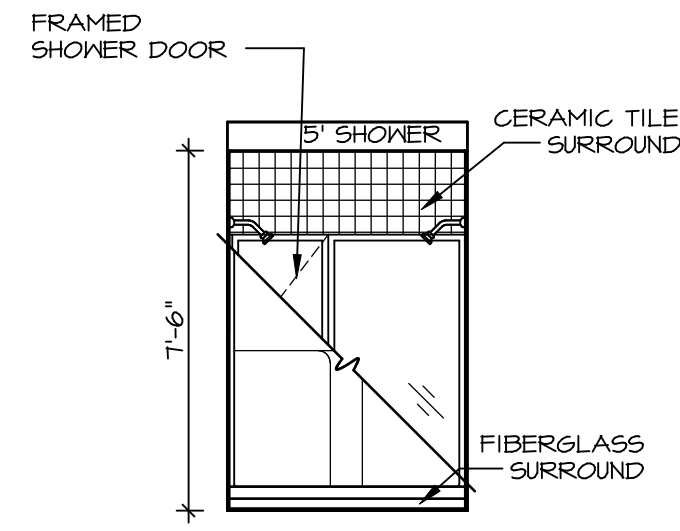


**KITCHEN ELEVATION A**  
SCALE: 3/8" = 1'-0"

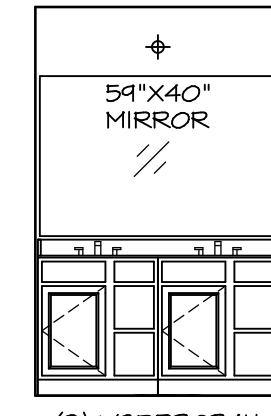
|                          |                         |                  |               |        |        |
|--------------------------|-------------------------|------------------|---------------|--------|--------|
| SHEET NO.<br><b>A-12</b> | MODEL<br><b>PALERMO</b> | SET NO.<br>PALOO | VERSION<br>03 | DATE   | OPTION |
|                          | DRAWING TITLE           | DRAWN BY         | DATE          | OPTION |        |
| 70                       | OPTION DESCRIPTION      |                  |               |        |        |
| <p>REMARKS</p>           |                         |                  |               |        |        |
| <p>REV. NO. DATE</p>     |                         |                  |               |        |        |

NVR, Inc., owner, expressly reserves its copyright in these plans. These plans are not to be reproduced, changed, copied in any way, or used for any other purpose without the written consent of NVR, Inc.

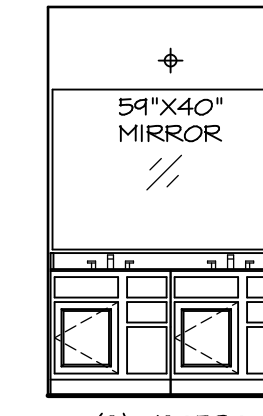




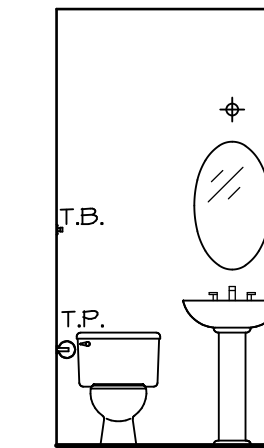
**N OWNER'S BATH**  
SCALE: 1/4" = 1'-0"



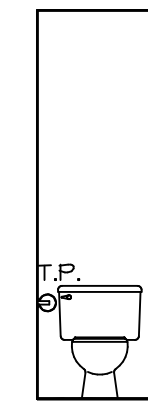
**J OWNER'S BATH**  
SCALE: 1/4" = 1'-0"



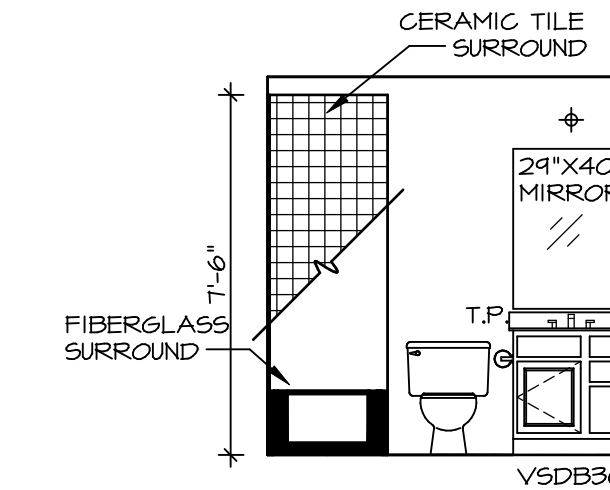
**E BATH #1**  
SCALE: 1/4" = 1'-0"



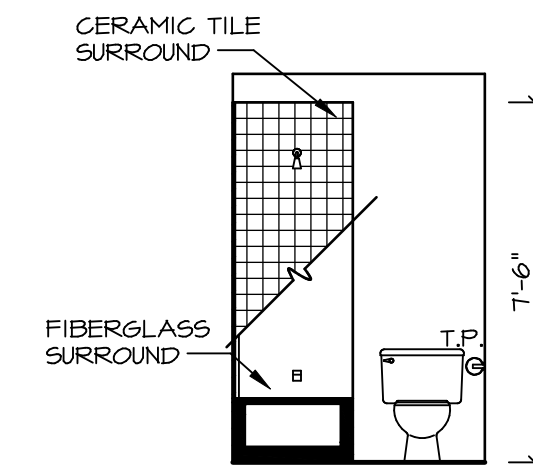
**B POWDER ROOM**  
SCALE: 1/4" = 1'-0"



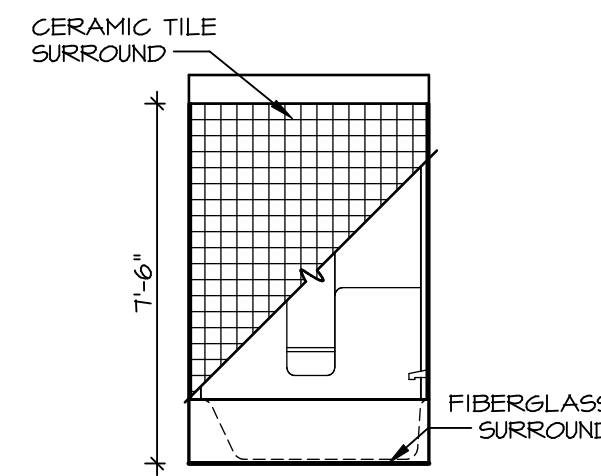
**H OWNER'S BATH**  
SCALE: 1/4" = 1'-0"



**A BASEMENT BATH**  
SCALE: 1/4" = 1'-0"



**G BATH #1**  
SCALE: 1/4" = 1'-0"



**F BATH #1**  
SCALE: 1/4" = 1'-0"

**NOTES:**

1. TEMPERED GLASS SHOWER ENCLOSURE WITH SWING DOOR OR OPTIONAL SLIDING DOOR BY DIVISION
2. TUB ACCESS PANELS PROVIDED AS NEEDED, ALL MATERIALS BY DIVISION
3. REFER TO SHEET IT-2 FOR TUB AND SHOWER DETAILS.
4. ALL V5DB24-42 DRAWERS TO BE SET ON RIGHT HAND.
5. BATH ELEVATIONS ARE SHOWN PER PLAN.

| SHEET NO. | MODEL           | SET NO. | VERSION | DRAWN BY | DATE: | OPTION | REVISIONS | DATE | REMARKS |
|-----------|-----------------|---------|---------|----------|-------|--------|-----------|------|---------|
| A-13      | PALERMO         | 03      | 03      |          |       |        |           |      |         |
| 72        | BATH ELEVATIONS |         |         |          |       |        |           |      |         |

**NVR**  
NVR, Inc.  
Architectural Services  
Architects  
5285 Westpark Drive, Suite 100  
Frederick, MD 21703