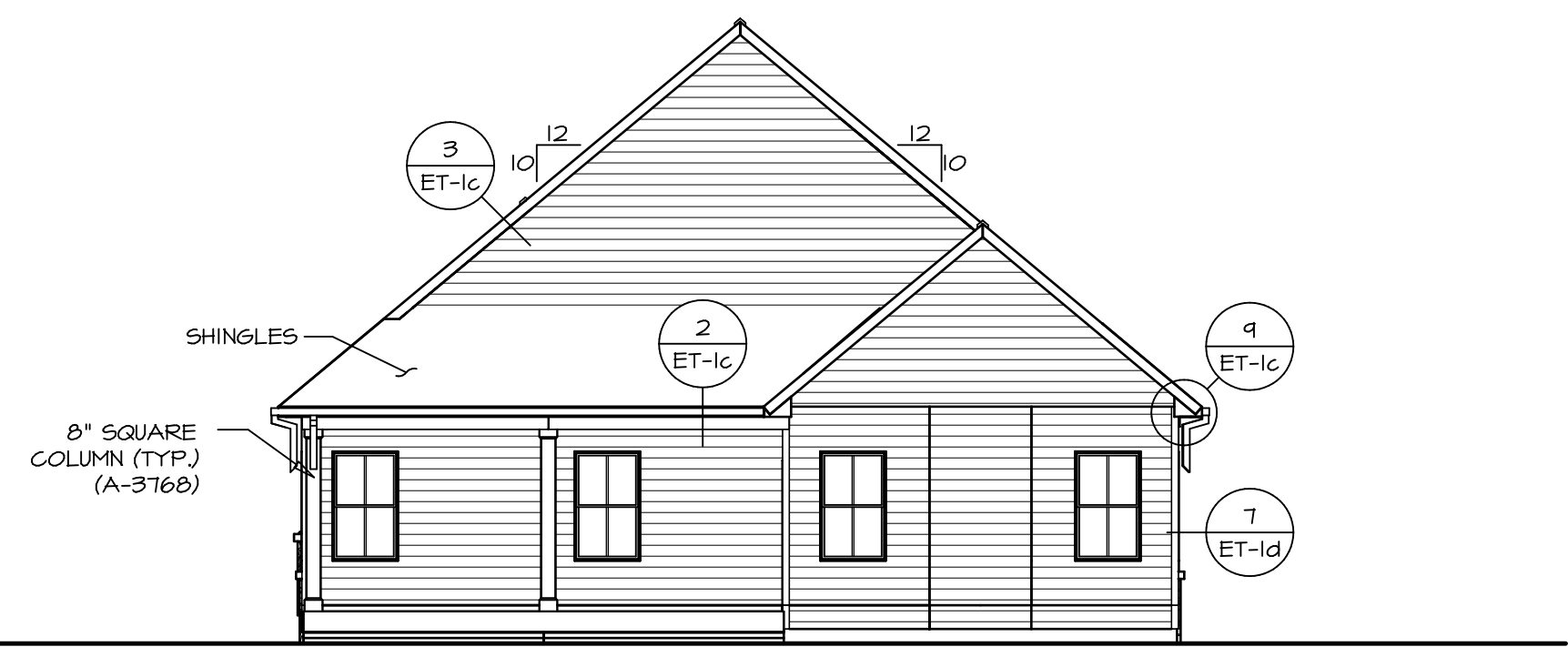
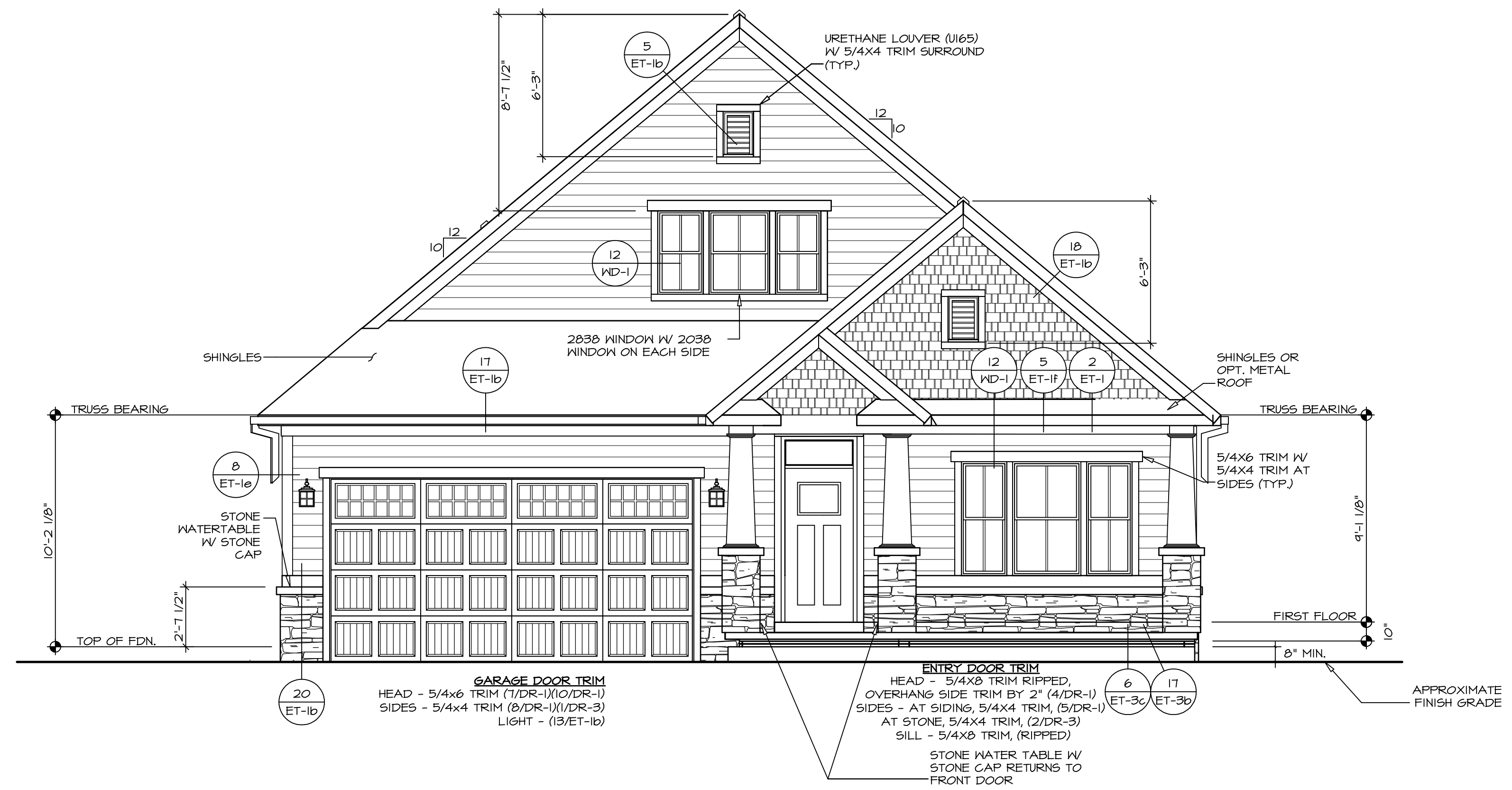


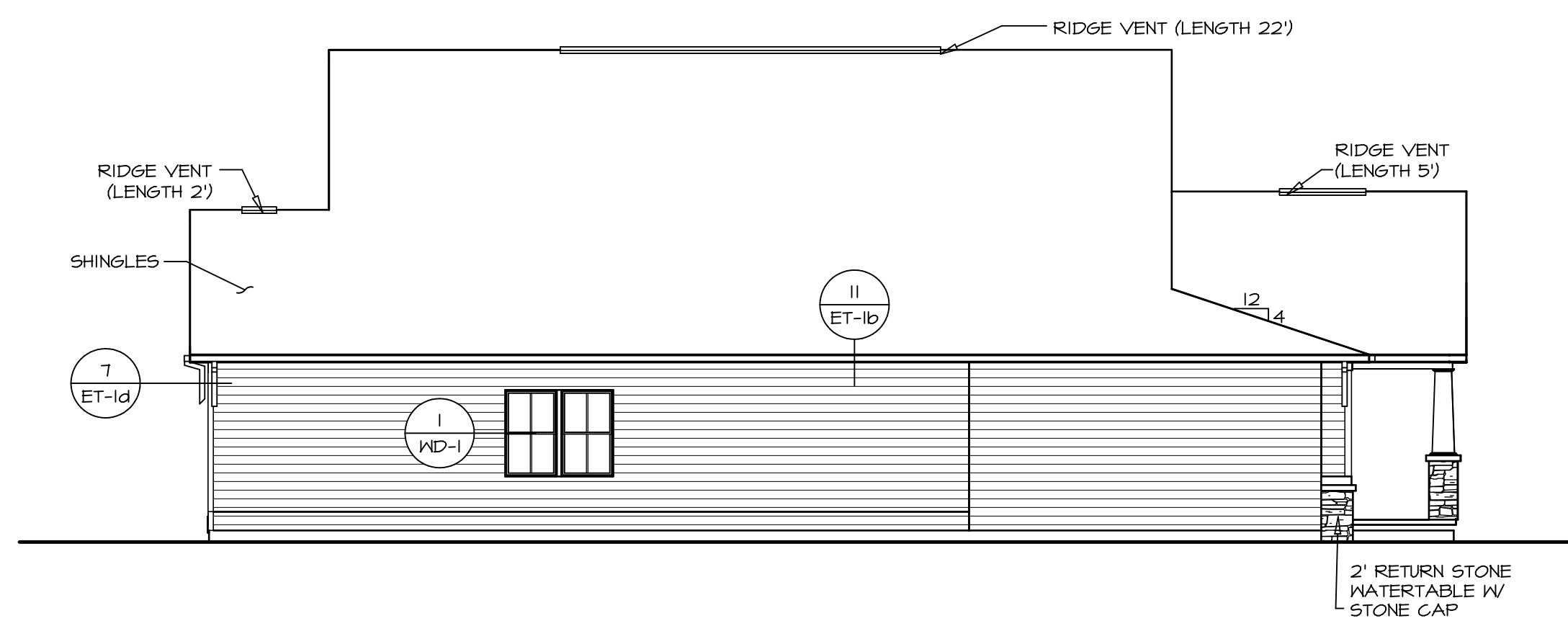
2
A-1
SCALE: 1/8" = 1'-0"



3
A-1
SCALE: 1/8" = 1'-0"



1
A-1
SCALE: 1/4" = 1'-0"



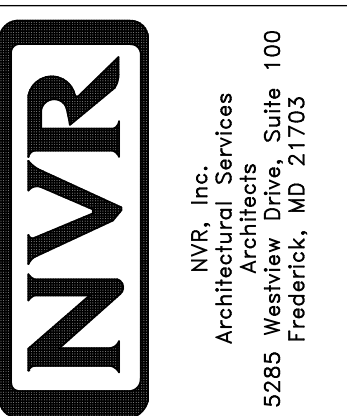
4
A-1
SCALE: 1/8" = 1'-0"

NOTE:
GARAGE DOOR GLASS
DESIGN MAY VARY BY
MANUFACTURER

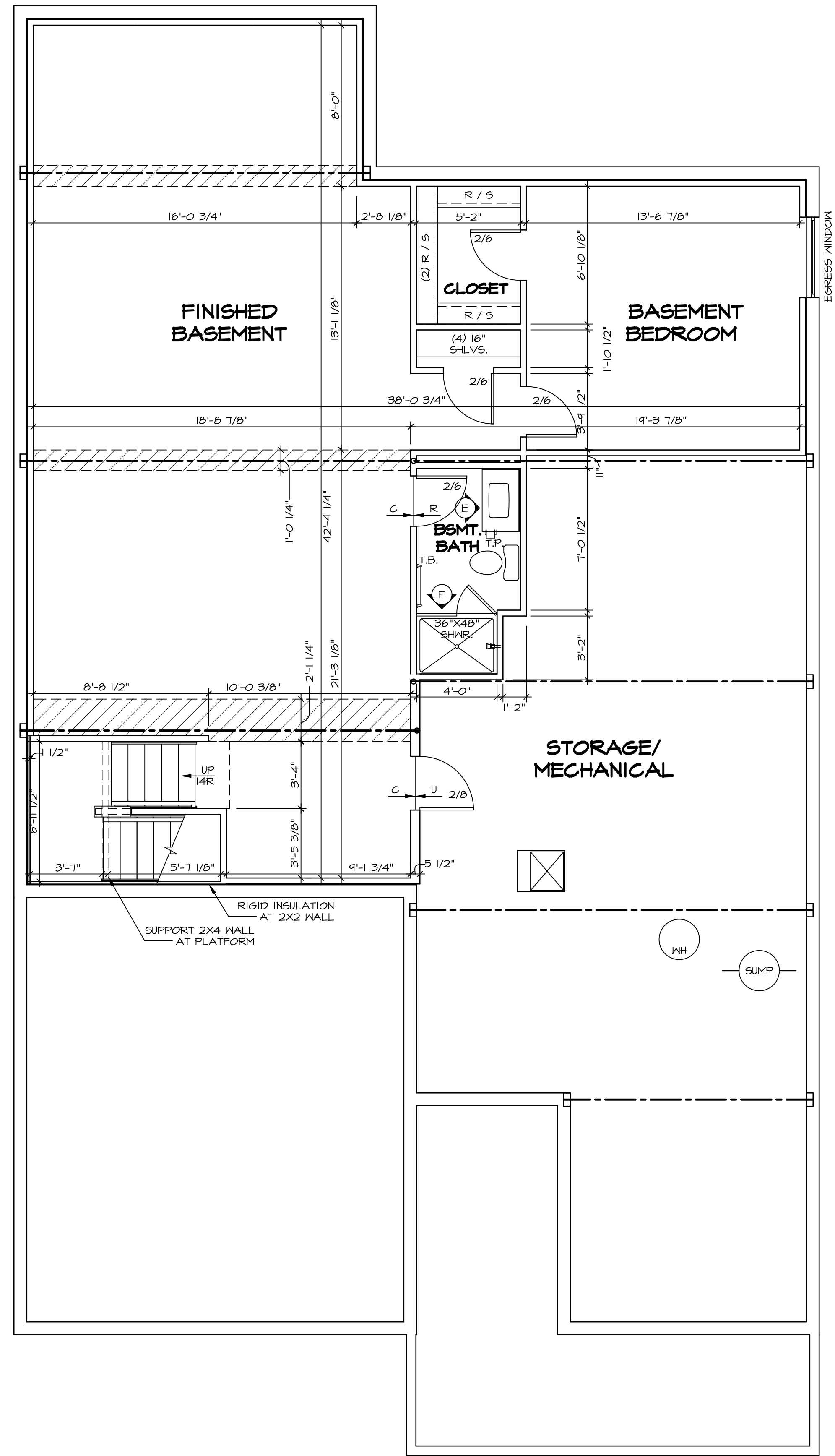
NOTE:
GRILLES IN GLAZING OF ALL
EXTERIOR DOORS AND
SIDELIGHTS TO BE OMITTED
WITH BRONZE WINDOWS

REV. NO.	DATE	REMARKS

NVR, Inc., owner, expressly reserves its copyright in these plans. These plans are not to be reproduced, changed, copied, or otherwise used in any way without the written consent of NVR, Inc.



SET NO. PLD0A	VERSION 01	DRAWN BY SPW	DATE: 2/6/17	OPTION FEA
MODEL PALLADIO RANCH	DRAWING TITLE ELEVATIONS	OPTION DESCRIPTION FULL BASEMENT FOUNDATION	SHEET NO. A-1	
				4



LEGEND

	BEARING WALL
	NON BEARING WALL
	INDICATES BEARING FROM POINT-LOAD ABOVE
	JACKS
	BEAM/HEADER
	PAD FOOTING
	STEEL COLUMN
	PORTAL FRAME
	JOIST/TRUSS
	LVL
	ENGINEERING PAGE NUMBER

SEE FC DETAILS FOR FRAMING CONNECTORS

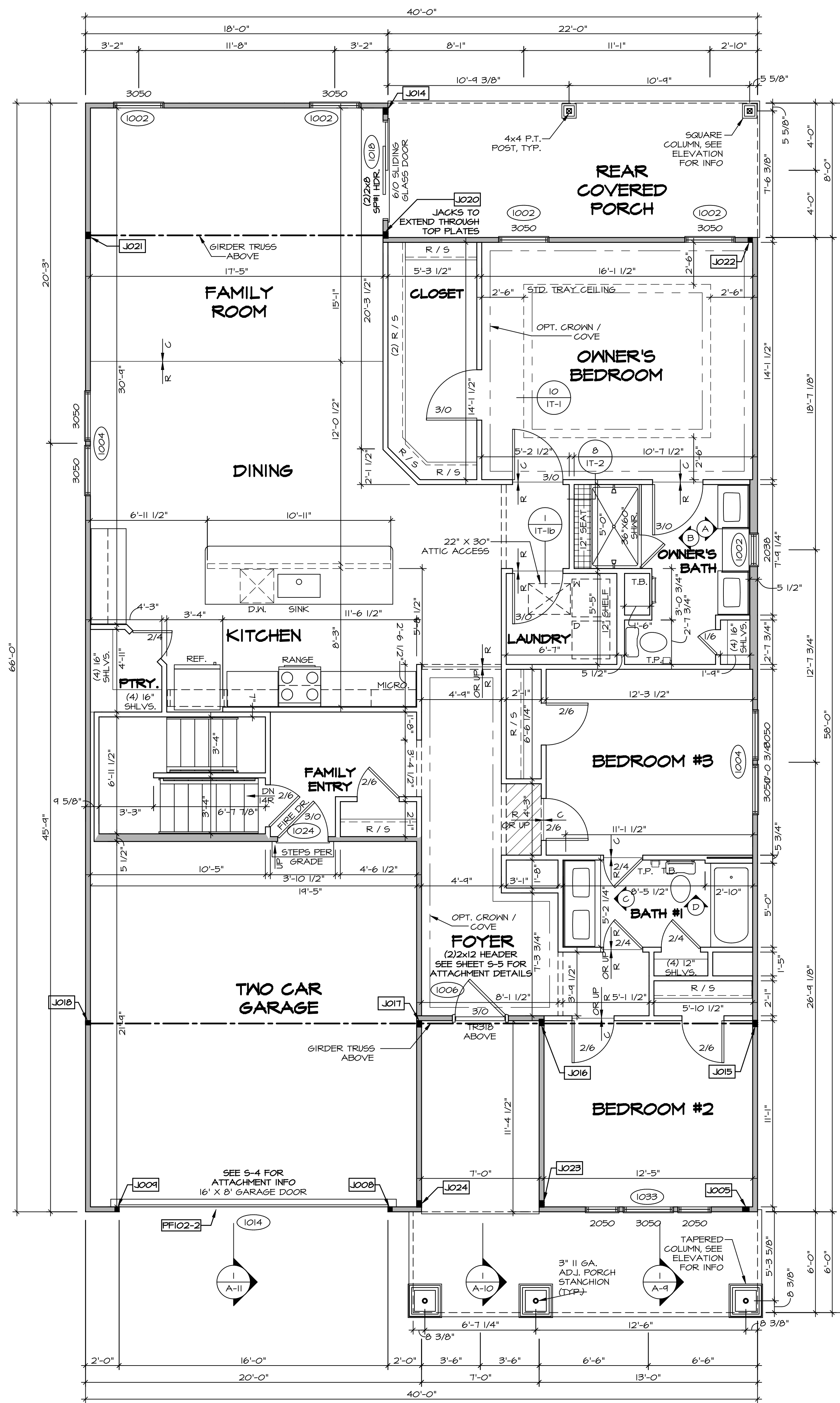
- FLOOR PLAN NOTES**
- ALL HEADERS ARE (2) 2x6 w/ 2x4 WALLS OR (3) 2x6 w/ 2x6 WALLS, UNLESS OTHERWISE NOTED.
 - ALL HEADERS TO HAVE (1) 2x4 OR 2x6 JACK EACH END, UNLESS OTHERWISE NOTED.
 - ALL EXTERIOR WALLS TO BE 4" AND ALL INTERIOR WALLS TO BE 3 1/2", UNLESS OTHERWISE NOTED.
 - HATCHED AREAS INDICATE DROPPED CEILINGS. ALL DROPPED CEILINGS ARE 12" UNLESS OTHERWISE NOTED.
 - SEE "BRACED WALL PANEL DETAIL SHEET" FOR SPECIAL WALL FRAMING LOCATIONS AND HEADER SIZES, IF APPLICABLE.
 - SEE STANDARD DETAIL CATEGORY "IT" SHEET(S) FOR INTERIOR TRIM DETAILS.
 - SEE ARCHITECTURAL DETAIL SHEET "AD" FOR HOUSE SPECIFIC INTERIOR TRIM OPTION TABLE.
 - ALL WINDOWS HAVE 7'-0 1/2" HEADER HEIGHT UNLESS OTHERWISE NOTED.

- GYPSUM NOTES**
- AT GARAGE:
GYPSUM BOARD AT COMMON WALLS, CEILINGS, BEAM WRAPS AND SUPPORTS PER STANDARD DETAIL FA-1(b) FIRE ASSEMBLIES OR AS REQUIRED BY LOCAL CODE.
- AT STAIRS:
1/2" GYPSUM BOARD AT UNDERSIDE OF STAIRS AND WALLS IN CLOSET

BASEMENT FLOOR PLAN
 SCALE: 1/4" = 1'-0"

REMARKS						
REV. NO.	DATE					
<p style="font-size: small;">NVR, Inc., owner, expressly reserves its copyright in these plans. These plans are not to be reproduced, changed, copied in any way, or used for any other project without the written consent of NVR, Inc.</p>						
<p style="font-size: x-small;">NVR, Inc. Architectural Services 5285 West... Frederick, MD 21703</p>						
MODEL	SET NO.	FLDOA	VERSION	DRAWN BY	DATE	OPTION
PALLADIO RANCH	A-6	A-6	01	DRH	2/22/17	
DRAWING TITLE	BASEMENT FLOOR PLAN					
OPTION DESCRIPTION	OPTION					
SHEET NO.	22					

C:\NVR\Solves\PALLADIO_RANCH_FLDOA_01\DC1-Y6-147A\970655\Sheets\Lot_Specific\22_A-6_BSMT_LS.dwg 10/05/18 - 3:16 am



LEGEND

- BEARING WALL
- NON BEARING WALL
- INDICATES BEARING FROM POINT-LOAD ABOVE
- JACKS
- BEAM/HEADER
- PAD FOOTING
- STEEL COLUMN
- PORTAL FRAME
- JOIST/TRUSS
- LVL
- ENGINEERING PAGE NUMBER

SEE FC DETAILS FOR FRAMING CONNECTORS

- FLOOR PLAN NOTES**
- ALL HEADERS ARE (2) 2x6 w/ 2x4 WALLS OR (3) 2x6 w/ 2x6 WALLS, UNLESS OTHERWISE NOTED.
 - ALL HEADERS TO HAVE (1) 2x4 OR 2x6 JACK EACH END, UNLESS OTHERWISE NOTED.
 - ALL EXTERIOR WALLS TO BE 4" AND ALL INTERIOR WALLS TO BE 3 1/2", UNLESS OTHERWISE NOTED.
 - HATCHED AREAS INDICATE DROPPED CEILINGS. ALL DROPPED CEILINGS ARE 12" UNLESS OTHERWISE NOTED. SEE "BRACED WALL PANEL DETAIL SHEET" FOR SPECIAL WALL FRAMING LOCATIONS AND HEADER SIZES, IF APPLICABLE.
 - SEE STANDARD DETAIL CATEGORY "IT" SHEET(S) FOR INTERIOR TRIM DETAILS.
 - SEE ARCHITECTURAL DETAIL SHEET "AD" FOR HOUSE SPECIFIC INTERIOR TRIM OPTION TABLE.
 - ALL WINDOWS HAVE 7'-0 1/2" HEADER HEIGHT UNLESS OTHERWISE NOTED.

- GYPSUM NOTES**
- AT GARAGE:
GYPSUM BOARD AT COMMON WALLS, CEILINGS, BEAM WRAPS AND SUPPORTS PER STANDARD DETAIL FA-1(b) FIRE ASSEMBLIES OR AS REQUIRED BY LOCAL CODE.
- AT STAIRS:
1/2" GYPSUM BOARD AT UNDERSIDE OF STAIRS AND WALLS IN CLOSET

FIRST FLOOR JACK SCHEDULE

IDENTIFIER	DESCRIPTION	OPTIONS	ENS. NUM.	REMARKS
JO05	JACK - (3) 2X4 SFF STUD GRADE	ELL	1010	
JO08	JACK - (2) 2X4 SFF STUD GRADE	GCB, ELB, ELL	1014	
JO04	JACK - (2) 2X4 SFF STUD GRADE	GCB, ELB, ELL	1014	
JO14	JACK - (3) 2X4 SFF STUD GRADE		1026	
JO15	JACK - (3) 2X4 SFF STUD GRADE	ELB, ELL	1024	
JO16	JACK - (3) 2X4 SFF STUD GRADE		1024	
JO17	JACK - (3) 2X4 SFF STUD GRADE		1024	
JO18	JACK - (2) 2X4 SFF STUD GRADE	GCB, ELB, ELL	1024	
JO20	JACK - (3) 2X4 SFF#1		1030	
JO21	JACK - (3) 2X4 SFF STUD GRADE		1030	
JO22	JACK - (2) 2X4 SFF STUD GRADE		1026	
JO23	JACK - (3) 2X4 SFF STUD GRADE	ELB, ELL	1035	
JO24	JACK - (3) 2X4 SFF STUD GRADE	ELB, ELL	1035	

FIELD INSTALLED FIRST FLOOR BEAM/HEADER SCHEDULE

IDENTIFIER	DESCRIPTION	LENGTH	OPTIONS	ENS. NUM.	REMARKS
PF102-2	LVL - 11-04	14'-8"	GCB, ELB, ELL	1014	1A

FIRST FLOOR PLAN
SCALE: 1/4" = 1'-0"

REMARKS

REV. NO. DATE

SET NO. PLODA
VERSION 01
DRAWN BY DRH
DATE: 2/22/17
OPTION

MODEL
PALLADIO RANCH
DRAWING TITLE
FIRST FLOOR PLAN
OPTION DESCRIPTION

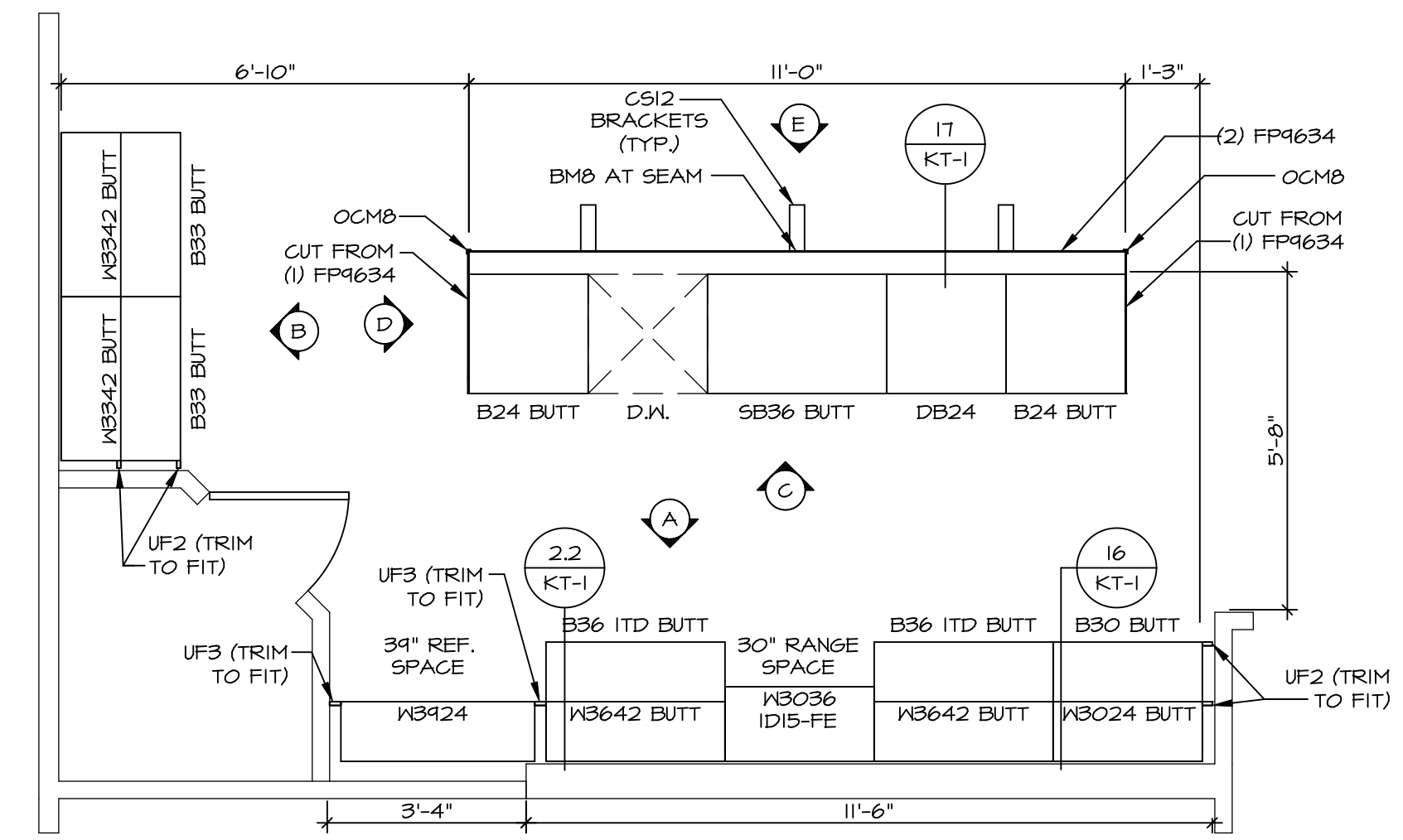
SHEET NO.
A-7

24

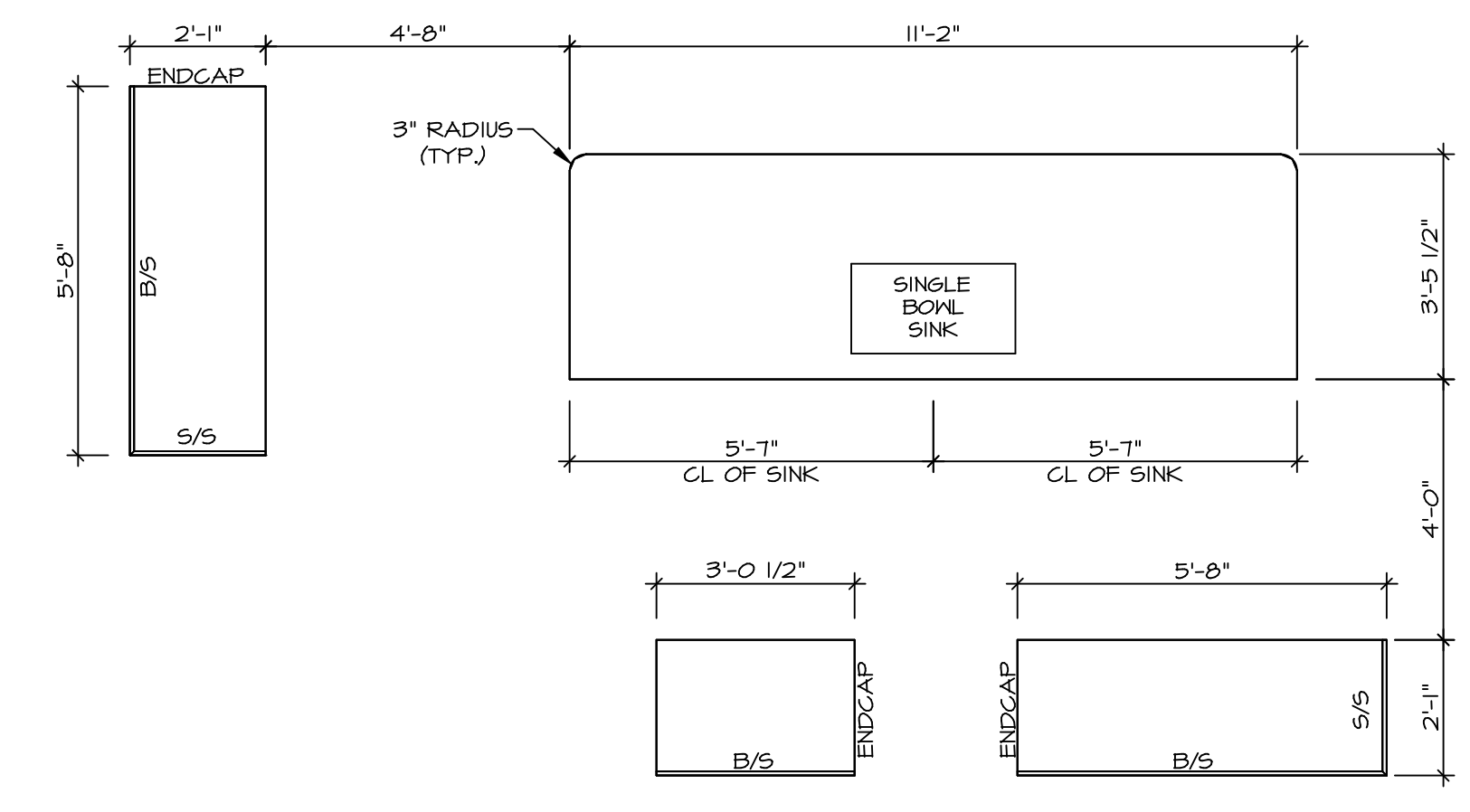
NVR, Inc., owner, expressly reserves its copyright in the common law plans. These plans are not to be reproduced, changed, copied, or otherwise used without the written consent of NVR, Inc.

NVR
NVR, Inc.
Architectural Services
5285 Washington Blvd
Frederick, MD 21703

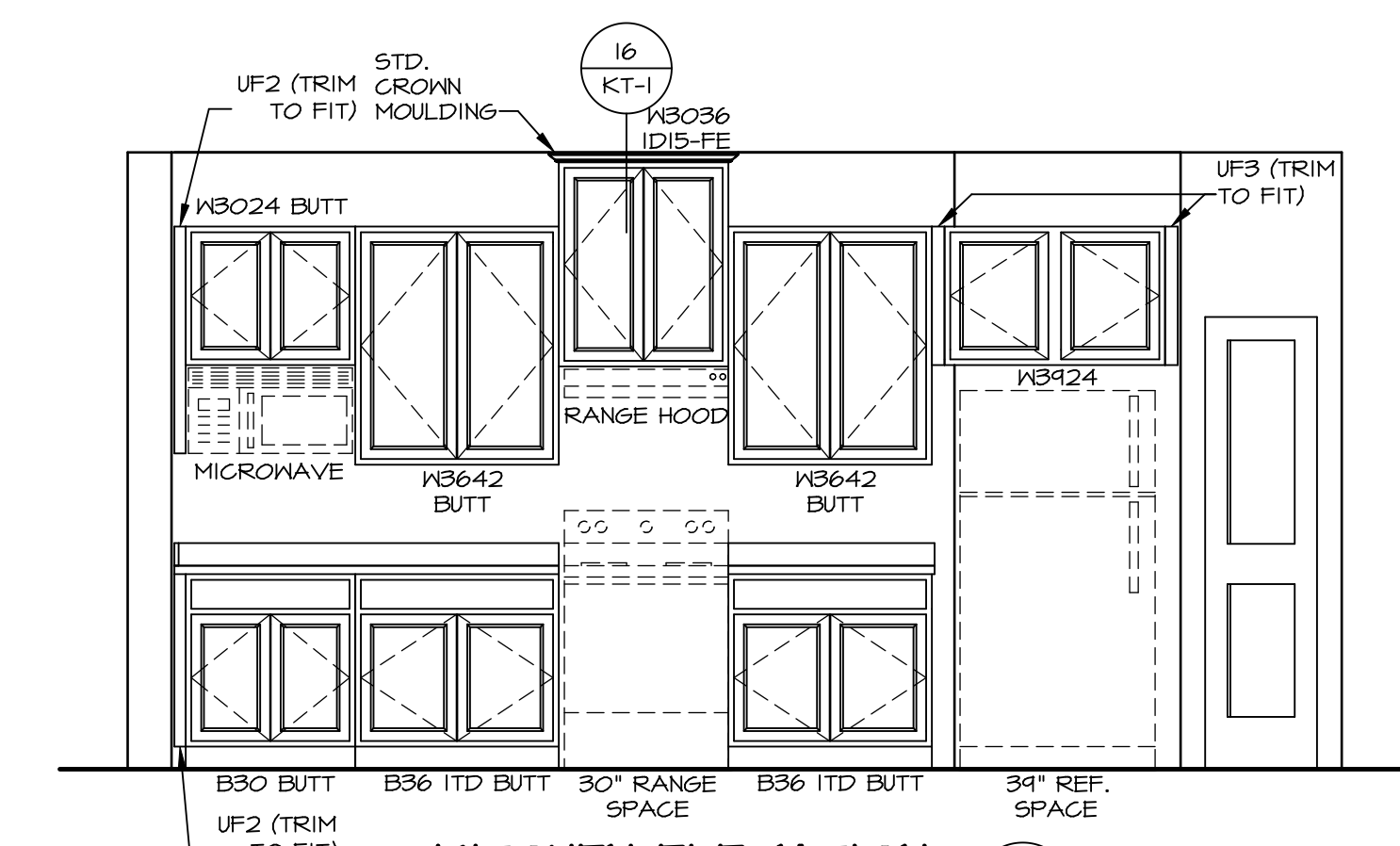
C:\NVR\Projects\PALLADIO_RANCH_PLODA_01\DCI-VG-147A\970655\Sheets\Lot_Specific\24_A-7_Plan_L5.dwg 10/05/18 - 3:16 pm



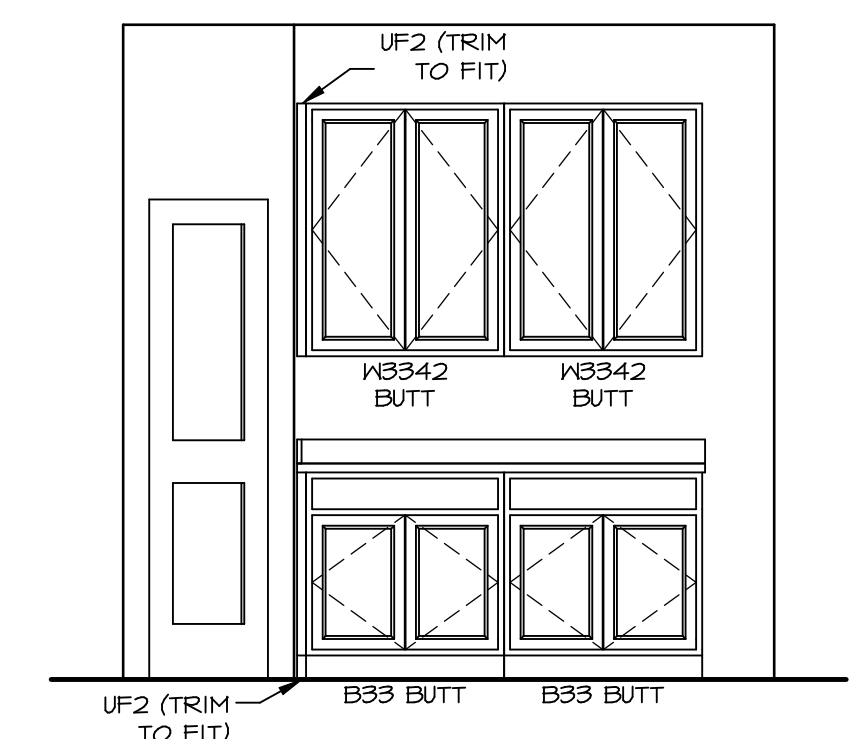
KITCHEN CABINET PLAN / KC - 3445
SCALE: 3/8" = 1'-0" A-13



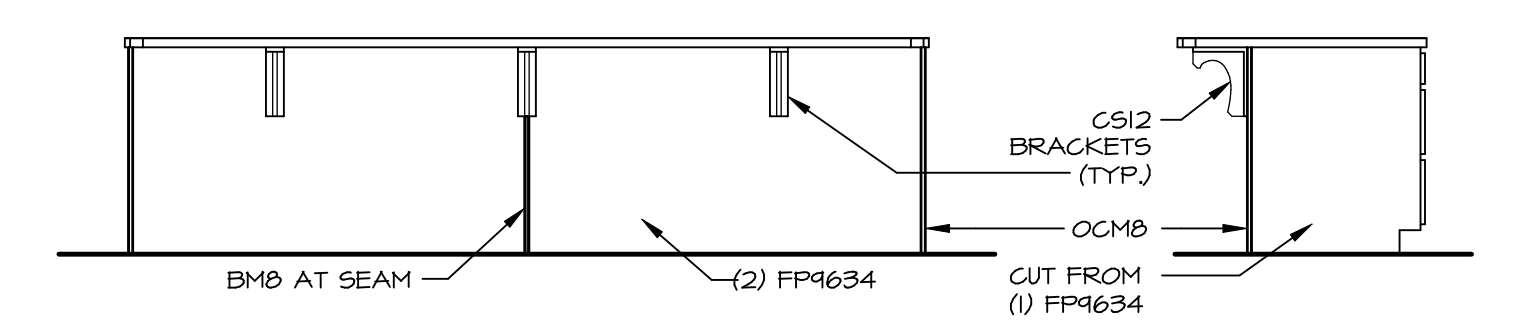
KITCHEN COUNTERTOP PLAN / KC - 3445
SCALE: 3/8" = 1'-0" A-13



KITCHEN ELEVATION A
SCALE: 3/8" = 1'-0"

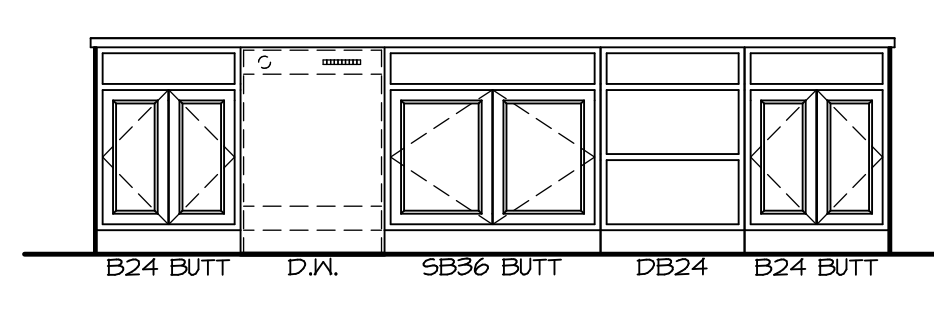


KITCHEN ELEVATION B
SCALE: 3/8" = 1'-0"



KITCHEN ELEVATION C
SCALE: 3/8" = 1'-0"

KITCHEN ELEV. D
SCALE: 3/8" = 1'-0"



KITCHEN ELEVATION E
SCALE: 3/8" = 1'-0"

SHEET NO. A-13	MODEL PALLADIO RANCH	DRAWING TITLE KITCHEN PLANS AND ELEVATIONS	SET NO. PLD0A	VERSION 01	DRAWN BY DRH	DATE: 2/22/17	OPTION
			OPTION DESCRIPTION				
REMARKS							
REV. NO. DATE							
<p>NVR, Inc., owner, expressly reserves its copyright in these plans. These plans are not to be reproduced, changed, copied, or otherwise used in any way without the written consent of NVR, Inc.</p>							
<p>NVR NVR, Inc. Architectural Services 5285 Westpark Drive, Suite 100 Frederick, MD 21703</p>							

