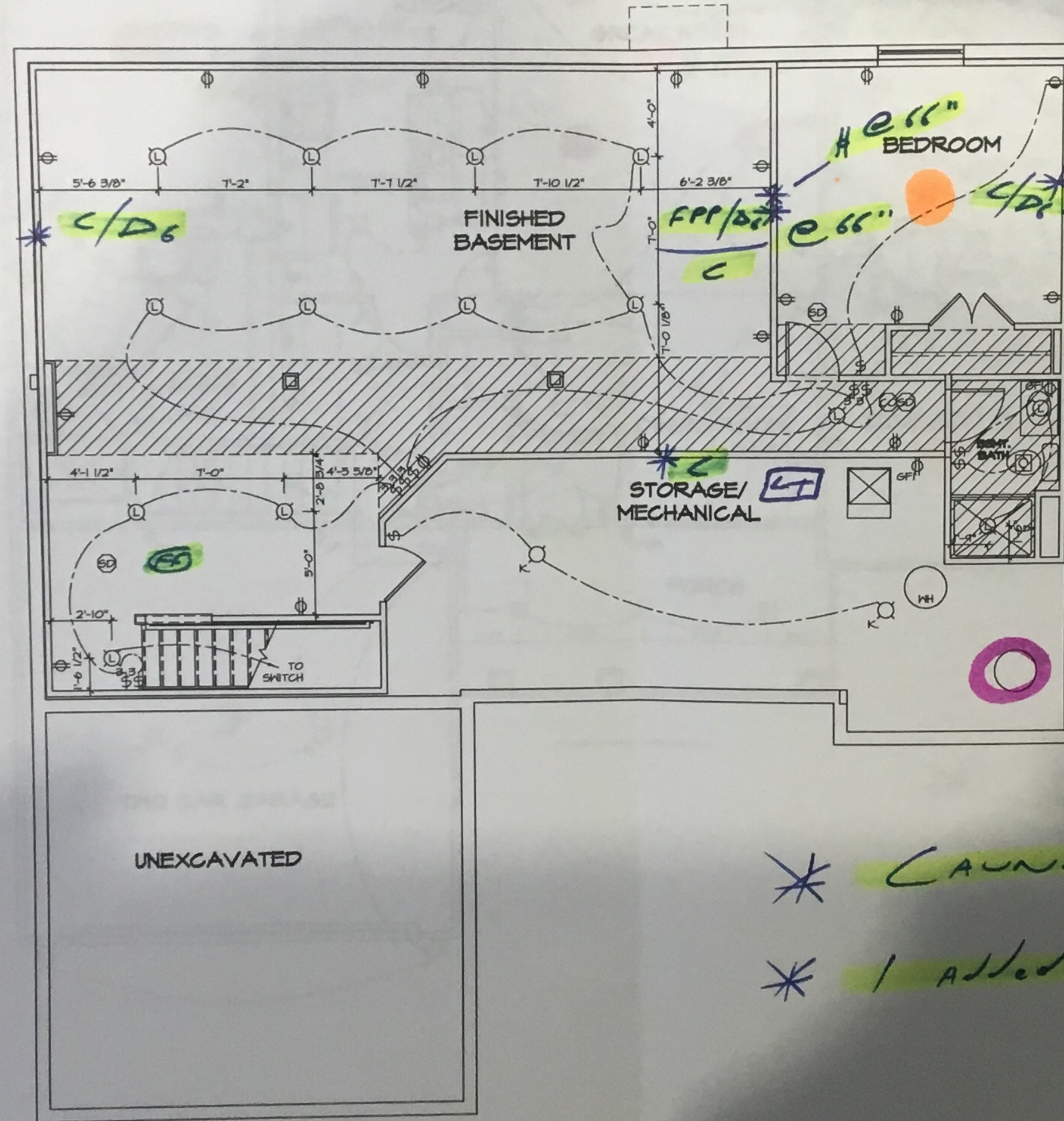


# Ceiling Fan Rough-in

## LAUNDRY TUB IN BSMT BY FURNACE



\* LAUNDRY TUB  
 \* 1 added outlet (location on print)

- NOTES:**
1. ALL ELECTRICAL PLANS ARE SCHEMATIC ONLY AND NOT INTENDED AS ENGINEERED DRAWINGS. THESE PLANS REPRESENT THE DESIGN INTENT FOR SWITCH AND RECEPTACLE LOCATIONS. ADDITIONAL INFORMATION, IF REQUIRED, SHALL BE PROVIDED BY A LICENSED ELECTRICAL SUBCONTRACTOR OR ENGINEER.
  2. ALL KITCHEN, BATHS, GARAGES, LAUNDRY ROOM, UNFINISHED BASEMENT, KETTBARS AND ALL OUTDOOR RECEPTACLES ARE TO BE GFI PROTECTED.
  3. PROVIDE SWITCH W/ KEYLESS LIGHT IN ATTIC SPACE.
  4. PROVIDE SWITCH W/ KEYLESS LIGHT AND GFI RECEPTACLE WHEN HVAC EQUIPMENT IS IN ATTIC SPACE.
  5. PROVIDE ARC-FAULT CIRCUIT INTERRUPTERS TO ALL BEDROOM RECEPTACLES.
  6. WASHER ON LEFT, DRYER ON RIGHT (PER PLAN OR REVERSED).
  7. DRYER RECEPTACLE 110 HV 6AS OR 220 HV ELECTRIC.

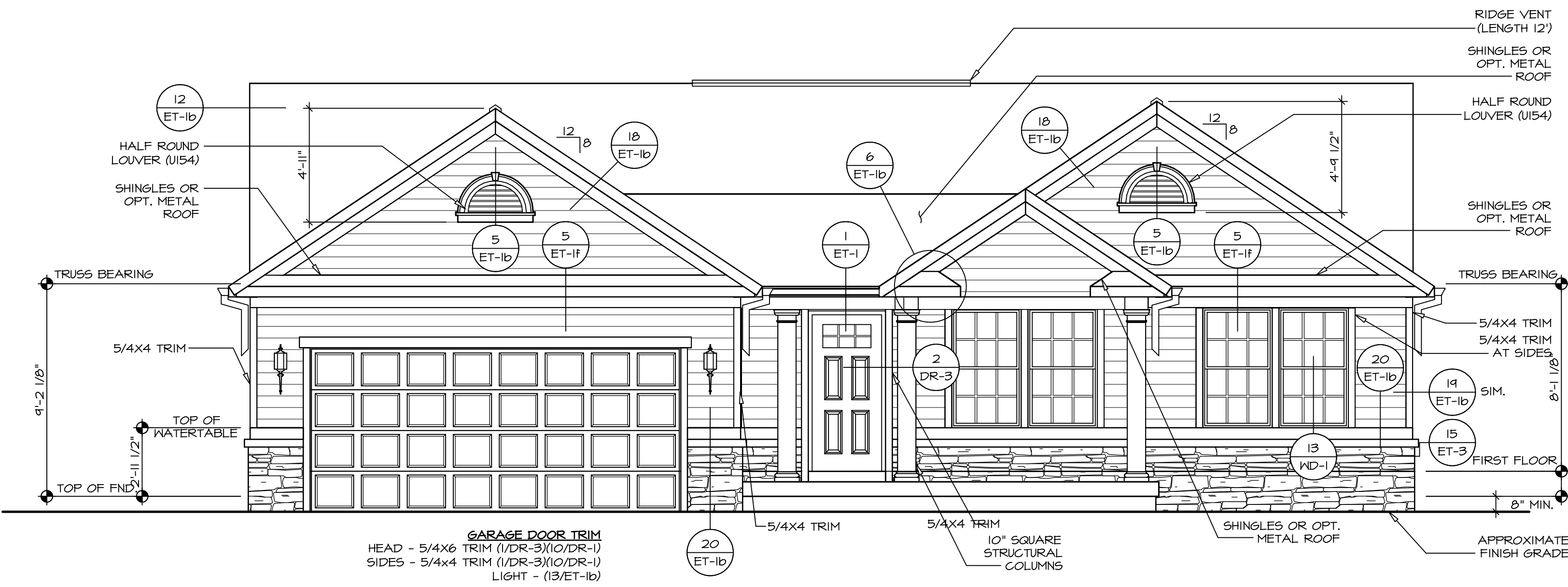
**ELECTRICAL LEGEND**

⊕	SINGLE POLE SWITCH
⊕⊕	THREE WAY SWITCH
⊕⊕⊕	FOUR WAY SWITCH
⊕⊕⊕⊕	DUPLEX RECEPTACLE
⊕⊕⊕⊕⊕	DUPLEX RECEPTACLE - BOTTOM HALF SWITCHED
⊕⊕⊕⊕⊕	DUPLEX RECEPTACLE - FLOOR MOUNTED
⊕⊕⊕⊕⊕	RECEPTACLE - 220V
⊕⊕⊕⊕⊕	DUPLEX RECEPTACLE - GROUND FAULT INTERRUPT
⊕⊕⊕⊕⊕	DUPLEX RECEPTACLE - WEATHER PROOF AND GROUND FAULT INTERRUPT
⊕⊕⊕⊕⊕	SMOKE DETECTOR - WIRED IN SERIES
⊕⊕⊕⊕⊕	CARBON MONOXIDE DETECTOR
⊕⊕⊕⊕⊕	EXHAUST FAN MOTOR
⊕⊕⊕⊕⊕	EXHAUST FAN MOTOR WITH LIGHT
⊕⊕⊕⊕⊕	TELEVISION RECEPTACLE
⊕⊕⊕⊕⊕	TELEPHONE RECEPTACLE
⊕⊕⊕⊕⊕	DOOR CHIME
⊕⊕⊕⊕⊕	LIGHT FIXTURE - WALL MOUNTED
⊕⊕⊕⊕⊕	LIGHT FIXTURE - CEILING MOUNTED
⊕⊕⊕⊕⊕	LIGHT FIXTURE - RECESSED
⊕⊕⊕⊕⊕	LIGHT FIXTURE - RECESSED WEATHER PROOF
⊕⊕⊕⊕⊕	LIGHT FIXTURE - CEILING MOUNTED LED
⊕⊕⊕⊕⊕	LIGHT FIXTURE - HANGING
⊕⊕⊕⊕⊕	LIGHT FIXTURE - PENDANT
⊕⊕⊕⊕⊕	LIGHT FIXTURE - FLUORESCENT
⊕⊕⊕⊕⊕	LIGHT FIXTURE - UNDER CABINET LIGHT
⊕⊕⊕⊕⊕	FULLCHAIN LAMPHOLDER
⊕⊕⊕⊕⊕	KEYLESS LAMPHOLDER

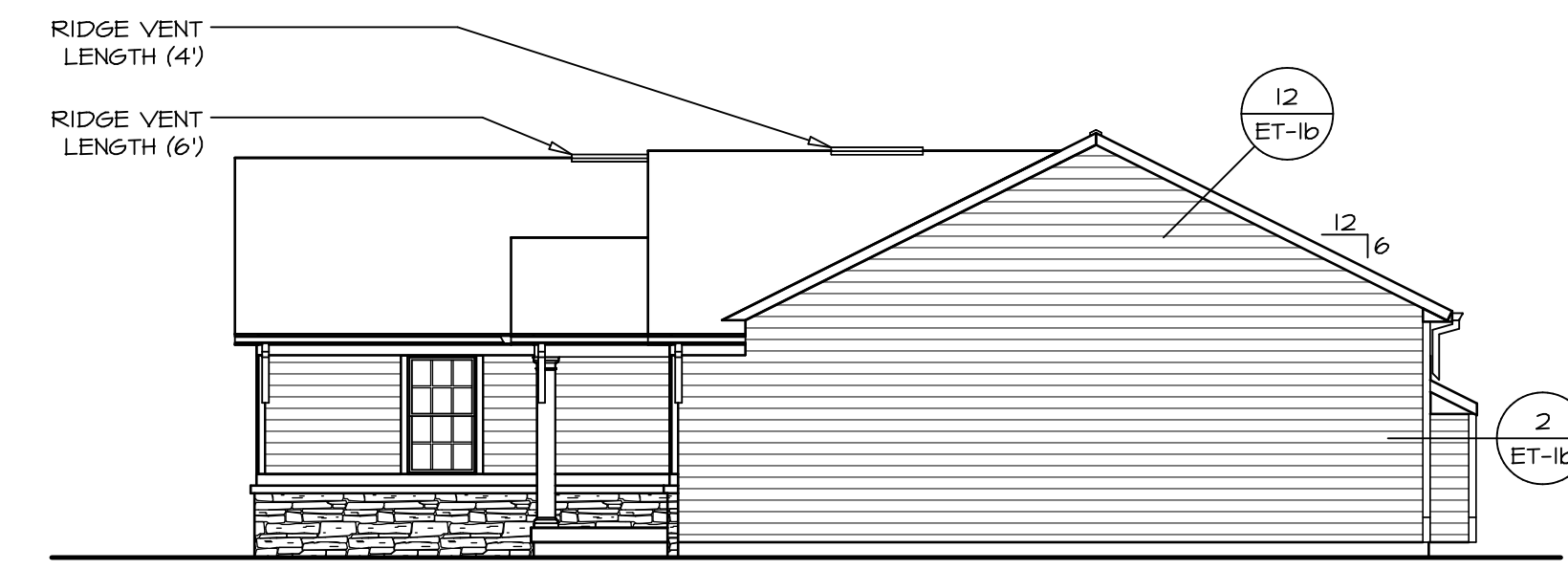
REMARKS	
REV. NO.	DATE
<small>NVR, Inc. is not, expressly or otherwise, liable for any errors or omissions in these drawings and shall not be held responsible for any damages, claims, or liabilities, arising out of the use of these drawings, without the written consent of NVR, Inc.</small>	
<b>NVR</b>	
<small>NVR, Inc.          Architectural Services          5225 Washington, Suite 100          Frederick, MD 21703</small>	
SET NO. A1400	VERSION 01
DRAWN BY SGA	DATE: 6/4/15
OPTION	OPTION
<b>AVIANO</b>	<b>BASEMENT ELECTRICAL PLAN</b>
<b>E-1</b>	<b>43</b>

**BASEMENT ELECTRICAL PLAN**  
 SCALE: 1/4" = 1'-0"

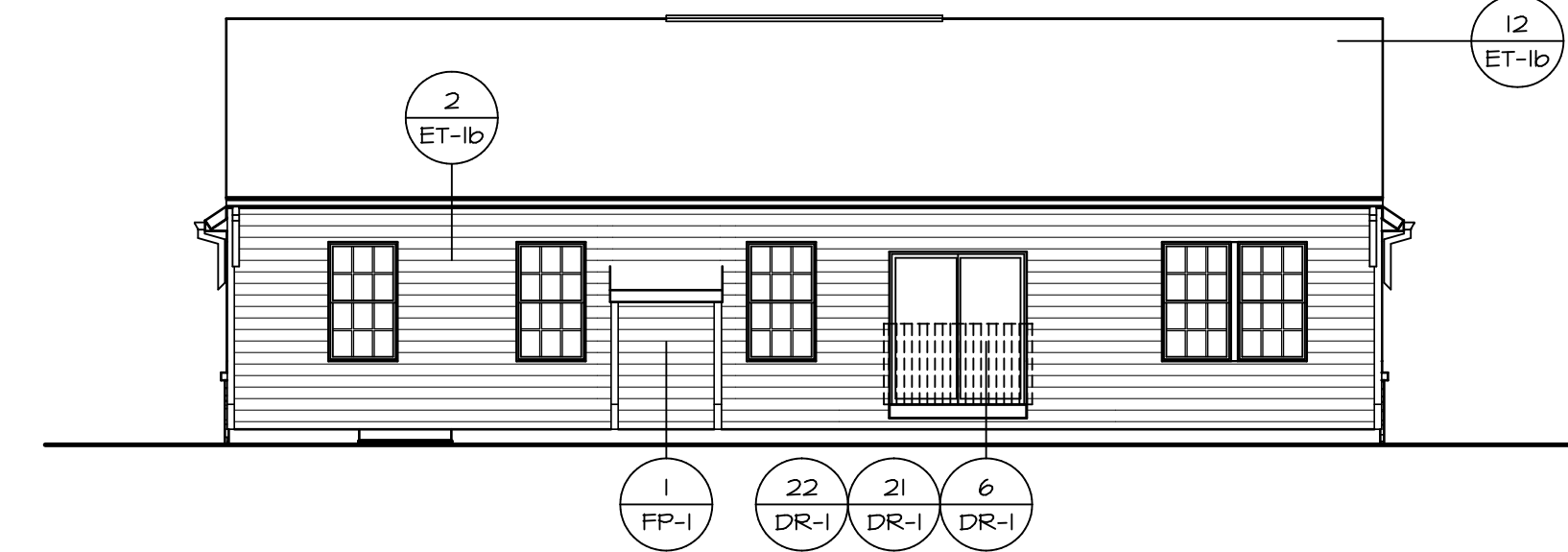
Handwritten initials: X n.7



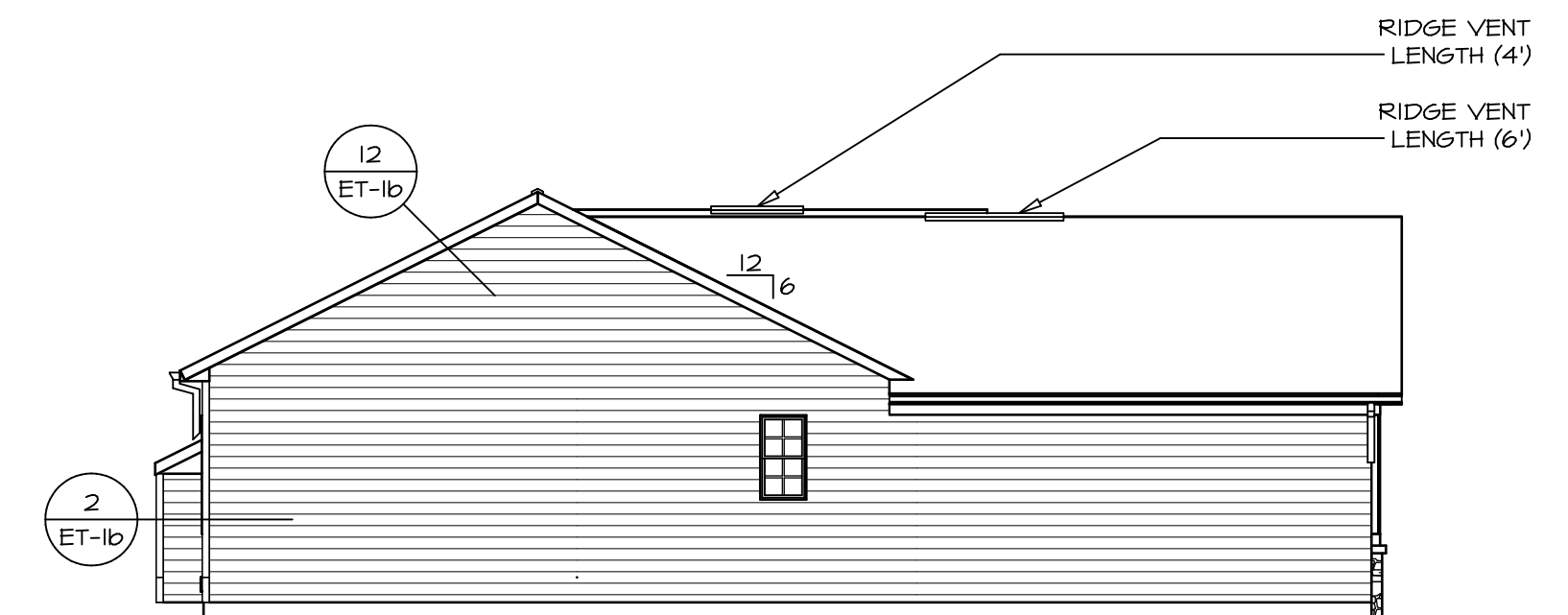
**1 FRONT ELEVATION**  
SCALE: 1/4" = 1'-0"



**2 RIGHT ELEVATION**  
SCALE: 1/8" = 1'-0"



**3 REAR ELEVATION**  
SCALE: 1/8" = 1'-0"



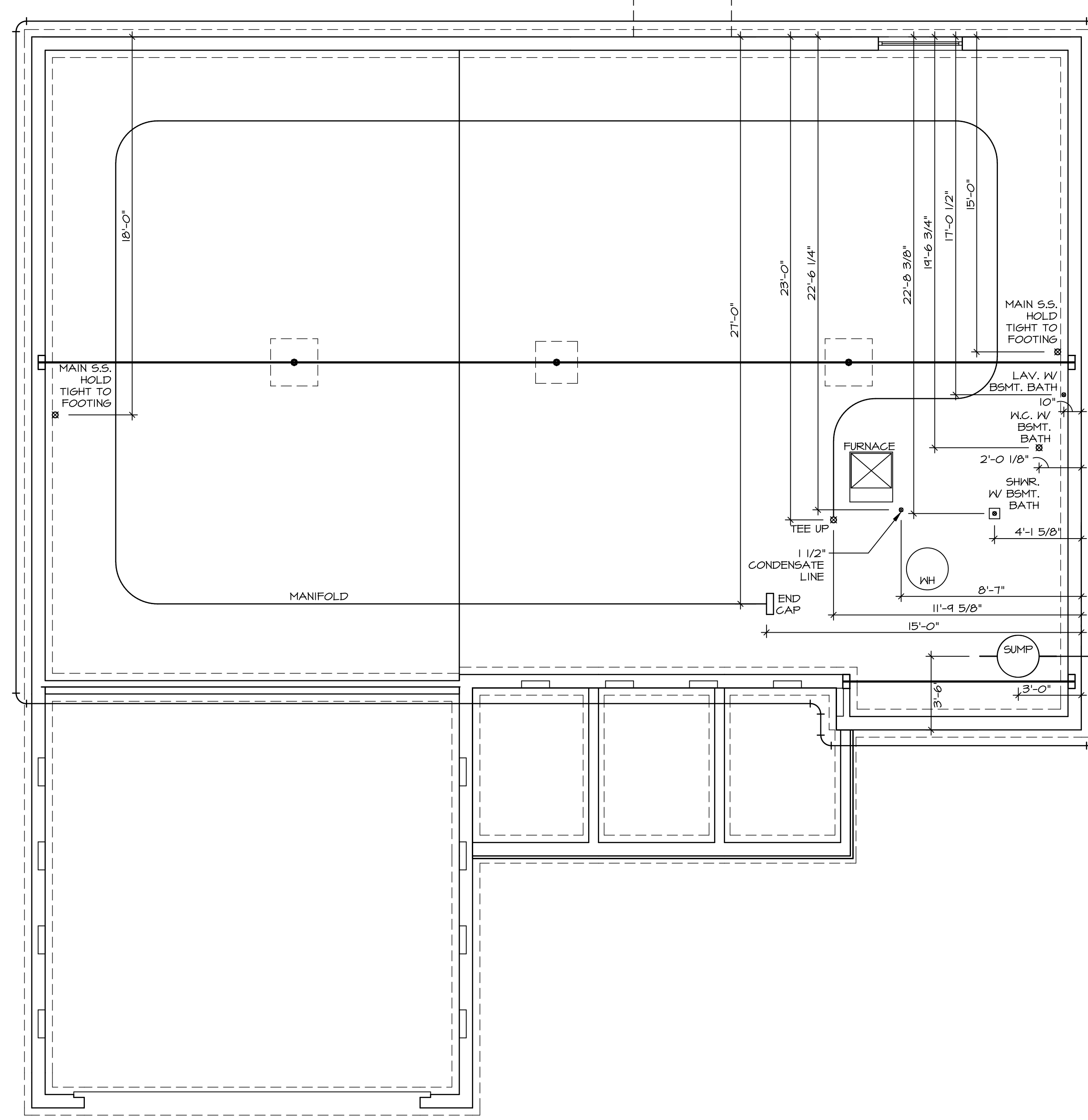
**4 LEFT ELEVATION**  
SCALE: 1/8" = 1'-0"

REV. NO.	DATE	REMARKS

NVR, Inc., owner, expressly reserves its copyright in these plans. These plans are not to be reproduced, changed, copied, or otherwise used without the written consent of NVR, Inc.

**NVR**  
Architectural Services  
5285 Washington Blvd  
Frederick, MD 21703

SHEET NO.	MODEL	SET NO.	OPTION
A-1	AVIANO ELEVATIONS	01	FBA
5	FULL BASEMENT FOUNDATION	DATE: 9/22/15	
		DRAWN BY: SGA	
		VERSION: 01	



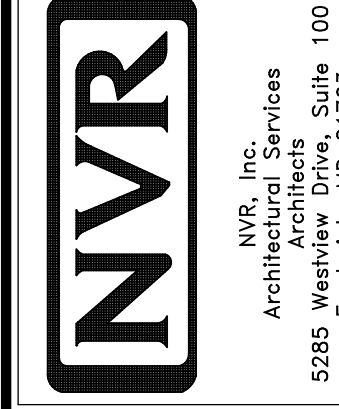
1  
A-5  
PLUMBING PLAN  
SCALE: 1/4" = 1'-0"

SHEET NO.  
A-5

26

MODEL  
AVIANO  
DRAWING TITLE  
PLUMBING PLAN  
OPTION DESCRIPTION

SET NO. A/A00  
VERSION 01  
DRAWN BY  
DATE:  
OPTION

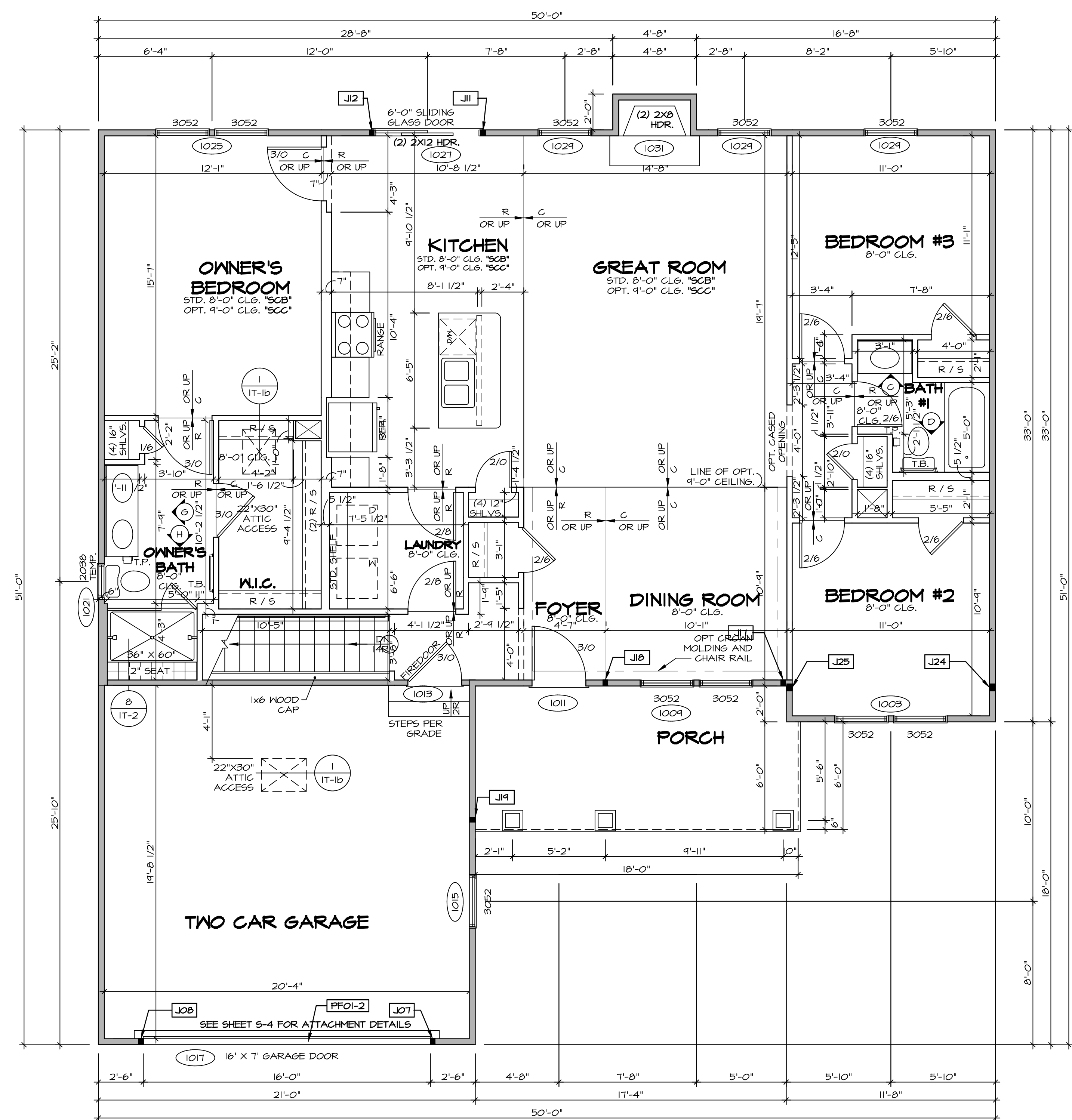


NVR, Inc., owner, expressly reserves its copyright in these plans. These plans are not to be reproduced, changed, copied in any manner, or any other way, without the written consent of NVR, Inc.

REV. NO. DATE

REMARKS





**FIRST FLOOR PLAN**  
SCALE: 1/4" = 1'-0"

**LEGEND**

- BEARING WALL
- NON BEARING WALL
- INDICATES BEARING FROM POINT-LOAD ABOVE
- JACKS
- BEAM/HEADER
- PAD FOOTING
- STEEL COLUMN
- PORTAL FRAME
- JOIST/TRUSS
- LVL
- ENGINEERING PAGE NUMBER

SEE FC DETAILS FOR FRAMING CONNECTORS

- FLOOR PLAN NOTES**
- ALL HEADERS ARE (2) 2x6 w/ 2x4 WALLS OR (3) 2x6 w/ 2x6 WALLS, UNLESS OTHERWISE NOTED.
  - ALL HEADERS TO HAVE (1) 2x4 OR 2x6 JACK AND KING STUD EACH END, UNLESS OTHERWISE NOTED.
  - ALL EXTERIOR WALLS TO BE 4" w/ OSB OR 3 1/2" w/ T-PLY, ALL INTERIOR WALLS TO BE 3 1/2", UNLESS OTHERWISE NOTED.
  - HATCHED AREAS INDICATE DROPPED CEILING. ALL DROPPED CEILING ARE 12" UNLESS OTHERWISE NOTED.
  - SEE "BRACED WALL PANEL DETAIL SHEET" FOR SPECIAL WALL FRAMING LOCATIONS AND HEADER SIZES, IF APPLICABLE.
  - SEE STANDARD DETAIL CATEGORY "IT" SHEET(S) FOR INTERIOR TRIM DETAILS.
  - SEE ARCHITECTURAL DETAIL SHEET "AD" FOR HOUSE SPECIFIC INTERIOR TRIM OPTION TABLE.
  - ALL WINDOWS HAVE 7'-0 1/2" HEADER HEIGHT UNLESS OTHERWISE NOTED.
  - ALL HEADERS IN NON-BEARING WALLS SHALL BE A SINGLE FLAT 2x4 OR 2x6 ATTACHED TO CRIPPLES ABOVE, UNLESS OTHERWISE NOTED.

- GYPSUM NOTES**
- AT GARAGE:**  
GYPSUM BOARD AT COMMON WALLS, CEILING, BEAM WRAPS AND SUPPORTS PER STANDARD DETAIL FA-1(b) FIRE ASSEMBLIES OR AS REQUIRED BY LOCAL CODE.
- AT STAIRS:**  
1/2" GYPSUM BOARD AT UNDERSIDE OF STAIRS AND WALLS IN CLOSET

**LVL PLY TO PLY FASTENING SCHEDULE:**

- 1A - (2) PLY UP TO AND INCLUDING 11 7/8" TALL; FASTEN PLYS w/ (2) ROWS 16D NAILS AT 12" O.C.
- 2A - (2) PLY 14" TO AND 18" TALL (INCLUSIVE); FASTEN PLYS w/ (3) ROWS 16D NAILS AT 12" O.C.
- 3A - (2) PLY 20" TALL AND OVER; FASTEN PLYS w/ (4) ROWS 16D NAILS AT 12" O.C.
- 4A - (3) PLY UP TO AND INCLUDING 11 7/8" TALL; FASTEN PLYS w/ (2) ROWS 16D NAILS AT 12" O.C. FROM EACH SIDE
- 5A - (3) PLY 14" TO AND 18" TALL (INCLUSIVE); FASTEN PLYS w/ (3) ROWS 16D NAILS AT 12" O.C. FROM EACH SIDE
- 6A - (3) PLY 20" TALL AND OVER; FASTEN PLYS w/ (4) ROWS 16D NAILS AT 12" O.C. FROM EACH SIDE

**FIELD INSTALLED FIRST FLOOR BEAM/HEADER SCHEDULE**

IDENTIFIER	DESCRIPTION	LENGTH	OPTIONS	ENG. NUM.	REMARKS
PFOI-2	EXT HEADER - 2X12 - 2 PLY	20'-4"	GCB	1017	

**FIRST FLOOR JACK SCHEDULE**

IDENTIFIER	DESCRIPTION	OPTIONS	ENG. NUM.	REMARKS
J01	JACK - (2) 2X4 SFF STUD GRADE	GCB	1017	
J08	JACK - (2) 2X4 SFF STUD GRADE	GCB	1017	
J11	JACK - (2) 2X4 SFF STUD GRADE		1021	
J12	JACK - (2) 2X4 SFF STUD GRADE		1021	
J17	JACK - (2) 2X4 SFF STUD GRADE	ELC	1033	
J18	JACK - (2) 2X4 SFF STUD GRADE	ELC	1033	
J19	JACK - (2) 2X4 SFF STUD GRADE	ELC	1033	
J24	JACK - (3) 2X4 SFF STUD GRADE		1036	
J25	JACK - (3) 2X4 SFF STUD GRADE		1036	

REVISIONS

REV. NO.	DATE	DESCRIPTION
1	7/8/17	DRH - T-PLY CONVERSION

REMARKS

NVR, Inc., owner, expressly reserves its copyright in these plans. These plans are not to be reproduced, changed, copied, or otherwise used in any way without the prior written consent of NVR, Inc.

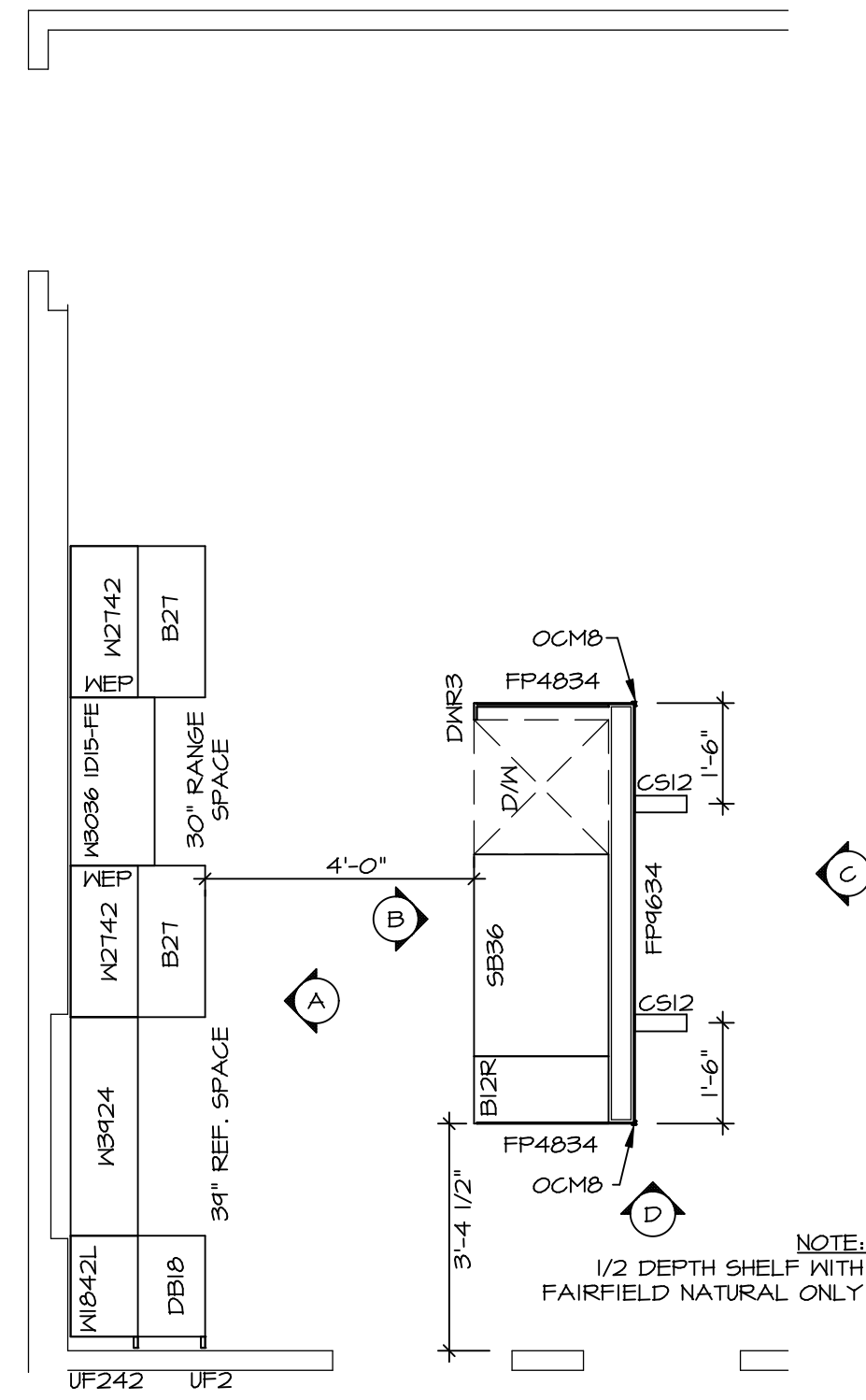
**NVR**  
Architectural Services  
100  
5285 West  
Frederick, MD 21703

SET NO. AVIACO  
VERSION 01  
DRAWN BY SGA  
DATE: 9/17/15  
OPTION

MODEL: AVIANO  
DRAWING TITLE: FIRST FLOOR PLAN  
OPTION DESCRIPTION

SHEET NO. A-7  
31

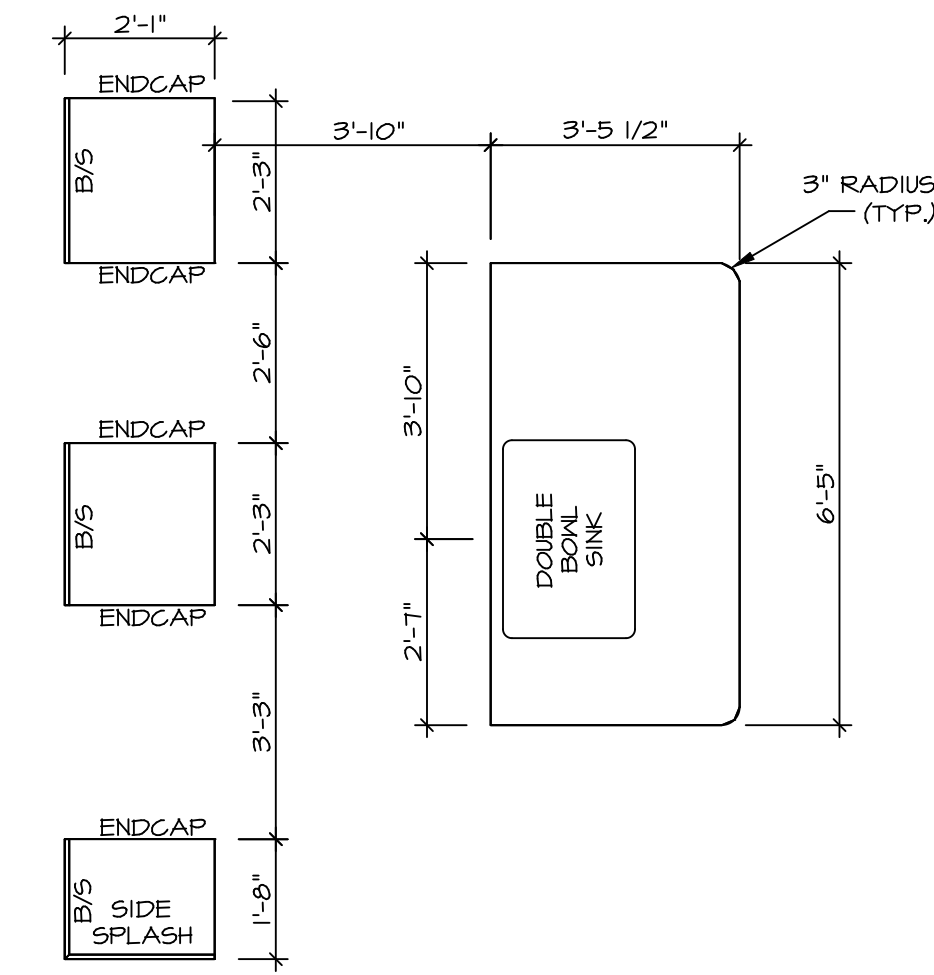
C:\NVR\Solves\AVIANO\_A100\_01\01-16-17\1785012\Sheets\01\_Specific\31\_A-7\_Plan\_L5.dwg 05/06/18 - 4:56 PM



**KITCHEN CABINET  
PLAN / KC-3431**

SCALE: 3/8" = 1'-0"

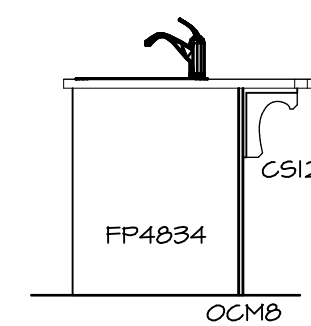
1  
A-II



**KITCHEN COUNTERTOP  
PLAN / KC-3431**

SCALE: 3/8" = 1'-0"

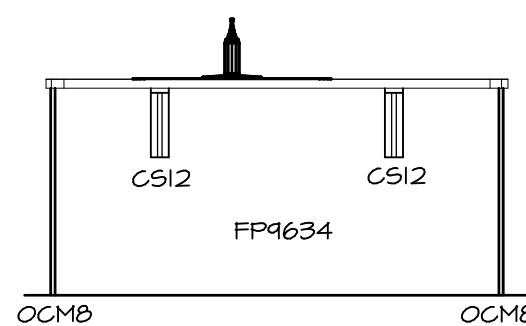
2  
A-II



**KITCHEN ELEVATION**

SCALE: 3/8" = 1'-0"

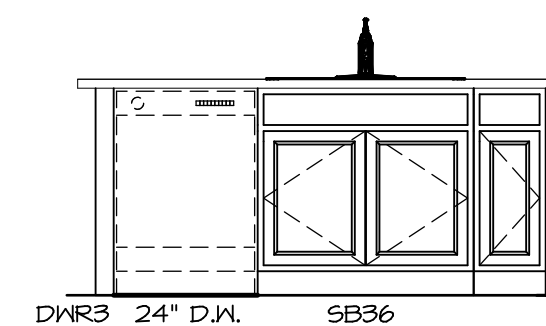
D



**KITCHEN ELEVATION**

SCALE: 3/8" = 1'-0"

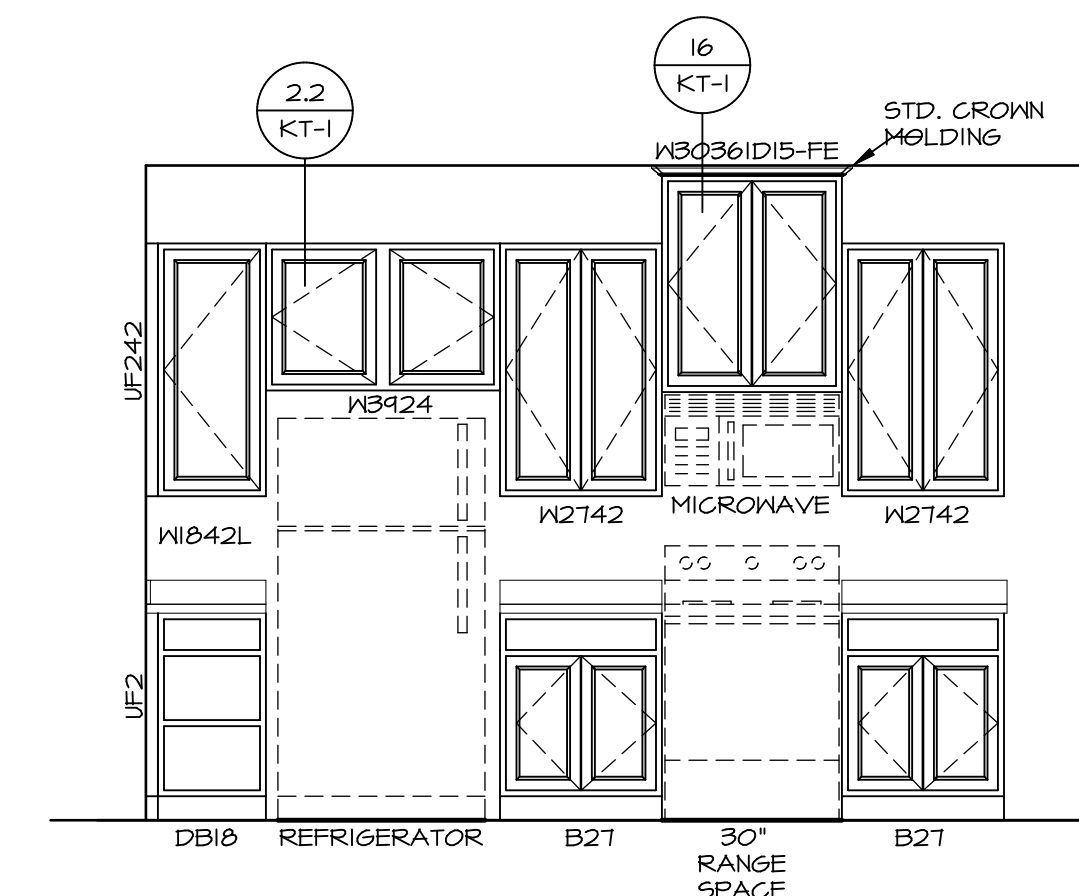
C



**KITCHEN ELEVATION**

SCALE: 3/8" = 1'-0"

B



**KITCHEN ELEVATION**

SCALE: 3/8" = 1'-0"

A

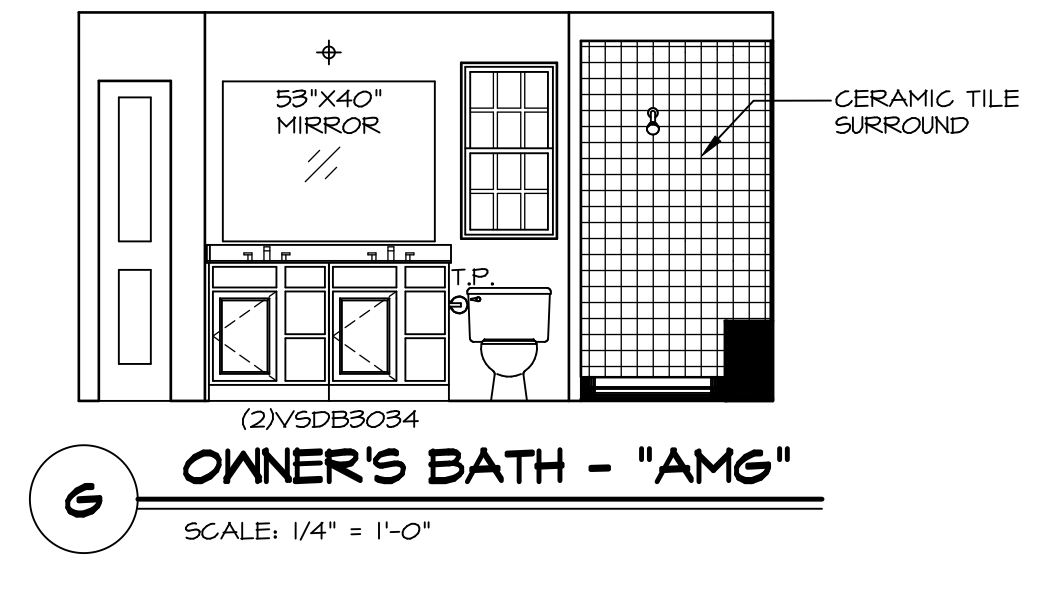
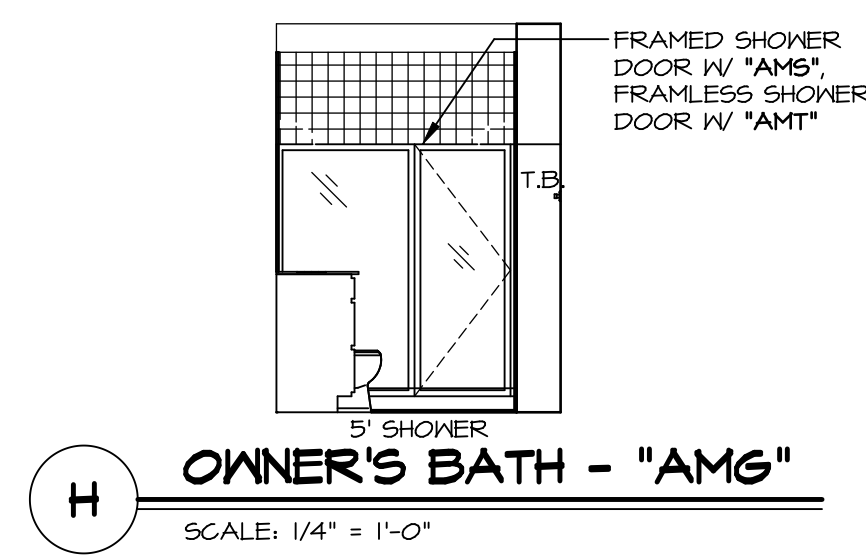
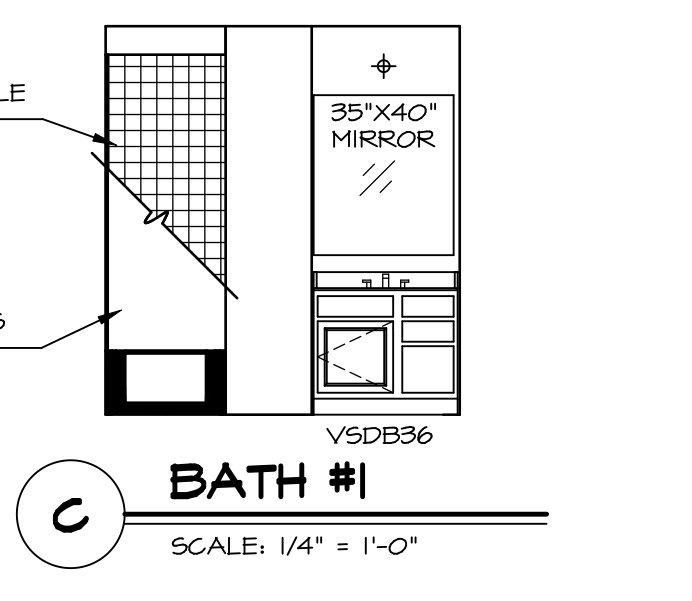
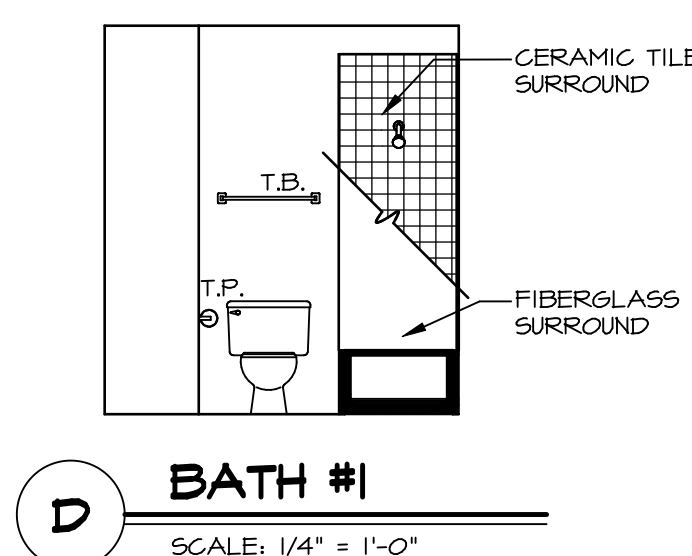
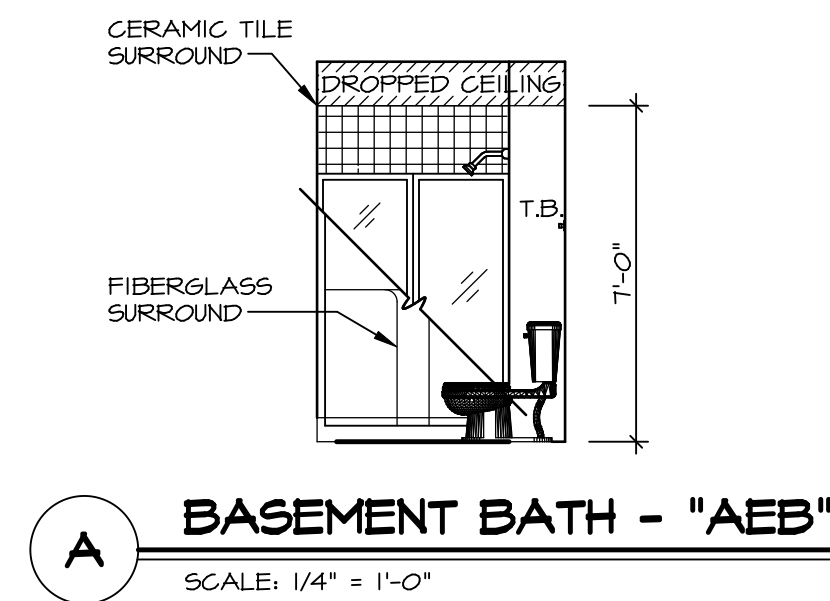
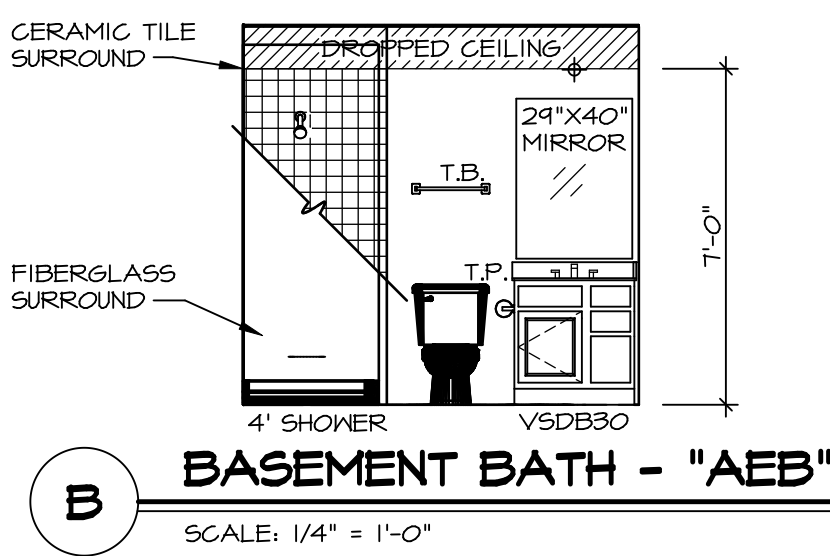
**3  
A-II KITCHEN ELEVATIONS**

SCALE: 1/4" = 1'-0"

SHEET NO. <b>A-II</b>	MODEL <b>AVIANO</b>	DRAWING TITLE <b>KITCHEN LAYOUT</b>	OPTION DESCRIPTION <b>OPTION</b>	SET NO. A/A00	VERSION 01	DRAWN BY RJC	DATE: 4/11/15	OPTION
				<p>AVIANO Architectural Services Architects 5285 Westover Lane, Suite 100 Frederick, MD 21703</p>				
<p>NVR, Inc., owner, expressly reserves its copyright in these plans. These plans are not to be reproduced, changed, copied, or otherwise used in any way without the prior written consent of NVR, Inc.</p>								
<p>REMARKS</p>								
<p>REV. NO. DATE</p>								

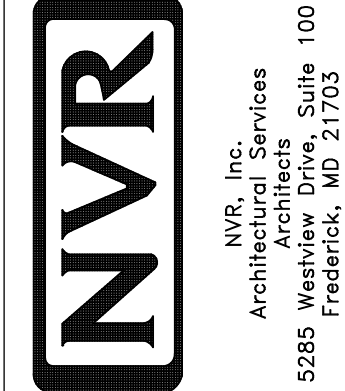
**NOTES:**

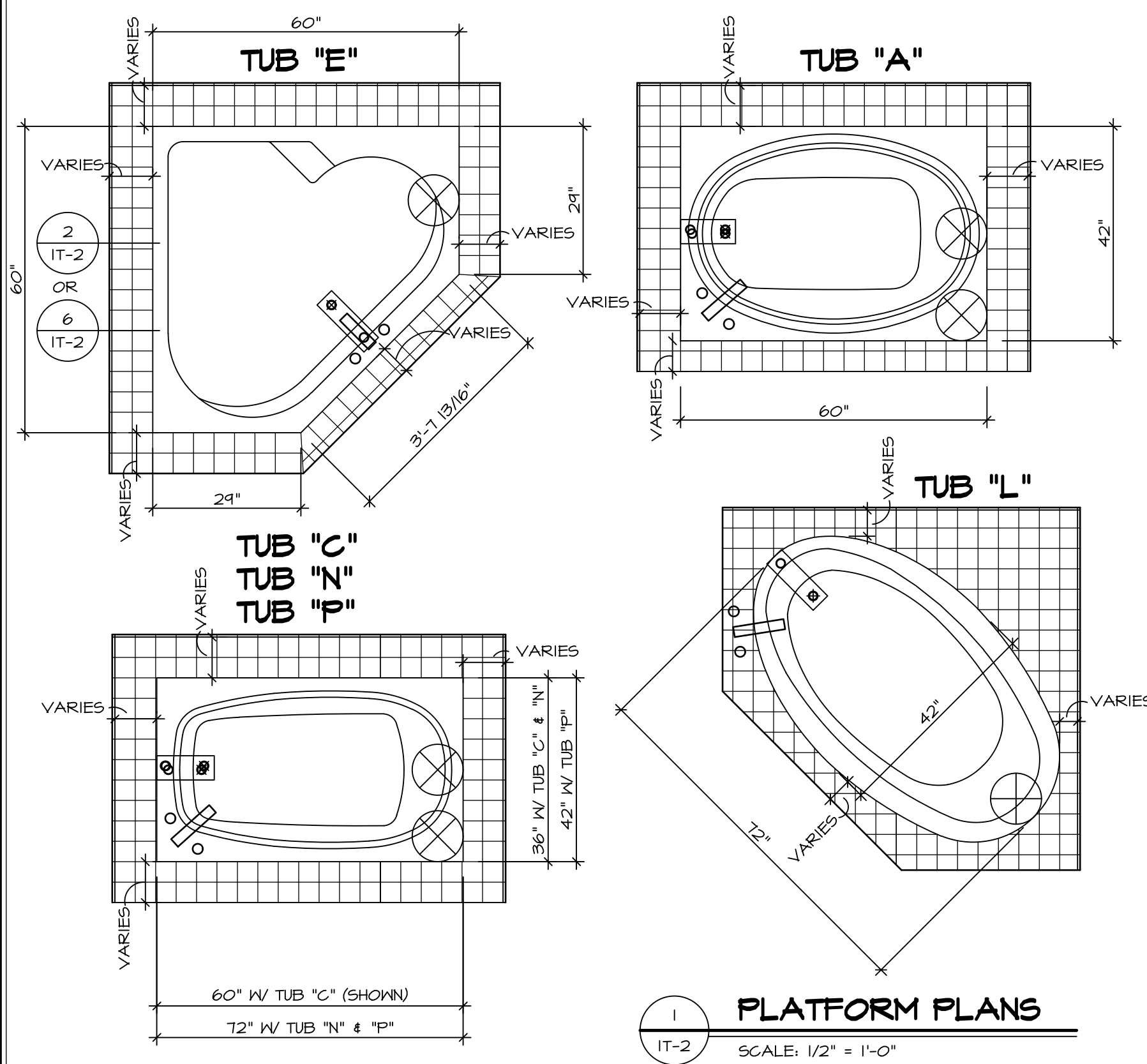
1. TEMPERED GLASS SHOWER ENCLOSURE WITH SWING DOOR OR OPTIONAL SLIDING DOOR BY DIVISION
2. TUB ACCESS PANELS PROVIDED AS NEEDED, ALL MATERIALS BY DIVISION
3. REFER TO SHEET IT-2 FOR TUB AND SHOWER DETAILS.
4. ALL V5DB24-42 DRAWERS TO BE SET ON RIGHT HAND.
5. BATH ELEVATIONS ARE SHOWN PER PLAN.



SHEET NO.	MODEL	SET NO.	VERSION	DATE	OPTION	REVISIONS	REMARKS
A-12	AVIANO BATH ELEVATIONS	01	01	9/11/15	OPTION		
42							

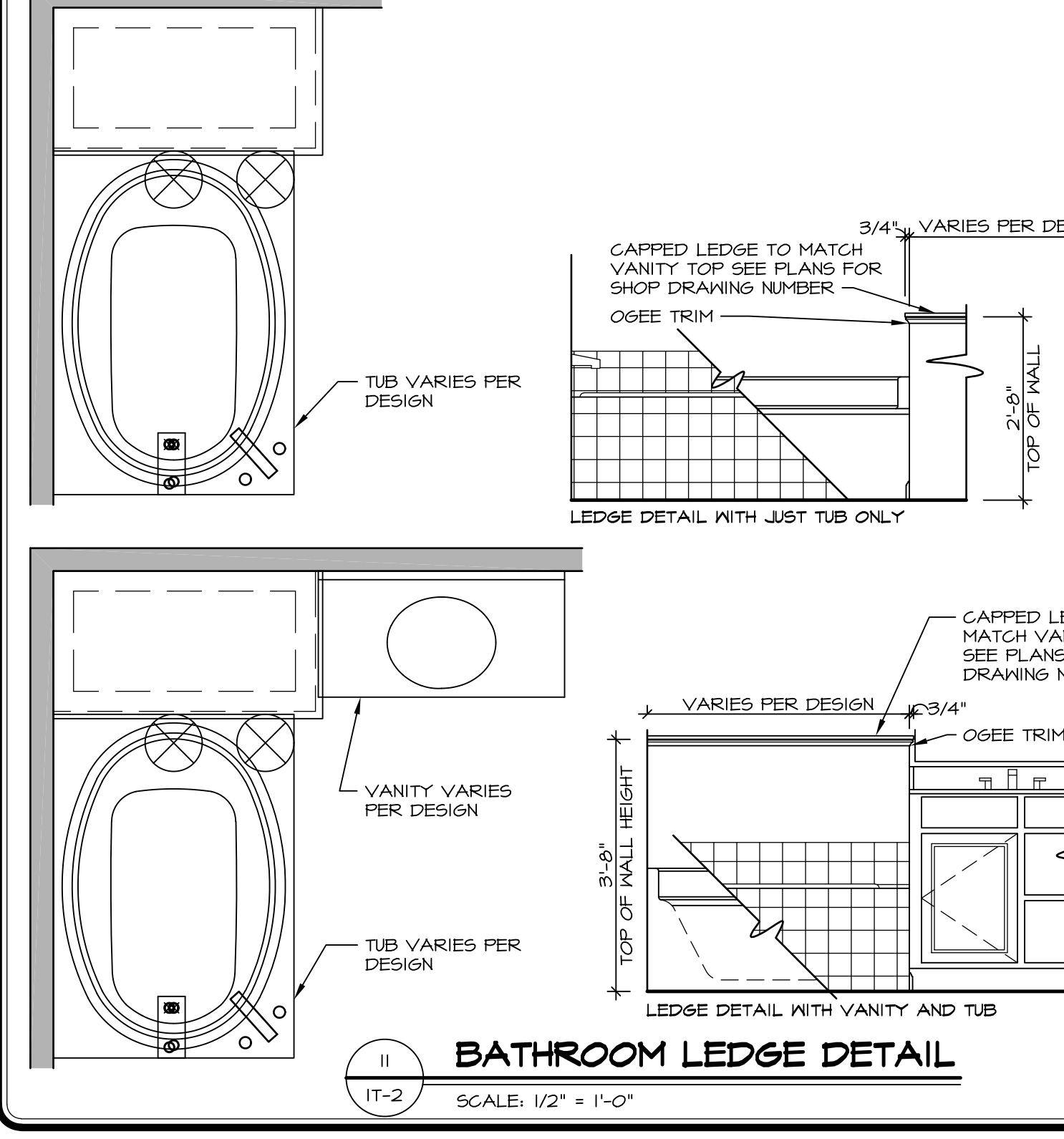
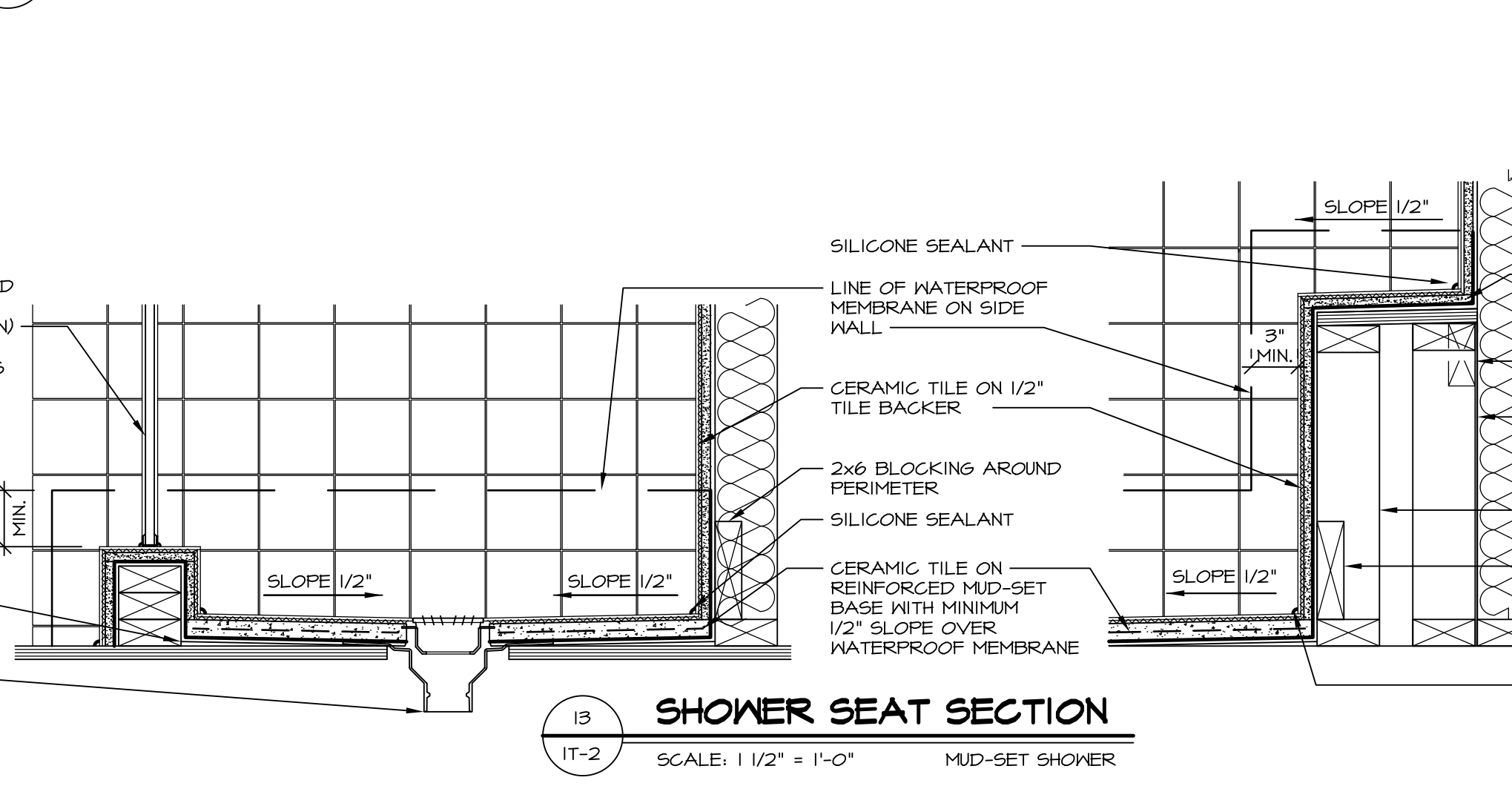
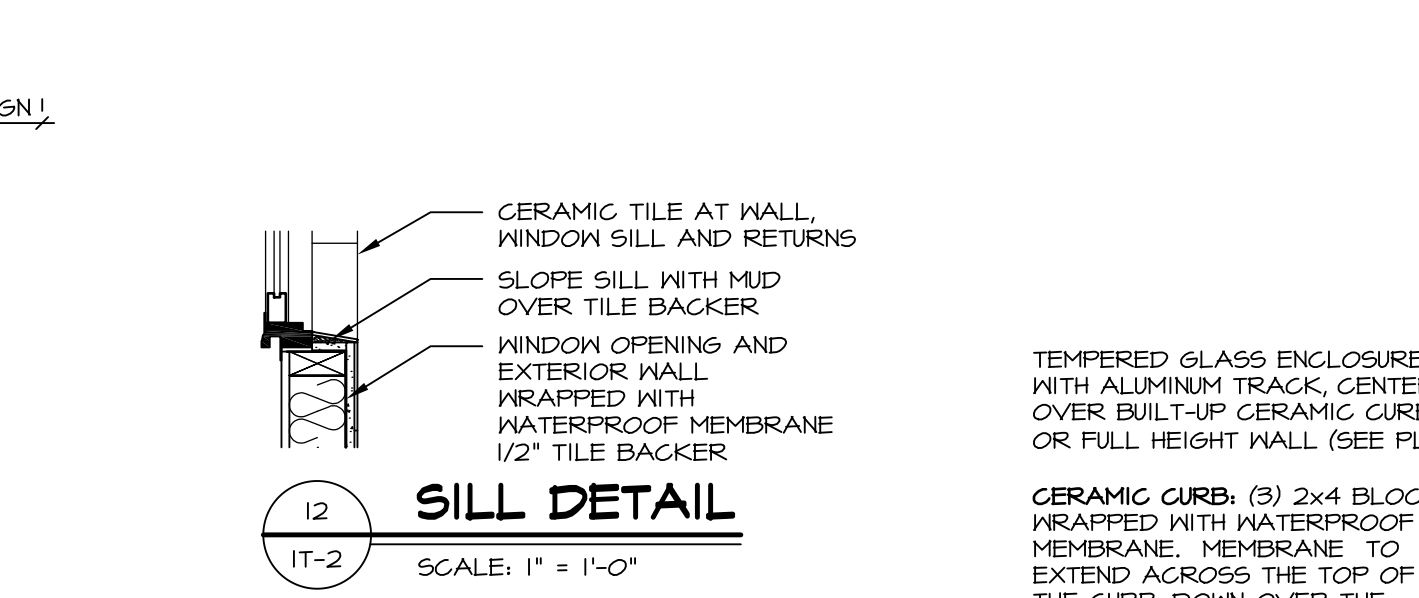
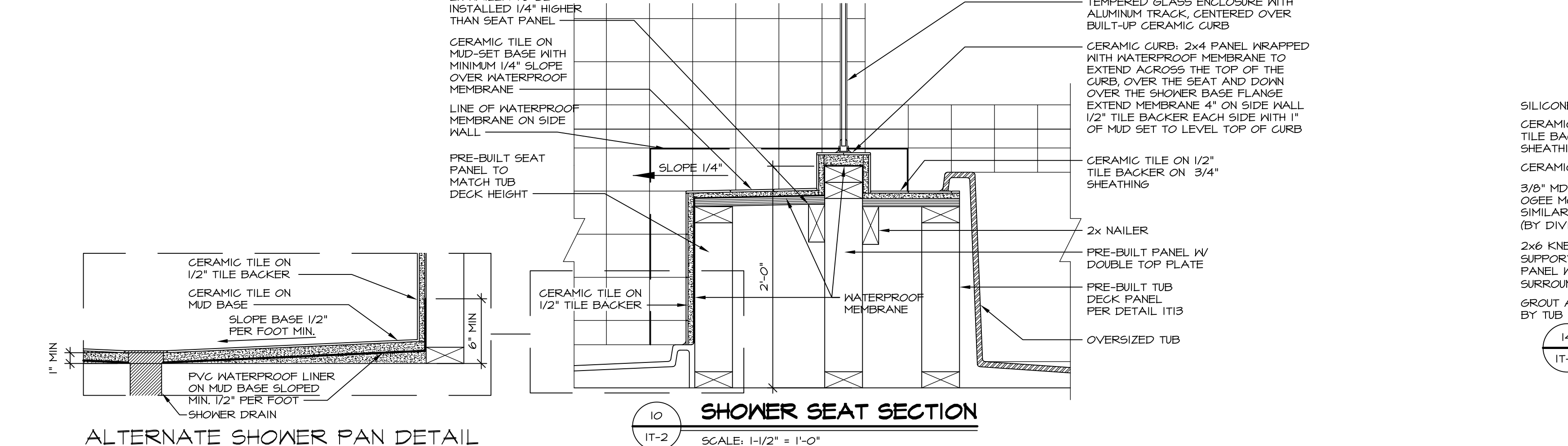
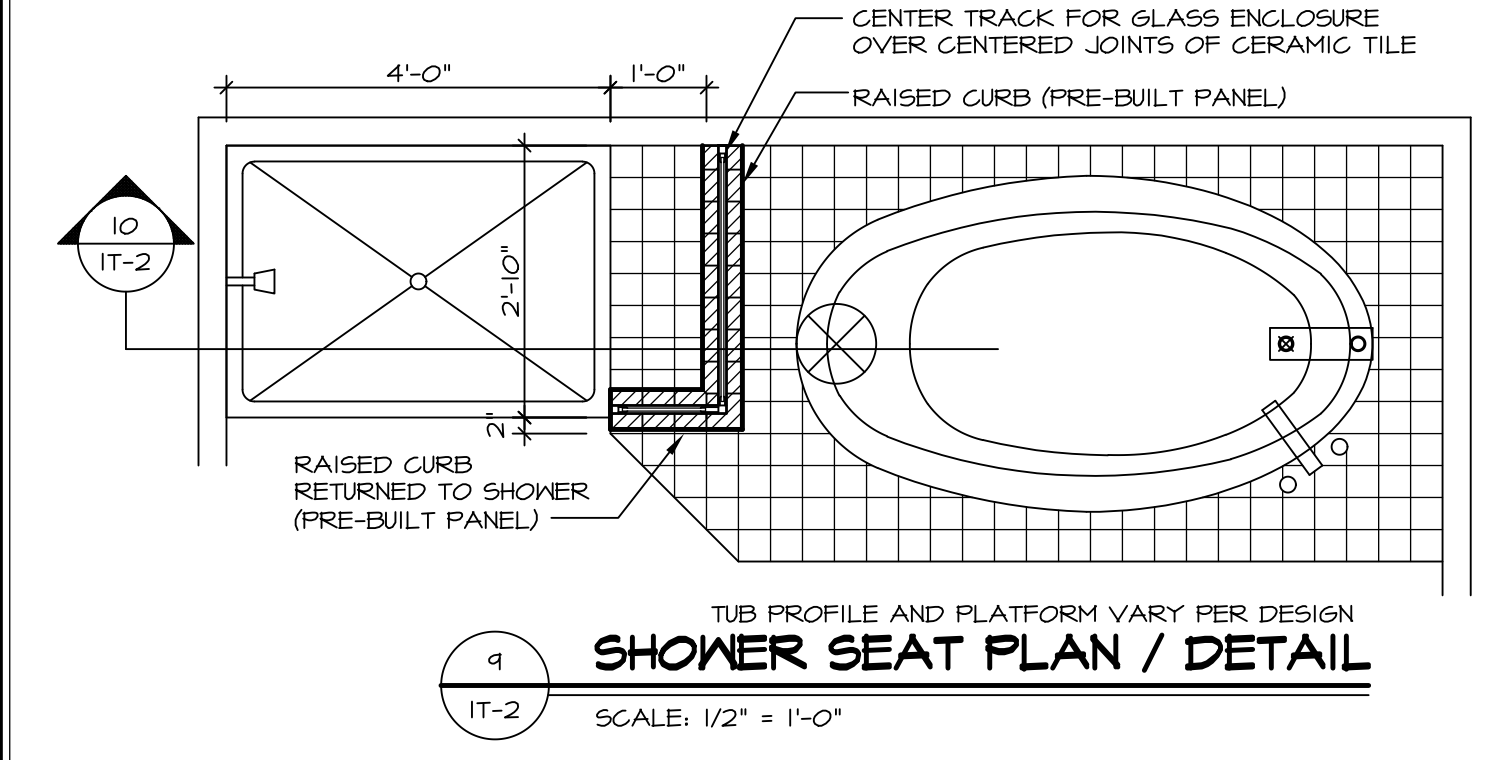
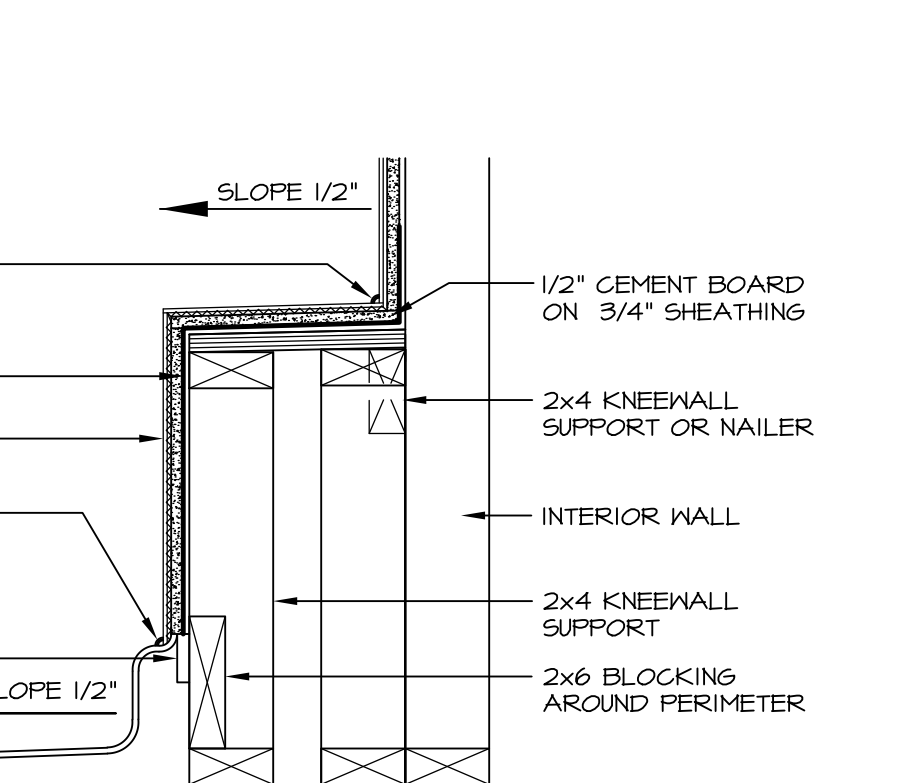
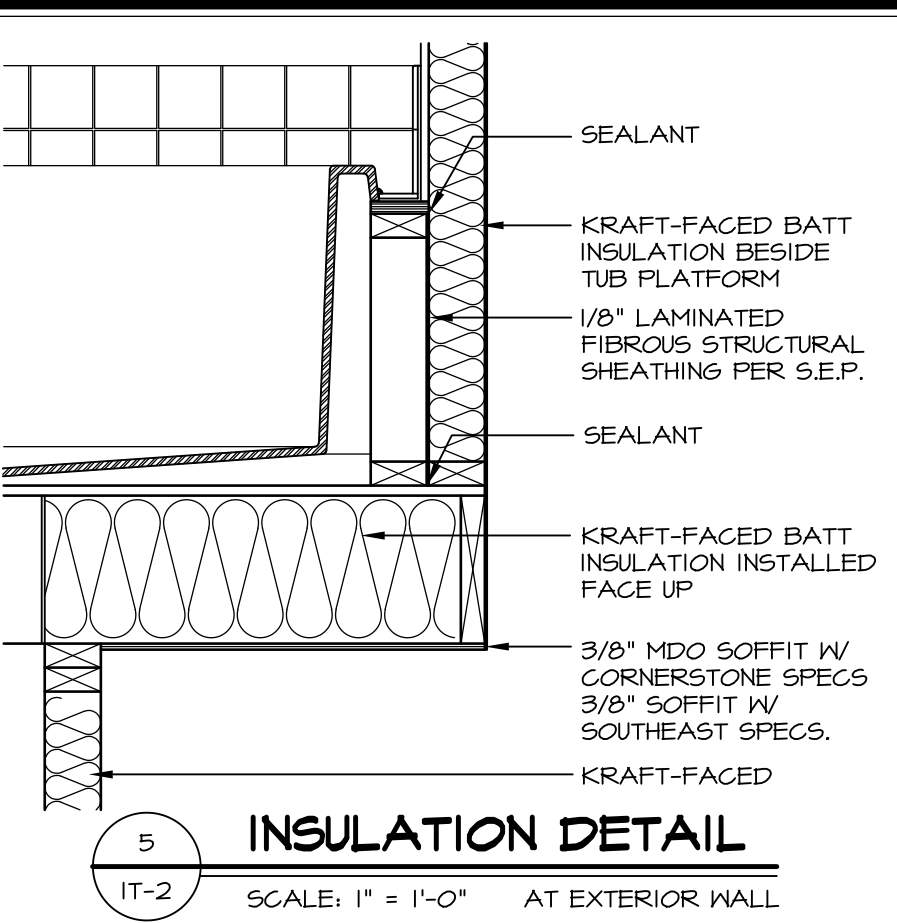
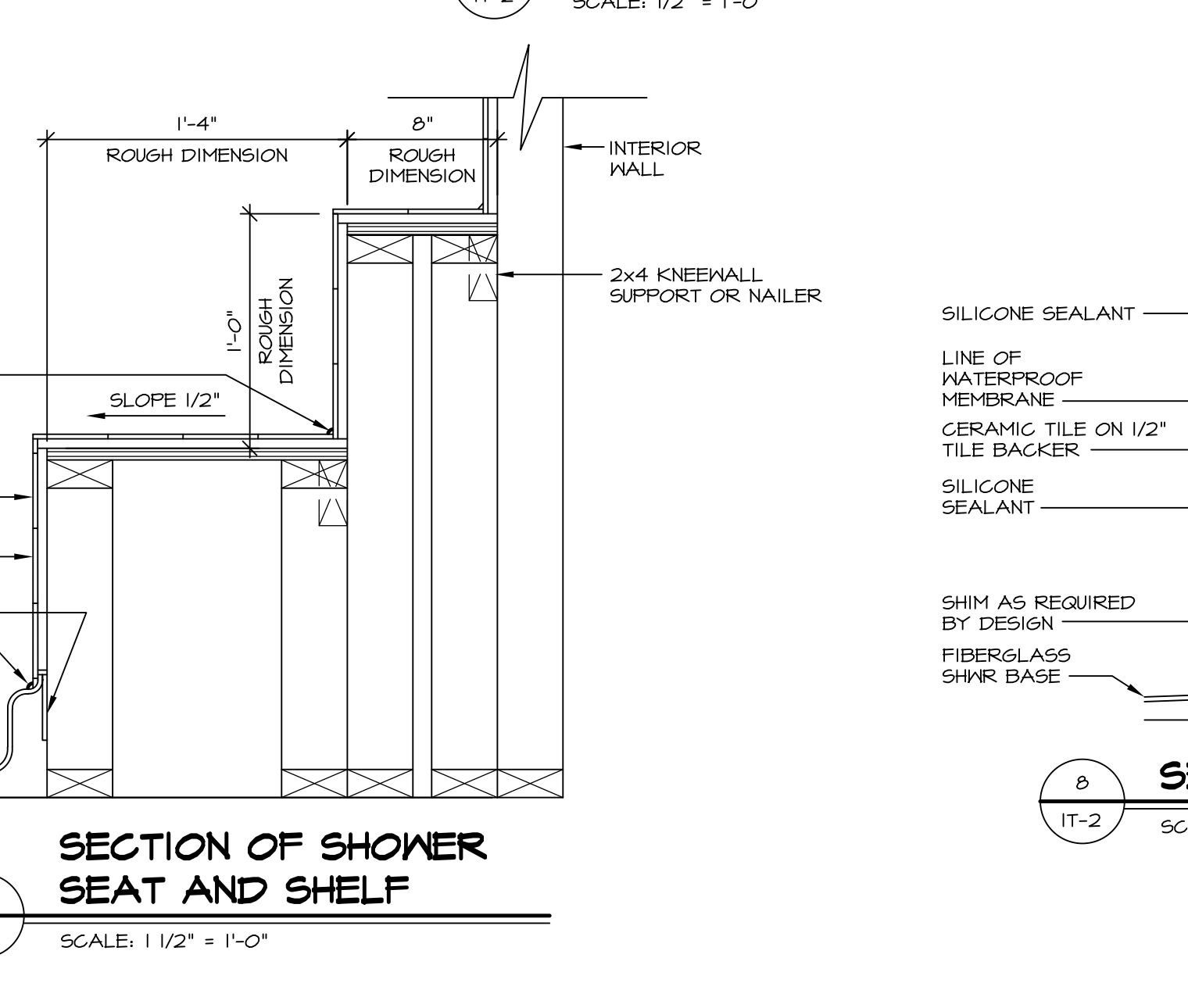
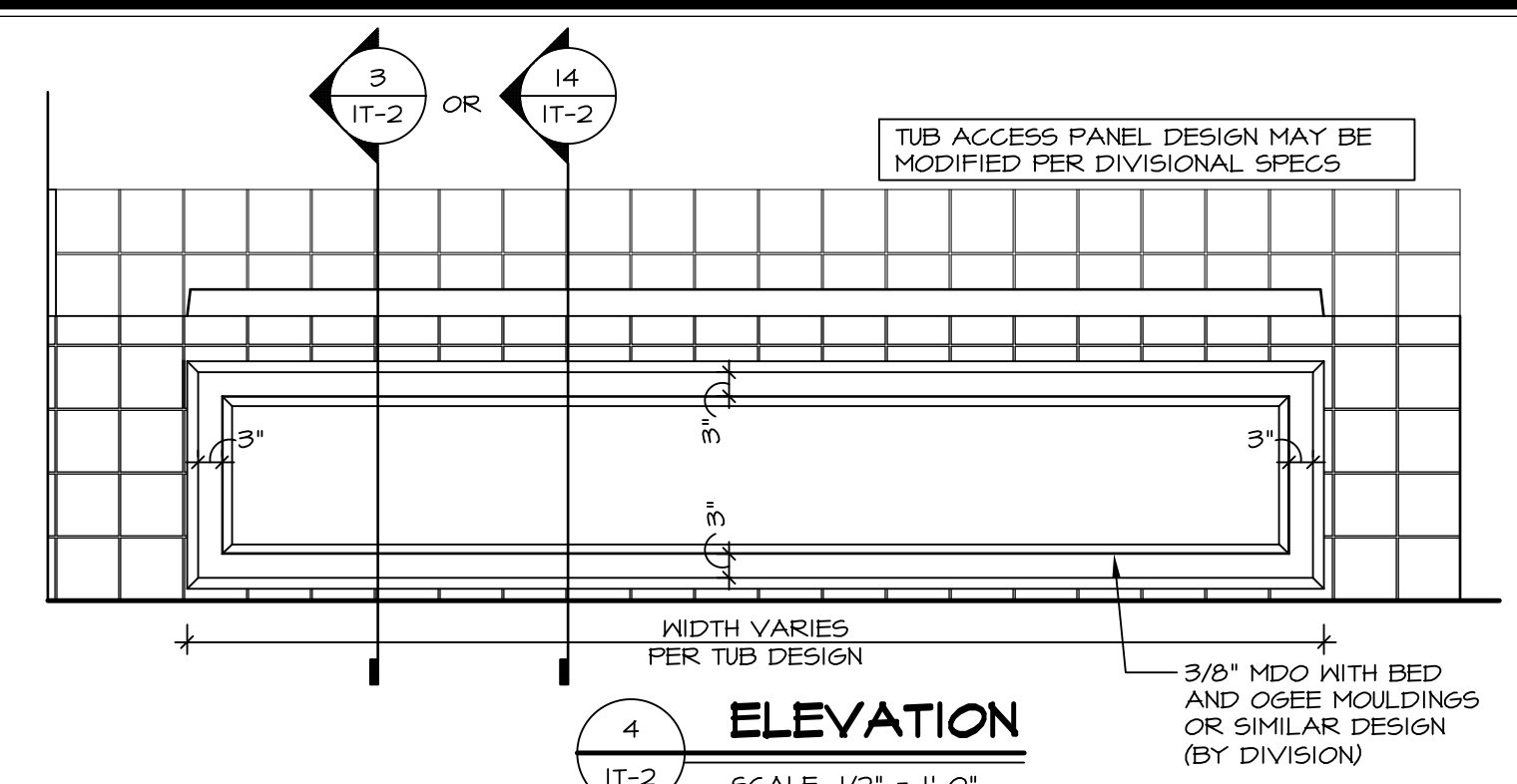
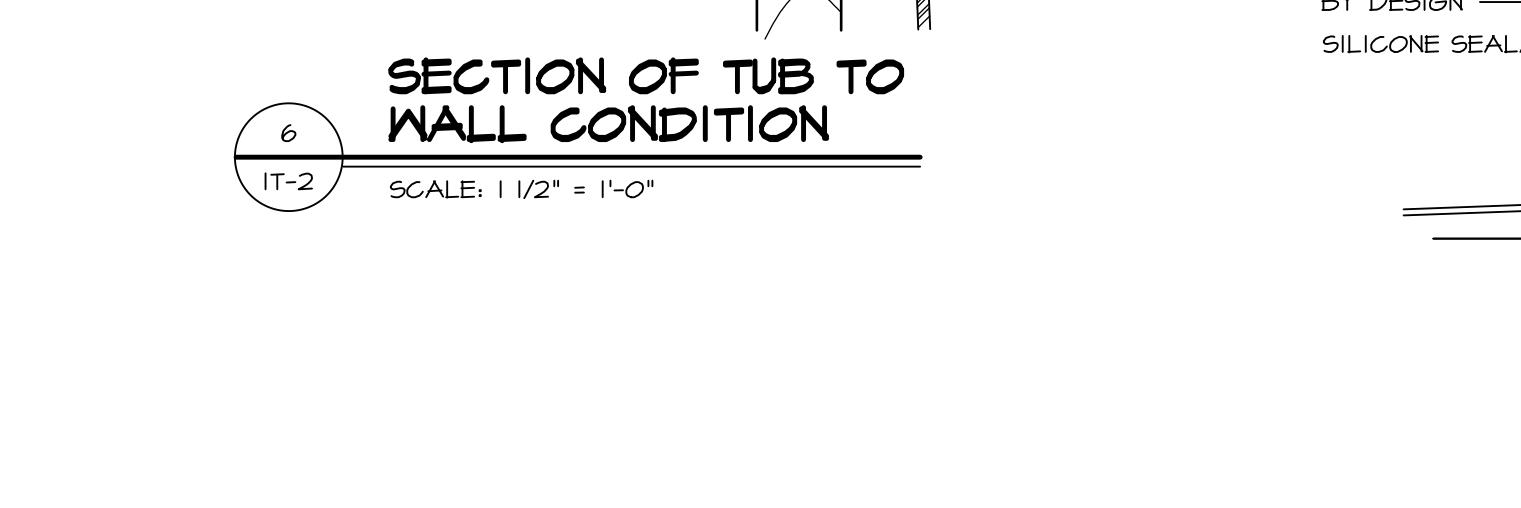
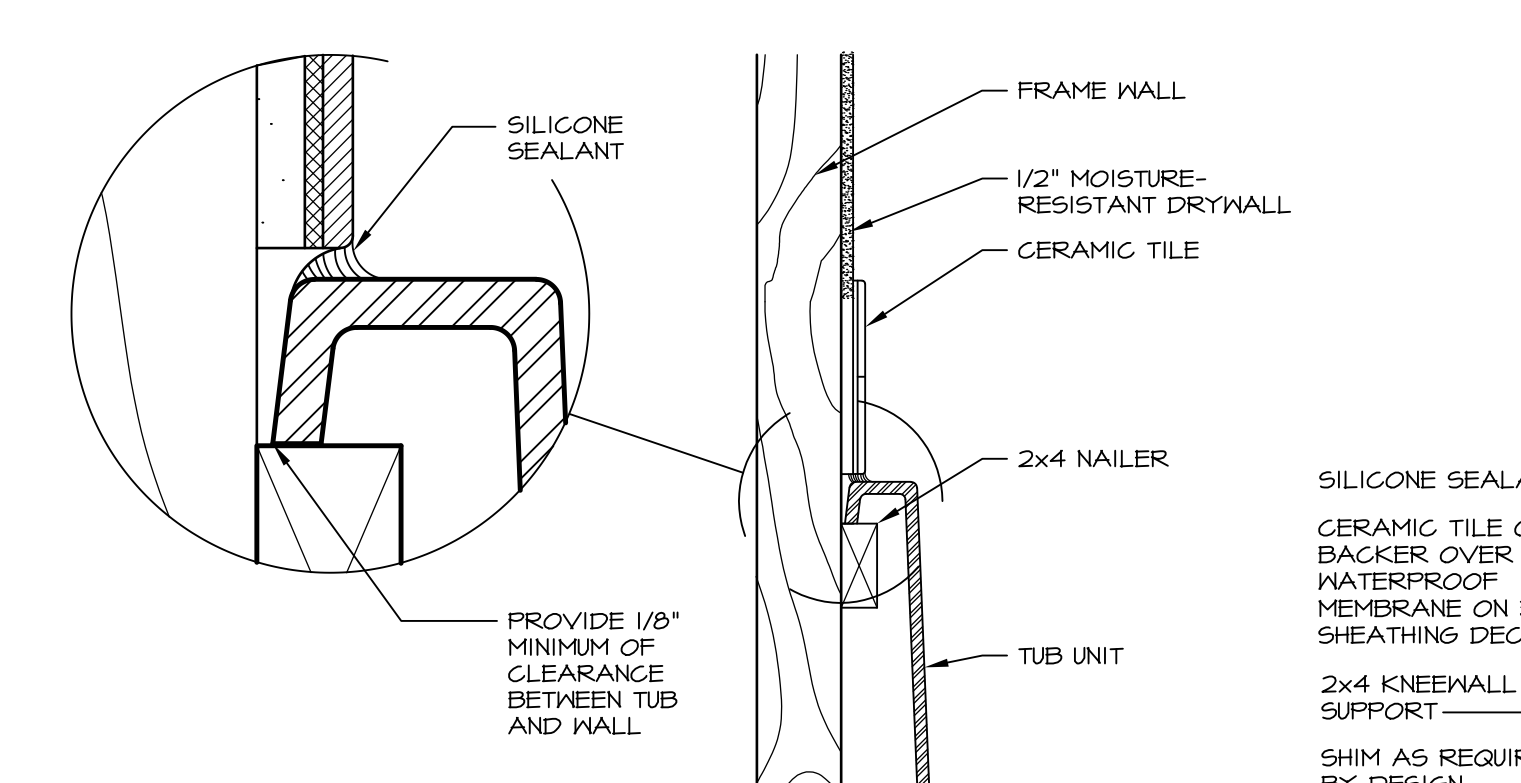
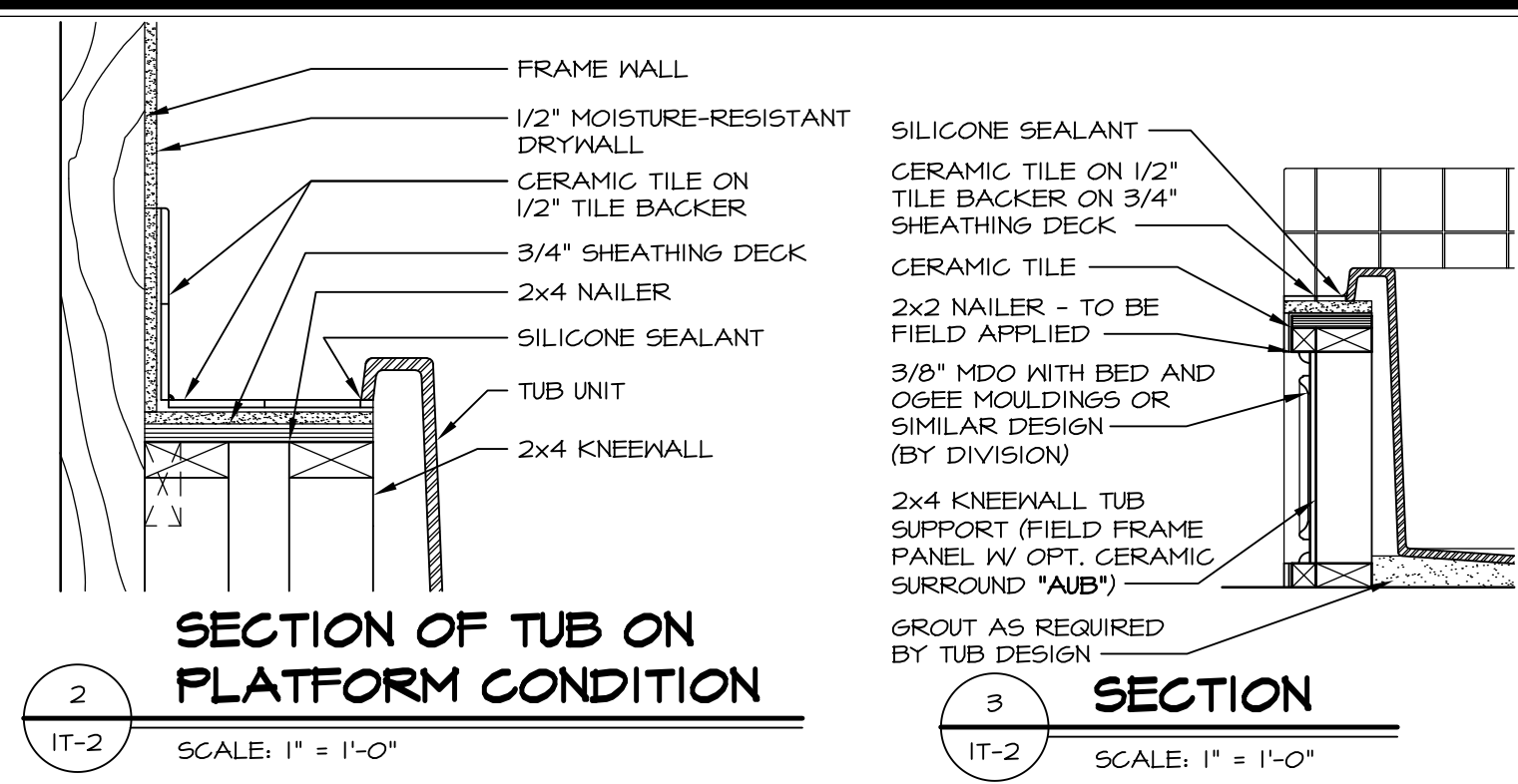
NVR, Inc., owner, expressly reserves its copyright in these plans. These plans are not to be reproduced, changed, copied, or otherwise used without the written consent of NVR, Inc.





**1 PLATFORM PLANS**  
SCALE: 1/2" = 1'-0"

TUB	MANUF.	HEIGHT	WIDTH	LENGTH	TUB DECK PANEL HEIGHT
"A"	KOHLER/ STERLING	18 3/4"	42"	60"	17 1/8"
"C"	KOHLER/ STERLING	18 3/4"	36"	60"	17 1/8"
"E"	KOHLER/ STERLING	19 1/2"	60"	60"	17 7/8"
"L"	KOHLER/ STERLING	18 1/2"	42"	72"	16 7/8"
"N"	KOHLER/ STERLING	18 3/4"	36"	72"	17 1/8"
"P"	KOHLER/ STERLING	18 3/4"	42"	72"	17 1/8"



REVISIONS

REV. NO.	DATE	DESCRIPTION
1	5/1/17	EBP - REVISED DETAIL 1 AND 11 TO REMOVE TUB ACCESS PANEL REF. (DSS #15 5414)
2	9/2/17	EBP - REVISED T-FLY NOTE TO CALL OUT LFS
3	9/2/17	EBP - REVISED NOTE ON DETAIL #1 - REVISED ORDER OF MATERIAL PARA#6934

REMARKS

NVR, Inc., owner, expressly reserves its common law copyright and other property rights in these plans. These plans are not to be reproduced, copied, or otherwise used in any way without the written consent of NVR, Inc.

**NVR**  
NVR, Inc.  
Architectural Services  
5285 Westchester Blvd, Suite 100  
Frederick, MD 21703

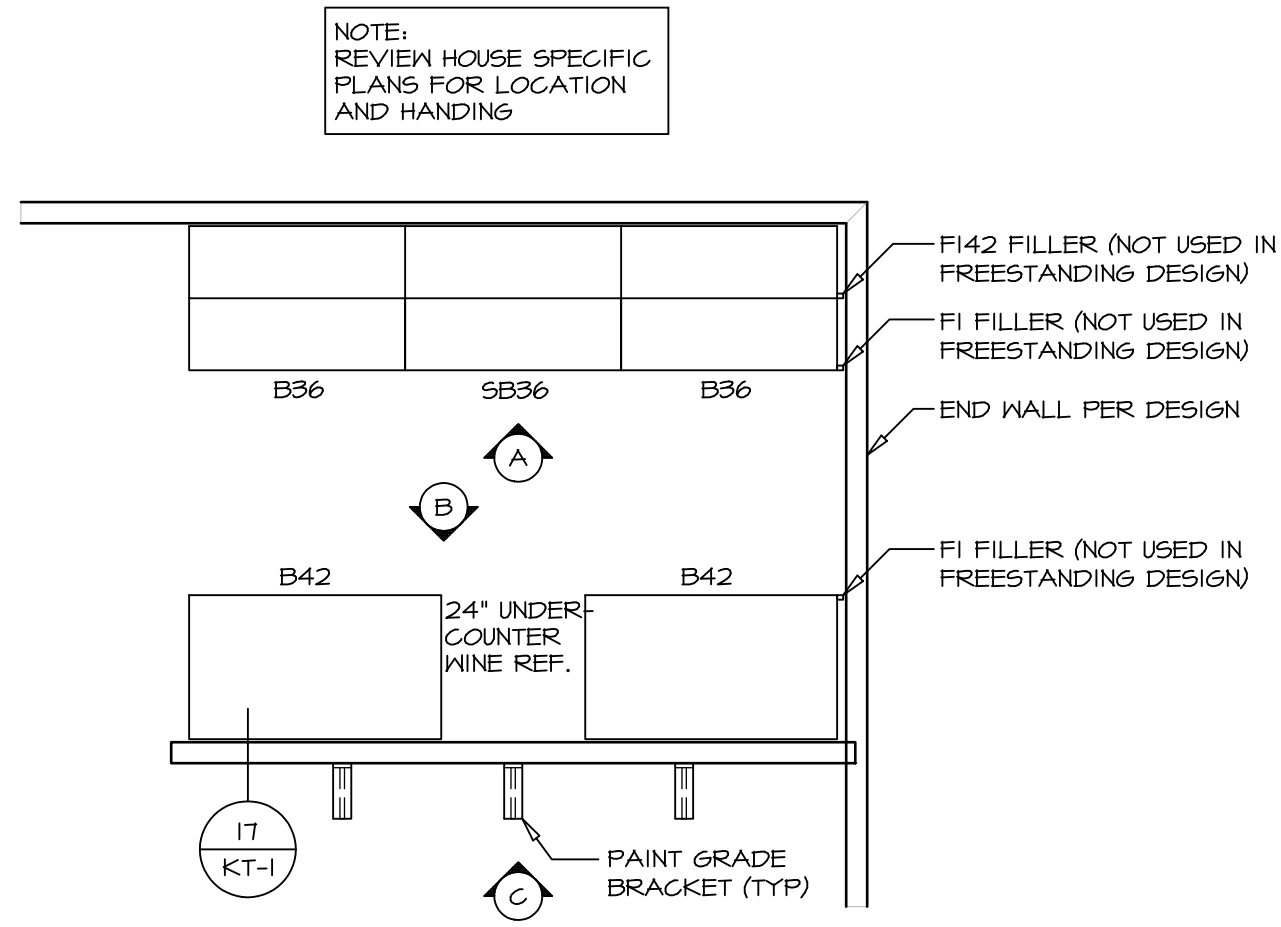
SET NO. NVR  
VERSION  
DRAWN BY  
DATE:  
OPTION

MODEL  
**STANDARD DETAILS**  
DRAWING TITLE  
INTERIOR TRIM DETAILS  
BATH DETAILS  
OPTION DESCRIPTION

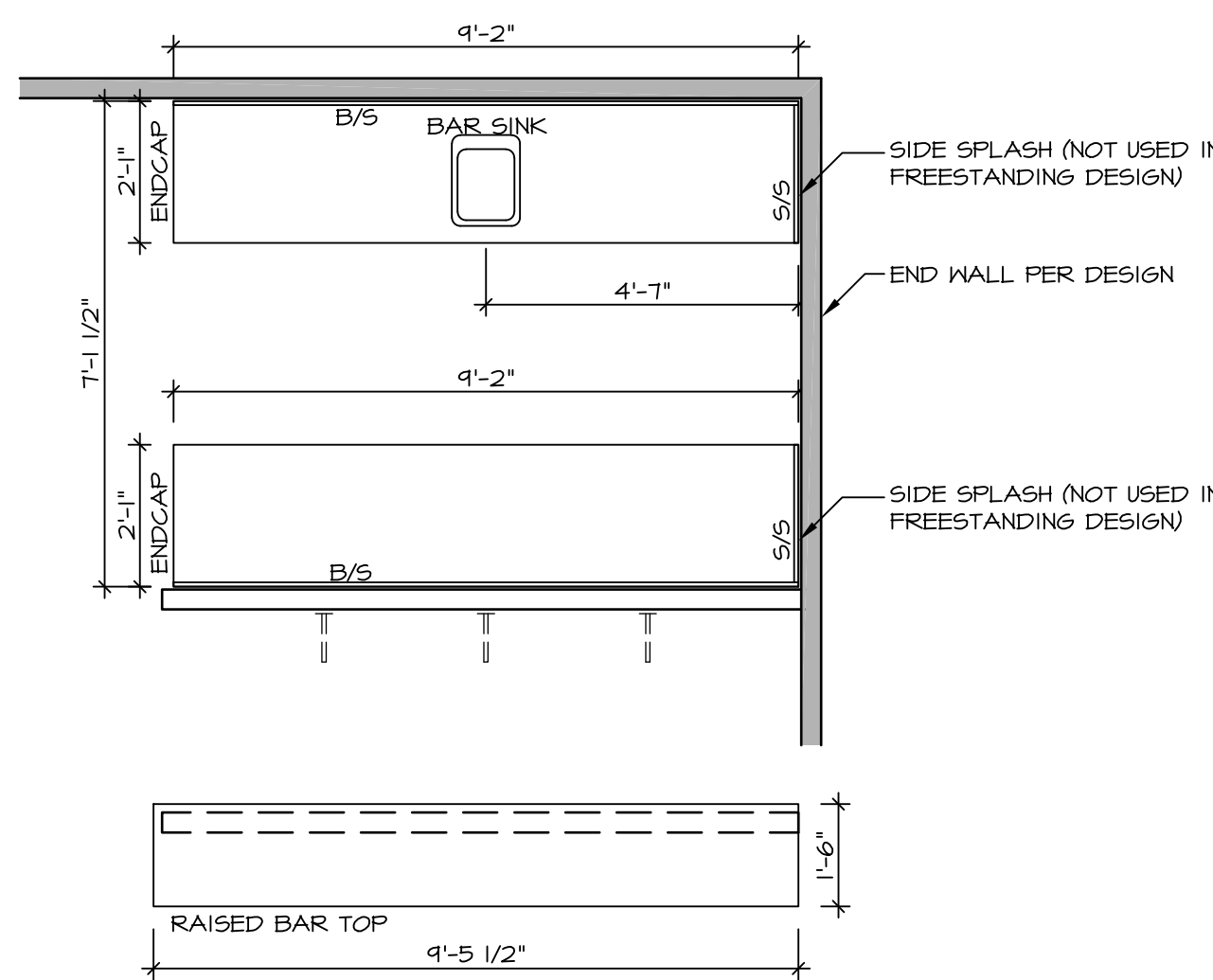
SHEET NO.  
**IT-2**

J:\Dwg\NVR\Interior Trim\IT2.dwg 09/27/17 - 9:20 am

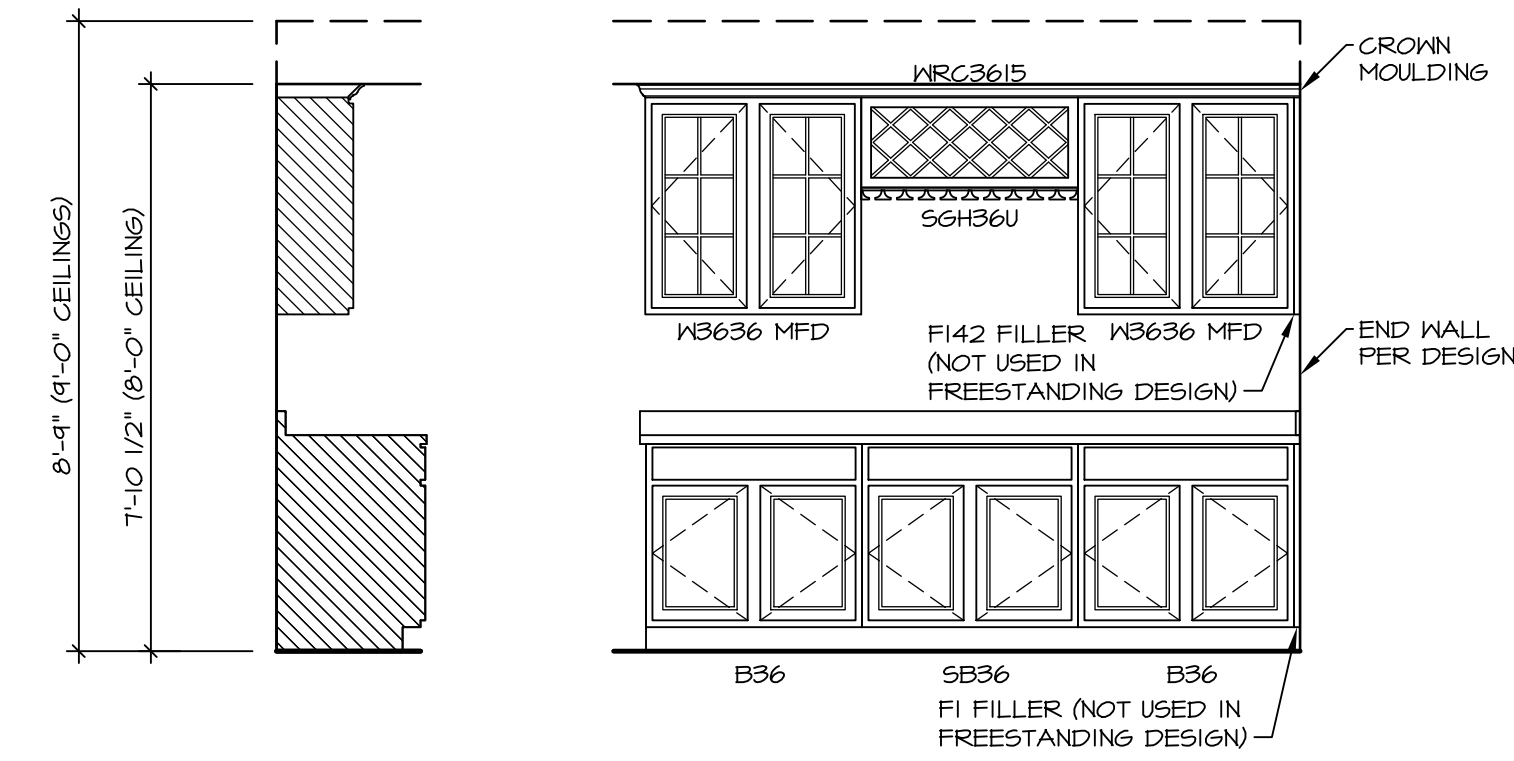




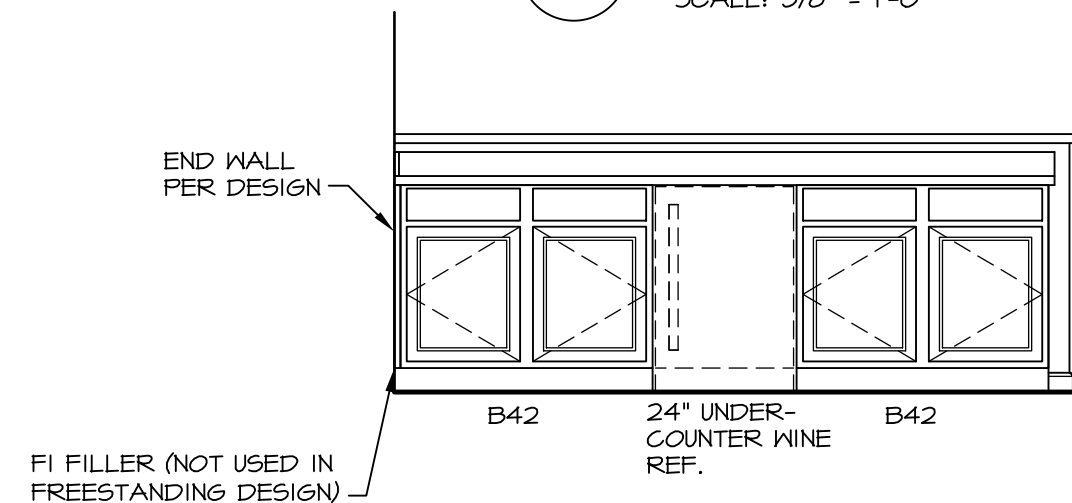
**2**  
KITCHEN CABINET  
PLAN KC - 1901  
SCALE: 3/8" = 1'-0"



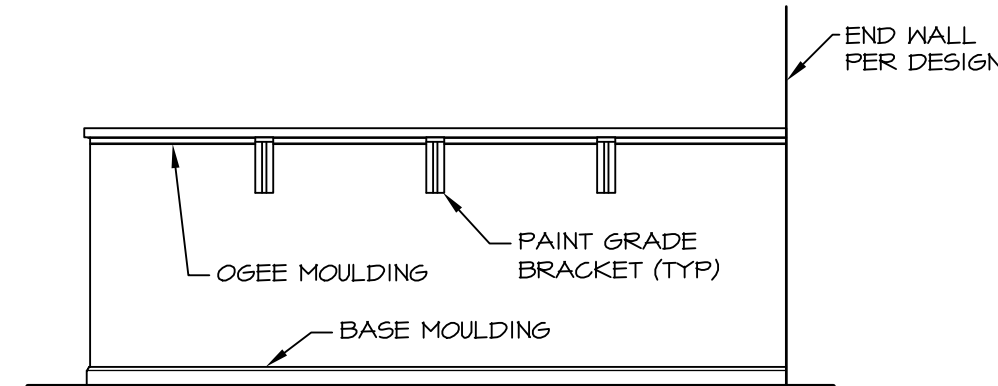
**8**  
KITCHEN COUNTERTOP  
PLAN KT - 1901  
SCALE: 3/8" = 1'-0"



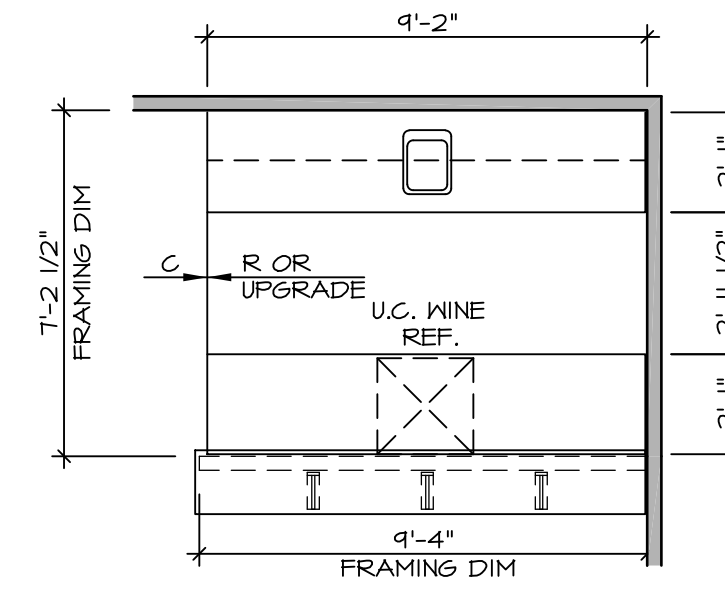
**3**  
ELEVATION "A"  
SCALE: 3/8" = 1'-0"



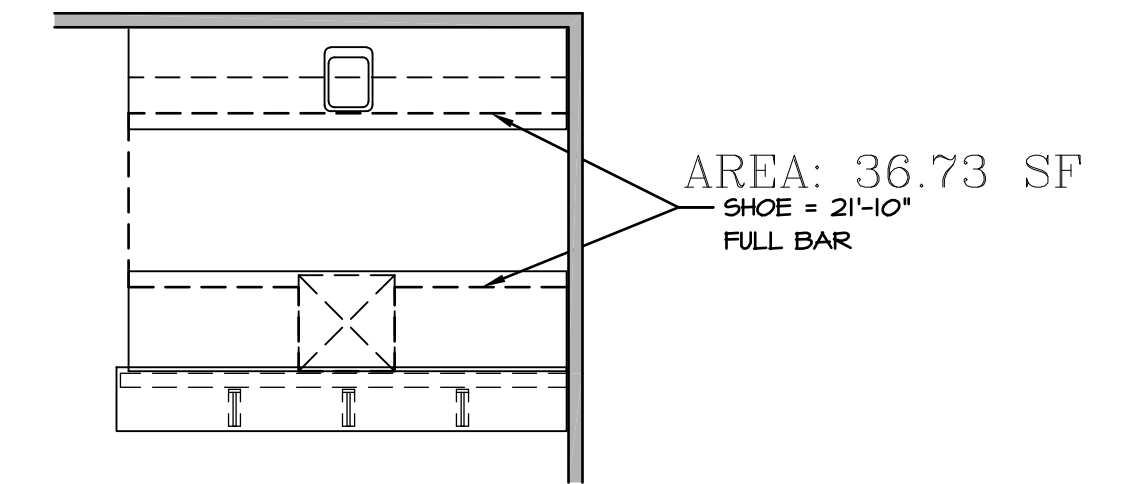
**4**  
ELEVATION "B"  
SCALE: 3/8" = 1'-0"



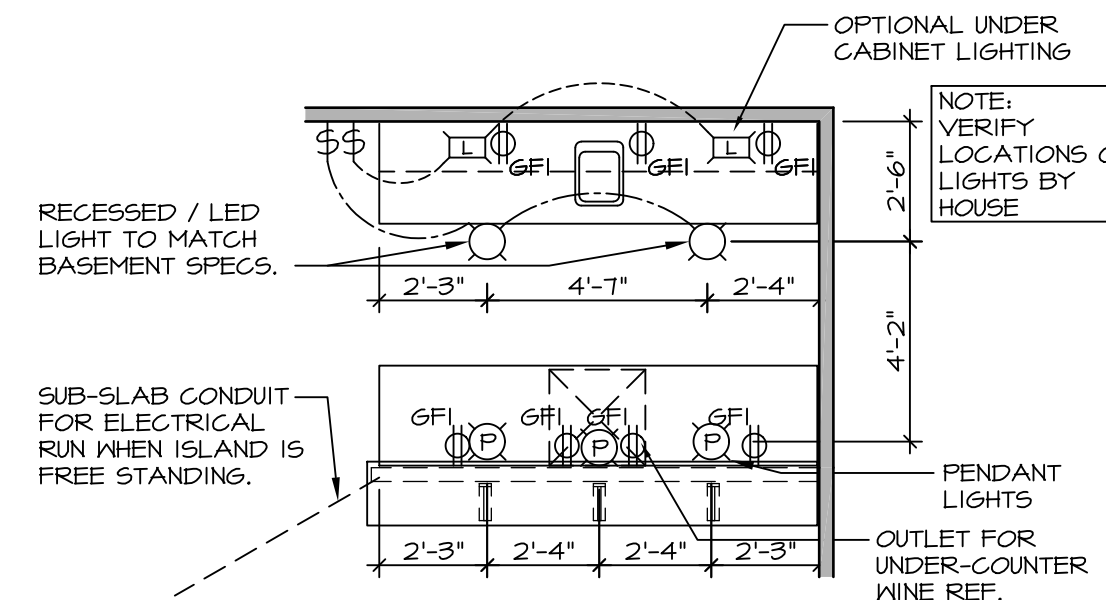
**5**  
ELEVATION "C"  
SCALE: 3/8" = 1'-0"



**6**  
FLOOR PLAN  
SCALE: 1/4" = 1'-0"



**7**  
FLOORING PLAN  
SCALE: 1/4" = 1'-0"

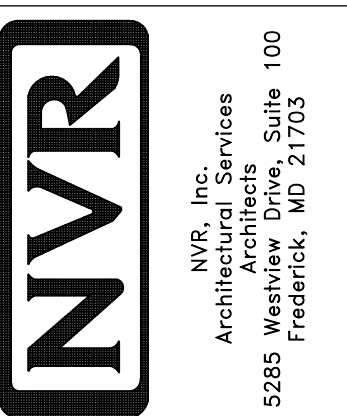


**9**  
FLOOR PLAN ELECTRICAL LAYOUT  
SCALE: 1/4" = 1'-0"

**1**  
WET BAR DETAILS  
SCALE: VARIES

REV. NO.	DATE	REMARKS
1	5/17/17	56A - REVISED FLOOR PLAN DIMENSIONS TO MATCH COUNTERTOP DIMENSIONS
2	5/23/17	56A - FIXED OVERLAPPING TEXT ON 3/17-13
3	6/5/17	56A - REMOVED U.C. REF. AND TURNED OFF FLOORING SPACES
4	9/14/17	EBP - ADDED NOTE TO RECESSED LIGHT / LED LIGHT IN NET BAR
5	9/28/17	EBP - ADDED FRAMING DIMENSIONS FOR THE NET BAR WALL

NVR, Inc., owner, expressly reserves its common law copyright and other property rights in these plans. These plans are not to be copied, reproduced, or otherwise used in any way without the express written consent of NVR, Inc. nor are they to be assigned to any third party, without first obtaining the expressed written consent of NVR, Inc.



SHEET NO.	MODEL	SET NO.
IT-3	STANDARD DETAILS	NVR
	DRAWING TITLE	VERSION
	INTERIOR TRIM DETAILS	
	NET BAR DETAILS - FULL BAR (RYAN ONLY)	DRAWN BY
	OPTION DESCRIPTION	DATE:
		OPTION