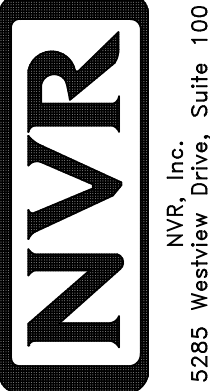
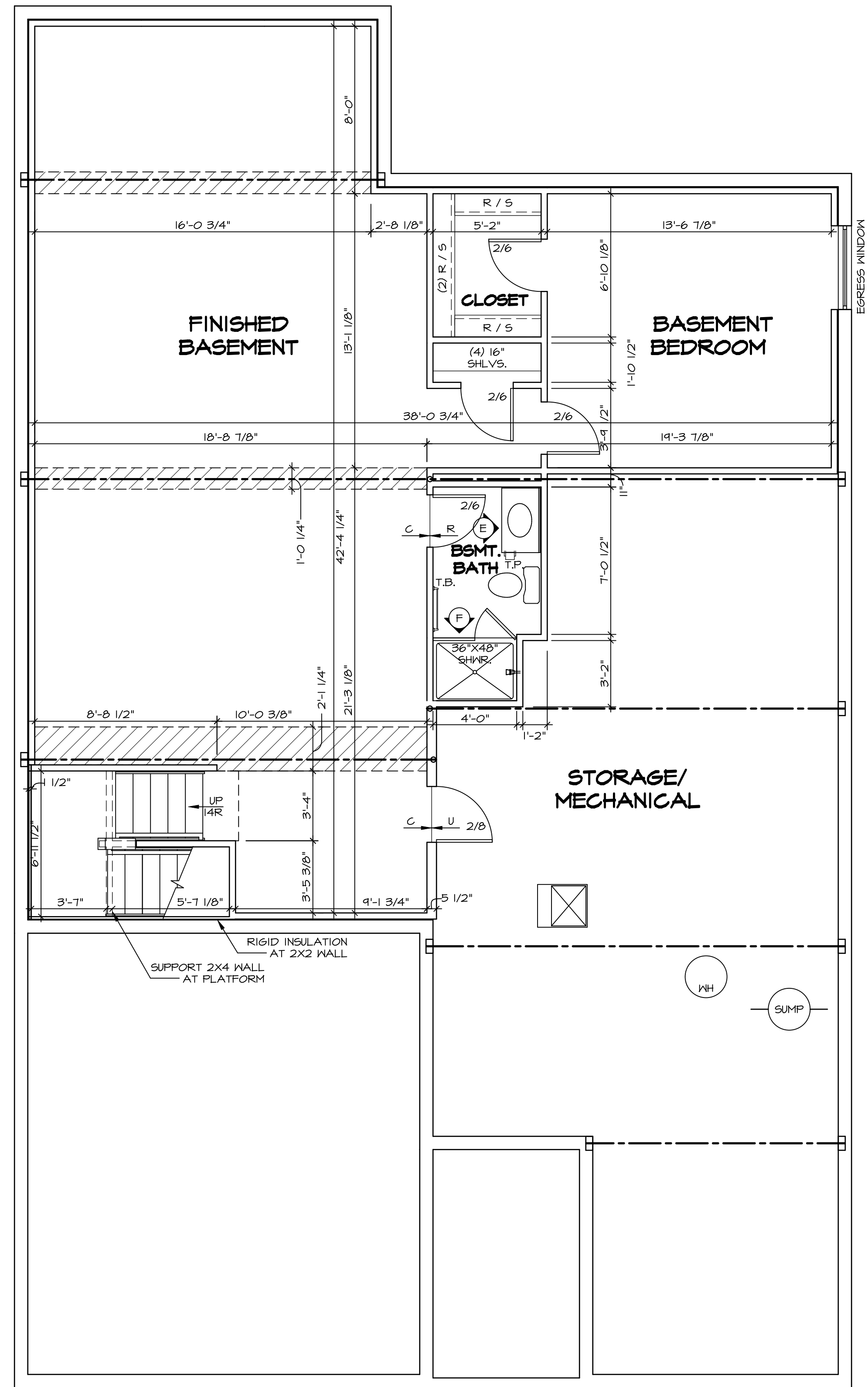


NOTE:
 RADON REMEDIATION
 RADON LOOP:

- MUST BE PLACED IN STONE BED SLIGHTLY HIGHER THAN ANY INTERIOR DRAIN TILE
- (4") PERFORATED HDPE "LOOP"
- LOOP TO BE SEPARATE FROM ANY DRAIN TILE ELEMENTS
- TO BE CORRUGATED HDPE PIPE
- SCREWS TO BE INSTALLED THROUGH LOOP AT TEE UP INTO STACK STACK REQUIREMENTS:
- 3" PVC STACK (4" IF BASEMENT IS GREATER THAN 2200 SQFT.)
- NO PART OF STACK IS TO BE HORIZONTAL
- PIPE TO BE PHYSICALLY LABELED IN THE FIELD AS "RADON VENT" OR OTHER JURISDICTIONALLY REQUIRED LANGUAGE (ON EVERY LEVEL OF HOUSE)
- ROOF TERMINATION TO BE IN TOP 1/3 OF ROOF
- SCREEN INSTALLED TO KEEP PESTS OUT OF RADON VENT AT ROOF TERMINATION

PLUMBING PLAN
 SCALE: 1/4" = 1'-0"

SHEET NO. A-5	MODEL PALLADIO RANCH	SET NO. PLDCA VERSION 01	DATE 2/13/17	OPTION
	DRAWING TITLE PLUMBING PLAN	DRAWN BY SPW	DATE 2/13/17	OPTION
OPTION DESCRIPTION				
20				
REMARKS				
REV. NO. DATE				
© NVR, Inc. expressly reserves the right to modify or amend these plans at any time without notice. These plans are not to be reproduced, changed or altered in any way without the written consent of NVR, Inc.				
 NVR, Inc. Suite 100 Frederick, MD 21703 5285 Washburne Rd.				
C:\NVR\Solves\PALLADIO_RANCH_PLDCA_01\DCY-YG-148\122688A\SheetA Col. Specific\20_A-5_PLMG_LS.dwg 05/14/19 - 4:16 am				

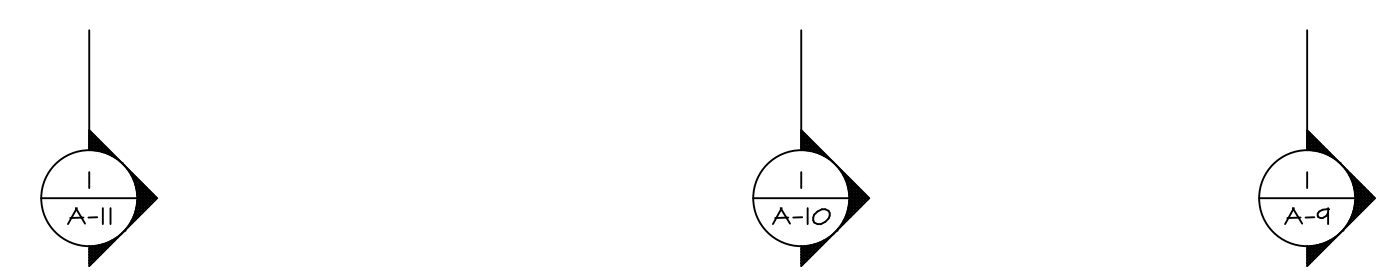


LEGEND	
	BEARING WALL
	NON BEARING WALL
	INDICATES BEARING FROM POINT-LOAD ABOVE
	JACKS
	BEAM/HEADER
	PAD FOOTING
	STEEL COLUMN
	PORTAL FRAME
	JOIST/TRUSS
	LVL
	ENGINEERING PAGE NUMBER

SEE FC DETAILS FOR FRAMING CONNECTORS

- FLOOR PLAN NOTES**
1. ALL HEADERS ARE (2) 2x6 w/ 2x4 WALLS OR (3) 2x6 w/ 2x6 WALLS, UNLESS OTHERWISE NOTED.
 2. ALL HEADERS TO HAVE (1) 2x4 OR 2x6 JACK EACH END, UNLESS OTHERWISE NOTED.
 3. ALL EXTERIOR WALLS TO BE 4" AND ALL INTERIOR WALLS TO BE 3 1/2", UNLESS OTHERWISE NOTED.
 4. HATCHED AREAS INDICATE DROPPED CEILINGS. ALL DROPPED CEILINGS ARE 12" UNLESS OTHERWISE NOTED.
 5. SEE "BRACED WALL PANEL DETAIL SHEET" FOR SPECIAL WALL FRAMING LOCATIONS AND HEADER SIZES, IF APPLICABLE.
 6. SEE STANDARD DETAIL CATEGORY "IT" SHEET(S) FOR INTERIOR TRIM DETAILS.
 7. SEE ARCHITECTURAL DETAIL SHEET "AD" FOR HOUSE SPECIFIC INTERIOR TRIM OPTION TABLE.
 8. ALL WINDOWS HAVE 7'-0 1/2" HEADER HEIGHT UNLESS OTHERWISE NOTED.

- GYPSUM NOTES**
- AT GARAGE:
GYPSUM BOARD AT COMMON WALLS, CEILING, BEAM WRAPS AND SUPPORTS PER STANDARD DETAIL FA-1(b) FIRE ASSEMBLIES OR AS REQUIRED BY LOCAL CODE.
- AT STAIRS:
1/2" GYPSUM BOARD AT UNDERSIDE OF STAIRS AND WALLS IN CLOSET



BASEMENT FLOOR PLAN
SCALE: 1/4" = 1'-0"

SHEET NO.	MODEL	DRAWING TITLE	OPTION DESCRIPTION	DATE	DRAWN BY	VERSION	SET NO.	REVISIONS	
								NO.	DATE
A-6	PALLADIO RANCH	BASEMENT FLOOR PLAN		2/22/17	DRH	01			
22									

REVISIONS

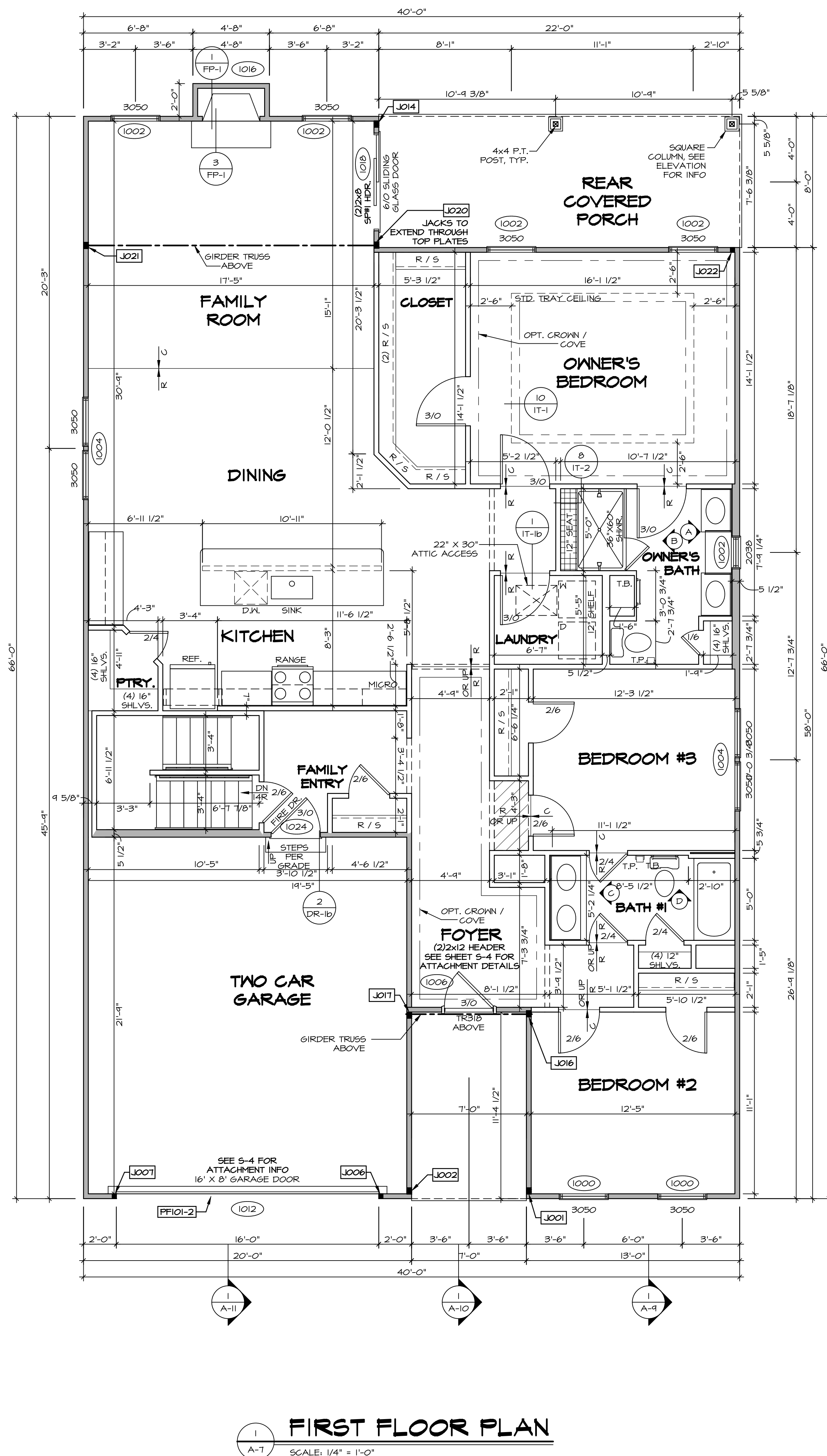
REMARKS

© NVR, Inc. expressly reserves the copyright and all other rights in these plans. These plans are not to be reproduced, changed, or copied in any way without the written consent of NVR, Inc.

NVR
NVR, Inc. Suite 100
Frederick, MD 21703

5285 Washburne, Suite 100
Frederick, MD 21703

SET NO. PLD0A
VERSION 01
DRAWN BY DRH
DATE: 2/22/17
OPTION



LEGEND

- BEARING WALL
- NON BEARING WALL
- INDICATES BEARING FROM POINT-LOAD ABOVE
- JACKS
- BEAM/HEADER
- PAD FOOTING
- STEEL COLUMN
- PORTAL FRAME
- JOIST/TRUSS
- LVL
- ENGINEERING PAGE NUMBER

SEE FC DETAILS FOR FRAMING CONNECTORS

- FLOOR PLAN NOTES**
1. ALL HEADERS ARE (2) 2x6 w/ 2x4 WALLS OR (3) 2x6 w/ 2x6 WALLS, UNLESS OTHERWISE NOTED.
 2. ALL HEADERS TO HAVE (1) 2x4 OR 2x6 JACK EACH END, UNLESS OTHERWISE NOTED.
 3. ALL EXTERIOR WALLS TO BE 4" AND ALL INTERIOR WALLS TO BE 3 1/2", UNLESS OTHERWISE NOTED.
 4. HATCHED AREAS INDICATE DROPPED CEILINGS. ALL DROPPED CEILINGS ARE 12" UNLESS OTHERWISE NOTED. SEE "BRACED WALL PANEL DETAIL SHEET" FOR SPECIAL WALL FRAMING LOCATIONS AND HEADER SIZES, IF APPLICABLE.
 5. SEE STANDARD DETAIL CATEGORY "IT" SHEET(S) FOR INTERIOR TRIM DETAILS.
 6. SEE ARCHITECTURAL DETAIL SHEET "AD" FOR HOUSE SPECIFIC INTERIOR TRIM OPTION TABLE.
 7. ALL WINDOWS HAVE 7'-0 1/2" HEADER HEIGHT UNLESS OTHERWISE NOTED.

- GYPSUM NOTES**
- AT GARAGE:
GYPSUM BOARD AT COMMON WALLS, CEILING, BEAM WRAPS AND SUPPORTS PER STANDARD DETAIL FA-1(b) FIRE ASSEMBLIES OR AS REQUIRED BY LOCAL CODE.
- AT STAIRS:
1/2" GYPSUM BOARD AT UNDERSIDE OF STAIRS AND WALLS IN CLOSET

FIRST FLOOR JACK SCHEDULE

IDENTIFIER	DESCRIPTION	OPTIONS	ENG. NUM.	REMARKS
J001	JACK - (3) 2X4 SFF STUD GRADE	ELA, ELK	100B	
J002	JACK - (3) 2X4 SFF STUD GRADE	ELA, ELK	100B	
J006	JACK - (2) 2X4 SFF STUD GRADE	GCB, ELA, ELK	1012	
J007	JACK - (2) 2X4 SFF STUD GRADE	GCB, ELA, ELK	1012	
J014	JACK - (3) 2X4 SFF STUD GRADE	GCB, ELA, ELK	1026	
J016	JACK - (3) 2X4 SFF STUD GRADE		1024	
J017	JACK - (3) 2X4 SFF#1		1024	
J020	JACK - (3) 2X4 SFF#1		1030	
J021	JACK - (3) 2X4 SFF STUD GRADE		1030	
J022	JACK - (2) 2X4 SFF STUD GRADE		1026	

FIELD INSTALLED FIRST FLOOR BEAM/HEADER SCHEDULE

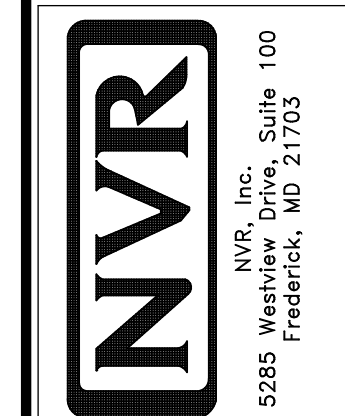
IDENTIFIER	DESCRIPTION	LENGTH	OPTIONS	ENG. NUM.	REMARKS
PF101-2	EXT HEADER - 2X12 - 2 PLY	14'-8"	GCB, ELA, ELK	1012	

FIRST FLOOR PLAN
SCALE: 1/4" = 1'-0"

REVISIONS

REV. NO. DATE

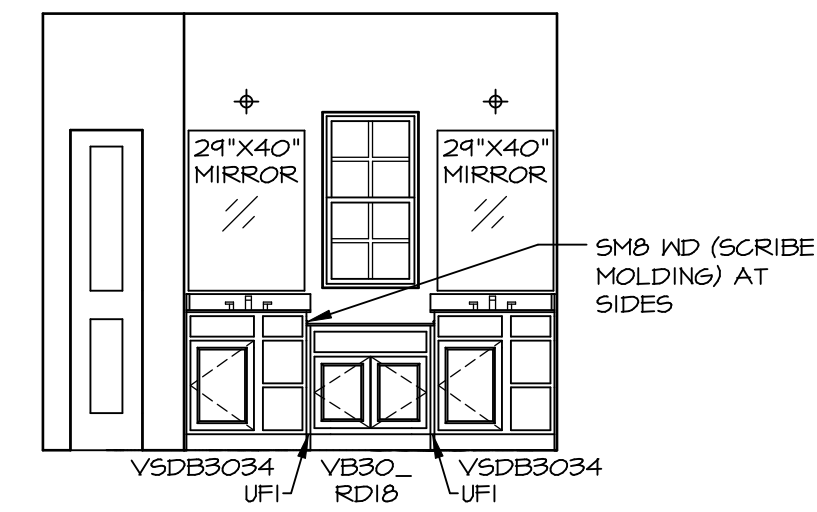
NVR, Inc. expressly reserves the right to modify or change any part of these plans without notice. No reproduction, storage in a retrieval system, or transmission in any form or by any means, electronic, mechanical, photocopying, recording, or otherwise, is permitted without the prior written consent of NVR, Inc.



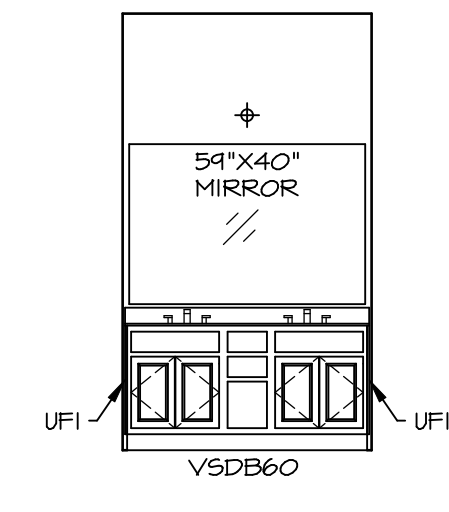
SET NO. PLODA
VERSION 01
DRAWN BY DRH
DATE: 2/22/17
OPTION

MODEL: PALLADIO RANCH
DRAWING TITLE: FIRST FLOOR PLAN
OPTION DESCRIPTION

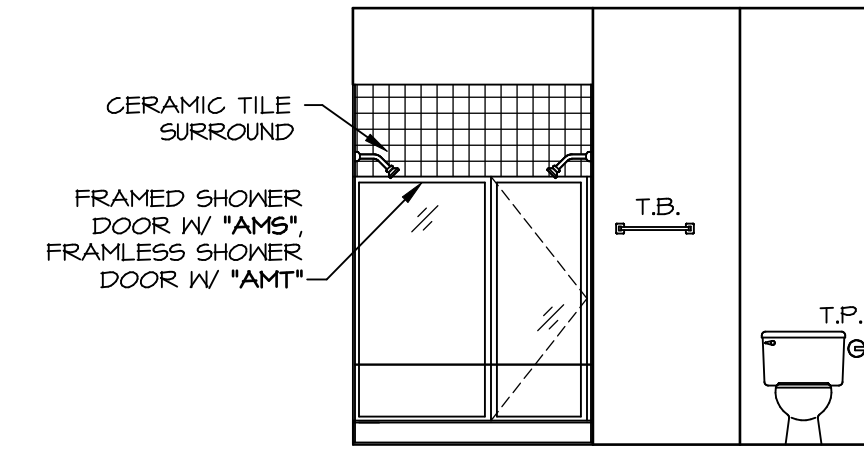
SHEET NO. A-7
24



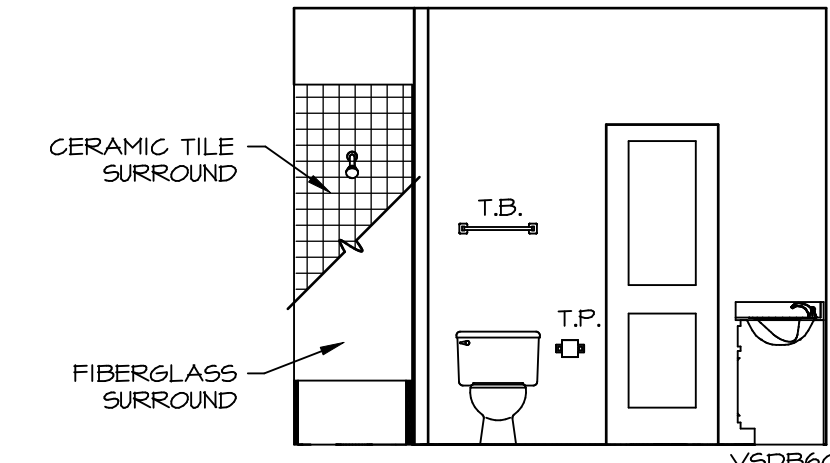
A OWNER'S BATH
SCALE: 1/4" = 1'-0"



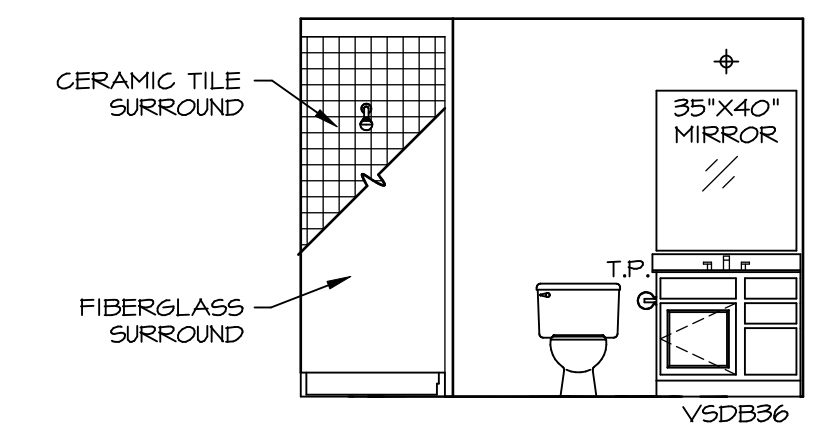
C BATH #1
SCALE: 1/4" = 1'-0"



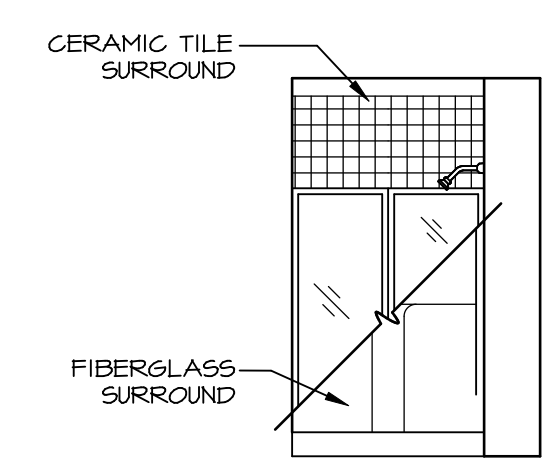
B OWNER'S BATH ("AMG")
SCALE: 1/4" = 1'-0"



D BATH #1
SCALE: 1/4" = 1'-0"



E BASEMENT BATH ("AEB")
SCALE: 1/4" = 1'-0"

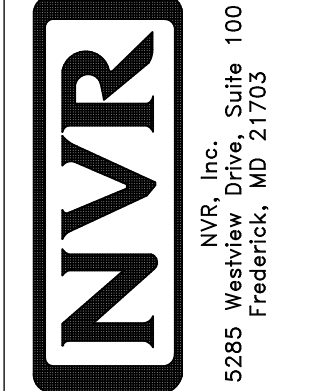


F BASEMENT BATH ("AEB")
SCALE: 1/4" = 1'-0"

NOTES:

1. TEMPERED GLASS SHOWER ENCLOSURE WITH SHING DOOR OR OPTIONAL SLIDING DOOR BY DIVISION
2. TUB ACCESS PANELS PROVIDED AS NEEDED, ALL MATERIALS BY DIVISION
3. REFER TO SHEET D-II FOR TUB AND SHOWER DETAILS.
4. ALL VSDB24-42 DRAWERS TO BE SET ON RIGHT HAND.
5. BATH ELEVATIONS ARE SHOWN PER PLAN.

SHEET NO. A-13	MODEL PALLADIO RANCH	SET NO. FLD0A	VERSION 01
	DRAWING TITLE BATH ELEVATIONS	DRAWN BY SPM	DATE 2/7/17
32	OPTION DESCRIPTION	OPTION	
	REMARKS	REV. NO.	DATE



© NVR, Inc. expressly reserves the right to modify or change any of the information contained in these plans. These plans are not to be reproduced, changed or copied in any way without the written consent of NVR, Inc.