

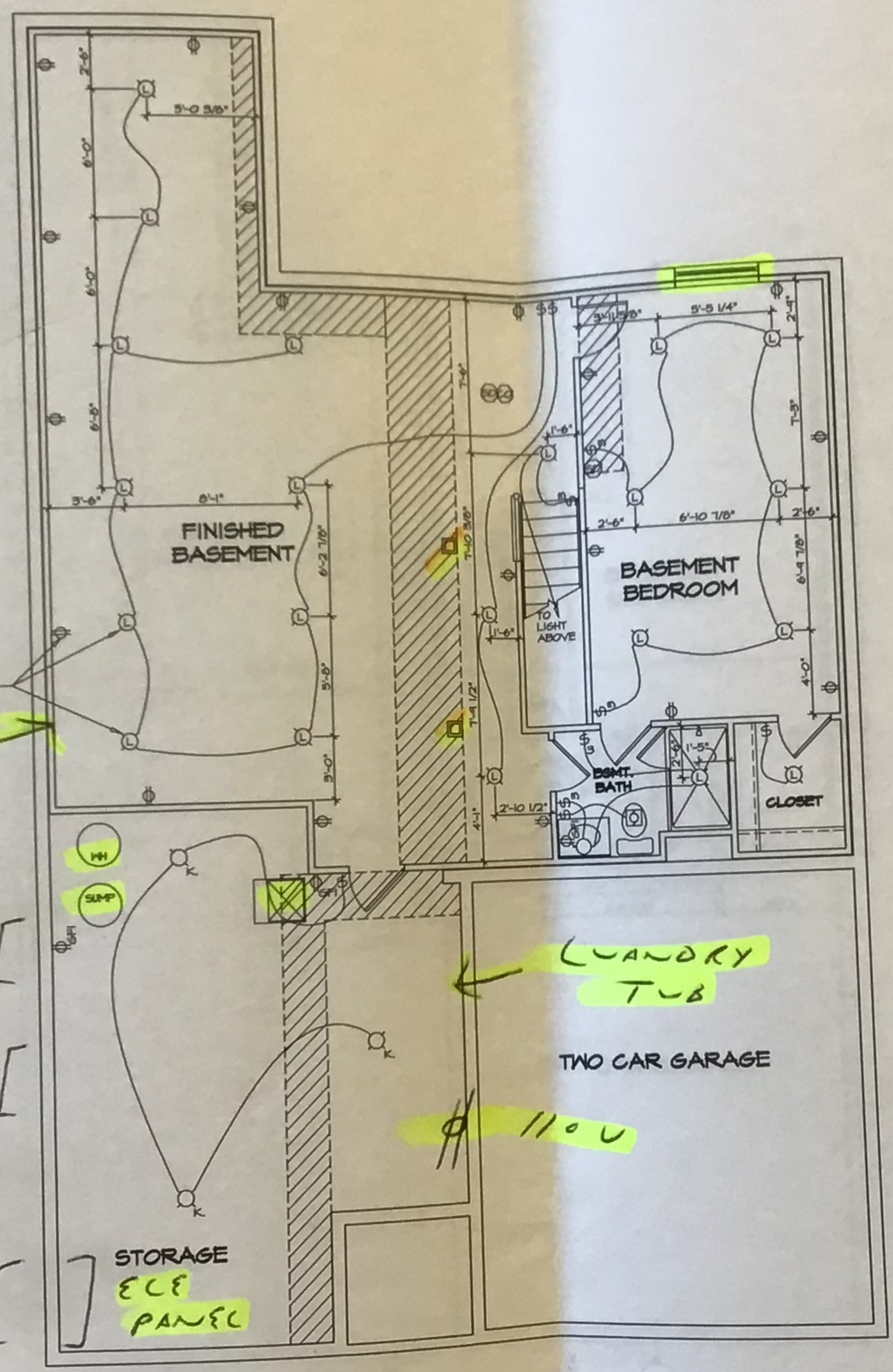
* Meter & A/C locations can change depending on site conditions

WET BAR R/I

A/C GAS METER

ECE METER

MO RB



- NOTES:
1. ALL ELECTRICAL PLANS ARE SCHEMATIC ONLY AND NOT INTENDED AS ENGINEERED DRAWINGS. THESE PLANS REPRESENT THE DESIGN INTENT FOR SWITCH AND RECEPTACLE LOCATIONS. ADDITIONAL INFORMATION, IF REQUIRED, SHALL BE PROVIDED BY A LICENSED ELECTRICAL SUBCONTRACTOR OR ENGINEER.
 2. ALL KITCHEN, BATHS, GARAGES, LAUNDRY ROOM, UNFINISHED BASEMENT, PETS/STAIRS AND ALL OUTDOOR RECEPTACLES ARE TO BE GFI PROTECTED.
 3. PROVIDE SWITCH W/ KEYLESS LIGHT IN ATTIC SPACE.
 4. PROVIDE SWITCH W/ KEYLESS LIGHT AND GFI RECEPTACLE WHEN HVAC EQUIPMENT IS IN ATTIC SPACE.
 5. PROVIDE ARC-FAULT CIRCUIT INTERRUPTERS TO ALL BEDROOM RECEPTACLES.
 6. WASHER ON LEFT, DRYER ON RIGHT (PER PLAN OR REVERSED).
 7. DRYER RECEPTACLE 110 W GAS OR 220 W ELECTRIC.

ELECTRICAL LEGEND

⊕	SINGLE POLE SWITCH
⊕⊕	THREE WAY SWITCH
⊕⊕⊕	FOUR WAY SWITCH
⊕⊕	DUPLEX RECEPTACLE
⊕⊕ (bottom half shaded)	DUPLEX RECEPTACLE - BOTTOM HALF SWITCHED
⊕⊕ (top half shaded)	DUPLEX RECEPTACLE - TOP HALF SWITCHED
⊕⊕ (circle)	RECEPTACLE - 220V
⊕⊕ (USB symbol)	DUPLEX RECEPTACLE - USB
⊕⊕ (GFI symbol)	DUPLEX RECEPTACLE - GROUND FAULT INTERRUPT
⊕⊕ (weather symbol)	DUPLEX RECEPTACLE - WEATHER PROOF AND GROUND FAULT INTERRUPT
⊕⊕ (smoke detector symbol)	SMOKE DETECTOR - WIRED IN SERIES
⊕⊕ (CO symbol)	CARBON MONOXIDE DETECTOR
⊕⊕ (fan symbol)	EXHAUST FAN MOTOR
⊕⊕ (fan with light symbol)	EXHAUST FAN MOTOR WITH LIGHT
⊕⊕ (TV symbol)	TELEVISION RECEPTACLE
⊕⊕ (phone symbol)	TELEPHONE RECEPTACLE
⊕⊕ (door chime symbol)	DOOR CHIME
⊕⊕ (circle)	LIGHT FIXTURE - HALL MOUNTED
⊕⊕ (circle)	LIGHT FIXTURE - CEILING MOUNTED
⊕⊕ (circle)	LIGHT FIXTURE - RECESSED
⊕⊕ (circle)	LIGHT FIXTURE - RECESSED WEATHER PROOF
⊕⊕ (circle)	LIGHT FIXTURE - CEILING MOUNTED LED
⊕⊕ (circle)	LIGHT FIXTURE - HANGING
⊕⊕ (circle)	LIGHT FIXTURE - PENDANT
⊕⊕ (circle)	LIGHT FIXTURE - FLUORESCENT
⊕⊕ (circle)	LIGHT FIXTURE - UNDER CABINET LIGHT
⊕⊕ (circle)	PULLCHAIN LAMPHOLDER
⊕⊕ (circle)	KEYLESS LAMPHOLDER

REV. NO. DATE

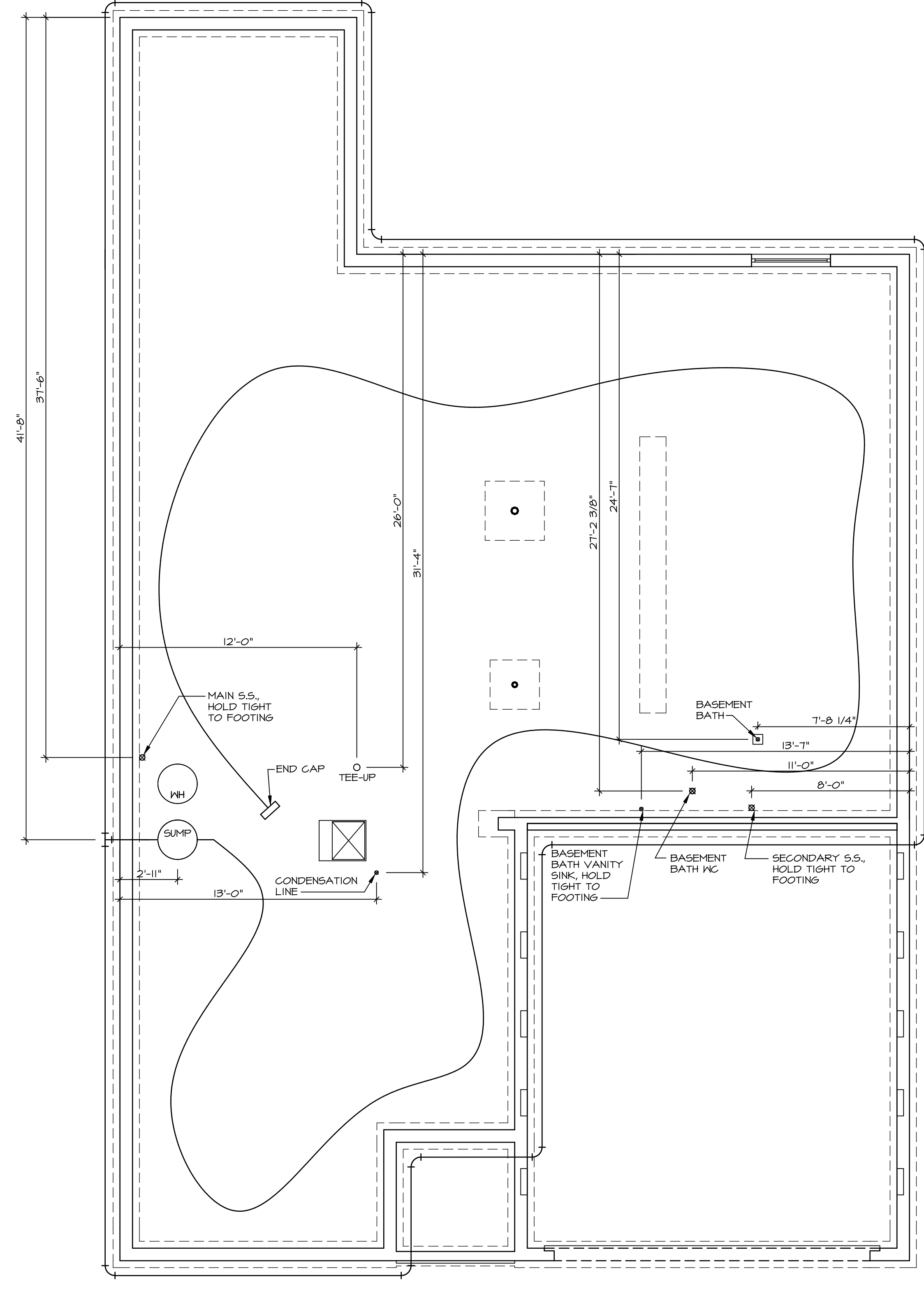
REVISIONS

1. NVR, Inc. reserves the right to make changes to this drawing without notice. These changes are not to be construed as an error or omission. The user of this drawing is responsible for verifying the accuracy of the information contained herein.

NVR
NVR, Inc.
Architecture Services
5385 Washburn Drive, Suite 100
Frederick, MD 21703

SET NO. AND CO.	VERSION 01	DRAWN BY DT	DATE:	OPTION:
MODEL	ANDOVER	DRAWING TITLE	BASEMENT ELECTRICAL PLAN	OPTION DESCRIPTION
SHEET NO.	E-1			

BASEMENT ELECTRICAL PLAN SCALE: 1/4" = 1'-0"



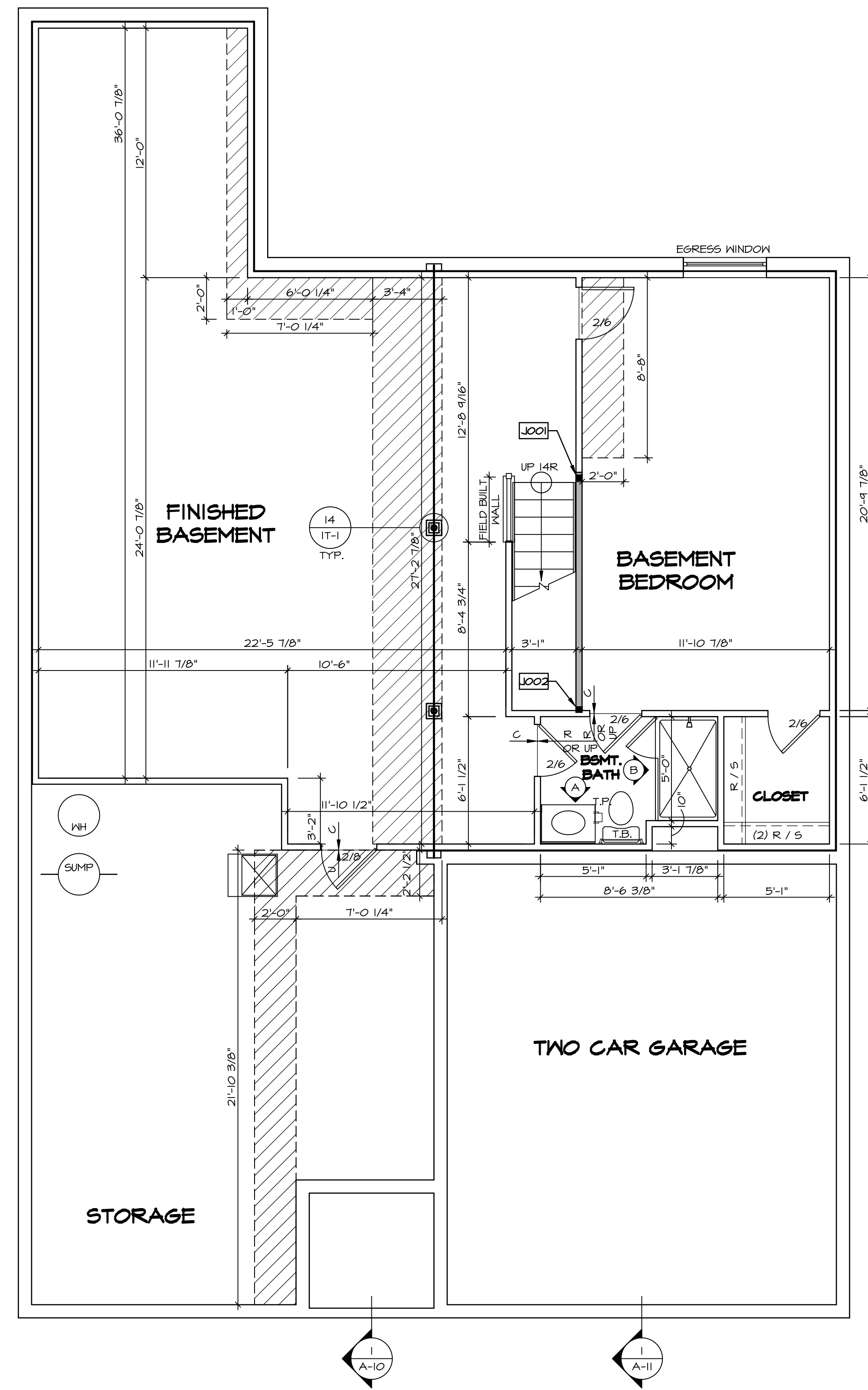
1
A-5 **PLUMBING PLAN**
SCALE: 1/4" = 1'-0"

SHEET NO. A-5	MODEL ANDOVER	SET NO. AND00
OPTION 20	DRAWING TITLE PLUMBING PLAN	VERSION 01
	DATE:	DRAWN BY HD
	OPTION	

NVR
NVR, Inc.
Architectural Services
5285 Westwood Drive, Suite 100
Frederick, MD 21703

NVR, Inc., owner, expressly reserves its copyright in these plans. These plans are not to be reproduced, changed, copied, or otherwise used in any way without the prior written consent of NVR, Inc.

REV. NO.	DATE	REMARKS



LEGEND	
	BEARING WALL
	NON BEARING WALL
	INDICATES BEARING FROM POINT-LOAD ABOVE
	JACKS
	BEAM/HEADER
	PAD FOOTING
	STEEL COLUMN
	PORTAL FRAME
	JOIST/TRUSS
	LVL
	ENGINEERING PAGE NUMBER

SEE FC DETAILS FOR FRAMING CONNECTORS

- FLOOR PLAN NOTES**
- ALL HEADERS ARE (2) 2x6 w/ 2x4 WALLS OR (3) 2x6 w/ 2x6 WALLS, UNLESS OTHERWISE NOTED.
 - ALL HEADERS TO HAVE (1) 2x4 OR 2x6 JACK EACH END, UNLESS OTHERWISE NOTED.
 - ALL EXTERIOR WALLS TO BE 4" AND ALL INTERIOR WALLS TO BE 3 1/2" UNLESS OTHERWISE NOTED.
 - HATCHED AREAS INDICATE DROPPED CEILINGS. ALL DROPPED CEILINGS ARE 12" UNLESS OTHERWISE NOTED.
 - SEE "BRACED WALL PANEL DETAIL SHEET" FOR SPECIAL WALL FRAMING LOCATIONS AND HEADER SIZES, IF APPLICABLE.
 - SEE STANDARD DETAIL CATEGORY "IT" SHEET(S) FOR INTERIOR TRIM DETAILS.
 - SEE ARCHITECTURAL DETAIL SHEET "AD" FOR HOUSE SPECIFIC INTERIOR TRIM OPTION TABLE.
 - ALL WINDOWS HAVE 7'-0 1/2" HEADER HEIGHT UNLESS OTHERWISE NOTED.

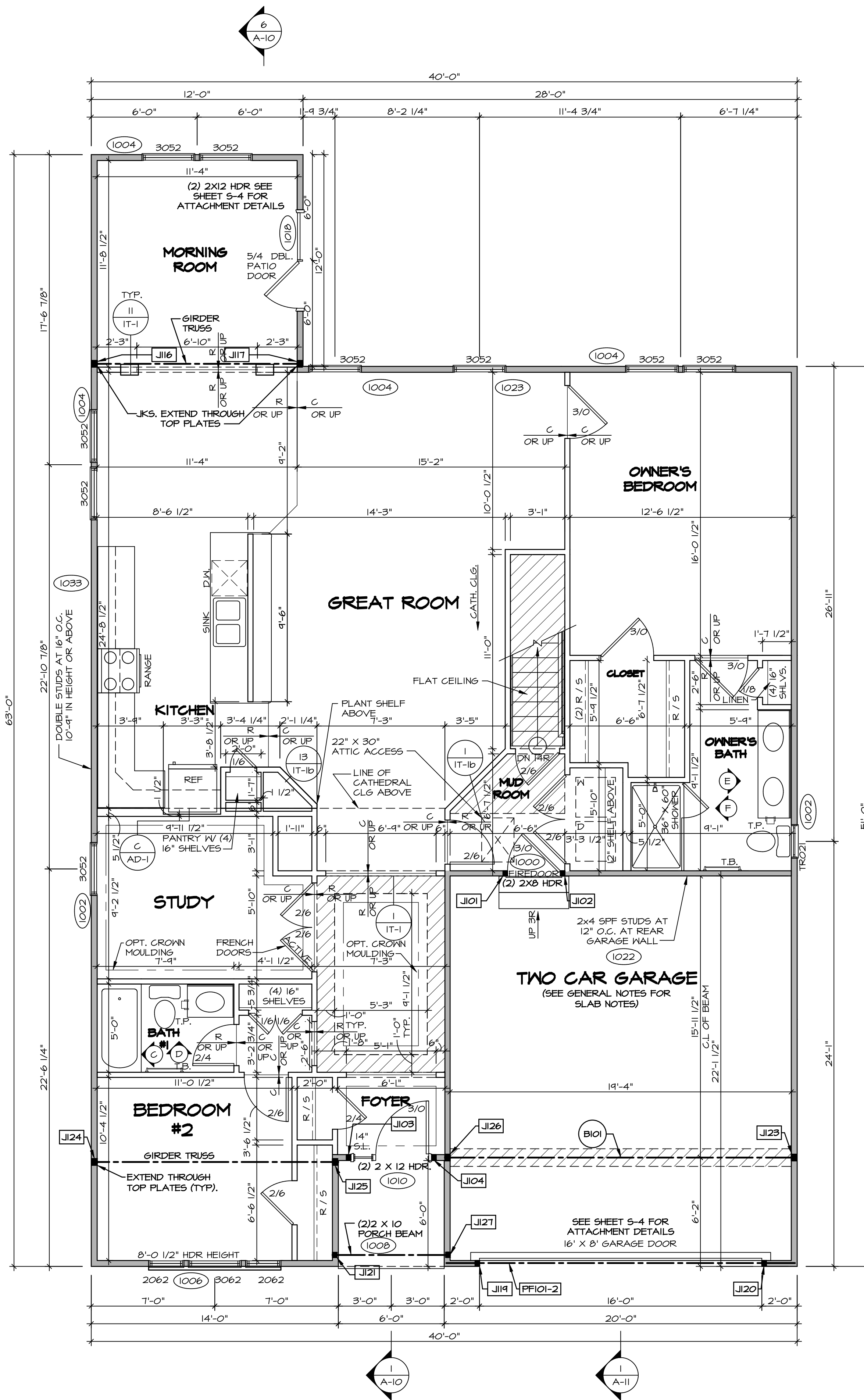
- GYPSUM NOTES**
- AT GARAGE:
GYPSUM BOARD AT COMMON WALLS, CEILING, BEAM WRAPS AND SUPPORTS PER STANDARD DETAIL FA-1(b) FIRE ASSEMBLIES OR AS REQUIRED BY LOCAL CODE.
- AT STAIRS:
1/2" GYPSUM BOARD AT UNDERSIDE OF STAIRS AND WALLS IN CLOSET
- BASEMENT WITH I-JOIST FLOOR SYSTEM ABOVE:
WITH OPTION "SGI" - DRYWALL UNFINISHED BASEMENT CEILING AREA
- NOTES:**
- 1/2" GYPSUM WALL BOARD REQUIRED ON CEILING IN UNFINISHED AREAS WHEN NO SPRINKLER SYSTEM IS INSTALLED.
 - A MAXIMUM AREA OF 80 SQ FT MAY BE OMITTED AS NEEDED FOR INSTALLATION OF PLUMBING, ELECTRICAL, AND/OR HVAC (TYPICALLY AN 8'-0"x8'-0" CEILING SPACE ABOVE MECHANICAL AREA).
 - PROVIDE FIRE BLOCKING AS REQUIRED AT PERIMETER OF ANY AREAS WHERE DRYWALL HAS BEEN OMITTED.

BASEMENT FLOOR PLAN
SCALE: 1/4" = 1'-0"

SHEET NO.	MODEL	SET NO.	VERSION	DATE	OPTION	REMARKS
A-6	ANDOVER DRAWING TITLE BASEMENT FLOOR PLAN	AND00	01	DT		
23	OPTION DESCRIPTION					

NVR
Architectural Services
5285 West...
Frederick, MD 21703

NVR, Inc., owner, expressly disclaims any copyright interest in the drawings, specifications, or other documents prepared by NVR, Inc. for the project. These drawings are not to be reproduced, changed, copied, or otherwise used without the written consent of NVR, Inc.



FIRST FLOOR PLAN
SCALE: 1/4" = 1'-0"

GYPSUM NOTES
AT GARAGE:
GYPSUM BOARD AT COMMON WALLS, CEILING, BEAM WRAPS AND SUPPORTS PER STANDARD DETAIL FA-16(B) FIRE ASSEMBLIES OR AS REQUIRED BY LOCAL CODE.
AT STAIRS:
1/2" GYPSUM BOARD AT UNDERSIDE OF STAIRS AND WALLS IN CLOSET

FLOOR PLAN NOTES
1. ALL HEADERS ARE (2) 2x6 w/ 2x4 WALLS OR (3) 2x6 w/ 2x6 WALLS, UNLESS OTHERWISE NOTED.
2. ALL HEADERS TO HAVE (1) 2x4 OR 2x6 JACK EACH END, UNLESS OTHERWISE NOTED.
3. ALL EXTERIOR WALLS TO BE 4" AND ALL INTERIOR WALLS TO BE 3 1/2", UNLESS OTHERWISE NOTED.
4. HATCHED AREAS INDICATE DROPPED CEILINGS. ALL DROPPED CEILINGS ARE 12" UNLESS OTHERWISE NOTED.
5. SEE "BRACED WALL PANEL DETAIL SHEET" FOR SPECIAL WALL FRAMING LOCATIONS AND HEADER SIZES, IF APPLICABLE.
6. SEE STANDARD DETAIL CATEGORY "11" SHEET(S) FOR INTERIOR TRIM DETAILS.
7. SEE ARCHITECTURAL DETAIL SHEET "AD" FOR HOUSE SPECIFIC INTERIOR TRIM OPTION TABLE.
8. ALL WINDOWS HAVE 7'-0" 1/2" HEADER HEIGHT UNLESS OTHERWISE NOTED.

LEGEND

- BEARING WALL
- NON BEARING WALL
- INDICATES BEARING FROM POINT-LOAD ABOVE JACKS
- BEAM/HEADER
- PAD FOOTING
- STEEL COLUMN
- PORTAL FRAME
- JOIST/TRUSS
- LVL
- ENGINEERING PAGE NUMBER

SEE FC DETAILS FOR FRAMING CONNECTORS

FIRST FLOOR JACK SCHEDULE

IDENTIFIER	DESCRIPTION	OPTIONS	ENG. NUM.	REMARKS
J101	JACK - (2) 2X4 SPF STUD GRADE	ZIA	1000	
J102	JACK - (2) 2X4 SPF STUD GRADE	ZIA	1000	
J103	JACK - (2) 2X4 SPF STUD GRADE	SXC	1010	
J104	JACK - (2) 2X4 SPF STUD GRADE	SXC	1010	
J116	JACK - (3) 2X4 SPH	MAA / SXC / ZIA	1020	
J117	JACK - (3) 2X4 SPH	MAA / SXC / ZIA	1020	
J119	JACK - (2) 2X4 SPF STUD GRADE	SXC	1012	
J120	JACK - (2) 2X4 SPF STUD GRADE	SXC	1012	
J121	JACK - (2) 2X4 SPF STUD GRADE	ELA	1008	
J123	JACK - (3) 2X4 SPF STUD GRADE	ZIA / SXC	1025	
J124	JACK - (3) 2X4 SPH		1020	
J125	JACK - (3) 2X4 SPH		1020	
J126	JACK - (3) 2X4 SPF STUD GRADE	ZIA / SXC	1025	
J127	JACK - (2) 2X4 SPF STUD GRADE	ELA	1008	

LVL PLY TO PLY FASTENING SCHEDULE: (WHERE APPLICABLE BASED ON LVL USAGE)
 1.A - (2) PLY UP TO AND INCLUDING 11 7/8" TALL; FASTEN FLIES W (2) ROWS 16D NAILS AT 12" O.C.
 2.A - (2) PLY 14" TO AND INCLUDING 18" TALL (INCLUSIVE); FASTEN FLIES W (3) ROWS 16D NAILS AT 12" O.C.
 3.A - (2) PLY 20" TALL AND OVER; FASTEN FLIES W (4) ROWS 16D NAILS AT 12" O.C.
 4.A - (3) PLY UP TO AND INCLUDING 11 7/8" TALL; FASTEN FLIES W (2) ROWS 16D NAILS AT 12" O.C. FROM EACH SIDE
 5.A - (3) PLY 14" TO AND INCLUDING 18" TALL (INCLUSIVE); FASTEN FLIES W (3) ROWS 16D NAILS AT 12" O.C. FROM EACH SIDE
 6.A - (3) PLY 20" TALL AND OVER; FASTEN FLIES W (4) ROWS 16D NAILS AT 12" O.C. FROM EACH SIDE

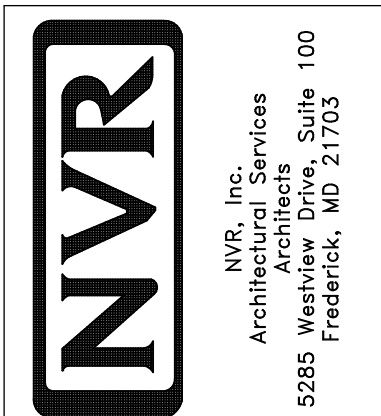
FIELD INSTALLED FIRST FLOOR BEAM/HEADER SCHEDULE

IDENTIFIER	DESCRIPTION	LENGTH	OPTIONS	ENG. NUM.	REMARKS
B101	BEAM STEEL - W12X14	19'-10 1/2"	ZIA / SXC	1025	
PF101-2	LVL - 11-04	19'-4"	SXC	1012	1.A

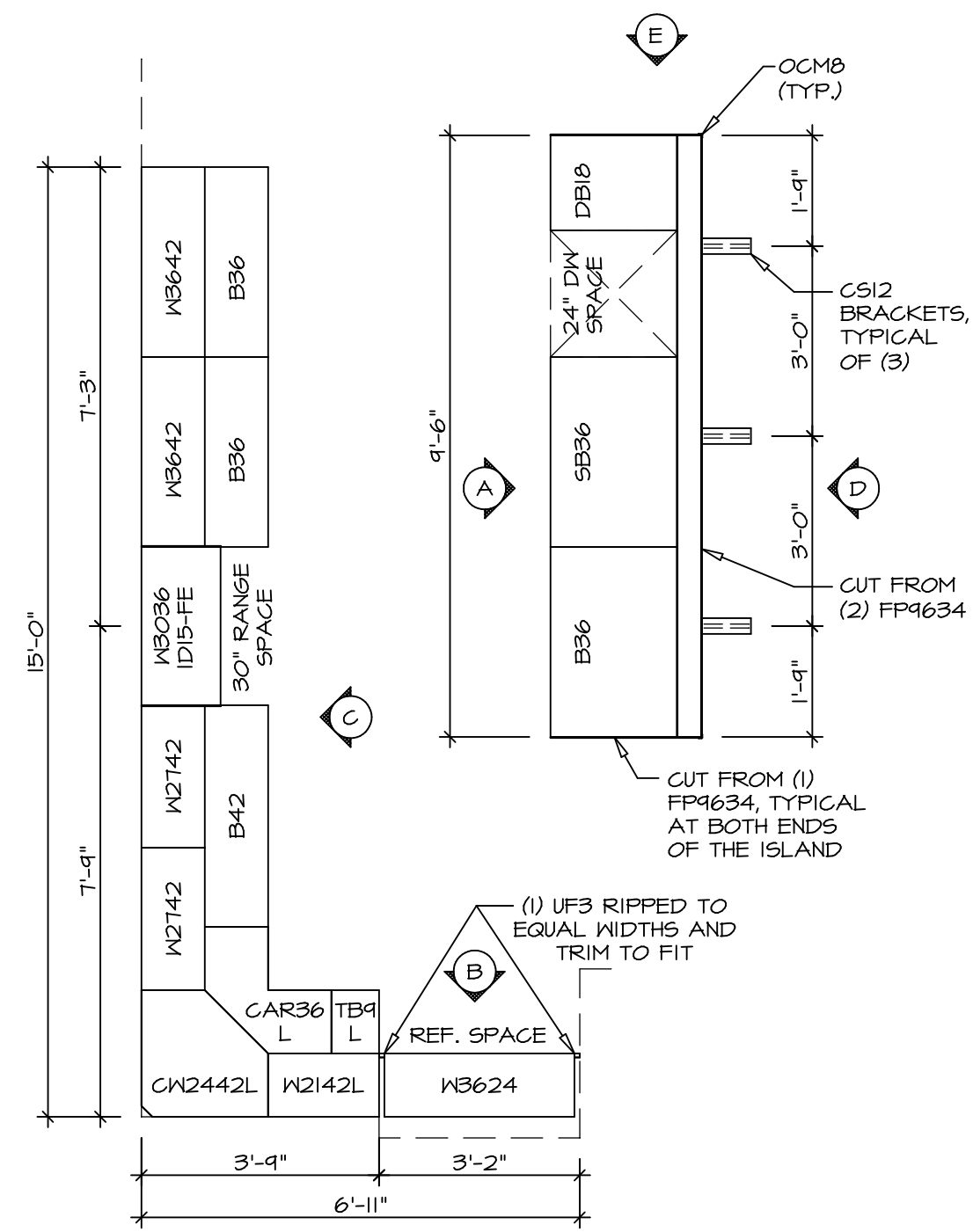
STEEL COLUMN SCHEDULE

IDENTIFIER	STYLE	HEIGHT	OPTIONS	ENG. NUM.	REMARKS
------------	-------	--------	---------	-----------	---------

NVR, Inc., owner, expressly reserves its copyright in these plans. These plans are not to be reproduced, changed, copied, or otherwise used in any way without the written consent of NVR, Inc.

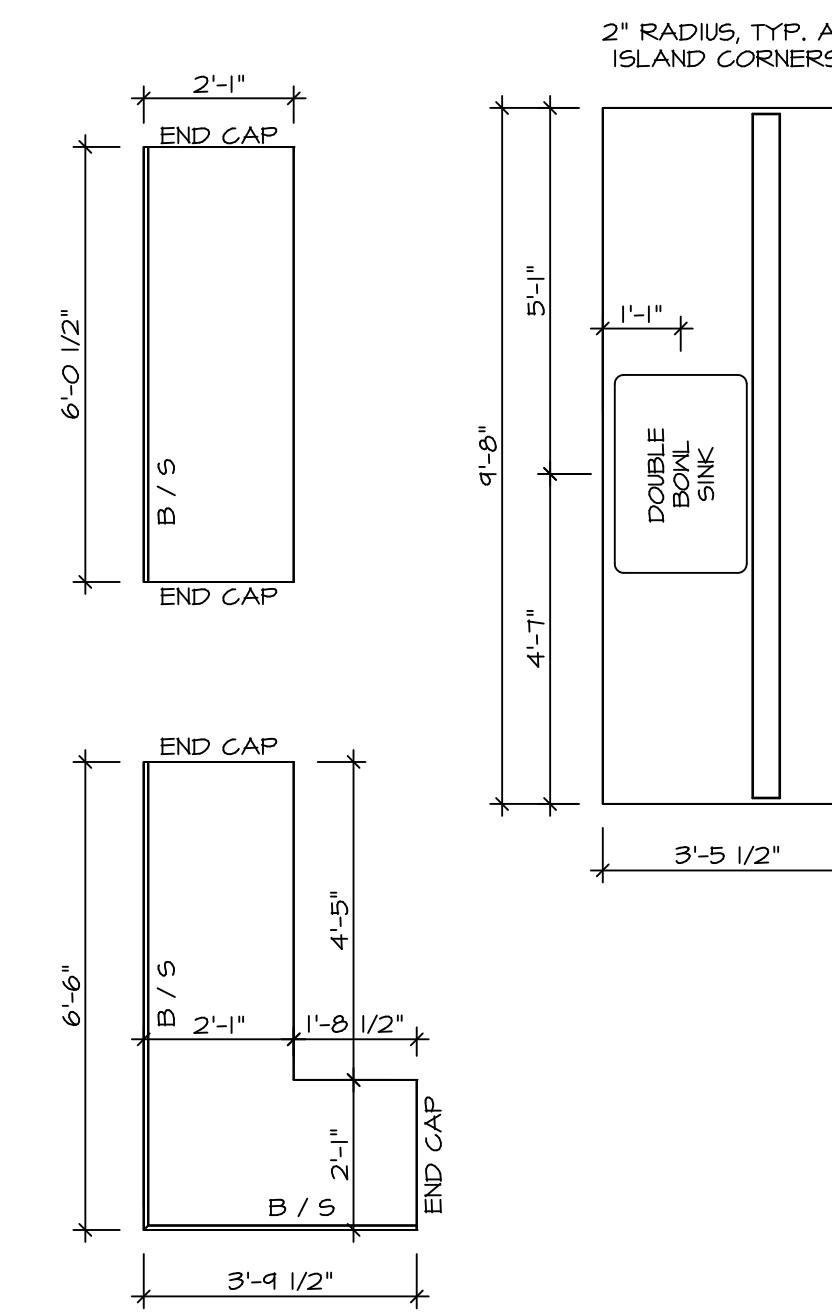


MODEL	ANDOVER
DRAWING TITLE	FIRST FLOOR PLAN
OPTION DESCRIPTION	
SET NO.	ANDOVER_01
VERSION	01
DRAWN BY	HD
DATE:	
OPTION	
SHEET NO.	A-8
25	



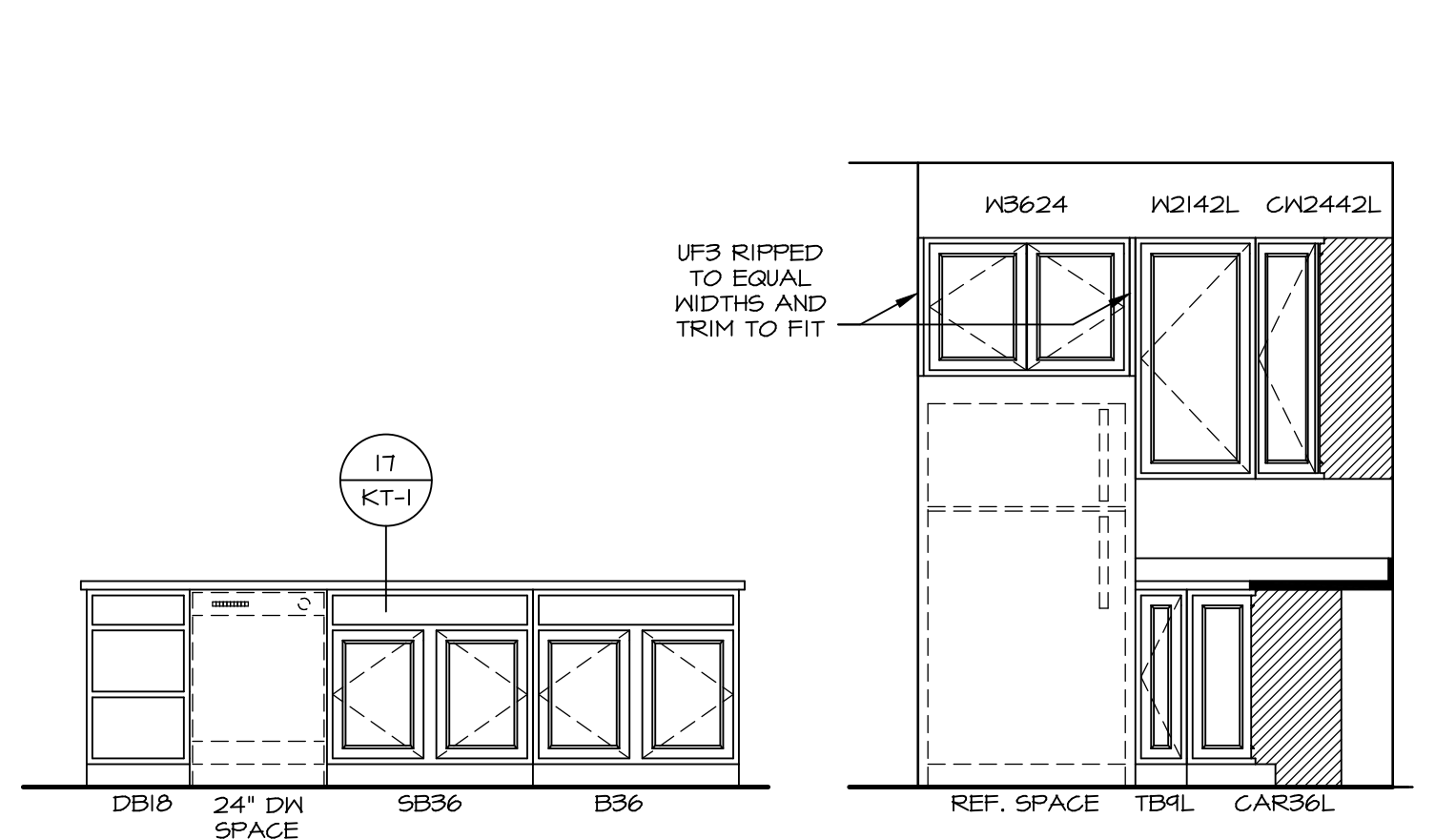
KITCHEN CABINET LAYOUT (KC-3357)

1
A-13 SCALE: 3/8" = 1'-0"



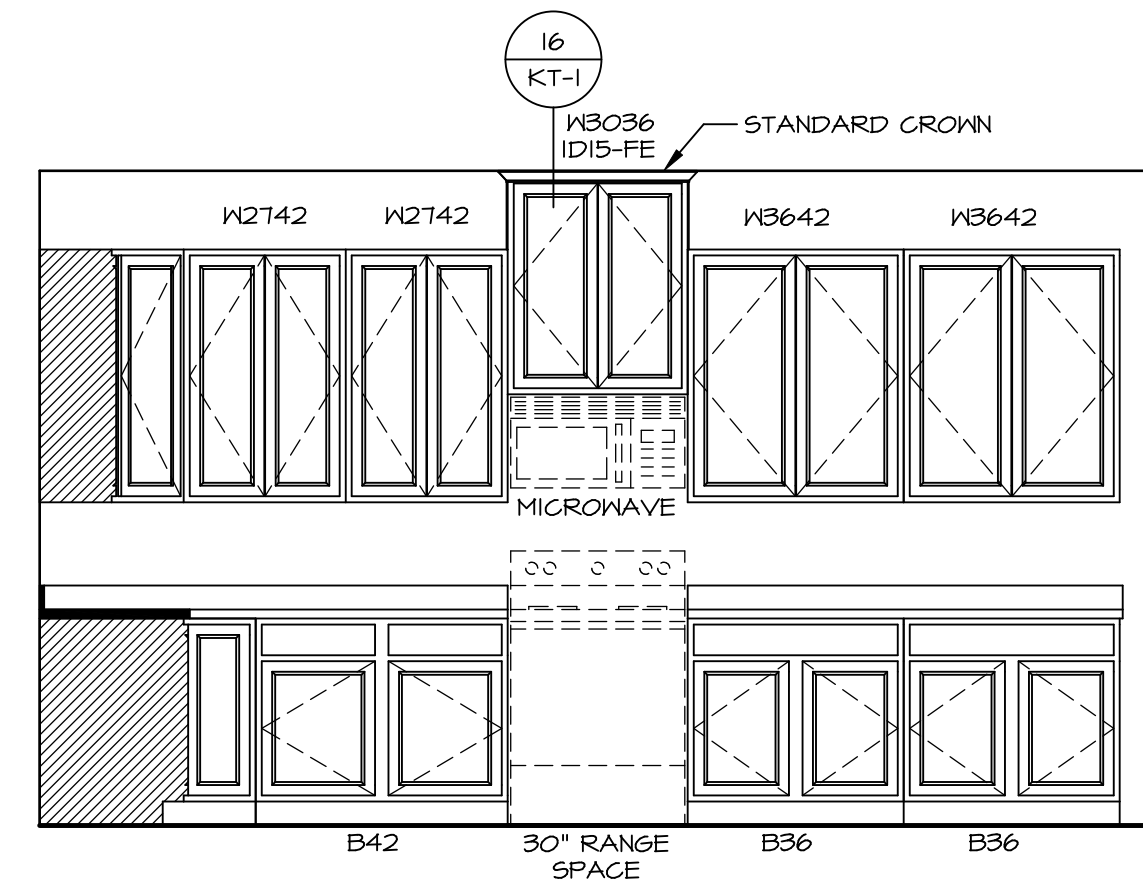
KITCHEN COUNTERTOP LAYOUT (KC-3357)

2
A-13 SCALE: 3/8" = 1'-0"

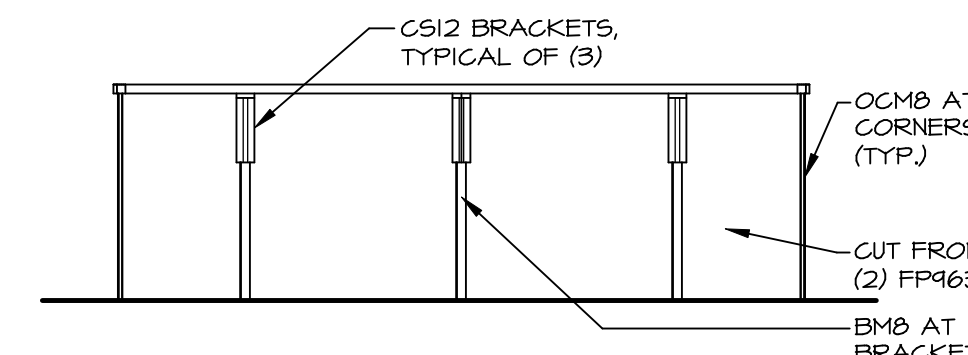


A ELEVATION "A"
SCALE: 3/8" = 1'-0"

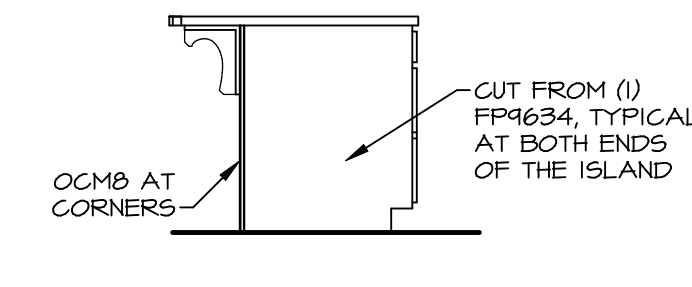
B ELEVATION "B"
SCALE: 3/8" = 1'-0"



C ELEVATION "C"
SCALE: 3/8" = 1'-0"



D ELEVATION "D"
SCALE: 3/8" = 1'-0"

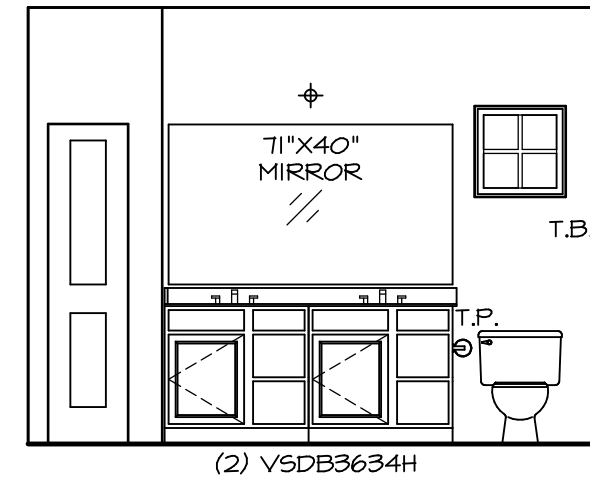


E ELEVATION "E"
SCALE: 3/8" = 1'-0"

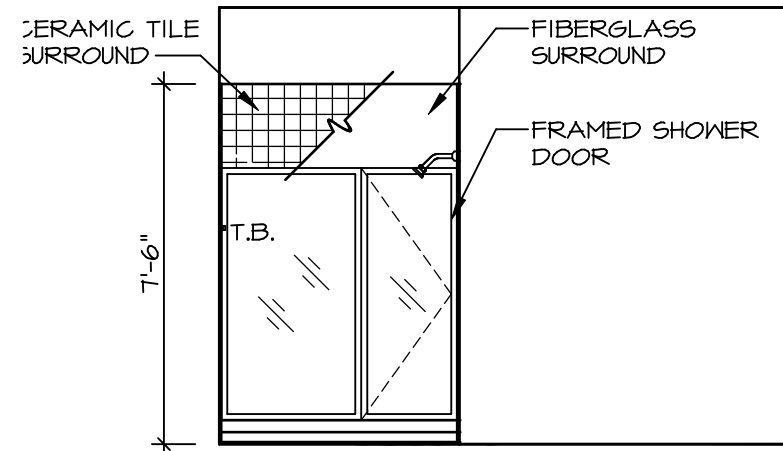
SHEET NO.	MODEL	SET NO.	ANDOVER	VERSION	DATE	OPTION	REVISIONS	REMARKS
A-13	ANDOVER DRAWING TITLE KITCHENS	01	01	HD				
38								

NVR
Architectural Services
5285 Westover Hills, Suite 100
Frederick, MD 21703

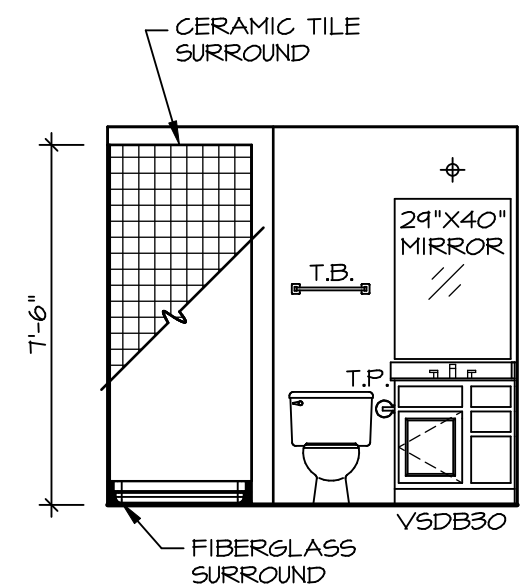
MODEL: ANDOVER
DRAWING TITLE: KITCHENS
OPTION DESCRIPTION:
SHEET NO. A-13
SCALE: 3/8" = 1'-0"
DATE:
DRAWN BY: HD
DATE:
OPTION:
REVISIONS:
REMARKS:
C:\NVR\Solves\ANDOVER_AND00_01\DCY-16-1483\1143750\SheetA.ctb Specific\38 A-13 KT-LS.dwg 03/07/19 - 8:11 am



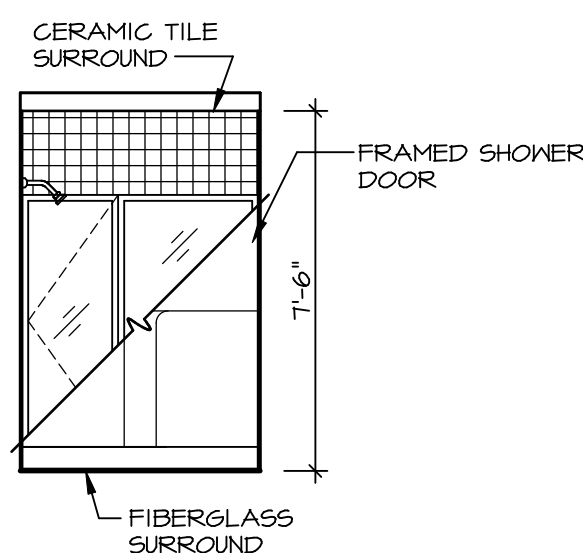
E OWNER'S BATH
SCALE: 1/4" = 1'-0"



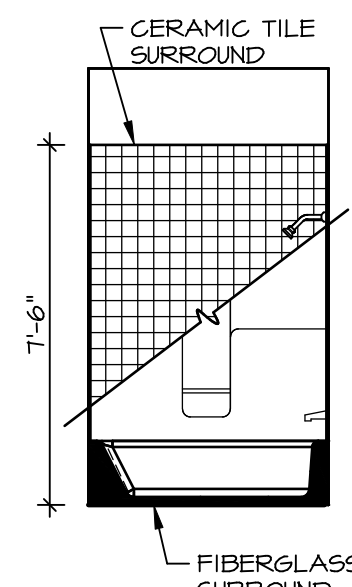
F OWNER'S BATH
SCALE: 1/4" = 1'-0"



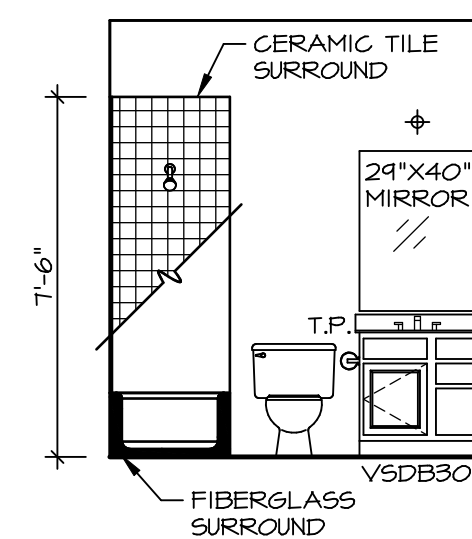
A BASEMENT BATH
SCALE: 1/4" = 1'-0"



B BASEMENT BATH
SCALE: 1/4" = 1'-0"



C BATH #1
SCALE: 1/4" = 1'-0"



D BATH #1
SCALE: 1/4" = 1'-0"

NOTES:

1. TEMPERED GLASS SHOWER ENCLOSURE WITH SWING DOOR OR OPTIONAL SLIDING DOOR BY DIVISION
2. TUB ACCESS PANELS PROVIDED AS NEEDED, ALL MATERIALS BY DIVISION
3. REFER TO SHEET IT-2 FOR TUB AND SHOWER DETAILS.
4. ALL VSDB24-42 DRAWERS TO BE SET ON RIGHT HAND.
5. BATH ELEVATIONS ARE SHOWN PER PLAN.