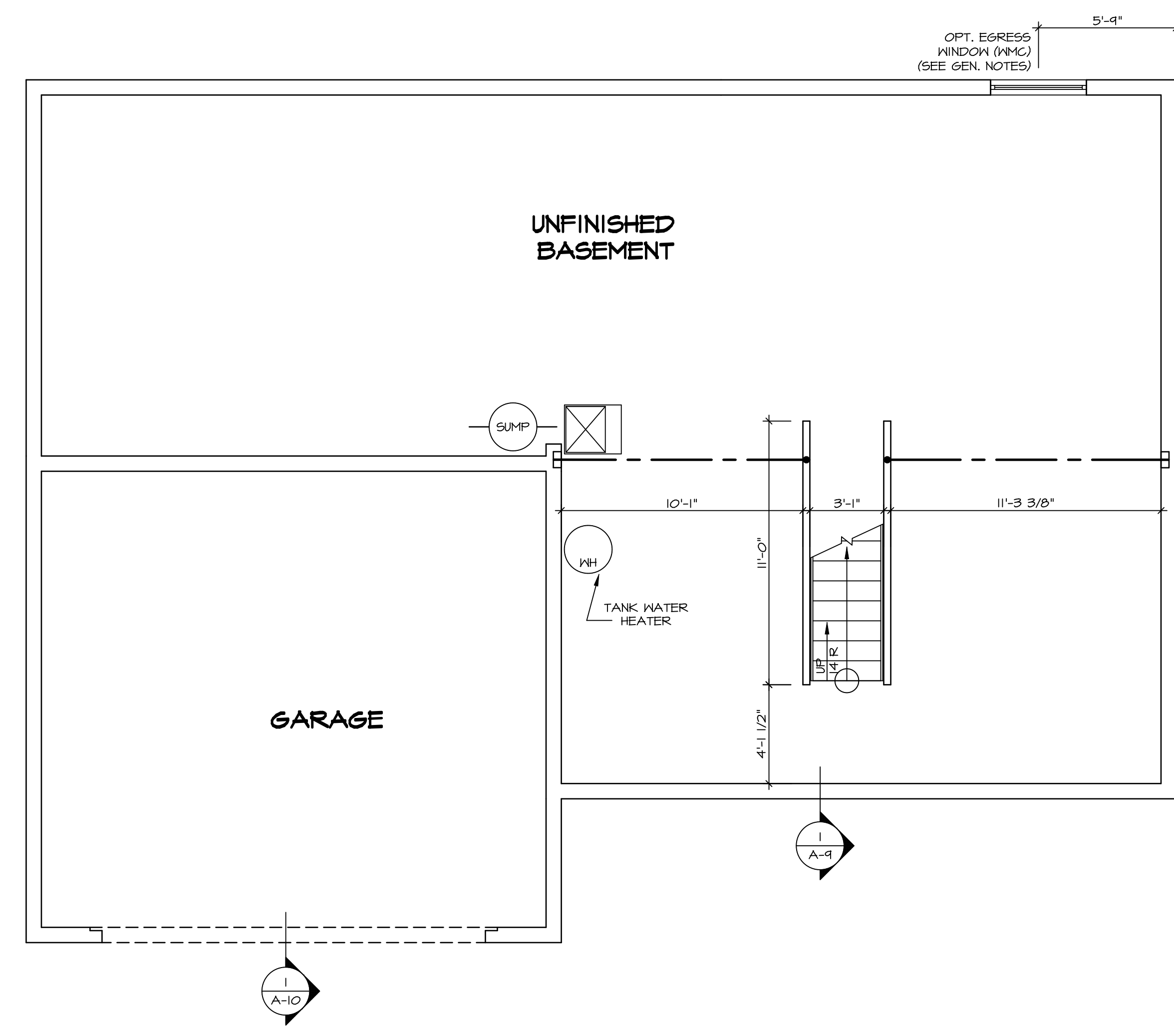


LEGEND	
	BEARING WALL
	NON BEARING WALL
	INDICATES BEARING FROM POINT-LOAD ABOVE
	JACKS
	BEAM/HEADER
	PAD FOOTING
	STEEL COLUMN
	PORTAL FRAME
	JOIST/TRUSS
	LVL
	ENGINEERING PAGE NUMBER

SEE FC DETAILS FOR FRAMING CONNECTORS

- FLOOR PLAN NOTES**
1. ALL HEADERS ARE (2) 2x6 w/ 2x4 WALLS OR (3) 2x6 w/ 2x6 WALLS, UNLESS OTHERWISE NOTED.
 2. ALL HEADERS TO HAVE (1) 2x4 OR 2x6 JACK EACH END, UNLESS OTHERWISE NOTED.
 3. ALL EXTERIOR WALLS TO BE 4" AND ALL INTERIOR WALLS TO BE 3 1/2", UNLESS OTHERWISE NOTED.
 4. HATCHED AREAS INDICATE DROPPED CEILINGS. ALL DROPPED CEILINGS ARE 12" UNLESS OTHERWISE NOTED.
 5. SEE "BRACED WALL PANEL DETAIL SHEET" FOR SPECIAL WALL FRAMING LOCATIONS AND HEADER SIZES, IF APPLICABLE.
 6. SEE STANDARD DETAIL CATEGORY "IT" SHEET(S) FOR INTERIOR TRIM DETAILS.
 7. SEE ARCHITECTURAL DETAIL SHEET "AD" FOR HOUSE SPECIFIC INTERIOR TRIM OPTION TABLE.
 8. ALL WINDOWS HAVE 7'-0" 1/2" HEADER HEIGHT UNLESS OTHERWISE NOTED.
 9. ALL CASED OPENINGS AT 7'-11", UNLESS OTHERWISE NOTED.

- GYPSUM NOTES**
- AT GARAGE:
GYPSUM BOARD AT COMMON WALLS, CEILING, BEAM WRAPS AND SUPPORTS PER STANDARD DETAIL FA-1(b) FIRE ASSEMBLIES OR AS REQUIRED BY LOCAL CODE.
- AT STAIRS:
1/2" GYPSUM BOARD AT UNDERSIDE OF STAIRS AND WALLS IN CLOSET



BASEMENT FLOOR PLAN
SCALE: 1/4" = 1'-0"

SHEET NO.	MODEL	SET NO.	DATE	REV. NO.	DATE	REMARKS
A-6	PALERMO	03	08/05/18	1		
51						

OPTION DESCRIPTION

OPTION

DATE

DRAWN BY

VERSION

SET NO.

MODEL

SHEET NO.

A-6

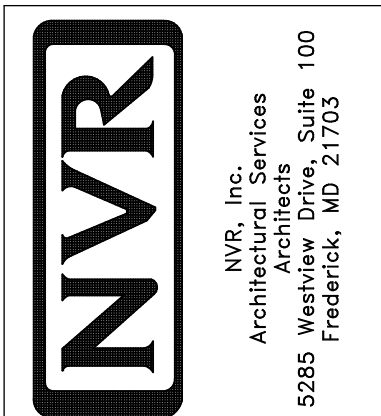
51

PALERMO

BASEMENT FLOOR PLAN

BASEMENT FLOOR PLAN

08/05/18

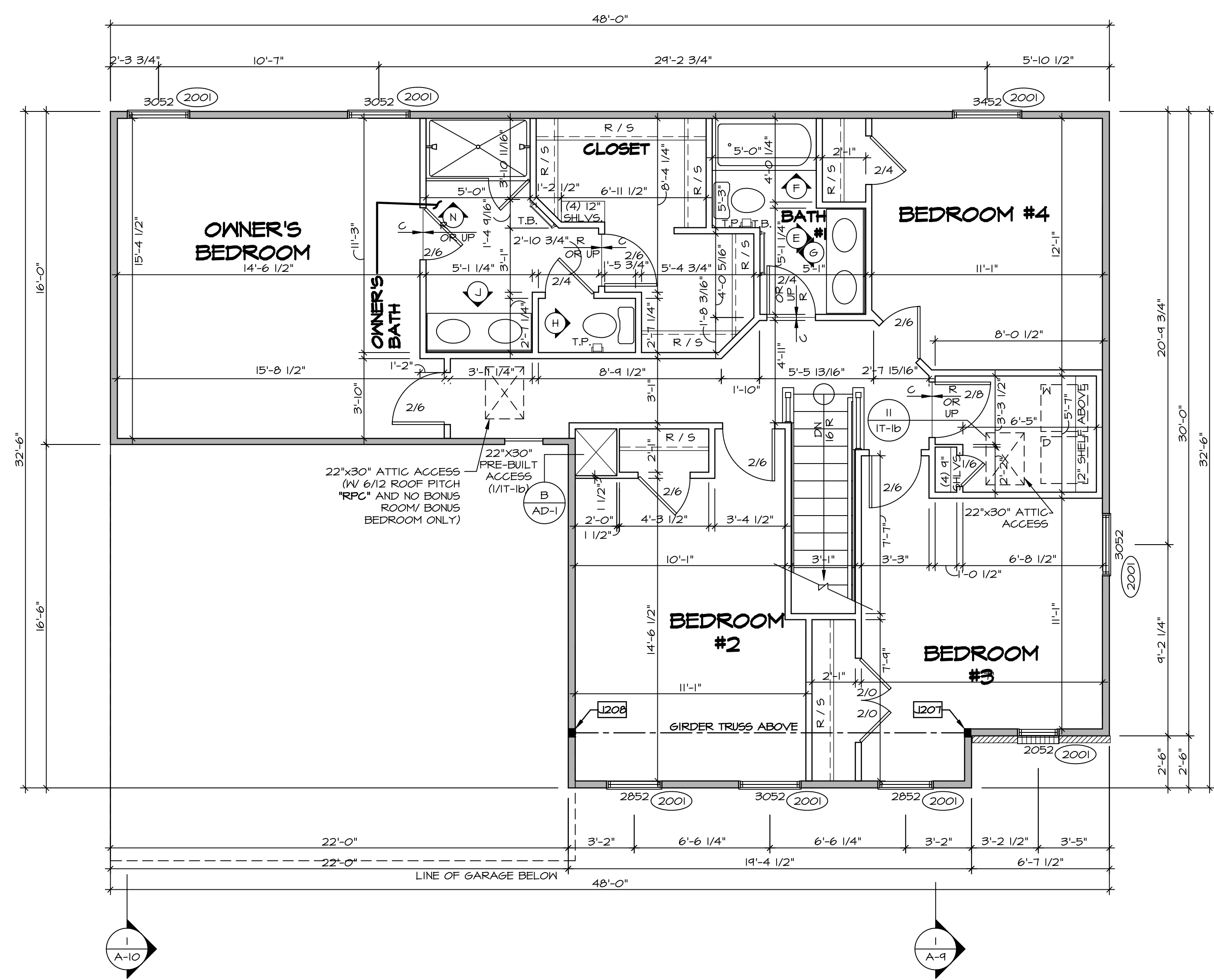


NVR, Inc., owner, expressly reserves its copyright in these plans. These plans are not to be reproduced, changed, copied, or otherwise used in any way without the written consent of NVR, Inc.

SECOND FLOOR JACK SCHEDULE				
IDENTIFIER	DESCRIPTION	OPTIONS	ENG. NUM.	REMARKS
J207	JACK - (3) 2x4 SPM	ELD	2011	EXTEND JACKS THROUGH TOP PLATE
J208	JACK - (3) 2x4 SPM	ELD	2011	EXTEND JACKS THROUGH TOP PLATE

LEGEND	
	BEARING WALL
	NON BEARING WALL
	INDICATES BEARING FROM POINT-LOAD ABOVE
	JACKS
	BEAM/HEADER
	PAD FOOTING
	STEEL COLUMN
	PORTAL FRAME
	JOIST/TRUSS
	LVL
	ENGINEERING PAGE NUMBER

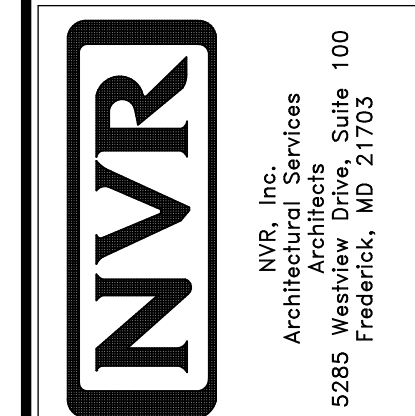
- FLOOR PLAN NOTES**
- ALL HEADERS ARE (2) 2x6 w/ 2x4 WALLS OR (3) 2x6 w/ 2x6 WALLS, UNLESS OTHERWISE NOTED.
 - ALL HEADERS TO HAVE (1) 2x4 OR 2x6 JACK AND KING STUD EACH END, UNLESS OTHERWISE NOTED.
 - ALL EXTERIOR WALLS TO BE 4" w/ OSB OR 3 1/2" w/ T-PLY, ALL INTERIOR WALLS TO BE 3 1/2", UNLESS OTHERWISE NOTED.
 - HATCHED AREAS INDICATE DROPPED CEILINGS. ALL DROPPED CEILINGS ARE 12" UNLESS OTHERWISE NOTED.
 - SEE "BRACED WALL PANEL DETAIL SHEET" FOR SPECIAL WALL FRAMING LOCATIONS AND HEADER SIZES, IF APPLICABLE.
 - SEE STANDARD DETAIL CATEGORY "1T" SHEET(S) FOR INTERIOR TRIM DETAILS.
 - SEE ARCHITECTURAL DETAIL SHEET "AD" FOR HOUSE SPECIFIC INTERIOR TRIM OPTION TABLE.
 - ALL WINDOWS HAVE 7'-0 1/2" HEADER HEIGHT UNLESS OTHERWISE NOTED.
 - ALL HEADERS IN NON-BEARING WALLS SHALL BE A SINGLE FLAT 2x4 OR 2x6 ATTACHED TO CRIPPLES ABOVE, UNLESS OTHERWISE NOTED.



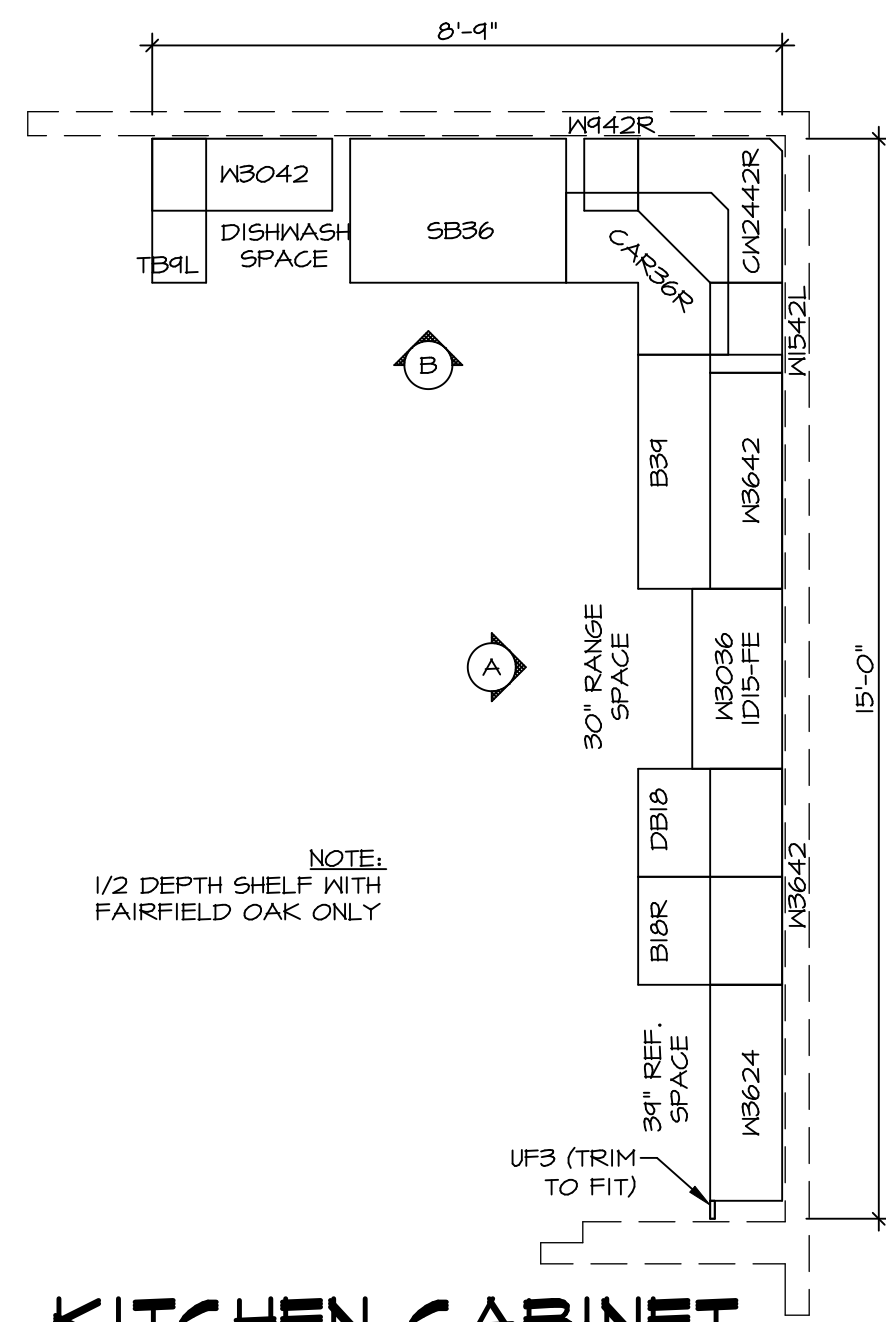
SECOND FLOOR PLAN
SCALE: 1/4" = 1'-0"

REV. NO.	DATE	REMARKS
1	08/04/18	TH - DRAWING ALIGNMENT
2	07/27/18	SLS - T-PLY CONVERSION PROJECT

NVR, Inc., owner, expressly reserves its copyright in these plans. These plans are not to be reproduced, changed, copied, or otherwise used in any way without the written consent of NVR, Inc.



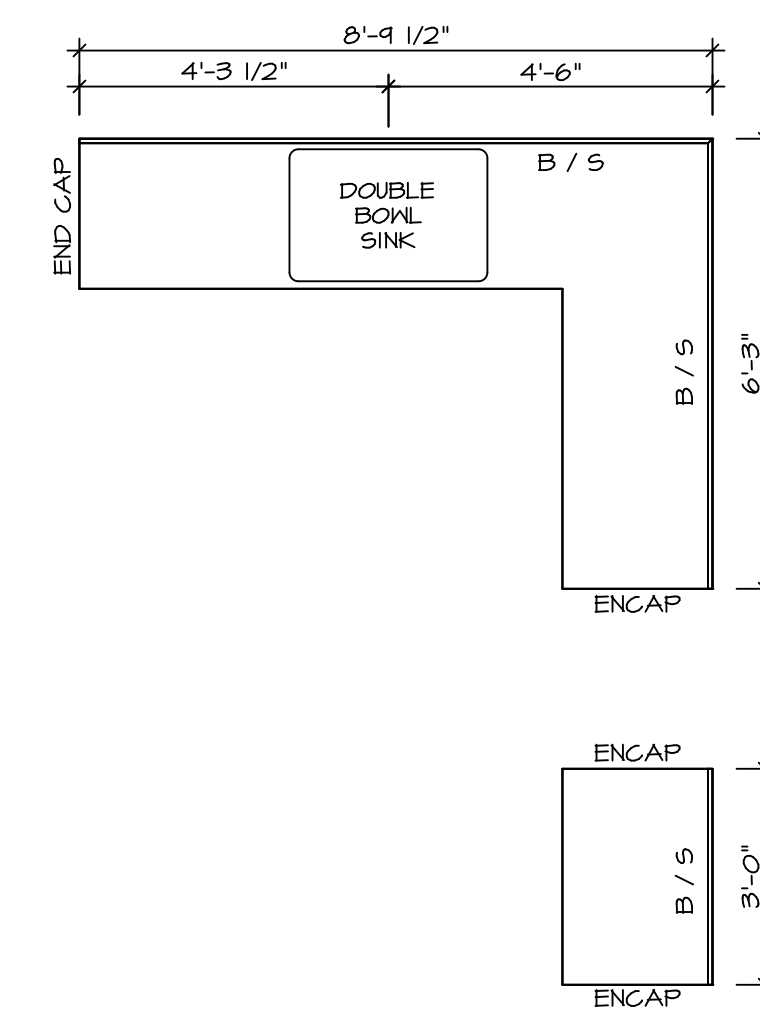
SHEET NO.	MODEL	SET NO.	VERSION	DRAWN BY	DATE:	OPTION
A-8	PALERMO	03	03			
60						



**KITCHEN CABINET
PLAN-KC-2858**

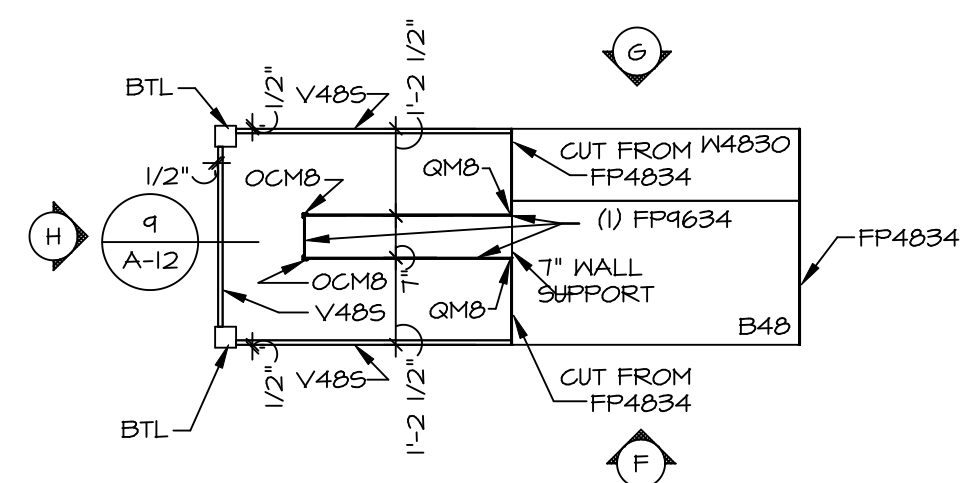
STANDARD KITCHEN SCALE: 3/8" = 1'-0" A-12

NOTE:
1/2 DEPTH SHELF WITH
FAIRFIELD OAK ONLY



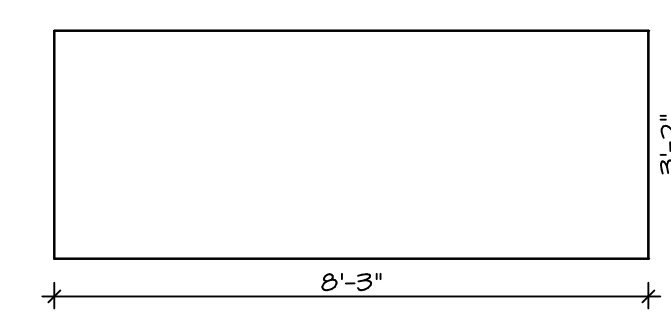
**KITCHEN COUNTERTOP
PLAN-KT-2858**

STANDARD KITCHEN SCALE: 3/8" = 1'-0" A-12



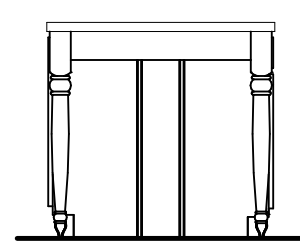
**KITCHEN CABINET
PLAN-KC-3214**

GOURMET ISLAND SCALE: 3/8" = 1'-0" A-12

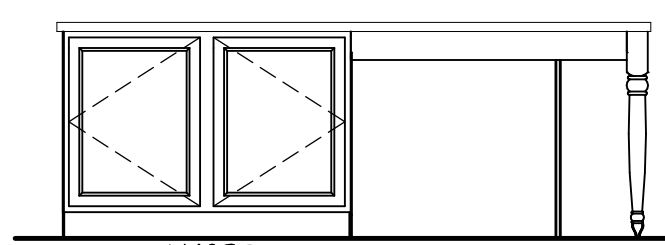


**KITCHEN COUNTERTOP
PLAN-KT-3214**

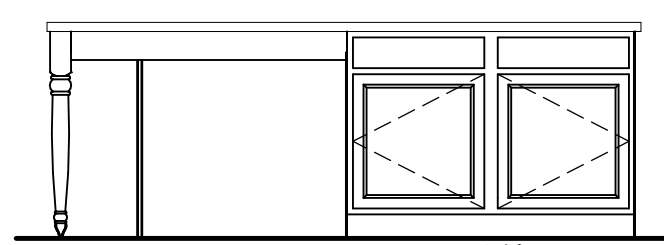
GOURMET ISLAND SCALE: 3/8" = 1'-0" A-12



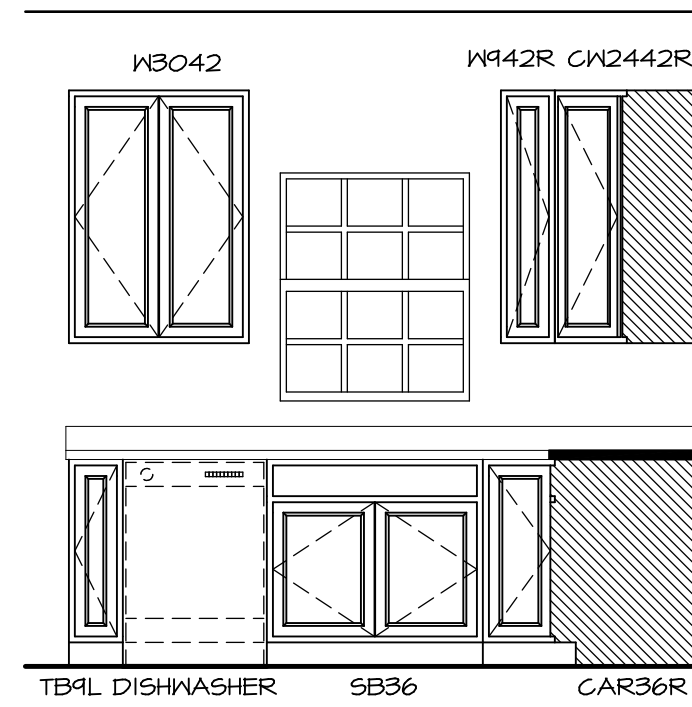
**KITCHEN ELEVATION
SCALE: 3/8" = 1'-0" H**



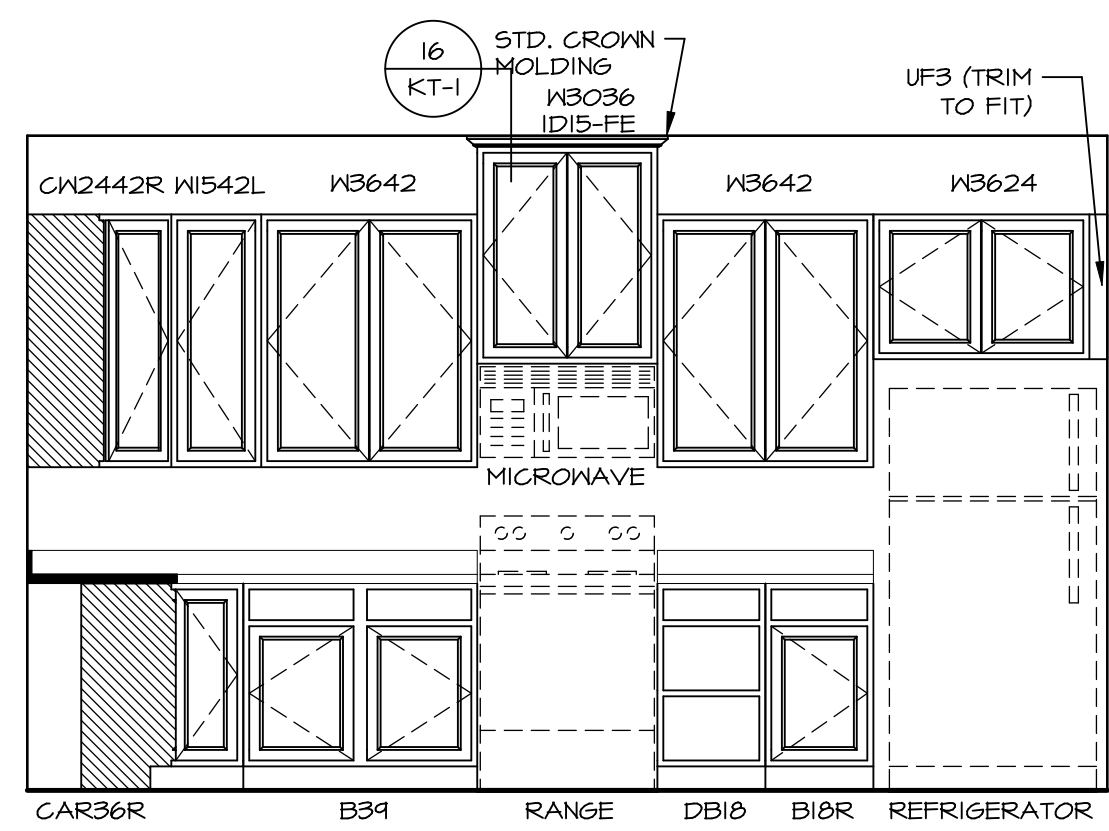
**KITCHEN ELEVATION
SCALE: 3/8" = 1'-0" G**



**KITCHEN ELEVATION
SCALE: 3/8" = 1'-0" F**

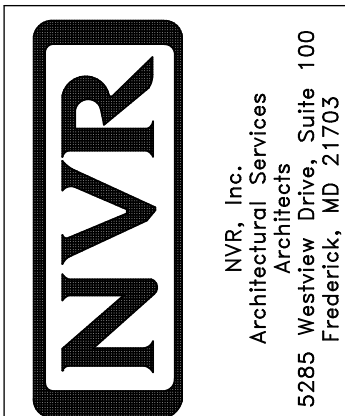


**KITCHEN ELEVATION
SCALE: 3/8" = 1'-0" B**

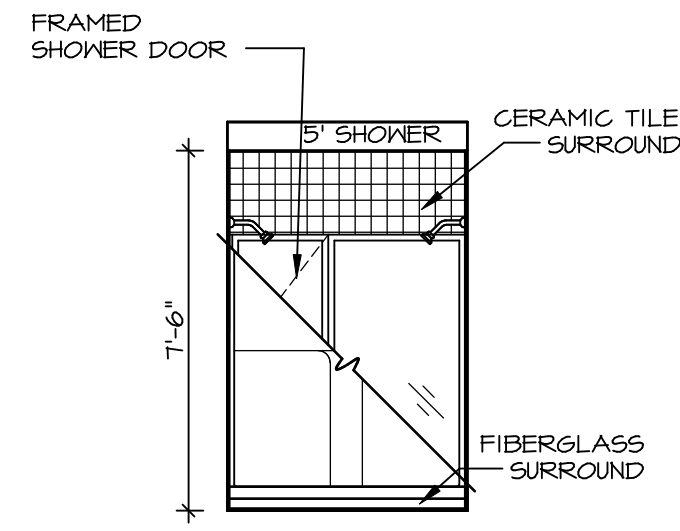


**KITCHEN ELEVATION
SCALE: 3/8" = 1'-0" A**

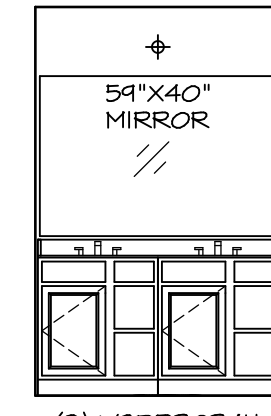
SHEET NO. A-12	MODEL PALERMO	SET NO. PALOO	REMARKS
	DRAWING TITLE	VERSION 03	
70	OPTION DESCRIPTION	DRAWN BY	REV. NO. DATE
		DATE:	
		OPTION	



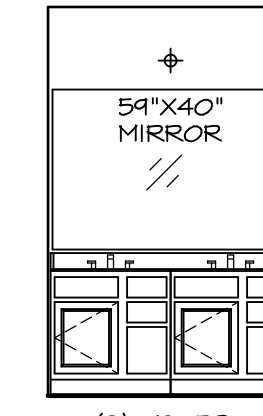
NVR, Inc., owner, expressly reserves its copyright in these plans. These plans are not to be reproduced, changed, copied, or otherwise used in any way without the prior written consent of NVR, Inc.



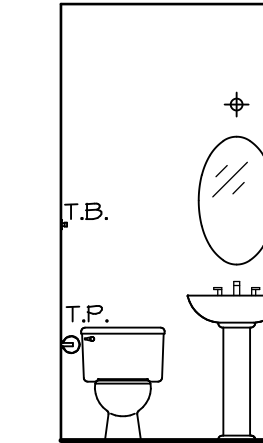
N OWNER'S BATH
SCALE: 1/4" = 1'-0"



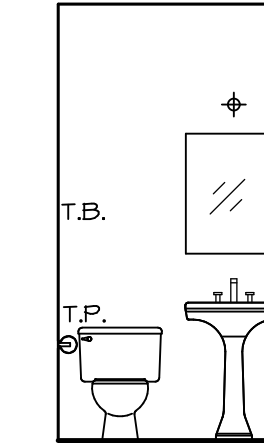
J OWNER'S BATH
SCALE: 1/4" = 1'-0"



E BATH #1
SCALE: 1/4" = 1'-0"

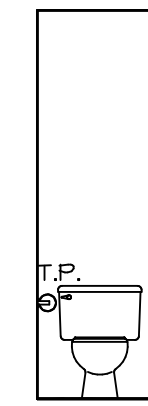


PEDESTAL SINK WITH OVAL MIRROR "52B"

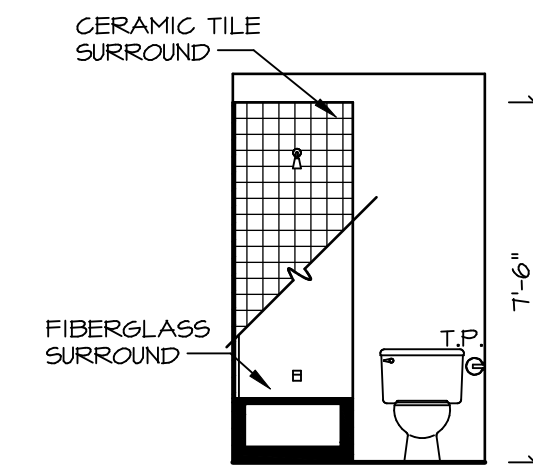


PEDESTAL SINK WITH SQUARE MIRROR "52C"

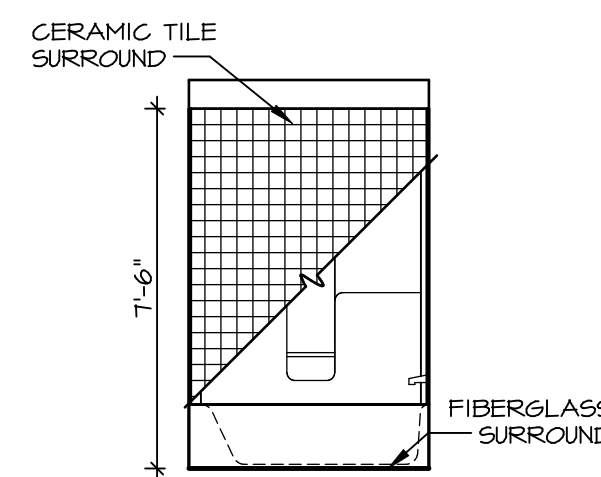
B POWDER ROOM
SCALE: 1/4" = 1'-0"



H OWNER'S BATH
SCALE: 1/4" = 1'-0"



G BATH #1
SCALE: 1/4" = 1'-0"



F BATH #1
SCALE: 1/4" = 1'-0"

NOTES:

1. TEMPERED GLASS SHOWER ENCLOSURE WITH SWING DOOR OR OPTIONAL SLIDING DOOR BY DIVISION
2. TUB ACCESS PANELS PROVIDED AS NEEDED, ALL MATERIALS BY DIVISION
3. REFER TO SHEET IT-2 FOR TUB AND SHOWER DETAILS.
4. ALL V5DB24-42 DRAWERS TO BE SET ON RIGHT HAND.
5. BATH ELEVATIONS ARE SHOWN PER PLAN.

SHEET NO.	A-13
MODEL	PALERMO
DRAWING TITLE	BATH ELEVATIONS
OPTION DESCRIPTION	
72	

NVR
NVR, Inc.
Architectural Services
Architects
5285 Westover Lane, Suite 100
Frederick, MD 21703

NVR, Inc., owner, expressly reserves its copyright in these plans. These plans are not to be reproduced, changed, copied, or otherwise used in any way without the prior written consent of NVR, Inc.

REV. NO.	DATE	REMARKS
1	08/04/18	TH - DRAINING ALIGNMENT