

PLUMBING PLAN
 SCALE: 1/4" = 1'-0"

SHEET NO. A-5	MODEL BATEMAN	SET NO. BAT00 VERSION 03	REV. NO. DATE	
	DRAWING TITLE PLUMBING PLAN	DRAWN BY	REMARKS	
	OPTION DESCRIPTION 42	DATE: OPTION	NVR, Inc., owner, expressly reserves its copyright in these plans. These plans are not to be reproduced, changed, copied, or used in any way without the written consent of NVR, Inc.	
NVR, Inc. Architects 5285 Westwood Drive, Suite 100 Frederick, MD 21703		C:\NVR\Solves\BATEMAN_BAT00_03\DCY-16-1490\874041\Sheets\101_Spec\16_A-5_PLUMB_L3.dwg 07/24/18 - 8:15 am		

FLOOR PLAN NOTES



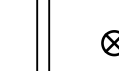

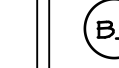

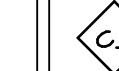


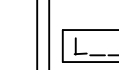
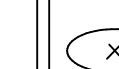
1. ALL HEADERS ARE (2) 2x6 W/ 2x4 WALLS OR (3) 2x6 W/ 2x6 WALLS, UNLESS OTHERWISE NOTED.
2. ALL HEADERS TO HAVE (1) 2x4 OR 2x6 JACK EACH END, UNLESS OTHERWISE NOTED.
3. ALL EXTERIOR WALLS TO BE 4" AND ALL INTERIOR WALLS TO BE 3 1/2", UNLESS OTHERWISE NOTED.
4. HATCHED AREAS INDICATE DROPPED CEILINGS. ALL DROPPED CEILINGS ARE 12" UNLESS OTHERWISE NOTED.
5. SEE "BRACED WALL PANEL DETAIL SHEET" FOR SPECIAL WALL FRAMING LOCATIONS AND HEADER SIZES, IF APPLICABLE.
6. SEE STANDARD DETAIL CATEGORY "IT" SHEET(S) FOR INTERIOR TRIM DETAILS.
7. SEE ARCHITECTURAL DETAIL SHEET "AD" FOR HOUSE SPECIFIC INTERIOR TRIM OPTION TABLE.
8. ALL WINDOWS HAVE T-O 1/2" HEADER HEIGHT UNLESS OTHERWISE NOTED.

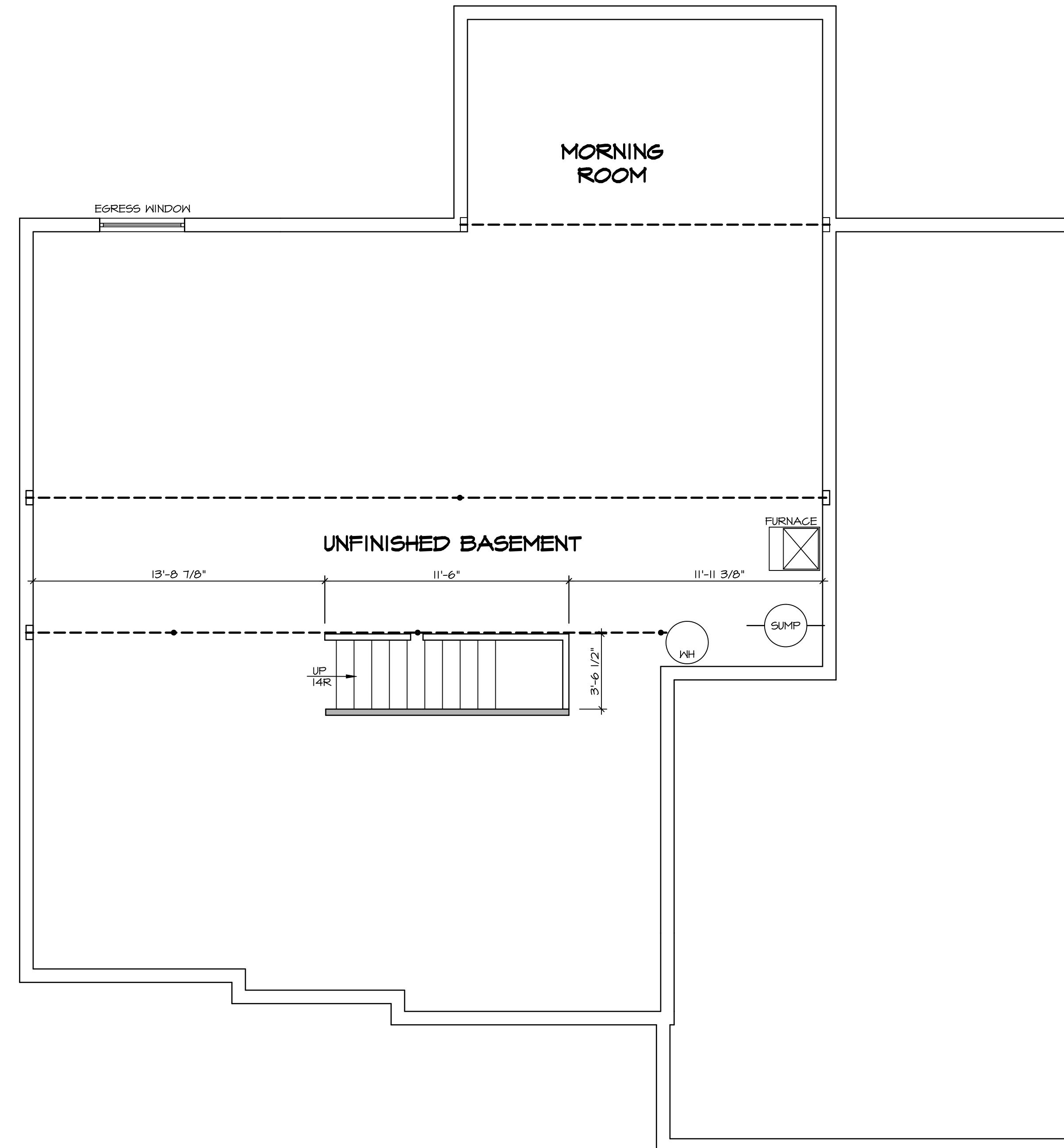
GYPHUM NOTES

AT GARAGE:
 GYPSUM BOARD AT COMMON WALLS, CEILINGS, BEAM WRAPS AND SUPPORTS PER STANDARD DETAIL FA-1(b) FIRE ASSEMBLIES OR AS REQUIRED BY LOCAL CODE.

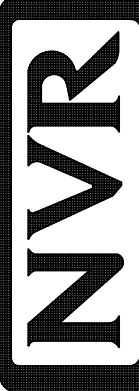
AT STAIRS:
 1/2" GYPSUM BOARD AT UNDERSIDE OF STAIRS AND WALLS IN CLOSET

LEGEND

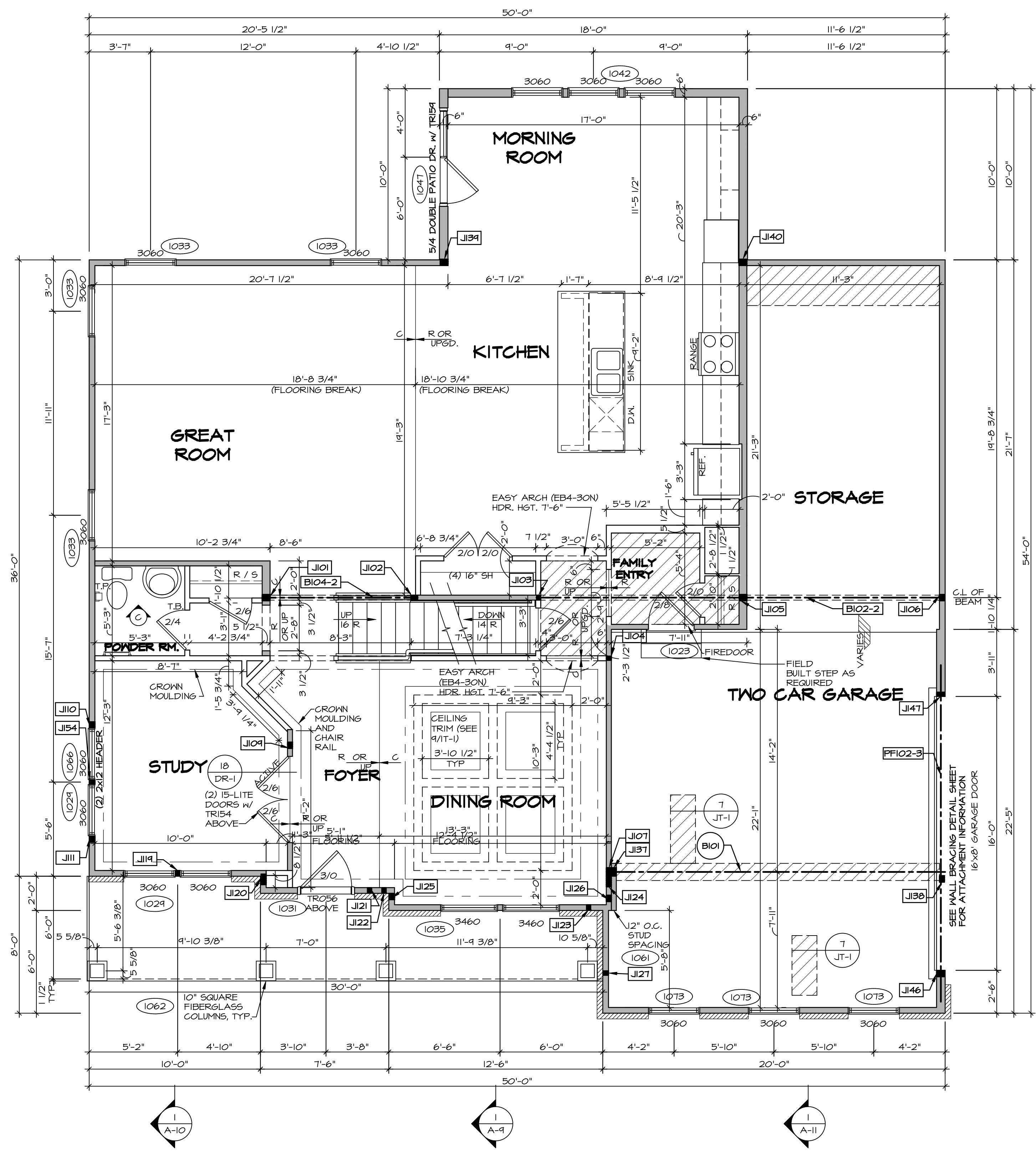
-  BEARING WALL
 -  NON BEARING WALL
 -  INDICATES BEARING FROM POINT-LOAD ABOVE
 -  JACKS
 -  BEAM/HEADER
 -  PAD FOOTING
 -  STEEL COLUMN
 -  PORTAL FRAME
 -  JOIST/TRUSS
 -  LVL
 -  ENGINEERING PAGE NUMBER
- SEE FC DETAILS FOR FRAMING CONNECTORS



BASEMENT FLOOR PLAN
 SCALE: 1/4" = 1'-0"

SHEET NO. A-6	MODEL BATEMAN	SET NO. BAT00 VERSION 03 DRAWING TITLE BASEMENT FLOOR PLAN	DRAWN BY DATE: OPTION 	OPTION DESCRIPTION 	SHEET NO. 46
 NVR, Inc. Architectural Services Architects 5285 Westpark Drive, Suite 100 Frederick, MD 21703					
NVR, Inc., owner, expressly reserves its copyright in these plans. These plans are not to be reproduced, changed, adapted, or otherwise used without the written consent of NVR, Inc.					
C:\NVR\Solves\BATEMAN_BAT00_03\DCY-YG-YG-1490\874041\Sheets\Lot_Spec\16_A-6_BSMT_LS.dwg 07/24/18 - 8:15 am					

REV. NO.	DATE	REMARKS



FIRST FLOOR PLAN
SCALE: 1/4" = 1'-0"

LEGEND

- BEARING WALL
- NON BEARING WALL
- INDICATES BEARING FROM POINT-LOAD ABOVE
- JACKS
- BEAM/HEADER
- PAD FOOTING
- STEEL COLUMN
- PORTAL FRAME
- JOIST/TRUSS
- LVL
- ENGINEERING PAGE NUMBER

SEE FC DETAILS FOR FRAMING CONNECTORS

- FLOOR PLAN NOTES**
- ALL HEADERS ARE (2) 2x6 w/ 2x4 WALLS OR (3) 2x6 w/ 2x6 WALLS, UNLESS OTHERWISE NOTED.
 - ALL HEADERS TO HAVE (1) 2x4 OR 2x6 JACK EACH END, UNLESS OTHERWISE NOTED.
 - ALL EXTERIOR WALLS TO BE 4" AND ALL INTERIOR WALLS TO BE 3 1/2", UNLESS OTHERWISE NOTED.
 - HATCHED AREAS INDICATE DROPPED CEILINGS. ALL DROPPED CEILINGS ARE 12" UNLESS OTHERWISE NOTED.
 - SEE "BRACED WALL PANEL DETAIL SHEET" FOR SPECIAL WALL FRAMING LOCATIONS AND HEADER SIZES, IF APPLICABLE.
 - SEE STANDARD DETAIL CATEGORY "IT" SHEET(S) FOR INTERIOR TRIM DETAILS.
 - SEE ARCHITECTURAL DETAIL SHEET "AD" FOR HOUSE SPECIFIC INTERIOR TRIM OPTION TABLE.
 - ALL WINDOWS HAVE 7'-0 1/2" HEADER HEIGHT UNLESS OTHERWISE NOTED.

- GYPSUM NOTES**
- AT GARAGE:**
GYPSUM BOARD AT COMMON WALLS, CEILING, BEAM WRAPS AND SUPPORTS PER STANDARD DETAIL FA-1(b) FIRE ASSEMBLIES OR AS REQUIRED BY LOCAL CODE.
- AT STAIRS:**
1/2" GYPSUM BOARD AT UNDERSIDE OF STAIRS AND WALLS IN CLOSET

- LVL PLY TO PLY FASTENING SCHEDULE: (WHERE APPLICABLE BASED ON LVL USAGE)**
- 1A - (2) FLY UP TO AND INCLUDING 11 7/8" TALL; FASTEN FLIES W/ (2) ROWS 16D NAILS AT 12" O.C.
 - 2A - (2) FLY 14" TO AND 18" TALL (INCLUSIVE); FASTEN FLIES W/ (3) ROWS 16D NAILS AT 12" O.C.
 - 3A - (2) FLY 20" TALL AND OVER; FASTEN FLIES W/ (4) ROWS 16D NAILS AT 12" O.C.
 - 4A - (3) FLY UP TO AND INCLUDING 11 7/8" TALL; FASTEN FLIES W/ (2) ROWS 16D NAILS AT 12" O.C. FROM EACH SIDE
 - 5A - (3) FLY 14" TO AND 18" TALL (INCLUSIVE); FASTEN FLIES W/ (3) ROWS 16D NAILS AT 12" O.C. FROM EACH SIDE
 - 6A - (3) FLY 20" TALL AND OVER; FASTEN FLIES W/ (4) ROWS 16D NAILS AT 12" O.C. FROM EACH SIDE
 - 7A - (4) FLY (ALL SIZES); FASTEN FLIES W/ (2) ROWS 1/2" DIAMETER A307 BOLTS AT 24" O.C. SEE SHOP DRAWING FOR ADDITIONAL INFORMATION.

FIRST FLOOR JACK SCHEDULE

IDENTIFIER	DESCRIPTION	OPTIONS	ENG. NUM.
J101	JACK - (3) 2X6 SFF STUD GRADE		1012
J102	JACK - (3) 2X4 SFF STUD GRADE		1012
J103	JACK - (2) 2X4 SFF STUD GRADE		1020
J104	JACK - (2) 2X4 SFF STUD GRADE		1008
J105	JACK - (3) 2X6 SFF STUD GRADE		1020
J106	JACK - (3) 2X4 SFF STUD GRADE		1020
J107	JACK - (4) 2X4 SFF		1025
J109	JACK - (3) 2X4 SFF STUD GRADE	MAV	1014
J110	JACK - (3) 2X4 SFF STUD GRADE	WSS, MAV	1066
J111	JACK - (3) 2X4 SFF STUD GRADE	WSS, MAV	1066
J119	JACK - (2) 2X4 SFF	ELC	1029
J120	JACK - (5) 2X4 SFF	ELC	2000
J121	JACK - (2) 2X4 SFF STUD GRADE	ELC	
J122	JACK - (2) 2X4 SFF STUD GRADE	ELC	
J123	JACK - (2) 2X4 SFF STUD GRADE	ELC	
J124	JACK - (5) 2X4 SFF	ELC	2000
J125	JACK - (3) 2X4 SFF STUD GRADE	ELC, EVA	2000
J126	JACK - (3) 2X4 SFF STUD GRADE	ELC, EVA	2000
J127	JACK - (2) 2X4 SFF STUD GRADE	ELC	
J131	JACK - (4) 2X4 SFF		1025
J138	JACK - (3) 2X4 SFF STUD GRADE	EVA	1060
J139	JACK - (3) 2X6 SFF STUD GRADE	MAA	1027
J140	JACK - (3) 2X6 SFF STUD GRADE	MAA	1027
J146	JACK - (3) 2X6 SFF STUD GRADE	GCC	1070
J147	JACK - (2) 2X6 SFF STUD GRADE	GCC	1070
J154	JACK - (2) 2X4 SFF STUD GRADE	WSS, MAV	1066

STEEL COLUMN SCHEDULE

IDENTIFIER	STYLE	HEIGHT	OPTIONS	ENG. NUM.	REMARKS

FIELD INSTALLED FIRST FLOOR BEAM/HEADER SCHEDULE

IDENTIFIER	DESCRIPTION	LENGTH	OPTIONS	ENG. NUM.	REMARKS
BIO1	BEAM STEEL - W10X30	19'-4"		1025	
BIO2-2	LVL - 11-14	23'-10"		1020	1A, 2-PLY, FIELD INSTALLED
BIO4-2	LVL - 11-04	4'-1"		1012	
PF102-3	LVL - 18	19'-8"	GCC	1070	5A, 3-PLY, PORTAL FRAME

REVISIONS:

REV. NO.	DATE	REMARKS

SET NO. BATOOC
VERSION 03
DRAWN BY
DATE:
OPTION

BATEMAN
DRAWING TITLE
FIRST FLOOR PLAN
OPTION DESCRIPTION

SHEET NO. **A-7**
49

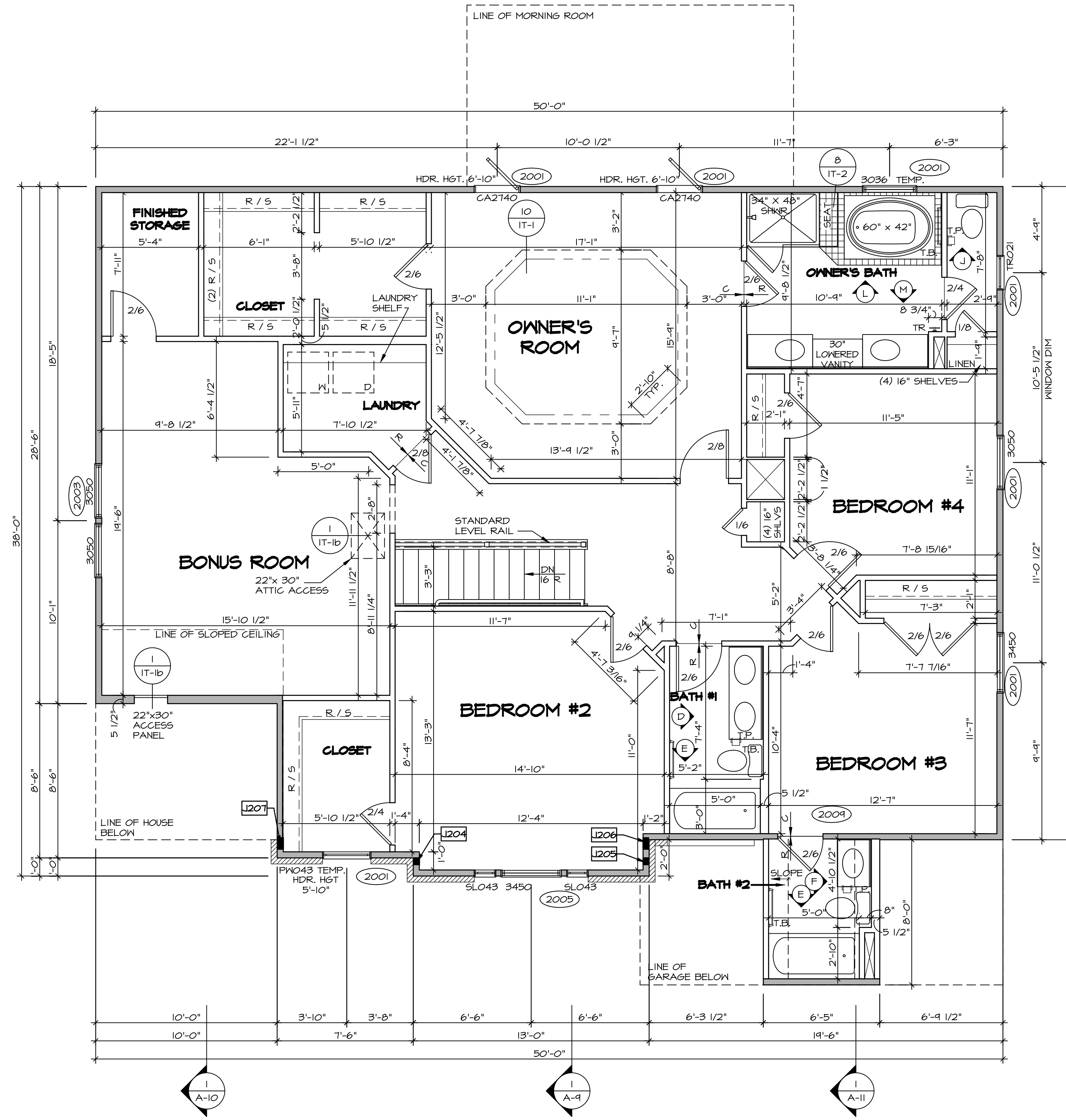
NVR
NVR, Inc.
Architectural Services
5285 West... Suite 100
Frederick, MD 21703

C:\NVR\Solves\BATEMAN_BAT00_03\DC1-V6-149\874041\Sheets\Lot_Spec\16 A-7 PLINT_L5.dwg 07/24/18 - 8:15 am

SECOND FLOOR JACK SCHEDULE			
IDENTIFIER	DESCRIPTION	OPTIONS	ENG. N.M.
J204	JACK - (3) 2X4 SPF STUD GRADE	ELC, EVA	2000
J205	JACK - (3) 2X4 SPF STUD GRADE	ELC, EVA	2000
J206	JACK - (3) 2X4 SPH	ELC	2000
J207	JACK - (3) 2X4 SPH	ELC	2000

FLOOR PLAN NOTES

- ALL HEADERS ARE (2) 2x6 w/ 2x4 WALLS OR (3) 2x6 w/ 2x6 WALLS, UNLESS OTHERWISE NOTED.
- ALL HEADERS TO HAVE (1) 2x4 OR 2x6 JACK EACH END, UNLESS OTHERWISE NOTED.
- ALL EXTERIOR WALLS TO BE 4" AND ALL INTERIOR WALLS TO BE 3 1/2", UNLESS OTHERWISE NOTED.
- HATCHED AREAS INDICATE DROPPED CEILINGS. ALL DROPPED CEILINGS ARE 12" UNLESS OTHERWISE NOTED.
- SEE "BRACED WALL PANEL DETAIL SHEET" FOR SPECIAL WALL FRAMING LOCATIONS AND HEADER SIZES, IF APPLICABLE.
- SEE STANDARD DETAIL CATEGORY "1T" SHEET(S) FOR INTERIOR TRIM DETAILS.
- SEE ARCHITECTURAL DETAIL SHEET "AD" FOR HOUSE SPECIFIC INTERIOR TRIM OPTION TABLE.
- ALL WINDOWS HAVE 7'-0 1/2" HEADER HEIGHT UNLESS OTHERWISE NOTED.



LEGEND

- BEARING WALL
 - NON BEARING WALL
 - INDICATES BEARING FROM POINT-LOAD ABOVE
 - JACKS
 - BEAM/HEADER
 - PAD FOOTING
 - STEEL COLUMN
 - PORTAL FRAME
 - JOIST/TRUSS
 - LVL
 - ENGINEERING PAGE NUMBER
- SEE FC DETAILS FOR FRAMING CONNECTORS

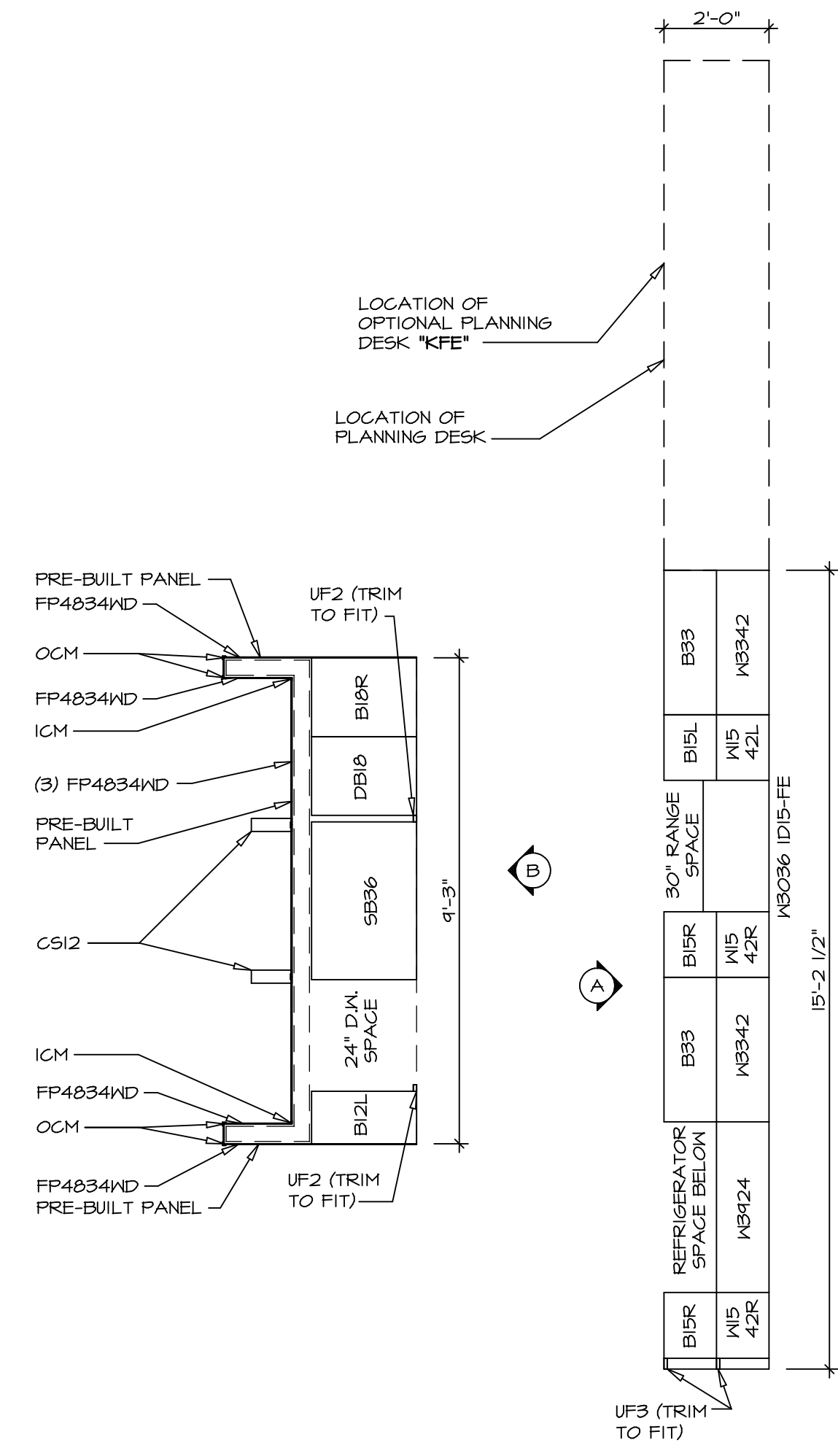
SECOND FLOOR PLAN
SCALE: 1/4" = 1'-0"

SHEET NO.	MODEL	SET NO.	VERSION	DRAWN BY	DATE	OPTION	REMARKS
A-8	BATEMAN	BAT00	03				
54	SECOND FLOOR PLAN						

NVR, Inc., owner, expressly reserves its copyright in these plans. These plans are not to be reproduced, changed, copied, or otherwise used in any way without the written consent of NVR, Inc.

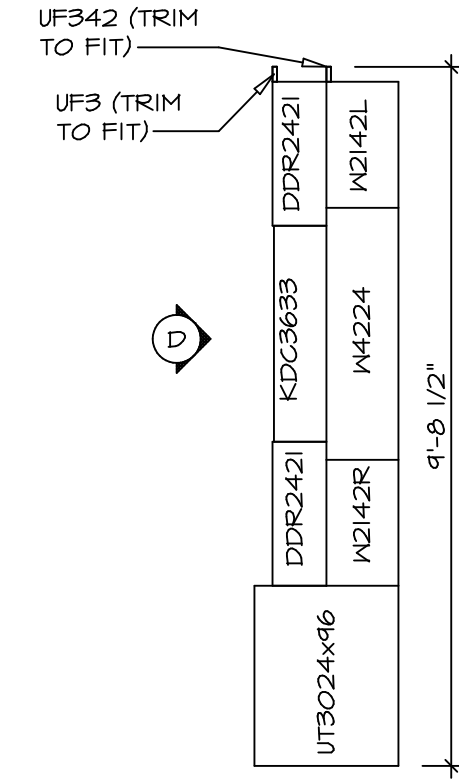
NVR, Inc.
Architectural Services
5285 Westpark Drive
Frederick, MD 21703

C:\NVR\Solves\BATEMAN_BAT00_03\DCY-16-149\874041\Sheets\101_Spec\16_54_A-8_PLN2_LS.dwg 07/24/18 - 8:15 am



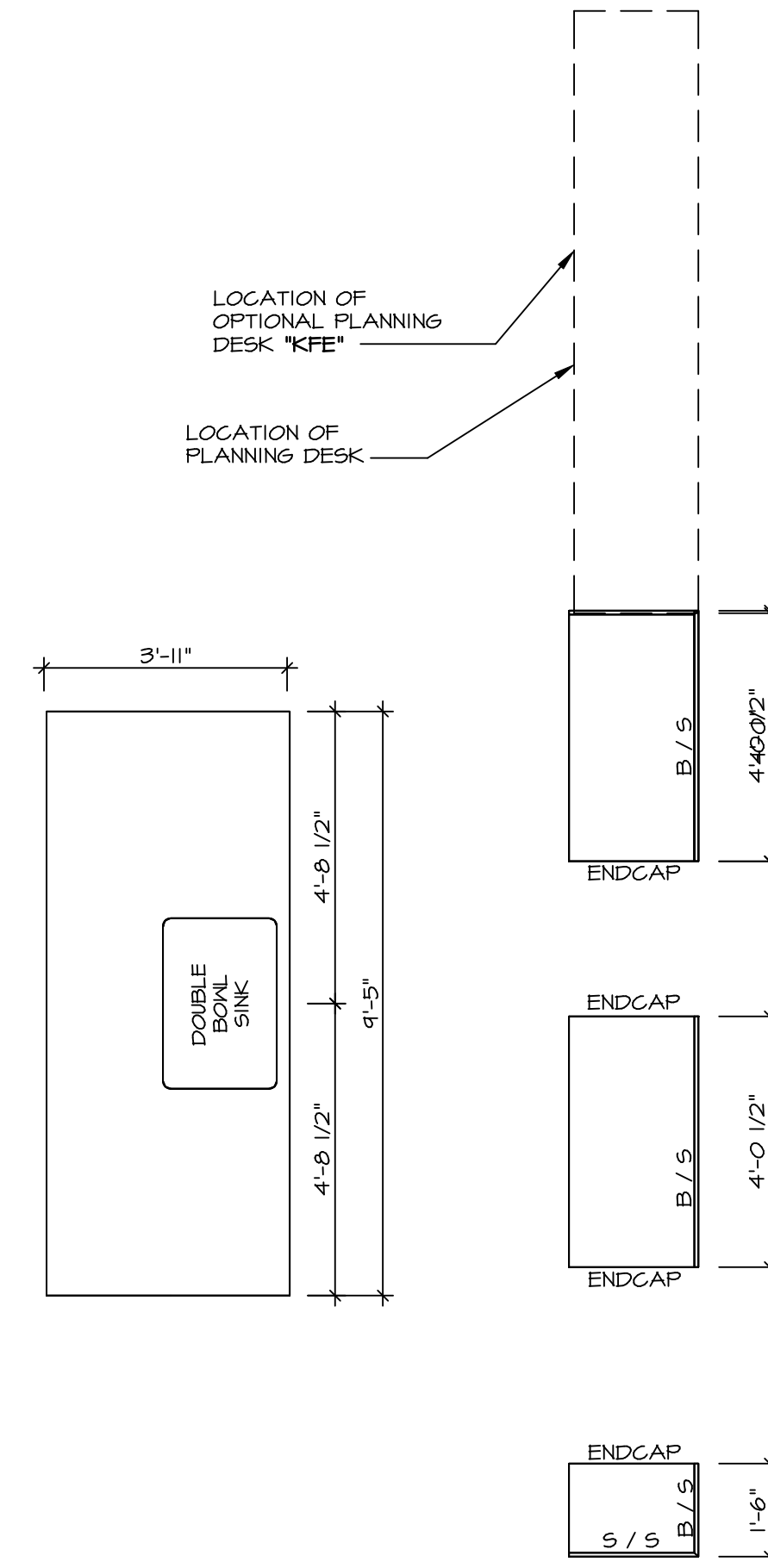
KITCHEN CABINET PLAN - KC-3146

1 A-13 SCALE: 3/8\"/>



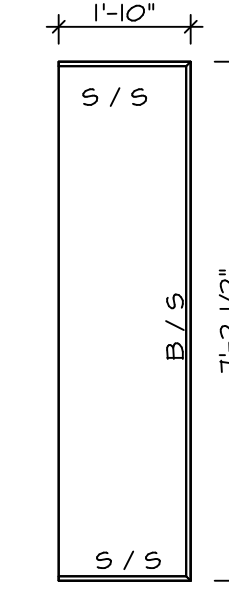
KITCHEN CABINET PLAN - KC-4215

5 A-12 SCALE: 3/8\"/>



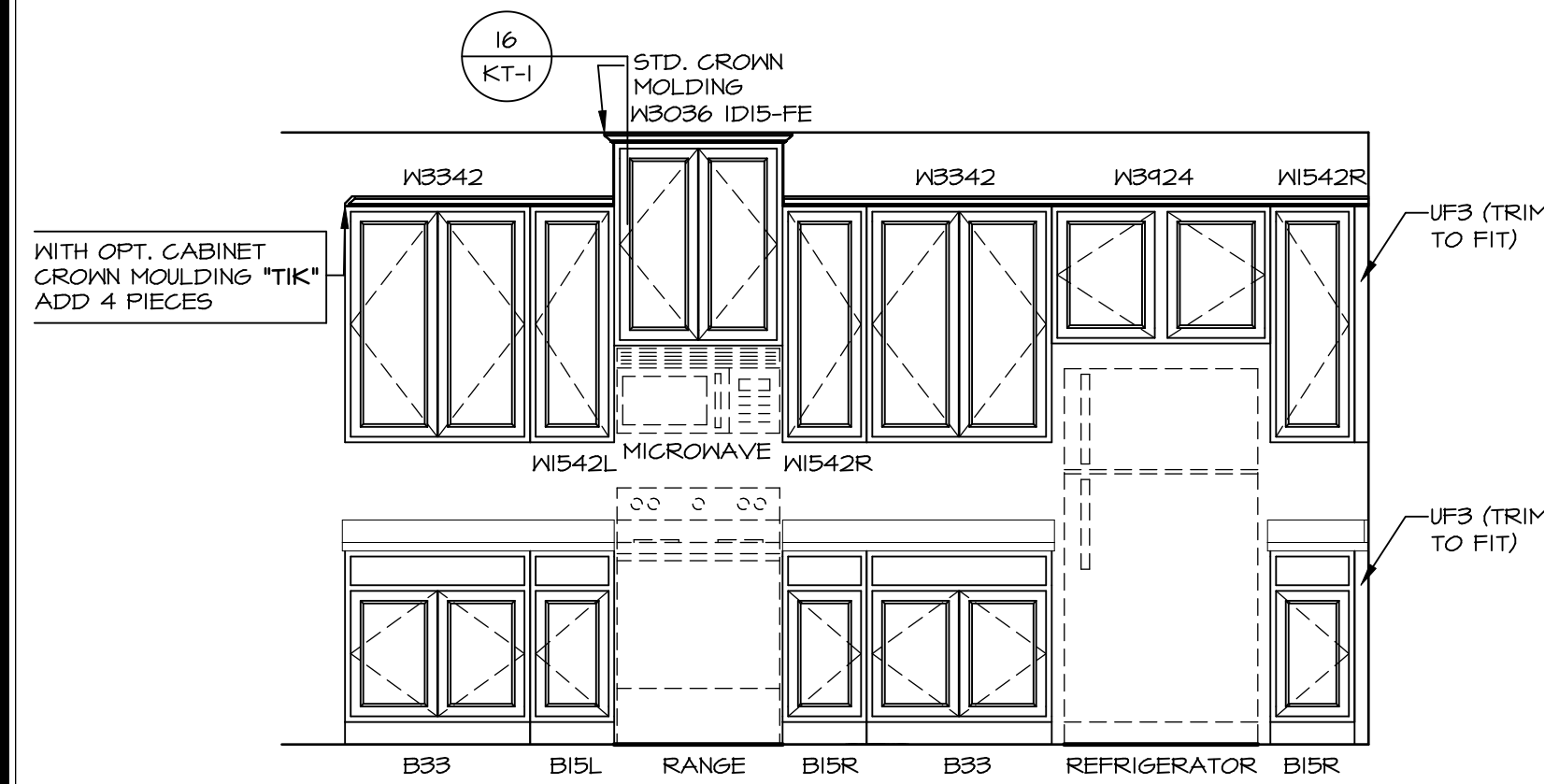
KITCHEN COUNTERTOP PLAN - KC-3146

2 A-13 SCALE: 3/8\"/>

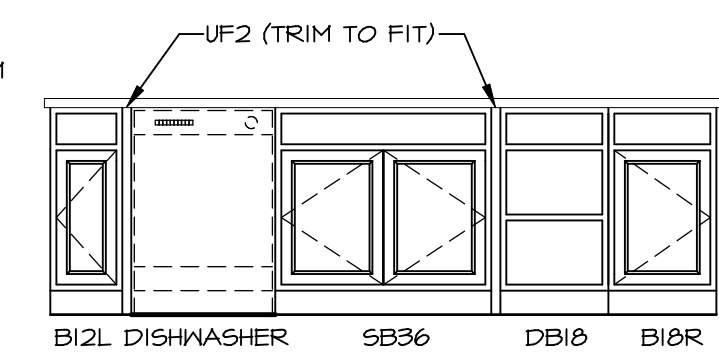


KITCHEN COUNTERTOP PLAN - KC-4215

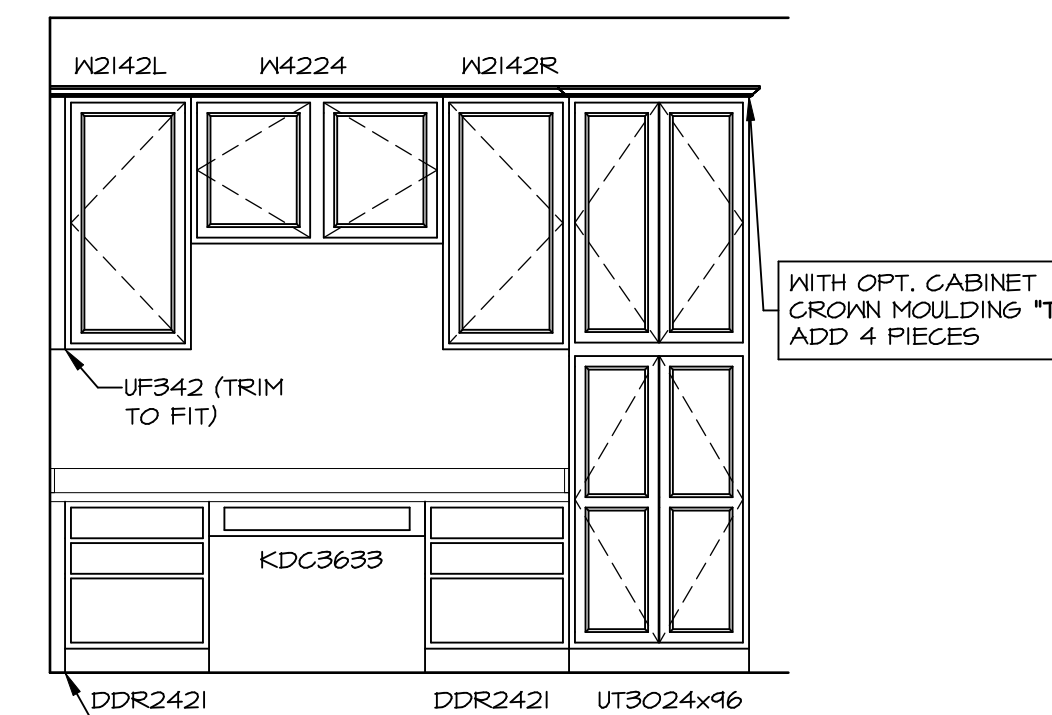
6 A-12 SCALE: 3/8\"/>



A ELEVATION
SCALE: 3/8\"/>



B ELEVATION
SCALE: 3/8\"/>

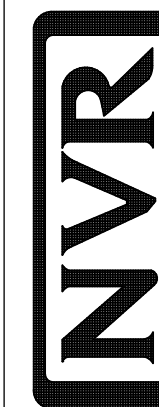


D ELEVATION
SCALE: 3/8\"/>

REMARKS

REV. NO. DATE

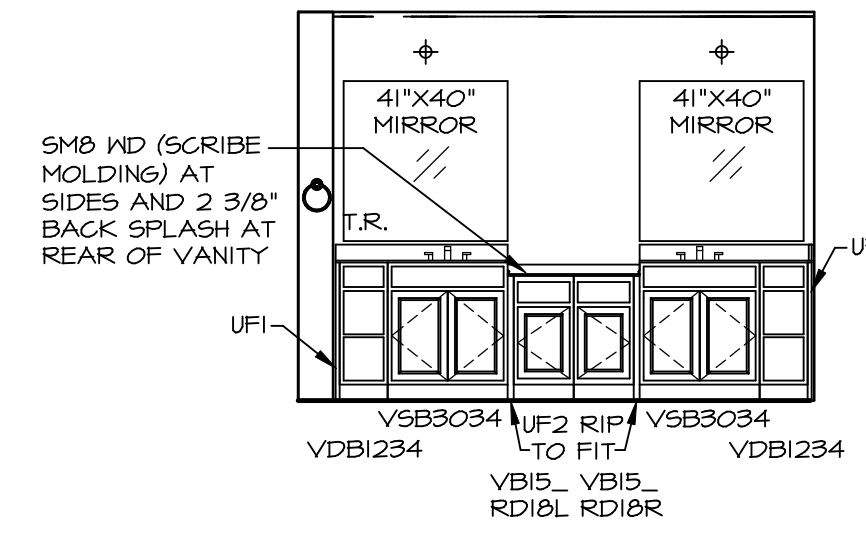
NVR, Inc., owner, expressly reserves its copyright in these plans. These plans are not to be reproduced, changed, copied in any manner or for any purpose not assigned to the contractor by the written consent of NVR, Inc.



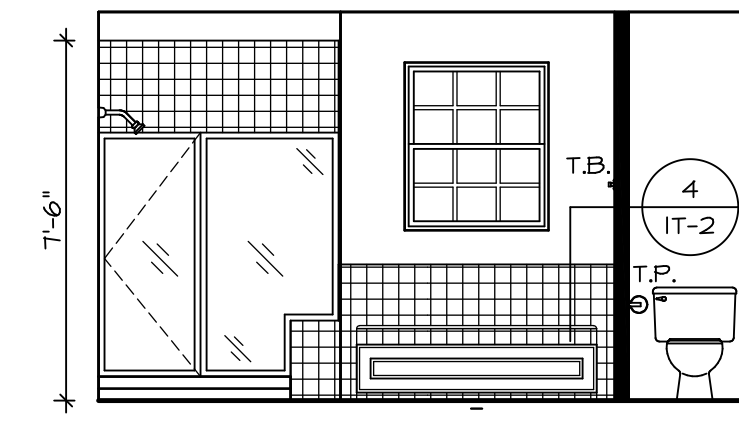
NVR, Inc.
Architectural Services
100
5285 West... Suite
Frederick, MD 21703

SHEET NO. **A-13**
MODEL **BATEMAN**
DRAWING TITLE **KITCHEN PLANS**
OPTION DESCRIPTION

65



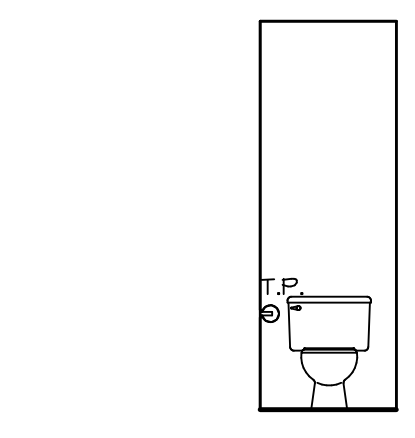
M OWNER'S BATH
SCALE: 1/4" = 1'-0"



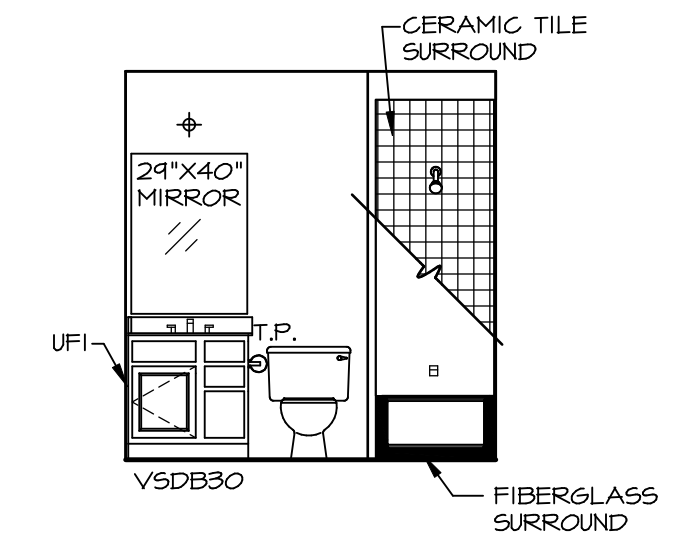
L OWNER'S BATH
SCALE: 1/4" = 1'-0"

NOTES:

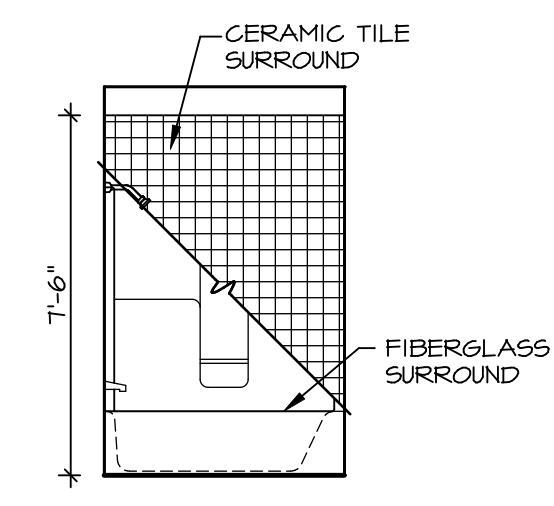
1. TEMPERED GLASS SHOWER ENCLOSURE WITH SWING DOOR OR OPTIONAL SLIDING DOOR BY DIVISION
2. TUB ACCESS PANELS PROVIDED AS NEEDED, ALL MATERIALS PROVIDED AS REFER TO SHEET IT-2 FOR TUB AND SHOWER DETAILS.
3. ALL VSDDB24-42 DRAWERS TO BE SET ON RIGHT HAND.
4. BATH ELEVATIONS ARE SHOWN PER PLAN.



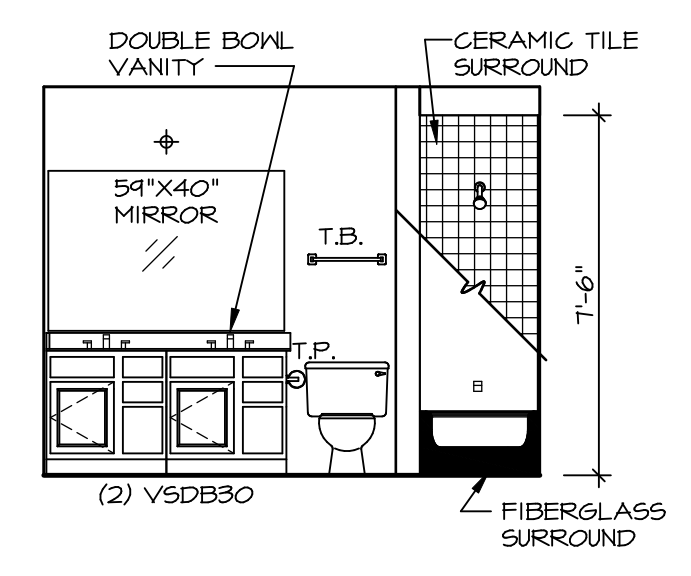
J OWNER'S BATH
SCALE: 1/4" = 1'-0"



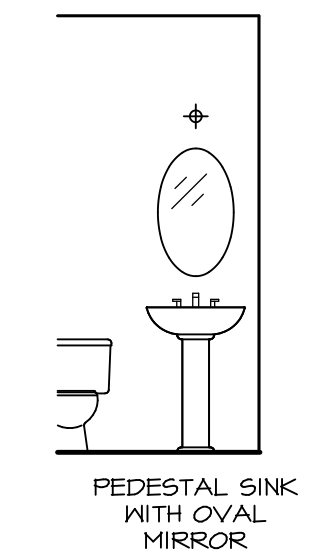
F BATH #2
SCALE: 1/4" = 1'-0"



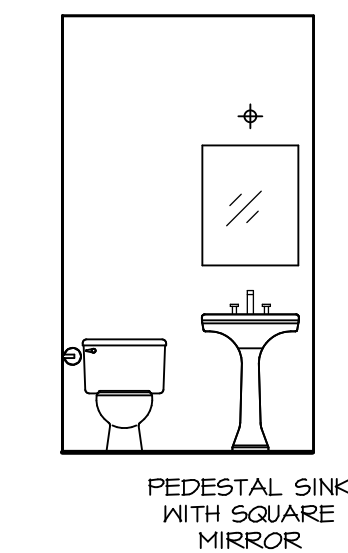
E BATH #1 / #2
SCALE: 1/4" = 1'-0"



D BATH #1
SCALE: 1/4" = 1'-0"



A OWNER ROOM
SCALE: 1/4" = 1'-0"

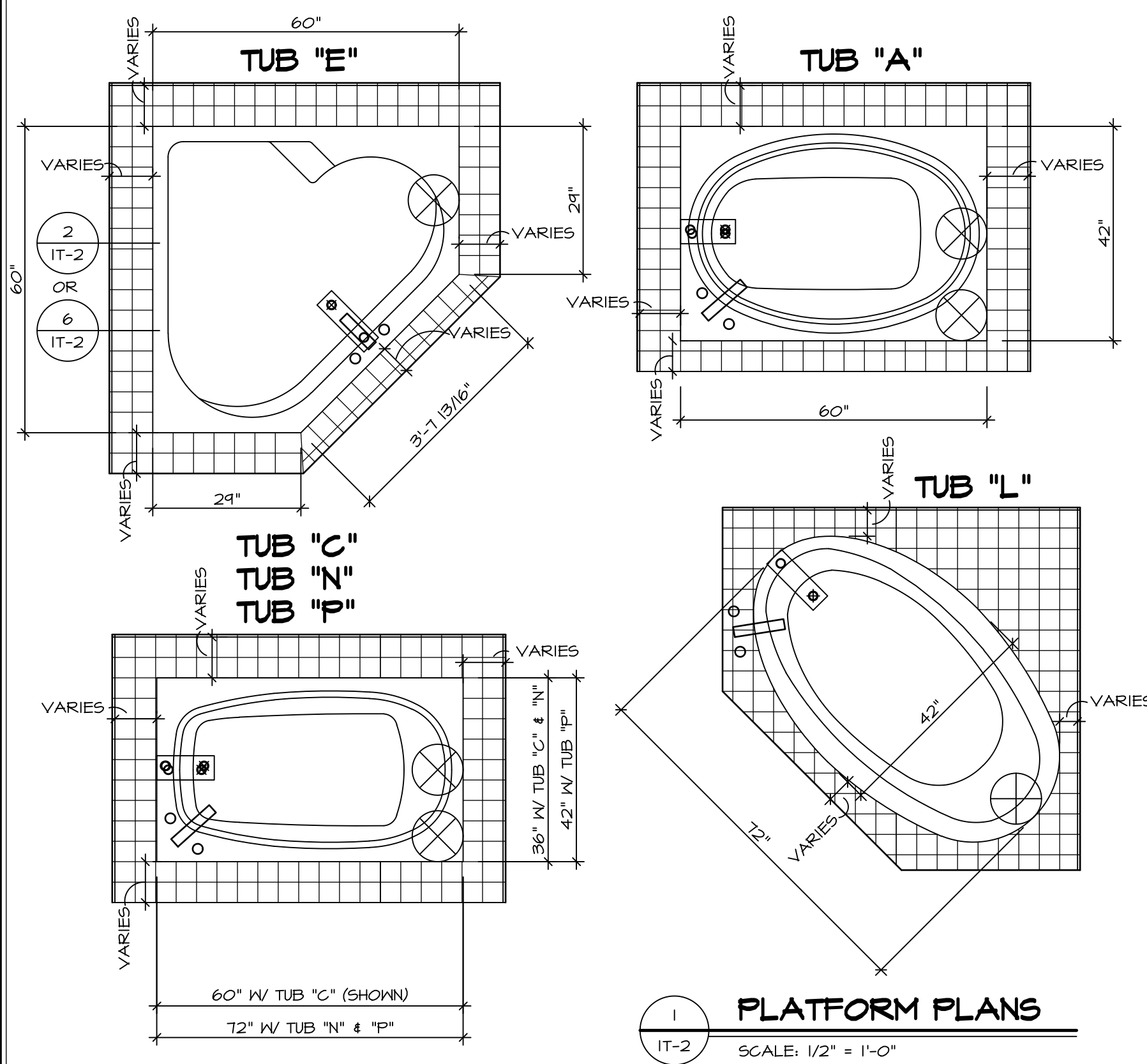


C POWDER ROOM
SCALE: 1/4" = 1'-0"

SHEET NO.	MODEL	SET NO.	DATE	REVISIONS	REMARKS
A-14	BATEMAN	BAT00_03	03		
10	BATH ELEVATIONS				

NVR
NVR, Inc.
Architectural Services
5285 Westpark Drive, Suite 100
Frederick, MD 21703

C:\NVR\Solves\BATEMAN_BAT00_03\DC1-VG-149\A\B74041\Sheets\Lot_Spec\16-A-14_BATH_LS.dwg 07/24/18 - 8:15 am

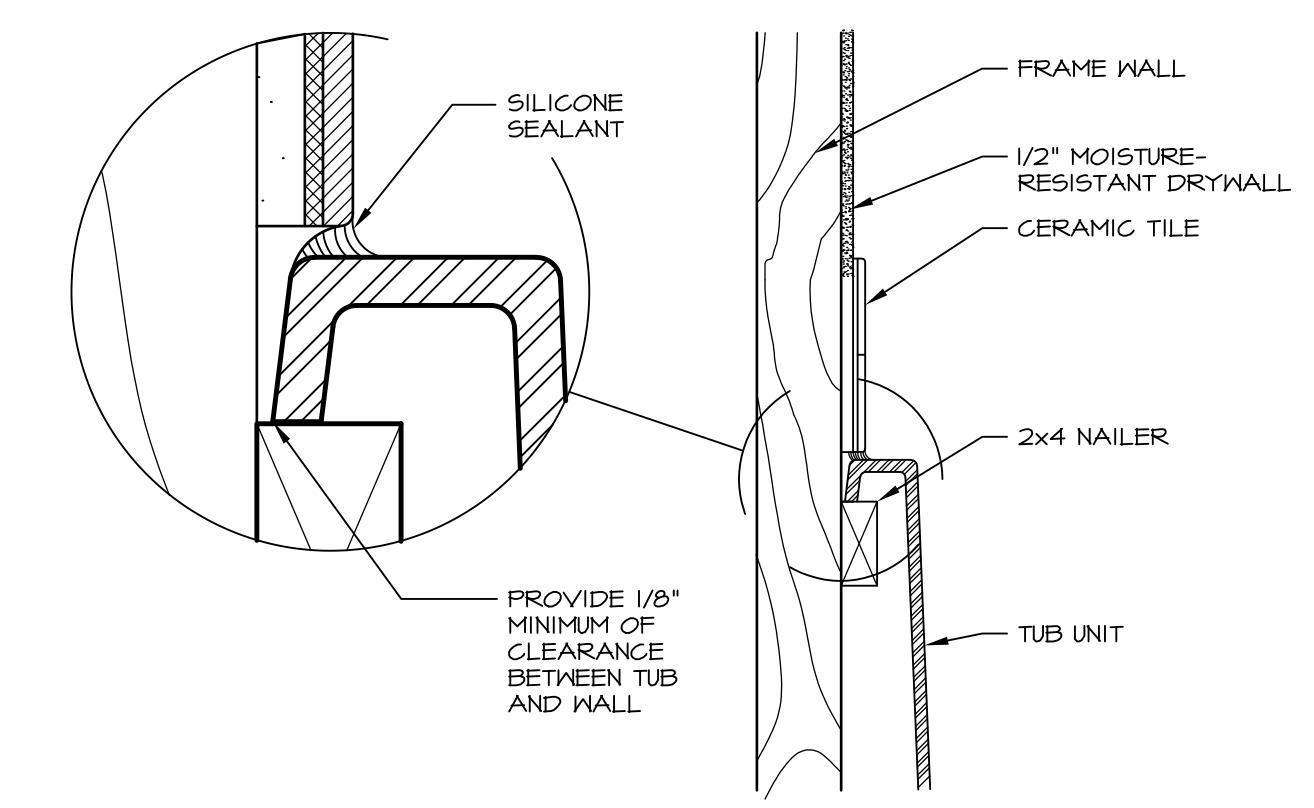


1 PLATFORM PLANS
SCALE: 1/2" = 1'-0"

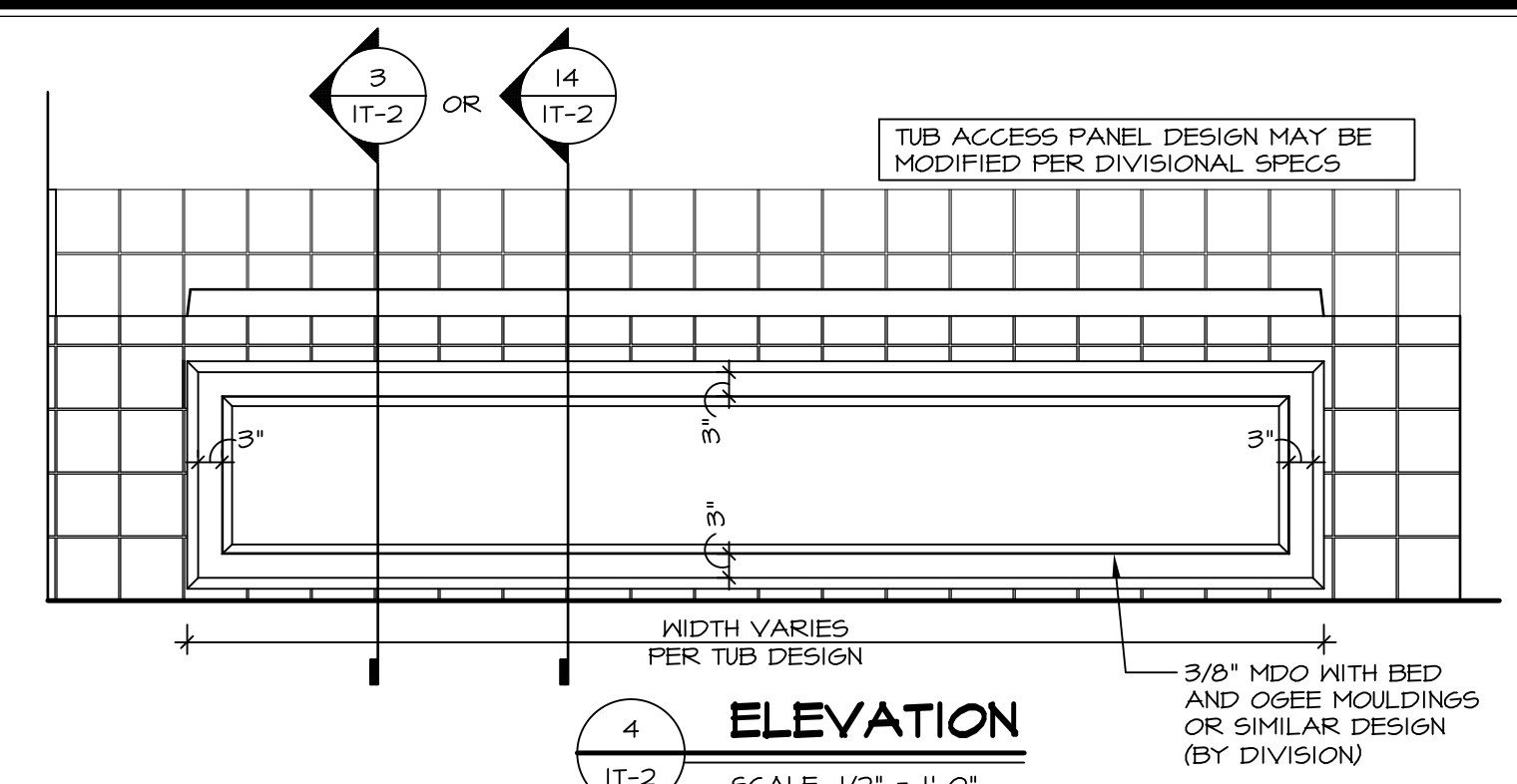
TUB	MANUF.	HEIGHT	WIDTH	LENGTH	TUB DECK PANEL HEIGHT
"A"	KOHLER/ STERLING	18 3/4"	42"	60"	17 1/8"
"C"	KOHLER/ STERLING	18 3/4"	36"	60"	17 1/8"
"E"	KOHLER/ STERLING	19 1/2"	60"	60"	17 7/8"
"L"	KOHLER/ STERLING	18 1/2"	42"	72"	16 7/8"
"N"	KOHLER/ STERLING	18 3/4"	36"	72"	17 1/8"
"P"	KOHLER/ STERLING	18 3/4"	42"	72"	17 1/8"



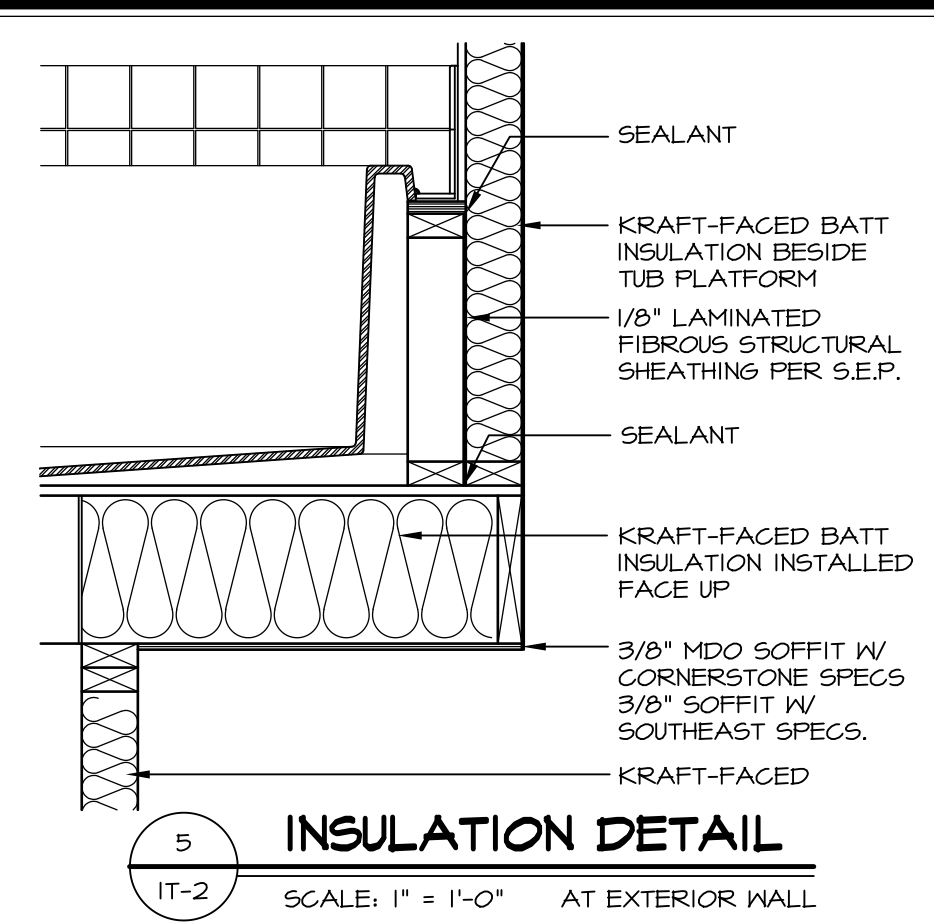
2 SECTION OF TUB ON PLATFORM CONDITION
SCALE: 1" = 1'-0"



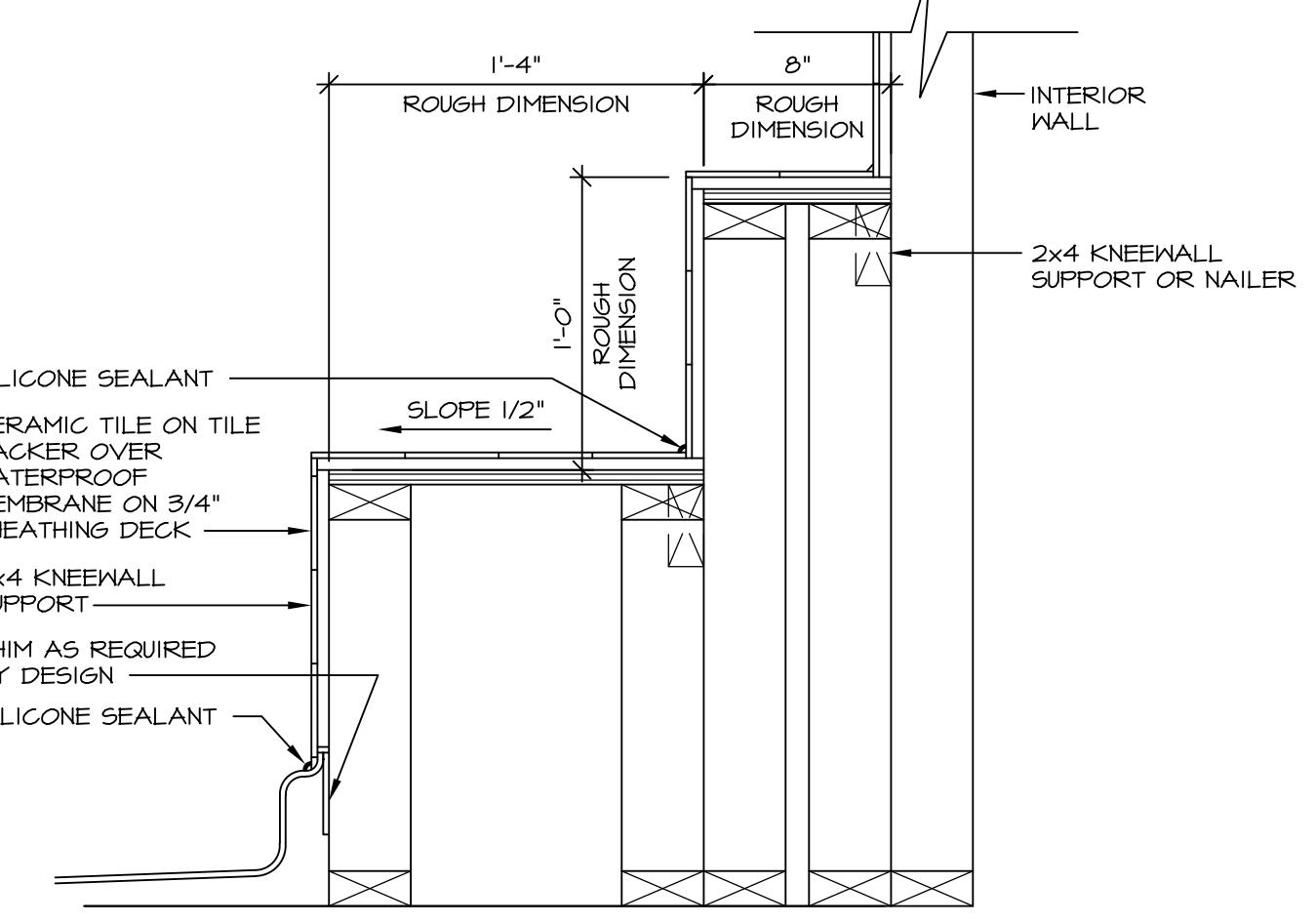
3 SECTION OF TUB TO WALL CONDITION
SCALE: 1" = 1'-0"



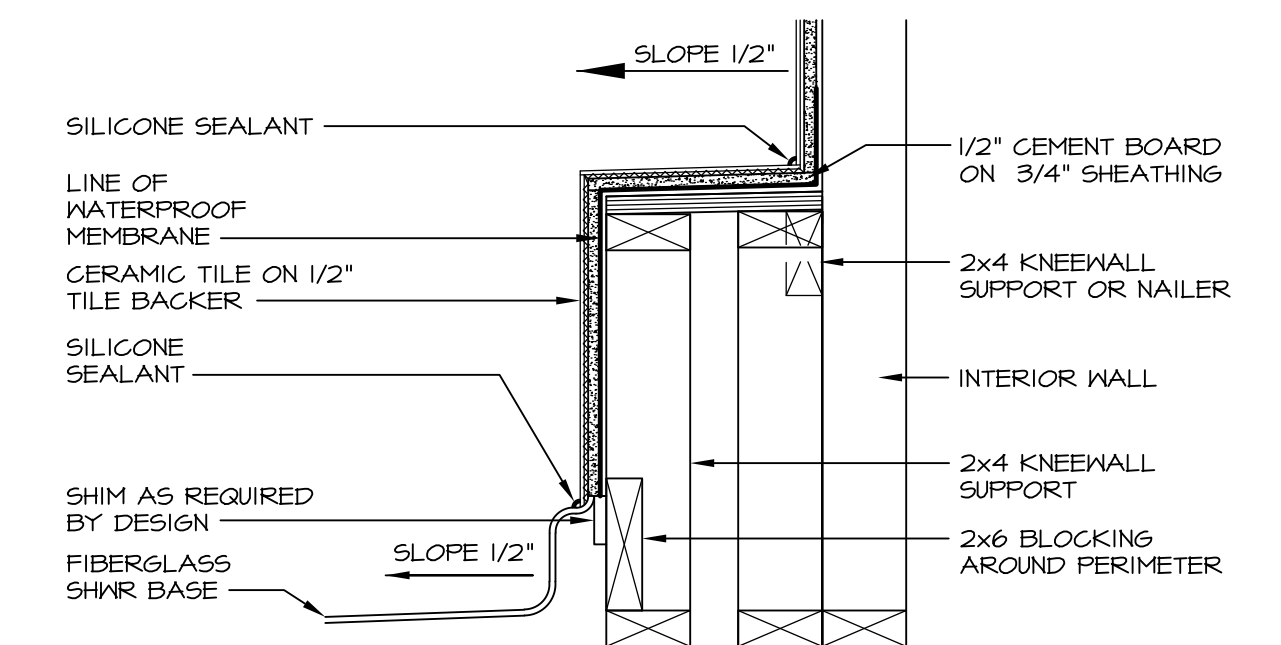
4 ELEVATION
SCALE: 1/2" = 1'-0"



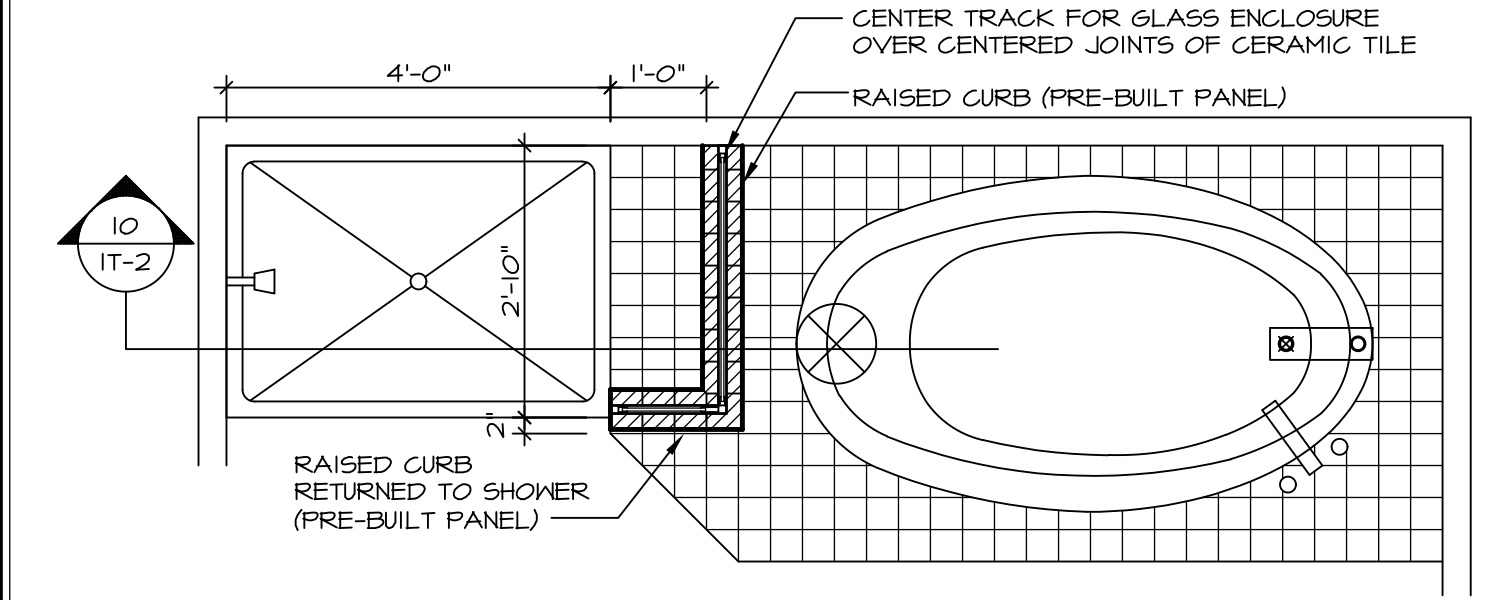
5 INSULATION DETAIL
SCALE: 1" = 1'-0" AT EXTERIOR WALL



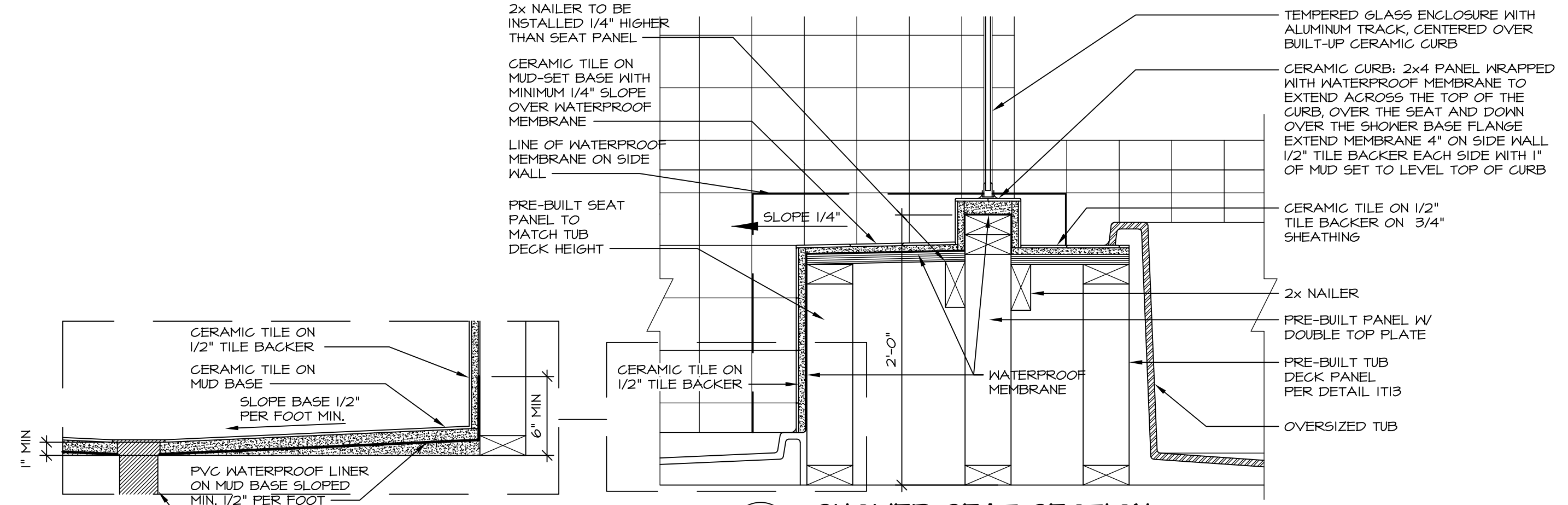
6 SECTION OF SHOWER SEAT AND SHELF
SCALE: 1/2" = 1'-0"



7 SECTION OF SHOWER SEAT
SCALE: 1/2" = 1'-0" FIBERGLASS SHOWER BASE



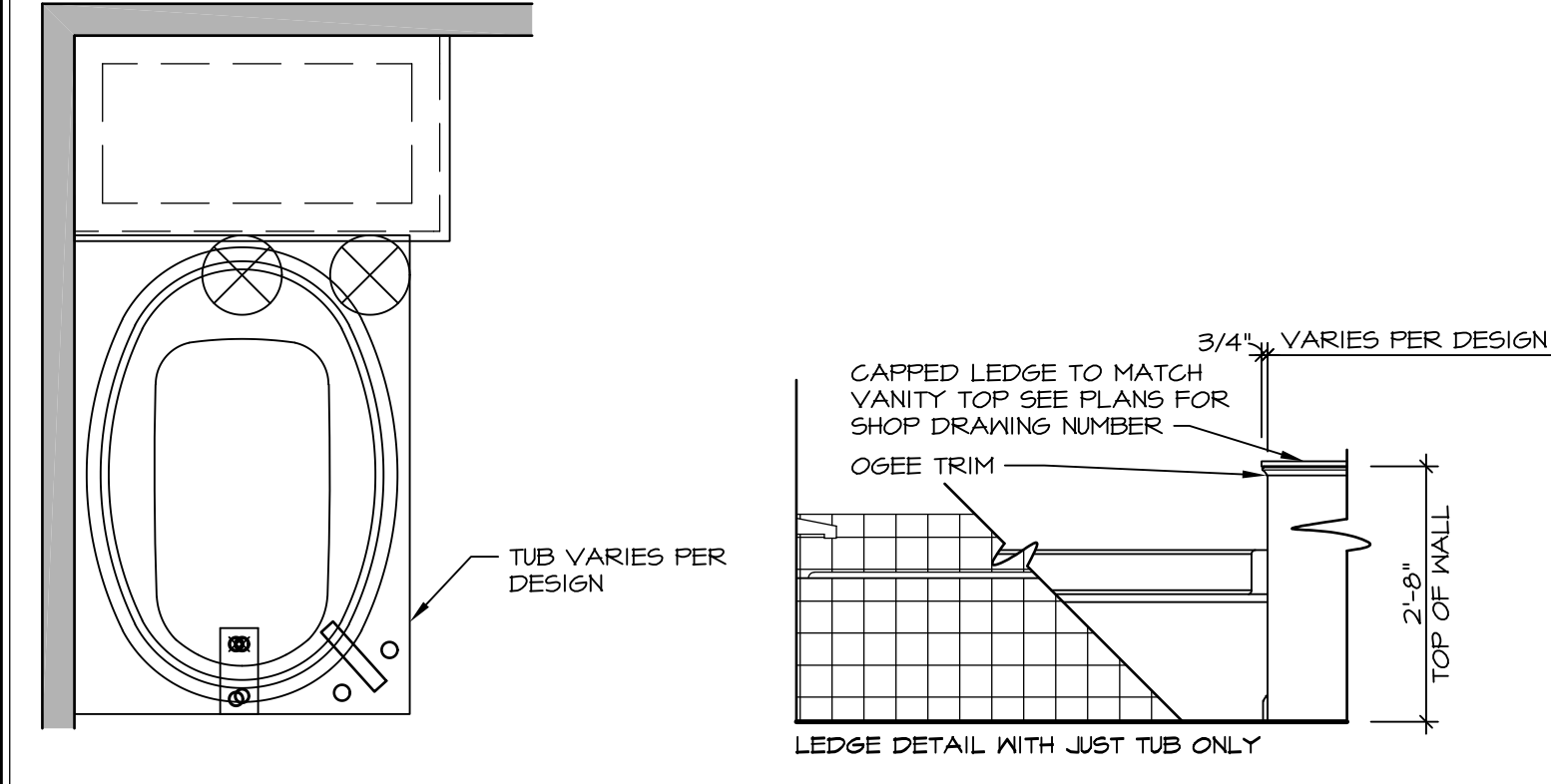
9 SHOWER SEAT PLAN / DETAIL
SCALE: 1/2" = 1'-0"



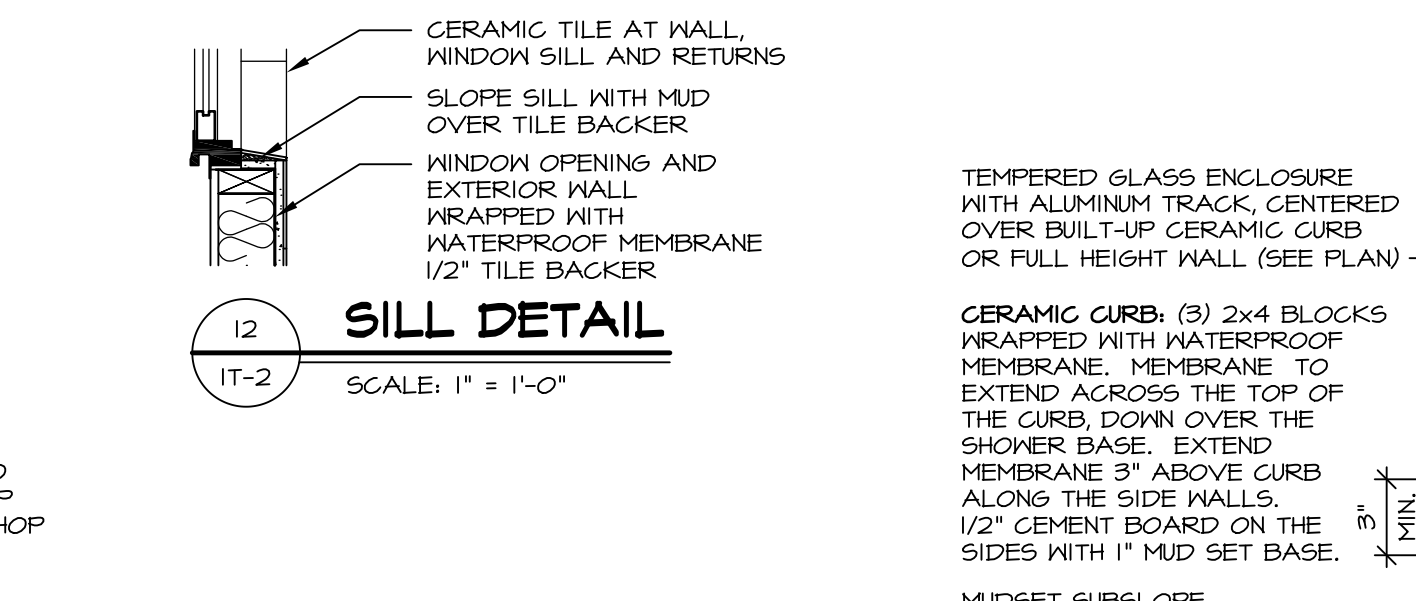
10 SHOWER SEAT SECTION
SCALE: 1/2" = 1'-0"



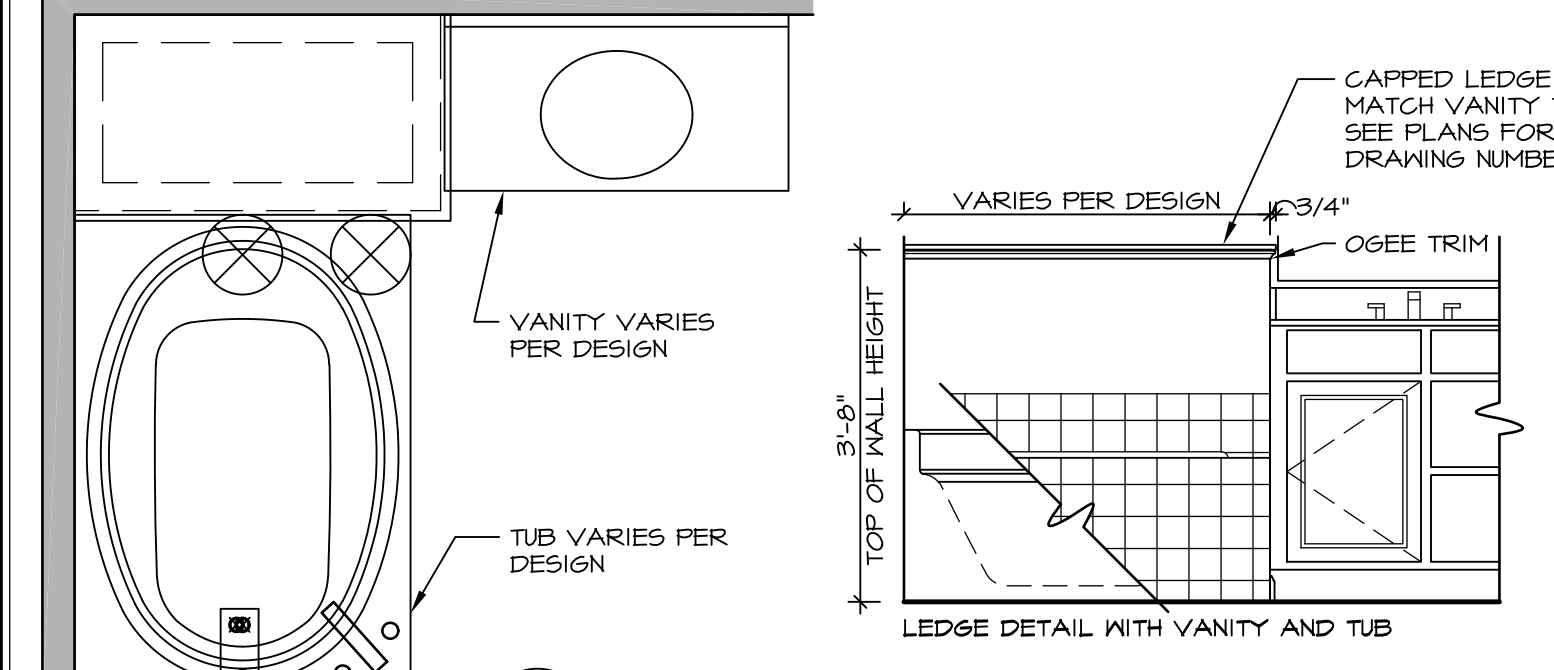
11 ALTERNATE SHOWER PAN DETAIL
SCALE: 1/2" = 1'-0"



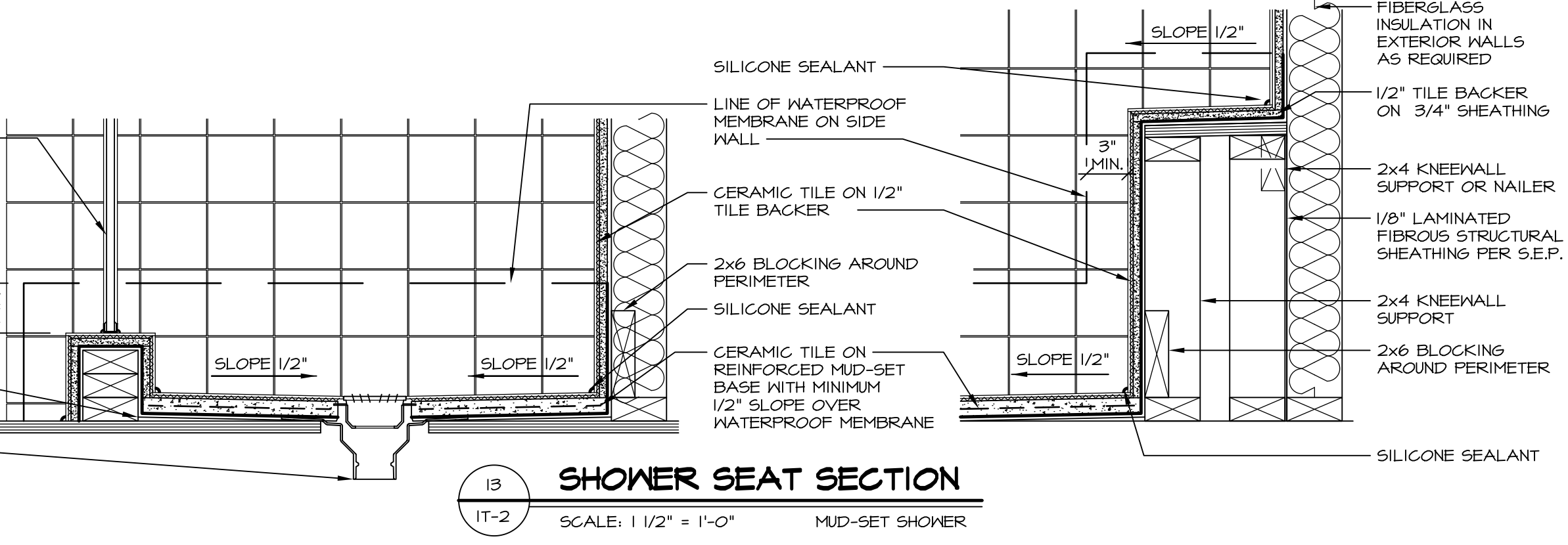
12 BATHROOM LEDGE DETAIL
SCALE: 1/2" = 1'-0"



13 SILL DETAIL
SCALE: 1" = 1'-0"



14 BATHROOM LEDGE DETAIL
SCALE: 1/2" = 1'-0"

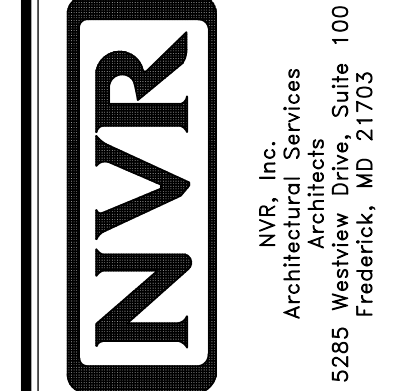


15 SHOWER SEAT SECTION
SCALE: 1/2" = 1'-0" MUD-SET SHOWER

REMARKS

REV. NO.	DATE	DESCRIPTION
1	5/1/17	EBP - REVISED DETAIL 1 AND 11 TO REMOVE TUB ACCESS PANEL REF. (095 #15 5414)
2	9/2/17	EBP - REVISED T-FLY NOTE TO CALL OUT LFS
3	9/2/17	EBP - REVISED NOTE ON DETAIL #1 - REVISED ORDER OF MATERIAL PARA#4934

NVR, Inc., owner, expressly reserves its common law copyright and other property rights in these plans. These plans are not to be reproduced, stored in a retrieval system, or transmitted in any form or by any means, electronic, mechanical, photocopying, recording, or by any information storage and retrieval system, without first obtaining the expressed written consent of NVR, Inc.



SET NO.	VERSION	DATE	OPTION
1	1		

MODEL: STANDARD DETAILS
DRAWING TITLE: INTERIOR TRIM DETAILS
BATH DETAILS
OPTION DESCRIPTION

SHEET NO. IT-2

J:\Dwg\NVR\Interior Trim\IT2.dwg 09/27/17 - 9:20 am