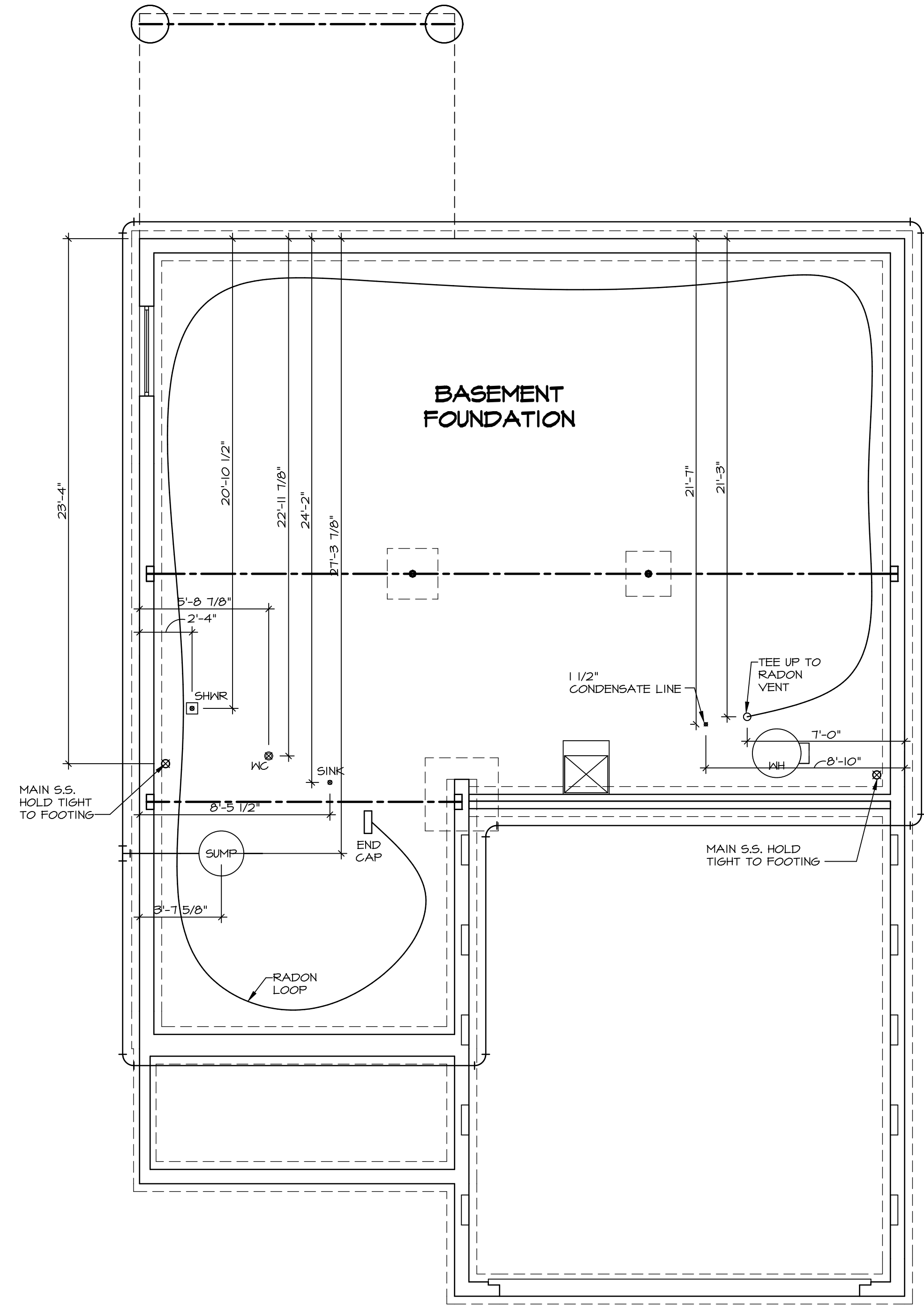


NOTE
 RADON REMEDIATION
 RADON LOOP:

- (4") PERFORATED HDPE "LOOP"
- MUST BE PLACED IN STONE BED SLIGHTLY HIGHER THAN ANY INTERIOR DRAINTILE
- LOOP TO BE SEPARATE FROM ANY DRAINTILE ELEMENTS
- TO BE CORRUGATED HDPE PIPE
- SCREENS TO BE INSTALLED THROUGH LOOP AT TEE UP INTO STACK

STACK REQUIREMENTS:

- 3" PVC STACK (4" IF BASEMENT IS GREATER THAN 2200 SQFT.)
- NO PART OF STACK IS TO BE HORIZONTAL
- PIPE TO BE PHYSICALLY LABELED IN THE FIELD AS "RADON VENT" OR OTHER
- JURISDICTIONALLY REQUIRED LANGUAGE (ON EVERY LEVEL OF HOUSE)
- ROOF TERMINATION TO BE IN TOP 1/3 OF ROOF
- SCREEN INSTALLED TO KEEP PESTS OUT OF RADON VENT AT ROOF TERMINATION

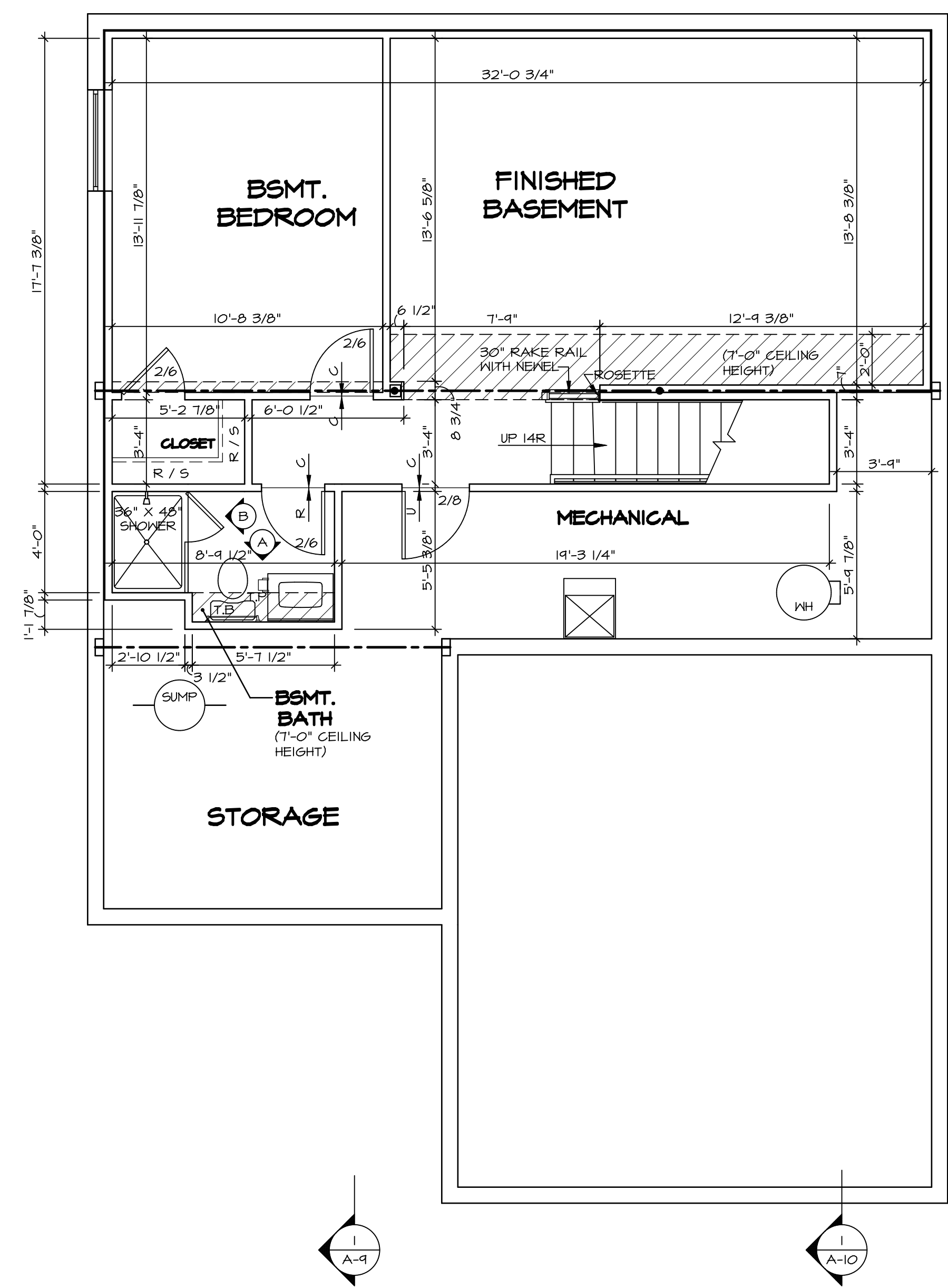


PLUMBING PLAN
 SCALE: 1/4" = 1'-0"

SHEET NO. A-5	MODEL BALLENGER	SET NO. BLG00	REMARKS
	DRAWING TITLE PLUMBING PLAN	VERSION 01	
23	OPTION DESCRIPTION	DATE:	REV. NO. DATE
		OPTION	

NVR
 NVR, Inc.
 Architectural Services
 Architects
 5285 Westpark Drive, Suite 100
 Frederick, MD 21703

NVR, Inc., owner, expressly reserves its copyright in these plans. These plans are not to be reproduced, changed, copied in any way, or otherwise used without the written consent of NVR, Inc.



BASEMENT FLOOR PLAN
SCALE: 1/4" = 1'-0"

LEGEND

	BEARING WALL
	NON BEARING WALL
	INDICATES BEARING FROM POINT-LOAD ABOVE
	JACKS
	BEAM/HEADER
	PAD FOOTING
	STEEL COLUMN
	PORTAL FRAME
	JOIST/TRUSS
	LVL
	ENGINEERING PAGE NUMBER

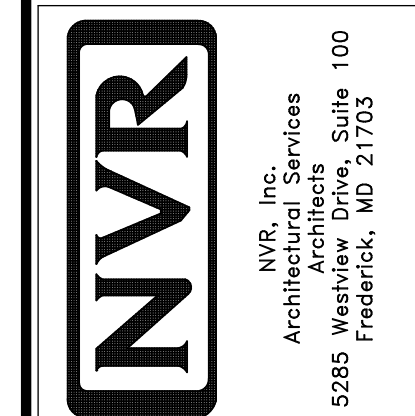
SEE FC DETAILS FOR FRAMING CONNECTORS

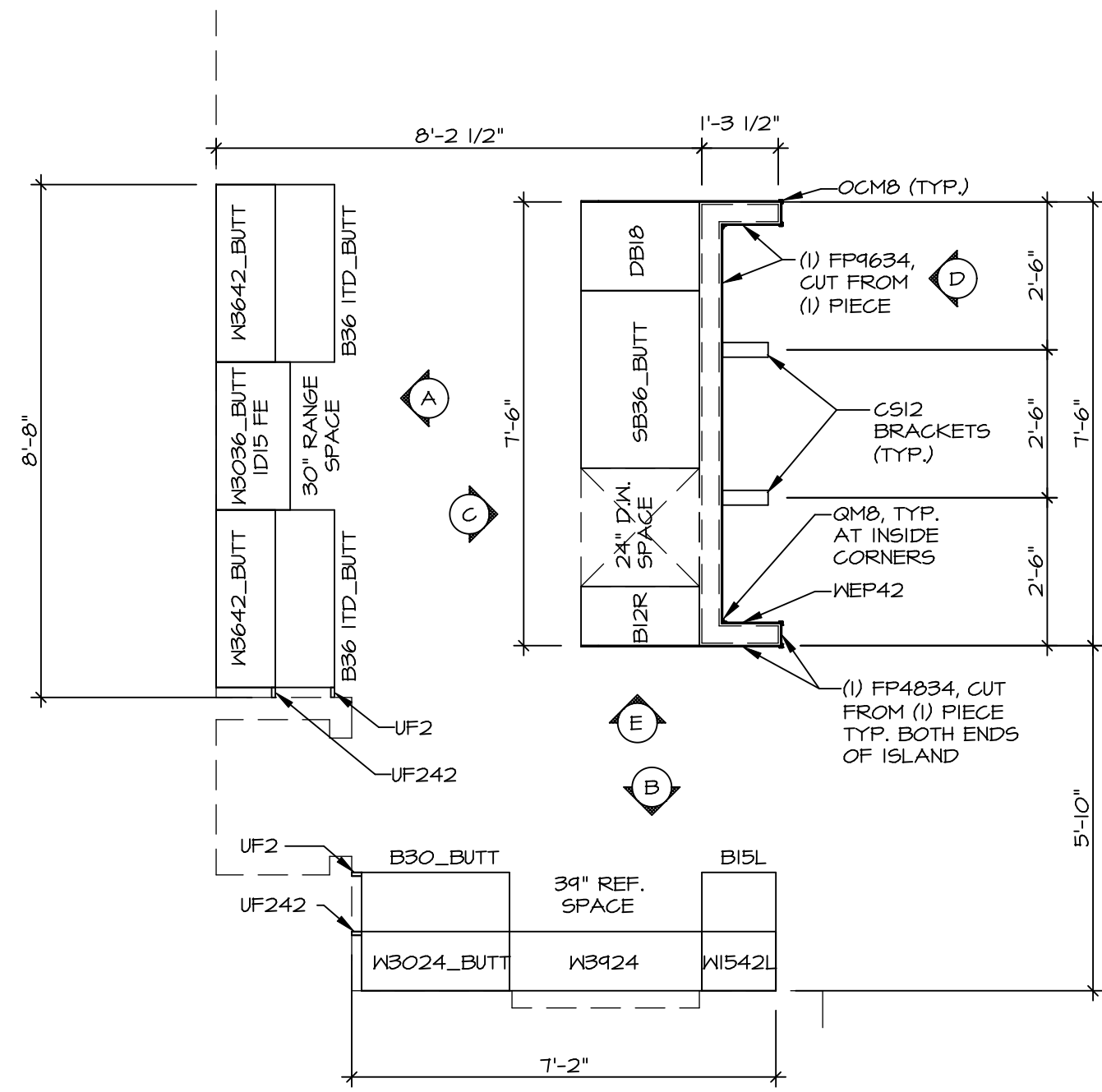
- FLOOR PLAN NOTES**
- ALL HEADERS ARE (2) 2x6 w/ 2x4 WALLS OR (3) 2x6 w/ 2x6 WALLS, UNLESS OTHERWISE NOTED.
 - ALL HEADERS TO HAVE (1) 2x4 OR 2x6 JACK AND KING STUD EACH END, UNLESS OTHERWISE NOTED.
 - ALL EXTERIOR WALLS TO BE 4" w/ OSB OR 3 1/2" w/ T-PLY, ALL INTERIOR WALLS TO BE 3 1/2", UNLESS OTHERWISE NOTED.
 - HATCHED AREAS INDICATE DROPPED CEILINGS. ALL DROPPED CEILINGS ARE 12" UNLESS OTHERWISE NOTED.
 - SEE "BRACED WALL PANEL DETAIL SHEET" FOR SPECIAL WALL FRAMING LOCATIONS AND HEADER SIZES, IF APPLICABLE.
 - SEE STANDARD DETAIL CATEGORY "IT" SHEET(S) FOR INTERIOR TRIM DETAILS.
 - SEE ARCHITECTURAL DETAIL SHEET "AD" FOR HOUSE SPECIFIC INTERIOR TRIM OPTION TABLE.
 - ALL WINDOWS HAVE 1'-0 1/2" HEADER HEIGHT UNLESS OTHERWISE NOTED.
 - ALL HEADERS IN NON-BEARING WALLS SHALL BE A SINGLE FLAT 2x4 OR 2x6 ATTACHED TO CRIPPLES ABOVE, UNLESS OTHERWISE NOTED.
 - TANKED WATER HEATER SHOWN AS BASE CONDITION, OPTIONAL TANKLESS WATER HEATER IS AVAILABLE IN LIEU OF TANKED WATER HEATER.

- GYPSUM NOTES**
- AT GARAGE:
GYPSUM BOARD AT COMMON WALLS, CEILINGS, BEAM WRAPS AND SUPPORTS PER STANDARD DETAIL FA-1(b) FIRE ASSEMBLIES OR AS REQUIRED BY LOCAL CODE.
- AT STAIRS:
1/2" GYPSUM BOARD AT UNDERSIDE OF STAIRS AND WALLS IN CLOSET

SHEET NO. A-6	MODEL BALLENGER	SET NO. BLG00	VERSION 01	DRAWN BY	DATE:	OPTION
		DRAWING TITLE BASEMENT FLOOR PLAN				
OPTION DESCRIPTION		OPTION				
27						
REMARKS						
REV. NO. DATE						

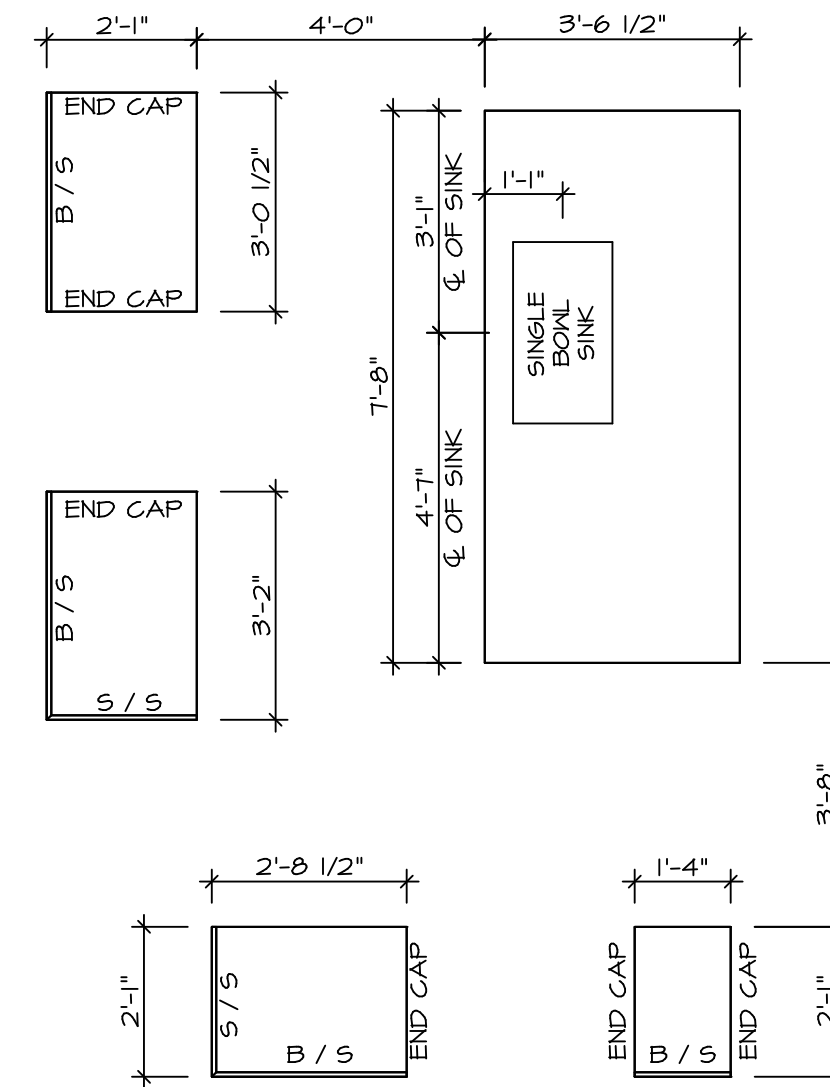
NVR, Inc., owner, expressly reserves its copyright in these plans. These plans are not to be reproduced, changed, copied, or otherwise used in any way without the written consent of NVR, Inc.





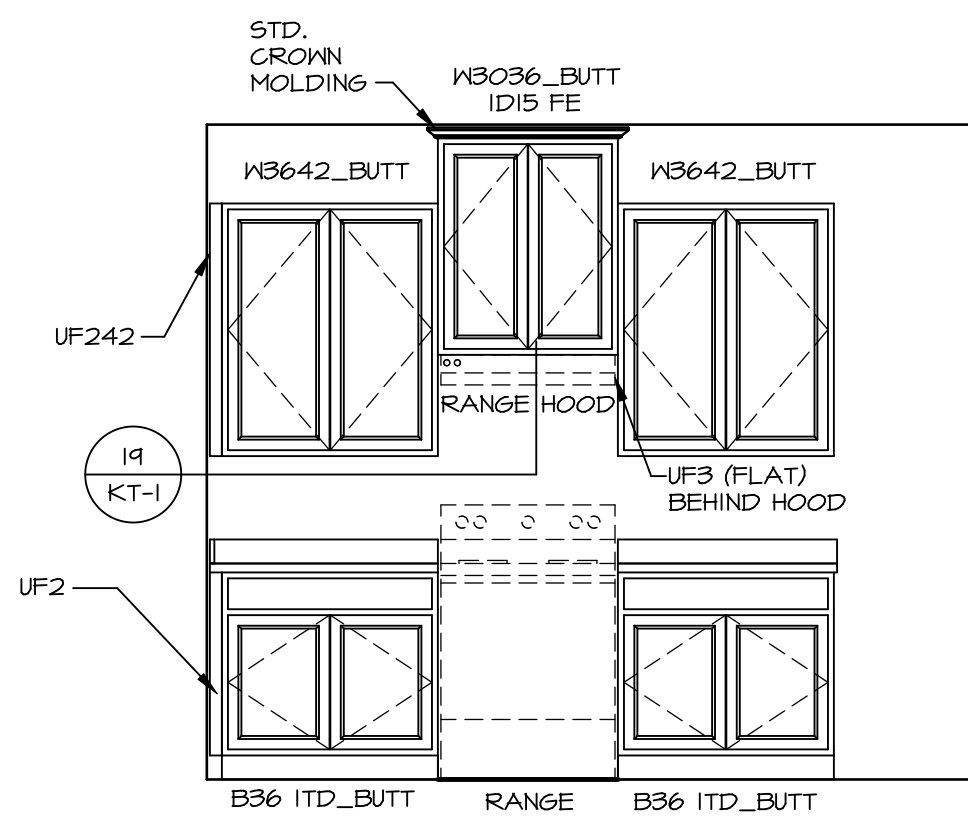
**KITCHEN CABINET
PLAN (KC - 3491)**

SCALE: 3/8" = 1'-0"



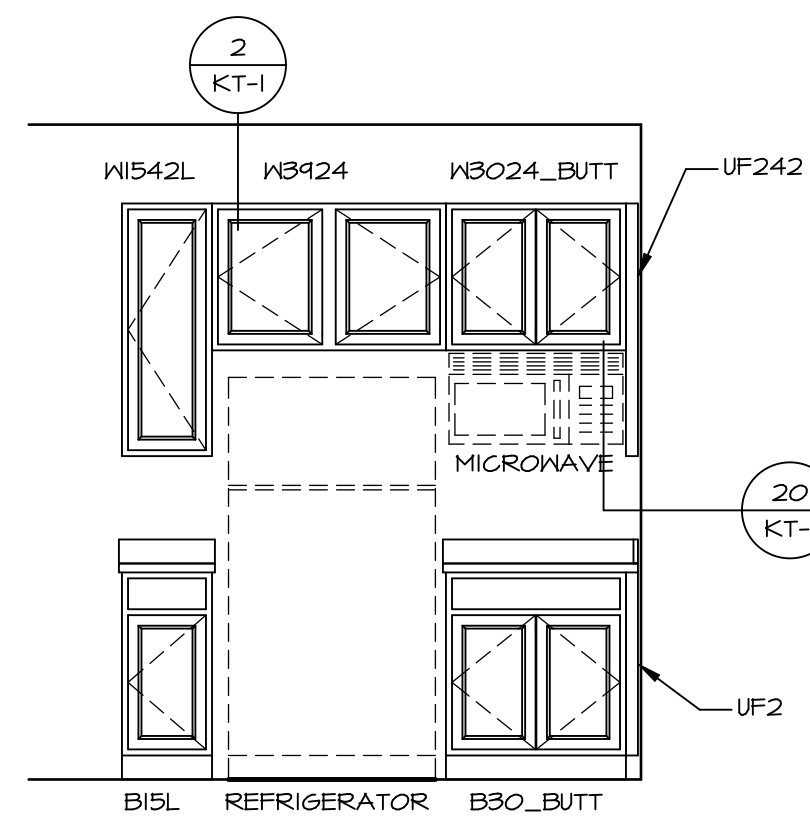
**KITCHEN COUNTERTOP
PLAN (KC - 3491)**

SCALE: 3/8" = 1'-0"



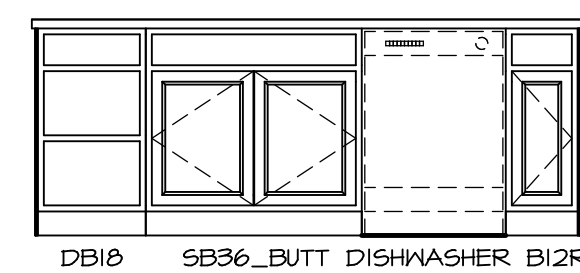
ELEVATION "A"

SCALE: 3/8" = 1'-0"



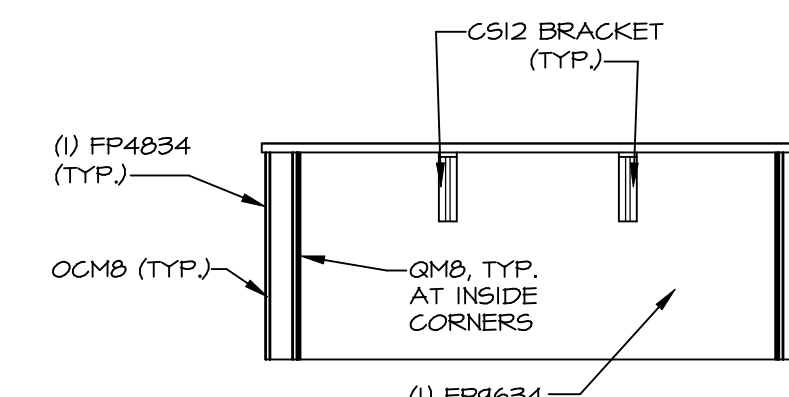
ELEVATION "B"

SCALE: 3/8" = 1'-0"



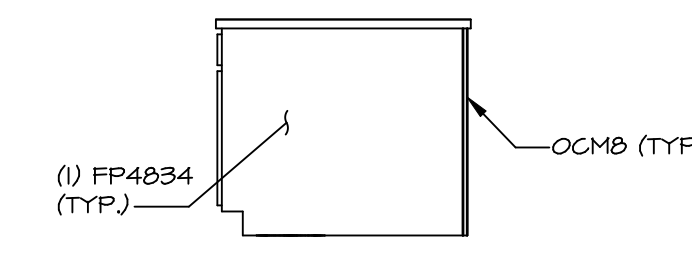
ELEVATION "C"

SCALE: 3/8" = 1'-0"



ELEVATION "D"

SCALE: 3/8" = 1'-0"



ELEVATION "E"

SCALE: 3/8" = 1'-0"

NOTE:
KITCHEN ELEVATIONS/PLANS CALL
OUT STANDARD MOLDING. REFER TO
DETAIL 11/KT-1 FOR REPLACEMENT
BASED ON CABINET STYLE.

NOTE:
CABINET LAYOUT(S) ARE
BASED ON FINISHED
DIMENSION TO DRYWALL.

MODEL	BALLENGER
SHEET NO.	A-12
OPTION	47
SET NO.	BLG00
VERSION	01
DRAWN BY	
DATE:	
OPTION	

NVR
NVR, Inc.
Architectural Services
Architects
5285 Westpark Drive, Suite 100
Frederick, MD 21703

NVR, Inc., owner, expressly
reserves its copyright in these
plans. These plans are not to be
reproduced, changed, copied, or
distributed in any form without
the prior written consent of
NVR, Inc.

REV. NO.	DATE	REMARKS

