

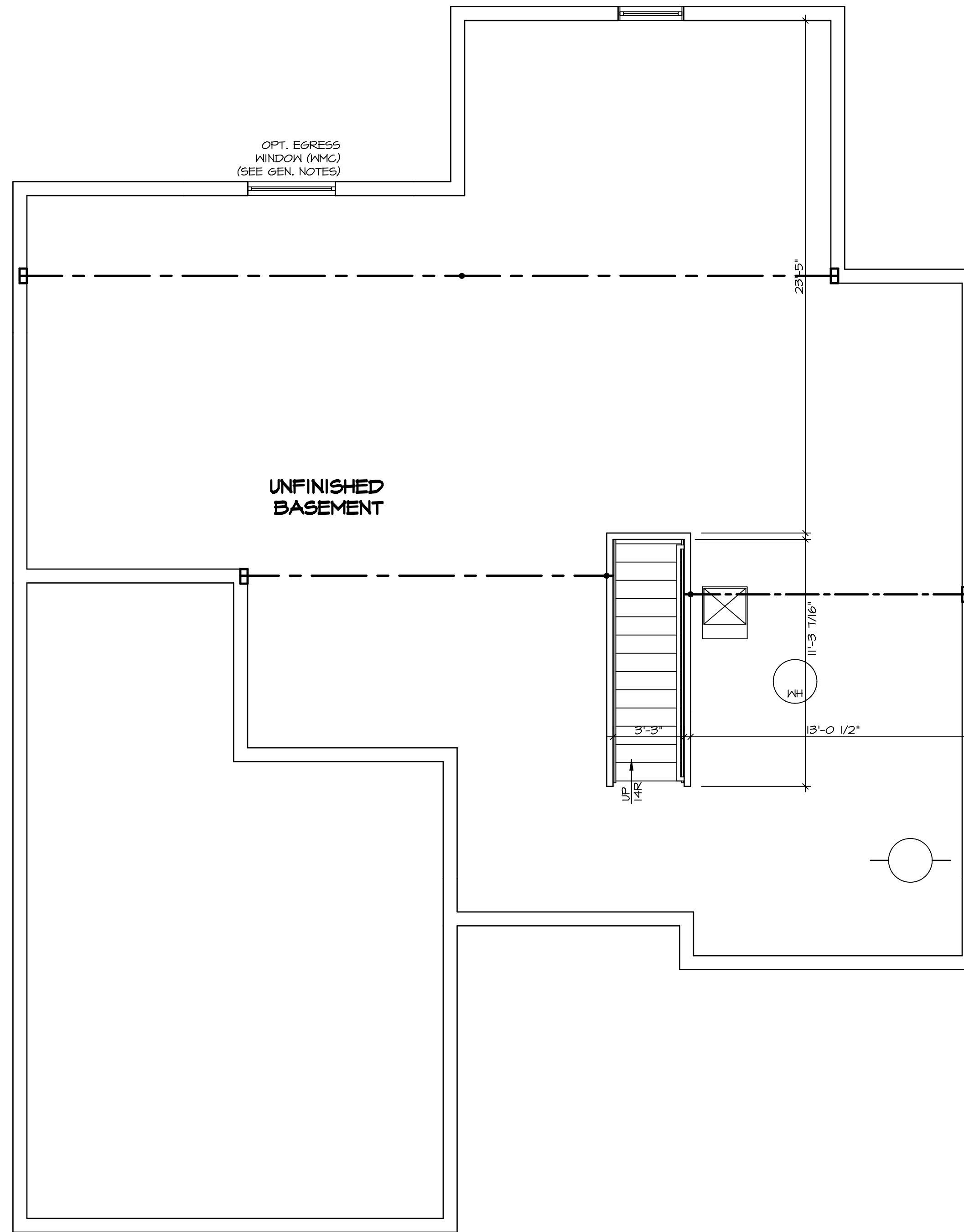
**PLUMBING PLAN**  
 SCALE: 1/4" = 1'-0"

<b>SHEET NO.</b>	<b>A-5</b>
<b>MODEL</b>	<b>DUNKIRK</b>
<b>SET NO.</b>	<b>DUNOO</b>
<b>VERSION</b>	<b>01</b>
<b>DRAWN BY</b>	
<b>DATE</b>	
<b>OPTION</b>	
<b>DRAWING TITLE</b>	<b>PLUMBING PLAN</b>
<b>OPTION DESCRIPTION</b>	

NVR, Inc.  
 Architectural Services  
 Architects  
 5285 Westview, Suite 100  
 Frederick, MD 21703

NVR, Inc., owner, expressly  
 reserves its copyright  
 interest in the drawings and  
 plans. These plans are not to be  
 reproduced, changed, copied in  
 any way, or otherwise used,  
 nor are they to be assigned to  
 anyone else without the written  
 consent of NVR, Inc.

<b>REV. NO.</b>	<b>DATE</b>	<b>REMARKS</b>



UNFINISHED  
BASEMENT

OPT. EGRESS  
WINDOW (NMG)  
(SEE GEN. NOTES)

**FLOOR PLAN NOTES**

- ALL HEADERS ARE (2) 2x6 w/ 2x4 WALLS OR (3) 2x6 w/ 2x6 WALLS, UNLESS OTHERWISE NOTED.
- ALL HEADERS TO HAVE (1) 2x4 OR 2x6 JACK EACH END, UNLESS OTHERWISE NOTED.
- ALL EXTERIOR WALLS TO BE 4" AND ALL INTERIOR WALLS TO BE 3 1/2", UNLESS OTHERWISE NOTED.
- HATCHED AREAS INDICATE DROPPED CEILINGS. ALL DROPPED CEILINGS ARE 12" UNLESS OTHERWISE NOTED.
- SEE "BRACED WALL PANEL DETAIL SHEET" FOR SPECIAL WALL FRAMING LOCATIONS AND HEADER SIZES, IF APPLICABLE.
- SEE STANDARD DETAIL CATEGORY "IT" SHEET(S) FOR INTERIOR TRIM DETAILS.
- SEE ARCHITECTURAL DETAIL SHEET "AD" FOR HOUSE SPECIFIC INTERIOR TRIM OPTION TABLE.
- ALL WINDOWS HAVE 7'-0 1/2" HEADER HEIGHT UNLESS OTHERWISE NOTED.

**GYPSUM NOTES**

**AT GARAGE:**  
GYPSUM BOARD AT COMMON WALLS, CEILINGS, BEAM WRAPS AND SUPPORTS PER STANDARD DETAIL FA-1(b) FIRE ASSEMBLIES OR AS REQUIRED BY LOCAL CODE.

**AT STAIRS:**  
1/2" GYPSUM BOARD AT UNDERSIDE OF STAIRS AND WALLS IN CLOSET

**LEGEND**

- BEARING WALL
  - NON BEARING WALL
  - INDICATES BEARING FROM POINT-LOAD ABOVE
  - JACKS
  - BEAM/HEADER
  - PAD FOOTING
  - STEEL COLUMN
  - PORTAL FRAME
  - JOIST/TRUSS
  - LVL
  - ENGINEERING PAGE NUMBER
- SEE FC DETAILS FOR FRAMING CONNECTORS

1  
A-6

**BASEMENT FLOOR PLAN**

SCALE: 1/4" = 1'-0"

SEE FC DETAILS FOR FRAMING CONNECTORS

SHEET NO.

A-6

DUNKIRK  
DRAWING TITLE  
BASEMENT FLOOR PLAN

OPTION DESCRIPTION

OPTION

DATE:

DRAWN BY

VERSION OF

SET NO. DUNDO

REVISIONS

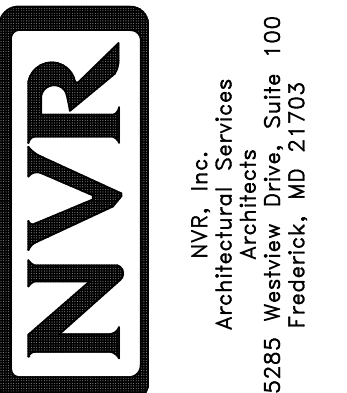
REMARKS

REV. NO.

DATE

REVISIONS

REVISIONS



NVR, Inc., owner, expressly reserves its copyright in these plans. These plans are not to be reproduced, changed, adapted in any way, or otherwise used, without the prior written consent of NVR, Inc.

FIRST FLOOR JACK SCHEDULE				
IDENTIFIER	DESCRIPTION	OPTIONS	ENG. NUM.	REMARKS
J101	JACK - (3) 2x4 SFF STUD GRADE	EVF, EVN, EVY, ELK, ELL	104B	
J107	JACK - (3) 2x4 SFF STUD GRADE	ELL	200A	
J108	JACK - (2) 2x6 SFF STUD GRADE	ELL	200A	
J109	JACK - (2) 2x4 SFF STUD GRADE	GCF	112T	
J110	JACK - (2) 2x4 SFF STUD GRADE	GCF	112T	
J121	JACK - (2) 2x4 SFF STUD GRADE	GCF	112A	
J122	JACK - (2) 2x4 SFF STUD GRADE	GCF	112A	
J123	JACK - (2) 2x4 SFF STUD GRADE	MSQ	1034, 1036, 1042	
J128	JACK - (2) 2x4 SFF STUD GRADE	EDQ, MNG	1114	
J129	JACK - (2) 2x4 SFF STUD GRADE	EDQ, MNG	1114	
J133	JACK - (4) 2x6 SFF STUD GRADE	MAA	1062	
J134	JACK - (2) 2x4 SFF STUD GRADE	MAA, EDQ	1076	
J136	JACK - (3) 2x6 SFF STUD GRADE	MAA	1068	
J137	JACK - (2) 2x4 SFF STUD GRADE		1062	
J138	JACK - (2) 2x4 SFF STUD GRADE		1072	
J139	JACK - (2) 2x4 SFF STUD GRADE		1072	
J140	JACK - (2) 2x4 SFF STUD GRADE		1056	
J141	JACK - (2) 2x4 SFF STUD GRADE		1056	
J142	JACK - (3) 2x4 SFF STUD GRADE		1034, 1034	

STEEL COLUMN SCHEDULE					
IDENTIFIER	STYLE	HEIGHT	OPTIONS	ENG. NUM.	REMARKS
C102	STANCHION - 4 IN DIA 116A ADJ	9'-8"	GCF	1124	

**LVL PLY TO PLY FASTENING SCHEDULE:** (WHERE APPLICABLE BASED ON LVL USAGE)

1.A - (2) FLY UP TO AND INCLUDING 11 7/8" TALL; FASTEN PLYS W/ (2) ROWS 16D NAILS AT 12" O.C.  
 2.A - (2) FLY 14" TO AND 18" TALL (INCLUSIVE); FASTEN PLYS W/ (3) ROWS 16D NAILS AT 12" O.C.  
 3.A - (2) FLY 20" TALL AND OVER; FASTEN PLYS W/ (4) ROWS 16D NAILS AT 12" O.C.  
 4.A - (3) FLY UP TO AND INCLUDING 11 7/8" TALL; FASTEN PLYS W/ (2) ROWS 16D NAILS AT 12" O.C. FROM EACH SIDE  
 5.A - (3) FLY 14" TO AND 18" TALL (INCLUSIVE); FASTEN PLYS W/ (3) ROWS 16D NAILS AT 12" O.C. FROM EACH SIDE  
 6.A - (3) FLY 20" TALL AND OVER; FASTEN PLYS W/ (4) ROWS 16D NAILS AT 12" O.C. FROM EACH SIDE  
 7.A - (4) FLY (ALL SIZES); FASTEN PLYS W/ (2) ROWS 1/2" DIAMETER A307 BOLTS AT 24" O.C. SEE SHOP DRAWING FOR ADDITIONAL INFORMATION.

FIRST FLOOR BEAM/HEADER SCHEDULE					
IDENTIFIER	DESCRIPTION	LENGTH	OPTIONS	ENG. NUM.	REMARKS
B101	BEAM STEEL - W12X26	20'-3"	EVF, EVN, EVY, ELK, ELL	104B	
PF103-2	LVL - 14	20'-0"	GCF	112T	2A, PORTAL FRAME
PF104	EXT HEADER - 2X12 - 2 PLY	11'-4"	GCF	112A	PORTAL FRAME

**FLOOR PLAN NOTES**

- ALL HEADERS ARE (2) 2x6 W/ 2x4 WALLS OR (3) 2x6 W/ 2x6 WALLS, UNLESS OTHERWISE NOTED.
- ALL HEADERS TO HAVE (1) 2x4 OR 2x6 JACK EACH END, UNLESS OTHERWISE NOTED.
- ALL EXTERIOR WALLS TO BE 4" AND ALL INTERIOR WALLS TO BE 3 1/2", UNLESS OTHERWISE NOTED.
- HATCHED AREAS INDICATE DROPPED CEILINGS. ALL DROPPED CEILINGS ARE 12" UNLESS OTHERWISE NOTED.
- SEE "BRACED WALL PANEL DETAIL SHEET" FOR SPECIAL WALL FRAMING LOCATIONS AND HEADER SIZES, IF APPLICABLE.
- SEE STANDARD DETAIL CATEGORY "IT" SHEET(S) FOR INTERIOR TRIM DETAILS.
- SEE ARCHITECTURAL DETAIL SHEET "AD" FOR HOUSE SPECIFIC INTERIOR TRIM OPTION TABLE.
- ALL WINDOWS HAVE 8'-0" 1/2" HEADER HEIGHT UNLESS OTHERWISE NOTED.

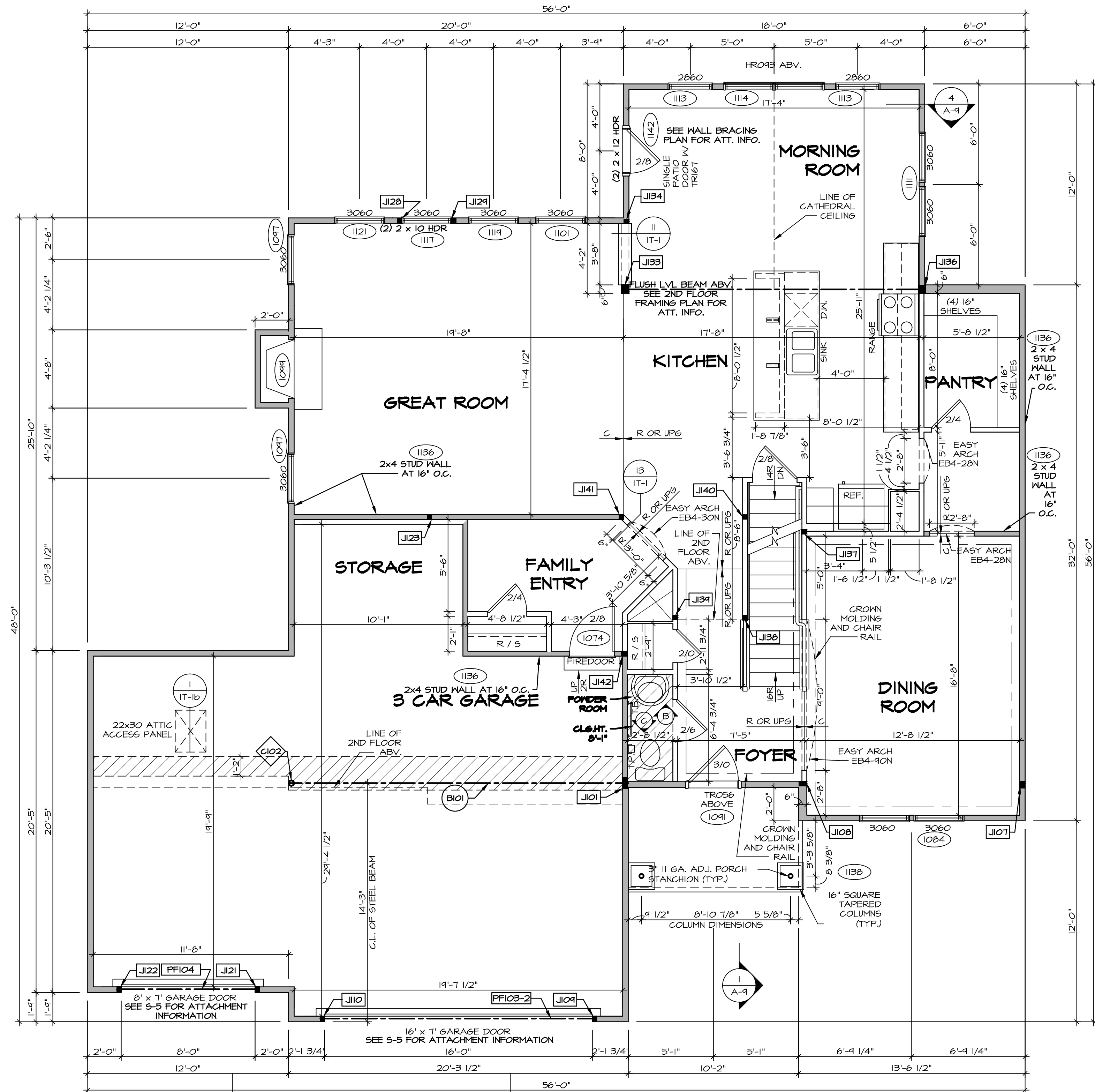
**GYPSUM NOTES**

**AT GARAGE:**  
 GYPSUM BOARD AT COMMON WALLS, CEILINGS, BEAM WRAPS AND SUPPORTS PER STANDARD DETAIL FA-1(b) FIRE ASSEMBLIES OR AS REQUIRED BY LOCAL CODE.

**AT STAIRS:**  
 1/2" GYPSUM BOARD AT UNDERSIDE OF STAIRS AND WALLS IN CLOSET

**LEGEND**

- BEARING WALL
  - NON BEARING WALL
  - INDICATES BEARING FROM POINT-LOAD ABOVE
  - JACKS
  - BEAM/HEADER
  - PAD FOOTING
  - STEEL COLUMN
  - PORTAL FRAME
  - JOIST/TRUSS
  - LVL
  - ENGINEERING PAGE NUMBER
- SEE FC DETAILS FOR FRAMING CONNECTORS



**FIRST FLOOR PLAN**  
 SCALE: 1/4" = 1'-0"

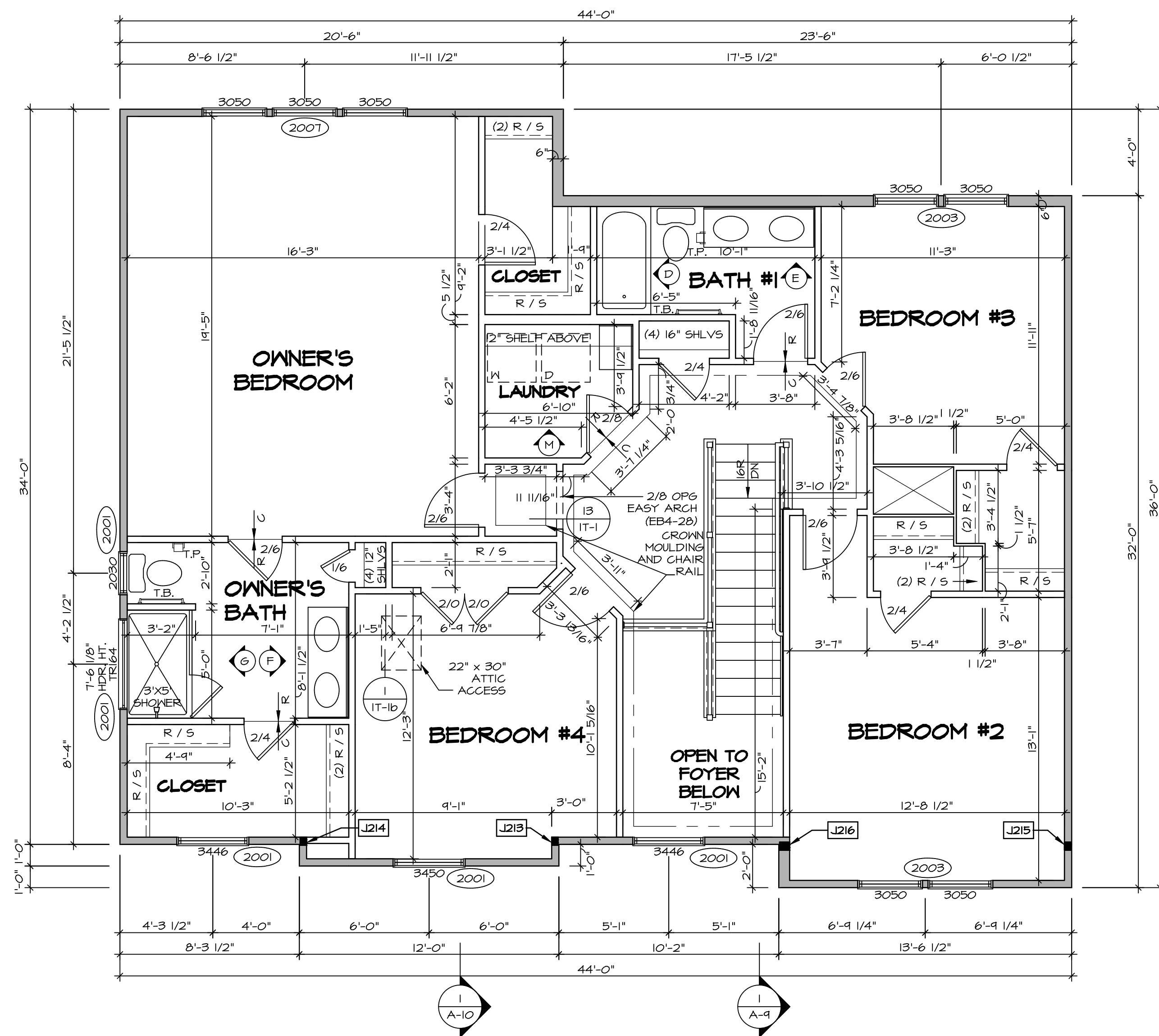
SHEET NO. <b>A-7</b>	MODEL <b>DUNKIRK</b>	SET NO. <b>DUNDO</b> VERSION <b>01</b> DRAWN BY DATE: OPTION	DRAWING TITLE <b>FIRST FLOOR PLAN</b>	OPTION DESCRIPTION <b>29</b>	REV. NO. DATE REMARKS
-------------------------	-------------------------	--	--	---------------------------------	--------------------------

NVR, Inc., owner, expressly reserves its copyright in these plans. These plans are not to be reproduced, changed, copied, or otherwise used in any way without the written consent of NVR, Inc.

**NVR**  
 NVR, Inc.  
 Architectural Services  
 Architects  
 Suite 100  
 5285 West  
 Frederick, MD 21703

C:\NVR\Solves\DUNKIRK-DUNDO-09\DC1-16-1493\903265\Sheets\Lot\_Spec\16-A-7-PLN1\_L5.dwg 08/15/18 - 2:38 am

SECOND FLOOR JACK SCHEDULE				
IDENTIFIER	DESCRIPTION	OPTIONS	ENG. NUM.	REMARKS
J213	JACK - (3) 2X4 SPF STUD GRADE	ELL	2009	
J214	JACK - (3) 2X4 SPF STUD GRADE	ELL	2009	
J215	JACK - (3) 2X4 SPF STUD GRADE	ELL	2009	EXTEND THROUGH TOP PLATE
J216	JACK - (3) 2X6 SPF STUD GRADE	ELL	2009	



I  
A-8 **SECOND FLOOR PLAN**  
SCALE: 1/4" = 1'-0"

LEGEND	
	BEARING WALL
	NON BEARING WALL
	INDICATES BEARING FROM POINT-LOAD ABOVE JACKS
	BEAM/HEADER
	PAD FOOTING
	STEEL COLUMN
	PORTAL FRAME
	JOIST/TRUSS
	LVL
	ENGINEERING PAGE NUMBER

SEE FC DETAILS FOR FRAMING CONNECTORS

**FLOOR PLAN NOTES**

- ALL HEADERS ARE (2) 2x6 w/ 2x4 WALLS OR (3) 2x6 w/ 2x6 WALLS, UNLESS OTHERWISE NOTED.
- ALL HEADERS TO HAVE (1) 2x4 OR 2x6 JACK EACH END, UNLESS OTHERWISE NOTED.
- ALL EXTERIOR WALLS TO BE 4" AND ALL INTERIOR WALLS TO BE 3 1/2", UNLESS OTHERWISE NOTED.
- HATCHED AREAS INDICATE DROPPED CEILINGS. ALL DROPPED CEILINGS ARE 12" UNLESS OTHERWISE NOTED. SEE "BRACED WALL PANEL DETAIL SHEET" FOR SPECIAL WALL FRAMING LOCATIONS AND HEADER SIZES, IF APPLICABLE.
- SEE STANDARD DETAIL CATEGORY "11" SHEET(S) FOR INTERIOR TRIM DETAILS.
- SEE ARCHITECTURAL DETAIL SHEET "AD" FOR HOUSE SPECIFIC INTERIOR TRIM OPTION TABLE.
- ALL WINDOWS HAVE 7'-0 1/2" HEADER HEIGHT UNLESS OTHERWISE NOTED.

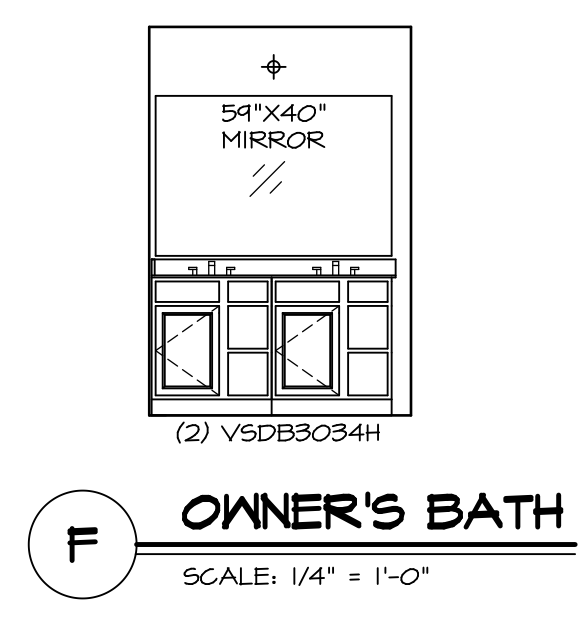
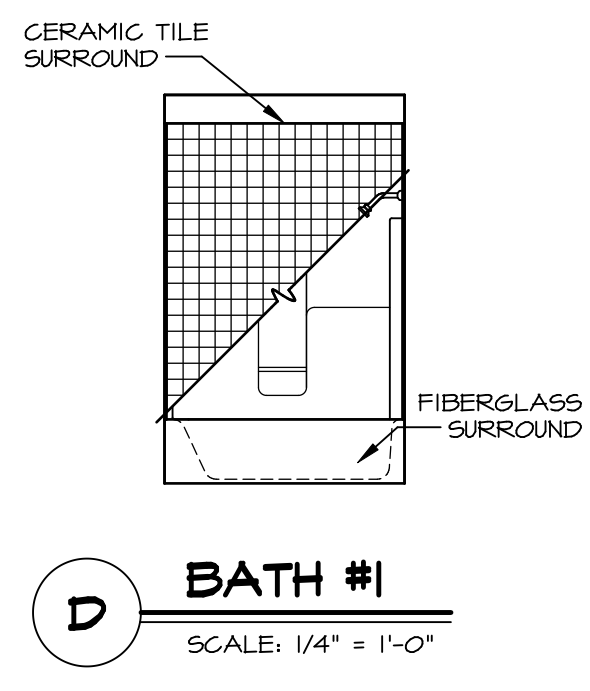
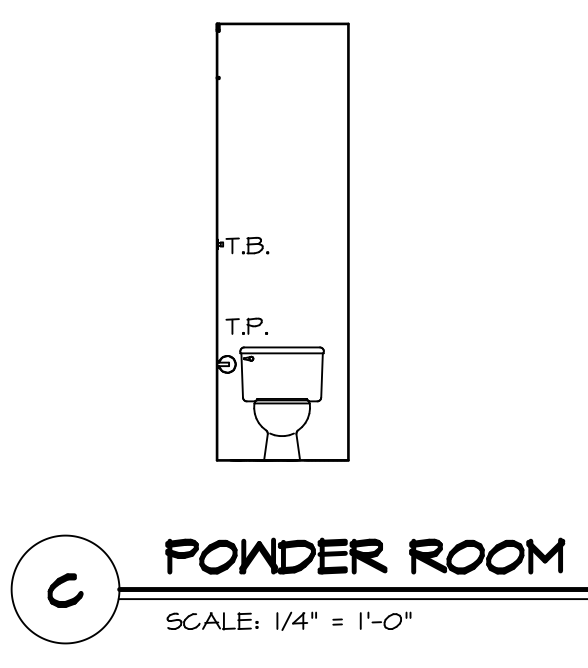
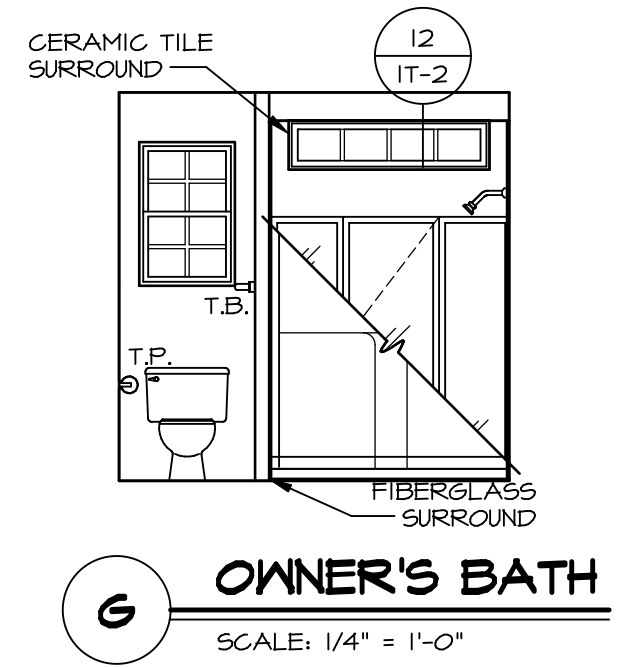
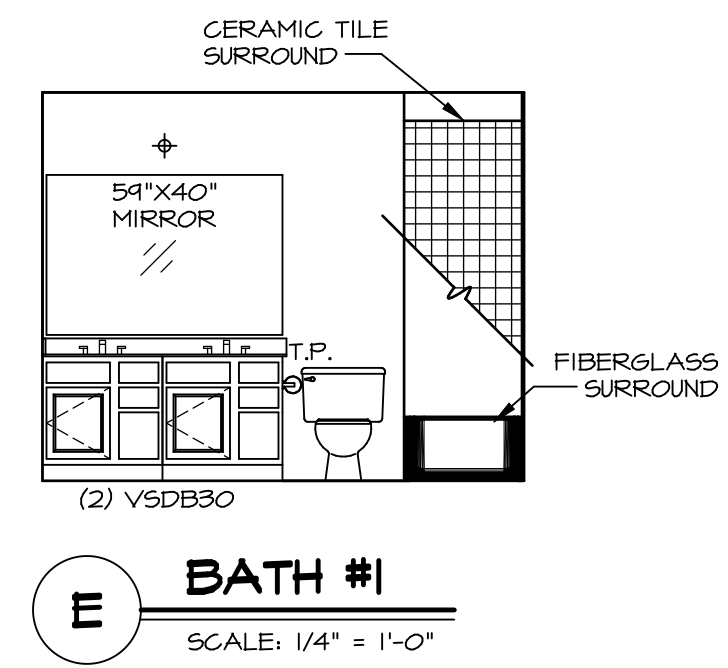
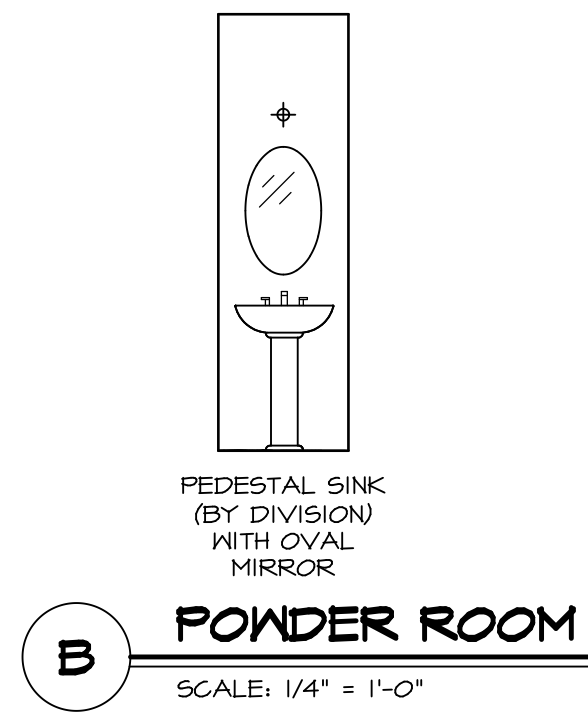
SHEET NO.	<b>A-8</b>	OPTION	<b>34</b>
MODEL	<b>DUNKIRK</b>	DESCRIPTION	<b>SECOND FLOOR PLAN</b>
SET NO.	<b>DUNCO</b>	VERSION	<b>04</b>
DRAWN BY		DATE	

**NVR**  
NVR, Inc.  
Architectural Services  
Frederick, MD 21703  
5285 West Walkway, Suite 100  
Frederick, MD 21703

NVR, Inc., owner, expressly reserves its copyright in these plans. These plans are not to be reproduced, changed, copied, or otherwise used without the written consent of NVR, Inc.

REV. NO.	DATE	REMARKS





- NOTES:**
1. TEMPERED GLASS SHOWER ENCLOSURE WITH SWING DOOR OR OPTIONAL SLIDING DOOR BY DIVISION
  2. TUB ACCESS PANELS PROVIDED AS NEEDED, ALL MATERIALS BY DIVISION
  3. REFER TO SHEET (IT-2) FOR TUB AND SHOWER DETAILS.
  4. ALL V5DB24-42 DRAWERS TO BE SET ON RIGHT HAND.
  5. BATH ELEVATIONS ARE SHOWN PER PLAN.

SHEET NO. <b>A-13</b>	MODEL <b>DUNKIRK</b>	SET NO. <b>DUNCO</b>	VERSION <b>01</b>
	DRAWING TITLE <b>BATH ELEVATIONS</b>	DRAWN BY	DATE:
	OPTION DESCRIPTION	OPTION	
<b>45</b>			

**NVR**  
NVR, Inc.  
Architectural Services  
5285 Westview, Suite 100  
Frederick, MD 21703

NVR, Inc., owner, expressly reserves its copyright in these plans. These plans are not to be reproduced, changed, copied, or otherwise used in any way without the written consent of NVR, Inc.

REV. NO.	DATE	REMARKS