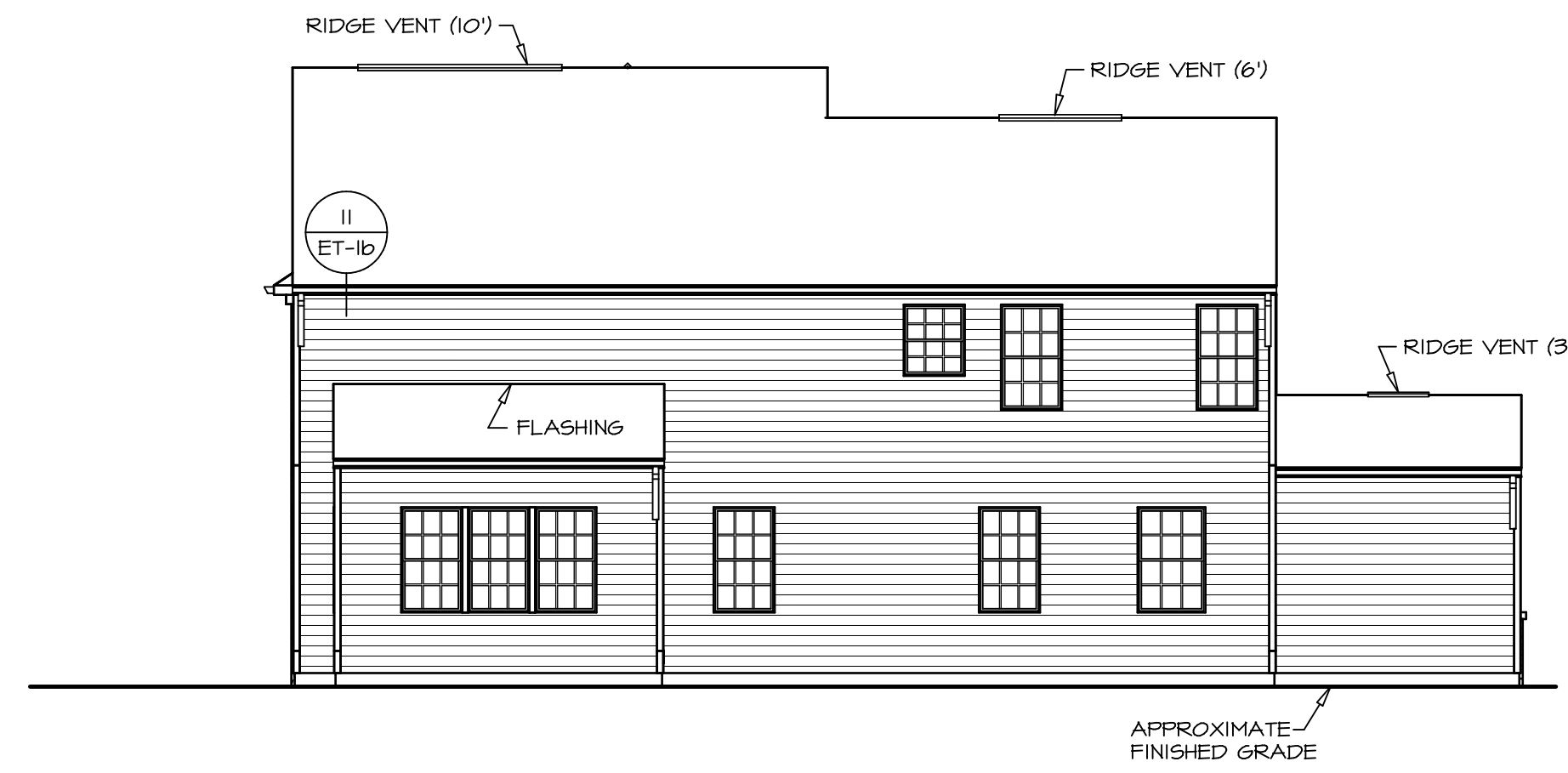
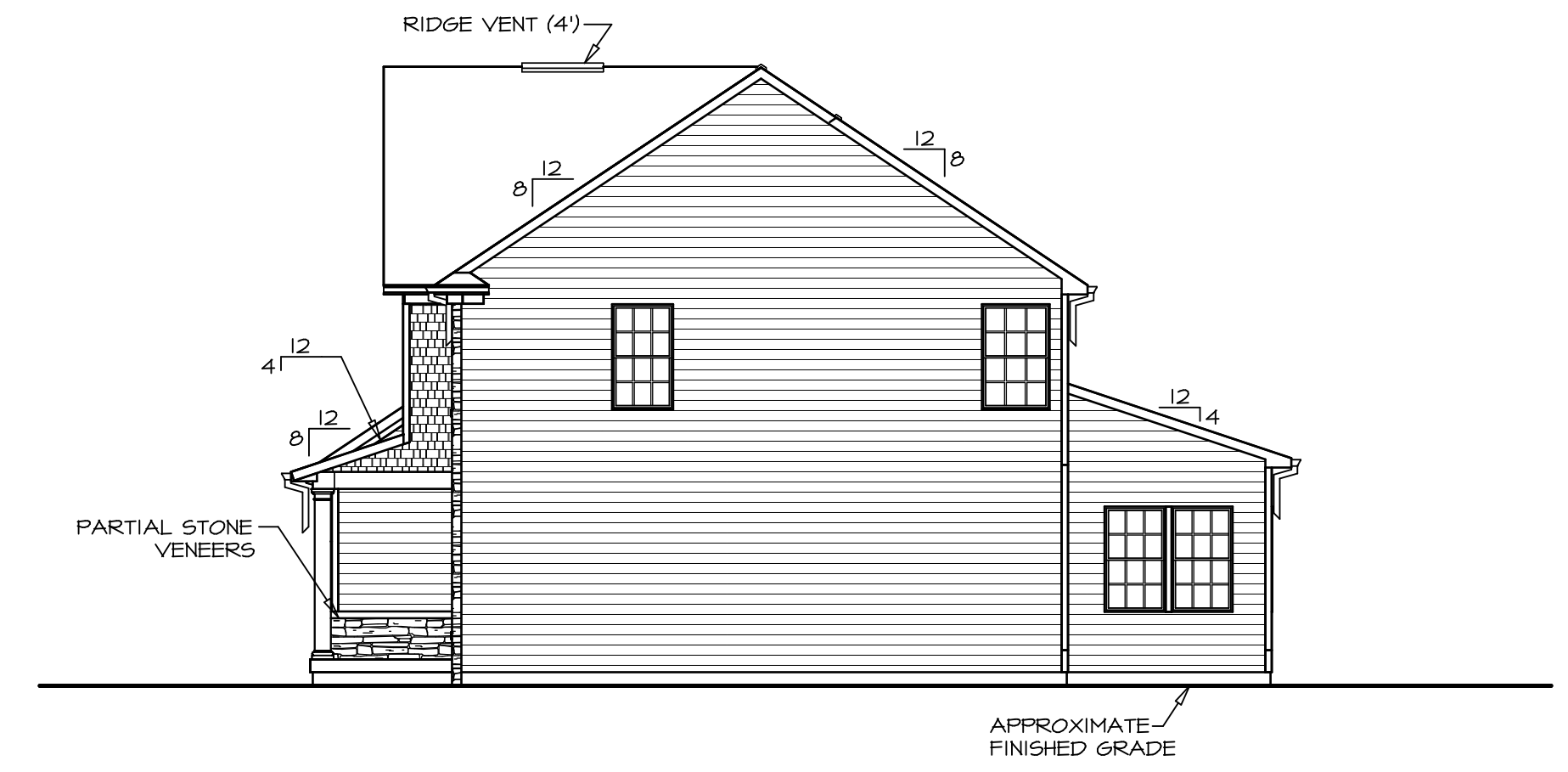


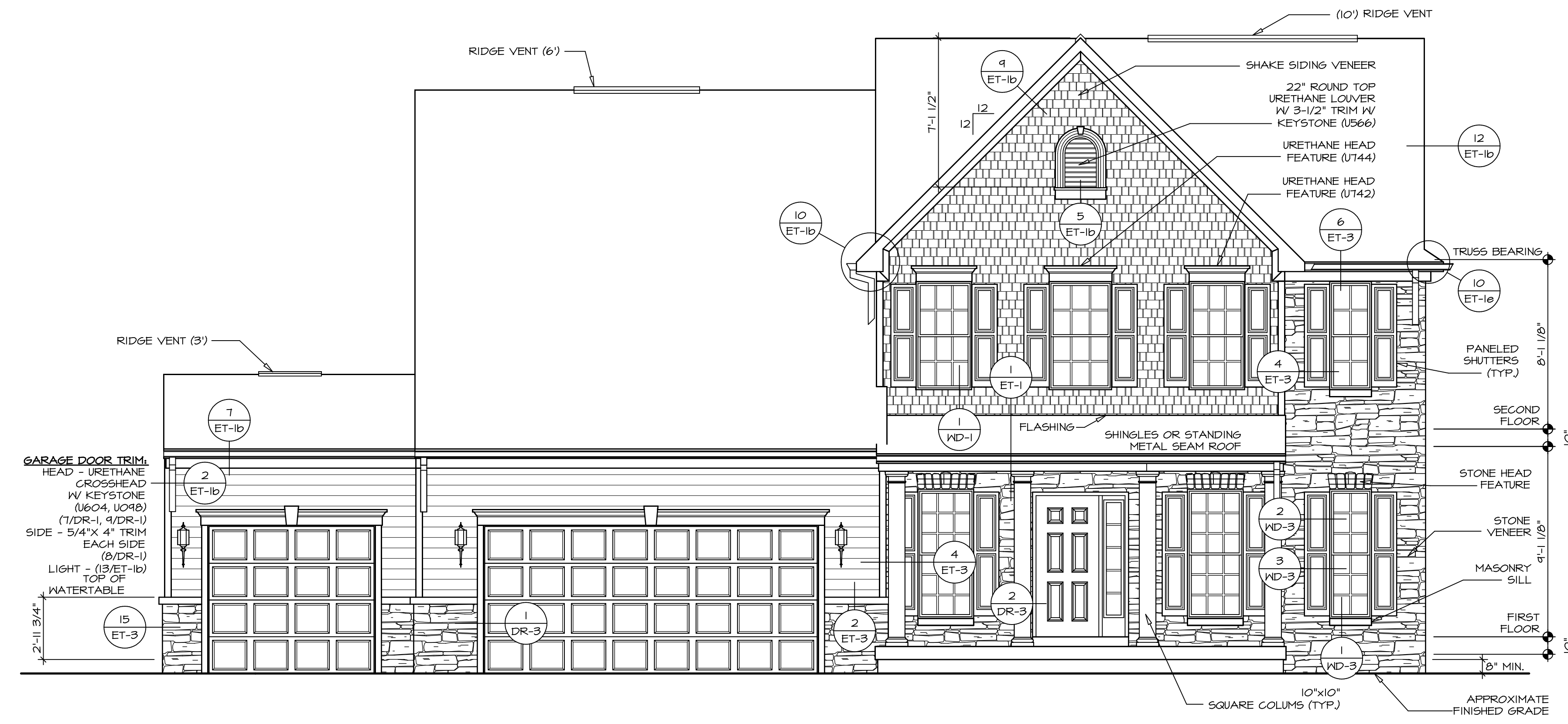
4 LEFT ELEVATION
SCALE: 1/8" = 1'-0"



3 REAR ELEVATION
SCALE: 1/8" = 1'-0"



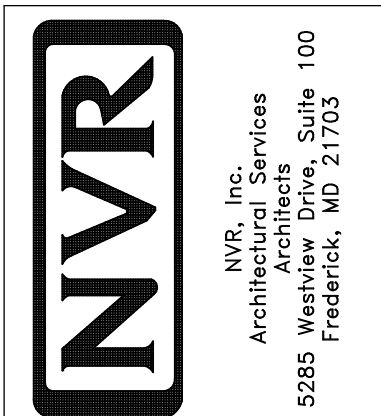
2 RIGHT ELEVATION
SCALE: 1/8" = 1'-0"

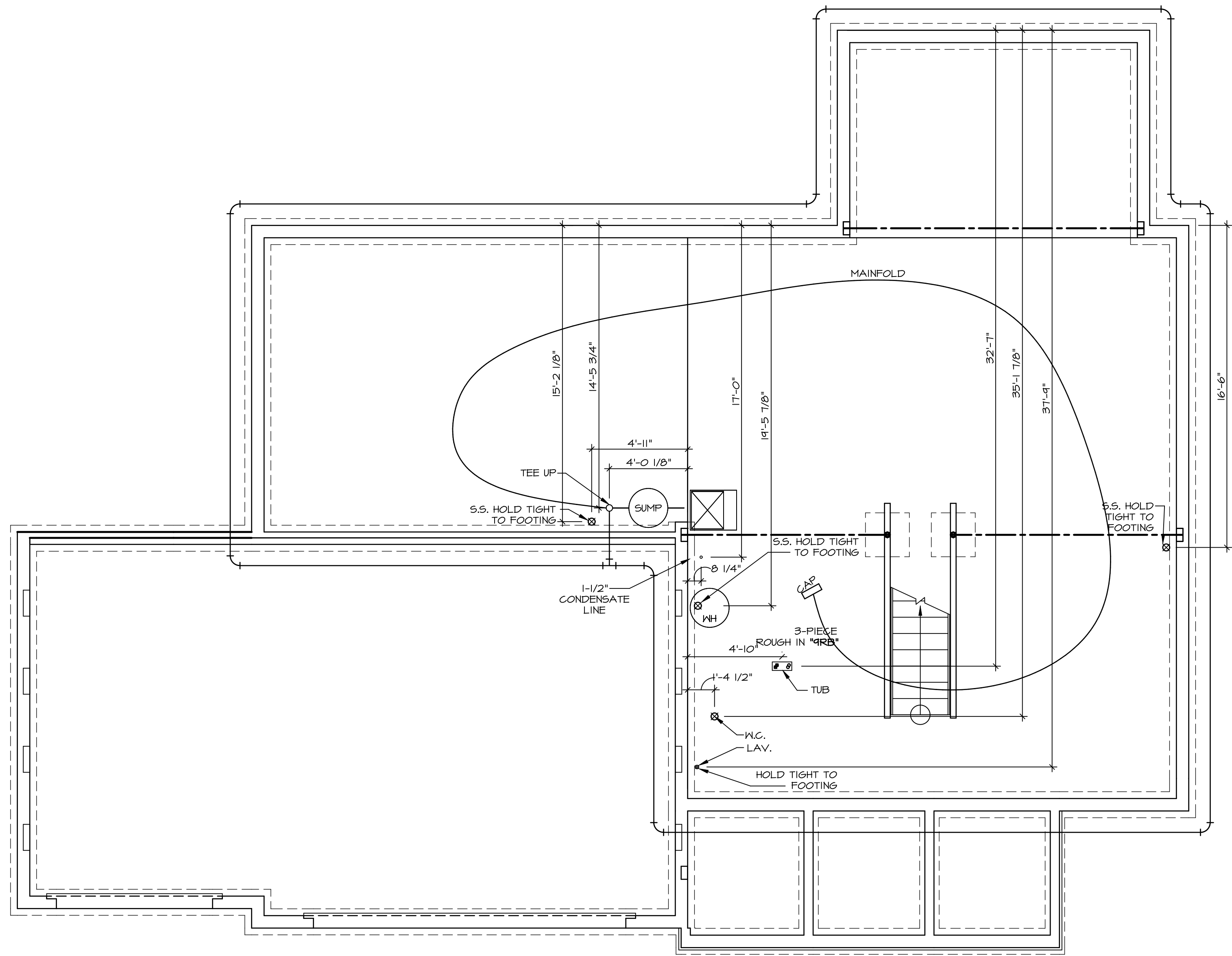


1 FRONT ELEVATION "D"
SCALE: 1/4" = 1'-0"

SHEET NO. A-1	MODEL PALERMO	SET NO. PALOO	VERSION 03
	DRAWING TITLE ELEVATIONS	DRAWN BY	DATE:
5	OPTION DESCRIPTION FULL BASEMENT FOUNDATION	OPTION FBA	
	<p>REMARKS</p> <p>REV. NO. DATE</p>		

NVR, Inc., owner, expressly reserves its copyright in these plans. These plans are not to be reproduced, changed, copied, or otherwise used without the written consent of NVR, Inc.





1
A-5 PLUMBING PLAN
SCALE: 1/4" = 1'-0"

SHEET NO. A-5	MODEL PALERMO	SET NO. PALOO
OPTION DESCRIPTION 48	VERSION 03	DRAWING TITLE PLUMBING PLAN
	DRAWN BY	DATE:
	DATE:	OPTION

NVR
NVR, Inc.
Architectural Services
5285 Westwood Drive, Suite 100
Frederick, MD 21703

NVR, Inc., owner, expressly reserves its copyright in these plans. These plans are not to be reproduced, changed, copied, or otherwise used in any way without the prior written consent of NVR, Inc.

REV. NO.	DATE	REMARKS

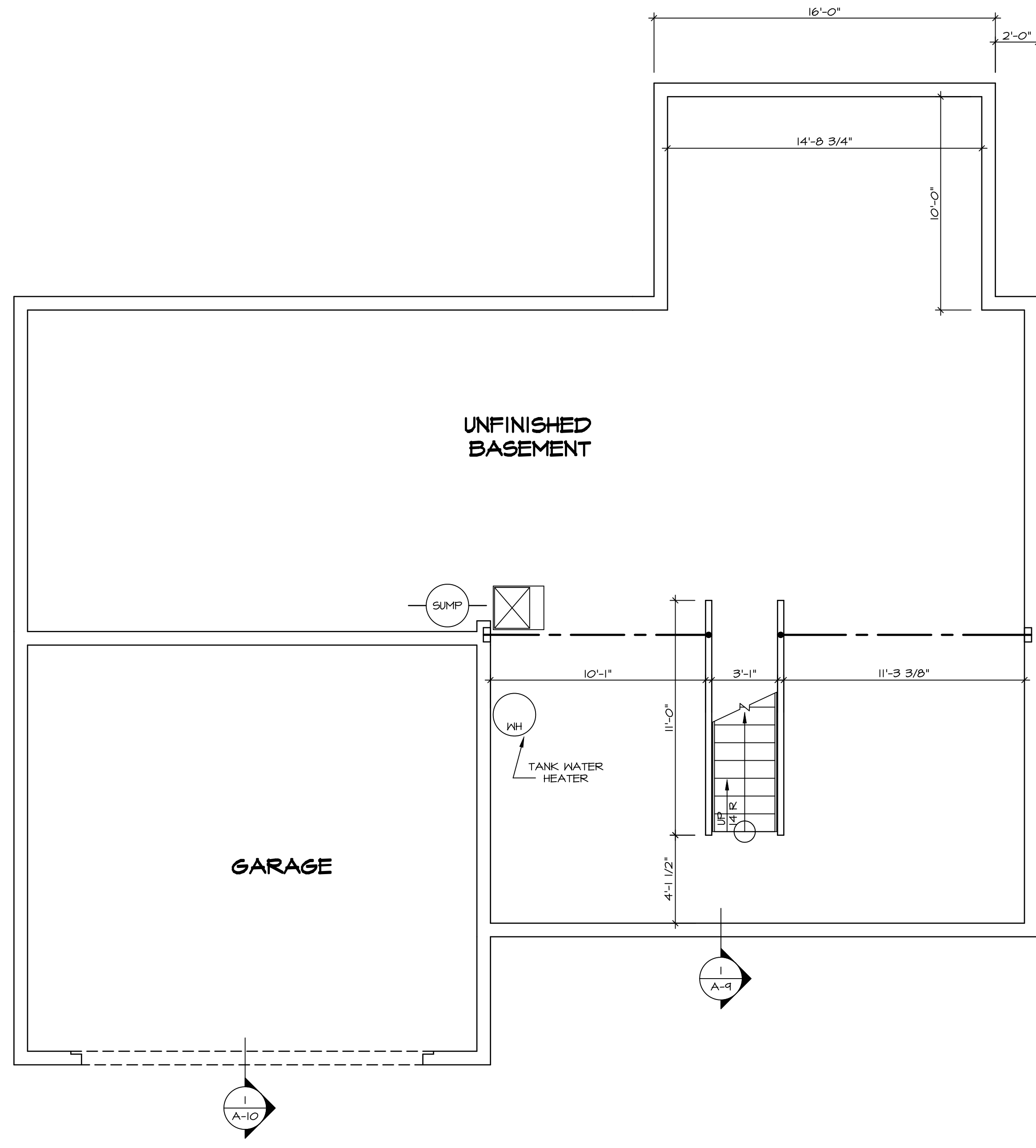
LEGEND

	BEARING WALL
	NON BEARING WALL
	INDICATES BEARING FROM POINT-LOAD ABOVE
	JACKS
	BEAM/HEADER
	PAD FOOTING
	STEEL COLUMN
	PORTAL FRAME
	JOIST/TRUSS
	LVL
	ENGINEERING PAGE NUMBER

SEE FC DETAILS FOR FRAMING CONNECTORS

- FLOOR PLAN NOTES**
- ALL HEADERS ARE (2) 2x6 w/ 2x4 WALLS OR (3) 2x6 w/ 2x6 WALLS, UNLESS OTHERWISE NOTED.
 - ALL HEADERS TO HAVE (1) 2x4 OR 2x6 JACK EACH END, UNLESS OTHERWISE NOTED.
 - ALL EXTERIOR WALLS TO BE 4" AND ALL INTERIOR WALLS TO BE 3 1/2", UNLESS OTHERWISE NOTED.
 - HATCHED AREAS INDICATE DROPPED CEILINGS. ALL DROPPED CEILINGS ARE 12" UNLESS OTHERWISE NOTED.
 - SEE "BRACED WALL PANEL DETAIL SHEET" FOR SPECIAL WALL FRAMING LOCATIONS AND HEADER SIZES, IF APPLICABLE.
 - SEE STANDARD DETAIL CATEGORY "IT" SHEET(S) FOR INTERIOR TRIM DETAILS.
 - SEE ARCHITECTURAL DETAIL SHEET "AD" FOR HOUSE SPECIFIC INTERIOR TRIM OPTION TABLE.
 - ALL WINDOWS HAVE 7'-0" 1/2" HEADER HEIGHT UNLESS OTHERWISE NOTED.
 - ALL CASED OPENINGS AT 7'-11", UNLESS OTHERWISE NOTED.

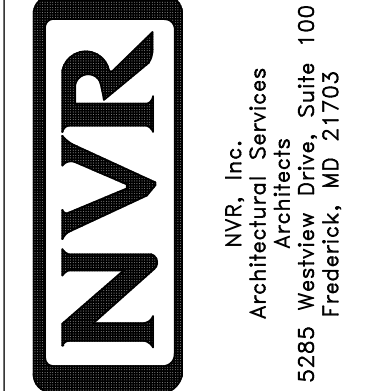
- GYPSUM NOTES**
- AT GARAGE:
GYPSUM BOARD AT COMMON WALLS, CEILINGS, BEAM WRAPS AND SUPPORTS PER STANDARD DETAIL FA-1(b) FIRE ASSEMBLIES OR AS REQUIRED BY LOCAL CODE.
- AT STAIRS:
1/2" GYPSUM BOARD AT UNDERSIDE OF STAIRS AND WALLS IN CLOSET



BASEMENT FLOOR PLAN
SCALE: 1/4" = 1'-0"

SHEET NO. A-6	MODEL PALERMO	SET NO. PALOO	REMARKS
	DRAWING TITLE BASEMENT FLOOR PLAN	VERSION 03	
OPTION DESCRIPTION 51	DRAWN BY	DATE:	REV. NO. DATE DESCRIPTION
	OPTION		

NVR, Inc., owner, expressly reserves its copyright in these plans. These plans are not to be reproduced, changed, copied in any way, or otherwise used without the written consent of NVR, Inc.



FIRST FLOOR JACK SCHEDULE				
IDENTIFIER	DESCRIPTION	OPTIONS	ENG. NUM.	REMARKS
J101	JACK - (2) 2x4 SPF STUD GRADE		1072	
J102	JACK - (2) 2x4 SPF STUD GRADE		1072	
J106	JACK - (2) 2x4 SPF STUD GRADE		1072	
J107	JACK - (2) 2x4 SPF STUD GRADE		1072	
J108	JACK - (2) 2x4 SPF STUD GRADE		1072	
J120	JACK - (4) 2x6 SPF STUD GRADE	MAA	1019	
J121	JACK - (3) 2x6 SPF STUD GRADE	MAA	1019	FIELD INSTALLED
J122	JACK - (3) 2x4 SPF STUD GRADE	SRM	1040	
J123	JACK - (3) 2x4 SPF STUD GRADE	SRM	1044	
J124	JACK - (3) 2x4 SPF STUD GRADE	ELD	1021	
J150	JACK - (3) 2x4 SPF STUD GRADE	GCF	1044	
J151	JACK - (3) 2x4 SPF STUD GRADE	GCF	1044	
J154	JACK - (2) 2x4 SPF STUD GRADE	GCF	1122	
J155	JACK - (2) 2x4 SPF STUD GRADE	GCF	1122	
J156	JACK - (2) 2x4 SPF STUD GRADE	GCF	1105	
J164	JACK - (3) 2x4 SPF STUD GRADE	ELD		

LVL PLY TO PLY FASTENING SCHEDULE:
 1A - (2) FLY UP TO AND INCLUDING 11 7/8" TALL; FASTEN FLIES W/ (2) ROWS 16D NAILS AT 12" O.C.
 2A - (2) FLY UP TO AND INCLUDING 18" TALL (INCLUSIVE); FASTEN FLIES W/ (3) ROWS 16D NAILS AT 12" O.C.
 3A - (2) FLY UP TO AND INCLUDING 20" TALL AND OVER; FASTEN FLIES W/ (4) ROWS 16D NAILS AT 12" O.C.
 4A - (3) FLY UP TO AND INCLUDING 11 7/8" TALL; FASTEN FLIES W/ (2) ROWS 16D NAILS AT 12" O.C. FROM EACH SIDE
 5A - (3) FLY UP TO AND INCLUDING 18" TALL (INCLUSIVE); FASTEN FLIES W/ (3) ROWS 16D NAILS AT 12" O.C. FROM EACH SIDE
 6A - (3) FLY UP TO AND INCLUDING 20" TALL (INCLUSIVE); FASTEN FLIES W/ (4) ROWS 16D NAILS AT 12" O.C. FROM EACH SIDE

FIRST FLOOR BEAM/HEADER SCHEDULE					
IDENTIFIER	DESCRIPTION	LENGTH	OPTIONS	ENG. NUM.	REMARKS
B101-3	LVL - 16	14'-4 1/2"	MAA	1019	5.A, FIELD INSTALL
B106-2	LVL - 16	17'-4"	ZSU	1044	2.A, FIELD INSTALL
PF104-2	EXT HEADER - 2X12 - 2 PLY	11'-4"	GCF	1054, 1148	2-PLY, FIELD INSTALL

STEEL COLUMN SCHEDULE					
IDENTIFIER	STYLE	HEIGHT	OPTIONS	ENG. NUM.	REMARKS

LEGEND

- BEARING WALL
- NON BEARING WALL
- INDICATES BEARING FROM POINT-LOAD ABOVE
- JACKS
- BEAM/HEADER
- PAD FOOTING
- STEEL COLUMN
- PORTAL FRAME
- JOIST/TRUSS
- LVL
- ENGINEERING PAGE NUMBER

SEE FC DETAILS FOR FRAMING CONNECTORS

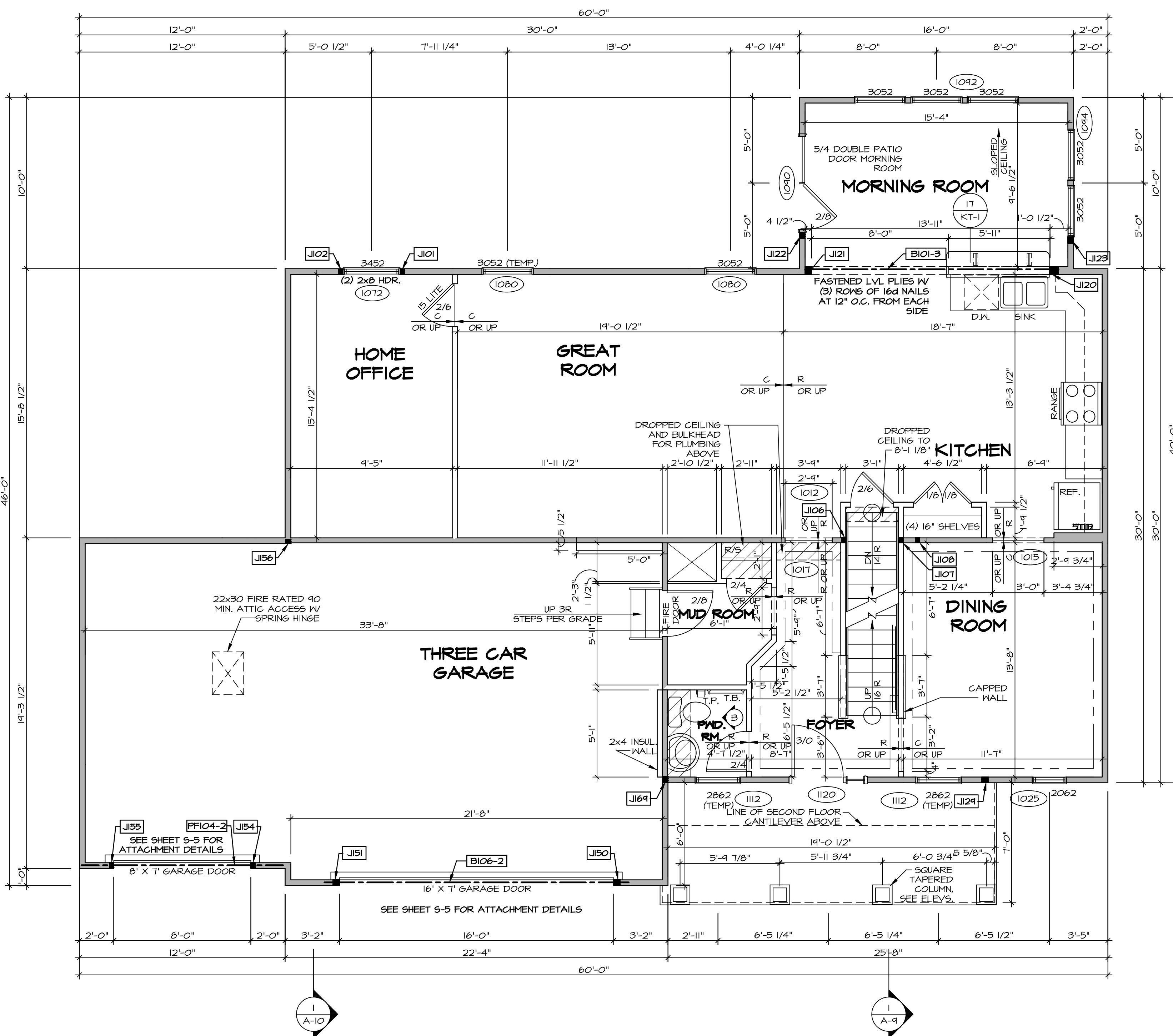
FLOOR PLAN NOTES

- ALL HEADERS ARE (2) 2x6 w/ 2x4 WALLS OR (3) 2x6 w/ 2x6 WALLS, UNLESS OTHERWISE NOTED.
- ALL HEADERS TO HAVE (1) 2x4 OR 2x6 JACK AND KING STUD EACH END, UNLESS OTHERWISE NOTED.
- ALL EXTERIOR WALLS TO BE 4" w/ OSB OR 3 1/2" w/ T-PLY, ALL INTERIOR WALLS TO BE 3 1/2" UNLESS OTHERWISE NOTED.
- HATCHED AREAS INDICATE DROPPED CEILINGS. ALL DROPPED CEILINGS ARE 12" UNLESS OTHERWISE NOTED.
- SEE "BRACED WALL PANEL DETAIL SHEET" FOR SPECIAL WALL FRAMING LOCATIONS AND HEADER SIZES, IF APPLICABLE.
- SEE STANDARD DETAIL CATEGORY "IT" SHEET(S) FOR INTERIOR TRIM DETAILS.
- SEE ARCHITECTURAL DETAIL SHEET "AD" FOR HOUSE SPECIFIC INTERIOR TRIM OPTION TABLE.
- ALL WINDOWS HAVE 7'-0 1/2" HEADER HEIGHT UNLESS OTHERWISE NOTED.
- ALL HEADERS IN NON-BEARING WALLS SHALL BE A SINGLE FLAT 2X4 OR 2X6 ATTACHED TO GRIPPLES ABOVE, UNLESS OTHERWISE NOTED.

GYPSUM NOTES

AT GARAGE:
 GYPSUM BOARD AT COMMON WALLS, CEILING, BEAM WRAPS AND SUPPORTS PER STANDARD DETAIL FA-1(b) FIRE ASSEMBLIES OR AS REQUIRED BY LOCAL CODE.

AT STAIRS:
 1/2" GYPSUM BOARD AT UNDERSIDE OF STAIRS AND WALLS IN CLOSET



FIRST FLOOR PLAN
 SCALE: 1/4" = 1'-0"

REV. NO.	DATE	REMARKS
1	08/04/18	TM - DRAWING ALIGNMENT
2	07/17/18	SLS - T-PLY CONVERSION PROJECT

NVR, Inc., owner, expressly reserves its copyright in these plans. These plans are not to be reproduced, changed, copied, altered, or otherwise used without the written consent of NVR, Inc.

NVR
 NVR, Inc.
 Architectural Services
 Suite 100
 5285 Westchase Blvd
 Frederick, MD 21703

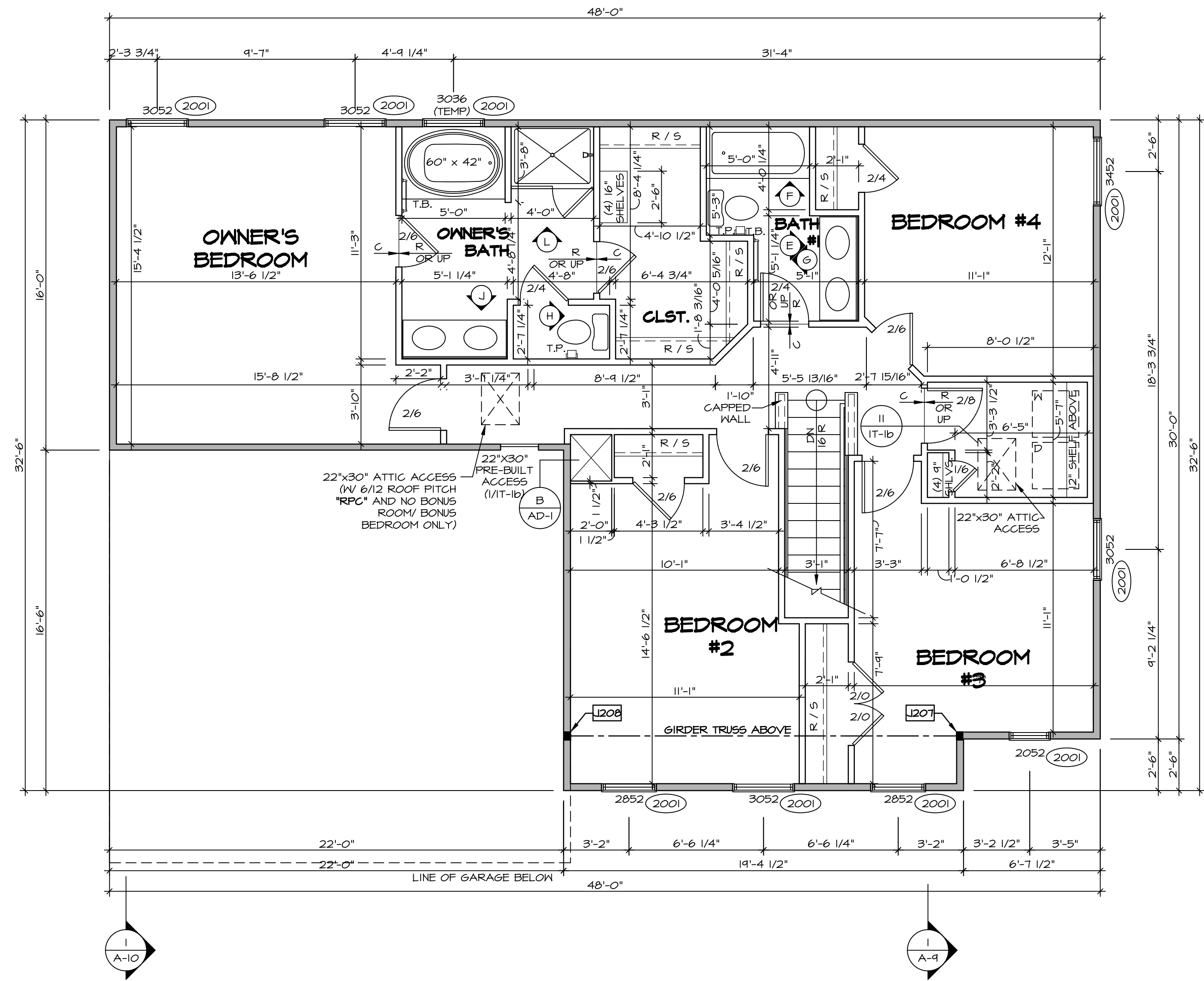
SET NO. PALOO
 VERSION 03
 DRAWN BY
 DATE:
 OPTION

MODEL
PALERMO
 DRAWING TITLE
FIRST FLOOR PLAN
 OPTION DESCRIPTION

SECOND FLOOR JACK SCHEDULE				
IDENTIFIER	DESCRIPTION	OPTIONS	ENG. NUM.	REMARKS
J207	JACK - (3) 2x4 SPM	ELD	2011	EXTEND JACKS THROUGH TOP PLATE
J208	JACK - (3) 2x4 SPM	ELD	2011	EXTEND JACKS THROUGH TOP PLATE

LEGEND	
	BEARING WALL
	NON BEARING WALL
	INDICATES BEARING FROM POINT-LOAD ABOVE
	JACKS
	BEAM/HEADER
	PAD FOOTING
	STEEL COLUMN
	PORTAL FRAME
	JOIST/TRUSS
	LVL
	ENGINEERING PAGE NUMBER

- FLOOR PLAN NOTES**
- ALL HEADERS ARE (2) 2x6 w/ 2x4 WALLS OR (3) 2x6 w/ 2x6 WALLS, UNLESS OTHERWISE NOTED.
 - ALL HEADERS TO HAVE (1) 2x4 OR 2x6 JACK AND KING STUD EACH END, UNLESS OTHERWISE NOTED.
 - ALL EXTERIOR WALLS TO BE 4" w/ OSB OR 3 1/2" w/ T-PLY, ALL INTERIOR WALLS TO BE 3 1/2", UNLESS OTHERWISE NOTED.
 - HATCHED AREAS INDICATE DROPPED CEILINGS. ALL DROPPED CEILINGS ARE 12" UNLESS OTHERWISE NOTED.
 - SEE "BRACED WALL PANEL DETAIL SHEET" FOR SPECIAL WALL FRAMING LOCATIONS AND HEADER SIZES, IF APPLICABLE.
 - SEE STANDARD DETAIL CATEGORY "IT" SHEET(S) FOR INTERIOR TRIM DETAILS.
 - SEE ARCHITECTURAL DETAIL SHEET "AD" FOR HOUSE SPECIFIC INTERIOR TRIM OPTION TABLE.
 - ALL WINDOWS HAVE 7'-0 1/2" HEADER HEIGHT UNLESS OTHERWISE NOTED.
 - ALL HEADERS IN NON-BEARING WALLS SHALL BE A SINGLE FLAT 2x4 OR 2x6 ATTACHED TO CRIPPLES ABOVE, UNLESS OTHERWISE NOTED.

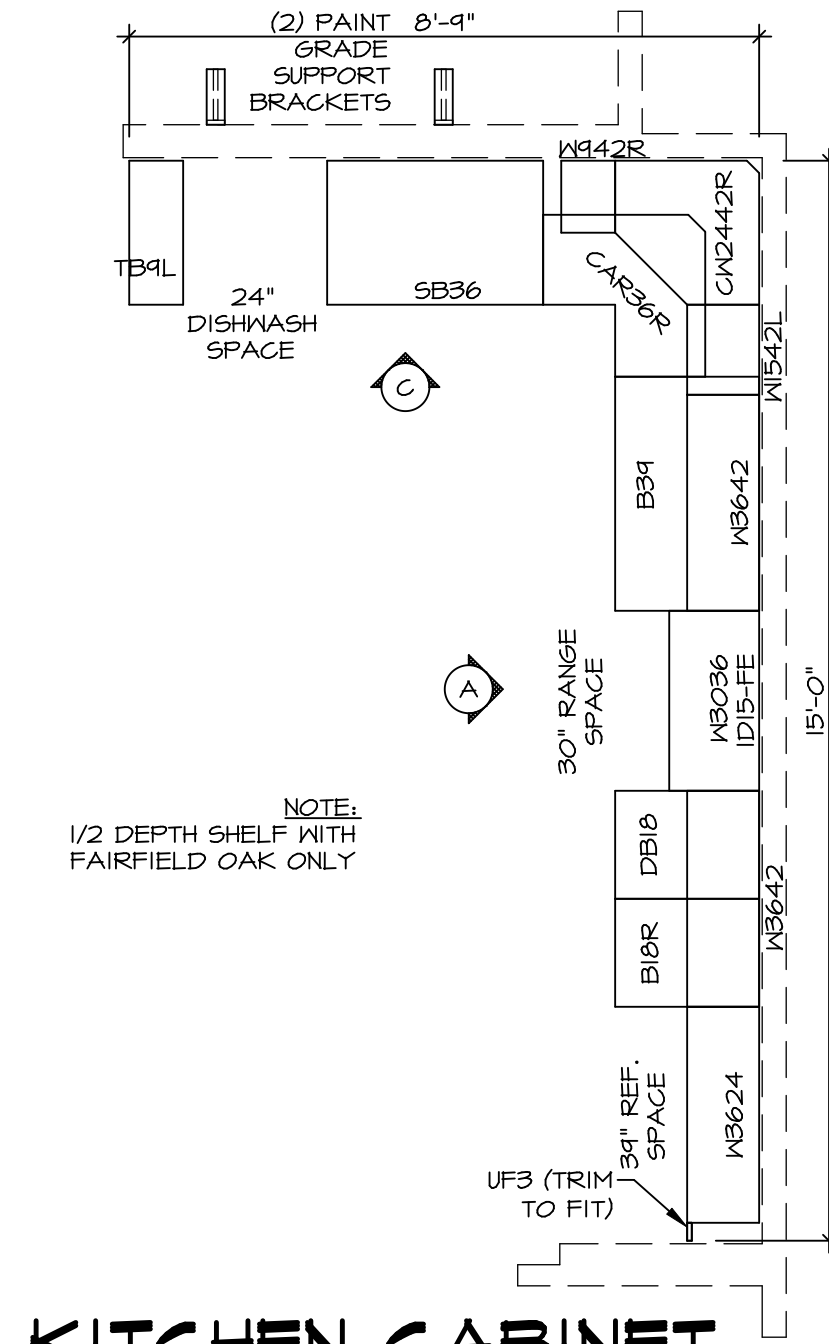


SECOND FLOOR PLAN
SCALE: 1/4" = 1'-0"

SHEET NO. A-8	MODEL PALERMO	SET NO. PALOO	REV. NO. 1	DATE 08/04/18	REMARKS
		VERSION 03	REV. NO. 2	DATE 07/27/18	REMARKS
DRAWING TITLE SECOND FLOOR PLAN		DRAWN BY			
OPTION DESCRIPTION		DATE:			
60		OPTION			

NVR, Inc.
 Architectural Services
 Architects
 5285 West
 Frederick, MD 21703

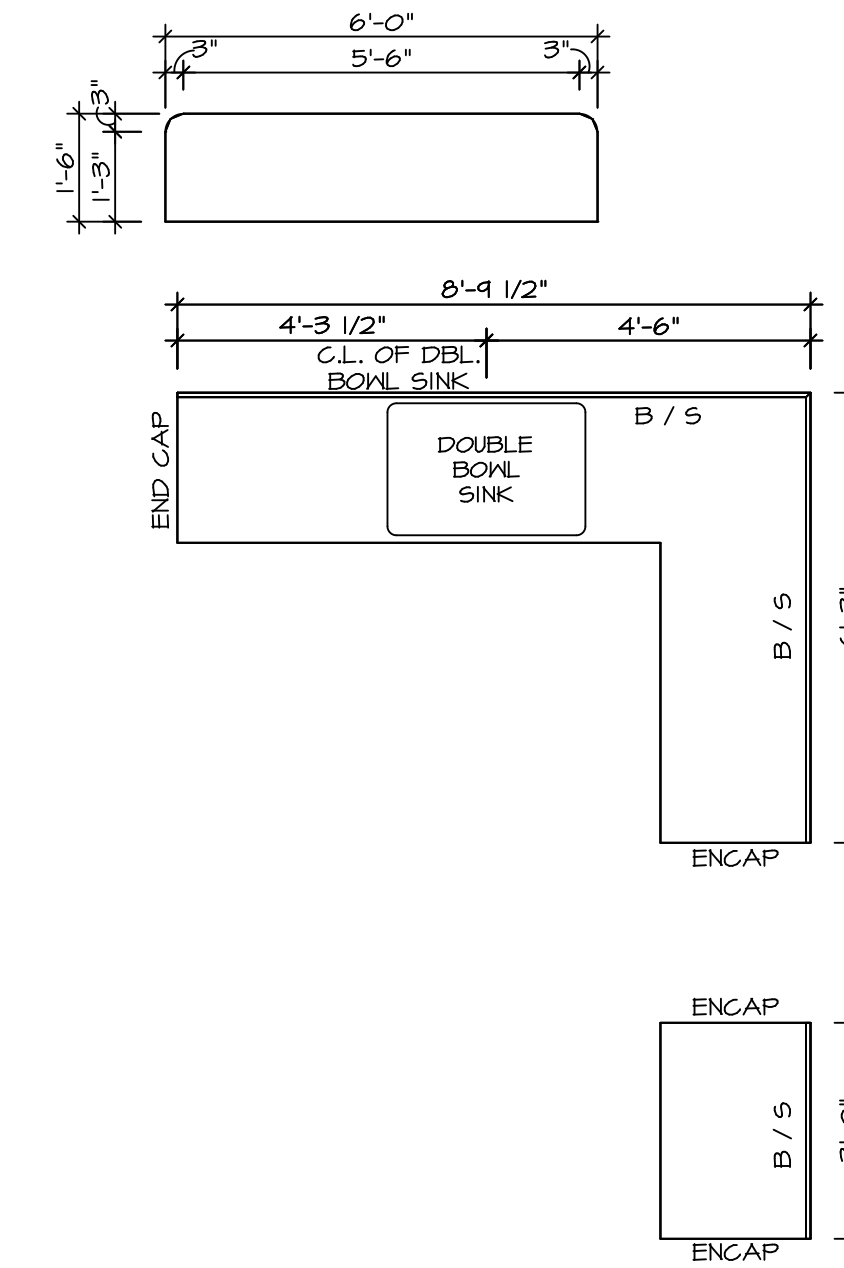
C:\NVR\Solves\PALERMO_PALOO_03\DCY-16-149A\00102\Sheets\101_Spec\16_0 A-B_PLN2_L5.dwg 05/27/18 - 422.dwg



KITCHEN CABINET PLAN-KC-2862

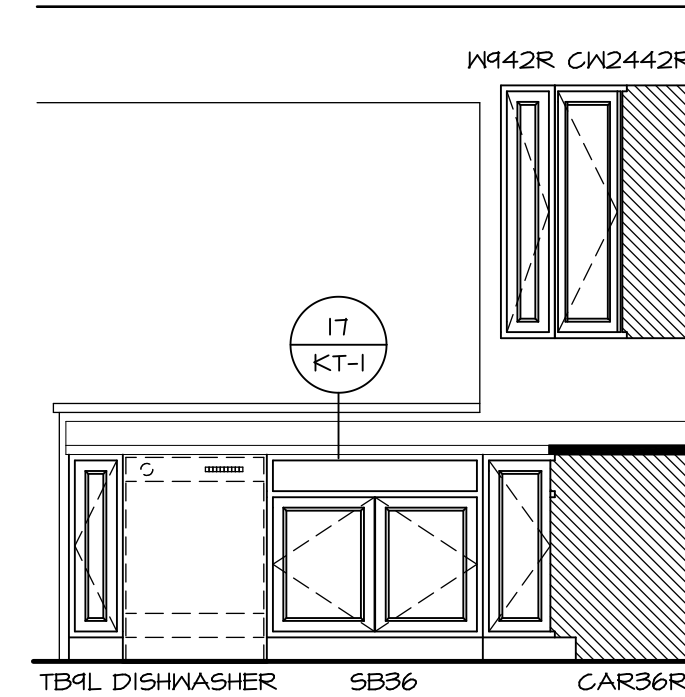
STANDARD KITCHEN MORNING ROOM SCALE: 3/8" = 1'-0" A-12

NOTE:
1/2 DEPTH SHELF WITH FAIRFIELD OAK ONLY

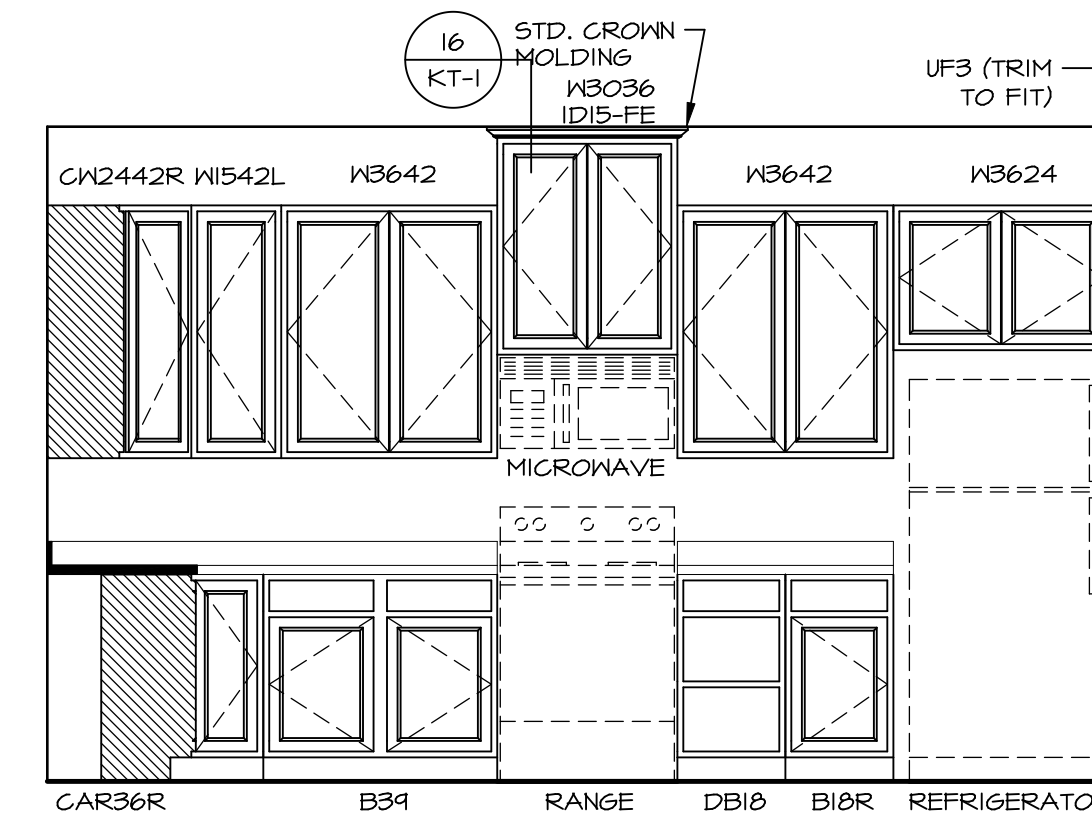


KITCHEN COUNTERTOP PLAN-KT-2862

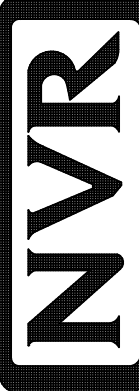
STANDARD KITCHEN MORNING ROOM SCALE: 3/8" = 1'-0" A-12



KITCHEN ELEVATION C
SCALE: 3/8" = 1'-0"



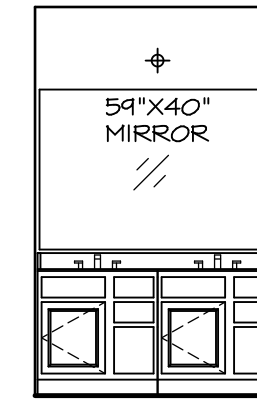
KITCHEN ELEVATION A
SCALE: 3/8" = 1'-0"

SHEET NO. A-12	MODEL PALERMO	SET NO. PALOO	REVISIONS
	DRAWING TITLE	VERSION 03	DATE
OPTION DESCRIPTION 70	OPTION DESCRIPTION	DATE	DATE
	OPTION DESCRIPTION	DATE	DATE
 NVR, Inc. Architectural Services Architects 5285 Westpark Drive, Suite 100 Frederick, MD 21703		NVR, Inc., owner, expressly reserves its copyright in these plans. These plans are not to be reproduced, changed, copied, or otherwise used in any way without the written consent of NVR, Inc.	



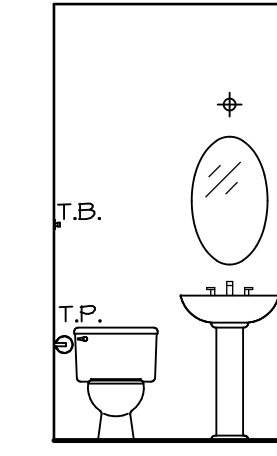
(2) V5DB3034H

J OWNER'S BATH
SCALE: 1/4" = 1'-0"

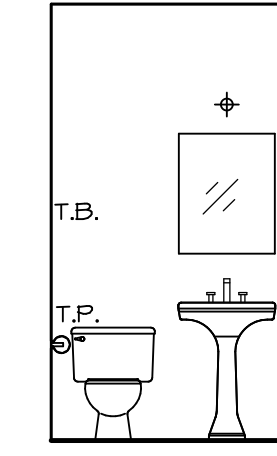


(2) V5DB30

E BATH #1
SCALE: 1/4" = 1'-0"

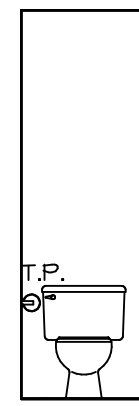


PEDESTAL SINK WITH OVAL MIRROR "5ZB"

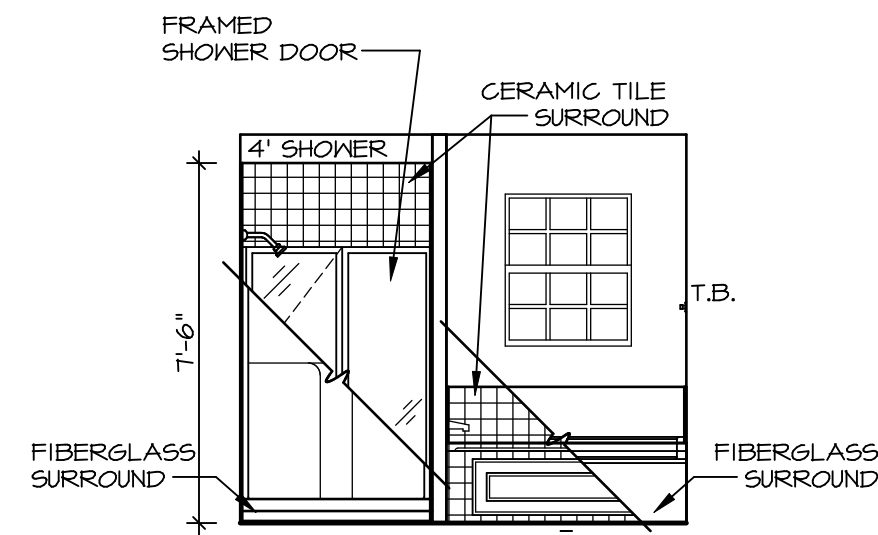


PEDESTAL SINK WITH SQUARE MIRROR "5ZC"

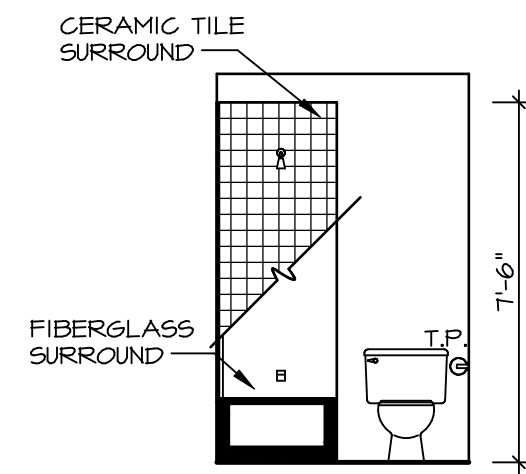
B POWDER ROOM
SCALE: 1/4" = 1'-0"



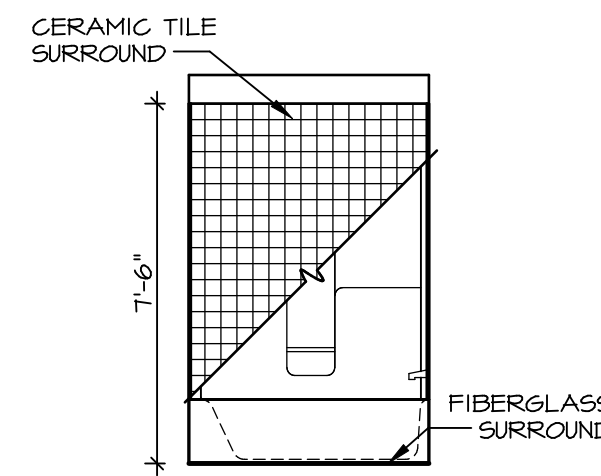
H OWNER'S BATH
SCALE: 1/4" = 1'-0"



L OWNER'S BATH
SCALE: 1/4" = 1'-0"



G BATH #1
SCALE: 1/4" = 1'-0"



F BATH #1
SCALE: 1/4" = 1'-0"

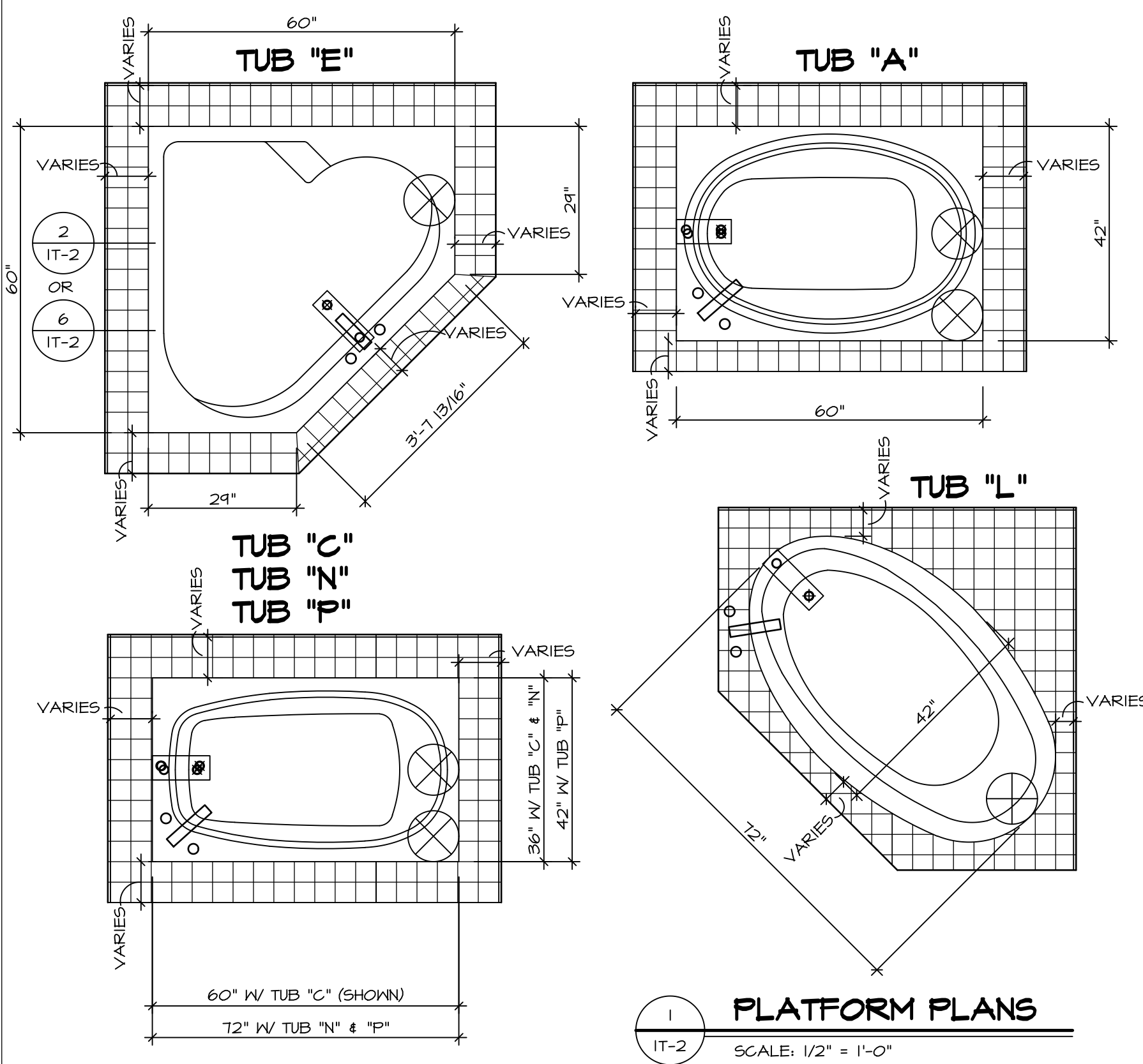
NOTES:

1. TEMPERED GLASS SHOWER ENCLOSURE WITH SWING DOOR OR OPTIONAL SLIDING DOOR BY DIVISION
2. TUB ACCESS PANELS PROVIDED AS NEEDED, ALL MATERIALS BY DIVISION
3. REFER TO SHEET IT-2 FOR TUB AND SHOWER DETAILS.
4. ALL V5DB24-42 DRAWERS TO BE SET ON RIGHT HAND.
5. BATH ELEVATIONS ARE SHOWN PER PLAN.

SHEET NO.	MODEL	SET NO.	VERSION	DRAWN BY	DATE:	OPTION	DESCRIPTION	REV. NO.	DATE	REMARKS
A-13	PALERMO	03	03				BATH ELEVATIONS	1	08/04/18	TH - DRAINING ALIGNMENT
72										

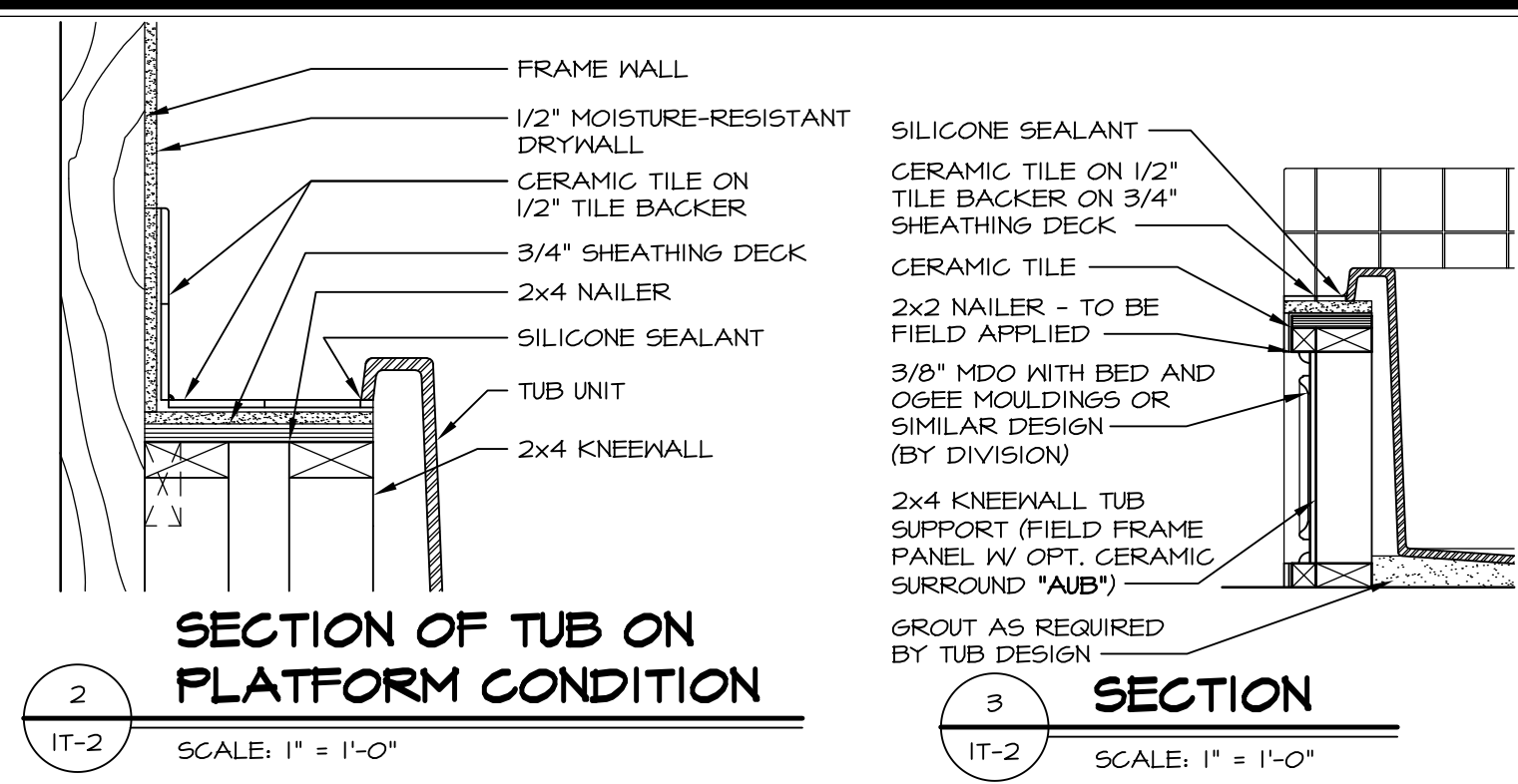
NVR
 NVR, Inc.
 Architectural Services
 Architects
 Suite 100
 5285 Westover Lane
 Frederick, MD 21703

C:\NVR\Solves\PALERMO_PAL00_03\DCY-YG-149A\B00102\Sheets\Lot_Spec\1672_A-13_BATH_LS.dwg 05/22/18 - 4:22 am

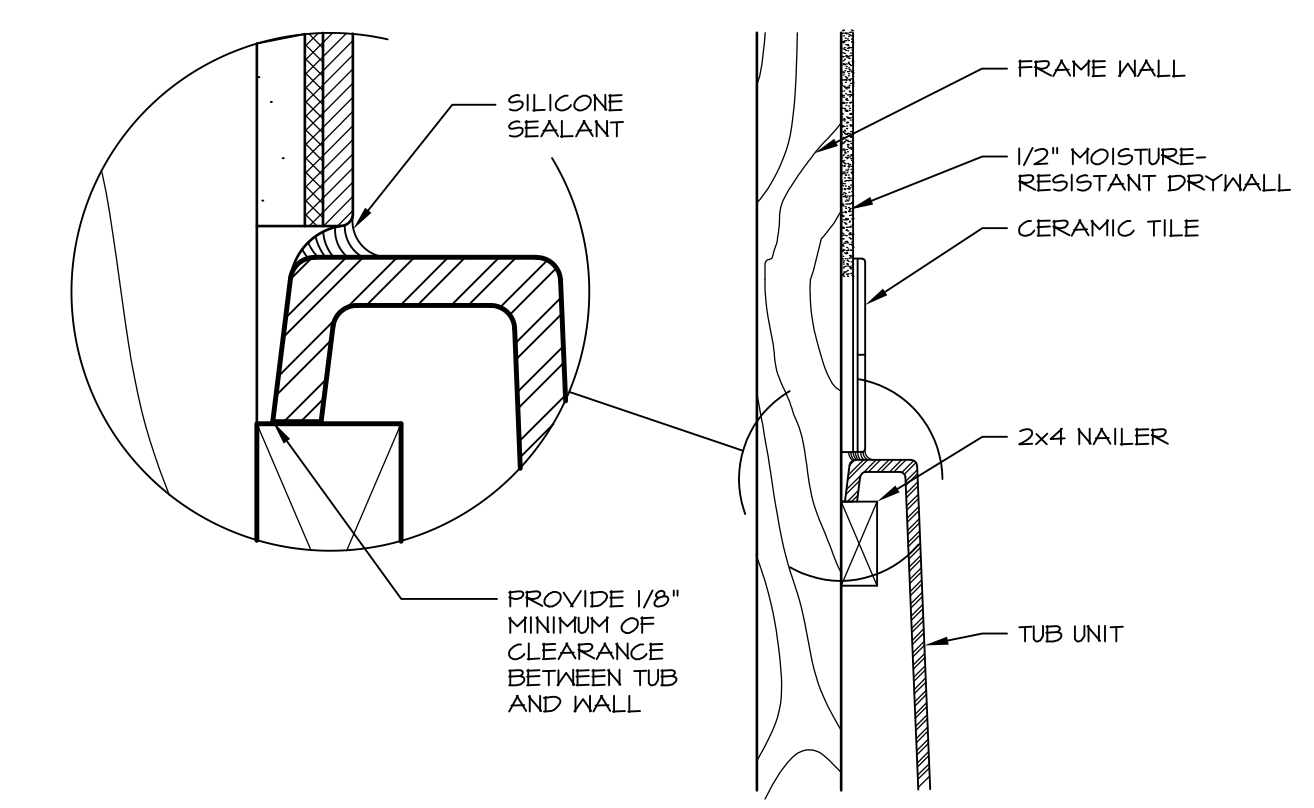


1 PLATFORM PLANS
SCALE: 1/2" = 1'-0"

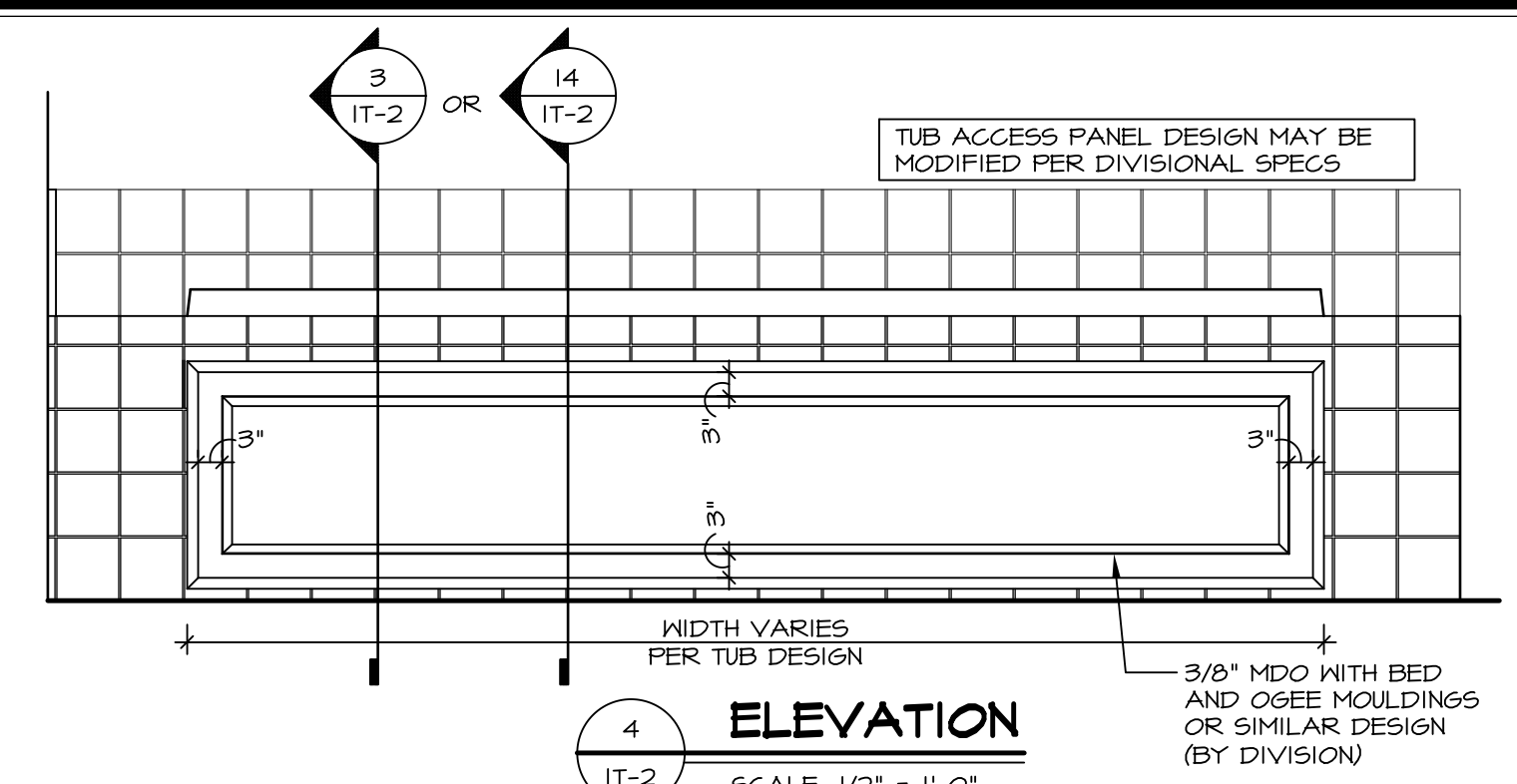
TUB	MANUF.	HEIGHT	WIDTH	LENGTH	TUB DECK PANEL HEIGHT
"A"	KOHLER/ STERLING	18 3/4"	42"	60"	17 1/8"
"C"	KOHLER/ STERLING	18 3/4"	36"	60"	17 1/8"
"E"	KOHLER/ STERLING	19 1/2"	60"	60"	17 7/8"
"L"	KOHLER/ STERLING	18 1/2"	42"	72"	16 7/8"
"N"	KOHLER/ STERLING	18 3/4"	36"	72"	17 1/8"
"P"	KOHLER/ STERLING	18 3/4"	42"	72"	17 1/8"



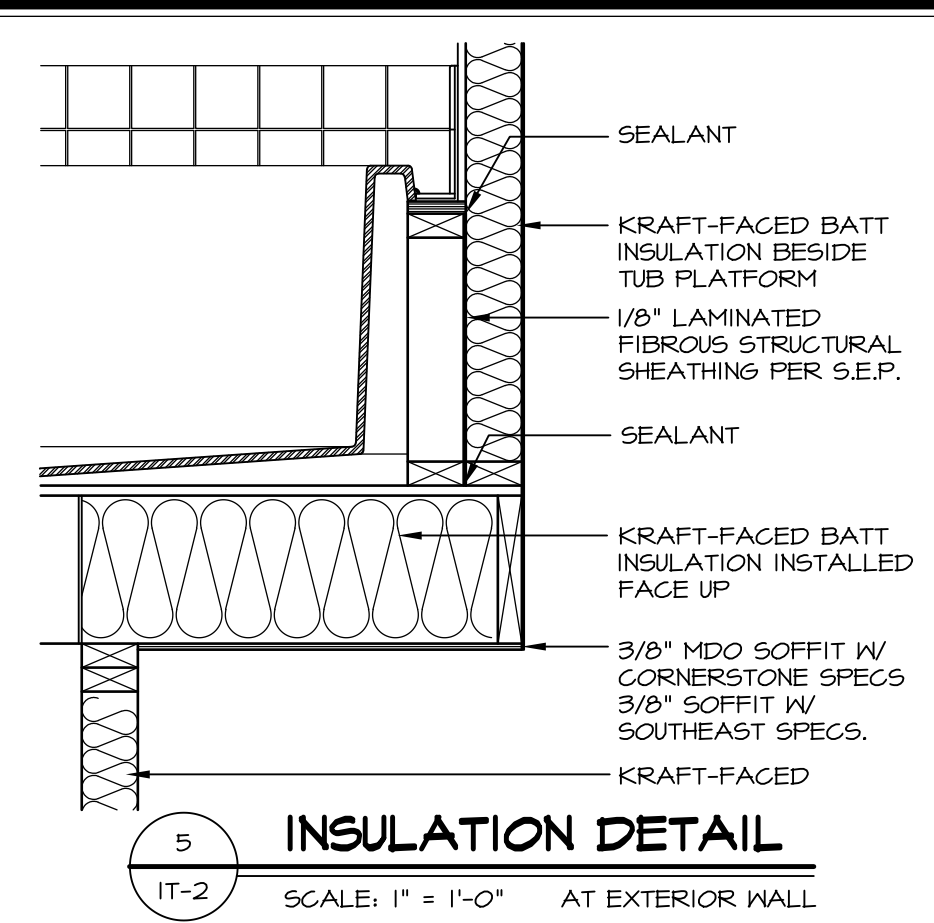
2 SECTION OF TUB ON PLATFORM CONDITION
SCALE: 1" = 1'-0"



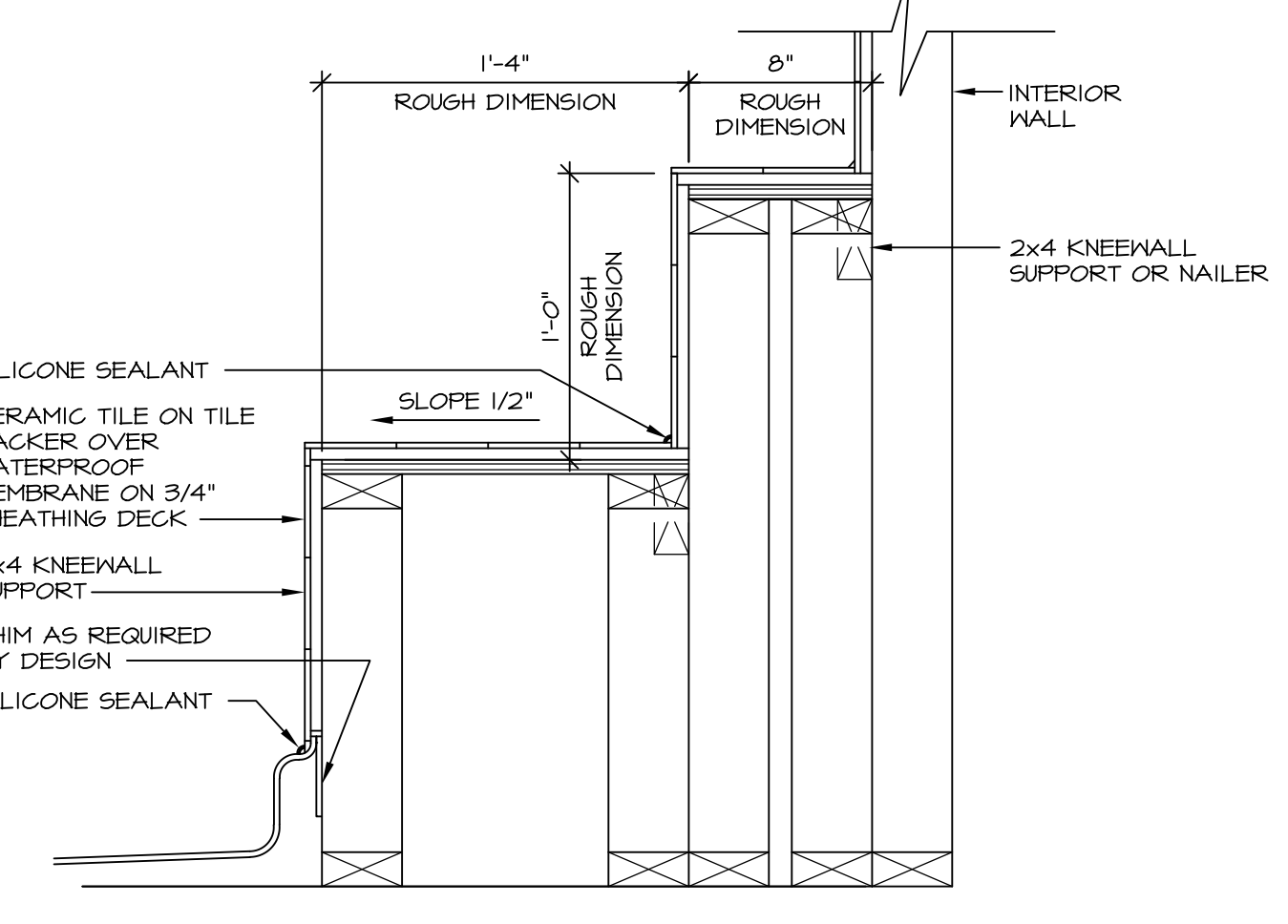
3 SECTION OF TUB TO WALL CONDITION
SCALE: 1" = 1'-0"



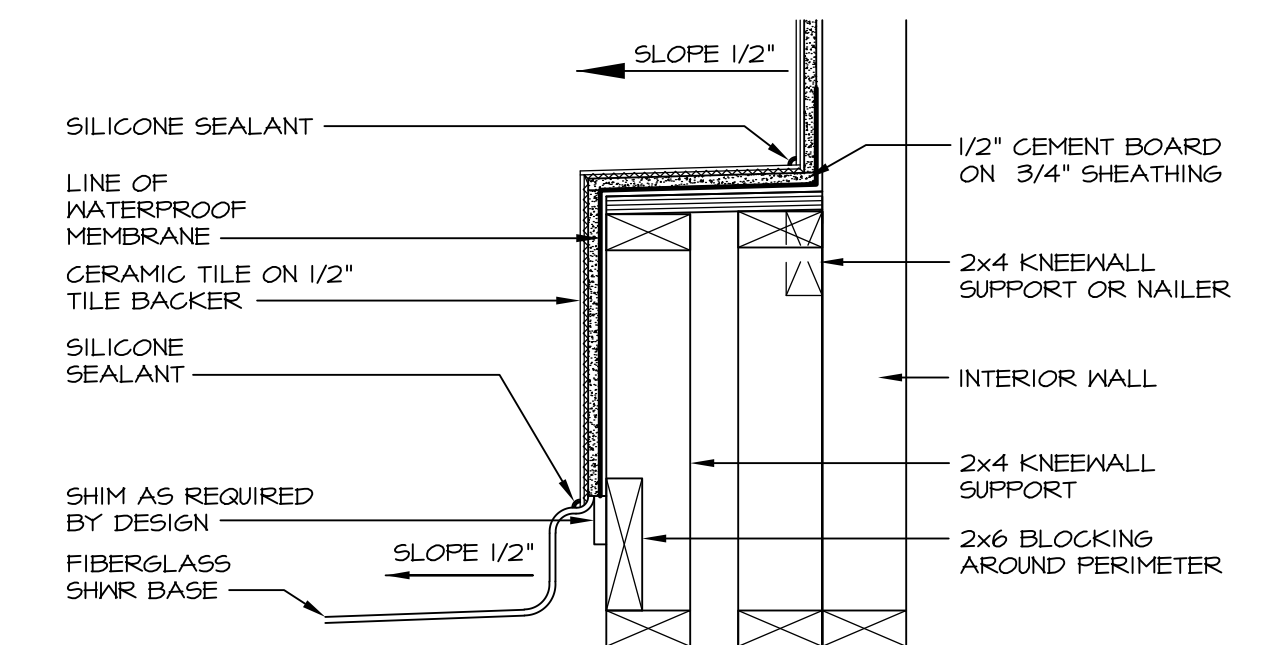
4 ELEVATION
SCALE: 1/2" = 1'-0"



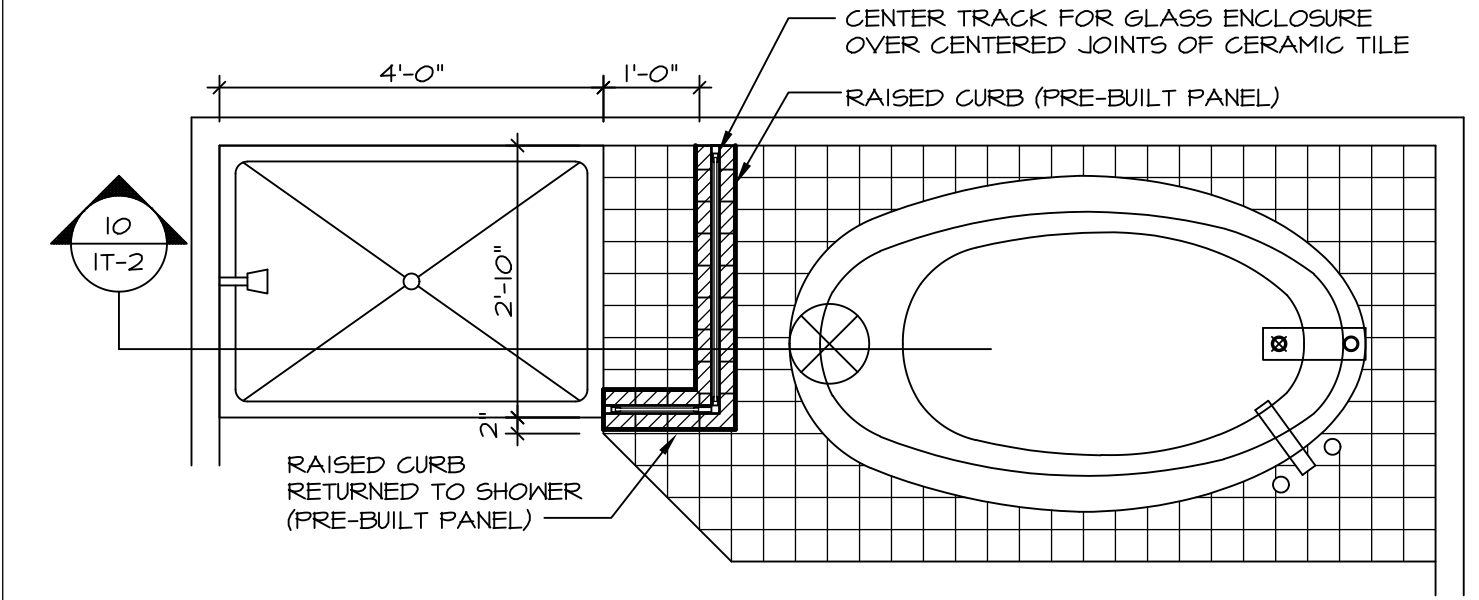
5 INSULATION DETAIL
SCALE: 1" = 1'-0" AT EXTERIOR WALL



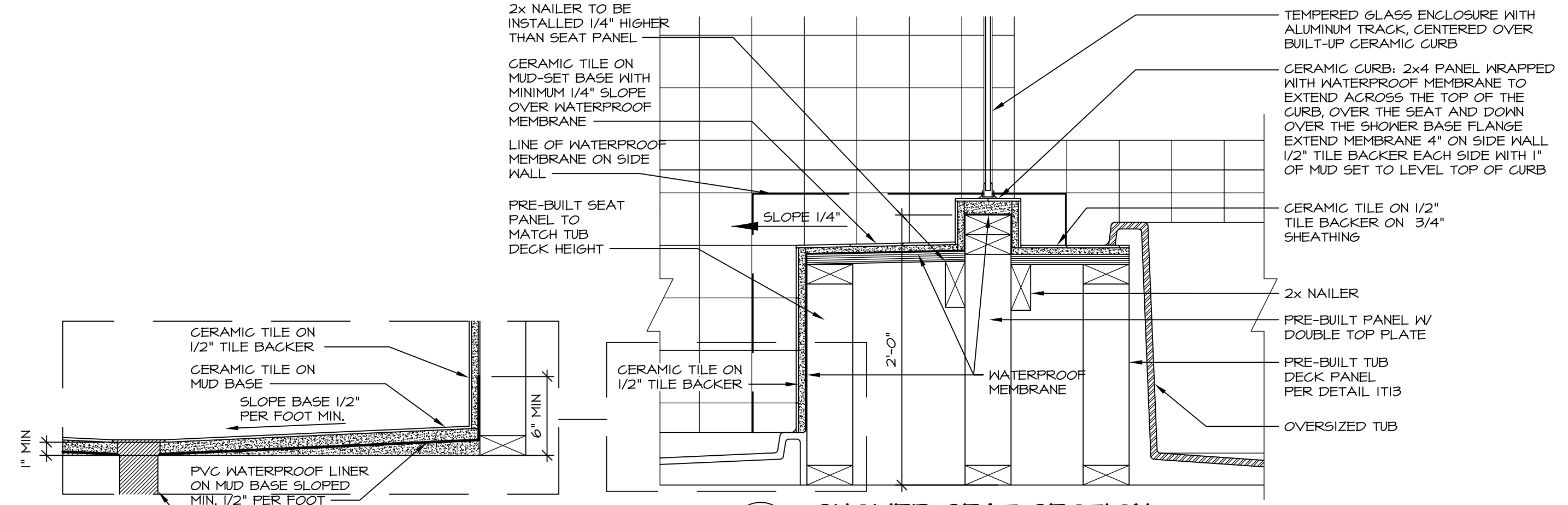
6 SECTION OF SHOWER SEAT AND SHELF
SCALE: 1/2" = 1'-0"



7 SECTION OF SHOWER SEAT
SCALE: 1/2" = 1'-0" FIBERGLASS SHOWER BASE



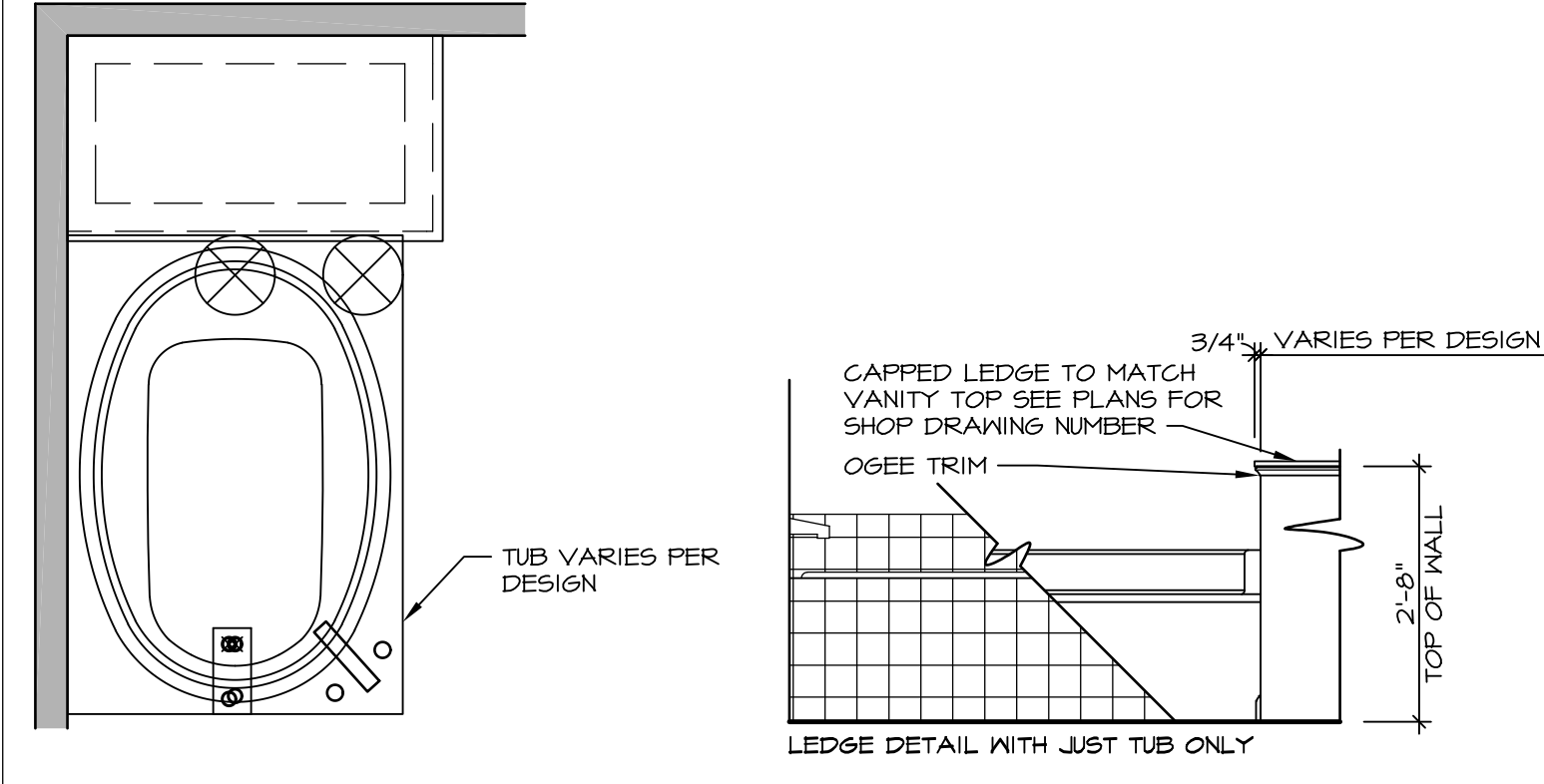
8 SHOWER SEAT PLAN / DETAIL
SCALE: 1/2" = 1'-0"



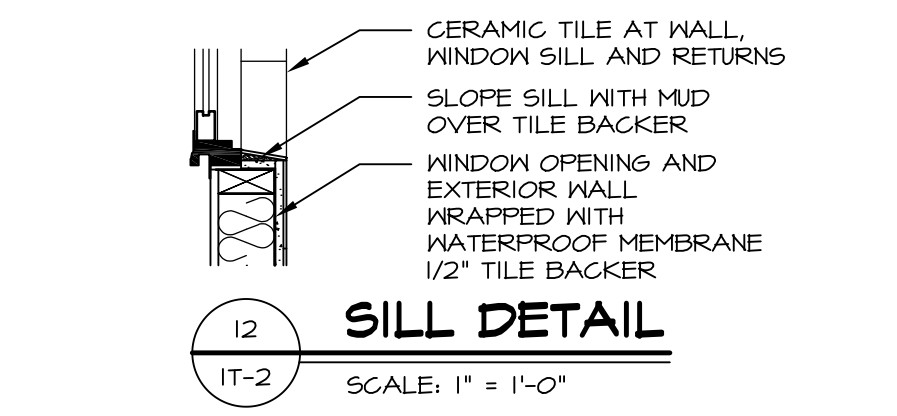
9 SHOWER SEAT SECTION
SCALE: 1/2" = 1'-0"



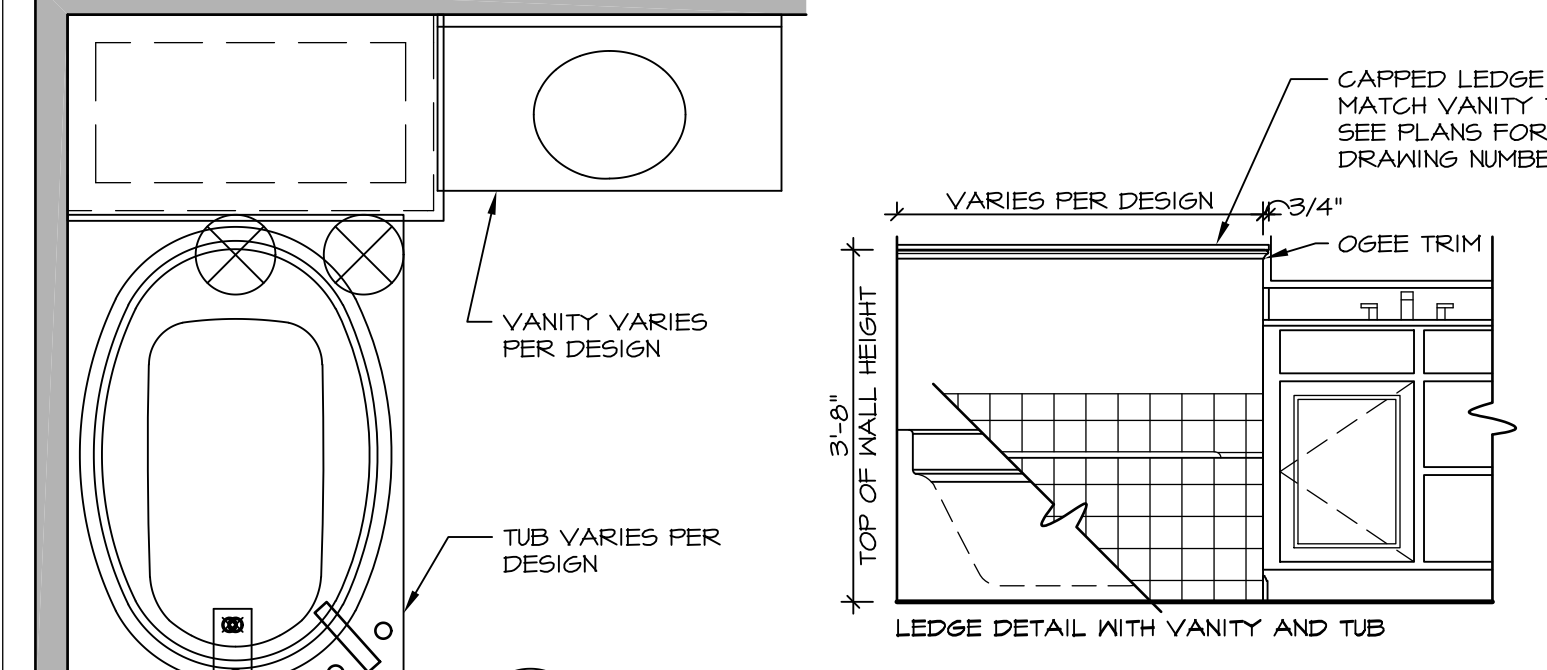
10 ALTERNATE SHOWER PAN DETAIL



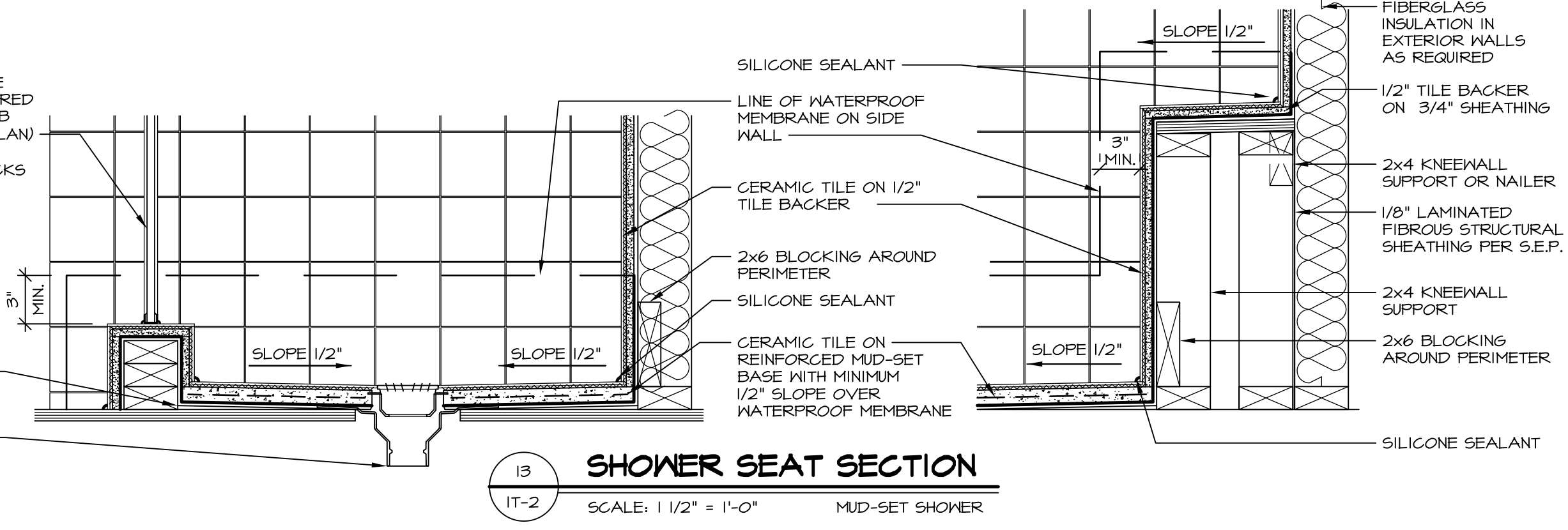
11 BATHROOM LEDGE DETAIL
SCALE: 1/2" = 1'-0"



12 SILL DETAIL
SCALE: 1" = 1'-0"



13 BATHROOM LEDGE DETAIL
SCALE: 1/2" = 1'-0"

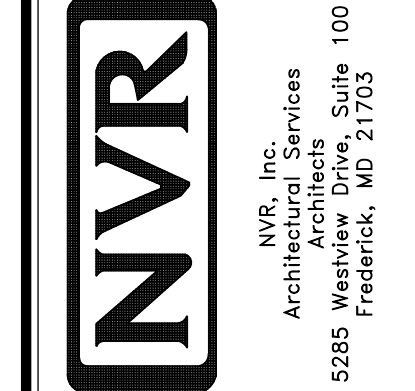


14 SHOWER SEAT SECTION
SCALE: 1" = 1'-0" MUD-SET SHOWER

REVISIONS

REV. NO.	DATE	DESCRIPTION
1	5/1/17	EBP - REVISED DETAIL I AND II TO REMOVE TUB ACCESS PANEL REF. (DSS #15 5414)
2	9/2/17	EBP - REVISED T-FLY NOTE TO CALL OUT LFS
3	9/2/17	EBP - REVISED NOTE ON DETAIL IT - REVISED ORDER OF MATERIAL PARA#6934

NVR, Inc., owner, expressly reserves its common law copyright and other property rights in these plans. These plans are not to be reproduced, stored in a retrieval system, or transmitted in any form or by any means, electronic, mechanical, photocopying, recording, or by any information storage and retrieval system, without the prior written consent of NVR, Inc.



SET NO.	VERSION	DATE	OPTION
1	1		

STANDARD DETAILS
DRAWING TITLE
INTERIOR TRIM DETAILS
BATH DETAILS
OPTION DESCRIPTION

SHEET NO. IT-2

J:\Dwg\NVR\Interior Trim\IT2.dwg 09/27/17 - 9:20 am