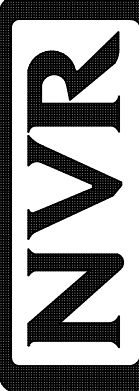
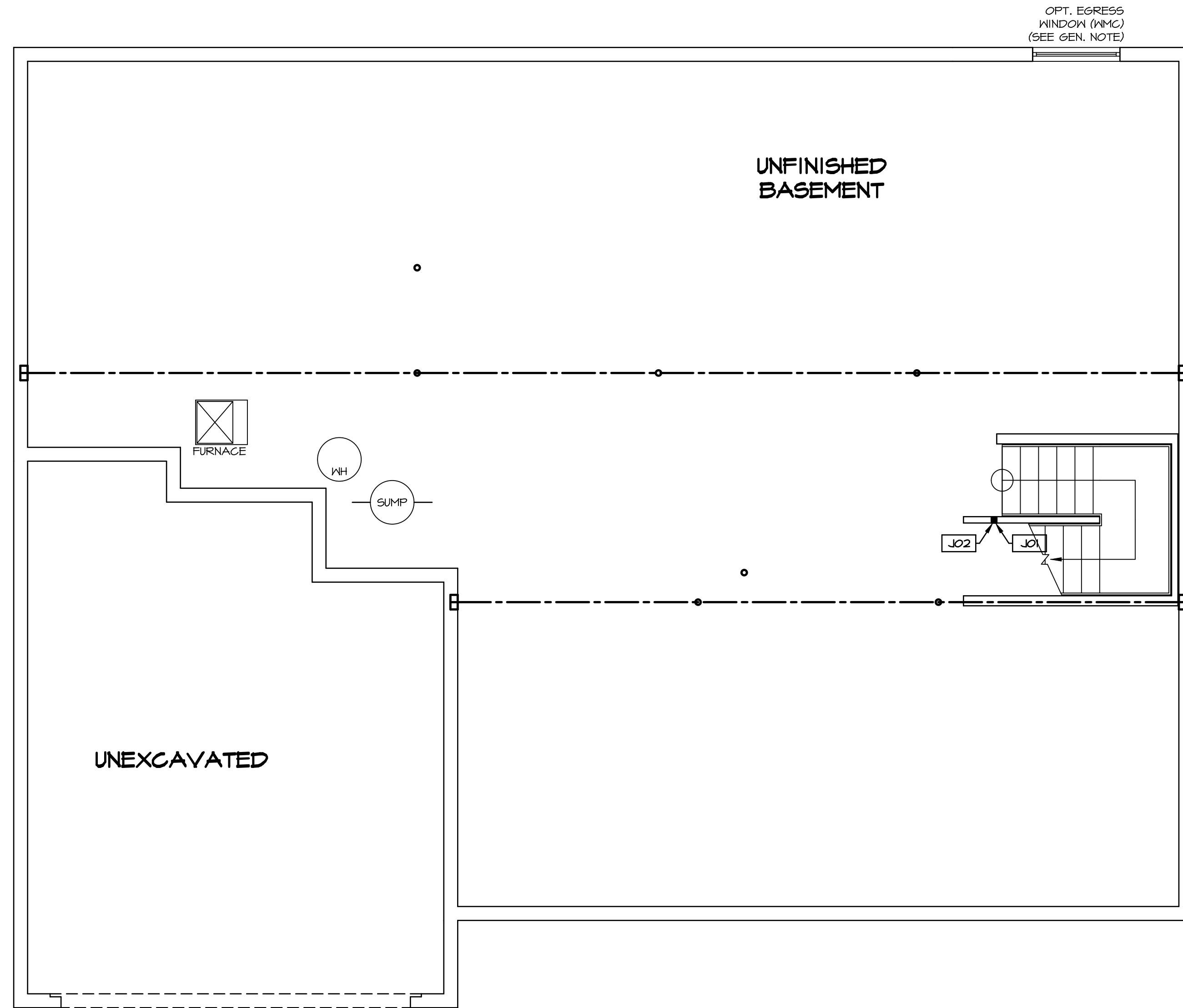


PLUMBING PLAN
 SCALE: 1/4" = 1'-0"

SHEET NO. A-5	MODEL NORMANDY DRAWING TITLE PLUMBING PLAN OPTION DESCRIPTION 31	SET NO. NRM00 VERSION 01 DRAWN BY RJC DATE: 5/14/15 OPTION	 <p>NVR, Inc. Architectural Services Architects 5285 Westheimer Blvd, Suite 100 Frederick, MD 21703</p>	<p>NVR, Inc., owner, expressly reserves its copyright in these plans. These plans are not to be reproduced, changed, copied in any way, or used for any purpose not assigned to them without the written consent of NVR, Inc.</p>	REV. NO. DATE	REMARKS
-------------------------	--	--	--	---	---------------	---------



LEGEND	
	BEARING WALL
	NON BEARING WALL
	INDICATES BEARING FROM POINT-LOAD ABOVE
	JACKS
	BEAM/HEADER
	PAD FOOTING
	STEEL COLUMN
	PORTAL FRAME
	JOIST/TRUSS
	LVL
	ENGINEERING PAGE NUMBER

SEE FC DETAILS FOR FRAMING CONNECTORS

- FLOOR PLAN NOTES**
- ALL HEADERS ARE (2) 2x6 w/ 2x4 WALLS OR (3) 2x6 w/ 2x6 WALLS, UNLESS OTHERWISE NOTED.
 - ALL HEADERS TO HAVE (1) 2x4 OR 2x6 JACK EACH END, UNLESS OTHERWISE NOTED.
 - ALL EXTERIOR WALLS TO BE 4" AND ALL INTERIOR WALLS TO BE 3 1/2", UNLESS OTHERWISE NOTED.
 - HATCHED AREAS INDICATE DROPPED CEILINGS. ALL DROPPED CEILINGS ARE 12" UNLESS OTHERWISE NOTED.
 - SEE "BRACED WALL PANEL DETAIL SHEET" FOR SPECIAL WALL FRAMING LOCATIONS AND HEADER SIZES, IF APPLICABLE.
 - SEE STANDARD DETAIL CATEGORY "IT" SHEET(S) FOR INTERIOR TRIM DETAILS.
 - SEE ARCHITECTURAL DETAIL SHEET "AD" FOR HOUSE SPECIFIC INTERIOR TRIM OPTION TABLE.
 - ALL WINDOWS HAVE 7'-0" 1/2" HEADER HEIGHT UNLESS OTHERWISE NOTED.

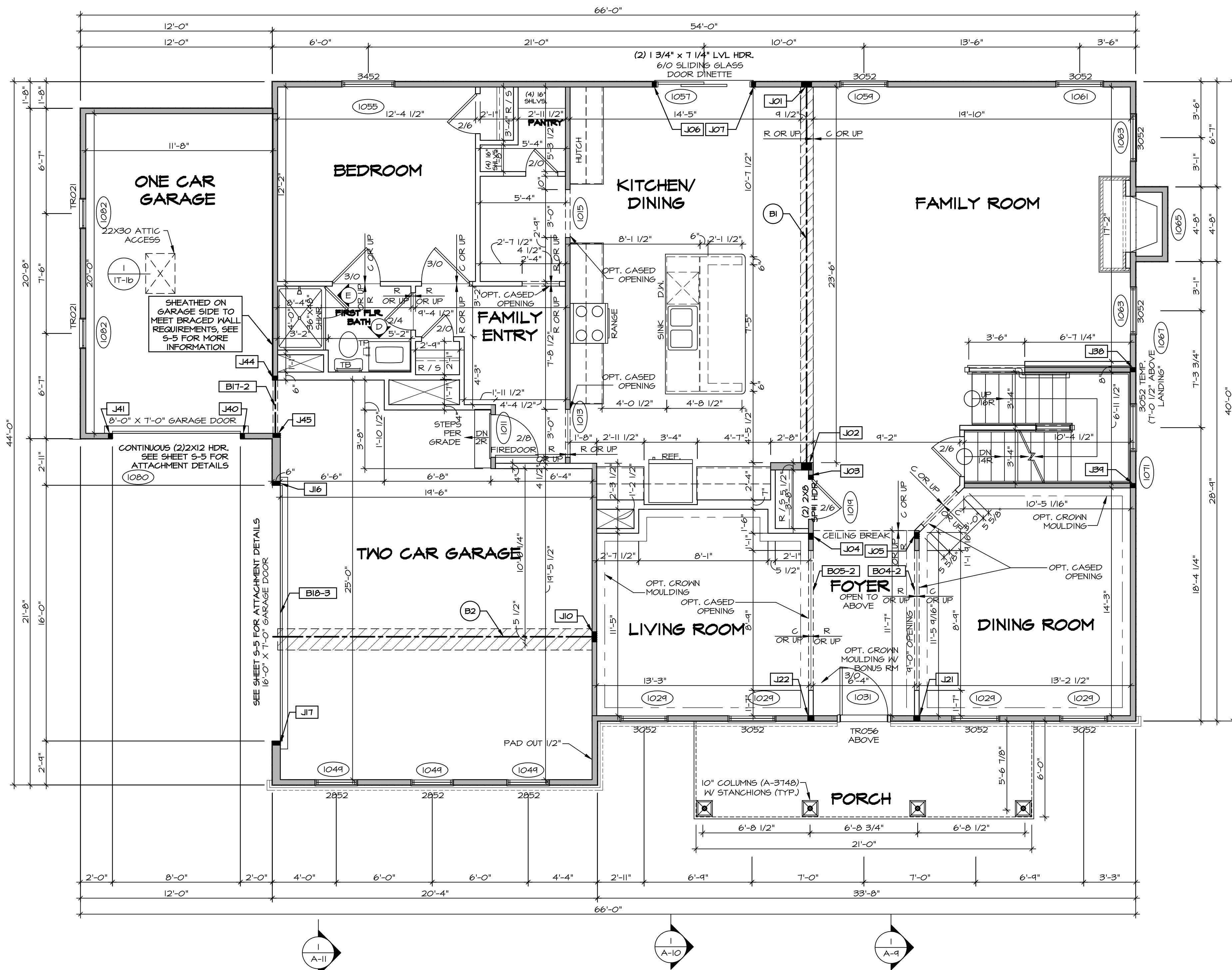
- GYPSUM NOTES**
- AT GARAGE:
- GYPSUM BOARD AT COMMON WALLS, CEILING, BEAM WRAPS AND SUPPORTS PER STANDARD DETAIL FA-1(b) FIRE ASSEMBLIES OR AS REQUIRED BY LOCAL CODE.
- AT STAIRS:
- 1/2" GYPSUM BOARD AT UNDERSIDE OF STAIRS AND WALLS IN CLOSET

BASEMENT JACK SCHEDULE

IDENTIFIER	DESCRIPTION	OPTIONS	ENG. NUM.	REMARKS
J01	JACK - 2x4 SPF STUD GRADE		B10	
J02	JACK - 2x4 SPF STUD GRADE		B22	

SHEET NO. A-6	MODEL NORMANDY	SET NO. NRM00 VERSION 01 DRAWN BY SGA DATE: 6/29/15 OPTION	DRAWING TITLE BASEMENT FLOOR PLAN	OPTION DESCRIPTION	SHEET NO. 34
NVR, Inc. Architectural Services 5285 West... Suite 100 Frederick, MD 21703					
NVR, Inc., owner, expressly reserves its copyright in these plans. These plans are not to be reproduced, changed, copied, or otherwise used in any way without the prior written consent of NVR, Inc.					
REV. NO. DATE DESCRIPTION REMARKS					
1	08/07/16	NL - DRAWING ALIGNMENT			
2	11/05/16	TH - STANDARD DETAILS 3.0			
3	4/20/17	SFK - ADDED BASEMENT FLOOR PLAN JACK SCHEDULE			

BASEMENT FLOOR PLAN
 SCALE: 1/4" = 1'-0"



FIRST FLOOR PLAN
SCALE: 1/4" = 1'-0"

LEGEND

- BEARING WALL
- NON BEARING WALL
- INDICATES BEARING FROM POINT-LOAD ABOVE
- JACKS
- BEAM/HEADER
- PAD FOOTING
- STEEL COLUMN
- PORTAL FRAME
- JOIST/TRUSS
- LVL
- ENGINEERING PAGE NUMBER

SEE FC DETAILS FOR FRAMING CONNECTORS

- FLOOR PLAN NOTES** RYAN
- ALL HEADERS ARE (2) 2x6 W/ 2x4 WALLS OR (3) 2x6 W/ 2x6 WALLS, UNLESS OTHERWISE NOTED.
 - ALL HEADERS TO HAVE (1) 2x4 OR 2x6 JACK AND KING STUD EACH END, UNLESS OTHERWISE NOTED.
 - ALL EXTERIOR WALLS TO BE 4" W/ OSB OR 3 1/2" W/ T-PLY, ALL INTERIOR WALLS TO BE 3 1/2", UNLESS OTHERWISE NOTED.
 - HATCHED AREAS INDICATE DROPPED CEILINGS. ALL DROPPED CEILINGS ARE 12" UNLESS OTHERWISE NOTED.
 - SEE "BRACED WALL PANEL DETAIL SHEET" FOR SPECIAL WALL FRAMING LOCATIONS AND HEADER SIZES, IF APPLICABLE.
 - SEE STANDARD DETAIL CATEGORY "IT" SHEET(S) FOR INTERIOR TRIM DETAILS.
 - SEE ARCHITECTURAL DETAIL SHEET "AD" FOR HOUSE SPECIFIC INTERIOR TRIM OPTION TABLE.
 - ALL WINDOWS HAVE 7'-0 1/2" HEADER HEIGHT UNLESS OTHERWISE NOTED.
 - ALL HEADERS IN NON-BEARING WALLS SHALL BE A SINGLE FLAT 2x4 OR 2x6 ATTACHED TO CRIPPLES ABOVE, UNLESS OTHERWISE NOTED.

- GYPSUM NOTES** RYAN
- AT GARAGE:**
GYPSUM BOARD AT COMMON WALLS, CEILINGS, BEAM WRAPS AND SUPPORTS PER STANDARD DETAIL FA-1(b) FIRE ASSEMBLIES OR AS REQUIRED BY LOCAL CODE.
- AT STAIRS:**
1/2" GYPSUM BOARD AT UNDERSIDE OF STAIRS AND WALLS IN CLOSET

LVL PLY TO PLY FASTENING SCHEDULE: (WHERE APPLICABLE BASED ON LVL USAGE)

- 1A - (2) PLY UP TO AND INCLUDING 11 7/8" TALL; FASTEN PLYS W/ (2) ROWS 16D NAILS AT 12" O.C.
- 2A - (2) PLY 14" TO AND 18" TALL (INCLUSIVE); FASTEN PLYS W/ (3) ROWS 16D NAILS AT 12" O.C.
- 3A - (2) PLY 20" TALL AND OVER; FASTEN PLYS W/ (4) ROWS 16D NAILS AT 12" O.C.
- 4A - (3) PLY UP TO AND INCLUDING 11 7/8" TALL; FASTEN PLYS W/ (2) ROWS 16D NAILS AT 12" O.C. FROM EACH SIDE
- 5A - (3) PLY 14" TO AND 18" TALL (INCLUSIVE); FASTEN PLYS W/ (3) ROWS 16D NAILS AT 12" O.C. FROM EACH SIDE
- 6A - (3) PLY 20" TALL AND OVER; FASTEN PLYS W/ (4) ROWS 16D NAILS AT 12" O.C. FROM EACH SIDE
- 7A - (4) PLY (ALL SIZES); FASTEN PLYS W/ (2) ROWS 1/2" DIAMETER A307 BOLTS AT 24" O.C. SEE SHOP DRAWING FOR ADDITIONAL INFORMATION.

FIELD INSTALLED FIRST FLOOR BEAM/HEADER SCHEDULE

IDENTIFIER	DESCRIPTION	LENGTH	OPTIONS	ENG. NUM.	REMARKS
B04-2	LVL - 11-4	11'-4 1/16"	SRM, SGK, SQL, ELA, ELK	1017	1A
B05-2	LVL - 11-4	11'-8 1/2"	SRM, SGK, SQL, ELA, ELK	1017	1A
BI	BEAM STEEL - W12X35	24'-2"		1021	
BIT-2	LVL - 11-4	3'-10"	BARGAAFBFA	1071	1A
BI0-3	LVL - 16	16'-6"	GCC, GAA	1051	5A

FIRST FLOOR JACK SCHEDULE

IDENTIFIER	DESCRIPTION	OPTIONS	ENG. NUM.	REMARKS
J01	JACK - (5) 2X4 SP#II		1021	
J02	JACK - (5) 2X6 SP#II		1021	
J03	JACK - (2) 2X4 SP# STUD GRADE		1014	
J04	JACK - (3) 2X4 SP# STUD GRADE		1017	
J05	JACK - (3) 2X4 SP# STUD GRADE		1017	
J06	JACK - (2) 2X4 SP# STUD GRADE		1051	
J07	JACK - (2) 2X4 SP# STUD GRADE		1051	
J10	JACK - (5) 2X4 SP#II		1023	
J16	JACK - (2) 2X6 SP# STUD GRADE	GCC, GAA	1051	
J17	JACK - (2) 2X6 SP# STUD GRADE	GCC, GAA	1051	
J21	JACK - (3) 2X4 SP# STUD GRADE	SRM, SGK, SQL, ELA, ELB, ELK	1017	
J22	JACK - (3) 2X4 SP# STUD GRADE	SRM, SGK, SQL, ELA, ELB, ELK	1017	
J30	JACK - (2) 2X4 SP# STUD GRADE	SRM, SGK, SQL, ELA, ELB, ELK	1007	
J31	JACK - (2) 2X4 SP# STUD GRADE	SRM, SGK, SQL, ELA, ELB, ELK	1007	
J40	JACK - (2) 2X4 SP# STUD GRADE	GCC, GAA	1074	
J41	JACK - (2) 2X4 SP# STUD GRADE	GCC, GAA	1074	
J44	JACK - (2) 2X4 SP# STUD GRADE	BAR, GAA, FBA	1077	
J45	JACK - (2) 2X6 SP# STUD GRADE	BAR, GAA, FBA	1077	

REMARKS

REV. NO.	DATE	DESCRIPTION
1	08/01/16	N.L. - DRAWING ALIGNMENT
2	11/05/16	TH - STANDARD DETAILS 3.0
3	07/17/17	SL5 - T-PLY CONVERSION PROJECT

REV. NO. DATE DESCRIPTION

1 08/01/16 N.L. - DRAWING ALIGNMENT

2 11/05/16 TH - STANDARD DETAILS 3.0

3 07/17/17 SL5 - T-PLY CONVERSION PROJECT

SET NO. NRM00
VERSION 01
DRAWN BY SGA
DATE: 6/29/15
OPTION

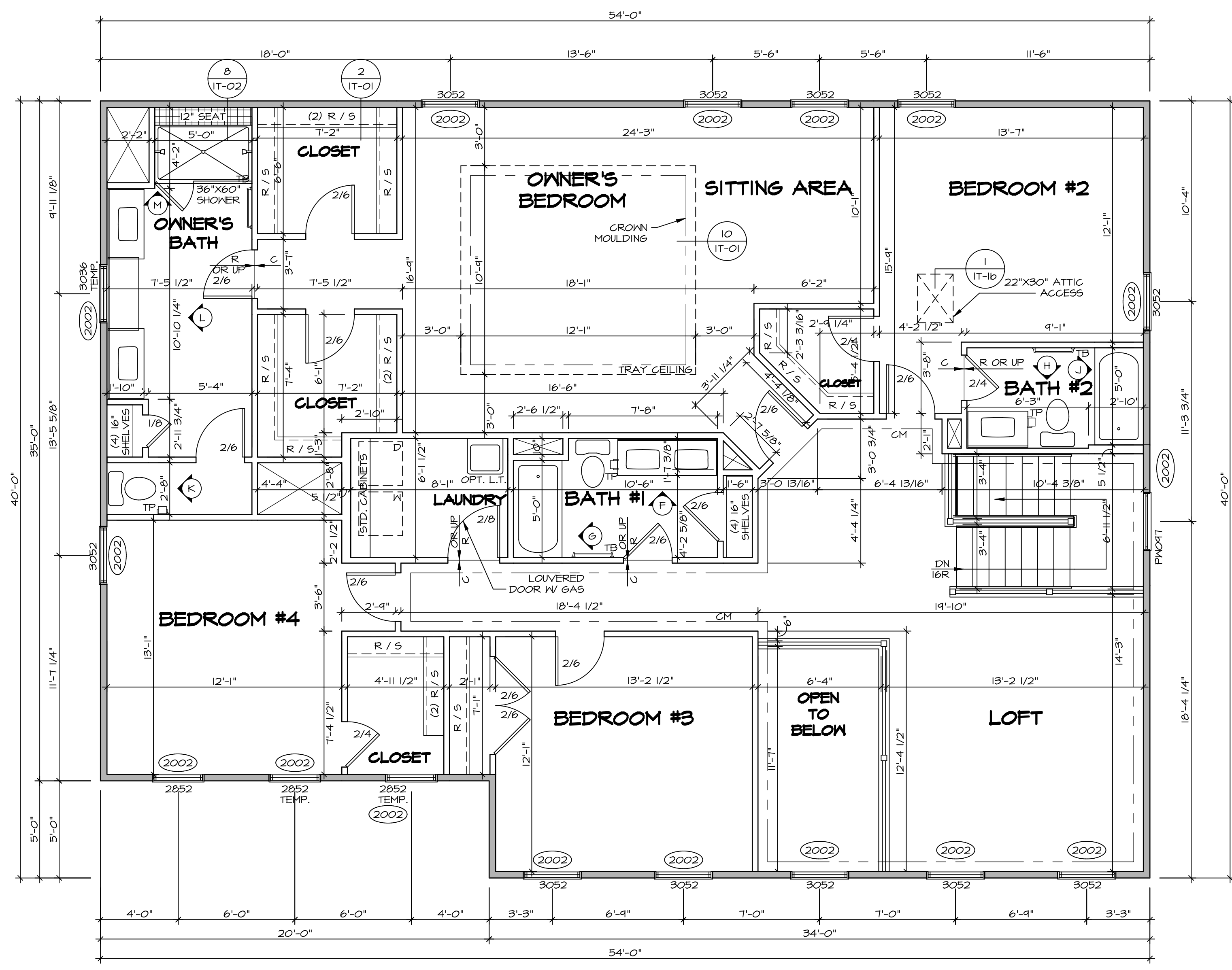
NORMANDY ARCHITECTURAL SERVICES
Architects
Suite 100
5285 Westgate Drive
Frederick, MD 21703

NVR
NVR, Inc.
Architectural Services
Suite 100
5285 Westgate Drive
Frederick, MD 21703

SHEET NO. **A-7**

35

C:\NVA\Solves\NORMANDY_ARCH\001\DCI\16-VG-1537\116658\Sheets\Lot_Specific\35_A-7_PLNT_LS.dwg 07/15/19 - 5:28 gm



LEGEND

- BEARING WALL
- NON BEARING WALL
- INDICATES BEARING FROM POINT-LOAD ABOVE
- JACKS
- BEAM/HEADER
- PAD FOOTING
- STEEL COLUMN
- PORTAL FRAME
- JOIST/TRUSS
- LVL
- ENGINEERING PAGE NUMBER

SEE FC DETAILS FOR FRAMING CONNECTORS

- FLOOR PLAN NOTES** RYAN
- ALL HEADERS ARE (2) 2x6 w/ 2x4 WALLS OR (3) 2x6 w/ 2x6 WALLS, UNLESS OTHERWISE NOTED.
 - ALL HEADERS TO HAVE (1) 2x4 OR 2x6 JACK AND KING STUD EACH END, UNLESS OTHERWISE NOTED.
 - ALL EXTERIOR WALLS TO BE 4" w/ OSB OR 3 1/2" w/ T-PLY, ALL INTERIOR WALLS TO BE 3 1/2", UNLESS OTHERWISE NOTED.
 - HATCHED AREAS INDICATE DROPPED CEILINGS. ALL DROPPED CEILINGS ARE 12" UNLESS OTHERWISE NOTED.
 - SEE "BRACED WALL PANEL DETAIL SHEET" FOR SPECIAL WALL FRAMING LOCATIONS AND HEADER SIZES, IF APPLICABLE.
 - SEE STANDARD DETAIL CATEGORY "IT" SHEET(S) FOR INTERIOR TRIM DETAILS.
 - SEE ARCHITECTURAL DETAIL SHEET "AD" FOR HOUSE SPECIFIC INTERIOR TRIM OPTION TABLE.
 - ALL WINDOWS HAVE 7'-0 1/2" HEADER HEIGHT UNLESS OTHERWISE NOTED.
 - ALL HEADERS IN NON-BEARING WALLS SHALL BE A SINGLE FLAT 2x4 OR 2x6 ATTACHED TO GRIPPLES ABOVE, UNLESS OTHERWISE NOTED.

SECOND FLOOR JACK SCHEDULE

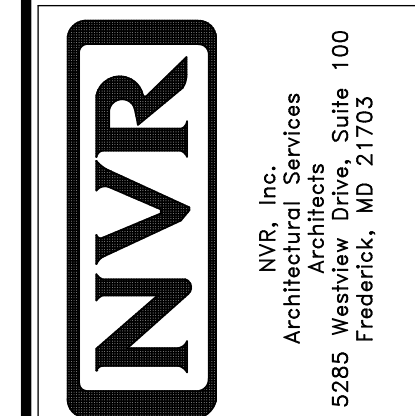
IDENTIFIER	DESCRIPTION	OPTIONS	ENG. NUM.	REMARKS

SECOND FLOOR PLAN
SCALE: 1/4" = 1'-0"

REMARKS

REV. NO.	DATE	DESCRIPTION
1	08/07/16	NL - DRAWING ALIGNMENT
2	10/05/16	TH - STANDARD DETAILS 3.0
3	07/17/17	SLS - T-PLY CONVERSION PROJECT

NVR, Inc., owner, expressly reserves its copyright in these plans. These plans are not to be reproduced, changed, copied, or otherwise used in any way without the written consent of NVR, Inc.



MODEL: NORMANDY

VERSION: 01

DRAWN BY: SGA

DATE: 6/29/15

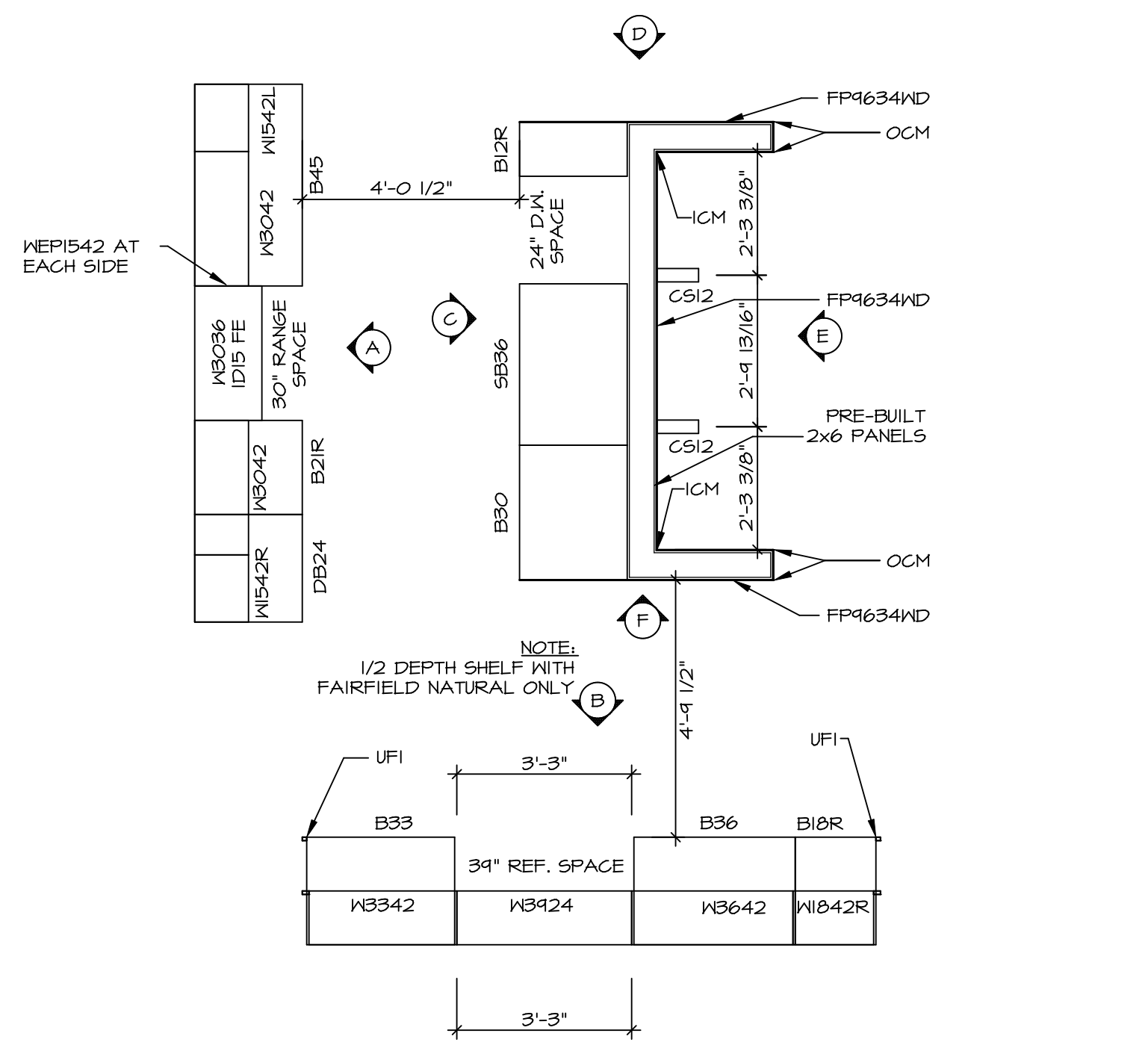
OPTION:

SHEET NO. **A-8**

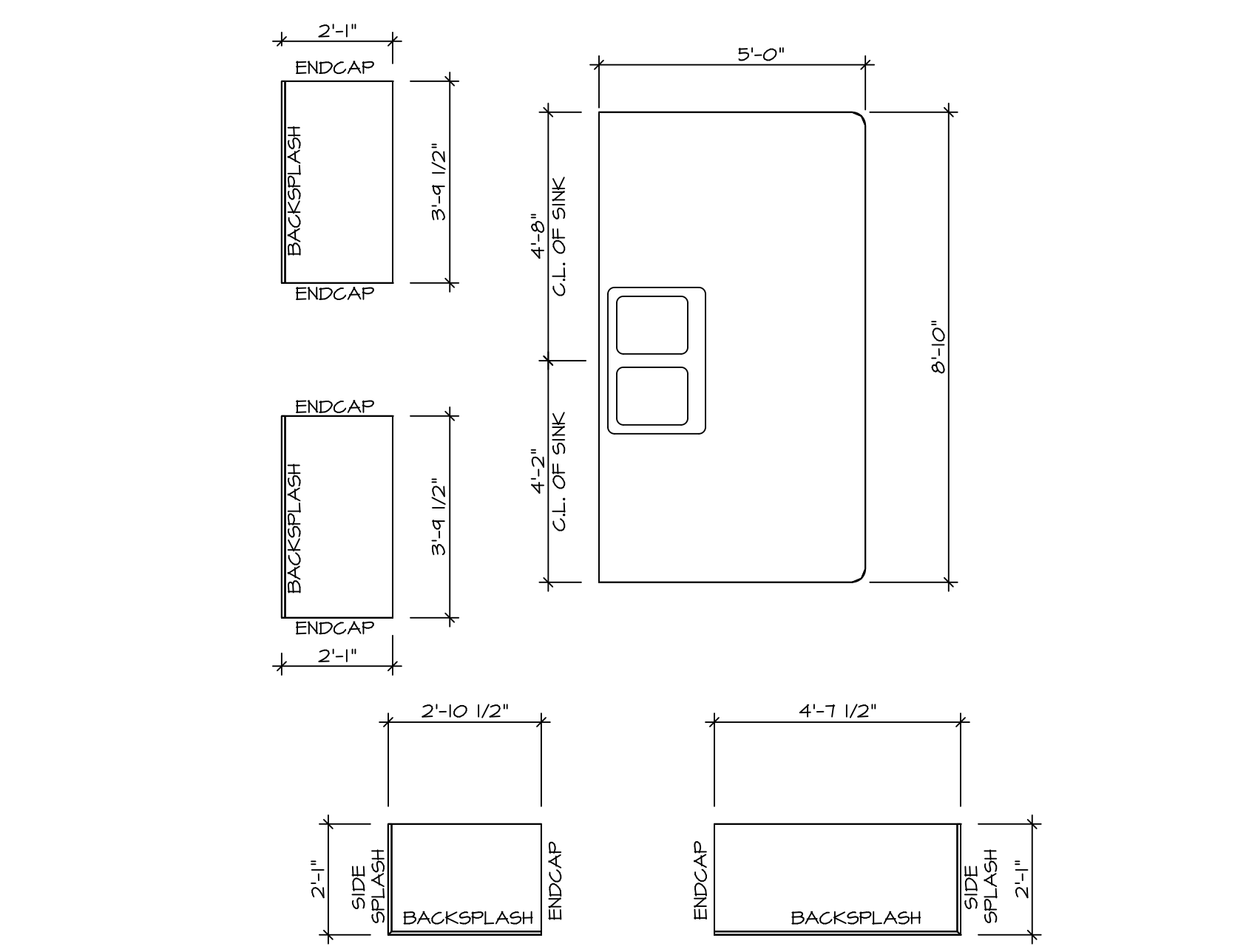
MODEL: NORMANDY

DRAWING TITLE: SECOND FLOOR PLAN

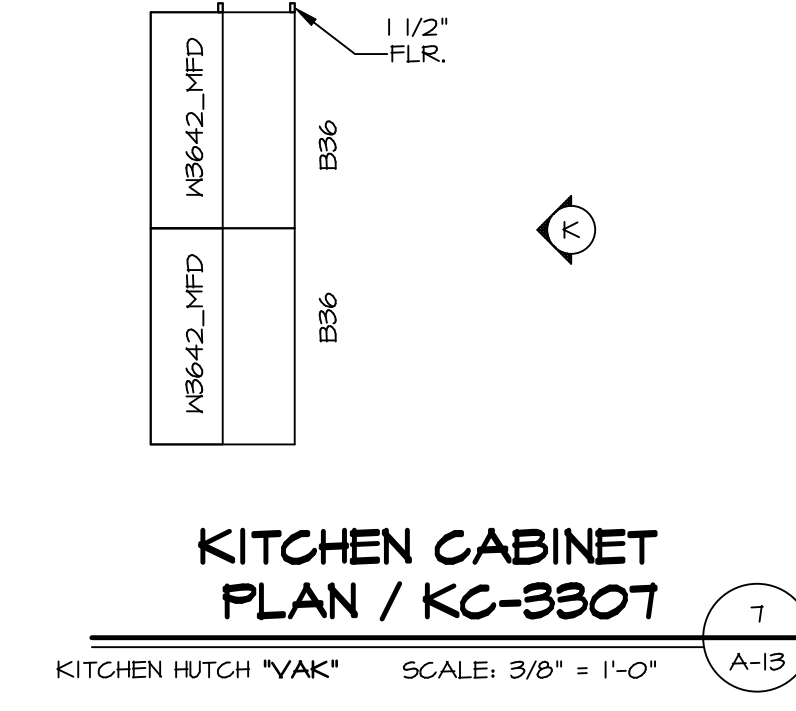
OPTION DESCRIPTION:



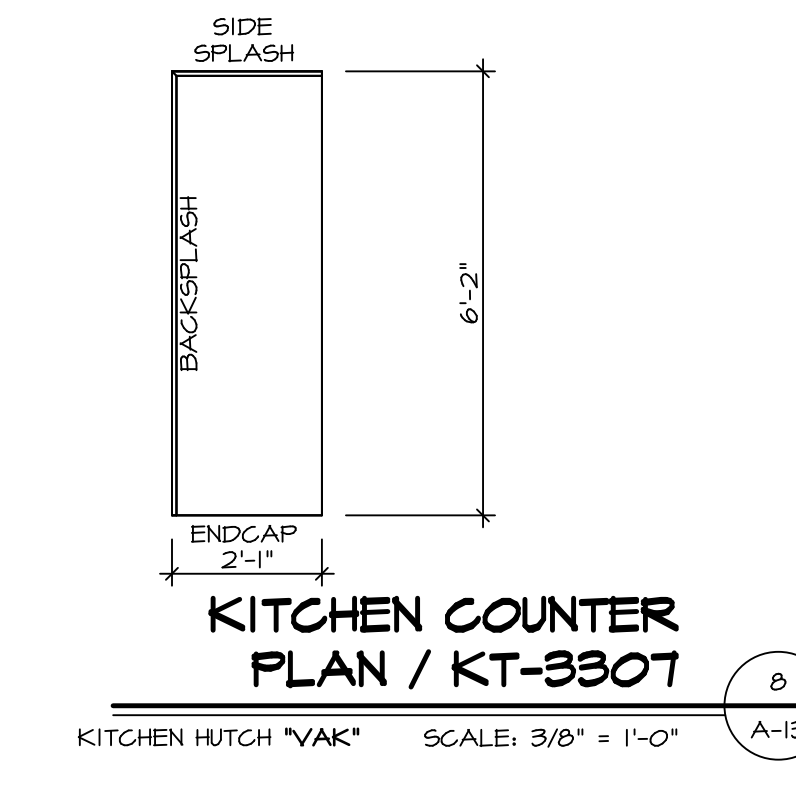
KITCHEN CABINET PLAN / KC-3230
SCALE: 3/8" = 1'-0" A-13



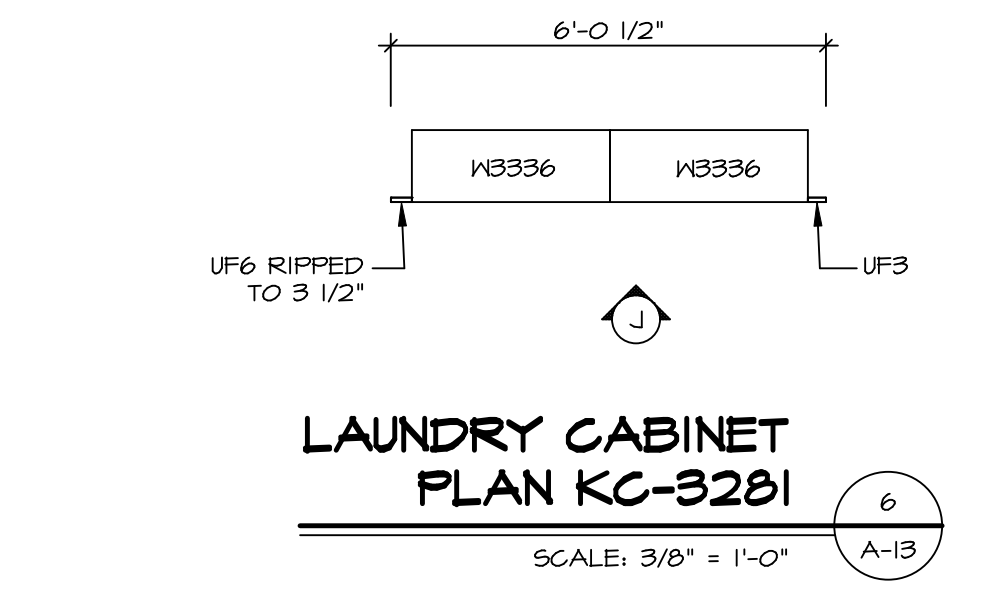
KITCHEN COUNTERTOP PLAN / KT-3230
SCALE: 3/8" = 1'-0" A-13



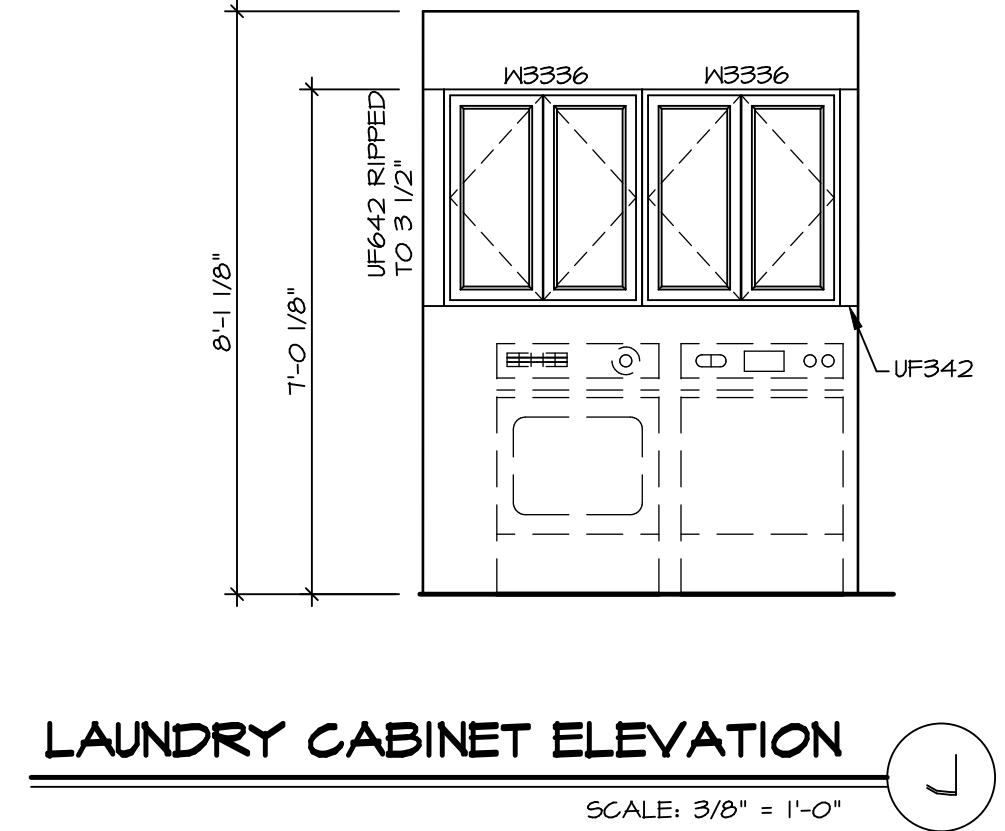
KITCHEN CABINET PLAN / KC-3307
KITCHEN HUTCH 'VAK' SCALE: 3/8" = 1'-0" A-13



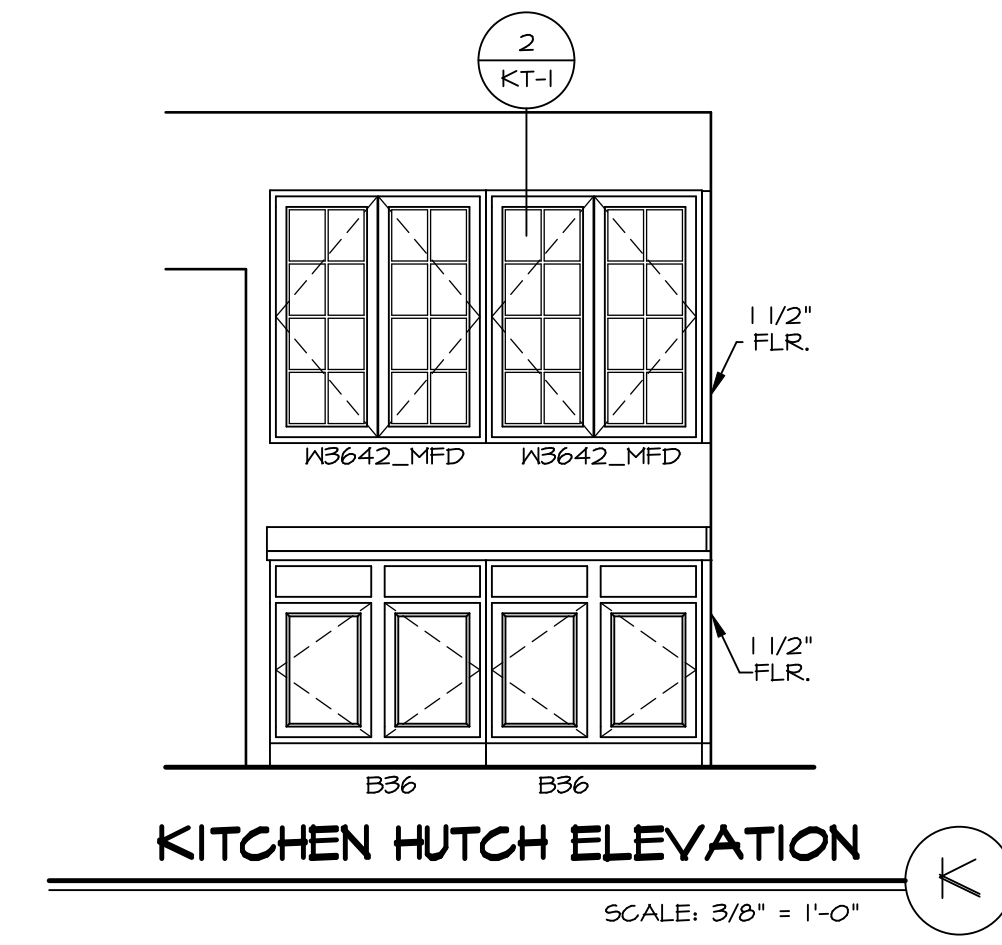
KITCHEN COUNTER PLAN / KT-3307
KITCHEN HUTCH 'VAK' SCALE: 3/8" = 1'-0" A-13



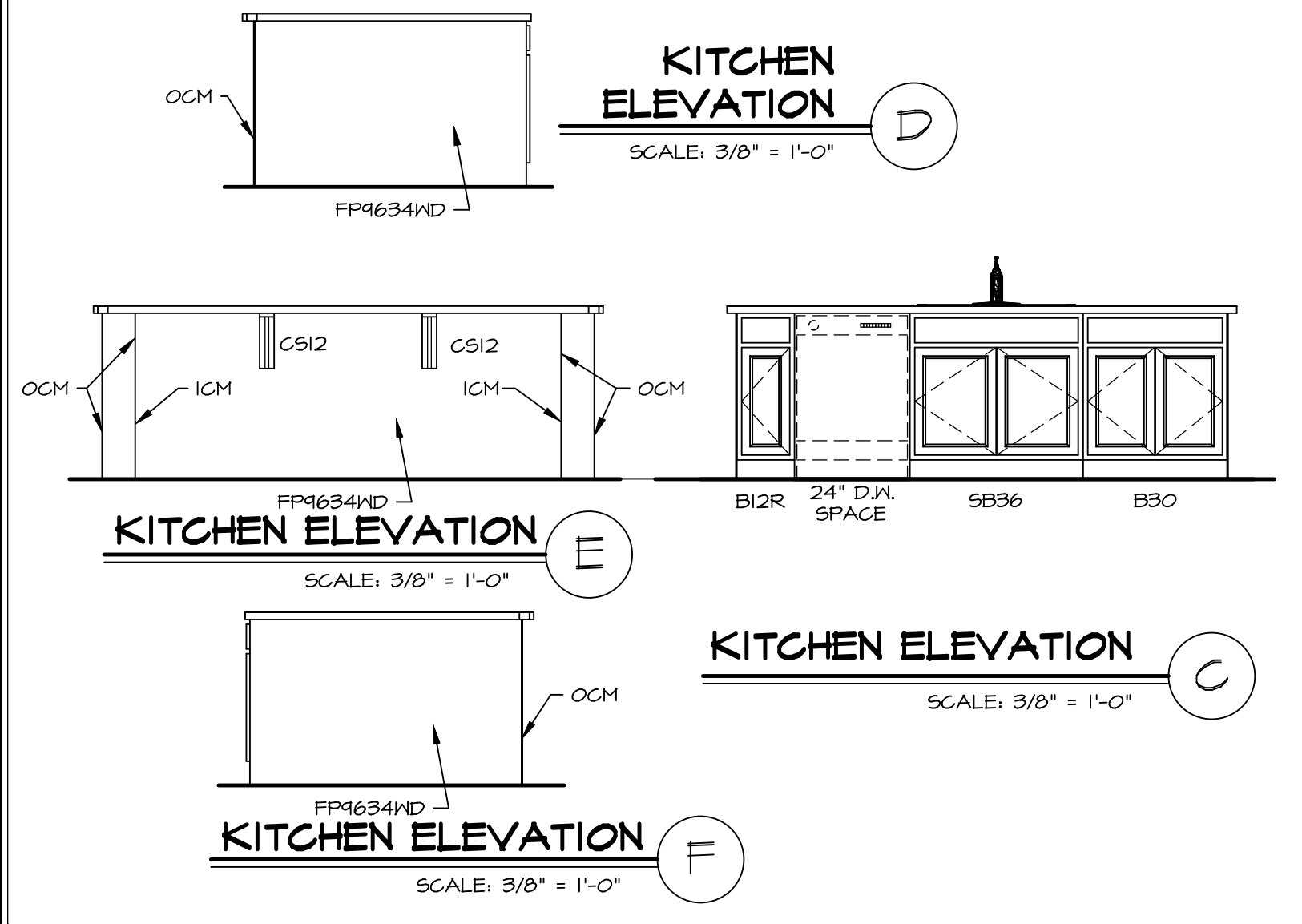
LAUNDRY CABINET PLAN KC-3201
SCALE: 3/8" = 1'-0" A-13



LAUNDRY CABINET ELEVATION
SCALE: 3/8" = 1'-0" A-13



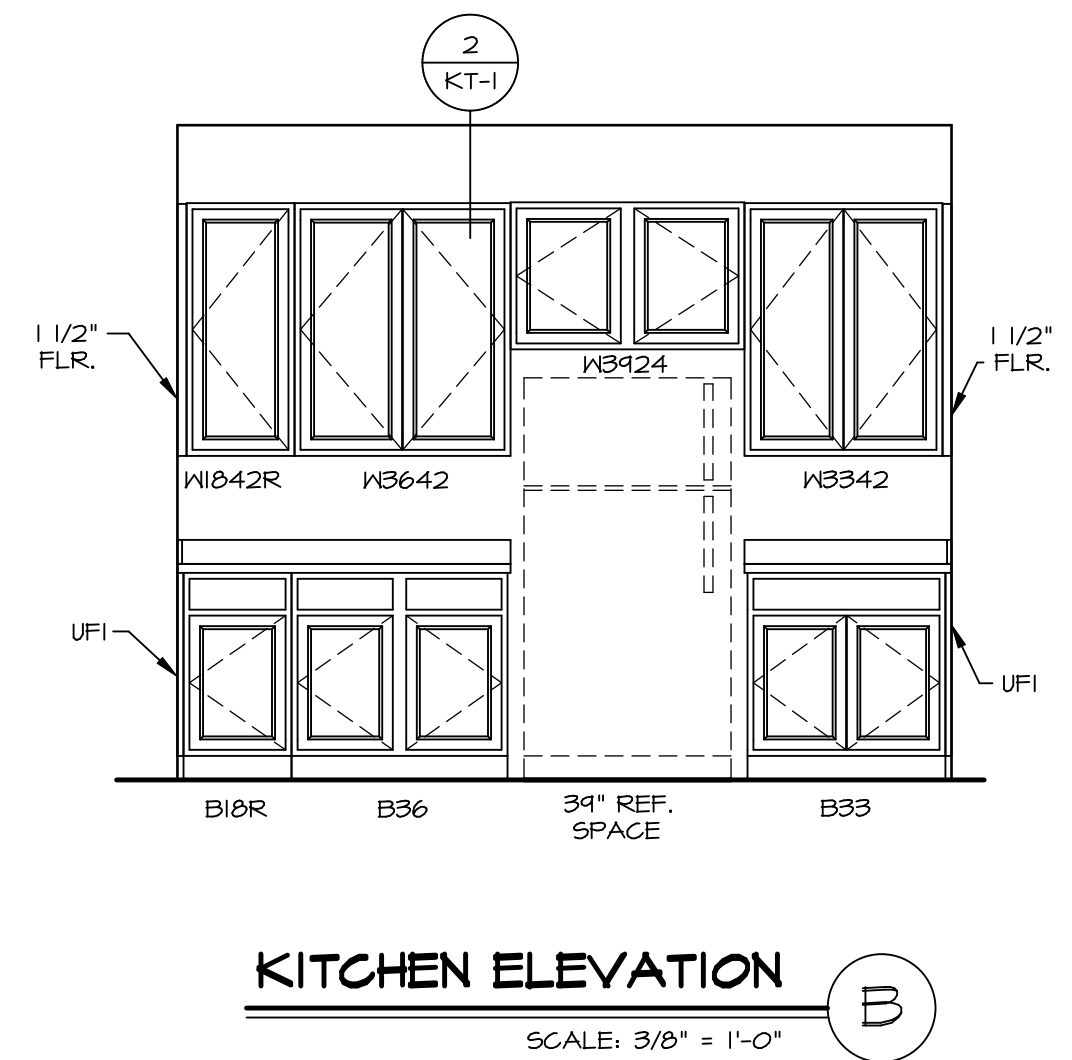
KITCHEN HUTCH ELEVATION
SCALE: 3/8" = 1'-0" A-13



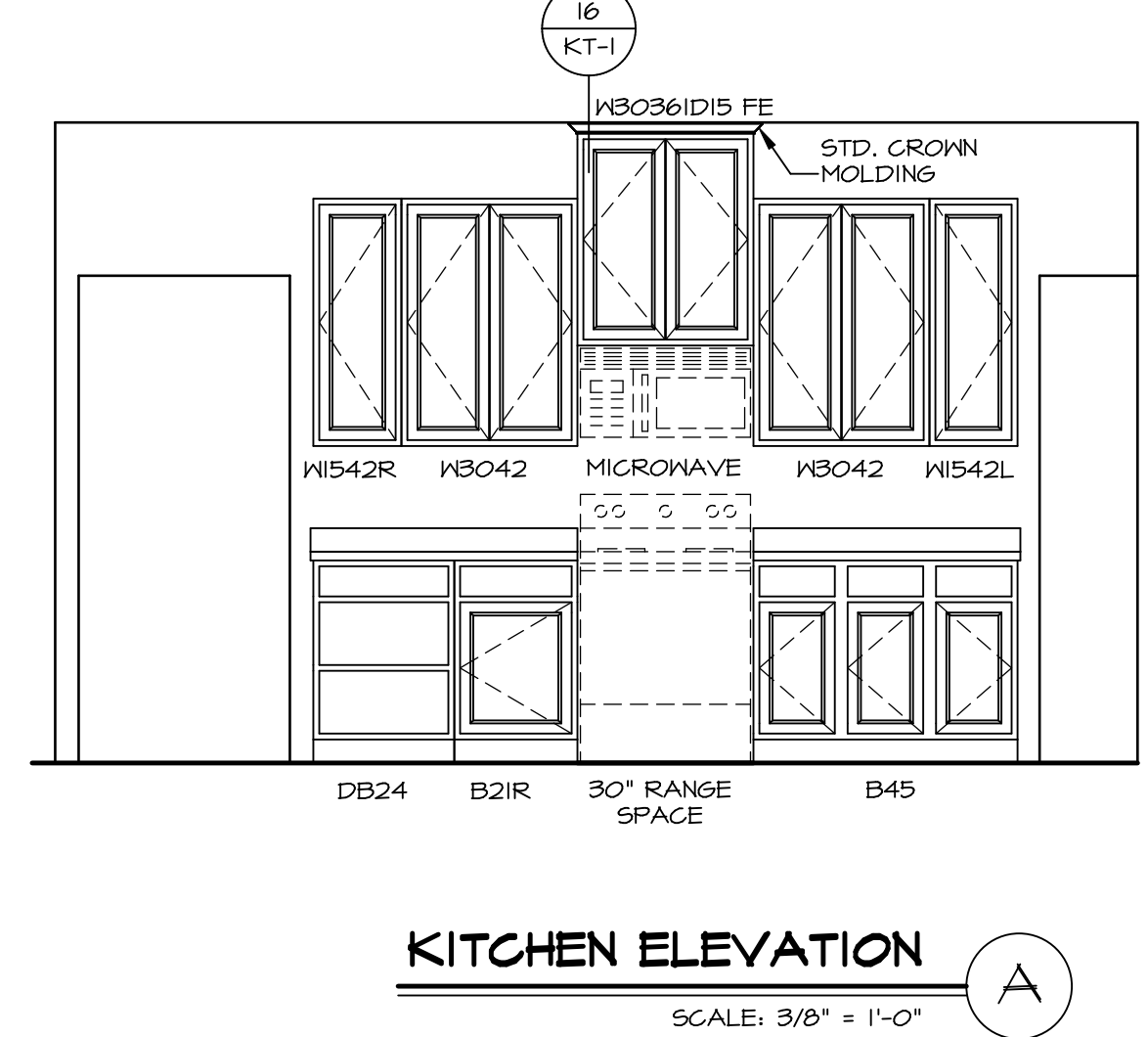
KITCHEN ELEVATION D
SCALE: 3/8" = 1'-0" A-13

KITCHEN ELEVATION E
SCALE: 3/8" = 1'-0" A-13

KITCHEN ELEVATION F
SCALE: 3/8" = 1'-0" A-13



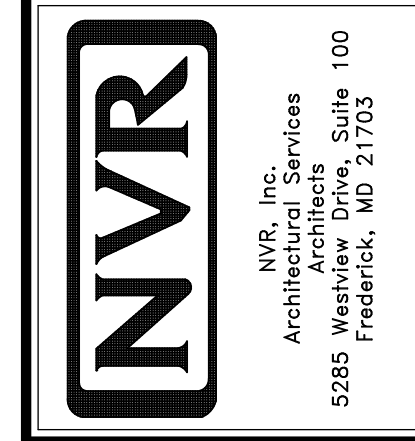
KITCHEN ELEVATION B
SCALE: 3/8" = 1'-0" A-13



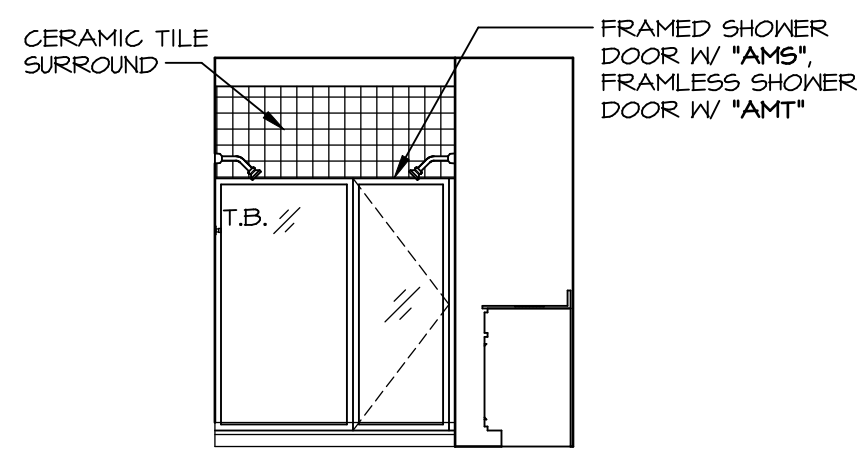
KITCHEN ELEVATION A
SCALE: 3/8" = 1'-0" A-13

REV. NO.	DATE	REMARKS
1	11/15/16	TRV - STANDARD DETAILS 3.0

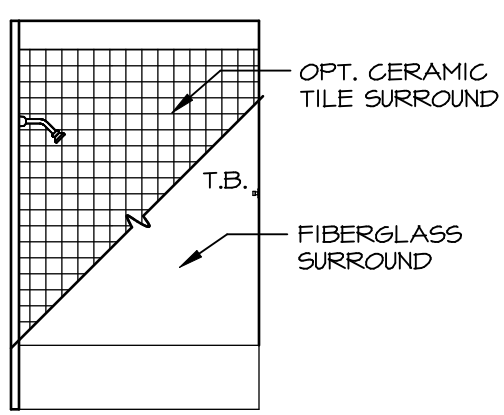
NVR, Inc., owner, expressly reserves its copyright in these plans. These plans are not to be reproduced, changed, copied, or otherwise used in any way without the written consent of NVR, Inc.



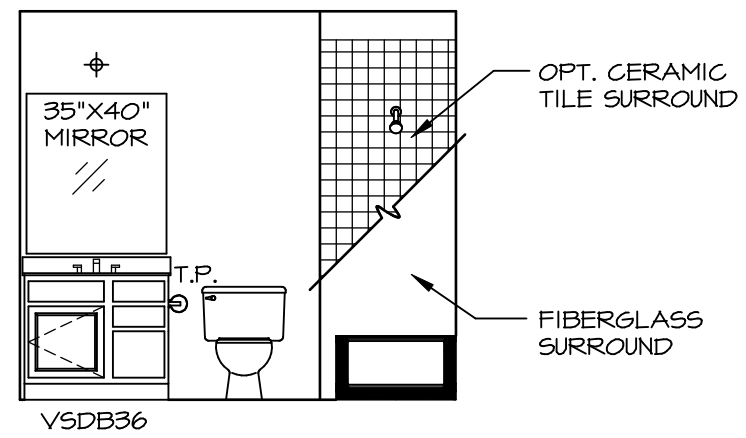
SHEET NO.	MODEL	SET NO.	VERSION	DRAWN BY	DATE	OPTION
A-13	NORMANDY	01	01	RJC	6/29/15	
	DRAWING TITLE					
	KITCHEN LAYOUT					
	OPTION DESCRIPTION					



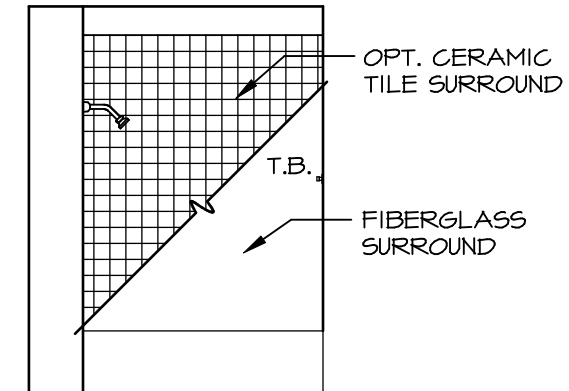
M OWNER'S BATH - "AMG"
SCALE: 1/4" = 1'-0"



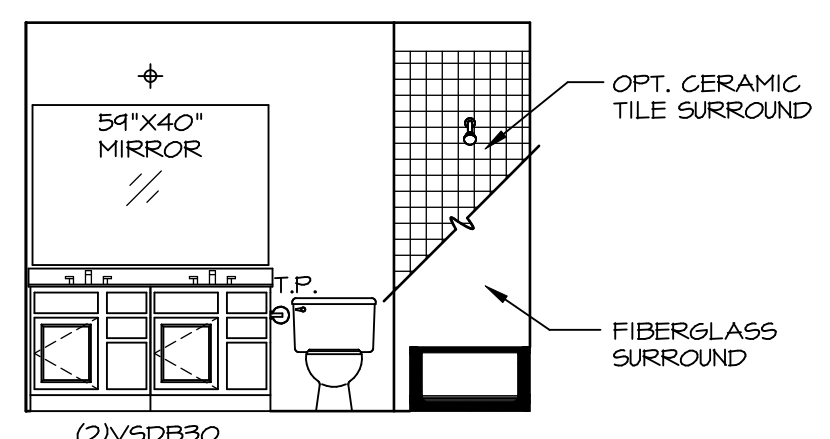
J BATH #2
SCALE: 1/4" = 1'-0"



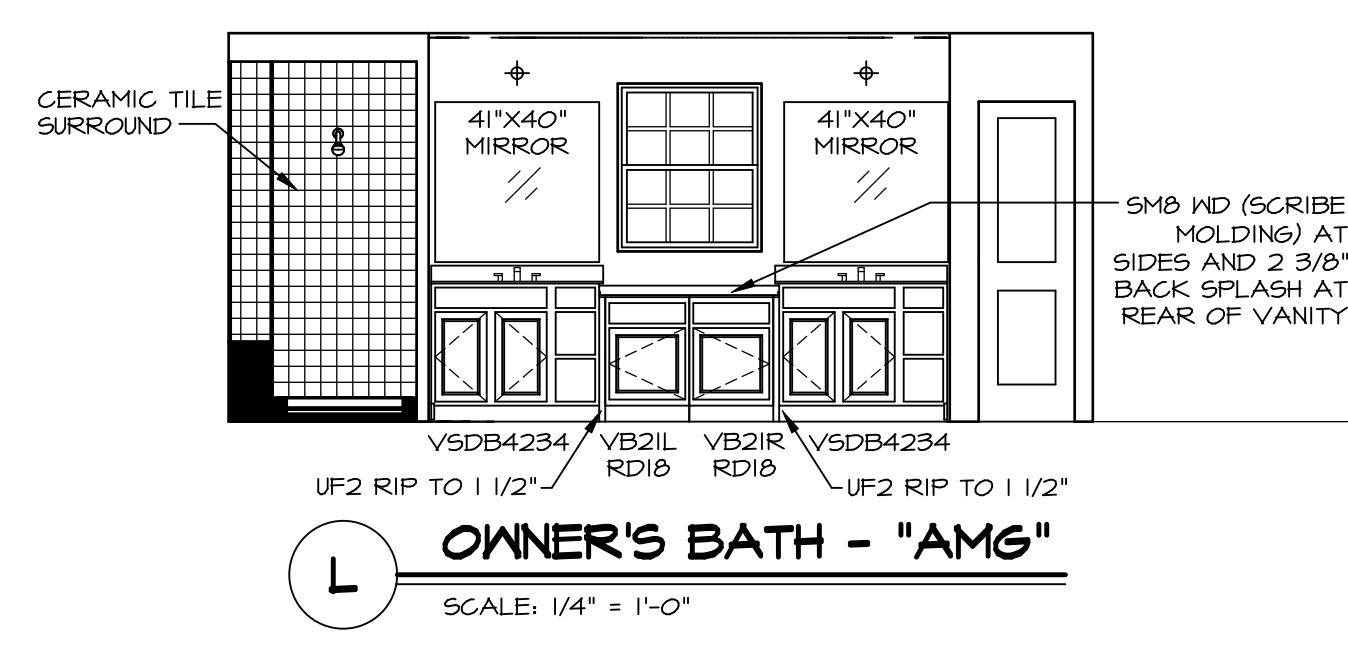
H BATH #2
SCALE: 1/4" = 1'-0"



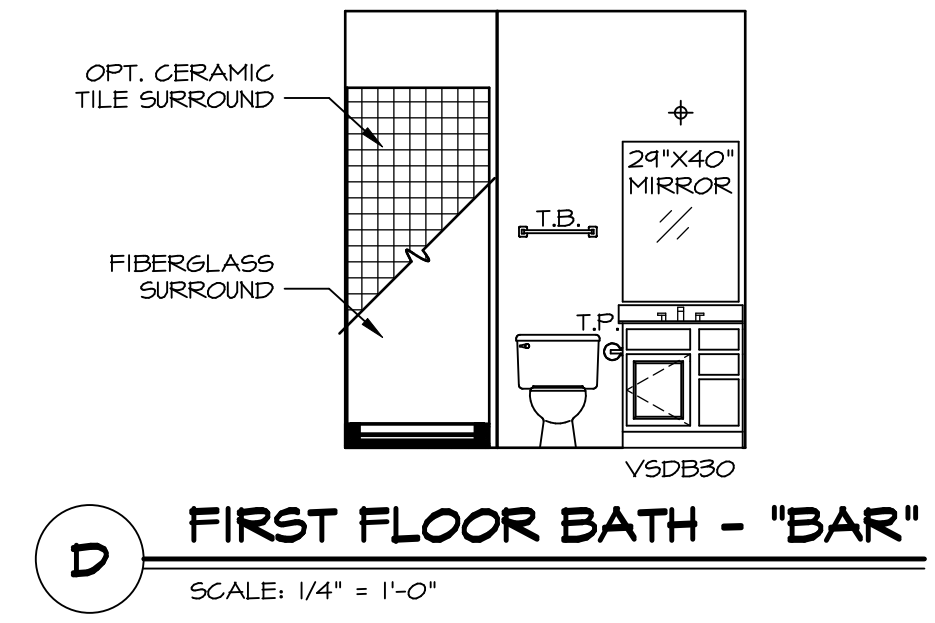
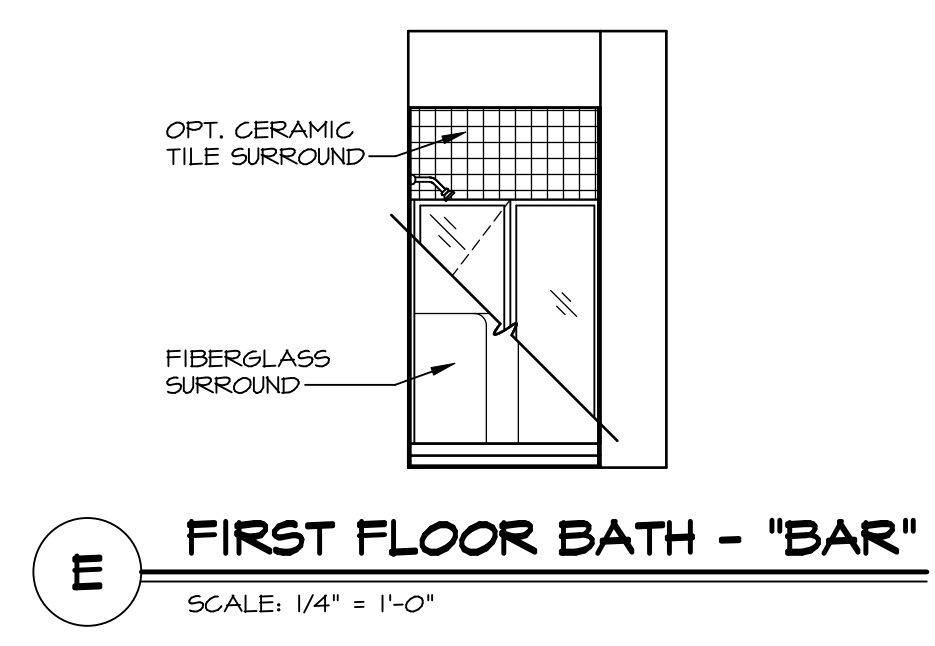
G BATH #1
SCALE: 1/4" = 1'-0"



F BATH #1
SCALE: 1/4" = 1'-0"



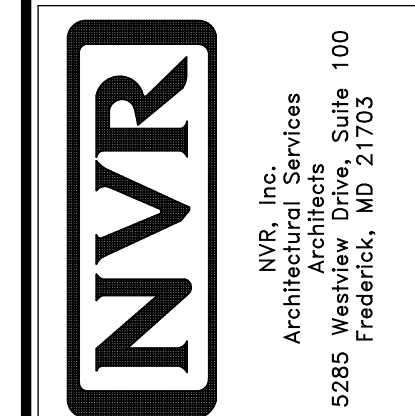
K OWNER'S BATH - "AMA" OR "AMG"
SCALE: 1/4" = 1'-0"



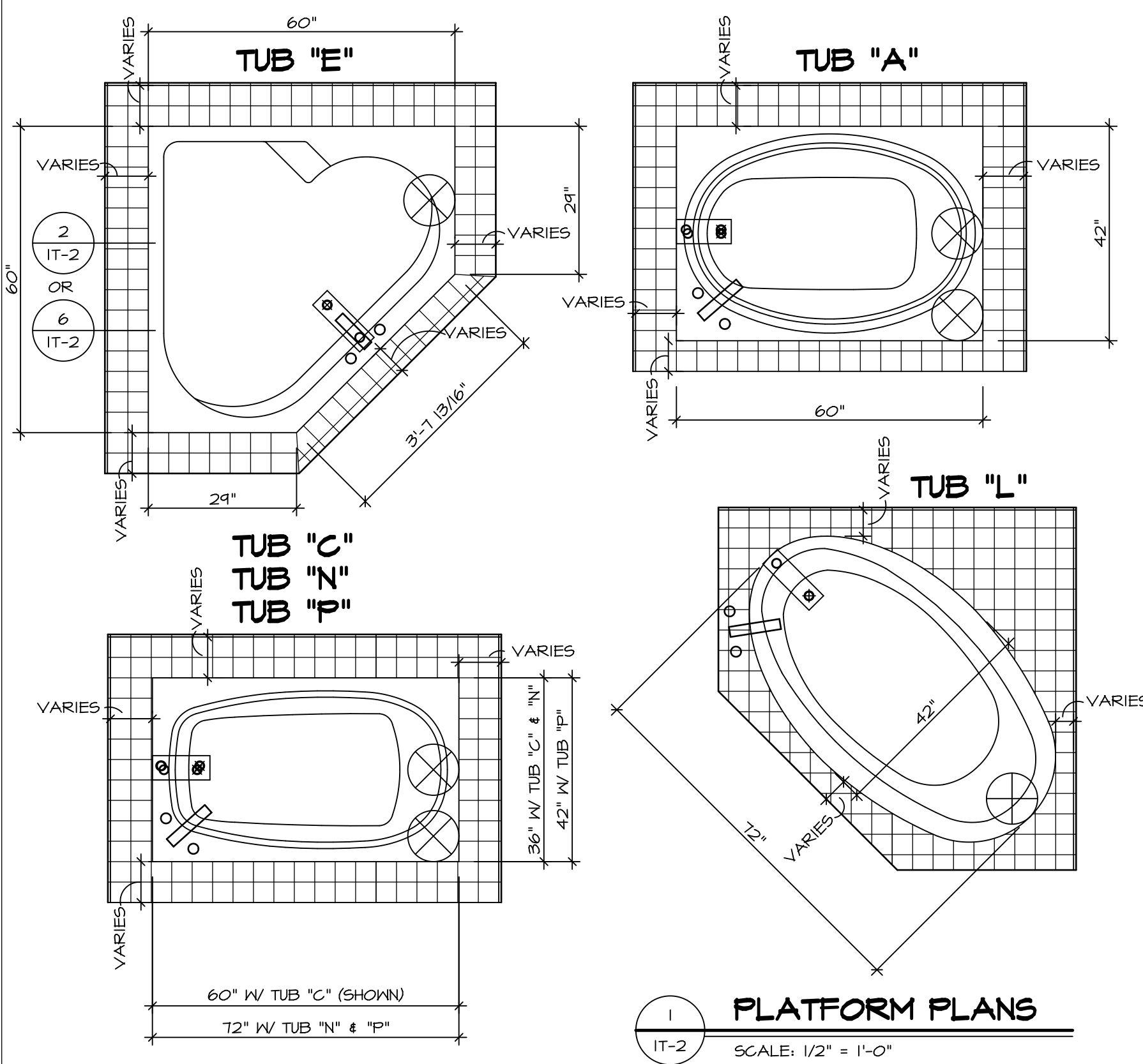
- NOTES:**
- TEMPERED GLASS SHOWER ENCLOSURE WITH SWING DOOR OR OPTIONAL SLIDING DOOR BY DIVISION
 - TUB ACCESS PANELS PROVIDED AS NEEDED, ALL MATERIALS BY DIVISION
 - REFER TO SHEET (IT-2) FOR TUB AND SHOWER DETAILS.
 - ALL V5DB24-42 DRAWERS TO BE SET ON RIGHT HAND.
 - BATH ELEVATIONS ARE SHOWN PER PLAN.

REV. NO.	DATE	REMARKS
1	08/07/16	N - DRAWING ALIGNMENT
2	11/15/16	TRV - STANDARD DETAILS 5.0

NVR, Inc., owner, expressly reserves its copyright in these plans. These plans are not to be reproduced, changed, copied, or otherwise used in any way without the prior written consent of NVR, Inc.

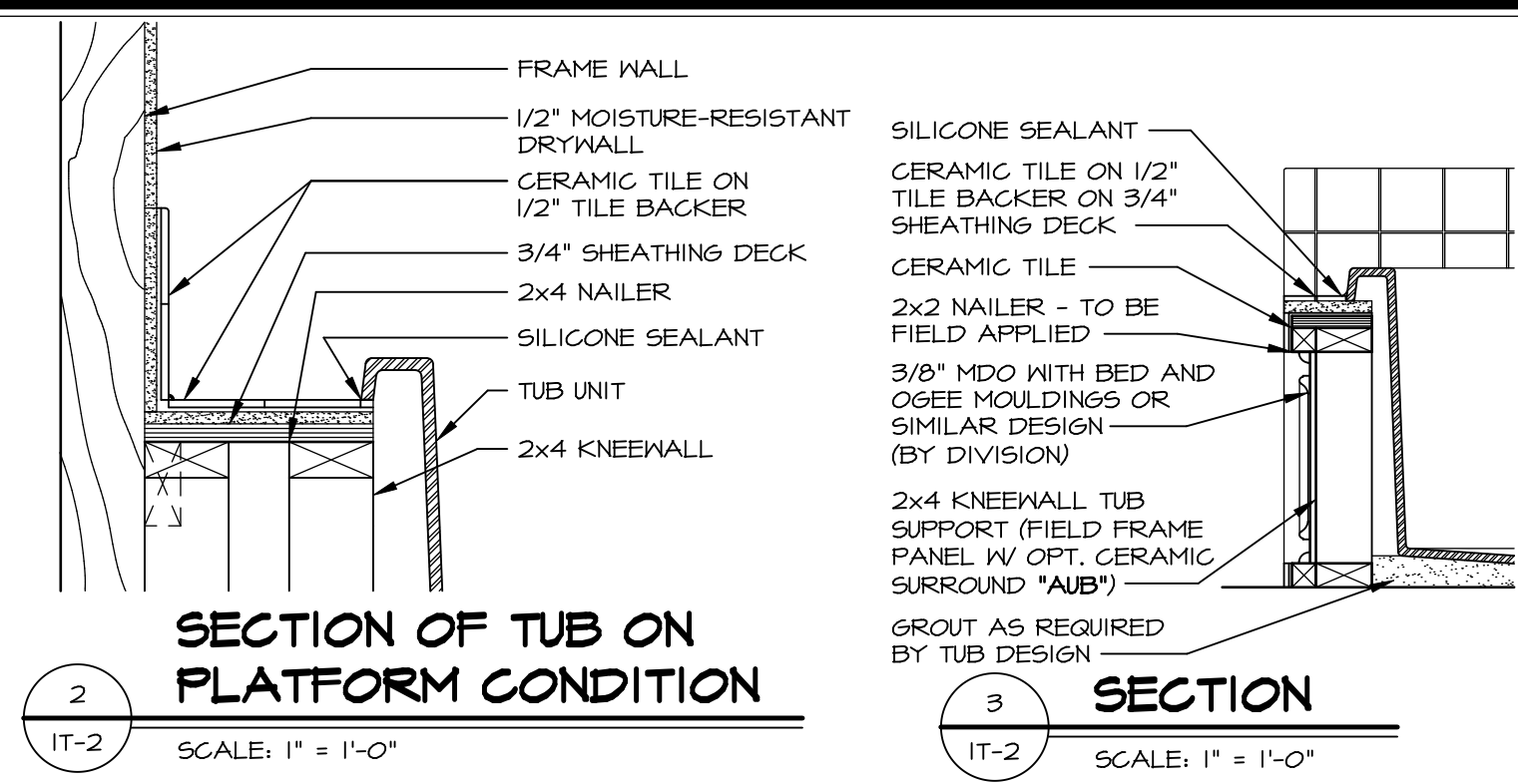


MODEL	NORMANDY
DRAWING TITLE	BATH ELEVATIONS
OPTION DESCRIPTION	
SHEET NO.	A-14
48	

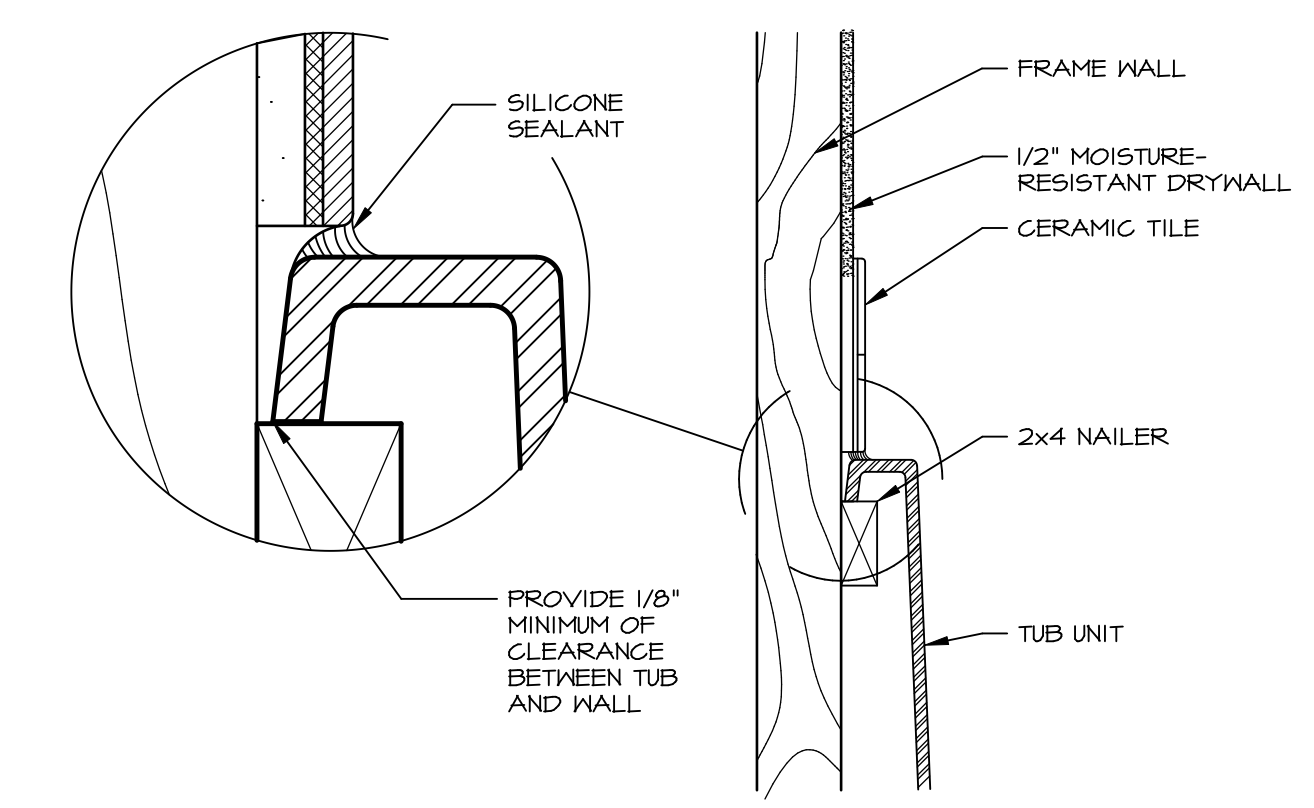


1 PLATFORM PLANS
SCALE: 1/2" = 1'-0"

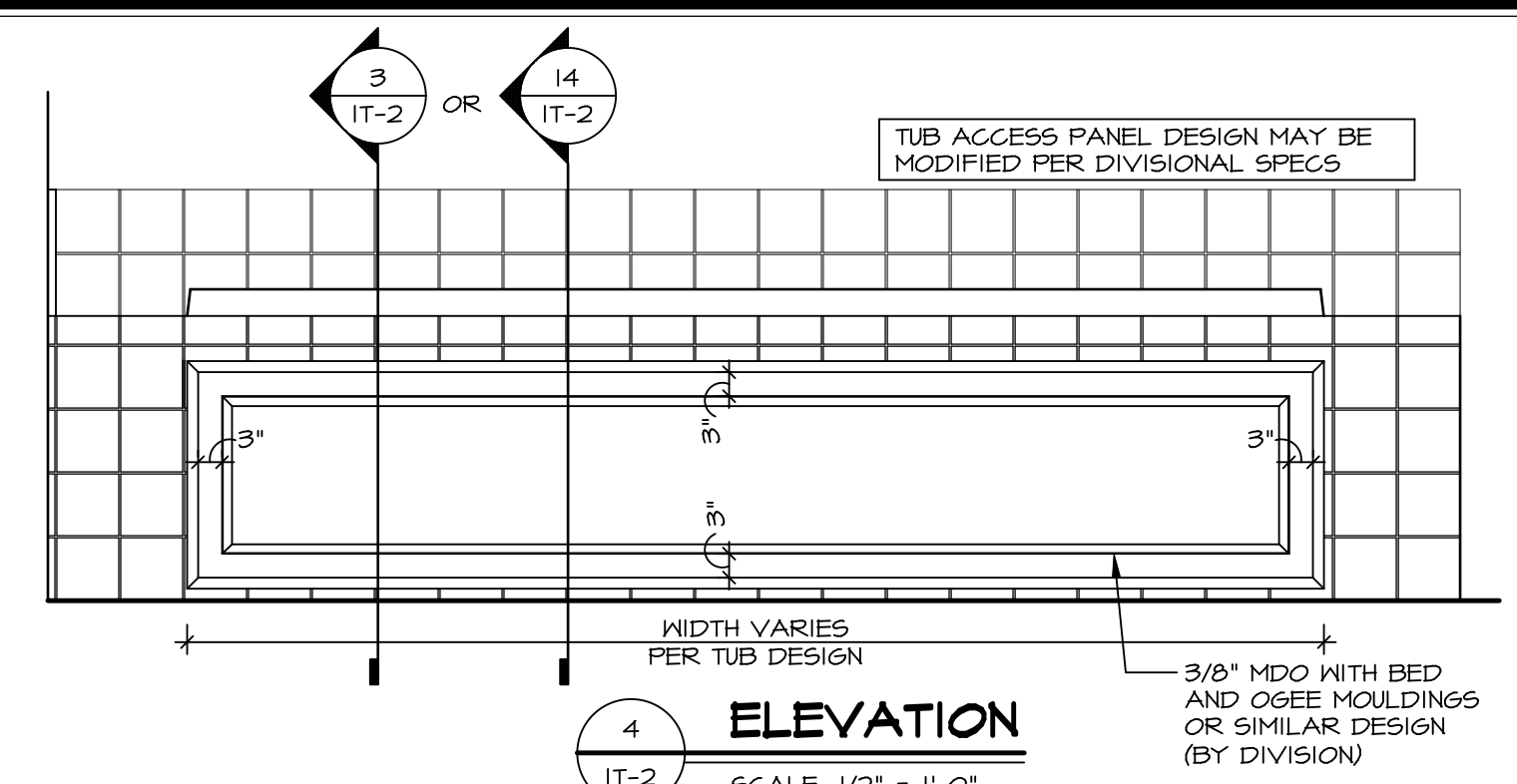
TUB	MANUF.	HEIGHT	WIDTH	LENGTH	TUB DECK PANEL HEIGHT
"A"	KOHLER/STERLING	18 3/4"	42"	60"	17 1/8"
"C"	KOHLER/STERLING	18 3/4"	36"	60"	17 1/8"
"E"	KOHLER/STERLING	19 1/2"	60"	60"	17 7/8"
"L"	KOHLER/STERLING	18 1/2"	42"	72"	16 7/8"
"N"	KOHLER/STERLING	18 3/4"	36"	72"	17 1/8"
"P"	KOHLER/STERLING	18 3/4"	42"	72"	17 1/8"



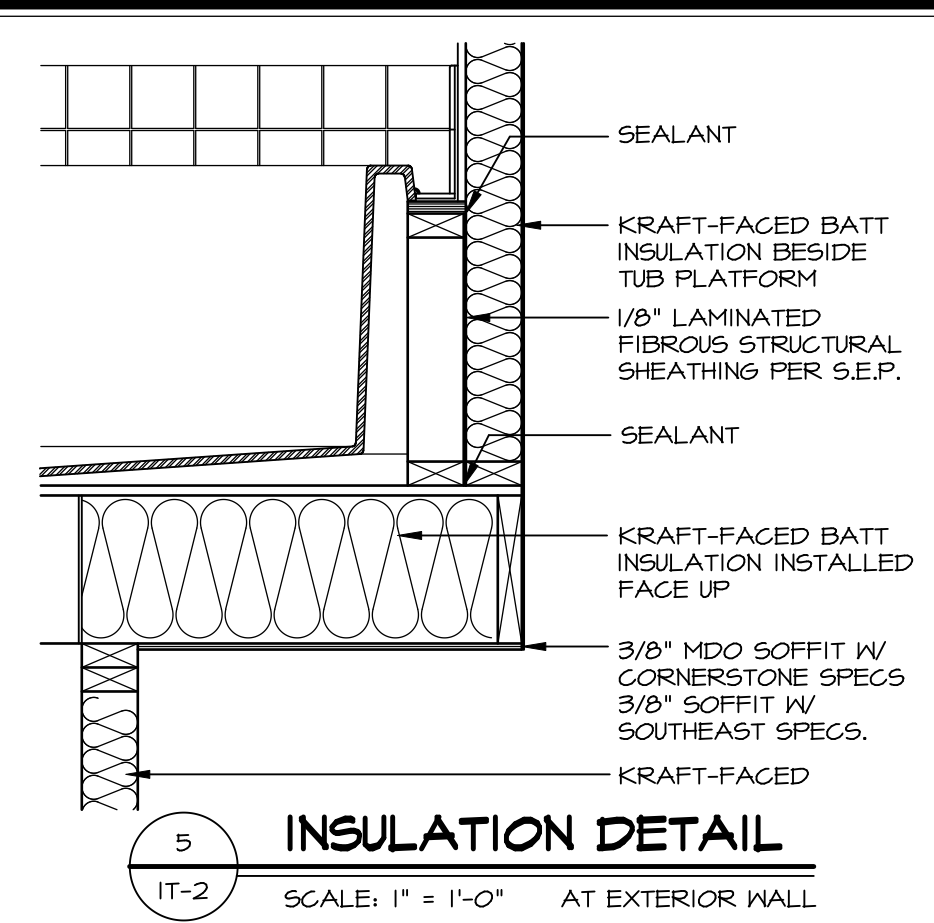
2 SECTION OF TUB ON PLATFORM CONDITION
SCALE: 1" = 1'-0"



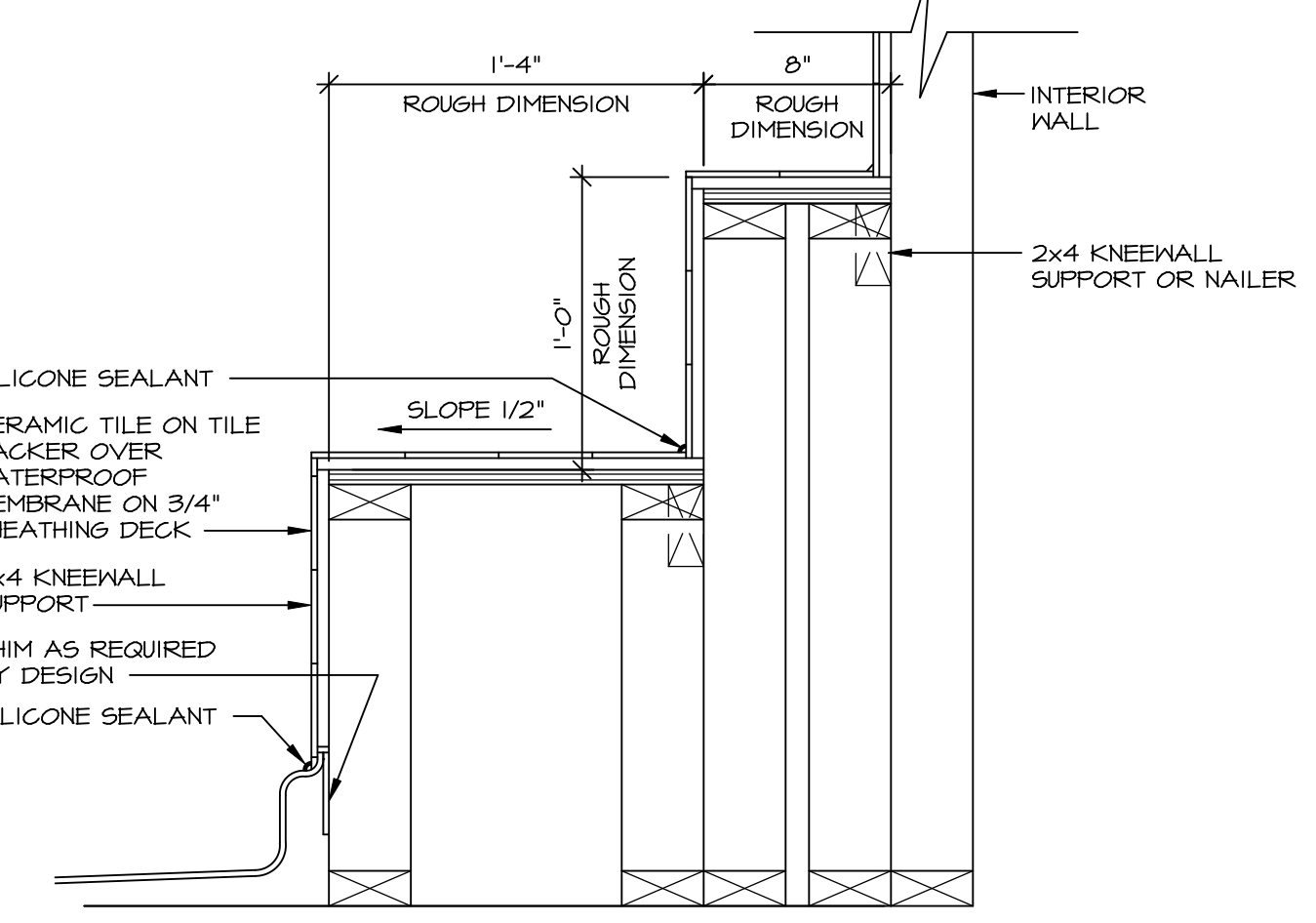
3 SECTION OF TUB TO WALL CONDITION
SCALE: 1" = 1'-0"



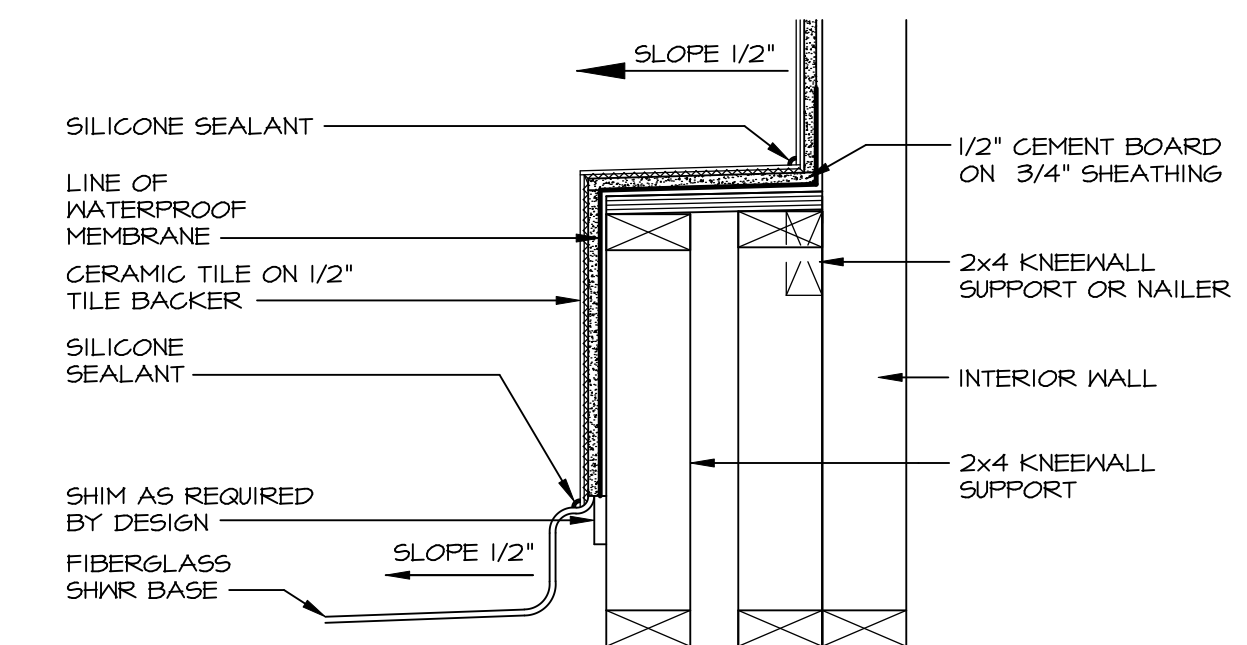
4 ELEVATION
SCALE: 1/2" = 1'-0"



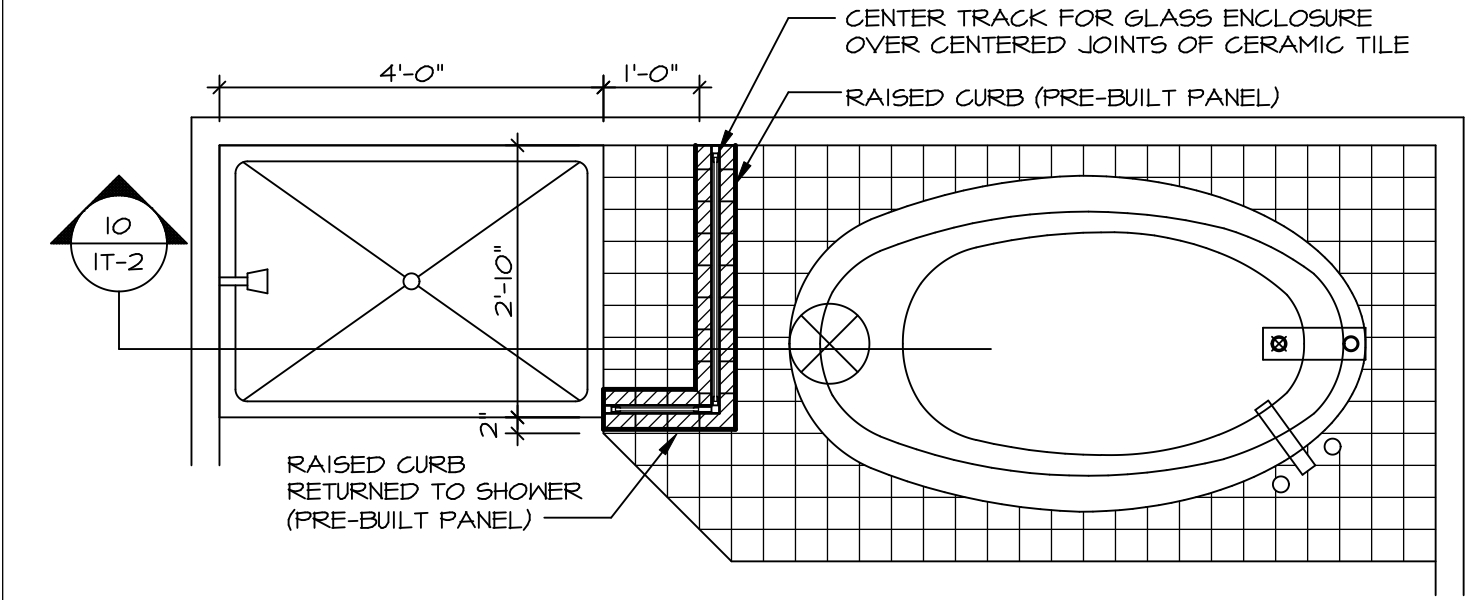
5 INSULATION DETAIL
SCALE: 1" = 1'-0" AT EXTERIOR WALL



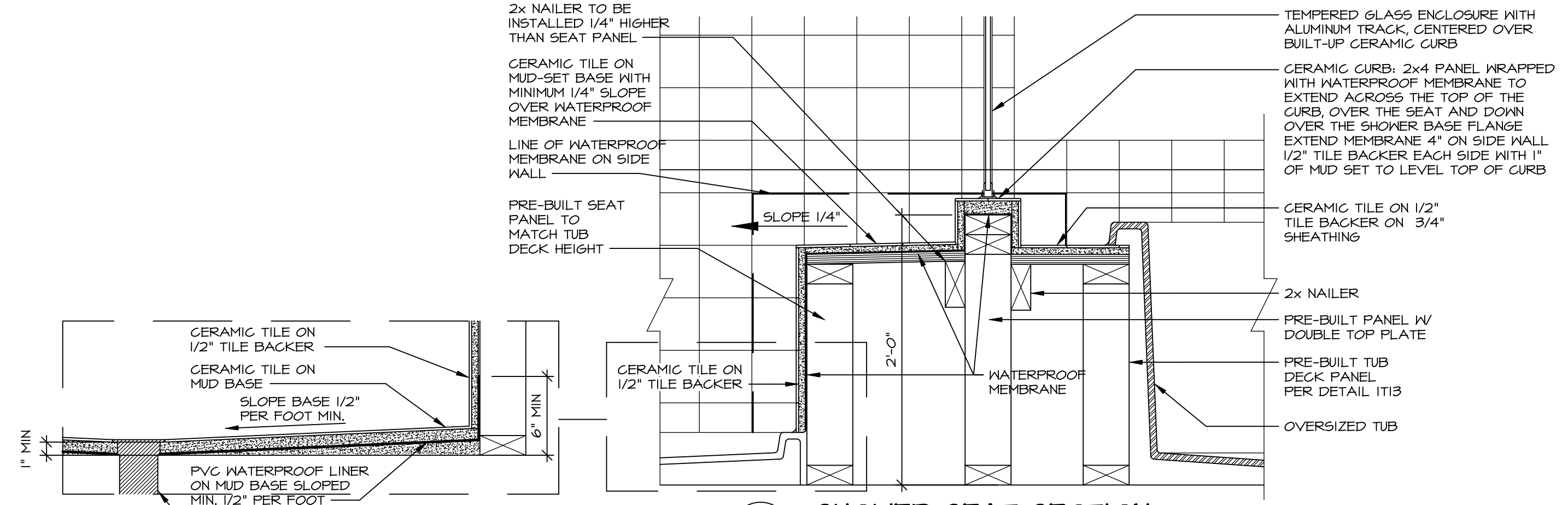
7 SECTION OF SHOWER SEAT AND SHELF
SCALE: 1/2" = 1'-0"



8 SECTION OF SHOWER SEAT
SCALE: 1/2" = 1'-0" FIBERGLASS SHOWER BASE



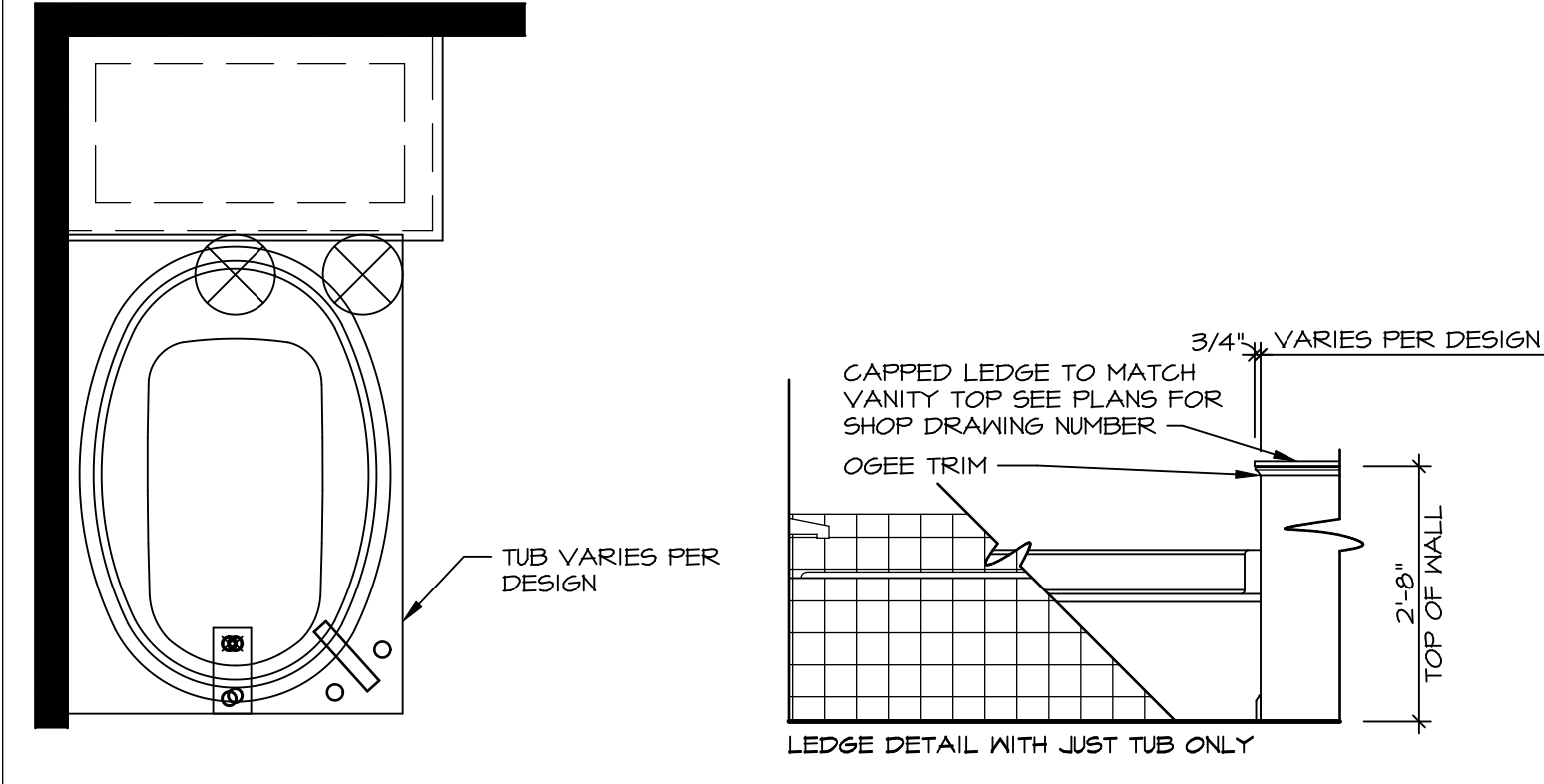
9 SHOWER SEAT PLAN / DETAIL
SCALE: 1/2" = 1'-0"



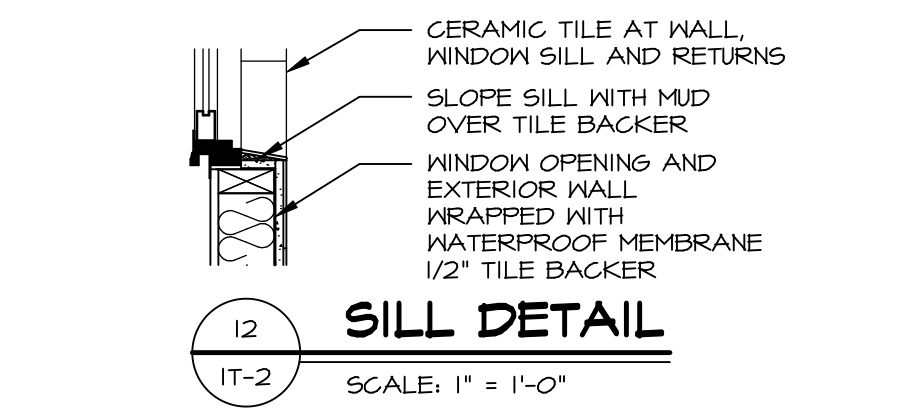
10 SHOWER SEAT SECTION
SCALE: 1/2" = 1'-0"



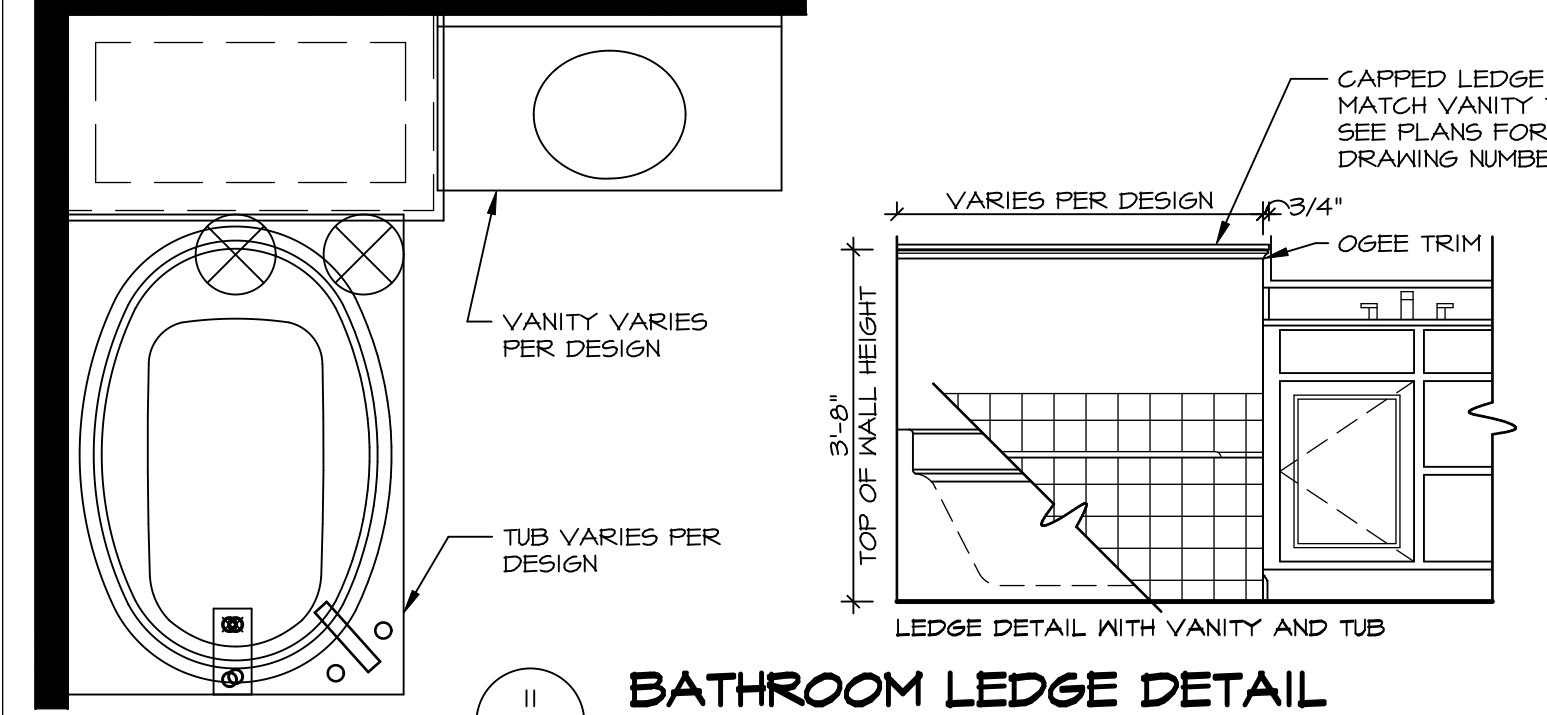
11 ALTERNATE SHOWER PAN DETAIL
SCALE: 1/2" = 1'-0"



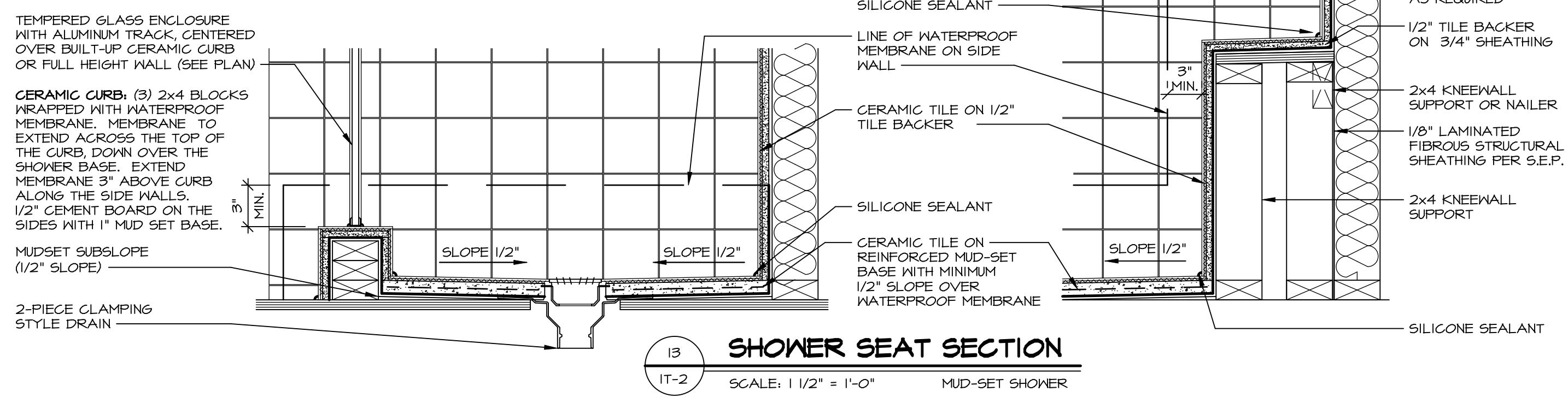
12 BATHROOM LEDGE DETAIL
SCALE: 1/2" = 1'-0"



13 SILL DETAIL
SCALE: 1" = 1'-0"



14 BATHROOM LEDGE DETAIL
SCALE: 1/2" = 1'-0"



15 SHOWER SEAT SECTION
SCALE: 1/2" = 1'-0" MUD-SET SHOWER

REVISIONS

REV. NO.	DATE	DESCRIPTION
1	5/1/17	EBP - REVISED DETAIL 1 AND 11 TO REMOVE TUB ACCESS PANEL REF. (099 #15 341/4)
2	9/21/17	EBP - REVISED T-FLY NOTE TO CALL OUT LFS
3	9/21/17	EBP - REVISED NOTE ON DETAIL #1 - REVISED ORDER OF MATERIAL PARA#4934
4	8/28/18	EBP - DTL 8 / 19 ME REMOVED THE 2X6 BULKING AT BASE OF SHWR REQUEST #4663

NVR, Inc., owner, expressly reserves its common law copyright and other property rights in these plans. These plans are not to be reproduced, stored in a retrieval system, or transmitted in any form or by any means, electronic, mechanical, photocopying, recording, or by any information storage and retrieval system, without first obtaining the expressed written consent of NVR, Inc.

NVR
Architectural Services
5285 West... Suite 100
Frederick, MD 21703

SET NO. NVR

MODEL	DRAWING TITLE	OPTION
IT-2	STANDARD DETAILS INTERIOR TRIM DETAILS BATH DETAILS	

SHEET NO. IT-2