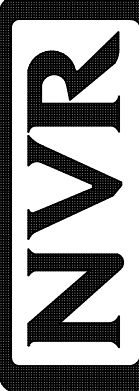
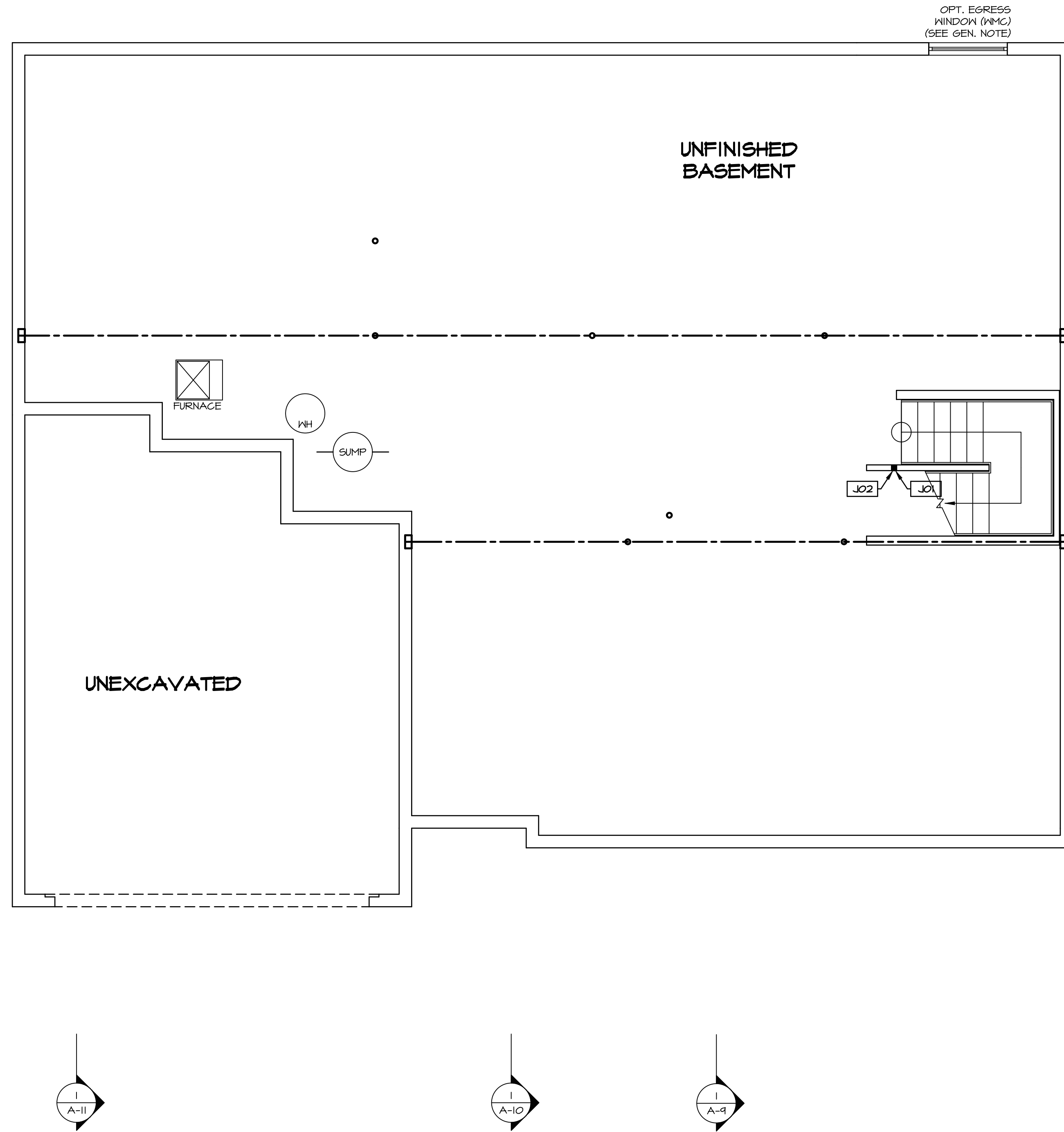


PLUMBING PLAN
 SCALE: 1/4" = 1'-0"

SHEET NO. A-5	MODEL NORMANDY DRAWING TITLE PLUMBING PLAN OPTION DESCRIPTION 31	SET NO. NRM00 VERSION 01 DRAWN BY RJC DATE: 5/14/15 OPTION	 <p>NVR, Inc. Architectural Services 5285 Westheimer Road, Suite 100 Frederick, MD 21703</p>	<p>NVR, Inc., owner, expressly reserves its copyright in these plans. These plans are not to be reproduced, changed, copied in any way, or otherwise used without the written consent of NVR, Inc.</p>	REV. NO. DATE	REMARKS
-------------------------	--	--	--	--	-----------------	---------



OPT. EGRESS WINDOW (MMG) (SEE GEN. NOTE)

UNFINISHED BASEMENT

UNEXCAVATED

FURNACE

WH

SUMP

J02

J01

A-11

A-10

A-9

A-6

BASEMENT FLOOR PLAN

SCALE: 1/4" = 1'-0"

LEGEND

- BEARING WALL
- - - NON BEARING WALL
- ⊗ INDICATES BEARING FROM POINT-LOAD ABOVE
- ⊥ JACKS
- ⊙ BEAM/HEADER
- ⊞ PAD FOOTING
- ◇ STEEL COLUMN
- ⊠ PORTAL FRAME
- ⊞ JOIST/TRUSS
- LVL
- ⊙ ENGINEERING PAGE NUMBER

SEE FC DETAILS FOR FRAMING CONNECTORS

- FLOOR PLAN NOTES**
- ALL HEADERS ARE (2) 2x6 w/ 2x4 WALLS OR (3) 2x6 w/ 2x6 WALLS, UNLESS OTHERWISE NOTED.
 - ALL HEADERS TO HAVE (1) 2x4 OR 2x6 JACK EACH END, UNLESS OTHERWISE NOTED.
 - ALL EXTERIOR WALLS TO BE 4" AND ALL INTERIOR WALLS TO BE 3 1/2", UNLESS OTHERWISE NOTED.
 - HATCHED AREAS INDICATE DROPPED CEILINGS. ALL DROPPED CEILINGS ARE 12" UNLESS OTHERWISE NOTED.
 - SEE "BRACED WALL PANEL DETAIL SHEET" FOR SPECIAL WALL FRAMING LOCATIONS AND HEADER SIZES, IF APPLICABLE.
 - SEE STANDARD DETAIL CATEGORY "IT" SHEET(S) FOR INTERIOR TRIM DETAILS.
 - SEE ARCHITECTURAL DETAIL SHEET "AD" FOR HOUSE SPECIFIC INTERIOR TRIM OPTION TABLE.
 - ALL WINDOWS HAVE 7'-0 1/2" HEADER HEIGHT UNLESS OTHERWISE NOTED.

- GYPSUM NOTES**
- AT GARAGE:
GYPSUM BOARD AT COMMON WALLS, CEILING, BEAM WRAPS AND SUPPORTS PER STANDARD DETAIL FA-1(b) FIRE ASSEMBLIES OR AS REQUIRED BY LOCAL CODE.
- AT STAIRS:
1/2" GYPSUM BOARD AT UNDERSIDE OF STAIRS AND WALLS IN CLOSET

BASEMENT JACK SCHEDULE

IDENTIFIER	DESCRIPTION	OPTIONS	ENG. NUM.	REMARKS
J01	JACK - 2x4 SPF STUD GRADE		B10	
J02	JACK - 2x4 SPF STUD GRADE		B22	

MODEL
NORMANDY

DRAWING TITLE
BASEMENT FLOOR PLAN

OPTION DESCRIPTION

SHEET NO.
A-6

34

SET NO. NRM00
VERSION 01
DRAWN BY SGA
DATE: 6/29/15
OPTION

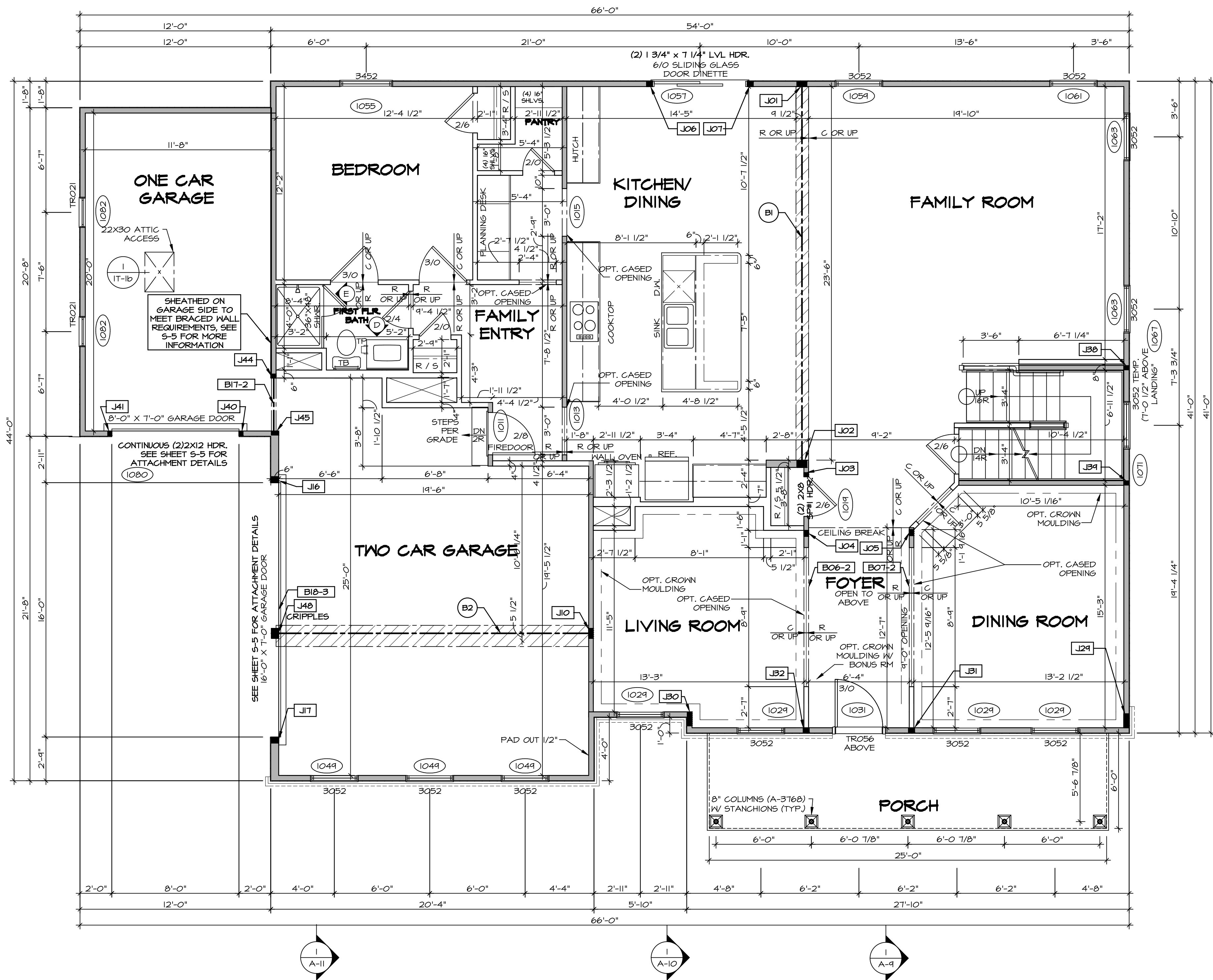
NVR
NVR, Inc.
Architectural Services
Architects
5285 West
Frederick, MD 21703

REVISIONS

REV. NO.	DATE	DESCRIPTION	REMARKS
1	08/07/16	NL - DRAWING ALIGNMENT	
2	11/05/16	TH - STANDARD DETAILS 3.0	
3	4/20/17	SFK - ADDED BASEMENT FLOOR PLAN JACK SCHEDULE	

NVR, Inc., owner, expressly reserves its copyright in these plans. These plans are not to be reproduced, changed, copied, or otherwise used in any way without the prior written consent of NVR, Inc.

C:\NVR\Solves\NORMANDY_NRM00_01\DCY-VG-1539\406980\Sheets\01_Specific\A-6 A-6 BSMT_LS.dwg 10/03/19 - 2:37 am



FIRST FLOOR PLAN
SCALE: 1/4" = 1'-0"

LEGEND

- BEARING WALL
- NON BEARING WALL
- JOIST/TRUSS
- JACKS
- BEAM/HEADER
- PAD FOOTING
- STEEL COLUMN
- PORTAL FRAME
- LVL
- ENGINEERING PAGE NUMBER

SEE FC DETAILS FOR FRAMING CONNECTORS

- FLOOR PLAN NOTES** RYAN
- ALL HEADERS ARE (2) 2x6 W/ 2x4 WALLS OR (3) 2x6 W/ 2x6 WALLS, UNLESS OTHERWISE NOTED.
 - ALL HEADERS TO HAVE (1) 2x4 OR 2x6 JACK AND KING STUD EACH END, UNLESS OTHERWISE NOTED.
 - ALL EXTERIOR WALLS TO BE 4" W/ OSB OR 3 1/2" W/ T-PLY, ALL INTERIOR WALLS TO BE 3 1/2", UNLESS OTHERWISE NOTED.
 - HATCHED AREAS INDICATE DROPPED CEILINGS. ALL DROPPED CEILINGS ARE 12" UNLESS OTHERWISE NOTED.
 - SEE "BRACED WALL PANEL DETAIL SHEET" FOR SPECIAL WALL FRAMING LOCATIONS AND HEADER SIZES, IF APPLICABLE.
 - SEE STANDARD DETAIL CATEGORY "IT" SHEET(S) FOR INTERIOR TRIM DETAILS.
 - SEE ARCHITECTURAL DETAIL SHEET "AD" FOR HOUSE SPECIFIC INTERIOR TRIM OPTION TABLE.
 - ALL WINDOWS HAVE 7'-0 1/2" HEADER HEIGHT UNLESS OTHERWISE NOTED.
 - ALL HEADERS IN NON-BEARING WALLS SHALL BE A SINGLE FLAT 2X4 OR 2X6 ATTACHED TO CRIPPLES ABOVE, UNLESS OTHERWISE NOTED.

- GYPSON NOTES** RYAN
- AT GARAGE:**
GYPSUM BOARD AT COMMON WALLS, CEILINGS, BEAM WRAPS AND SUPPORTS PER STANDARD DETAIL FA-1(b) FIRE ASSEMBLIES OR AS REQUIRED BY LOCAL CODE.
- AT STAIRS:**
1/2" GYPSUM BOARD AT UNDERSIDE OF STAIRS AND WALLS IN CLOSET

LVL PLY TO PLY FASTENING SCHEDULE: (WHERE APPLICABLE BASED ON LVL USAGE)

- 1A - (2) PLY UP TO AND INCLUDING 11/8" TALL; FASTEN PLYS W/ (2) ROWS 16D NAILS AT 12" O.C.
- 2A - (2) PLY 14" TO AND INCLUDING 18" TALL (INCLUSIVE); FASTEN PLYS W/ (3) ROWS 16D NAILS AT 12" O.C.
- 3A - (2) PLY 20" TALL AND OVER; FASTEN PLYS W/ (4) ROWS 16D NAILS AT 12" O.C.
- 4A - (3) PLY UP TO AND INCLUDING 11/8" TALL; FASTEN PLYS W/ (2) ROWS 16D NAILS AT 12" O.C. FROM EACH SIDE
- 5A - (3) PLY 14" TO AND INCLUDING 18" TALL (INCLUSIVE); FASTEN PLYS W/ (3) ROWS 16D NAILS AT 12" O.C. FROM EACH SIDE
- 6A - (3) PLY 20" TALL AND OVER; FASTEN PLYS W/ (4) ROWS 16D NAILS AT 12" O.C. FROM EACH SIDE
- 1A - (4) PLY (ALL SIZES); FASTEN PLYS W/ (2) ROWS 1/2" DIAMETER A307 BOLTS AT 24" O.C. SEE SHOP DRAWING FOR ADDITIONAL INFORMATION.

FIELD INSTALLED FIRST FLOOR BEAM/HEADER SCHEDULE

IDENTIFIER	DESCRIPTION	LENGTH	OPTIONS	ENG. NUM.	REMARKS
B06-2	LVL - 11-4	12'-8 1/2"	SRM, SQK, SOL, ELC	1017	1A
B07-2	LVL - 11-4	12'-4 1/16"	SRM, SQK, SOL, ELC	1017	1A
B1	BEAM STEEL - W12X35	24'-2"		1021	
B17-2	LVL - 11-4	3'-10"	BARGAAAFBA	1077	1A
B18-3	LVL 1.15 - 18	16'-4"	GCC, GAA	1051	5A
B2	BEAM STEEL - W12X26	20'-2 1/2"	SRI	1022	

FIRST FLOOR JACK SCHEDULE

IDENTIFIER	DESCRIPTION	OPTIONS	ENG. NUM.	REMARKS
JO1	JACK - (5) 2X4 SPF#1		1021	
JO2	JACK - (5) 2X6 SPF#1		1021	
JO3	JACK - (2) 2X4 SPF STUD GRADE		1019	
JO4	JACK - (3) 2X4 SPF STUD GRADE		1017	
JO5	JACK - (3) 2X4 SPF STUD GRADE		1017	
JO6	JACK - (3) 2X4 SPF STUD GRADE		1057	
JO7	JACK - (3) 2X4 SPF STUD GRADE		1057	
JO	JACK - (5) 2X4 SPF#1	SRI	1023	
J16	JACK - (3) 2X6 SPF STUD GRADE	GCC, GAA	1051	
J17	JACK - (3) 2X6 SPF STUD GRADE	GCC, GAA	1051	
J24	JACK - (7) 2X4 SPF#1	ELC	2000	
J30	JACK - (7) 2X4 SPF#1	ELC	2000	
J31	JACK - (3) 2X4 SPF STUD GRADE	SRM, SQK, SOL, ELC	1017	
J32	JACK - (3) 2X4 SPF STUD GRADE	SRM, SQK, SOL, ELC	1017	
J38	JACK - (2) 2X4 SPF STUD GRADE		1007	
J39	JACK - (2) 2X4 SPF STUD GRADE		1007	
J40	JACK - (2) 2X4 SPF STUD GRADE	GCC, GAA	1074	
J41	JACK - (2) 2X4 SPF STUD GRADE	GCC, GAA	1074	
J44	JACK - (2) 2X4 SPF STUD GRADE	BAR, GAA, FBA	1077	
J45	JACK - (2) 2X6 SPF STUD GRADE	BAR, GAA, FBA	1077	
J49	JACK - (5) 2X6 SPF STUD GRADE	GCC, FBA, FCA	1070	CRIPPLES

REVISIONS

REV. NO.	DATE	DESCRIPTION
1	08/01/16	N.L. - DRAWING ALIGNMENT
2	11/05/16	TH - STANDARD DETAILS 3.0
3	07/17/17	SL5 - T-PLY CONVERSION PROJECT

REMARKS

1. NVR, Inc., owner, expressly reserves its copyright in these plans. These plans are not to be reproduced, changed, copied, or otherwise used in any way without the written consent of NVR, Inc.

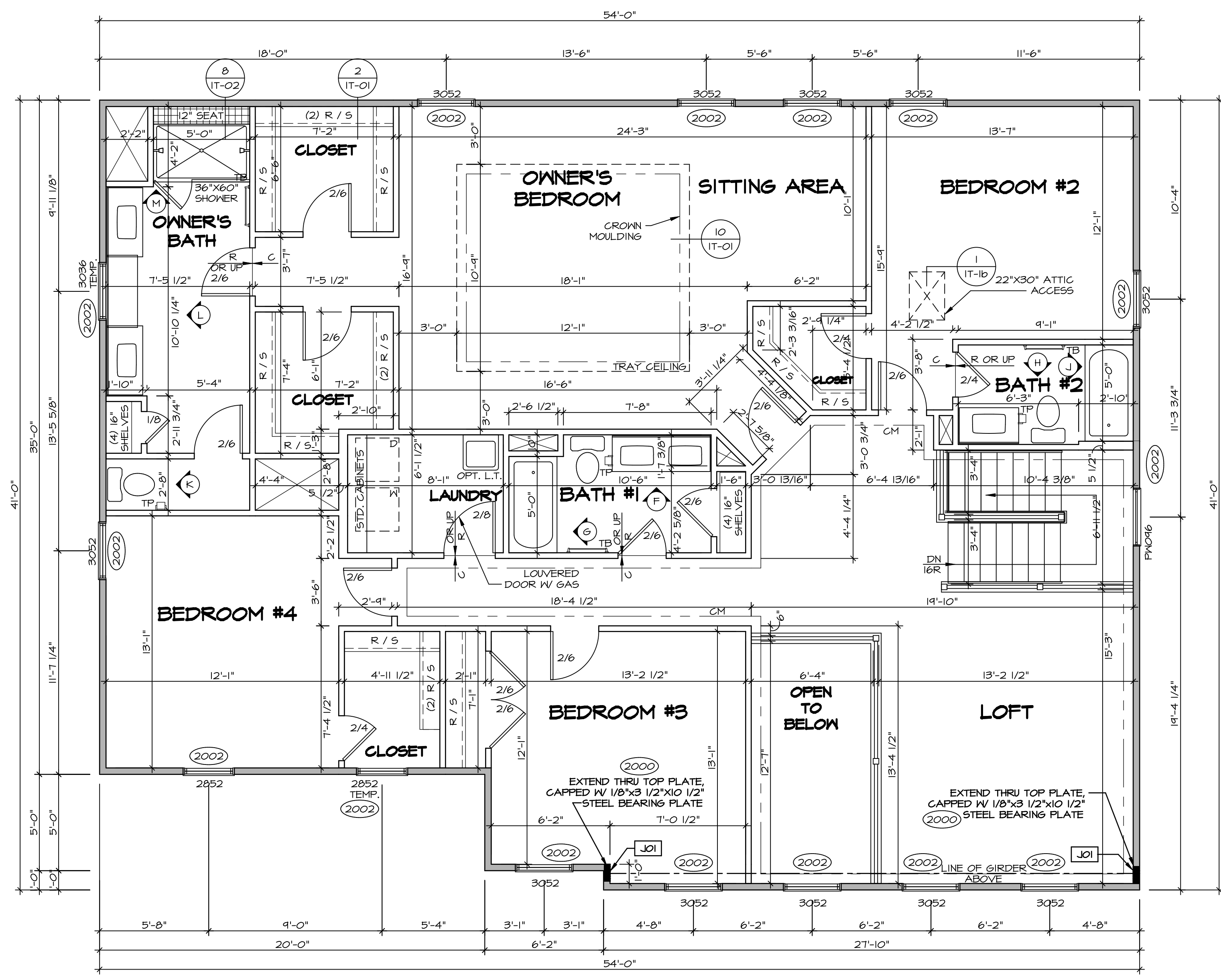
NVR
Architectural Services
Suite 100
5285 Westgate Drive
Frederick, MD 21703

SET NO. NRM00
VERSION 01
DRAWN BY SGA
DATE: 6/29/15
OPTION

NORMANDY
DRAWING TITLE
FIRST FLOOR PLAN
OPTION DESCRIPTION

SHEET NO. **A-7** OF 35

C:\NVR\Solves\NORMANDY_ARCH00_01\DCI-16-1598\1406980\Sheets\01_Specific\35_A-7_PLN1_US.dwg 10/03/19 - 2:37 pm



LEGEND

- BEARING WALL
- NON BEARING WALL
- INDICATES BEARING FROM POINT-LOAD ABOVE
- JACKS
- BEAM/HEADER
- PAD FOOTING
- STEEL COLUMN
- PORTAL FRAME
- JOIST/TRUSS
- LVL
- ENGINEERING PAGE NUMBER

SEE FC DETAILS FOR FRAMING CONNECTORS

- FLOOR PLAN NOTES** RYAN
- ALL HEADERS ARE (2) 2x6 W/ 2x4 WALLS OR (3) 2x6 W/ 2x6 WALLS, UNLESS OTHERWISE NOTED.
 - ALL HEADERS TO HAVE (1) 2x4 OR 2x6 JACK AND KING STUD EACH END, UNLESS OTHERWISE NOTED.
 - ALL EXTERIOR WALLS TO BE 4" W/ OSB OR 3 1/2" W/ T-PLY, ALL INTERIOR WALLS TO BE 3 1/2", UNLESS OTHERWISE NOTED.
 - HATCHED AREAS INDICATE DROPPED CEILINGS, ALL DROPPED CEILINGS ARE 12" UNLESS OTHERWISE NOTED.
 - SEE "BRACED WALL PANEL DETAIL SHEET" FOR SPECIAL WALL FRAMING LOCATIONS AND HEADER SIZES, IF APPLICABLE.
 - SEE STANDARD DETAIL CATEGORY "IT" SHEET(S) FOR INTERIOR TRIM DETAILS.
 - SEE ARCHITECTURAL DETAIL SHEET "AD" FOR HOUSE SPECIFIC INTERIOR TRIM OPTION TABLE.
 - ALL WINDOWS HAVE 7'-0" 1/2" HEADER HEIGHT UNLESS OTHERWISE NOTED.
 - ALL HEADERS IN NON-BEARING WALLS SHALL BE A SINGLE FLAT 2x4 OR 2x6 ATTACHED TO GRIPPLES ABOVE, UNLESS OTHERWISE NOTED.

SECOND FLOOR JACK SCHEDULE

IDENTIFIER	DESCRIPTION	OPTIONS	ENG. NUM.	REMARKS
J01	JACK - (7) 2X4 SP#1	ELC	2000	
J02	JACK - (7) 2X4 SP#1	ELC	2000	

SECOND FLOOR PLAN
SCALE: 1/4" = 1'-0"

REMARKS

REV. NO.	DATE	DESCRIPTION
1	08/07/16	NL - DRAWING ALIGNMENT
2	11/05/16	TH - STANDARD DETAILS 3.0
3	07/17/17	SLS - T-PLY CONVERSION PROJECT

SET NO. NRM00
VERSION 01
DRAWN BY SGA
DATE: 6/29/15
OPTION

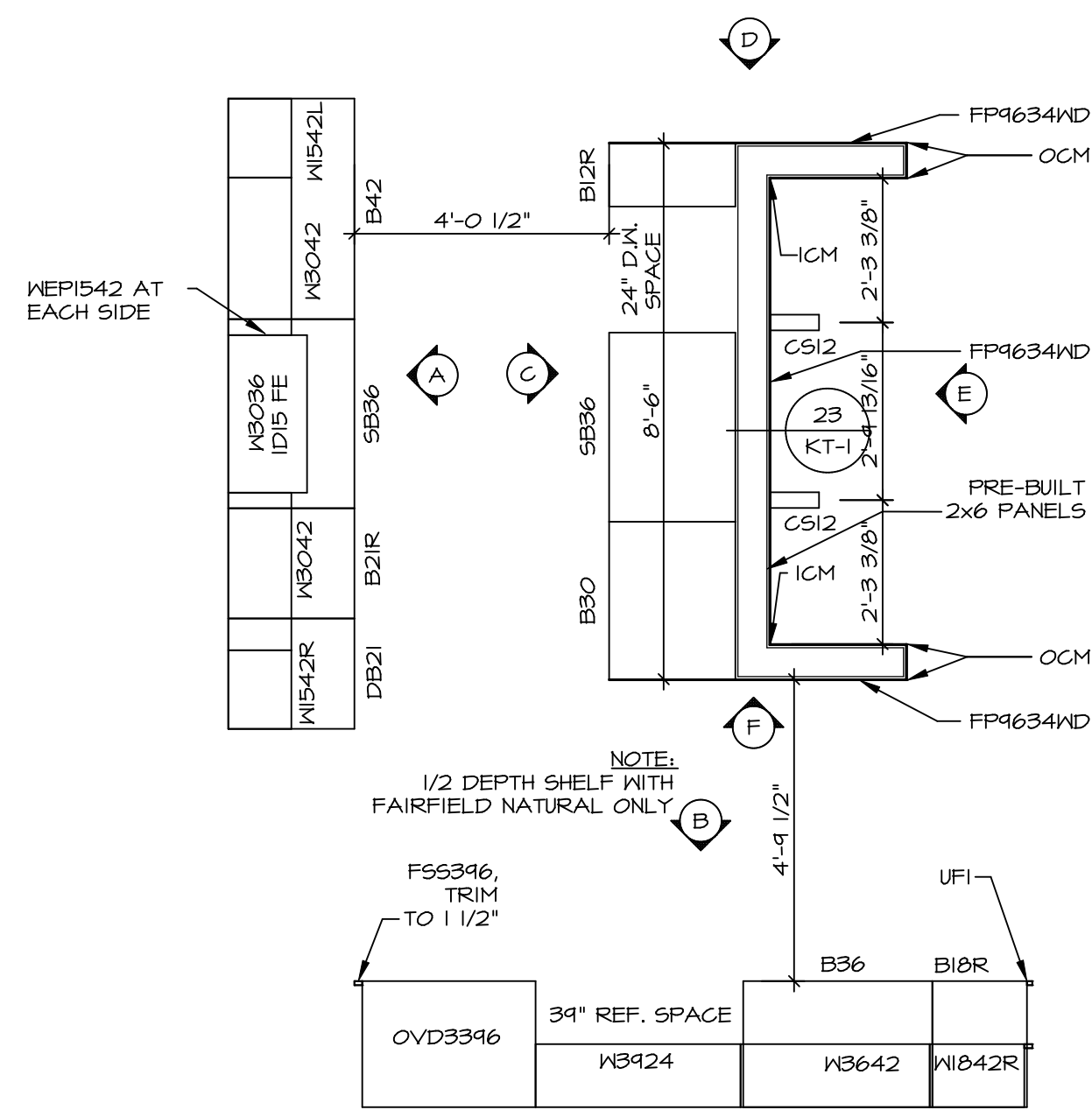
MODEL
NORMANDY
DRAWING TITLE
SECOND FLOOR PLAN
OPTION DESCRIPTION

SHEET NO.
A-8

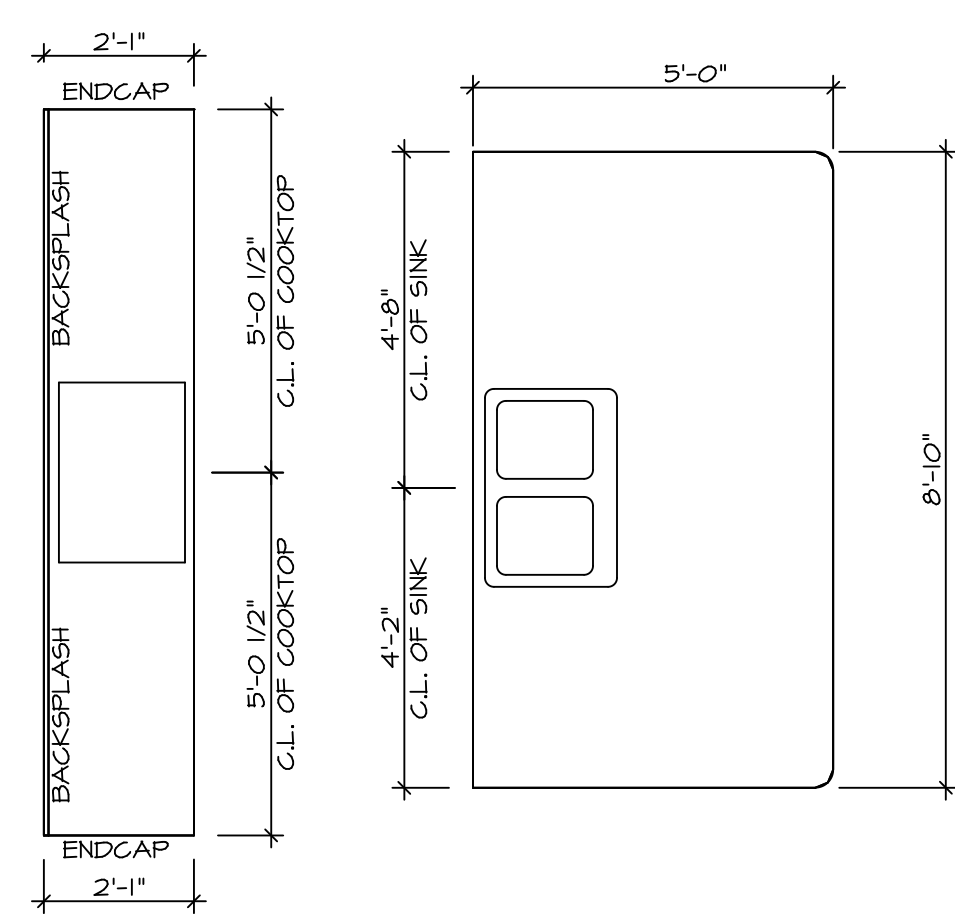
38

NVR
NVR, Inc.
Architectural Services
5285 West... Suite 100
Frederick, MD 21703

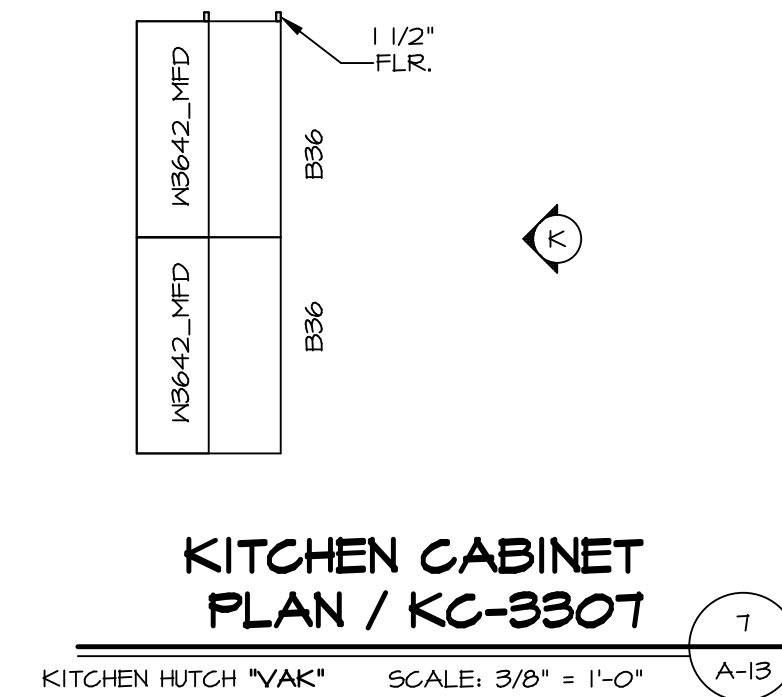
C:\NVA\Solves\NORMANDY_NRM00_01\DCI-VG-1558\1406880\Sheets\Lot_Specific\8 A-8 PLAN LS.dwg 10/03/19 - 2:37 pm



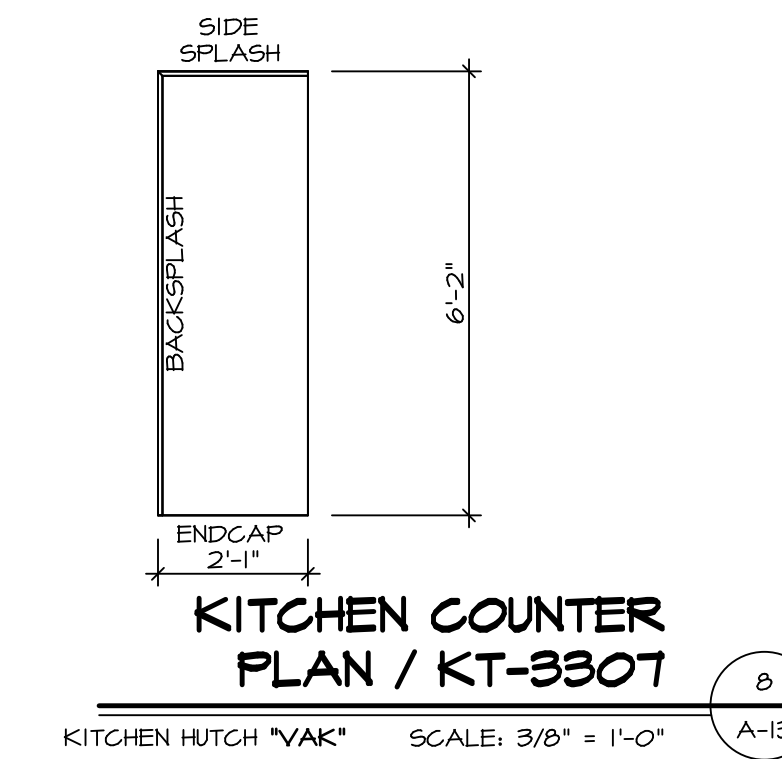
KITCHEN CABINET PLAN / KC-3231
SCALE: 3/8" = 1'-0" A-13



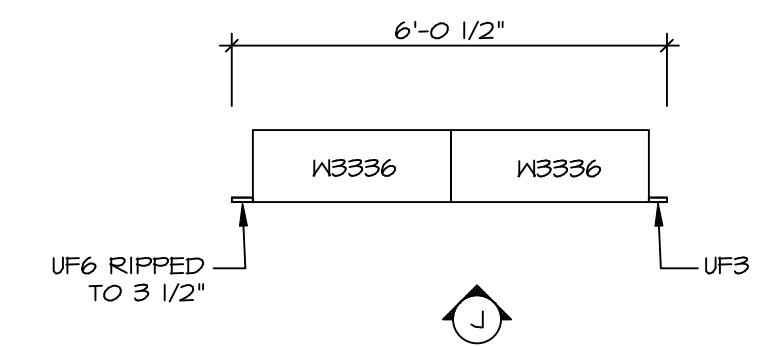
KITCHEN COUNTERTOP PLAN / KT-3231
SCALE: 3/8" = 1'-0" A-13



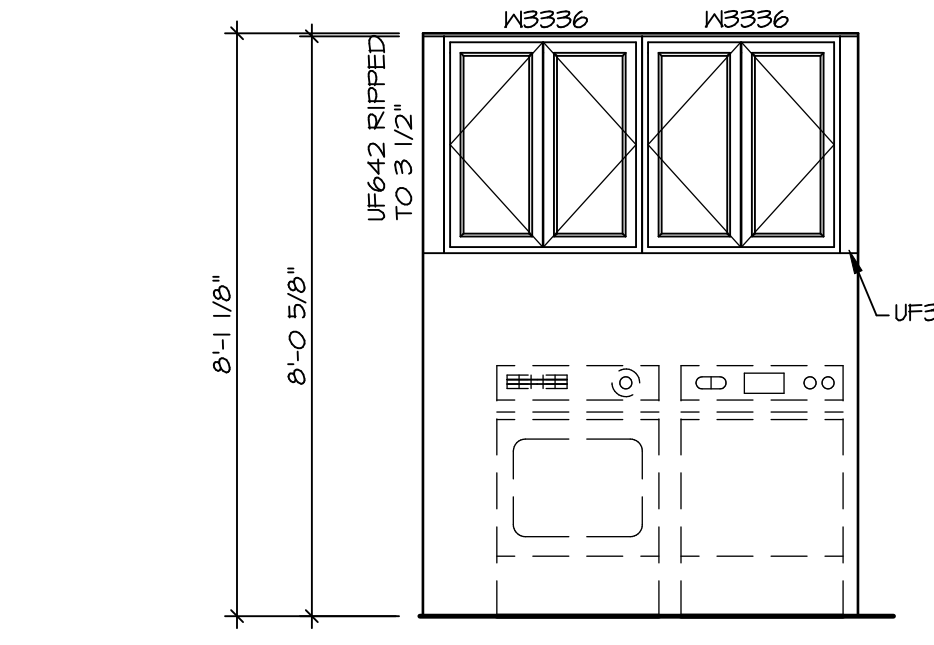
KITCHEN CABINET PLAN / KC-3307
KITCHEN HUTCH "VAK" SCALE: 3/8" = 1'-0" A-13



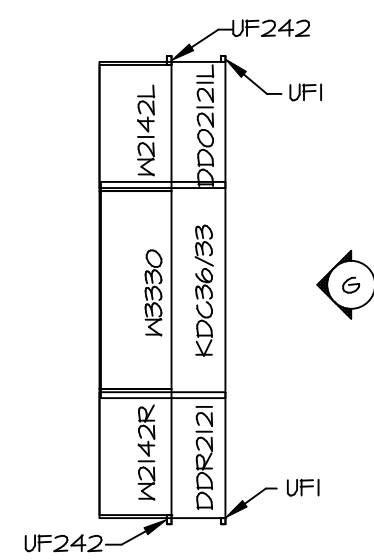
KITCHEN COUNTER PLAN / KT-3307
KITCHEN HUTCH "VAK" SCALE: 3/8" = 1'-0" A-13



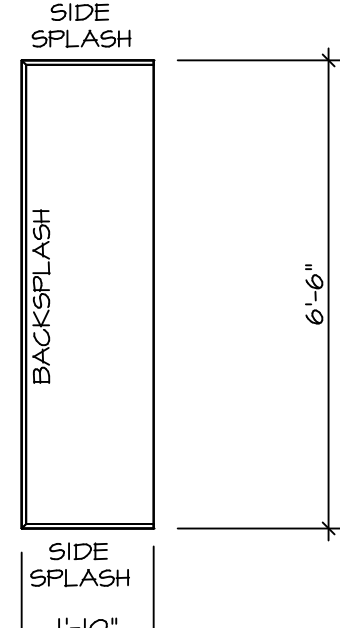
LAUNDRY CABINET PLAN KC-3281
SCALE: 3/8" = 1'-0" A-13



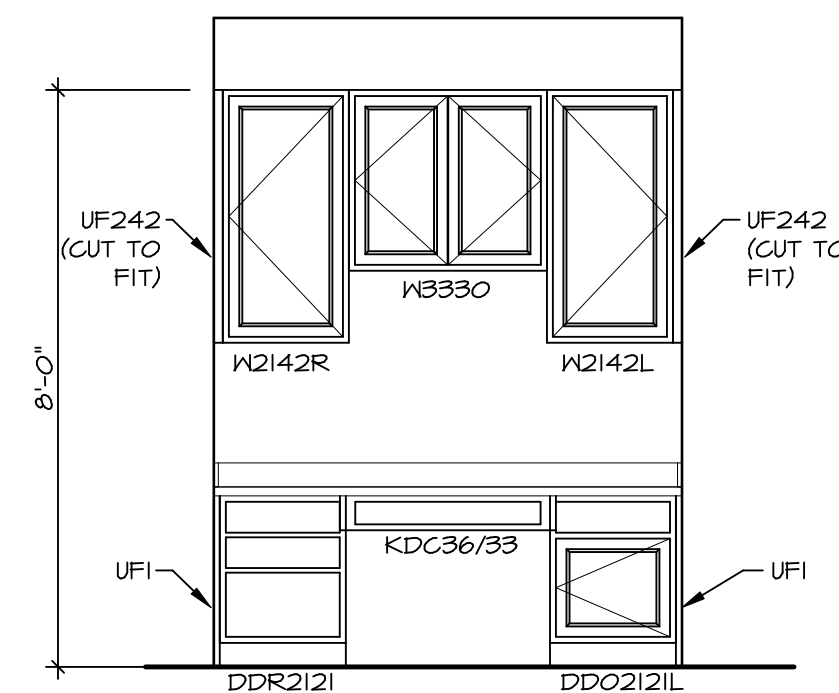
LAUNDRY CABINET ELEVATION
SCALE: 3/8" = 1'-0" A-13



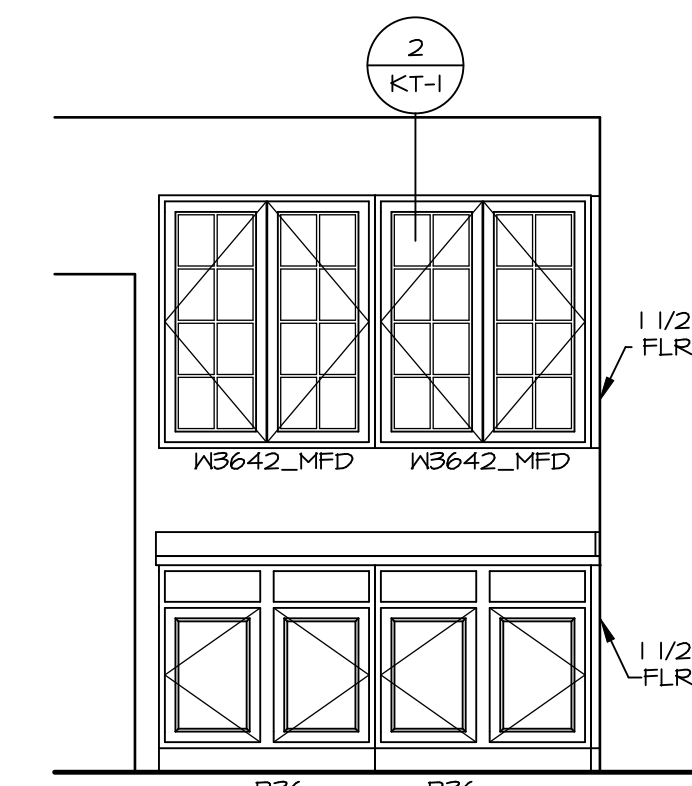
KITCHEN CABINET PLAN / KC-3232
KITCHEN PLANNING DESK "KFE" SCALE: 3/8" = 1'-0" A-13



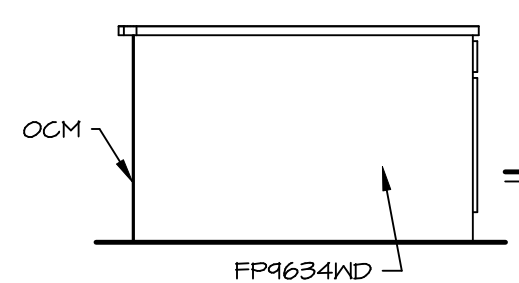
KITCHEN COUNTER PLAN / KT-3232
KITCHEN PLANNING DESK "KFE" SCALE: 3/8" = 1'-0" A-13



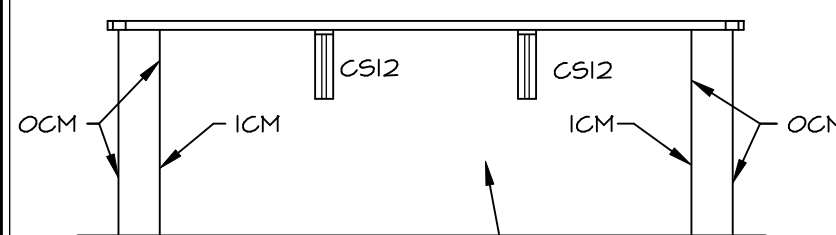
KITCHEN ELEVATION
KITCHEN PLANNING DESK "KFE" SCALE: 3/8" = 1'-0" A-13



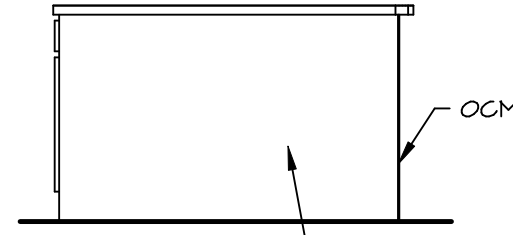
KITCHEN HUTCH ELEVATION
SCALE: 3/8" = 1'-0" A-13



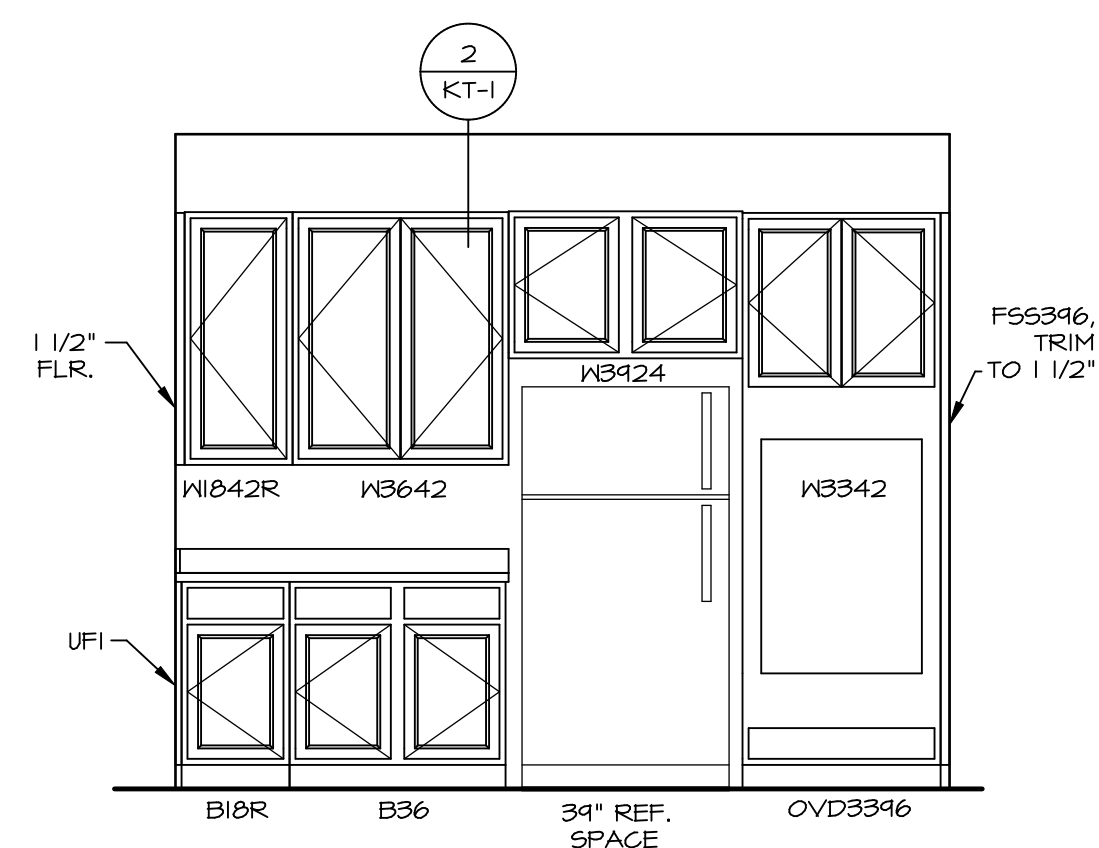
KITCHEN ELEVATION
SCALE: 3/8" = 1'-0" A-13



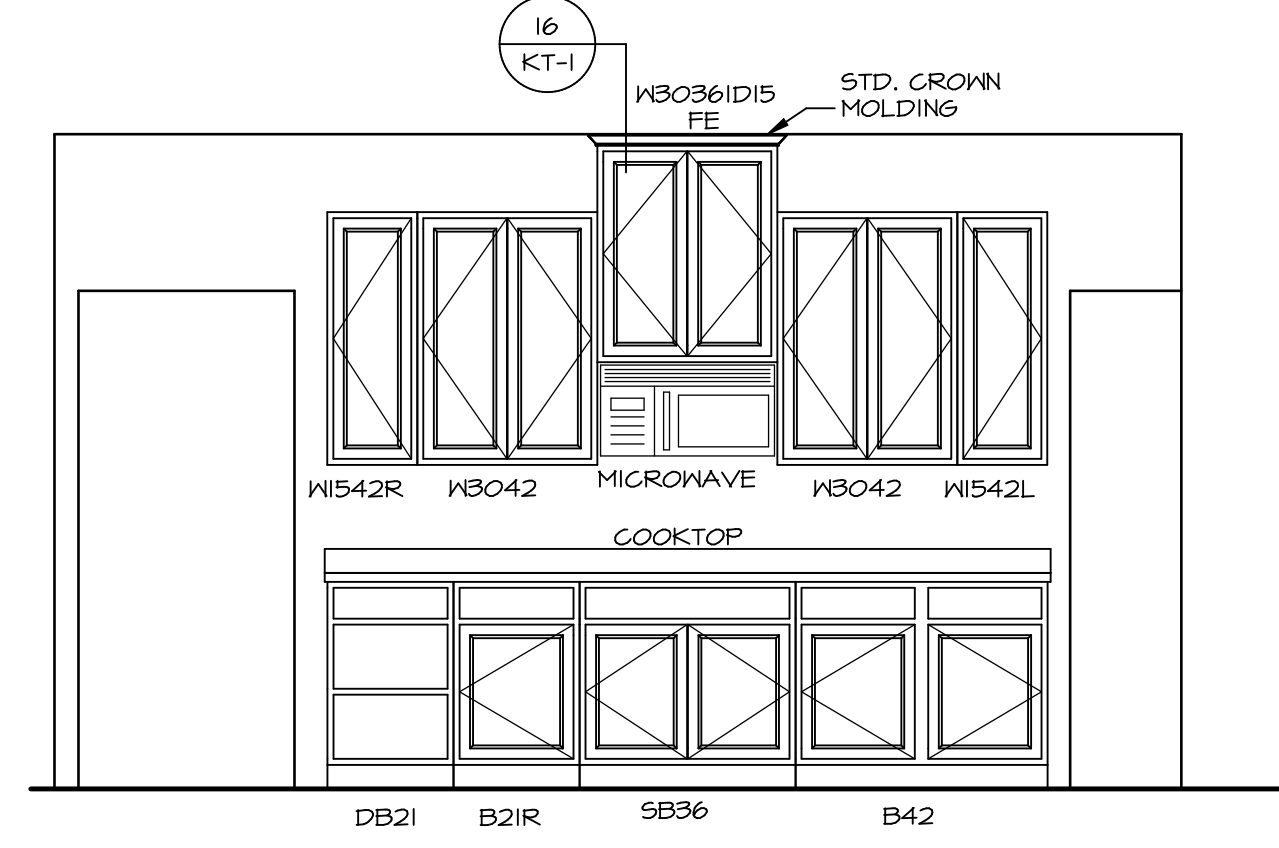
KITCHEN ELEVATION
SCALE: 3/8" = 1'-0" A-13



KITCHEN ELEVATION
SCALE: 3/8" = 1'-0" A-13



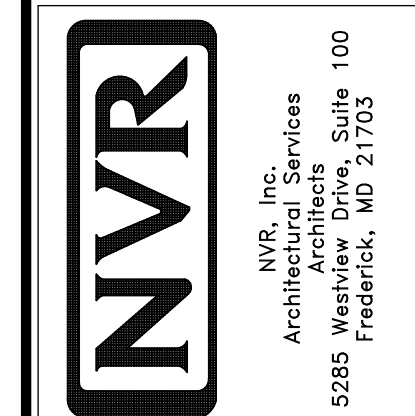
KITCHEN ELEVATION
SCALE: 3/8" = 1'-0" A-13



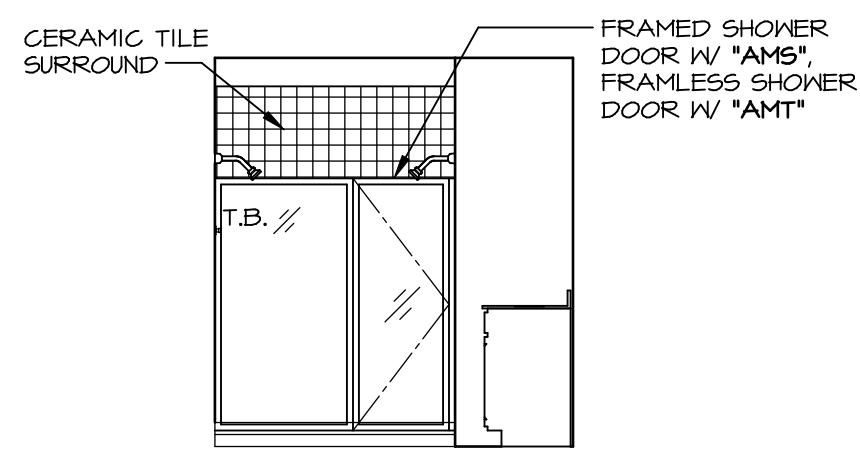
KITCHEN ELEVATION
SCALE: 3/8" = 1'-0" A-13

REV. NO.	DATE	REMARKS
1	10/15/16	TRV - STANDARD DETAILS 5.0

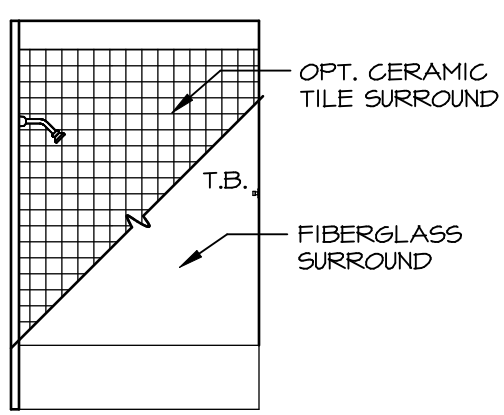
NVR, Inc., owner, expressly reserves the copyright in these plans. These plans are not to be reproduced, changed, copied in any way, or used for any other purpose without the written consent of NVR, Inc.



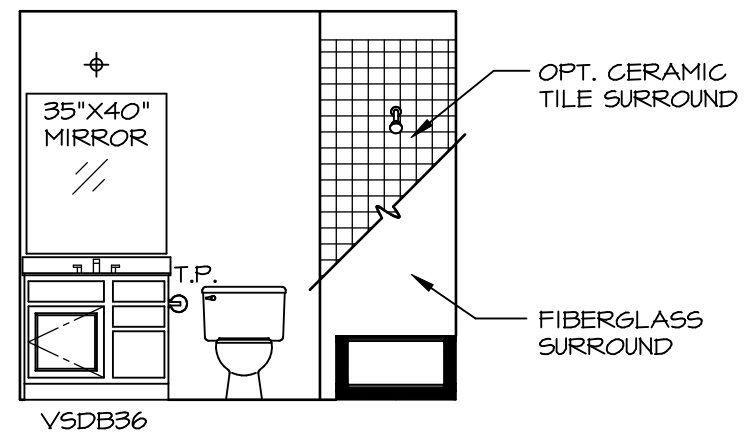
SHEET NO.	MODEL	SET NO.	VERSION	DRAWN BY	DATE	OPTION
A-13	NORMANDY	01	01	RJC	6/29/15	
	DRAWING TITLE					
	KITCHEN LAYOUT					
	OPTION DESCRIPTION					
46						



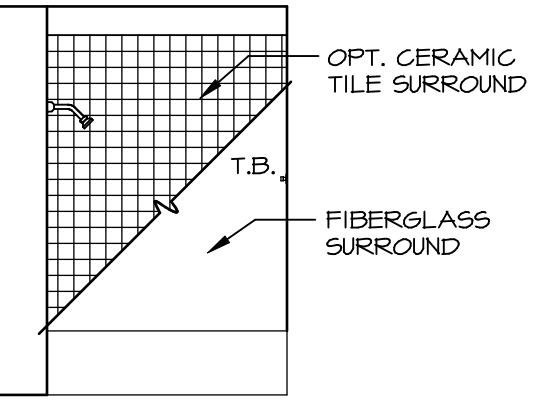
M OWNER'S BATH - "AMG"
SCALE: 1/4" = 1'-0"



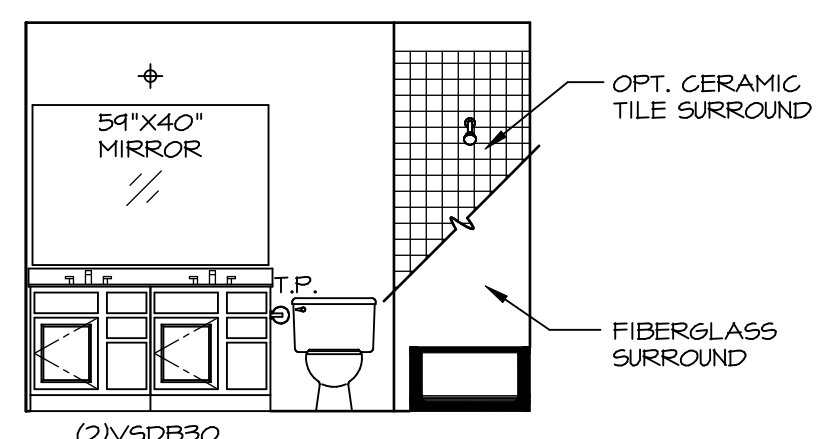
J BATH #2
SCALE: 1/4" = 1'-0"



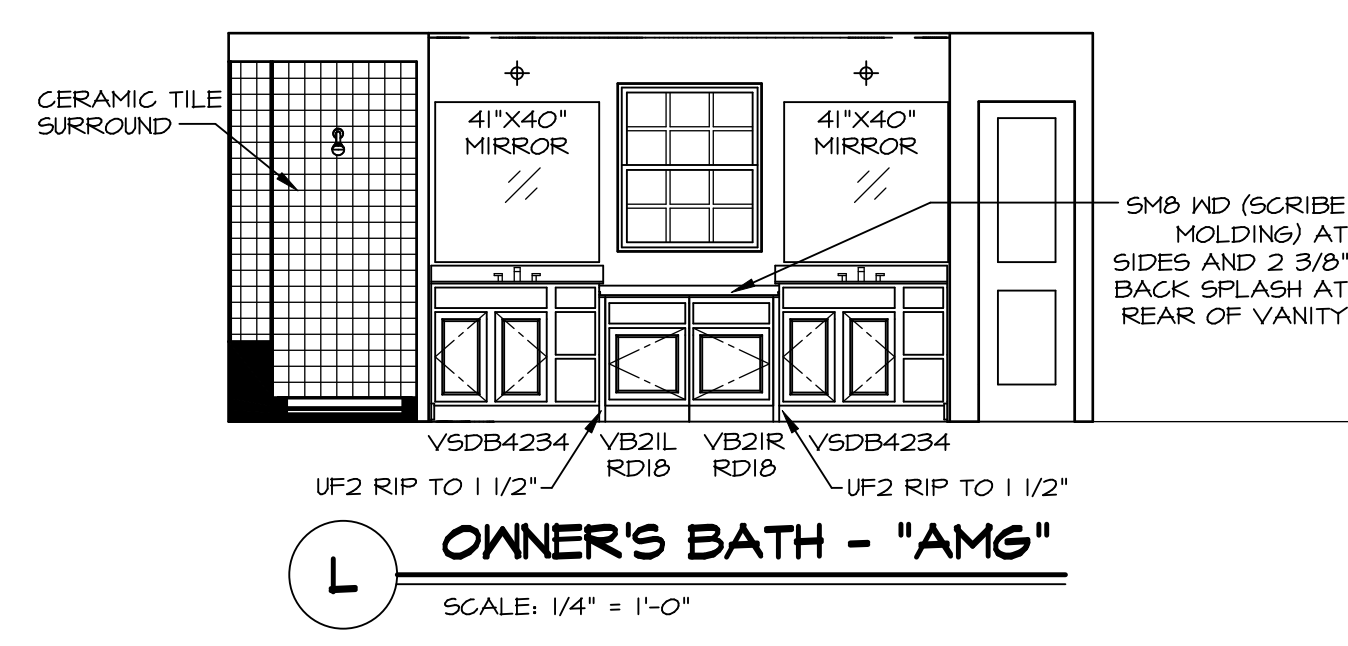
H BATH #2
SCALE: 1/4" = 1'-0"



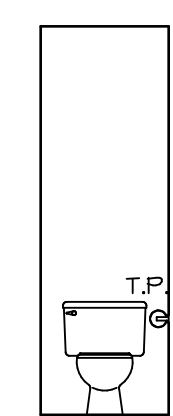
G BATH #1
SCALE: 1/4" = 1'-0"



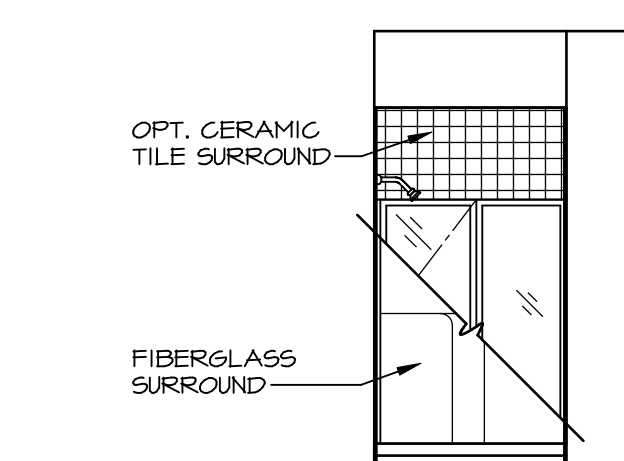
F BATH #1
SCALE: 1/4" = 1'-0"



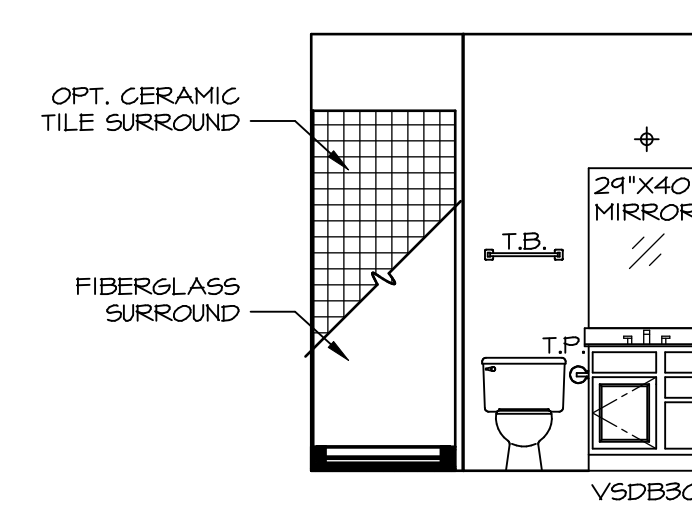
L OWNER'S BATH - "AMG"
SCALE: 1/4" = 1'-0"



K OWNER'S BATH - "AMA" OR "AMG"
SCALE: 1/4" = 1'-0"



E FIRST FLOOR BATH - "BAR"
SCALE: 1/4" = 1'-0"



D FIRST FLOOR BATH - "BAR"
SCALE: 1/4" = 1'-0"

NOTES:

1. TEMPERED GLASS SHOWER ENCLOSURE WITH SWING DOOR OR OPTIONAL SLIDING DOOR BY DIVISION
2. TUB ACCESS PANELS PROVIDED AS NEEDED, ALL MATERIALS BY DIVISION
3. REFER TO SHEET (IT-2) FOR TUB AND SHOWER DETAILS.
4. ALL V5DB24-42 DRAWERS TO BE SET ON RIGHT HAND.
5. BATH ELEVATIONS ARE SHOWN PER PLAN.

REV. NO.	DATE	REMARKS
1	08/07/16	N - DRAWING ALIGNMENT
2	11/15/16	TRV - STANDARD DETAILS 5.0

NVR, Inc., owner, expressly reserves its copyright in these plans. These plans are not to be reproduced, changed, copied in any way, or used for any other purpose without the written consent of NVR, Inc.

NVR
NVR, Inc.
Architectural Services
Architects
5285 Westpark Drive, Suite 100
Frederick, MD 21703

MODEL	NORMANDY
DRAWING TITLE	BATH ELEVATIONS
OPTION DESCRIPTION	
SHEET NO.	A-14
SET NO.	NRM00
VERSION	01
DRAWN BY	SGA
DATE	5/24/15
OPTION	