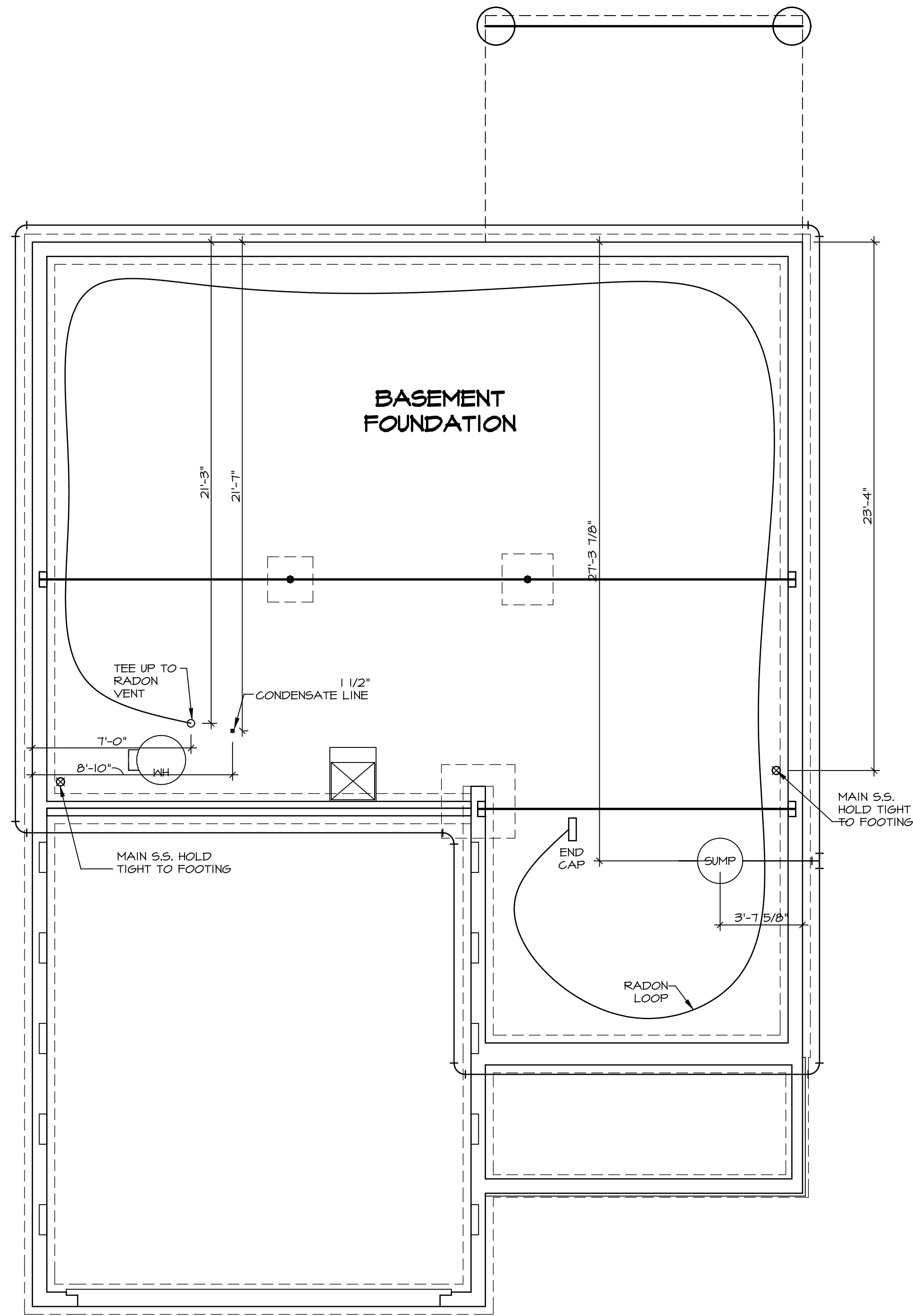


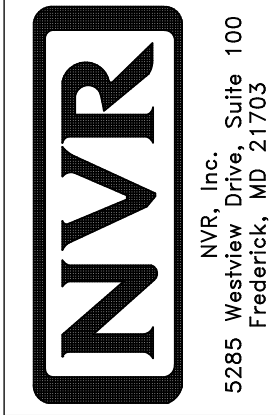
NOTE
 RADON REMEDIATION
 RADON LOOP

- MUST BE PLACED IN STONE BED SLIGHTLY HIGHER THAN ANY INTERIOR DRAINTILE
- (4") PERFORATED HDPE "LOOP"
- LOOP TO BE SEPARATE FROM ANY DRAINTILE ELEMENTS
- TO BE CORRUGATED HDPE PIPE
- SCREWS TO BE INSTALLED THROUGH LOOP AT TEE UP INTO STACK
- 3" PVC STACK (4" IF BASEMENT IS GREATER THAN 2200 SQFT)
- NO PART OF STACK IS TO BE HORIZONTAL
- PIPE TO BE PHYSICALLY LABELED IN THE FIELD AS "RADON VENT" OR OTHER JURISDICTIONALLY REQUIRED LANGUAGE (ON EVERY LEVEL OF HOUSE)
- ROOF TERMINATION TO BE IN TOP 1/3 OF ROOF
- SCREEN INSTALLED TO KEEP PESTS OUT OF RADON VENT AT ROOF TERMINATION



PLUMBING PLAN
 SCALE: 1/4" = 1'-0"

| | | | | | | |
|-------------------------|--------------------------------|------------------|----------------|----------|------|---------|
| SHEET NO. A-5 | MODEL BALLENGER | SET NO. BL600 | REVISION 01 | REV. NO. | DATE | REMARKS |
| | DRAWING TITLE PLUMBING PLAN | DRAWN BY | DATE: | | | |
| | OPTION DESCRIPTION | OPTION | | | | |
| | | | | | | |



© NVR, Inc. expressly reserves the right to modify or amend these plans at any time without notice. These plans are not to be reproduced, changed or altered in any way without the written consent of NVR, Inc.

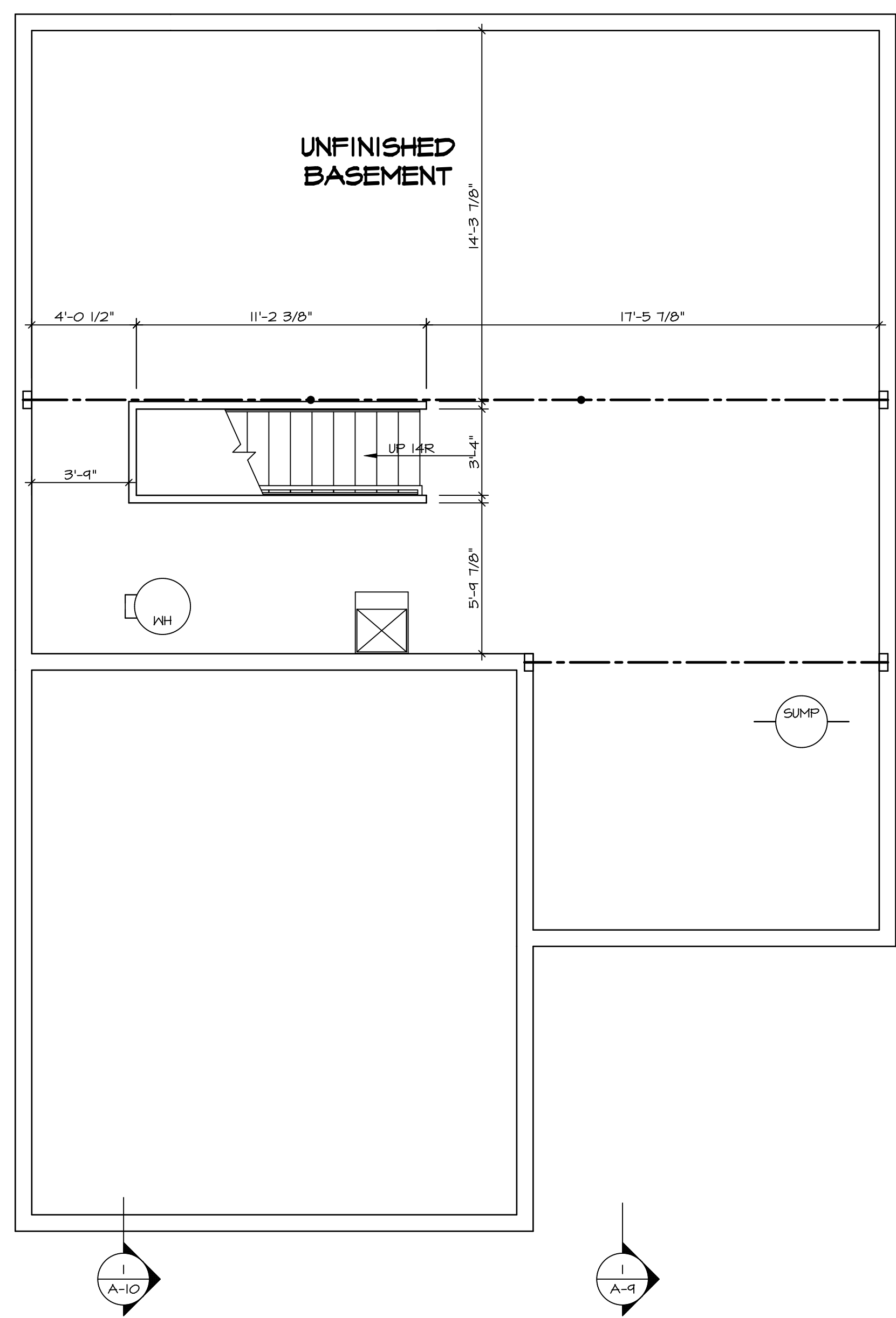
| LEGEND | |
|---------------------------------------|---|
| | BEARING WALL |
| | NON BEARING WALL |
| | INDICATES BEARING FROM POINT-LOAD ABOVE |
| | JACKS |
| | BEAM/HEADER |
| | PAD FOOTING |
| | STEEL COLUMN |
| | PORTAL FRAME |
| | JOIST/TRUSS |
| | LVL |
| | ENGINEERING PAGE NUMBER |
| SEE FC DETAILS FOR FRAMING CONNECTORS | |

- FLOOR PLAN NOTES**
- ALL HEADERS ARE (2) 2x6 w/ 2x4 WALLS OR (3) 2x6 w/ 2x6 WALLS, UNLESS OTHERWISE NOTED.
 - ALL HEADERS TO HAVE (1) 2x4 OR 2x6 JACK AND KING STUD EACH END, UNLESS OTHERWISE NOTED.
 - ALL EXTERIOR WALLS TO BE 4" w/ OSB OR 3 1/2" w/ T-PLY, ALL INTERIOR WALLS TO BE 3 1/2", UNLESS OTHERWISE NOTED.
 - HATCHED AREAS INDICATE DROPPED CEILINGS. ALL DROPPED CEILINGS ARE 12" UNLESS OTHERWISE NOTED.
 - SEE "BRACED WALL PANEL DETAIL SHEET" FOR SPECIAL WALL FRAMING LOCATIONS AND HEADER SIZES, IF APPLICABLE.
 - SEE STANDARD DETAIL CATEGORY "IT" SHEET(S) FOR INTERIOR TRIM DETAILS.
 - SEE ARCHITECTURAL DETAIL SHEET "AD" FOR HOUSE SPECIFIC INTERIOR TRIM OPTION TABLE.
 - ALL WINDOWS HAVE 1"-0 1/2" HEADER HEIGHT UNLESS OTHERWISE NOTED.
 - ALL HEADERS IN NON-BEARING WALLS SHALL BE A SINGLE FLAT 2x4 OR 2x6 ATTACHED TO CRIPPLES ABOVE, UNLESS OTHERWISE NOTED.
 - TANKED WATER HEATER SHOWN AS BASE CONDITION, OPTIONAL TANKLESS WATER HEATER IS AVAILABLE IN LIEU OF TANKED WATER HEATER.

GYPSUM NOTES

AT GARAGE:
GYPSUM BOARD AT COMMON WALLS, CEILINGS, BEAM WRAPS AND SUPPORTS PER STANDARD DETAIL FA-1(b) FIRE ASSEMBLIES OR AS REQUIRED BY LOCAL CODE.

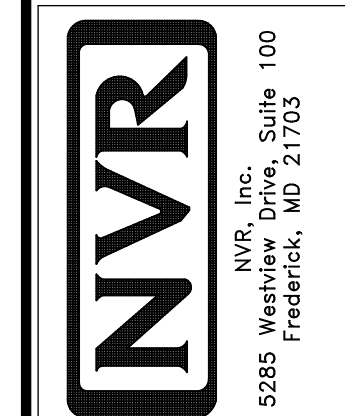
AT STAIRS:
1/2" GYPSUM BOARD AT UNDERSIDE OF STAIRS AND WALLS IN CLOSET



BASEMENT FLOOR PLAN
SCALE: 1/4" = 1'-0"

| SHEET NO. | MODEL | SET NO. | BLG00 | VERSION | DATE | OPTION | DESCRIPTION | REMARKS |
|-----------|-----------|---------|-------|---------|------|--------|---------------------|---------|
| A-6 | BALLENGER | 01 | 01 | | | | BASEMENT FLOOR PLAN | |
| 27 | | | | | | | | |

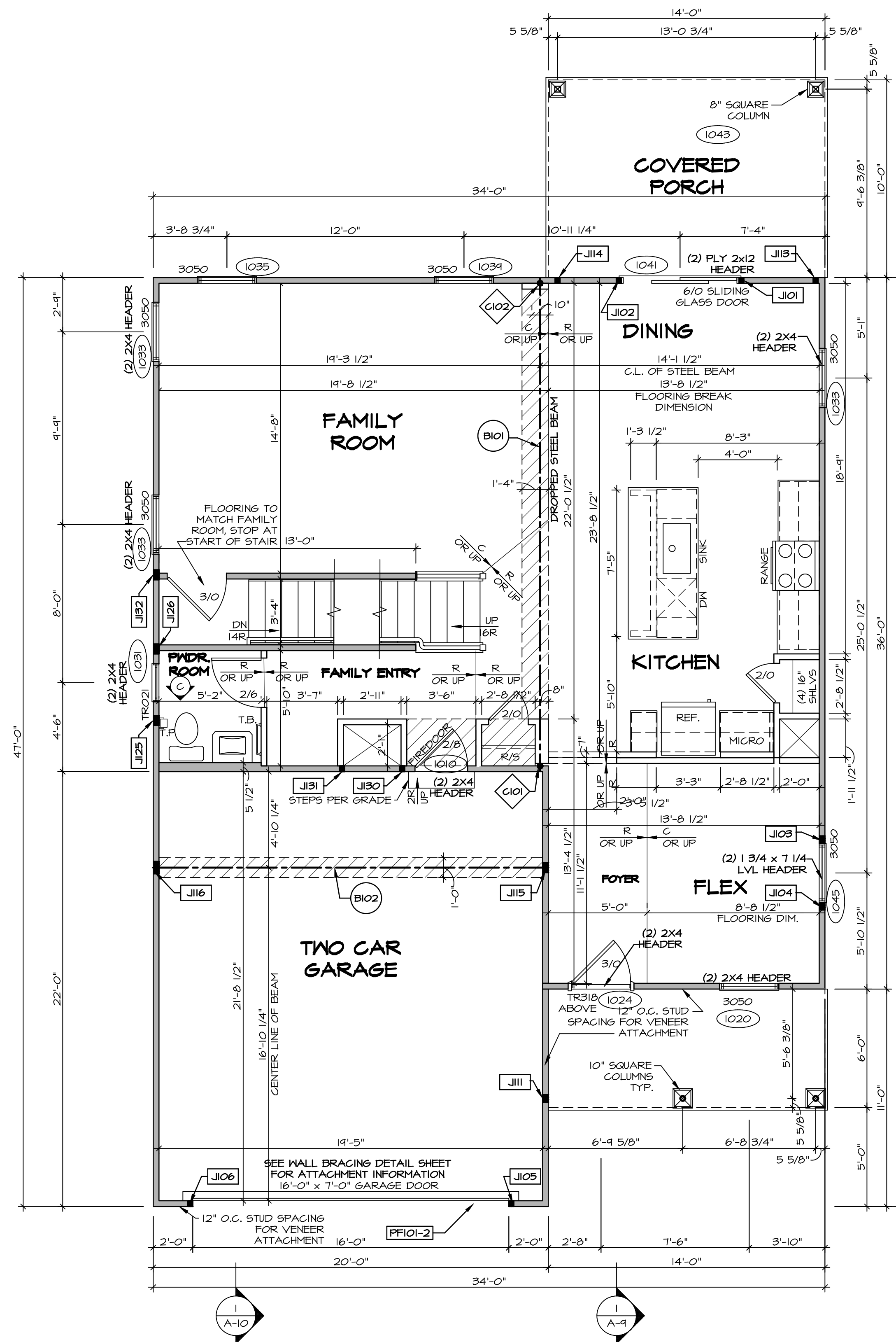
© NVR, Inc. expressly reserves the right to modify or change these plans without notice. These plans are not to be reproduced, changed or altered in any way without the written consent of NVR, Inc.



| FIRST FLOOR JACK SCHEDULE | | | | |
|---------------------------|-------------------------------|---------------|-----------|---------|
| IDENTIFIER | DESCRIPTION | OPTIONS | ENG. NUM. | REMARKS |
| J101 | JACK - (2) 2X4 SFF STUD GRADE | | 1041 | |
| J102 | JACK - (2) 2X4 SFF STUD GRADE | | 1041 | |
| J103 | JACK - (3) 2X4 SFF STUD GRADE | | 1045 | |
| J104 | JACK - (3) 2X4 SFF STUD GRADE | | 1045 | |
| J105 | JACK - (2) 2X4 SFF STUD GRADE | | 1028 | |
| J106 | JACK - (2) 2X4 SFF STUD GRADE | | 1028 | |
| J111 | JACK - (3) 2X4 SFF STUD GRADE | ELK | 1026 | |
| J113 | JACK - (2) 2X4 SFF STUD GRADE | EPE | 1043 | |
| J114 | JACK - (2) 2X4 SFF STUD GRADE | EPE | 1043 | |
| J115 | JACK - (4) 2X4 SFF STUD GRADE | ELA, ELK | 1012 | |
| J116 | JACK - (5) 2X4 SFF STUD GRADE | ELA, ELK, GCB | 1012 | |
| J125 | JACK - (4) 2X4 SFF STUD GRADE | | 1006 | |
| J126 | JACK - (4) 2X4 SFF STUD GRADE | | 1006 | |
| J130 | JACK - (2) 2X4 SFF STUD GRADE | | | |
| J131 | JACK - (2) 2X4 SFF STUD GRADE | | | |
| J132 | JACK - (4) 2X4 SFF STUD GRADE | | 1006 | |

| STEEL COLUMN SCHEDULE | | | | | |
|-----------------------|---------------------------|------------|---------|-----------|---------|
| IDENTIFIER | STYLE | HEIGHT | OPTIONS | ENG. NUM. | REMARKS |
| C101 | STANCHION - 3 IN SCHED 40 | 7'-11 1/8" | | 1008 | |
| C102 | STANCHION - 3 IN SCHED 40 | 7'-11 1/8" | | 1008 | |

| FIELD INSTALLED FIRST FLOOR BEAM/HEADER SCHEDULE | | | | | |
|--|---------------------------|---------|---------------|-----------|---------------------|
| IDENTIFIER | DESCRIPTION | LENGTH | OPTIONS | ENG. NUM. | REMARKS |
| B101 | BEAM STEEL - #12X35 | 24'-11" | | 1008 | |
| B102 | BEAM STEEL - #10X26 | 20'-0" | ELA, ELK, SXC | 1012 | |
| PF101-2 | EXT HEADER - 2X12 - 2 PLY | 14'-4" | GCB | 1028 | 2-PLY, PORTAL FRAME |



FIRST FLOOR PLAN
SCALE: 1/4" = 1'-0"

| LEGEND | |
|--------|---|
| | BEARING WALL |
| | NON BEARING WALL |
| | INDICATES BEARING FROM POINT-LOAD ABOVE |
| | JACKS |
| | BEAM/HEADER |
| | PAD FOOTING |
| | STEEL COLUMN |
| | PORTAL FRAME |
| | JOIST/TRUSS |
| | LVL |
| | ENGINEERING PAGE NUMBER |

SEE FC DETAILS FOR FRAMING CONNECTORS

- FLOOR PLAN NOTES**
- ALL HEADERS ARE (2) 2x6 w/ 2x4 WALLS OR (3) 2x6 w/ 2x6 WALLS, UNLESS OTHERWISE NOTED.
 - ALL HEADERS TO HAVE (1) 2x4 OR 2x6 JACK AND KING STUD EACH END, UNLESS OTHERWISE NOTED.
 - ALL EXTERIOR WALLS TO BE 4" w/ OSB OR 3 1/2" w/ T-PLY. ALL INTERIOR WALLS TO BE 3 1/2", UNLESS OTHERWISE NOTED.
 - HATCHED AREAS INDICATE DROPPED CEILING. ALL DROPPED CEILING ARE 12" UNLESS OTHERWISE NOTED.
 - SEE "BRACED WALL PANEL DETAIL SHEET" FOR SPECIAL WALL FRAMING LOCATIONS AND HEADER SIZES, IF APPLICABLE.
 - SEE STANDARD DETAIL CATEGORY "IT" SHEET(S) FOR INTERIOR TRIM DETAILS.
 - SEE ARCHITECTURAL DETAIL SHEET "AD" FOR HOUSE SPECIFIC INTERIOR TRIM OPTION TABLE.
 - ALL WINDOWS HAVE 7'-0 1/2" HEADER HEIGHT UNLESS OTHERWISE NOTED.
 - ALL HEADERS IN NON-BEARING WALLS SHALL BE A SINGLE FLAT 2X4 OR 2X6 ATTACHED TO CRIPPLES ABOVE, UNLESS OTHERWISE NOTED.
 - TANKED WATER HEATER SHOWN AS BASE CONDITION. OPTIONAL TANKLESS WATER HEATER IS AVAILABLE IN LIEU OF TANKED WATER HEATER.

- GYPSUM NOTES**
- AT GARAGE:**
GYPSUM BOARD AT COMMON WALLS, CEILINGS, BEAM WRAPS AND SUPPORTS PER STANDARD DETAIL FA-1(b) FIRE ASSEMBLIES OR AS REQUIRED BY LOCAL CODE.
- AT STAIRS:**
1/2" GYPSUM BOARD AT UNDERSIDE OF STAIRS AND WALLS IN CLOSET

REMARKS

REV. NO. DATE

© NVR, Inc. The owner expressly reserves the right to modify or amend these plans at any time without notice. These plans are not to be reproduced, changed or altered in any way without the written consent of NVR, Inc.

NVR
NVR, Inc. Suite 100
Frederick, MD 21703
5285 Washburn Ave.

SET NO. BLG00
VERSION 01
DRAWN BY
DATE:
OPTION

BALLENGER
DRAWING TITLE
FIRST FLOOR PLAN
OPTION DESCRIPTION

SHEET NO. **A-7**

29

C:\NVR\Solves\BALLENGER-BLG00_01\DCI-VG-1592\1182670\Sheets\A-7-PLN1-LS.dwg 04/05/19 - 5:21 am

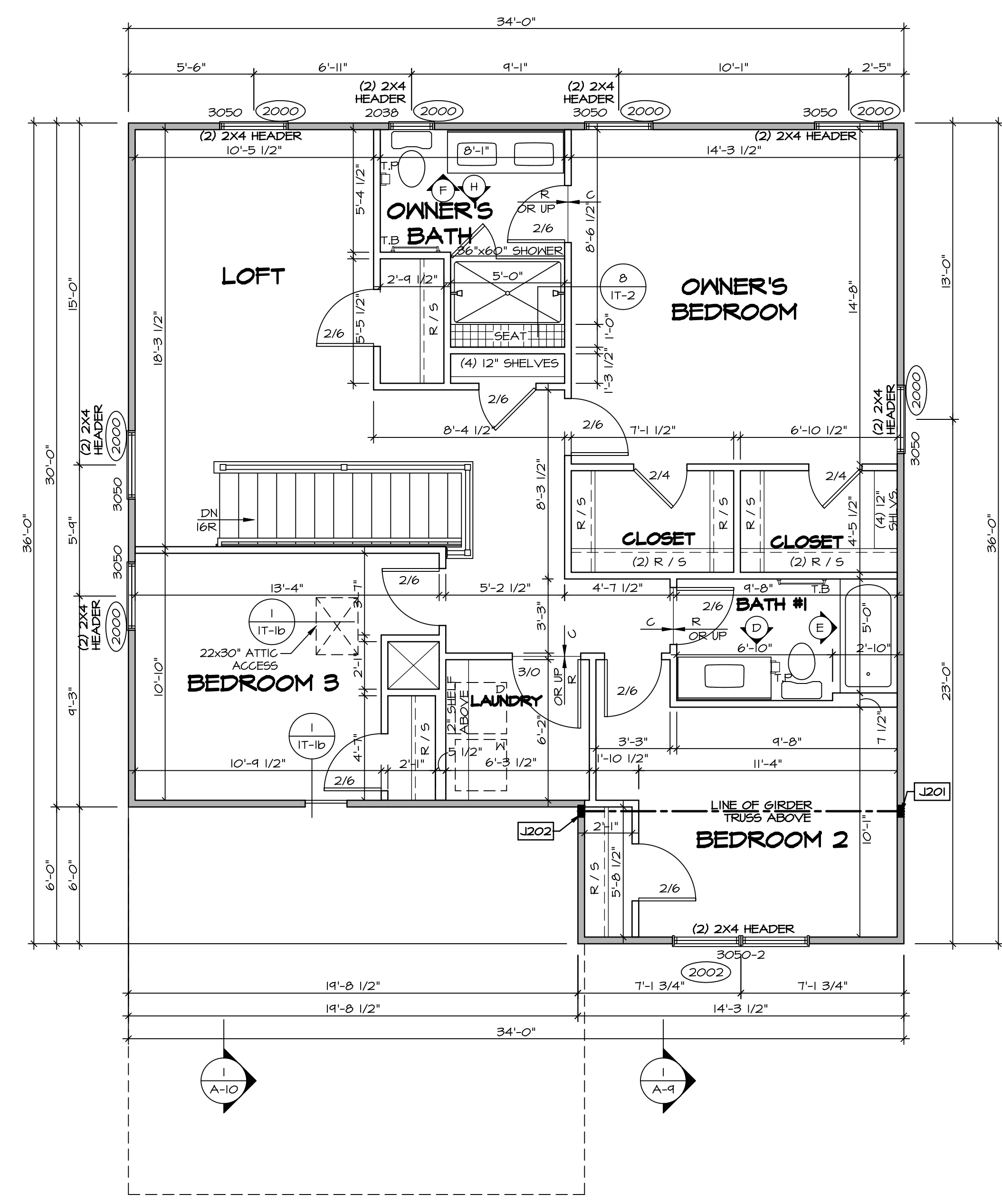
| SECOND FLOOR JACK SCHEDULE | | | | |
|----------------------------|-------------------------------|----------|-----------|---------|
| IDENTIFIER | DESCRIPTION | OPTIONS | ENG. NUM. | REMARKS |
| J201 | JACK - (4) 2X4 SPF STUD GRADE | ELA, ELK | 2004 | |
| J202 | JACK - (4) 2X4 SPF STUD GRADE | ELA, ELK | 2004 | |

| LEGEND | |
|--------|---|
| | BEARING WALL |
| | NON BEARING WALL |
| | INDICATES BEARING FROM POINT-LOAD ABOVE |
| | JACKS |
| | BEAM/HEADER |
| | PAD FOOTING |
| | STEEL COLUMN |
| | PORTAL FRAME |
| | JOIST/TRUSS |
| | LVL |
| | ENGINEERING PAGE NUMBER |

SEE FC DETAILS FOR FRAMING CONNECTORS

- FLOOR PLAN NOTES**
- ALL HEADERS ARE (2) 2x6 w/ 2x4 WALLS OR (3) 2x6 w/ 2x6 WALLS, UNLESS OTHERWISE NOTED.
 - ALL HEADERS TO HAVE (1) 2x4 OR 2x6 JACK AND KING STUD EACH END, UNLESS OTHERWISE NOTED.
 - ALL EXTERIOR WALLS TO BE 4" w/ OSB OR 3 1/2" w/ T-PLY. ALL INTERIOR WALLS TO BE 3 1/2", UNLESS OTHERWISE NOTED.
 - HATCHED AREAS INDICATE DROPPED CEILINGS. ALL DROPPED CEILINGS ARE 12" UNLESS OTHERWISE NOTED.
 - SEE "BRACED WALL PANEL DETAIL SHEET" FOR SPECIAL WALL FRAMING LOCATIONS AND HEADER SIZES, IF APPLICABLE.
 - SEE STANDARD DETAIL CATEGORY "IT" SHEET(S) FOR INTERIOR TRIM DETAILS.
 - SEE ARCHITECTURAL DETAIL SHEET "AD" FOR HOUSE SPECIFIC INTERIOR TRIM OPTION TABLE.
 - ALL WINDOWS HAVE 7'-0 1/2" HEADER HEIGHT UNLESS OTHERWISE NOTED.
 - ALL HEADERS IN NON-BEARING WALLS SHALL BE A SINGLE FLAT 2X4 OR 2X6 ATTACHED TO CRIPPLES ABOVE, UNLESS OTHERWISE NOTED.
 - TANKED WATER HEATER SHOWN AS BASE CONDITION. OPTIONAL TANKLESS WATER HEATER IS AVAILABLE IN LIEU OF TANKED WATER HEATER.

- GYPSUM NOTES**
- AT GARAGE:
GYPSUM BOARD AT COMMON WALLS, CEILINGS, BEAM WRAPS AND SUPPORTS PER STANDARD DETAIL FA-1(b) FIRE ASSEMBLIES OR AS REQUIRED BY LOCAL CODE.
- AT STAIRS:
1/2" GYPSUM BOARD AT UNDERSIDE OF STAIRS AND WALLS IN CLOSET



SECOND FLOOR PLAN
SCALE: 1/4" = 1'-0"

| REV. NO. | DATE | REMARKS |
|----------|------|---------|
| | | |
| | | |
| | | |
| | | |

© NVR, Inc. expressly reserves the right to modify these plans without notice. These plans are not to be reproduced, changed or copied in any way without the written consent of NVR, Inc.

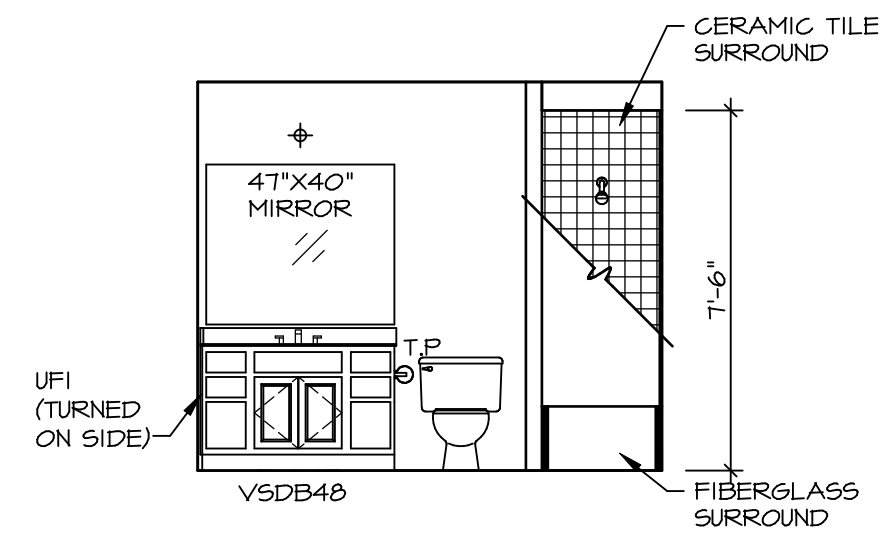
NVR
NVR, Inc. Suite 100
5285 Washburne Rd
Frederick, MD 21703

SET NO. BLG00
VERSION 01
DRAWN BY
DATE:
OPTION

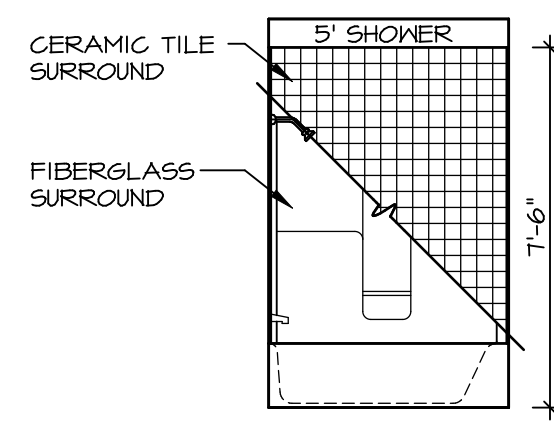
BALLENGER
DRAWING TITLE
SECOND FLOOR PLAN
OPTION DESCRIPTION

A-8
32

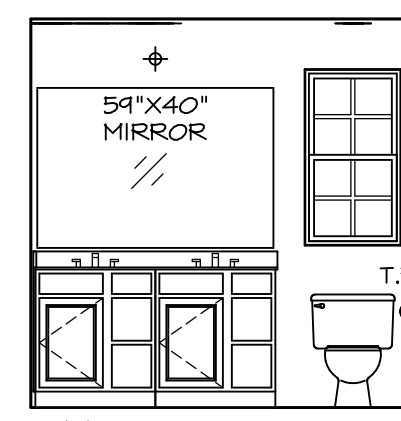
C:\NVR\Solves\BALLENGER-BLG00_01\DCI-VG-1592\1182670\Sheets\2 A-8 PLAN_15.dwg 04/05/19 - 5:21 am



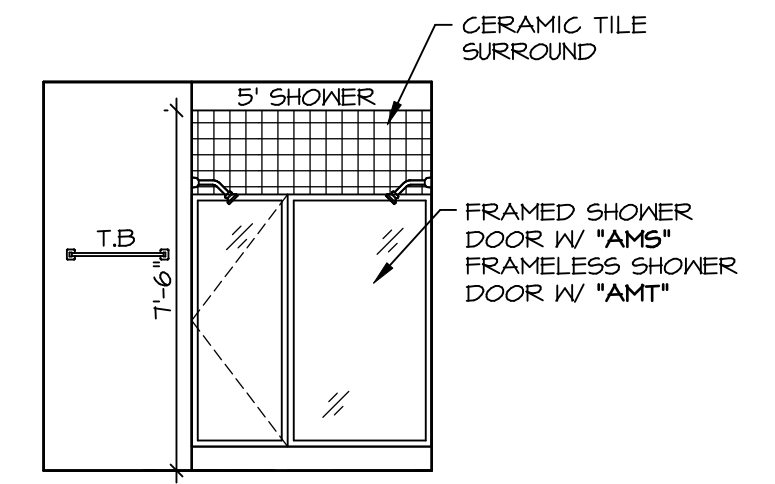
D BATH #1
SCALE: 1/4" = 1'-0"



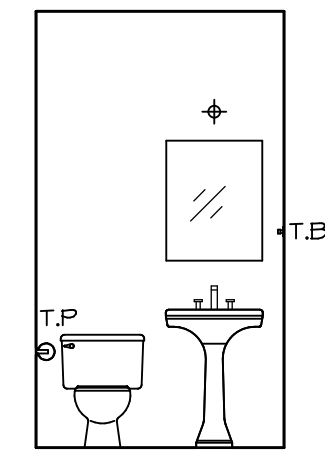
E BATH #1
SCALE: 1/4" = 1'-0"



F OWNER'S BATH
SCALE: 1/4" = 1'-0"



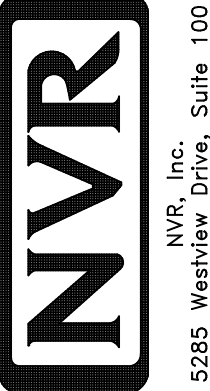
H OWNER'S BATH
SCALE: 1/4" = 1'-0"



C POWDER ROOM
SCALE: 1/4" = 1'-0"

NOTES:

- TEMPERED GLASS SHOWER ENCLOSURE WITH SWING DOOR OR OPTIONAL SLIDING DOOR BY DIVISION
- TUB ACCESS PANELS PROVIDED AS NEEDED. ALL MATERIALS BY DIVISION
- REFER TO SHEET IT-2 FOR TUB AND SHOWER DETAILS.
- ALL V5DB24-42 DRAWERS TO BE SET ON RIGHT HAND.
- ALL BATH ELEVATIONS ARE SHOWN PER PLAN.

| | | | |
|--|---------------------------|----------------------|-------------------|
| SHEET NO. A-13 | MODEL BALLENGER | SET NO. BLG00 | VERSION 01 |
| | | DRAWN BY | DATE: |
| 49 | OPTION DESCRIPTION | OPTION | |
| | | OPTION | |
| REMARKS | | | |
| REV. NO. DATE | | | |
| <small>© NVR, Inc. expressly reserves the right to modify or change these plans without notice. These plans are not to be reproduced, changed or altered in any way without the written consent of NVR, Inc.</small> | | | |
|  <small>NVR, Inc. Suite 100 5285 Westpark Drive Frederick, MD 21703</small> | | | |
| <small>C:\NVR\Solves\BALLENGER-BLG00_01\DCY-VC-1592\1182670\Sheets\01_Specific\09_A-13_BATH_LS.dwg 04/05/19 - 5:21 am</small> | | | |