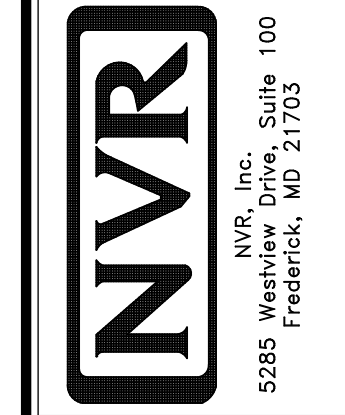


PLUMBING PLAN
 SCALE: 1/4" = 1'-0"

SHEET NO.	MODEL	SET NO.	VERSION	DRAWN BY	DATE	OPTION
A-5	CAROLINA PLACE PLUMBING PLAN	CNPOO_02	02			
36						



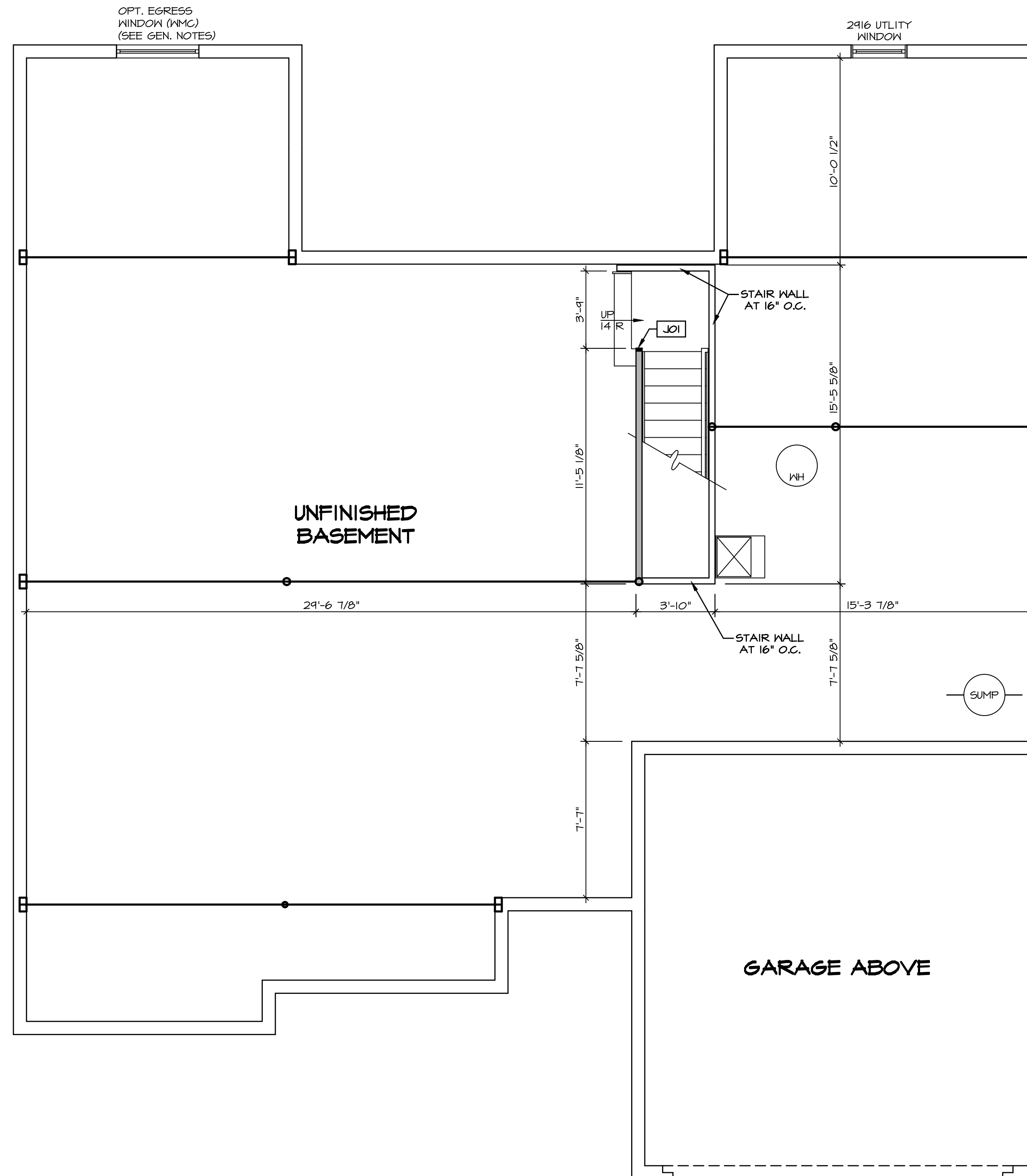
© NVR, Inc. All rights reserved. The information contained herein is the property of NVR, Inc. and is not to be reproduced, changed, copied, or disseminated in any form or by any means without the prior written consent of NVR, Inc.

REV. NO.	DATE	REMARKS

BASEMENT JACK SCHEDULE				
IDENTIFIER	DESCRIPTION	OPTIONS	ENG. NUM.	REMARKS
JO1	JACK - 2x4 SPF STUD GRADE		B016	

LEGEND	
	BEARING WALL
	NON BEARING WALL
	INDICATES BEARING FROM POINT-LOAD ABOVE
	JACKS
	BEAM/HEADER
	PAD FOOTING
	STEEL COLUMN
	PORTAL FRAME
	JOIST/TRUSS
	LVL
	ENGINEERING PAGE NUMBER

SEE FC DETAILS FOR FRAMING CONNECTORS

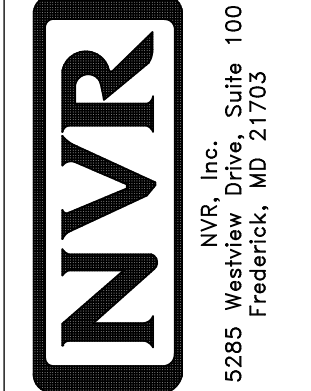


- ### FLOOR PLAN NOTES
- ALL HEADERS ARE (2) 2x6 w/ 2x4 WALLS OR (3) 2x6 w/ 2x6 WALLS, UNLESS OTHERWISE NOTED.
 - ALL HEADERS TO HAVE (1) 2x4 OR 2x6 JACK AND KING STUD EACH END, UNLESS OTHERWISE NOTED.
 - ALL EXTERIOR WALLS TO BE 4" w/ OSB OR 3 1/2" w/ T-PLY, ALL INTERIOR WALLS TO BE 3 1/2", UNLESS OTHERWISE NOTED.
 - HATCHED AREAS INDICATE DROPPED CEILINGS. ALL DROPPED CEILINGS ARE 12' UNLESS OTHERWISE NOTED.
 - SEE "BRACED WALL PANEL DETAIL SHEET" FOR SPECIAL WALL FRAMING LOCATIONS AND HEADER SIZES, IF APPLICABLE.
 - SEE STANDARD DETAIL CATEGORY "IT" SHEET(S) FOR INTERIOR TRIM DETAILS.
 - SEE ARCHITECTURAL DETAIL SHEET "AD" FOR HOUSE SPECIFIC INTERIOR TRIM OPTION TABLE.
 - ALL WINDOWS HAVE 7'-0 1/2" HEADER HEIGHT UNLESS OTHERWISE NOTED.
 - ALL HEADERS IN NON-BEARING WALLS SHALL BE A SINGLE FLAT 2x4 OR 2x6 ATTACHED TO CRIPPLES ABOVE, UNLESS OTHERWISE NOTED.
 - TANKED WATER HEATER SHOWN AS BASE CONDITION, OPTIONAL TANKLESS WATER HEATER IS AVAILABLE IN LIEU OF TANKED WATER HEATER.
- ### GYPSUM NOTES
- AT GARAGE:
GYPSUM BOARD AT COMMON WALLS, CEILING, BEAM WRAPS AND SUPPORTS PER STANDARD DETAIL FA-1(b) FIRE ASSEMBLIES OR AS REQUIRED BY LOCAL CODE.
- AT STAIRS:
1/2" GYPSUM BOARD AT UNDERSIDE OF STAIRS AND WALLS IN CLOSET

SHEET NO.	MODEL	SET NO.	DATE	REV. NO.	DATE	REMARKS
A-6	CAROLINA PLACE DRAWING TITLE BASEMENT FLOOR PLAN	CNPOO VERSION 02	06/27/19	1	06/20/16	N-DRAWING ALIGNMENT
40	OPTION DESCRIPTION FULL BASEMENT FOUNDATION	DRAWN BY DATE: OPTION FEA				

BASEMENT FLOOR PLAN
SCALE: 1/4" = 1'-0"

© NVR, Inc. expressly reserves the right to modify or amend these plans at any time without notice. These plans are not to be reproduced, changed or altered in any way without the written consent of NVR, Inc.



LEGEND

- BEARING WALL
- NON BEARING WALL
- INDICATES BEARING FROM POINT-LOAD ABOVE
- JACKS
- BEAM/HEADER
- PAD FOOTING
- STEEL COLUMN
- PORTAL FRAME
- JOIST/TRUSS
- LVL
- ENGINEERING PAGE NUMBER

SEE FC DETAILS FOR FRAMING CONNECTORS

- FLOOR PLAN NOTES**
- ALL HEADERS ARE (2) 2x6 w/ 2x4 WALLS OR (3) 2x6 w/ 2x6 WALLS, UNLESS OTHERWISE NOTED.
 - ALL HEADERS TO HAVE (1) 2x4 OR 2x6 JACK AND KING STUD EACH END, UNLESS OTHERWISE NOTED.
 - ALL EXTERIOR WALLS TO BE 4" w/ OSB OR 3 1/2" w/ T-PLY, ALL INTERIOR WALLS TO BE 3 1/2", UNLESS OTHERWISE NOTED.
 - HATCHED AREAS INDICATE DROPPED CEILING. ALL DROPPED CEILING ARE 12" UNLESS OTHERWISE NOTED.
 - SEE "BRACED WALL PANEL DETAIL SHEET" FOR SPECIAL WALL FRAMING LOCATIONS AND HEADER SIZES, IF APPLICABLE.
 - SEE STANDARD DETAIL CATEGORY "IT" SHEET(S) FOR INTERIOR TRIM DETAILS.
 - SEE ARCHITECTURAL DETAIL SHEET "AD" FOR HOUSE SPECIFIC INTERIOR TRIM OPTION TABLE.
 - ALL WINDOWS HAVE T-O 1/2" HEADER HEIGHT UNLESS OTHERWISE NOTED.
 - ALL HEADERS IN NON-BEARING WALLS SHALL BE A SINGLE FLAT 2x4 OR 2x6 ATTACHED TO CRIPPLES ABOVE, UNLESS OTHERWISE NOTED.
 - TANKED WATER HEATER SHOWN AS BASE CONDITION, OPTIONAL, TANKLESS WATER HEATER IS AVAILABLE IN LIEU OF TANKED WATER HEATER.

- GYPSUM NOTES**
- AT GARAGE:**
GYPSUM BOARD AT COMMON WALLS, CEILING, BEAM WRAPS AND SUPPORTS PER STANDARD DETAIL FA-1(b) FIRE ASSEMBLIES OR AS REQUIRED BY LOCAL CODE.
- AT STAIRS:**
1/2" GYPSUM BOARD AT UNDERSIDE OF STAIRS AND WALLS IN CLOSET

LVL PLY TO PLY FASTENING SCHEDULE:

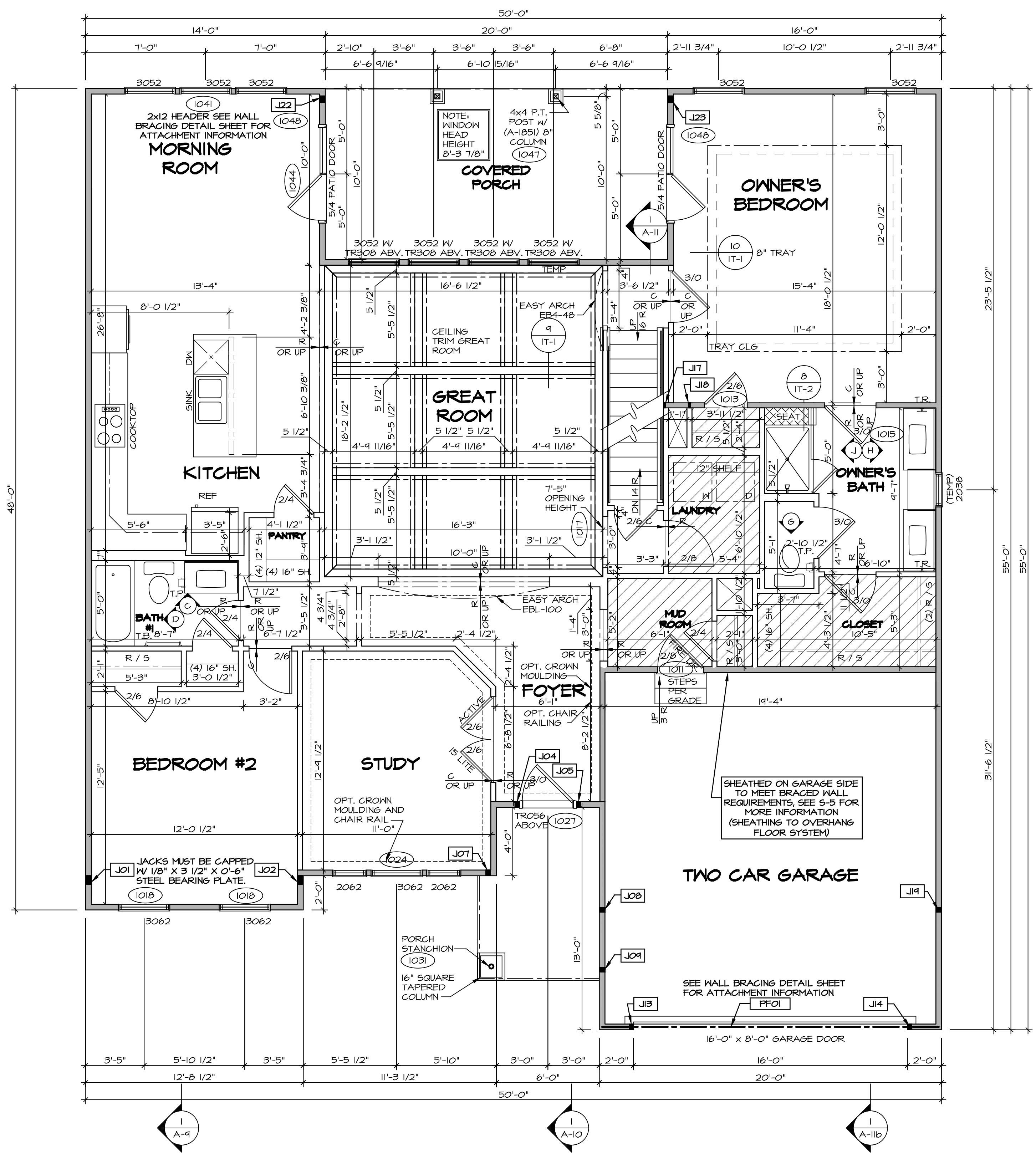
1.A - (2) PLY UP TO AND INCLUDING 11 7/8" TALL; FASTEN PLYS W/ (2) ROWS 16D NAILS AT 12" O.C.
 2.A - (2) PLY 14" TO AND 18" TALL (INCLUSIVE); FASTEN PLYS W/ (3) ROWS 16D NAILS AT 12" O.C.
 3.A - (2) PLY 20" TALL AND OVER; FASTEN PLYS W/ (4) ROWS 16D NAILS AT 12" O.C.
 4.A - (3) PLY UP TO AND INCLUDING 11 7/8" TALL; FASTEN PLYS W/ (2) ROWS 16D NAILS AT 12" O.C. FROM EACH SIDE
 5.A - (3) PLY 14" TO AND 18" TALL (INCLUSIVE); FASTEN PLYS W/ (3) ROWS 16D NAILS AT 12" O.C. FROM EACH SIDE
 6.A - (3) PLY 20" TALL AND OVER; FASTEN PLYS W/ (4) ROWS 16D NAILS AT 12" O.C. FROM EACH SIDE

FIRST FLOOR BEAM/HEADER SCHEDULE

IDENTIFIER	DESCRIPTION	LENGTH	OPTIONS	ENG. NUM.	REMARKS
PFO1	BEAM BUILT 2X12 - 2 PLY	19'-8"	6CB	1033	2-PLY, PORTAL FRAME

FIRST FLOOR JACK SCHEDULE

IDENTIFIER	DESCRIPTION	OPTIONS	ENG. NUM.	REMARKS
JO1	JACK - (4) 2X4 SP#1		1044	EXT. THRU TOP PLATES
JO2	JACK - (4) 2X4 SP#1		1044	EXT. THRU TOP PLATES
JO4	JACK - (2) 2X4 SP# STUD GRADE		1027	
JO5	JACK - (2) 2X4 SP# STUD GRADE		1027	
JO7	JACK - (2) 2X4 SP# STUD GRADE	ELK	1031	
JO8	JACK - (2) 2X4 SP# STUD GRADE	ELK	1044	
JO9	JACK - (2) 2X4 SP# STUD GRADE	ELK	1031	
J13	JACK - (2) 2X4 SP# STUD GRADE	6CB	1033	
J14	JACK - (2) 2X4 SP# STUD GRADE	6CB	1033	
J17	JACK - 2X4 SP# STUD GRADE	BVV, MAV	1005, 1004	
J18	JACK - 2X4 SP# STUD GRADE	BVV, MAV	1005, 1004	
J19	JACK - (2) 2X4 SP# STUD GRADE	6CB, ELB, ELK	1044	
J22	JACK - (3) 2X4 SP# STUD GRADE	MAA, EPE	1047	
J23	JACK - (3) 2X4 SP# STUD GRADE	ECY, EPE	1047	

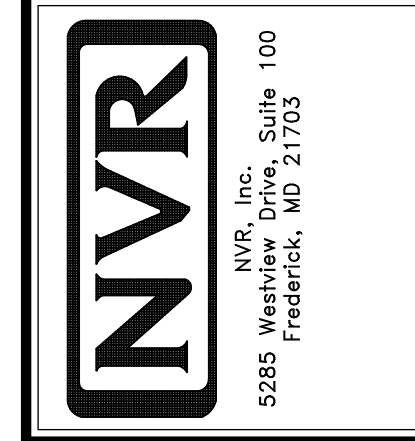


FIRST FLOOR PLAN
SCALE: 1/4" = 1'-0"

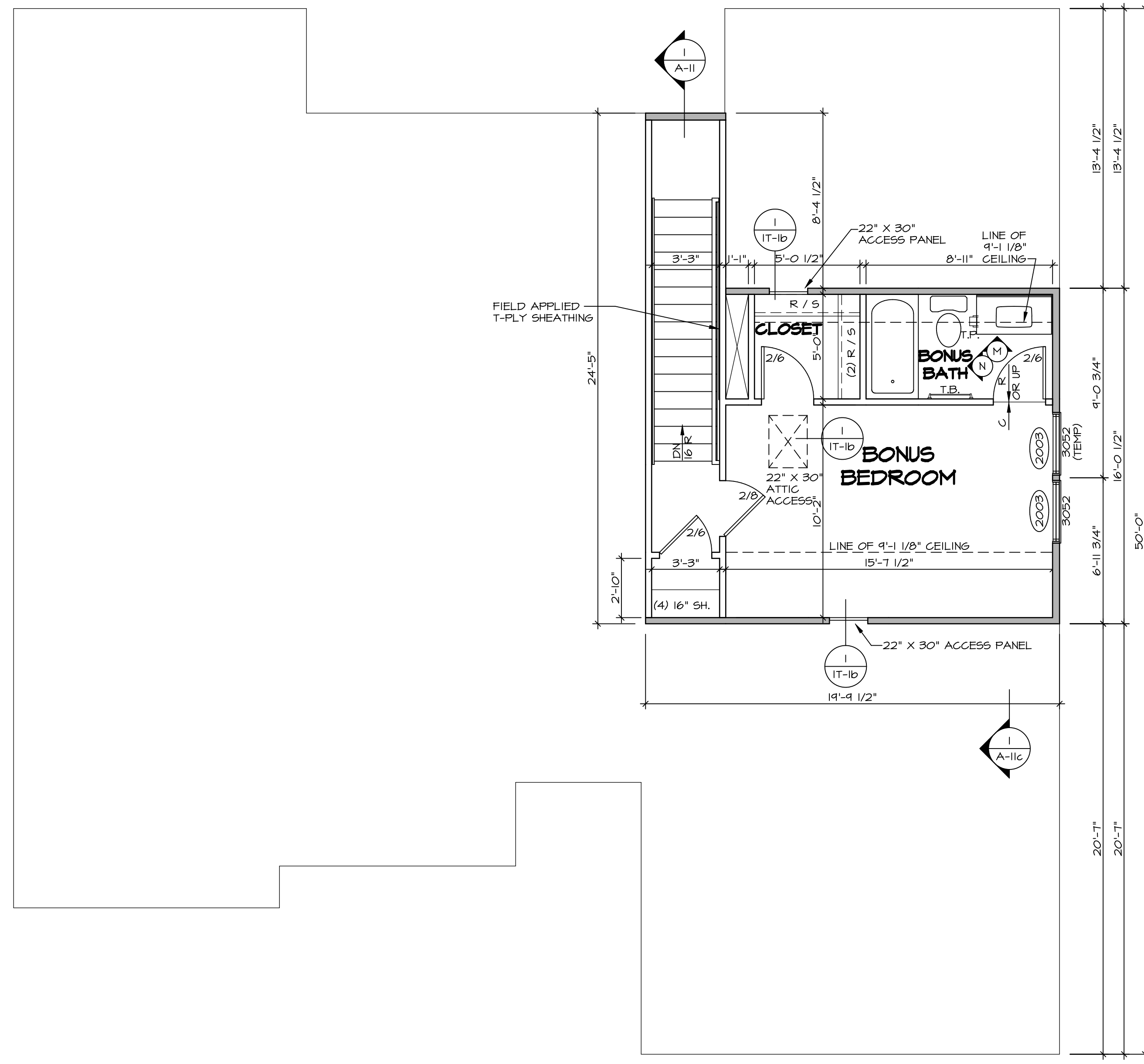
REVISIONS

REV. NO.	DATE	DESCRIPTION
1	08/04/16	NL-DRAWING ALIGNMENT
2	7/8/17	DRH - T-PLY CONVERSION

© NVR, Inc. expressly reserves the right to modify or amend these plans at any time without notice. These plans are not to be reproduced, changed or altered in any way without the written consent of NVR, Inc.



SET NO. CNP00	VERSION 02
DRAWN BY	
DATE:	OPTION
SHEET NO. A-7	
MODEL CAROLINA PLACE	
DRAWING TITLE FIRST FLOOR PLAN	
OPTION DESCRIPTION	
42	



LEGEND

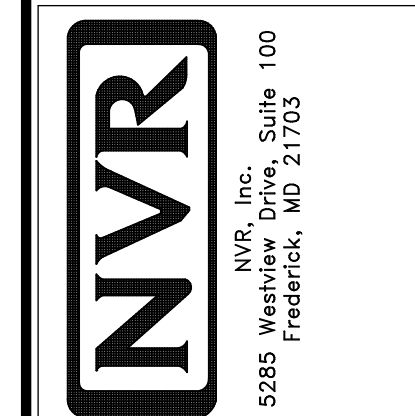
	BEARING WALL
	NON BEARING WALL
	INDICATES BEARING FROM POINT-LOAD ABOVE
	JACKS
	BEAM/HEADER
	PAD FOOTING
	STEEL COLUMN
	PORTAL FRAME
	JOIST/TRUSS
	LVL
	ENGINEERING PAGE NUMBER

SEE FC DETAILS FOR FRAMING CONNECTORS

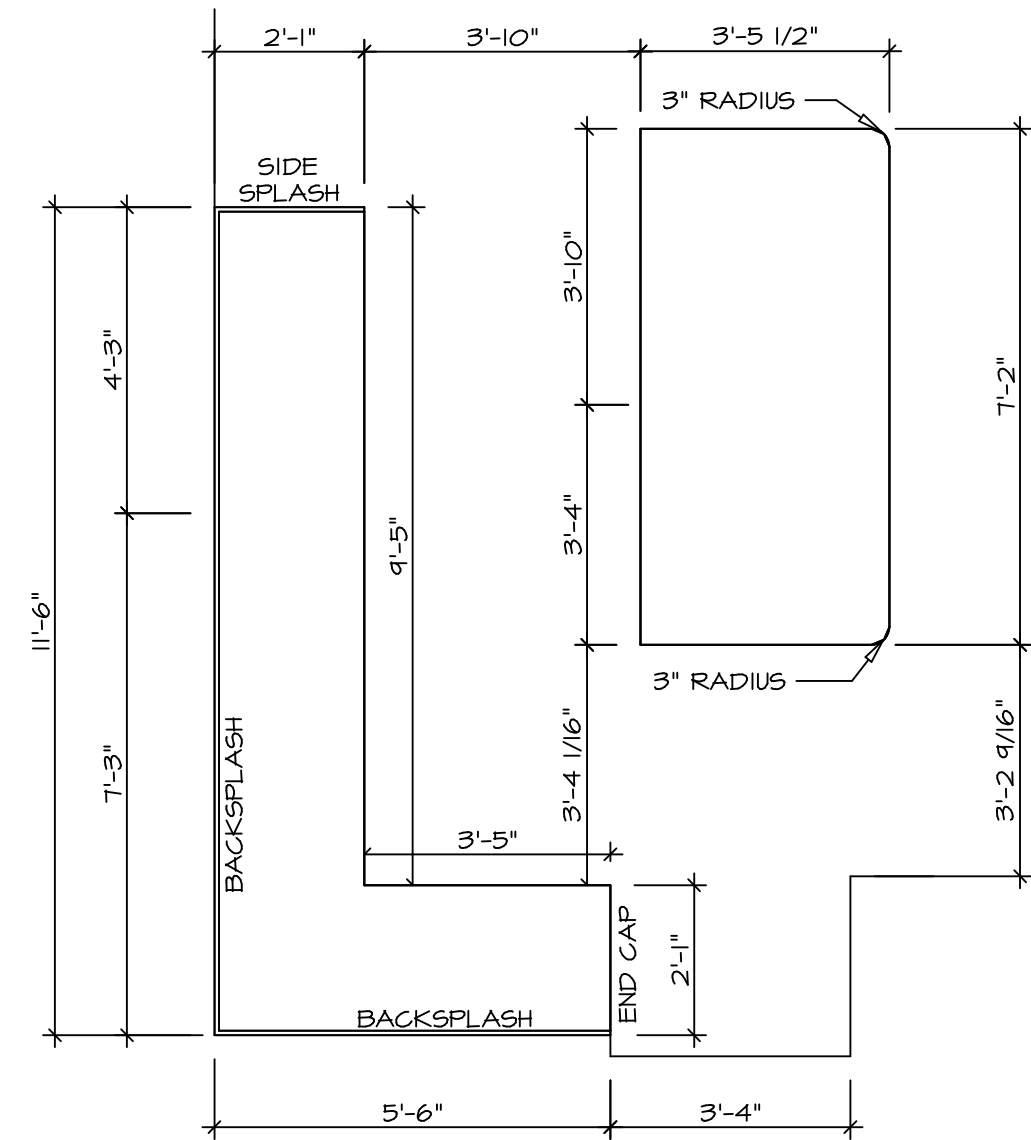
- FLOOR PLAN NOTES**
- ALL HEADERS ARE (2) 2x6 w/ 2x4 WALLS OR (3) 2x6 w/ 2x6 WALLS, UNLESS OTHERWISE NOTED.
 - ALL HEADERS TO HAVE (1) 2x4 OR 2x6 JACK AND KING STUD EACH END, UNLESS OTHERWISE NOTED.
 - ALL EXTERIOR WALLS TO BE 4" w/ OSB OR 3 1/2" w/ T-PLY, ALL INTERIOR WALLS TO BE 3 1/2", UNLESS OTHERWISE NOTED.
 - HATCHED AREAS INDICATE DROPPED CEILINGS. ALL DROPPED CEILINGS ARE 12" UNLESS OTHERWISE NOTED. SEE "BRACED WALL PANEL DETAIL SHEET" FOR SPECIAL WALL FRAMING LOCATIONS AND HEADER SIZES, IF APPLICABLE.
 - SEE STANDARD DETAIL CATEGORY "IT" SHEET(S) FOR INTERIOR TRIM DETAILS.
 - SEE ARCHITECTURAL DETAIL SHEET "AD" FOR HOUSE SPECIFIC INTERIOR TRIM OPTION TABLE.
 - ALL WINDOWS HAVE 7'-0 1/2" HEADER HEIGHT UNLESS OTHERWISE NOTED.
 - ALL HEADERS IN NON-BEARING WALLS SHALL BE A SINGLE FLAT 2x4 OR 2x6 ATTACHED TO CRIPPLES ABOVE, UNLESS OTHERWISE NOTED.
 - TANKED WATER HEATER SHOWN AS BASE CONDITION, OPTIONAL TANKLESS WATER HEATER IS AVAILABLE IN LIEU OF TANKED WATER HEATER.

SECOND FLOOR PLAN
SCALE: 1/4" = 1'-0"

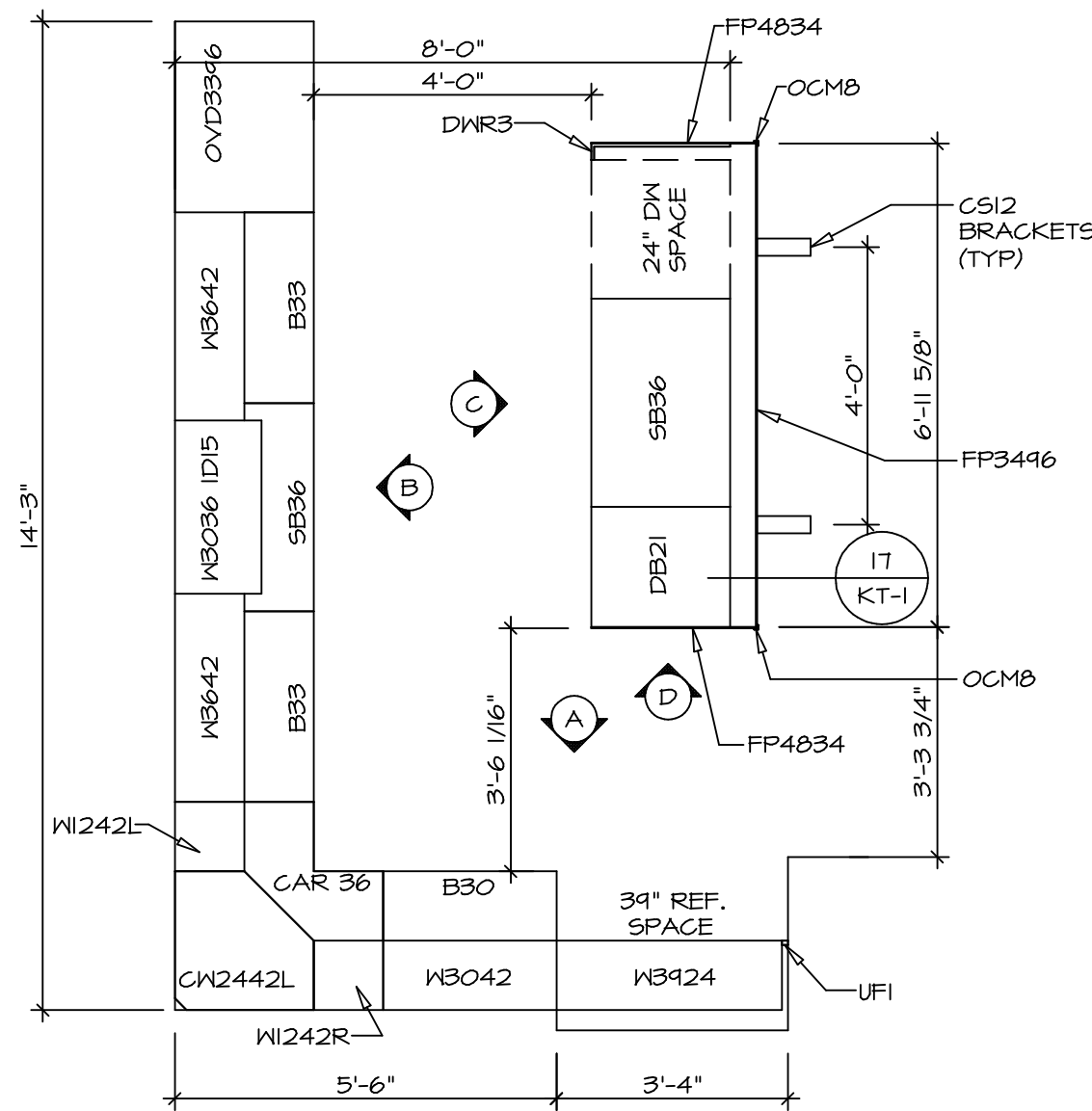
SHEET NO. A-8	MODEL CAROLINA PLACE	SET NO. CNP00	REVISIONS	REMARKS
	DRAWING TITLE SECOND FLOOR PLAN	VERSION 02	DATE	
OPTION DESCRIPTION				
46				



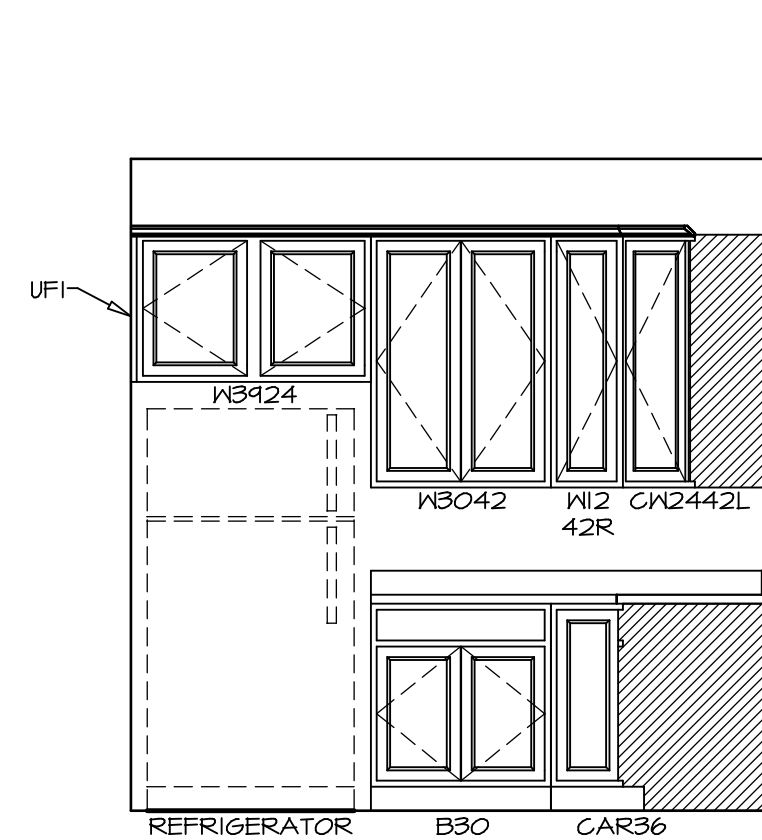
© NVR, Inc. All rights reserved. No part of this drawing may be reproduced, stored in a retrieval system, or transmitted in any form or by any means, electronic, mechanical, photocopying, recording, or by any information storage and retrieval system, without the prior written permission of NVR, Inc.



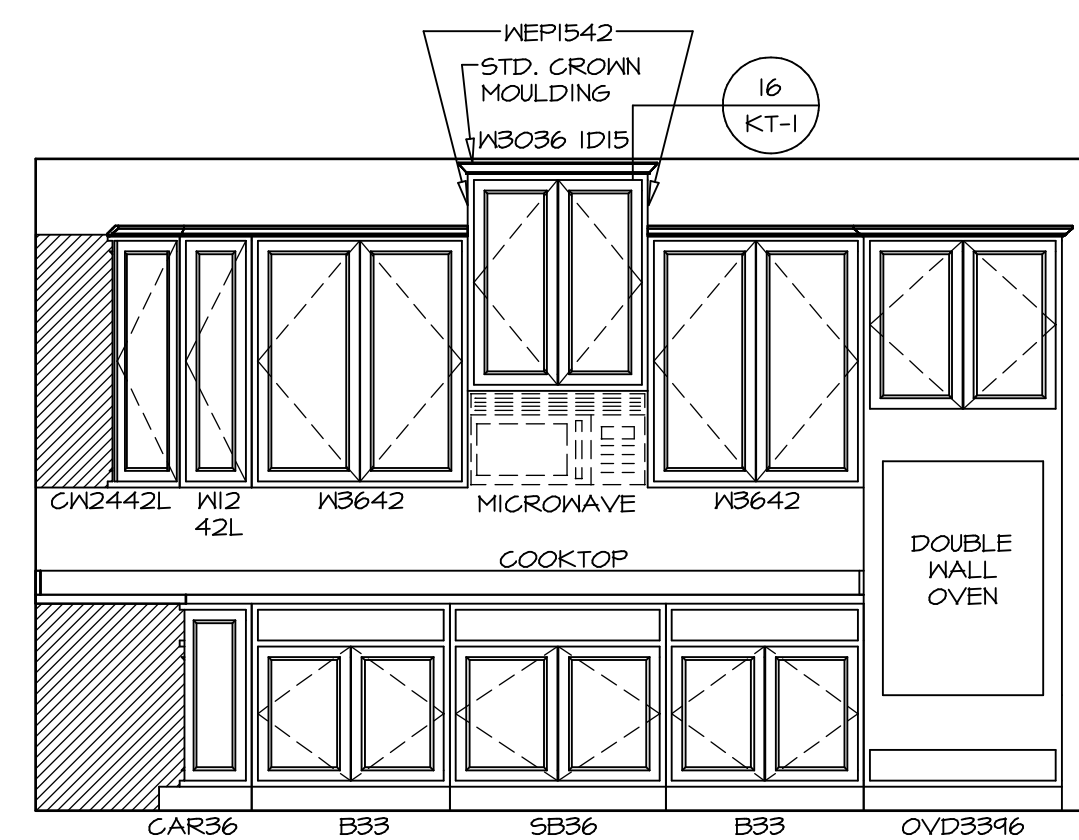
KITCHEN COUNTERTOP PLAN - (KT-3119)



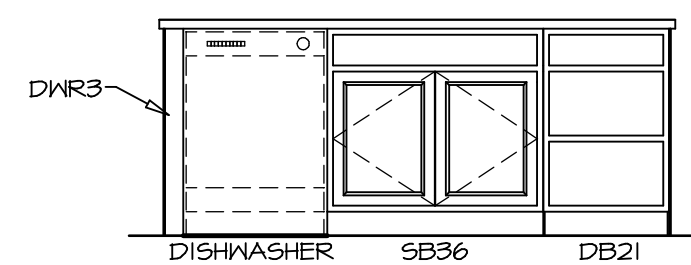
KITCHEN CABINET PLAN - (KC-3119)



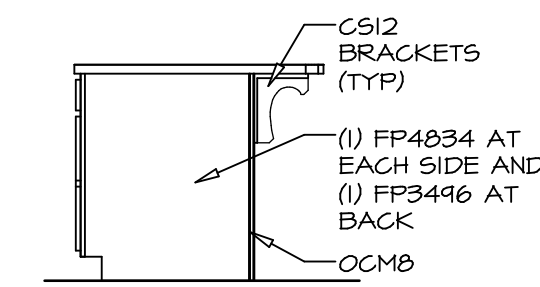
KITCHEN ELEVATION



KITCHEN ELEVATION



KITCHEN ELEVATION

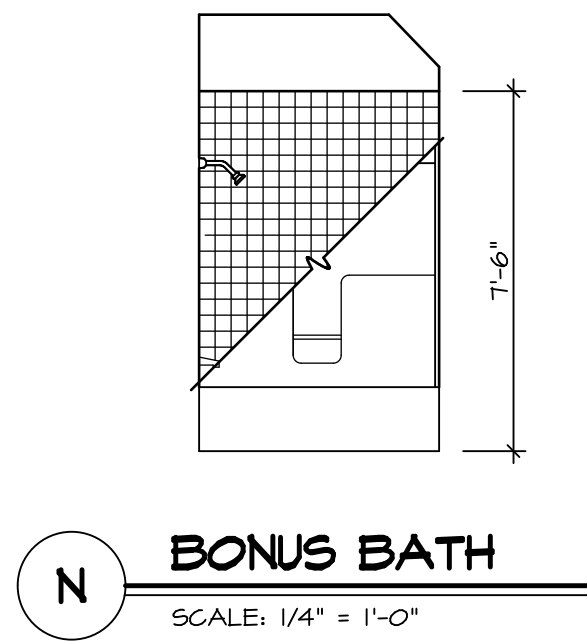


KITCHEN ELEVATION

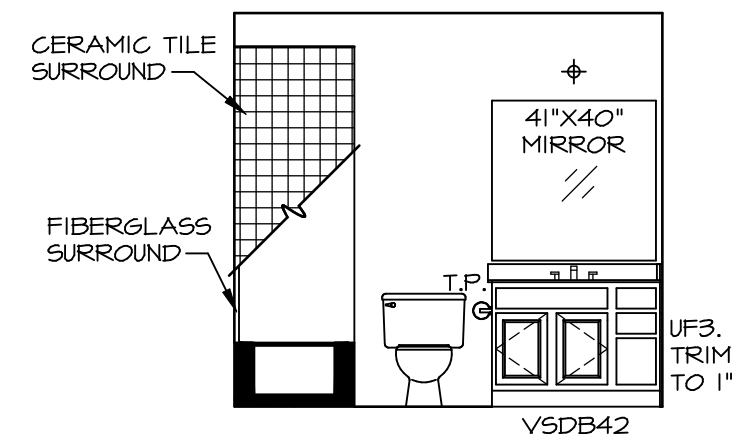
SHEET NO. A-13	MODEL CAROLINA PLACE	SET NO. CNP00	REVISIONS	REMARKS
	DRAWING TITLE KITCHENS	VERSION 02	DATE: 6/7/16	
54	OPTION DESCRIPTION	OPTION		
	<p>© NVR, Inc. expressly reserves the copyright and all other rights in these plans. These plans are not to be reproduced, changed or copied in any way without the written consent of NVR, Inc.</p> <p>NVR NVR, Inc. Suite 100 Fredericks, MD 21703</p>			

NOTES:

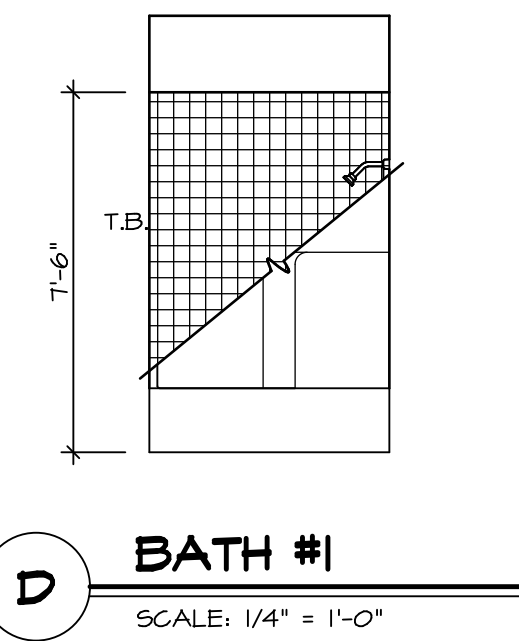
1. TEMPERED GLASS SHOWER ENCLOSURE WITH SWING DOOR OR OPTIONAL SLIDING DOOR BY DIVISION
2. TUB ACCESS PANELS PROVIDED AS NEEDED, ALL MATERIALS BY DIVISION
3. REFER TO SHEET IT-2 FOR TUB AND SHOWER DETAILS.
4. ALL VSDB24-42 DRAWERS TO BE SET ON RIGHT HAND.
5. BATH ELEVATIONS ARE SHOWN PER PLAN.



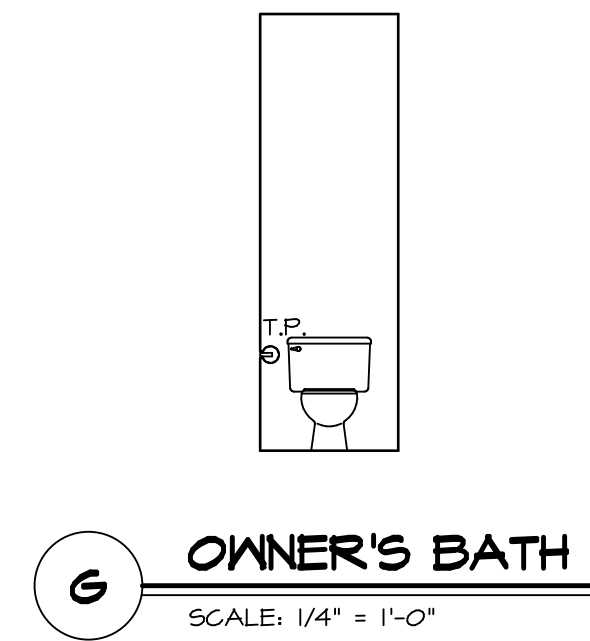
N BONUS BATH
SCALE: 1/4" = 1'-0"



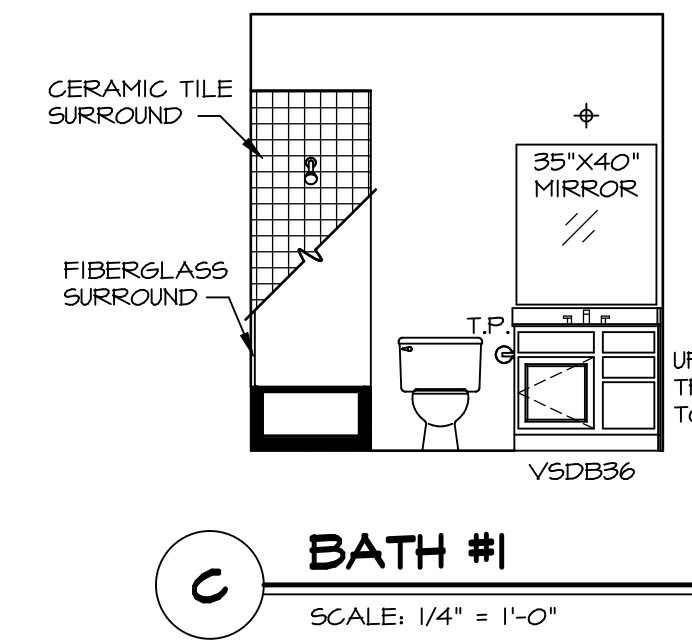
M BONUS BATH
SCALE: 1/4" = 1'-0"



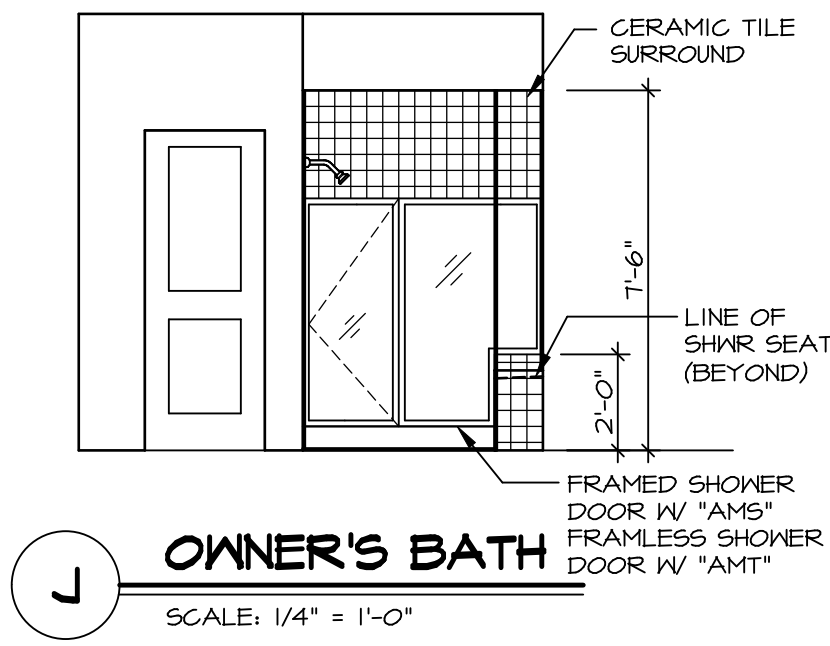
D BATH #1
SCALE: 1/4" = 1'-0"



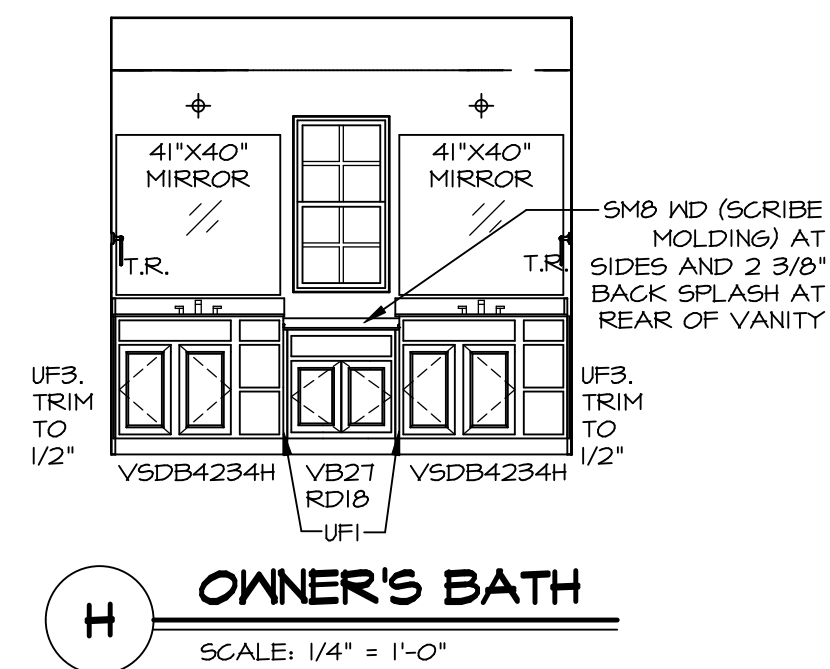
G OWNER'S BATH
SCALE: 1/4" = 1'-0"



C BATH #1
SCALE: 1/4" = 1'-0"



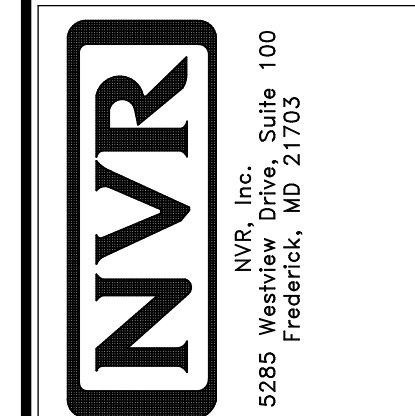
J OWNER'S BATH
SCALE: 1/4" = 1'-0"



H OWNER'S BATH
SCALE: 1/4" = 1'-0"

REV. NO.	DATE	REMARKS
1	08/04/16	NL-DRAWING ALIGNMENT

© NVR, Inc. expressly reserves the right to modify or change any of the information contained in these plans. These plans are not to be reproduced, changed or copied in any way without the written consent of NVR, Inc.



SHEET NO.	MODEL	SET NO.	VERSION
A-14	CAROLINA PLACE	CNPOO_02	02
	DRAWING TITLE	DRAWN BY	
	BATH ELEVATIONS	DATE:	6/7/16
	OPTION DESCRIPTION	OPTION	
57			