

FOUNDATION NOTES - BASEMENT

- FOUNDATION UNDER HABITABLE SPACE:
1.1. CONCRETE SLAB ON 6 MIL VAPOR BARRIER OVER SUB-BASE (SEE SPEC SHEET FOR SLAB NOTES)
- SLAB UNDER GARAGE:
2.1. UNEXCAVATED WITH CONCRETE SLAB ON VAPOR BARRIER OVER SUB-BASE (SEE SPEC SHEET FOR SLAB NOTES)
- SEE SHEET (A-4) FOR FOUNDATION CONNECTION INFORMATION
- OPTIONAL EGRESS WINDOW - LOCATION MAY VARY DUE TO GRADE OR OPTIONS ABOVE WINDOW WELL REQUIRED W/ CERTAIN GRADE CONDITIONS (SEE SPEC SHEET FOR ADDITIONAL INFO)
- SLAB LEDGE LOCATIONS VARY W/ GRADE BEAM(S) ORIENTATION. SEE GB-1 FOR DETAILS.

FOUNDATION BEAM/HEADER SCHEDULE

IDENTIFIER	DESCRIPTION	LENGTH	OPTIONS	ENG. NUM.	REMARKS
B001	BEAM STEEL - #8X10 W 2X4 SILL	13'-3 3/4"		B0032	
B002	BEAM STEEL - #8X35 W 2X8 SILL	17'-0 1/4"		B0034	
B003	BEAM STEEL - #8X28 W 2X6 SILL	12'-11 1/4"		B0023	
B004	BEAM STEEL - #8X28 W 2X6 SILL	36'-5"		B0026	MULTI-SPAN
B005	BEAM STEEL - #8X13 W 2X4 SILL	29'-11 7/8"		B0019	MULTI-SPAN
B006	BEAM BUILT 2X10 PT - 2 PLY	9'-2"		B0036	
B007	BEAM BUILT 2X10 PT - 2 PLY	9'-2"		B0036	

STEEL COLUMN SCHEDULE

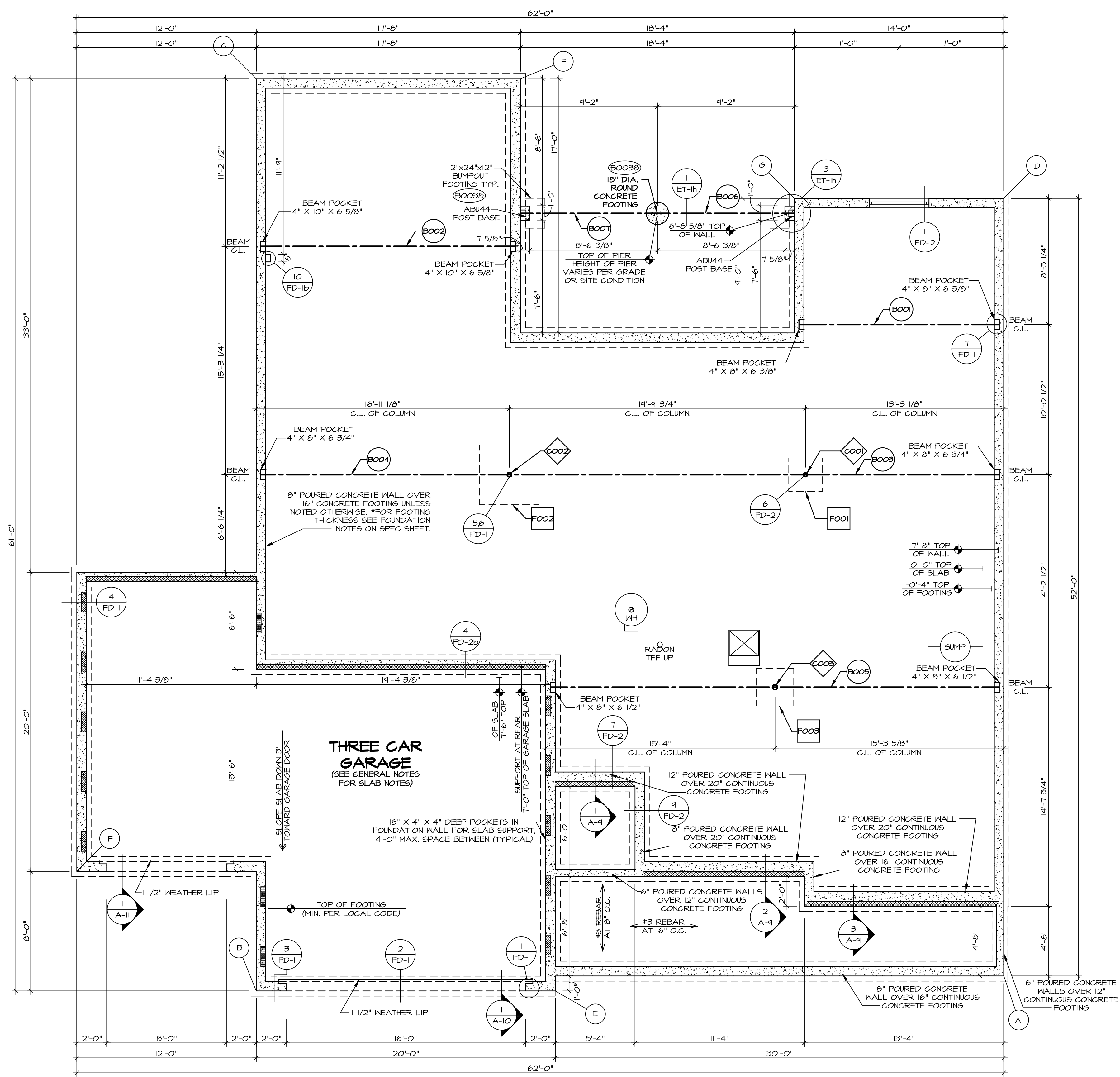
IDENTIFIER	STYLE	HEIGHT	OPTIONS	ENG. NUM.	REMARKS
C001	STANCHION - 3 IN DIA I16A ADJ	7'-5 7/16"		B0031	
C002	STANCHION - 3.5 IN SCHED 40	7'-5 7/16"		B0031	
C003	STANCHION - 4 IN DIA I16A ADJ	7'-5 1/2"		B0022	

PAD FOOTING SCHEDULE

IDENTIFIER	LENGTH	WIDTH	HEIGHT	OPTIONS	ENG. NUM.
FO01	2'-3"	2'-3"	1'-0"		B0031
FO02	4'-0"	4'-0"	1'-6"		B0031
FO03	2'-6"	2'-6"	1'-0"		B0022

FOUNDATION DIAGONALS

A		B	
A	0"	A	50'-0 3/16"
B	50'-0 3/16"	B	0"
C	78'-1 3/8"	C	61'-0"
D	52'-0 1/8"	D	72'-10 3/8"
E	30'-0 5/16"	E	20'-0"
F	62'-4 13/16"	F	14'-5 1/16"
G	68'-2"	F	63'-6 1/16"
G	53'-10 5/16"	G	64'-0 13/16"



FOUNDATION PLAN
SCALE: 1/4" = 1'-0"

DIV-COMM-LOT-UNIT
DCY-VG-T716
 COMM-LOT
 VILGE OF WINDING CREEK MARR CO - T716
 STREET ADDRESS
 4711 WINDING CREEK BLVD
 CITY
 CENTERVILLE
 STATE
 OH
 ZIP
 45459

© NVR, Inc. expressly reserves the right to modify these plans without notice. These plans are not to be reproduced, changed or copied in any way without the written consent of NVR, Inc.

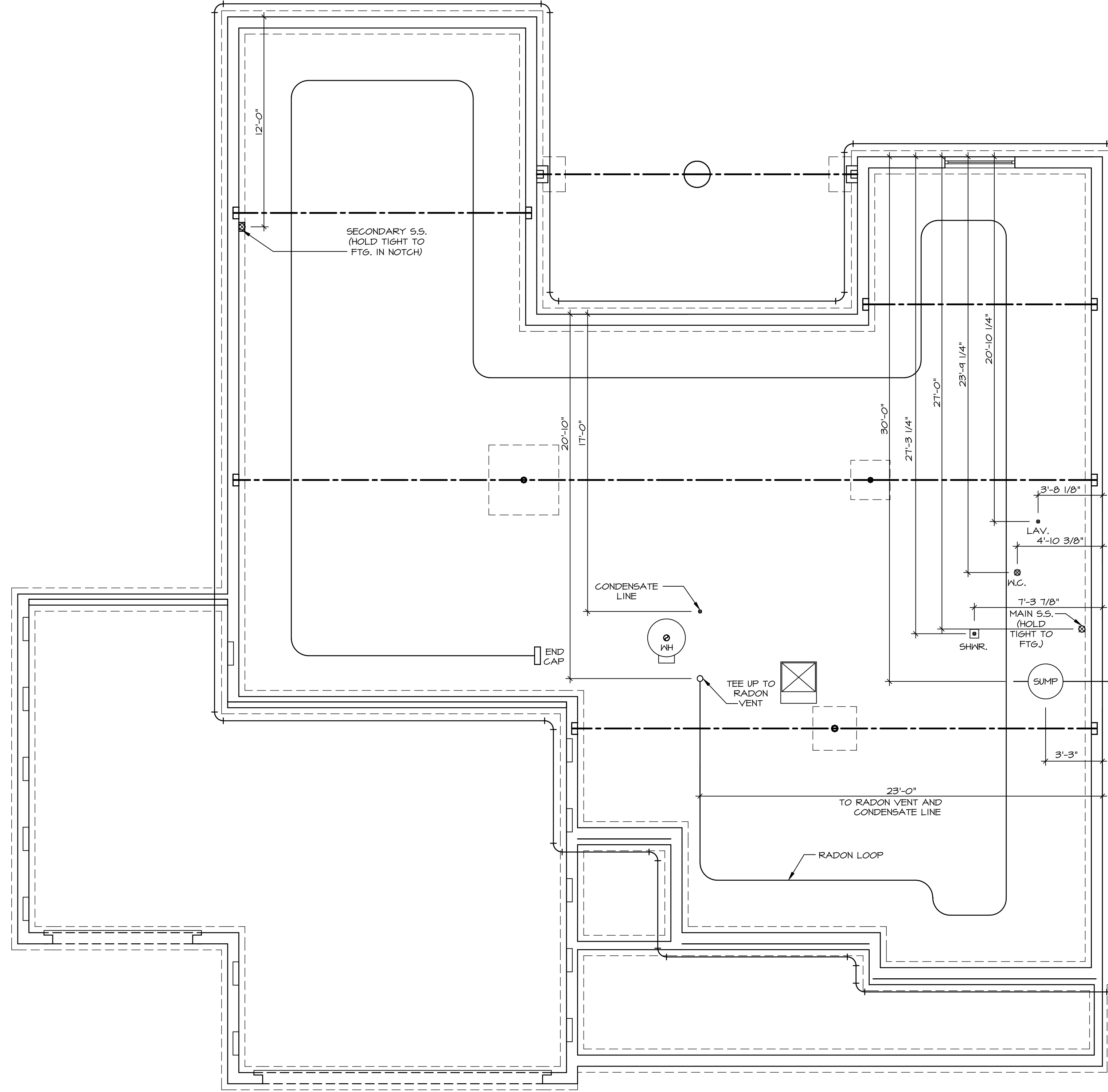
NVR
 NVR, Inc. Suite 100
 Frederick, MD 21703
 5285 Washburne Rd.

SET NO. CVB00
 VERSION 01
 DRAWN BY RDB
 DATE:
 OPTION

MODEL
CUMBERLAND
 DRAWING TITLE
 FOUNDATION PLAN
 OPTION DESCRIPTION

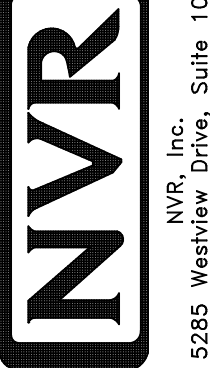
SHEET NO.
A-3
 16

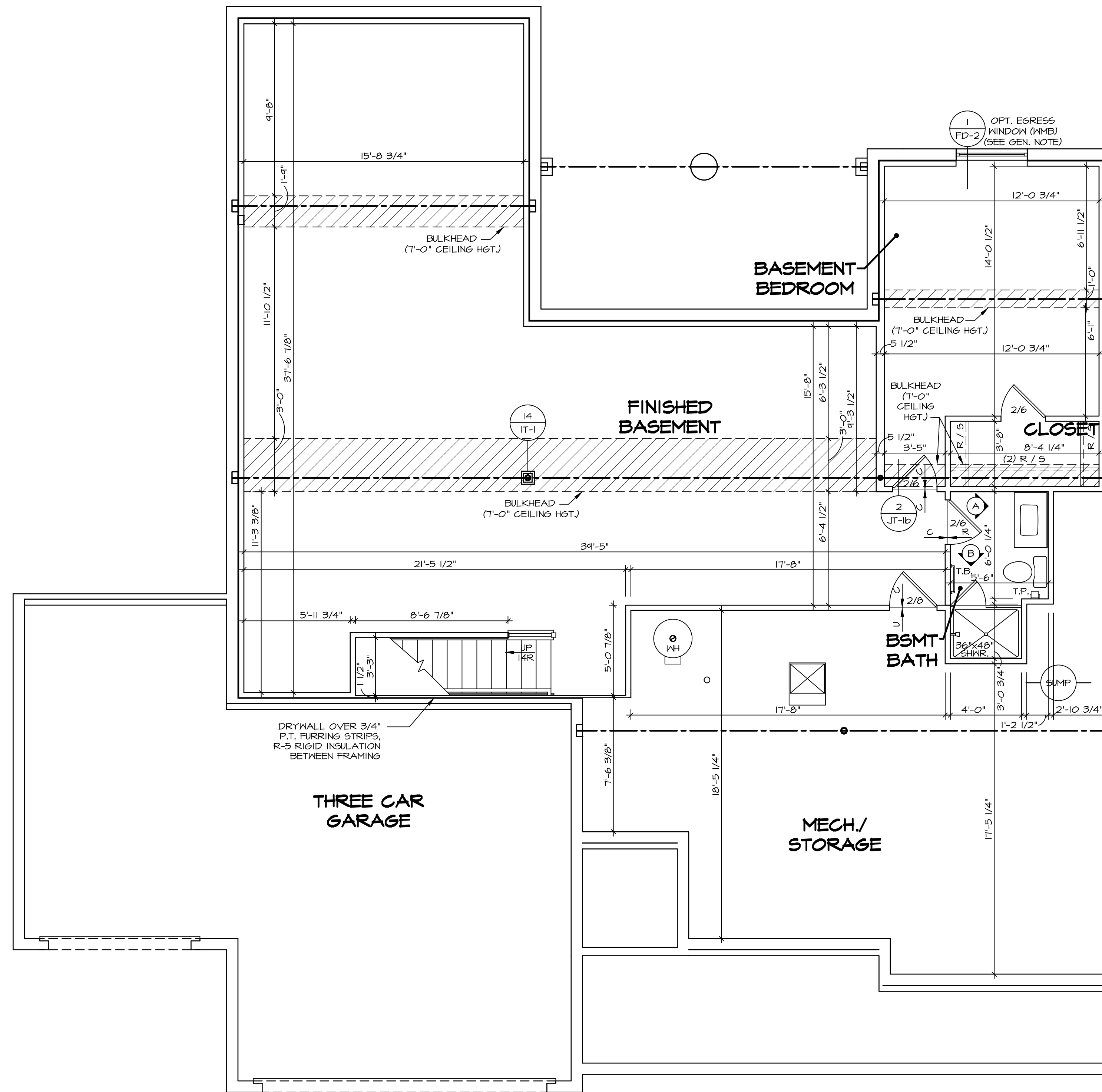
C:\NVR\Solves\CUMBERLAND_CMB00_01\DCY-VG-T716\223613\Sheets\Lot_Specs\16_A-3_FDN_LS_FBA.dwg 03/02/21 - 2:35 pm



PLUMBING PLAN
SCALE: 1/4" = 1'-0"

NOTE
RADON REMEDIATION
RADON LOOP:
- (4") PERFORATED HDPE "LOOP"
- MUST BE PLACED IN STONE BED SLIGHTLY HIGHER THAN ANY INTERIOR DRAINTILE
- LOOP TO BE SEPARATE FROM ANY DRAINTILE ELEMENTS
- TO BE CORRUGATED HDPE PIPE
- SCREENS TO BE INSTALLED THROUGH LOOP AT TEE UP INTO STACK
STACK REQUIREMENTS:
- 3" PVC STACK (4" IF BASEMENT IS GREATER THAN 2200 SQFT.)
- NO PART OF STACK IS TO BE HORIZONTAL
- PIPE TO BE PHYSICALLY LABELED IN THE FIELD AS "RADON VENT" OR OTHER JURISDICTIONALLY REQUIRED LANGUAGE (ON EVERY LEVEL OF HOUSE)
- ROOF TERMINATION TO BE IN TOP 1/3 OF ROOF
- SCREEN INSTALLED TO KEEP PESTS OUT OF RADON VENT AT ROOF TERMINATION

SHEET NO. A-5	MODEL CUMBERLAND	SET NO. CMB00	OPTION DESCRIPTION OPTION
	DRAWING TITLE PLUMBING PLAN	VERSION 01 DRAWN BY SGA	
43	C:\NVR\Solves\CUMBERLAND_CMB00_01\DCY-VG-T716\223613\Sheets\Lot_Specific\A-5_PLUMB_LS.dwg 03/02/21 - 2:53 pm	© NVR, Inc. expressly reserves the right to modify or amend these plans without notice. These plans are not to be reproduced, changed or altered in any way without the written consent of NVR, Inc.	
		 NVR, Inc. Suite 100 Fredericks, MD 21703	
DIV-COMM-LOT-UNIT DCY-VG-T716		COMM-LOT VLGES OF WINDING CREEK WARR CO - T716 STREET ADDRESS 4711 WINDING CREEK BLVD CITY CENTERVILLE STATE OH ZIP 45459	



1
A-6 **BASEMENT FLOOR PLAN**
SCALE: 1/4" = 1'-0"

LEGEND

	BEARING WALL
	NON BEARING WALL
	INDICATES BEARING FROM POINT-LOAD ABOVE
	JACKS
	BEAM/HEADER
	PAD FOOTING
	STEEL COLUMN
	TRUSS TIE DOWN
	PORTAL FRAME
	JOIST/TRUSS
	LVL
	ENGINEERING PAGE NUMBER

SEE FC DETAILS FOR FRAMING CONNECTORS

- FLOOR PLAN NOTES**
- ALL HEADERS ARE (2) 2x6 w/ 2x4 WALLS OR (3) 2x6 w/ 2x6 WALLS, UNLESS OTHERWISE NOTED.
 - ALL HEADERS TO HAVE (1) 2x4 OR 2x6 JACK AND KING STUD EACH END, UNLESS OTHERWISE NOTED. MULTI-OPENING HEADERS TO HAVE (2) JACKS AT INTERMEDIATE BEARINGS, UNLESS OTHERWISE NOTED.
 - ALL EXTERIOR WALLS TO BE 4" w/ OSB OR 3 1/2" w/ LAMINATED FIBROUS STRUCTURAL SHEATHING. ALL INTERIOR WALLS TO BE 3 1/2", UNLESS OTHERWISE NOTED.
 - HATCHED AREAS INDICATE DROPPED CEILINGS. ALL DROPPED CEILINGS ARE 12" UNLESS OTHERWISE NOTED. SEE "BRACED WALL PANEL DETAIL SHEET" FOR SPECIAL WALL FRAMING LOCATIONS AND HEADER SIZES, IF APPLICABLE.
 - SEE STANDARD DETAIL CATEGORY "IT" SHEET(S) FOR INTERIOR DETAILS.
 - SEE ARCHITECTURAL DETAIL SHEET "AD" FOR HOUSE SPECIFIC INTERIOR TRIM OPTION TABLE.
 - ALL WINDOWS HAVE 7'-0" 1/2" HEADER HEIGHT UNLESS OTHERWISE NOTED.
 - ALL HEADERS IN NON-BEARING WALLS SHALL BE A SINGLE FLAT 2x4 OR 2x6 ATTACHED TO CRIPPLES ABOVE, UNLESS OTHERWISE NOTED.
 - TANKED WATER HEATER SHOWN AS BASE CONDITION. OPTIONAL TANKLESS WATER HEATER IS AVAILABLE IN LIEU OF TANKED WATER HEATER.

- GYPSUM NOTES**
- AT GARAGE:**
GYPSUM BOARD AT COMMON HALLS, CEILING, BEAM WRAPS AND SUPPORTS PER STANDARD DETAIL FA-1(b) FIRE ASSEMBLIES OR AS REQUIRED BY LOCAL CODE.
- AT STAIRS:**
1/2" GYPSUM BOARD AT UNDERSIDE OF STAIRS AND WALLS IN CLOSET

© NVR, Inc. expressly reserves the right to modify these plans without notice. These plans are not to be reproduced, changed or altered in any way without the written consent of NVR, Inc.

NVR
NVR, Inc. Suite 100
Frederick, MD 21703
5285 Walkers Lane

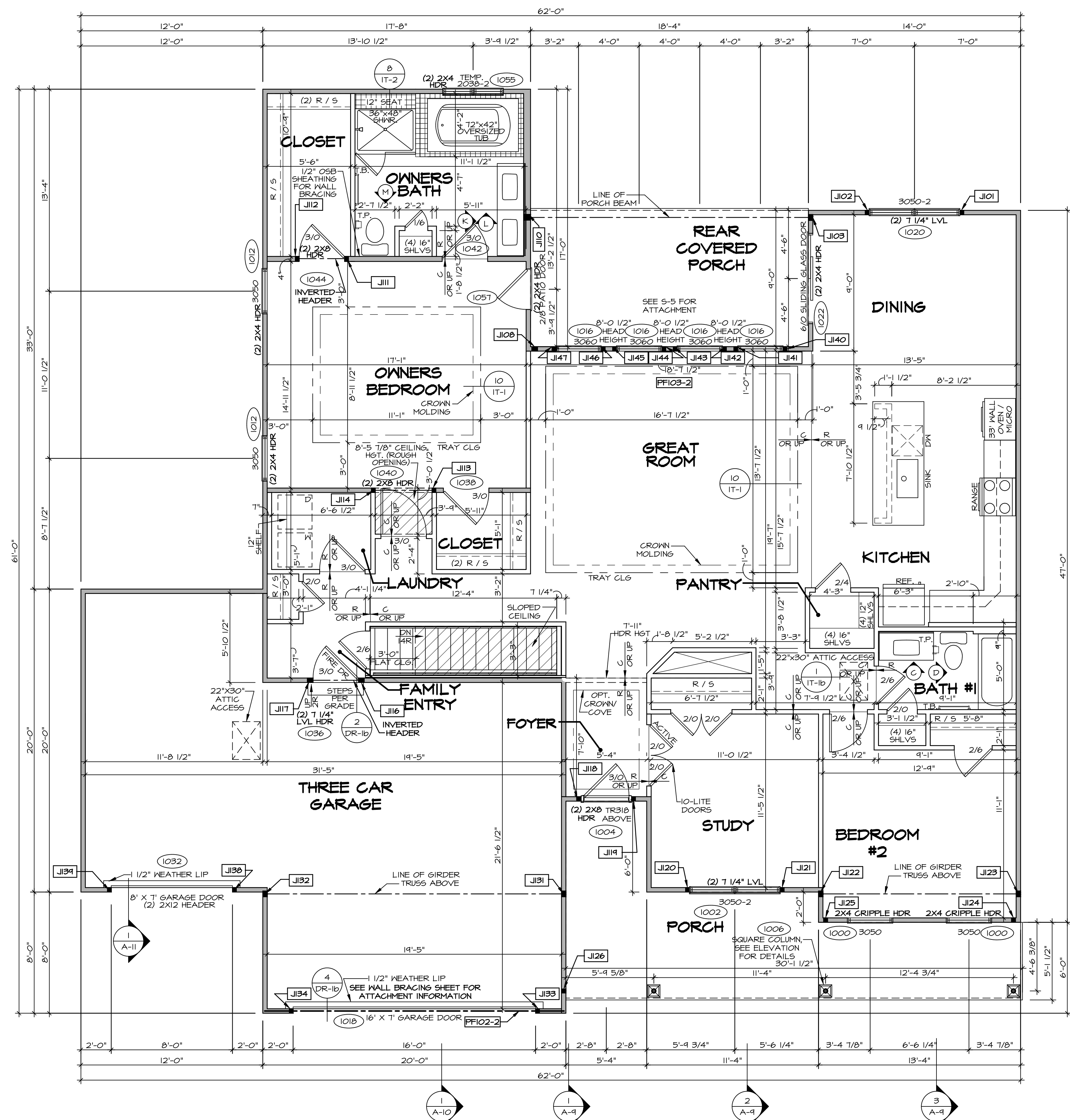
SET NO. CMB00
VERSION 01
DRAWN BY RDB
DATE:
OPTION

CUMBERLAND
DRAWING TITLE
BASEMENT FLOOR PLAN
OPTION DESCRIPTION

SHEET NO. **A-6**
46

DIV-COMM-LOT-UNIT
DCY-VG-T716
COMM-LOT
VILLES OF WINDING CREEK WARR CO - T716
STREET ADDRESS
4711 WINDING CREEK BLVD
CITY STATE OH
CENTERVILLE OH
ZIP 45459

C:\NVR\Solves\CUMBERLAND_CMB00_01\DCY-VG-T716\223613\Sheets\Lot_Spec\16 A-6 BSMT_L.S.dwg 03/02/21 - 2:54 pm



FIRST FLOOR PLAN
SCALE: 1/4" = 1'-0"

FLOOR PLAN NOTES

- ALL HEADERS ARE (2) 2x6 w/ 2x4 WALLS OR (3) 2x6 w/ 2x6 WALLS UNLESS OTHERWISE NOTED.
- ALL HEADERS TO HAVE (1) 2x4 OR 2x6 JACK AND KING STUD EACH END, UNLESS OTHERWISE NOTED.
- ALL EXTERIOR WALLS TO BE 4" w/ OSB OR 3 1/2" w/ LAMINATED FIBROUS STRUCTURAL SHEATHING, ALL INTERIOR WALLS TO BE 3 1/2", UNLESS OTHERWISE NOTED.
- HATCHED AREAS INDICATE DROPPED CEILINGS. ALL DROPPED CEILINGS ARE 12" UNLESS OTHERWISE NOTED.
- SEE "BRACED WALL PANEL DETAIL SHEET" FOR SPECIAL WALL FRAMING LOCATIONS AND HEADER SIZES, IF APPLICABLE.
- SEE STANDARD DETAIL CATEGORY "IT" SHEET(S) FOR INTERIOR TRIM DETAILS.
- SEE ARCHITECTURAL DETAIL SHEET "AD" FOR HOUSE SPECIFIC INTERIOR TRIM OPTION TABLE.
- ALL WINDOWS HAVE "T-O 1/2" HEADER HEIGHT UNLESS OTHERWISE NOTED.
- TANKED WATER HEATER SHOWN AS BASE CONDITION, OPTIONAL TANKLESS WATER HEATER IS AVAILABLE IN LIEU OF TANKED WATER HEATER.

GYPSUM NOTES

AT GARAGE:
GYPSUM BOARD AT COMMON WALLS, CEILINGS, BEAM WRAPS AND SUPPORTS PER STANDARD DETAIL FA-1(b) FIRE ASSEMBLIES OR AS REQUIRED BY LOCAL CODE.

AT STAIRS:
1/2" GYPSUM BOARD AT UNDERSIDE OF STAIRS AND WALLS IN CLOSET

NOTE:

EXTERIOR WALLS DRAWN TO FRAMING WIDTH, EXTERIOR SHEATHING IS NOT INCLUDED IN WALL THICKNESS.

LEGEND

- BEARING WALL
 - NON BEARING WALL
 - INDICATES BEARING FROM POINT-LOAD ABOVE JACKS
 - BEAM/HEADER
 - PAD FOOTING
 - STEEL COLUMN
 - TRUSS TIE DOWN
 - PORTAL FRAME
 - JOIST/TRUSS
 - LVL
 - ENGINEERING PAGE NUMBER
- SEE FC DETAILS FOR FRAMING CONNECTORS

FIRST FLOOR JACK SCHEDULE

IDENTIFIER	DESCRIPTION	OPTIONS	ENG. NUM.	REMARKS
J101	JACK - (2) 2X4 SFF STUD GRADE		1020	
J102	JACK - (2) 2X4 SFF STUD GRADE		1020	
J103	JACK - (3) 2X4 SFF STUD GRADE		1026	
J104	JACK - (3) 2X4 SFF STUD GRADE		1044	
J105	JACK - (3) 2X6 SFF STUD GRADE		1026	
J106	JACK - (2) 2X4 SFF STUD GRADE		1044	
J107	JACK - (2) 2X4 SFF STUD GRADE		1044	
J108	JACK - (2) 2X4 SFF STUD GRADE		1040	
J109	JACK - (2) 2X4 SFF STUD GRADE		1040	
J110	JACK - (2) 2X4 SFF STUD GRADE		1040	
J111	JACK - (3) 2X4 SFF STUD GRADE		1036	
J112	JACK - (2) 2X4 SFF STUD GRADE		1036	
J113	JACK - (2) 2X4 SFF STUD GRADE		1004	
J114	JACK - (2) 2X4 SFF STUD GRADE		1004	
J115	JACK - (2) 2X4 SFF STUD GRADE		1002	
J116	JACK - (3) 2X4 SFF STUD GRADE		1002	
J117	JACK - (3) 2X4 SFF STUD GRADE		1002	
J118	JACK - (2) 2X4 SFF STUD GRADE		1006	
J119	JACK - (2) 2X4 SFF STUD GRADE		1006	
J120	JACK - (2) 2X4 SFF STUD GRADE		1006	
J121	JACK - (2) 2X4 SFF STUD GRADE		1006	
J122	JACK - (3) 2X4 SFF#1		1048	EXTEND THROUGH TOP PLATE
J123	JACK - (3) 2X4 SFF#1		1048	EXTEND THROUGH TOP PLATE
J124	JACK - (2) 2X4 SFF STUD GRADE		1006	
J125	JACK - (2) 2X4 SFF STUD GRADE		1006	
J126	JACK - (2) 2X4 SFF STUD GRADE		1006	
J127	JACK - (3) 2X4 SFF#1		1048	EXTEND THROUGH TOP PLATE
J128	JACK - (3) 2X4 SFF#1		1048	EXTEND THROUGH TOP PLATE
J129	JACK - (2) 2X4 SFF STUD GRADE		1006	
J130	JACK - (2) 2X4 SFF STUD GRADE		1006	
J131	JACK - (2) 2X4 SFF STUD GRADE		1006	
J132	JACK - (2) 2X4 SFF STUD GRADE		1006	
J133	JACK - (2) 2X4 SFF STUD GRADE		1016	
J134	JACK - (2) 2X4 SFF STUD GRADE		1016	
J135	JACK - (2) 2X4 SFF STUD GRADE		1016	
J136	JACK - (2) 2X4 SFF STUD GRADE		1016	
J137	JACK - (2) 2X4 SFF STUD GRADE		1016	
J138	JACK - (2) 2X4 SFF STUD GRADE		1016	
J139	JACK - (2) 2X4 SFF STUD GRADE		1016	
J140	JACK - (2) 2X4 SFF STUD GRADE		1016	
J141	JACK - (2) 2X4 SFF STUD GRADE		1016	
J142	JACK - (2) 2X4 SFF STUD GRADE		1016	
J143	JACK - (2) 2X4 SFF STUD GRADE		1016	
J144	JACK - (2) 2X4 SFF STUD GRADE		1016	
J145	JACK - (2) 2X4 SFF STUD GRADE		1016	
J146	JACK - (2) 2X4 SFF STUD GRADE		1016	
J147	JACK - (2) 2X4 SFF STUD GRADE		1016	

FIELD INSTALLED FIRST FLOOR BEAM/HEADER SCHEDULE

IDENTIFIER	DESCRIPTION	LENGTH	OPTIONS	ENG. NUM.	REMARKS
PF102-2	EXT HEADER - 2X12 - 2 PLY	14'-4"		1008	
PF103-2	EXT HEADER - 2X12 - 2 PLY	18'-8"		1016	

DCY-VG-T716

DCY-VG-T716

COMMITTEE

VLGS OF WINDING CREEK WARR CO - T716

STREET ADDRESS

4711 WINDING CREEK BLVD

CITY

CENTERVILLE

STATE

OH

ZIP

45459

SET NO. CVB00

VERSION 01

DRAWN BY RDB

DATE:

OPTION

MODEL

CUMBERLAND

DRAWING TITLE

FIRST FLOOR PLAN

OPTION DESCRIPTION

SHEET NO.

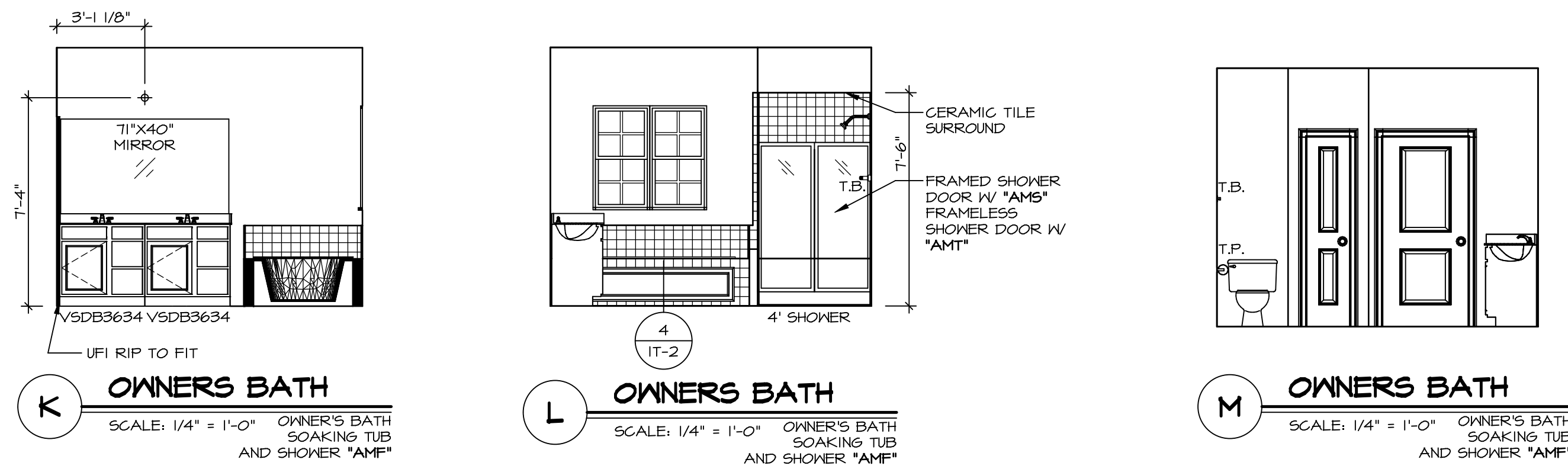
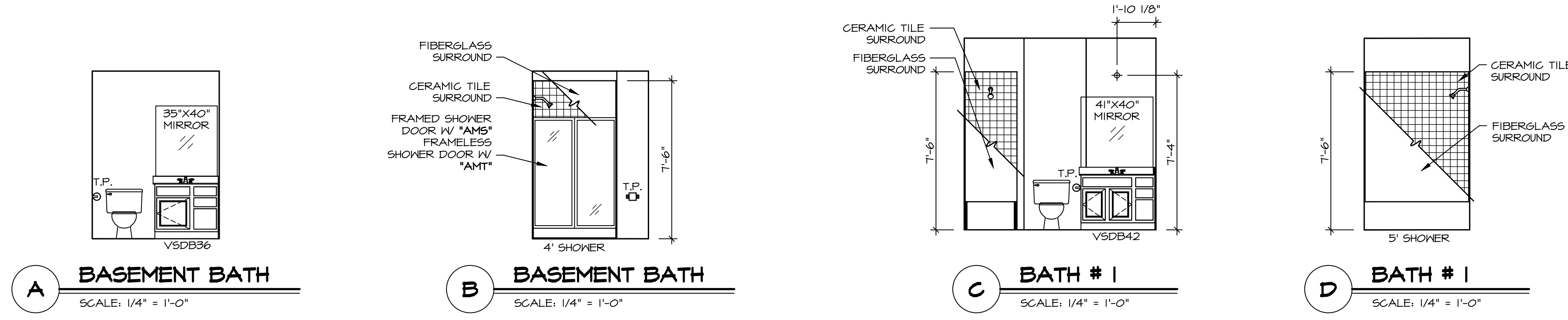
A-7

DESCRIPTION

48

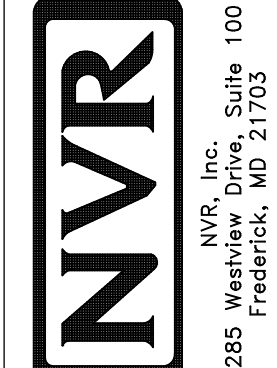
NOTES:

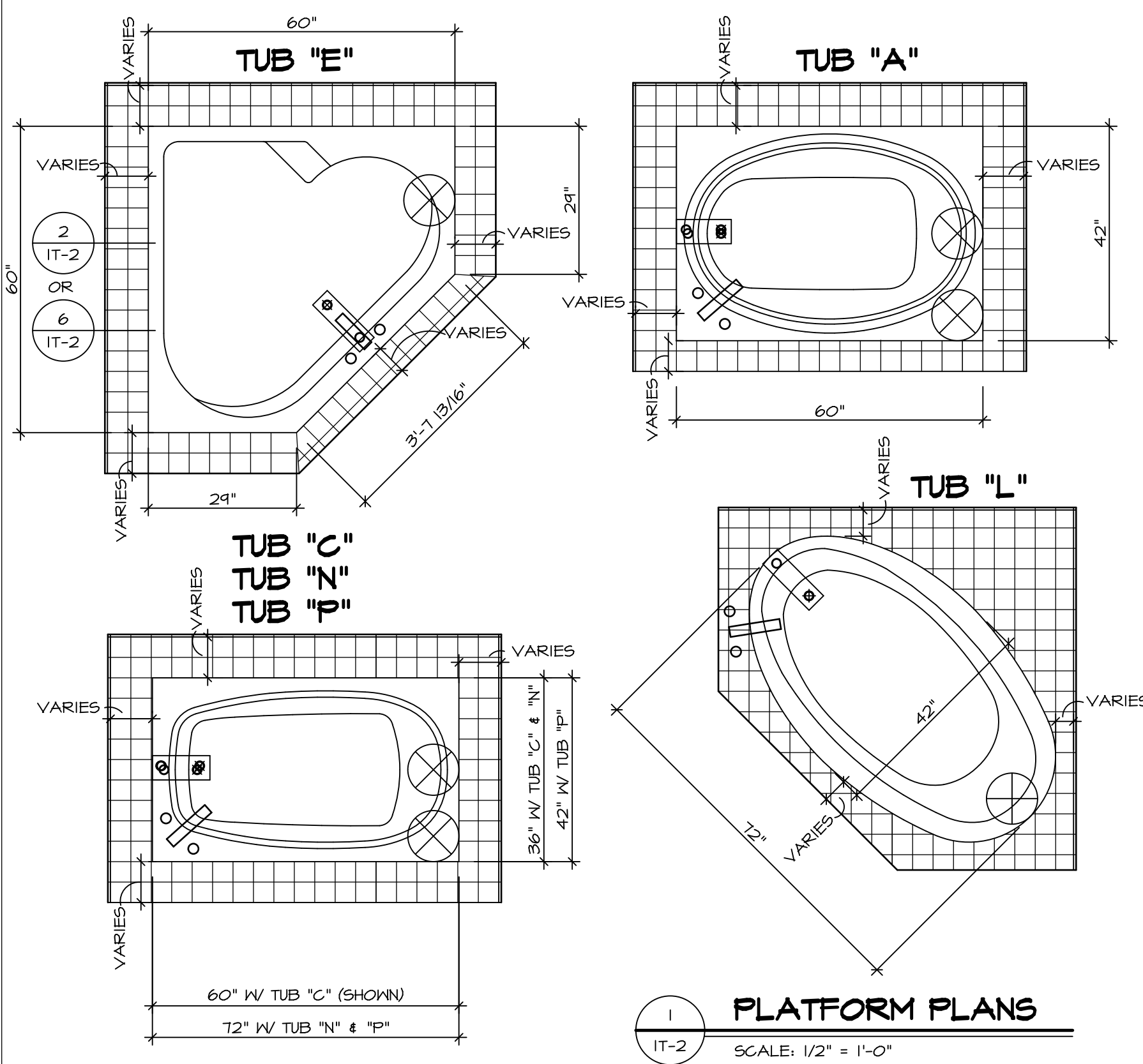
1. TEMPERED GLASS SHOWER ENCLOSURE WITH SWING DOOR OR OPTIONAL SLIDING DOOR BY DIVISION
2. TUB ACCESS PANELS PROVIDED AS NEEDED, ALL MATERIALS BY DIVISION
3. REFER TO SHEET IT-2 FOR TUB AND SHOWER DETAILS.
4. ALL V5DB24-42 DRAWERS TO BE SET ON RIGHT HAND.
5. ALL BATH ELEVATIONS ARE SHOWN PER PLAN.



SHEET NO. A-14	MODEL CUMBERLAND	DRAWING TITLE BATH ELEVATIONS	OPTION DESCRIPTION	SET NO. CM800	VERSION 01	DRAWN BY RDB	DATE:	OPTION
				78				
DIV-COMM-LOT-UNIT DCY-VG-T716				COMM-LOT VLGS OF WINDING CREEK WARR CO - T716				
STREET ADDRESS 4711 WINDING CREEK BLVD				APT. NO. ----		STATE OH		
CITY CENTERVILLE				ZIP 45459				

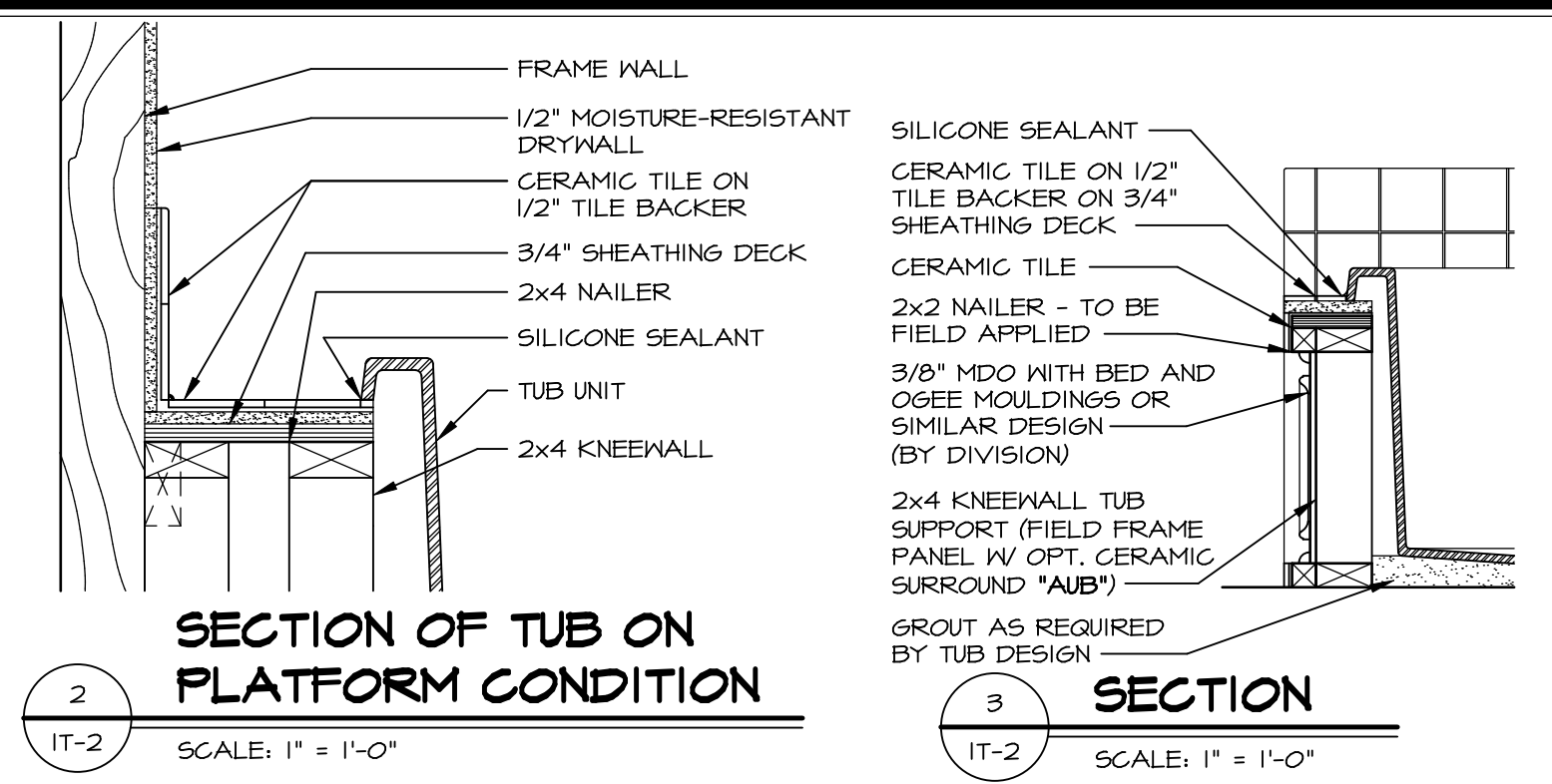
© NVR, Inc. expressly reserves the right to modify these plans at any time without notice. These plans are not to be reproduced, changed or altered in any way without the written consent of NVR, Inc.



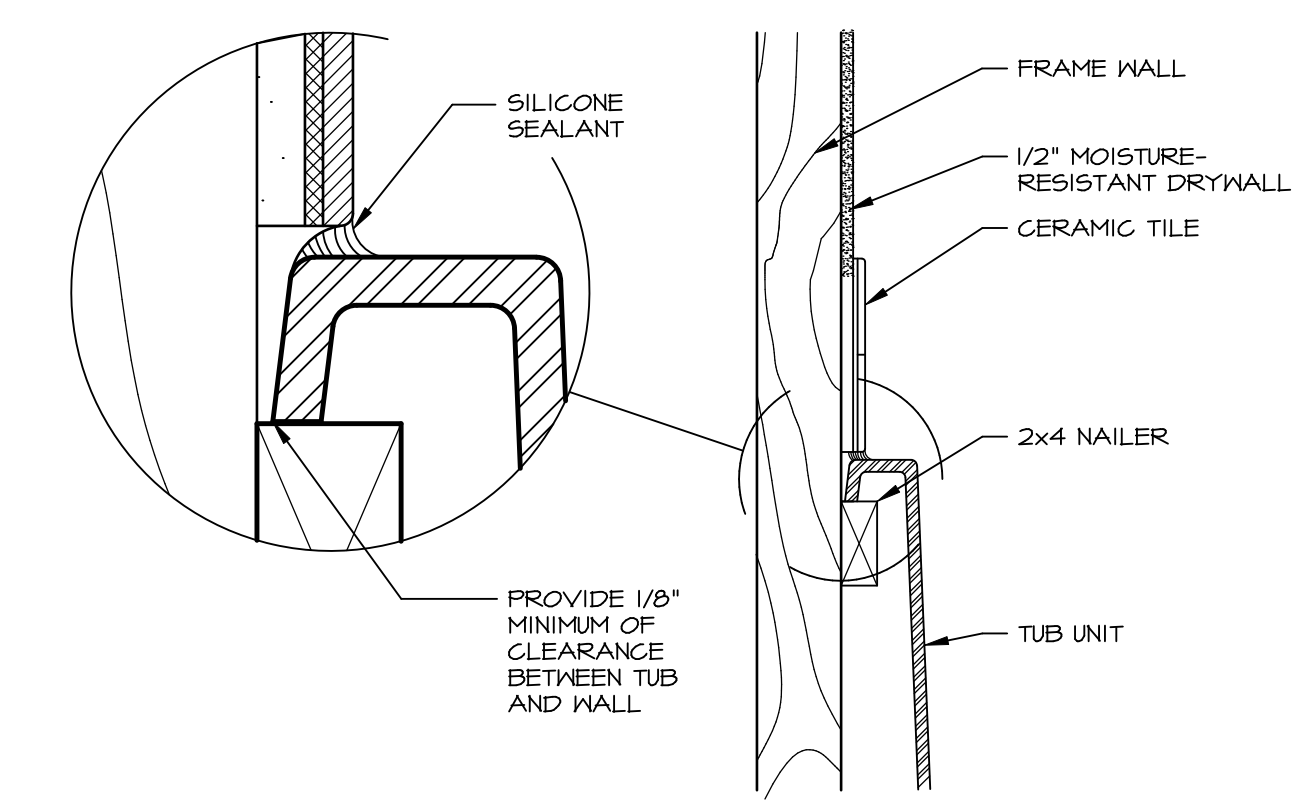


1 PLATFORM PLANS
IT-2 SCALE: 1/2" = 1'-0"

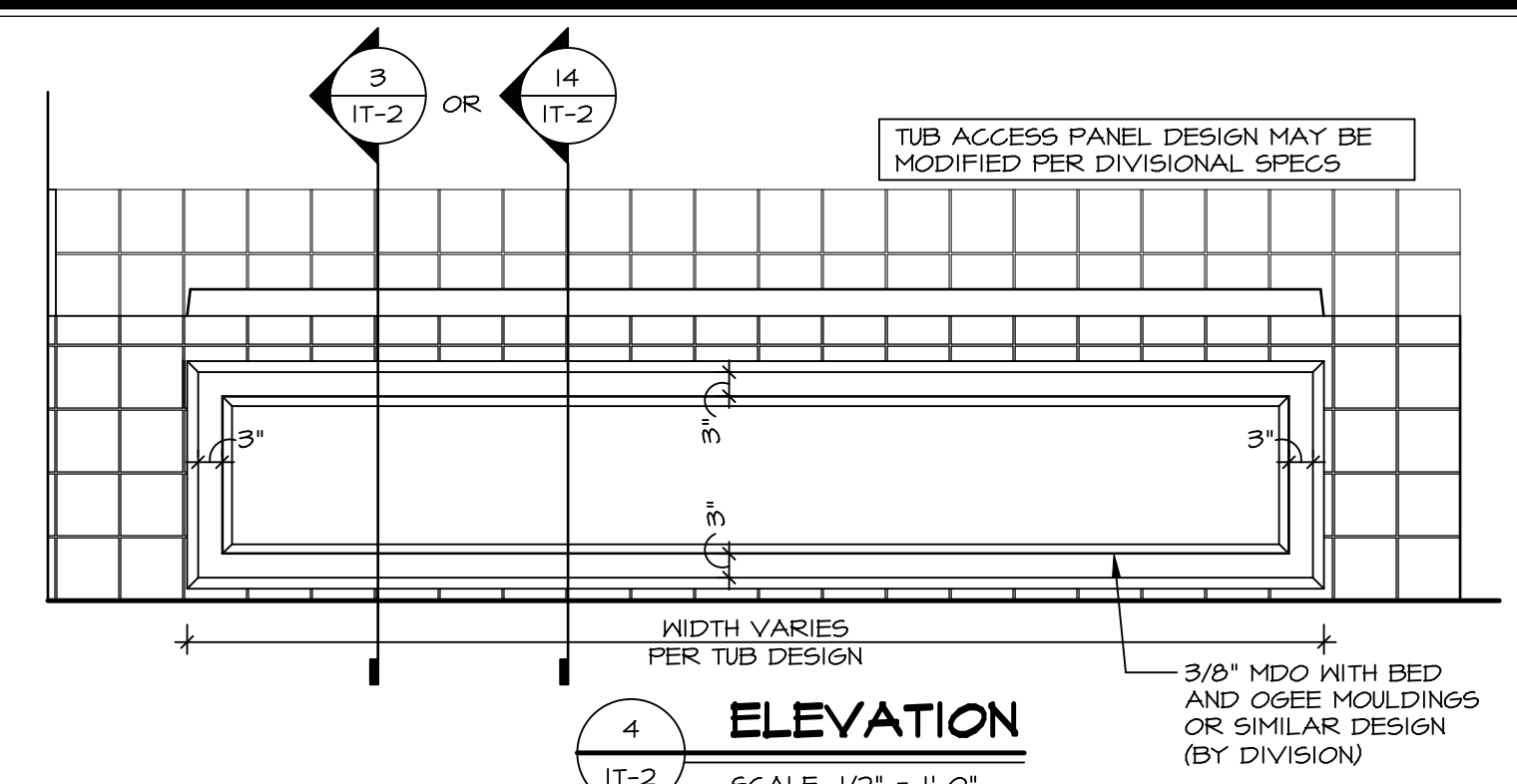
TUB	MANUF.	HEIGHT	WIDTH	LENGTH	TUB DECK PANEL HEIGHT
"A"	KOHLER/ STERLING	18 3/4"	42"	60"	17 1/8"
"C"	KOHLER/ STERLING	18 3/4"	36"	60"	17 1/8"
"E"	KOHLER/ STERLING	19 1/2"	60"	60"	17 7/8"
"L"	KOHLER/ STERLING	18 1/2"	42"	72"	16 7/8"
"N"	KOHLER/ STERLING	18 3/4"	36"	72"	17 1/8"
"P"	KOHLER/ STERLING	18 3/4"	42"	72"	17 1/8"



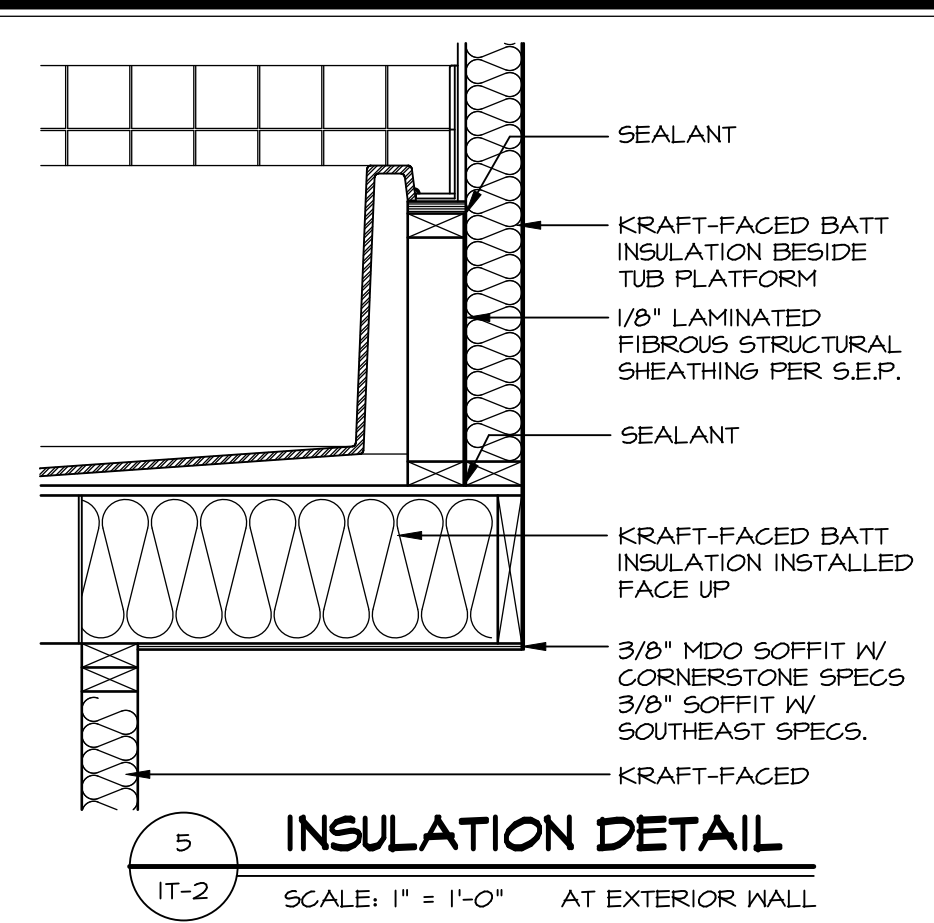
2 SECTION OF TUB ON PLATFORM CONDITION
IT-2 SCALE: 1" = 1'-0"



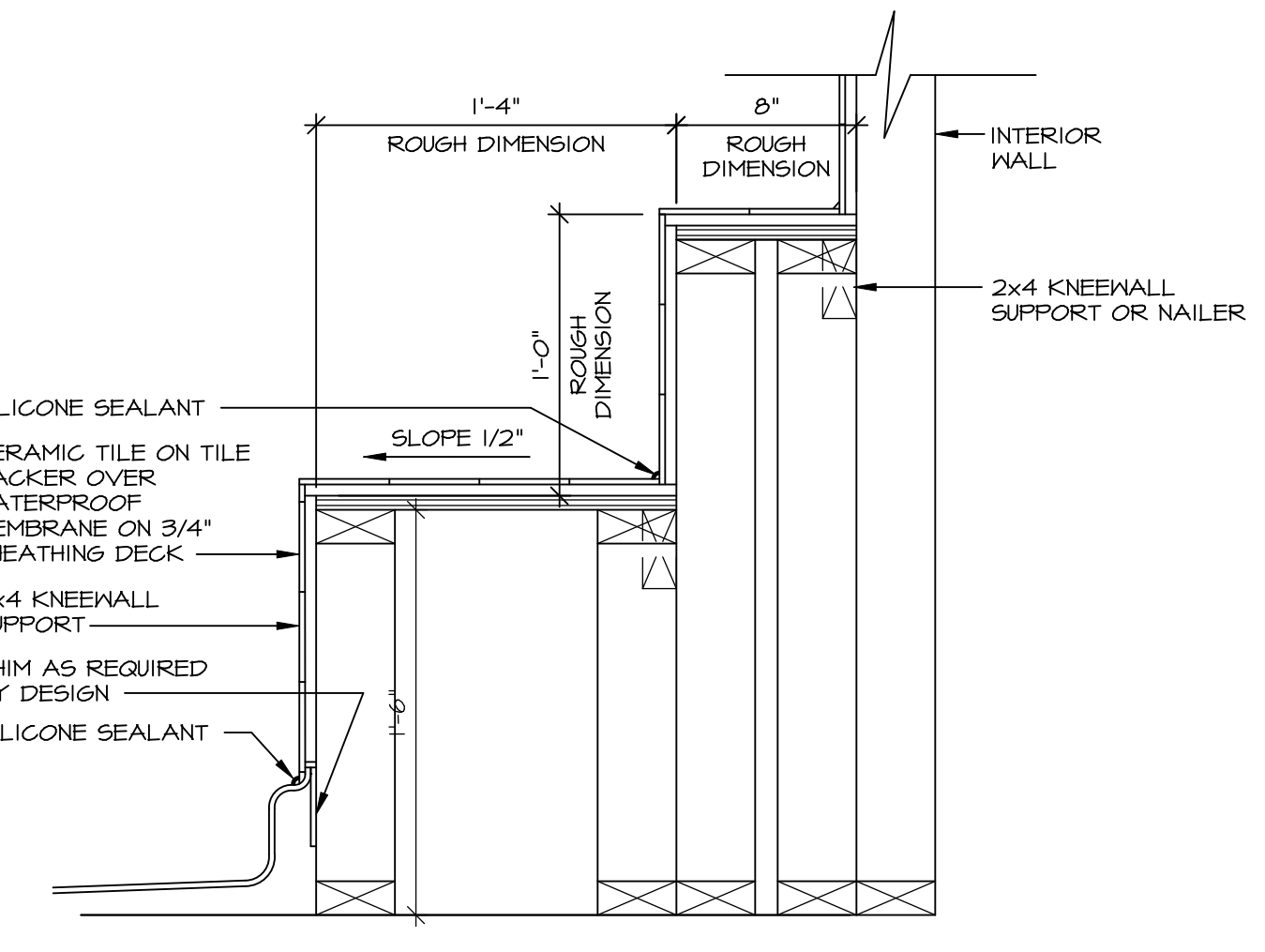
3 SECTION OF TUB TO WALL CONDITION
IT-2 SCALE: 1 1/2" = 1'-0"



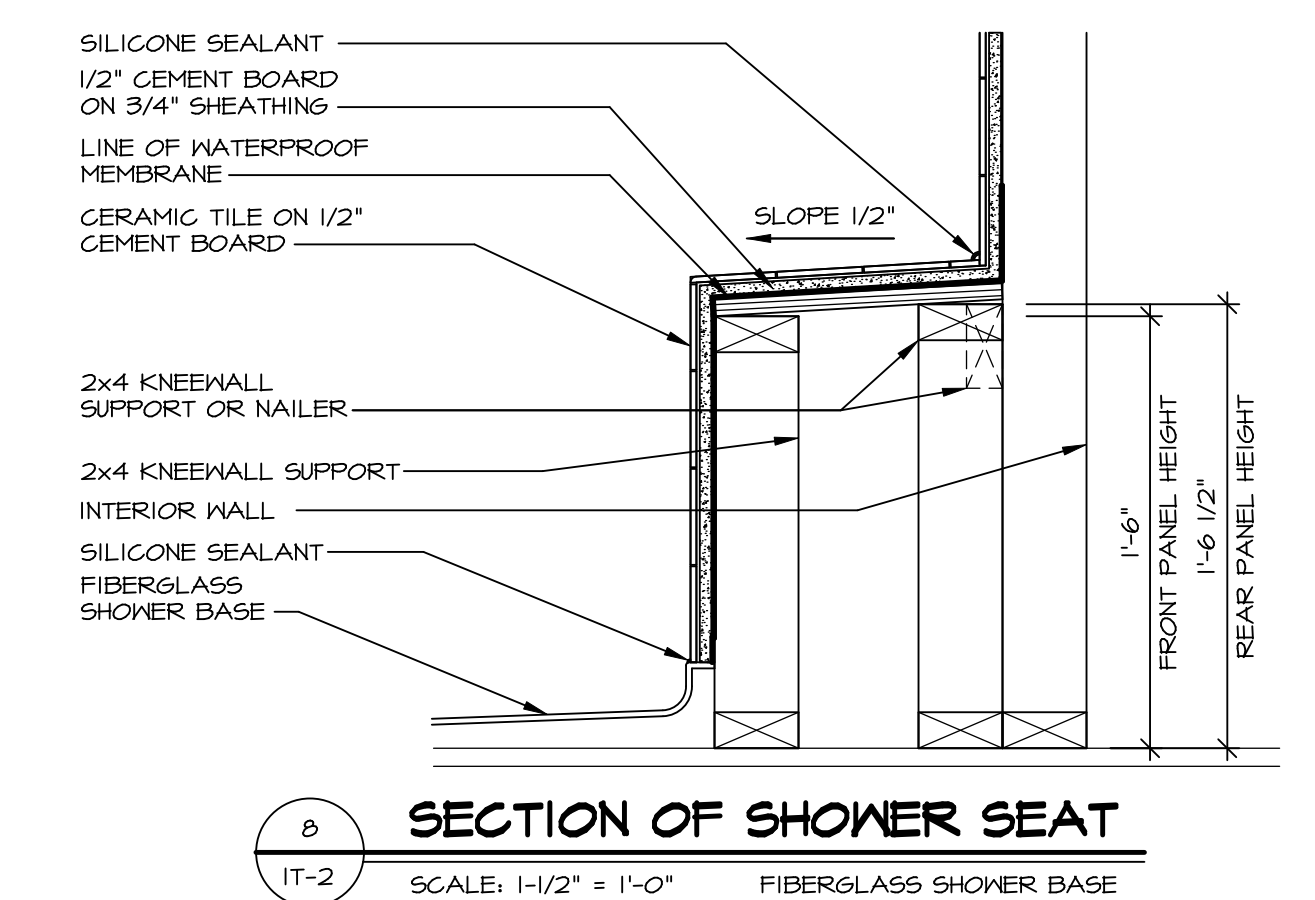
4 ELEVATION
IT-2 SCALE: 1/2" = 1'-0"



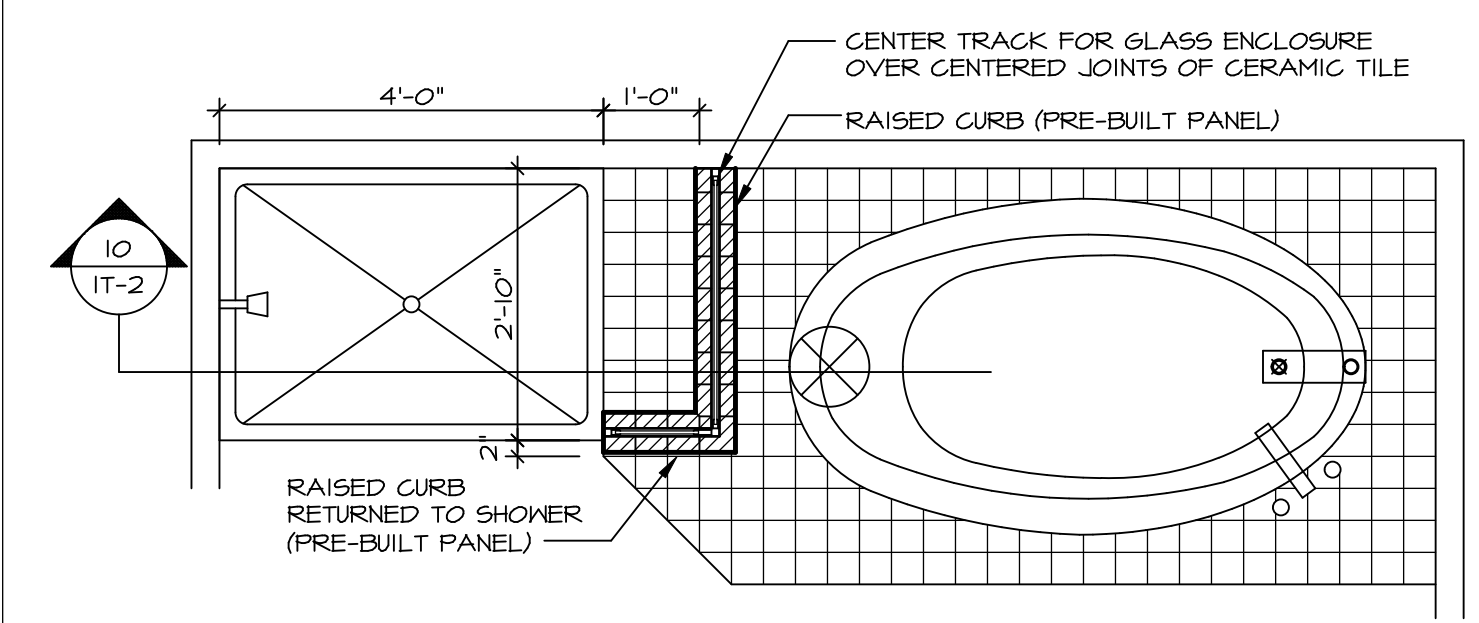
5 INSULATION DETAIL
IT-2 SCALE: 1" = 1'-0" AT EXTERIOR WALL



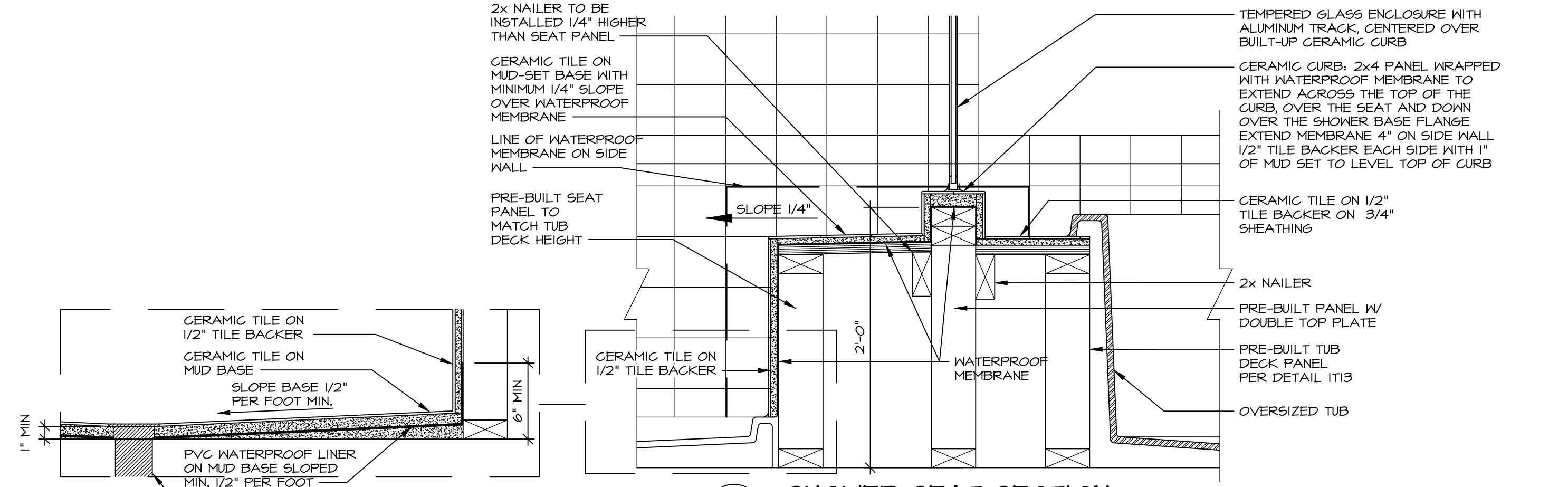
7 SECTION OF SHOWER SEAT AND SHELF
IT-2 SCALE: 1 1/2" = 1'-0"



8 SECTION OF SHOWER SEAT
IT-2 SCALE: 1-1/2" = 1'-0" FIBERGLASS SHOWER BASE



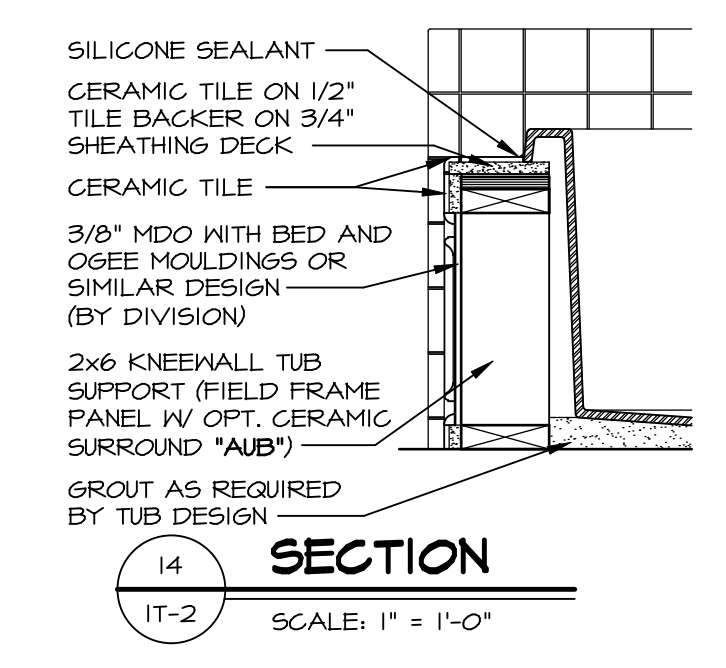
9 SHOWER SEAT PLAN / DETAIL
IT-2 SCALE: 1/2" = 1'-0"



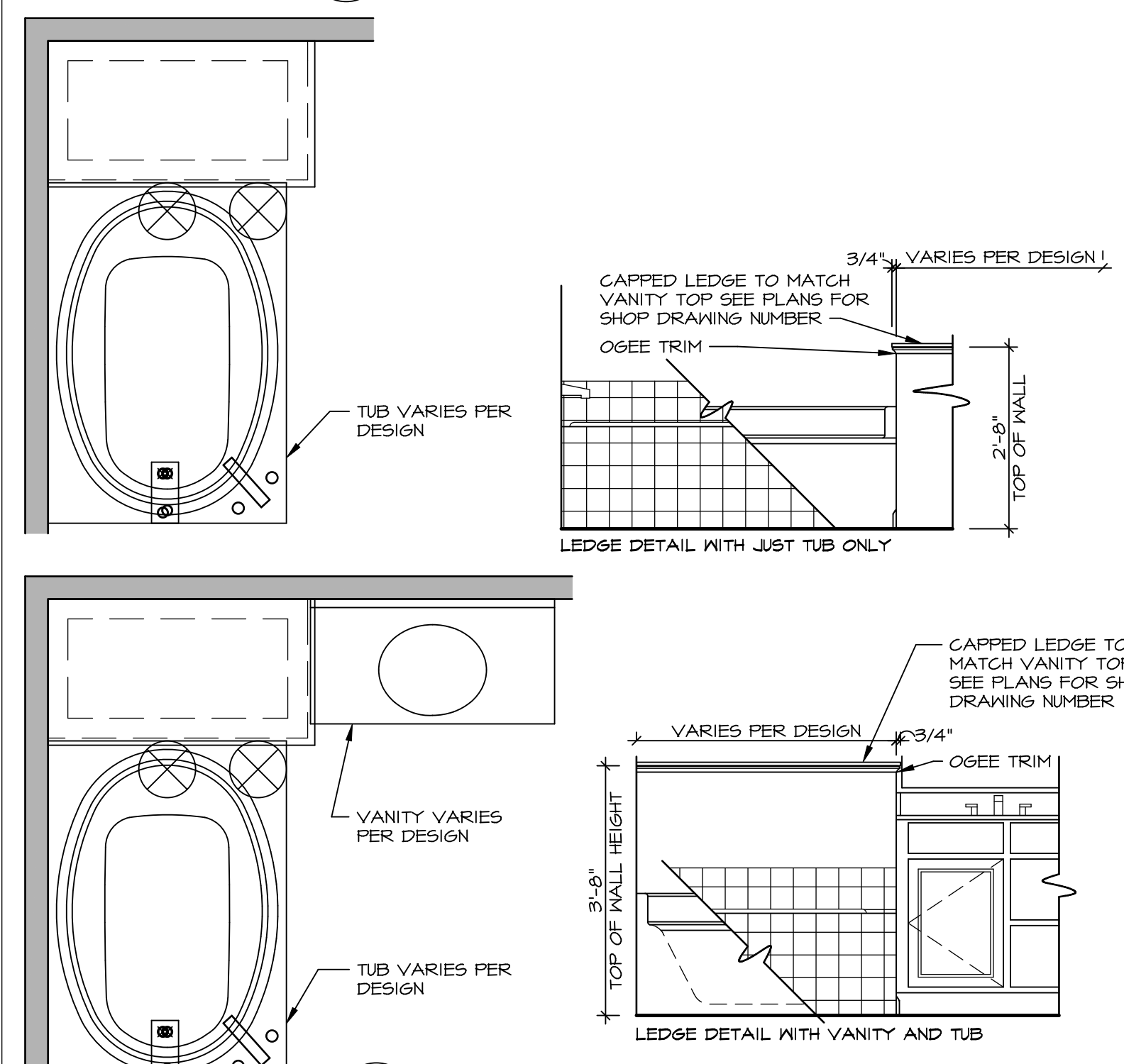
10 SHOWER SEAT SECTION
IT-2 SCALE: 1-1/2" = 1'-0"



10 ALTERNATE SHOWER PAN DETAIL



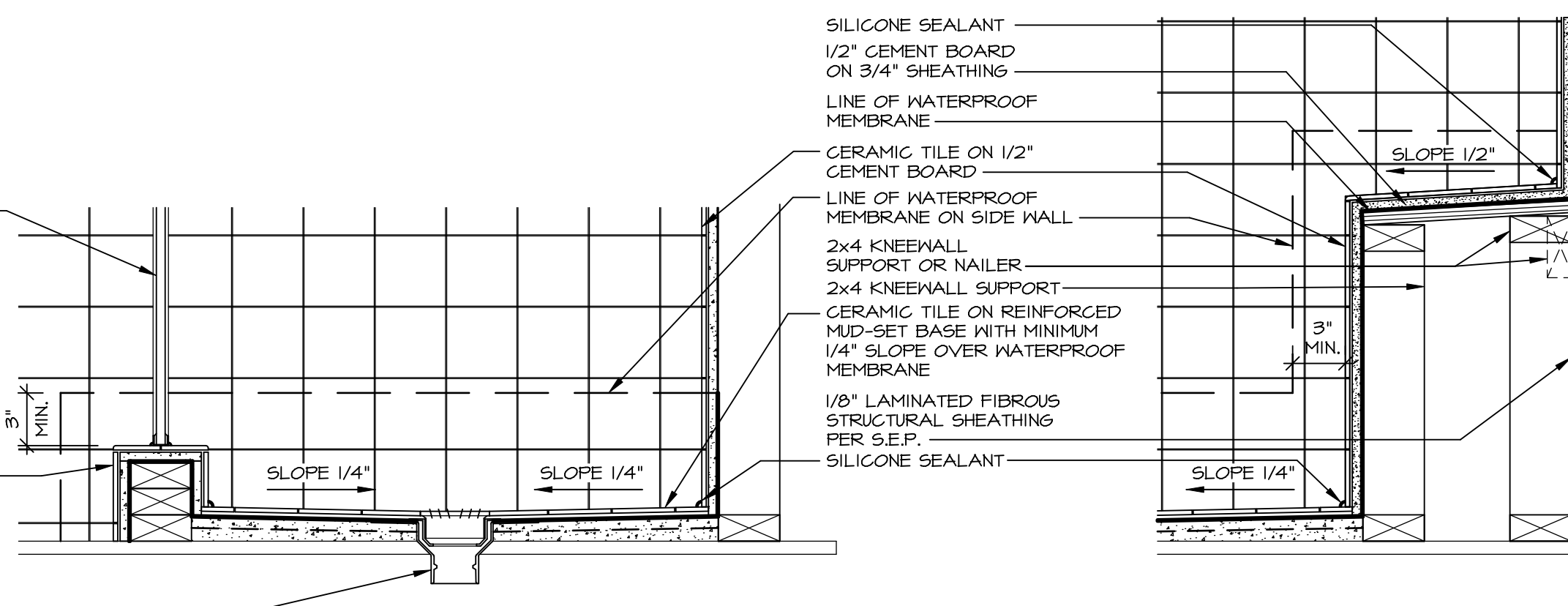
14 SECTION
IT-2 SCALE: 1" = 1'-0"



11 BATHROOM LEDGE DETAIL
IT-2 SCALE: 1/2" = 1'-0"



12 SILL DETAIL
IT-2 SCALE: 1" = 1'-0"



13 SHOWER SEAT SECTION
IT-2 SCALE: 1 1/2" = 1'-0" MUD-SET SHOWER

REVISIONS

REV. NO.	DATE	DESCRIPTION
1	5/11/17	EBP - REVISED DETAIL 1 AND 11 TO REMOVE TUB ACCESS PANEL REF. (095 #15 3/4" x 1/2")
2	9/21/17	EBP - REVISED T-FLY NOTE TO CALL OUT LFS
3	9/21/17	EBP - REVISED NOTE ON DETAIL #1 - REVISED ORDER OF MATERIAL PAR#49304
4	8/28/18	EBP - DTL 8 / 19 ME REMOVED THE 2x6 BULKING AT BASE OF SHWR REQUEST #46653

© NVR, Inc. NVR, Inc. expressly reserves the right to modify these plans without notice. These plans are not to be reproduced, changed or altered in any way without the written consent of NVR, Inc.

NVR
NVR, Inc. Suite 100
5285 Washington Blvd.
Frederick, MD 21703

SET NO. NVR
VERSION
DRAWN BY
DATE:
OPTION

MODEL
STANDARD DETAILS
DRAWING TITLE
INTERIOR TRIM DETAILS
BATH DETAILS
OPTION DESCRIPTION

SHEET NO.
IT-2

J:\PROJECTS\DETAILS\NVR-Interior_Trim\12.dwg_06/05/20 - 10:18 am