

PLUMBING PLAN
 SCALE: 1/4" = 1'-0"

SHEET NO. A-5	MODEL RAVENNA	SET NO. RYNOO VERSION 03	NVR, Inc. Architectural Services Architects 21 B... Frederick, MD 21702	NVR, Inc., owner, expressly reserves its copyright in these plans. These plans shall not be reproduced, copied, or otherwise disseminated in any form, or by any means, without the prior written consent of NVR, Inc.	REV. NO. DATE	REMARKS
	DRAWING TITLE PLUMBING PLAN	DRAWN BY				DATE:
OPTION DESCRIPTION 41	DRAWING TITLE PLUMBING PLAN	DATE:	NVR, Inc.	NVR, Inc.	DATE:	REMARKS

C:\NVA\Solves\RAVENNA_RYN00_03\DC1-YR-004B\688748\Sheets\Lot_Specfic\1 A-5 PLUMB_LS.dwg 02/21/18 - 11:22.am

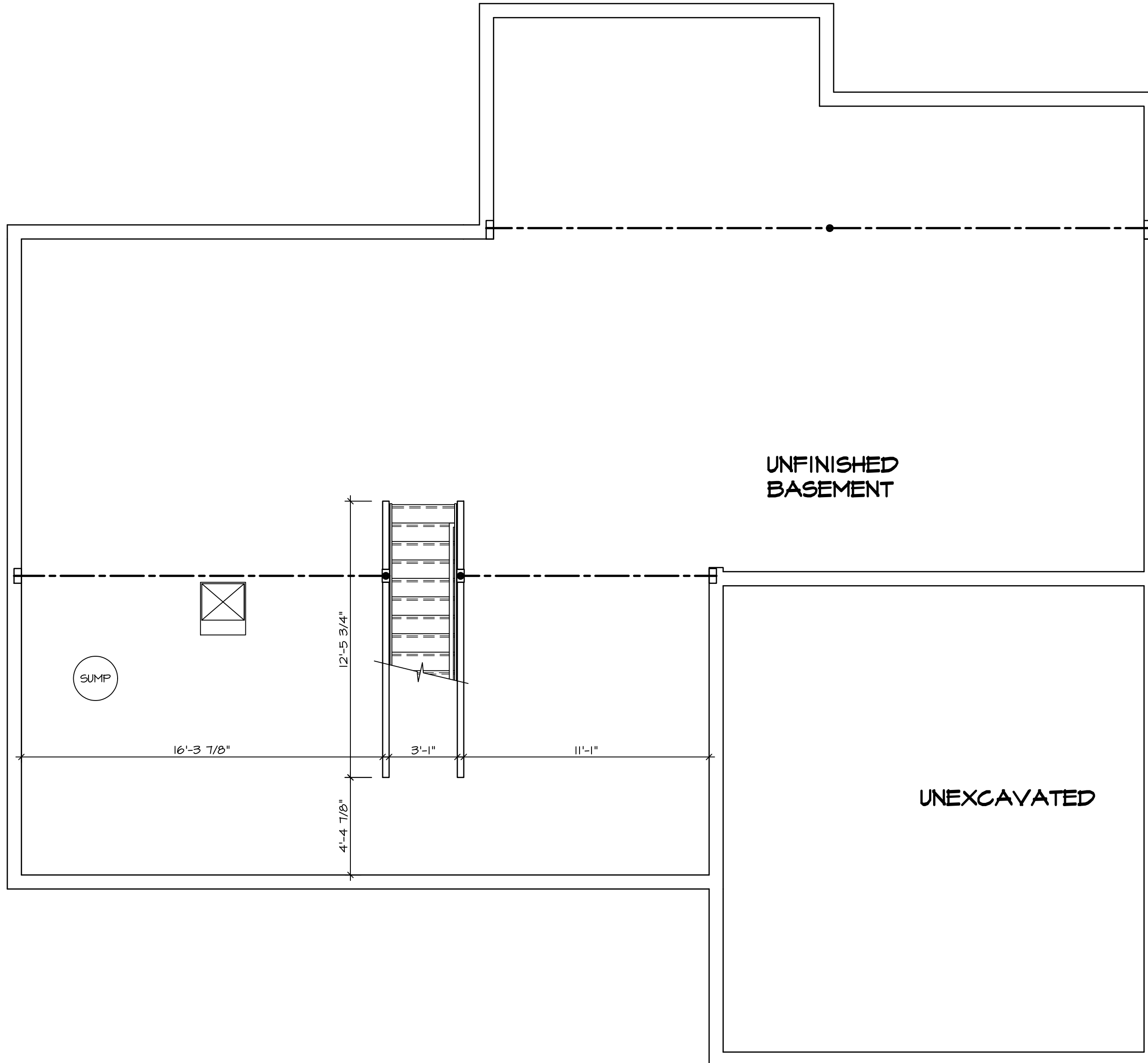
LEGEND	
	BEARING WALL
	NON BEARING WALL
	INDICATES BEARING FROM POINT-LOAD ABOVE
	JACKS
	BEAM/HEADER
	PAD FOOTING
	STEEL COLUMN
	PORTAL FRAME
	JOIST/TRUSS
	LVL
	ENGINEERING PAGE NUMBER

- FLOOR PLAN NOTES**
- ALL HEADERS ARE (2) 2x6 w/ 2x4 WALLS OR (3) 2x6 w/ 2x6 WALLS, UNLESS OTHERWISE NOTED.
 - ALL HEADERS TO HAVE (1) 2x4 OR 2x6 JACK EACH END, UNLESS OTHERWISE NOTED.
 - ALL EXTERIOR WALLS TO BE 4" AND ALL INTERIOR WALLS TO BE 3 1/2" UNLESS OTHERWISE NOTED.
 - HATCHED AREAS INDICATE DROPPED CEILINGS. ALL DROPPED CEILINGS ARE 12" UNLESS OTHERWISE NOTED. SEE "BRACED WALL PANEL DETAIL SHEET" FOR SPECIAL WALL FRAMING LOCATIONS AND HEADER SIZES, IF APPLICABLE.
 - SEE STANDARD DETAIL CATEGORY "IT" SHEET(S) FOR INTERIOR TRIM DETAILS.
 - SEE ARCHITECTURAL DETAIL SHEET "AD" FOR HOUSE SPECIFIC INTERIOR TRIM OPTION TABLE.
 - ALL WINDOWS HAVE 7'-0" 1/2" HEADER HEIGHT UNLESS OTHERWISE NOTED.

GYPSUM NOTES

AT GARAGE:
 GYPSUM BOARD AT COMMON WALLS, CEILINGS, BEAM WRAPS AND SUPPORTS PER STANDARD DETAIL FA-1(b) FIRE ASSEMBLIES OR AS REQUIRED BY LOCAL CODE.

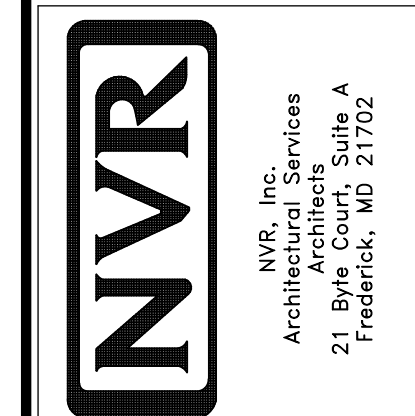
AT STAIRS:
 1/2" GYPSUM BOARD AT UNDERSIDE OF STAIRS AND WALLS IN CLOSET



BASEMENT FLOOR PLAN
 SCALE: 1/4" = 1'-0"

REV. NO.	DATE	REMARKS
1	08/02/16	TH - DRAWING ALIGNMENT

NVR, Inc., owner, expressly reserves its common law copyright in these architectural plans. These plans are not to be reproduced, changed, adapted, or otherwise used in any way without the prior written consent of NVR, Inc.



SHEET NO.	MODEL	SET NO.	VERSION	DRAWN BY	DATE:	OPTION
A-7	RAVENNA	03	03			
44	BASEMENT FLOOR PLAN					

FIRST FLOOR JACK SCHEDULE				
IDENTIFIER	DESCRIPTION	OPTIONS	ENG. NUM.	REMARKS
J01	JACK - (3) 2X6 SFF STUD GRADE	MAA	112	
J02	JACK - (3) 2X6 SFF STUD GRADE	MAA	112	
J03	JACK - (3) 2X4 SFF STUD GRADE	SRN, SGK, MAA	116	FULL HEIGHT STUDS
J04	JACK - (3) 2X4 SFF STUD GRADE	SRN, SGK, MAA	116	FULL HEIGHT STUDS
J15	JACK - (4) 2X4 SFF STUD GRADE	BAR	133	
J16	JACK - (4) 2X4 SFF STUD GRADE	BAR	133	
J25	JACK - (4) 2X4 SFF STUD GRADE	MAV, ELA, ELB, ELC, ELL, GCB	114	
J26	JACK - (4) 2X4 SFF STUD GRADE	MAV, ELA, ELB, ELC, ELL, GCB	114	
J27	JACK - (3) 2X4 SFF STUD GRADE	ELA, ELB, ELC, MAV, EVA, EVP, GCB	114	
J28	JACK - (3) 2X4 SFF STUD GRADE	ELA, ELB, ELC, MAV, EVA, EVP, GCB	114	
J29	JACK - (2) 2X4 SFF STUD GRADE	MAV, GCB	102	
J30	JACK - (2) 2X4 SFF STUD GRADE	MAV, GCB	102	
J65	JACK - (2) 2X4 SFF STUD GRADE	BAR	112	
J66	JACK - (2) 2X4 SFF STUD GRADE	BAR	112	
J76	JACK - (3) 2X4 SFF STUD GRADE		101	
J76	JACK - (3) 2X4 SFF STUD GRADE		101	
J76	JACK - (3) 2X4 SFF STUD GRADE	SGK OR SRN	110	

LVL PLY TO PLY FASTENING SCHEDULE:

1.A - (2) PLY UP TO AND INCLUDING 11 7/8" TALL; FASTEN PLYS W/ (2) ROWS 16D NAILS AT 12" O.C.
 2.A - (2) PLY 14" TO AND 18" TALL (INCLUSIVE); FASTEN PLYS W/ (3) ROWS 16D NAILS AT 12" O.C.
 3.A - (2) PLY 20" TALL AND OVER; FASTEN PLYS W/ (4) ROWS 16D NAILS AT 12" O.C.
 4.A - (3) PLY UP TO AND INCLUDING 11 7/8" TALL; FASTEN PLYS W/ (2) ROWS 16D NAILS AT 12" O.C. FROM EACH SIDE
 5.A - (3) PLY 14" TO AND 18" TALL (INCLUSIVE); FASTEN PLYS W/ (3) ROWS 16D NAILS AT 12" O.C. FROM EACH SIDE
 6.A - (3) PLY 20" TALL AND OVER; FASTEN PLYS W/ (4) ROWS 16D NAILS AT 12" O.C. FROM EACH SIDE

FIELD INSTALLED FIRST FLOOR BEAM/HEADER SCHEDULE					
IDENTIFIER	DESCRIPTION	LENGTH	OPTIONS	ENG. NUM.	REMARKS
B02	BEAM STEEL - W12X19	20'-2 1/2"	MAV, ELA, ELB, ELC, ELL, GCB	145	
B11-3	LVL - 16	15'-4"	MAA	112	3 PLY, 5A

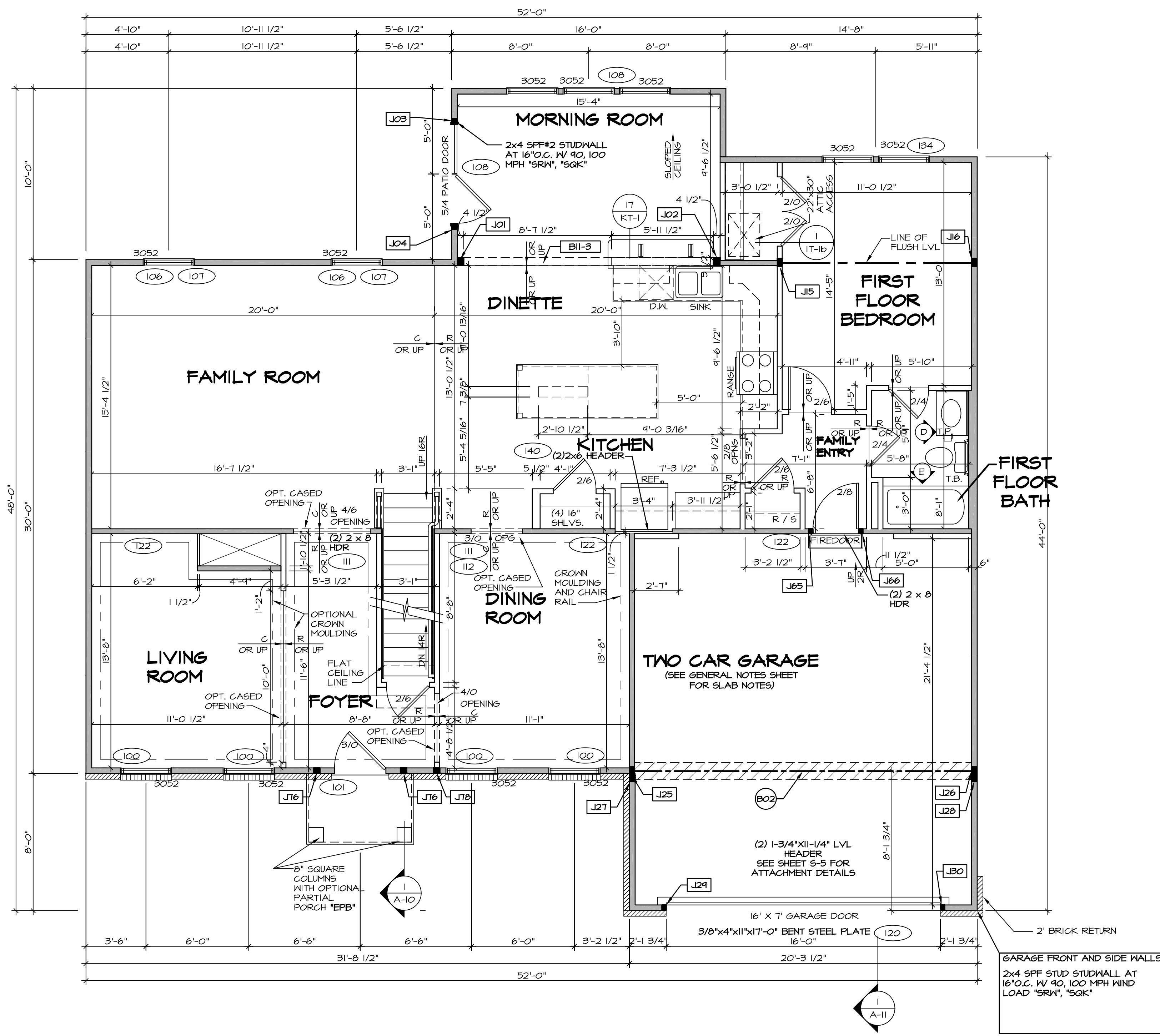
LEGEND

- BEARING WALL
- NON BEARING WALL
- INDICATES BEARING FROM POINT-LOAD ABOVE
- JACKS
- BEAM/HEADER
- PAD FOOTING
- STEEL COLUMN
- PORTAL FRAME
- JOIST/TRUSS
- LVL
- ENGINEERING PAGE NUMBER

SEE FC DETAILS FOR FRAMING CONNECTORS

- FLOOR PLAN NOTES**
- ALL HEADERS ARE (2) 2x6 W/ 2x4 WALLS OR (3) 2x6 W/ 2x6 WALLS, UNLESS OTHERWISE NOTED.
 - ALL HEADERS TO HAVE (1) 2x4 OR 2x6 JACK AND KING STUD EACH END, UNLESS OTHERWISE NOTED.
 - ALL EXTERIOR WALLS TO BE 4" W/ OSB OR 3 1/2" W/ T-PLY; ALL INTERIOR WALLS TO BE 3 1/2", UNLESS OTHERWISE NOTED.
 - HATCHED AREAS INDICATE DROPPED CEILINGS. ALL DROPPED CEILINGS ARE 12" UNLESS OTHERWISE NOTED.
 - SEE "BRACED WALL PANEL DETAIL SHEET" FOR SPECIAL WALL FRAMING LOCATIONS AND HEADER SIZES, IF APPLICABLE.
 - SEE STANDARD DETAIL CATEGORY "IT" SHEET(S) FOR INTERIOR TRIM DETAILS.
 - SEE ARCHITECTURAL DETAIL SHEET "AD" FOR HOUSE SPECIFIC INTERIOR TRIM OPTION TABLE.
 - ALL WINDOWS HAVE 1"-0 1/2" HEADER HEIGHT UNLESS OTHERWISE NOTED.
 - ALL HEADERS IN NON-BEARING WALLS SHALL BE A SINGLE FLAT 2X4 OR 2X6 ATTACHED TO CRIPPLES ABOVE, UNLESS OTHERWISE NOTED.

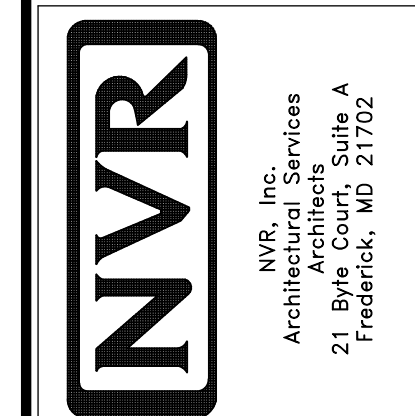
- GYPSUM NOTES**
- AT GARAGE:
 GYPSUM BOARD AT COMMON WALLS, CEILING, BEAM WRAPS AND SUPPORTS PER STANDARD DETAIL FA-1(b) FIRE ASSEMBLIES OR AS REQUIRED BY LOCAL CODE.
- AT STAIRS:
 1/2" GYPSUM BOARD AT UNDERSIDE OF STAIRS AND WALLS IN CLOSET



FIRST FLOOR PLAN
 SCALE: 1/4" = 1'-0"

REV. NO.	DATE	DESCRIPTION
1	08/02/16	TH - DRAWING ALIGNMENT
2	07/11/17	SL5 - T-PLY CONVERSION PROJECT

NVR, Inc., owner, expressly reserves its copyright in the drawings and plans. These plans are not to be reproduced, changed, copied, or otherwise used without the written consent of NVR, Inc.



SET NO. RYNOO	VERSION 03
DRAWN BY	DATE:
OPTION	OPTION

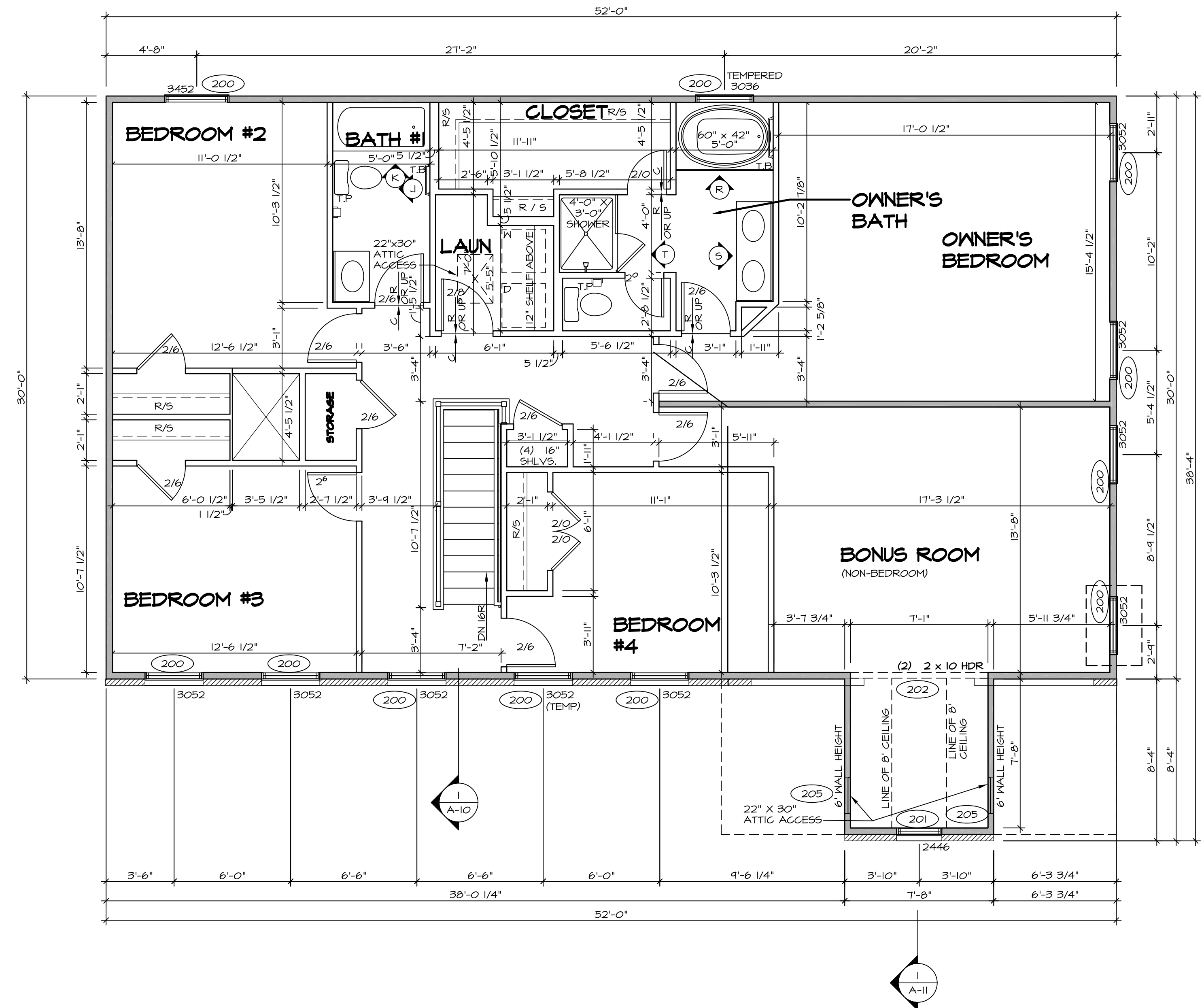
SHEET NO. A-8	MODEL RAVENNA	DRAWING TITLE FIRST FLOOR PLAN
OPTION DESCRIPTION		
45		

SECOND FLOOR JACK SCHEDULE				
IDENTIFIER	DESCRIPTION	OPTIONS	ENG. NUM.	REMARKS

LEGEND	
	BEARING WALL
	NON BEARING WALL
	INDICATES BEARING FROM POINT-LOAD ABOVE
	JACKS
	BEAM/HEADER
	PAD FOOTING
	STEEL COLUMN
	PORTAL FRAME
	JOIST/TRUSS
	LVL
	ENGINEERING PAGE NUMBER

SEE FC DETAILS FOR FRAMING CONNECTORS

- FLOOR PLAN NOTES**
- ALL HEADERS ARE (2) 2x6 w/ 2x4 WALLS OR (3) 2x6 w/ 2x6 WALLS, UNLESS OTHERWISE NOTED.
 - ALL HEADERS TO HAVE (1) 2x4 OR 2x6 JACK AND KING STUD EACH END, UNLESS OTHERWISE NOTED.
 - ALL EXTERIOR WALLS TO BE 4" w/ OSB OR 3 1/2" w/ T-PLY; ALL INTERIOR WALLS TO BE 3 1/2", UNLESS OTHERWISE NOTED.
 - HATCHED AREAS INDICATE DROPPED CEILINGS. ALL DROPPED CEILINGS ARE 12" UNLESS OTHERWISE NOTED.
 - SEE "BRACED WALL PANEL DETAIL SHEET" FOR SPECIAL WALL FRAMING LOCATIONS AND HEADER SIZES, IF APPLICABLE.
 - SEE STANDARD DETAIL CATEGORY "IT" SHEET(S) FOR INTERIOR TRIM DETAILS.
 - SEE ARCHITECTURAL DETAIL SHEET "AD" FOR HOUSE SPECIFIC INTERIOR TRIM OPTION TABLE.
 - ALL WINDOWS HAVE 1'-0 1/2" HEADER HEIGHT UNLESS OTHERWISE NOTED.
 - ALL HEADERS IN NON-BEARING WALLS SHALL BE A SINGLE FLAT 2x4 OR 2x6 ATTACHED TO CRIPPLES ABOVE, UNLESS OTHERWISE NOTED.



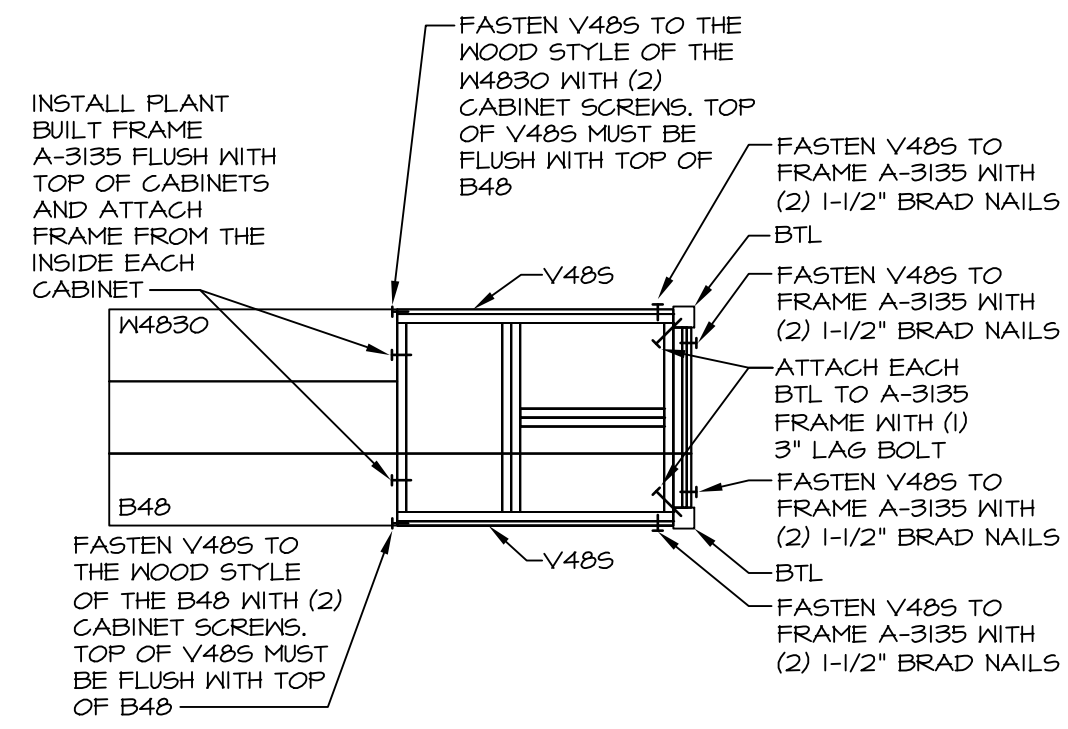
SECOND FLOOR PLAN
SCALE: 1/4" = 1'-0"

REV. NO.	DATE	DESCRIPTION	REMARKS
1	08/02/16	TH - DRAWING ALIGNMENT	
2	6/22/17	TRV - REVISED ROOF ACCESS PANELS	
3	07/11/17	SLS - T-PLY CONVERSION PROJECT	

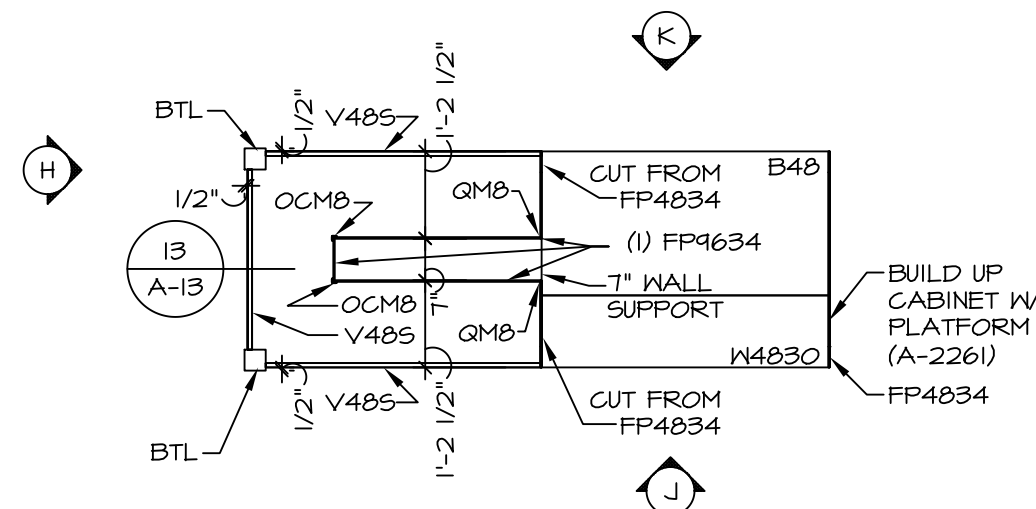
<p>NVR, Inc., owner, expressly disclaims any copyright interest in the common law plans. These plans are not to be reproduced, changed, copied, or otherwise used in any way without the written consent of NVR, Inc.</p>	<p>NVR Architectural Services Architects 21 Park Plaza, Suite A Frederick, MD 21702</p>
---	--

<p>SET NO. RYNOO VERSION 03 DRAWN BY DATE: OPTION</p>	<p>MODEL RAVENNA DRAWING TITLE SECOND FLOOR PLAN OPTION DESCRIPTION</p>
---	--

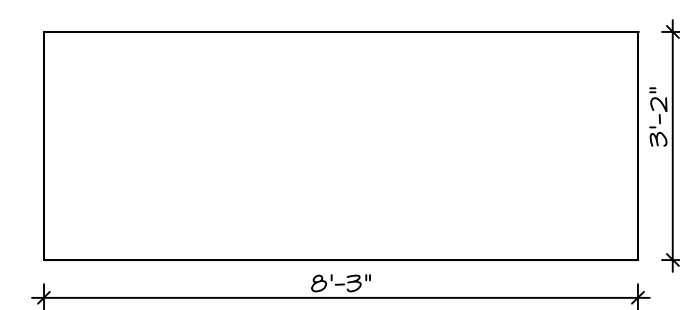
SHEET NO. A-9	49
-------------------------	----



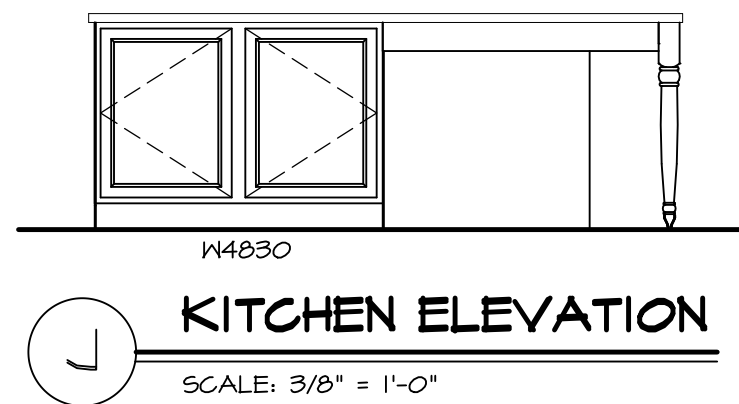
13 COUNTERTOP SUPPORT FRAME
SCALE: 3/8" = 1'-0"



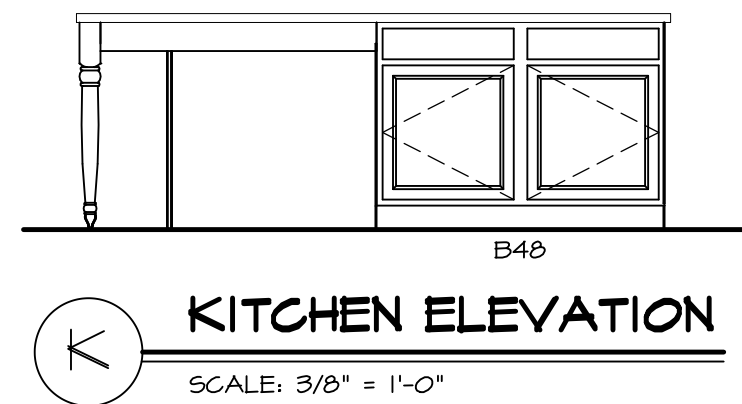
11 KITCHEN CABINET PLAN - KC-3217
SCALE: 3/8" = 1'-0" GOURMET KITCHEN ISLAND *KFF*



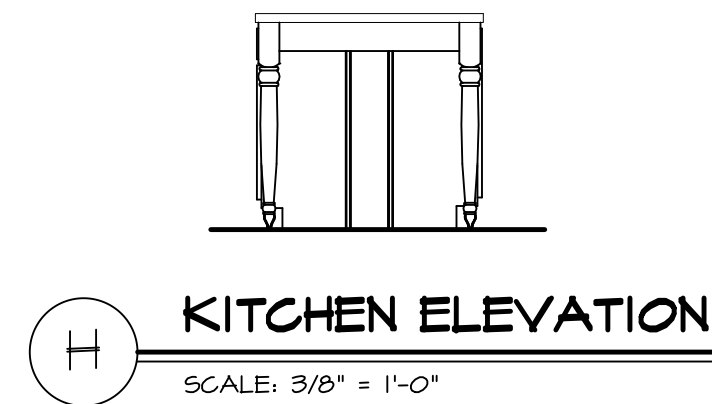
12 COUNTERTOP PLAN - KT-3217
SCALE: 3/8" = 1'-0" GOURMET KITCHEN ISLAND *KFF*



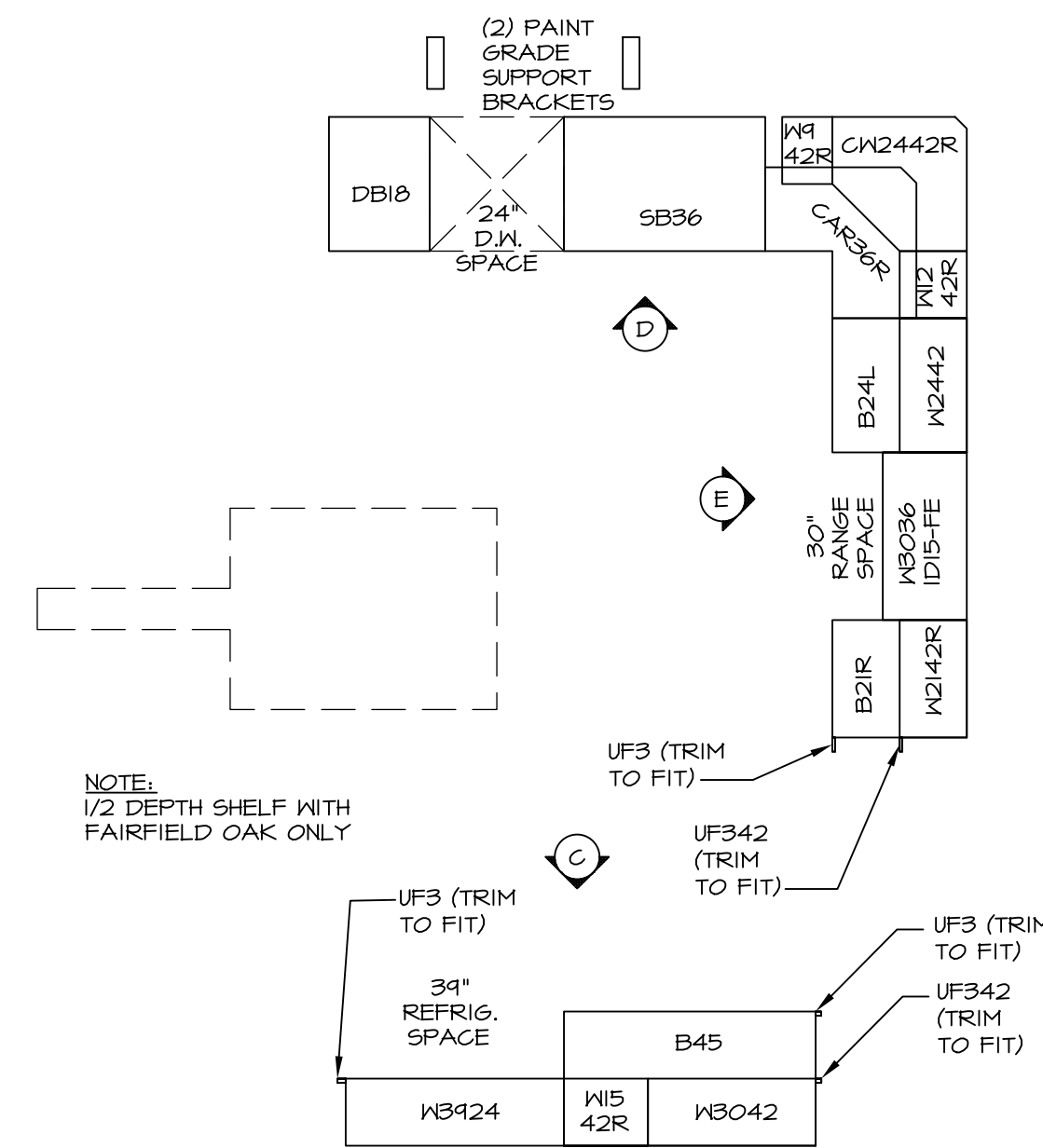
J KITCHEN ELEVATION
SCALE: 3/8" = 1'-0"



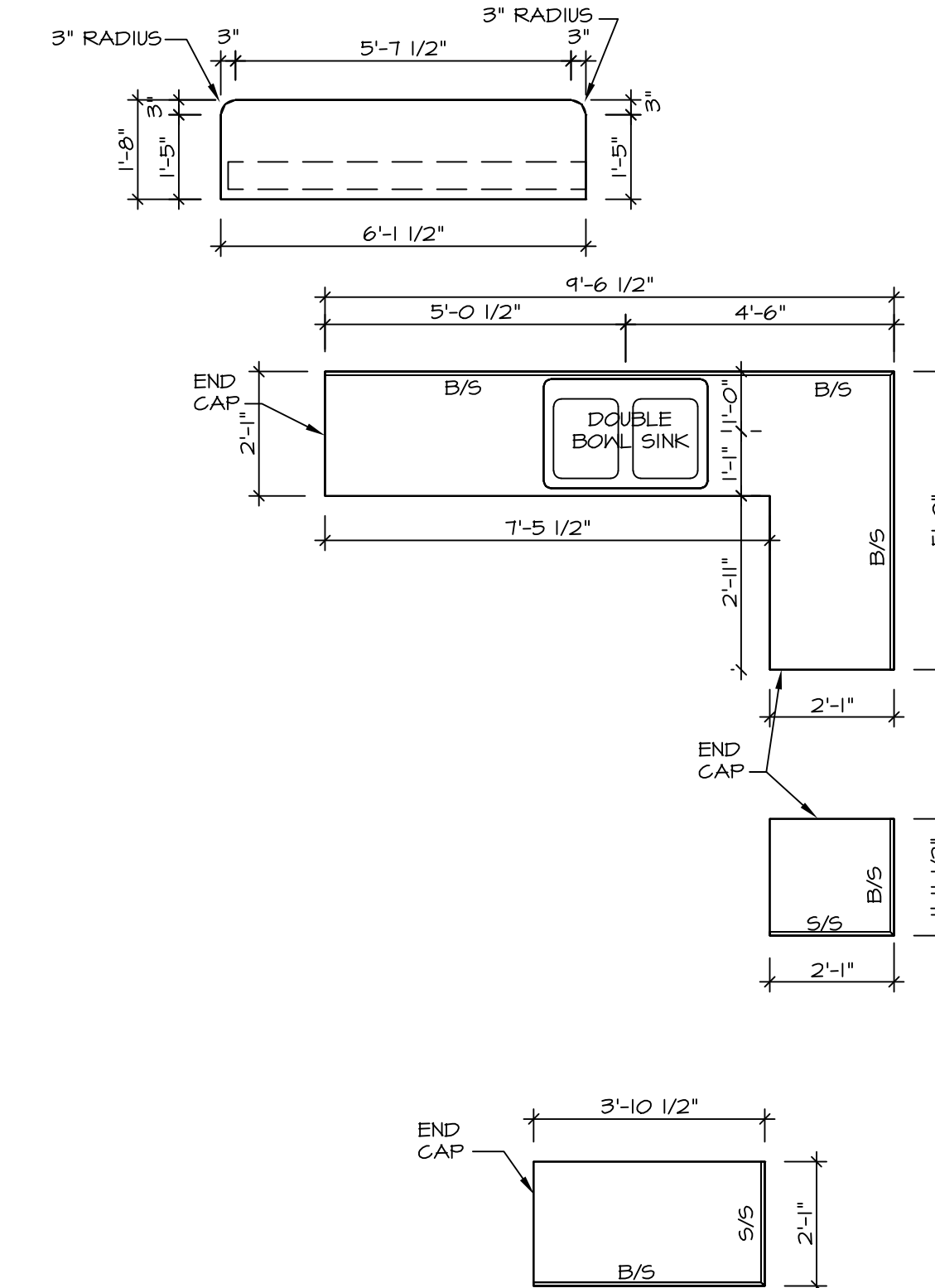
K KITCHEN ELEVATION
SCALE: 3/8" = 1'-0"



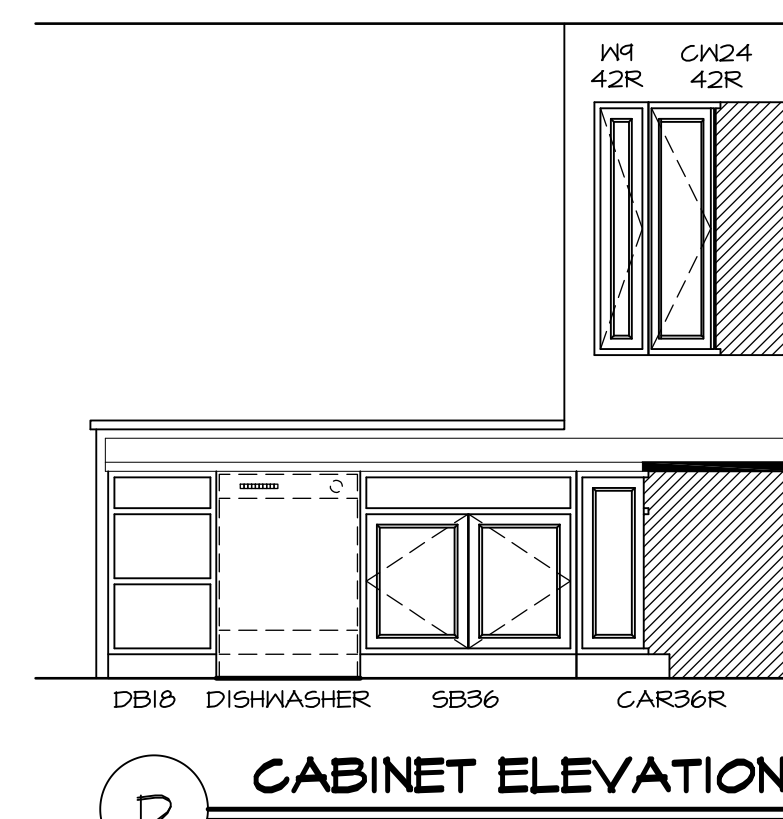
H KITCHEN ELEVATION
SCALE: 3/8" = 1'-0"



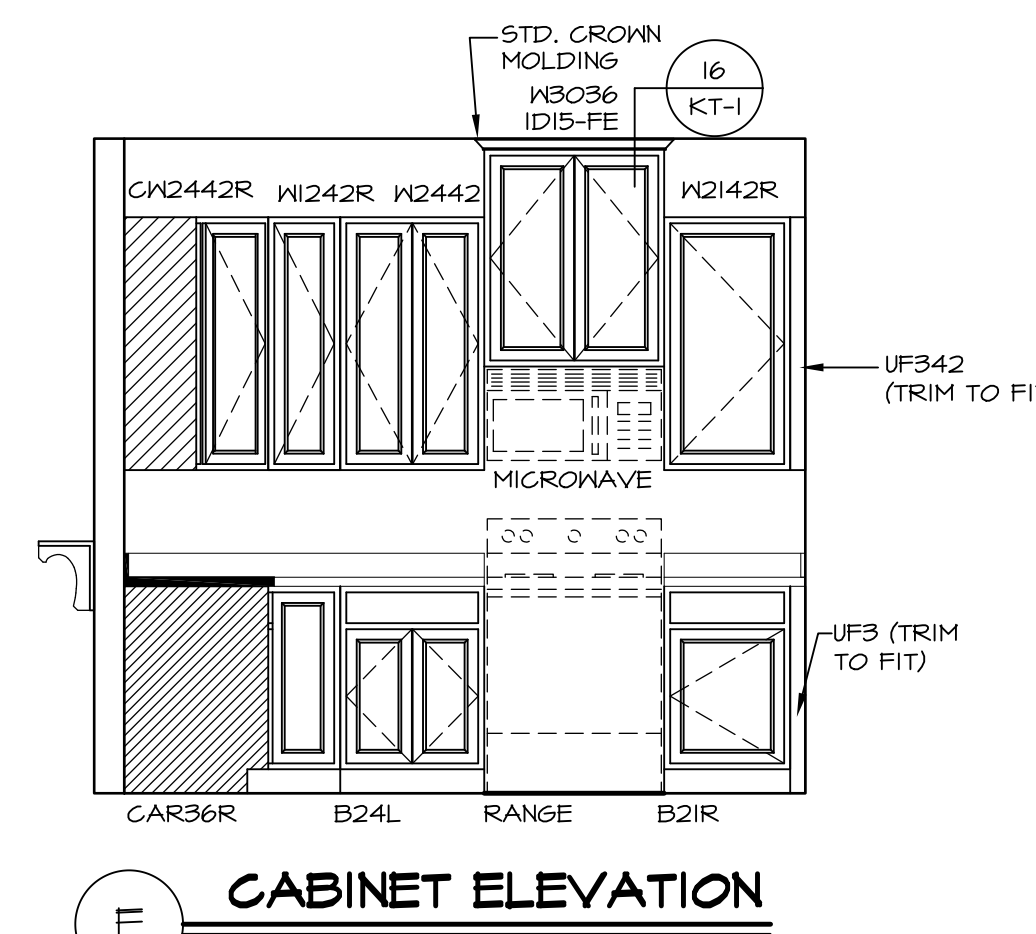
3 KITCHEN CABINET PLAN - KC-2856
SCALE: 3/8" = 1'-0"



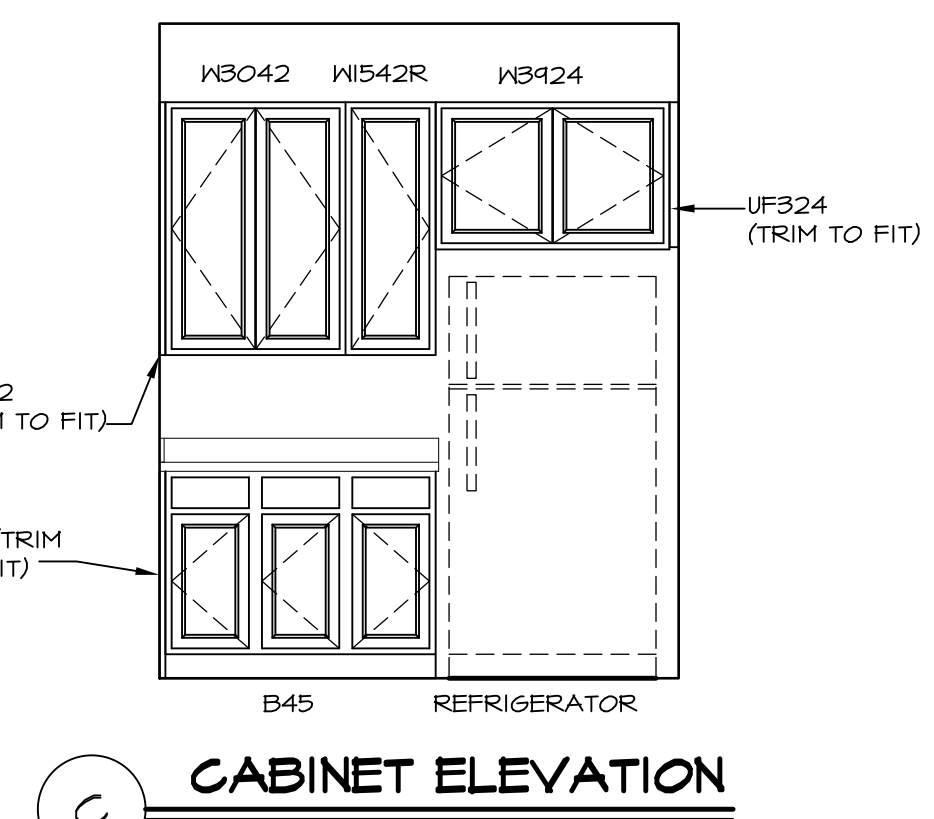
4 KITCHEN COUNTERTOP PLAN - KT-2856
SCALE: 3/8" = 1'-0"



D CABINET ELEVATION
SCALE: 3/8" = 1'-0"

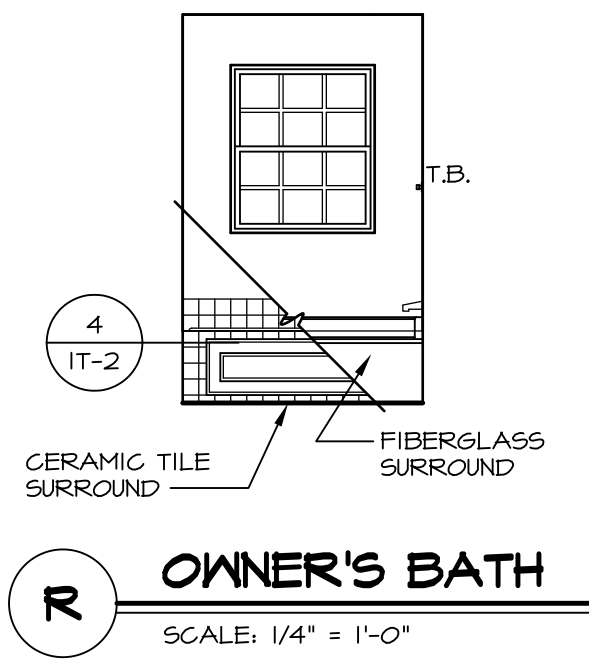


E CABINET ELEVATION
SCALE: 3/8" = 1'-0"



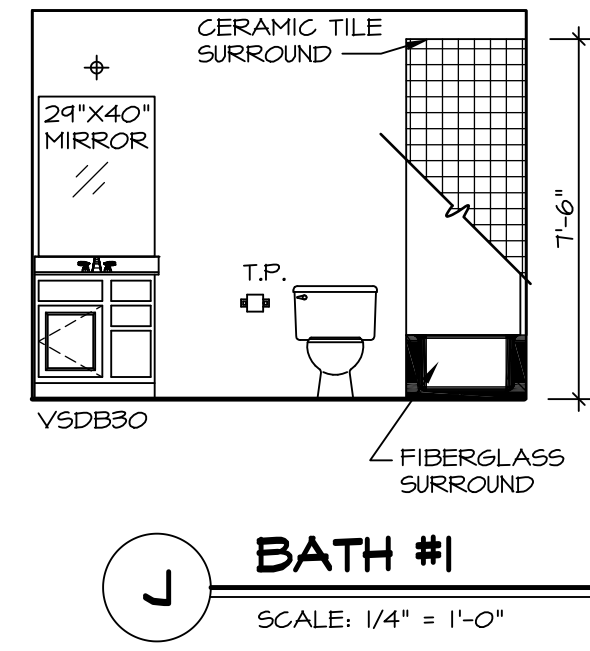
C CABINET ELEVATION
SCALE: 3/8" = 1'-0"

SHEET NO. A-13	MODEL RAVENNA	DRAWING TITLE KITCHEN PLAN	OPTION DESCRIPTION	REV. NO.	DATE	REMARKS
SET NO. RYNOO VERSION 03 DRAWN BY DATE: OPTION				NVR, Inc., owner, expressly reserves its copyright in these plans. These plans are not to be reproduced, changed, copied in any way, or used for any other purpose without the written consent of NVR, Inc.		
NVR, Inc. Architectural Services Architects 21 Bay View, Ste. A Frederick, MD 21702				C:\NVR\Solves\RAVENNA_RYNOO_03\031-VR-0048\688748\Sheets\Lot_Specs\60_A-13_KIT_LS.dwg 02/27/18 - 11:22 am		



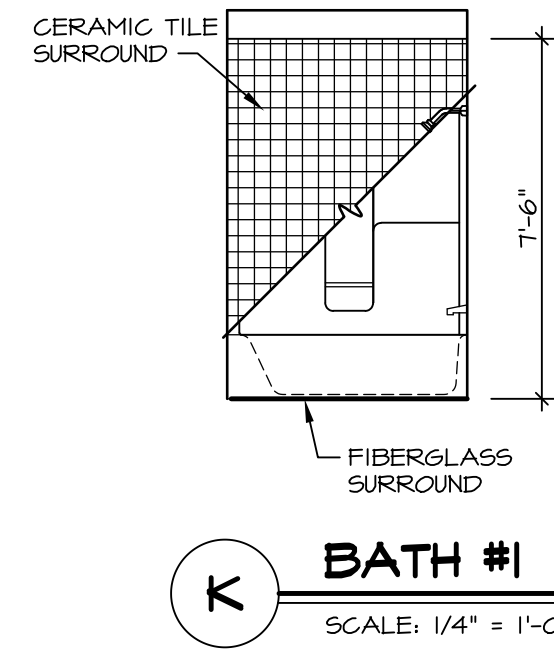
OWNER'S BATH

SCALE: 1/4" = 1'-0"



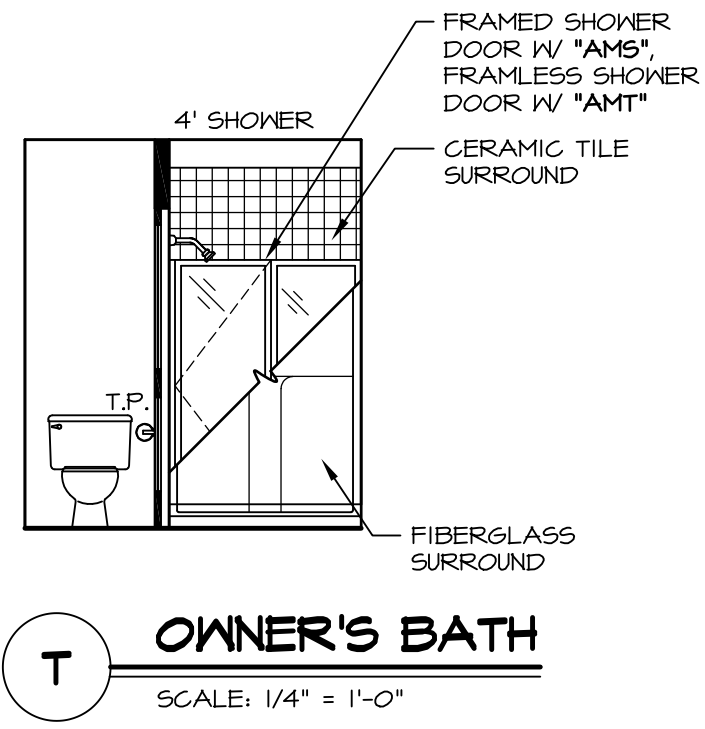
BATH #1

SCALE: 1/4" = 1'-0"



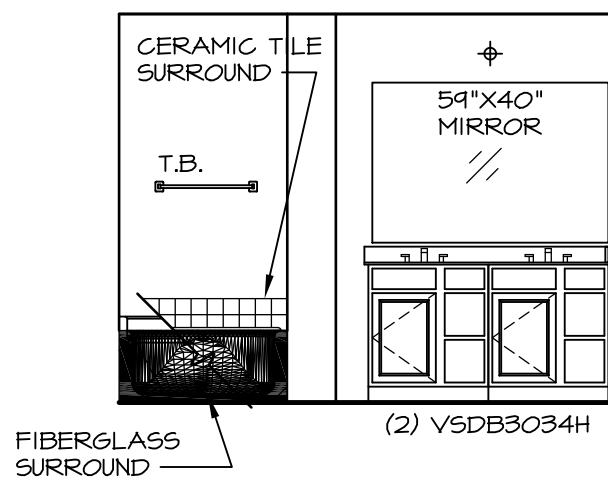
BATH #1

SCALE: 1/4" = 1'-0"



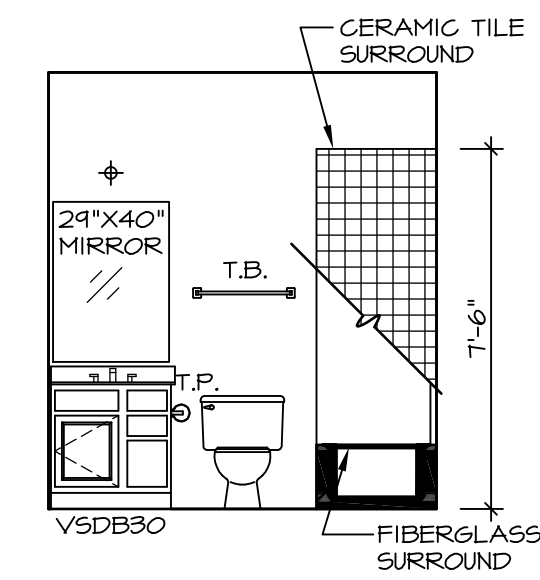
OWNER'S BATH

SCALE: 1/4" = 1'-0"



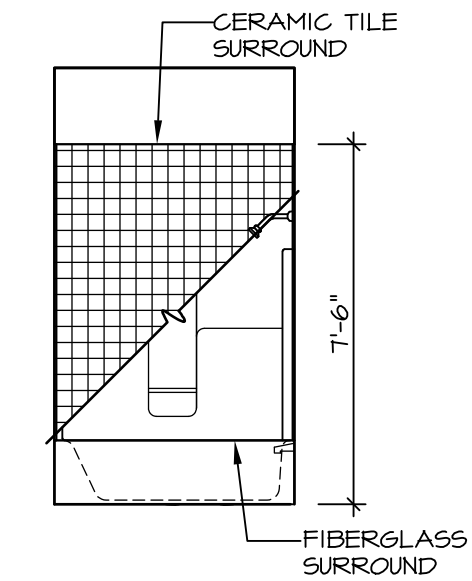
OWNER'S BATH

SCALE: 1/4" = 1'-0"



FIRST FLOOR BATH

SCALE: 1/4" = 1'-0"



FIRST FLOOR BATH

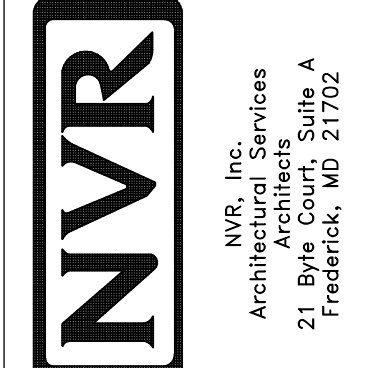
SCALE: 1/4" = 1'-0"

NOTES:

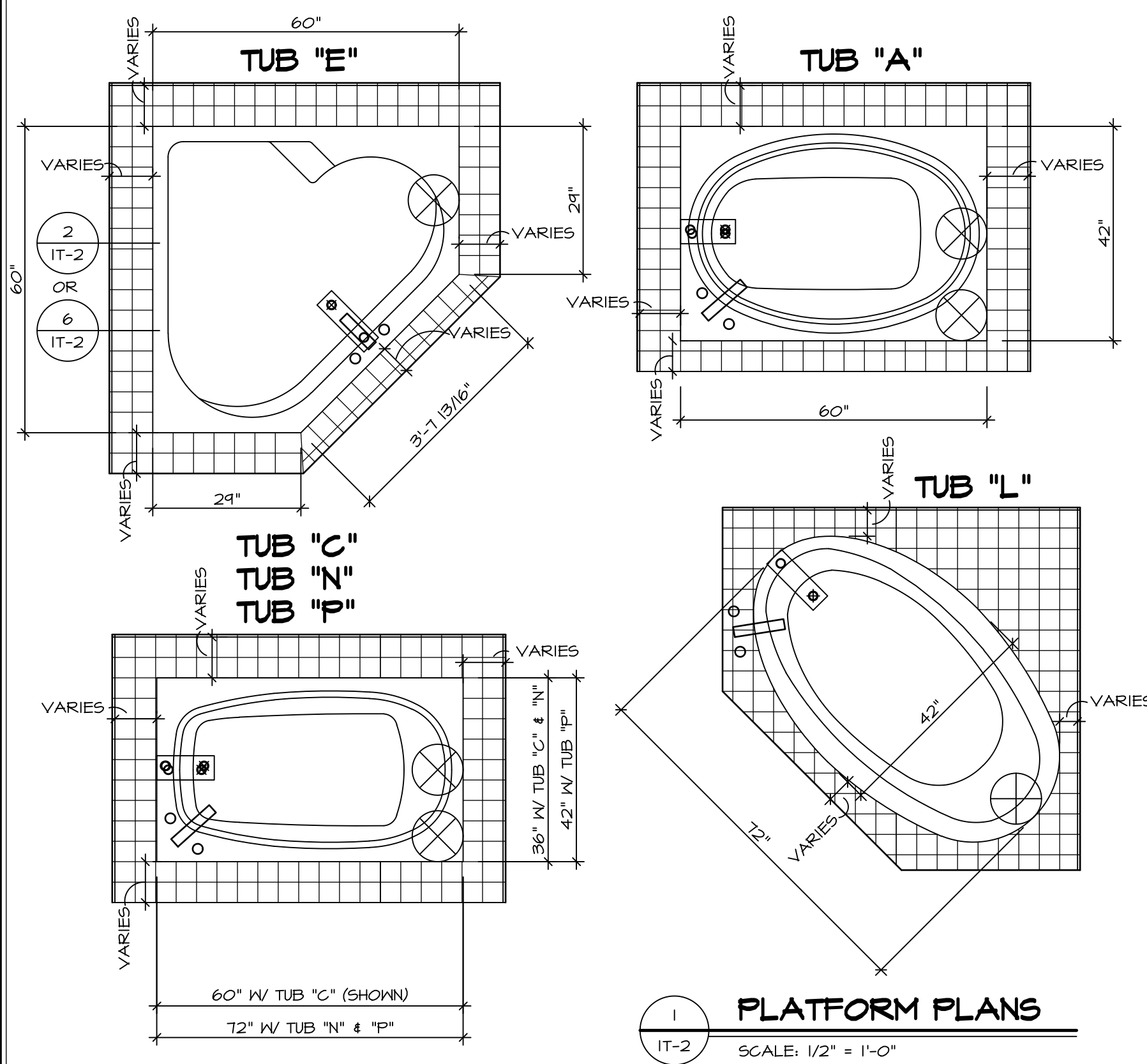
1. TEMPERED GLASS SHOWER ENCLOSURE WITH SWING DOOR OR OPTIONAL SLIDING DOOR BY DIVISION
2. TUB ACCESS PANELS PROVIDED AS NEEDED. ALL MATERIALS BY DIVISION
3. REFER TO SHEET IT-2 FOR TUB AND SHOWER DETAILS.
4. ALL V5DB24-42 DRAWERS TO BE SET ON RIGHT HAND.
5. BATH ELEVATIONS ARE SHOWN PER PLAN.

REV. NO.	DATE	REMARKS
1	08/02/16	TH - DRAINING ALIGNMENT

NVR, Inc., owner, expressly reserves its copyright in these plans. These plans are not to be reproduced, changed, adapted, or otherwise used in any way without the prior written consent of NVR, Inc.

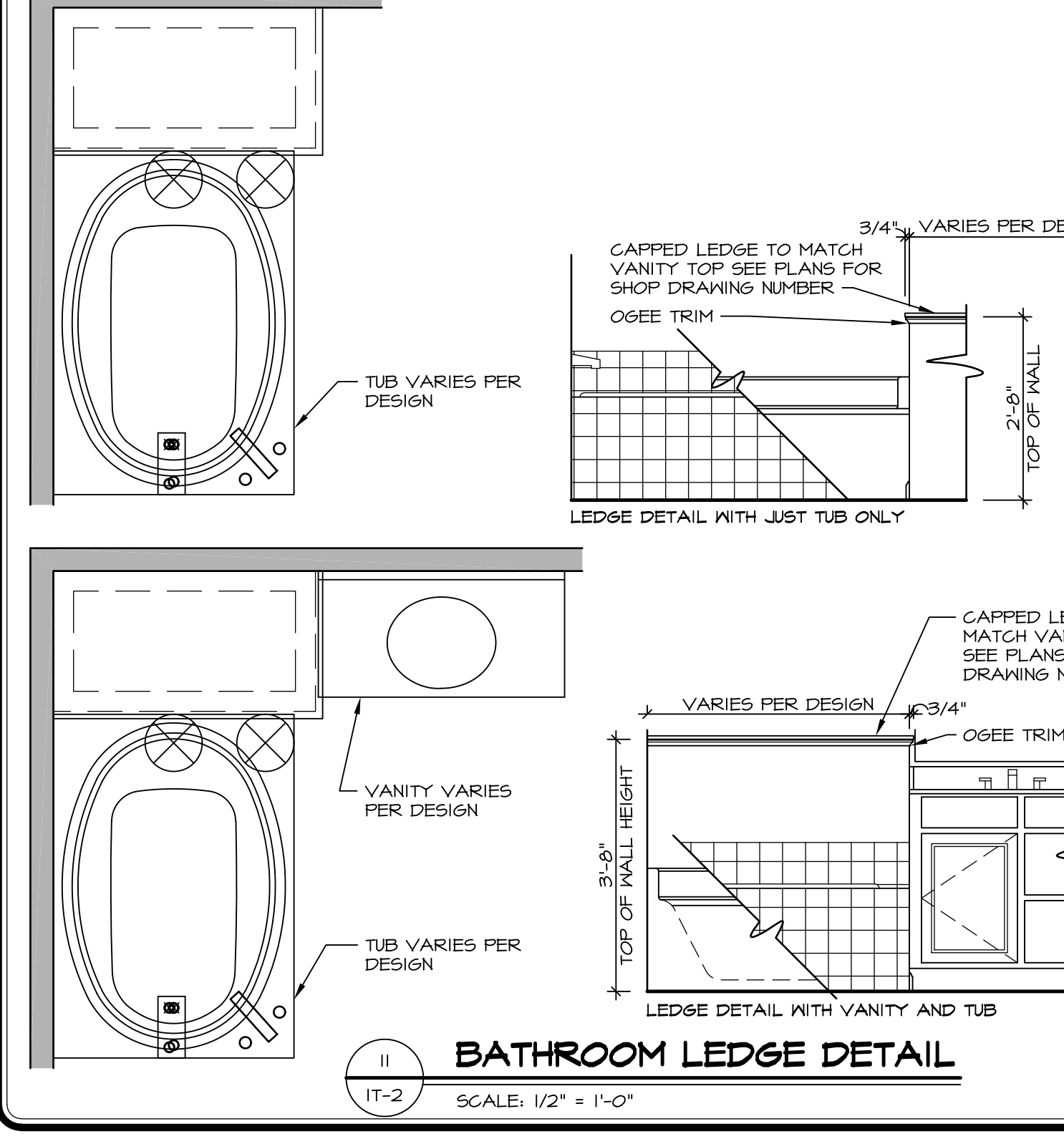
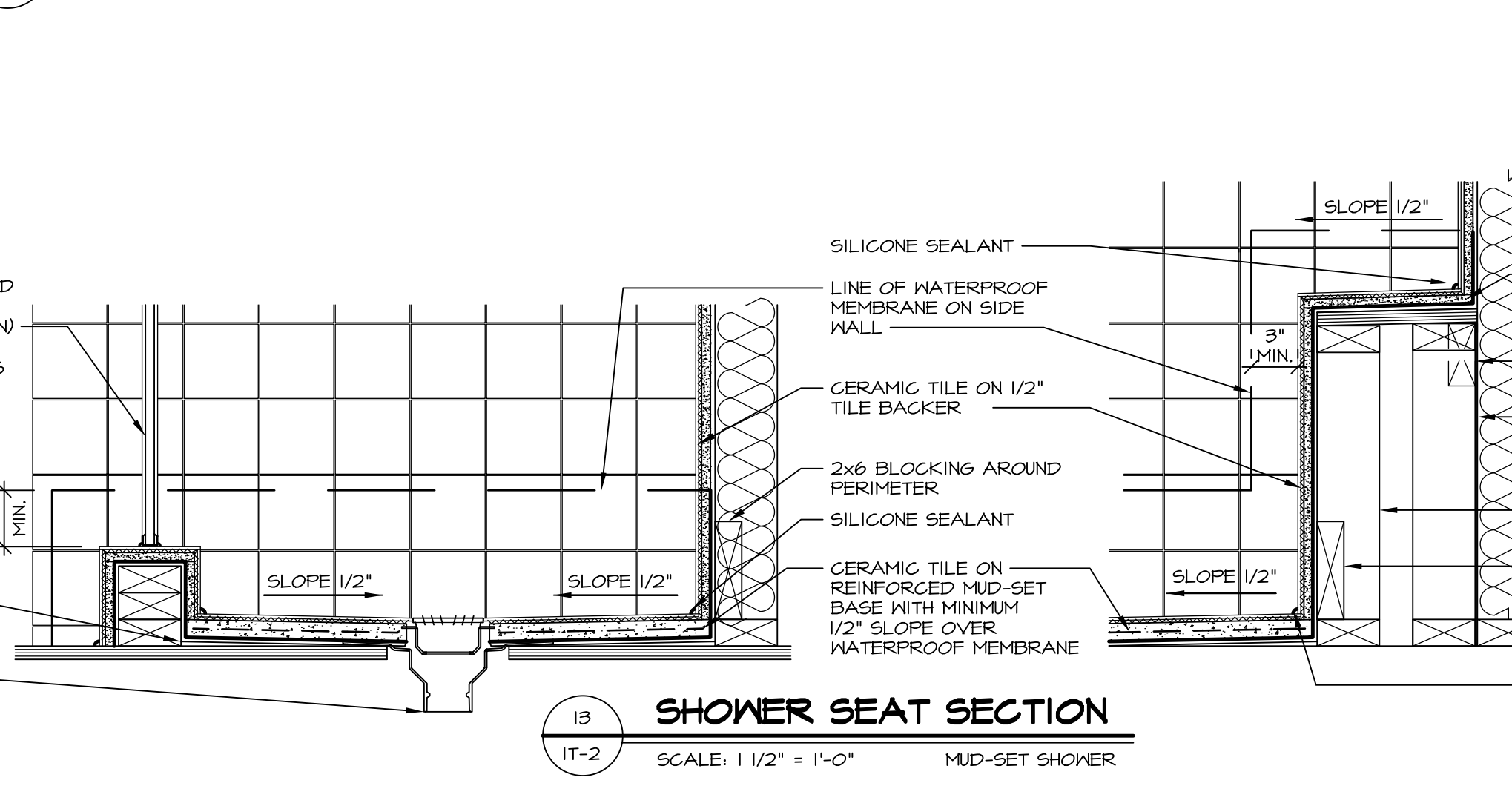
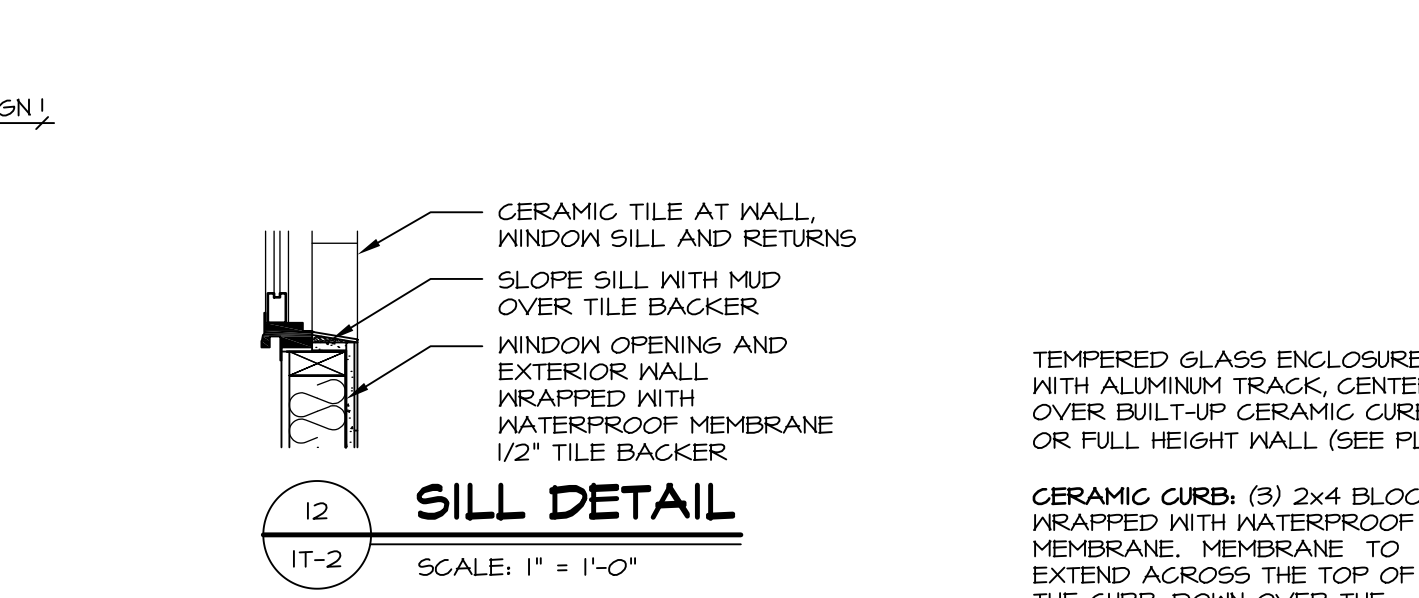
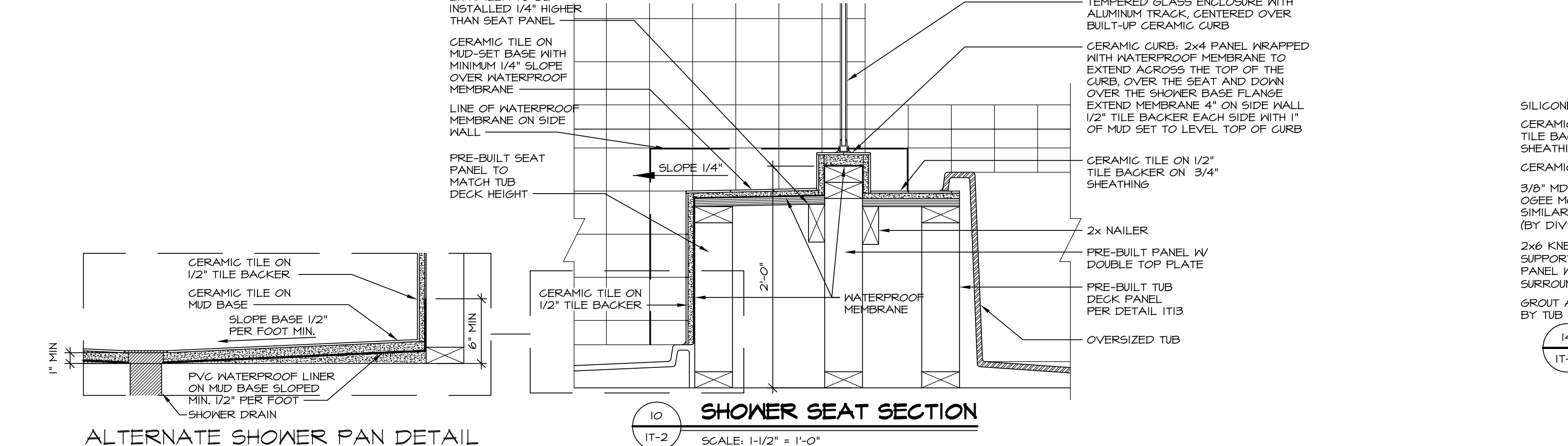
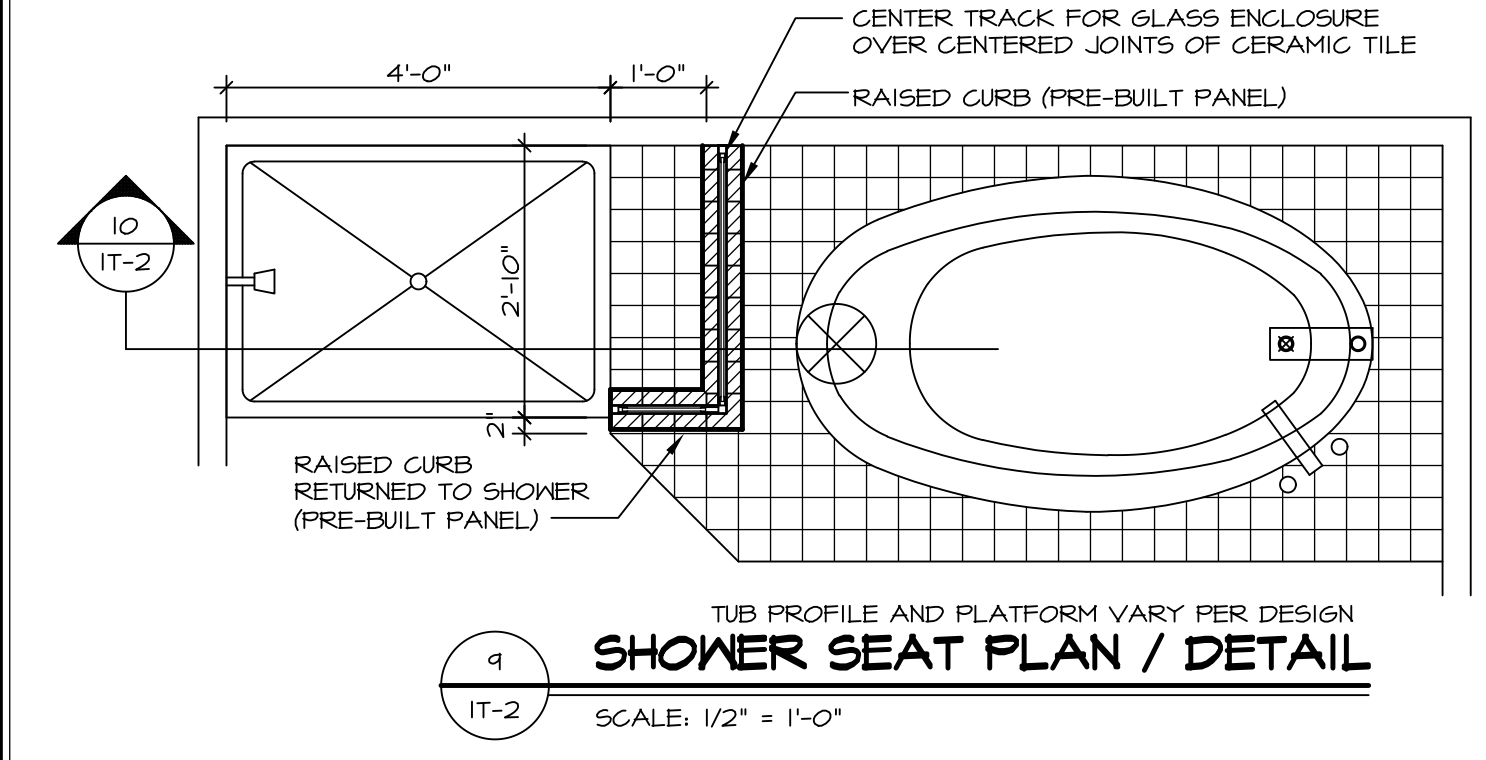
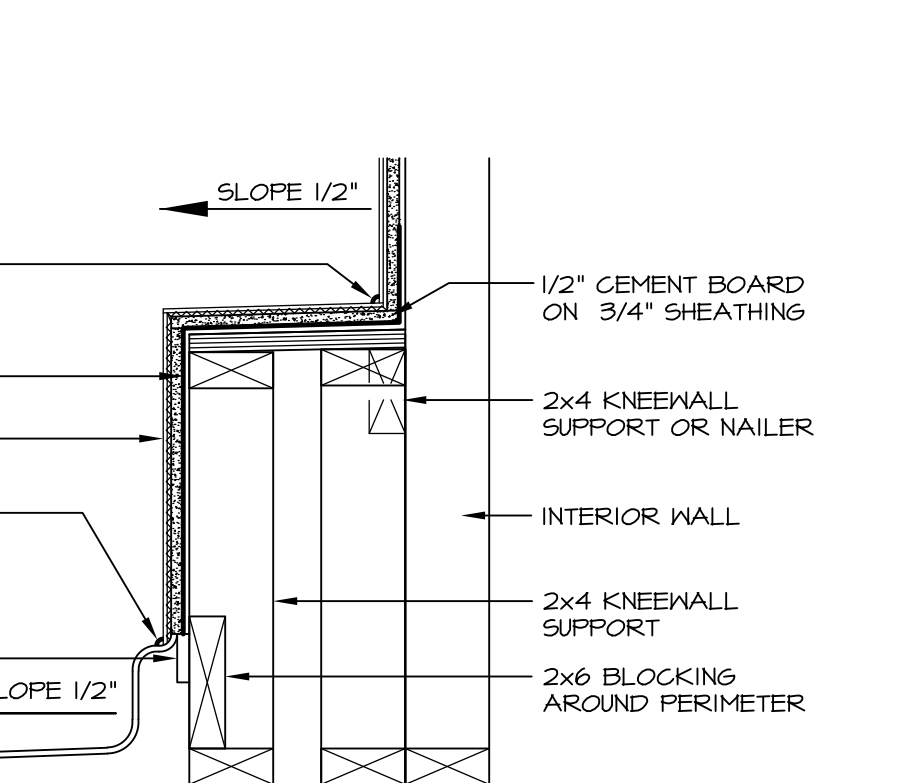
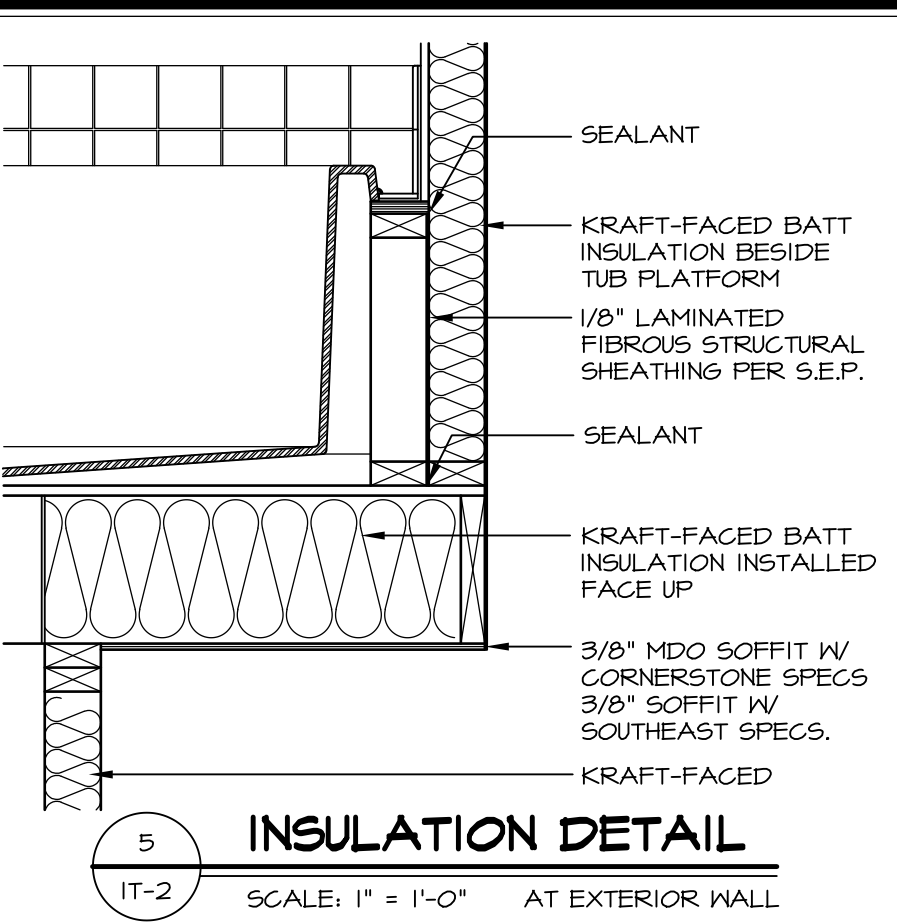
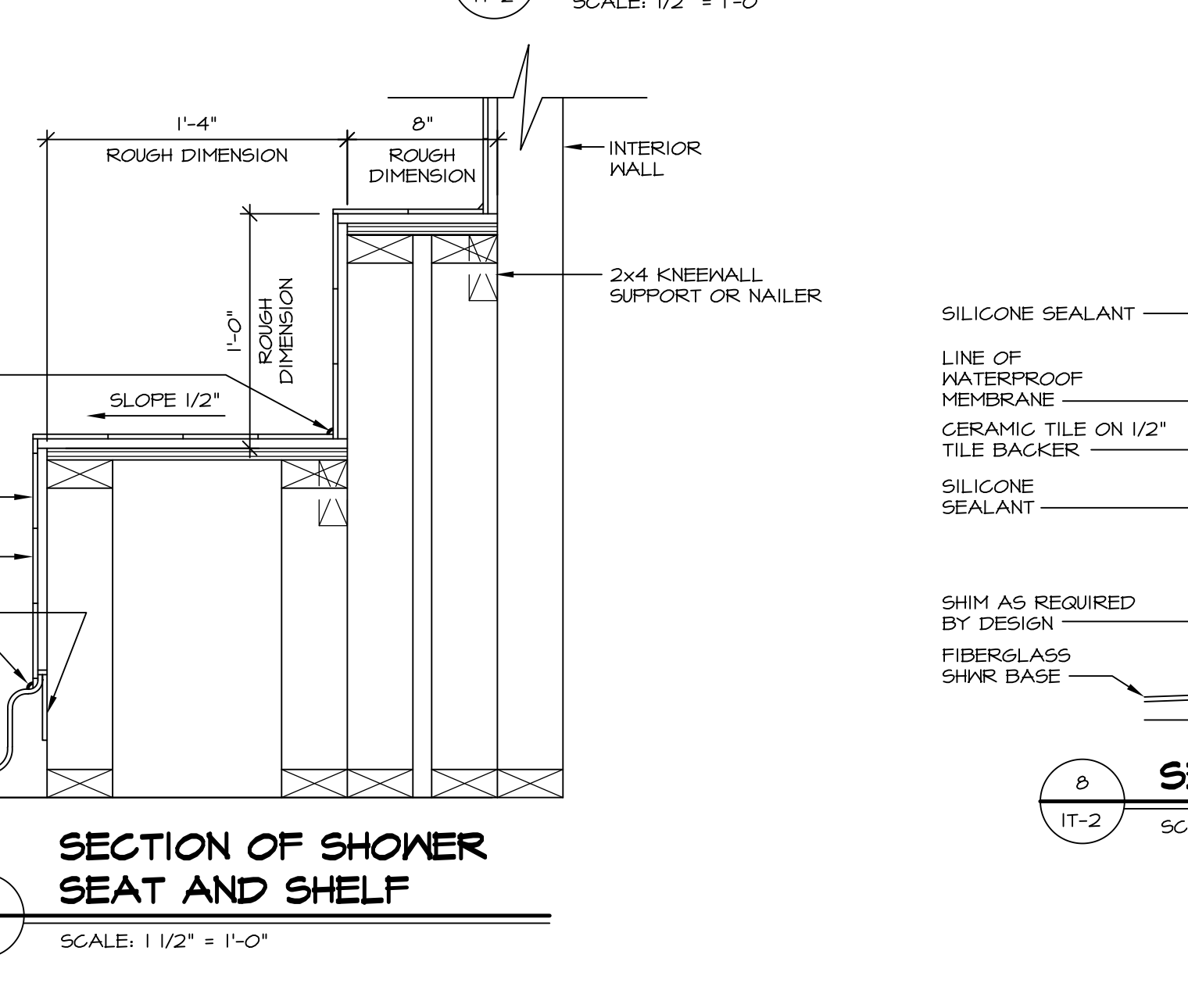
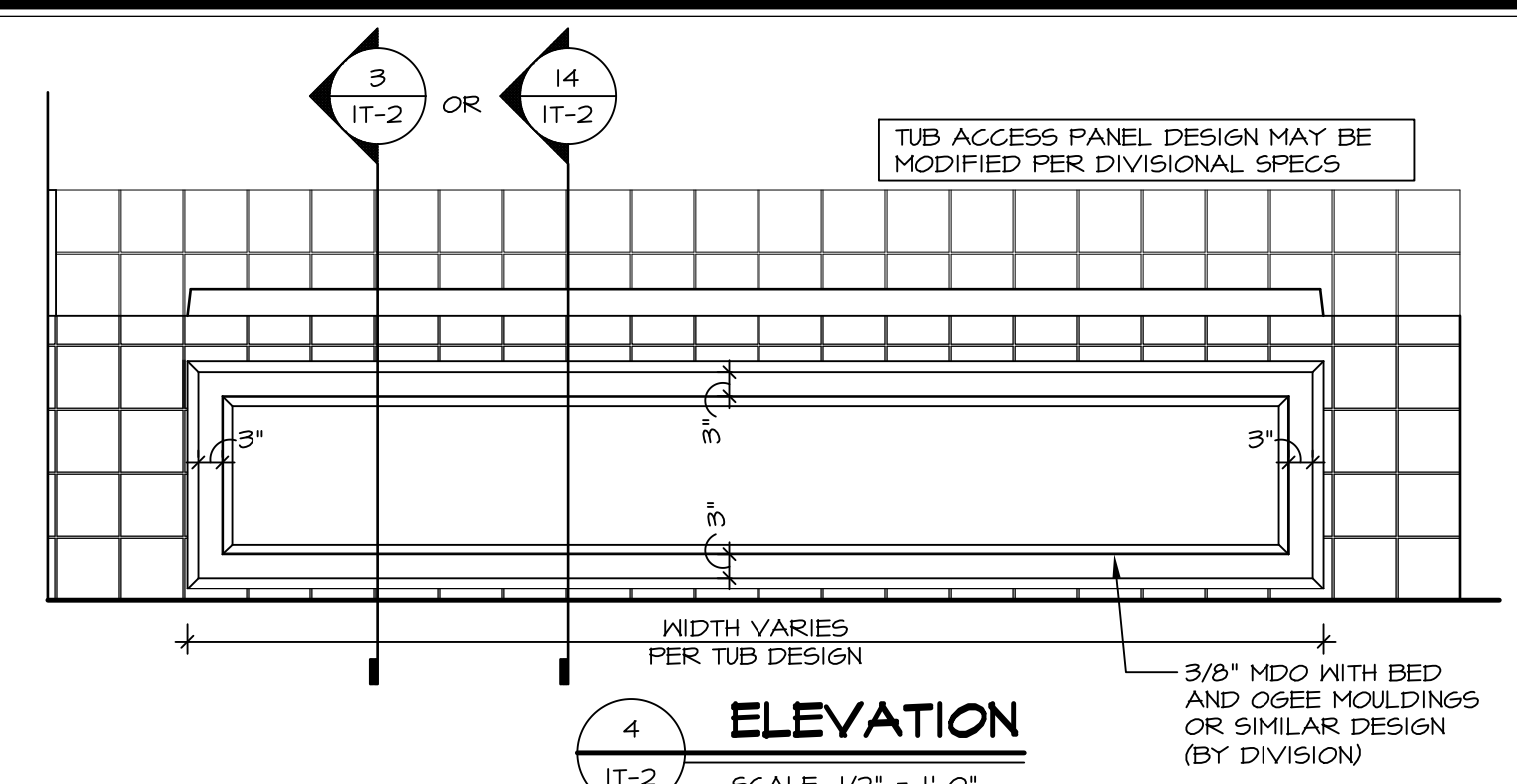
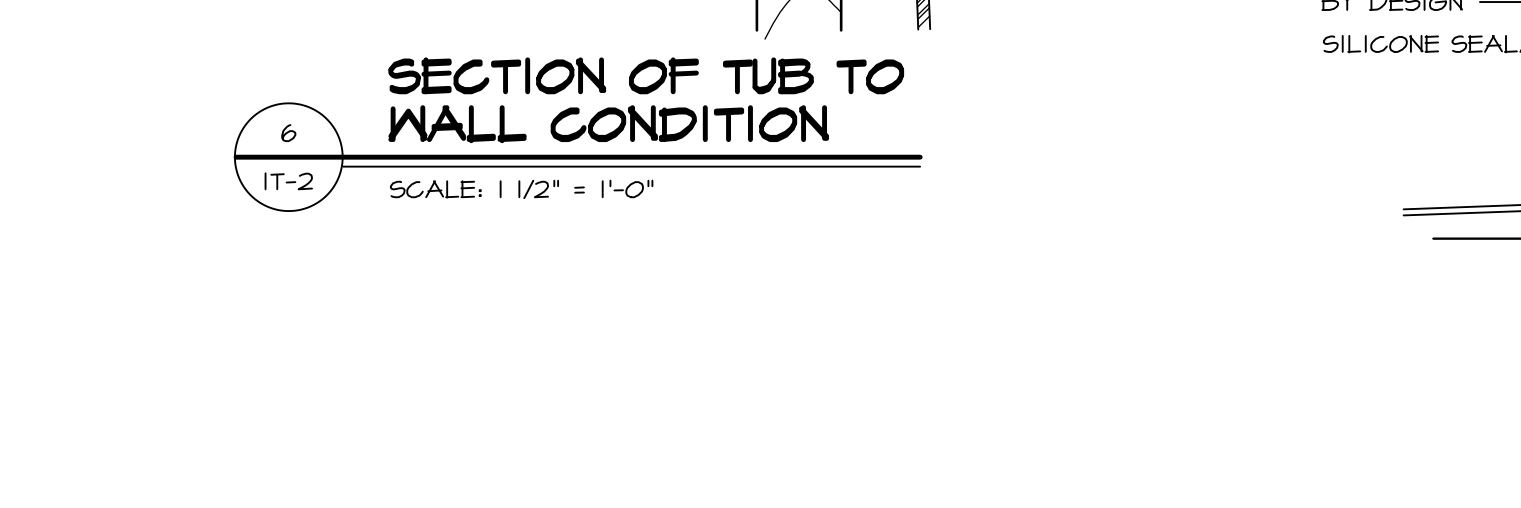
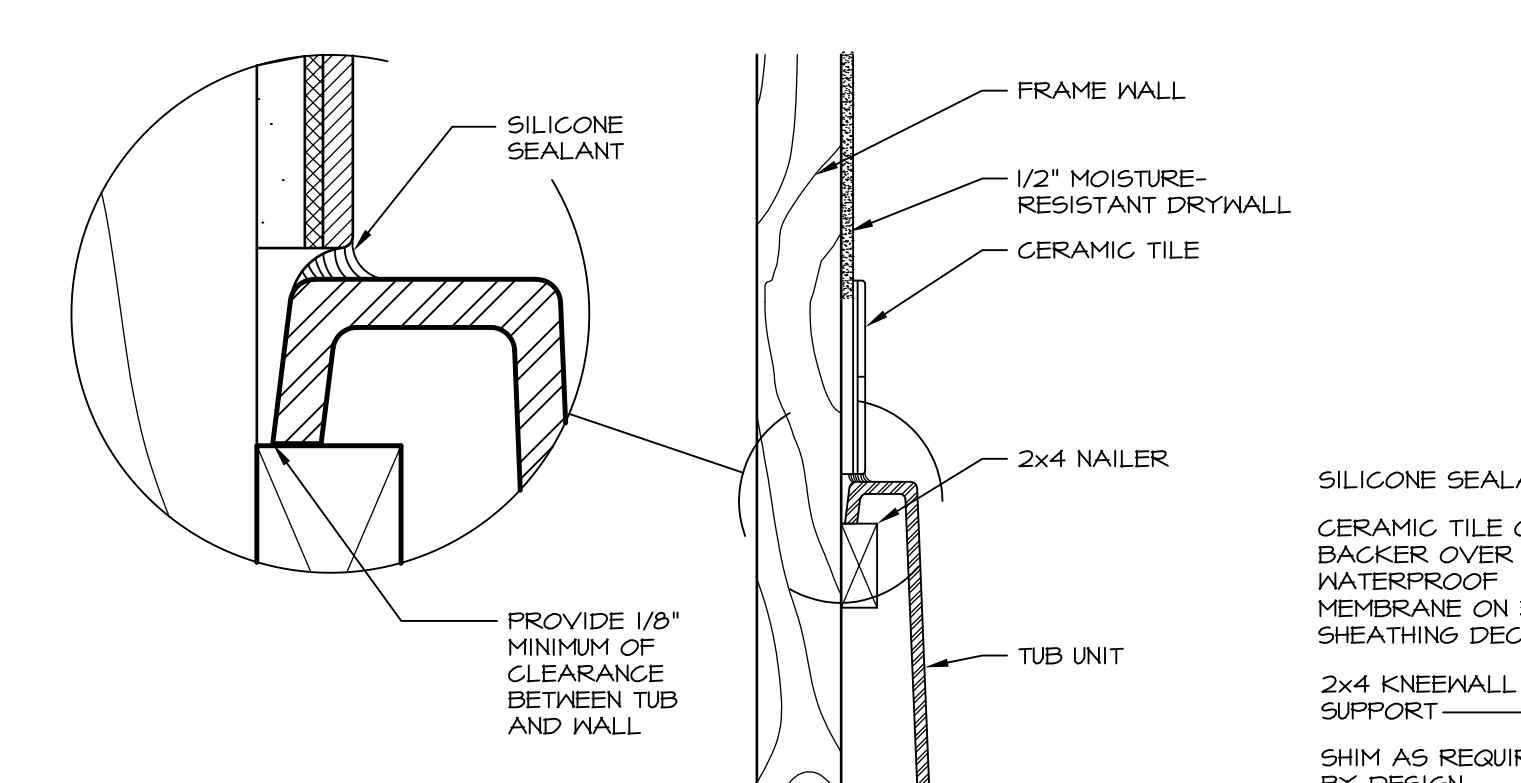


SHEET NO.	MODEL	SET NO.	VERSION	DRAWN BY	DATE:	OPTION
A-14	RAVENNA	03	03			
62	BATH ELEVATIONS					



1 PLATFORM PLANS
SCALE: 1/2" = 1'-0"

TUB	MANUF.	HEIGHT	WIDTH	LENGTH	TUB DECK PANEL HEIGHT
"A"	KOHLER/ STERLING	18 3/4"	42"	60"	17 1/8"
"C"	KOHLER/ STERLING	18 3/4"	36"	60"	17 1/8"
"E"	KOHLER/ STERLING	19 1/2"	60"	60"	17 7/8"
"L"	KOHLER/ STERLING	18 1/2"	42"	72"	16 7/8"
"N"	KOHLER/ STERLING	18 3/4"	36"	72"	17 1/8"
"P"	KOHLER/ STERLING	18 3/4"	42"	72"	17 1/8"



REVISIONS

REV. NO.	DATE	DESCRIPTION
1	5/1/17	EBP - REVISED DETAIL 1 AND 11 TO REMOVE TUB ACCESS PANEL REF. (DSS #15 5414)
2	9/2/17	EBP - REVISED T-FLY NOTE TO CALL OUT LFS
3	9/2/17	EBP - REVISED NOTE ON DETAIL #1 - REVISED ORDER OF MATERIAL PARA#4934

REMARKS

NVR, Inc., owner, expressly reserves its common law copyright and other property rights in these plans. These plans are not to be reproduced, stored in a retrieval system, or transmitted in any form or by any means, electronic, mechanical, photocopying, recording, or by any information storage and retrieval system, without first obtaining the expressed written consent of NVR, Inc.

NVR
NVR, Inc.
Architectural Services
5285 West Lakeshore Drive
Frederick, MD 21703

SET NO. NVR
VERSION
DRAWN BY
DATE:
OPTION

MODEL
STANDARD DETAILS
DRAWING TITLE
INTERIOR TRIM DETAILS
BATH DETAILS
OPTION DESCRIPTION

SHEET NO. **IT-2**

J:\Dwg\NVR\Interior Trim\IT2.dwg 09/27/17 - 9:20 am