

FOUNDATION BEAM/HEADER SCHEDULE					
IDENTIFIER	DESCRIPTION	LENGTH	OPTIONS	ENG. NUM.	REMARKS
BO01	BEAM STEEL - W8X28	30'-4 3/4"		BO030	
BO02	BEAM STEEL - W8X31	18'-5 1/8"		BO033	
BO03	BEAM STEEL - W8X35	23'-3 1/8"		BO036	
BO04	BEAM STEEL - W8X21	18'-5 1/2"		BO048	
BO05	BEAM STEEL - W8X31	22'-3 3/8"		BO051	
BO08	BEAM STEEL - W8X18	14'-3 3/4"	"ELB" AND "EVA"	BO054	

PAD FOOTING SCHEDULE					
IDENTIFIER	LENGTH	WIDTH	HEIGHT	OPTIONS	ENG. NUM.
FO01	4'-0"	4'-0"	1'-6"		BO031
FO02	3'-0"	3'-0"	1'-3"		BO034
FO03	2'-3"	2'-3"	1'-0"		BO034
FO04	12'-0"	1'-4"	0'-8"		BO037
FO05	2'-0"	2'-0"	1'-0"		BO044
FO06	2'-0"	2'-0"	1'-0"		BO044
FO07	3'-4"	3'-4"	1'-6"		BO052
FO20	2'-6"	2'-6"	1'-0"		BO45

FOUNDATION DIAGONALS			
A		B	
A	0"	A	54'-5 3/4"
B	54'-5 3/4"	B	0"
D	72'-8 2/32"	D	52'-4"
E	44'-11 3/32"	E	66'-11 3/32"
F	40'-4 1/32"	F	64'-10 13/32"

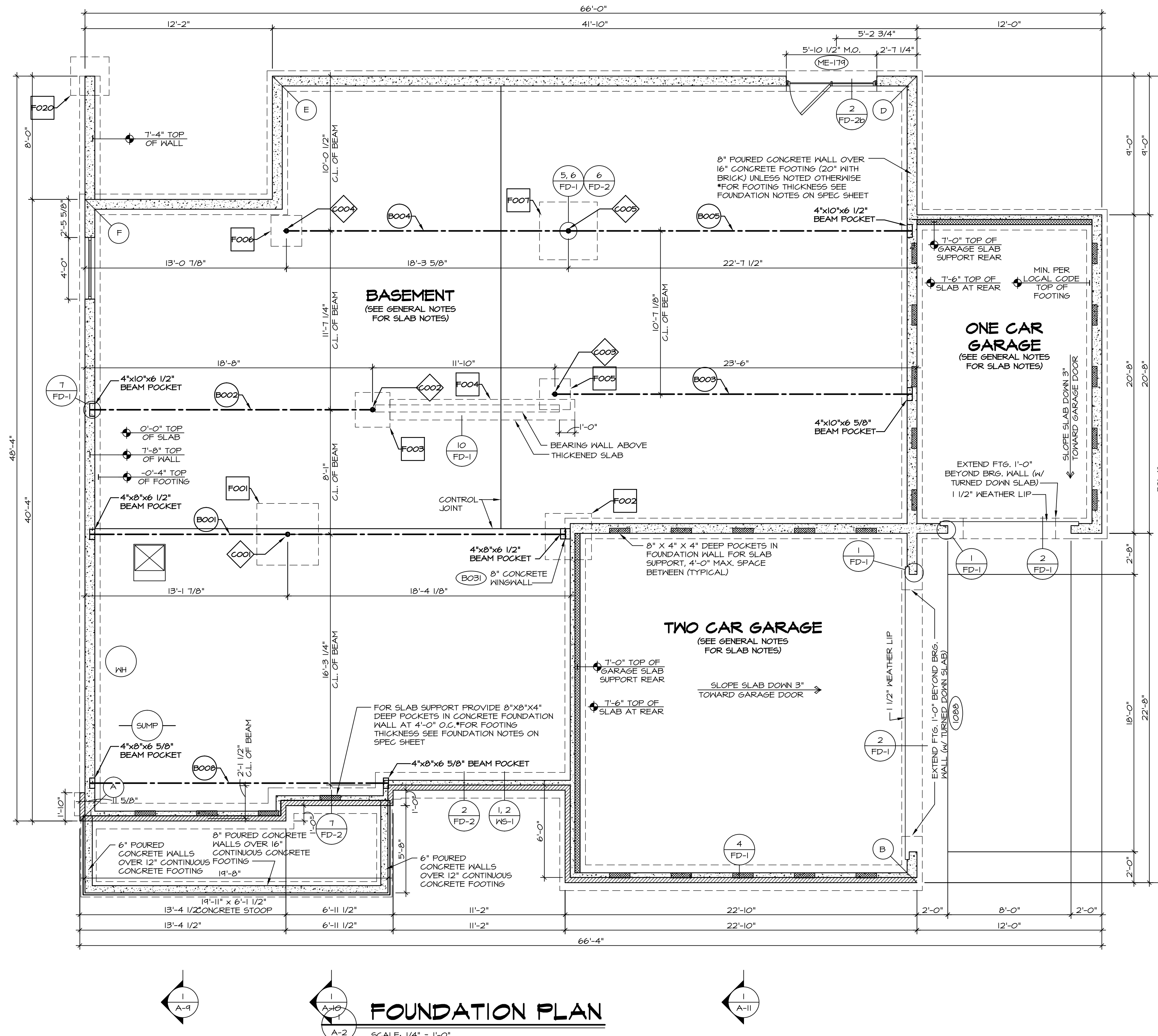
- FOUNDATION NOTES - BASEMENT**
- FOUNDATION UNDER HABITABLE SPACE: CONCRETE SLAB ON 6 MIL VAPOR BARRIER OVER SUB-BASE (SEE SPEC SHEET FOR SLAB NOTES)
  - SLAB UNDER GARAGE: UNEXCAVATED WITH CONCRETE SLAB ON VAPOR BARRIER OVER SUB-BASE (SEE SPEC SHEET FOR SLAB NOTES)
  - SEE SHEET (A-4) FOR FOUNDATION CONNECTION INFORMATION
  - OPTIONAL EGRESS WINDOW - LOCATION MAY VARY DUE TO GRADE OR OPTIONS ABOVE WINDOW WELL REQUIRED W/ CERTAIN GRADE CONDITIONS (SEE SPEC SHEET FOR ADDITIONAL INFO)
  - SLAB LEDGE LOCATIONS VARY W/ GRADE BEAM(S) ORIENTATION. SEE GB-1 FOR DETAILS.

**LEGEND**

- BEARING WALL
- NON BEARING WALL
- INDICATES BEARING FROM POINT-LOAD ABOVE JACKS
- BEAM/HEADER
- PAD FOOTING
- STEEL COLUMN
- PORTAL FRAME
- JOIST/TRUSS
- LVL
- ENGINEERING PAGE NUMBER

SEE FC DETAILS FOR FRAMING CONNECTORS

STEEL COLUMN SCHEDULE					
IDENTIFIER	STYLE	HEIGHT	OPTIONS	ENG. NUM.	REMARKS
CO01	STANCHION - 3 IN SCHED 40	7'-5 1/4"		BO031	
CO02	STANCHION - 3 IN DIA 115A ADJ	7'-5 1/4"		BO034	
CO03	STANCHION - 3 IN DIA 115A ADJ	7'-5 1/4"		BO037	
CO04	STANCHION - 3 IN DIA 115A ADJ	7'-5 1/4"		BO044	
CO05	STANCHION - 3 IN SCHED 40	7'-5 1/4"		BO052	



**FOUNDATION PLAN**  
SCALE: 1/4" = 1'-0"

REVISIONS

REV. NO.	DATE	DESCRIPTION
1	08/06/16	TH - DRAWING ALIGNMENT

REMARKS

SET NO. VRS000  
VERSION 01  
DRAWN BY  
DATE:  
OPTION

MODEL VERSAILLES  
DRAWING TITLE FOUNDATION PLAN  
OPTION DESCRIPTION

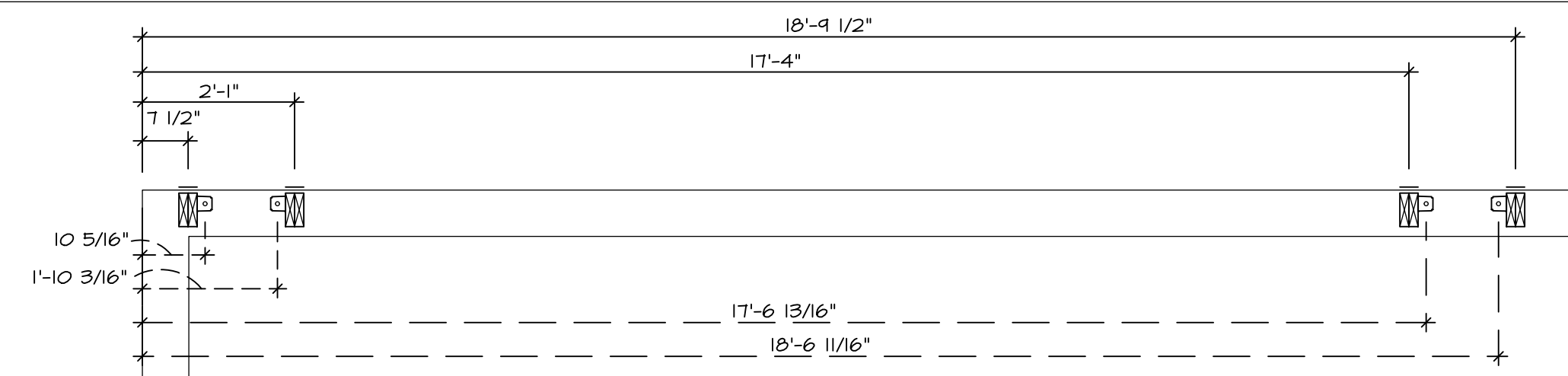
SHEET NO. A-2

16

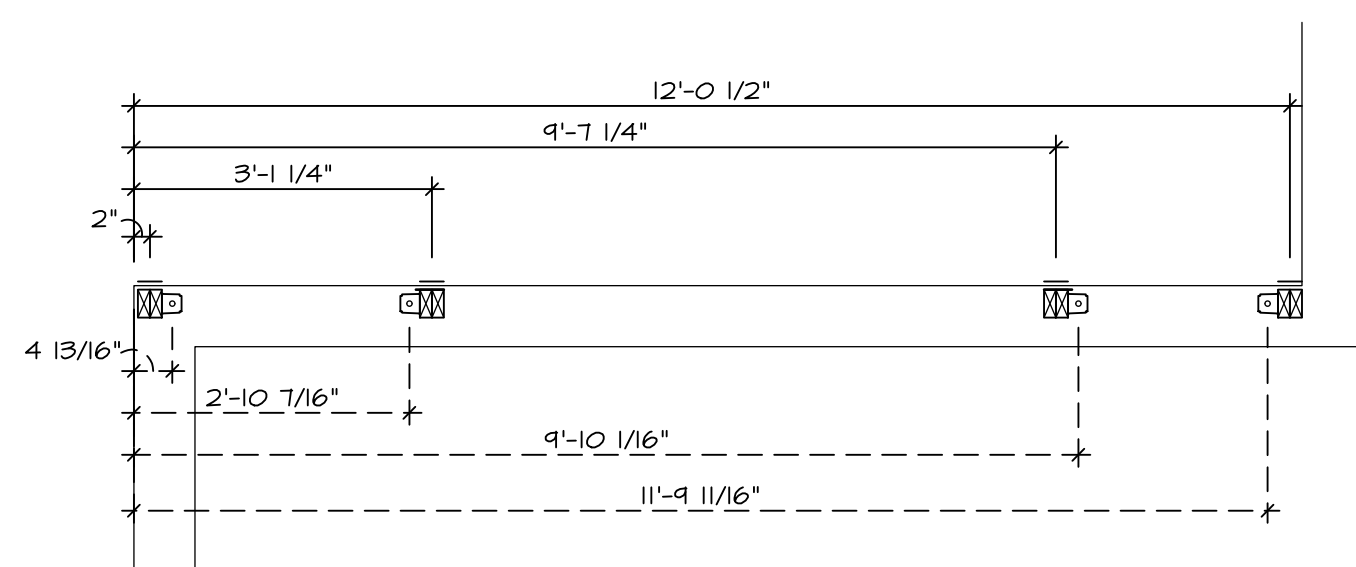
NVR, Inc., owner, expressly reserves its copyright in these plans. These plans are not to be reproduced, changed, adapted in any way, or used for any other purpose without the written consent of NVR, Inc.

**NVR**  
NVR, Inc.  
Architectural Services  
Suite 100  
5285 Westpark Drive  
Frederick, MD 21703

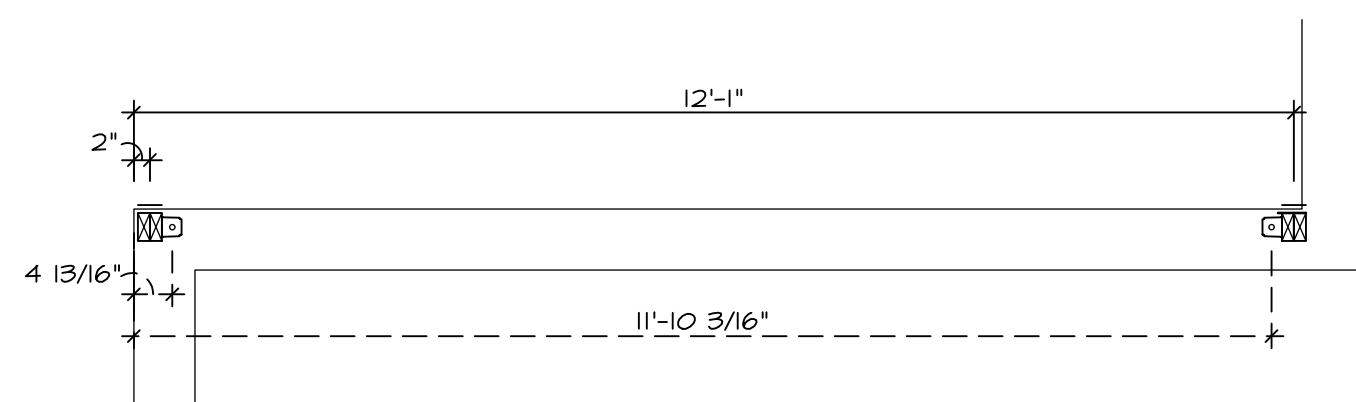
C:\NVR\Solves\VERSAILLES\_VRS000\_01\DC-VR-006\550461\Sheets\Lot\_Specific\16 A-3 FDN\_LS (FBA).DWG 02/21/17 - 2.03 b.m



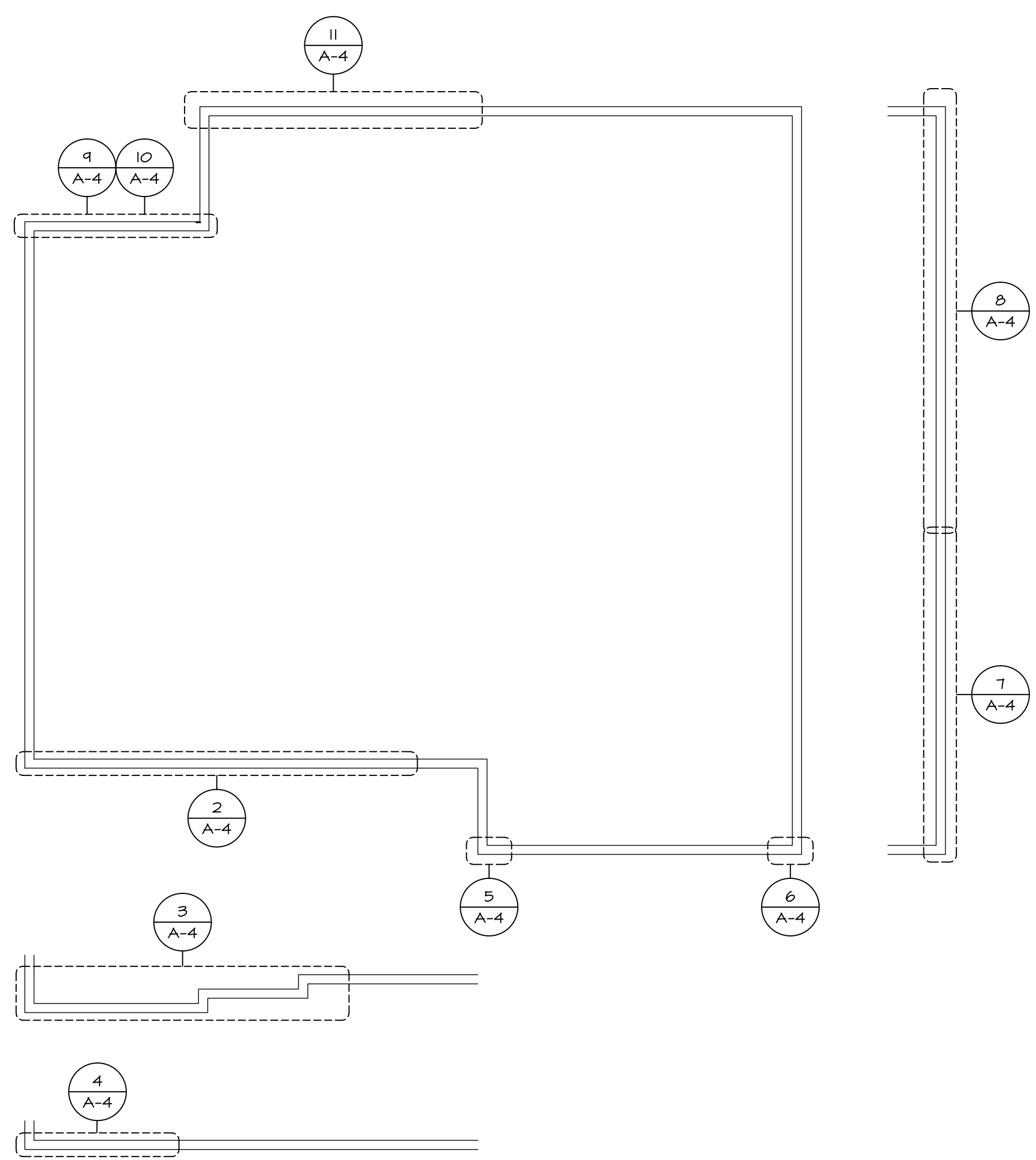
**11 FOUNDATION HOLD DOWN DETAILS**  
SCALE: 1/2" = 1'-0"



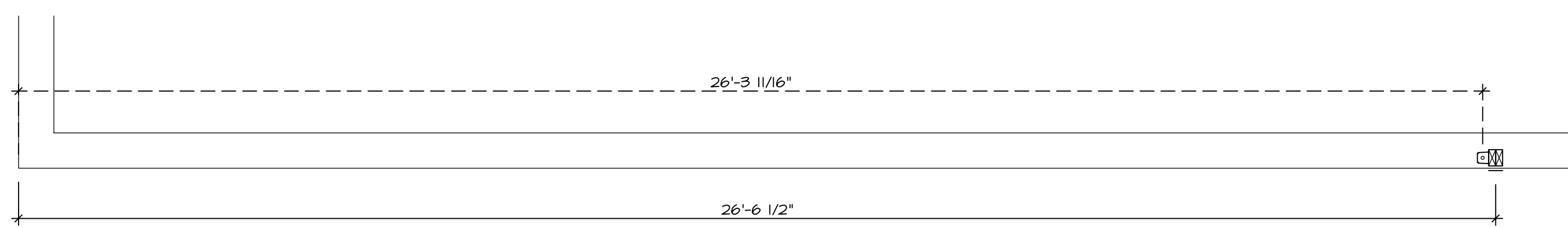
**10 FOUNDATION HOLD DOWN DETAILS**  
SCALE: 1/2" = 1'-0" WITH 100 MPH \*SGK\*



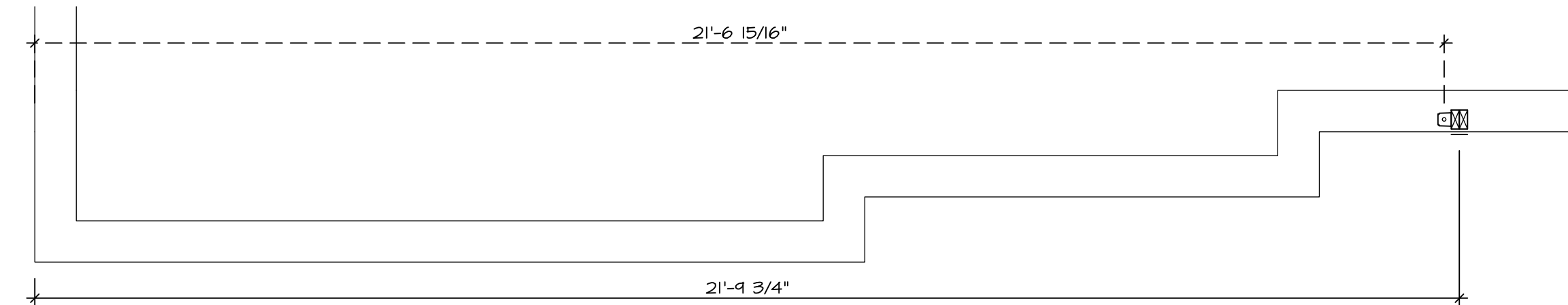
**9 FOUNDATION HOLD DOWN DETAILS**  
SCALE: 1/2" = 1'-0" WITH 90 MPH \*SRM\*



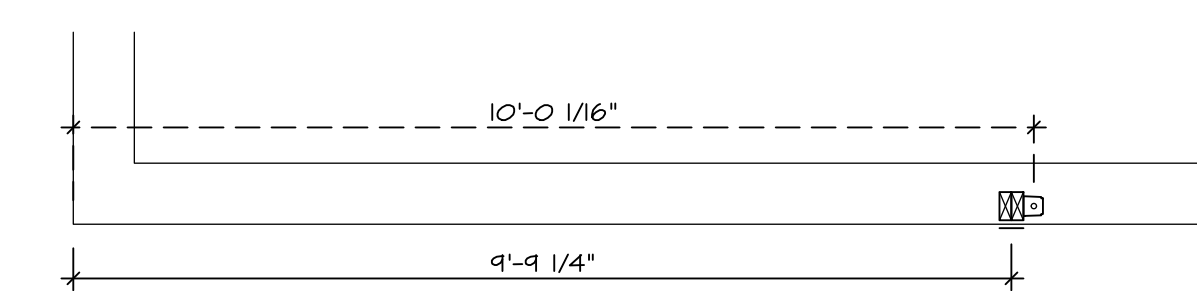
**1 FOUNDATION HOLD DOWN PLAN**  
SCALE: 1/8" = 1'-0"



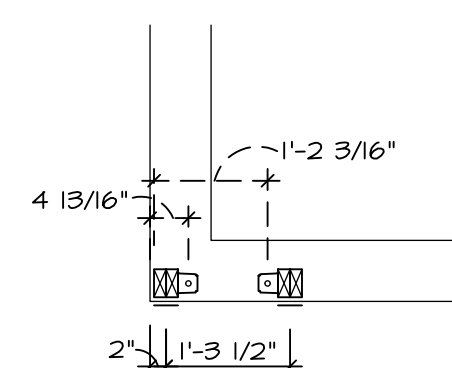
**2 FOUNDATION HOLD DOWN DETAILS**  
SCALE: 1/2" = 1'-0" ELEVATION A "ELA" ELEVATION K "ELK" (W/ \*FSM\* OR \*FSN\* ONLY)



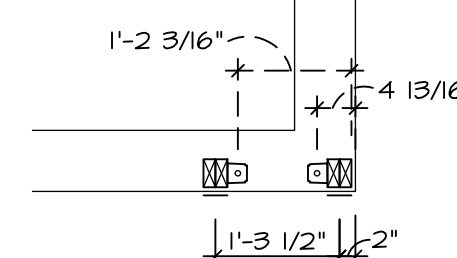
**3 FOUNDATION HOLD DOWN DETAILS**  
SCALE: 1/2" = 1'-0" ELEVATION B "ELB" (W/ \*FSM\* OR \*FSN\* ONLY)



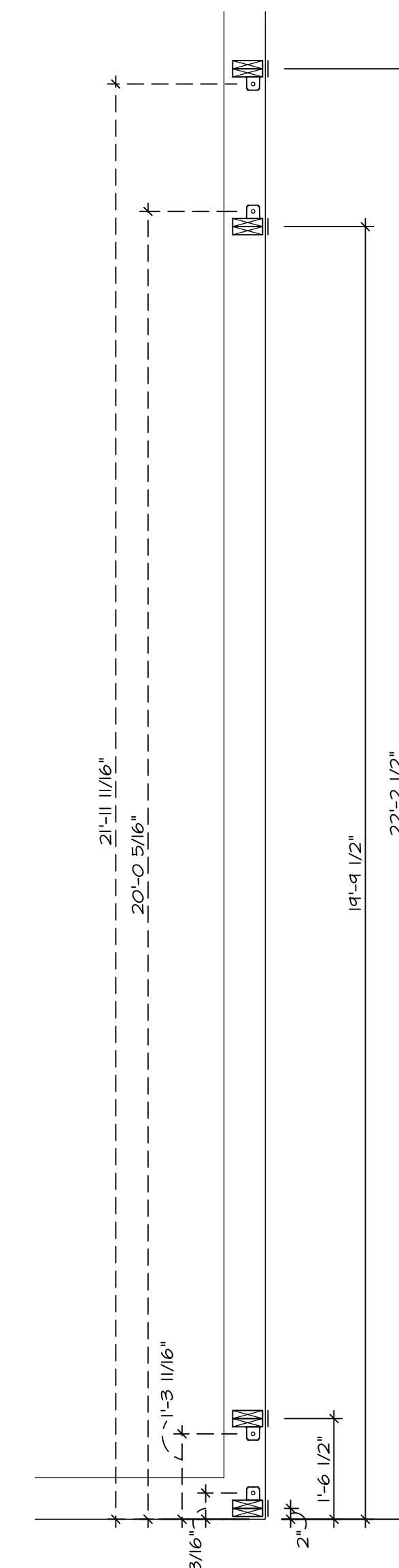
**4 FOUNDATION HOLD DOWN DETAILS**  
SCALE: 1/2" = 1'-0" ELEVATION C "ELC" ELEVATION L "ELL" (W/ \*FSM\* OR \*FSN\* ONLY)



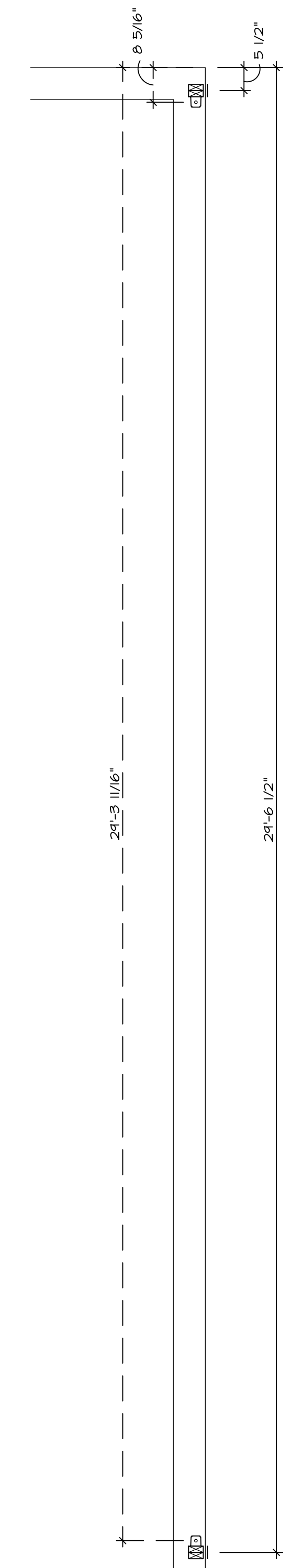
**5 FOUNDATION HOLD DOWN DETAILS**  
SCALE: 1/2" = 1'-0" TWO CAR FRONT ENTRY GARAGE "6CB"



**6 FOUNDATION HOLD DOWN DETAILS**  
SCALE: 1/2" = 1'-0" TWO CAR FRONT ENTRY GARAGE "6CB"



**7 FOUNDATION HOLD DOWN DETAILS**  
SCALE: 1/2" = 1'-0" TWO CAR SIDE ENTRY GARAGE "6CC"



**8 FOUNDATION HOLD DOWN DETAILS**  
SCALE: 1/2" = 1'-0" TWO CAR SIDE ENTRY GARAGE "6CC" (W/ 100 MPH \*SGK\* ONLY)

**HOLD DOWN NOTES**

REFER TO DETAIL (9/FD-1) FOR HOLD DOWN OFFSET DIMENSIONS.  
REFER TO DETAIL (12/FD-1) FOR HOLD DOWNS ON CMU BLOCK.

STRAP	1. STRAP: a. ON FOUNDATION USE (5THD14) b. ON FLOOR SYSTEM USE (5THD14R/J) 2. ALL OTHER HOLD DOWN SEE DETAIL (MB-1, 2) FOR MORE INFORMATION. 3. STRAP LOCATION ON PLANS SHOWN BY DASHED DIMENSION TO CENTER OF STUDS
BOLT	1. 5/8"Ø THREADED ROD 2. ALL OTHER HOLD DOWN SEE DETAIL (MB-1, 2) FOR MORE INFORMATION. 3. BOLT LOCATION ON PLANS SHOWN BY DASHED DIMENSION TO CENTER OF BOLT
	OR
	4. ALL HARDY PANELS USE (1/8" DIAMETER THREADED ROD) 5. SEE DETAIL (MB-3) FOR MORE HARDY PANEL INFORMATION. 6. HARDY PANEL LOCATION ON PLANS SHOWN BY DIMENSIONS TO CENTER OF HARDY PANEL TEMPLATE.

REV. NO.	DATE	REMARKS
1	8/9/16	TN - DRAWING ALIGNMENT
2	01/25/17	CNG - STANDARD DETAILS 3.0

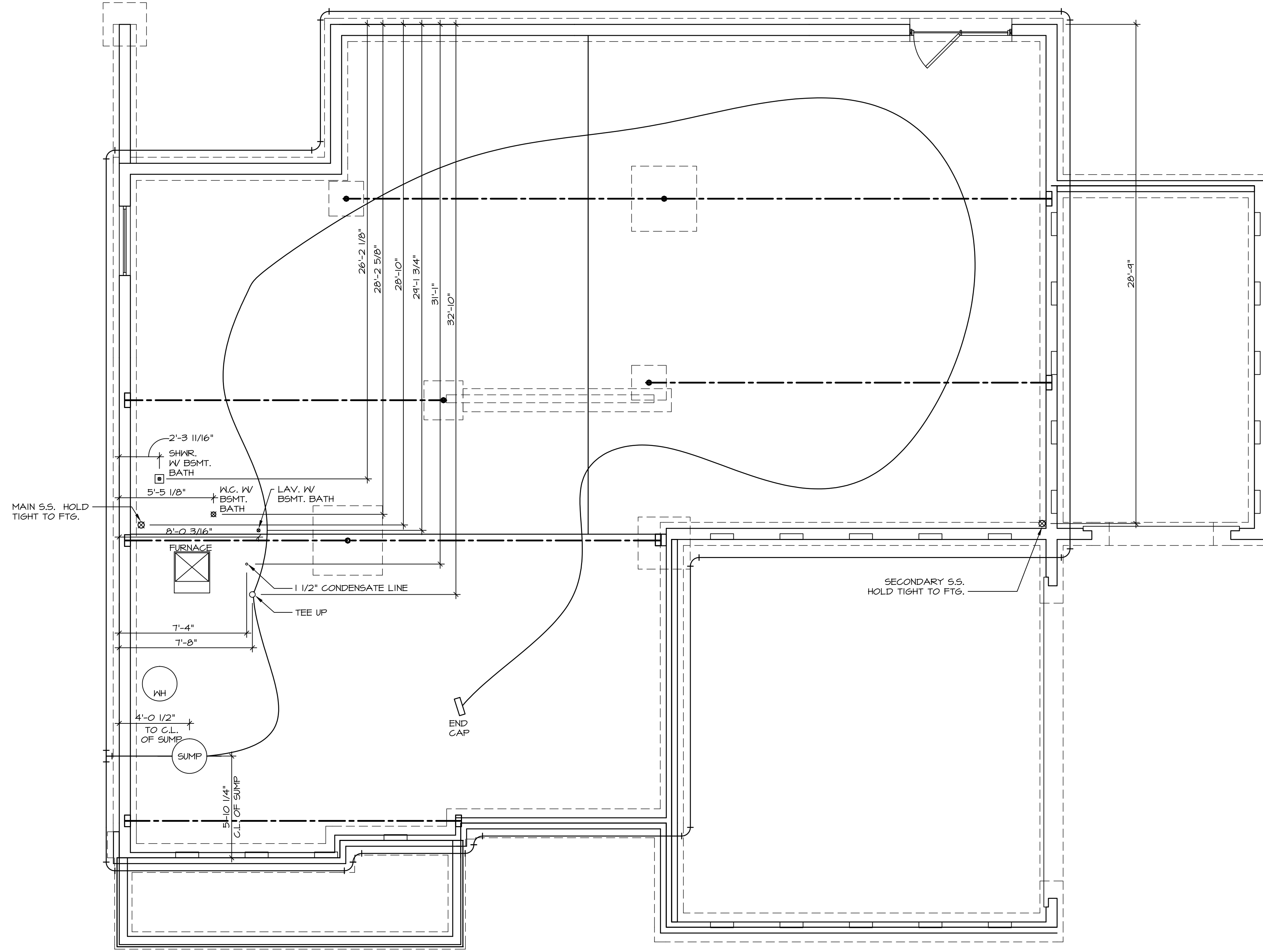
SET NO. VRS00  
 VERSION 01  
 DRAWN BY SAM  
 DATE: 7/8/15  
 OPTION  
 SRA  
 SGK

**VERSAILLES**  
 FOUNDATION HOLD DOWN DETAILS  
 MODEL A-4  
 SHEET NO. 31

NVR, Inc., owner, expressly reserves its common law copyright and other property rights in these plans. These plans are not to be copied, reproduced, or transmitted in any form or by any means, nor are they to be assigned to any third party, without first obtaining the expressed written consent of NVR, Inc.

**NVR**  
 NVR, Inc.  
 Architectural Services  
 Architects  
 Suite 100  
 5285 Westchase Circle  
 Frederick, MD 21703

C:\NVR\_Solves\VERSAILLES\_VRS00\_01\DCI-VR-006\Streets\Master Set\Foundation Hold Down\31 A-4 FON-FB\_HD\_90-100.dwg 02/27/17 - 2:03 PM



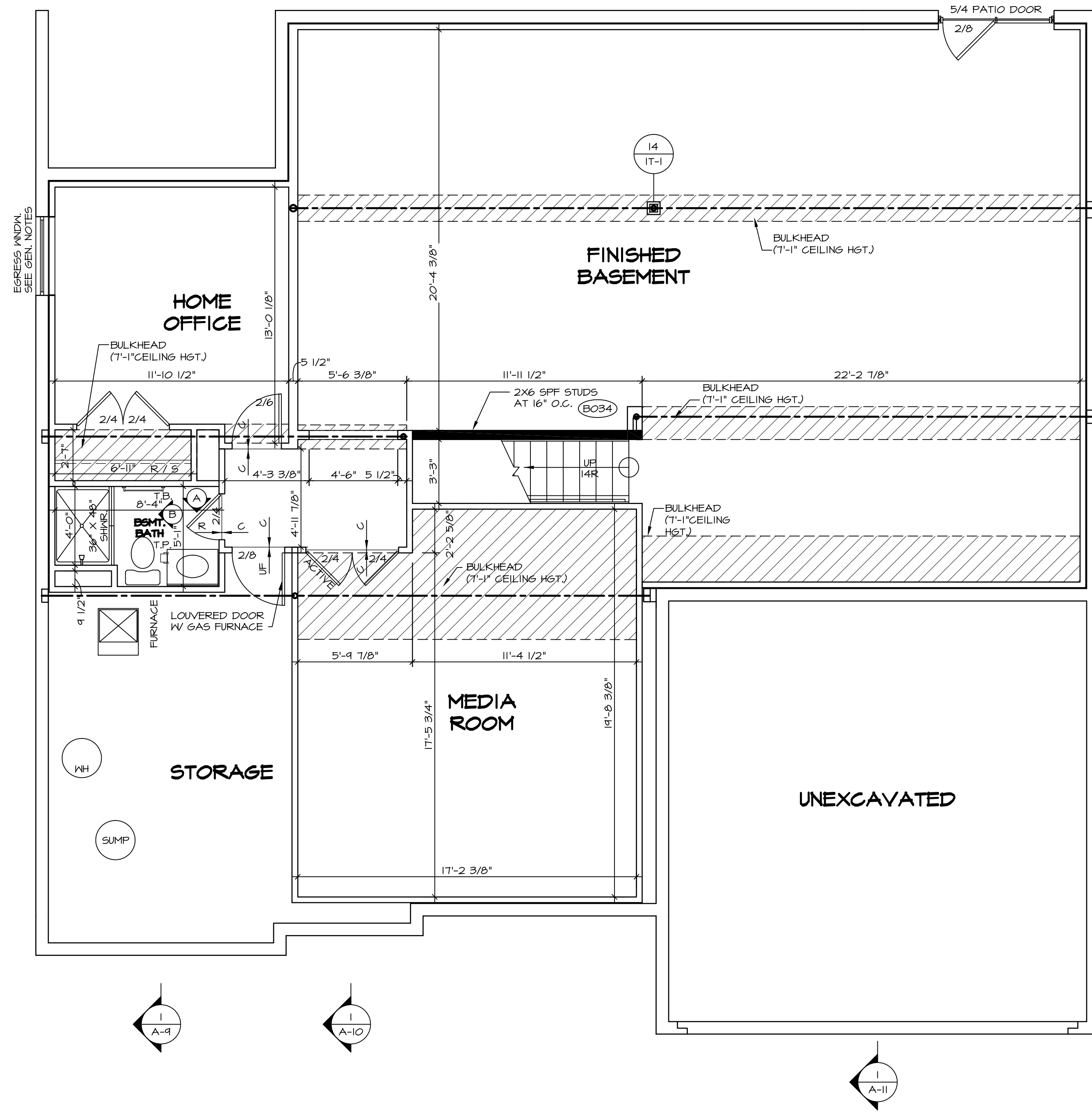
**PLUMBING PLAN**  
SCALE: 1/4" = 1'-0"

SHEET NO. <b>A-5</b>	MODEL <b>VERSAILLES</b>	SET NO. VRS00 VERSION 01
	DRAWING TITLE <b>PLUMBING PLAN</b>	DRAWN BY
	OPTION DESCRIPTION	DATE:
<b>34</b>		OPTION

**NVR**  
NVR, Inc.  
Architectural Services  
5285 Westpark Drive, Suite 100  
Frederick, MD 21703

NVR, Inc., owner, expressly reserves its copyright in these plans. These plans are not to be reproduced, changed, copied, or otherwise used without the written consent of NVR, Inc.

REV. NO.	DATE	REMARKS



**LEGEND**

[Solid Line]	BEARING WALL
[Dashed Line]	NON BEARING WALL
[Circle with X]	INDICATES BEARING FROM POINT-LOAD ABOVE
[Square with X]	JACKS
[Circle with B]	BEAM/HEADER
[Square with F]	PAD FOOTING
[Diamond with C]	STEEL COLUMN
[Square with X]	PORTAL FRAME
[Square with X]	JOIST/TRUSS
[Line with LVL]	LVL
[Circle with X]	ENGINEERING PAGE NUMBER

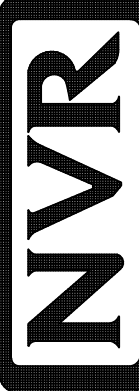
SEE FC DETAILS FOR FRAMING CONNECTORS

- FLOOR PLAN NOTES**
- ALL HEADERS ARE (2) 2x6 w/ 2x4 WALLS OR (3) 2x6 w/ 2x6 WALLS, UNLESS OTHERWISE NOTED.
  - ALL HEADERS TO HAVE (1) 2x4 OR 2x6 JACK EACH END, UNLESS OTHERWISE NOTED.
  - ALL EXTERIOR WALLS TO BE 4" AND ALL INTERIOR WALLS TO BE 3 1/2", UNLESS OTHERWISE NOTED.
  - HATCHED AREAS INDICATE DROPPED CEILINGS. ALL DROPPED CEILINGS ARE 12" UNLESS OTHERWISE NOTED.
  - SEE "BRACED WALL PANEL DETAIL SHEET" FOR SPECIAL WALL FRAMING LOCATIONS AND HEADER SIZES, IF APPLICABLE.
  - SEE STANDARD DETAIL CATEGORY "IT" SHEET(S) FOR INTERIOR TRIM DETAILS.
  - SEE ARCHITECTURAL DETAIL SHEET "AD" FOR HOUSE SPECIFIC INTERIOR TRIM OPTION TABLE.
  - ALL WINDOWS HAVE 7'-0 1/2" HEADER HEIGHT UNLESS OTHERWISE NOTED.

- GYPSUM NOTES**
- AT GARAGE:  
GYPSUM BOARD AT COMMON WALLS, CEILING, BEAM WRAPS AND SUPPORTS PER STANDARD DETAIL FA-1(b) FIRE ASSEMBLIES OR AS REQUIRED BY LOCAL CODE.
- AT STAIRS:  
1/2" GYPSUM BOARD AT UNDERSIDE OF STAIRS AND WALLS IN CLOSET

**BASEMENT FLOOR PLAN**  
SCALE: 1/4" = 1'-0"

SHEET NO. <b>A-6</b>	MODEL <b>VERSAILLES</b>	DRAWING TITLE <b>BASEMENT FLOOR PLAN</b>	SET NO. <b>VR500</b>	REV. NO. <b>1</b>	DATE <b>08/06/16</b>	REMARKS
			VERSION <b>01</b>	DATE	OPTION	
<b>37</b>						

  
 NVR, Inc.  
 Architectural Services  
 5285 Westwood Drive, Suite 100  
 Frederick, MD 21703

C:\NVR\Solves\VERSAILLES\_VRS00\_01\DCI-YR-006\350461\Sheets\Lot\_Specific\37 A-6 BSMT\_L5.dwg 02/21/17 - 2:03 PM

NVR, Inc., owner, expressly reserves its common law copyright in these plans. These plans are not to be reproduced, changed, adapted in any way, or otherwise used, without the prior written consent of NVR, Inc.

FIRST FLOOR JACK SCHEDULE				
IDENTIFIER	DESCRIPTION	OPTIONS	ENG. NUM.	REMARKS
J101	JACK - (6) 2X4 SP#1		2014	
J105	JACK - (3) 2X4 SP# STUD GRADE	ELAE/LBELK	1034	
J106	JACK - (5) 2X4 SP# STUD GRADE	ELAE/VEA/LBE/VEA	1043	
J107	JACK - (3) 2X6 SP# STUD GRADE	GCC/ELAE/LBEK	1083	
J108	JACK - (2) 2X6 SP# STUD GRADE	GCC/ELAE/LBEK	1083	
J115	JACK - (4) 2X4 SP# STUD GRADE	ELAE/LBE/LK	1007	
J119	JACK - (3) 2X6 SP# STUD GRADE		1111	
J120	JACK - (2) 2X4 SP# STUD GRADE		1033	
J121	JACK - (4) 2X4 SP# STUD GRADE		1033	
J122	JACK - (4) 2X4 SP# STUD GRADE		1033	
J123	JACK - (2) 2X4 SP# STUD GRADE		1013	
J132	JACK - (5) 2X4 SP#1	ELB	2014	
J133	JACK - (3) 2X4 SP#1	ELBE/VA	2014	
J134	JACK - (2) 2X4 SP# STUD GRADE		1045	
J140	JACK - (2) 2X4 SP# STUD GRADE		1070	
J141	JACK - (3) 2X6 SP# STUD GRADE		1103	
J142	JACK - (2) 2X4 SP# STUD GRADE		1111	
J143	JACK - (2) 2X4 SP# STUD GRADE	GAA	1087	
J144	JACK - (4) 2X4 SP# STUD GRADE	MSL/ELB	1126	
J145	JACK - (2) 2X4 SP# STUD GRADE	MSL/ELB	1126	

LVL PLY TO PLY FASTENING SCHEDULE:

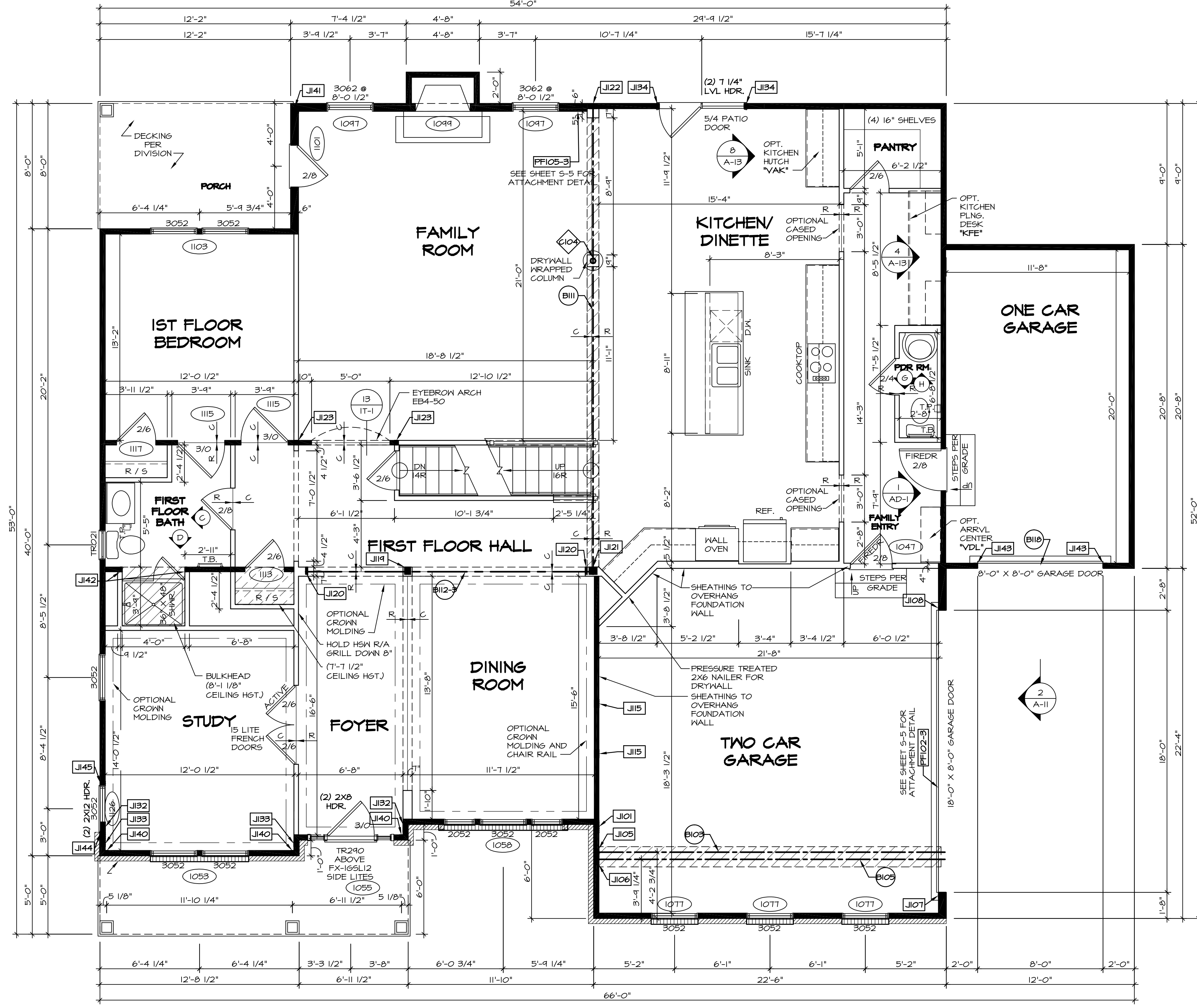
1A - (2) PLY UP TO AND INCLUDING 11 7/8" TALL; FASTEN PLYS W/ (2) ROWS 16D NAILS AT 12" O.C.  
 2A - (2) PLY 14" TO AND 18" TALL (INCLUSIVE); FASTEN PLYS W/ (3) ROWS 16D NAILS AT 12" O.C.  
 3A - (2) PLY 20" TALL AND OVER; FASTEN PLYS W/ (4) ROWS 16D NAILS AT 12" O.C.  
 4A - (3) PLY UP TO AND INCLUDING 11 7/8" TALL; FASTEN PLYS W/ (2) ROWS 16D NAILS AT 12" O.C.  
 FROM EACH SIDE  
 5A - (3) PLY 14" TO AND 18" TALL (INCLUSIVE); FASTEN PLYS W/ (3) ROWS 16D NAILS AT 12" O.C.  
 FROM EACH SIDE  
 6A - (3) PLY 20" TALL AND OVER; FASTEN PLYS W/ (4) ROWS 16D NAILS AT 12" O.C. FROM EACH SIDE

FIRST FLOOR BEAM/HEADER SCHEDULE					
IDENTIFIER	DESCRIPTION	LENGTH	OPTIONS	ENG. NUM.	REMARKS
B103	BEAM STEEL - W12X14	22'-4"	ELAE/LBELK	1034	
B105	BEAM STEEL - W16X31	22'-4"	ELAE/VEA/LBE/VEA	1043	
B111	BEAM STEEL - W8X21	30'-0"		1033	
B112-3	LVL - O4-O4	17'-11 1/2"		1009	4A, FIELD INSTALLED
B118	INT HEADER - 2X12 - 2 PLY	8'-6"	GAA		FIELD INSTALLED
PF102-3	LVL - 16	18'-7 1/2"	GCC/ELAE/LBELK	1083	5A, FIELD INSTALLED
PF105-3	LVL - 16	18'-5"		1047/1049	5A, FIELD INSTALLED

STEEL COLUMN SCHEDULE					
IDENTIFIER	STYLE	HEIGHT	OPTIONS	ENG. NUM.	REMARKS
C104	STANCHION - 4 IN DIA 116A ADJ	8'-3 3/8"		1033	

- FLOOR PLAN NOTES**
- ALL HEADERS ARE (2) 2x6 W/ 2x4 WALLS OR (3) 2x6 W/ 2x6 WALLS, UNLESS OTHERWISE NOTED.
  - ALL HEADERS TO HAVE (1) 2x4 OR 2x6 JACK EACH END, UNLESS OTHERWISE NOTED.
  - ALL EXTERIOR WALLS TO BE 4" AND ALL INTERIOR WALLS TO BE 3 1/2", UNLESS OTHERWISE NOTED.
  - HATCHED AREAS INDICATE DROPPED CEILINGS. ALL DROPPED CEILINGS ARE 12" UNLESS OTHERWISE NOTED.
  - SEE "BRACED WALL PANEL DETAIL SHEET" FOR SPECIAL WALL FRAMING LOCATIONS AND HEADER SIZES, IF APPLICABLE.
  - SEE STANDARD DETAIL CATEGORY "IT" SHEET(S) FOR INTERIOR TRIM DETAILS.
  - SEE ARCHITECTURAL DETAIL SHEET "AD" FOR HOUSE SPECIFIC INTERIOR TRIM OPTION TABLE.
  - ALL WINDOWS HAVE 7'-0 1/2" HEADER HEIGHT UNLESS OTHERWISE NOTED.

- GYPSUM NOTES**
- AT GARAGE:  
 GYPSUM BOARD AT COMMON WALLS, CEILINGS, BEAM WRAPS AND SUPPORTS PER STANDARD DETAIL FA-1(b) FIRE ASSEMBLIES OR AS REQUIRED BY LOCAL CODE.
- AT STAIRS:  
 1/2" GYPSUM BOARD AT UNDERSIDE OF STAIRS AND WALLS IN CLOSET



**FIRST FLOOR PLAN**  
 SCALE: 1/4" = 1'-0"

**LEGEND**

- BEARING WALL
- NON BEARING WALL
- INDICATES BEARING FROM POINT-LOAD ABOVE
- JACKS
- BEAM/HEADER
- PAD FOOTING
- STEEL COLUMN
- PORTAL FRAME
- JOIST/TRUSS
- LVL
- ENGINEERING PAGE NUMBER

SEE FC DETAILS FOR FRAMING CONNECTORS

REV. NO. DATE 08/06/16 TH - DRAWING ALIGNMENT

REVISIONS

SET NO. VRS00  
 VERSION 01  
 DRAWN BY  
 DATE:  
 OPTION

MODEL VERSAILLES  
 DRAWING TITLE FIRST FLOOR PLAN  
 OPTION DESCRIPTION

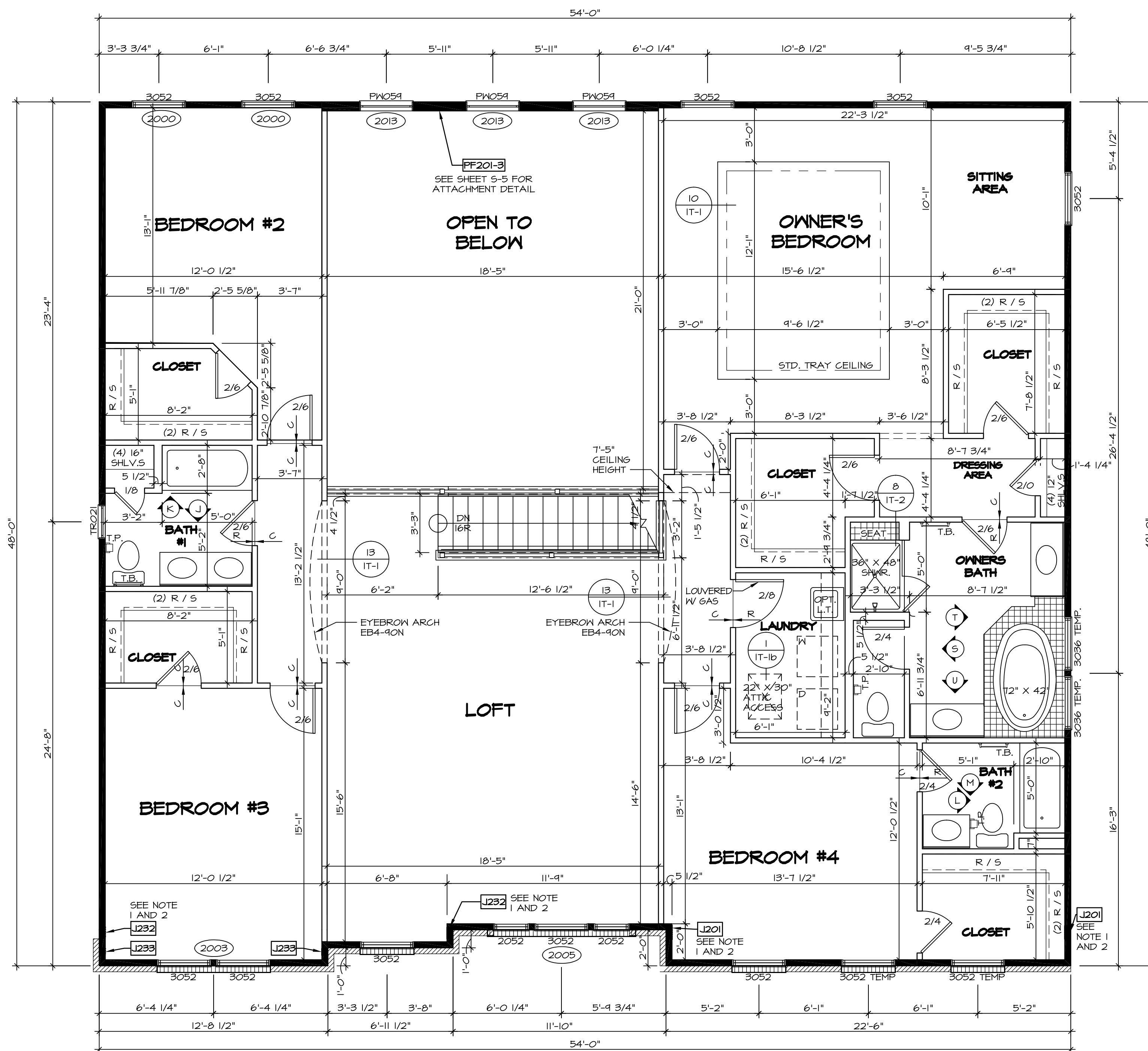
SHEET NO. A-7 39

NVR, Inc. owner, expressly reserves its copyright in these plans. These plans are not to be reproduced, changed, altered, or otherwise used in any way without the written consent of NVR, Inc.

**NVR**  
 NVR, Inc.  
 Architectural Services  
 Architects Suite 100  
 5285 Washington Blvd.  
 Frederick, MD 21703

C:\NVR\Solves\VERSAILLES\_VRS00\_01\DC-FR-006\1550461\Sheets\101-Specific\39 A-7 PLAN\_L5.dwg 02/27/17 - 2:03 PM





**FLOOR PLAN NOTES**

- JACKS MUST BE CAPPED W/ 1/8" X 3 1/2" X 0'-9" STEEL BEARING PLATE.
- JACKS MUST EXTEND THROUGH TOP PLATES OF WALL TO BEAR DIRECTLY ON BOTTOM CHORD OF GIRDER TRUSS.

**SECOND FLOOR JACK SCHEDULE**

IDENTIFIER	DESCRIPTION	OPTIONS	ENG. NUM.	REMARKS
J201	JACK - (6) 2X4 SPRI		2014	
J232	JACK - (6) 2X4 SPRI	ELB	2014	
J233	JACK - (3) 2X4 SPRI	ELBEVA	2014	

**LVL PLY TO PLY FASTENING SCHEDULE:**

- (2) PLY UP TO AND INCLUDING 11 7/8" TALL; FASTEN PLYS W/ (2) ROWS 16D NAILS AT 12" O.C.
- (2) PLY 14" TO AND 18" TALL (INCLUSIVE); FASTEN PLYS W/ (3) ROWS 16D NAILS AT 12" O.C.
- (2) PLY 20" TALL AND OVER; FASTEN PLYS W/ (4) ROWS 16D NAILS AT 12" O.C.
- (3) PLY UP TO AND INCLUDING 11 7/8" TALL; FASTEN PLYS W/ (2) ROWS 16D NAILS AT 12" O.C. FROM EACH SIDE
- (3) PLY 14" TO AND 18" TALL (INCLUSIVE); FASTEN PLYS W/ (3) ROWS 16D NAILS AT 12" O.C. FROM EACH SIDE
- (3) PLY 20" TALL AND OVER; FASTEN PLYS W/ (4) ROWS 16D NAILS AT 12" O.C. FROM EACH SIDE

**SECOND FLOOR BEAM/HEADER SCHEDULE**

IDENTIFIER	DESCRIPTION	LENGTH	OPTIONS	ENG. NUM.	REMARKS
PF201-3	LVL - 11-04	18'-5"		2013	4A, PORTAL FRAME

**FLOOR PLAN NOTES**

- ALL HEADERS ARE (2) 2x6 W/ 2x4 WALLS OR (3) 2x6 W/ 2x6 WALLS, UNLESS OTHERWISE NOTED.
- ALL HEADERS TO HAVE (1) 2x4 OR 2x6 JACK EACH END, UNLESS OTHERWISE NOTED.
- ALL EXTERIOR WALLS TO BE 4" AND ALL INTERIOR WALLS TO BE 3 1/2", UNLESS OTHERWISE NOTED.
- HATCHED AREAS INDICATE DROPPED CEILINGS. ALL DROPPED CEILINGS ARE 12" UNLESS OTHERWISE NOTED.
- SEE "BRACED WALL PANEL DETAIL SHEET" FOR SPECIAL WALL FRAMING LOCATIONS AND HEADER SIZES, IF APPLICABLE.
- SEE STANDARD DETAIL CATEGORY "11" SHEET(S) FOR INTERIOR TRIM DETAILS.
- SEE ARCHITECTURAL DETAIL SHEET "AD" FOR HOUSE SPECIFIC INTERIOR TRIM OPTION TABLE.
- ALL WINDOWS HAVE "T-0 1/2" HEADER HEIGHT UNLESS OTHERWISE NOTED.

**LEGEND**

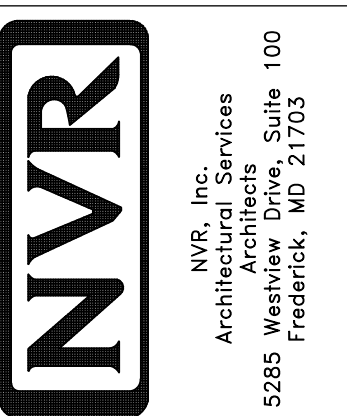
- BEARING WALL
  - NON BEARING WALL
  - INDICATES BEARING FROM POINT-LOAD ABOVE
  - JACKS
  - BEAM/HEADER
  - PAD FOOTING
  - STEEL COLUMN
  - PORTAL FRAME
  - JOIST/TRUSS
  - LVL
  - ENGINEERING PAGE NUMBER
- SEE FC DETAILS FOR FRAMING CONNECTORS

**SECOND FLOOR PLAN**

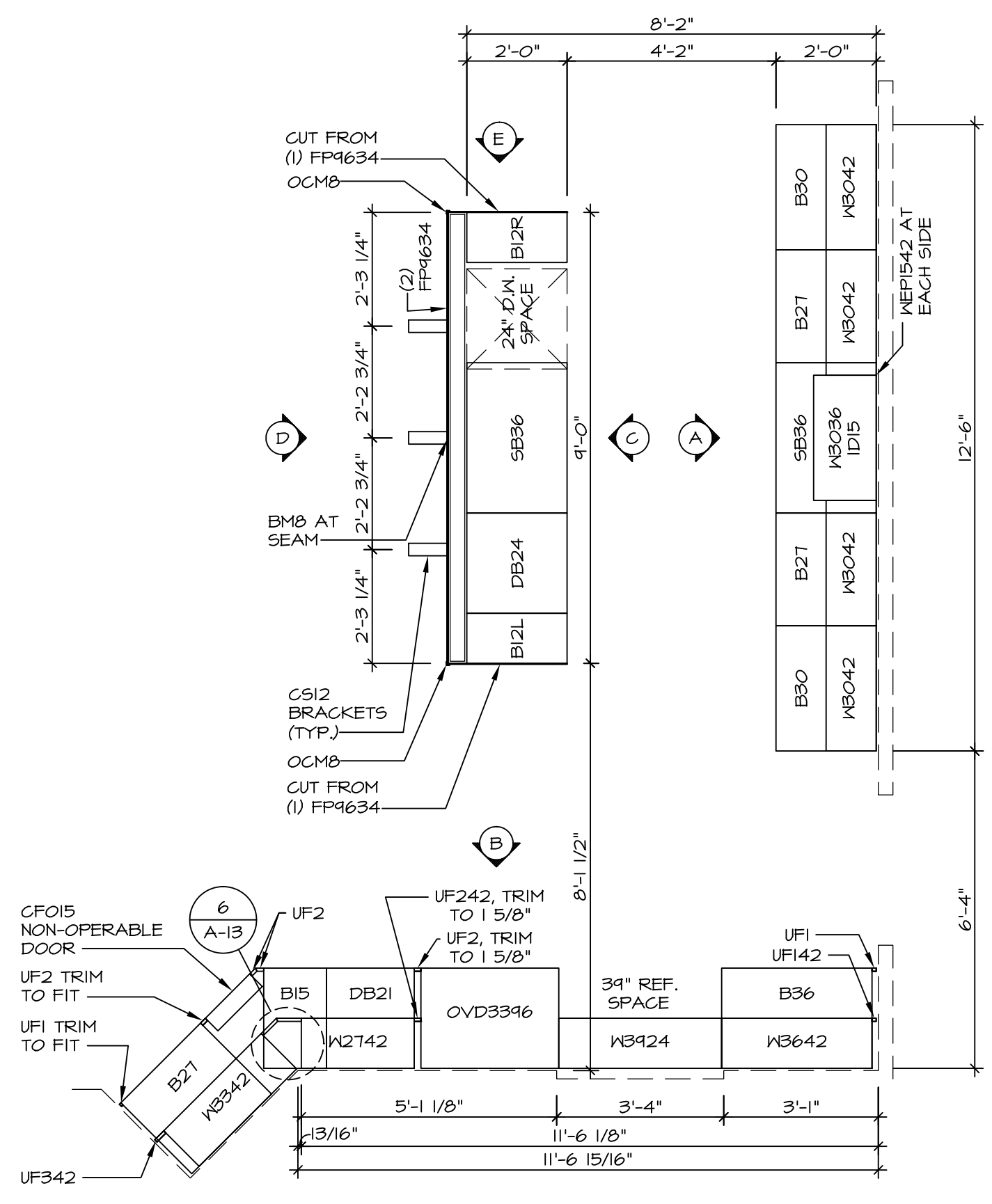
SCALE: 1/4" = 1'-0"

REV. NO. DATE DESCRIPTION

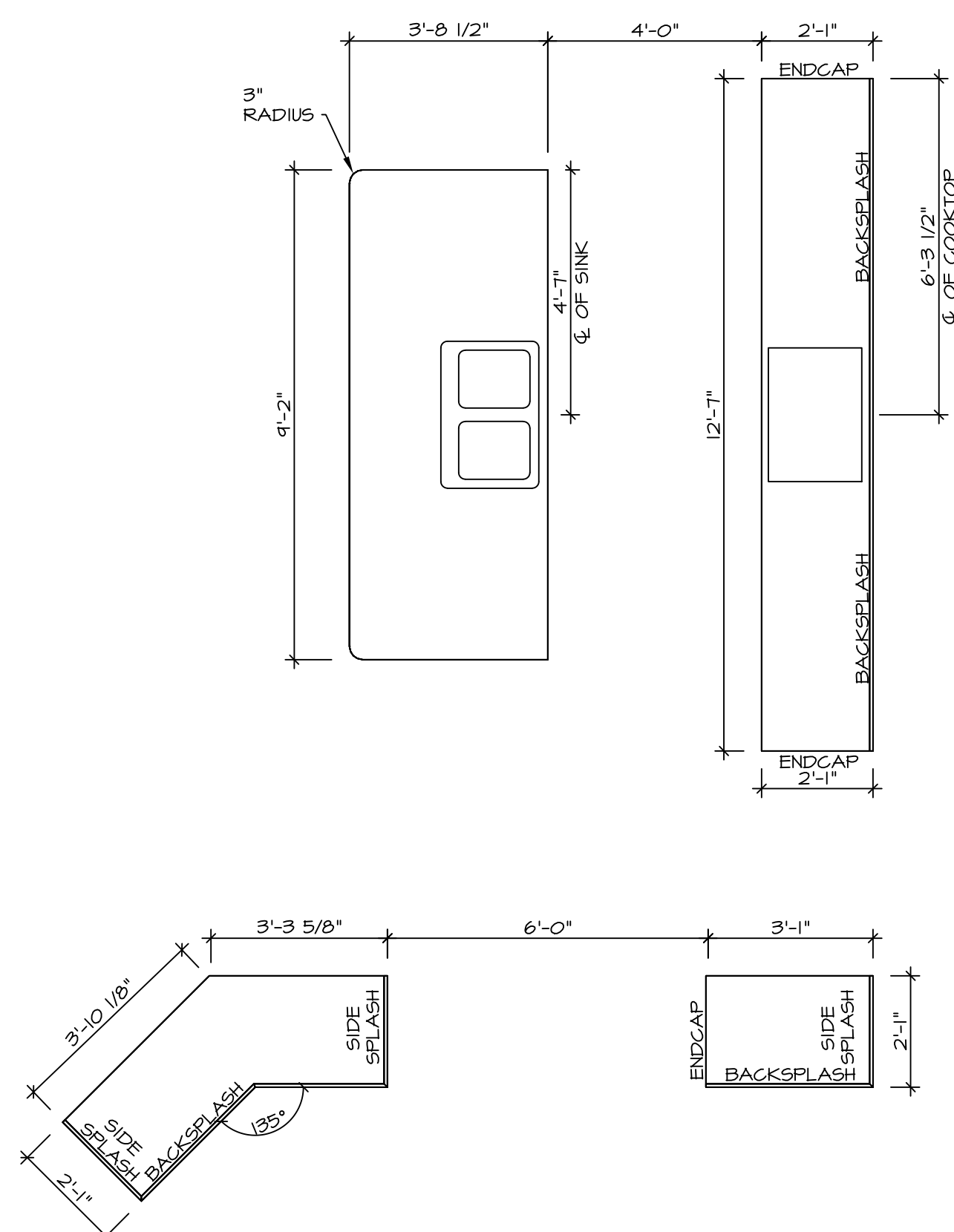
NVR, Inc., owner, expressly reserves its common law copyright in these plans. These plans are not to be reproduced, changed, copied in any way, or otherwise used without the written consent of NVR, Inc.



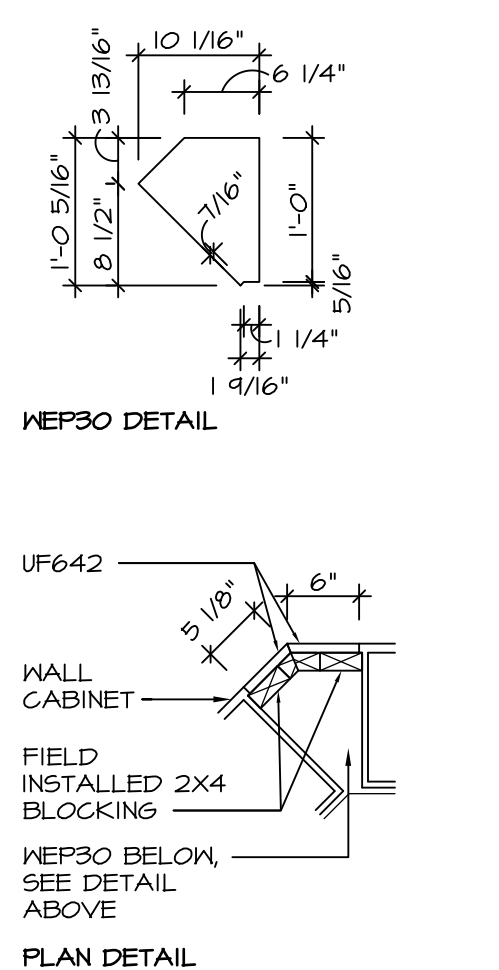
MODEL: VERSAILLES  
 DRAWING TITLE: SECOND FLOOR PLAN  
 SHEET NO.: A-8  
 SET NO.: VRS00  
 VERSION: 01  
 DRAWN BY:  
 DATE:  
 OPTION:



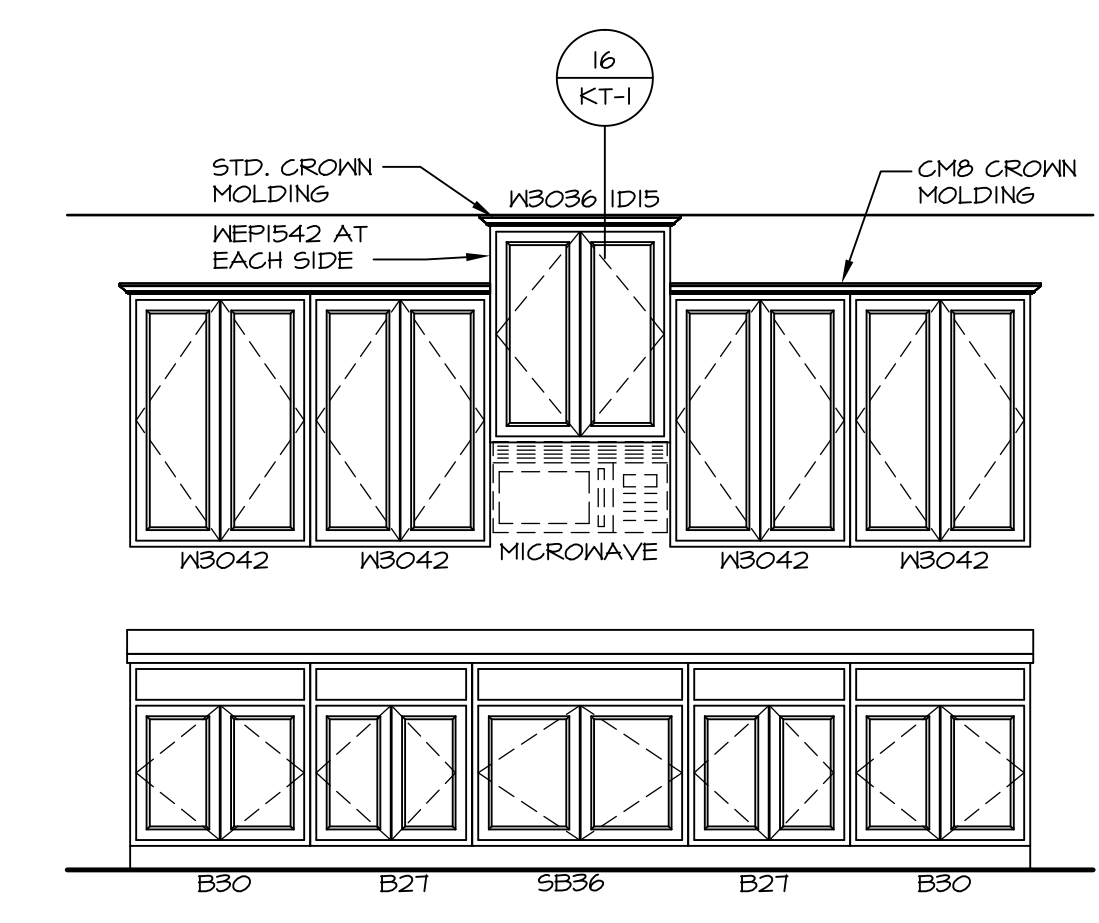
**1 KITCHEN CABINET PLAN / KC - 3286**  
SCALE: 3/8" = 1'-0"



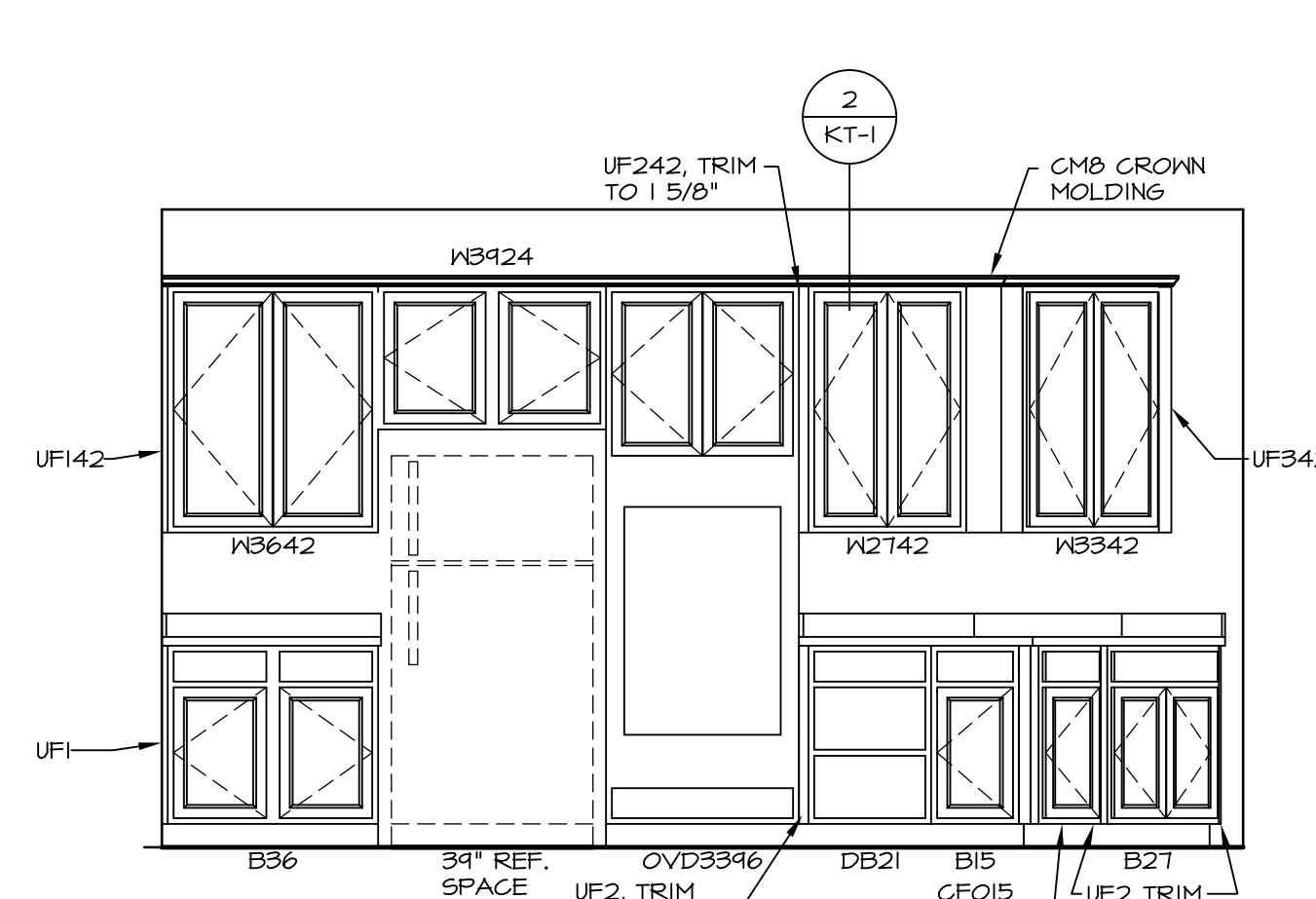
**2 KITCHEN COUNTERTOP PLAN / KC - 3286**  
SCALE: 3/8" = 1'-0"



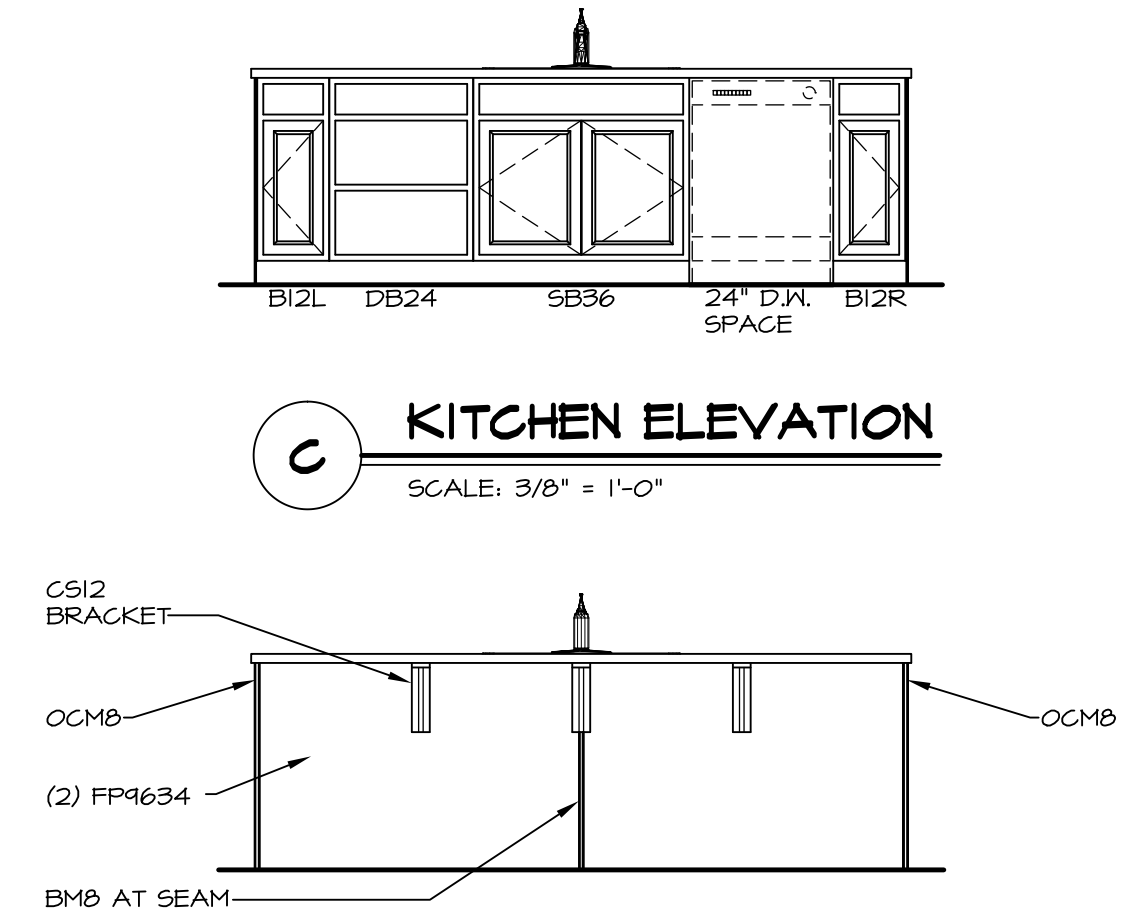
**6 TRIM DETAIL**  
SCALE: 3/4\"/>



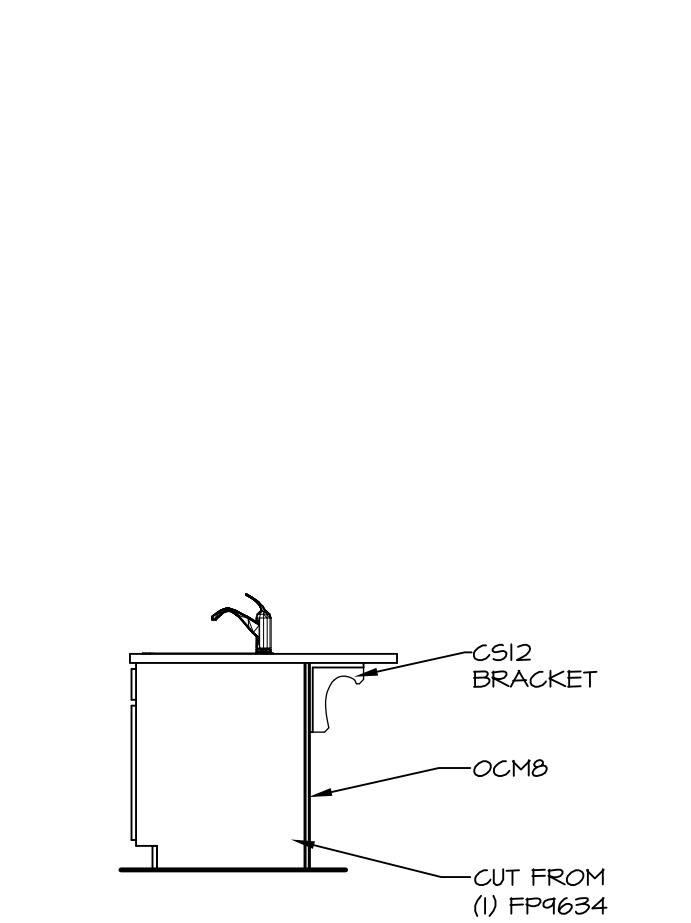
**A KITCHEN ELEVATION**  
SCALE: 3/8" = 1'-0"



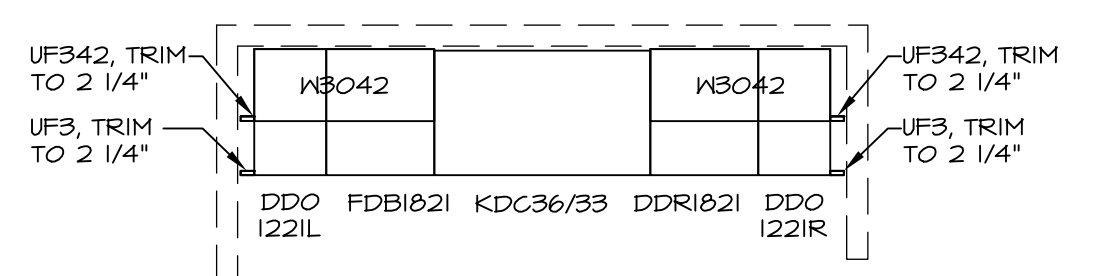
**B KITCHEN ELEVATION**  
SCALE: 3/8" = 1'-0"



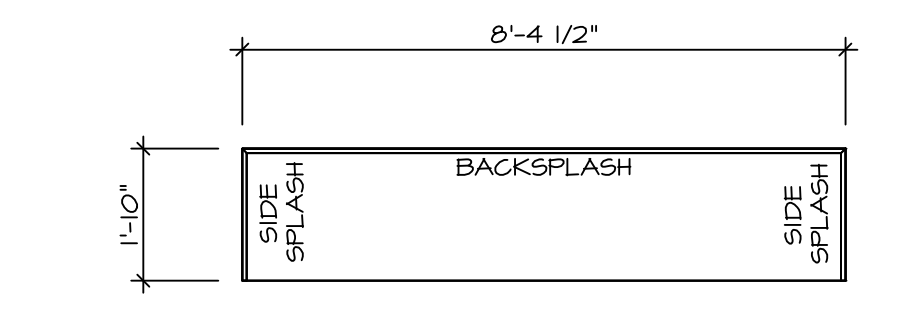
**C KITCHEN ELEVATION**  
SCALE: 3/8" = 1'-0"



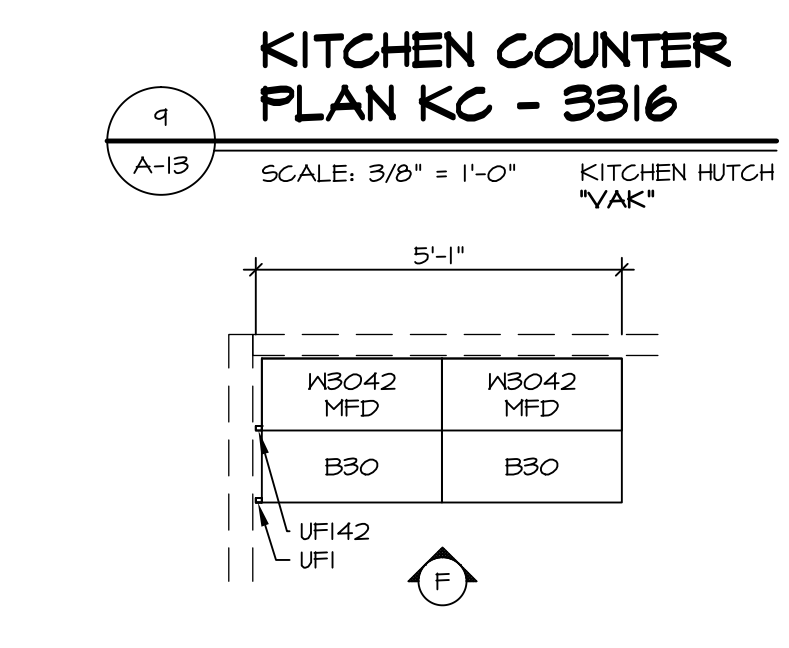
**E KITCHEN ELEVATION**  
SCALE: 3/8" = 1'-0"



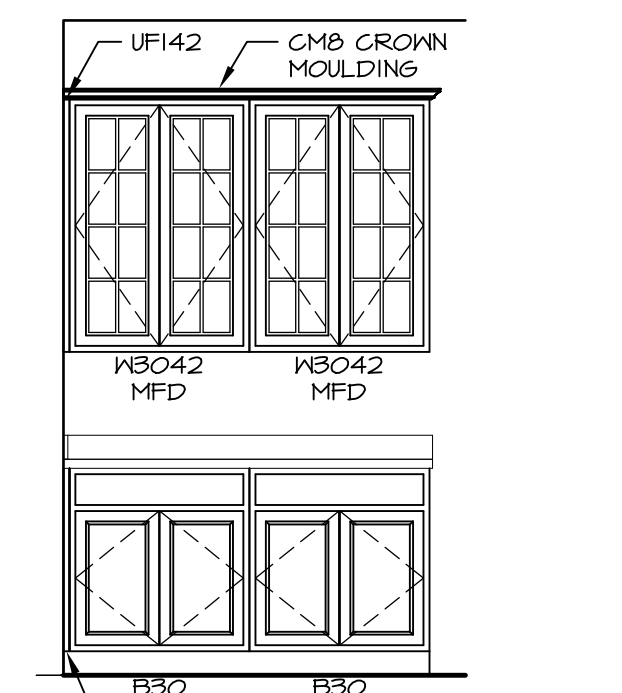
**4 KITCHEN CABINET PLAN KC - 3287**  
SCALE: 3/8" = 1'-0" KITCHEN PLANNING DESK "KFE"



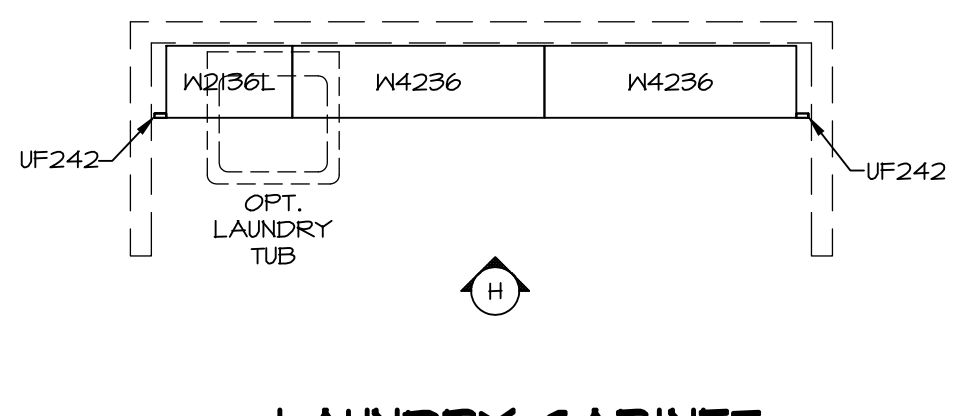
**5 KITCHEN COUNTER PLAN KC - 3287**  
SCALE: 3/8" = 1'-0" KITCHEN PLANNING DESK "KFE"



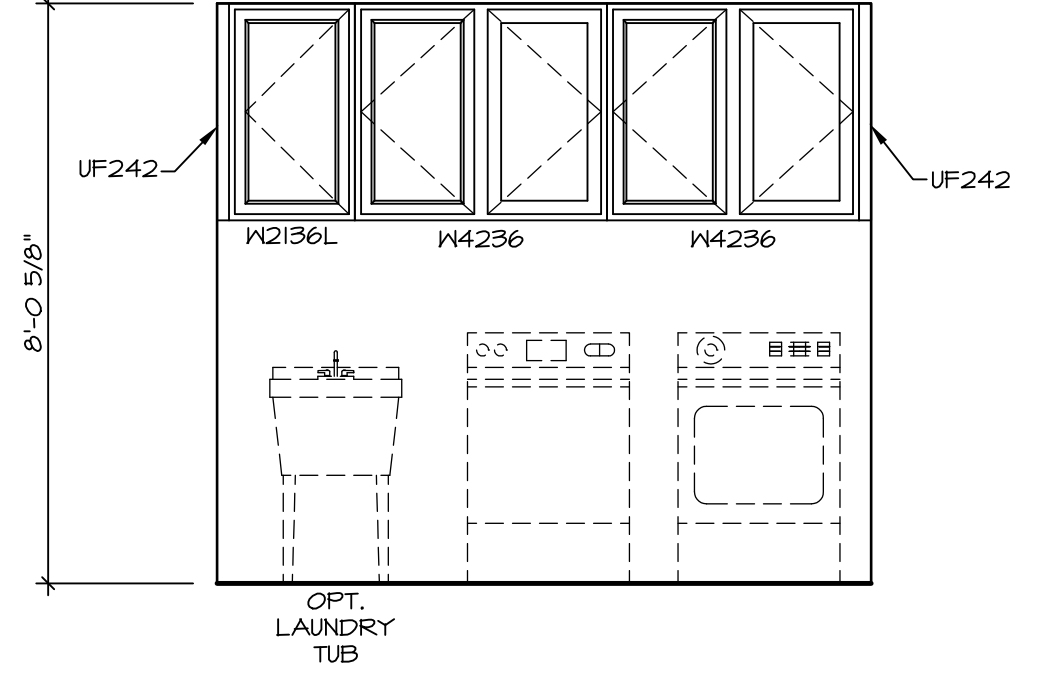
**4 KITCHEN COUNTER PLAN KC - 3316**  
SCALE: 3/8" = 1'-0" KITCHEN HUTCH VAK



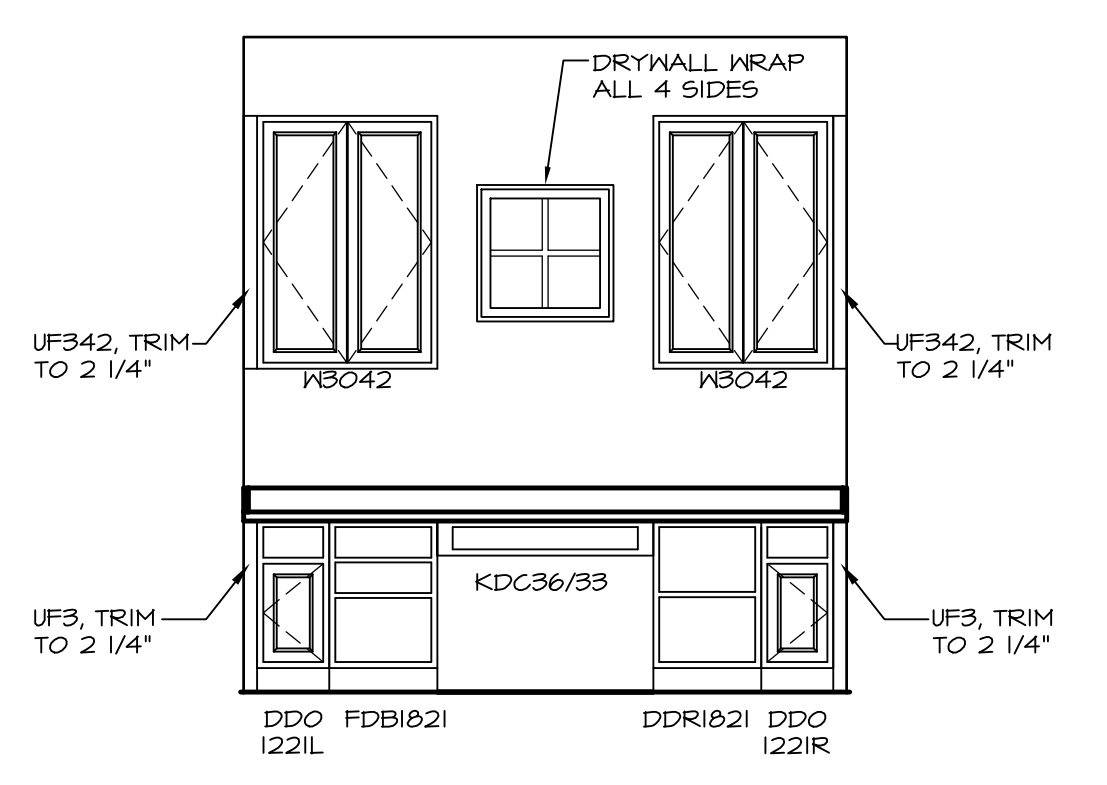
**F KITCHEN ELEVATION**  
SCALE: 3/8" = 1'-0" KITCHEN HUTCH VAK



**3 LAUNDRY CABINET PLAN KC - 3288**  
SCALE: 3/8" = 1'-0"



**H LAUNDRY ELEVATION**  
SCALE: 3/8" = 1'-0"



**G KITCHEN ELEVATION**  
SCALE: 3/8" = 1'-0" KITCHEN PLANNING DESK "KFE"

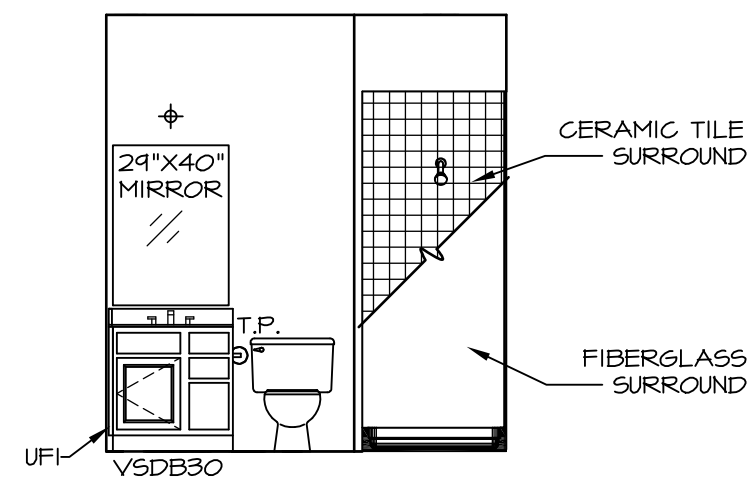
REV. NO.	DATE	REMARKS

NVR, Inc., owner, expressly reserves the copyright in these plans. These plans are not to be reproduced, changed, copied in any way, or used for any purpose other than that for which they are assigned to, without the express written consent of NVR, Inc.

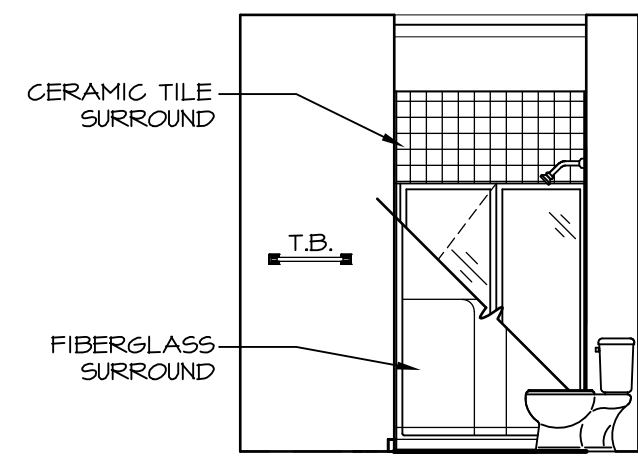
**NVR**  
 NVR, Inc.  
 Architectural Services  
 5285 Washington Blvd  
 Suite 100  
 Frederick, MD 21703

SET NO. VRS00 VERSION 01 DRAWN BY DATE: OPTION	MODEL <b>VERSAILLES</b> DRAWING TITLE <b>KITCHENS</b> OPTION DESCRIPTION
<b>SHEET NO. A-13</b>	<b>53</b>

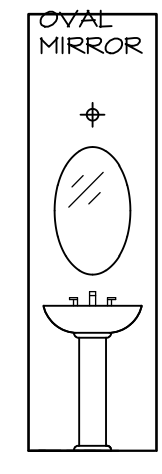
C:\NVR\Solves\VERSAILLES\_VRS00\_01\DC-VR-006\550461\Sheets\A-13\_KIT\_LS.dwg 02/21/17 - 2:04 pm



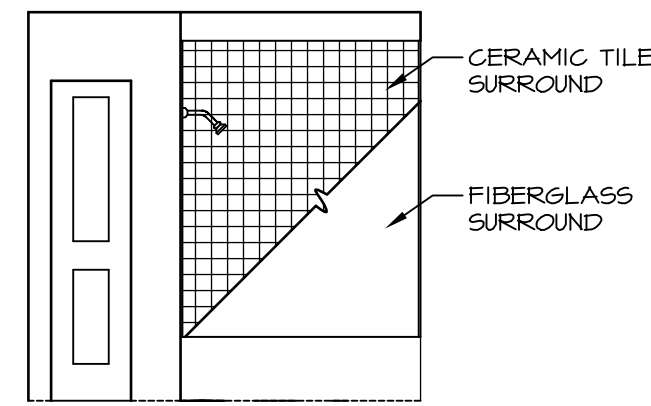
**A** BASEMENT BATH "AEB"  
SCALE: 1/4" = 1'-0"



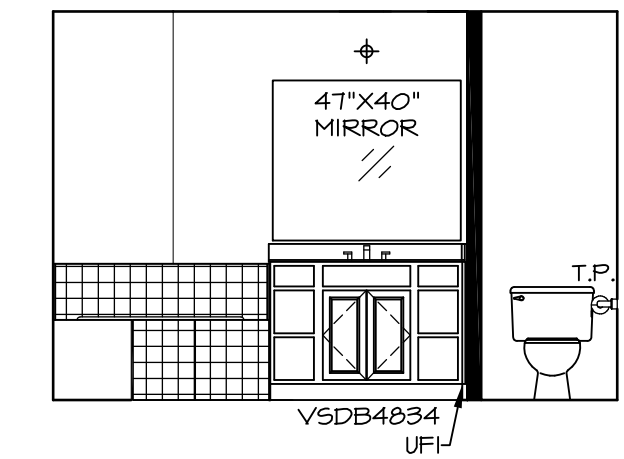
**D** FIRST FLOOR BATH  
SCALE: 1/4" = 1'-0"



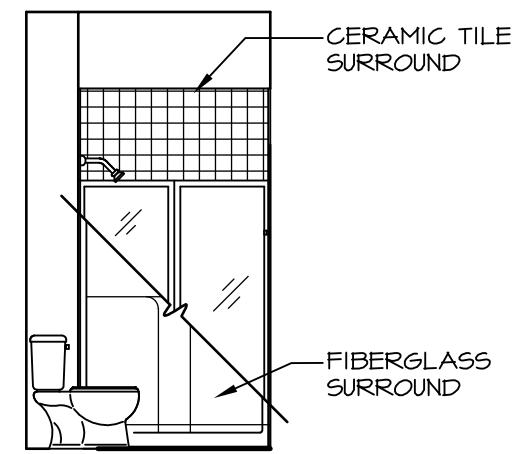
**H** POWDER ROOM "APR"  
SCALE: 1/4" = 1'-0"



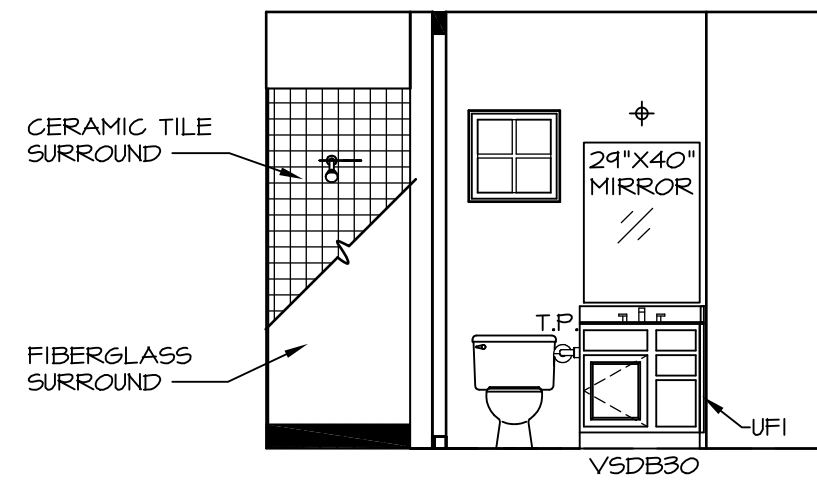
**K** BATH #1  
SCALE: 1/4" = 1'-0"



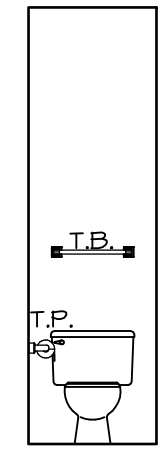
**U** OWNER'S BATH ("AME")  
SCALE: 1/4" = 1'-0"



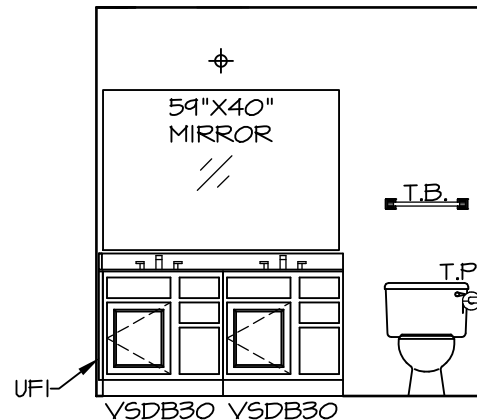
**B** BASEMENT BATH "AEB"  
SCALE: 1/4" = 1'-0"



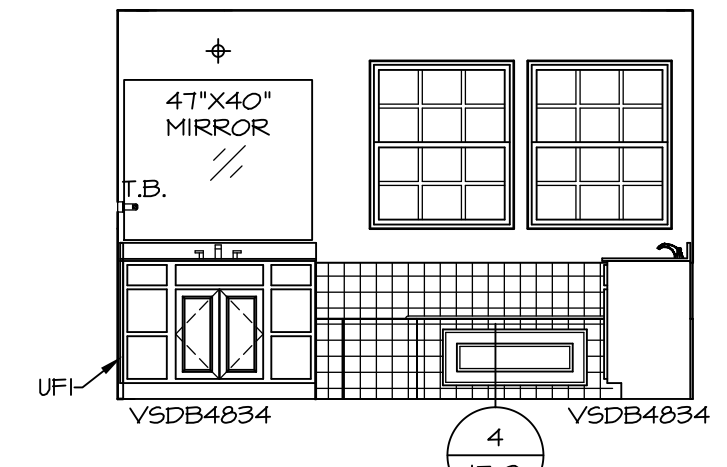
**C** FIRST FLOOR BATH  
SCALE: 1/4" = 1'-0"



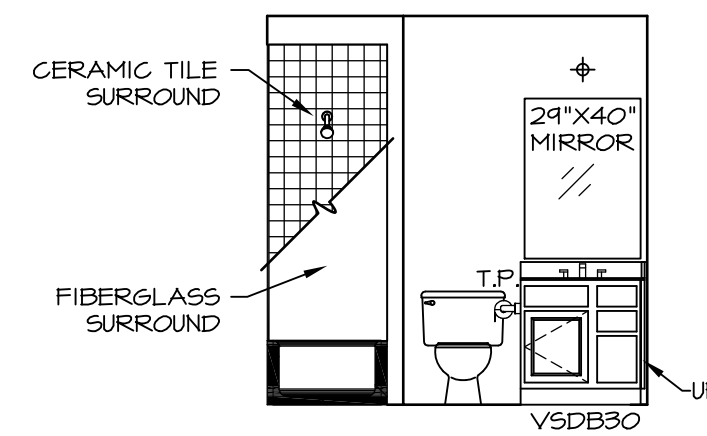
**G** POWDER ROOM "APR"  
SCALE: 1/4" = 1'-0"



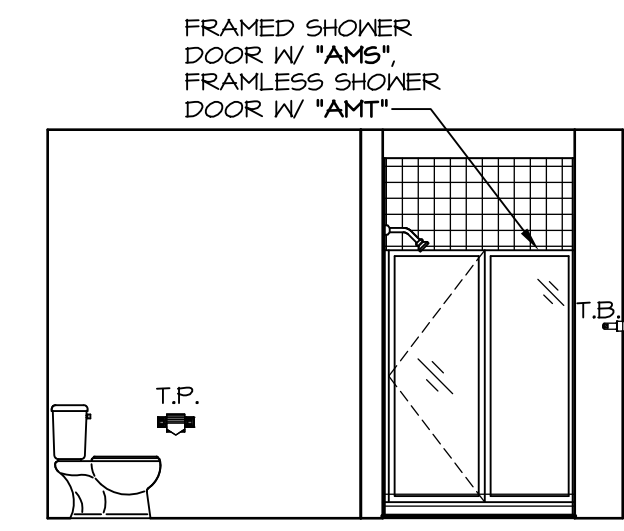
**J** BATH #1  
SCALE: 1/4" = 1'-0"



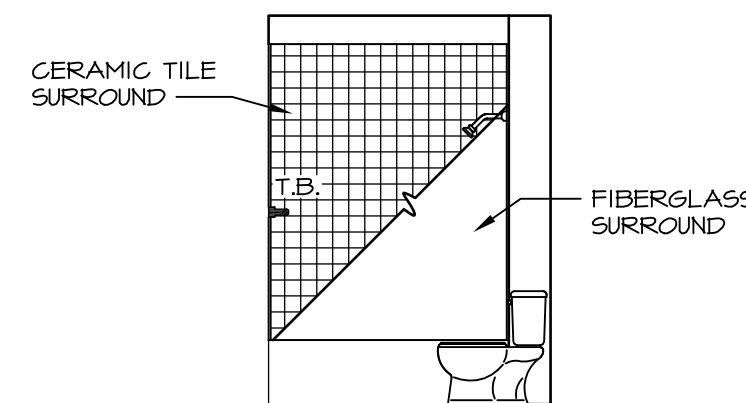
**T** OWNER'S BATH ("AME")  
SCALE: 1/4" = 1'-0"



**M** BATH #2  
SCALE: 1/4" = 1'-0"



**S** OWNER'S BATH ("AME")  
SCALE: 1/4" = 1'-0"



**L** BATH #2  
SCALE: 1/4" = 1'-0"

**NOTES:**

1. TEMPERED GLASS SHOWER ENCLOSURE WITH SWING DOOR OR OPTIONAL SLIDING DOOR BY DIVISION
2. TUB ACCESS PANELS PROVIDED AS NEEDED, ALL MATERIALS BY DIVISION
3. REFER TO SHEET IT-2 FOR TUB AND SHOWER DETAILS.
4. ALL VSDB24-42 DRAWERS TO BE SET ON RIGHT HAND.
5. BATH ELEVATIONS ARE SHOWN PER PLAN.

SET NO. VRS00  
VERSION 01  
DRAWN BY  
DATE:  
OPTION

**VERSAILLES**  
DRAWING TITLE  
BATH ELEVATIONS

**A-14**

55

**NVR**  
NVR, Inc.  
Architectural Services  
5285 Westpark Drive  
Frederick, MD 21703

NVR, Inc., owner, expressly reserves its copyright in these plans. These plans are not to be reproduced, changed, copied, or otherwise used in any way without the written consent of NVR, Inc.

REV. NO. DATE 08/09/16 TH - DRAWING ALIGNMENT

REMARKS