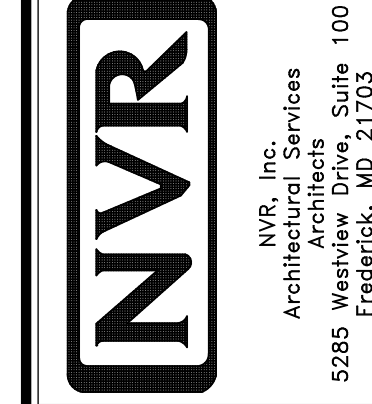


1 PLUMBING PLAN
A-5 SCALE: 1/4" = 1'-0"

SHEET NO. **A-5**
MODEL **PALERMO**
DRAWING TITLE **PLUMBING PLAN**
OPTION DESCRIPTION

SET NO. **PAL00**
VERSION **03**
DRAWN BY
DATE:
OPTION

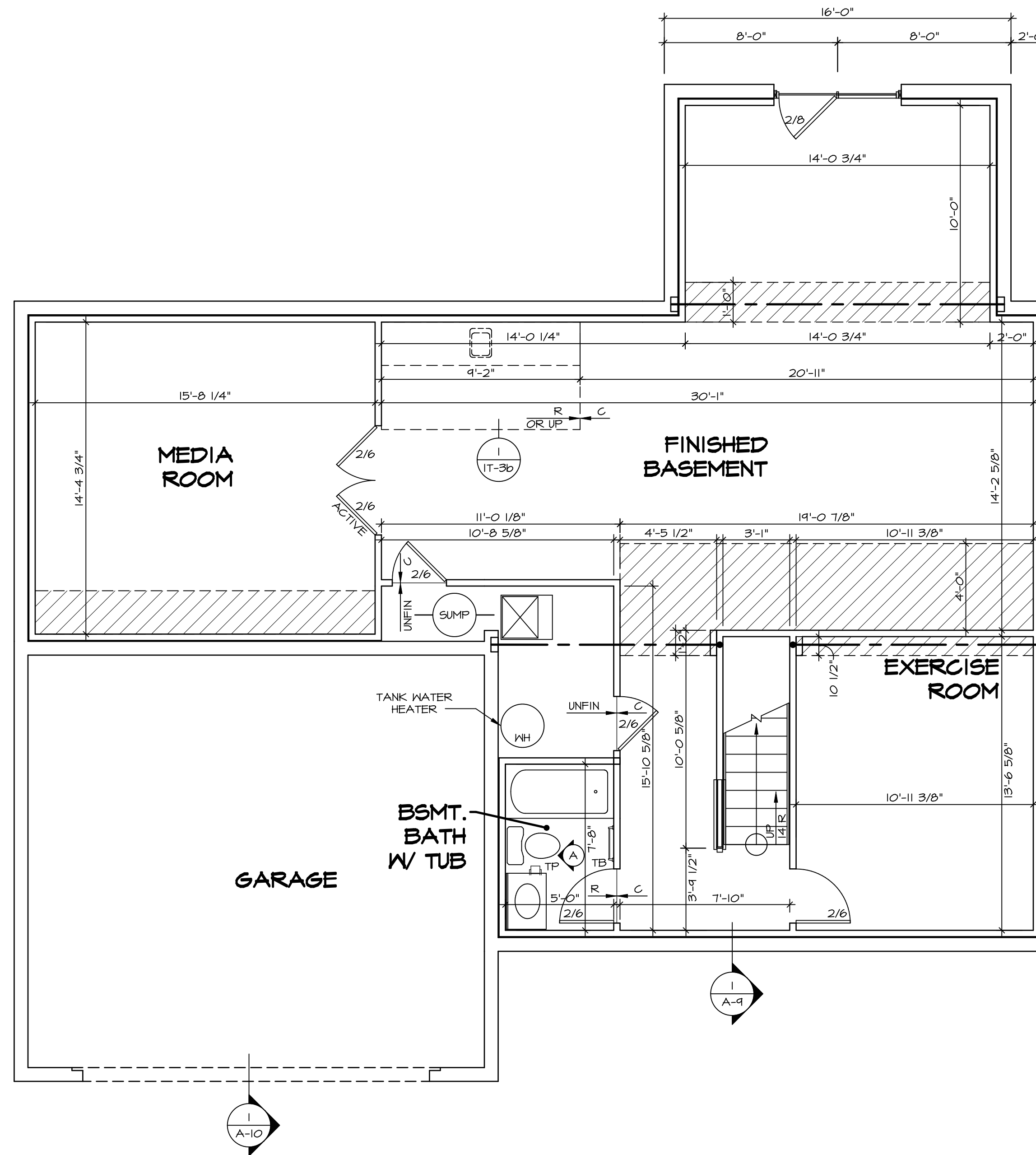


NVR, Inc., owner, expressly reserves its copyright in these plans. These plans are not to be reproduced, changed, copied, or otherwise used in any way without the prior written consent of NVR, Inc.

REV. NO. DATE

REMARKS

48



LEGEND

	BEARING WALL
	NON BEARING WALL
	INDICATES BEARING FROM POINT-LOAD ABOVE
	JACKS
	BEAM/HEADER
	PAD FOOTING
	STEEL COLUMN
	PORTAL FRAME
	JOIST/TRUSS
	LVL
	ENGINEERING PAGE NUMBER

SEE FC DETAILS FOR FRAMING CONNECTORS

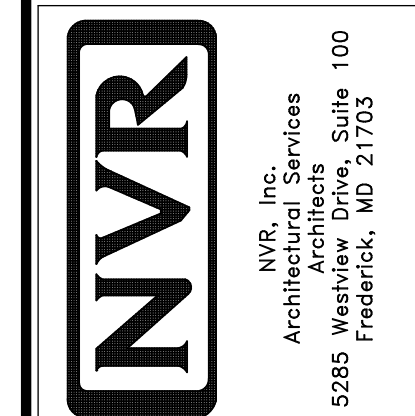
- FLOOR PLAN NOTES**
- ALL HEADERS ARE (2) 2x6 w/ 2x4 WALLS OR (3) 2x6 w/ 2x6 WALLS, UNLESS OTHERWISE NOTED.
 - ALL HEADERS TO HAVE (1) 2x4 OR 2x6 JACK EACH END, UNLESS OTHERWISE NOTED.
 - ALL EXTERIOR WALLS TO BE 4" AND ALL INTERIOR WALLS TO BE 3 1/2", UNLESS OTHERWISE NOTED.
 - HATCHED AREAS INDICATE DROPPED CEILINGS. ALL DROPPED CEILINGS ARE 12" UNLESS OTHERWISE NOTED.
 - SEE "BRACED WALL PANEL DETAIL SHEET" FOR SPECIAL WALL FRAMING LOCATIONS AND HEADER SIZES, IF APPLICABLE.
 - SEE STANDARD DETAIL CATEGORY "IT" SHEET(S) FOR INTERIOR TRIM DETAILS.
 - SEE ARCHITECTURAL DETAIL SHEET "AD" FOR HOUSE SPECIFIC INTERIOR TRIM OPTION TABLE.
 - ALL WINDOWS HAVE 7'-0 1/2" HEADER HEIGHT UNLESS OTHERWISE NOTED.
 - ALL CASED OPENINGS AT T-11, UNLESS OTHERWISE NOTED.

- GYPSUM NOTES**
- AT GARAGE:
GYPSUM BOARD AT COMMON WALLS, CEILING, BEAM WRAPS AND SUPPORTS PER STANDARD DETAIL FA-1(b) FIRE ASSEMBLIES OR AS REQUIRED BY LOCAL CODE.
- AT STAIRS:
1/2" GYPSUM BOARD AT UNDERSIDE OF STAIRS AND WALLS IN CLOSET

BASEMENT FLOOR PLAN
SCALE: 1/4" = 1'-0"

SHEET NO. A-6	MODEL PALERMO	SET NO. PALOO	REVISIONS	REMARKS
		VERSION 03	DATE	
DRAWING TITLE BASEMENT FLOOR PLAN		DRAWN BY	DATE	
OPTION DESCRIPTION		OPTION		
51				

NVR, Inc., owner, expressly reserves its copyright in these plans. These plans are not to be reproduced, changed, copied, or otherwise used in any way without the prior written consent of NVR, Inc.



FIRST FLOOR JACK SCHEDULE				
IDENTIFIER	DESCRIPTION	OPTIONS	ENG. NUM.	REMARKS
J101	JACK - (2) 2X4 SPF STUD GRADE		1072	
J102	JACK - (2) 2X4 SPF STUD GRADE		1072	
J106	JACK - (2) 2X4 SPF STUD GRADE		1072	
J107	JACK - (2) 2X4 SPF STUD GRADE		1072	
J108	JACK - (2) 2X4 SPF STUD GRADE		1072	
J120	JACK - (4) 2X6 SPF STUD GRADE	MAA	1019	
J121	JACK - (3) 2X6 SPF STUD GRADE	MAA	1019	FIELD INSTALLED
J122	JACK - (3) 2X4 SPF STUD GRADE	SRH	1040	
J150	JACK - (3) 2X4 SPF STUD GRADE	GCF	1044	
J151	JACK - (3) 2X4 SPF STUD GRADE	GCF	1044	
J152	JACK - (2) 2X4 SPF STUD GRADE	GCF, MAV	1044, 1131	CRIPPLES
J153	JACK - (2) 2X4 SPF STUD GRADE	GCF, MAV	1044, 1131	CRIPPLES
J154	JACK - (2) 2X4 SPF STUD GRADE	GCF	1122	
J155	JACK - (2) 2X4 SPF STUD GRADE	GCF	1122	
J156	JACK - (2) 2X4 SPF STUD GRADE	GCF	1105	
J157	JACK - (2) 2X4 SPH	ELE	1021	
J170	JACK - (2) 2X4 SPH	ELE	1021	

LVL PLY TO PLY FASTENING SCHEDULE:

1A - (2) FLY UP TO AND INCLUDING 11 7/8" TALL; FASTEN FLIES W/ (2) ROWS 16D NAILS AT 12" O.C.
 2A - (2) FLY 14" TO AND INCLUDING 18" TALL (INCLUSIVE); FASTEN FLIES W/ (3) ROWS 16D NAILS AT 12" O.C.
 3A - (2) FLY 20" TALL AND OVER; FASTEN FLIES W/ (4) ROWS 16D NAILS AT 12" O.C.
 4A - (3) FLY UP TO AND INCLUDING 11 7/8" TALL; FASTEN FLIES W/ (2) ROWS 16D NAILS AT 12" O.C. FROM EACH SIDE
 5A - (3) FLY 14" TO AND INCLUDING 18" TALL (INCLUSIVE); FASTEN FLIES W/ (3) ROWS 16D NAILS AT 12" O.C. FROM EACH SIDE
 6A - (3) FLY 20" TALL AND OVER; FASTEN FLIES W/ (4) ROWS 16D NAILS AT 12" O.C. FROM EACH SIDE

FIRST FLOOR BEAM/HEADER SCHEDULE					
IDENTIFIER	DESCRIPTION	LENGTH	OPTIONS	ENG. NUM.	REMARKS
B101-3	LVL - 16	14'-4 1/2"	MAA	1019	5A, FIELD INSTALL
B105	BEAM STEEL - W12X40	22'-3 1/2"	ELE, MAV	1057, 1133	
B107-2	LVL - 14	17'-4"	MAV	1050, 1051	2A, FIELD INSTALL
PF104-2	EXT HEADER - 2X12 - 2 PLY	11'-4"	GCF	1054, 1148	2-PLY, FIELD INSTALL

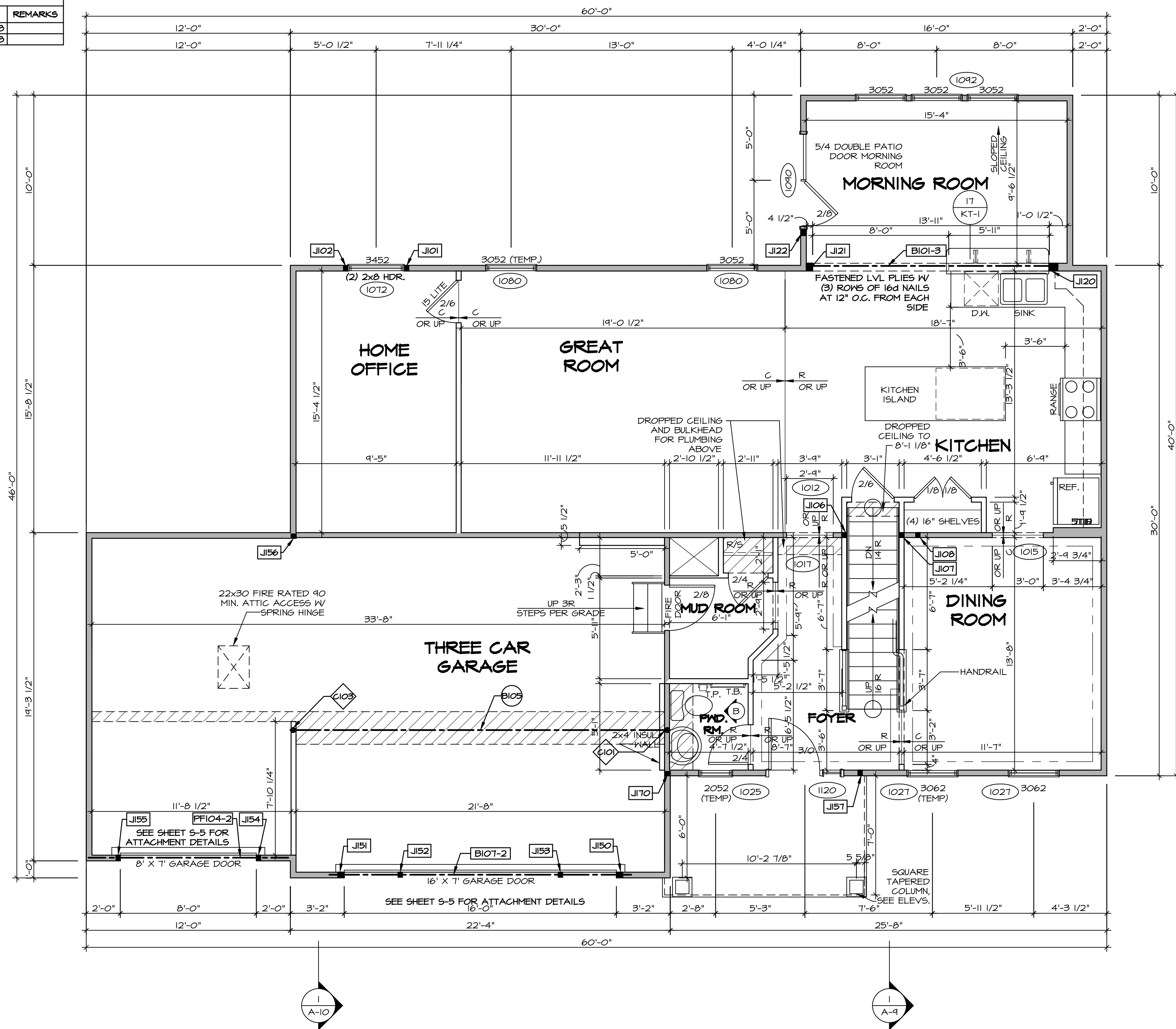
LEGEND	
	BEARING WALL
	NON BEARING WALL
	INDICATES BEARING FROM POINT-LOAD ABOVE
	JACKS
	BEAM/HEADER
	PAD FOOTING
	STEEL COLUMN
	PORTAL FRAME
	JOIST/TRUSS
	LVL
	ENGINEERING PAGE NUMBER

SEE FC DETAILS FOR FRAMING CONNECTORS

- FLOOR PLAN NOTES**
- ALL HEADERS ARE (2) 2x6 W/ 2x4 WALLS OR (3) 2x6 W/ 2x6 WALLS, UNLESS OTHERWISE NOTED.
 - ALL HEADERS TO HAVE (1) 2x4 OR 2x6 JACK AND KING STUD EACH END, UNLESS OTHERWISE NOTED.
 - ALL EXTERIOR WALLS TO BE 4" W/ OSB OR 3 1/2" W/ T-PLY, ALL INTERIOR WALLS TO BE 3 1/2", UNLESS OTHERWISE NOTED.
 - HATCHED AREAS INDICATE DROPPED CEILINGS. ALL DROPPED CEILINGS ARE 12" UNLESS OTHERWISE NOTED.
 - SEE "BRACED WALL PANEL DETAIL SHEET" FOR SPECIAL WALL FRAMING LOCATIONS AND HEADER SIZES, IF APPLICABLE.
 - SEE STANDARD DETAIL CATEGORY "IT" SHEET(S) FOR INTERIOR TRIM DETAILS.
 - SEE ARCHITECTURAL DETAIL SHEET "AD" FOR HOUSE SPECIFIC INTERIOR TRIM OPTION TABLE.
 - ALL WINDOWS HAVE 7'-0" 1/2" HEADER HEIGHT UNLESS OTHERWISE NOTED.
 - ALL HEADERS IN NON-BEARING WALLS SHALL BE A SINGLE FLAT 2X4 OR 2X6 ATTACHED TO CRIPPLES ABOVE, UNLESS OTHERWISE NOTED.

- GYPSUM NOTES**
- AT GARAGE:**
 GYPSUM BOARD AT COMMON WALLS, CEILING, BEAM WRAPS AND SUPPORTS PER STANDARD DETAIL FA-1(b) FIRE ASSEMBLIES OR AS REQUIRED BY LOCAL CODE.
- AT STAIRS:**
 1/2" GYPSUM BOARD AT UNDERSIDE OF STAIRS AND WALLS IN CLOSET

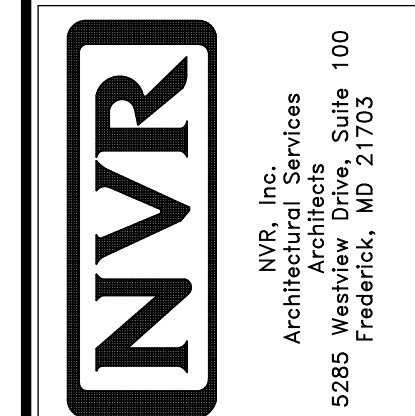
STEEL COLUMN SCHEDULE					
IDENTIFIER	STYLE	HEIGHT	OPTIONS	ENG. NUM.	REMARKS
C101	STANCHION - 3 IN SCHED 40	9'-0 11/16"	FBA	1057, 1133, 1128	
C103	STANCHION - 3 IN SCHED 40	9'-0 11/16"	FBA	1057, 1133, 1128	



FIRST FLOOR PLAN
 SCALE: 1/4" = 1'-0"

REV. NO.	DATE	DESCRIPTION
1	08/04/16	TH - DRAWING ALIGNMENT
2	07/27/17	SLS - T-PLY CONVERSION PROJECT

NVR, Inc., owner, expressly reserves the copyright in these plans. These plans are not to be reproduced, changed, copied, or otherwise used in any way without the written consent of NVR, Inc.

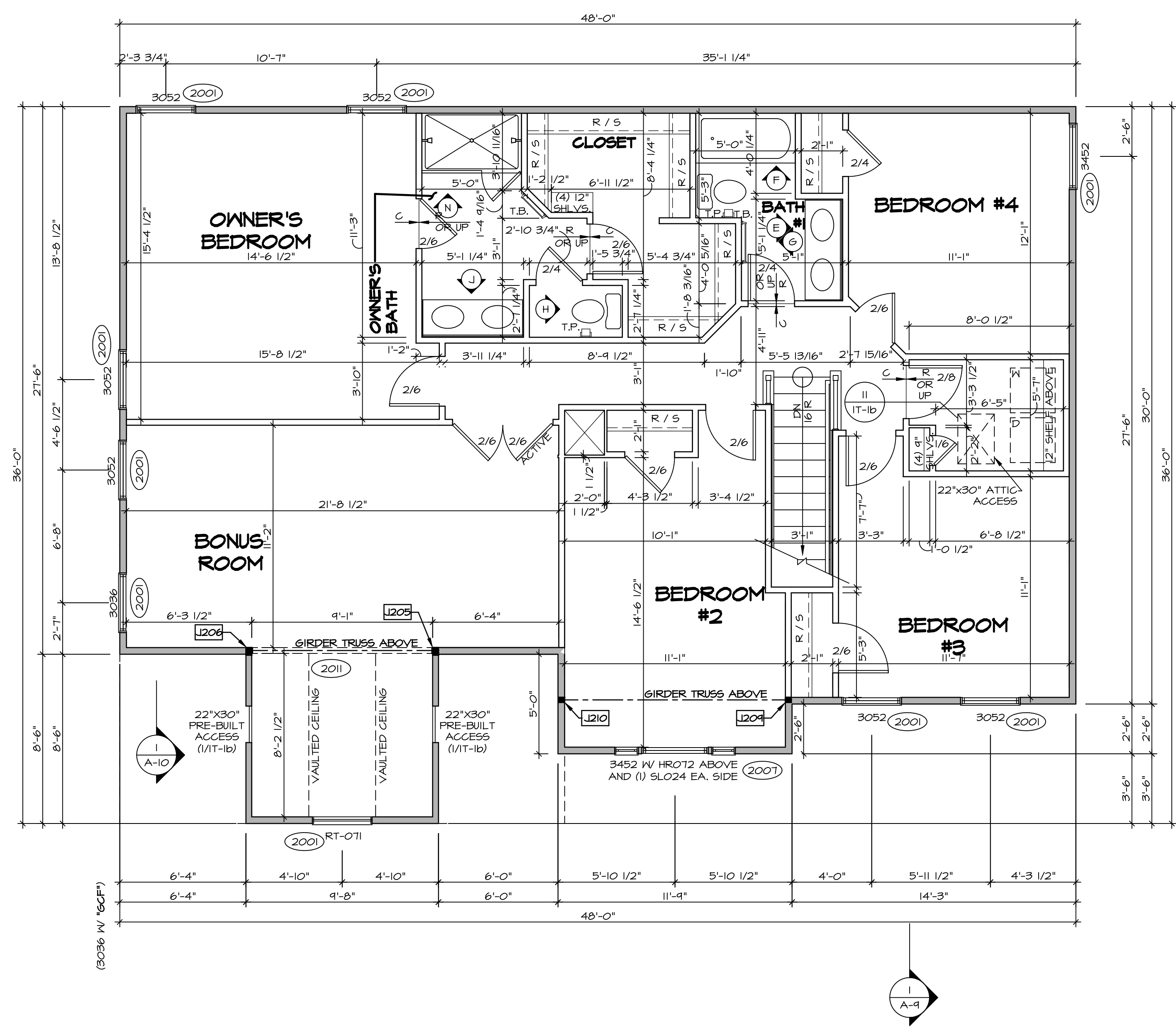


MODEL	PALERMO
DRAWING TITLE	FIRST FLOOR PLAN
OPTION	DESCRIPTION
SHEET NO.	A-7
53	

SECOND FLOOR JACK SCHEDULE				
IDENTIFIER	DESCRIPTION	OPTIONS	ENG. NUM.	REMARKS
J205	JACK - (3) 2X4 SPF STUD GRADE	MAY	2011	
J206	JACK - (3) 2X4 SPF STUD GRADE	MAY	2011	
J204	JACK - (2) 2X4 9F#11	ELE	2011	
J210	JACK - (2) 2X4 9F#11	ELE	2011	

LEGEND	
	BEARING WALL
	NON BEARING WALL
	INDICATES BEARING FROM POINT-LOAD ABOVE
	JACKS
	BEAM/HEADER
	PAD FOOTING
	STEEL COLUMN
	PORTAL FRAME
	JOIST/TRUSS
	LVL
	ENGINEERING PAGE NUMBER

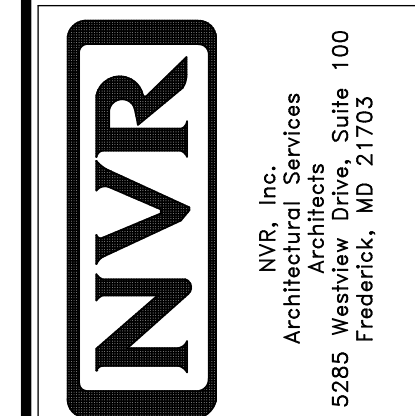
- FLOOR PLAN NOTES**
- ALL HEADERS ARE (2) 2x6 w/ 2x4 WALLS OR (3) 2x6 w/ 2x6 WALLS, UNLESS OTHERWISE NOTED.
 - ALL HEADERS TO HAVE (1) 2x4 OR 2x6 JACK AND KING STUD EACH END, UNLESS OTHERWISE NOTED.
 - ALL EXTERIOR WALLS TO BE 4" w/ OSB OR 3 1/2" w/ T-PLY, ALL INTERIOR WALLS TO BE 3 1/2", UNLESS OTHERWISE NOTED.
 - HATCHED AREAS INDICATE DROPPED CEILINGS. ALL DROPPED CEILINGS ARE 12" UNLESS OTHERWISE NOTED.
 - SEE "BRACED WALL PANEL DETAIL SHEET" FOR SPECIAL WALL FRAMING LOCATIONS AND HEADER SIZES, IF APPLICABLE.
 - SEE STANDARD DETAIL CATEGORY "1T" SHEET(S) FOR INTERIOR TRIM DETAILS.
 - SEE ARCHITECTURAL DETAIL SHEET "AD" FOR HOUSE SPECIFIC INTERIOR TRIM OPTION TABLE.
 - ALL WINDOWS HAVE 7'-0 1/2" HEADER HEIGHT UNLESS OTHERWISE NOTED.
 - ALL HEADERS IN NON-BEARING WALLS SHALL BE A SINGLE FLAT 2x4 OR 2x6 ATTACHED TO GRIPPLES ABOVE, UNLESS OTHERWISE NOTED.



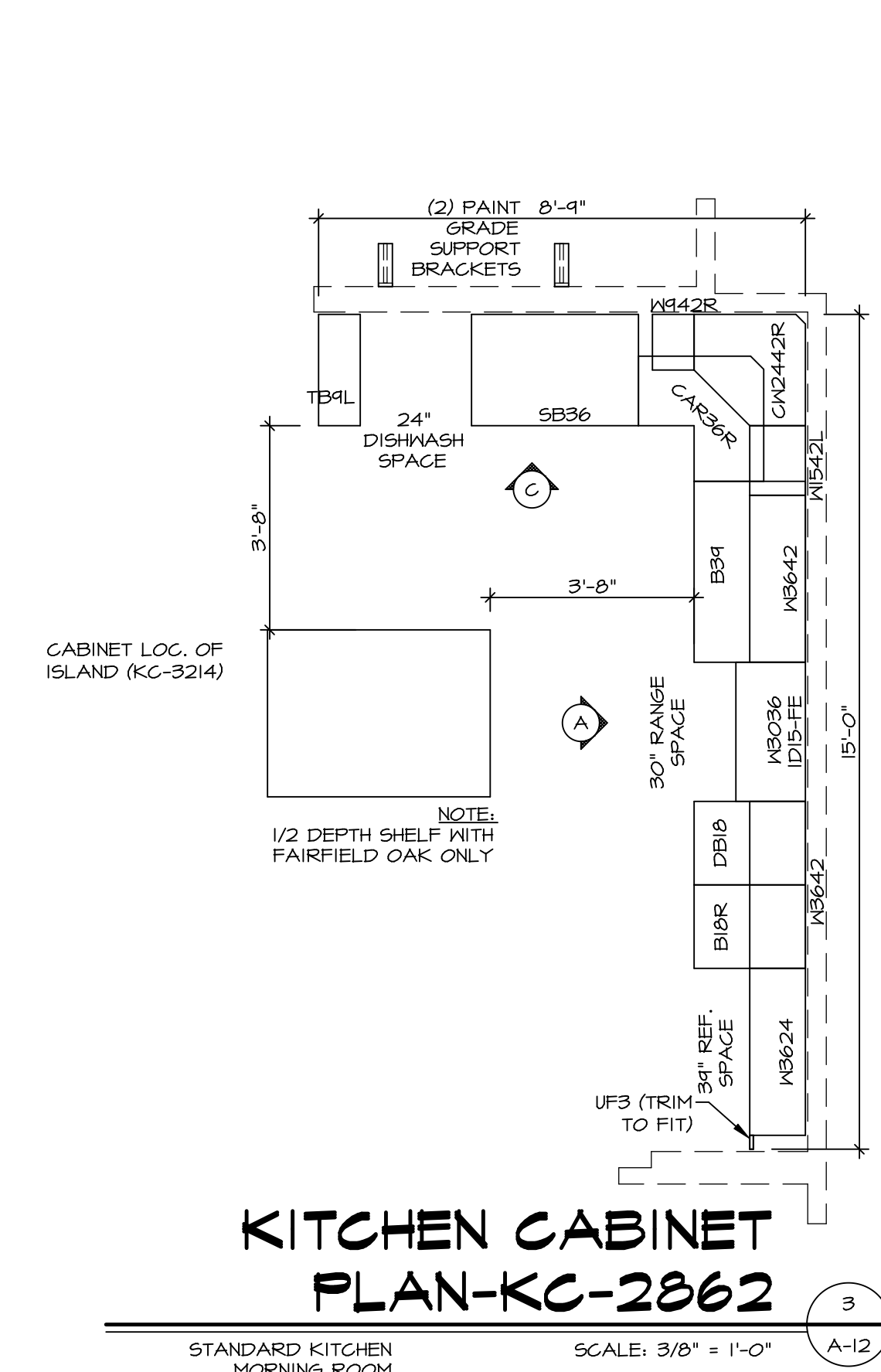
SECOND FLOOR PLAN
SCALE: 1/4" = 1'-0"

REV. NO.	DATE	REMARKS
1	08/04/16	TM - DRAINING ALIGNMENT
2	07/12/17	SLS - T-PLY CONVERSION PROJECT

NVR, Inc., owner, expressly reserves its copyright in these plans. These plans are not to be reproduced, changed, copied, or otherwise used in any way without the written consent of NVR, Inc.

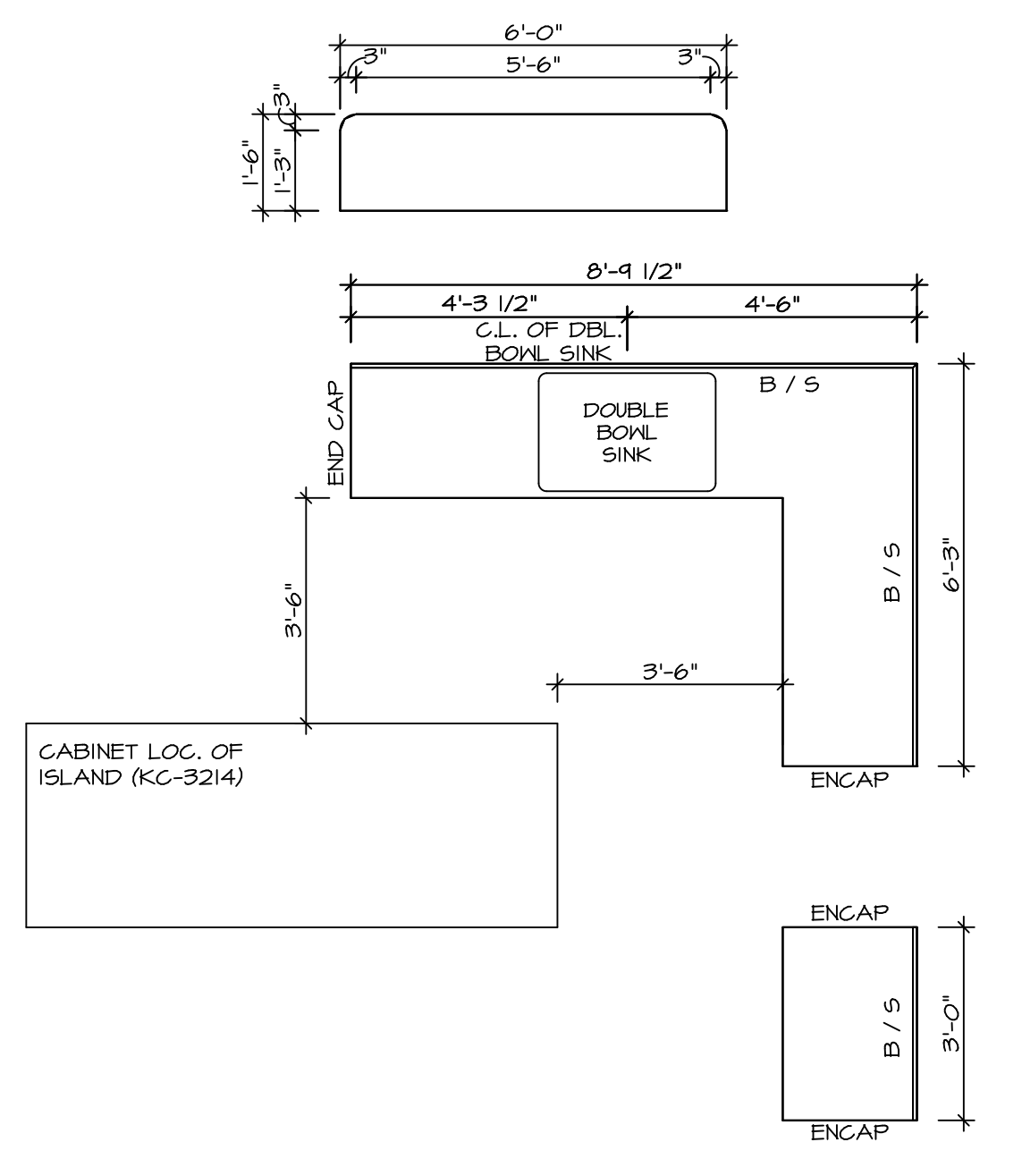


SHEET NO.	A-8	OPTION DESCRIPTION	60
MODEL	PALERMO	SET NO. PALOO	
DRAWING TITLE	SECOND FLOOR PLAN	VERSION	03
OPTION DESCRIPTION		DRAWN BY	
		DATE:	
		OPTION	



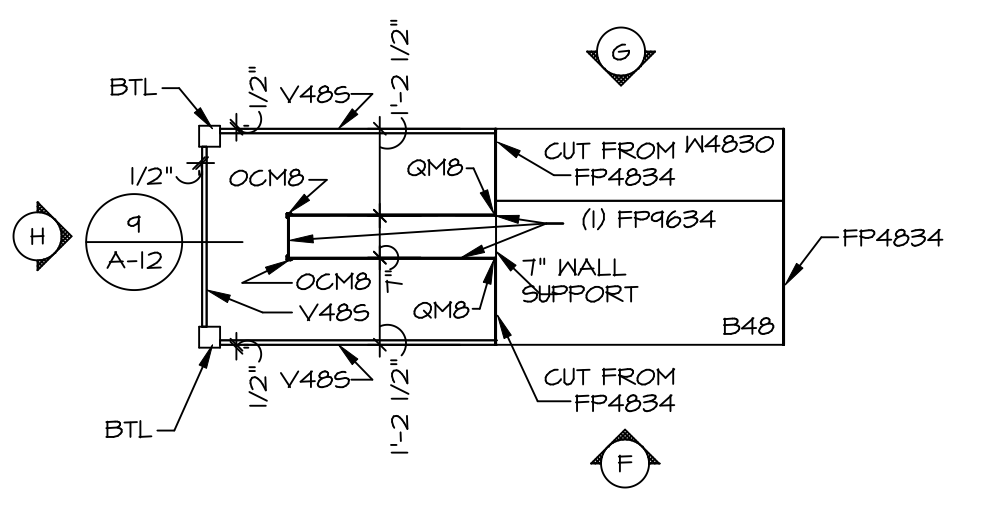
**KITCHEN CABINET
PLAN-KC-2862** 3

STANDARD KITCHEN MORNING ROOM SCALE: 3/8" = 1'-0" A-12



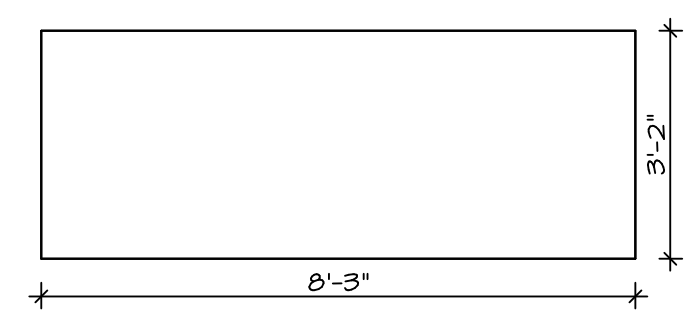
**KITCHEN COUNTERTOP
PLAN-KT-2862** 4

STANDARD KITCHEN MORNING ROOM SCALE: 3/8" = 1'-0" A-12



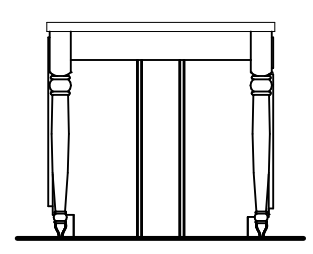
**KITCHEN CABINET
PLAN-KC-3214** 7

GOURMET ISLAND SCALE: 3/8" = 1'-0" A-12

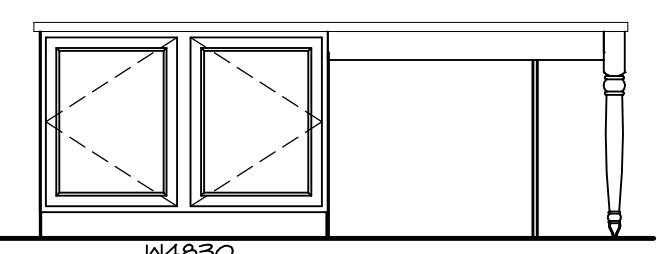


**KITCHEN COUNTERTOP
PLAN-KT-3214** 8

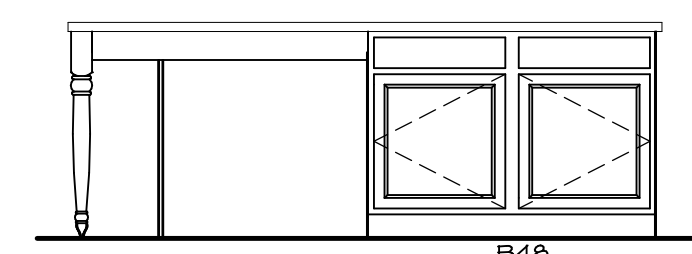
GOURMET ISLAND SCALE: 3/8" = 1'-0" A-12



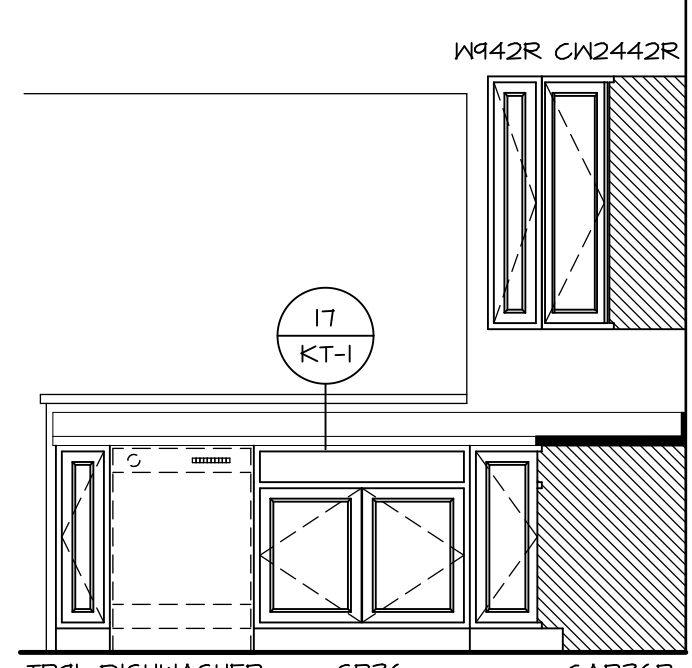
KITCHEN ELEVATION H
SCALE: 3/8" = 1'-0"



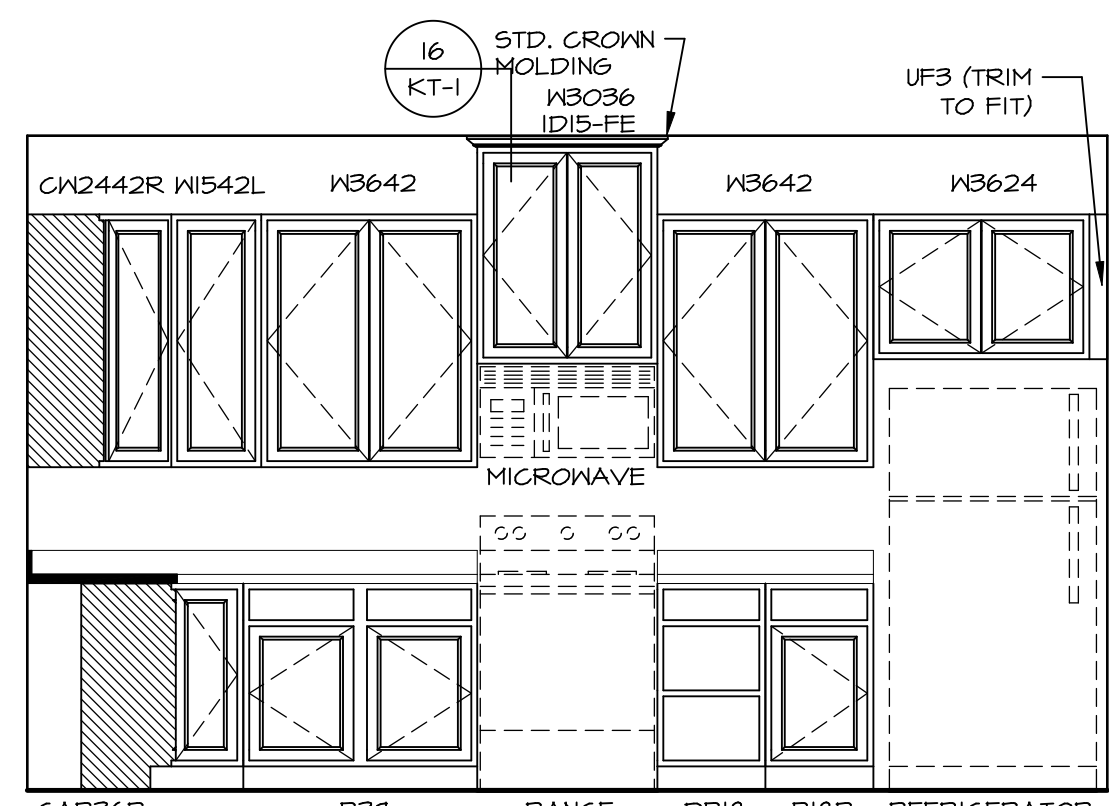
KITCHEN ELEVATION G
SCALE: 3/8" = 1'-0"



KITCHEN ELEVATION F
SCALE: 3/8" = 1'-0"



KITCHEN ELEVATION C
SCALE: 3/8" = 1'-0"



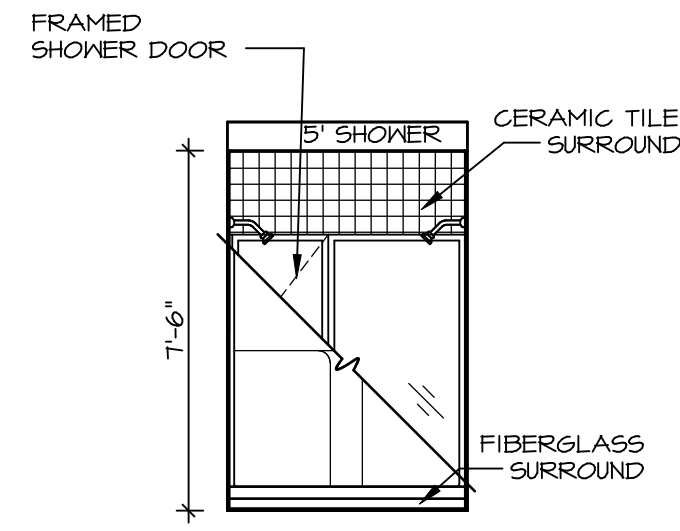
KITCHEN ELEVATION A
SCALE: 3/8" = 1'-0"

REV. NO.	DATE	REMARKS

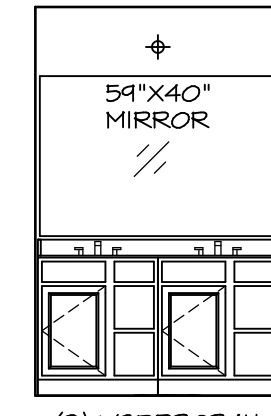
NVR, Inc., owner, expressly reserves the copyright in these plans. These plans are not to be reproduced, changed, copied, or otherwise used without the written consent of NVR, Inc.

NVR
Architectural Services
100
5285 Westpark Dr., Suite 100
Frederick, MD 21703

SHEET NO. A-12	SET NO. PALOO	OPTION
	VERSION 03	
DRAWING TITLE	DRAWN BY	
	DATE:	
DRAWING DESCRIPTION	DRAWN BY	
	DATE:	
70		

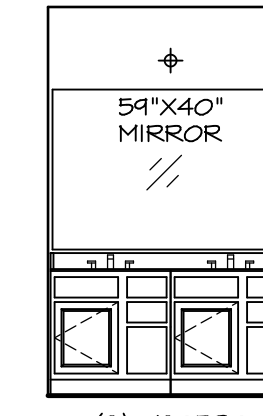


N OWNER'S BATH
SCALE: 1/4" = 1'-0"



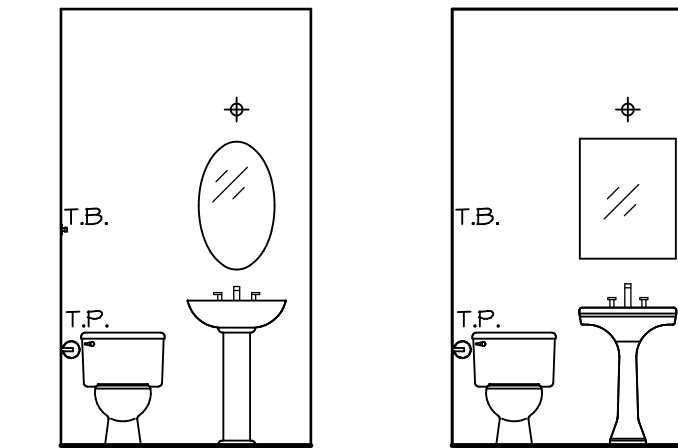
(2) V5DB3034H

J OWNER'S BATH
SCALE: 1/4" = 1'-0"



(2) V5DB30

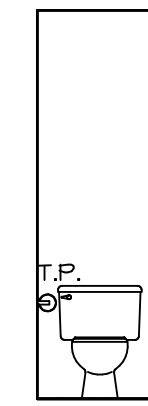
E BATH #1
SCALE: 1/4" = 1'-0"



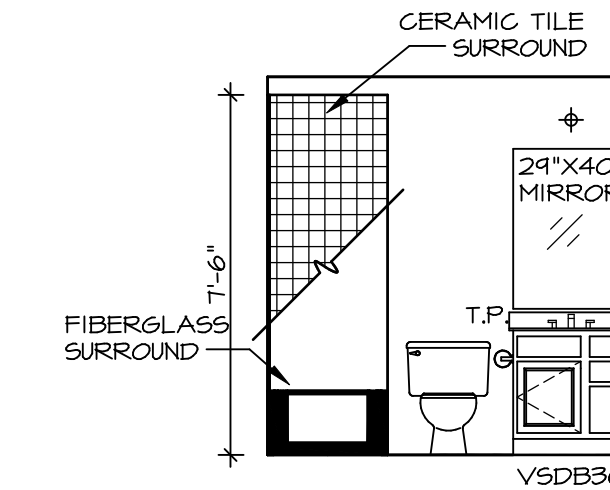
PEDESTAL SINK WITH OVAL MIRROR "52B"

PEDESTAL SINK WITH SQUARE MIRROR "52C"

B POWDER ROOM
SCALE: 1/4" = 1'-0"



H OWNER'S BATH
SCALE: 1/4" = 1'-0"



29"X40" MIRROR

V5DB30

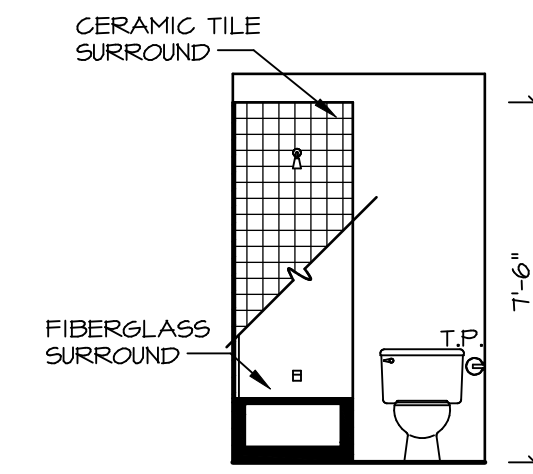
FIBERGLASS SURROUND

T.P.

CERAMIC TILE SURROUND

7'-6"

A BASEMENT BATH
SCALE: 1/4" = 1'-0"

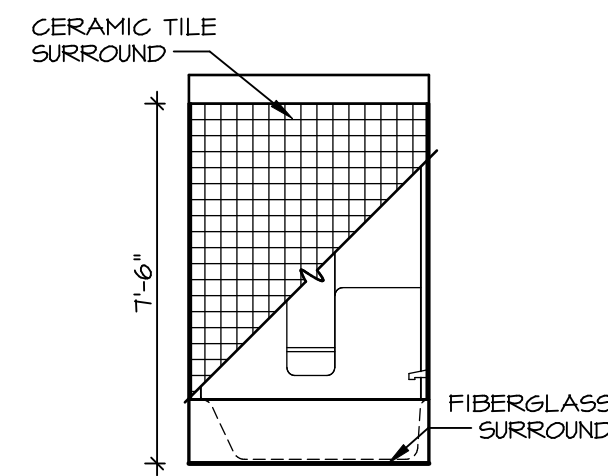


7'-6"

FIBERGLASS SURROUND

T.P.

G BATH #1
SCALE: 1/4" = 1'-0"



7'-6"

FIBERGLASS SURROUND

F BATH #1
SCALE: 1/4" = 1'-0"

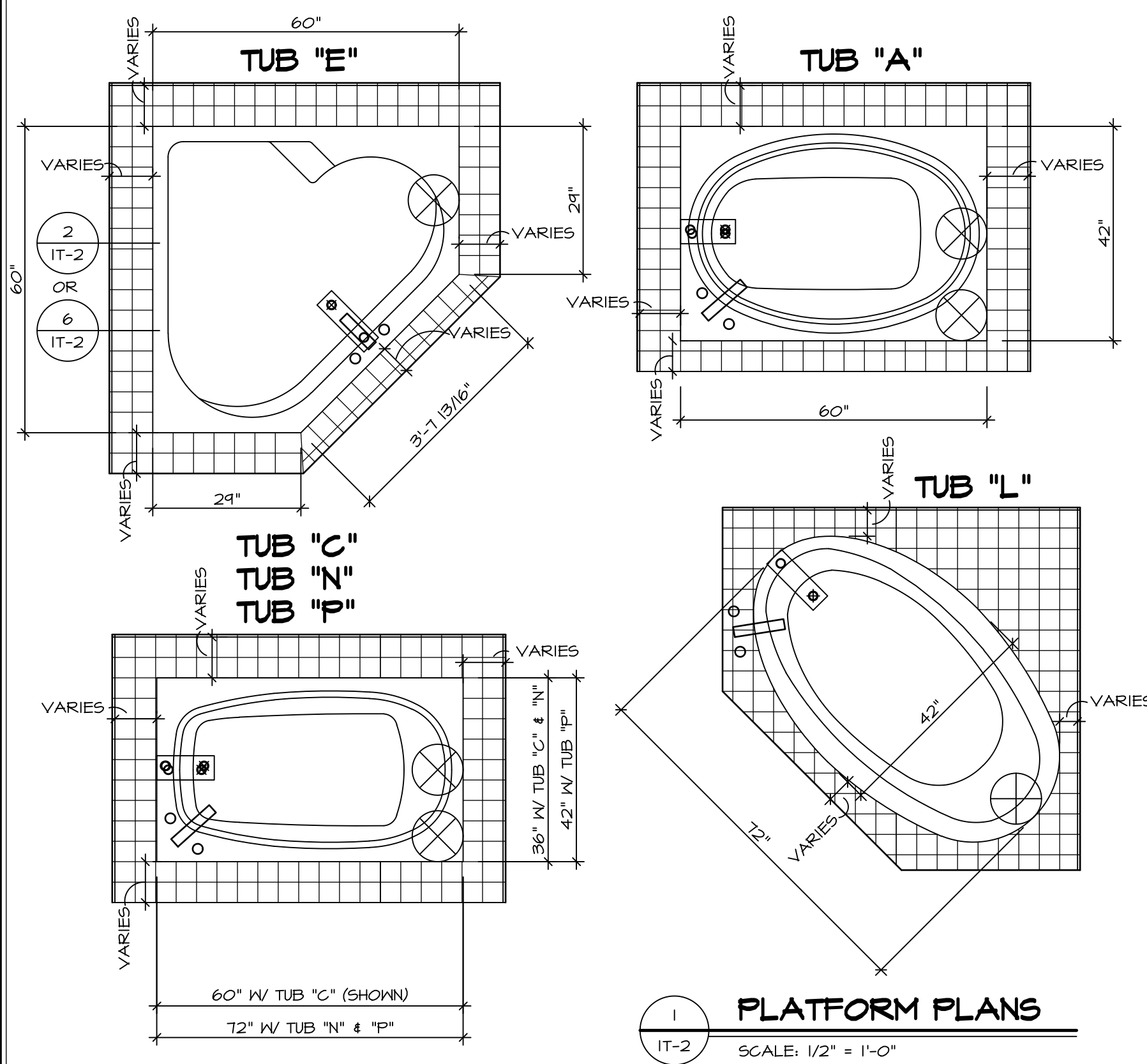
NOTES:

1. TEMPERED GLASS SHOWER ENCLOSURE WITH SWING DOOR OR OPTIONAL SLIDING DOOR BY DIVISION
2. TUB ACCESS PANELS PROVIDED AS NEEDED, ALL MATERIALS BY DIVISION
3. REFER TO SHEET IT-2 FOR TUB AND SHOWER DETAILS.
4. ALL V5DB24-42 DRAWERS TO BE SET ON RIGHT HAND.
5. BATH ELEVATIONS ARE SHOWN PER PLAN.

SHEET NO.	MODEL	SET NO.	VERSION	DRAWN BY	DATE:	OPTION	REMARKS
A-13	PALERMO	PALOO	03				
	BATH ELEVATIONS						
72							

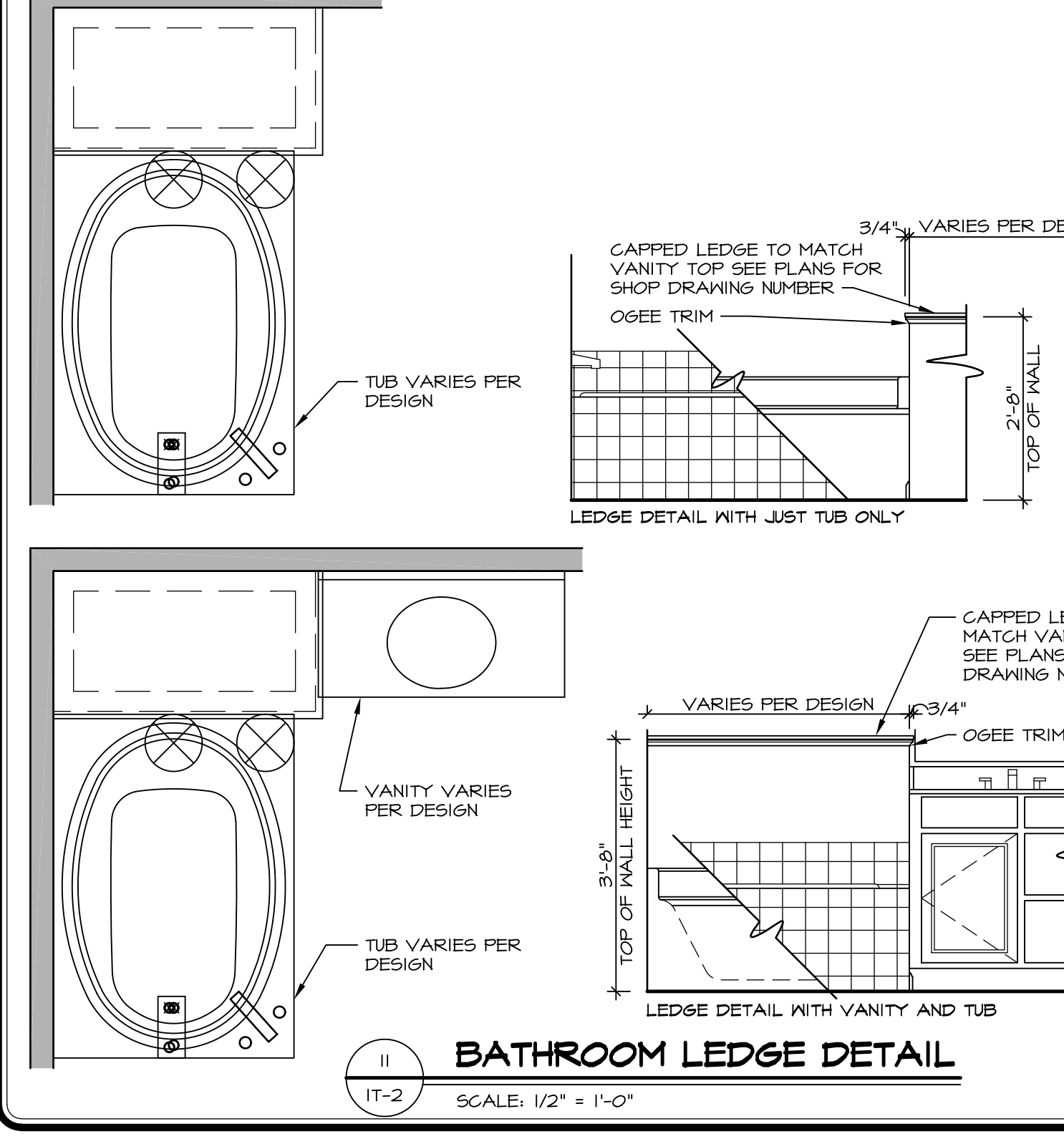
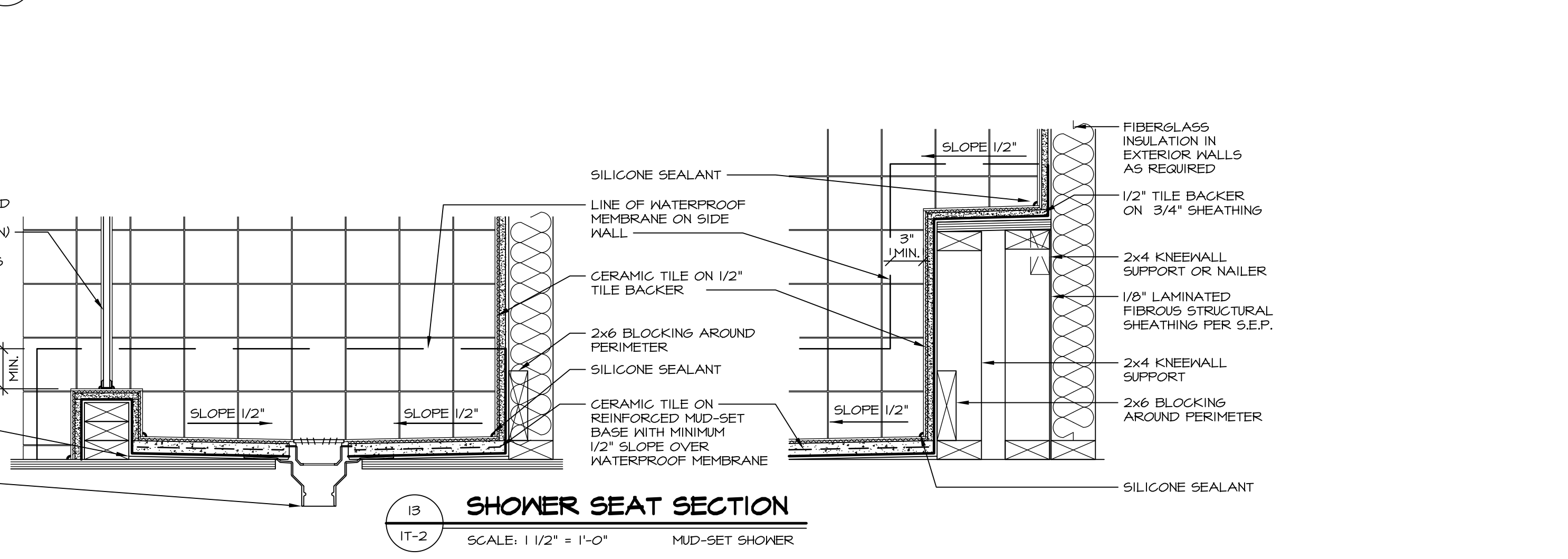
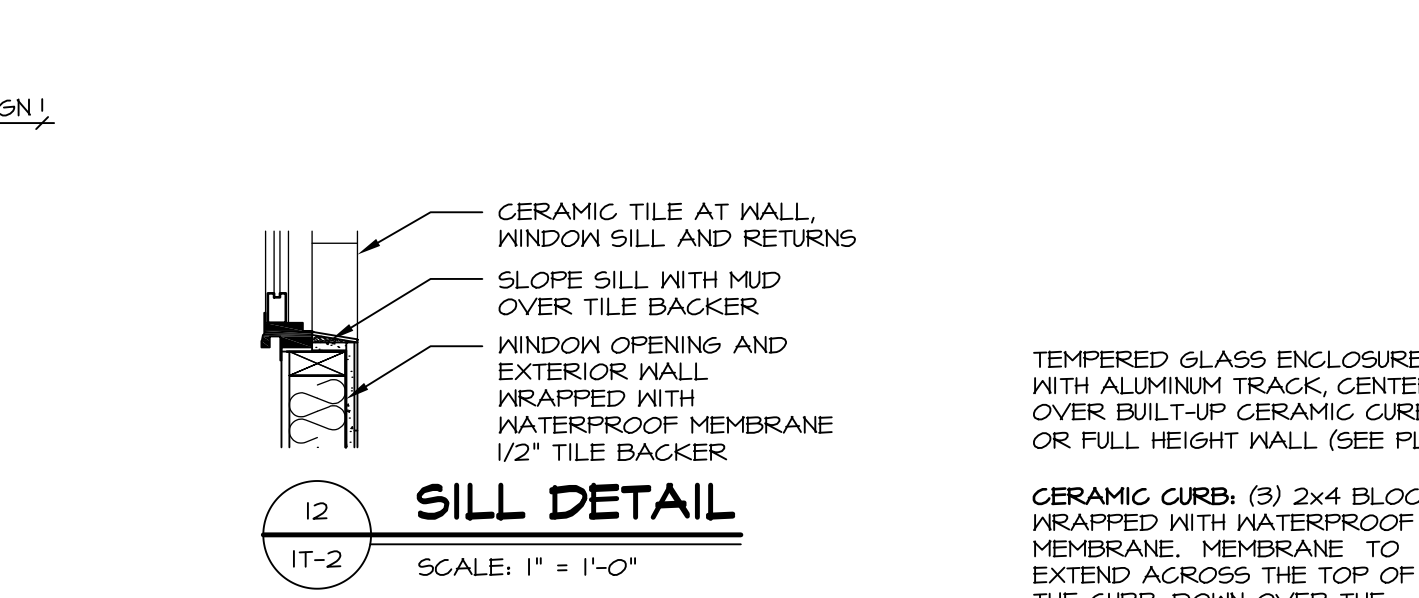
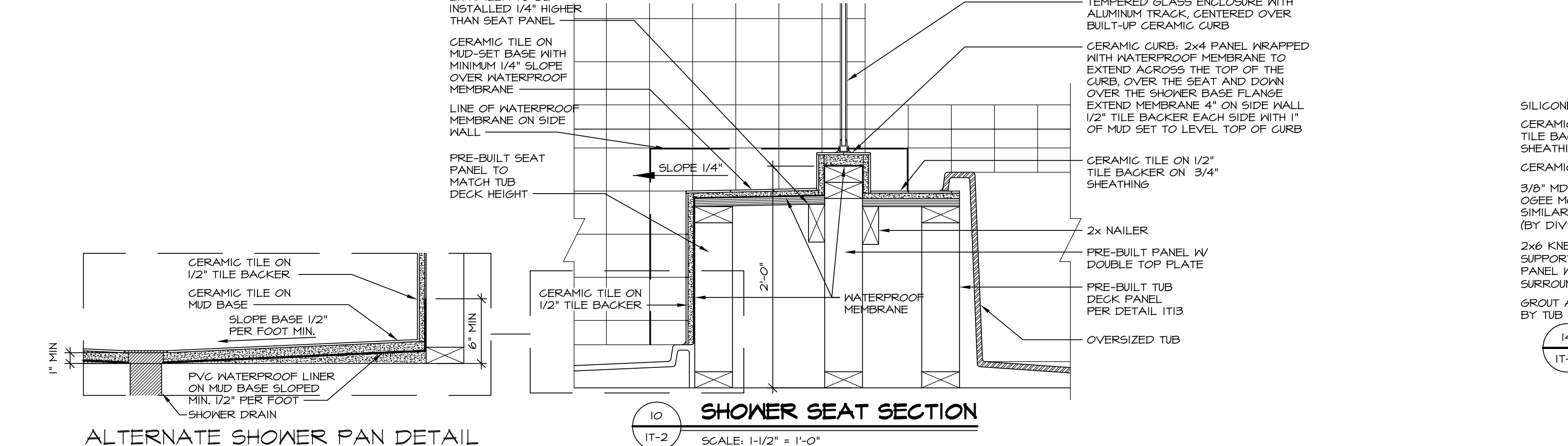
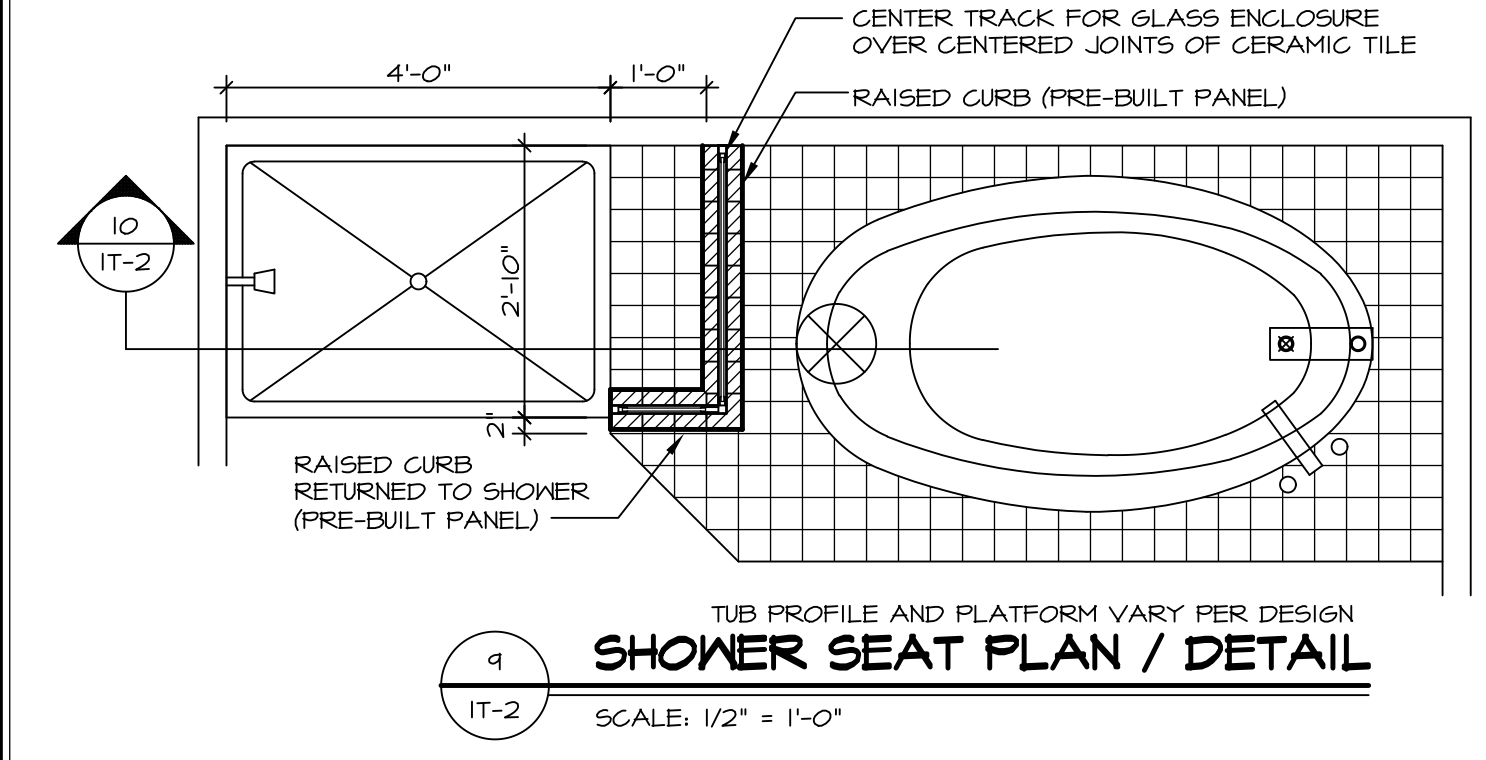
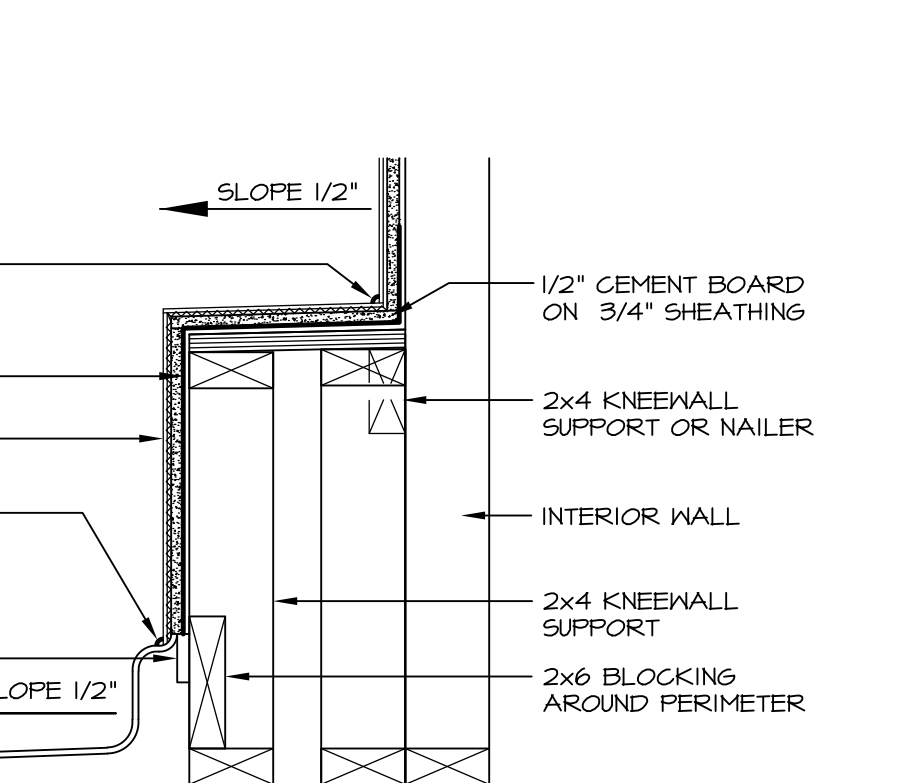
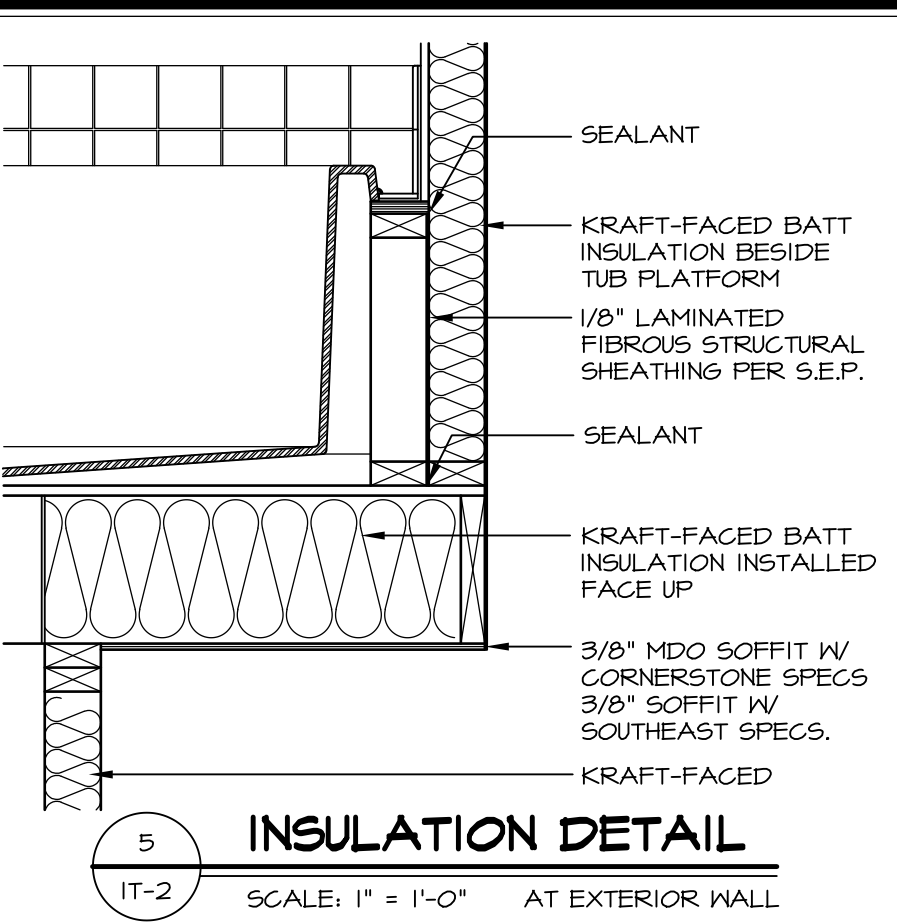
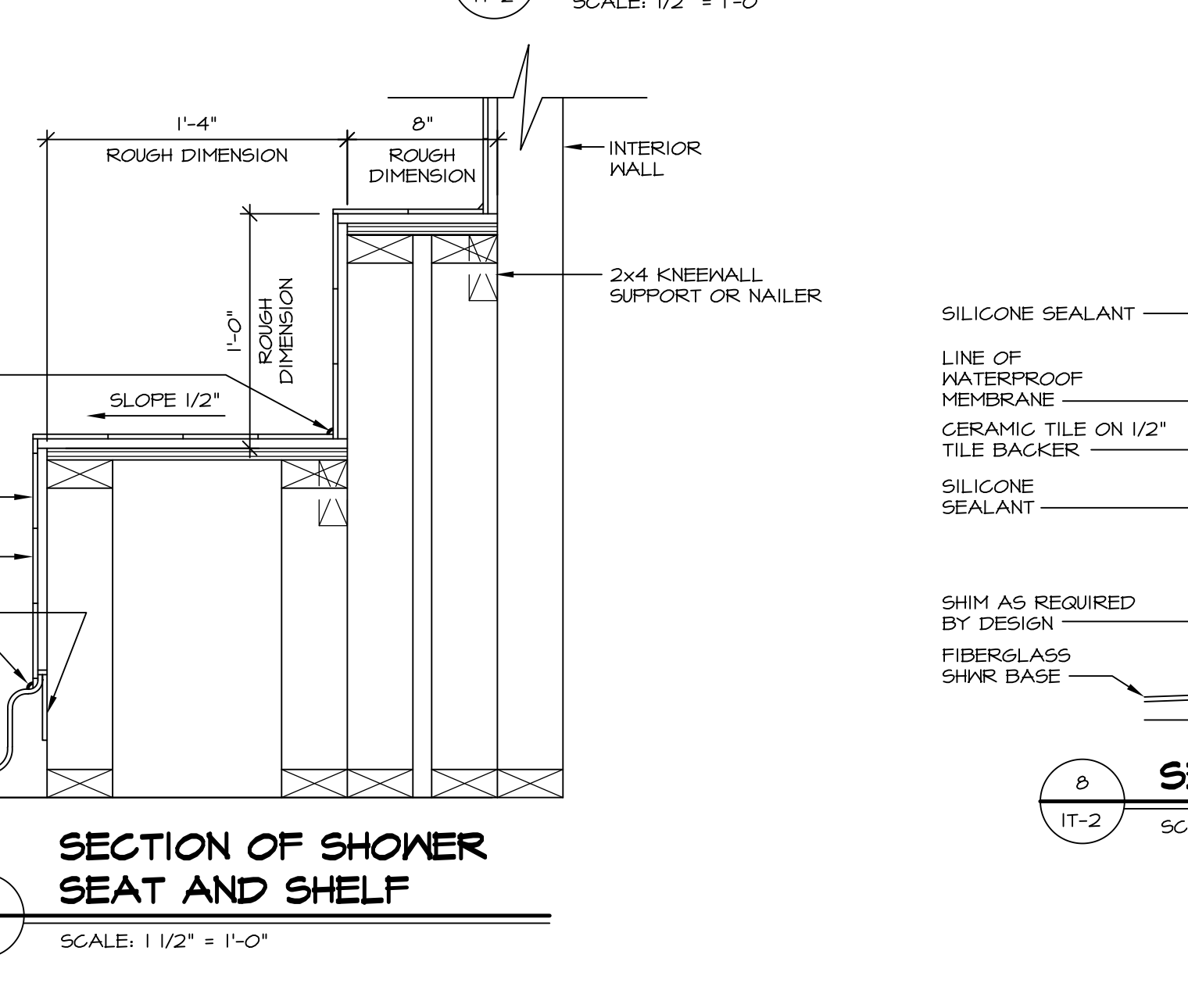
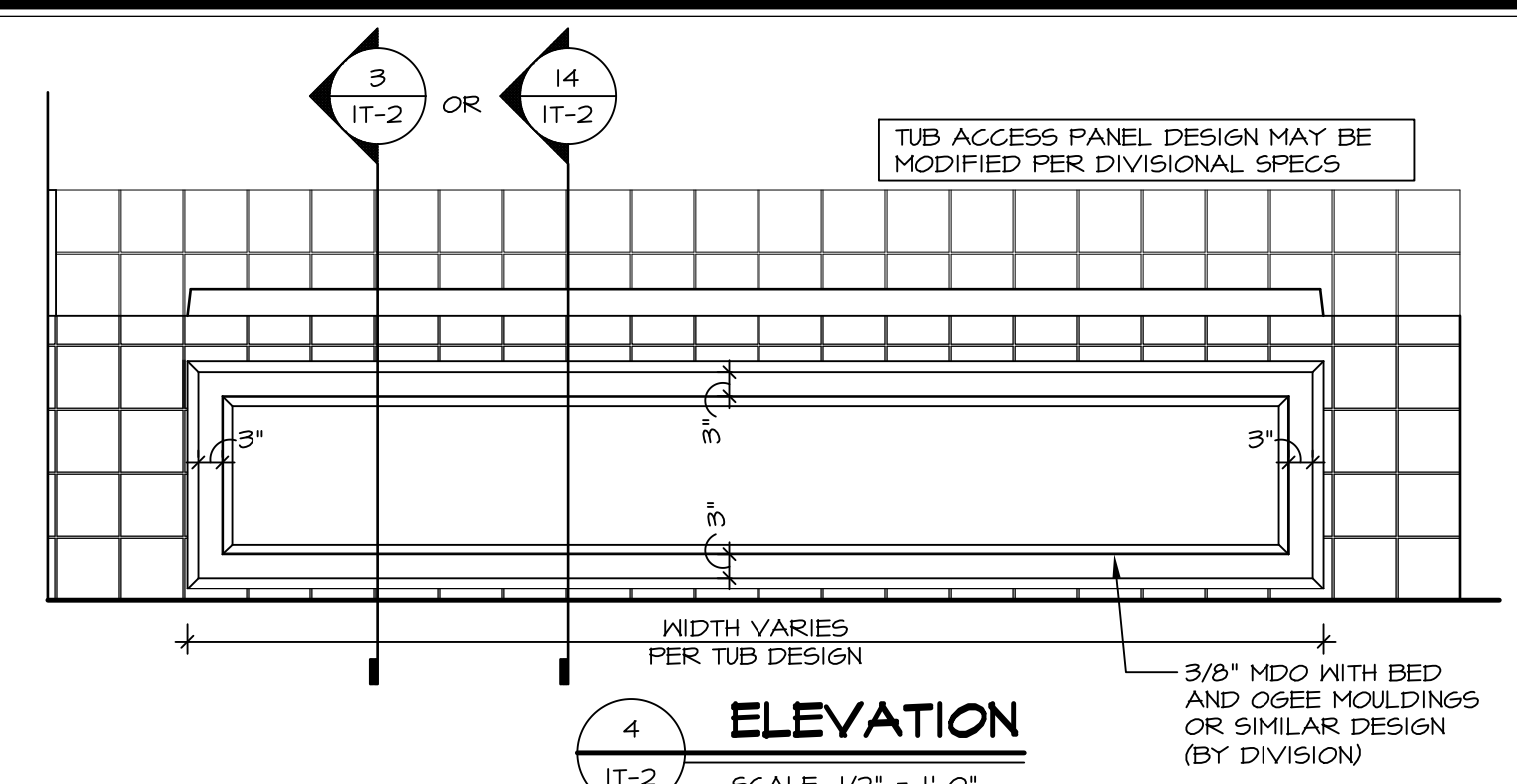
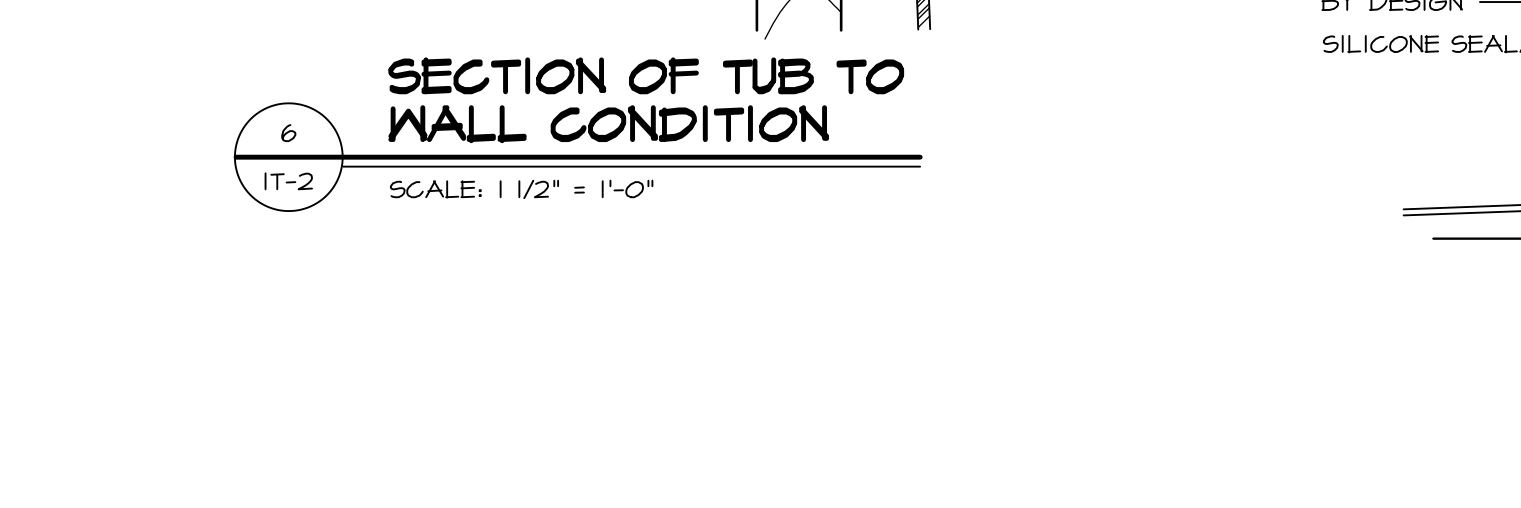
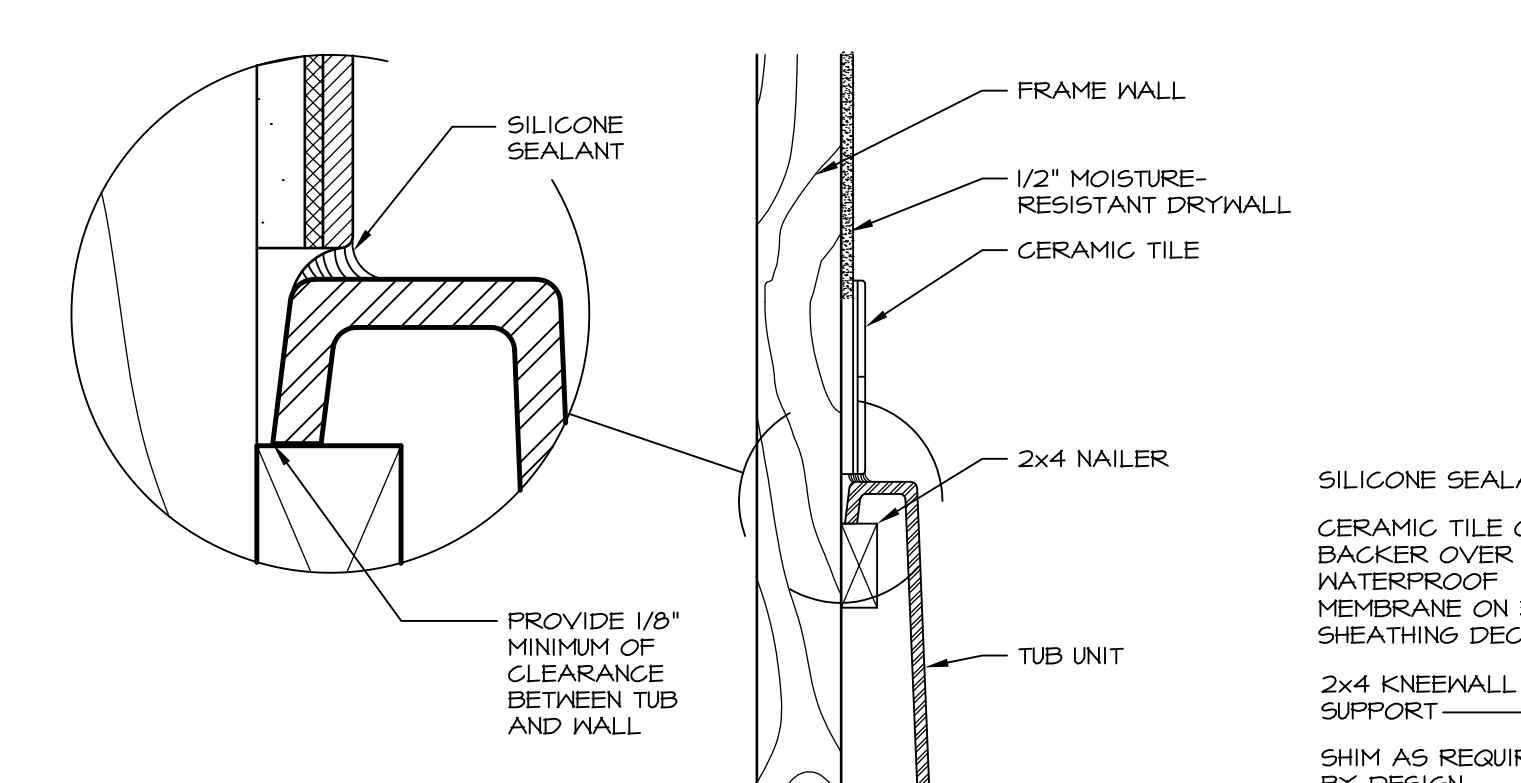
NVR
Architectural Services
5285 Westpark Drive
Frederick, MD 21703

C:\NVR\Solves\PALERMO_PALOO_03\DCY-YR-006A\000075\Sheets\Lot_Spec\72_A-13_BATH_LS.dwg 05/30/18 - 3:29 am



1 PLATFORM PLANS
SCALE: 1/2" = 1'-0"

TUB	MANUF.	HEIGHT	WIDTH	LENGTH	TUB DECK PANEL HEIGHT
"A"	KOHLER/ STERLING	18 3/4"	42"	60"	17 1/8"
"C"	KOHLER/ STERLING	18 3/4"	36"	60"	17 1/8"
"E"	KOHLER/ STERLING	19 1/2"	60"	60"	17 7/8"
"L"	KOHLER/ STERLING	18 1/2"	42"	72"	16 7/8"
"N"	KOHLER/ STERLING	18 3/4"	36"	72"	17 1/8"
"P"	KOHLER/ STERLING	18 3/4"	42"	72"	17 1/8"



REVISIONS

REV. NO.	DATE	DESCRIPTION
1	5/1/17	EBP - REVISED DETAIL 1 AND 11 TO REMOVE TUB ACCESS PANEL REF. (DSS #15 5414)
2	9/2/17	EBP - REVISED T-FLY NOTE TO CALL OUT LFS
3	9/2/17	EBP - REVISED NOTE ON DETAIL #1 - REVISED ORDER OF MATERIAL PARA#4934

SET NO. NVR
VERSION
DRAWN BY
DATE:
OPTION

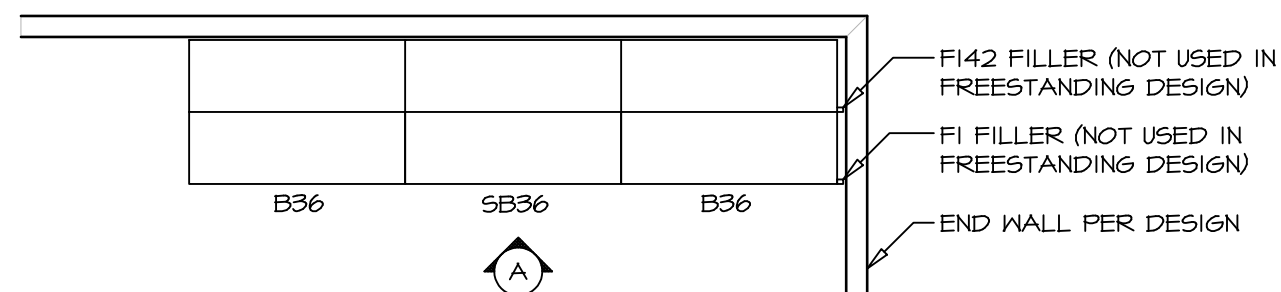
MODEL
STANDARD DETAILS
DRAWING TITLE
INTERIOR TRIM DETAILS
BATH DETAILS
OPTION DESCRIPTION

SHEET NO. **IT-2**

J:\Dwg\NVR\Interior Trim\IT2.dwg 09/27/17 - 9:20 am

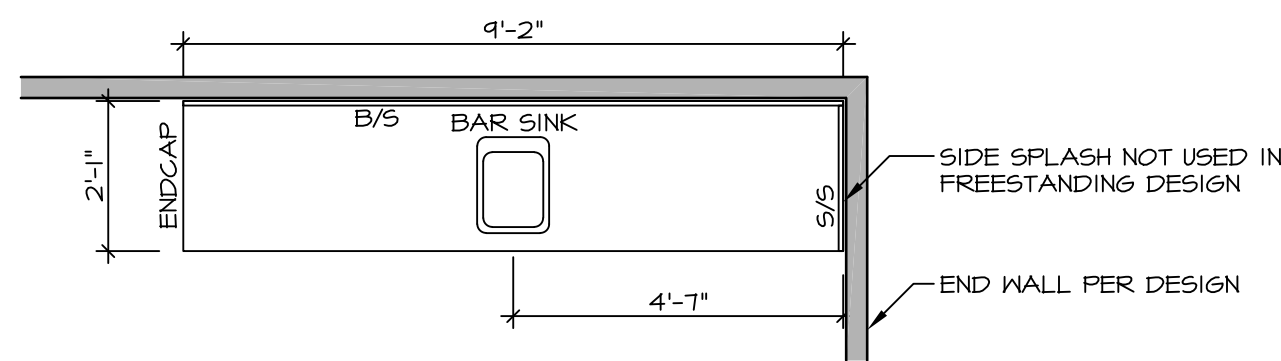
NVR
NVR, Inc.
Architectural Services
5285 Washburn Circle
Frederick, MD 21703

NOTE:
REVIEW HOUSE SPECIFIC
PLANS FOR LOCATION
AND HANDING



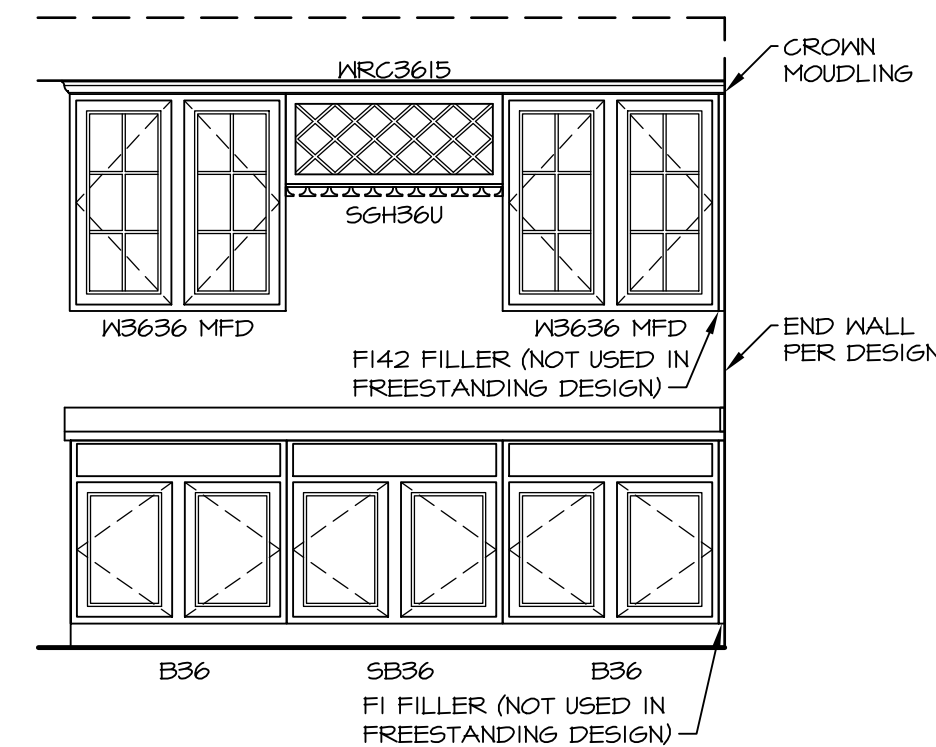
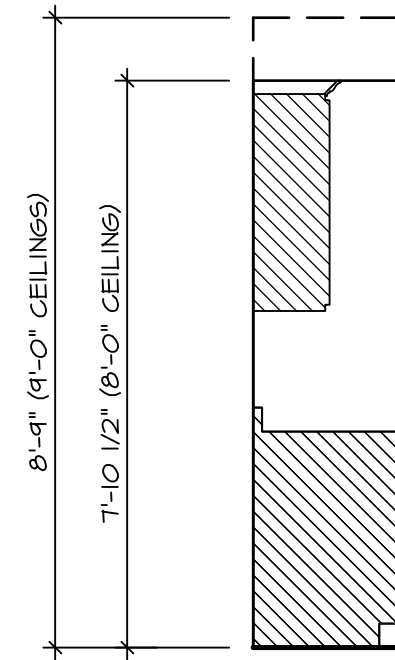
**KITCHEN CABINET
PLAN KC - 1900**

2
IT-3b SCALE: 3/8" = 1'-0"

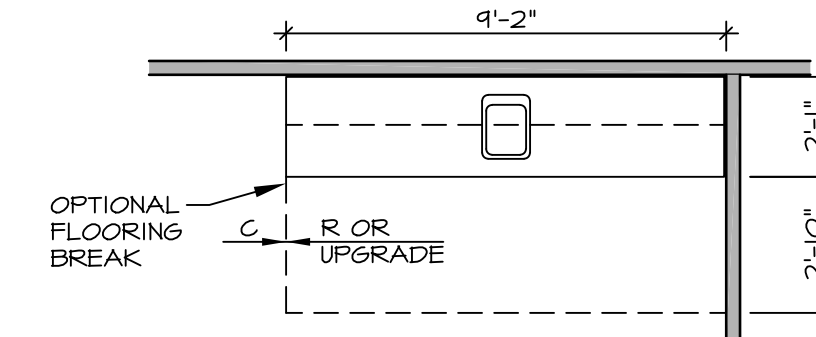


**KITCHEN COUNTERTOP
PLAN KT - 1900**

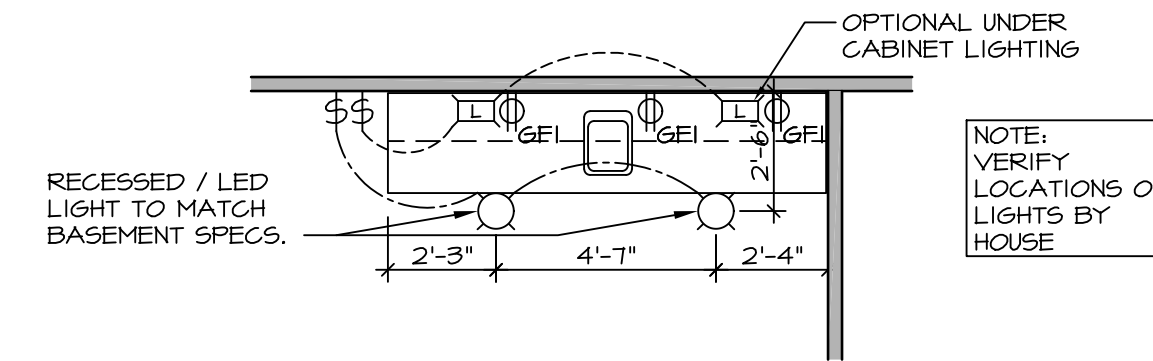
6
IT-3b SCALE: 3/8" = 1'-0"



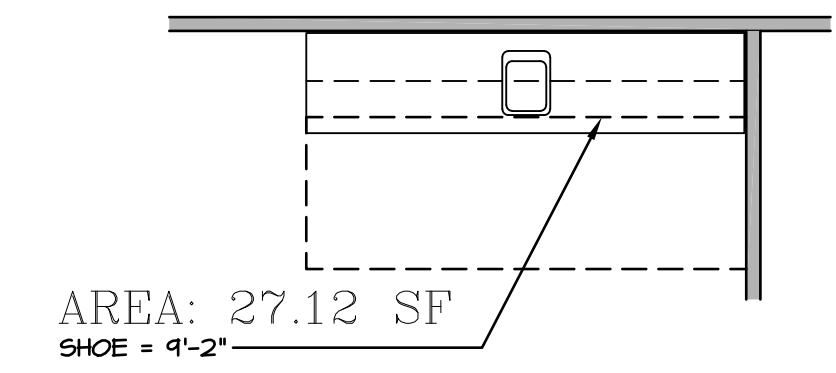
3
IT-3b **ELEVATION "A"**
SCALE: 3/8" = 1'-0"



4
IT-3b **FLOOR PLAN**
SCALE: 1/4" = 1'-0"



7
IT-3b **FLOOR PLAN ELECTRICAL LAYOUT**
SCALE: 1/4" = 1'-0"



5
IT-3b **FLOORING PLAN**
SCALE: 1/4" = 1'-0"

1
IT-3b **WET BAR DETAILS**
SCALE: VARIES * SHOWN AS END WALL DESIGN

REV. NO.	DATE	REMARKS
1	5/17/17	56A - REVISED FLOOR PLAN DIMENSIONS TO MATCH COUNTERTOP DIMENSIONS
2	5/23/17	56A - REMOVED COUNTERTOP INFORMATION FROM 2/IT-3b
3	6/5/17	56A - REMOVED U.C. REF. AND TURNED OFF FLOORING SPACES
4	9/14/17	EBP - ADDED NOTE TO RECESSED LIGHT / LED LIGHT IN NET BAR

SET NO.	VERSION	DATE	OPTION

NVR
Architectural Services
5285 West Ashburn Avenue, Suite 100
Frederick, MD 21703

MODEL STANDARD DETAILS	SET NO. NVR
DRAWING TITLE INTERIOR TRIM DETAILS	VERSION
WET BAR DETAILS - BACK BAR (RYAN ONLY)	DRAWN BY
OPTION DESCRIPTION	DATE:
	OPTION

SHEET NO.
IT-3b