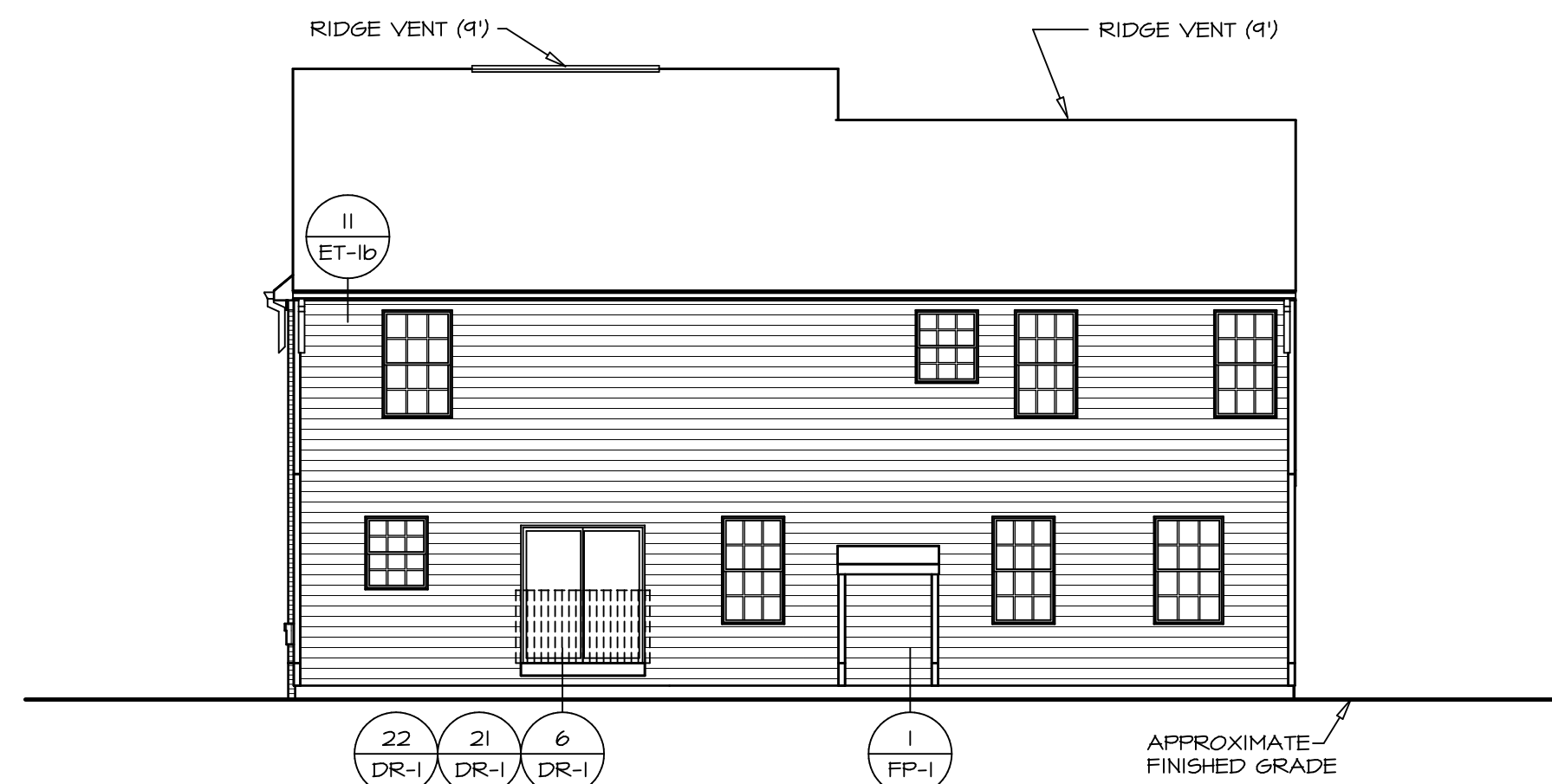
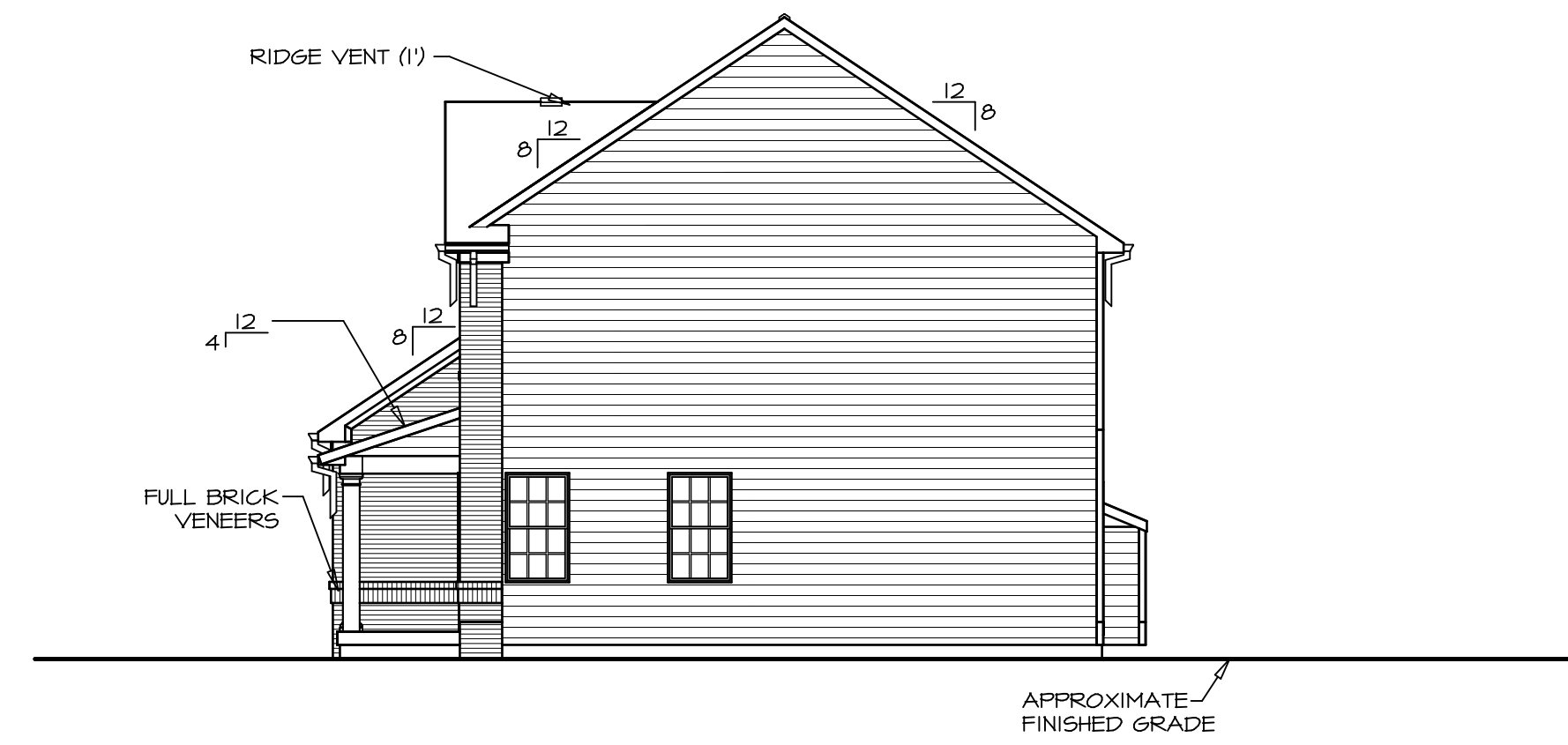


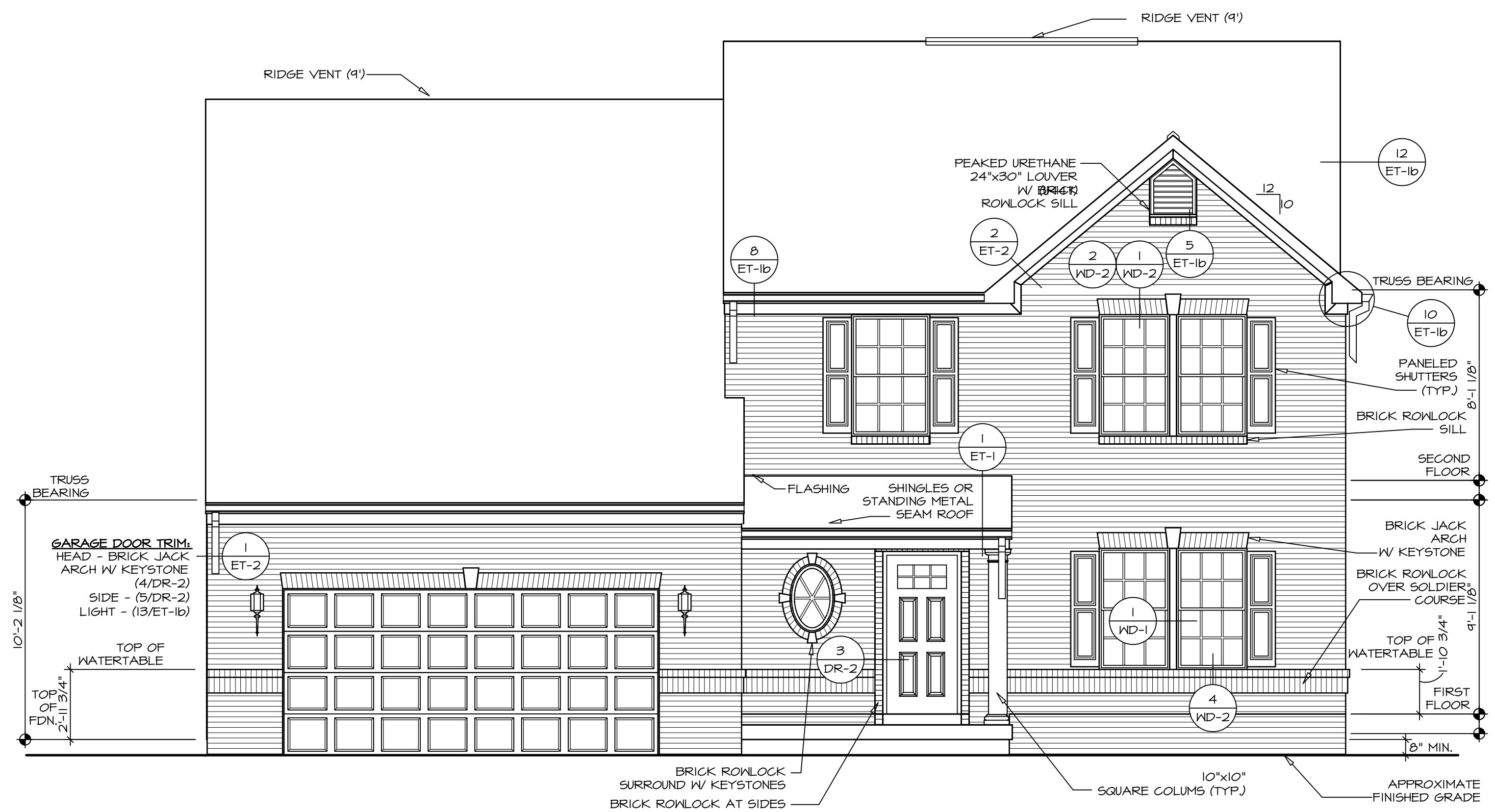
4  
A-1  
**LEFT ELEVATION**  
SCALE: 1/8" = 1'-0"



3  
A-1  
**REAR ELEVATION**  
SCALE: 1/8" = 1'-0"



2  
A-1  
**RIGHT ELEVATION**  
SCALE: 1/8" = 1'-0"



1  
A-1  
**FRONT ELEVATION "C"**  
SCALE: 1/4" = 1'-0"

SHEET NO.	MODEL	SET NO.	VERSION	DRAWN BY	DATE:	OPTION	DESCRIPTION
A-1	PALERMO ELEVATIONS	03	03			FBA	FULL BASEMENT FOUNDATION
5							

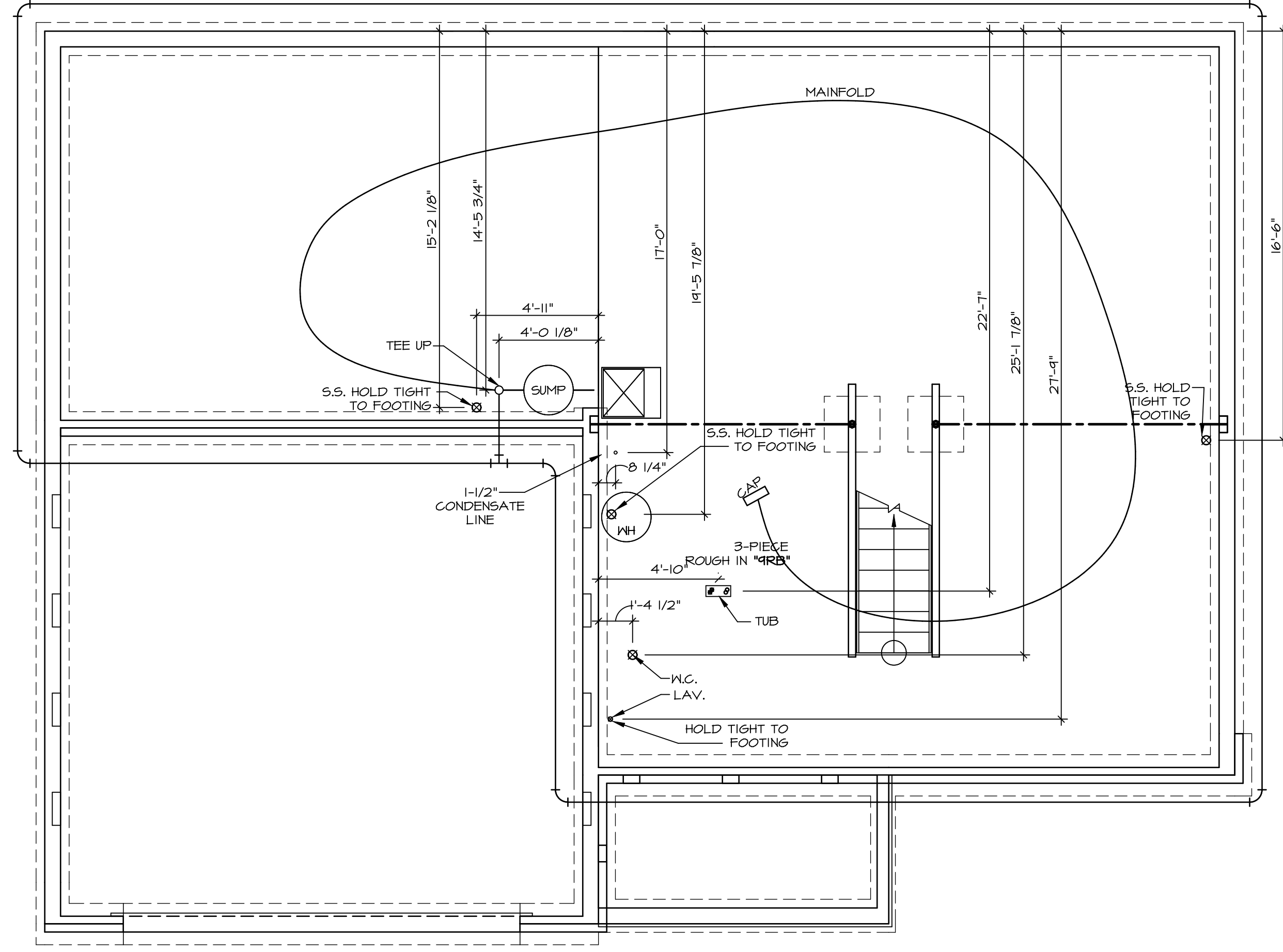
REV. NO.	DATE	REMARKS

NVR, Inc., owner, expressly reserves its copyright in these plans. These plans are not to be reproduced, changed, copied in any way, or otherwise used without the written consent of NVR, Inc.

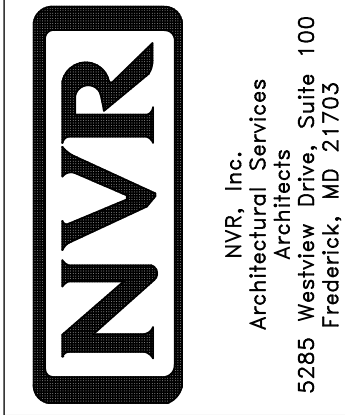
**NVR**  
NVR, Inc.  
Architectural Services  
5285 Westover Hills  
Frederick, MD 21703

C:\NVR\Solves\PALERMO\_PAL00\_03\DCY-VR-0065\93981\Sheets\Lot\_Spec\15\_A-1\_ELV\_LS\_(FBA).dwg\_05/16/18 - 5:49 am



**PLUMBING PLAN**  
SCALE: 1/4" = 1'-0"

SHEET NO. <b>A-5</b>	MODEL <b>PALERMO</b>	SET NO. <b>PALOO</b>	OPTION DESCRIPTION
<b>48</b>	DRAWING TITLE <b>PLUMBING PLAN</b>	VERSION <b>03</b>	DRAWN BY
	DATE:	DATE:	OPTION



NVR, Inc., owner, expressly reserves its copyright in these plans. These plans are not to be reproduced, changed, copied, or otherwise used in any way without the prior written consent of NVR, Inc.

REV. NO.	DATE	REMARKS

FIRST FLOOR JACK SCHEDULE				
IDENTIFIER	DESCRIPTION	OPTIONS	ENG. NUM.	REMARKS
J101	JACK - (2) 2x4 SPF STUD GRADE		1072	
J102	JACK - (2) 2x4 SPF STUD GRADE		1072	
J103	JACK - (2) 2x4 SPF STUD GRADE	DGT	1084	
J104	JACK - (2) 2x4 SPF STUD GRADE	DGT	1084	
J105	JACK - (2) 2x4 SPF STUD GRADE		1086	
J106	JACK - (2) 2x4 SPF STUD GRADE		1012	
J107	JACK - (2) 2x4 SPF STUD GRADE		1012	
J108	JACK - (2) 2x4 SPF STUD GRADE		1012	
J109	JACK - (3) 2x4 SPF STUD GRADE	GCB	1046	
J110	JACK - (3) 2x4 SPF STUD GRADE	GCB	1046	
J124	JACK - (3) 2x4 SPF STUD GRADE	ELC	1021	
J125	JACK - (2) 2x4 SPF STUD GRADE	ELC	1009	
J126	JACK - (2) 2x4 SPF STUD GRADE	ELC	1009	
J127	JACK - (2) 2x4 SPF STUD GRADE	ELC	1038	
J128	JACK - (2) 2x4 SPF STUD GRADE	ELC	1038	
J139	JACK - (2) 2x4 SPF STUD GRADE	ELC	1021	
J167	JACK - (2) 2x4 SPF STUD GRADE	L66	1082	
J168	JACK - (2) 2x4 SPF STUD GRADE	L66	1082	
J171	JACK - (2) 2x4 SPF STUD GRADE	ELC, EVA		

**LVL PLY TO PLY FASTENING SCHEDULE:**

1.A - (2) FLY UP TO AND INCLUDING 11 7/8" TALL; FASTEN FLIES W/ (2) ROWS 16D NAILS AT 12" O.C.  
 2.A - (2) FLY 14" TO AND INCLUDING 18" TALL (INCLUSIVE); FASTEN FLIES W/ (3) ROWS 16D NAILS AT 12" O.C.  
 3.A - (2) FLY 20" TALL AND OVER; FASTEN FLIES W/ (4) ROWS 16D NAILS AT 12" O.C.  
 4.A - (3) FLY UP TO AND INCLUDING 11 7/8" TALL; FASTEN FLIES W/ (2) ROWS 16D NAILS AT 12" O.C. FROM EACH SIDE  
 5.A - (3) FLY 14" TO AND INCLUDING 18" TALL (INCLUSIVE); FASTEN FLIES W/ (3) ROWS 16D NAILS AT 12" O.C. FROM EACH SIDE  
 6.A - (3) FLY 20" TALL AND OVER; FASTEN FLIES W/ (4) ROWS 16D NAILS AT 12" O.C. FROM EACH SIDE

FIRST FLOOR BEAM/HEADER SCHEDULE					
IDENTIFIER	DESCRIPTION	LENGTH	OPTIONS	ENG. NUM.	REMARKS
B106-2	LVL - 16	17'-4"	Z5U	1044	2.A, FIELD INSTALL

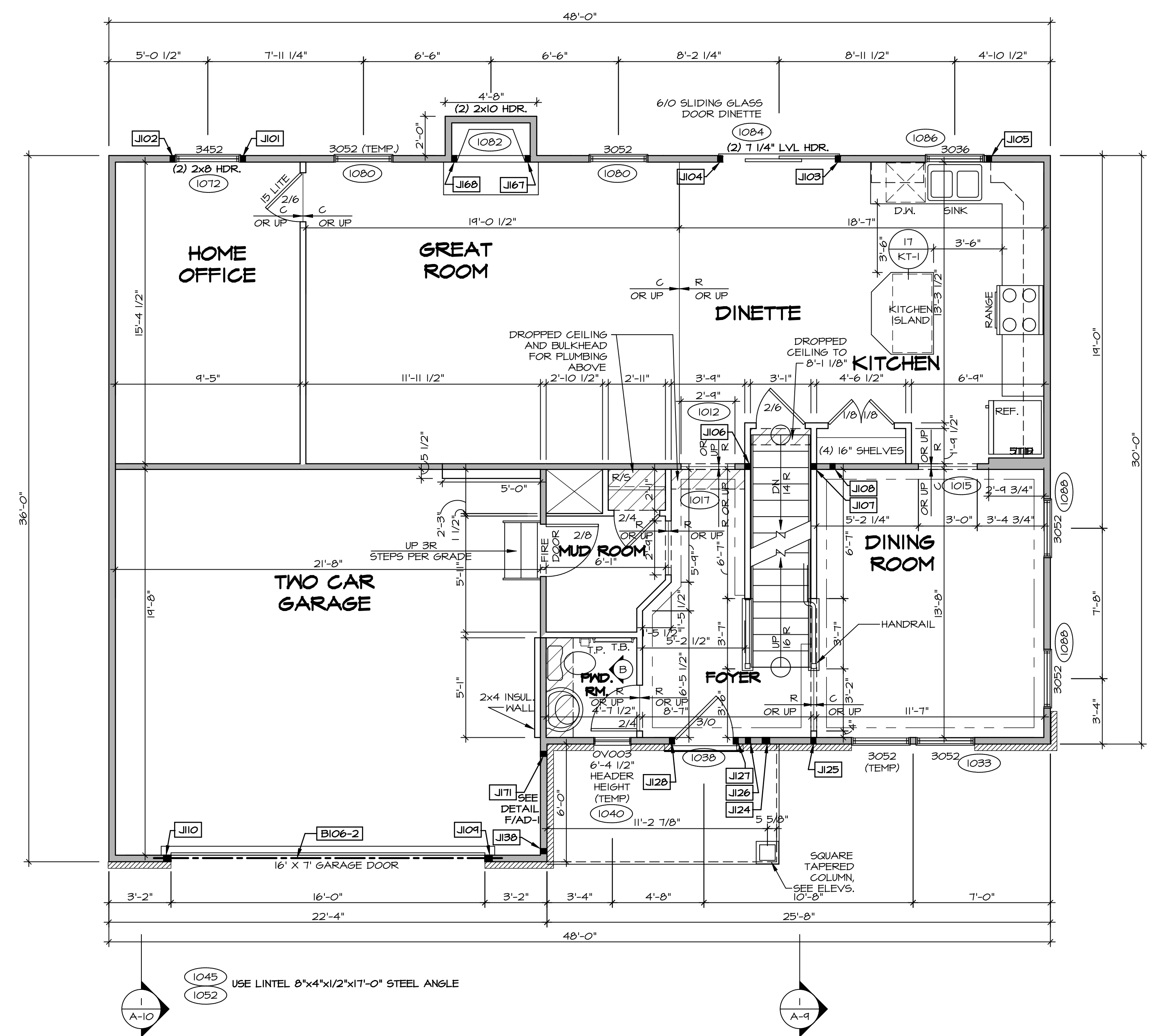
LEGEND	
(Solid line)	BEARING WALL
(Dashed line)	NON BEARING WALL
(Circle with dot)	INDICATES BEARING FROM POINT-LOAD ABOVE
(Circle with L)	JACKS
(Circle with B)	BEAM/HEADER
(Square with F)	PAD FOOTING
(Diamond with C)	STEEL COLUMN
(Square with X)	PORTAL FRAME
(Square with X)	JOIST/TRUSS
(Line with LVL)	LVL
(Circle with X)	ENGINEERING PAGE NUMBER

SEE FC DETAILS FOR FRAMING CONNECTORS

STEEL COLUMN SCHEDULE					
IDENTIFIER	STYLE	HEIGHT	OPTIONS	ENG. NUM.	REMARKS

- FLOOR PLAN NOTES**
- ALL HEADERS ARE (2) 2x6 W/ 2x4 WALLS OR (3) 2x6 W/ 2x6 WALLS, UNLESS OTHERWISE NOTED.
  - ALL HEADERS TO HAVE (1) 2x4 OR 2x6 JACK AND KING STUD EACH END, UNLESS OTHERWISE NOTED.
  - ALL EXTERIOR WALLS TO BE 4" W/ OSB OR 3 1/2" W/ T-PLY, ALL INTERIOR WALLS TO BE 3 1/2" UNLESS OTHERWISE NOTED.
  - HATCHED AREAS INDICATE DROPPED CEILINGS. ALL DROPPED CEILINGS ARE 12" UNLESS OTHERWISE NOTED.
  - SEE "BRACED WALL PANEL DETAIL SHEET" FOR SPECIAL WALL FRAMING LOCATIONS AND HEADER SIZES, IF APPLICABLE.
  - SEE STANDARD DETAIL CATEGORY "IT" SHEET(S) FOR INTERIOR TRIM DETAILS.
  - SEE ARCHITECTURAL DETAIL SHEET "AD" FOR HOUSE SPECIFIC INTERIOR TRIM OPTION TABLE.
  - ALL WINDOWS HAVE 7'-0" 1/2" HEADER HEIGHT UNLESS OTHERWISE NOTED.
  - ALL HEADERS IN NON-BEARING WALLS SHALL BE A SINGLE FLAT 2x4 OR 2x6 ATTACHED TO CRIPPLES ABOVE, UNLESS OTHERWISE NOTED.

- GYPSUM NOTES**
- AT GARAGE:**  
 GYPSUM BOARD AT COMMON WALLS, CEILING, BEAM WRAPS AND SUPPORTS PER STANDARD DETAIL FA-1(b) FIRE ASSEMBLIES OR AS REQUIRED BY LOCAL CODE.
- AT STAIRS:**  
 1/2" GYPSUM BOARD AT UNDERSIDE OF STAIRS AND WALLS IN CLOSET



1045 USE LINTEL 8"x4"x1/2"x17'-0" STEEL ANGLE  
 1052

**FIRST FLOOR PLAN**  
 SCALE: 1/4" = 1'-0"

REVISIONS	REMARKS
1	09/04/16 TH - DRAWING ALIGNMENT
2	07/12/17 SLS - T-PLY CONVERSION PROJECT

REV. NO. DATE

1 09/04/16 TH - DRAWING ALIGNMENT

2 07/12/17 SLS - T-PLY CONVERSION PROJECT

SET NO. PALOO  
 VERSION 03  
 DRAWN BY  
 DATE:  
 OPTION

**PALERMO**  
 DRAWING TITLE  
 FIRST FLOOR PLAN

OPTION DESCRIPTION

SHEET NO. **A-7**

53

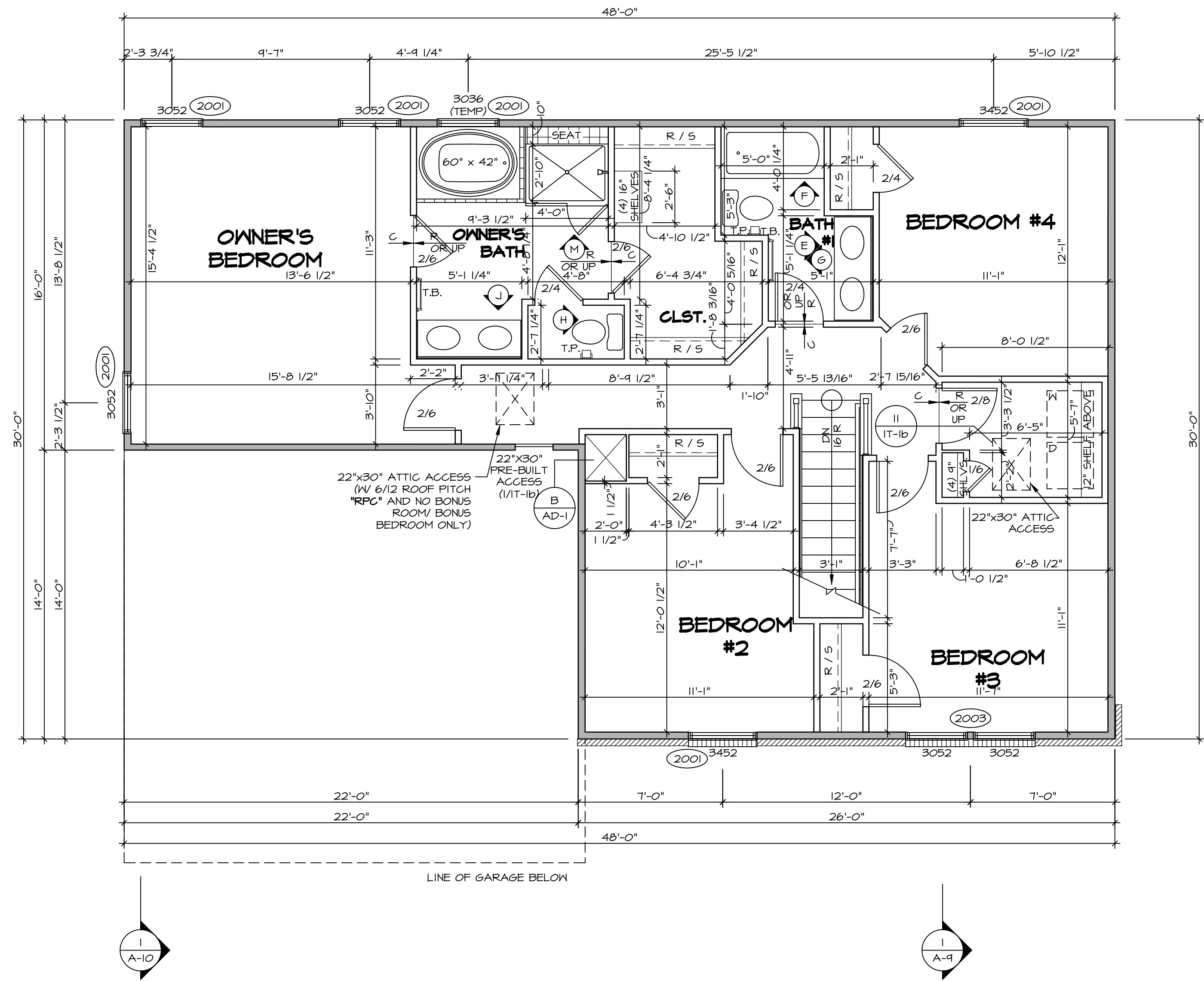
**NVR**  
 NVR, Inc.  
 Architects  
 5285 West  
 Frederick, MD 21703

C:\NVR\Solves\PALERO\_PALOO\_03\DC-VR-0065\93981\Sheets\Lot\_Specific\53\_A-7\_PINT\_L5.dwg 05/16/18 - 5:49 am

SECOND FLOOR JACK SCHEDULE				
IDENTIFIER	DESCRIPTION	OPTIONS	ENG. NUM.	REMARKS

LEGEND	
	BEARING WALL
	NON BEARING WALL
	INDICATES BEARING FROM POINT-LOAD ABOVE
	JACKS
	BEAM/HEADER
	PAD FOOTING
	STEEL COLUMN
	PORTAL FRAME
	JOIST/TRUSS
	LVL
	ENGINEERING PAGE NUMBER

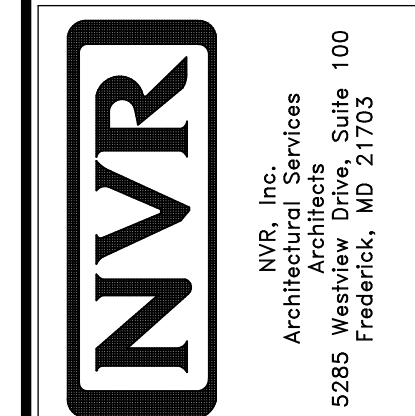
- FLOOR PLAN NOTES**
- ALL HEADERS ARE (2) 2x6 w/ 2x4 WALLS OR (3) 2x6 w/ 2x6 WALLS, UNLESS OTHERWISE NOTED.
  - ALL HEADERS TO HAVE (1) 2x4 OR 2x6 JACK AND KING STUD EACH END, UNLESS OTHERWISE NOTED.
  - ALL EXTERIOR WALLS TO BE 4" w/ OSB OR 3 1/2" w/ T-PLY, ALL INTERIOR WALLS TO BE 3 1/2", UNLESS OTHERWISE NOTED.
  - HATCHED AREAS INDICATE DROPPED CEILINGS. ALL DROPPED CEILINGS ARE 12" UNLESS OTHERWISE NOTED.
  - SEE "BRACED WALL PANEL DETAIL SHEET" FOR SPECIAL WALL FRAMING LOCATIONS AND HEADER SIZES, IF APPLICABLE.
  - SEE STANDARD DETAIL CATEGORY "IT" SHEET(S) FOR INTERIOR TRIM DETAILS.
  - SEE ARCHITECTURAL DETAIL SHEET "AD" FOR HOUSE SPECIFIC INTERIOR TRIM OPTION TABLE.
  - ALL WINDOWS HAVE 7'-0 1/2" HEADER HEIGHT UNLESS OTHERWISE NOTED.
  - ALL HEADERS IN NON-BEARING WALLS SHALL BE A SINGLE FLAT 2x4 OR 2x6 ATTACHED TO CRIPPLES ABOVE, UNLESS OTHERWISE NOTED.



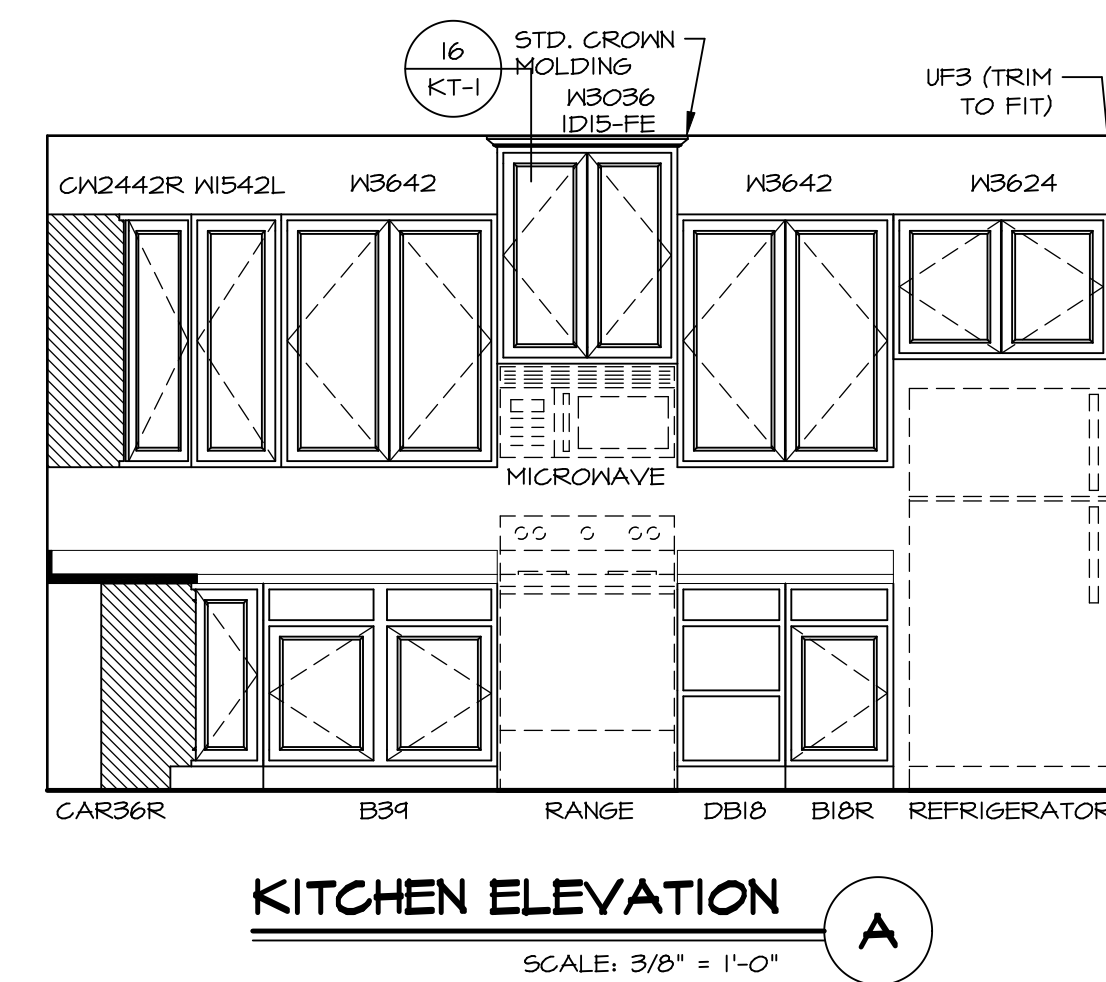
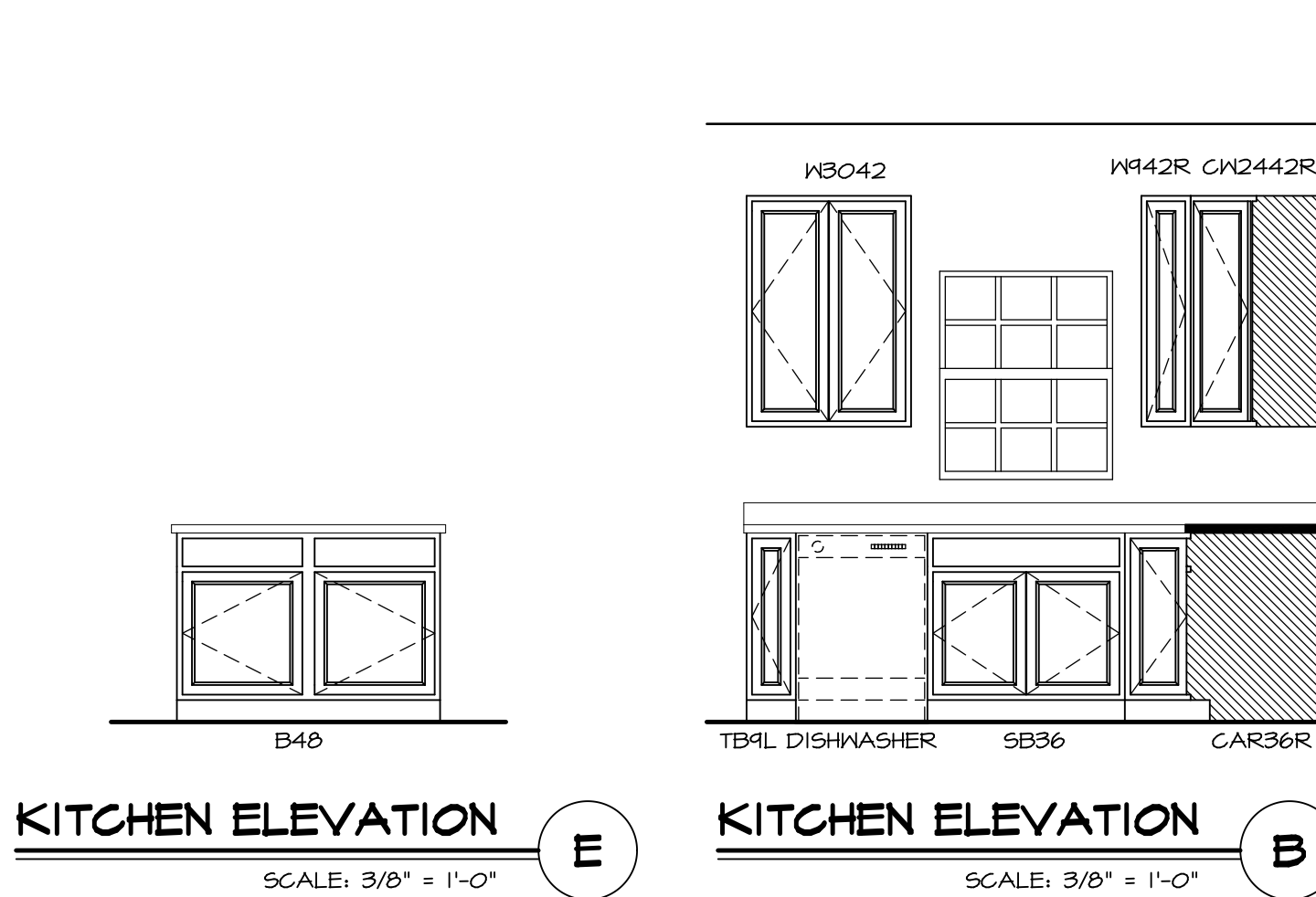
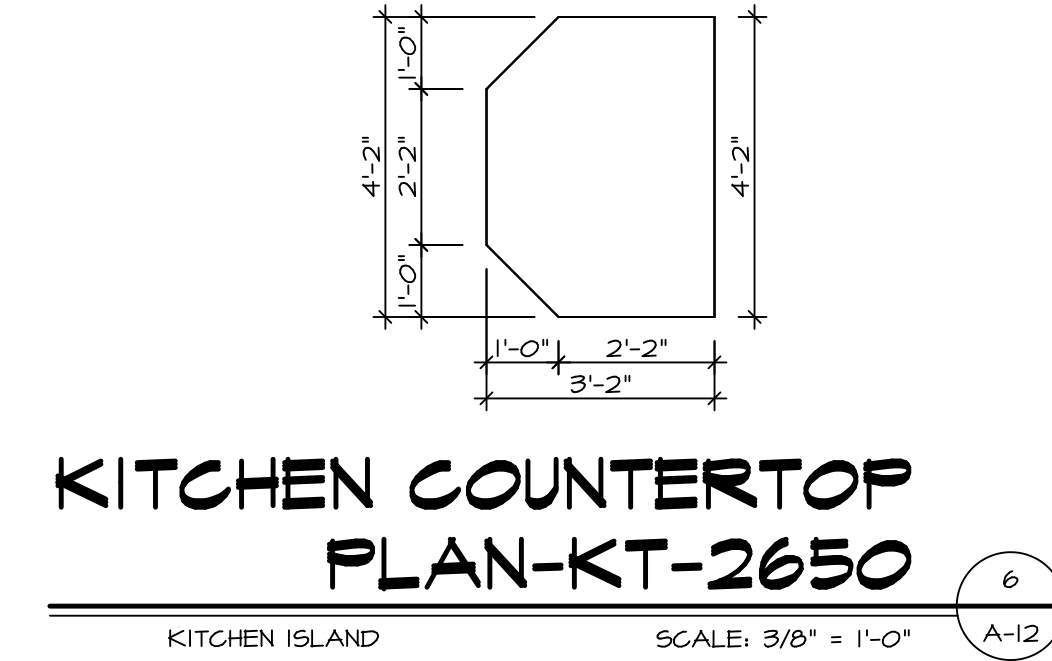
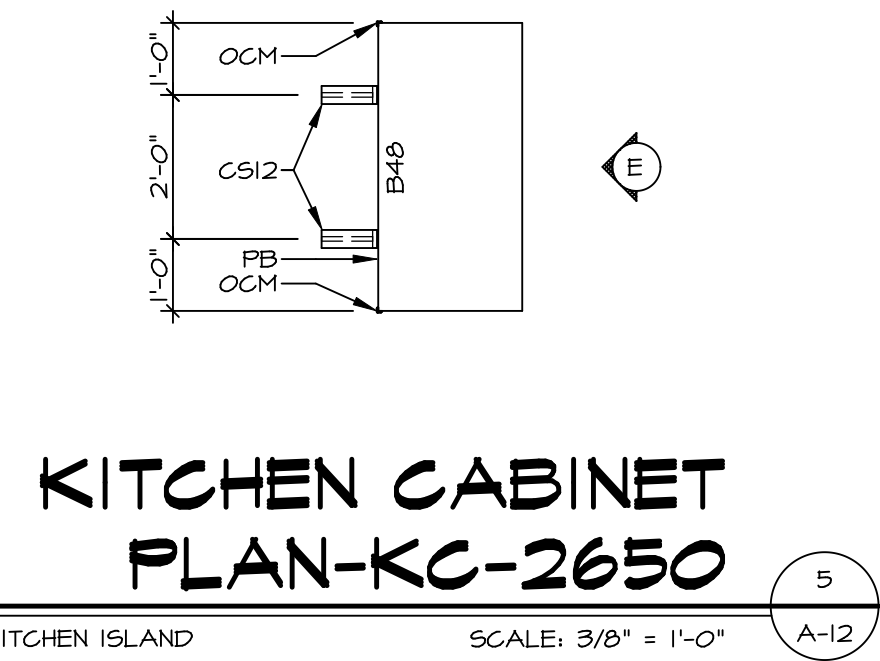
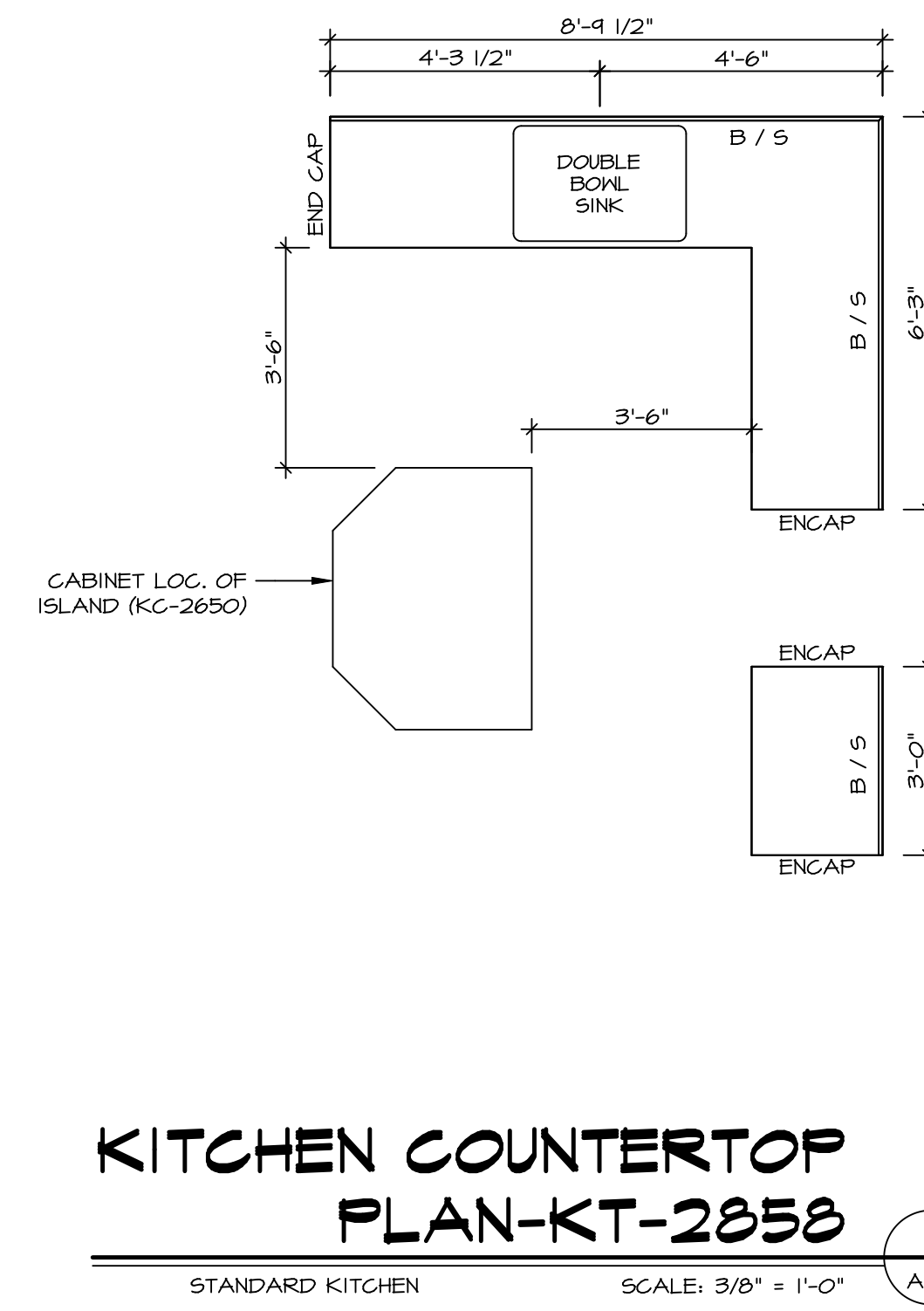
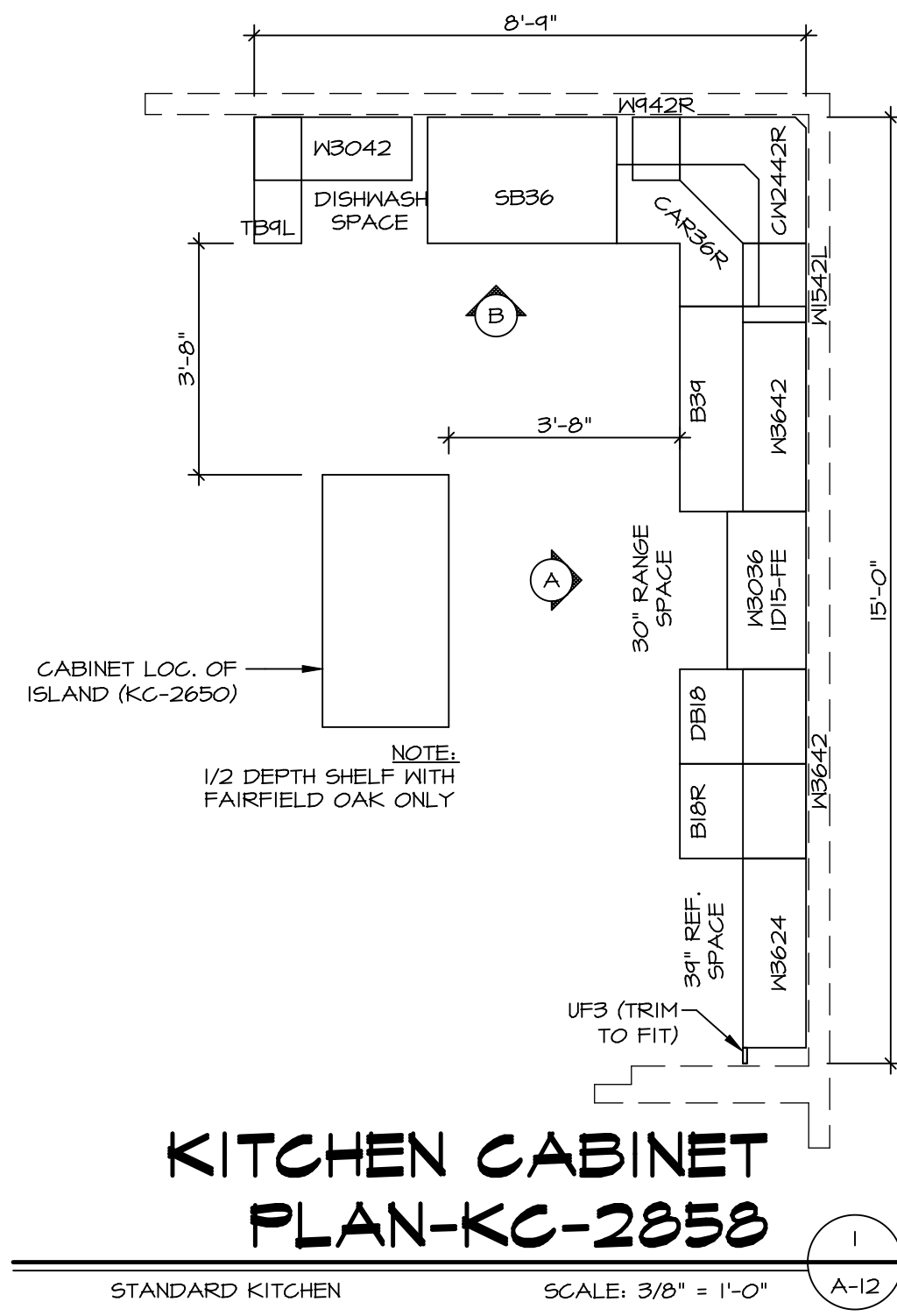
**SECOND FLOOR PLAN**  
SCALE: 1/4" = 1'-0"

REV. NO.	DATE	REMARKS
1	08/04/16	TM - DRAWING ALIGNMENT
2	07/27/17	SLS - T-PLY CONVERSION PROJECT

NVR, Inc., owner, expressly reserves its copyright in these plans. These plans are not to be reproduced, changed, copied, or otherwise used in any way without the written consent of NVR, Inc.



SHEET NO.	<b>A-8</b>
MODEL	<b>PALERMO</b>
VERSION	<b>03</b>
DRAWING TITLE	<b>SECOND FLOOR PLAN</b>
OPTION DESCRIPTION	
DATE:	
OPTION	
SET NO. PALOO	
DATE:	
OPTION	
SHEET NO.	<b>60</b>



SHEET NO.	MODEL	SET NO.	VERSION	DATE	OPTION	REMARKS
A-12	PALERMO	03	03			
70						

NVR, Inc. Architectural Services  
 5285 West... Suite 100  
 Frederick, MD 21703

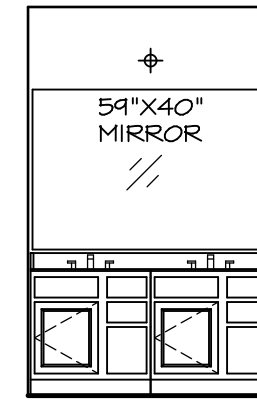
NVR, Inc. owner, expressly reserves its copyright in these plans. These plans are not to be reproduced, changed, copied in any way, or used for any purpose not assigned to them without the written consent of NVR, Inc.

C:\NVR\Drawings\PALERMO\_PAL00\_03\DCY-YR-0065\93981\Sheets\Lot\_Specific\70 A-12\_KIT\_IS.dwg 05/15/18 5:49 am



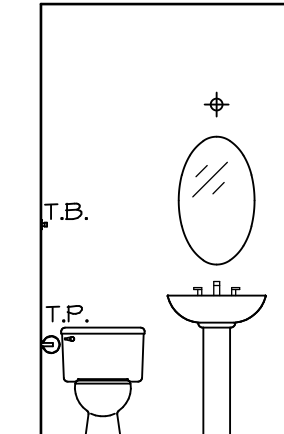
(2) V5DB3034H

**J** OWNER'S BATH  
SCALE: 1/4" = 1'-0"

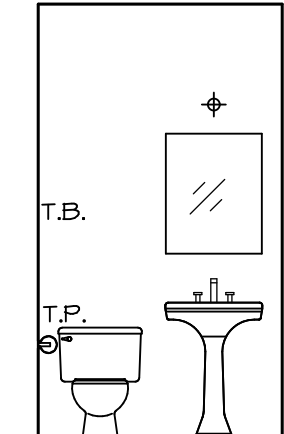


(2) V5DB30

**E** BATH #1  
SCALE: 1/4" = 1'-0"

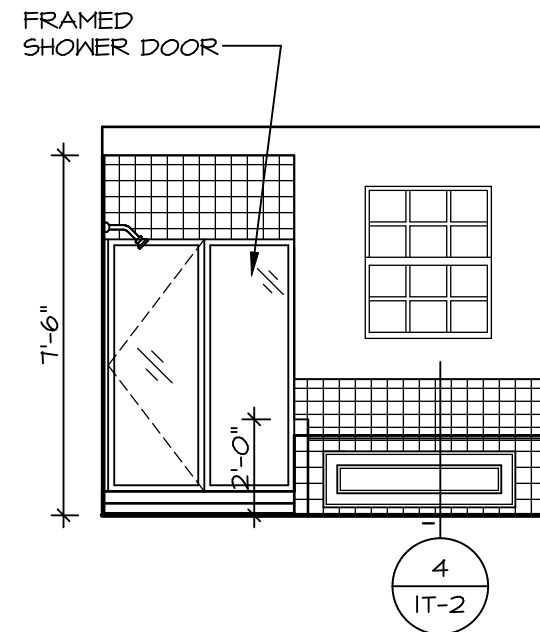


PEDESTAL SINK WITH OVAL MIRROR "5ZB"

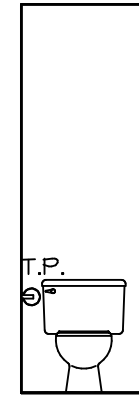


PEDESTAL SINK WITH SQUARE MIRROR "5ZC"

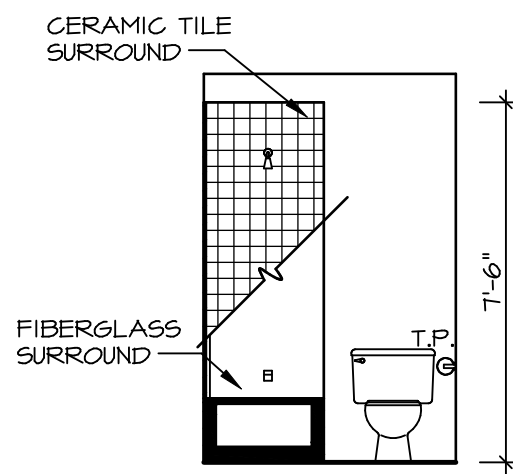
**B** POWDER ROOM  
SCALE: 1/4" = 1'-0"



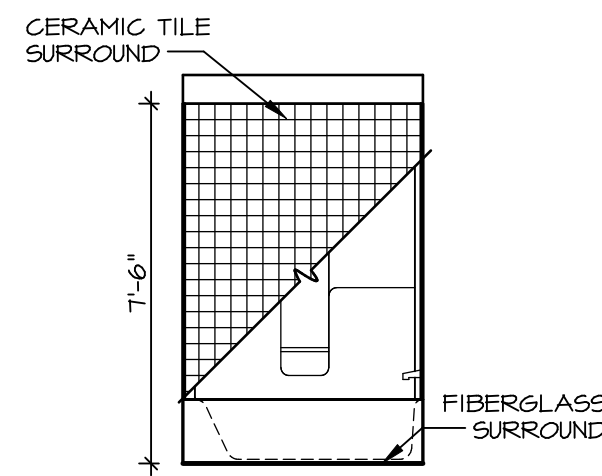
**M** OWNER'S BATH  
SCALE: 1/4" = 1'-0"



**H** OWNER'S BATH  
SCALE: 1/4" = 1'-0"



**G** BATH #1  
SCALE: 1/4" = 1'-0"



**F** BATH #1  
SCALE: 1/4" = 1'-0"

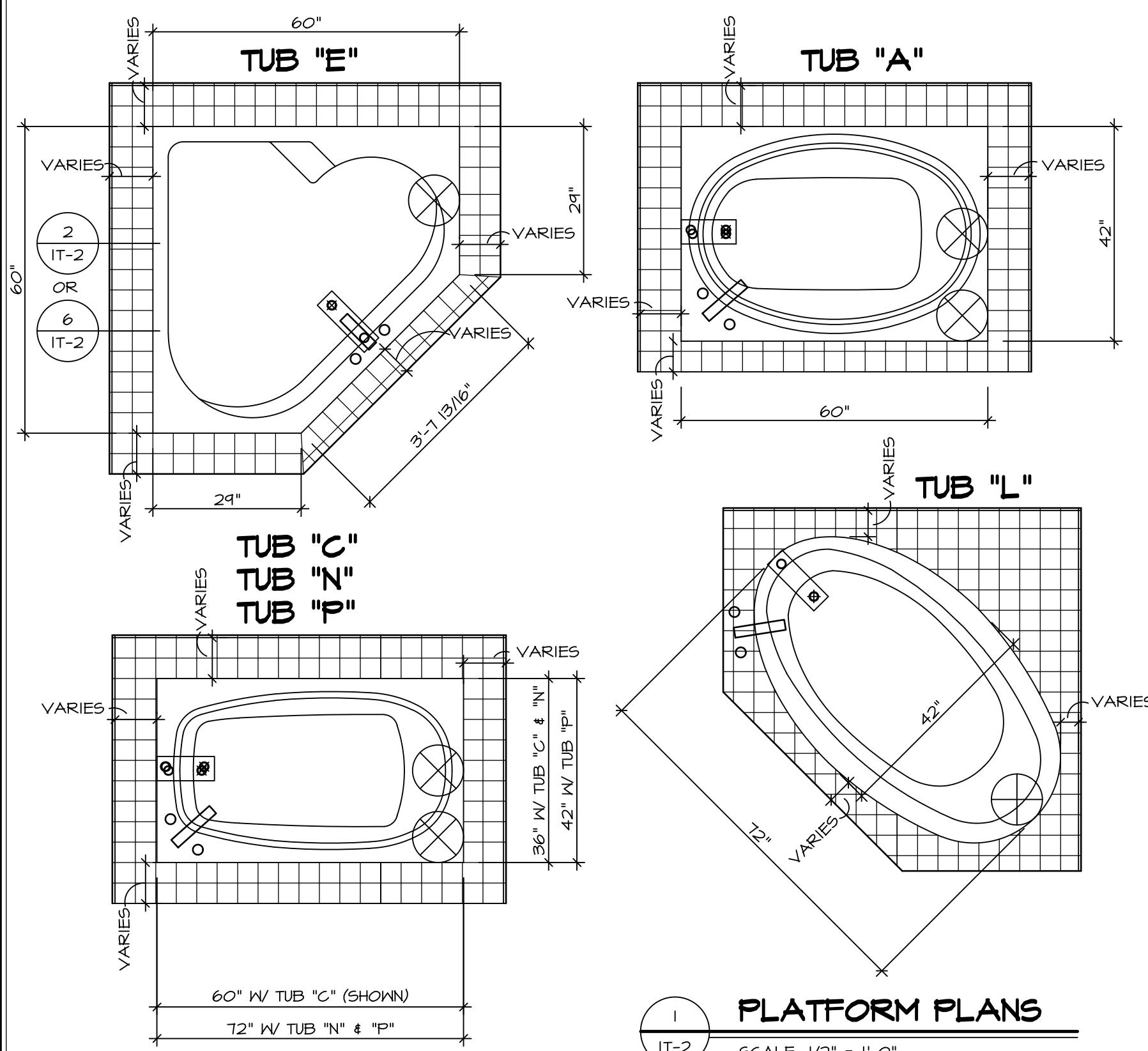
**NOTES:**

1. TEMPERED GLASS SHOWER ENCLOSURE WITH SWING DOOR OR OPTIONAL SLIDING DOOR BY DIVISION
2. TUB ACCESS PANELS PROVIDED AS NEEDED, ALL MATERIALS BY DIVISION
3. REFER TO SHEET IT-2 FOR TUB AND SHOWER DETAILS.
4. ALL V5DB24-42 DRAWERS TO BE SET ON RIGHT HAND.
5. BATH ELEVATIONS ARE SHOWN PER PLAN.

SHEET NO. <b>A-13</b>	MODEL <b>PALERMO</b>	SET NO. <b>PALOO</b>	REVISIONS	REV. NO.	DATE	REMARKS
	DRAWING TITLE <b>BATH ELEVATIONS</b>	VERSION <b>03</b>	DRAWN BY	1	08/04/18	TH - DRAINING ALIGNMENT
OPTION DESCRIPTION						
<b>72</b>						

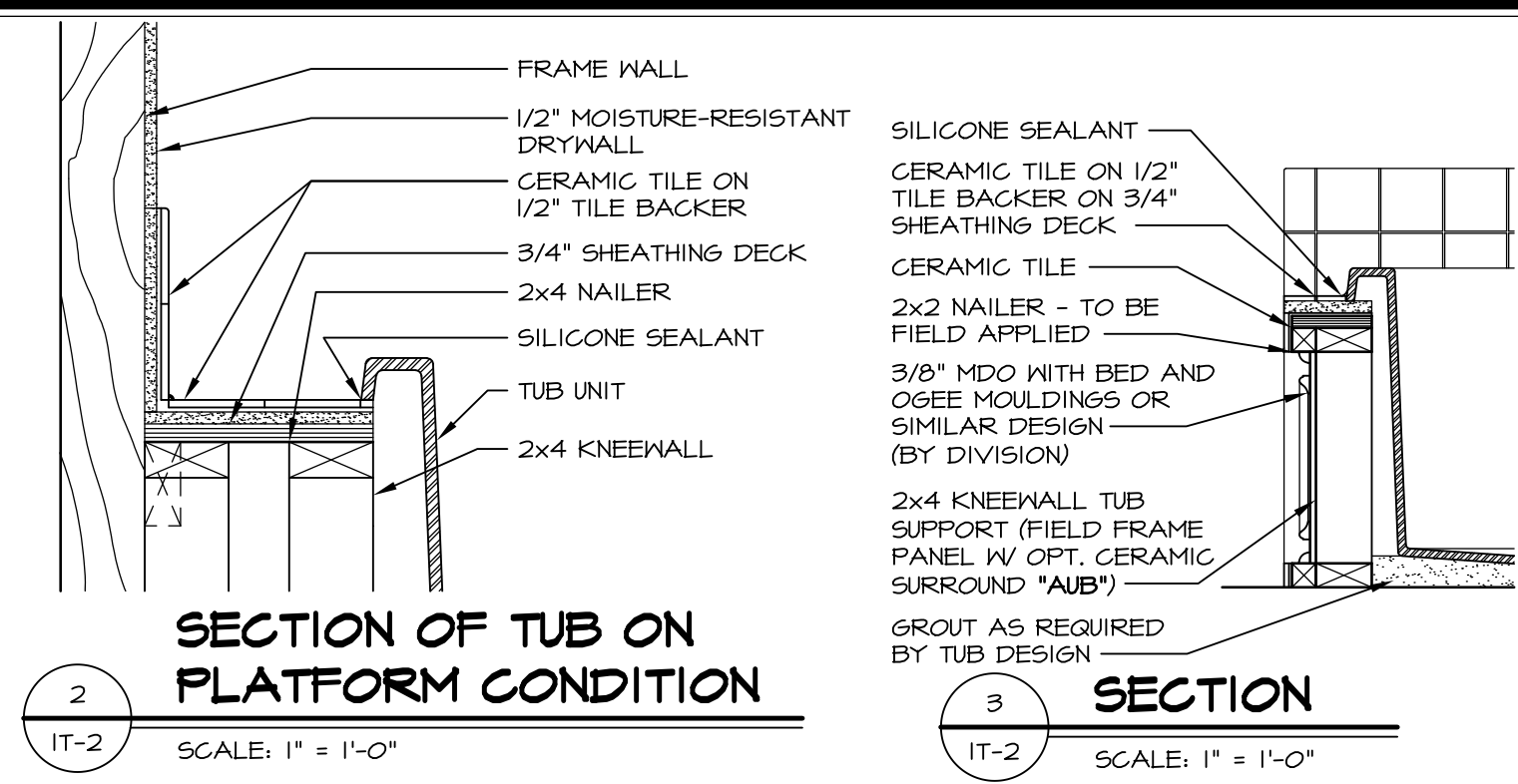
**NVR**  
NVR, Inc.  
Architectural Services  
Architects  
5285 Westover Lane, Suite 100  
Frederick, MD 21703

C:\NVR\Solves\PALERMO\_PALOO\_03\DCY-YR-0065\93981\Sheets\Lot\_Specs\72\_A-13\_BATH\_LS.dwg 05/16/18 - 5:49 am

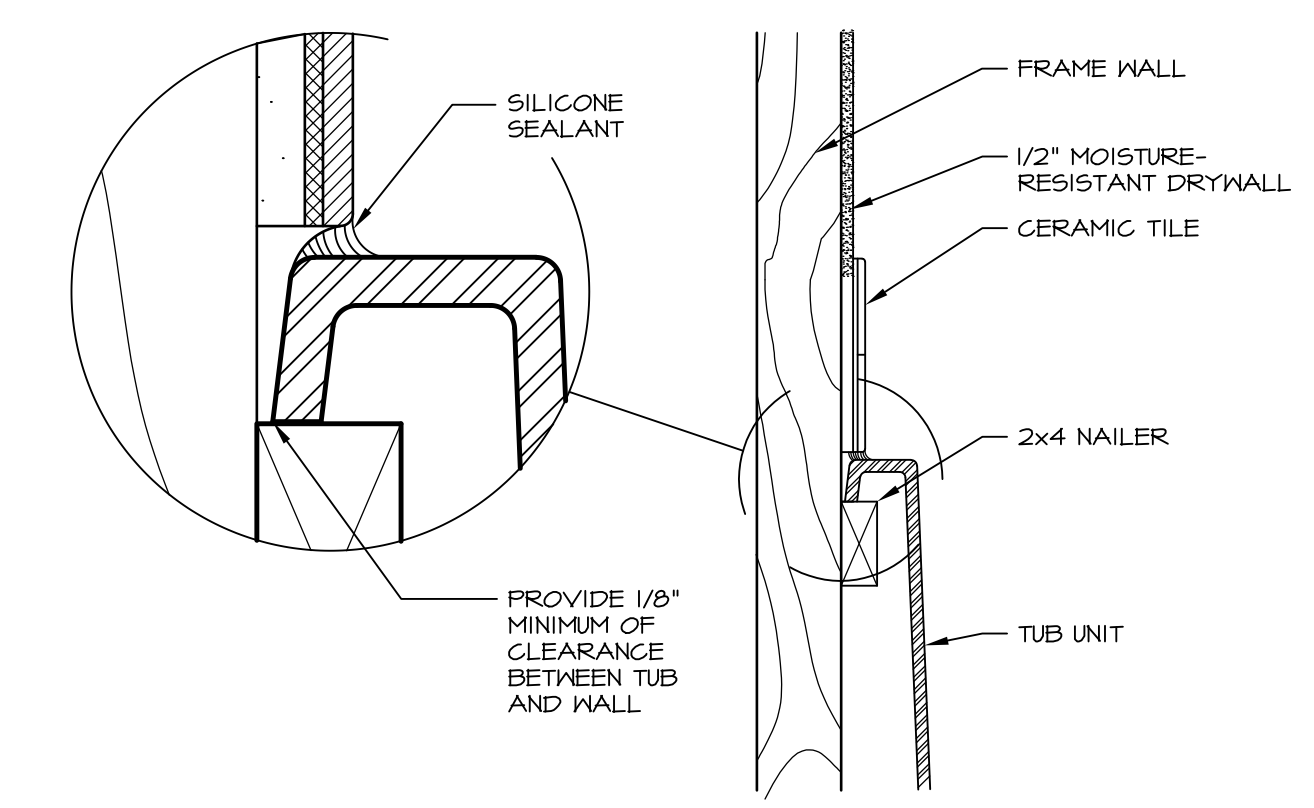


**1 PLATFORM PLANS**  
SCALE: 1/2" = 1'-0"

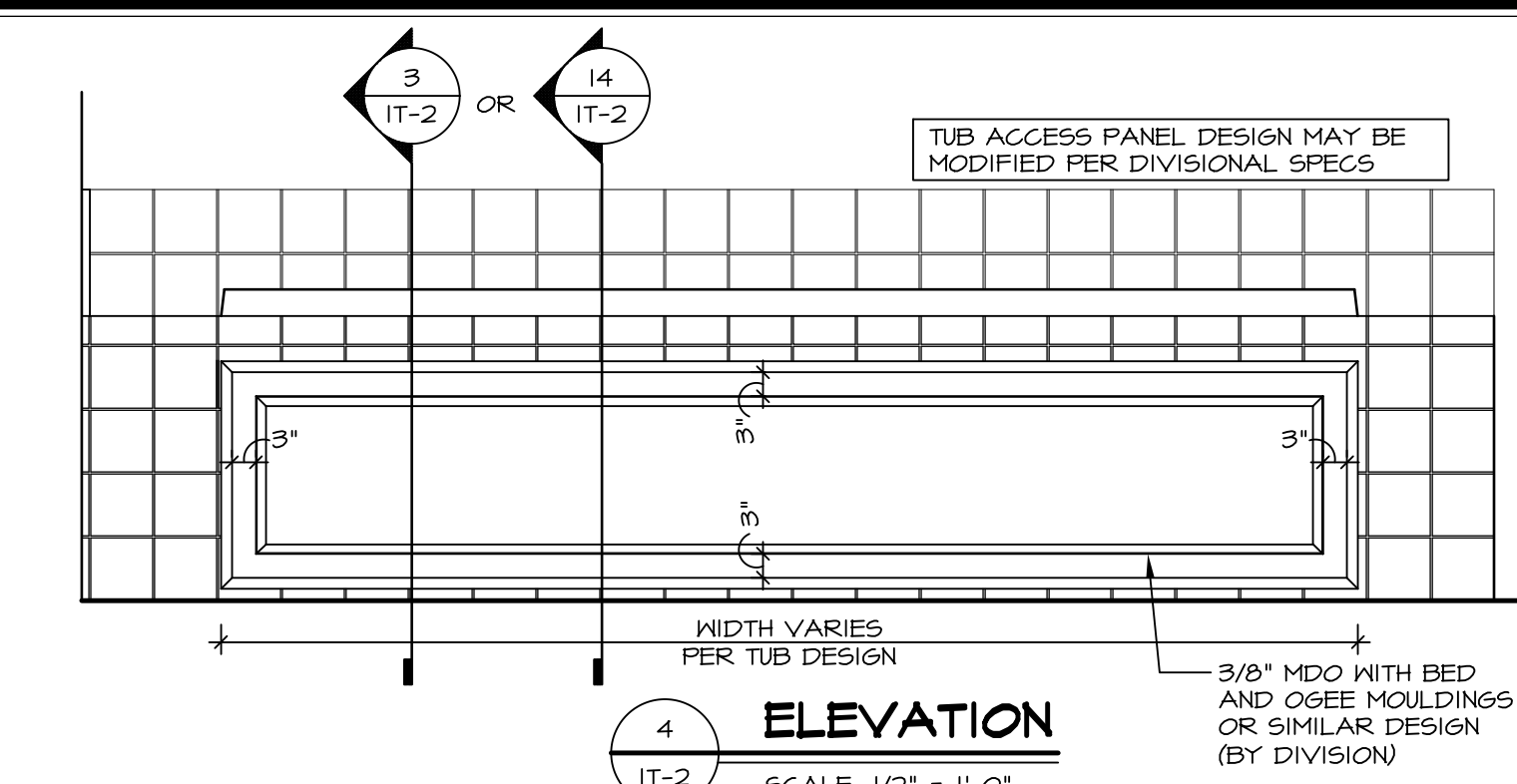
TUB	MANUF.	HEIGHT	WIDTH	LENGTH	TUB DECK PANEL HEIGHT
"A"	KOHLER/STERLING	18 3/4"	42"	60"	17 1/8"
"C"	KOHLER/STERLING	18 3/4"	36"	60"	17 1/8"
"E"	KOHLER/STERLING	19 1/2"	60"	60"	17 7/8"
"L"	KOHLER/STERLING	18 1/2"	42"	72"	16 7/8"
"N"	KOHLER/STERLING	18 3/4"	36"	72"	17 1/8"
"P"	KOHLER/STERLING	18 3/4"	42"	72"	17 1/8"



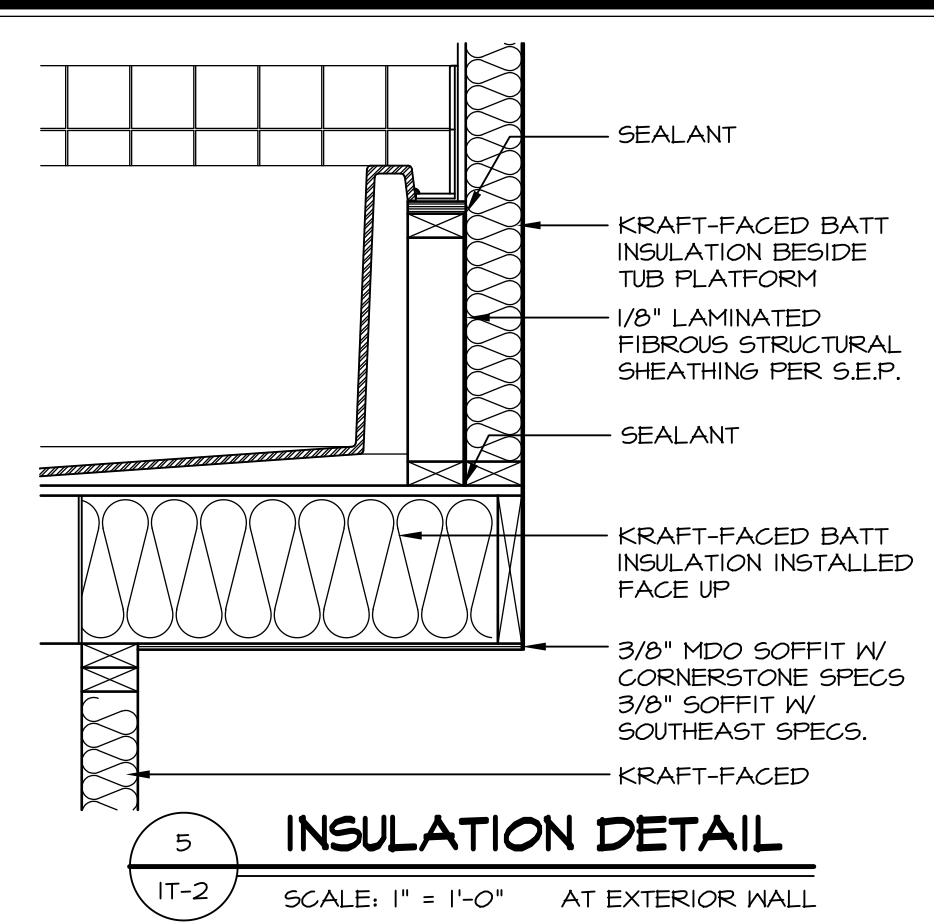
**2 SECTION OF TUB ON PLATFORM CONDITION**  
SCALE: 1" = 1'-0"



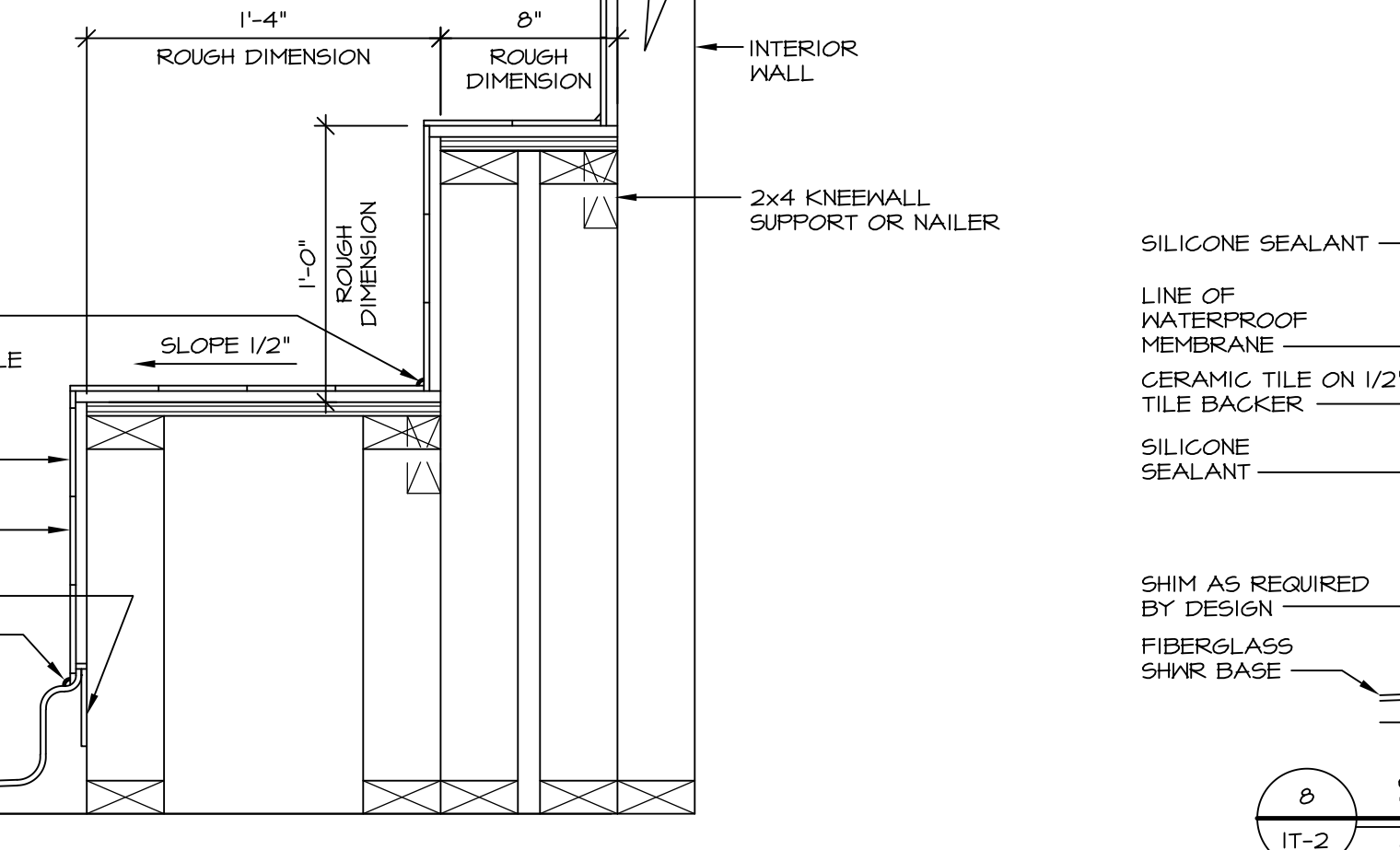
**3 SECTION OF TUB TO WALL CONDITION**  
SCALE: 1" = 1'-0"



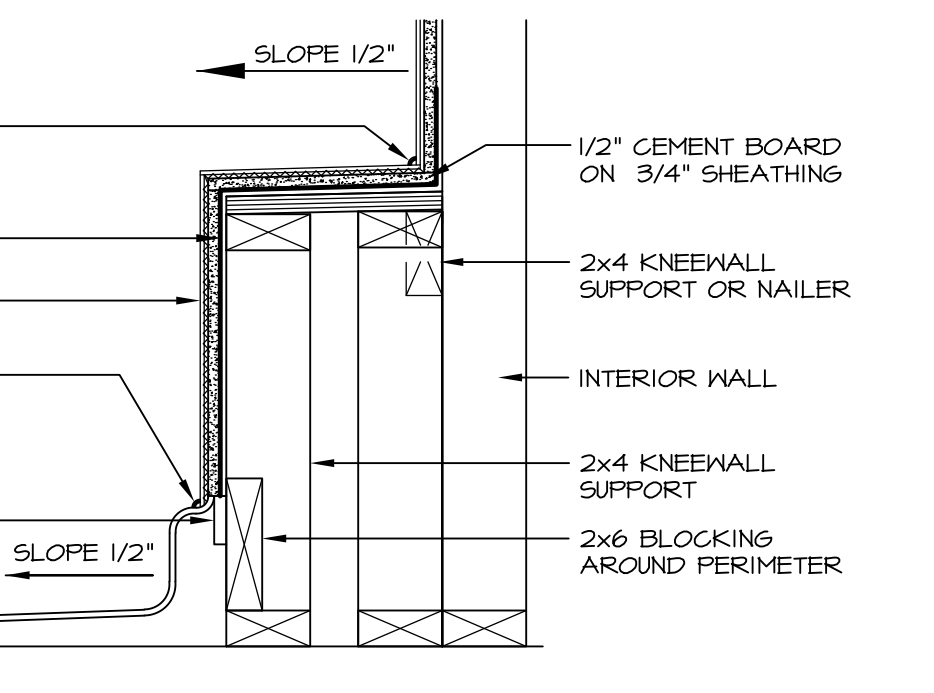
**4 ELEVATION**  
SCALE: 1/2" = 1'-0"



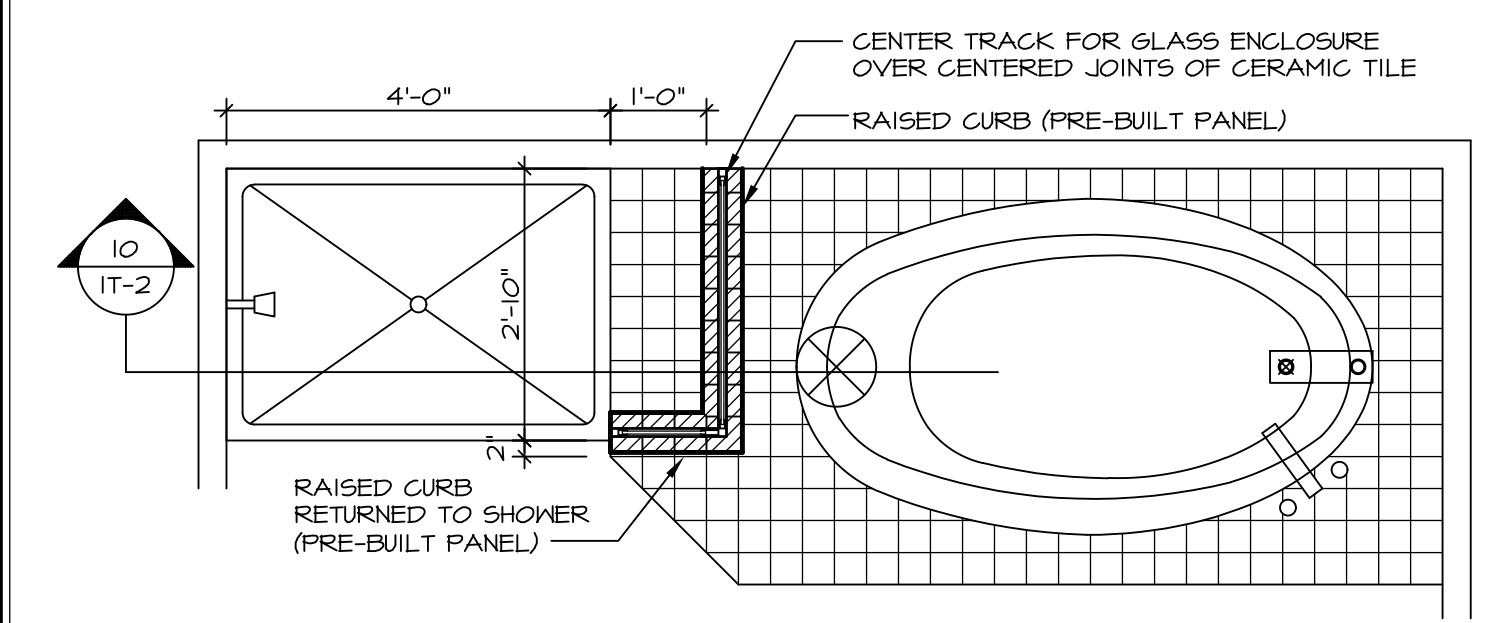
**5 INSULATION DETAIL**  
SCALE: 1" = 1'-0" AT EXTERIOR WALL



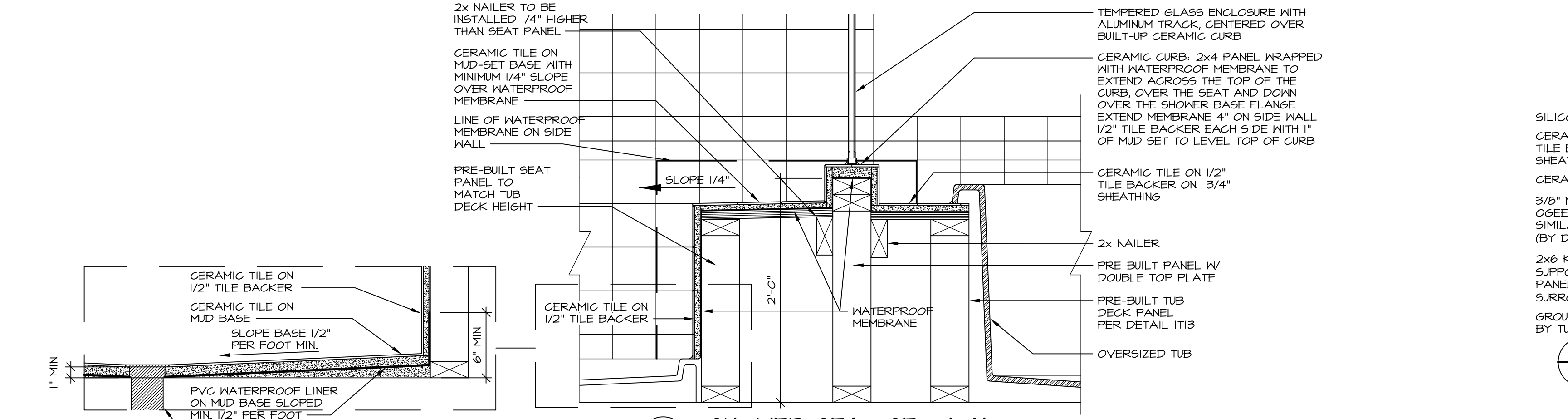
**7 SECTION OF SHOWER SEAT AND SHELF**  
SCALE: 1/2" = 1'-0"



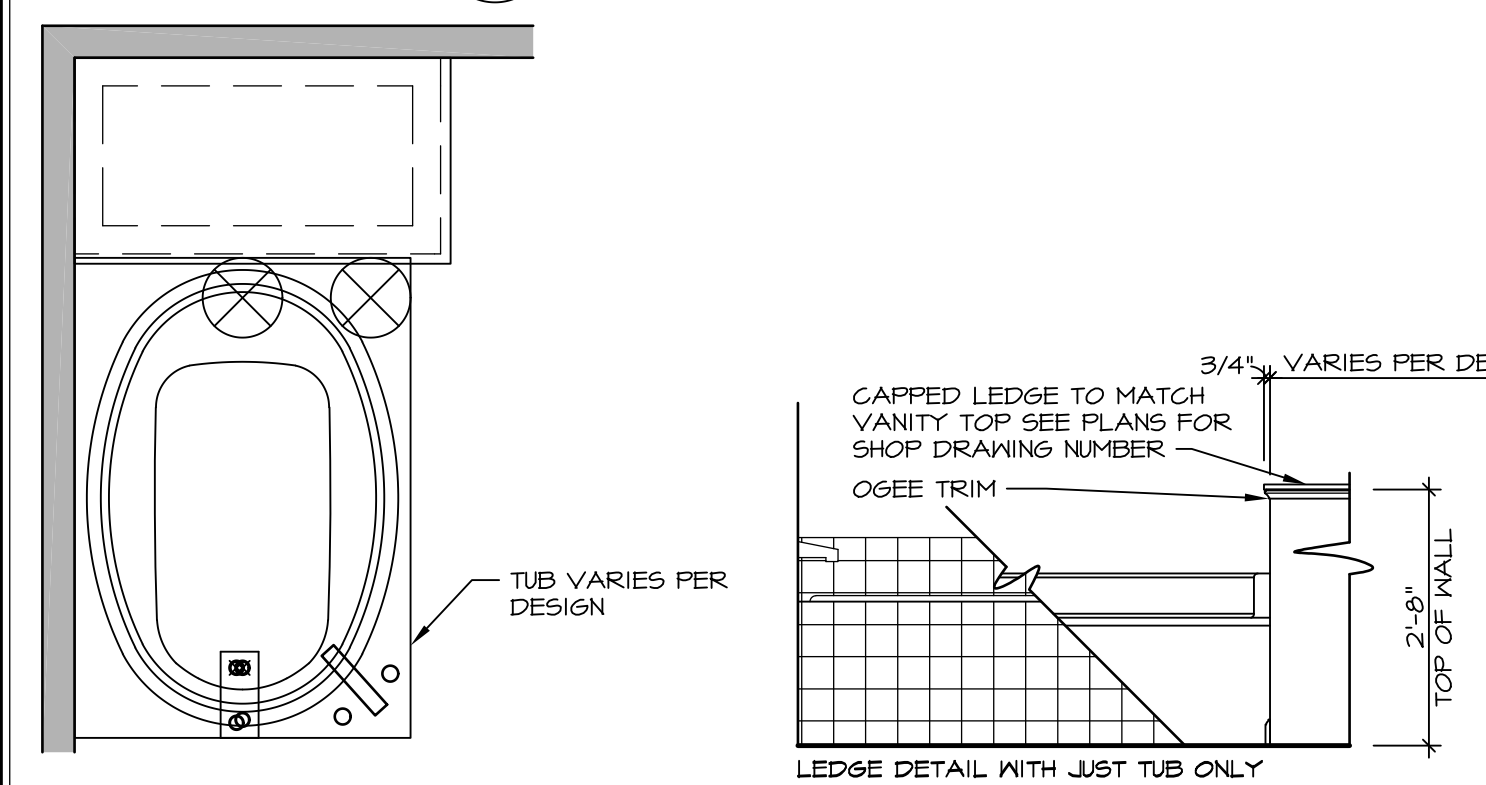
**8 SECTION OF SHOWER SEAT**  
SCALE: 1/2" = 1'-0" FIBERGLASS SHOWER BASE



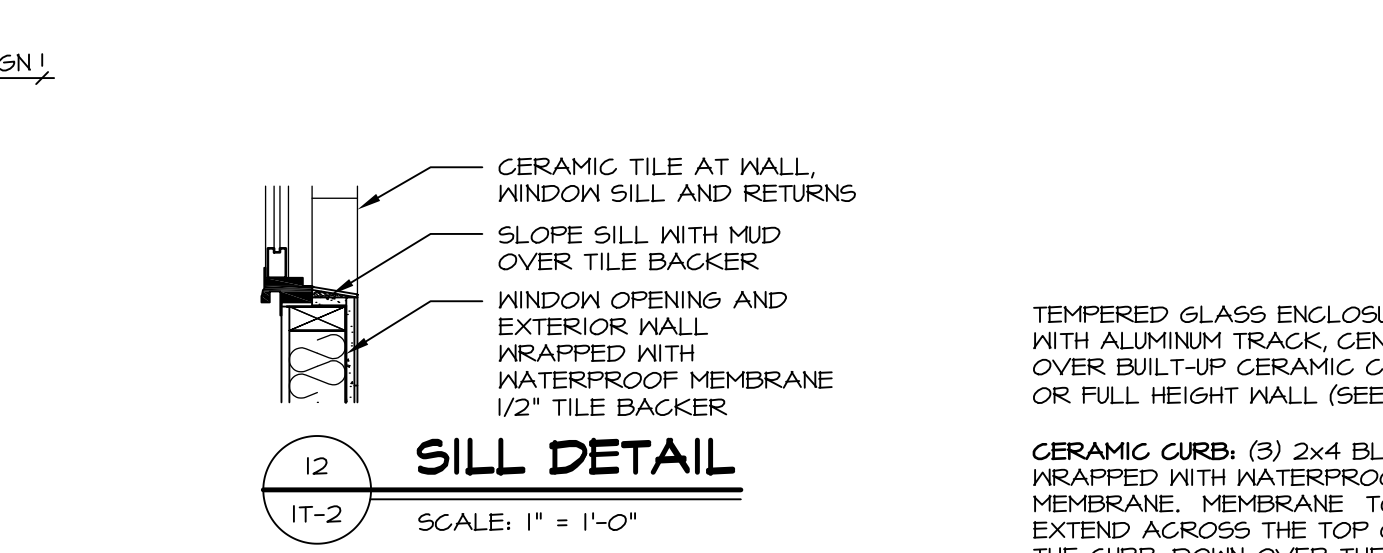
**9 SHOWER SEAT PLAN / DETAIL**  
SCALE: 1/2" = 1'-0"



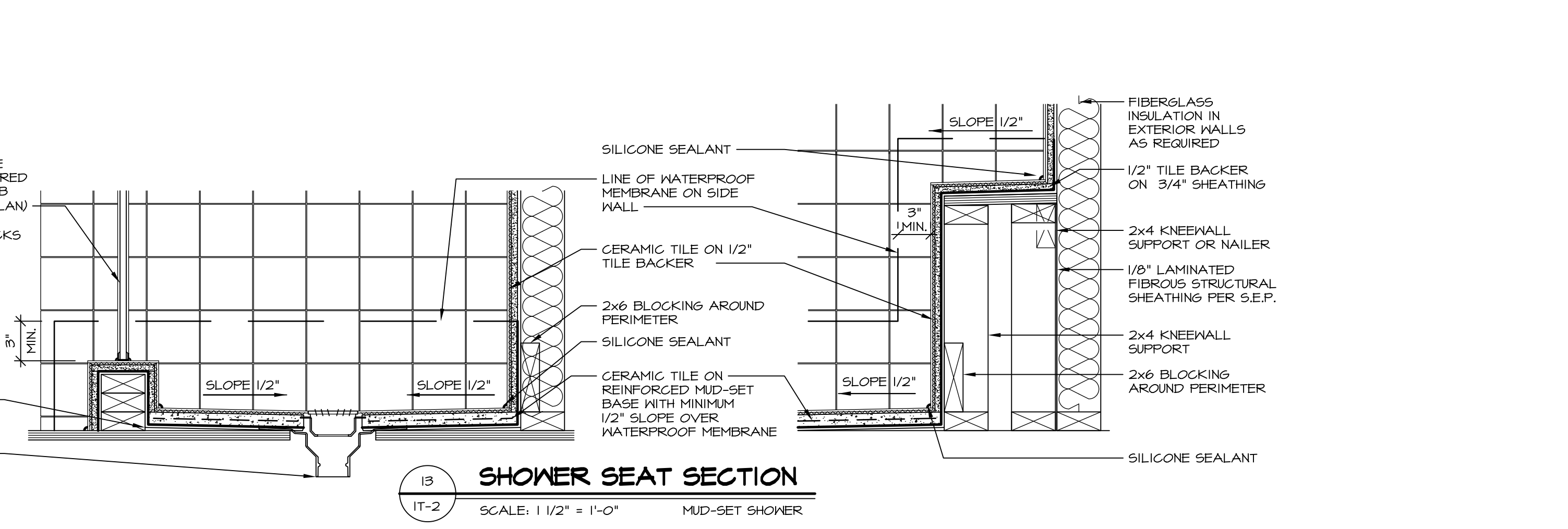
**10 SHOWER SEAT SECTION**  
SCALE: 1/2" = 1'-0"



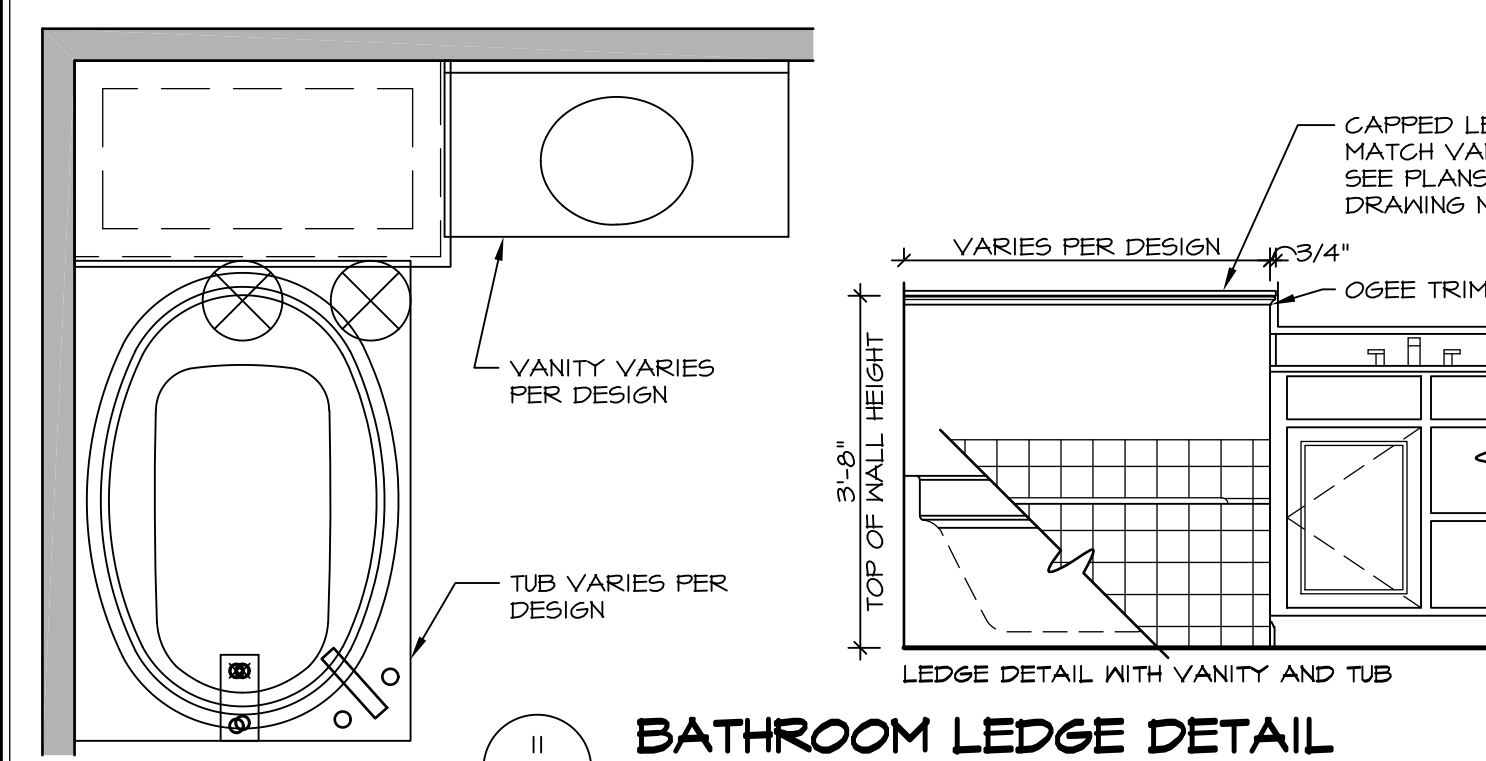
**11 BATHROOM LEDGE DETAIL**  
SCALE: 1/2" = 1'-0"



**12 SILL DETAIL**  
SCALE: 1" = 1'-0"



**13 SHOWER SEAT SECTION**  
SCALE: 1/2" = 1'-0" MUD-SET SHOWER

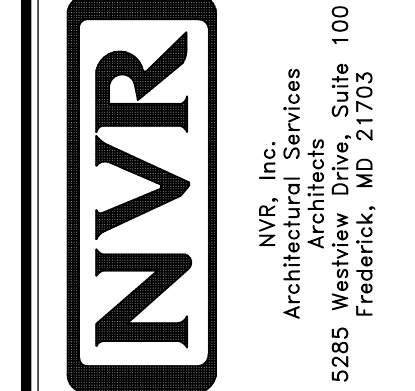


**14 SHOWER PAN DETAIL**  
SCALE: 1/2" = 1'-0"

REVISIONS

REV. NO.	DATE	DESCRIPTION
1	5/1/17	EBP - REVISED DETAIL 1 AND 11 TO REMOVE TUB ACCESS PANEL REF. (095 #15 541/4)
2	9/2/17	EBP - REVISED T-FLY NOTE TO CALL OUT LFS
3	9/2/17	EBP - REVISED NOTE ON DETAIL #1 - REVISED ORDER OF MATERIAL PARA#493/4

NVR, Inc., owner, expressly reserves its common law copyright and other property rights in these plans. These plans are not to be reproduced, copied, or otherwise used in any way without the prior written consent of NVR, Inc.



SET NO. NVR

VERSION

DRAWN BY

DATE:

OPTION

MODEL STANDARD DETAILS

DRAWING TITLE INTERIOR TRIM DETAILS

BATH DETAILS

OPTION DESCRIPTION

SHEET NO. IT-2

J:\Dwg\NVR\Interior Trim\IT2.dwg 09/27/17 - 9:20 am