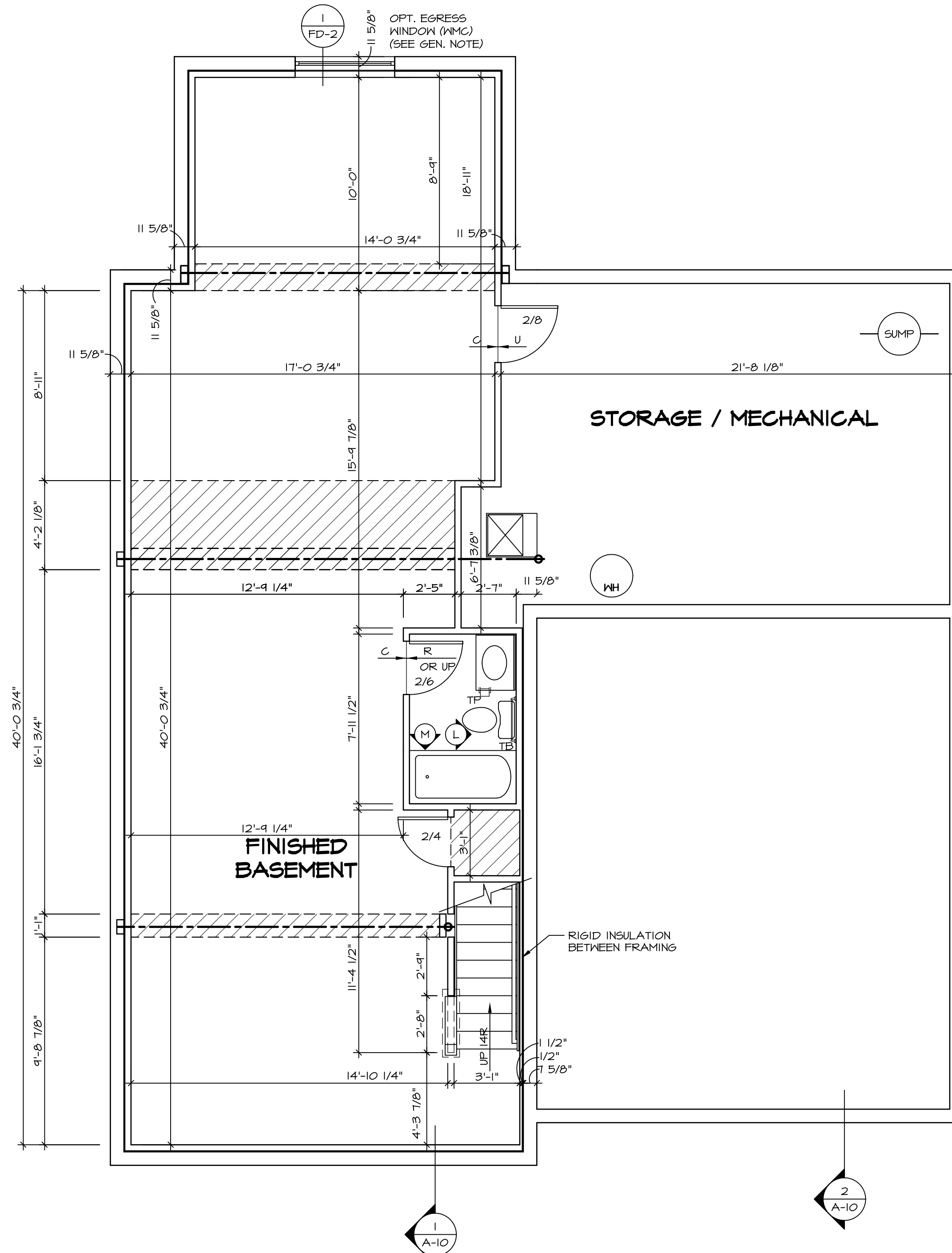


1
PLUMBING PLAN
 SCALE: 1/4" = 1'-0"

SHEET NO. A-5	MODEL NAPLES DRAWING TITLE PLUMBING PLAN OPTION DESCRIPTION 28	SET NO. NAPOO VERSION 06 DRAWN BY TN DATE: 05/22/15 OPTION	NVR, Inc. Architectural Services 5285 Washington Blvd., Suite 100 Frederick, MD 21703	NVR, Inc. owner, expressly reserves its copyright in these plans. These plans are not to be reproduced, changed, adapted, or copied in any way without the written consent of NVR, Inc.	REV. NO. DATE REMARKS



1
A-6
BASEMENT FLOOR PLAN
SCALE: 1/4" = 1'-0"

LEGEND

	BEARING WALL
	NON BEARING WALL
	INDICATES BEARING FROM POINT-LOAD ABOVE JACKS
	BEAM/HEADER
	PAD FOOTING
	STEEL COLUMN
	PORTAL FRAME
	JOIST/TRUSS
	LVL
	ENGINEERING PAGE NUMBER

SEE FC DETAILS FOR FRAMING CONNECTORS

- FLOOR PLAN NOTES**
- ALL HEADERS ARE (2) 2x6 w/ 2x4 WALLS OR (3) 2x6 w/ 2x6 WALLS, UNLESS OTHERWISE NOTED.
 - ALL HEADERS TO HAVE (1) 2x4 OR 2x6 JACK EACH END, UNLESS OTHERWISE NOTED.
 - ALL EXTERIOR WALLS TO BE 4" AND ALL INTERIOR WALLS TO BE 3 1/2", UNLESS OTHERWISE NOTED.
 - HATCHED AREAS INDICATE DROPPED CEILING. ALL DROPPED CEILING ARE 12" UNLESS OTHERWISE NOTED.
 - SEE 'BRACED WALL PANEL DETAIL SHEET' FOR SPECIAL WALL FRAMING LOCATIONS AND HEADER SIZES, IF APPLICABLE.
 - SEE STANDARD DETAIL CATEGORY 'IT' SHEET(S) FOR INTERIOR TRIM DETAILS.
 - SEE ARCHITECTURAL DETAIL SHEET 'AD' FOR HOUSE SPECIFIC INTERIOR TRIM OPTION TABLE.
 - ALL WINDOWS HAVE T-O 1/2" HEADER HEIGHT UNLESS OTHERWISE NOTED.

- GYPSUM NOTES**
- AT GARAGE:
GYPSUM BOARD AT COMMON WALLS, CEILING, BEAM WRAPS AND SUPPORTS PER STANDARD DETAIL FA-1(b) FIRE ASSEMBLIES OR AS REQUIRED BY LOCAL CODE.
- AT STAIRS:
1/2" GYPSUM BOARD AT UNDERSIDE OF STAIRS AND WALLS IN CLOSET

SHEET NO. A-6	MODEL NAPLES	DRAWING TITLE BASEMENT FLOOR PLAN	OPTION DESCRIPTION OPTION	SET NO. NAPOO VERSION 06	DRAWN BY TN	DATE: 05/22/15	OPTION
				<p>REMARKS</p> <p>08/07/16 N - DRAWING ALIGNMENT</p>			
<p>NVR, Inc., owner, expressly reserves its copyright in these plans. These plans are not to be reproduced, changed, copied, or otherwise used in any way without the prior written consent of NVR, Inc.</p>							
<p>NVR Architectural Services 5285 Westover Lane, Suite 100 Frederick, MD 21703</p>							
<p>C:\NVR\Solves\NAPLES_NAPOO_06\DCI-VR-0087\620928\Sheet\1 - Specific\31 - A-6_BSM1_LS.dwg 12/17/17 - 4:24 pm</p>							

LEGEND

- BEARING WALL
- NON BEARING WALL
- INDICATES BEARING FROM POINT-LOAD ABOVE JACKS
- BEAM/HEADER
- PAD FOOTINGS
- STEEL COLUMN
- PORTAL FRAME
- JOIST/TRUSS
- LVL
- ENGINEERING PAGE NUMBER

SEE FC DETAILS FOR FRAMING CONNECTORS

- FLOOR PLAN NOTES**
- ALL HEADERS ARE (2) 2x6 w/ 2x4 WALLS OR (3) 2x6 w/ 2x6 WALLS, UNLESS OTHERWISE NOTED.
 - ALL HEADERS TO HAVE (1) 2x4 OR 2x6 JACK AND KING STUD EACH END, UNLESS OTHERWISE NOTED.
 - ALL EXTERIOR WALLS TO BE 4" w/ OSB OR 3 1/2" w/ T-PLY, ALL INTERIOR WALLS TO BE 3 1/2", UNLESS OTHERWISE NOTED.
 - HATCHED AREAS INDICATE DROPPED CEILING. ALL DROPPED CEILING ARE 12" UNLESS OTHERWISE NOTED.
 - SEE "BRACED WALL PANEL DETAIL SHEET" FOR SPECIAL WALL FRAMING LOCATIONS AND HEADER SIZES, IF APPLICABLE.
 - SEE STANDARD DETAIL CATEGORY "IT" SHEET(S) FOR INTERIOR TRIM DETAILS.
 - SEE ARCHITECTURAL DETAIL SHEET "AD" FOR HOUSE SPECIFIC INTERIOR TRIM OPTION TABLE.
 - ALL WINDOWS HAVE 7'-0 1/2" HEADER HEIGHT UNLESS OTHERWISE NOTED.
 - ALL HEADERS IN NON-BEARING WALLS SHALL BE A SINGLE FLAT 2x4 OR 2x6 ATTACHED TO GRIFFLES ABOVE, UNLESS OTHERWISE NOTED.

- GYPSUM NOTES**
- AT GARAGE:
GYPSUM BOARD AT COMMON WALLS, CEILING, BEAM WRAPS AND SUPPORTS PER STANDARD DETAIL FA-(b) FIRE ASSEMBLIES OR AS REQUIRED BY LOCAL CODE.
- AT STAIRS:
1/2" GYPSUM BOARD AT UNDERSIDE OF STAIRS AND WALLS IN CLOSET.

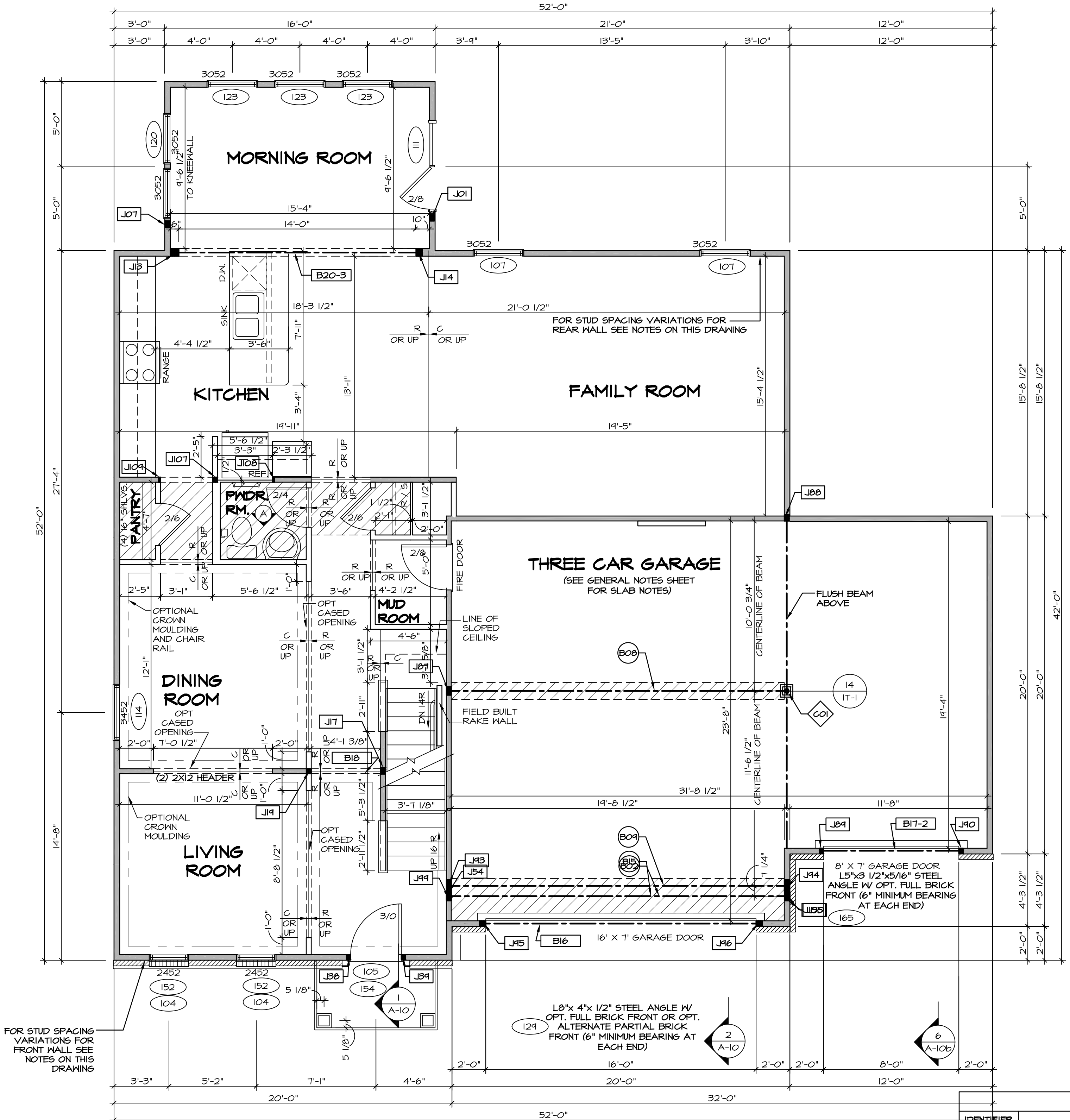
- LVL PLY TO PLY FASTENING SCHEDULE:**
- 1A - (2) PLY UP TO AND INCLUDING 11 7/8" TALL; FASTEN PLYS W/ (2) ROWS 16D NAILS AT 12" O.C.
 - 2A - (2) PLY 14" TO AND 18" TALL (INCLUSIVE); FASTEN PLYS W/ (3) ROWS 16D NAILS AT 12" O.C.
 - 3A - (2) PLY 20" TALL AND OVER; FASTEN PLYS W/ (4) ROWS 16D NAILS AT 12" O.C.
 - 4A - (3) PLY UP TO AND INCLUDING 11 7/8" TALL; FASTEN PLYS W/ (2) ROWS 16D NAILS AT 12" O.C. FROM EACH SIDE
 - 5A - (3) PLY 14" TO AND 18" TALL (INCLUSIVE); FASTEN PLYS W/ (3) ROWS 16D NAILS AT 12" O.C. FROM EACH SIDE
 - 6A - (3) PLY 20" TALL AND OVER; FASTEN PLYS W/ (4) ROWS 16D NAILS AT 12" O.C. FROM EACH SIDE

FIRST FLOOR BEAM/HEADER SCHEDULE

IDENTIFIER	DESCRIPTION	LENGTH	OPTIONS	ENG. NUM.	REMARKS
B02	BEAM STEEL - W12X22	20'-3"	ELD, EVM, GCB	143	
B03	BEAM STEEL - W12X14	20'-3"	GCF	103	
B04	BEAM STEEL - W12X30	20'-3"	ELB, ELC, ELL, ELN, GCF	114	
B15	BEAM STEEL - W12X22	20'-3"	ELB, GCF, EVA	130	
B16	EXT HEADER - 2X12 - 2 PLY	14'-4"	GCF, ELB, ELC, ELL, ELN	120	
BIT-2	LVL 1.75 - 04-04	8'-6"	GCF, FBA, FGA	164	FIELD INSTALLED 1A
B18	INT HEADER - 2X8 - 2 PLY	4'-7 1/2"		100	FIELD INSTALLED
B20-3	LVL - 16	14'-11"	MAA, ZCC	124	5A

FIRST FLOOR JACK SCHEDULE

IDENTIFIER	DESCRIPTION	OPTIONS	ENG. NUM.	REMARKS
J01	JACK - (3) 2X4 SPF STUD GRADE	SRM, SGK	112	FULL HEIGHT STUDS
J07	JACK - (3) 2X4 SPF STUD GRADE	SRM, SGK, MAA	112	FULL HEIGHT STUDS
J100	JACK - (4) 2X4 SPF STUD GRADE	GCF, ELB, EVA	130	
J107	JACK - (2) 2X4 SPF STUD GRADE	ZCC	167	
J109	JACK - 2X4 SPF STUD GRADE		150, 167	
J13	JACK - (4) 2X6 SPF STUD GRADE	ZCC, MAA	124	
J14	JACK - (3) 2X6 SPF STUD GRADE	ZCC, MAA	124	
J17	JACK - (3) 2X4 SPF STUD GRADE	ZCC, FBA		
J18	JACK - (2) 2X4 SPF STUD GRADE	MBL	105	
J38	JACK - (2) 2X4 SPF STUD GRADE	ELB	105	
J39	JACK - (2) 2X4 SPF STUD GRADE	ELB	105	
J54	JACK - (4) 2X4 SPF STUD GRADE	GCB, ELD, EVM	143	
J55	JACK - (4) 2X4 SPF STUD GRADE	GCB, ELD, EVM	143	
J87	JACK - (4) 2X4 SPF STUD GRADE			
J88	JACK - (3) 2X4 SPF STUD GRADE			
J89	JACK - (2) 2X4 SPF STUD GRADE	GCF/GAA	164	
J90	JACK - (2) 2X4 SPF STUD GRADE	GCF/GAA	164	
J93	JACK - (6) 2X4 SPF	GCF, ELB, ELC, ELL, ELN, ZCC	143	
J94	JACK - (6) 2X4 SPF	SRM, SGK, SR1, 5X5, GCF	142, 143	
J95	JACK - (3) 2X4 SPF STUD GRADE	GCF	120	
J96	JACK - (3) 2X4 SPF STUD GRADE	GCF	120	
J99	JACK - (4) 2X4 SPF STUD GRADE	GCF, ELB, EVA	130	



- STUD SPACING FOR FRONT WALLS AT LIVING ROOM:**
W/O ATTIC "BTU"/MAU": 2x4 STUD WALLS AT 16" O.C. (115)
OR
W/ ATTIC "BTU"/MAU": 2x4 STUD WALLS AT 12" O.C. (157)
- STUD SPACING FOR FRONT WALLS AT FOYER:**
W/O ATTIC "BTU"/MAU": 2x4 STUD WALLS AT 16" O.C. (116)
OR
W/ ATTIC "BTU"/MAU": 2x4 STUD WALLS AT 12" O.C. (157)
- STUD SPACING FOR FRONT / SIDE WALLS AT GARAGE:**
W/ 40 MPH "SRM" OR 100 MPH "SGK": 2x4 STUD WALLS AT 16" O.C. (125)
OR
W/ 110 MPH "SQL" OR 120 MPH "SRX": 2x4 STUD WALLS AT 12" O.C. (125)
- STUD SPACING FOR REAR WALLS AT DINETTE/ KITCHEN:**
W/ CORPORATE TRUSS SPECS. "SR1" OR SOUTHEAST SPECS. "5X5" WITHOUT ATTIC: 2x4 STUD WALLS AT 16" O.C. (117)
OR
W/ NORTHEAST TRUSS SPECS. "SRJ" WITHOUT ATTIC: 2x4 STUD WALLS AT 12" O.C. (117)
OR
W/ ATTIC "BTU"/MAU": 2x4 STUD WALLS AT 12" O.C. (158)
- STUD SPACING FOR REAR WALLS AT FAMILY ROOM:**
W/O ATTIC "BTU"/MAU": 2x4 STUD WALLS AT 16" O.C. (117)
OR
W/ ATTIC "BTU"/MAU": 2x4 STUD WALLS AT 12" O.C. (158)

STEEL COLUMN SCHEDULE

IDENTIFIER	STYLE	HEIGHT	OPTIONS	ENG. NUM.	REMARKS
---	TRIM - COLUMN GARAGE	8'-0"			
CO1	STANCHION - 3 IN DIA 116A ADJ	9'-4 1/2"	GCF, FBA	164	

FIRST FLOOR PLAN
SCALE: 1/4" = 1'-0"

REVISIONS

REV. NO.	DATE	DESCRIPTION
1	08/01/16	N.E. - DRAWING ALIGNMENT
2	07/12/17	5/15 - T-PLY CONVERSION PROJECT

Copyright © 2016 NVR, Inc. All rights reserved. No part of this drawing may be reproduced, stored in a retrieval system, or transmitted in any form or by any means, electronic, mechanical, photocopying, recording, or by any information storage and retrieval system, without the prior written consent of NVR, Inc.

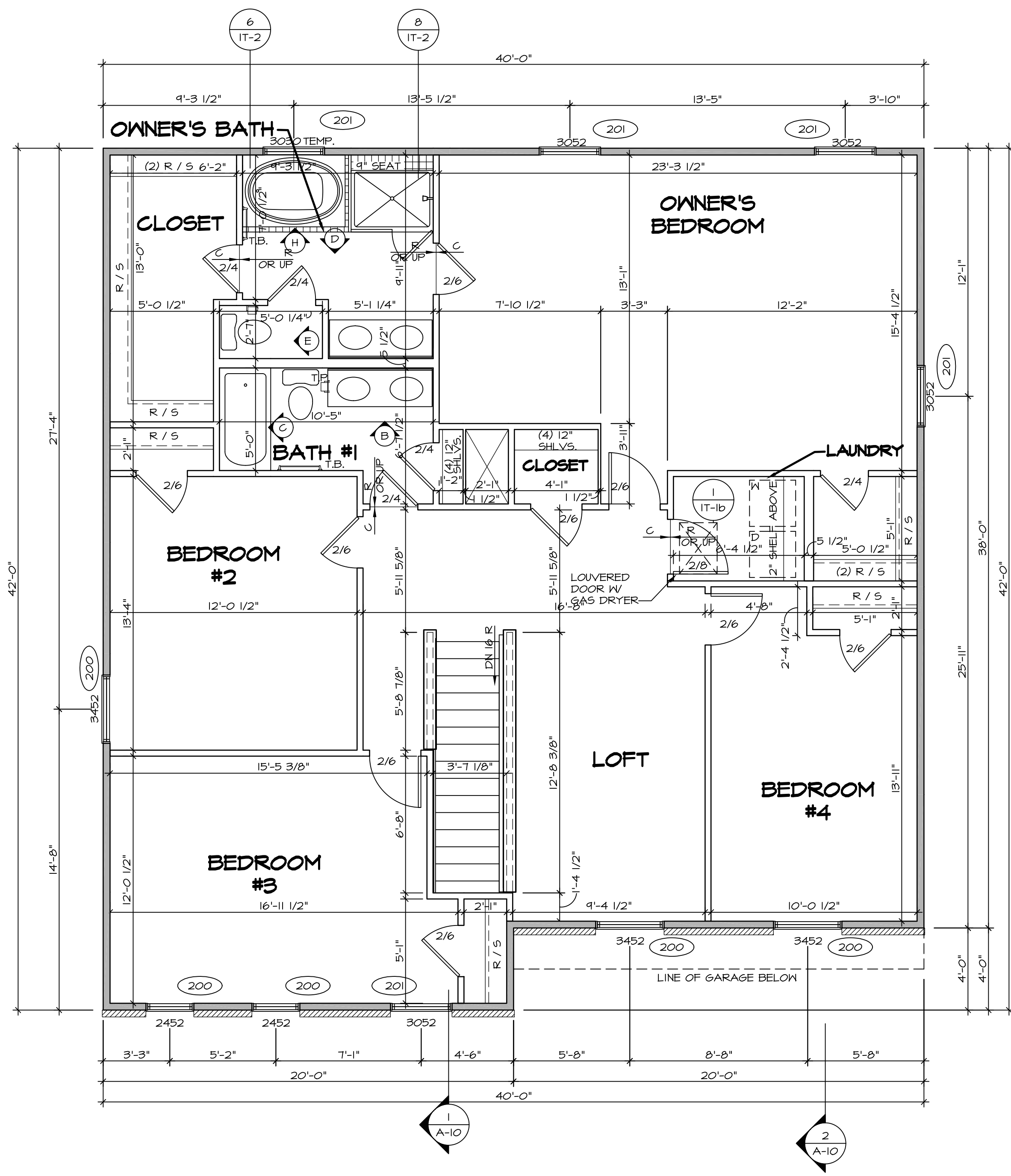
NVR
Architectural Services
Suite 100
5285 Westpark Drive
Frederick, MD 21703

SET NO. NAPOO
VERSION 06
DRAWN BY TN
DATE: 05/22/15
OPTION

MODEL
NAPLES
DRAWING TITLE
FIRST FLOOR PLAN
OPTION DESCRIPTION

SHEET NO. A-7
32

C:\NVR\Solves\NAPLES_NAPOO_06\DC1-VR-0087\620928\Sheet\101_Specific\32_A-7_PLN1_LS.dwg 12/17/17 - 4:24 pm



SECOND FLOOR PLAN
SCALE: 1/4" = 1'-0"

LEGEND

- BEARING WALL
- NON BEARING WALL
- INDICATES BEARING FROM POINT-LOAD ABOVE
- J JACKS
- B BEAM/HEADER
- F PAD FOOTING
- C STEEL COLUMN
- X PORTAL FRAME
- X JOIST/TRUSS
- L LVL
- () ENGINEERING PAGE NUMBER

SEE FC DETAILS FOR FRAMING CONNECTORS

- FLOOR PLAN NOTES**
1. ALL HEADERS ARE (2) 2x6 w/ 2x4 WALLS OR (3) 2x6 w/ 2x6 WALLS, UNLESS OTHERWISE NOTED.
 2. ALL HEADERS TO HAVE (1) 2x4 OR 2x6 JACK AND KING STUD EACH END, UNLESS OTHERWISE NOTED.
 3. ALL EXTERIOR WALLS TO BE 4" w/ OSB OR 3 1/2" w/ T-PLY, ALL INTERIOR WALLS TO BE 3 1/2", UNLESS OTHERWISE NOTED.
 4. HATCHED AREAS INDICATE DROPPED CEILINGS. ALL DROPPED CEILINGS ARE 12" UNLESS OTHERWISE NOTED.
 5. SEE "BRACED WALL PANEL DETAIL SHEET" FOR SPECIAL WALL FRAMING LOCATIONS AND HEADER SIZES, IF APPLICABLE.
 6. SEE STANDARD DETAIL CATEGORY "11" SHEET(S) FOR INTERIOR TRIM DETAILS.
 7. SEE ARCHITECTURAL DETAIL SHEET "AD" FOR HOUSE SPECIFIC INTERIOR TRIM OPTION TABLE.
 8. ALL WINDOWS HAVE T-O 1/2" HEADER HEIGHT UNLESS OTHERWISE NOTED.
 9. ALL HEADERS IN NON-BEARING WALLS SHALL BE A SINGLE FLAT 2X4 OR 2X6 ATTACHED TO CRIPPLES ABOVE, UNLESS OTHERWISE NOTED.

SECOND FLOOR JACK SCHEDULE

IDENTIFIER	DESCRIPTION	OPTIONS	ENG. NUM.	REMARKS

- LVL PLY TO PLY FASTENING SCHEDULE:**
- 1A - (2) PLY UP TO AND INCLUDING 11 7/8" TALL; FASTEN PLYS W/ (2) ROWS 16D NAILS AT 12" O.C.
 - 2A - (2) PLY 14" TO AND 18" TALL (INCLUSIVE); FASTEN PLYS W/ (3) ROWS 16D NAILS AT 12" O.C.
 - 3A - (2) PLY 20" TALL AND OVER; FASTEN PLYS W/ (4) ROWS 16D NAILS AT 12" O.C.
 - 4A - (3) PLY UP TO AND INCLUDING 11 7/8" TALL; FASTEN PLYS W/ (2) ROWS 16D NAILS AT 12" O.C. FROM EACH SIDE
 - 5A - (3) PLY 14" TO AND 18" TALL (INCLUSIVE); FASTEN PLYS W/ (3) ROWS 16D NAILS AT 12" O.C. FROM EACH SIDE
 - 6A - (3) PLY 20" TALL AND OVER; FASTEN PLYS W/ (4) ROWS 16D NAILS AT 12" O.C. FROM EACH SIDE

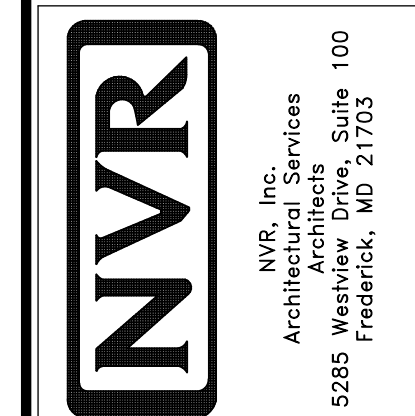
SECOND FLOOR BEAM/HEADER SCHEDULE

IDENTIFIER	DESCRIPTION	LENGTH	OPTIONS	ENG. NUM.	REMARKS

REMARKS

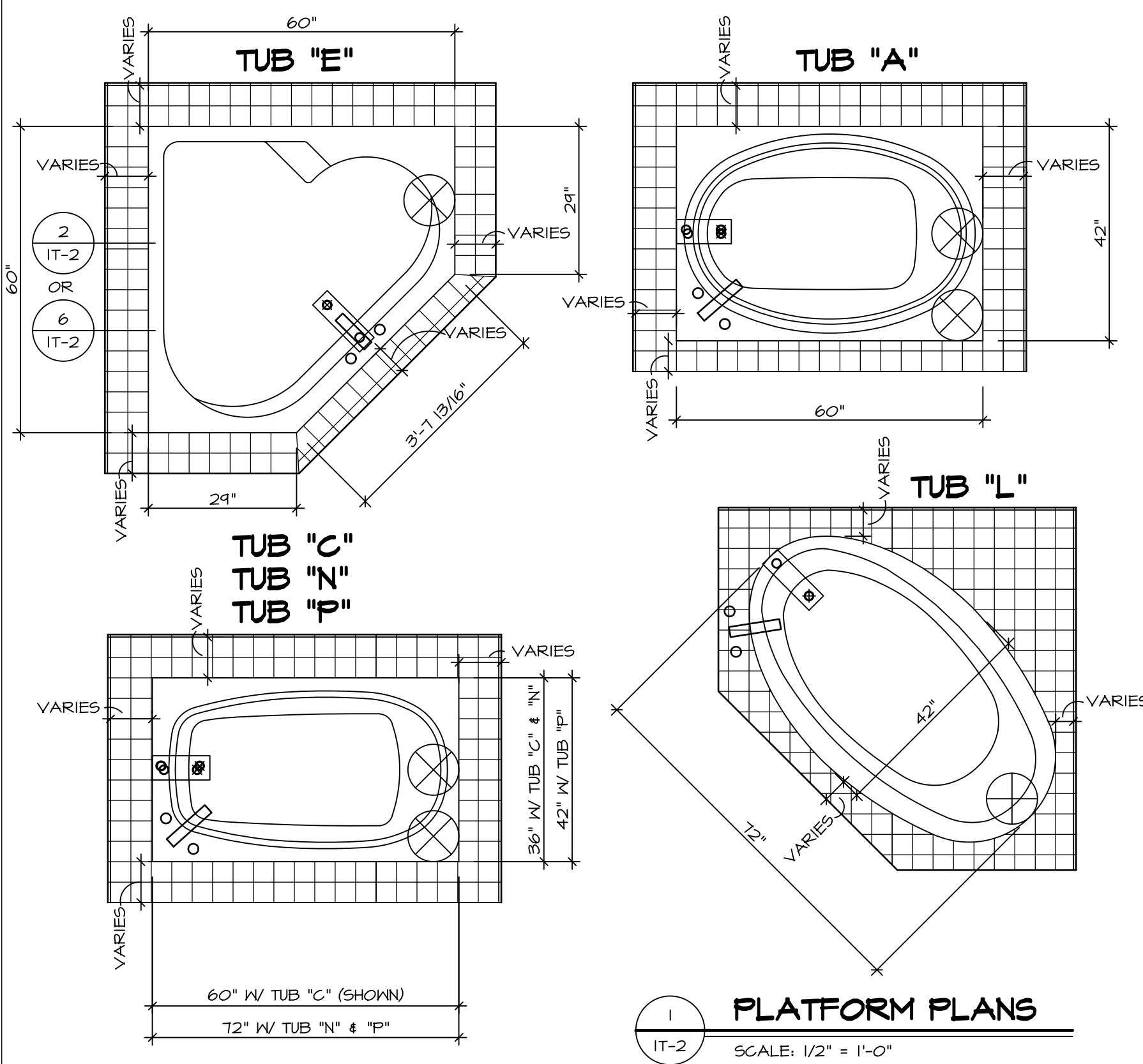
REV. NO.	DATE	DESCRIPTION
1	08/01/16	N - DRAWING ALIGNMENT
2	07/17/17	SLS - T-PLY CONVERSION PROJECT

NVR, Inc., owner, expressly reserves its copyright in these plans. These plans are not to be reproduced, changed, copied, or otherwise used in any way without the written consent of NVR, Inc.



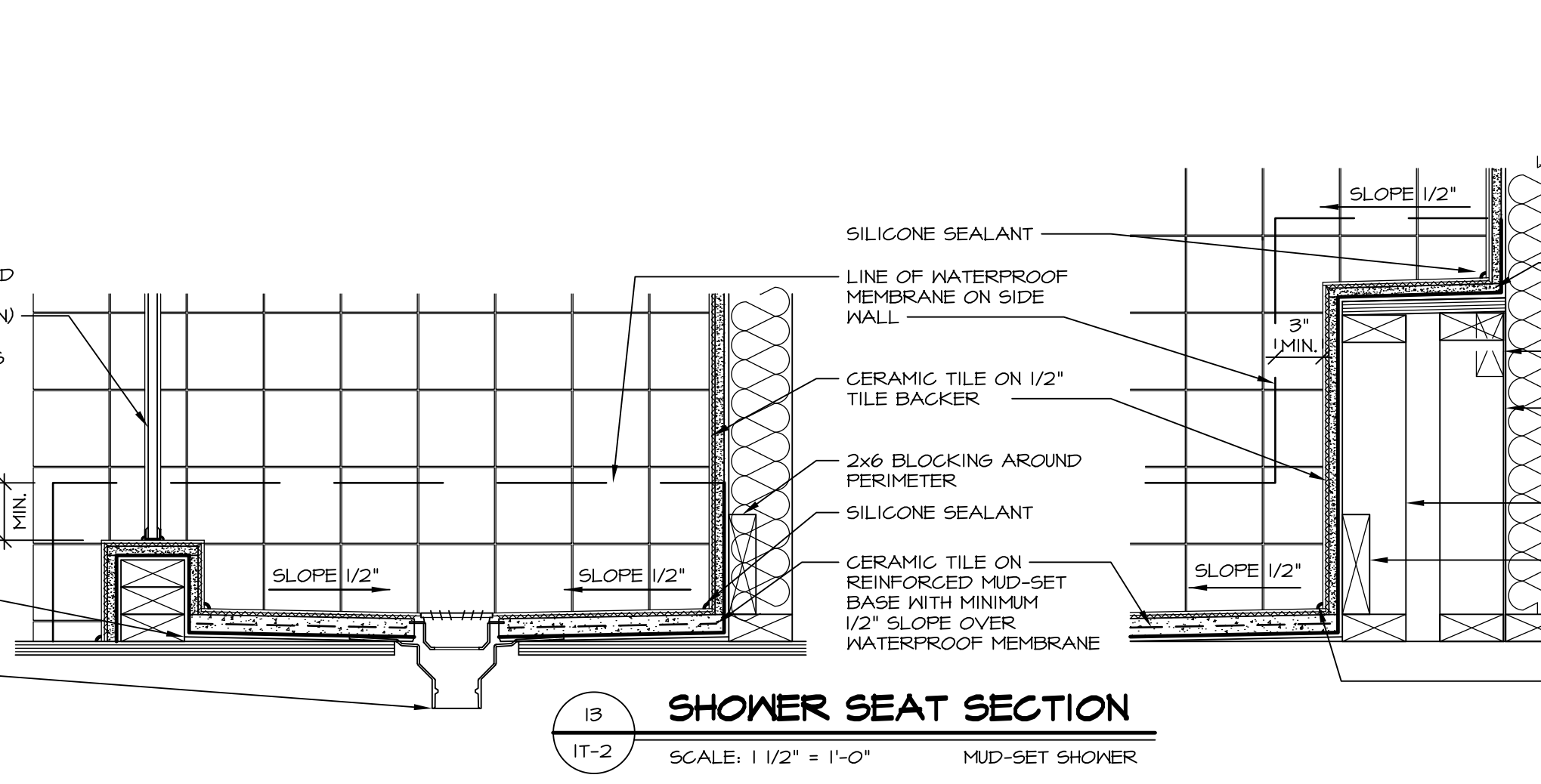
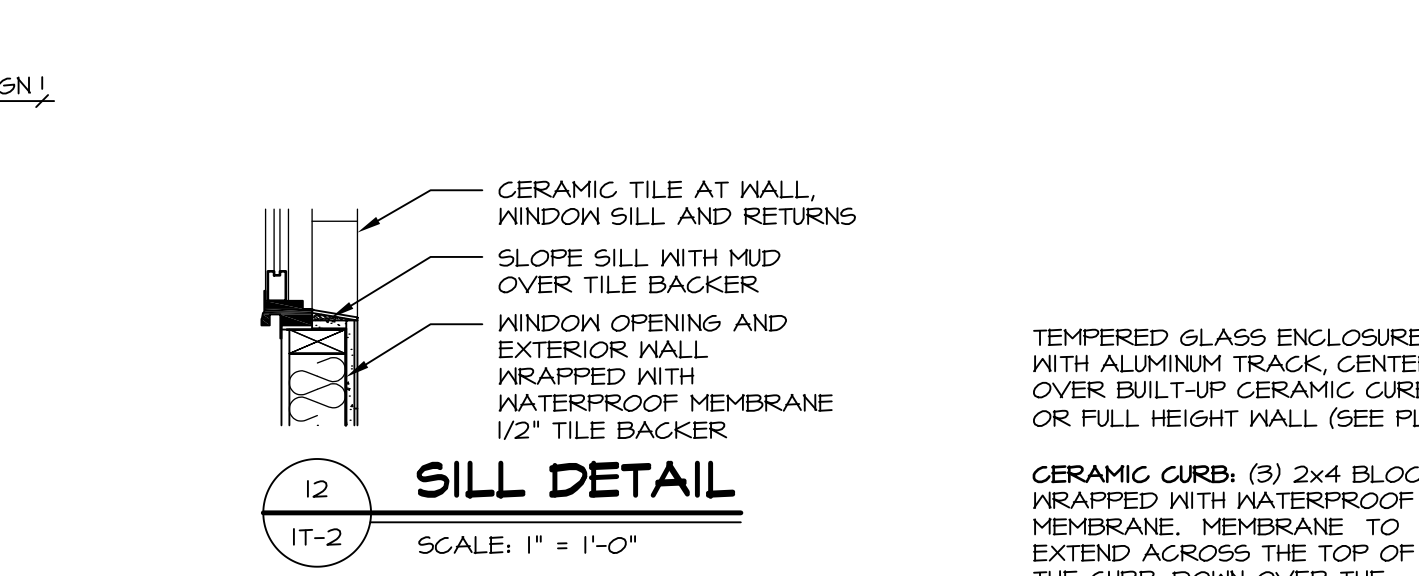
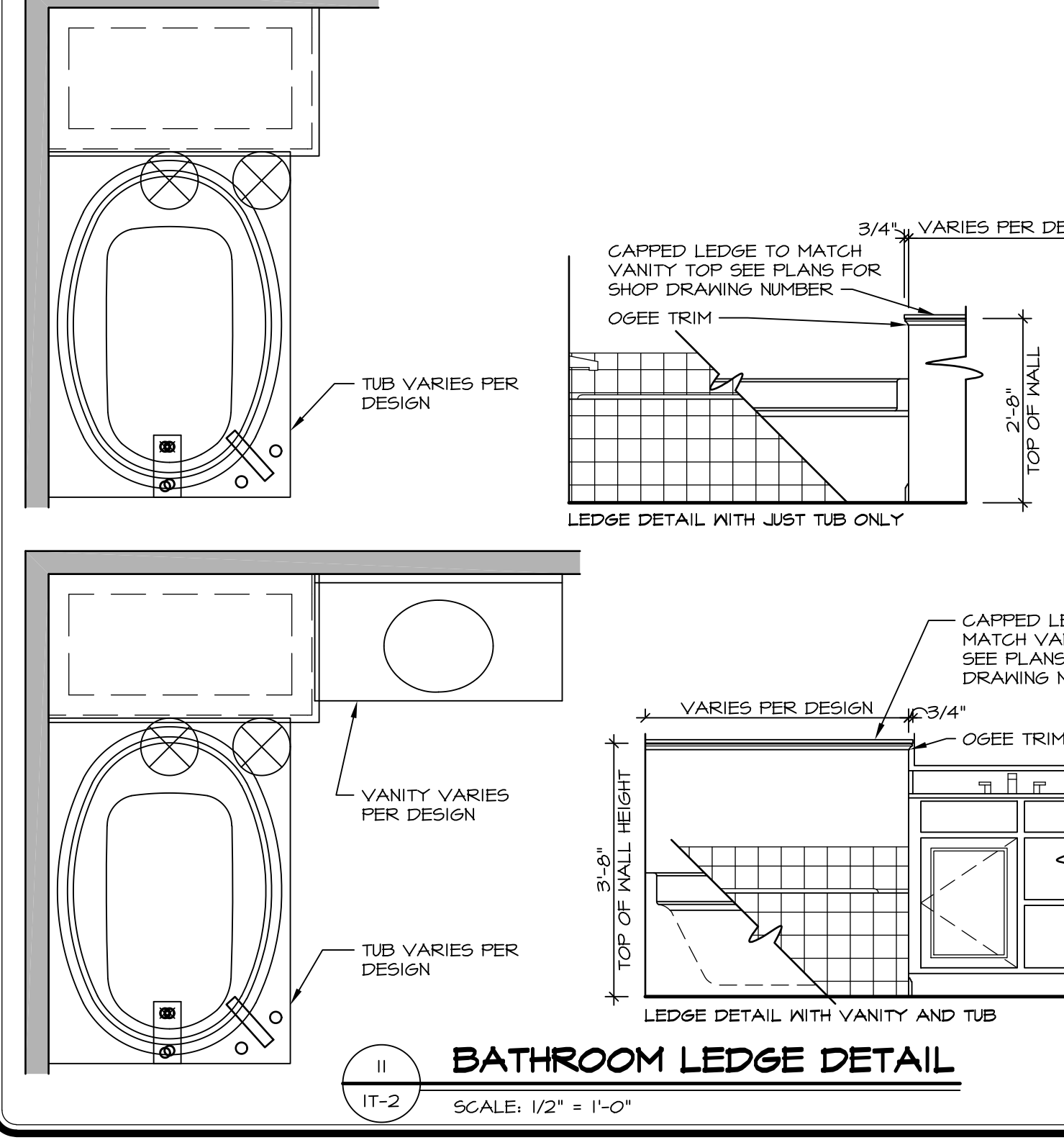
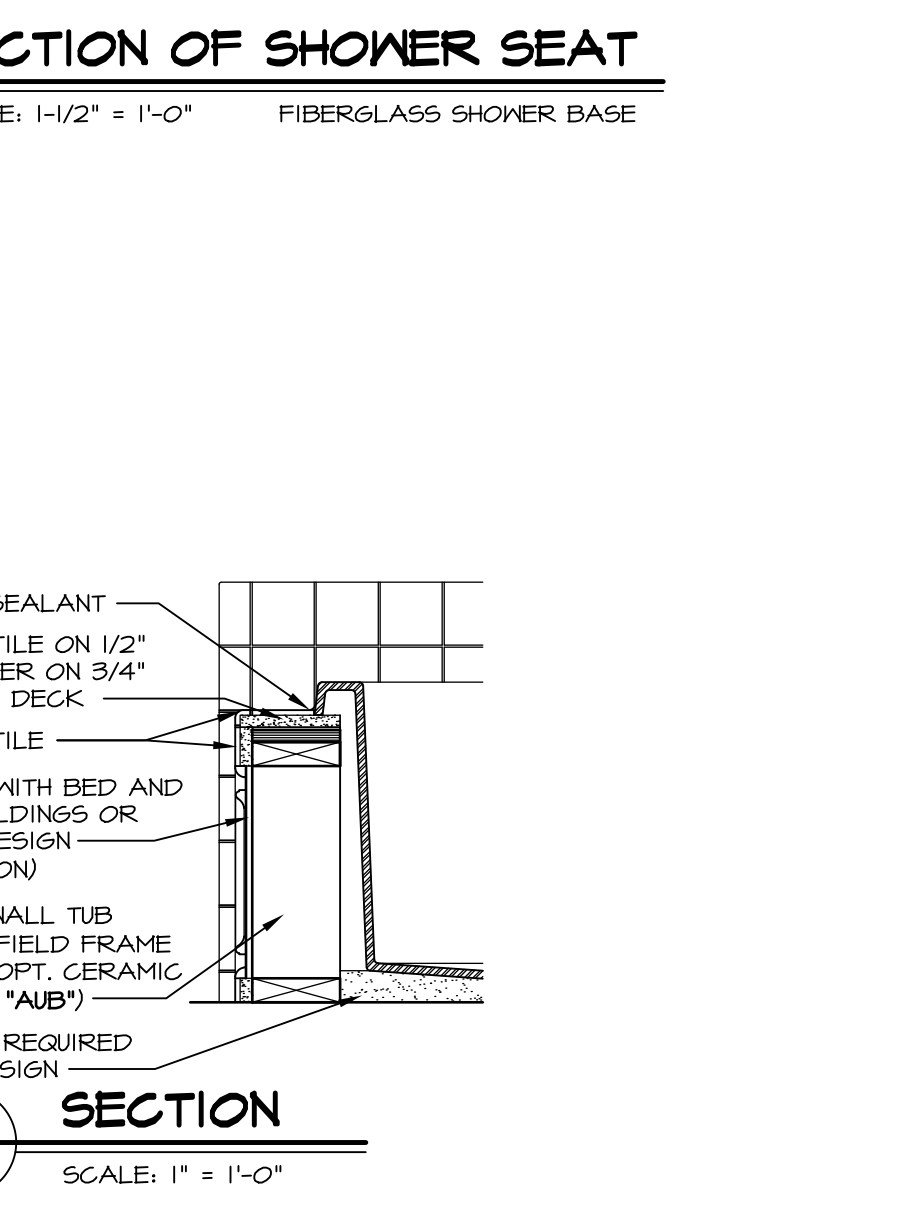
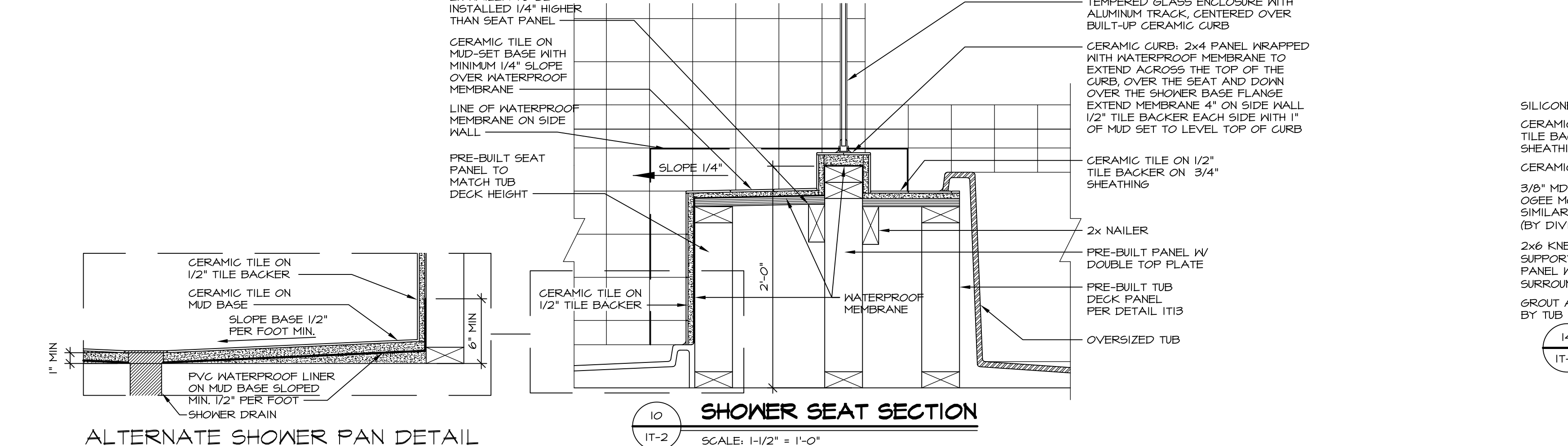
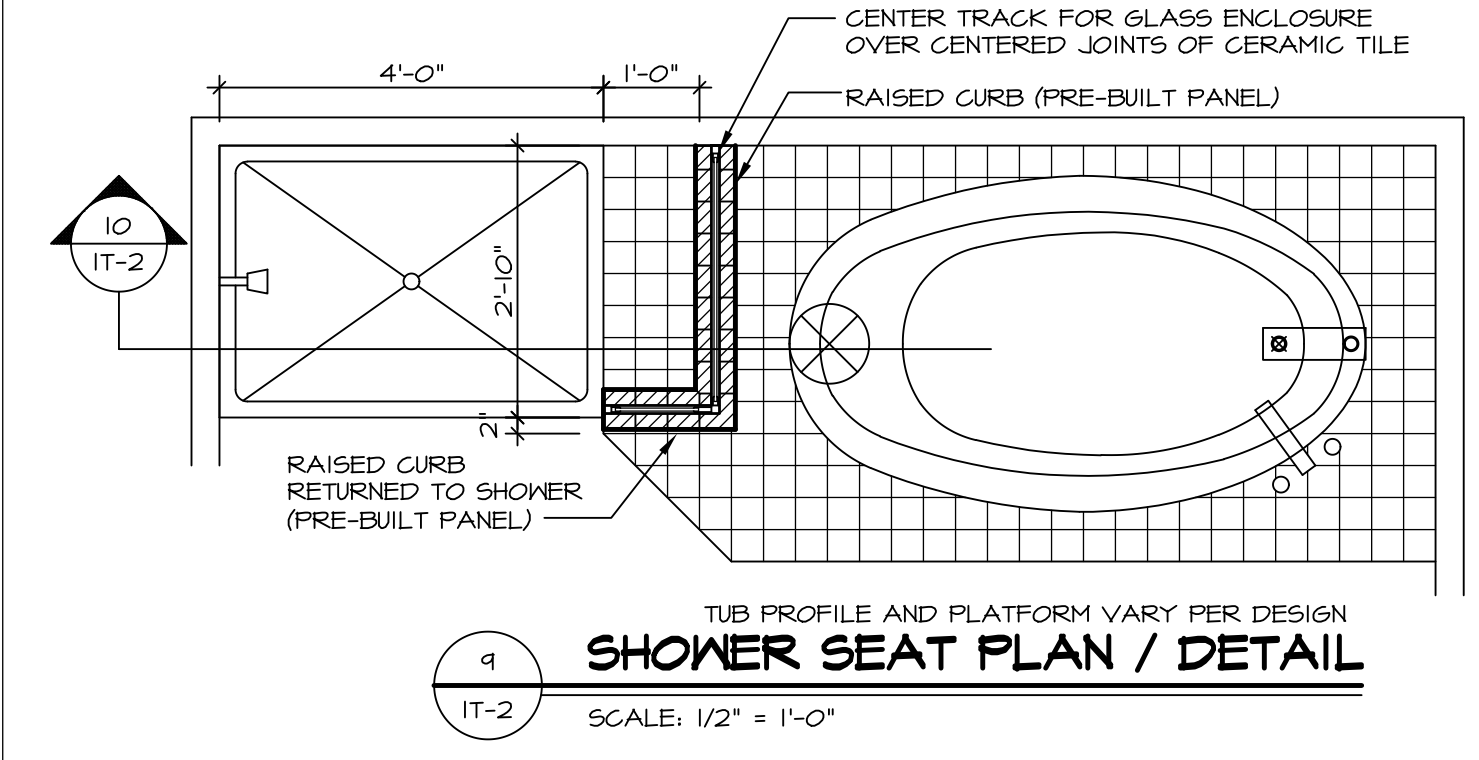
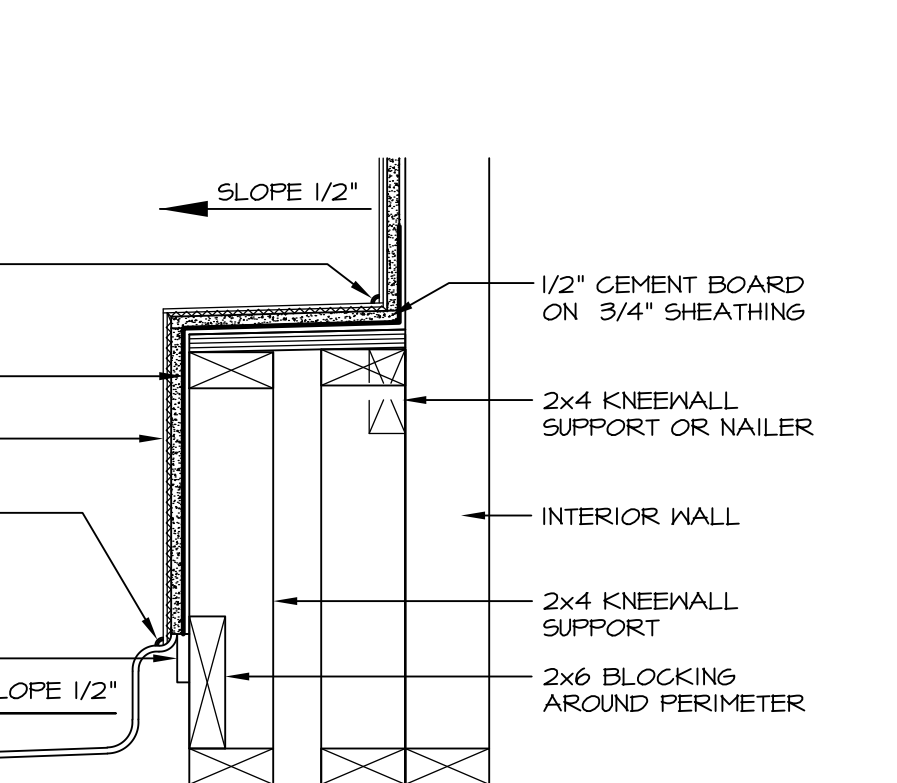
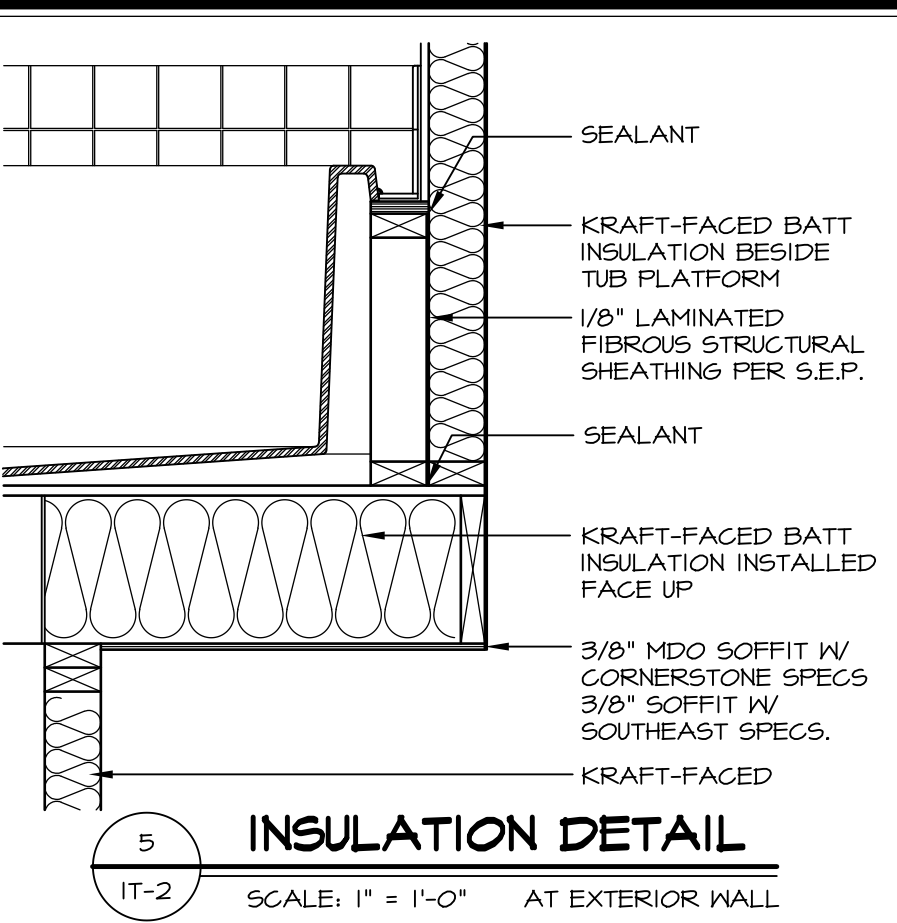
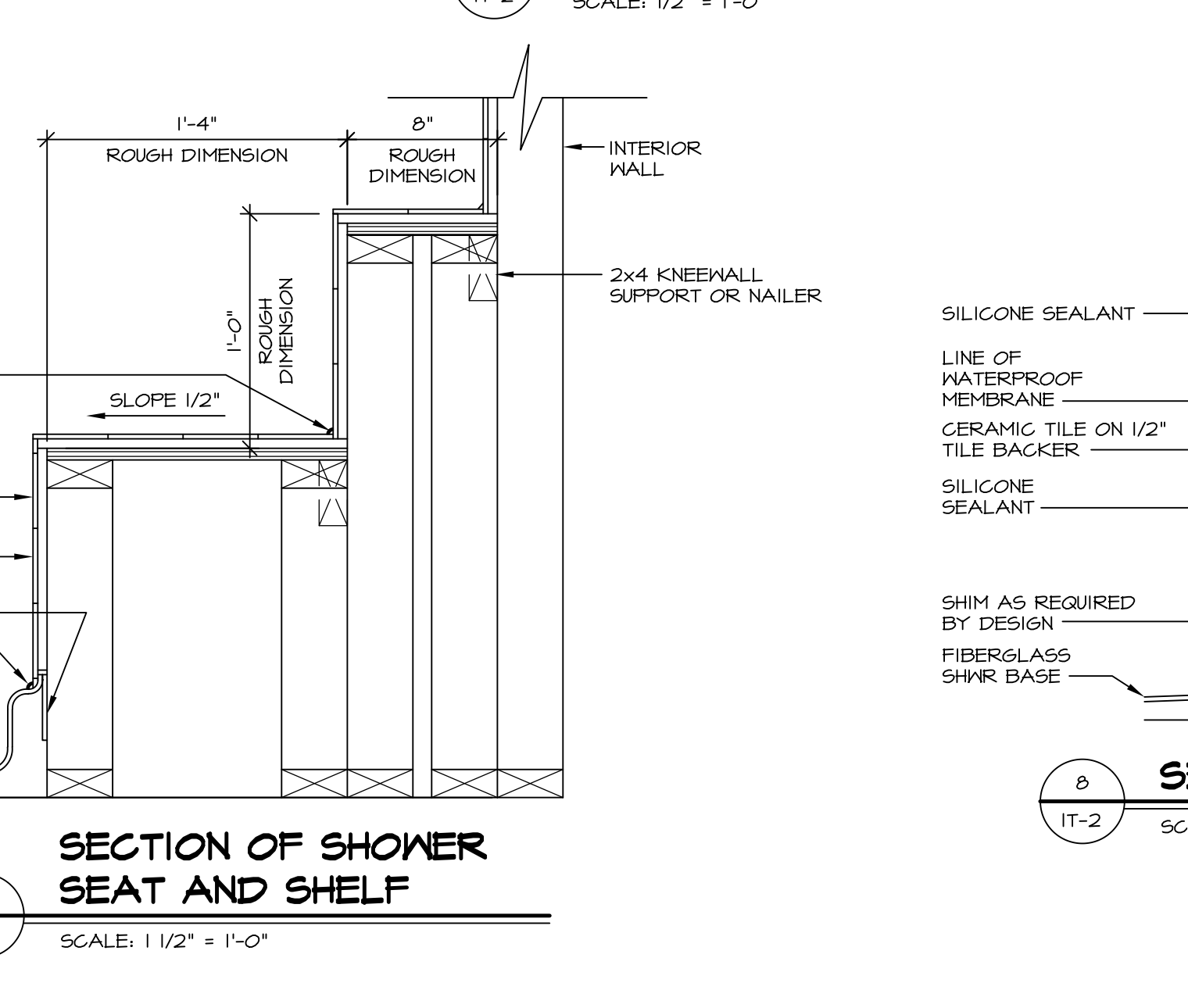
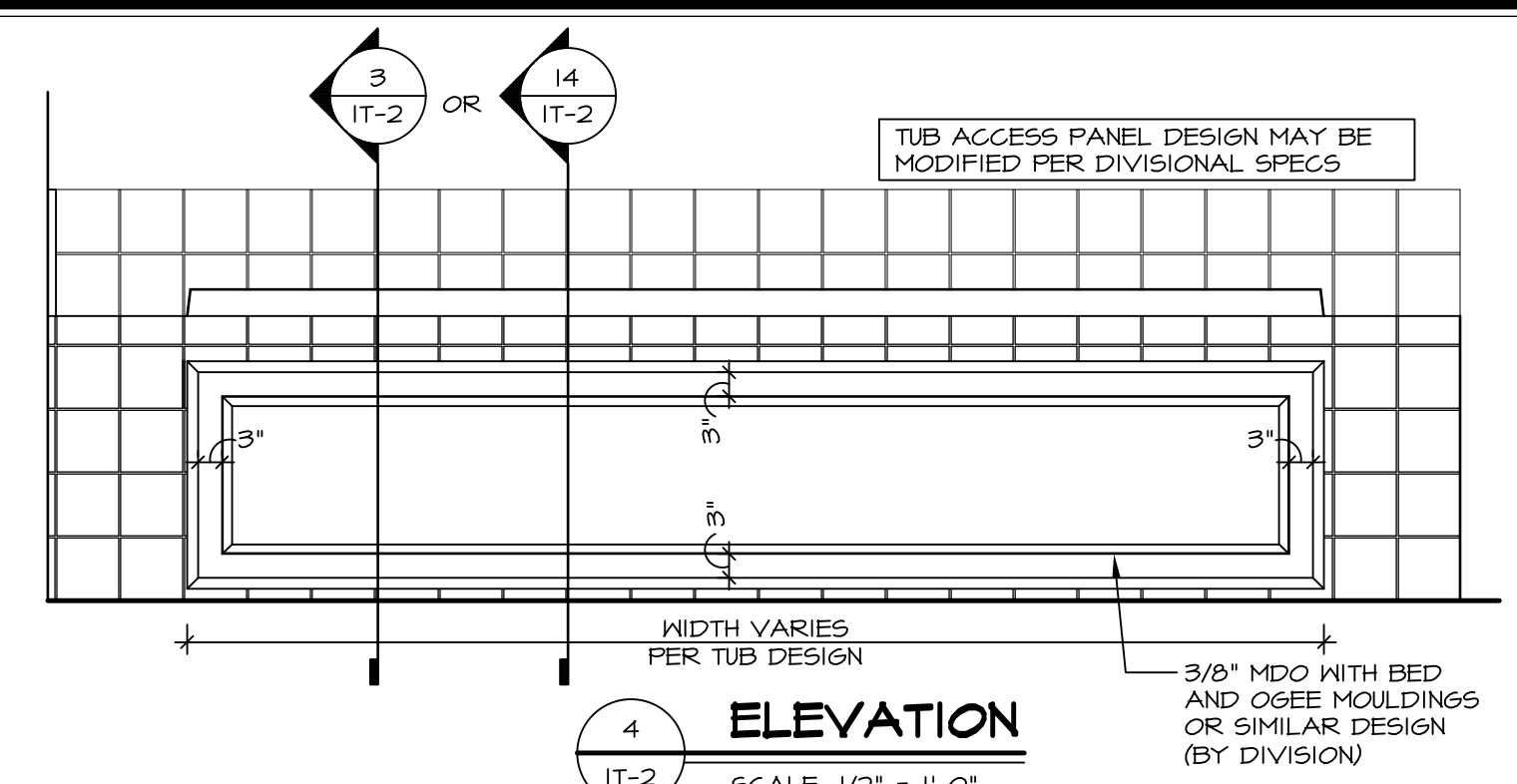
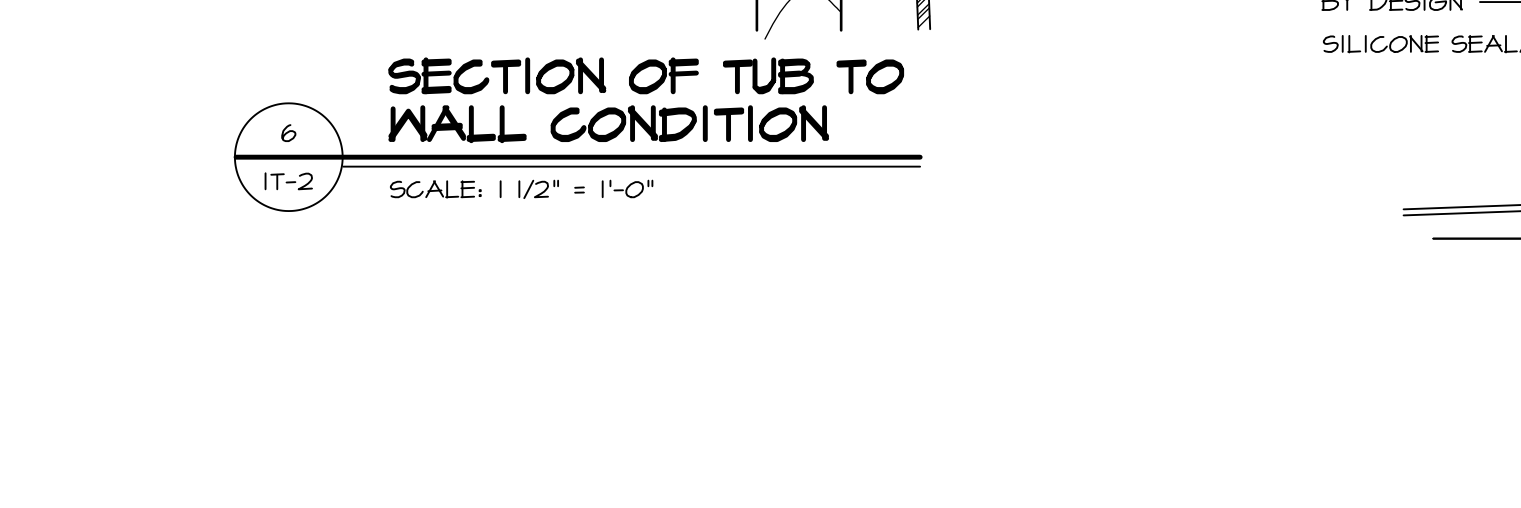
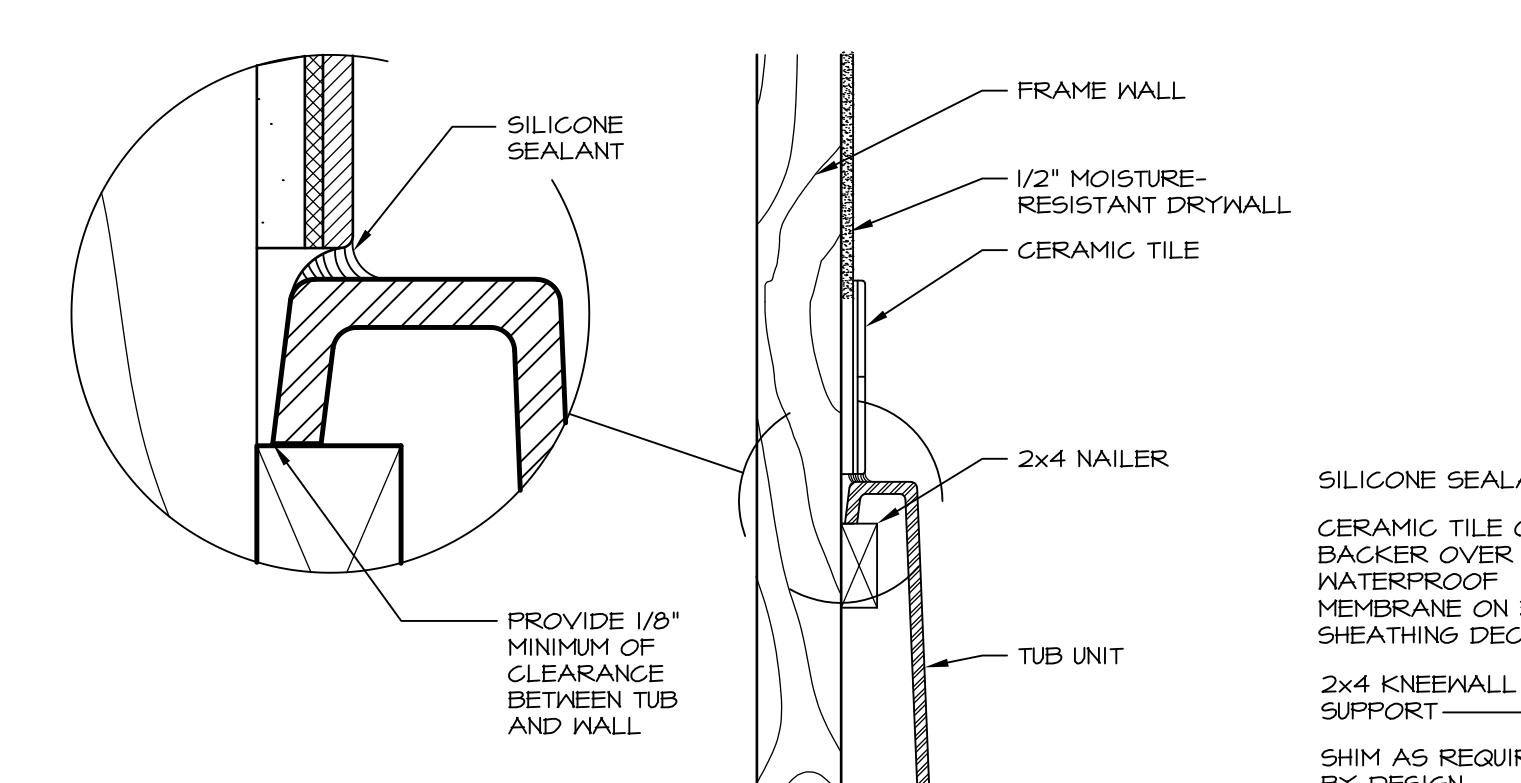
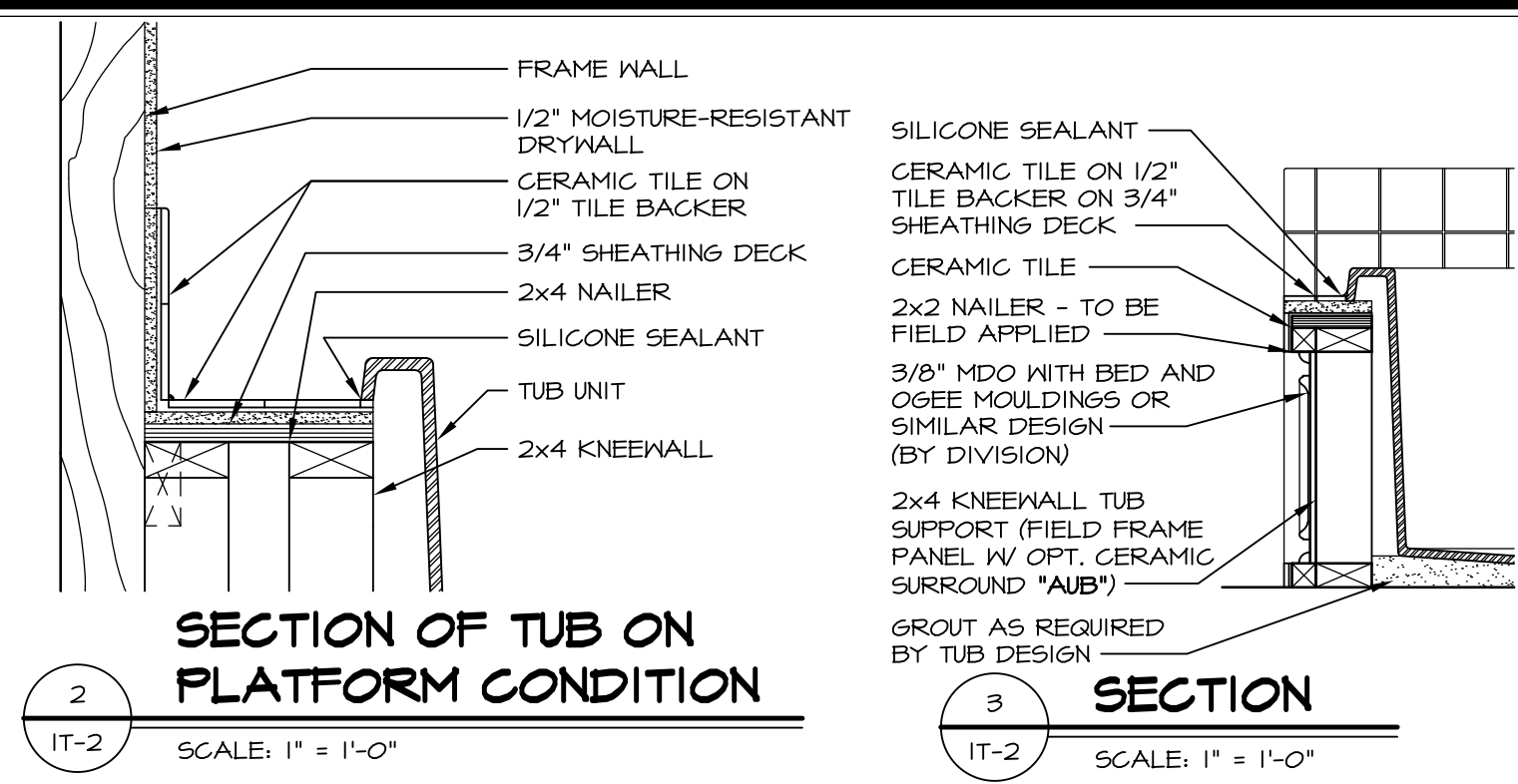
SET NO. NAPOO
VERSION 06
DRAWN BY TN
DATE: 05/22/15
OPTION

MODEL
NAPLES
DRAWING TITLE
SECOND FLOOR PLAN
OPTION DESCRIPTION



1 PLATFORM PLANS
SCALE: 1/2" = 1'-0"

TUB	MANUF.	HEIGHT	WIDTH	LENGTH	TUB DECK PANEL HEIGHT
"A"	KOHLER/ STERLING	18 3/4"	42"	60"	17 1/8"
"C"	KOHLER/ STERLING	18 3/4"	36"	60"	17 1/8"
"E"	KOHLER/ STERLING	19 1/2"	60"	60"	17 7/8"
"L"	KOHLER/ STERLING	18 1/2"	42"	72"	16 7/8"
"N"	KOHLER/ STERLING	18 3/4"	36"	72"	17 1/8"
"P"	KOHLER/ STERLING	18 3/4"	42"	72"	17 1/8"



REVISIONS

REV. NO.	DATE	DESCRIPTION
1	5/1/17	EBP - REVISED DETAIL 1 AND 11 TO REMOVE TUB ACCESS PANEL REF. (095 #15 5414)
2	9/2/17	EBP - REVISED T-FLY NOTE TO CALL OUT LFS
3	9/2/17	EBP - REVISED NOTE ON DETAIL #1 - REVISED ORDER OF MATERIAL PARA#6934

REMARKS

NVR, Inc., owner, expressly reserves its common law copyright and other property rights in these plans. These plans are not to be reproduced, copied, or otherwise used in any way without the prior written consent of NVR, Inc.

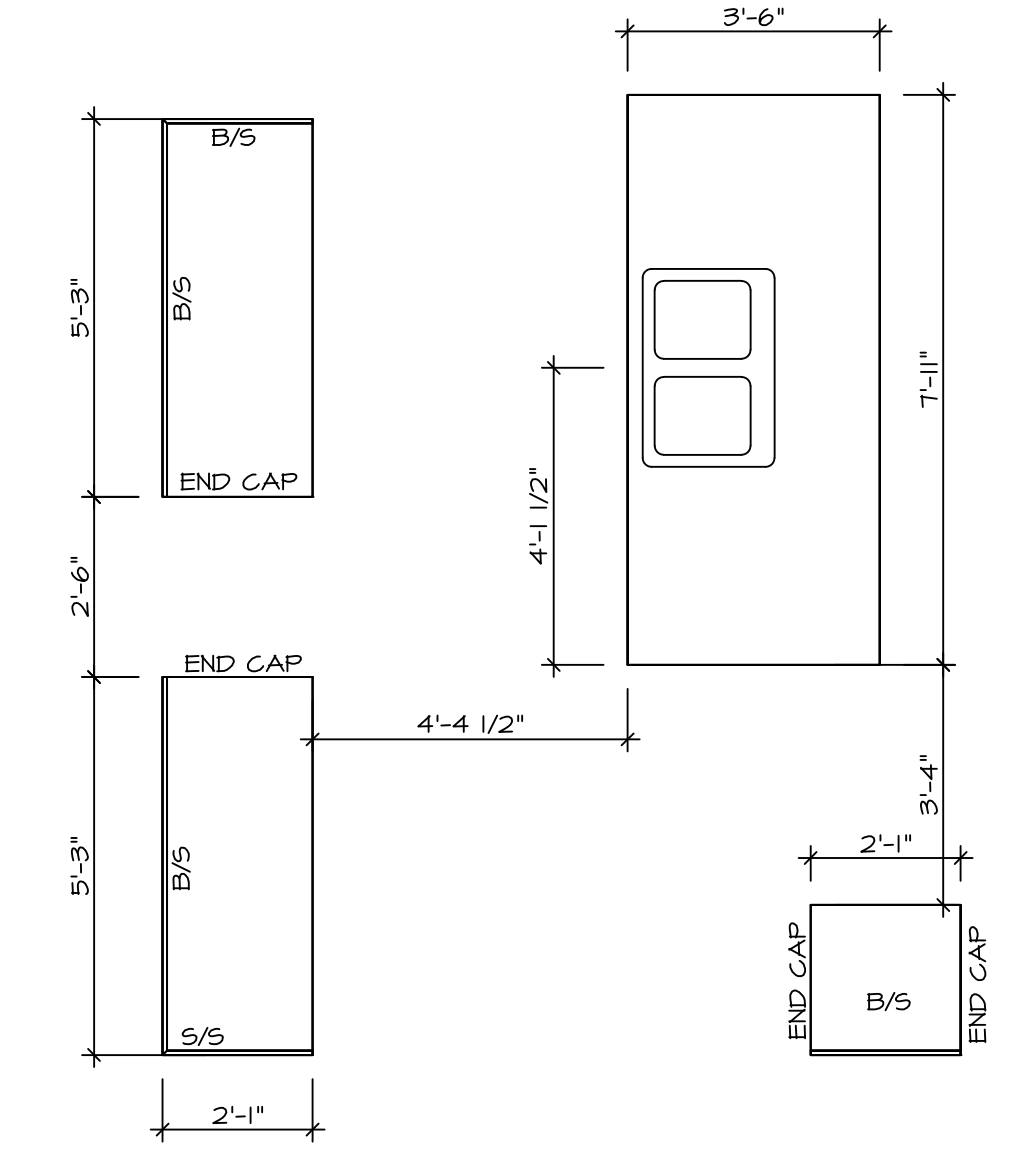
NVR
NVR, Inc.
Architectural Services
5285 Westpark Drive
Frederick, MD 21703

SET NO. NVR
VERSION
DRAWN BY
DATE:
OPTION

MODEL
STANDARD DETAILS
DRAWING TITLE
INTERIOR TRIM DETAILS
BATH DETAILS
OPTION DESCRIPTION

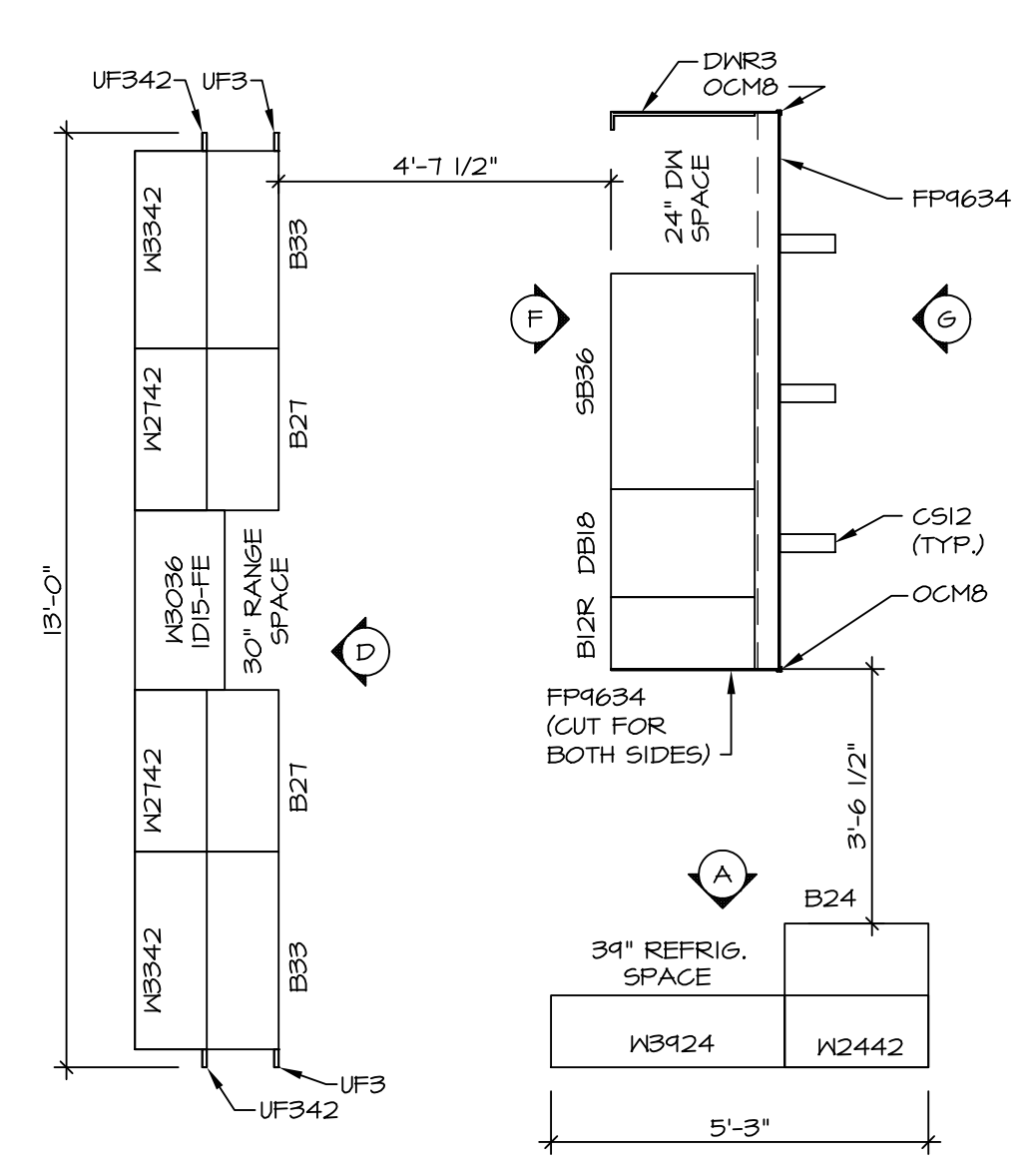
SHEET NO.
IT-2

J:\Dwg\NVR\Interior Trim\IT2.dwg 09/27/17 - 9:20 am



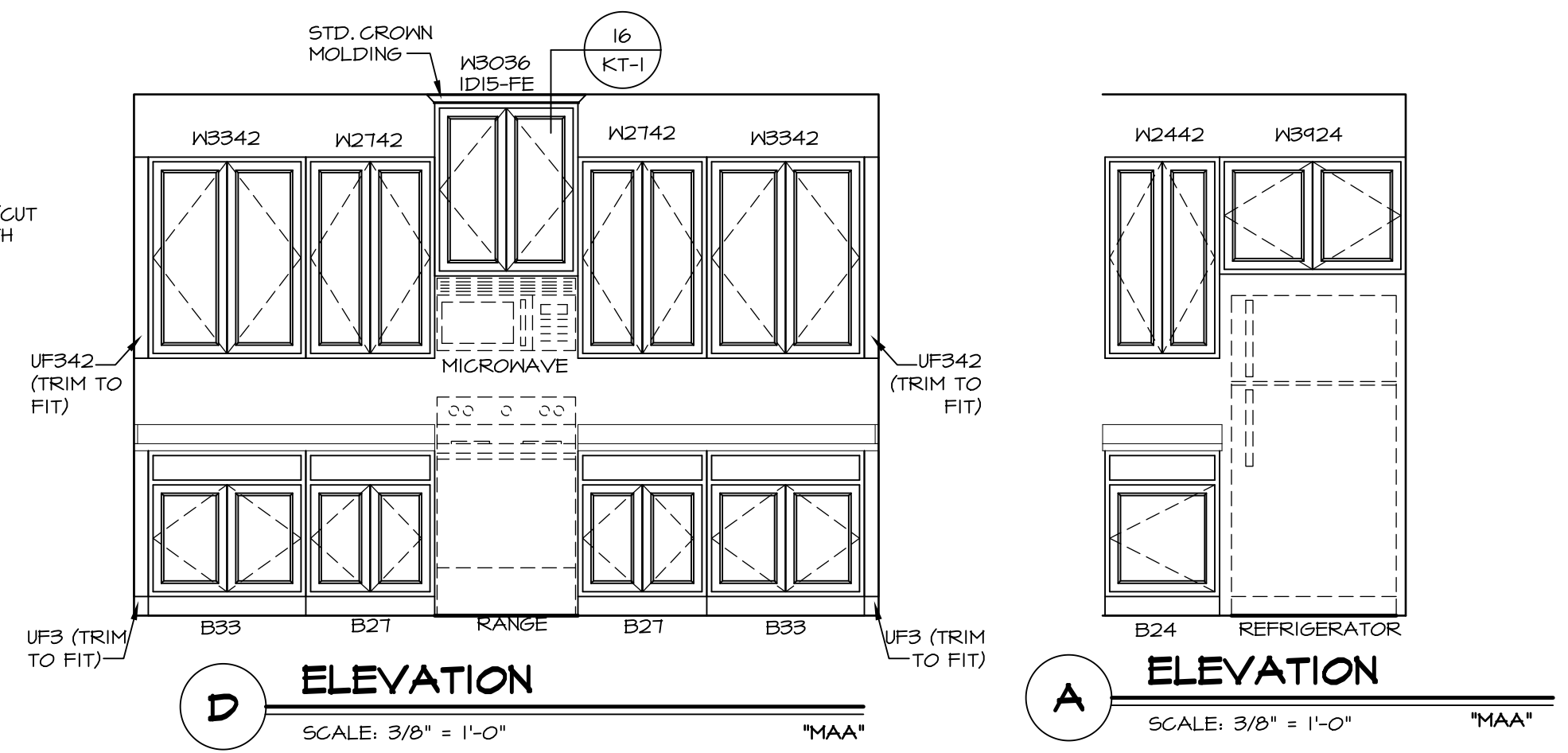
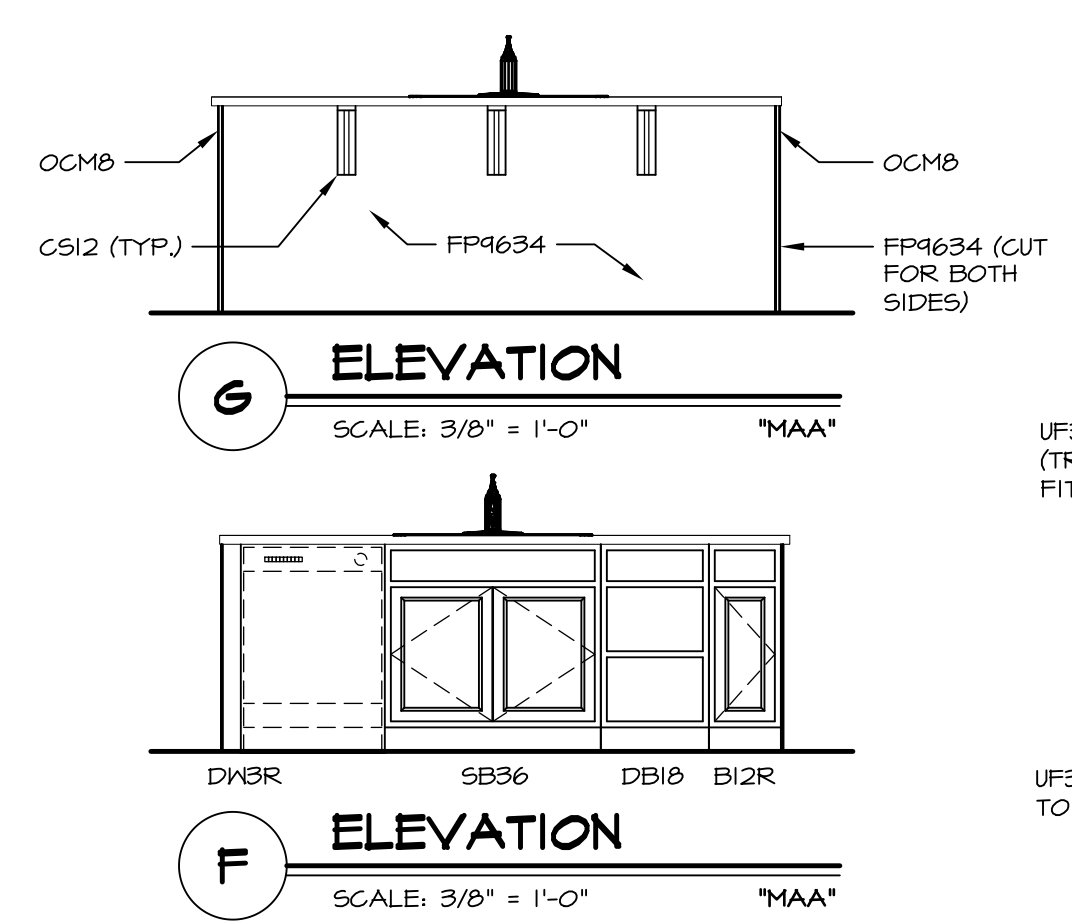
**KITCHEN COUNTERTOP
PLAN - KT-3293**

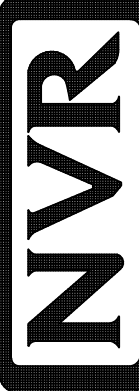
2
A-12 SCALE: 3/8" = 1'-0"

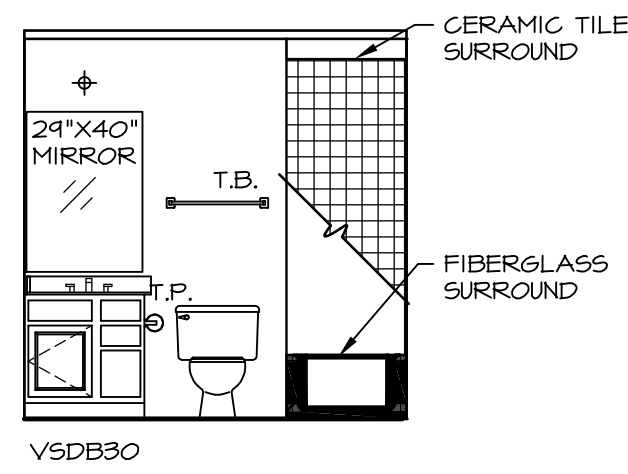


**KITCHEN CABINET
PLAN - KC-3293**

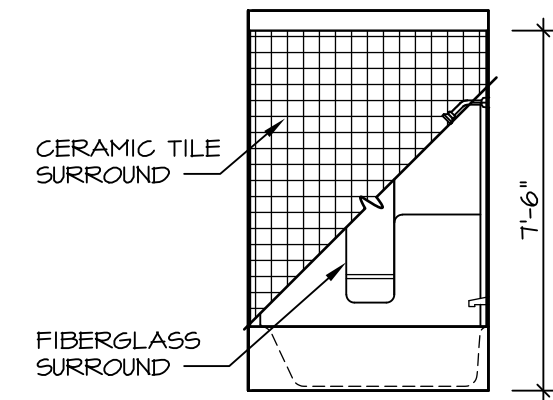
4
A-12 SCALE: 3/8" = 1'-0"



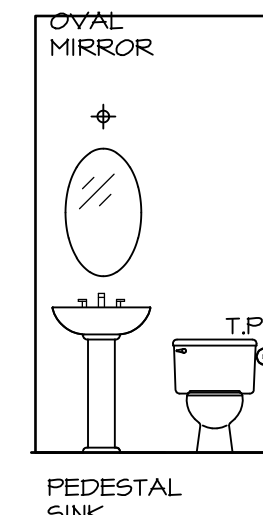
SHEET NO. A-12	MODEL NAPLES	DRAWING TITLE KITCHEN SECTION	OPTION DESCRIPTION	SET NO. NAPOO	REV. NO. DATE	REMARKS
				VERSION 06		
49	DRAWN BY TN	DATE: 05/22/15	OPTION	NVR, Inc., owner, expressly reserves its copyright in these plans. These plans are not to be reproduced, changed, copied, or otherwise used in any way without the written consent of NVR, Inc.		
				 NVR, Inc. Architectural Services Architects 5285 Westpark Drive, Suite 100 Frederick, MD 21703		
C:\NVR\Solves\NAPLES_NAPOO_06\DCI-VR-0087\620928\Sheet\49_A-12_KIT_LS.dwg 12/17/17 - 4:24 pm						



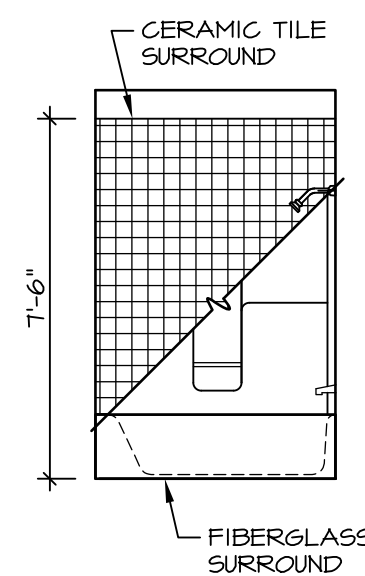
L BASEMENT BATH
SCALE: 1/4" = 1'-0"



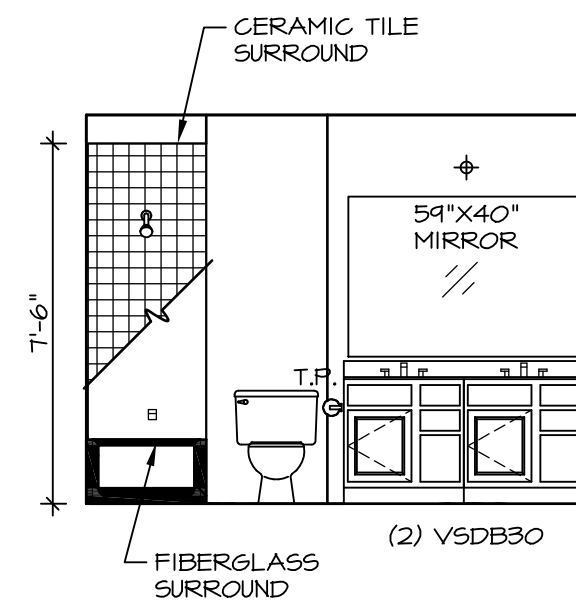
M BASEMENT BATH
SCALE: 1/4" = 1'-0"



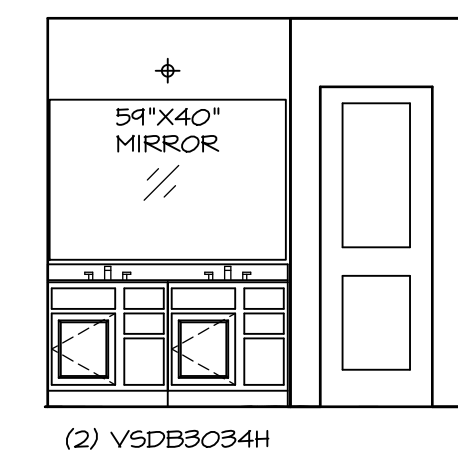
A POWDER ROOM
SCALE: 1/4" = 1'-0"



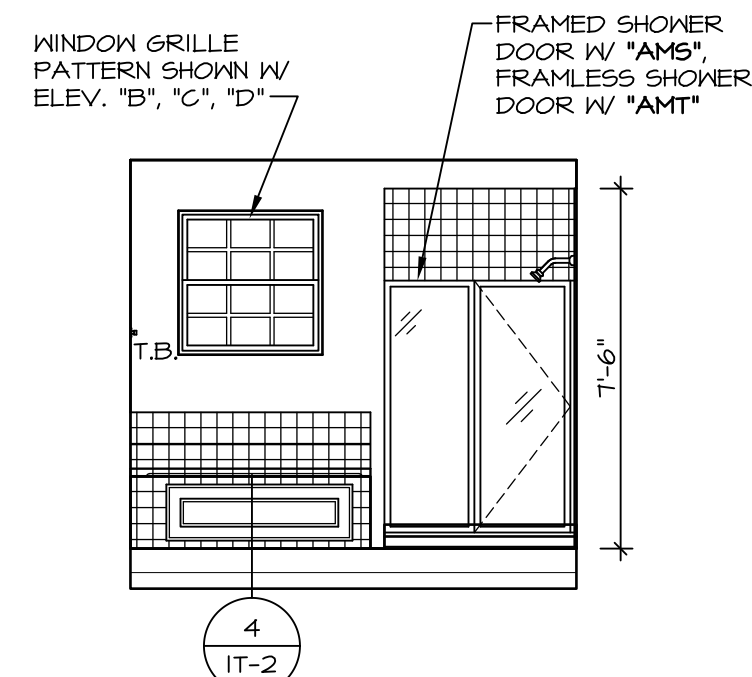
C BATH #1
SCALE: 1/4" = 1'-0"



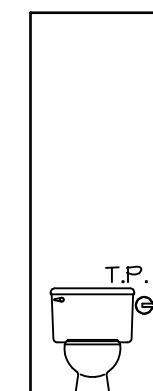
B BATH #1
SCALE: 1/4" = 1'-0"



D OWNER'S BATH
SCALE: 1/4" = 1'-0"



H OWNER'S BATH
SCALE: 1/4" = 1'-0"



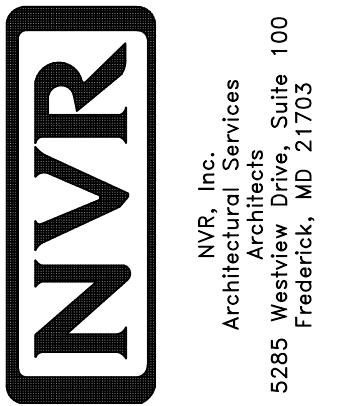
E OWNER'S BATH
SCALE: 1/4" = 1'-0"

NOTES:

- TEMPERED GLASS SHOWER ENCLOSURE WITH SWING DOOR OR OPTIONAL SLIDING DOOR BY DIVISION
- TUB ACCESS PANELS PROVIDED AS NEEDED, ALL MATERIALS BY DIVISION
- REFER TO SHEET ET-2 FOR TUB AND SHOWER DETAILS.
- ALL VSDB24-42 DRAWERS TO BE SET ON RIGHT HAND.
- BATH ELEVATIONS ARE SHOWN PER PLAN.

REV. NO.	DATE	REMARKS
1	08/07/16	N - DRAWING ALIGNMENT

NVR, Inc., owner, expressly reserves its copyright in these plans. These plans are not to be reproduced, changed, copied, or otherwise used in any way without the prior written consent of NVR, Inc.



MODEL	SET NO. NAPOO	VERSION 06	DRAWN BY TN	DATE: 05/22/15	OPTION
DRAWING TITLE	BATH ELEVATIONS				
SHEET NO.	51				