

1  
A-5 PLUMBING PLAN  
SCALE: 1/4" = 1'-0"

SHEET NO. <b>A-5</b>	MODEL <b>BATEMAN</b>	SET NO. BAT00
OPTION DESCRIPTION <b>42</b>	DRAWING TITLE PLUMBING PLAN	VERSION 03
	DATE:	DRAWN BY:
	OPTION:	

**NVR**  
NVR, Inc.  
Architectural Services  
5285 Westpark Drive, Suite 100  
Frederick, MD 21703

NVR, Inc., owner, expressly reserves its copyright in these plans. These plans are not to be reproduced, changed, copied, or otherwise used in any way without the written consent of NVR, Inc.

REV. NO.	DATE	REMARKS

**FLOOR PLAN NOTES**

1. ALL HEADERS ARE (2) 2x6 W/ 2x4 WALLS OR (3) 2x6 W/ 2x6 WALLS, UNLESS OTHERWISE NOTED.
2. ALL HEADERS TO HAVE (1) 2x4 OR 2x6 JACK EACH END, UNLESS OTHERWISE NOTED.
3. ALL EXTERIOR WALLS TO BE 4" AND ALL INTERIOR WALLS TO BE 3 1/2", UNLESS OTHERWISE NOTED.
4. HATCHED AREAS INDICATE DROPPED CEILINGS. ALL DROPPED CEILINGS ARE 12" UNLESS OTHERWISE NOTED.
5. SEE "BRACED WALL PANEL DETAIL SHEET" FOR SPECIAL WALL FRAMING LOCATIONS AND HEADER SIZES, IF APPLICABLE.
6. SEE STANDARD DETAIL CATEGORY "IT" SHEET(S) FOR INTERIOR TRIM DETAILS.
7. SEE ARCHITECTURAL DETAIL SHEET "AD" FOR HOUSE SPECIFIC INTERIOR TRIM OPTION TABLE.
8. ALL WINDOWS HAVE T-O 1/2" HEADER HEIGHT UNLESS OTHERWISE NOTED.

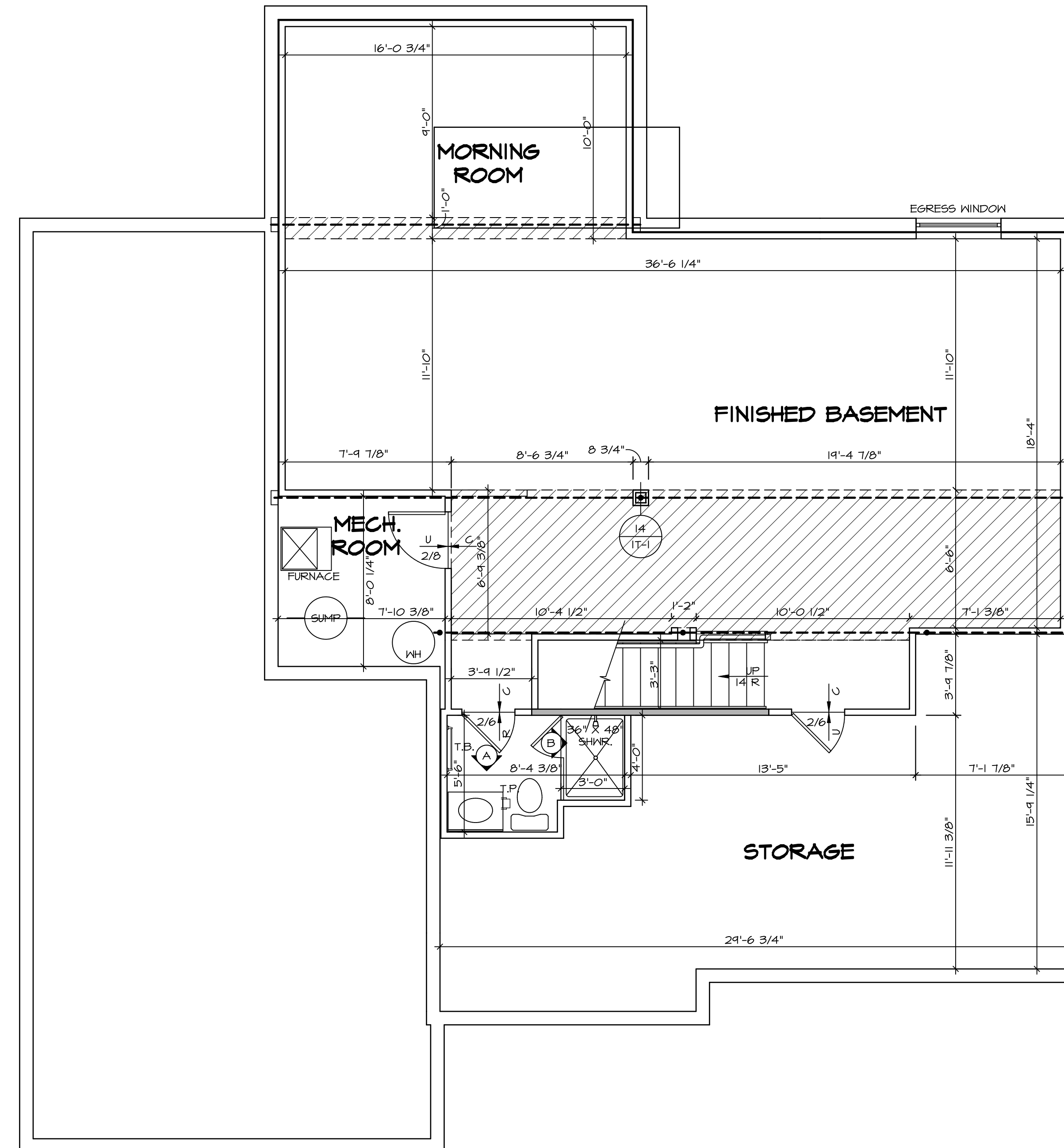
**GYPSTUM NOTES**

AT GARAGE:  
GYPSUM BOARD AT COMMON WALLS, CEILINGS, BEAM WRAPS AND SUPPORTS PER STANDARD DETAIL FA-1(b) FIRE ASSEMBLIES OR AS REQUIRED BY LOCAL CODE.

AT STAIRS:  
1/2" GYPSUM BOARD AT UNDERSIDE OF STAIRS AND WALLS IN CLOSET

**LEGEND**

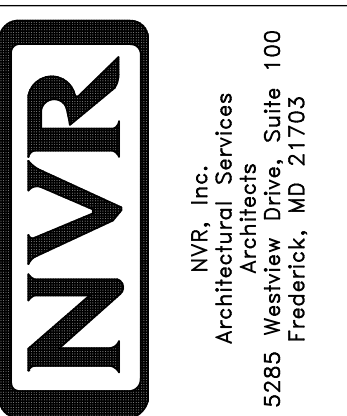
- BEARING WALL
  - NON BEARING WALL
  - INDICATES BEARING FROM POINT-LOAD ABOVE JACKS
  - BEAM/HEADER
  - PAD FOOTING
  - STEEL COLUMN
  - PORTAL FRAME
  - JOIST/TRUSS
  - LVL
  - ENGINEERING PAGE NUMBER
- SEE FC DETAILS FOR FRAMING CONNECTORS



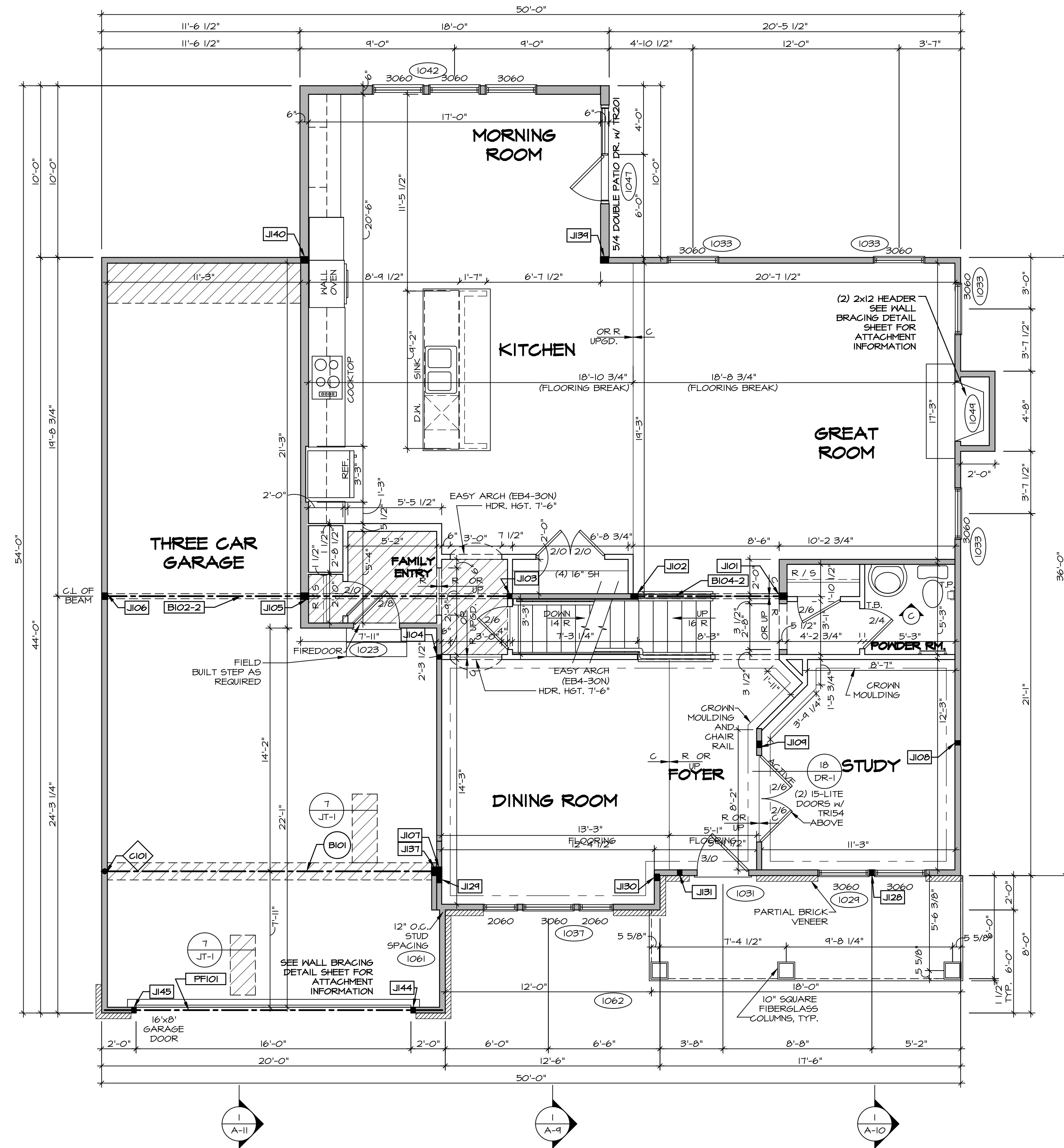
**BASEMENT FLOOR PLAN**  
SCALE: 1/4" = 1'-0"

SHEET NO.	MODEL	SET NO.	DATE	REV. NO.	DATE	REMARKS
A-6	BATEMAN DRAWING TITLE BASEMENT FLOOR PLAN	BAT00	03			
46	OPTION DESCRIPTION	VERSION 03 DRAWN BY	DATE:			
		OPTION				

NVR, Inc., owner, expressly reserves its copyright in these plans. These plans are not to be reproduced, changed, adapted in any way, or any part thereof, without the written consent of NVR, Inc.



C:\NVR\Solves\BATEMAN\_BAT00\_03\DCY-YR-0070\66416\Sheets\Lot\_Specs\A-6\_BSMF\_LS.dwg 07/17/18 - 2:38 pm



**FIRST FLOOR PLAN**  
SCALE: 1/4" = 1'-0"

**LEGEND**

- BEARING WALL
- NON BEARING WALL
- INDICATES BEARING FROM POINT-LOAD ABOVE
- JOISTS
- BEAM/HEADER
- PAD FOOTING
- STEEL COLUMN
- PORTAL FRAME
- JOIST/TRUSS
- LVL
- ENGINEERING PAGE NUMBER

SEE FC DETAILS FOR FRAMING CONNECTORS

- FLOOR PLAN NOTES**
- ALL HEADERS ARE (2) 2x6 W/ 2x4 WALLS OR (3) 2x6 W/ 2x6 WALLS, UNLESS OTHERWISE NOTED.
  - ALL HEADERS TO HAVE (1) 2x4 OR 2x6 JACK EACH END, UNLESS OTHERWISE NOTED.
  - ALL EXTERIOR WALLS TO BE 4" AND ALL INTERIOR WALLS TO BE 3 1/2", UNLESS OTHERWISE NOTED.
  - HATCHED AREAS INDICATE DROPPED CEILINGS. ALL DROPPED CEILINGS ARE 12" UNLESS OTHERWISE NOTED.
  - SEE "BRACED WALL PANEL DETAIL SHEET" FOR SPECIAL WALL FRAMING LOCATIONS AND HEADER SIZES, IF APPLICABLE.
  - SEE STANDARD DETAIL CATEGORY "11" SHEET(S) FOR INTERIOR TRIM DETAILS.
  - SEE ARCHITECTURAL DETAIL SHEET "AD" FOR HOUSE SPECIFIC INTERIOR TRIM OPTION TABLE.
  - ALL WINDOWS HAVE 7'-0 1/2" HEADER HEIGHT UNLESS OTHERWISE NOTED.

- GYPSTUM NOTES**
- AT GARAGE:  
GYPSUM BOARD AT COMMON WALLS, CEILING, BEAM WRAPS AND SUPPORTS PER STANDARD DETAIL FA-1(b) FIRE ASSEMBLIES OR AS REQUIRED BY LOCAL CODE.
- AT STAIRS:  
1/2" GYPSUM BOARD AT UNDERSIDE OF STAIRS AND WALLS IN CLOSET

- LVL PLY TO PLY FASTENING SCHEDULE: (WHERE APPLICABLE BASED ON LVL USAGE)**
- 1A - (2) FLY UP TO AND INCLUDING 11 7/8" TALL; FASTEN PLYS W/ (2) ROWS 16D NAILS AT 12" O.C.
  - 2A - (2) FLY 14" TO AND 18" TALL (INCLUSIVE); FASTEN PLYS W/ (3) ROWS 16D NAILS AT 12" O.C.
  - 3A - (2) FLY 20" TALL AND OVER; FASTEN PLYS W/ (4) ROWS 16D NAILS AT 12" O.C.
  - 4A - (3) FLY UP TO AND INCLUDING 11 7/8" TALL; FASTEN PLYS W/ (2) ROWS 16D NAILS AT 12" O.C. FROM EACH SIDE
  - 5A - (3) FLY 14" TO AND 18" TALL (INCLUSIVE); FASTEN PLYS W/ (3) ROWS 16D NAILS AT 12" O.C. FROM EACH SIDE
  - 6A - (3) FLY 20" TALL AND OVER; FASTEN PLYS W/ (4) ROWS 16D NAILS AT 12" O.C. FROM EACH SIDE
  - 7A - (4) FLY (ALL SIZES); FASTEN PLYS W/ (2) ROWS 1/2" DIAMETER A307 BOLTS AT 24" O.C. SEE SHOP DRAWING FOR ADDITIONAL INFORMATION.

**FIRST FLOOR JACK SCHEDULE**

IDENTIFIER	DESCRIPTION	OPTIONS	ENG. NUM.
J101	JACK - (3) 2X6 SFF STUD GRADE		1012
J102	JACK - (3) 2X4 SFF STUD GRADE		1012
J103	JACK - (2) 2X4 SFF STUD GRADE		1020
J104	JACK - (2) 2X4 SFF STUD GRADE		1008
J105	JACK - (3) 2X6 SFF STUD GRADE		1020
J106	JACK - (3) 2X4 SFF STUD GRADE		1020
J107	JACK - (4) 2X4 SFF		1025
J108	JACK - (2) 2X4 SFF	ZGM, MAV	1014
J109	JACK - (3) 2X4 SFF STUD GRADE	MAV	1014
J128	JACK - (2) 2X4 SFF	ELK	1028
J129	JACK - (3) 2X4 SFF	ELK	2000
J130	JACK - (3) 2X4 SFF	ELK	2000
J131	JACK - (2) 2X4 SFF STUD GRADE	ELK	
J137	JACK - (4) 2X4 SFF		1025
J139	JACK - (3) 2X6 SFF STUD GRADE	MAA	1027
J140	JACK - (3) 2X6 SFF STUD GRADE	MAA	1027
J144	JACK - (2) 2X4 SFF STUD GRADE	GCH	1051
J145	JACK - (2) 2X4 SFF STUD GRADE	GCH	1051

**STEEL COLUMN SCHEDULE**

IDENTIFIER	STYLE	HEIGHT	OPTIONS	ENG. NUM.	REMARKS
C101	STANCHION - 3 IN SCHED 40	9'-2 1/8"	GCH, FBA	1025	

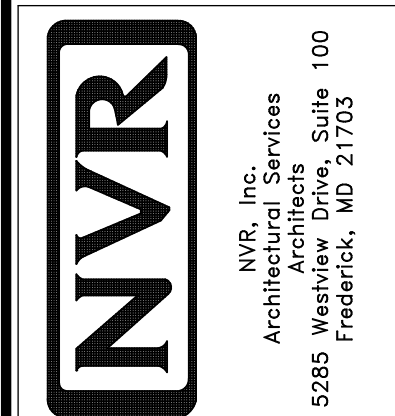
**FIELD INSTALLED FIRST FLOOR BEAM/HEADER SCHEDULE**

IDENTIFIER	DESCRIPTION	LENGTH	OPTIONS	ENG. NUM.	REMARKS
B101	BEAM STEEL - W10X30	19'-4"		1025	
B102-2	LVL - 11-14	23'-10"		1020	1A, 2-PLY, FIELD INSTALLED
B104-2	LVL - 11-04	9'-1"		1012	
FF101	EXT HEADER - 2X12 - 2 PLY	19'-8"	GCH	1051	2-PLY, PORTAL FRAME

REVISIONS

REV. NO.	DATE	DESCRIPTION

NVR, Inc., owner, expressly reserves its copyright in the common law plans. These plans are not to be reproduced, changed, copied, or otherwise used without the written consent of NVR, Inc.



MODEL: BATEMAN  
DRAWING TITLE: FIRST FLOOR PLAN  
OPTION DESCRIPTION: A-7

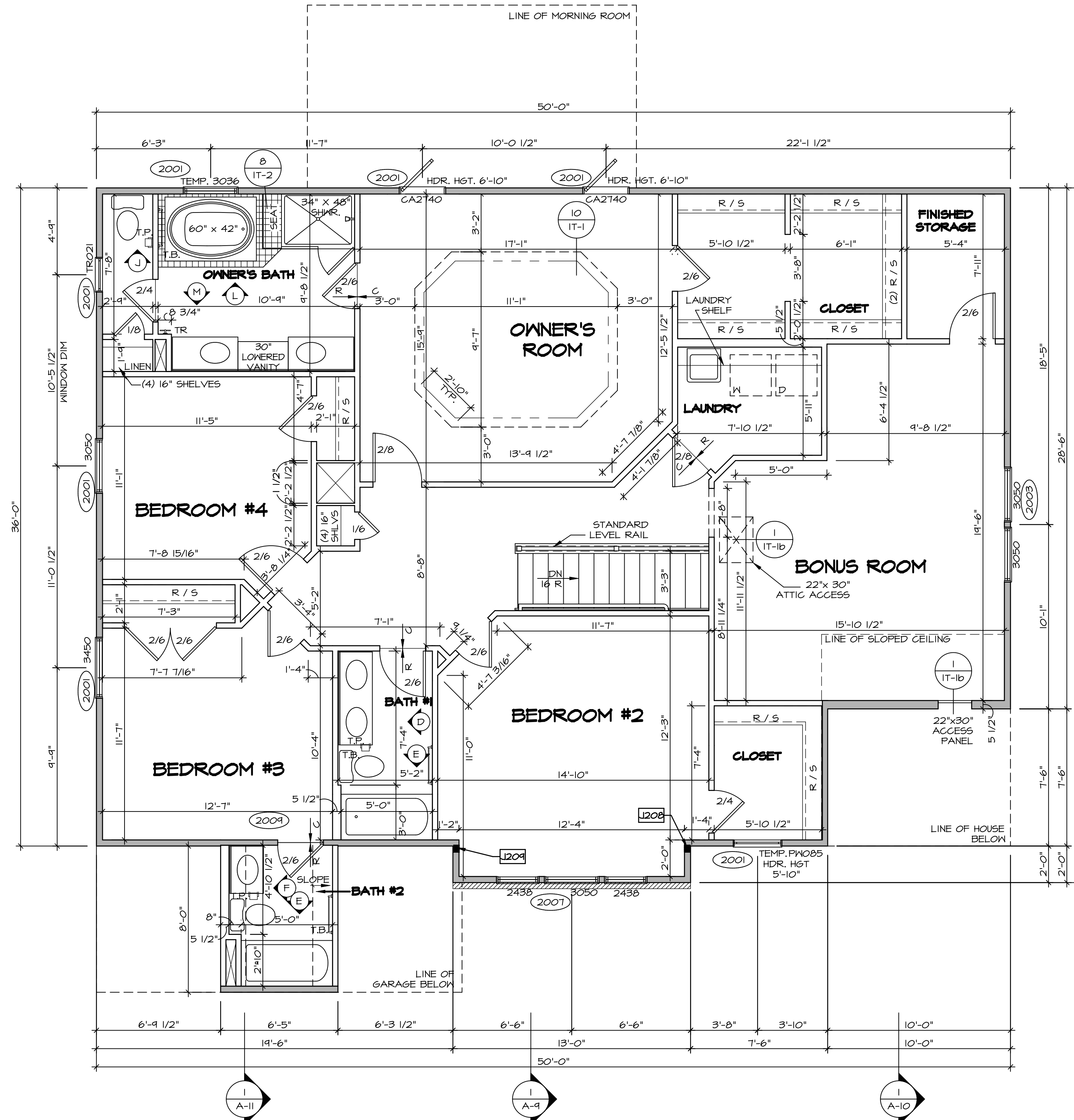
SET NO. BATOOC  
VERSION 03  
DRAWN BY: [Name]  
DATE: [Date]  
OPTION: [Option]

SHEET NO. A-7  
49

SECOND FLOOR JACK SCHEDULE			
IDENTIFIER	DESCRIPTION	OPTIONS	ENG. N.M.
J208	JACK - (3) 2x4 SPM	ELK	2000
J209	JACK - (3) 2x4 SPM	ELK	2000

### FLOOR PLAN NOTES

- ALL HEADERS ARE (2) 2x6 w/ 2x4 WALLS OR (3) 2x6 w/ 2x6 WALLS, UNLESS OTHERWISE NOTED.
- ALL HEADERS TO HAVE (1) 2x4 OR 2x6 JACK EACH END, UNLESS OTHERWISE NOTED.
- ALL EXTERIOR WALLS TO BE 4" AND ALL INTERIOR WALLS TO BE 3 1/2", UNLESS OTHERWISE NOTED.
- HATCHED AREAS INDICATE DROPPED CEILINGS. ALL DROPPED CEILINGS ARE 12" UNLESS OTHERWISE NOTED.
- SEE "BRACED WALL PANEL DETAIL SHEET" FOR SPECIAL WALL FRAMING LOCATIONS AND HEADER SIZES, IF APPLICABLE.
- SEE STANDARD DETAIL CATEGORY "1T" SHEET(S) FOR INTERIOR TRIM DETAILS.
- SEE ARCHITECTURAL DETAIL SHEET "AD" FOR HOUSE SPECIFIC INTERIOR TRIM OPTION TABLE.
- ALL WINDOWS HAVE 7'-0 1/2" HEADER HEIGHT UNLESS OTHERWISE NOTED.

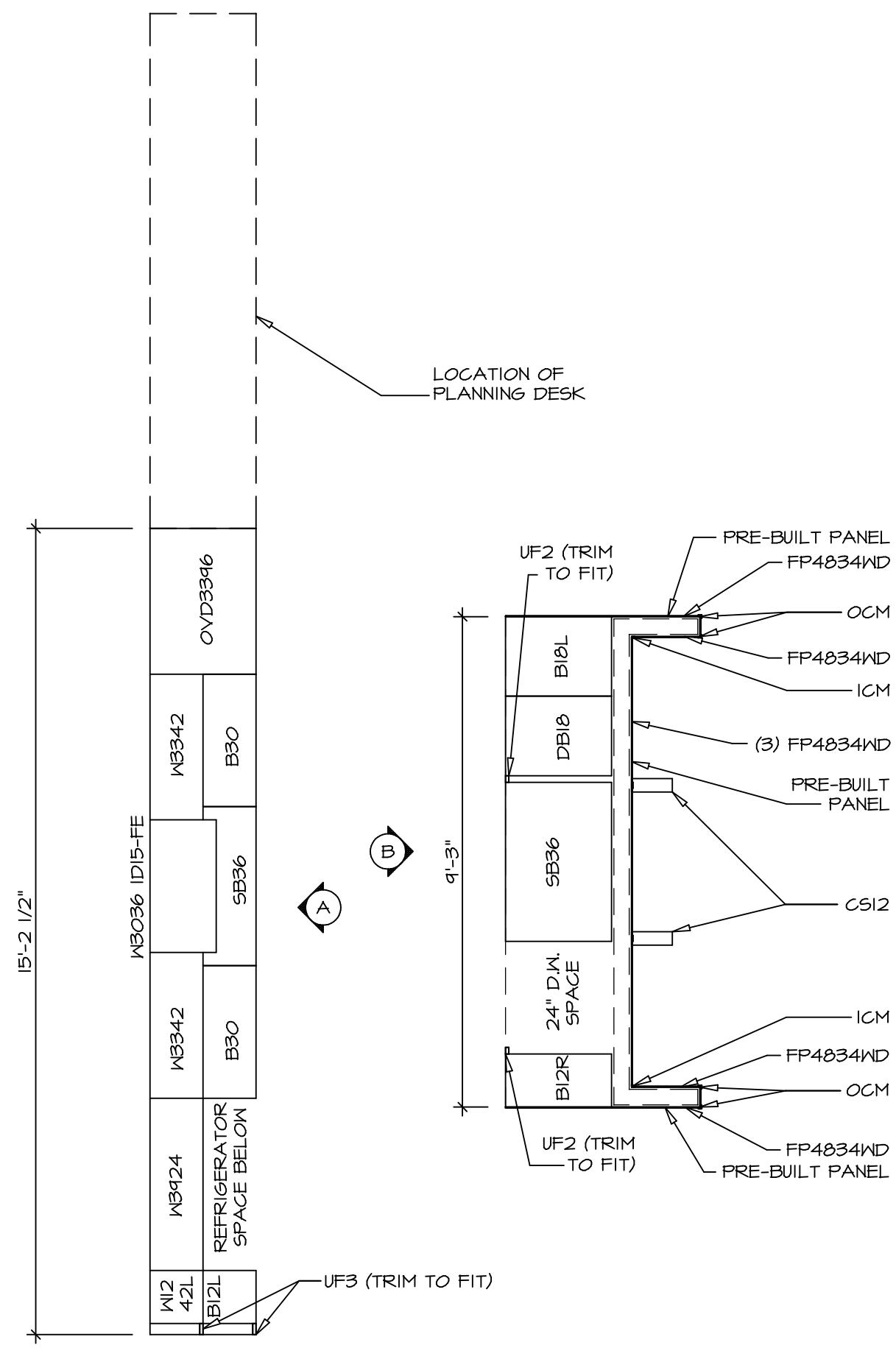


### LEGEND

- BEARING WALL
  - NON BEARING WALL
  - INDICATES BEARING FROM POINT-LOAD ABOVE
  - JACKS
  - BEAM/HEADER
  - PAD FOOTING
  - STEEL COLUMN
  - PORTAL FRAME
  - JOIST/TRUSS
  - LVL
  - ENGINEERING PAGE NUMBER
- SEE FC DETAILS FOR FRAMING CONNECTORS

**SECOND FLOOR PLAN**  
SCALE: 1/4" = 1'-0"

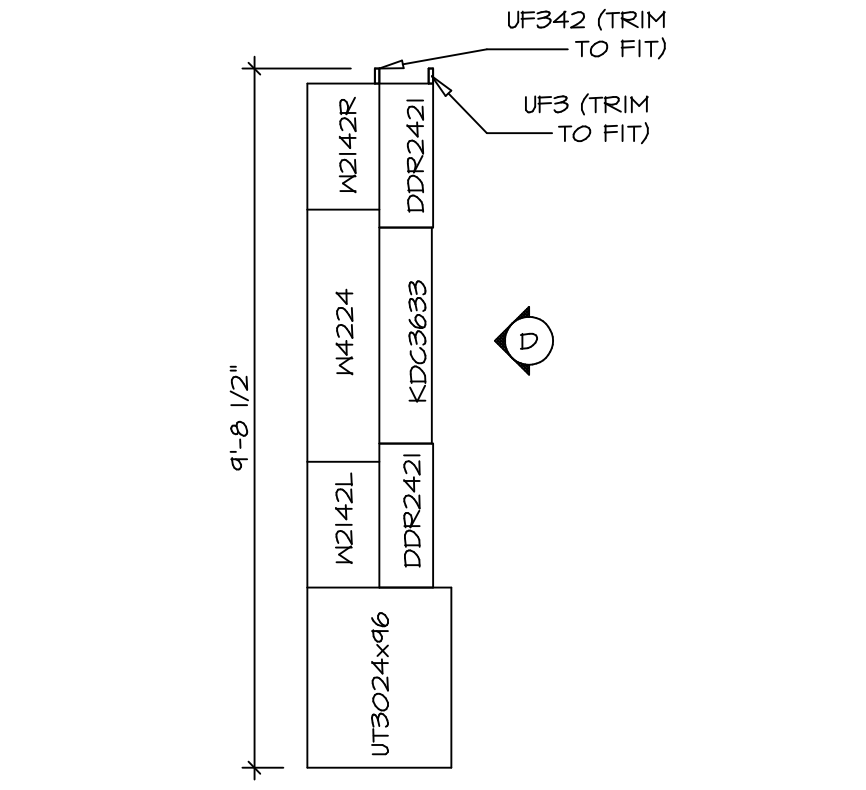
SHEET NO. <b>A-8</b>	MODEL <b>BATEMAN</b>	SET NO. <b>BAT00</b>	REV. NO. <b>1</b>	DATE <b>7/6/17</b>	REMARKS
		VERSION <b>03</b>	1/6/17	TH - REVISED ROOF ACCESS PANELS	
DRAWING TITLE <b>SECOND FLOOR PLAN</b>		<p>NVR, Inc., owner, expressly reserves its copyright in these plans. These plans are not to be reproduced, changed, copied, or otherwise used in any way without the written consent of NVR, Inc.</p>			
OPTION DESCRIPTION		<p>NVR, Inc. Architectural Services 5285 Westgate Drive Frederick, MD 21703</p>			
54		<p>C:\NVR\Solves\BATEMAN_BAT00_03\DCY-YR-0070\864116\Sheets\Lot_Spec\54_A-B_FLN2_LS.dwg 07/17/18 - 2:38 am</p>			



**KITCHEN CABINET PLAN - KC-3148**

SCALE: 3/8" = 1'-0"

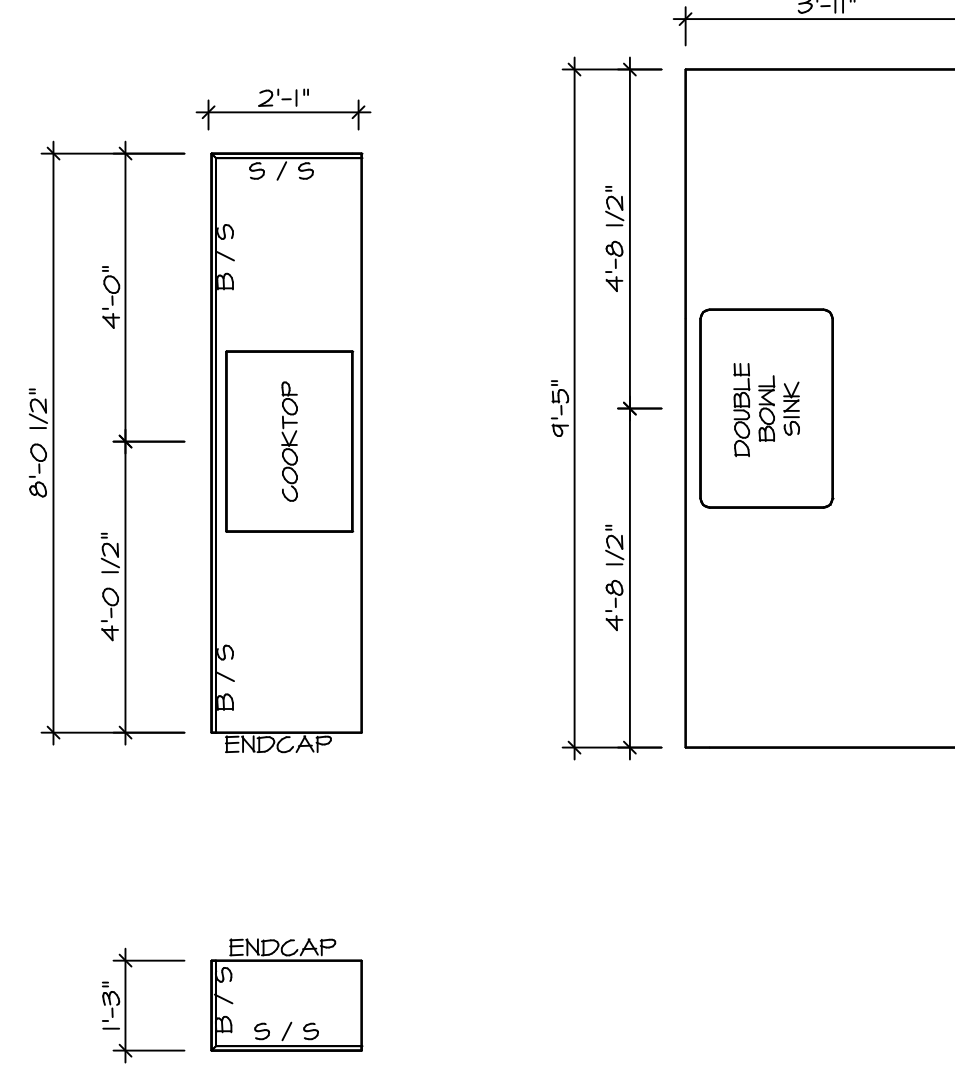
1  
A-13



**KITCHEN CABINET PLAN - KC-4215**

SCALE: 3/8" = 1'-0"

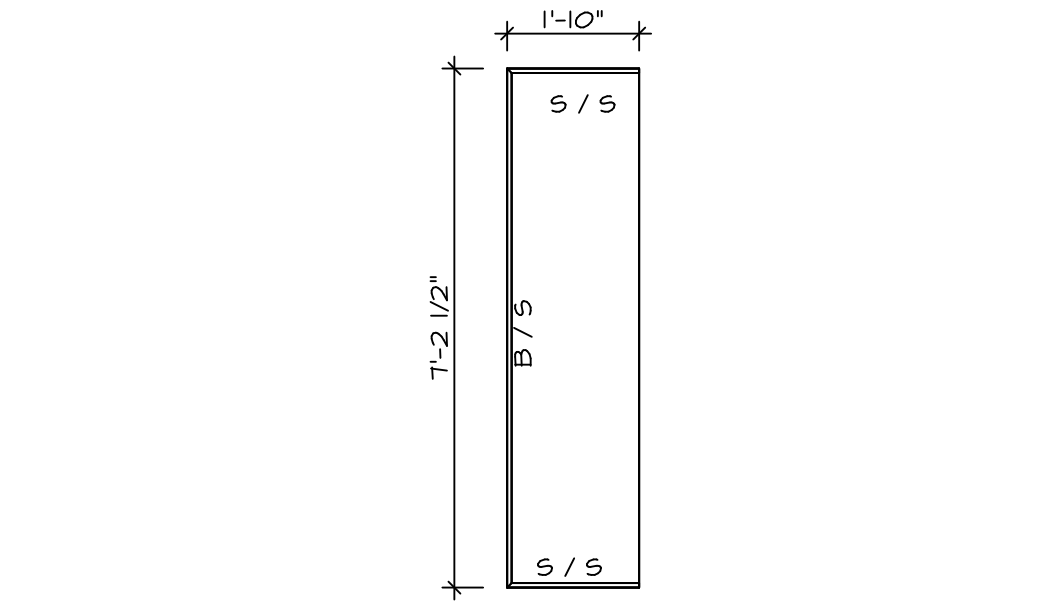
5  
A-13



**KITCHEN COUNTERTOP PLAN - KC-3148**

SCALE: 3/8" = 1'-0"

2  
A-13

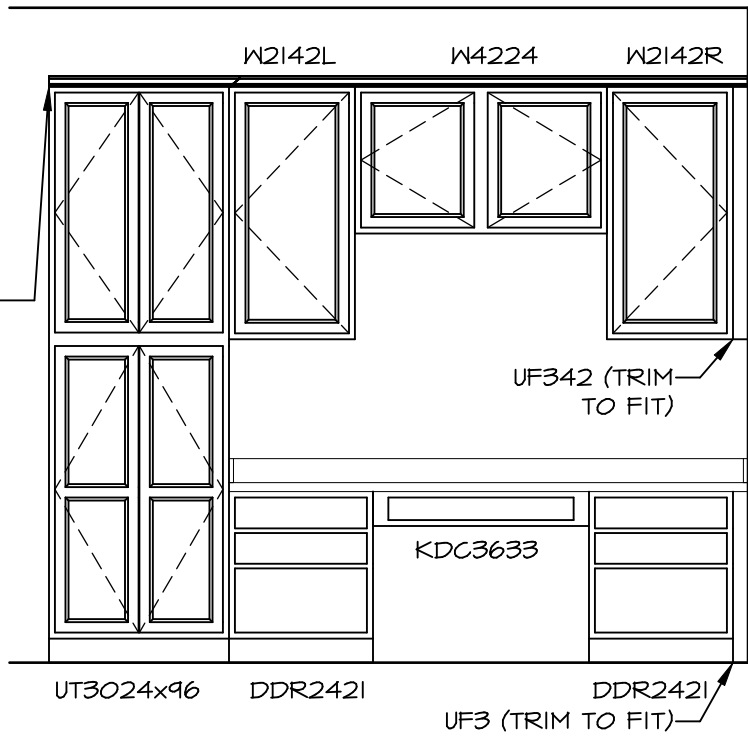


**KITCHEN COUNTERTOP PLAN - KC-4215**

SCALE: 3/8" = 1'-0"

6  
A-13

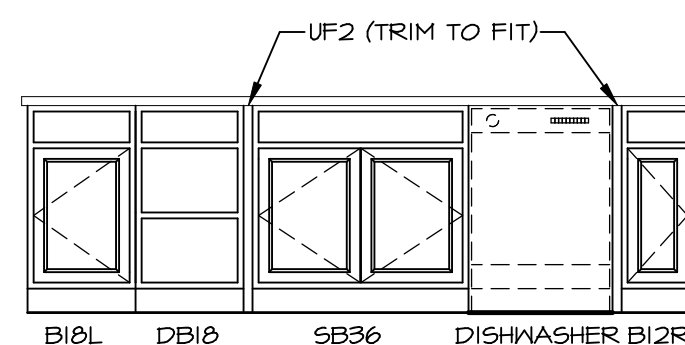
WITH OPT. CABINET CROWN MOULDING \*TIK\* ADD 4 PIECES



**ELEVATION D**

SCALE: 3/8" = 1'-0"

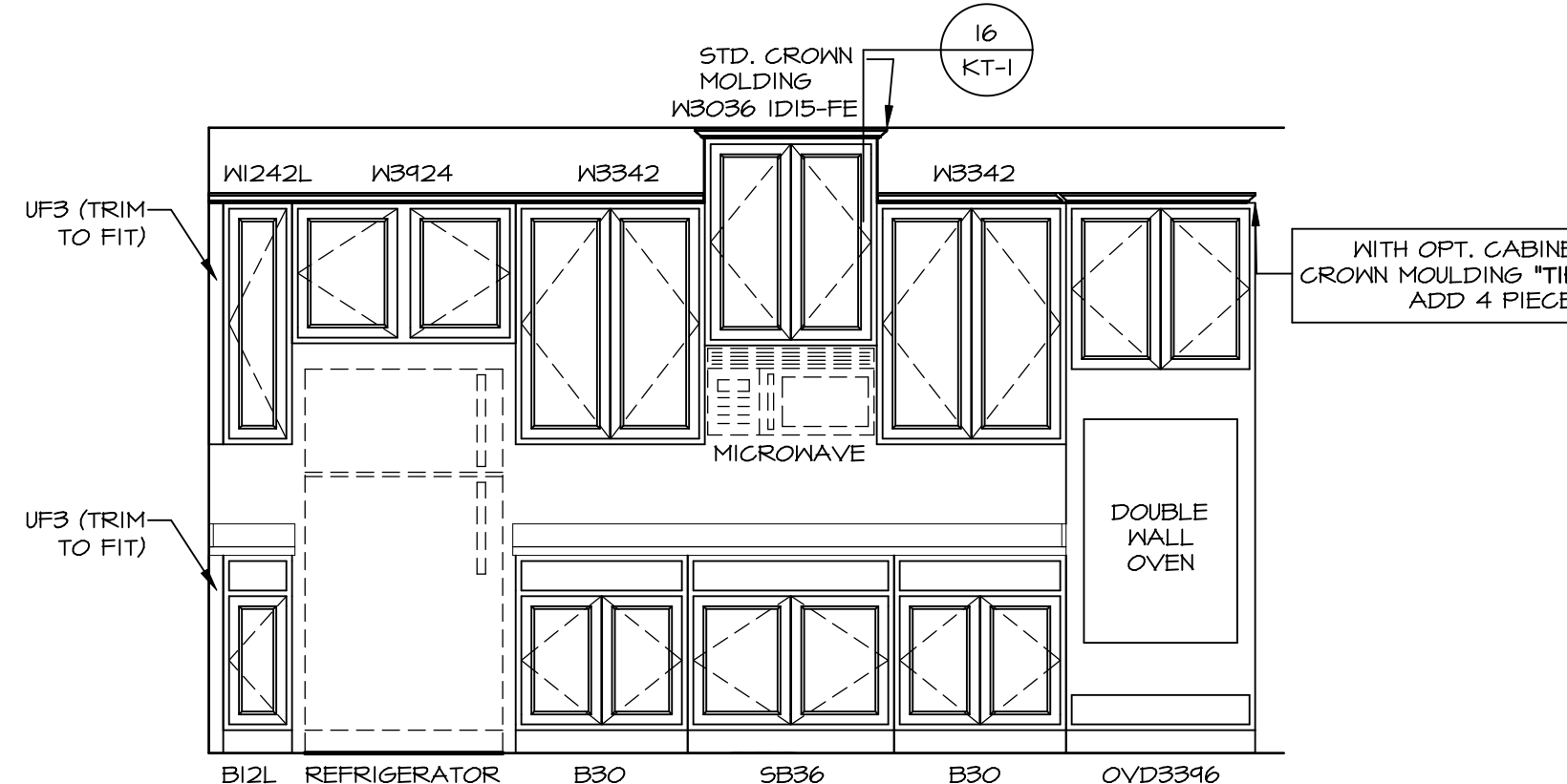
D



**ELEVATION B**

SCALE: 3/8" = 1'-0"

B



**ELEVATION A**

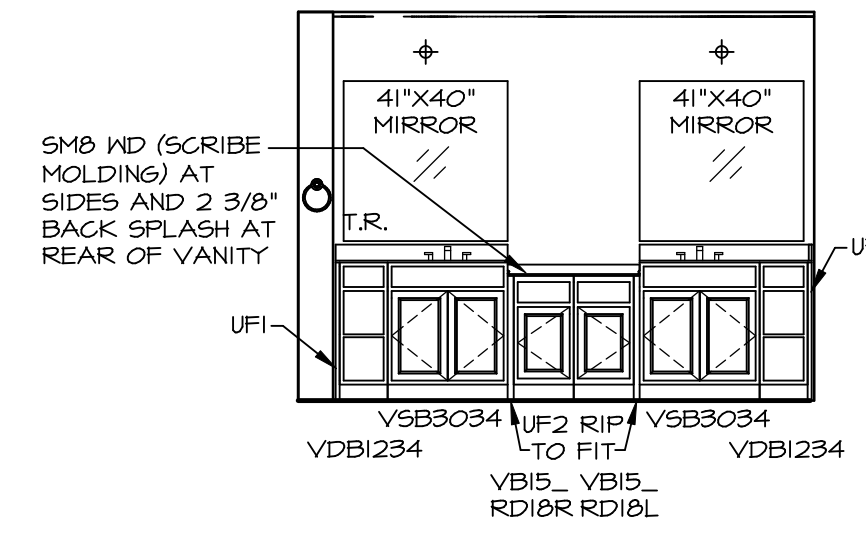
SCALE: 3/8" = 1'-0"

A

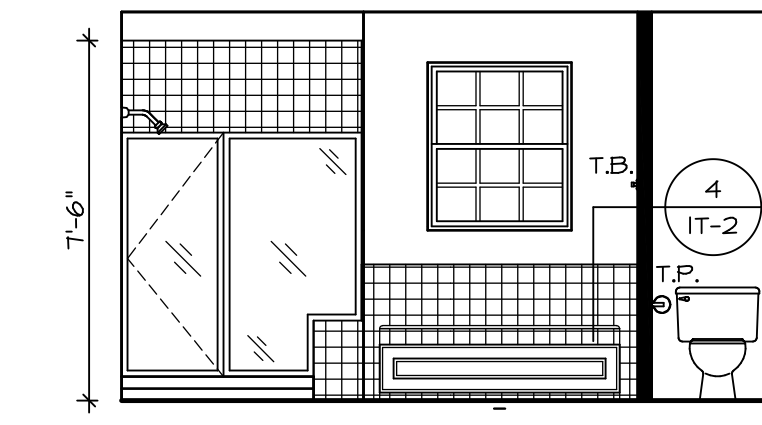
SHEET NO.	MODEL	SET NO.	VERSION	DRAWN BY	DATE	OPTION	REMARKS
A-13	BATEMAN	BAT00_03	03				
65	BATEMAN	BAT00_03	03				

NVR, Inc. over, expressly reserves its copyright in these plans. These plans are not to be reproduced, changed, copied, or otherwise used without the written consent of NVR, Inc.

**NVR**  
NVR, Inc.  
Architectural Services  
Architects  
5285 Westover Hills  
Frederick, MD 21703



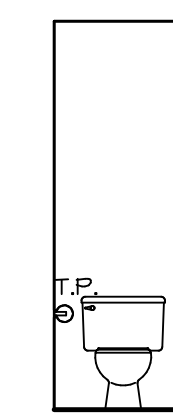
**M** OWNER'S BATH  
SCALE: 1/4" = 1'-0"



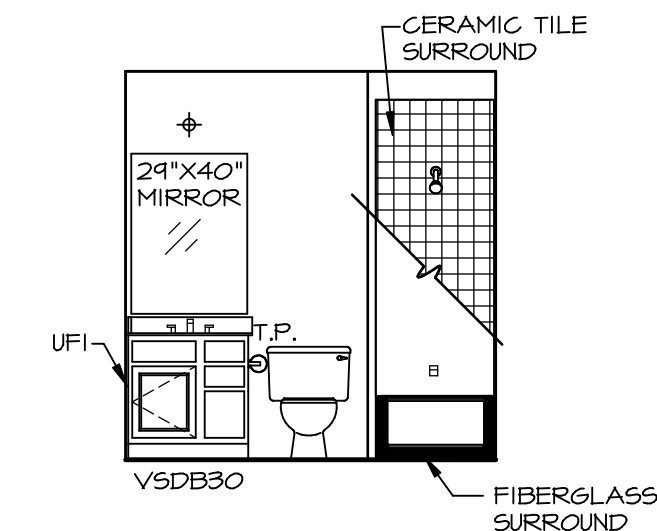
**L** OWNER'S BATH  
SCALE: 1/4" = 1'-0"

**NOTES:**

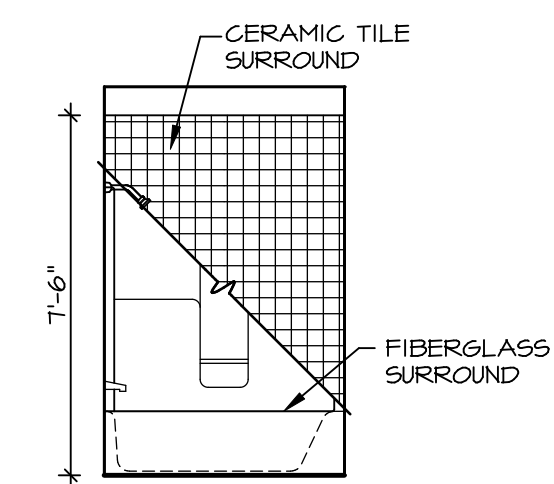
1. TEMPERED GLASS SHOWER ENCLOSURE WITH SWING DOOR OR OPTIONAL SLIDING DOOR BY DIVISION
2. TUB ACCESS PANELS PROVIDED AS NEEDED, ALL MATERIALS BY DIVISION
3. REFER TO SHEET IT-2 FOR TUB AND SHOWER DETAILS.
4. ALL VSD24-42 DRAWERS TO BE SET ON RIGHT HAND.
5. BATH ELEVATIONS ARE SHOWN PER PLAN.



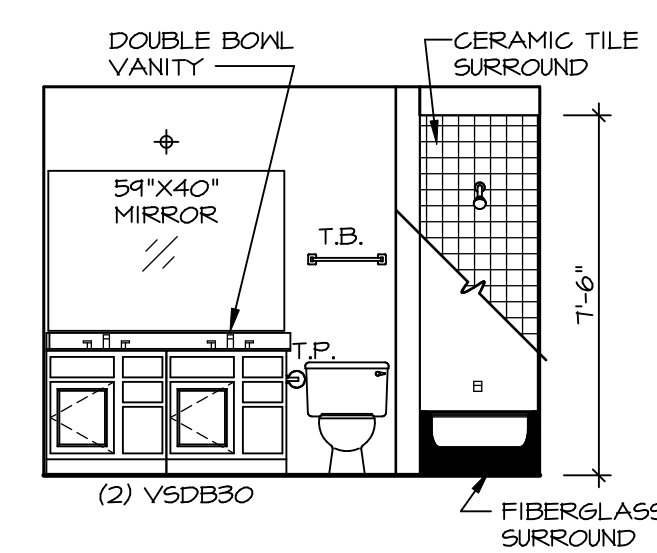
**J** OWNER'S BATH  
SCALE: 1/4" = 1'-0"



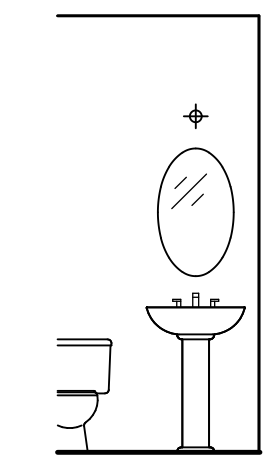
**F** BATH #2  
SCALE: 1/4" = 1'-0"



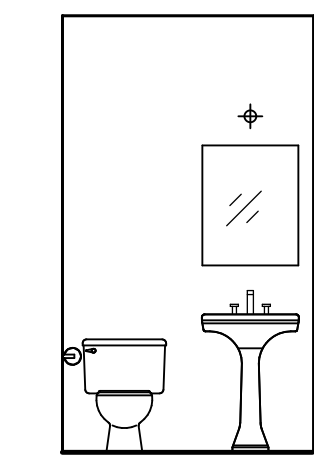
**E** BATH #1 / #2  
SCALE: 1/4" = 1'-0"



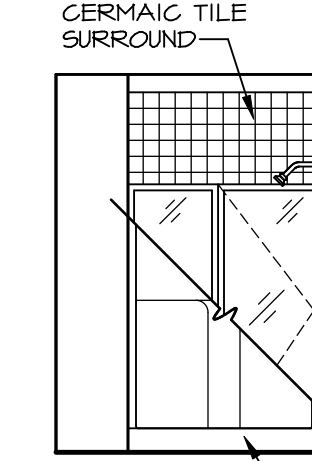
**D** BATH #1  
SCALE: 1/4" = 1'-0"



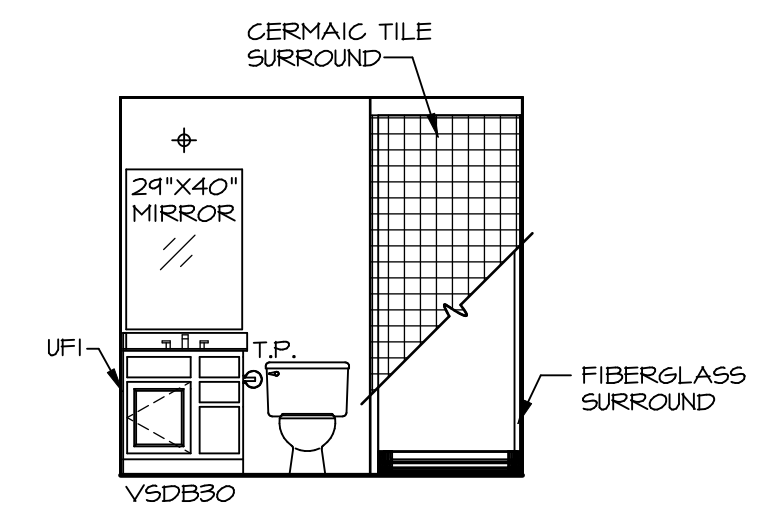
**ALE** OWNER ROOM  
SCALE: 1/4" = 1'-0"



**C** POWDER ROOM  
SCALE: 1/4" = 1'-0"



**B** BASEMENT BATH  
SCALE: 1/4" = 1'-0"



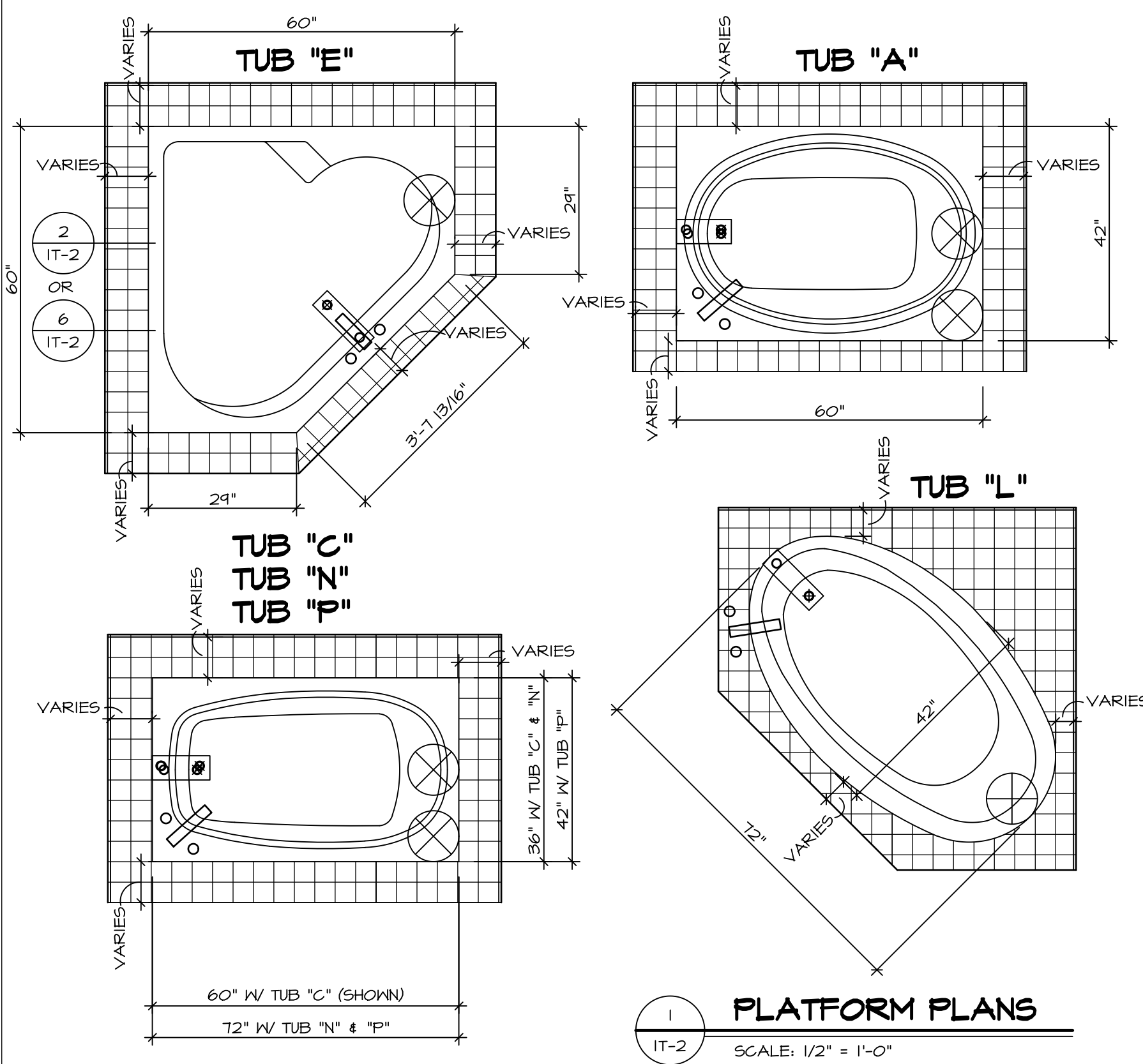
**A** BASEMENT BATH  
SCALE: 1/4" = 1'-0"

REV. NO.	DATE	REMARKS

NVR, Inc., owner, expressly reserves its copyright in these plans. These plans are not to be reproduced, changed, copied, or otherwise used without the written consent of NVR, Inc.

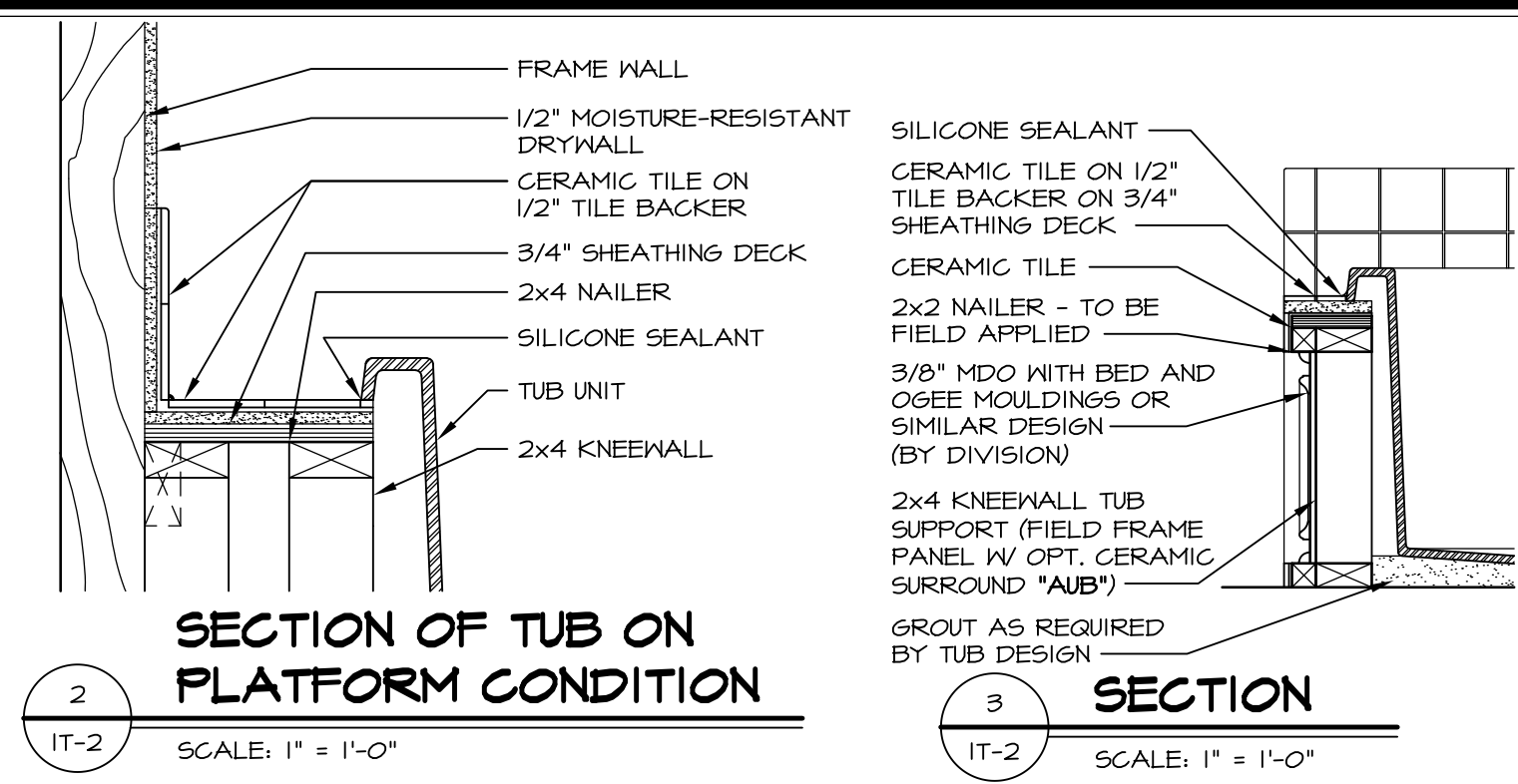
**NVR**  
NVR, Inc.  
Architectural Services  
Architects  
5285 Westpark Drive, Suite 100  
Frederick, MD 21703

MODEL	BATEMAN
DRAWING TITLE	BATH ELEVATIONS
OPTION DESCRIPTION	
SHEET NO.	A-14
	70

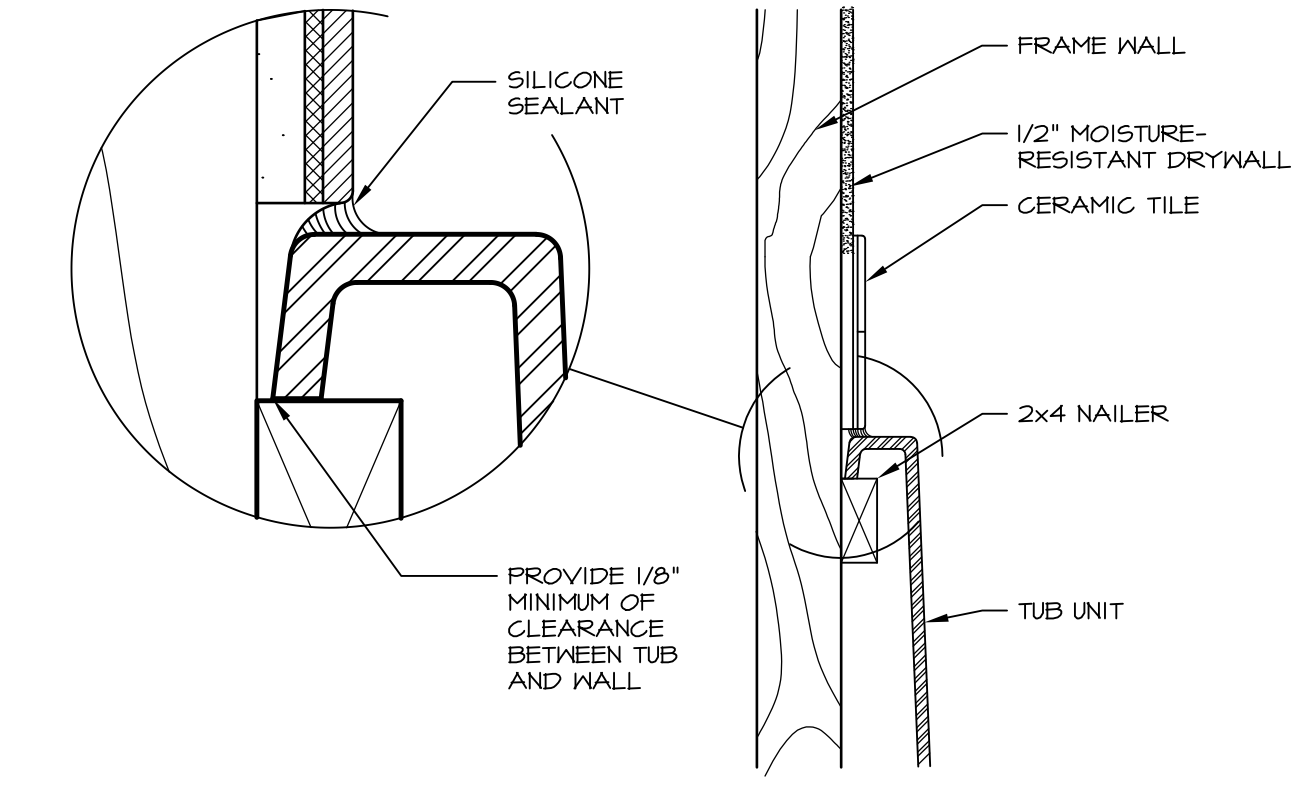


**1 PLATFORM PLANS**  
SCALE: 1/2" = 1'-0"

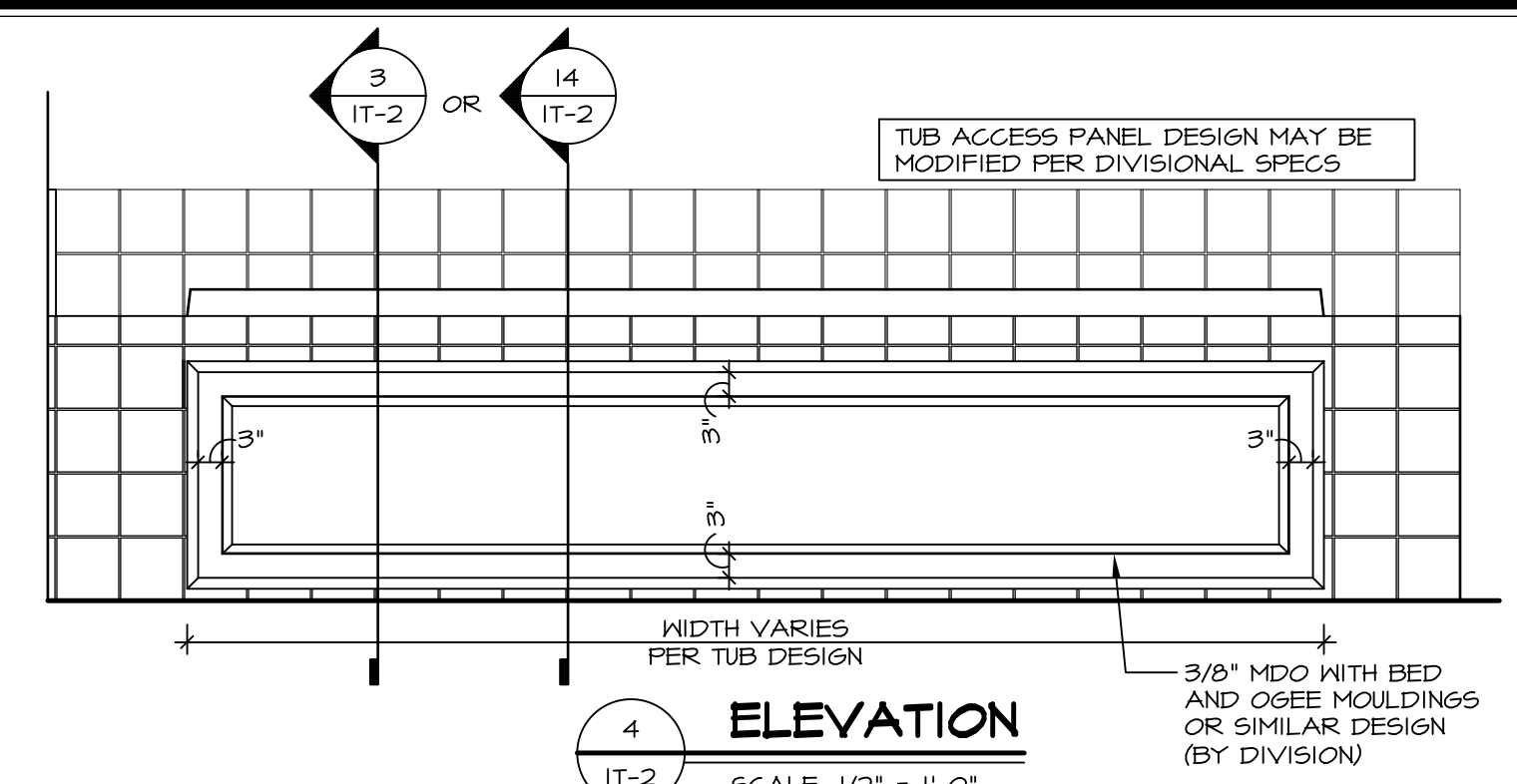
TUB	MANUF.	HEIGHT	WIDTH	LENGTH	TUB DECK PANEL HEIGHT
"A"	KOHLER/ STERLING	18 3/4"	42"	60"	17 1/8"
"C"	KOHLER/ STERLING	18 3/4"	36"	60"	17 1/8"
"E"	KOHLER/ STERLING	19 1/2"	60"	60"	17 7/8"
"L"	KOHLER/ STERLING	18 1/2"	42"	72"	16 7/8"
"N"	KOHLER/ STERLING	18 3/4"	36"	72"	17 1/8"
"P"	KOHLER/ STERLING	18 3/4"	42"	72"	17 1/8"



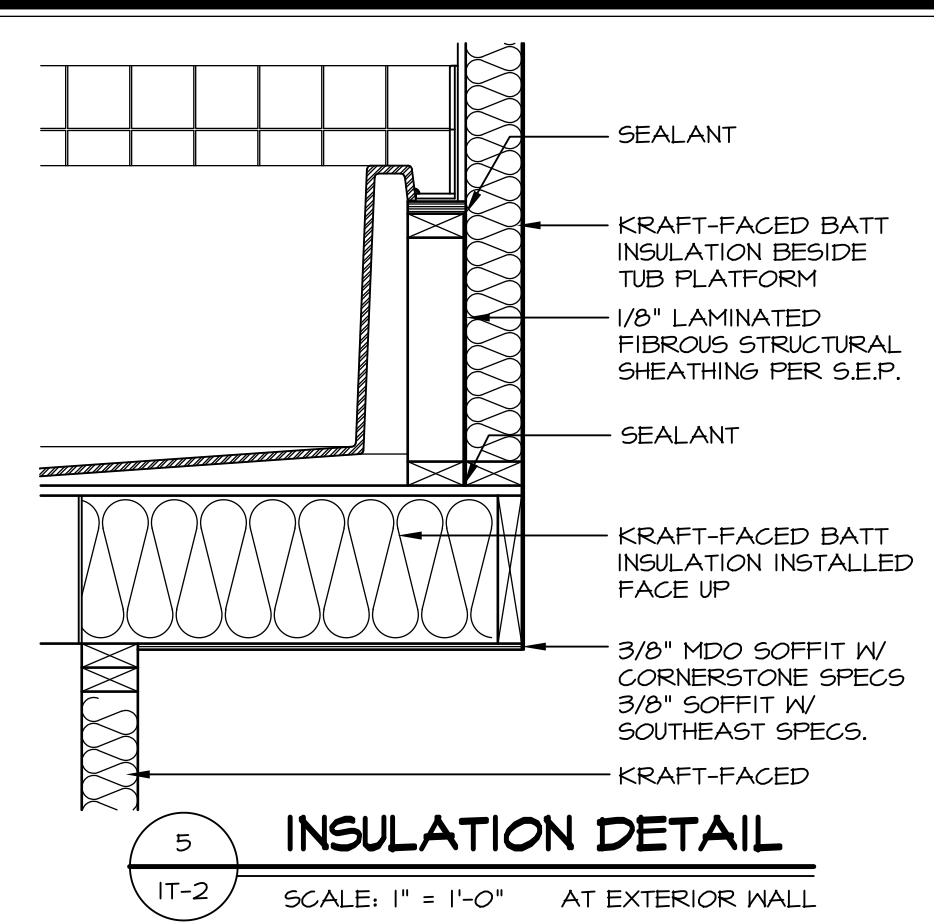
**2 SECTION OF TUB ON PLATFORM CONDITION**  
SCALE: 1" = 1'-0"



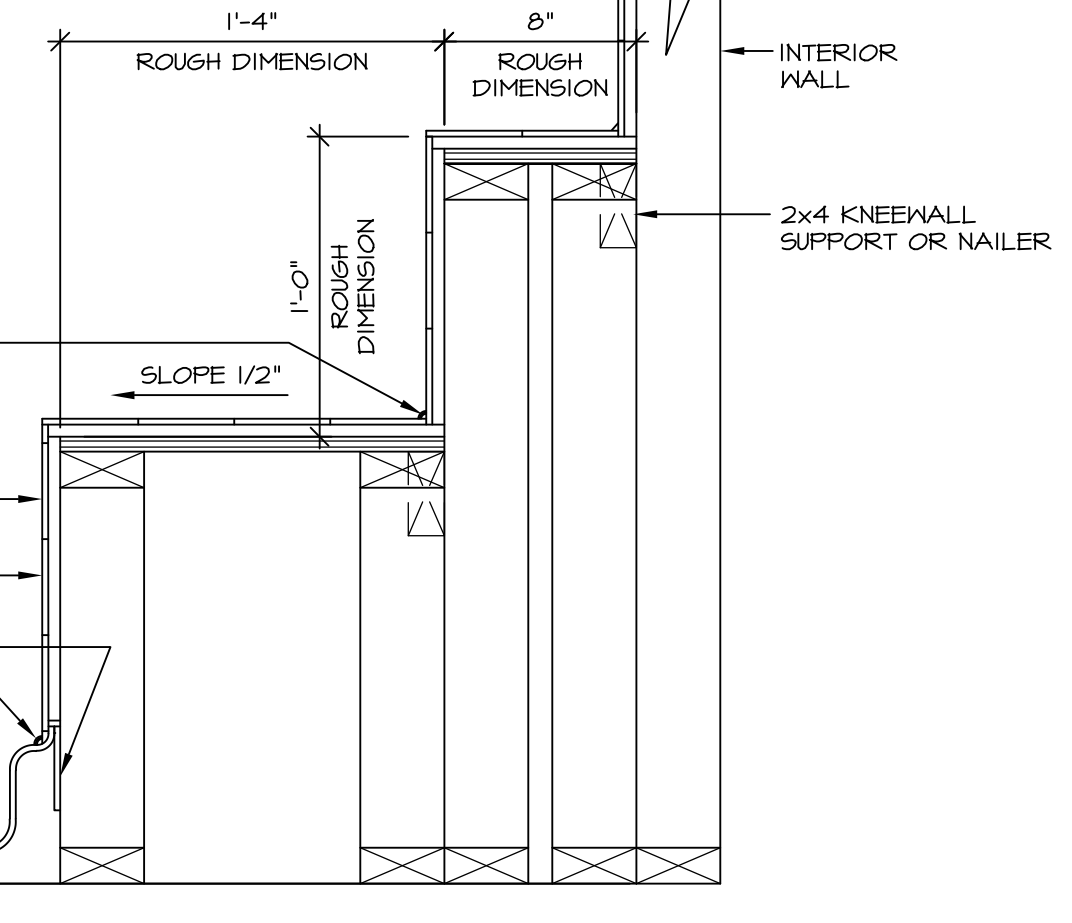
**3 SECTION OF TUB TO WALL CONDITION**  
SCALE: 1 1/2" = 1'-0"



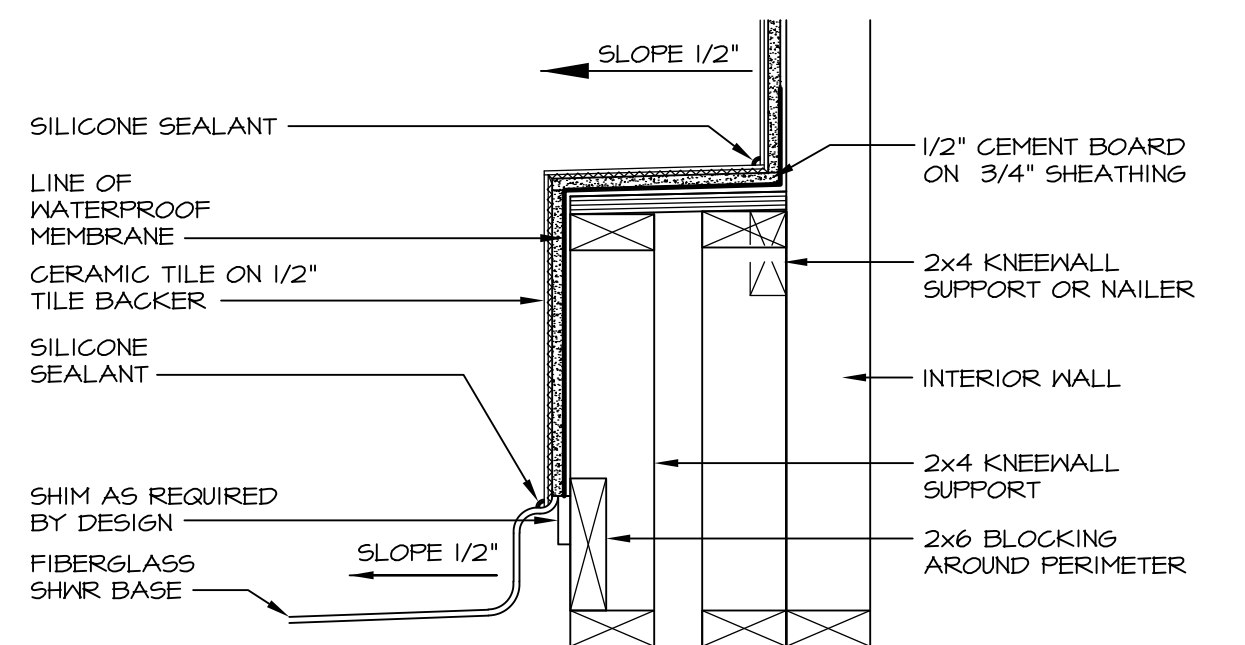
**4 ELEVATION**  
SCALE: 1/2" = 1'-0"



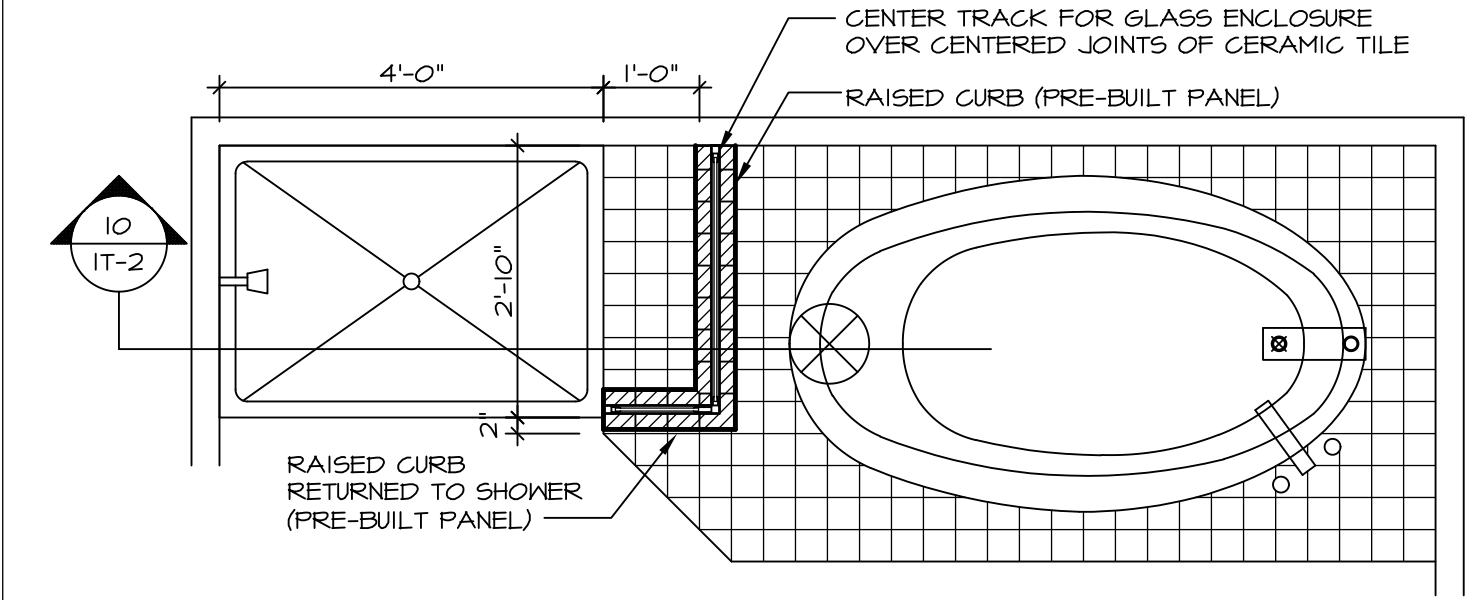
**5 INSULATION DETAIL**  
SCALE: 1" = 1'-0" AT EXTERIOR WALL



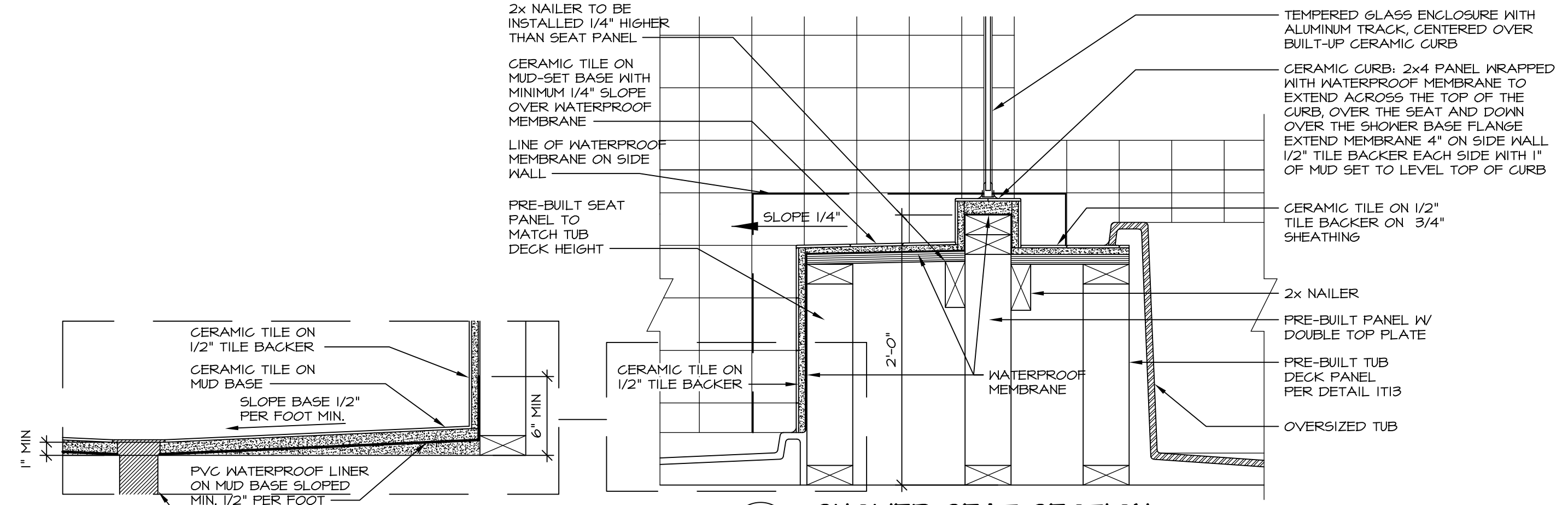
**7 SECTION OF SHOWER SEAT AND SHELF**  
SCALE: 1 1/2" = 1'-0"



**8 SECTION OF SHOWER SEAT**  
SCALE: 1-1/2" = 1'-0" FIBERGLASS SHOWER BASE



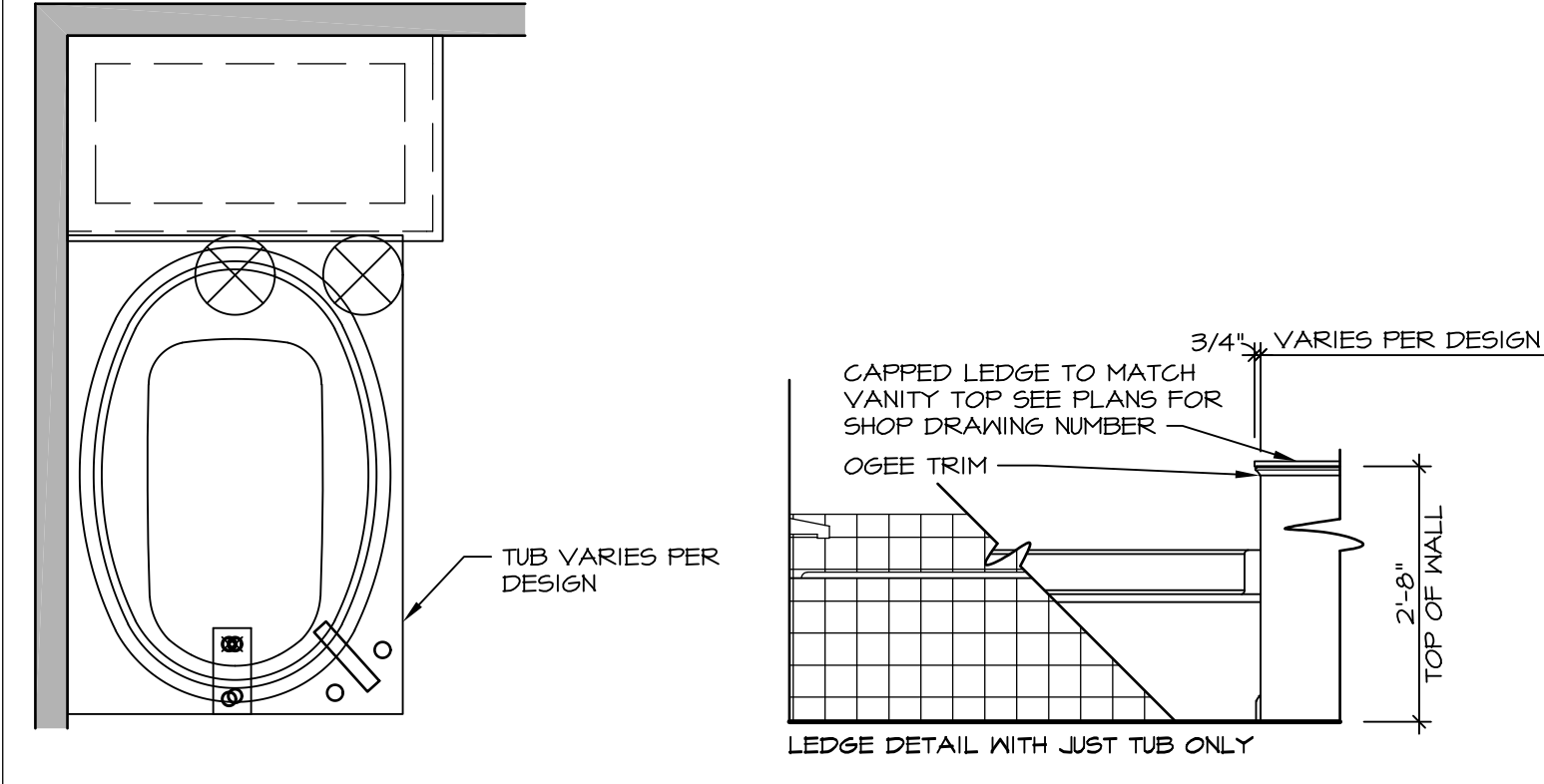
**9 SHOWER SEAT PLAN / DETAIL**  
SCALE: 1/2" = 1'-0"



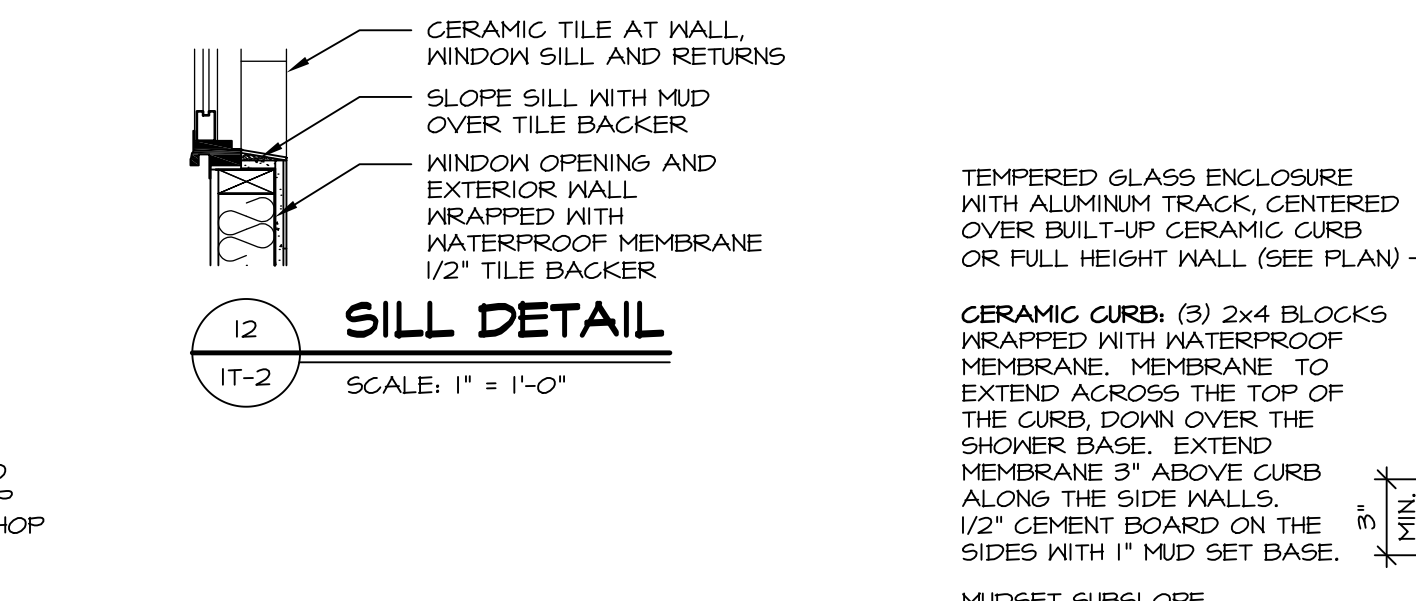
**10 SHOWER SEAT SECTION**  
SCALE: 1-1/2" = 1'-0"



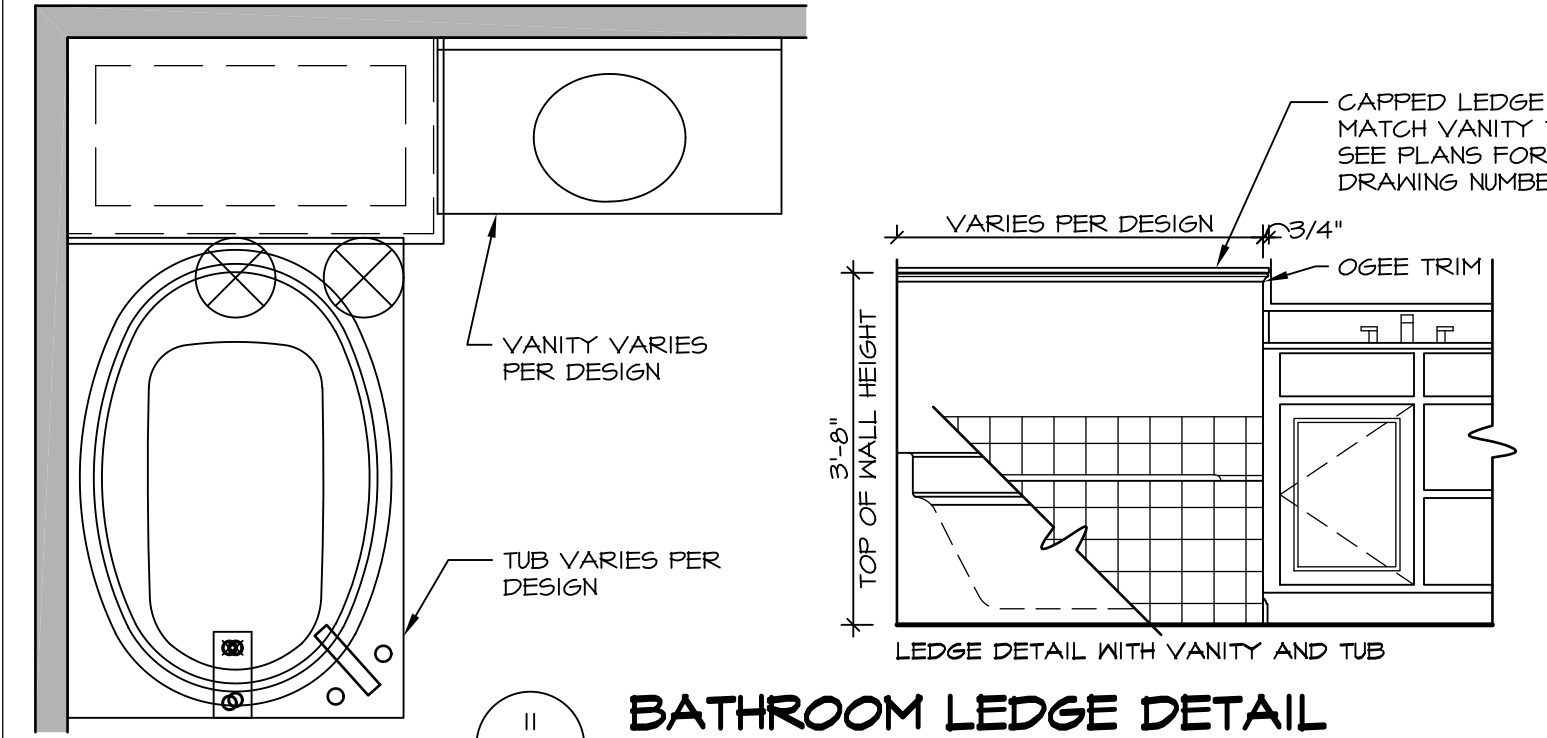
**11 ALTERNATE SHOWER PAN DETAIL**



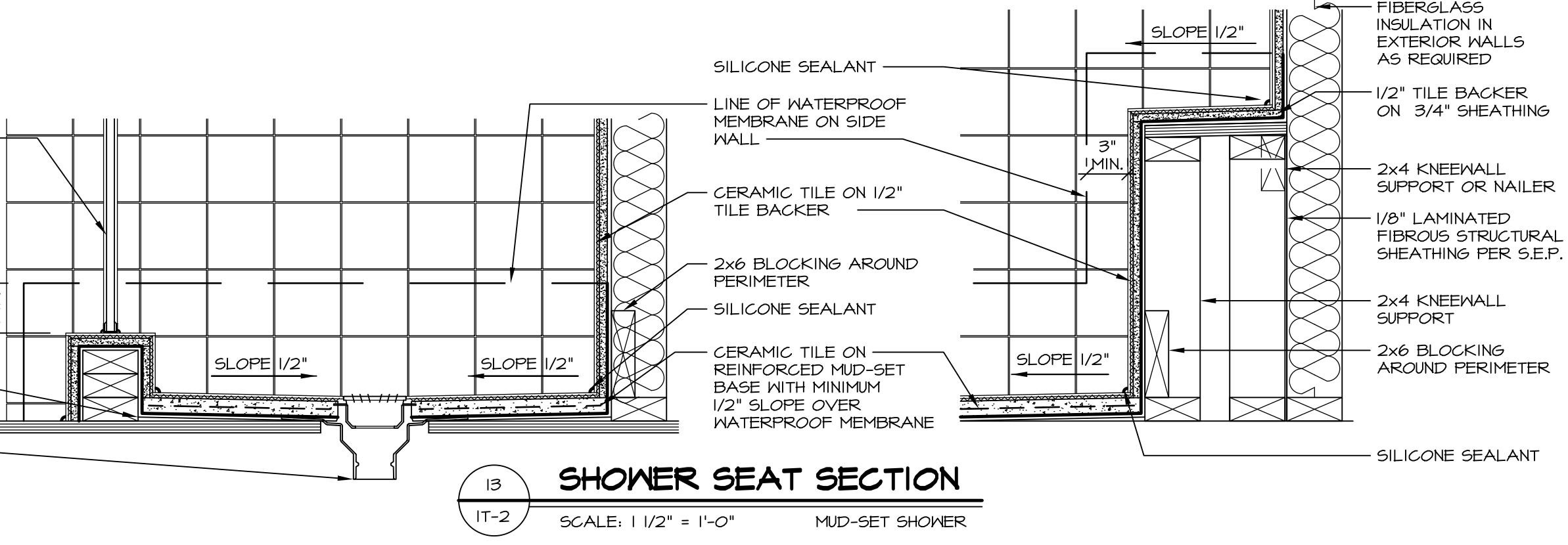
**12 BATHROOM LEDGE DETAIL**  
SCALE: 1/2" = 1'-0"



**13 SILL DETAIL**  
SCALE: 1" = 1'-0"



**14 BATHROOM LEDGE DETAIL**  
SCALE: 1/2" = 1'-0"



**15 SHOWER SEAT SECTION**  
SCALE: 1 1/2" = 1'-0" MUD-SET SHOWER

REVISIONS

REV. NO.	DATE	DESCRIPTION
1	5/1/17	EBP - REVISED DETAIL 1 AND 11 TO REMOVE TUB ACCESS PANEL REF. (DSS #15 5414)
2	9/2/17	EBP - REVISED T-FLY NOTE TO CALL OUT LFS
3	9/2/17	EBP - REVISED NOTE ON DETAIL #1 - REVISED ORDER OF MATERIAL PARA#4934

NVR, Inc., owner, expressly reserves its common law copyright and other property rights in these plans. These plans are not to be reproduced, stored in a retrieval system, or transmitted in any form or by any means, electronic, mechanical, photocopying, recording, or by any information storage and retrieval system, without the prior written consent of NVR, Inc.

**NVR**  
NVR, Inc.  
Architectural Services  
5285 Westpark Drive  
Frederick, MD 21703

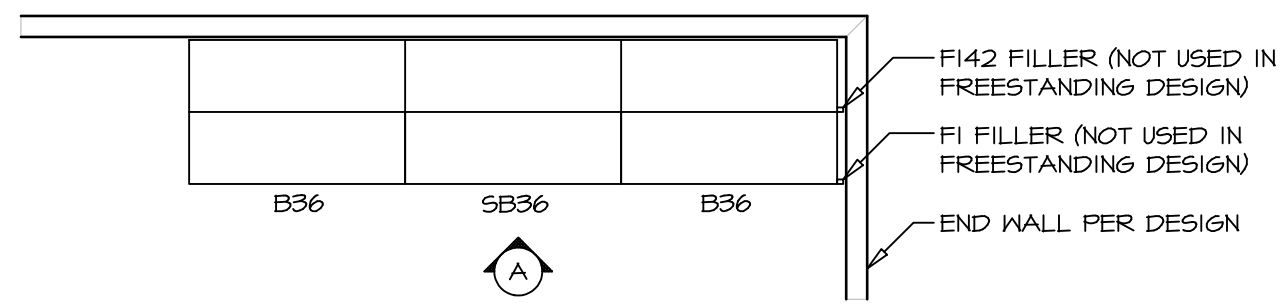
SET NO. NVR  
VERSION  
DRAWN BY  
DATE:  
OPTION

MODEL  
**STANDARD DETAILS**  
DRAWING TITLE  
INTERIOR TRIM DETAILS  
BATH DETAILS  
OPTION DESCRIPTION

SHEET NO.  
**IT-2**

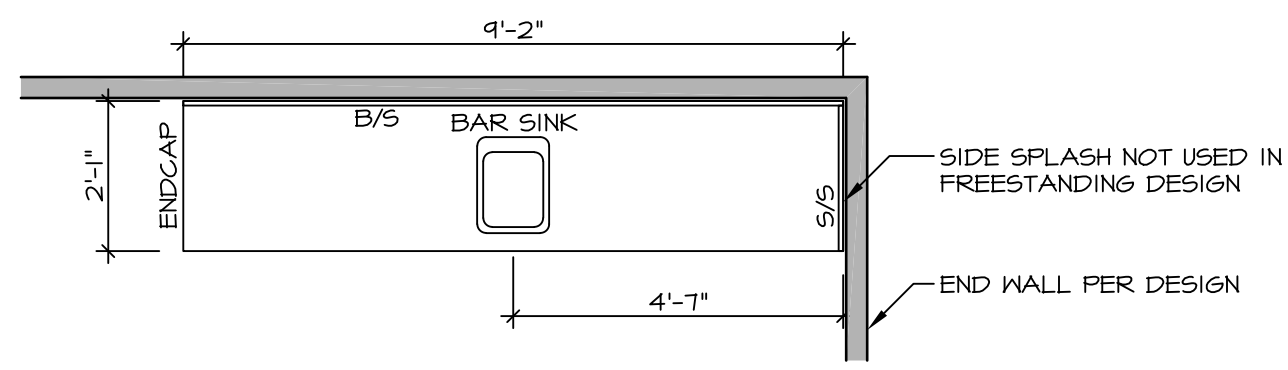
J:\Dwg\NVR\Interior Trim\IT2.dwg 09/27/17 - 9:20 am

NOTE:  
REVIEW HOUSE SPECIFIC  
PLANS FOR LOCATION  
AND HANDING



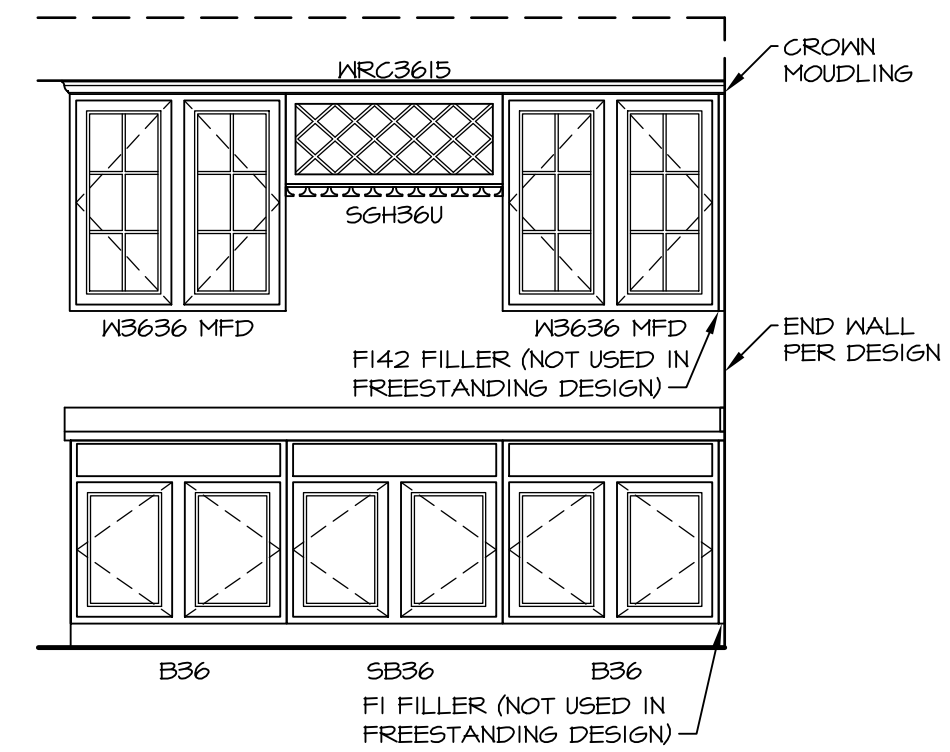
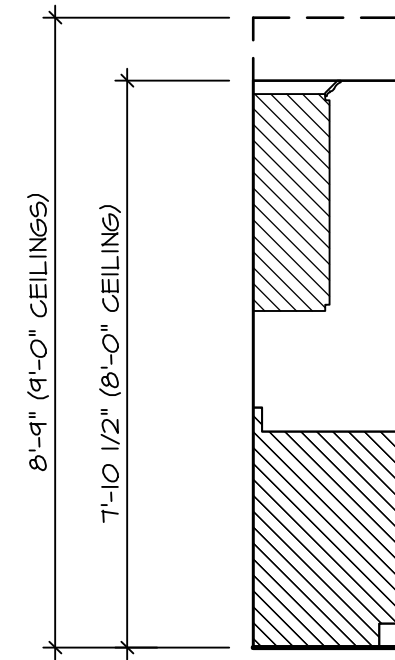
**KITCHEN CABINET  
PLAN KC - 1900**

2  
IT-3b SCALE: 3/8" = 1'-0"



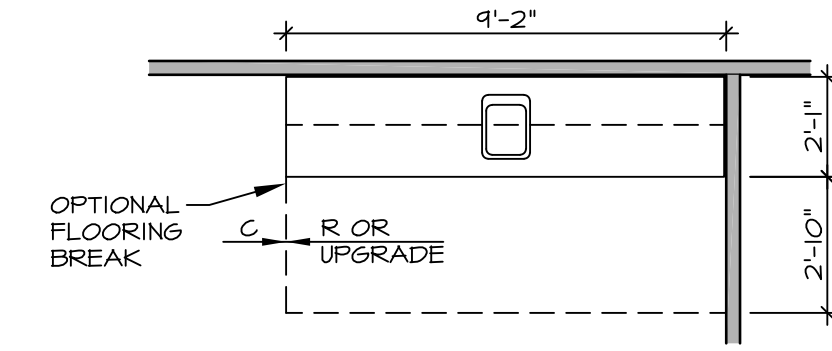
**KITCHEN COUNTERTOP  
PLAN KT - 1900**

6  
IT-3b SCALE: 3/8" = 1'-0"



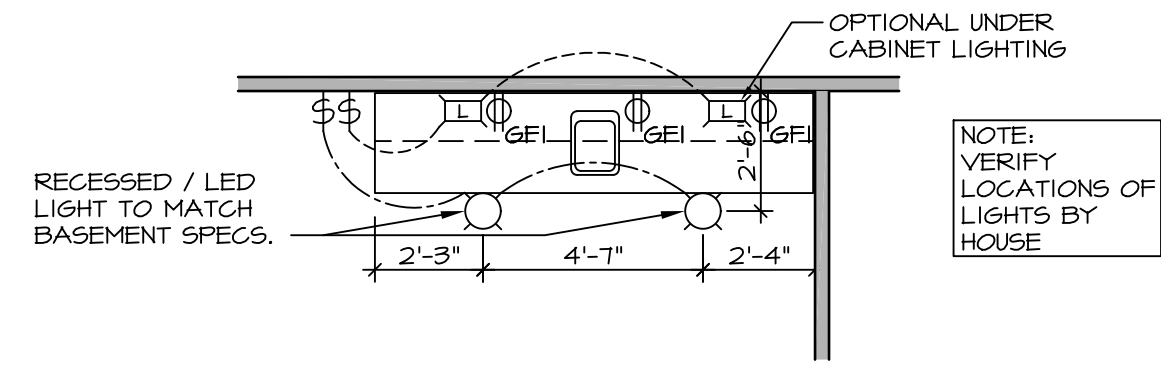
**3 ELEVATION "A"**

IT-3b SCALE: 3/8" = 1'-0"



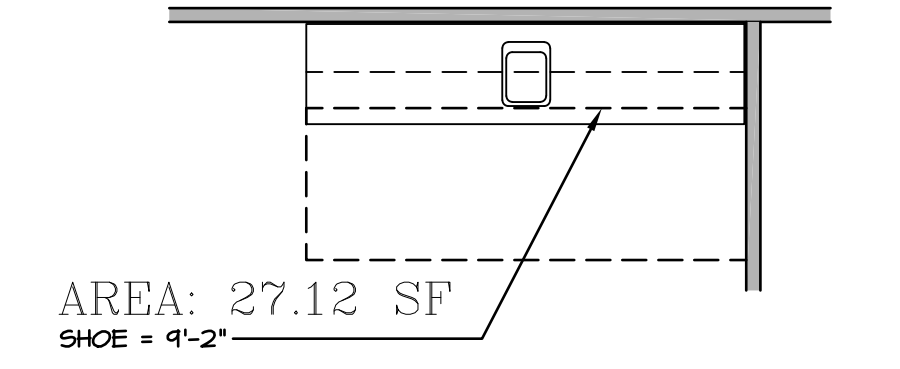
**4 FLOOR PLAN**

IT-3b SCALE: 1/4" = 1'-0"



**7 FLOOR PLAN ELECTRICAL LAYOUT**

IT-3b SCALE: 1/4" = 1'-0"



AREA: 27.12 SF  
SHOE = 4'-2"

**5 FLOORING PLAN**

IT-3b SCALE: 1/4" = 1'-0"

**1 WET BAR DETAILS**

IT-3b SCALE: VARIES \* SHOWN AS END WALL DESIGN

SHEET NO. <b>IT-3b</b>	MODEL <b>STANDARD DETAILS</b>	SET NO. NVR	REV. NO.	DATE	REMARKS
		VERSION	1	5/17/17	56A - REVISED FLOOR PLAN DIMENSIONS TO MATCH COUNTERTOP DIMENSIONS
DRAWING TITLE	INTERIOR TRIM DETAILS	DRAWN BY	2	5/23/17	56A - REMOVED COUNTERTOP INFORMATION FROM 2/IT-3b
WET BAR DETAILS - BACK BAR (RYAN ONLY)		DATE:	3	6/5/17	56A - REMOVED U.C. REF. AND TURNED OFF FLOORING SPACES
OPTION DESCRIPTION		OPTION	4	9/14/17	EBP - ADDED NOTE TO RECESSED LIGHT / LED LIGHT IN NET BAR

