

1
A-5 PLUMBING PLAN
SCALE: 1/4" = 1'-0"

SHEET NO.
A-5

MODEL
PALERMO

DRAWING TITLE
PLUMBING PLAN

OPTION DESCRIPTION

48

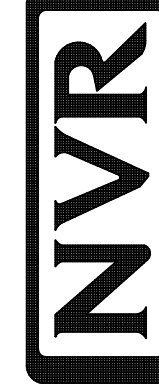
SET NO. **PALOO**

VERSION **03**

DRAWN BY

DATE:

OPTION

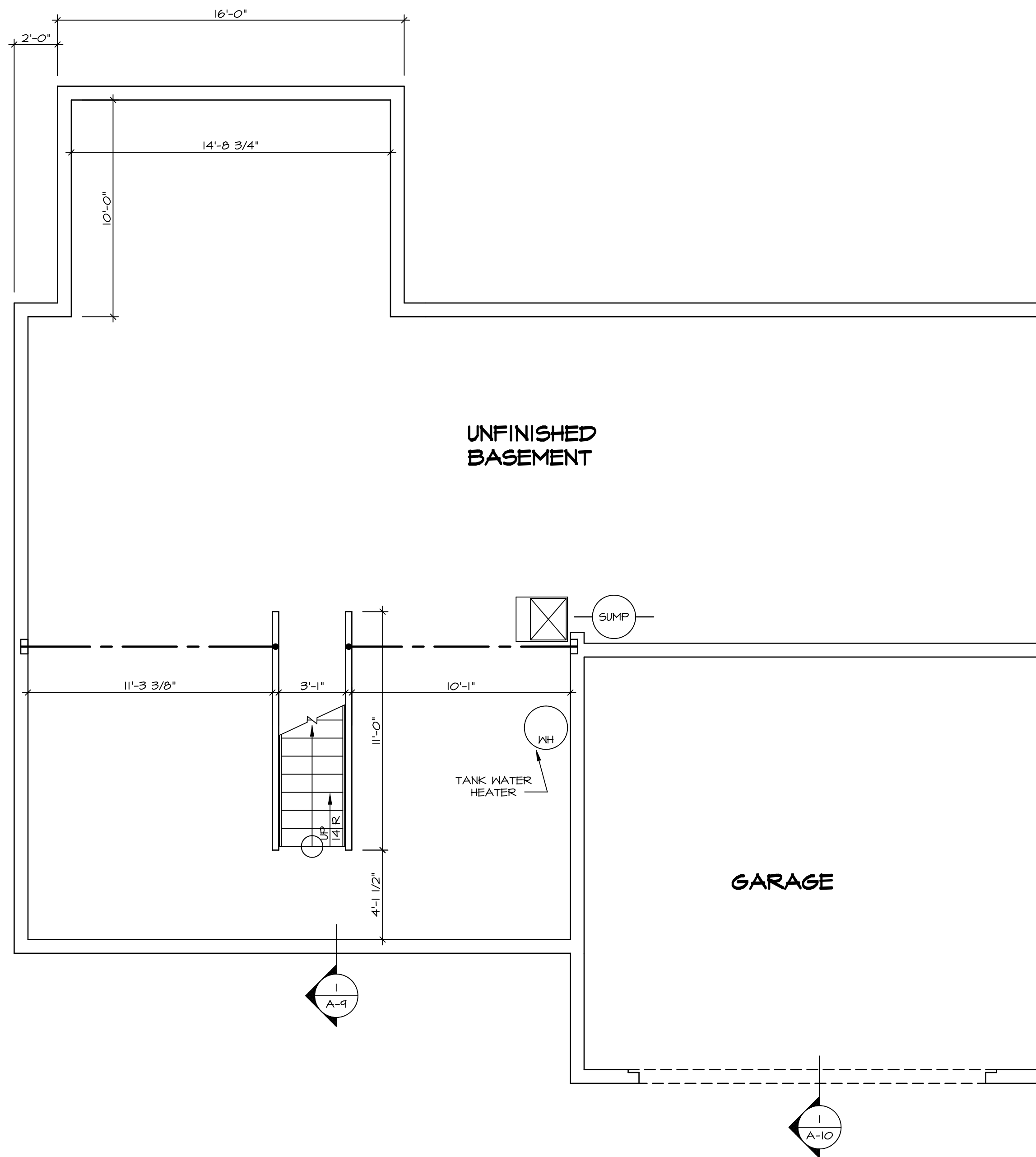


NVR, Inc. Suite 100
5285 Washburn Ave.
Frederick, MD 21703

© NVR, Inc. NVR, Inc. expressly reserves the right to modify or amend these plans without notice. These plans are not to be reproduced, changed or altered in any way without the prior written consent of NVR, Inc.

REV. NO. | DATE

REMARKS



LEGEND	
	BEARING WALL
	NON BEARING WALL
	INDICATES BEARING FROM POINT-LOAD ABOVE
	JACKS
	BEAM/HEADER
	PAD FOOTING
	STEEL COLUMN
	PORTAL FRAME
	JOIST/TRUSS
	LVL
	ENGINEERING PAGE NUMBER

SEE FC DETAILS FOR FRAMING CONNECTORS

- FLOOR PLAN NOTES**
- ALL HEADERS ARE (2) 2x6 w/ 2x4 WALLS OR (3) 2x6 w/ 2x6 WALLS, UNLESS OTHERWISE NOTED.
 - ALL HEADERS TO HAVE (1) 2x4 OR 2x6 JACK EACH END, UNLESS OTHERWISE NOTED.
 - ALL EXTERIOR WALLS TO BE 4" AND ALL INTERIOR WALLS TO BE 3 1/2", UNLESS OTHERWISE NOTED.
 - HATCHED AREAS INDICATE DROPPED CEILINGS. ALL DROPPED CEILINGS ARE 12" UNLESS OTHERWISE NOTED.
 - SEE "BRACED WALL PANEL DETAIL SHEET" FOR SPECIAL WALL FRAMING LOCATIONS AND HEADER SIZES, IF APPLICABLE.
 - SEE STANDARD DETAIL CATEGORY "IT" SHEET(S) FOR INTERIOR TRIM DETAILS.
 - SEE ARCHITECTURAL DETAIL SHEET "AD" FOR HOUSE SPECIFIC INTERIOR TRIM OPTION TABLE.
 - ALL WINDOWS HAVE 7'-0" 1/2" HEADER HEIGHT UNLESS OTHERWISE NOTED.
 - ALL CASED OPENINGS AT T-11", UNLESS OTHERWISE NOTED.

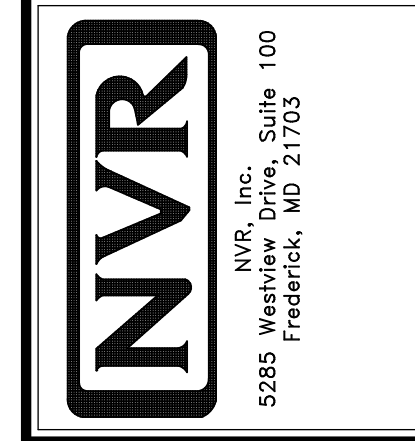
GYPSUM NOTES

AT GARAGE:
GYPSUM BOARD AT COMMON WALLS, CEILING, BEAM WRAPS AND SUPPORTS PER STANDARD DETAIL FA-1(b) FIRE ASSEMBLIES OR AS REQUIRED BY LOCAL CODE.

AT STAIRS:
1/2" GYPSUM BOARD AT UNDERSIDE OF STAIRS AND WALLS IN CLOSET

REV. NO.	DATE	REMARKS
1	08/05/16	TH - DRAWING ALIGNMENT

© NVR, Inc. expressly reserves the right to modify or amend these plans at any time without notice. These plans are not to be reproduced, changed, or altered in any way without the written consent of NVR, Inc.



SHEET NO.	MODEL	SET NO.	VERSION	DRAWN BY	DATE	OPTION
A-6	PALERMO	03	03			
	DRAWING TITLE					
	BASEMENT FLOOR PLAN					
	OPTION DESCRIPTION					

BASEMENT FLOOR PLAN
SCALE: 1/4" = 1'-0"

FIRST FLOOR JACK SCHEDULE				
IDENTIFIER	DESCRIPTION	OPTIONS	ENG. NUM.	REMARKS
J101	JACK - (2) 2X4 SPF STUD GRADE		1072	
J102	JACK - (2) 2X4 SPF STUD GRADE		1072	
J106	JACK - (2) 2X4 SPF STUD GRADE		1012	
J107	JACK - (2) 2X4 SPF STUD GRADE		1012	
J108	JACK - (2) 2X4 SPF STUD GRADE		1012	
J104	JACK - (2) 2X4 SPF STUD GRADE	6CB	1016	
J110	JACK - (3) 2X4 SPF STUD GRADE	6CB	1016	
J120	JACK - (4) 2X6 SPF STUD GRADE	MAA	1014	
J121	JACK - (3) 2X6 SPF STUD GRADE	MAA	1014	FIELD INSTALLED
J122	JACK - (3) 2X4 SPF STUD GRADE	SRM	1040	
J124	JACK - (3) 2X4 SP#1	ELD	1021	
J133	JACK - (2) 2X4 SPF STUD GRADE	6CBMAV	1044, 1131	CRIPPLES
J134	JACK - (2) 2X4 SPF STUD GRADE	6CBMAV	1044, 1131	CRIPPLES
J137	JACK - (3) 2X4 SPF STUD GRADE	EVP, MAV	1124	
J164	JACK - (3) 2X4 SPF STUD GRADE	EVP, MAV	1124	
J164	JACK - (3) 2X4 SP#1	ELD		

LVL PLY TO PLY FASTENING SCHEDULE:

1A - (2) FLY UP TO AND INCLUDING 11 7/8" TALL; FASTEN FLIES W/ (2) ROWS 16D NAILS AT 12" O.C.
 2A - (2) FLY 14" TO AND INCLUDING 18" TALL (INCLUSIVE); FASTEN FLIES W/ (3) ROWS 16D NAILS AT 12" O.C.
 3A - (2) FLY 20" TALL AND OVER; FASTEN FLIES W/ (4) ROWS 16D NAILS AT 12" O.C.
 4A - (3) FLY UP TO AND INCLUDING 11 7/8" TALL; FASTEN FLIES W/ (2) ROWS 16D NAILS AT 12" O.C. FROM EACH SIDE
 5A - (3) FLY 14" TO AND INCLUDING 18" TALL (INCLUSIVE); FASTEN FLIES W/ (3) ROWS 16D NAILS AT 12" O.C. FROM EACH SIDE
 6A - (3) FLY 20" TALL AND OVER; FASTEN FLIES W/ (4) ROWS 16D NAILS AT 12" O.C. FROM EACH SIDE

FIRST FLOOR BEAM/HEADER SCHEDULE					
IDENTIFIER	DESCRIPTION	LENGTH	OPTIONS	ENG. NUM.	REMARKS
B101-3	LVL - 16	14'-4 1/2"	MAA	1014	5A, FIELD INSTALL
B103	BEAM STEEL - W12X35	22'-3 1/2"	ELD, MAV	1128	
B104	BEAM STEEL - W12X14	22'-3 1/2"	ELD, EVP, MAV	1124	
B107-2	LVL - 14	17'-4"	MAV	1050, 1051	2A, FIELD INSTALL

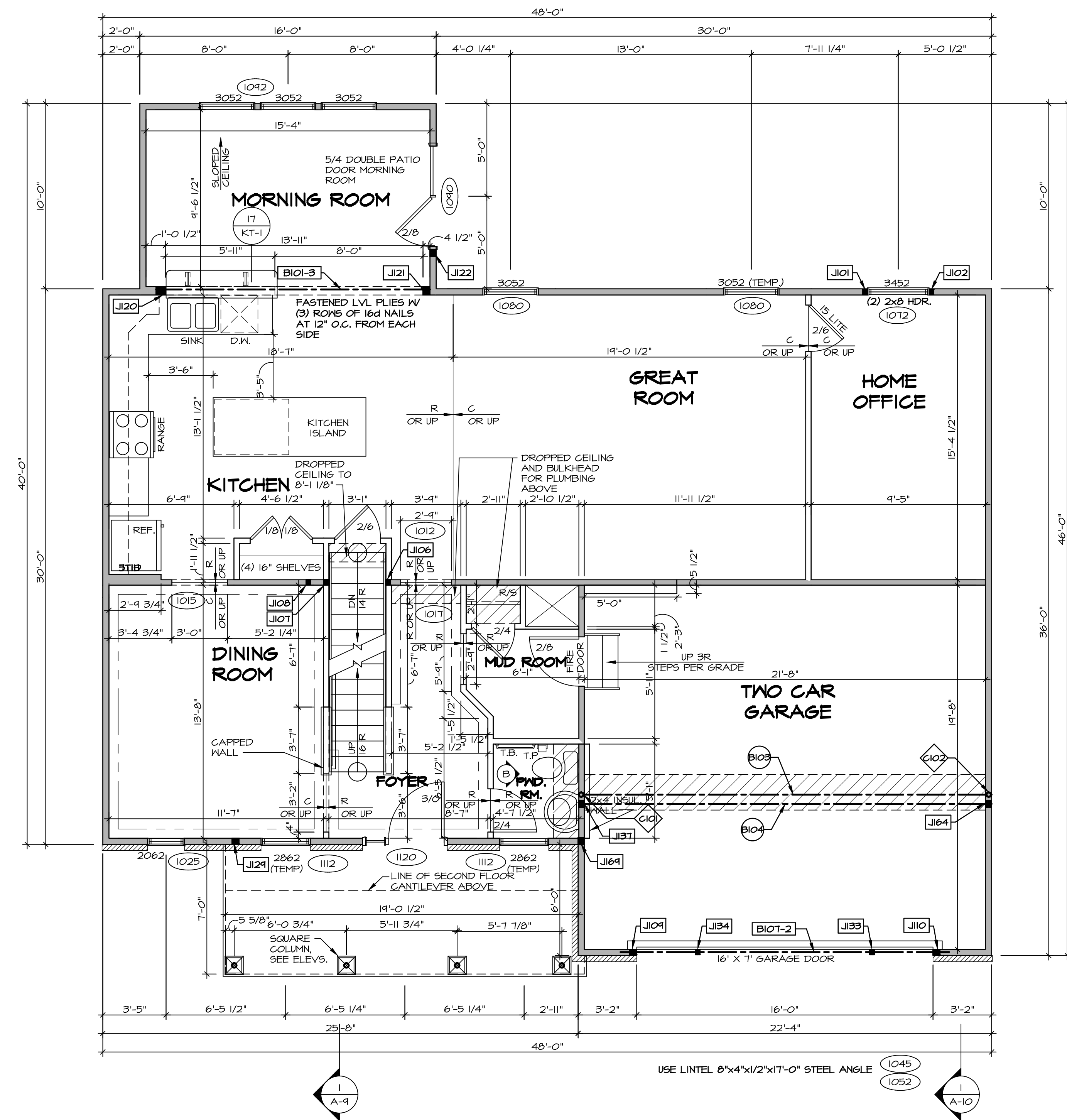
STEEL COLUMN SCHEDULE					
IDENTIFIER	STYLE	HEIGHT	OPTIONS	ENG. NUM.	REMARKS
C101	STANCHION - 3 IN SCHED 40	9'-0 11/16"	FBA	1057, 1133, 1128	
C102	STANCHION - 3 IN SCHED 40	9'-0 11/16"	FBA	1057, 1133, 1128	

LEGEND	
	BEARING WALL
	NON BEARING WALL
	INDICATES BEARING FROM POINT-LOAD ABOVE
	JACKS
	BEAM/HEADER
	PAD FOOTING
	STEEL COLUMN
	PORTAL FRAME
	JOIST/TRUSS
	LVL
	ENGINEERING PAGE NUMBER

SEE FC DETAILS FOR FRAMING CONNECTORS

- FLOOR PLAN NOTES**
- ALL HEADERS ARE (2) 2x6 W/ 2x4 WALLS OR (3) 2x6 W/ 2x6 WALLS, UNLESS OTHERWISE NOTED.
 - ALL HEADERS TO HAVE (1) 2x4 OR 2x6 JACK AND KING STUD EACH END, UNLESS OTHERWISE NOTED.
 - ALL EXTERIOR WALLS TO BE 4" W/ OSB OR 3 1/2" W/ T-PLY, ALL INTERIOR WALLS TO BE 3 1/2", UNLESS OTHERWISE NOTED.
 - HATCHED AREAS INDICATE DROPPED CEILINGS. ALL DROPPED CEILINGS ARE 12" UNLESS OTHERWISE NOTED.
 - SEE 'BRACED WALL PANEL DETAIL SHEET' FOR SPECIAL WALL FRAMING LOCATIONS AND HEADER SIZES, IF APPLICABLE.
 - SEE STANDARD DETAIL CATEGORY 'IT' SHEET(S) FOR INTERIOR TRIM DETAILS.
 - SEE ARCHITECTURAL DETAIL SHEET 'AD' FOR HOUSE SPECIFIC INTERIOR TRIM OPTION TABLE.
 - ALL WINDOWS HAVE 7'-0 1/2" HEADER HEIGHT UNLESS OTHERWISE NOTED.
 - ALL HEADERS IN NON-BEARING WALLS SHALL BE A SINGLE FLAT 2X4 OR 2X6 ATTACHED TO CRIPPLES ABOVE, UNLESS OTHERWISE NOTED.

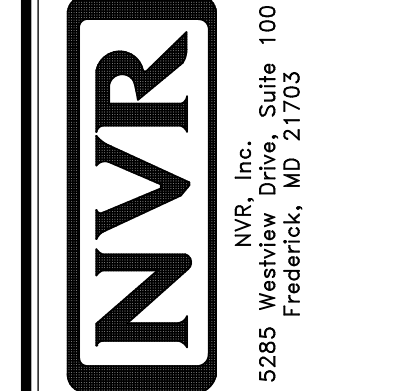
- GYPSUM NOTES**
- AT GARAGE:
 GYPSUM BOARD AT COMMON WALLS, CEILING, BEAM WRAPS AND SUPPORTS PER STANDARD DETAIL FA-1(b) FIRE ASSEMBLIES OR AS REQUIRED BY LOCAL CODE.
- AT STAIRS:
 1/2" GYPSUM BOARD AT UNDERSIDE OF STAIRS AND WALLS IN CLOSET



FIRST FLOOR PLAN
 SCALE: 1/4" = 1'-0"

REV. NO.	DATE	REMARKS
1	08/04/16	TH - DRAWING ALIGNMENT
2	07/12/17	SLS - T-PLY CONVERSION PROJECT

© NVR, Inc. All rights reserved. The user expressly reserves the right to modify these plans at any time without notice. These plans are not to be reproduced, changed or altered in any way without the written consent of NVR, Inc.

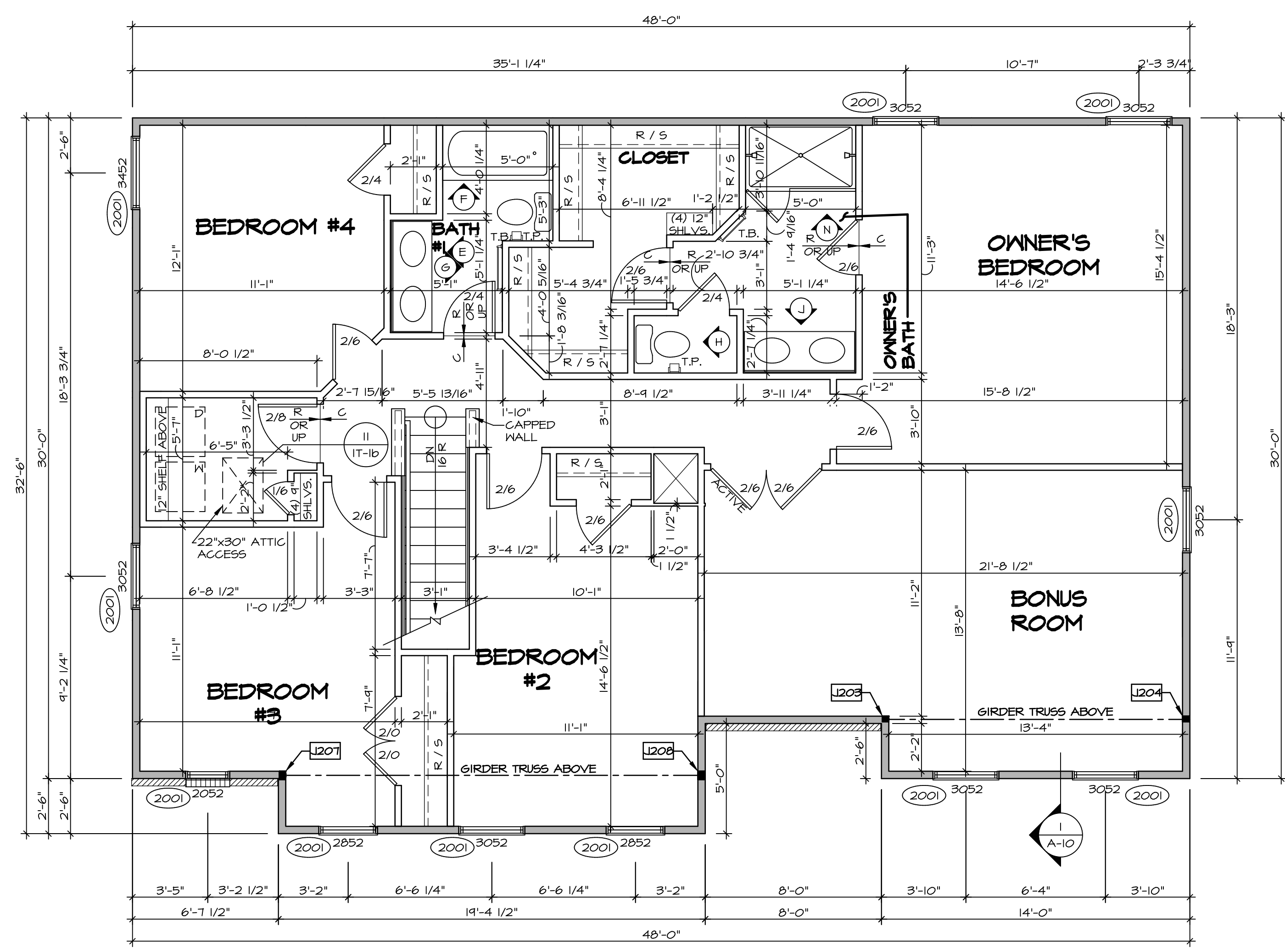


MODEL	SET NO. PALOO
DRAWING TITLE	VERSION 03
DRAWN BY	DATE:
DRAWING DESCRIPTION	OPTION
SHEET NO.	A-7
	53

SECOND FLOOR JACK SCHEDULE				
IDENTIFIER	DESCRIPTION	OPTIONS	ENG. NUM.	REMARKS
J203	JACK - (2) 2X4 SPM	MAY	2011	EXTEND JACKS THROUGH TOP PLATE
J204	JACK - (2) 2X4 SPM	MAY	2011	EXTEND JACKS THROUGH TOP PLATE
J207	JACK - (3) 2X4 SPM	ELD	2011	EXTEND JACKS THROUGH TOP PLATE
J208	JACK - (3) 2X4 SPM	ELD	2011	EXTEND JACKS THROUGH TOP PLATE

LEGEND	
	BEARING WALL
	NON BEARING WALL
	INDICATES BEARING FROM POINT-LOAD ABOVE
	JACKS
	BEAM/HEADER
	PAD FOOTING
	STEEL COLUMN
	PORTAL FRAME
	JOIST/TRUSS
	LVL
	ENGINEERING PAGE NUMBER

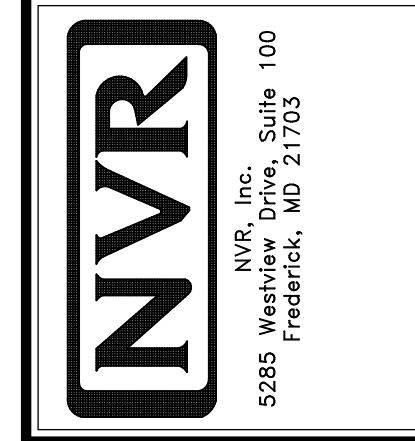
- FLOOR PLAN NOTES**
- ALL HEADERS ARE (2) 2x6 w/ 2x4 WALLS OR (3) 2x6 w/ 2x6 WALLS, UNLESS OTHERWISE NOTED.
 - ALL HEADERS TO HAVE (1) 2x4 OR 2x6 JACK AND KING STUD EACH END, UNLESS OTHERWISE NOTED.
 - ALL EXTERIOR WALLS TO BE 4" w/ OSB OR 3 1/2" w/ T-PLY, ALL INTERIOR WALLS TO BE 3 1/2", UNLESS OTHERWISE NOTED.
 - HATCHED AREAS INDICATE DROPPED CEILINGS. ALL DROPPED CEILINGS ARE 12' UNLESS OTHERWISE NOTED.
 - SEE "BRACED WALL PANEL DETAIL SHEET" FOR SPECIAL WALL FRAMING LOCATIONS AND HEADER SIZES, IF APPLICABLE.
 - SEE STANDARD DETAIL CATEGORY "IT" SHEET(S) FOR INTERIOR TRIM DETAILS.
 - SEE ARCHITECTURAL DETAIL SHEET "AD" FOR HOUSE SPECIFIC INTERIOR TRIM OPTION TABLE.
 - ALL WINDOWS HAVE 7'-0 1/2" HEADER HEIGHT UNLESS OTHERWISE NOTED.
 - ALL HEADERS IN NON-BEARING WALLS SHALL BE A SINGLE FLAT 2x4 OR 2x6 ATTACHED TO GRIPPLES ABOVE, UNLESS OTHERWISE NOTED.



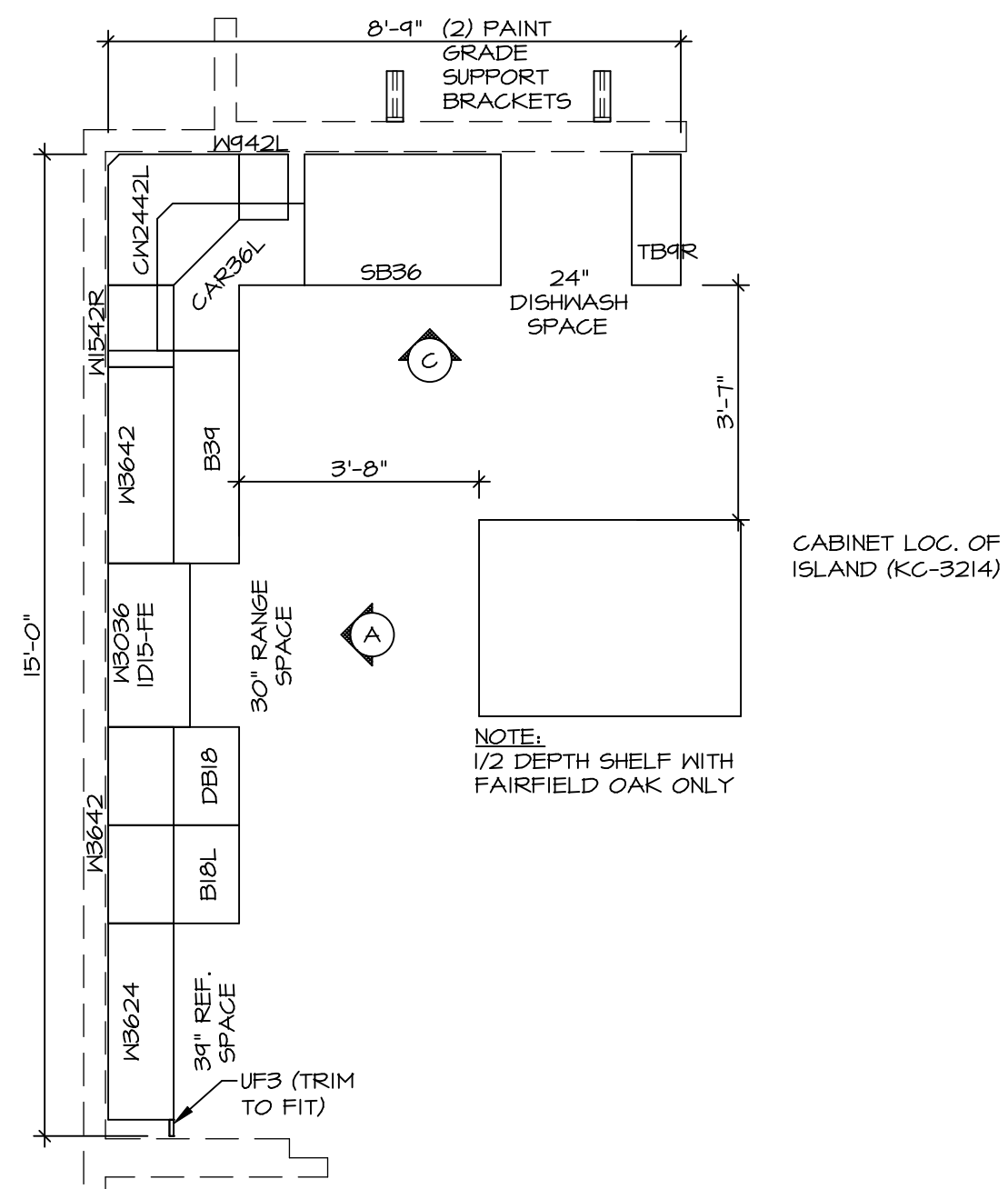
SECOND FLOOR PLAN
SCALE: 1/4" = 1'-0"

REV. NO.	DATE	REMARKS
1	08/04/16	TH - DRAWING ALIGNMENT
2	07/12/17	SLS - T-PLY CONVERSION PROJECT

© NVR, Inc. expressly reserves the right to modify or amend these plans at any time without notice. These plans are not to be reproduced, changed or copied in any way without the written consent of NVR, Inc.

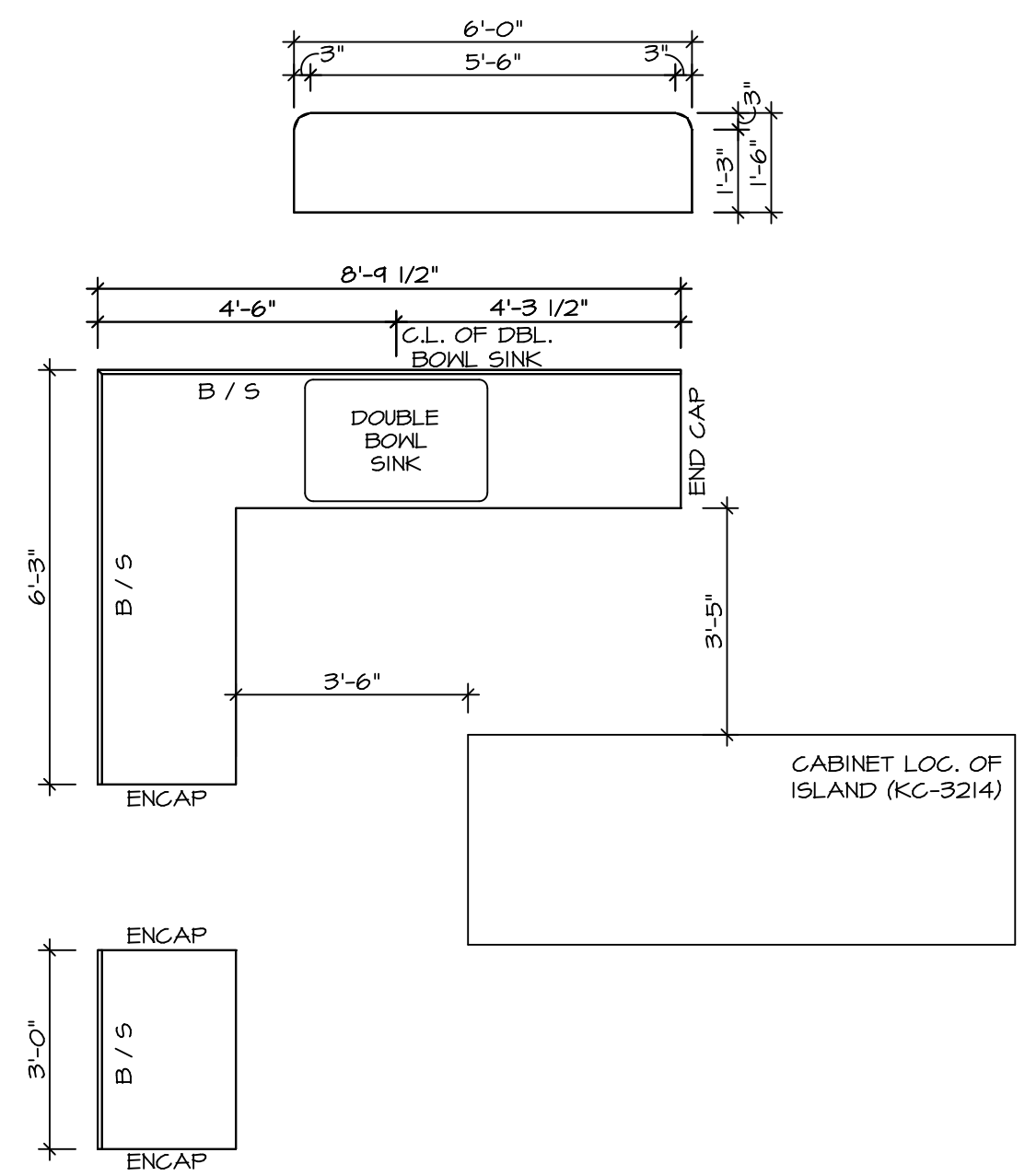


SHEET NO.	A-8	60
MODEL	PALERMO	
VERSION	03	
DRAWN BY		
DATE:		
OPTION		
SET NO.	PALOO	
DRAWING TITLE	SECOND FLOOR PLAN	
OPTION DESCRIPTION		



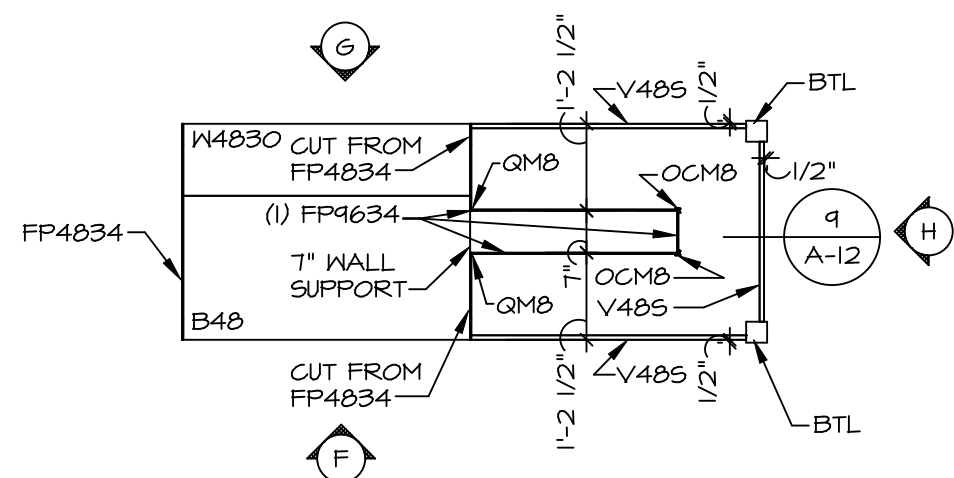
**KITCHEN CABINET
PLAN-KC-2862**

3 A-12 SCALE: 3/8" = 1'-0" STANDARD KITCHEN MORNING ROOM



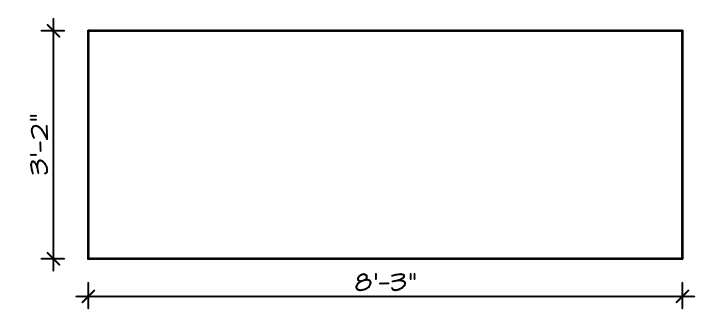
**KITCHEN COUNTERTOP
PLAN-KT-2862**

4 A-12 SCALE: 3/8" = 1'-0" STANDARD KITCHEN MORNING ROOM



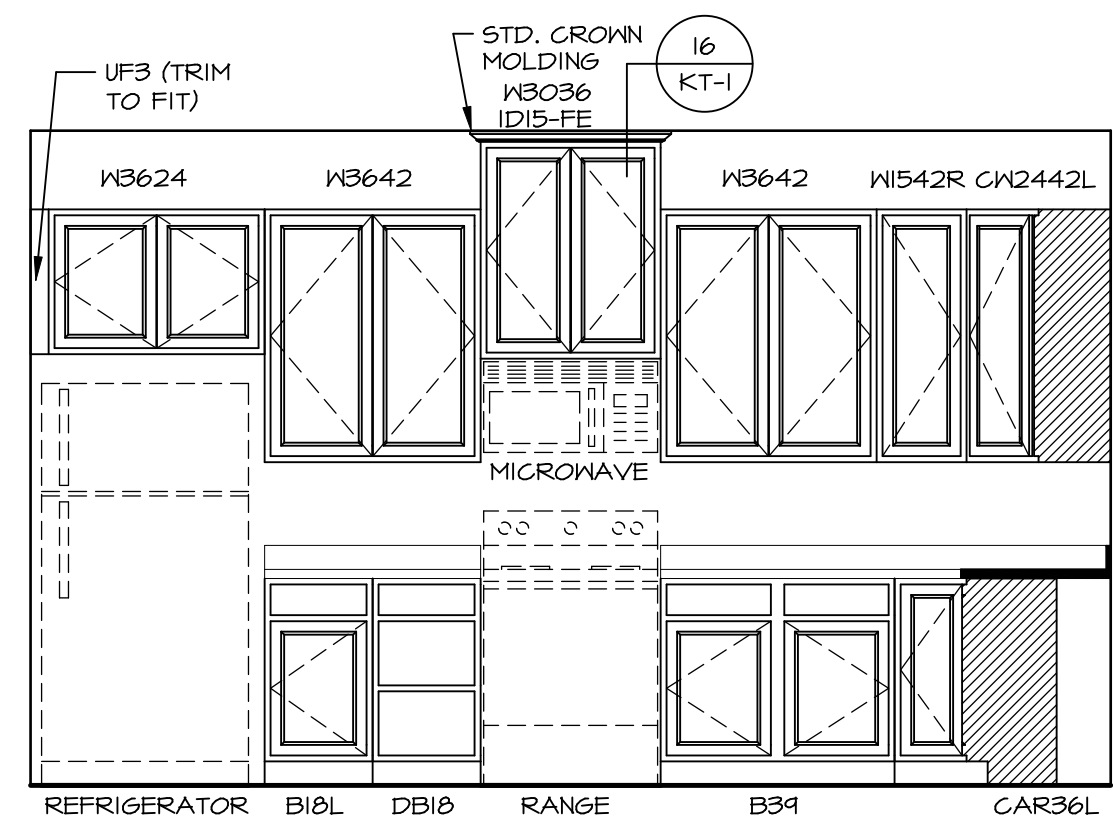
**KITCHEN CABINET
PLAN-KC-3214**

7 A-12 SCALE: 3/8" = 1'-0" GOURMET ISLAND



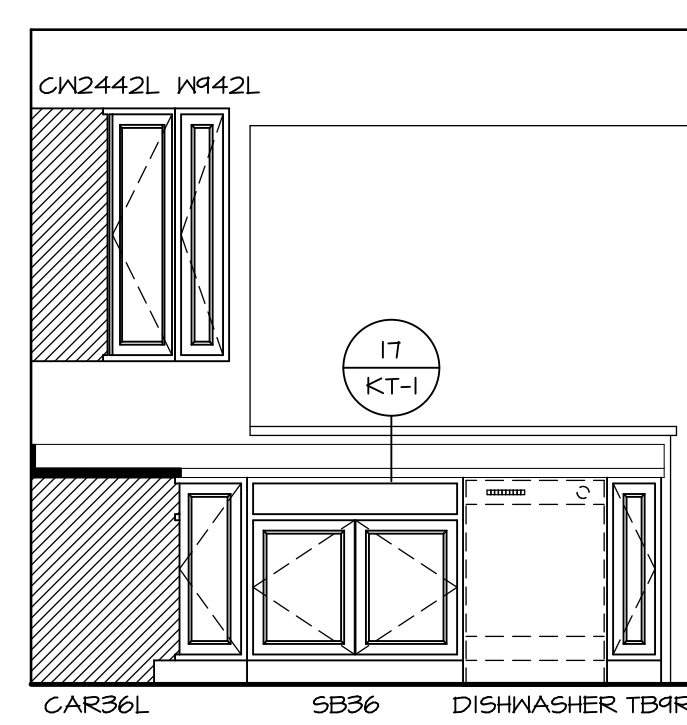
**KITCHEN COUNTERTOP
PLAN-KT-3214**

6 A-12 SCALE: 3/8" = 1'-0" GOURMET ISLAND



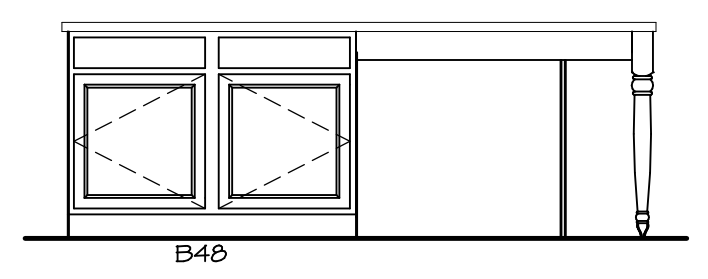
A KITCHEN ELEVATION

SCALE: 3/8" = 1'-0"



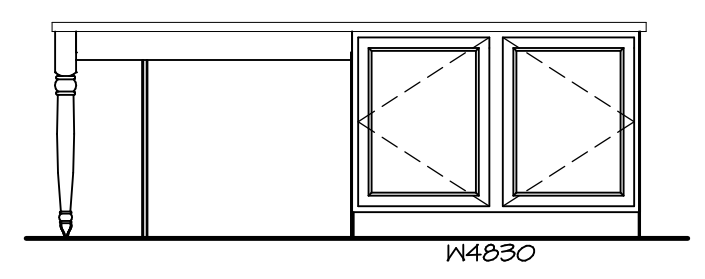
C KITCHEN ELEVATION

SCALE: 3/8" = 1'-0"



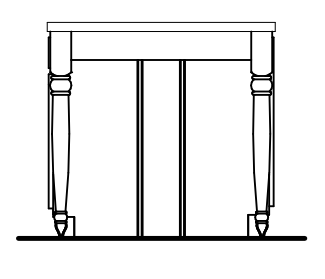
F KITCHEN ELEVATION

SCALE: 3/8" = 1'-0"



G KITCHEN ELEVATION

SCALE: 3/8" = 1'-0"



H KITCHEN ELEVATION

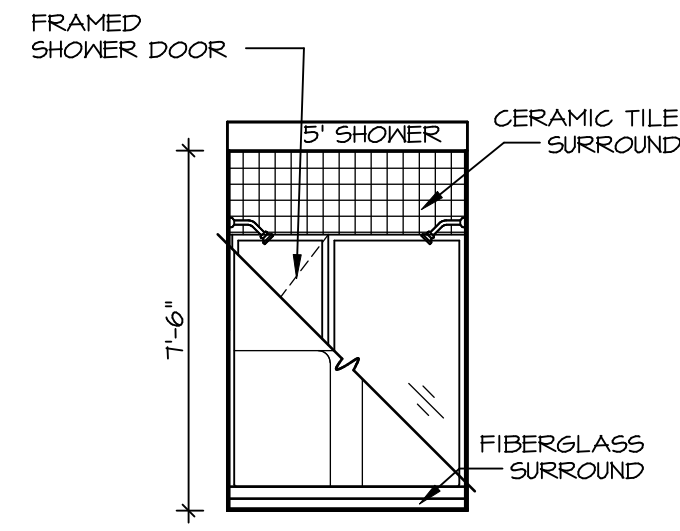
SCALE: 3/8" = 1'-0"

SHEET NO.	A-12	TOTAL SHEETS	70
MODEL	PALERMO	VERSION	03
DRAWING TITLE		DATE	
OPTION DESCRIPTION		OPTION	

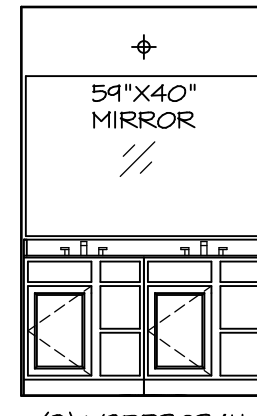


NVR, Inc. expressly reserves the right to modify or change any of these plans without notice. These plans are not to be reproduced, changed or altered in any way without the written consent of NVR, Inc.

REV. NO.	DATE	REMARKS

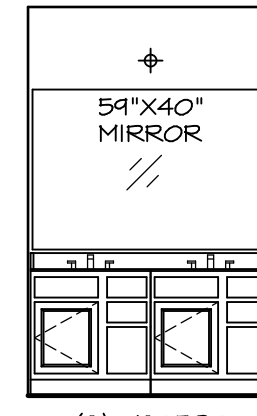


N OWNER'S BATH
SCALE: 1/4" = 1'-0"



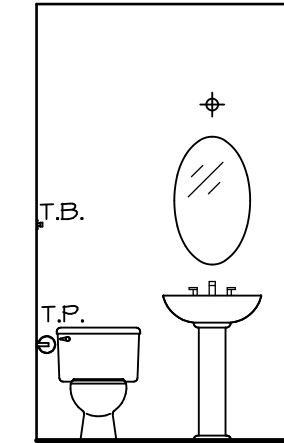
(2) V5DB3034H

J OWNER'S BATH
SCALE: 1/4" = 1'-0"



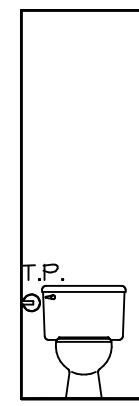
(2) V5DB30

E BATH #1
SCALE: 1/4" = 1'-0"

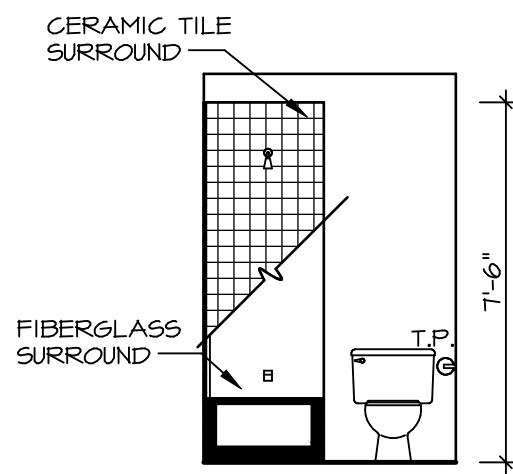


PEDESTAL SINK WITH OVAL MIRROR

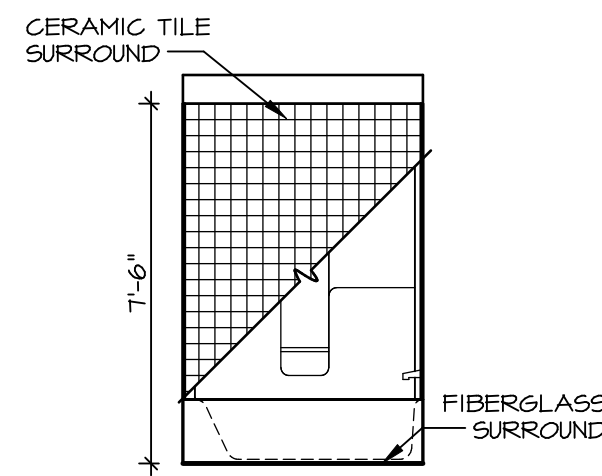
B POWDER ROOM
SCALE: 1/4" = 1'-0"



H OWNER'S BATH
SCALE: 1/4" = 1'-0"



G BATH #1
SCALE: 1/4" = 1'-0"



F BATH #1
SCALE: 1/4" = 1'-0"

NOTES:

1. TEMPERED GLASS SHOWER ENCLOSURE WITH SWING DOOR OR OPTIONAL SLIDING DOOR BY DIVISION
2. TUB ACCESS PANELS PROVIDED AS NEEDED, ALL MATERIALS BY DIVISION
3. REFER TO SHEET IT-2 FOR TUB AND SHOWER DETAILS.
4. ALL V5DB24-42 DRAWERS TO BE SET ON RIGHT HAND.
5. BATH ELEVATIONS ARE SHOWN PER PLAN.

SHEET NO. A-13	MODEL PALERMO	SET NO. PALOO	REVISION 03	DATE 08/07/19	REV. NO. 1	DATE 08/07/19	REMARKS
	DRAWING TITLE BATH ELEVATIONS	DRAWN BY PALOO	OPTION				
72							

NVR
NVR, Inc. Suite 100
5285 Washington Blvd.
Frederick, MD 21703