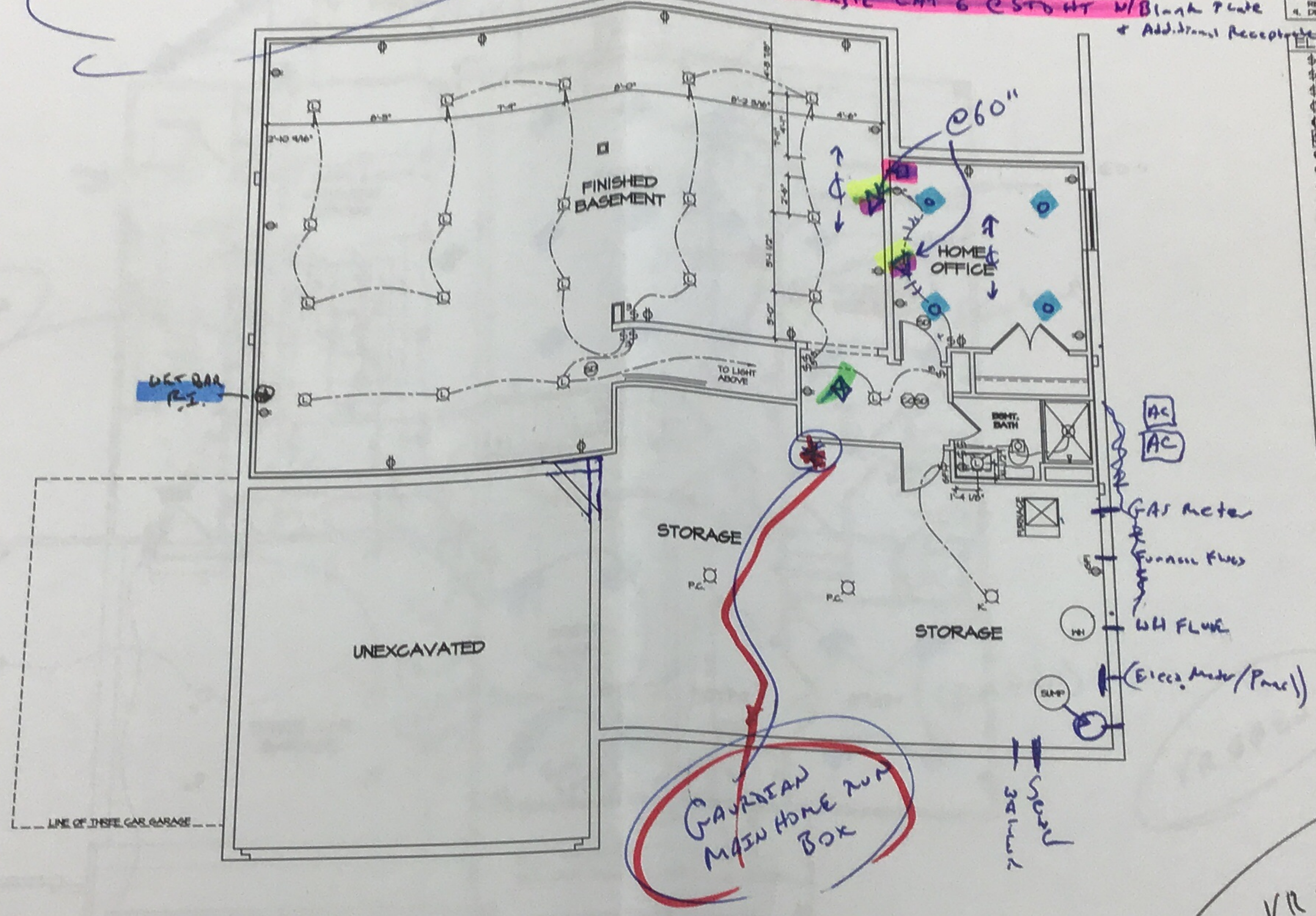


* GAURDEAN NOTE -
 No Termination E-strings
 - Blank Plate w/ 36" of wire
 coiled @ each end

- ◇ Single CAT 6 Collor, Meter w/ Blank Plate
- (4) Additional LED LTS (Replaces 8 Recept)
- △ (2) Two CAT 6 Home Run Lines / 3BL GANG Recept w/ Blank Plate (Each) (4 outlets)
- (3) Single CAT 6 @ STD HT w/ Blank Plate + Additional Recept

NOTES:
 1. ALL ELECTRICAL PLANS ARE SCHEMATIC ONLY AND NOT INTENDED AS ENGINEERED DRAWINGS. THESE PLANS REPRESENT THE DESIGN INTENT FOR SWITCH AND RECEPTACLE LOCATIONS. ADDITIONAL INFORMATION, IF REQUIRED, SHALL BE PROVIDED BY A LICENSED ELECTRICAL SUBCONTRACTOR OR ENGINEER.
 2. ALL FITTERS, GARAGES, UNFINISHED BASEMENT, ATTIC AND ALL OUTDOOR RECEPTABLES ARE TO BE GFI PROTECTED.
 3. PROVIDE DUPLEX RECEPTACLE ON DEDICATED CIRCUIT FOR DISHWASHER IN CABINET UNDER THE SINK.
 4. PROVIDE DUPLEX RECEPTACLE FOR GARAGEBARGE DOWN IN CABINET UNDER THE SINK.
 5. PROVIDE GFI KEYLESS LIGHT IN ATTIC SPACE.
 6. PROVIDE SWITCH W/ KEYLESS LIGHT AND GFI RECEPTACLE WHEN HVAC EQUIPMENT IS IN ATTIC SPACE.
 7. PROVIDE GROUND-FULT CIRCUIT INTERRUPTERS TO ALL ROOMS EXCEPT BATH AND EXTERIOR RECEPTABLES.
 8. WASHER ON LEFT, DRYER ON RIGHT (PER PLAN OR REVERSED).
 9. DRYER RECEPTACLE 10 W 6AS OR 220 W ELECTRIC.

ELECTRICAL LEGEND	
⊕	SINGLE POLE SWITCH
⊕⊕	THREE WAY SWITCH
⊕⊕⊕	FOUR WAY SWITCH
⊕⊕	DUPLEX RECEPTACLE
⊕⊕⊕	DUPLEX RECEPTACLE - BOTTOM HALF SWITCHED
⊕⊕	DUPLEX RECEPTACLE - FLOOR MOUNTED
⊕	RECEPTACLE - 220V
⊕	DUPLEX RECEPTACLE - USB
⊕	DUPLEX RECEPTACLE - GROUND FAULT INTERRUPT
⊕	DUPLEX RECEPTACLE - HEATHER PROOF AND GROUND FAULT INTERRUPT
⊕	DUPLEX RECEPTACLE - MICROVAIVE
⊕	SMOKE DETECTOR - WIRED IN SERIES
⊕	CARBON MONOXIDE DETECTOR
⊕	EXHAUST FAN MOTOR
⊕	EXHAUST FAN MOTOR WITH LIGHT
⊕	TELEVISION RECEPTACLE
⊕	TELEPHONE RECEPTACLE
⊕	DOOR CHIME
⊕	LIGHT FIXTURE - HALL MOUNTED
⊕	LIGHT FIXTURE - CEILING MOUNTED
⊕	LIGHT FIXTURE - RECESSED
⊕	LIGHT FIXTURE - RECESSED HEATHER PROOF
⊕	LIGHT FIXTURE - CEILING MOUNTED LED
⊕	LIGHT FIXTURE - HANGING
⊕	LIGHT FIXTURE - PENDANT
⊕	LIGHT FIXTURE - FLUORESCENT
⊕	LIGHT FIXTURE - UNDER CABINET LIGHT
⊕	"S" = SMALL "M" = MEDIUM "L" = LARGE
⊕	FULLCHAIN LAMPHOLDER
⊕	KEYLESS LAMPHOLDER



BASEMENT ELECTRICAL PLAN
 SCALE: 1/4" = 1'-0"

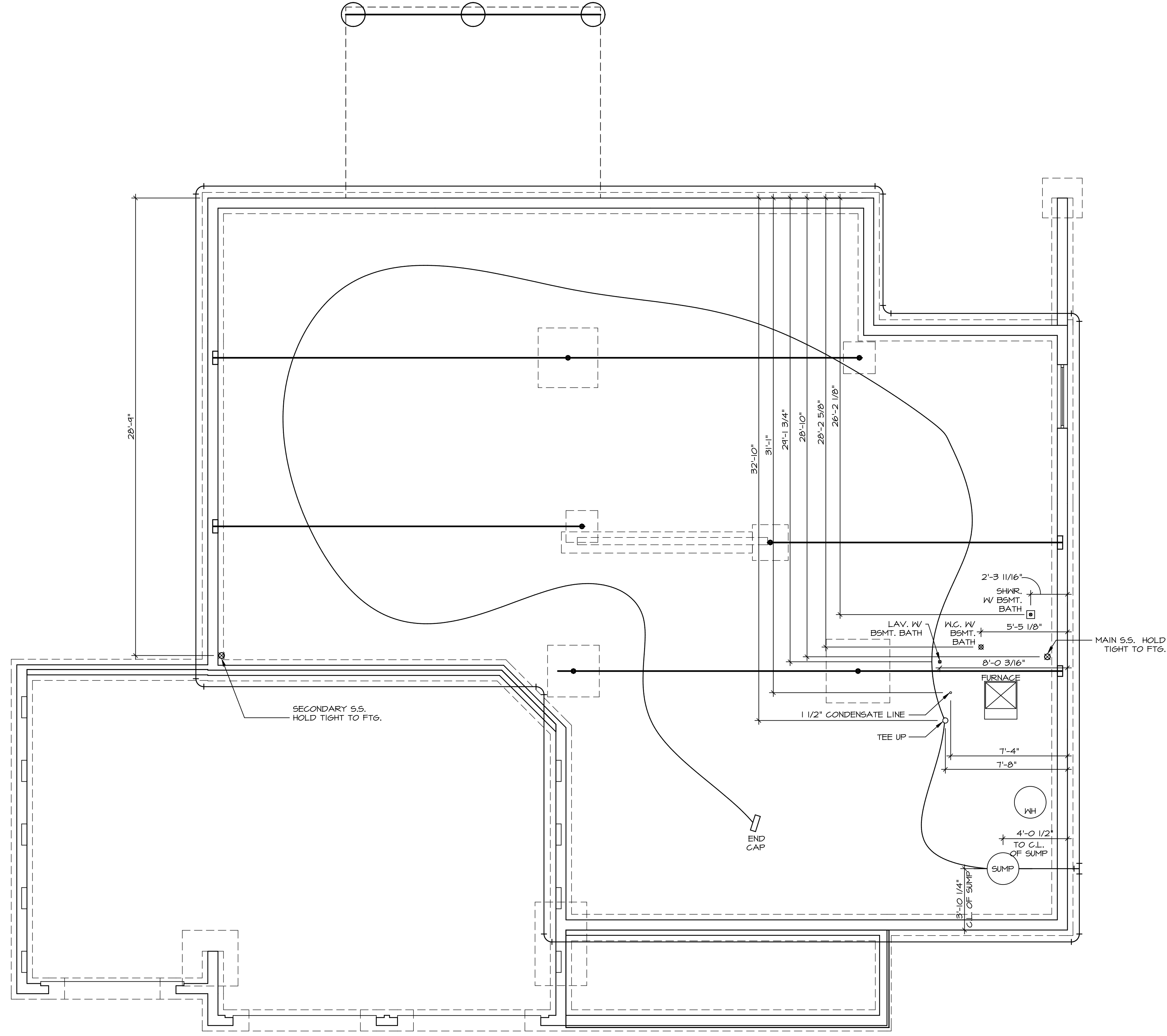
VR 49 82
 + [Signature]
 + Carol Bashish
 11-11-19

DATE: _____ TIME: _____
 CITY: _____
 STREET ADDRESS: _____
 CITY: _____

NVR
 NVR, Inc.
 5385 Washington Blvd 100
 Frederick, MD 21703

SET NO. V9600
 VERSION 01
 DRAWN BY: _____
 DATE: _____
 OPTION: _____

MODEL: **VERSAILLES**
 DRAWING TITLE: **BASEMENT ELECTRICAL PLAN**
 SHEET NO. **E-1**
 OPTION DESCRIPTION: _____



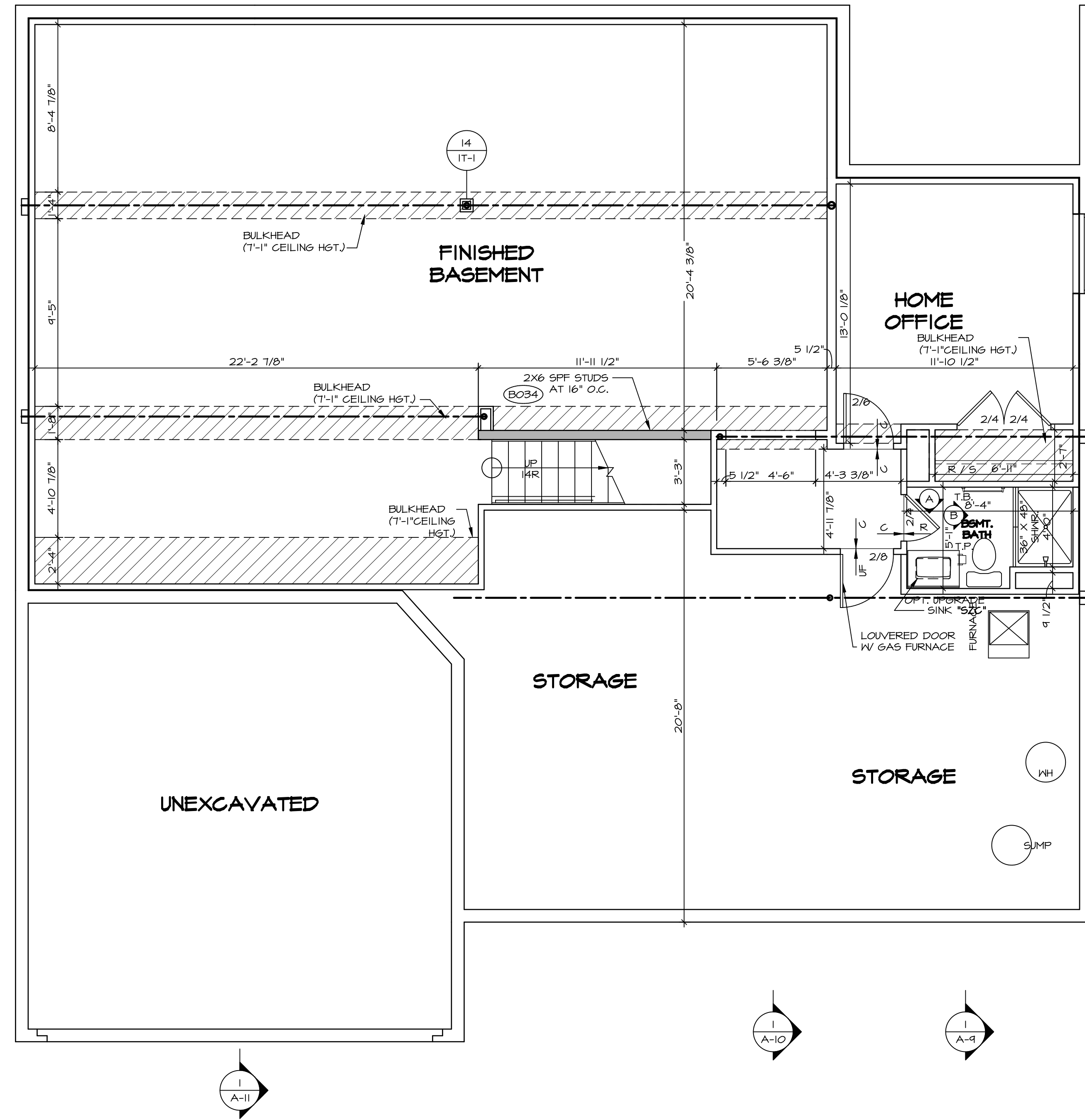
1
A-5 **PLUMBING PLAN**
SCALE: 1/4" = 1'-0"

SHEET NO.	MODEL	SET NO.	VERSION
A-5	VERSAILLES	YRS00	01
	DRAWING TITLE	DRAWN BY	
	PLUMBING PLAN	DATE:	OPTION
	OPTION DESCRIPTION		

NVR
NVR, Inc.
Architectural Services
5285 Westover Hills, Suite 100
Frederick, MD 21703

NVR, Inc., owner, expressly reserves its copyright in these plans. These plans are not to be reproduced, changed, copied, or otherwise used in any way without the prior written consent of NVR, Inc.

REV. NO.	DATE	REMARKS



BASEMENT FLOOR PLAN
 SCALE: 1/4" = 1'-0"

LEGEND	
	BEARING WALL
	NON BEARING WALL
	INDICATES BEARING FROM POINT-LOAD ABOVE
	JACKS
	BEAM/HEADER
	PAD FOOTING
	STEEL COLUMN
	PORTAL FRAME
	JOIST/TRUSS
	LVL
	ENGINEERING PAGE NUMBER

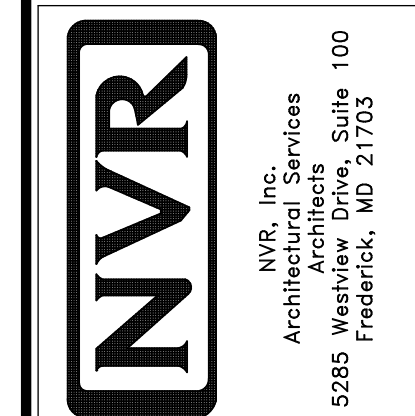
SEE FC DETAILS FOR FRAMING CONNECTORS

- FLOOR PLAN NOTES**
- ALL HEADERS ARE (2) 2x6 w/ 2x4 WALLS OR (3) 2x6 w/ 2x6 WALLS, UNLESS OTHERWISE NOTED.
 - ALL HEADERS TO HAVE (1) 2x4 OR 2x6 JACK EACH END, UNLESS OTHERWISE NOTED.
 - ALL EXTERIOR WALLS TO BE 4" AND ALL INTERIOR WALLS TO BE 3 1/2", UNLESS OTHERWISE NOTED.
 - HATCHED AREAS INDICATE DROPPED CEILINGS. ALL DROPPED CEILINGS ARE 12" UNLESS OTHERWISE NOTED.
 - SEE "BRACED WALL PANEL DETAIL SHEET" FOR SPECIAL WALL FRAMING LOCATIONS AND HEADER SIZES, IF APPLICABLE.
 - SEE STANDARD DETAIL CATEGORY "IT" SHEET(S) FOR INTERIOR TRIM DETAILS.
 - SEE ARCHITECTURAL DETAIL SHEET "AD" FOR HOUSE SPECIFIC INTERIOR TRIM OPTION TABLE.
 - ALL WINDOWS HAVE 7'-0 1/2" HEADER HEIGHT UNLESS OTHERWISE NOTED.

- GYPSUM NOTES**
- AT GARAGE:
 GYPSUM BOARD AT COMMON WALLS, CEILING, BEAM WRAPS AND SUPPORTS PER STANDARD DETAIL FA-10(b) FIRE ASSEMBLIES OR AS REQUIRED BY LOCAL CODE.
- AT STAIRS:
 1/2" GYPSUM BOARD AT UNDERSIDE OF STAIRS AND WALLS IN CLOSET

REV. NO.	DATE	REMARKS
1	08/09/16	TH - DRAWING ALIGNMENT

NVR, Inc., owner, expressly reserves its copyright in these plans. These plans are not to be reproduced, changed, copied, or otherwise used in any way without the written consent of NVR, Inc.



SHEET NO.	MODEL	SET NO.	VERSION	DATE	OPTION
A-6	VERSAILLES	YRS00_01	01		
	DRAWING TITLE	DRAWN BY			
	BASEMENT FLOOR PLAN				
	OPTION DESCRIPTION				

LVL PLY TO PLY FASTENING SCHEDULE:

- 1.A - (2) PLY UP TO AND INCLUDING 11 7/8" TALL; FASTEN PLYS W/ (2) ROWS 16D NAILS AT 12" O.C.
- 2.A - (2) PLY 14" TO AND 18" TALL (INCLUSIVE); FASTEN PLYS W/ (3) ROWS 16D NAILS AT 12" O.C.
- 3.A - (2) PLY 20" TALL AND OVER; FASTEN PLYS W/ (4) ROWS 16D NAILS AT 12" O.C.
- 4.A - (3) PLY UP TO AND INCLUDING 11 7/8" TALL; FASTEN PLYS W/ (2) ROWS 16D NAILS AT 12" O.C. FROM EACH SIDE
- 5.A - (3) PLY 14" TO AND 18" TALL (INCLUSIVE); FASTEN PLYS W/ (3) ROWS 16D NAILS AT 12" O.C. FROM EACH SIDE
- 6.A - (3) PLY 20" TALL AND OVER; FASTEN PLYS W/ (4) ROWS 16D NAILS AT 12" O.C. FROM EACH SIDE

FIRST FLOOR BEAM/HEADER SCHEDULE

IDENTIFIER	DESCRIPTION	LENGTH	OPTIONS	ENG. NUM.	REMARKS
B104	BEAM STEEL - W12X35 W 2X6 SILL	22'-3 3/4"	ELC,ELL, 5XS, SRI	1041	
B111	BEAM STEEL - W8X21	30'-0"		1033	
B12-3	LVL - 2x12-04	17'-11 1/2"		1024	4.A, FIELD INSTALLED
B111	INT HEADER - 2X12 - 2 PLY	8'-6"	GCF	1031	FIELD INSTALLED
PF101-2	LVL - 11-04	22'-2"	GCB, GCF, FBA, FCA	1074	1.A, FIELD INSTALLED
PF105-3	LVL - 16	18'-5"		1047/1049	5.A, FIELD INSTALLED

FIRST FLOOR JACK SCHEDULE

IDENTIFIER	DESCRIPTION	OPTIONS	ENG. NUM.	REMARKS
J111	JACK - (2) 2X4 SFF STUD GRADE	GCF	1087	
J113	JACK - (3) 2X4 SFF#1	GCF,ELC,ELL	1037	
J114	JACK - (2) 2X4 SFF STUD GRADE		1045	
J115	JACK - (4) 2X4 SFF STUD GRADE	ELAVEL/VELK	1007	
J116	JACK - (4) 2X4 SFF STUD GRADE	ELC,ELL	1021	
J118	JACK - (6) 2X4 SFF#1	ELC,ELL	1015	
J114	JACK - (3) 2X6 SFF STUD GRADE		1114	
J120	JACK - 2X6 SFF STUD GRADE		1114	
J121	JACK - (4) 2X6 SFF STUD GRADE		1033	
J122	JACK - (4) 2X4 SFF STUD GRADE		1033	
J123	JACK - (2) 2X4 SFF STUD GRADE		1013	
J130	JACK - (6) 2X4 SFF#1	ELC,ELL	2017	
J131	JACK - (4) 2X4 SFF#1	ELC,ELL	2015	
J134	JACK - 2X4 SFF STUD GRADE	GCB,GCF	1074	
J140	JACK - (2) 2X4 SFF STUD GRADE		1070	
J141	JACK - (3) 2X6 SFF STUD GRADE		1105	
J142	JACK - 2X4 SFF STUD GRADE		1111	
J146	JACK - (2) 2X4 SFF STUD GRADE		1127	
J147	JACK - (2) 2X4 SFF STUD GRADE		1127	

STEEL COLUMN SCHEDULE

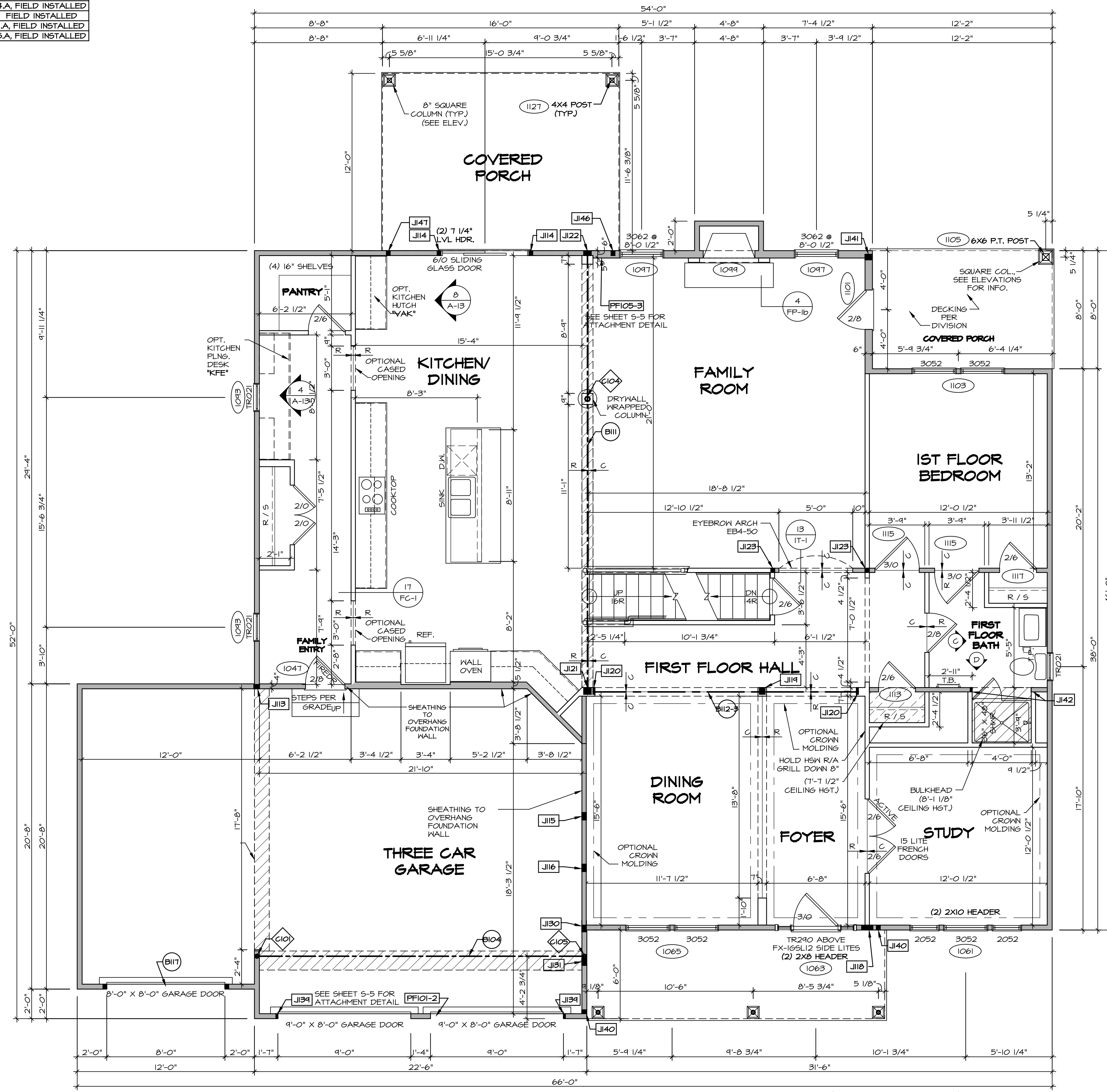
IDENTIFIER	STYLE	HEIGHT	OPTIONS	ENG. NUM.	REMARKS
C101	STANCHION - 3 IN SCHED 40	4'-0 1/8"	ELC,ELL,5XS,SRI	1041	
C104	STANCHION - 4 IN DIA 11GA ADJ	8'-3 3/8"		1033	
C105	STANCHION - 3 IN SCHED 40	18'-10 5/8"	ELC,ELL,5XS,SRI	1041	

FLOOR PLAN NOTES

- ALL HEADERS ARE (2) 2x6 W/ 2x4 WALLS OR (3) 2x6 W/ 2x6 WALLS, UNLESS OTHERWISE NOTED.
- ALL HEADERS TO HAVE (1) 2x4 OR 2x6 JACK AND KING STUD EACH END, UNLESS OTHERWISE NOTED.
- ALL EXTERIOR WALLS TO BE 4" W/ OSB OR 3 1/2" W/ T-PLY; ALL INTERIOR WALLS TO BE 3 1/2", UNLESS OTHERWISE NOTED.
- HATCHED AREAS INDICATE DROPPED CEILING. ALL DROPPED CEILING ARE 12" UNLESS OTHERWISE NOTED.
- SEE "BRACED WALL PANEL DETAIL SHEET" FOR SPECIAL WALL FRAMING LOCATIONS AND HEADER SIZES, IF APPLICABLE.
- SEE STANDARD DETAIL CATEGORY "IT" SHEET(S) FOR INTERIOR TRIM DETAILS.
- SEE ARCHITECTURAL DETAIL SHEET "AD" FOR HOUSE SPECIFIC INTERIOR TRIM OPTION TABLE.
- ALL WINDOWS HAVE 7'-0 1/2" HEADER HEIGHT UNLESS OTHERWISE NOTED.
- ALL HEADERS IN NON-BEARING WALLS SHALL BE A SINGLE FLAT 2X4 OR 2X6 ATTACHED TO CRIPPLES ABOVE, UNLESS OTHERWISE NOTED.

GYPSUM NOTES

- AT GARAGE:**
GYPSUM BOARD AT COMMON WALLS, CEILING, BEAM WRAPS AND SUPPORTS PER STANDARD DETAIL FA-1(b) FIRE ASSEMBLIES OR AS REQUIRED BY LOCAL CODE.
- AT STAIRS:**
1/2" GYPSUM BOARD AT UNDERSIDE OF STAIRS AND WALLS IN CLOSET



FIRST FLOOR PLAN
SCALE: 1/4" = 1'-0"

LEGEND

- BEARING WALL
- NON BEARING WALL
- INDICATES BEARING FROM POINT-LOAD ABOVE
- JACKS
- BEAM/HEADER
- PAD FOOTING
- STEEL COLUMN
- PORTAL FRAME
- JOIST/TRUSS
- LVL
- ENGINEERING PAGE NUMBER

SEE FC DETAILS FOR FRAMING CONNECTORS

REVISIONS

REV. NO.	DATE	DESCRIPTION
1	08/06/16	TH - DRAWING ALIGNMENT
2	07/01/15	SLS - T-PLY CONVERSION PROJECT

SET NO. VRS000
VERSION 01
DRAWN BY
DATE:
OPTION

MODEL VERSAILLES
DRAWING TITLE
FIRST FLOOR PLAN
OPTION DESCRIPTION

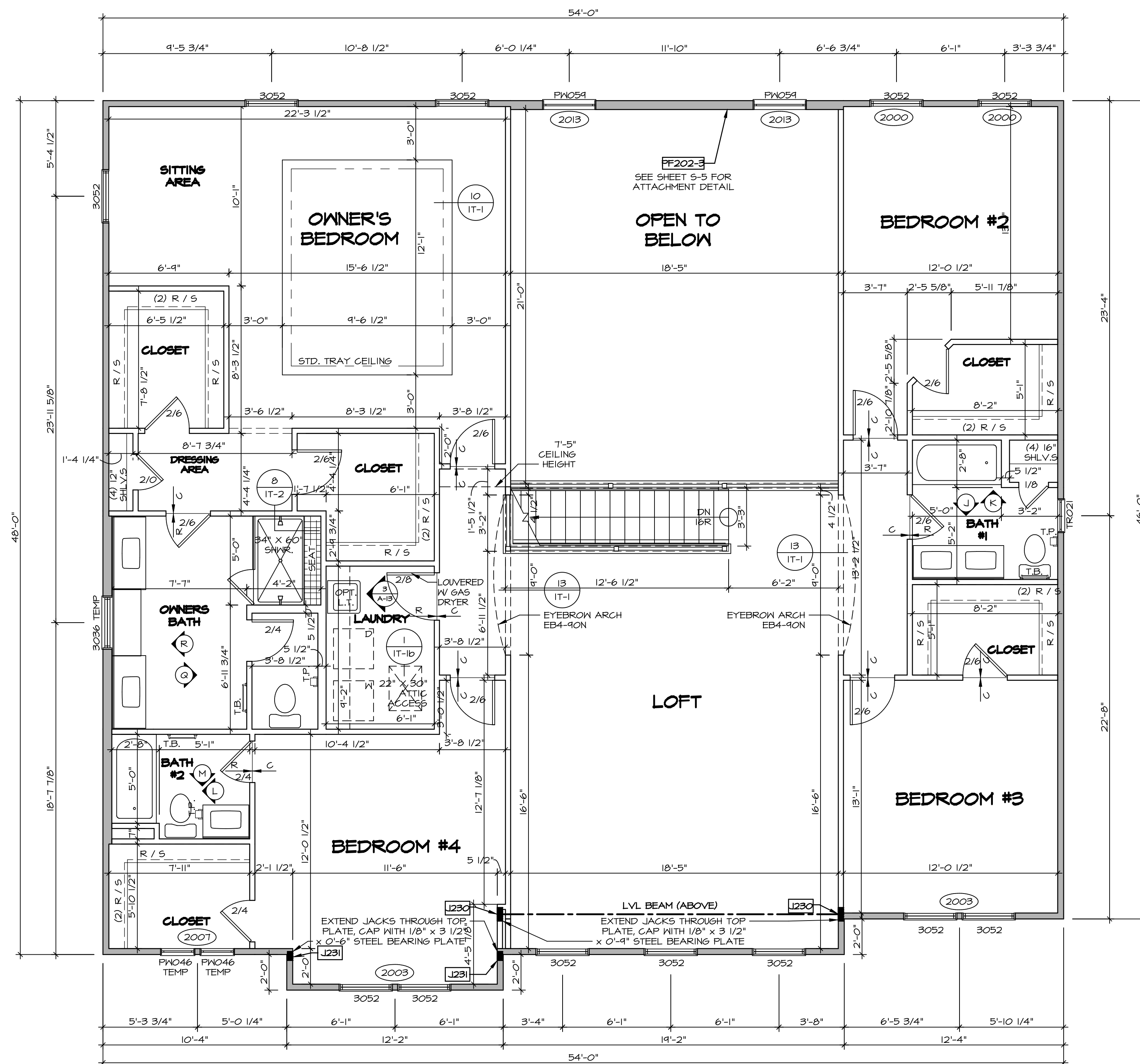
A-7

39

NVR, Inc., owner, expressly reserves its copyright in these plans. These plans are not to be reproduced, changed, copied, or otherwise used in any way without the written consent of NVR, Inc.

NVR
NVR, Inc.
Architectural Services
100
5285 West...
Frederick, MD 21703

C:\NVR\Solves\VERSAILLES_VRS000_01\DCI-VR-008A\1517520\Sheet\101_Specific\39_A-7_Plan1_LS.dwg 17/04/19 - 2:29 am



SECOND FLOOR JACK SCHEDULE			
IDENTIFIER	DESCRIPTION	ENG. NUM.	REMARKS
J230	JACK - (6) 2X4 SP#1	2017	
J231	JACK - (4) 2X4 SP#1	2015	EXTEND THROUGH TOP PLATE

LVL PLY TO PLY FASTENING SCHEDULE:

1A - (2) PLY UP TO AND INCLUDING II 7/8" TALL; FASTEN PLYS W/ (2) ROWS 16D NAILS AT 12" O.C.
 2A - (2) PLY 14" TO AND 18" TALL (INCLUSIVE); FASTEN PLYS W/ (3) ROWS 16D NAILS AT 12" O.C.
 3A - (2) PLY 20" TALL AND OVER; FASTEN PLYS W/ (4) ROWS 16D NAILS AT 12" O.C.
 4A - (3) PLY UP TO AND INCLUDING II 7/8" TALL; FASTEN PLYS W/ (2) ROWS 16D NAILS AT 12" O.C. FROM EACH SIDE
 5A - (3) PLY 14" TO AND 18" TALL (INCLUSIVE); FASTEN PLYS W/ (3) ROWS 16D NAILS AT 12" O.C. FROM EACH SIDE
 6A - (3) PLY 20" TALL AND OVER; FASTEN PLYS W/ (4) ROWS 16D NAILS AT 12" O.C. FROM EACH SIDE

SECOND FLOOR BEAM/HEADER SCHEDULE					
IDENTIFIER	DESCRIPTION	LENGTH	OPTIONS	ENG. NUM.	REMARKS
FF202-3	LVL - II-04	18'-5"		2013	4A, PORTAL FRAME

- FLOOR PLAN NOTES**
- ALL HEADERS ARE (2) 2x6 W/ 2x4 WALLS OR (3) 2x6 W/ 2x6 WALLS, UNLESS OTHERWISE NOTED.
 - ALL HEADERS TO HAVE (1) 2x4 OR 2x6 JACK AND KING STUD EACH END, UNLESS OTHERWISE NOTED.
 - ALL EXTERIOR WALLS TO BE 4" W/ OSB OR 3 1/2" W/ T-PLY; ALL INTERIOR WALLS TO BE 3 1/2", UNLESS OTHERWISE NOTED.
 - HATCHED AREAS INDICATE DROPPED CEILINGS. ALL DROPPED CEILINGS ARE 12' UNLESS OTHERWISE NOTED.
 - SEE "BRACED WALL PANEL DETAIL SHEET" FOR SPECIAL WALL FRAMING LOCATIONS AND HEADER SIZES, IF APPLICABLE.
 - SEE STANDARD DETAIL CATEGORY "IT" SHEET(S) FOR INTERIOR TRIM DETAILS.
 - SEE ARCHITECTURAL DETAIL SHEET "AD" FOR HOUSE SPECIFIC INTERIOR TRIM OPTION TABLE.
 - ALL WINDOWS HAVE 7'-0 1/2" HEADER HEIGHT UNLESS OTHERWISE NOTED.
 - ALL HEADERS IN NON-BEARING WALLS SHALL BE A SINGLE FLAT 2X4 OR 2X6 ATTACHED TO CRIPPLES ABOVE, UNLESS OTHERWISE NOTED.

SECOND FLOOR PLAN
 SCALE: 1/4" = 1'-0"

LEGEND

- BEARING WALL
- NON BEARING WALL
- INDICATES BEARING FROM POINT-LOAD ABOVE JACKS
- BEAM/HEADER
- PAD FOOTING
- STEEL COLUMN
- PORTAL FRAME
- JOIST/TRUSS
- LVL
- ENGINEERING PAGE NUMBER

SEE FC DETAILS FOR FRAMING CONNECTORS

REV. NO. DATE DESCRIPTION

1 08/08/16 TH - DRAWING ALIGNMENT

2 07/11/17 SLS - T-PLY CONVERSION PROJECT

SET NO. VRS000
 VERSION 01
 DRAWN BY
 DATE:
 OPTION

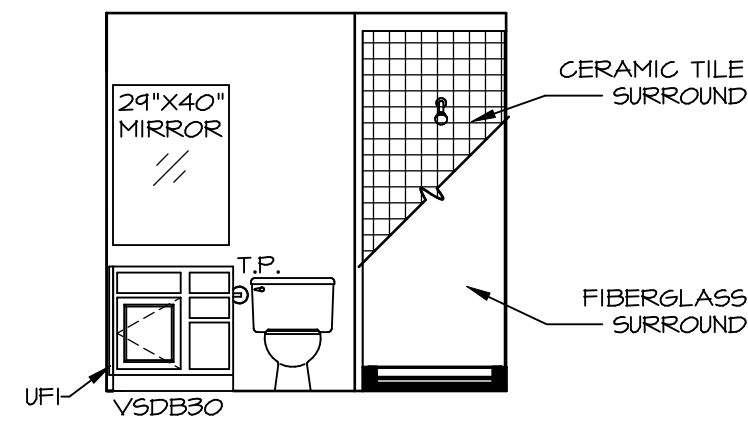
MODEL VERSAILLES
 DRAWING TITLE SECOND FLOOR PLAN
 OPTION DESCRIPTION

SHEET NO. A-8 42

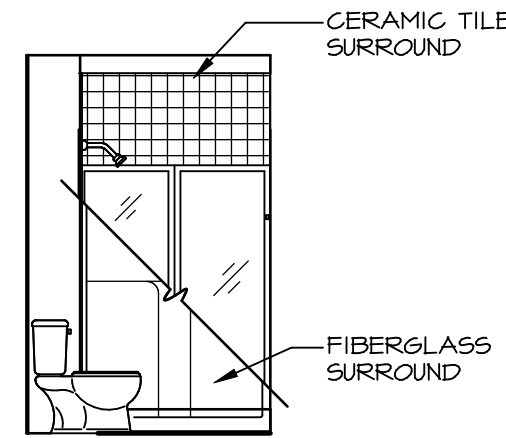
NVR, Inc. owner, expressly reserves its copyright in these plans. These plans are not to be reproduced, changed, copied, or otherwise used in any way without the prior written consent of NVR, Inc.

NVR, Inc.
 Architectural Services
 Architects Suite 100
 5285 Westpark Drive
 Frederick, MD 21703

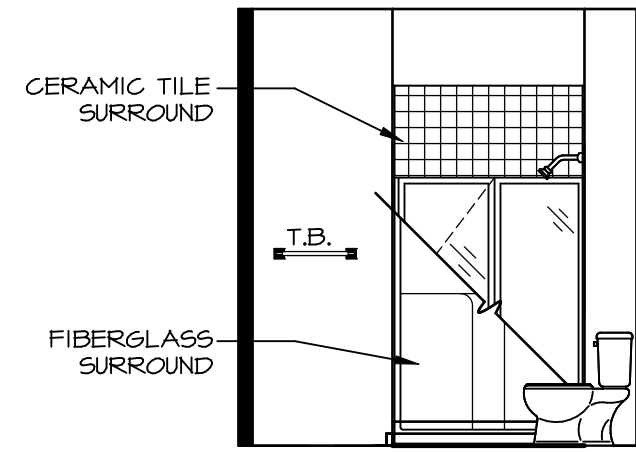
C:\NVR\Solves\VERSAILLES_VRS000_01\DCI-VR-0082\1517320\Sheet\42_A-8_PLY_LS.dwg 17/04/19 - 2:29 am



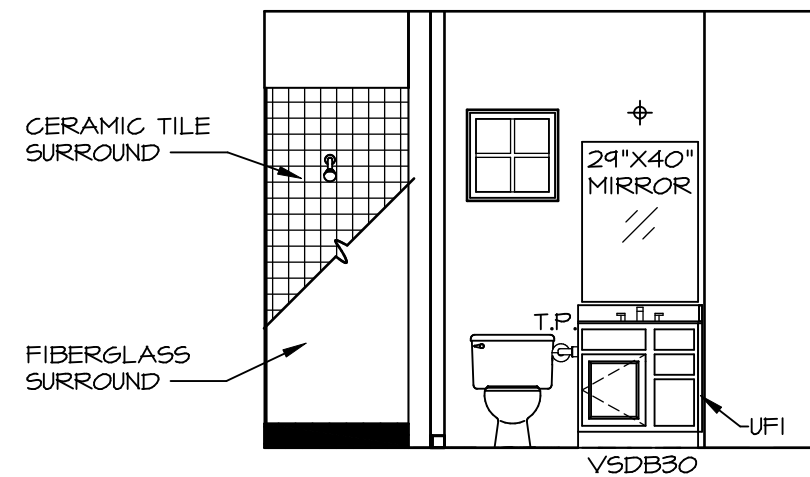
A BASEMENT BATH "AEB"
SCALE: 1/4" = 1'-0"



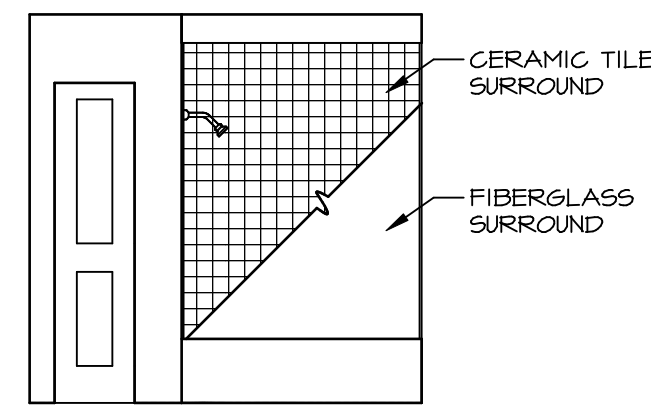
B BASEMENT BATH "AEB"
SCALE: 1/4" = 1'-0"



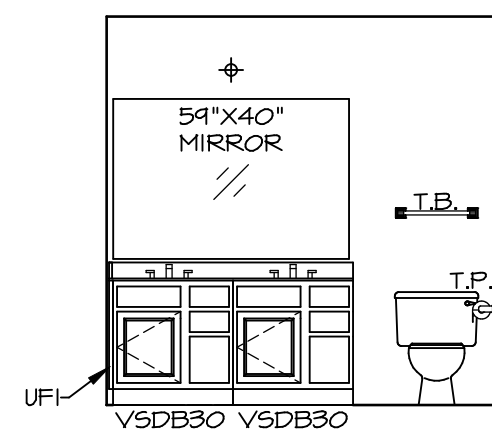
D FIRST FLOOR BATH
SCALE: 1/4" = 1'-0"



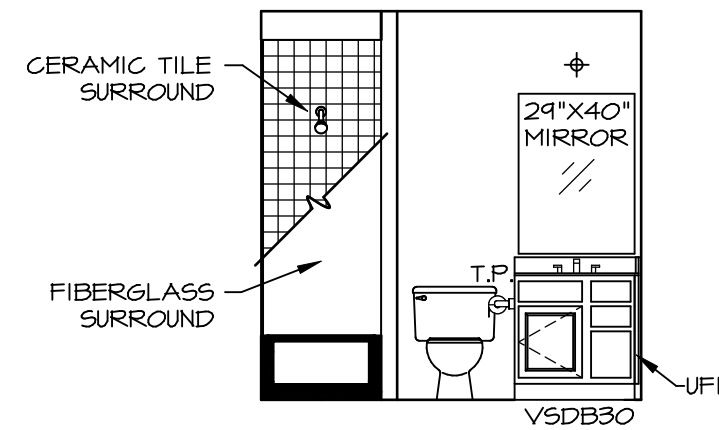
C FIRST FLOOR BATH
SCALE: 1/4" = 1'-0"



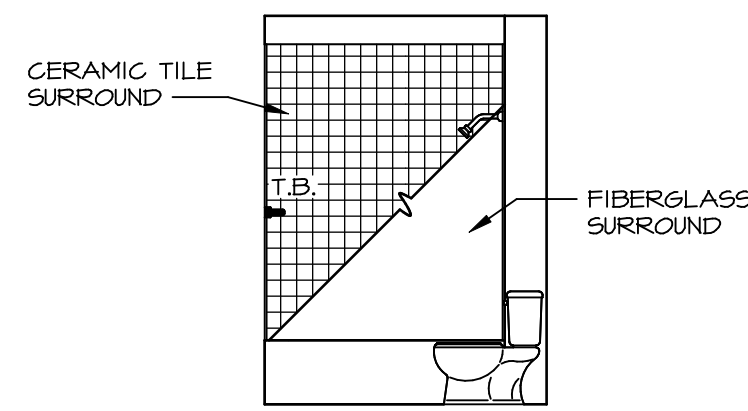
K BATH #1
SCALE: 1/4" = 1'-0"



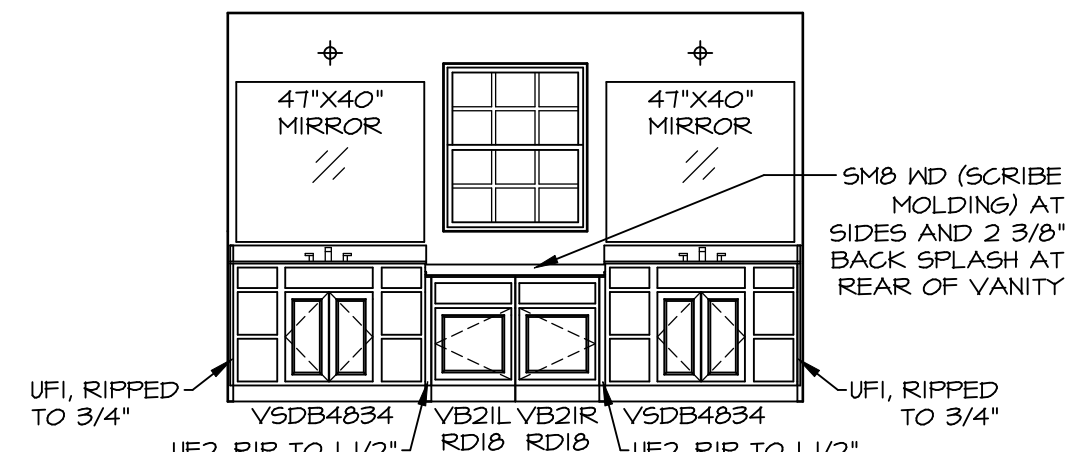
J BATH #1
SCALE: 1/4" = 1'-0"



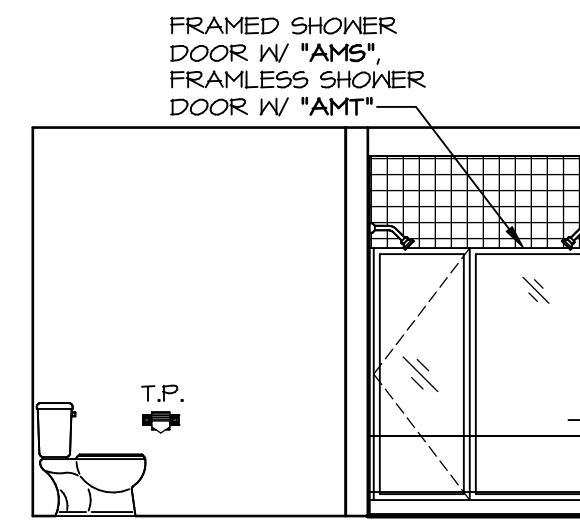
M BATH #2
SCALE: 1/4" = 1'-0"



L BATH #2
SCALE: 1/4" = 1'-0"



R OWNER'S BATH ("AMG")
SCALE: 1/4" = 1'-0"



Q OWNER'S BATH ("AMG")
SCALE: 1/4" = 1'-0"

NOTES:

- TEMPERED GLASS SHOWER ENCLOSURE WITH SWING DOOR OR OPTIONAL SLIDING DOOR BY DIVISION
- TUB ACCESS PANELS PROVIDED AS NEEDED, ALL MATERIALS BY DIVISION REFER TO SHEET IT-2 FOR TUB AND SHOWER DETAILS.
- ALL VSDB24-42 DRAWERS TO BE SET ON RIGHT HAND.
- BATH ELEVATIONS ARE SHOWN PER PLAN.

MODEL	VERSAILLES
DRAWING TITLE	BATH ELEVATIONS
SHEET NO.	A-14
OPTION DESCRIPTION	55

NVR
NVR, Inc.
Architectural Services
Architects
5285 Westheimer, Suite 100
Frederick, MD 21703

NVR, Inc., owner, expressly reserves its copyright in these plans. These plans are not to be reproduced, changed, copied, or otherwise used in any way without the prior written consent of NVR, Inc.

REV. NO.	DATE	REMARKS
1	08/09/16	TM - DRAWING ALIGNMENT