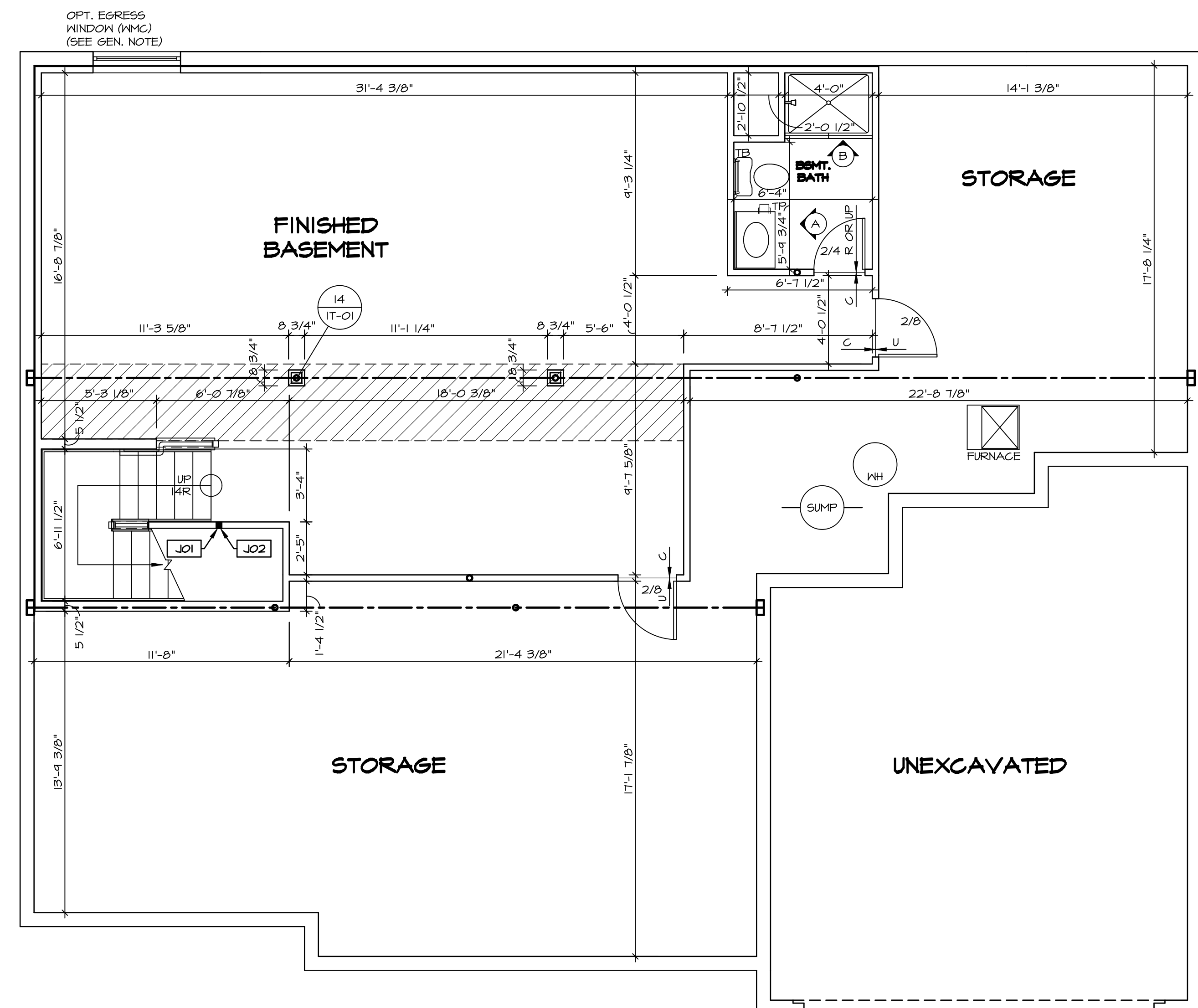


1 PLUMBING PLAN
A-5 SCALE: 1/4" = 1'-0"

SHEET NO. A-5	MODEL NORMANDY	DRAWING TITLE PLUMBING PLAN	OPTION DESCRIPTION 31	SET NO. NRM00	VERSION 01	DRAWN BY RJC	DATE: 5/14/15	OPTION
				NVR, Inc. Architectural Services 5285 Westheimer, Suite 100 Frederick, MD 21703				
NVR, Inc., owner, expressly reserves its copyright in this plumbing plan. These plans are not to be reproduced, changed, adapted, copied, or otherwise used without the prior written consent of NVR, Inc.								
NVR, Inc., owner, expressly reserves its copyright in this plumbing plan. These plans are not to be reproduced, changed, adapted, copied, or otherwise used without the prior written consent of NVR, Inc.								
				REV. NO.	DATE	REMARKS		

C:\NVR\Solves\NORMANDY_NRM00_01\DCY-YR-008A\31-5-PLMG_LS.dwg 08/21/19 11:53 am



LEGEND

- BEARING WALL
- NON BEARING WALL
- INDICATES BEARING FROM POINT-LOAD ABOVE
- JACKS
- BEAM/HEADER
- PAD FOOTING
- STEEL COLUMN
- PORTAL FRAME
- JOIST/TRUSS
- LVL
- ENGINEERING PAGE NUMBER

SEE FC DETAILS FOR FRAMING CONNECTORS

- FLOOR PLAN NOTES**
1. ALL HEADERS ARE (2) 2x6 w/ 2x4 WALLS OR (3) 2x6 w/ 2x6 WALLS, UNLESS OTHERWISE NOTED.
 2. ALL EXTERIOR WALLS TO BE 4" AND ALL INTERIOR WALLS TO BE 3 1/2", UNLESS OTHERWISE NOTED.
 3. ALL EXTERIOR WALLS TO BE 4" AND ALL INTERIOR WALLS TO BE 3 1/2", UNLESS OTHERWISE NOTED.
 4. HATCHED AREAS INDICATE DROPPED CEILINGS. ALL DROPPED CEILINGS ARE 12" UNLESS OTHERWISE NOTED.
 5. SEE "BRACED WALL PANEL DETAIL SHEET" FOR SPECIAL WALL FRAMING LOCATIONS AND HEADER SIZES, IF APPLICABLE.
 6. SEE STANDARD DETAIL CATEGORY "IT" SHEET(S) FOR INTERIOR TRIM DETAILS.
 7. SEE ARCHITECTURAL DETAIL SHEET "AD" FOR HOUSE SPECIFIC INTERIOR TRIM OPTION TABLE.
 8. ALL WINDOWS HAVE 7'-0 1/2" HEADER HEIGHT UNLESS OTHERWISE NOTED.

- GYPSUM NOTES**
- AT GARAGE:
 GYPSUM BOARD AT COMMON WALLS, CEILINGS, BEAM WRAPS AND SUPPORTS PER STANDARD DETAIL FA-1(b) FIRE ASSEMBLIES OR AS REQUIRED BY LOCAL CODE.
- AT STAIRS:
 1/2" GYPSUM BOARD AT UNDERSIDE OF STAIRS AND WALLS IN CLOSET

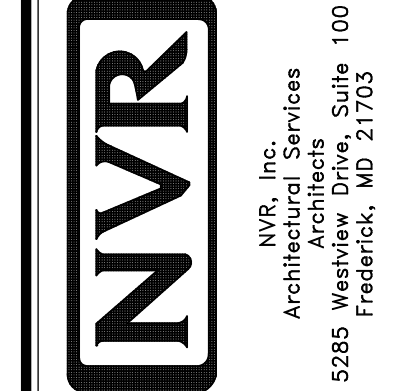
BASEMENT JACK SCHEDULE

IDENTIFIER	DESCRIPTION	OPTIONS	ENG. NUM.	REMARKS
J01	JACK - 2x4 SPF STUD GRADE		B10	
J02	JACK - 2x4 SPF STUD GRADE		B22	

REMARKS

REV. NO.	DATE	DESCRIPTION
1	08/07/16	NL - DRAWING ALIGNMENT
2	11/05/16	TH - STANDARD DETAILS 3.0
3	4/20/17	SFK - ADDED BASEMENT FLOOR PLAN JACK SCHEDULE

NVR, Inc., owner, expressly reserves its copyright in these plans. These plans are not to be reproduced, changed, copied, or used in any way without the written consent of NVR, Inc.

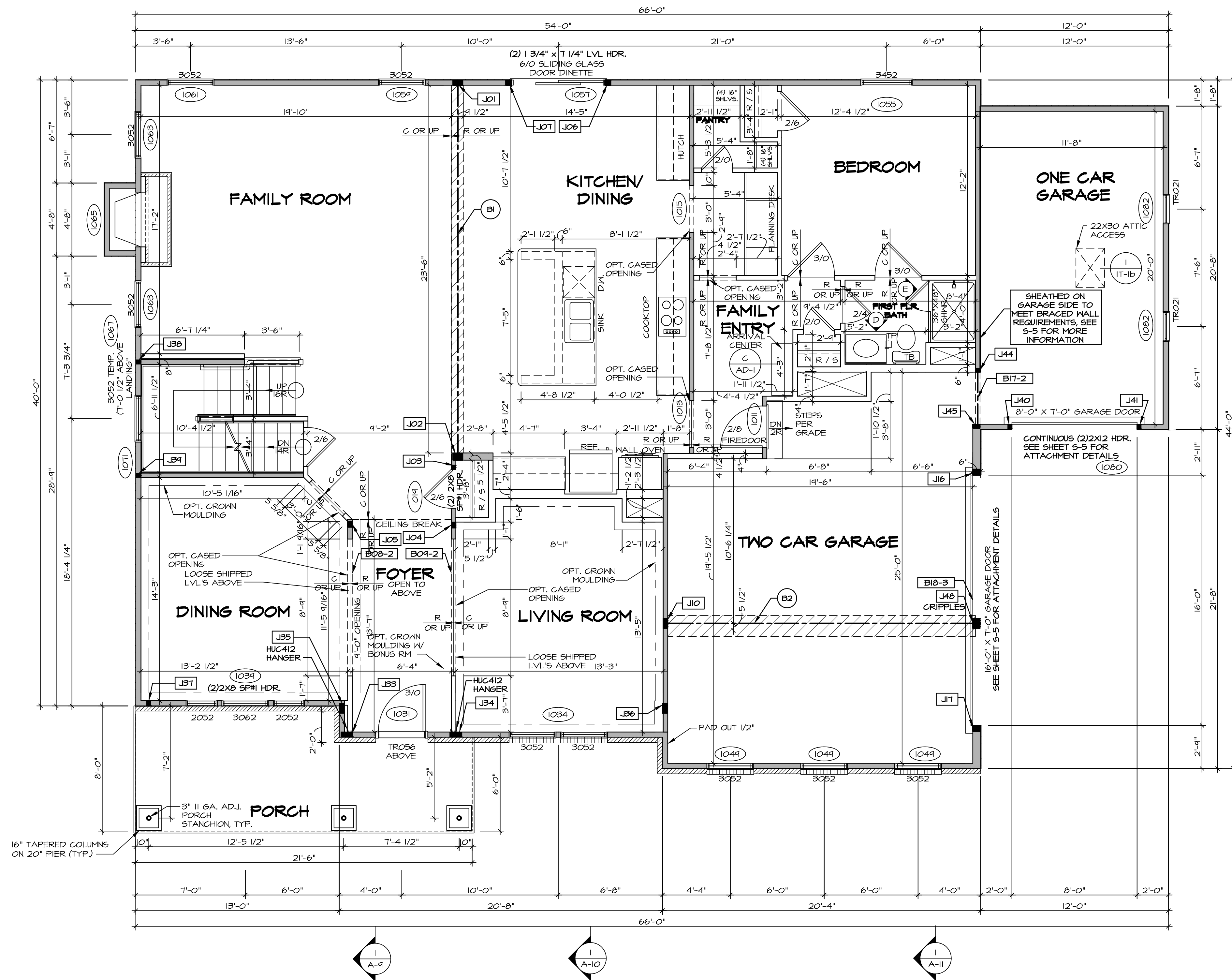


SET NO. NRM00
 VERSION 01
 DRAWN BY SGA
 DATE: 6/29/15
 OPTION

MODEL: NORMANDY
 DRAWING TITLE: BASEMENT FLOOR PLAN
 OPTION DESCRIPTION

SHEET NO. A-6
 34

BASEMENT FLOOR PLAN
 SCALE: 1/4" = 1'-0"



FIRST FLOOR PLAN
SCALE: 1/4" = 1'-0"

LEGEND

- BEARING WALL
- NON BEARING WALL
- INDICATES BEARING FROM POINT-LOAD ABOVE
- JACKS
- BEAM/HEADER
- PAD FOOTING
- STEEL COLUMN
- PORTAL FRAME
- JOIST/TRUSS
- LVL
- ENGINEERING PAGE NUMBER

SEE FC DETAILS FOR FRAMING CONNECTORS

- FLOOR PLAN NOTES** RYAN
- ALL HEADERS ARE (2) 2x6 W/ 2x4 WALLS OR (3) 2x6 W/ 2x6 WALLS, UNLESS OTHERWISE NOTED.
 - ALL HEADERS TO HAVE (1) 2x4 OR 2x6 JACK AND KING STUD EACH END, UNLESS OTHERWISE NOTED.
 - ALL EXTERIOR WALLS TO BE 4" W/ OSB OR 3 1/2" W/ T-PLY; ALL INTERIOR WALLS TO BE 3 1/2", UNLESS OTHERWISE NOTED.
 - HATCHED AREAS INDICATE DROPPED CEILINGS. ALL DROPPED CEILINGS ARE 12" UNLESS OTHERWISE NOTED.
 - SEE "BRACED WALL PANEL DETAIL SHEET" FOR SPECIAL WALL FRAMING LOCATIONS AND HEADER SIZES, IF APPLICABLE.
 - SEE STANDARD DETAIL CATEGORY "IT" SHEET(S) FOR INTERIOR TRIM DETAILS.
 - SEE ARCHITECTURAL DETAIL SHEET "AD" FOR HOUSE SPECIFIC INTERIOR TRIM OPTION TABLE.
 - ALL WINDOWS HAVE 7'-0 1/2" HEADER HEIGHT UNLESS OTHERWISE NOTED.
 - ALL HEADERS IN NON-BEARING WALLS SHALL BE A SINGLE FLAT 2x4 OR 2x6 ATTACHED TO CRIPPLES ABOVE, UNLESS OTHERWISE NOTED.

- GYPSUM NOTES** RYAN
- AT GARAGE:**
GYPSUM BOARD AT COMMON WALLS, CEILINGS, BEAM WRAPS AND SUPPORTS PER STANDARD DETAIL FA-1(b) FIRE ASSEMBLIES OR AS REQUIRED BY LOCAL CODE.
- AT STAIRS:**
1/2" GYPSUM BOARD AT UNDERSIDE OF STAIRS AND WALLS IN CLOSET

LVL PLY TO PLY FASTENING SCHEDULE: (WHERE APPLICABLE BASED ON LVL USAGE)

- 1A - (2) PLY UP TO AND INCLUDING 11/8" TALL; FASTEN PLYS W/ (2) ROWS 16D NAILS AT 12" O.C.
- 2A - (2) PLY 1/4" TO AND INCLUDING 1/2" TALL (INCLUSIVE); FASTEN PLYS W/ (3) ROWS 16D NAILS AT 12" O.C.
- 3A - (2) PLY 20" TALL AND OVER; FASTEN PLYS W/ (4) ROWS 16D NAILS AT 12" O.C.
- 4A - (3) PLY UP TO AND INCLUDING 11/8" TALL; FASTEN PLYS W/ (2) ROWS 16D NAILS AT 12" O.C. FROM EACH SIDE
- 5A - (3) PLY 1/4" TO AND INCLUDING 1/2" TALL (INCLUSIVE); FASTEN PLYS W/ (3) ROWS 16D NAILS AT 12" O.C.
- 6A - (3) PLY 20" TALL AND OVER; FASTEN PLYS W/ (4) ROWS 16D NAILS AT 12" O.C. FROM EACH SIDE
- 1A - (4) PLY (ALL SIZES); FASTEN PLYS W/ (2) ROWS 1/2" DIAMETER A307 BOLTS AT 24" O.C. SEE SHOP DRAWING FOR ADDITIONAL INFORMATION.

FIELD INSTALLED FIRST FLOOR BEAM/HEADER SCHEDULE

IDENTIFIER	DESCRIPTION	LENGTH	OPTIONS	ENG. NUM.	REMARKS
B08-2	LVL - 11-4	13'-5 9/16"	ELL	1017	1A (FIELD INSTALLED)
B04-2	LVL - 11-4	13'-5"	ELL	1017	1A (FIELD INSTALLED)
BI	BEAM STEEL - W12X35	24'-2"	BARGAAFBFA	1021	1A
BIT-2	LVL - 11-4	3'-10"	GCC, GAA	1051	5A
BI0-3	LVL 1.75 - 10	16'-4"	GCC, GAA	1051	5A
B2	BEAM STEEL - W12X26	20'-2 1/2"	SRI	1022	

FIRST FLOOR JACK SCHEDULE

IDENTIFIER	DESCRIPTION	OPTIONS	ENG. NUM.	REMARKS
J01	JACK - (5) 2X4 SPM		1021	
J02	JACK - (5) 2X6 SPM		1021	
J03	JACK - (2) 2X4 SPM STUD GRADE		1019	
J04	JACK - (3) 2X4 SPM STUD GRADE		1017	
J05	JACK - (3) 2X4 SPM STUD GRADE		1017	
J06	JACK - (3) 2X4 SPM STUD GRADE		1057	
J07	JACK - (3) 2X4 SPM STUD GRADE		1057	
J10	JACK - (5) 2X4 SPM	SRI	1023	
J16	JACK - (3) 2X6 SPM STUD GRADE	GCC, GAA	1051	
J17	JACK - (3) 2X6 SPM STUD GRADE	GCC, GAA	1051	
J33	JACK - (6) 2X4 SPM STUD GRADE	ELL	1017	
J34	JACK - (6) 2X4 SPM STUD GRADE	ELL	1017	
J35	JACK - (5) 2X4 SPM	ELL	2000	
J36	JACK - (5) 2X4 SPM	ELL	2000	
J37	JACK - (2) 2X4 SPM STUD GRADE	ELL	1041	
J38	JACK - (2) 2X4 SPM STUD GRADE		1007	
J39	JACK - (2) 2X4 SPM STUD GRADE		1007	
J40	JACK - (2) 2X4 SPM STUD GRADE	GCC, GAA	1079	
J41	JACK - (2) 2X4 SPM STUD GRADE	GCC, GAA	1079	
J44	JACK - (2) 2X4 SPM STUD GRADE	BAR, GAA, FBA	1071	
J45	JACK - (2) 2X6 SPM STUD GRADE	BAR, GAA, FBA	1071	

REVISIONS

REV. NO.	DATE	DESCRIPTION
1	08/07/16	N.L. - DRAWING ALIGNMENT
2	11/05/16	TM - STANDARD DETAILS 3.0
3	07/17/17	SL5 - T-PLY CONVERSION PROJECT

REMARKS

NVR, Inc., owner, expressly reserves its copyright in these plans. These plans are not to be reproduced, changed, copied, or otherwise used in any way without the written consent of NVR, Inc.

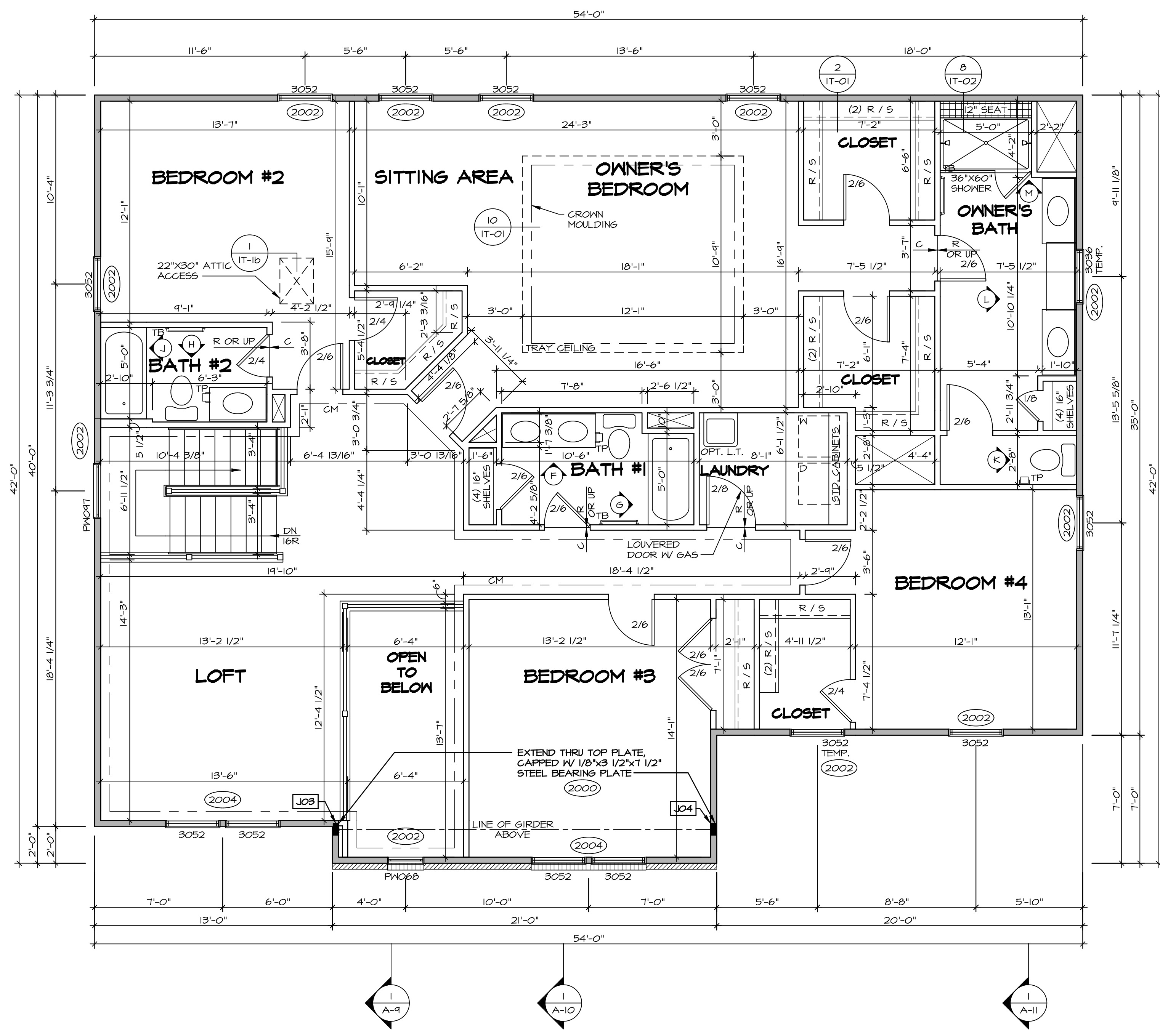
NVR
Architectural Services
Suite 100
5285 Washington Blvd
Frederick, MD 21703

SET NO. NRM00
VERSION 01
DRAWN BY SGA
DATE: 6/29/15
OPTION

NORMANDY
DRAWING TITLE
FIRST FLOOR PLAN
OPTION DESCRIPTION

SHEET NO. **A-7** OF 35

C:\NVR\Solves\NORMANDY_ARCH\001\DCI-VR-008A\3555929\Sheets\01_Specific\35_A-7_PLN1_US.dwg 08/21/19 11:33 am



SECOND FLOOR PLAN
SCALE: 1/4" = 1'-0"

LEGEND

- BEARING WALL
- NON BEARING WALL
- INDICATES BEARING FROM POINT-LOAD ABOVE
- JACKS
- BEAM/HEADER
- PAD FOOTING
- STEEL COLUMN
- PORTAL FRAME
- JOIST/TRUSS
- LVL
- ENGINEERING PAGE NUMBER

SEE FC DETAILS FOR FRAMING CONNECTORS

- FLOOR PLAN NOTES** RYAN
1. ALL HEADERS ARE (2) 2x6 W/ 2x4 WALLS OR (3) 2x6 W/ 2x6 WALLS, UNLESS OTHERWISE NOTED.
 2. ALL HEADERS TO HAVE (1) 2x4 OR 2x6 JACK AND KING STUD EACH END, UNLESS OTHERWISE NOTED.
 3. ALL EXTERIOR WALLS TO BE 4" W/ OSB OR 3 1/2" W/ T-PLY, ALL INTERIOR WALLS TO BE 3 1/2", UNLESS OTHERWISE NOTED.
 4. HATCHED AREAS INDICATE DROPPED CEILINGS. ALL DROPPED CEILINGS ARE 12" UNLESS OTHERWISE NOTED.
 5. SEE "BRACED WALL PANEL DETAIL SHEET" FOR SPECIAL WALL FRAMING LOCATIONS AND HEADER SIZES, IF APPLICABLE.
 6. SEE STANDARD DETAIL CATEGORY "11" SHEET(S) FOR INTERIOR TRIM DETAILS.
 7. SEE ARCHITECTURAL DETAIL SHEET "AD" FOR HOUSE SPECIFIC INTERIOR TRIM OPTION TABLE.
 8. ALL WINDOWS HAVE 7'-0 1/2" HEADER HEIGHT UNLESS OTHERWISE NOTED.
 9. ALL HEADERS IN NON-BEARING WALLS SHALL BE A SINGLE FLAT 2x4 OR 2x6 ATTACHED TO CRIPPLES ABOVE, UNLESS OTHERWISE NOTED.

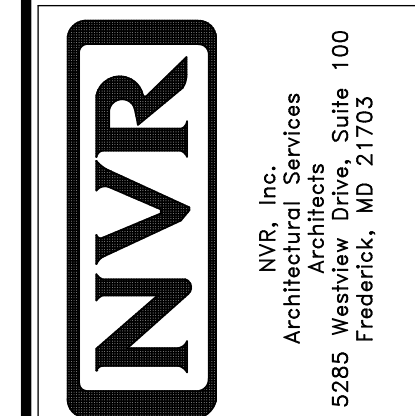
SECOND FLOOR JACK SCHEDULE

IDENTIFIER	DESCRIPTION	OPTIONS	ENG. NUM.	REMARKS
JO3	JACK - (5) 2X4 SPM	ELL	2000	
JO4	JACK - (5) 2X4 SPM	ELL	2000	

REMARKS

REV. NO.	DATE	DESCRIPTION
1	08/07/16	NL - DRAWING ALIGNMENT
2	11/05/16	TH - STANDARD DETAILS 3.0
3	07/17/17	SLS - T-PLY CONVERSION PROJECT

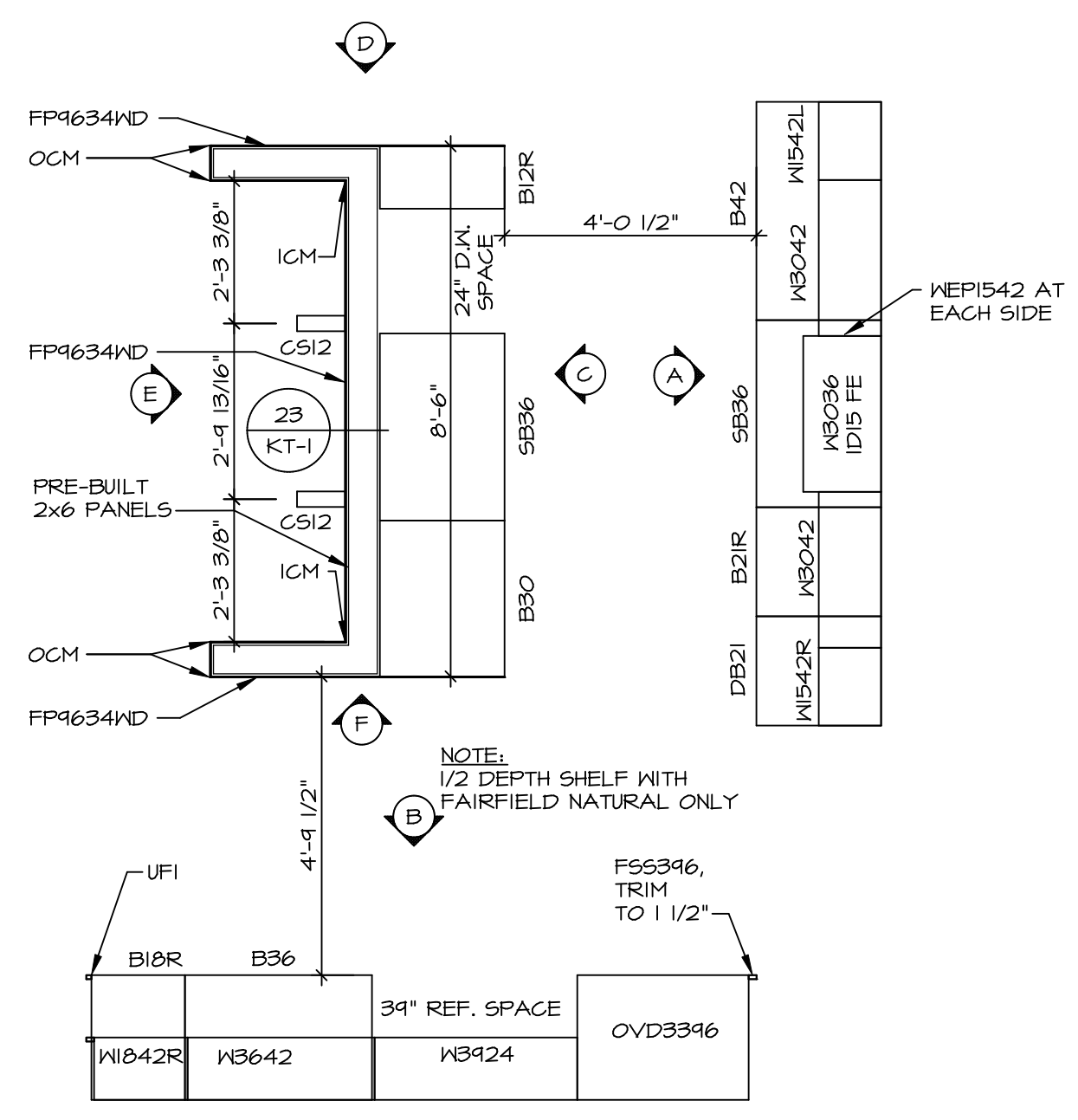
NVR, Inc., owner, expressly reserves its copyright in these plans. These plans are not to be reproduced, changed, copied, or otherwise used in any way without the written consent of NVR, Inc.



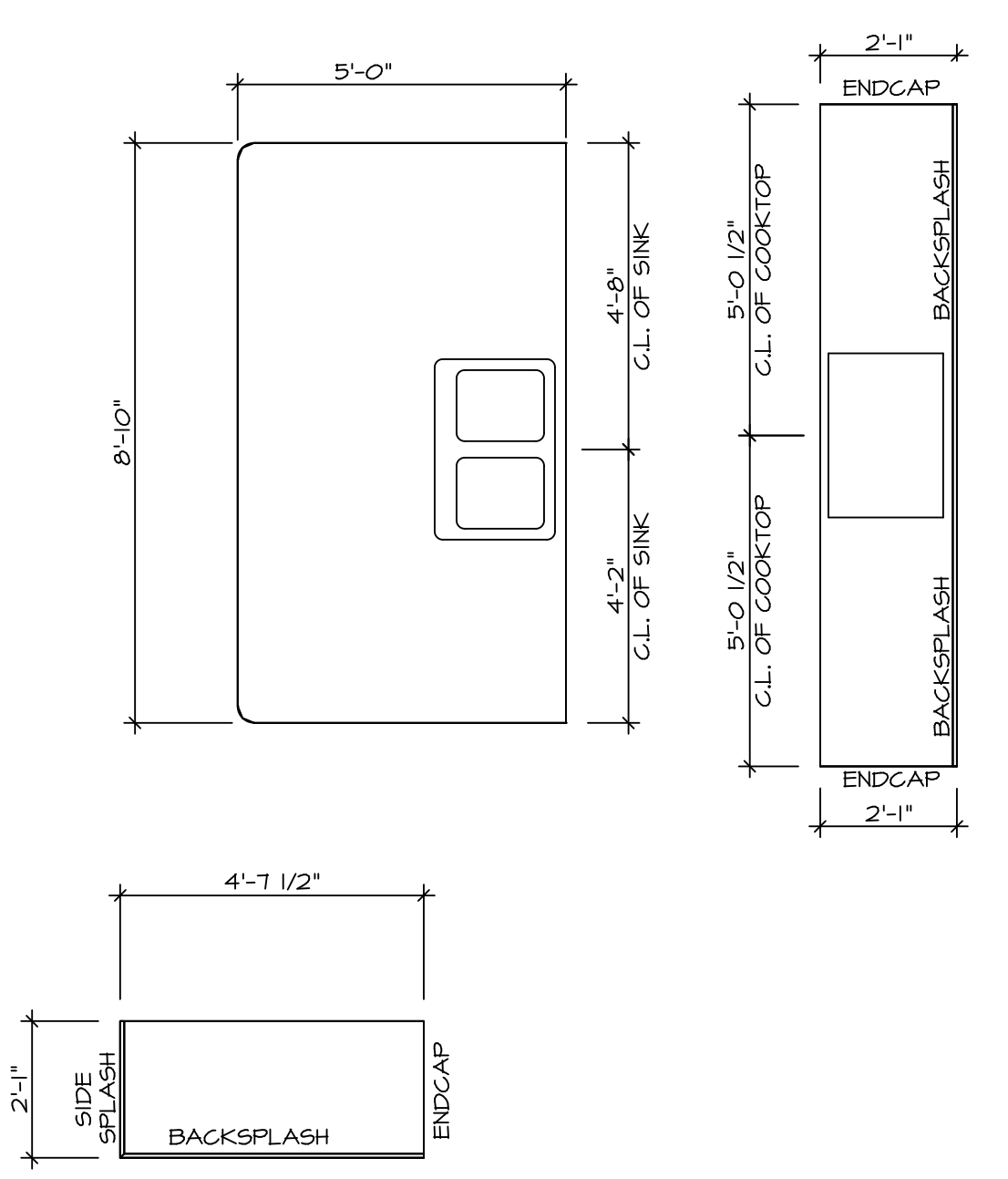
SET NO. NRM00
VERSION 01
DRAWN BY SGA
DATE: 6/29/15
OPTION

MODEL
NORMANDY
DRAWING TITLE
SECOND FLOOR PLAN
OPTION DESCRIPTION

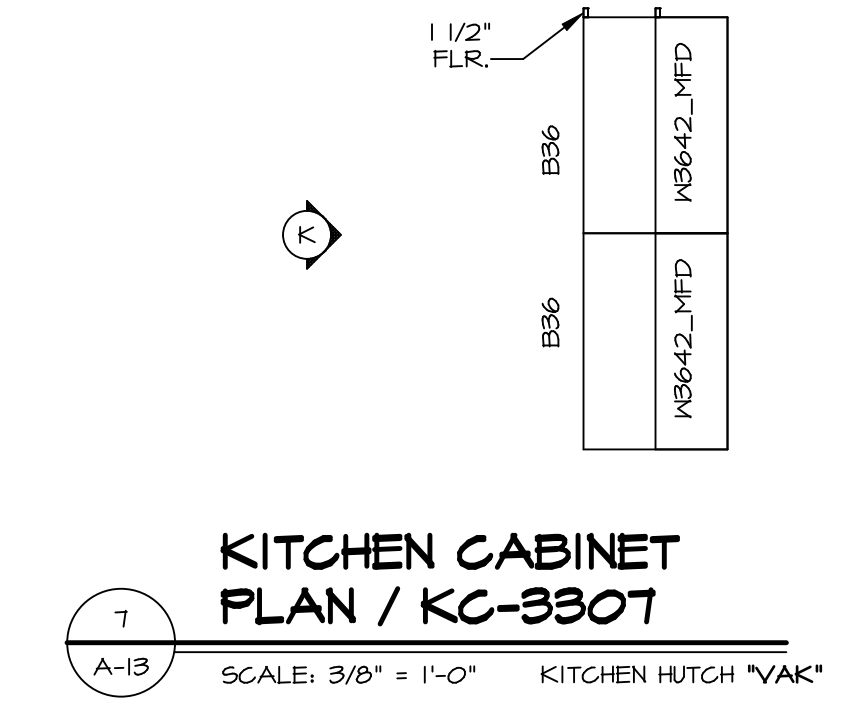
SHEET NO.
A-8
38



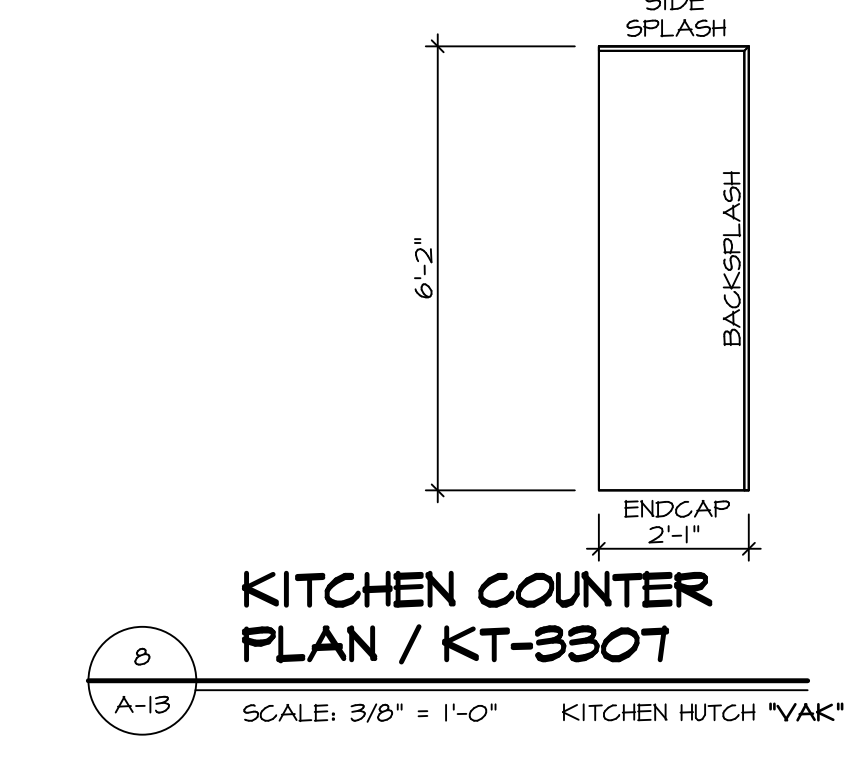
1
A-13
KITCHEN CABINET PLAN / KC-3231
SCALE: 3/8" = 1'-0"



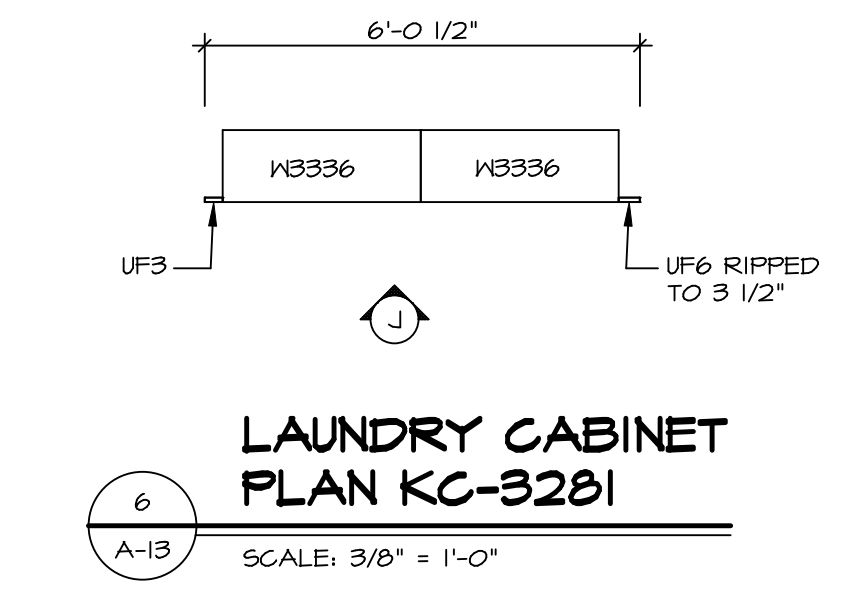
2
A-13
KITCHEN COUNTERTOP PLAN / KT-3231
SCALE: 3/8" = 1'-0"



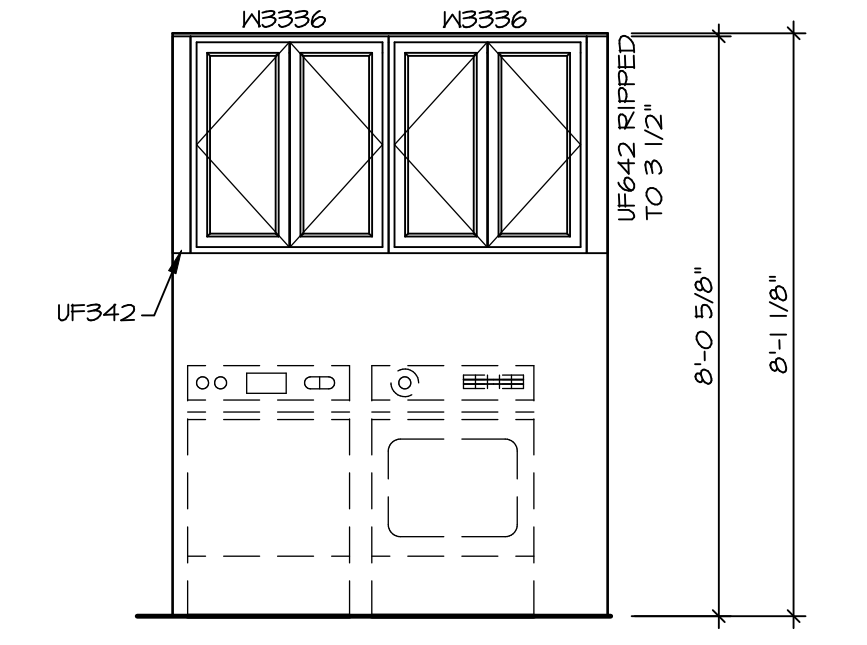
7
A-13
KITCHEN CABINET PLAN / KC-3307
SCALE: 3/8" = 1'-0" KITCHEN HUTCH "YAK"



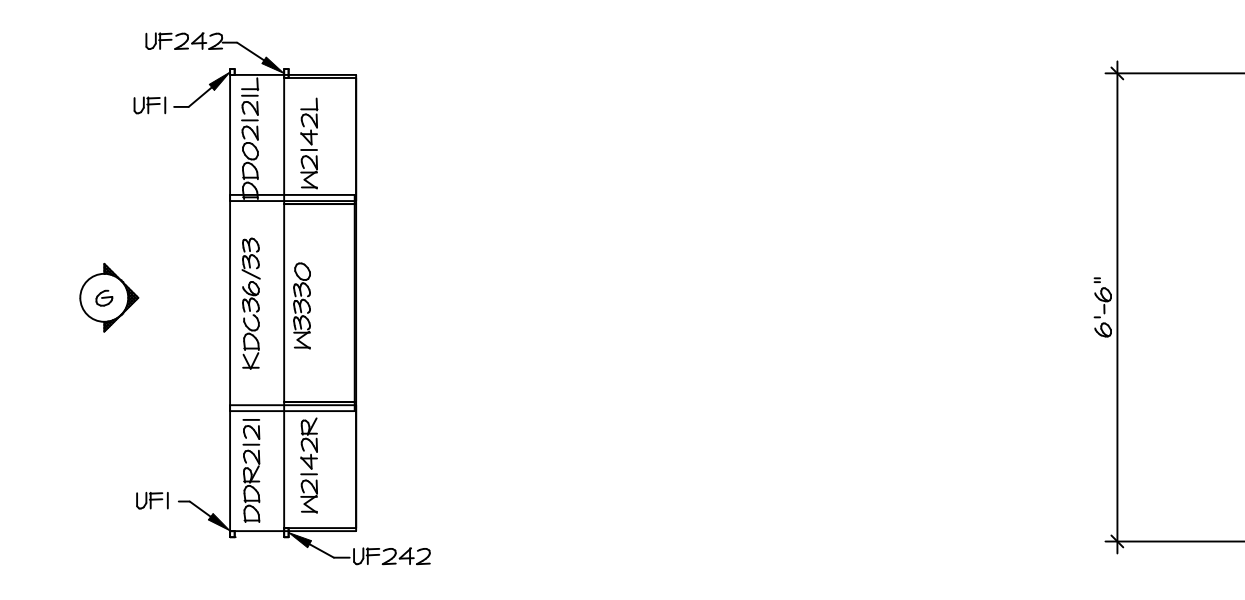
8
A-13
KITCHEN COUNTER PLAN / KT-3307
SCALE: 3/8" = 1'-0" KITCHEN HUTCH "YAK"



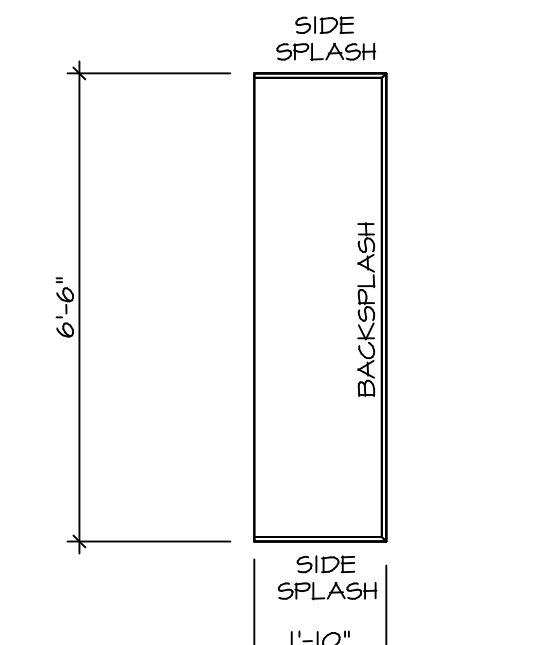
6
A-13
LAUNDRY CABINET PLAN / KC-3281
SCALE: 3/8" = 1'-0"



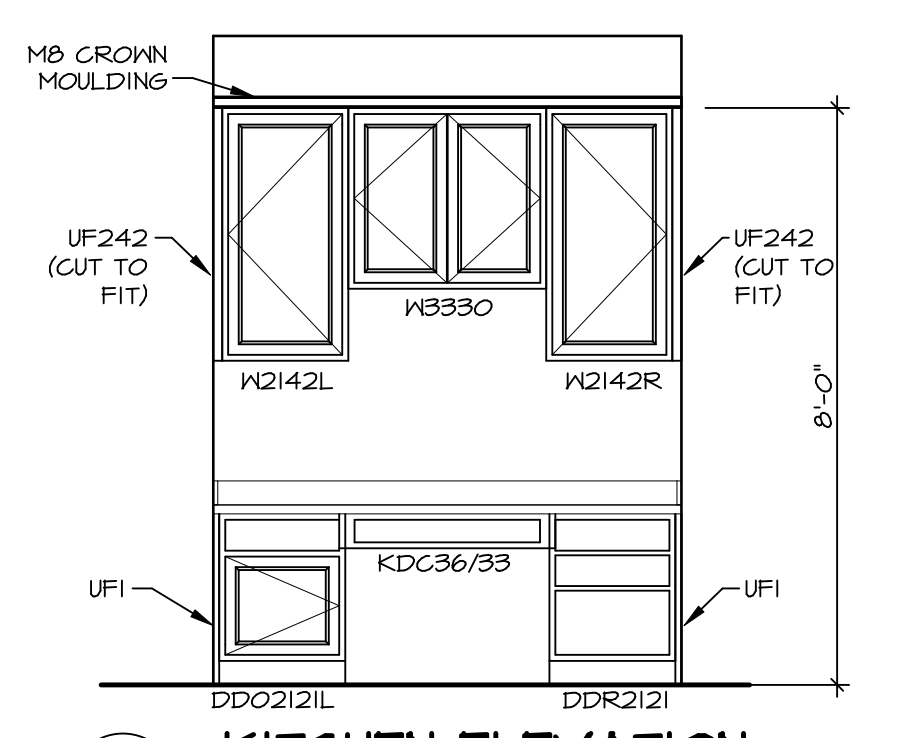
6
A-13
LAUNDRY CABINET ELEVATION
SCALE: 3/8" = 1'-0"



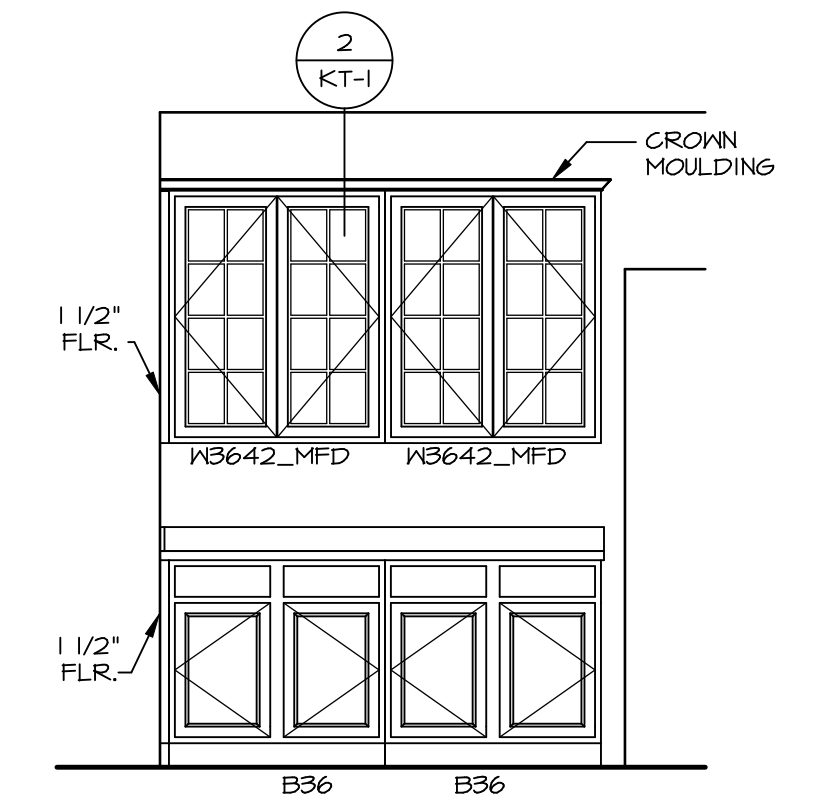
3
A-13
KITCHEN CABINET PLAN / KC-3232
SCALE: 3/8" = 1'-0" KITCHEN PLANNING DESK "KFE"



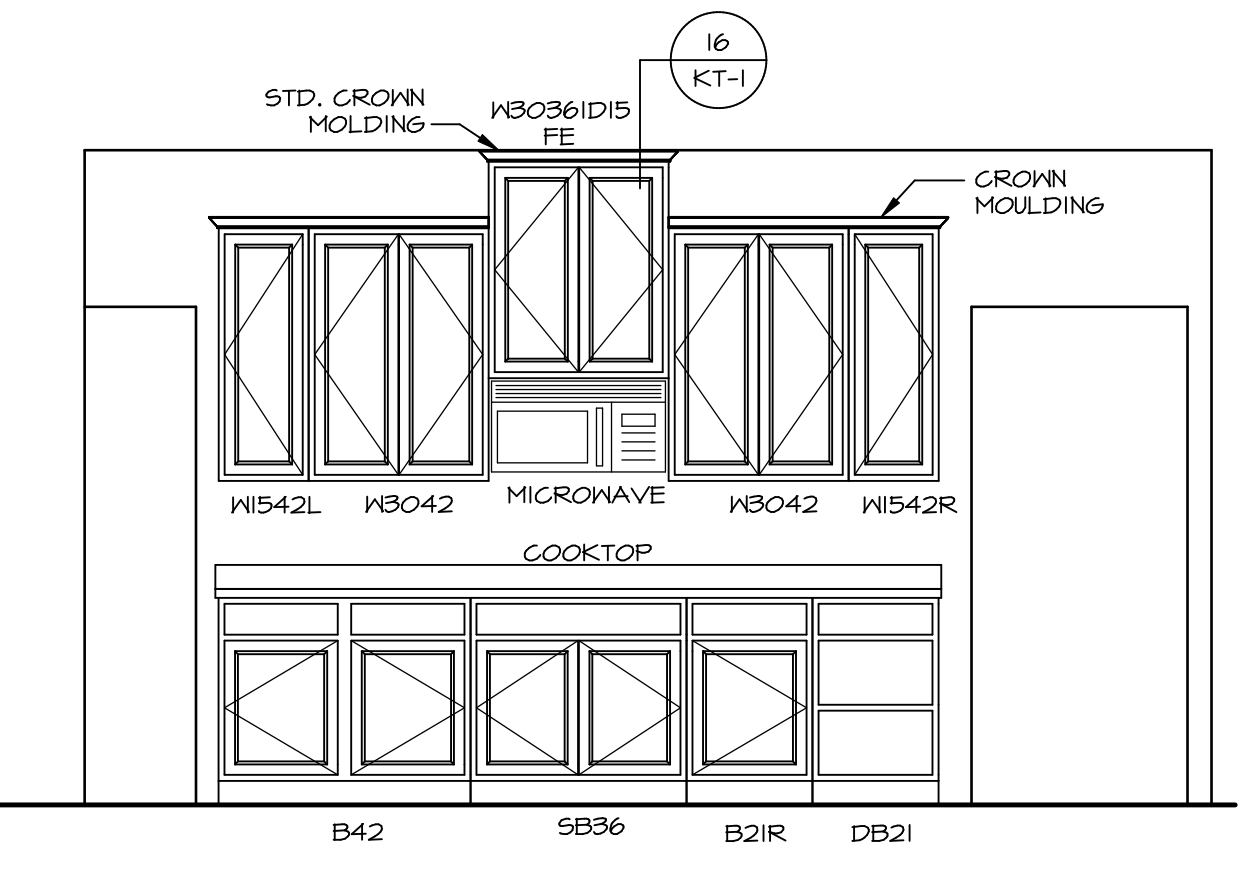
4
A-13
KITCHEN COUNTER PLAN / KT-3232
SCALE: 3/8" = 1'-0" KITCHEN PLANNING DESK "KFE"



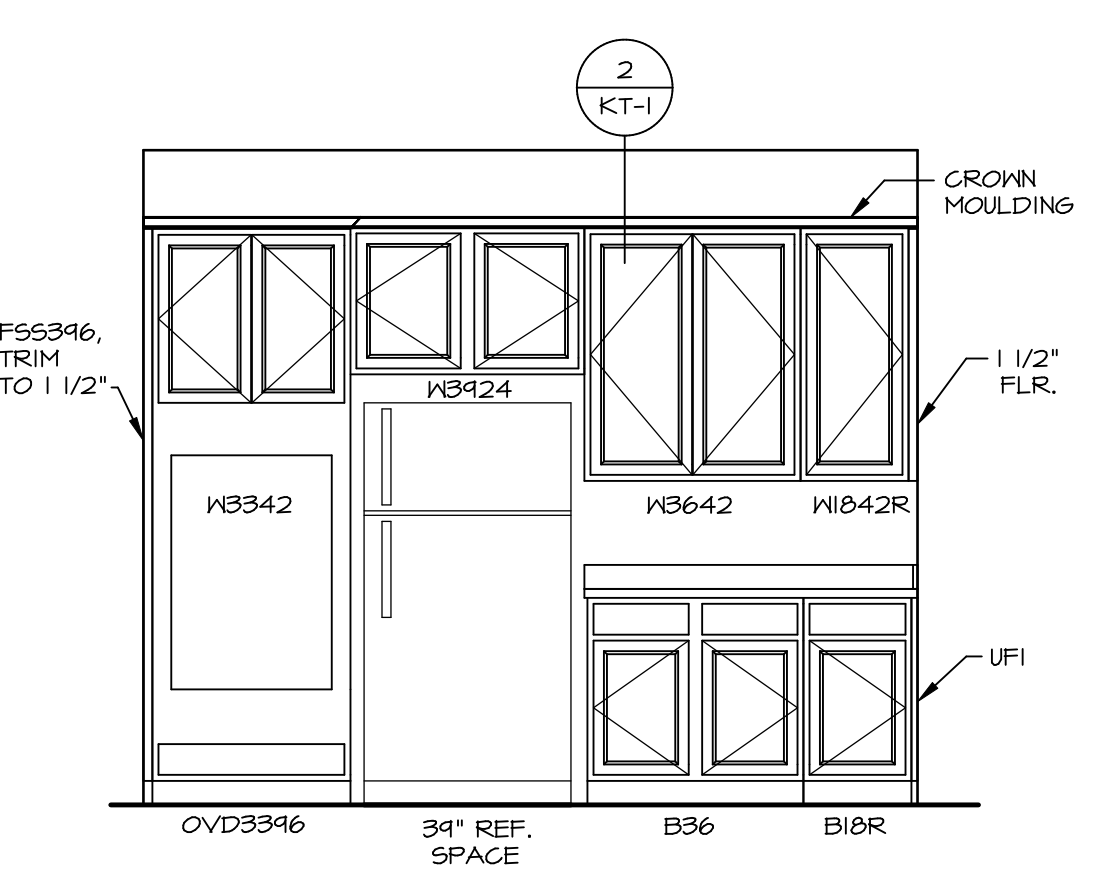
5
A-13
KITCHEN ELEVATION
SCALE: 3/8" = 1'-0" KITCHEN PLANNING DESK "KFE"



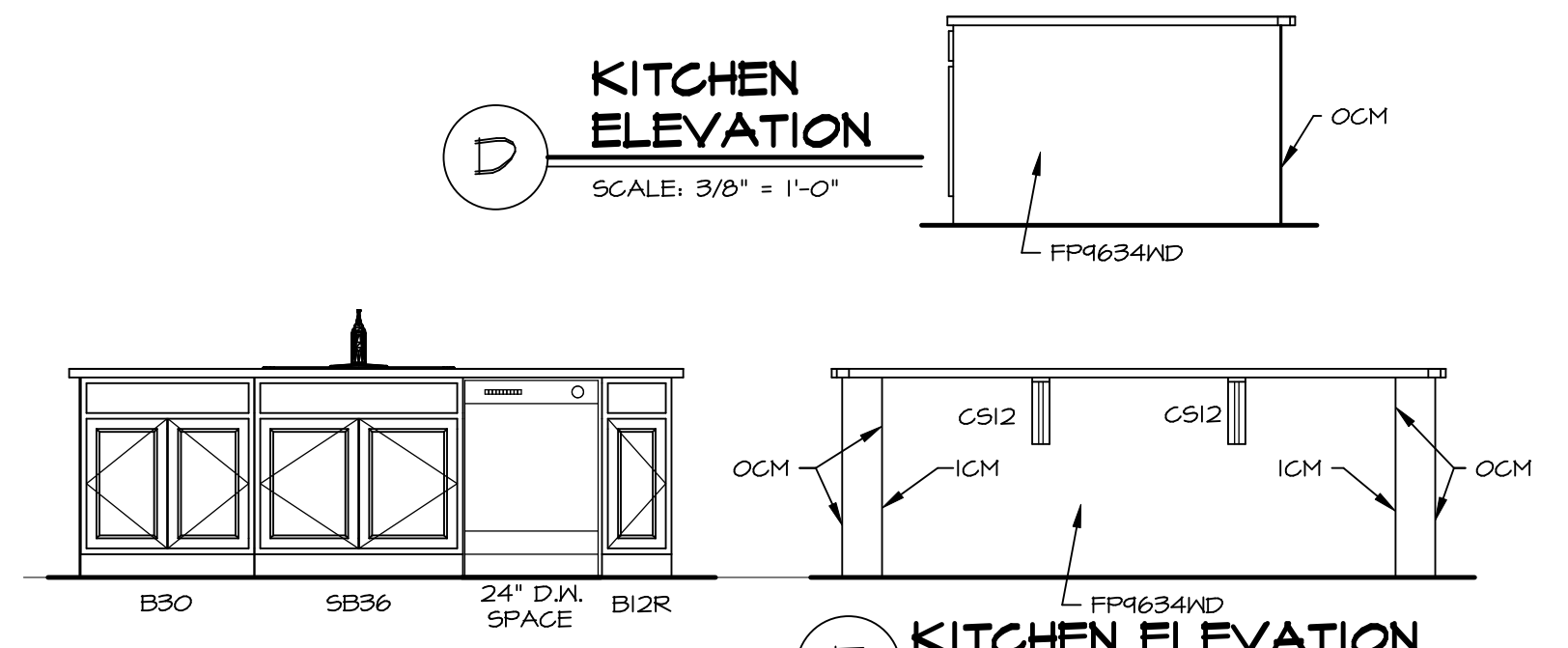
2
A-13
KITCHEN HUTCH ELEVATION
SCALE: 3/8" = 1'-0"



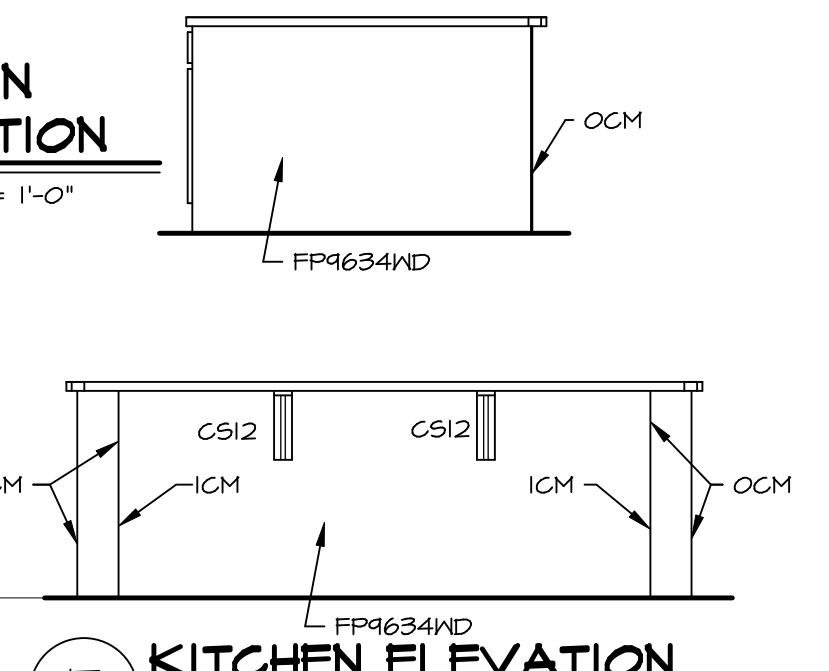
A
A-13
KITCHEN ELEVATION
SCALE: 3/8" = 1'-0"



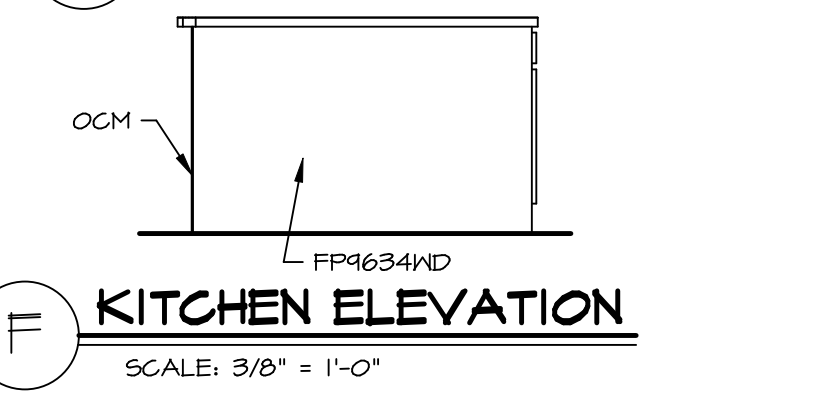
B
A-13
KITCHEN ELEVATION
SCALE: 3/8" = 1'-0"



C
A-13
KITCHEN ELEVATION
SCALE: 3/8" = 1'-0"



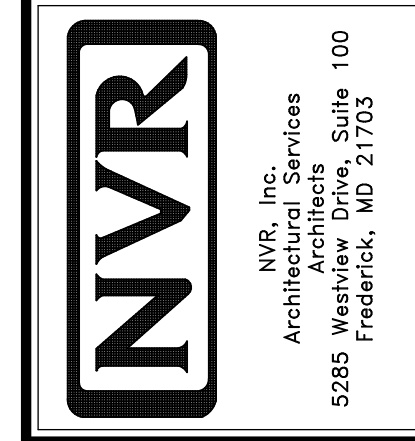
E
A-13
KITCHEN ELEVATION
SCALE: 3/8" = 1'-0"



F
A-13
KITCHEN ELEVATION
SCALE: 3/8" = 1'-0"

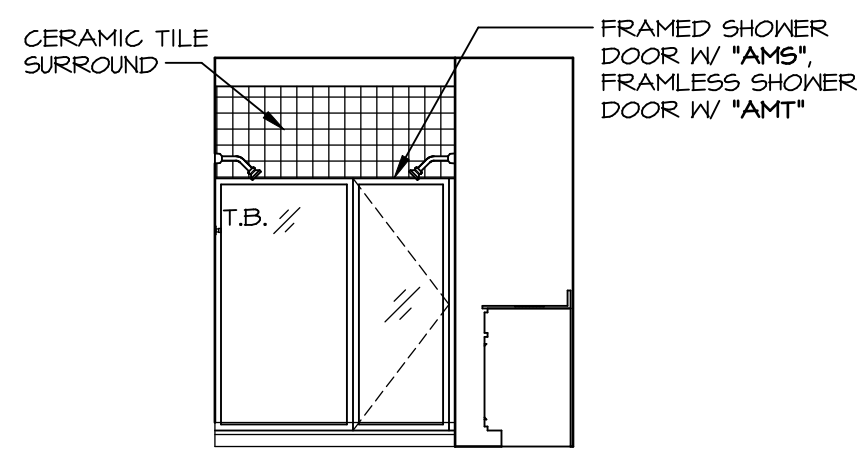
REV. NO.	DATE	REMARKS
1	11/05/16	TRV - STANDARD DETAILS 3.0

NVR, Inc., owner, expressly reserves its copyright in these plans. These plans are not to be reproduced, changed, copied, or otherwise used without the written consent of NVR, Inc.

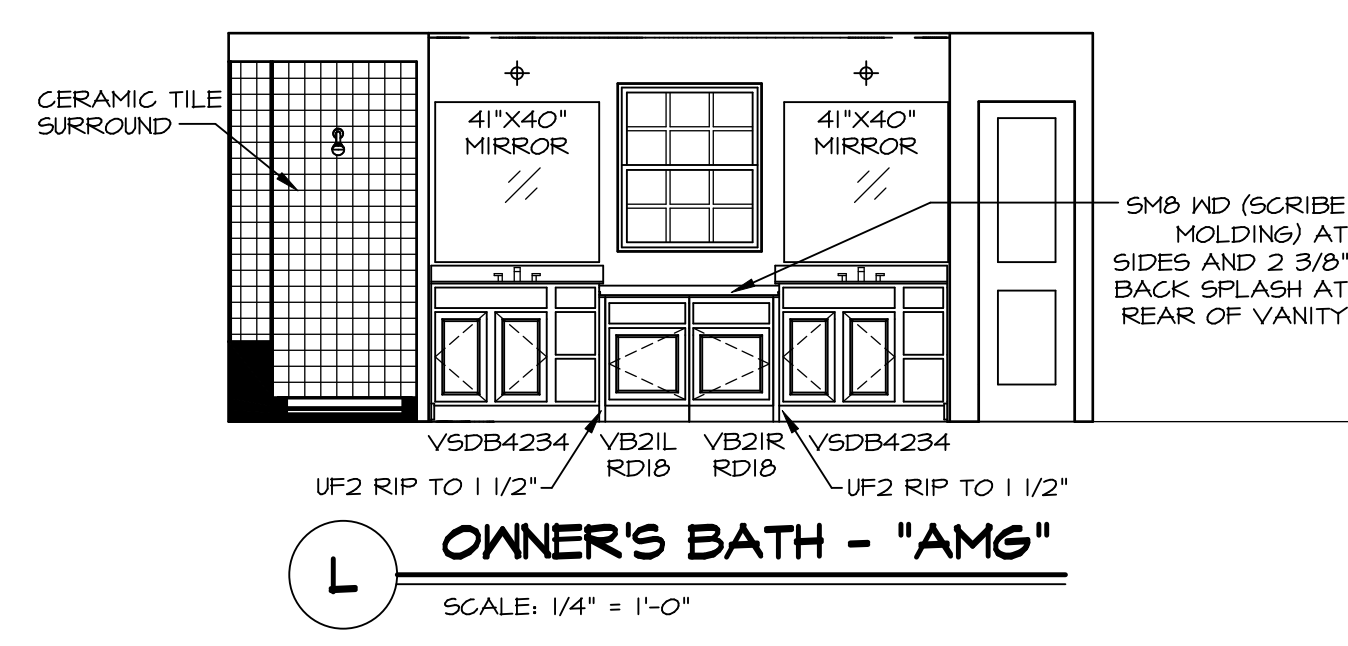


SET NO. NRM00	VERSION 01
DRAWN BY RJC	DATE: 6/29/15
OPTION	

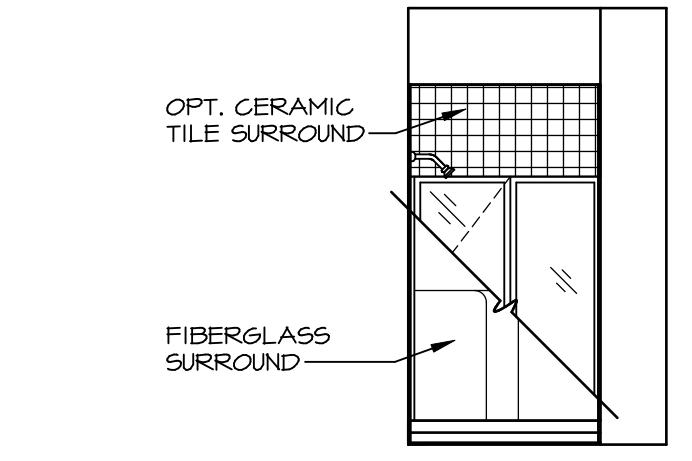
MODEL	NORMANDY
DRAWING TITLE	KITCHEN LAYOUT
SHEET NO.	A-13
OPTION DESCRIPTION	46



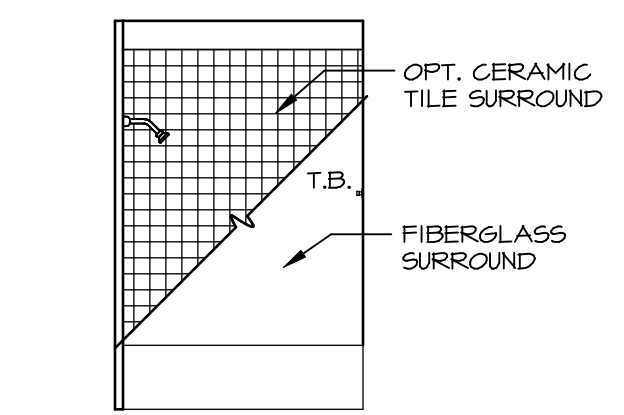
M OWNER'S BATH - "AMG"
SCALE: 1/4" = 1'-0"



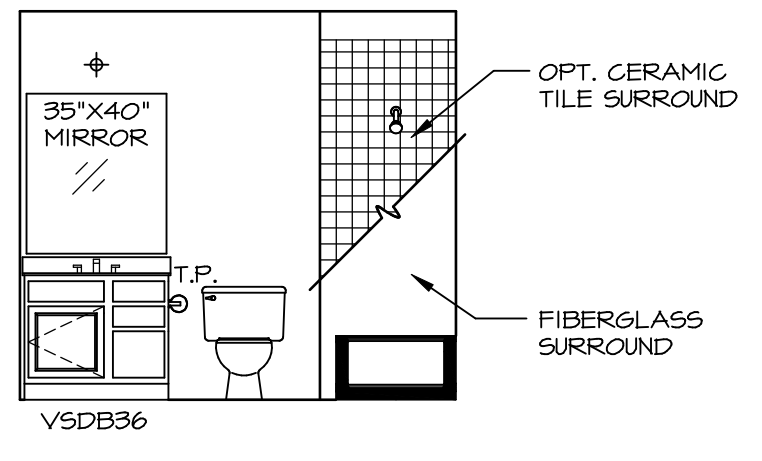
L OWNER'S BATH - "AMG"
SCALE: 1/4" = 1'-0"



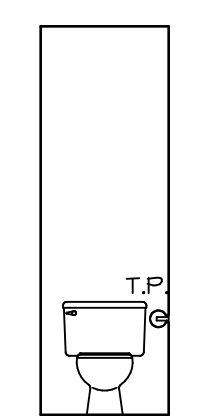
E FIRST FLOOR BATH - "BAR"
SCALE: 1/4" = 1'-0"



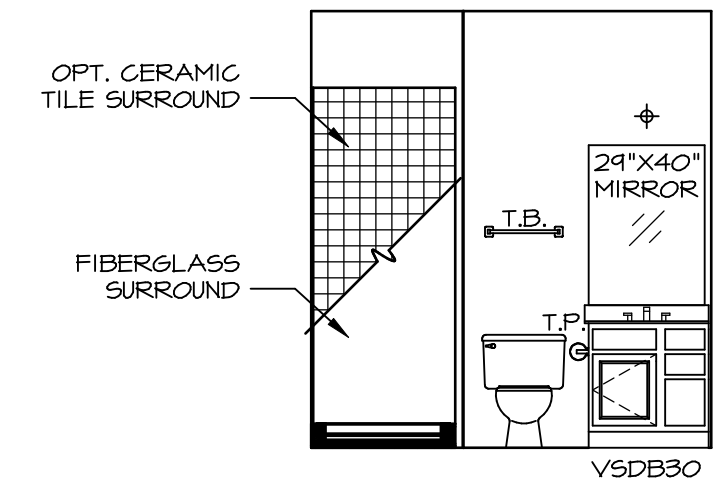
J BATH #2
SCALE: 1/4" = 1'-0"



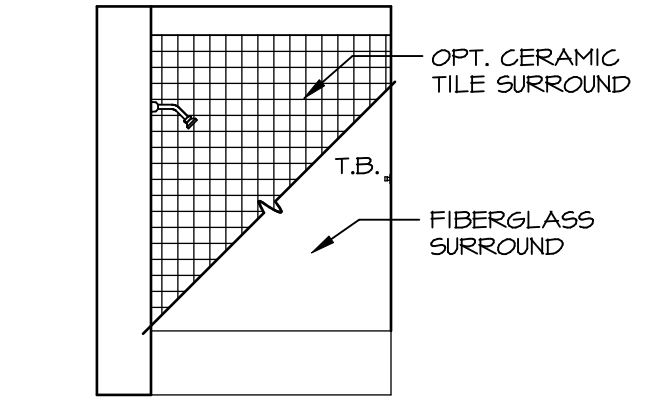
H BATH #2
SCALE: 1/4" = 1'-0"



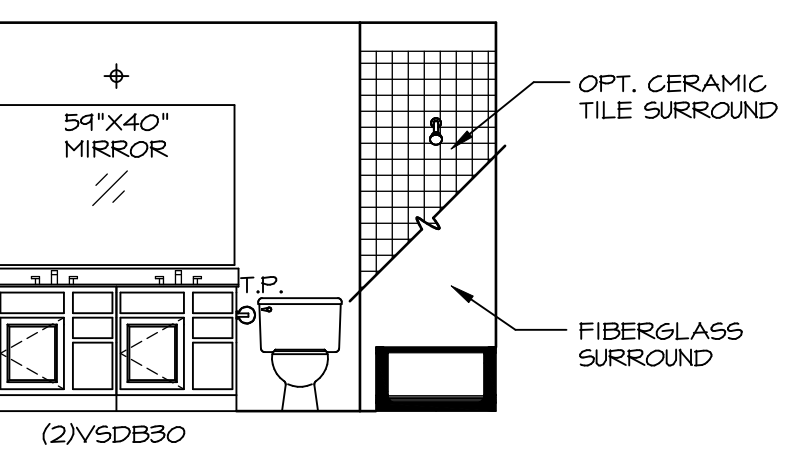
K OWNER'S BATH - "AMA" OR "AMG"
SCALE: 1/4" = 1'-0"



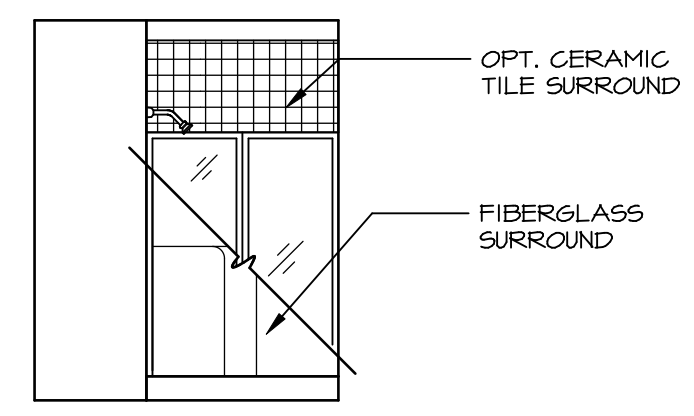
D FIRST FLOOR BATH - "BAR"
SCALE: 1/4" = 1'-0"



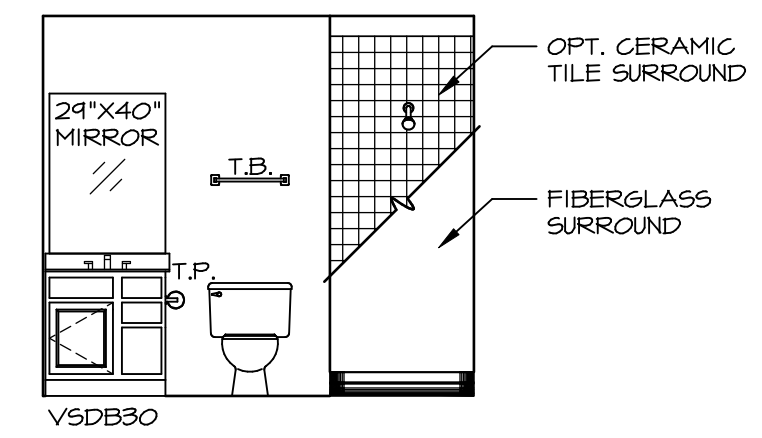
G BATH #1
SCALE: 1/4" = 1'-0"



F BATH #1
SCALE: 1/4" = 1'-0"



B BASEMENT BATH - "AEB"
SCALE: 1/4" = 1'-0"



A BASEMENT BATH - "AEB"
SCALE: 1/4" = 1'-0"

NOTES:

1. TEMPERED GLASS SHOWER ENCLOSURE WITH SWING DOOR OR OPTIONAL SLIDING DOOR BY DIVISION
2. TUB ACCESS PANELS PROVIDED AS NEEDED, ALL MATERIALS BY DIVISION
3. REFER TO SHEET (11-2) FOR TUB AND SHOWER DETAILS.
4. ALL V5DB24-42 DRAWERS TO BE SET ON RIGHT HAND.
5. BATH ELEVATIONS ARE SHOWN PER PLAN.

REV. NO.	DATE	REMARKS
1	08/07/16	N - DRAWING ALIGNMENT
2	11/15/16	TRV - STANDARD DETAILS 5.0

NVR, Inc., owner, expressly reserves its copyright in these plans. These plans are not to be reproduced, changed, copied, or otherwise used in any way without the written consent of NVR, Inc.

NVR
NVR, Inc.
Architectural Services
100
5285 West... Suite
Frederick, MD 21703

SET NO. NRM00	VERSION 01
DRAWN BY SGA	DATE: 5/24/15
OPTION	

MODEL	NORMANDY
DRAWING TITLE	BATH ELEVATIONS
SHEET NO.	A-14
OPTION DESCRIPTION	
	48