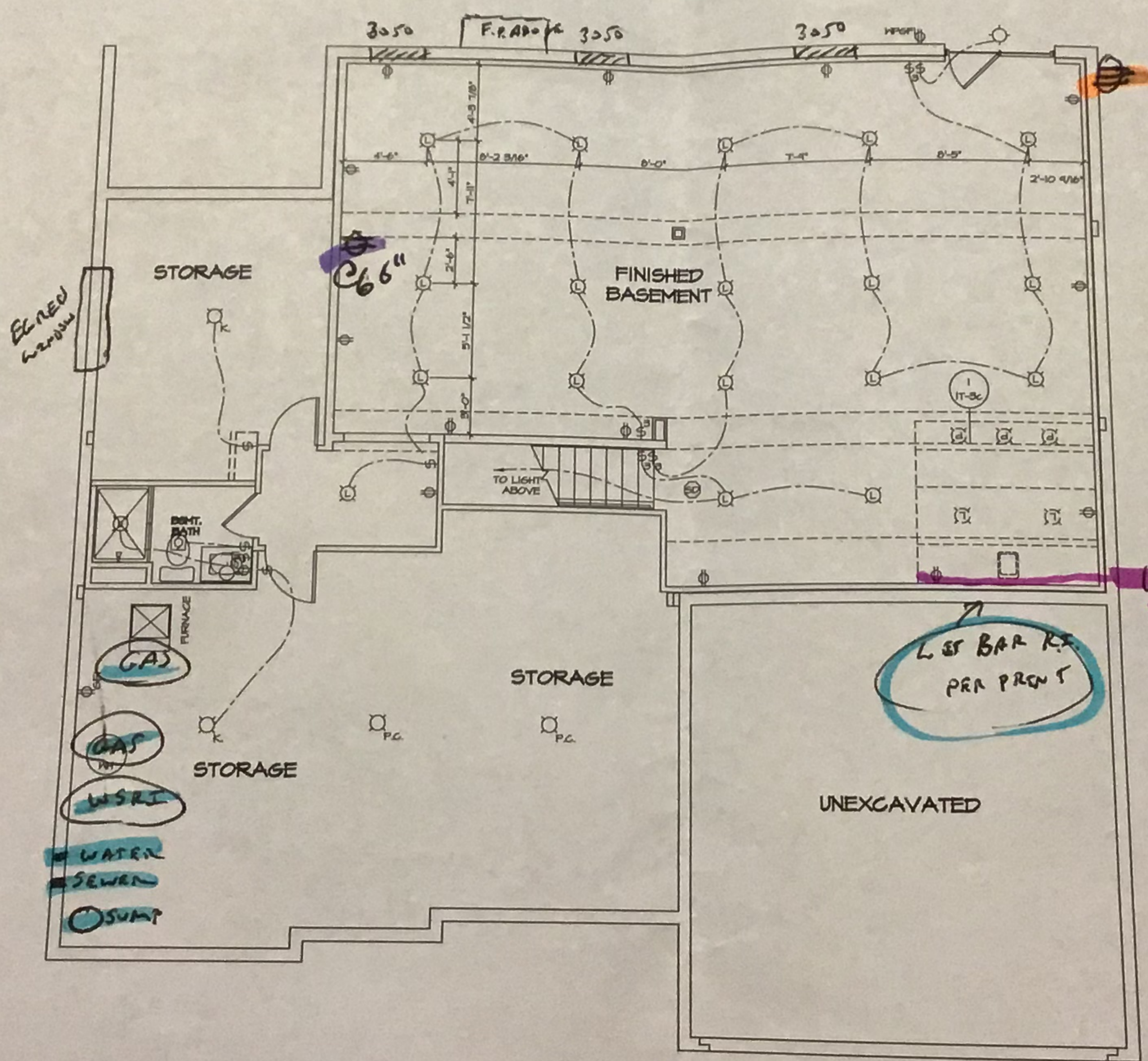


(1) EXTRA RECEPTACLE
 (A) HOT TUB ROUGH IN
 (BASEMENT LEVEL)

VR0087



- NOTES:
1. ALL ELECTRICAL PLANS ARE SCHEMATIC ONLY AND NOT INTENDED AS ENGINEERED DRAWINGS. THESE PLANS REPRESENT THE DESIGN INTENT FOR SWITCH AND RECEPTACLE LOCATIONS. ADDITIONAL INFORMATION, IF REQUIRED, SHALL BE PROVIDED BY A LICENSED ELECTRICAL SUBCONTRACTOR OR ENGINEER.
 2. ALL KITCHEN, BATHS, GARAGES, LAUNDRY ROOM, UNFINISHED BASEMENT, ATTIC AND ALL OUTDOOR RECEPTACLES ARE TO BE GFI PROTECTED.
 3. PROVIDE SWITCH IN KEYLESS LIGHT IN ATTIC SPACE.
 4. PROVIDE SWITCH IN KEYLESS LIGHT AND GFI RECEPTACLE WHEN HVAC EQUIPMENT IS IN ATTIC SPACE.
 5. PROVIDE AFC-Fault Circuit Interrupters TO ALL BEDROOM RECEPTACLES.
 6. PANSWER ON LEFT, DRYER ON RIGHT (SEE PLAN OR REVISIONS).
 7. DRYER RECEPTACLE 10 W 600 OR 220 V ELECTRIC.

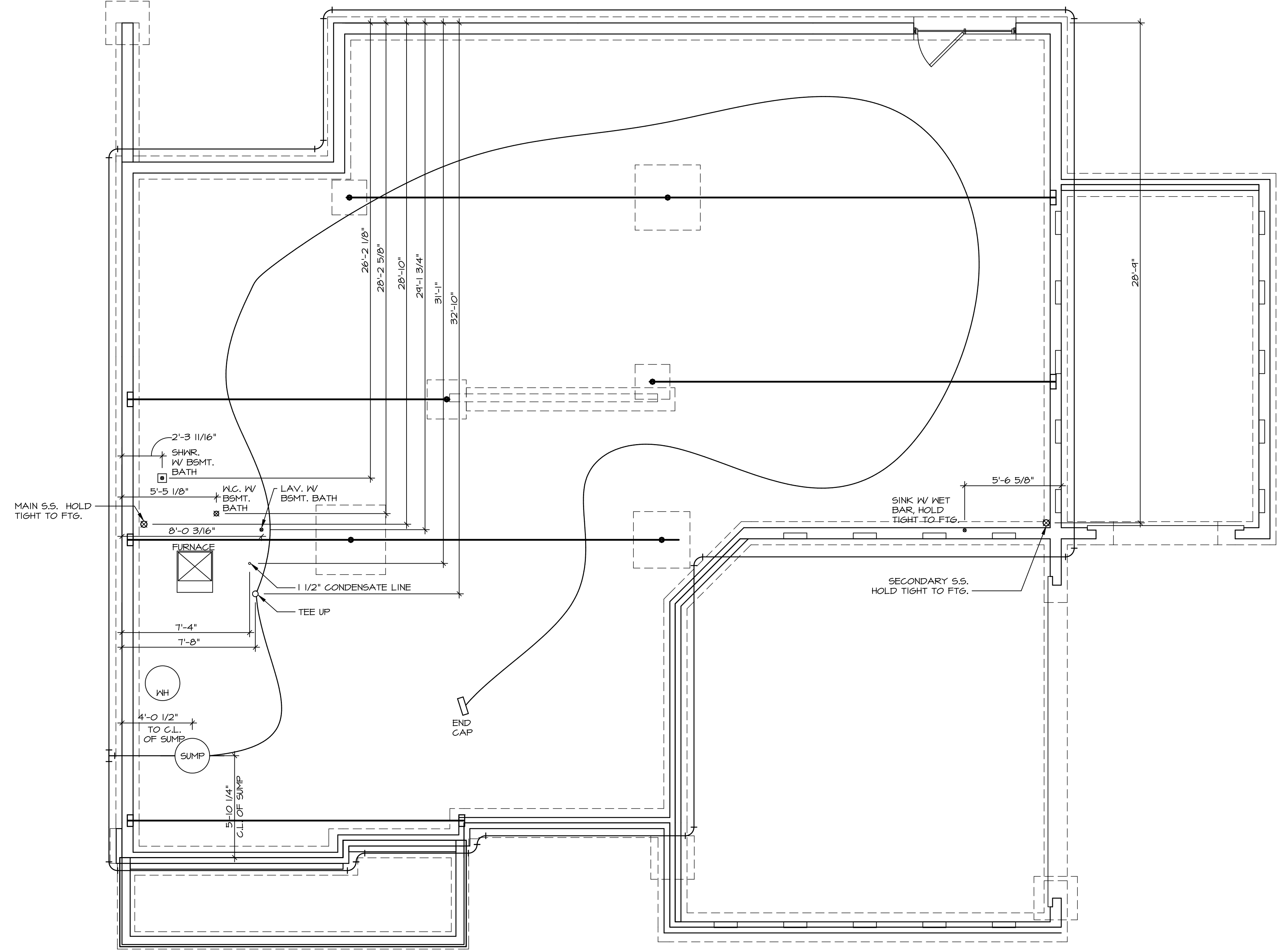
ELECTRICAL LEGEND

⊕	SINGLE POLE SWITCH
⊕	THREE WAY SWITCH
⊕	FOUR WAY SWITCH
⊕	DUPLEX RECEPTACLE
⊕	DUPLEX RECEPTACLE - BOTTOM HALF SWITCHED
⊕	DUPLEX RECEPTACLE - FLOOR MOUNTED
⊕	RECEPTACLE - 220V
⊕	DUPLEX RECEPTACLE - GROUND FAULT INTERRUPT
⊕	DUPLEX RECEPTACLE - HEATER PROOF AND GROUND FAULT INTERRUPT
⊕	SMOKE DETECTOR - WIRED IN SERIES
⊕	CARBON MONOXIDE DETECTOR
⊕	EXHAUST FAN MOTOR
⊕	EXHAUST FAN MOTOR WITH LIGHT
⊕	TELEVISION RECEPTACLE
⊕	TELEPHONE RECEPTACLE
⊕	DOOR CHIME
⊕	LIGHT FIXTURE - WALL MOUNTED
⊕	LIGHT FIXTURE - CEILING MOUNTED
⊕	LIGHT FIXTURE - RECESSED
⊕	LIGHT FIXTURE - RECESSED HEATER PROOF
⊕	LIGHT FIXTURE - CEILING MOUNTED LED
⊕	LIGHT FIXTURE - HANGING
⊕	LIGHT FIXTURE - PENDANT
⊕	LIGHT FIXTURE - FLUORESCENT
⊕	LIGHT FIXTURE - UNDER CABINET LIGHT
⊕	FULLCHAIN LAMPHOLDER
⊕	KEYLESS LAMPHOLDER

x *William C. Pendergast*
 x *[Signature]*
 12-21-18

1 BASEMENT ELECTRICAL PLAN
 E-1 SCALE: 1/4" = 1'-0"

REV. NO. DATE
 1 12-21-18
 2
 3
 4
 5
 6
 7
 8
 9
 10
 11
 12
 13
 14
 15
 16
 17
 18
 19
 20
 21
 22
 23
 24
 25
 26
 27
 28
 29
 30
 31
 32
 33
 34
 35
 36
 37
 38
 39
 40
 41
 42
 43
 44
 45
 46
 47
 48
 49
 50
 51
 52
 53
 54
 55
 56
 57
 58
 59
 60
 61
 62
 63
 64
 65
 66
 67
 68
 69
 70
 71
 72
 73
 74
 75
 76
 77
 78
 79
 80
 81
 82
 83
 84
 85
 86
 87
 88
 89
 90
 91
 92
 93
 94
 95
 96
 97
 98
 99
 100



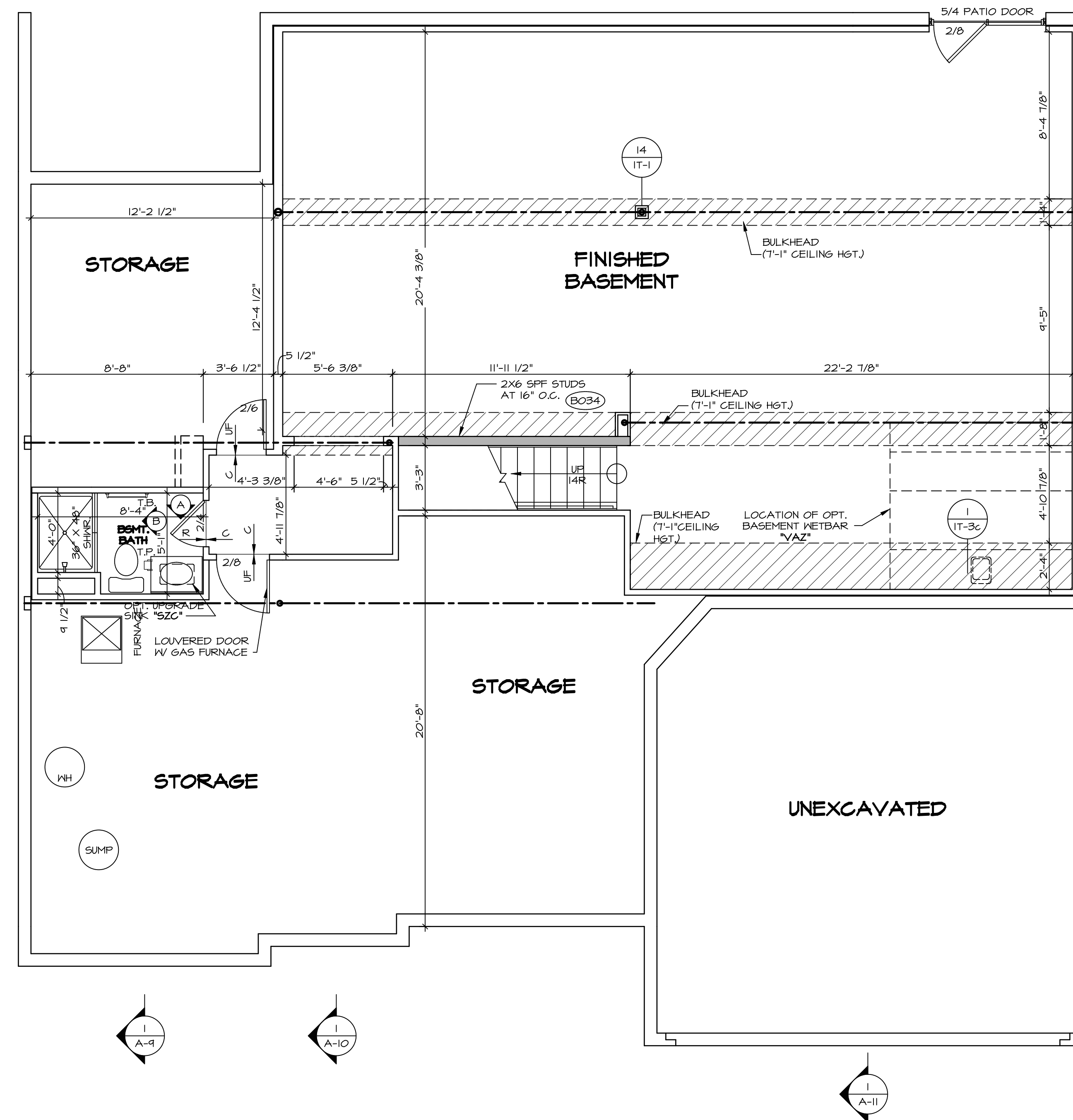
1
A-5 PLUMBING PLAN
SCALE: 1/4" = 1'-0"

SHEET NO.	A-5
MODEL	VERSAILLES
DRAWING TITLE	PLUMBING PLAN
OPTION DESCRIPTION	
SET NO.	VRS00
VERSION	01
DRAWN BY	
DATE:	
OPTION	

NVR
 NVR, Inc.
 Architectural Services
 Architects
 5285 Westwood Drive, Suite 100
 Frederick, MD 21703

NVR, Inc., owner, expressly reserves its copyright in these plans. These plans are not to be reproduced, changed, copied, or otherwise used in any way without the prior written consent of NVR, Inc.

REV. NO.	DATE	REMARKS



BASEMENT FLOOR PLAN
 SCALE: 1/4" = 1'-0"

LEGEND	
	BEARING WALL
	NON BEARING WALL
	INDICATES BEARING FROM POINT-LOAD ABOVE
	JACKS
	BEAM/HEADER
	PAD FOOTING
	STEEL COLUMN
	PORTAL FRAME
	JOIST/TRUSS
	LVL
	ENGINEERING PAGE NUMBER

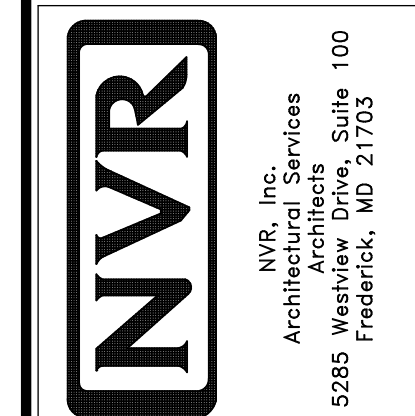
SEE FC DETAILS FOR FRAMING CONNECTORS

- FLOOR PLAN NOTES**
- ALL HEADERS ARE (2) 2x6 w/ 2x4 WALLS OR (3) 2x6 w/ 2x6 WALLS, UNLESS OTHERWISE NOTED.
 - ALL HEADERS TO HAVE (1) 2x4 OR 2x6 JACK EACH END, UNLESS OTHERWISE NOTED.
 - ALL EXTERIOR WALLS TO BE 4" AND ALL INTERIOR WALLS TO BE 3 1/2", UNLESS OTHERWISE NOTED.
 - HATCHED AREAS INDICATE DROPPED CEILINGS. ALL DROPPED CEILINGS ARE 12" UNLESS OTHERWISE NOTED.
 - SEE "BRACED WALL PANEL DETAIL SHEET" FOR SPECIAL WALL FRAMING LOCATIONS AND HEADER SIZES, IF APPLICABLE.
 - SEE STANDARD DETAIL CATEGORY "IT" SHEET(S) FOR INTERIOR TRIM DETAILS.
 - SEE ARCHITECTURAL DETAIL SHEET "AD" FOR HOUSE SPECIFIC INTERIOR TRIM OPTION TABLE.
 - ALL WINDOWS HAVE 7'-0 1/2" HEADER HEIGHT UNLESS OTHERWISE NOTED.

- GYPSUM NOTES**
- AT GARAGE:
 GYPSUM BOARD AT COMMON WALLS, CEILING, BEAM WRAPS AND SUPPORTS PER STANDARD DETAIL FA-1(b) FIRE ASSEMBLIES OR AS REQUIRED BY LOCAL CODE.
- AT STAIRS:
 1/2" GYPSUM BOARD AT UNDERSIDE OF STAIRS AND WALLS IN CLOSET

REV. NO.	DATE	REMARKS
1	08/09/14	DRWING ALIGNMENT

NVR, Inc., owner, expressly reserves its copyright in these plans. These plans are not to be reproduced, changed, copied in any way, or used for any other project without the written consent of NVR, Inc.



MODEL	VERSAILLES
DRAWING TITLE	BASEMENT FLOOR PLAN
OPTION DESCRIPTION	
SHEET NO.	A-6
SET NO.	VR500
VERSION	01
DRAWN BY	
DATE:	
OPTION	

LVL PLY TO PLY FASTENING SCHEDULE:

- 1.A - (2) PLY UP TO AND INCLUDING 11 7/8" TALL; FASTEN PLYS W/ (2) ROWS 16D NAILS AT 12" O.C.
- 2.A - (2) PLY 14" TO AND 18" TALL (INCLUSIVE); FASTEN PLYS W/ (3) ROWS 16D NAILS AT 12" O.C.
- 3.A - (2) PLY 20" TALL AND OVER; FASTEN PLYS W/ (4) ROWS 16D NAILS AT 12" O.C.
- 4.A - (3) PLY UP TO AND INCLUDING 11 7/8" TALL; FASTEN PLYS W/ (2) ROWS 16D NAILS AT 12" O.C. FROM EACH SIDE
- 5.A - (3) PLY 14" TO AND 18" TALL (INCLUSIVE); FASTEN PLYS W/ (3) ROWS 16D NAILS AT 12" O.C. FROM EACH SIDE
- 6.A - (3) PLY 20" TALL AND OVER; FASTEN PLYS W/ (4) ROWS 16D NAILS AT 12" O.C. FROM EACH SIDE

FIRST FLOOR BEAM/HEADER SCHEDULE

IDENTIFIER	DESCRIPTION	LENGTH	OPTIONS	ENG. NUM.	REMARKS
B103	BEAM STEEL - W12X14	22'-4"	ELAE/LBELK	1034	
B105	BEAM STEEL - W16X31	22'-4"	ELAE/EAELB/EVA	1043	
B111	BEAM STEEL - W8X21	30'-0"	GCC/ELAE/LBELK	1033	
B112-3	LVL - 04104	17'-11 1/2"		1004	4.A. FIELD INSTALLED
B118	INT HEADER - 2X12 - 2 PLY	8'-6"	6AA		FIELD INSTALLED
PF102-3	LVL - 16	22'-1"	GCC/ELAE/LBELK	1093	5.A. FIELD INSTALLED
PF105-3	LVL - 16	18'-5"		1047/1049	5.A. FIELD INSTALLED

FIRST FLOOR JACK SCHEDULE

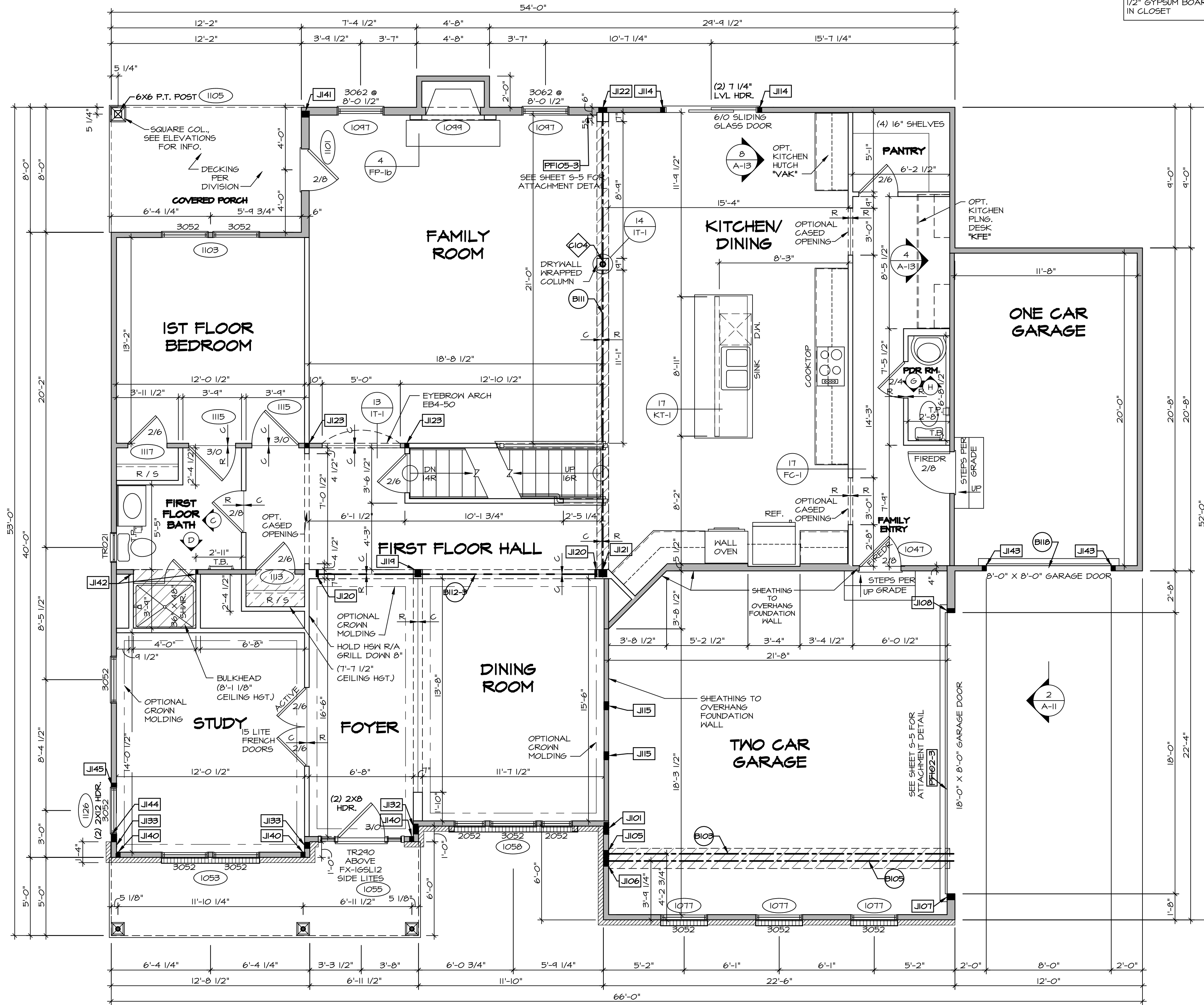
IDENTIFIER	DESCRIPTION	OPTIONS	ENG. NUM.	REMARKS
J101	JACK - (6) 2X4 SP#1		2014	
J105	JACK - (3) 2X4 SP# STUD GRADE	ELAE/LBELK	1034	
J106	JACK - (5) 2X4 SP# STUD GRADE	ELAE/EAELB/EVA	1043	
J107	JACK - (3) 2X6 SP# STUD GRADE	GCC/ELAE/LBELK	1033	
J108	JACK - (2) 2X6 SP# STUD GRADE	GCC/ELAE/LBELK	1033	
J114	JACK - (2) 2X4 SP# STUD GRADE		1045	
J115	JACK - (4) 2X4 SP# STUD GRADE	ELAE/LBELK	1007	
J119	JACK - (3) 2X6 SP# STUD GRADE		1119	
J120	JACK - 2X6 SP# STUD GRADE			
J121	JACK - (4) 2X6 SP# STUD GRADE		1033	
J122	JACK - (4) 2X4 SP# STUD GRADE		1033	
J123	JACK - (2) 2X4 SP# STUD GRADE		1013	
J132	JACK - (5) 2X4 SP#1	ELB	2014	
J133	JACK - (3) 2X4 SP#1	ELBEVA	2014	
J140	JACK - (2) 2X4 SP# STUD GRADE		1070	
J141	JACK - (3) 2X6 SP# STUD GRADE		1105	
J142	JACK - 2X4 SP# STUD GRADE		1111	
J143	JACK - (2) 2X4 SP# STUD GRADE	6AA	1081	
J144	JACK - (4) 2X4 SP# STUD GRADE	WEL/YELB	1126	
J145	JACK - (2) 2X4 SP# STUD GRADE	WEL/YELB	1126	

FLOOR PLAN NOTES

1. ALL HEADERS ARE (2) 2x6 W/ 2x4 WALLS OR (3) 2x6 W/ 2x6 WALLS, UNLESS OTHERWISE NOTED.
2. ALL HEADERS TO HAVE (1) 2x4 OR 2x6 JACK AND KING STUD EACH END, UNLESS OTHERWISE NOTED.
3. ALL EXTERIOR WALLS TO BE 4" W/ OSB OR 3 1/2" W/ T-PLY; ALL INTERIOR WALLS TO BE 3 1/2", UNLESS OTHERWISE NOTED.
4. HATCHED AREAS INDICATE DROPPED CEILING. ALL DROPPED CEILING ARE 12" UNLESS OTHERWISE NOTED.
5. SEE "BRACED WALL PANEL DETAIL SHEET" FOR SPECIAL WALL FRAMING LOCATIONS AND HEADER SIZES, IF APPLICABLE.
6. SEE STANDARD DETAIL CATEGORY "IT" SHEET(S) FOR INTERIOR TRIM DETAILS.
7. SEE ARCHITECTURAL DETAIL SHEET "AD" FOR HOUSE SPECIFIC INTERIOR TRIM OPTION TABLE.
8. ALL WINDOWS HAVE 7'-0 1/2" HEADER HEIGHT UNLESS OTHERWISE NOTED.
9. ALL HEADERS IN NON-BEARING WALLS SHALL BE A SINGLE FLAT 2X4 OR 2X6 ATTACHED TO CRIPPLES ABOVE, UNLESS OTHERWISE NOTED.

GYPSON NOTES

- AT GARAGE:**
 GYPSUM BOARD AT COMMON WALLS, CEILING, BEAM WRAPS AND SUPPORTS PER STANDARD DETAIL FA-1(b) FIRE ASSEMBLIES OR AS REQUIRED BY LOCAL CODE.
- AT STAIRS:**
 1/2" GYPSUM BOARD AT UNDERSIDE OF STAIRS AND WALLS IN CLOSET



LEGEND

- BEARING WALL
- NON BEARING WALL
- INDICATES BEARING FROM POINT-LOAD ABOVE
- J JACKS
- BEAM/HEADER
- F PAD FOOTING
- STEEL COLUMN
- X PORTAL FRAME
- X JOIST/TRUSS
- L LVL
- ENGINEERING PAGE NUMBER

SEE FC DETAILS FOR FRAMING CONNECTORS

FIRST FLOOR PLAN
 SCALE: 1/4" = 1'-0"

REVISIONS

REV. NO.	DATE	DESCRIPTION
1	08/06/16	TM - DRAWING ALIGNMENT
2	07/14/17	SLS - T-PLY CONVERSION PROJECT

SET NO. VRS00
VERSION 01
DRAWN BY
DATE:
OPTION

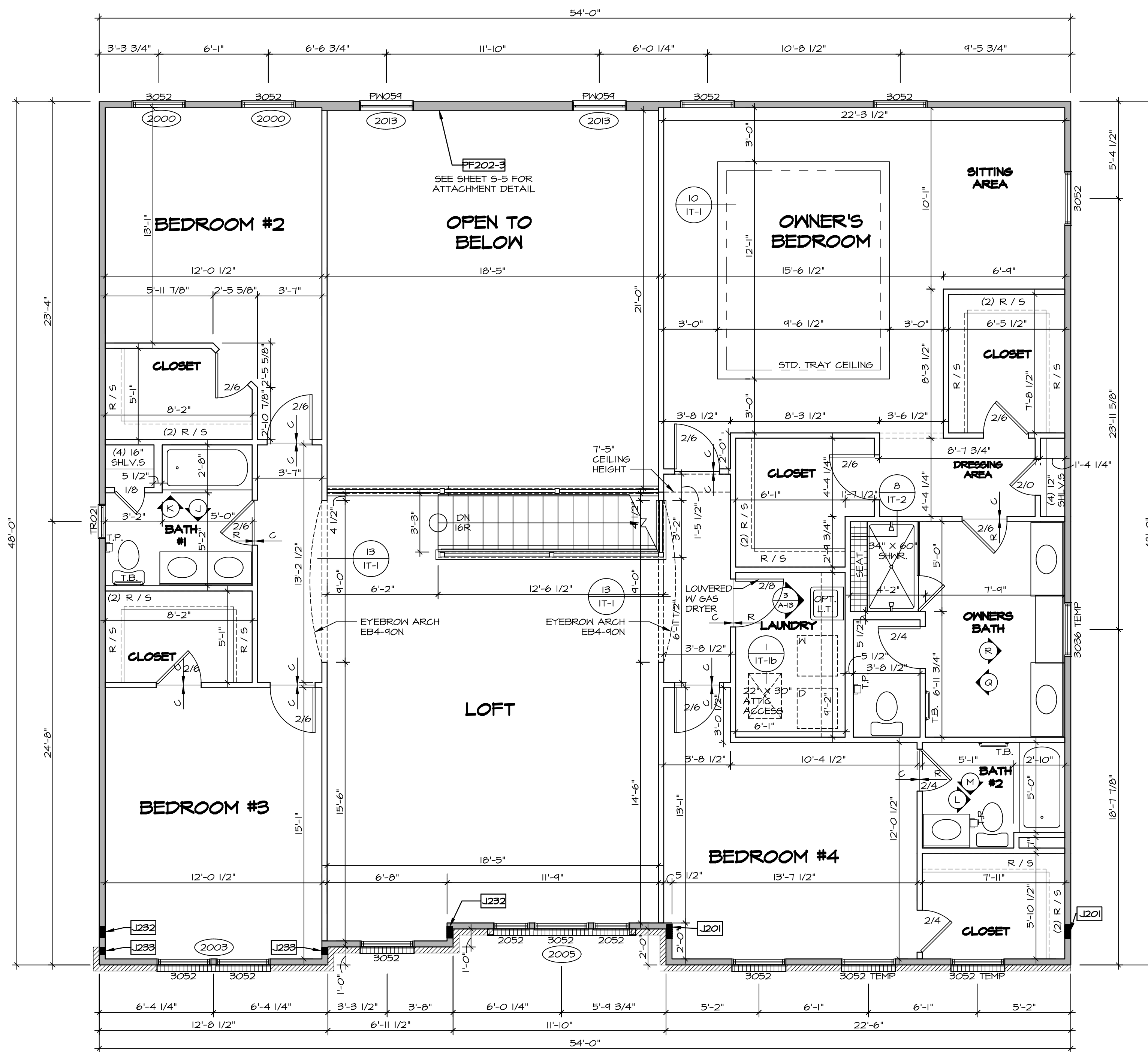
VERSAILLES
DRAWING TITLE
FIRST FLOOR PLAN
OPTION DESCRIPTION

A-7
39

NVR, Inc., owner, expressly reserves its copyright in these plans. These plans are not to be reproduced, changed, copied, or otherwise used in any way without the written consent of NVR, Inc.

NVR, Inc.
 Architectural Services
 Architects
 Suite 100
 5285 Washburn Ave.
 Frederick, MD 21703

C:\NVR\Solves\VERSAILLES_VRS00_01\DC-FR-008\Sheet\Lot_Specific\99_A-7_Plan1_LS.dwg 07/15/19 - 4:09 am



SECOND FLOOR JACK SCHEDULE			
IDENTIFIER	DESCRIPTION	ENG. NUM.	REMARKS
J201	JACK - (6) 2X4 9F#H	2014	EXTEND THROUGH TOP PLATE W/ STEEL BEARING PLATE 1/8" x 3 1/2" x 4"
J232	JACK - (5) 2X4 9F#H	2014	EXTEND THROUGH TOP PLATE W/ STEEL BEARING PLATE 1/8" x 3 1/2" x 4"
J233	JACK - (3) 2X4 9F#H	2014	

LVL PLY TO PLY FASTENING SCHEDULE:

1.A - (2) PLY UP TO AND INCLUDING II 7/8" TALL; FASTEN PLYS W/ (2) ROWS 16D NAILS AT 12" O.C.
 2.A - (2) PLY 14" TO AND 18" TALL (INCLUSIVE); FASTEN PLYS W/ (3) ROWS 16D NAILS AT 12" O.C.
 3.A - (2) PLY 20" TALL AND OVER; FASTEN PLYS W/ (4) ROWS 16D NAILS AT 12" O.C.
 4.A - (3) PLY UP TO AND INCLUDING II 7/8" TALL; FASTEN PLYS W/ (2) ROWS 16D NAILS AT 12" O.C. FROM EACH SIDE
 5.A - (3) PLY 14" TO AND 18" TALL (INCLUSIVE); FASTEN PLYS W/ (3) ROWS 16D NAILS AT 12" O.C. FROM EACH SIDE
 6.A - (3) PLY 20" TALL AND OVER; FASTEN PLYS W/ (4) ROWS 16D NAILS AT 12" O.C. FROM EACH SIDE

SECOND FLOOR BEAM/HEADER SCHEDULE			
IDENTIFIER	DESCRIPTION	LENGTH	OPTIONS
FF202-3	LVL - II-04	18'-5"	2013 4.A PORTAL FRAME

- FLOOR PLAN NOTES**
- ALL HEADERS ARE (2) 2x6 W/ 2x4 WALLS OR (3) 2x6 W/ 2x6 WALLS, UNLESS OTHERWISE NOTED.
 - ALL HEADERS TO HAVE (1) 2x4 OR 2x6 JACK AND KING STUD EACH END, UNLESS OTHERWISE NOTED.
 - ALL EXTERIOR WALLS TO BE 4" W/ OSB OR 3 1/2" W/ T-PLY; ALL INTERIOR WALLS TO BE 3 1/2", UNLESS OTHERWISE NOTED.
 - HATCHED AREAS INDICATE DROPPED CEILING. ALL DROPPED CEILING ARE 12' UNLESS OTHERWISE NOTED.
 - SEE "BRACED WALL PANEL DETAIL SHEET" FOR SPECIAL WALL FRAMING LOCATIONS AND HEADER SIZES, IF APPLICABLE.
 - SEE STANDARD DETAIL CATEGORY "IT" SHEET(S) FOR INTERIOR TRIM DETAILS.
 - SEE ARCHITECTURAL DETAIL SHEET "AD" FOR HOUSE SPECIFIC INTERIOR TRIM OPTION TABLE.
 - ALL WINDOWS HAVE 7'-0 1/2" HEADER HEIGHT UNLESS OTHERWISE NOTED.
 - ALL HEADERS IN NON-BEARING WALLS SHALL BE A SINGLE FLAT 2X4 OR 2X6 ATTACHED TO CRIPPLES ABOVE, UNLESS OTHERWISE NOTED.

SECOND FLOOR PLAN
 SCALE: 1/4" = 1'-0"

LEGEND

- BEARING WALL
- NON BEARING WALL
- INDICATES BEARING FROM POINT-LOAD ABOVE JACKS
- BEAM/HEADER
- PAD FOOTING
- STEEL COLUMN
- PORTAL FRAME
- JOIST/TRUSS
- LVL
- ENGINEERING PAGE NUMBER

SEE FC DETAILS FOR FRAMING CONNECTORS

REV. NO. DATE DESCRIPTION

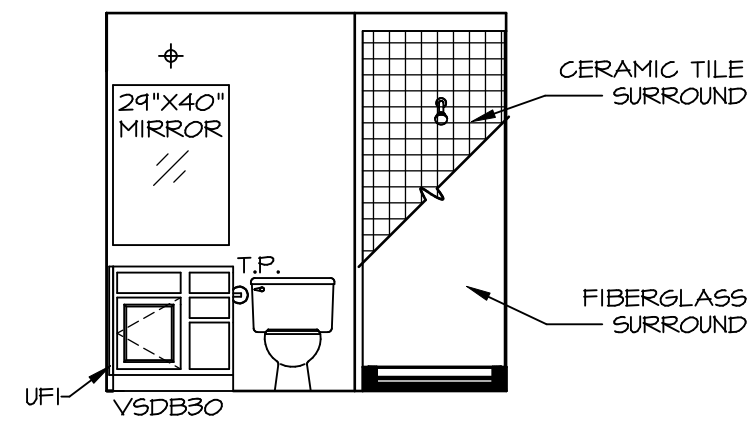
1	08/06/16	TH - DRAWING ALIGNMENT
2	07/11/17	SLS - T-PLY CONVERSION PROJECT

MODEL: VERSAILLES
 DRAWING TITLE: SECOND FLOOR PLAN
 SHEET NO. A-8

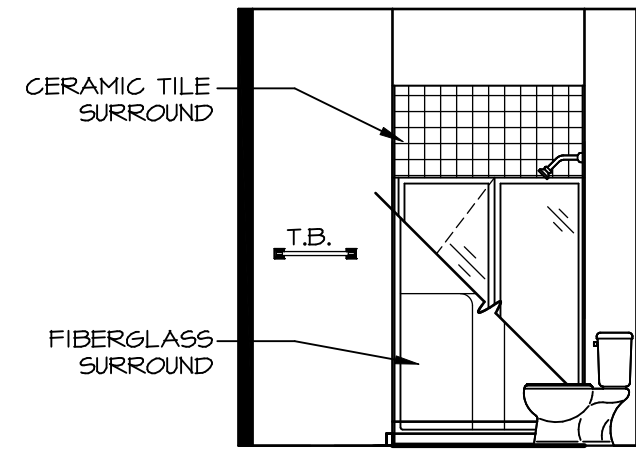
OPTION DESCRIPTION: 42

NVR, Inc. Architectural Services
 5285 Westminister Suite 100
 Frederick, MD 21703

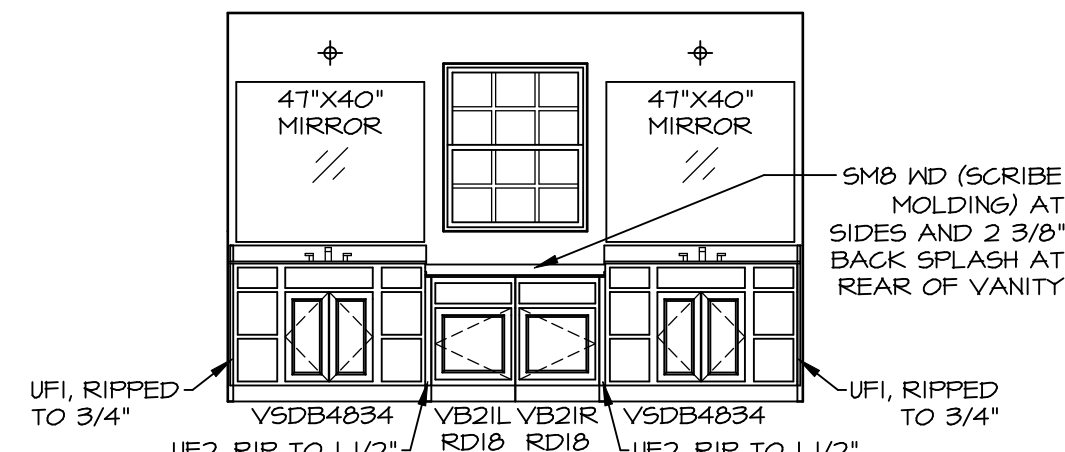
Copyright © 2016 NVR, Inc. All rights reserved. No part of this drawing may be reproduced, stored in a retrieval system, or transmitted in any form or by any means, electronic, mechanical, photocopying, recording, or by any information storage and retrieval system, without the prior written consent of NVR, Inc.



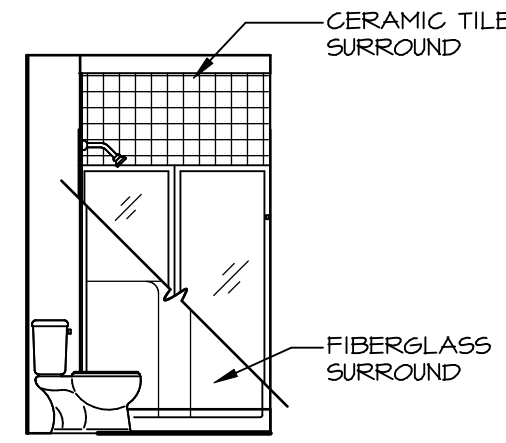
A BASEMENT BATH "AEB"
SCALE: 1/4" = 1'-0"



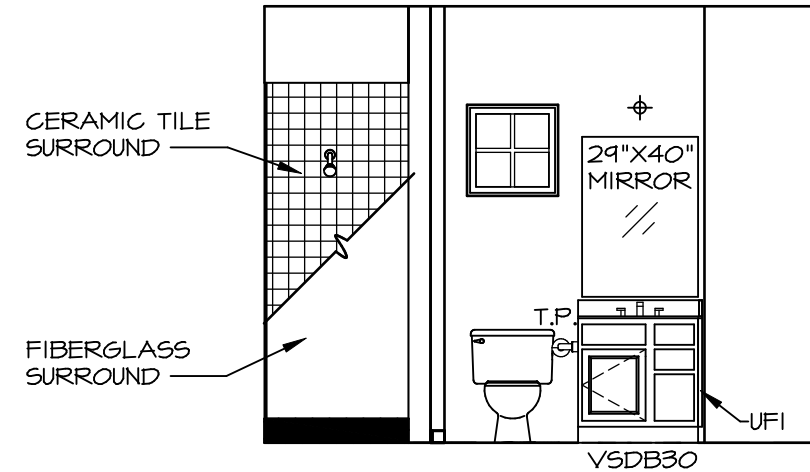
D FIRST FLOOR BATH
SCALE: 1/4" = 1'-0"



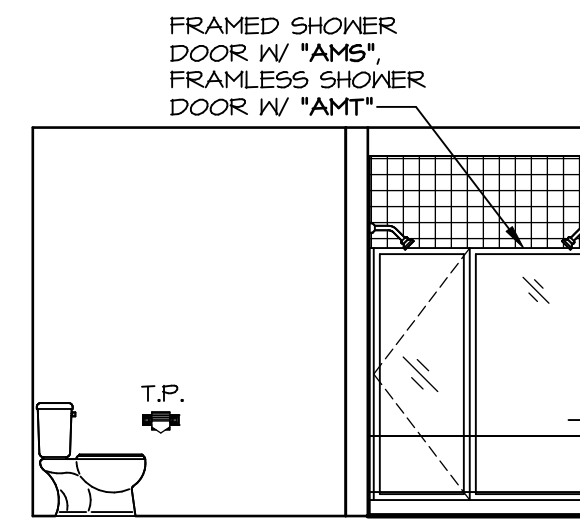
R OWNER'S BATH ("AMG")
SCALE: 1/4" = 1'-0"



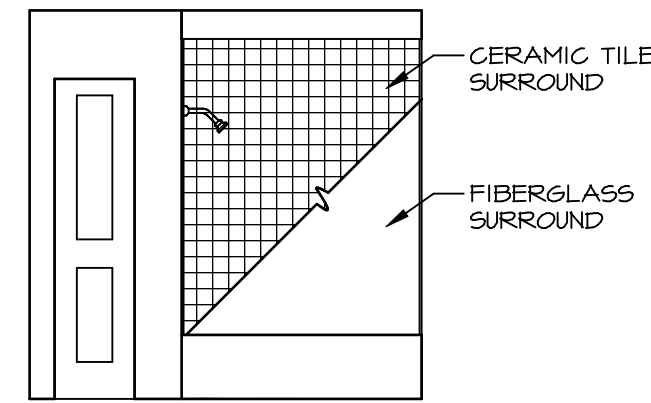
B BASEMENT BATH "AEB"
SCALE: 1/4" = 1'-0"



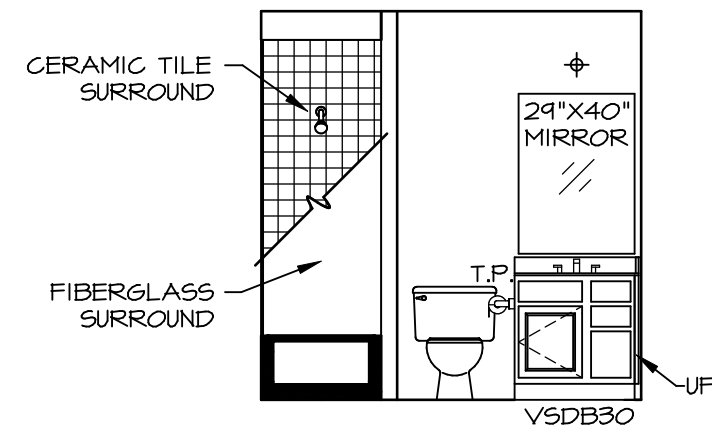
C FIRST FLOOR BATH
SCALE: 1/4" = 1'-0"



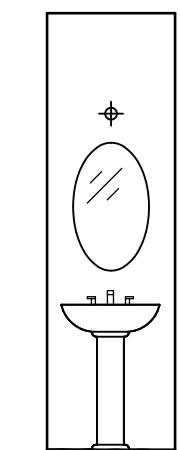
Q OWNER'S BATH ("AMG")
SCALE: 1/4" = 1'-0"



K BATH #1
SCALE: 1/4" = 1'-0"

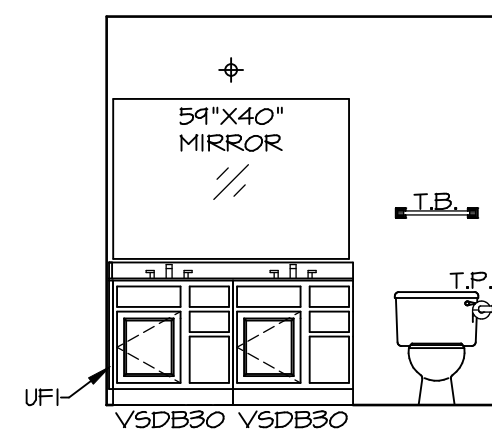


M BATH #2
SCALE: 1/4" = 1'-0"

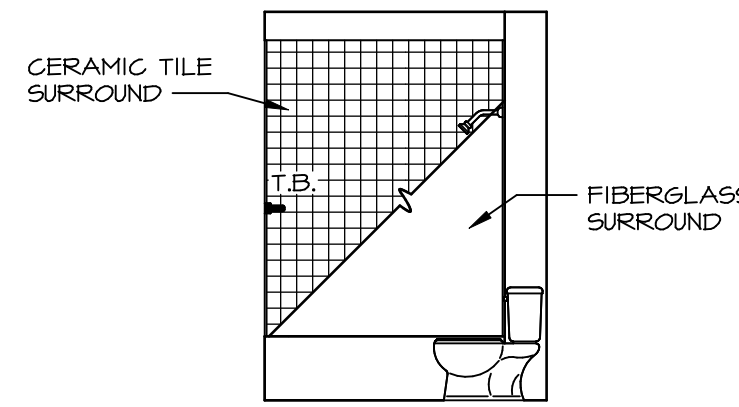


PEDESTAL SINK WITH OVAL MIRROR

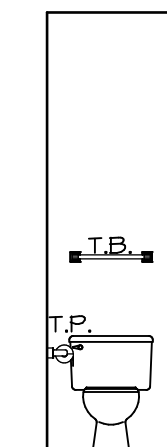
H POWDER ROOM "APR"
SCALE: 1/4" = 1'-0"



J BATH #1
SCALE: 1/4" = 1'-0"



L BATH #2
SCALE: 1/4" = 1'-0"



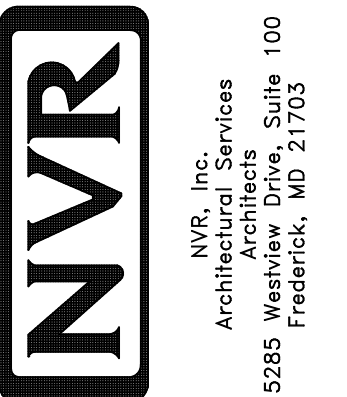
G POWDER ROOM "APR"
SCALE: 1/4" = 1'-0"

NOTES:

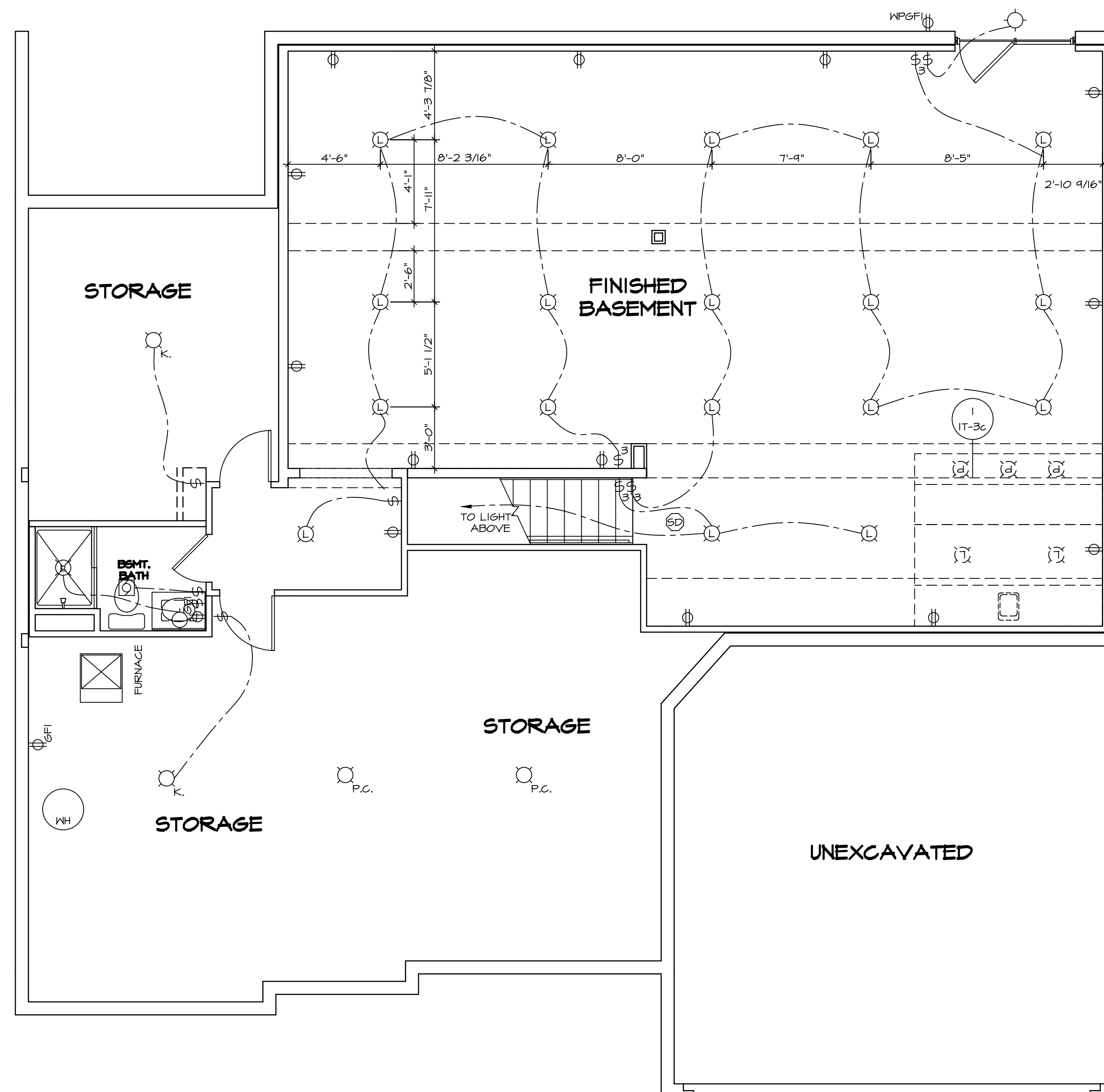
- TEMPERED GLASS SHOWER ENCLOSURE WITH SWING DOOR OR OPTIONAL SLIDING DOOR BY DIVISION
- TUB ACCESS PANELS PROVIDED AS NEEDED, ALL MATERIALS BY DIVISION REFER TO SHEET IT-2 FOR TUB AND SHOWER DETAILS.
- ALL VSDDB24-42 DRAWERS TO BE SET ON RIGHT HAND.
- BATH ELEVATIONS ARE SHOWN PER PLAN.

REV. NO.	DATE	REMARKS
1	08/09/16	TM - DRAWING ALIGNMENT

NVR, Inc., owner, expressly reserves its copyright in these plans. These plans are not to be reproduced, changed, copied, or otherwise used in any way without the written consent of NVR, Inc.



SET NO. VRS00	VERSION 01
DRAWN BY	DATE:
OPTION	OPTION
SHEET NO. A-14 MODEL VERSAILLES DRAWING TITLE BATH ELEVATIONS OPTION DESCRIPTION	
SHEET NO. 55	



- NOTES:
1. ALL ELECTRICAL PLANS ARE SCHEMATIC ONLY AND NOT INTENDED AS ENGINEERED DRAWINGS. THESE PLANS REPRESENT THE DESIGN INTENT FOR SWITCH AND RECEPTACLE LOCATIONS. ADDITIONAL INFORMATION, IF REQUIRED, SHALL BE PROVIDED BY A LICENSED ELECTRICAL SUBCONTRACTOR OR ENGINEER.
 2. ALL KITCHEN, BATHS, GARAGES, LAUNDRY ROOM, UNFINISHED BASEMENT, PATIAROS AND ALL OUTDOOR RECEPTACLES ARE TO BE GFI PROTECTED.
 3. PROVIDE SWITCH W/ KEYLESS LIGHT IN ATTIC SPACE.
 4. PROVIDE SWITCH W/ KEYLESS LIGHT AND GFI RECEPTACLE WHEN HVAC EQUIPMENT IS IN ATTIC SPACE.
 5. PROVIDE ARC-FAULT CIRCUIT INTERRUPTERS TO ALL BEDROOM RECEPTACLES.
 6. WASHER ON LEFT, DRYER ON RIGHT (PER PLAN OR REVERSED).
 7. DRYER RECEPTACLE 110 W/ 6AS OR 220 W/ ELECTRIC.

ELECTRICAL LEGEND

⊕	SINGLE POLE SWITCH
⊕	THREE WAY SWITCH
⊕	FOUR WAY SWITCH
⊕	DUPLEX RECEPTACLE
⊕	DUPLEX RECEPTACLE - BOTTOM HALF SWITCHED
⊕	DUPLEX RECEPTACLE - FLOOR MOUNTED
⊕	RECEPTACLE - 220V
⊕	DUPLEX RECEPTACLE - GROUND FAULT INTERRUPT
⊕	DUPLEX RECEPTACLE - WEATHER PROOF AND GROUND FAULT INTERRUPT
⊕	SMOKE DETECTOR - WIRED IN SERIES
⊕	CARBON MONOXIDE DETECTOR
⊕	EXHAUST FAN MOTOR
⊕	EXHAUST FAN MOTOR WITH LIGHT
⊕	TELEVISION RECEPTACLE
⊕	DOOR CHIME
⊕	LIGHT FIXTURE - WALL MOUNTED
⊕	LIGHT FIXTURE - CEILING MOUNTED
⊕	LIGHT FIXTURE - RECESSED
⊕	LIGHT FIXTURE - RECESSED WEATHER PROOF
⊕	LIGHT FIXTURE - CEILING MOUNTED LED
⊕	LIGHT FIXTURE - HANGING
⊕	LIGHT FIXTURE - PENDANT
⊕	LIGHT FIXTURE - FLUORESCENT
⊕	LIGHT FIXTURE - UNDER CABINET LIGHT
⊕	PULLCHAIN LAMPHOLDER
⊕	KEYLESS LAMPHOLDER

BASEMENT ELECTRICAL PLAN
SCALE: 1/4" = 1'-0"

SHEET NO. E-1	MODEL VERSAILLES	SET NO. VRS00	REVISIONS	REV. NO.	DATE	REMARKS
	DRAWING TITLE BASEMENT ELECTRICAL PLAN	VERSION 01	DRAWN BY	08/08/16	TH - DRAWING ALIGNMENT	
	OPTION DESCRIPTION					
56						

NVR, Inc. owner, expressly reserves its copyright in these plans. These plans are not to be reproduced, changed, copied, or otherwise used in any way without the written consent of NVR, Inc.

NVR
Architectural Services
5285 Westchase Lane, Suite 100
Frederick, MD 21703

C:\NVR\Solves\VERSAILLES_VRS00_01\DCI-YR-008\1080032A Sheet\1.dwg 01/15/19 - 4:09 am