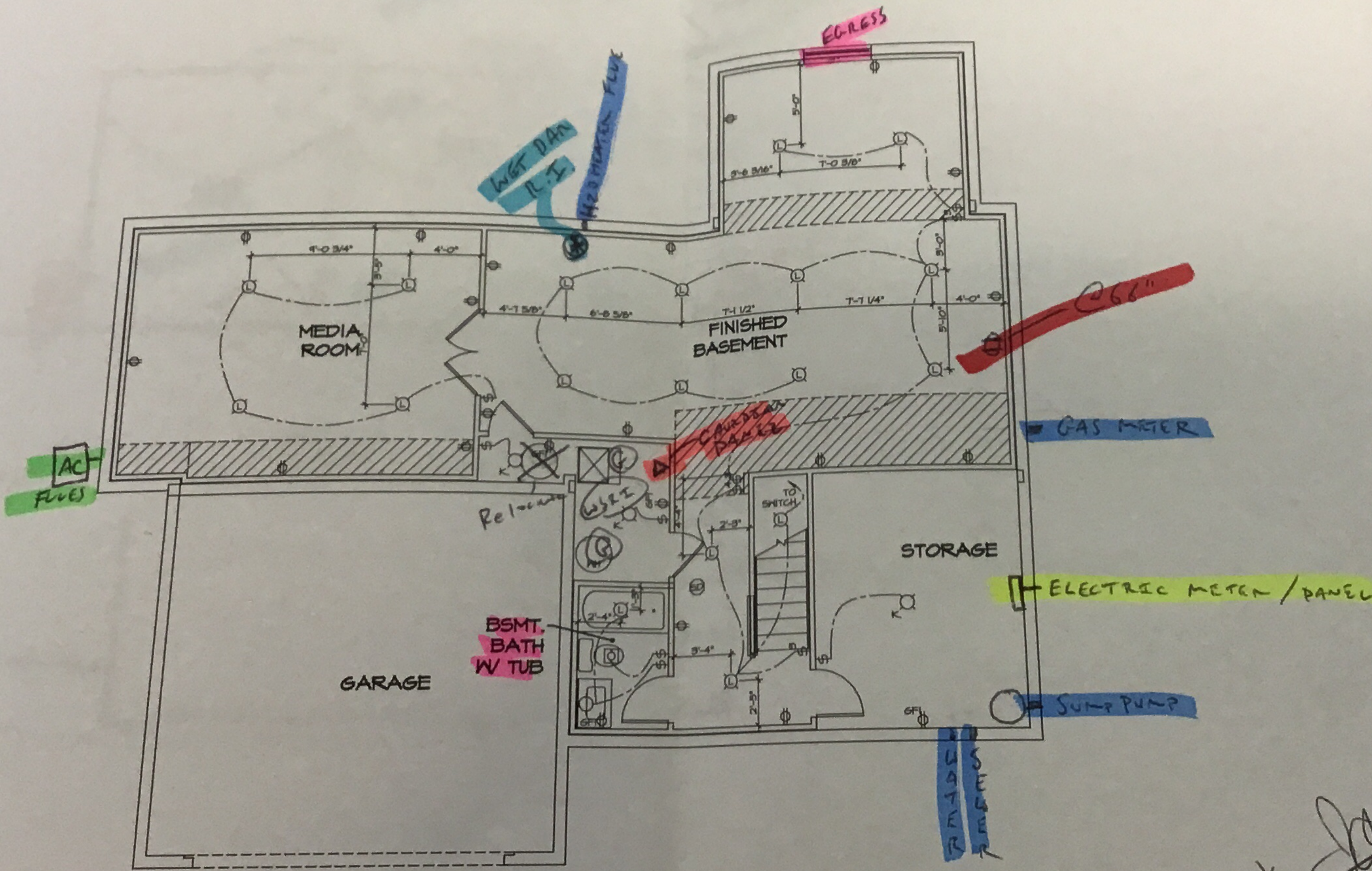


~~(1) Additional Receptacle~~

V120092



- NOTES:
1. ALL ELECTRICAL PLANS ARE SCHEMATIC ONLY AND NOT INTENDED AS ENGINEERED DRAWINGS. THESE PLANS REPRESENT THE DESIGN INTENT FOR SWITCH AND RECEPTACLE LOCATIONS. ADDITIONAL INFORMATION IF REQUIRED SHALL BE PROVIDED BY A LICENSED ELECTRICAL SUBCONTRACTOR OR ENGINEER.
 2. ALL KITCHEN GARAGES UNFINISHED BASEMENT RECEPTACLES AND ALL OUTDOOR RECEPTACLES ARE TO BE GFI PROTECTED.
 3. PROVIDE DUPLEX RECEPTACLE ON DEDICATED CIRCUIT FOR DISPOSER IN CABINET UNDER THE SINK.
 4. PROVIDE DUPLEX RECEPTACLE FOR GARBAGE DISPOSAL IN CABINET UNDER THE SINK.
 5. PROVIDE SWITCH W/ KEYLESS LIGHT IN ATTIC SPACE.
 6. PROVIDE SWITCH W/ KEYLESS LIGHT AND GFI RECEPTACLE WHEN HVAC EQUIPMENT IS IN ATTIC SPACE.
 7. PROVIDE ARC-FULT CIRCUIT INTERRUPTERS TO ALL ROOMS EXCEPT BATH AND EXTERIOR RECEPTACLES.
 8. WASHER ON LEFT, DRYER ON RIGHT (PER PLAN OR REVISIONS).
 9. DRYER RECEPTACLE 30 W/ 6AS OR 220 W/ ELECTRIC.

ELECTRICAL LEGEND

	SINGLE POLE SWITCH
	THREE WAY SWITCH
	FOUR WAY SWITCH
	DUPLEX RECEPTACLE
	DUPLEX RECEPTACLE - BOTTOM HALF SWITCHED
	DUPLEX RECEPTACLE - FLOOR MOUNTED
	RECEPTACLE - 220V
	DUPLEX RECEPTACLE - USB
	DUPLEX RECEPTACLE - GROUND FAULT INTERRUPT
	DUPLEX RECEPTACLE - HEATER PROOF AND GROUND FAULT INTERRUPT
	DUPLEX RECEPTACLE - MICROWAVE
	SMOKE DETECTOR - WIRED IN SERIES
	CARBON MONOXIDE DETECTOR
	EXHAUST FAN MOTOR
	EXHAUST FAN MOTOR WITH LIGHT
	TELEVISION RECEPTACLE
	TELEPHONE RECEPTACLE
	DOOR CHIME
	LIGHT FIXTURE - HALL MOUNTED
	LIGHT FIXTURE - CEILING MOUNTED
	LIGHT FIXTURE - RECESSED
	LIGHT FIXTURE - RECESSED HEATER PROOF
	LIGHT FIXTURE - CEILING MOUNTED LED
	LIGHT FIXTURE - HANGING
	LIGHT FIXTURE - PENDANT
	LIGHT FIXTURE - FLUORESCENT
	LIGHT FIXTURE - UNDER CABINET LIGHT
	PULLCHAIN LAMPHOLDER
	KEYLESS LAMPHOLDER

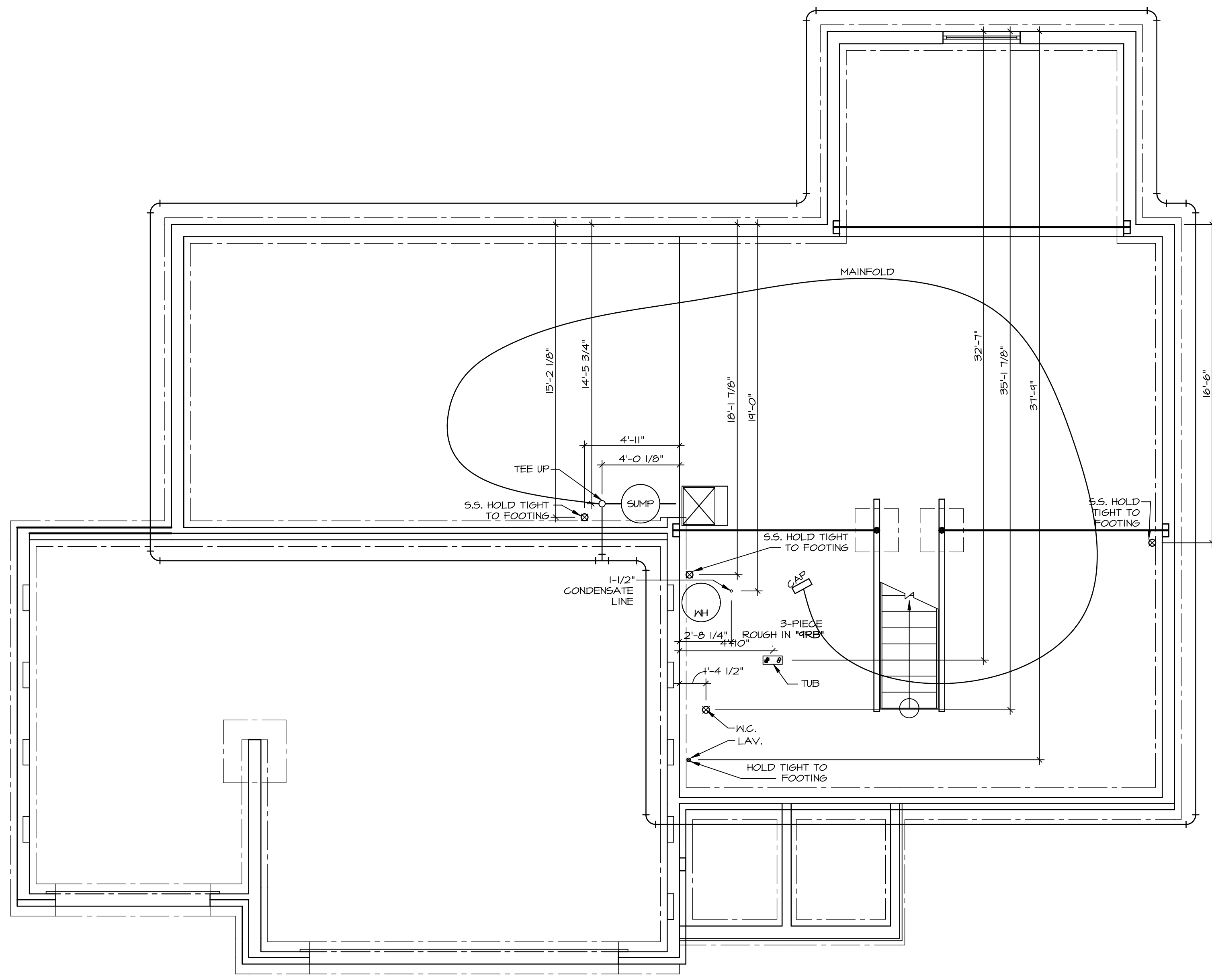
REVISIONS
REV. NO. DATE DESCRIPTION

NVR

SET NO. PALOO
VERSION 03

Handwritten signature and date: 5-11-9

1
E-1
SCALE: 1/4" = 1'-0"
BASEMENT ELECTRICAL PLAN



PLUMBING PLAN

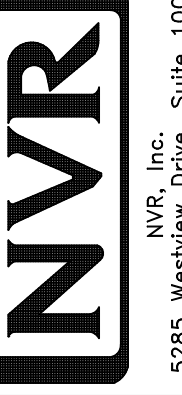
SCALE: 1/4" = 1'-0"

SHEET NO. **A-5**

MODEL **PALERMO**

DRAWING TITLE **PLUMBING PLAN**

OPTION DESCRIPTION **4B**



NVR, Inc. Suite 100
5285 Washburn Ave.
Frederick, MD 21703

SET NO. **PALOO**

VERSION **03**

DRAWN BY

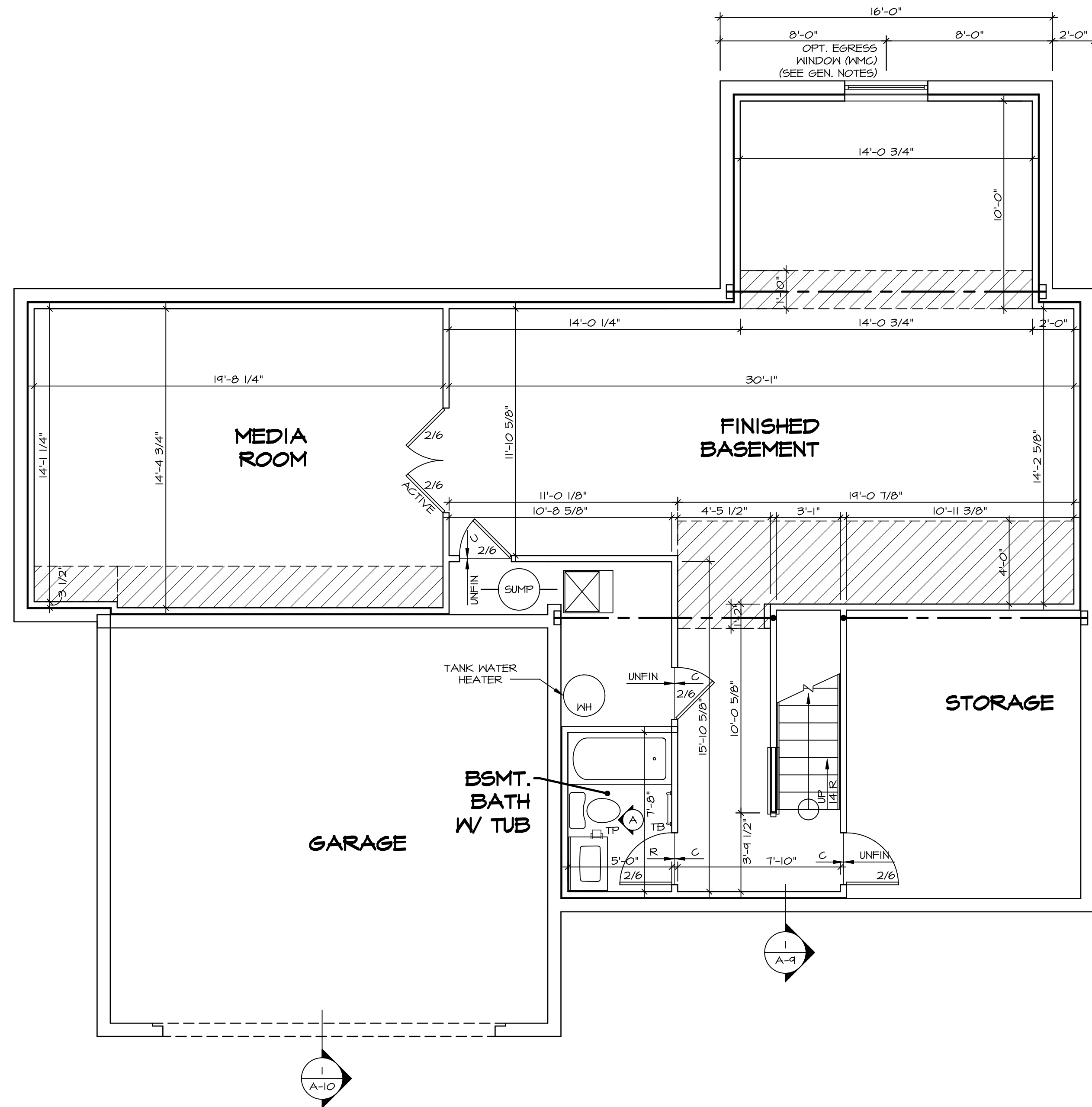
DATE:

OPTION

© NVR, Inc. expressly reserves the right to modify or amend these plans without notice. These plans are not to be reproduced, changed or altered in any way without the express written consent of NVR, Inc.

REV. NO. | DATE

REMARKS



LEGEND	
	BEARING WALL
	NON BEARING WALL
	INDICATES BEARING FROM POINT-LOAD ABOVE
	JACKS
	BEAM/HEADER
	PAD FOOTING
	STEEL COLUMN
	PORTAL FRAME
	JOIST/TRUSS
	LVL
	ENGINEERING PAGE NUMBER

SEE FC DETAILS FOR FRAMING CONNECTORS

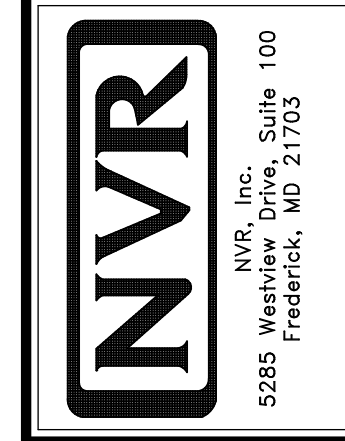
- FLOOR PLAN NOTES**
1. ALL HEADERS ARE (2) 2x6 w/ 2x4 WALLS OR (3) 2x6 w/ 2x6 WALLS, UNLESS OTHERWISE NOTED.
 2. ALL HEADERS TO HAVE (1) 2x4 OR 2x6 JACK EACH END, UNLESS OTHERWISE NOTED.
 3. ALL EXTERIOR WALLS TO BE 4" AND ALL INTERIOR WALLS TO BE 3 1/2", UNLESS OTHERWISE NOTED.
 4. HATCHED AREAS INDICATE DROPPED CEILINGS. ALL DROPPED CEILINGS ARE 12" UNLESS OTHERWISE NOTED.
 5. SEE "BRACED WALL PANEL DETAIL SHEET" FOR SPECIAL WALL FRAMING LOCATIONS AND HEADER SIZES, IF APPLICABLE.
 6. SEE STANDARD DETAIL CATEGORY "IT" SHEET(S) FOR INTERIOR TRIM DETAILS.
 7. SEE ARCHITECTURAL DETAIL SHEET "AD" FOR HOUSE SPECIFIC INTERIOR TRIM OPTION TABLE.
 8. ALL WINDOWS HAVE 7'-0 1/2" HEADER HEIGHT UNLESS OTHERWISE NOTED.
 9. ALL CASED OPENINGS AT 7'-11", UNLESS OTHERWISE NOTED.

- GYPSUM NOTES**
- AT GARAGE:
GYPSUM BOARD AT COMMON WALLS, CEILINGS, BEAM WRAPS AND SUPPORTS PER STANDARD DETAIL FA-1(b) FIRE ASSEMBLIES OR AS REQUIRED BY LOCAL CODE.
- AT STAIRS:
1/2" GYPSUM BOARD AT UNDERSIDE OF STAIRS AND WALLS IN CLOSET

BASEMENT FLOOR PLAN
SCALE: 1/4" = 1'-0"

SHEET NO.	MODEL	SET NO.	VERSION	DRAWN BY	DATE	OPTION	DRAWING TITLE	DESCRIPTION	REMARKS
A-6	PALERMO	03	03				BASEMENT FLOOR PLAN		
51									

© NVR, Inc. expressly reserves the right to modify or amend these plans at any time without notice. These plans are not to be reproduced, changed or altered in any way without the written consent of NVR, Inc.



FIRST FLOOR JACK SCHEDULE				
IDENTIFIER	DESCRIPTION	OPTIONS	ENG. NUM.	REMARKS
J106	JACK - (2) 2X4 SPF STUD GRADE		1012	
J107	JACK - (2) 2X4 SPF STUD GRADE		1012	
J108	JACK - (2) 2X4 SPF STUD GRADE		1012	
J114	JACK - (2) 2X4 SPF STUD GRADE	EDQMAP	1075, 1078	
J120	JACK - (4) 2X6 SPF STUD GRADE	MAA	1019	
J121	JACK - (3) 2X6 SPF STUD GRADE	MAA	1019	FIELD INSTALLED
J122	JACK - (3) 2X4 SPF STUD GRADE	SRH	1040	
J123	JACK - (3) 2X4 SPF STUD GRADE	SRH	1044	
J150	JACK - (3) 2X4 SPF STUD GRADE	GCF	1044	
J151	JACK - (3) 2X4 SPF STUD GRADE	GCF	1044	
J152	JACK - (2) 2X4 SPF STUD GRADE	GCF, MAV	1044, 1131	CRIPPLES
J153	JACK - (2) 2X4 SPF STUD GRADE	GCF, MAV	1044, 1131	CRIPPLES
J157	JACK - (2) 2X4 SP#	ELE	1021	
J161	JACK - (2) 2X4 SPF STUD GRADE	LGG	1082	
J168	JACK - (2) 2X4 SPF STUD GRADE	LGG	1082	
J170	JACK - (2) 2X4 SP#	ELE		

LVL PLY TO PLY FASTENING SCHEDULE:

1.A - (2) PLY UP TO AND INCLUDING 11 7/8" TALL; FASTEN FLIES W/ (2) ROWS 16D NAILS AT 12" O.C.
 2.A - (2) PLY 14" TO AND INCLUDING 18" TALL (INCLUSIVE); FASTEN FLIES W/ (3) ROWS 16D NAILS AT 12" O.C.
 3.A - (2) PLY 20" TALL AND OVER; FASTEN FLIES W/ (4) ROWS 16D NAILS AT 12" O.C.
 4.A - (3) PLY UP TO AND INCLUDING 11 7/8" TALL; FASTEN FLIES W/ (2) ROWS 16D NAILS AT 12" O.C. FROM EACH SIDE
 5.A - (3) PLY 14" TO AND INCLUDING 18" TALL (INCLUSIVE); FASTEN FLIES W/ (3) ROWS 16D NAILS AT 12" O.C. FROM EACH SIDE
 6.A - (3) PLY 20" TALL AND OVER; FASTEN FLIES W/ (4) ROWS 16D NAILS AT 12" O.C. FROM EACH SIDE

FIRST FLOOR BEAM/HEADER SCHEDULE					
IDENTIFIER	DESCRIPTION	LENGTH	OPTIONS	ENG. NUM.	REMARKS
B101-3	LVL - 16	14'-4 1/2"	MAA	1019	5.A, FIELD INSTALL
B105	BEAM STEEL - W12X40	22'-3 1/2"	ELE, MAV	1057, 1133	
B107-2	LVL - 14	17'-4"	MAV	1050, 1051	2.A, FIELD INSTALL
PF104-2	EXT HEADER - 2X12 - 2 PLY	11'-9"	GCF	1054, 1148	2-PLY, FIELD INSTALL

LEGEND	
	BEARING WALL
	NON BEARING WALL
	INDICATES BEARING FROM POINT-LOAD ABOVE
	JACKS
	BEAM/HEADER
	PAD FOOTING
	STEEL COLUMN
	PORTAL FRAME
	JOIST/TRUSS
	LVL
	ENGINEERING PAGE NUMBER

FLOOR PLAN NOTES

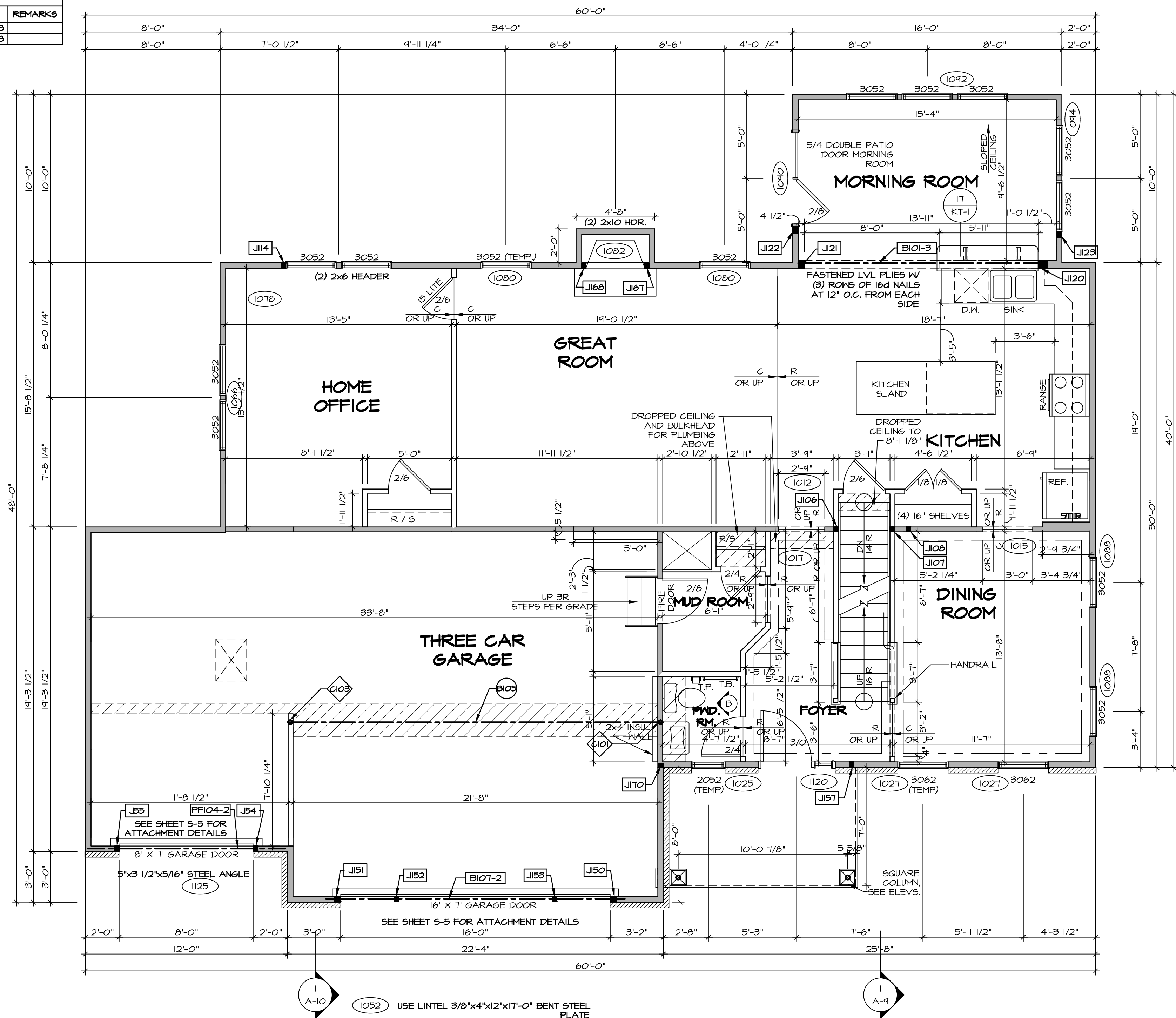
- ALL HEADERS ARE (2) 2x6 w/ 2x4 WALLS OR (3) 2x6 w/ 2x6 WALLS, UNLESS OTHERWISE NOTED.
- ALL HEADERS TO HAVE (1) 2x4 OR 2x6 JACK AND KING STUD EACH END, UNLESS OTHERWISE NOTED.
- ALL EXTERIOR WALLS TO BE 4" w/ OSB OR 3 1/2" w/ T-PLY, ALL INTERIOR WALLS TO BE 3 1/2", UNLESS OTHERWISE NOTED.
- HATCHED AREAS INDICATE DROPPED CEILINGS. ALL DROPPED CEILINGS ARE 12" UNLESS OTHERWISE NOTED.
- SEE 'BRACED WALL PANEL DETAIL SHEET' FOR SPECIAL WALL FRAMING LOCATIONS AND HEADER SIZES, IF APPLICABLE.
- SEE STANDARD DETAIL CATEGORY 'IT' SHEET(S) FOR INTERIOR TRIM DETAILS.
- SEE ARCHITECTURAL DETAIL SHEET 'AD' FOR HOUSE SPECIFIC INTERIOR TRIM OPTION TABLE.
- ALL WINDOWS HAVE 7'-0 1/2" HEADER HEIGHT UNLESS OTHERWISE NOTED.
- ALL HEADERS IN NON-BEARING WALLS SHALL BE A SINGLE FLAT 2X4 OR 2X6 ATTACHED TO CRIPPLES ABOVE, UNLESS OTHERWISE NOTED.

GYPSUM NOTES

AT GARAGE:
 GYPSUM BOARD AT COMMON WALLS, CEILING, BEAM WRAPS AND SUPPORTS PER STANDARD DETAIL FA-1(b) FIRE ASSEMBLIES OR AS REQUIRED BY LOCAL CODE.

AT STAIRS:
 1/2" GYPSUM BOARD AT UNDERSIDE OF STAIRS AND WALLS IN CLOSET

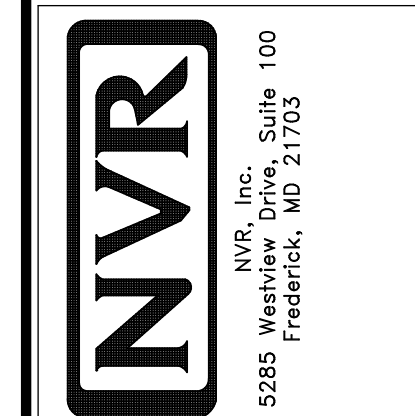
STEEL COLUMN SCHEDULE					
IDENTIFIER	STYLE	HEIGHT	OPTIONS	ENG. NUM.	REMARKS
C101	STANCHION - 3 IN SCHED 40	9'-0 11/16"	FBA	1057, 1133, 1128	
C103	STANCHION - 3 IN SCHED 40	9'-0 11/16"	FBA	1057, 1133, 1128	



FIRST FLOOR PLAN
 SCALE: 1/4" = 1'-0"

REV. NO.	DATE	REMARKS
1	08/04/18	TH - DRAWING ALIGNMENT
2	07/12/18	SLS - T-PLY CONVERSION PROJECT

© NVR, Inc. expressly reserves the right to modify these plans without notice. These plans are not to be reproduced, changed or altered in any way without the written consent of NVR, Inc.

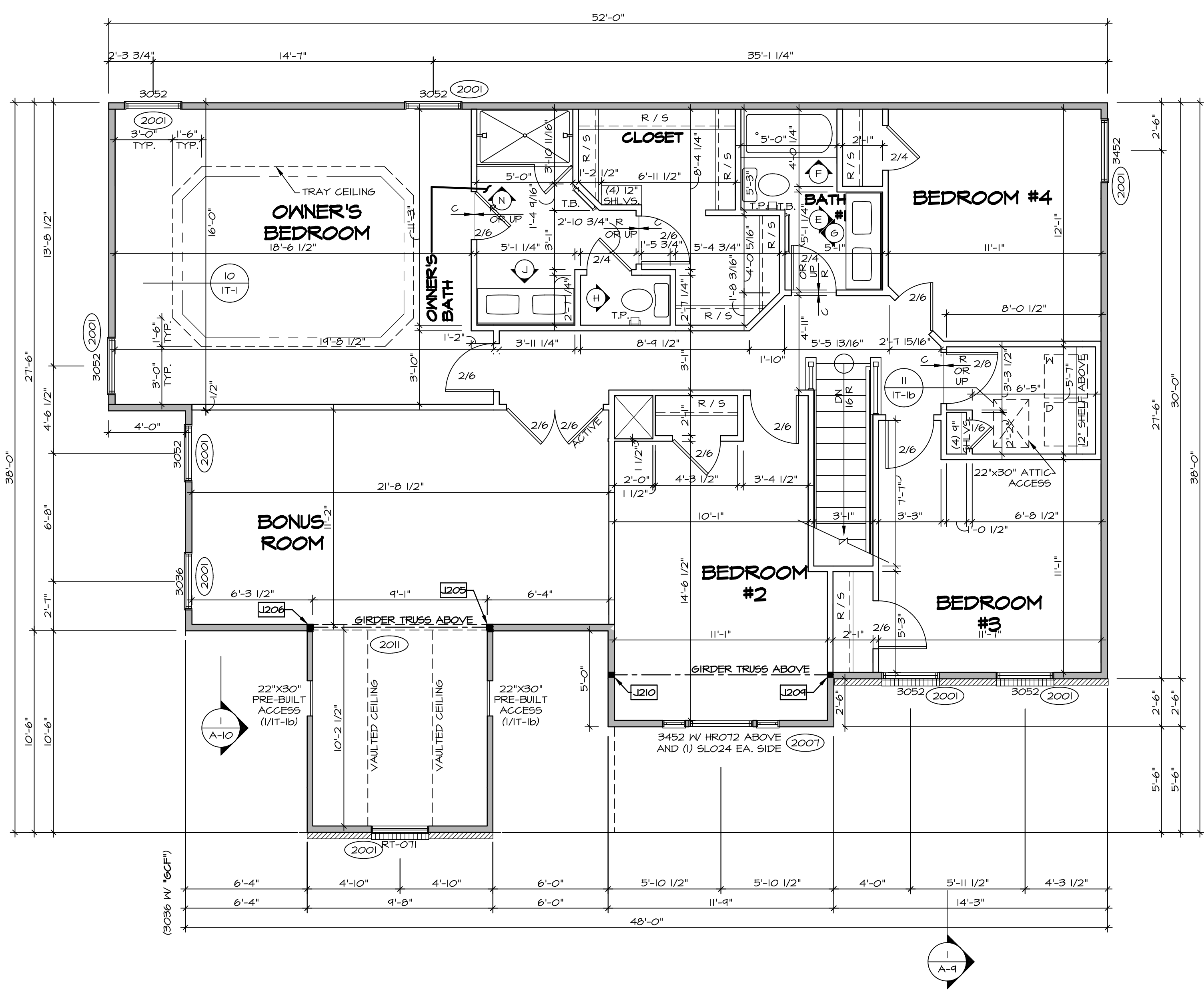


SHEET NO.	MODEL	SET NO.	VERSION	TITLE	DRAWN BY	DATE	OPTION
A-7	PALERMO	03	03	FIRST FLOOR PLAN			

SECOND FLOOR JACK SCHEDULE				
IDENTIFIER	DESCRIPTION	OPTIONS	ENG. NUM.	REMARKS
J205	JACK - (3) 2X4 SPF STUD GRADE	MAY	2011	
J206	JACK - (3) 2X4 SPF STUD GRADE	MAY	2011	
J204	JACK - (2) 2X4 9PM	ELE	2011	
J210	JACK - (2) 2X4 9PM	ELE	2011	

LEGEND	
	BEARING WALL
	NON BEARING WALL
	INDICATES BEARING FROM POINT-LOAD ABOVE
	JACKS
	BEAM/HEADER
	PAD FOOTING
	STEEL COLUMN
	PORTAL FRAME
	JOIST/TRUSS
	LVL
	ENGINEERING PAGE NUMBER

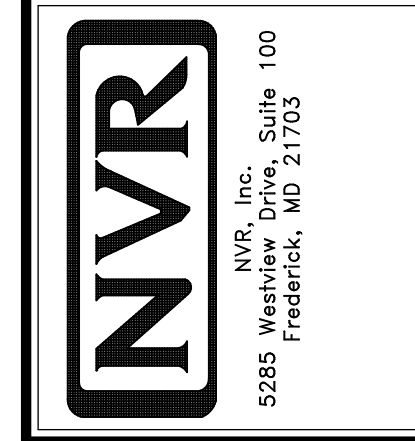
- FLOOR PLAN NOTES**
- ALL HEADERS ARE (2) 2x6 w/ 2x4 WALLS OR (3) 2x6 w/ 2x6 WALLS, UNLESS OTHERWISE NOTED.
 - ALL HEADERS TO HAVE (1) 2x4 OR 2x6 JACK AND KING STUD EACH END, UNLESS OTHERWISE NOTED.
 - ALL EXTERIOR WALLS TO BE 4" w/ OSB OR 3 1/2" w/ T-PLY, ALL INTERIOR WALLS TO BE 3 1/2", UNLESS OTHERWISE NOTED.
 - HATCHED AREAS INDICATE DROPPED CEILINGS. ALL DROPPED CEILINGS ARE 12" UNLESS OTHERWISE NOTED.
 - SEE "BRACED WALL PANEL DETAIL SHEET" FOR SPECIAL WALL FRAMING LOCATIONS AND HEADER SIZES, IF APPLICABLE.
 - SEE STANDARD DETAIL CATEGORY "1T" SHEET(S) FOR INTERIOR TRIM DETAILS.
 - SEE ARCHITECTURAL DETAIL SHEET "AD" FOR HOUSE SPECIFIC INTERIOR TRIM OPTION TABLE.
 - ALL WINDOWS HAVE 7'-0 1/2" HEADER HEIGHT UNLESS OTHERWISE NOTED.
 - ALL HEADERS IN NON-BEARING WALLS SHALL BE A SINGLE FLAT 2x4 OR 2x6 ATTACHED TO GRIPPLES ABOVE, UNLESS OTHERWISE NOTED.



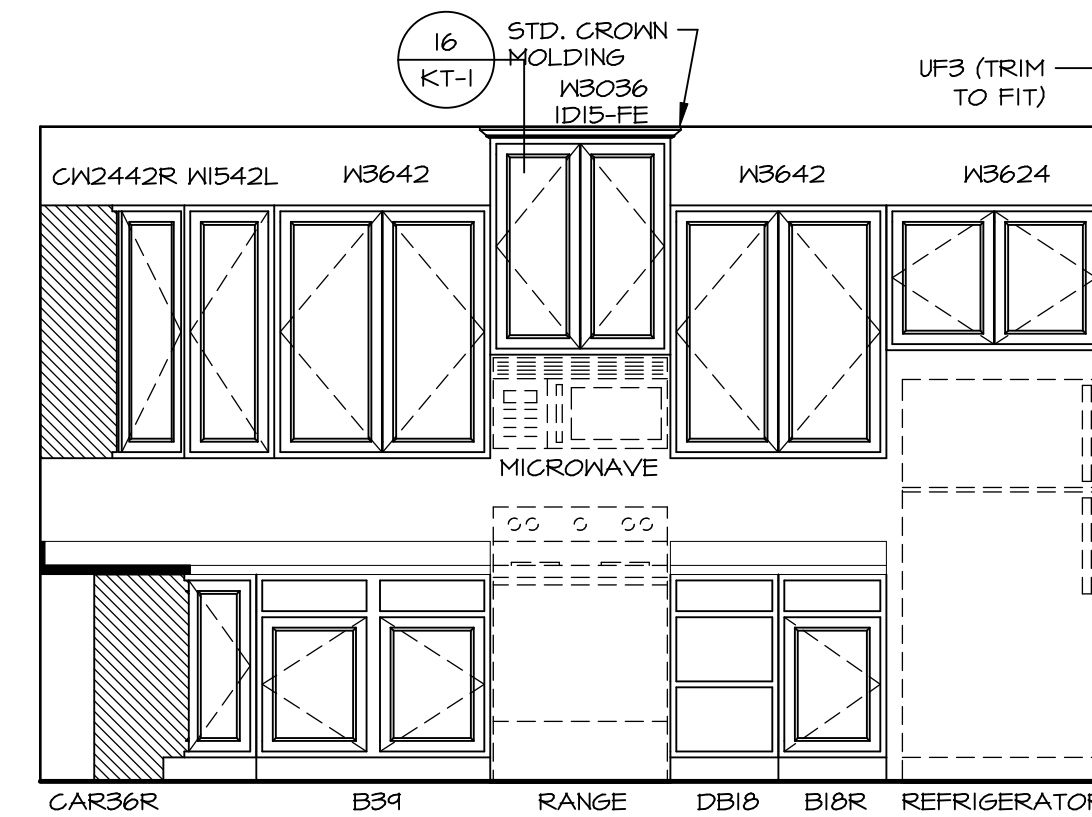
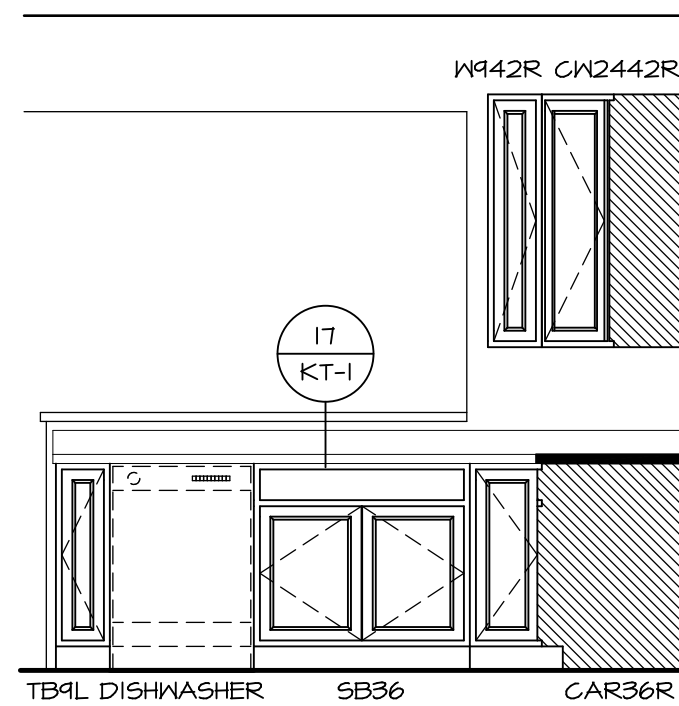
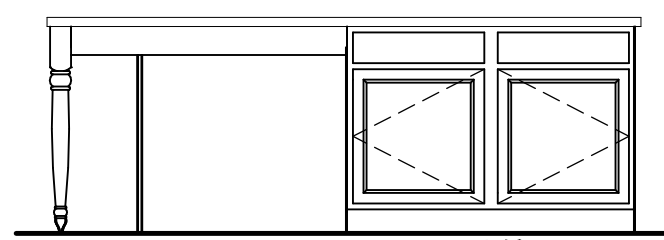
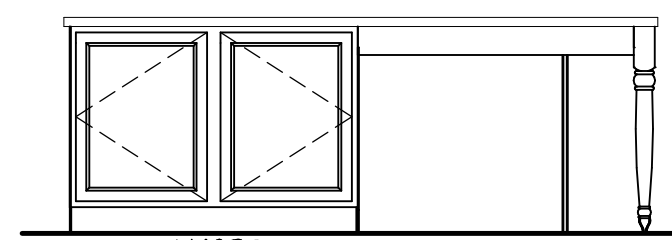
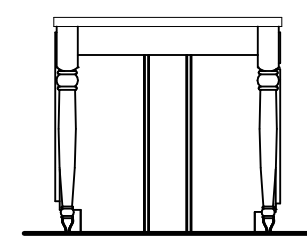
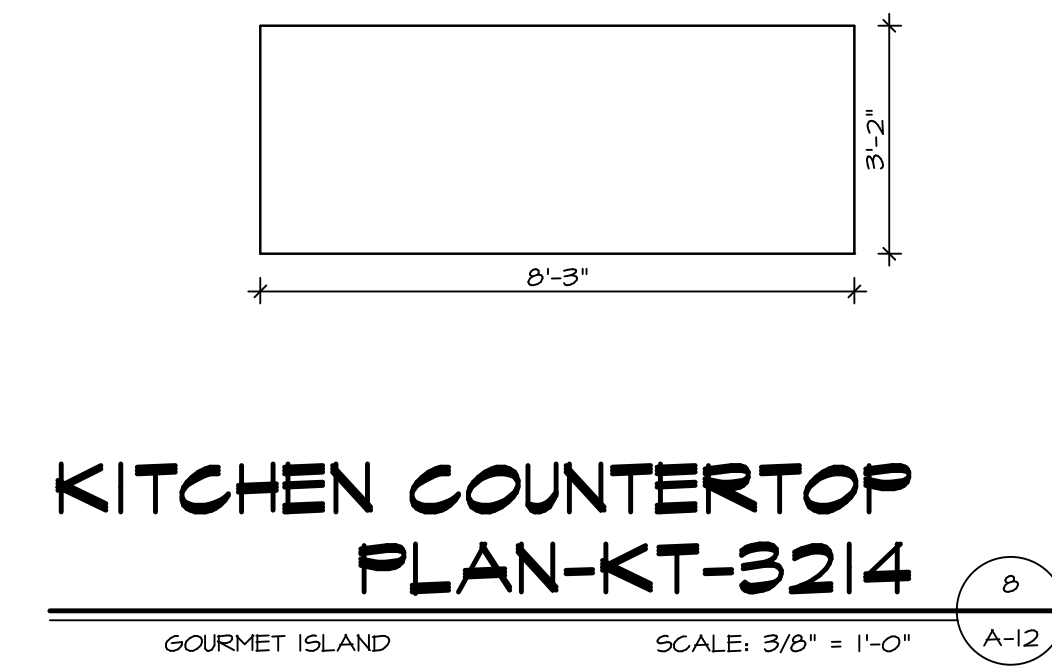
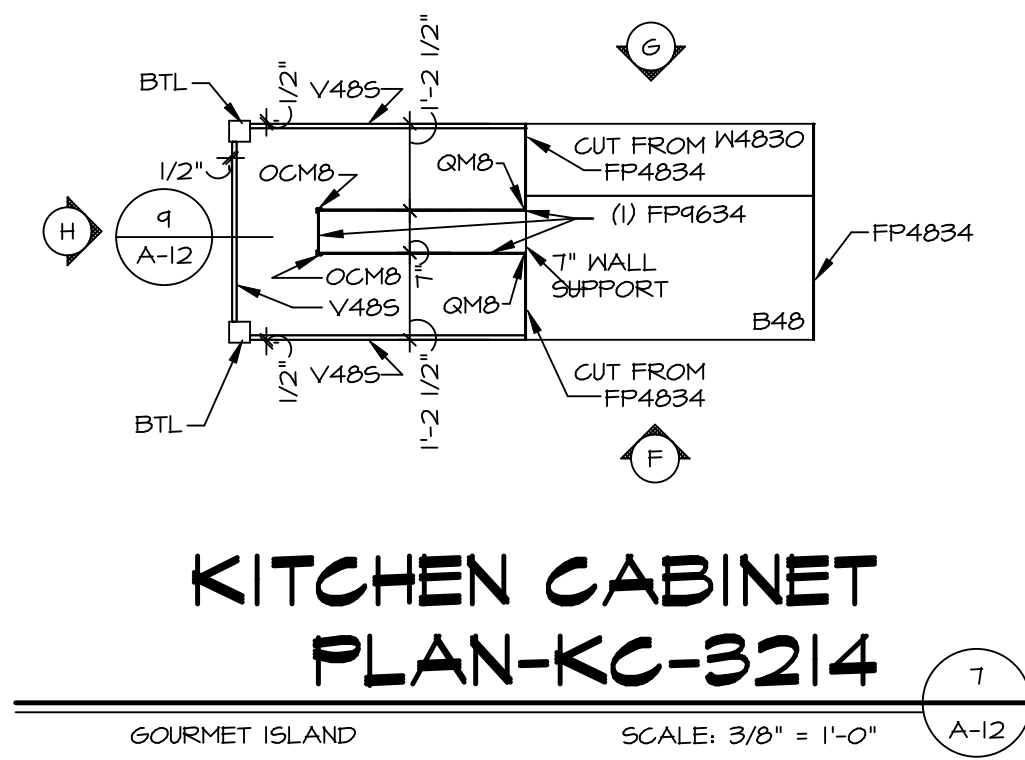
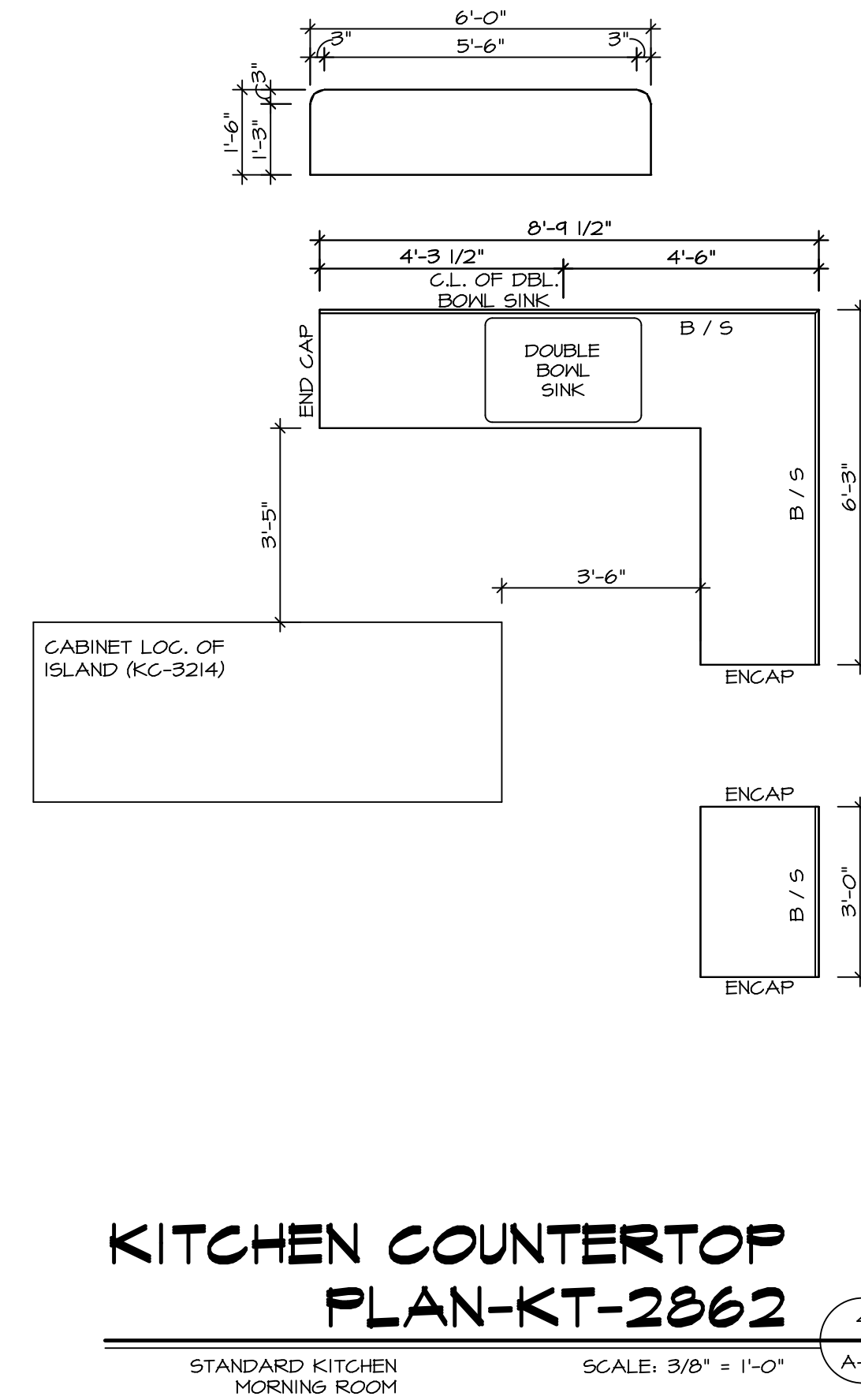
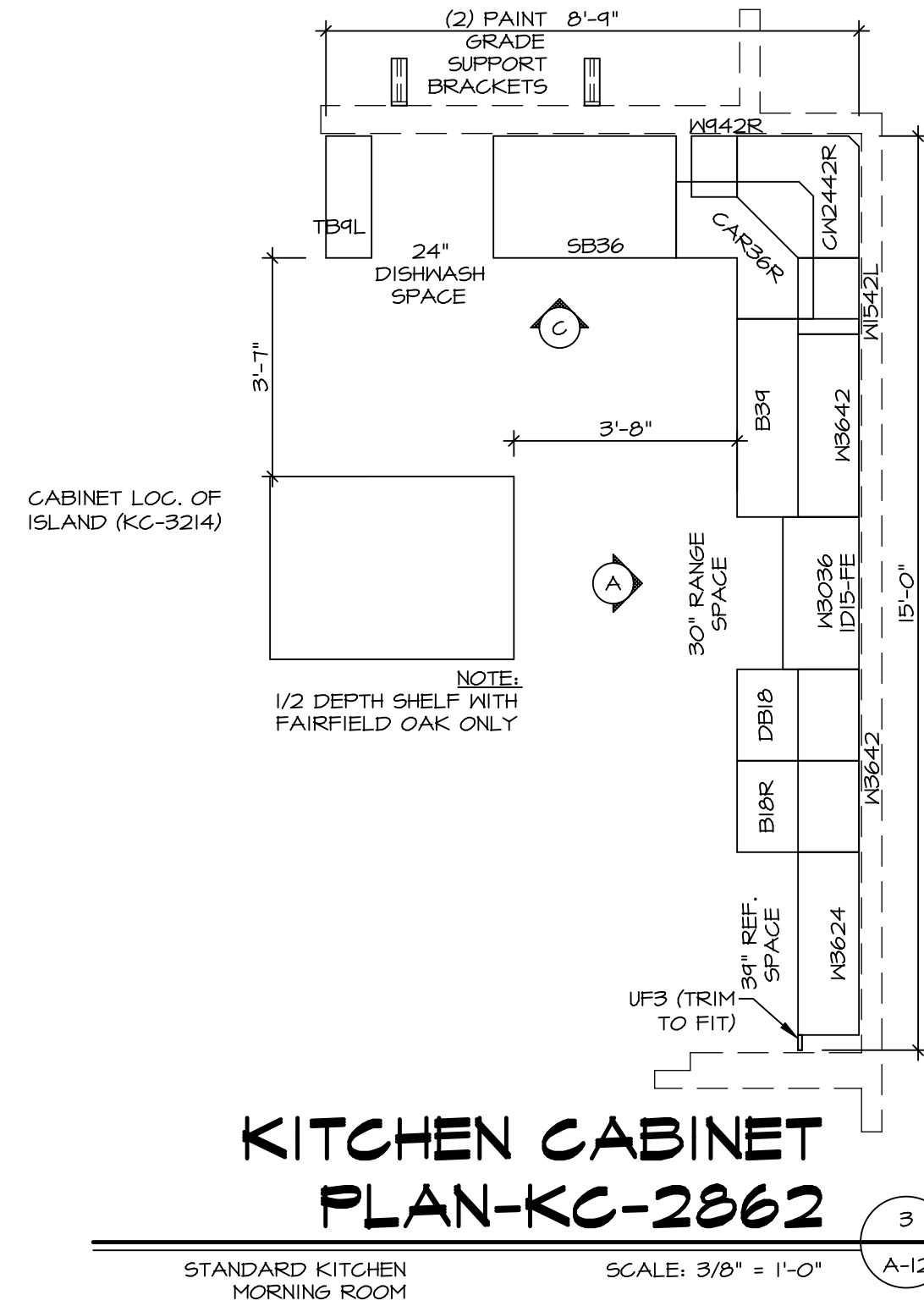
SECOND FLOOR PLAN
SCALE: 1/4" = 1'-0"

REV. NO.	DATE	REMARKS
1	08/04/16	TH - DRAWING ALIGNMENT
2	07/12/17	SLS - T-PLY CONVERSION PROJECT

© NVR, Inc. NVR, Inc. expressly reserves the right to modify these plans without notice. These plans are not to be reproduced, changed or altered in any way without the written consent of NVR, Inc.



SHEET NO.	MODEL	SET NO.	VERSION	DRAWN BY	DATE:	OPTION
A-8	PALERMO	03	03			
60						



KITCHEN ELEVATION H SCALE: 3/8" = 1'-0"

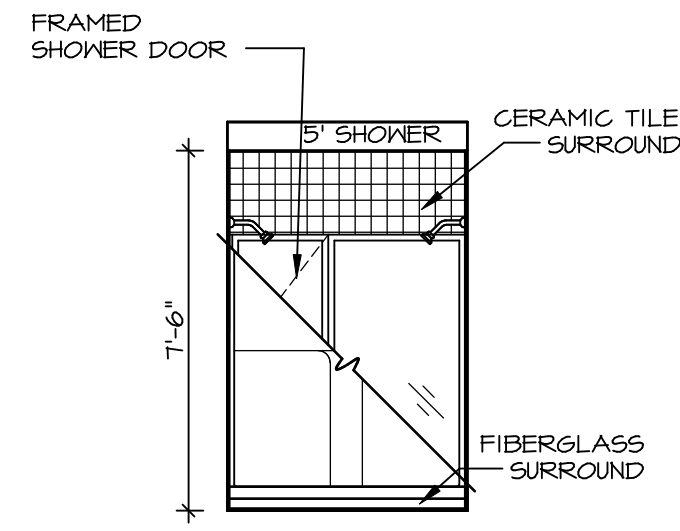
KITCHEN ELEVATION G SCALE: 3/8" = 1'-0"

KITCHEN ELEVATION F SCALE: 3/8" = 1'-0"

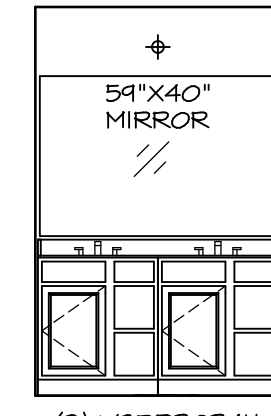
KITCHEN ELEVATION C SCALE: 3/8" = 1'-0"

KITCHEN ELEVATION A SCALE: 3/8" = 1'-0"

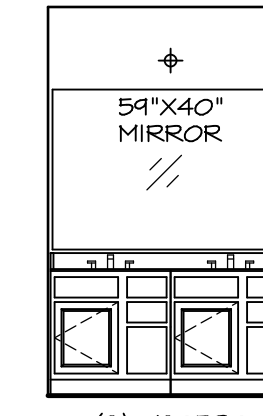
SHEET NO. A-12	MODEL PALERMO	SET NO. PALOO	VERSION 03
		DRAWN BY	DATE:
10	OPTION DESCRIPTION	OPTION	
REMARKS			
REV. NO. DATE			
<p>© NVR, Inc. expressly reserves the right to modify or change any of the information contained in these plans without notice. These plans are not to be reproduced, changed or altered in any way without the written consent of NVR, Inc.</p>			
<p>NVR NVR, Inc. Suite 100 5285 Washington Blvd. Frederick, MD 21703</p>			
<p>C:\NVR\Solves\PALERMO_PALOO_03\DCY-YR-0092\1226983A Sheet\A-12_KIT_LS.dwg 05/14/19 - 4:22 am</p>			



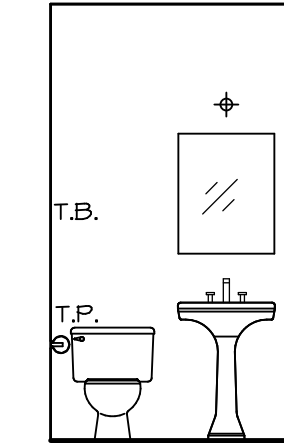
N OWNER'S BATH
SCALE: 1/4" = 1'-0"



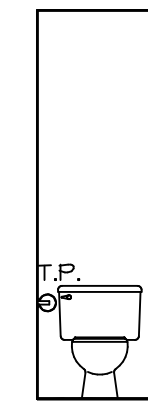
J OWNER'S BATH
SCALE: 1/4" = 1'-0"



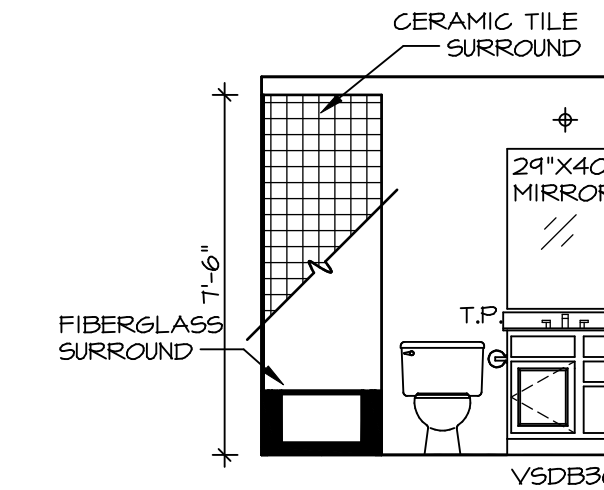
E BATH #1
SCALE: 1/4" = 1'-0"



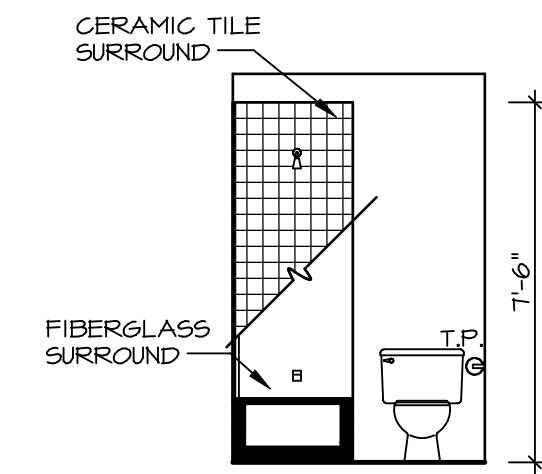
B POWDER ROOM
SCALE: 1/4" = 1'-0"



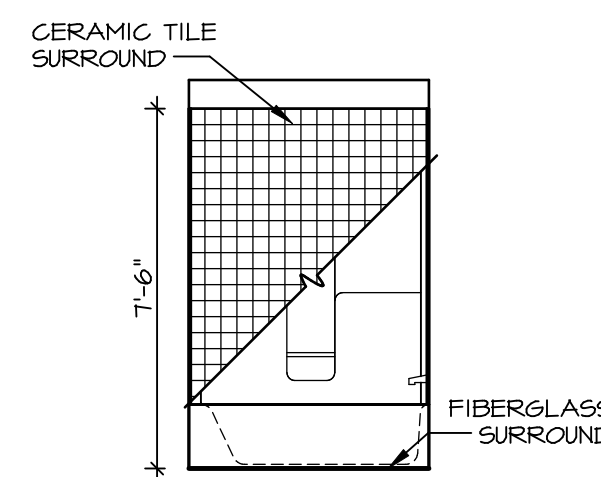
H OWNER'S BATH
SCALE: 1/4" = 1'-0"



A BASEMENT BATH
SCALE: 1/4" = 1'-0"



G BATH #1
SCALE: 1/4" = 1'-0"



F BATH #1
SCALE: 1/4" = 1'-0"

NOTES:

1. TEMPERED GLASS SHOWER ENCLOSURE WITH SWING DOOR OR OPTIONAL SLIDING DOOR BY DIVISION
2. TUB ACCESS PANELS PROVIDED AS NEEDED, ALL MATERIALS BY DIVISION
3. REFER TO SHEET IT-2 FOR TUB AND SHOWER DETAILS.
4. ALL V5DB24-42 DRAWERS TO BE SET ON RIGHT HAND.
5. BATH ELEVATIONS ARE SHOWN PER PLAN.

SHEET NO.	MODEL	SET NO.	VERSION	DRAWN BY	DATE:	OPTION	DRAWING TITLE	OPTION DESCRIPTION	REVISIONS	REMARKS
A-13	PALERMO	PALOO_03	03				BATH ELEVATIONS			
72										

© NVR, Inc. expressly reserves the right to modify or change these plans without notice. These plans are not to be reproduced, changed or copied in any way without the written consent of NVR, Inc.

