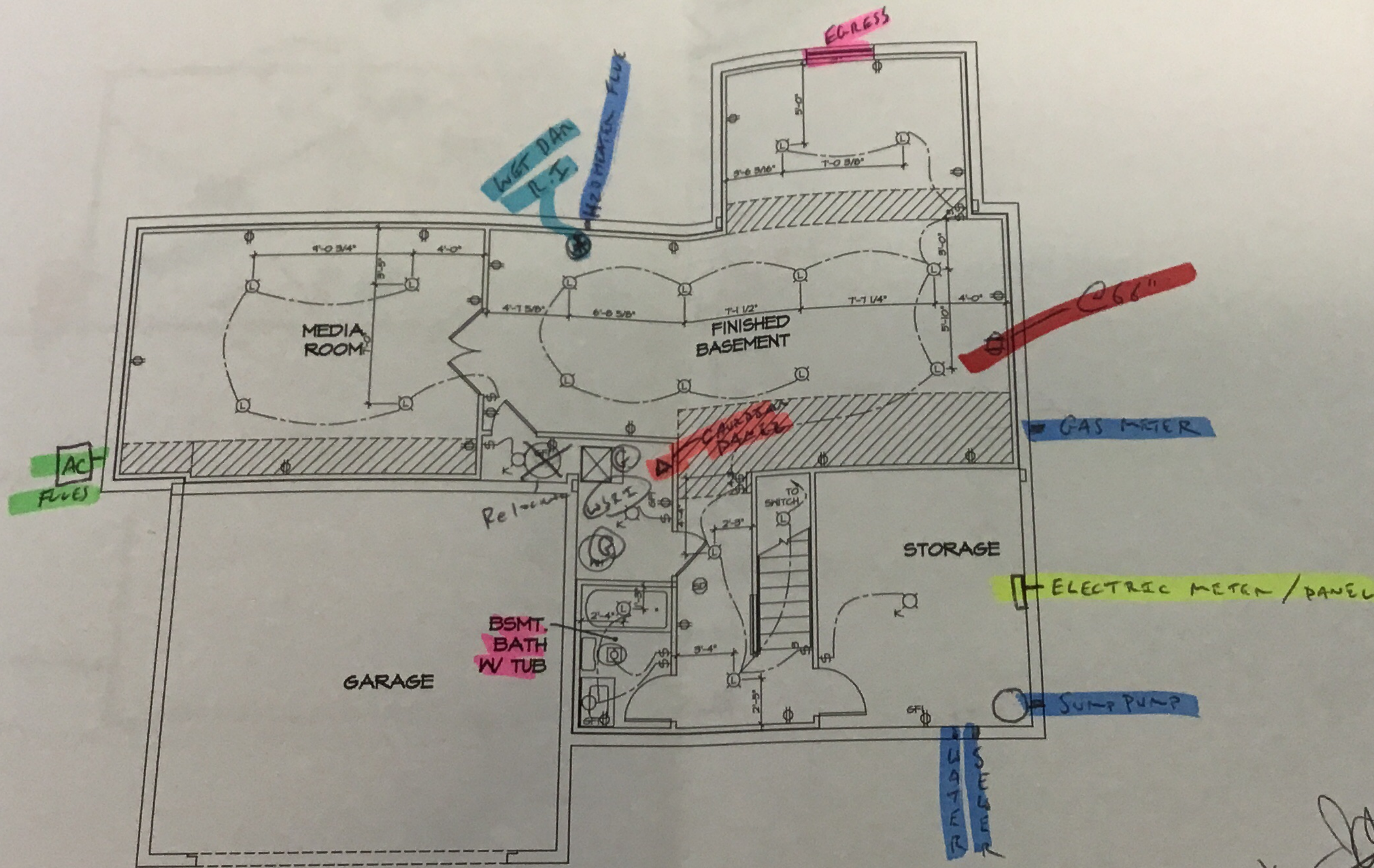


~~(1) Additional Receptacle~~

V120092



- NOTES:
1. ALL ELECTRICAL PLANS ARE SCHEMATIC ONLY AND NOT INTENDED AS ENGINEERED DRAWINGS. THESE PLANS REPRESENT THE DESIGN INTENT FOR SWITCH AND RECEPTACLE LOCATIONS. ADDITIONAL INFORMATION IF REQUIRED SHALL BE PROVIDED BY A LICENSED ELECTRICAL SUBCONTRACTOR OR ENGINEER.
 2. ALL KITCHEN GARAGES UNFINISHED BASEMENT RECEPTACLES AND ALL OUTDOOR RECEPTACLES ARE TO BE GFI PROTECTED.
 3. PROVIDE DUPLEX RECEPTACLE ON DEDICATED CIRCUIT FOR DISHWASHER IN CABINET UNDER THE SINK.
 4. PROVIDE DUPLEX RECEPTACLE FOR GARBAGE DISPOSAL IN CABINET UNDER THE SINK.
 5. PROVIDE SWITCH W/ KEYLESS LIGHT IN ATTIC SPACE.
 6. PROVIDE SWITCH W/ KEYLESS LIGHT AND GFI RECEPTACLE WHEN HVAC EQUIPMENT IS IN ATTIC SPACE.
 7. PROVIDE ARC-FAULT CIRCUIT INTERRUPTERS TO ALL ROOMS EXCEPT BATH AND EXTERIOR RECEPTACLES.
 8. WASHER ON LEFT, DRYER ON RIGHT (PER PLAN OR REVISIONS).
 9. DRYER RECEPTACLE 30 W/ 6AS OR 220 W/ ELECTRIC.

ELECTRICAL LEGEND

⊕	SINGLE POLE SWITCH
⊕	THREE WAY SWITCH
⊕	FOUR WAY SWITCH
⊕	DUPLEX RECEPTACLE
⊕	DUPLEX RECEPTACLE - BOTTOM HALF SWITCHED
⊕	DUPLEX RECEPTACLE - FLOOR MOUNTED
⊕	RECEPTACLE - 220V
⊕	DUPLEX RECEPTACLE - USB
⊕	DUPLEX RECEPTACLE - GROUND FAULT INTERRUPT
⊕	DUPLEX RECEPTACLE - HEATHER PROOF AND GROUND FAULT INTERRUPT
⊕	DUPLEX RECEPTACLE - MICROWAVE
⊕	SMOKE DETECTOR - WIRED IN SERIES
⊕	CARBON MONOXIDE DETECTOR
⊕	EXHAUST FAN MOTOR
⊕	EXHAUST FAN MOTOR WITH LIGHT
⊕	TELEVISION RECEPTACLE
⊕	TELEPHONE RECEPTACLE
⊕	DOOR CHIME
⊕	LIGHT FIXTURE - HALL MOUNTED
⊕	LIGHT FIXTURE - CEILING MOUNTED
⊕	LIGHT FIXTURE - RECESSED
⊕	LIGHT FIXTURE - RECESSED HEATHER PROOF
⊕	LIGHT FIXTURE - CEILING MOUNTED LED
⊕	LIGHT FIXTURE - HANGING
⊕	LIGHT FIXTURE - PENDANT
⊕	LIGHT FIXTURE - FLUORESCENT
⊕	LIGHT FIXTURE - UNDER CABINET LIGHT
⊕	"S" = SMALL "M" = MEDIUM "L" = LARGE
⊕	FULLCHAIN LAMPHOLDER
⊕	KEYLESS LAMPHOLDER

REVISIONS
REV. NO. DATE DESCRIPTION

NVR

SET NO. PALOO
VERSION 03

Handwritten signature and date: 5-11-9

1
E-1
SCALE: 1/4" = 1'-0"
BASEMENT ELECTRICAL PLAN

VR 92

OPTIONAL MORNING ROOM

BE EXACT !!!!!!!!! ON FD AND 3" Stack !!!!!!!!!

**3" sewers
Backwater valve required
4x2 floor drain**

HOUSE GETS A WET BAR , NEED LOCATION !!

