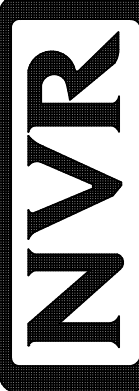
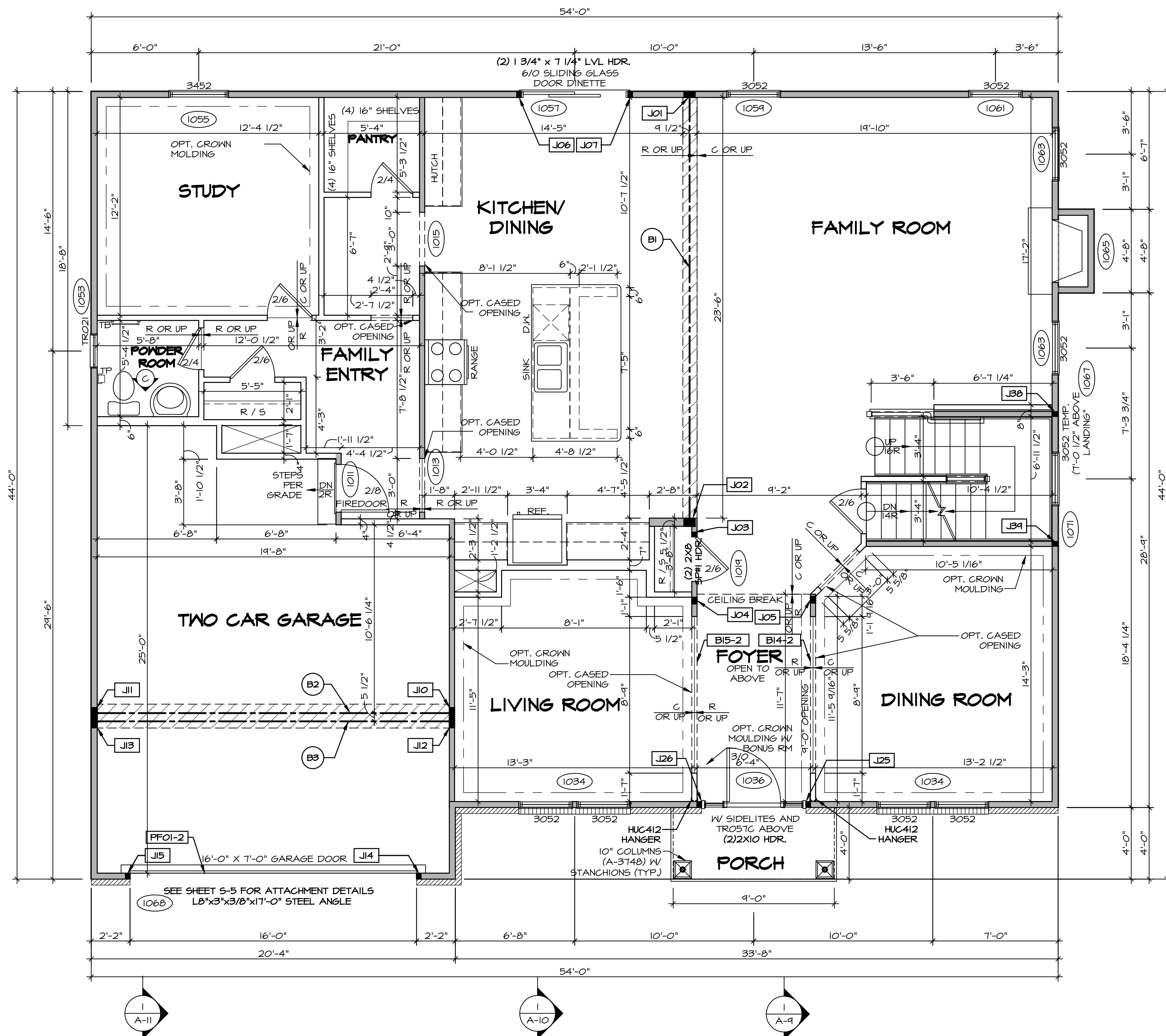


PLUMBING PLAN
SCALE: 1/4" = 1'-0"

SHEET NO. A-5	MODEL NORMANDY	SET NO. NRM00	REVISIONS	REV. NO.	DATE	REMARKS
	DRAWING TITLE PLUMBING PLAN	VERSION 01				
OPTION DESCRIPTION 31		DATE: 5/14/15				
		<p>NVR, Inc., owner, expressly reserves its copyright in these plans. These plans are not to be reproduced, changed, copied, or used in any way without the written consent of NVR, Inc.</p>				
 <p>NVR, Inc. Architectural Services 5285 Westheimer, Suite 100 Frederick, MD 21703</p>						
<p>C:\NVR\Solves\NORMANDY_NRM00_01\DCY-YR-0095A\161046\Sheets\Lot_Specific\31_A-5_PLUMB_LS.dwg 03/21/19 7:50 am</p>						



FIRST FLOOR PLAN
SCALE: 1/4" = 1'-0"

LEGEND

- BEARING WALL
- NON BEARING WALL
- INDICATES BEARING FROM POINT-LOAD ABOVE
- JACKS
- BEAM/HEADER
- PAD FOOTING
- STEEL COLUMN
- PORTAL FRAME
- JOIST/TRUSS
- LVL
- ENGINEERING PAGE NUMBER

SEE FC DETAILS FOR FRAMING CONNECTORS

- FLOOR PLAN NOTES** RYAN
- ALL HEADERS ARE (2) 2x6 W/ 2x4 WALLS OR (3) 2x6 W/ 2x6 WALLS, UNLESS OTHERWISE NOTED.
 - ALL HEADERS TO HAVE (1) 2x4 OR 2x6 JACK AND KING STUD EACH END, UNLESS OTHERWISE NOTED.
 - ALL EXTERIOR WALLS TO BE 4" W/ OSB OR 3 1/2" W/ T-PLY, ALL INTERIOR WALLS TO BE 3 1/2", UNLESS OTHERWISE NOTED.
 - HATCHED AREAS INDICATE DROPPED CEILINGS. ALL DROPPED CEILINGS ARE 12" UNLESS OTHERWISE NOTED.
 - SEE "BRACED WALL PANEL DETAIL SHEET" FOR SPECIAL WALL FRAMING LOCATIONS AND HEADER SIZES, IF APPLICABLE.
 - SEE STANDARD DETAIL CATEGORY "IT" SHEET(S) FOR INTERIOR TRIM DETAILS.
 - SEE ARCHITECTURAL DETAIL SHEET "AD" FOR HOUSE SPECIFIC INTERIOR TRIM OPTION TABLE.
 - ALL WINDOWS HAVE 7'-0 1/2" HEADER HEIGHT UNLESS OTHERWISE NOTED.
 - ALL HEADERS IN NON-BEARING WALLS SHALL BE A SINGLE FLAT 2X4 OR 2X6 ATTACHED TO CRIPPLES ABOVE, UNLESS OTHERWISE NOTED.

- GYPSUM NOTES** RYAN
- AT GARAGE:**
GYPSUM BOARD AT COMMON WALLS, CEILING, BEAM WRAPS AND SUPPORTS PER STANDARD DETAIL FA-1(b) FIRE ASSEMBLIES OR AS REQUIRED BY LOCAL CODE.
- AT STAIRS:**
1/2" GYPSUM BOARD AT UNDERSIDE OF STAIRS AND WALLS IN CLOSET

LVL PLY TO PLY FASTENING SCHEDULE: (WHERE APPLICABLE BASED ON LVL USAGE)

- 1A - (2) PLY UP TO AND INCLUDING 11 7/8" TALL; FASTEN PLYS W/ (2) ROWS 16D NAILS AT 12" O.C.
- 2A - (2) PLY 14" TO AND INCLUDING 18" TALL (INCLUSIVE); FASTEN PLYS W/ (3) ROWS 16D NAILS AT 12" O.C.
- 3A - (2) PLY 20" TALL AND OVER; FASTEN PLYS W/ (4) ROWS 16D NAILS AT 12" O.C.
- 4A - (3) PLY UP TO AND INCLUDING 11 7/8" TALL; FASTEN PLYS W/ (2) ROWS 16D NAILS AT 12" O.C. FROM EACH SIDE
- 5A - (3) PLY 14" TO AND INCLUDING 18" TALL (INCLUSIVE); FASTEN PLYS W/ (3) ROWS 16D NAILS AT 12" O.C. FROM EACH SIDE
- 6A - (3) PLY 20" TALL AND OVER; FASTEN PLYS W/ (4) ROWS 16D NAILS AT 12" O.C. FROM EACH SIDE
- 1A - (4) PLY (ALL SIZES); FASTEN PLYS W/ (2) ROWS 1/2" DIAMETER A307 BOLTS AT 24" O.C. SEE SHOP DRAWING FOR ADDITIONAL INFORMATION.

FIELD INSTALLED FIRST FLOOR BEAM/HEADER SCHEDULE

IDENTIFIER	DESCRIPTION	LENGTH	OPTIONS	ENG. NUM.	REMARKS
B1	BEAM STEEL - W12X35	24'-2"		1021	
B14-2	LVL - 11-14	11'-5 9/16"	ELB	1017	1A
B15-2	LVL - 11-14	11'-5"	ELB	1017	1A
B3	BEAM STEEL - W12X22	20'-2 1/2"	EVA	1025	
PF01-2	LVL - 11-04	20'-0"	6CB	1043	PORTAL FRAME, 1A

FIRST FLOOR JACK SCHEDULE

IDENTIFIER	DESCRIPTION	OPTIONS	ENG. NUM.	REMARKS
J01	JACK - (5) 2X4 SP#11		1021	
J02	JACK - (5) 2X6 SP#11		1021	
J03	JACK - (2) 2X4 SPF STUD GRADE		1018	
J04	JACK - (3) 2X4 SPF STUD GRADE		1017	
J05	JACK - (3) 2X4 SPF STUD GRADE		1017	
J06	JACK - (2) 2X4 SPF STUD GRADE		1057	
J07	JACK - (2) 2X4 SPF STUD GRADE		1057	
J10	JACK - (5) 2X4 SP#11		1023	
J11	JACK - (5) 2X4 SP#11	6CB	1023	
J12	JACK - (4) 2X4 SPF STUD GRADE	EVA	1025	
J13	JACK - (4) 2X4 SPF STUD GRADE	EVA, 6CB	1025	
J14	JACK - (2) 2X4 SPF STUD GRADE	6CB, 6CF	1043	
J15	JACK - (2) 2X4 SPF STUD GRADE	6CB, 6CF	1043	
J19	JACK - (2) 2X4 SPF STUD GRADE		1043	
J25	JACK - (2) 2X4 SPF STUD GRADE	EVA	1036	
J26	JACK - (2) 2X4 SPF STUD GRADE	EVA	1036	
J30	JACK - (2) 2X4 SPF STUD GRADE		1007	
J34	JACK - (2) 2X4 SPF STUD GRADE		1007	

REVISIONS

REV. NO.	DATE	DESCRIPTION
1	08/07/16	N.L. - DRAWING ALIGNMENT
2	11/05/16	TM - STANDARD DETAILS 3.0
3	07/17/17	SL5 - T-PLY CONVERSION PROJECT

REMARKS

NVR, Inc., owner, expressly reserves its copyright in these plans. These plans are not to be reproduced, changed, or copied in any way without the written consent of NVR, Inc.

NVR
Architectural Services
100
5285 West...
Frederick, MD 21703

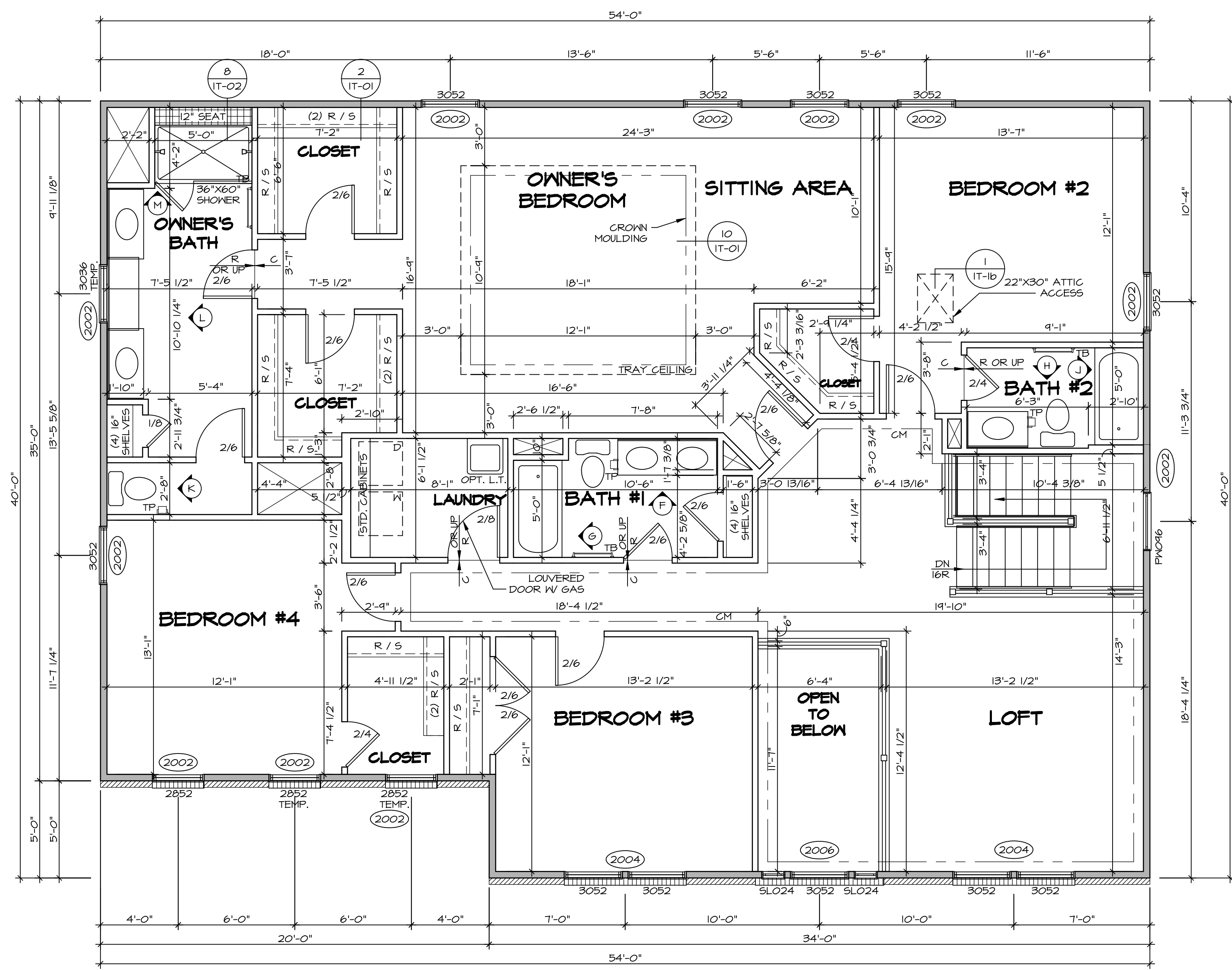
SET NO. NRM00
VERSION 01
DRAWN BY SGA
DATE: 6/29/15
OPTION

NORMANDY
DRAWING TITLE
FIRST FLOOR PLAN
OPTION DESCRIPTION

SHEET NO. **A-7**

35

C:\NVR\Solves\NORMANDY_ARCH00_01\DCI-VR-009A\1161046\Sheets\01_Spec\35_A-7_PLN1_US.dwg 03/21/19 7:50 am



LEGEND

- BEARING WALL
- NON BEARING WALL
- INDICATES BEARING FROM POINT-LOAD ABOVE
- JACKS
- BEAM/HEADER
- PAD FOOTING
- STEEL COLUMN
- PORTAL FRAME
- JOIST/TRUSS
- LVL
- ENGINEERING PAGE NUMBER

SEE FC DETAILS FOR FRAMING CONNECTORS

- FLOOR PLAN NOTES** RYAN
1. ALL HEADERS ARE (2) 2x6 w/ 2x4 WALLS OR (3) 2x6 w/ 2x6 WALLS, UNLESS OTHERWISE NOTED.
 2. ALL HEADERS TO HAVE (1) 2x4 OR 2x6 JACK AND KING STUD EACH END, UNLESS OTHERWISE NOTED.
 3. ALL EXTERIOR WALLS TO BE 4" w/ OSB OR 3 1/2" w/ T-PLY, ALL INTERIOR WALLS TO BE 3 1/2", UNLESS OTHERWISE NOTED.
 4. HATCHED AREAS INDICATE DROPPED CEILINGS. ALL DROPPED CEILINGS ARE 12" UNLESS OTHERWISE NOTED.
 5. SEE "BRACED WALL PANEL DETAIL SHEET" FOR SPECIAL WALL FRAMING LOCATIONS AND HEADER SIZES, IF APPLICABLE.
 6. SEE STANDARD DETAIL CATEGORY "IT" SHEET(S) FOR INTERIOR TRIM DETAILS.
 7. SEE ARCHITECTURAL DETAIL SHEET "AD" FOR HOUSE SPECIFIC INTERIOR TRIM OPTION TABLE.
 8. ALL WINDOWS HAVE 7'-0 1/2" HEADER HEIGHT UNLESS OTHERWISE NOTED.
 9. ALL HEADERS IN NON-BEARING WALLS SHALL BE A SINGLE FLAT 2x4 OR 2x6 ATTACHED TO GRIPPLES ABOVE, UNLESS OTHERWISE NOTED.

SECOND FLOOR JACK SCHEDULE

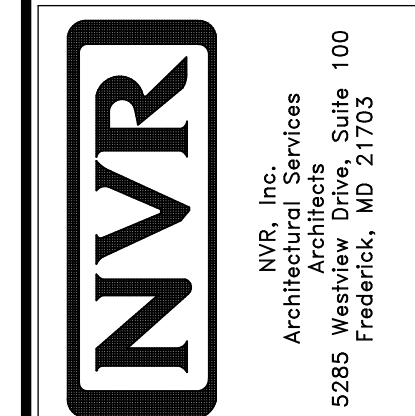
IDENTIFIER	DESCRIPTION	OPTIONS	ENG. NUM.	REMARKS

SECOND FLOOR PLAN
SCALE: 1/4" = 1'-0"

REMARKS

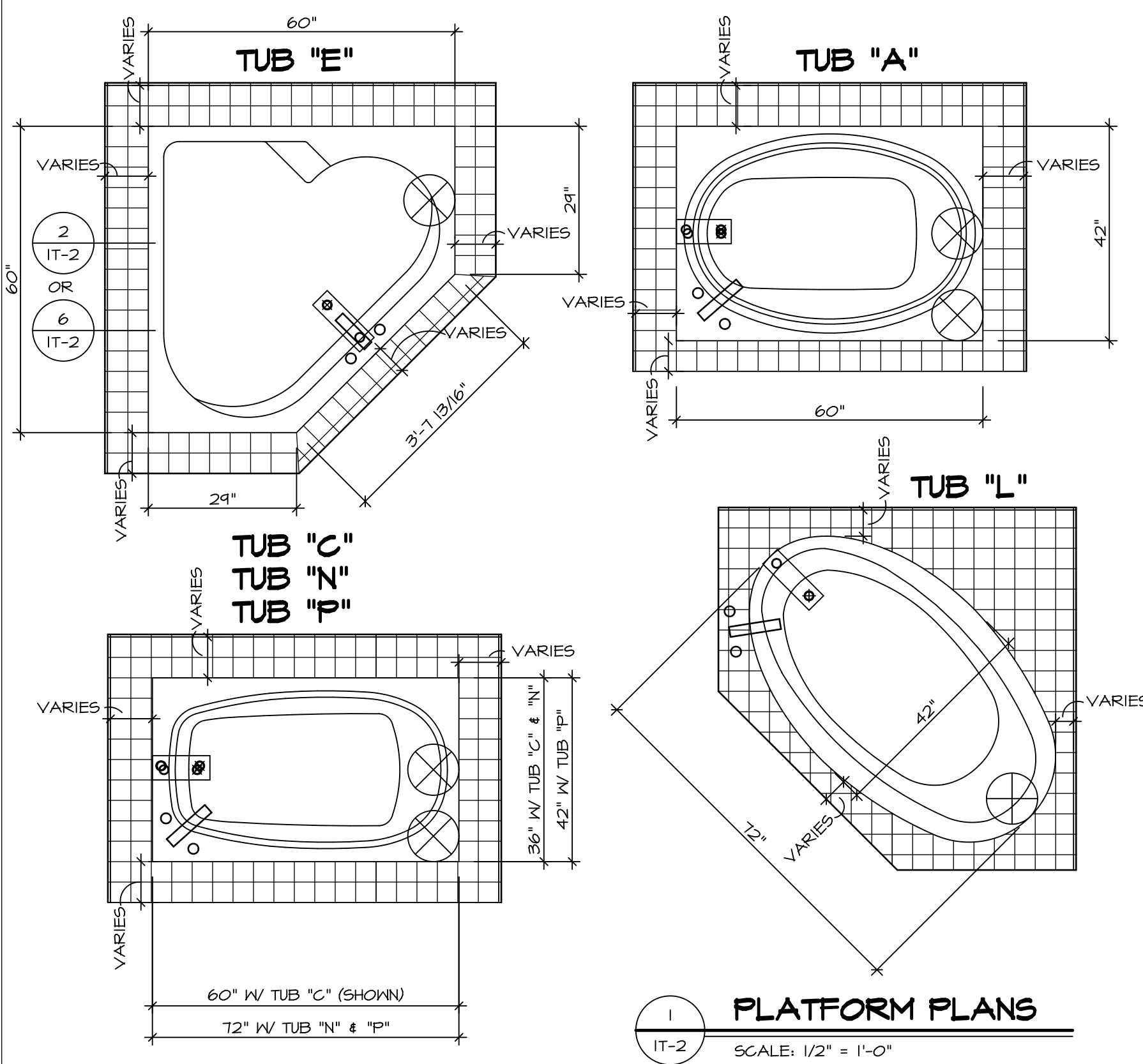
REV. NO.	DATE	DESCRIPTION
1	08/07/16	NL - DRAWING ALIGNMENT
2	10/05/16	TH - STANDARD DETAILS 3.0
3	07/17/17	SLS - T-PLY CONVERSION PROJECT

NVR, Inc., owner, expressly reserves its copyright in these plans. These plans are not to be reproduced, changed, copied, or otherwise used in any way without the written consent of NVR, Inc.



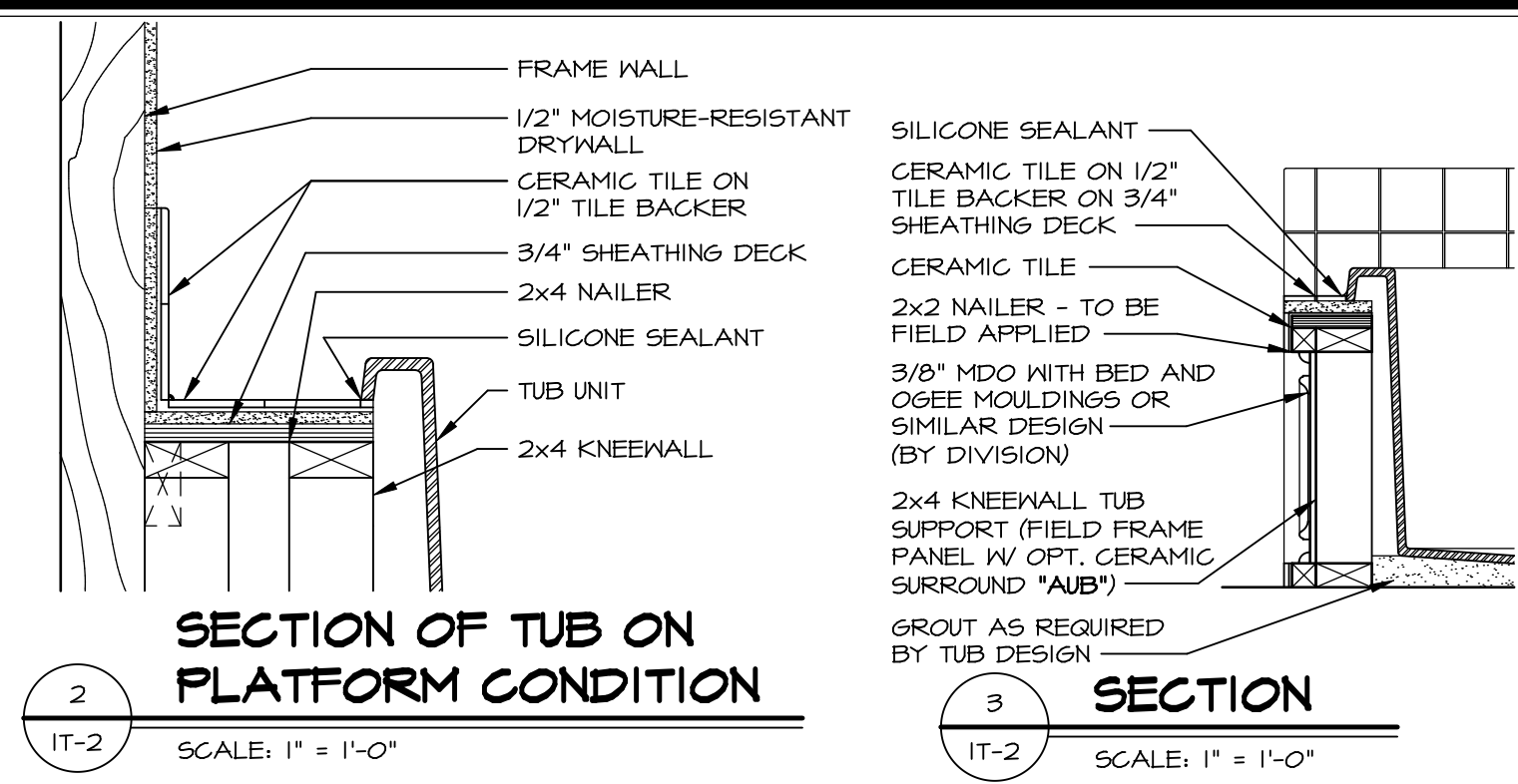
SET NO. NRM00	VERSION 01
DRAWN BY SGA	DATE: 6/29/15
OPTION	

MODEL: NORMANDY	DRAWING TITLE: SECOND FLOOR PLAN
SHEET NO. A-8	OPTION DESCRIPTION

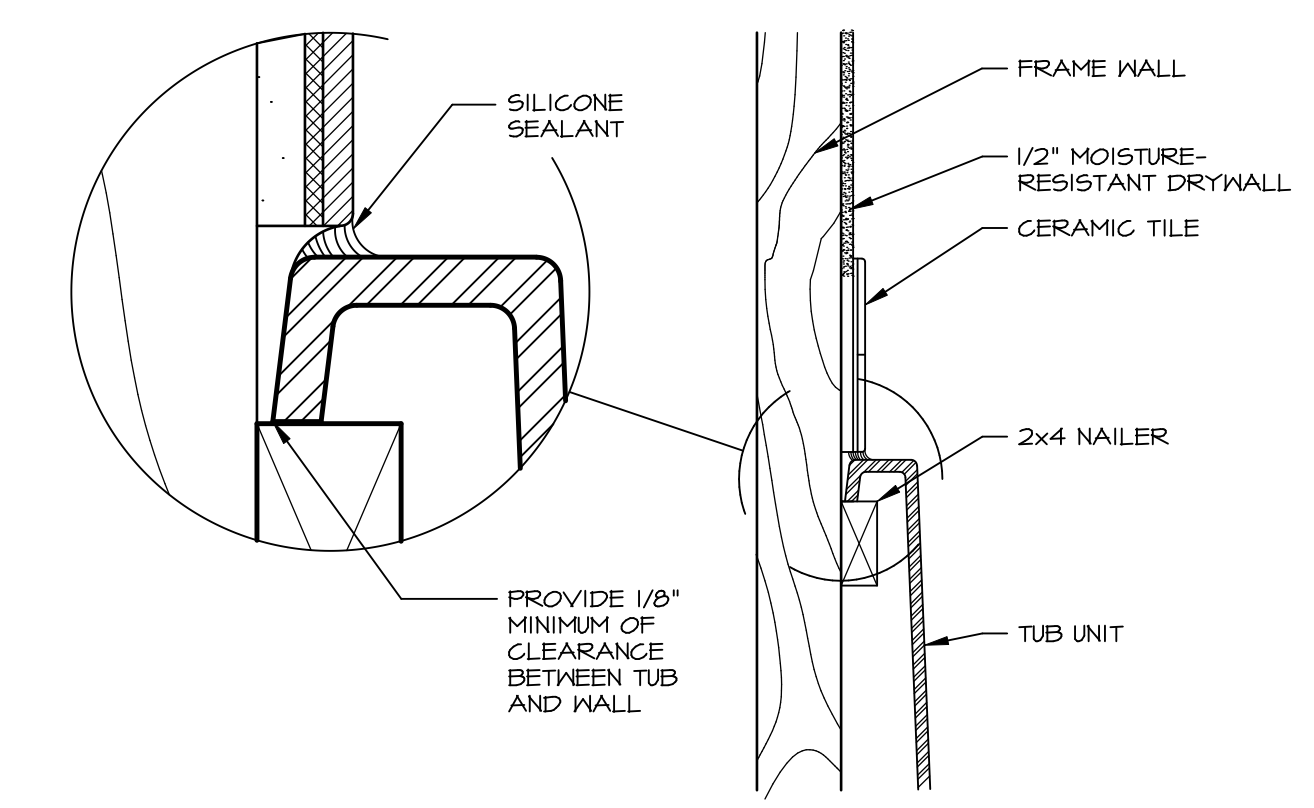


1 PLATFORM PLANS
SCALE: 1/2" = 1'-0"

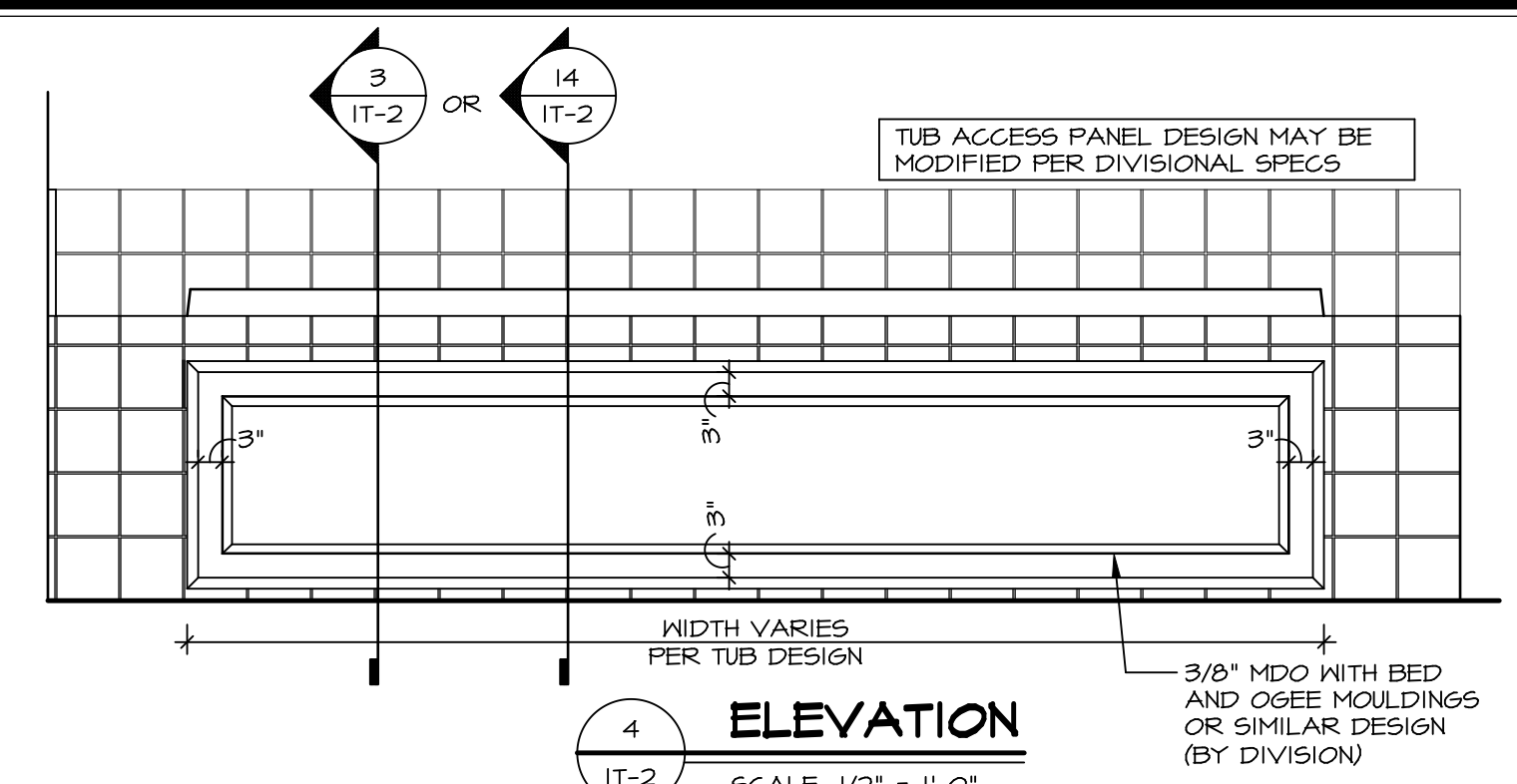
TUB	MANUF.	HEIGHT	WIDTH	LENGTH	TUB DECK PANEL HEIGHT
"A"	KOHLER/STERLING	18 3/4"	42"	60"	17 1/8"
"C"	KOHLER/STERLING	18 3/4"	36"	60"	17 1/8"
"E"	KOHLER/STERLING	19 1/2"	60"	60"	17 7/8"
"L"	KOHLER/STERLING	18 1/2"	42"	72"	16 7/8"
"N"	KOHLER/STERLING	18 3/4"	36"	72"	17 1/8"
"P"	KOHLER/STERLING	18 3/4"	42"	72"	17 1/8"



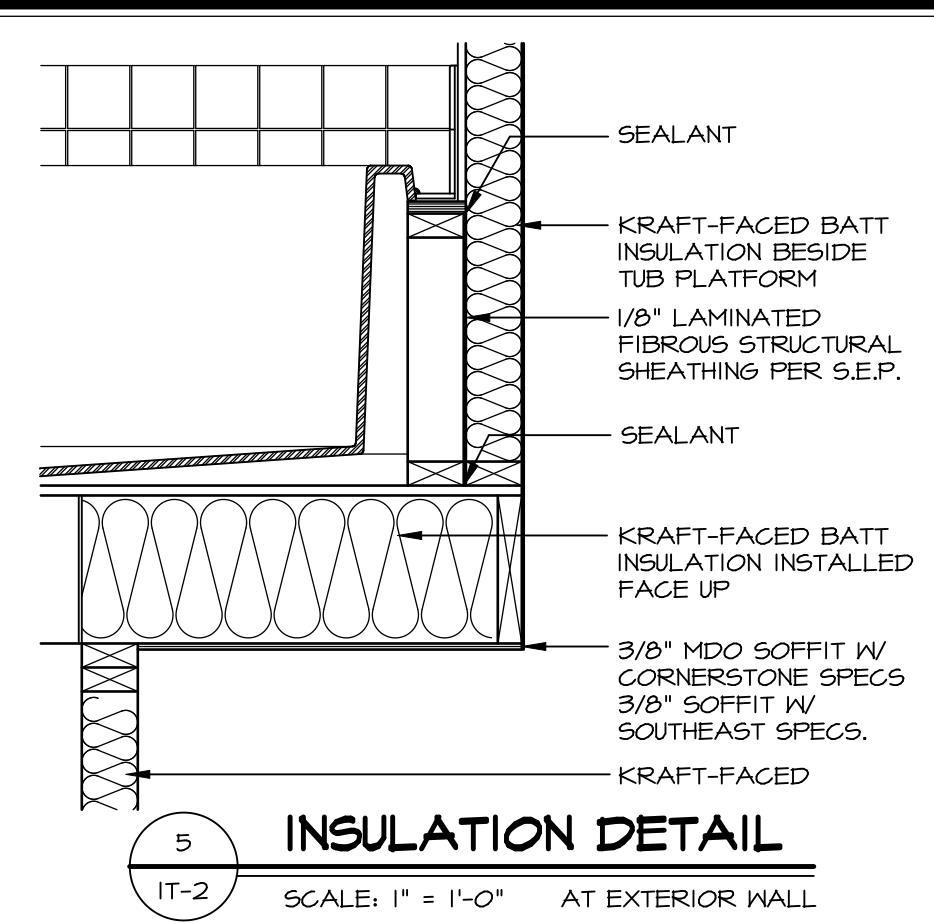
2 SECTION OF TUB ON PLATFORM CONDITION
SCALE: 1" = 1'-0"



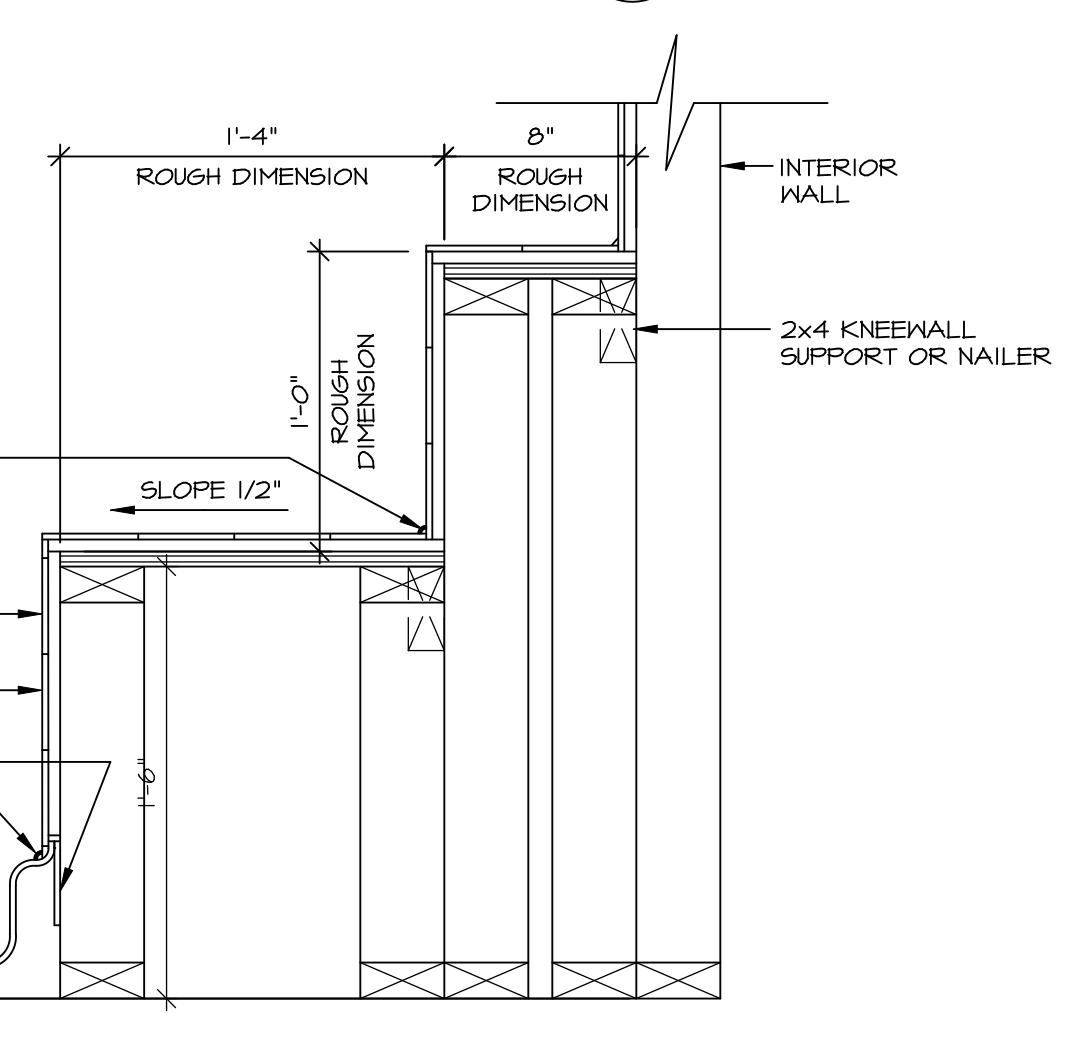
3 SECTION OF TUB TO WALL CONDITION
SCALE: 1 1/2" = 1'-0"



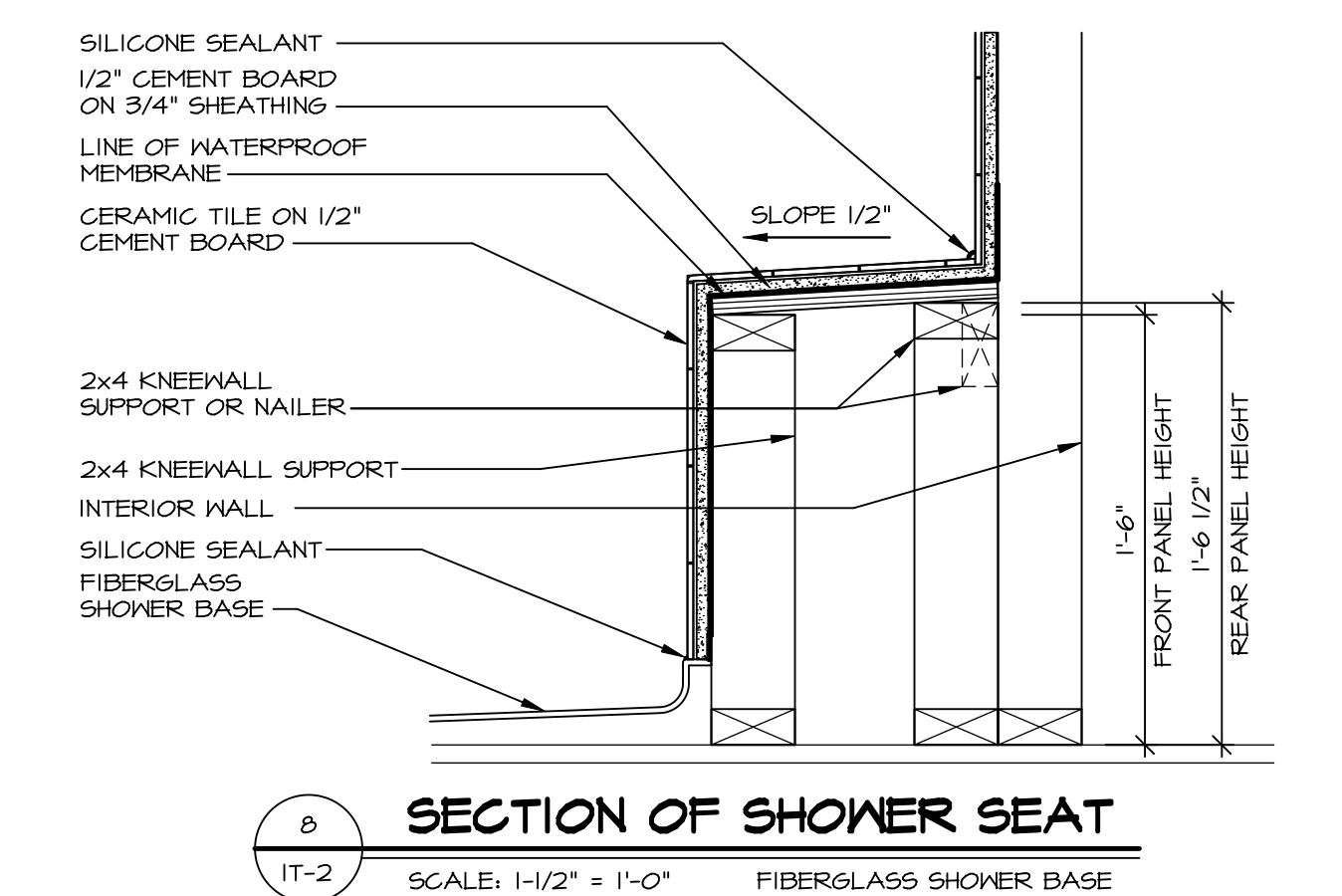
4 ELEVATION
SCALE: 1/2" = 1'-0"



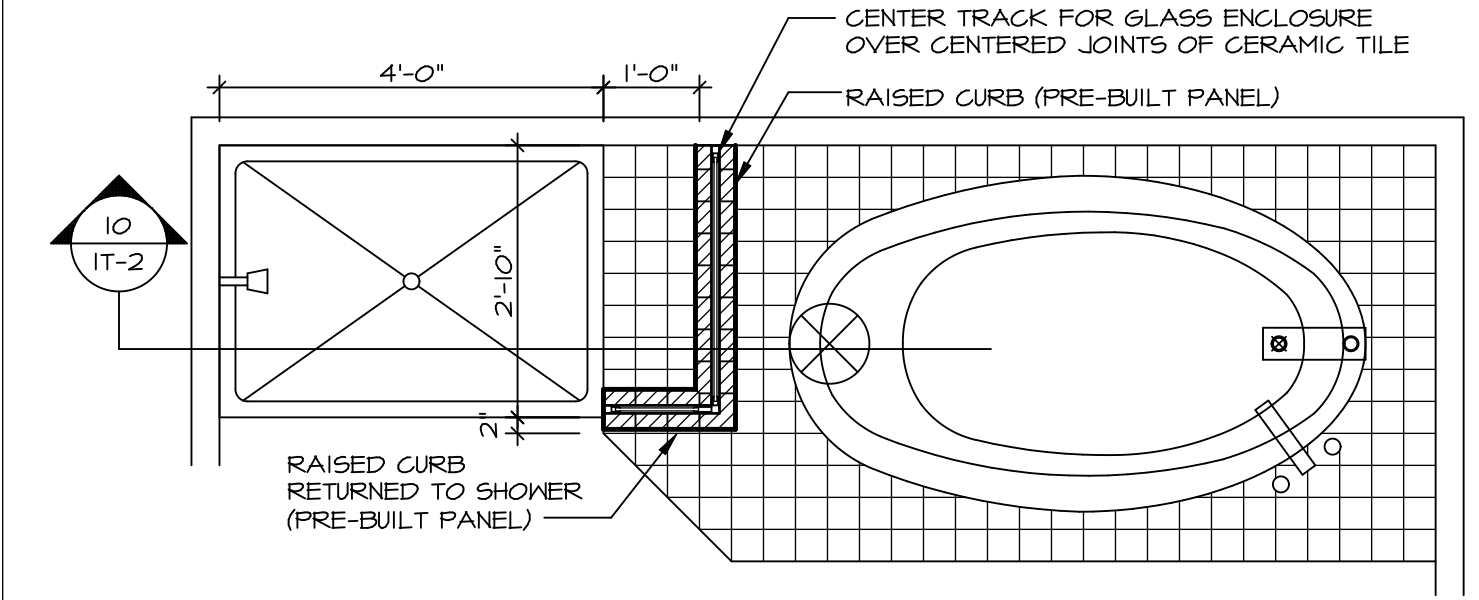
5 INSULATION DETAIL
SCALE: 1" = 1'-0" AT EXTERIOR WALL



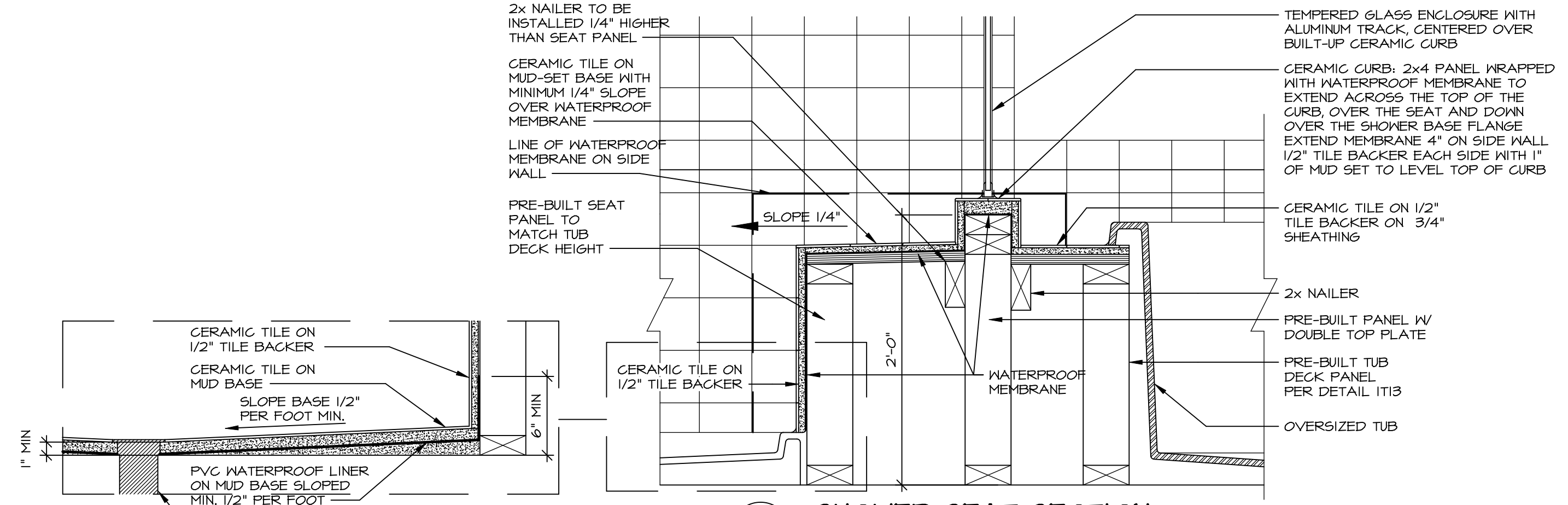
7 SECTION OF SHOWER SEAT AND SHELF
SCALE: 1 1/2" = 1'-0"



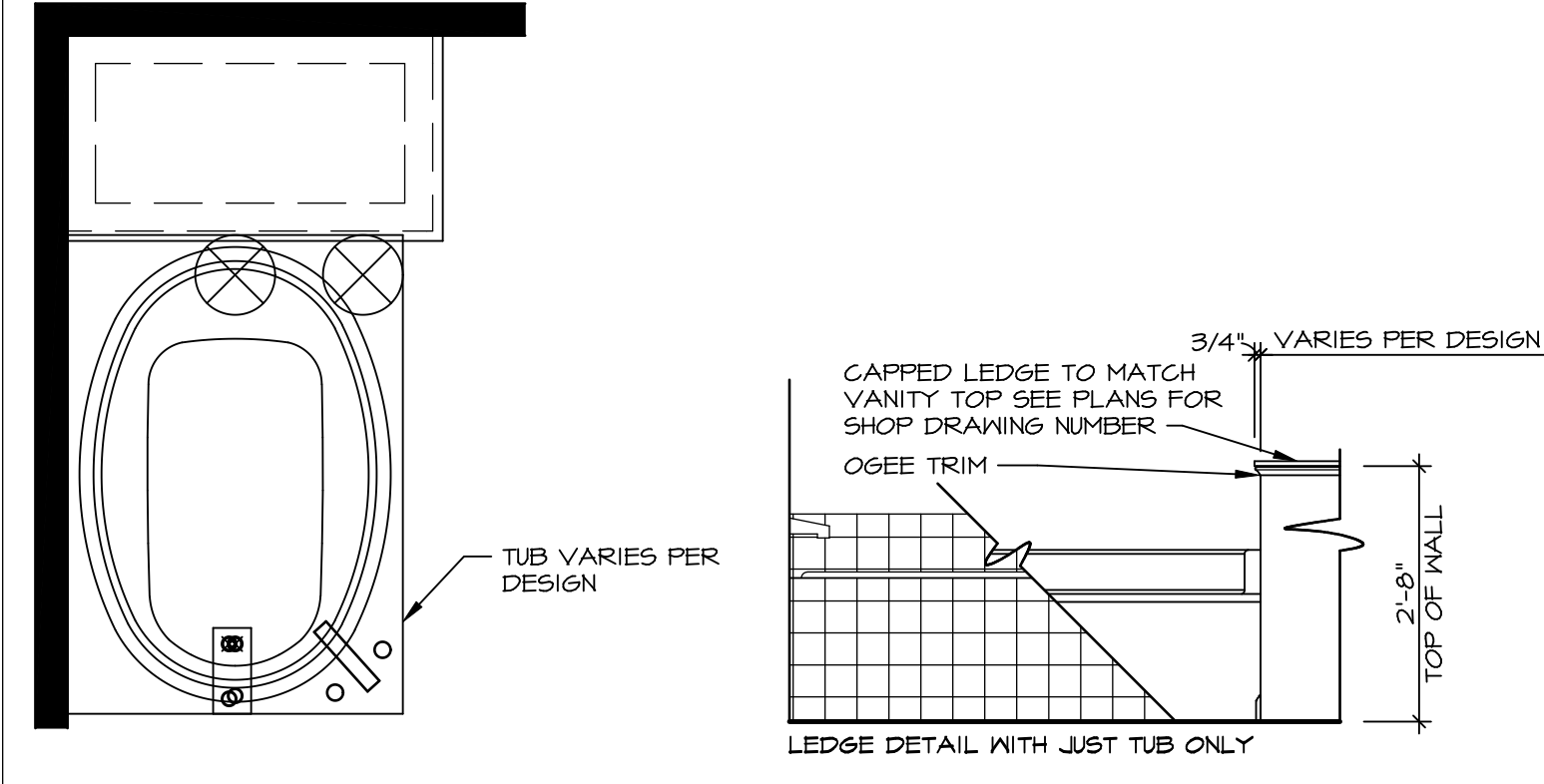
8 SECTION OF SHOWER SEAT
SCALE: 1-1/2" = 1'-0" FIBERGLASS SHOWER BASE



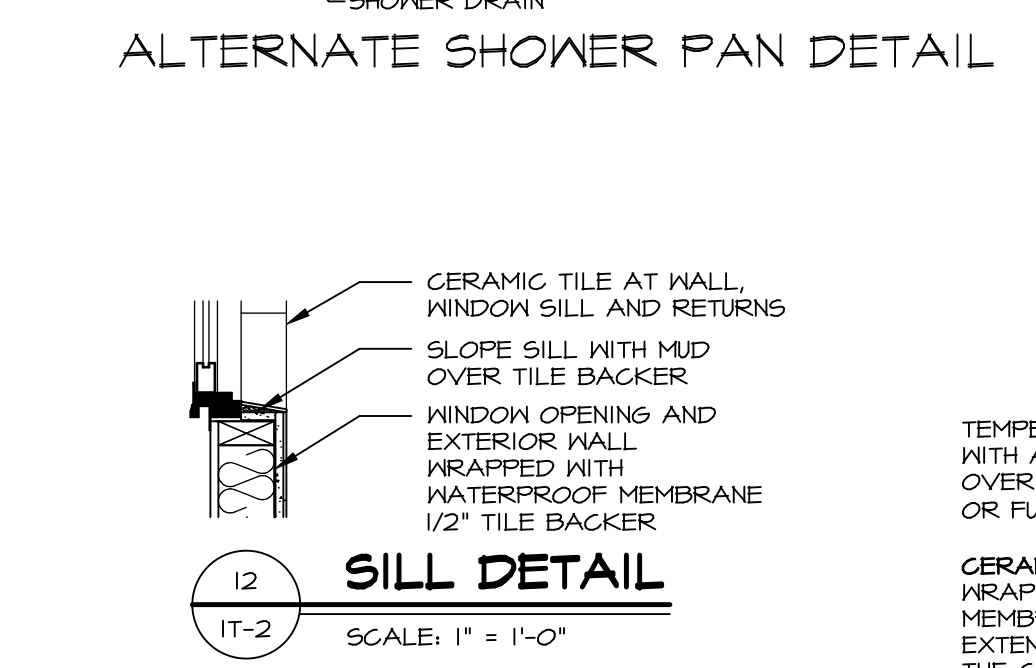
9 SHOWER SEAT PLAN / DETAIL
SCALE: 1/2" = 1'-0"



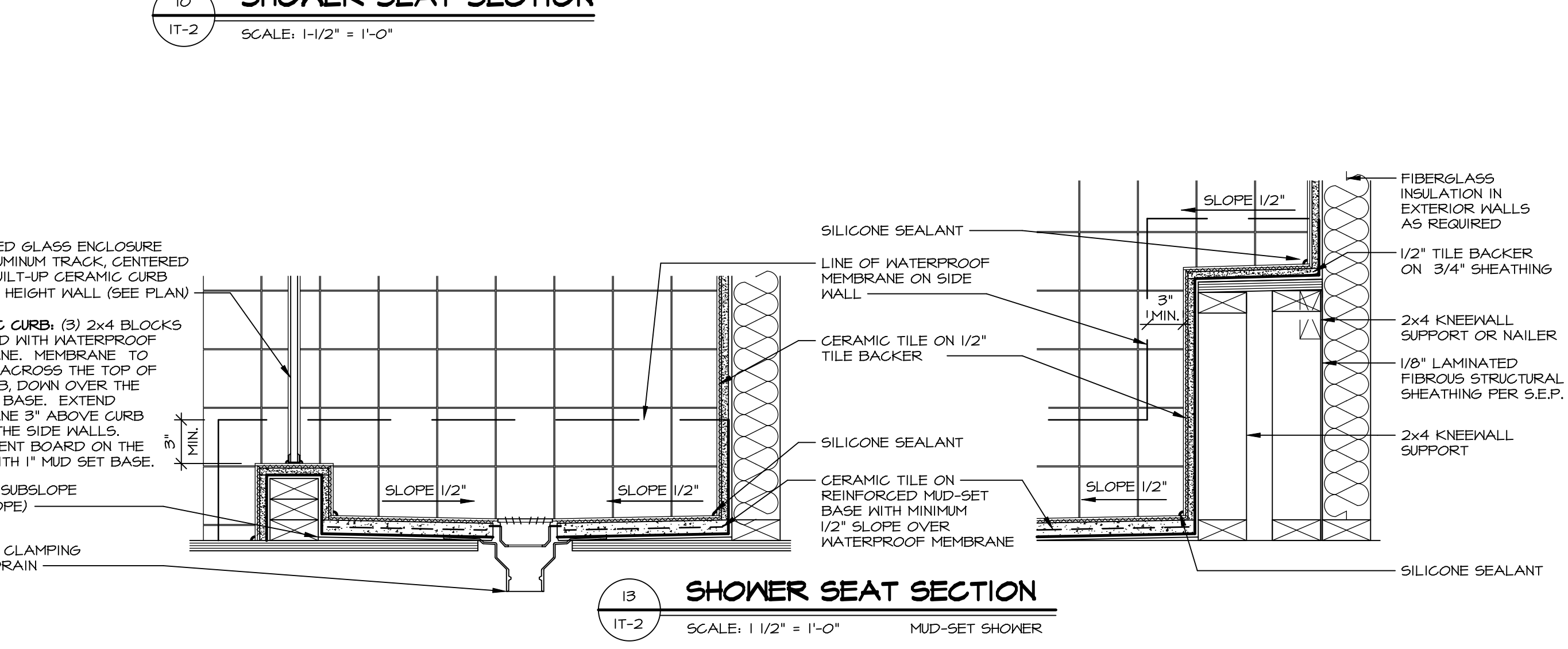
10 SHOWER SEAT SECTION
SCALE: 1-1/2" = 1'-0"



11 BATHROOM LEDGE DETAIL
SCALE: 1/2" = 1'-0"



12 SILL DETAIL
SCALE: 1" = 1'-0"

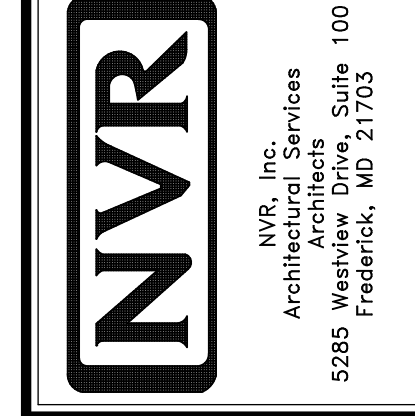


13 SHOWER SEAT SECTION
SCALE: 1 1/2" = 1'-0" MUD-SET SHOWER

REVISIONS

REV. NO.	DATE	DESCRIPTION
1	5/11/17	EBP - REVISED DETAIL 1 AND 11 TO REMOVE TUB ACCESS PANEL REF. (095 #15 3/4" x 1/2")
2	9/21/17	EBP - REVISED T-FLY NOTE TO CALL OUT LFS
3	9/21/17	EBP - REVISED NOTE ON DETAIL #1 - REVISED ORDER OF MATERIAL PAR#49304
4	8/28/18	EBP - DTL 8 / 19 ME REMOVED THE 2X6 BULKING AT BASE OF SHWR REQUEST #4663

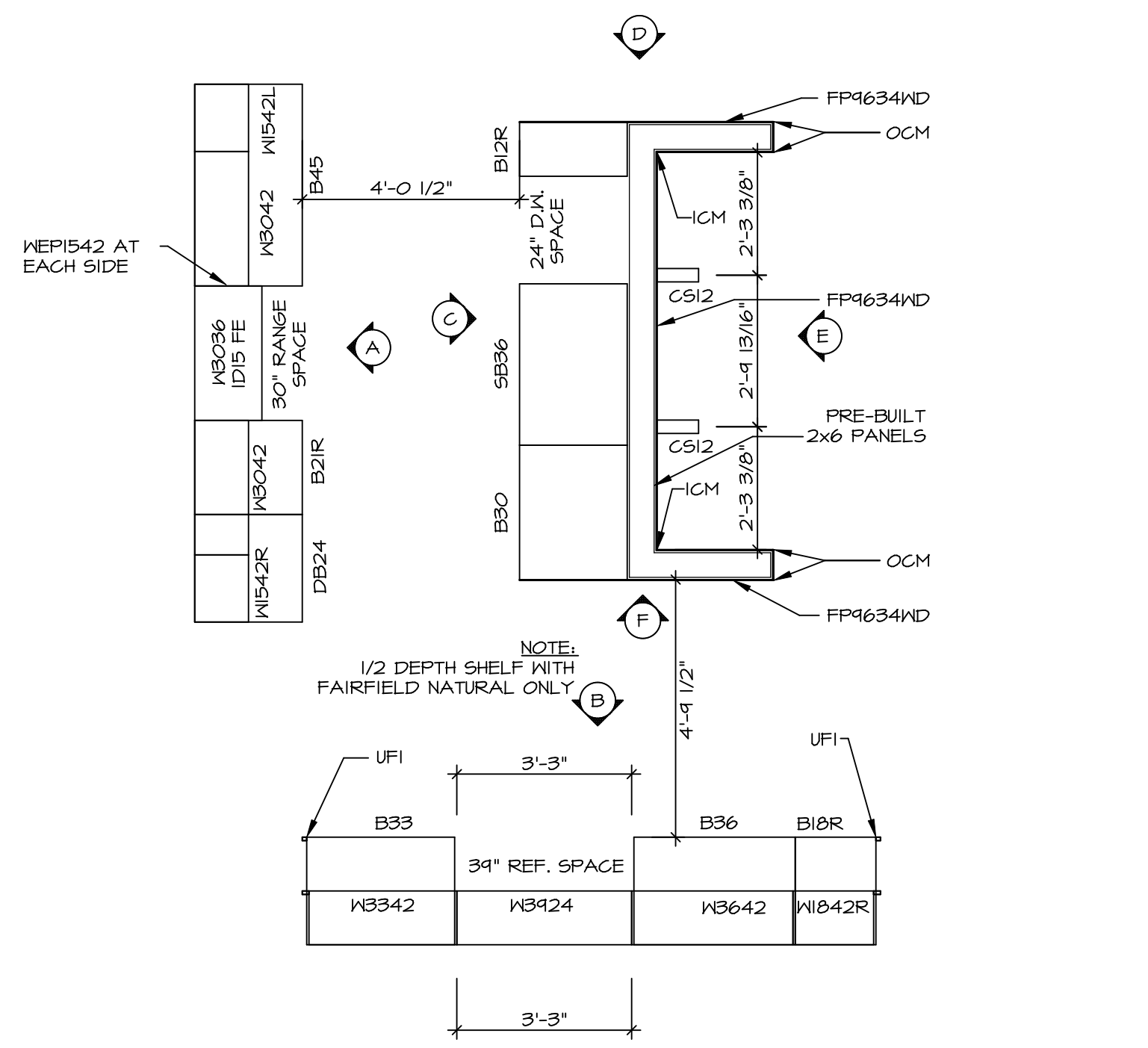
NVR, Inc., owner, expressly reserves its common law copyright and other property rights in these plans. These plans are not to be reproduced, stored in a retrieval system, or transmitted in any form or by any means, electronic, mechanical, photocopying, recording, or by any information storage and retrieval system, without first obtaining the expressed written consent of NVR, Inc.



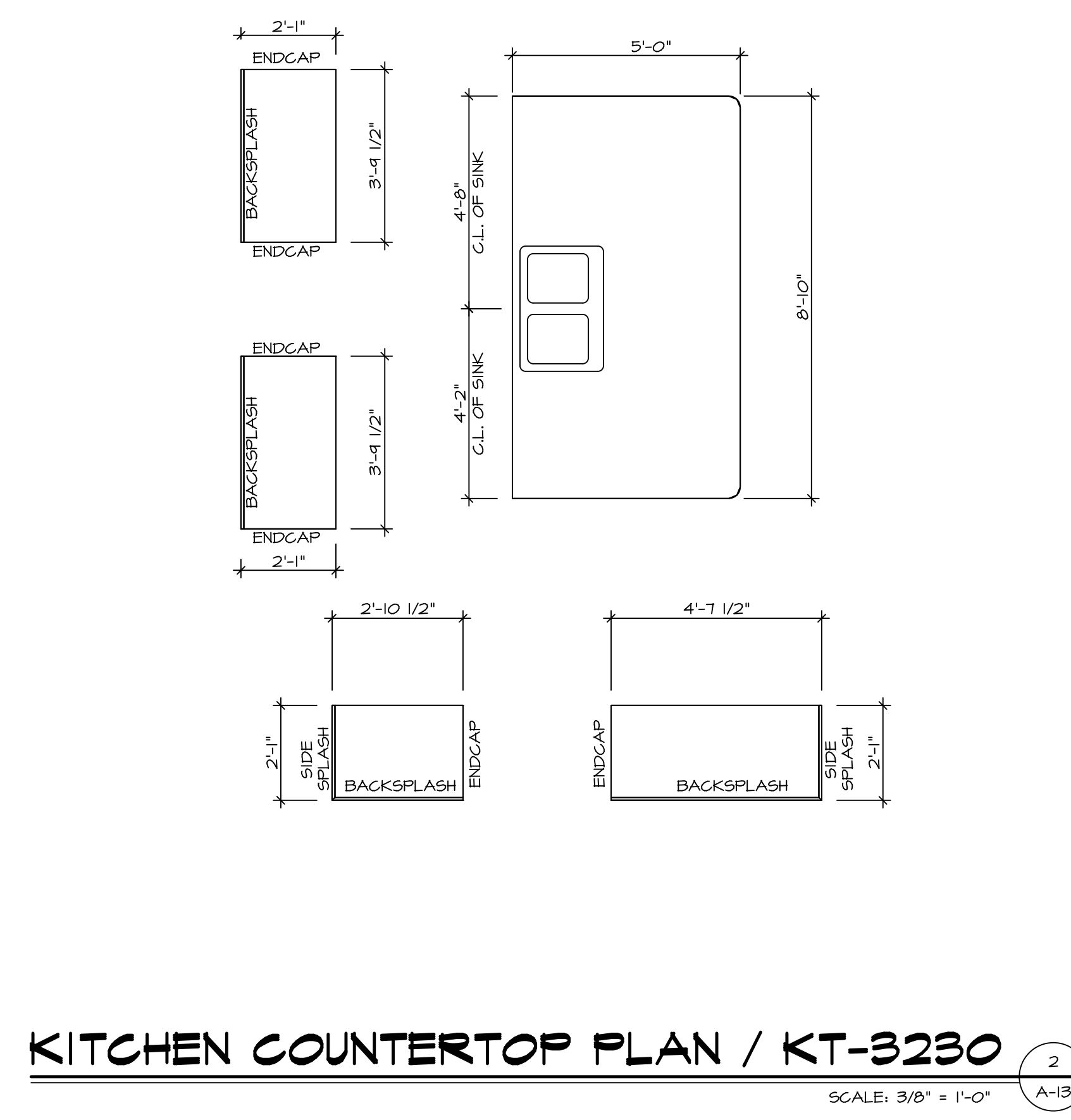
SET NO.	VERSION	DRAWN BY	DATE:	OPTION
11	1			

STANDARD DETAILS
DRAWING TITLE
INTERIOR TRIM DETAILS
BATH DETAILS
OPTION DESCRIPTION

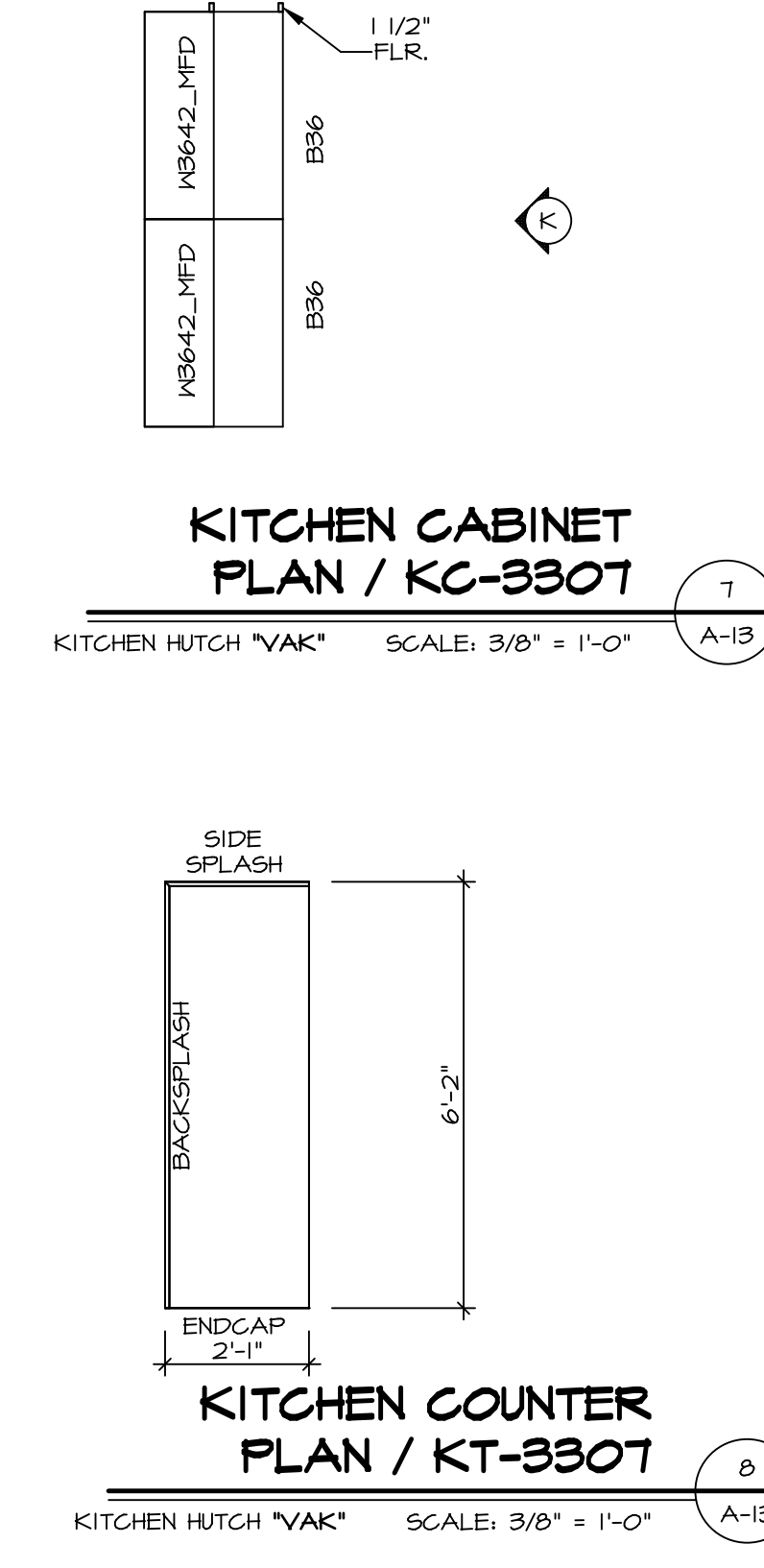
SHEET NO. **IT-2**



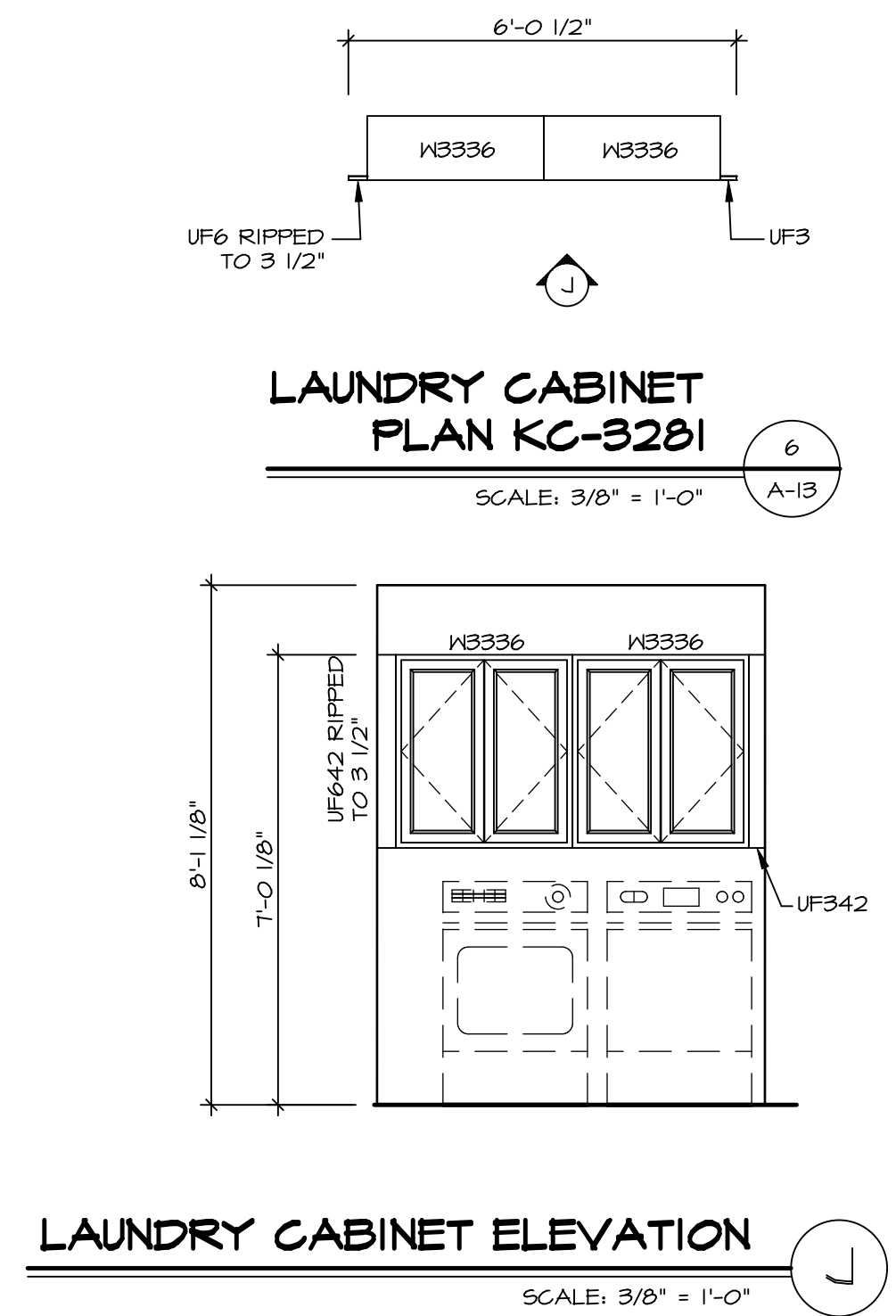
KITCHEN CABINET PLAN / KC-3230
SCALE: 3/8" = 1'-0" A-13



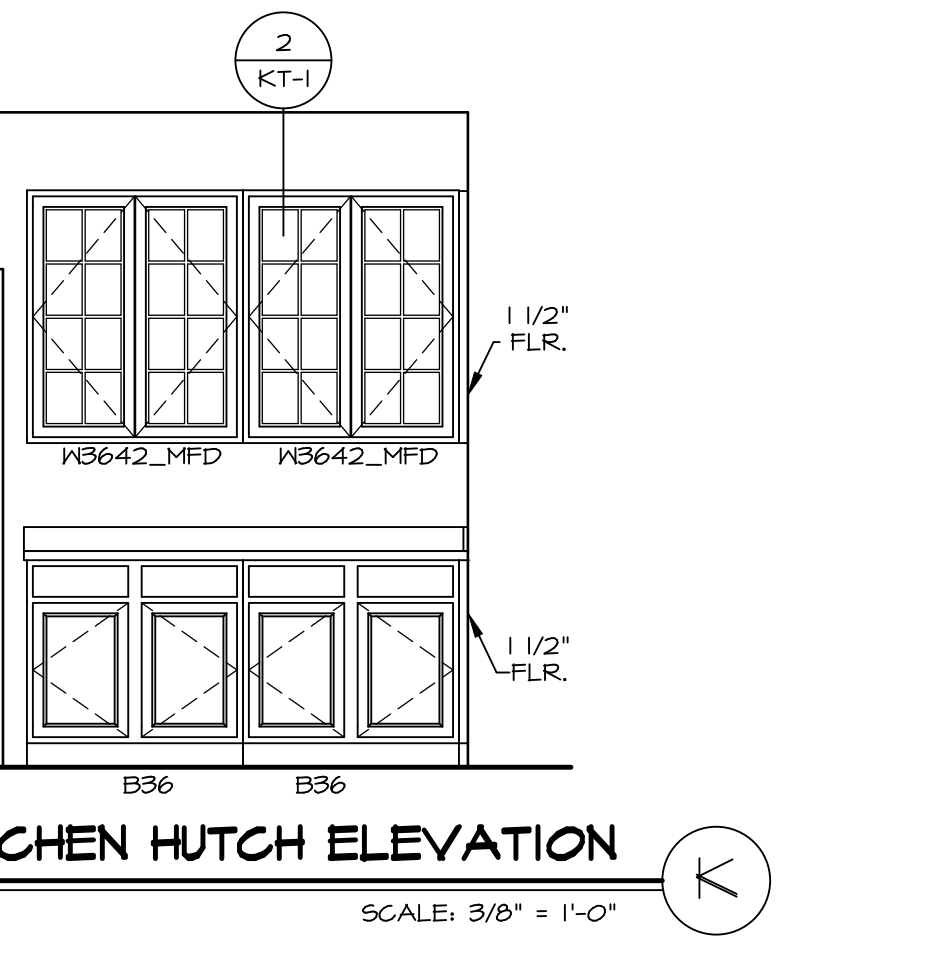
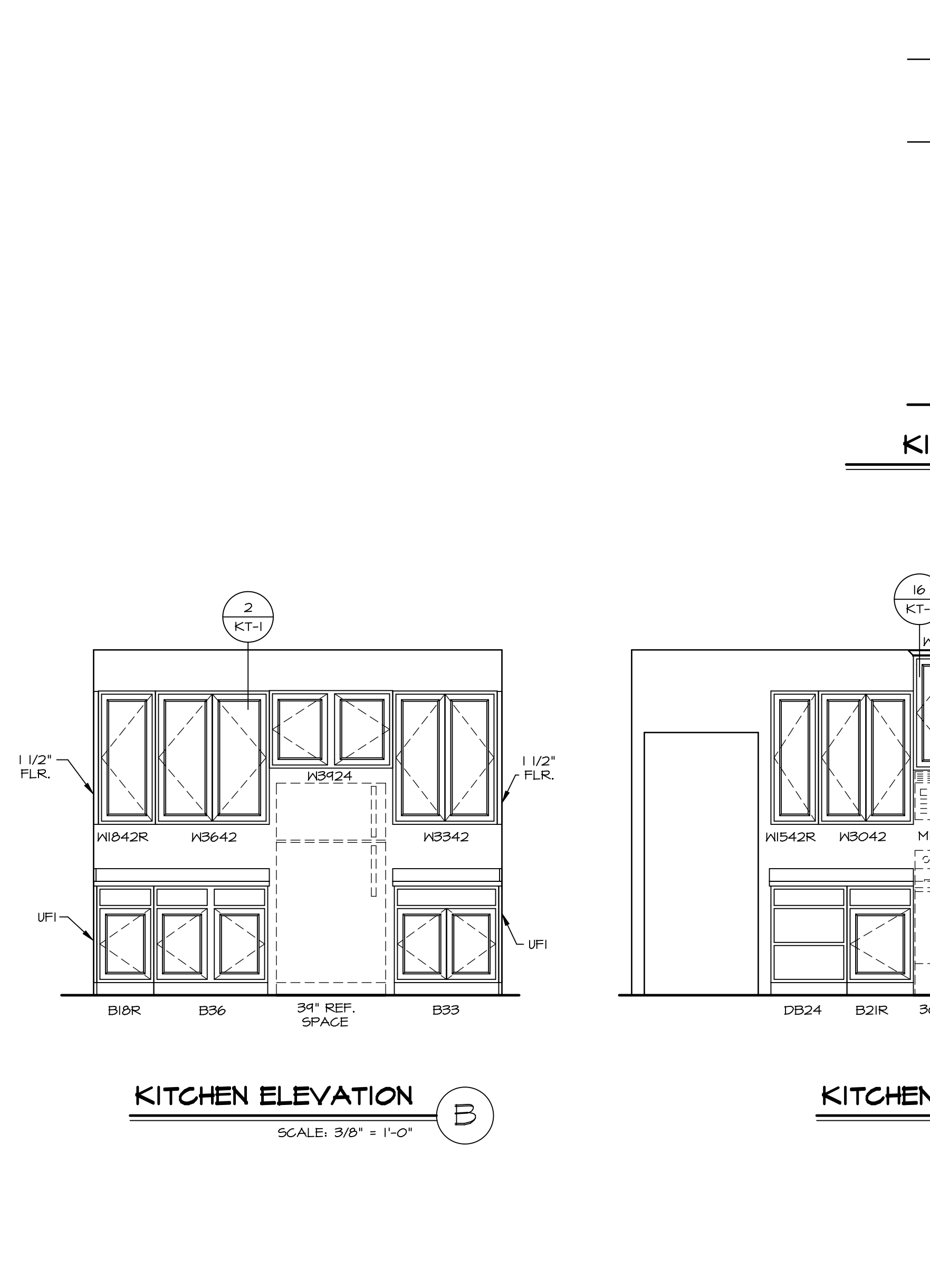
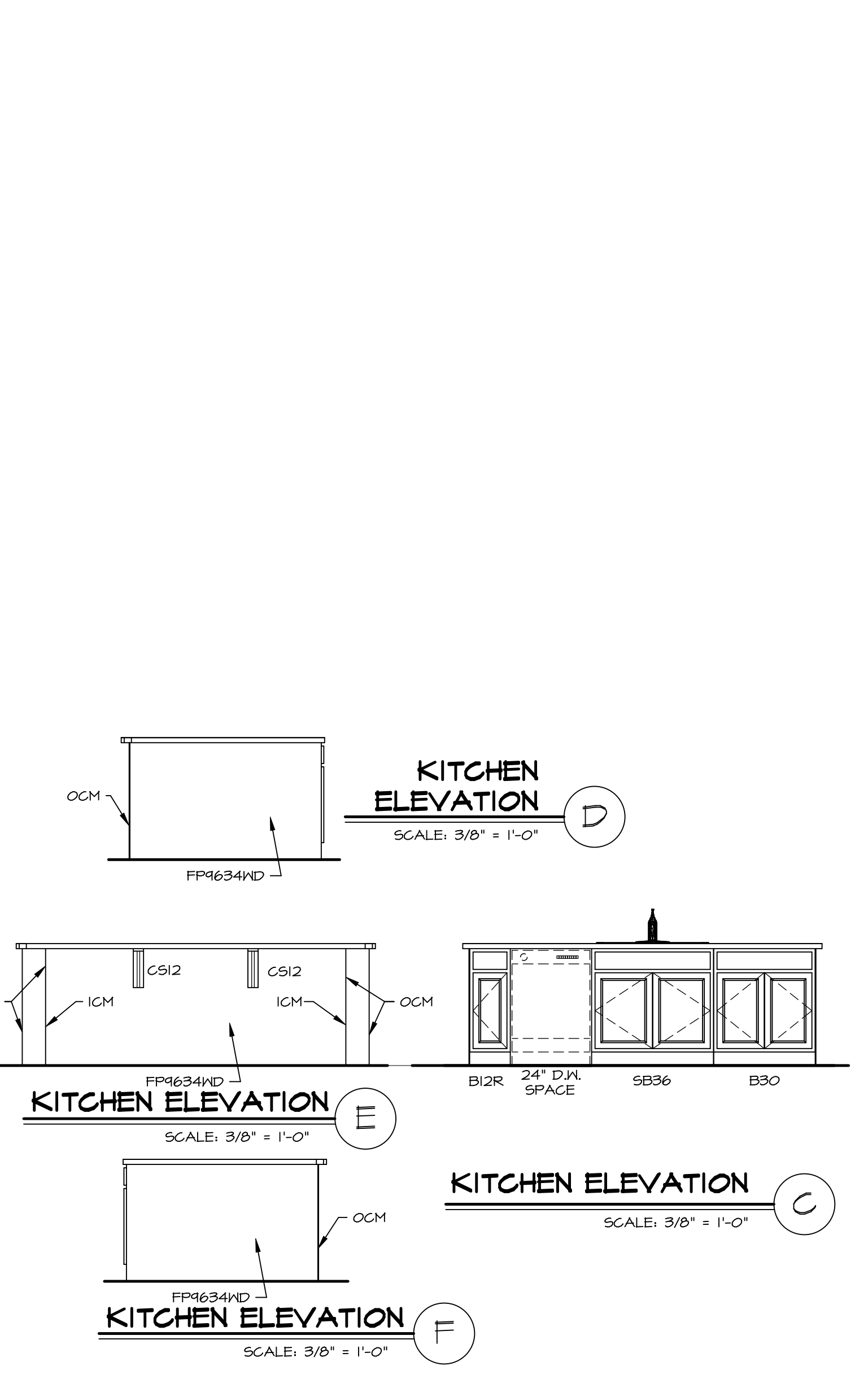
KITCHEN COUNTERTOP PLAN / KT-3230
SCALE: 3/8" = 1'-0" A-13



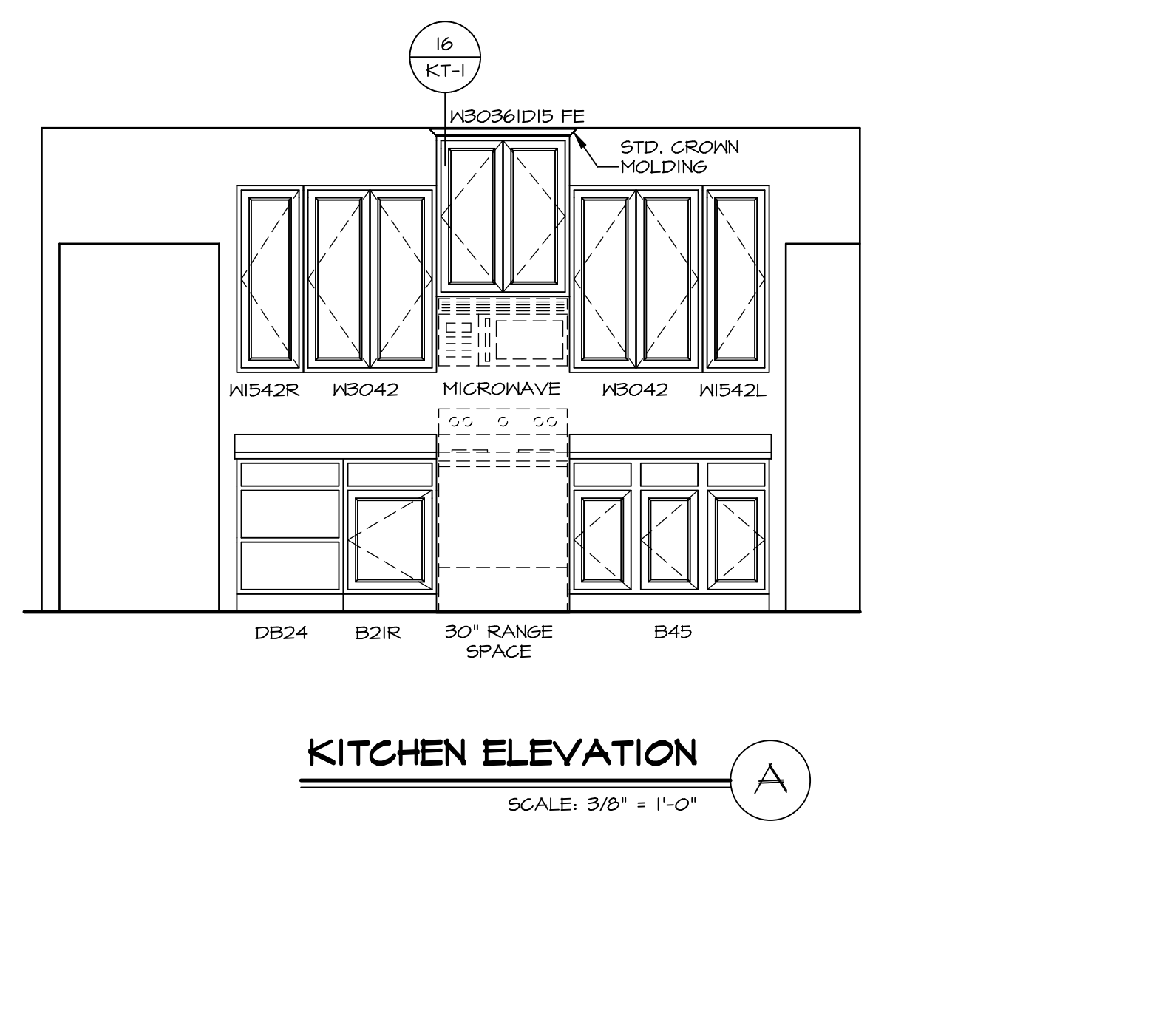
KITCHEN CABINET PLAN / KC-3307
KITCHEN HUTCH "VAK" SCALE: 3/8" = 1'-0" A-13



LAUNDRY CABINET PLAN KC-3201
SCALE: 3/8" = 1'-0" A-13



KITCHEN HUTCH ELEVATION
SCALE: 3/8" = 1'-0" K



KITCHEN ELEVATION A
SCALE: 3/8" = 1'-0"

REV. NO.	DATE	REMARKS
1	11/05/16	TRV - STANDARD DETAILS 5.0

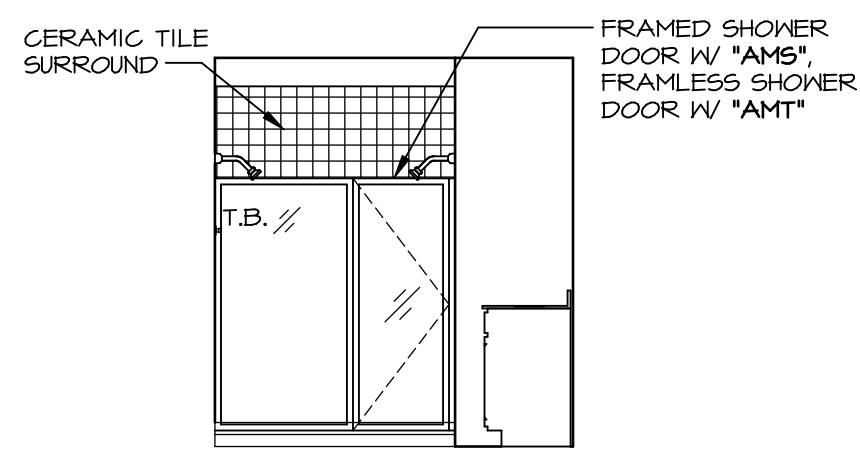
<p>SET NO. NRM00 VERSION 01 DRAWN BY RJC DATE: 6/29/15 OPTION</p>	<p>MODEL: NORMANDY DRAWING TITLE: KITCHEN LAYOUT OPTION DESCRIPTION:</p>
---	--

<p>SHEET NO. A-13</p>	<p>46</p>
-----------------------	-----------

NVR, Inc., owner, expressly reserves its copyright in these plans. These plans are not to be reproduced, changed, copied in any way, or used for any other purpose without the written consent of NVR, Inc.

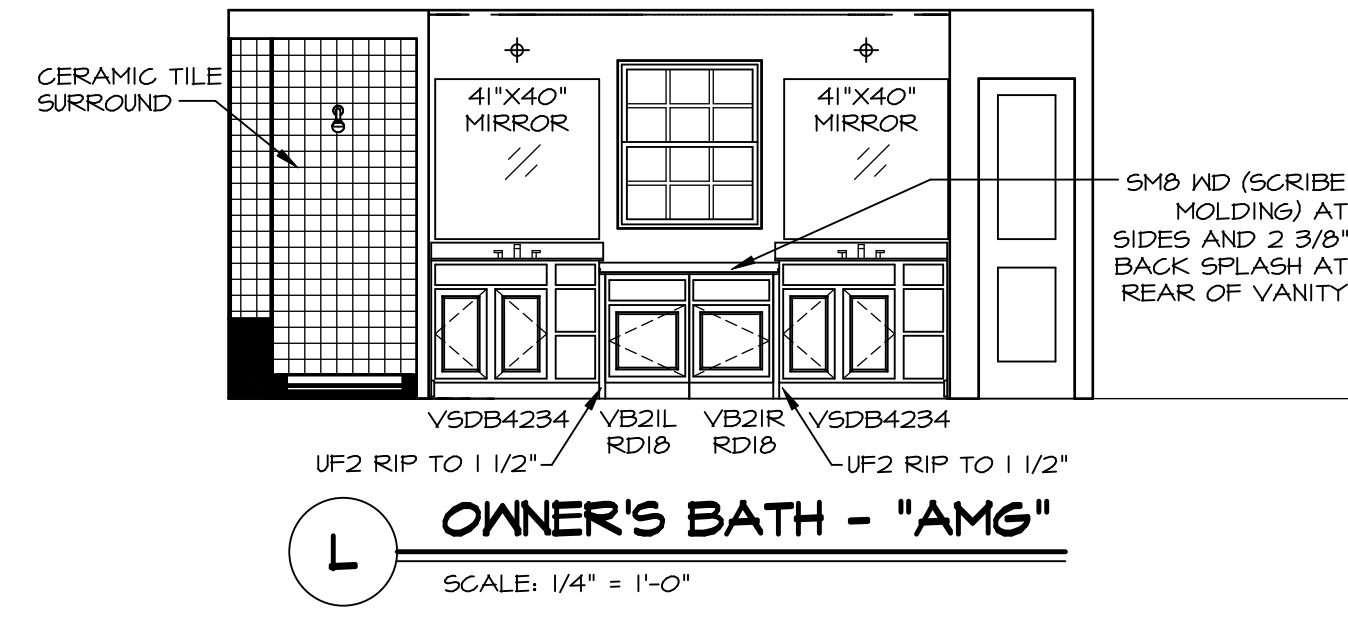
NVR, Inc. Architectural Services
5285 Westpark Drive
Frederick, MD 21703

C:\NVR\Solves\NORMANDY_NRM00_01\DCI-VR-0098\161046\Sheets\Lot_Specific\46 A-13 KT-LS.dwg 03/21/19 - 7:51 am

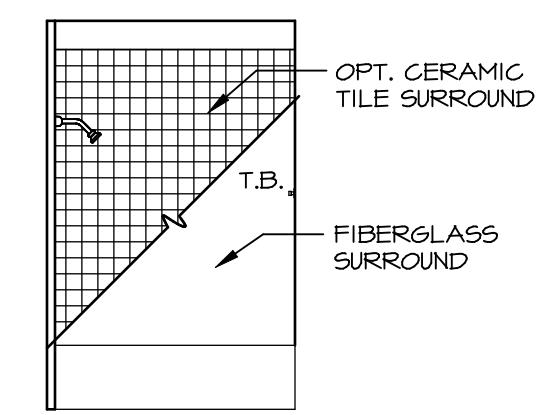


M OWNER'S BATH - "AMG"
SCALE: 1/4" = 1'-0"

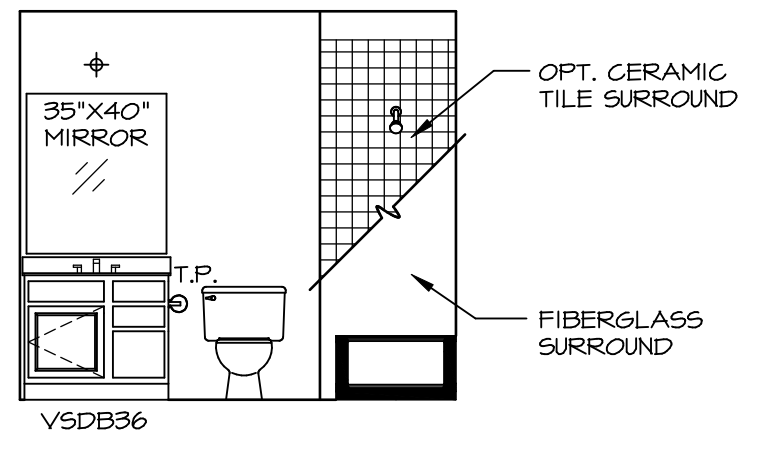
- NOTES:**
1. TEMPERED GLASS SHOWER ENCLOSURE WITH SWING DOOR OR OPTIONAL SLIDING DOOR BY DIVISION
 2. TUB ACCESS PANELS PROVIDED AS NEEDED, ALL MATERIALS BY DIVISION
 3. REFER TO SHEET (11-2) FOR TUB AND SHOWER DETAILS.
 4. ALL VSDB24-42 DRAWERS TO BE SET ON RIGHT HAND.
 5. BATH ELEVATIONS ARE SHOWN PER PLAN.



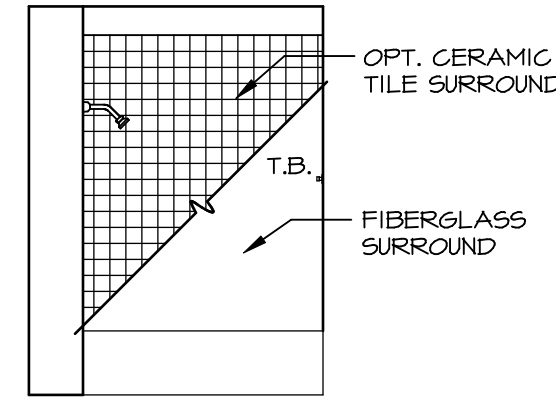
L OWNER'S BATH - "AMG"
SCALE: 1/4" = 1'-0"



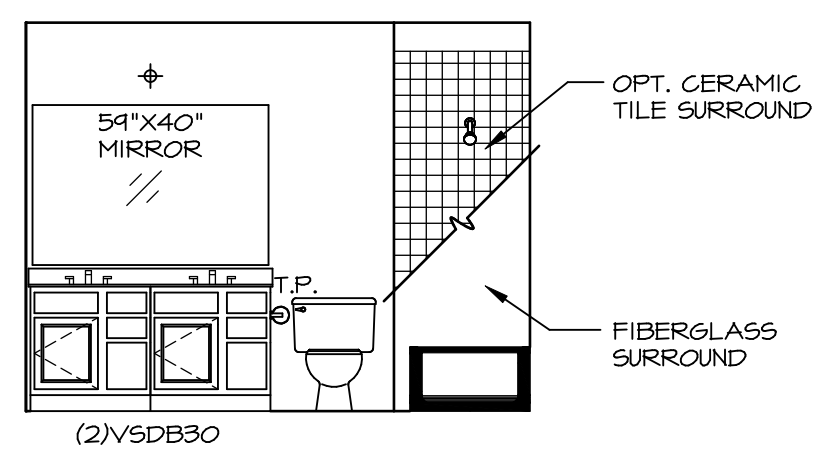
J BATH #2
SCALE: 1/4" = 1'-0"



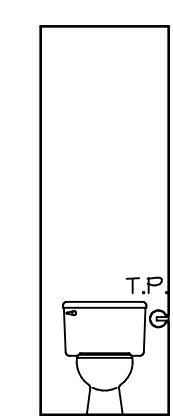
H BATH #2
SCALE: 1/4" = 1'-0"



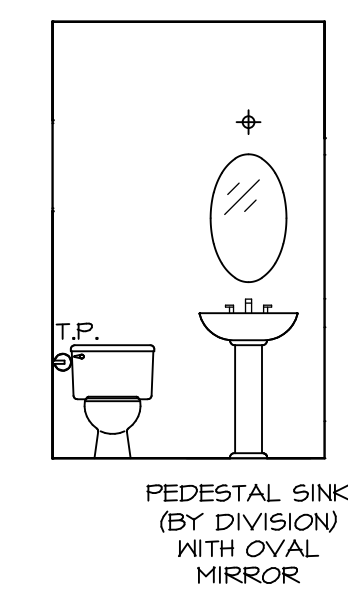
G BATH #1
SCALE: 1/4" = 1'-0"



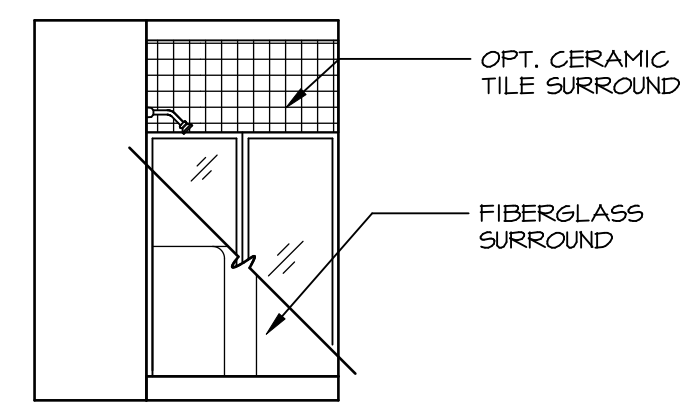
F BATH #1
SCALE: 1/4" = 1'-0"



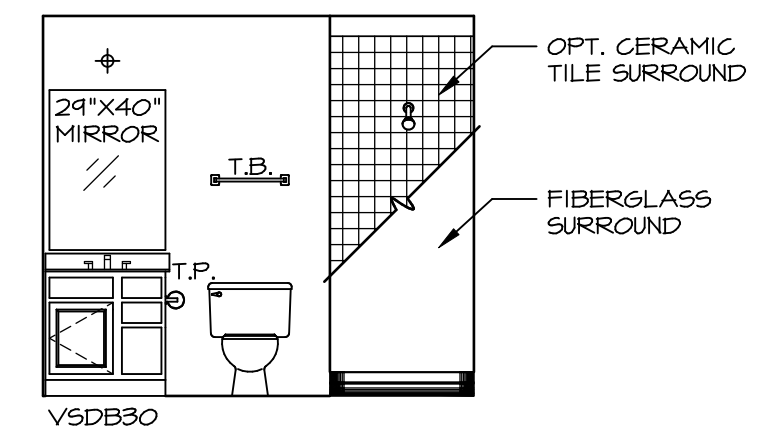
K OWNER'S BATH - "AMA" OR "AMG"
SCALE: 1/4" = 1'-0"



C POWDER ROOM - "MAS"
SCALE: 1/4" = 1'-0"



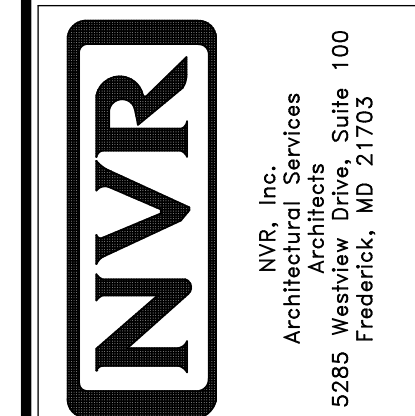
B BASEMENT BATH - "AEB"
SCALE: 1/4" = 1'-0"



A BASEMENT BATH - "AEB"
SCALE: 1/4" = 1'-0"

REV. NO.	DATE	REMARKS
1	08/07/16	N.L. - DRAWING ALIGNMENT
2	11/15/16	TRV. - STANDARD DETAILS 5.0

NVR, Inc., owner, expressly reserves its copyright in these plans. These plans are not to be reproduced, changed, copied, or otherwise used in any way without the written consent of NVR, Inc.



MODEL	NORMANDY
DRAWING TITLE	BATH ELEVATIONS
SHEET NO.	A-14
OPTION DESCRIPTION	4B
SET NO.	NRM00
VERSION	01
DRAWN BY	SGA
DATE	5/24/15
OPTION	