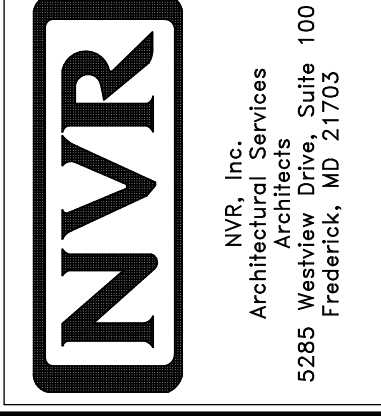


1  
A-5 PLUMBING PLAN  
SCALE: 1/4" = 1'-0"

SHEET NO.  
**A-5**

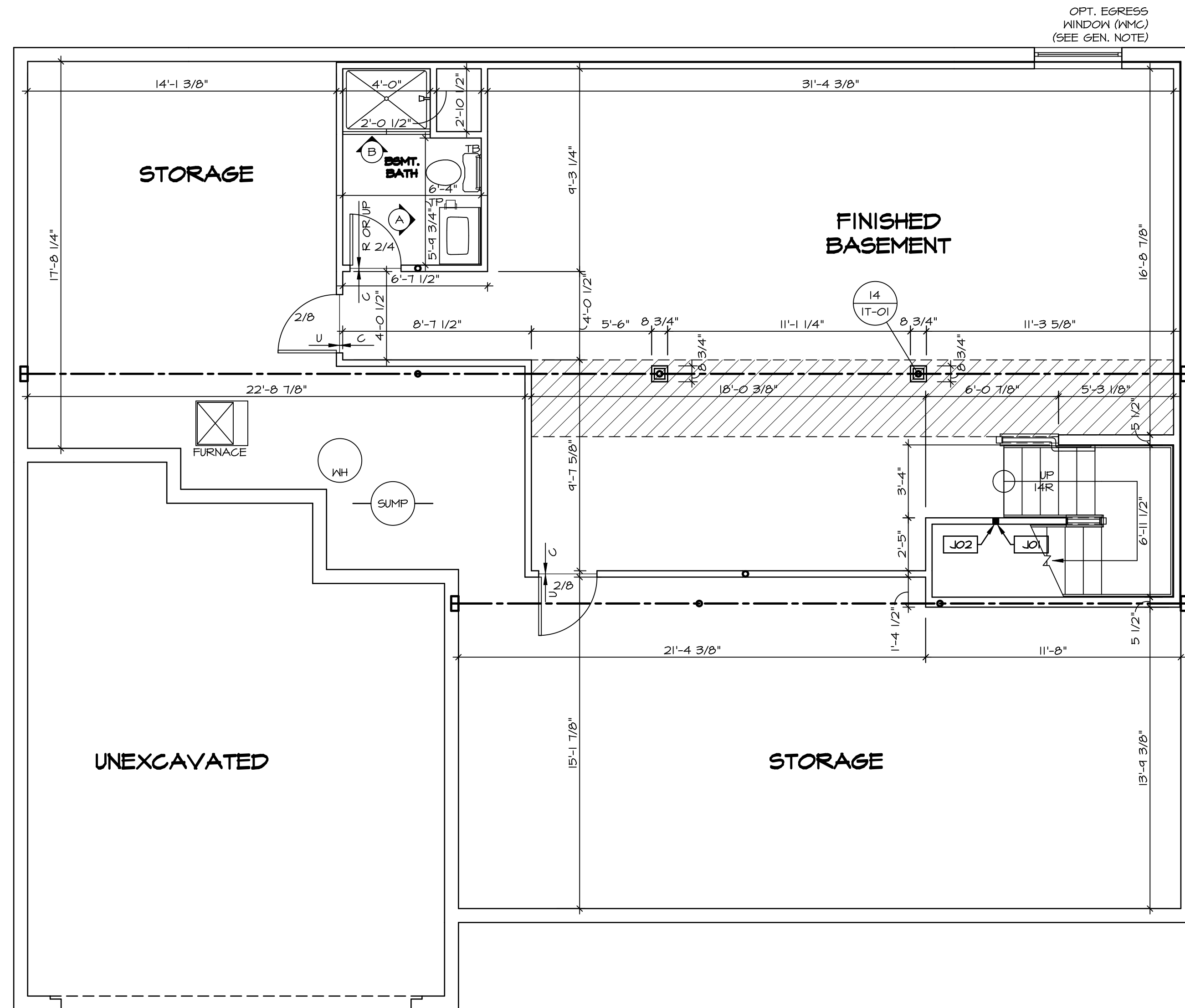
MODEL  
**NORMANDY**  
DRAWING TITLE  
**PLUMBING PLAN**  
OPTION DESCRIPTION  
**31**

SET NO. **NRMOO**  
VERSION **01**  
DRAWN BY **RJC**  
DATE: **5/14/15**  
OPTION



NVR, Inc., owner, expressly reserves its copyright in these plans. These plans are not to be reproduced, changed, copied in any way, or used for any other purpose without the written consent of NVR, Inc.

DIV-COMM-LOT-UNIT  
**DCY-YR-5061**  
COMM-LOT  
VILGE OF WINDING CREEK MONT CO - 5061  
STREET ADDRESS  
**446 WILD HORSE DRIVE**  
CITY  
**CENTERVILLE** STATE  
**OH** ZIP  
**45459**



**LEGEND**

- BEARING WALL
- NON BEARING WALL
- INDICATES BEARING FROM POINT-LOAD ABOVE
- JACKS
- BEAM/HEADER
- PAD FOOTING
- STEEL COLUMN
- PORTAL FRAME
- JOIST/TRUSS
- LVL
- ENGINEERING PAGE NUMBER

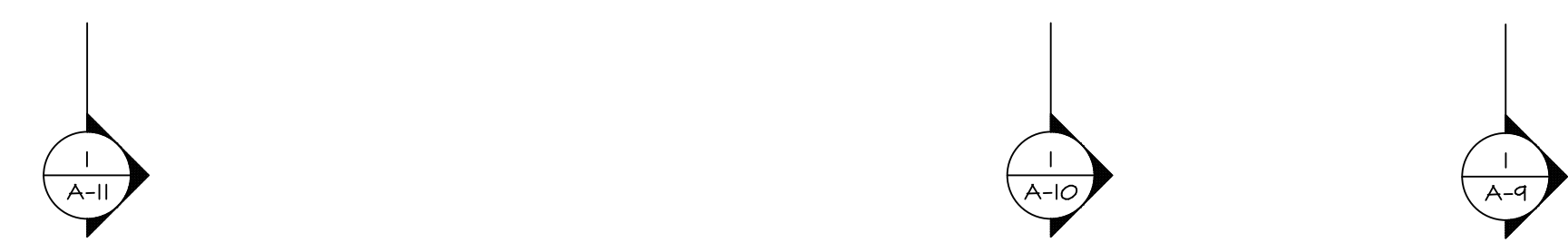
SEE FC DETAILS FOR FRAMING CONNECTORS

- FLOOR PLAN NOTES**
- ALL HEADERS ARE (2) 2x6 w/ 2x4 WALLS OR (3) 2x6 w/ 2x6 WALLS, UNLESS OTHERWISE NOTED.
  - ALL EXTERIOR WALLS TO BE 4" AND ALL INTERIOR WALLS TO BE 3 1/2", UNLESS OTHERWISE NOTED.
  - HATCHED AREAS INDICATE DROPPED CEILING. ALL DROPPED CEILING ARE 12" UNLESS OTHERWISE NOTED.
  - SEE "BRACED WALL PANEL DETAIL SHEET" FOR SPECIAL WALL FRAMING LOCATIONS AND HEADER SIZES, IF APPLICABLE.
  - SEE STANDARD DETAIL CATEGORY "IT" SHEET(S) FOR INTERIOR TRIM DETAILS.
  - SEE ARCHITECTURAL DETAIL SHEET "AD" FOR HOUSE SPECIFIC INTERIOR TRIM OPTION TABLE.
  - ALL WINDOWS HAVE 7'-0 1/2" HEADER HEIGHT UNLESS OTHERWISE NOTED.

- GYPSUM NOTES**
- AT GARAGE:  
GYPSUM BOARD AT COMMON WALLS, CEILING, BEAM WRAPS AND SUPPORTS PER STANDARD DETAIL FA-1(b) FIRE ASSEMBLIES OR AS REQUIRED BY LOCAL CODE.
- AT STAIRS:  
1/2" GYPSUM BOARD AT UNDERSIDE OF STAIRS AND WALLS IN CLOSET

**BASEMENT JACK SCHEDULE**

IDENTIFIER	DESCRIPTION	OPTIONS	ENG. NUM.	REMARKS
J01	JACK - 2x4 SPF STUD GRADE		B10	
J02	JACK - 2x4 SPF STUD GRADE		B22	



**BASEMENT FLOOR PLAN**  
SCALE: 1/4" = 1'-0"

SET NO. NRM00  
VERSION 01  
DRAWN BY SGA  
DATE: 6/29/15  
OPTION

MODEL  
**NORMANDY**  
DRAWING TITLE  
BASEMENT FLOOR PLAN  
OPTION DESCRIPTION

SHEET NO.  
**A-6**  
34

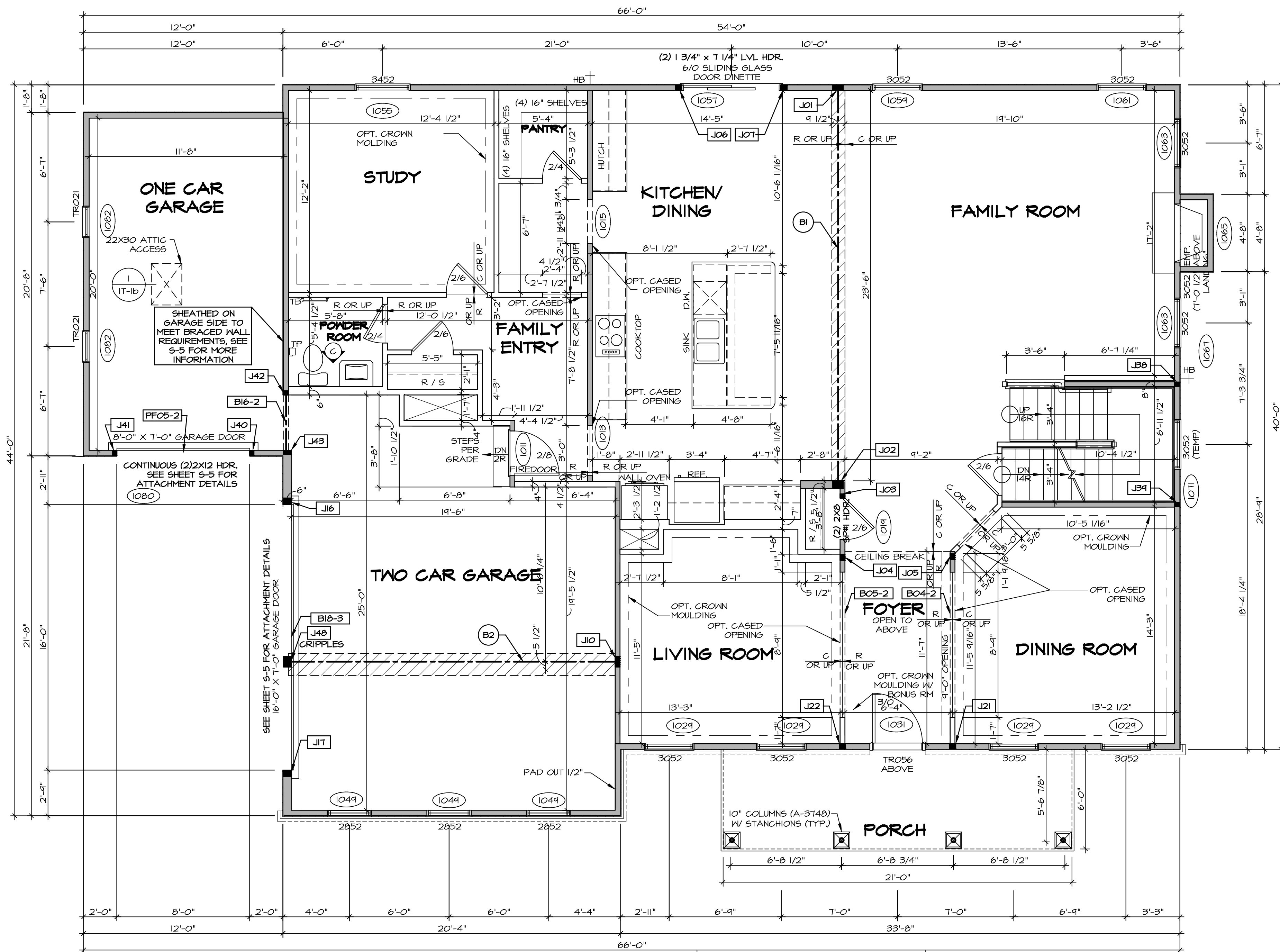
DCY-YR-S061

BLVD-COMM-LOT-UNIT  
COMM-L0T  
VILGE OF WINDING CREEK MONT CO - S061  
STREET ADDRESS  
446 WILD HORSE DRIVE  
CITY STATE OH ZIP  
CENTERVILLE OH 45459

NVR, Inc. owner, expressly reserves its copyright in these plans. These plans are not to be reproduced, changed, copied, or used in any way without the written consent of NVR, Inc.

**NVR**  
Architectural Services  
5285 Westchase Lane, Suite 100  
Frederick, MD 21703

C:\NVR\Solves\NORMANDY\_NRM00\_01\DCY-YR-S061\2315680\Sheets\Lot\_Specific\34\_A-6\_BSMT\_LS.dwg 06/16/21 - 3:19 am



**FIRST FLOOR PLAN**  
SCALE: 1/4" = 1'-0"

**LEGEND**

- BEARING WALL
- NON BEARING WALL
- INDICATES BEARING FROM POINT-LOAD ABOVE
- JACKS
- BEAM/HEADER
- PAD FOOTING
- STEEL COLUMN
- PORTAL FRAME
- JOIST/TRUSS
- LVL
- ENGINEERING PAGE NUMBER

SEE FC DETAILS FOR FRAMING CONNECTORS

- FLOOR PLAN NOTES** RYAN
- ALL HEADERS ARE (2) 2x6 W/ 2x4 WALLS OR (3) 2x6 W/ 2x6 WALLS, UNLESS OTHERWISE NOTED.
  - ALL HEADERS TO HAVE (1) 2x4 OR 2x6 JACK AND KING STUD EACH END, UNLESS OTHERWISE NOTED.
  - ALL EXTERIOR WALLS TO BE 4" W/ OSB OR 3 1/2" W/ T-PLY, ALL INTERIOR WALLS TO BE 3 1/2", UNLESS OTHERWISE NOTED.
  - HATCHED AREAS INDICATE DROPPED CEILINGS. ALL DROPPED CEILINGS ARE 12" UNLESS OTHERWISE NOTED.
  - SEE "BRACED WALL PANEL DETAIL SHEET" FOR SPECIAL WALL FRAMING LOCATIONS AND HEADER SIZES, IF APPLICABLE.
  - SEE STANDARD DETAIL CATEGORY "IT" SHEET(S) FOR INTERIOR TRIM DETAILS.
  - SEE ARCHITECTURAL DETAIL SHEET "AD" FOR HOUSE SPECIFIC INTERIOR TRIM OPTION TABLE.
  - ALL WINDOWS HAVE 7'-0 1/2" HEADER HEIGHT UNLESS OTHERWISE NOTED.
  - ALL HEADERS IN NON-BEARING WALLS SHALL BE A SINGLE FLAT 2X4 OR 2X6 ATTACHED TO CRIPPLES ABOVE, UNLESS OTHERWISE NOTED.

- GYPSON NOTES** RYAN
- AT GARAGE:**  
GYPSON BOARD AT COMMON WALLS, CEILING, BEAM WRAPS AND SUPPORTS PER STANDARD DETAIL FA-1(b) FIRE ASSEMBLIES OR AS REQUIRED BY LOCAL CODE.
- AT STAIRS:**  
1/2" GYPSON BOARD AT UNDERSIDE OF STAIRS AND WALLS IN CLOSET

- LVL PLY TO PLY FASTENING SCHEDULE: (WHERE APPLICABLE BASED ON LVL USAGE)**
- 1A - (2) PLY UP TO AND INCLUDING 11/8" TALL; FASTEN PLYS W/ (2) ROWS 16D NAILS AT 12" O.C.
  - 2A - (2) PLY 14" TO AND 18" TALL (INCLUSIVE); FASTEN PLYS W/ (3) ROWS 16D NAILS AT 12" O.C.
  - 3A - (2) PLY 20" TALL AND OVER; FASTEN PLYS W/ (4) ROWS 16D NAILS AT 12" O.C.
  - 4A - (3) PLY UP TO AND INCLUDING 11/8" TALL; FASTEN PLYS W/ (2) ROWS 16D NAILS AT 12" O.C. FROM EACH SIDE
  - 5A - (3) PLY 14" TO AND 18" TALL (INCLUSIVE); FASTEN PLYS W/ (3) ROWS 16D NAILS AT 12" O.C. FROM EACH SIDE
  - 6A - (3) PLY 20" TALL AND OVER; FASTEN PLYS W/ (4) ROWS 16D NAILS AT 12" O.C. FROM EACH SIDE
  - 7A - (4) PLY (ALL SIZES); FASTEN PLYS W/ (2) ROWS 1/2" DIAMETER A307 BOLTS AT 24" O.C. SEE SHOP DRAWING FOR ADDITIONAL INFORMATION.

**FIELD INSTALLED FIRST FLOOR BEAM/HEADER SCHEDULE**

IDENTIFIER	DESCRIPTION	LENGTH	OPTIONS	ENG. NUM.	REMARKS
B04-2	LVL - 11-4	11'-4 1/16"	SRM, SGK, SGL, ELA, ELK	1017	1A
B05-2	LVL - 11-4	11'-8 1/2"	SRM, SGK, SGL, ELA, ELK	1017	1A
B1	BEAM STEEL - W12X35	24'-2"	SRM, SGK, SGL, ELA, ELB, ELK	1021	
B16-2	LVL - 11-4	3'-10"	MAS, GAA, FBA	1077	1A
B18-3	LVL 1.75 - 18	16'-4"	GCC, GAA	1051	5A
B2	BEAM STEEL - W12X26	20'-2 1/2"	SRI	1022	
PF05-2	EXT BEAM HEADER - 2X12 - 2 PLY	11'-4"	GCF	1045	PORTAL FRAME

**FIRST FLOOR JACK SCHEDULE**

IDENTIFIER	DESCRIPTION	OPTIONS	ENG. NUM.	REMARKS
J01	JACK - (5) 2X4 SP#1		1021	
J02	JACK - (5) 2X6 SP#1		1021	
J03	JACK - (2) 2X4 SP# STUD GRADE		1014	
J04	JACK - (3) 2X4 SP# STUD GRADE		1017	
J05	JACK - (3) 2X4 SP# STUD GRADE		1017	
J06	JACK - (3) 2X4 SP# STUD GRADE		1057	
J07	JACK - (3) 2X4 SP# STUD GRADE		1057	
J10	JACK - (5) 2X4 SP#1	SRI	1023	
J16	JACK - (3) 2X6 SP# STUD GRADE	GCC, GAA	1051	
J17	JACK - (3) 2X6 SP# STUD GRADE	GCC, GAA	1051	
J21	JACK - (3) 2X4 SP# STUD GRADE	SRM, SGK, SGL, ELA, ELB, ELK	1017	
J22	JACK - (3) 2X4 SP# STUD GRADE	SRM, SGK, SGL, ELA, ELB, ELK	1017	
JB8	JACK - (2) 2X4 SP# STUD GRADE		1007	
JB4	JACK - (2) 2X4 SP# STUD GRADE		1007	
J40	JACK - (2) 2X4 SP# STUD GRADE	GCC, GAA	1074	
J41	JACK - (2) 2X4 SP# STUD GRADE	GCC, GAA	1074	
J42	JACK - (2) 2X4 SP# STUD GRADE	MAS, GAA, FBA	1077	

**DCY-VR-S061**

BIV-COMM-LOT-UNIT

COMM-LOT

VILGE OF WINDING CREEK MONT CO - S061

STREET ADDRESS

446 WILD HORSE DRIVE

CITY

CENTERVILLE

STATE

OH

ZIP

45458

APR. NO.

-----

DATE

6/29/15

OPTION

DESCRIPTION

SET NO. NRM00

VERSION 01

DRAWN BY SGA

DATE: 6/29/15

OPTION

DESCRIPTION

**NORMANDY**

DRAWING TITLE

FIRST FLOOR PLAN

**A-7**

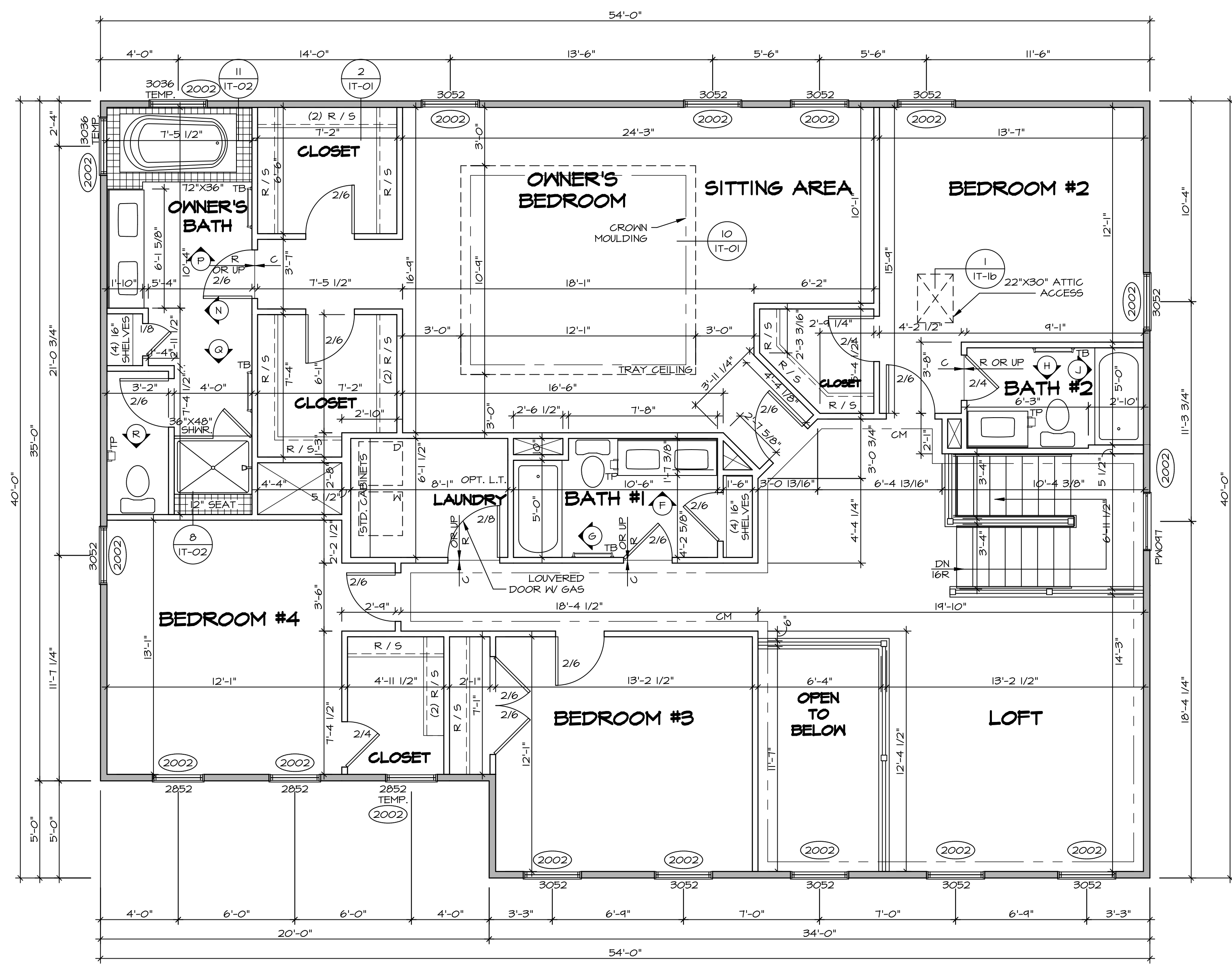
**35**

C:\NVR\Solves\NORMANDY\_ARCH\001\DCY-VR-S061\315680A\_Sheets\Lot\_Spec\35\_A-7\_PLN1\_US.dwg 06/16/21 - 3:20 am

NVR, Inc. owner, expressly reserves the copyright in these plans. These plans are not to be reproduced, changed, copied in any way, or used for any other purpose without the written consent of NVR, Inc.

**NVR**

NVR, Inc.  
Architectural Services  
100  
5285 Westchester Drive  
Frederick, MD 21703



**LEGEND**

- BEARING WALL
- NON BEARING WALL
- INDICATES BEARING FROM POINT-LOAD ABOVE JACKS
- BEAM/HEADER
- PAD FOOTING
- STEEL COLUMN
- PORTAL FRAME
- JOIST/TRUSS
- LVL
- ENGINEERING PAGE NUMBER

SEE FC DETAILS FOR FRAMING CONNECTORS

- FLOOR PLAN NOTES** RYAN
- ALL HEADERS ARE (2) 2x6 w/ 2x4 WALLS OR (3) 2x6 w/ 2x6 WALLS, UNLESS OTHERWISE NOTED.
  - ALL HEADERS TO HAVE (1) 2x4 OR 2x6 JACK AND KING STUD EACH END, UNLESS OTHERWISE NOTED.
  - ALL EXTERIOR WALLS TO BE 4" w/ OSB OR 3 1/2" w/ T-PLY, ALL INTERIOR WALLS TO BE 3 1/2", UNLESS OTHERWISE NOTED.
  - HATCHED AREAS INDICATE DROPPED CEILINGS, ALL DROPPED CEILINGS ARE 12" UNLESS OTHERWISE NOTED.
  - SEE "BRACED WALL PANEL DETAIL SHEET" FOR SPECIAL WALL FRAMING LOCATIONS AND HEADER SIZES, IF APPLICABLE.
  - SEE STANDARD DETAIL CATEGORY "IT" SHEET(S) FOR INTERIOR TRIM DETAILS.
  - SEE ARCHITECTURAL DETAIL SHEET "AD" FOR HOUSE SPECIFIC INTERIOR TRIM OPTION TABLE.
  - ALL WINDOWS HAVE 7'-0" 1/2" HEADER HEIGHT UNLESS OTHERWISE NOTED.
  - ALL HEADERS IN NON-BEARING WALLS SHALL BE A SINGLE FLAT 2x4 OR 2x6 ATTACHED TO GRIFFLES ABOVE, UNLESS OTHERWISE NOTED.

**SECOND FLOOR JACK SCHEDULE**

IDENTIFIER	DESCRIPTION	OPTIONS	ENG. NUM.	REMARKS

**SECOND FLOOR PLAN**  
SCALE: 1/4" = 1'-0"

**DCY-YR-S061**

DIV-COMM-LOT-UNIT  
COMM-LOT  
STREET ADDRESS  
496 WILD HORSE DRIVE  
CITY  
CENTERVILLE  
STATE  
OH  
ZIP  
45459

APRT. NO. ---

**NVR**  
NVR, Inc.  
Architectural Services  
5285 Westchester Blvd, Suite 100  
Frederick, MD 21703

SET NO. NRM00  
VERSION 01  
DRAWN BY SGA  
DATE: 6/29/15  
OPTION

**NORMANDY**  
DRAWING TITLE  
SECOND FLOOR PLAN  
OPTION DESCRIPTION

SHEET NO. **A-8**  
38

C:\NVA\Solves\NORMANDY\_NRM00\_01\DCY-YR-S061\2315680\Sheets\Lot\_Specific\38\_A-8\_Plan\_LS.dwg 06/16/21 - 3:20 am

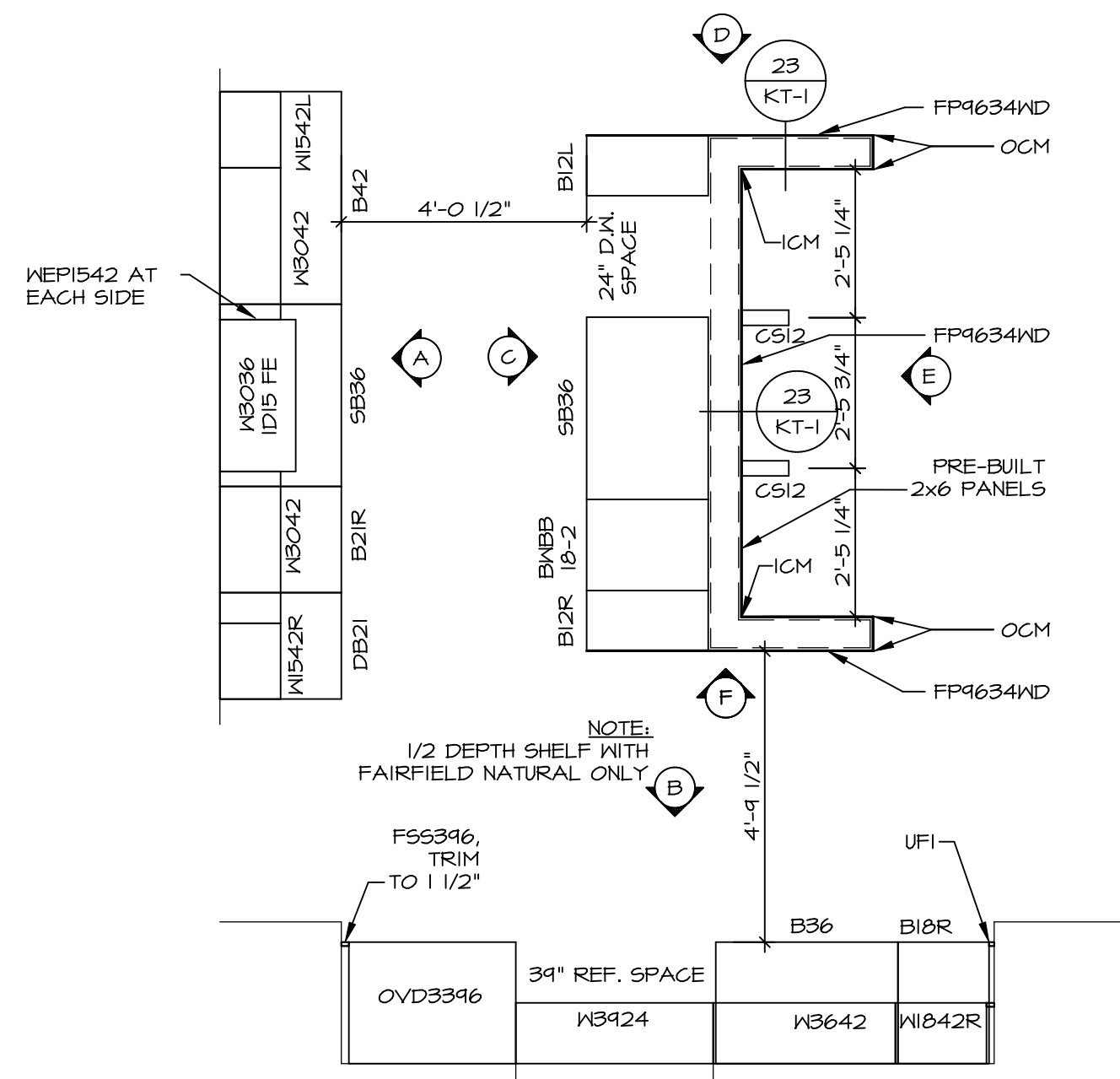
NVR, Inc., owner, expressly reserves its copyright in these plans. These plans are not to be reproduced, changed, copied, or otherwise used in any way without the written consent of NVR, Inc.

### KITCHEN CABINET PLAN / KC-323ITC

APPLIANCE LAYOUT W/  
CROCKTOP / WALL OVEN (TC)  
A2

SCALE: 3/8" = 1'-0"

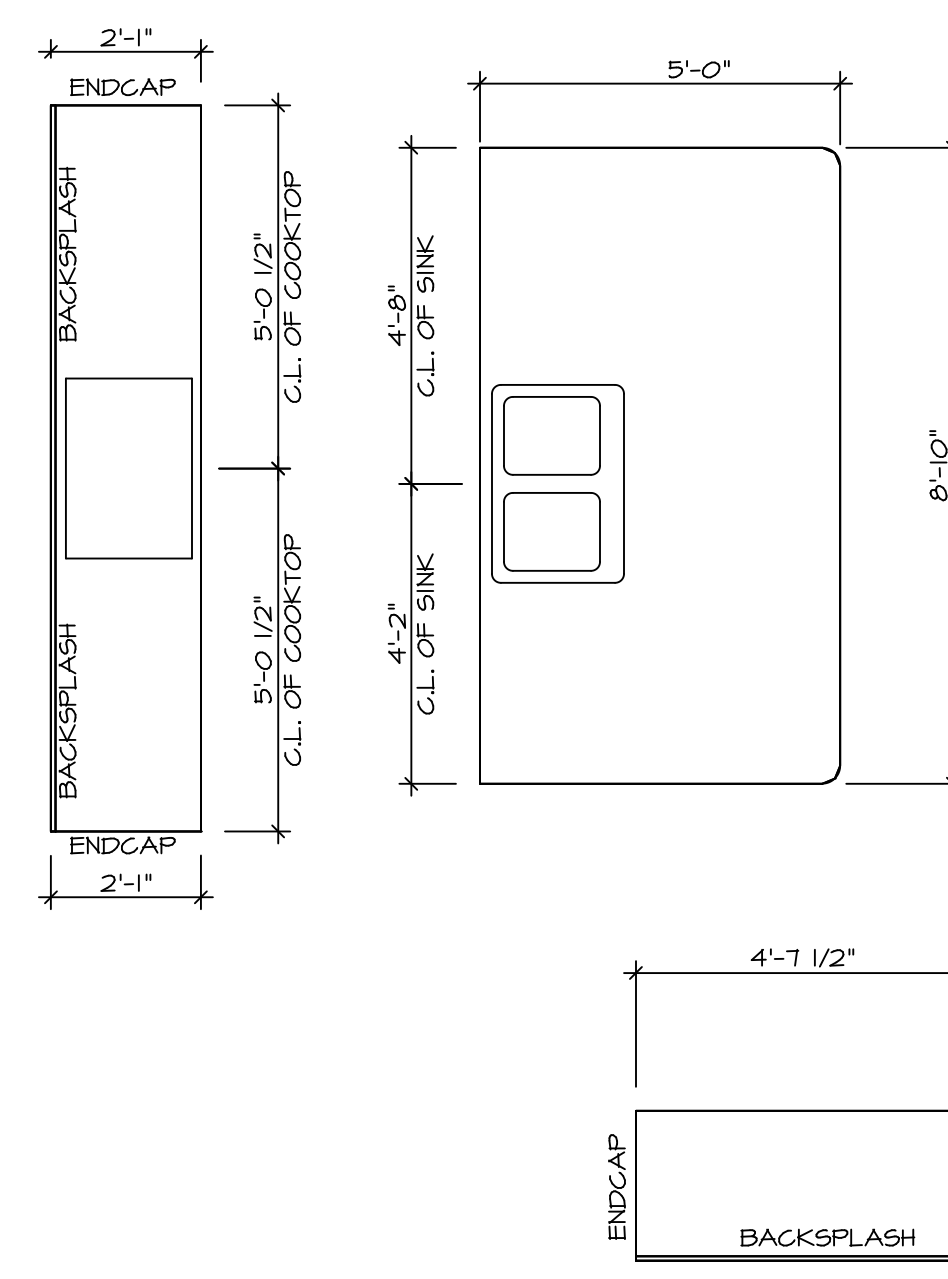
1 A-13



### KITCHEN COUNTERTOP PLAN / KT-323ITC

SCALE: 3/8" = 1'-0"

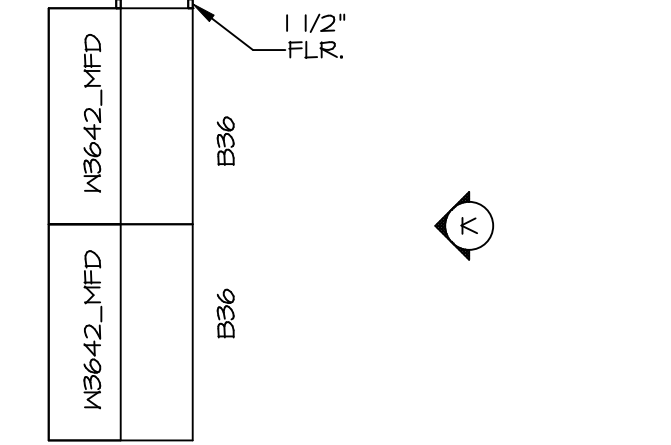
2 A-13



### KITCHEN CABINET PLAN / KC-3307

KITCHEN HUTCH "VAK" SCALE: 3/8" = 1'-0"

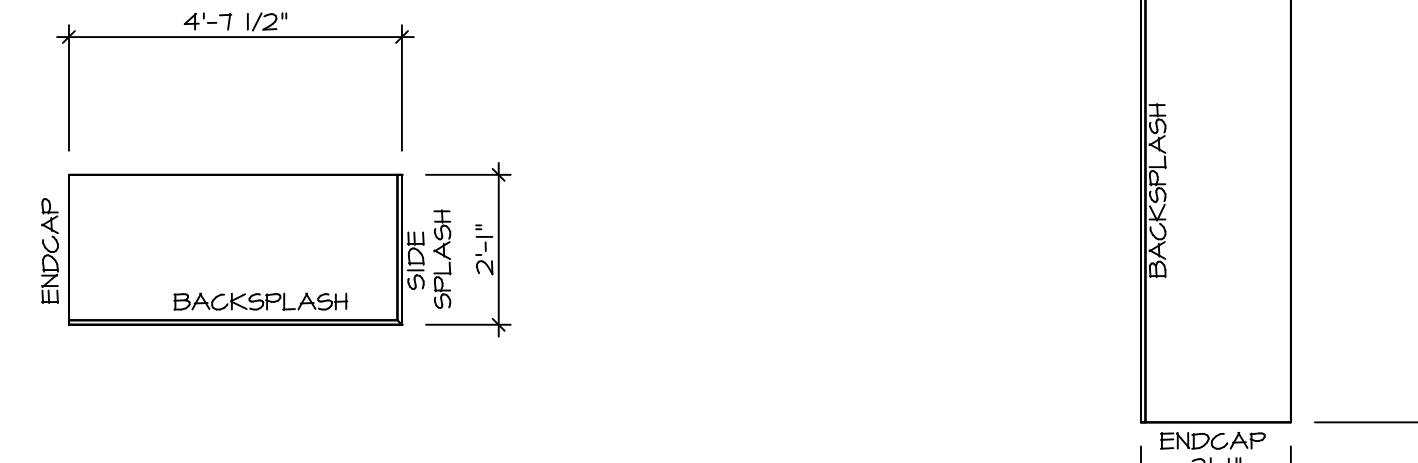
7 A-13



### KITCHEN COUNTER PLAN / KT-3307

KITCHEN HUTCH "VAK" SCALE: 3/8" = 1'-0"

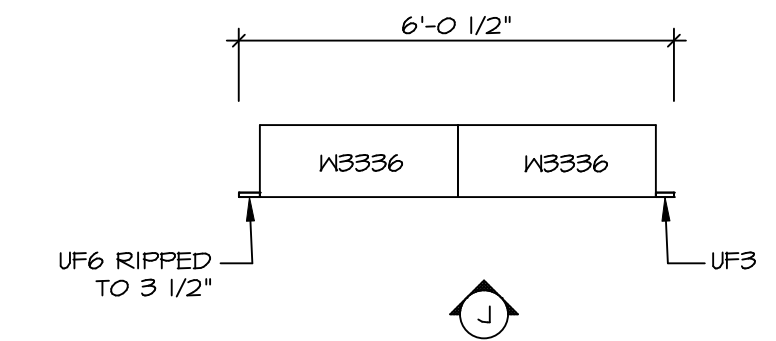
8 A-13



### LAUNDRY CABINET PLAN KC-3201

SCALE: 3/8" = 1'-0"

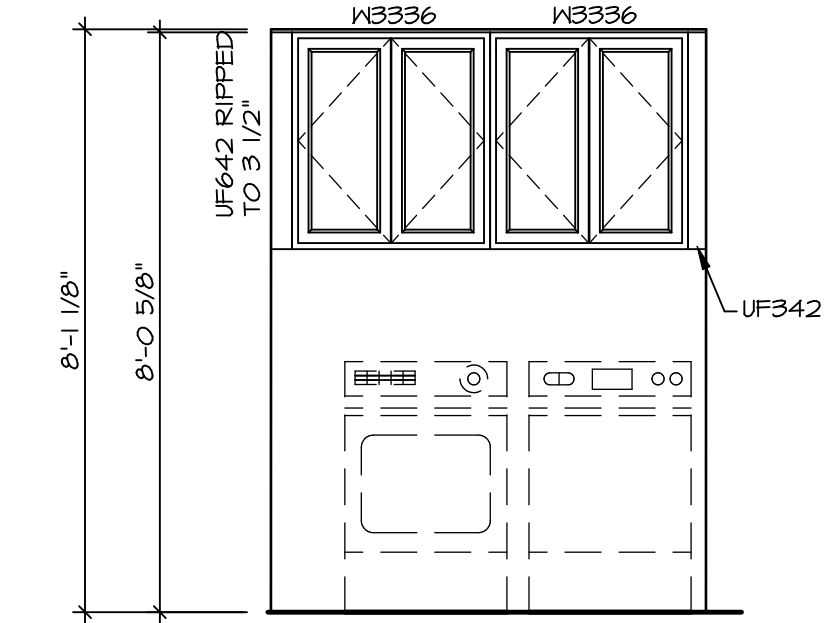
6 A-13



### LAUNDRY CABINET ELEVATION

SCALE: 3/8" = 1'-0"

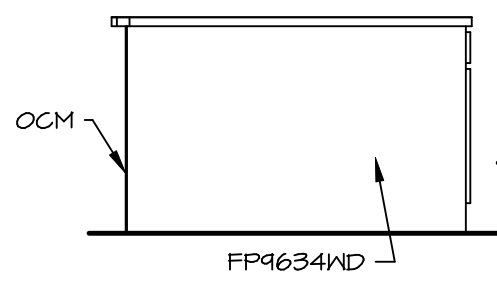
L A-13



### KITCHEN ELEVATION

SCALE: 3/8" = 1'-0"

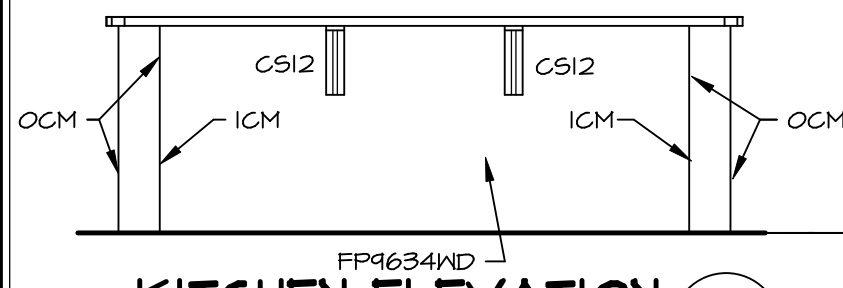
D A-13



### KITCHEN ELEVATION

SCALE: 3/8" = 1'-0"

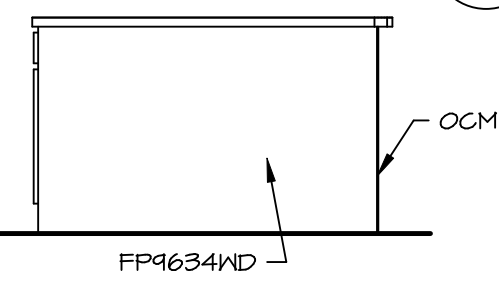
E A-13



### KITCHEN ELEVATION

SCALE: 3/8" = 1'-0"

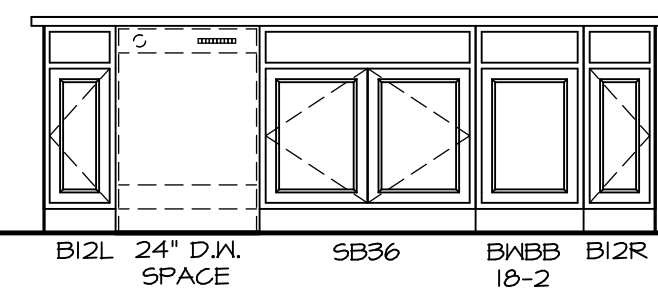
F A-13



### KITCHEN ELEVATION

SCALE: 3/8" = 1'-0"

C A-13

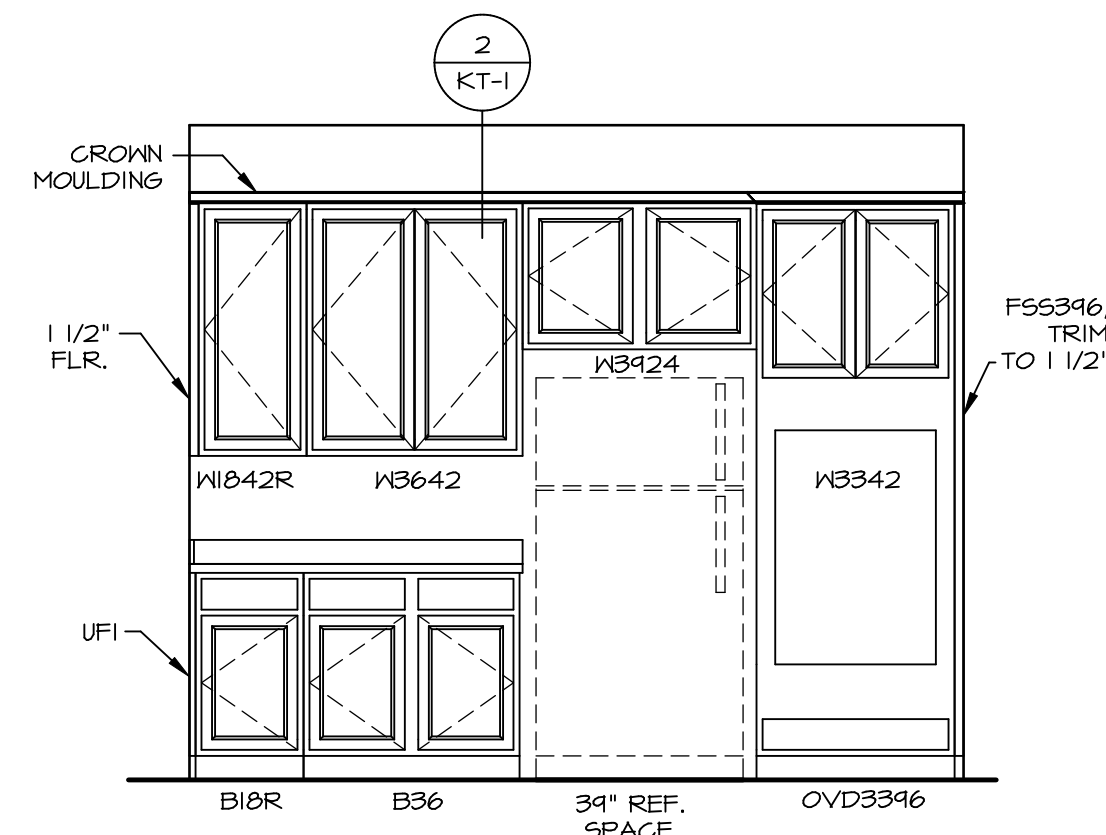


### KITCHEN ELEVATION

APP. LAYOUT W/  
CROCKTOP / WALL  
OVEN (TC) "KA2"

SCALE: 3/8" = 1'-0"

B A-13

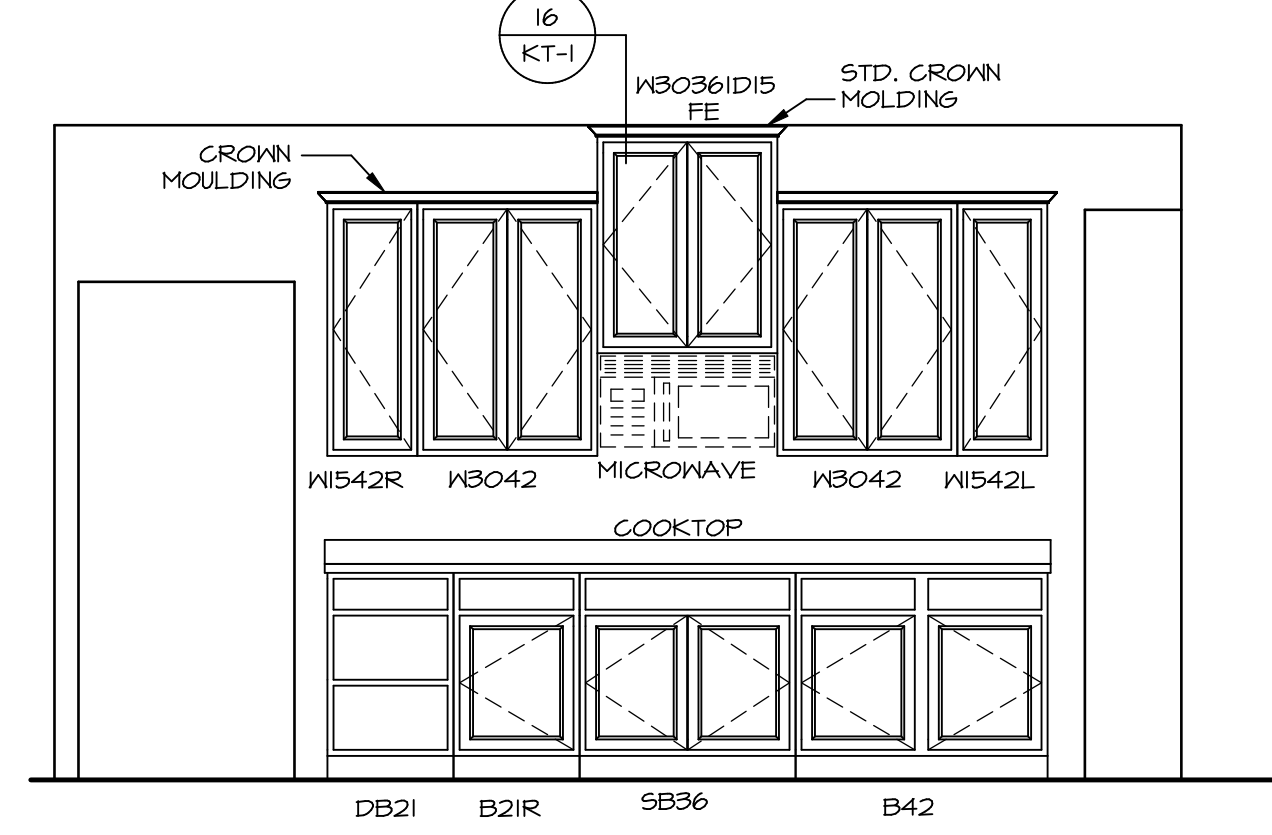


### KITCHEN ELEVATION

APP. LAYOUT W/  
CROCKTOP / WALL  
OVEN (TC) "KA2"

SCALE: 3/8" = 1'-0"

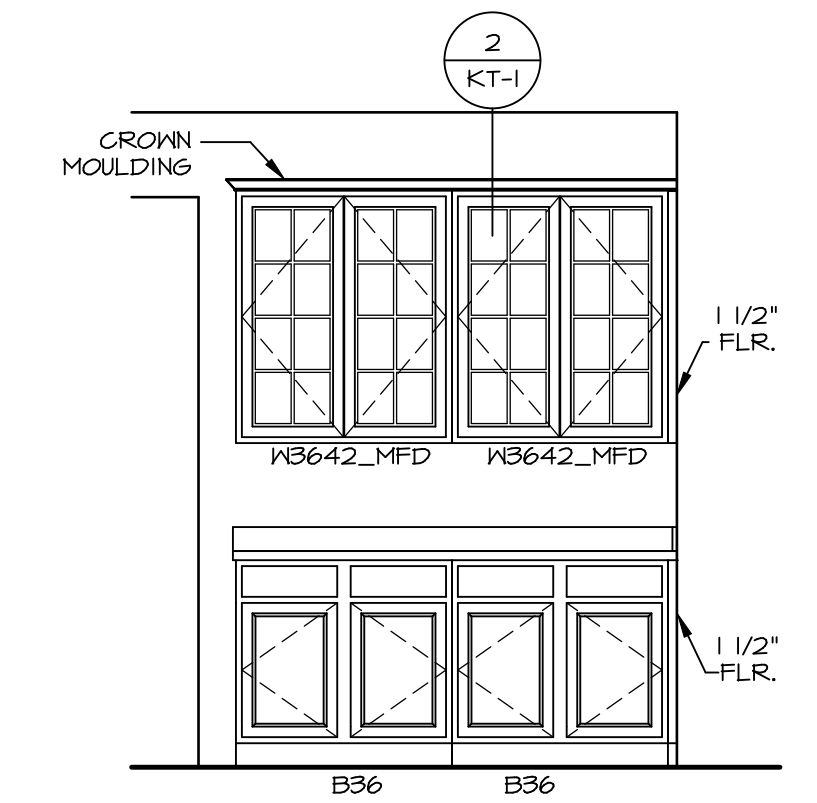
A A-13



### KITCHEN HUTCH ELEVATION

SCALE: 3/8" = 1'-0"

K A-13



DIV-COMM-LOT-UNIT  
**DCY-VR-S061**

COMM-LOT  
VILGGS OF WINDING CREEK MONT CO - S061

STREET ADDRESS  
946 WILD HORSE DRIVE

CITY STATE OH ZIP  
CENTERVILLE OH 45459

NVR, Inc., owner, expressly  
reserves its copyright and  
all other rights in these  
plans. These plans are not to be  
reproduced, changed, copied in  
any way, or otherwise used, in  
whole or in part, without the  
written consent of NVR, Inc.

**NVR**  
Architectural Services  
100  
Suite 100  
Frederick, MD 21703  
5285 West  
Frederick, MD 21703

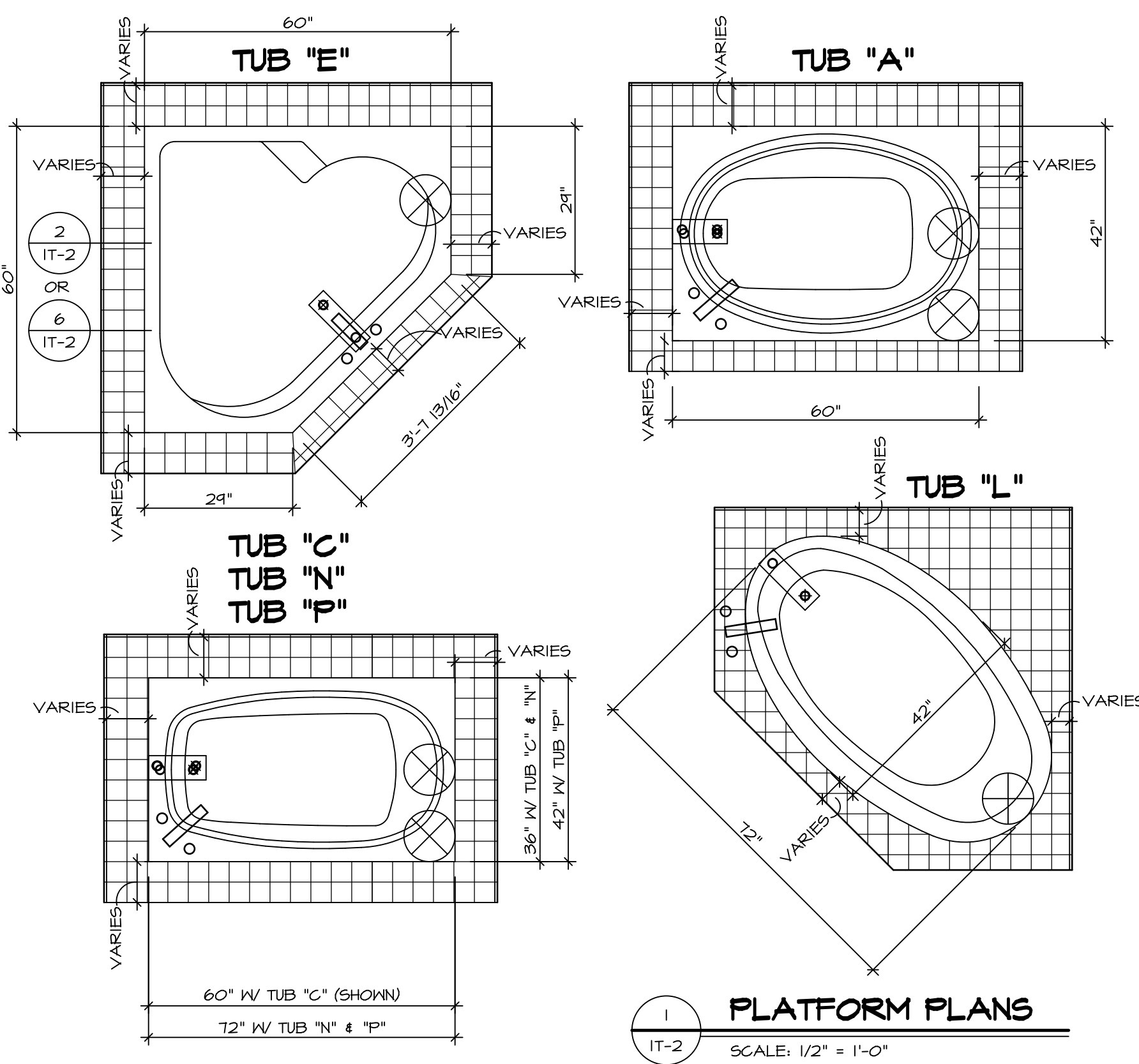
SET NO. NRM00  
VERSION 01  
DRAWN BY RJC  
DATE: 6/29/15  
OPTION

MODEL  
**NORMANDY**  
DRAWING TITLE  
KITCHEN LAYOUT

SHEET NO.  
**A-13**

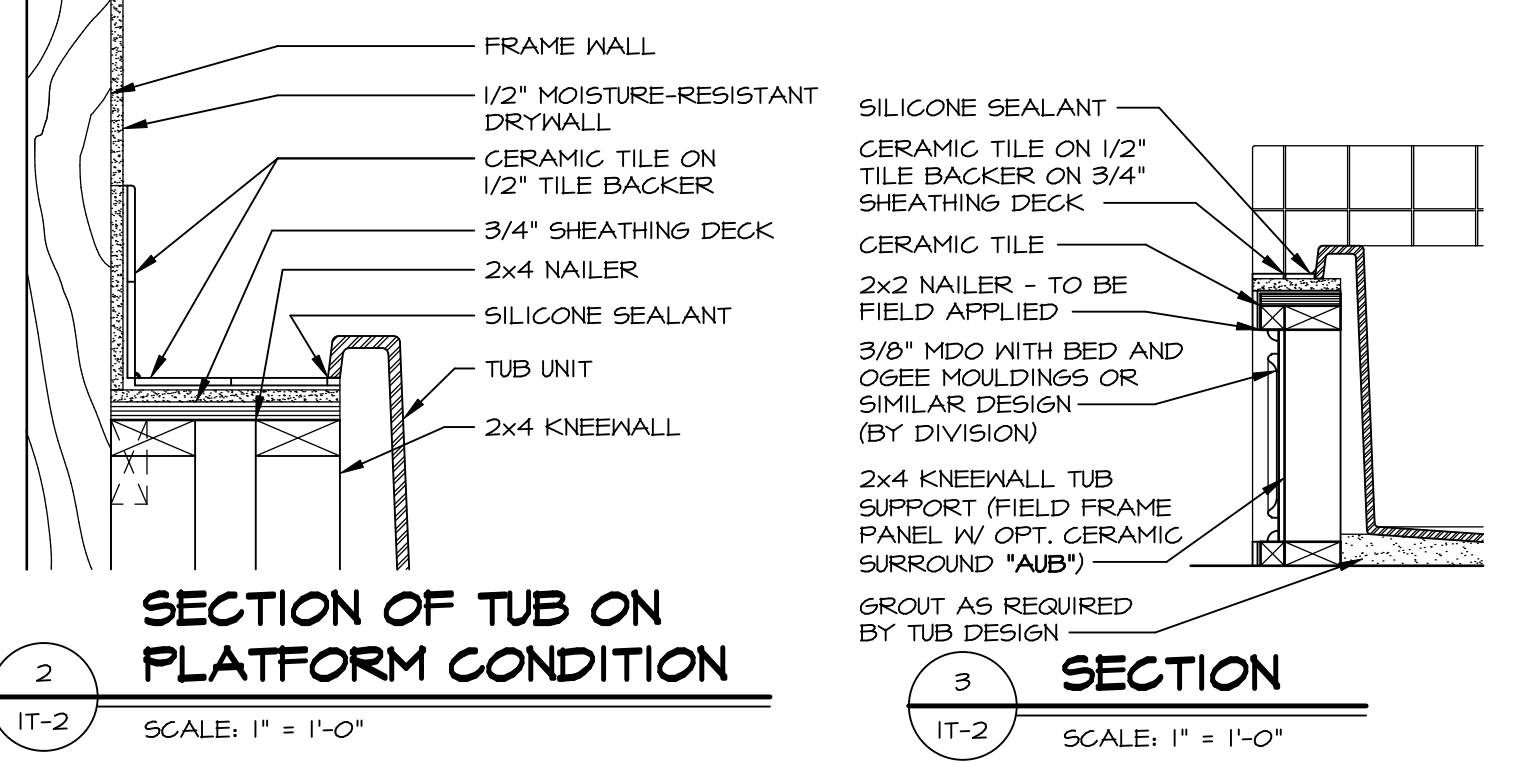
OPTION DESCRIPTION  
46

- NOTES:**
- CABINET LAYOUT (S) ARE BASED ON FINISHED DIMENSIONS TO DRYWALL.
  - IF KITCHEN PLANS/ELEVATIONS CALL-OUT STANDARD MOLDINGS, REFER TO STANDARD DETAIL (1/KT-1) FOR REPLACEMENT BASED ON CABINET STYLE.
  - ALL (U/F) FILLERS ARE TO BE "TRIM TO FIT" UNLESS OTHERWISE NOTED.
  - CABINET MUST BE SET, SHIMMED, LEVELED AND PLUMB W/ ADJOINING BASE CABINETS.
  - SET PRE-FINISHED SCRIBE MOLDING AT CABINET BULKHEADS AND AT ENDS (WHERE CABINETS MEET DRYWALL.) PRE-FINISHED SCRIBE MOLDING SHALL BE USED TO PAD OUT CABINET SIDES AT STILE FOR RETURN PIECES OF THE FACE-MOUNTED CABINET CROWN MOLDING.
  - HARDWARE INSTALL NOTE: KNOBS GO ON DOORS AND DRAWERS FOR ALL AREAS. ALL DRAWER FRONTS AND DOORS GET (I) KNOB/ PULL. NO HARDWARE ON FALSE DRAWER FRONTS.

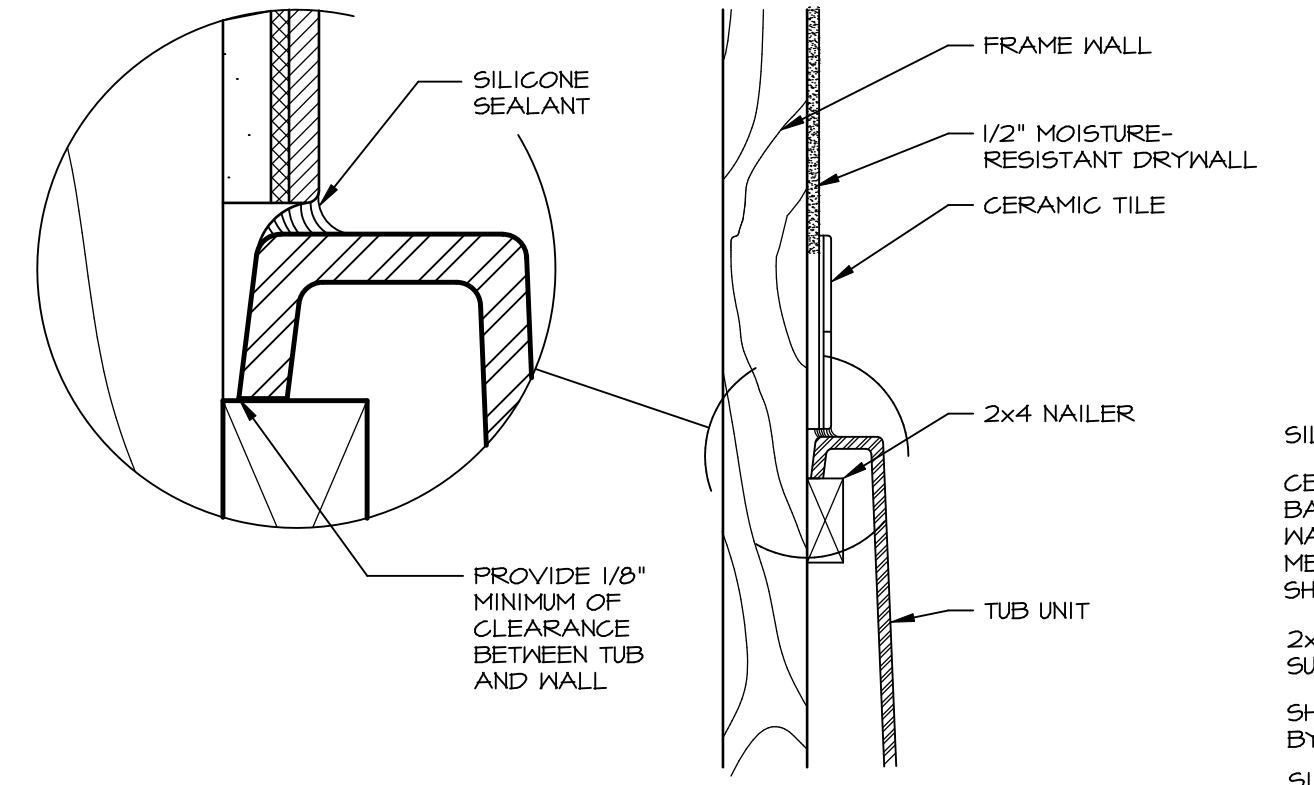


**1 PLATFORM PLANS**  
IT-2 SCALE: 1/2" = 1'-0"

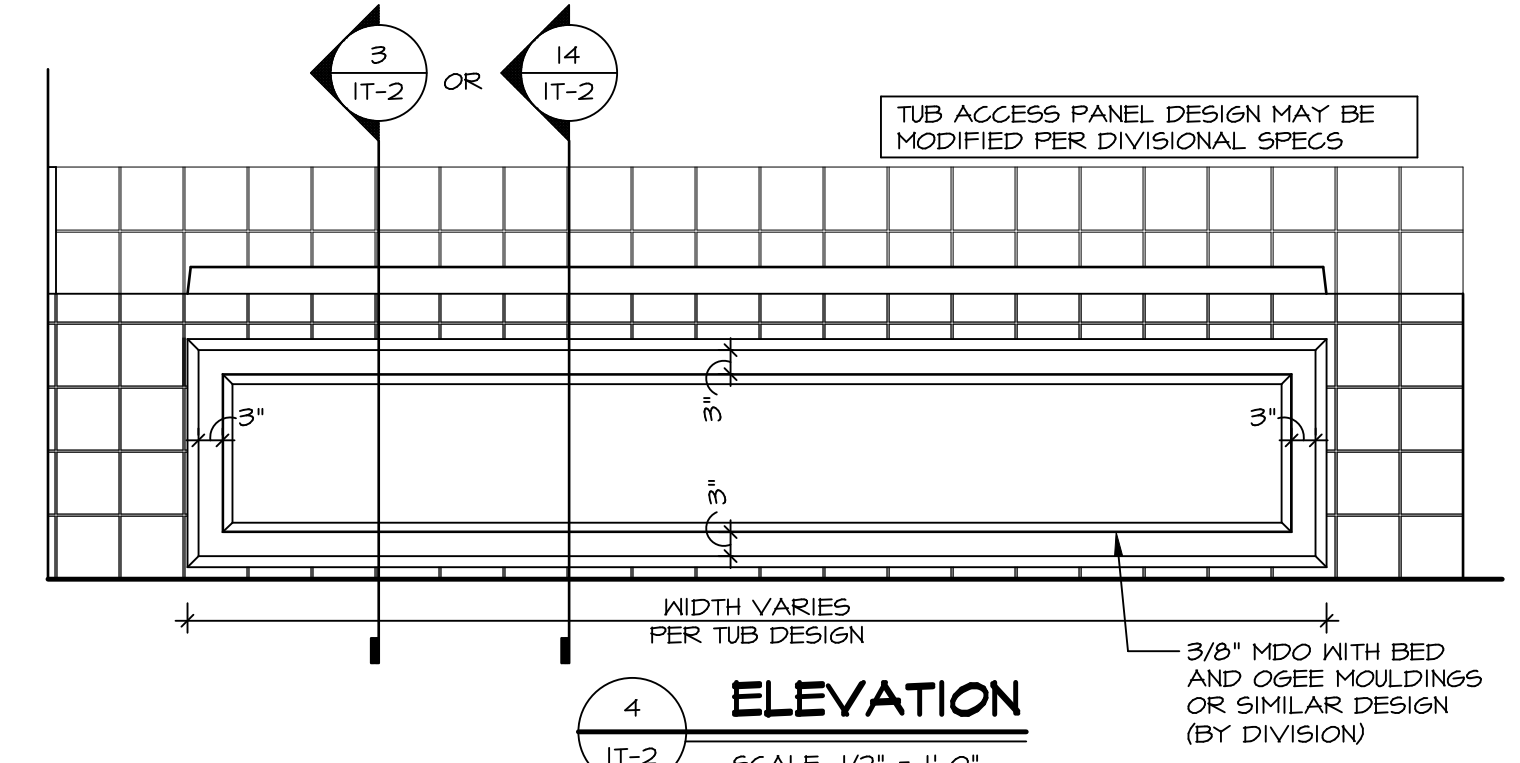
TUB	MANUF.	HEIGHT	WIDTH	LENGTH	TUB DECK PANEL HEIGHT
"A"	KOHLER/ STERLING	18 3/4"	42"	60"	17 1/8"
"C"	KOHLER/ STERLING	18 3/4"	36"	60"	17 1/8"
"E"	KOHLER/ STERLING	19 1/2"	60"	60"	17 7/8"
"L"	KOHLER/ STERLING	18 1/2"	42"	72"	16 7/8"
"N"	KOHLER/ STERLING	18 3/4"	36"	72"	17 1/8"
"P"	KOHLER/ STERLING	18 3/4"	42"	72"	17 1/8"



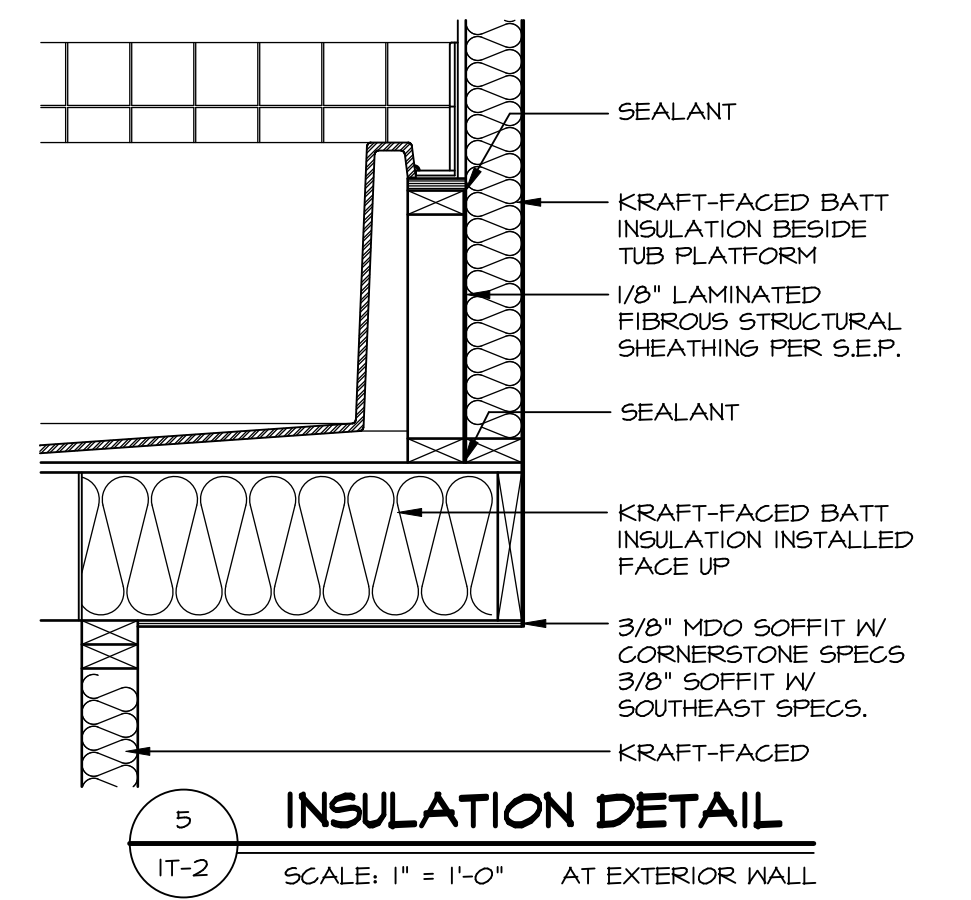
**2 SECTION OF TUB ON PLATFORM CONDITION**  
IT-2 SCALE: 1" = 1'-0"



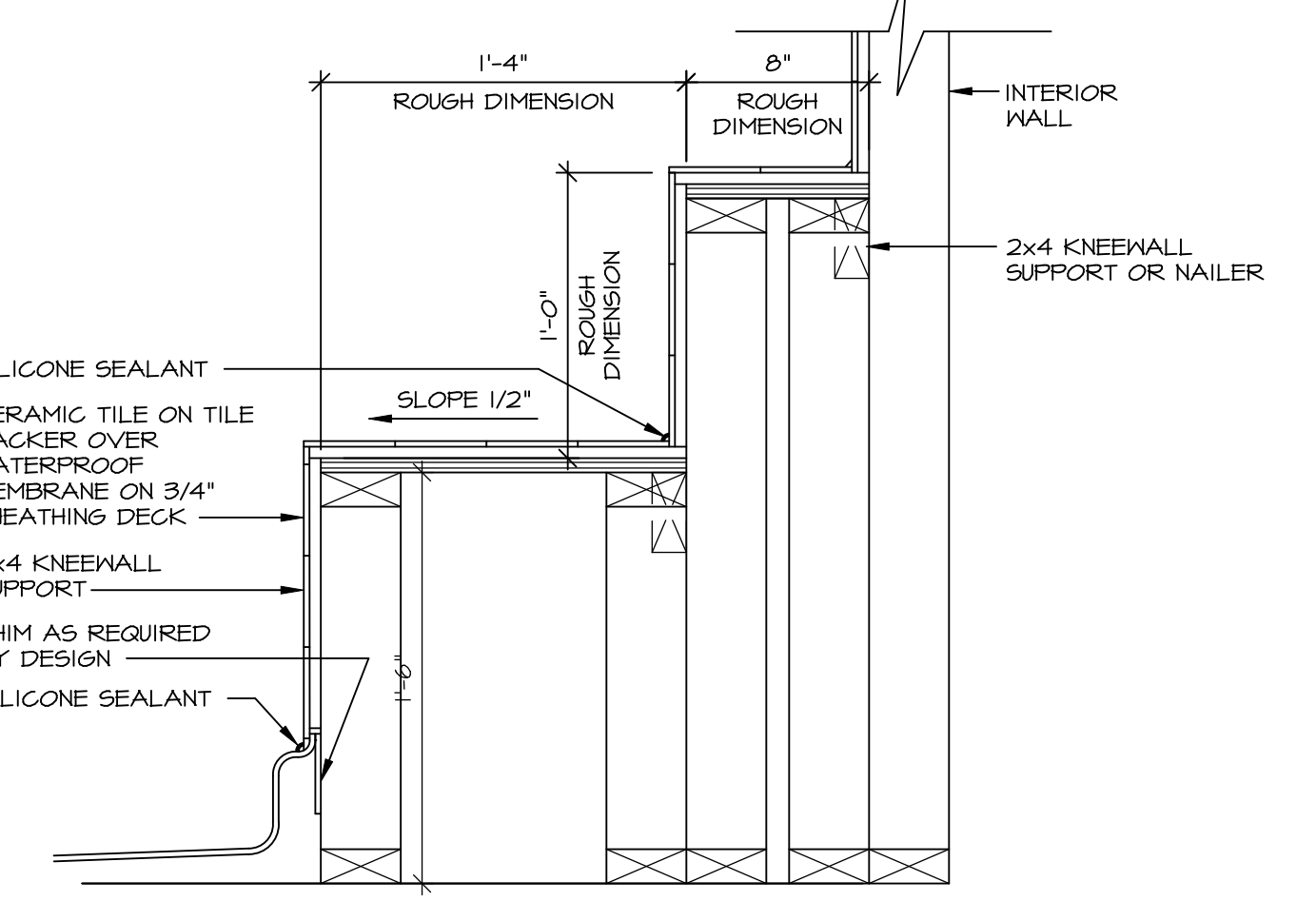
**3 SECTION OF TUB TO WALL CONDITION**  
IT-2 SCALE: 1 1/2" = 1'-0"



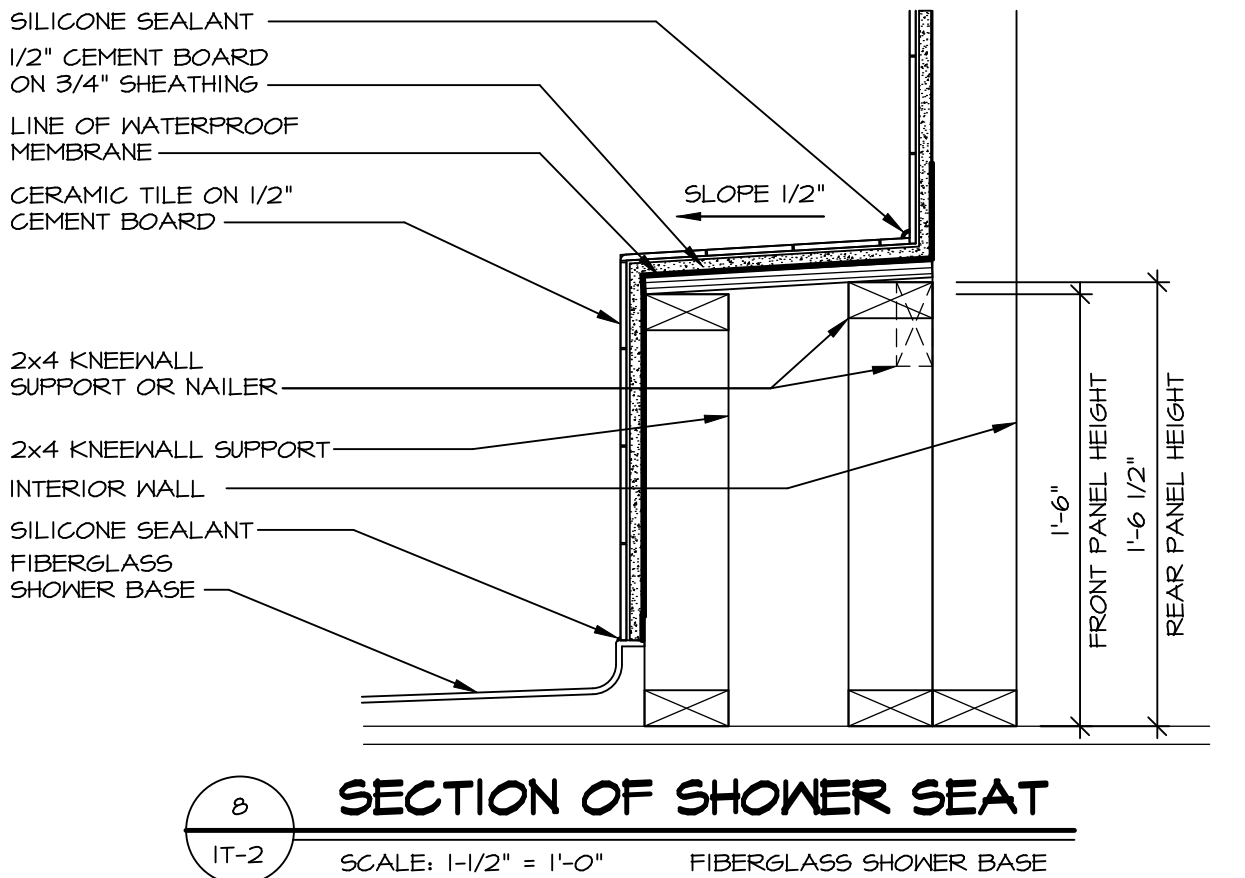
**4 ELEVATION**  
IT-2 SCALE: 1/2" = 1'-0"



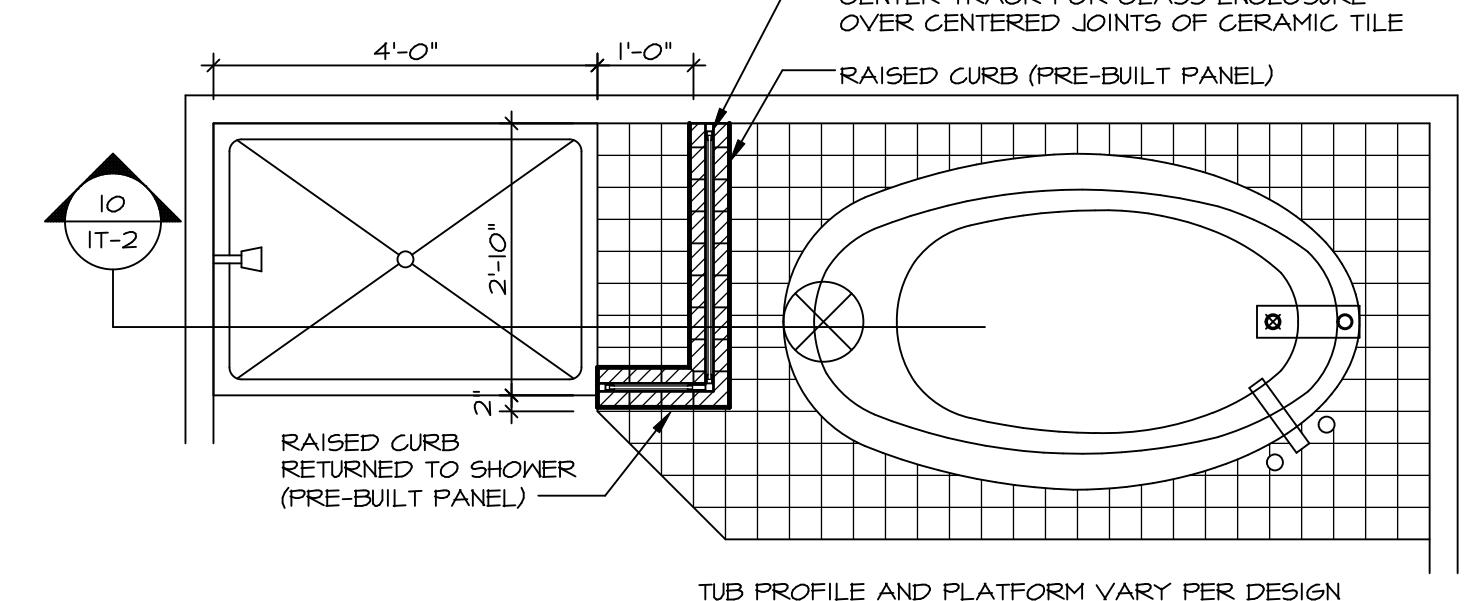
**5 INSULATION DETAIL**  
IT-2 SCALE: 1" = 1'-0" AT EXTERIOR WALL



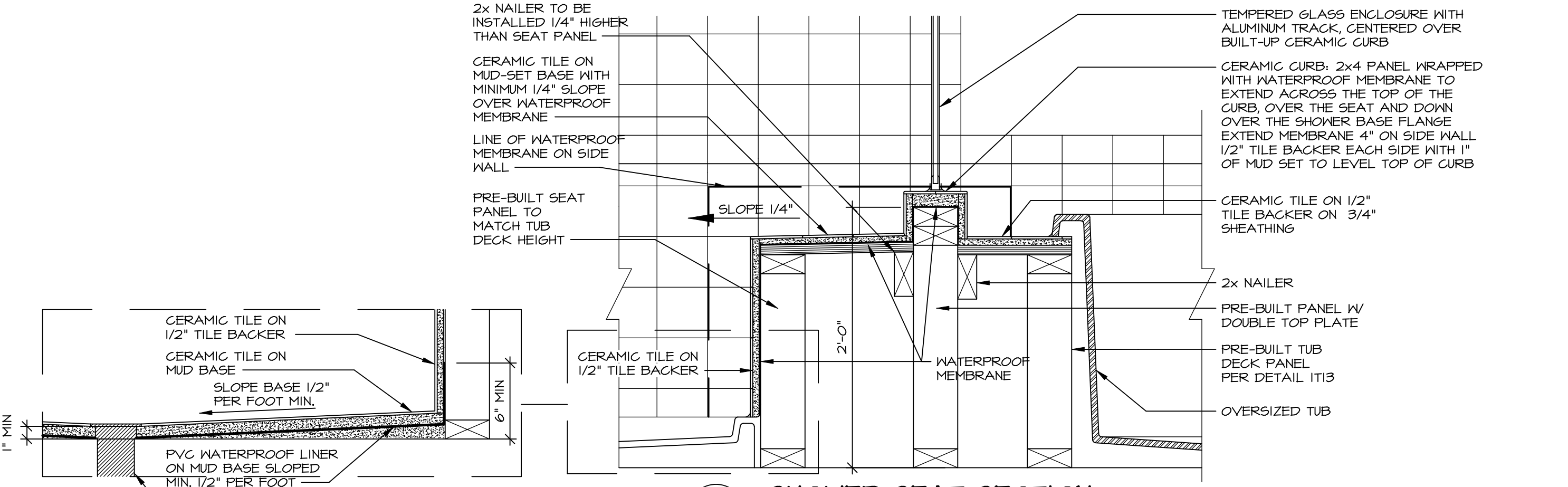
**7 SECTION OF SHOWER SEAT AND SHELF**  
IT-2 SCALE: 1 1/2" = 1'-0"



**8 SECTION OF SHOWER SEAT**  
IT-2 SCALE: 1-1/2" = 1'-0" FIBERGLASS SHOWER BASE



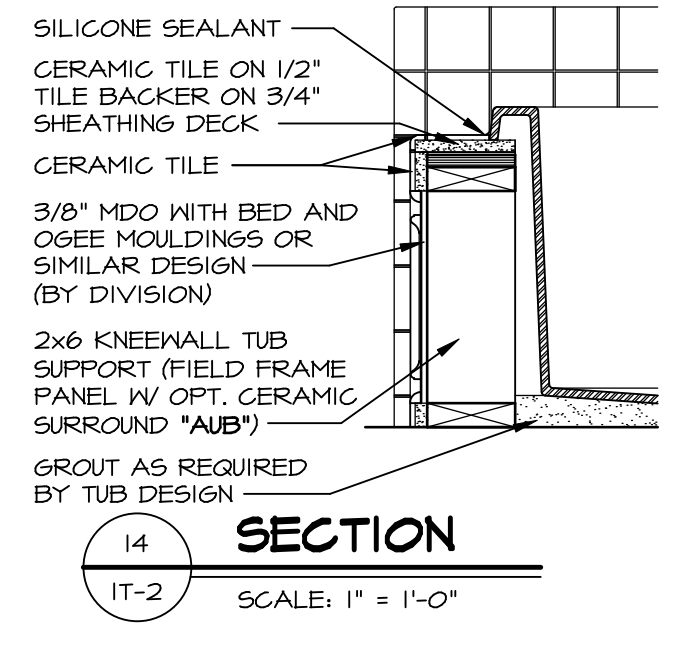
**9 SHOWER SEAT PLAN / DETAIL**  
IT-2 SCALE: 1/2" = 1'-0"



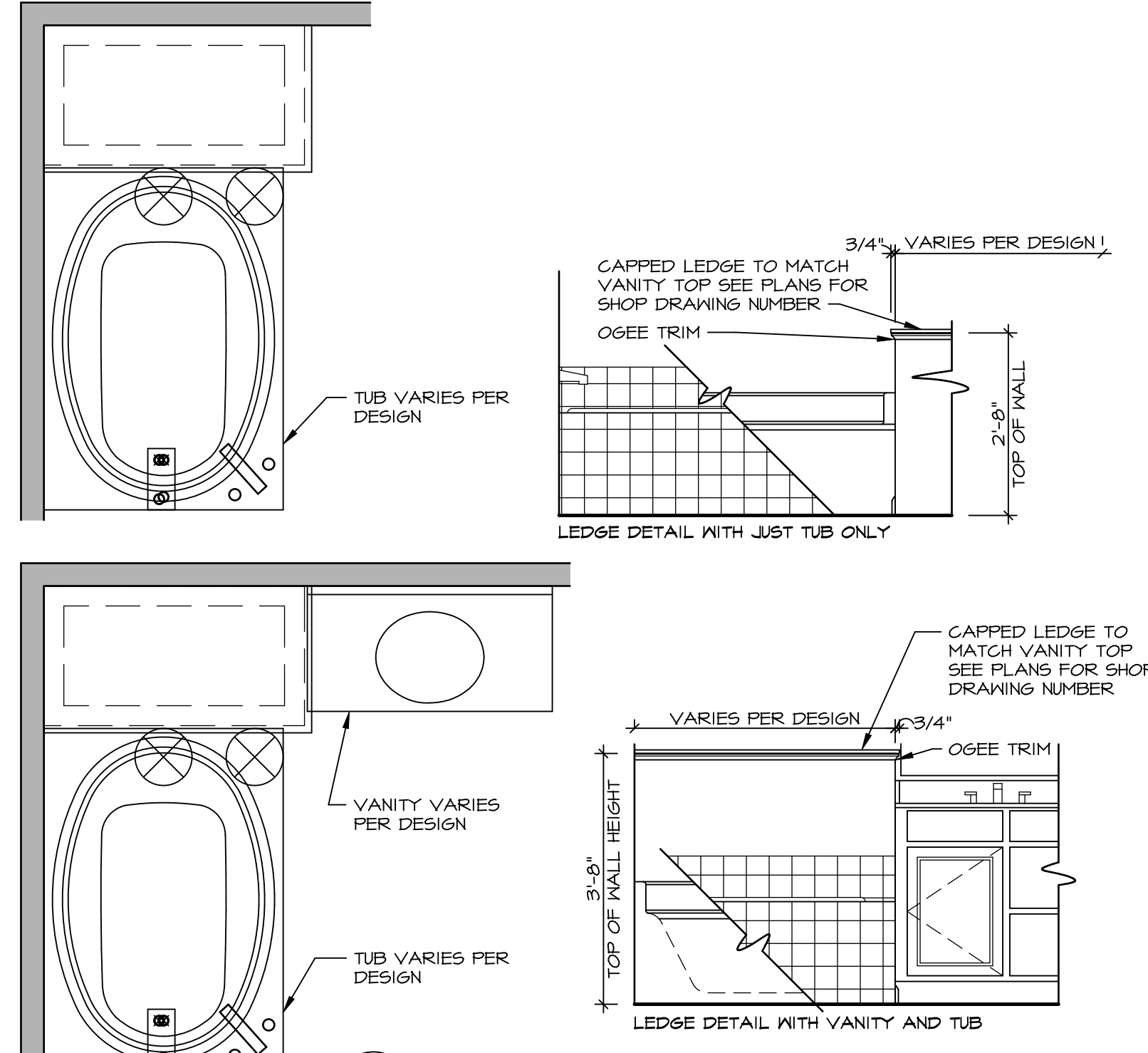
**10 SHOWER SEAT SECTION**  
IT-2 SCALE: 1-1/2" = 1'-0"



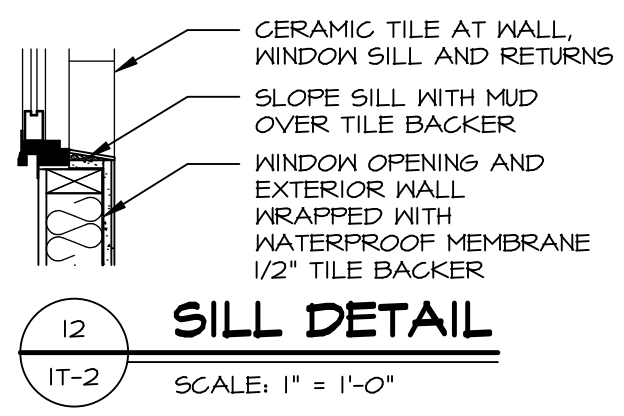
**11 ALTERNATE SHOWER PAN DETAIL**



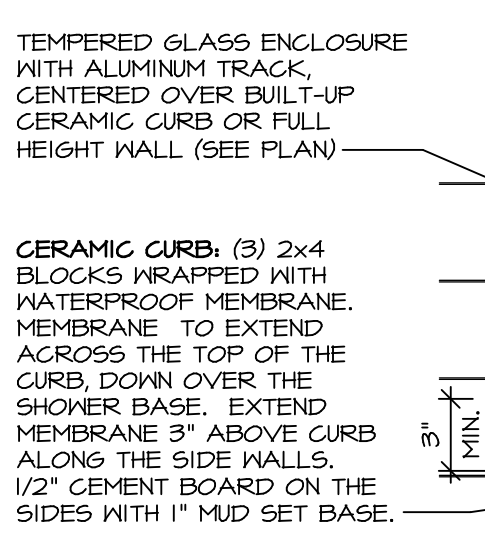
**14 SECTION**  
IT-2 SCALE: 1" = 1'-0"



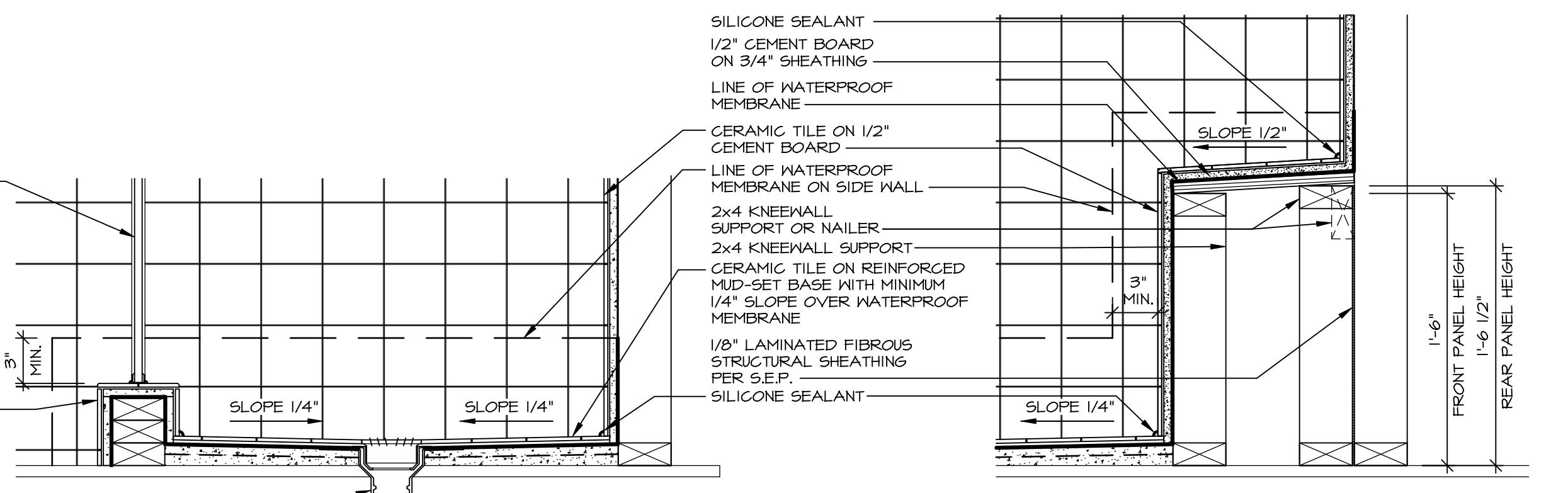
**11 BATHROOM LEDGE DETAIL**  
IT-2 SCALE: 1/2" = 1'-0"



**12 SILL DETAIL**  
IT-2 SCALE: 1" = 1'-0"



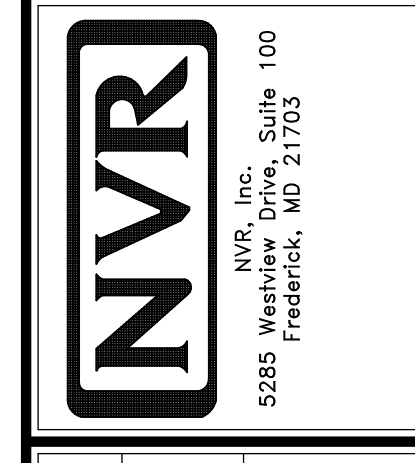
**13 SHOWER SEAT SECTION**  
IT-2 SCALE: 1 1/2" = 1'-0" MUD-SET SHOWER



REVISIONS

REV. NO.	DATE	DESCRIPTION
1	5/11/17	EBP - REVISED DETAIL 1 AND 11 TO REMOVE TUB ACCESS PANEL. REF. (095 #15 3/4)4
2	9/21/17	EBP - REVISED T-FLY NOTE TO CALL OUT LFS
3	9/21/17	EBP - REVISED NOTE ON DETAIL #1 - REVISED ORDER OF MATERIAL. PAR#49304
4	8/28/18	EBP - DTL 8 / 19 ME REMOVED THE 2x6 BULKING AT BASE OF SHWR REQUEST #4663

NVR, Inc. expressly reserves the right to modify or change these plans without notice. These plans are not to be reproduced, changed or altered in any way without the written consent of NVR, Inc.



5285 Washington Blvd., Suite 100  
Frederick, MD 21703

MODEL	STANDARD DETAILS
DRAWING TITLE	INTERIOR TRIM DETAILS
BATH DETAILS	BATH DETAILS
OPTION DESCRIPTION	