



FIRST FLOOR JACK SCHEDULE				
IDENTIFIER	DESCRIPTION	OPTIONS	ENG. NUM.	REMARKS
J01	JACK - (2) 2X4 SPF STUD GRADE		1051 / 1050	
J02	JACK - (2) 2X4 SPF STUD GRADE		1051 / 1050	
J03	JACK - (5) 2X4 SP#1	SXC	1051	STEEL PLATE
J04	JACK - (5) 2X4 SP#1	SXC	1051	STEEL PLATE
J05	JACK - (2) 2X4 SPF STUD GRADE	ZCC / SXC	1062	
J06	JACK - (2) 2X4 SPF STUD GRADE	ZCC / SXC	1062	
J14	JACK - (2) 2X4 SPF STUD GRADE	ELM	1053 / 1056	
J47	JACK - (5) 2X4 SP#1	EDI / SXC	1051	STEEL PLATE
J54	JACK - (3) 2X6 SPF STUD GRADE	EES / SXC	1050	STEEL PLATE
J55	JACK - (5) 2X4 SP#1	EES / SXC	1050	STEEL PLATE
J64	JACK - (2) 2X4 SPF STUD GRADE	EDI / WST	1044	
J65	JACK - (3) 2X4 SP#1	EDI / WST / SXC	1044	
J67	JACK - (3) 2X4 SPF STUD GRADE	GCB / ZCC	1006	
J68	JACK - (3) 2X4 SPF STUD GRADE	GCB / ZCC	1006	

LEGEND	
	BEARING WALL
	NON BEARING WALL
	INDICATES BEARING FROM POINT-LOAD ABOVE
	JACKS
	BEAM/HEADER
	PAD FOOTING
	STEEL COLUMN
	PORTAL FRAME
	JOIST/TRUSS
	LVL
	ENGINEERING PAGE NUMBER

SEE FC DETAILS FOR FRAMING CONNECTORS

**LVL PLY TO PLY FASTENING SCHEDULE:**

1.A - (2) PLY UP TO AND INCLUDING 11 7/8" TALL; FASTEN PLYS W/ (2) ROWS 16D NAILS AT 12" O.C.  
 2.A - (2) PLY 14" TO AND 18" TALL (INCLUSIVE); FASTEN PLYS W/ (3) ROWS 16D NAILS AT 12" O.C.  
 3.A - (2) PLY 20" TALL AND OVER; FASTEN PLYS W/ (4) ROWS 16D NAILS AT 12" O.C.  
 4.A - (3) PLY UP TO AND INCLUDING 11 7/8" TALL; FASTEN PLYS W/ (2) ROWS 16D NAILS AT 12" O.C. FROM EACH SIDE  
 5.A - (3) PLY 14" TO AND 18" TALL (INCLUSIVE); FASTEN PLYS W/ (3) ROWS 16D NAILS AT 12" O.C. FROM EACH SIDE  
 6.A - (3) PLY 20" TALL AND OVER; FASTEN PLYS W/ (4) ROWS 16D NAILS AT 12" O.C. FROM EACH SIDE

**FIELD INSTALLED FIRST FLOOR BEAM/HEADER SCHEDULE**

IDENTIFIER	DESCRIPTION	LENGTH	OPTIONS	ENG. NUM.	REMARKS
PFO1-2	LVL - 14	14'-4"	GCB / ZCC	1006	2 PLY, 2A

**FLOOR PLAN NOTES**

- ALL HEADERS ARE (2) 2x6 w/ 2x4 WALLS OR (3) 2x6 w/ 2x6 WALLS, UNLESS OTHERWISE NOTED.
- ALL HEADERS TO HAVE (1) 2x4 OR 2x6 JACK EACH END, UNLESS OTHERWISE NOTED.
- ALL EXTERIOR WALLS TO BE 4" AND ALL INTERIOR WALLS TO BE 3 1/2", UNLESS OTHERWISE NOTED.
- HATCHED AREAS INDICATE DROPPED CEILING. ALL DROPPED CEILING ARE 12" UNLESS OTHERWISE NOTED.
- SEE "BRACED WALL PANEL DETAIL SHEET" FOR SPECIAL WALL FRAMING LOCATIONS AND HEADER SIZES, IF APPLICABLE.
- SEE STANDARD DETAIL CATEGORY "IT" SHEET(S) FOR INTERIOR TRIM DETAILS.
- SEE ARCHITECTURAL DETAIL SHEET "AD" FOR HOUSE SPECIFIC INTERIOR TRIM OPTION TABLE.
- ALL WINDOWS HAVE T-0 1/2" HEADER HEIGHT UNLESS OTHERWISE NOTED.

**GYPSUM NOTES**

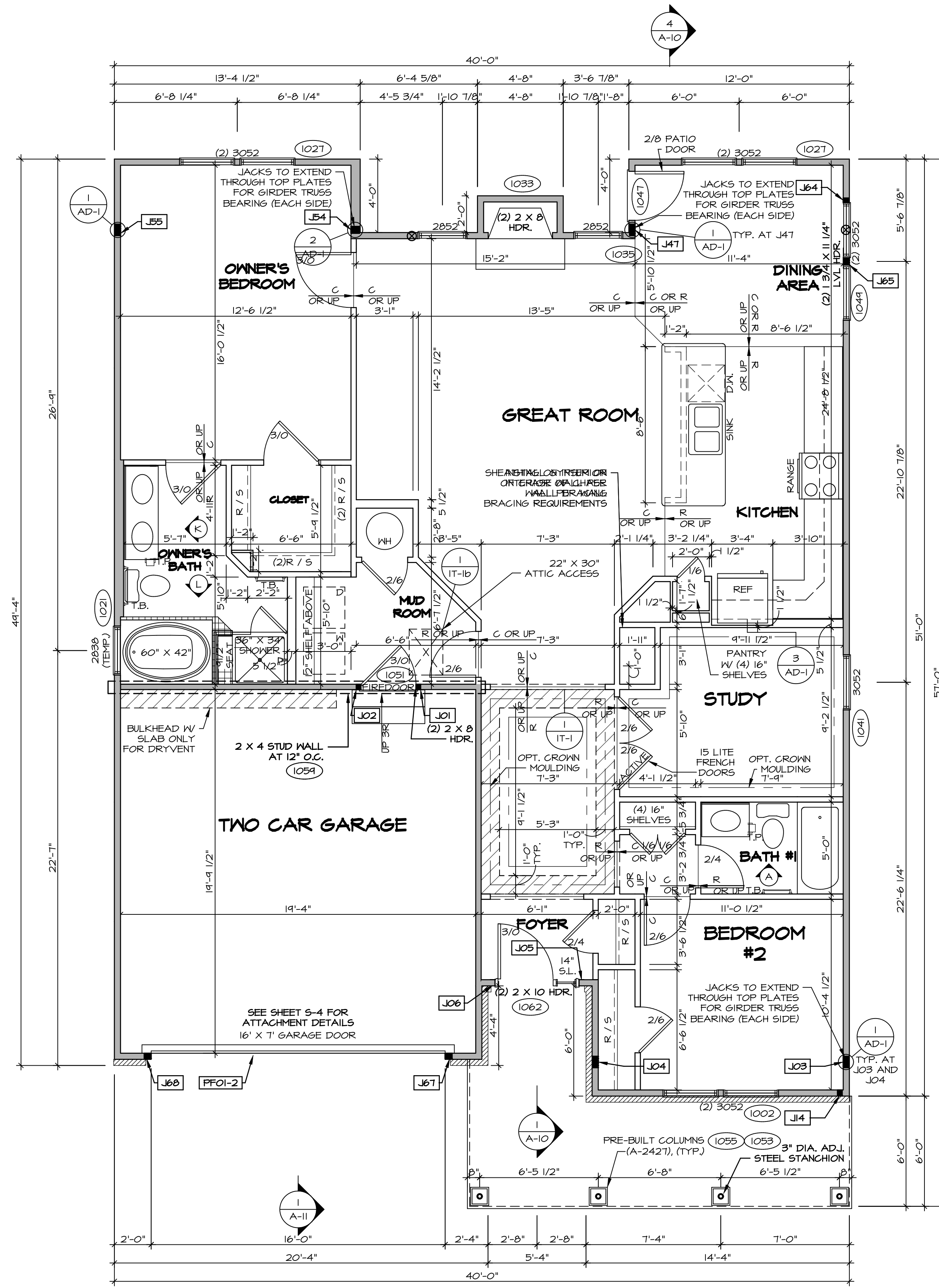
**AT GARAGE:**  
 GYPSUM BOARD AT COMMON WALLS, CEILING, BEAM WRAPS AND SUPPORTS PER STANDARD DETAIL FA-1(b) FIRE ASSEMBLIES OR AS REQUIRED BY LOCAL CODE.

**AT STAIRS:**  
 1/2" GYPSUM BOARD AT UNDERSIDE OF STAIRS AND WALLS IN CLOSET

**BASEMENT WITH I-JOIST FLOOR SYSTEM ABOVE:**  
 WITH OPTION "SG1" - DRYWALL UNFINISHED BASEMENT CEILING AREA

**NOTES:**

- 1/2" GYPSUM WALL BOARD REQUIRED ON CEILING IN UNFINISHED AREAS WHEN NO SPRINKLER SYSTEM IS INSTALLED
- A MAXIMUM AREA OF 80 SQ FT MAY BE OMITTED AS NEEDED FOR INSTALLATION OF PLUMBING, ELECTRICAL, AND/OR HVAC (TYPICALLY AN 8'-0"x8'-0" CEILING SPACE ABOVE MECHANICAL AREA).
- PROVIDE FIRE BLOCKING AS REQUIRED AT PERIMETER OF ANY AREAS WHERE DRYWALL HAS BEEN OMITTED.



**FIRST FLOOR PLAN**  
 SCALE: 1/4" = 1'-0"

REVISIONS

REV. NO.	DATE	DESCRIPTION
1	08/01/16	TH - DRAWING ALIGNMENT

© NVR, Inc. The owner expressly reserves the right to modify or change these plans at any time without notice. These plans are not to be reproduced, changed or altered in any way without the written consent of NVR, Inc.

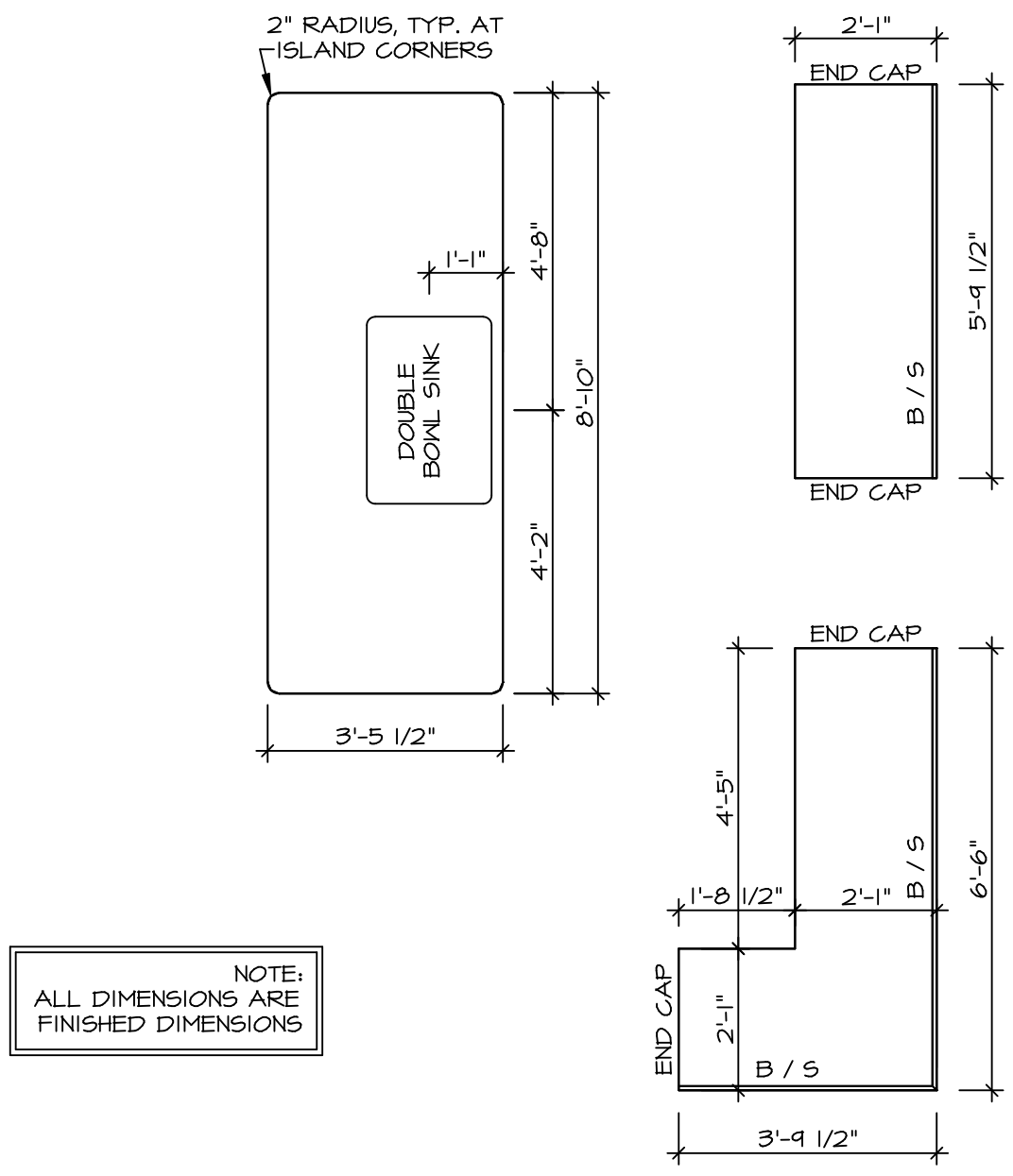
**NVR**  
 NVR, Inc. Suite 100  
 5285 Washburn Ave  
 Frederick, MD 21703

SET NO. P5700  
 VERSION 02  
 DRAWN BY  
 DATE:  
 OPTION

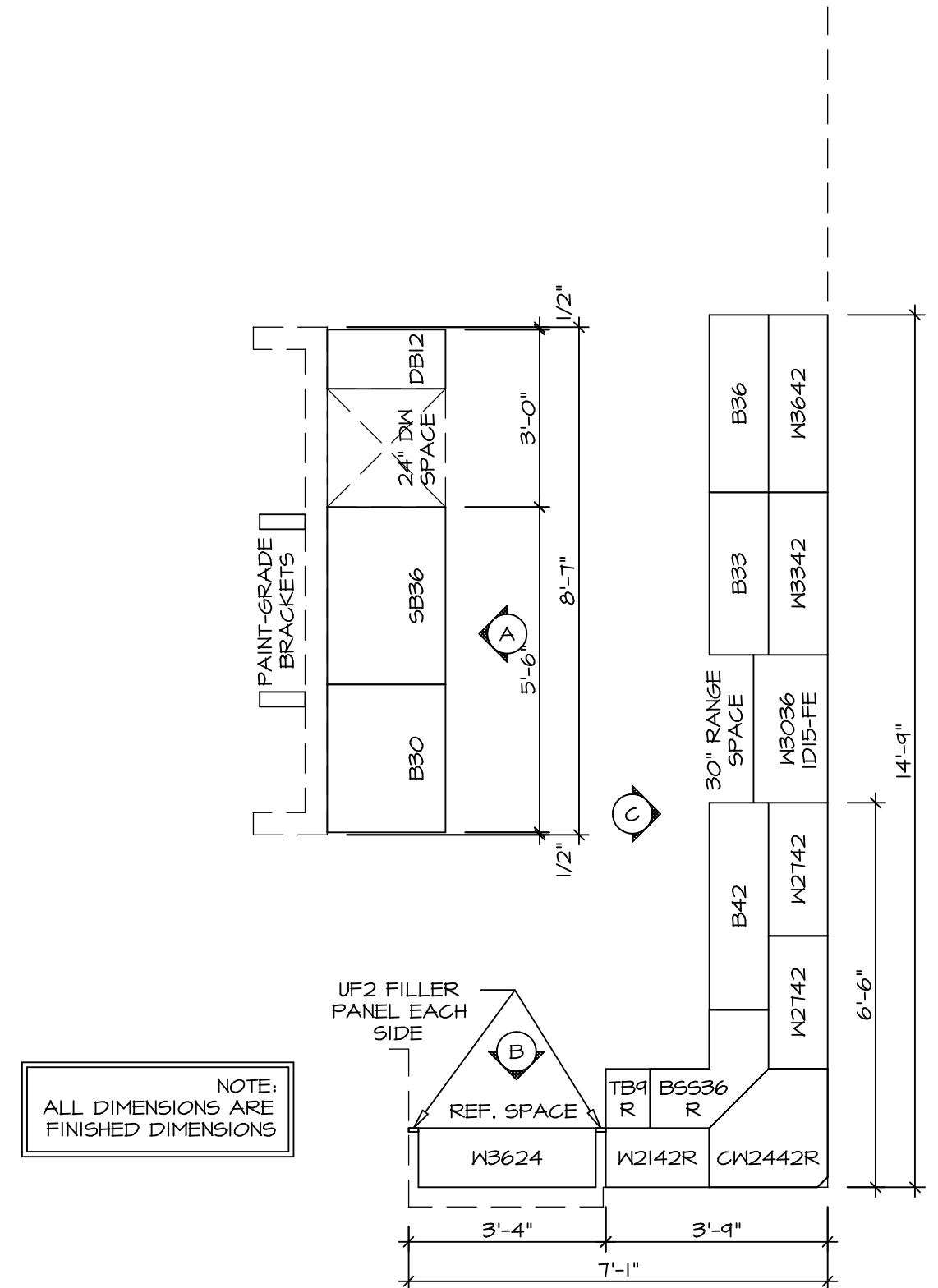
**PISA TORRE**  
 DRAWING TITLE  
 FIRST FLOOR PLAN  
 OPTION DESCRIPTION  
 CORNERSTONE SPECIFICATIONS

SHEET NO. **A-7** OF 36

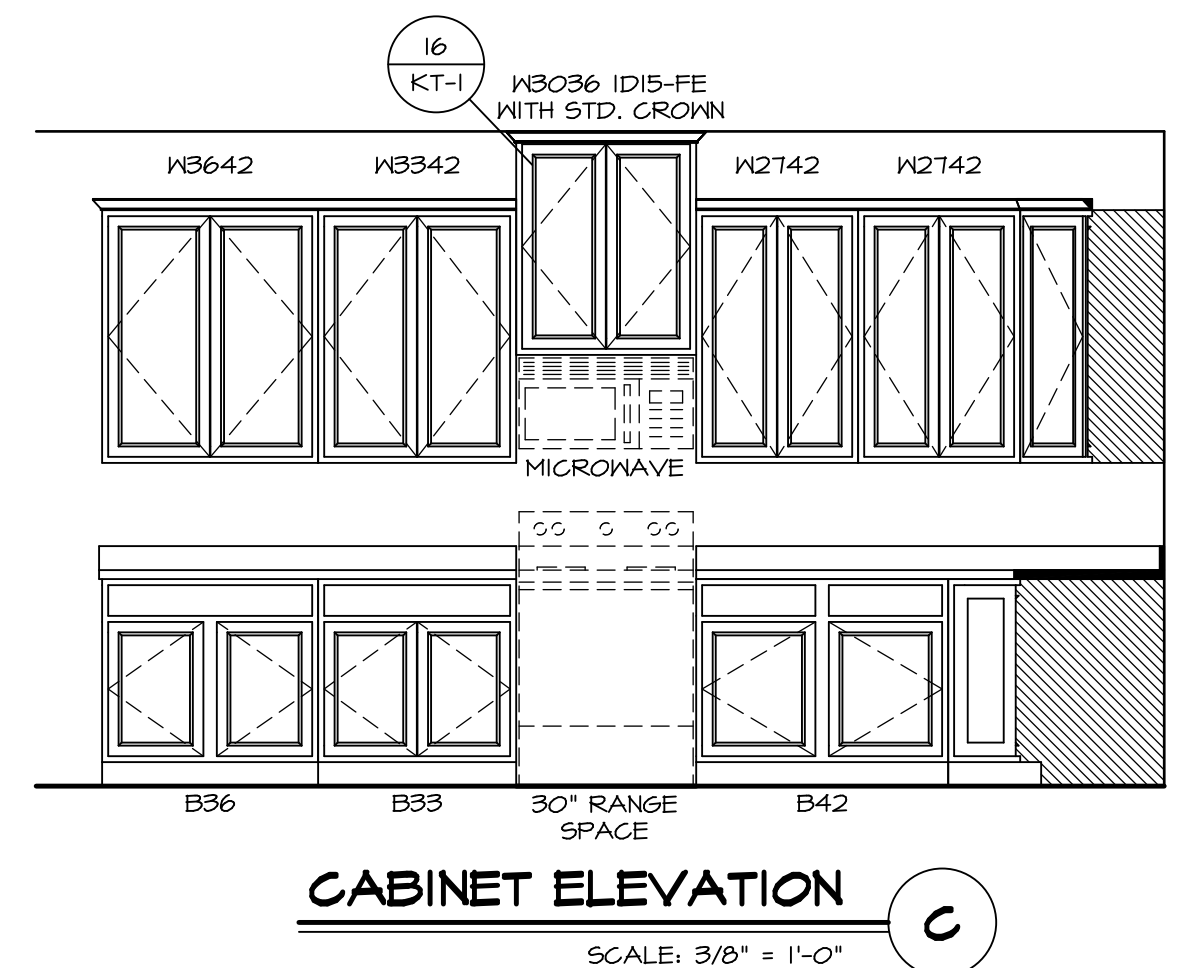
C:\NVR\Solves\PISA\_TORRE\_P5700\_02\DC1-WF-M165\1403893\Sheet\161-Specific\16 A-7-PLN1-SXC-LS.dwg 10/08/19 - 8:07 am



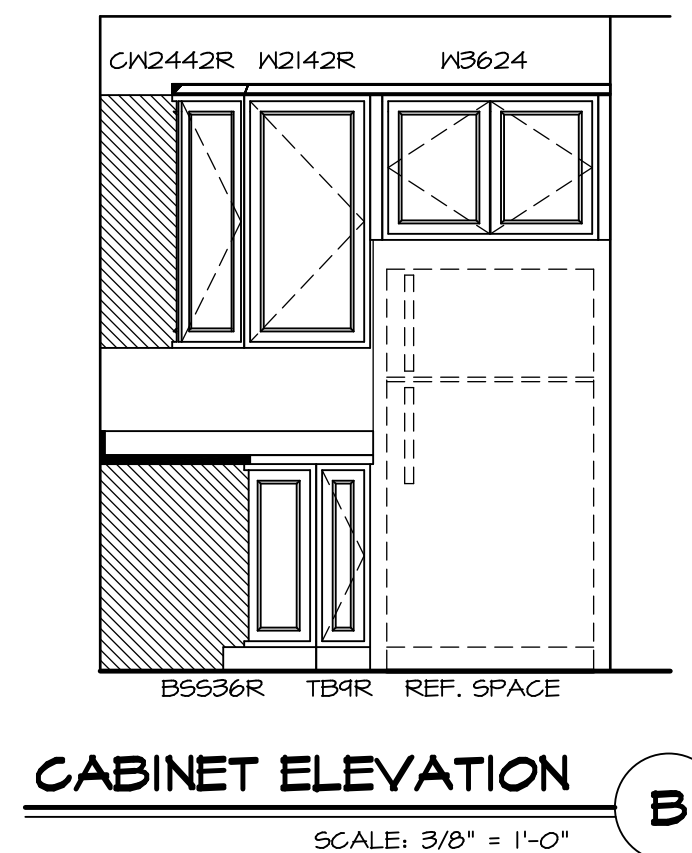
**(KT-3210)  
COUNTERTOP LAYOUT**  
SCALE: 3/8" = 1'-0" A-13



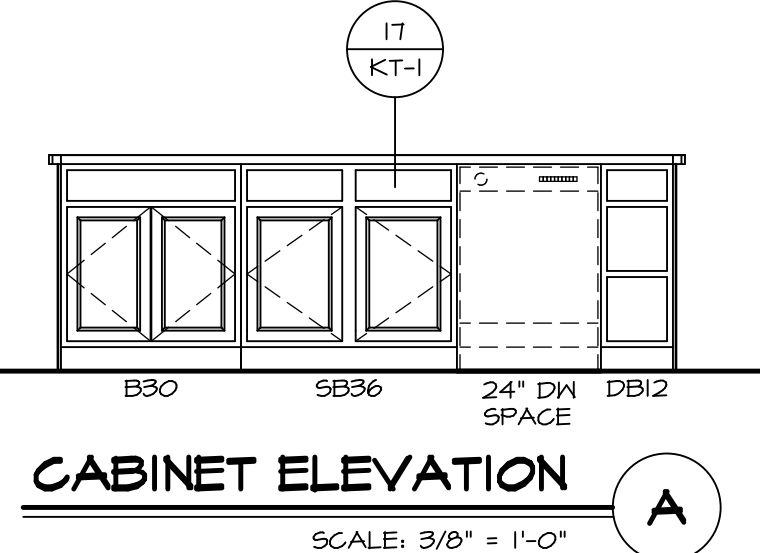
**(KC-3210)  
CABINET LAYOUT**  
SCALE: 3/8" = 1'-0" A-13



**CABINET ELEVATION C**  
SCALE: 3/8" = 1'-0"



**CABINET ELEVATION B**  
SCALE: 3/8" = 1'-0"



**CABINET ELEVATION A**  
SCALE: 3/8" = 1'-0"

SHEET NO. <b>A-13</b>	MODEL <b>PISA TORRE</b>	SET NO. PST00	OPTION DESCRIPTION	REMARKS
	DRAWING TITLE KITCHENS	VERSION 02		
48		DATE 3/24/15	OPTION	

© NVR, Inc. expressly reserves the right to modify these plans without notice. These plans are not to be reproduced, changed or copied in any way without the written consent of NVR, Inc.

