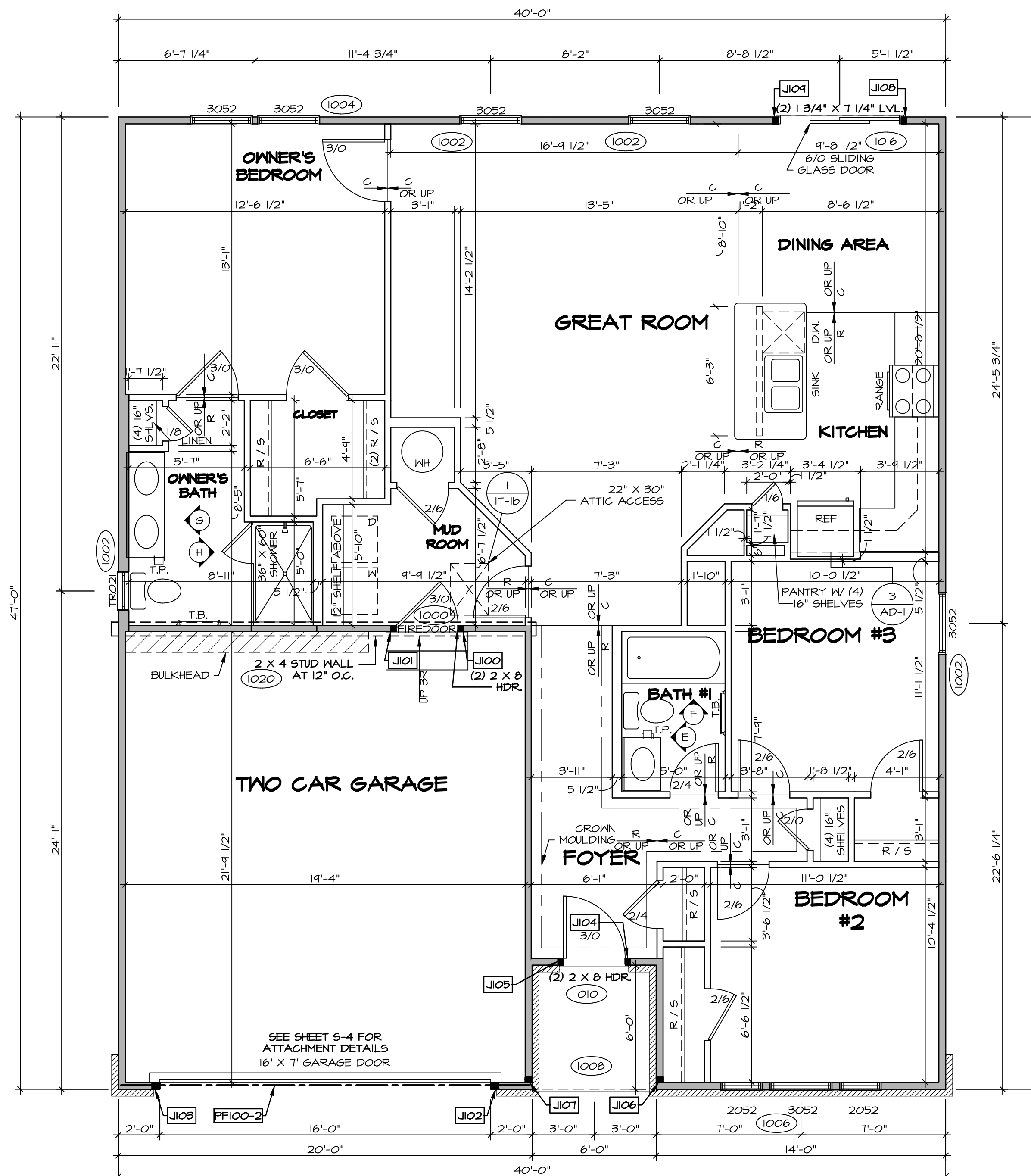


FIRST FLOOR JACK SCHEDULE				
IDENTIFIER	DESCRIPTION	OPTIONS	ENG. NUM.	REMARKS
J100	JACK - (2) 2X4 SPF STUD GRADE	SXC	1000	
J101	JACK - (2) 2X4 SPF STUD GRADE	SXC	1000	
J102	JACK - (3) 2X4 SPF STUD GRADE	SXC	1012	
J103	JACK - (3) 2X4 SPF STUD GRADE	SXC	1012	
J104	JACK - (2) 2X4 SPF STUD GRADE	SXC	1010	
J105	JACK - (2) 2X4 SPF STUD GRADE	SXC	1010	
J106	JACK - (2) 2X4 SPF STUD GRADE	SXC	1008	
J107	JACK - (2) 2X4 SPF STUD GRADE	SXC	1008	
J108	JACK - (2) 2X4 SPF STUD GRADE	ZLC	1016	
J109	JACK - (2) 2X4 SPF STUD GRADE	ZLC	1016	

LVL PLY TO PLY FASTENING SCHEDULE: (WHERE APPLICABLE BASED ON LVL USAGE)

1A - (2) PLY UP TO AND INCLUDING 11 7/8" TALL; FASTEN PLYS W/ (2) ROWS 16D NAILS AT 12" O.C.
 2A - (2) PLY 14" TO AND INCLUDING 18" TALL (INCLUSIVE); FASTEN PLYS W/ (3) ROWS 16D NAILS AT 12" O.C.
 3A - (2) PLY 20" TALL AND OVER; FASTEN PLYS W/ (4) ROWS 16D NAILS AT 12" O.C.
 4A - (3) PLY UP TO AND INCLUDING 11 7/8" TALL; FASTEN PLYS W/ (2) ROWS 16D NAILS AT 12" O.C. FROM EACH SIDE
 5A - (3) PLY 14" TO AND INCLUDING 18" TALL (INCLUSIVE); FASTEN PLYS W/ (3) ROWS 16D NAILS AT 12" O.C. FROM EACH SIDE
 6A - (3) PLY 20" TALL AND OVER; FASTEN PLYS W/ (4) ROWS 16D NAILS AT 12" O.C. FROM EACH SIDE
 7A - (4) PLY (ALL SIZES); FASTEN PLYS W/ (2) ROWS 1/2" DIAMETER A307 BOLTS AT 24" O.C. SEE SHOP DRAWINGS FOR ADDITIONAL INFORMATION.

FIELD INSTALLED FIRST FLOOR BEAM/HEADER SCHEDULE					
IDENTIFIER	DESCRIPTION	LENGTH	OPTIONS	ENG. NUM.	REMARKS
PF100-2	LVL - 14	19'-4"		1012	2A



LEGEND	
	BEARING WALL
	NON BEARING WALL
	INDICATES BEARING FROM POINT-LOAD ABOVE
	JACKS
	BEAM/HEADER
	PAD FOOTING
	STEEL COLUMN
	PORTAL FRAME
	JOIST/TRUSS
	LVL
	ENGINEERING PAGE NUMBER

SEE FC DETAILS FOR FRAMING CONNECTORS

- FLOOR PLAN NOTES**
- ALL HEADERS ARE (2) 2x6 W/ 2x4 WALLS OR (3) 2x6 W/ 2x6 WALLS, UNLESS OTHERWISE NOTED.
 - ALL HEADERS TO HAVE (1) 2x4 OR 2x6 JACK AND KING STUD EACH END, UNLESS OTHERWISE NOTED.
 - ALL EXTERIOR WALLS TO BE 4" AND ALL INTERIOR WALLS TO BE 3 1/2", UNLESS OTHERWISE NOTED.
 - HATCHED AREAS INDICATE DROPPED CEILINGS. ALL DROPPED CEILINGS ARE 12" UNLESS OTHERWISE NOTED.
 - SEE "BRACED WALL PANEL DETAIL SHEET" FOR SPECIAL WALL FRAMING LOCATIONS AND HEADER SIZES, IF APPLICABLE.
 - SEE STANDARD DETAIL CATEGORY "IT" SHEETS(S) FOR INTERIOR TRIM DETAILS.
 - SEE ARCHITECTURAL DETAIL SHEET "AD" FOR HOUSE SPECIFIC INTERIOR TRIM OPTION TABLE.
 - ALL WINDOWS HAVE T-0 1/2" HEADER HEIGHT UNLESS OTHERWISE NOTED.
 - ALL CASED OPENINGS AT 7'-11", UNLESS OTHERWISE NOTED.
 - ALL HEADERS IN NON-BEARING WALLS SHALL BE A SINGLE FLAT 2X4 OR 2X6 ATTACHED TO CRIPPLES ABOVE, UNLESS OTHERWISE NOTED.

GYPSUM NOTES

AT GARAGE:
 GYPSUM BOARD AT COMMON WALLS, CEILINGS, BEAM WRAPS AND SUPPORTS PER STANDARD DETAIL FA-1(b) FIRE ASSEMBLIES OR AS REQUIRED BY LOCAL CODE.

AT STAIRS:
 1/2" GYPSUM BOARD AT UNDERSIDE OF STAIRS AND WALLS IN CLOSET

FIRST FLOOR PLAN
 SCALE: 1/4" = 1'-0"

MODEL	PISA TORRE
DRAWING TITLE	FIRST FLOOR PLAN
OPTION DESCRIPTION	
SHEET NO.	A-7
20	

SET NO. P5T00
 VERSION 03
 DRAWN BY
 DATE:
 OPTION

MODEL PISA TORRE
 DRAWING TITLE FIRST FLOOR PLAN
 OPTION DESCRIPTION

SHEET NO. A-7
 20

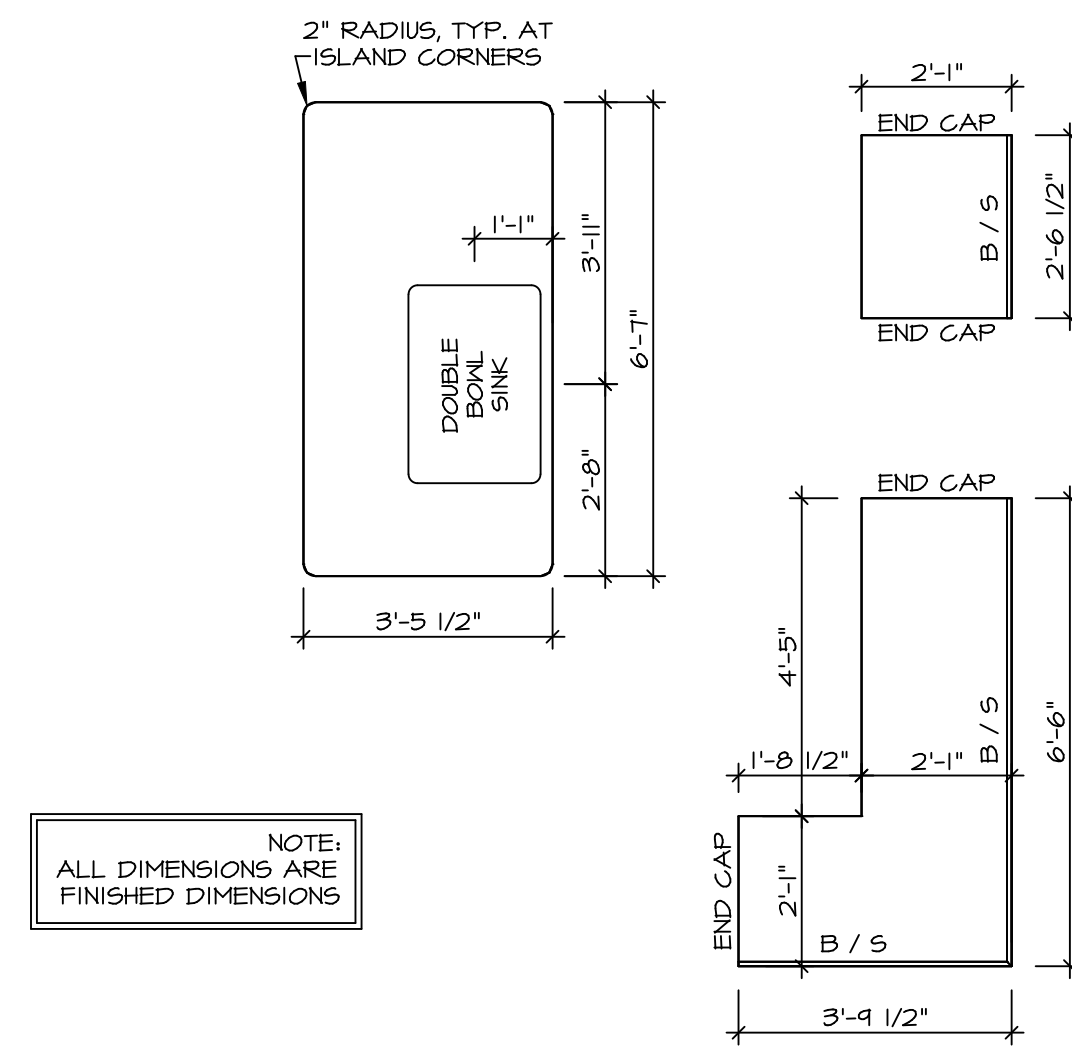
© NVR, Inc. expressly reserves the right to modify these plans without notice. These plans are not to be reproduced, changed or copied in any way without the written consent of NVR, Inc.

NVR
 NVR, Inc. Suite 100
 5285 Walkers Lane
 Frederick, MD 21703

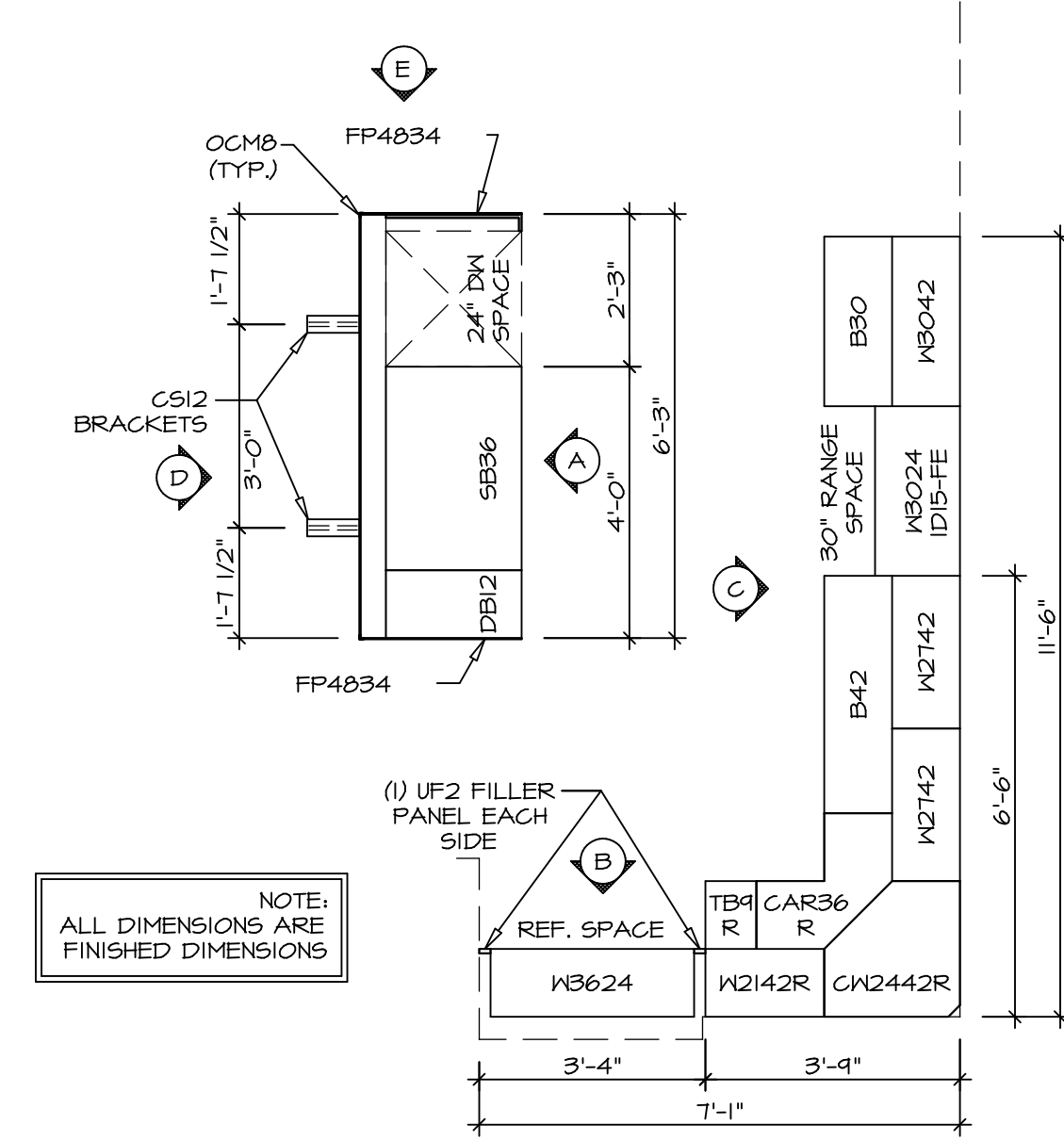
REV. NO. DATE T/OTIT SLS - T/PLY CONVERSION REVISIONS

REMARKS

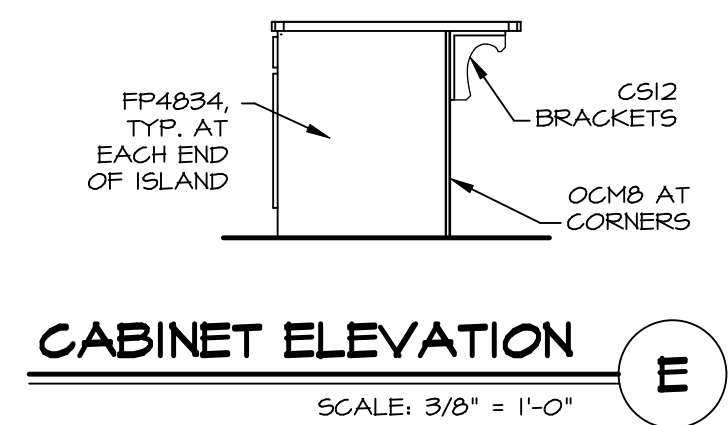
C:\NVR\Solves\PISA_TORRE_P5T00_03\DC1-WF-M180-135277A\Sheet\Lot_Specific\20_A-7_PLN1_LS.dwg 08/20/19 - 8:22 am



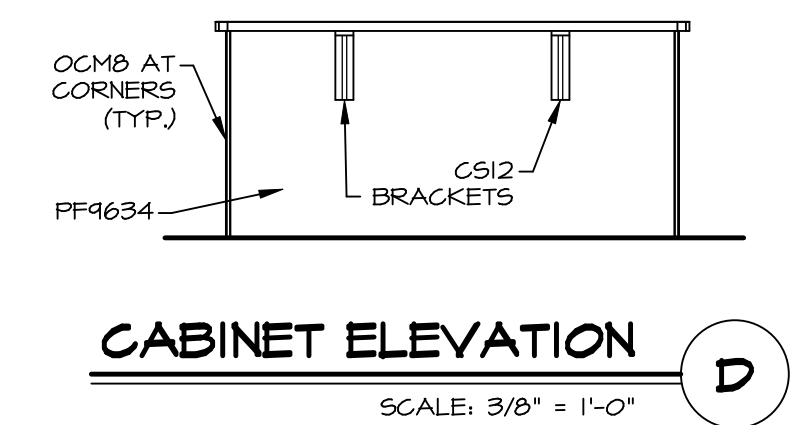
(KT-3359)
COUNTERTOP LAYOUT
 SCALE: 3/8" = 1'-0" 2 A-12



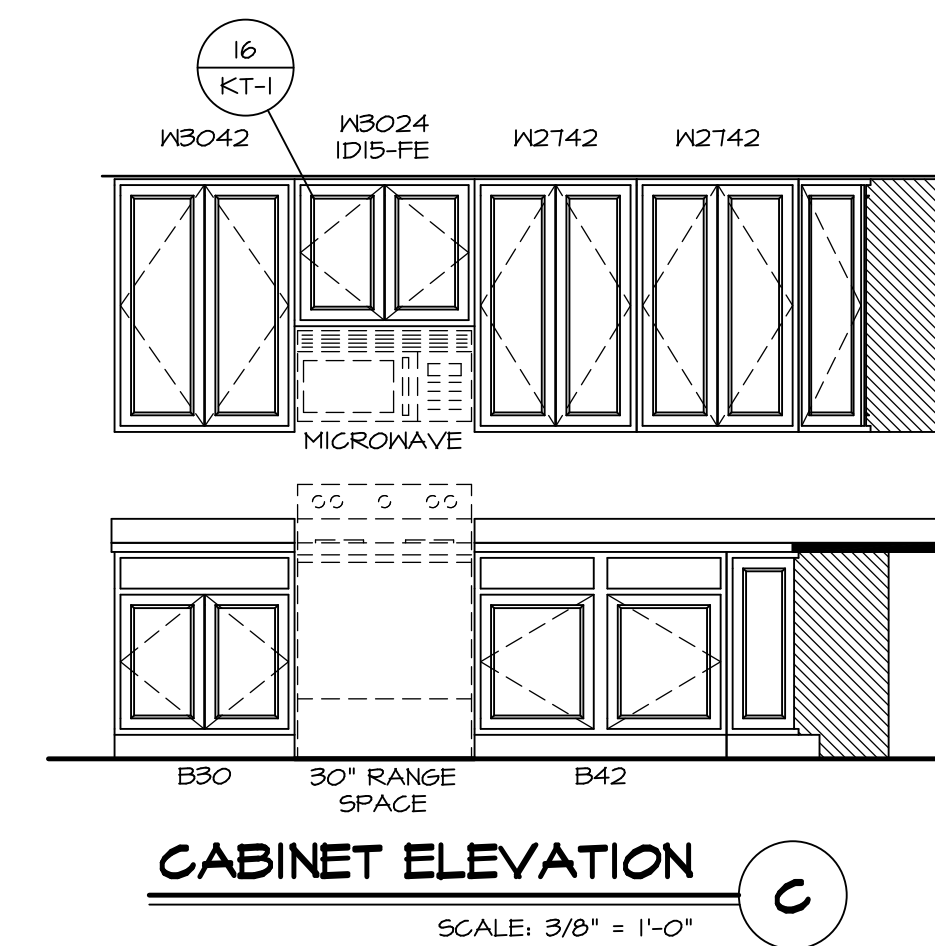
(KC-3359)
CABINET LAYOUT
 SCALE: 3/8" = 1'-0" 1 A-12



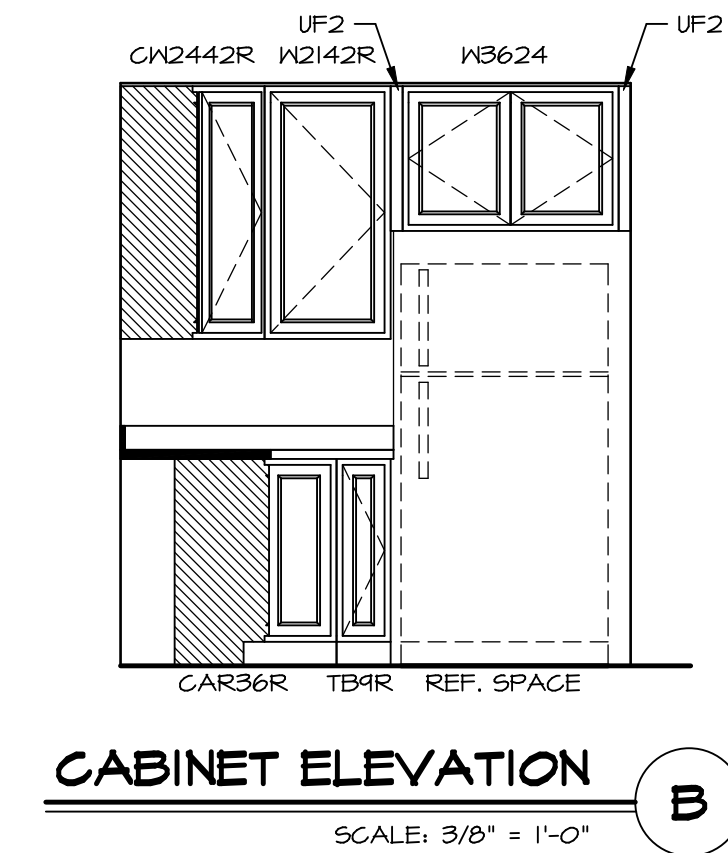
CABINET ELEVATION
 SCALE: 3/8" = 1'-0" E



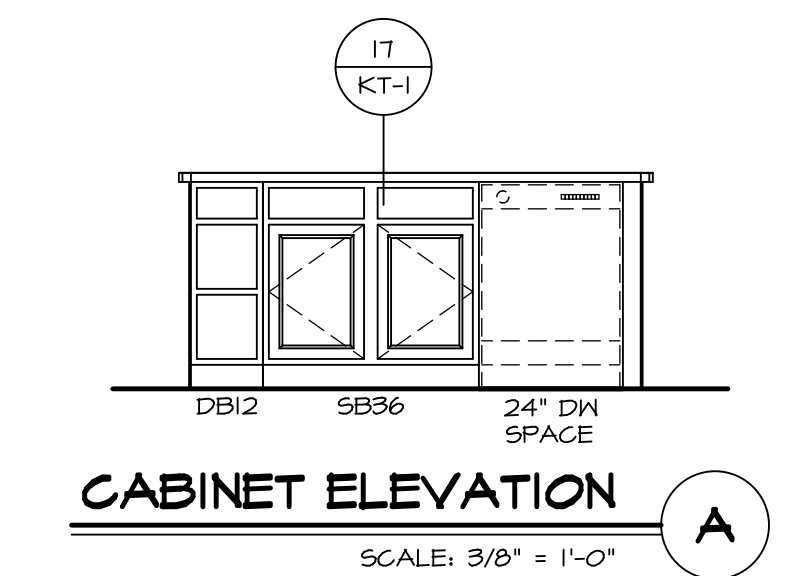
CABINET ELEVATION
 SCALE: 3/8" = 1'-0" D



CABINET ELEVATION
 SCALE: 3/8" = 1'-0" C



CABINET ELEVATION
 SCALE: 3/8" = 1'-0" B



CABINET ELEVATION
 SCALE: 3/8" = 1'-0" A

SHEET NO. A-13	MODEL PISA TORRE DRAWING TITLE KITCHENS OPTION DESCRIPTION 	SET NO. P5T00 VERSION 03 DRAWN BY DATE: OPTION	REV. NO. DATE
NVR, Inc. 5285 Washington Blvd., Suite 100 Frederick, MD 21703			REMARKS

